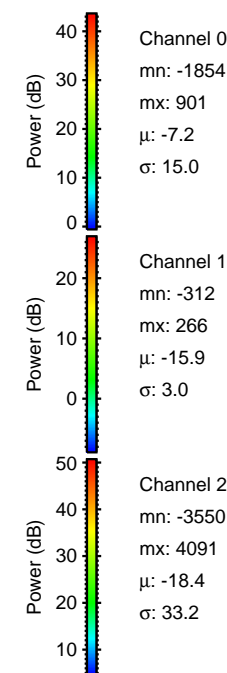
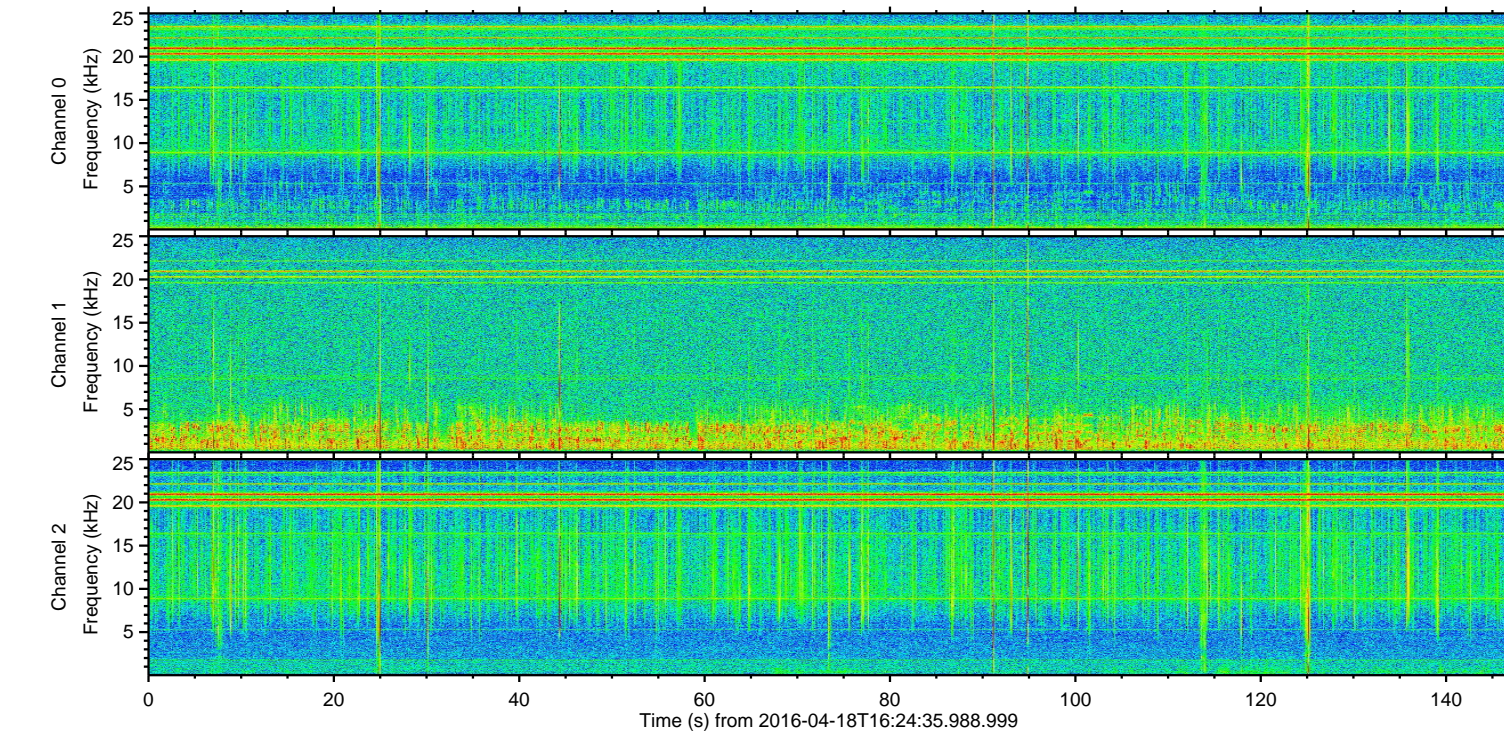
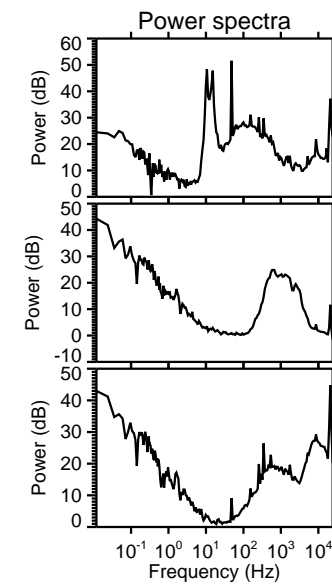
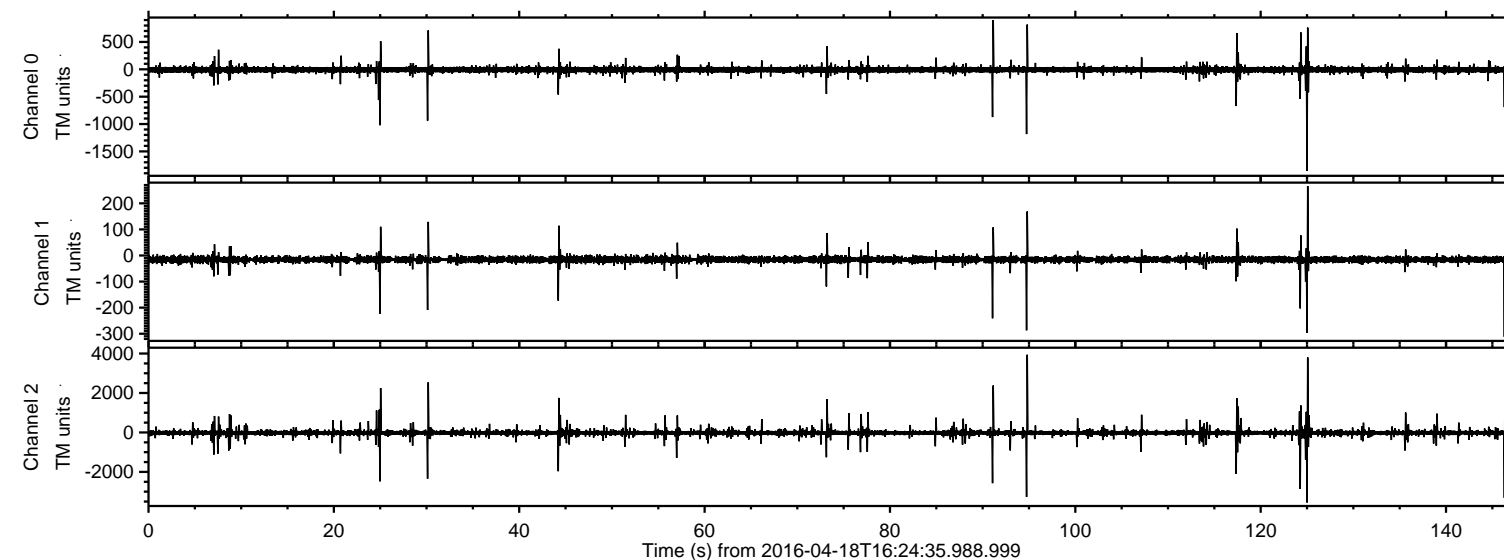
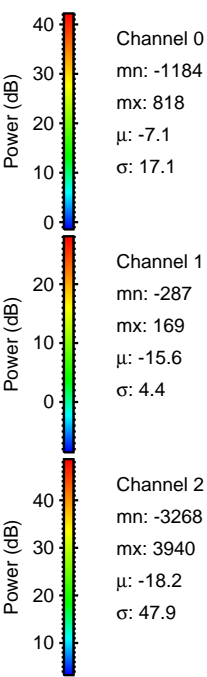
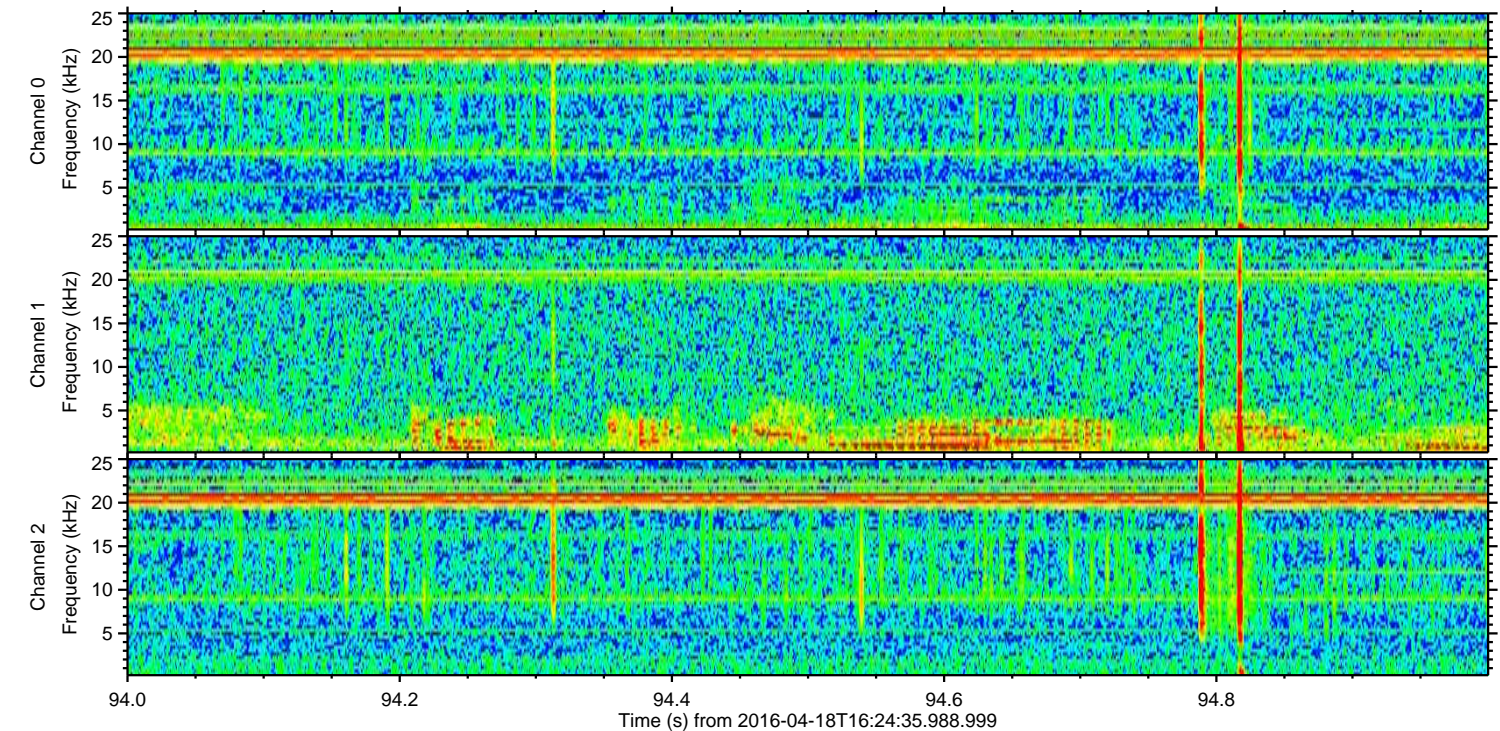
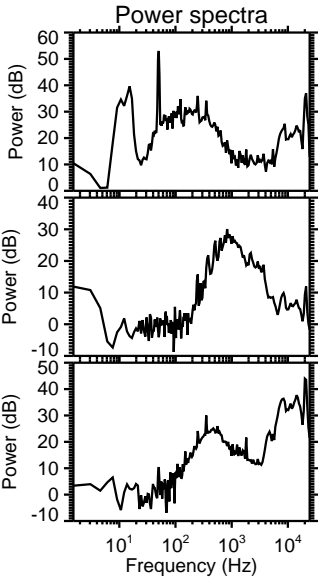
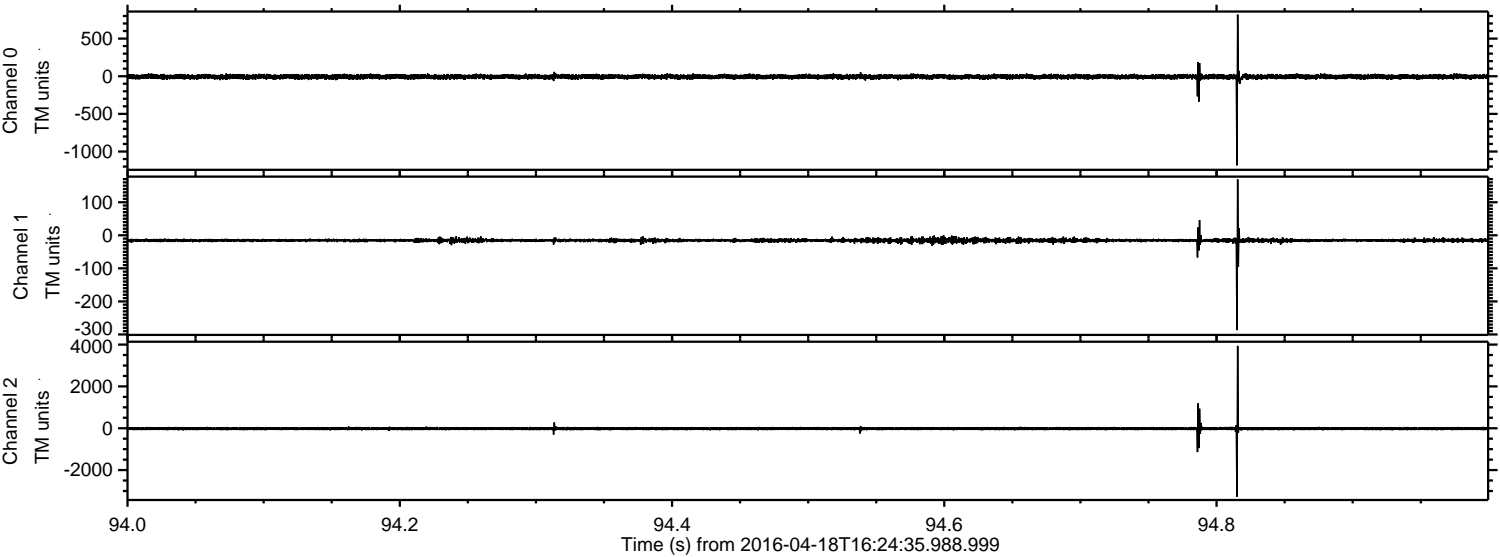


ELMAVAN 3D WAVEFORMS (Measured data sampled at 50 kHz) 51000 packets of 144 samples from 2016-04-18T16:24:35.988.999.

Processed Mon May 9 06:37:45 2016 by ELM ver.2012-10-06 from 001__elm20160418_162434__dat00.bin

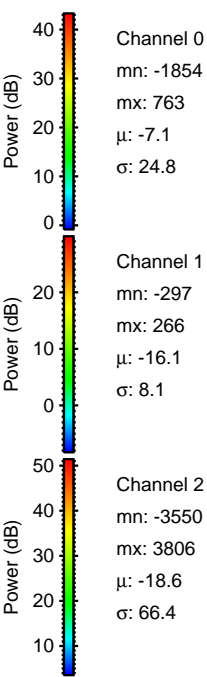
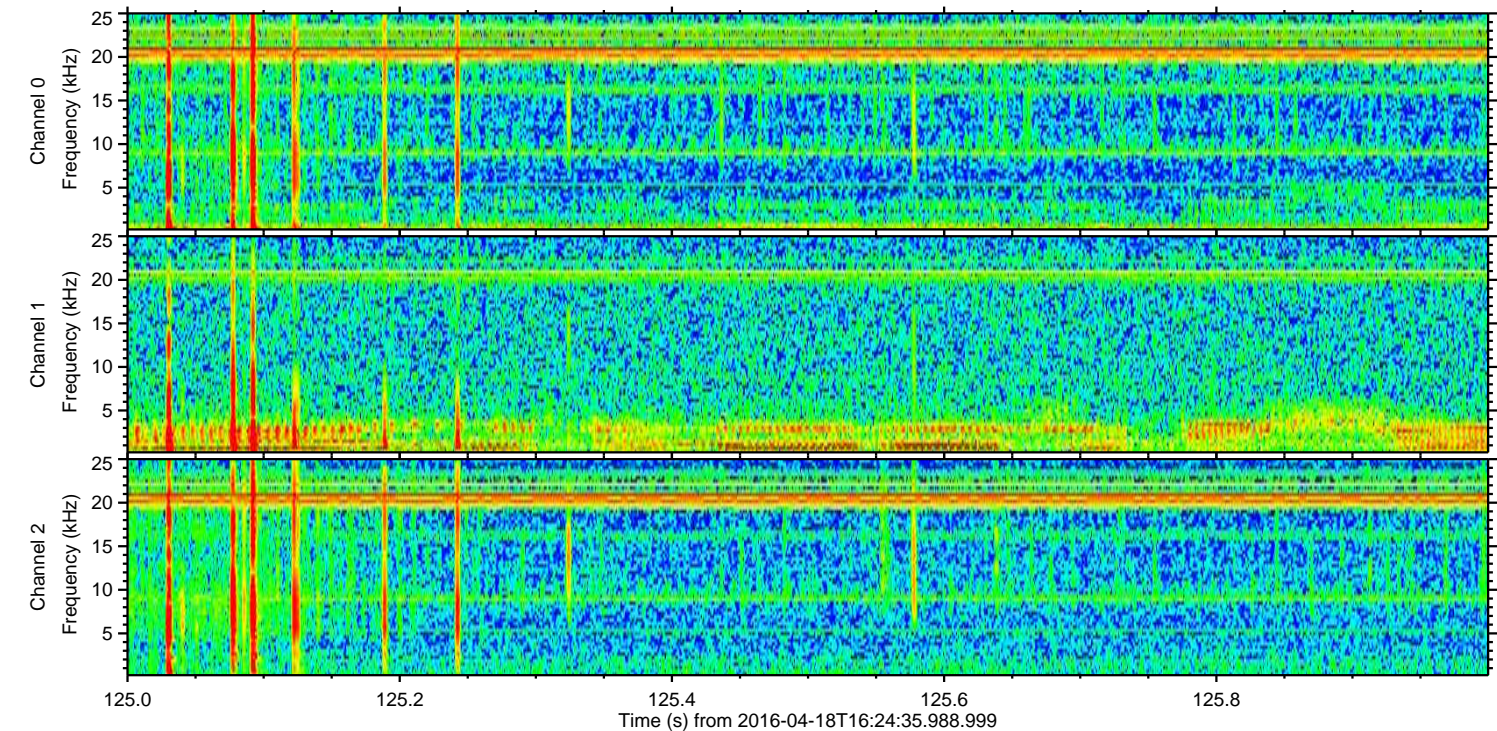
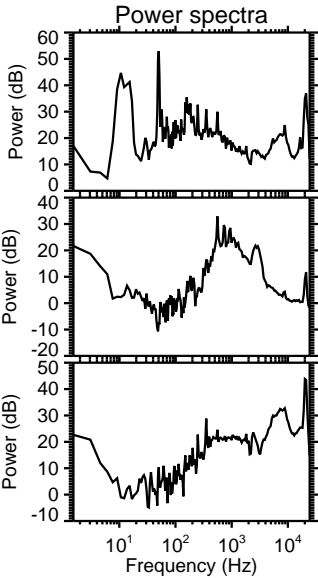
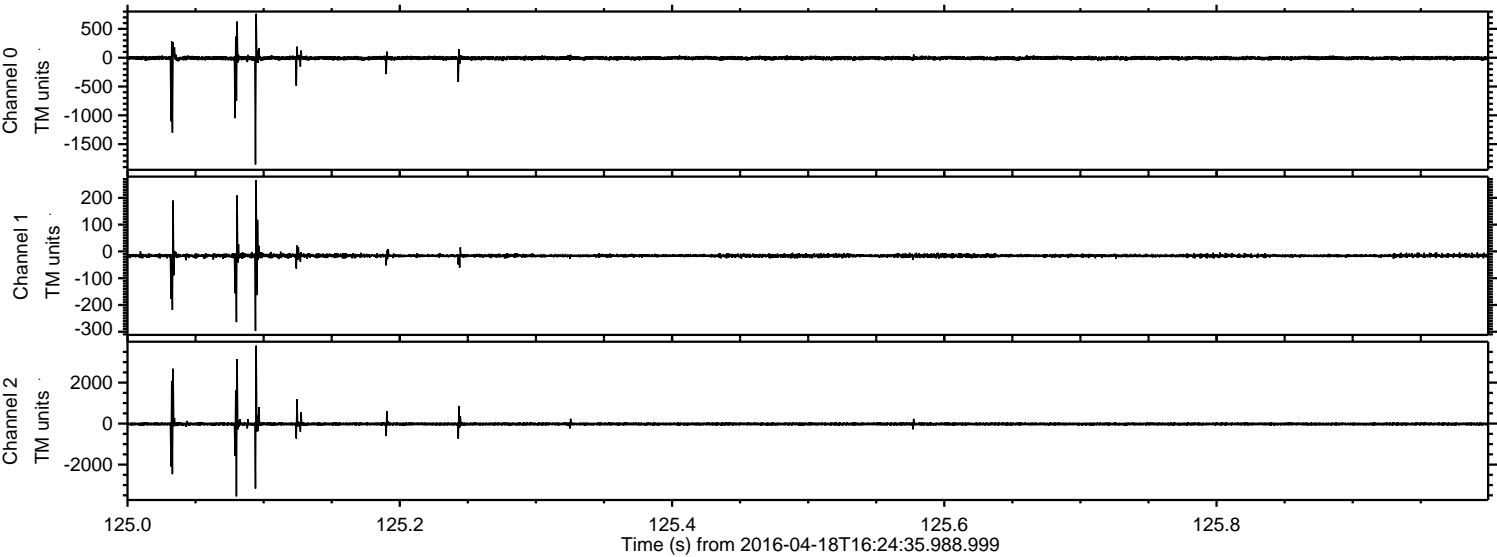


Processed Mon May 9 06:37:56 2016 by ELM ver.2012-10-06 from 001__elm20160418_162434__dat00.bin



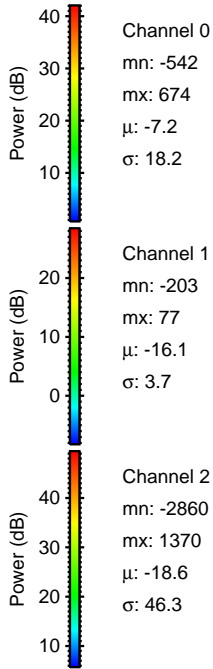
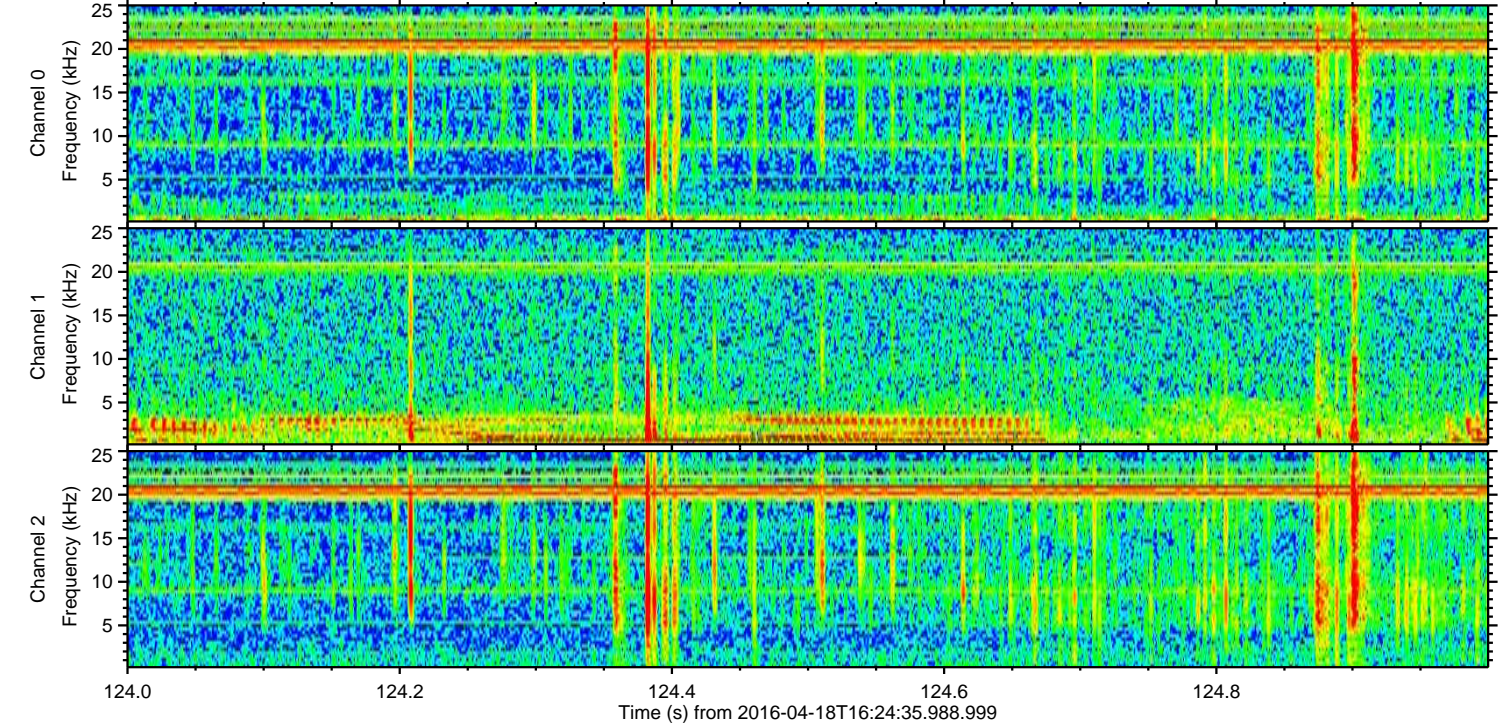
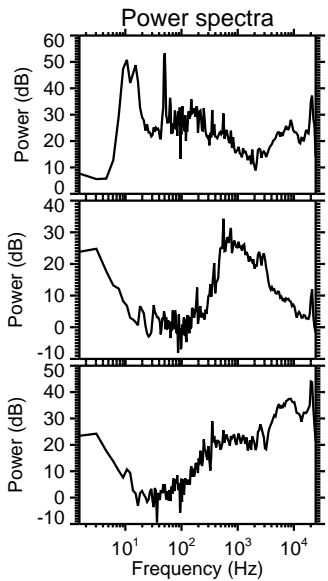
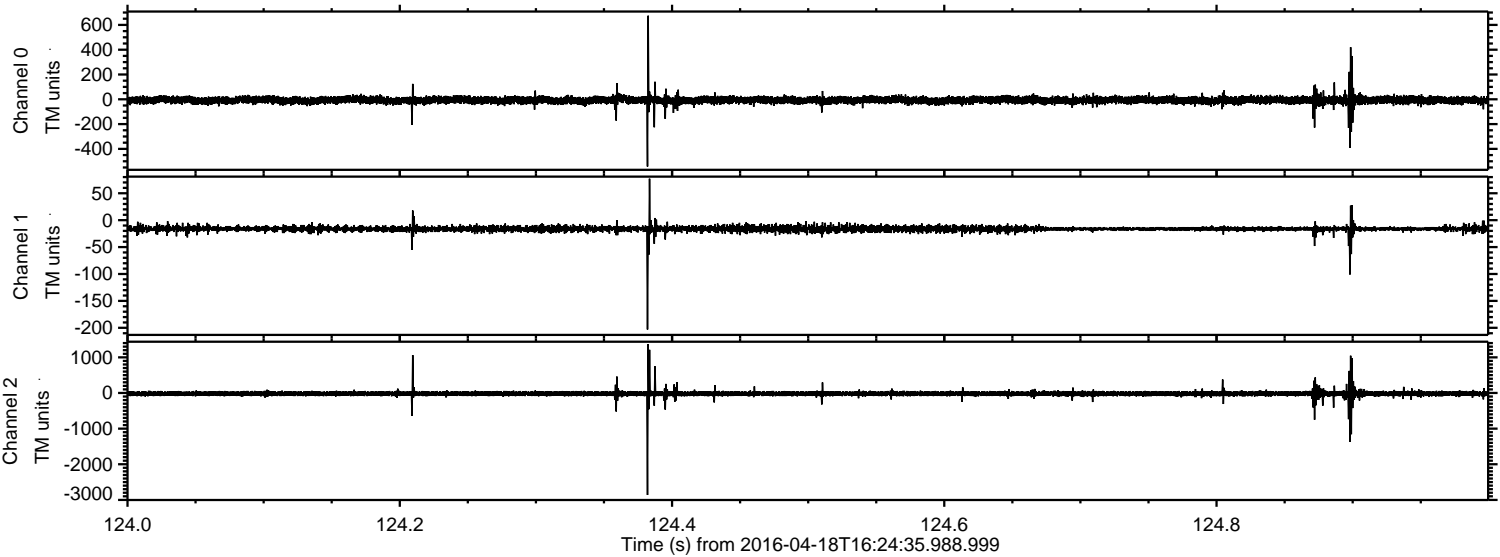
ELMAVAN 3D WAVEFORMS (Measured data sampled at 50 kHz) 51000 packets of 144 samples from 2016-04-18T16:24:35.988.999. Part 126/147

Processed Mon May 9 06:37:57 2016 by ELM ver.2012-10-06 from 001__elm20160418_162434__dat00.bin

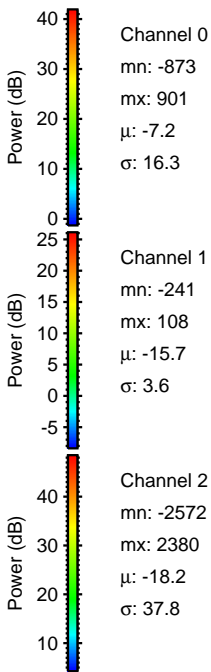
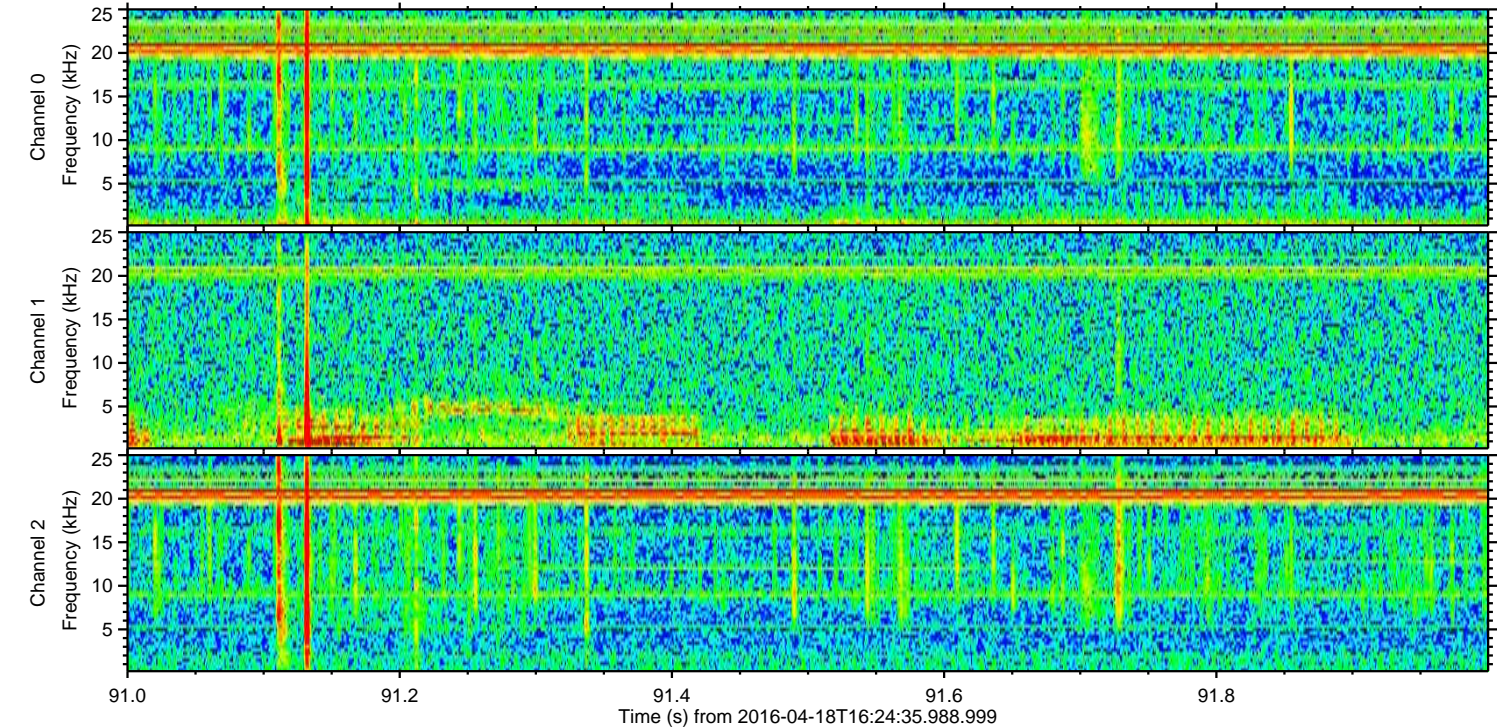
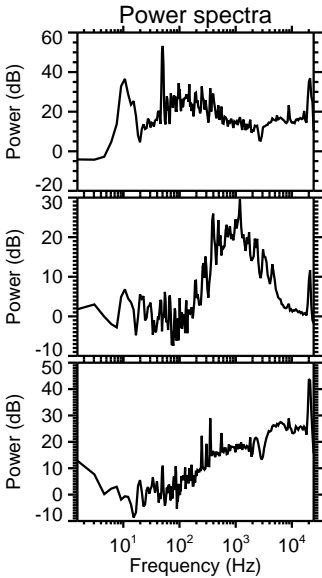
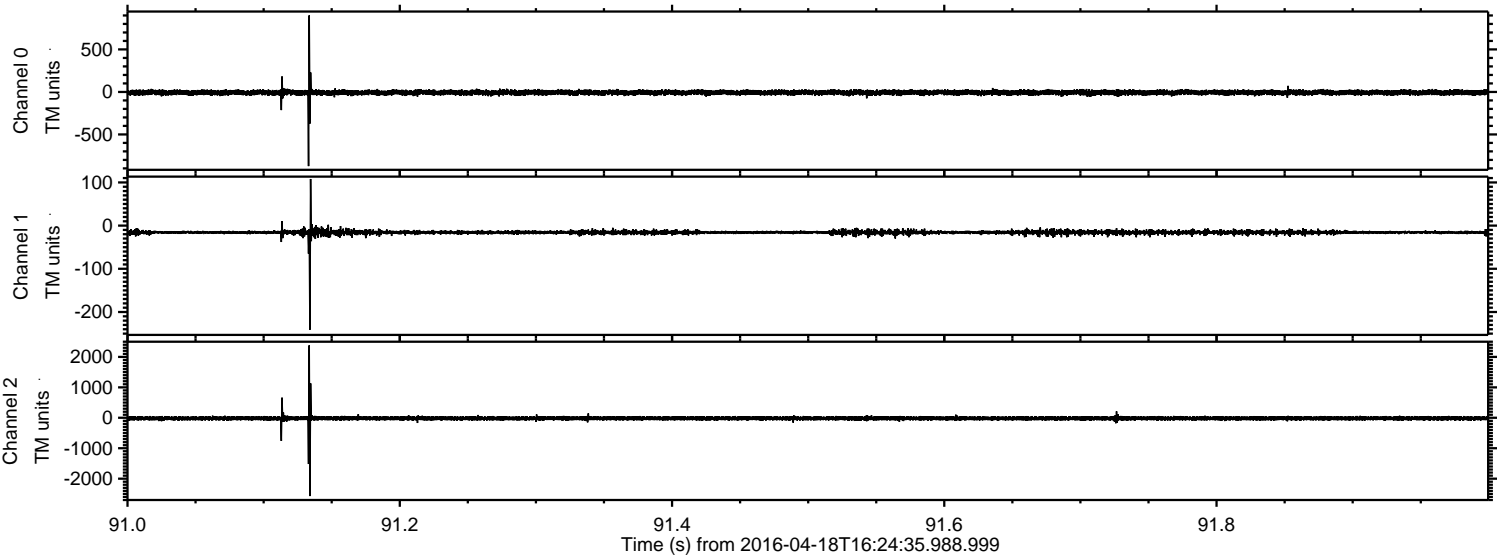


ELMAVAN 3D WAVEFORMS (Measured data sampled at 50 kHz) 51000 packets of 144 samples from 2016-04-18T16:24:35.988.999. Part 125/147

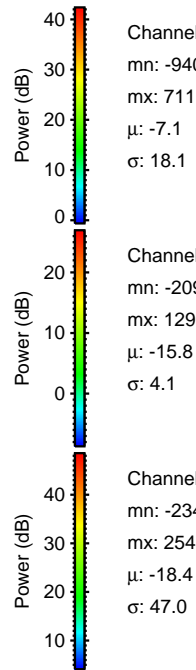
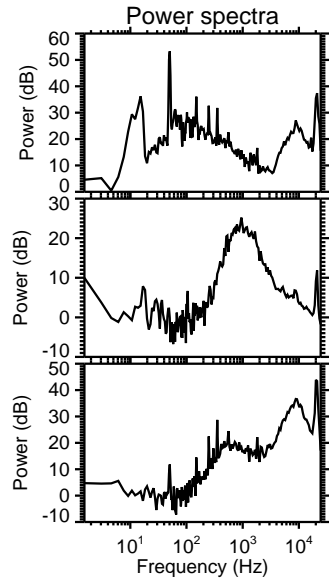
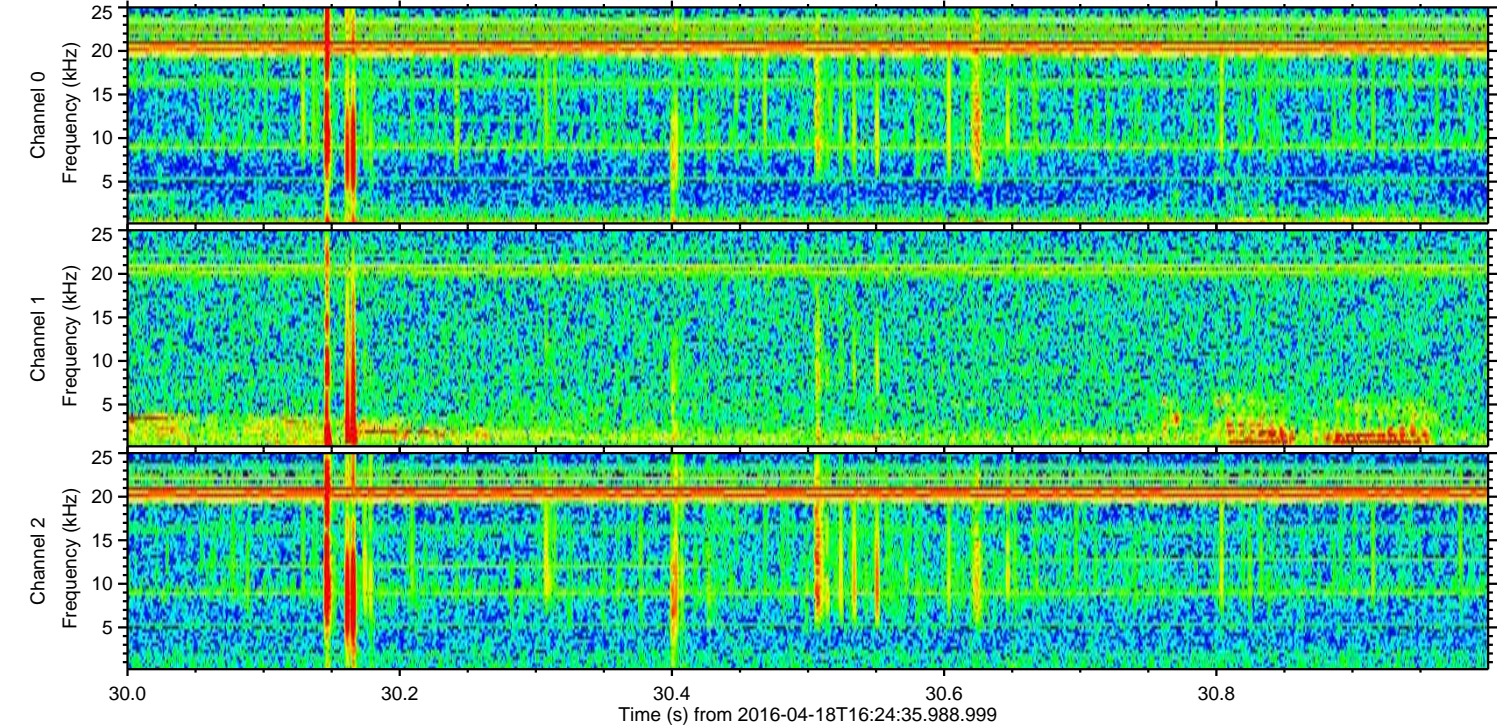
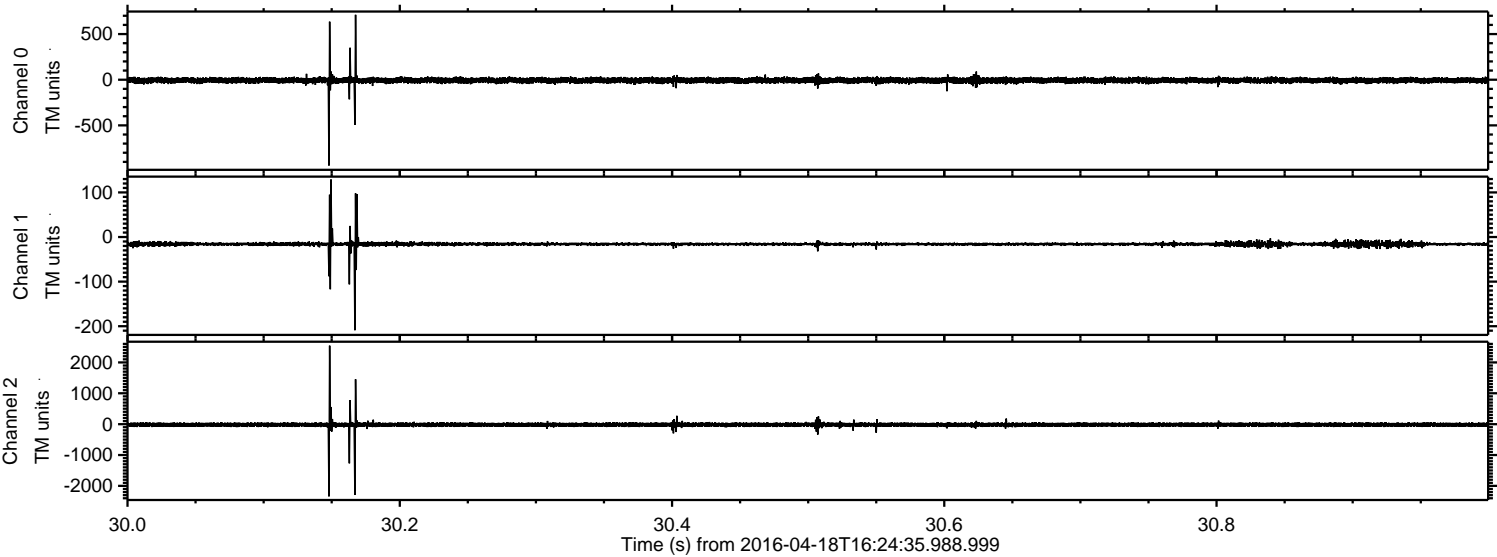
Processed Mon May 9 06:37:58 2016 by ELM ver.2012-10-06 from 001__elm20160418_162434__dat00.bin



Processed Mon May 9 06:37:59 2016 by ELM ver.2012-10-06 from 001__elm20160418_162434__dat00.bin



Processed Mon May 9 06:38:00 2016 by ELM ver.2012-10-06 from 001__elm20160418_162434__dat00.bin

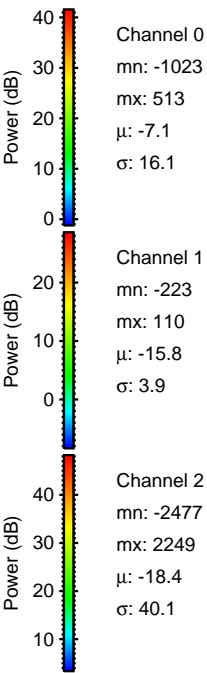
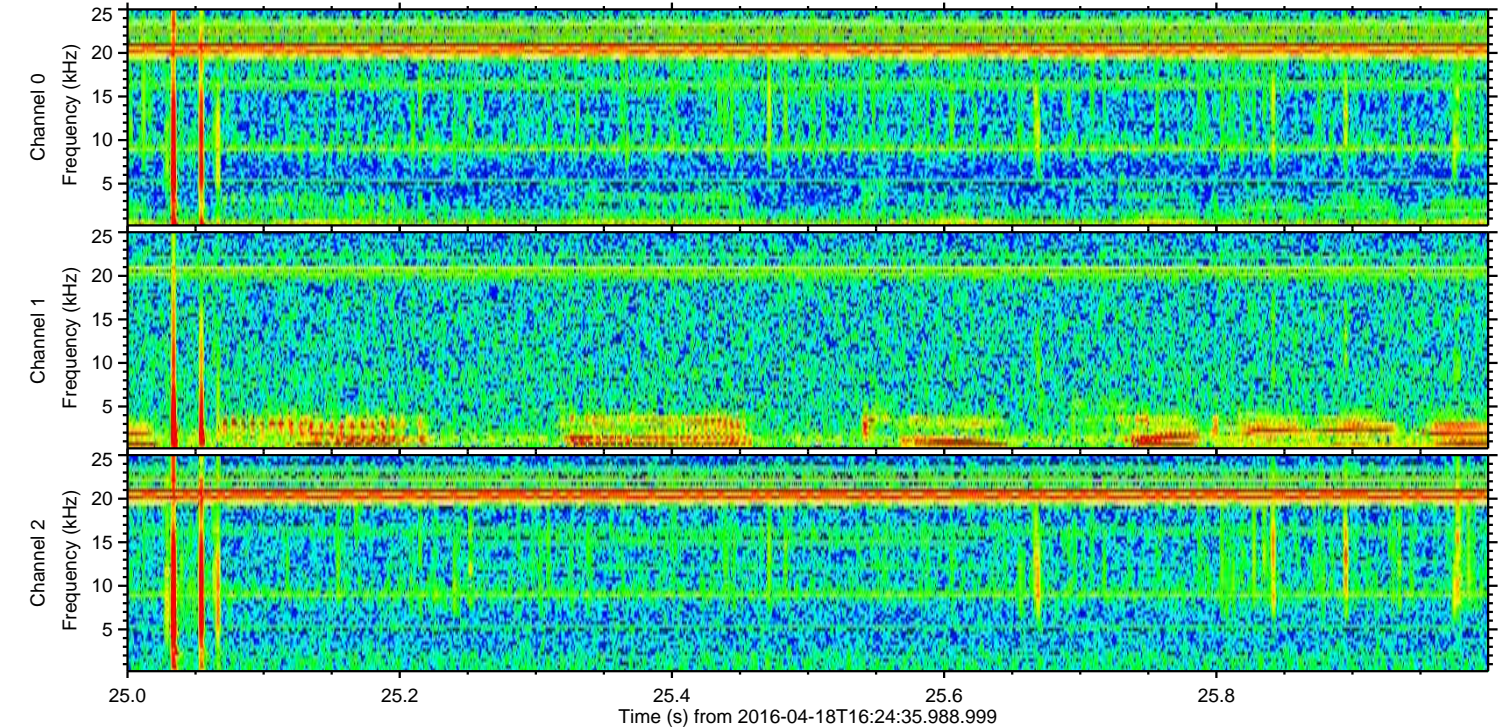
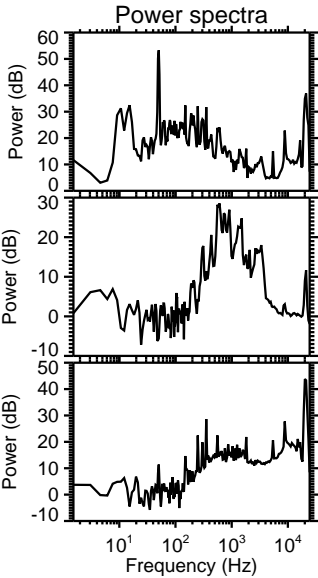
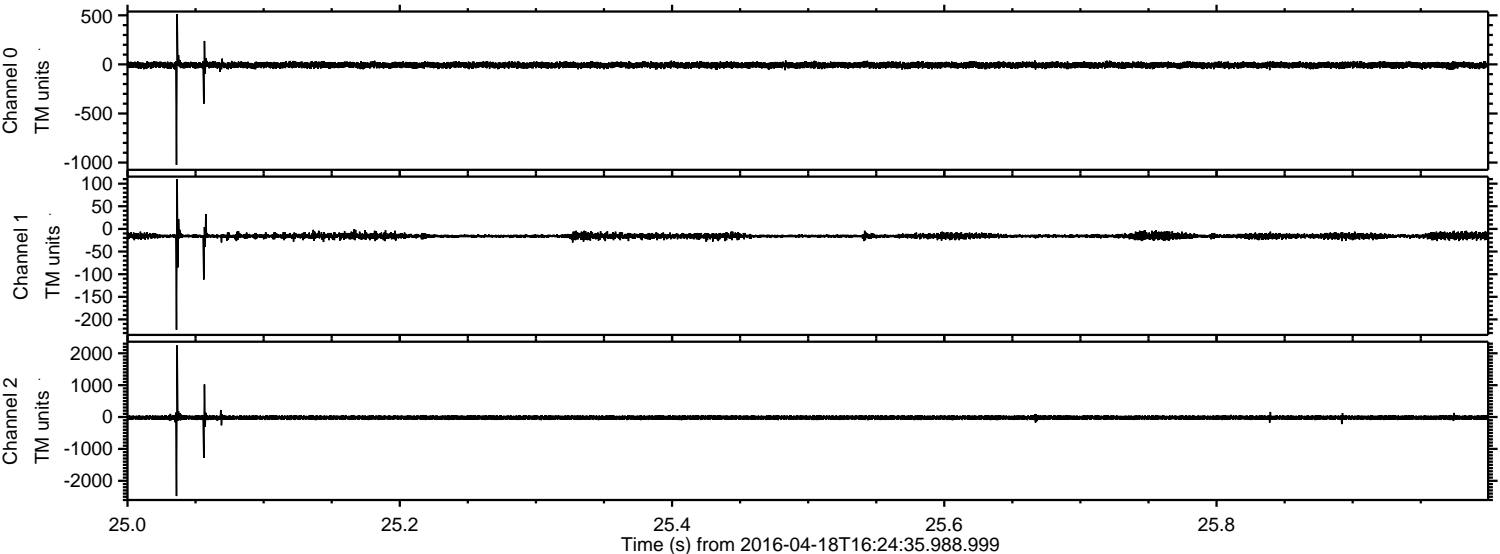


Channel 0
mn: -940
mx: 711
 μ : -7.1
 σ : 18.1

Channel 1
mn: -209
mx: 129
 μ : -15.8
 σ : 4.1

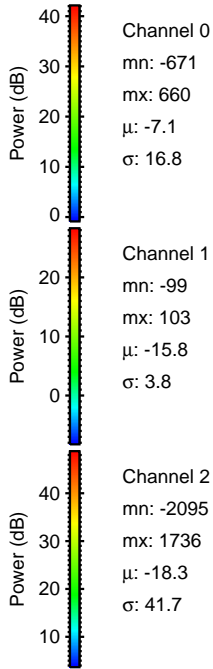
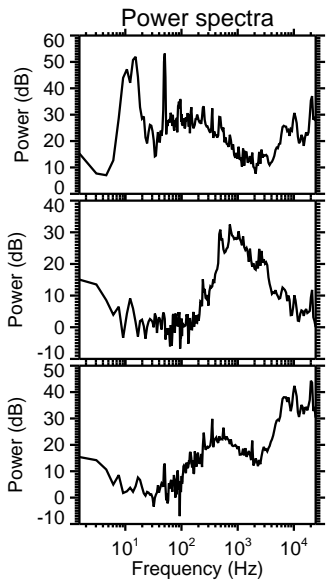
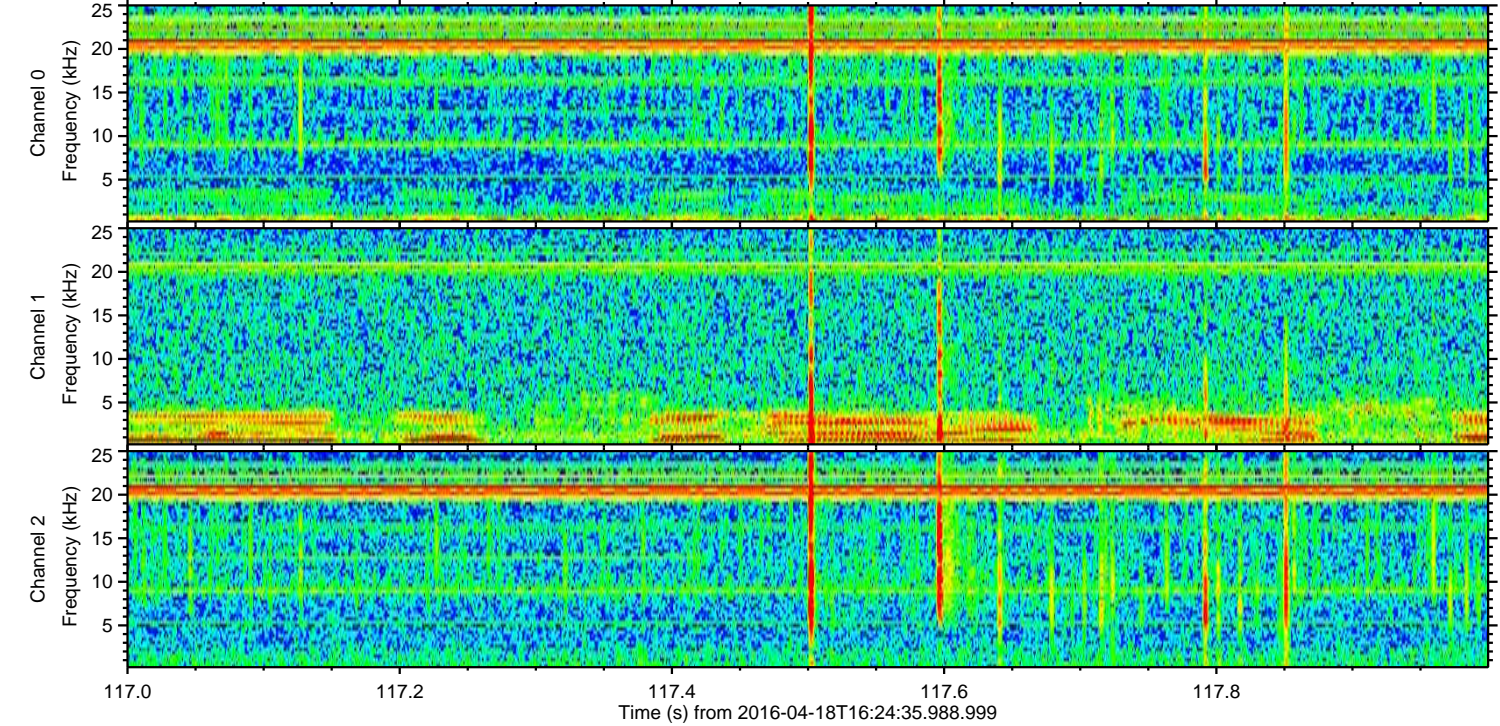
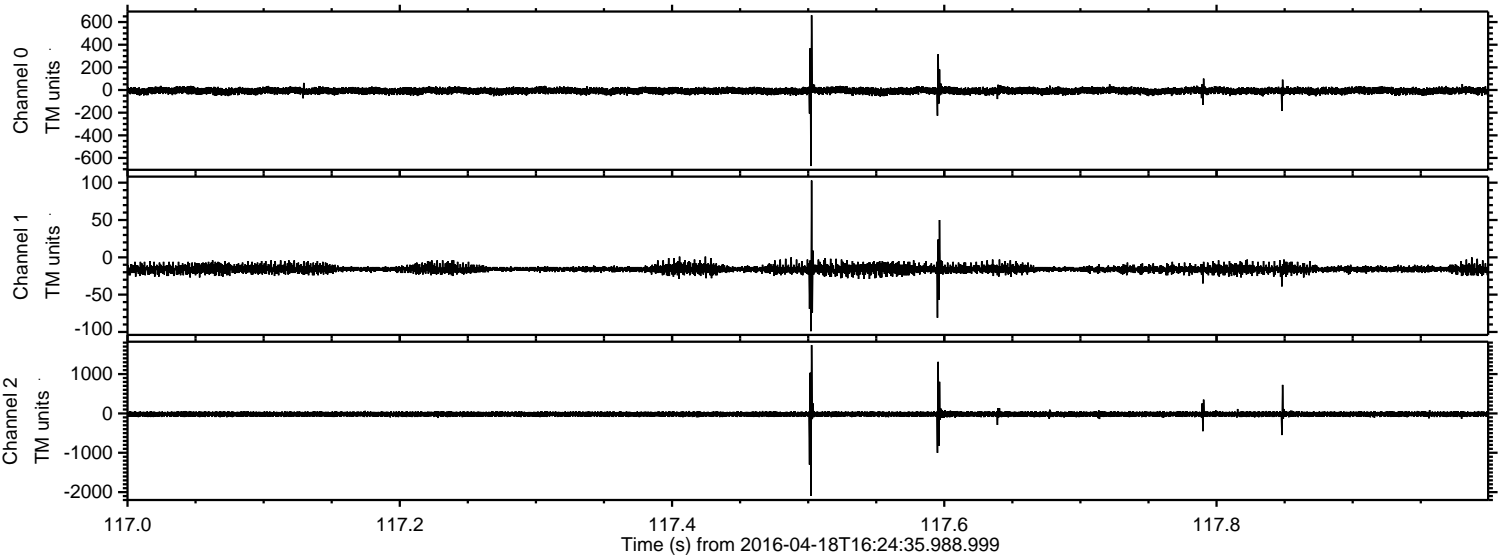
Channel 2
mn: -2340
mx: 2543
 μ : -18.4
 σ : 47.0

Processed Mon May 9 06:38:01 2016 by ELM ver.2012-10-06 from 001__elm20160418_162434__dat00.bin

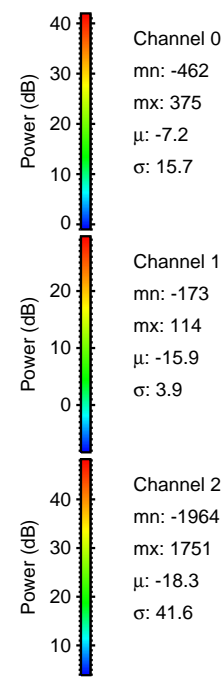
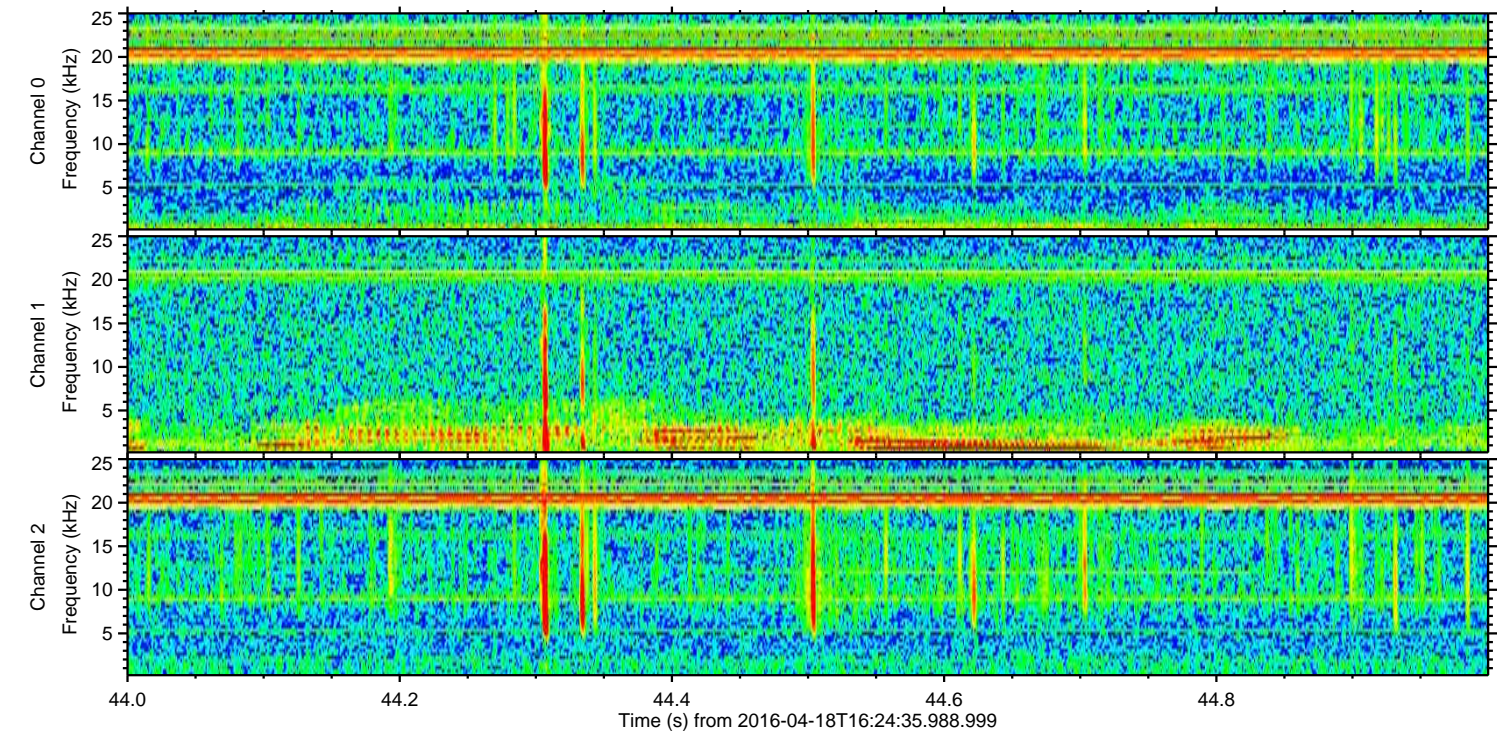
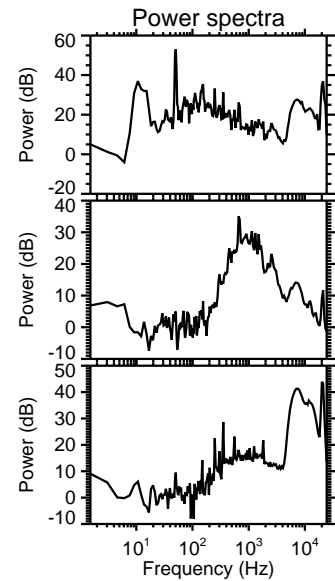
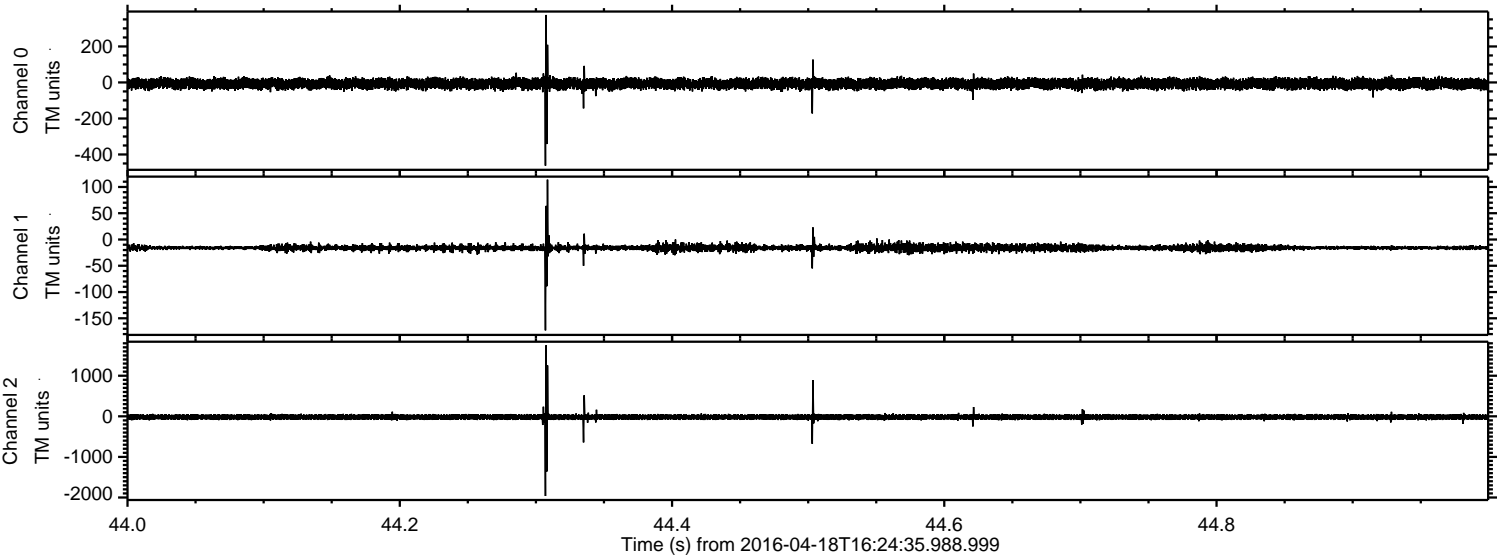


ELMAVAN 3D WAVEFORMS (Measured data sampled at 50 kHz) 51000 packets of 144 samples from 2016-04-18T16:24:35.988.999. Part 118/147

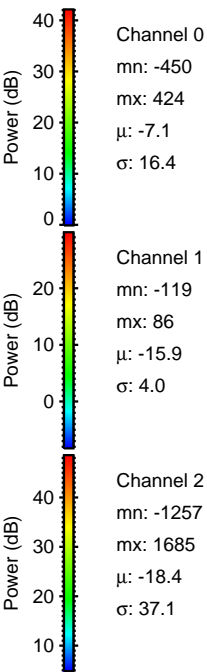
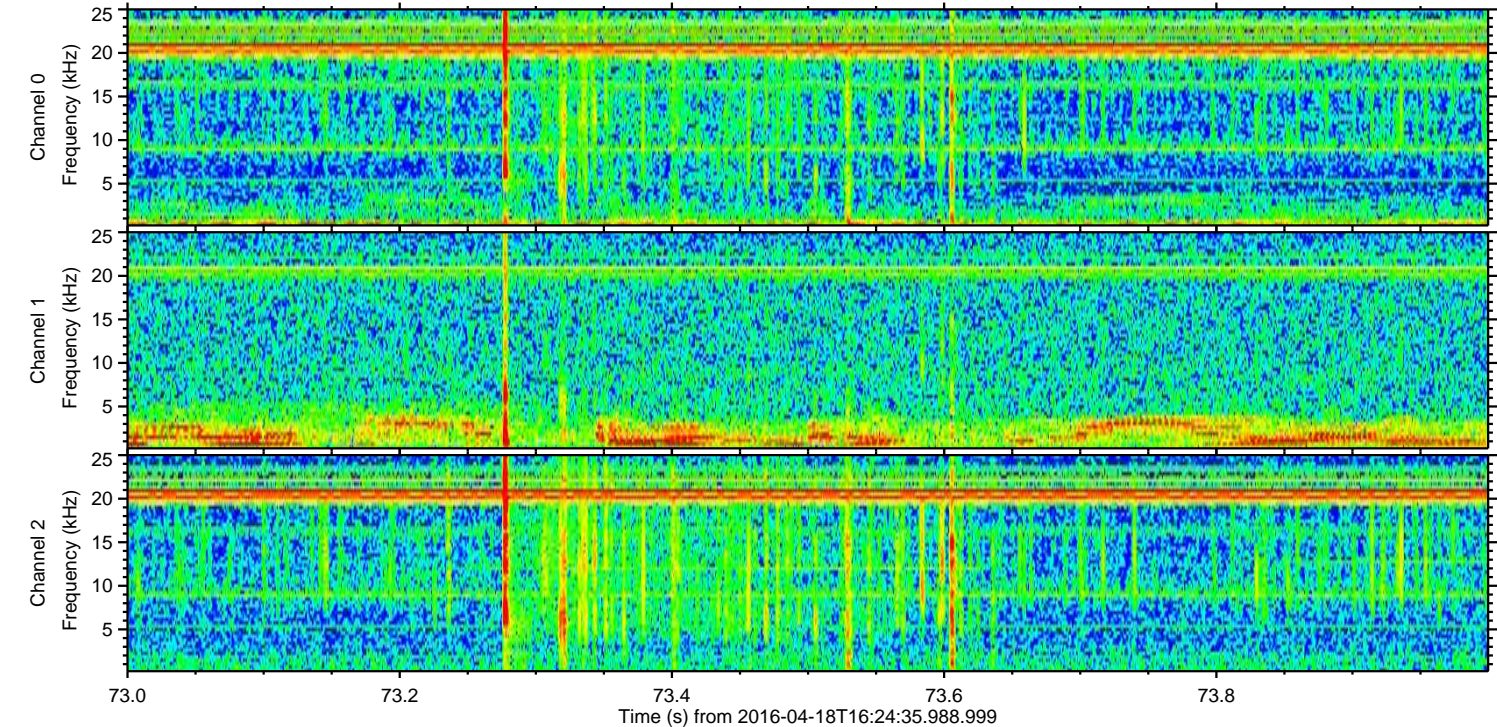
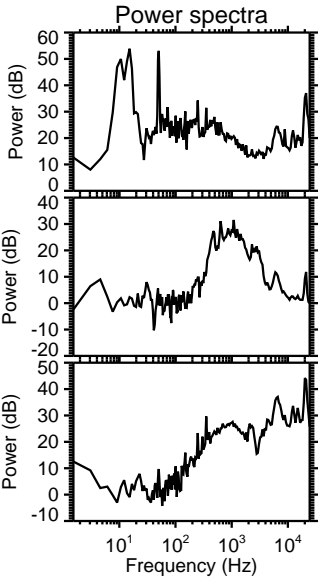
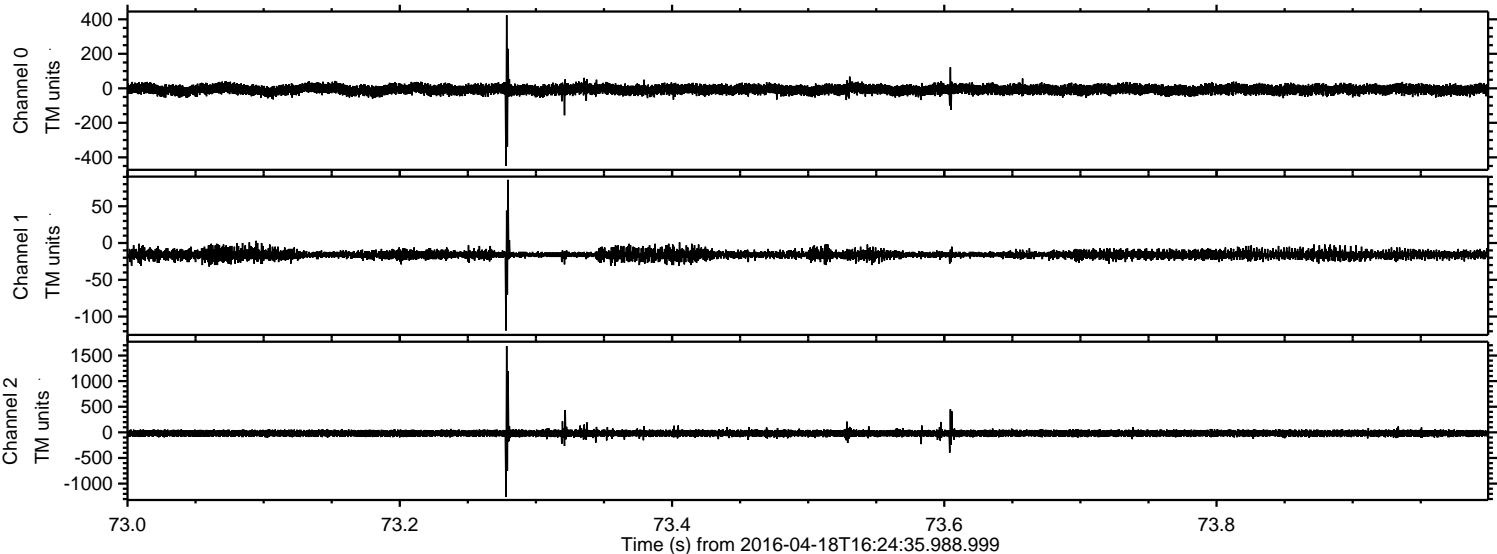
Processed Mon May 9 06:38:02 2016 by ELM ver.2012-10-06 from 001__elm20160418_162434__dat00.bin



Processed Mon May 9 06:38:03 2016 by ELM ver.2012-10-06 from 001_elm20160418_162434__dat00.bin



Processed Mon May 9 06:38:04 2016 by ELM ver.2012-10-06 from 001__elm20160418_162434__dat00.bin



Processed Mon May 9 06:38:05 2016 by ELM ver.2012-10-06 from 001__elm20160418_162434__dat00.bin

