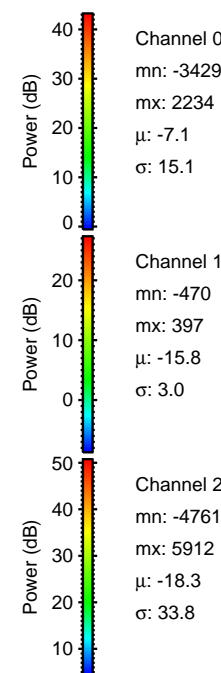
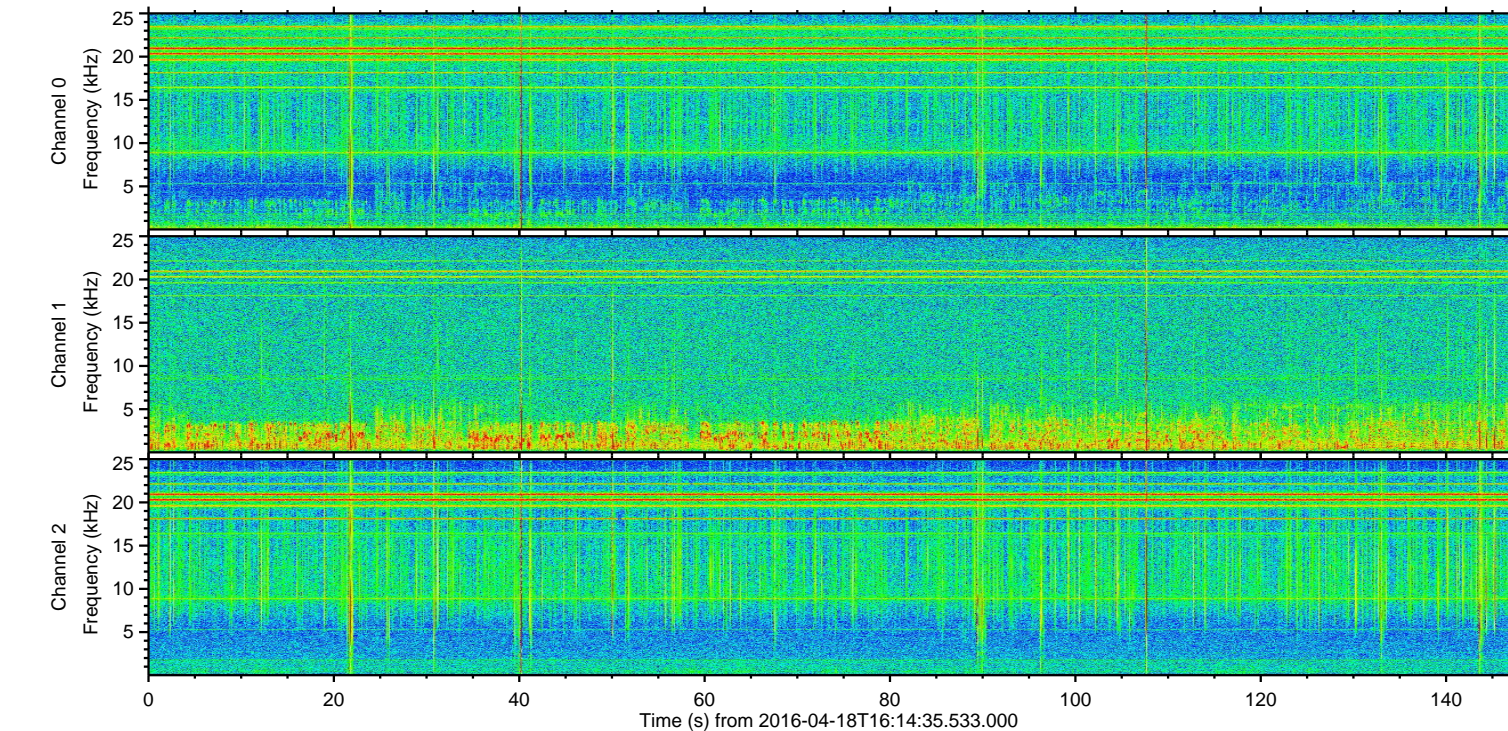
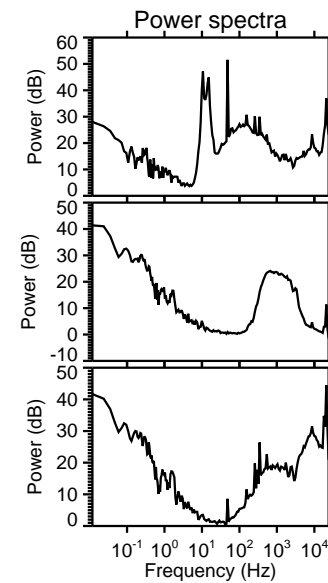
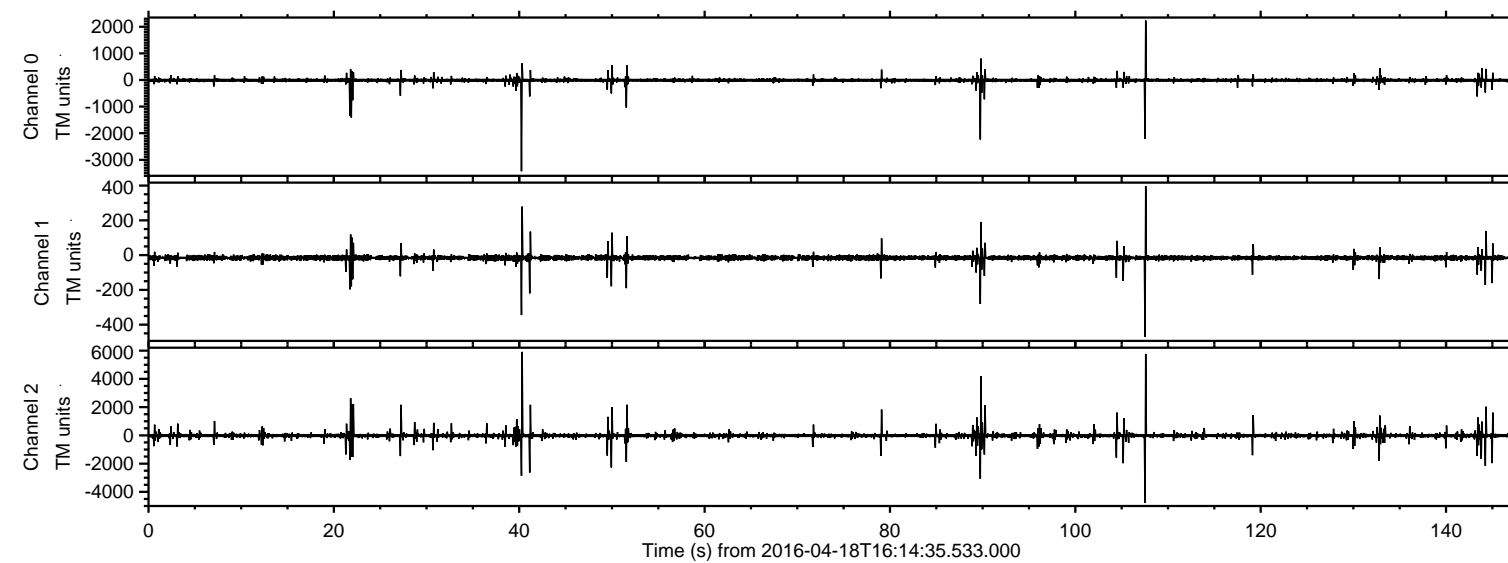
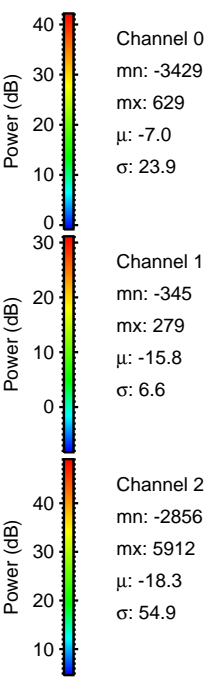
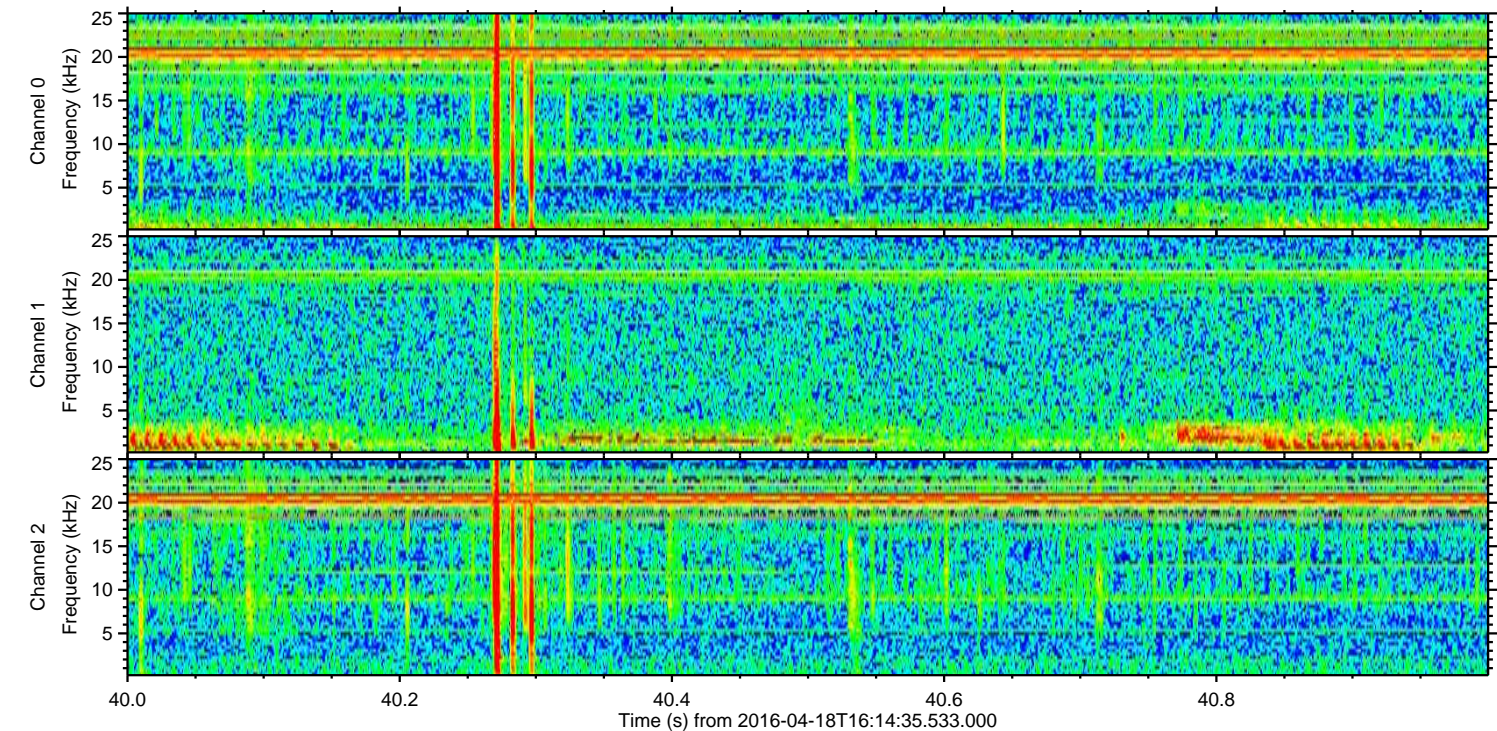
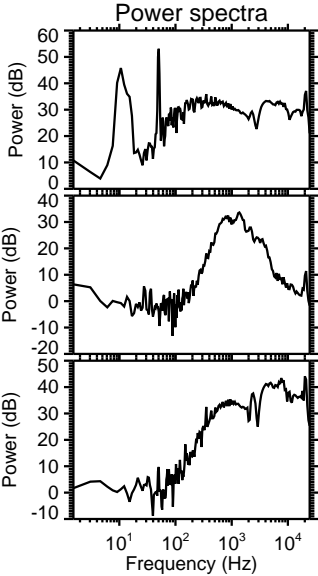
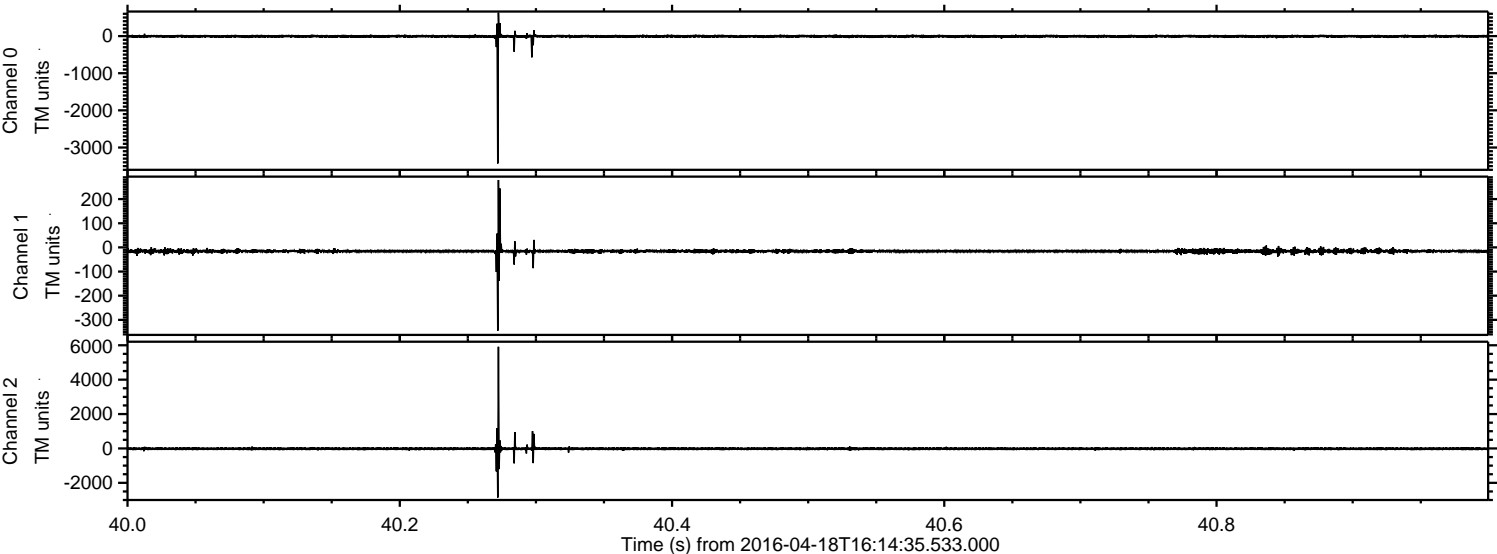


ELMAVAN 3D WAVEFORMS (Measured data sampled at 50 kHz) 51000 packets of 144 samples from 2016-04-18T16:14:35.533.000.

Processed Mon May 9 06:35:44 2016 by ELM ver.2012-10-06 from 001__elm20160418_161434__dat00.bin

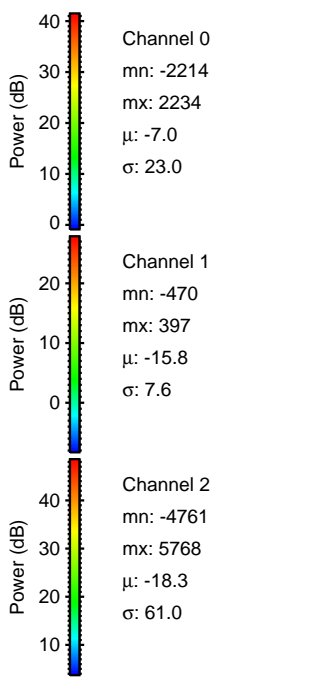
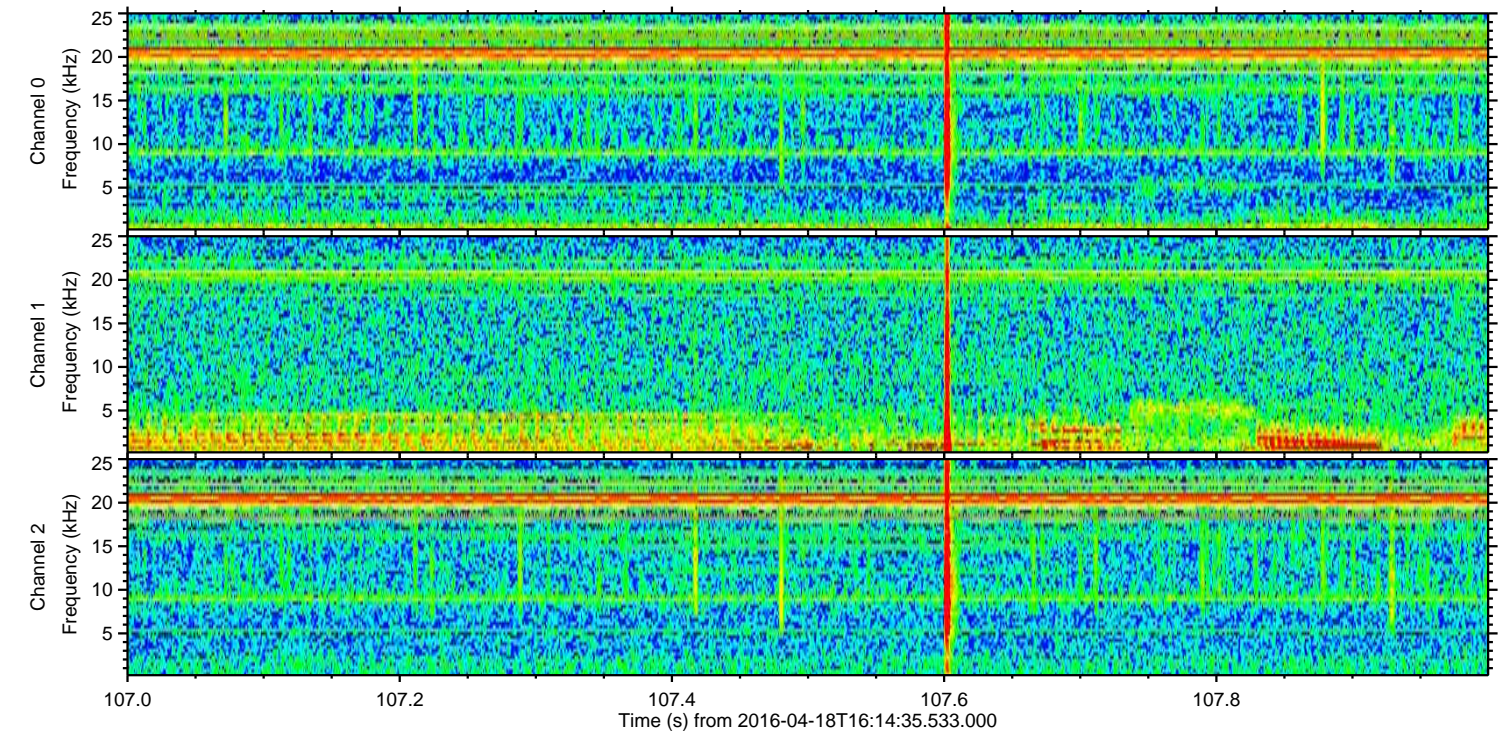
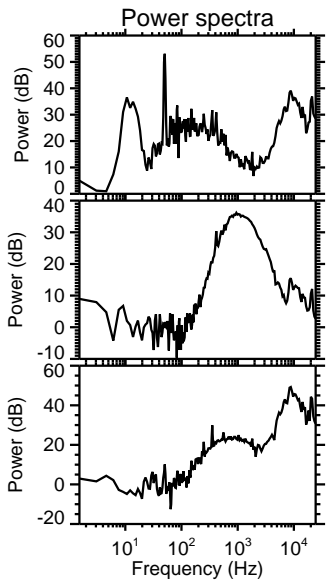
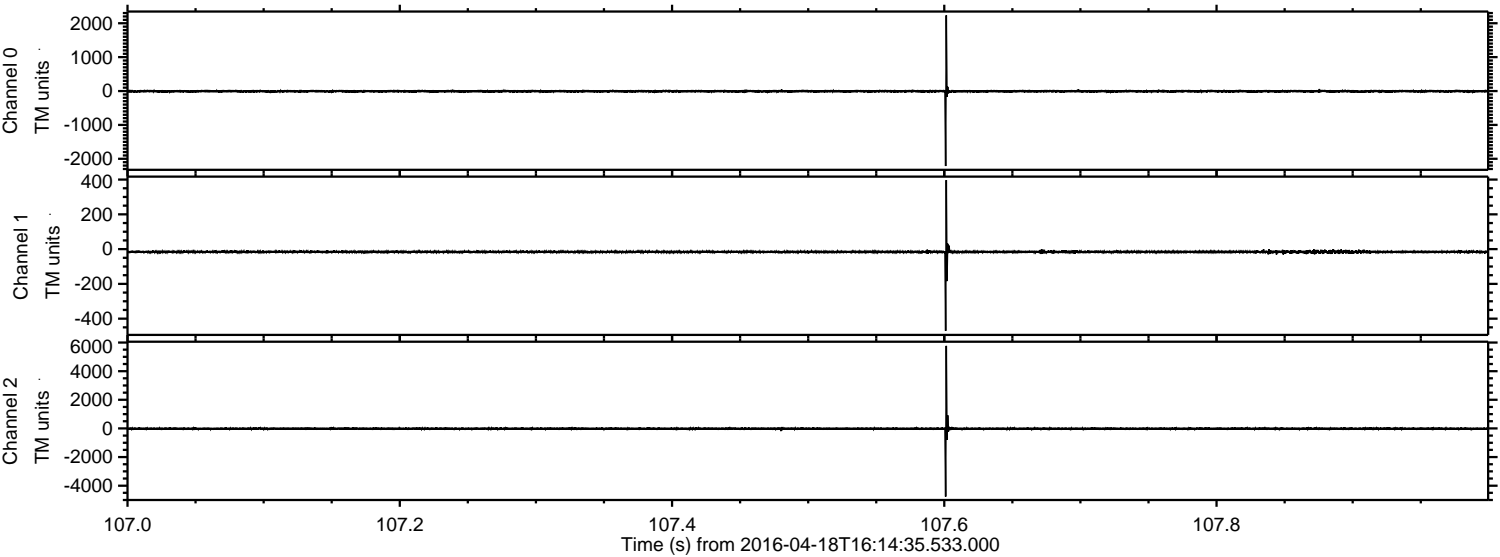


Processed Mon May 9 06:35:56 2016 by ELM ver.2012-10-06 from 001__elm20160418_161434__dat00.bin

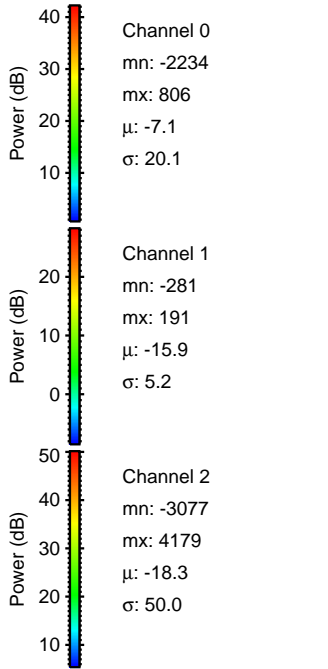
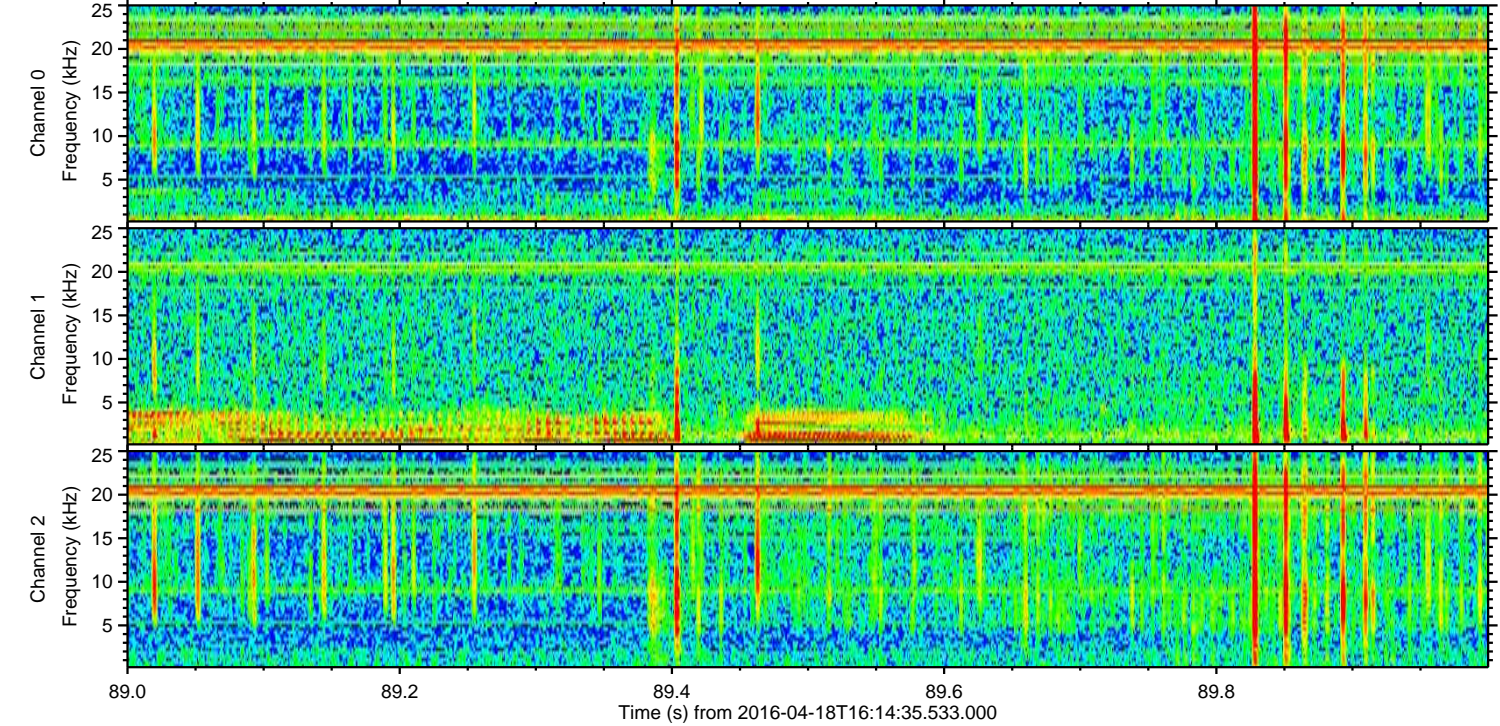
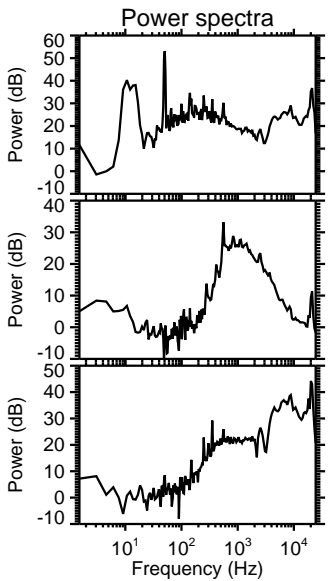
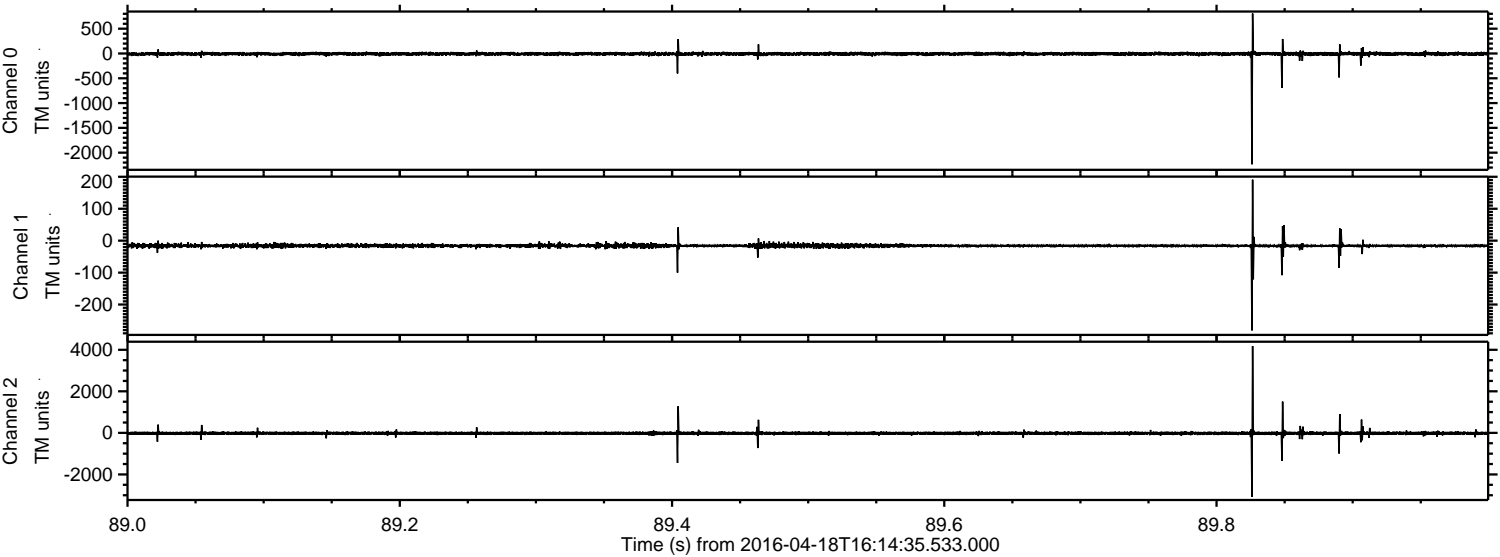


ELMAVAN 3D WAVEFORMS (Measured data sampled at 50 kHz) 51000 packets of 144 samples from 2016-04-18T16:14:35.533.000. Part 108/147

Processed Mon May 9 06:35:57 2016 by ELM ver.2012-10-06 from 001_elm20160418_161434__dat00.bin

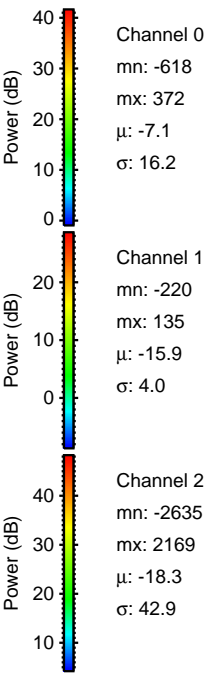
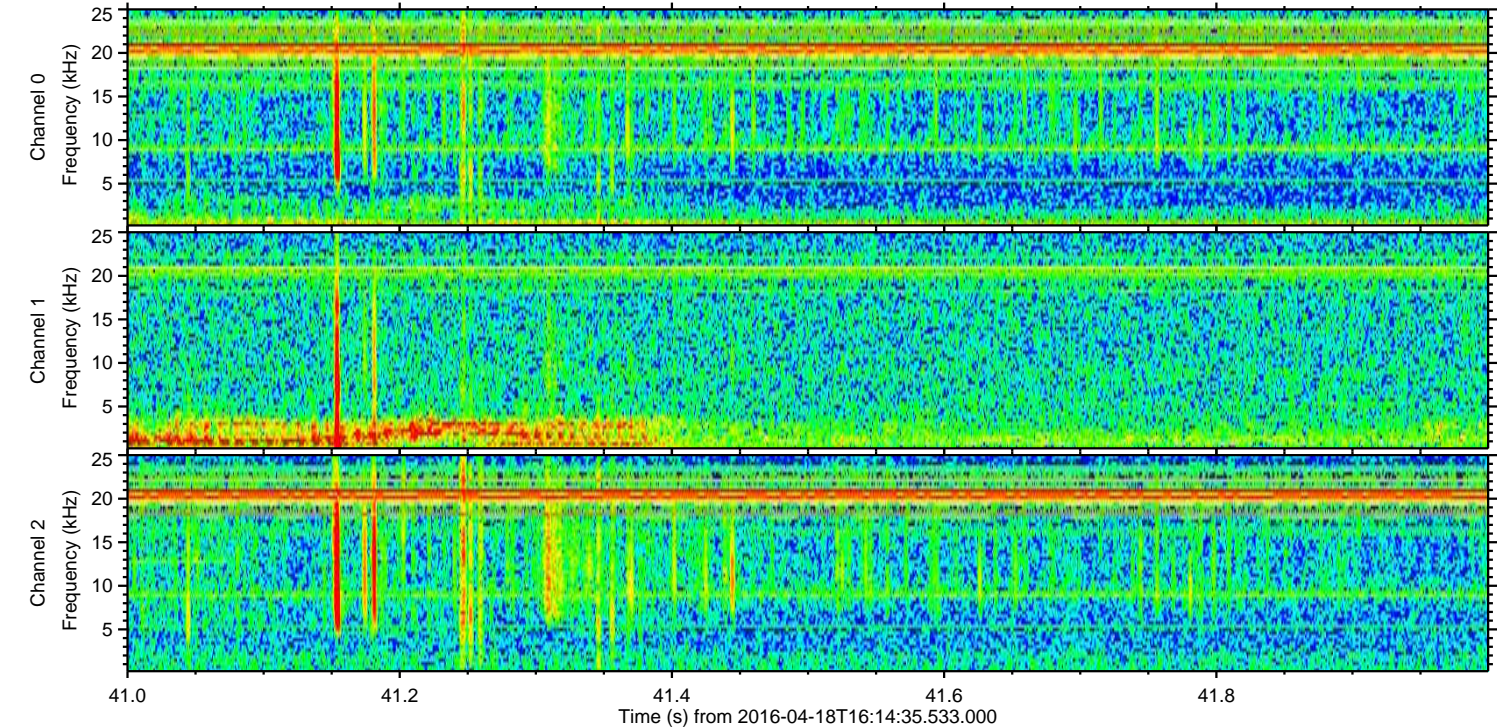
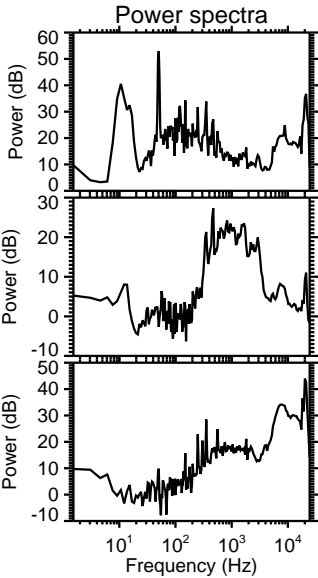
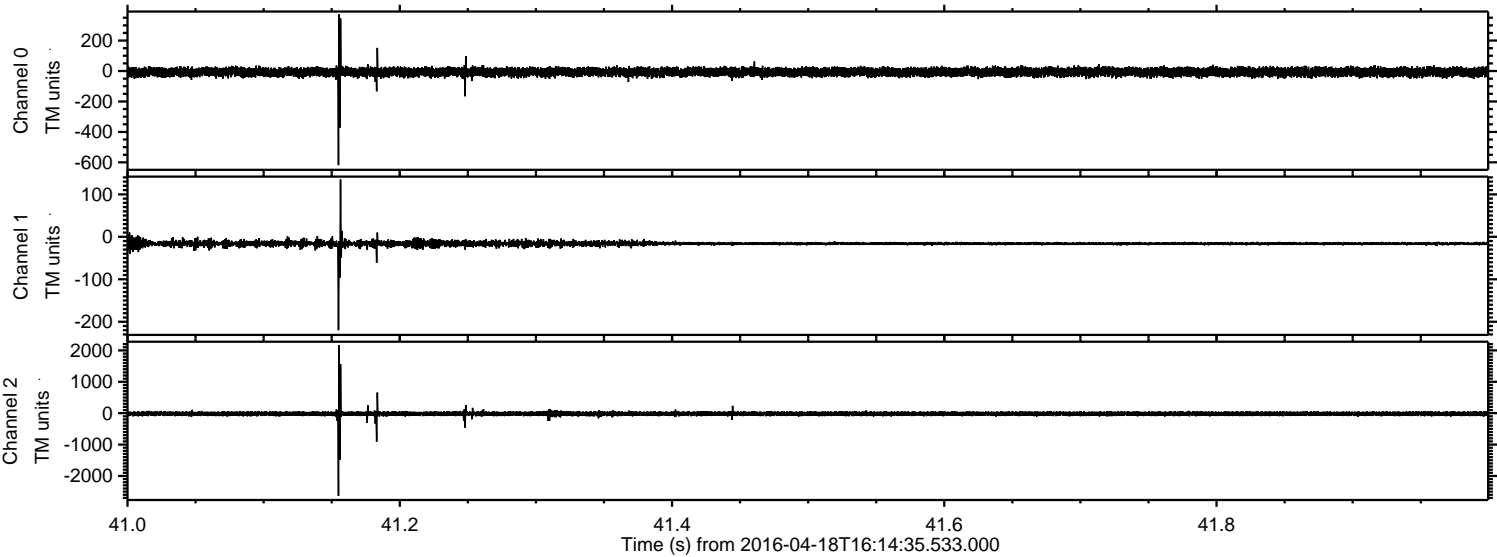


Processed Mon May 9 06:35:57 2016 by ELM ver.2012-10-06 from 001__elm20160418_161434__dat00.bin

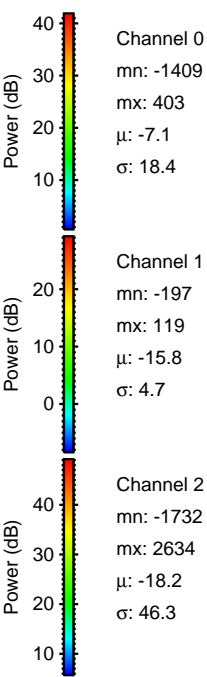
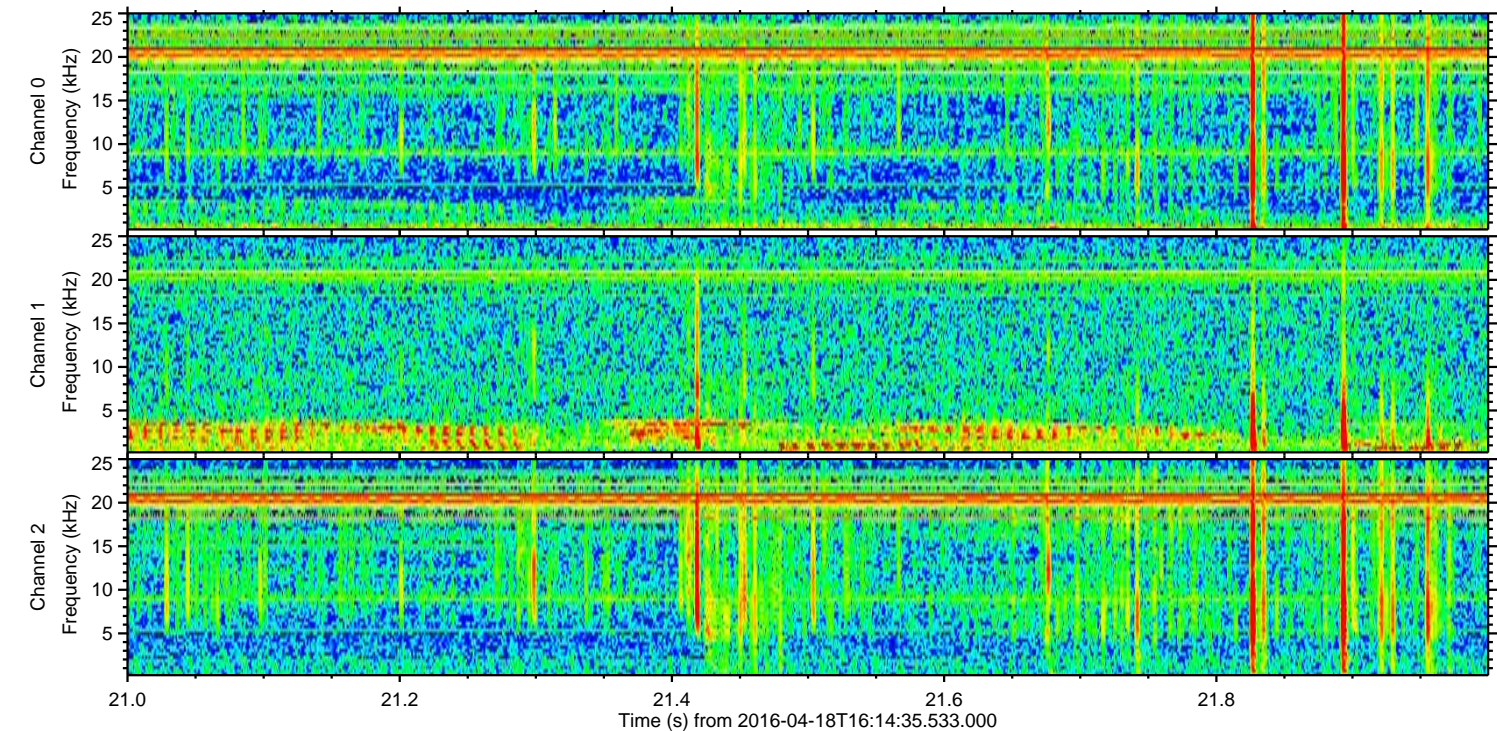
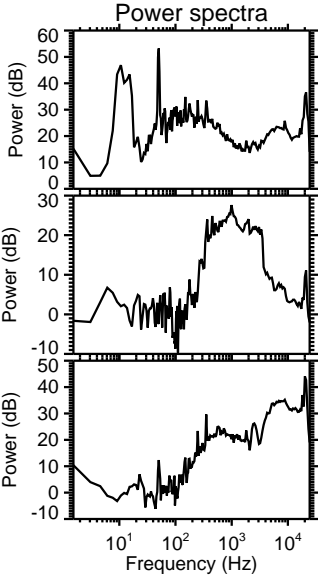
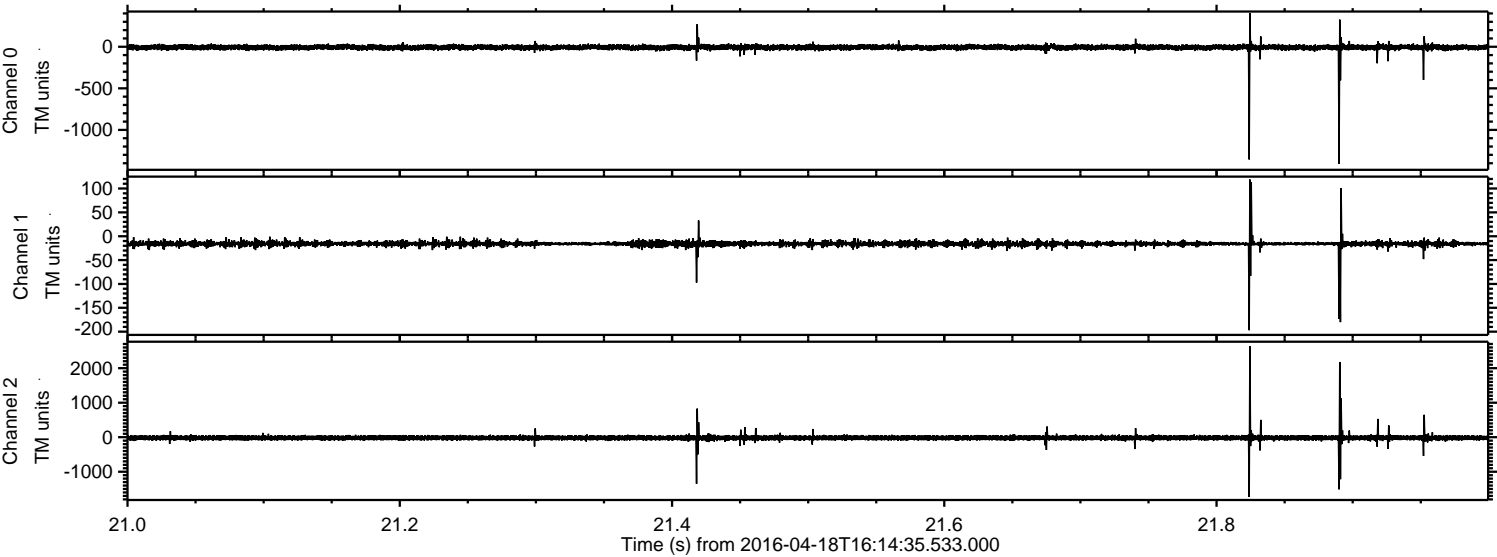


ELMAVAN 3D WAVEFORMS (Measured data sampled at 50 kHz) 51000 packets of 144 samples from 2016-04-18T16:14:35.533.000. Part 42/147

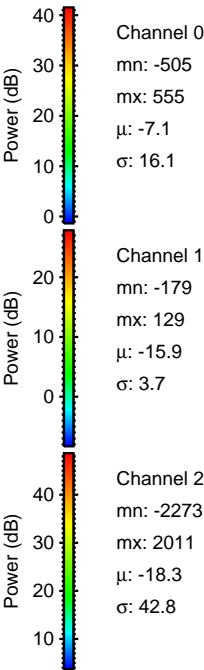
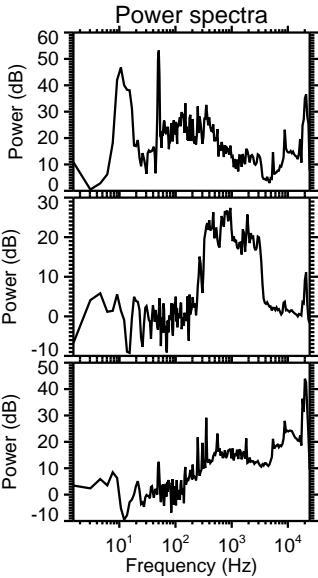
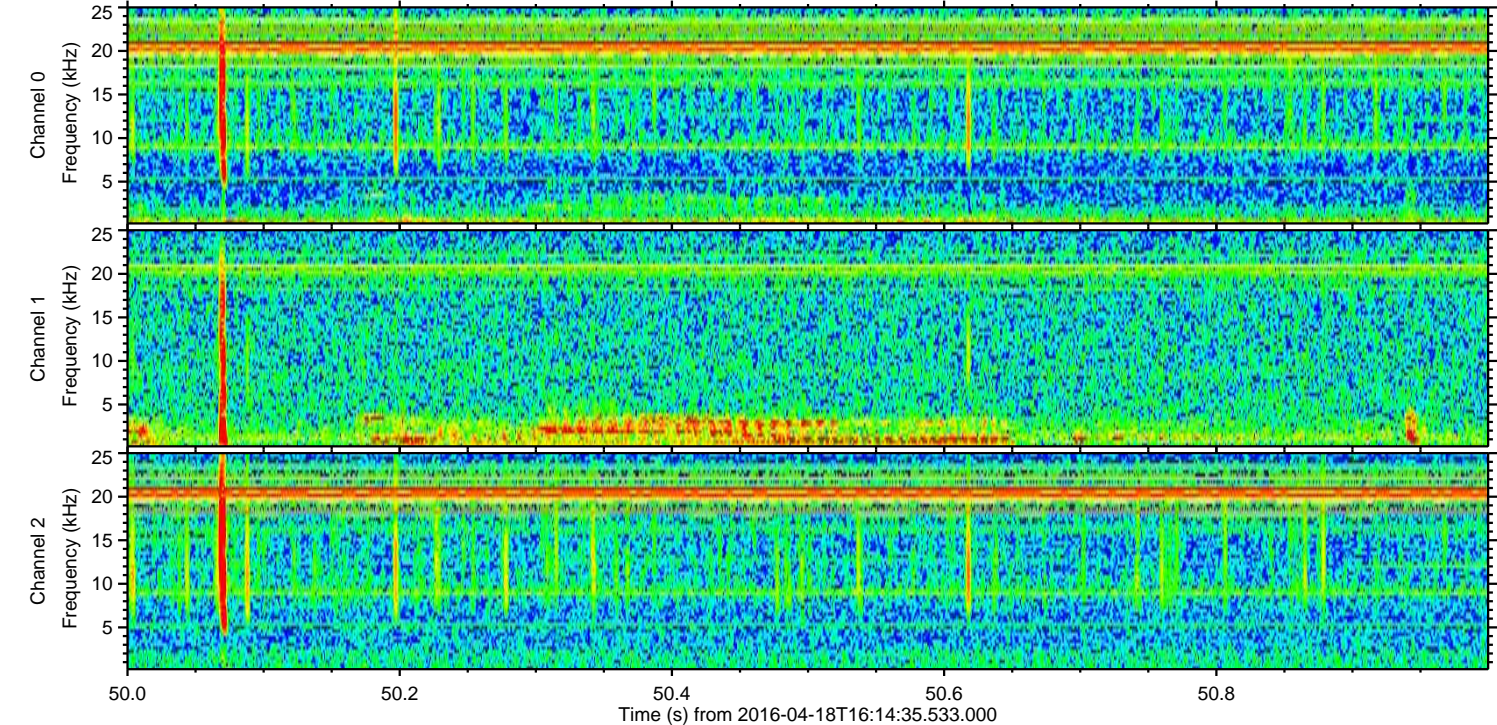
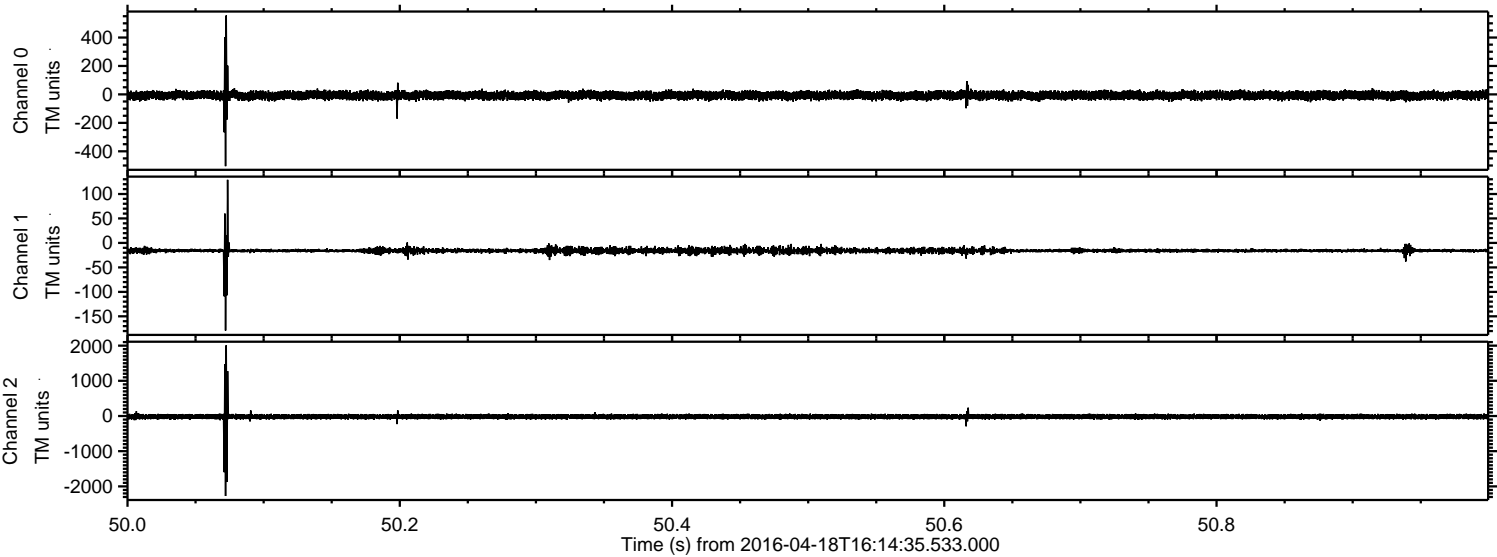
Processed Mon May 9 06:35:58 2016 by ELM ver.2012-10-06 from 001__elm20160418_161434__dat00.bin



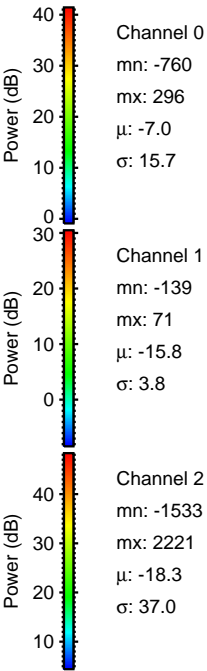
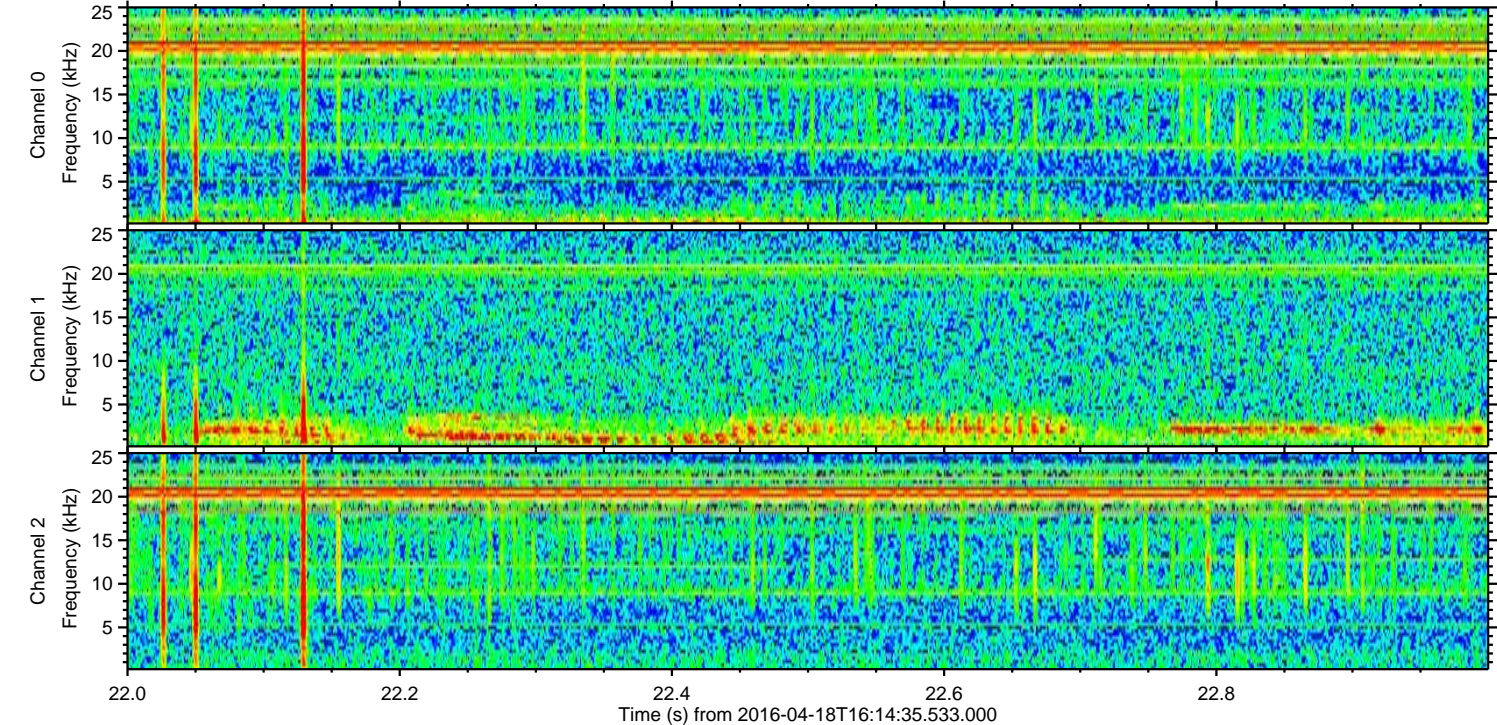
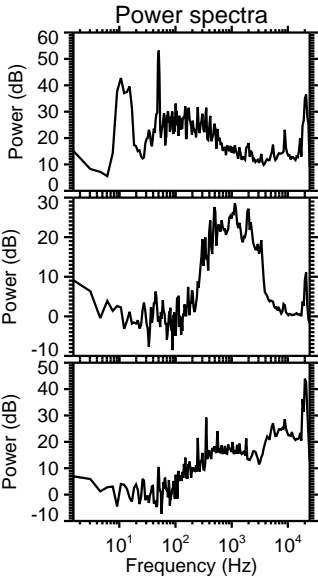
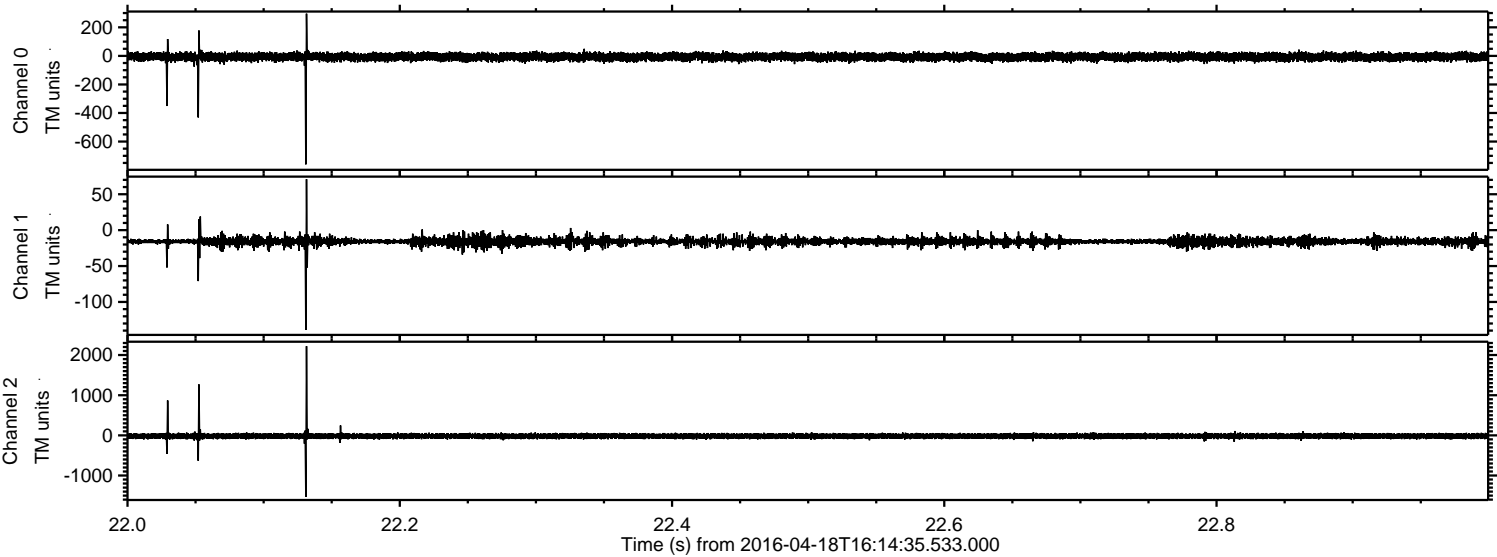
Processed Mon May 9 06:35:59 2016 by ELM ver.2012-10-06 from 001__elm20160418_161434__dat00.bin



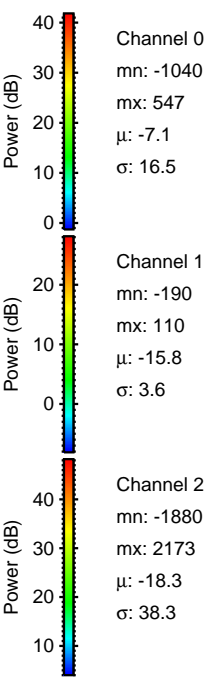
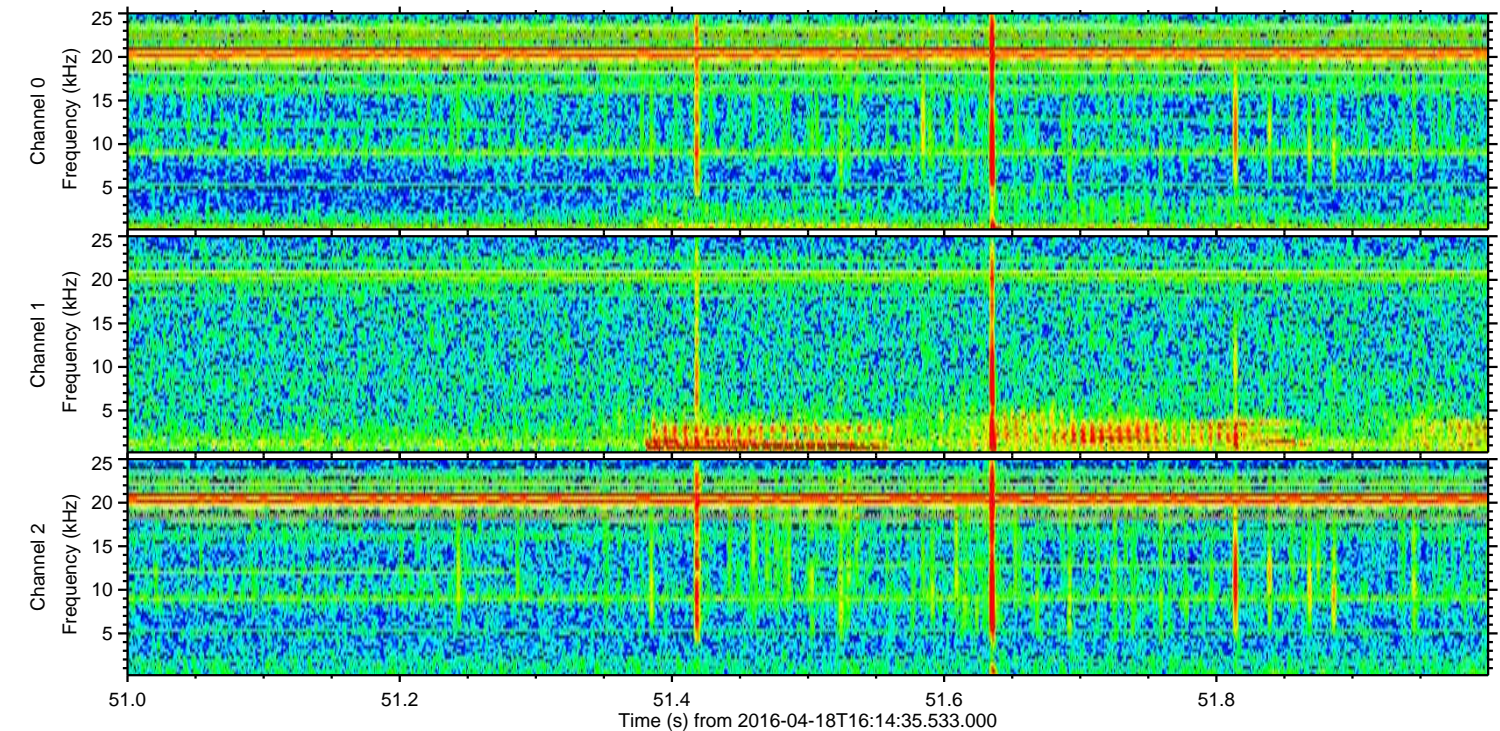
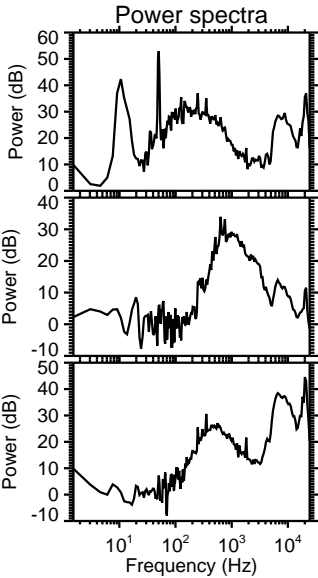
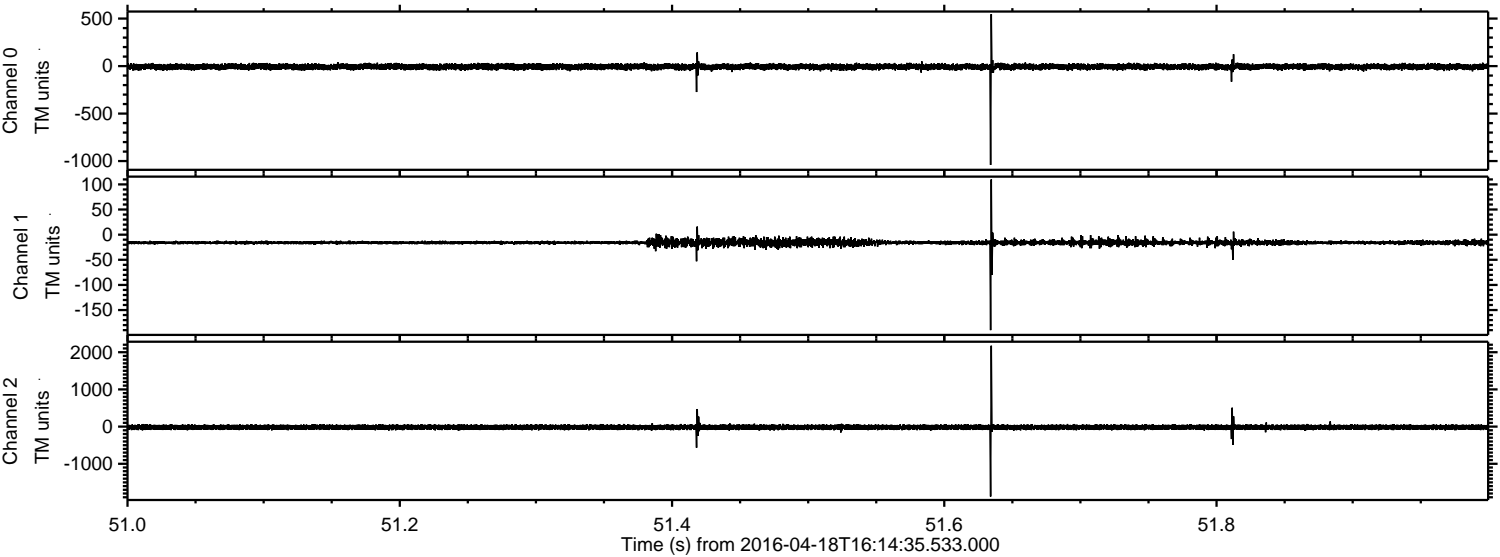
Processed Mon May 9 06:36:00 2016 by ELM ver.2012-10-06 from 001__elm20160418_161434__dat00.bin



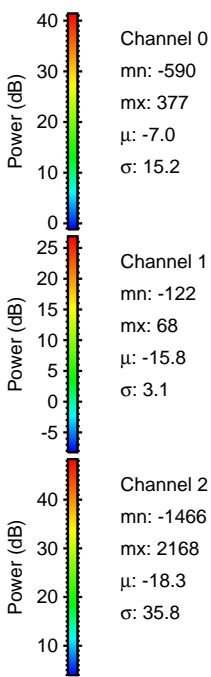
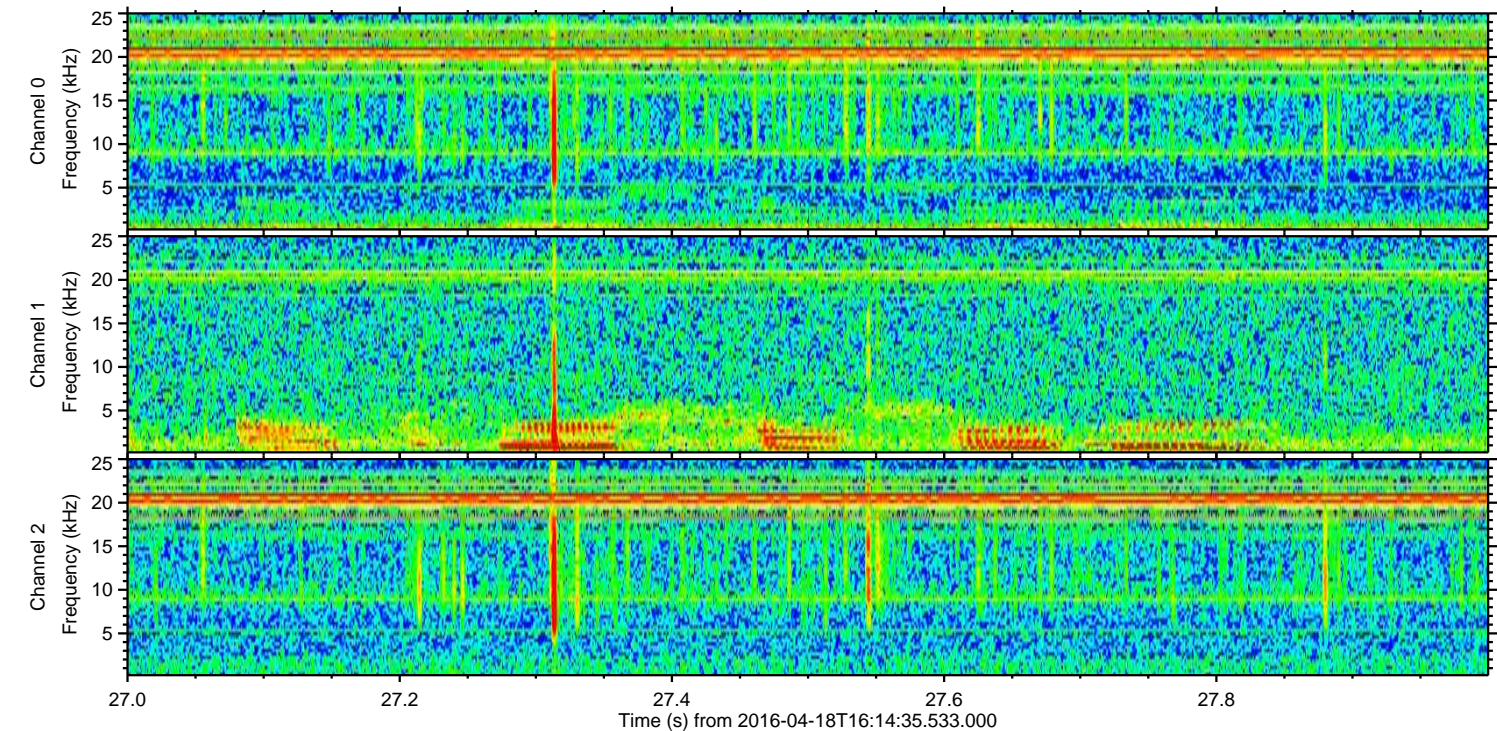
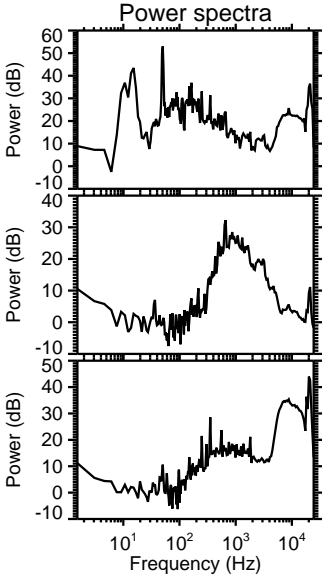
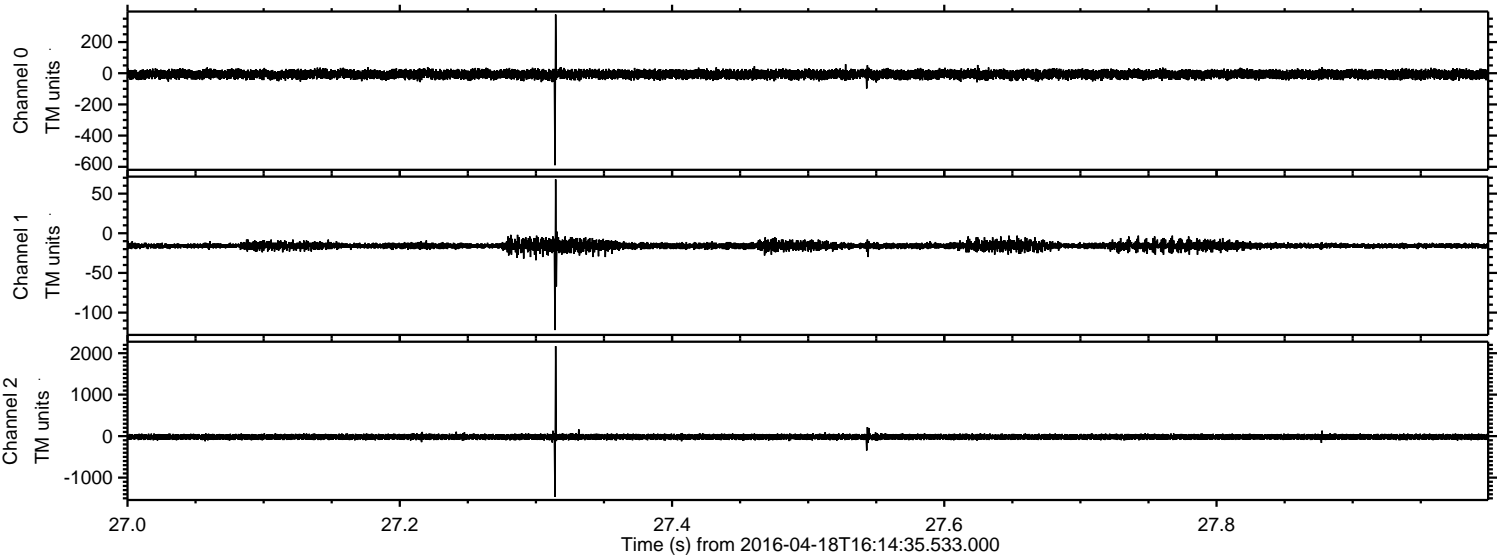
Processed Mon May 9 06:36:01 2016 by ELM ver.2012-10-06 from 001__elm20160418_161434__dat00.bin



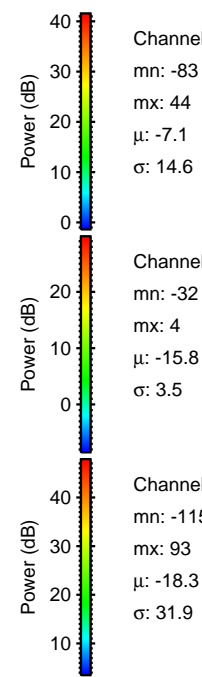
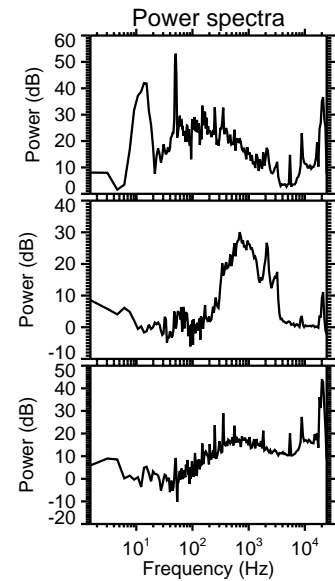
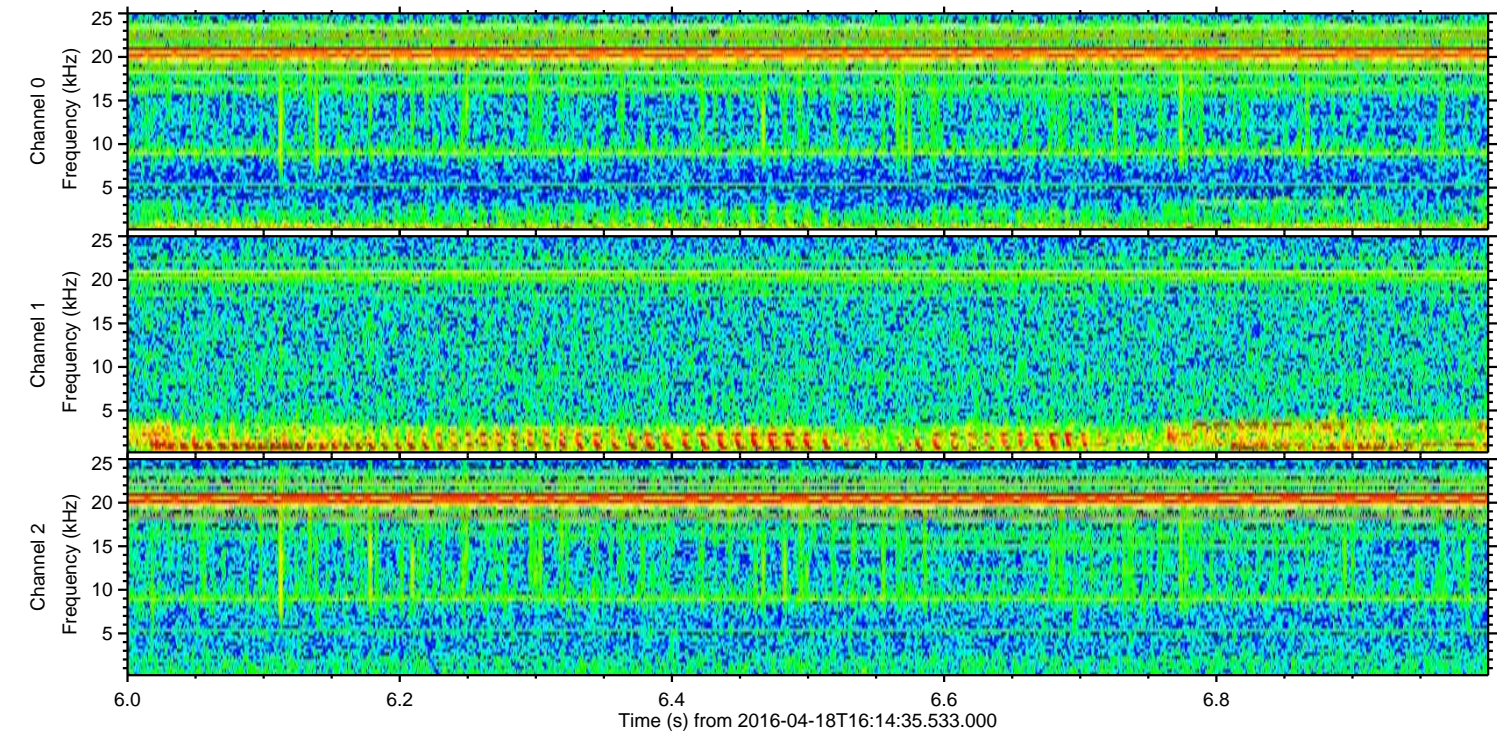
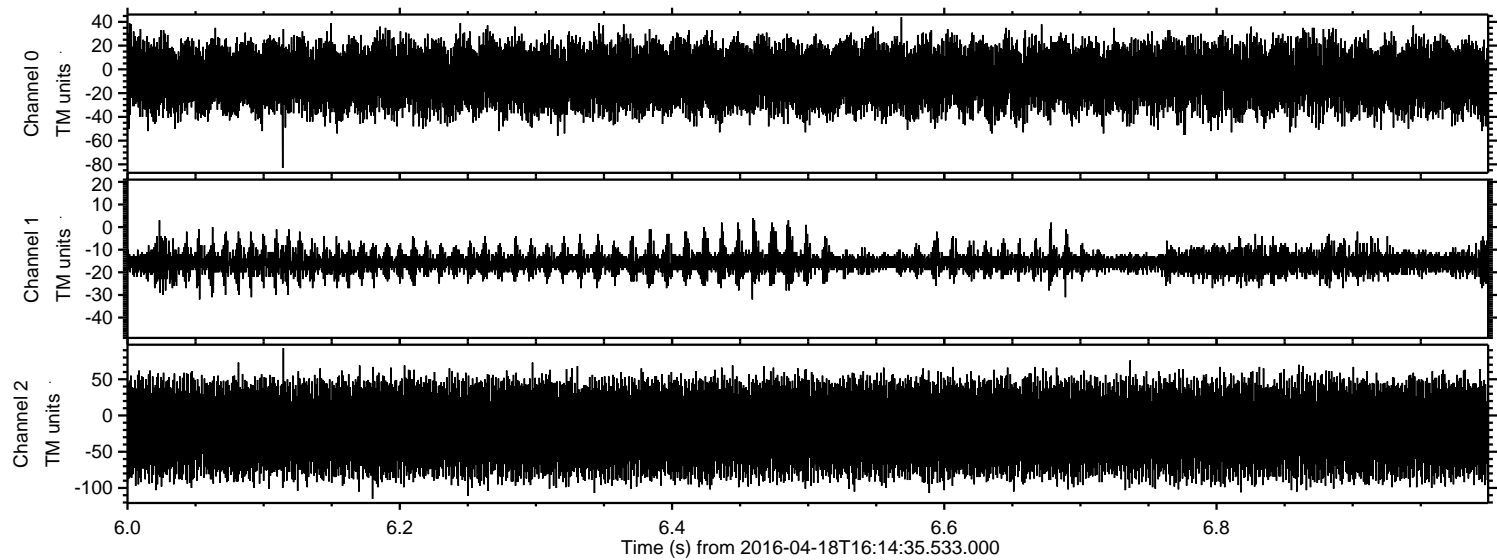
Processed Mon May 9 06:36:02 2016 by ELM ver.2012-10-06 from 001__elm20160418_161434__dat00.bin



Processed Mon May 9 06:36:03 2016 by ELM ver.2012-10-06 from 001__elm20160418_161434__dat00.bin



Processed Mon May 9 06:36:04 2016 by ELM ver.2012-10-06 from 001__elm20160418_161434__dat00.bin



Channel 0
mn: -83
mx: 44
 μ : -7.1
 σ : 14.6

Channel 1
mn: -32
mx: 4
 μ : -15.8
 σ : 3.5

Channel 2
mn: -115
mx: 93
 μ : -18.3
 σ : 31.9