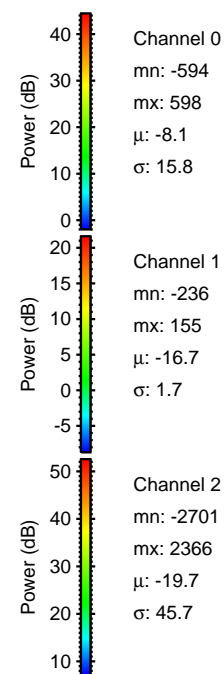
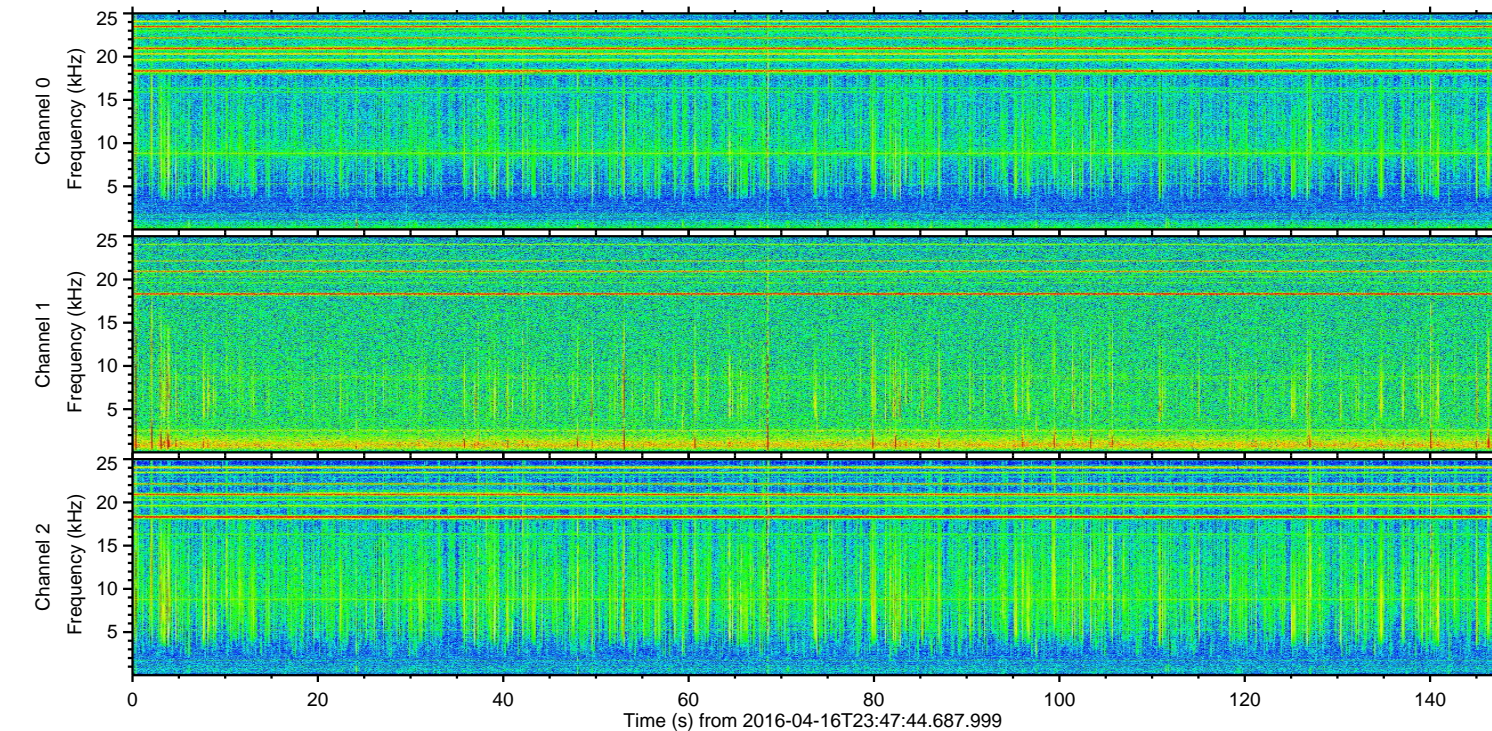
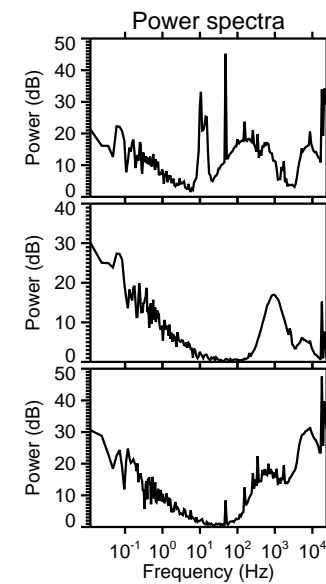
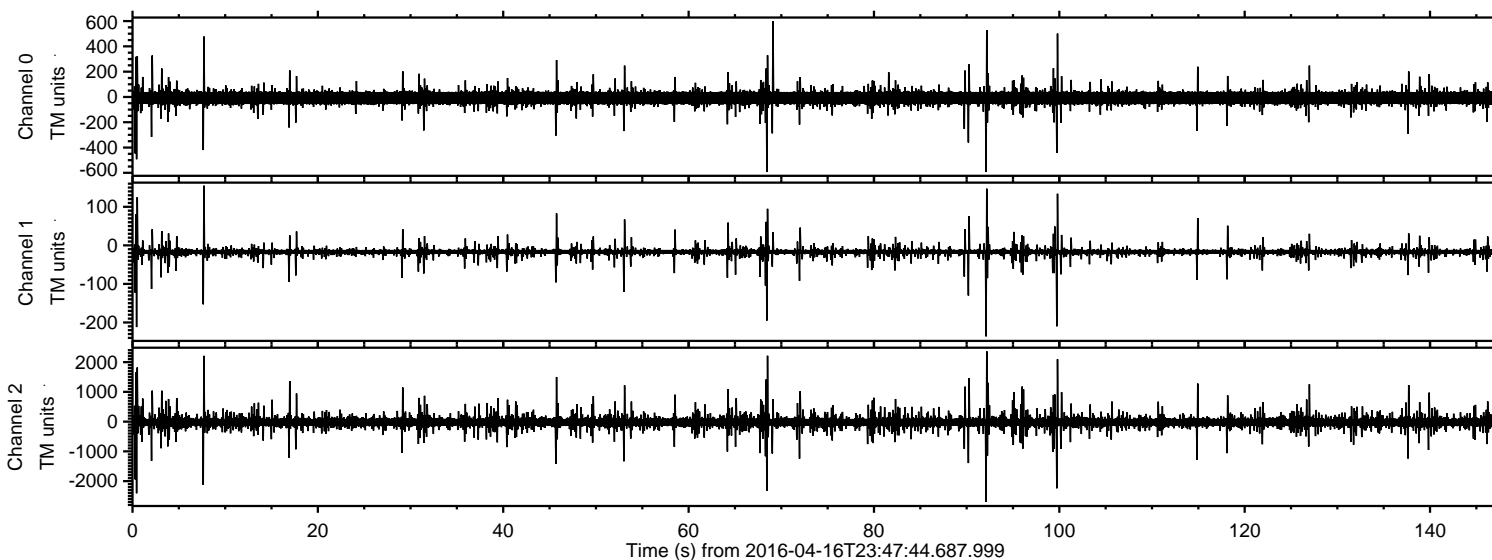


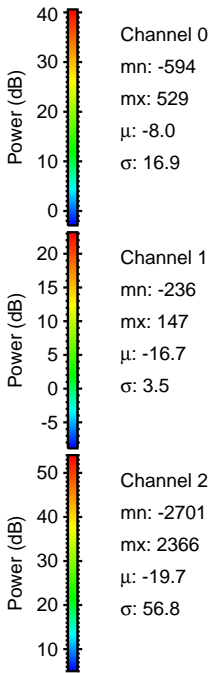
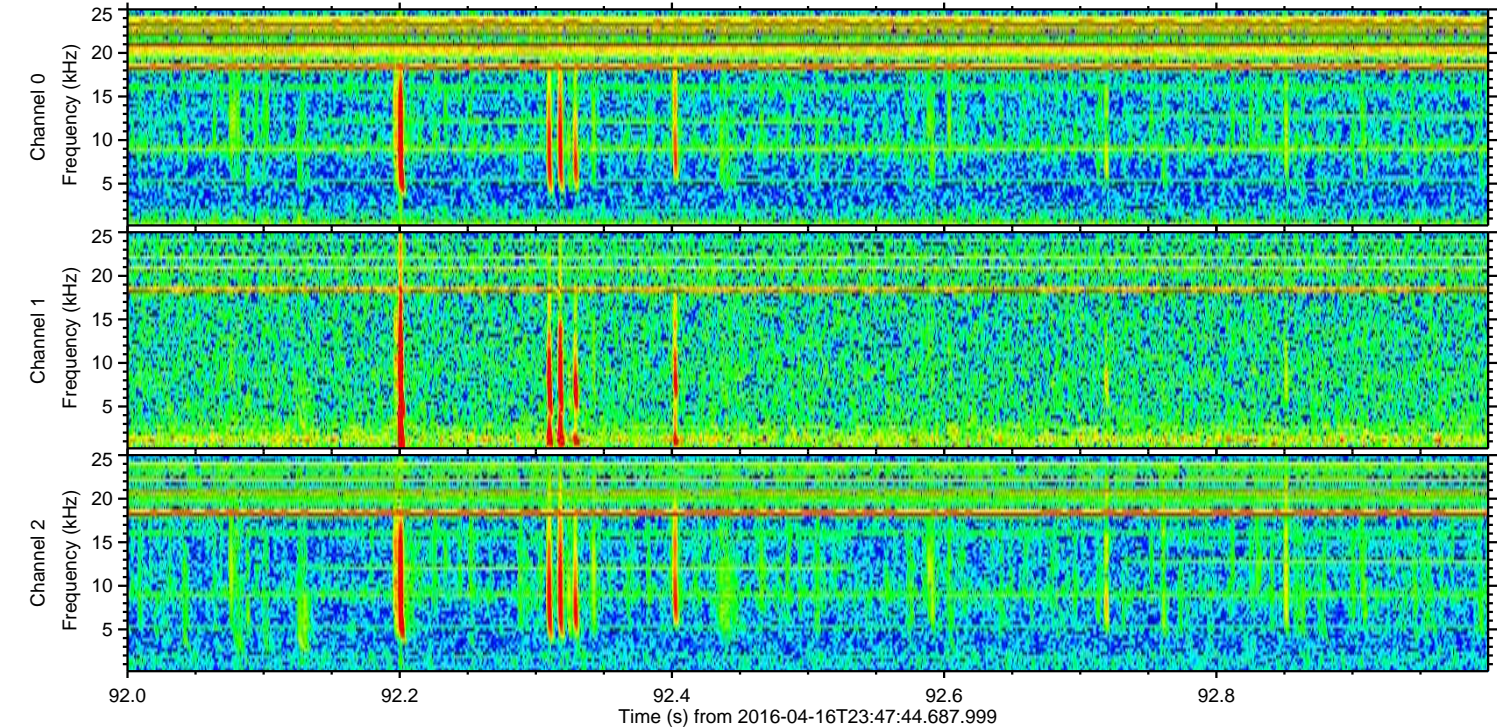
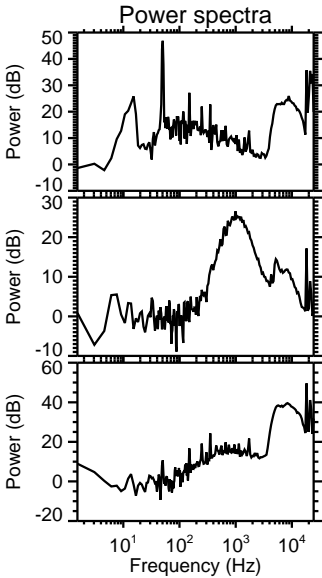
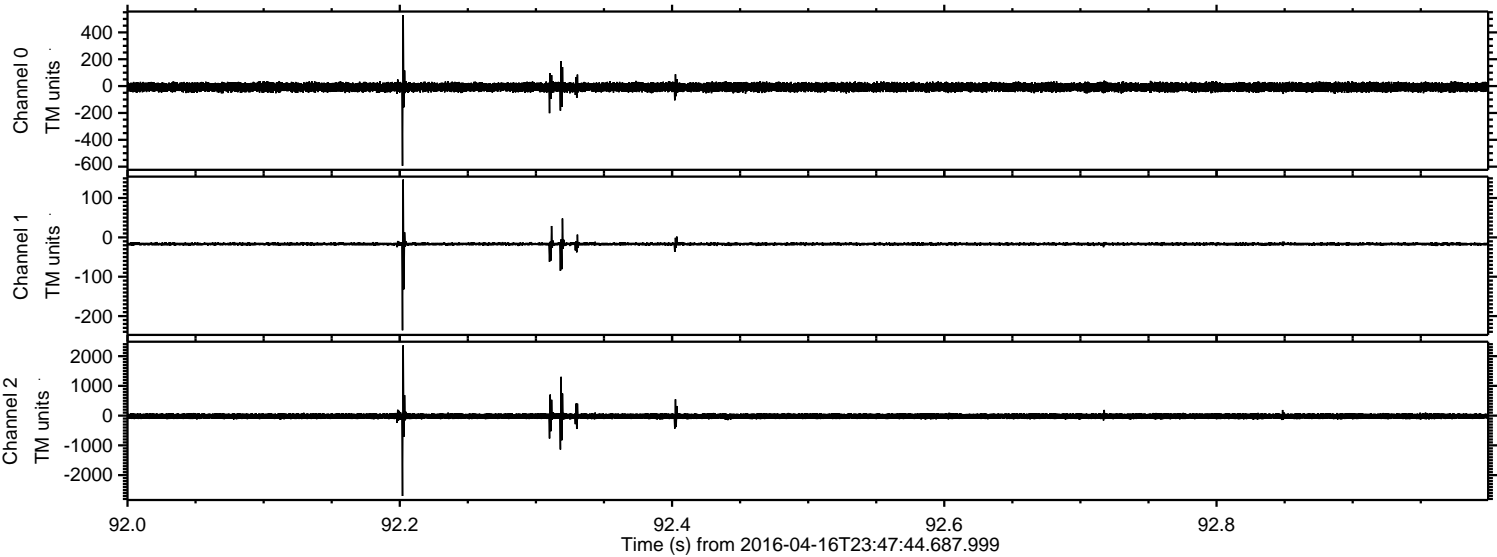
# ELMAVAN 3D WAVEFORMS (Measured data sampled at 50 kHz) 51000 packets of 144 samples from 2016-04-16T23:47:44.687.999.

Processed Sun May 8 22:16:34 2016 by ELM ver.2012-10-06 from 001\_\_elm20160416\_234743\_\_dat00.bin





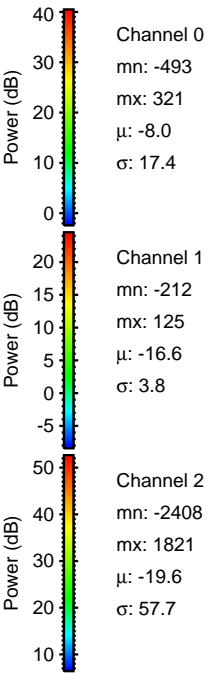
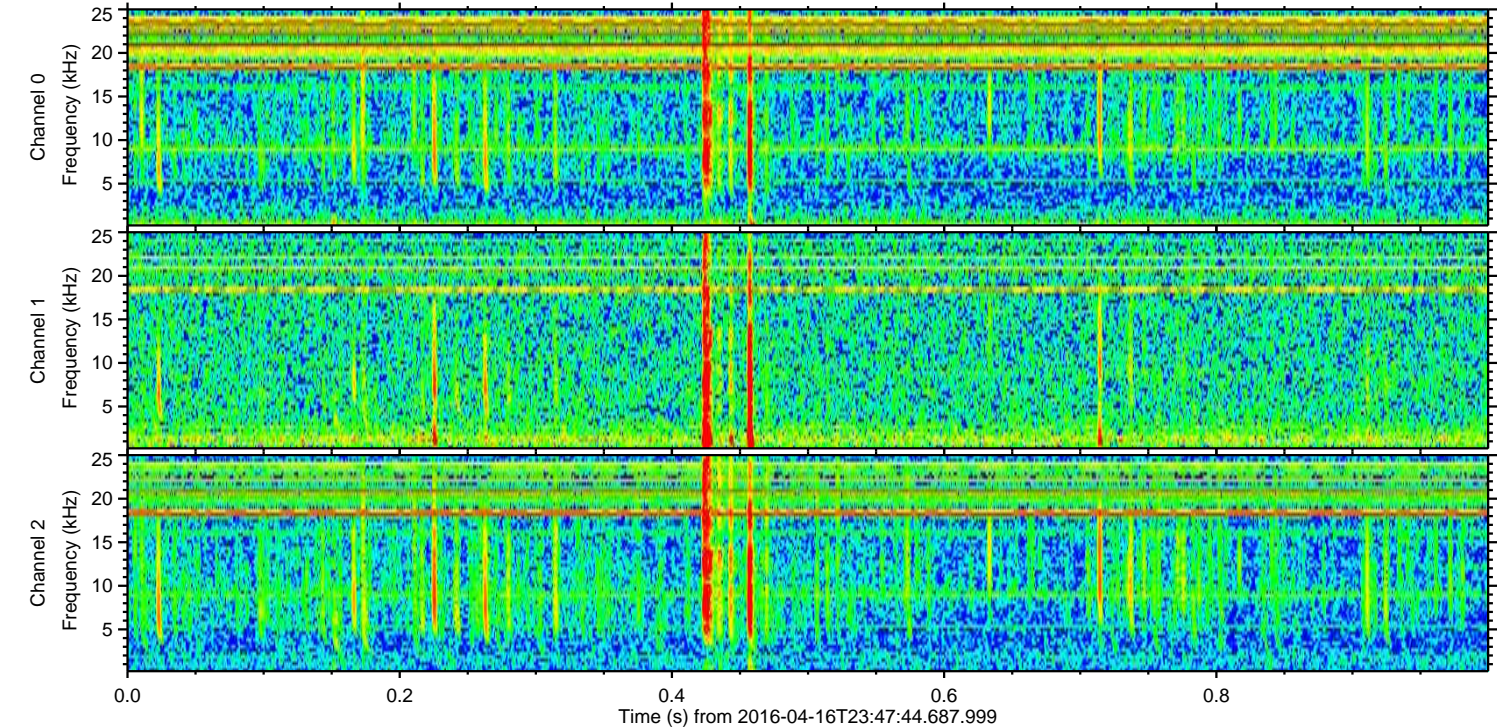
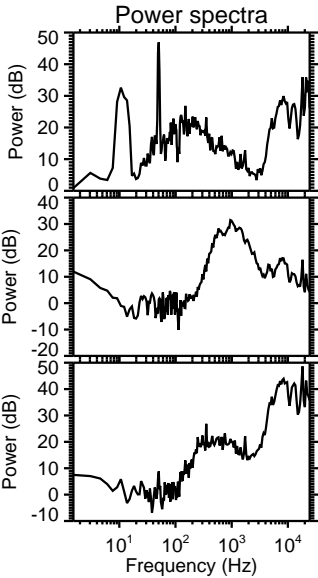
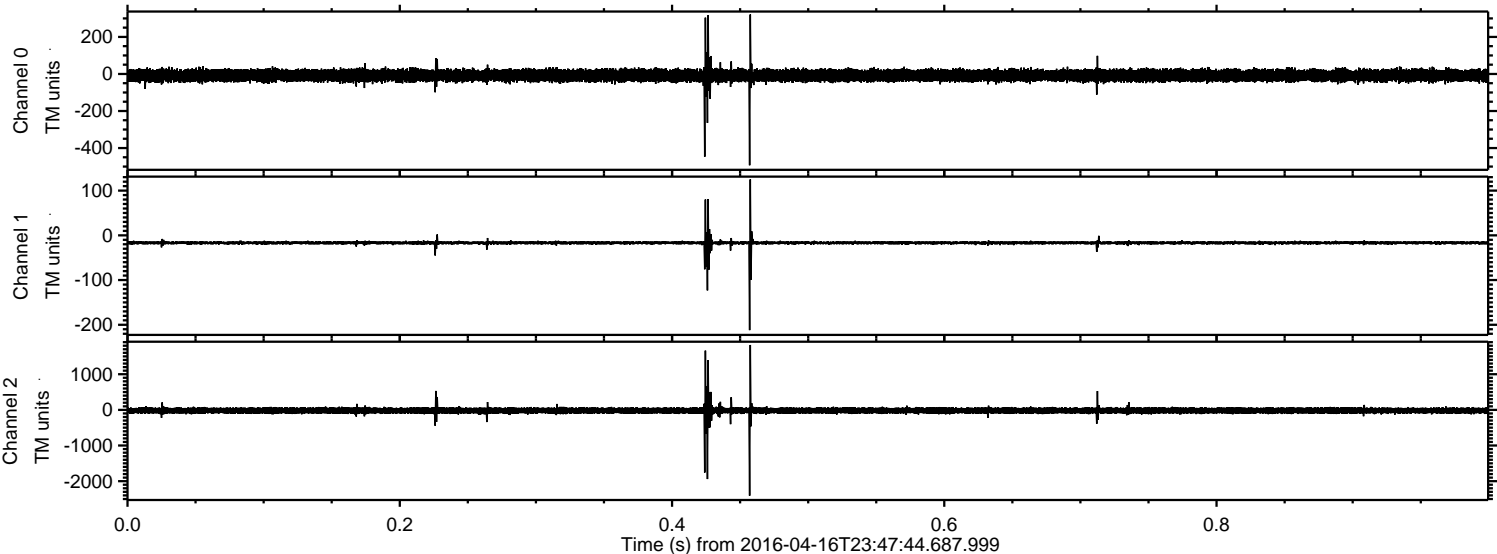
Processed Sun May 8 22:16:45 2016 by ELM ver.2012-10-06 from 001\_\_elm20160416\_234743\_\_dat00.bin





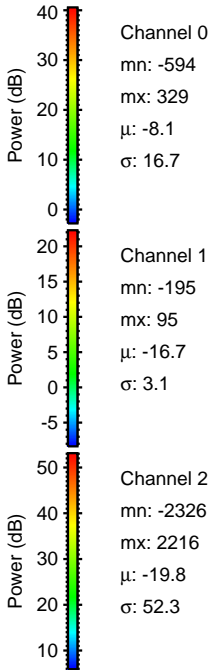
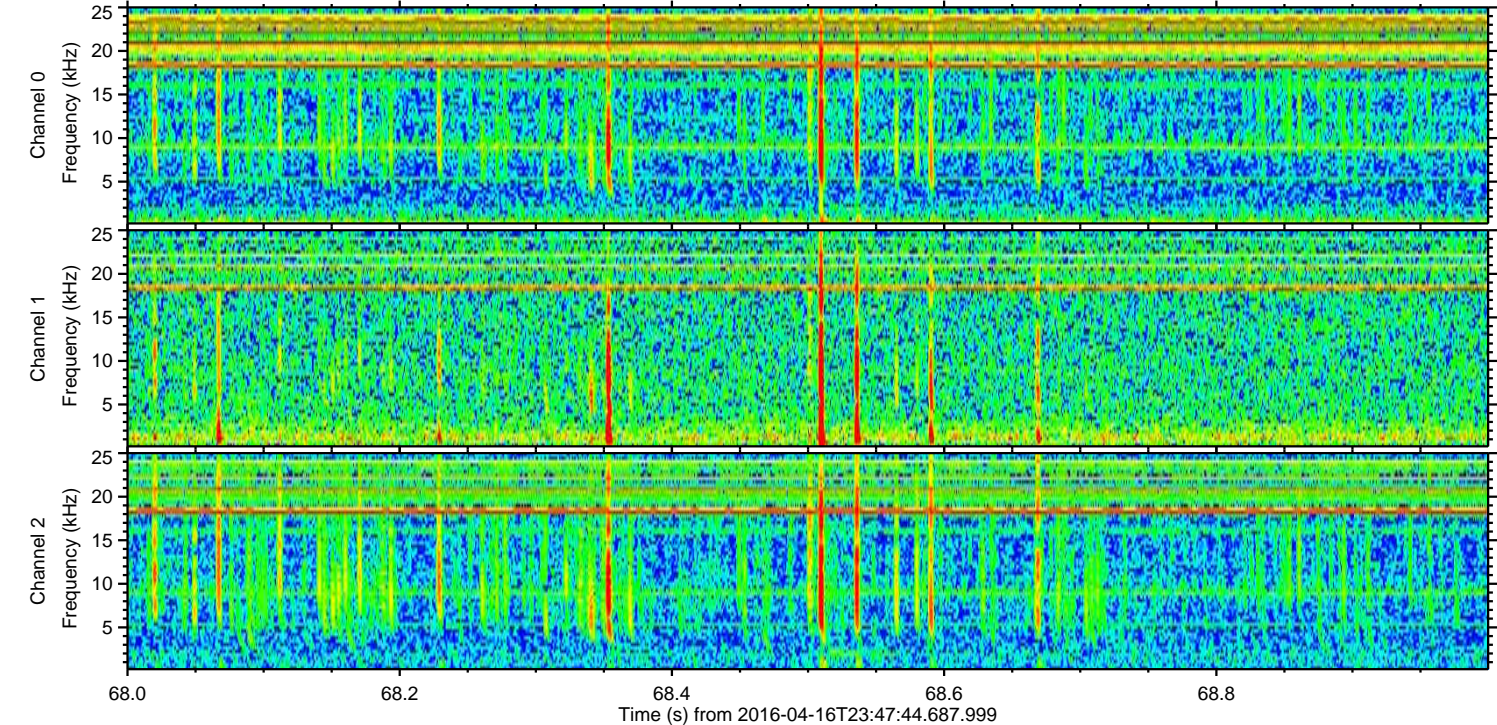
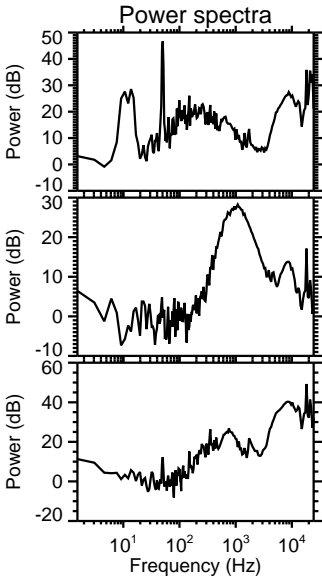
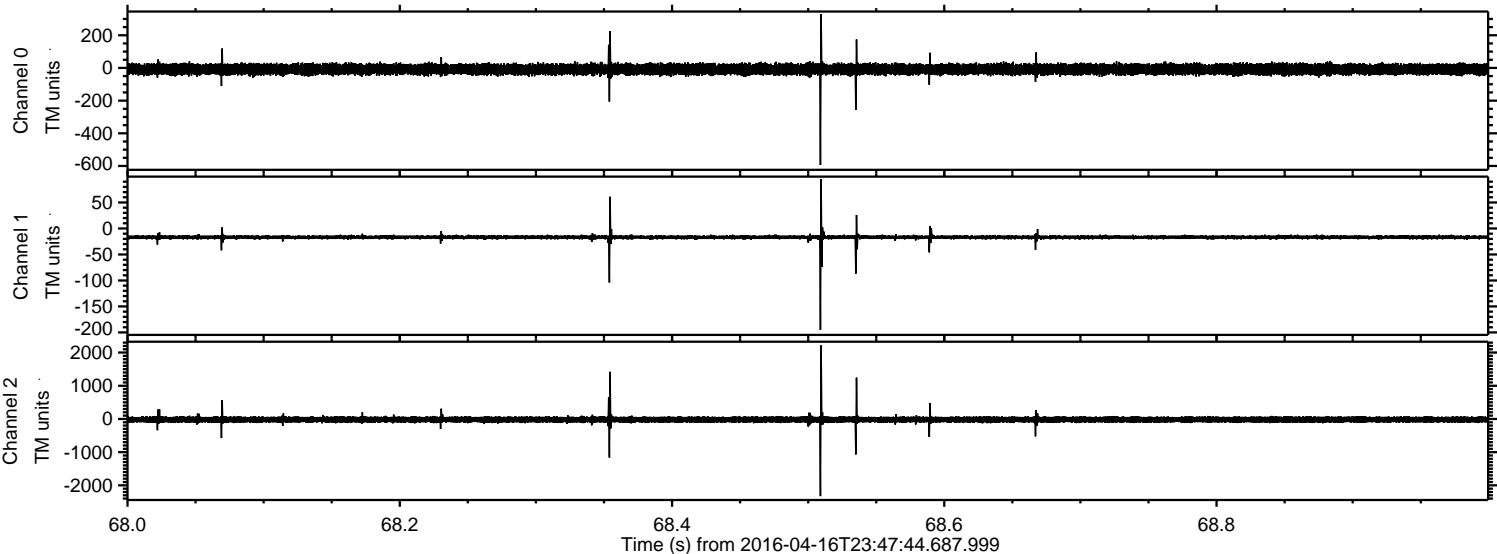
ELMAVAN 3D WAVEFORMS (Measured data sampled at 50 kHz) 51000 packets of 144 samples from 2016-04-16T23:47:44.687.999. Part 1/147

Processed Sun May 8 22:16:46 2016 by ELM ver.2012-10-06 from 001\_\_elm20160416\_234743\_\_dat000.bin





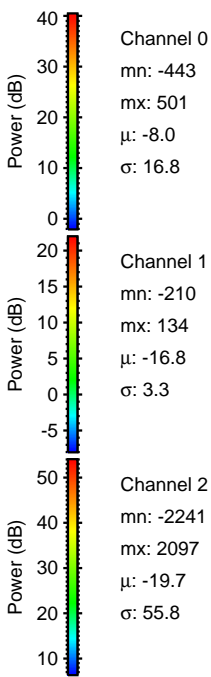
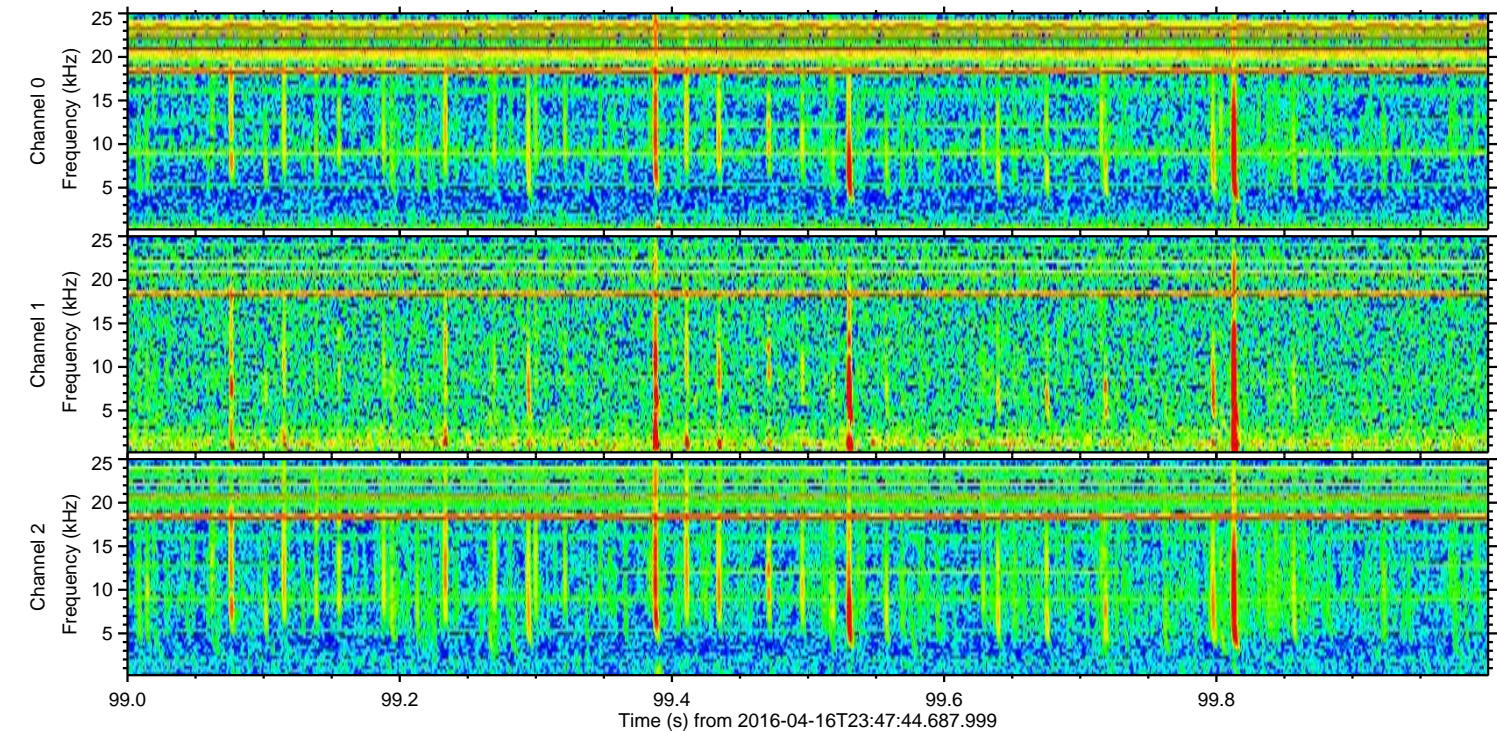
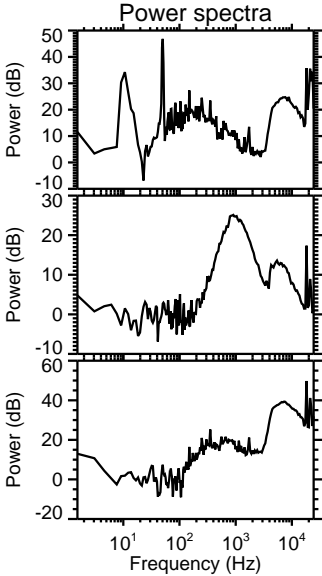
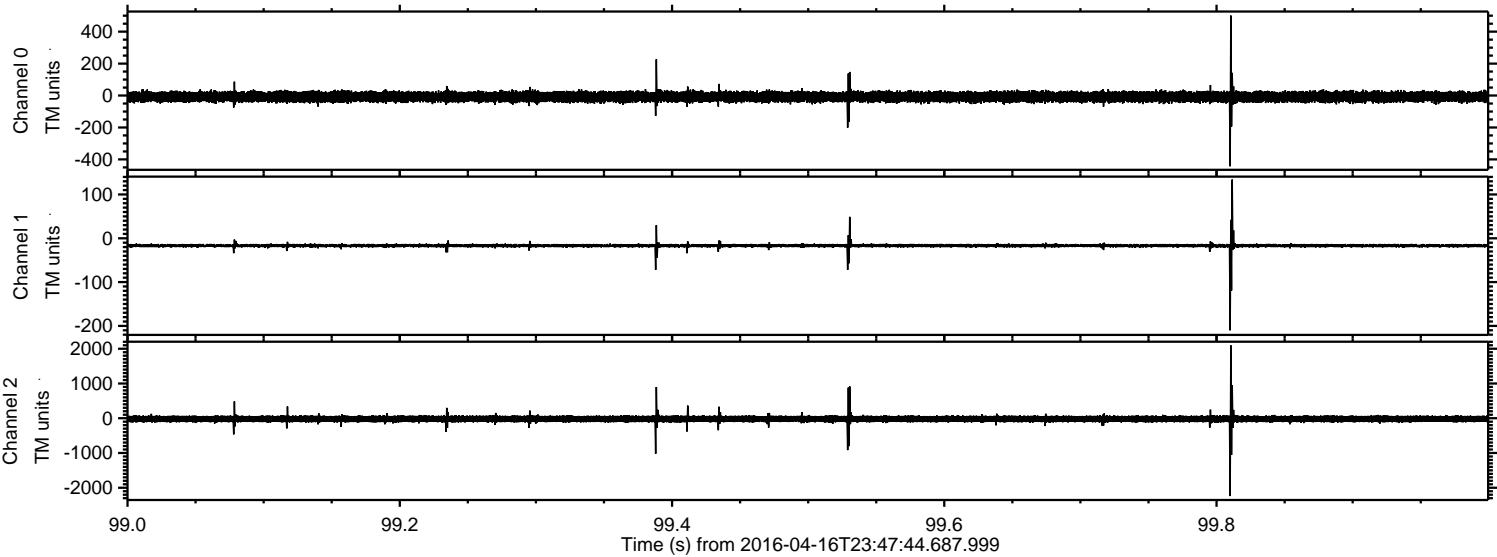
Processed Sun May 8 22:16:47 2016 by ELM ver.2012-10-06 from 001\_\_elm20160416\_234743\_\_dat00.bin





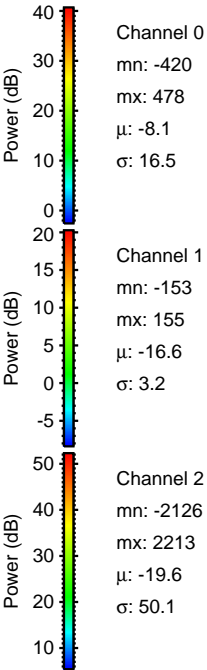
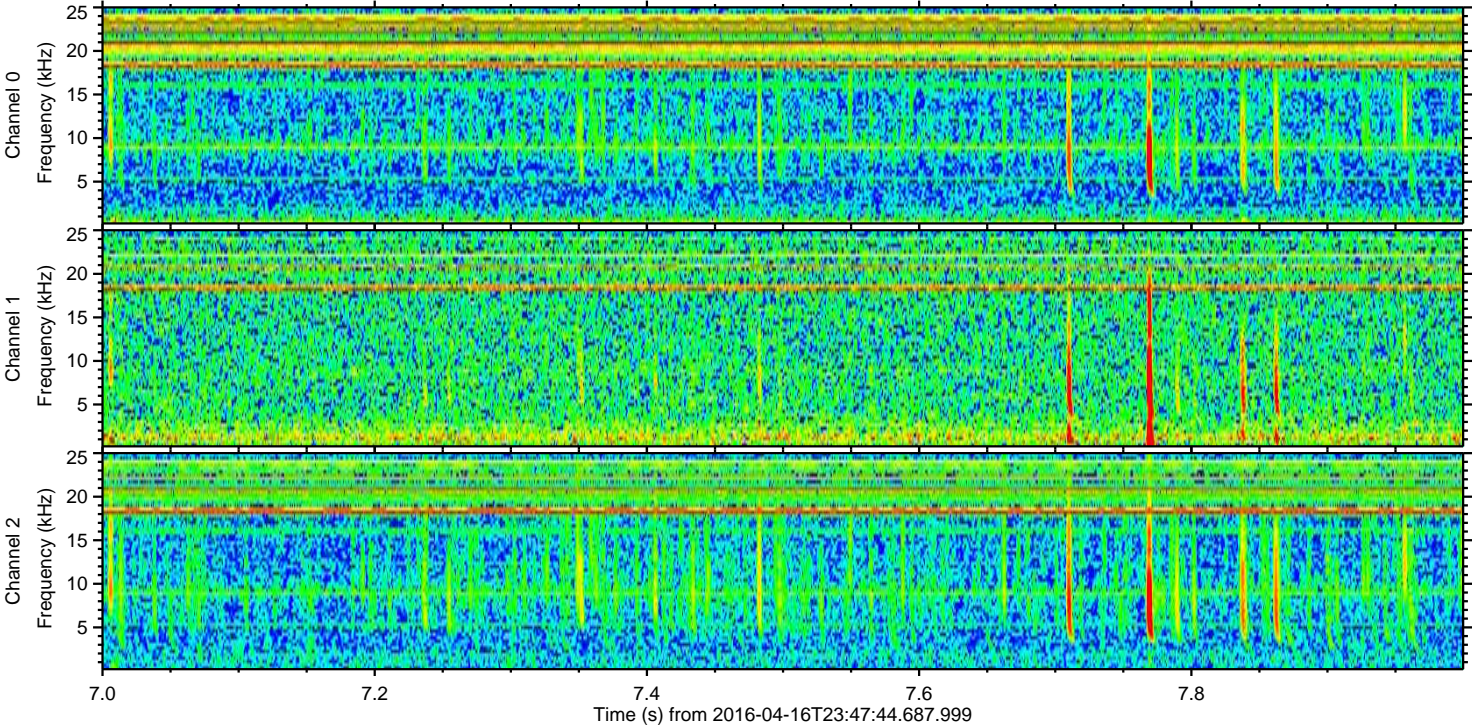
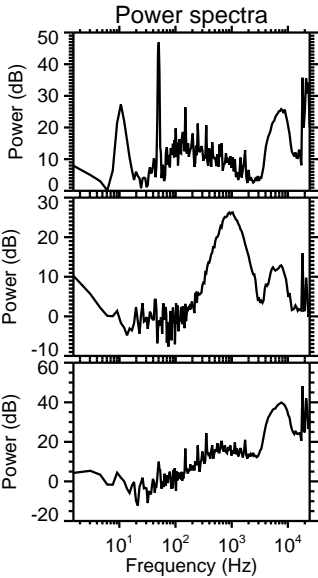
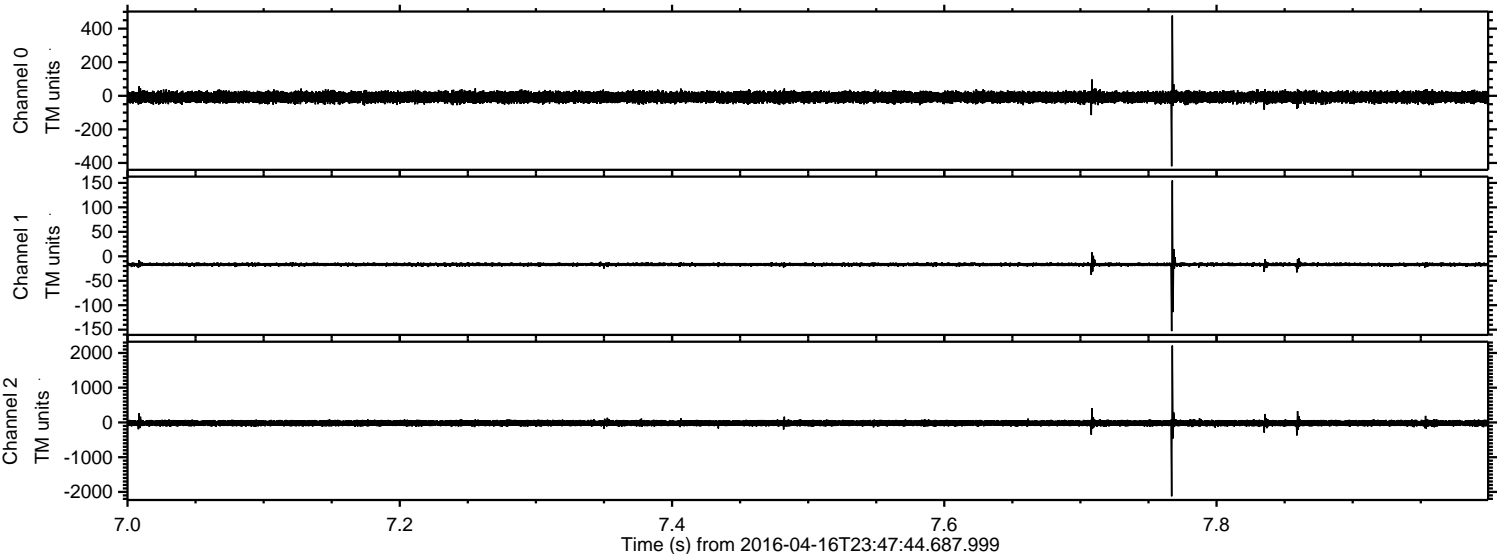
ELMAVAN 3D WAVEFORMS (Measured data sampled at 50 kHz) 51000 packets of 144 samples from 2016-04-16T23:47:44.687.999. Part 100/147

Processed Sun May 8 22:16:48 2016 by ELM ver.2012-10-06 from 001\_\_elm20160416\_234743\_\_dat00.bin



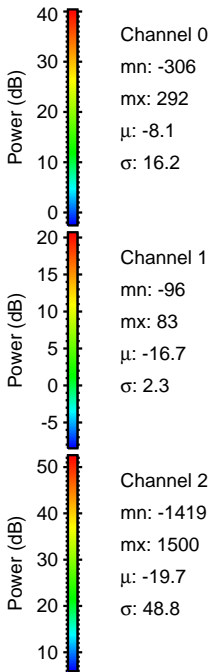
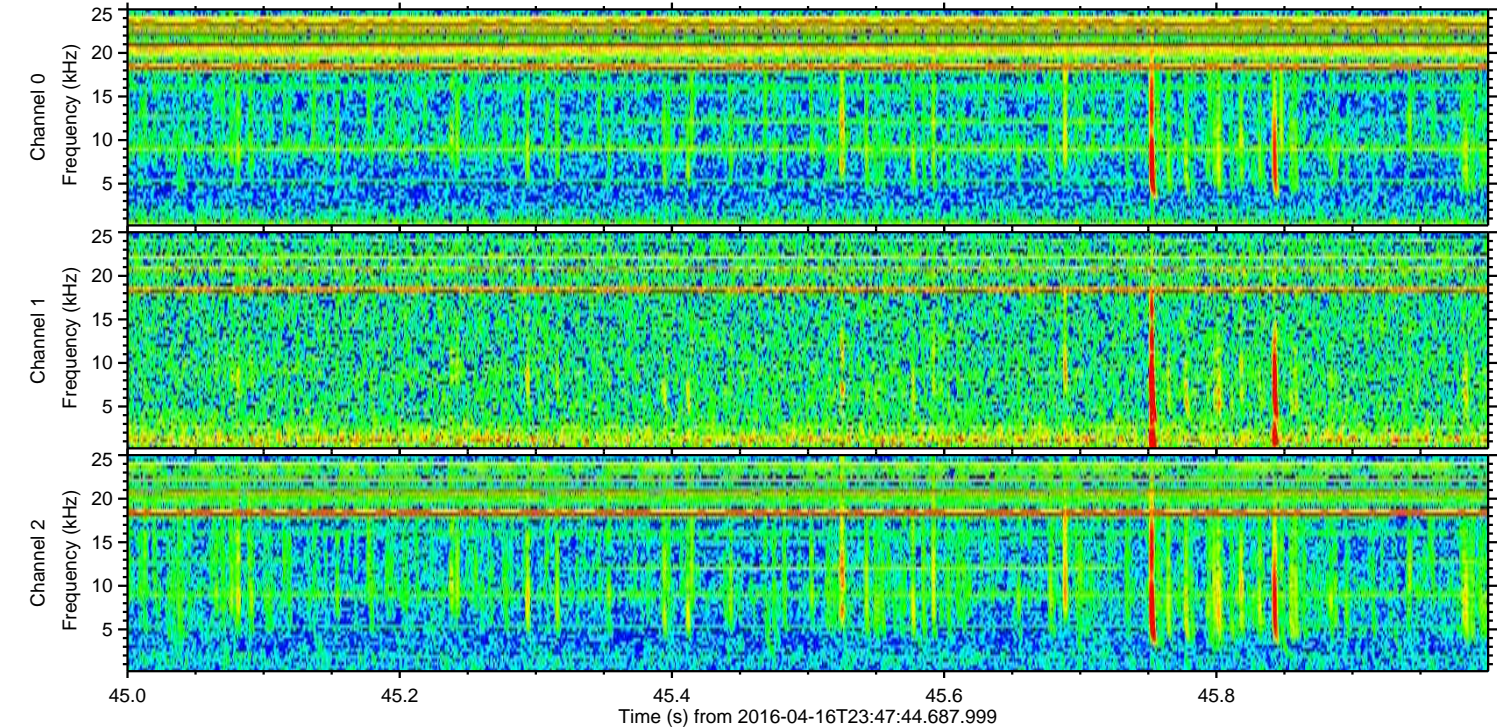
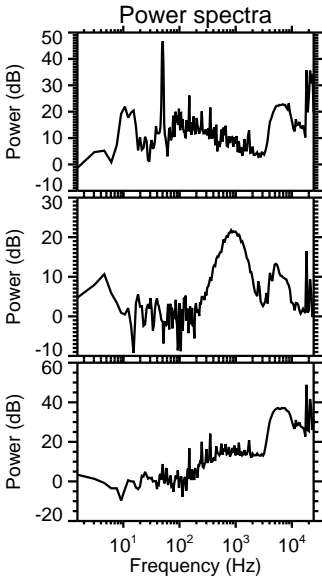
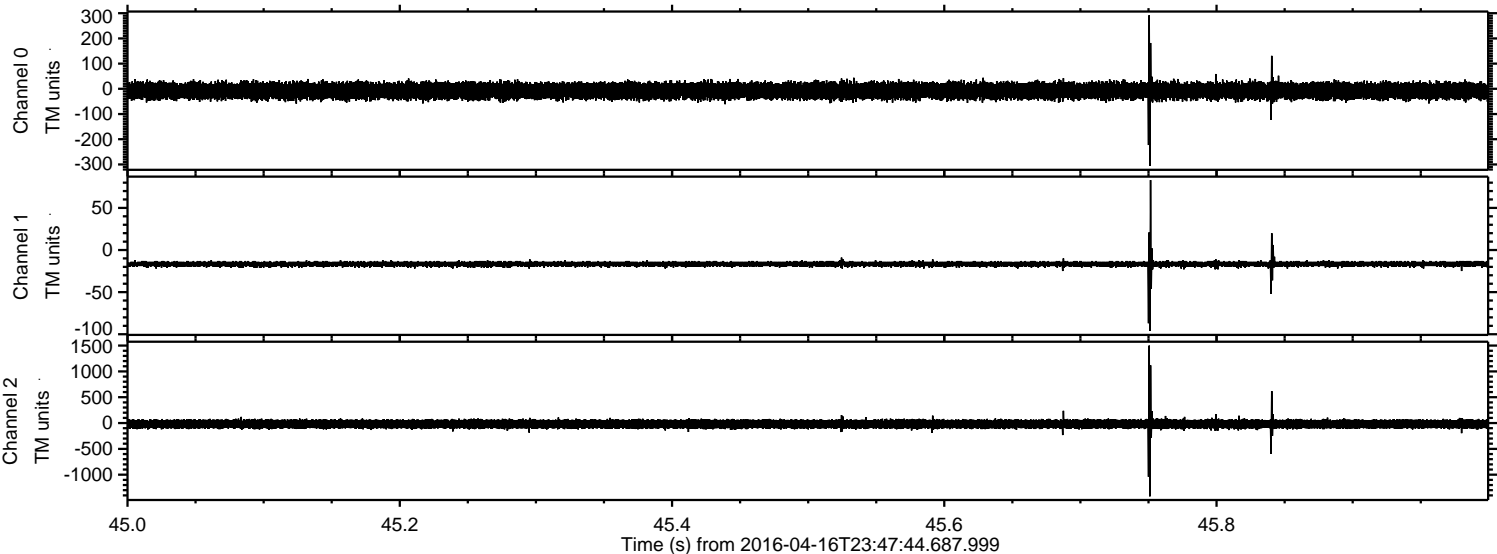


Processed Sun May 8 22:16:49 2016 by ELM ver.2012-10-06 from 001\_\_elm20160416\_234743\_\_dat00.bin



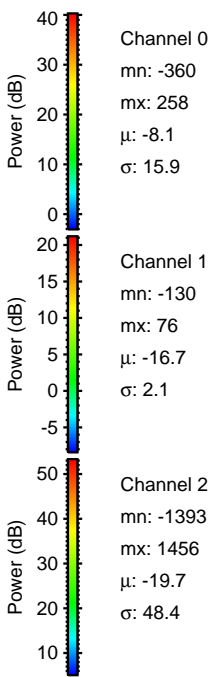
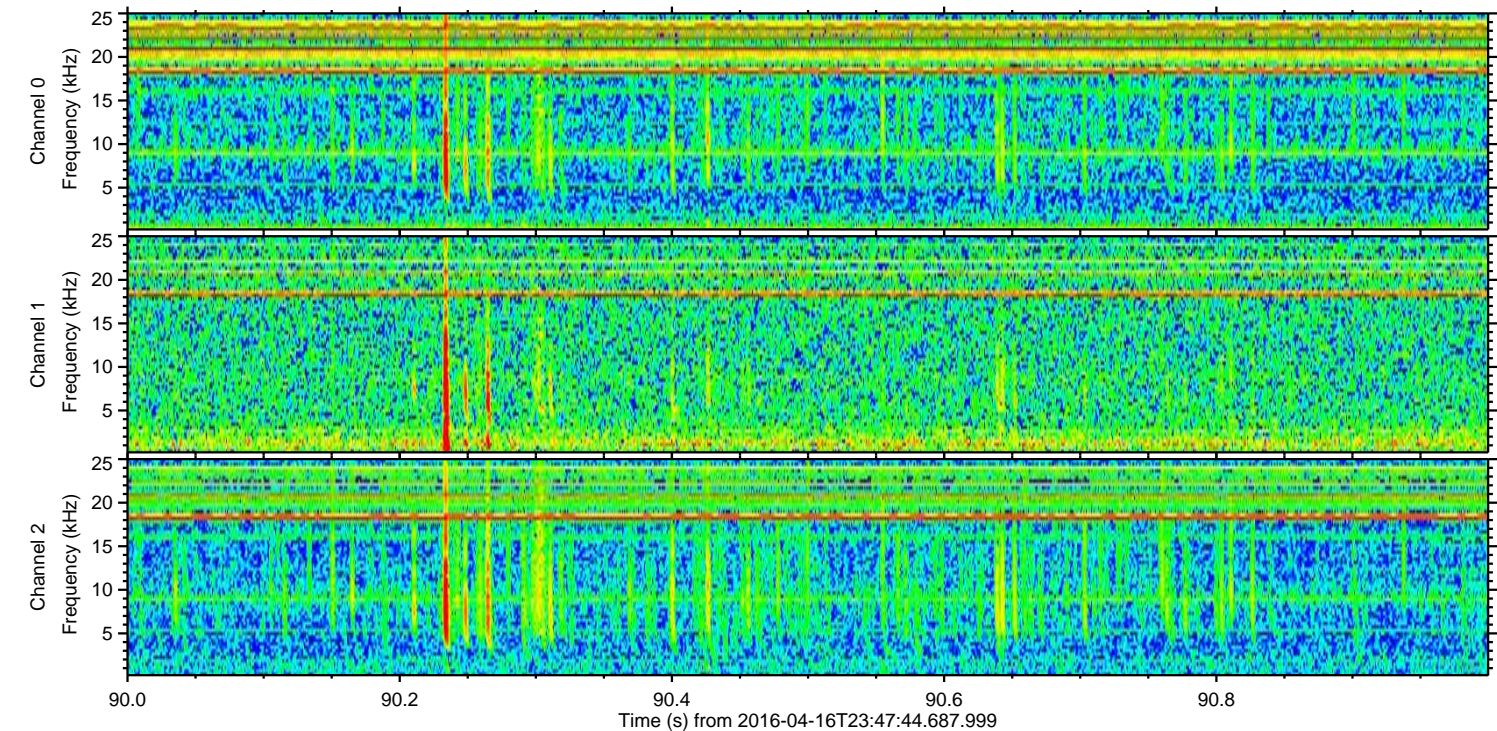
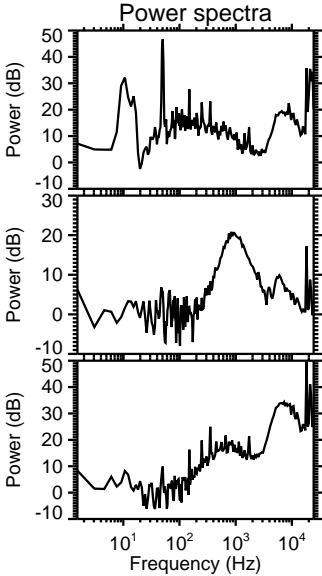
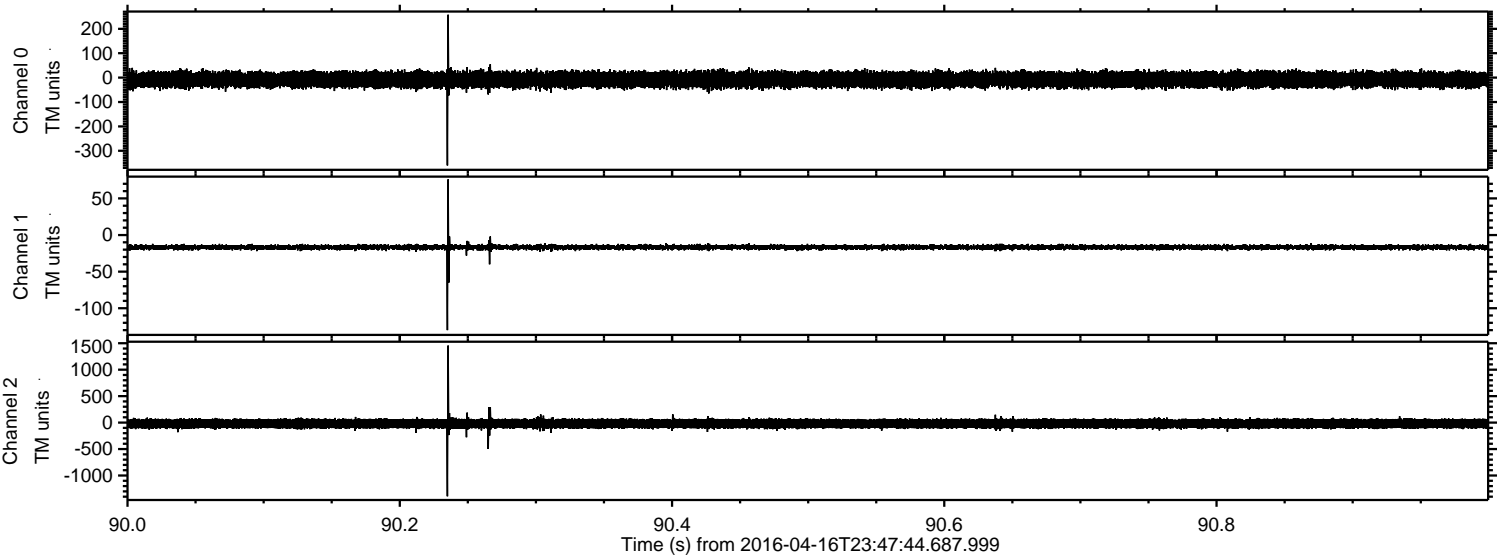


Processed Sun May 8 22:16:50 2016 by ELM ver.2012-10-06 from 001\_\_elm20160416\_234743\_\_dat00.bin



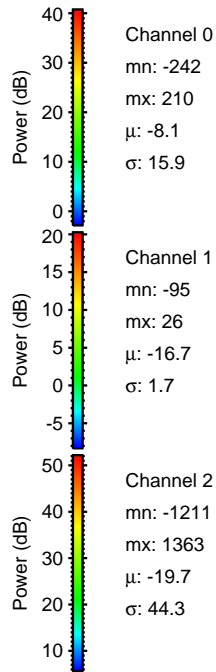
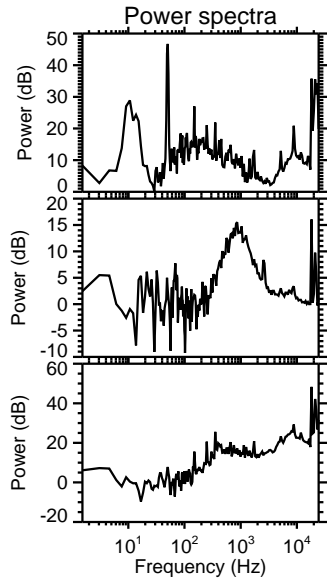
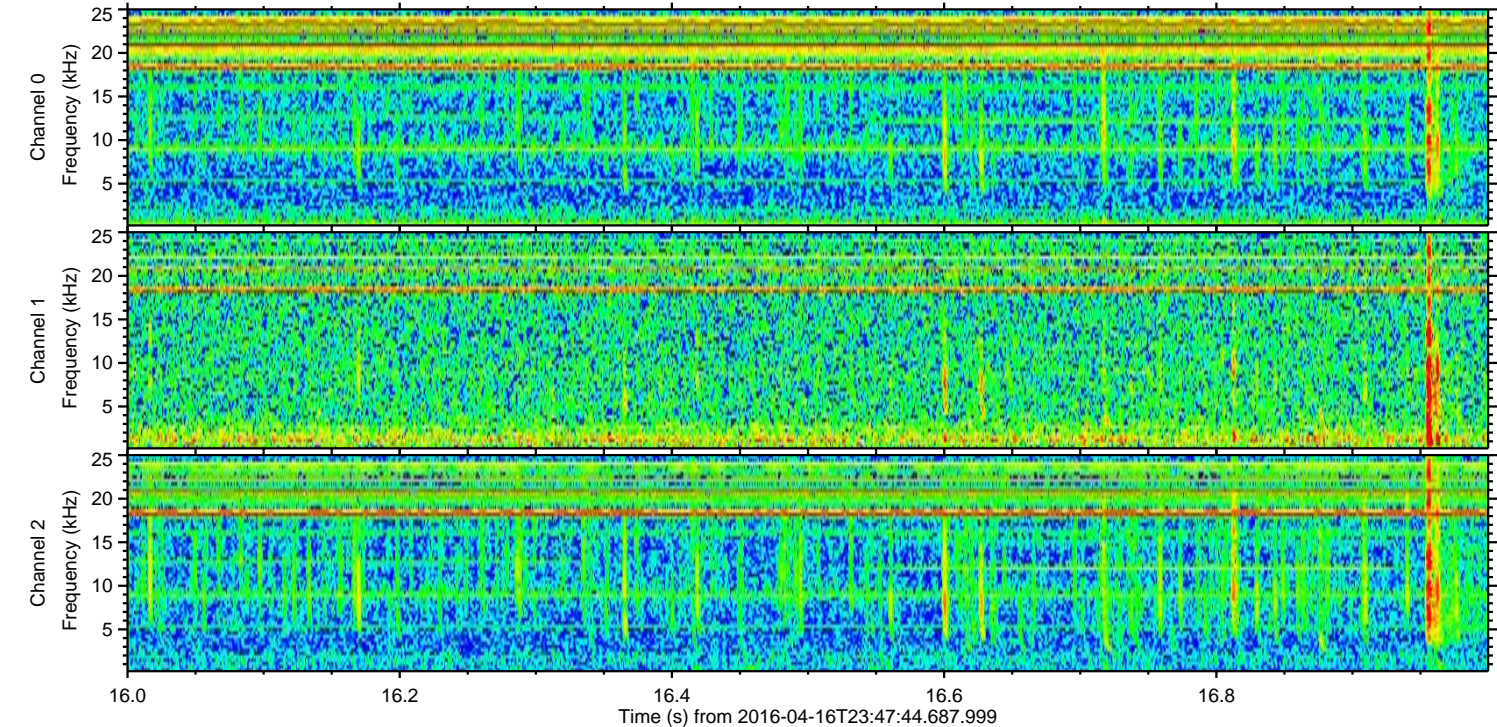
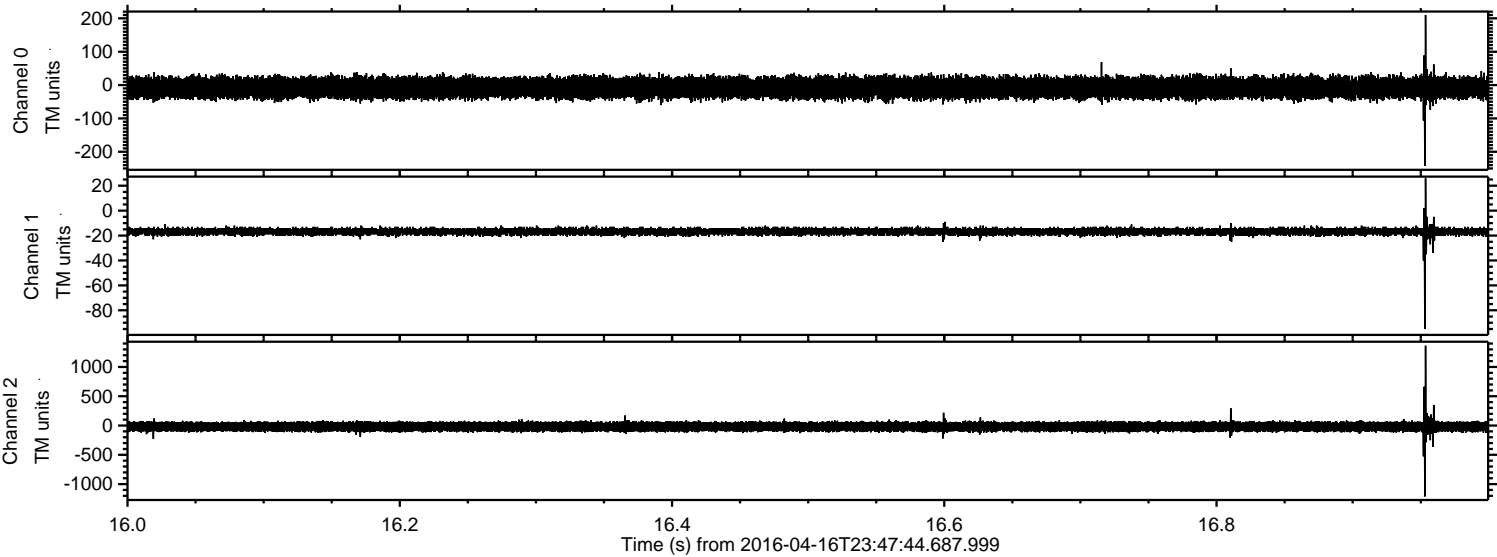


Processed Sun May 8 22:16:51 2016 by ELM ver.2012-10-06 from 001\_\_elm20160416\_234743\_\_dat00.bin





Processed Sun May 8 22:16:52 2016 by ELM ver.2012-10-06 from 001\_\_elm20160416\_234743\_\_dat00.bin





Processed Sun May 8 22:16:53 2016 by ELM ver.2012-10-06 from 001\_\_elm20160416\_234743\_\_dat00.bin

