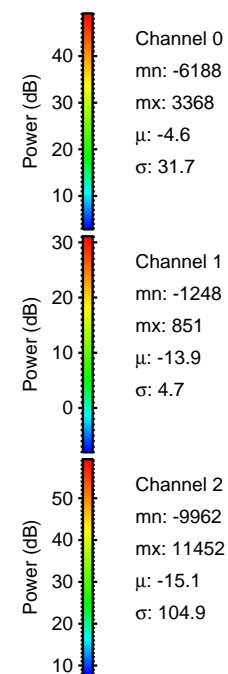
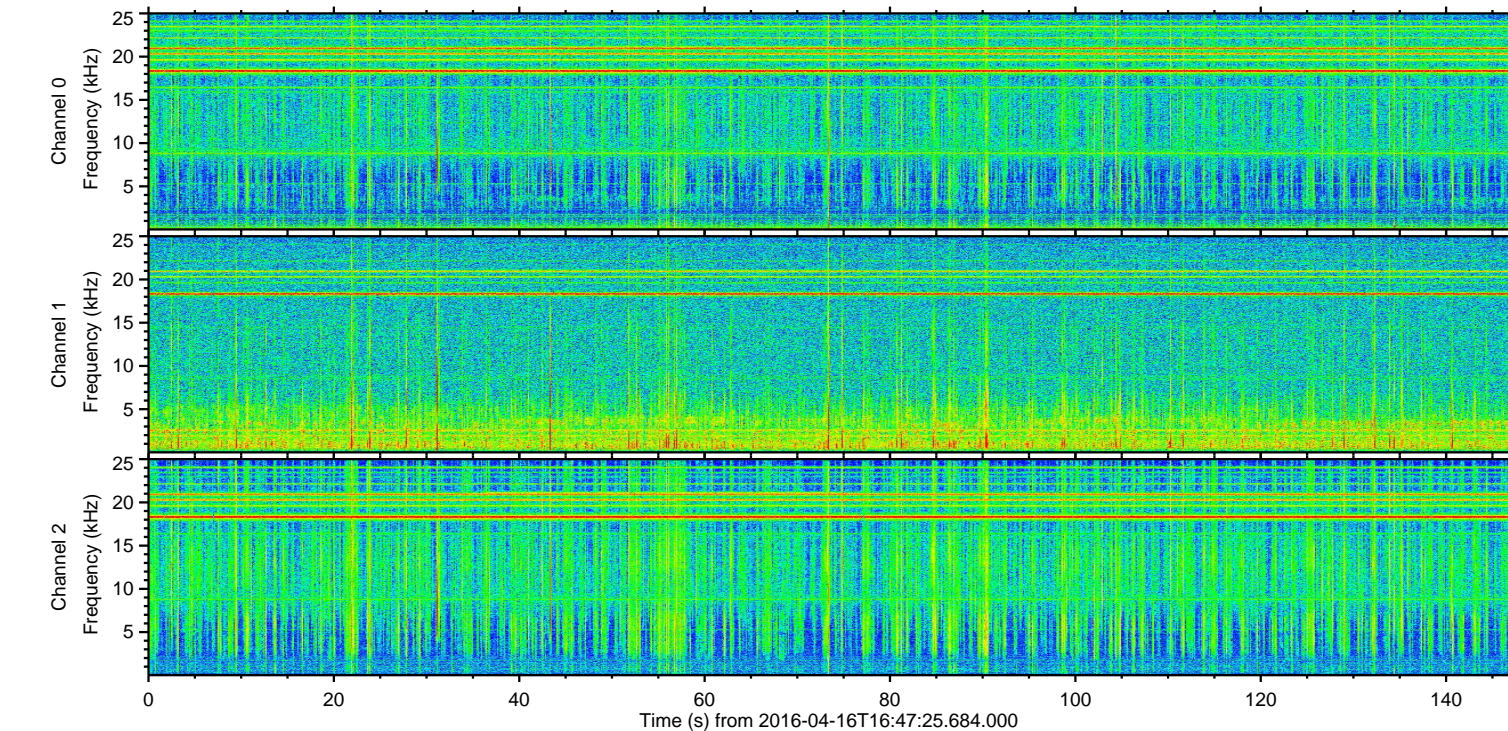
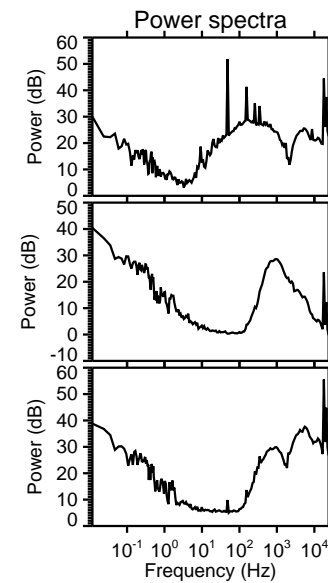
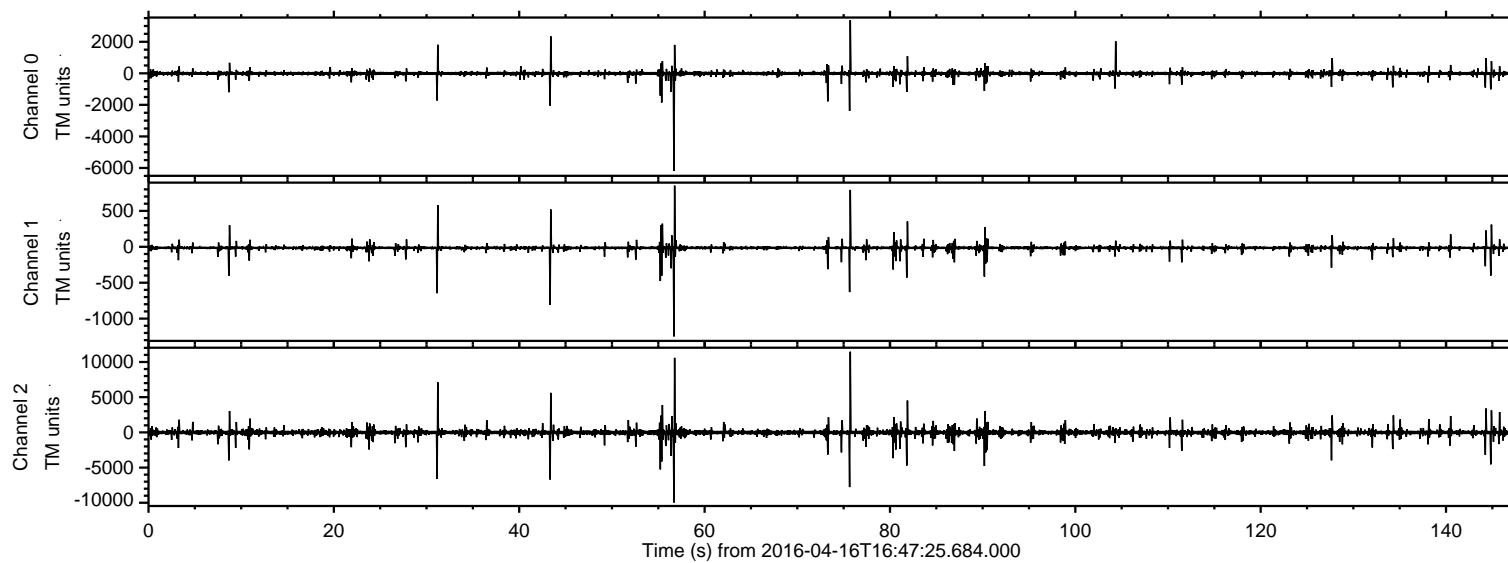
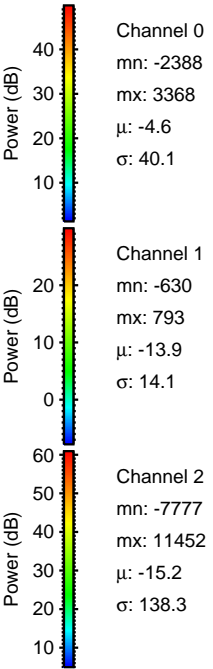
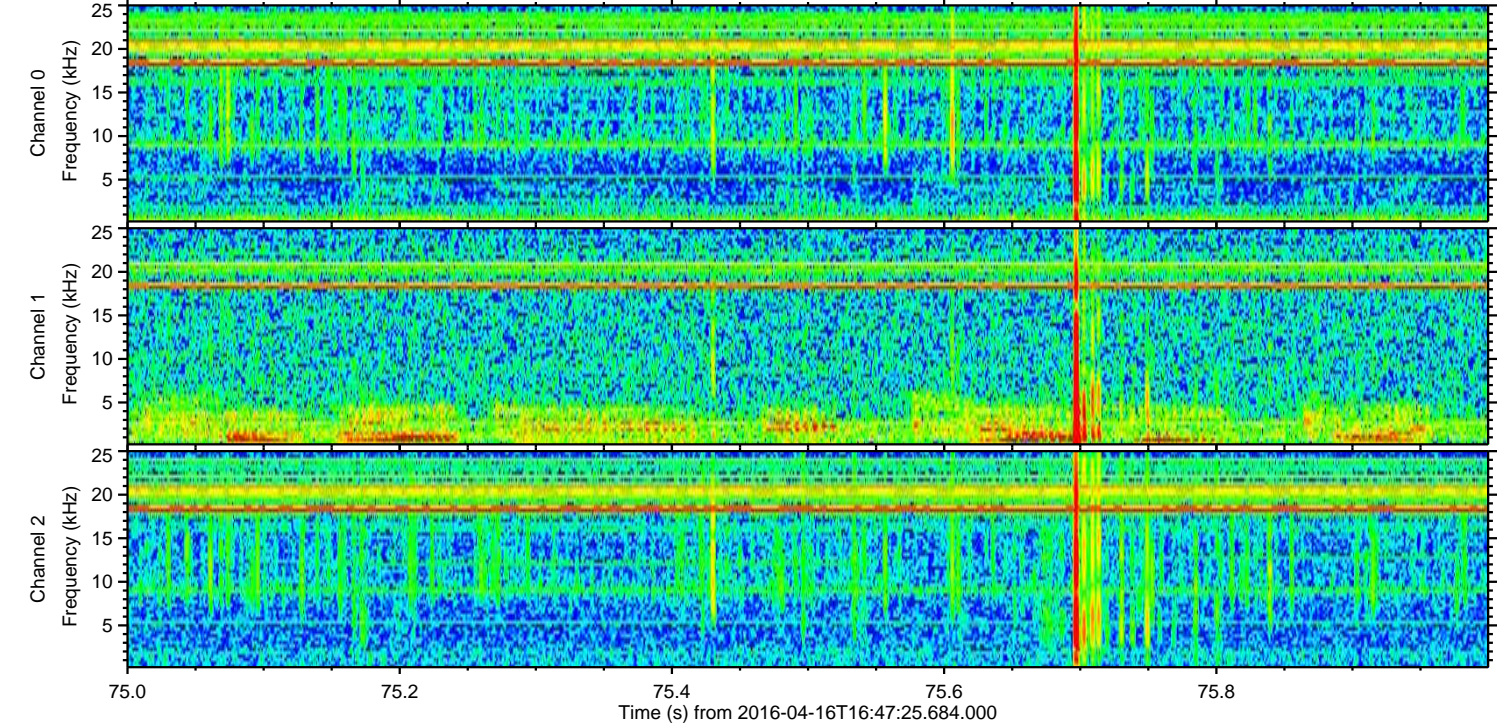
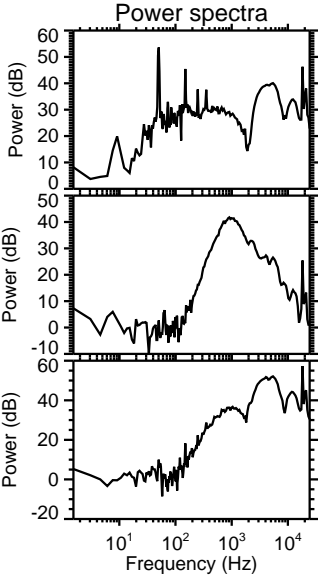
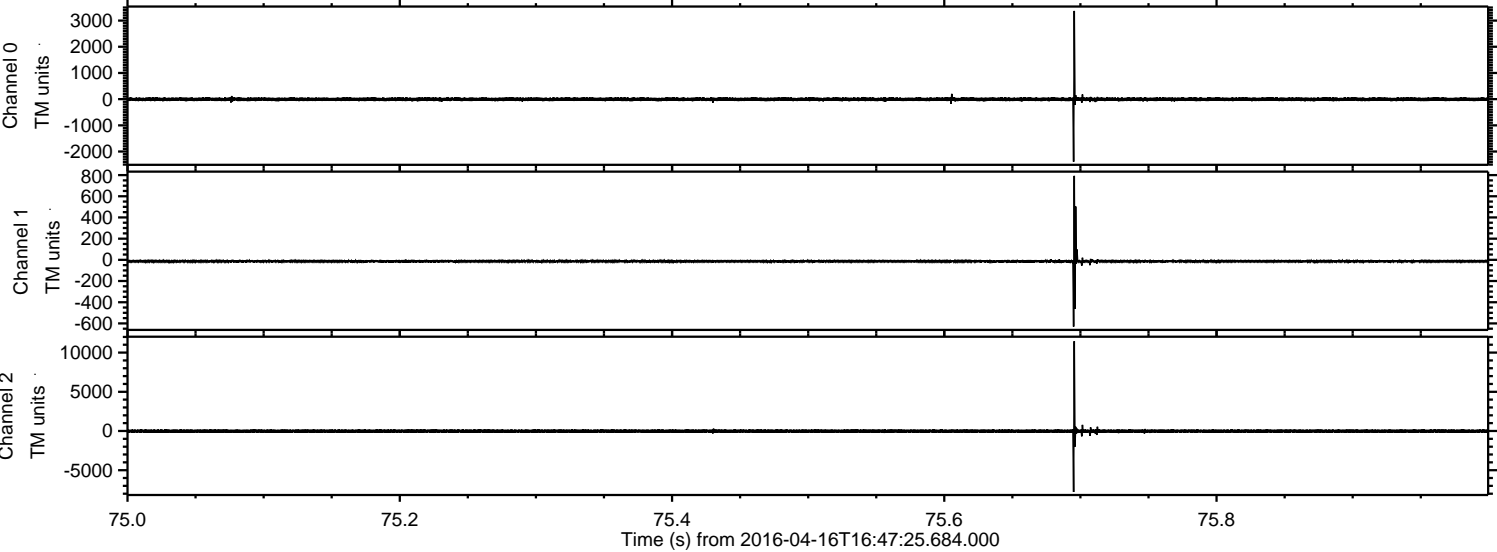


ELMAVAN 3D WAVEFORMS (Measured data sampled at 50 kHz) 51000 packets of 144 samples from 2016-04-16T16:47:25.684.000.

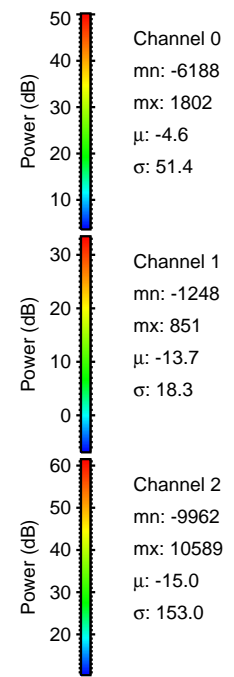
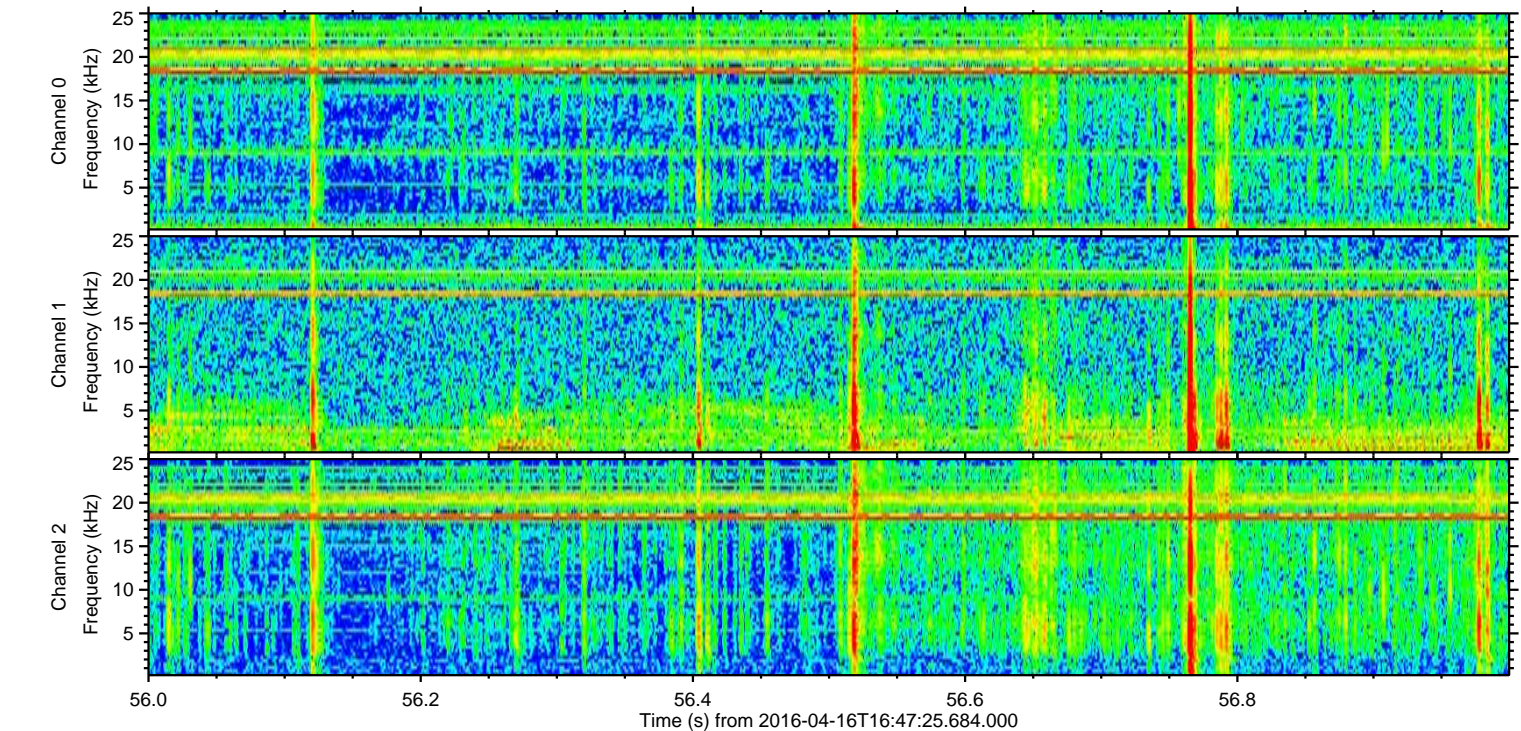
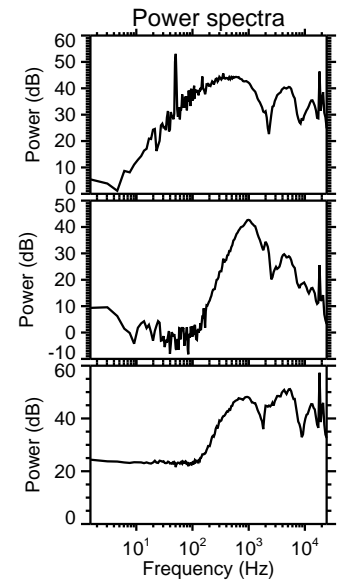
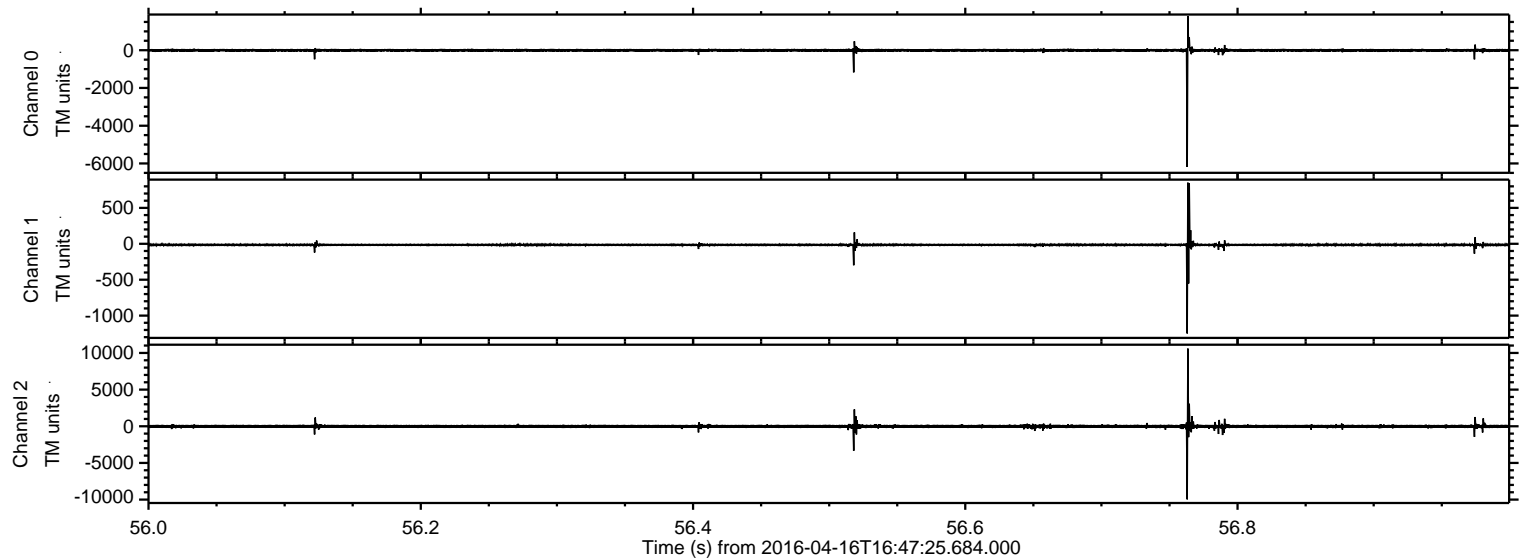
Processed Sun May 8 20:49:38 2016 by ELM ver.2012-10-06 from 001__elm20160416_164724__dat00.bin



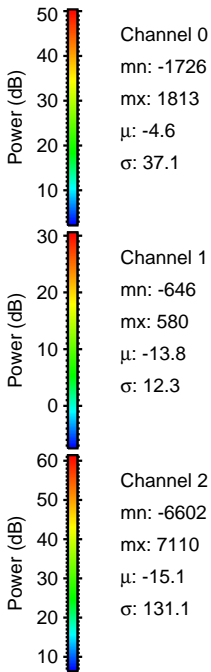
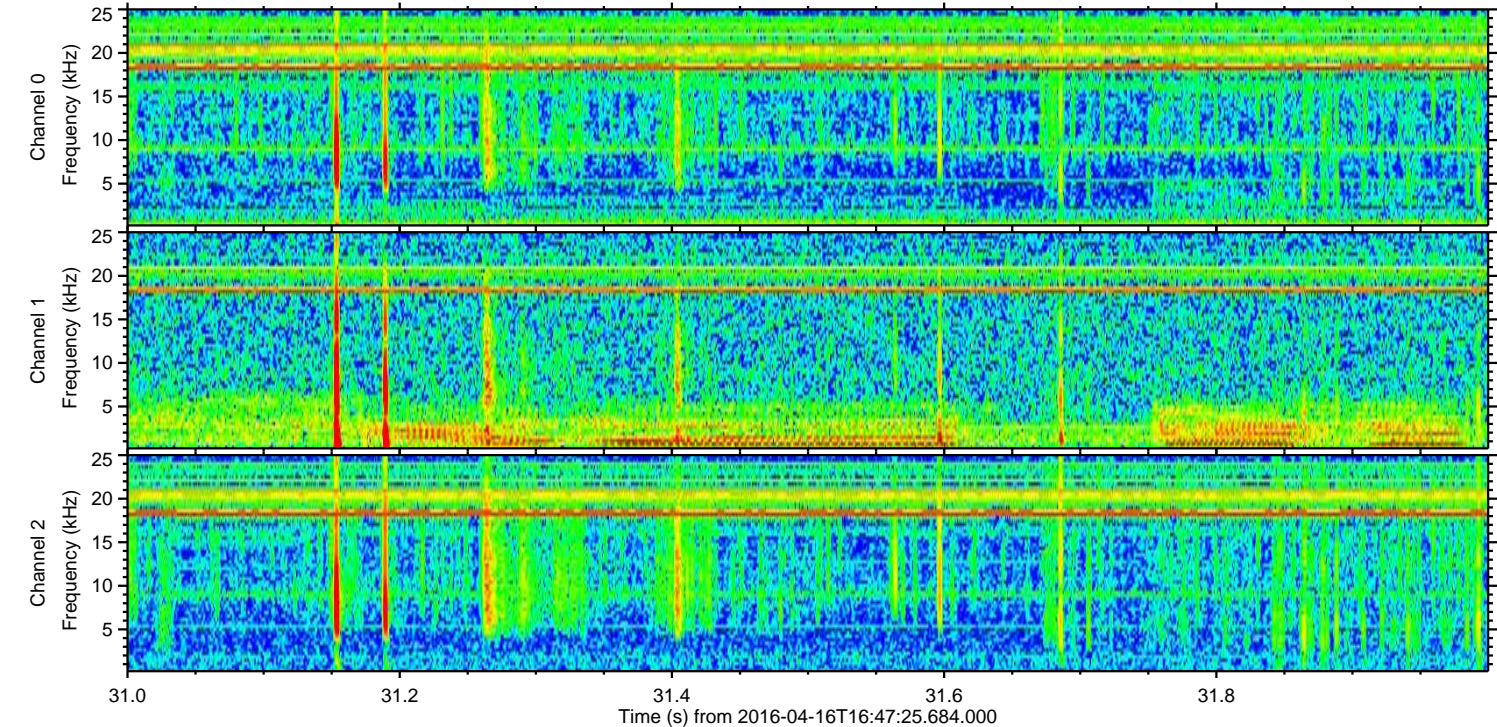
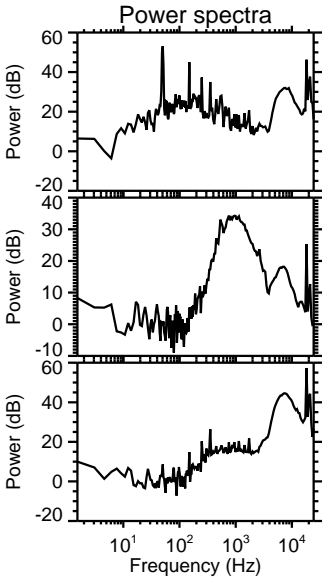
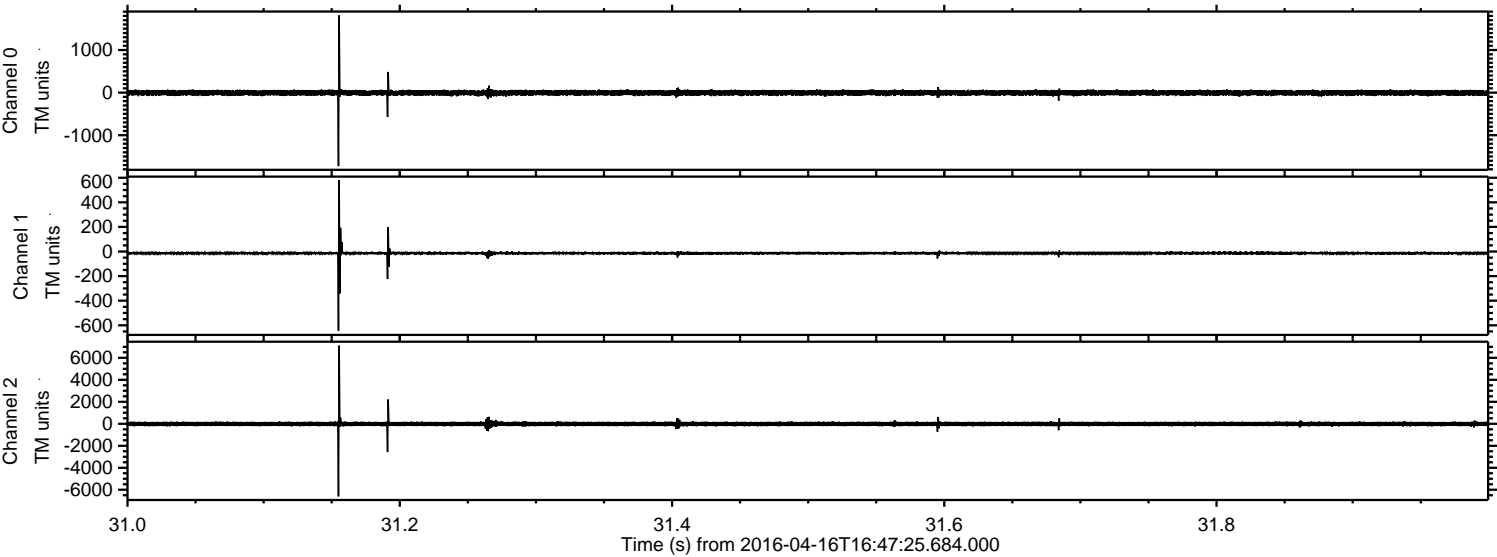
Processed Sun May 8 20:49:49 2016 by ELM ver.2012-10-06 from 001__elm20160416_164724__dat00.bin



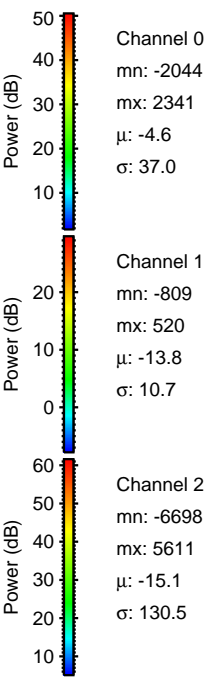
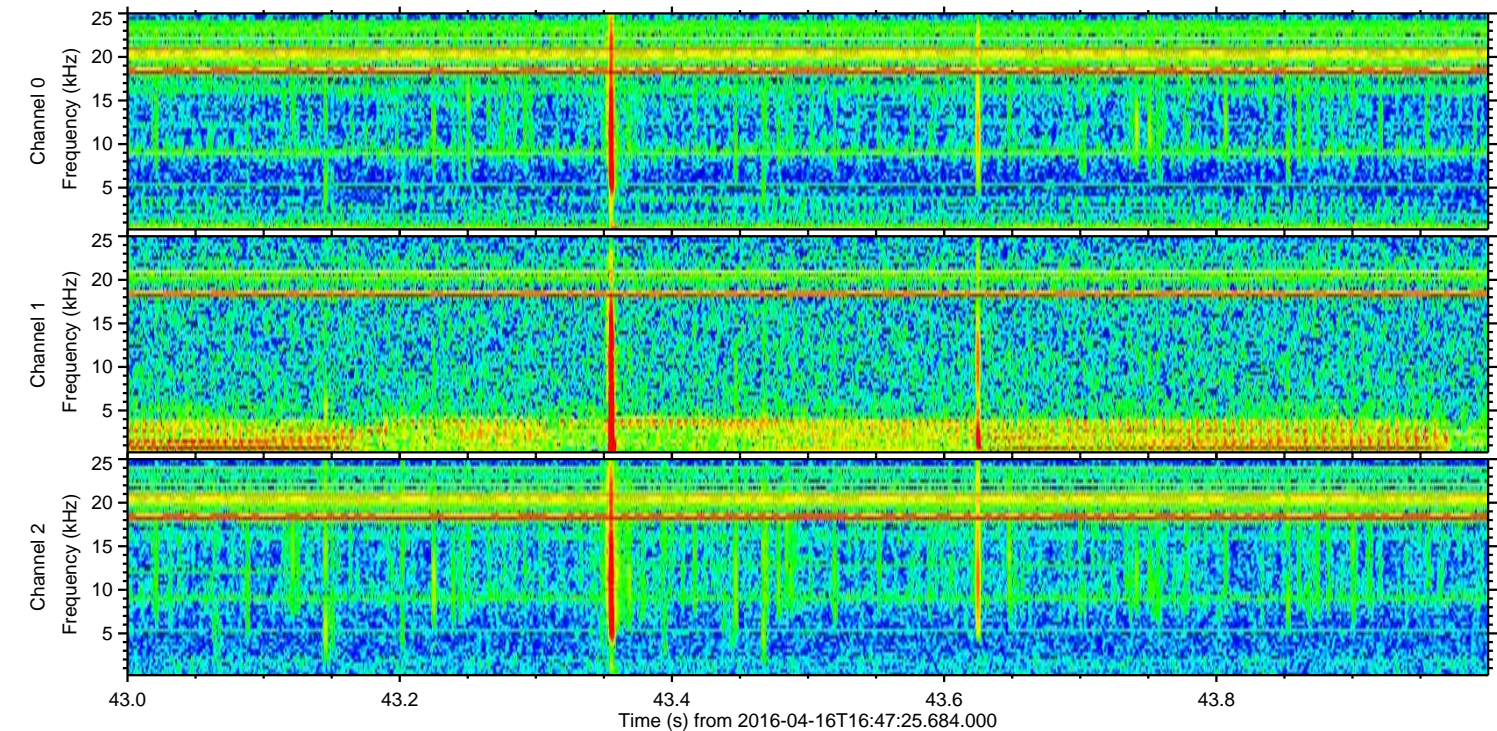
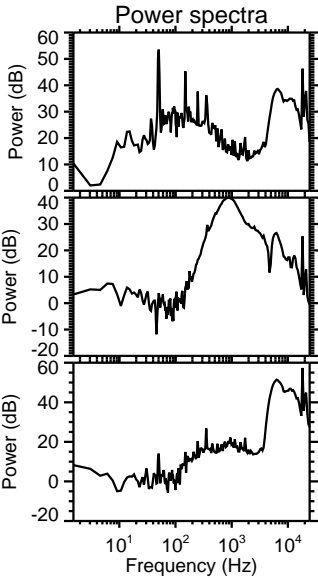
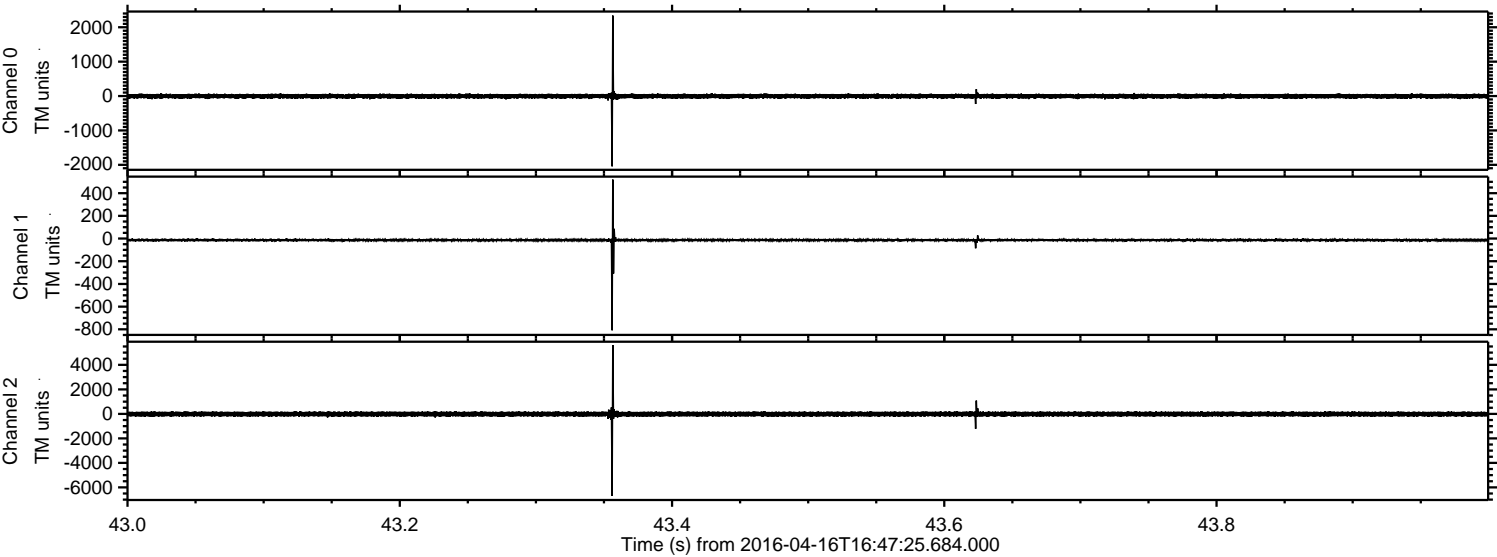
Processed Sun May 8 20:49:50 2016 by ELM ver.2012-10-06 from 001__elm20160416_164724__dat00.bin



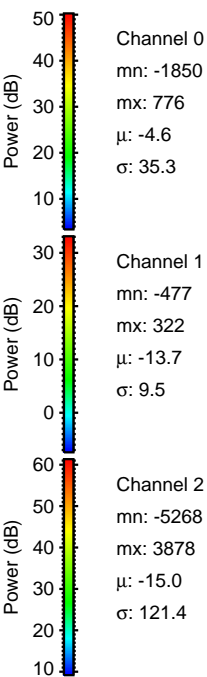
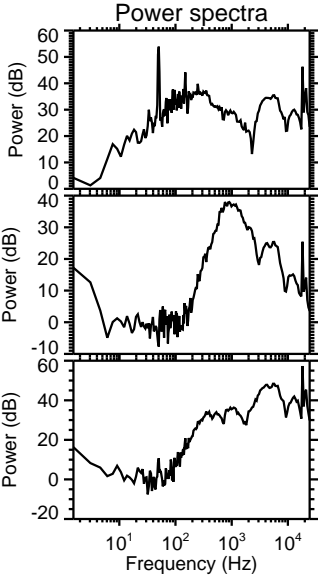
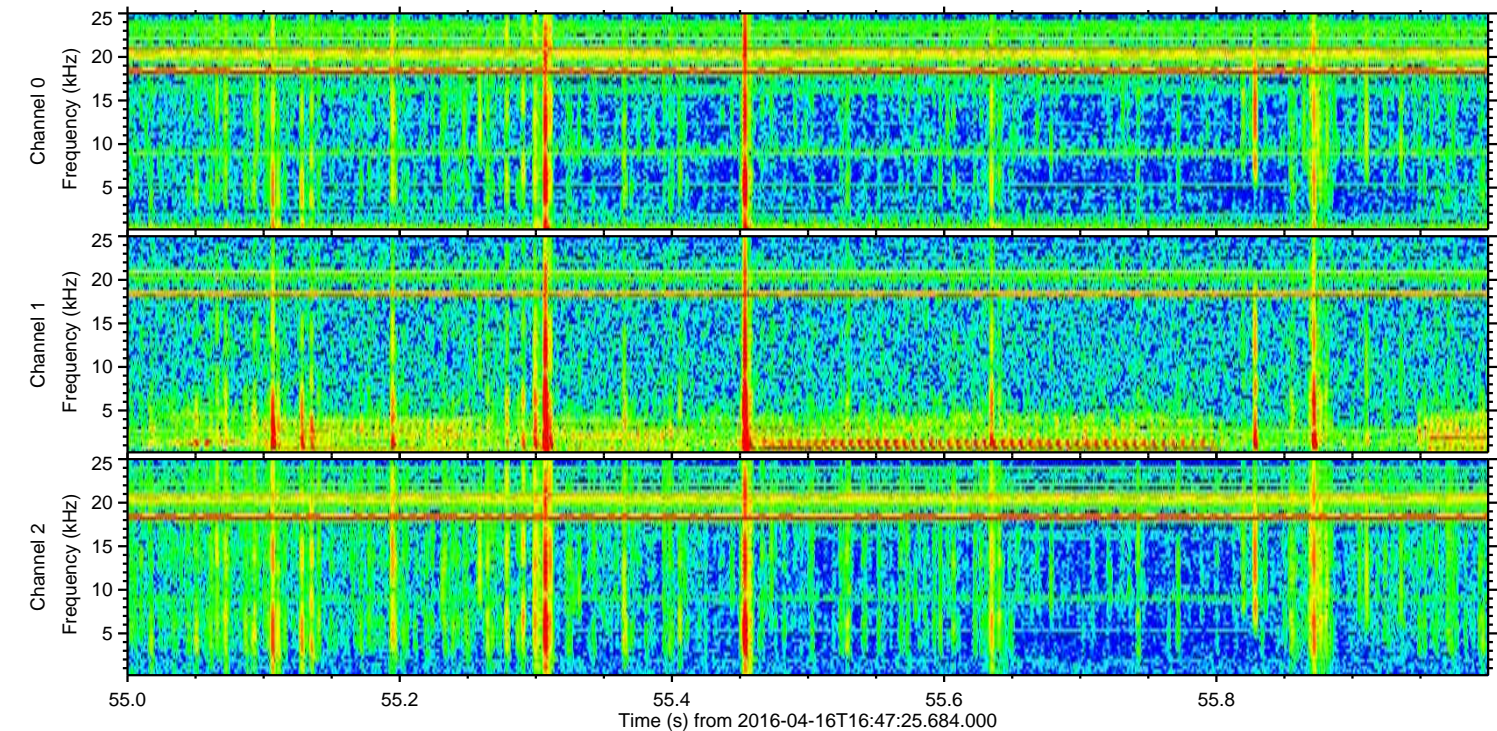
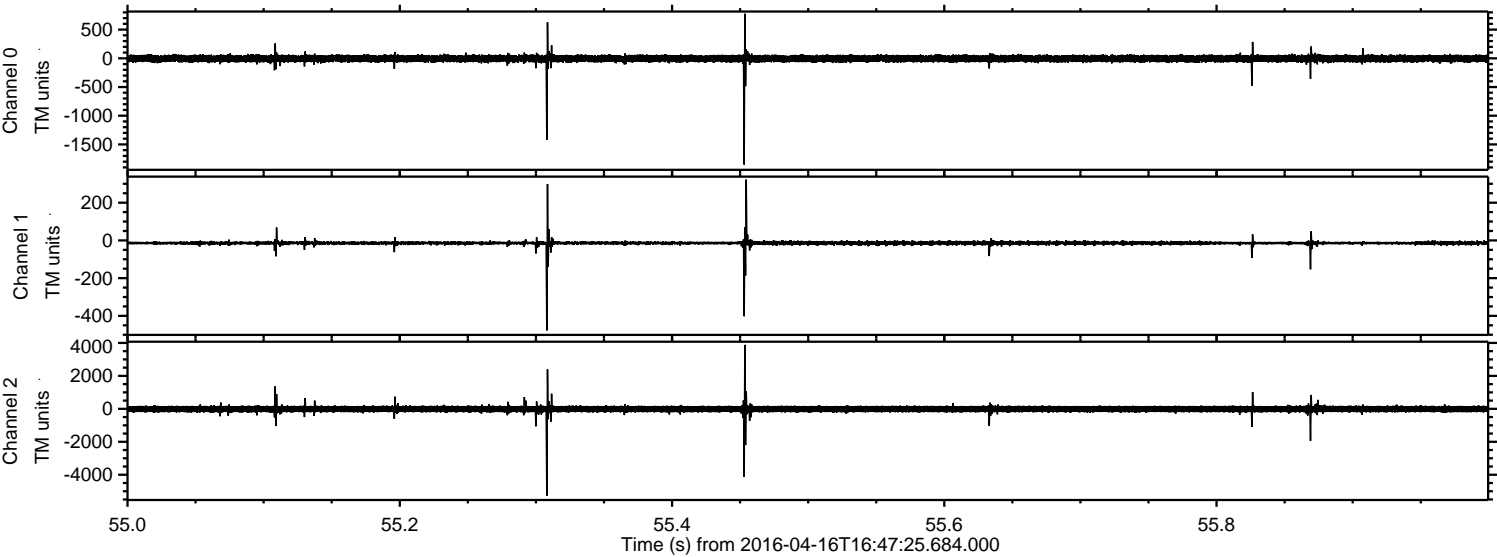
Processed Sun May 8 20:49:51 2016 by ELM ver.2012-10-06 from 001__elm20160416_164724__dat00.bin



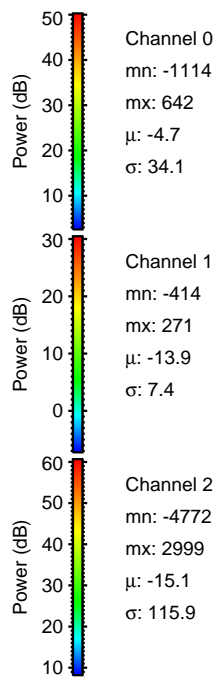
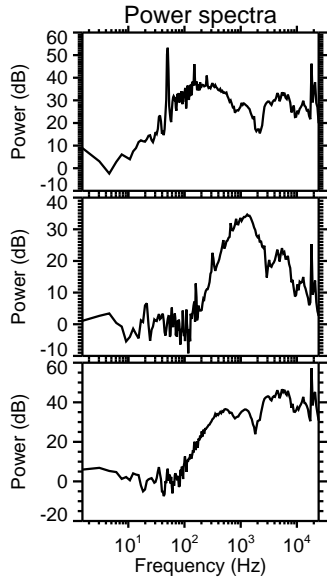
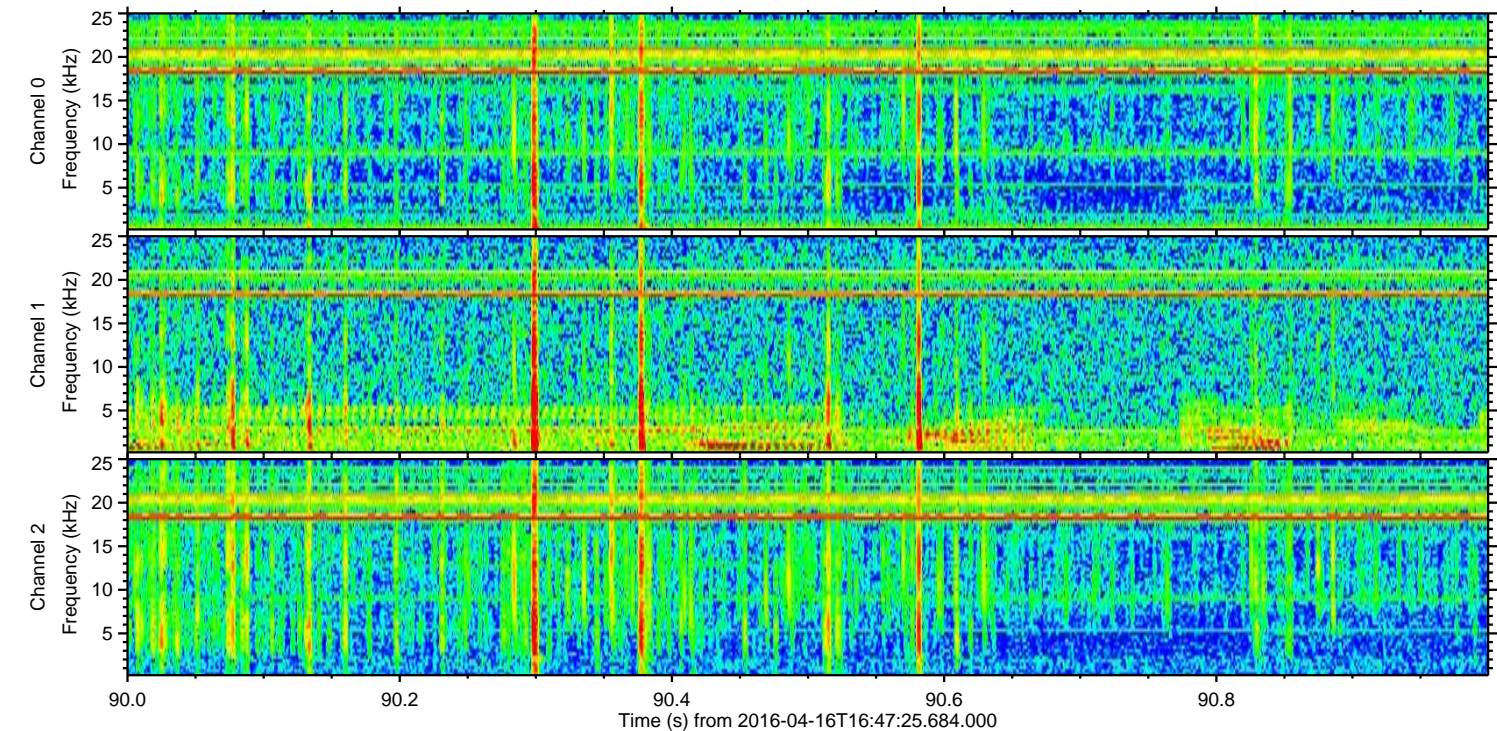
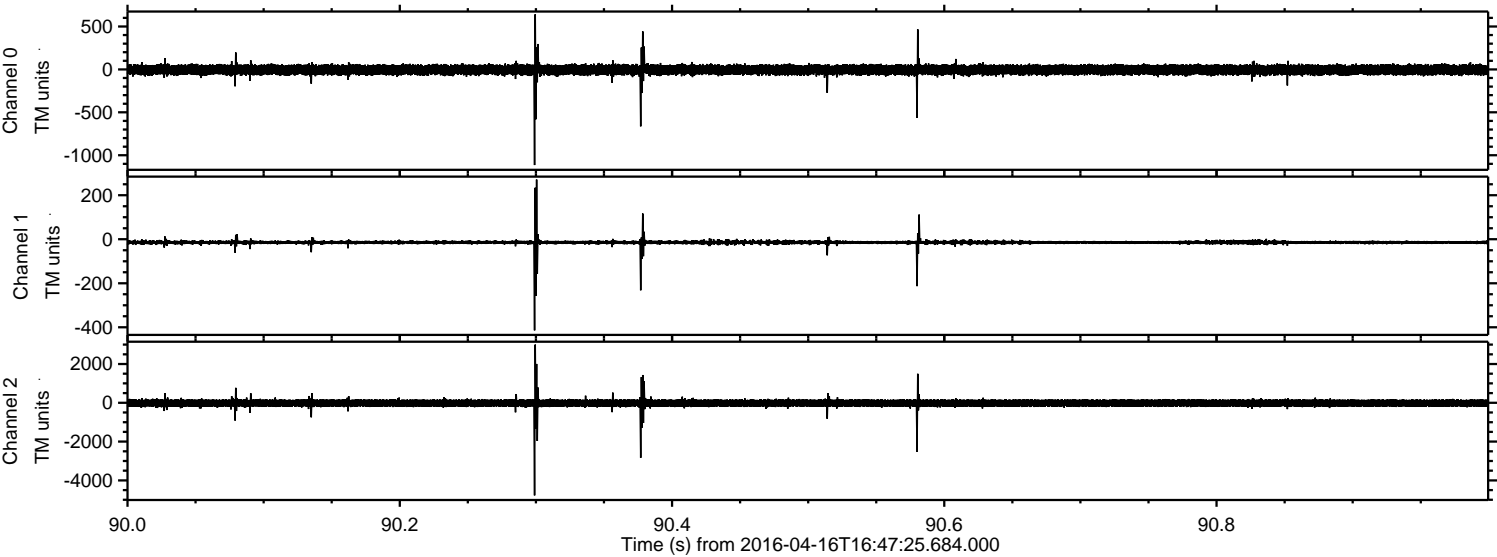
Processed Sun May 8 20:49:52 2016 by ELM ver.2012-10-06 from 001__elm20160416_164724__dat00.bin



Processed Sun May 8 20:49:53 2016 by ELM ver.2012-10-06 from 001__elm20160416_164724__dat00.bin

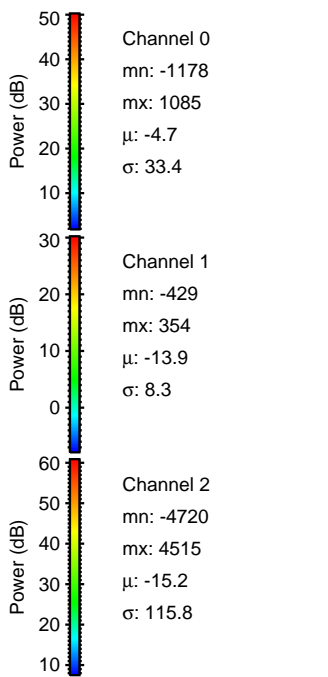
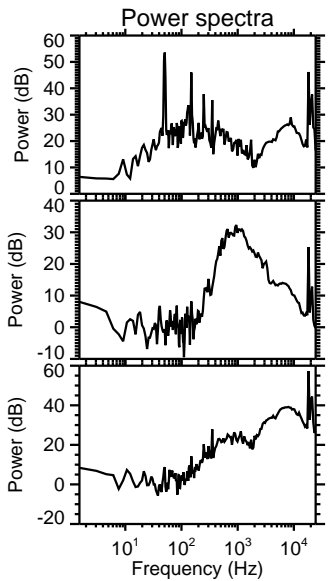
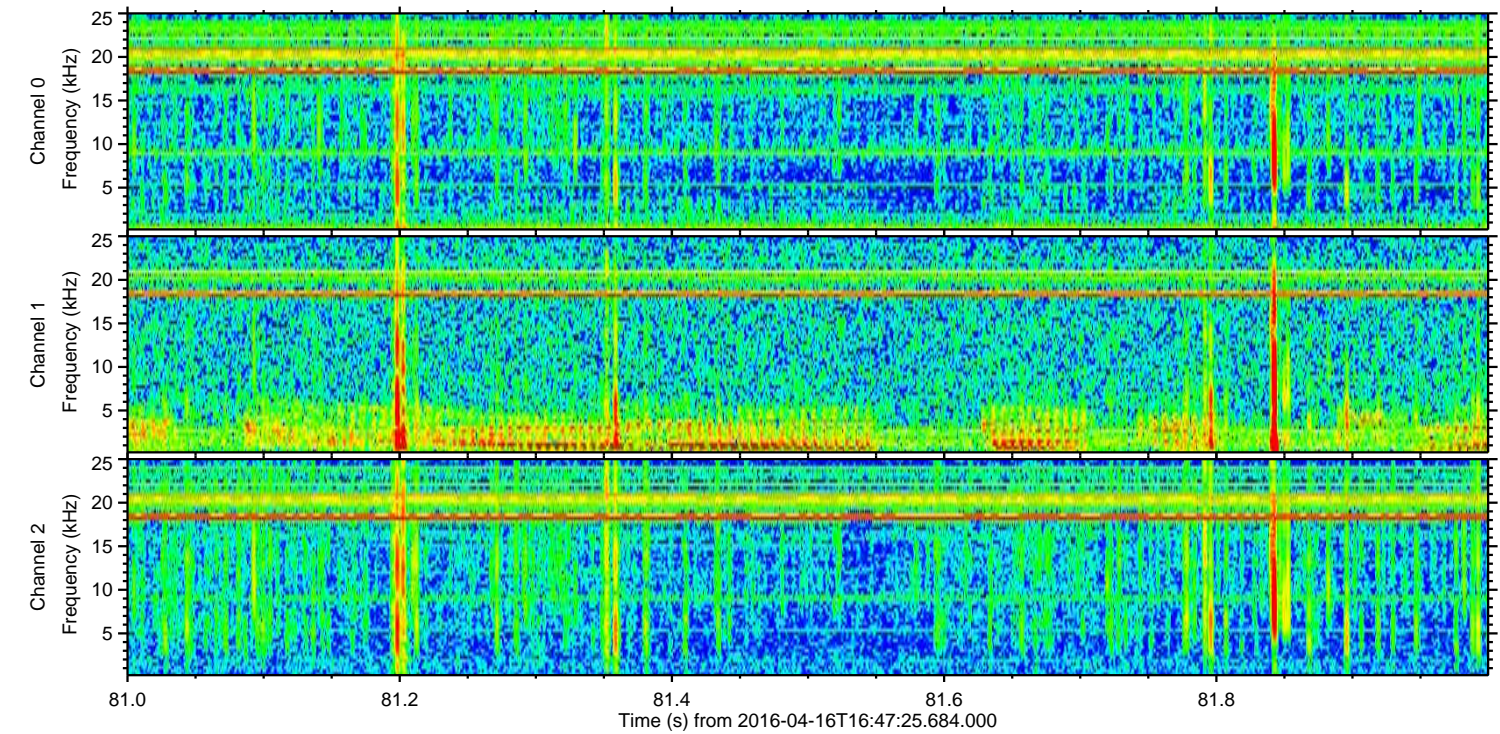
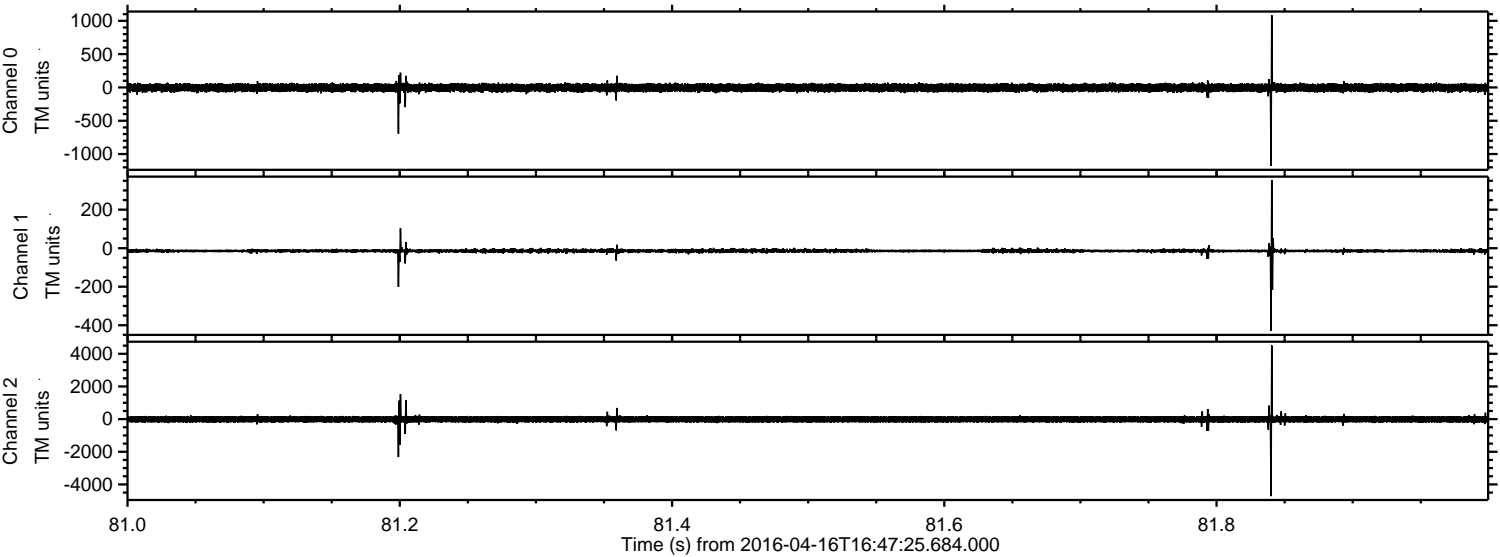


Processed Sun May 8 20:49:54 2016 by ELM ver.2012-10-06 from 001__elm20160416_164724__dat00.bin



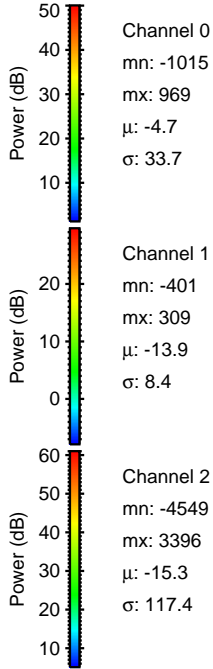
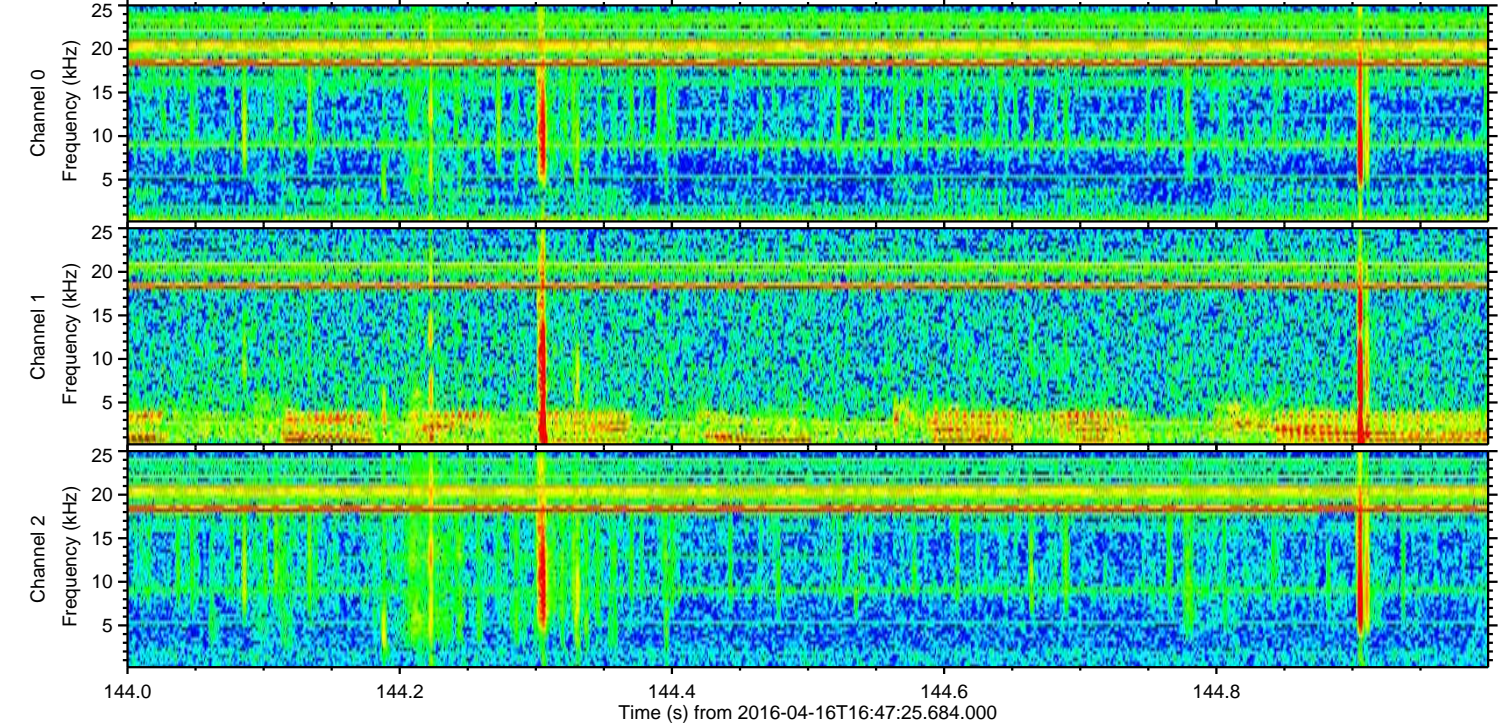
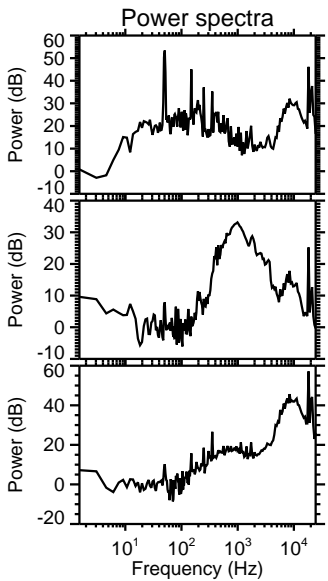
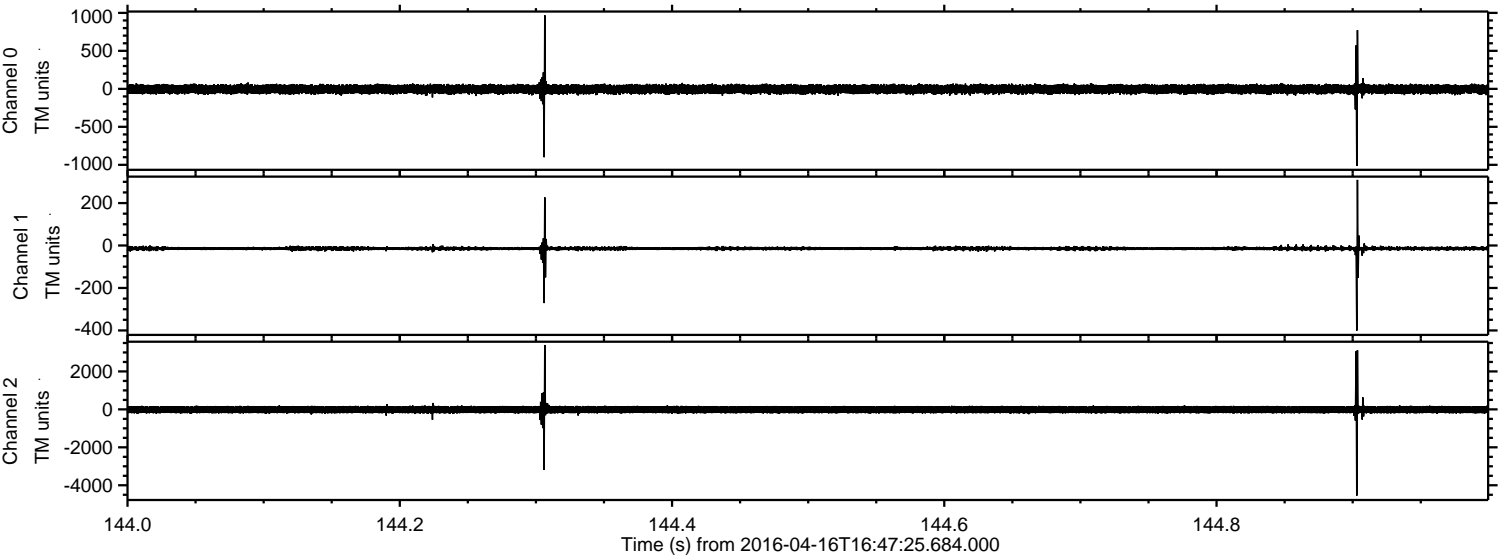
ELMAVAN 3D WAVEFORMS (Measured data sampled at 50 kHz) 51000 packets of 144 samples from 2016-04-16T16:47:25.684.000. Part 82/147

Processed Sun May 8 20:49:55 2016 by ELM ver.2012-10-06 from 001__elm20160416_164724__dat00.bin

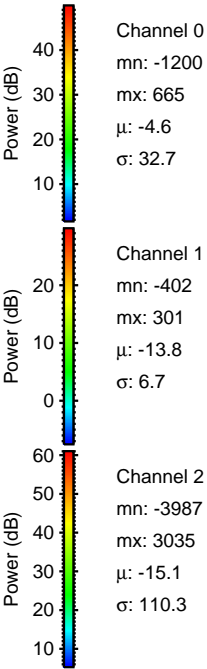
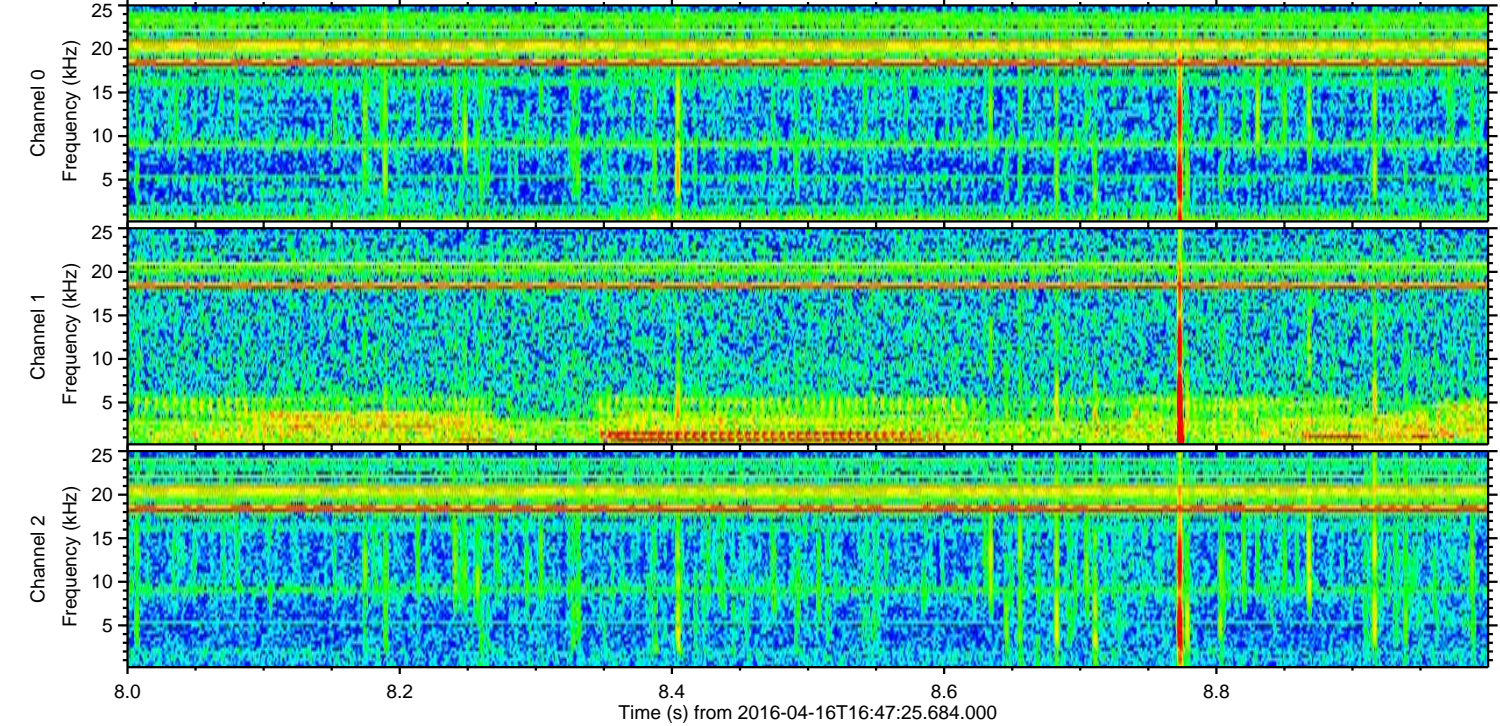
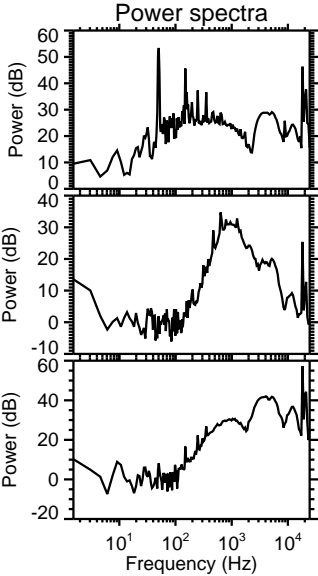
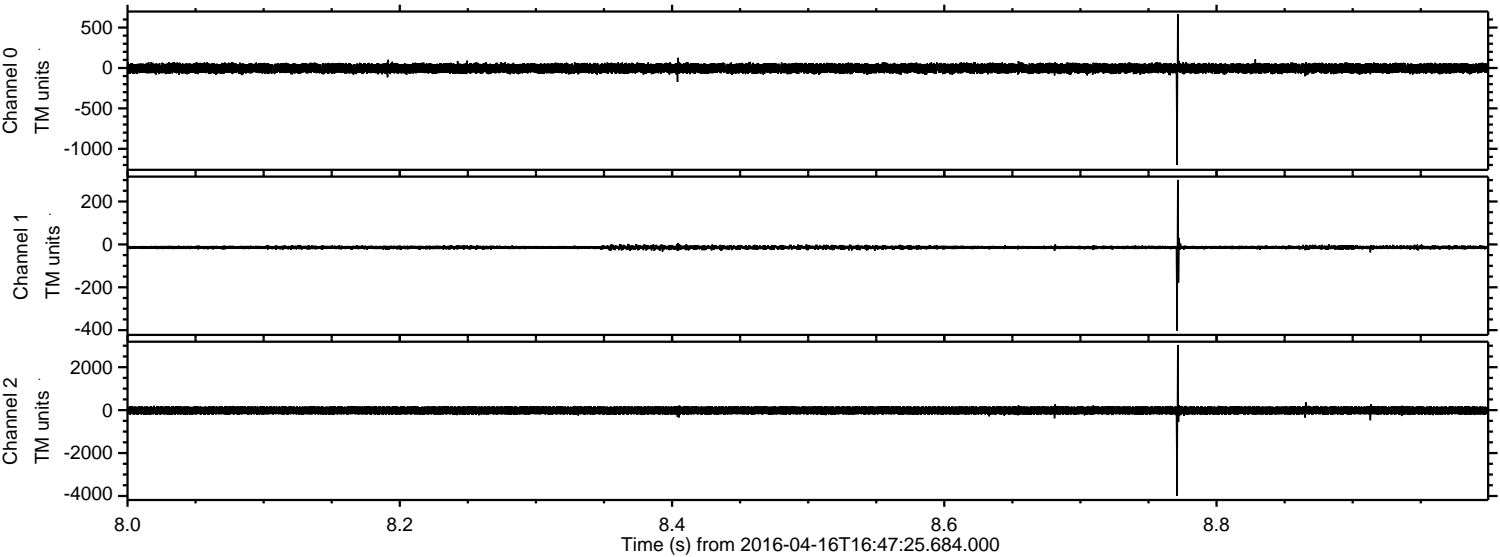


ELMAVAN 3D WAVEFORMS (Measured data sampled at 50 kHz) 51000 packets of 144 samples from 2016-04-16T16:47:25.684.000. Part 145/147

Processed Sun May 8 20:49:56 2016 by ELM ver.2012-10-06 from 001__elm20160416_164724__dat00.bin



Processed Sun May 8 20:49:57 2016 by ELM ver.2012-10-06 from 001__elm20160416_164724__dat00.bin



Channel 0
mn: -1200
mx: 665
 μ : -4.6
 σ : 32.7

Channel 1
mn: -402
mx: 301
 μ : -13.8
 σ : 6.7

Channel 2
mn: -3987
mx: 3035
 μ : -15.1
 σ : 110.3

Processed Sun May 8 20:49:58 2016 by ELM ver.2012-10-06 from 001__elm20160416_164724__dat00.bin

