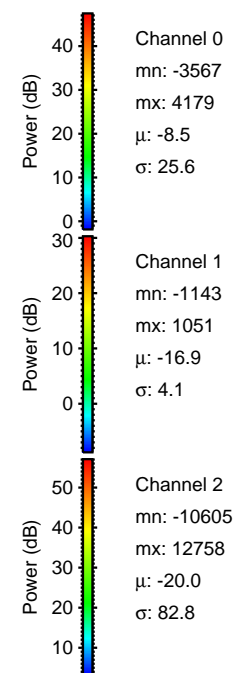
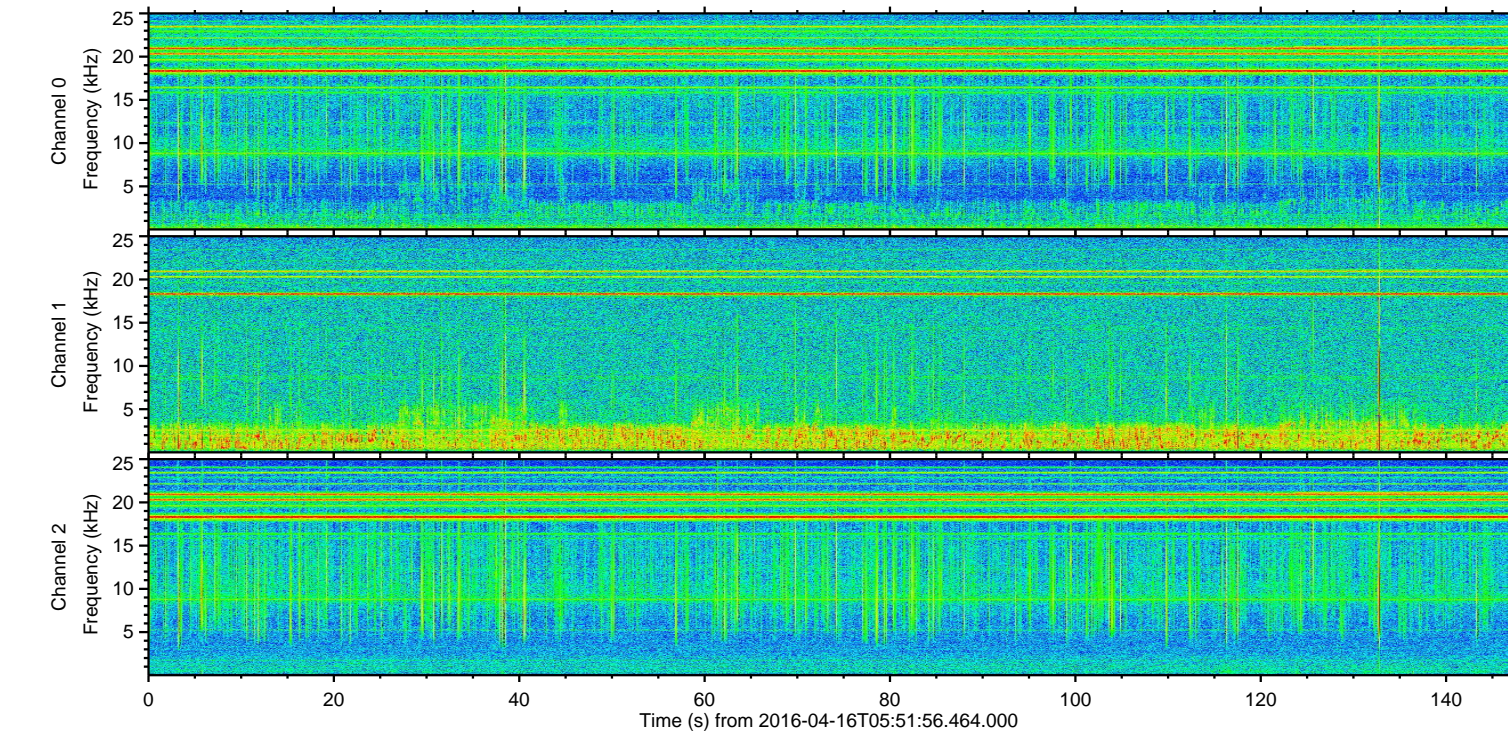
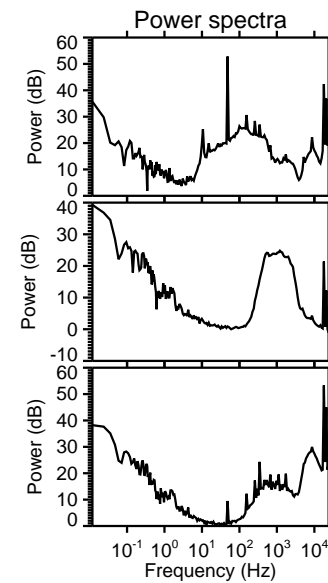
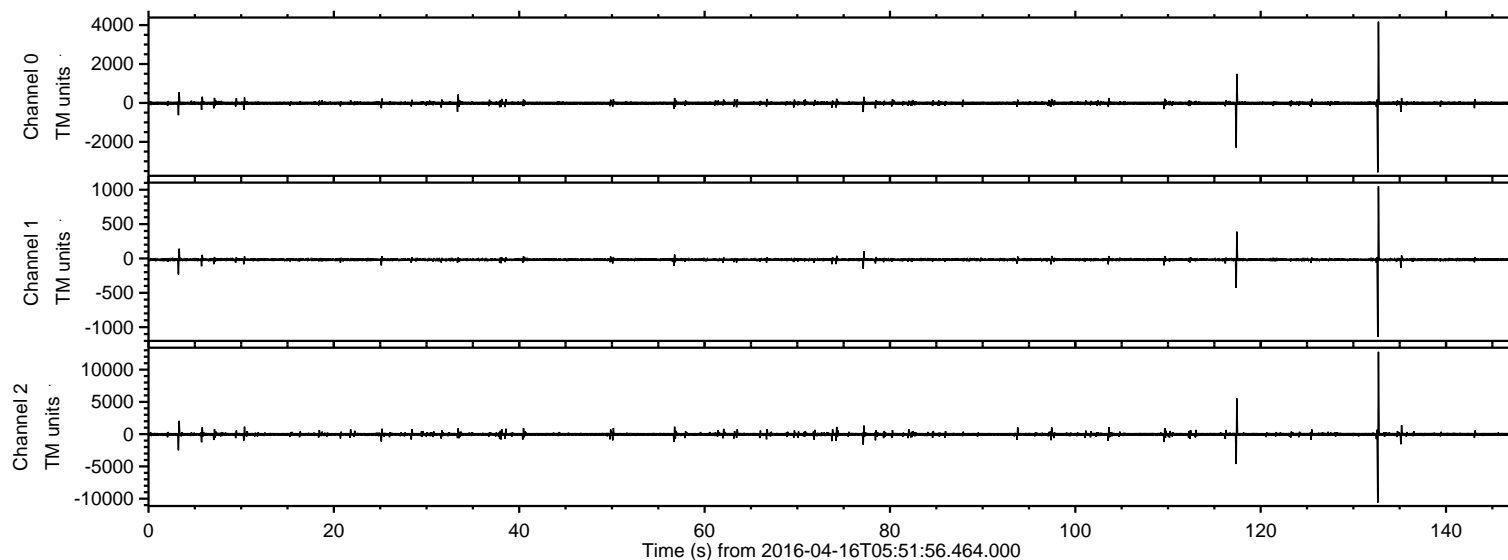


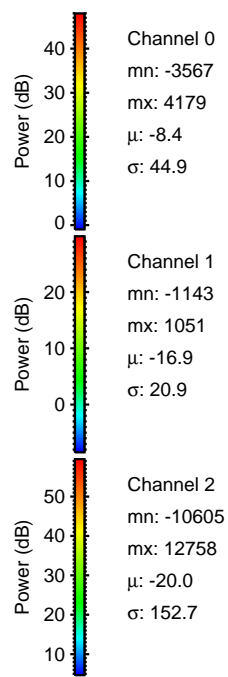
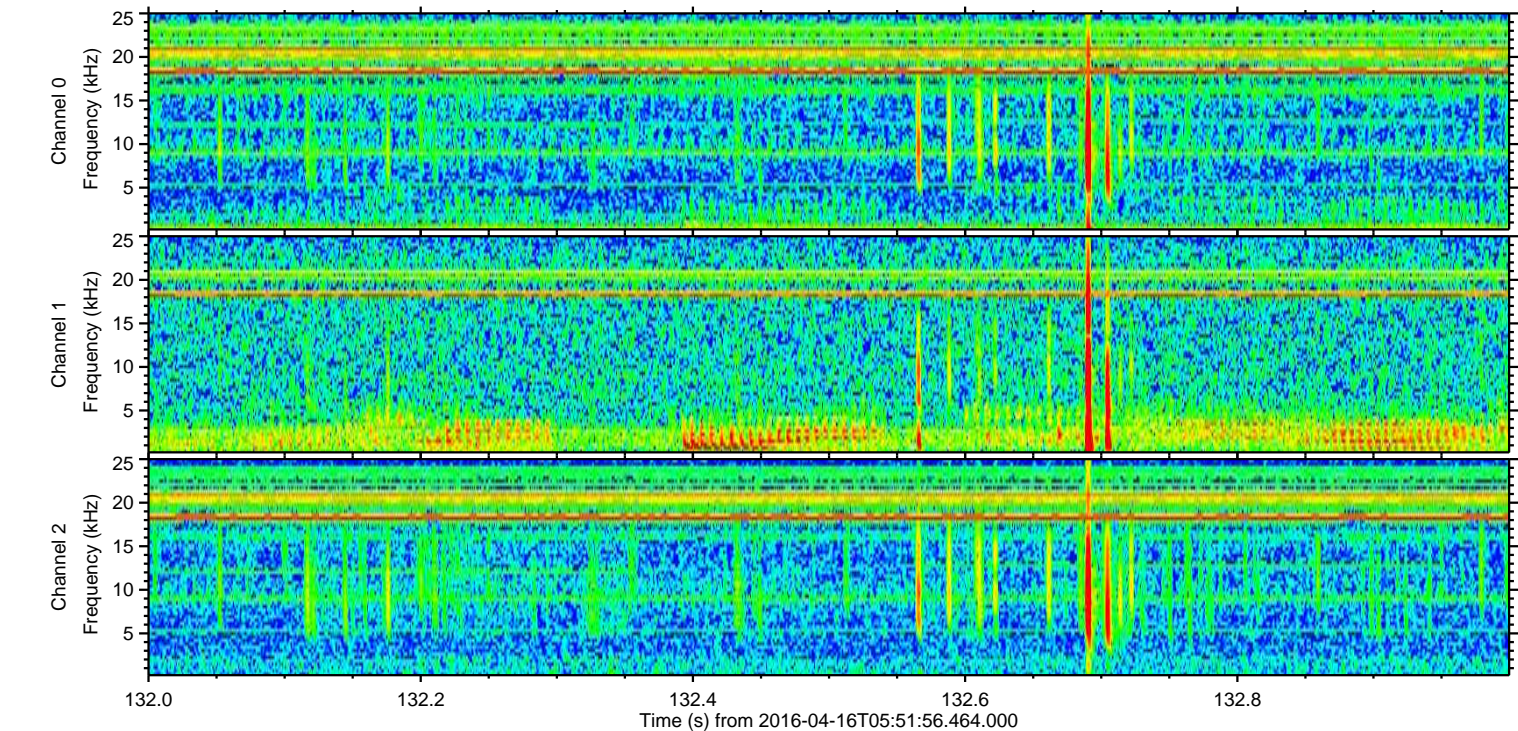
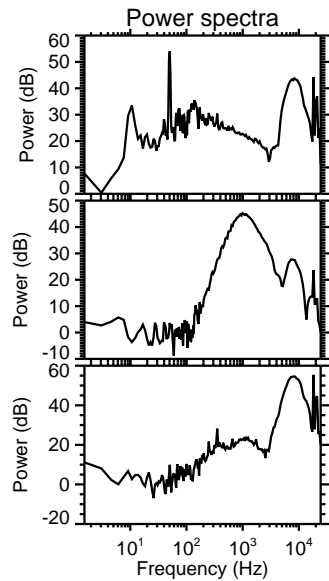
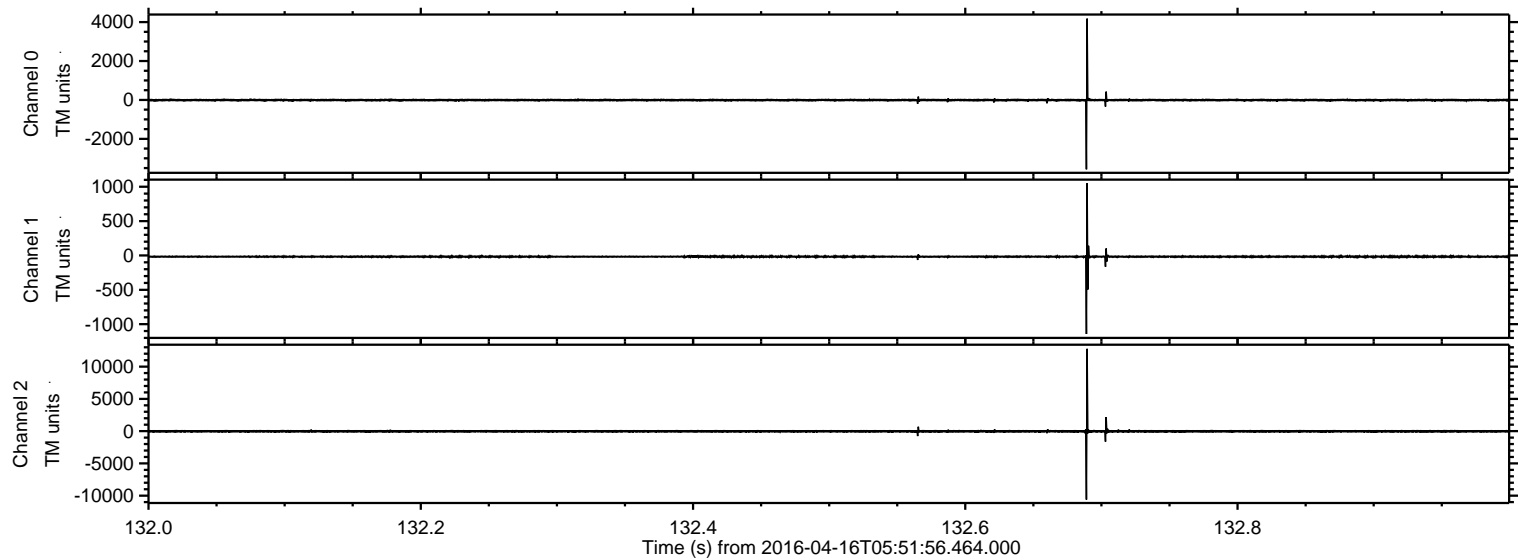
ELMAVAN 3D WAVEFORMS (Measured data sampled at 50 kHz) 51000 packets of 144 samples from 2016-04-16T05:51:56.464.000.

Processed Sun May 8 18:35:46 2016 by ELM ver.2012-10-06 from 001__elm20160416_055155__dat00.bin



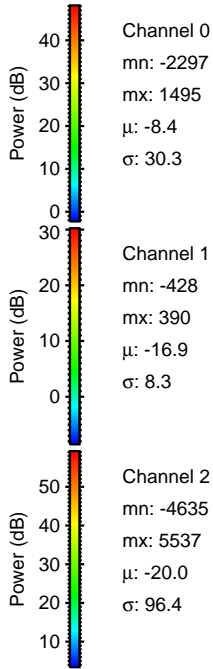
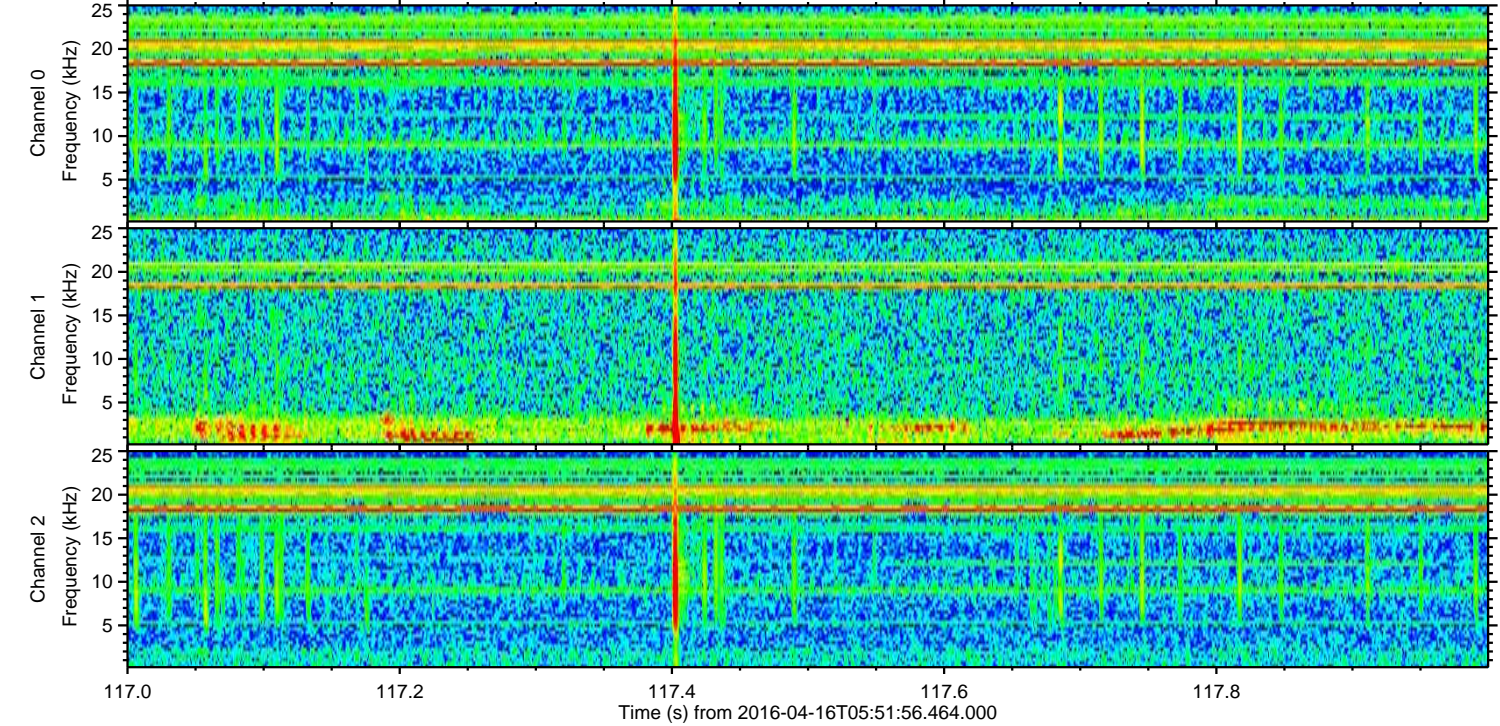
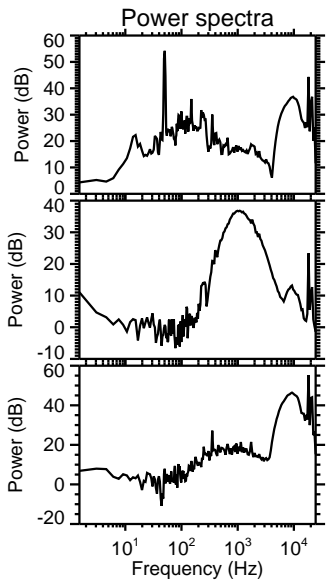
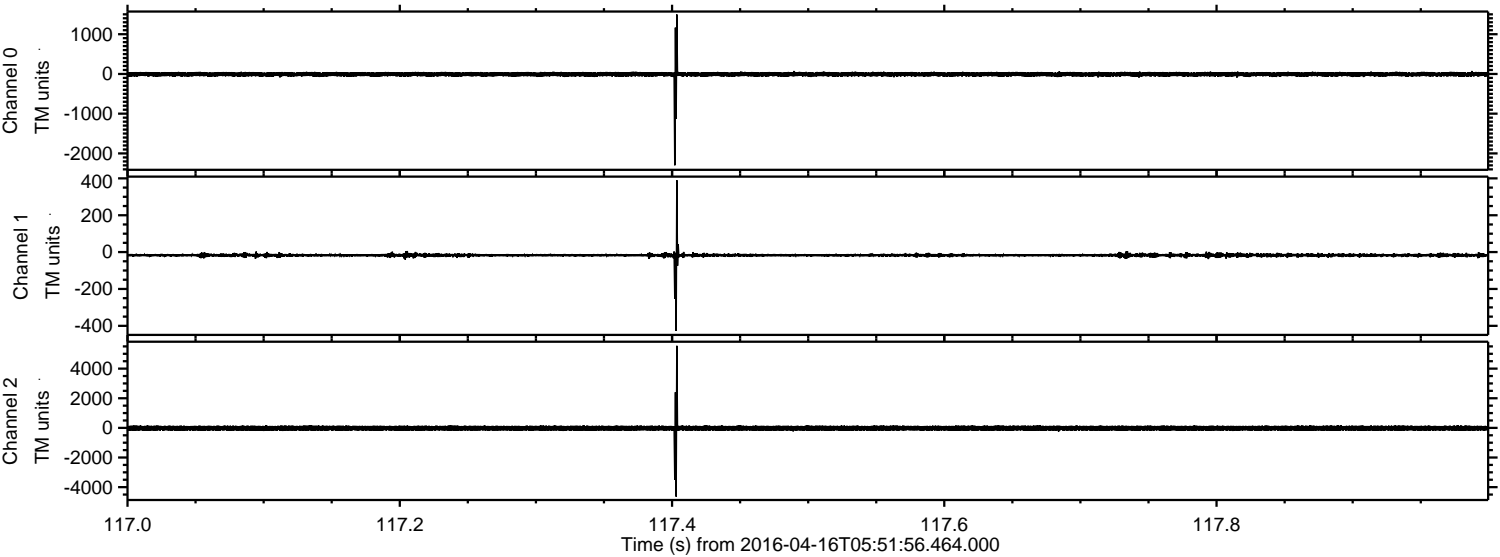
ELMAVAN 3D WAVEFORMS (Measured data sampled at 50 kHz) 51000 packets of 144 samples from 2016-04-16T05:51:56.464.000. Part 133/147

Processed Sun May 8 18:35:58 2016 by ELM ver.2012-10-06 from 001__elm20160416_055155__dat00.bin

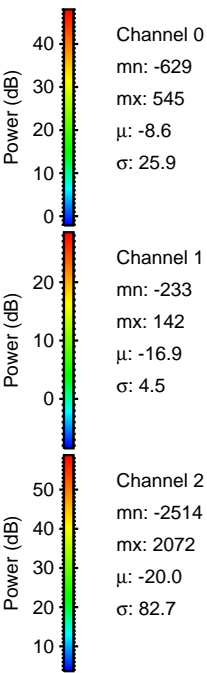
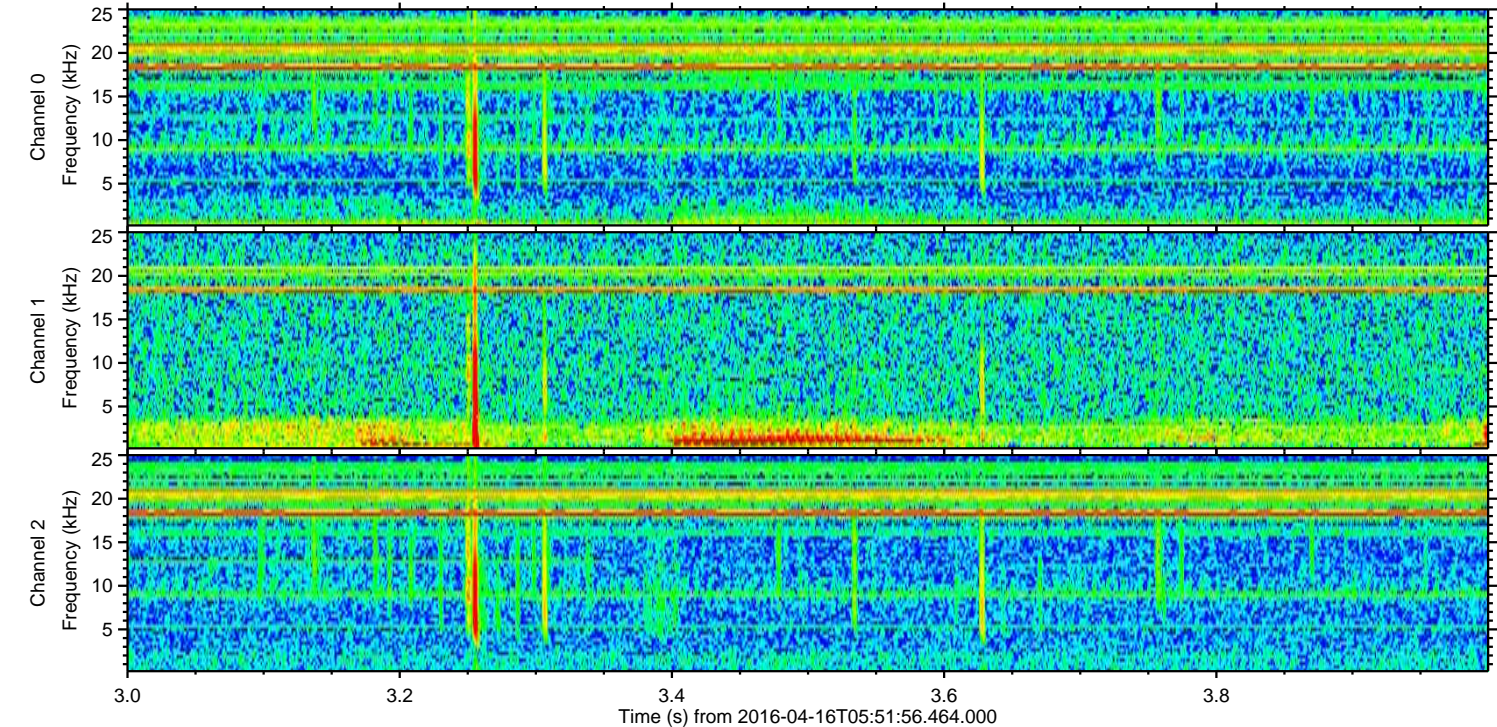
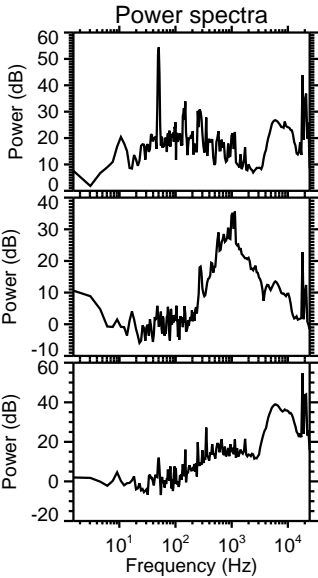
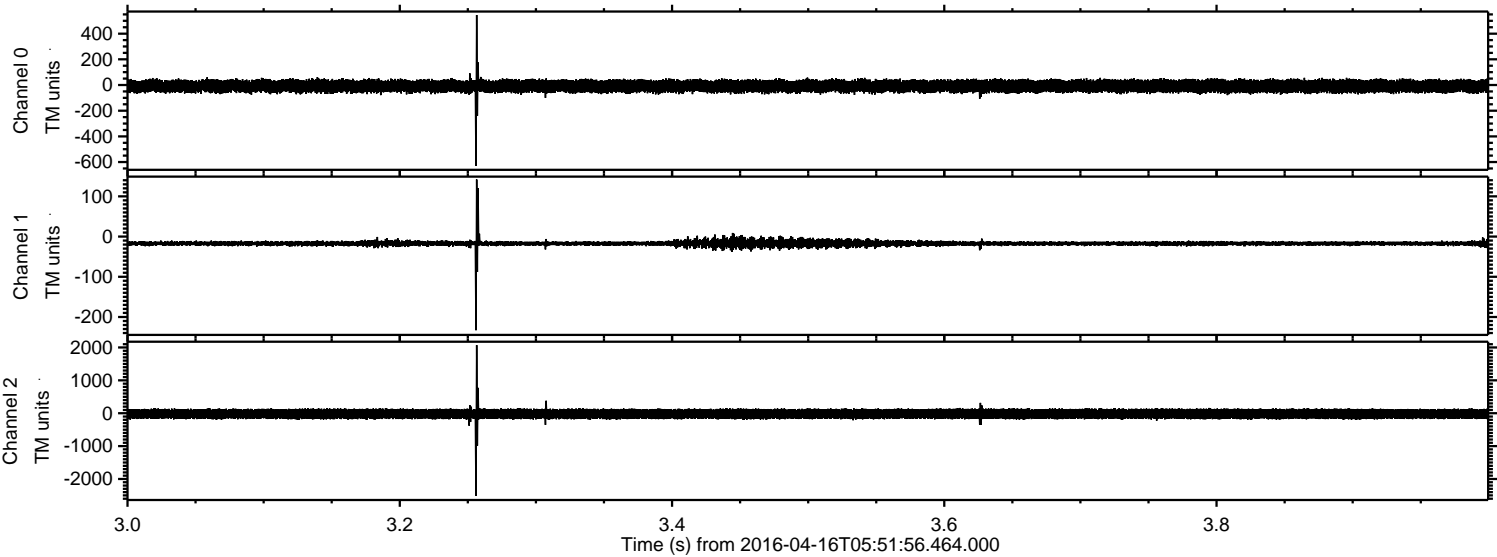


ELMAVAN 3D WAVEFORMS (Measured data sampled at 50 kHz) 51000 packets of 144 samples from 2016-04-16T05:51:56.464.000. Part 118/147

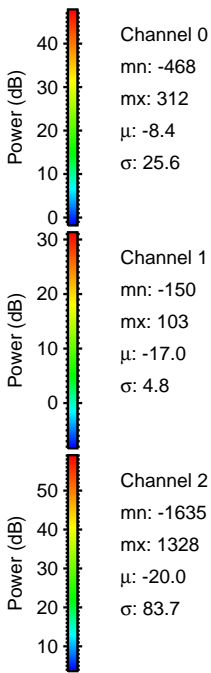
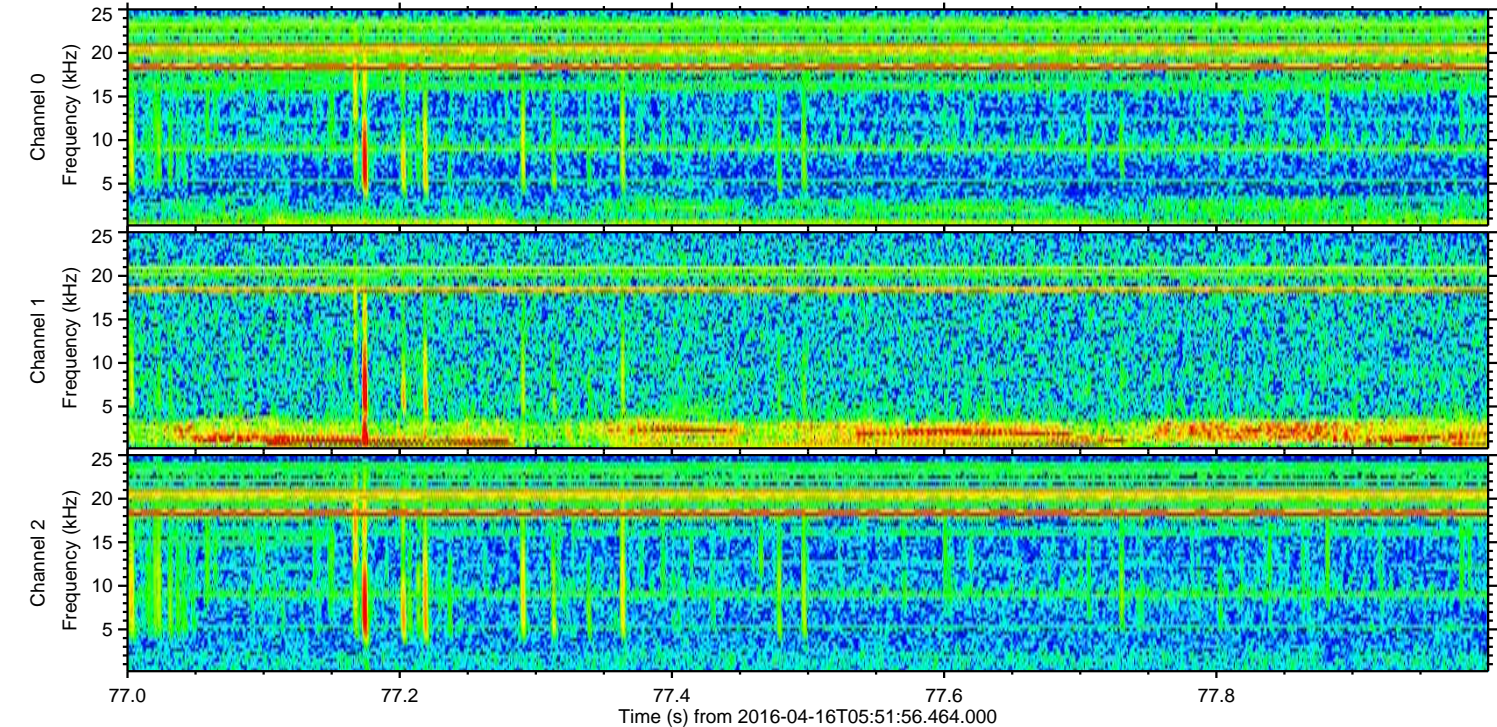
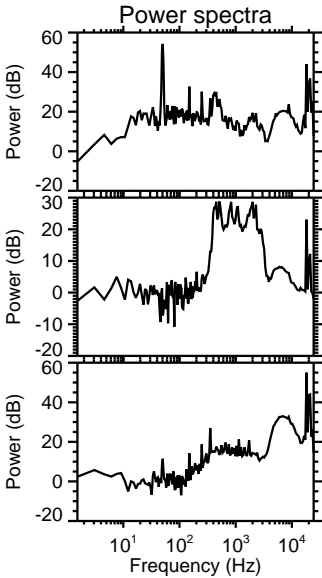
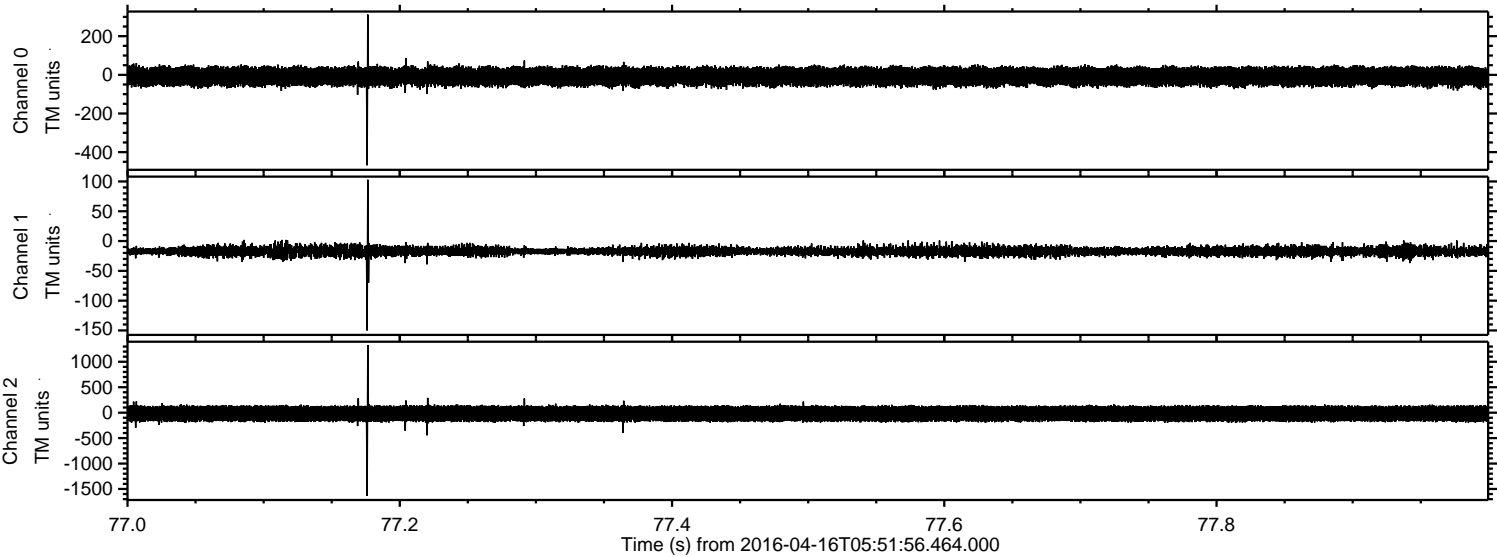
Processed Sun May 8 18:35:58 2016 by ELM ver.2012-10-06 from 001__elm20160416_055155__dat00.bin



Processed Sun May 8 18:35:59 2016 by ELM ver.2012-10-06 from 001__elm20160416_055155__dat00.bin

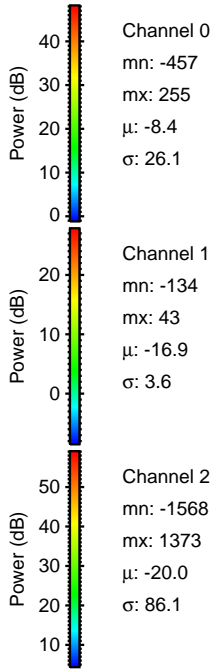
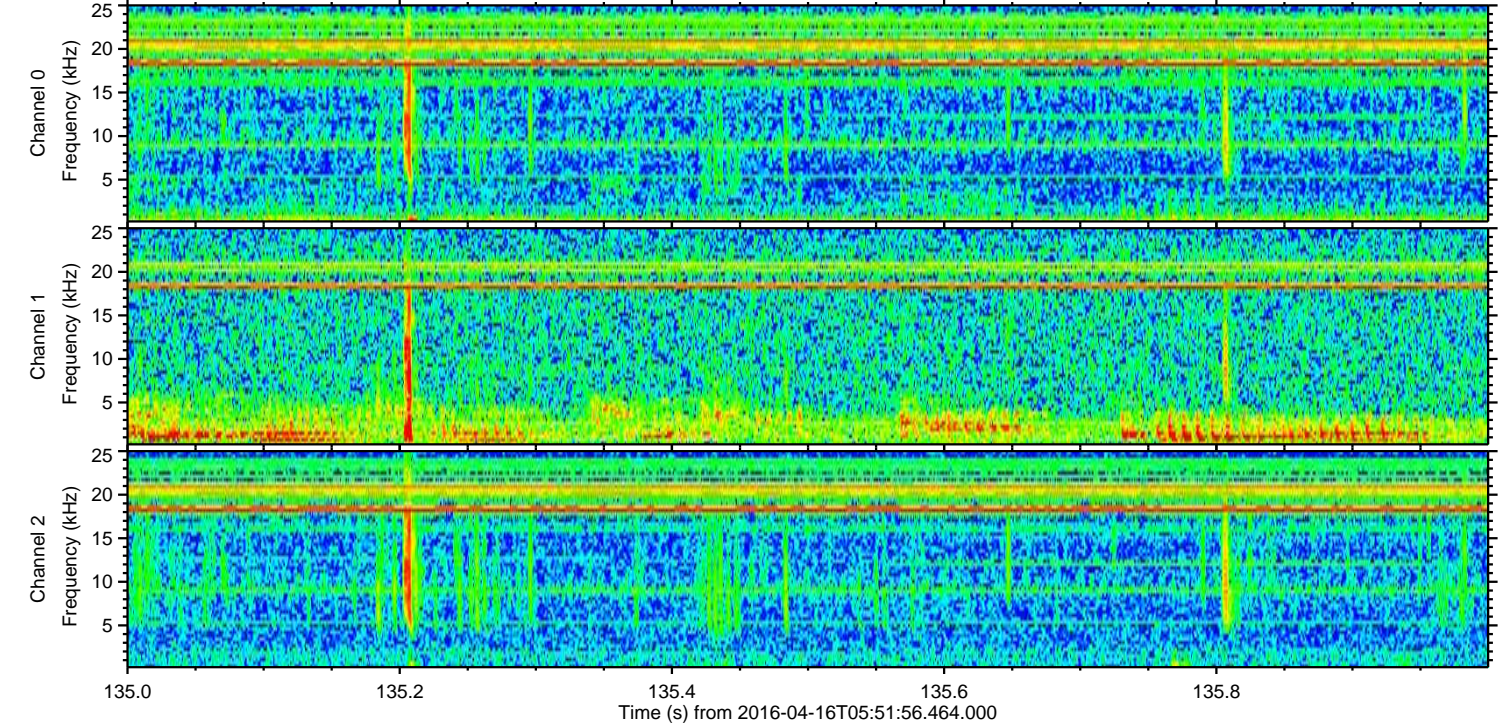
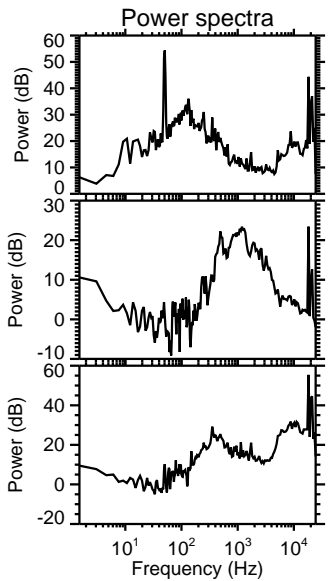
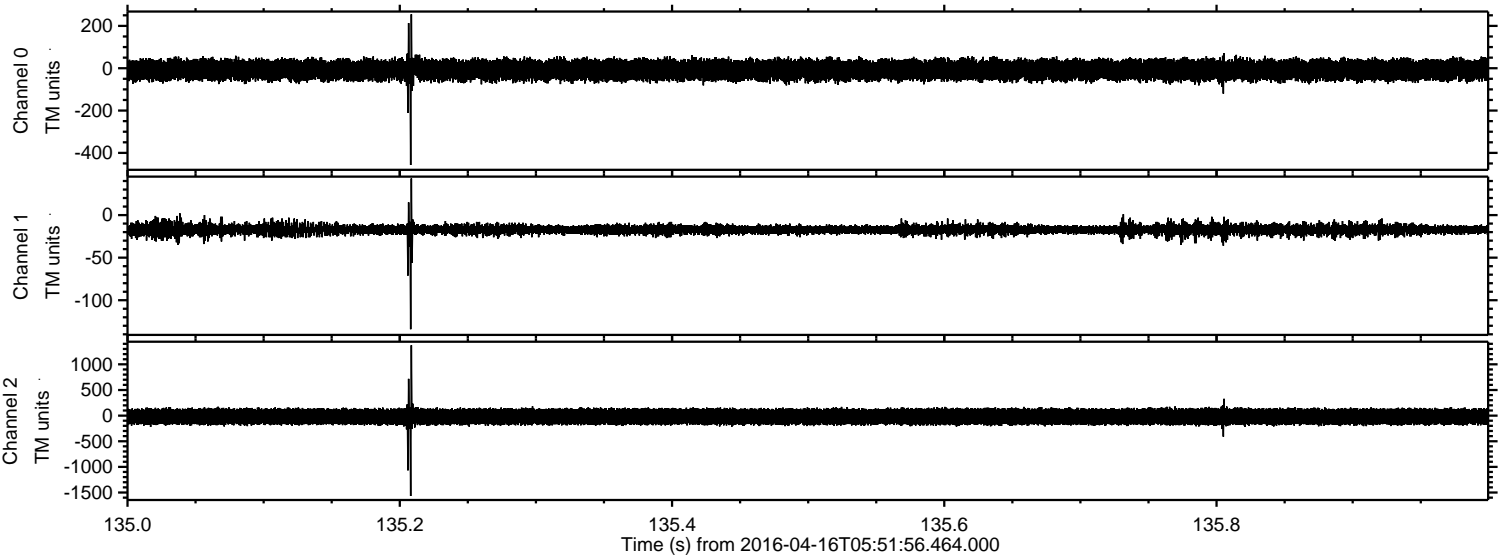


Processed Sun May 8 18:36:00 2016 by ELM ver.2012-10-06 from 001__elm20160416_055155__dat00.bin

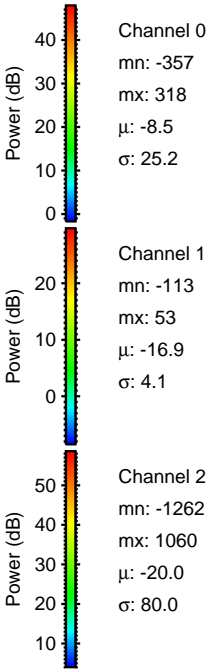
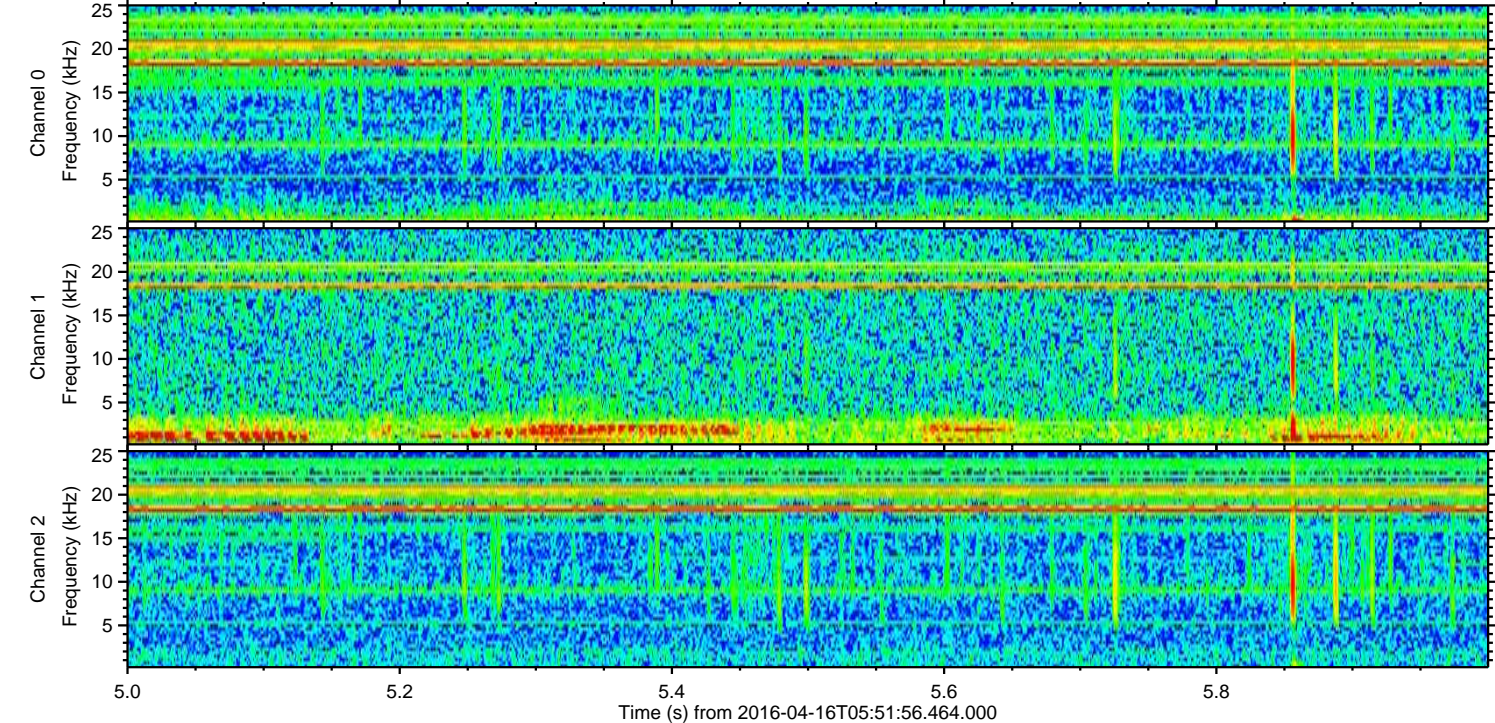
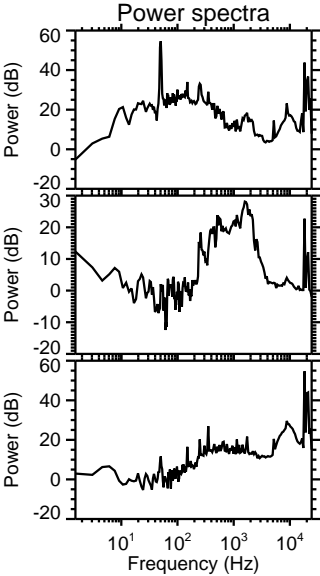
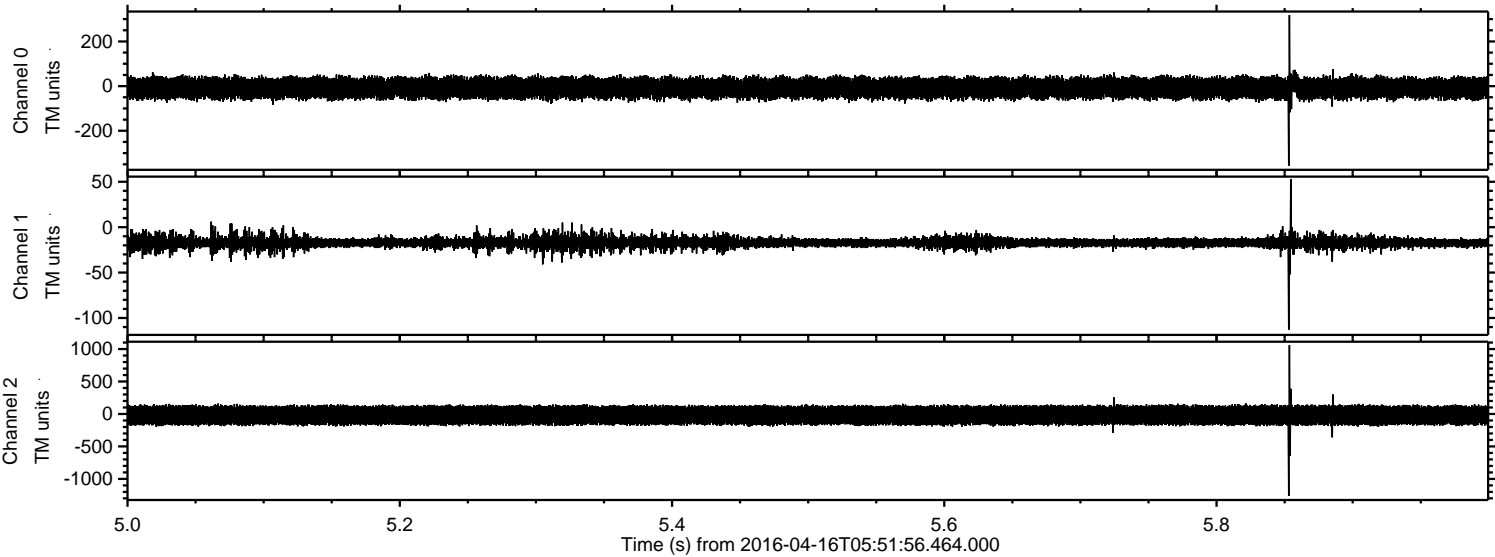


ELMAVAN 3D WAVEFORMS (Measured data sampled at 50 kHz) 51000 packets of 144 samples from 2016-04-16T05:51:56.464.000. Part 136/147

Processed Sun May 8 18:36:01 2016 by ELM ver.2012-10-06 from 001__elm20160416_055155__dat00.bin

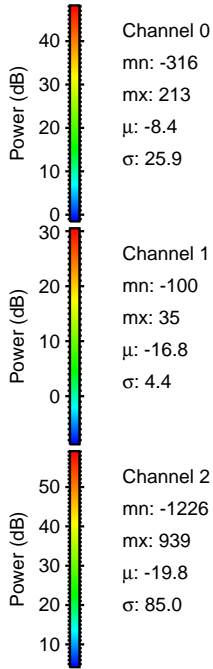
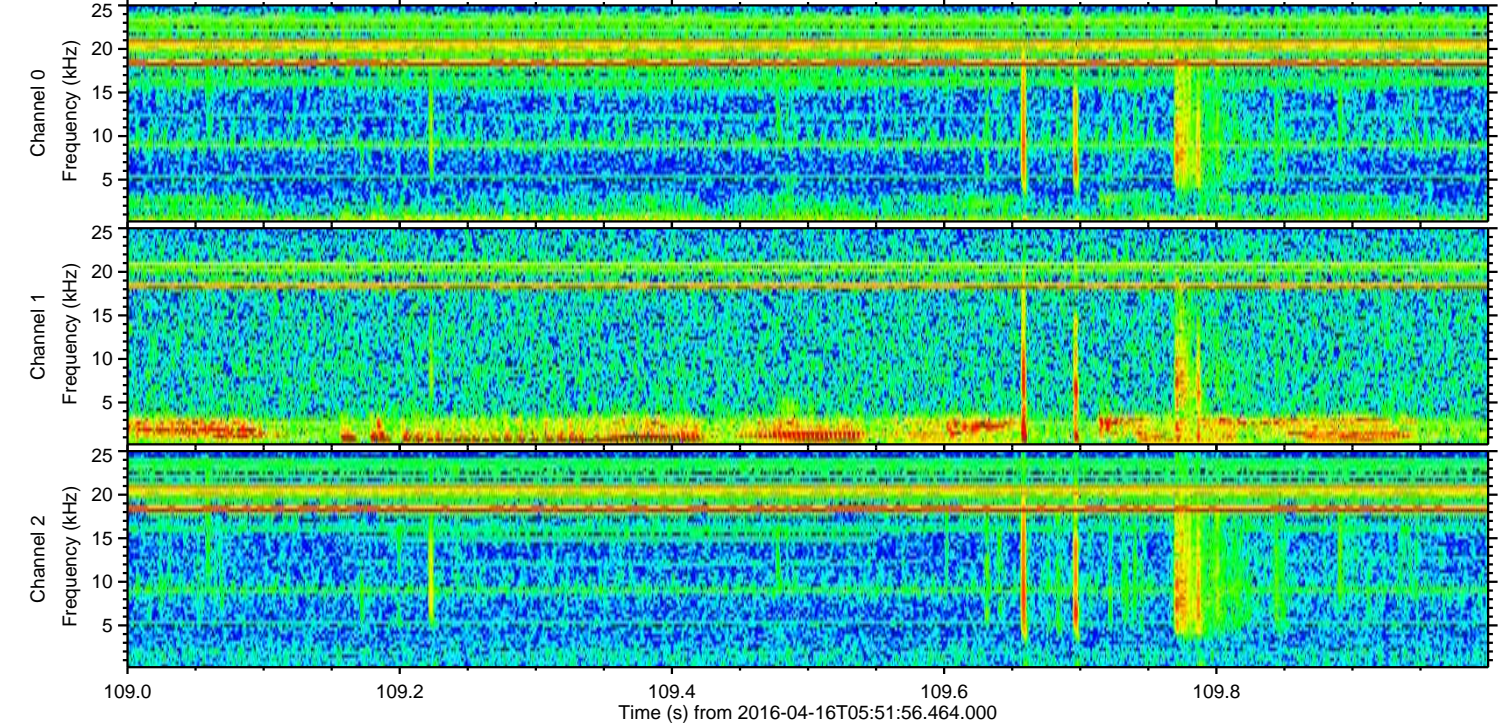
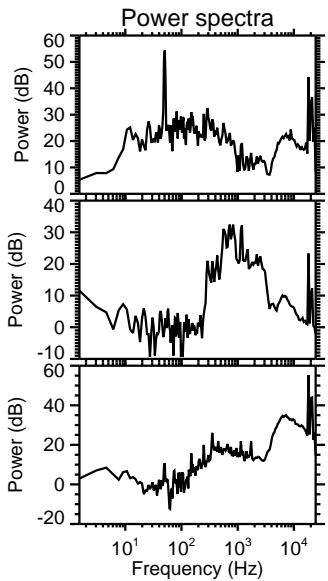
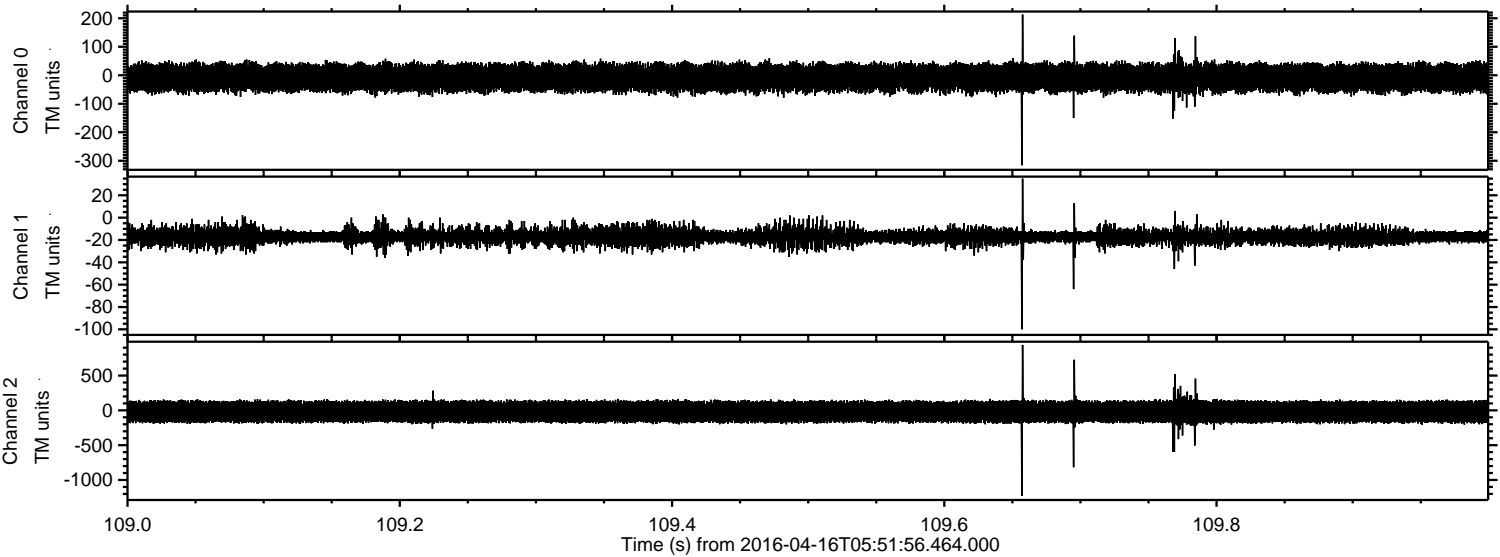


Processed Sun May 8 18:36:02 2016 by ELM ver.2012-10-06 from 001__elm20160416_055155__dat00.bin

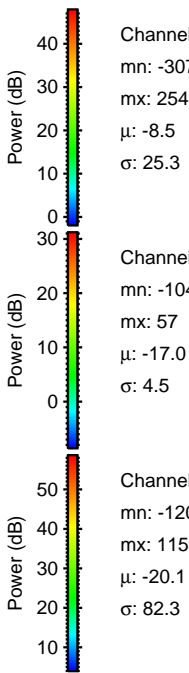
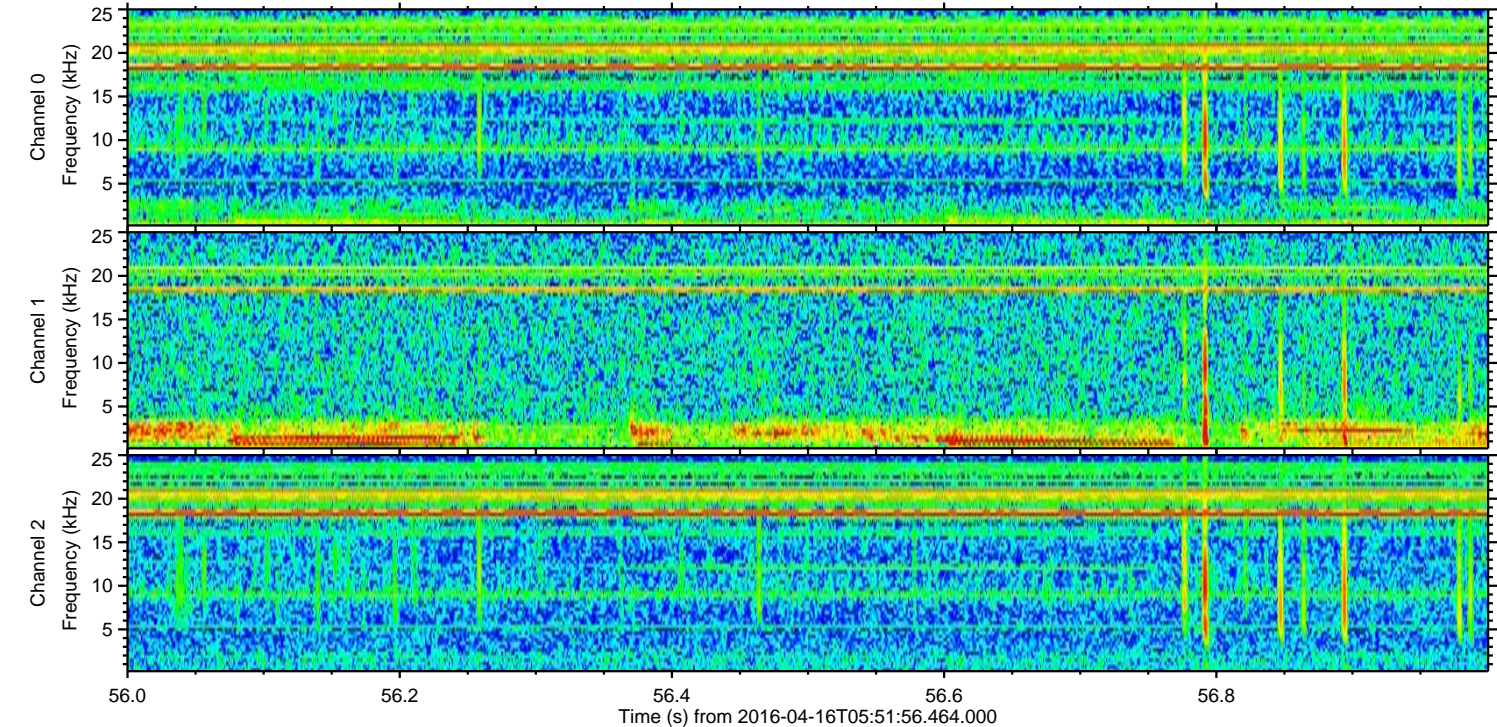
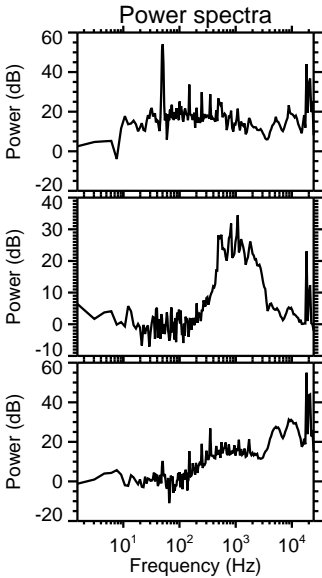
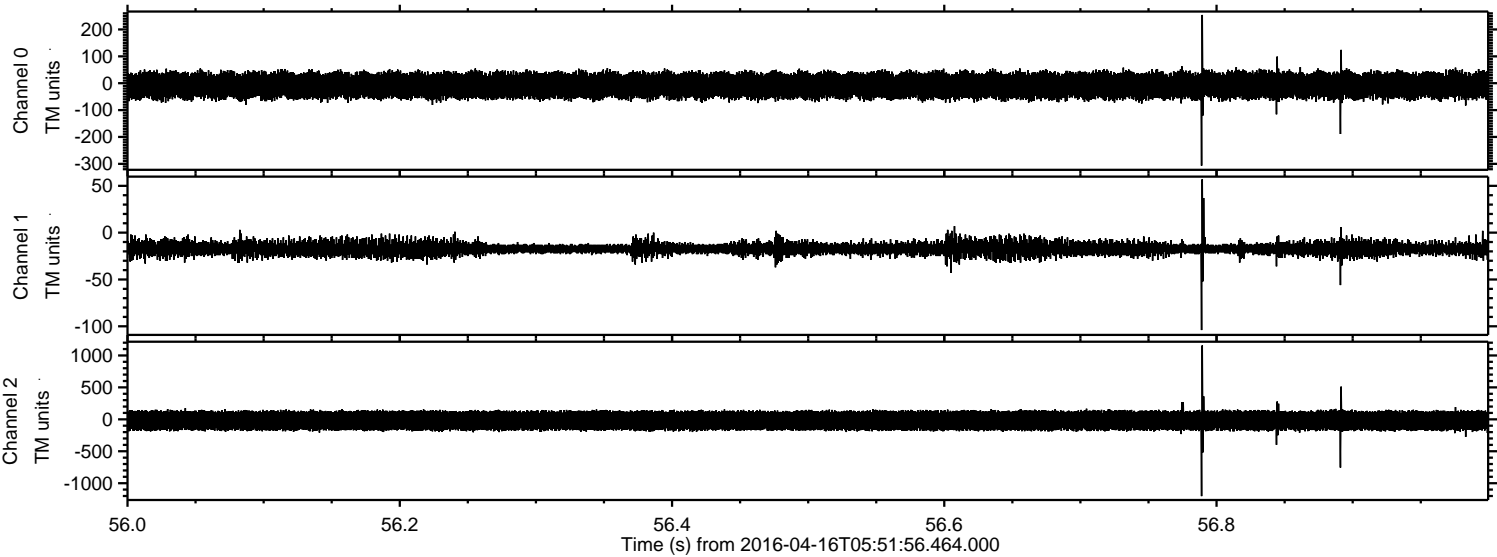


ELMAVAN 3D WAVEFORMS (Measured data sampled at 50 kHz) 51000 packets of 144 samples from 2016-04-16T05:51:56.464.000. Part 110/147

Processed Sun May 8 18:36:03 2016 by ELM ver.2012-10-06 from 001__elm20160416_055155__dat00.bin



Processed Sun May 8 18:36:04 2016 by ELM ver.2012-10-06 from 001__elm20160416_055155__dat00.bin



Channel 0
mn: -307
mx: 254
 μ : -8.5
 σ : 25.3

Channel 1
mn: -104
mx: 57
 μ : -17.0
 σ : 4.5

Channel 2
mn: -1203
mx: 1157
 μ : -20.1
 σ : 82.3

Processed Sun May 8 18:36:05 2016 by ELM ver.2012-10-06 from 001__elm20160416_055155__dat00.bin

