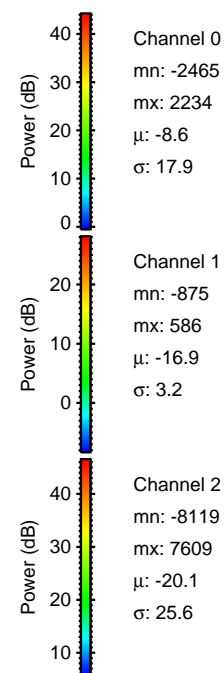
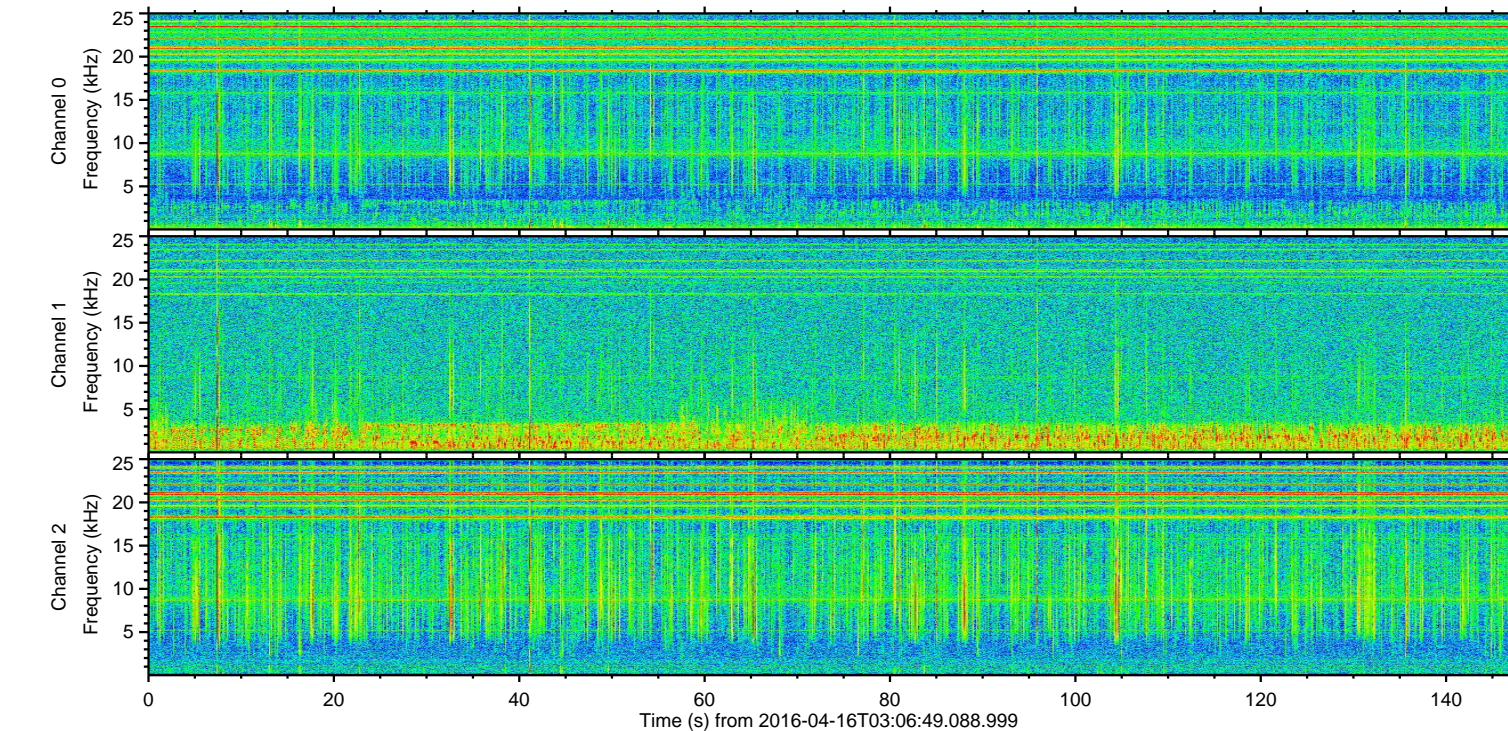
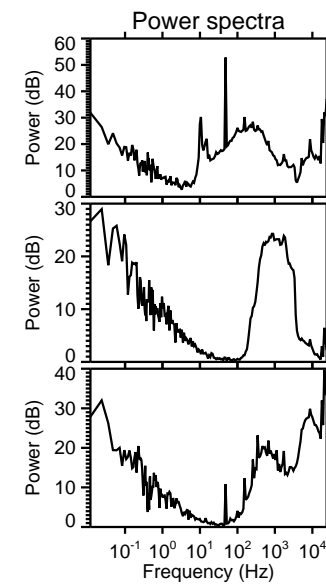
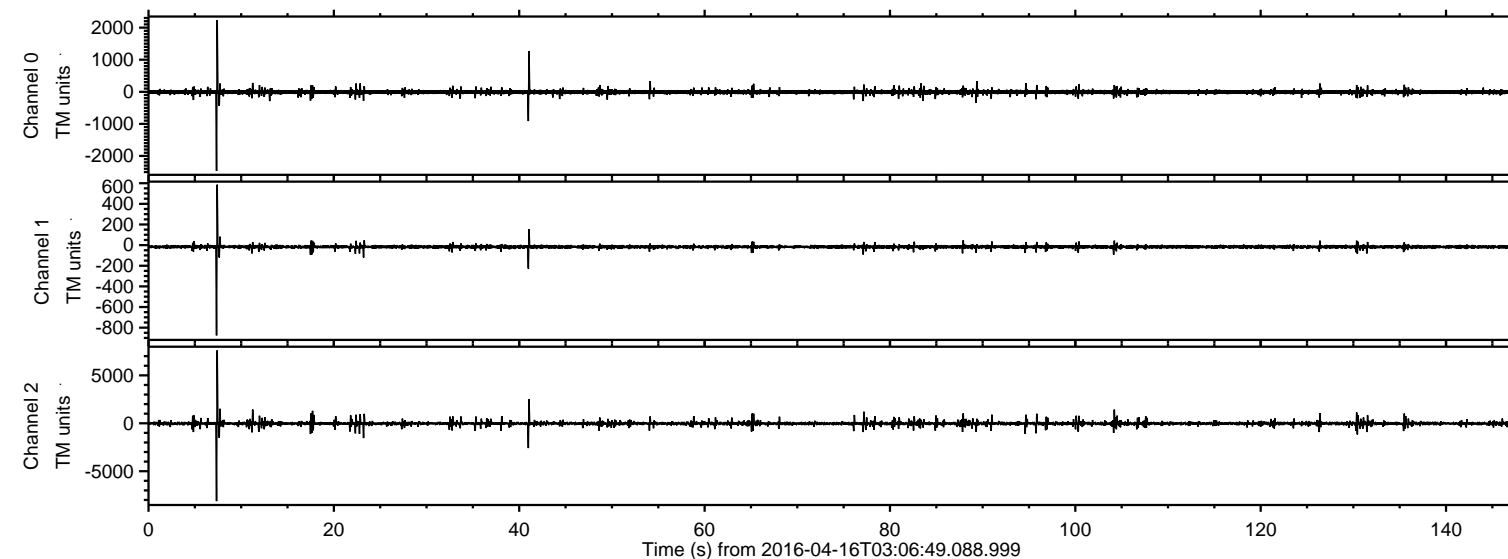
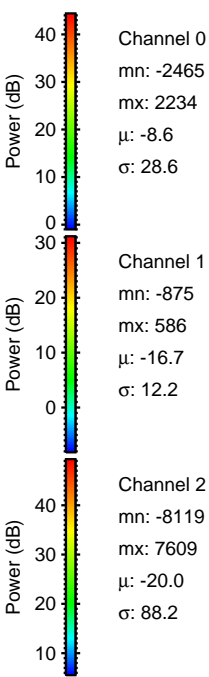
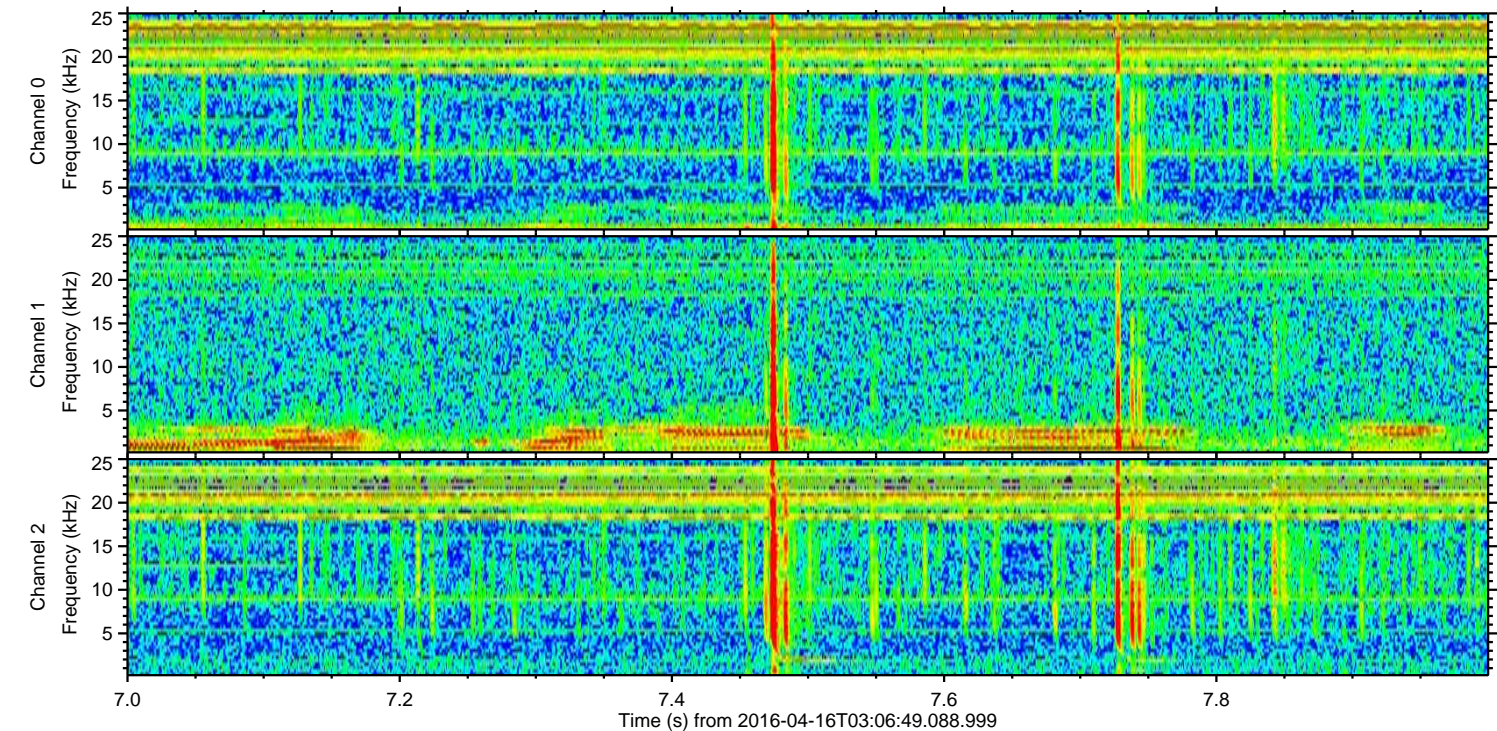
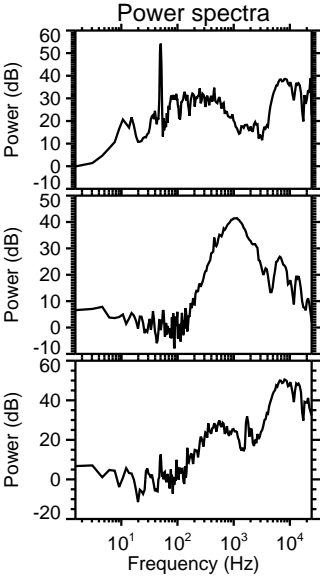
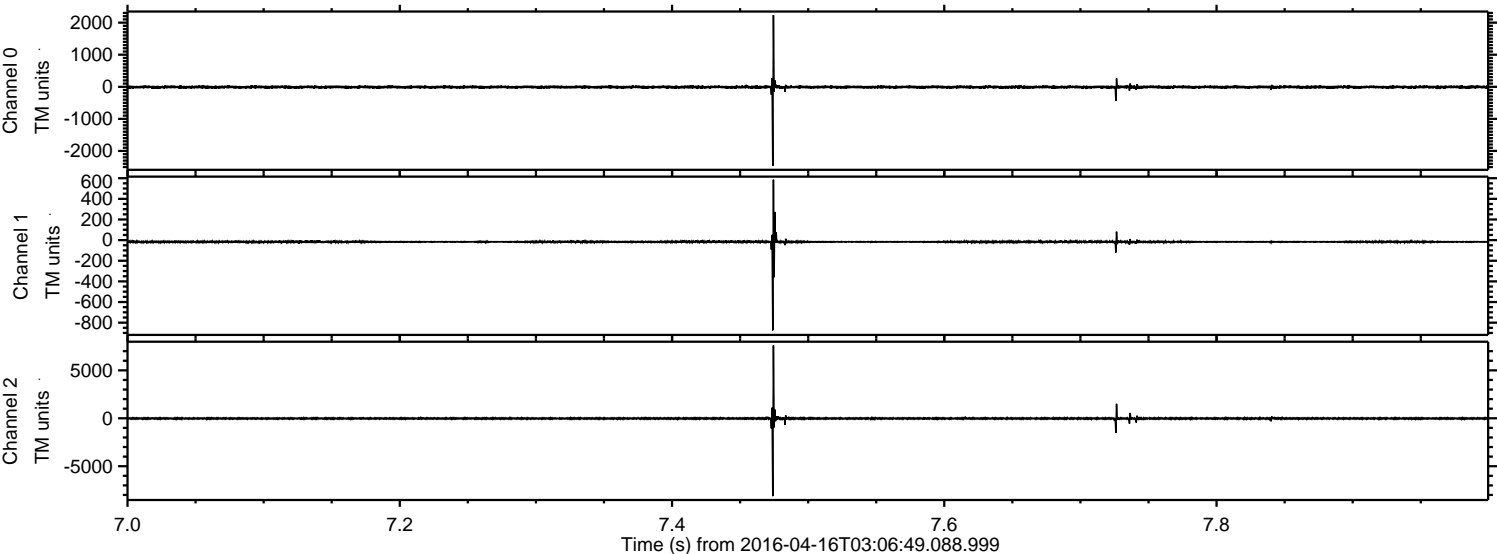


ELMAVAN 3D WAVEFORMS (Measured data sampled at 50 kHz) 51000 packets of 144 samples from 2016-04-16T03:06:49.088.999.

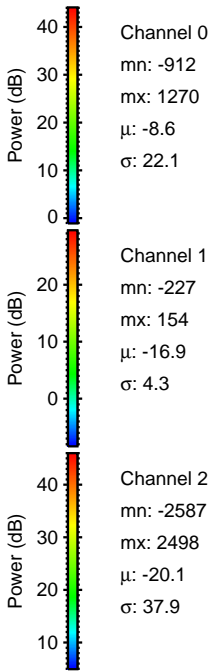
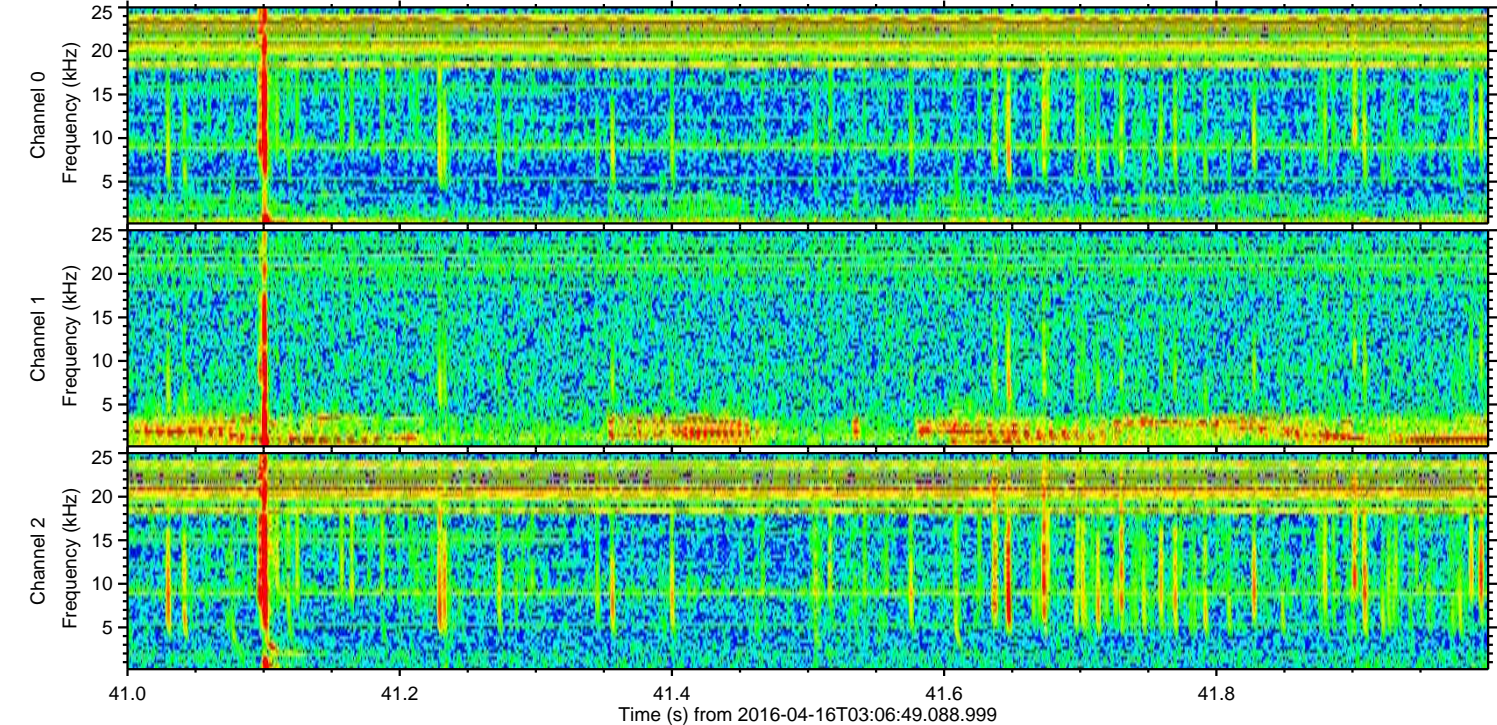
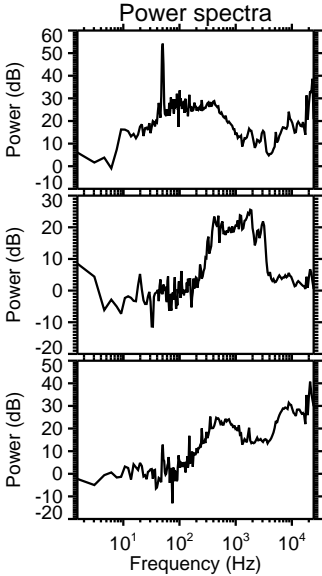
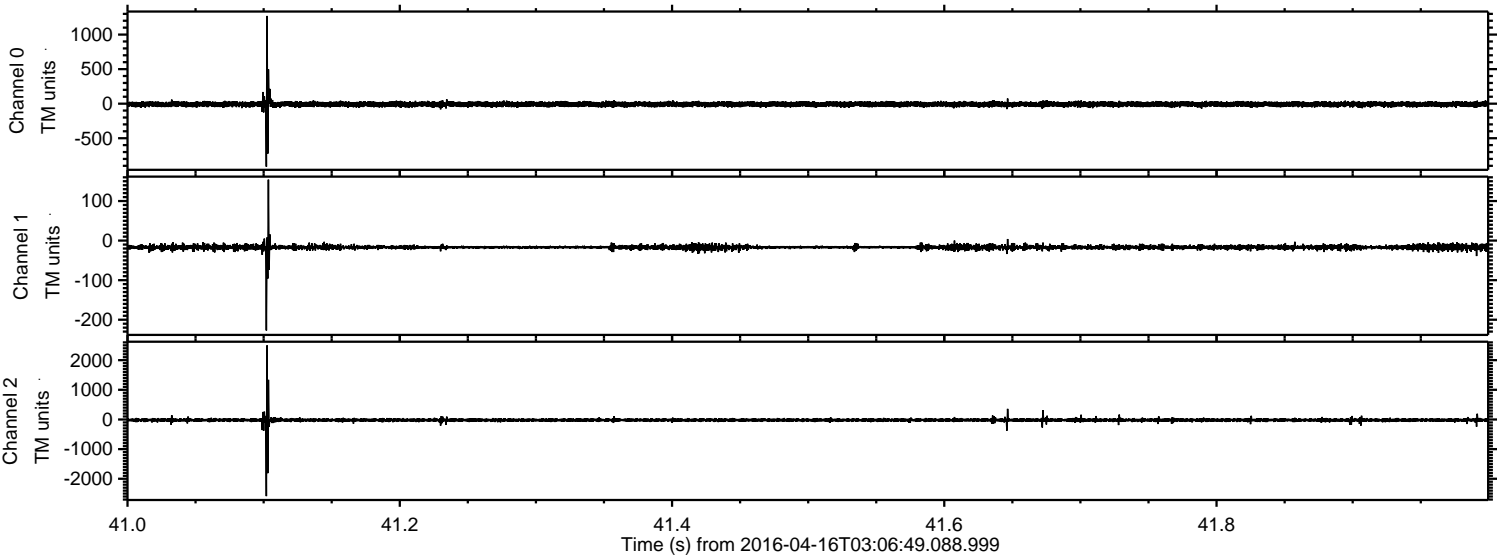
Processed Sun May 8 18:01:20 2016 by ELM ver.2012-10-06 from 001__elm20160416_030648__dat00.bin



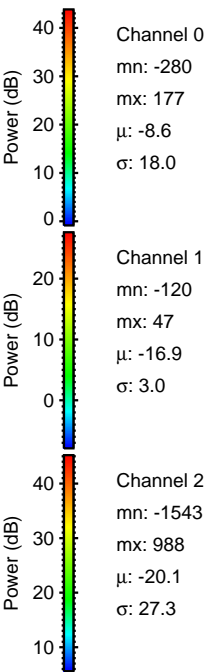
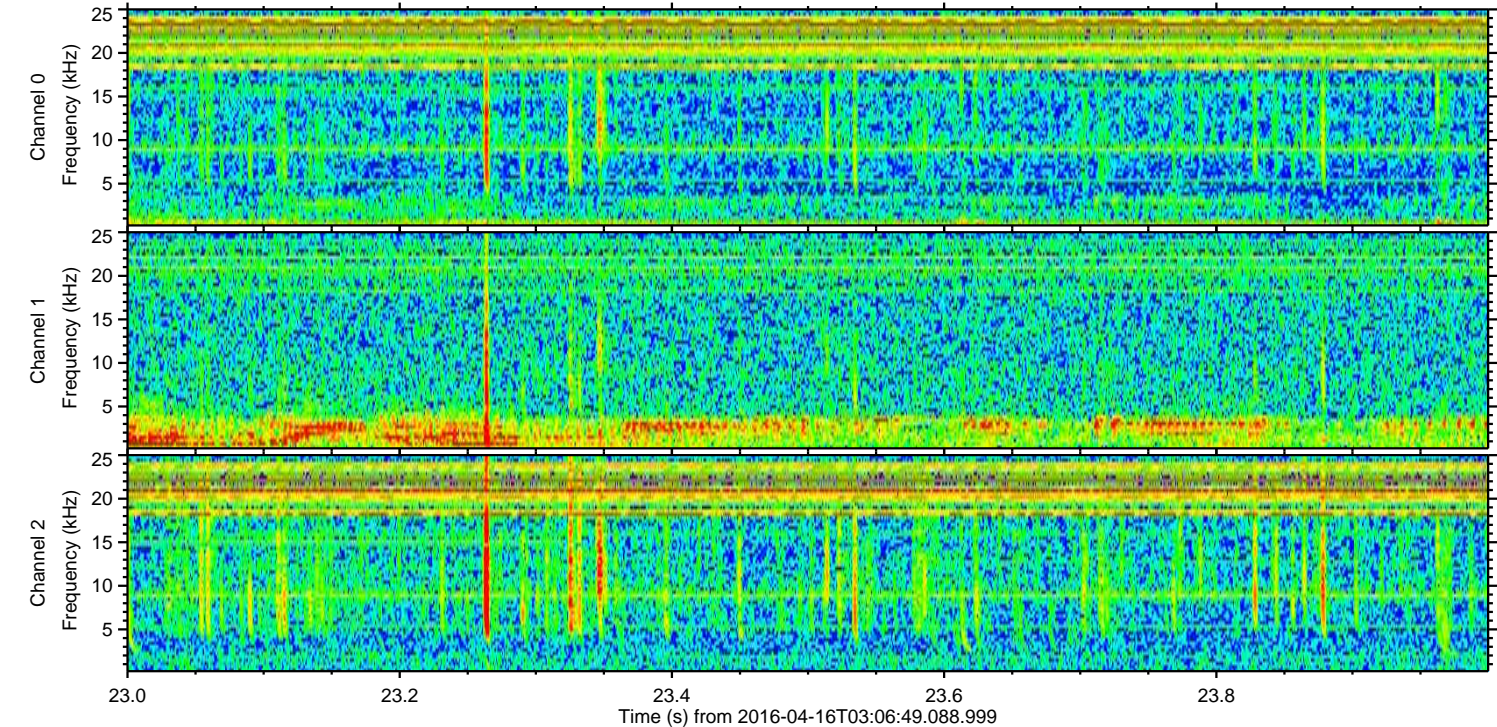
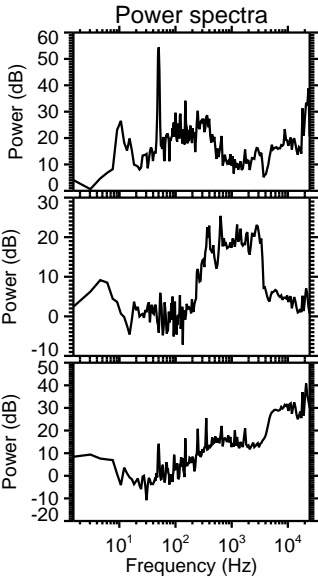
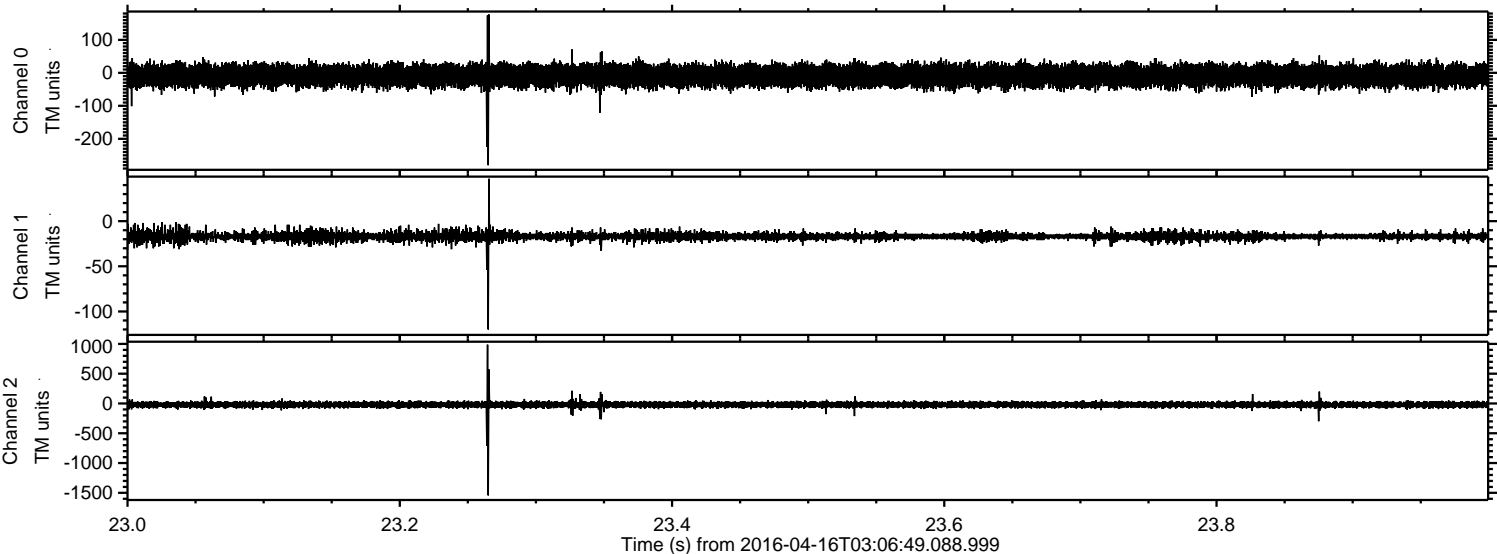
Processed Sun May 8 18:01:32 2016 by ELM ver.2012-10-06 from 001__elm20160416_030648__dat00.bin



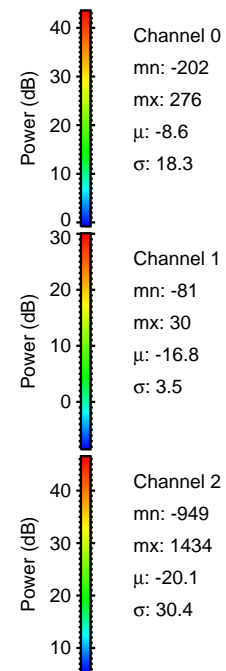
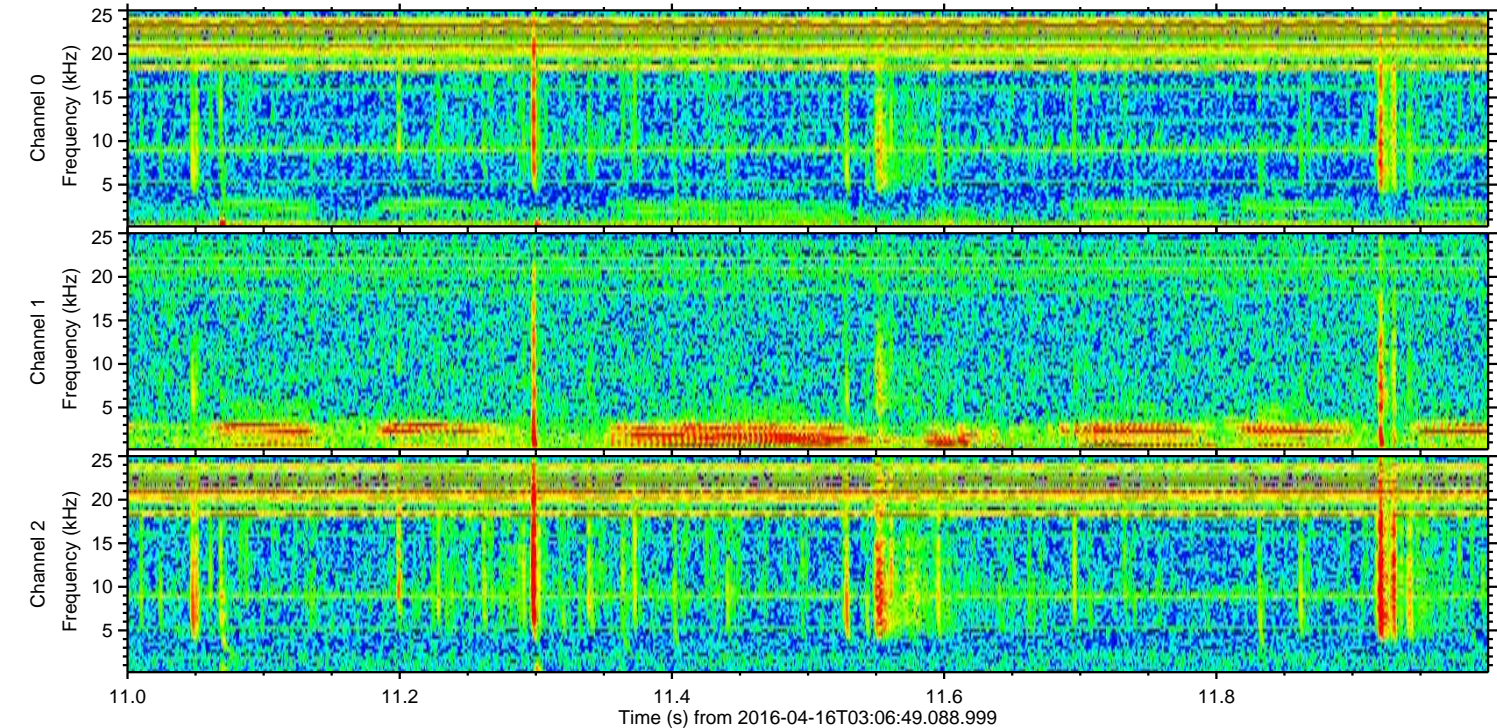
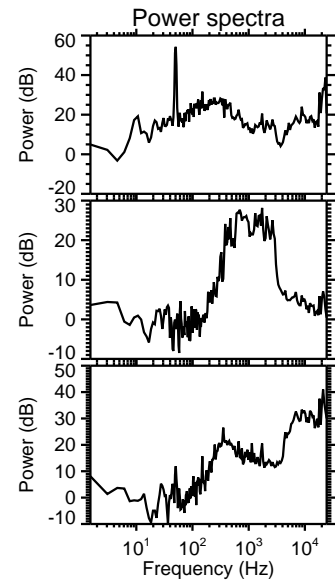
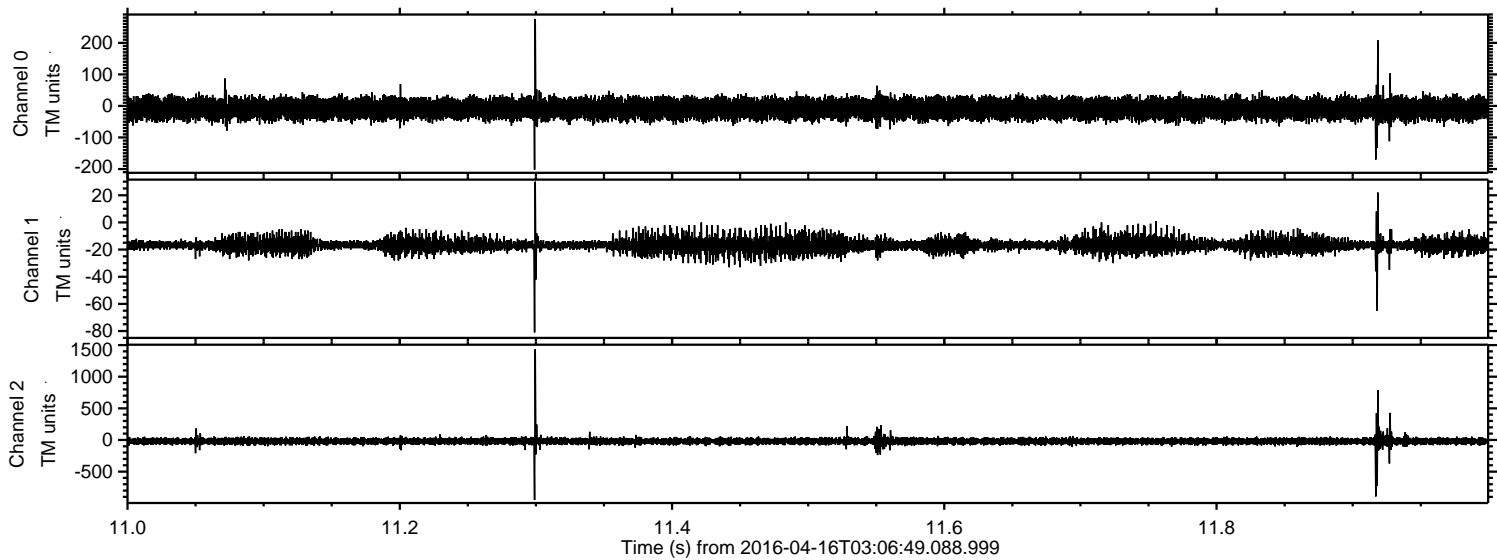
Processed Sun May 8 18:01:32 2016 by ELM ver.2012-10-06 from 001__elm20160416_030648__dat00.bin



Processed Sun May 8 18:01:33 2016 by ELM ver.2012-10-06 from 001__elm20160416_030648__dat00.bin

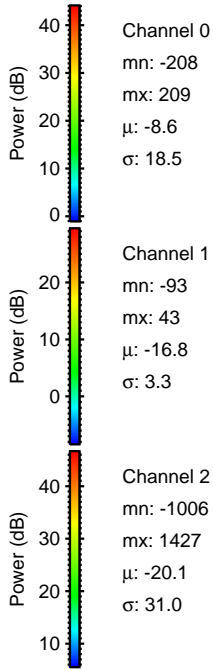
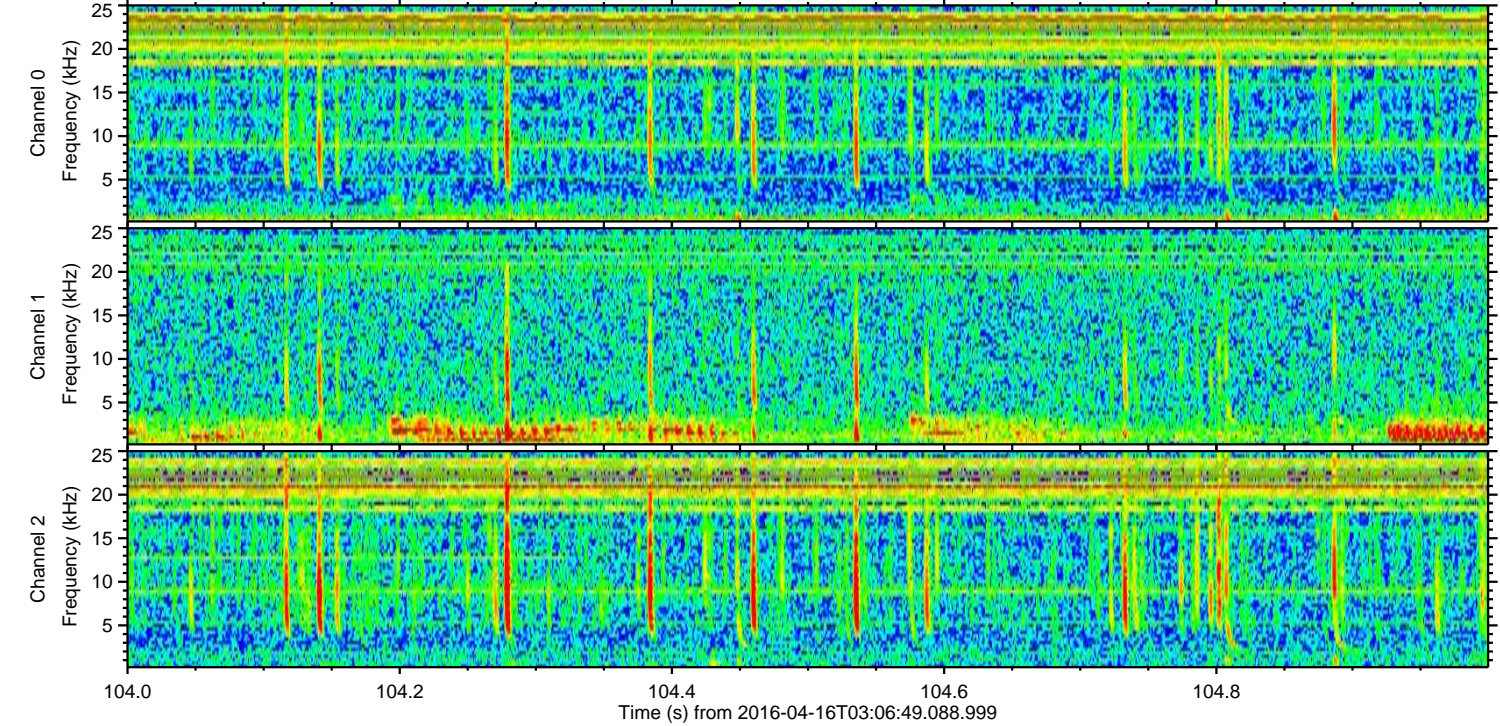
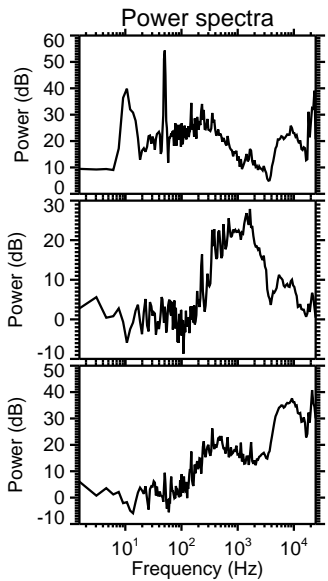
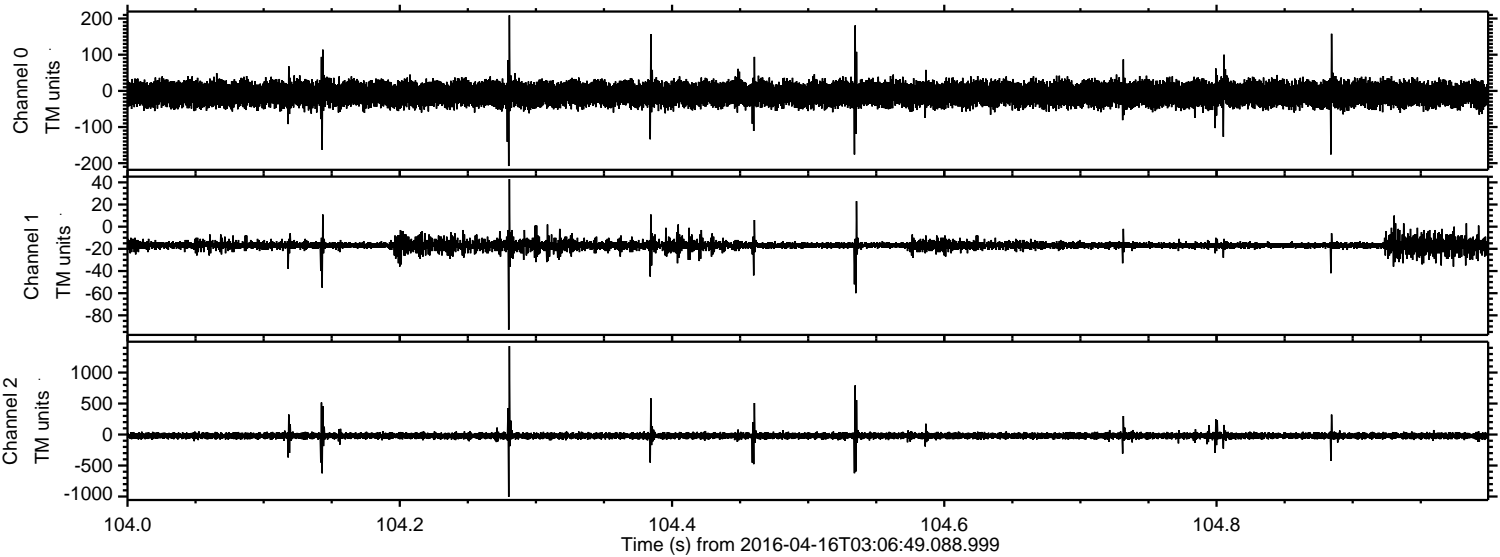


Processed Sun May 8 18:01:34 2016 by ELM ver.2012-10-06 from 001__elm20160416_030648__dat00.bin

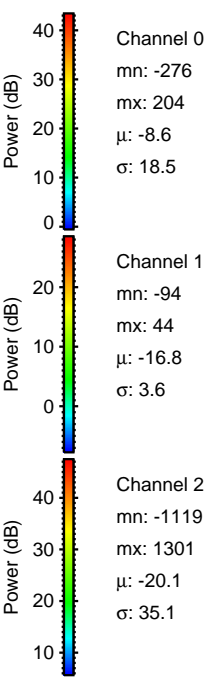
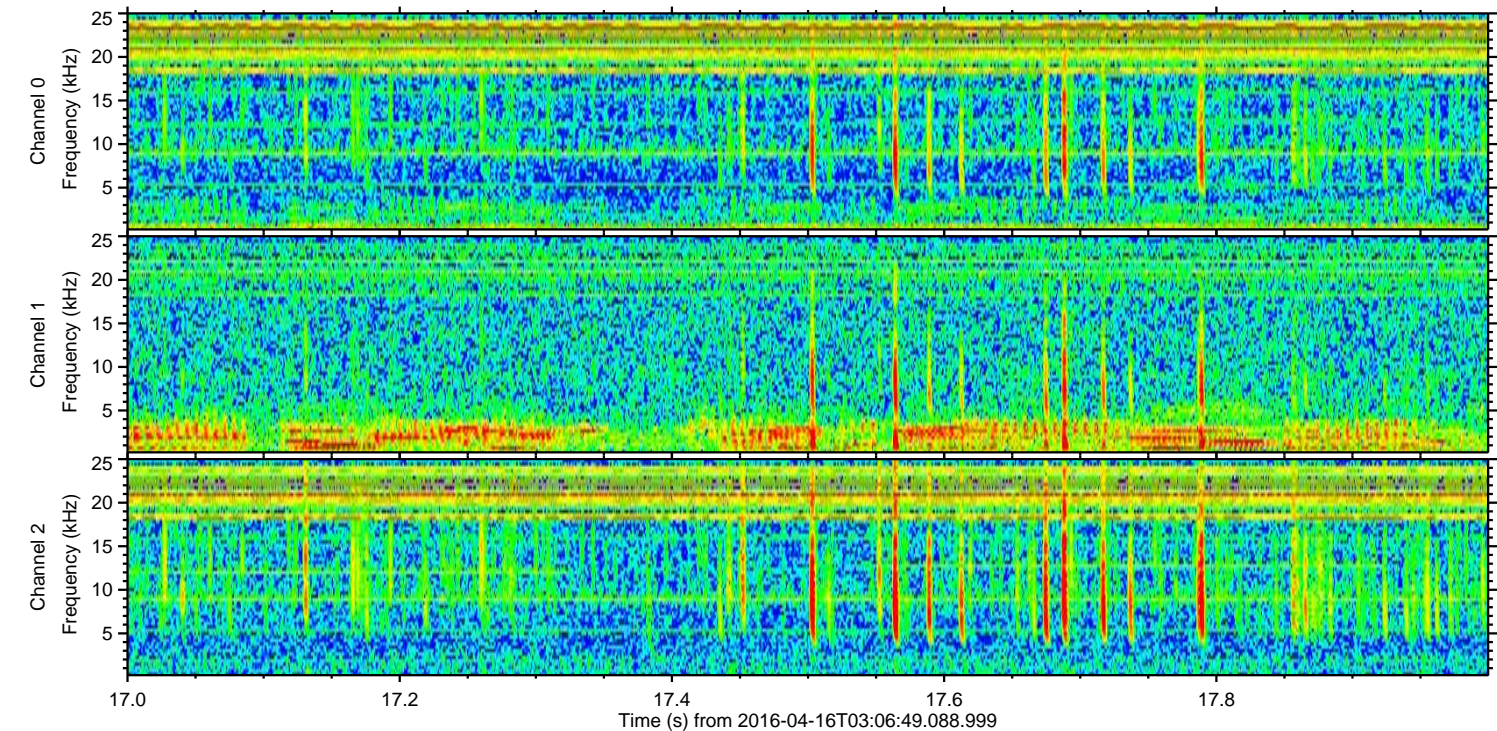
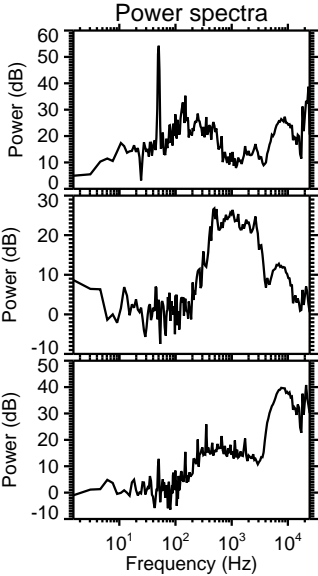
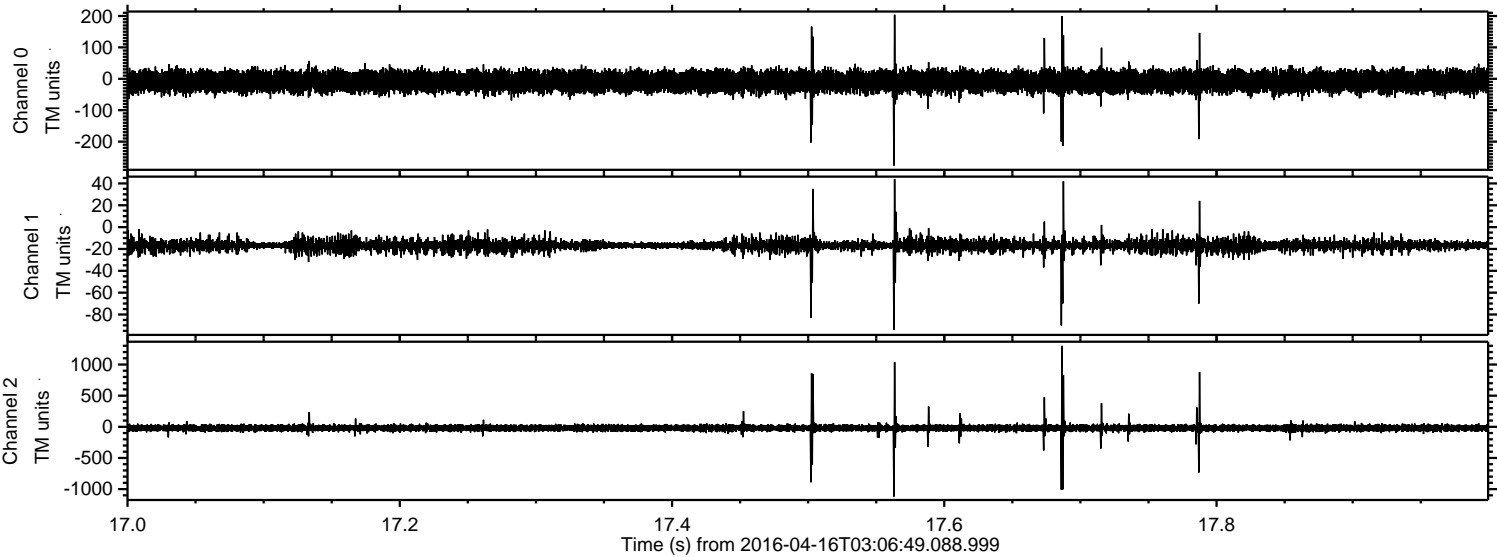


ELMAVAN 3D WAVEFORMS (Measured data sampled at 50 kHz) 51000 packets of 144 samples from 2016-04-16T03:06:49.088.999. Part 105/147

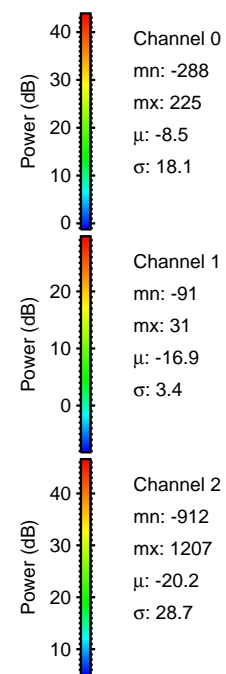
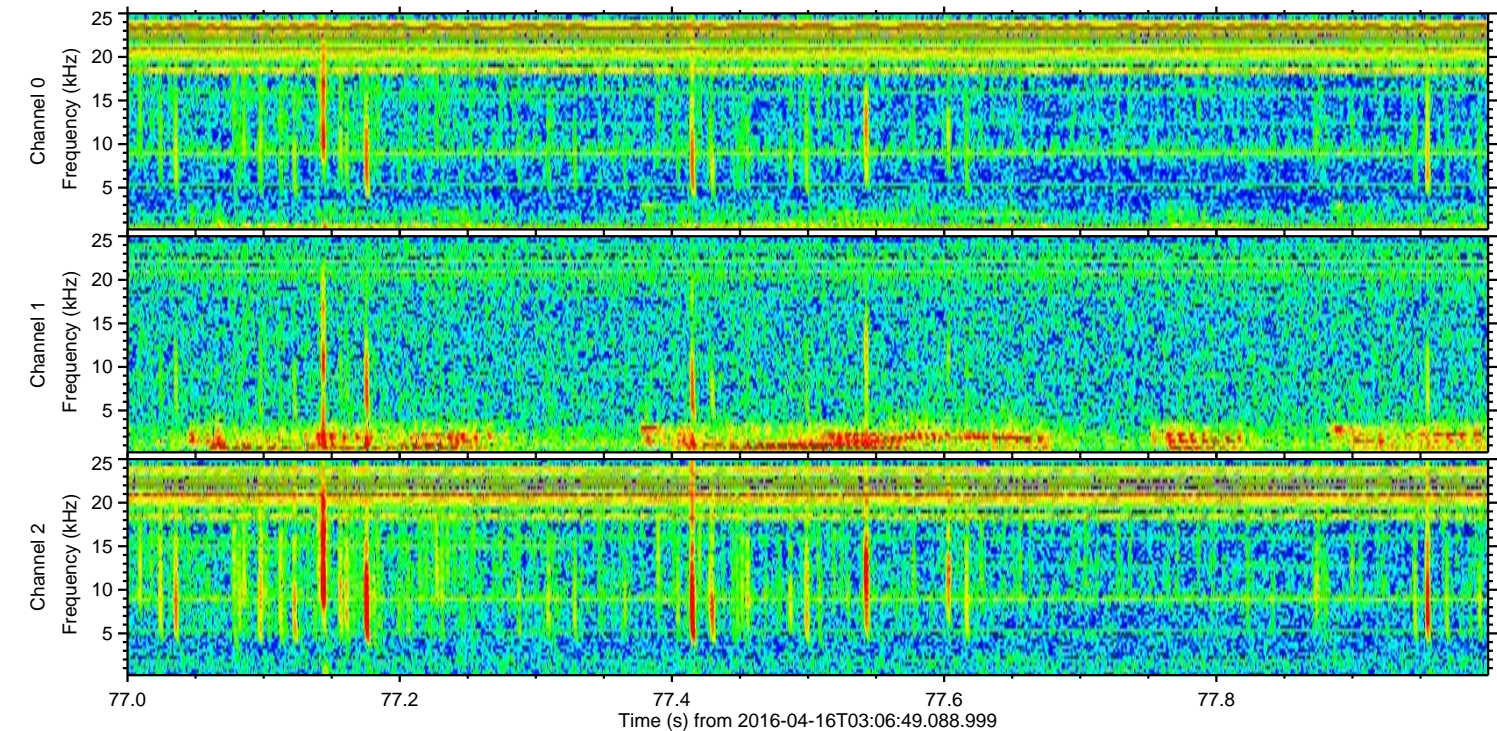
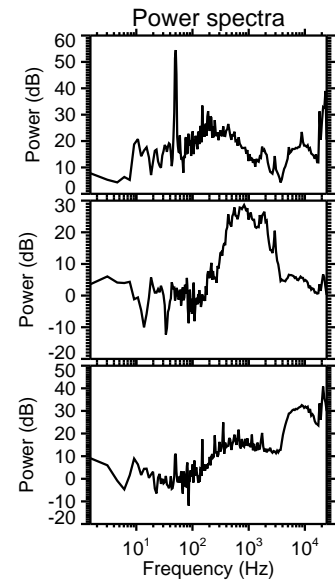
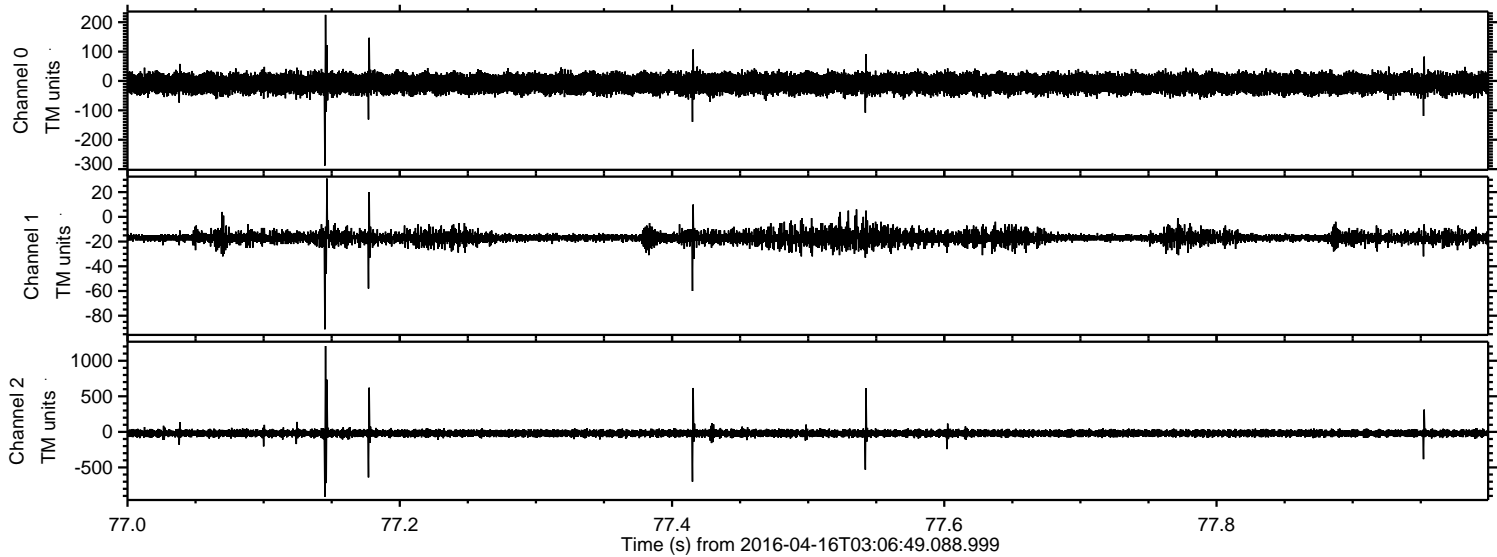
Processed Sun May 8 18:01:35 2016 by ELM ver.2012-10-06 from 001__elm20160416_030648__dat00.bin



Processed Sun May 8 18:01:36 2016 by ELM ver.2012-10-06 from 001__elm20160416_030648__dat00.bin

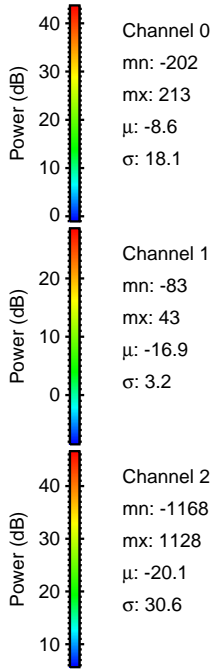
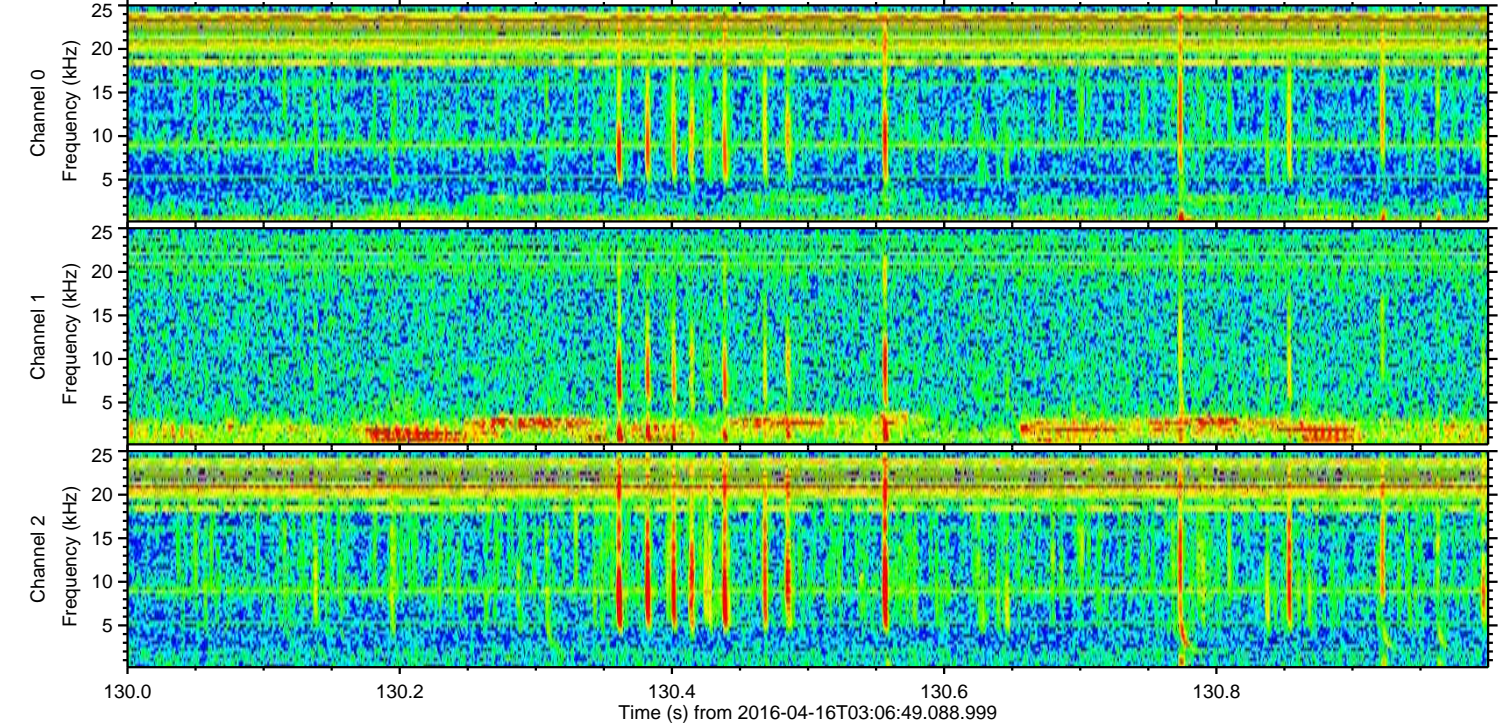
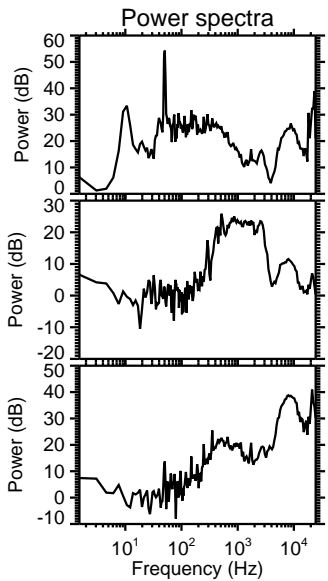
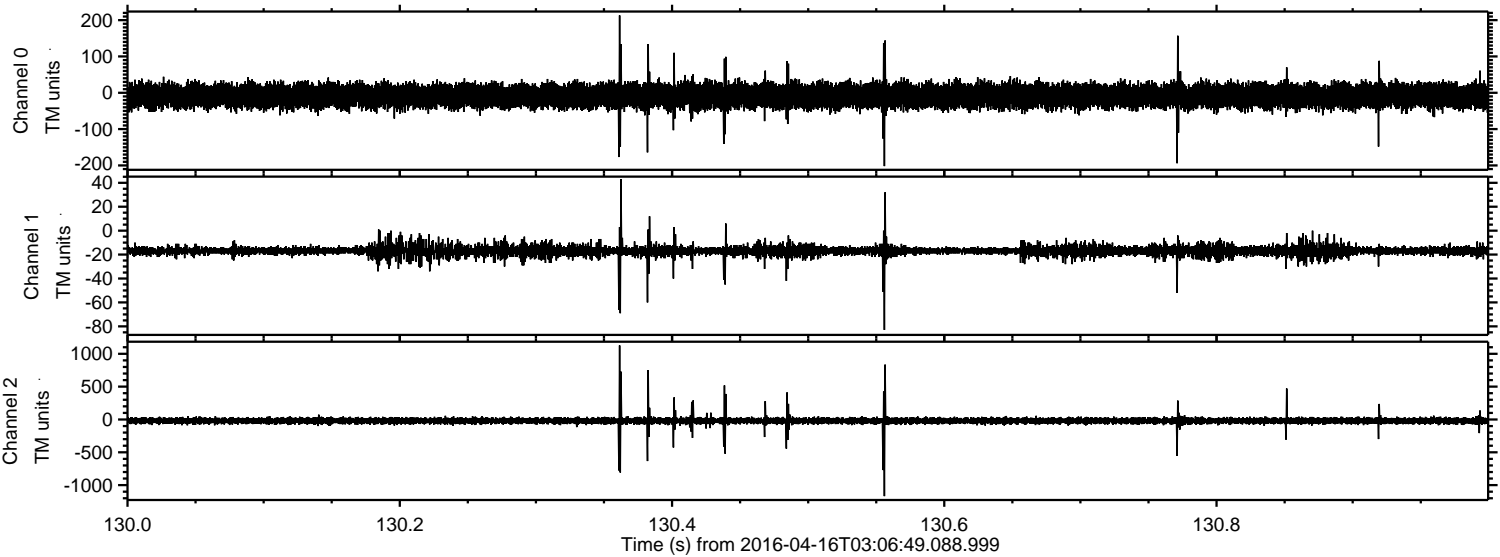


Processed Sun May 8 18:01:37 2016 by ELM ver.2012-10-06 from 001__elm20160416_030648__dat00.bin



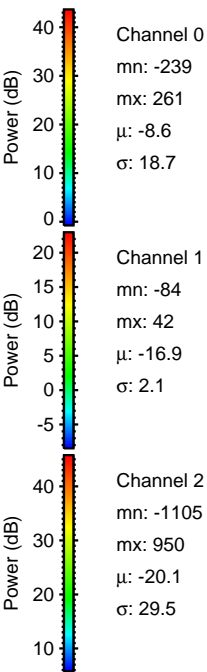
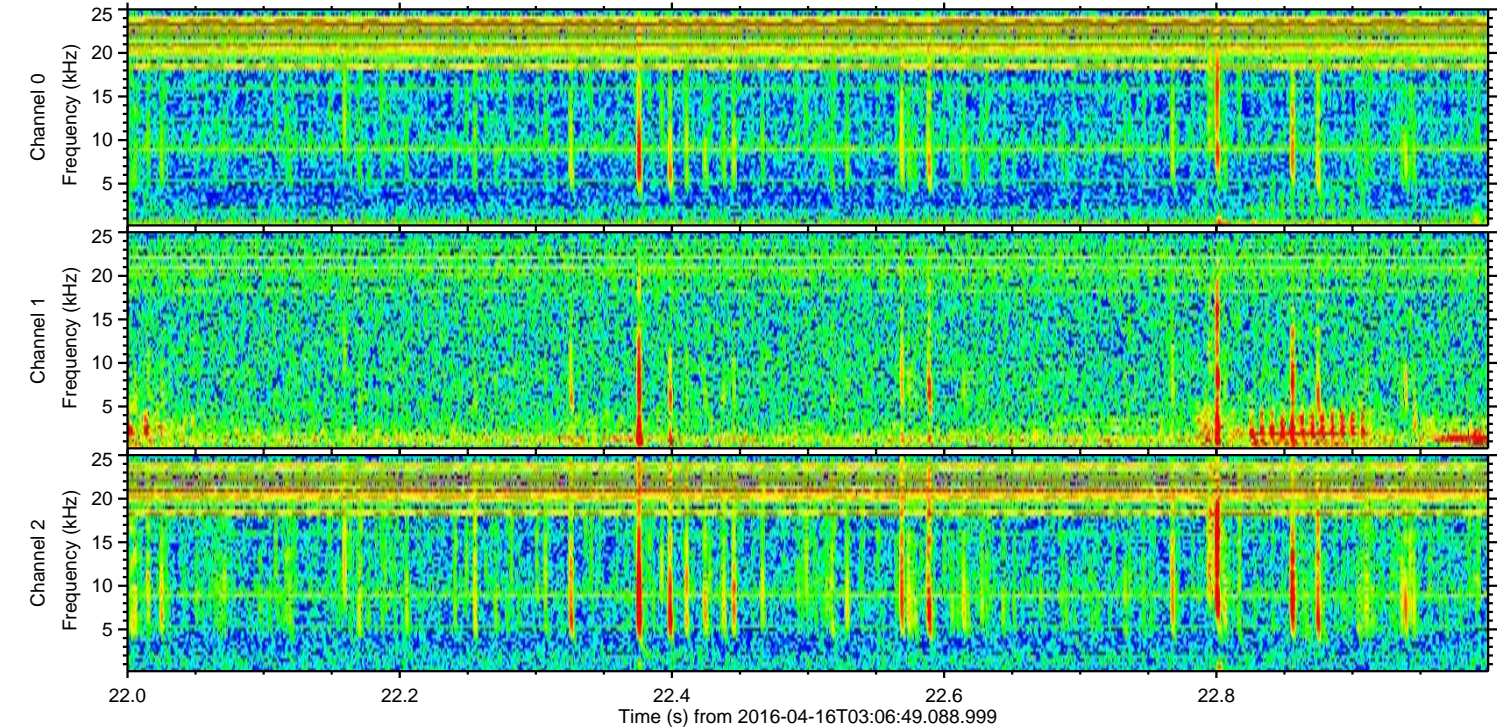
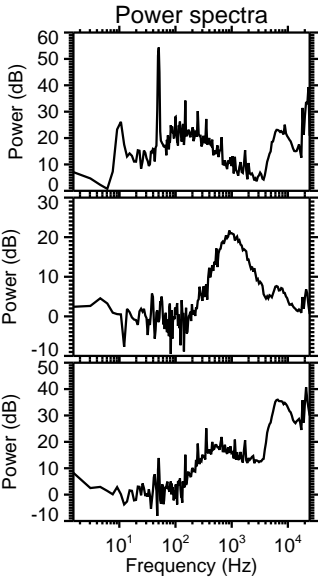
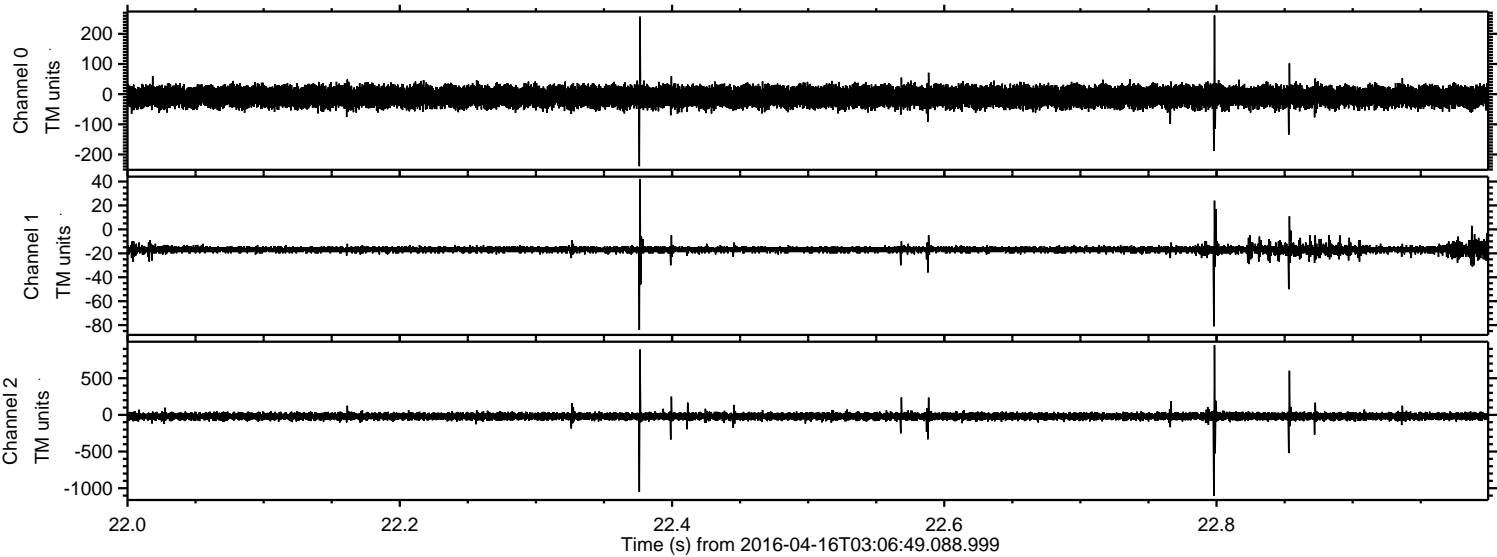
ELMAVAN 3D WAVEFORMS (Measured data sampled at 50 kHz) 51000 packets of 144 samples from 2016-04-16T03:06:49.088.999. Part 131/147

Processed Sun May 8 18:01:38 2016 by ELM ver.2012-10-06 from 001__elm20160416_030648__dat00.bin



ELMAVAN 3D WAVEFORMS (Measured data sampled at 50 kHz) 51000 packets of 144 samples from 2016-04-16T03:06:49.088.999. Part 23/147

Processed Sun May 8 18:01:39 2016 by ELM ver.2012-10-06 from 001__elm20160416_030648__dat00.bin



Power spectra

Channel 0
mn: -239
mx: 261
 μ : -8.6
 σ : 18.7

Channel 1
mn: -84
mx: 42
 μ : -16.9
 σ : 2.1

Channel 2
mn: -1105
mx: 950
 μ : -20.1
 σ : 29.5

