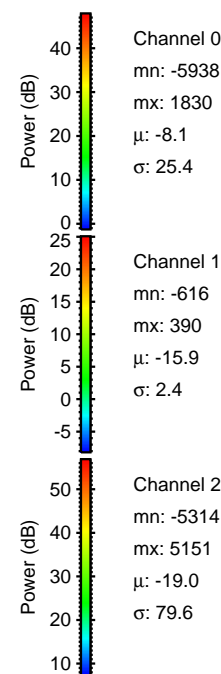
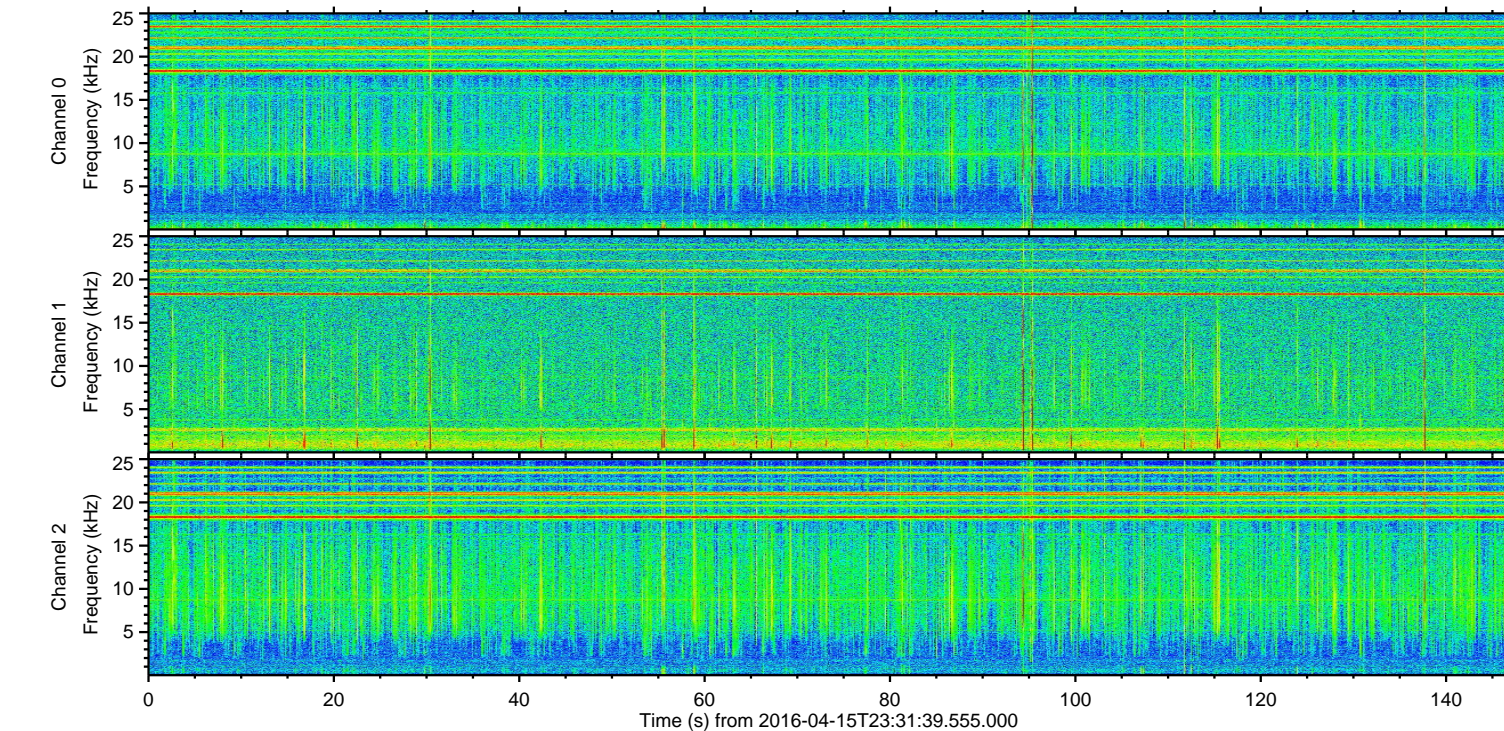
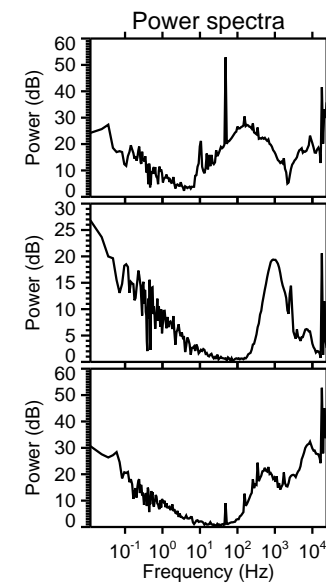
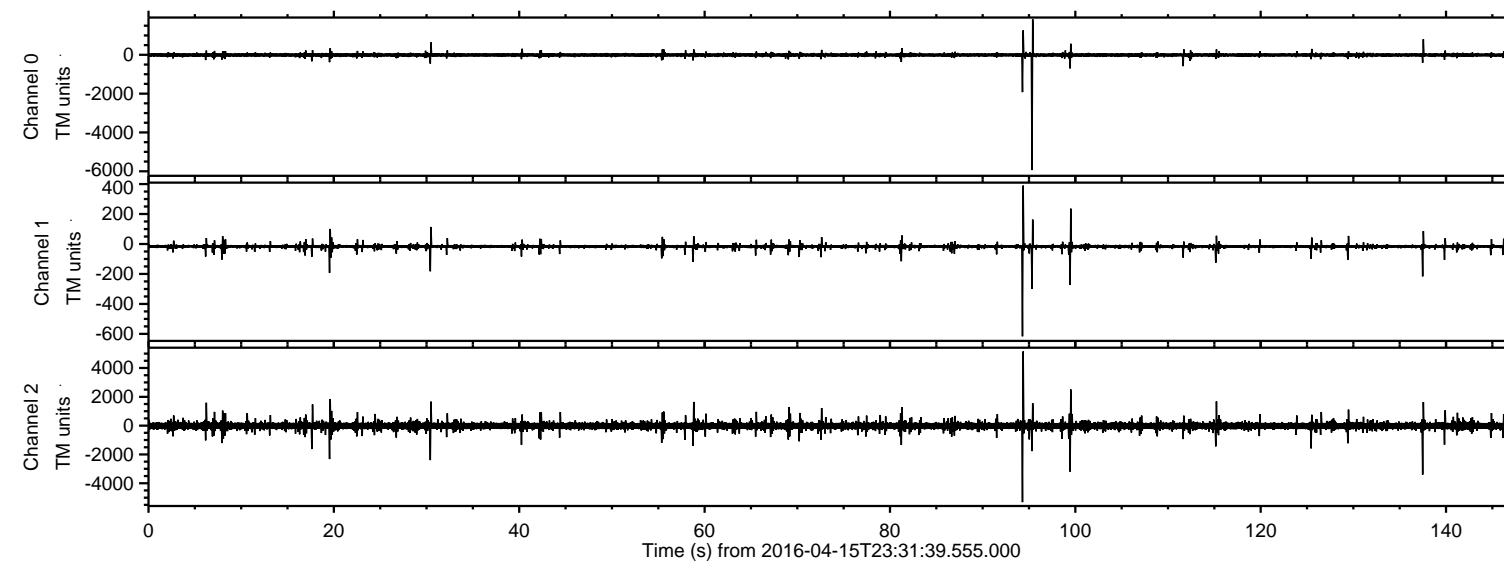


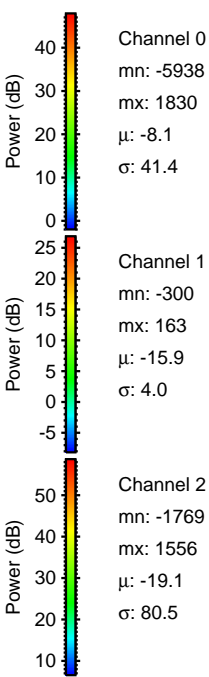
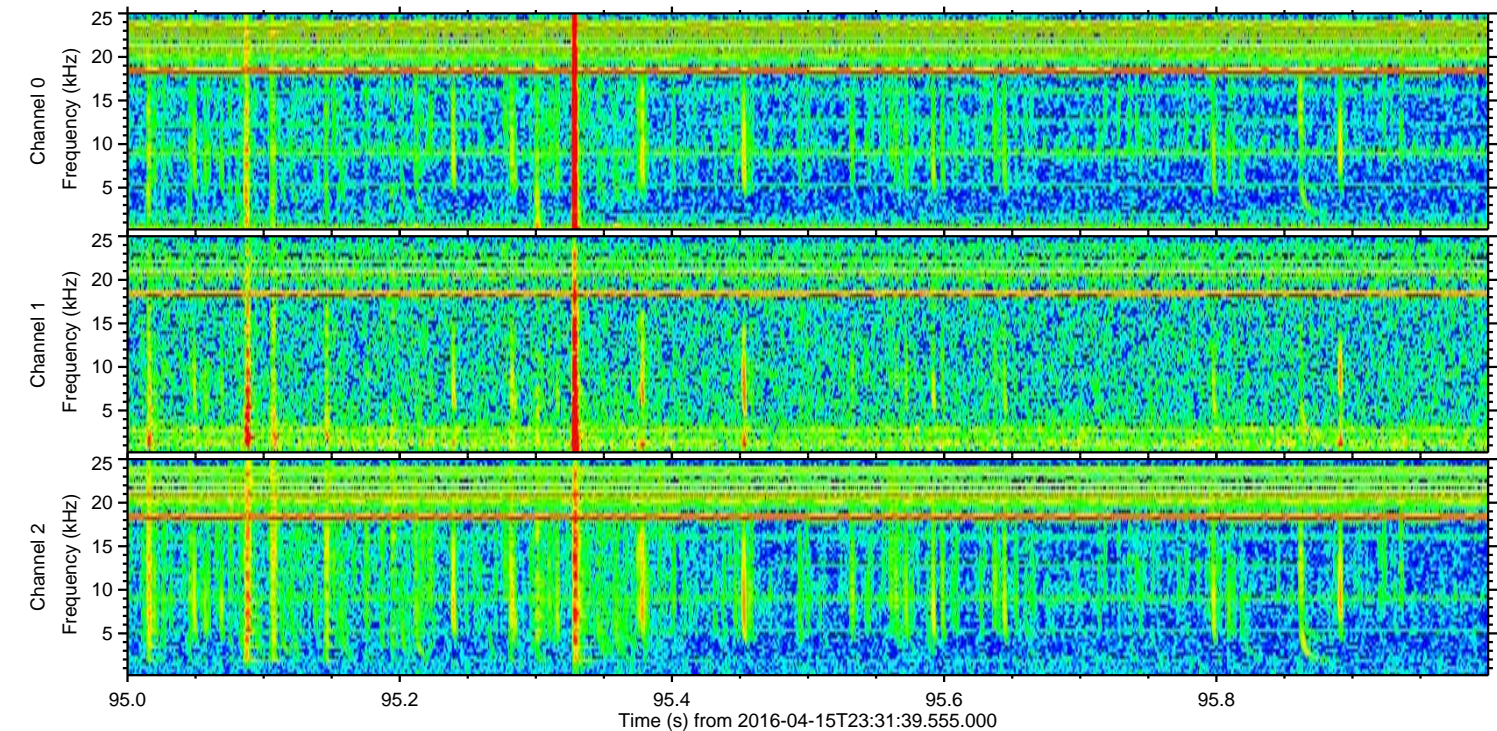
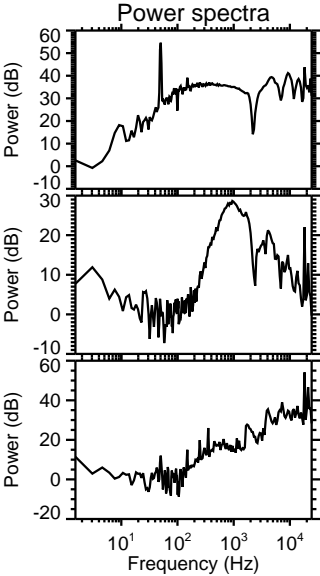
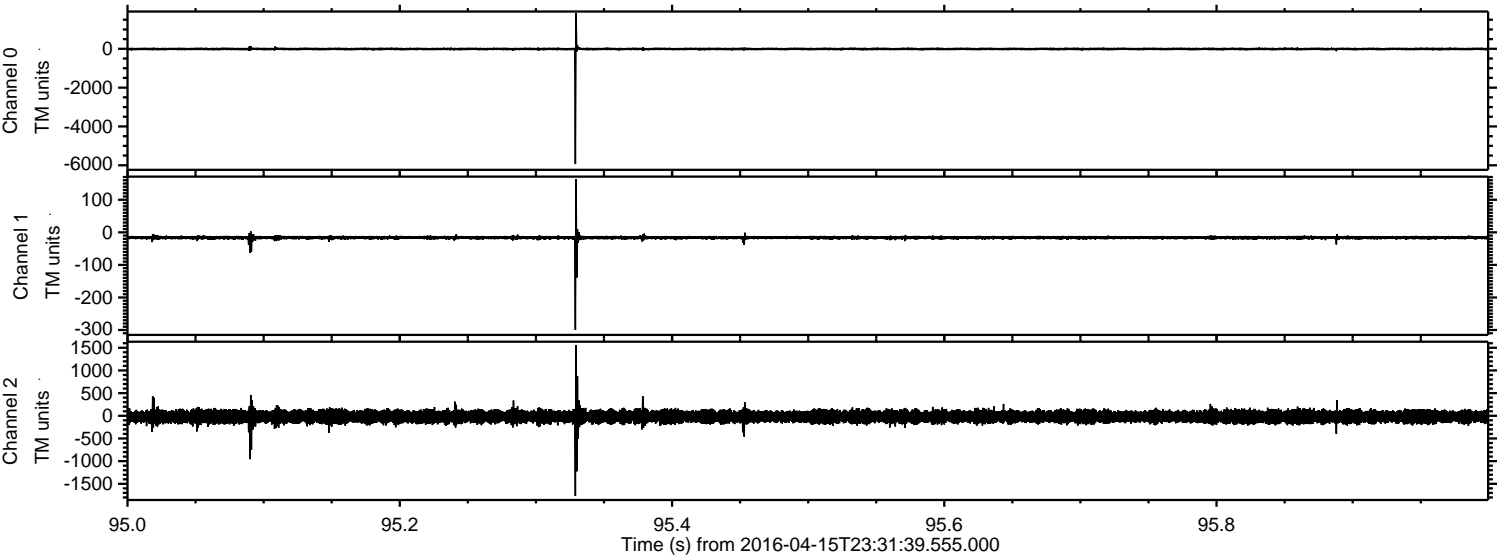
# ELMAVAN 3D WAVEFORMS (Measured data sampled at 50 kHz) 51000 packets of 144 samples from 2016-04-15T23:31:39.555.000.

Processed Sun May 8 17:14:38 2016 by ELM ver.2012-10-06 from 001\_\_elm20160415\_233138\_\_dat00.bin



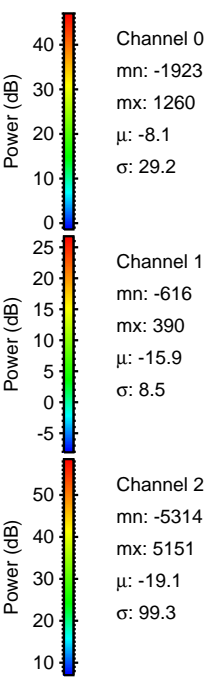
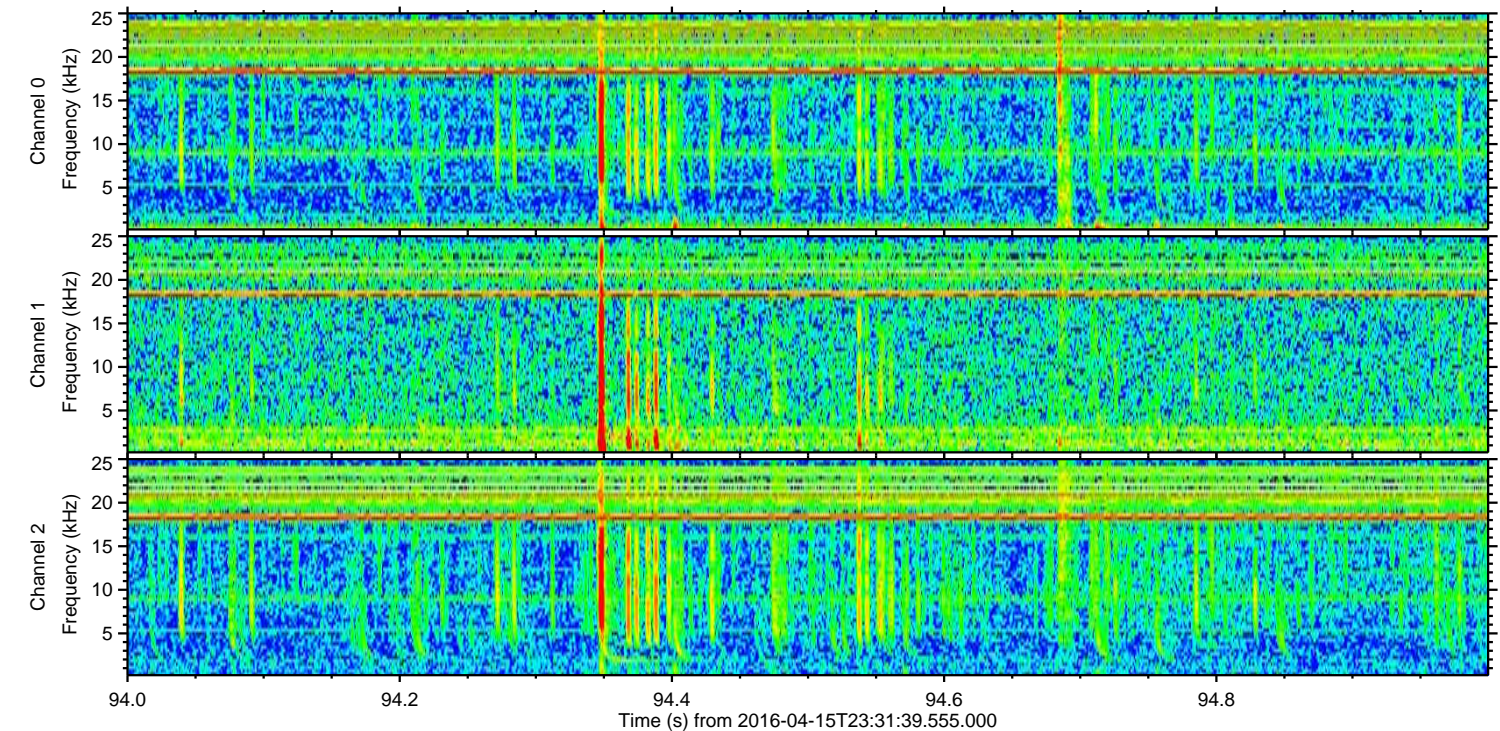
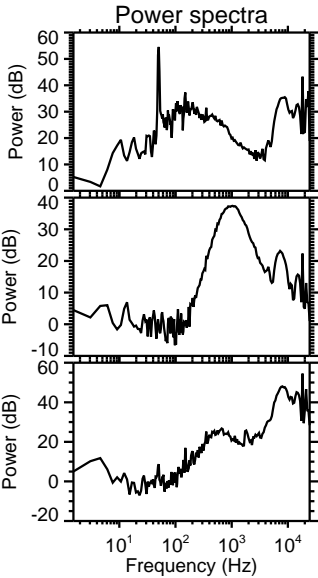
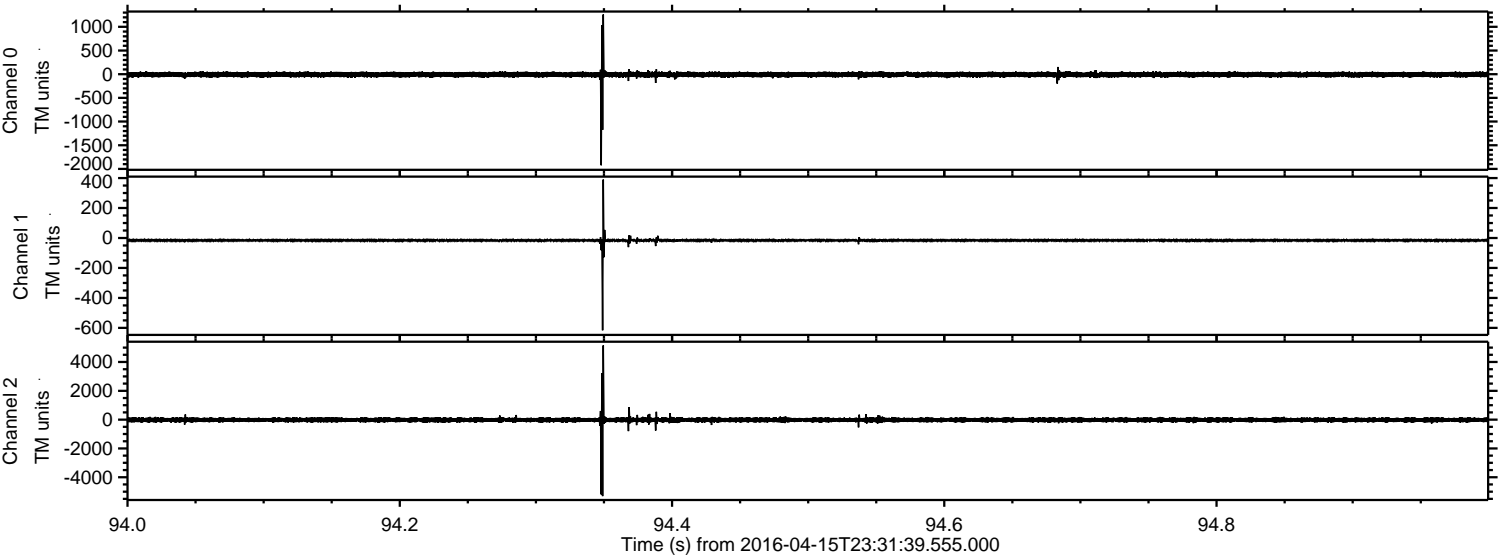


Processed Sun May 8 17:14:50 2016 by ELM ver.2012-10-06 from 001\_\_elm20160415\_233138\_\_dat00.bin





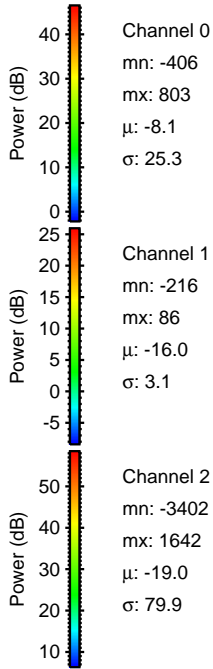
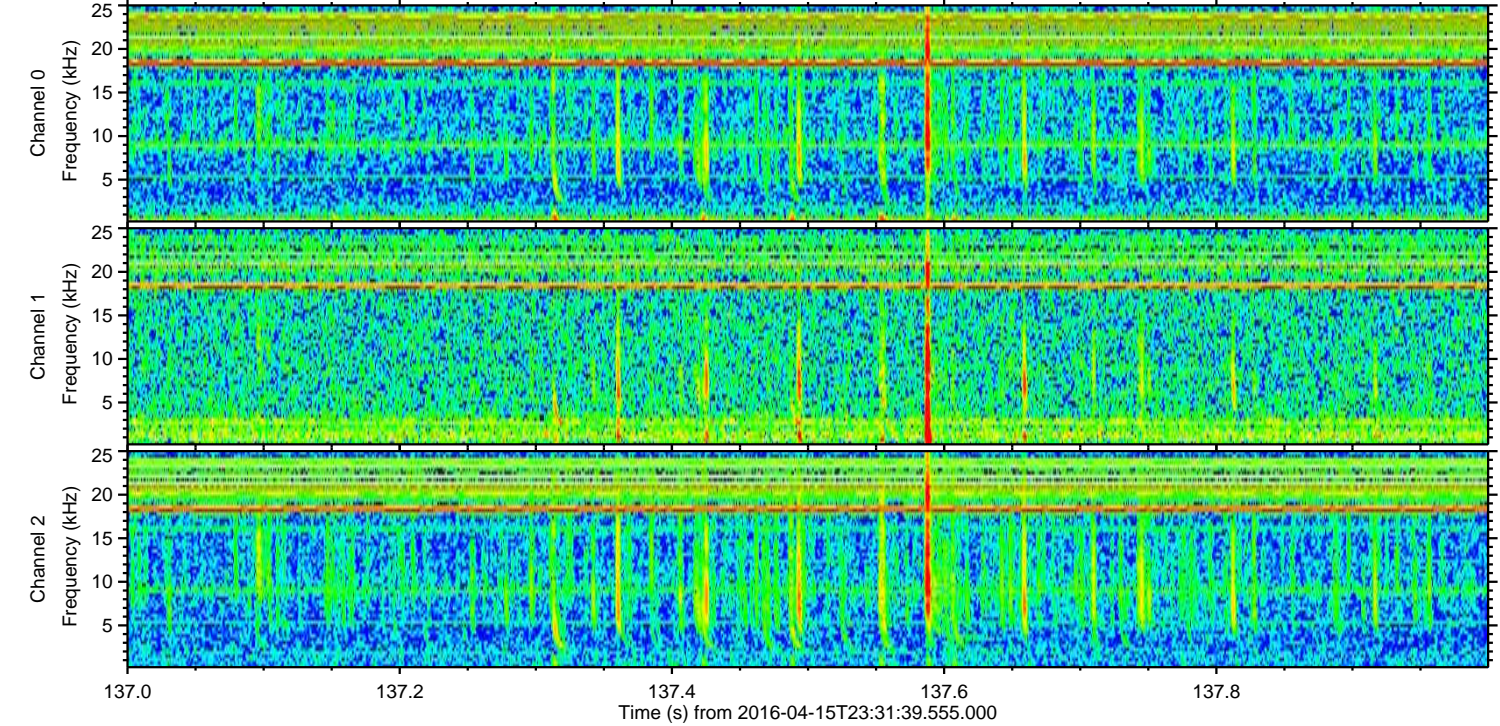
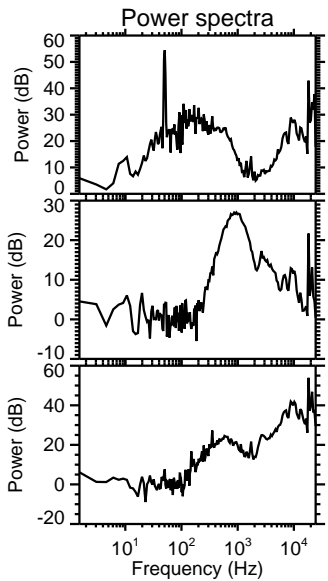
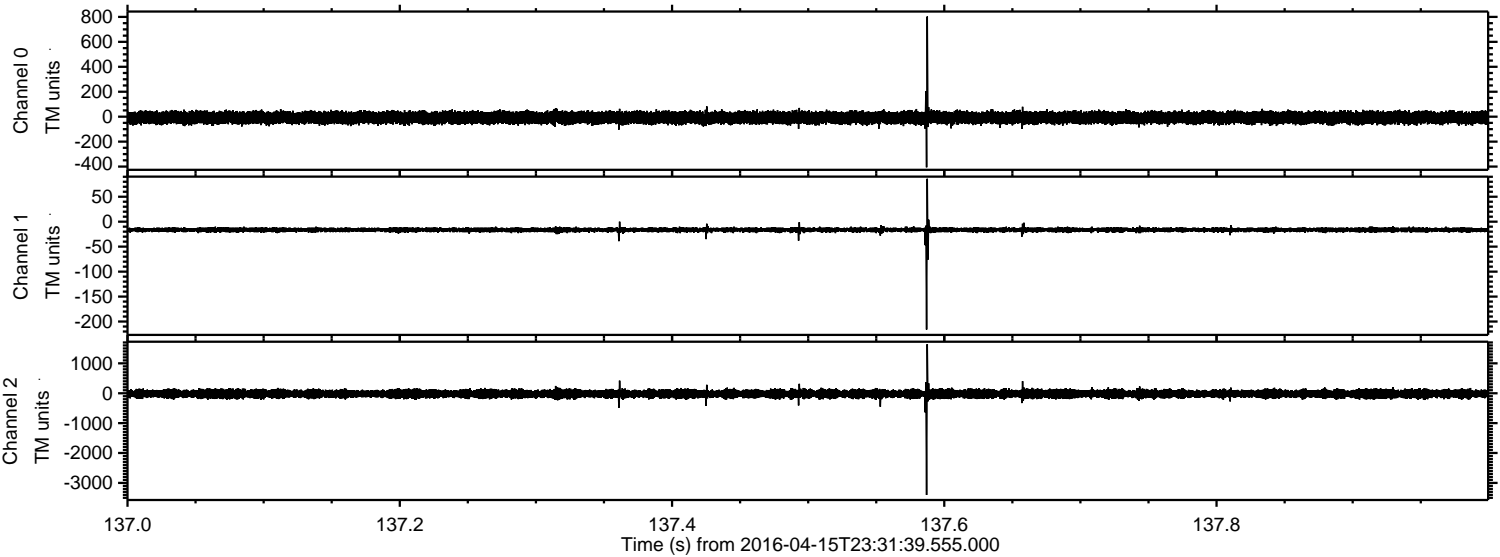
Processed Sun May 8 17:14:51 2016 by ELM ver.2012-10-06 from 001\_\_elm20160415\_233138\_\_dat00.bin





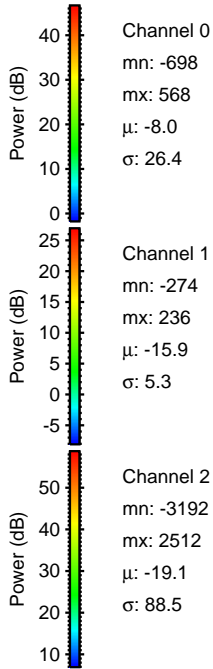
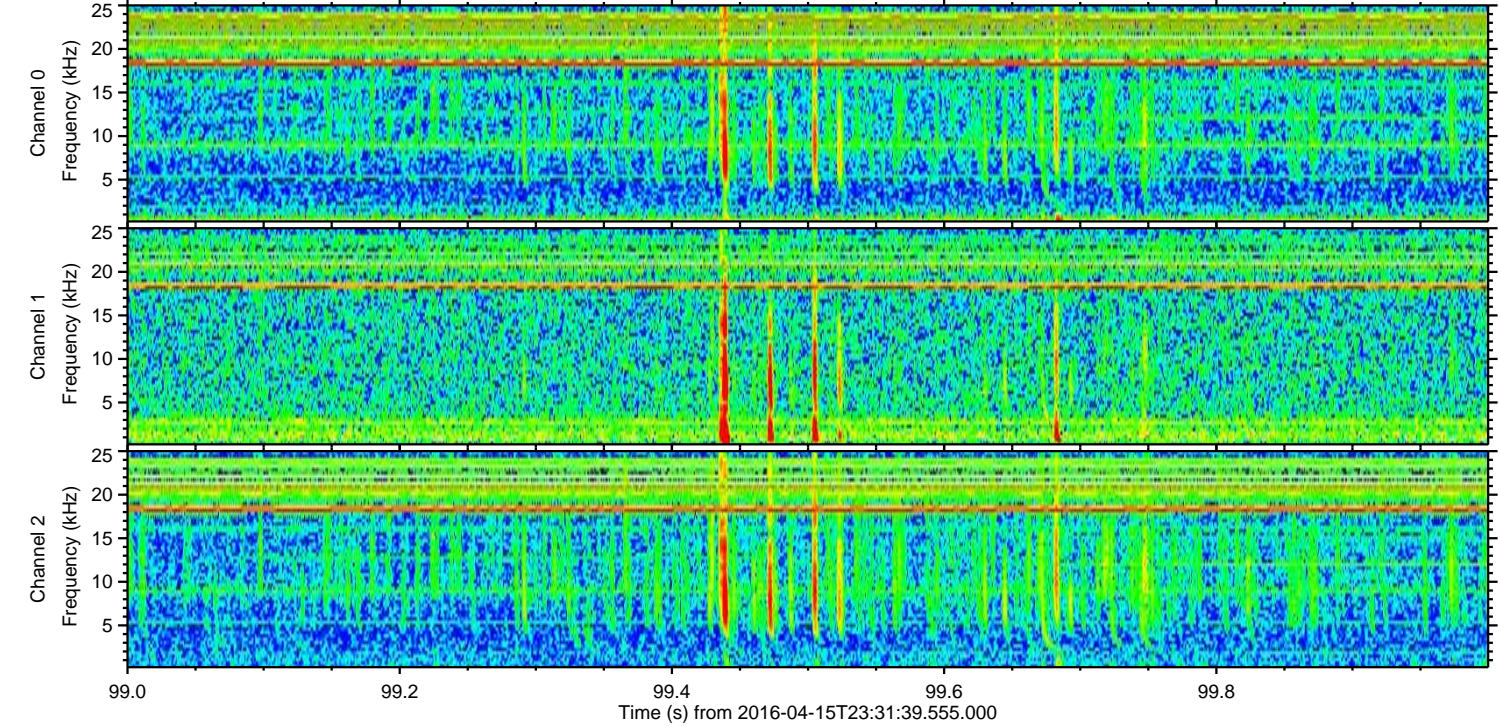
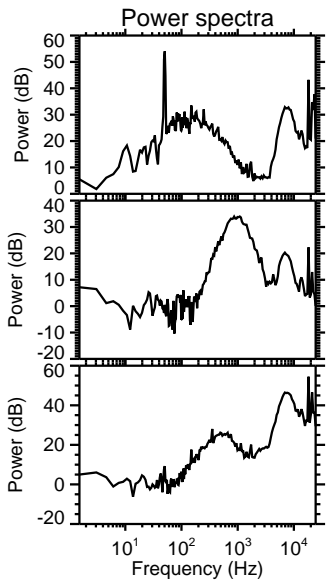
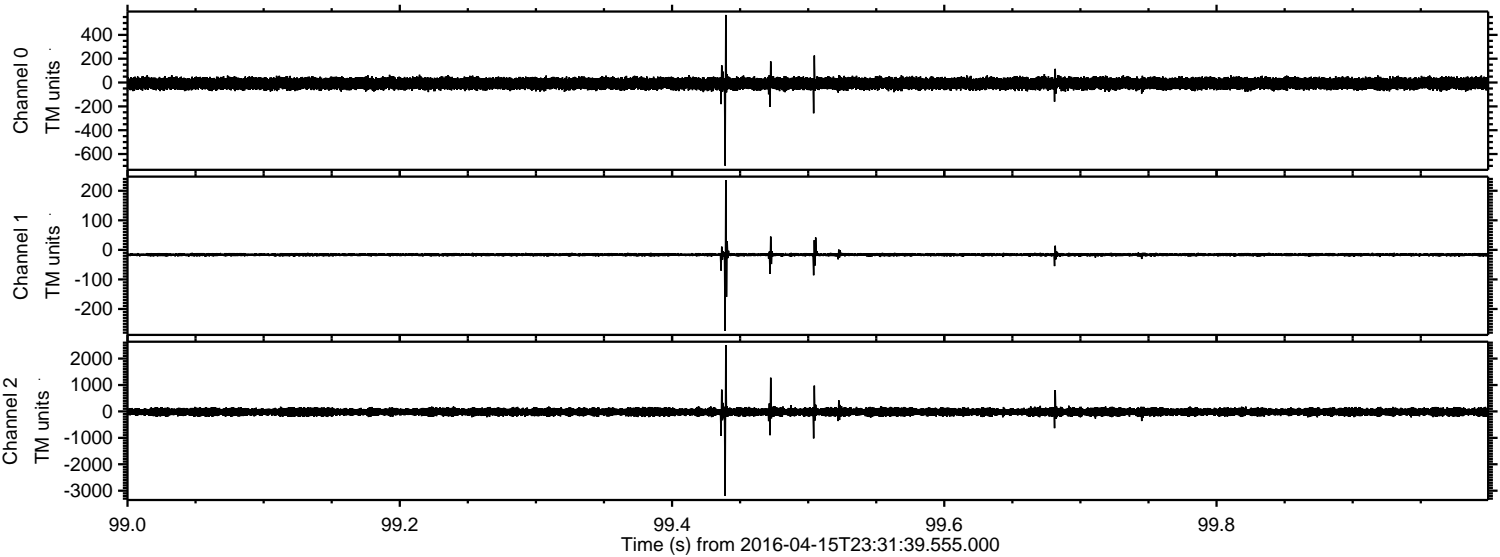
ELMAVAN 3D WAVEFORMS (Measured data sampled at 50 kHz) 51000 packets of 144 samples from 2016-04-15T23:31:39.555.000. Part 138/147

Processed Sun May 8 17:14:52 2016 by ELM ver.2012-10-06 from 001\_\_elm20160415\_233138\_\_dat00.bin



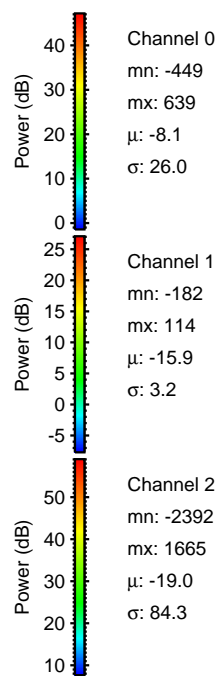
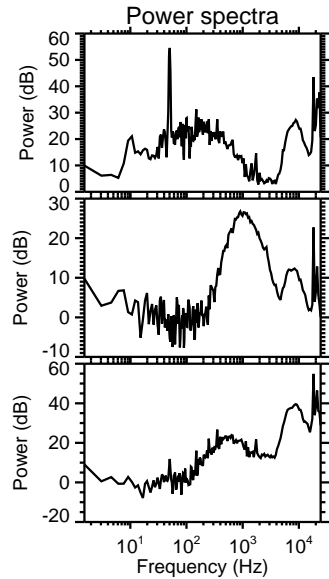
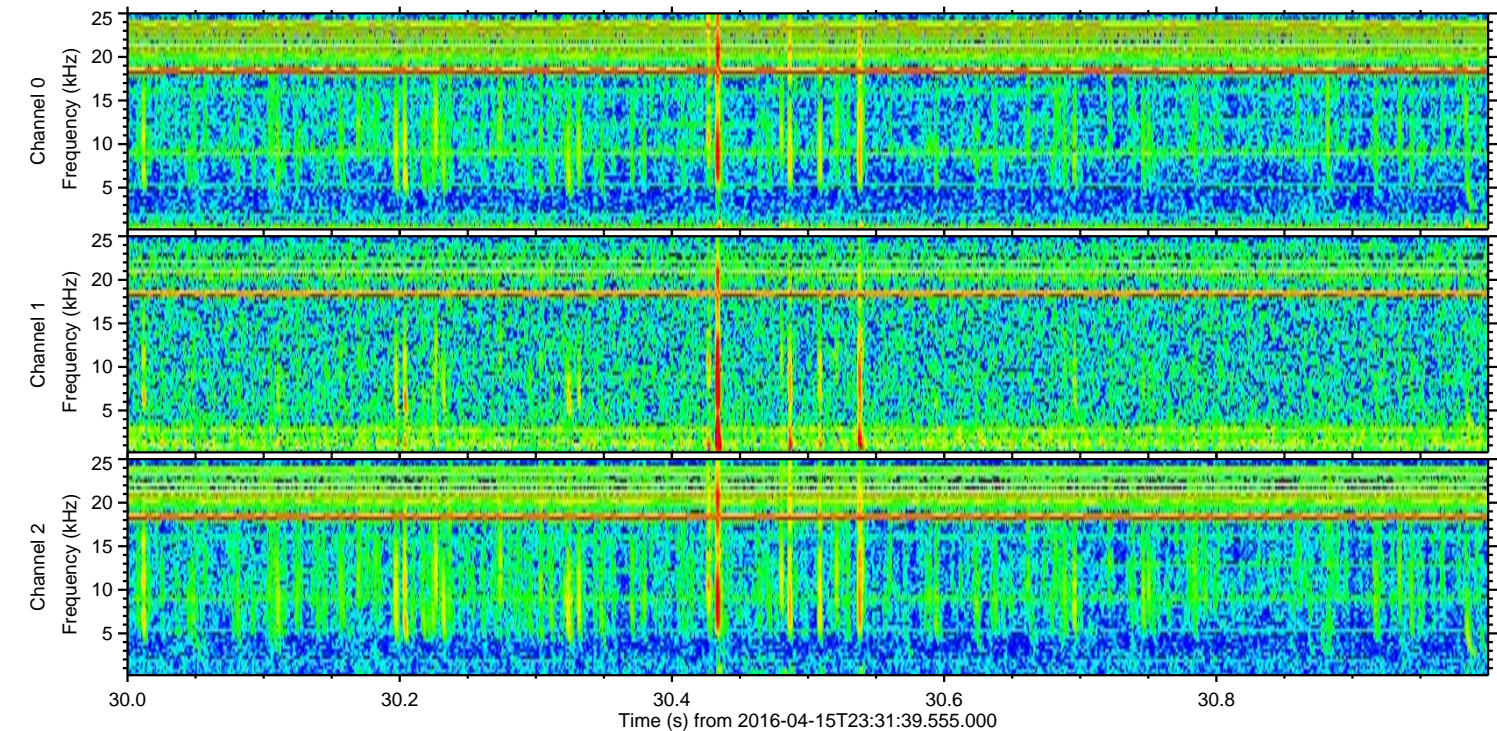
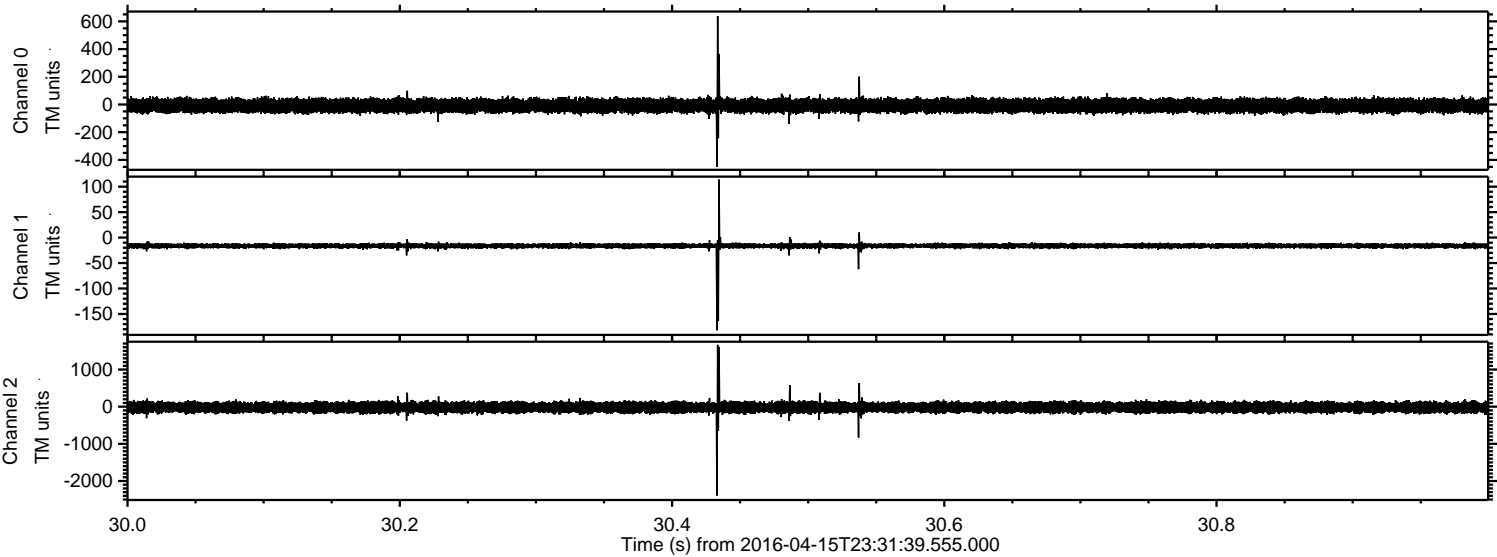


Processed Sun May 8 17:14:53 2016 by ELM ver.2012-10-06 from 001\_\_elm20160415\_233138\_\_dat00.bin



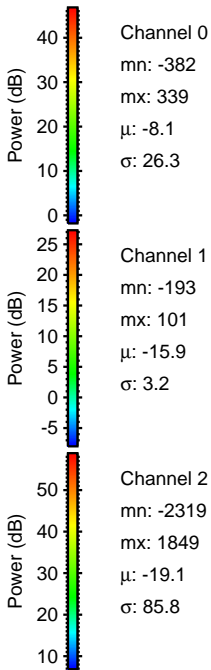
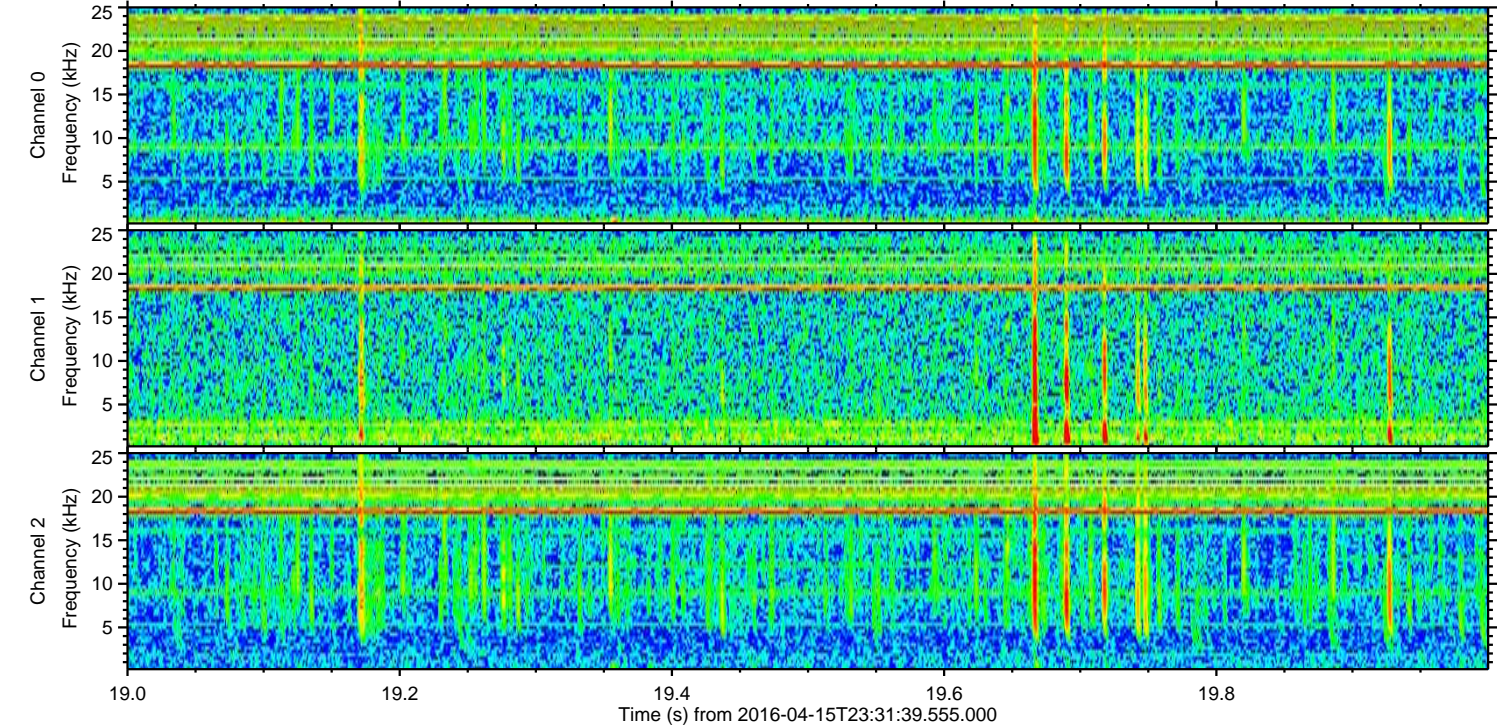
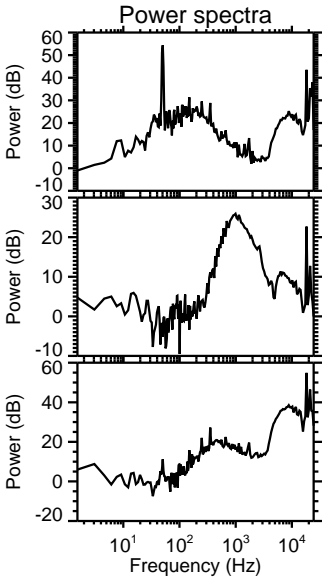
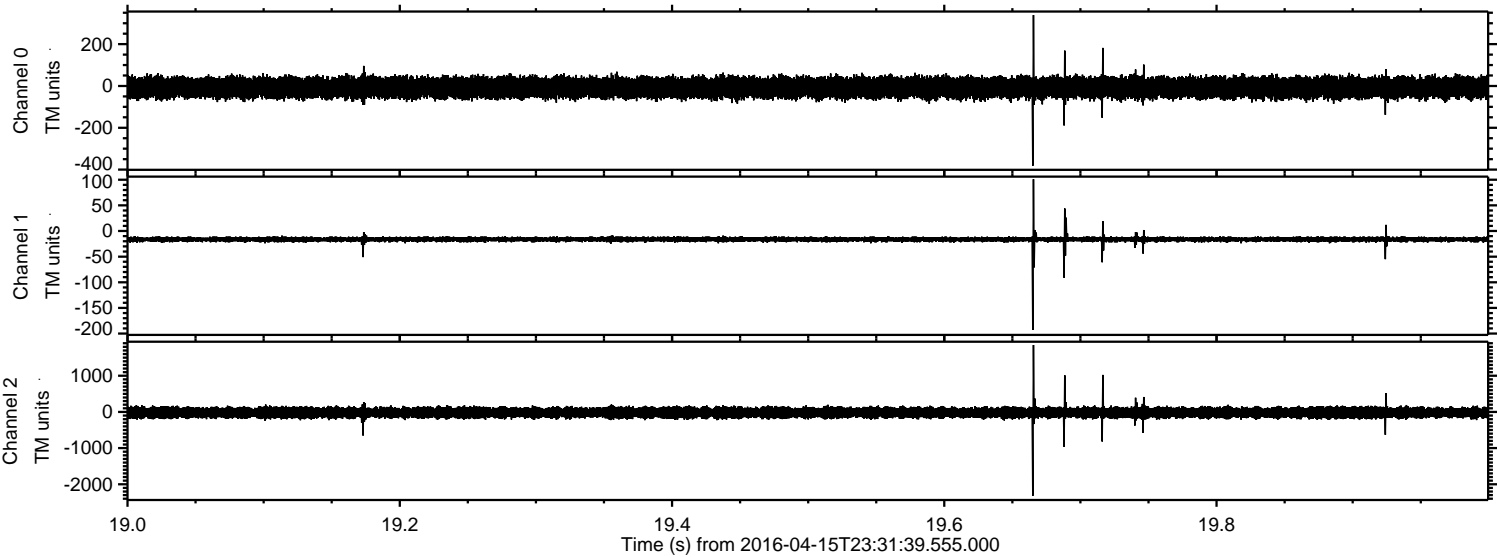


Processed Sun May 8 17:14:53 2016 by ELM ver.2012-10-06 from 001\_\_elm20160415\_233138\_\_dat00.bin





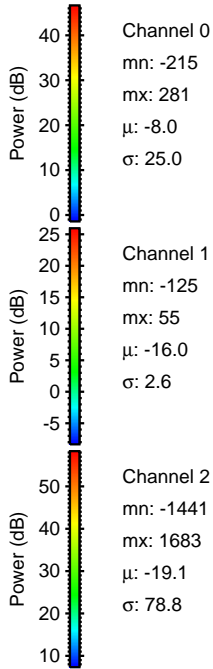
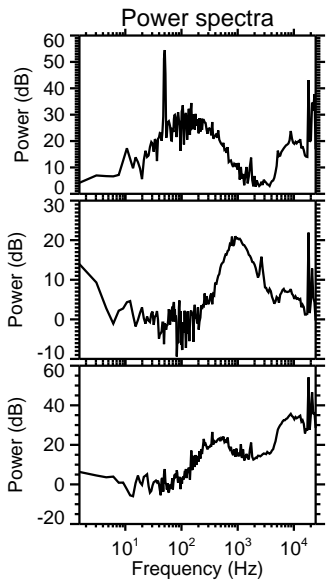
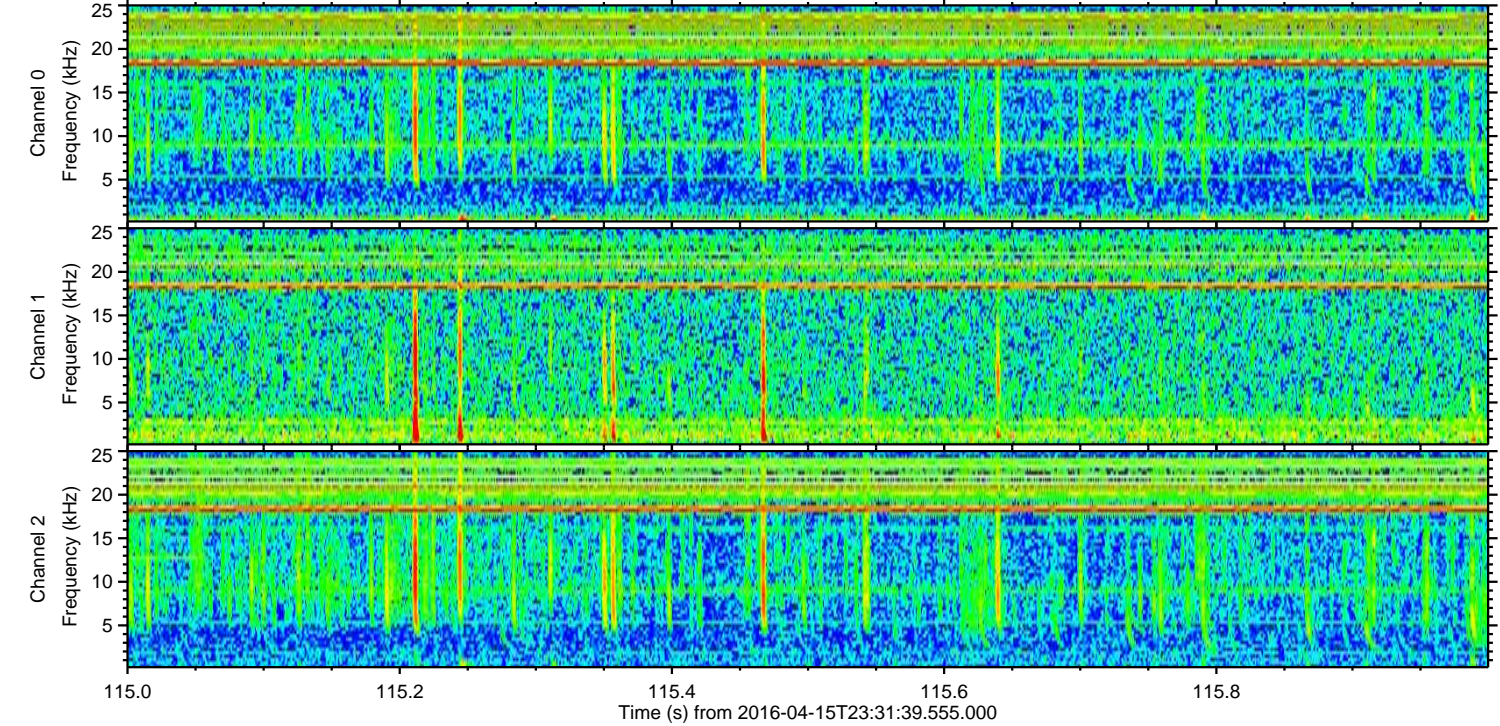
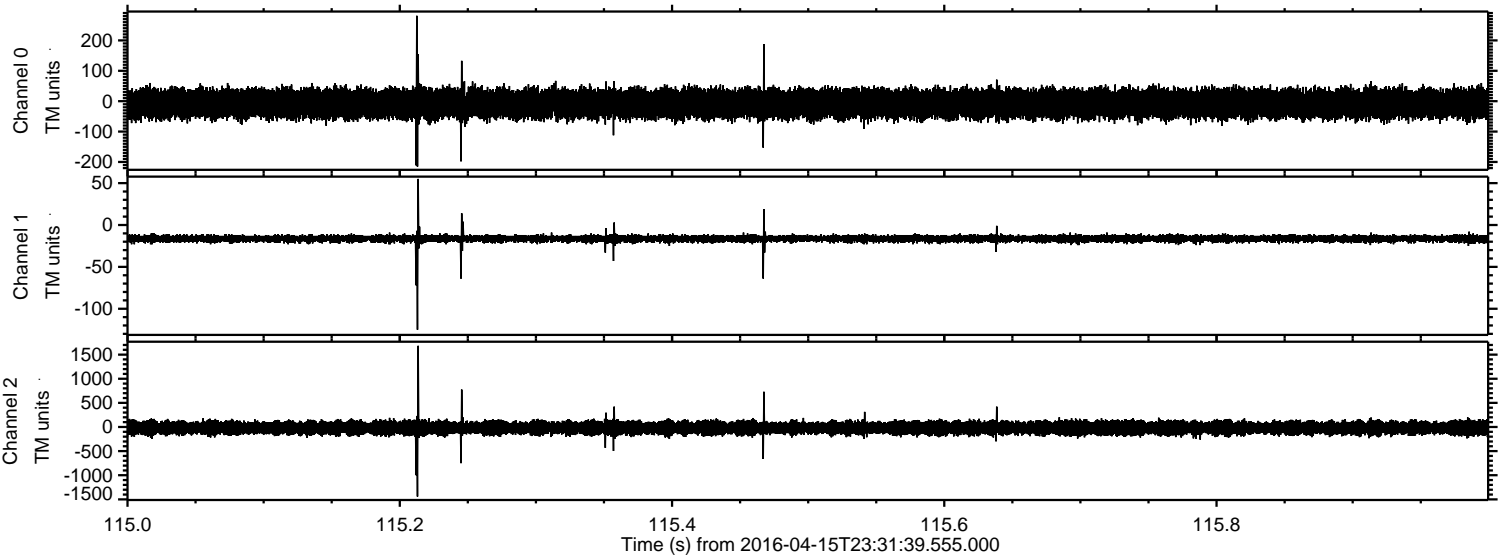
Processed Sun May 8 17:14:54 2016 by ELM ver.2012-10-06 from 001\_\_elm20160415\_233138\_\_dat00.bin





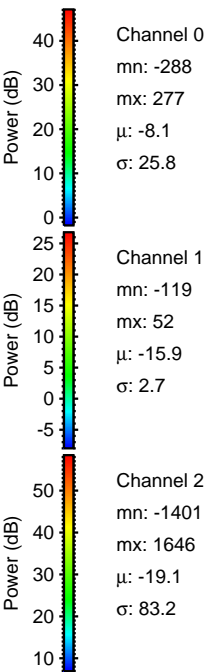
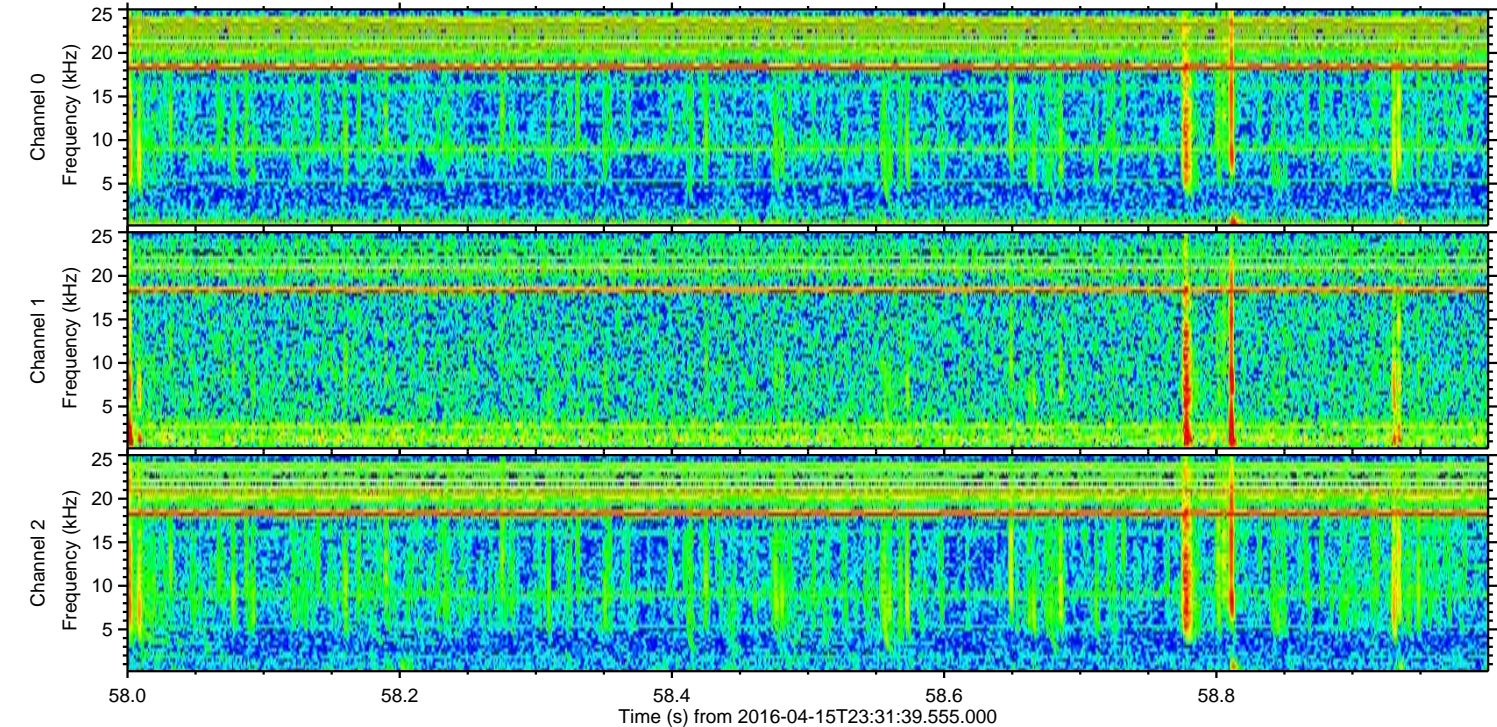
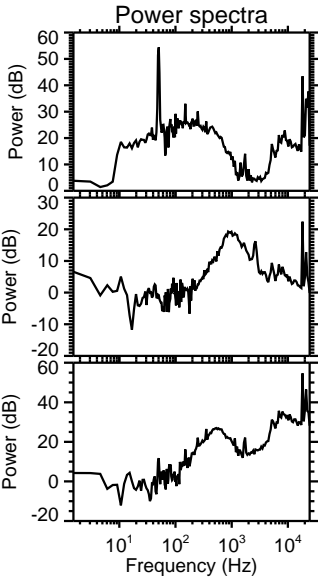
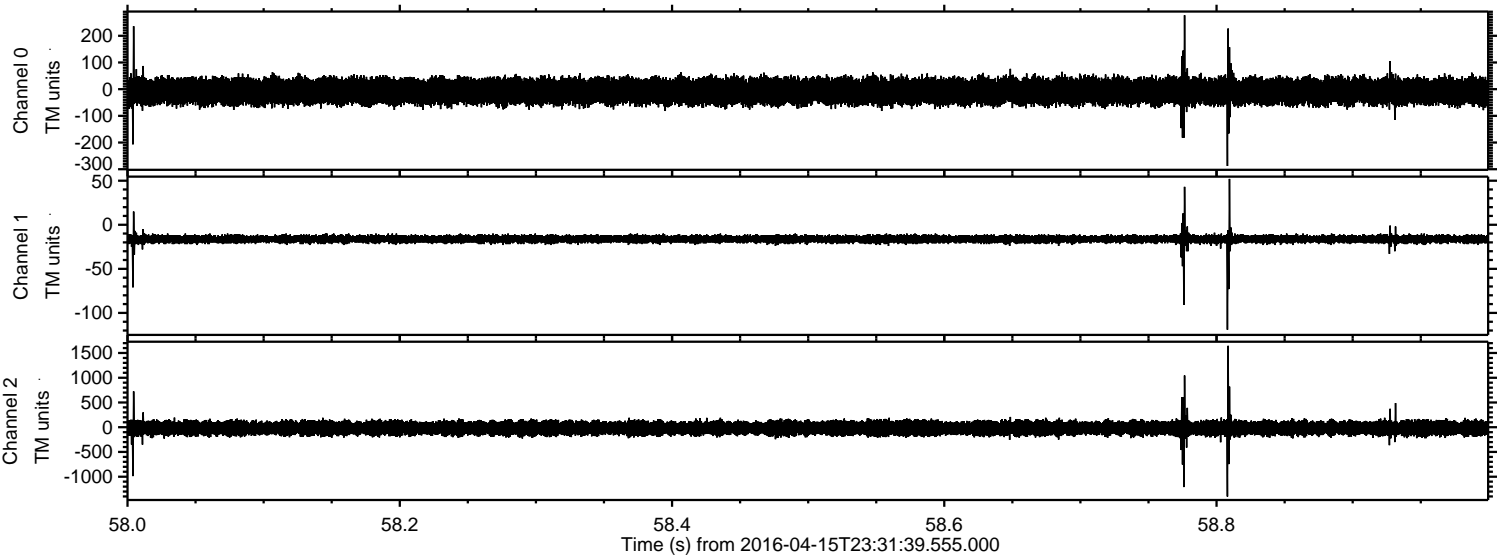
ELMAVAN 3D WAVEFORMS (Measured data sampled at 50 kHz) 51000 packets of 144 samples from 2016-04-15T23:31:39.555.000. Part 116/147

Processed Sun May 8 17:14:55 2016 by ELM ver.2012-10-06 from 001\_\_elm20160415\_233138\_\_dat00.bin



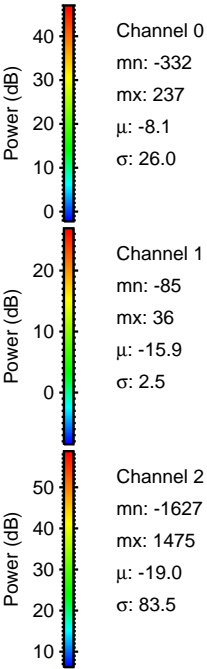
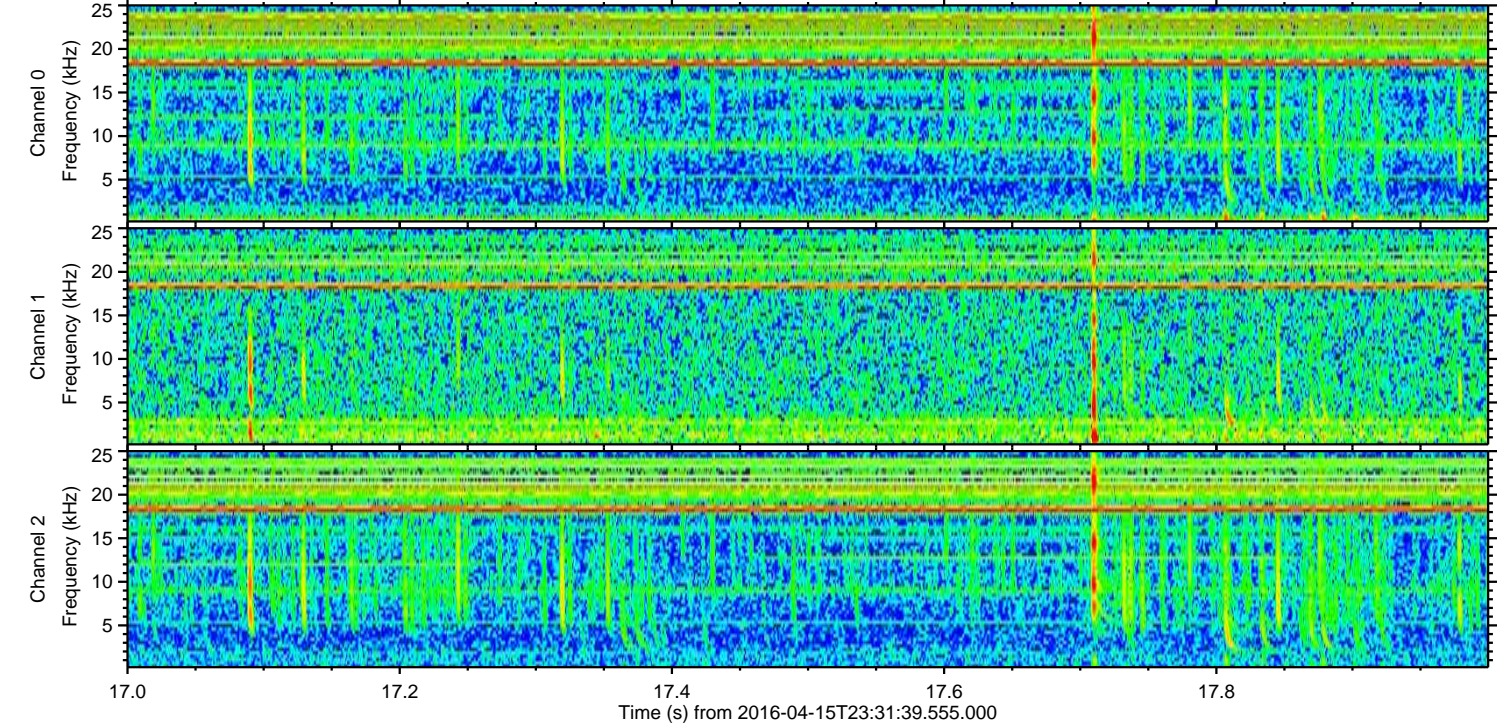
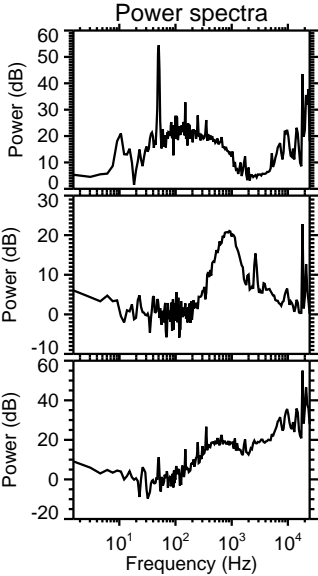
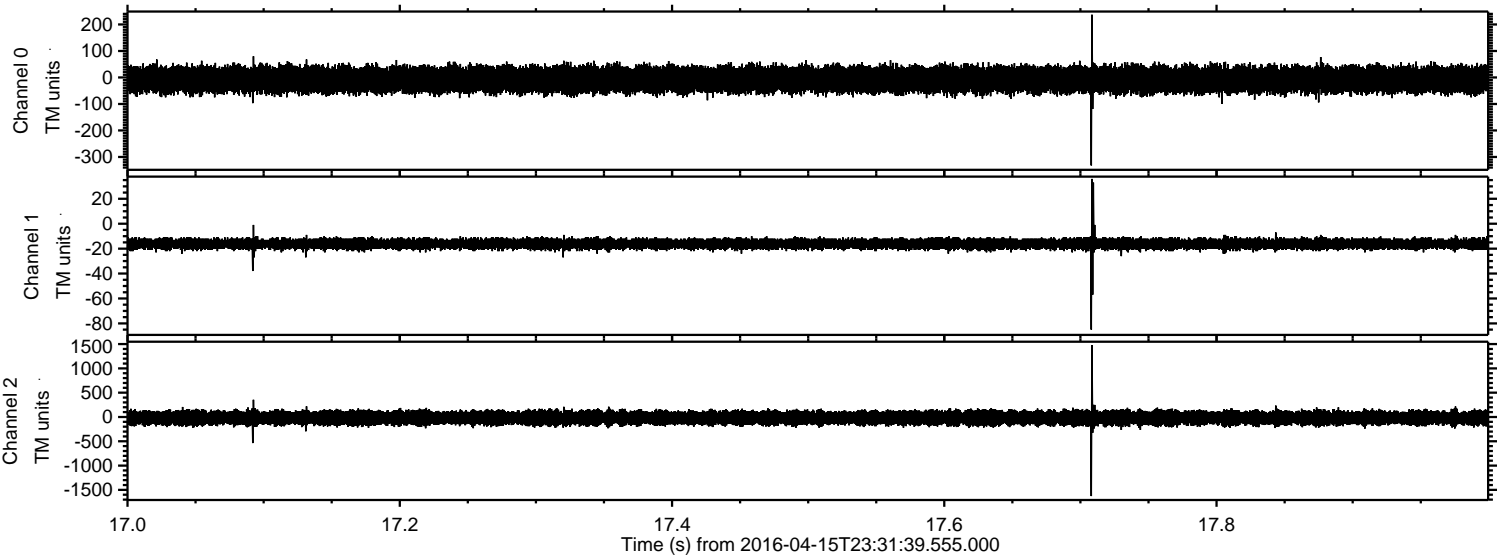


Processed Sun May 8 17:14:56 2016 by ELM ver.2012-10-06 from 001\_\_elm20160415\_233138\_\_dat00.bin





Processed Sun May 8 17:14:57 2016 by ELM ver.2012-10-06 from 001\_\_elm20160415\_233138\_\_dat00.bin



Channel 0  
mn: -332  
mx: 237  
 $\mu$ : -8.1  
 $\sigma$ : 26.0

Channel 1  
mn: -85  
mx: 36  
 $\mu$ : -15.9  
 $\sigma$ : 2.5

Channel 2  
mn: -1627  
mx: 1475  
 $\mu$ : -19.0  
 $\sigma$ : 83.5



Processed Sun May 8 17:14:58 2016 by ELM ver.2012-10-06 from 001\_\_elm20160415\_233138\_\_dat00.bin

