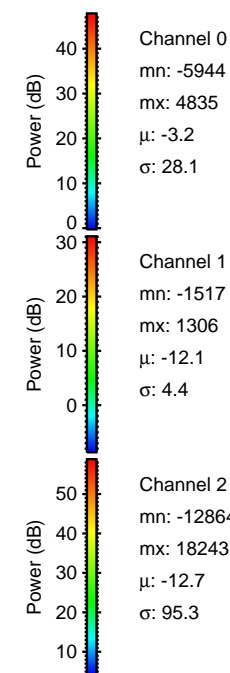
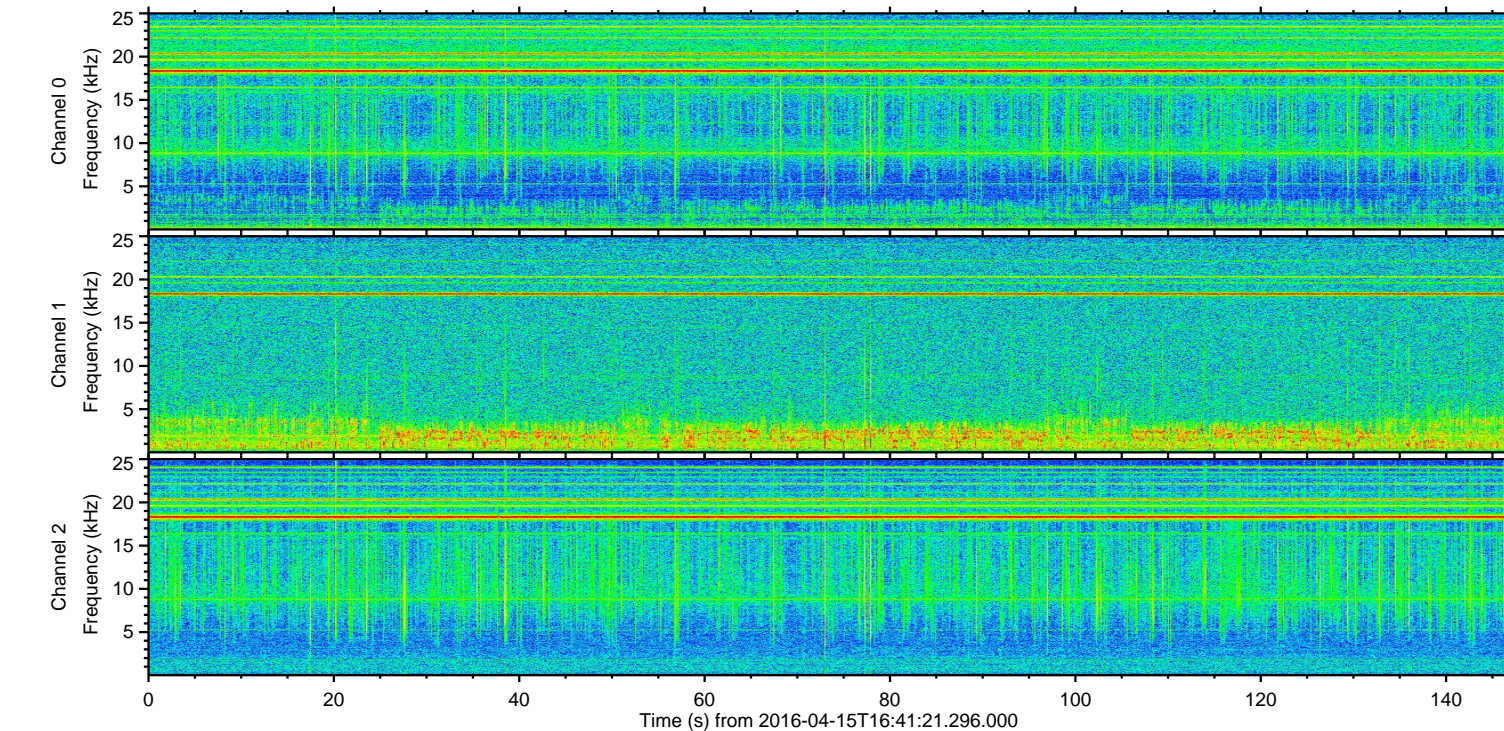
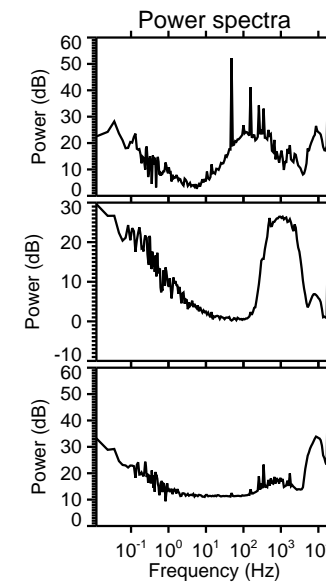
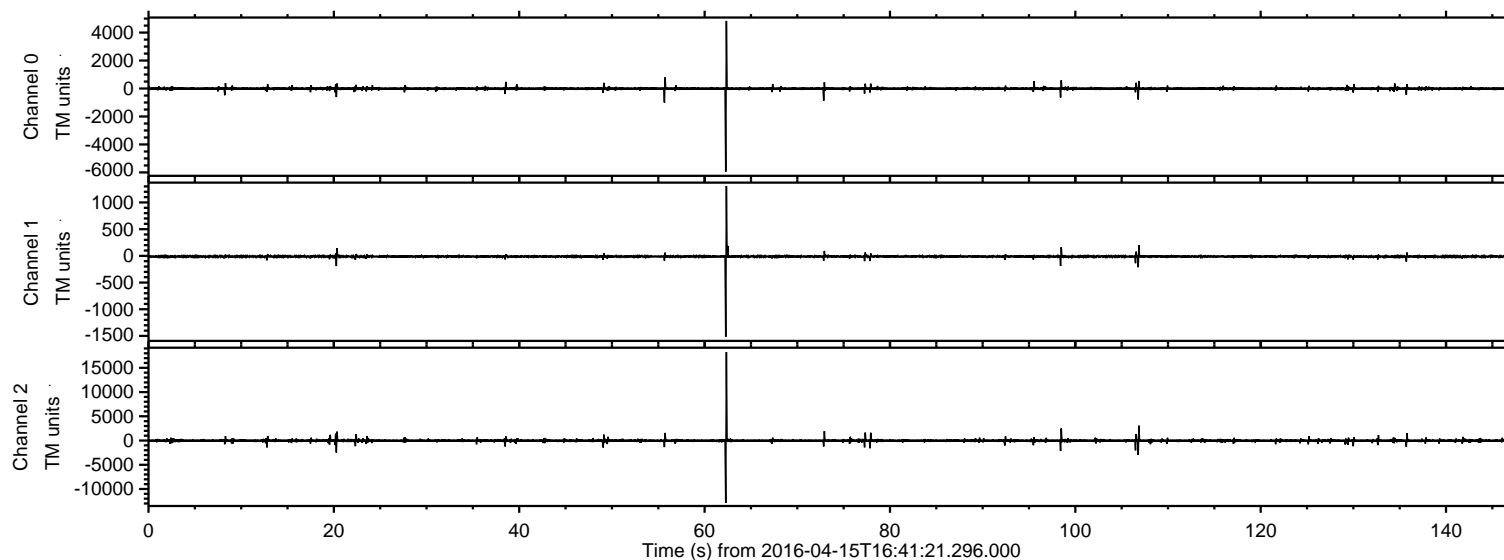
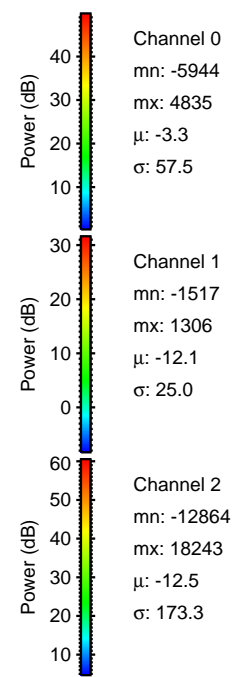
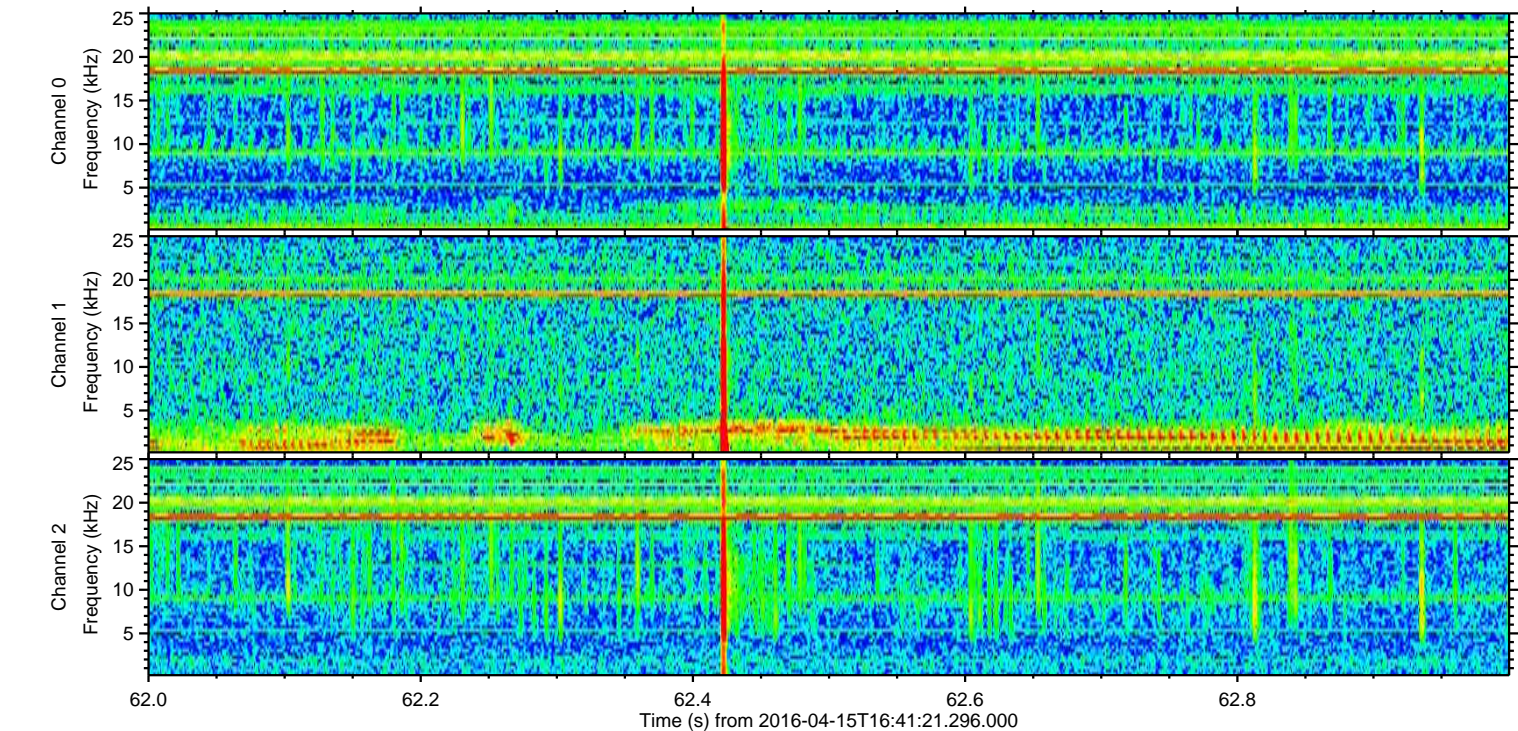
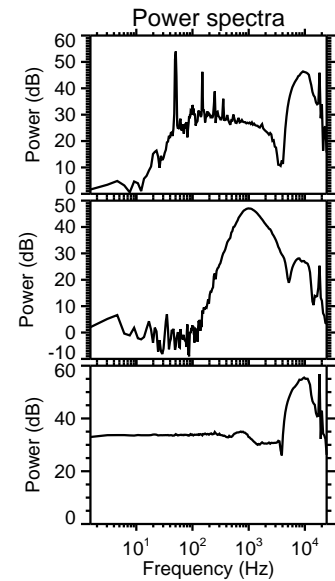
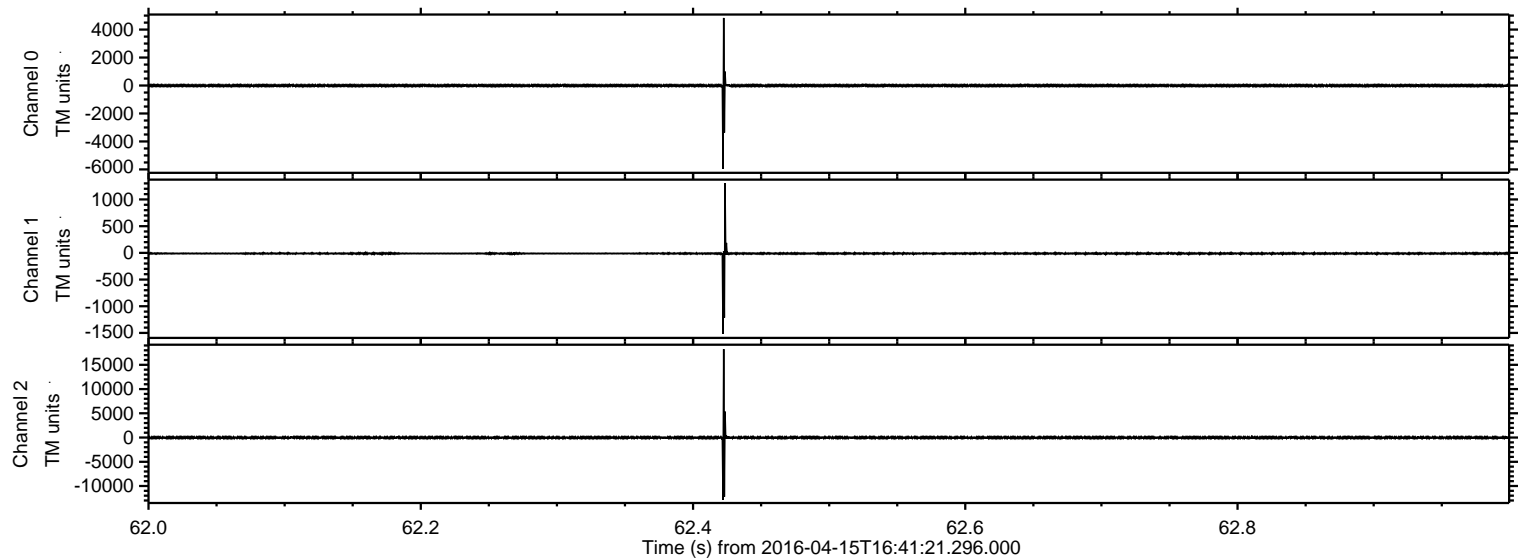


ELMAVAN 3D WAVEFORMS (Measured data sampled at 50 kHz) 51000 packets of 144 samples from 2016-04-15T16:41:21.296.000.

Processed Sun May 8 15:49:03 2016 by ELM ver.2012-10-06 from 001__elm20160415_164120__dat00.bin

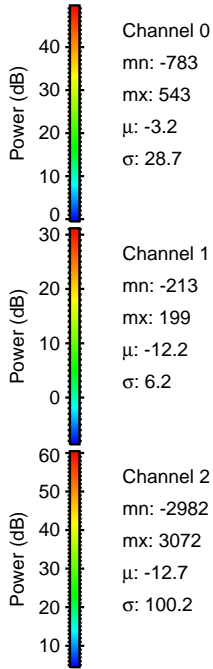
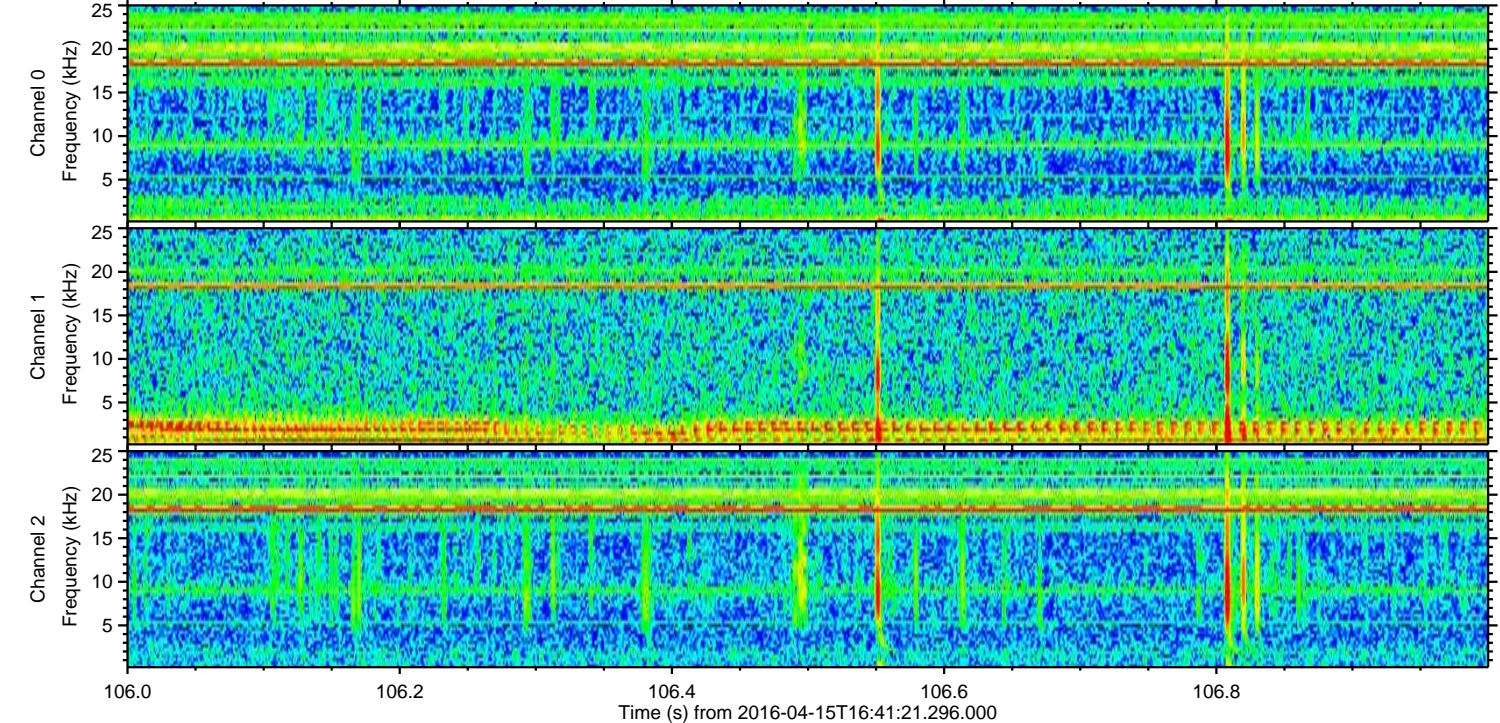
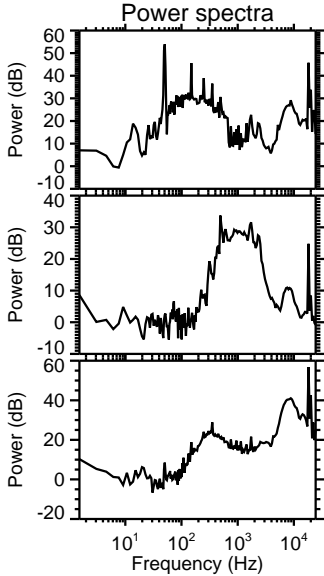
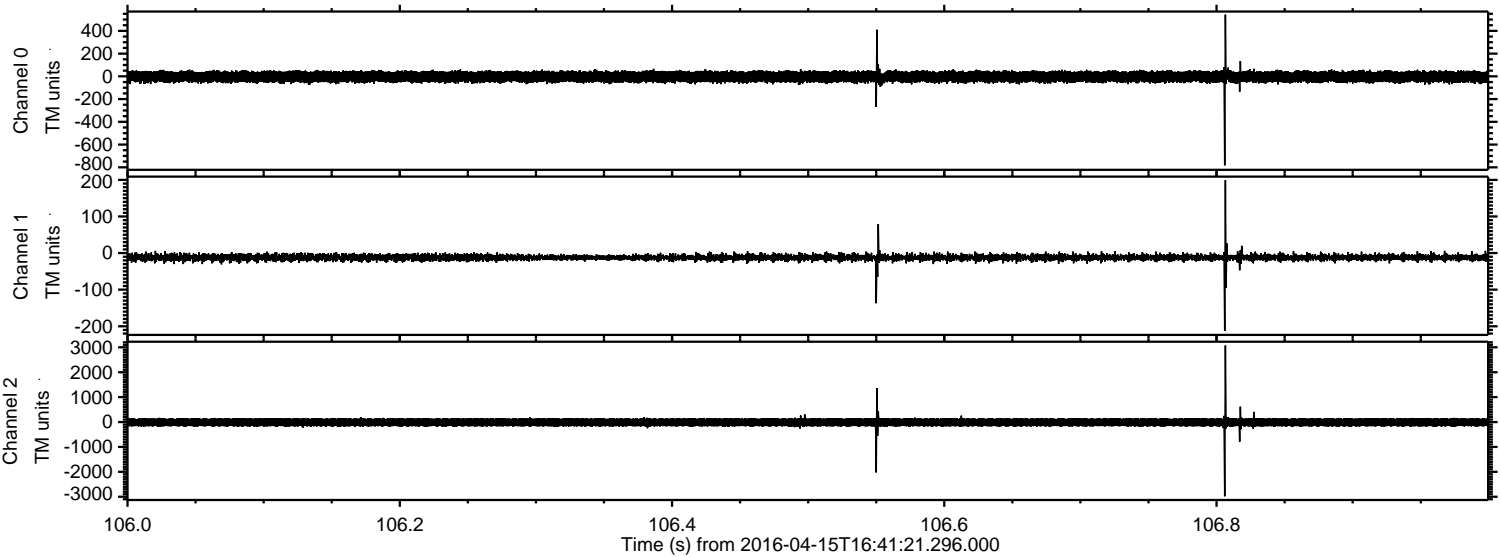


Processed Sun May 8 15:49:14 2016 by ELM ver.2012-10-06 from 001__elm20160415_164120__dat00.bin

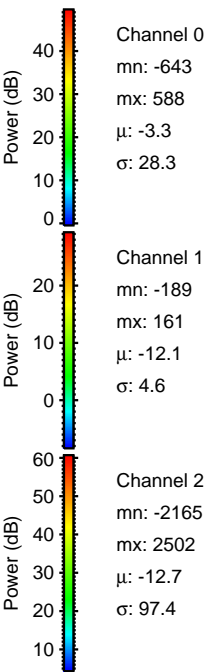
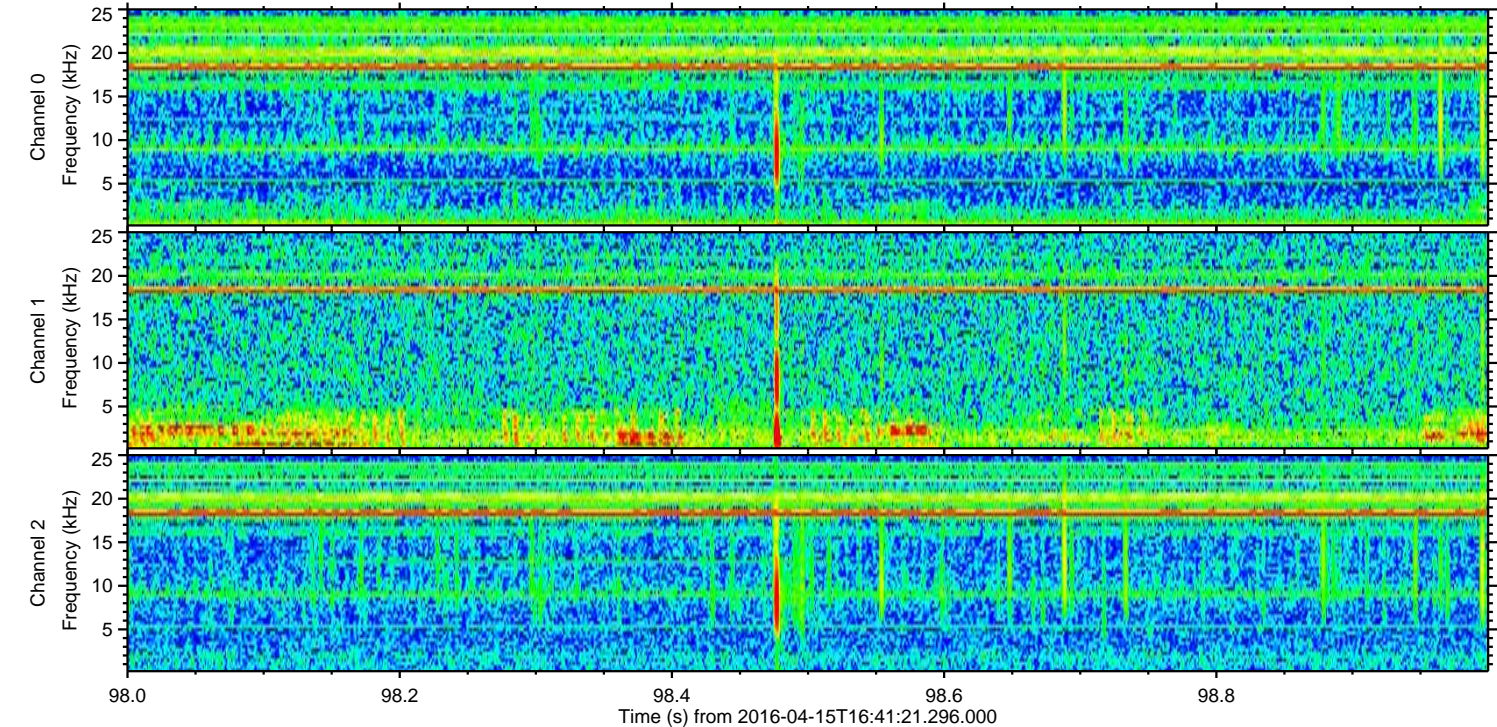
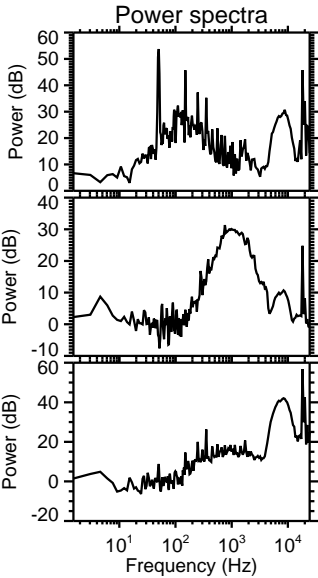
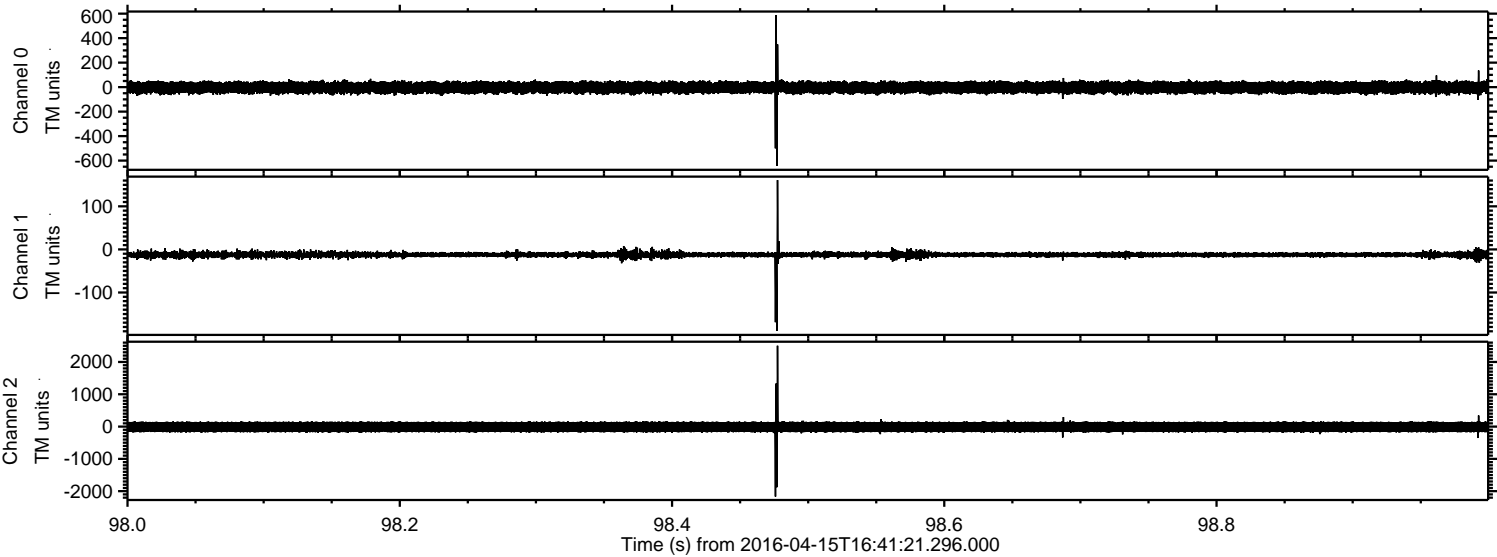


ELMAVAN 3D WAVEFORMS (Measured data sampled at 50 kHz) 51000 packets of 144 samples from 2016-04-15T16:41:21.296.000. Part 107/147

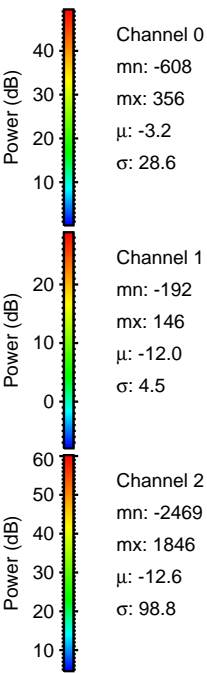
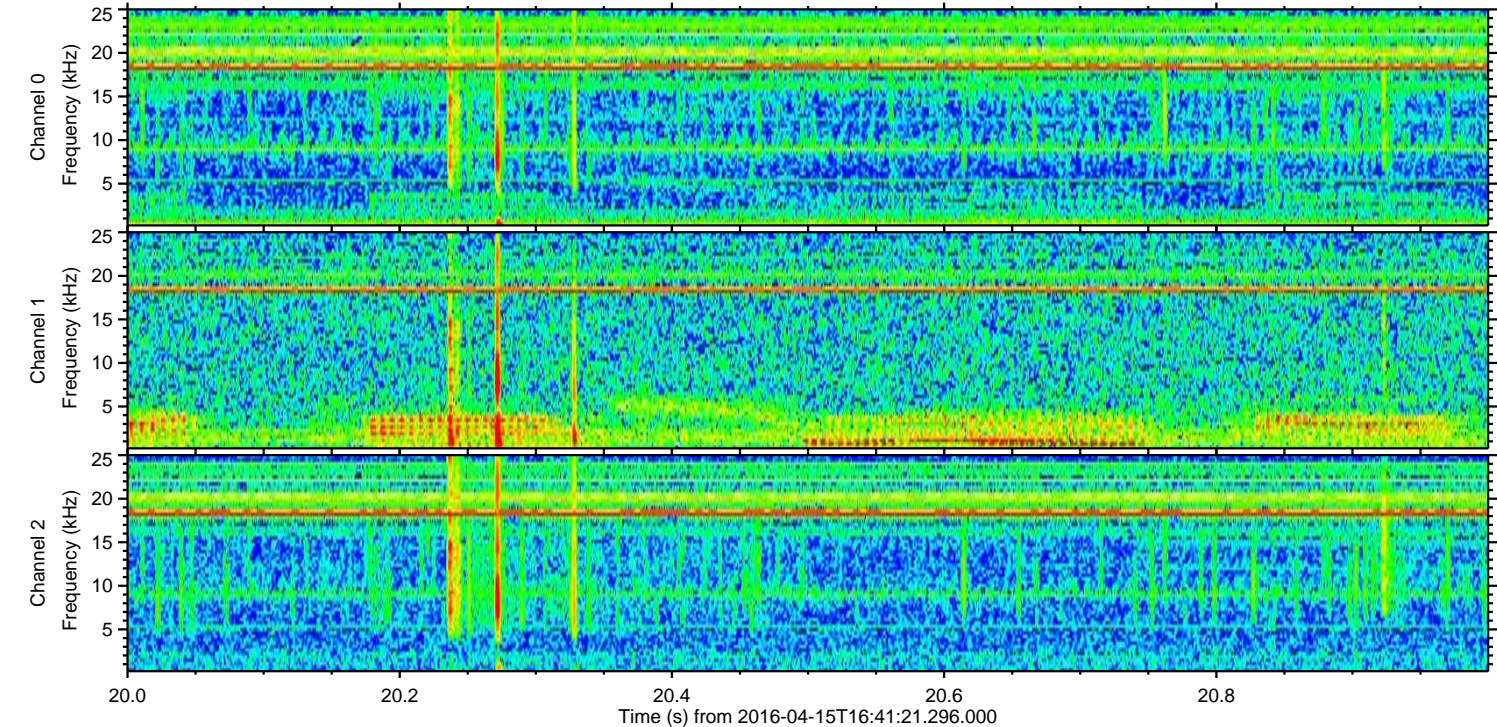
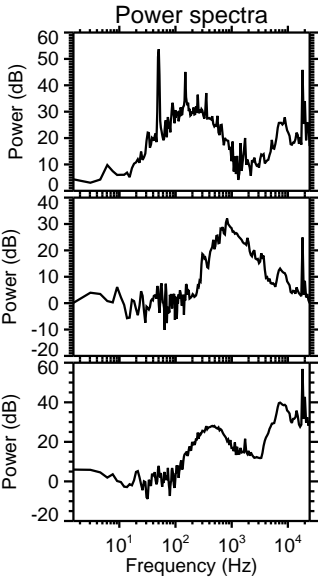
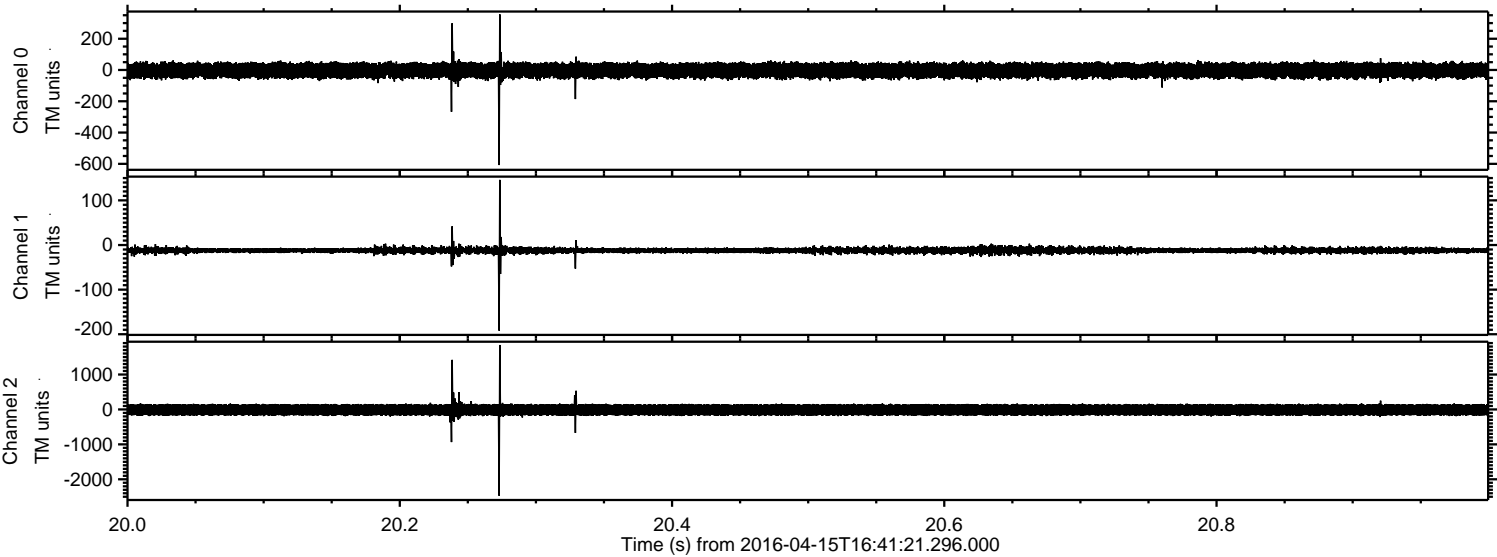
Processed Sun May 8 15:49:15 2016 by ELM ver.2012-10-06 from 001__elm20160415_164120__dat00.bin



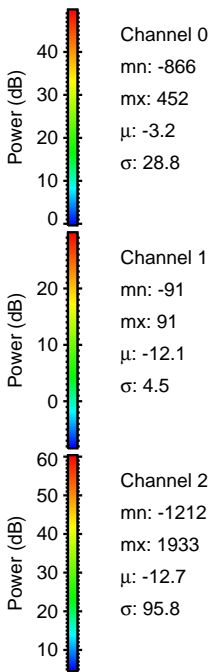
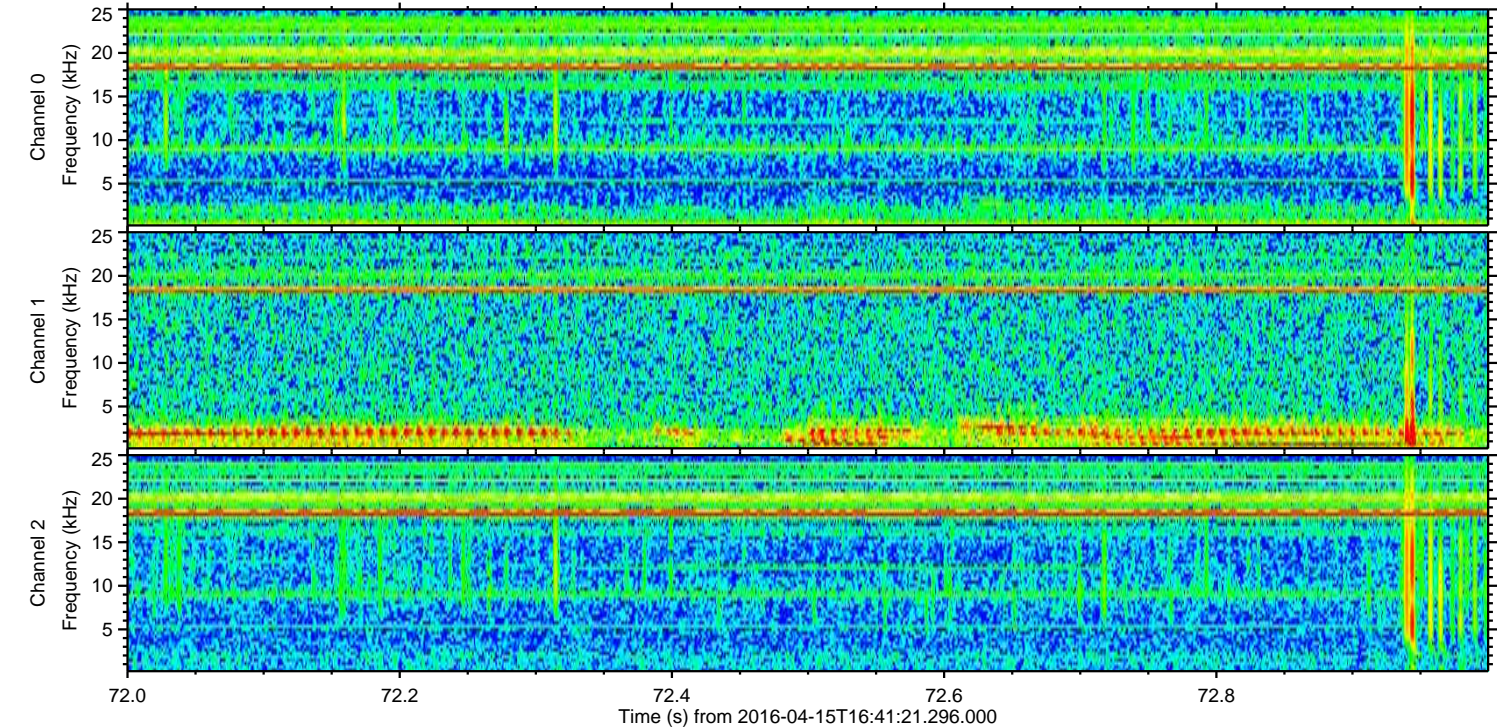
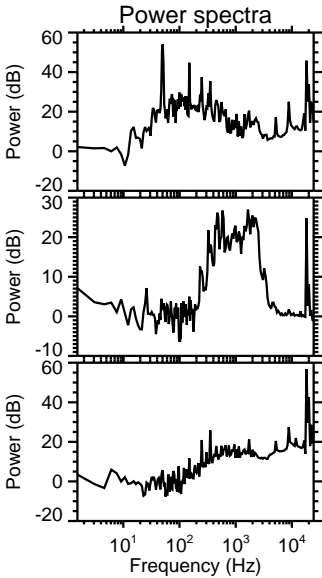
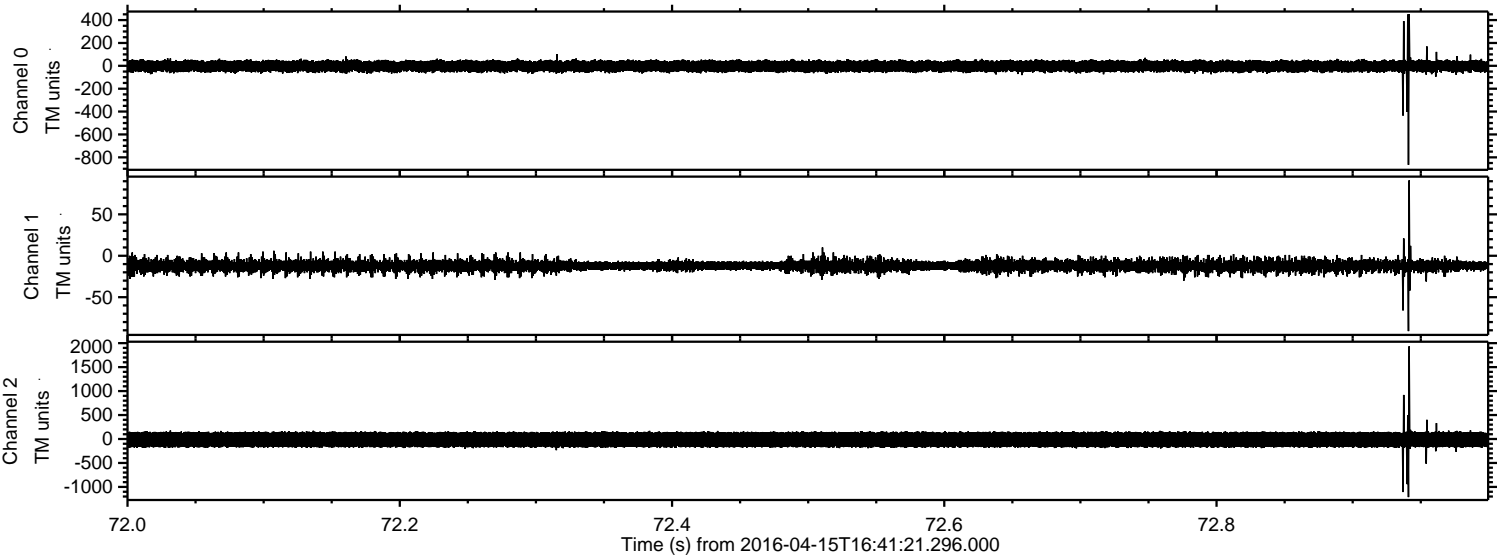
Processed Sun May 8 15:49:16 2016 by ELM ver.2012-10-06 from 001__elm20160415_164120__dat00.bin



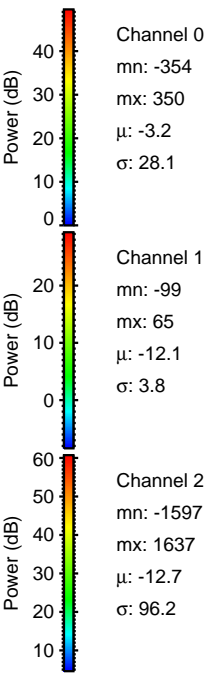
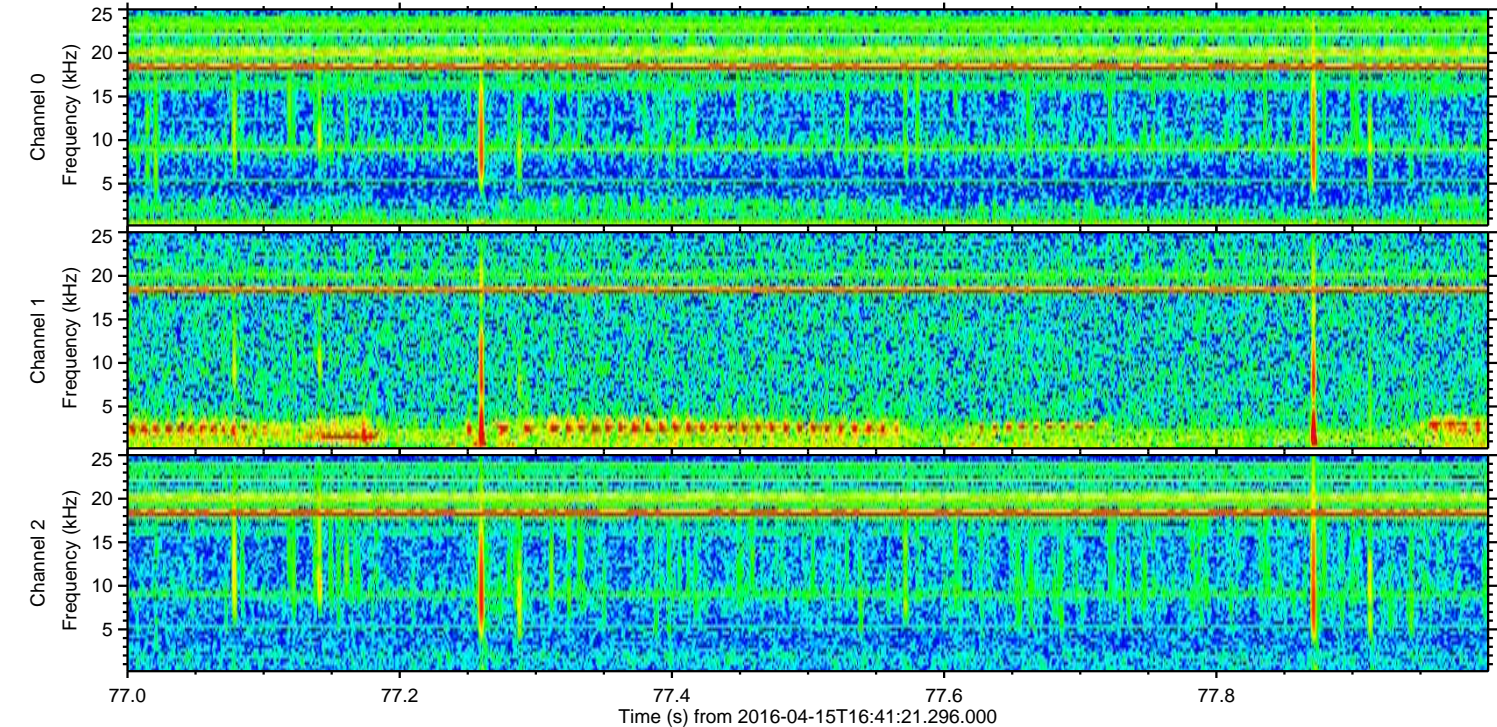
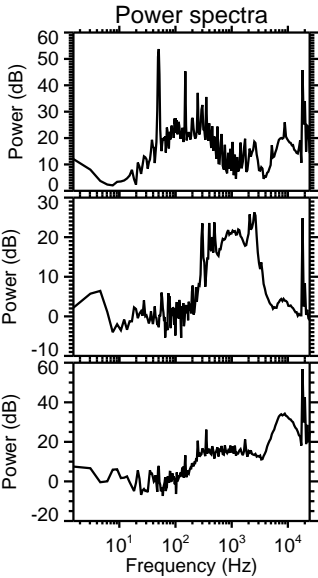
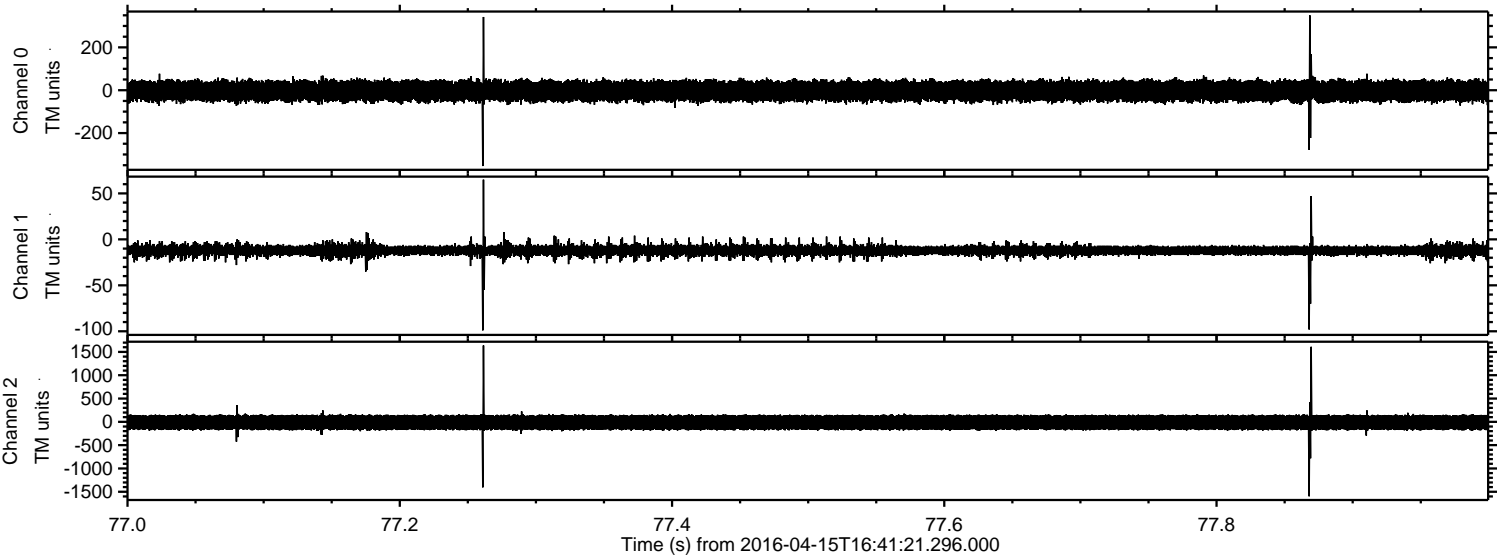
Processed Sun May 8 15:49:17 2016 by ELM ver.2012-10-06 from 001__elm20160415_164120__dat00.bin



Processed Sun May 8 15:49:18 2016 by ELM ver.2012-10-06 from 001__elm20160415_164120__dat00.bin

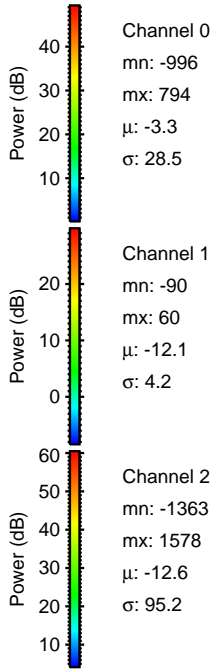
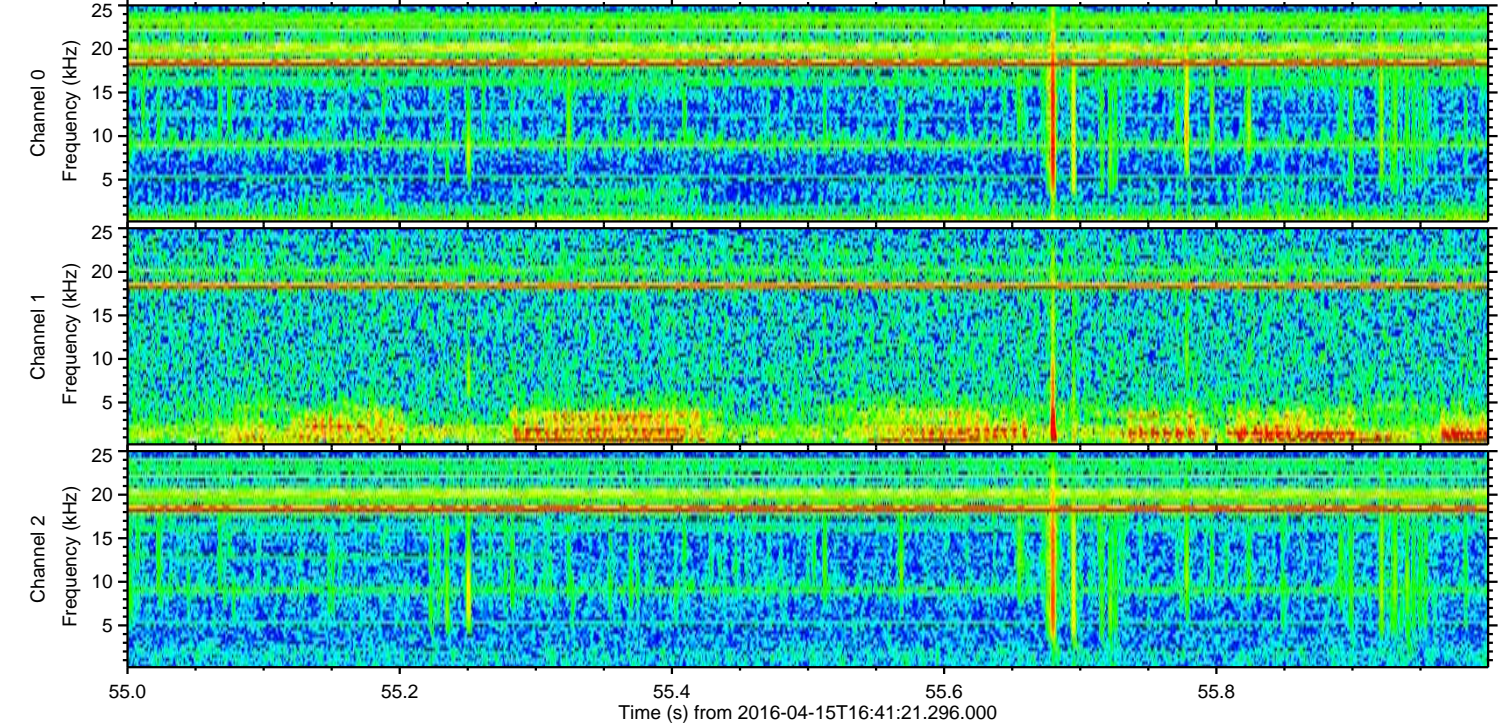
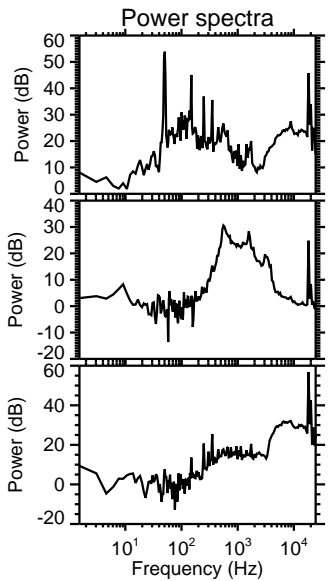
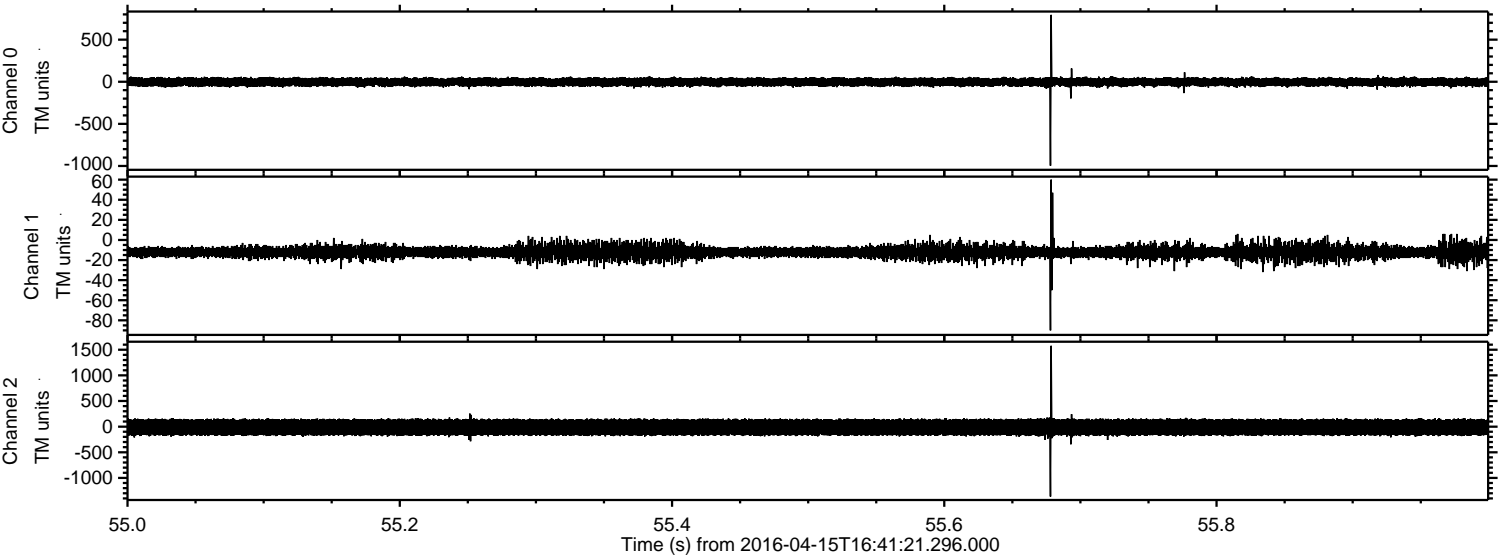


Processed Sun May 8 15:49:19 2016 by ELM ver.2012-10-06 from 001__elm20160415_164120__dat00.bin



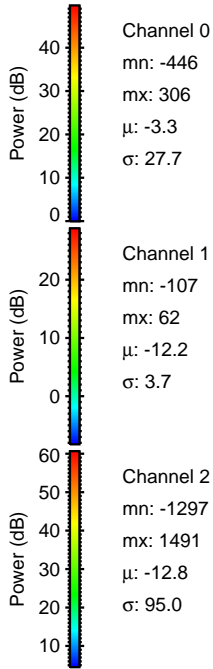
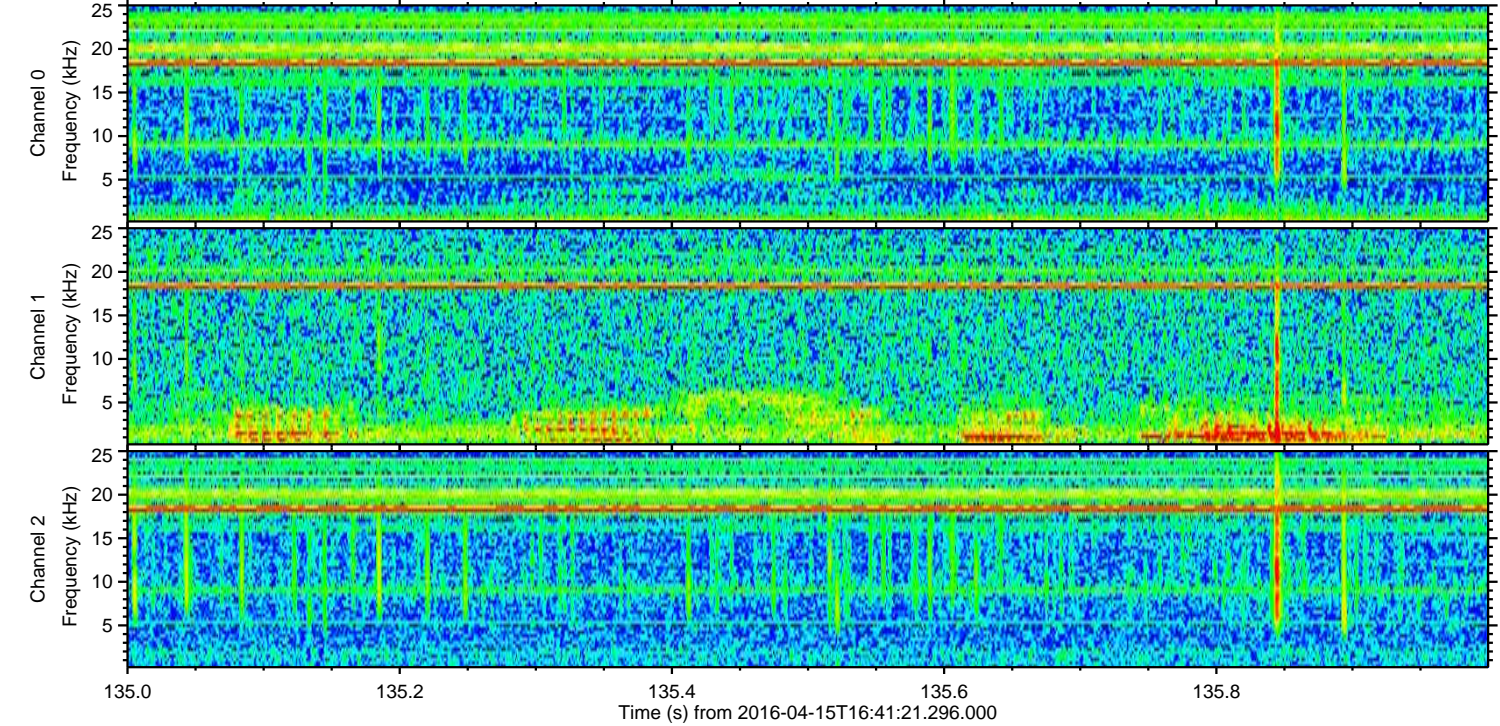
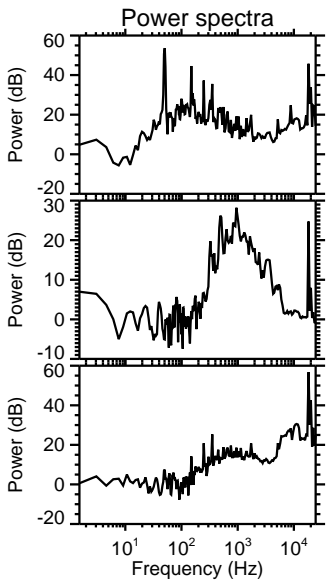
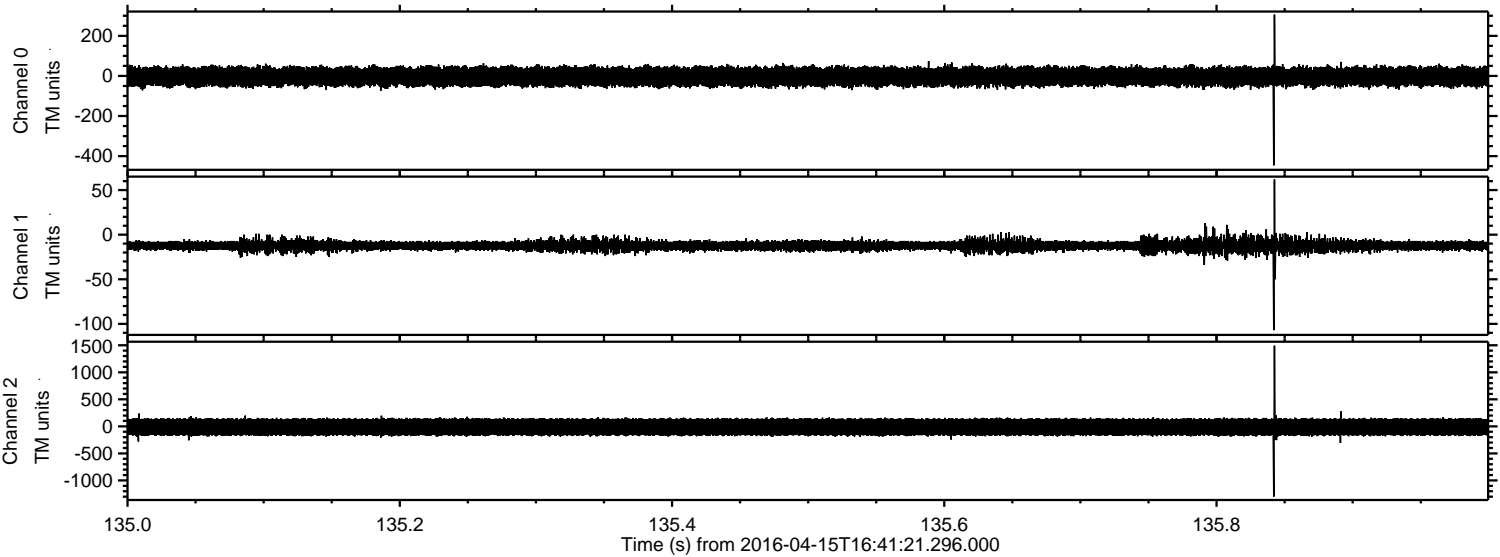
ELMAVAN 3D WAVEFORMS (Measured data sampled at 50 kHz) 51000 packets of 144 samples from 2016-04-15T16:41:21.296.000. Part 56/147

Processed Sun May 8 15:49:20 2016 by ELM ver.2012-10-06 from 001__elm20160415_164120__dat00.bin



ELMAVAN 3D WAVEFORMS (Measured data sampled at 50 kHz) 51000 packets of 144 samples from 2016-04-15T16:41:21.296.000. Part 136/147

Processed Sun May 8 15:49:21 2016 by ELM ver.2012-10-06 from 001__elm20160415_164120__dat00.bin

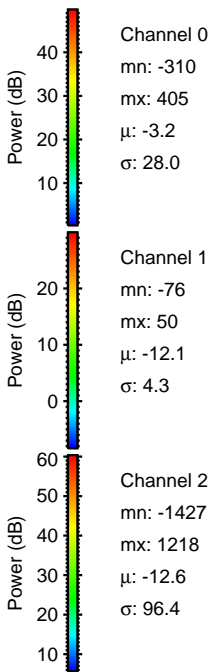
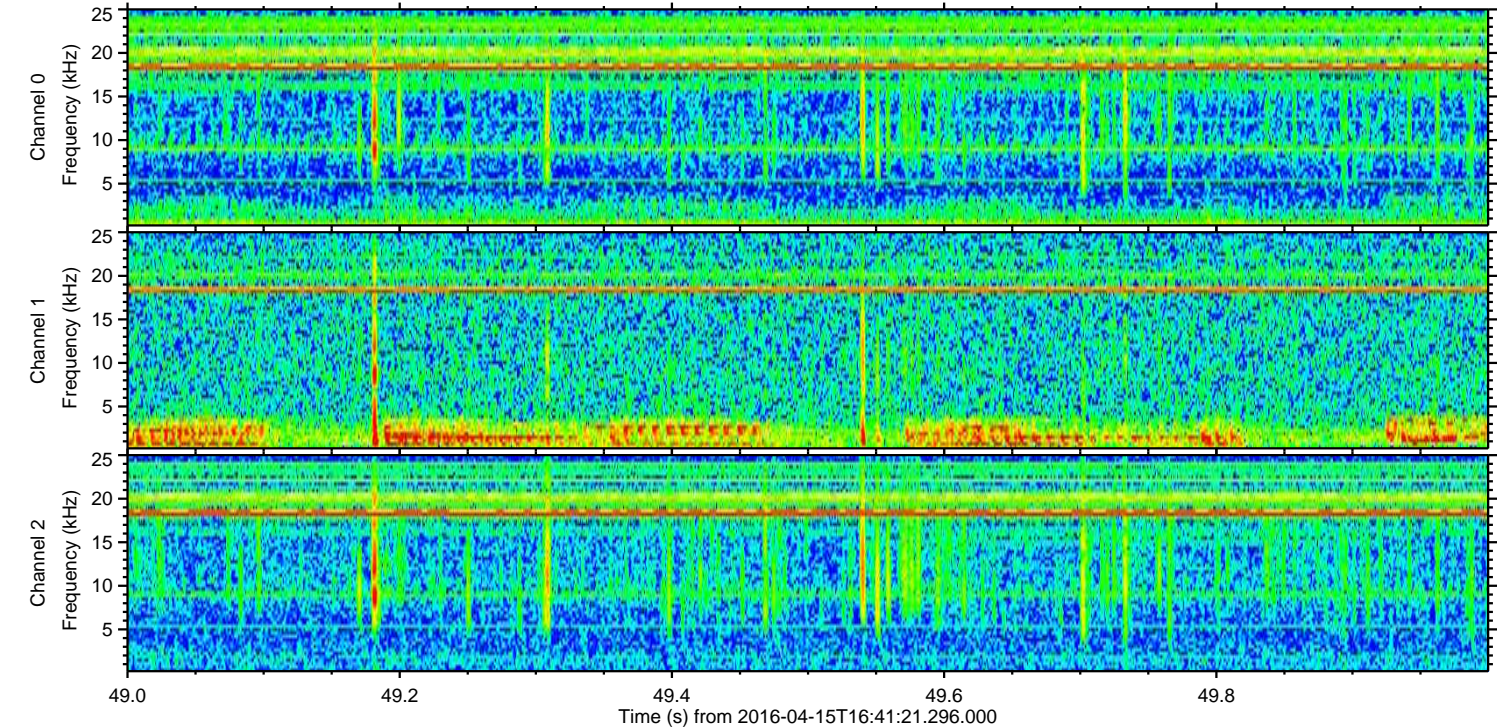
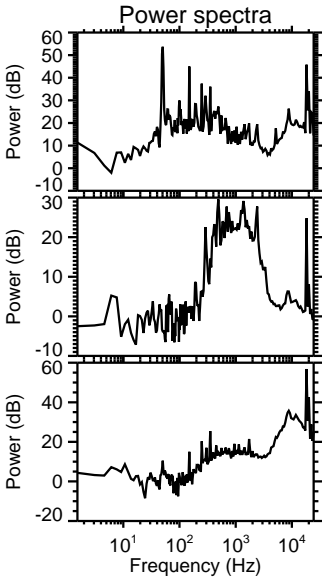
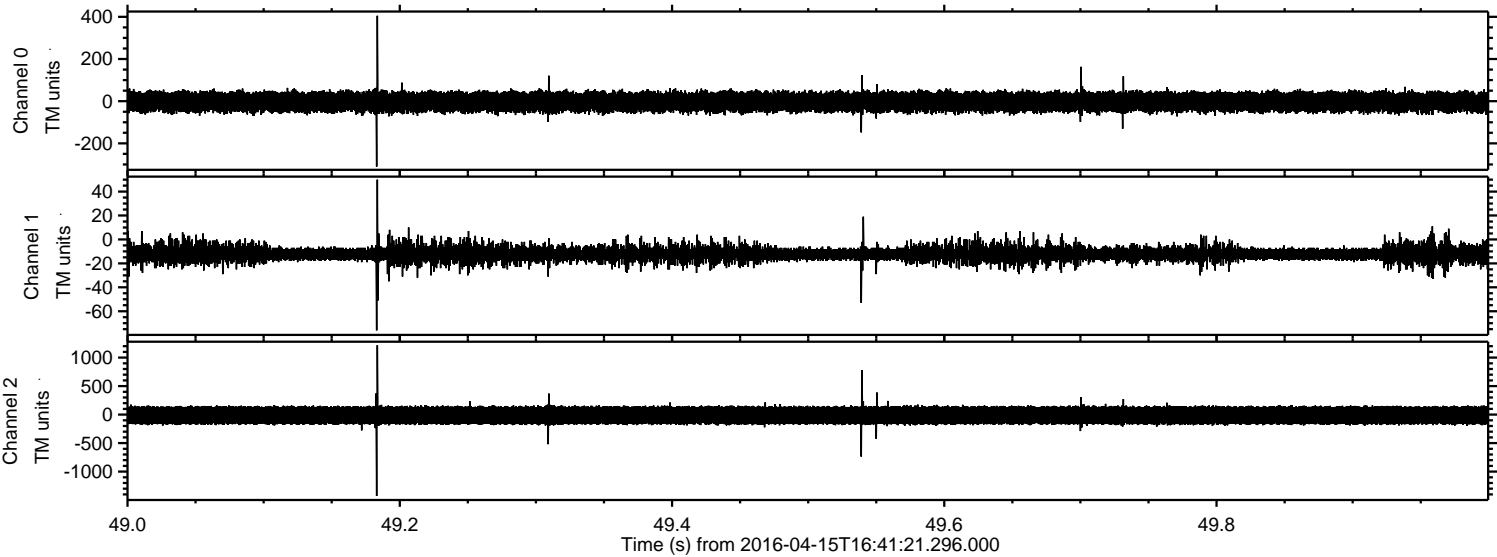


Channel 0
mn: -446
mx: 306
 μ : -3.3
 σ : 27.7

Channel 1
mn: -107
mx: 62
 μ : -12.2
 σ : 3.7

Channel 2
mn: -1297
mx: 1491
 μ : -12.8
 σ : 95.0

Processed Sun May 8 15:49:22 2016 by ELM ver.2012-10-06 from 001__elm20160415_164120__dat00.bin



Processed Sun May 8 15:49:23 2016 by ELM ver.2012-10-06 from 001__elm20160415_164120__dat00.bin

