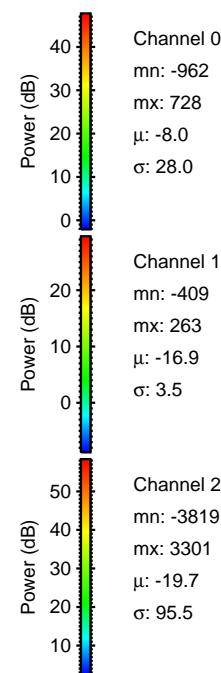
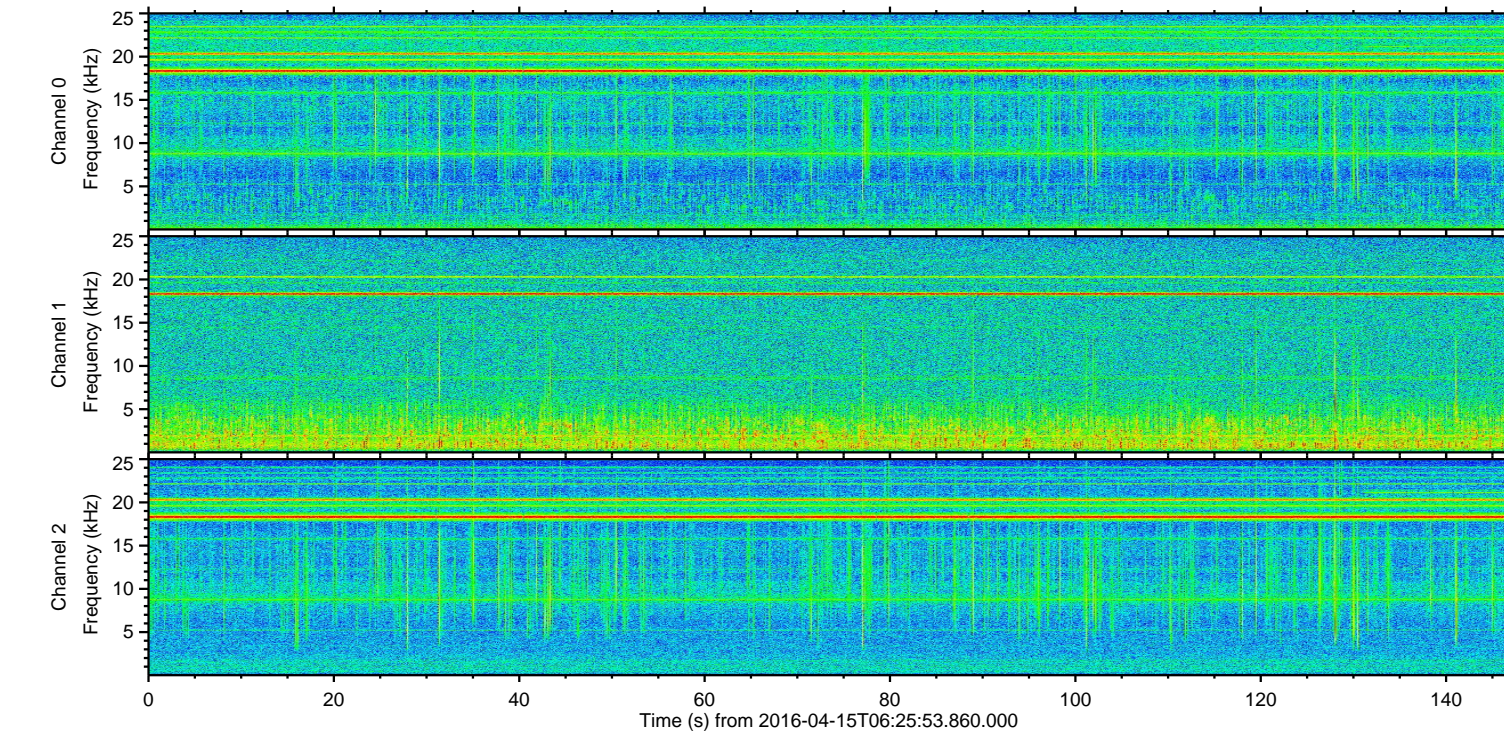
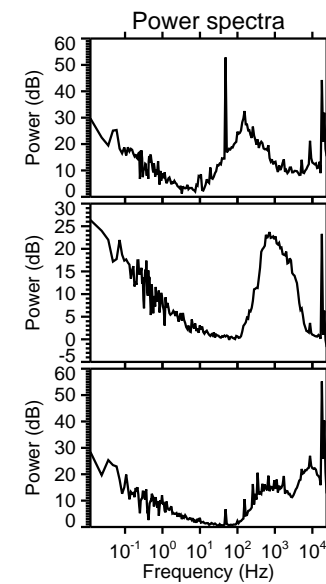
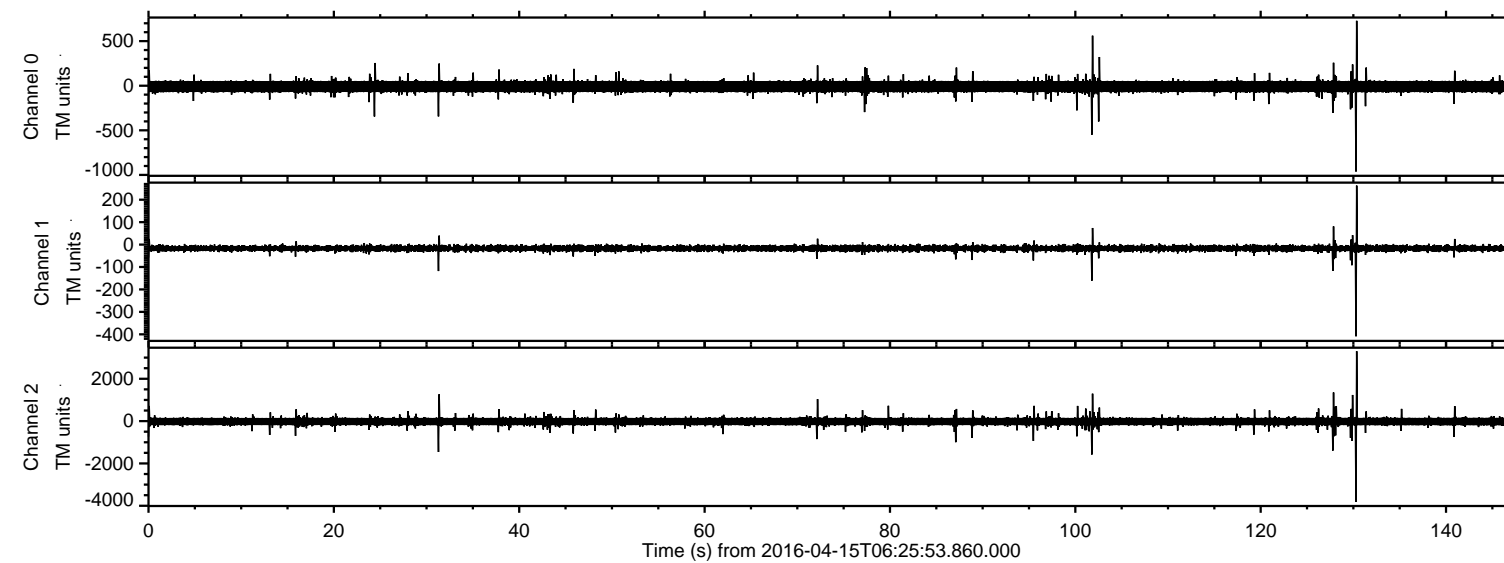


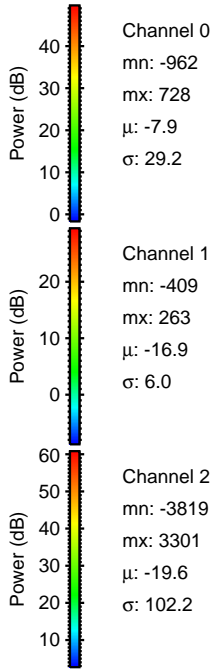
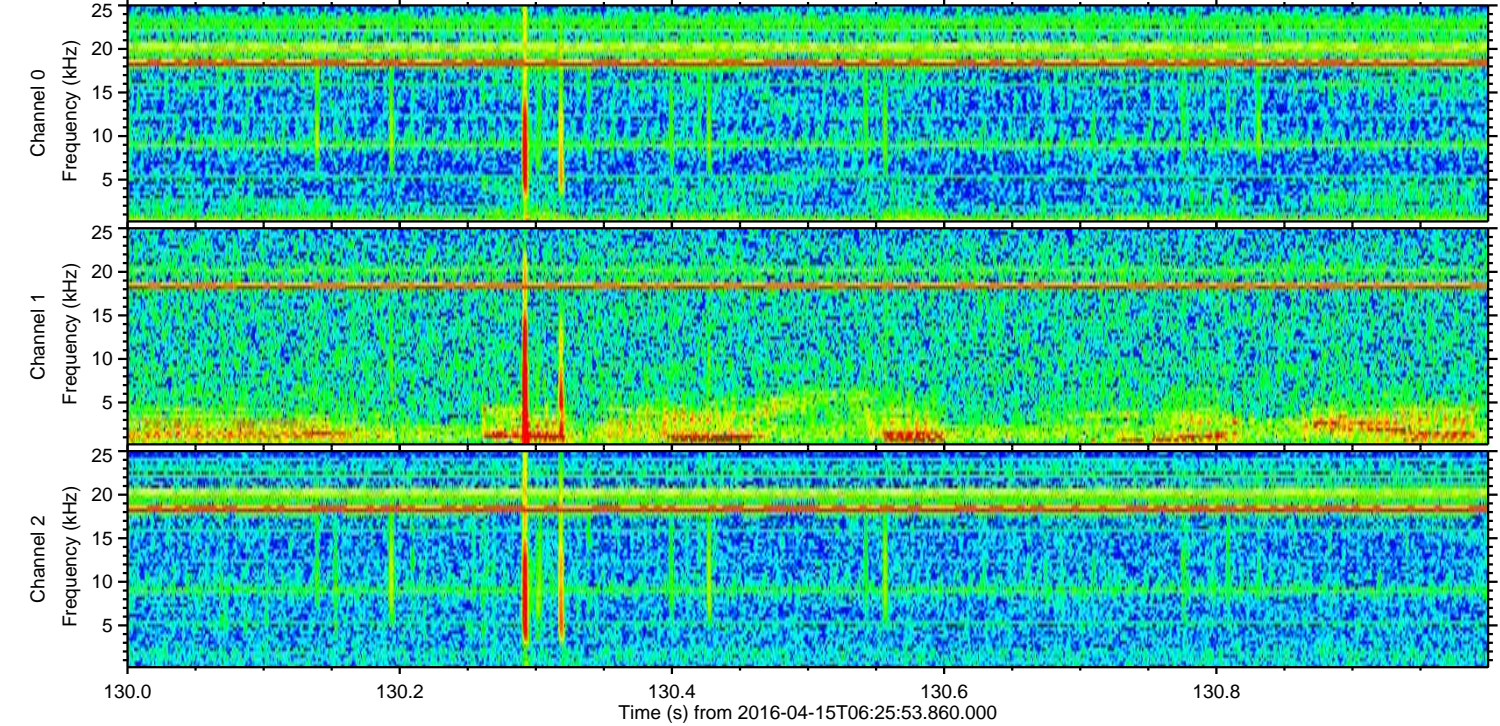
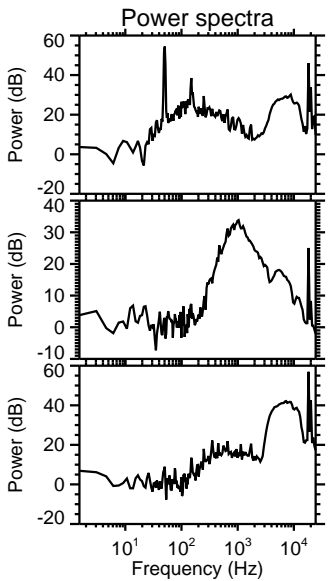
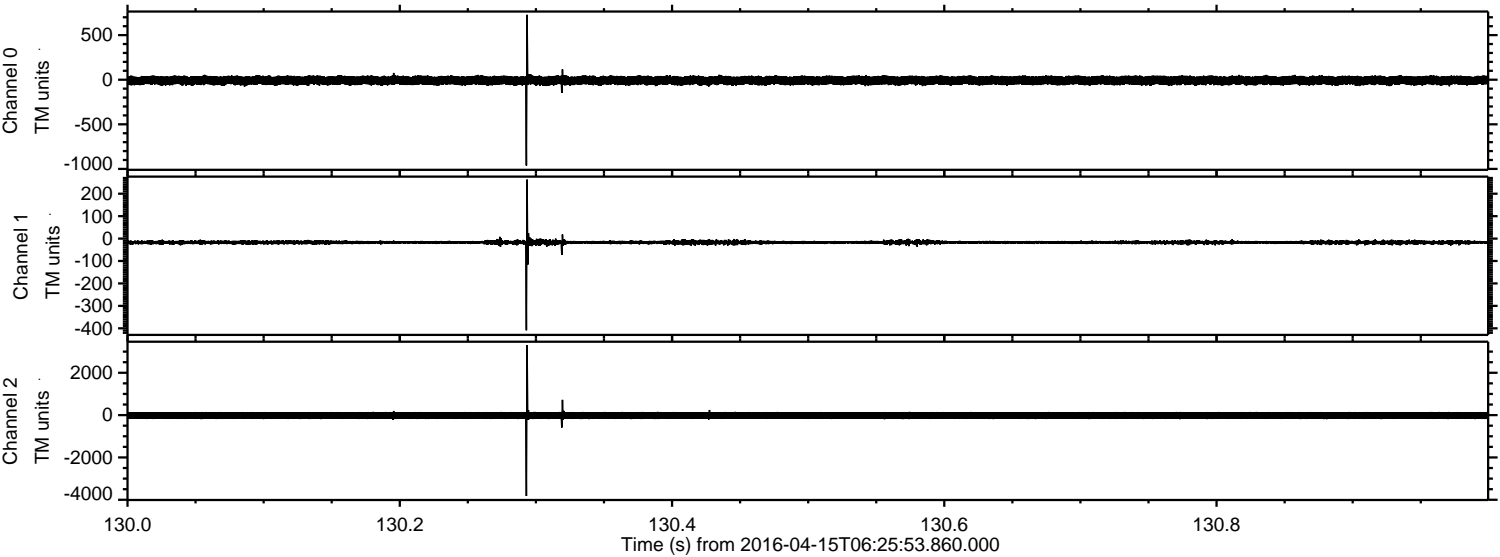
ELMAVAN 3D WAVEFORMS (Measured data sampled at 50 kHz) 51000 packets of 144 samples from 2016-04-15T06:25:53.860.000.

Processed Sun May 8 13:41:24 2016 by ELM ver.2012-10-06 from 001__elm20160415_062552__dat00.bin



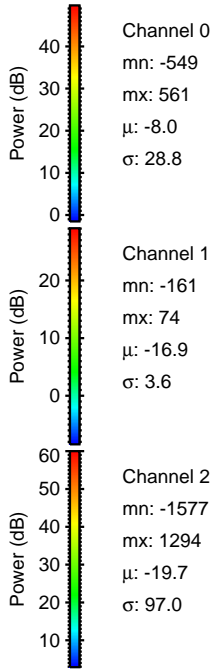
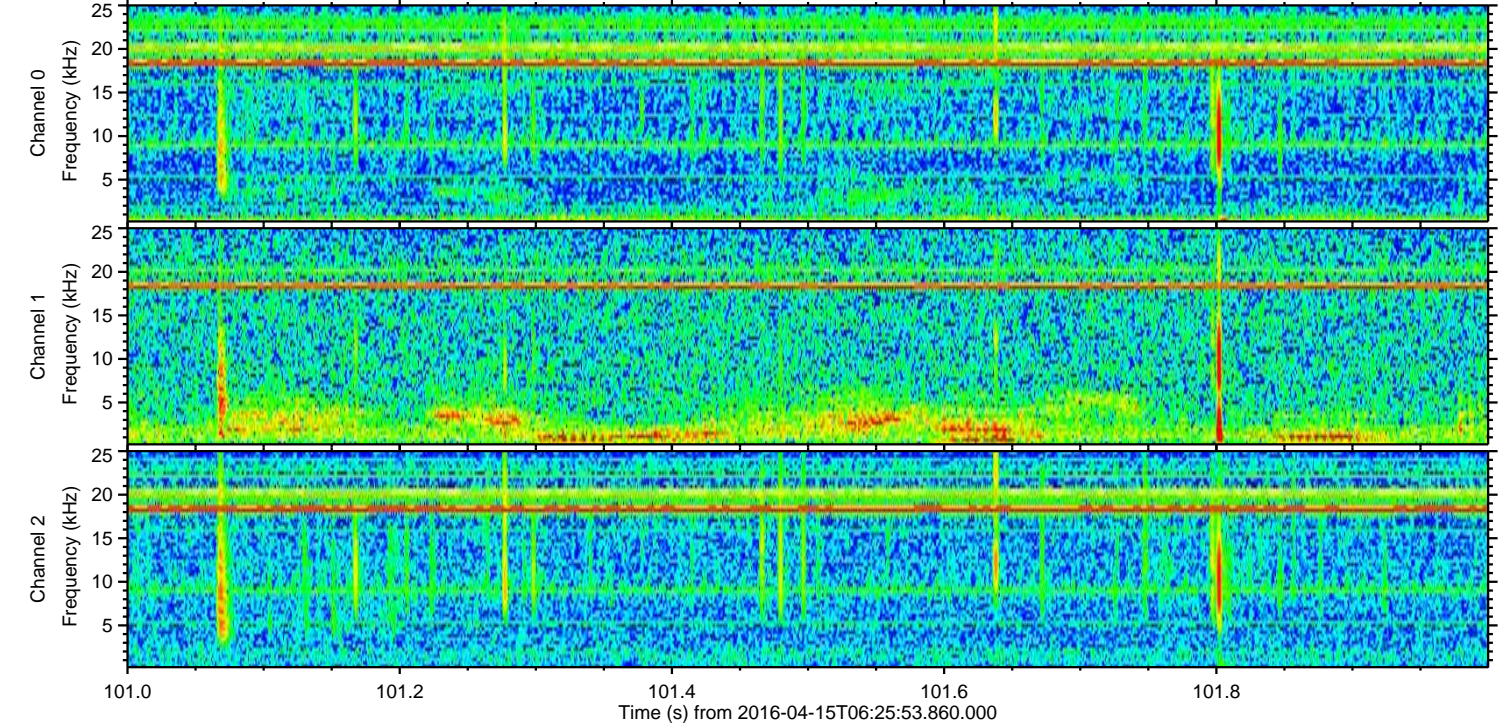
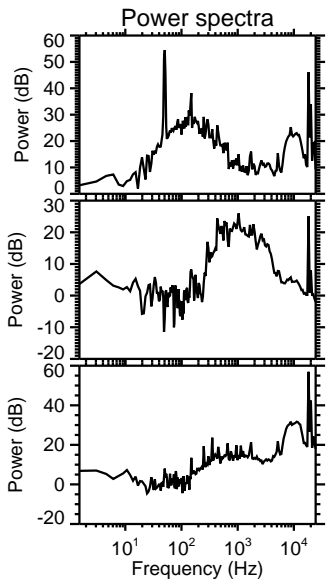
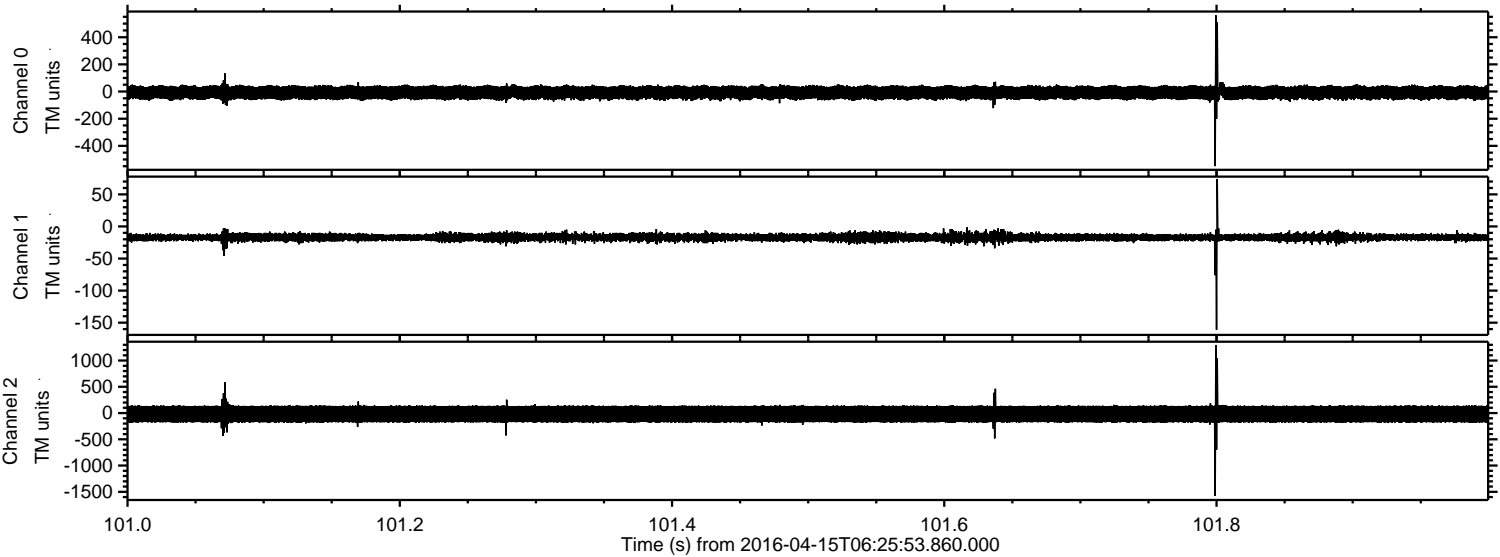
ELMAVAN 3D WAVEFORMS (Measured data sampled at 50 kHz) 51000 packets of 144 samples from 2016-04-15T06:25:53.860.000. Part 131/147

Processed Sun May 8 13:41:36 2016 by ELM ver.2012-10-06 from 001__elm20160415_062552__dat00.bin

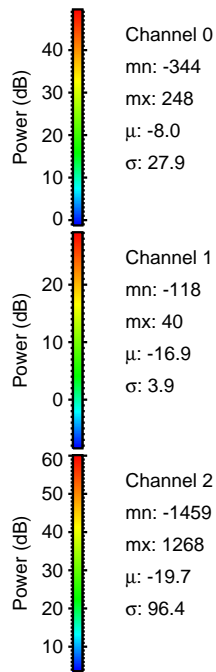
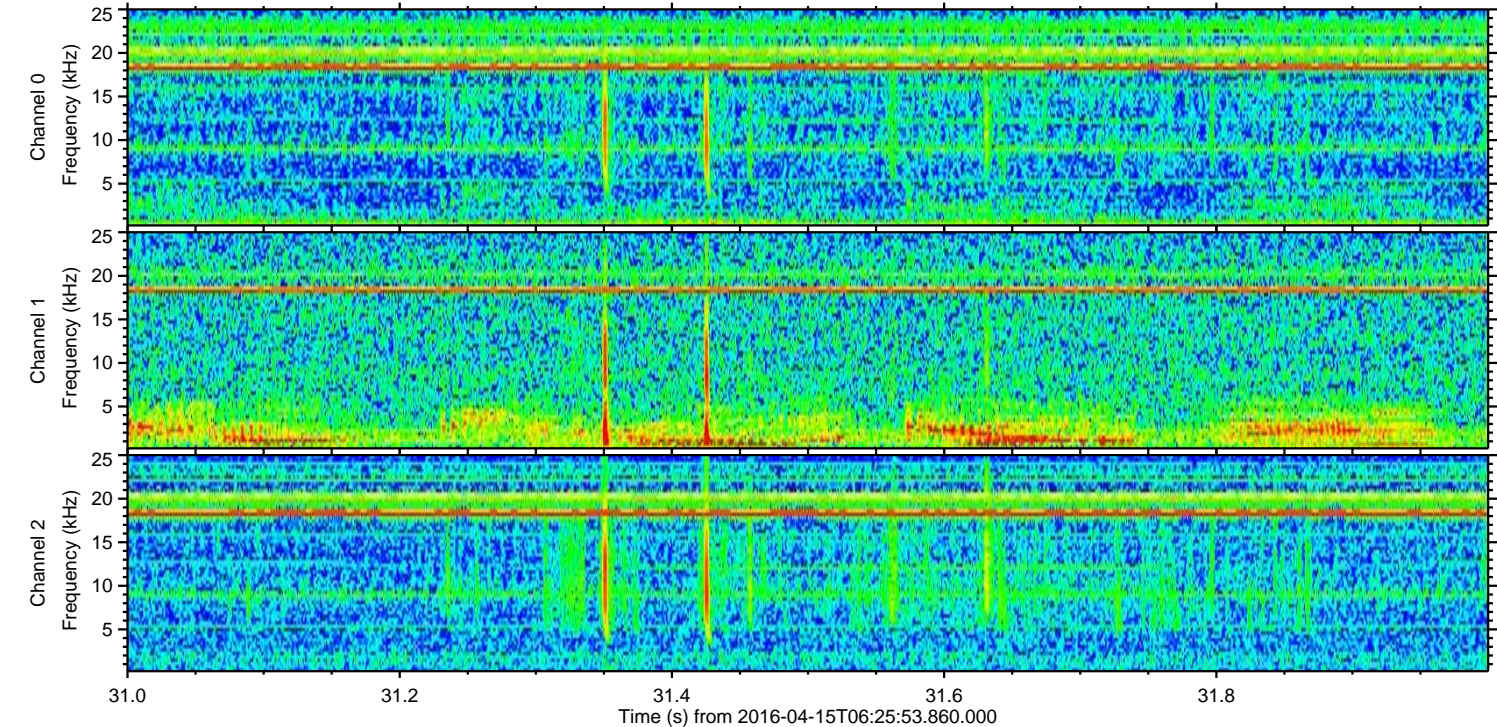
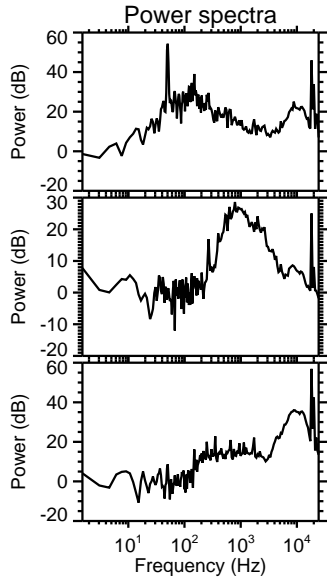
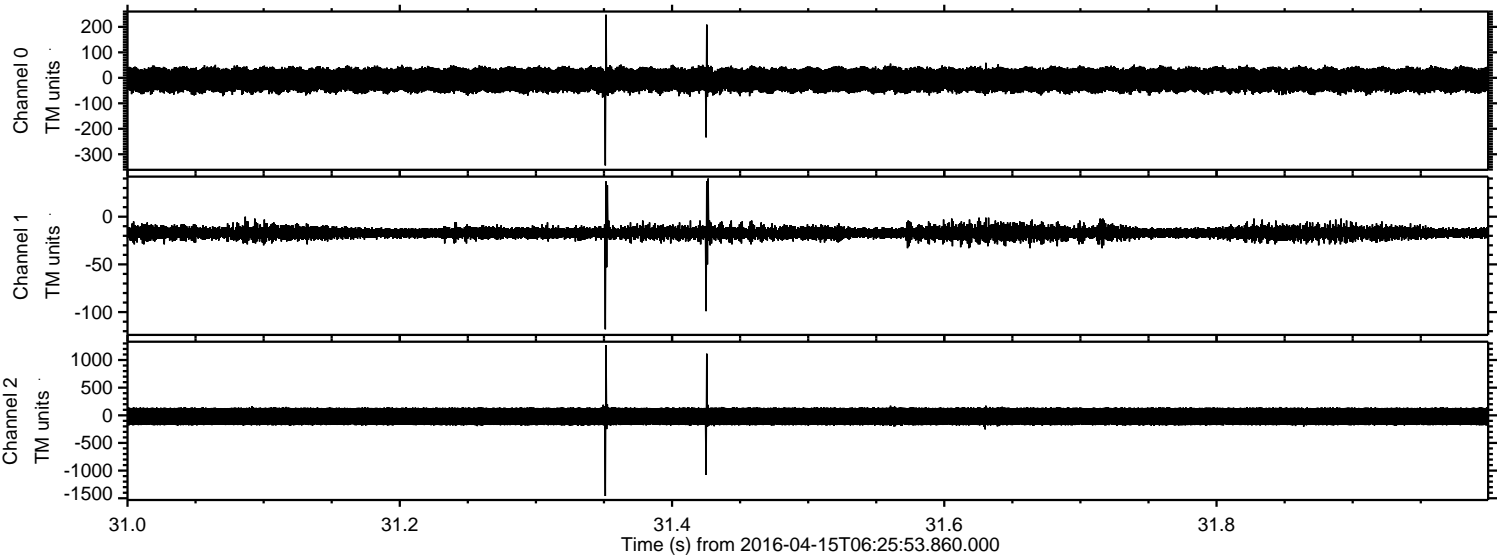


ELMAVAN 3D WAVEFORMS (Measured data sampled at 50 kHz) 51000 packets of 144 samples from 2016-04-15T06:25:53.860.000. Part 102/147

Processed Sun May 8 13:41:37 2016 by ELM ver.2012-10-06 from 001__elm20160415_062552__dat00.bin

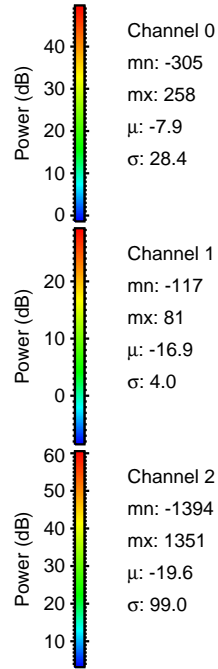
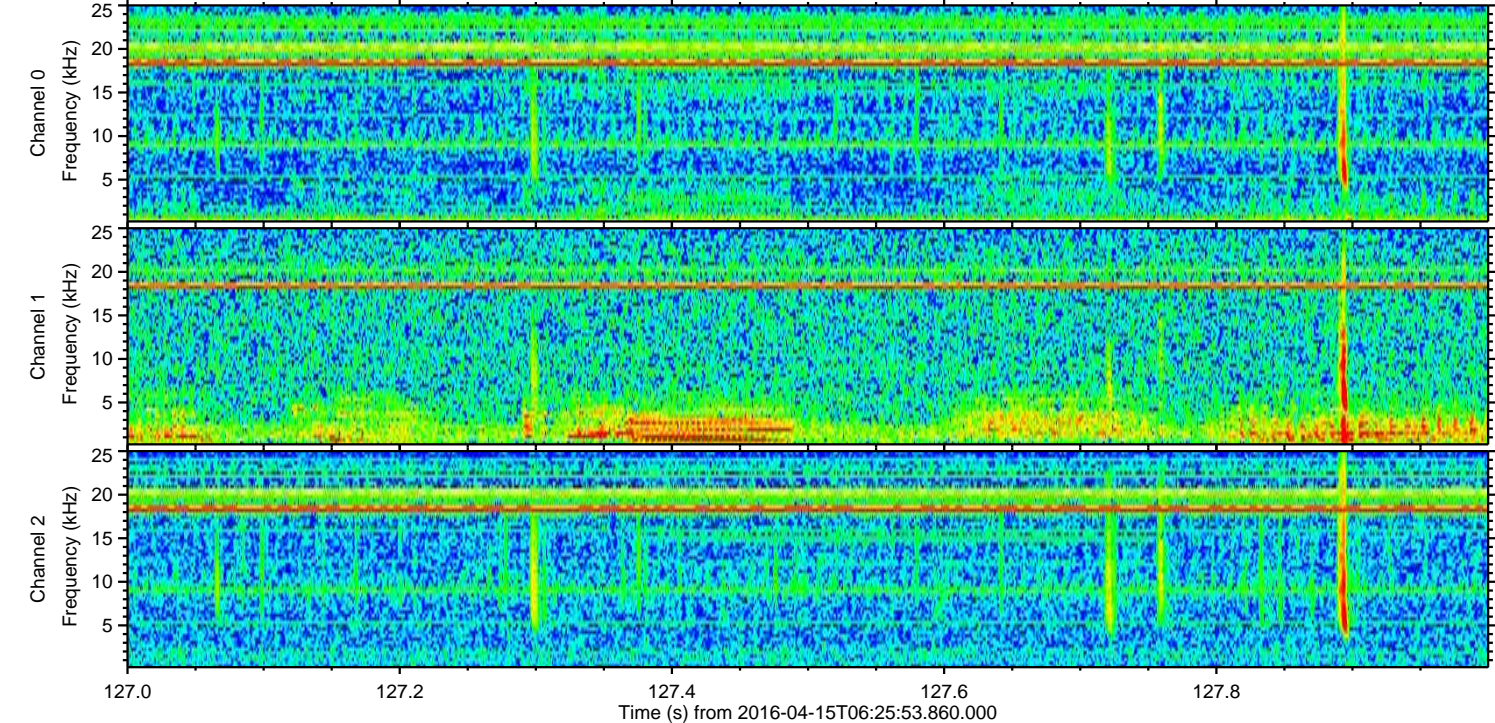
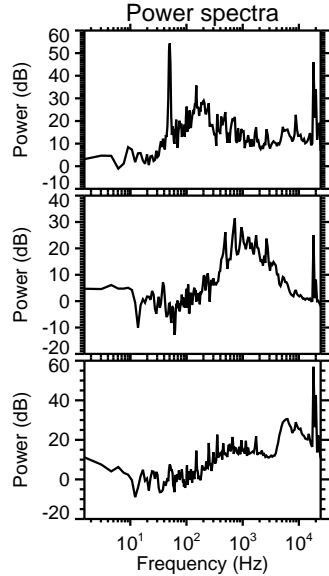
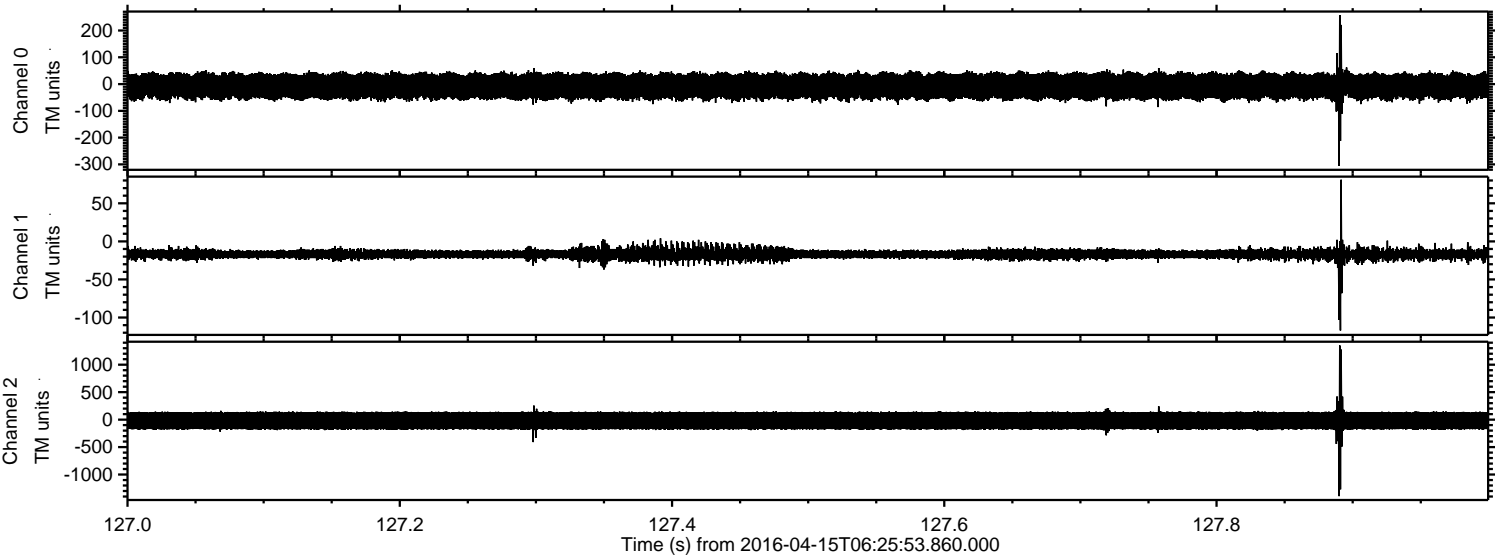


Processed Sun May 8 13:41:38 2016 by ELM ver.2012-10-06 from 001__elm20160415_062552__dat00.bin



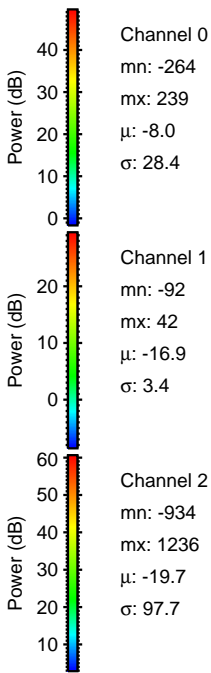
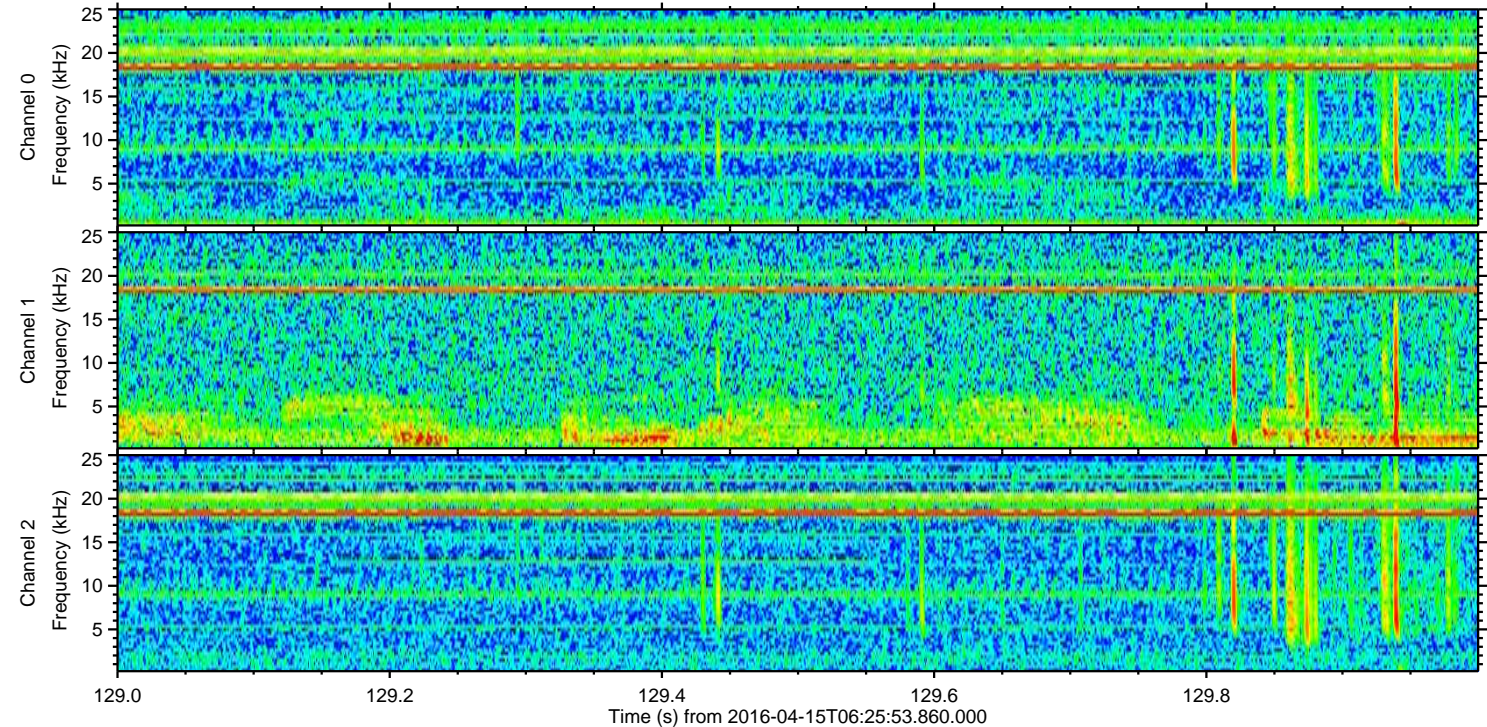
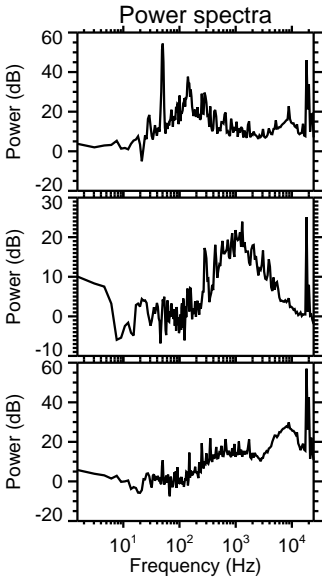
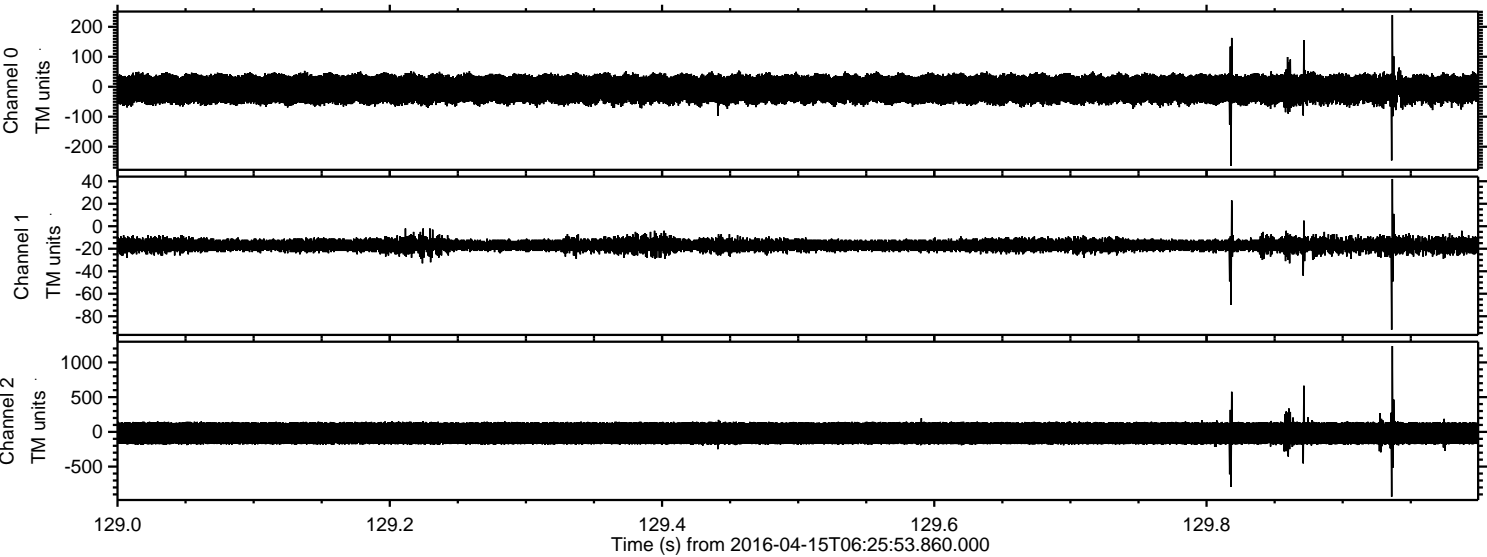
ELMAVAN 3D WAVEFORMS (Measured data sampled at 50 kHz) 51000 packets of 144 samples from 2016-04-15T06:25:53.860.000. Part 128/147

Processed Sun May 8 13:41:38 2016 by ELM ver.2012-10-06 from 001__elm20160415_062552__dat00.bin

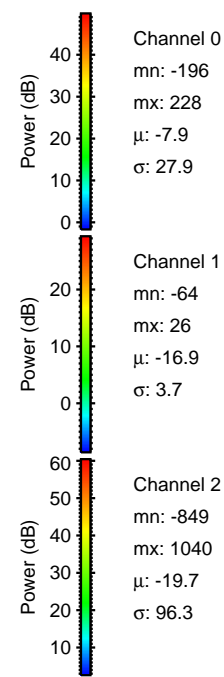
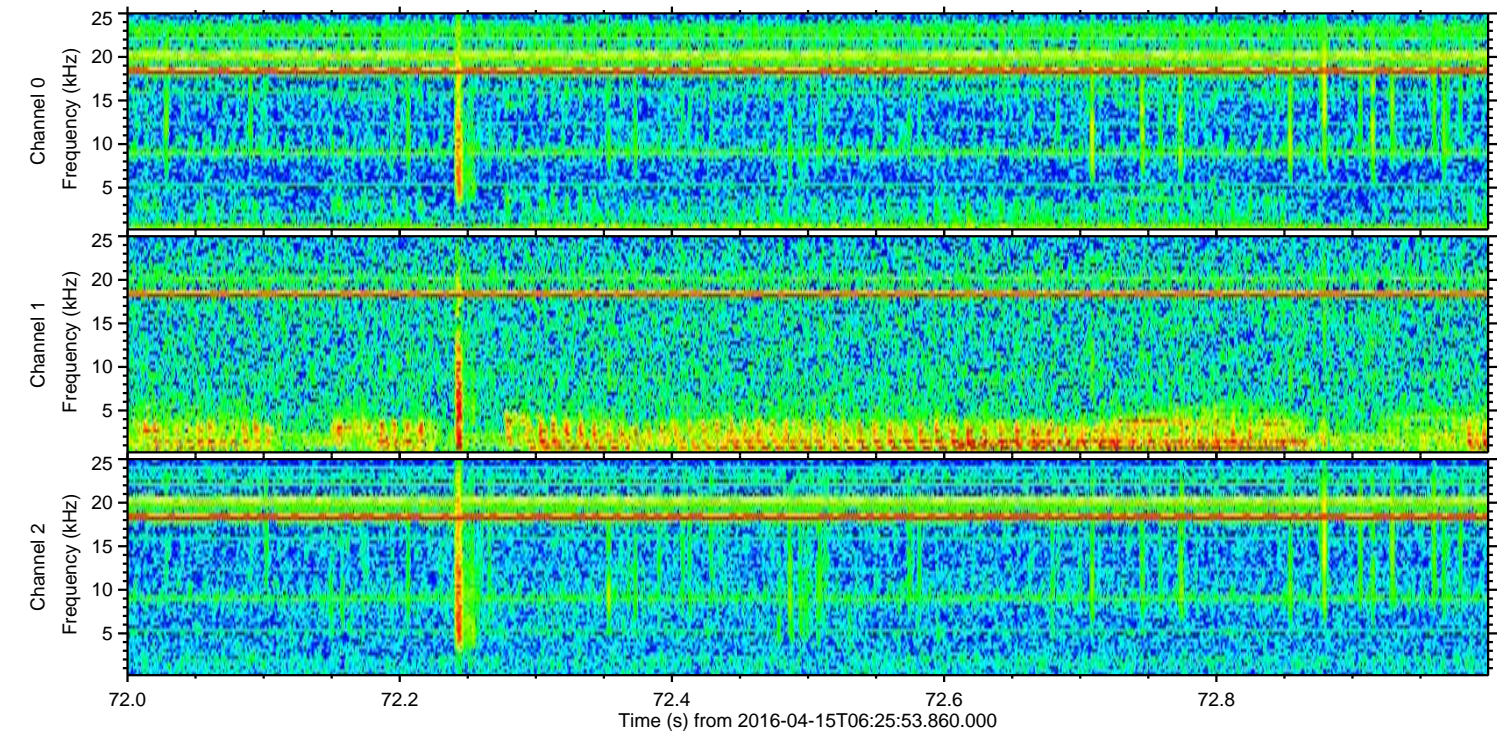
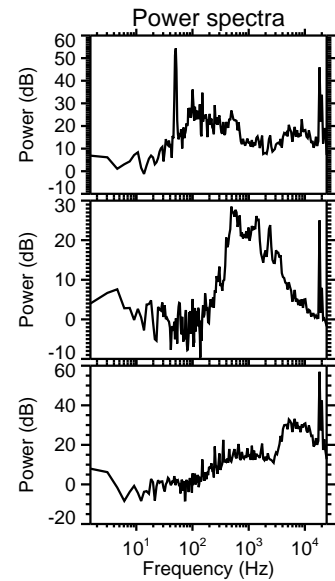
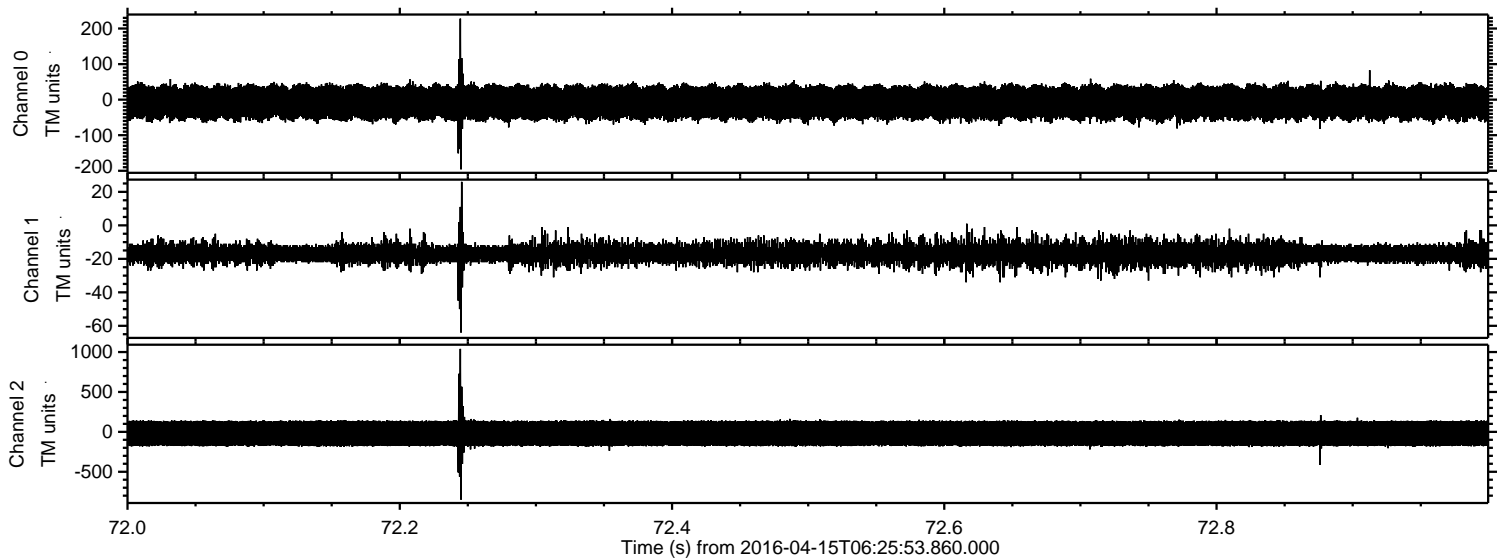


ELMAVAN 3D WAVEFORMS (Measured data sampled at 50 kHz) 51000 packets of 144 samples from 2016-04-15T06:25:53.860.000. Part 130/147

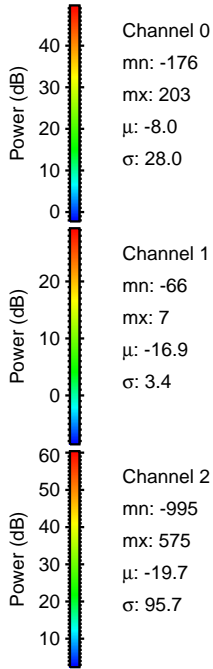
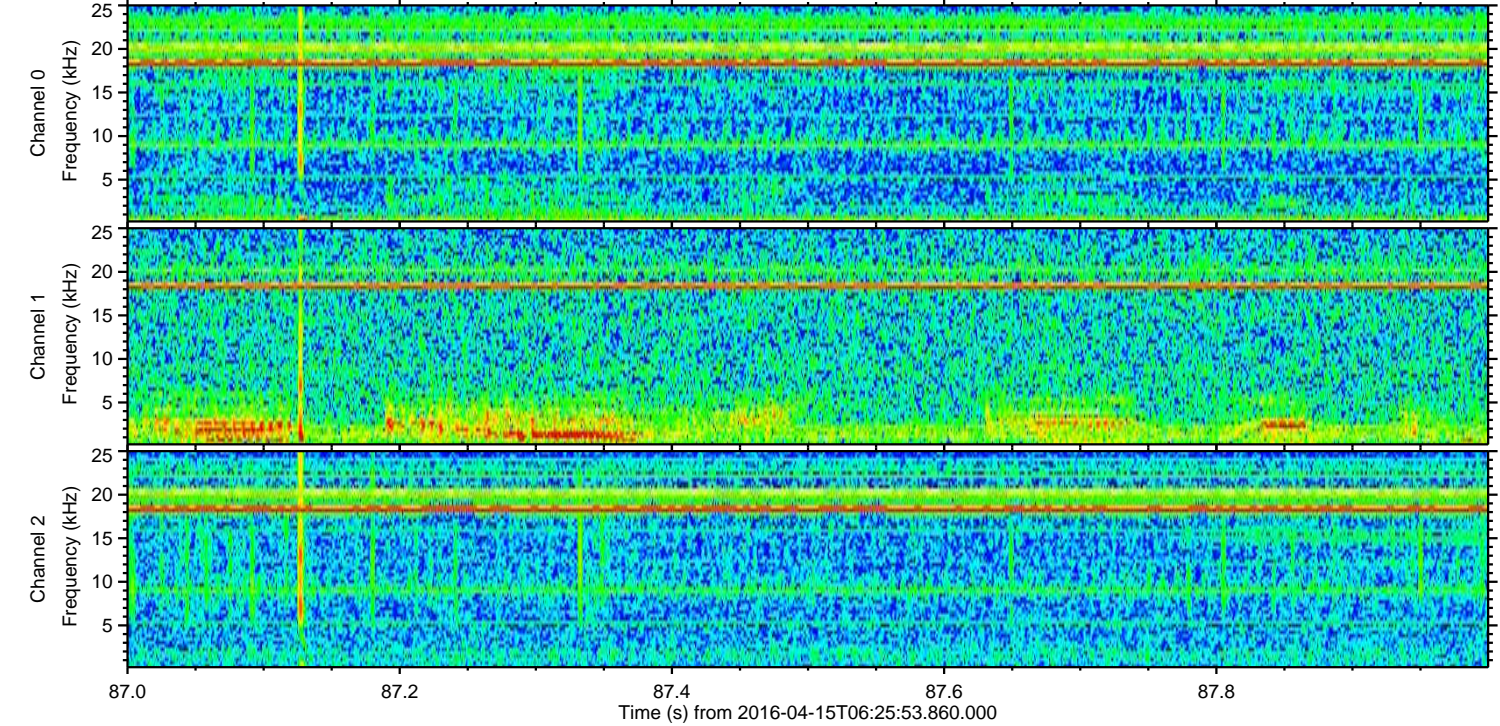
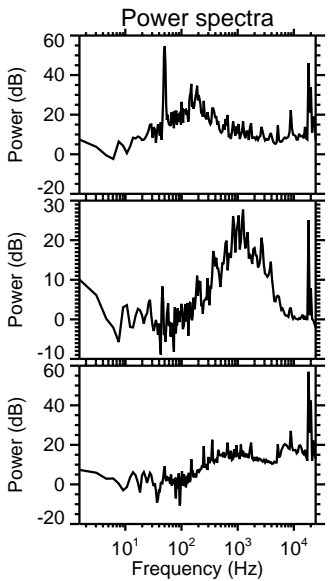
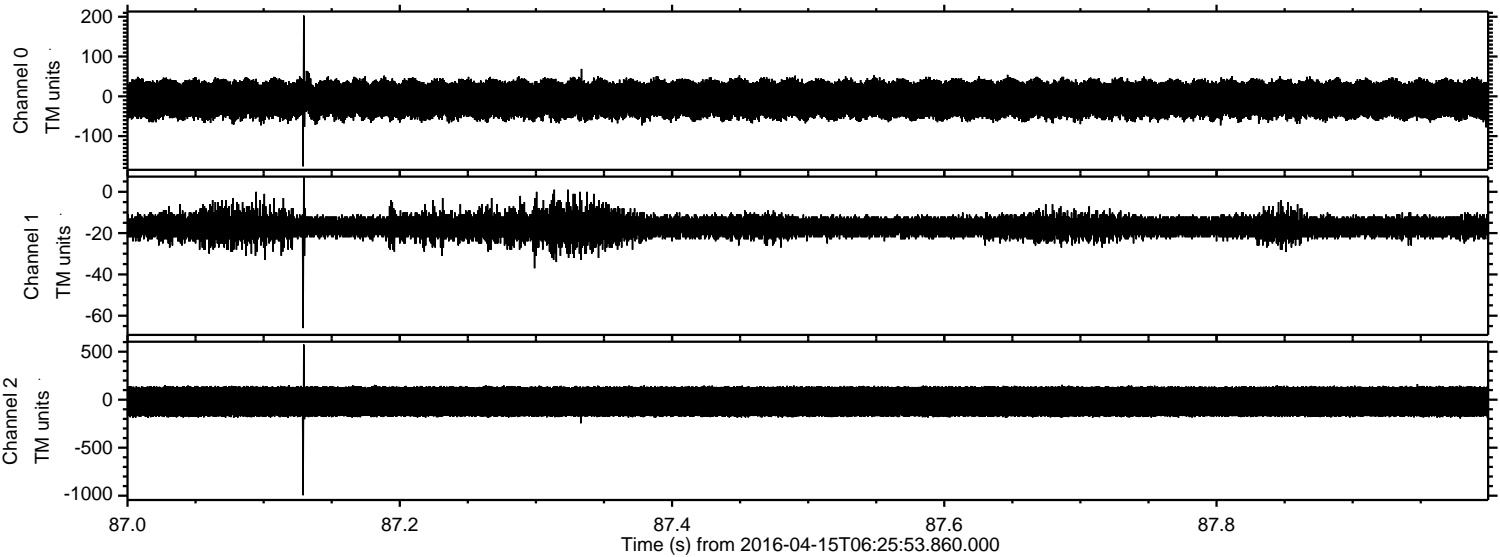
Processed Sun May 8 13:41:39 2016 by ELM ver.2012-10-06 from 001__elm20160415_062552__dat00.bin



Processed Sun May 8 13:41:40 2016 by ELM ver.2012-10-06 from 001__elm20160415_062552__dat00.bin



Processed Sun May 8 13:41:41 2016 by ELM ver.2012-10-06 from 001__elm20160415_062552__dat00.bin

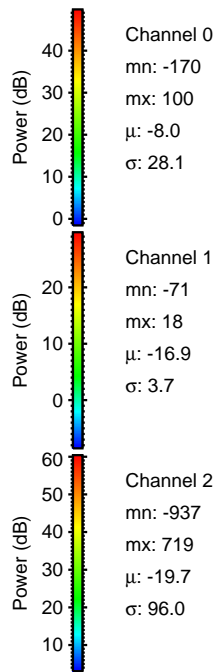
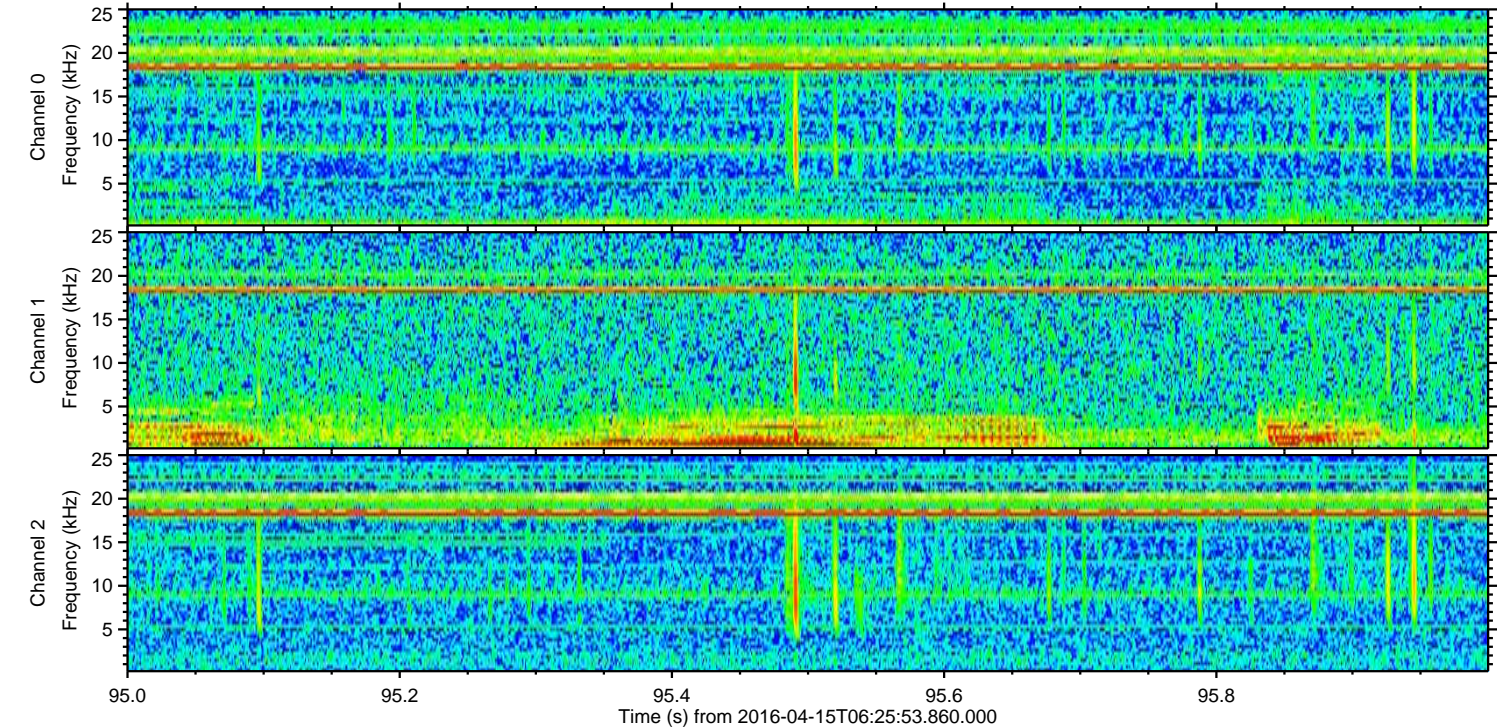
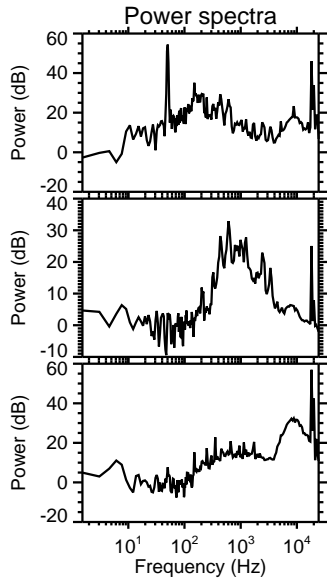
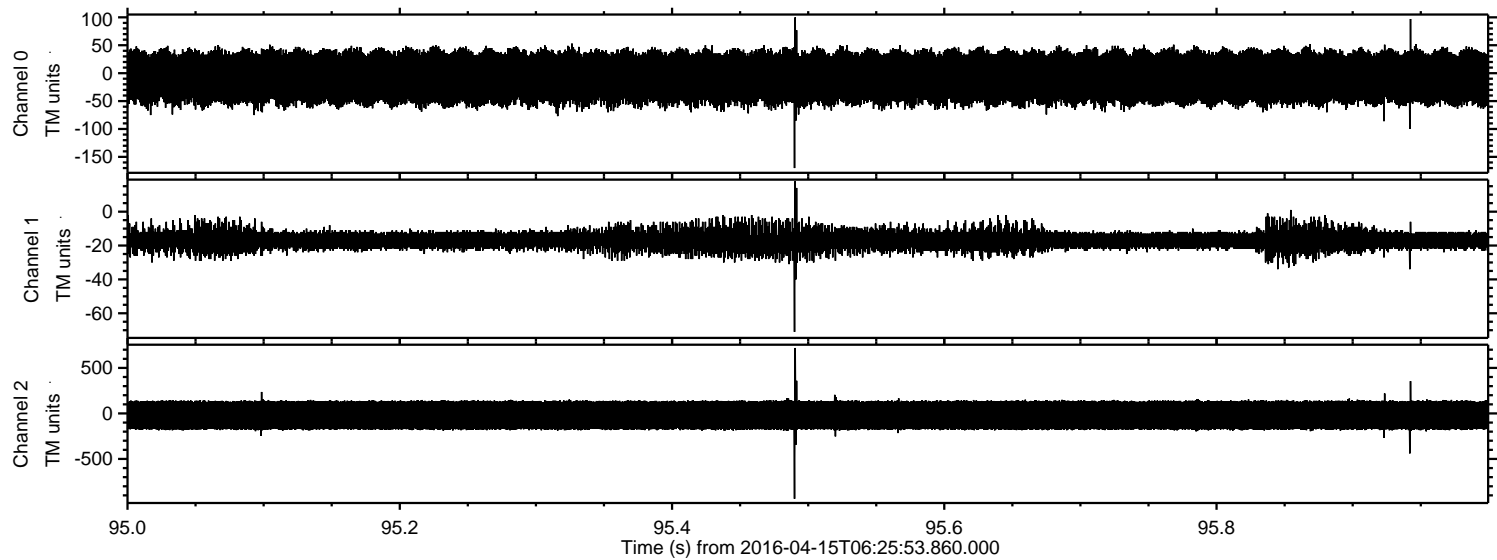


Channel 0
mn: -176
mx: 203
 μ : -8.0
 σ : 28.0

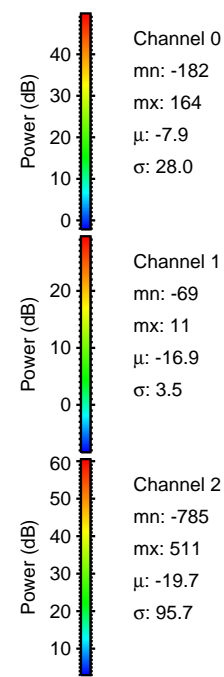
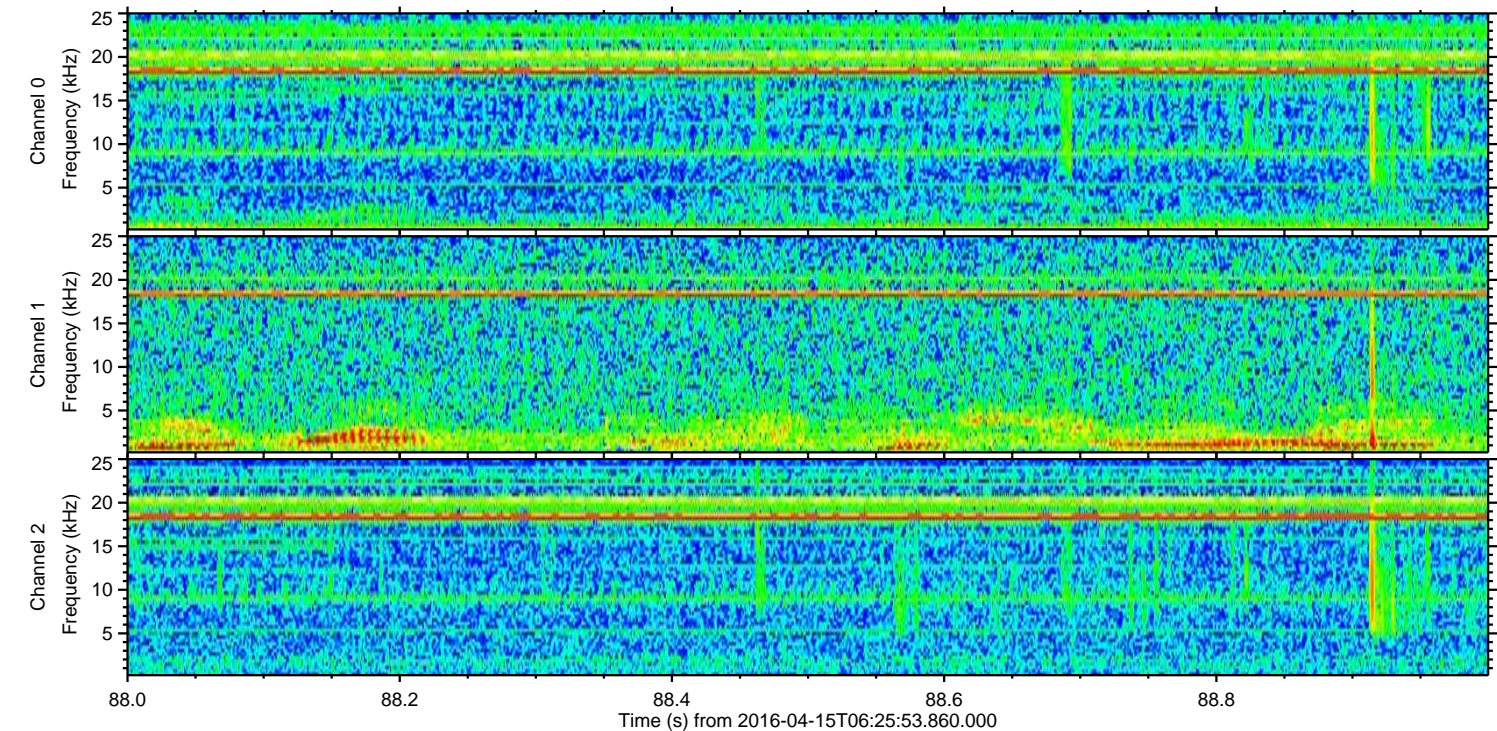
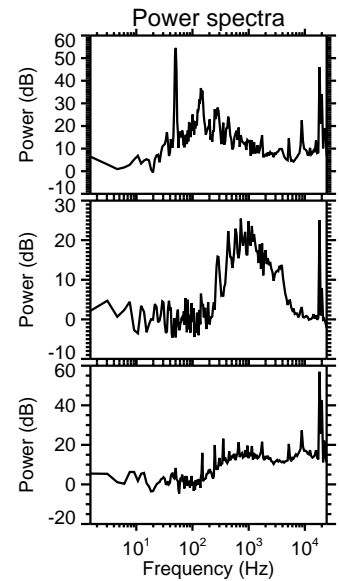
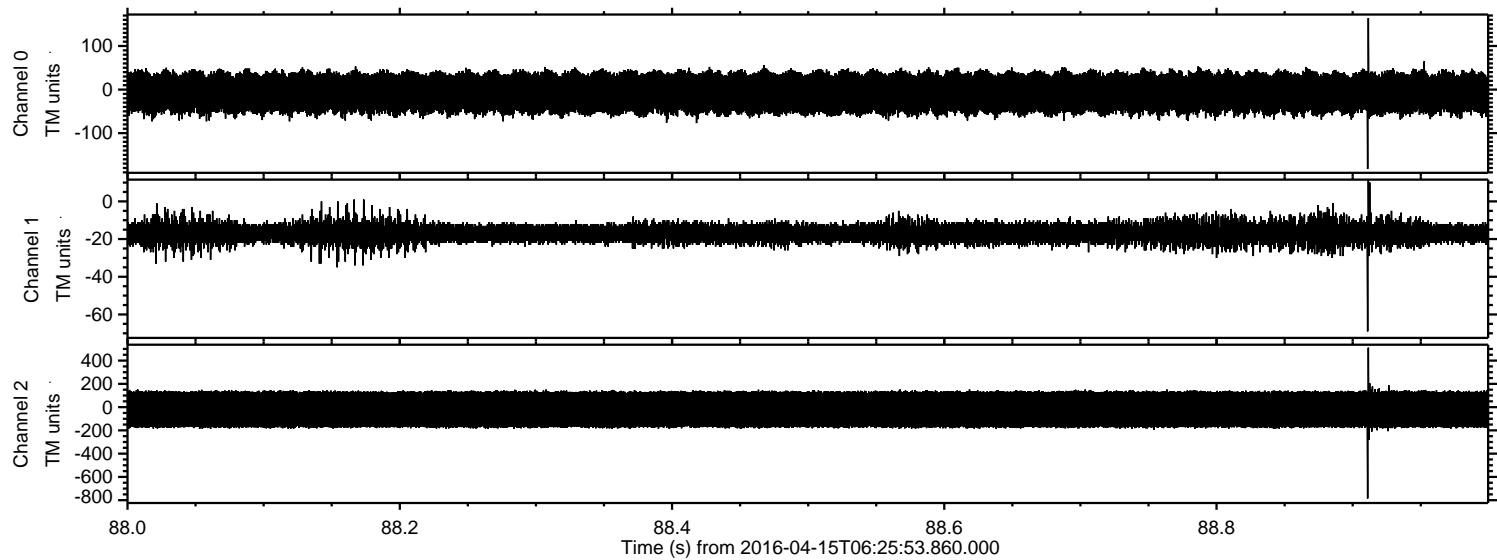
Channel 1
mn: -66
mx: 7
 μ : -16.9
 σ : 3.4

Channel 2
mn: -995
mx: 575
 μ : -19.7
 σ : 95.7

Processed Sun May 8 13:41:42 2016 by ELM ver.2012-10-06 from 001__elm20160415_062552__dat00.bin



Processed Sun May 8 13:41:43 2016 by ELM ver.2012-10-06 from 001__elm20160415_062552__dat00.bin



Processed Sun May 8 13:41:44 2016 by ELM ver.2012-10-06 from 001__elm20160415_062552__dat00.bin

