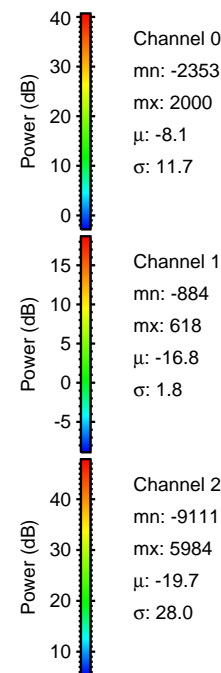
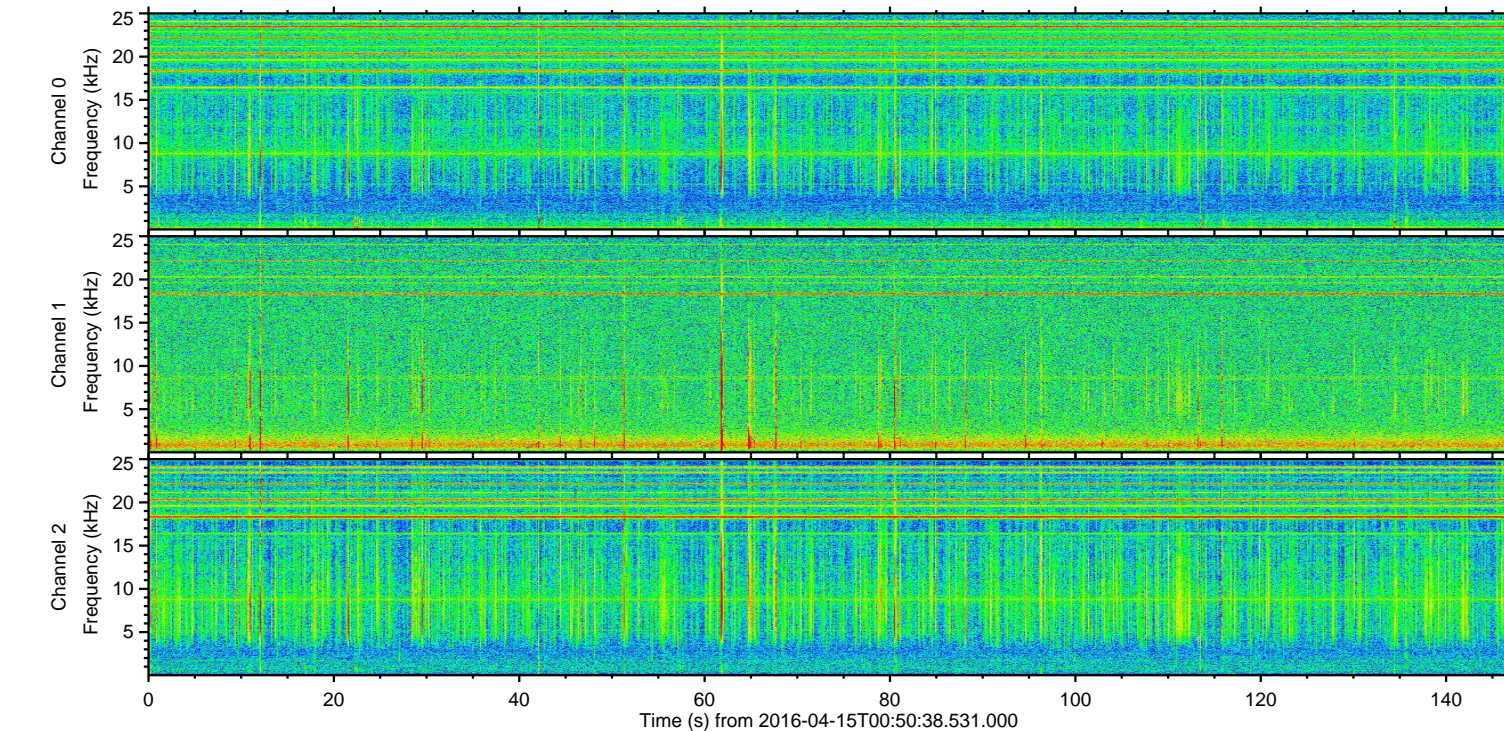
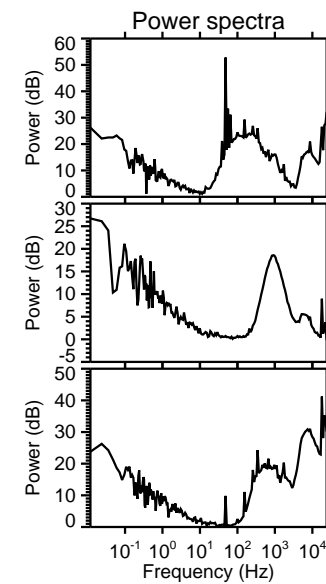
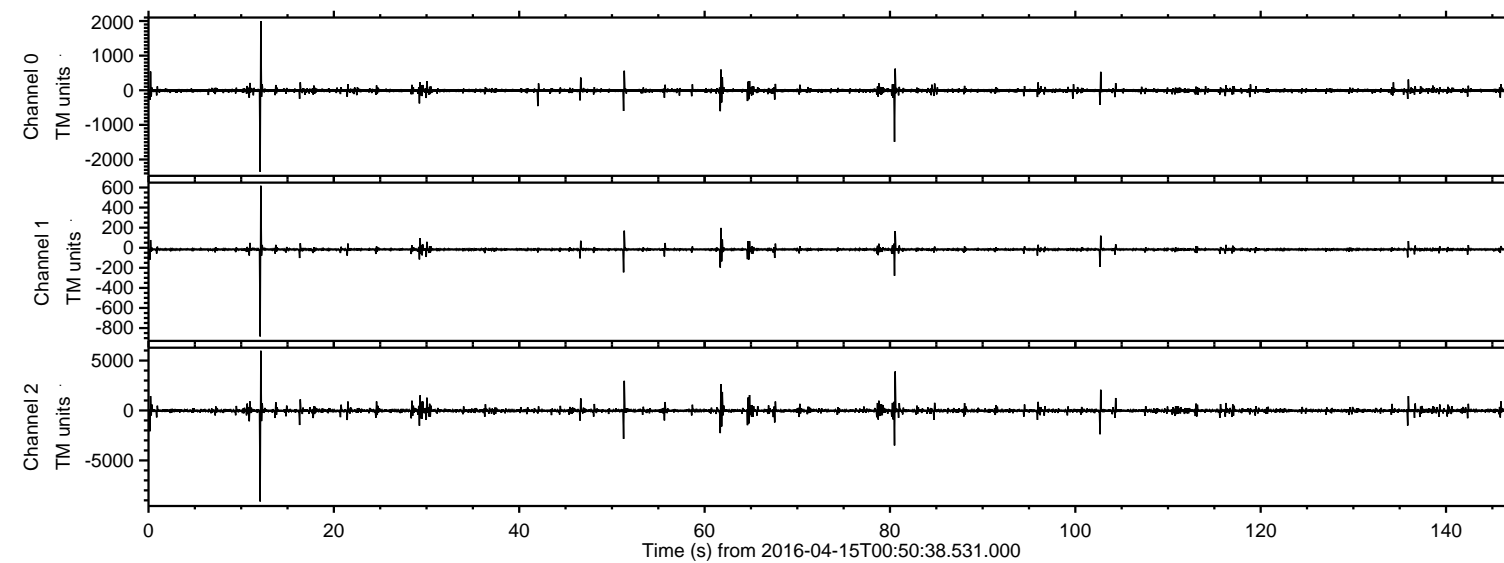


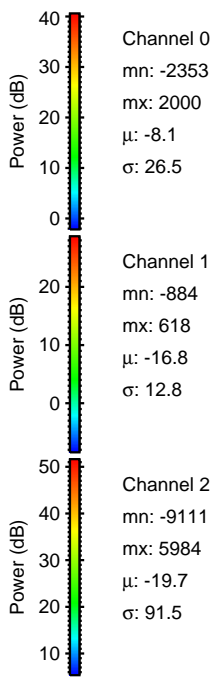
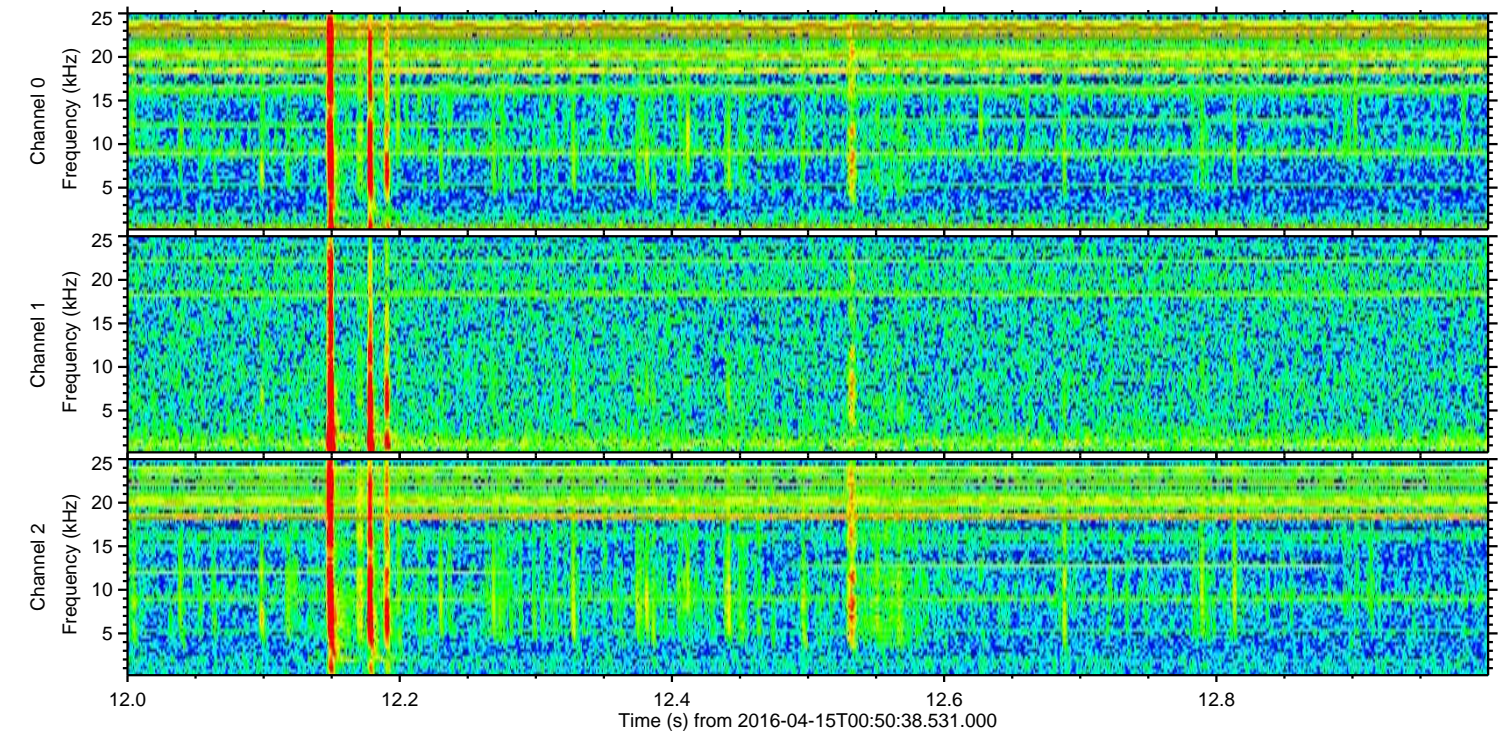
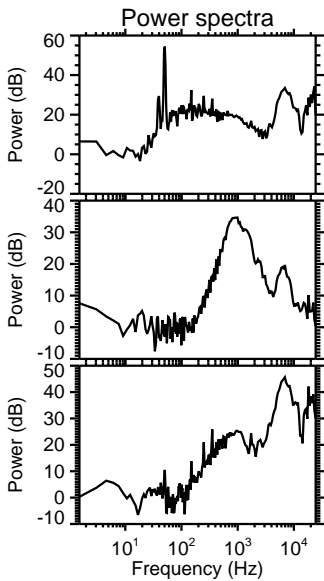
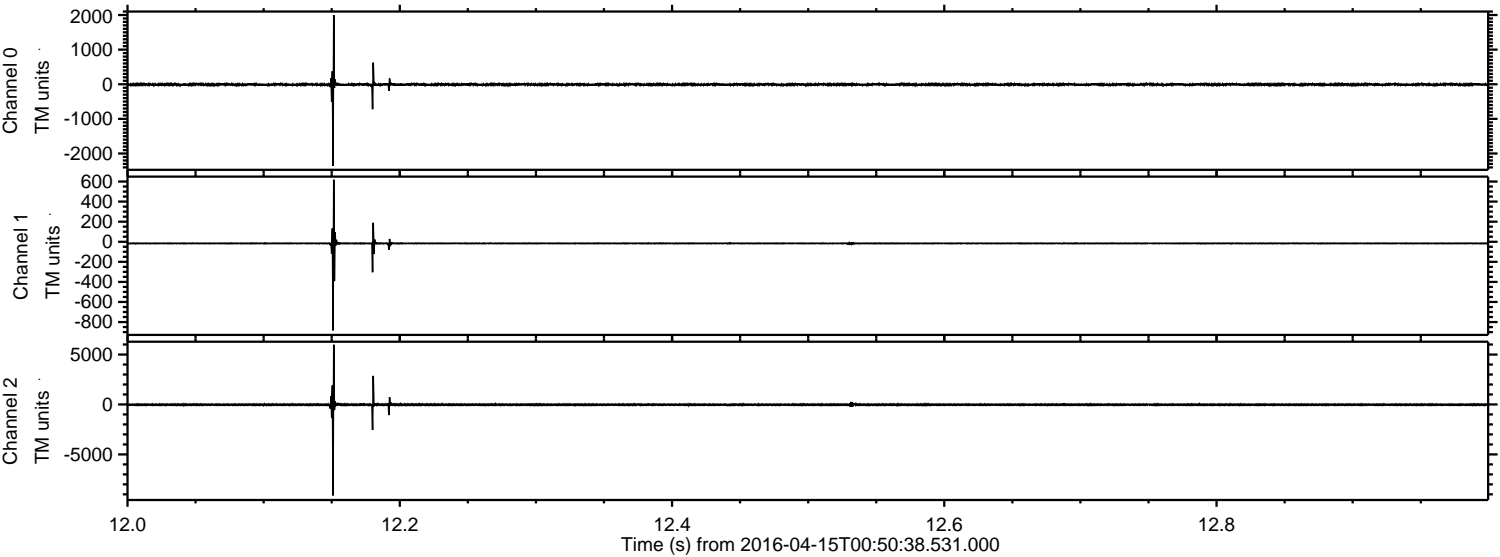
# ELMAVAN 3D WAVEFORMS (Measured data sampled at 50 kHz) 51000 packets of 144 samples from 2016-04-15T00:50:38.531.000.

Processed Sun May 8 12:30:41 2016 by ELM ver.2012-10-06 from 001\_\_elm20160415\_005037\_\_dat00.bin



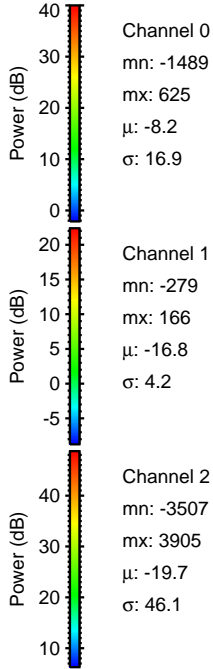
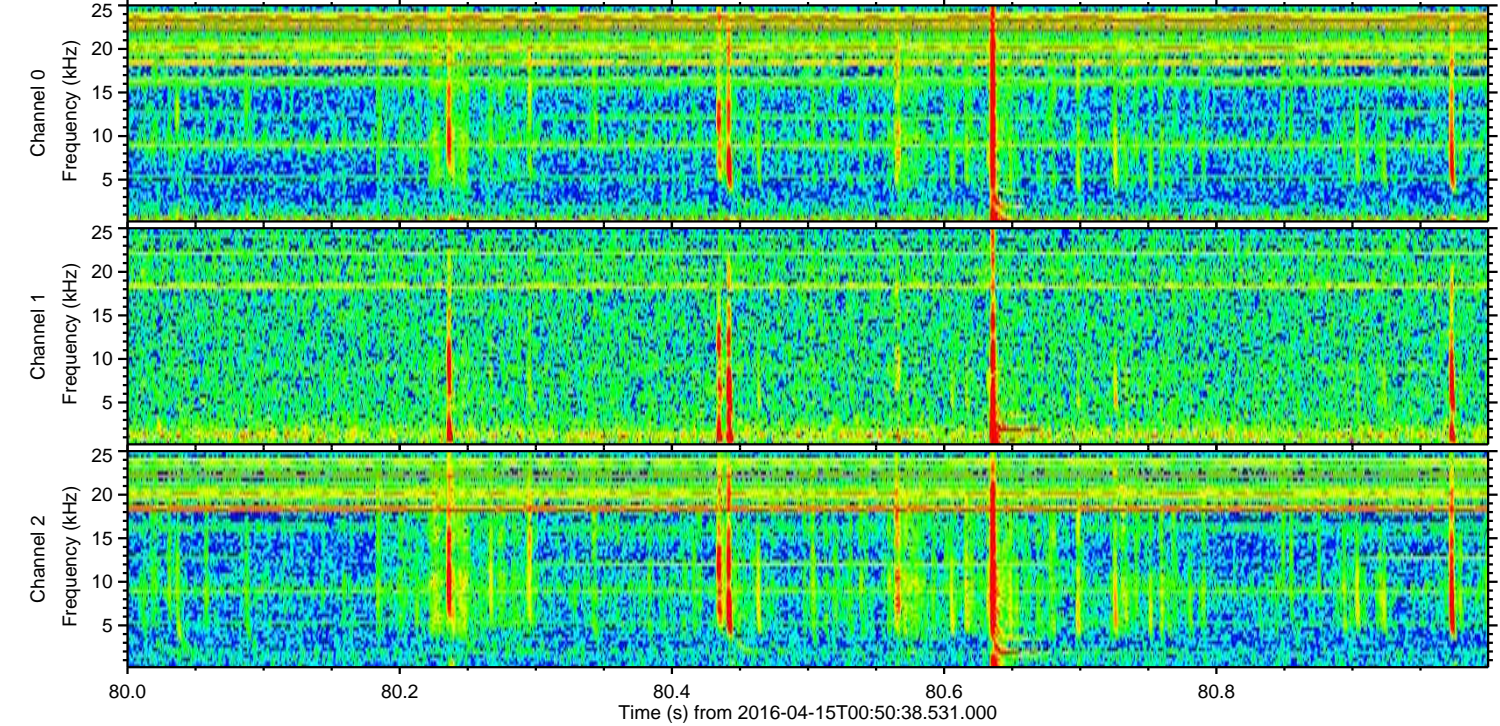
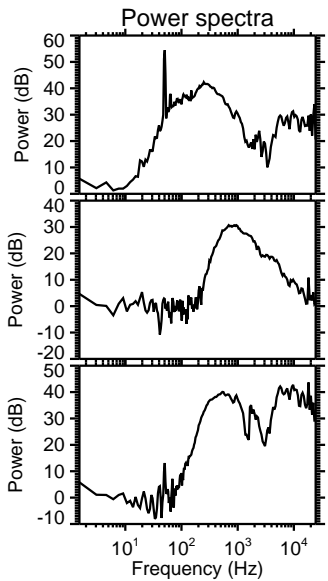
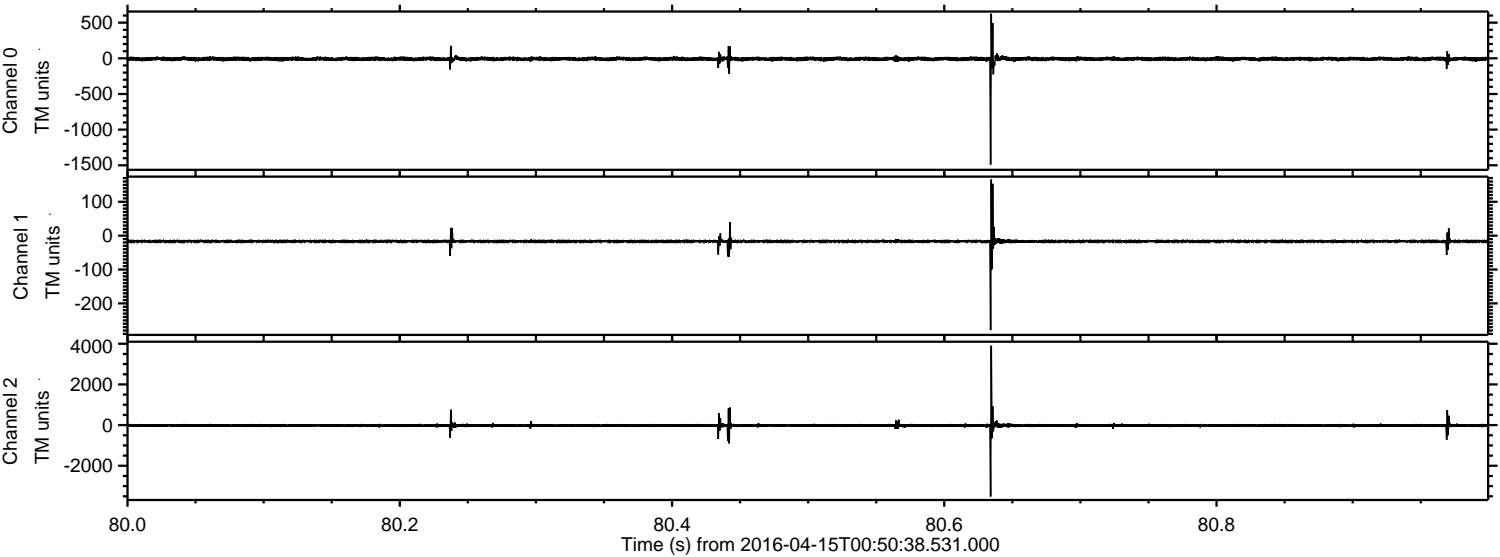


Processed Sun May 8 12:30:53 2016 by ELM ver.2012-10-06 from 001\_\_elm20160415\_005037\_\_dat00.bin



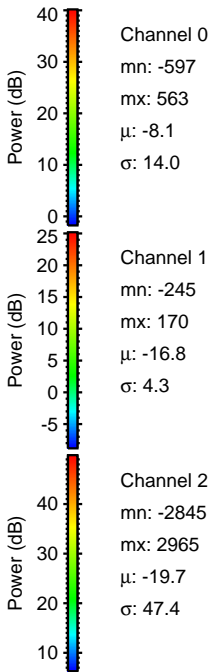
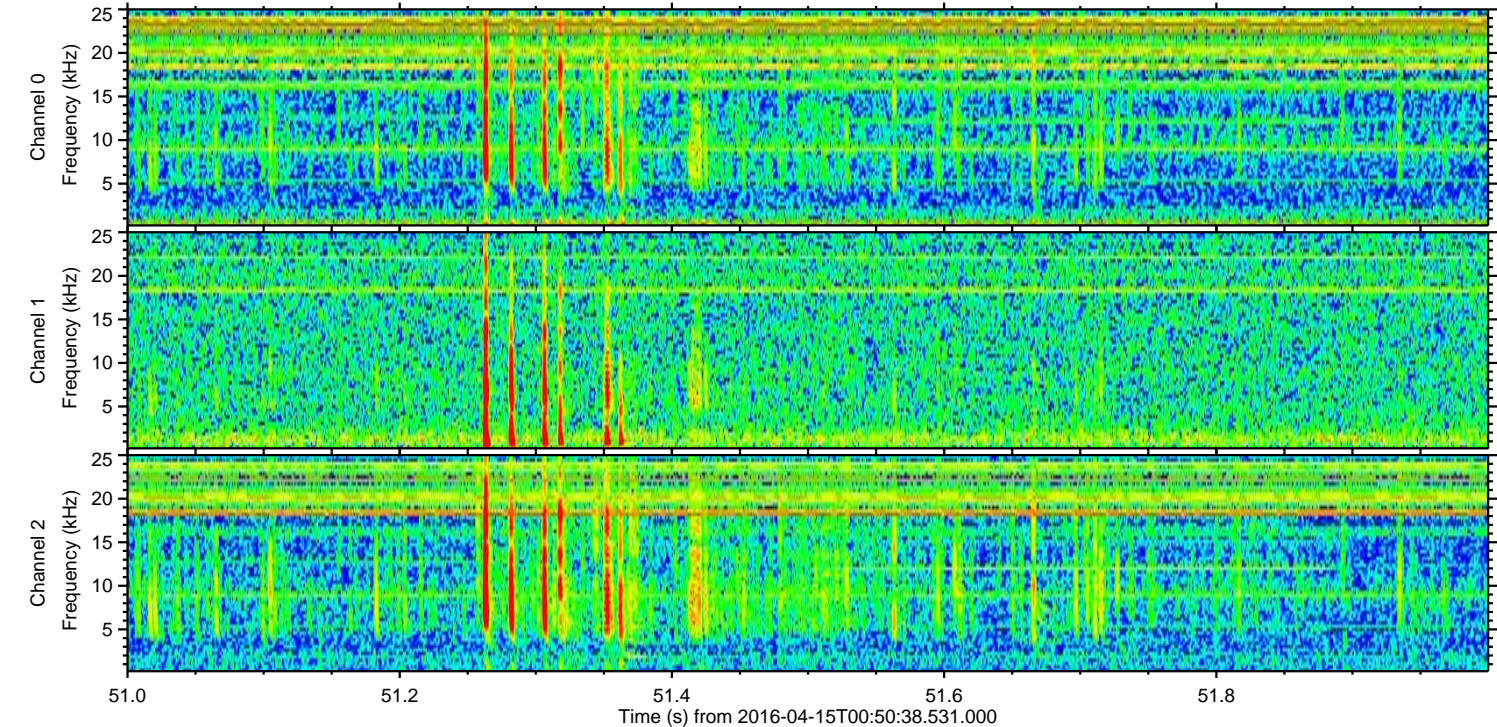
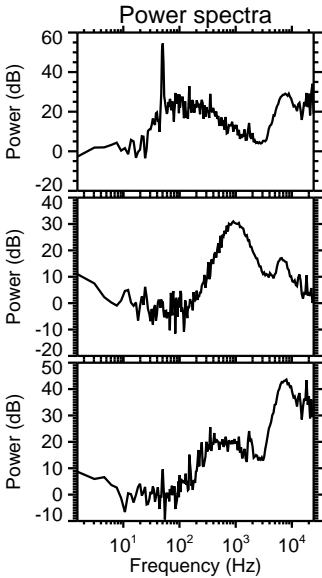
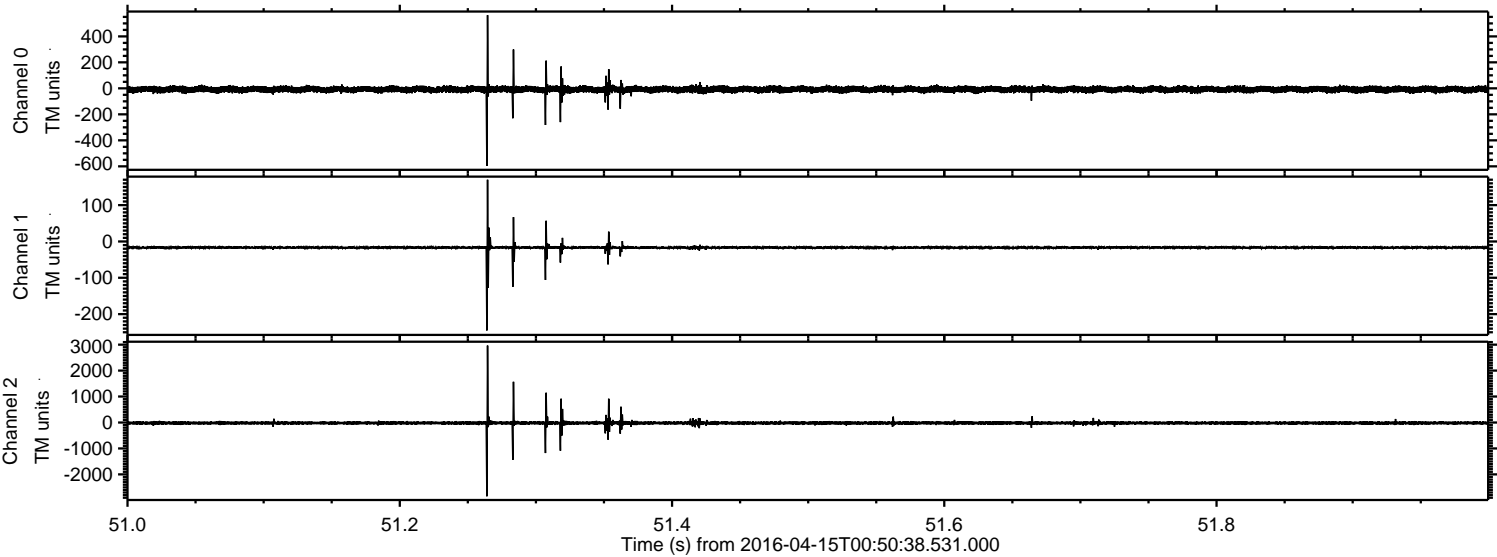


Processed Sun May 8 12:30:53 2016 by ELM ver.2012-10-06 from 001\_\_elm20160415\_005037\_\_dat00.bin



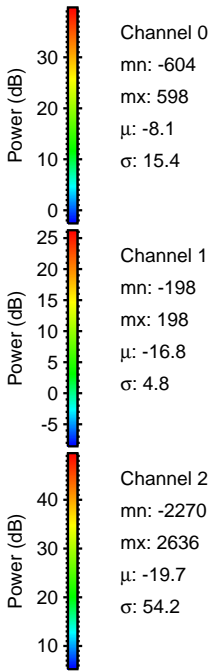
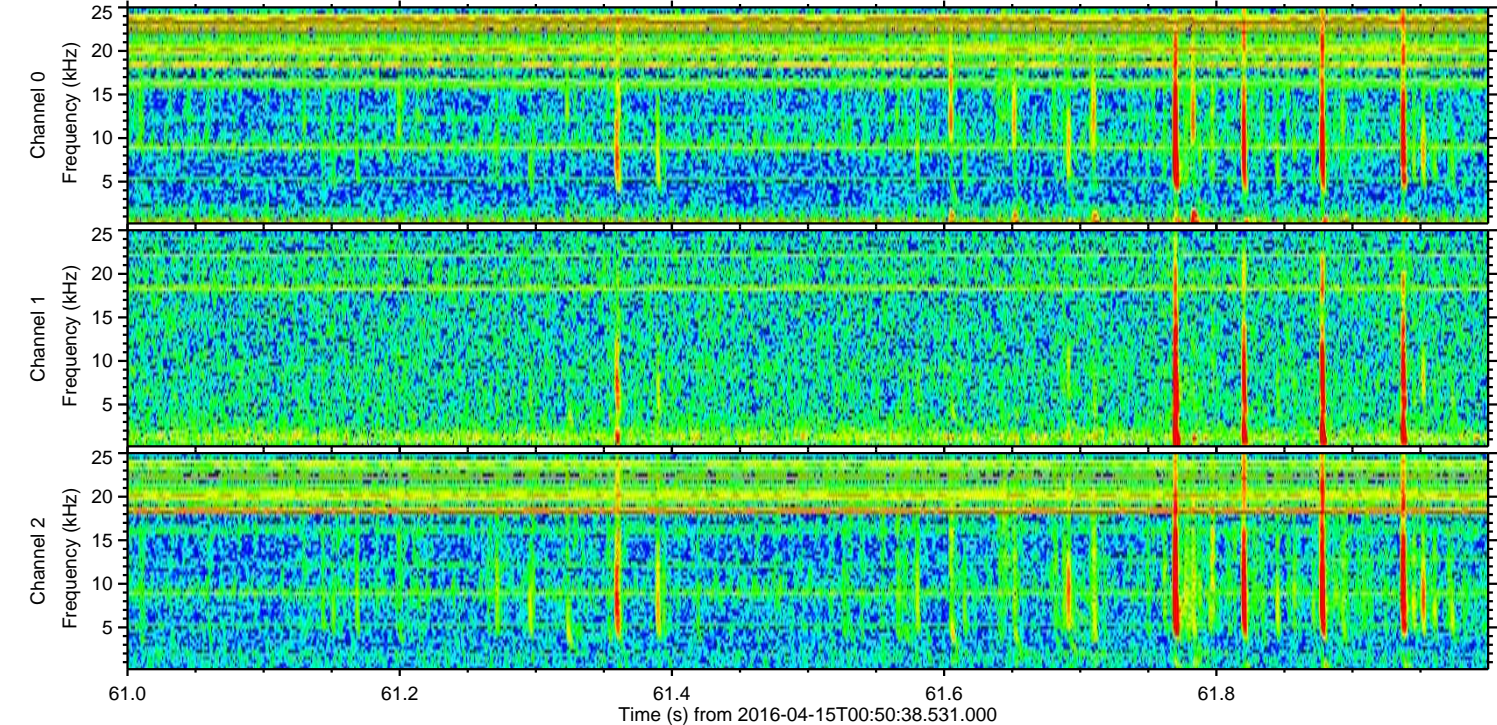
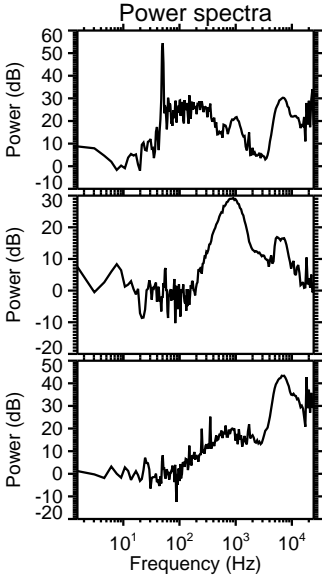
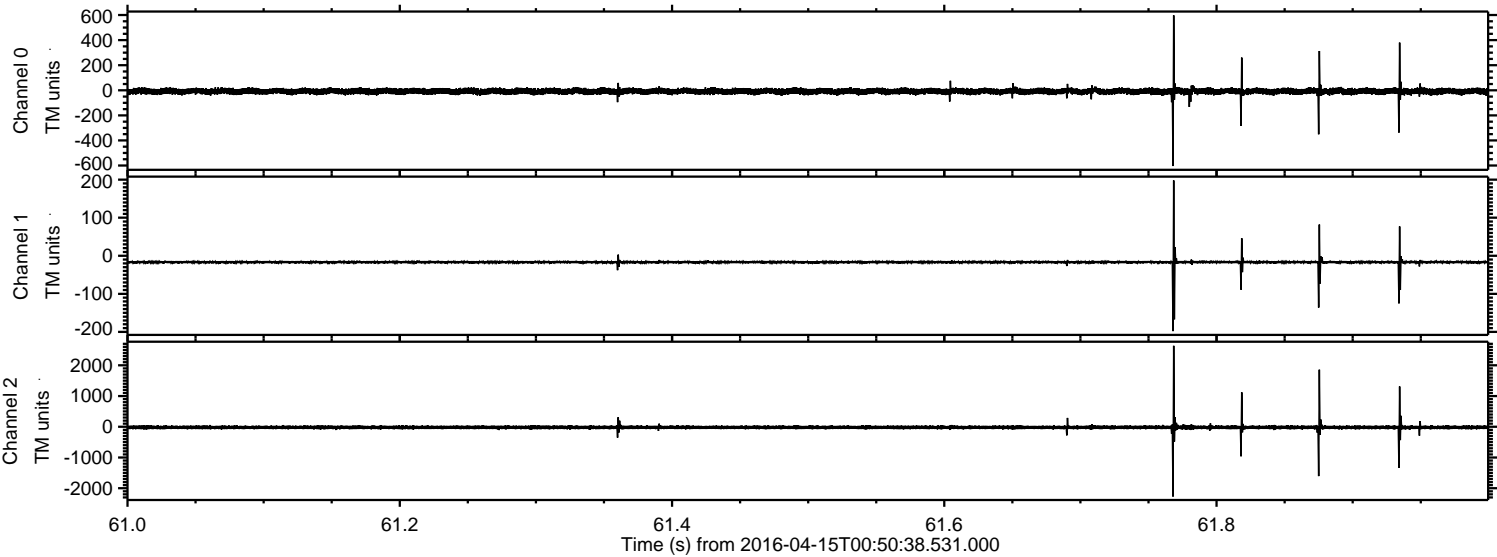


Processed Sun May 8 12:30:54 2016 by ELM ver.2012-10-06 from 001\_\_elm20160415\_005037\_\_dat00.bin





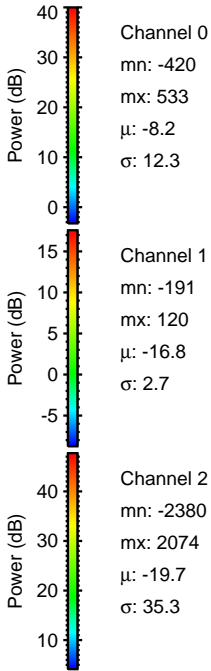
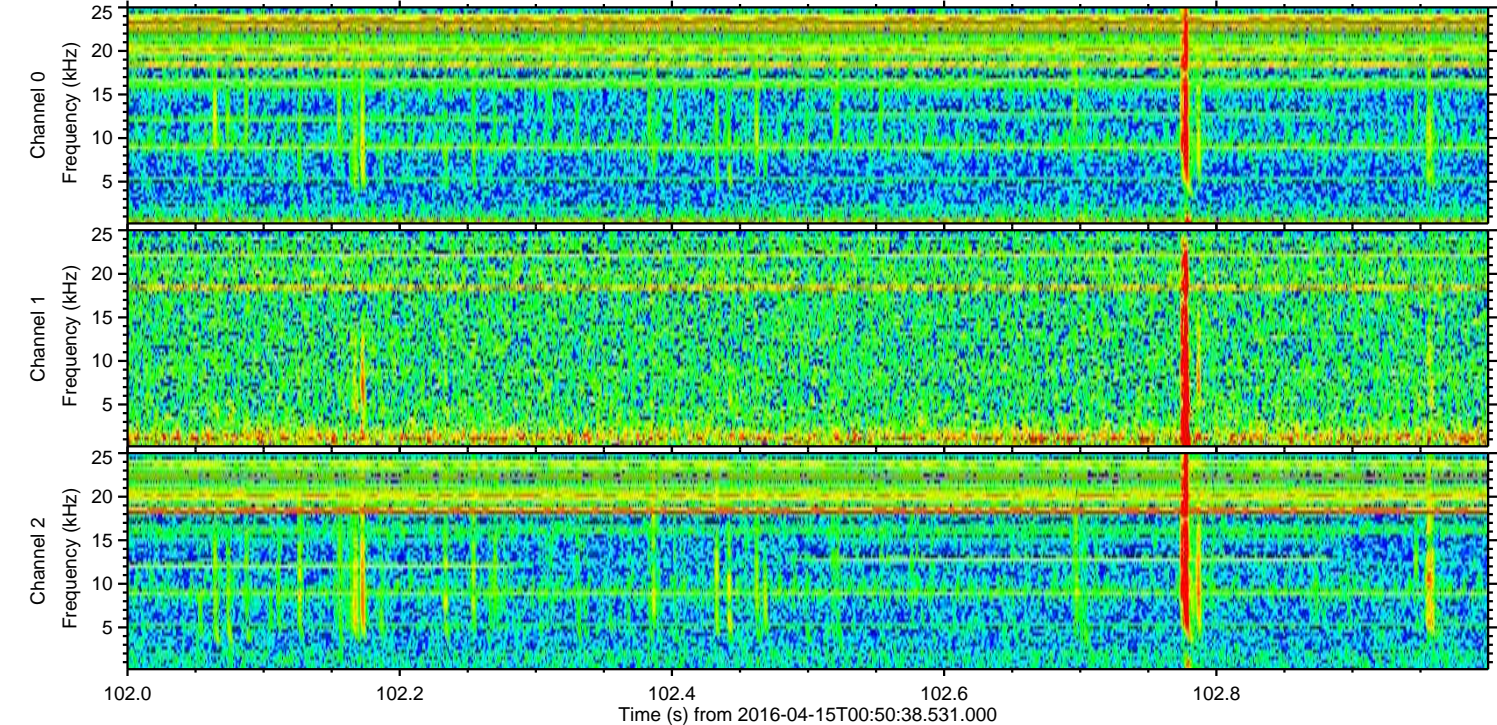
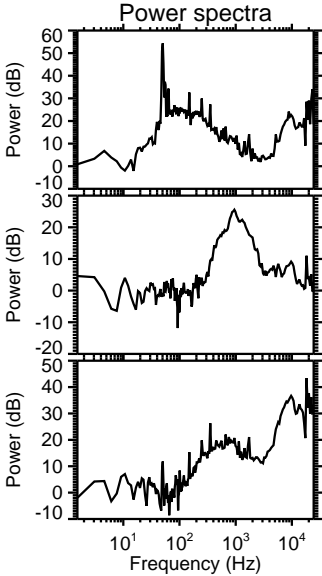
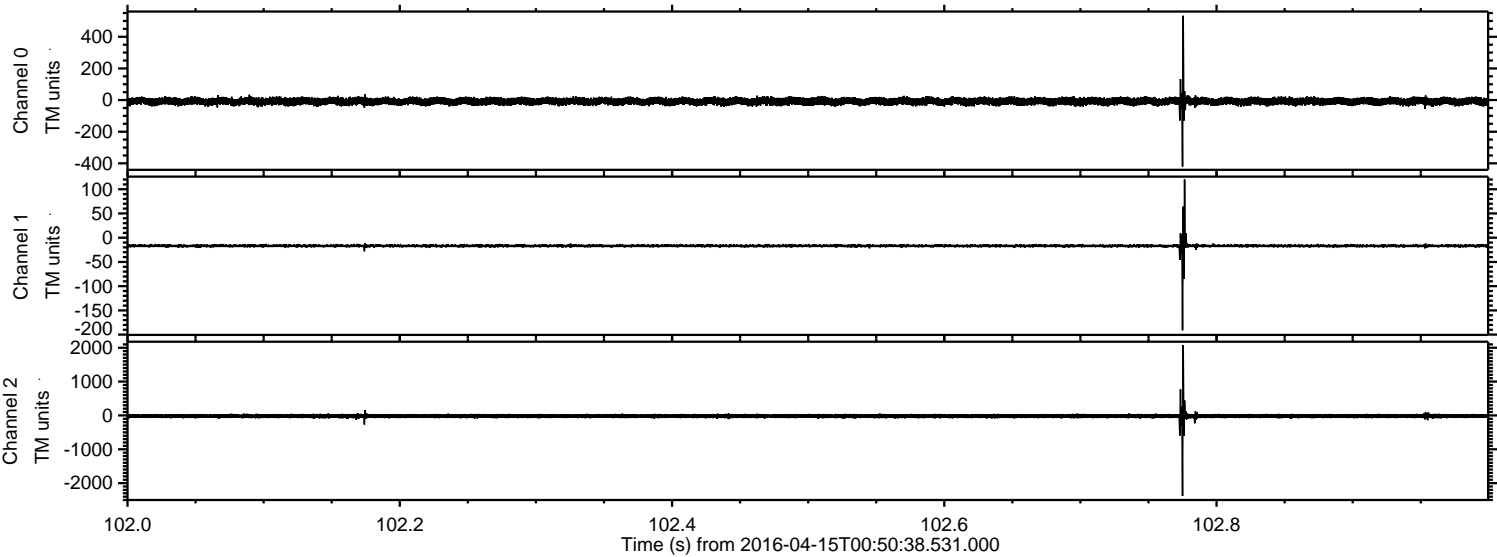
Processed Sun May 8 12:30:55 2016 by ELM ver.2012-10-06 from 001\_\_elm20160415\_005037\_\_dat00.bin





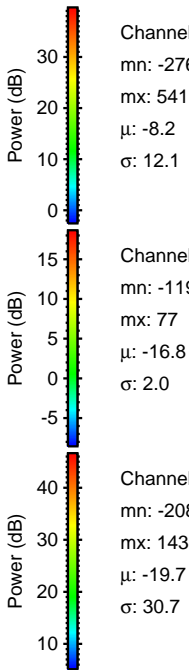
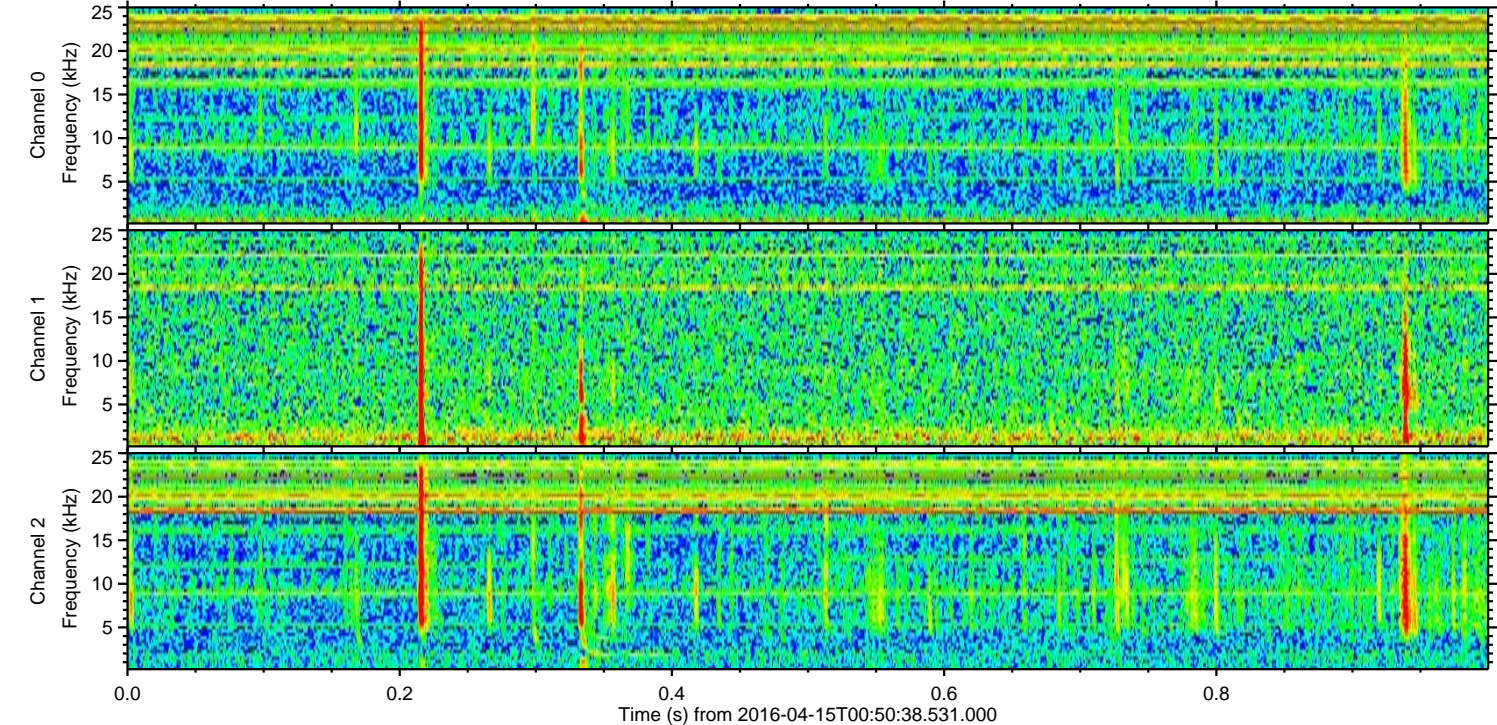
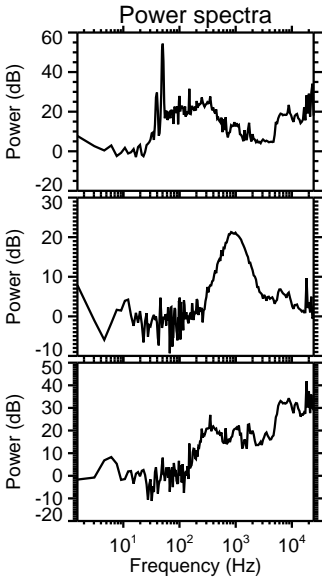
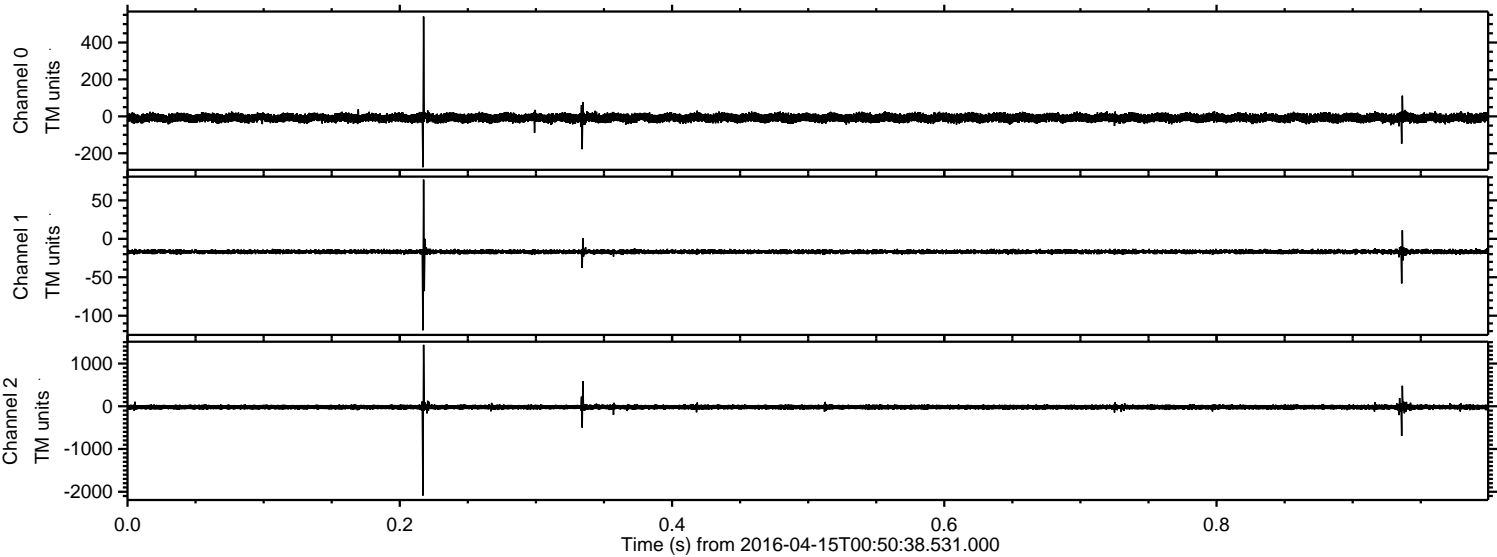
ELMAVAN 3D WAVEFORMS (Measured data sampled at 50 kHz) 51000 packets of 144 samples from 2016-04-15T00:50:38.531.000. Part 103/147

Processed Sun May 8 12:30:56 2016 by ELM ver.2012-10-06 from 001\_\_elm20160415\_005037\_\_dat00.bin



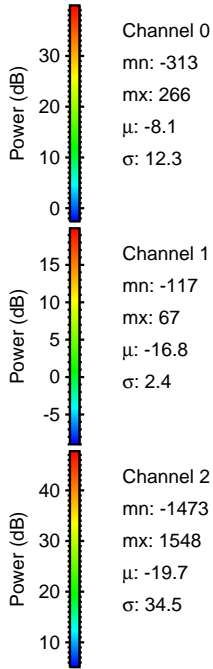
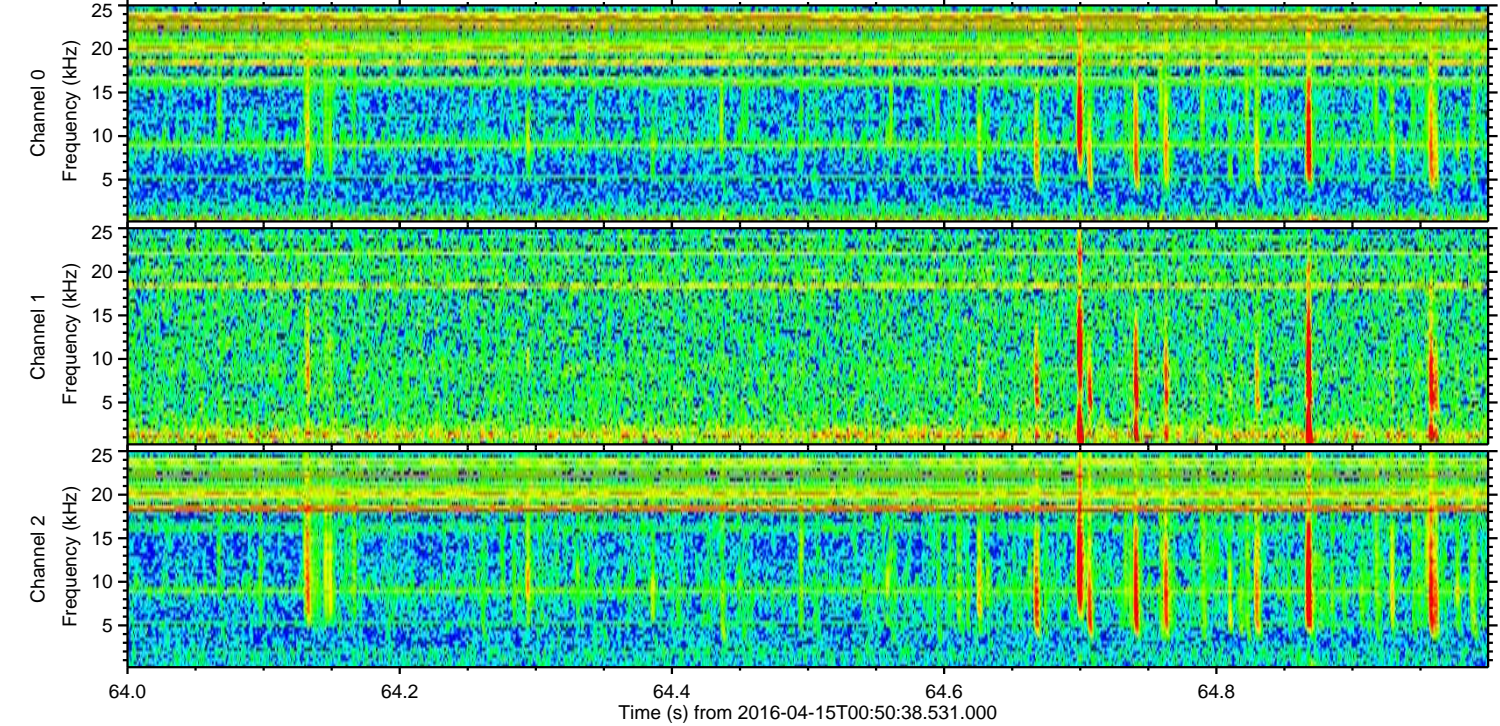
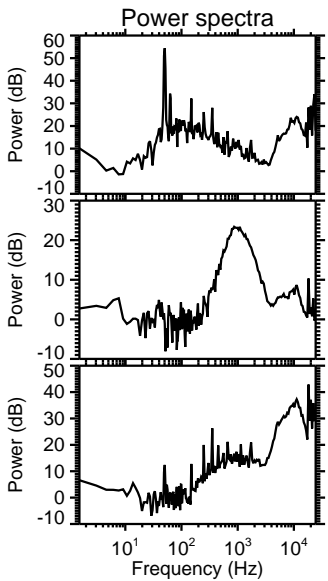
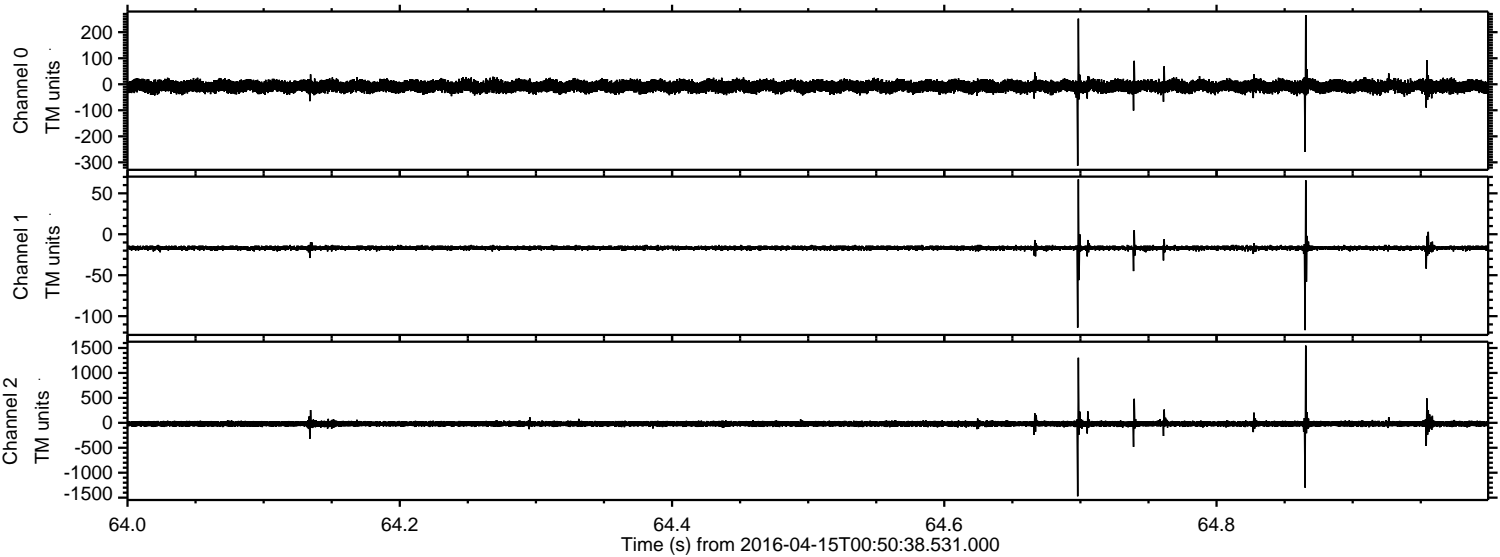


Processed Sun May 8 12:30:57 2016 by ELM ver.2012-10-06 from 001\_\_elm20160415\_005037\_\_dat00.bin



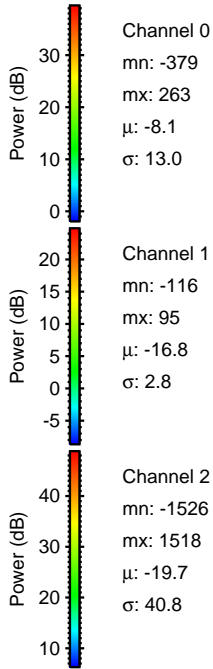
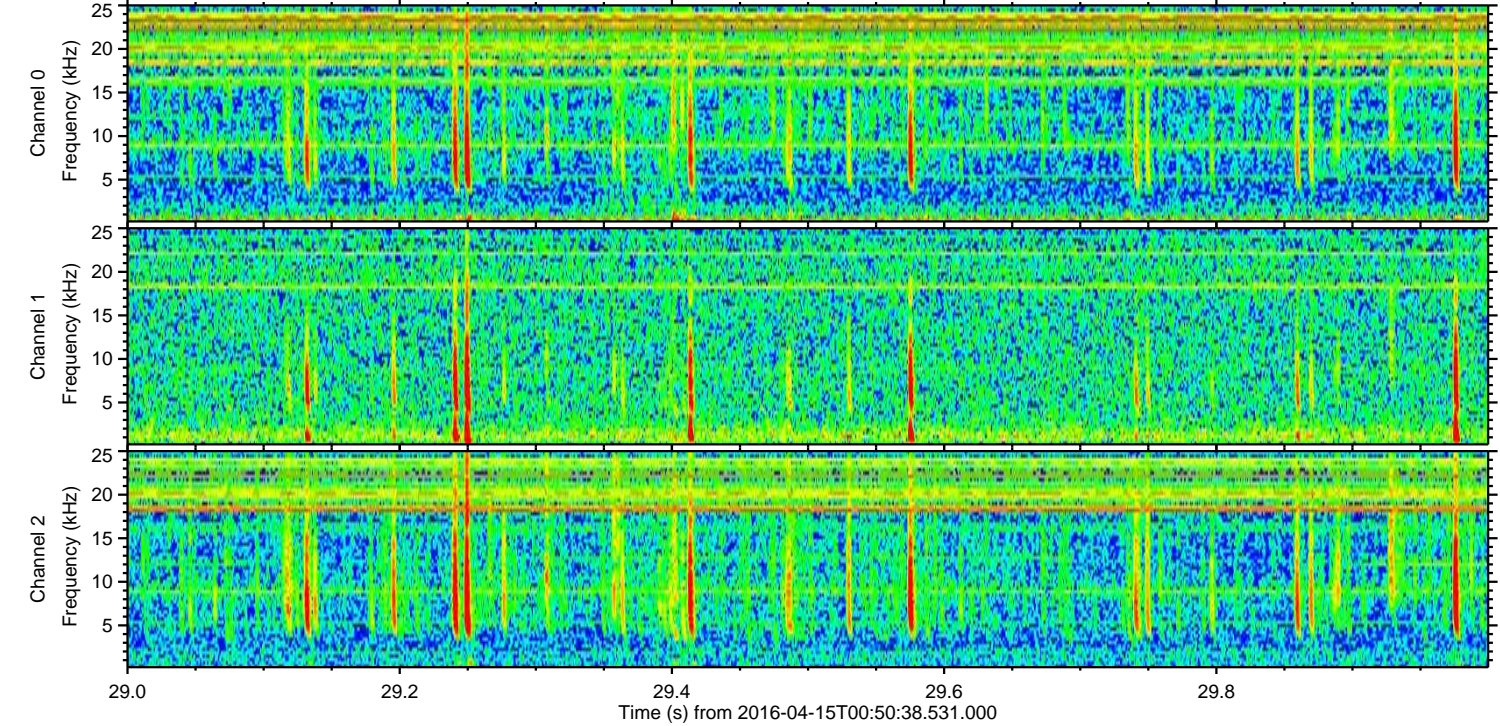
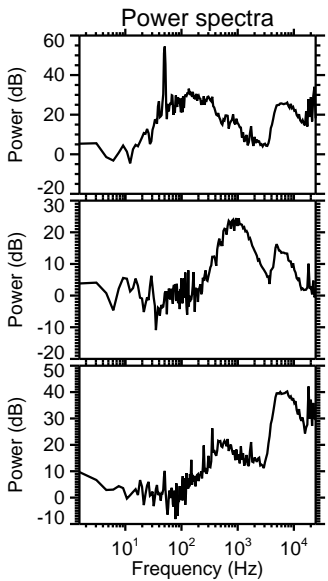
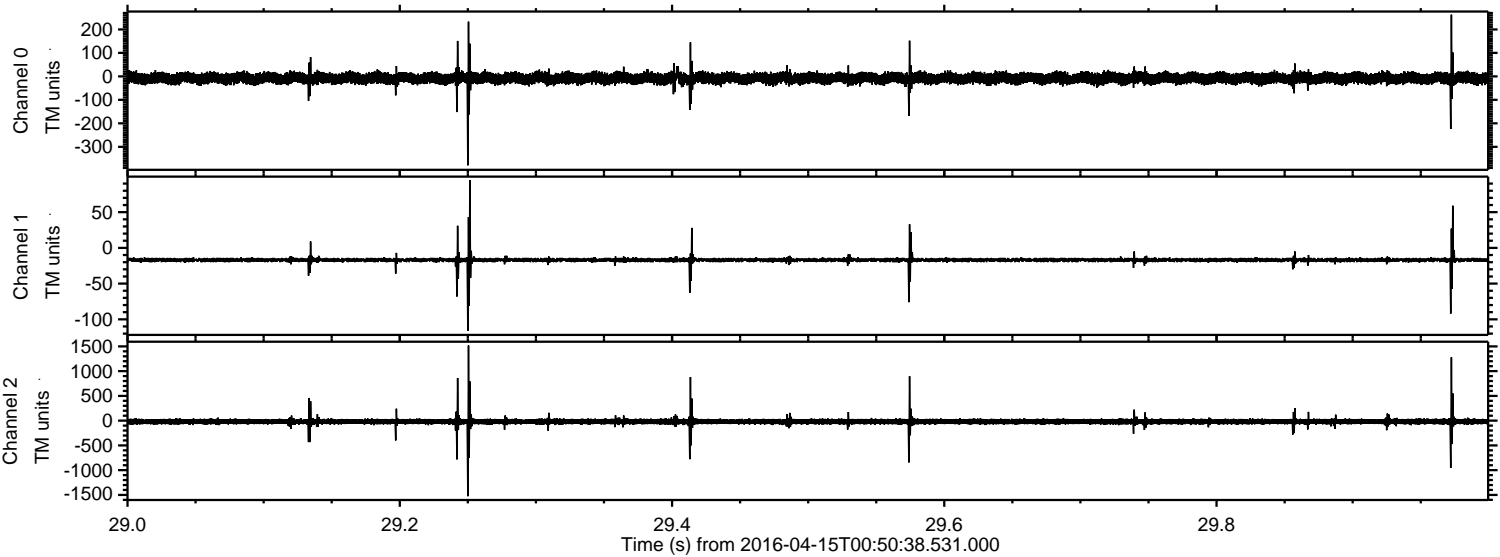


Processed Sun May 8 12:30:58 2016 by ELM ver.2012-10-06 from 001\_\_elm20160415\_005037\_\_dat00.bin





Processed Sun May 8 12:30:59 2016 by ELM ver.2012-10-06 from 001\_\_elm20160415\_005037\_\_dat00.bin





ELMAVAN 3D WAVEFORMS (Measured data sampled at 50 kHz) 51000 packets of 144 samples from 2016-04-15T00:50:38.531.000. Part 136/147

Processed Sun May 8 12:31:00 2016 by ELM ver.2012-10-06 from 001\_\_elm20160415\_005037\_\_dat00.bin

