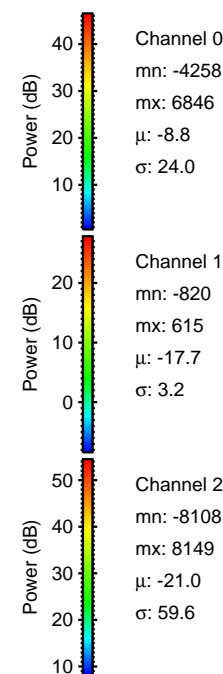
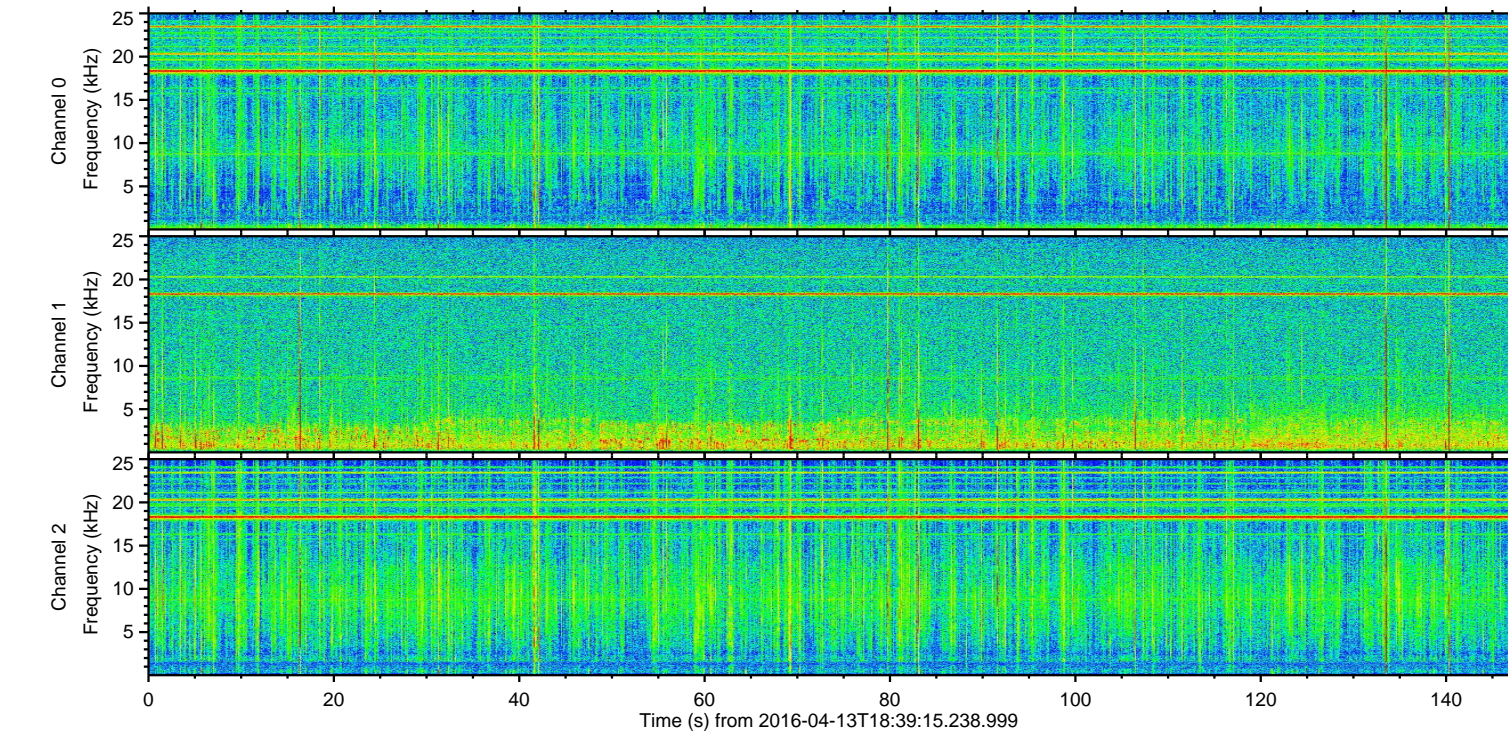
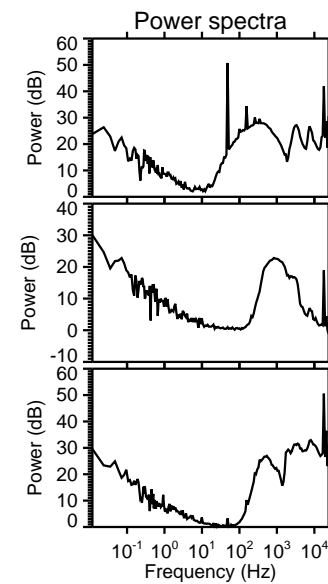
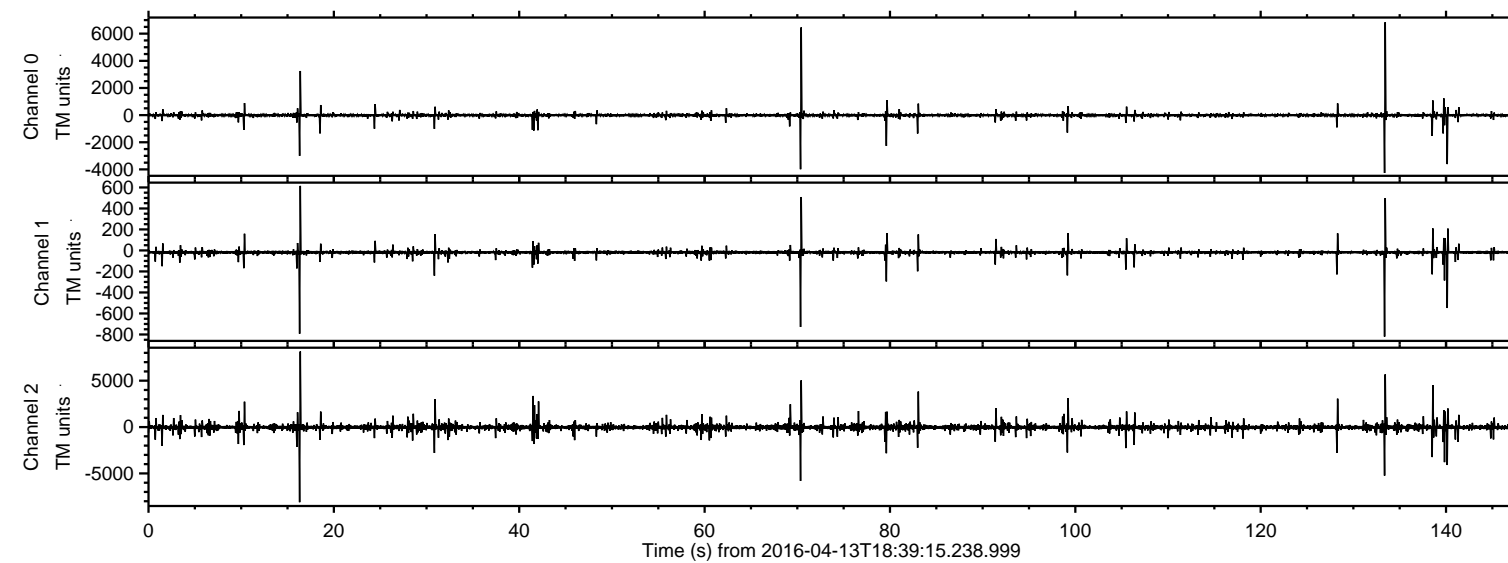
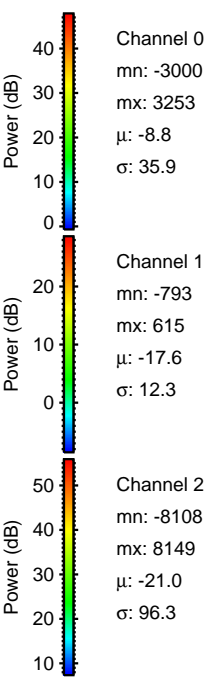
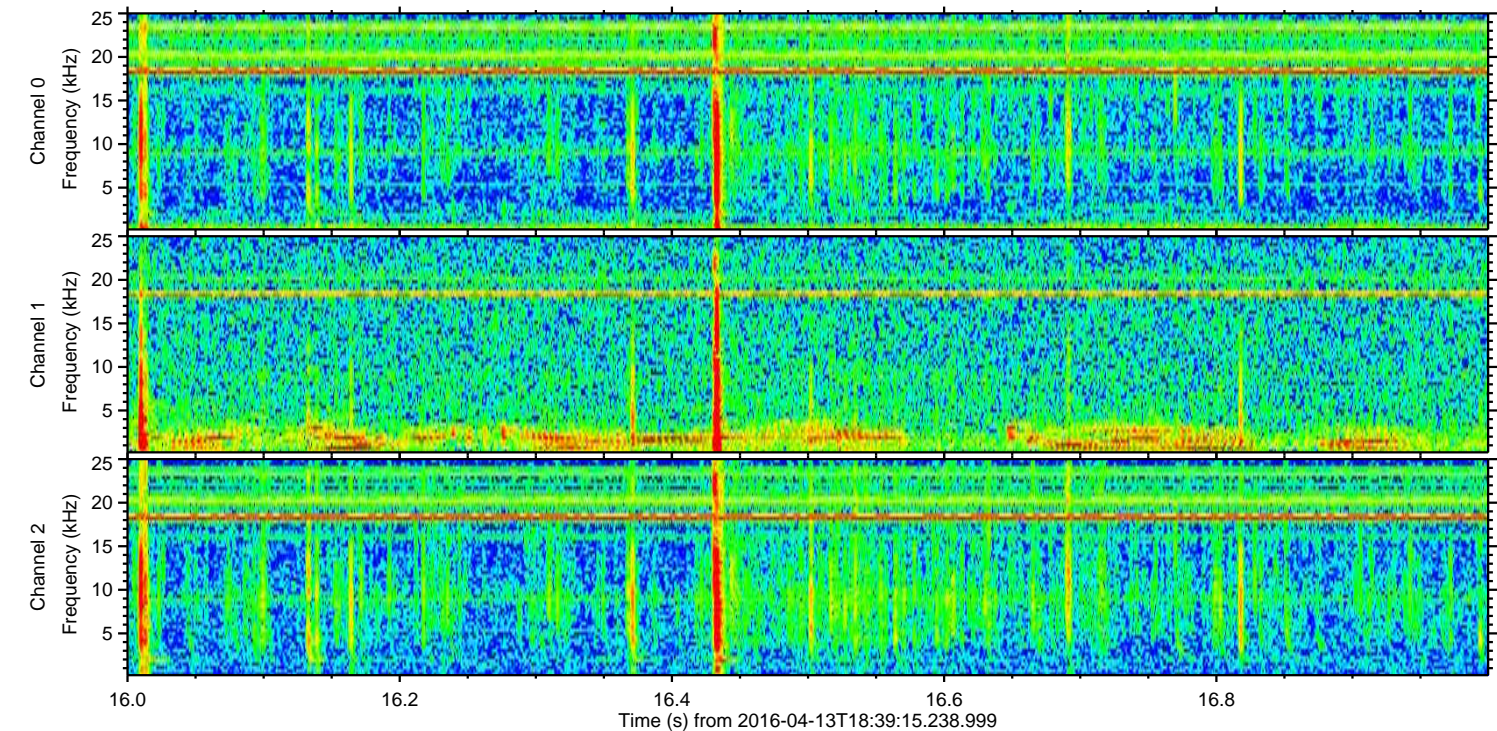
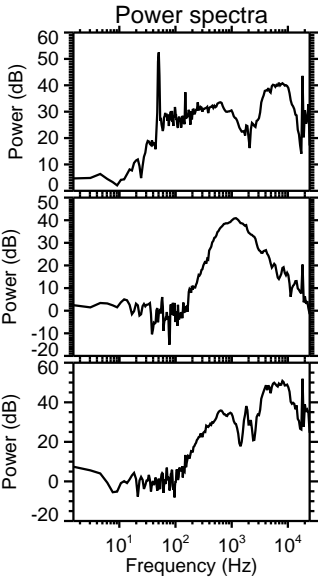
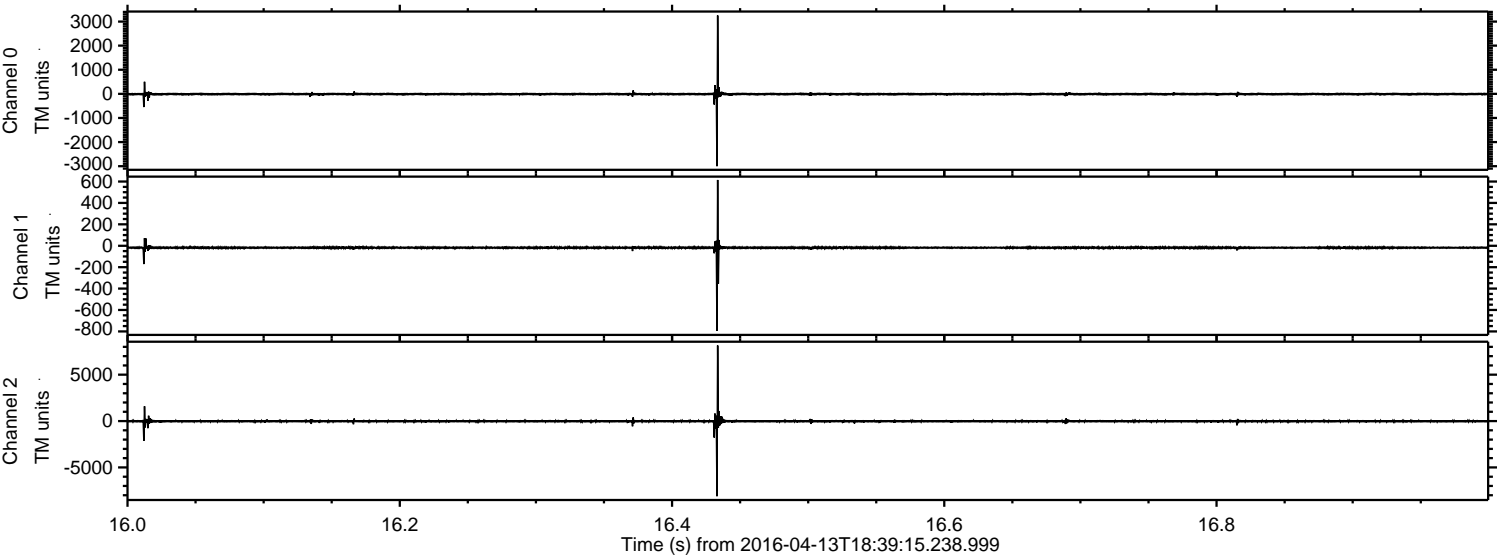


ELMAVAN 3D WAVEFORMS (Measured data sampled at 50 kHz) 51000 packets of 144 samples from 2016-04-13T18:39:15.238.999.

Processed Sun May 8 06:08:36 2016 by ELM ver.2012-10-06 from 001__elm20160413_183914__dat00.bin

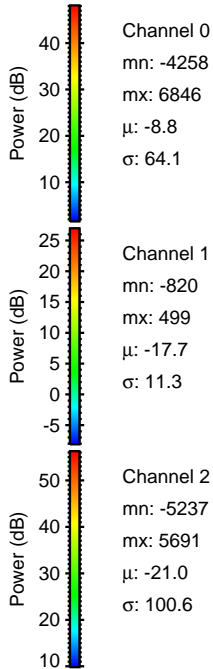
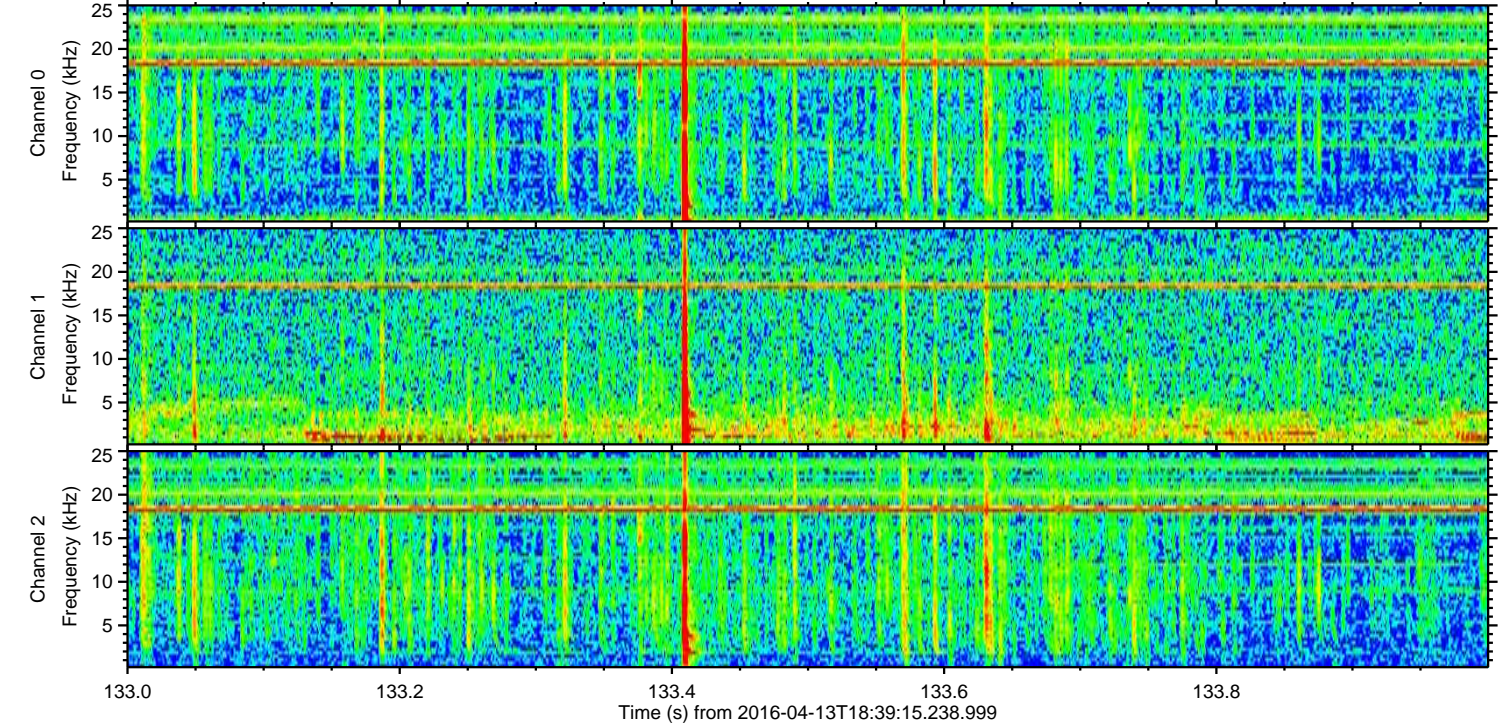
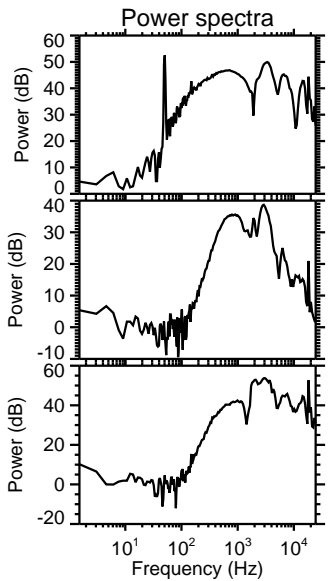
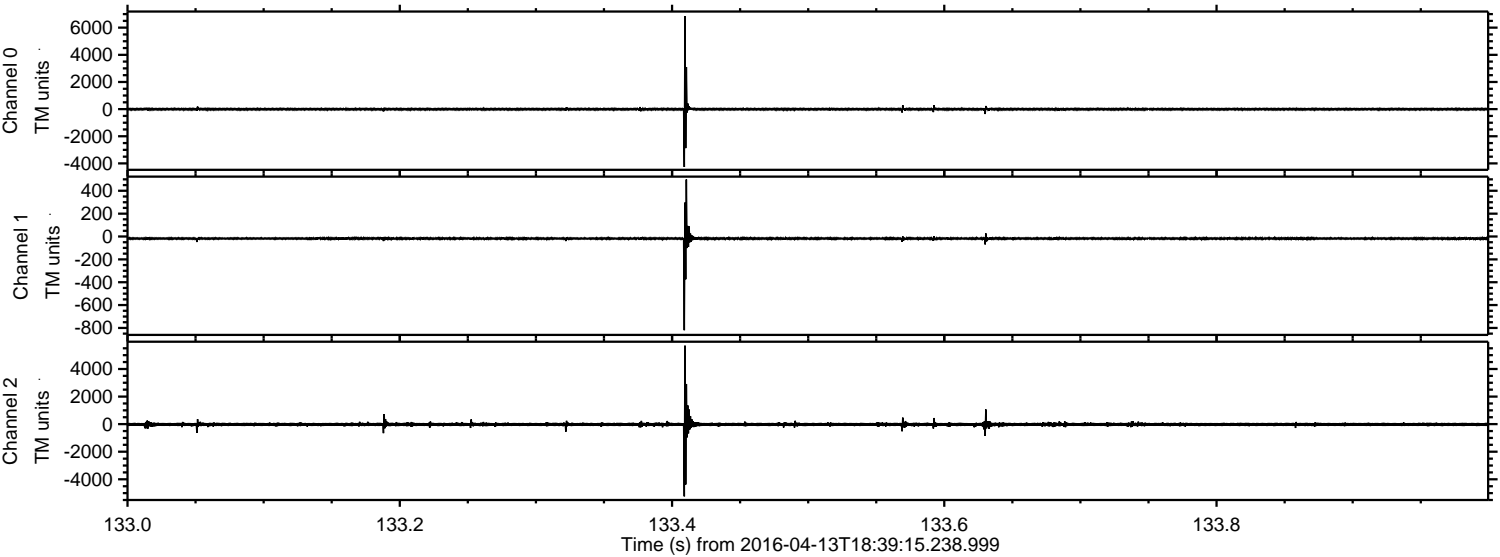


Processed Sun May 8 06:08:48 2016 by ELM ver.2012-10-06 from 001__elm20160413_183914__dat00.bin

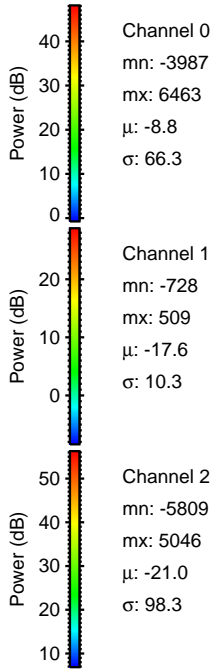
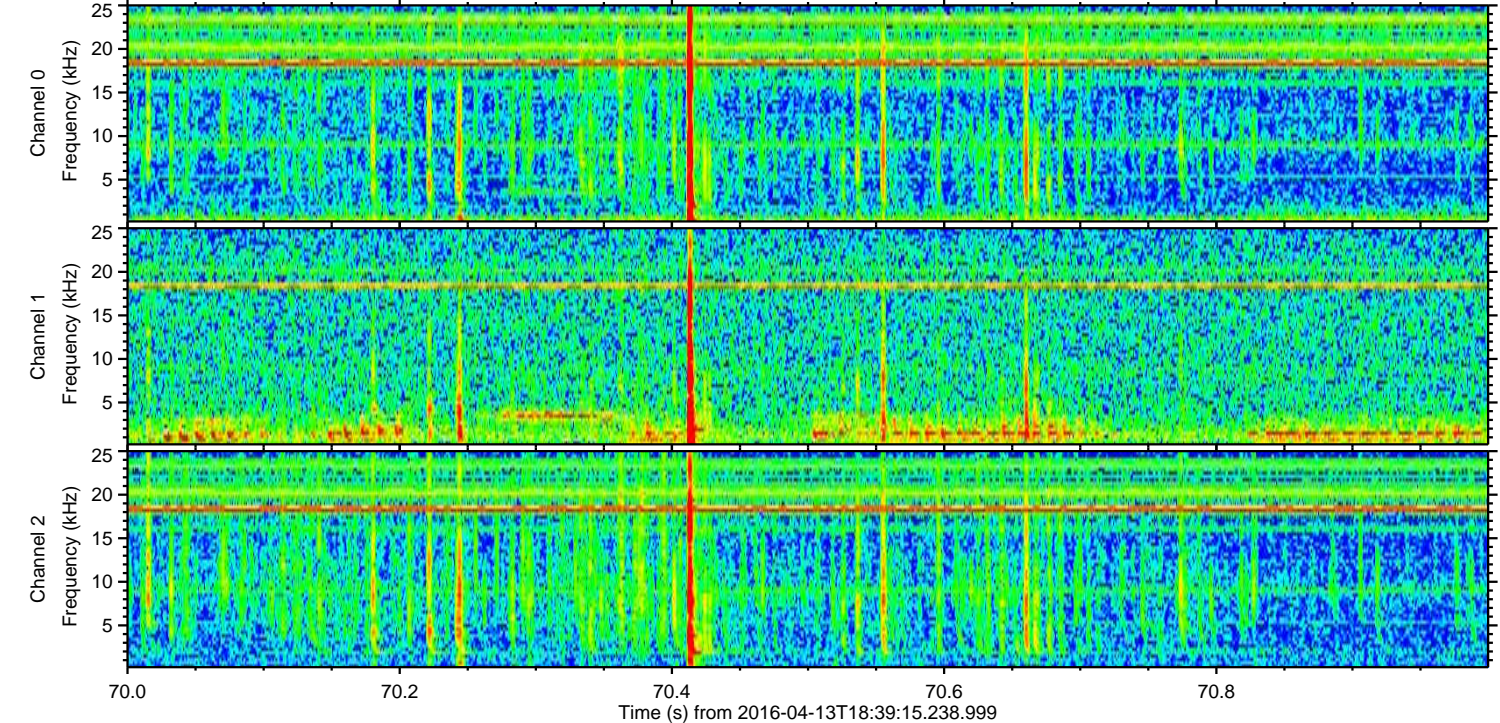
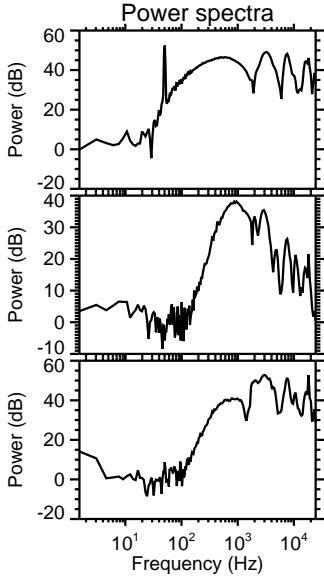
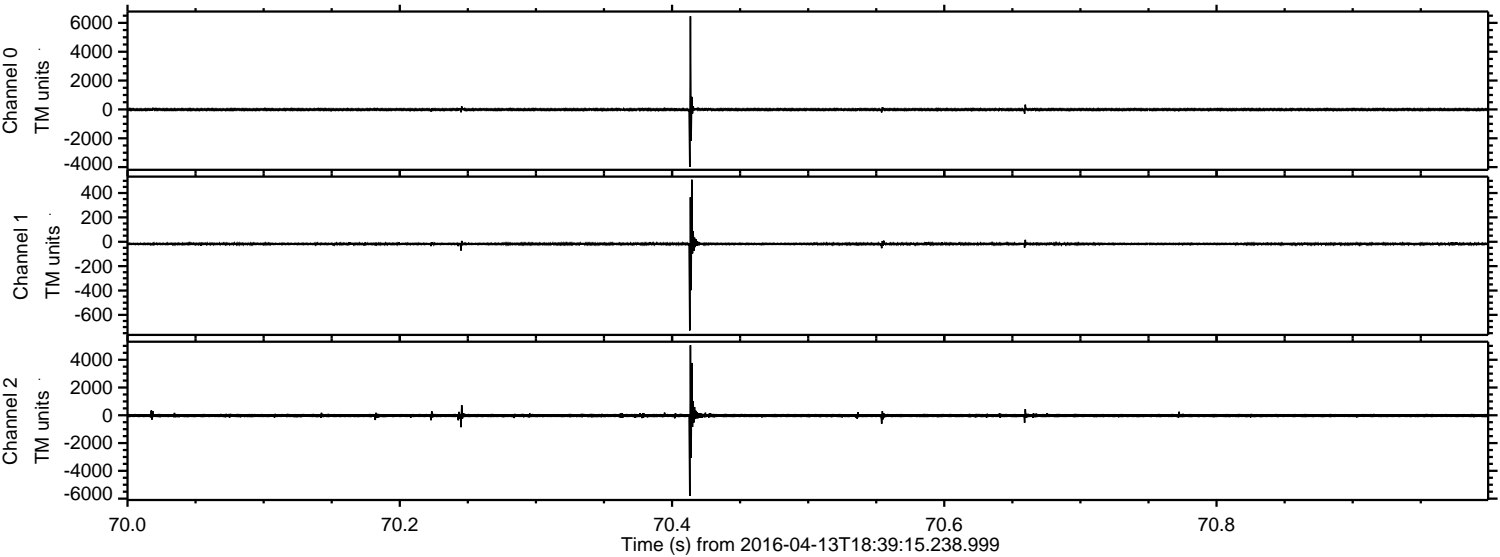


ELMAVAN 3D WAVEFORMS (Measured data sampled at 50 kHz) 51000 packets of 144 samples from 2016-04-13T18:39:15.238.999. Part 134/147

Processed Sun May 8 06:08:49 2016 by ELM ver.2012-10-06 from 001__elm20160413_183914__dat00.bin

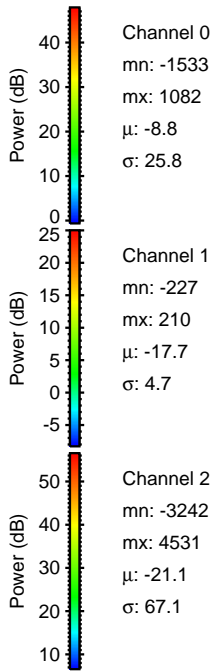
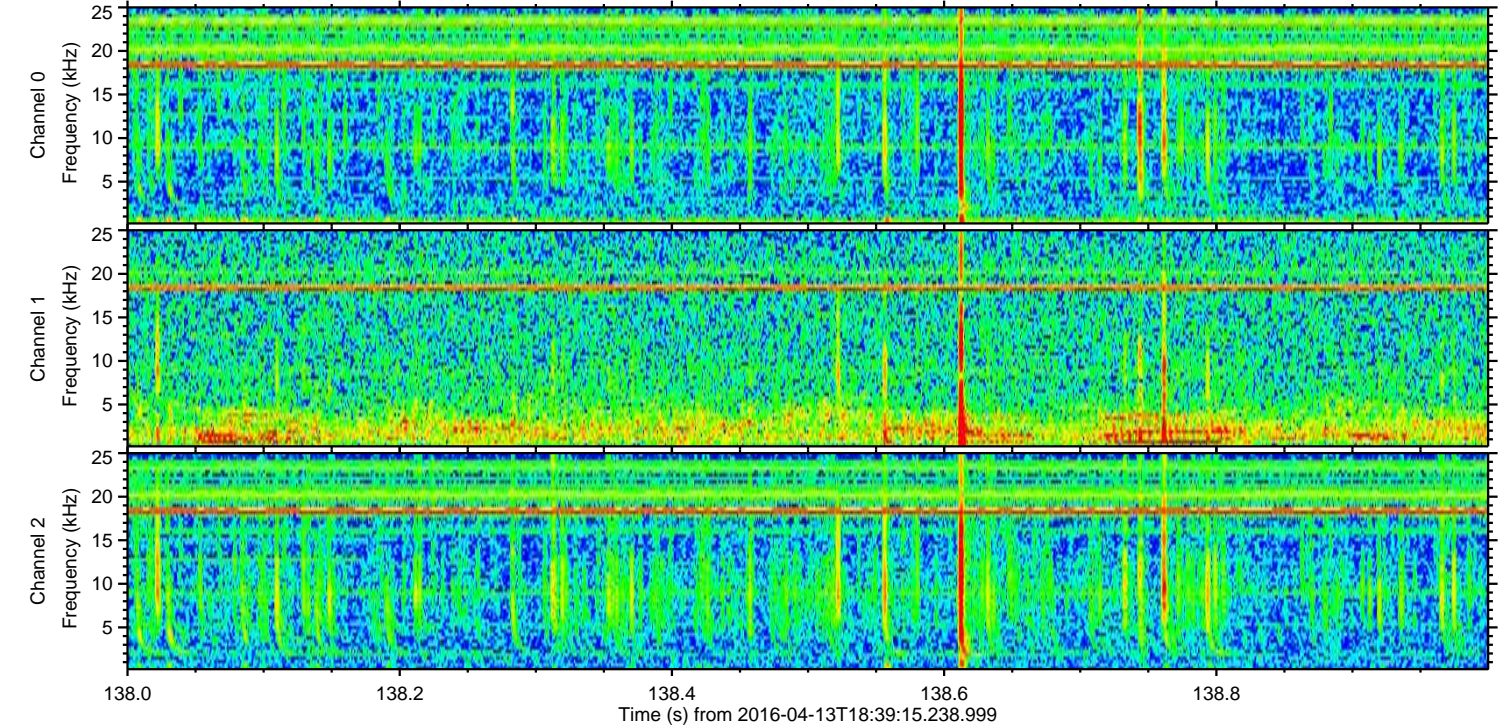
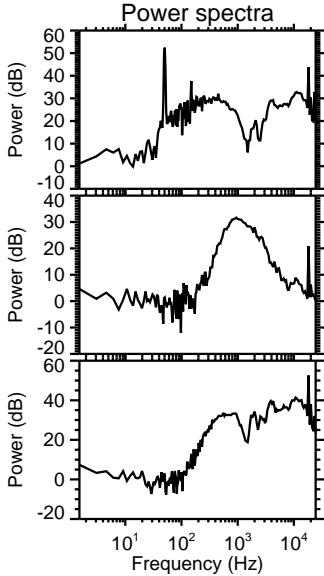
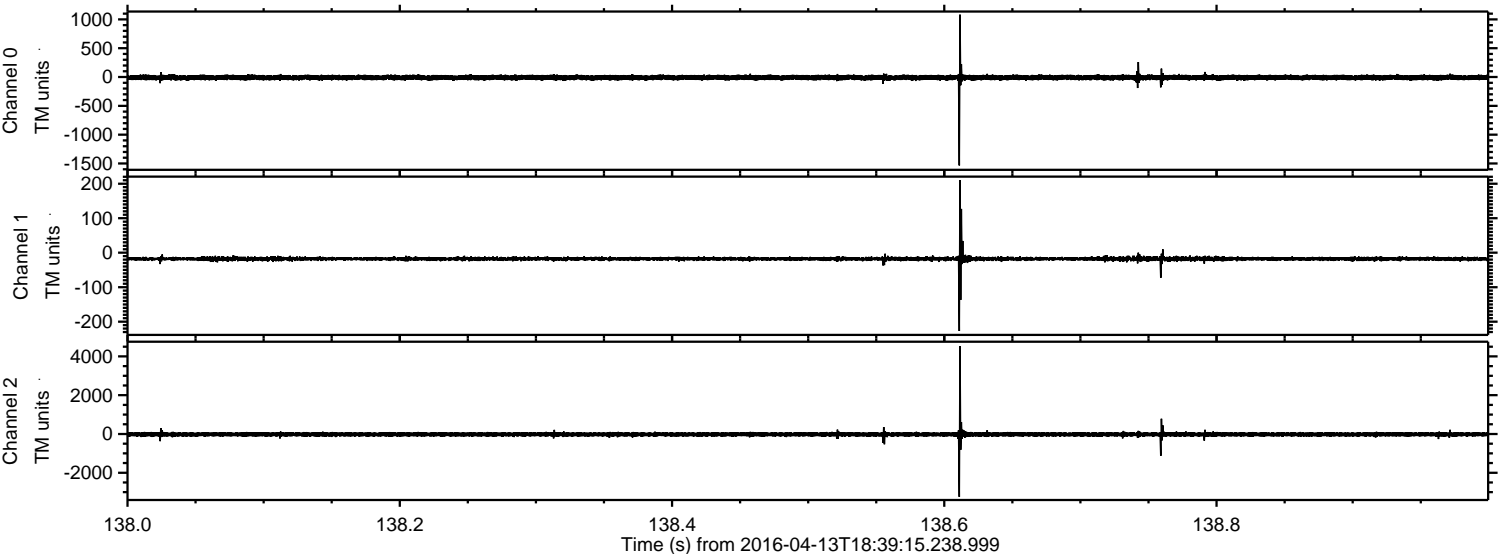


Processed Sun May 8 06:08:50 2016 by ELM ver.2012-10-06 from 001__elm20160413_183914__dat00.bin



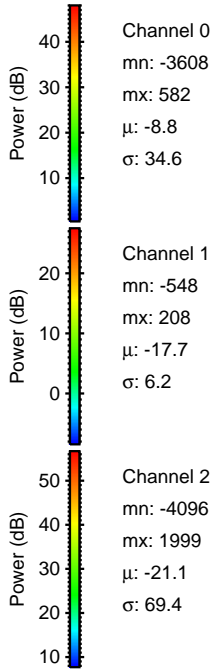
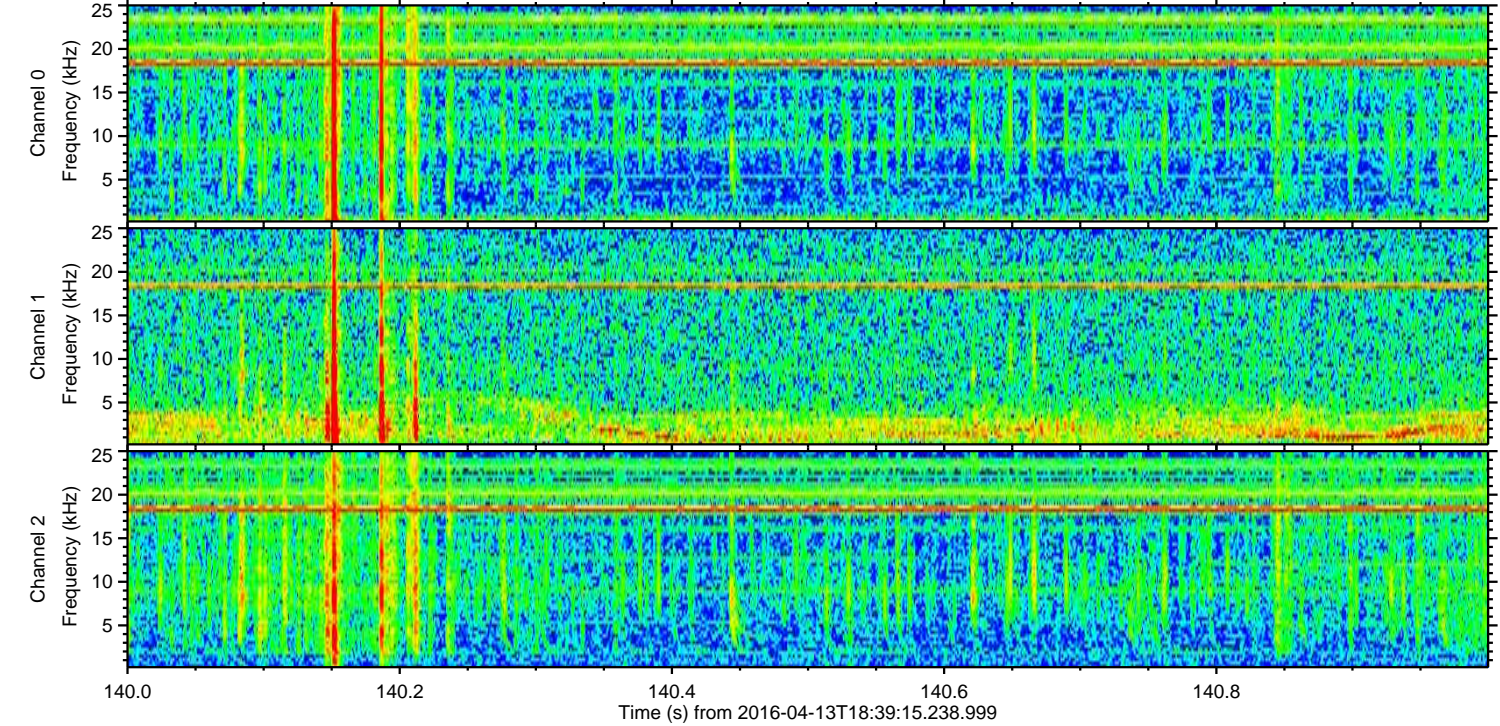
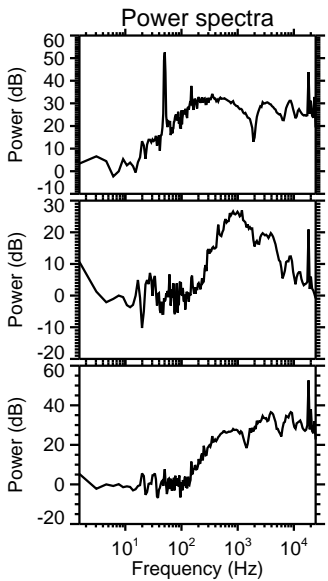
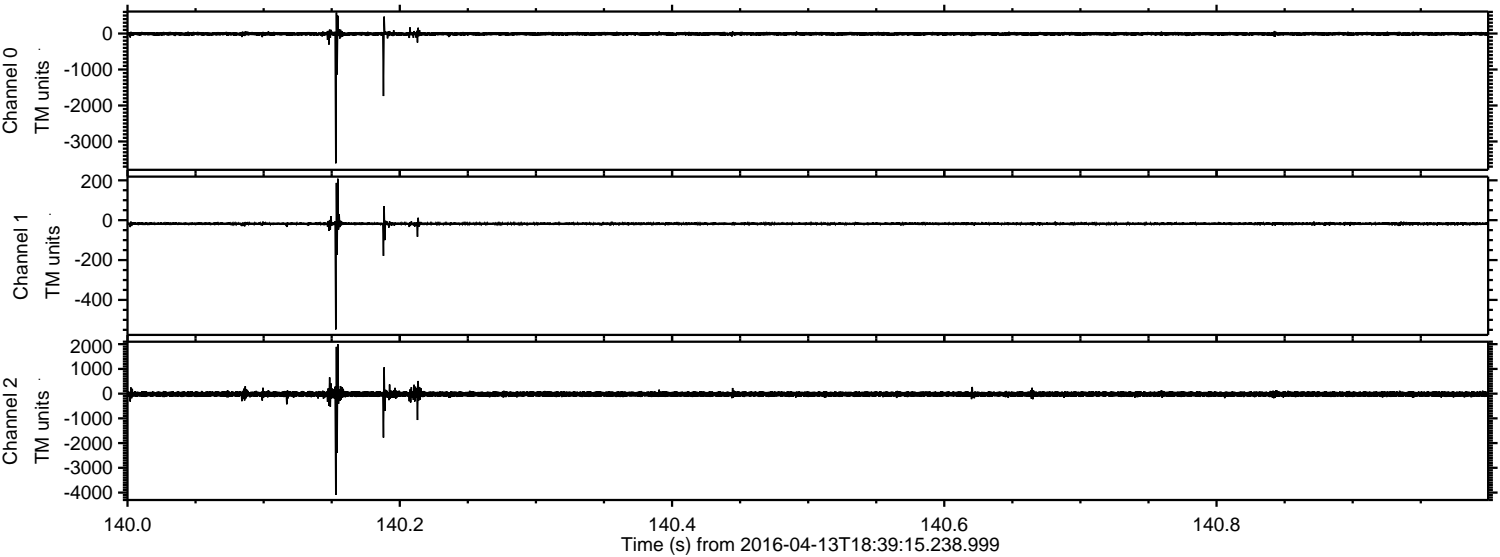
ELMAVAN 3D WAVEFORMS (Measured data sampled at 50 kHz) 51000 packets of 144 samples from 2016-04-13T18:39:15.238.999. Part 139/147

Processed Sun May 8 06:08:51 2016 by ELM ver.2012-10-06 from 001__elm20160413_183914__dat00.bin

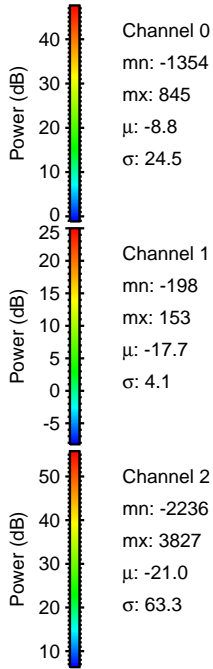
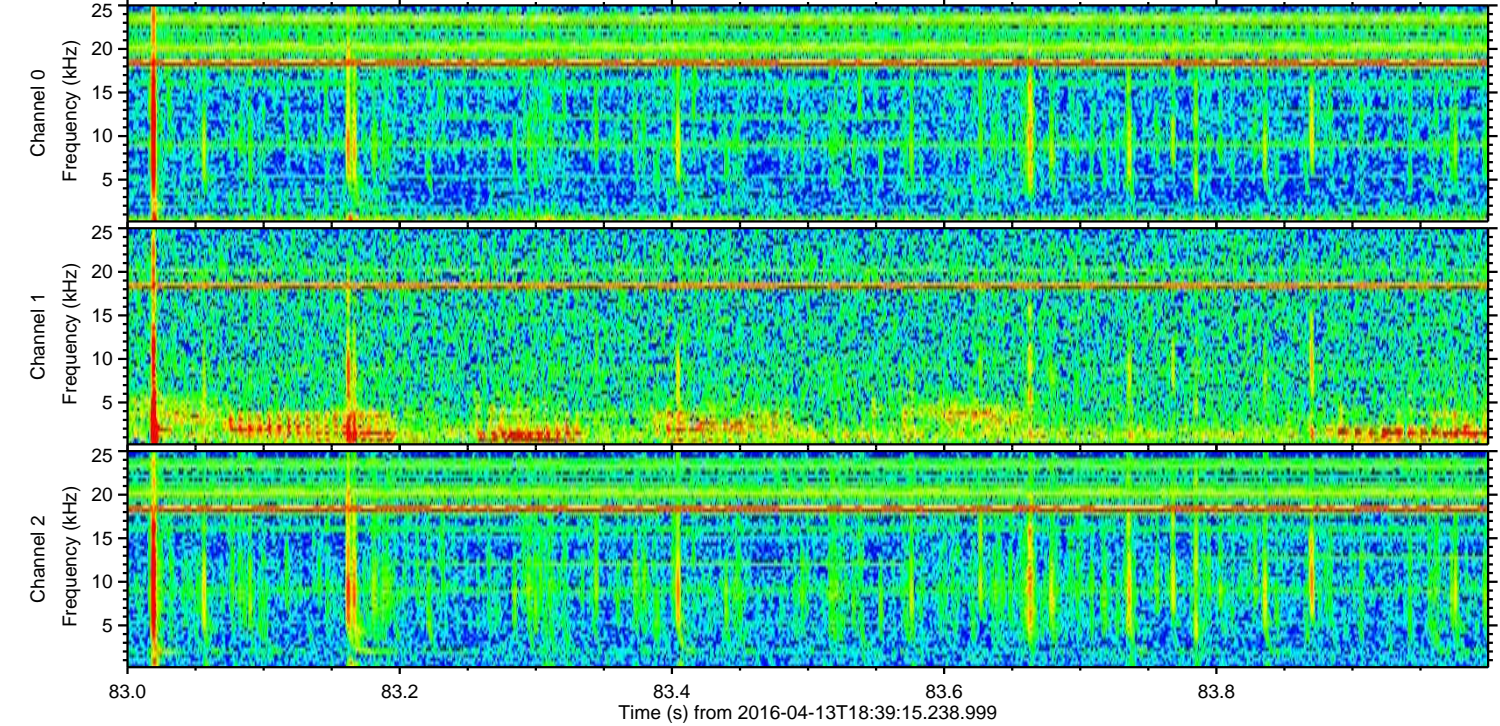
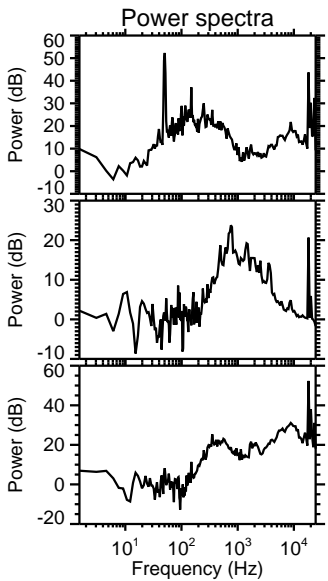
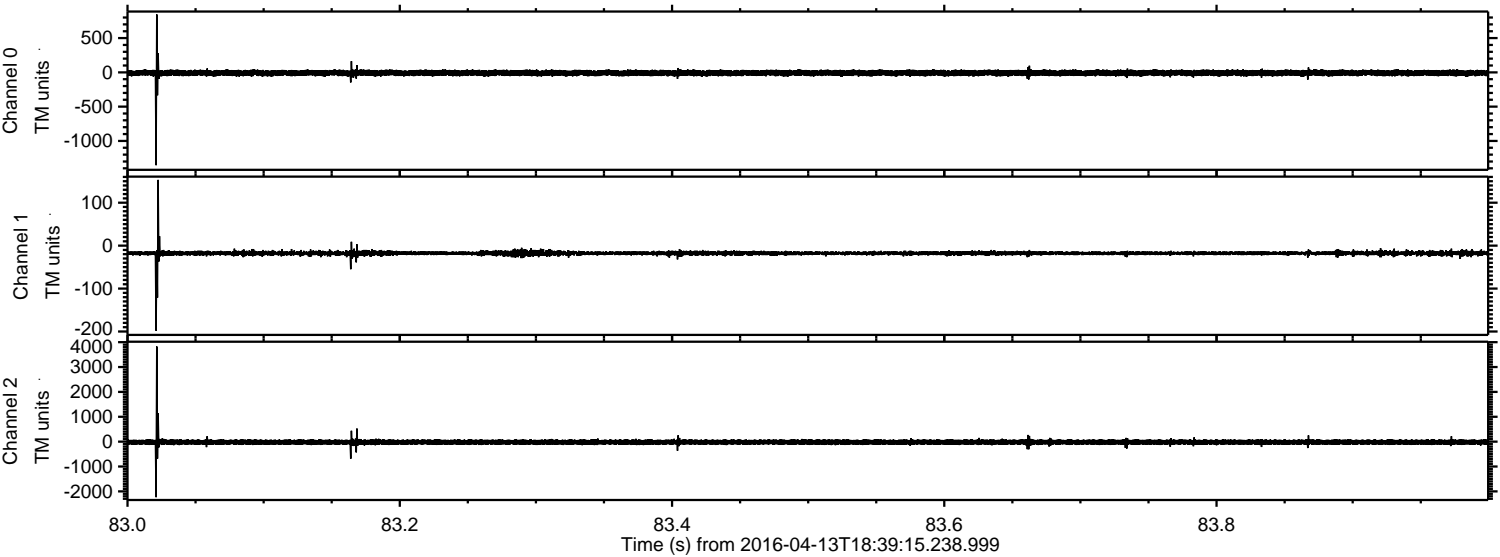


ELMAVAN 3D WAVEFORMS (Measured data sampled at 50 kHz) 51000 packets of 144 samples from 2016-04-13T18:39:15.238.999. Part 141/147

Processed Sun May 8 06:08:52 2016 by ELM ver.2012-10-06 from 001__elm20160413_183914__dat00.bin

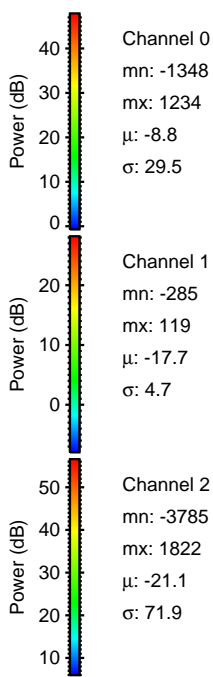
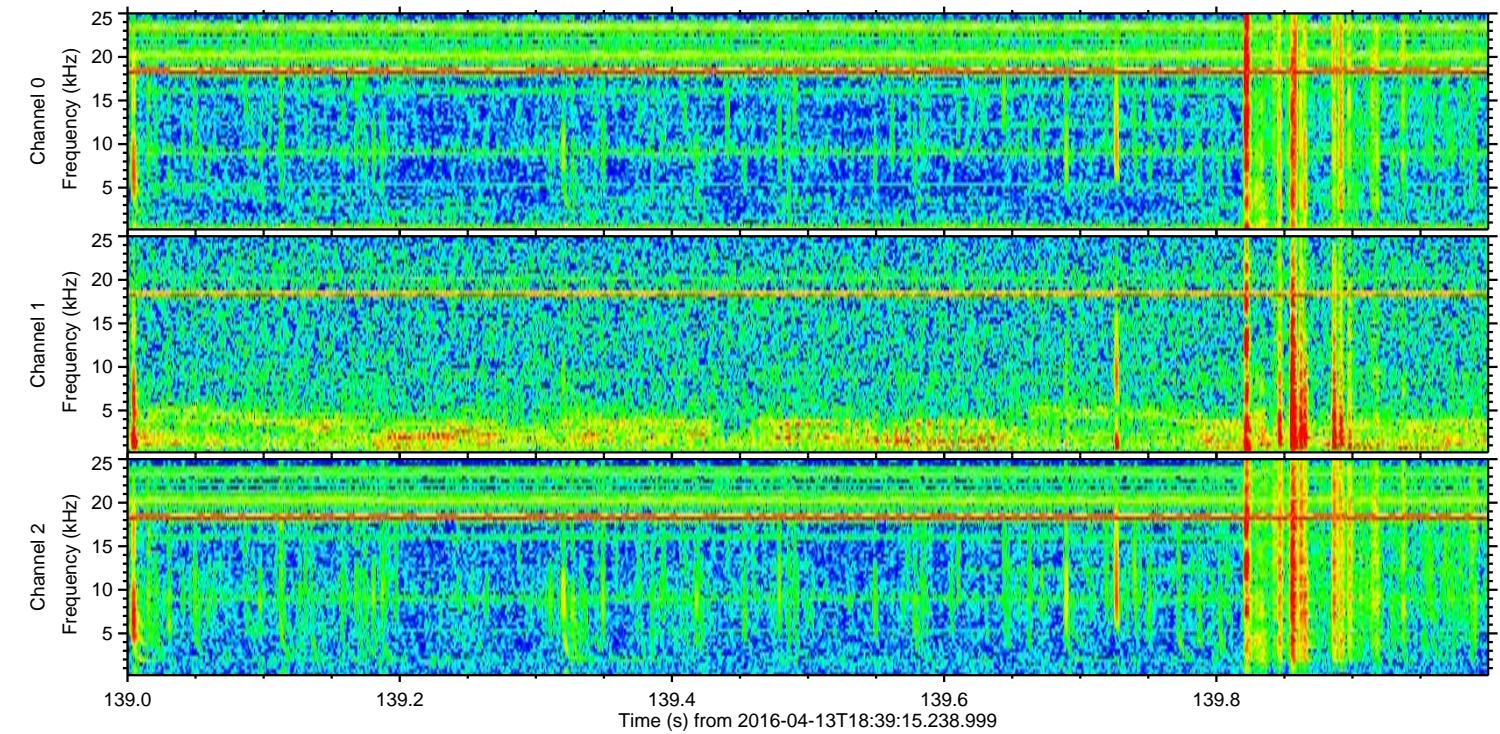
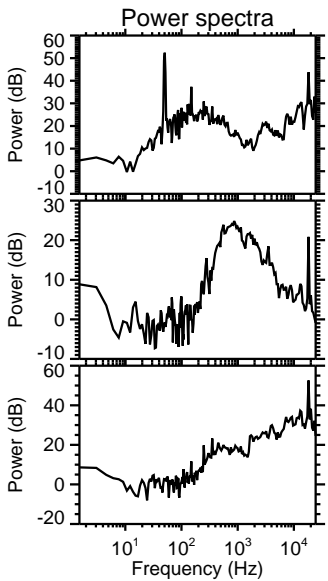
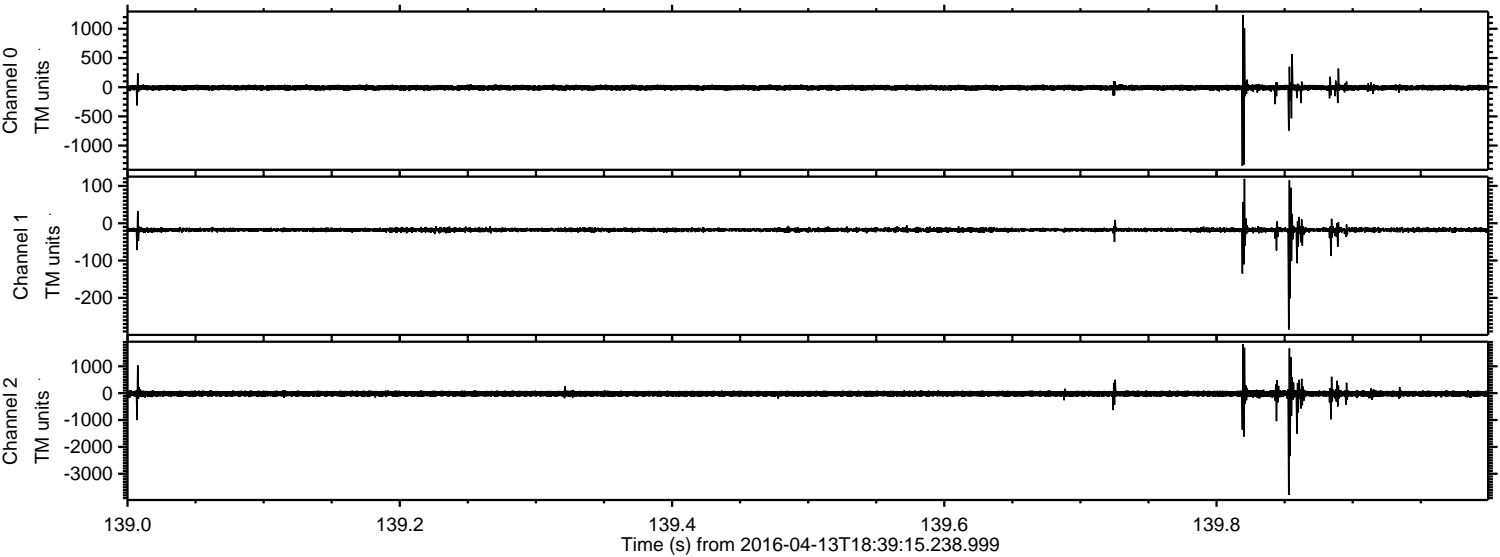


Processed Sun May 8 06:08:53 2016 by ELM ver.2012-10-06 from 001__elm20160413_183914__dat00.bin



ELMAVAN 3D WAVEFORMS (Measured data sampled at 50 kHz) 51000 packets of 144 samples from 2016-04-13T18:39:15.238.999. Part 140/147

Processed Sun May 8 06:08:53 2016 by ELM ver.2012-10-06 from 001__elm20160413_183914__dat00.bin

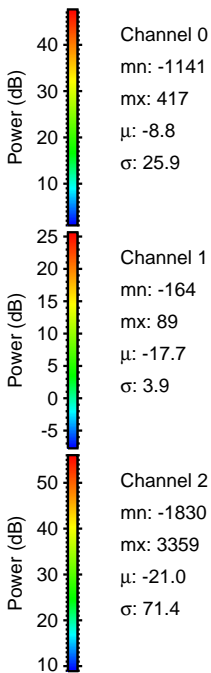
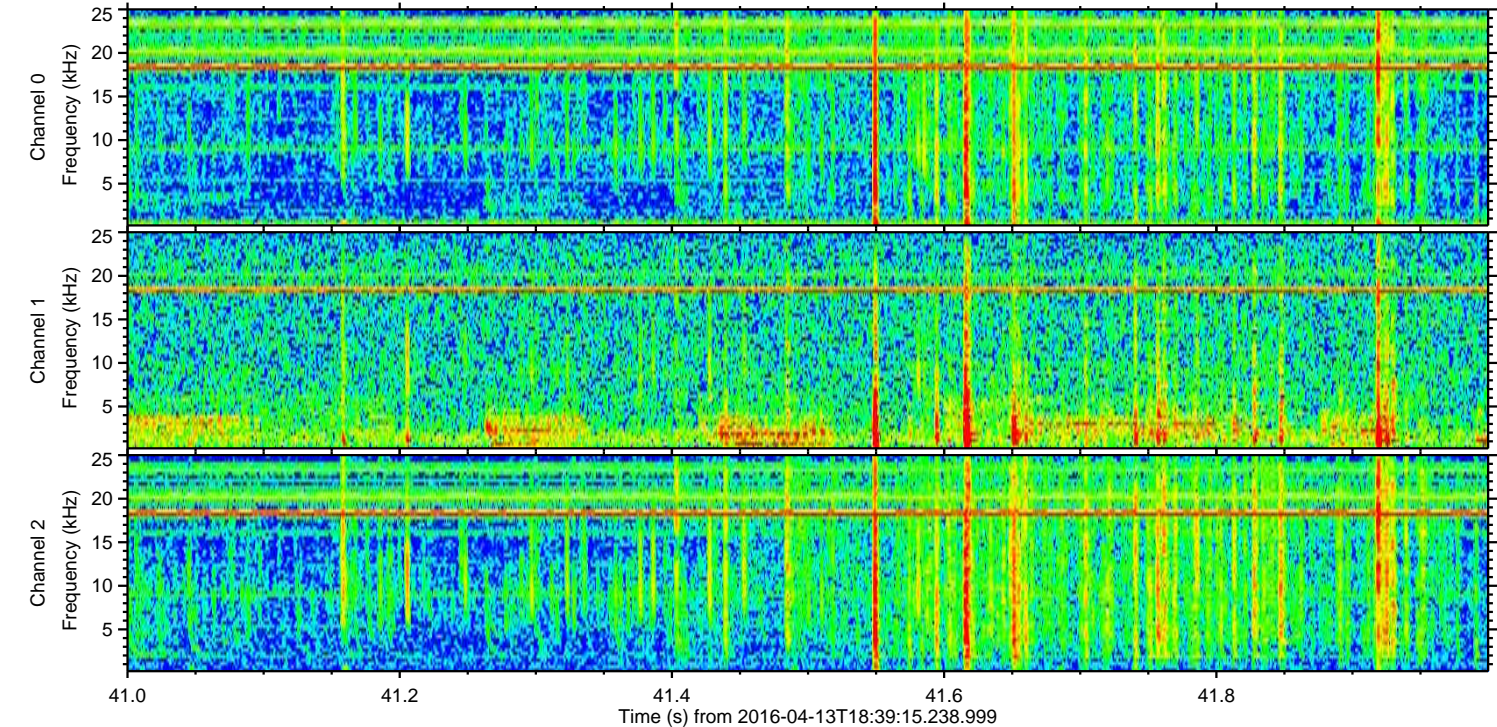
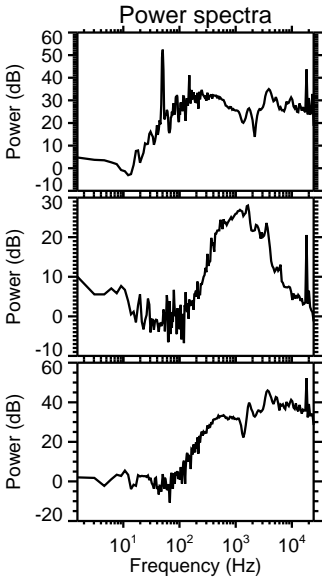
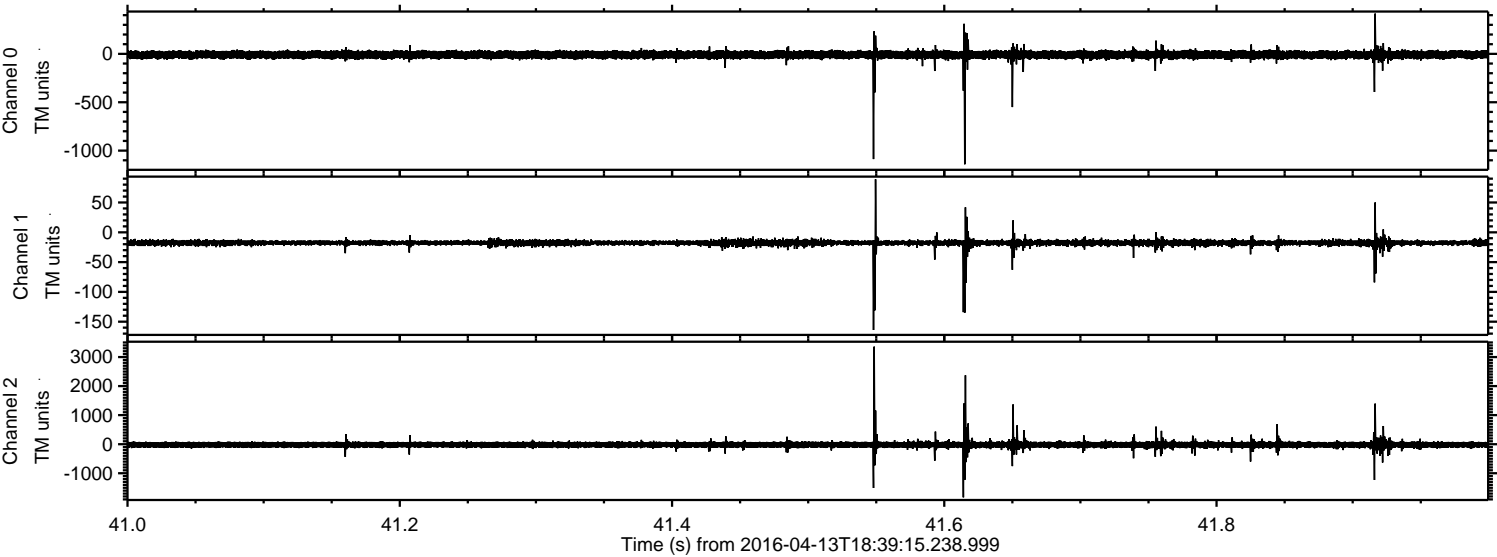


Channel 0
mn: -1348
mx: 1234
 μ : -8.8
 σ : 29.5

Channel 1
mn: -285
mx: 119
 μ : -17.7
 σ : 4.7

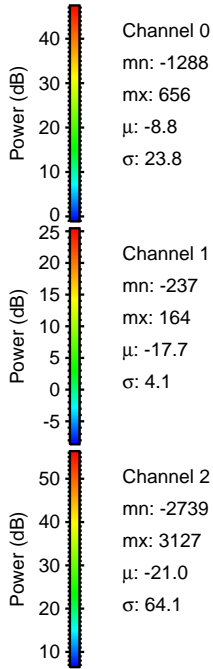
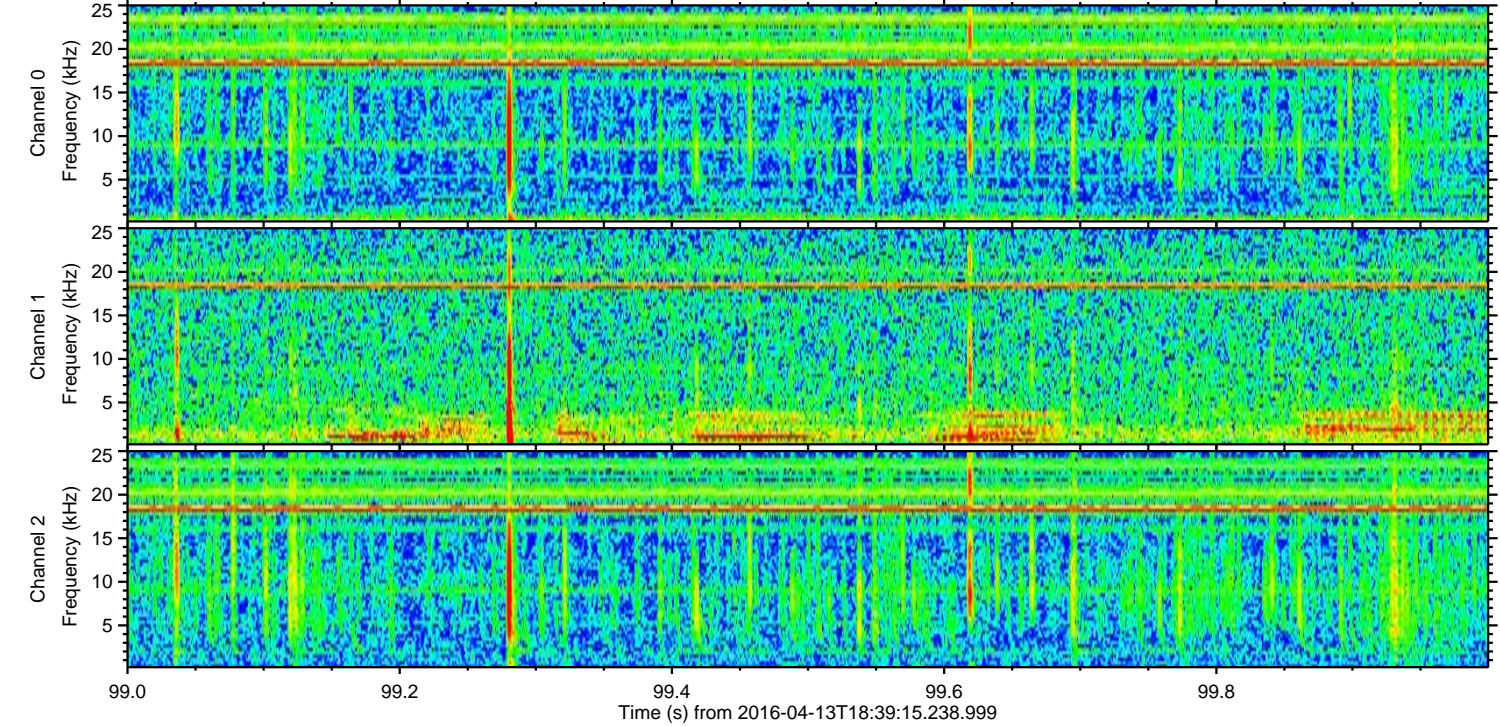
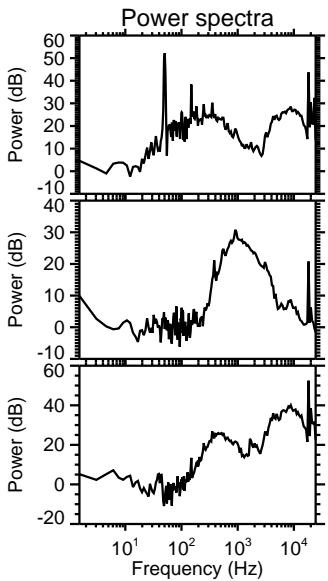
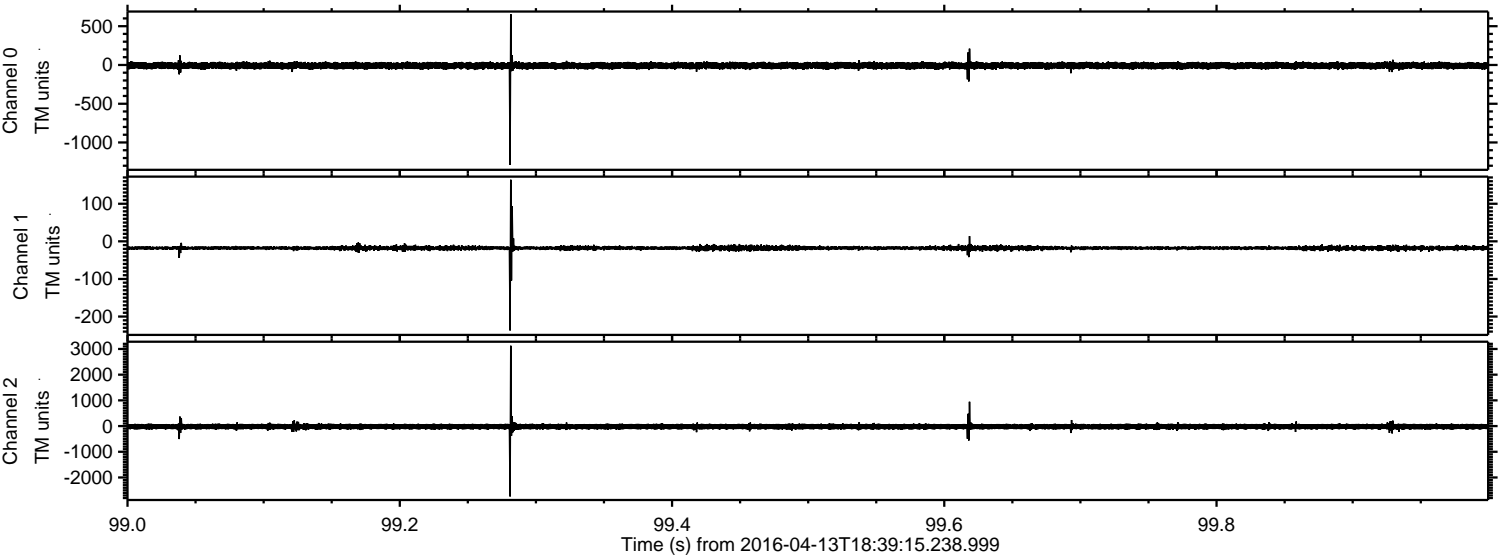
Channel 2
mn: -3785
mx: 1822
 μ : -21.1
 σ : 71.9

Processed Sun May 8 06:08:54 2016 by ELM ver.2012-10-06 from 001__elm20160413_183914__dat00.bin



ELMAVAN 3D WAVEFORMS (Measured data sampled at 50 kHz) 51000 packets of 144 samples from 2016-04-13T18:39:15.238.999. Part 100/147

Processed Sun May 8 06:08:55 2016 by ELM ver.2012-10-06 from 001__elm20160413_183914__dat00.bin



Channel 0
mn: -1288
mx: 656
 μ : -8.8
 σ : 23.8

Channel 1
mn: -237
mx: 164
 μ : -17.7
 σ : 4.1

Channel 2
mn: -2739
mx: 3127
 μ : -21.0
 σ : 64.1

ELMAVAN 3D WAVEFORMS (Measured data sampled at 50 kHz) 51000 packets of 144 samples from 2016-04-13T18:39:15.238.999. Part 128/147

