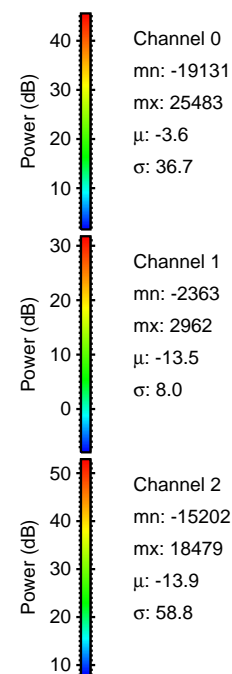
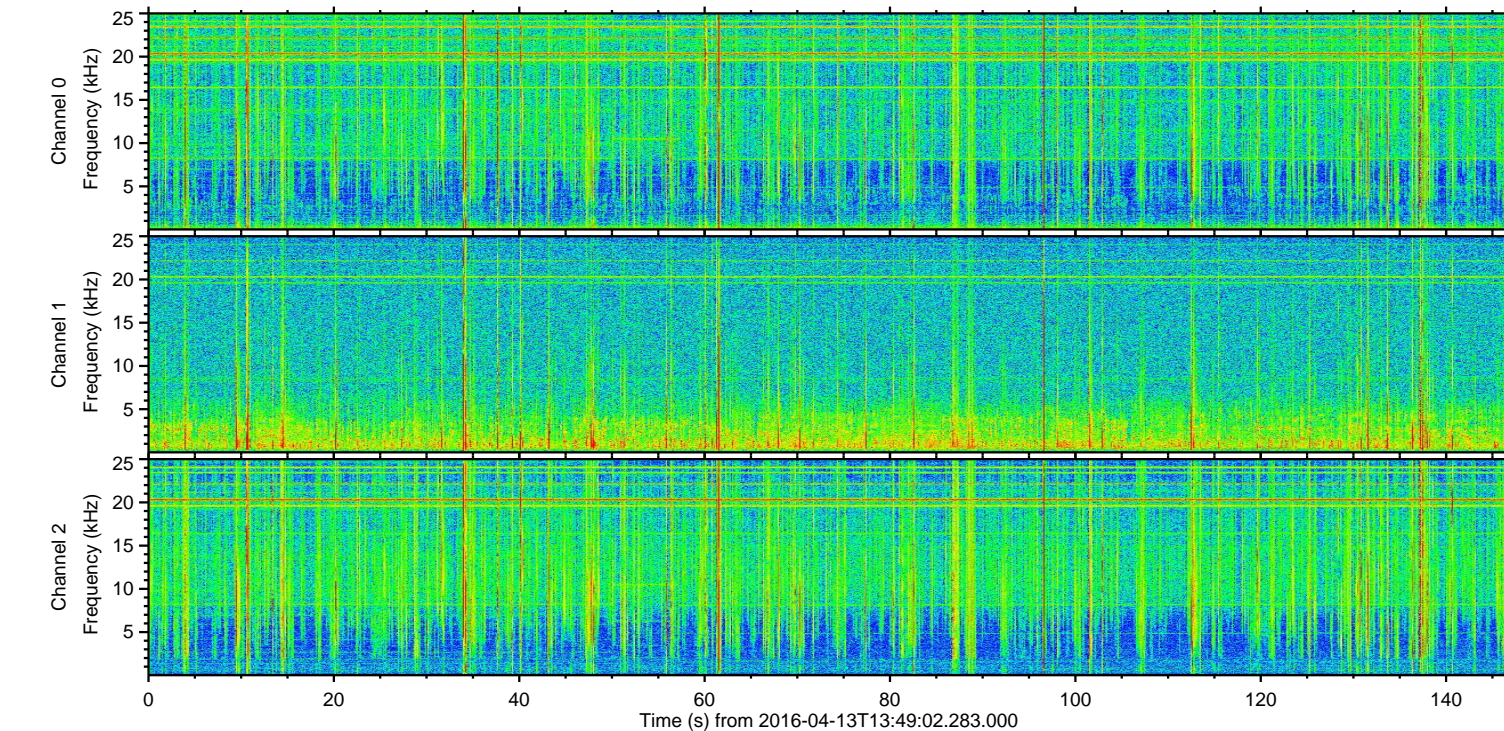
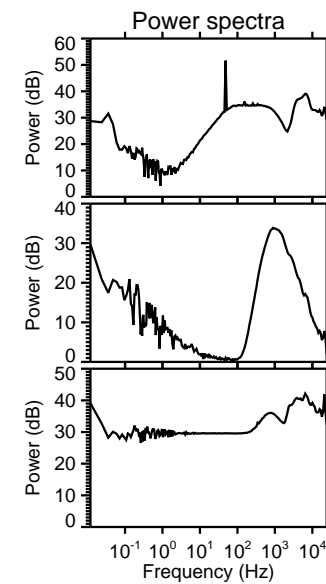
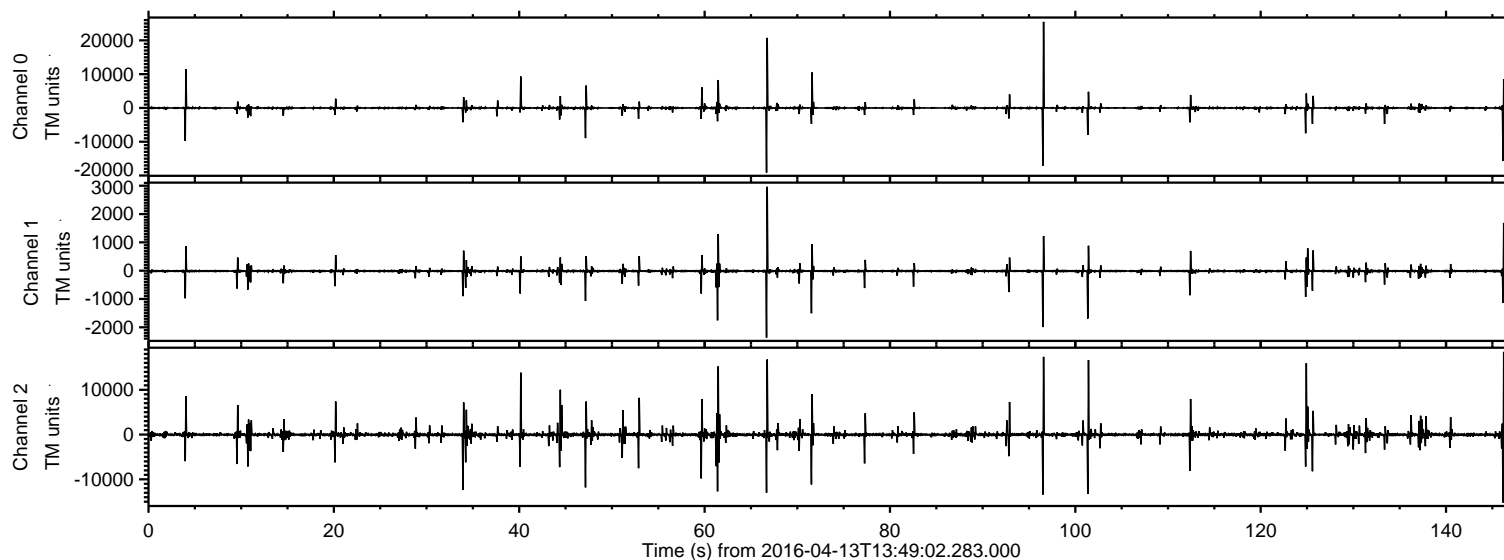
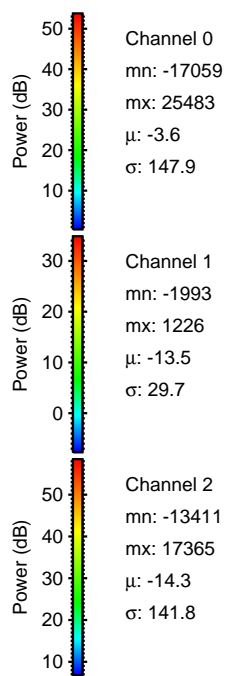
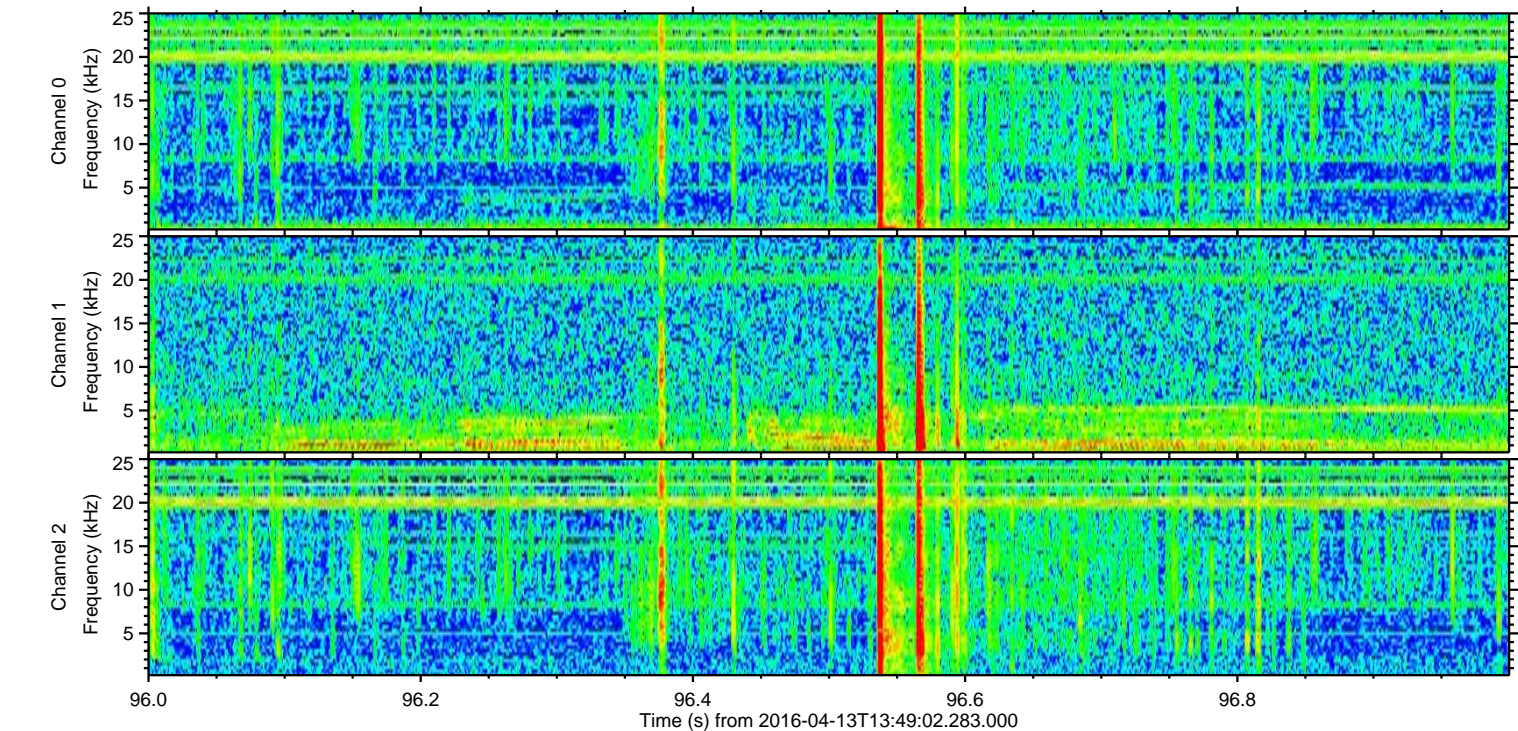
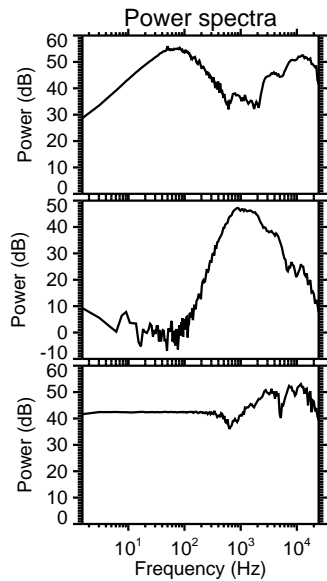
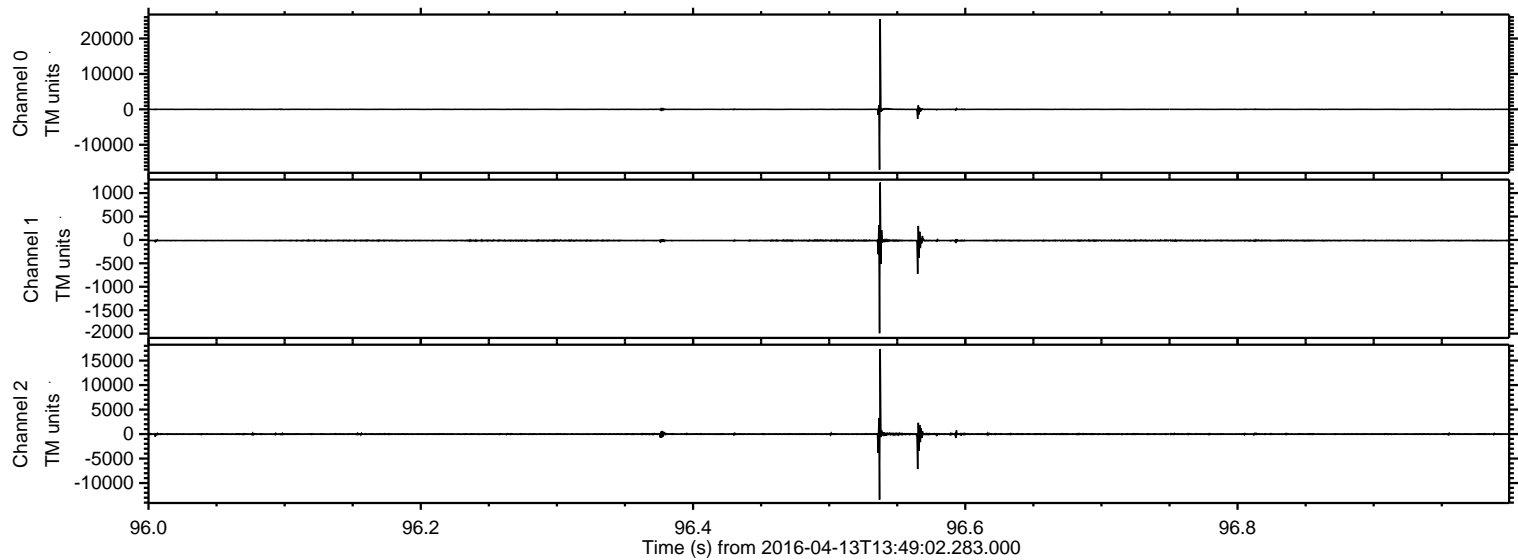


ELMAVAN 3D WAVEFORMS (Measured data sampled at 50 kHz) 51000 packets of 144 samples from 2016-04-13T13:49:02.283.000.

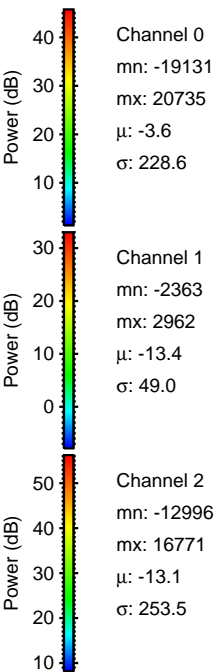
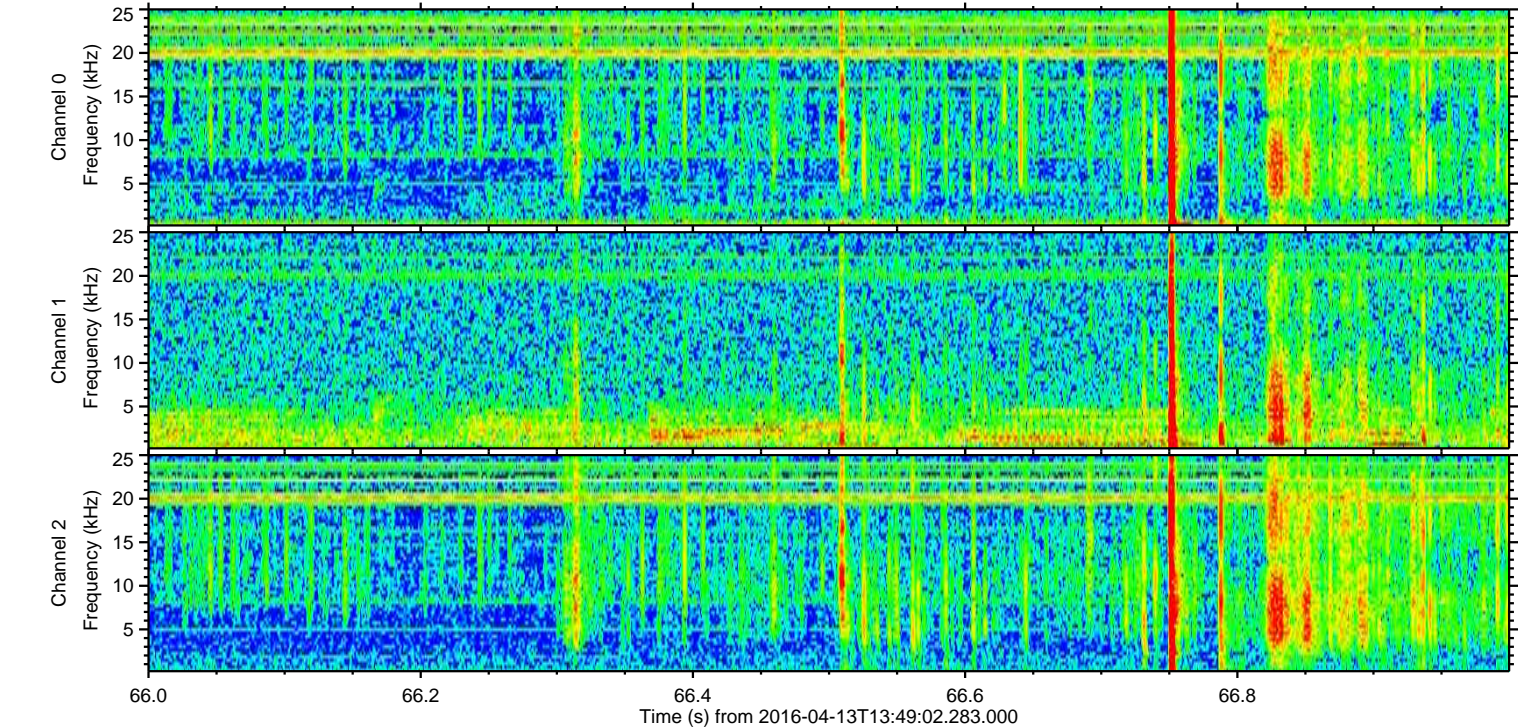
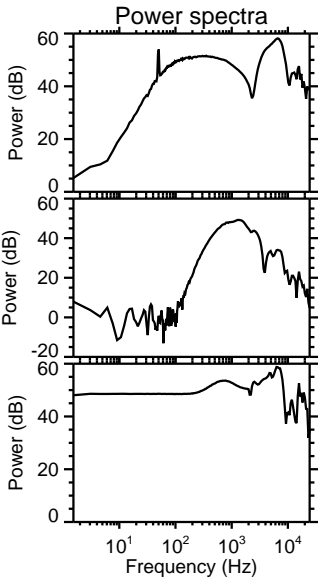
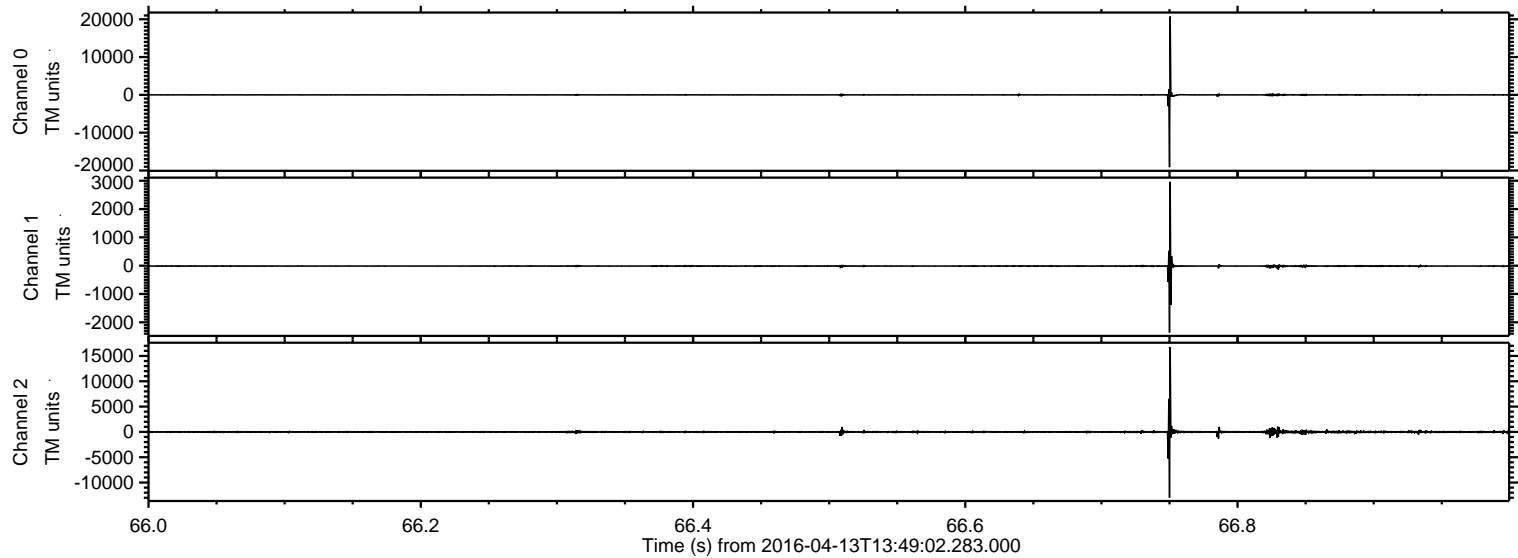
Processed Sun May 8 05:07:02 2016 by ELM ver.2012-10-06 from 001__elm20160413_134901__dat00.bin



Processed Sun May 8 05:07:14 2016 by ELM ver.2012-10-06 from 001__elm20160413_134901__dat00.bin

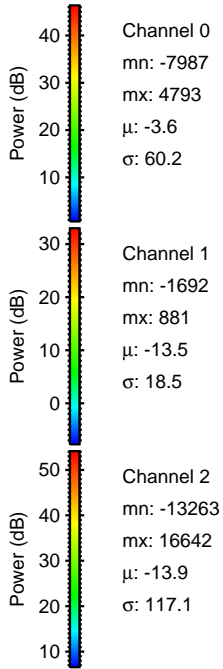
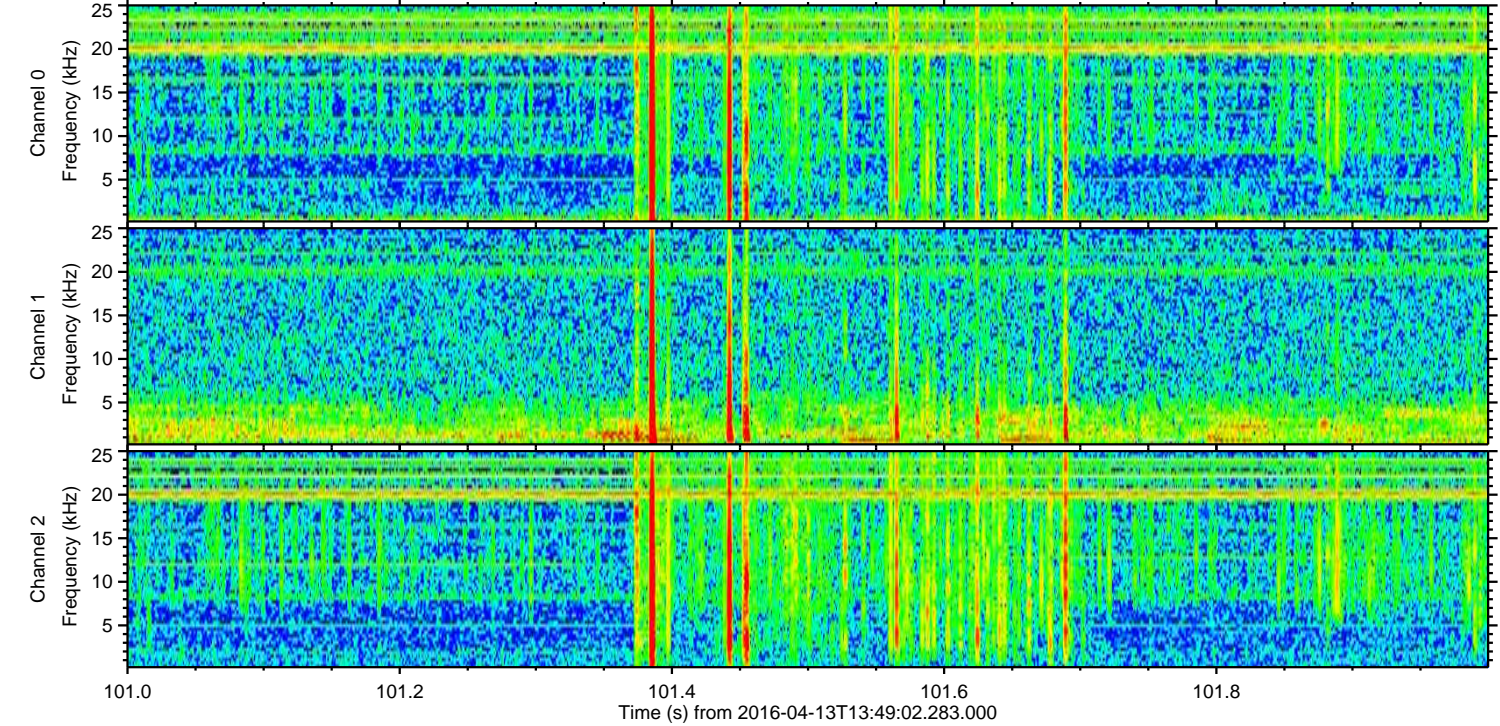
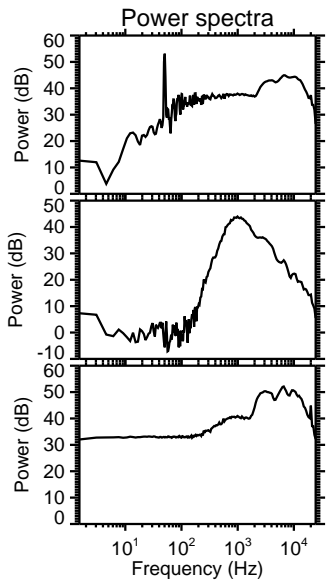
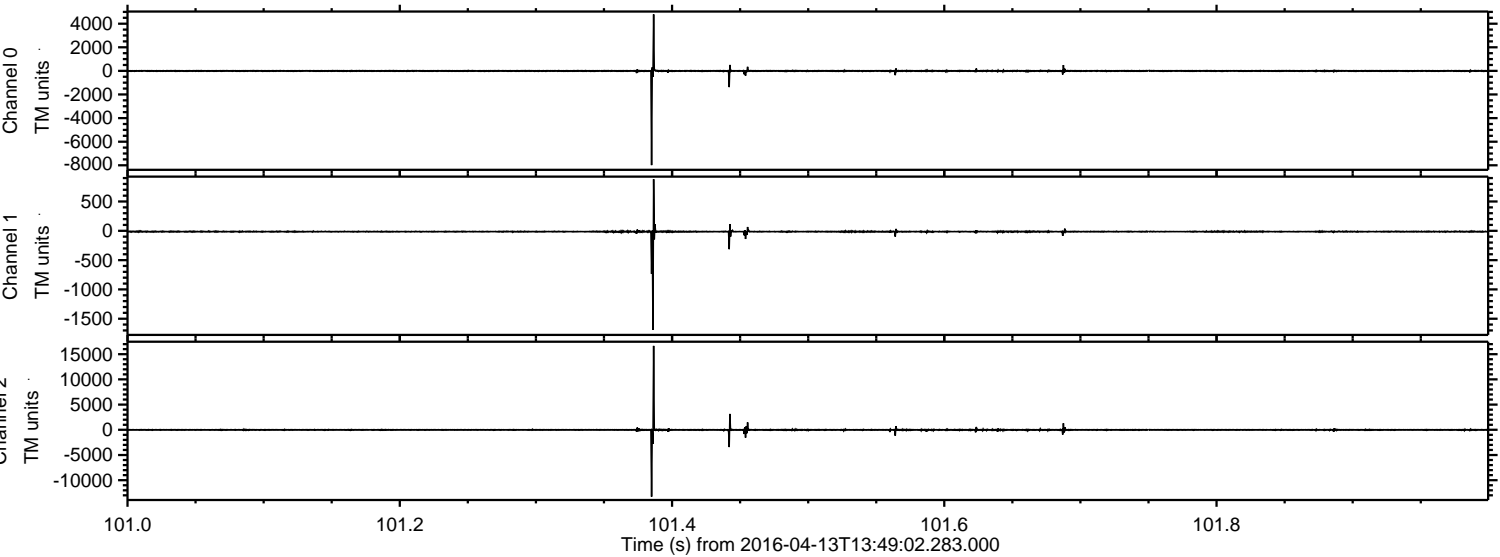


Processed Sun May 8 05:07:15 2016 by ELM ver.2012-10-06 from 001__elm20160413_134901__dat00.bin



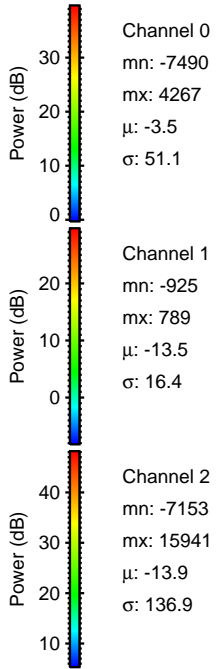
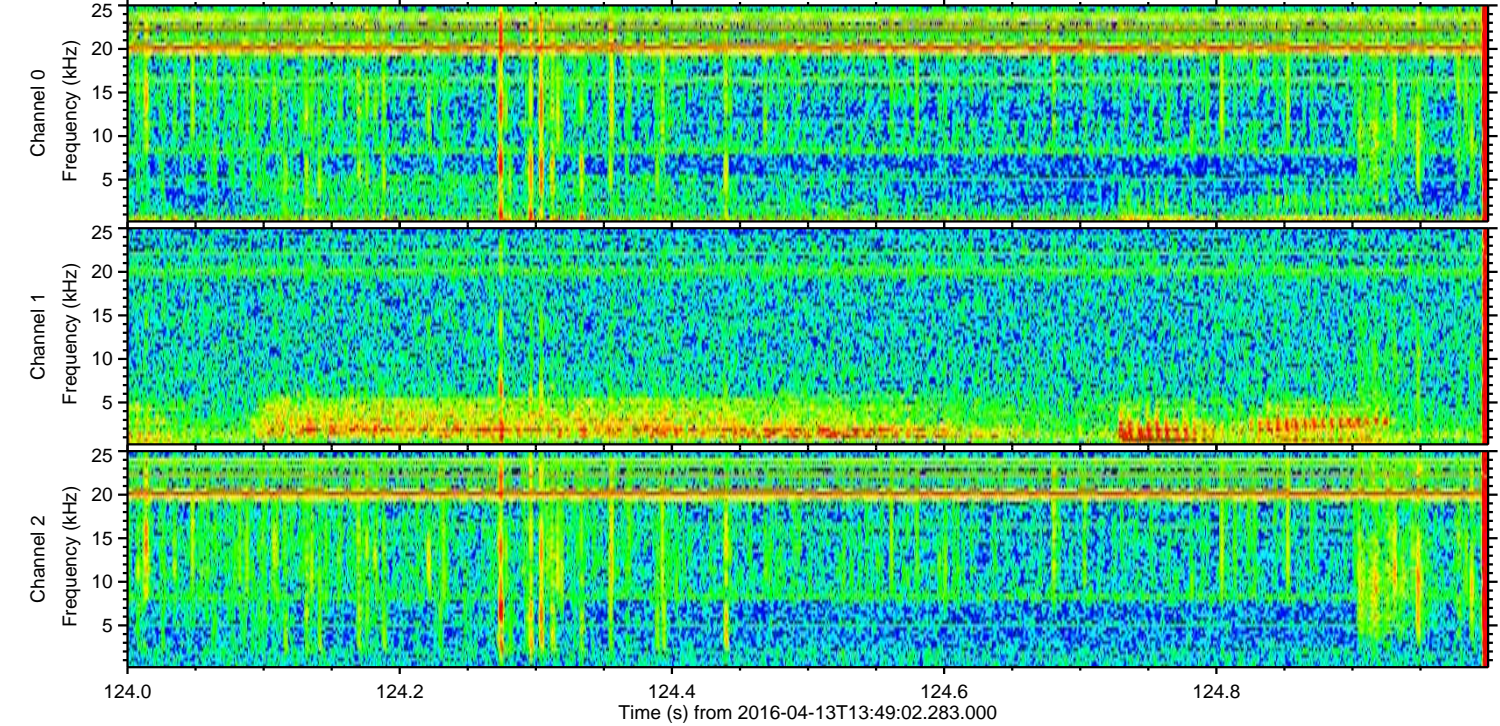
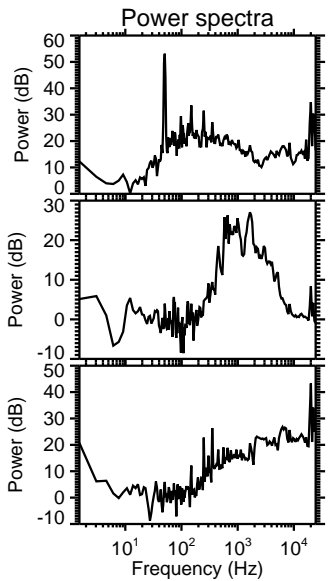
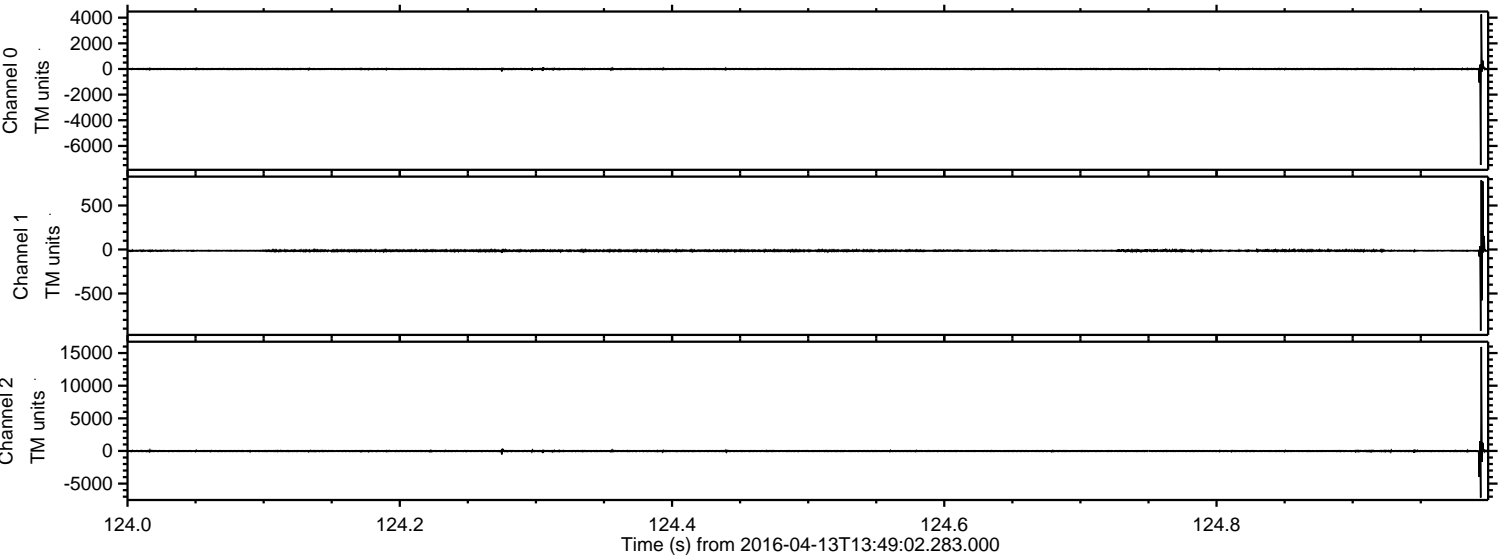
ELMAVAN 3D WAVEFORMS (Measured data sampled at 50 kHz) 51000 packets of 144 samples from 2016-04-13T13:49:02.283.000. Part 102/147

Processed Sun May 8 05:07:15 2016 by ELM ver.2012-10-06 from 001__elm20160413_134901__dat00.bin

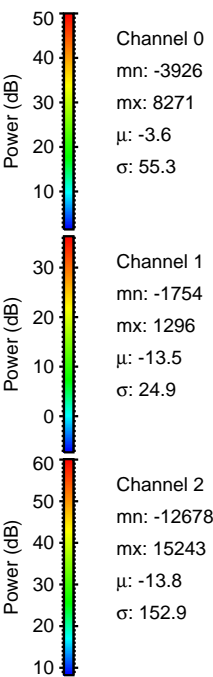
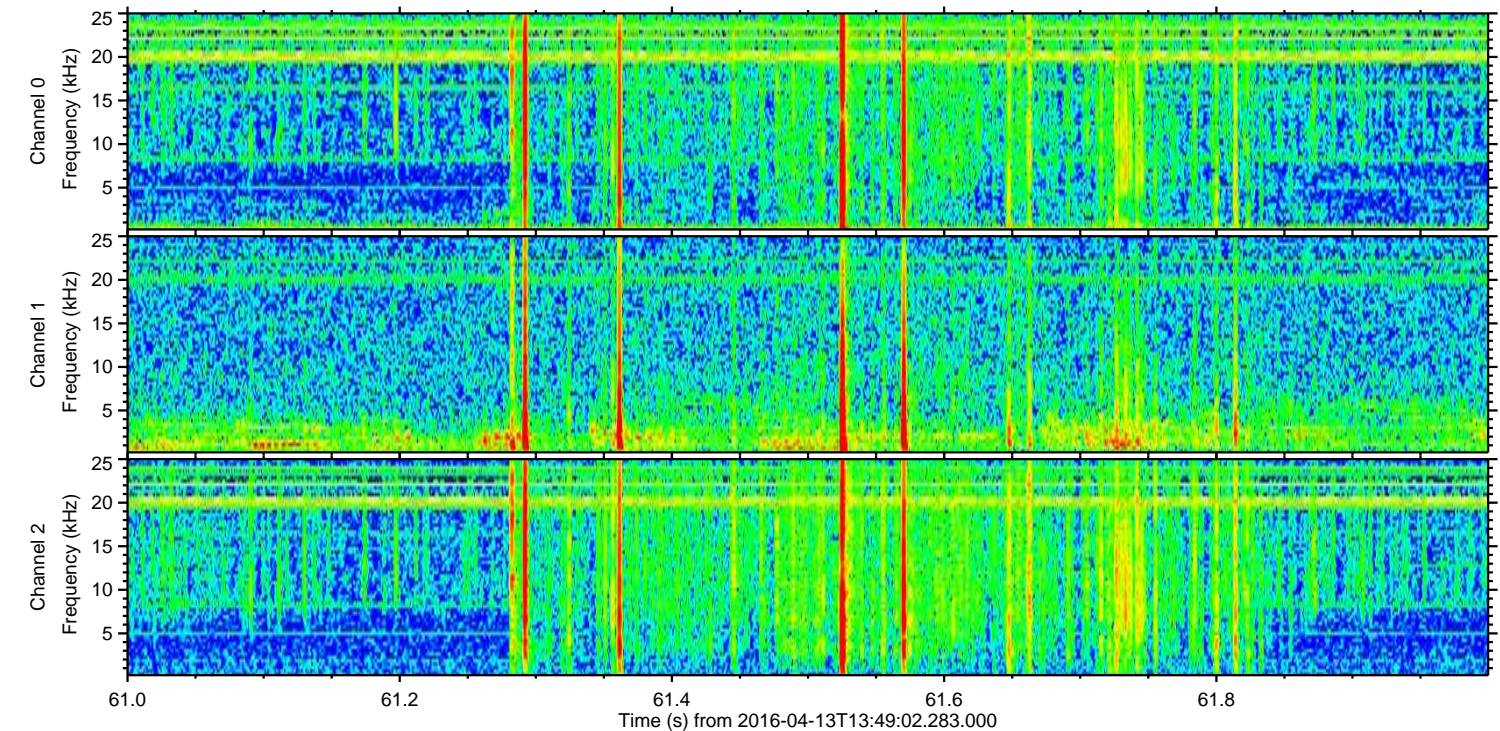
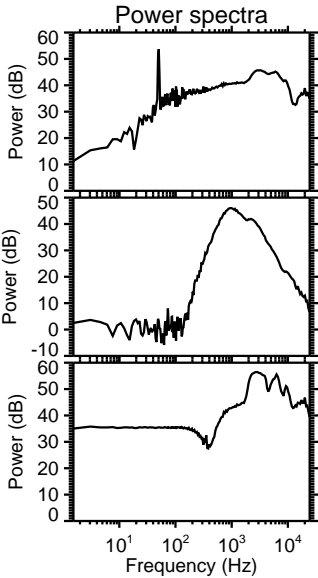
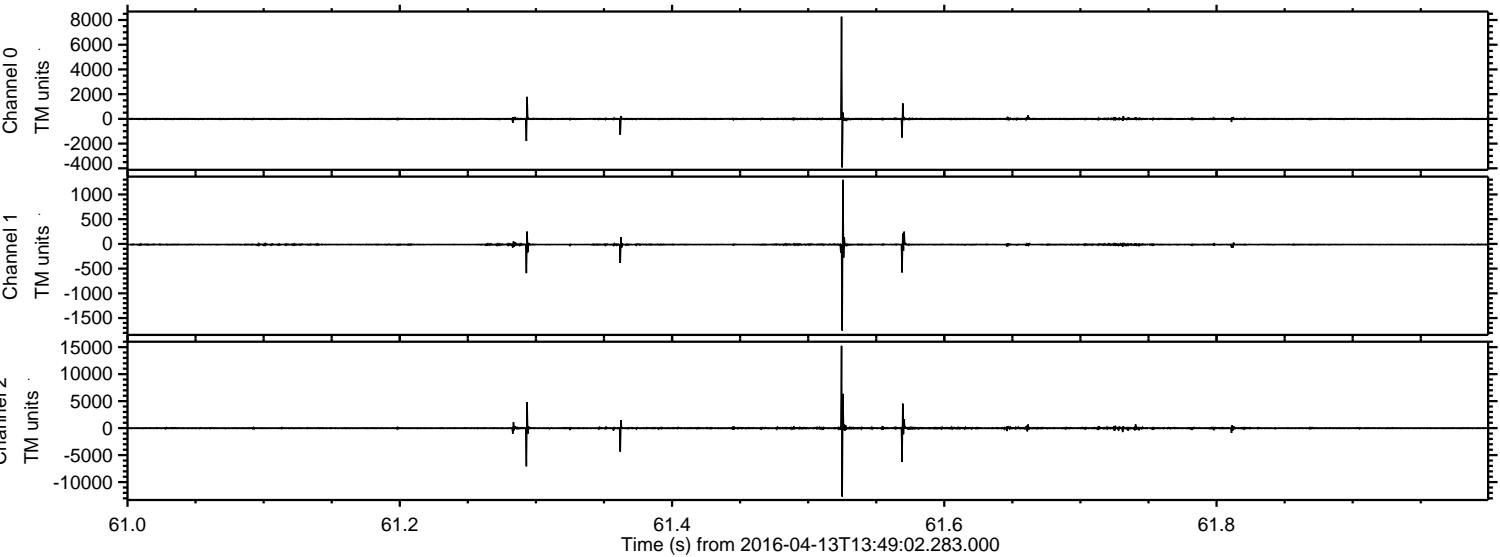


ELMAVAN 3D WAVEFORMS (Measured data sampled at 50 kHz) 51000 packets of 144 samples from 2016-04-13T13:49:02.283.000. Part 125/147

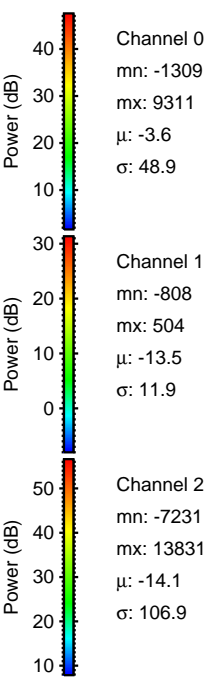
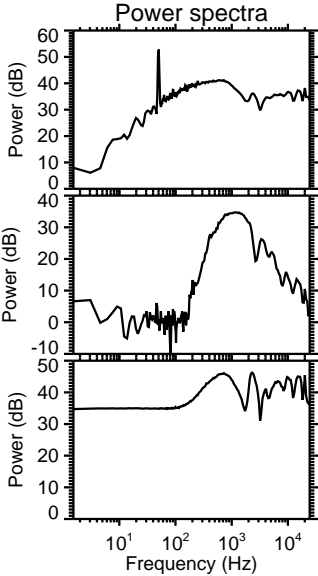
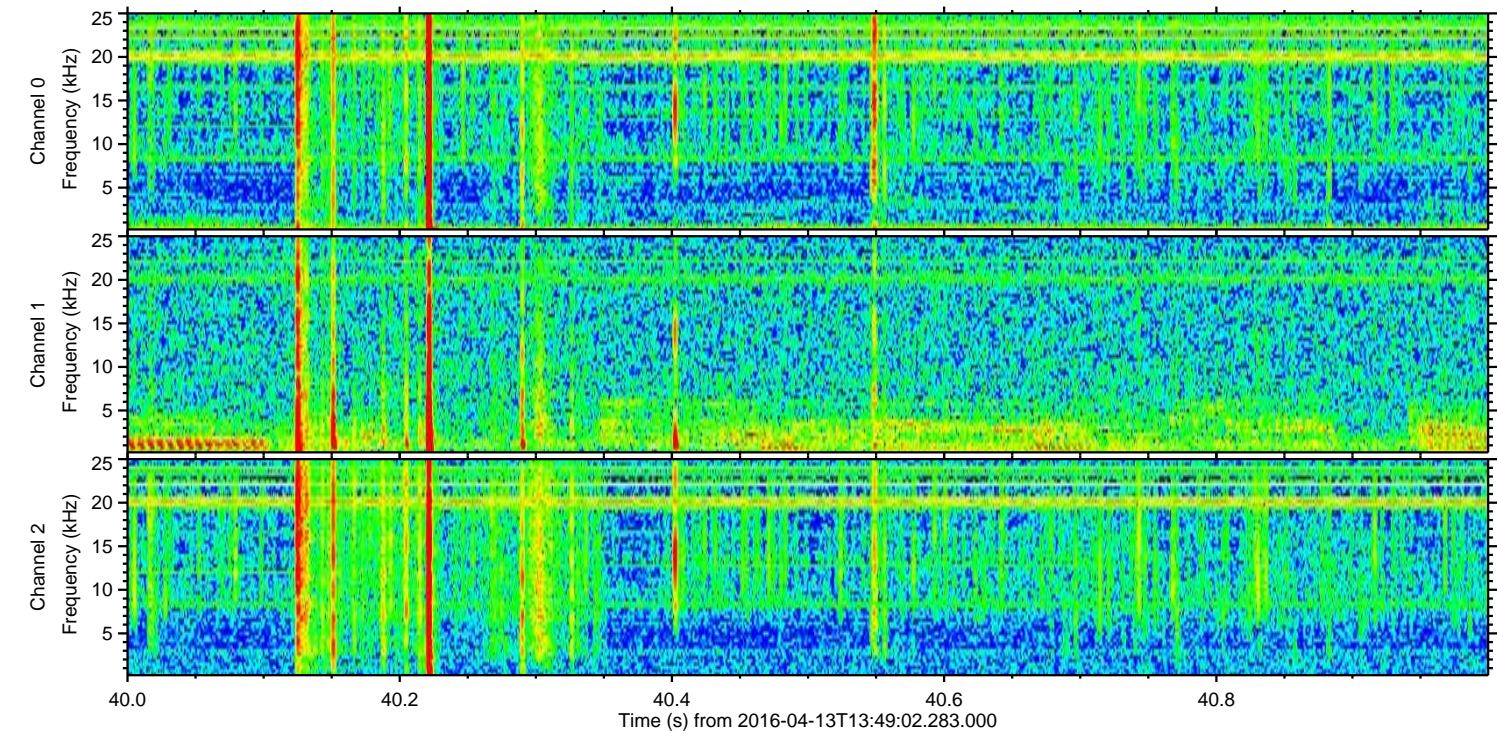
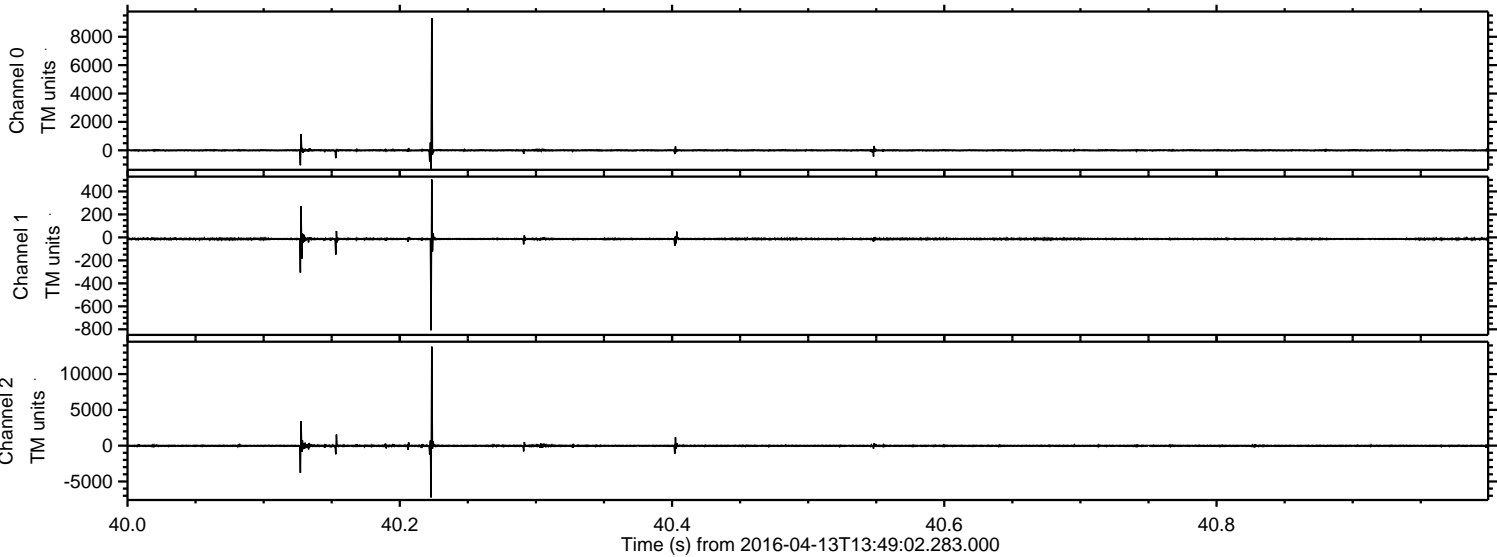
Processed Sun May 8 05:07:16 2016 by ELM ver.2012-10-06 from 001__elm20160413_134901__dat00.bin



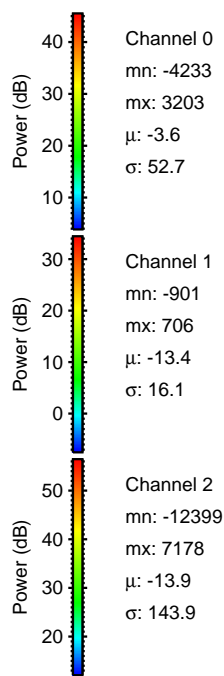
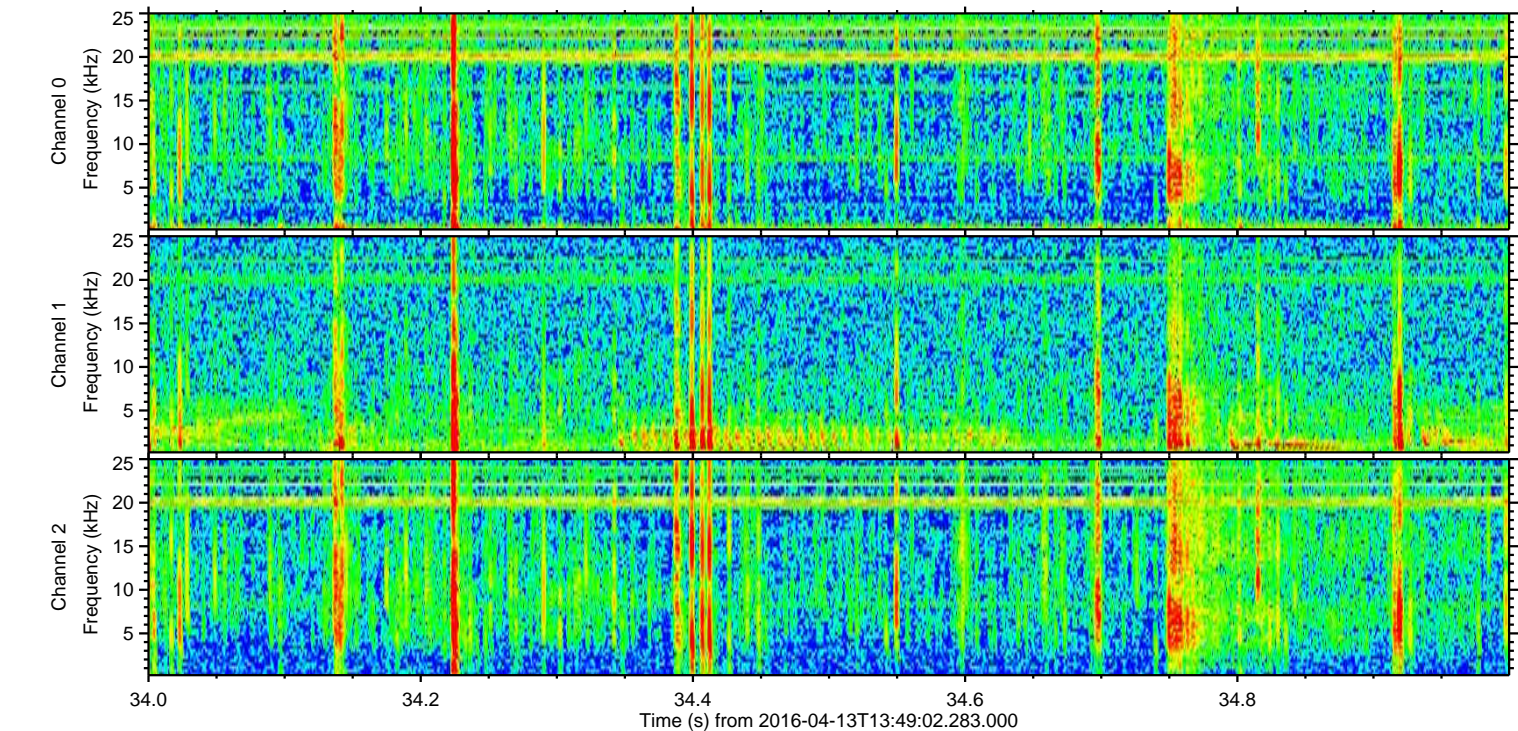
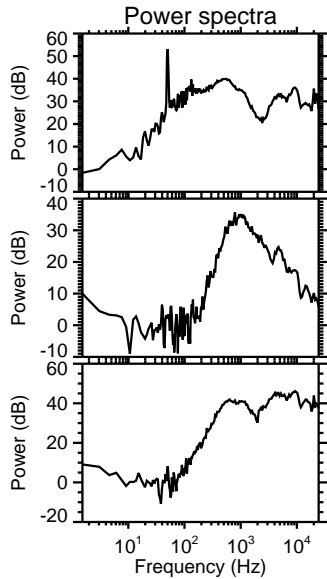
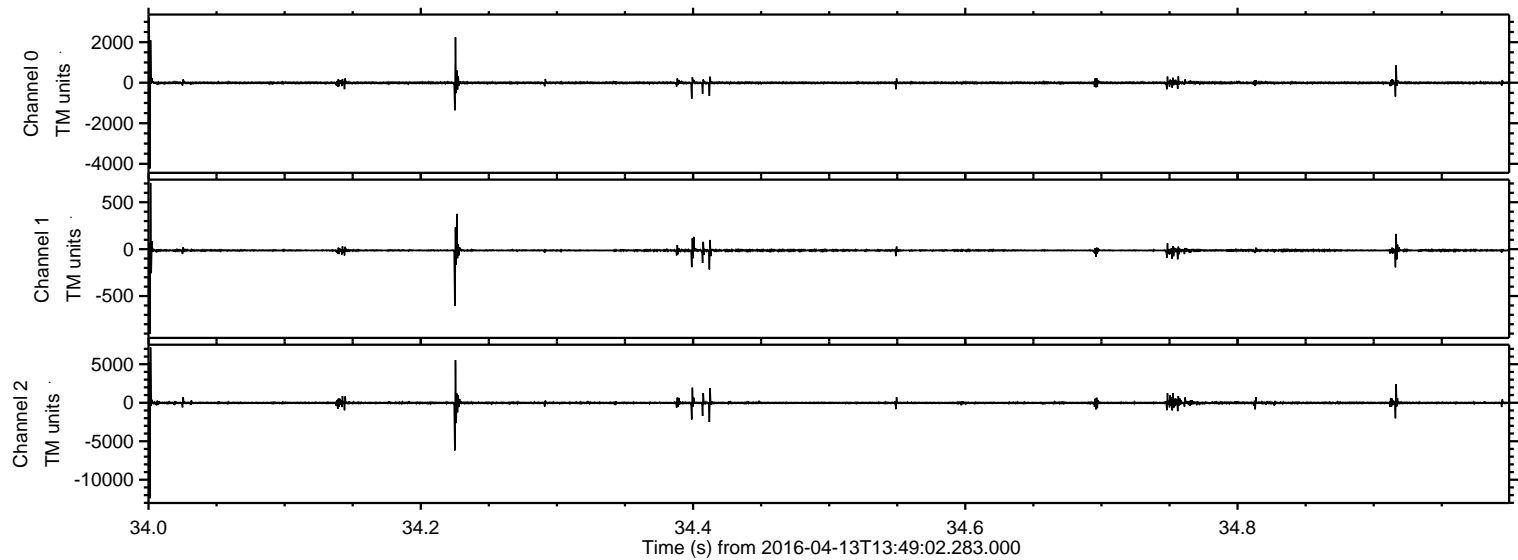
Processed Sun May 8 05:07:17 2016 by ELM ver.2012-10-06 from 001__elm20160413_134901__dat00.bin



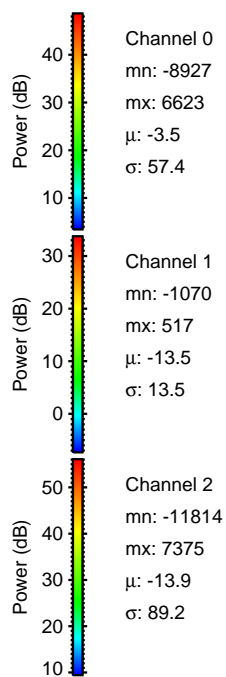
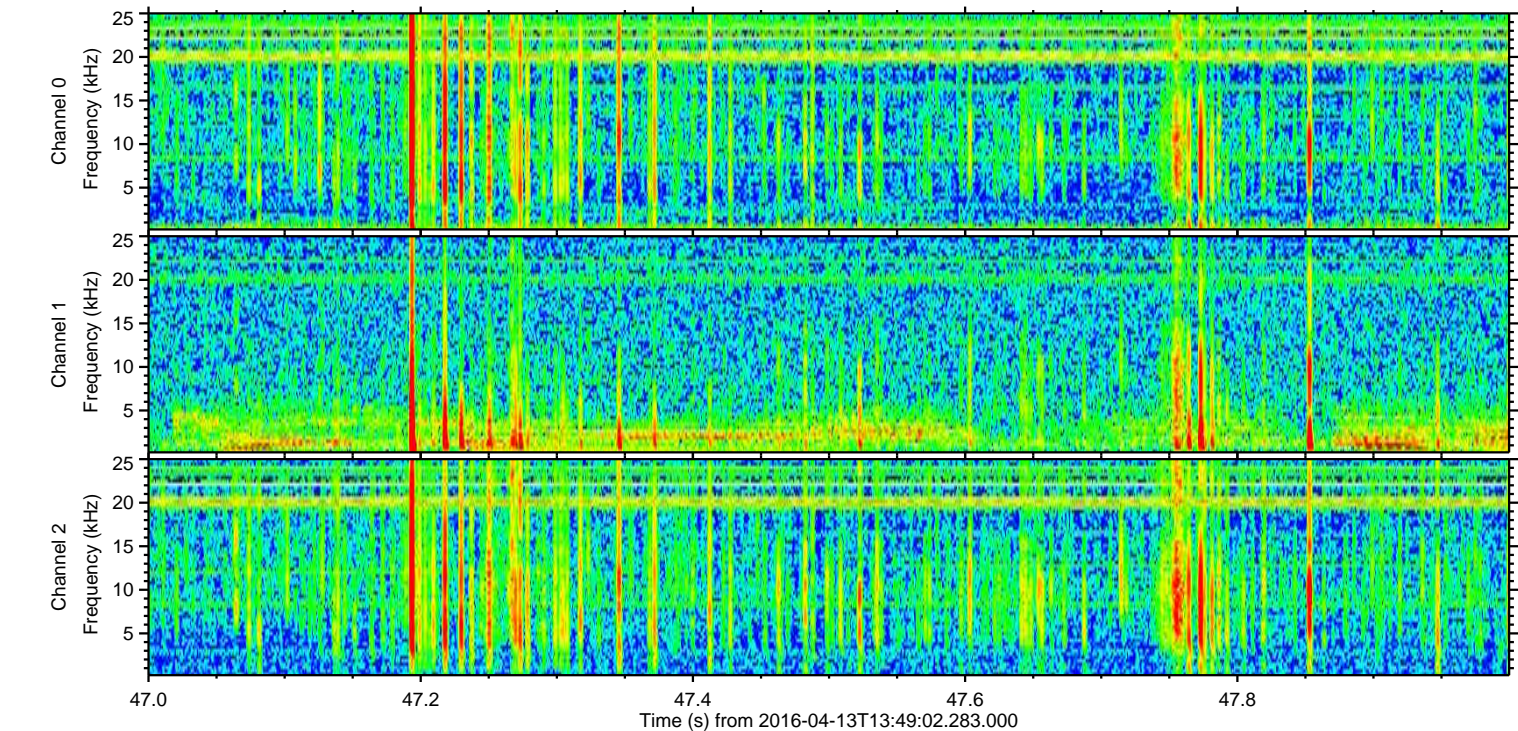
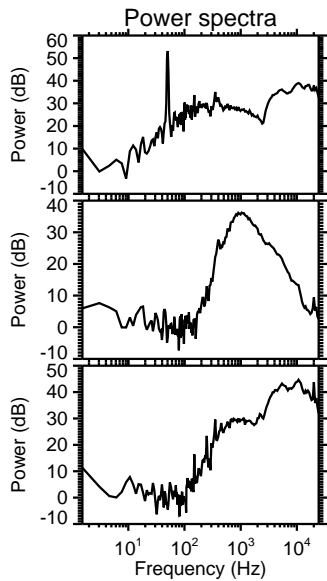
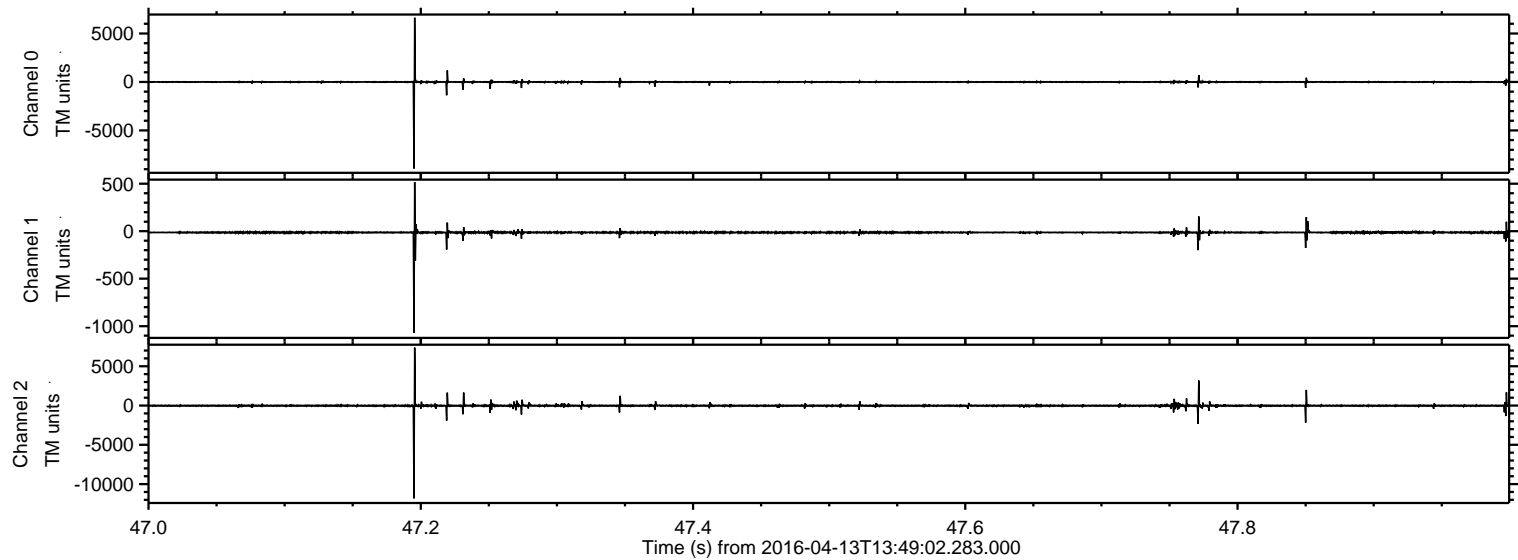
Processed Sun May 8 05:07:18 2016 by ELM ver.2012-10-06 from 001__elm20160413_134901__dat00.bin



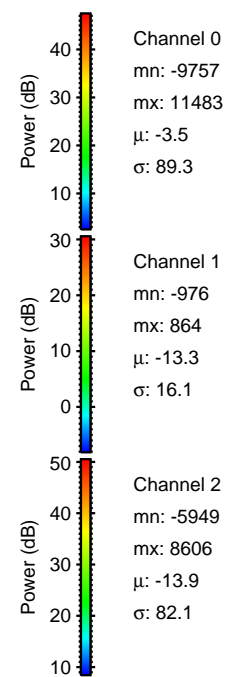
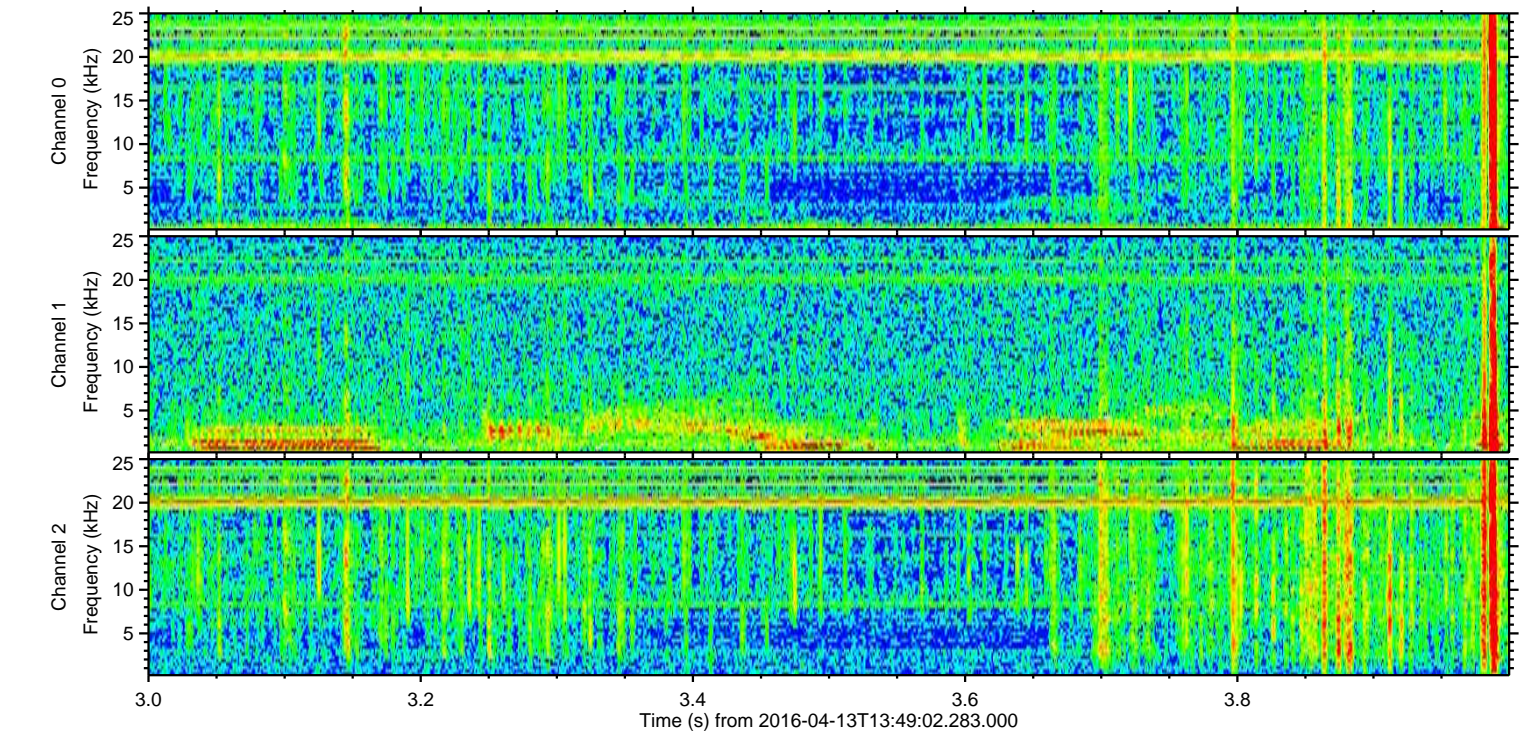
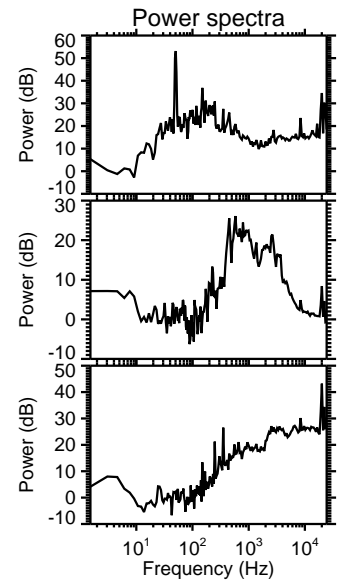
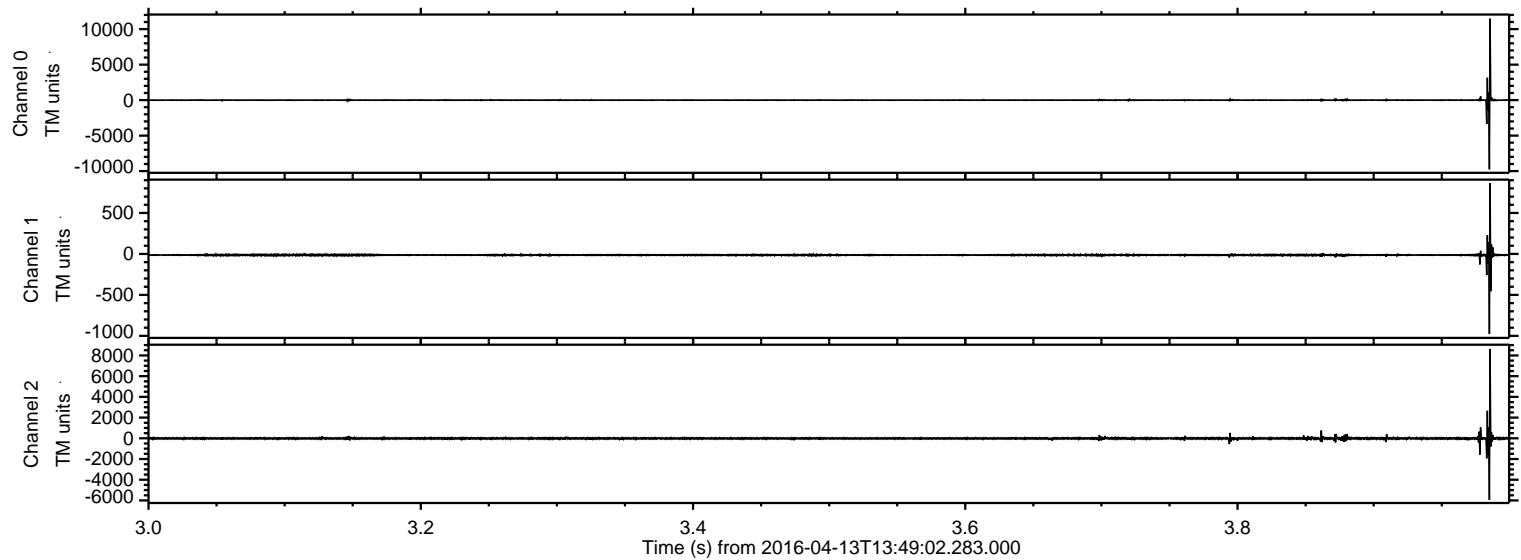
Processed Sun May 8 05:07:19 2016 by ELM ver.2012-10-06 from 001__elm20160413_134901__dat00.bin



Processed Sun May 8 05:07:20 2016 by ELM ver.2012-10-06 from 001__elm20160413_134901__dat00.bin



Processed Sun May 8 05:07:21 2016 by ELM ver.2012-10-06 from 001__elm20160413_134901__dat00.bin



Channel 0
mn: -9757
mx: 11483
 μ : -3.5
 σ : 89.3

Channel 1
mn: -976
mx: 864
 μ : -13.3
 σ : 16.1

Channel 2
mn: -5949
mx: 8606
 μ : -13.9
 σ : 82.1

