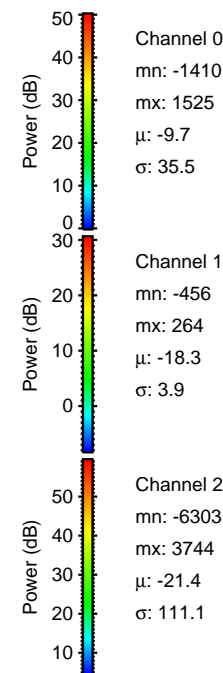
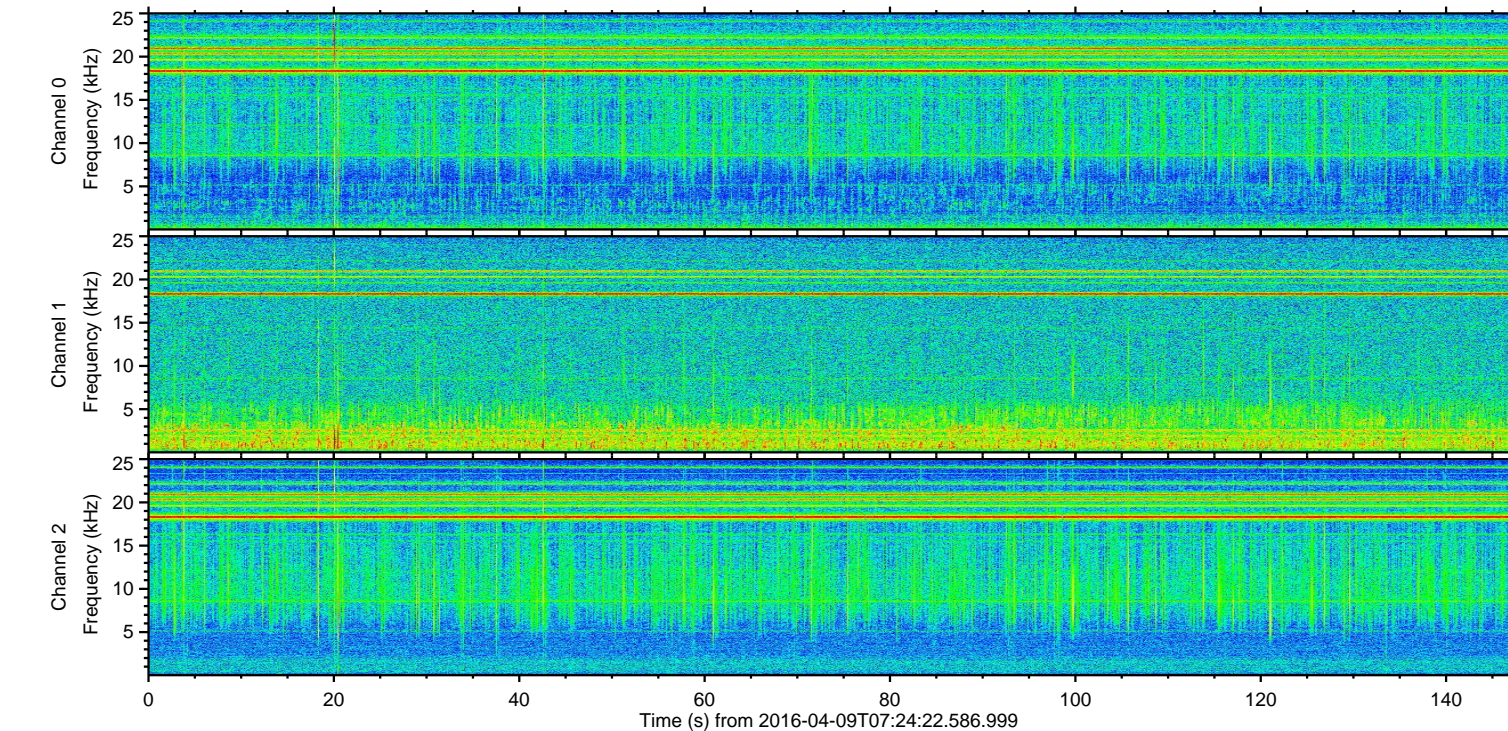
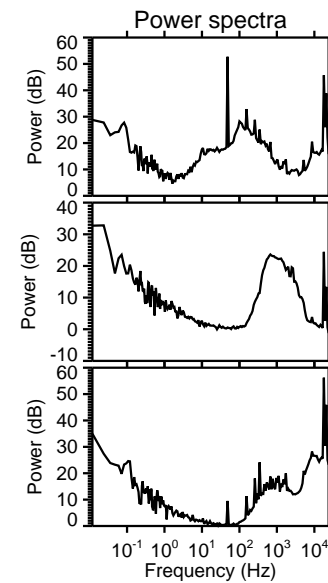
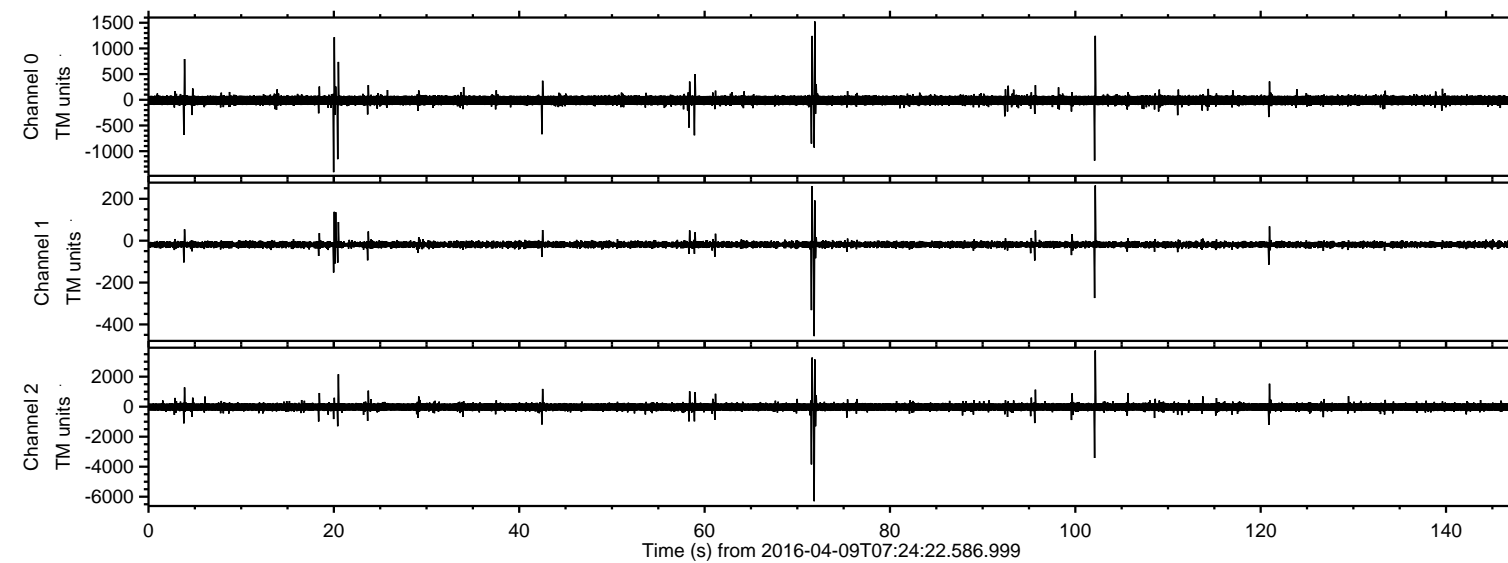
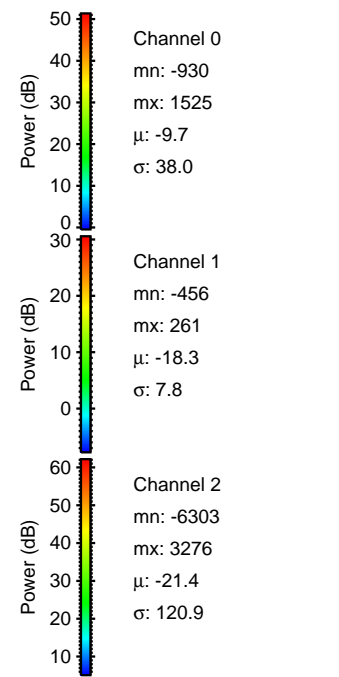
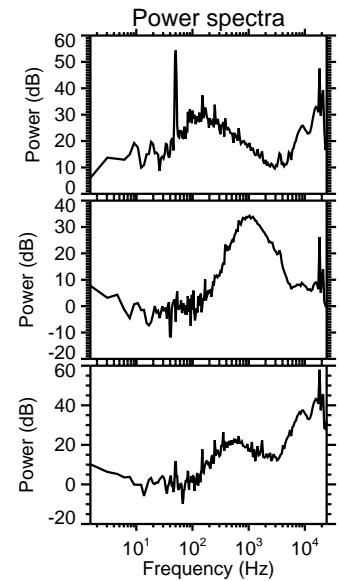
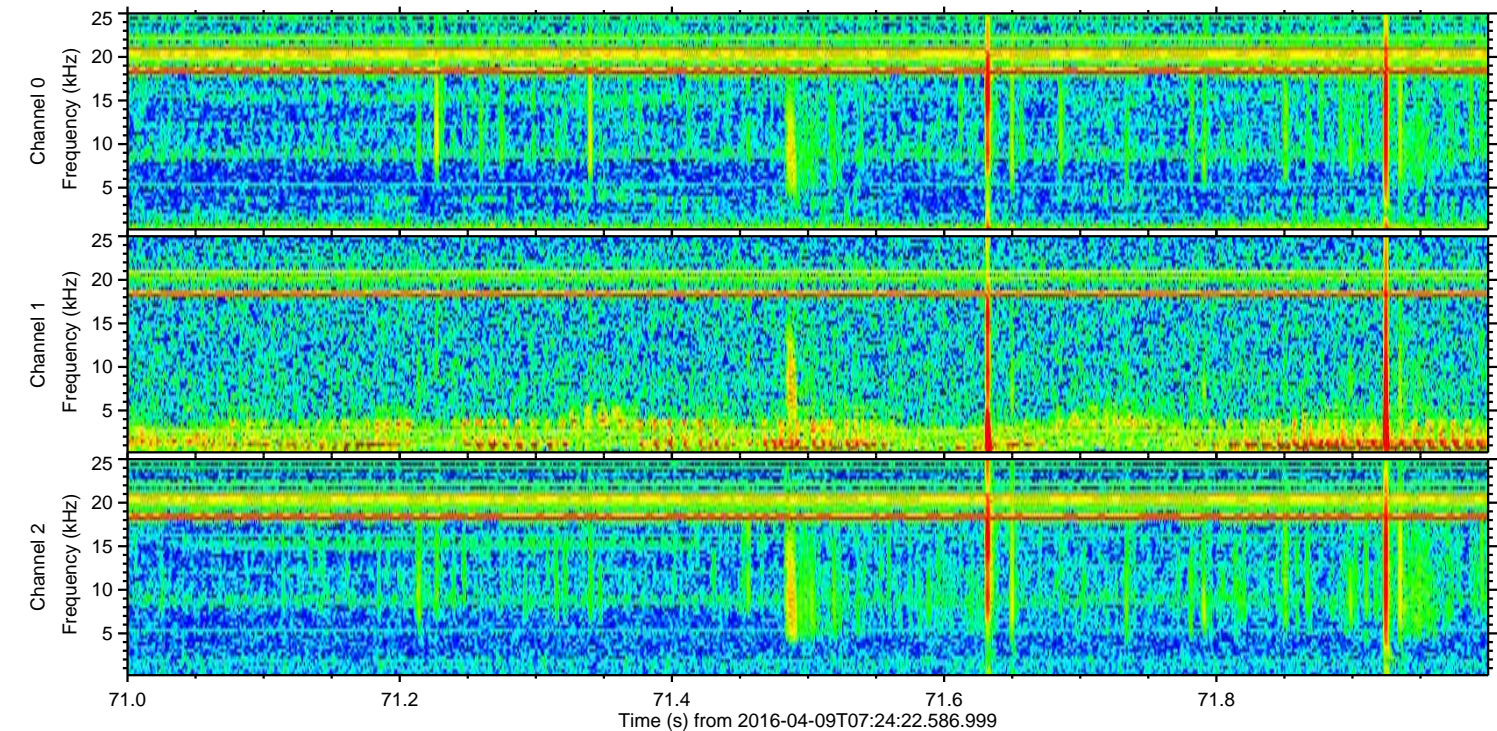
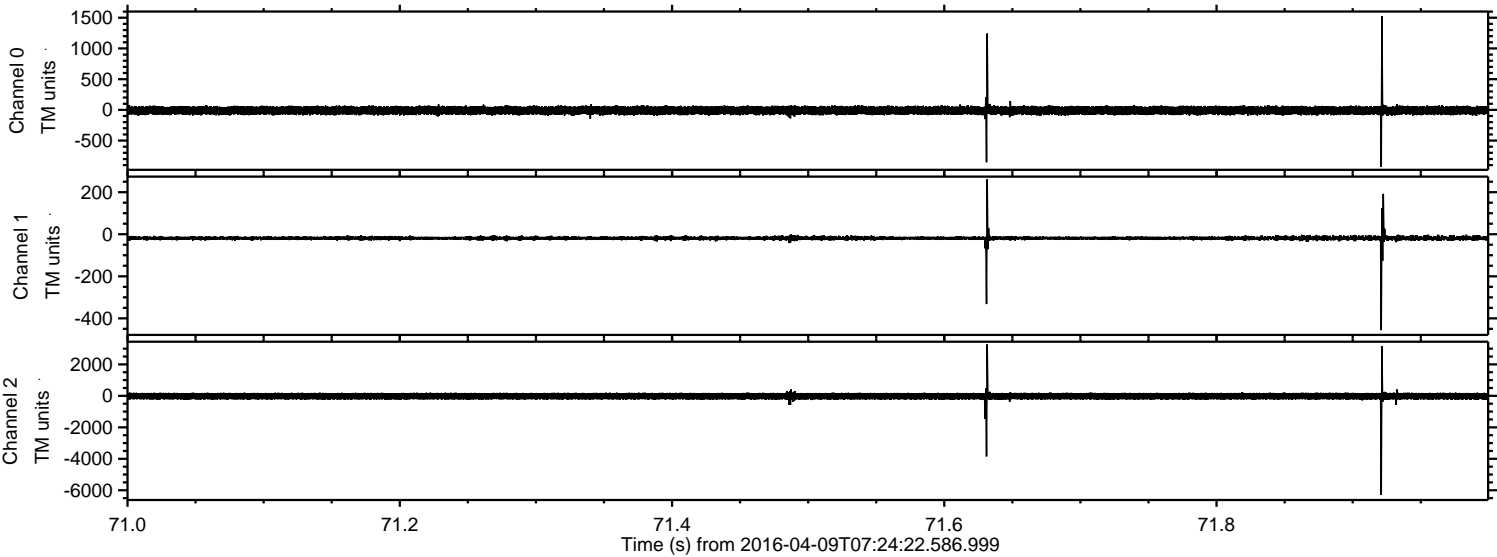


ELMAVAN 3D WAVEFORMS (Measured data sampled at 50 kHz) 51000 packets of 144 samples from 2016-04-09T07:24:22.586.999.

Processed Sat May 7 05:46:53 2016 by ELM ver.2012-10-06 from 001__elm20160409_072421__dat00.bin

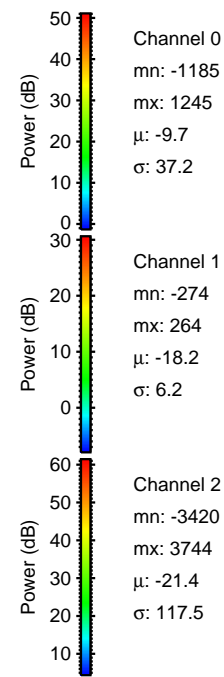
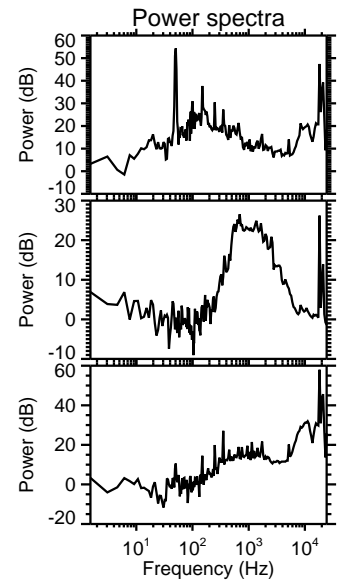
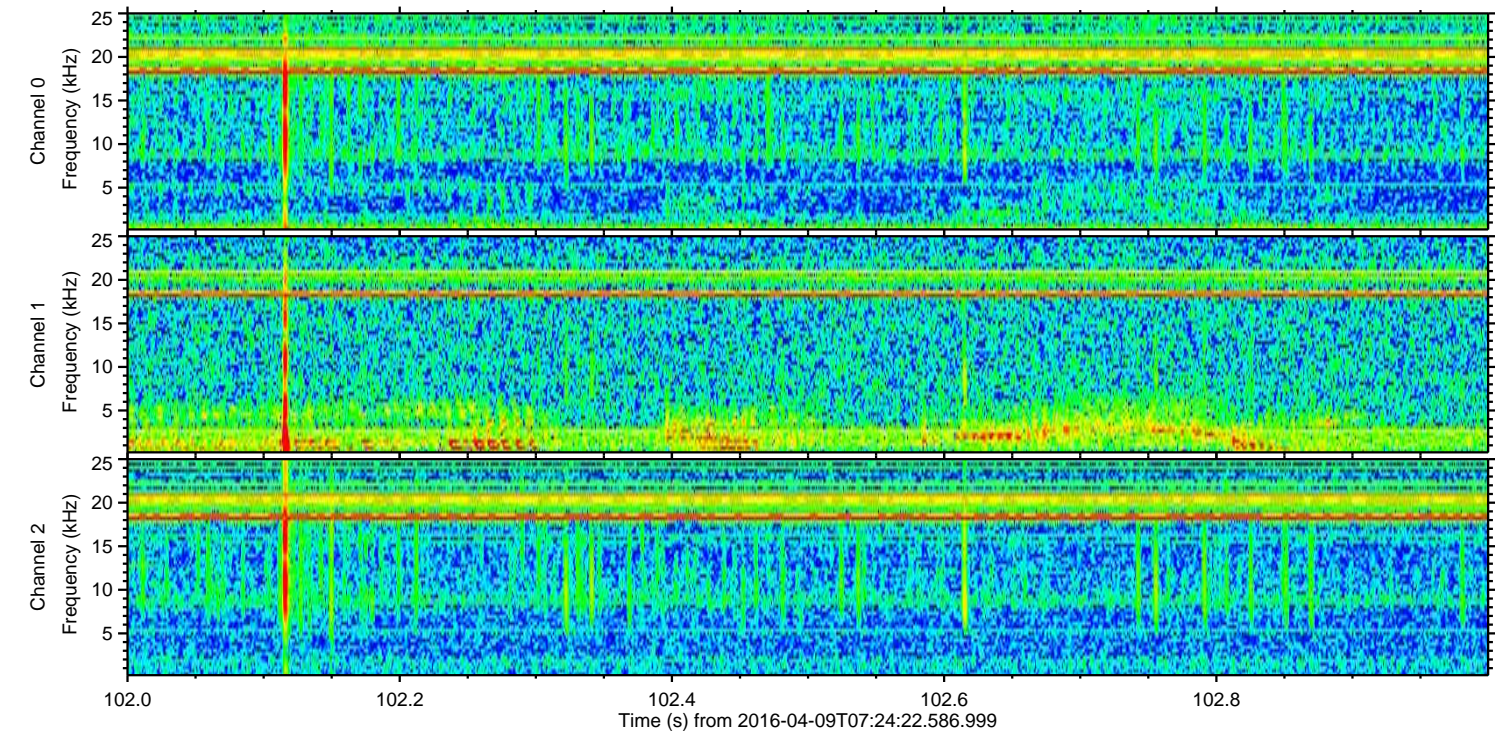
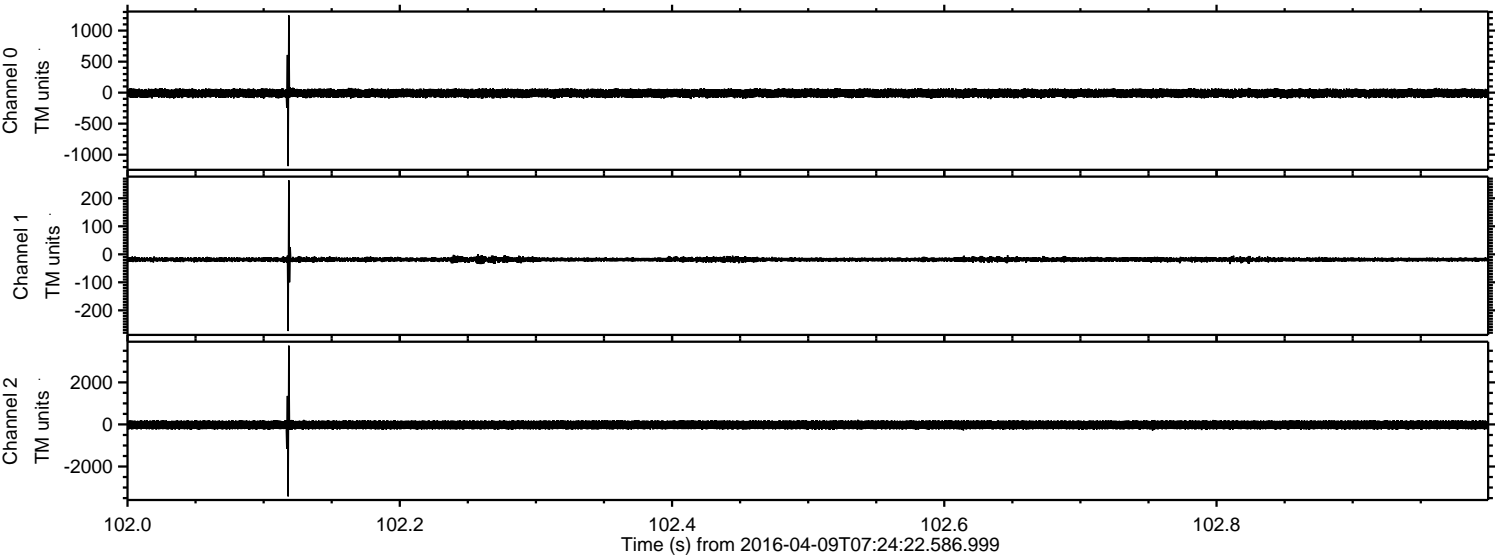


Processed Sat May 7 05:47:04 2016 by ELM ver.2012-10-06 from 001__elm20160409_072421__dat00.bin



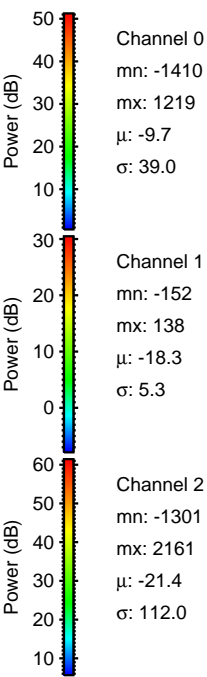
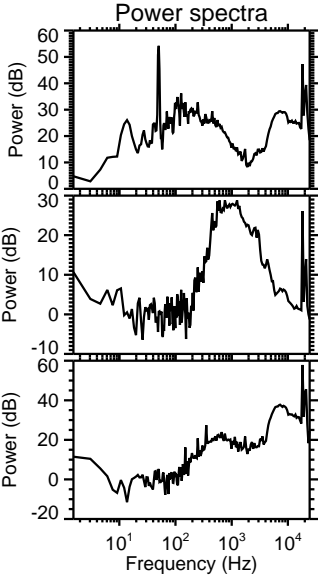
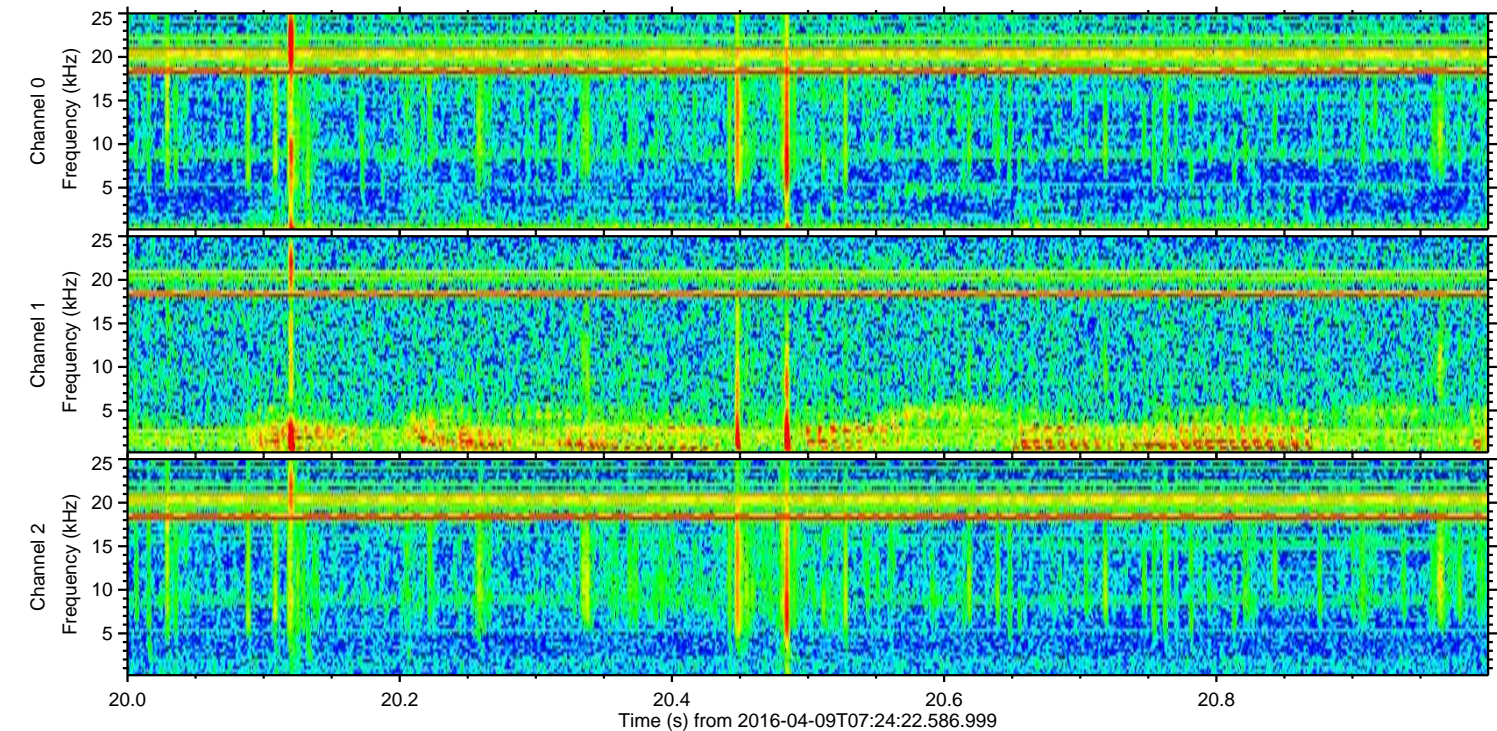
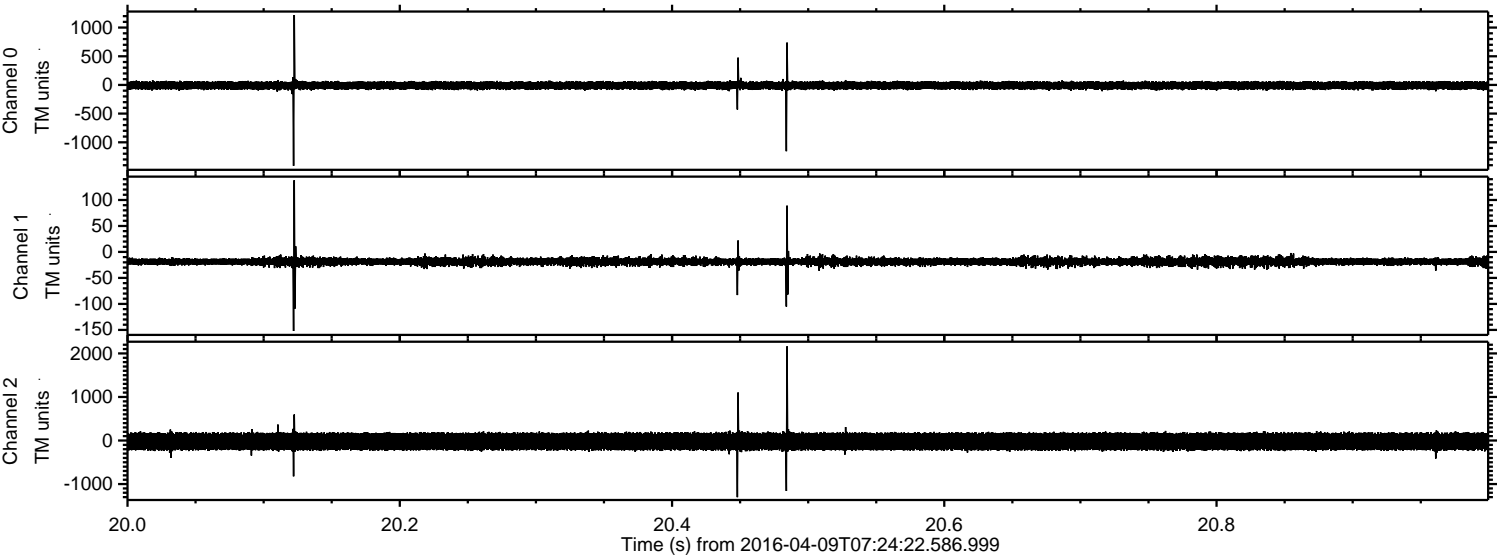
ELMAVAN 3D WAVEFORMS (Measured data sampled at 50 kHz) 51000 packets of 144 samples from 2016-04-09T07:24:22.586.999. Part 103/147

Processed Sat May 7 05:47:05 2016 by ELM ver.2012-10-06 from 001__elm20160409_072421__dat00.bin



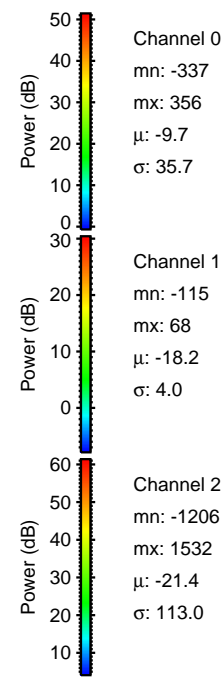
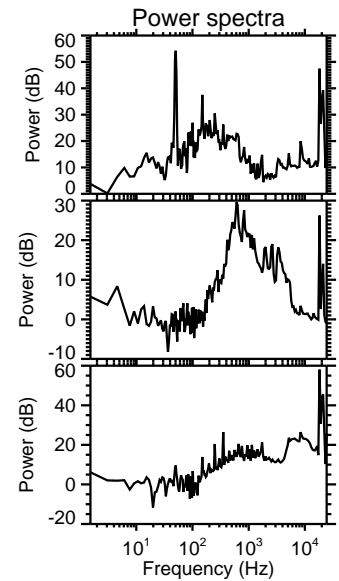
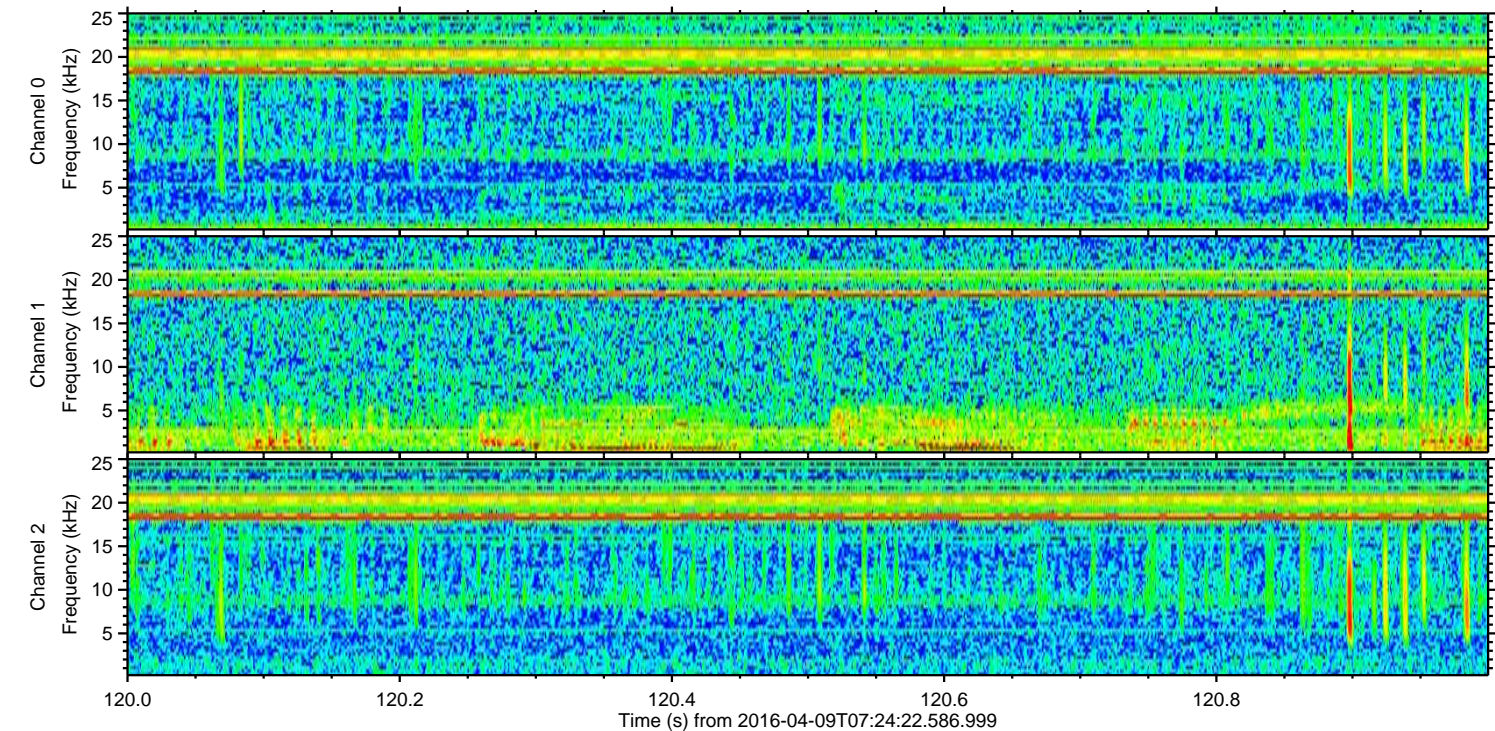
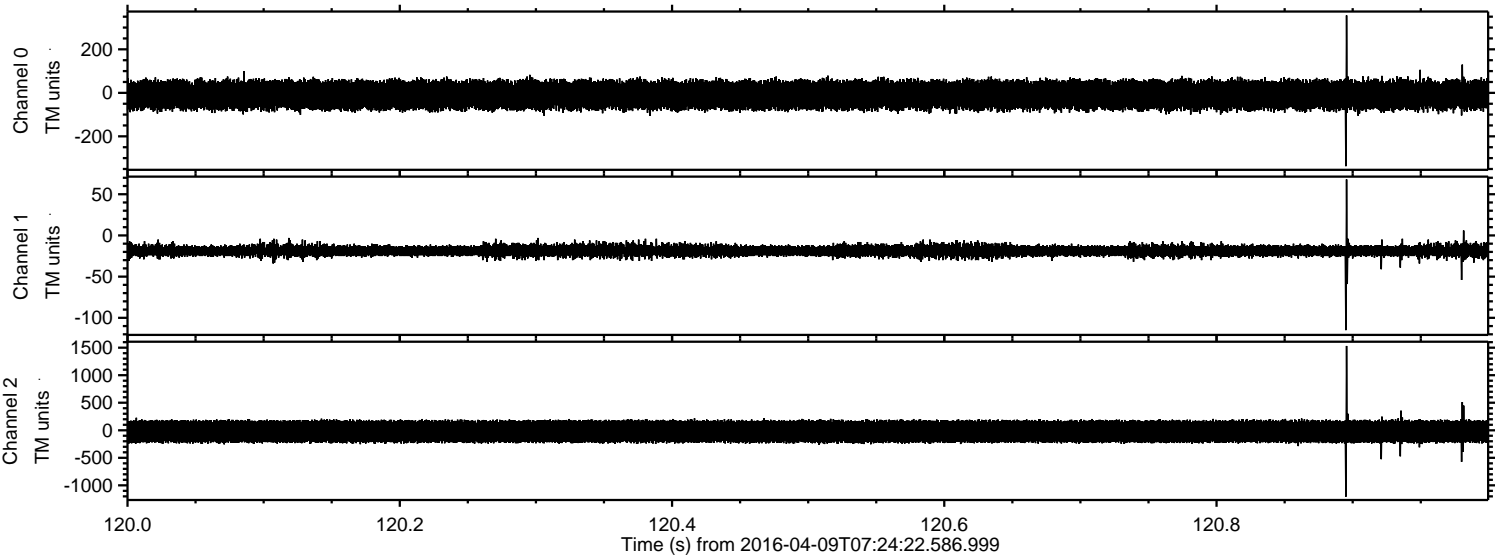
ELMAVAN 3D WAVEFORMS (Measured data sampled at 50 kHz) 51000 packets of 144 samples from 2016-04-09T07:24:22.586.999. Part 21/147

Processed Sat May 7 05:47:06 2016 by ELM ver.2012-10-06 from 001__elm20160409_072421__dat00.bin



ELMAVAN 3D WAVEFORMS (Measured data sampled at 50 kHz) 51000 packets of 144 samples from 2016-04-09T07:24:22.586.999. Part 121/147

Processed Sat May 7 05:47:07 2016 by ELM ver.2012-10-06 from 001__elm20160409_072421__dat00.bin



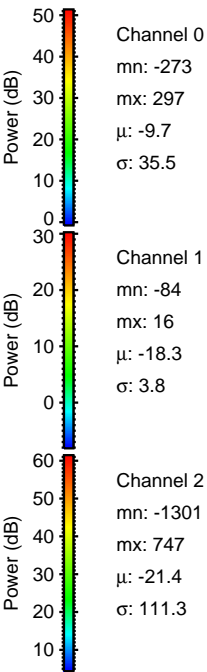
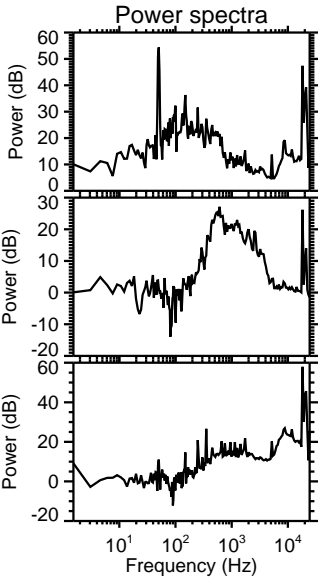
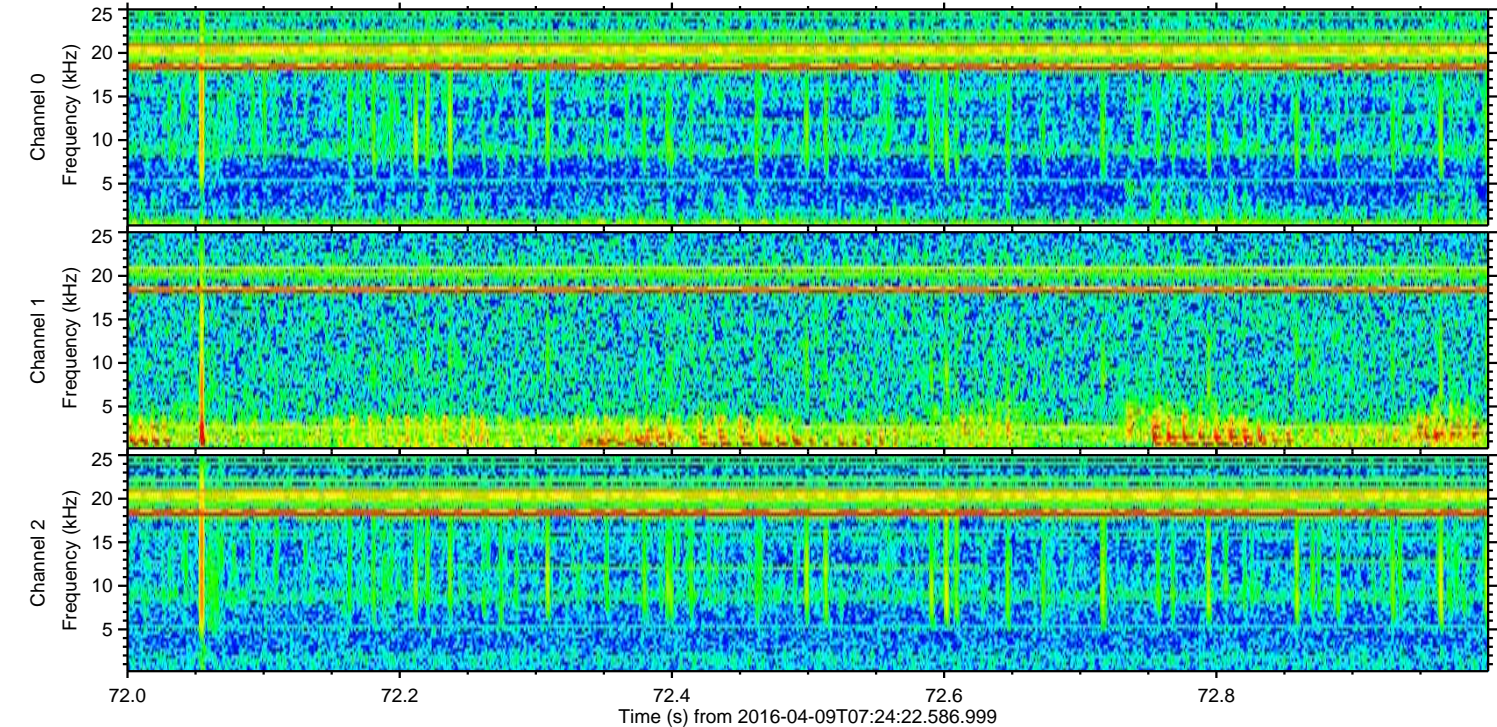
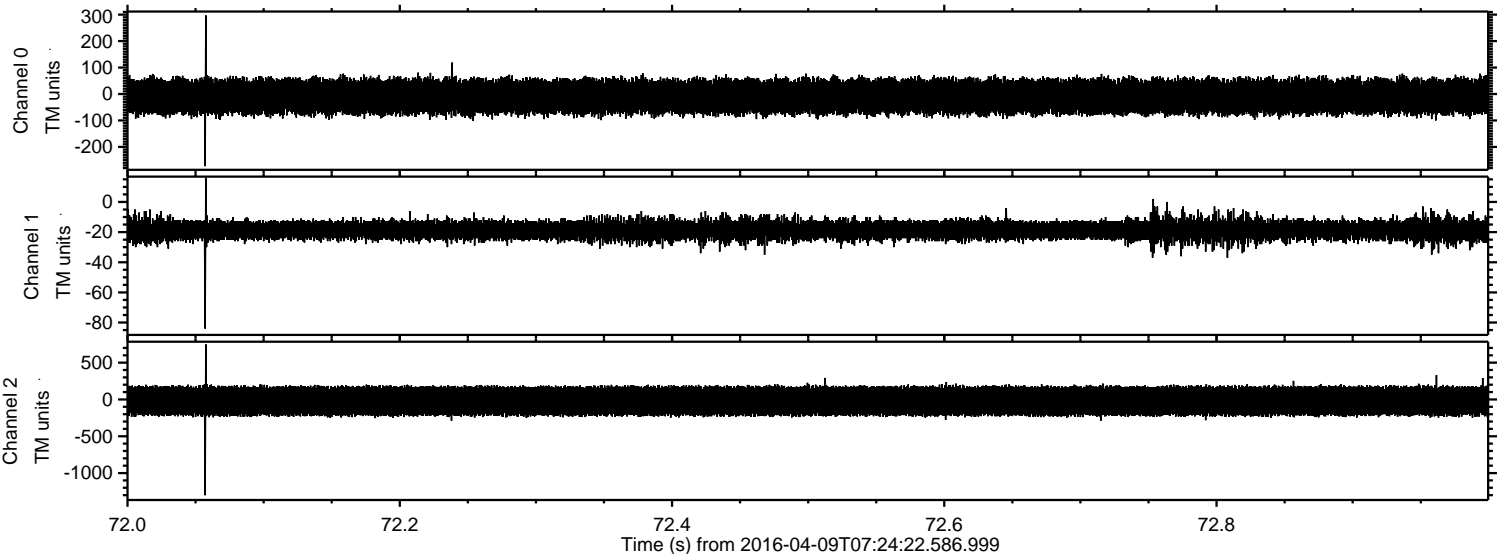
Channel 0
mn: -337
mx: 356
 μ : -9.7
 σ : 35.7

Channel 1
mn: -115
mx: 68
 μ : -18.2
 σ : 4.0

Channel 2
mn: -1206
mx: 1532
 μ : -21.4
 σ : 113.0

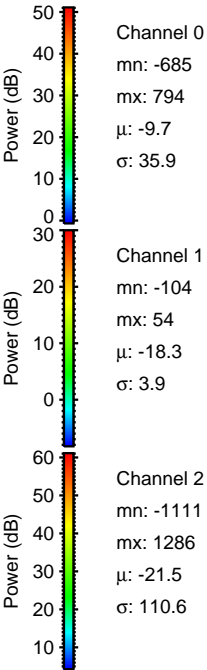
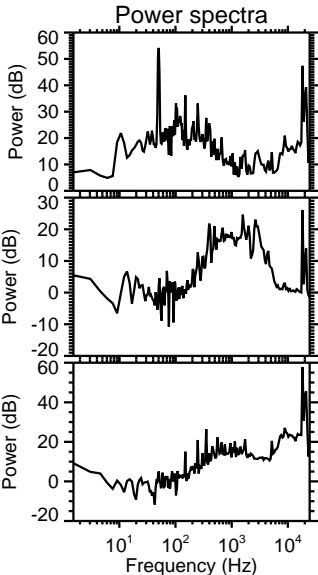
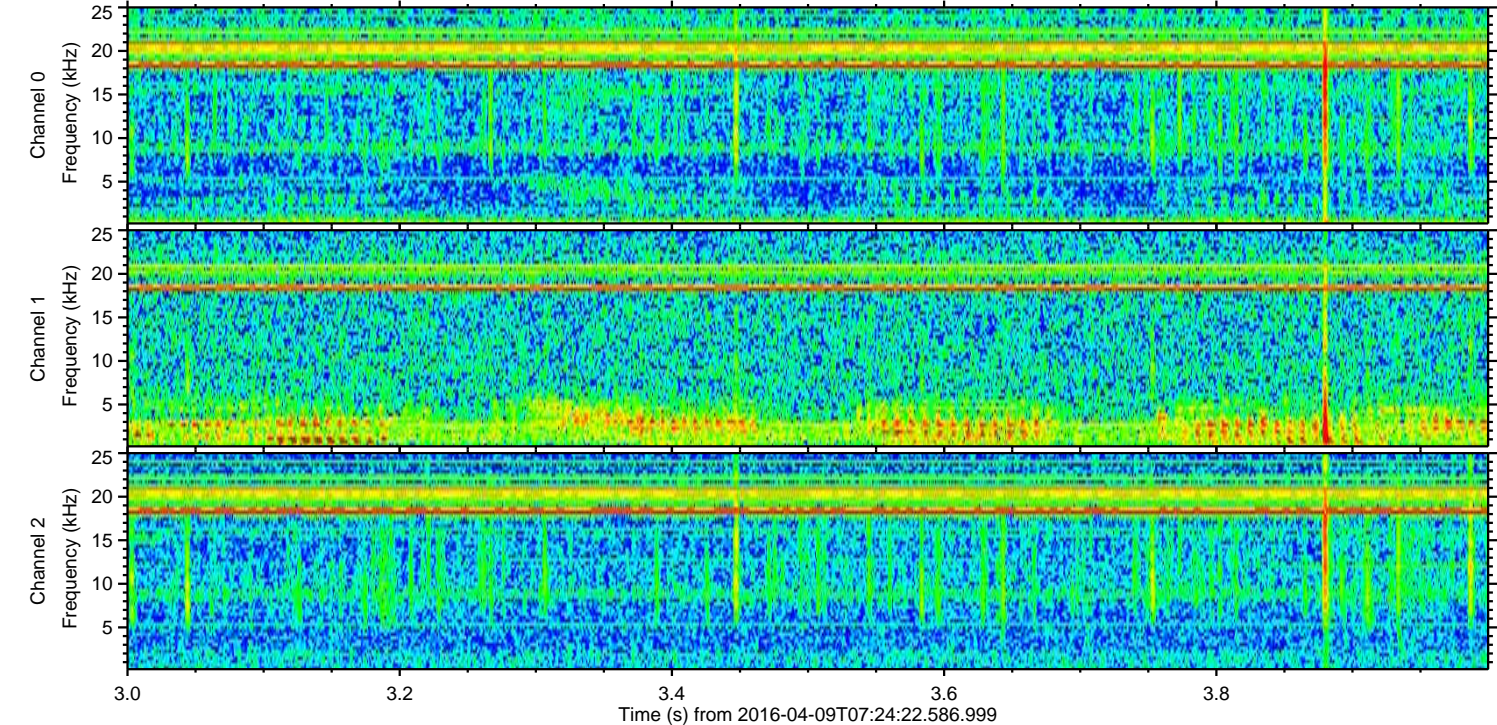
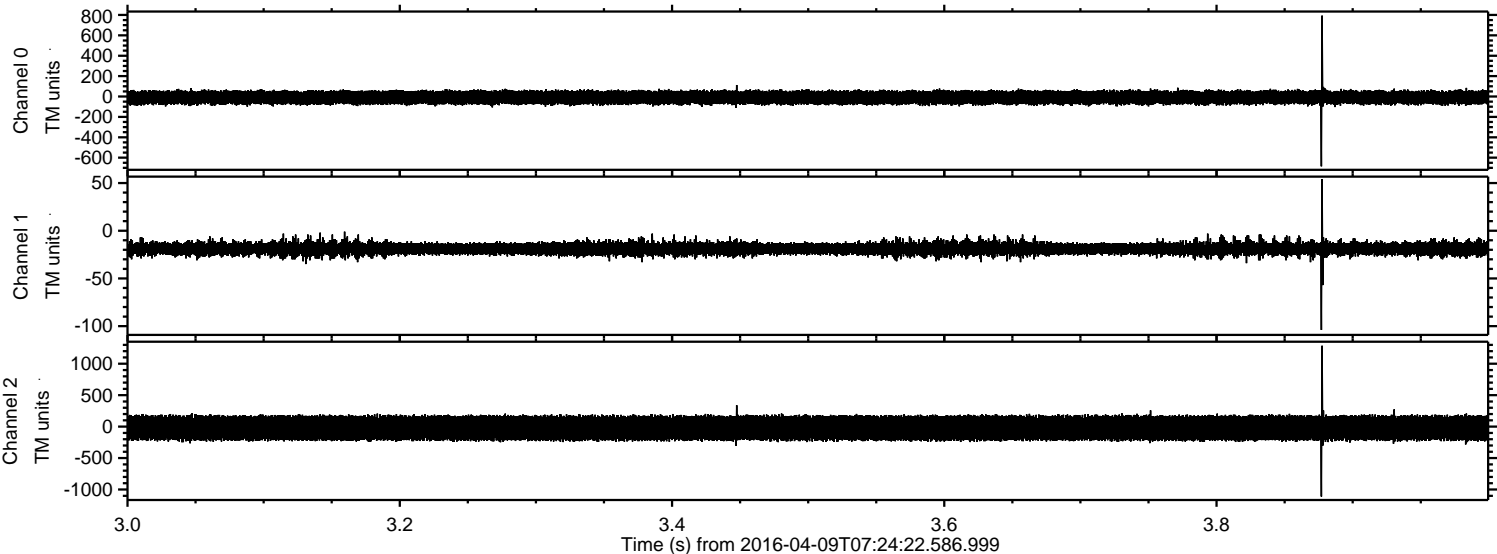
ELMAVAN 3D WAVEFORMS (Measured data sampled at 50 kHz) 51000 packets of 144 samples from 2016-04-09T07:24:22.586.999. Part 73/147

Processed Sat May 7 05:47:08 2016 by ELM ver.2012-10-06 from 001__elm20160409_072421__dat00.bin

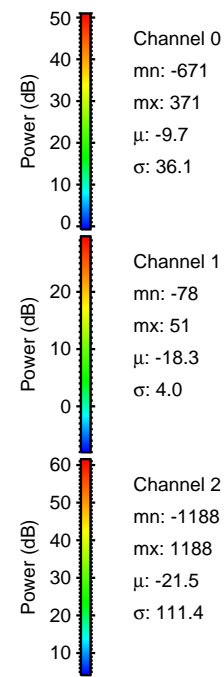
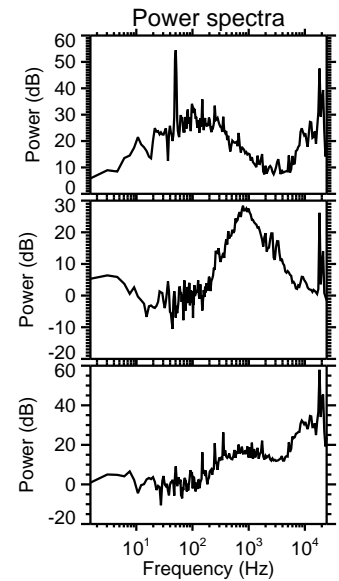
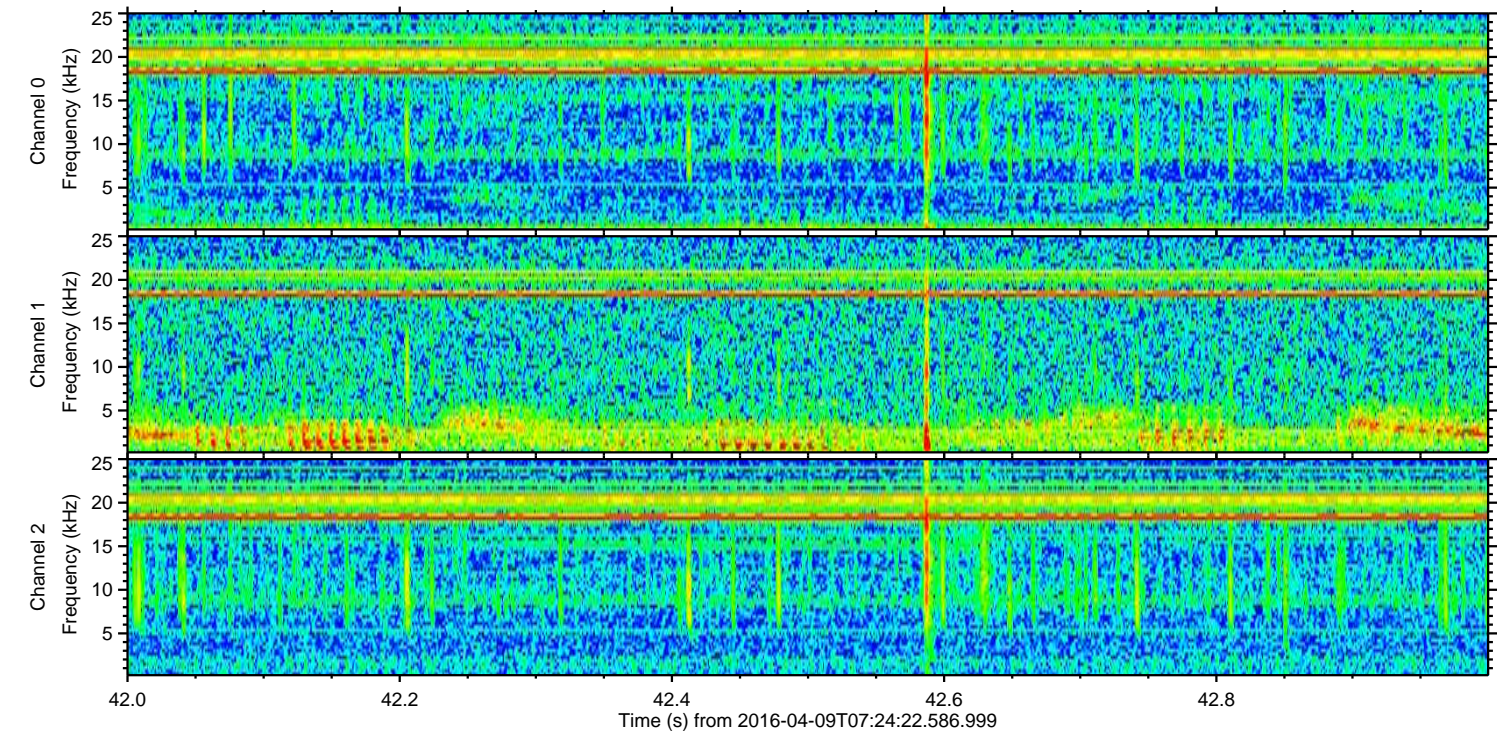
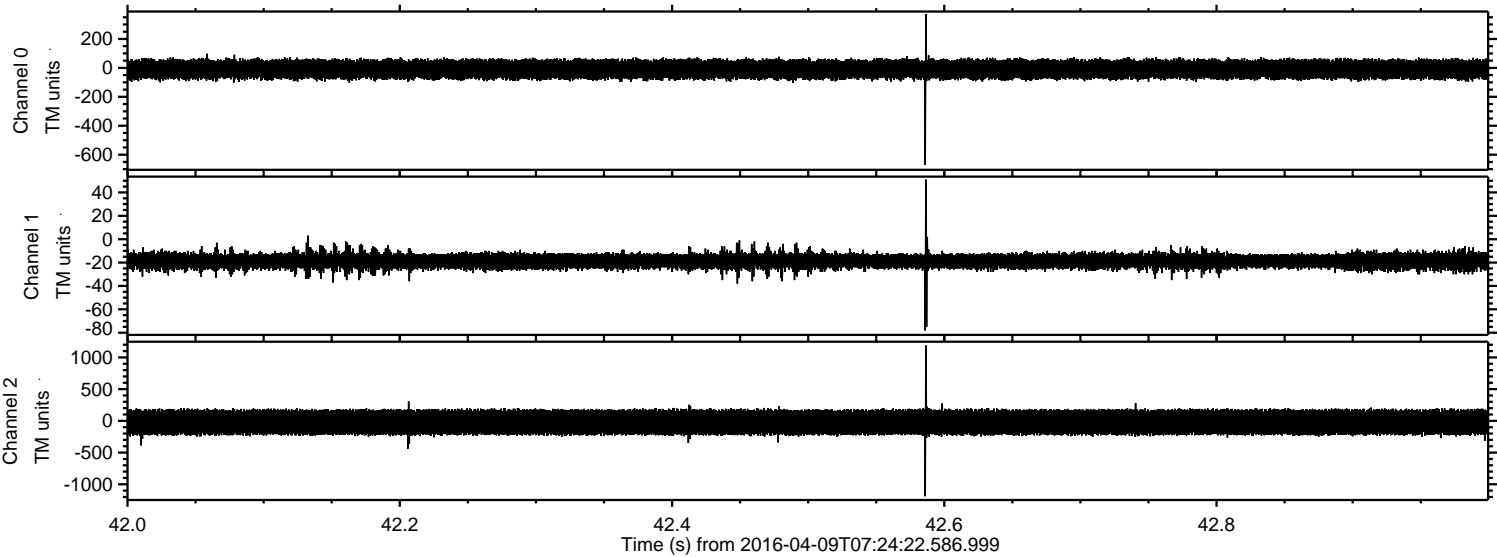


ELMAVAN 3D WAVEFORMS (Measured data sampled at 50 kHz) 51000 packets of 144 samples from 2016-04-09T07:24:22.586.999. Part 4/147

Processed Sat May 7 05:47:09 2016 by ELM ver.2012-10-06 from 001__elm20160409_072421__dat00.bin



Processed Sat May 7 05:47:10 2016 by ELM ver.2012-10-06 from 001__elm20160409_072421__dat00.bin

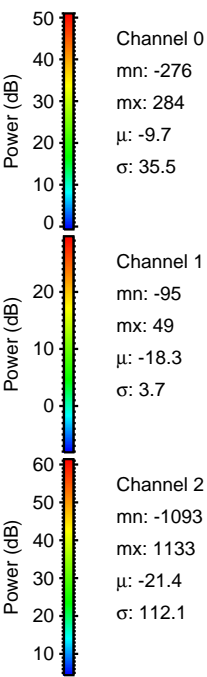
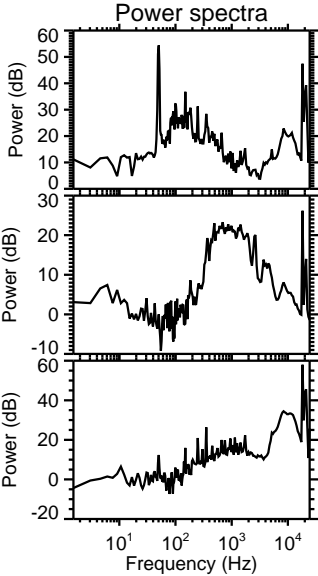
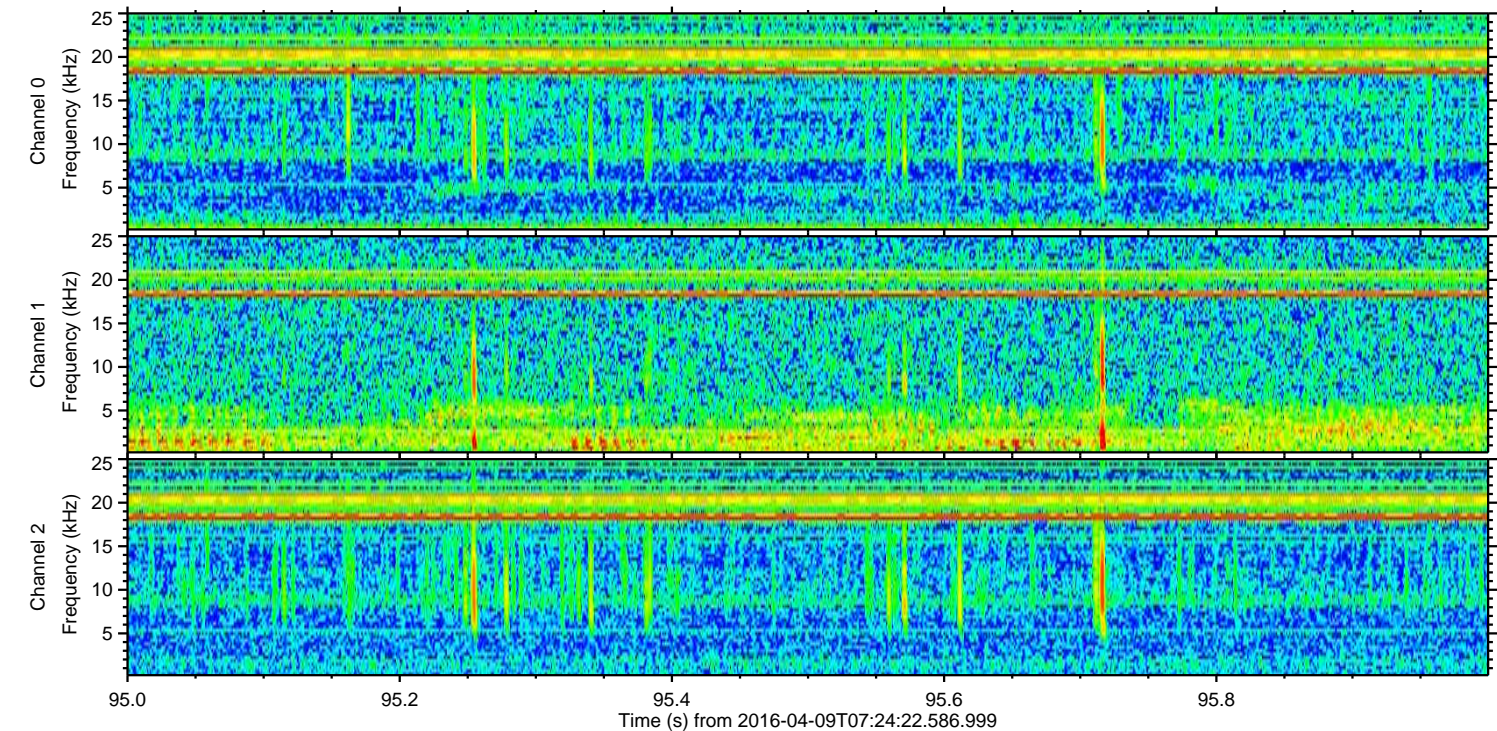
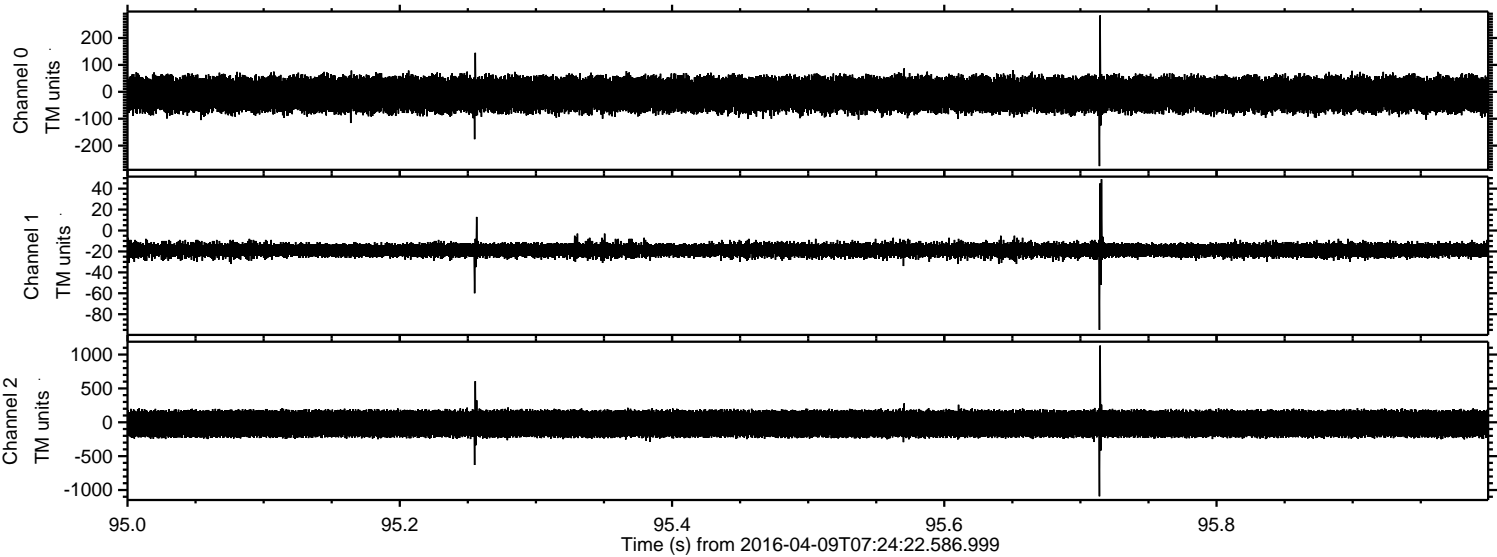


Channel 0
mn: -671
mx: 371
 μ : -9.7
 σ : 36.1

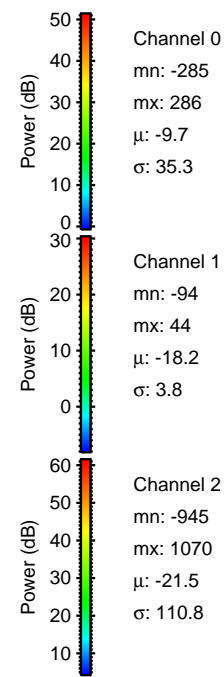
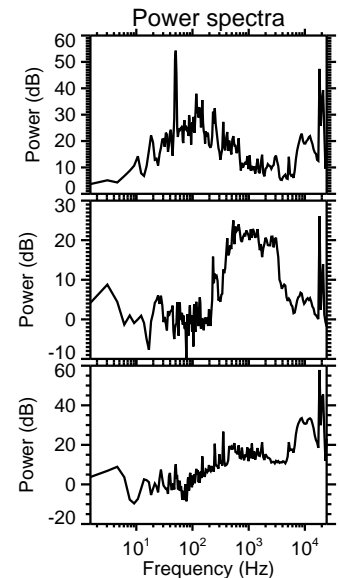
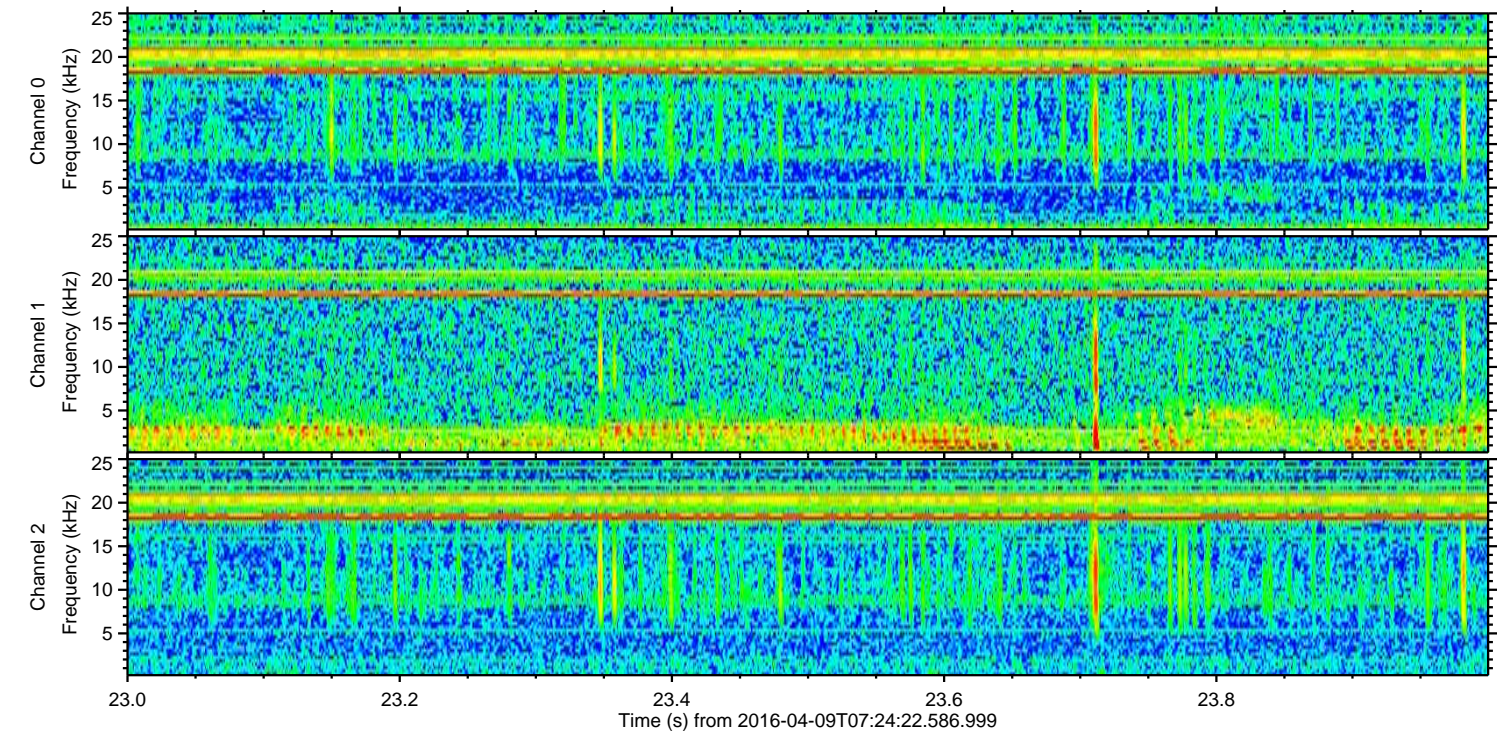
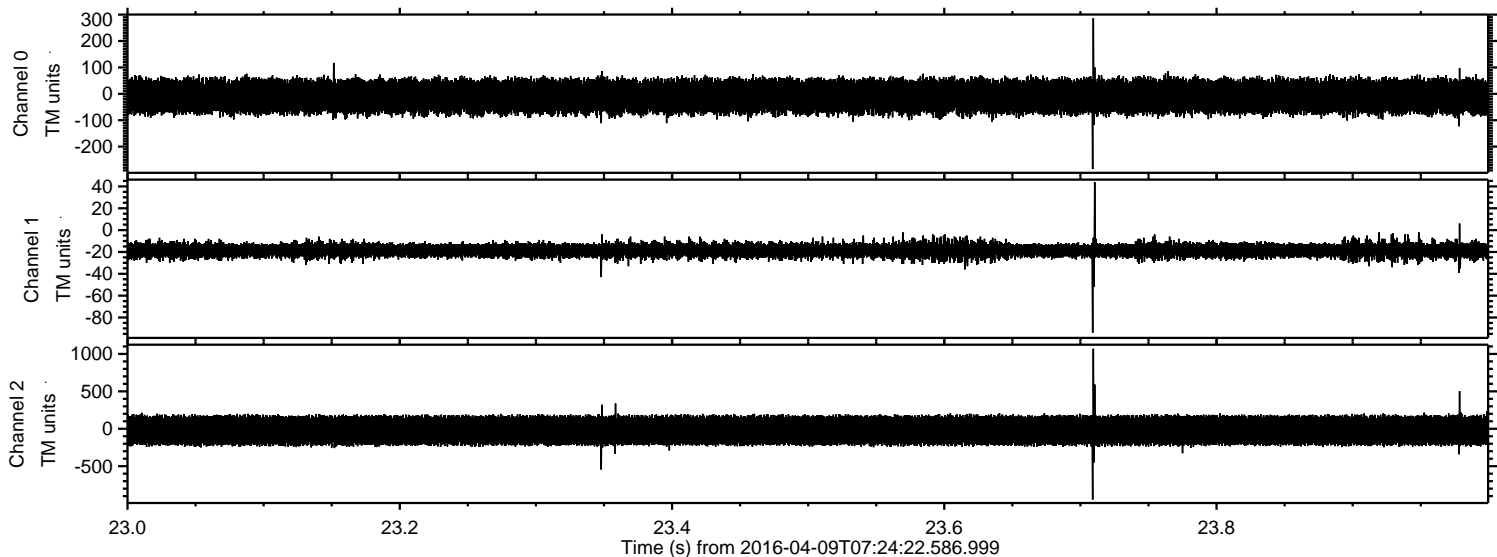
Channel 1
mn: -78
mx: 51
 μ : -18.3
 σ : 4.0

Channel 2
mn: -1188
mx: 1188
 μ : -21.5
 σ : 111.4

Processed Sat May 7 05:47:11 2016 by ELM ver.2012-10-06 from 001__elm20160409_072421__dat00.bin



Processed Sat May 7 05:47:12 2016 by ELM ver.2012-10-06 from 001__elm20160409_072421__dat00.bin



Processed Sat May 7 05:47:13 2016 by ELM ver.2012-10-06 from 001__elm20160409_072421__dat00.bin

