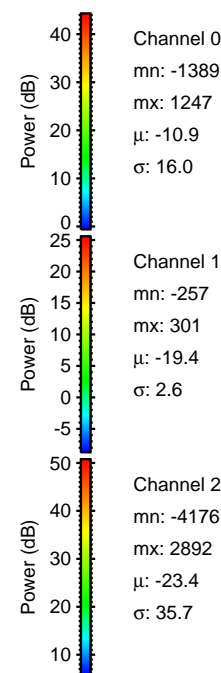
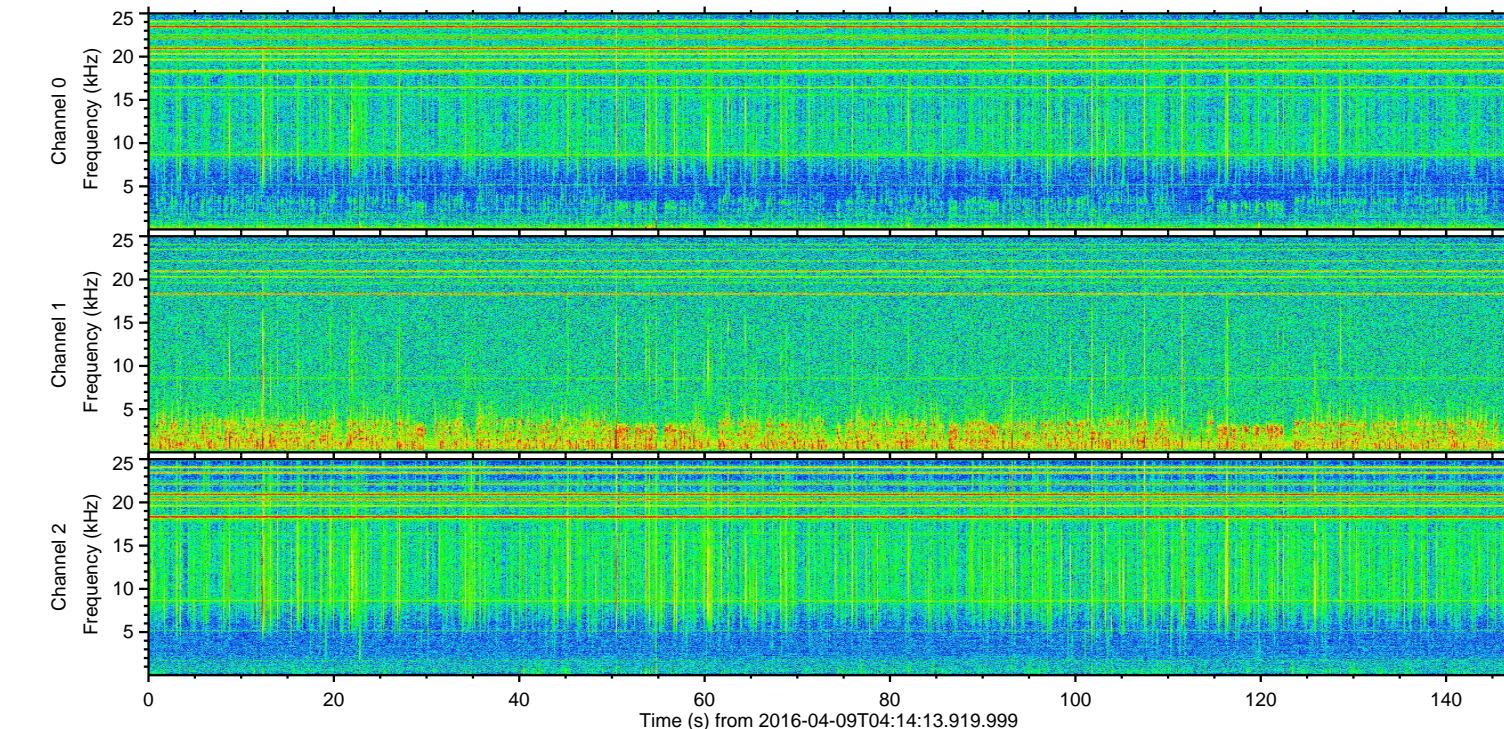
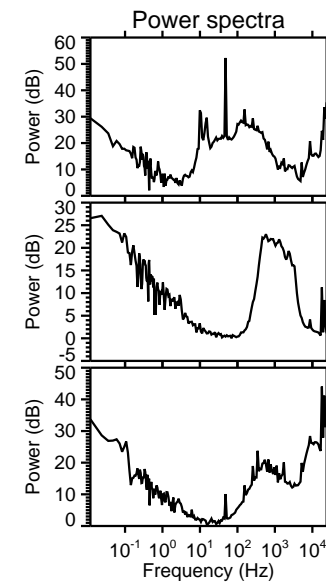
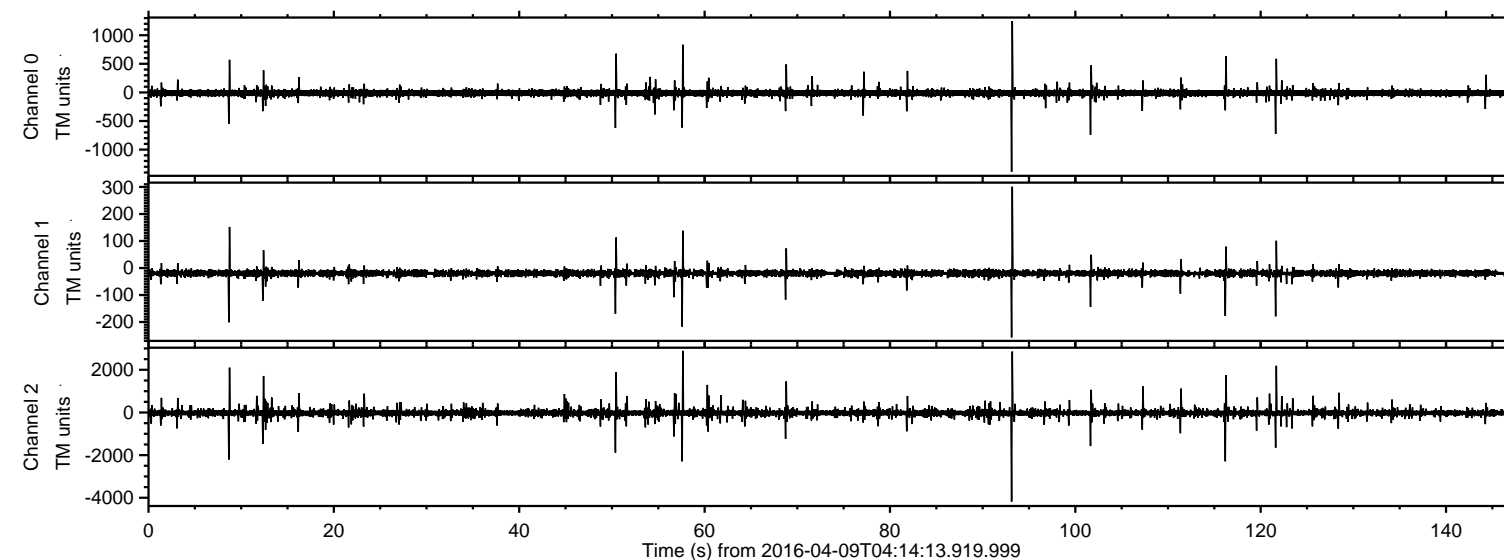
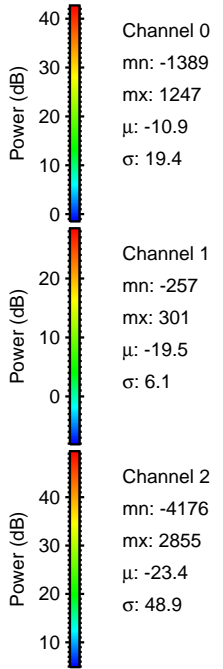
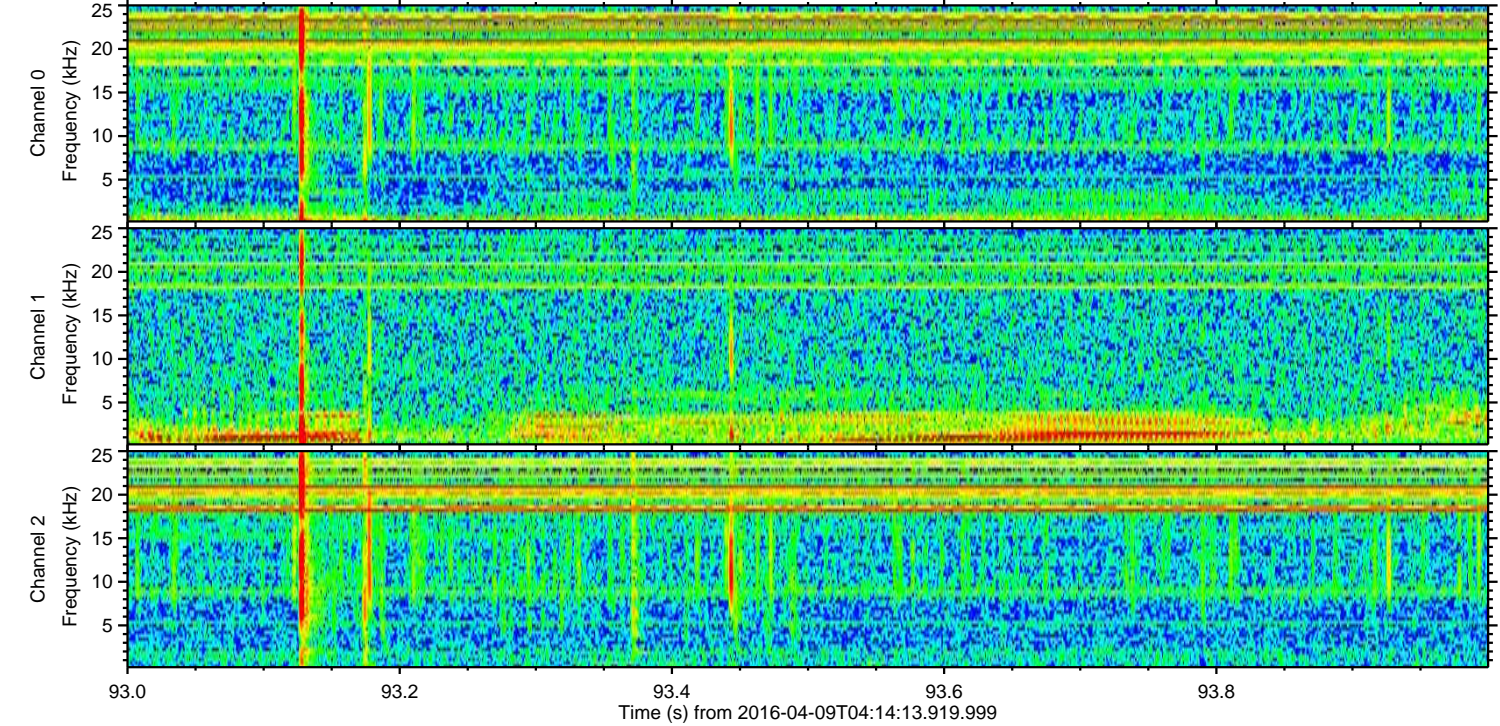
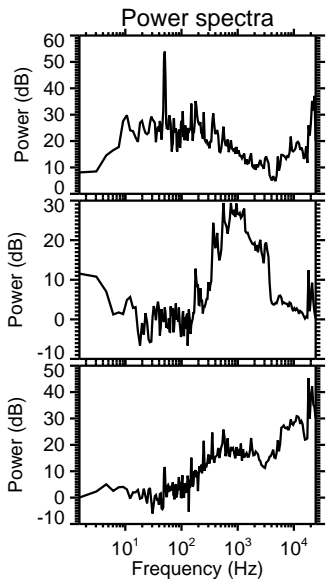
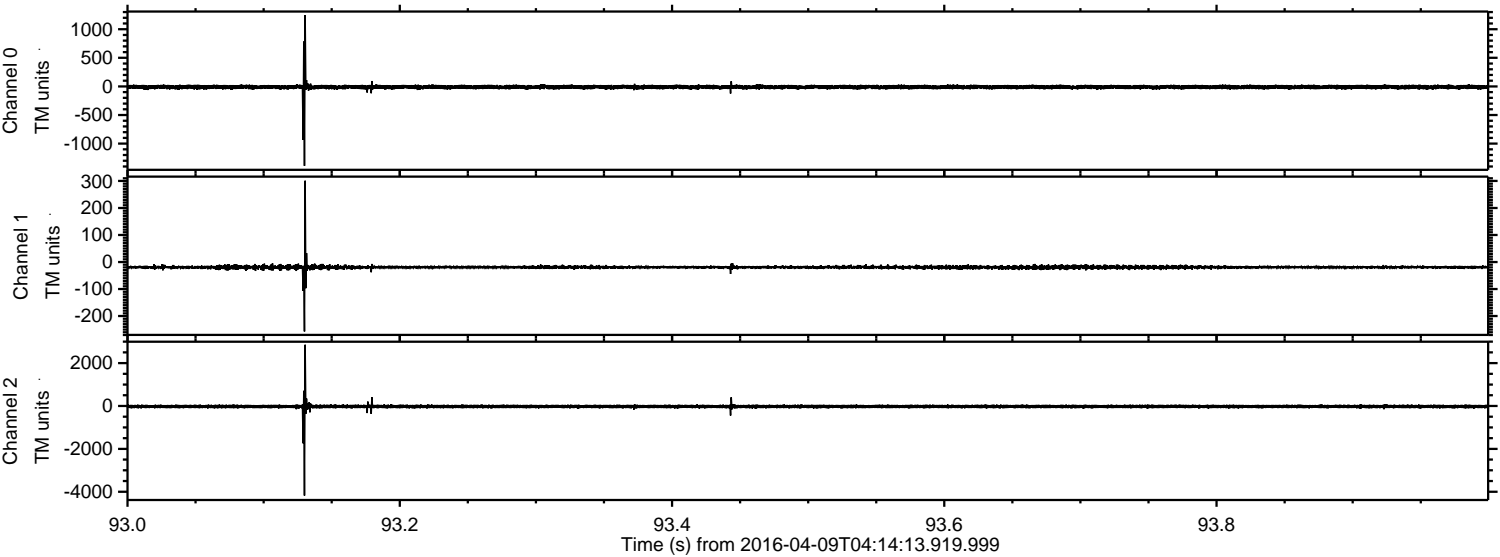


ELMAVAN 3D WAVEFORMS (Measured data sampled at 50 kHz) 51000 packets of 144 samples from 2016-04-09T04:14:13.919.999.

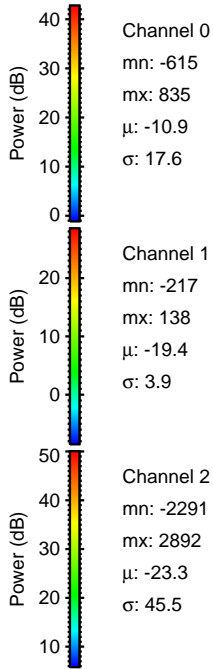
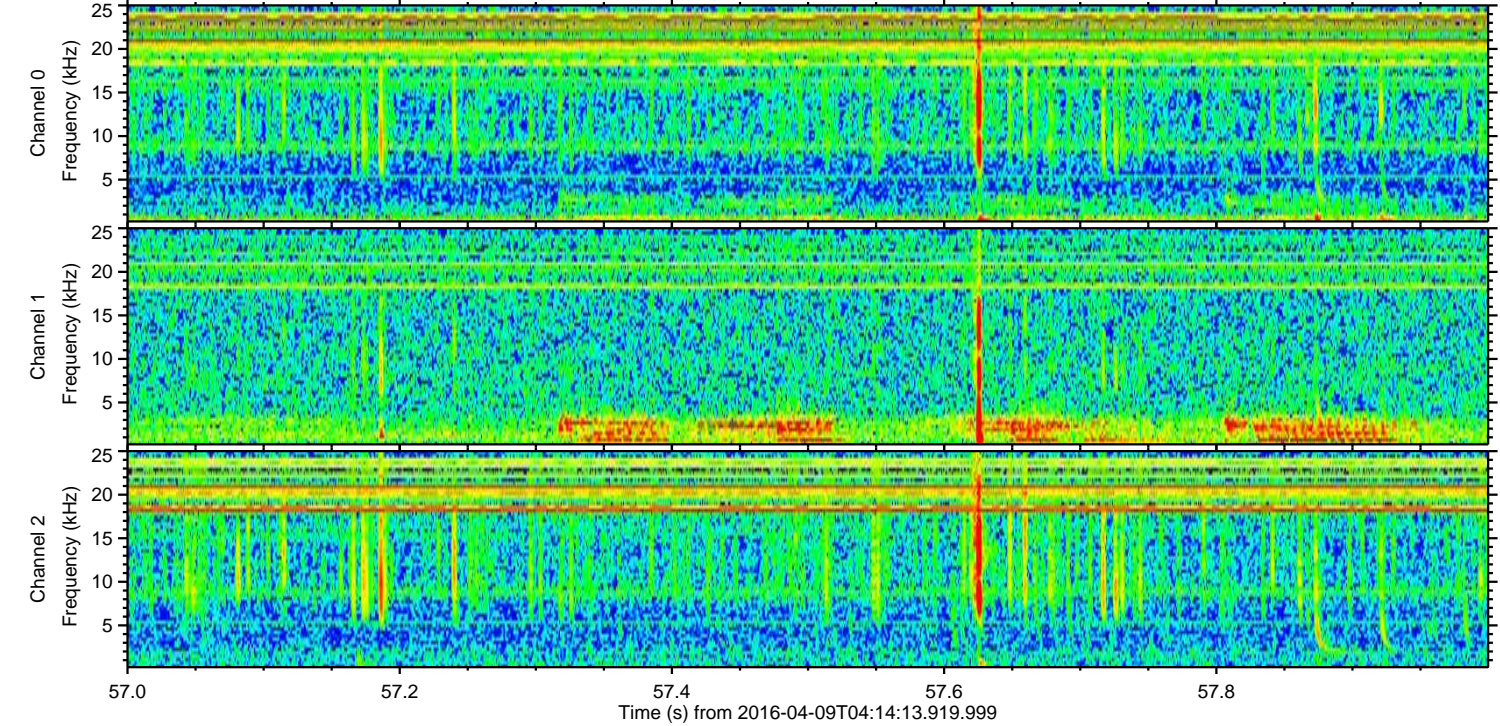
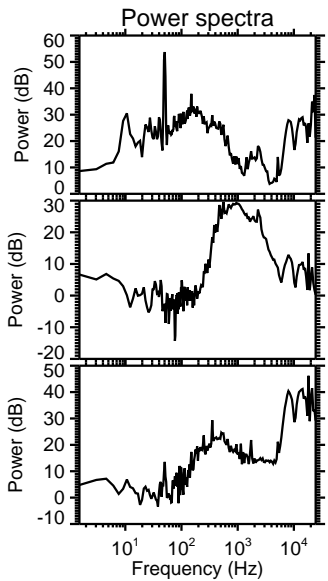
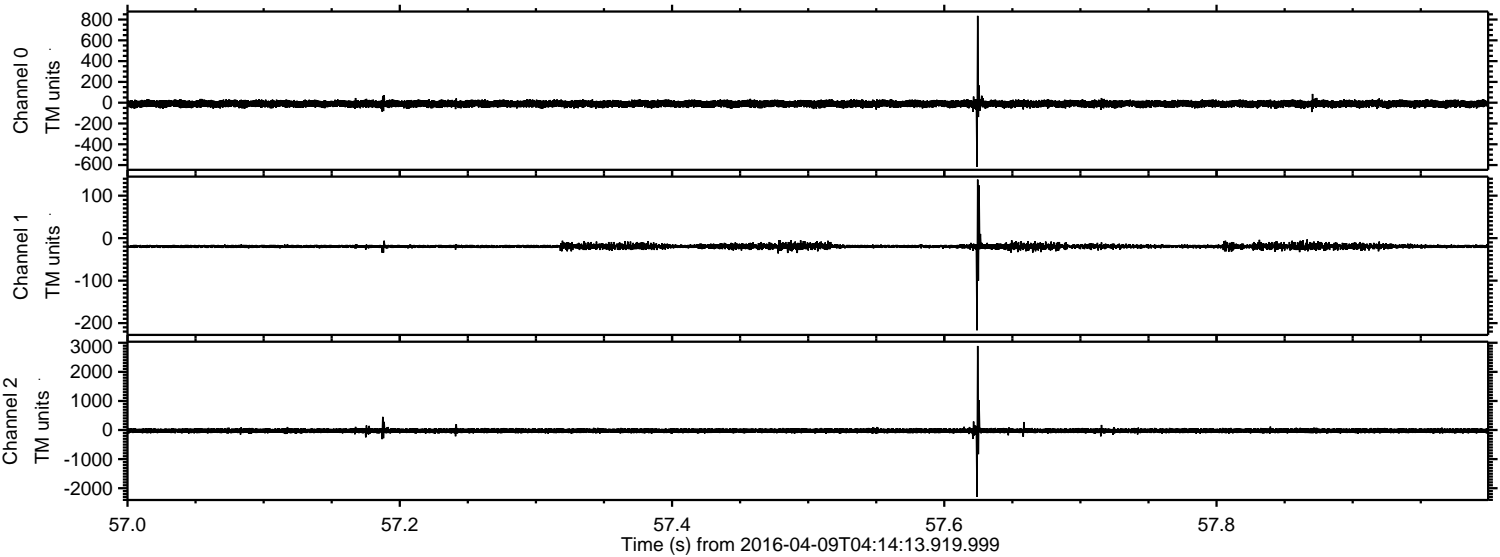
Processed Sat May 7 05:06:24 2016 by ELM ver.2012-10-06 from 001__elm20160409_041412__dat00.bin



Processed Sat May 7 05:06:39 2016 by ELM ver.2012-10-06 from 001__elm20160409_041412__dat00.bin

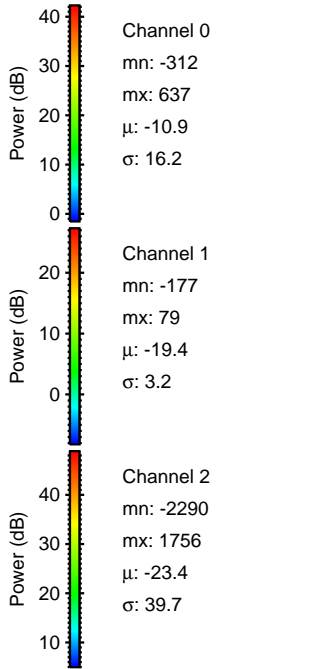
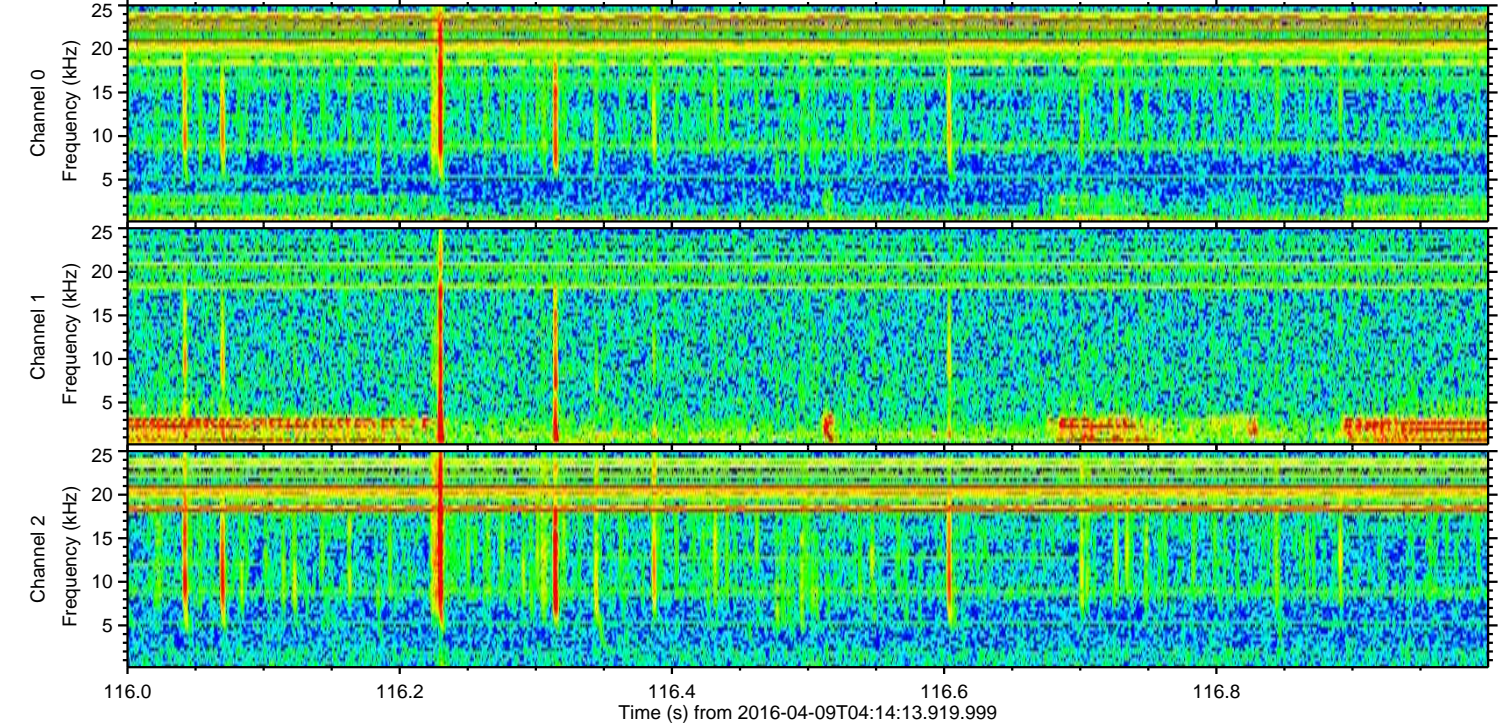
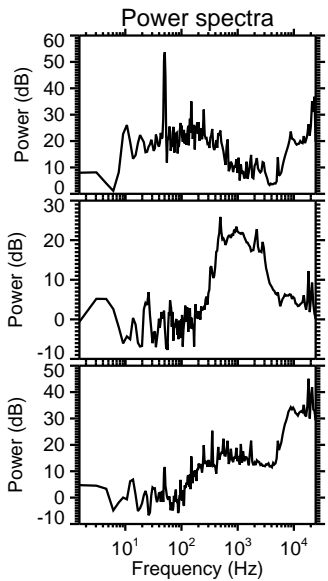
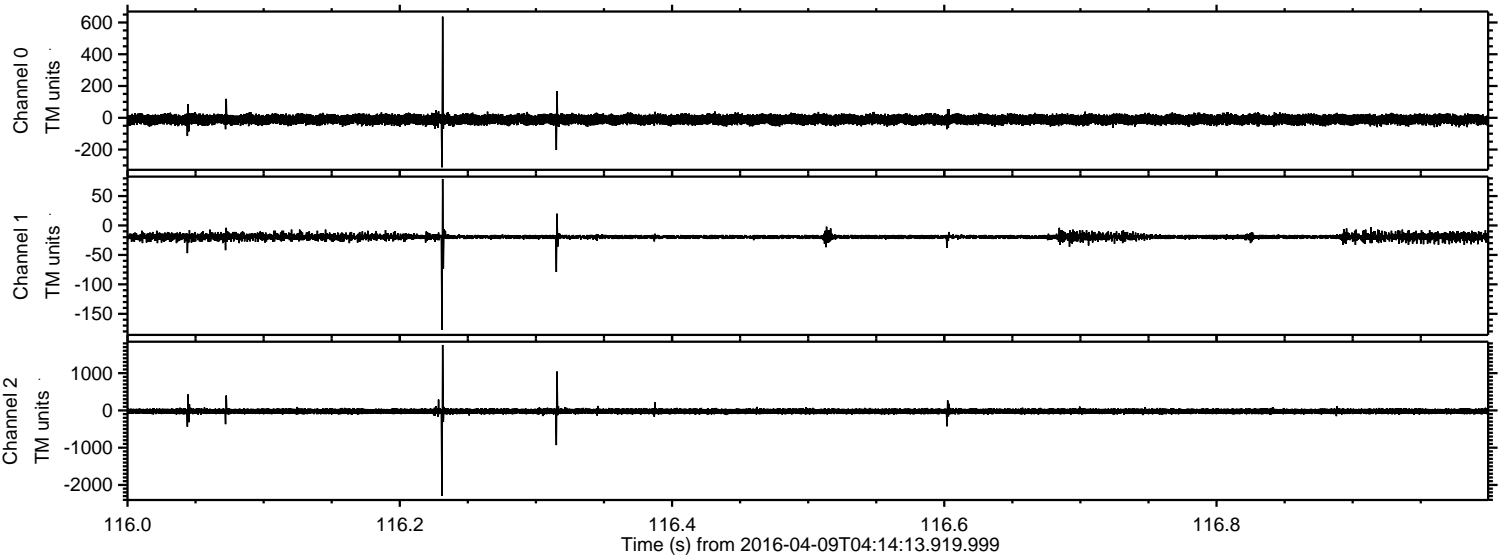


Processed Sat May 7 05:06:40 2016 by ELM ver.2012-10-06 from 001__elm20160409_041412__dat00.bin

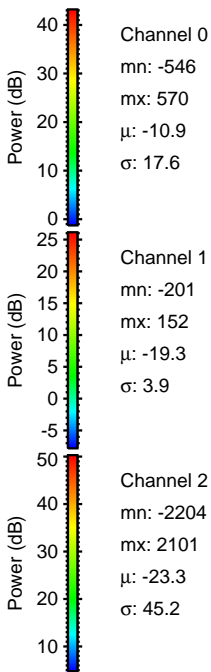
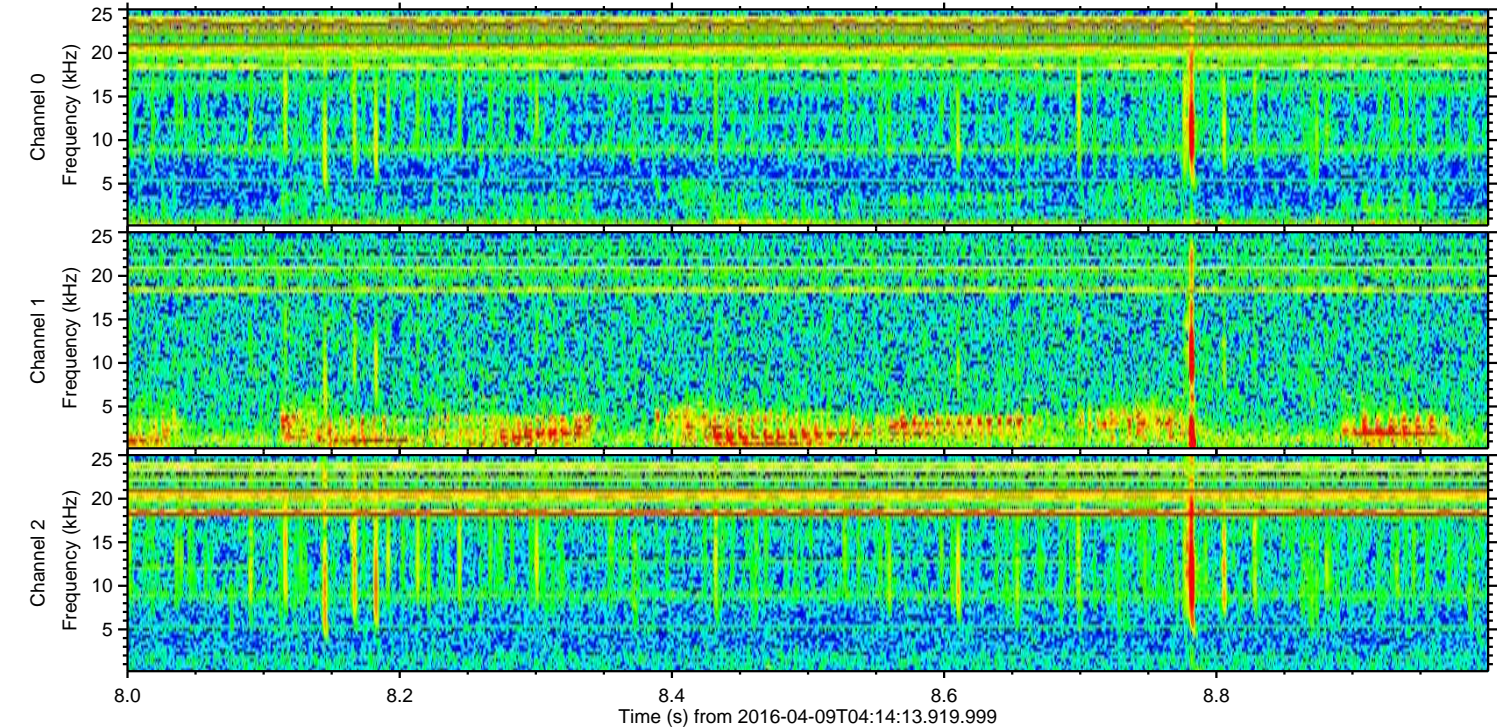
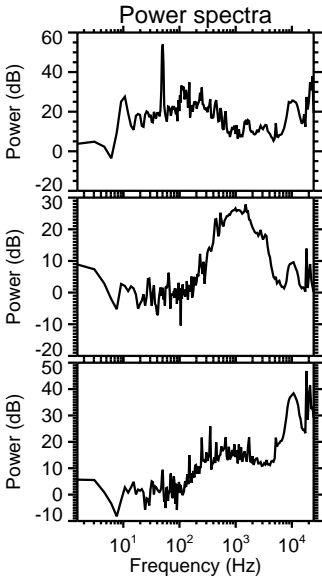
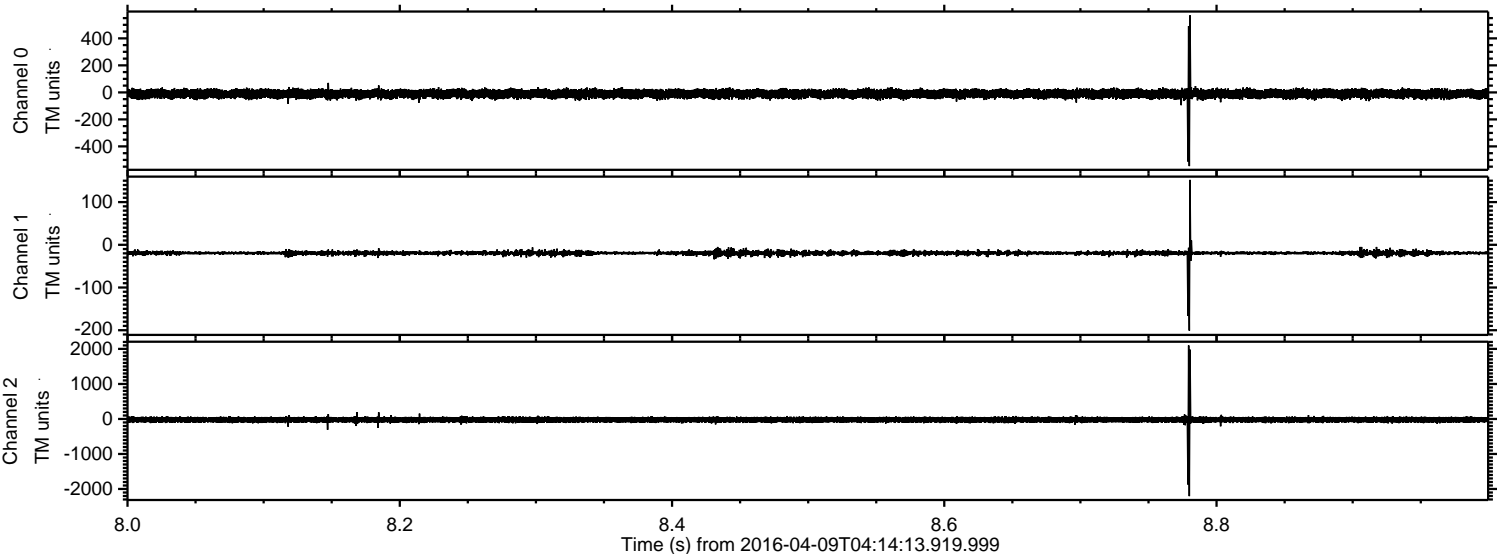


ELMAVAN 3D WAVEFORMS (Measured data sampled at 50 kHz) 51000 packets of 144 samples from 2016-04-09T04:14:13.919.999. Part 117/147

Processed Sat May 7 05:06:41 2016 by ELM ver.2012-10-06 from 001__elm20160409_041412__dat00.bin

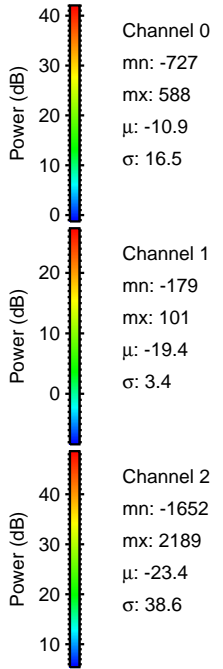
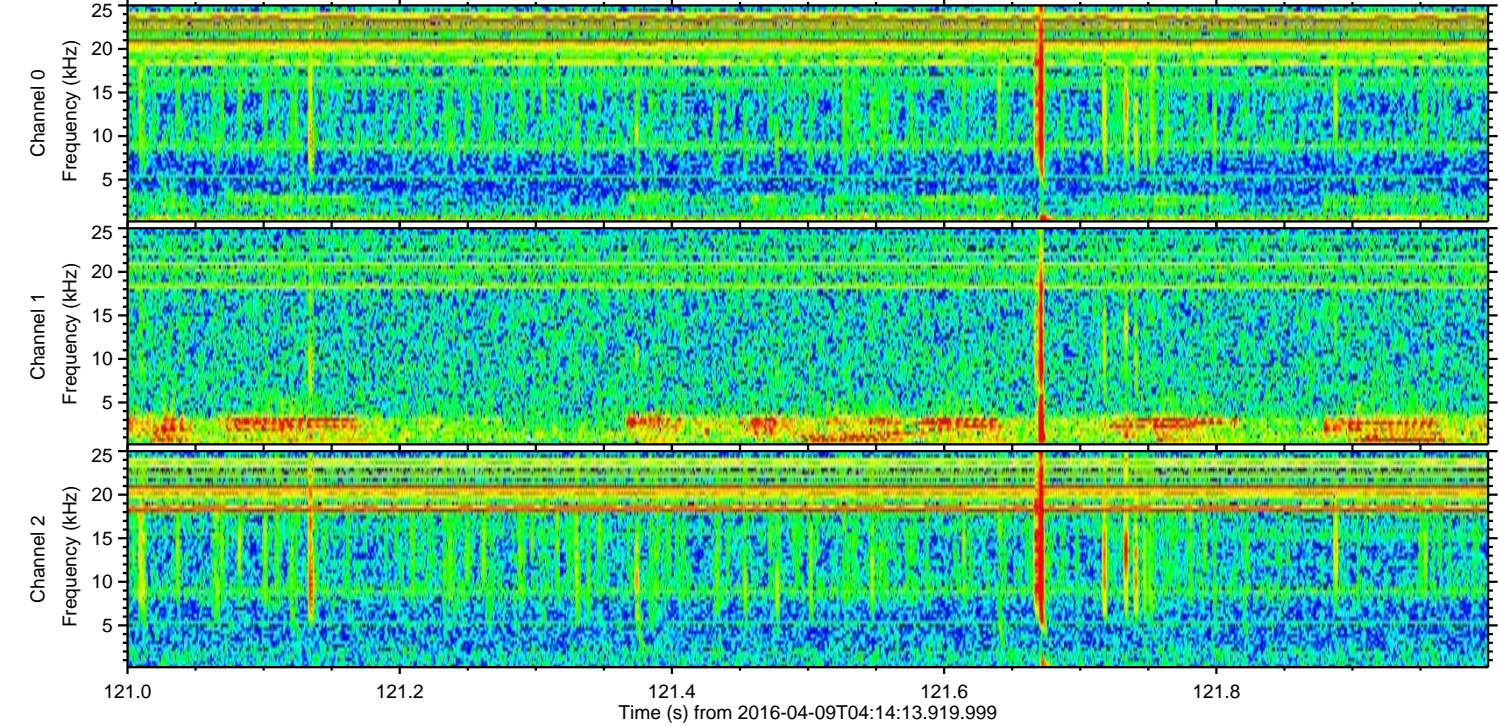
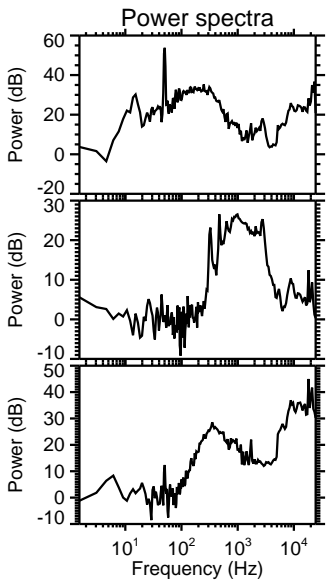
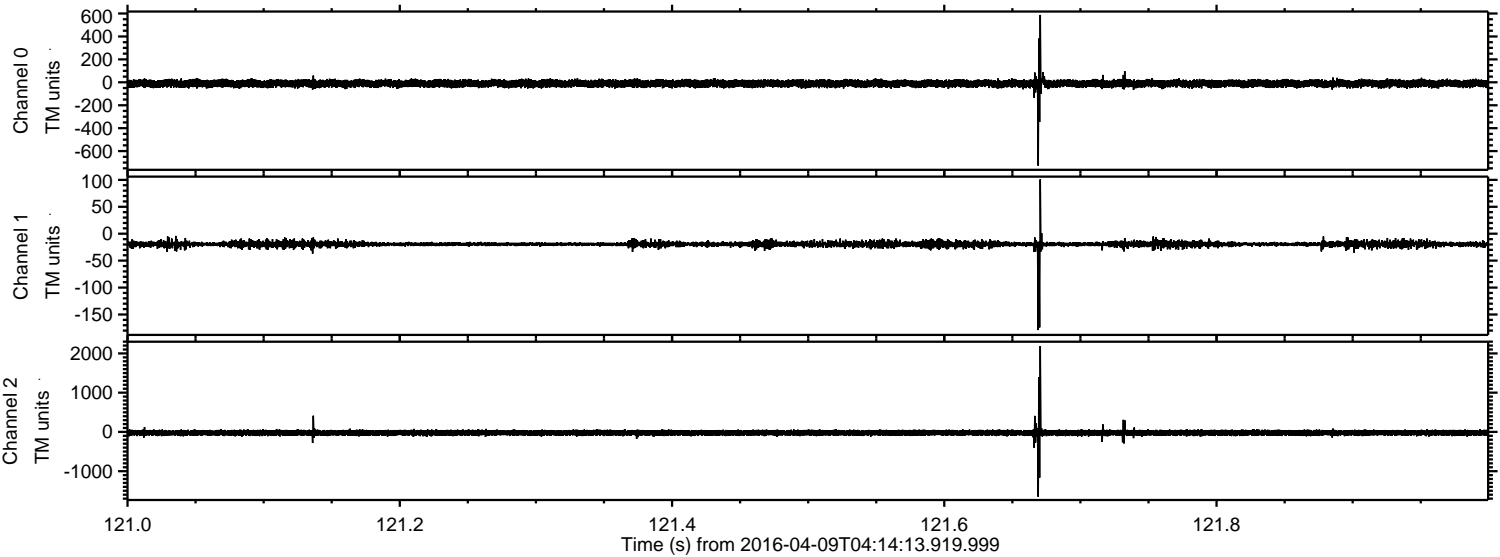


Processed Sat May 7 05:06:42 2016 by ELM ver.2012-10-06 from 001__elm20160409_041412__dat00.bin

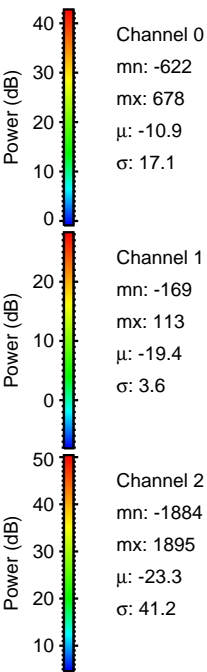
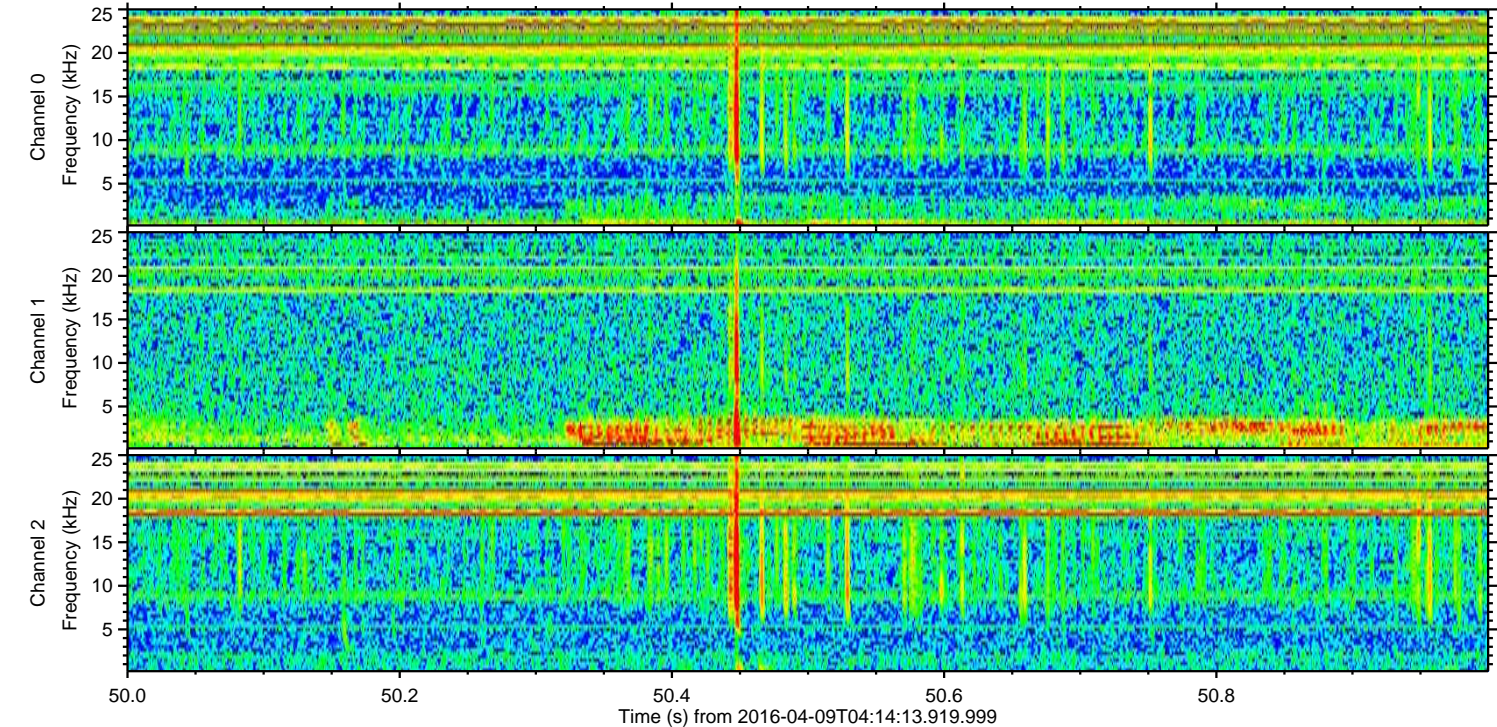
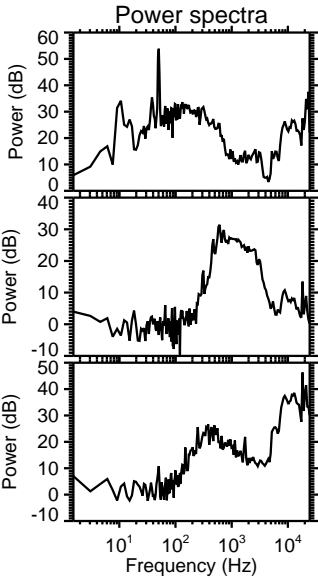
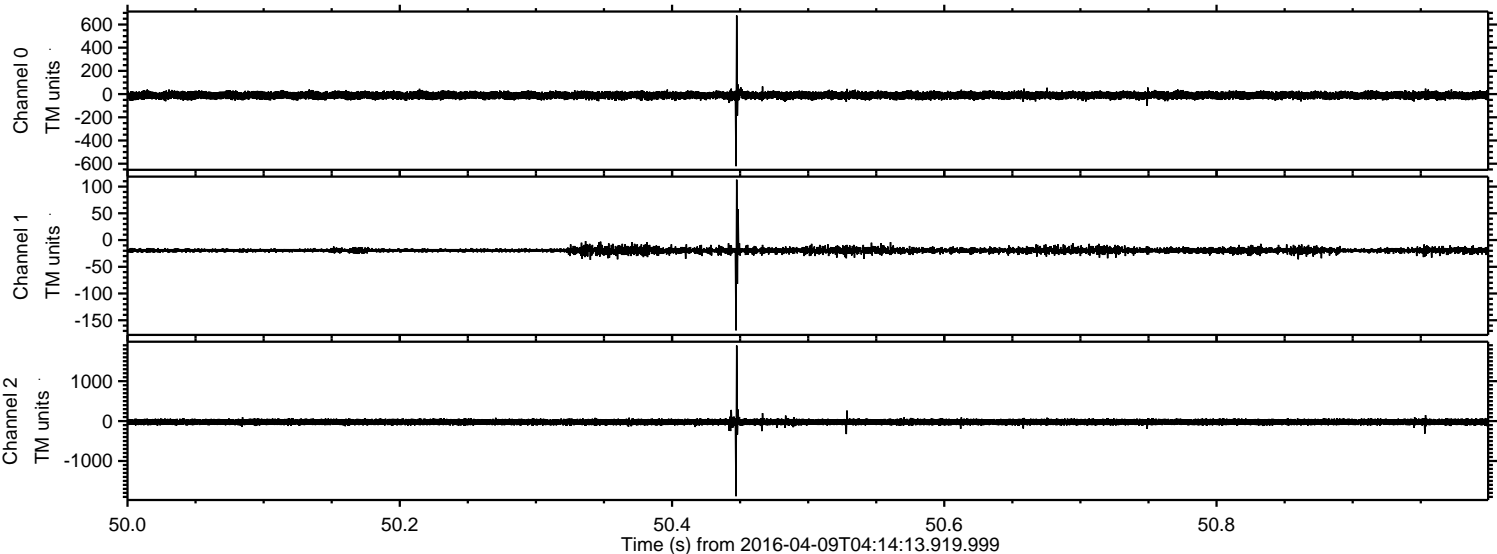


ELMAVAN 3D WAVEFORMS (Measured data sampled at 50 kHz) 51000 packets of 144 samples from 2016-04-09T04:14:13.919.999. Part 122/147

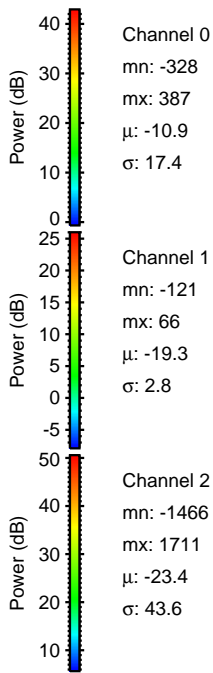
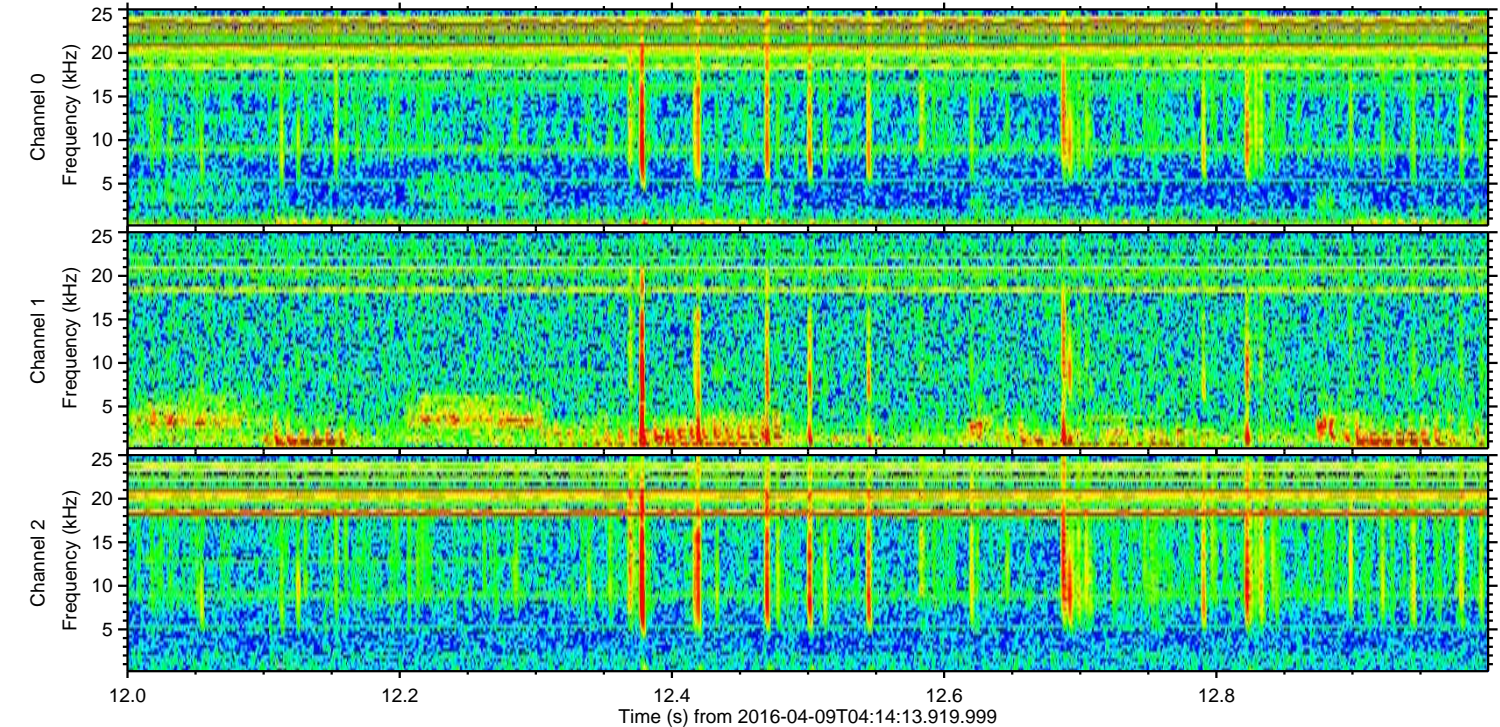
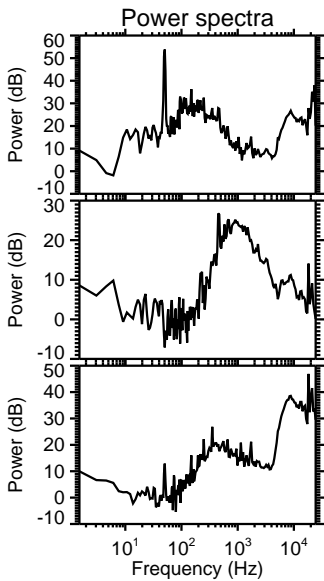
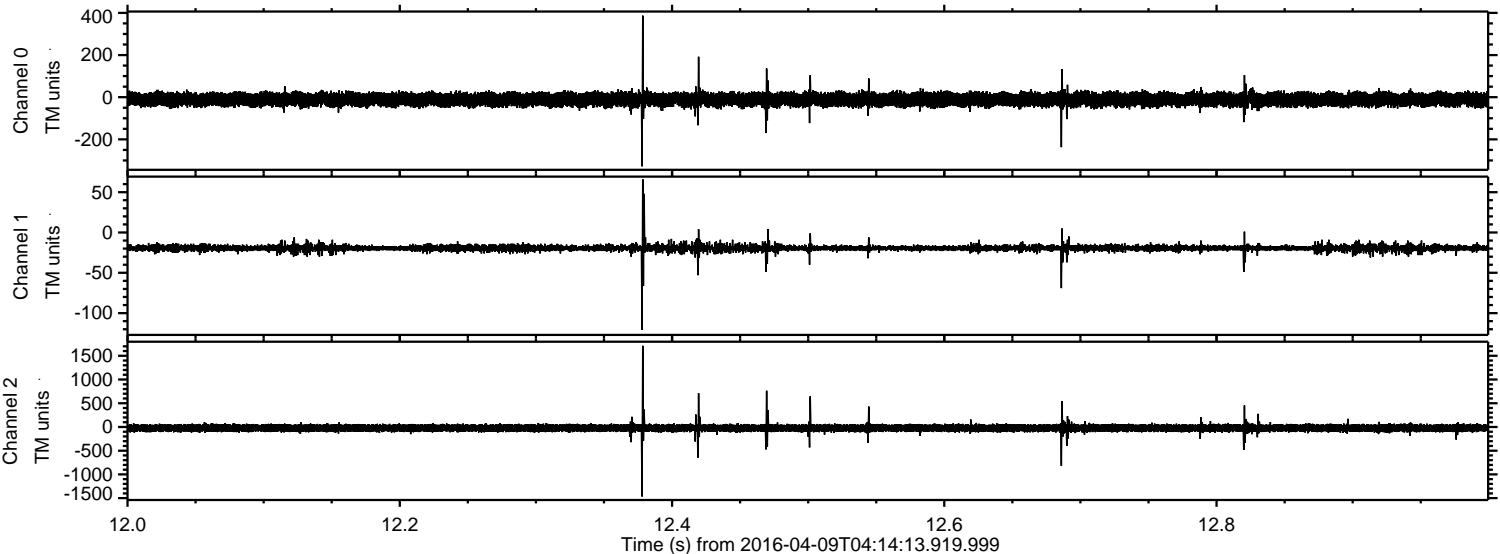
Processed Sat May 7 05:06:43 2016 by ELM ver.2012-10-06 from 001__elm20160409_041412__dat00.bin



Processed Sat May 7 05:06:44 2016 by ELM ver.2012-10-06 from 001__elm20160409_041412__dat00.bin

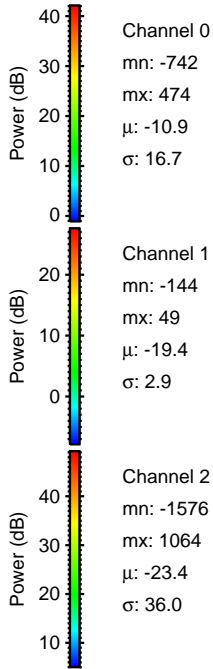
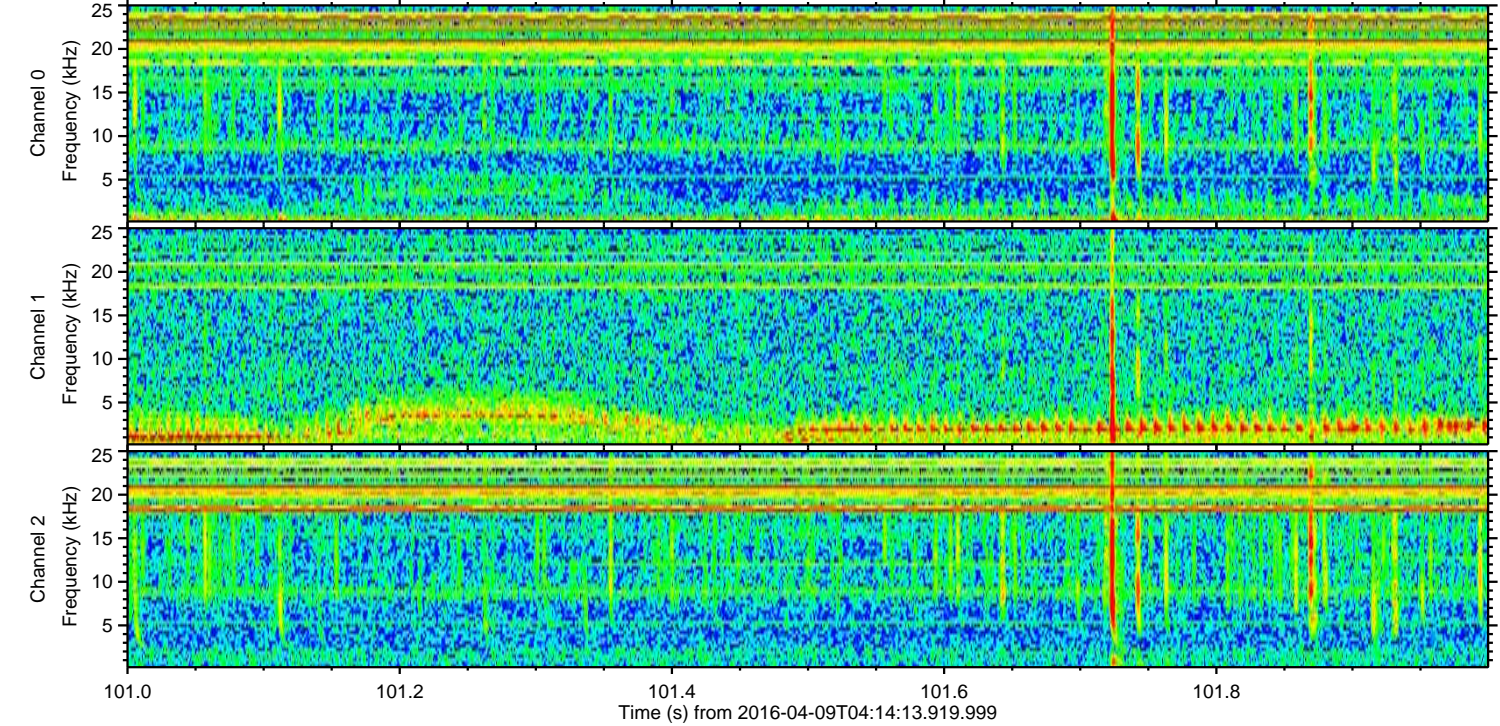
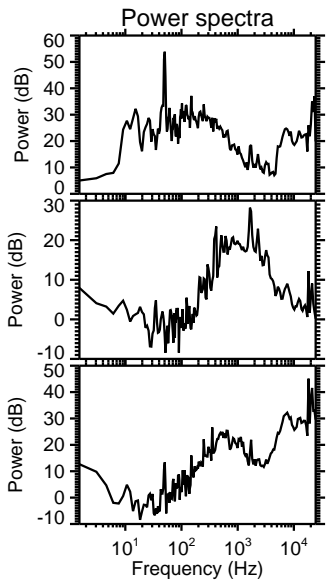
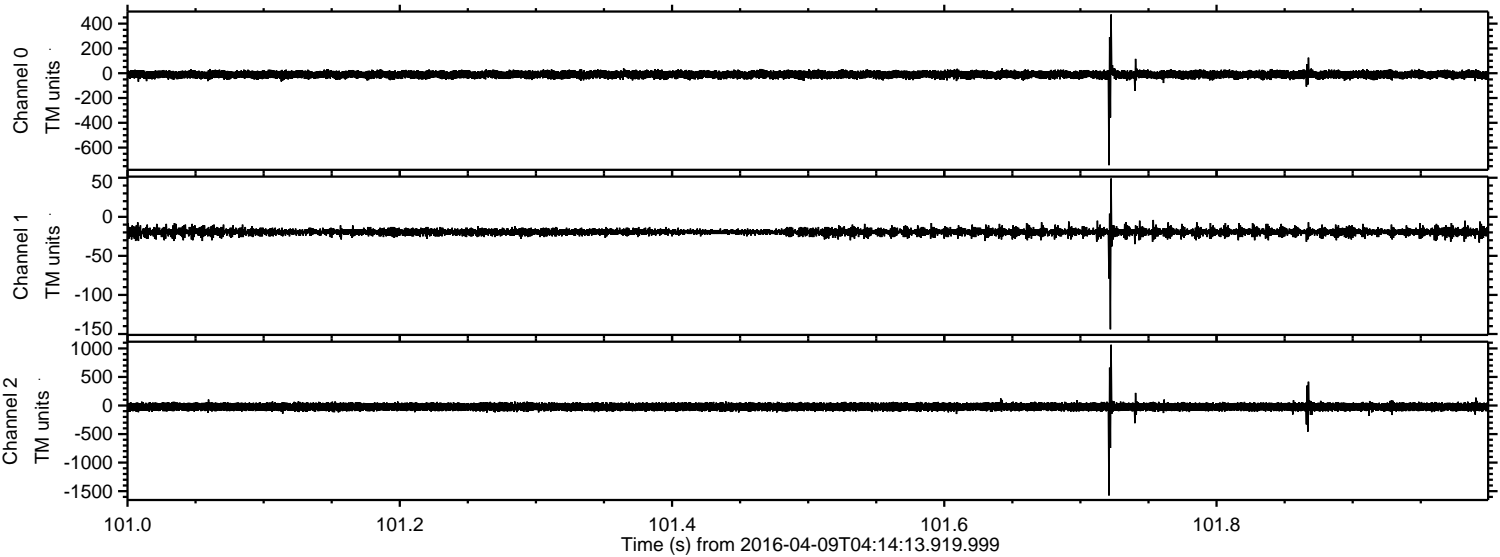


Processed Sat May 7 05:06:45 2016 by ELM ver.2012-10-06 from 001__elm20160409_041412__dat00.bin



ELMAVAN 3D WAVEFORMS (Measured data sampled at 50 kHz) 51000 packets of 144 samples from 2016-04-09T04:14:13.919.999. Part 102/147

Processed Sat May 7 05:06:46 2016 by ELM ver.2012-10-06 from 001__elm20160409_041412__dat00.bin

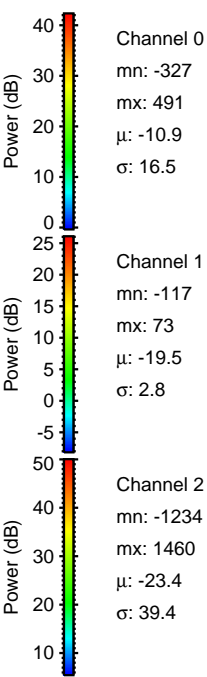
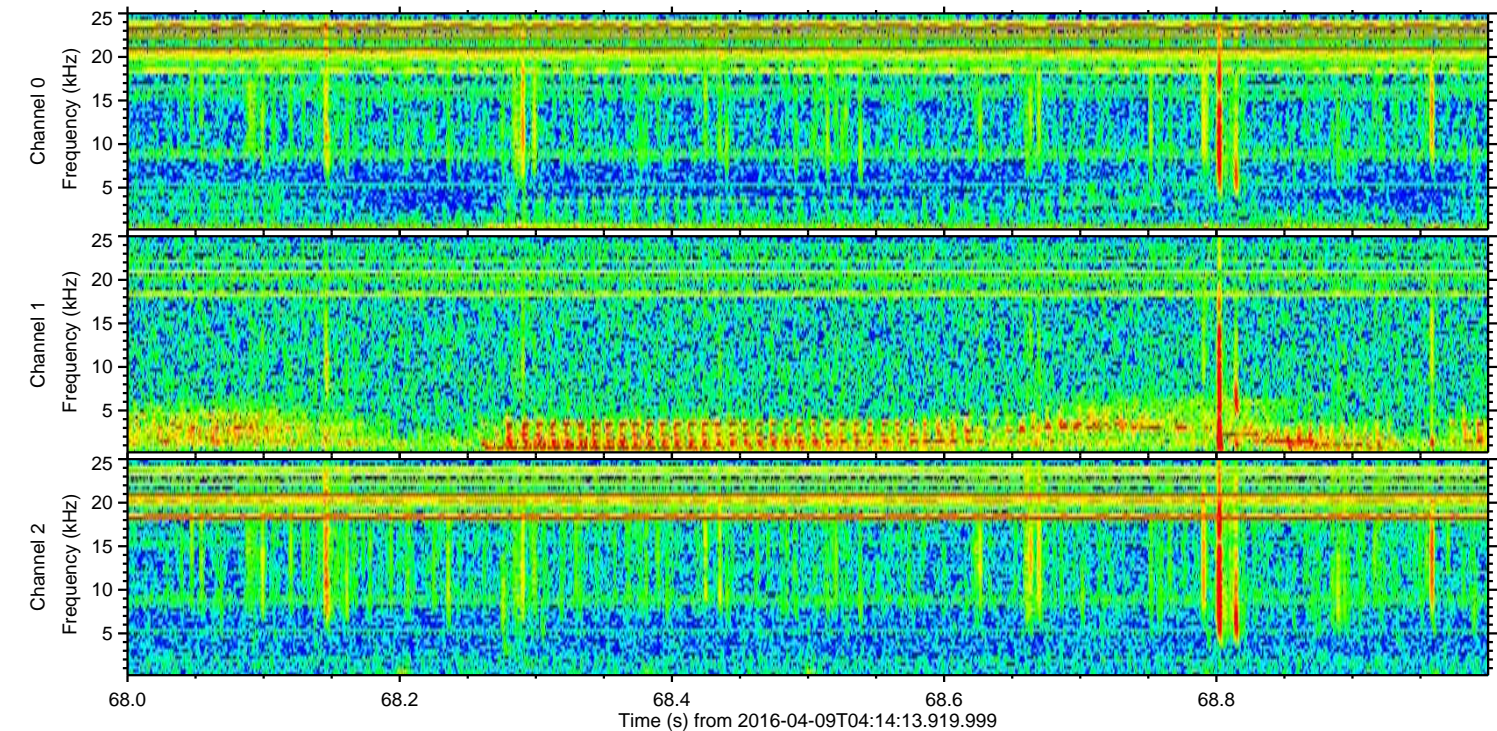
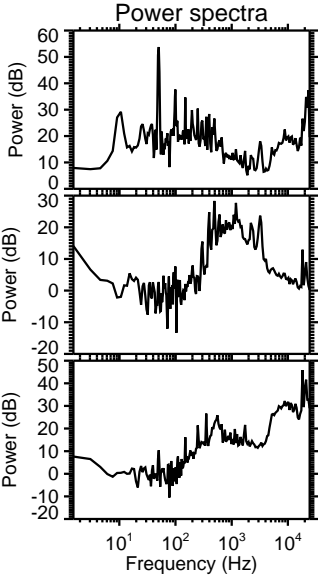
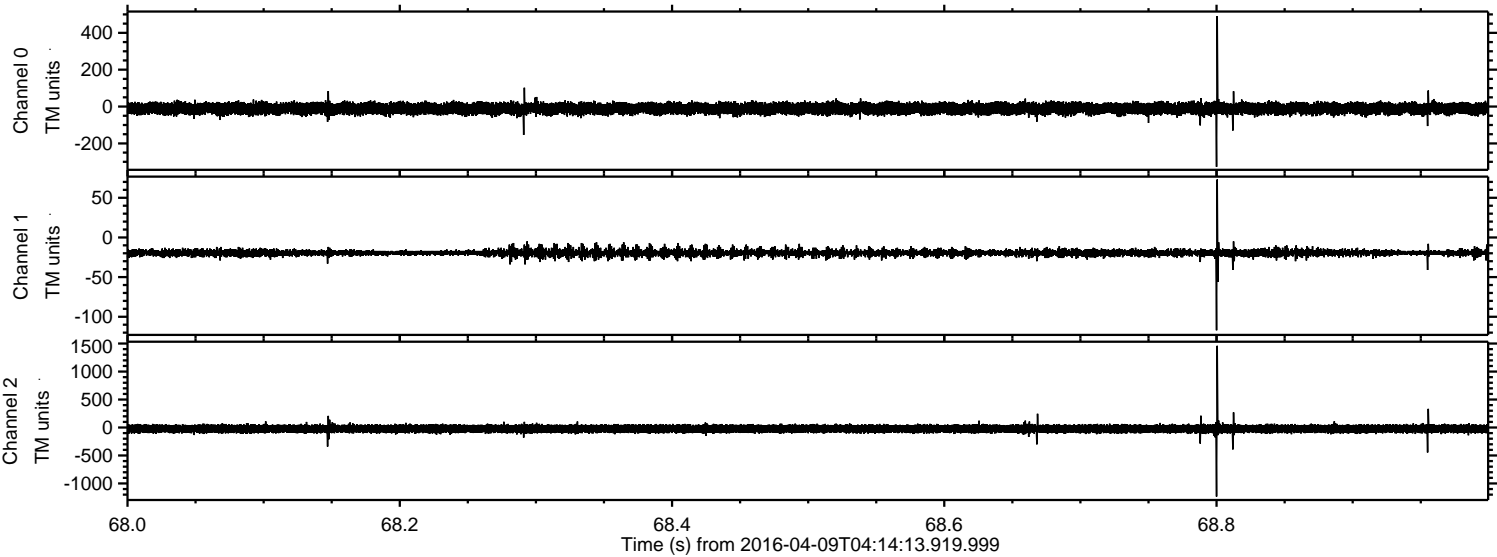


Channel 0
mn: -742
mx: 474
 μ : -10.9
 σ : 16.7

Channel 1
mn: -144
mx: 49
 μ : -19.4
 σ : 2.9

Channel 2
mn: -1576
mx: 1064
 μ : -23.4
 σ : 36.0

Processed Sat May 7 05:06:47 2016 by ELM ver.2012-10-06 from 001__elm20160409_041412__dat00.bin



Processed Sat May 7 05:06:48 2016 by ELM ver.2012-10-06 from 001__elm20160409_041412__dat00.bin

