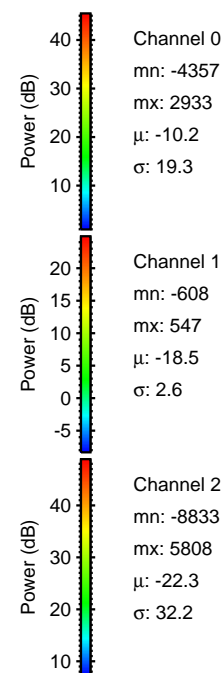
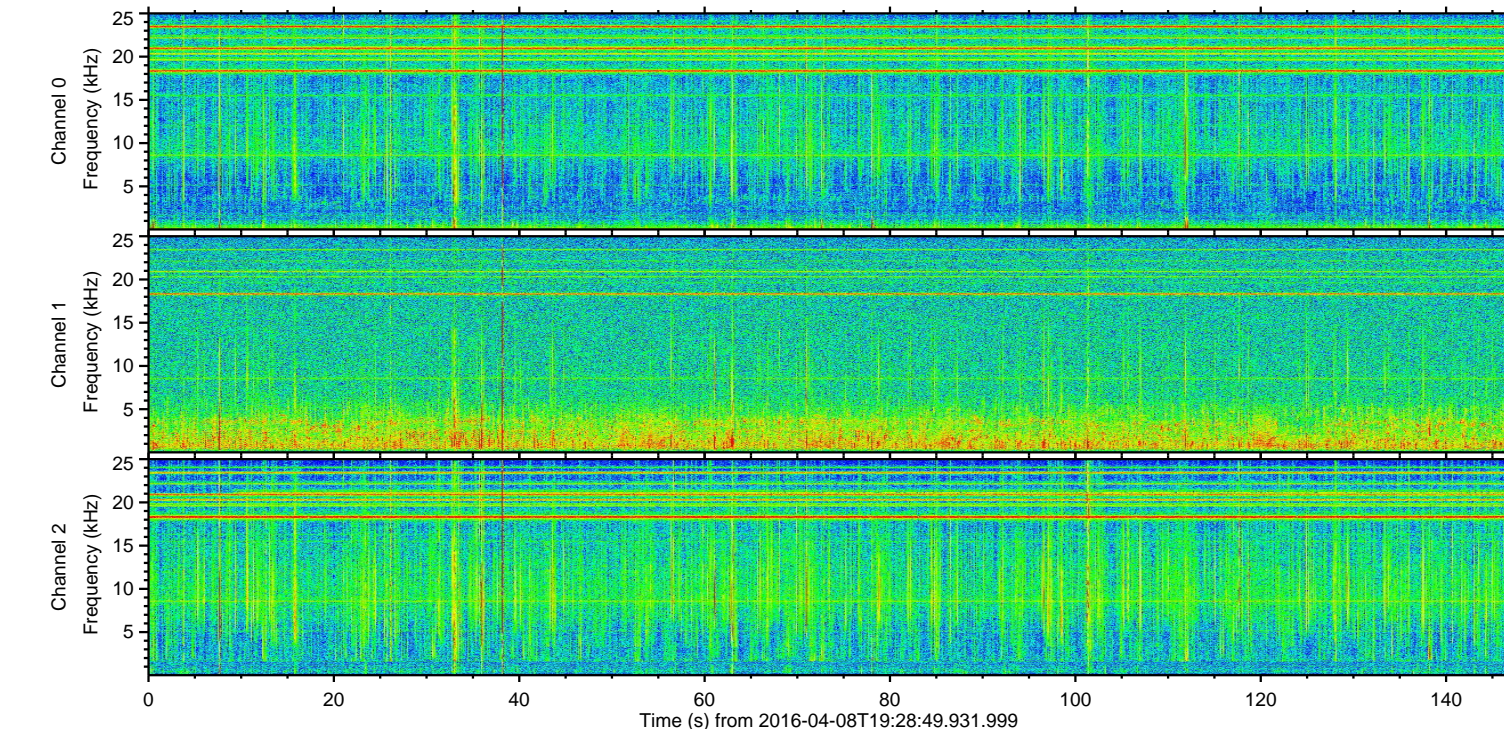
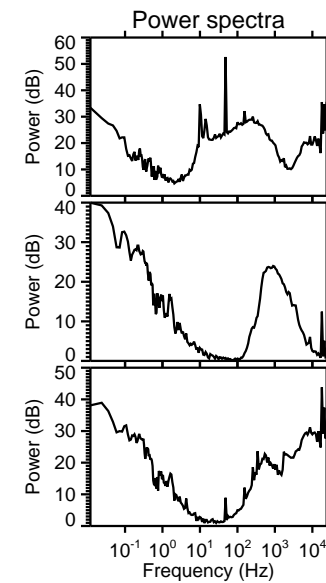
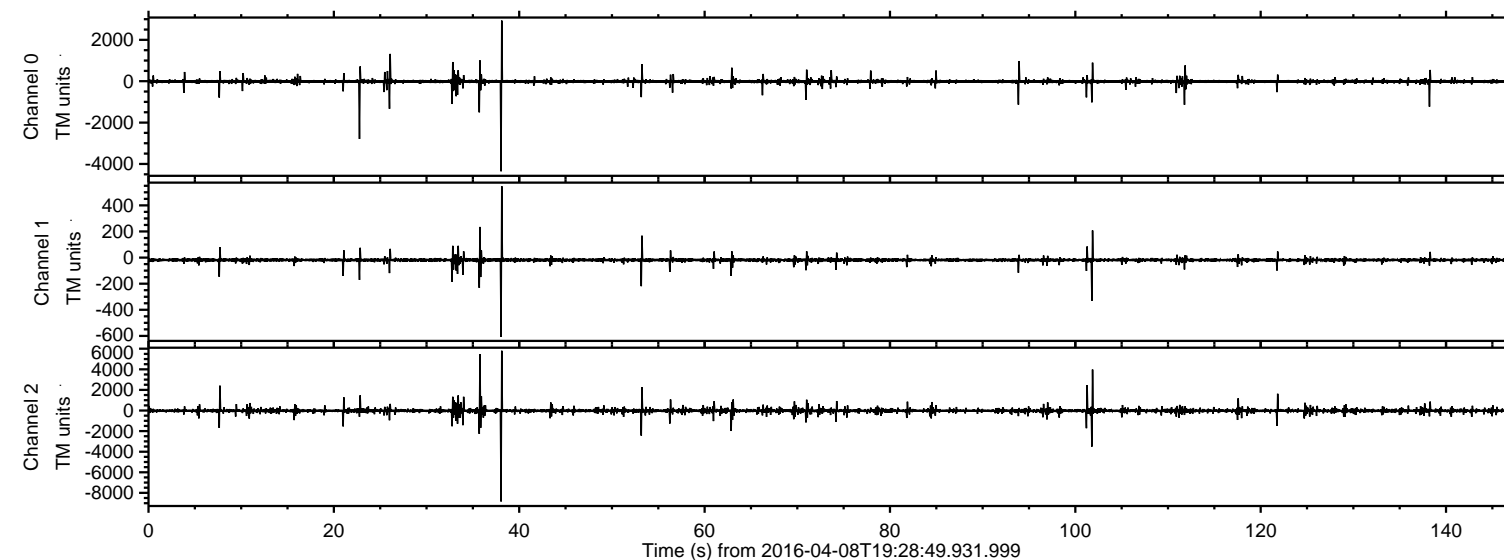


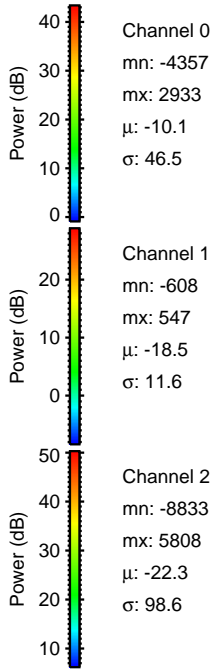
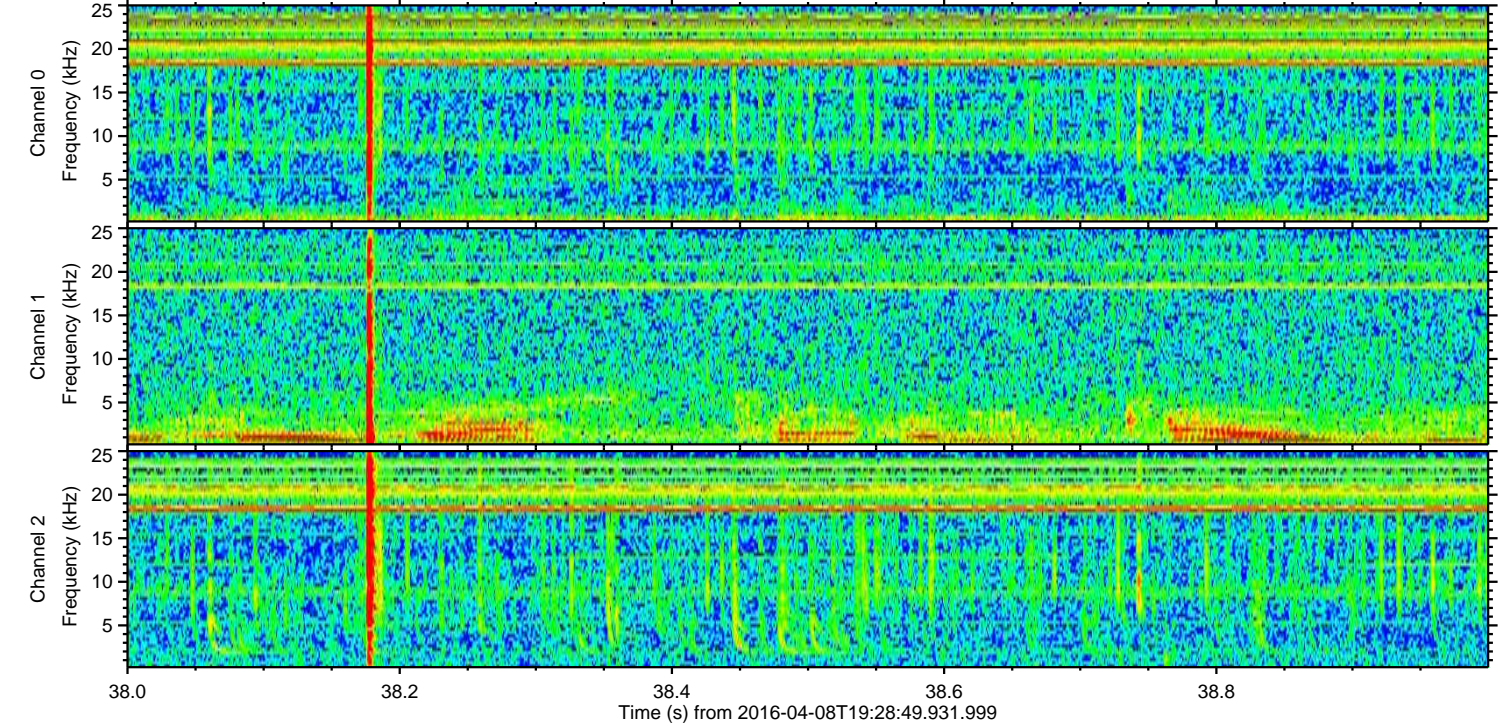
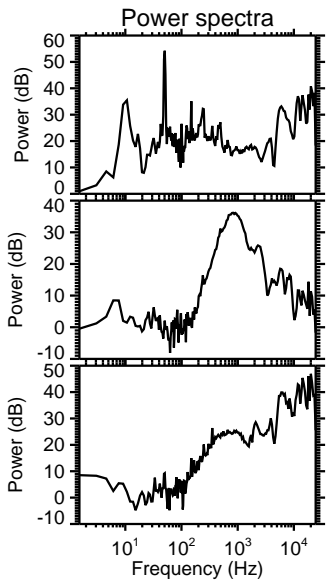
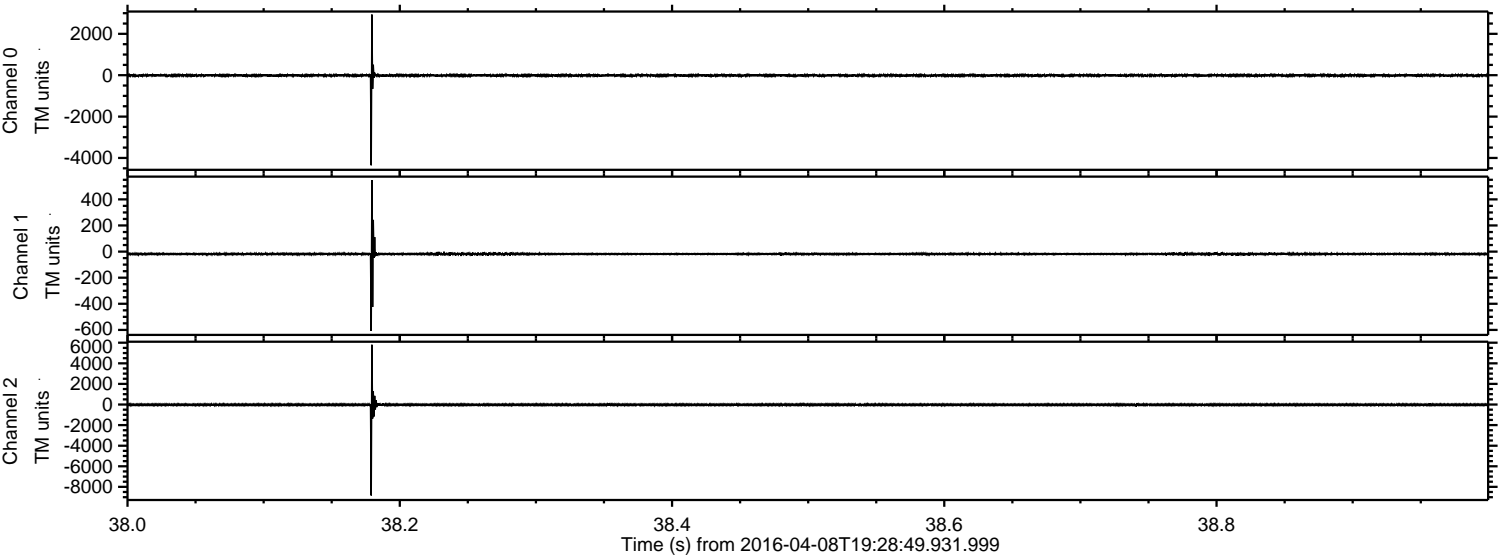
# ELMAVAN 3D WAVEFORMS (Measured data sampled at 50 kHz) 51000 packets of 144 samples from 2016-04-08T19:28:49.931.999.

Processed Sat May 7 03:06:27 2016 by ELM ver.2012-10-06 from 001\_\_elm20160408\_192848\_\_dat00.bin



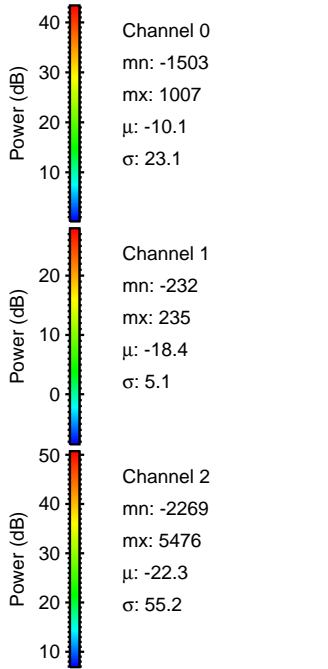
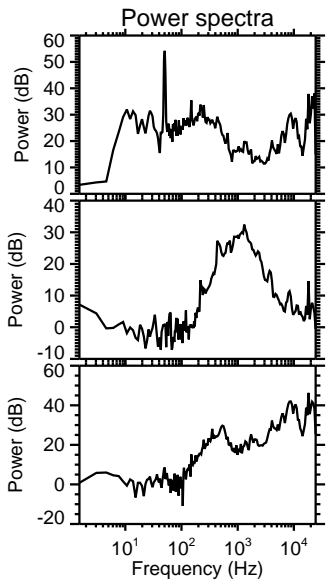
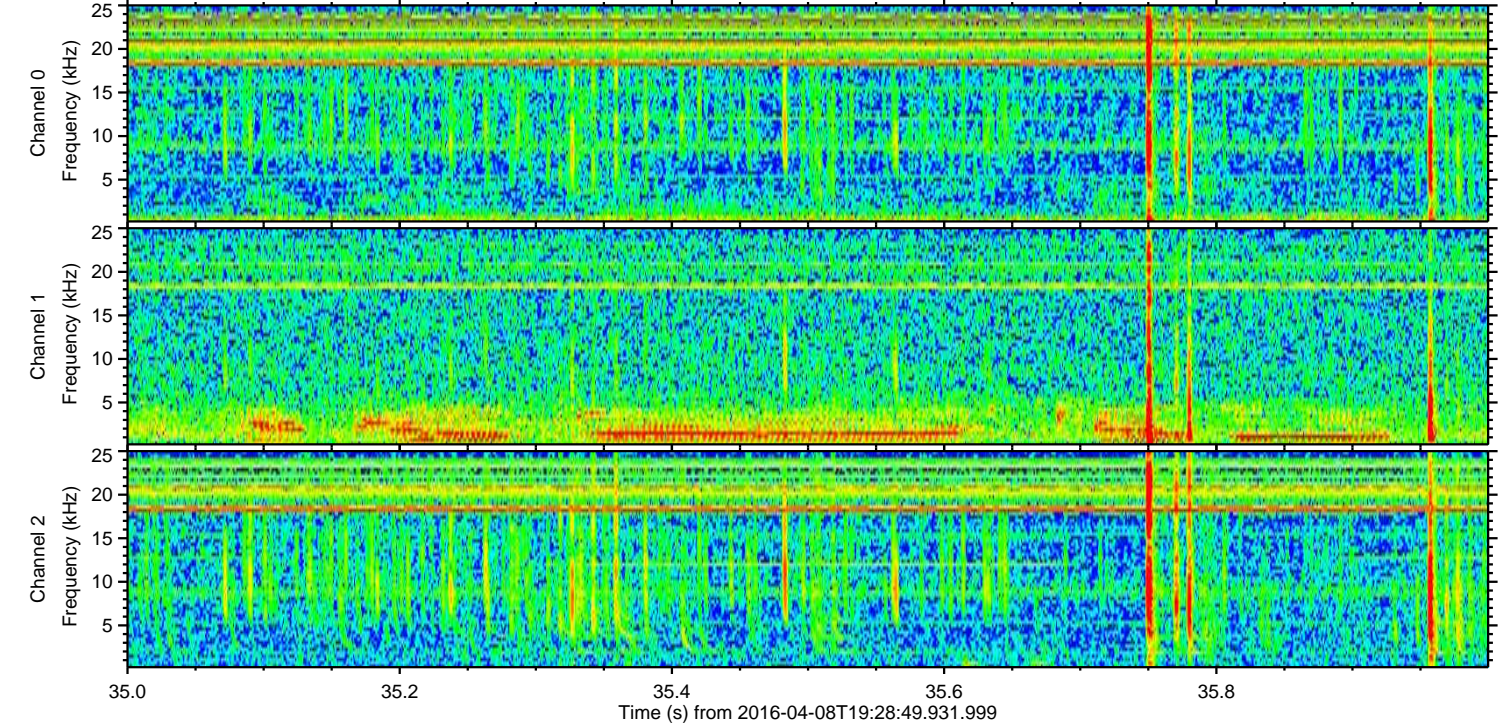
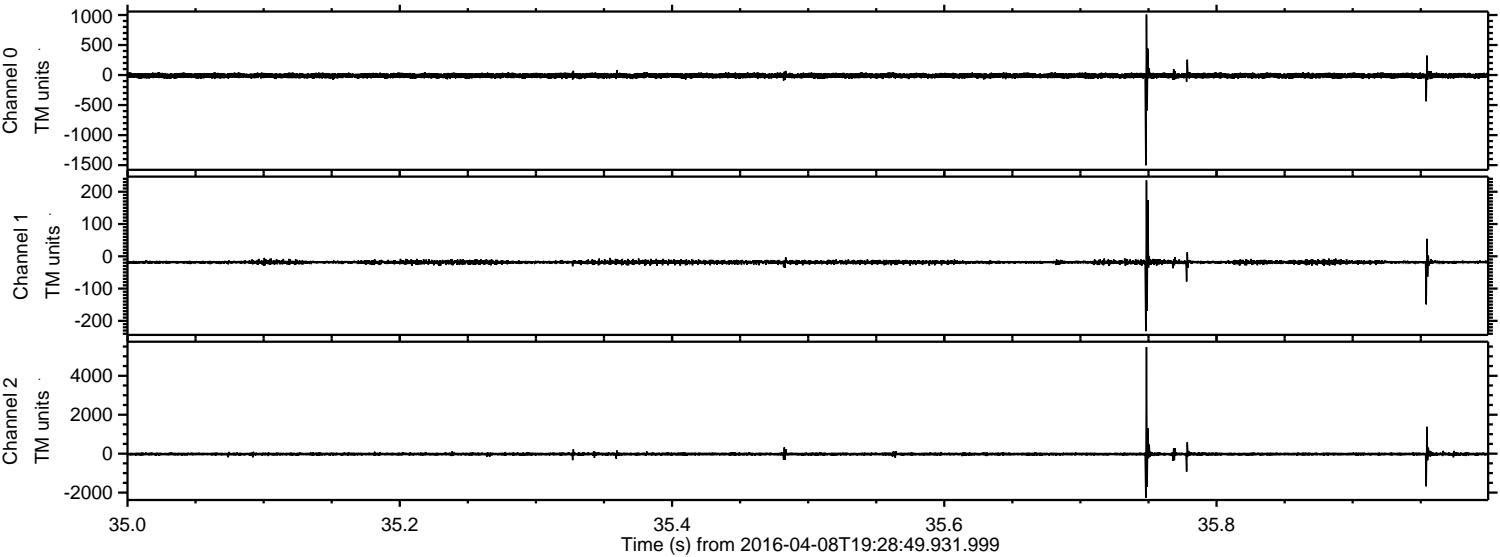


Processed Sat May 7 03:06:40 2016 by ELM ver.2012-10-06 from 001\_\_elm20160408\_192848\_\_dat00.bin





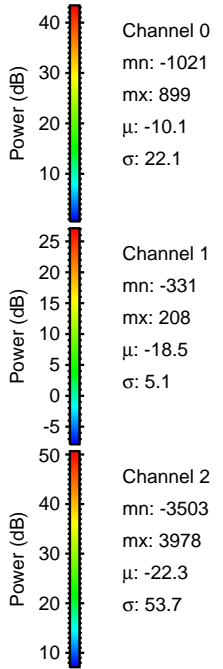
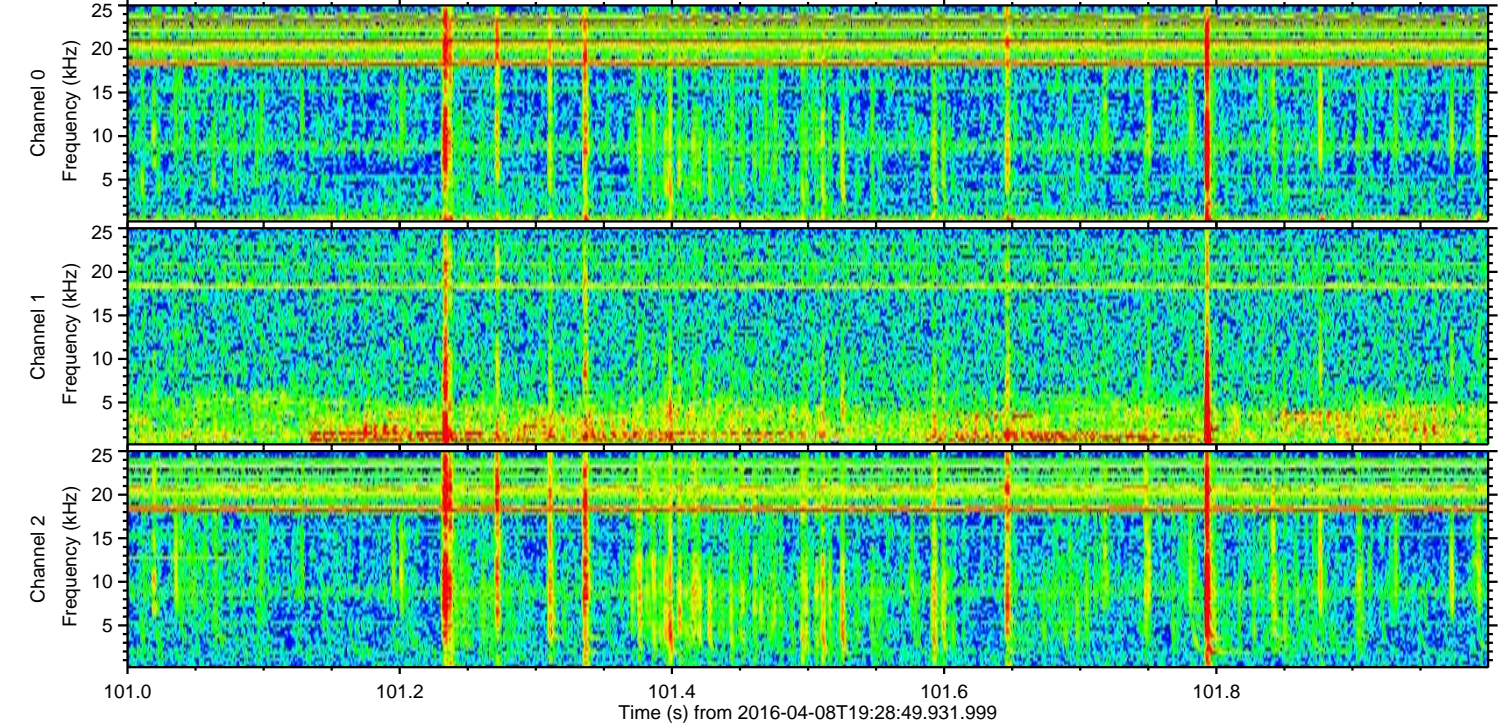
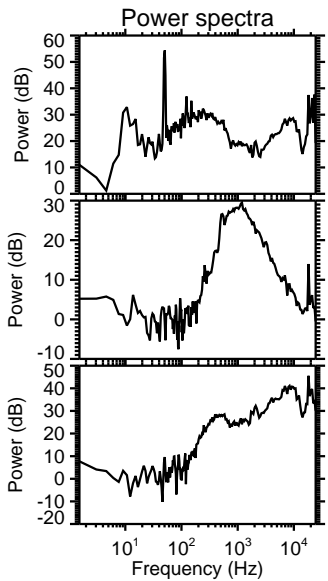
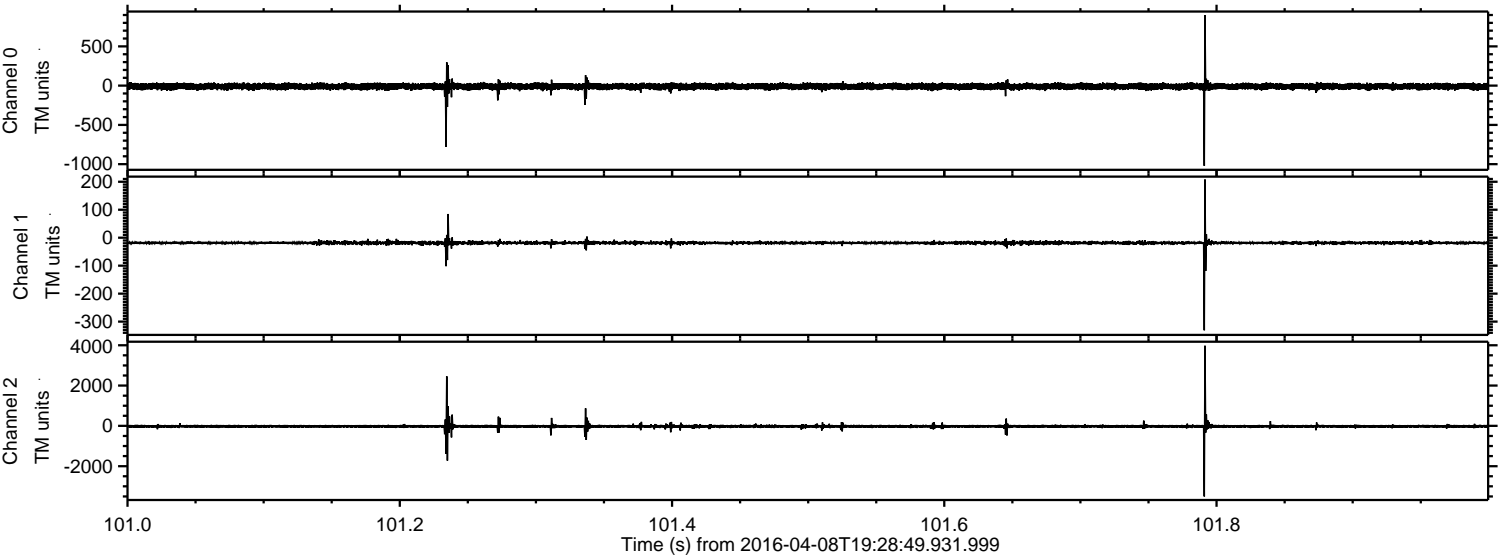
Processed Sat May 7 03:06:41 2016 by ELM ver.2012-10-06 from 001\_\_elm20160408\_192848\_\_dat00.bin





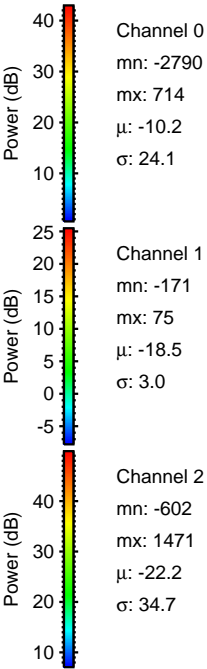
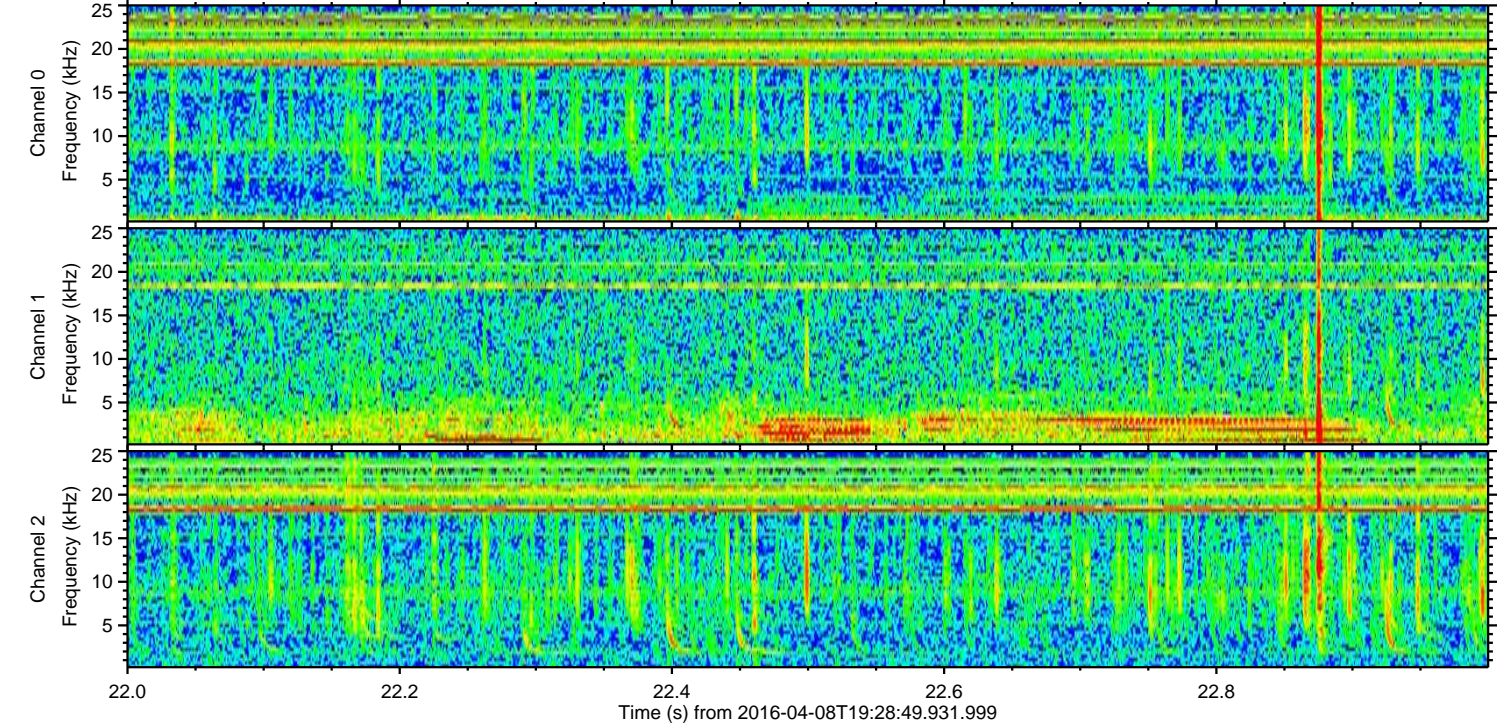
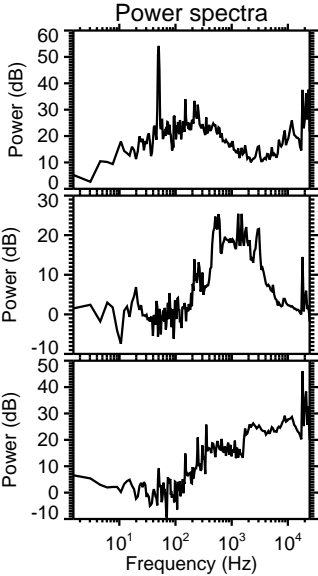
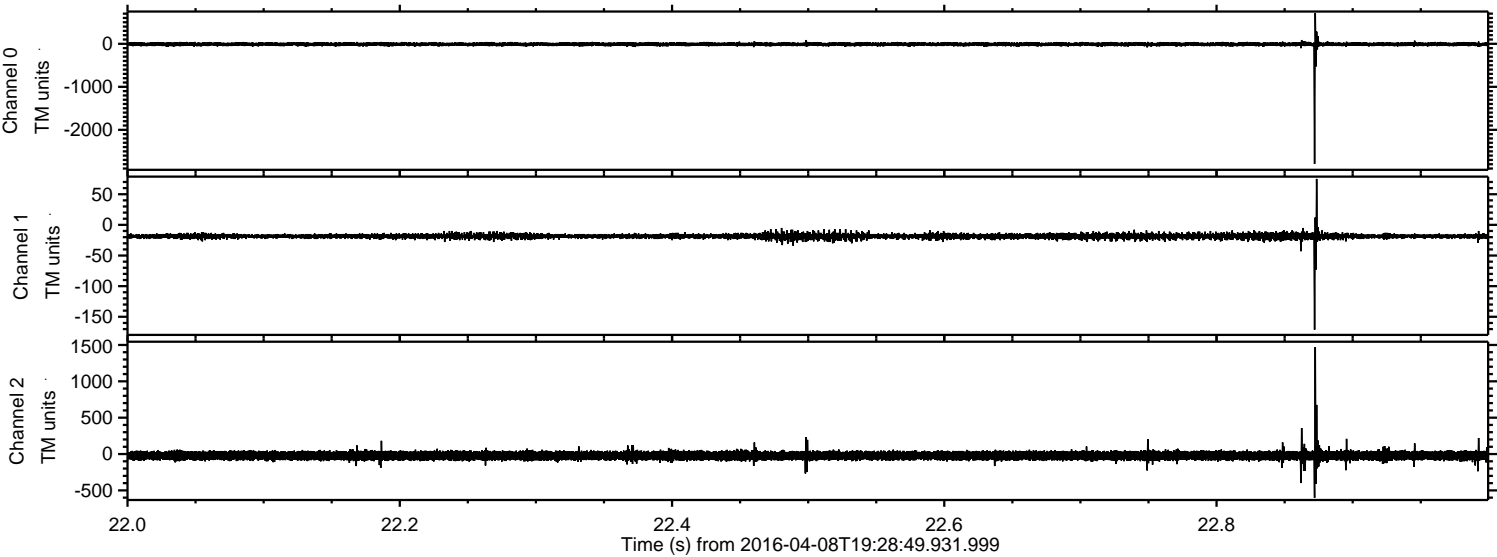
ELMAVAN 3D WAVEFORMS (Measured data sampled at 50 kHz) 51000 packets of 144 samples from 2016-04-08T19:28:49.931.999. Part 102/147

Processed Sat May 7 03:06:43 2016 by ELM ver.2012-10-06 from 001\_\_elm20160408\_192848\_\_dat00.bin



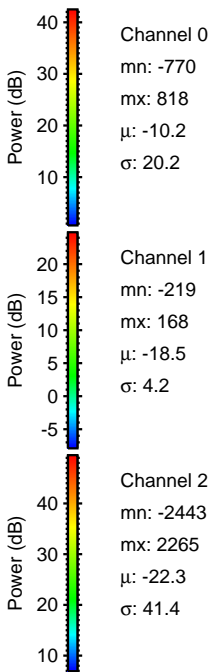
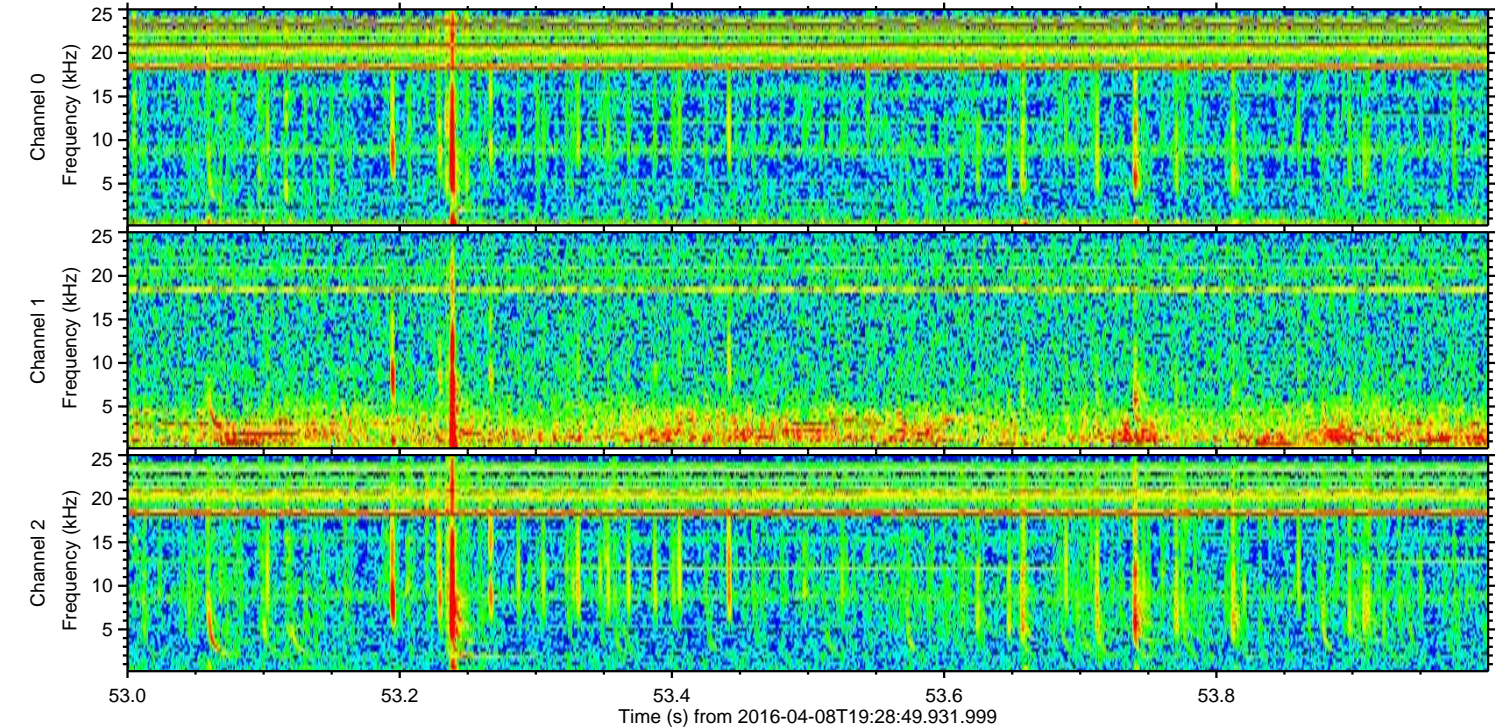
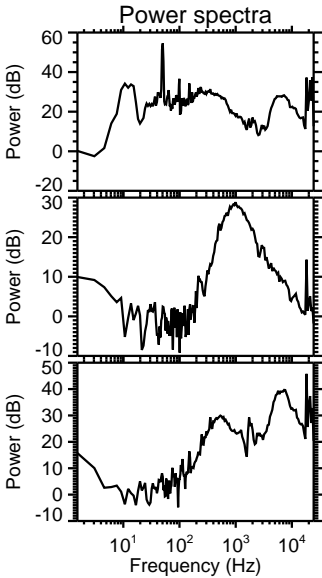
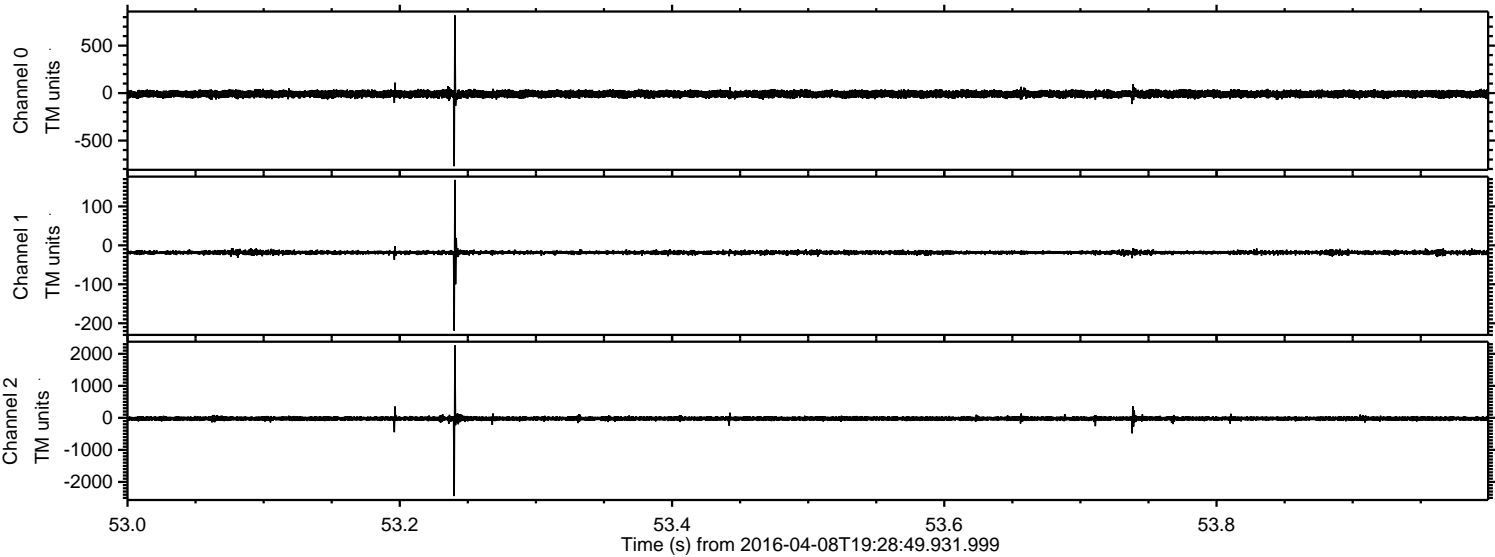


Processed Sat May 7 03:06:44 2016 by ELM ver.2012-10-06 from 001\_\_elm20160408\_192848\_\_dat00.bin



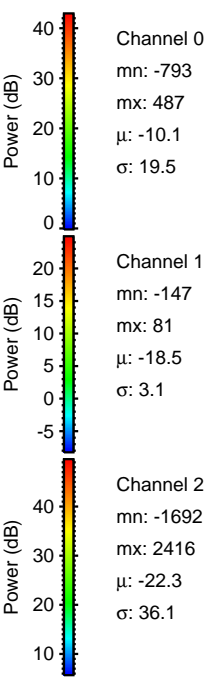
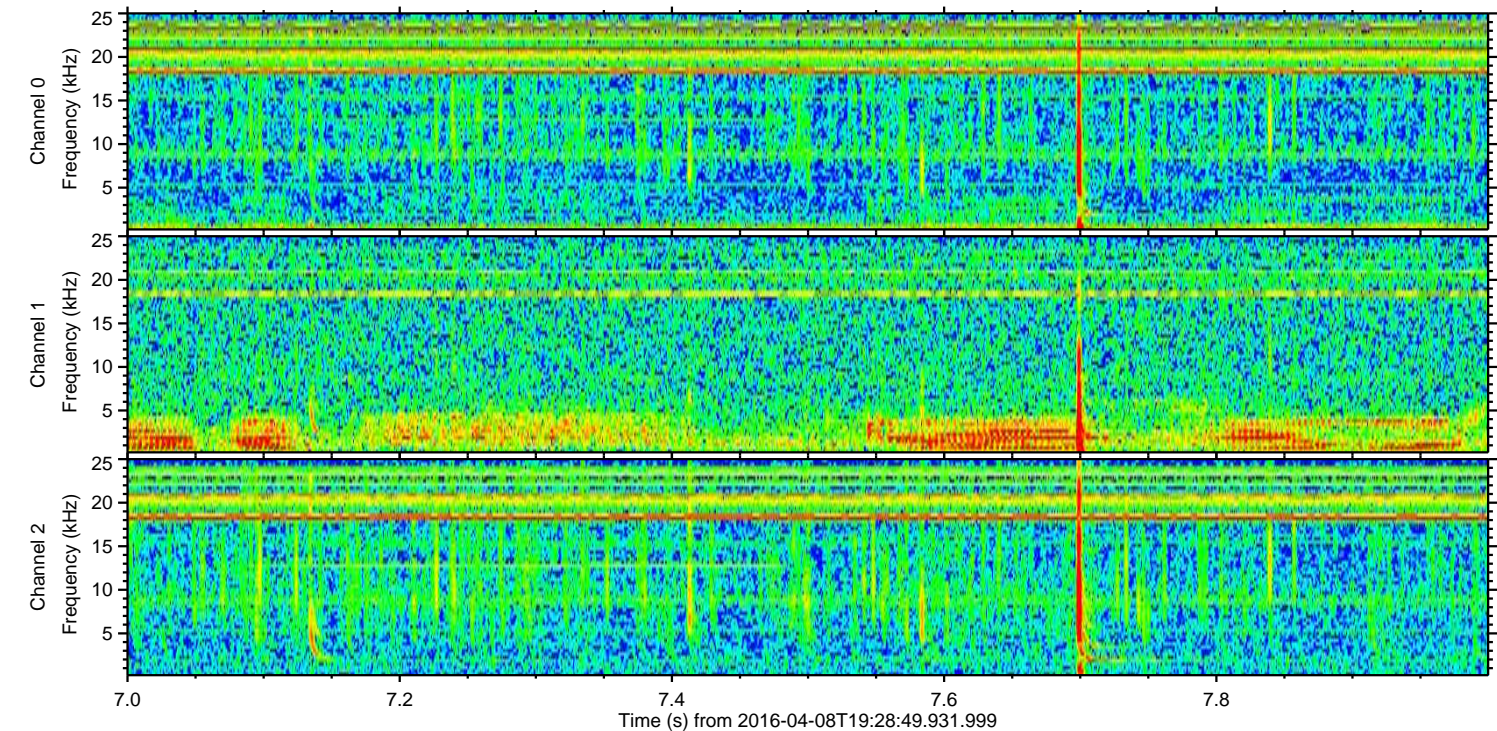
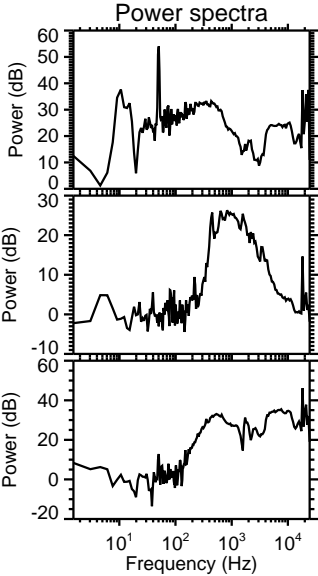
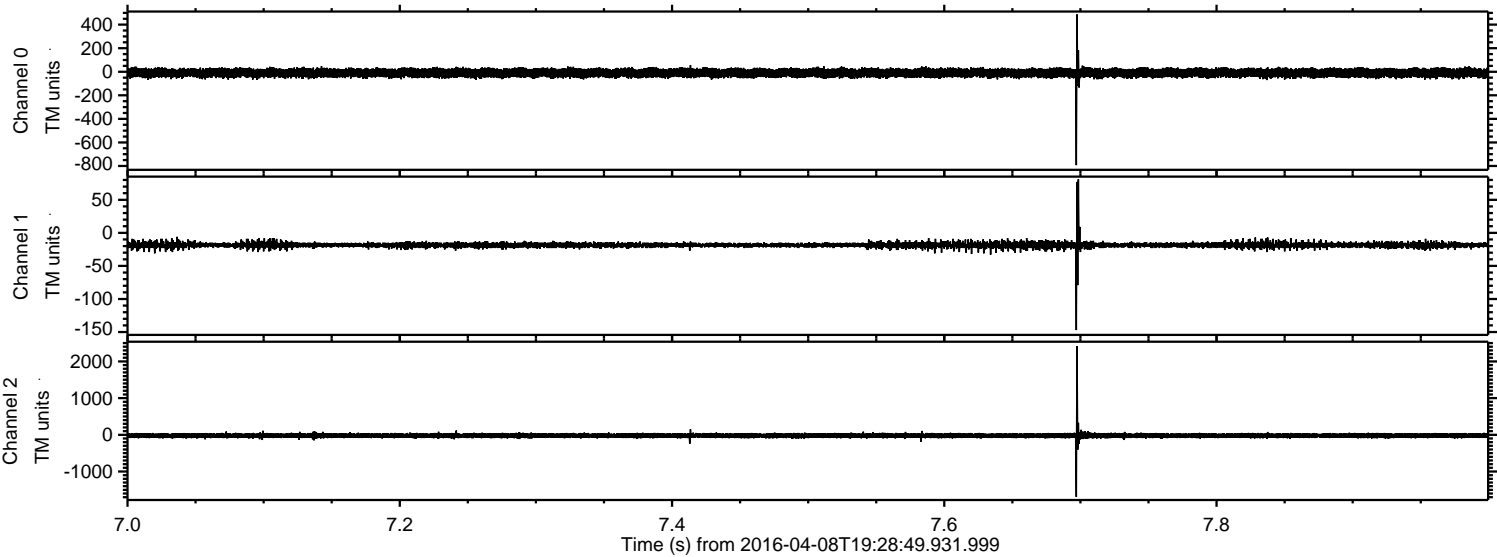


Processed Sat May 7 03:06:45 2016 by ELM ver.2012-10-06 from 001\_\_elm20160408\_192848\_\_dat00.bin



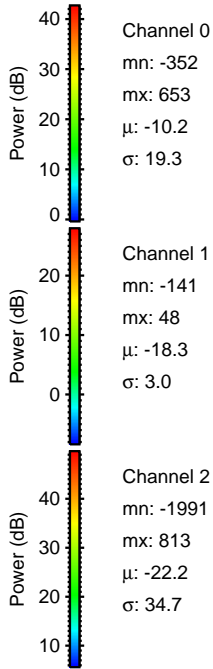
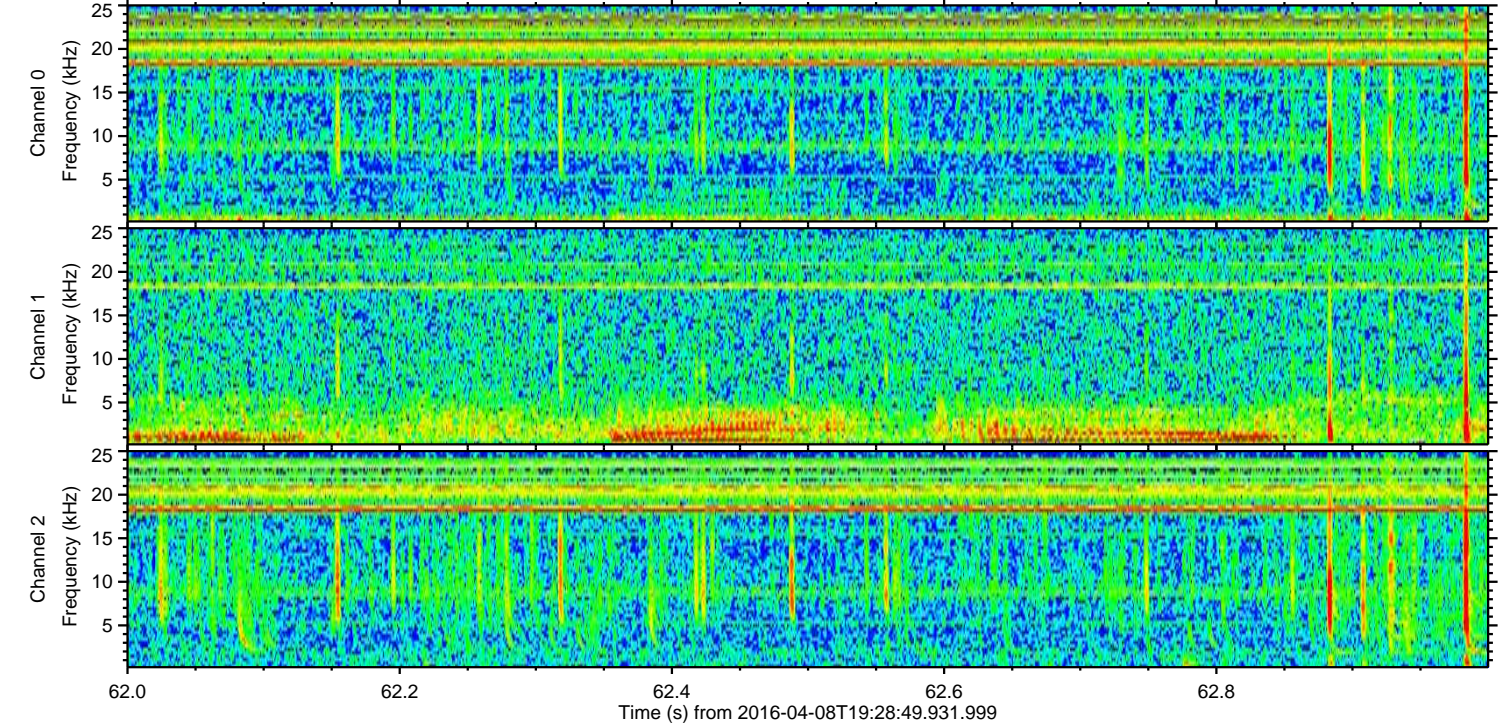
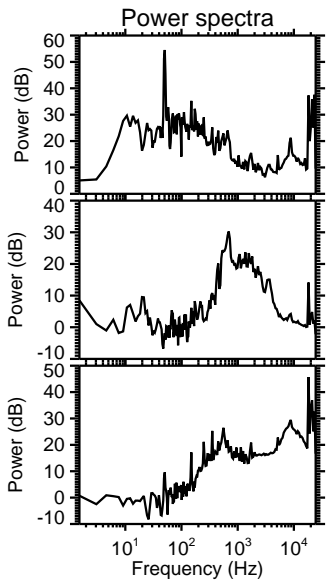
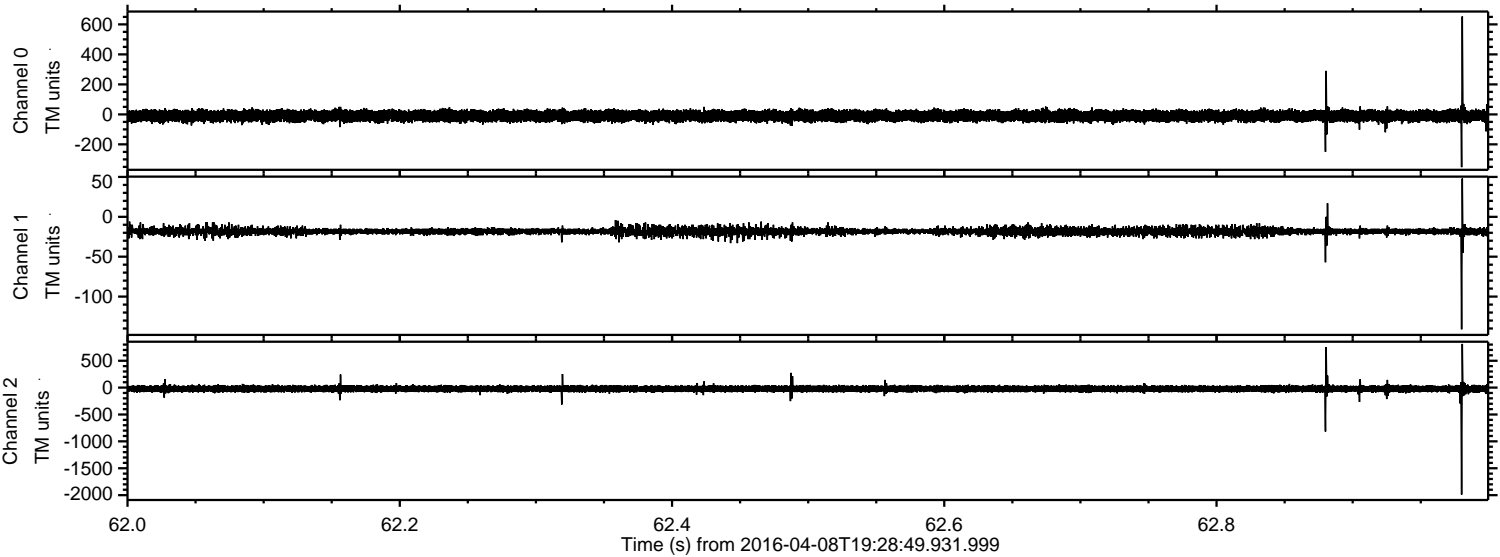


Processed Sat May 7 03:06:46 2016 by ELM ver.2012-10-06 from 001\_\_elm20160408\_192848\_\_dat00.bin





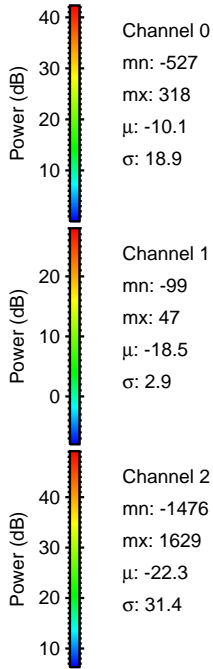
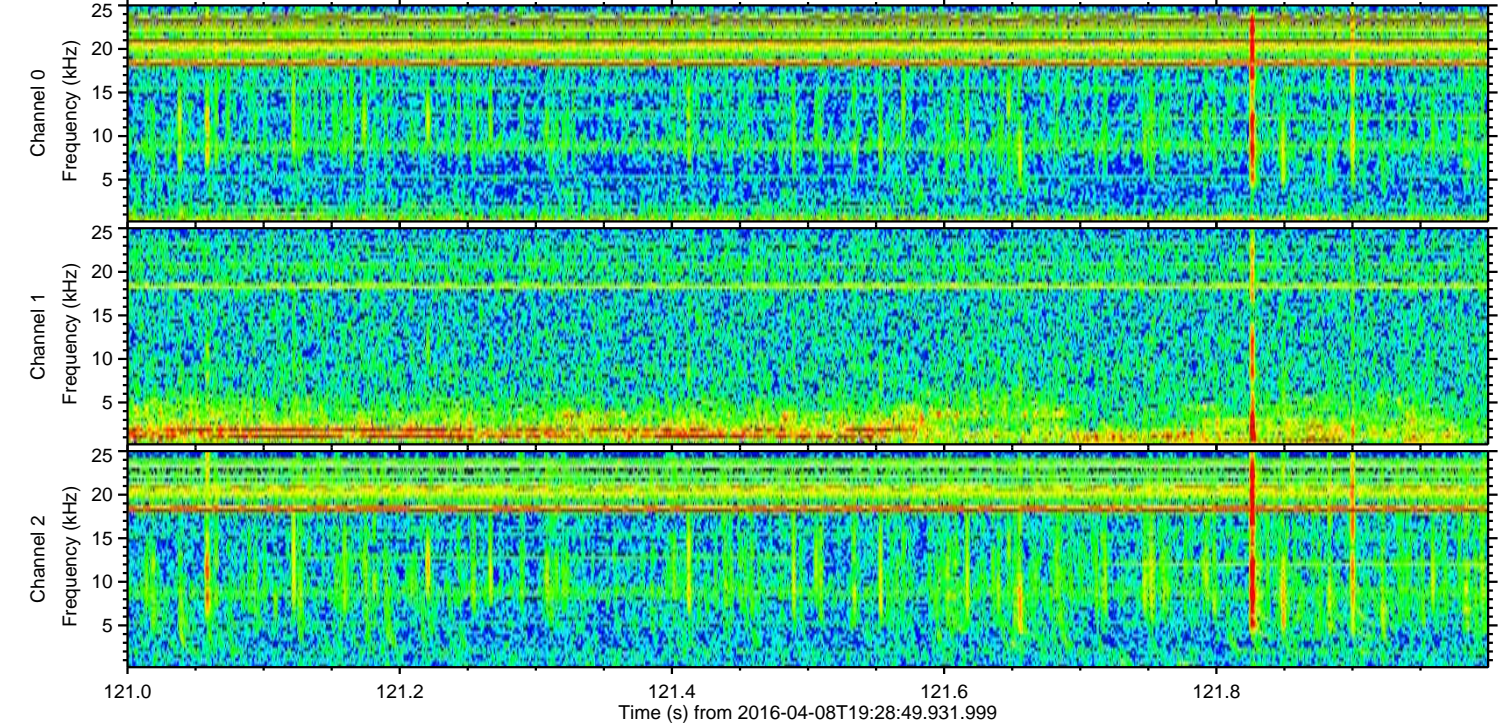
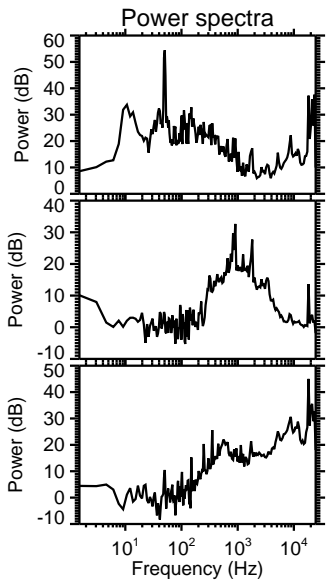
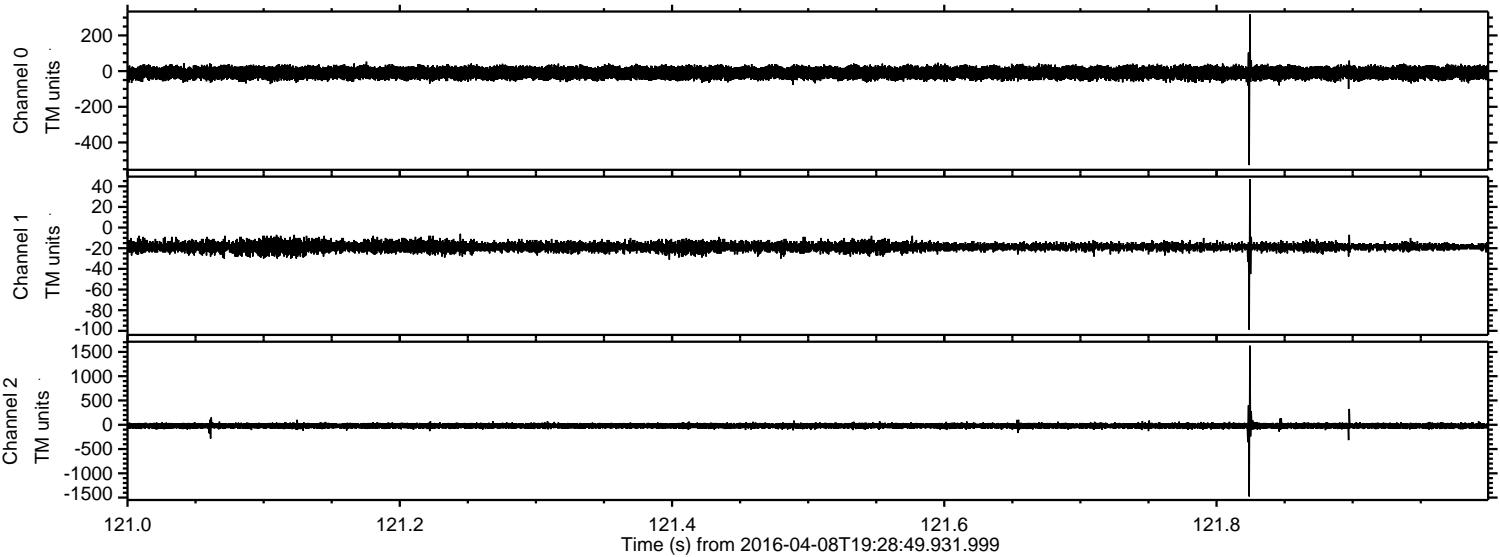
Processed Sat May 7 03:06:47 2016 by ELM ver.2012-10-06 from 001\_\_elm20160408\_192848\_\_dat00.bin





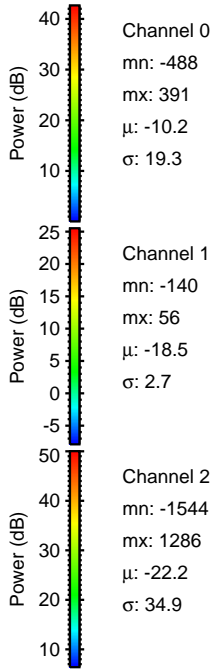
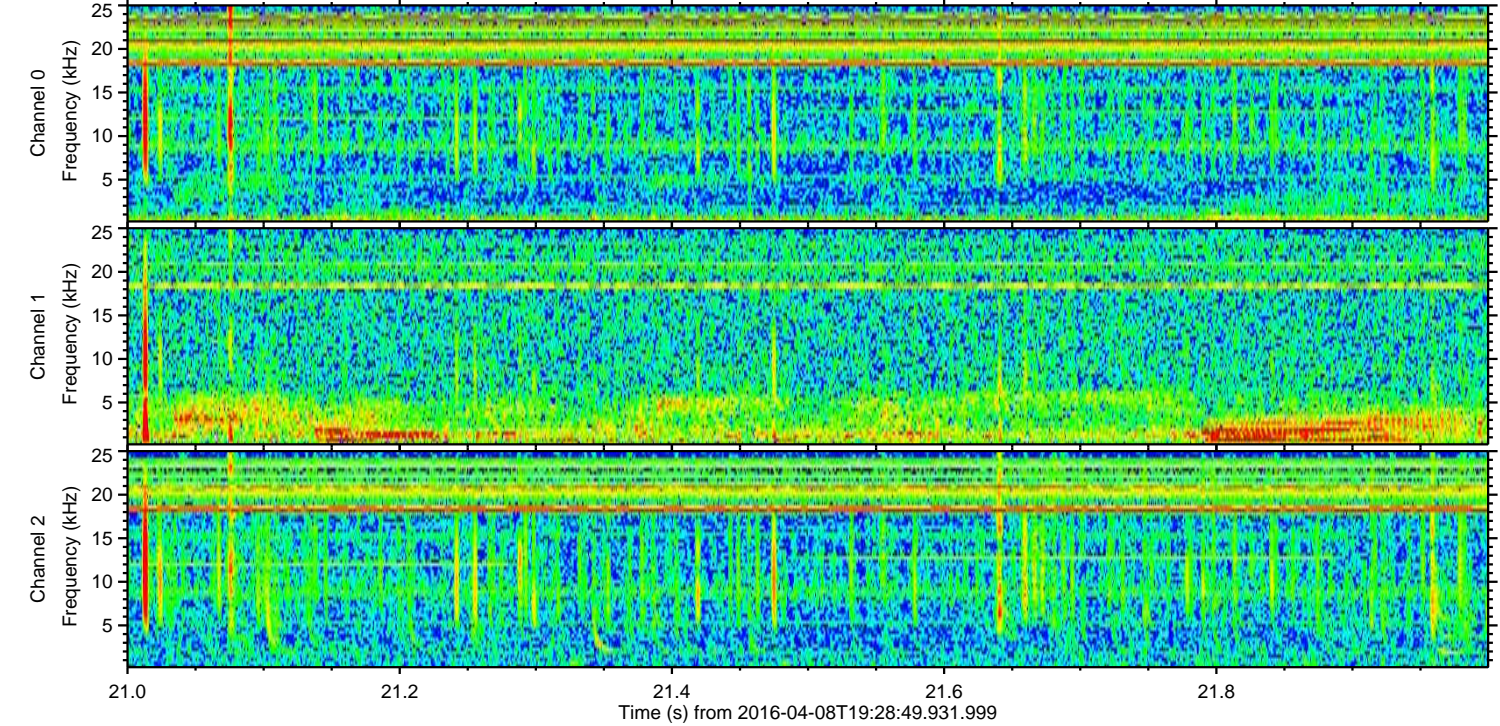
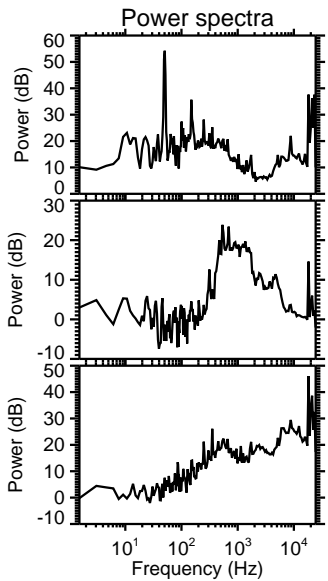
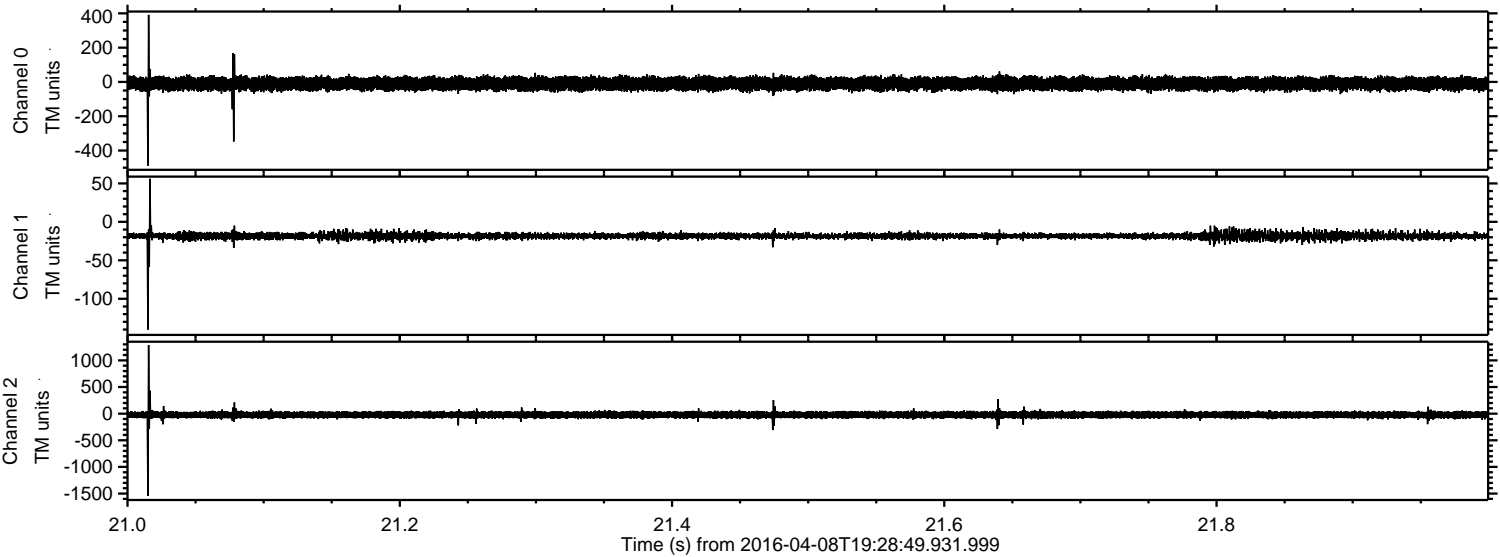
ELMAVAN 3D WAVEFORMS (Measured data sampled at 50 kHz) 51000 packets of 144 samples from 2016-04-08T19:28:49.931.999. Part 122/147

Processed Sat May 7 03:06:48 2016 by ELM ver.2012-10-06 from 001\_\_elm20160408\_192848\_\_dat00.bin





Processed Sat May 7 03:06:49 2016 by ELM ver.2012-10-06 from 001\_\_elm20160408\_192848\_\_dat00.bin



Channel 0  
mn: -488  
mx: 391  
 $\mu$ : -10.2  
 $\sigma$ : 19.3

Channel 1  
mn: -140  
mx: 56  
 $\mu$ : -18.5  
 $\sigma$ : 2.7

Channel 2  
mn: -1544  
mx: 1286  
 $\mu$ : -22.2  
 $\sigma$ : 34.9



Processed Sat May 7 03:06:50 2016 by ELM ver.2012-10-06 from 001\_\_elm20160408\_192848\_\_dat00.bin

