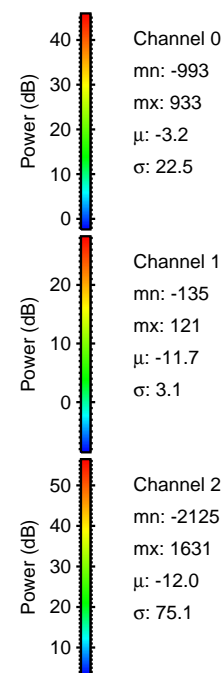
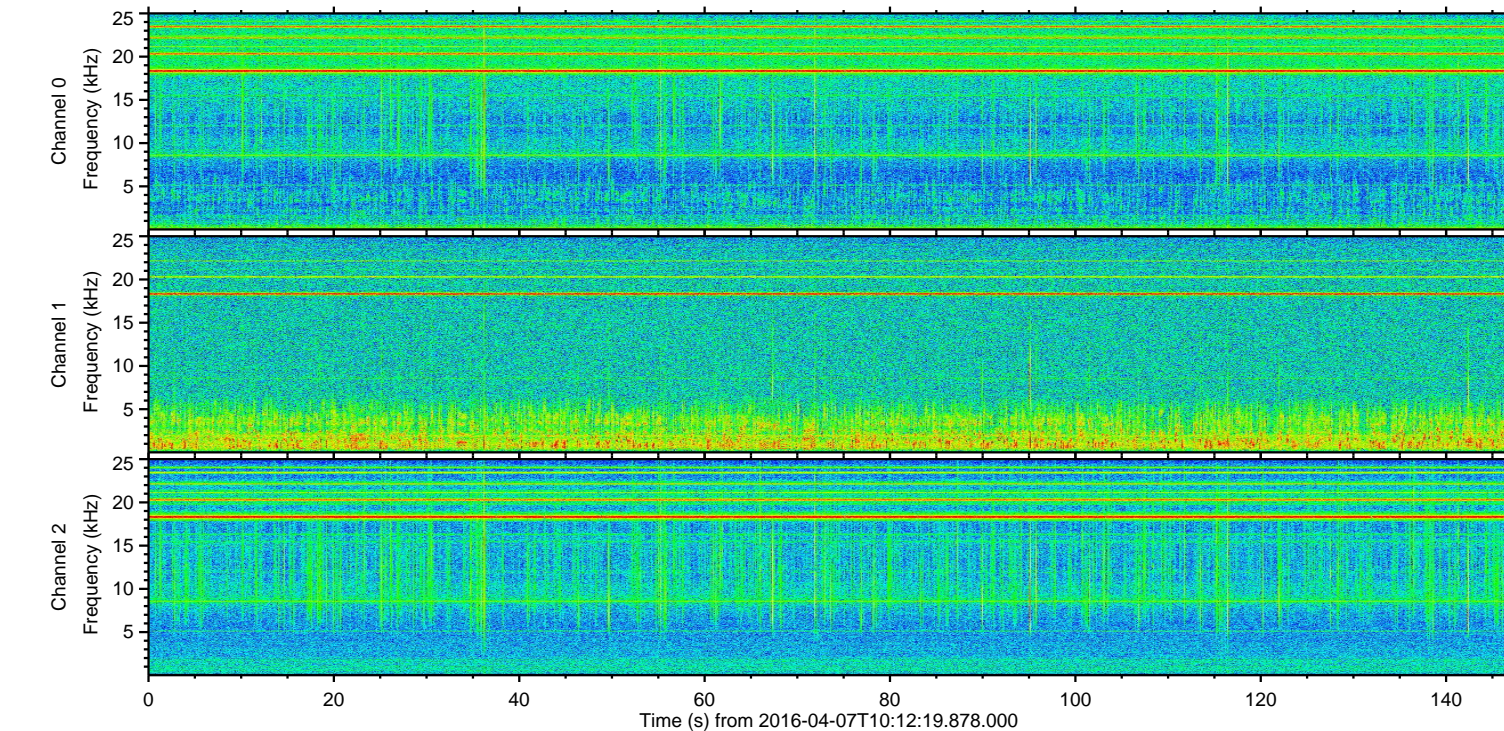
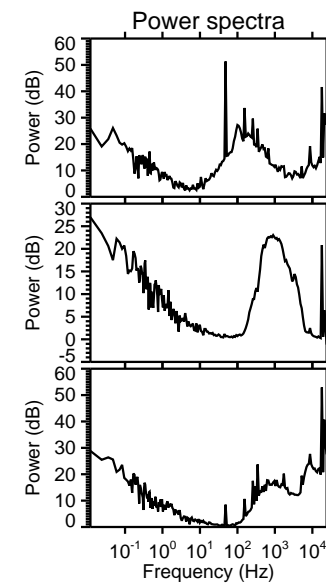
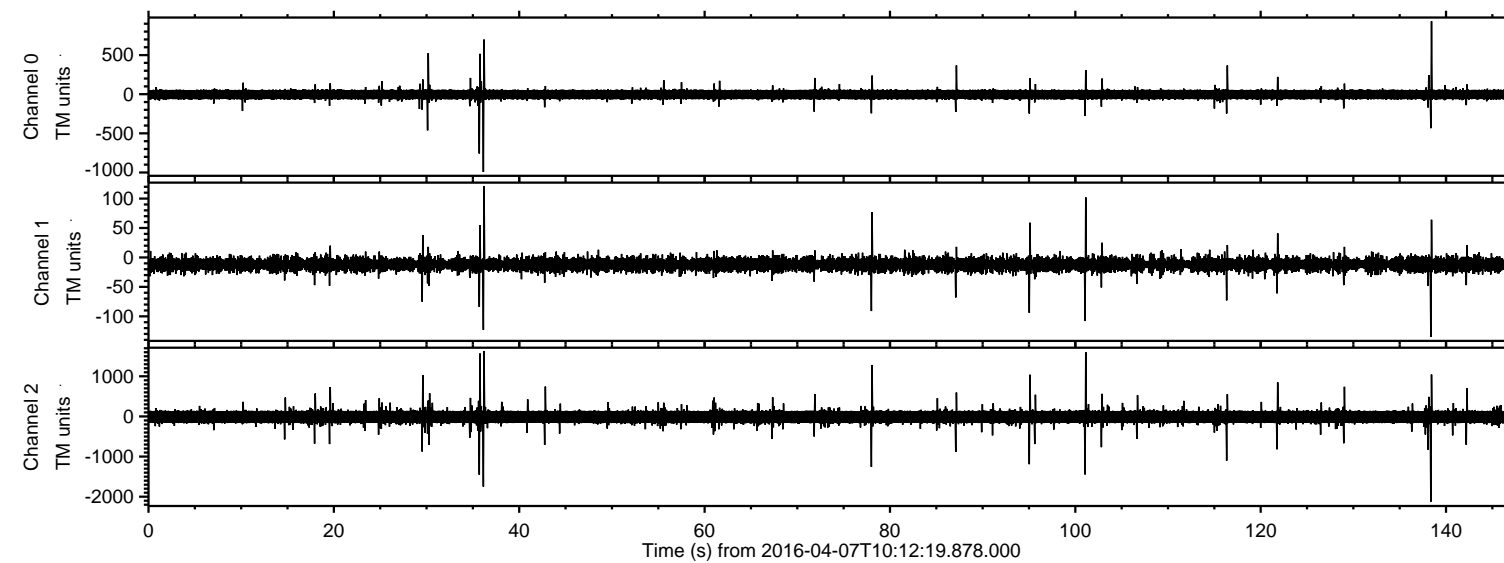


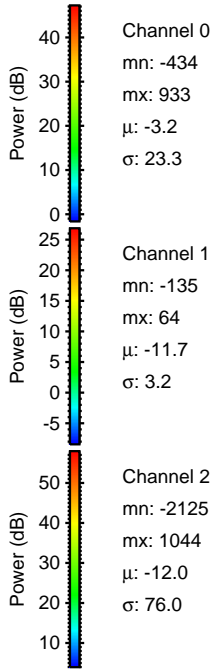
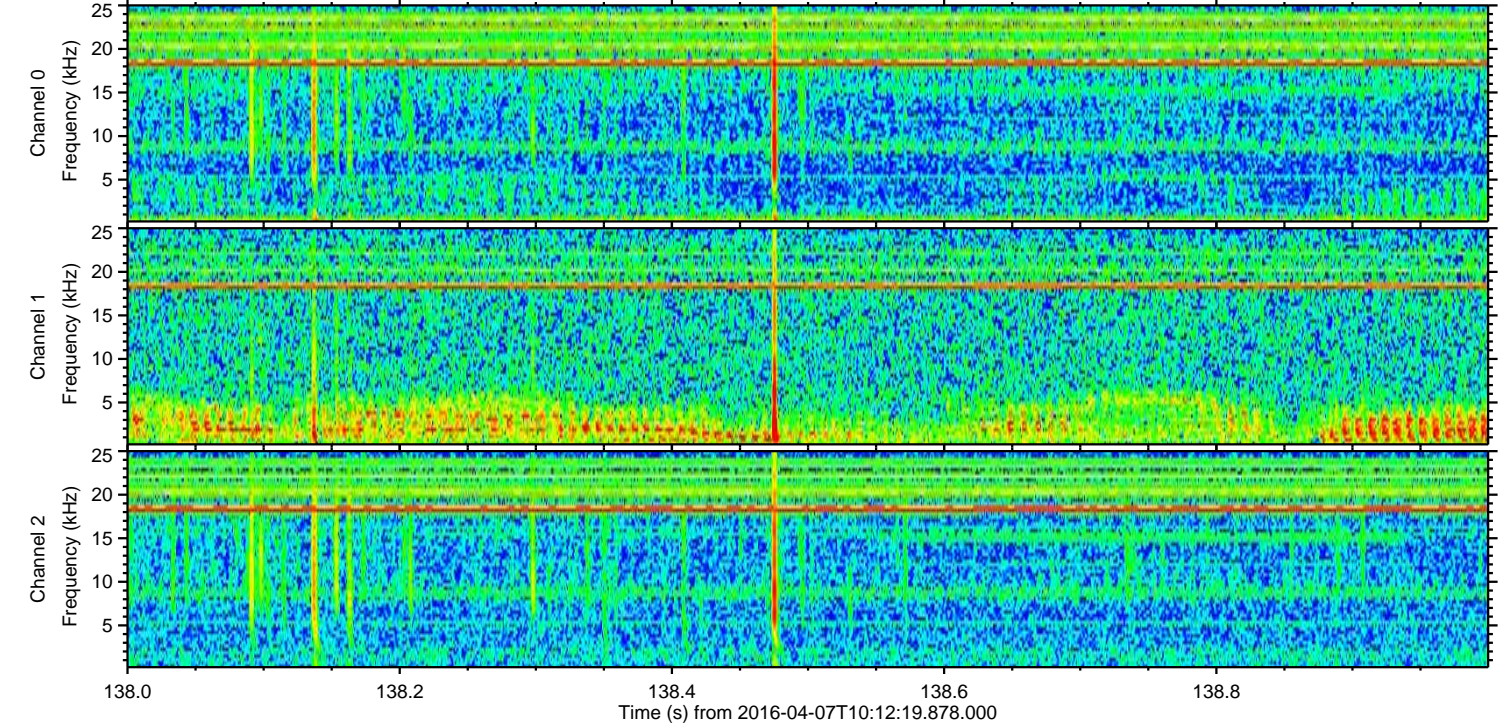
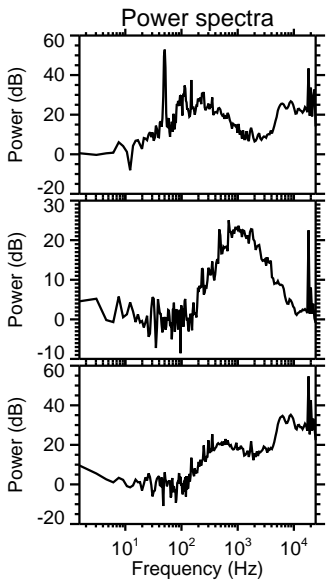
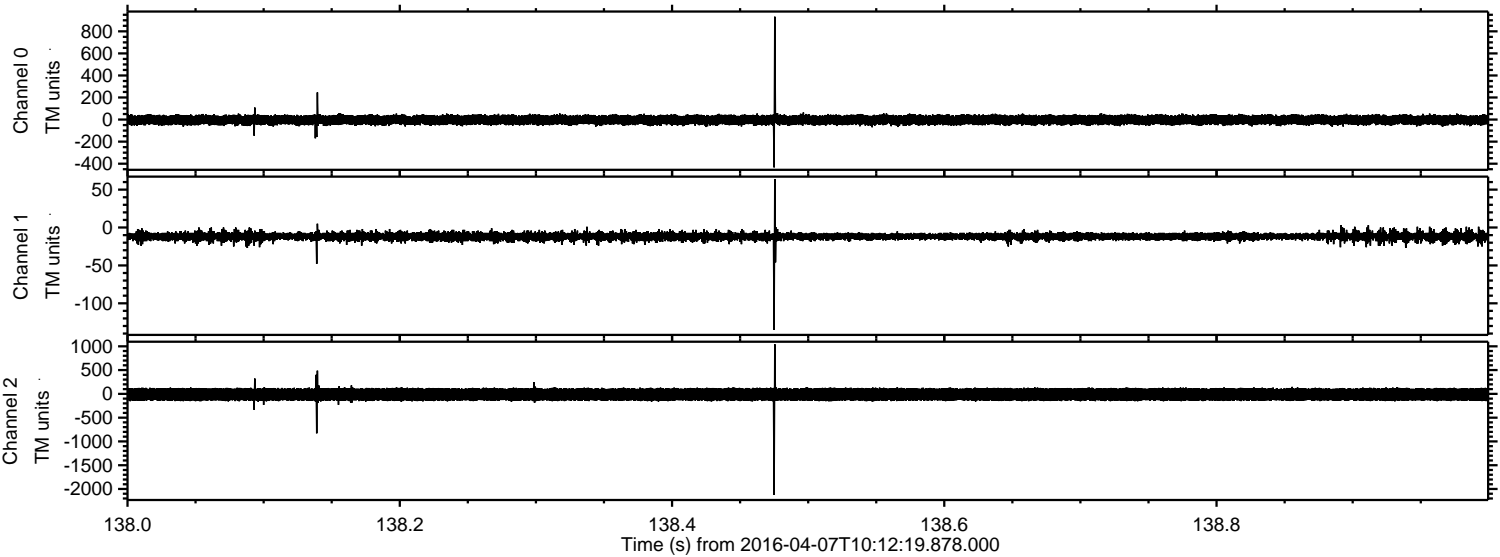
ELMAVAN 3D WAVEFORMS (Measured data sampled at 50 kHz) 51000 packets of 144 samples from 2016-04-07T10:12:19.878.000.

Processed Fri May 6 19:09:33 2016 by ELM ver.2012-10-06 from 001__elm20160407_101218__dat00.bin

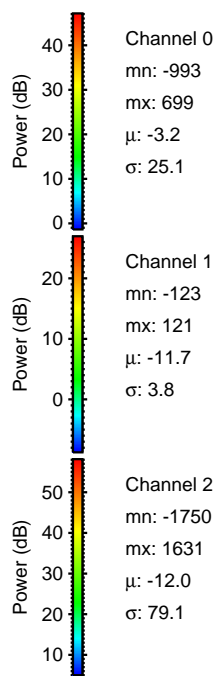
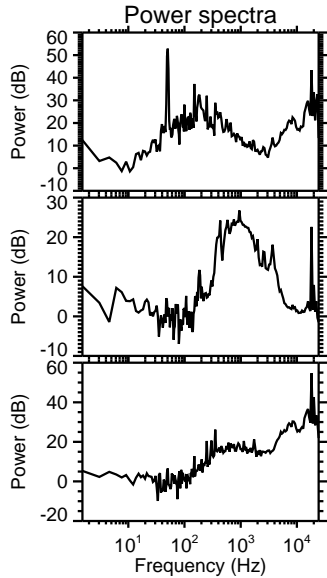
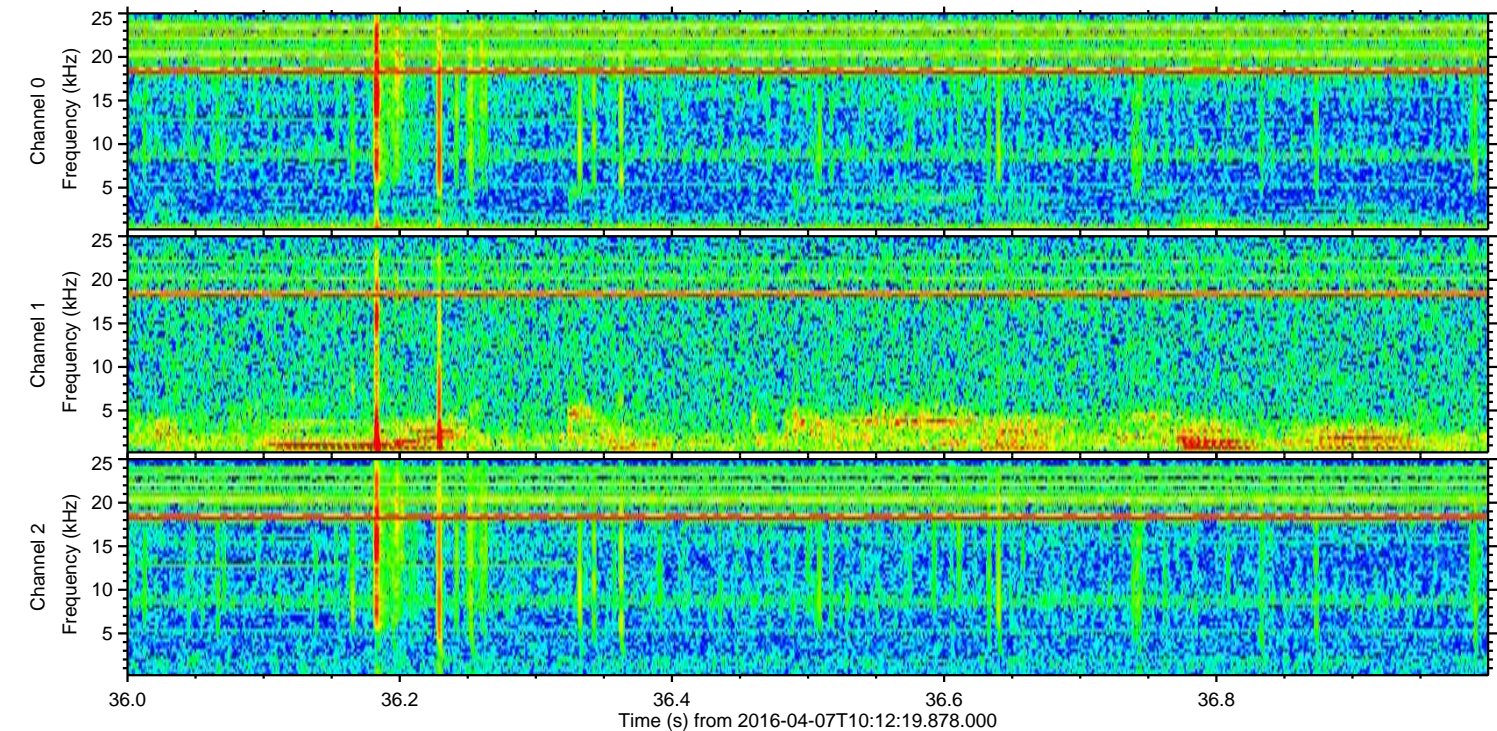
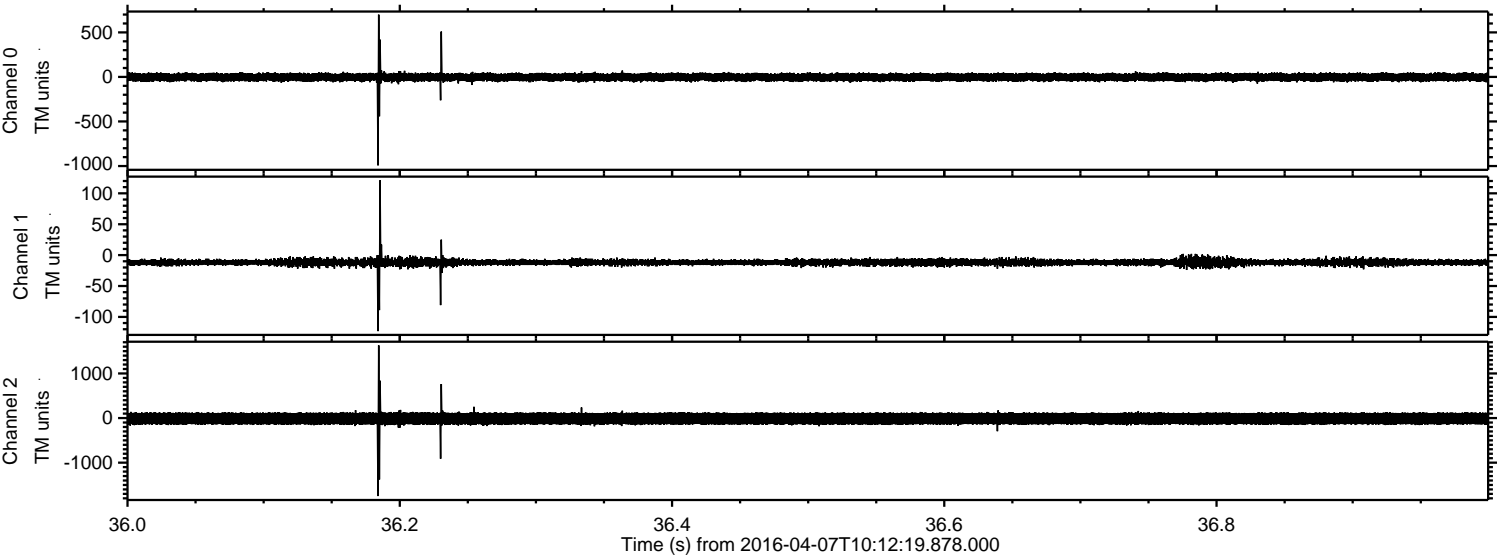


ELMAVAN 3D WAVEFORMS (Measured data sampled at 50 kHz) 51000 packets of 144 samples from 2016-04-07T10:12:19.878.000. Part 139/147

Processed Fri May 6 19:09:48 2016 by ELM ver.2012-10-06 from 001__elm20160407_101218__dat00.bin

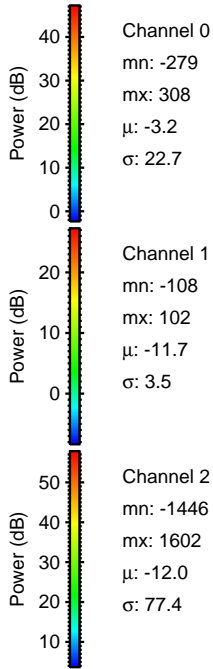
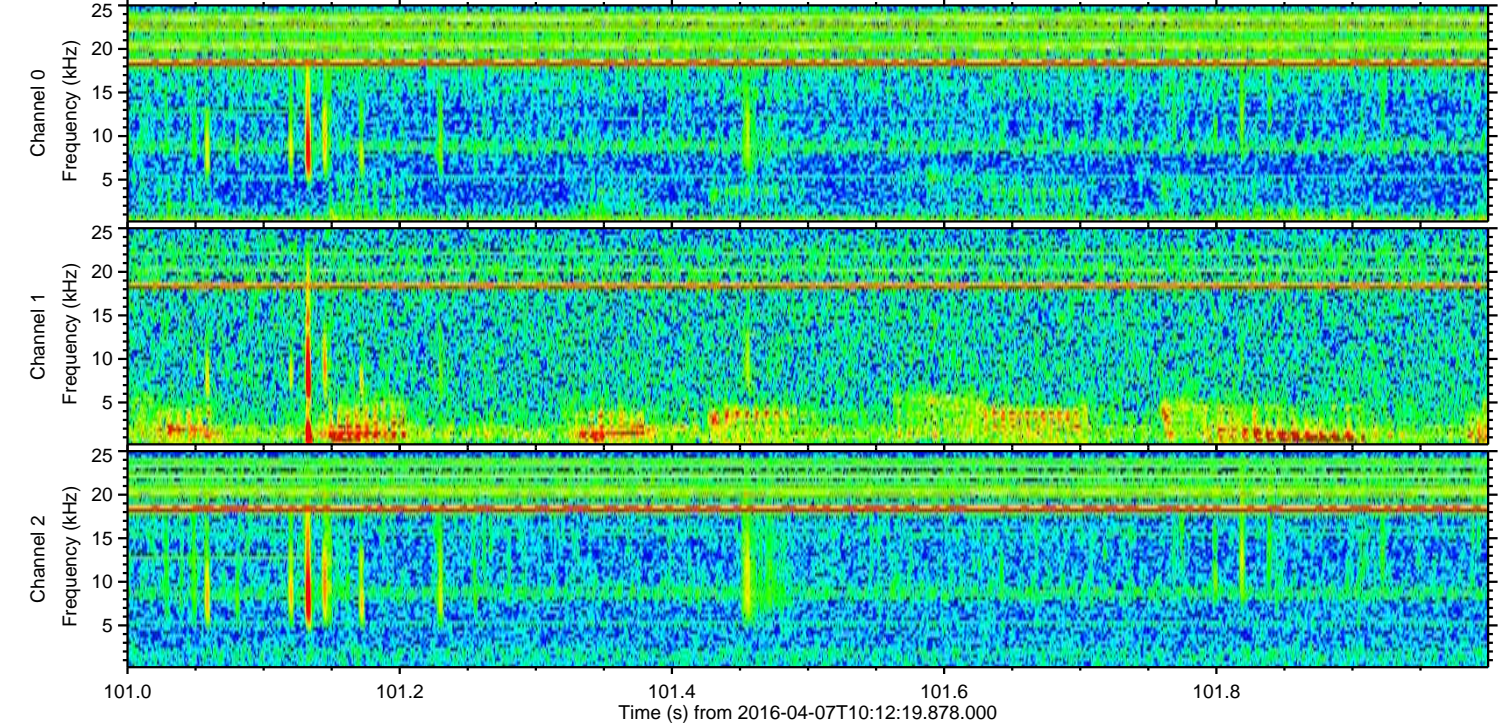
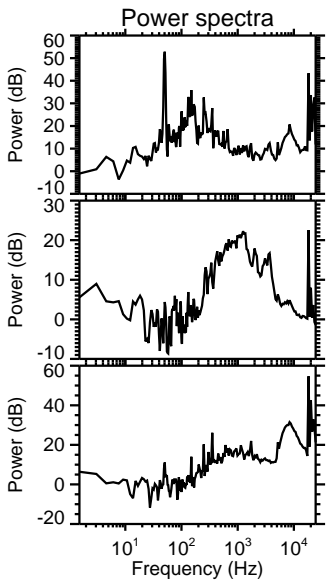
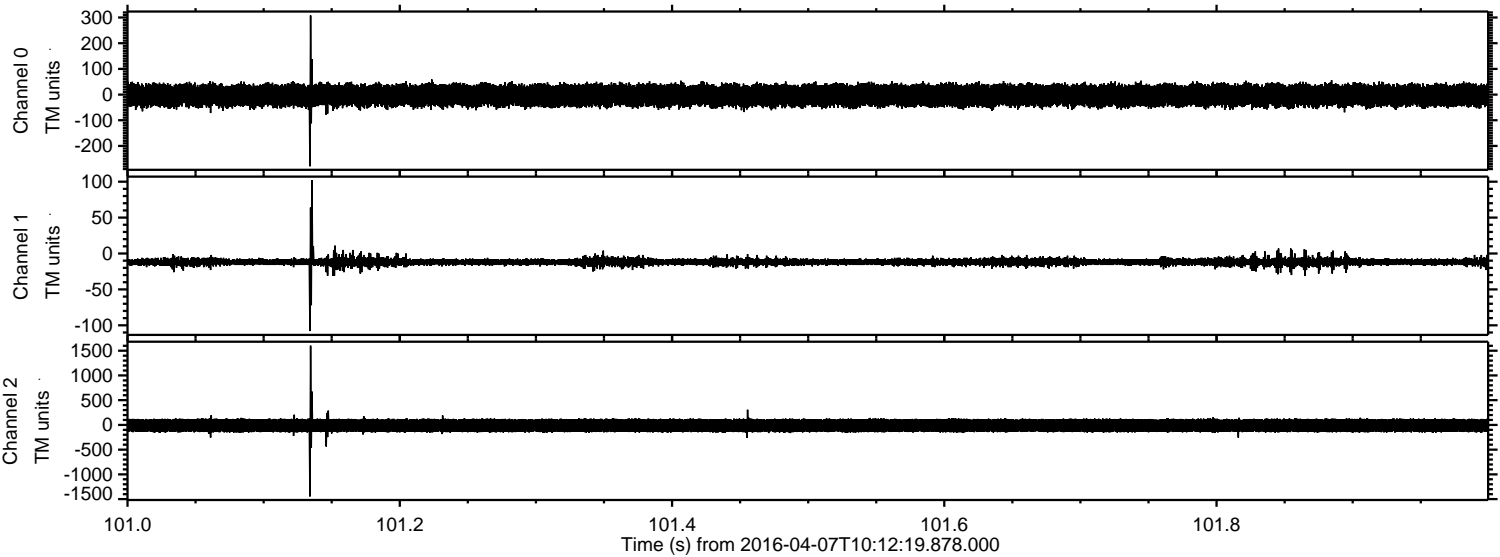


Processed Fri May 6 19:09:49 2016 by ELM ver.2012-10-06 from 001__elm20160407_101218__dat00.bin

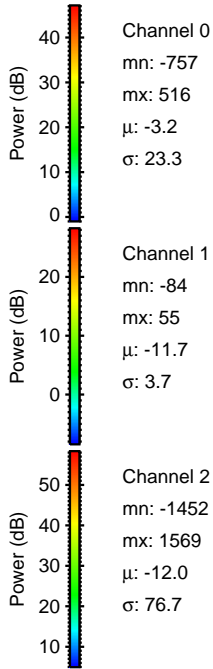
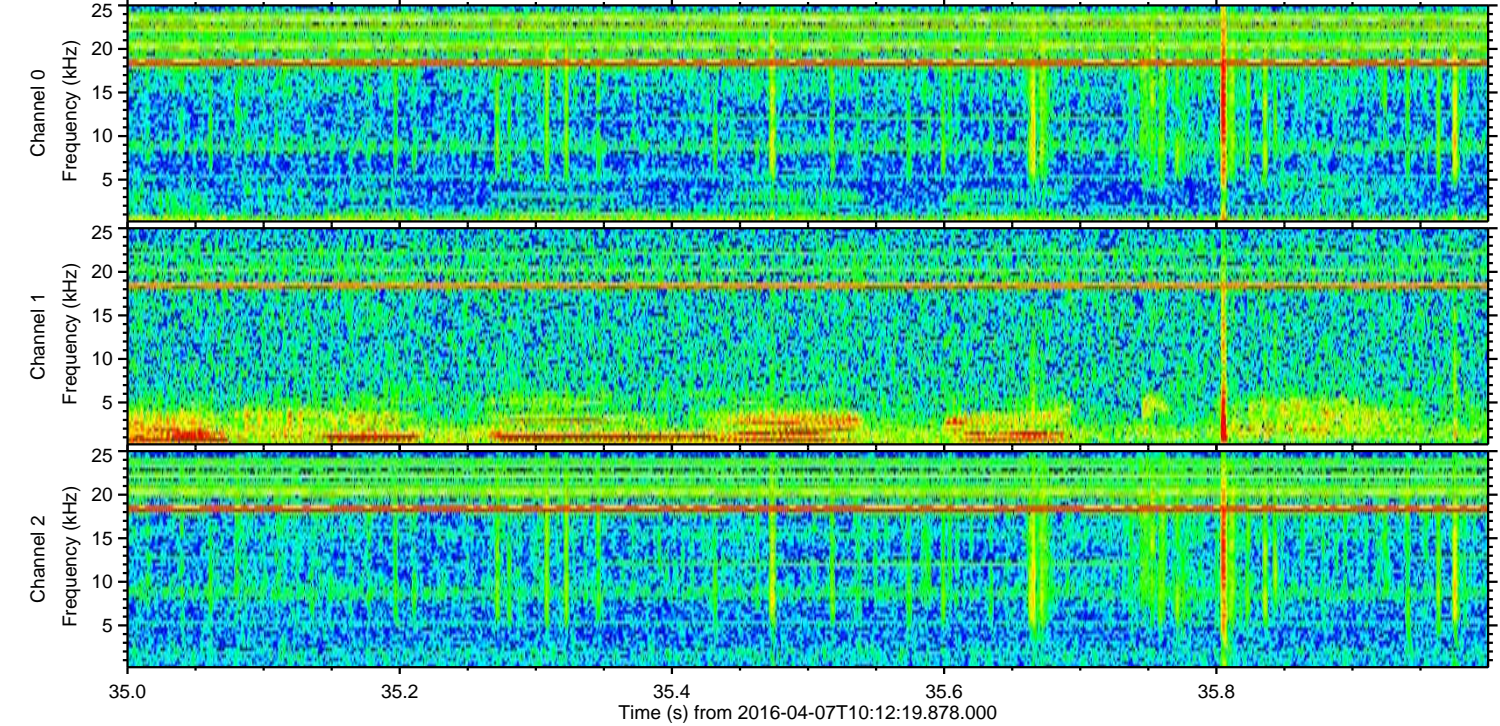
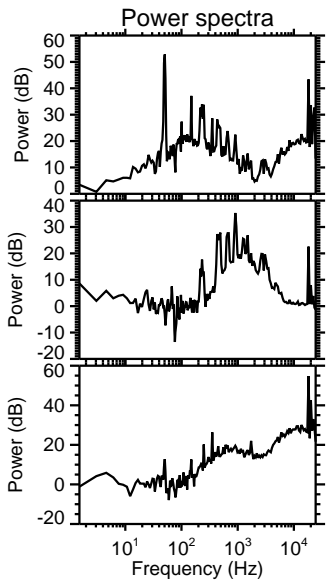
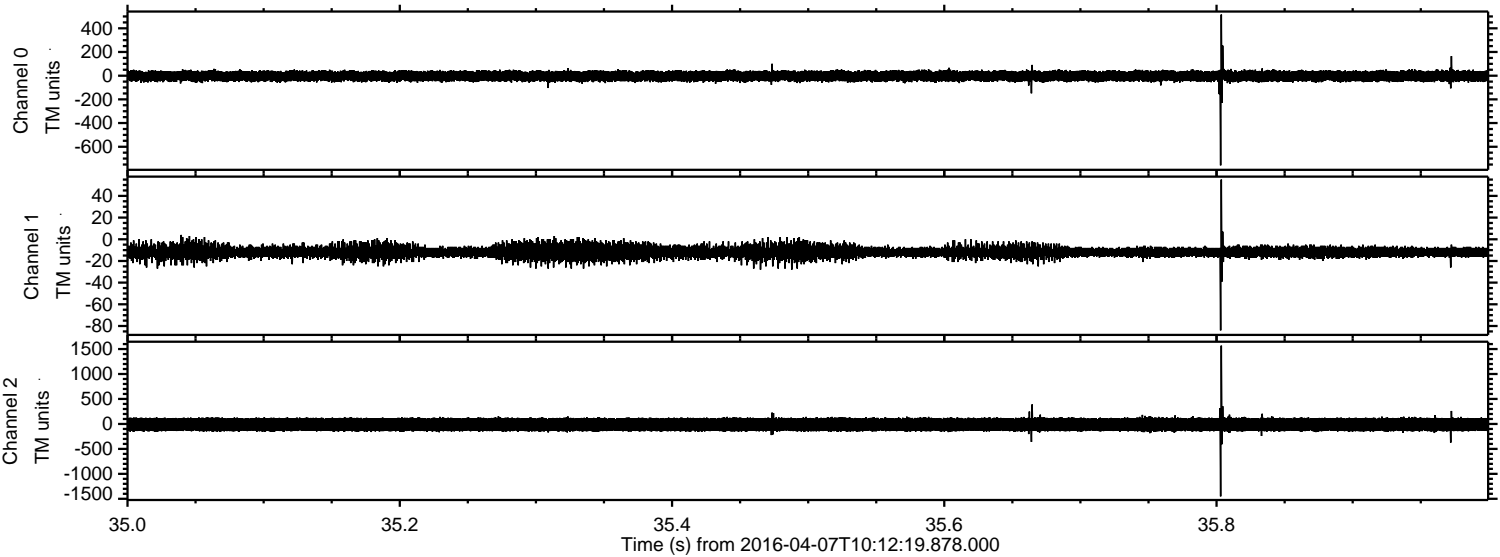


ELMAVAN 3D WAVEFORMS (Measured data sampled at 50 kHz) 51000 packets of 144 samples from 2016-04-07T10:12:19.878.000. Part 102/147

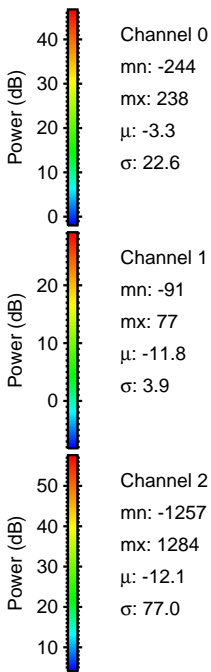
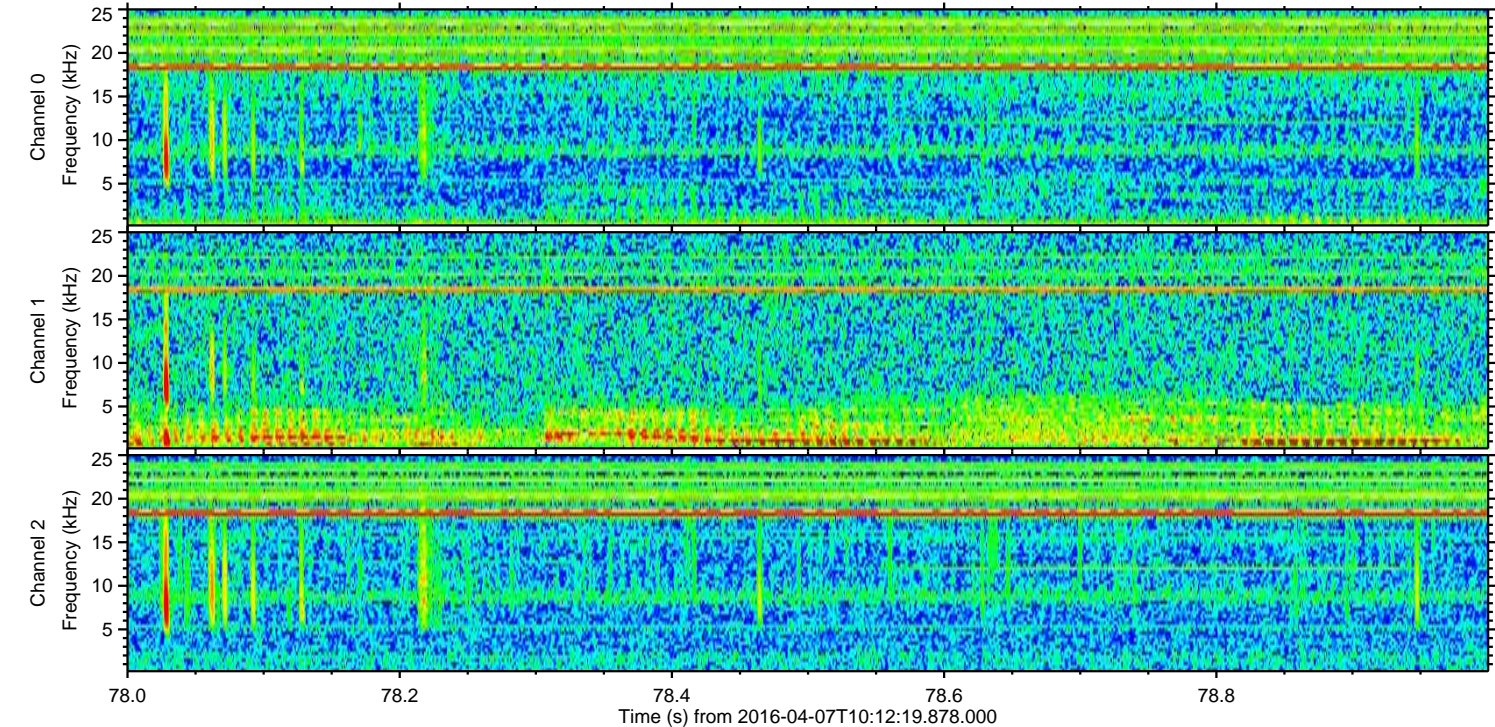
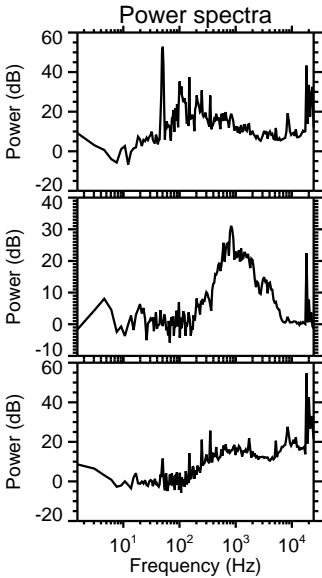
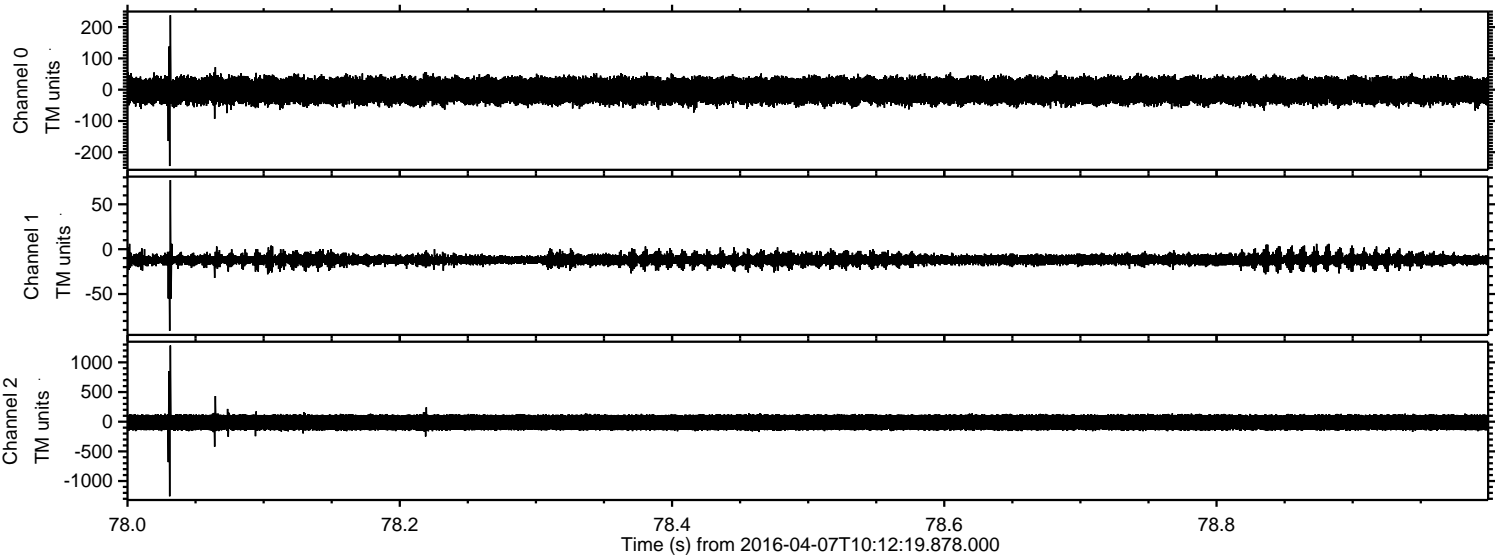
Processed Fri May 6 19:09:50 2016 by ELM ver.2012-10-06 from 001__elm20160407_101218__dat00.bin



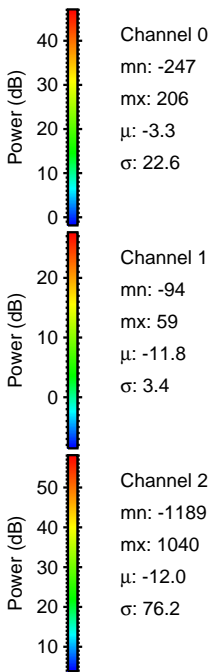
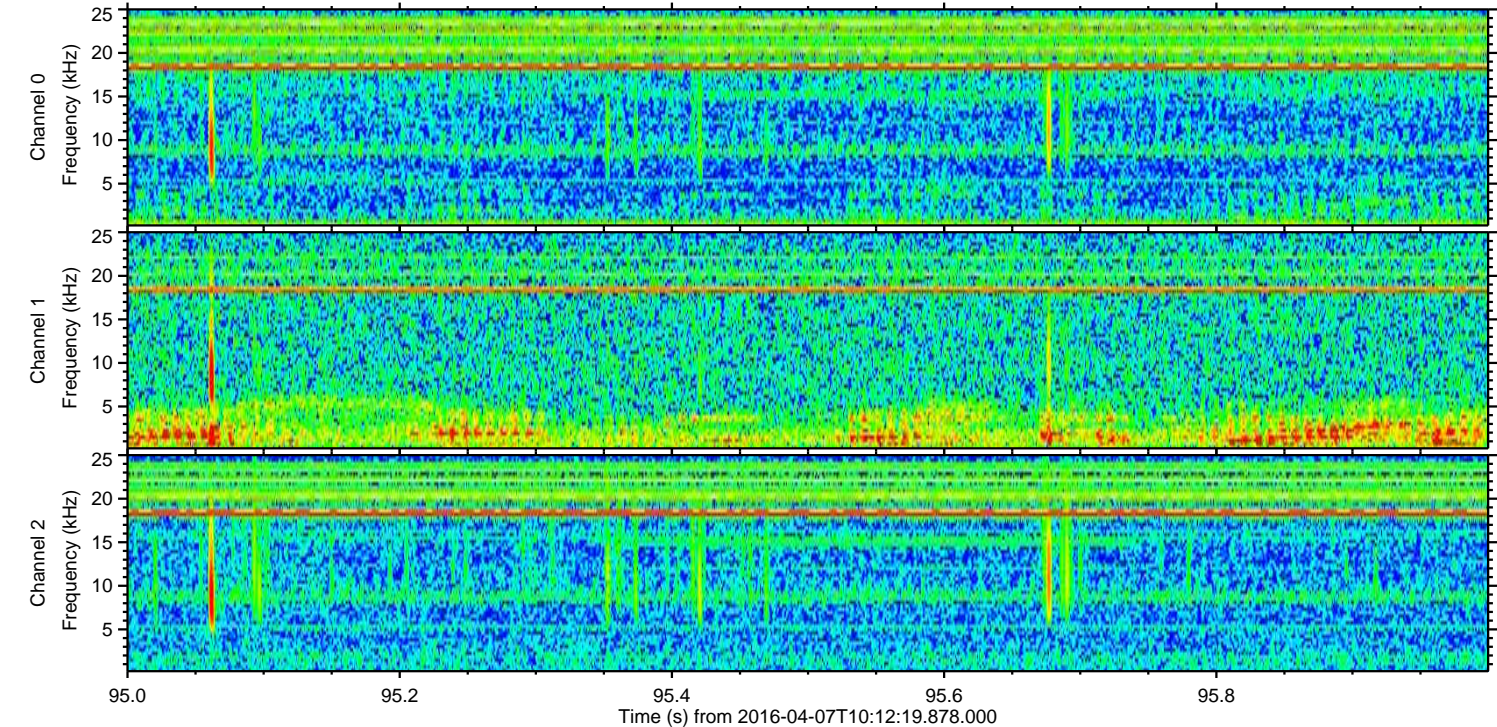
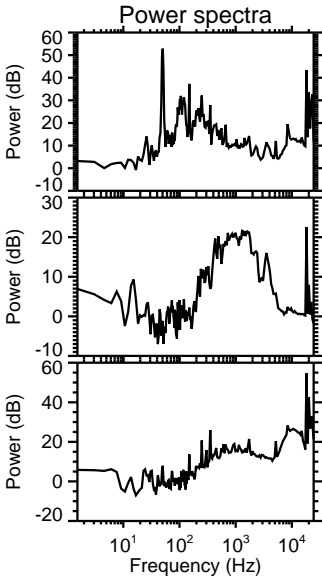
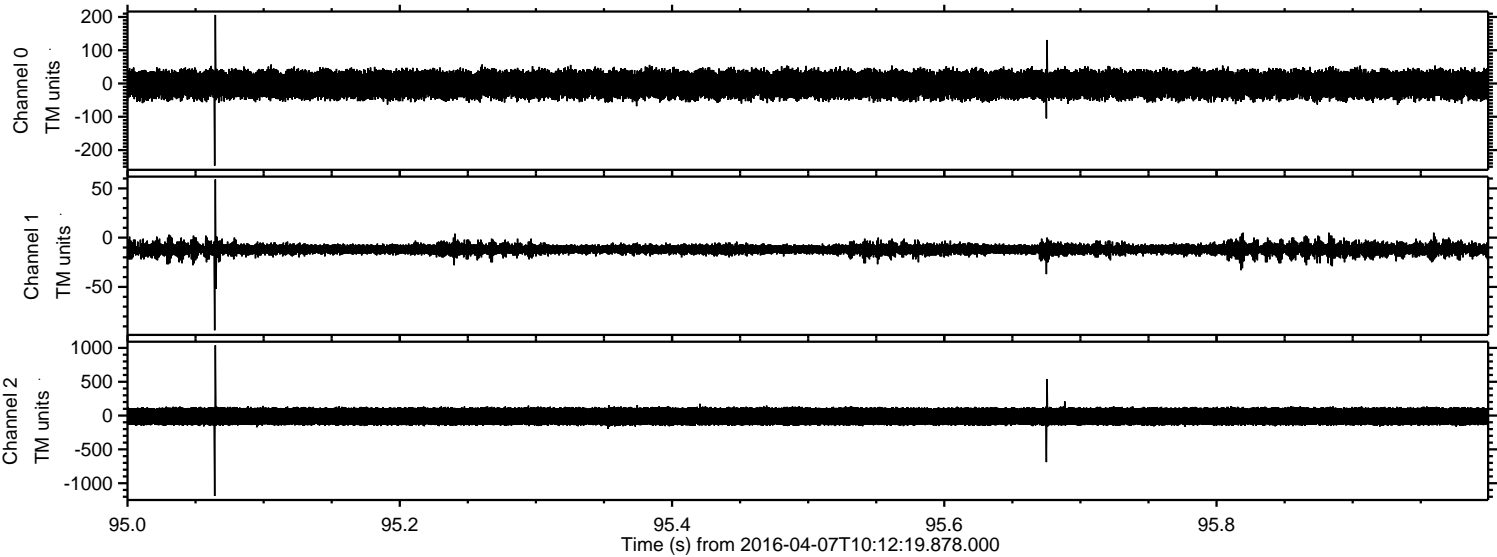
Processed Fri May 6 19:09:51 2016 by ELM ver.2012-10-06 from 001__elm20160407_101218__dat00.bin



Processed Fri May 6 19:09:52 2016 by ELM ver.2012-10-06 from 001__elm20160407_101218__dat00.bin

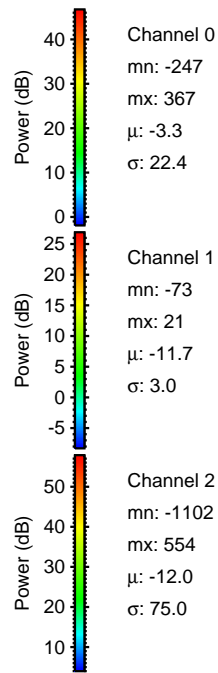
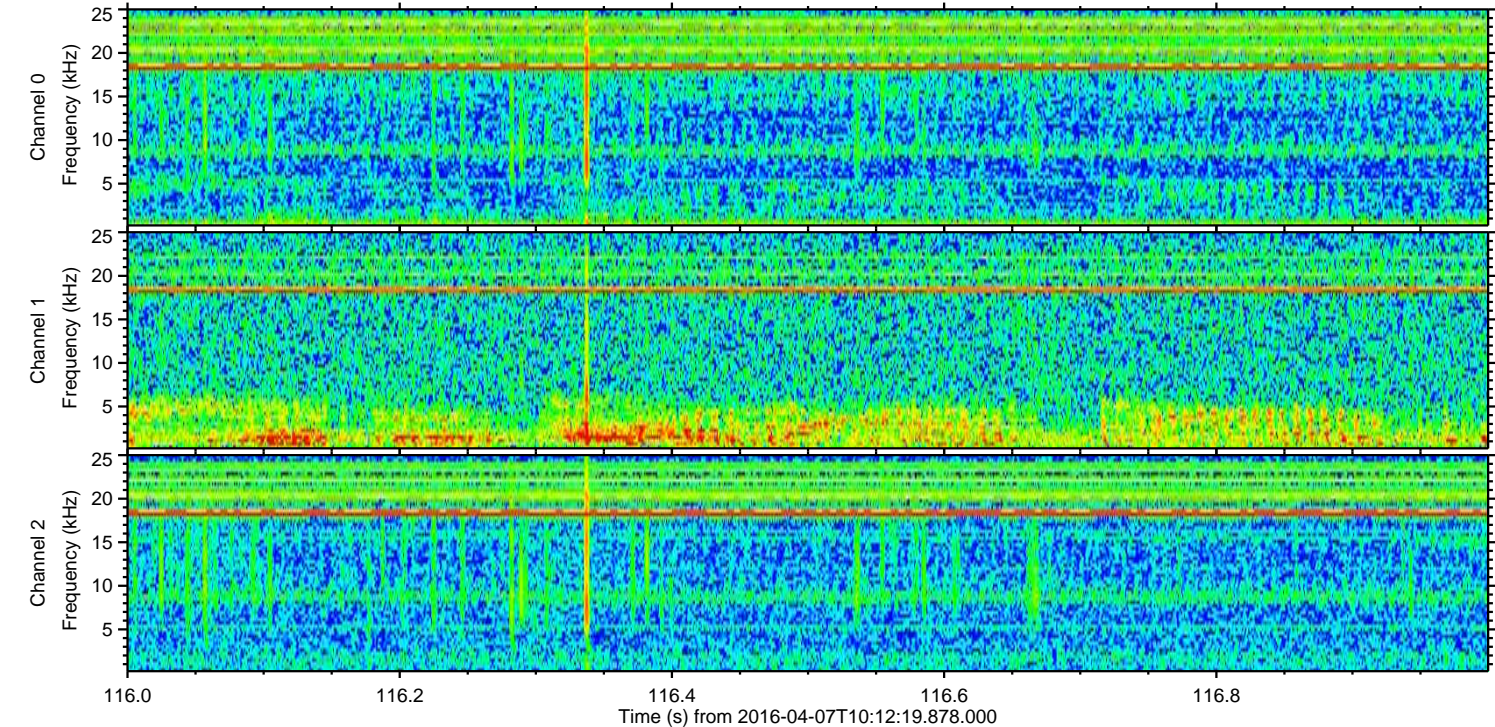
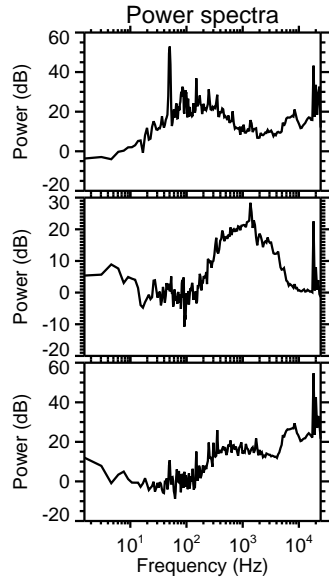
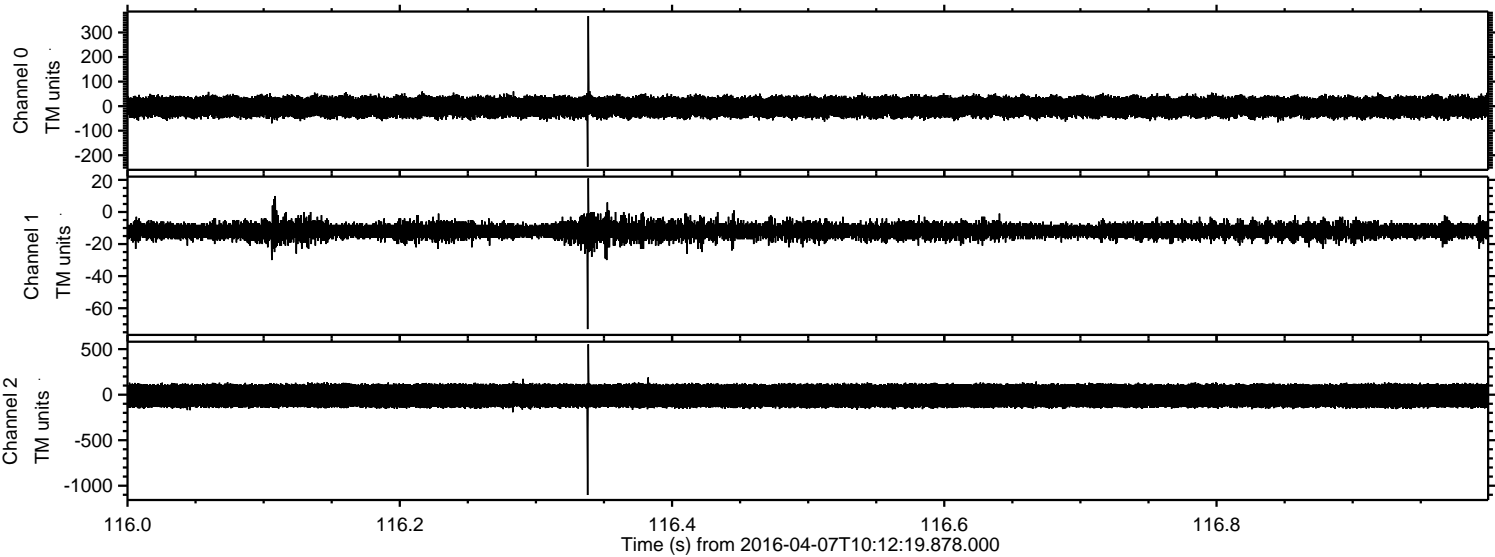


Processed Fri May 6 19:09:53 2016 by ELM ver.2012-10-06 from 001__elm20160407_101218__dat00.bin

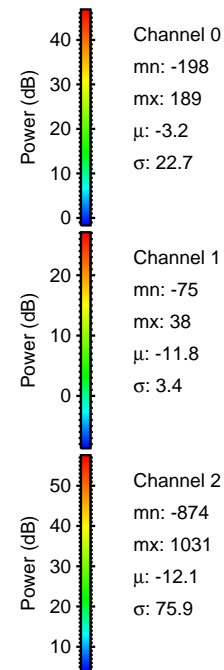
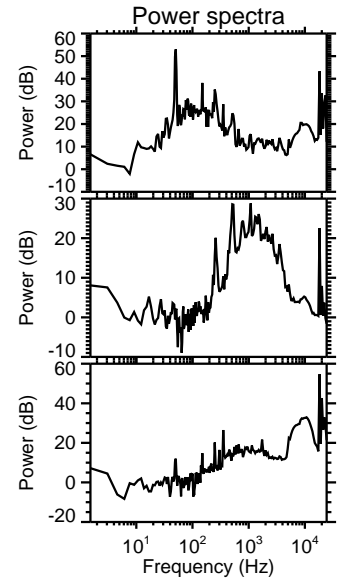
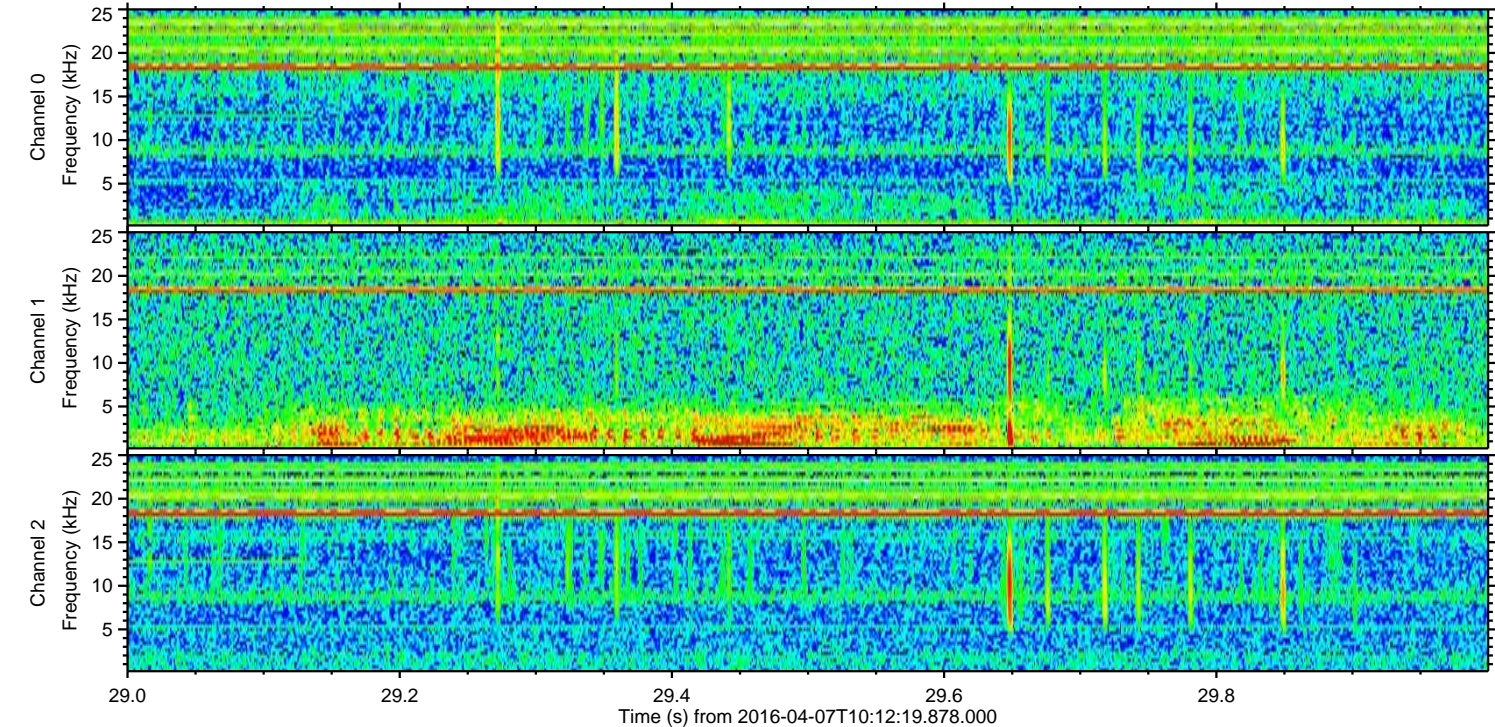
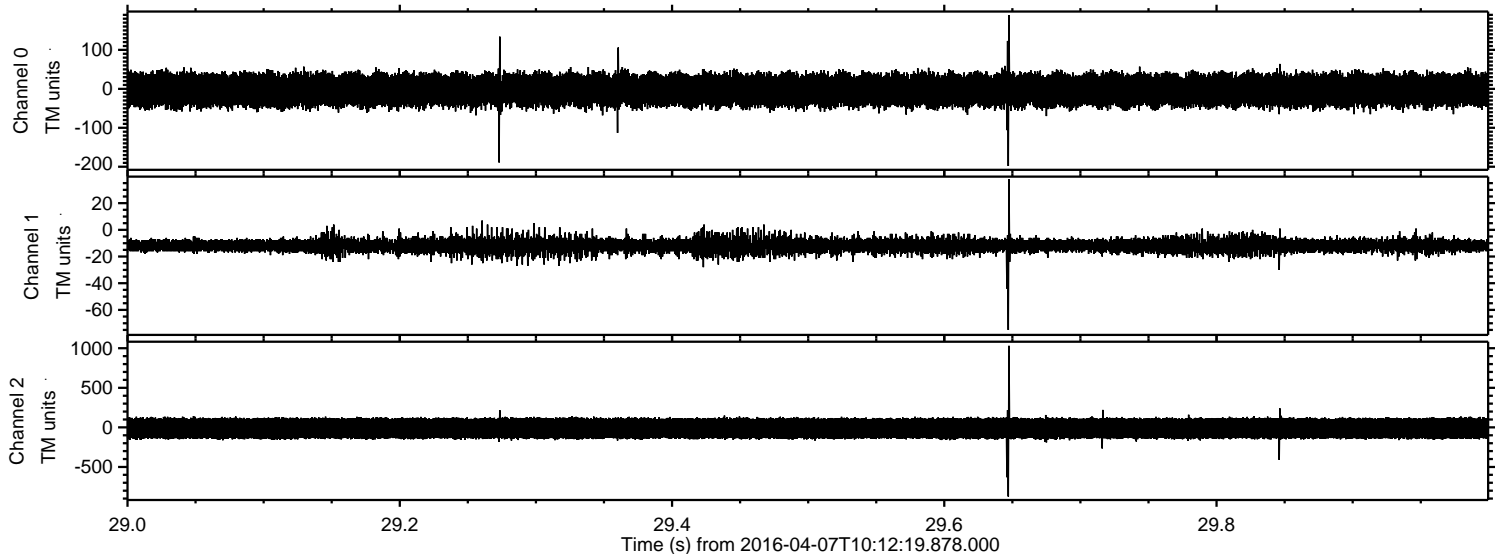


ELMAVAN 3D WAVEFORMS (Measured data sampled at 50 kHz) 51000 packets of 144 samples from 2016-04-07T10:12:19.878.000. Part 117/147

Processed Fri May 6 19:09:54 2016 by ELM ver.2012-10-06 from 001__elm20160407_101218__dat00.bin



Processed Fri May 6 19:09:55 2016 by ELM ver.2012-10-06 from 001__elm20160407_101218__dat00.bin



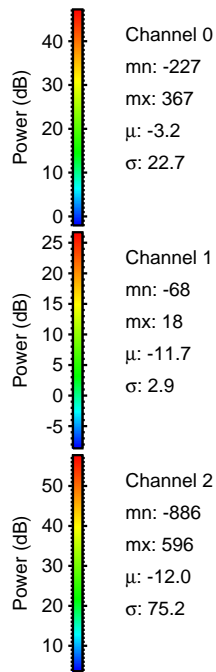
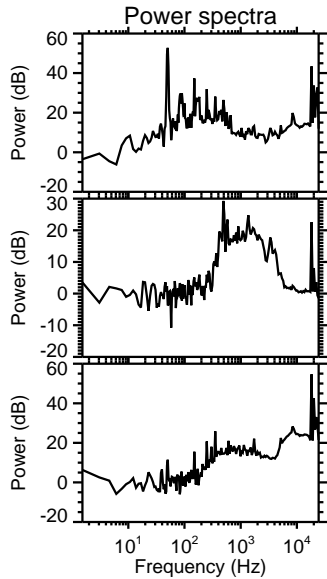
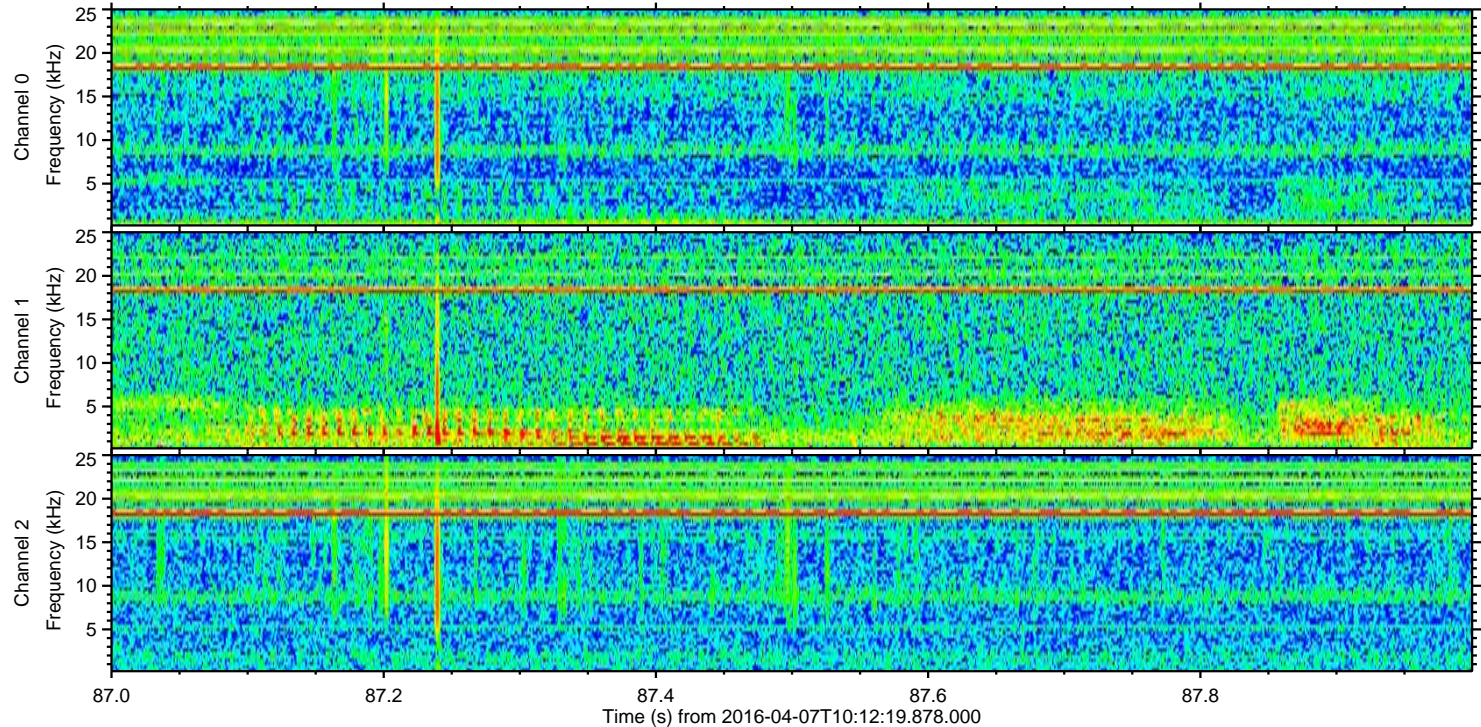
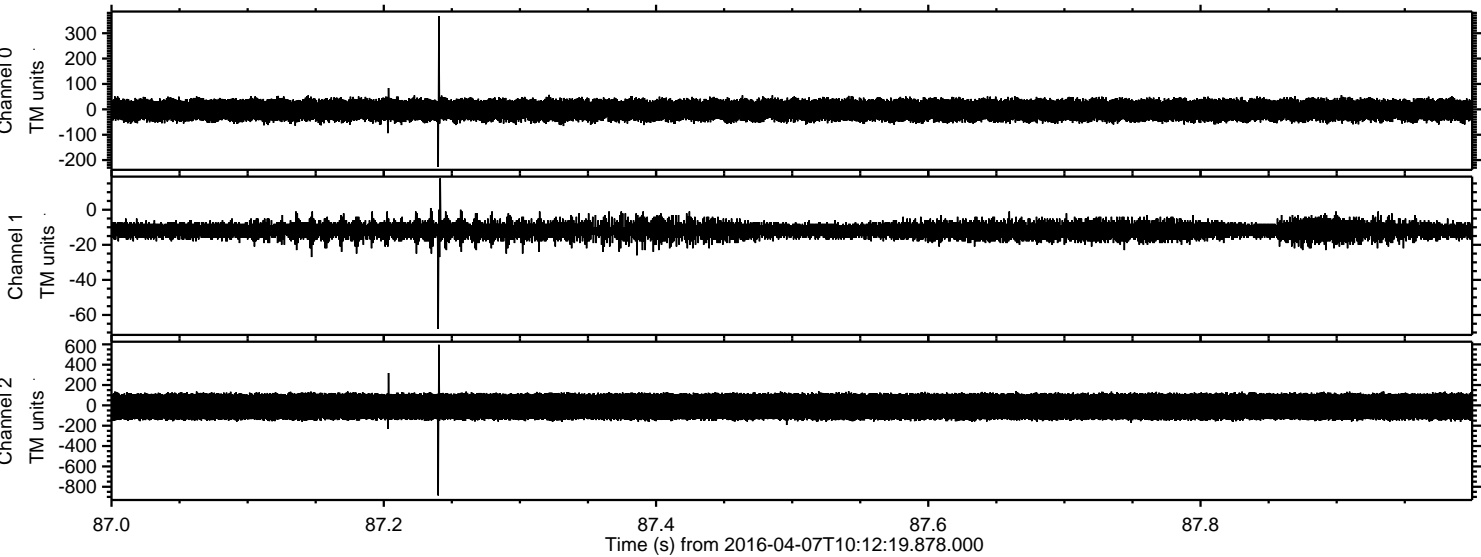
Power spectra

Channel 0
mn: -198
mx: 189
 μ : -3.2
 σ : 22.7

Channel 1
mn: -75
mx: 38
 μ : -11.8
 σ : 3.4

Channel 2
mn: -874
mx: 1031
 μ : -12.1
 σ : 75.9

Processed Fri May 6 19:09:56 2016 by ELM ver.2012-10-06 from 001__elm20160407_101218__dat00.bin



Processed Fri May 6 19:09:57 2016 by ELM ver.2012-10-06 from 001__elm20160407_101218__dat00.bin

