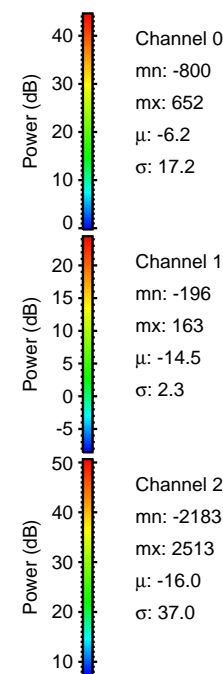
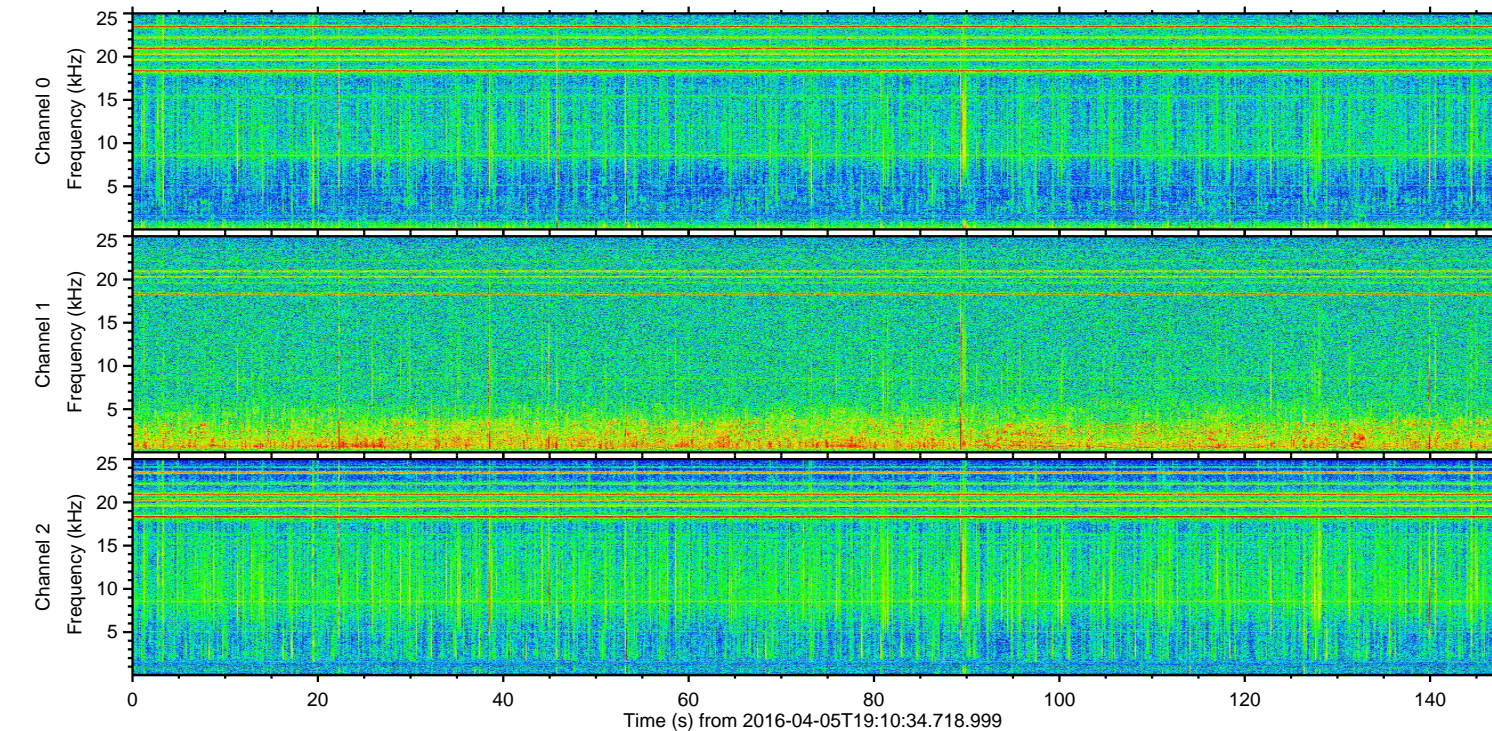
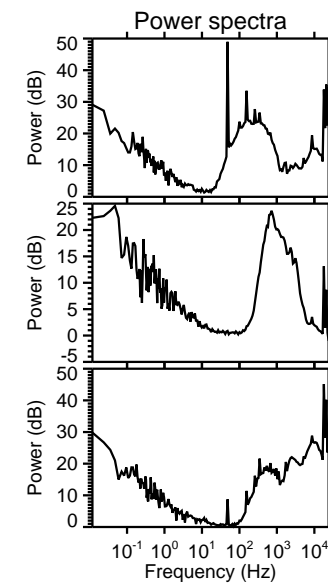
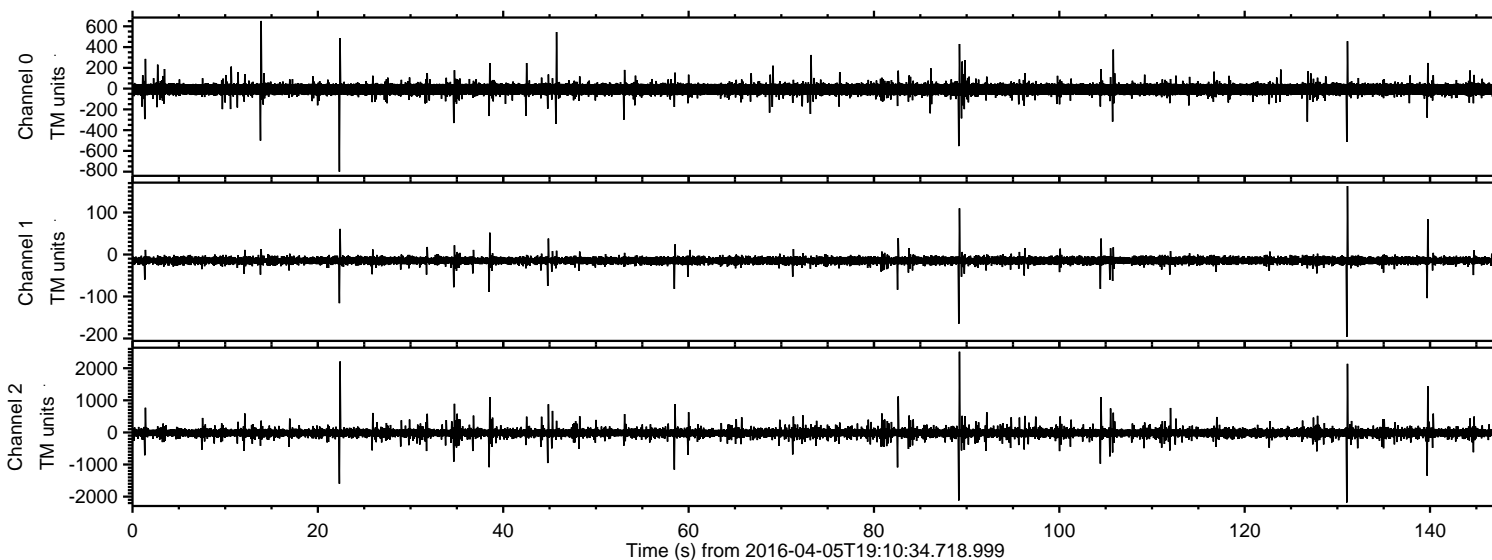


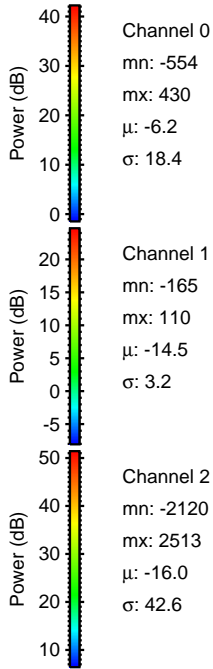
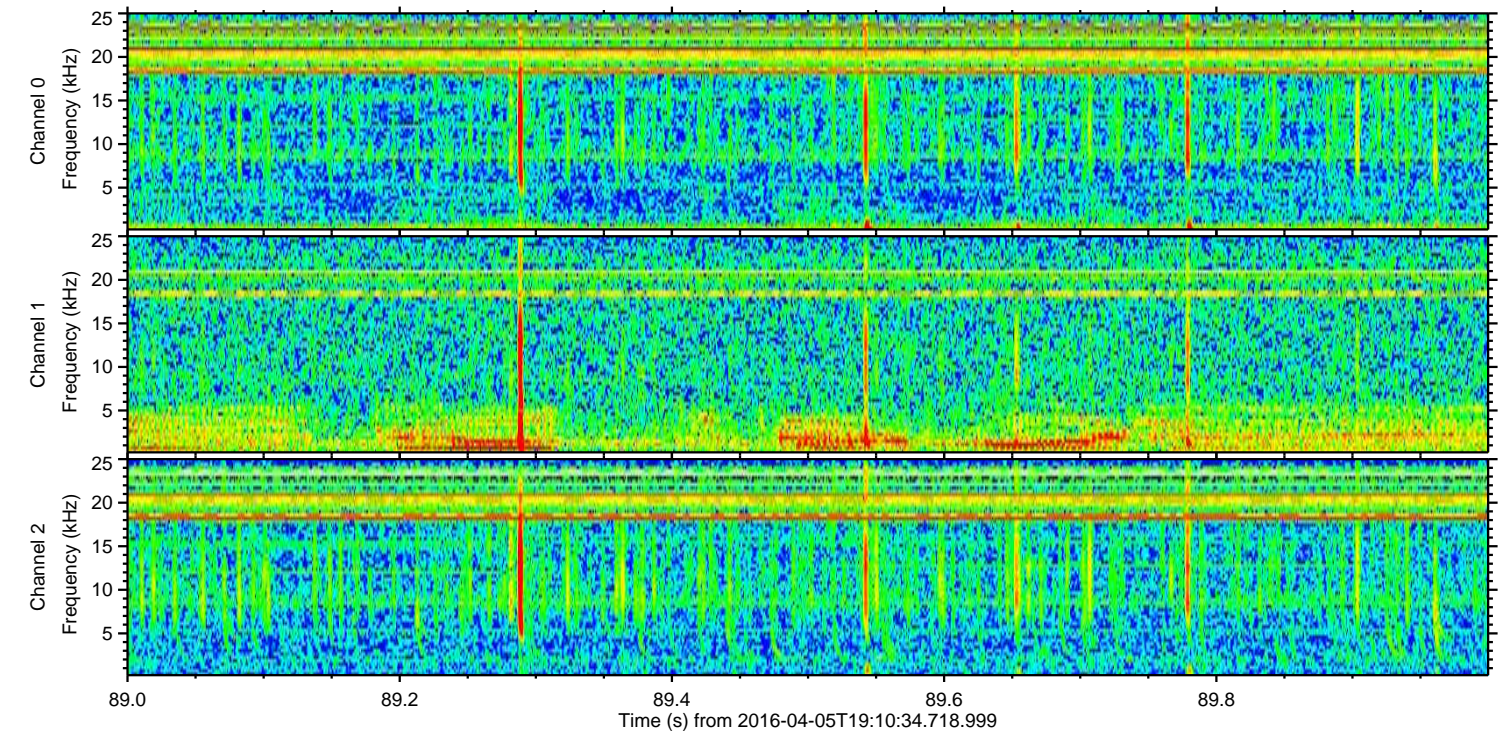
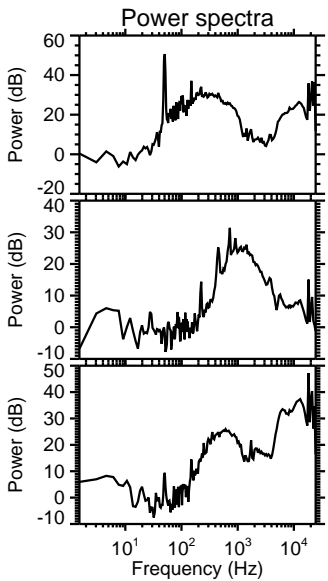
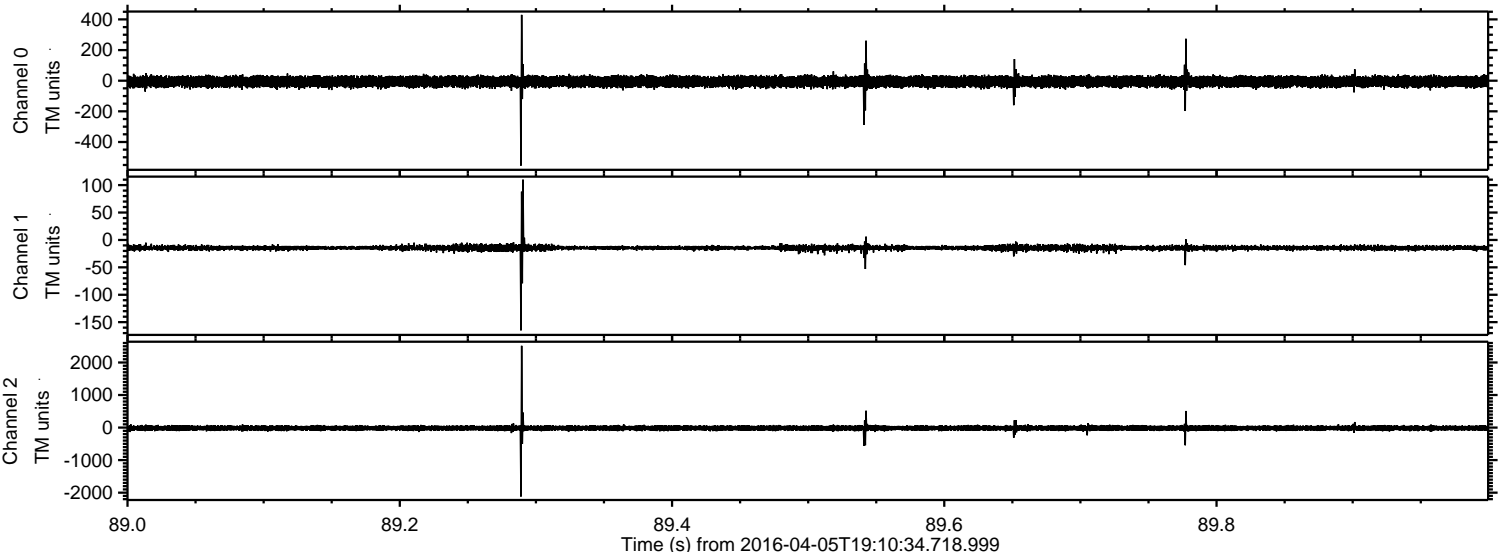
ELMAVAN 3D WAVEFORMS (Measured data sampled at 50 kHz) 51000 packets of 144 samples from 2016-04-05T19:10:34.718.999.

Processed Fri May 6 09:36:15 2016 by ELM ver.2012-10-06 from 001\_\_elm20160405\_191033\_\_dat00.bin



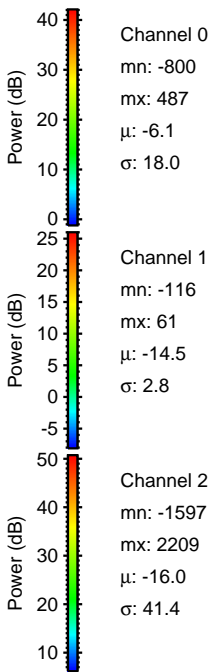
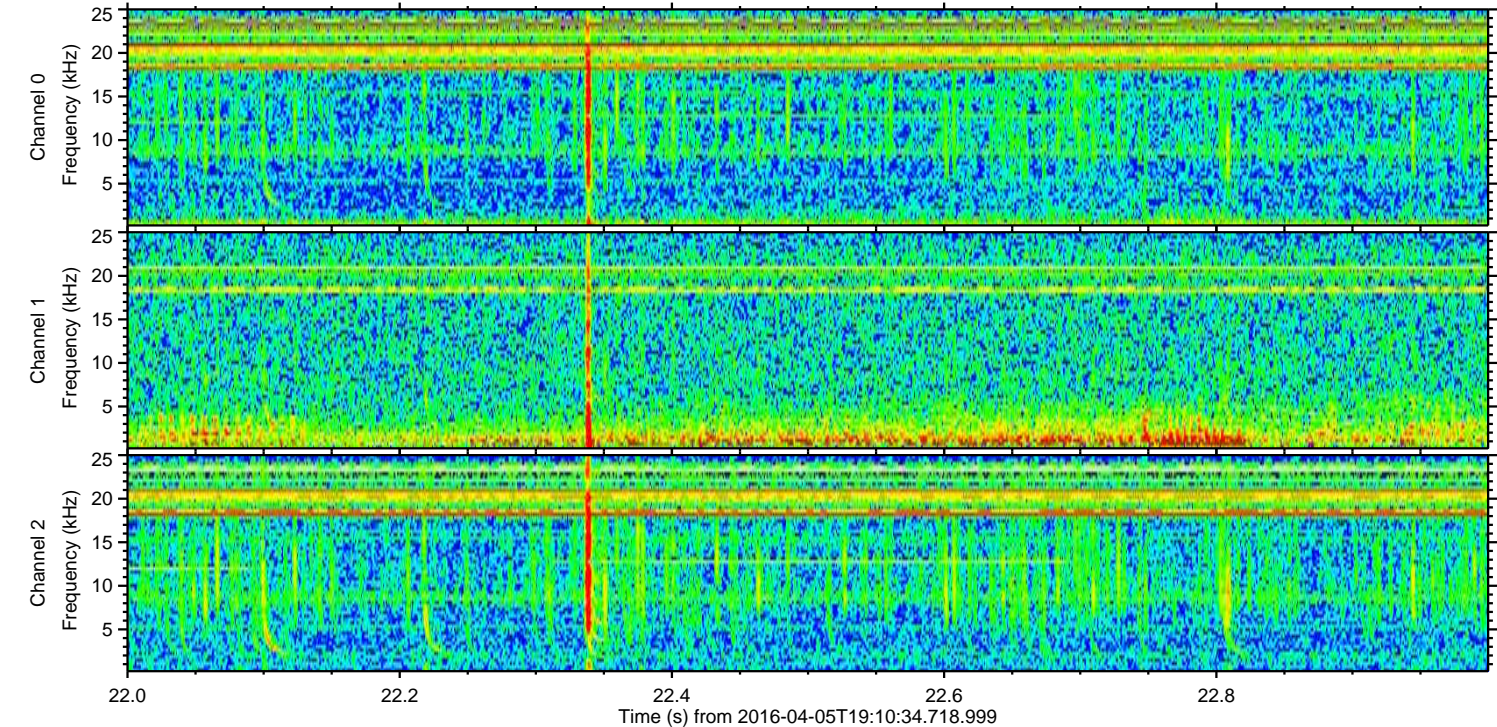
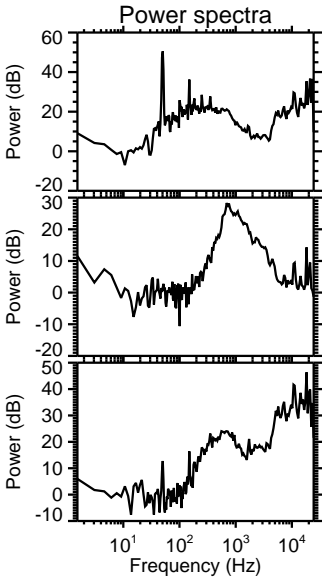
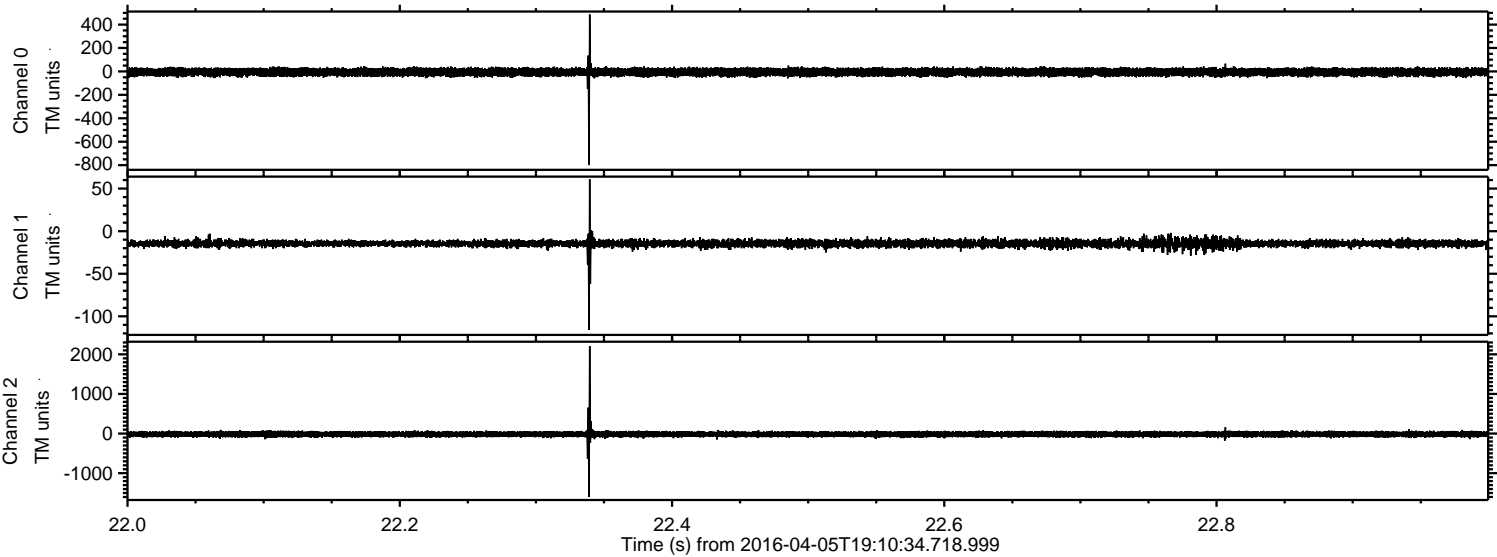


Processed Fri May 6 09:36:35 2016 by ELM ver.2012-10-06 from 001\_\_elm20160405\_191033\_\_dat00.bin





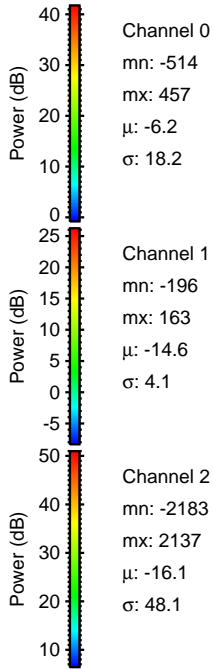
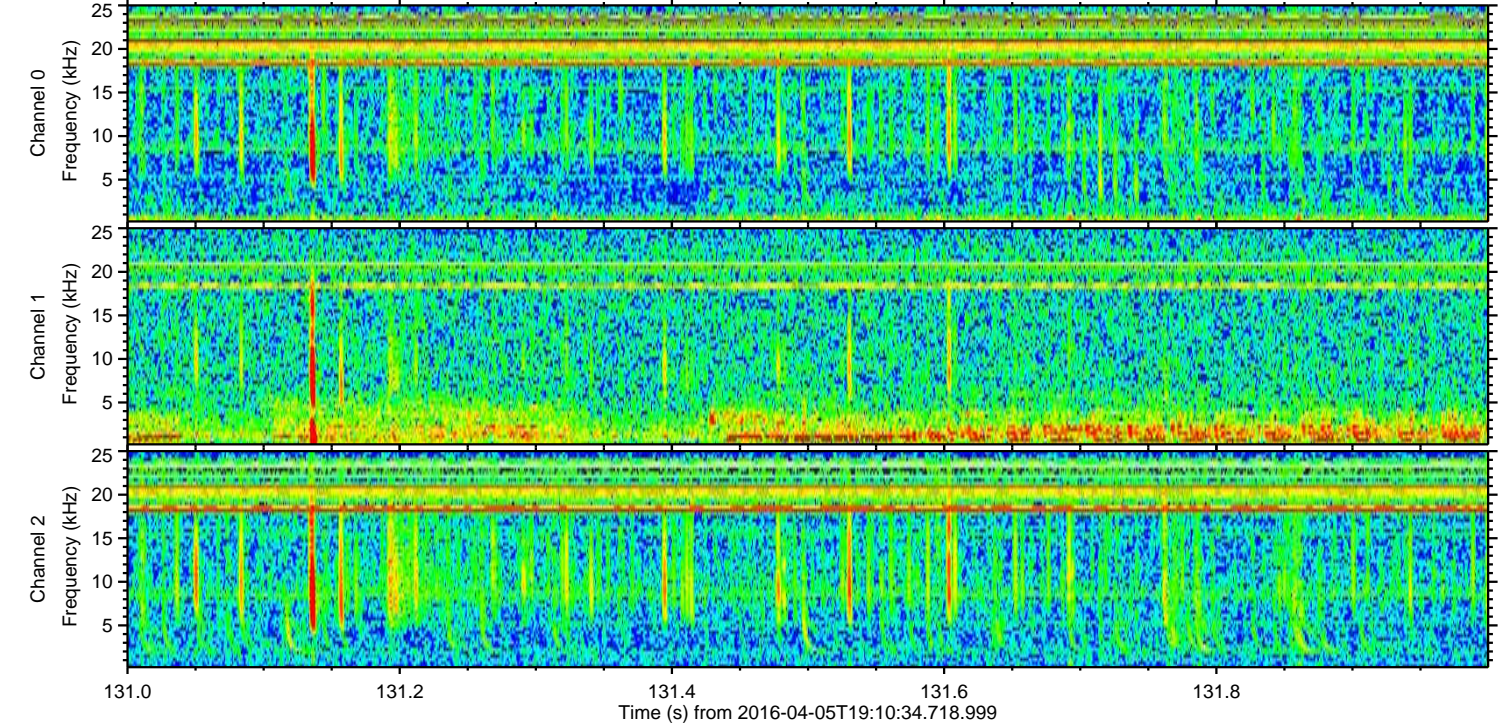
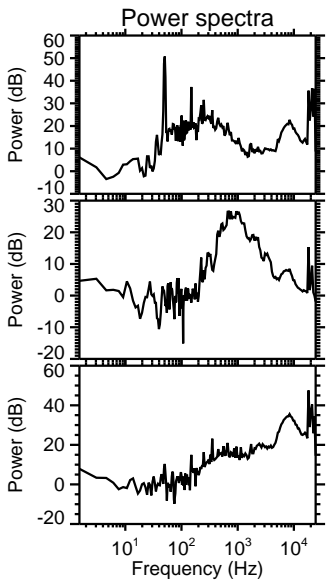
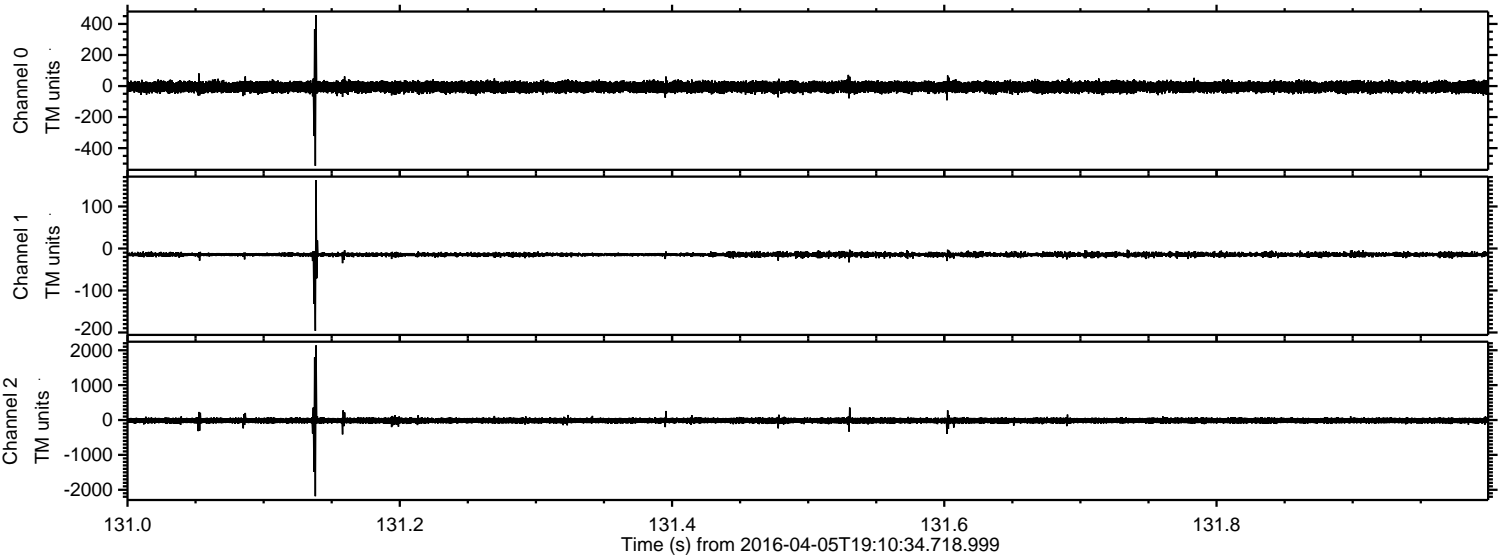
Processed Fri May 6 09:36:38 2016 by ELM ver.2012-10-06 from 001\_\_elm20160405\_191033\_\_dat00.bin





ELMAVAN 3D WAVEFORMS (Measured data sampled at 50 kHz) 51000 packets of 144 samples from 2016-04-05T19:10:34.718.999. Part 132/147

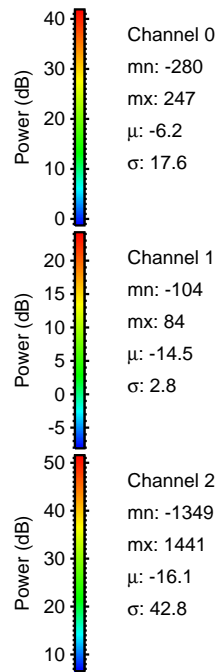
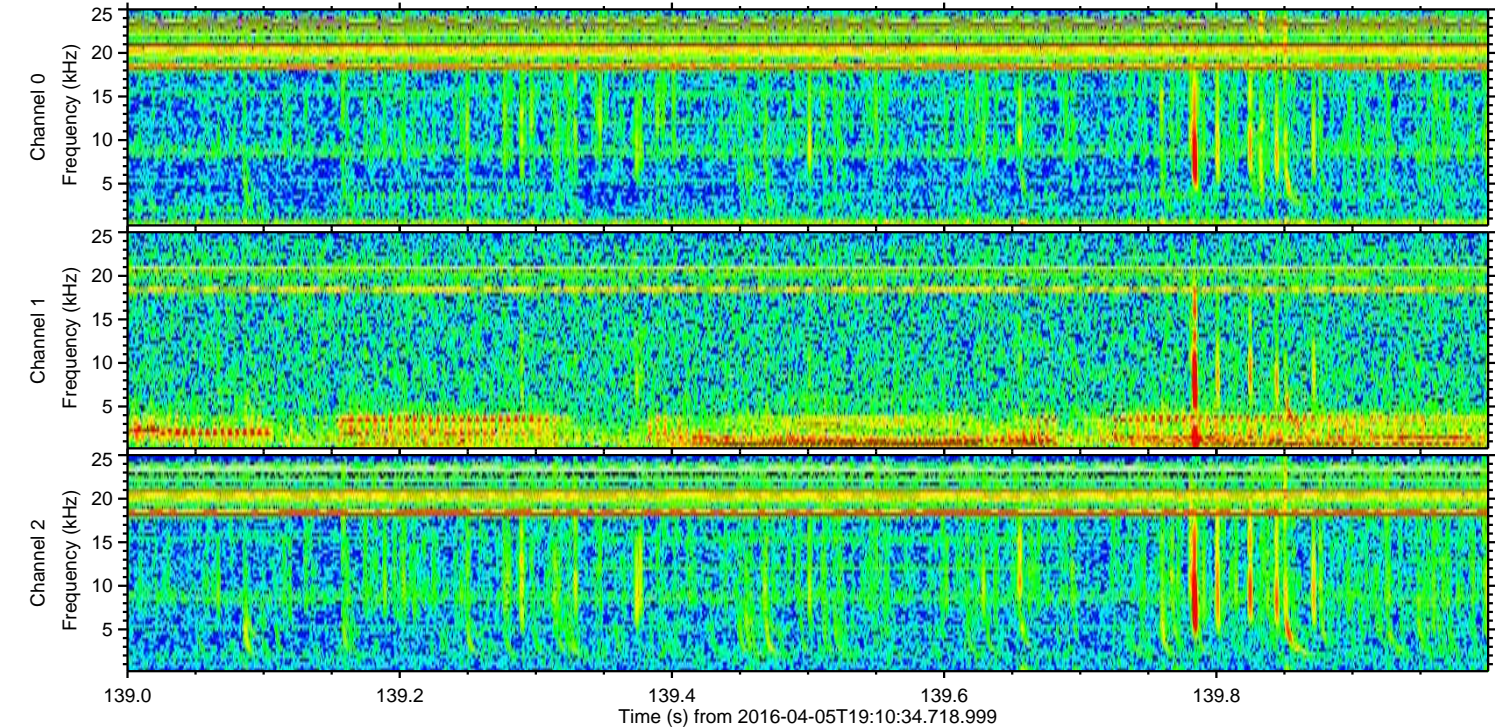
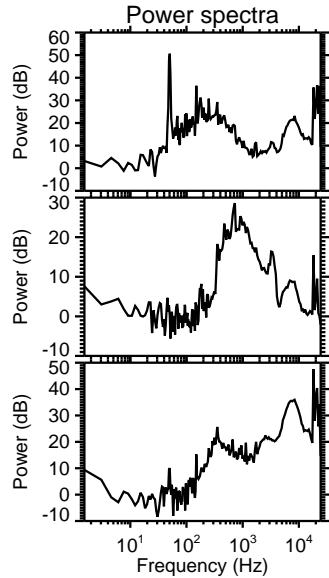
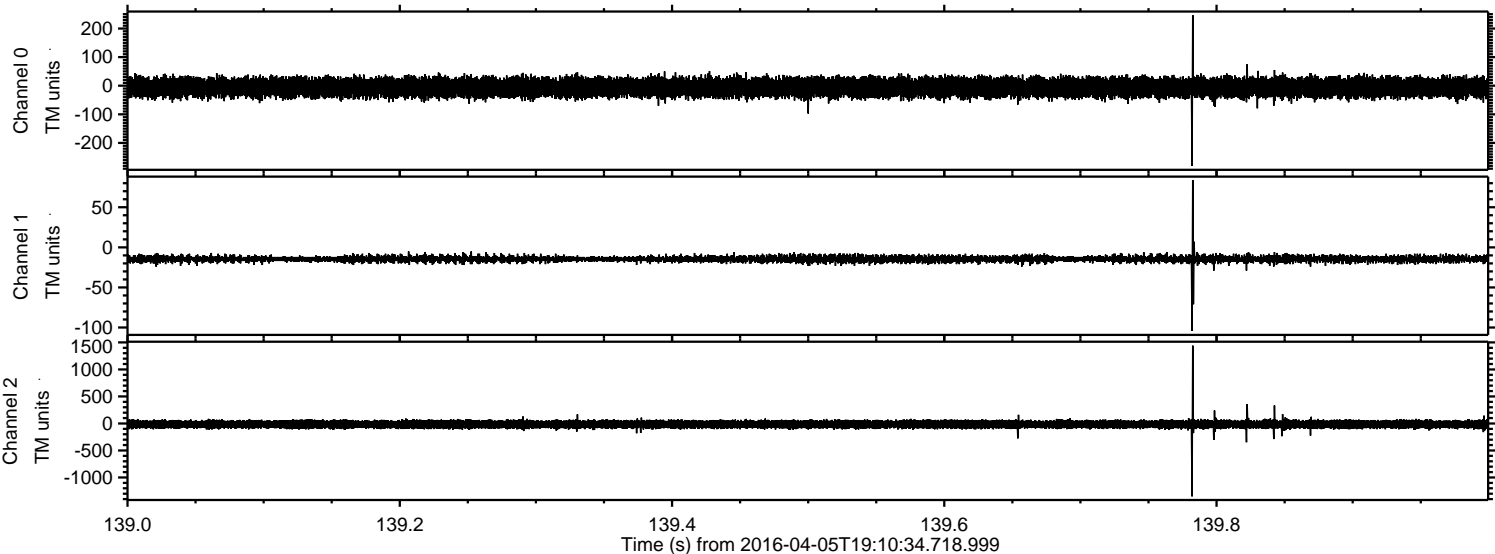
Processed Fri May 6 09:36:39 2016 by ELM ver.2012-10-06 from 001\_\_elm20160405\_191033\_\_dat00.bin





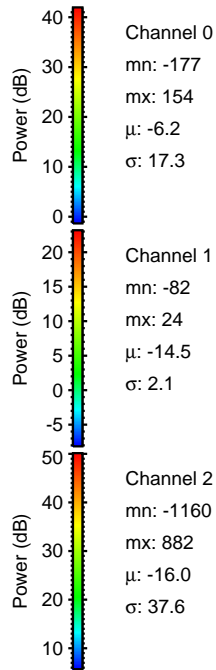
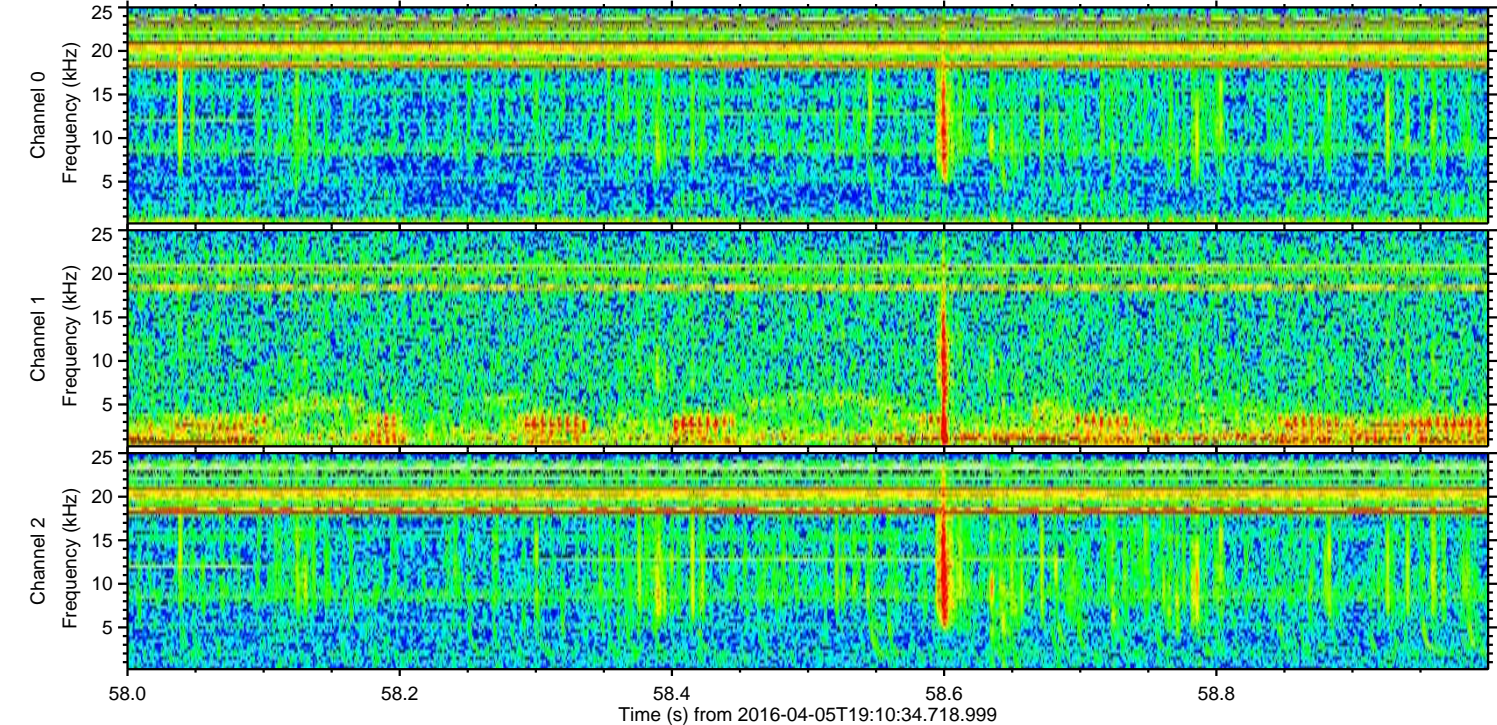
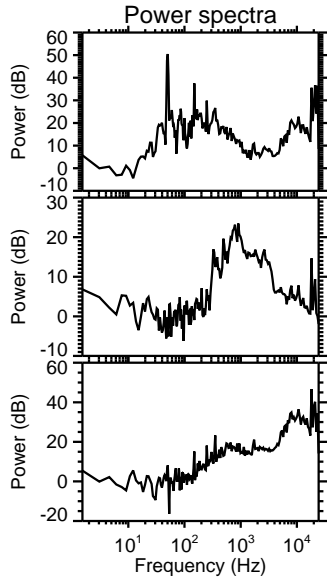
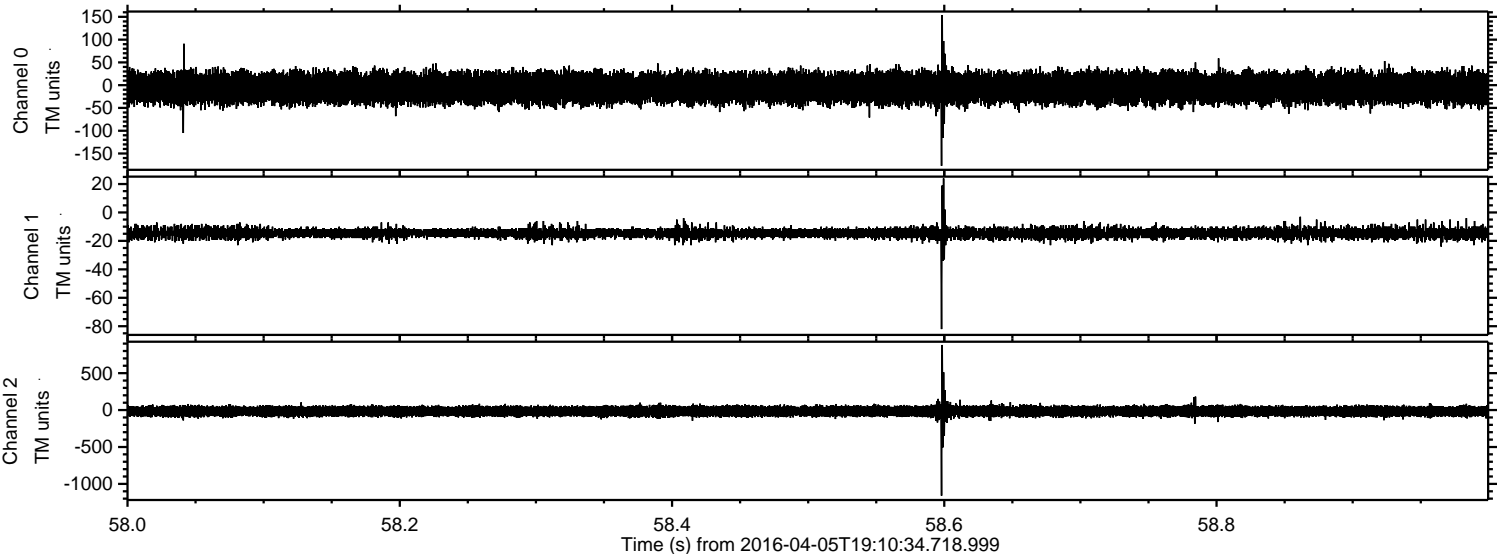
ELMAVAN 3D WAVEFORMS (Measured data sampled at 50 kHz) 51000 packets of 144 samples from 2016-04-05T19:10:34.718.999. Part 140/147

Processed Fri May 6 09:36:40 2016 by ELM ver.2012-10-06 from 001\_\_elm20160405\_191033\_\_dat00.bin



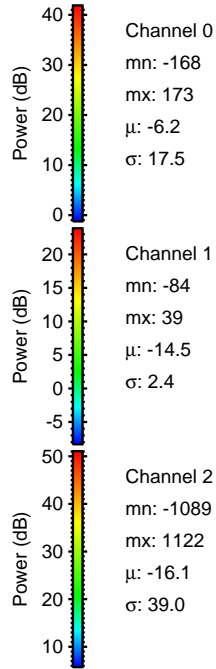
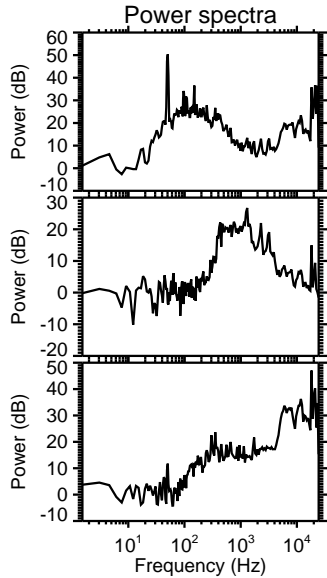
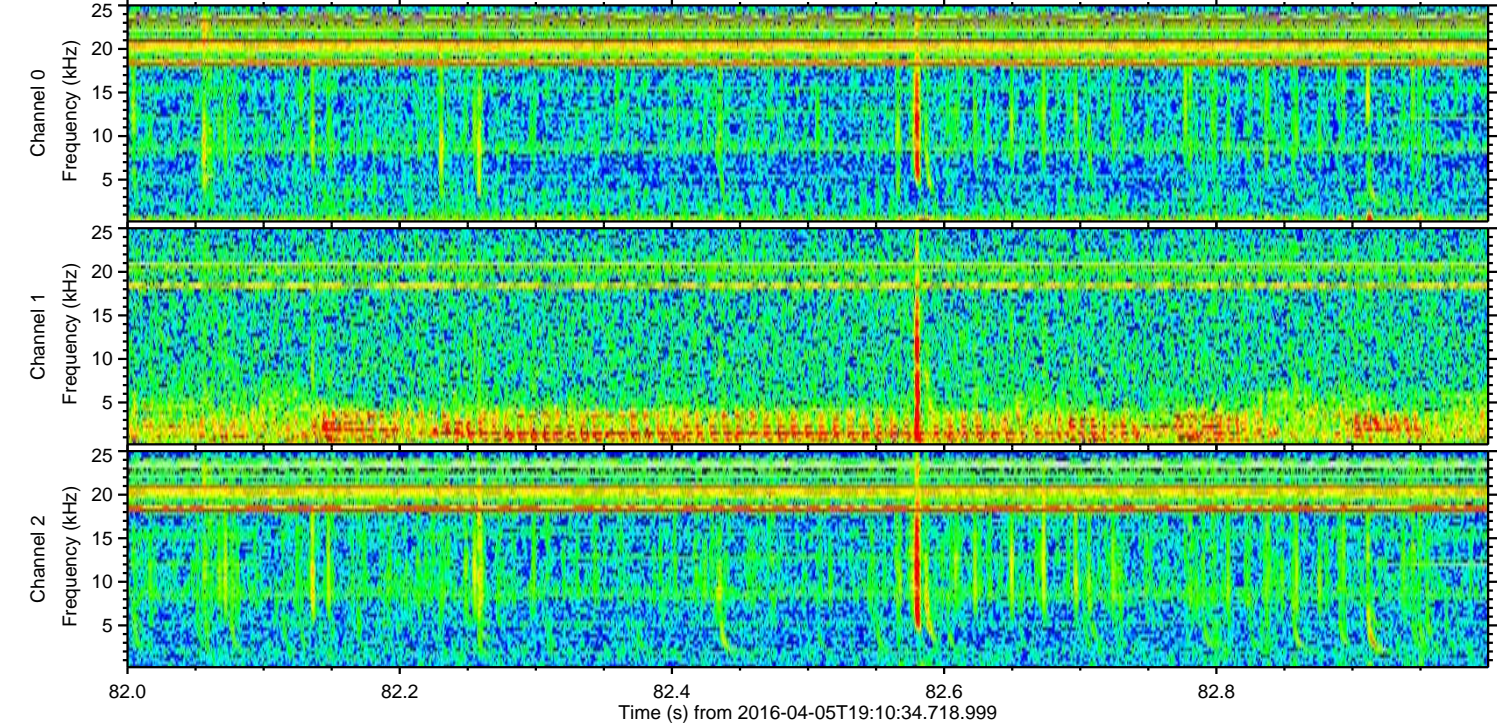
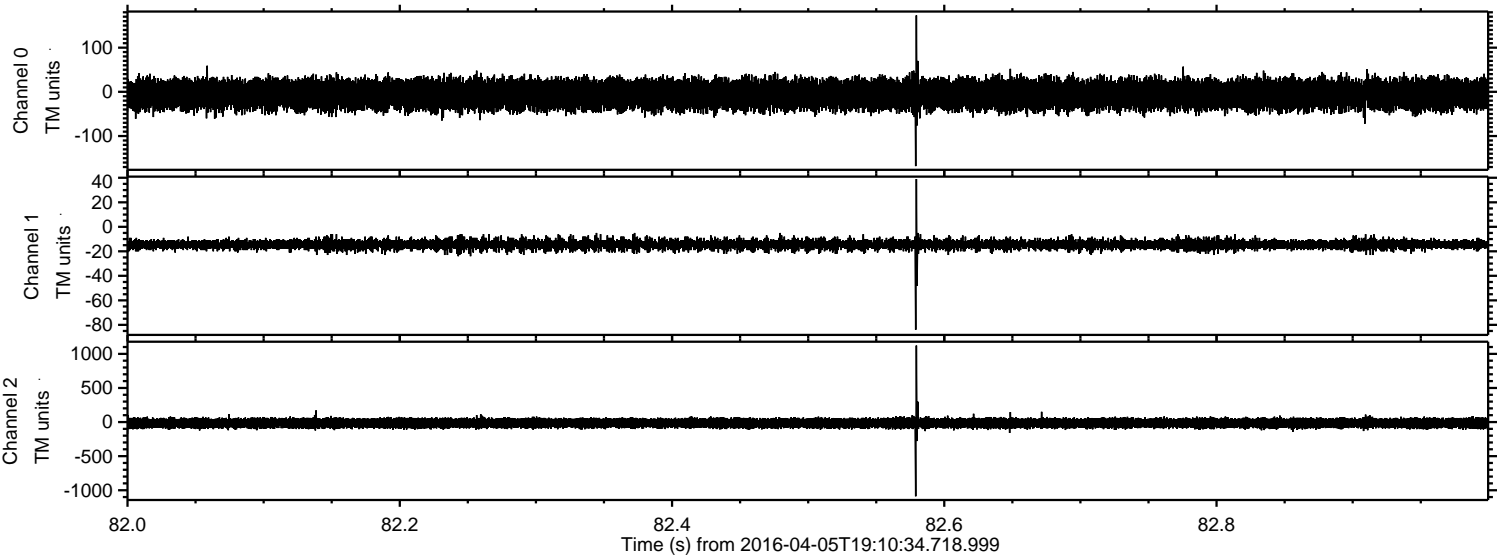


Processed Fri May 6 09:36:41 2016 by ELM ver.2012-10-06 from 001\_\_elm20160405\_191033\_\_dat00.bin



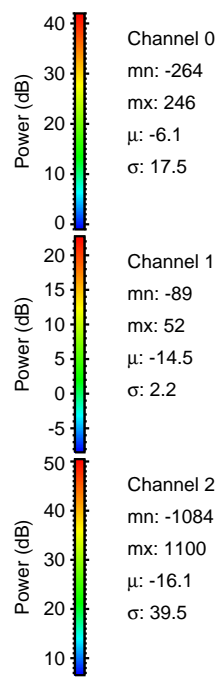
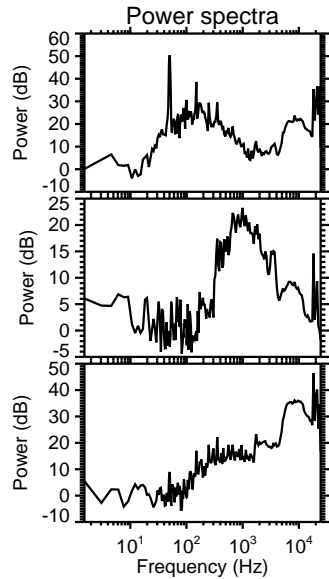
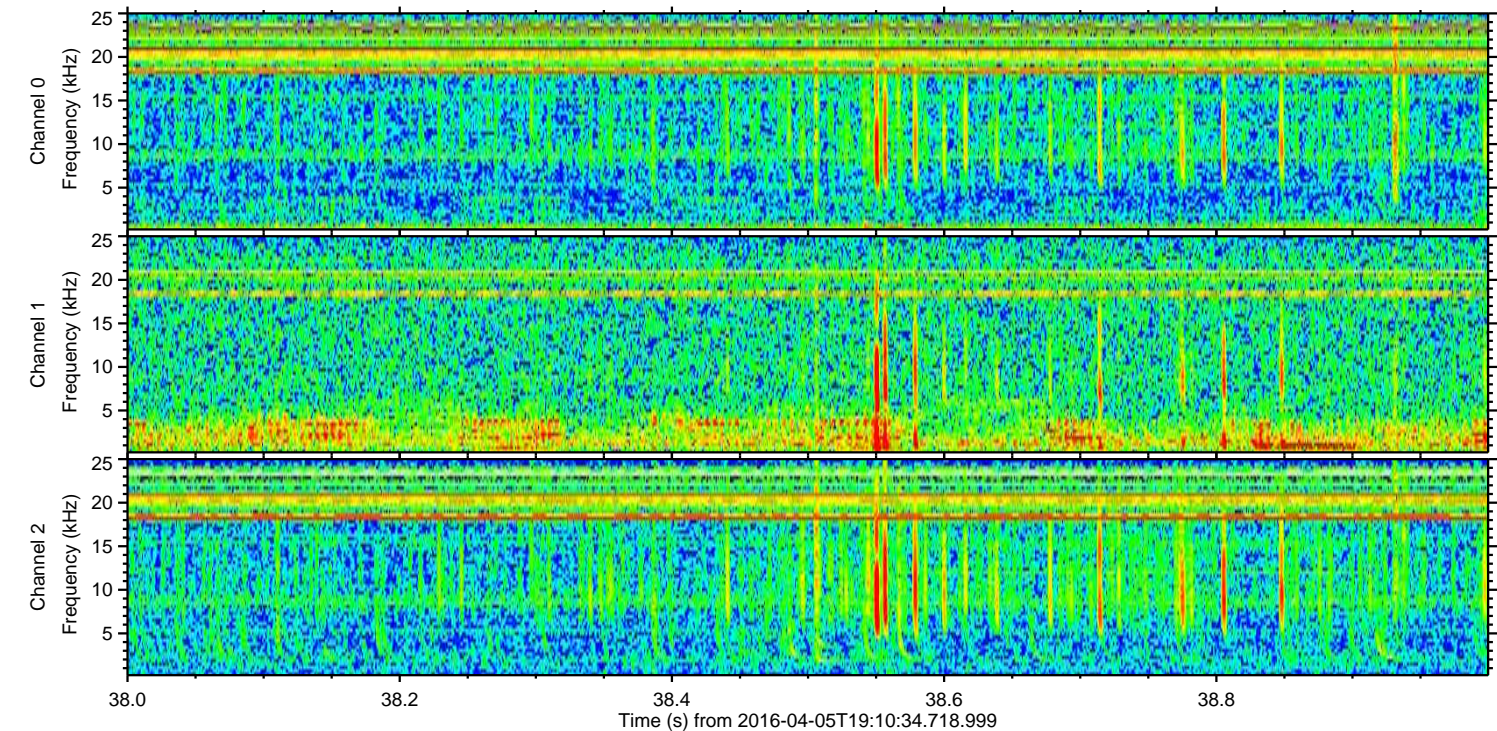
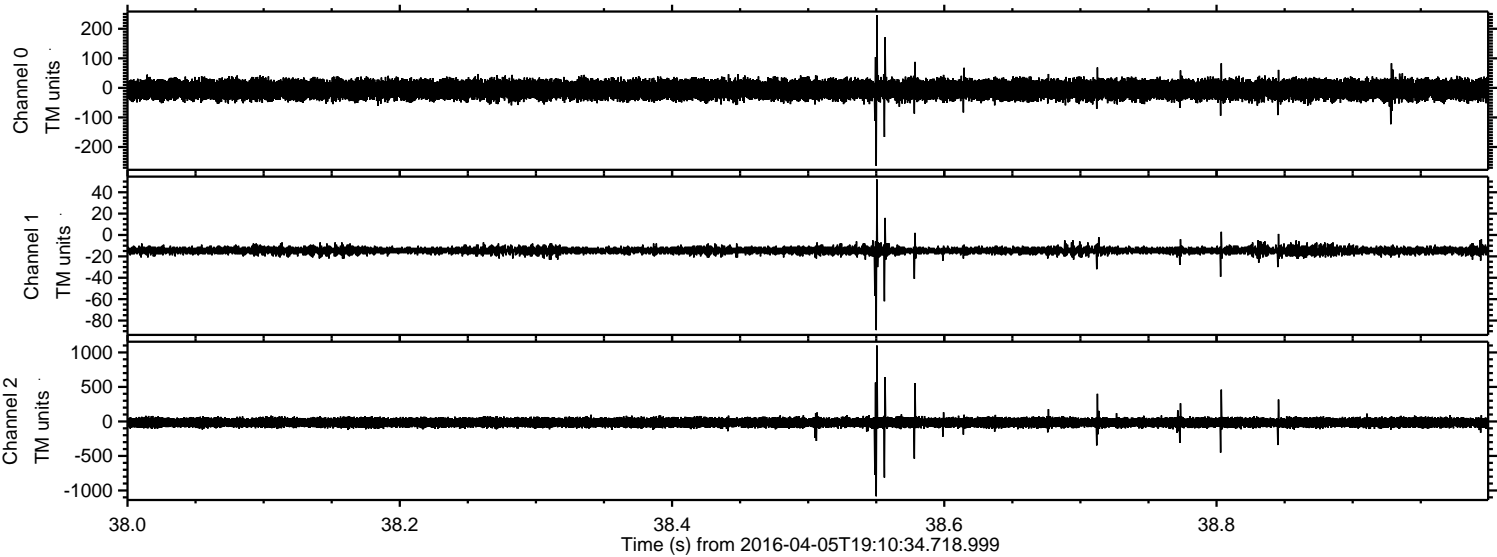


Processed Fri May 6 09:36:42 2016 by ELM ver.2012-10-06 from 001\_\_elm20160405\_191033\_\_dat00.bin



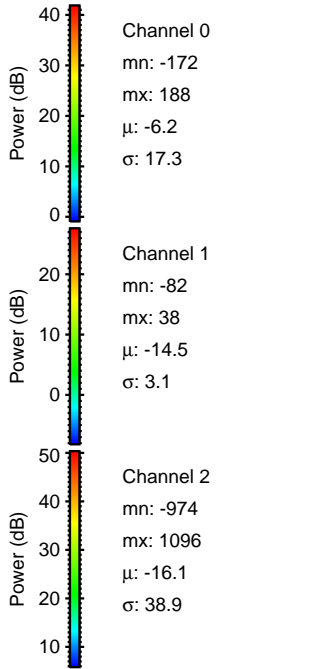
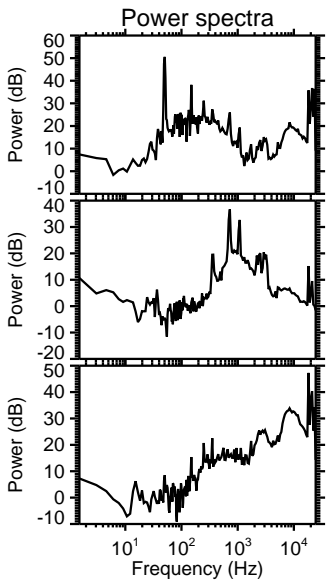
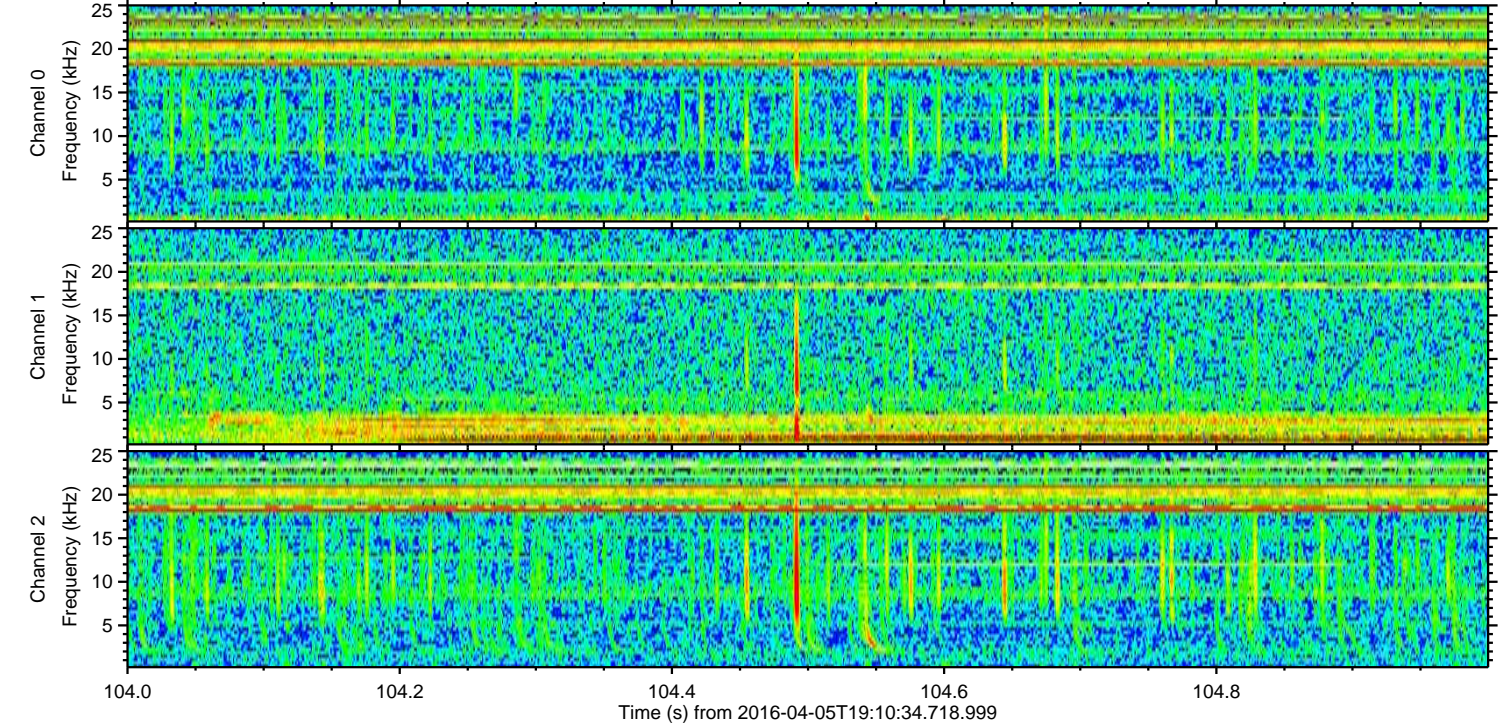
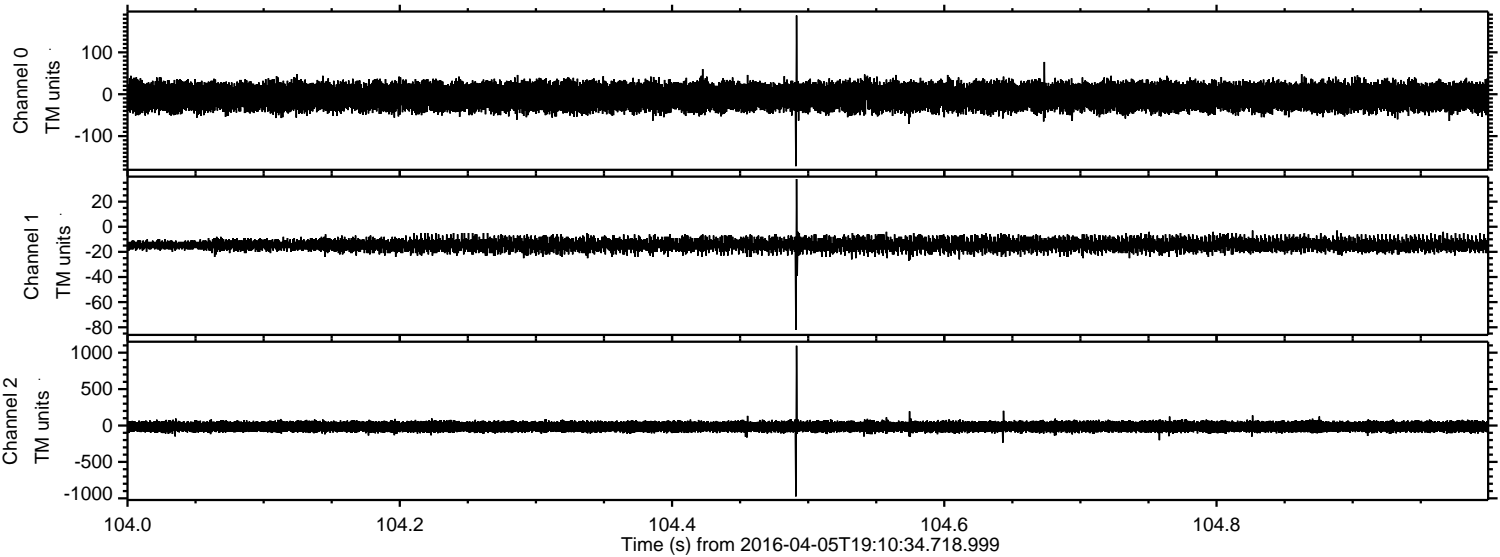


Processed Fri May 6 09:36:43 2016 by ELM ver.2012-10-06 from 001\_\_elm20160405\_191033\_\_dat00.bin





Processed Fri May 6 09:36:44 2016 by ELM ver.2012-10-06 from 001\_\_elm20160405\_191033\_\_dat00.bin





Processed Fri May 6 09:36:45 2016 by ELM ver.2012-10-06 from 001\_\_elm20160405\_191033\_\_dat00.bin

