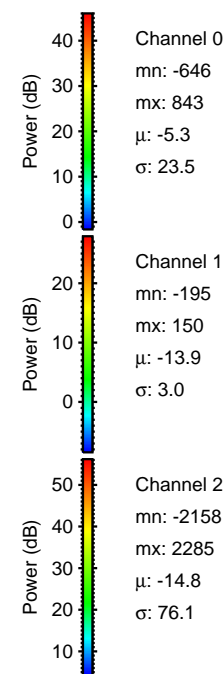
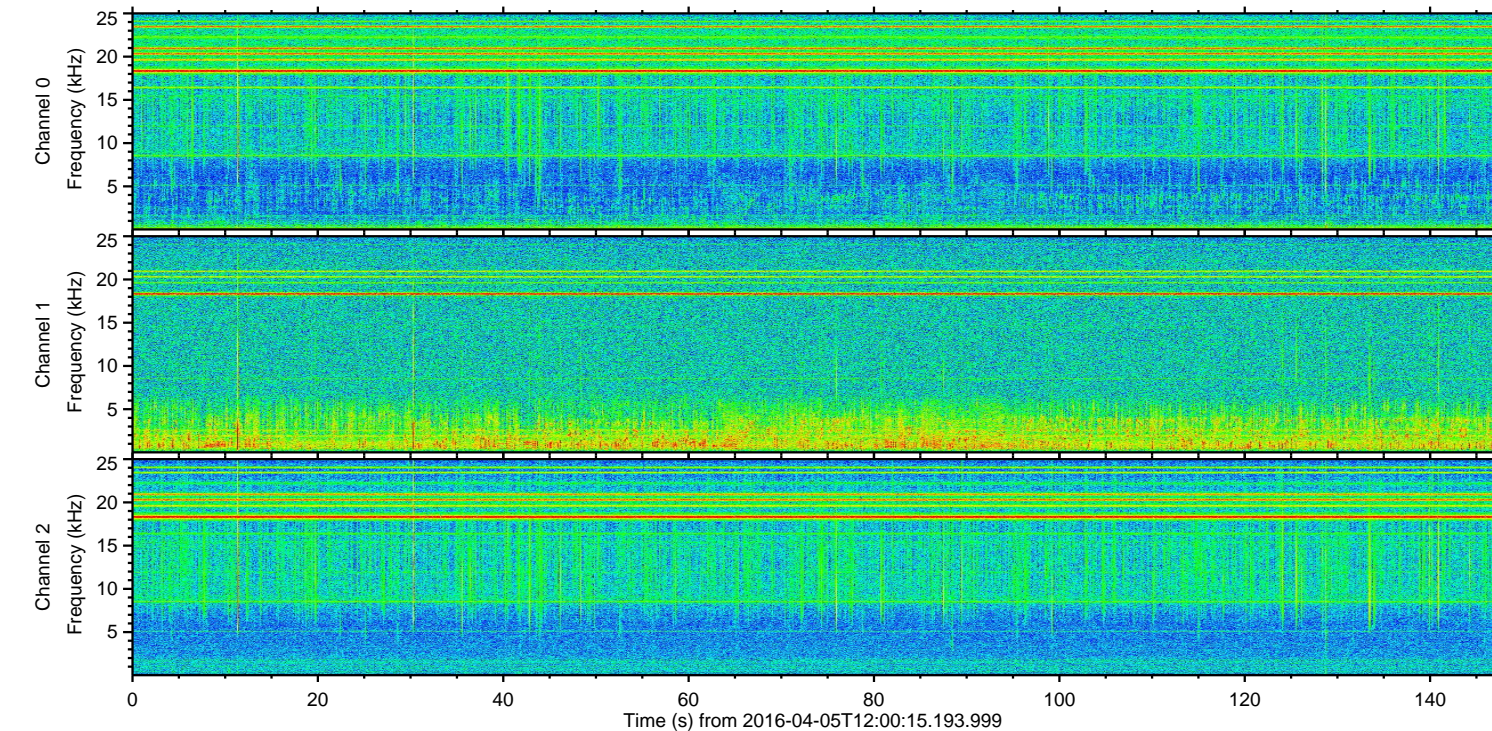
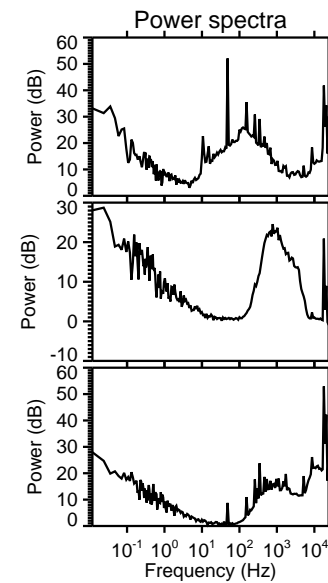
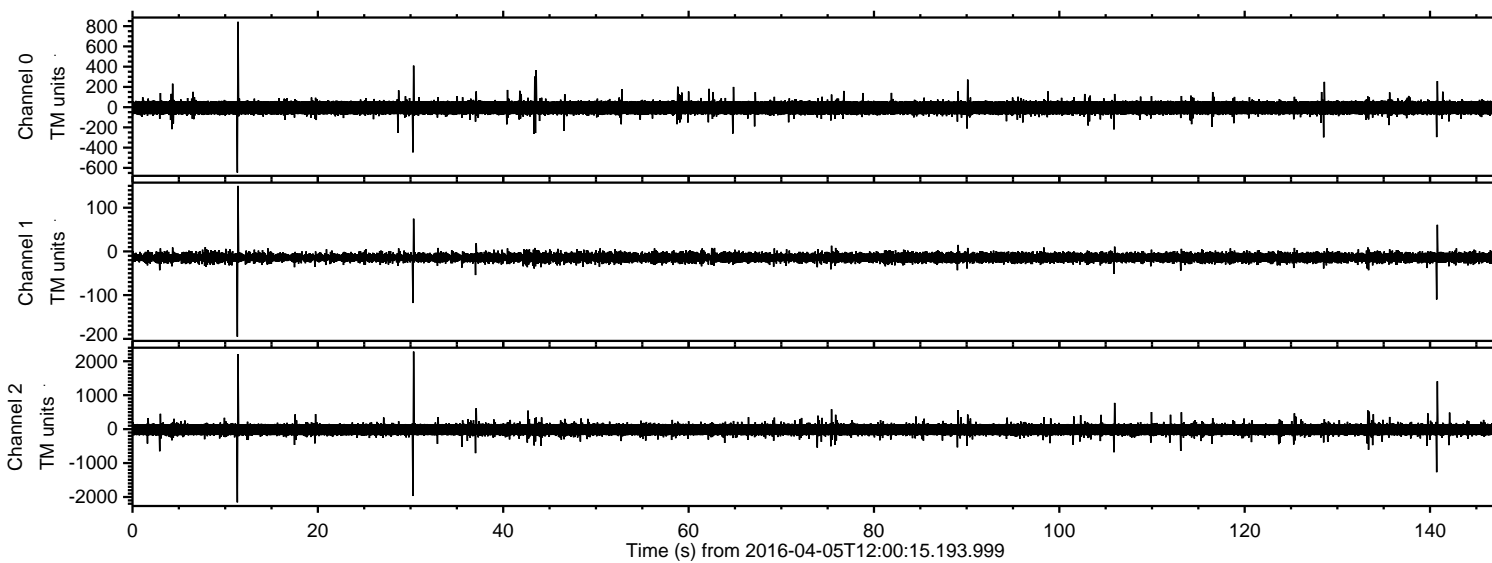
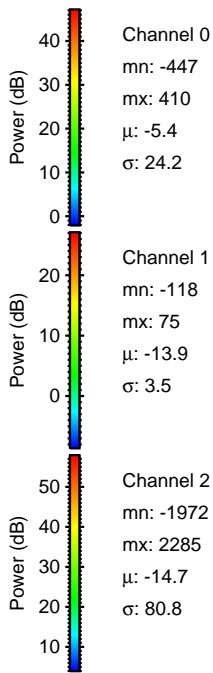
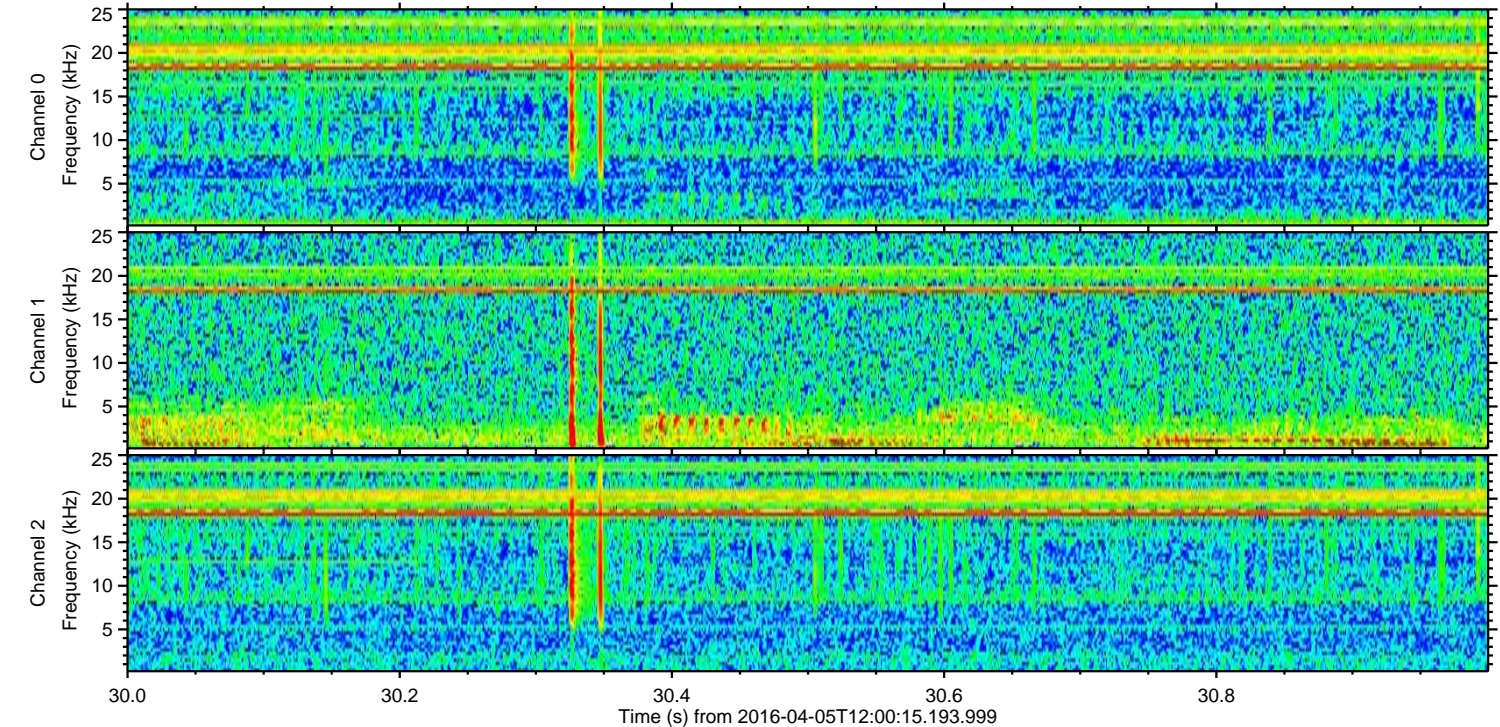
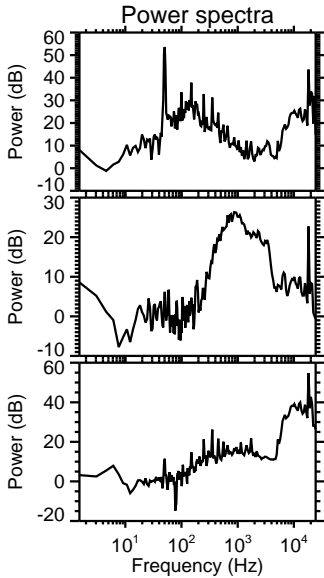
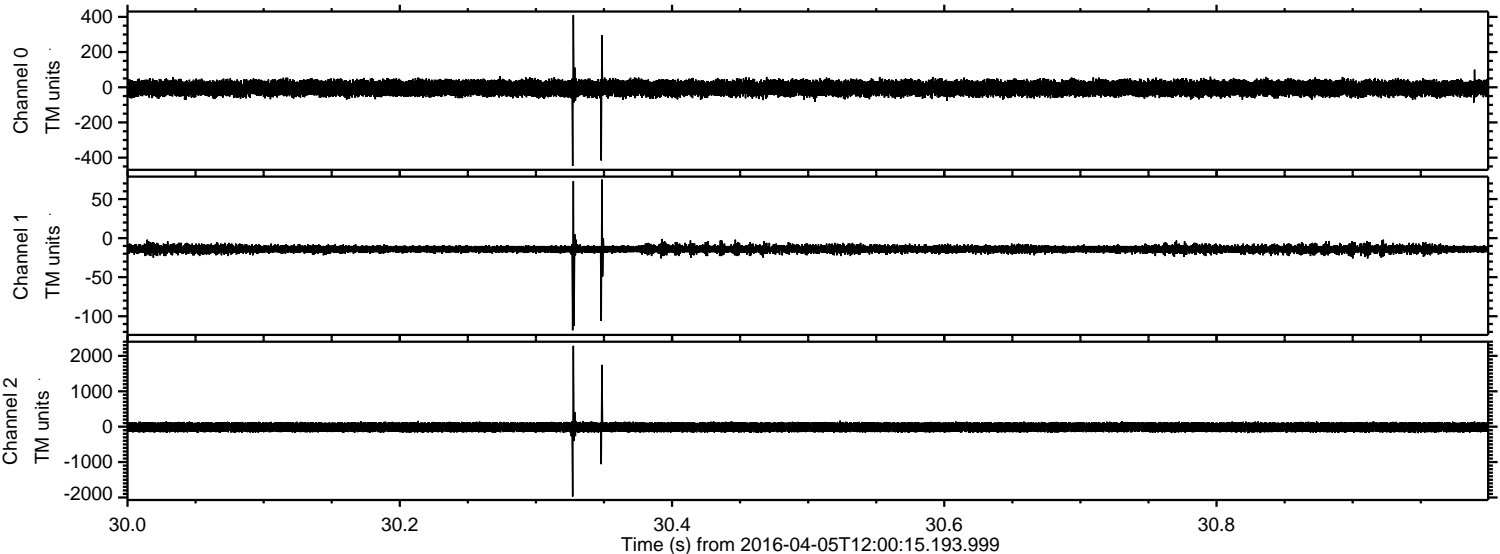


ELMAVAN 3D WAVEFORMS (Measured data sampled at 50 kHz) 51000 packets of 144 samples from 2016-04-05T12:00:15.193.999.

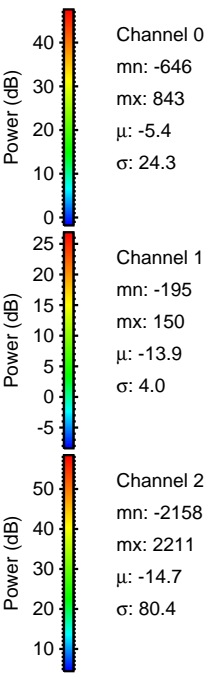
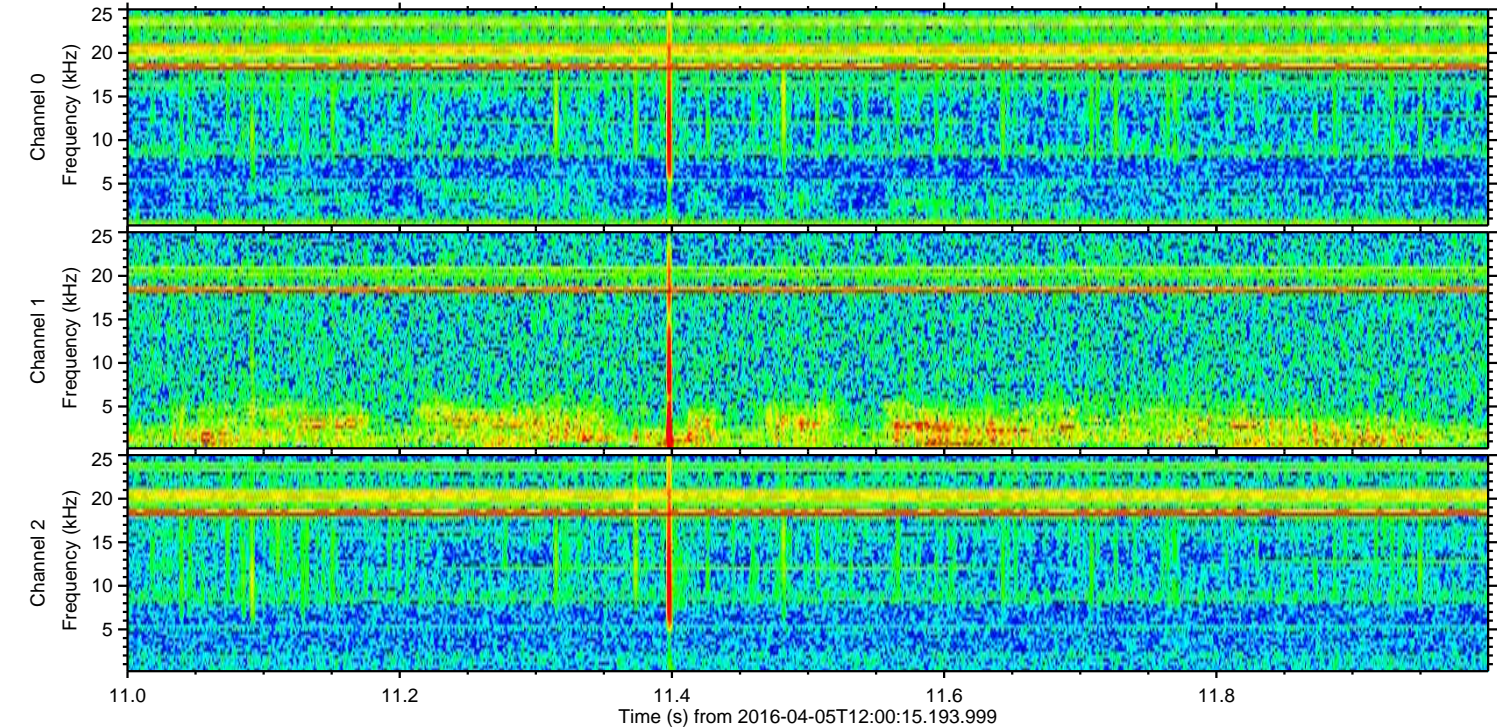
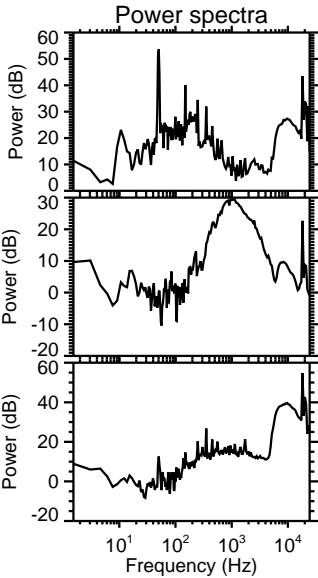
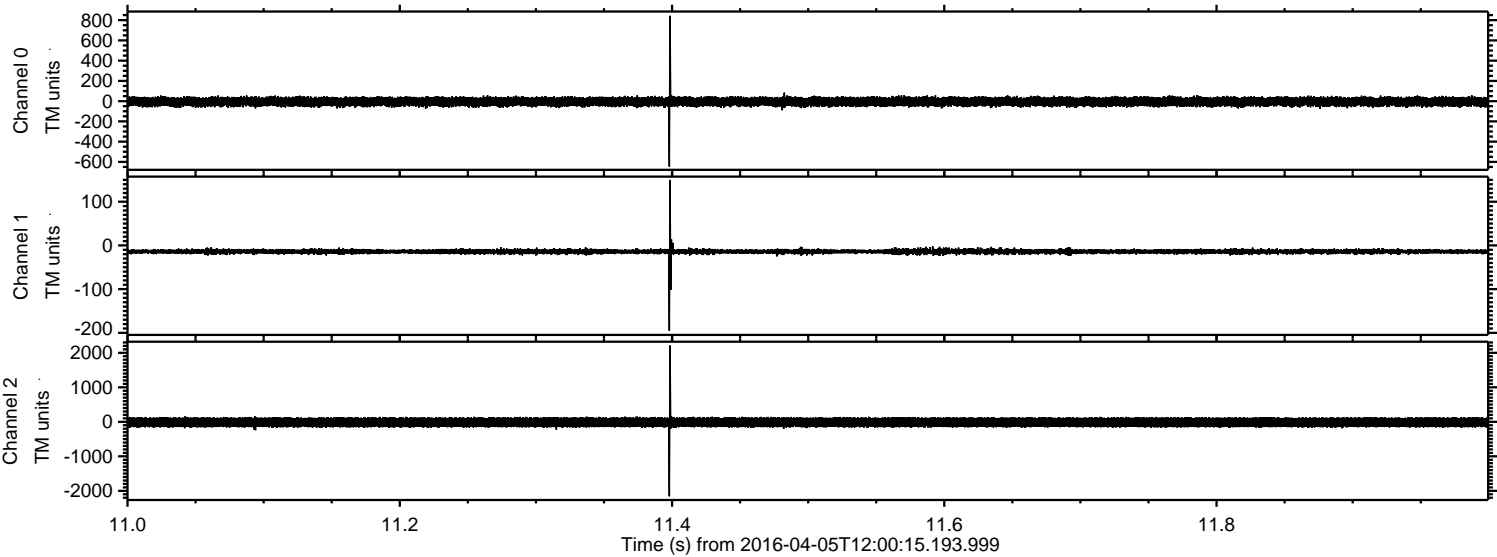
Processed Fri May 6 07:47:27 2016 by ELM ver.2012-10-06 from 001__elm20160405_120014__dat00.bin



Processed Fri May 6 07:47:43 2016 by ELM ver.2012-10-06 from 001__elm20160405_120014__dat00.bin



Processed Fri May 6 07:47:44 2016 by ELM ver.2012-10-06 from 001__elm20160405_120014__dat00.bin



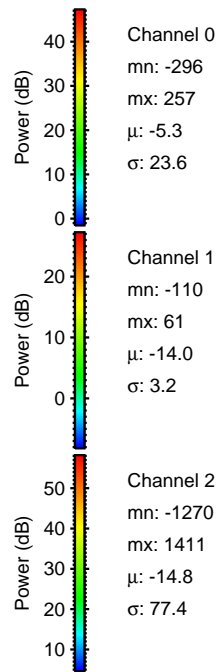
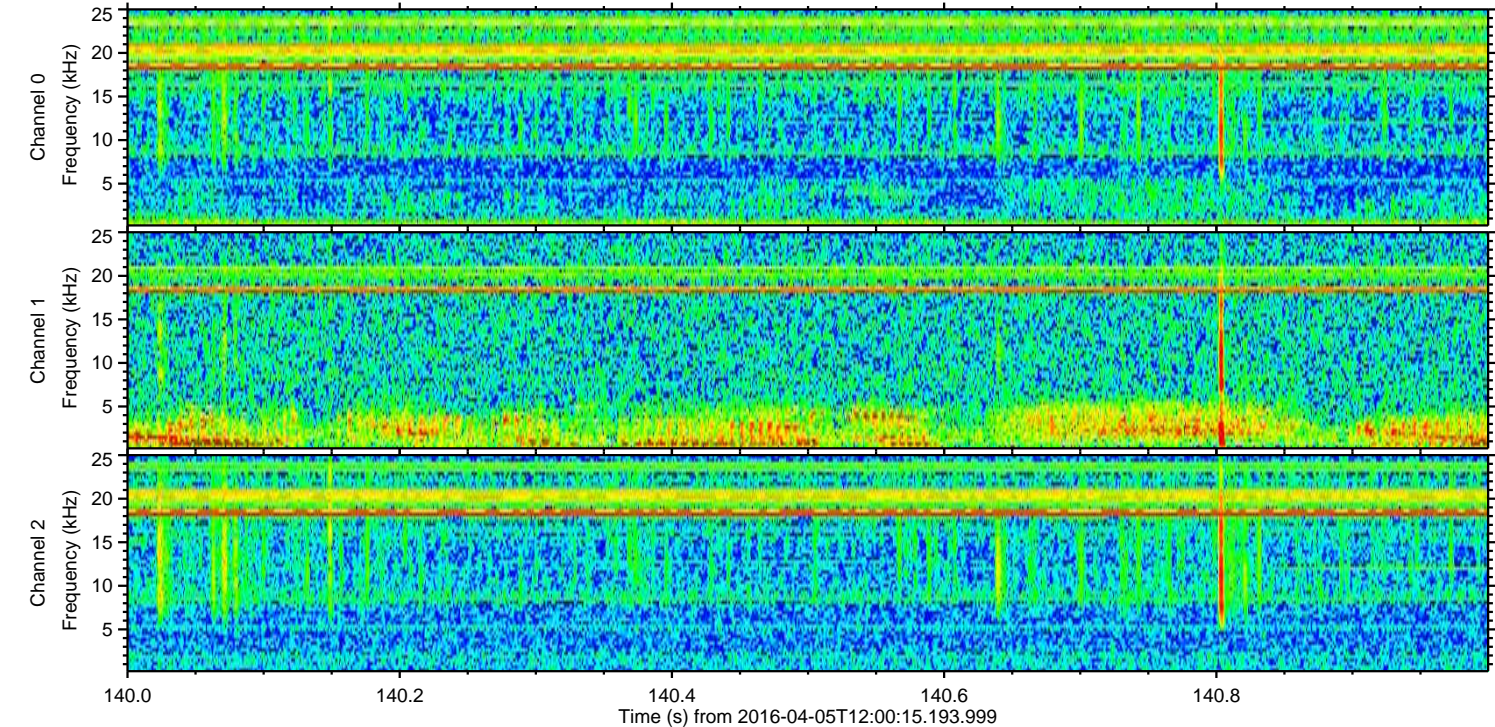
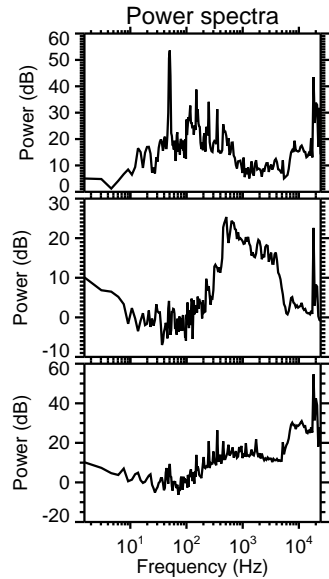
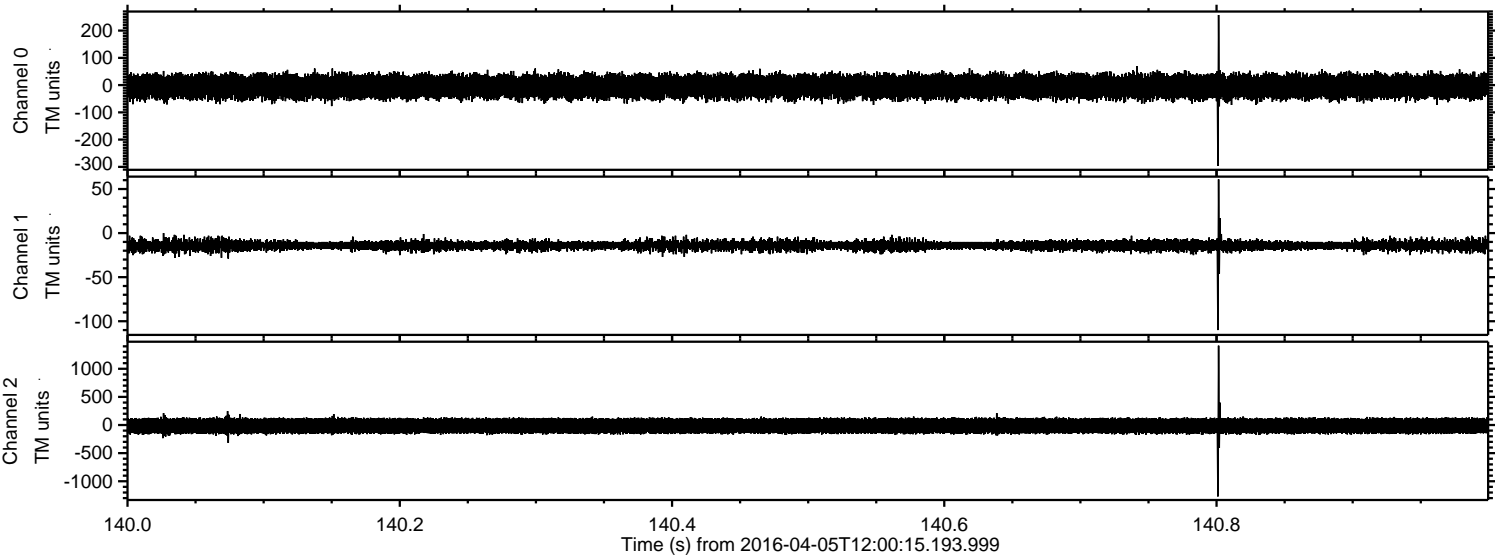
Channel 0
mn: -646
mx: 843
 μ : -5.4
 σ : 24.3

Channel 1
mn: -195
mx: 150
 μ : -13.9
 σ : 4.0

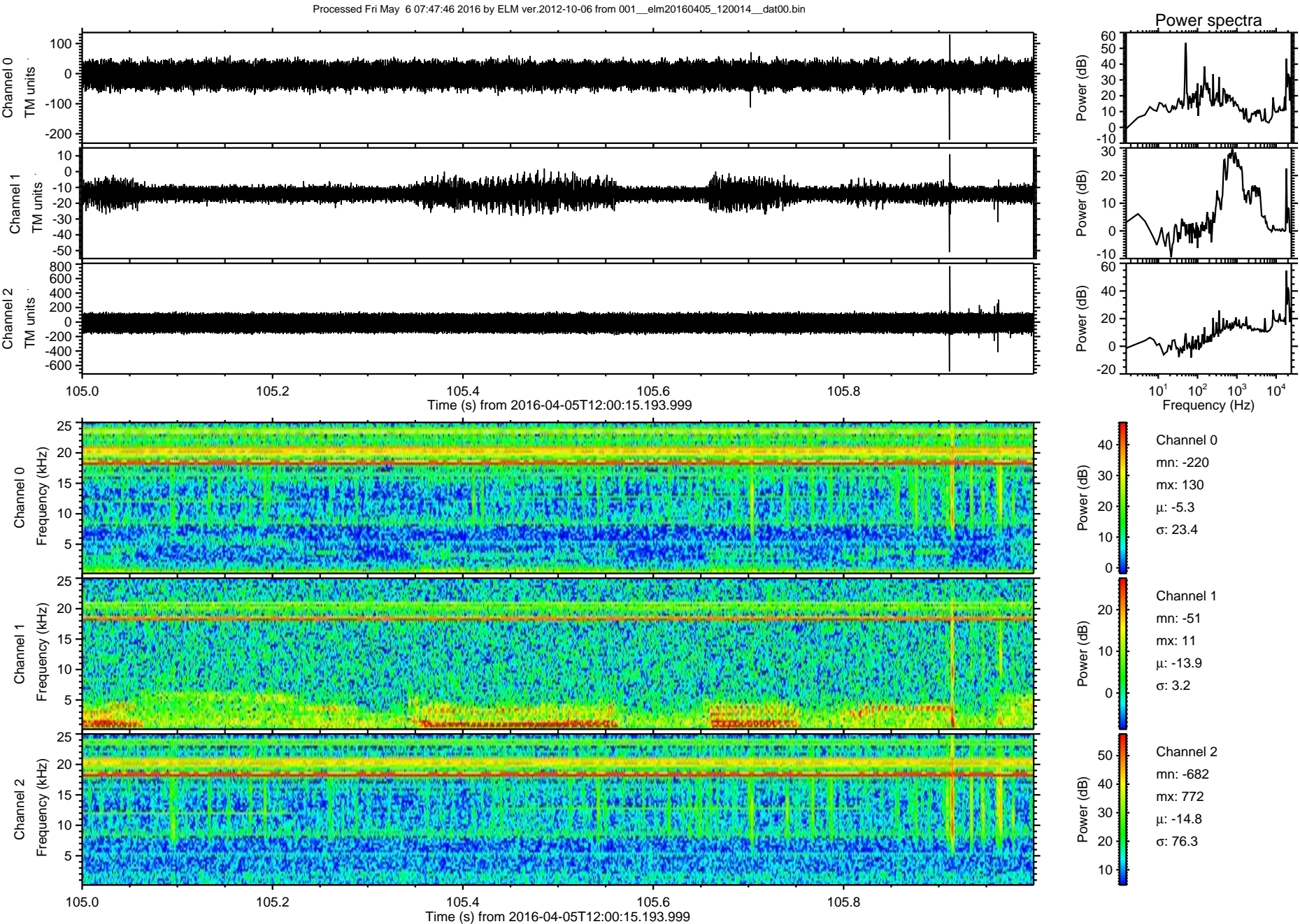
Channel 2
mn: -2158
mx: 2211
 μ : -14.7
 σ : 80.4

ELMAVAN 3D WAVEFORMS (Measured data sampled at 50 kHz) 51000 packets of 144 samples from 2016-04-05T12:00:15.193.999. Part 141/147

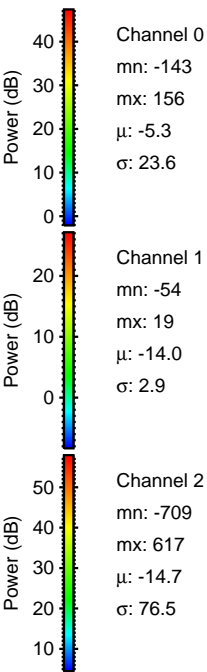
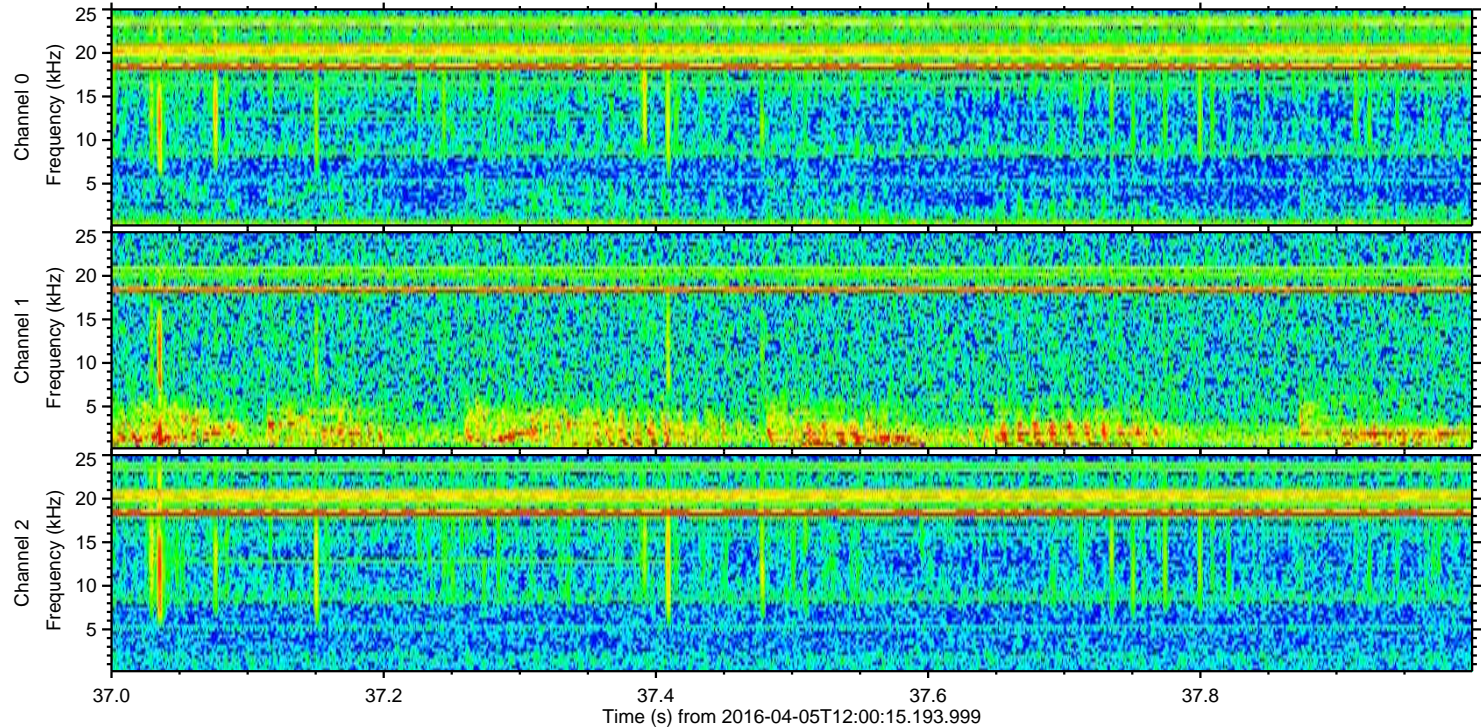
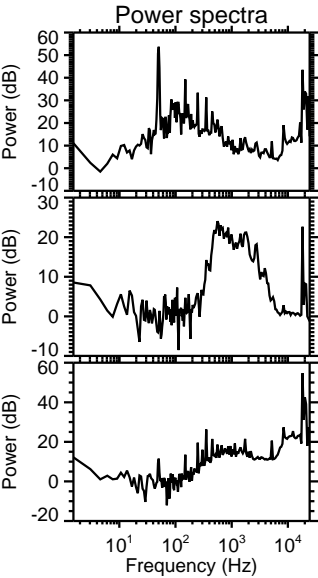
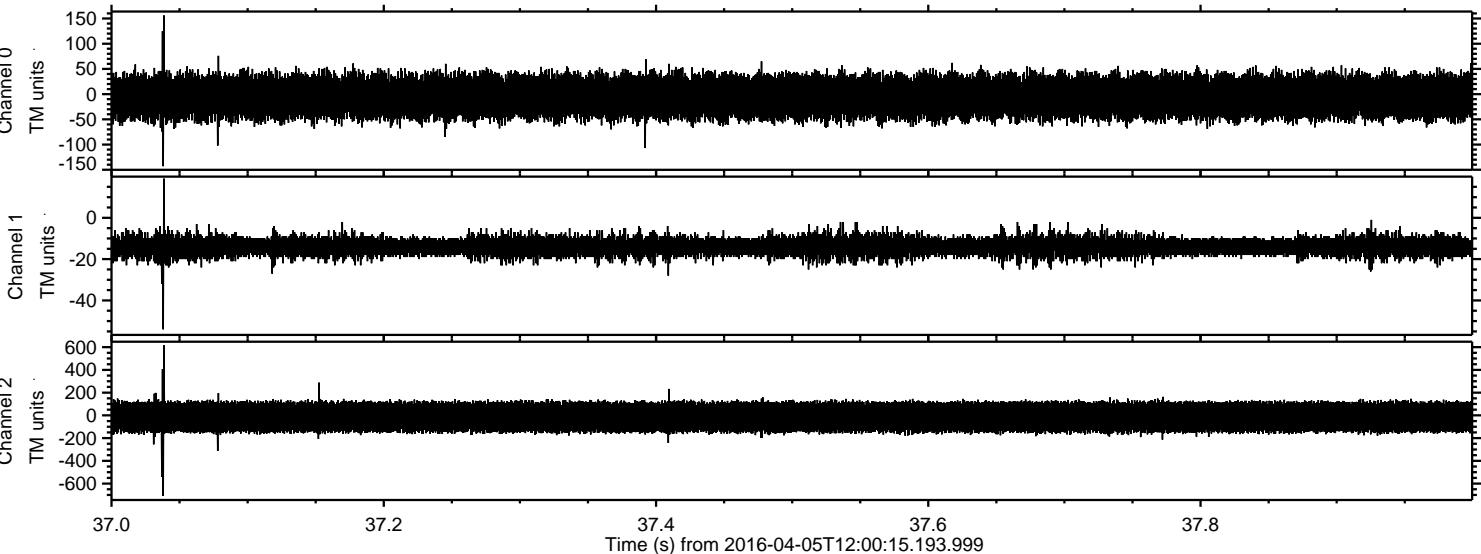
Processed Fri May 6 07:47:45 2016 by ELM ver.2012-10-06 from 001__elm20160405_120014__dat00.bin



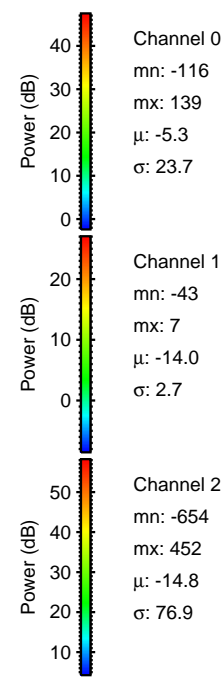
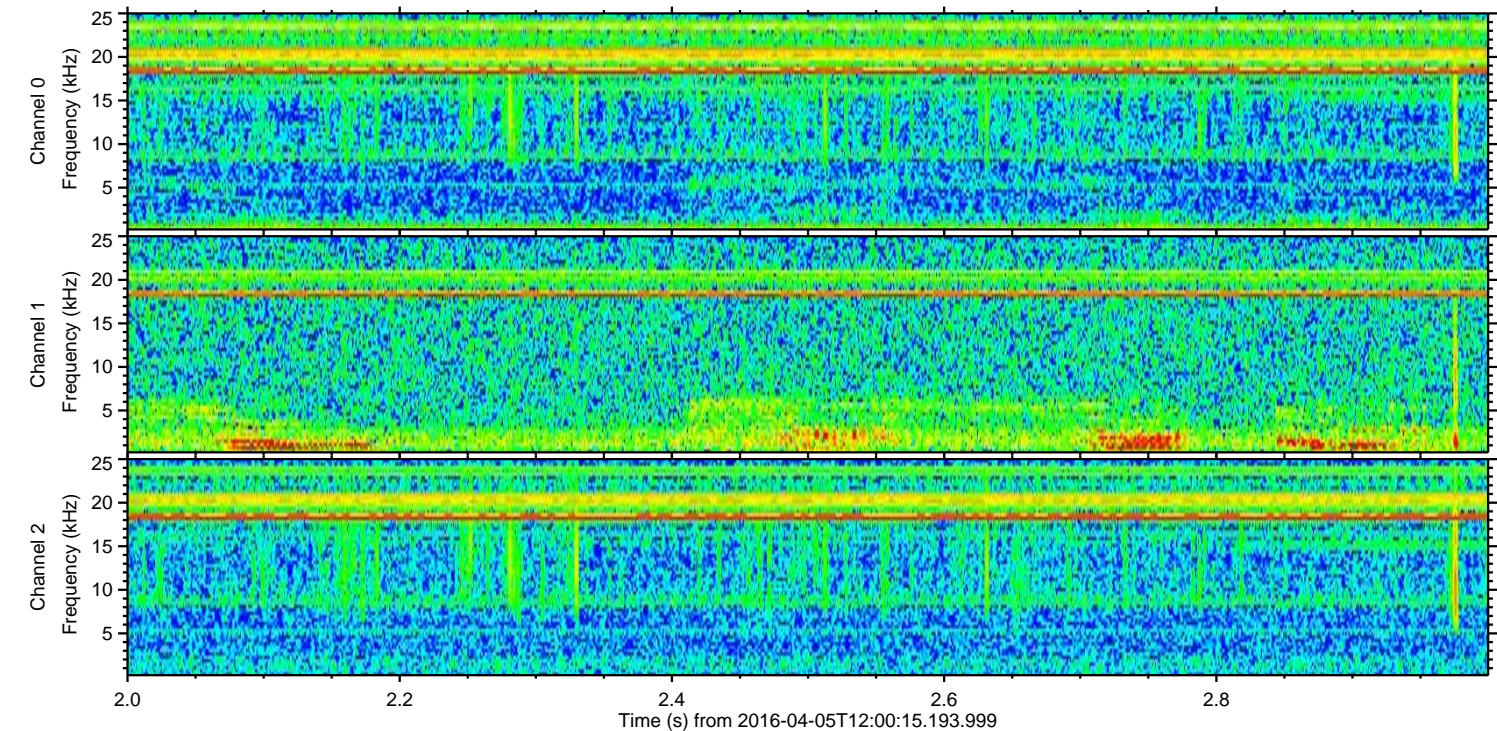
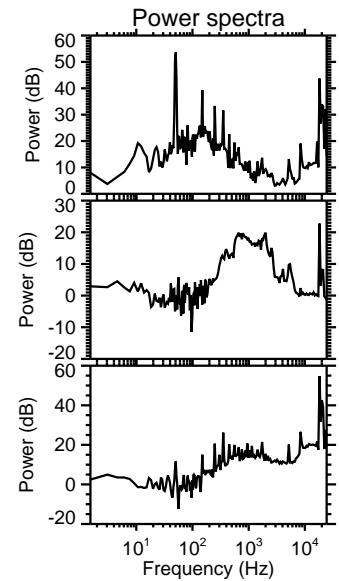
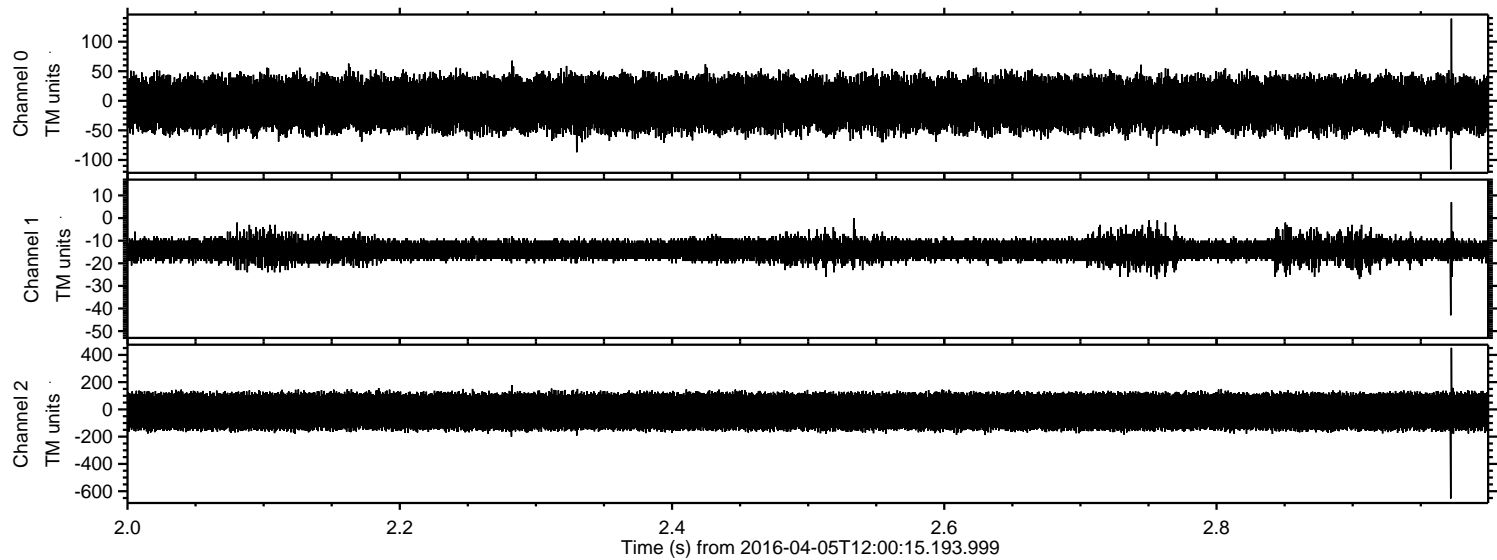
ELMAVAN 3D WAVEFORMS (Measured data sampled at 50 kHz) 51000 packets of 144 samples from 2016-04-05T12:00:15.193.999. Part 106/147



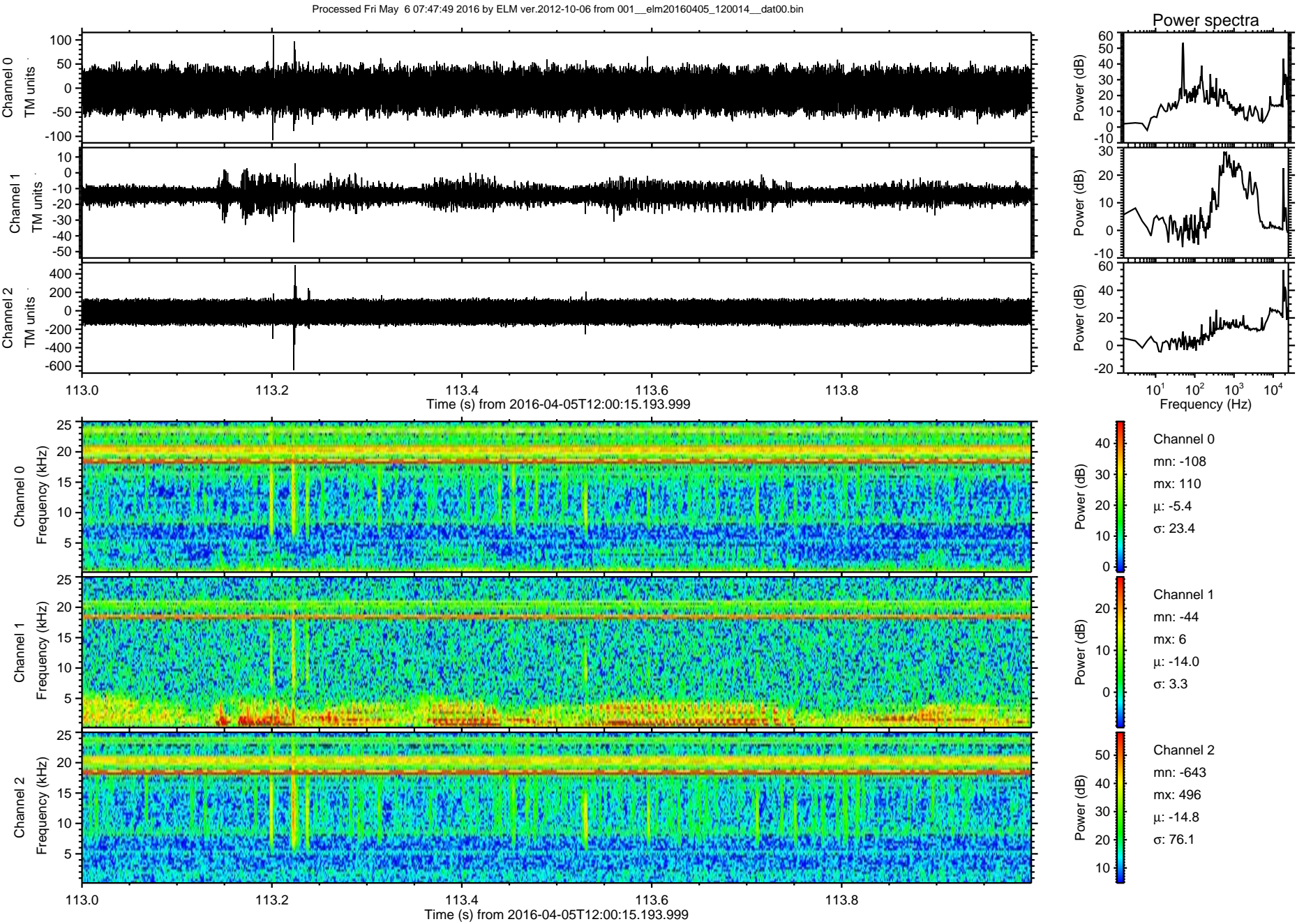
Processed Fri May 6 07:47:47 2016 by ELM ver.2012-10-06 from 001__elm20160405_120014__dat00.bin



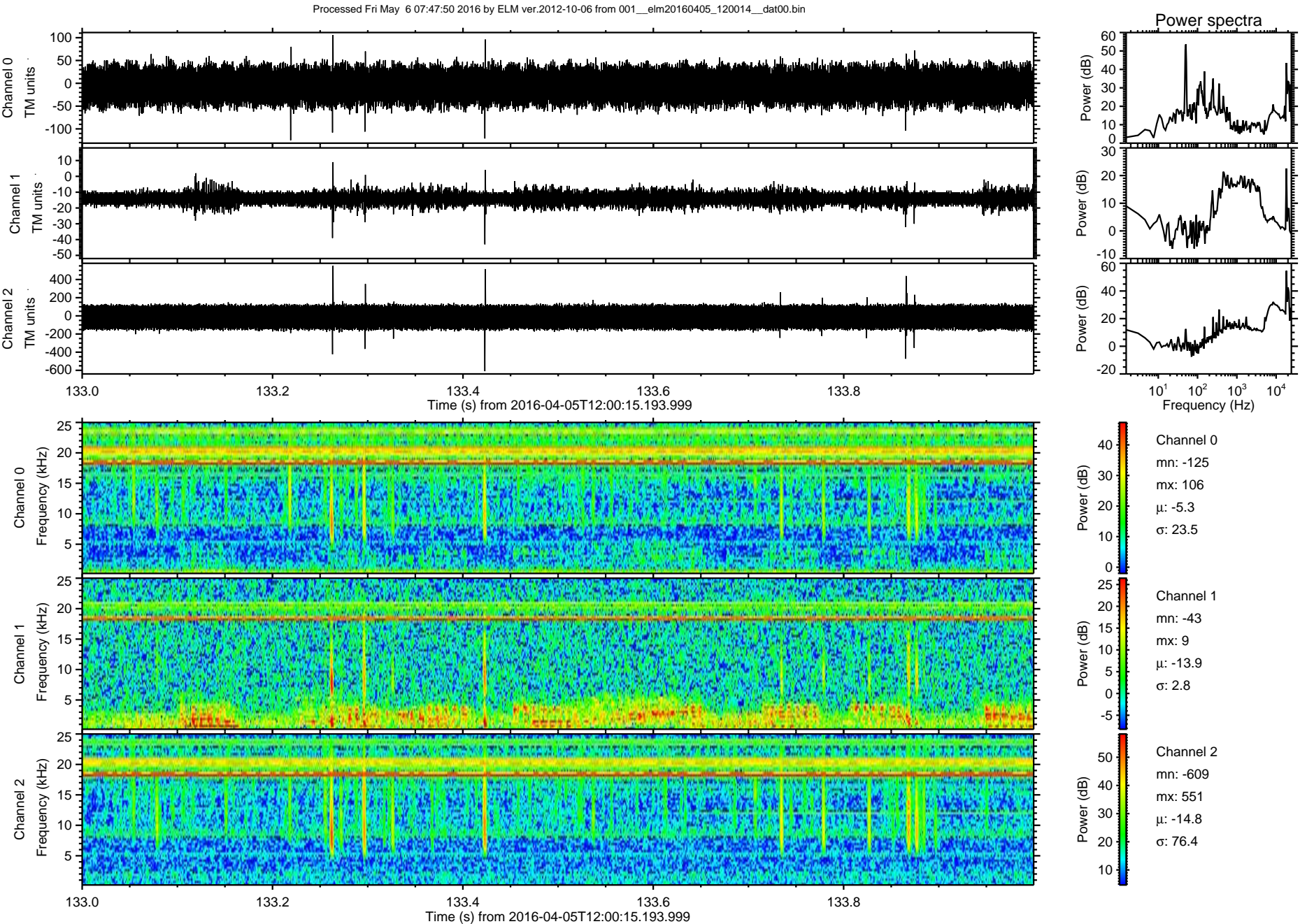
Processed Fri May 6 07:47:48 2016 by ELM ver.2012-10-06 from 001__elm20160405_120014__dat00.bin



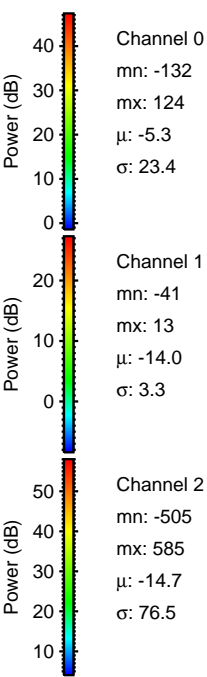
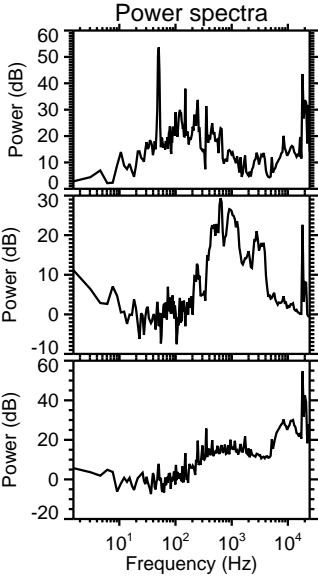
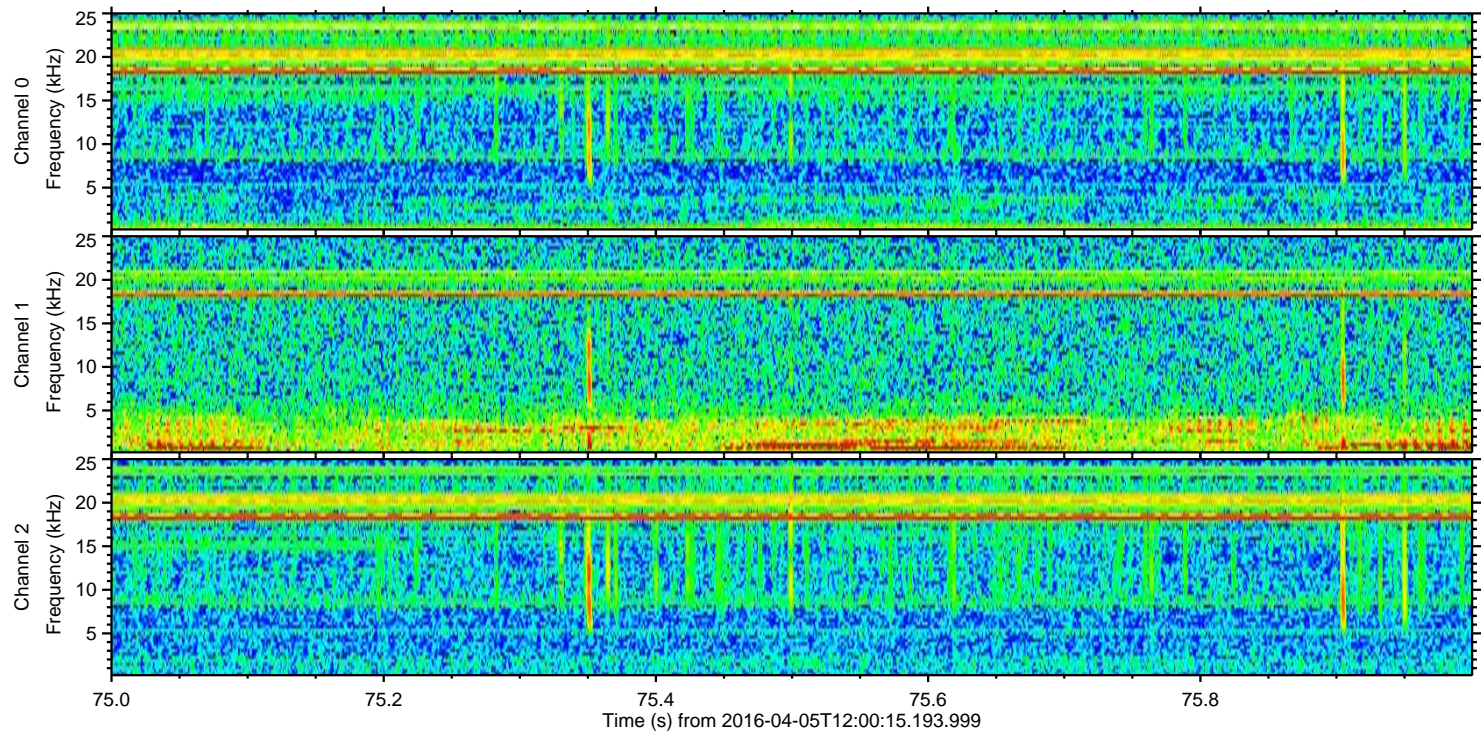
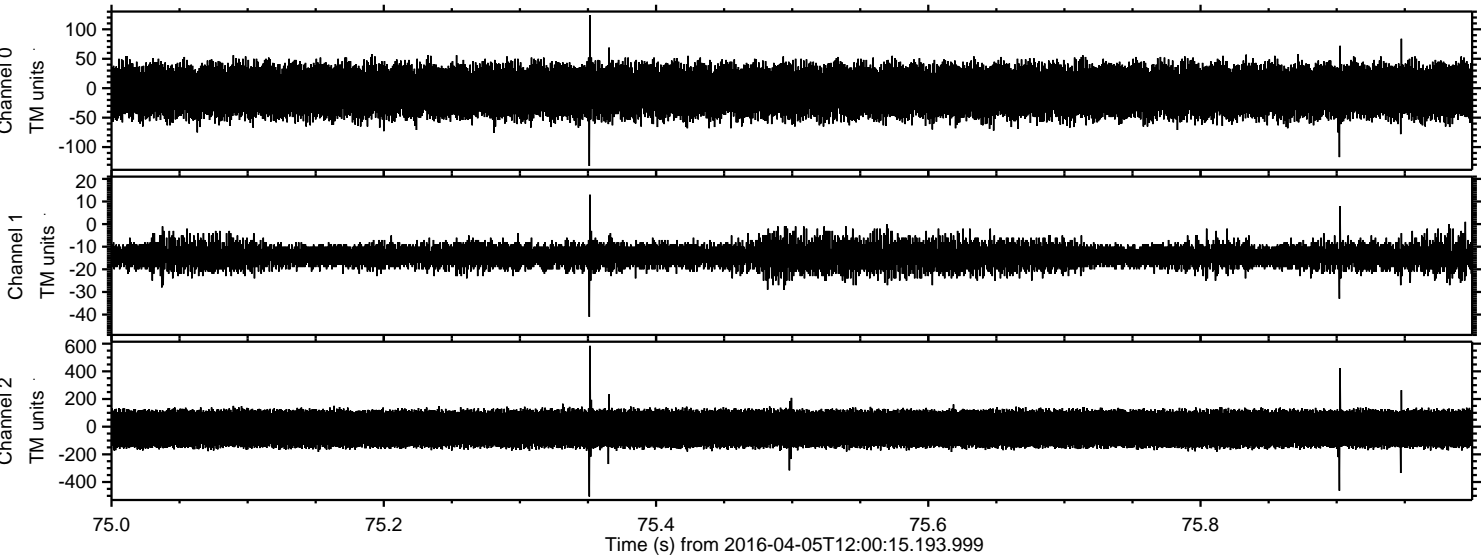
ELMAVAN 3D WAVEFORMS (Measured data sampled at 50 kHz) 51000 packets of 144 samples from 2016-04-05T12:00:15.193.999. Part 114/147



ELMAVAN 3D WAVEFORMS (Measured data sampled at 50 kHz) 51000 packets of 144 samples from 2016-04-05T12:00:15.193.999. Part 134/147



Processed Fri May 6 07:47:51 2016 by ELM ver.2012-10-06 from 001__elm20160405_120014__dat00.bin



Channel 0
mn: -132
mx: 124
 μ : -5.3
 σ : 23.4

Channel 1
mn: -41
mx: 13
 μ : -14.0
 σ : 3.3

Channel 2
mn: -505
mx: 585
 μ : -14.7
 σ : 76.5

