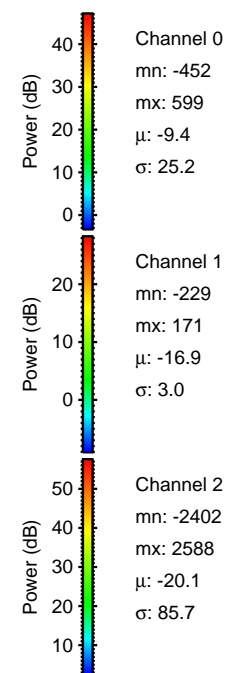
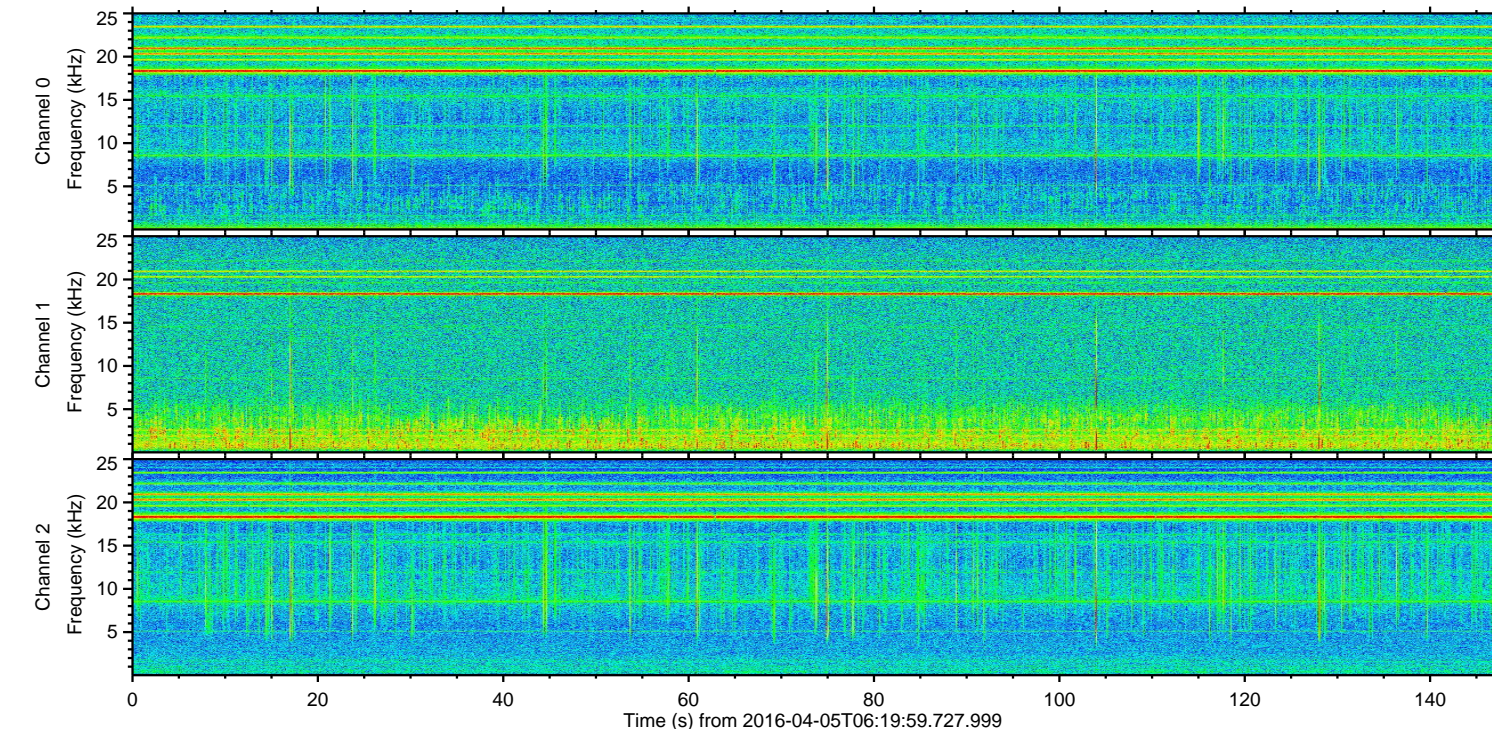
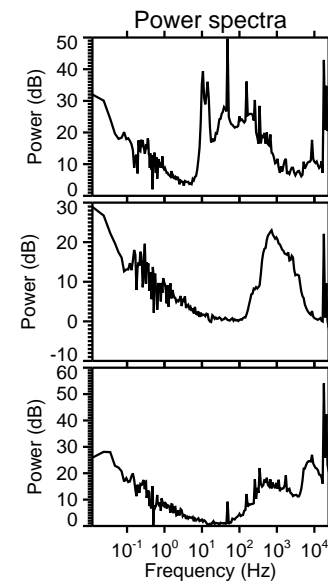
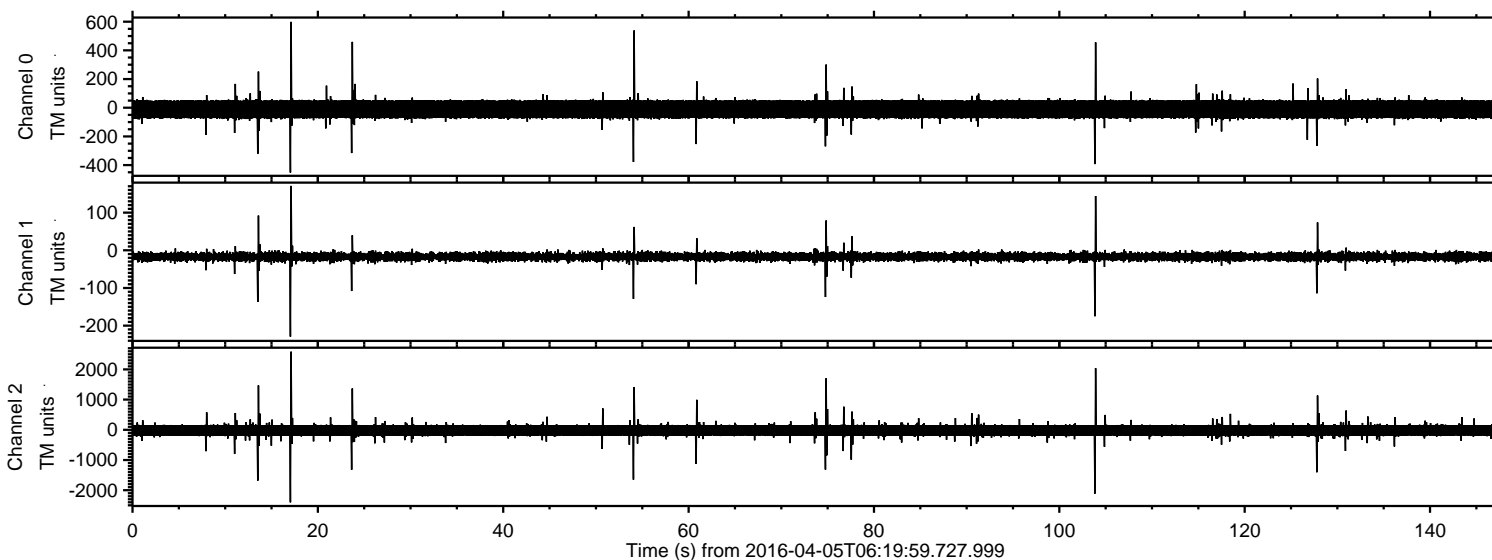


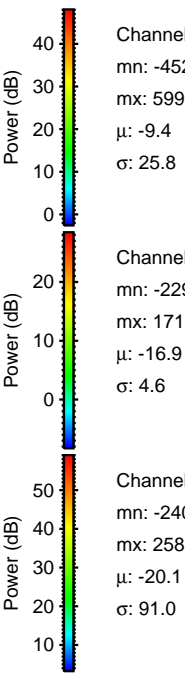
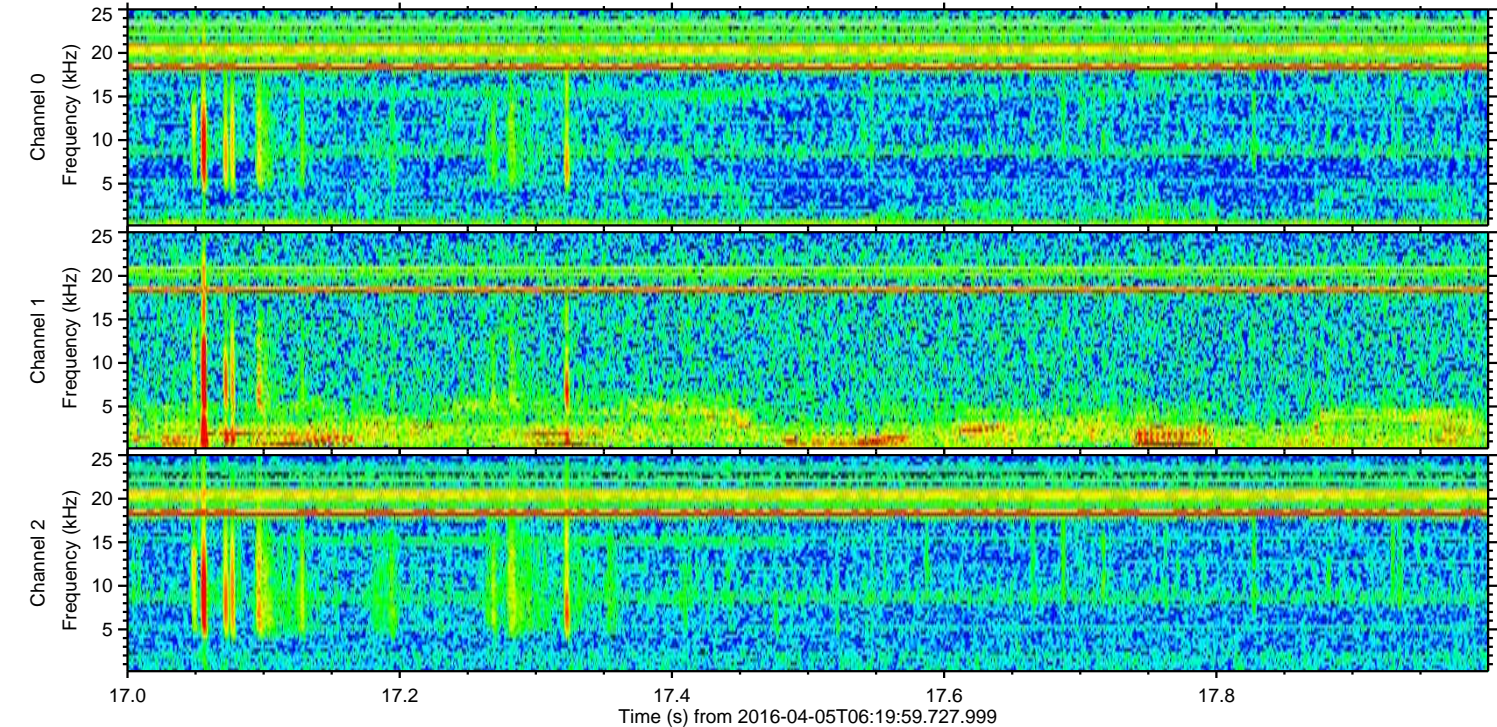
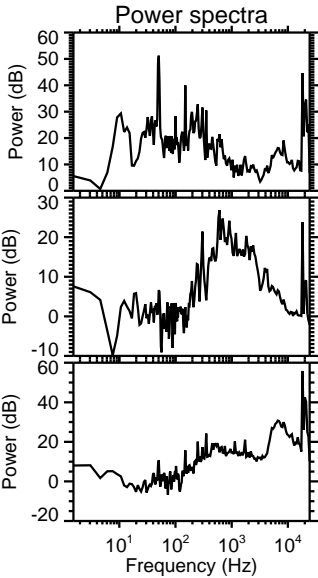
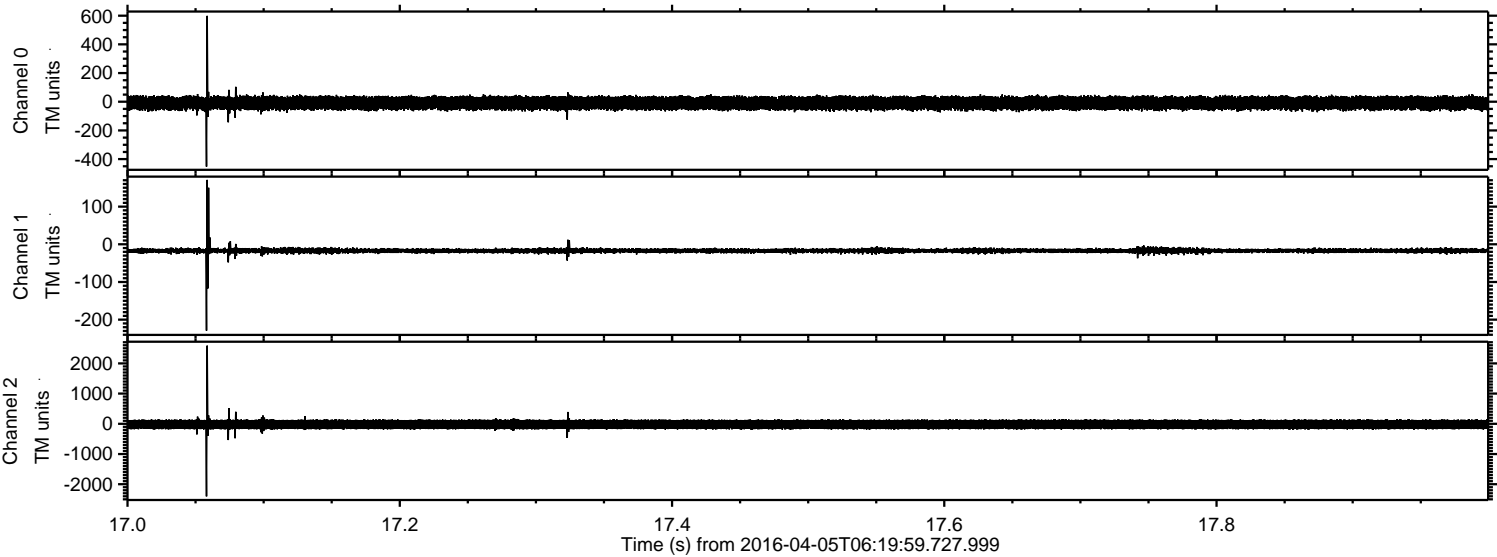
ELMAVAN 3D WAVEFORMS (Measured data sampled at 50 kHz) 51000 packets of 144 samples from 2016-04-05T06:19:59.727.999.

Processed Fri May 6 06:21:50 2016 by ELM ver.2012-10-06 from 001__elm20160405_061958__dat00.bin



ELMAVAN 3D WAVEFORMS (Measured data sampled at 50 kHz) 51000 packets of 144 samples from 2016-04-05T06:19:59.727.999. Part 18/147

Processed Fri May 6 06:22:05 2016 by ELM ver.2012-10-06 from 001__elm20160405_061958__dat00.bin



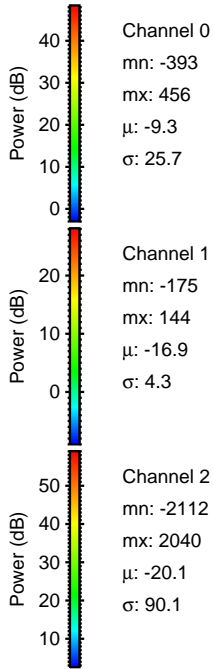
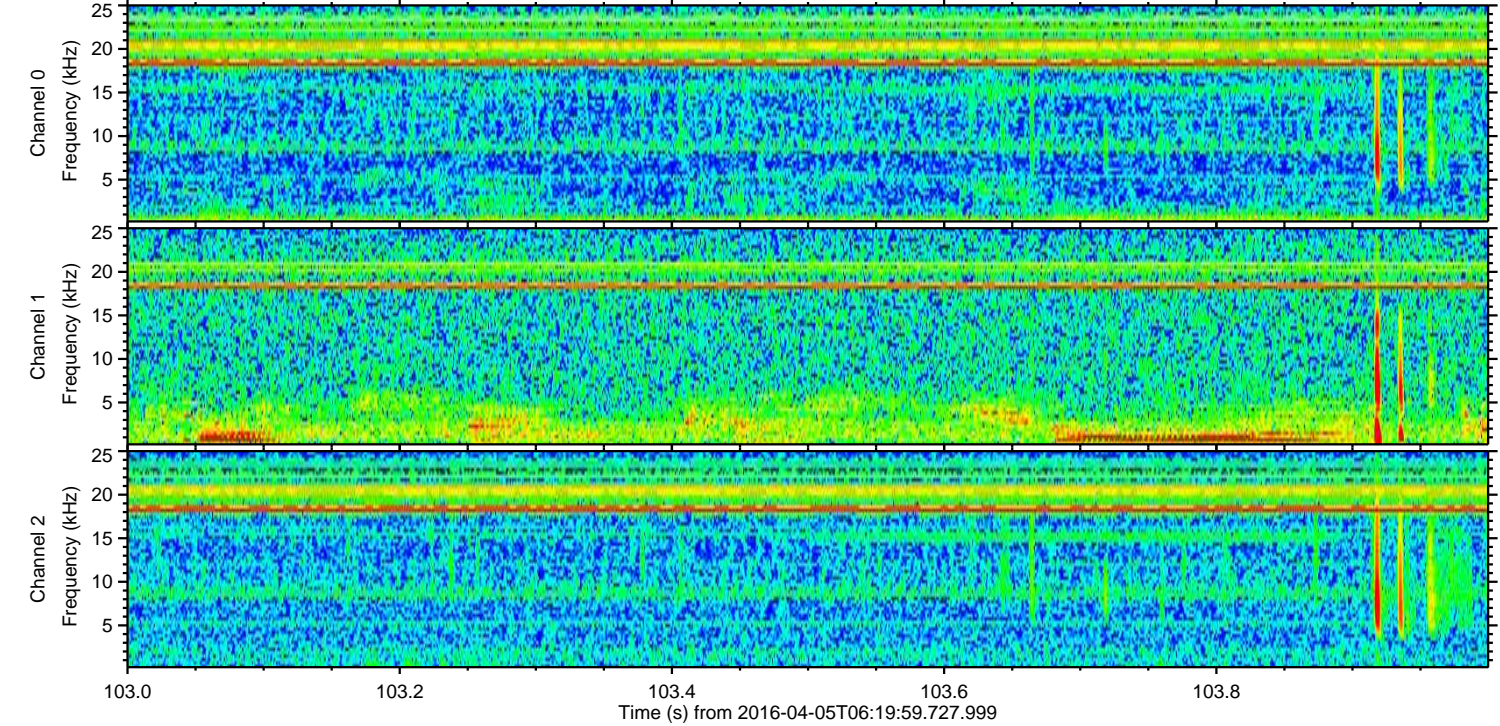
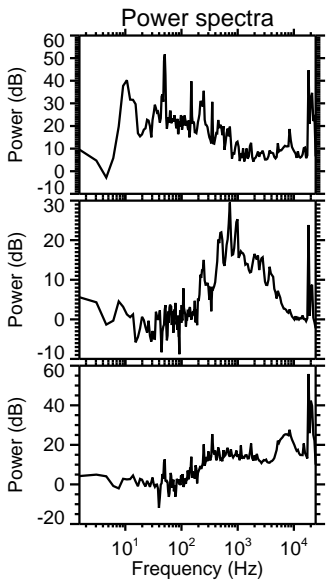
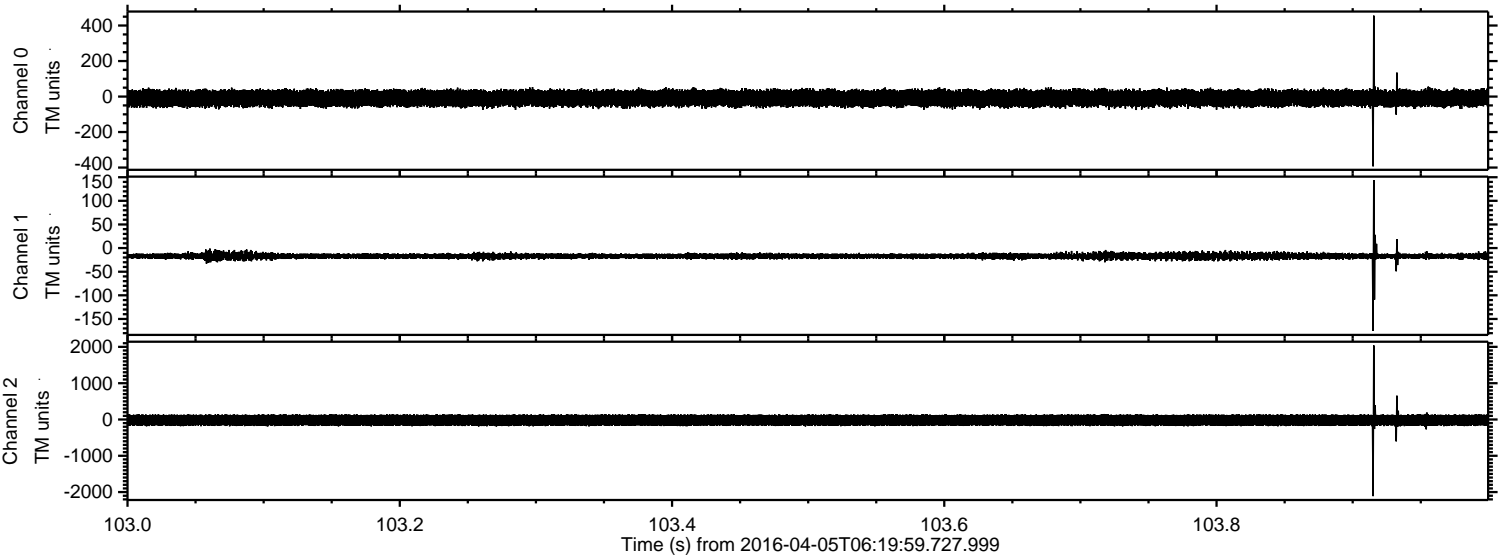
Channel 0
mn: -452
mx: 599
 μ : -9.4
 σ : 25.8

Channel 1
mn: -229
mx: 171
 μ : -16.9
 σ : 4.6

Channel 2
mn: -2402
mx: 2588
 μ : -20.1
 σ : 91.0

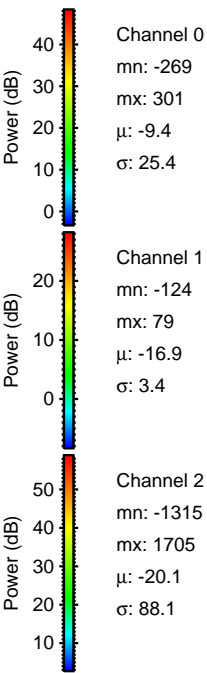
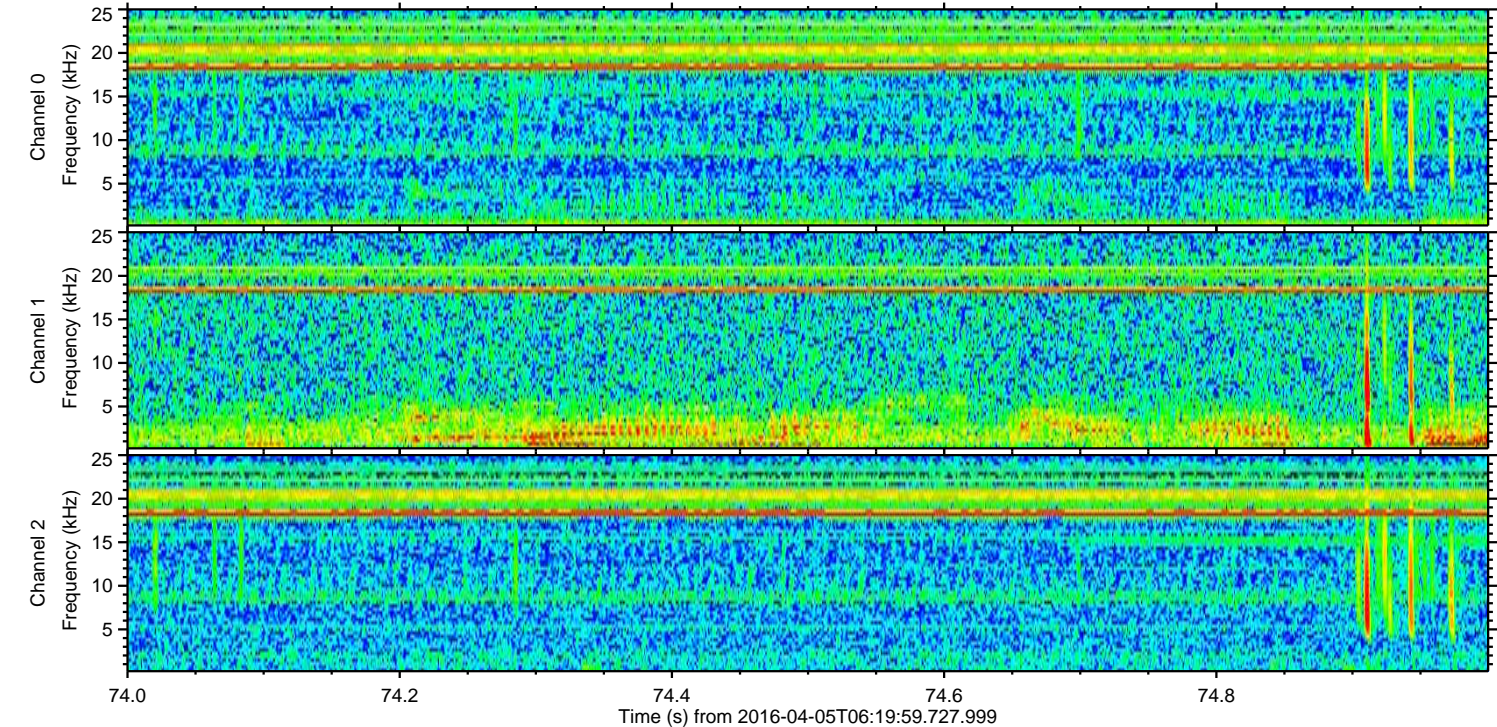
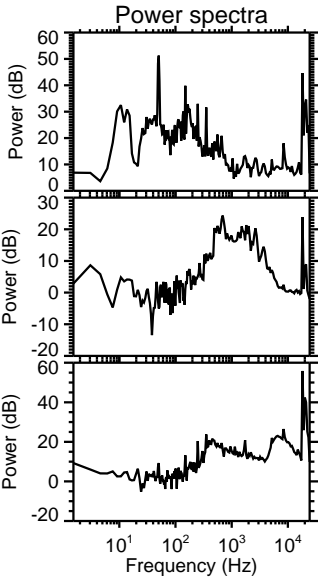
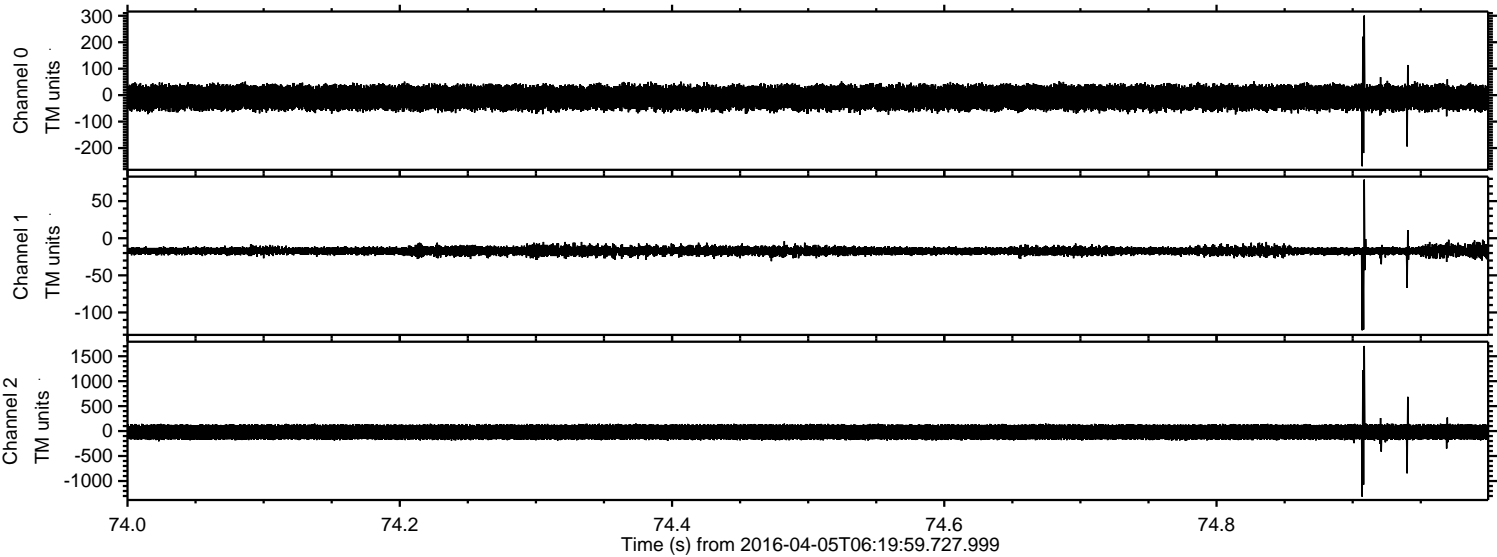
ELMAVAN 3D WAVEFORMS (Measured data sampled at 50 kHz) 51000 packets of 144 samples from 2016-04-05T06:19:59.727.999. Part 104/147

Processed Fri May 6 06:22:06 2016 by ELM ver.2012-10-06 from 001__elm20160405_061958__dat00.bin

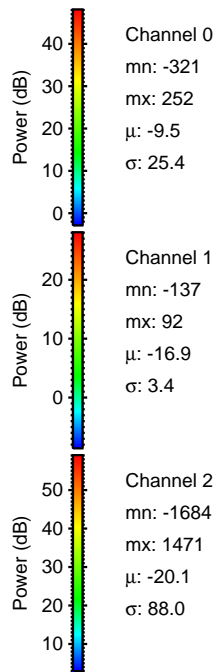
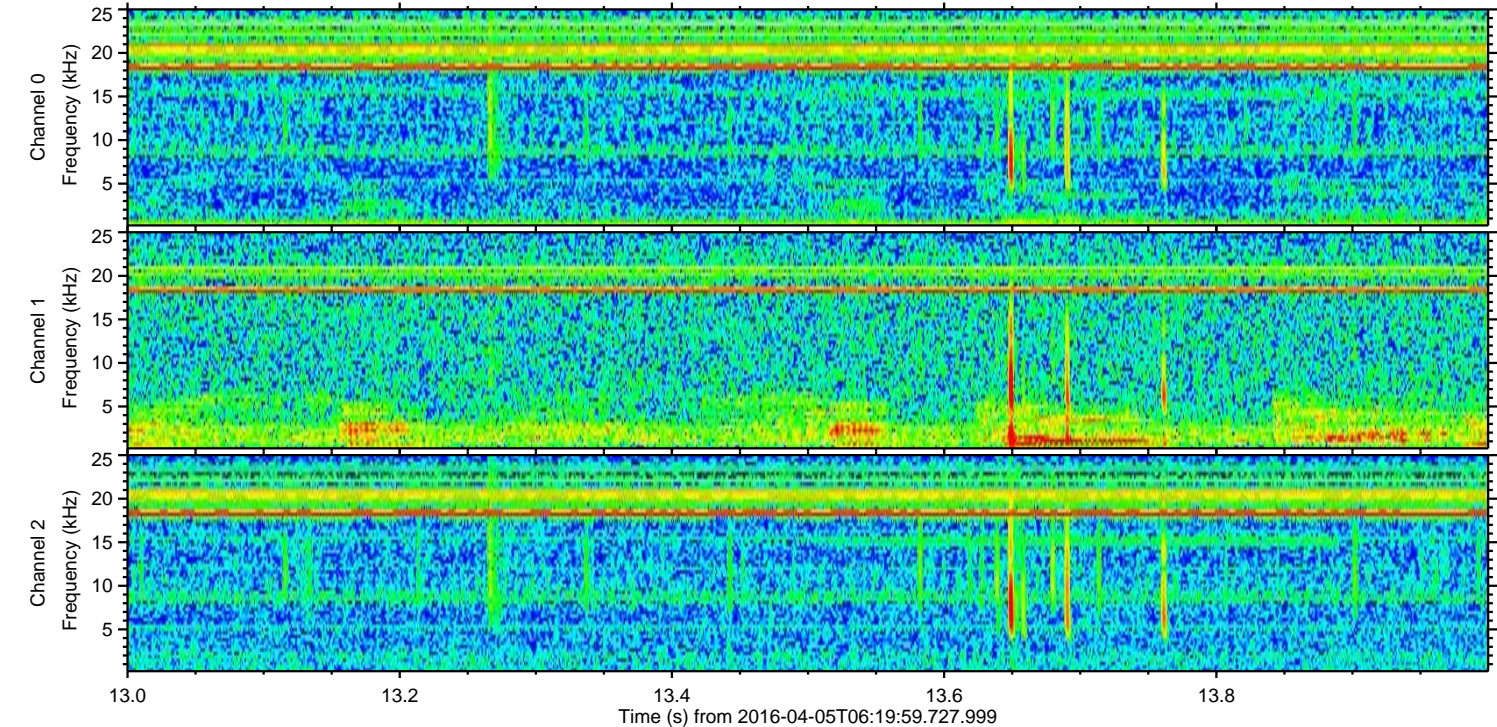
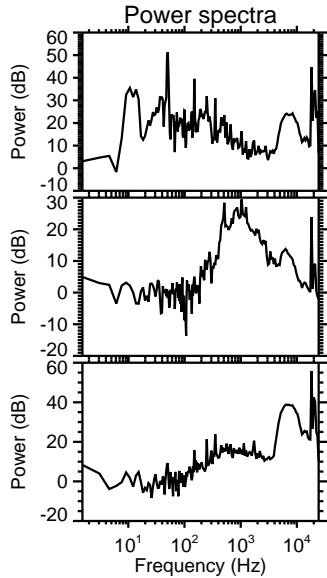
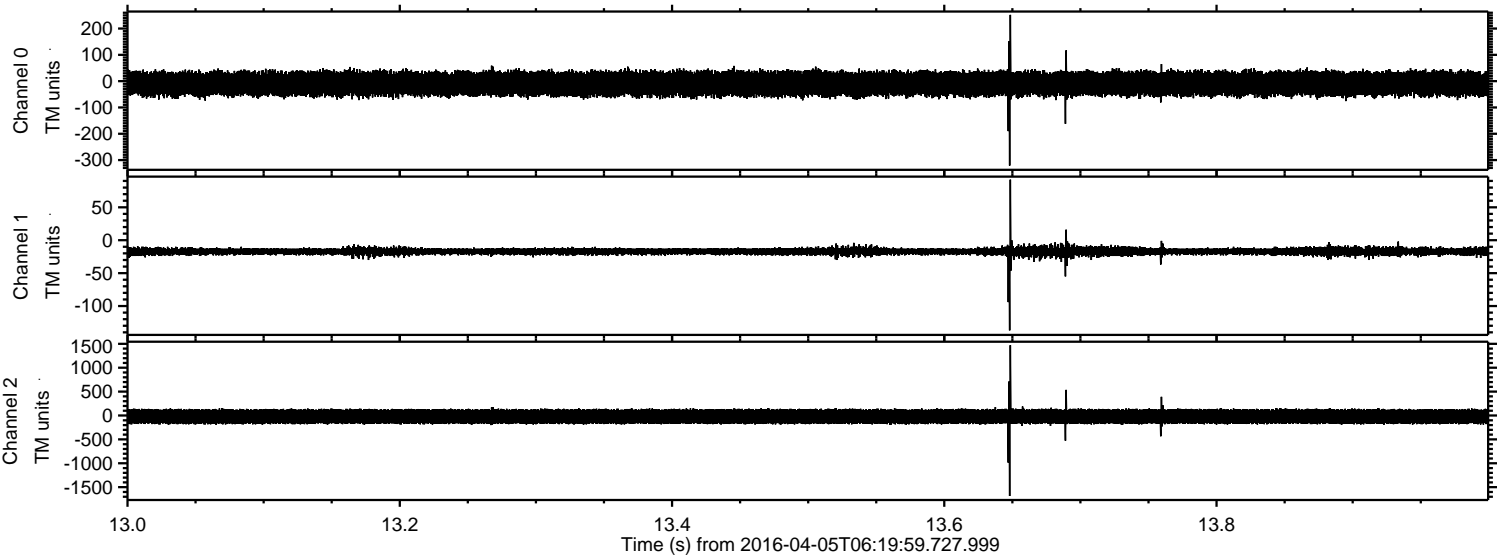


ELMAVAN 3D WAVEFORMS (Measured data sampled at 50 kHz) 51000 packets of 144 samples from 2016-04-05T06:19:59.727.999. Part 75/147

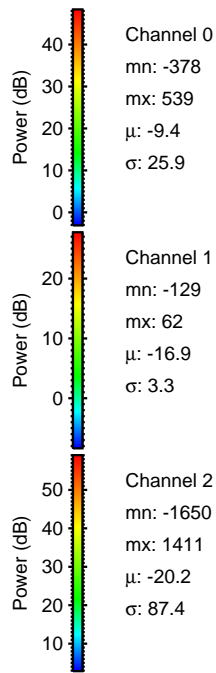
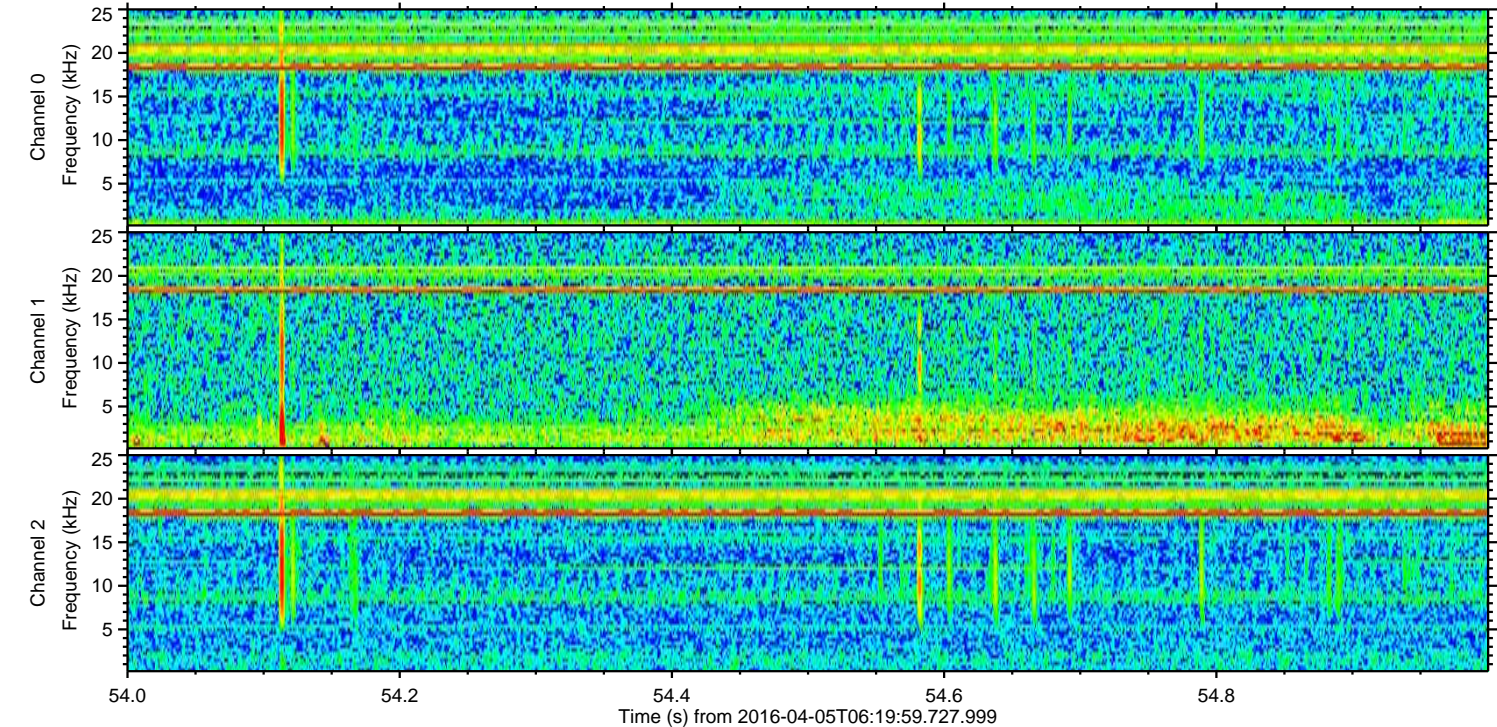
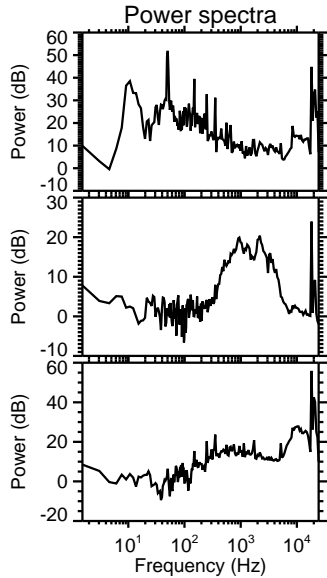
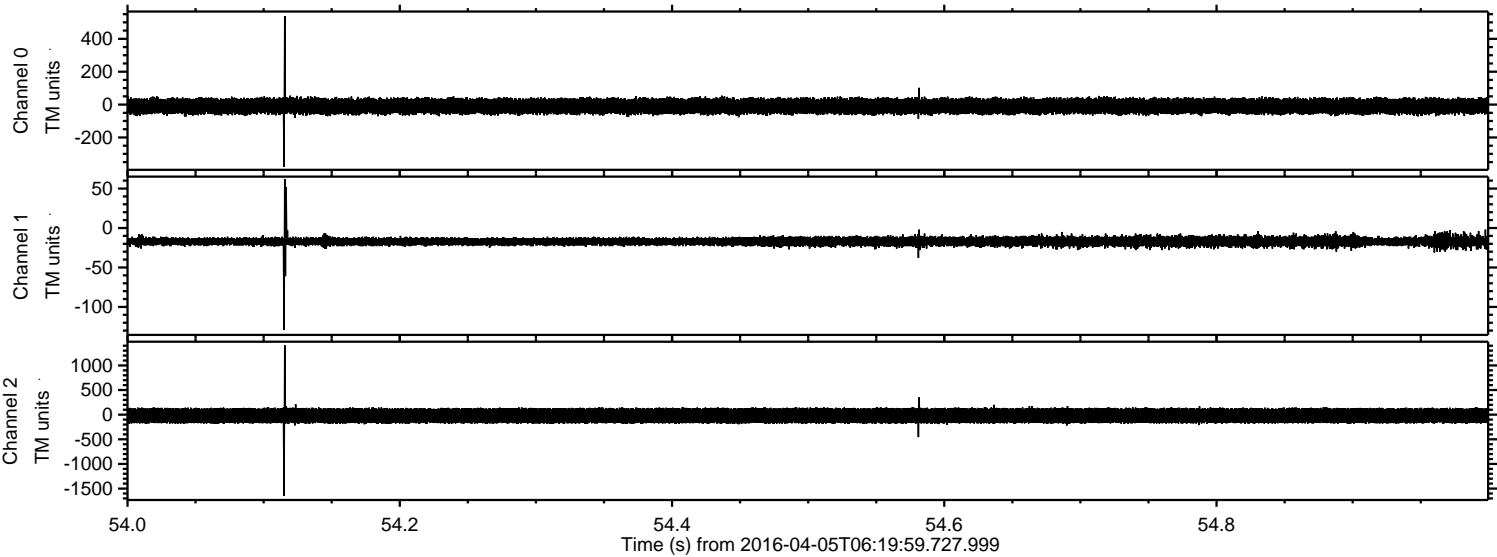
Processed Fri May 6 06:22:07 2016 by ELM ver.2012-10-06 from 001__elm20160405_061958__dat00.bin



Processed Fri May 6 06:22:08 2016 by ELM ver.2012-10-06 from 001__elm20160405_061958__dat00.bin

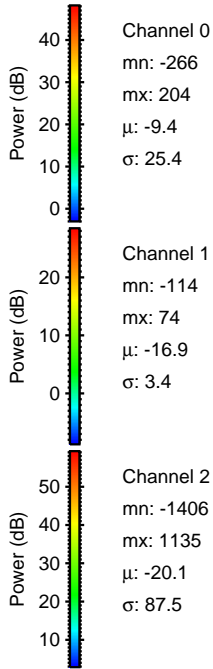
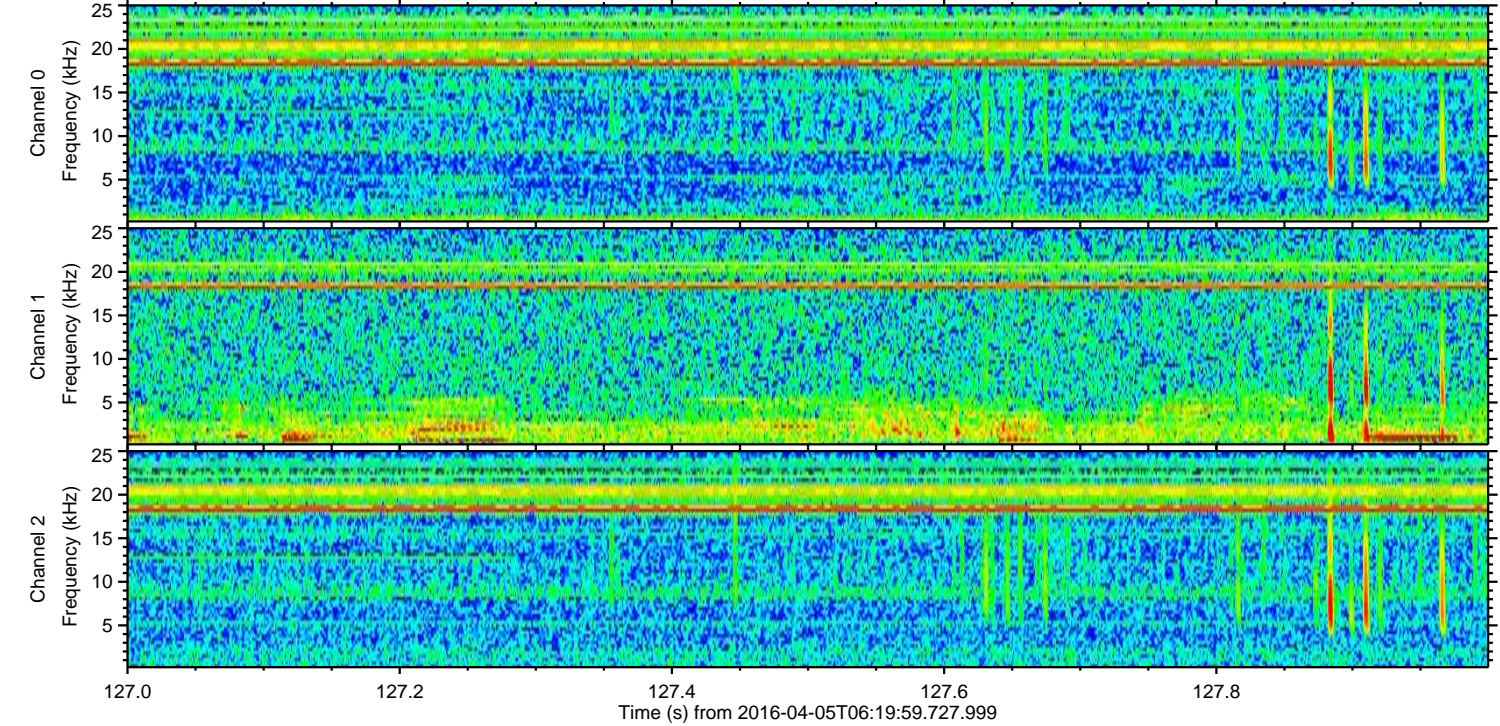
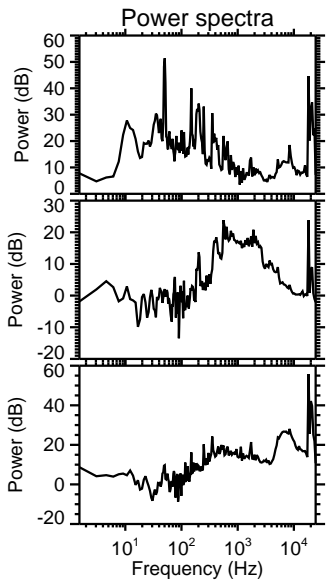
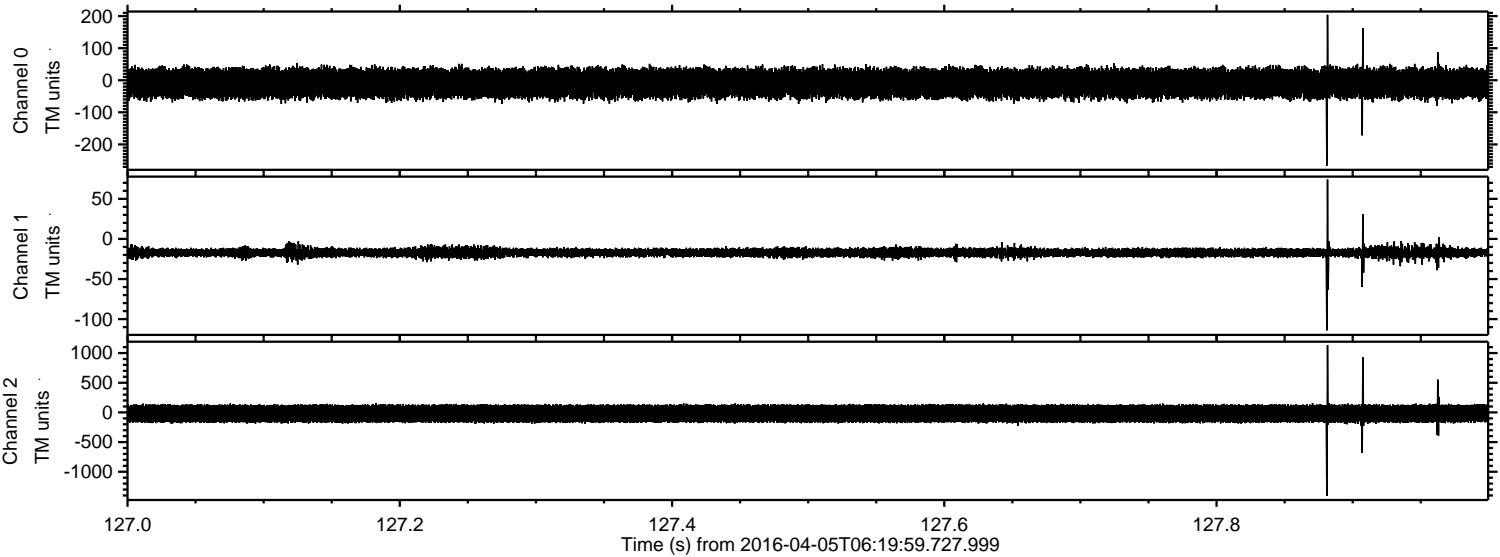


Processed Fri May 6 06:22:09 2016 by ELM ver.2012-10-06 from 001__elm20160405_061958__dat00.bin

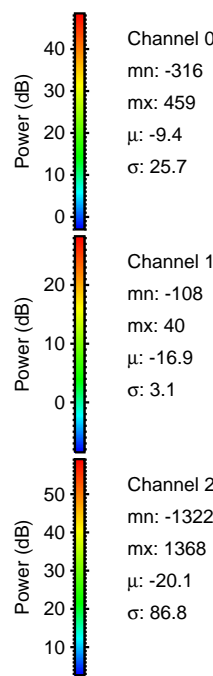
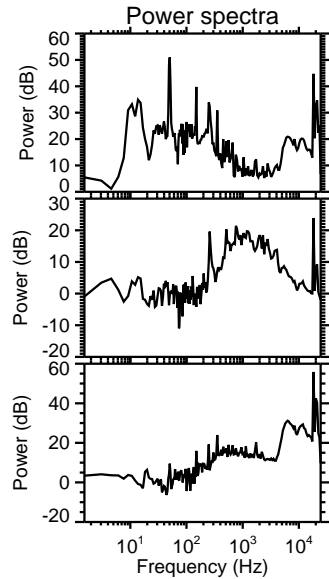
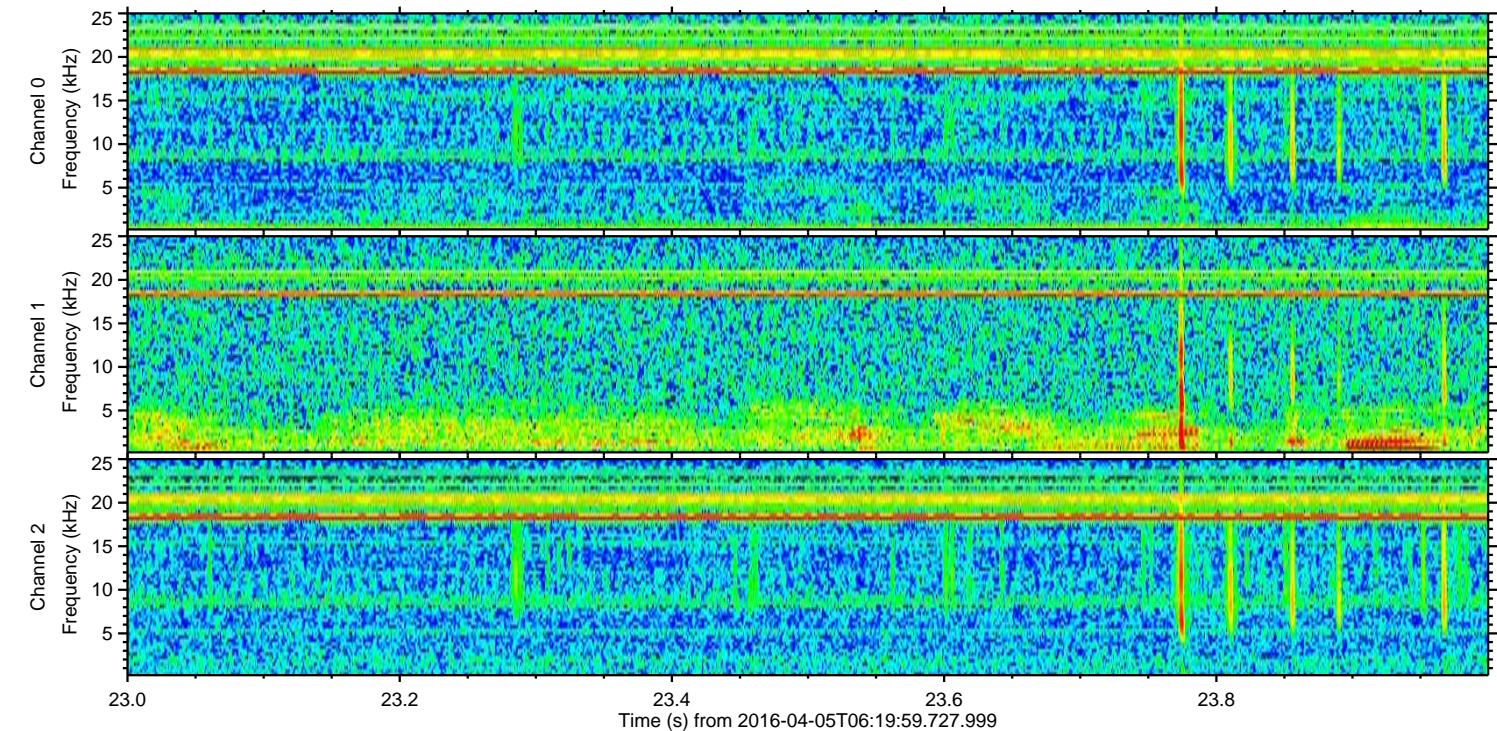
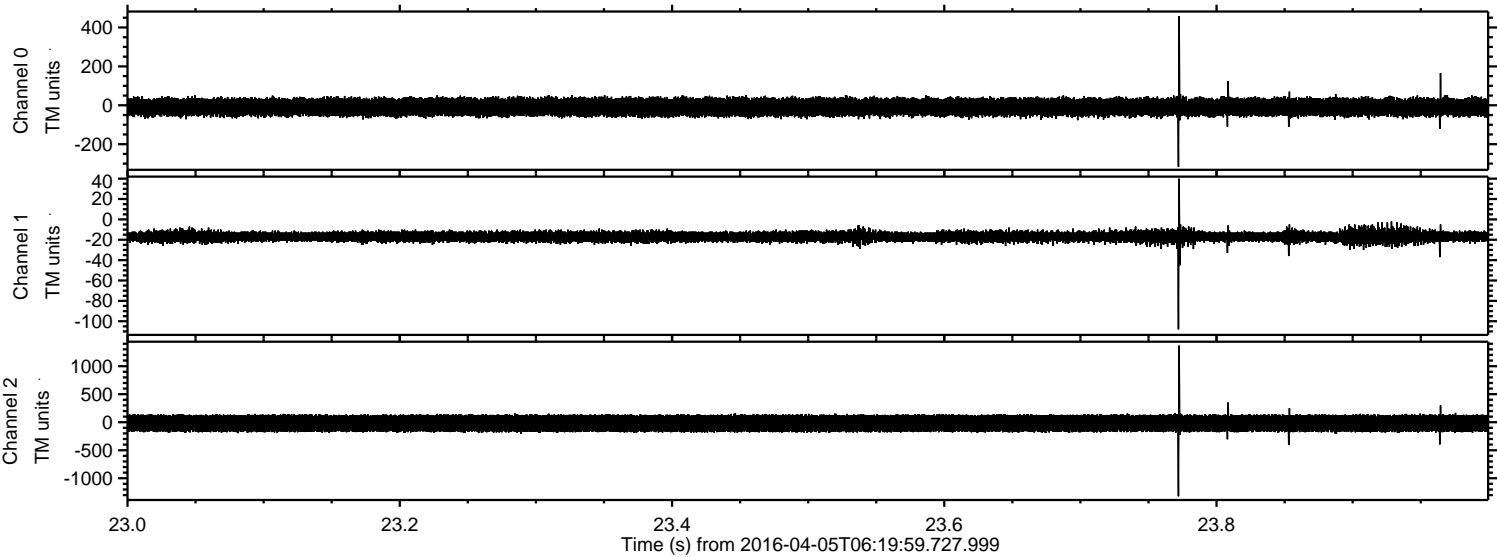


ELMAVAN 3D WAVEFORMS (Measured data sampled at 50 kHz) 51000 packets of 144 samples from 2016-04-05T06:19:59.727.999. Part 128/147

Processed Fri May 6 06:22:10 2016 by ELM ver.2012-10-06 from 001__elm20160405_061958__dat00.bin



Processed Fri May 6 06:22:11 2016 by ELM ver.2012-10-06 from 001__elm20160405_061958__dat00.bin

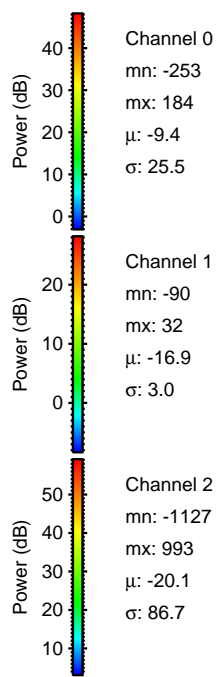
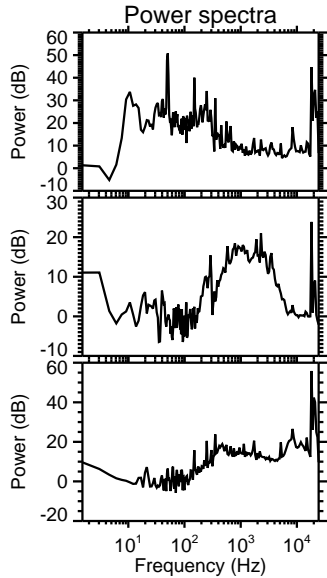
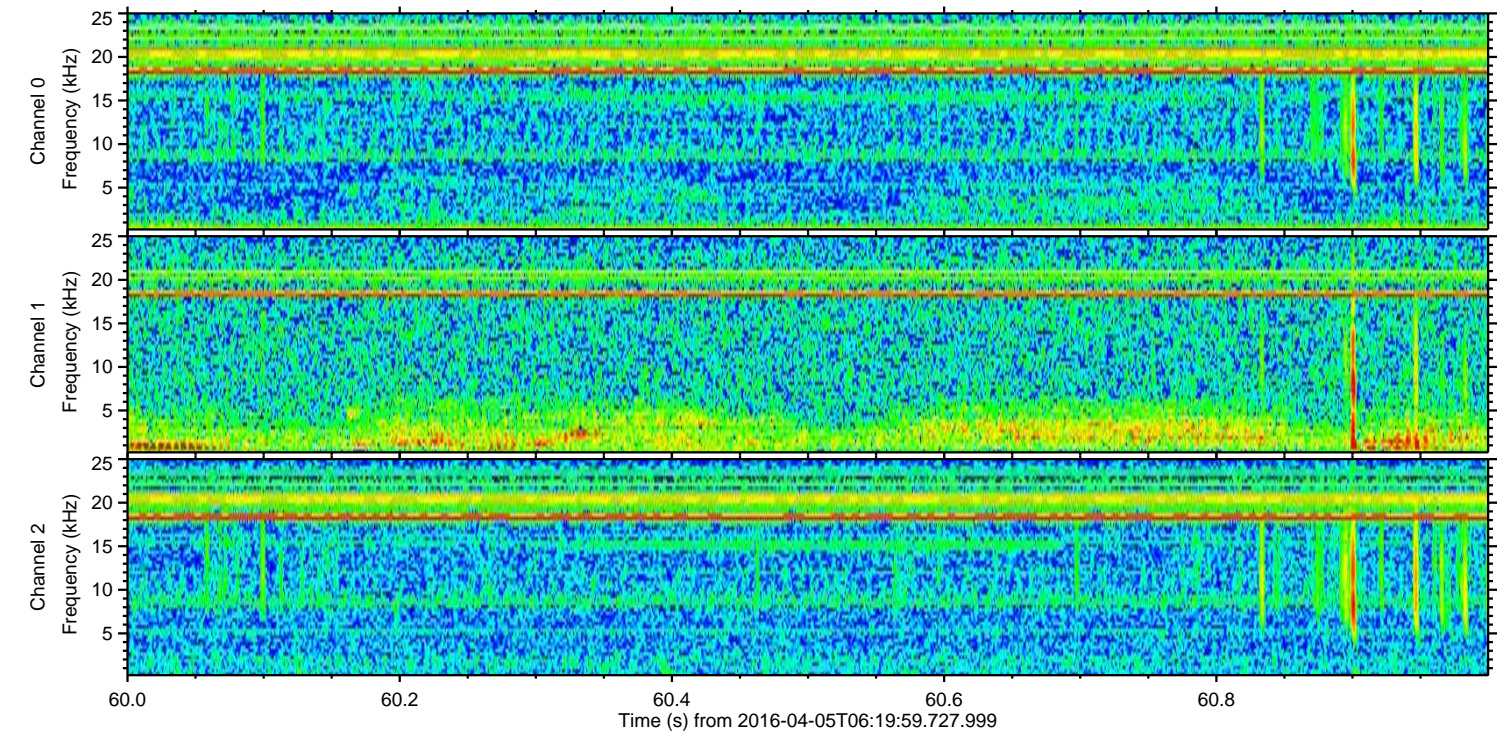
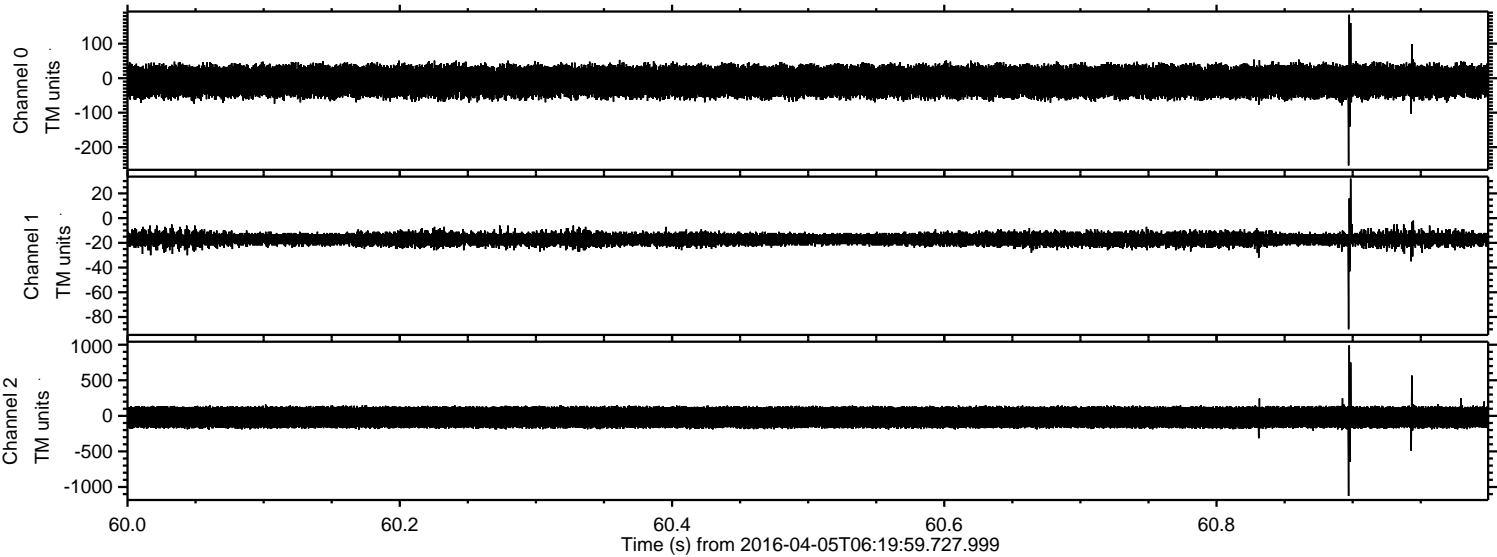


Channel 0
mn: -316
mx: 459
 μ : -9.4
 σ : 25.7

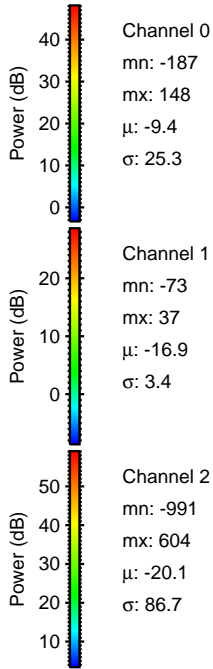
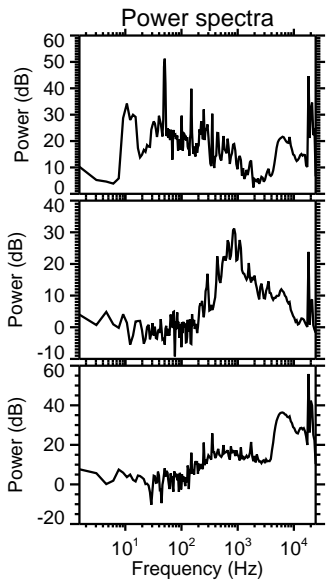
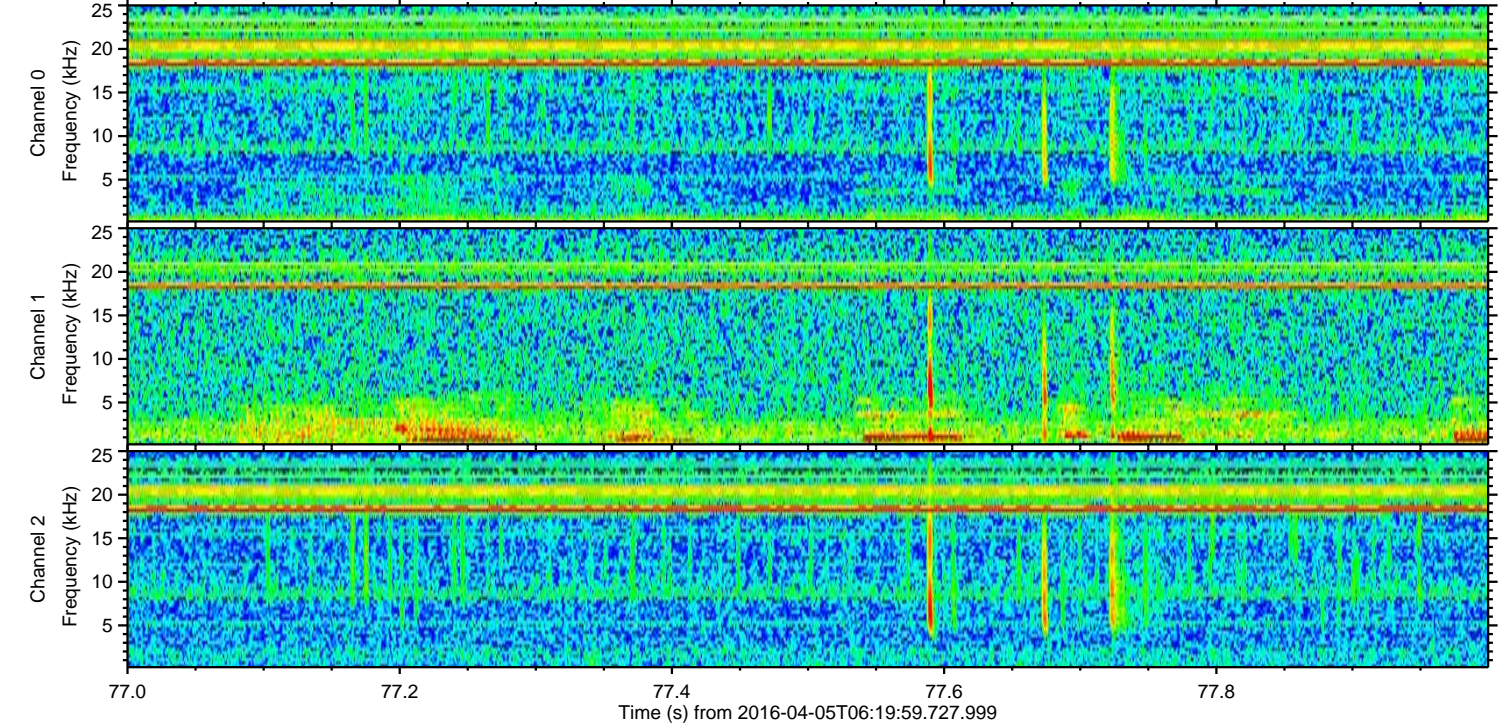
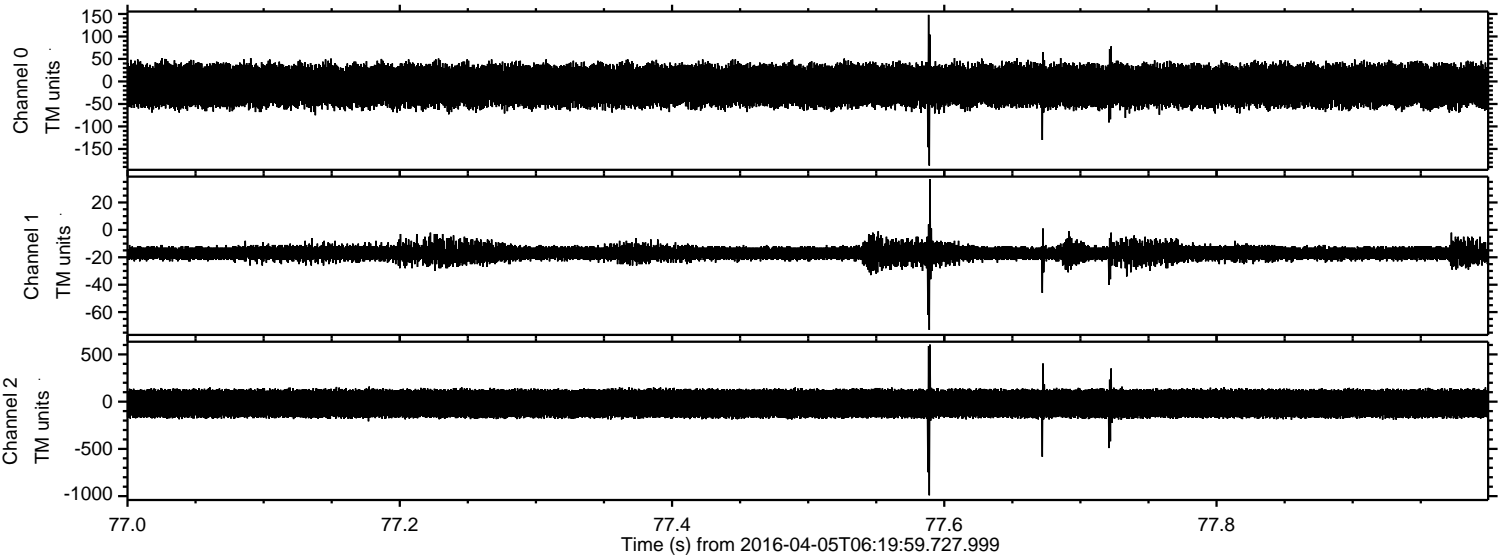
Channel 1
mn: -108
mx: 40
 μ : -16.9
 σ : 3.1

Channel 2
mn: -1322
mx: 1368
 μ : -20.1
 σ : 86.8

Processed Fri May 6 06:22:12 2016 by ELM ver.2012-10-06 from 001__elm20160405_061958__dat00.bin



Processed Fri May 6 06:22:13 2016 by ELM ver.2012-10-06 from 001__elm20160405_061958__dat00.bin



Processed Fri May 6 06:22:14 2016 by ELM ver.2012-10-06 from 001__elm20160405_061958__dat00.bin

