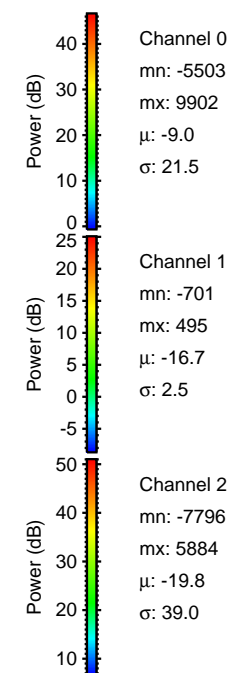
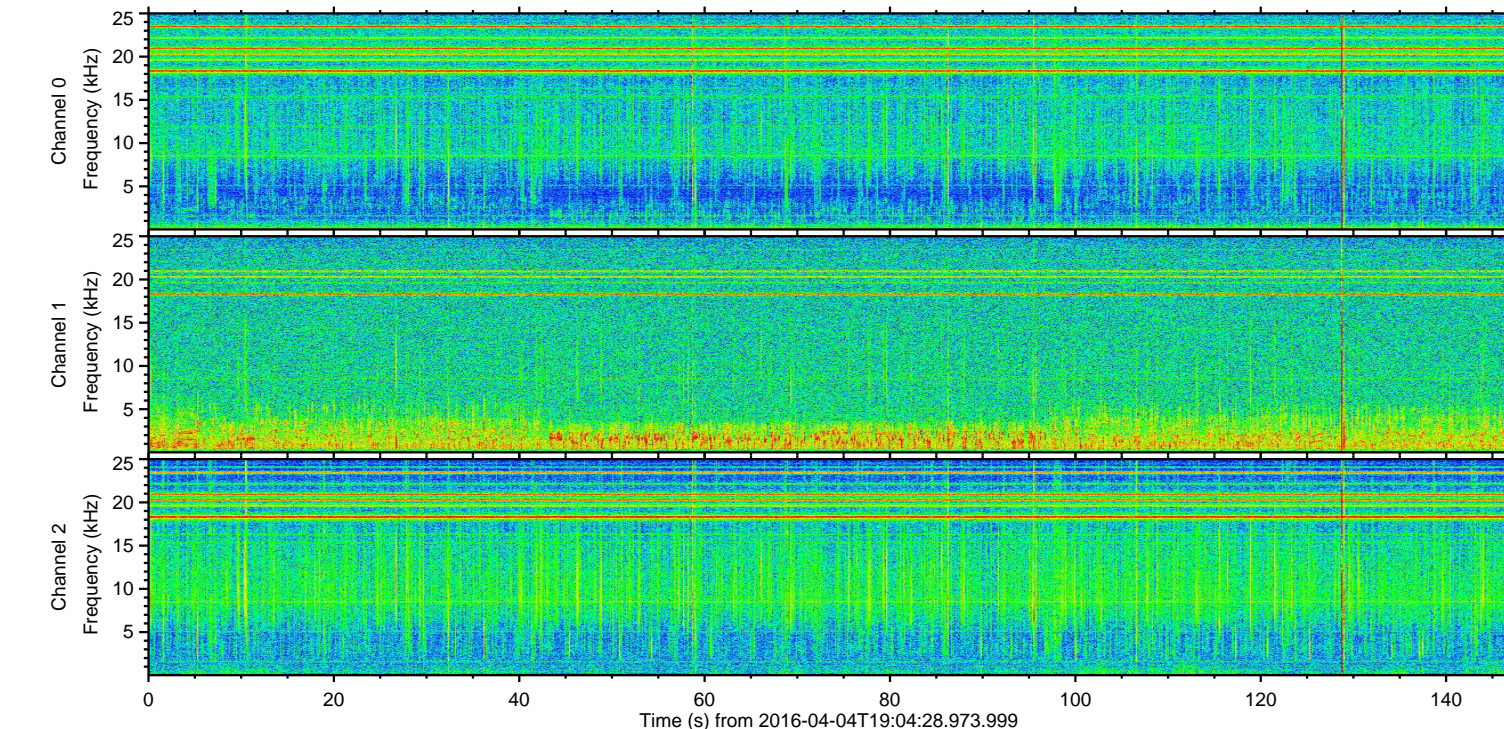
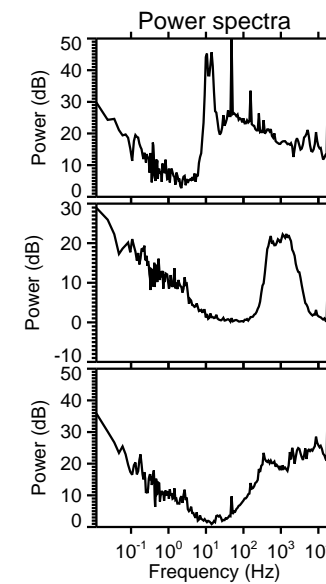
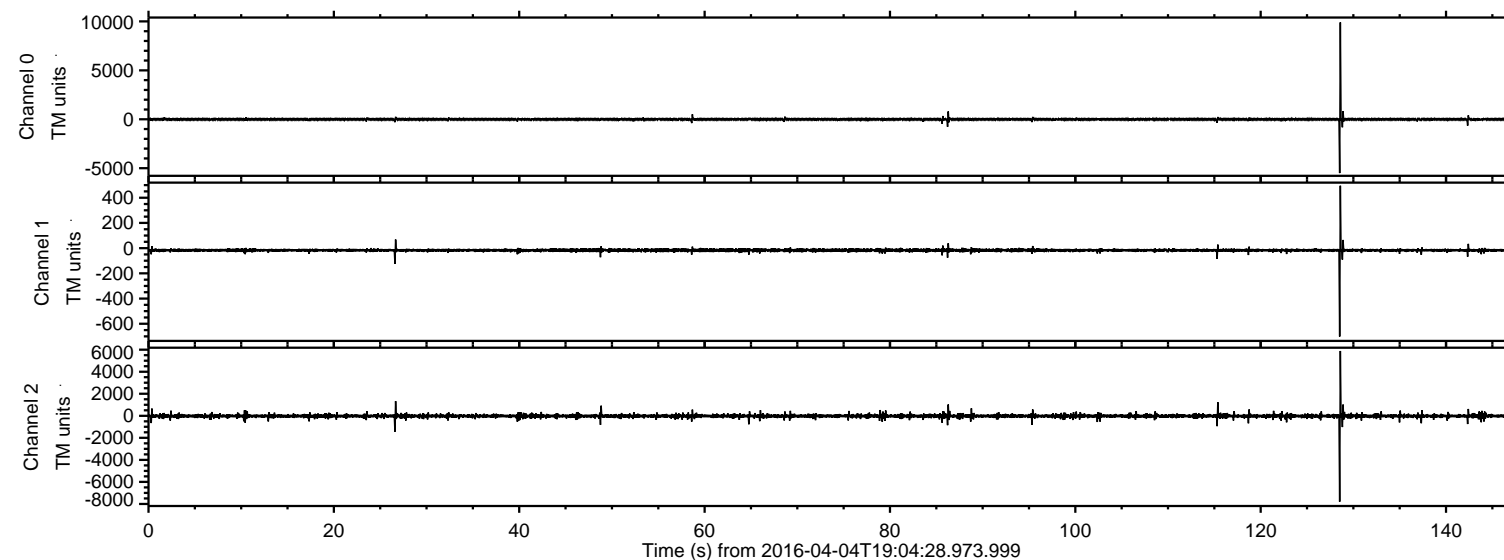


# ELMAVAN 3D WAVEFORMS (Measured data sampled at 50 kHz) 51000 packets of 144 samples from 2016-04-04T19:04:28.973.999.

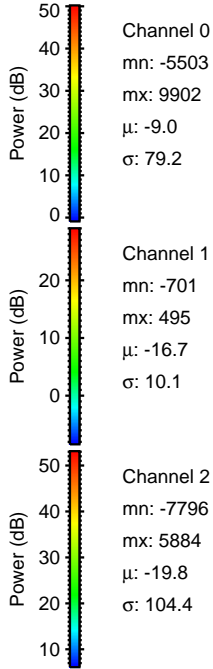
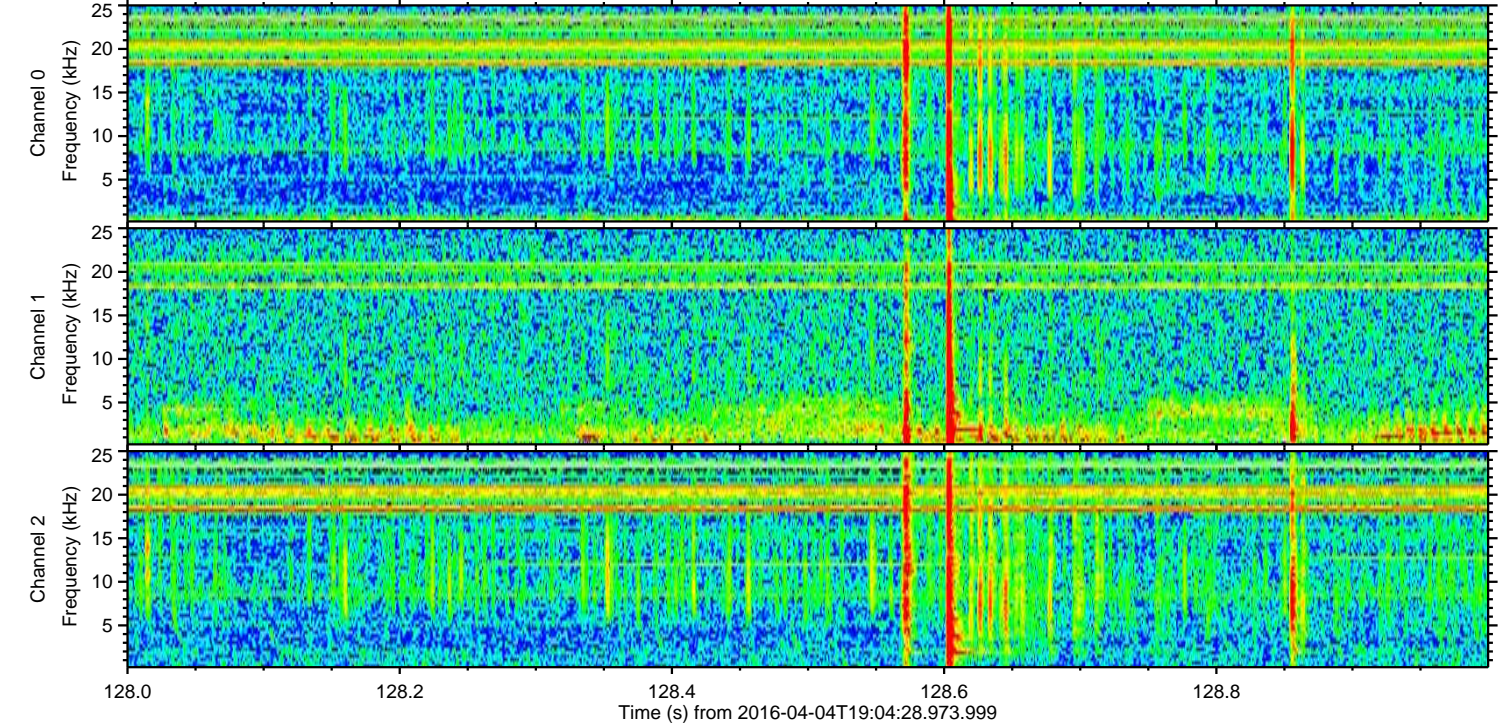
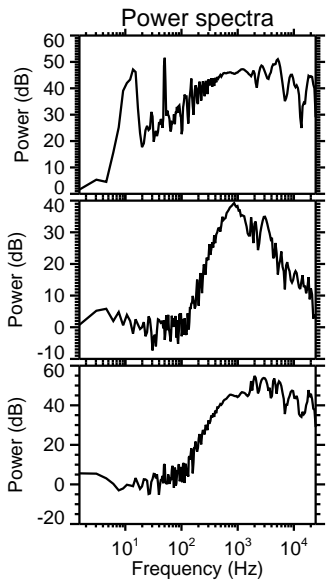
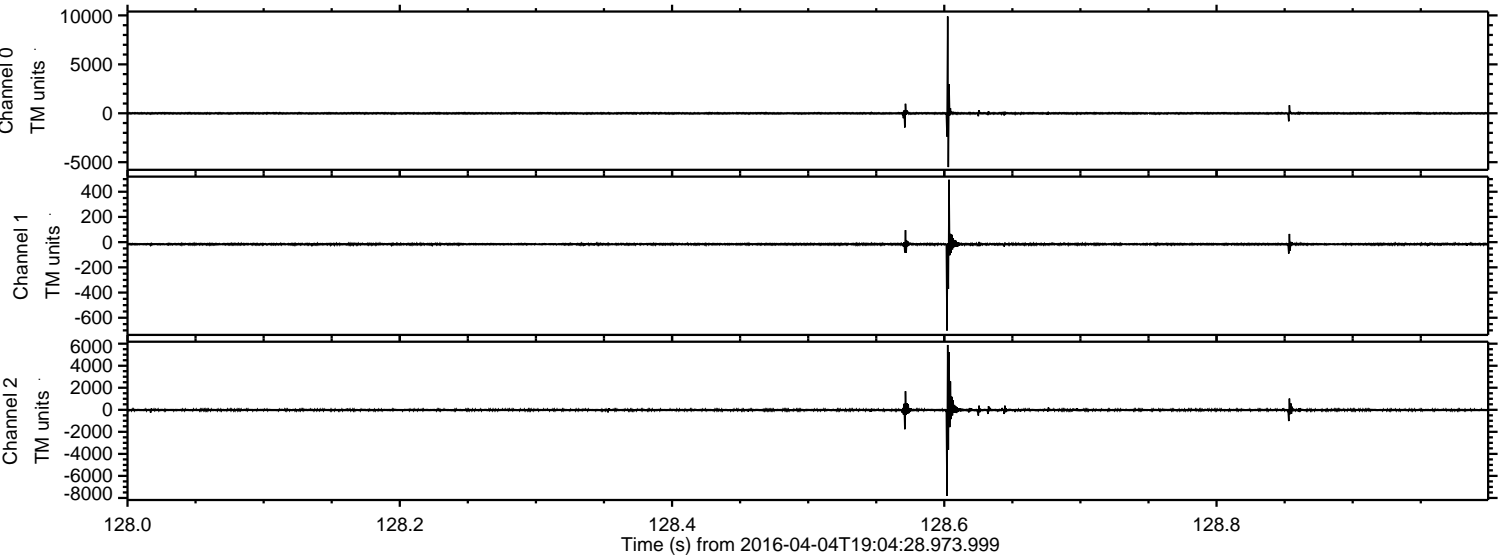
Processed Fri May 6 03:30:47 2016 by ELM ver.2012-10-06 from 001\_\_elm20160404\_190427\_\_dat00.bin





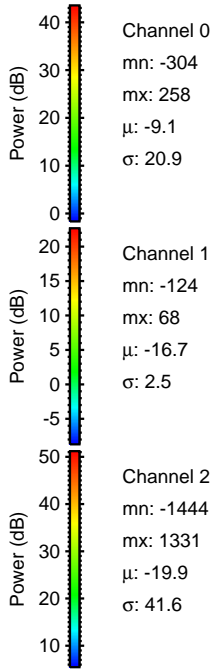
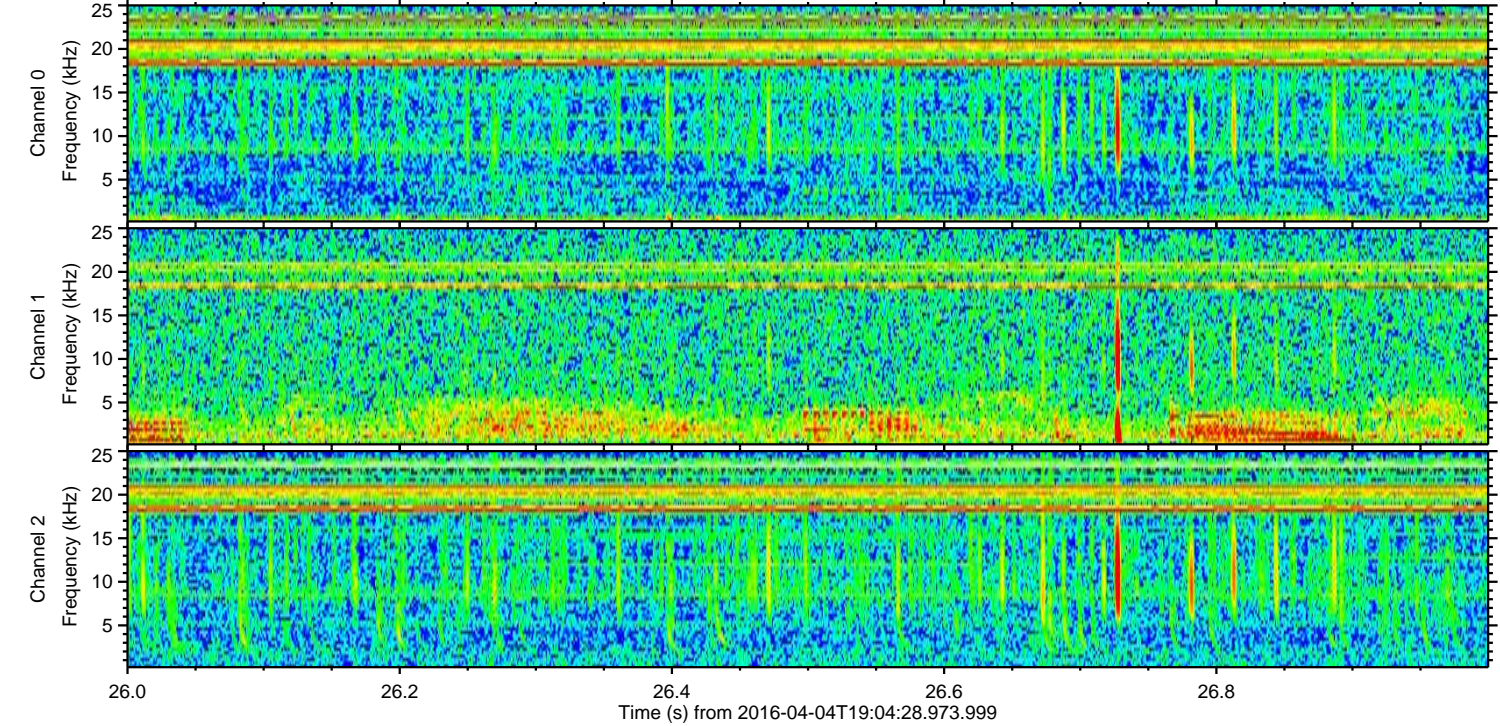
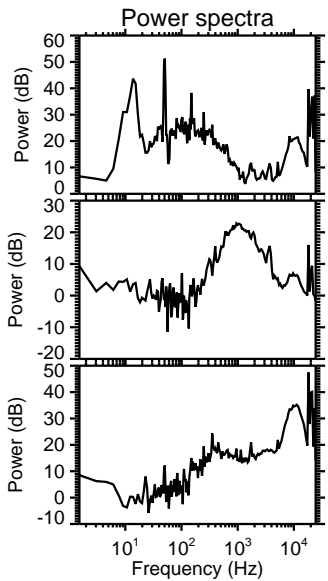
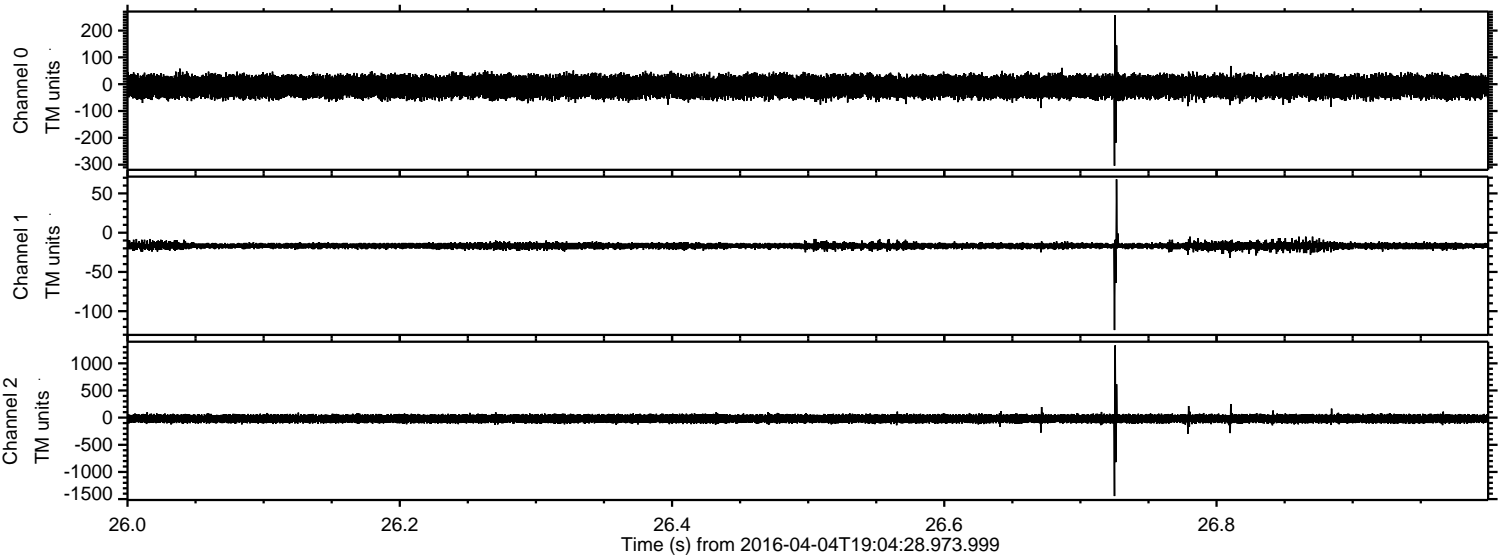
ELMAVAN 3D WAVEFORMS (Measured data sampled at 50 kHz) 51000 packets of 144 samples from 2016-04-04T19:04:28.973.999. Part 129/147

Processed Fri May 6 03:31:01 2016 by ELM ver.2012-10-06 from 001\_\_elm20160404\_190427\_\_dat00.bin





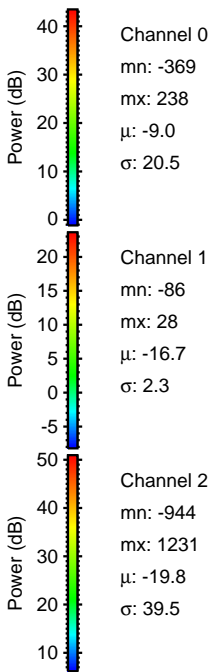
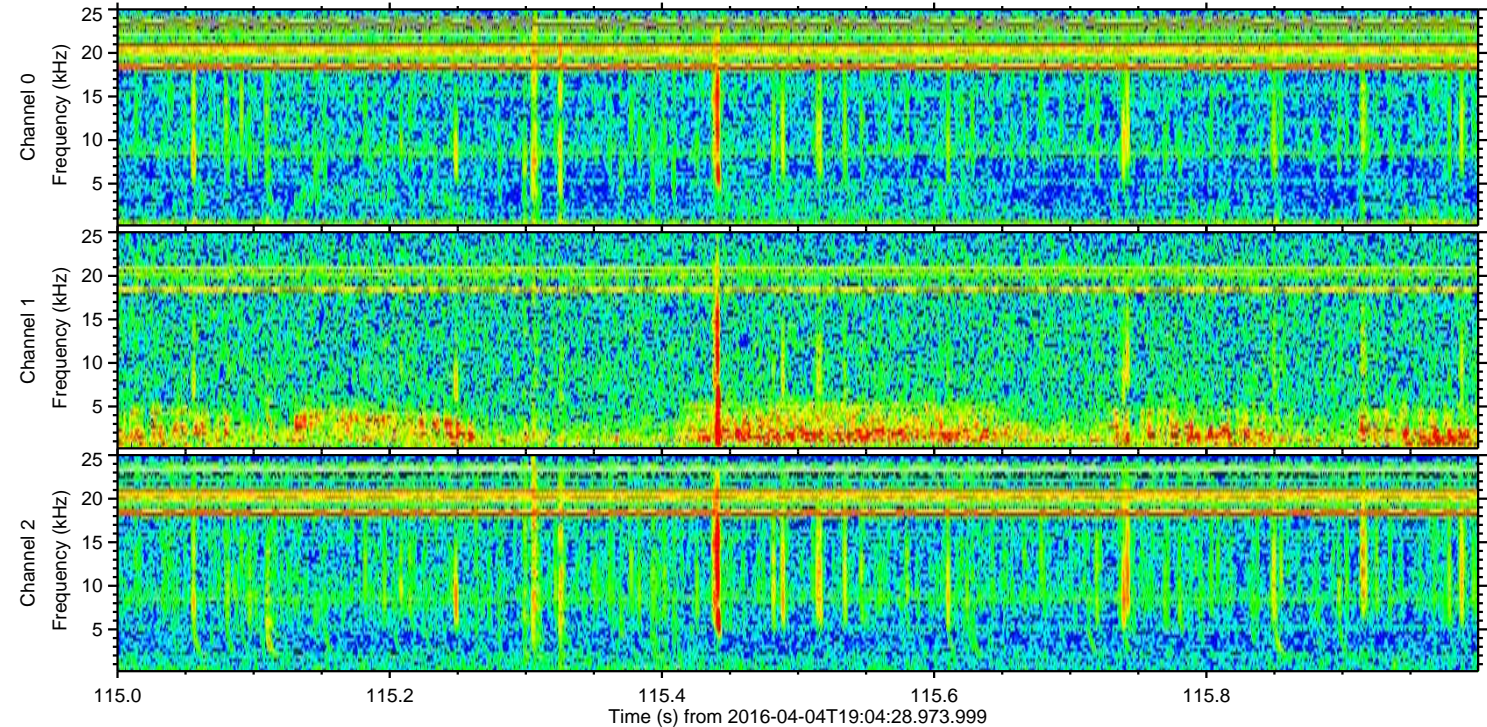
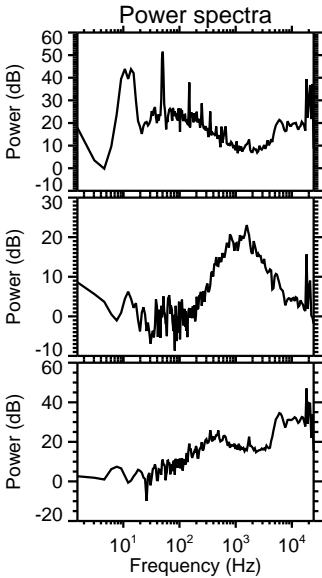
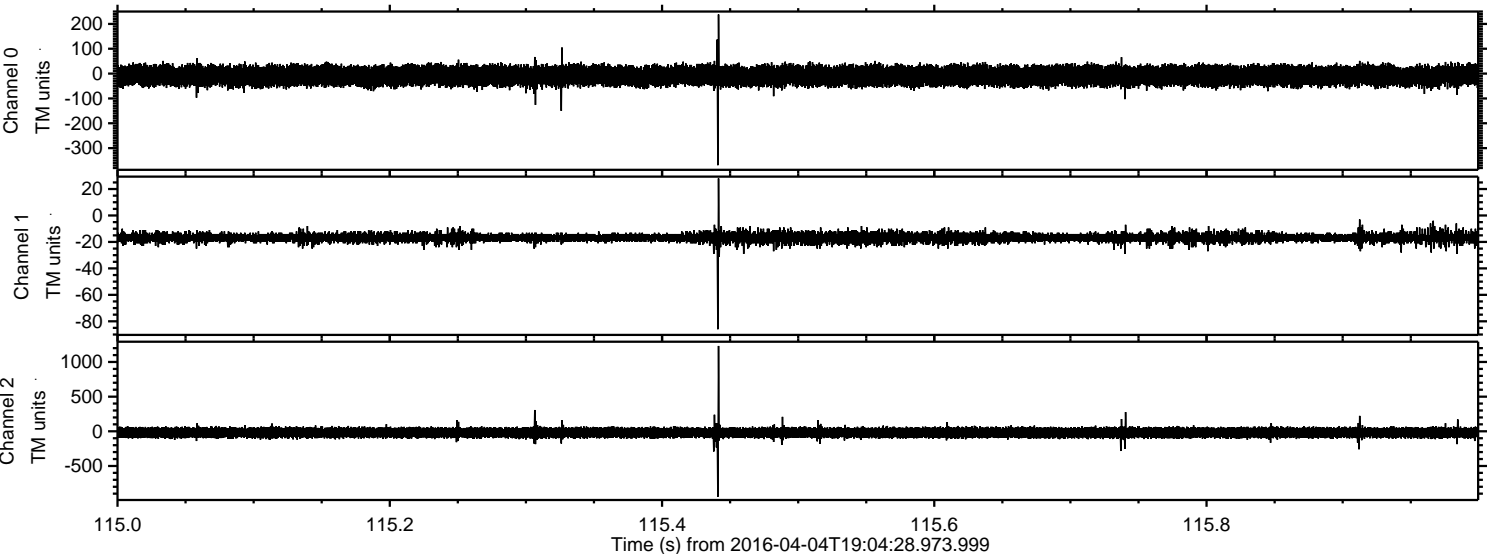
Processed Fri May 6 03:31:02 2016 by ELM ver.2012-10-06 from 001\_\_elm20160404\_190427\_\_dat00.bin





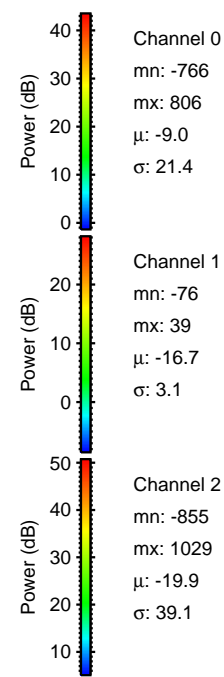
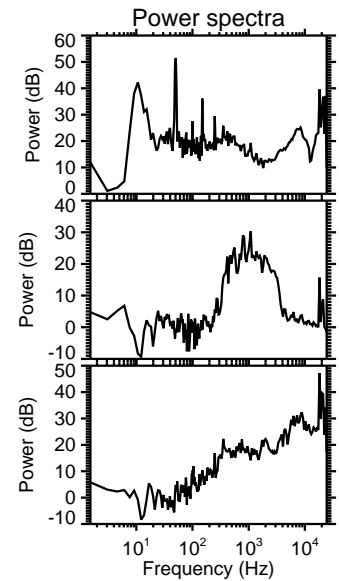
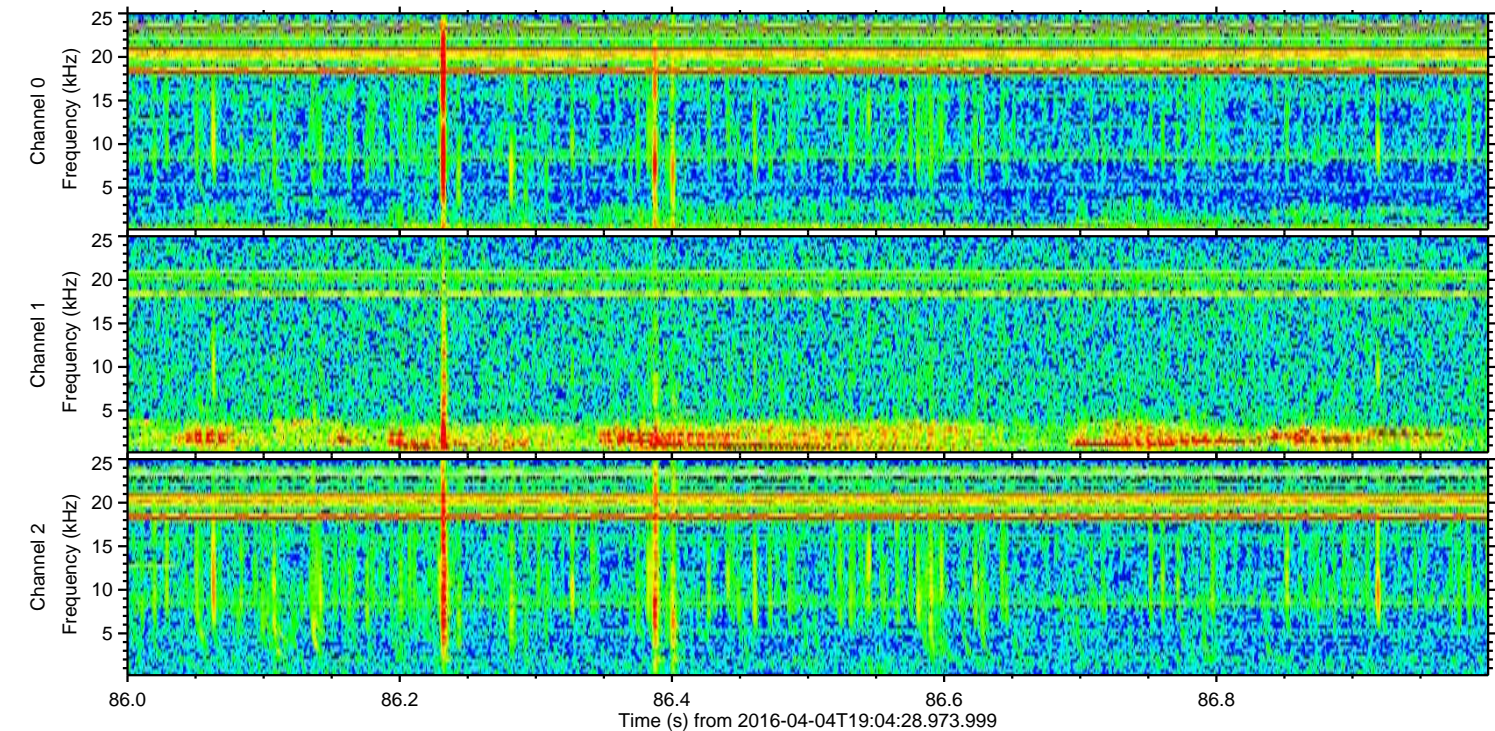
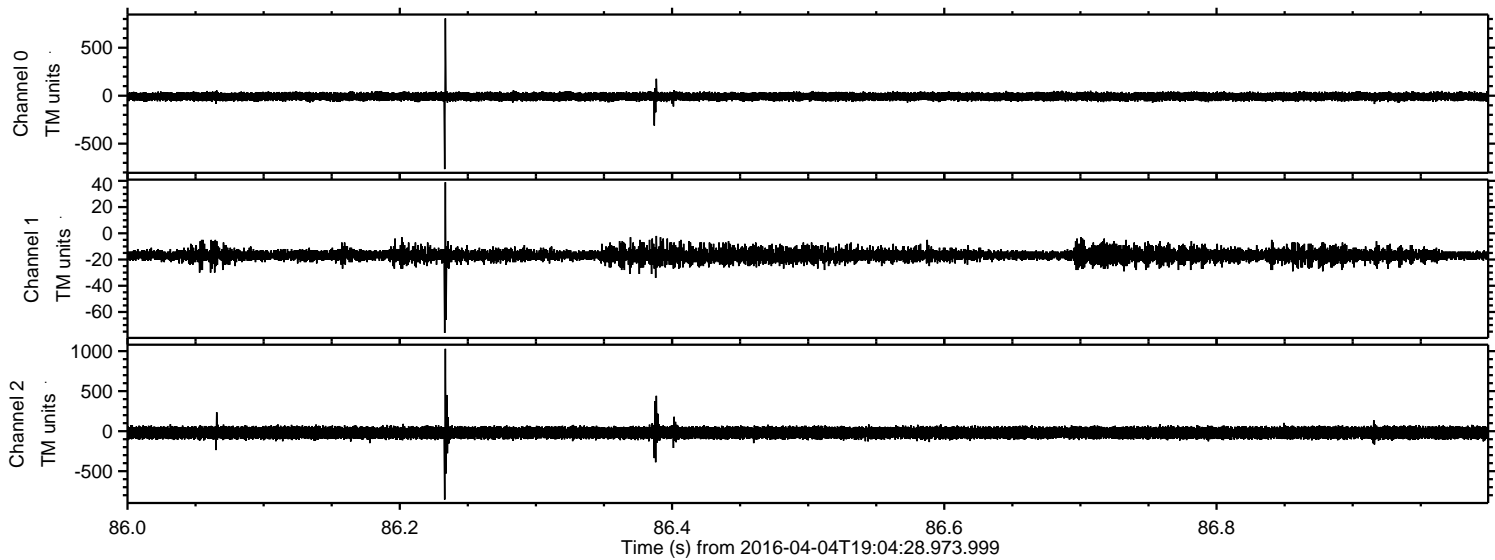
ELMAVAN 3D WAVEFORMS (Measured data sampled at 50 kHz) 51000 packets of 144 samples from 2016-04-04T19:04:28.973.999. Part 116/147

Processed Fri May 6 03:31:03 2016 by ELM ver.2012-10-06 from 001\_\_elm20160404\_190427\_\_dat00.bin



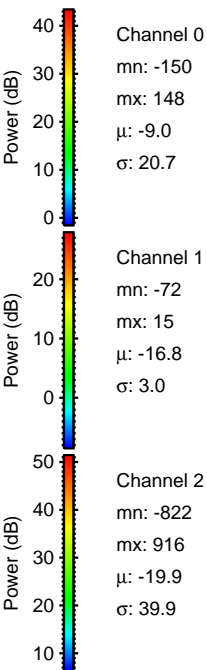
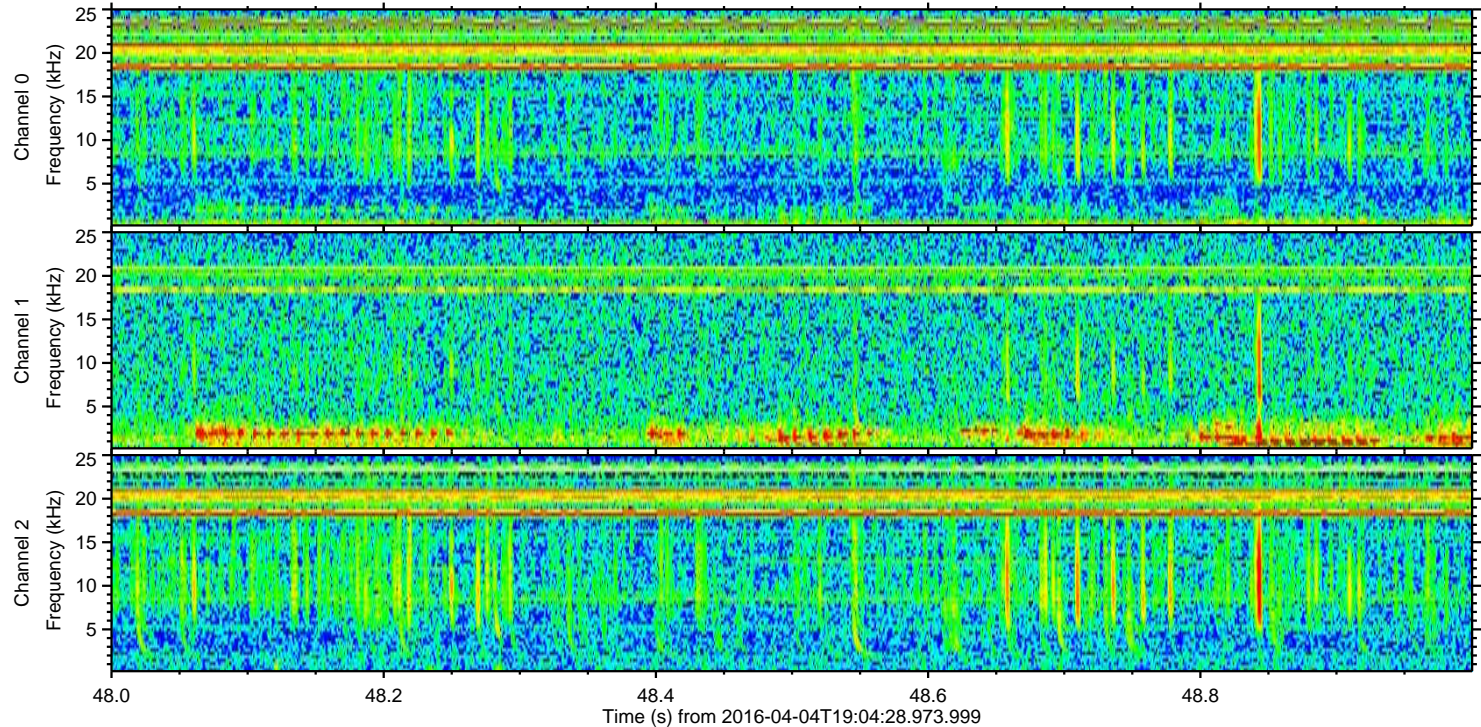
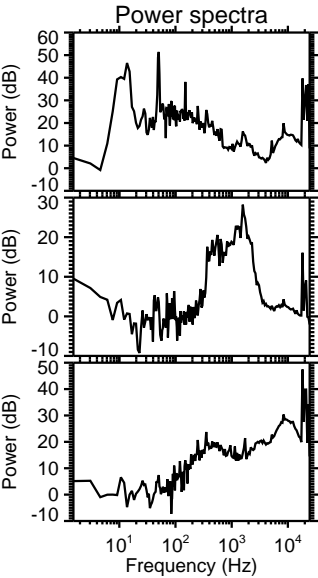
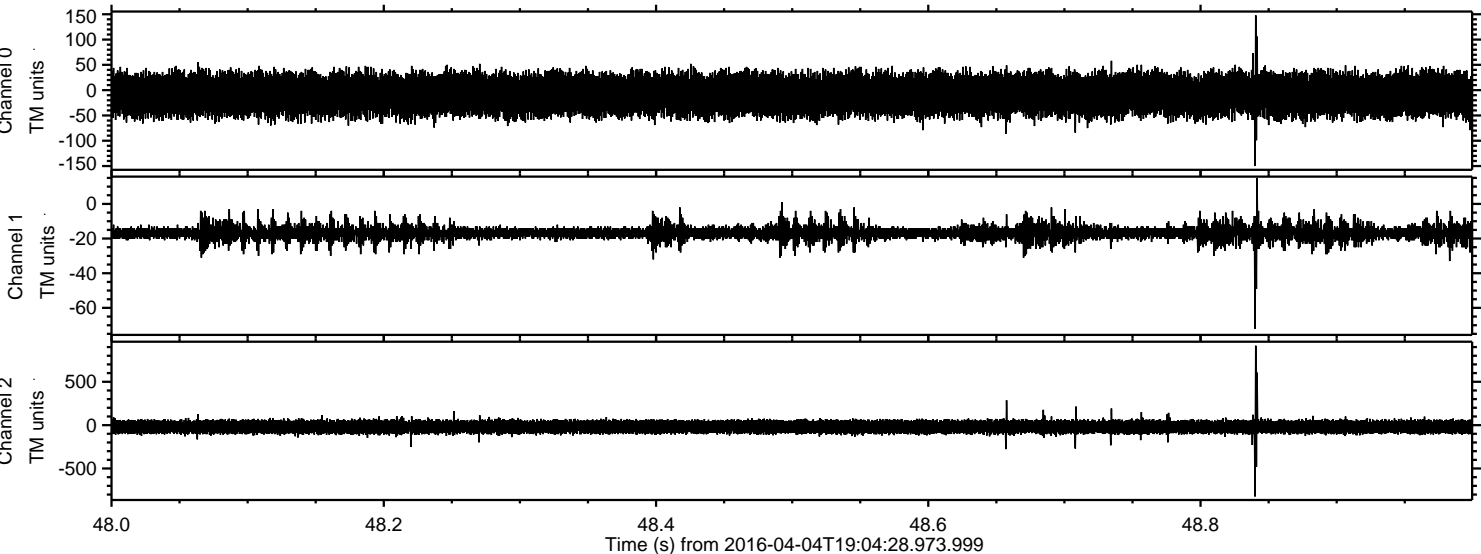


Processed Fri May 6 03:31:05 2016 by ELM ver.2012-10-06 from 001\_\_elm20160404\_190427\_\_dat00.bin



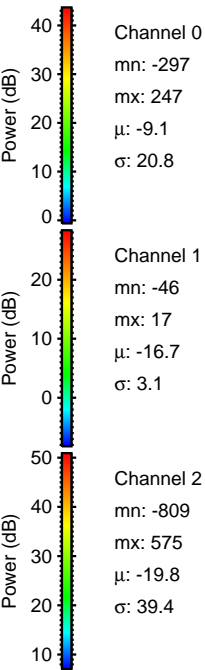
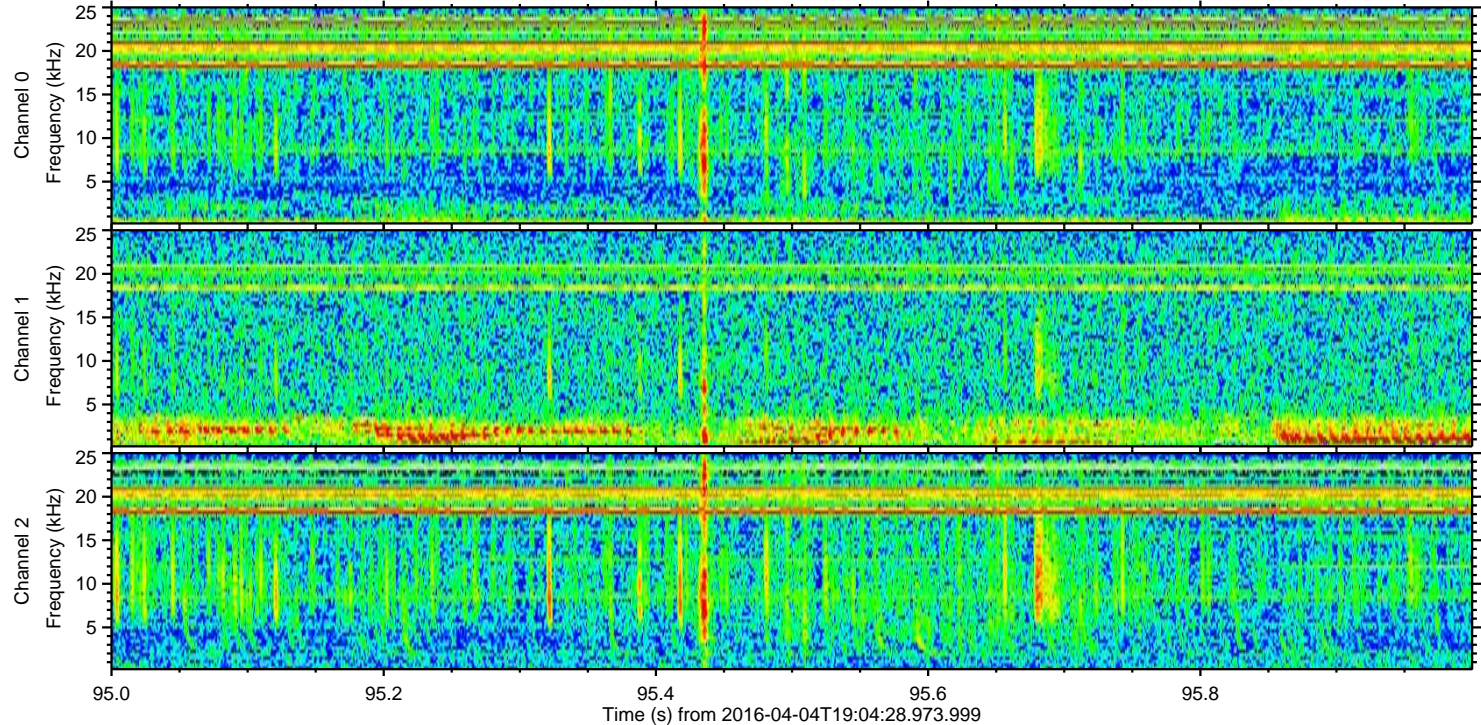
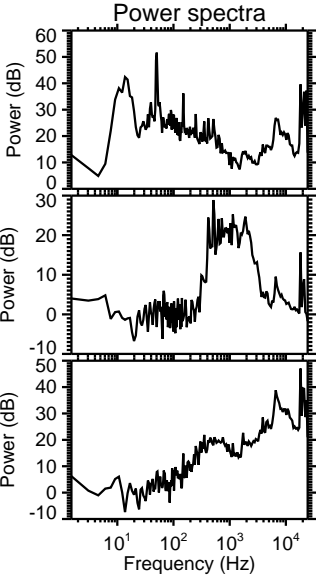
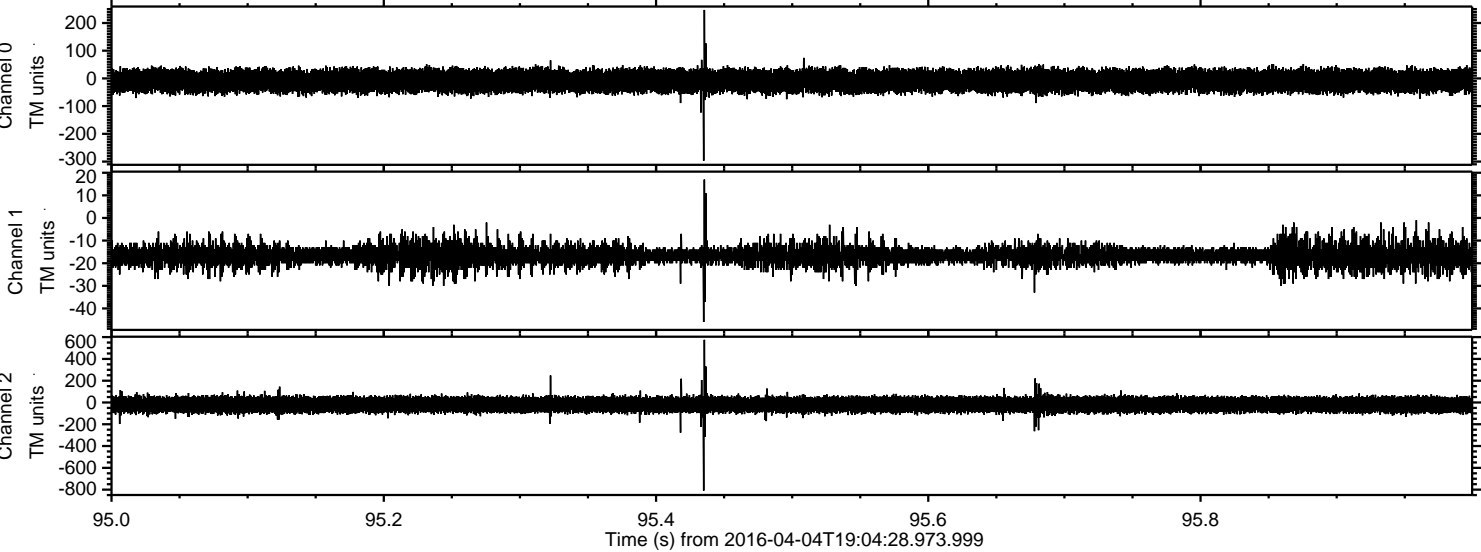


Processed Fri May 6 03:31:06 2016 by ELM ver.2012-10-06 from 001\_\_elm20160404\_190427\_\_dat00.bin



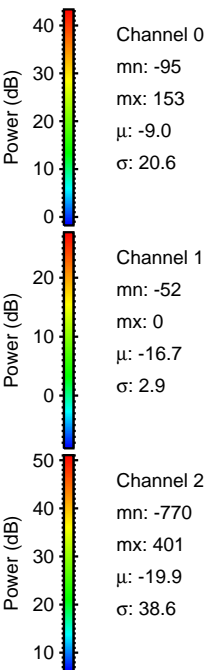
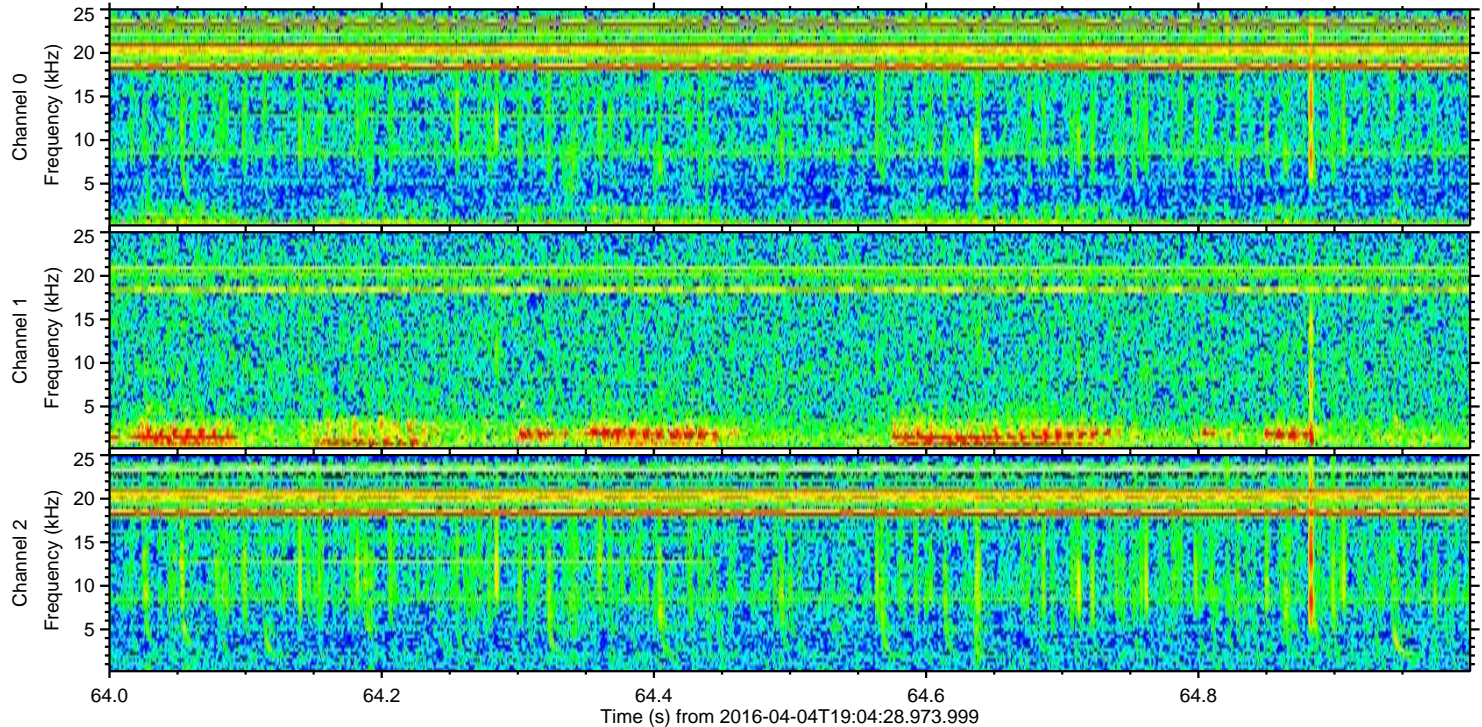
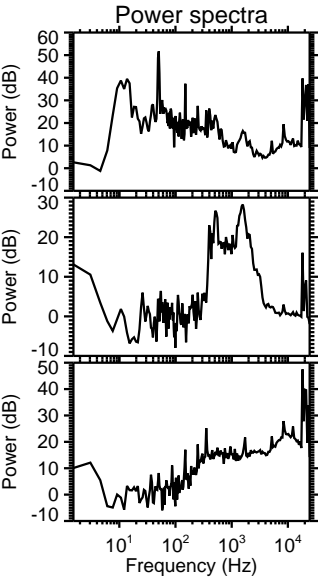
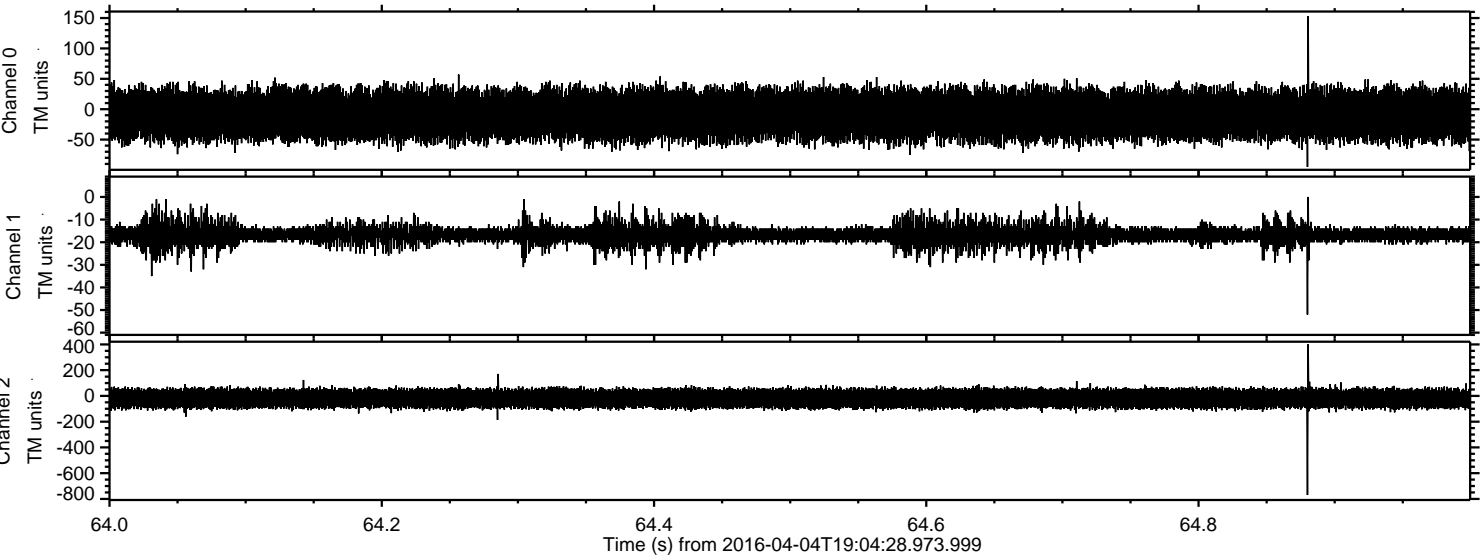


Processed Fri May 6 03:31:07 2016 by ELM ver.2012-10-06 from 001\_\_elm20160404\_190427\_\_dat00.bin



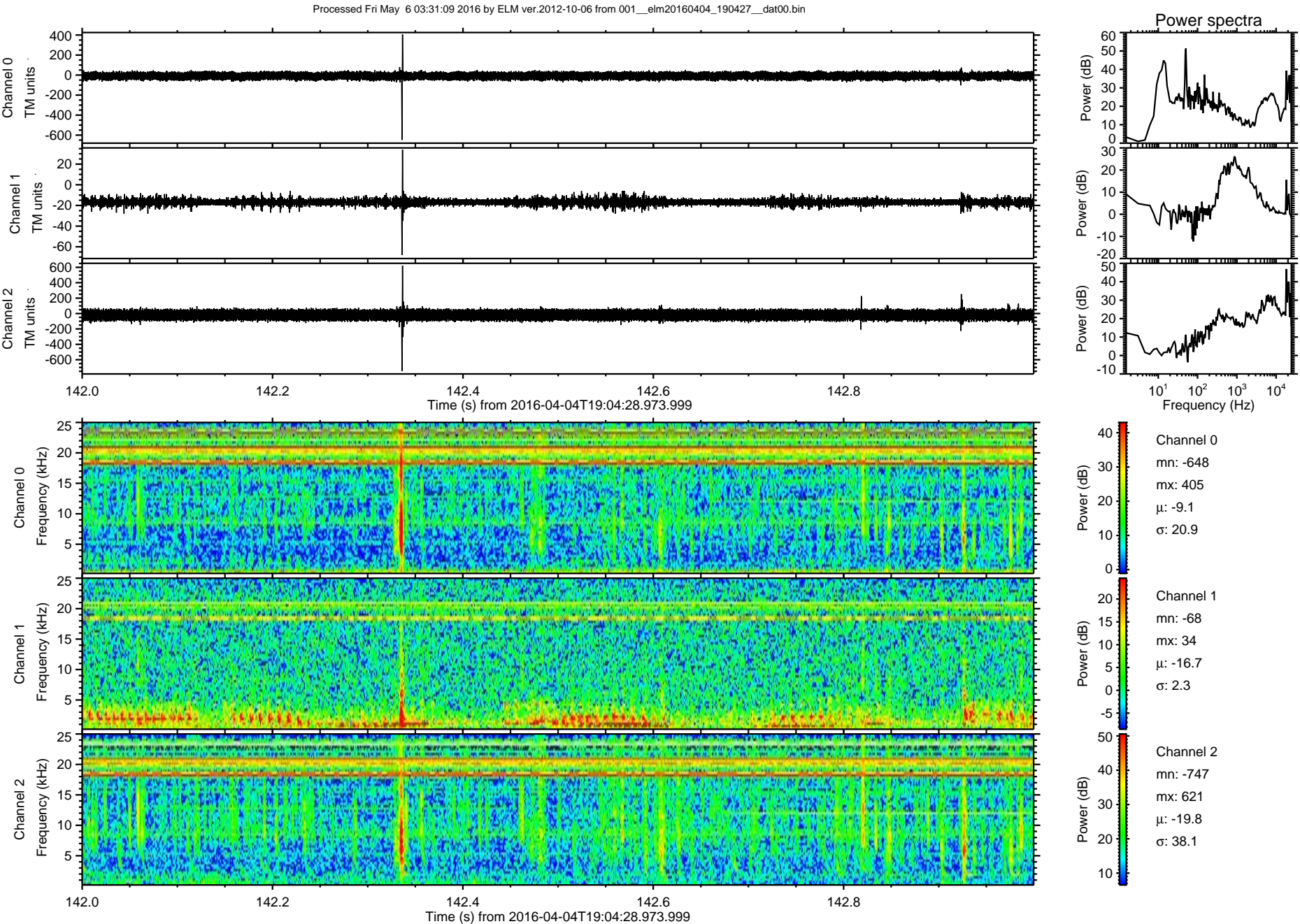


Processed Fri May 6 03:31:08 2016 by ELM ver.2012-10-06 from 001\_\_elm20160404\_190427\_\_dat00.bin





ELMAVAN 3D WAVEFORMS (Measured data sampled at 50 kHz) 51000 packets of 144 samples from 2016-04-04T19:04:28.973.999. Part 143/147





Processed Fri May 6 03:31:10 2016 by ELM ver.2012-10-06 from 001\_\_elm20160404\_190427\_\_dat00.bin

