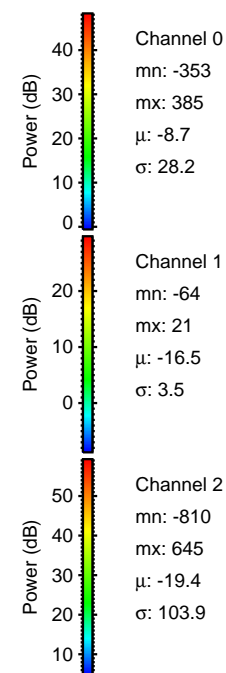
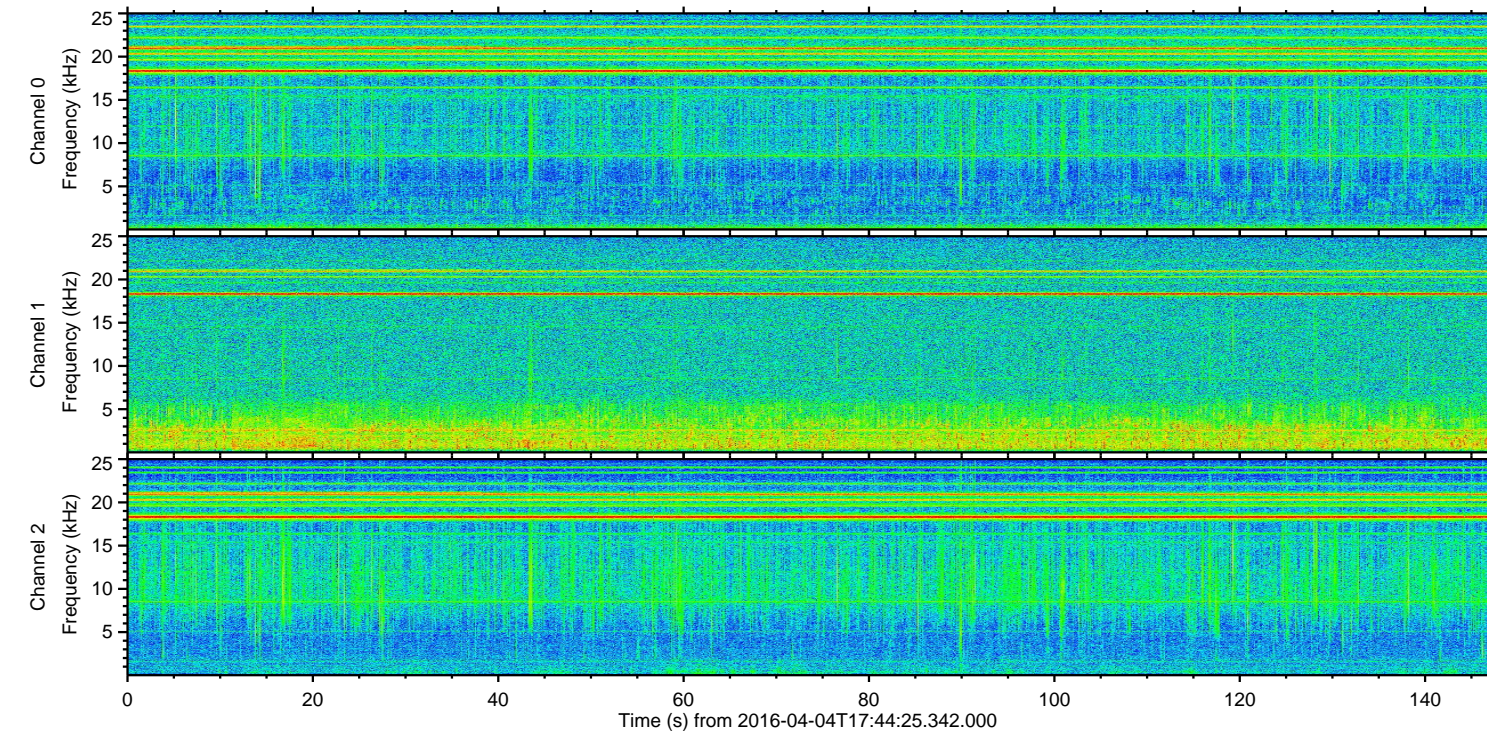
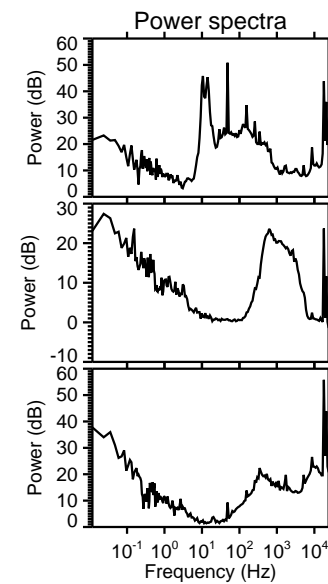
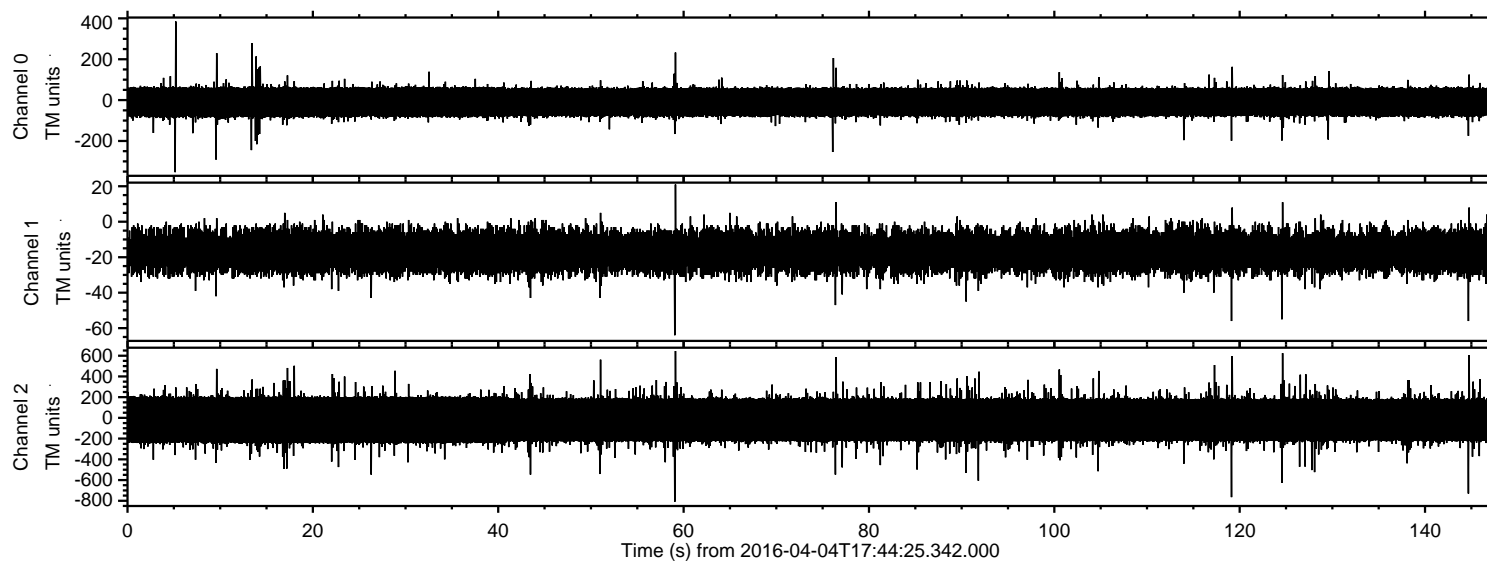


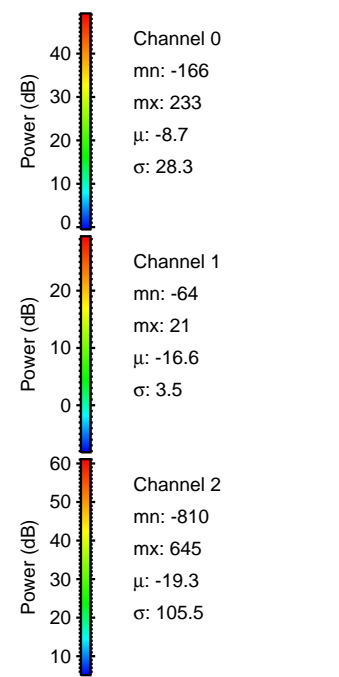
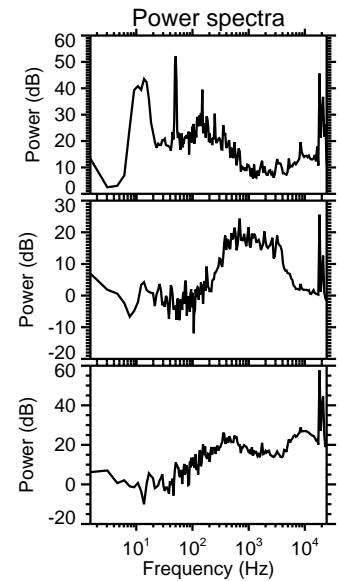
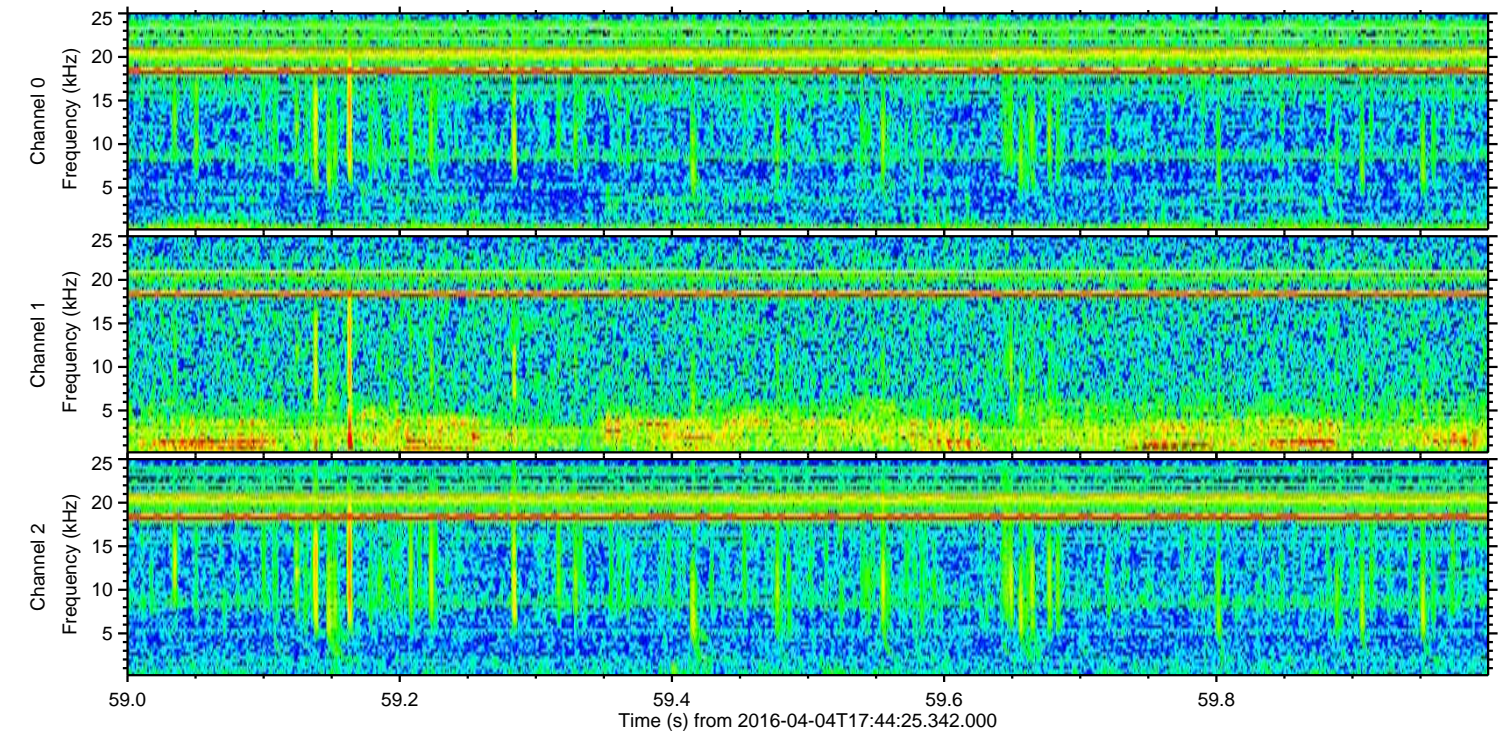
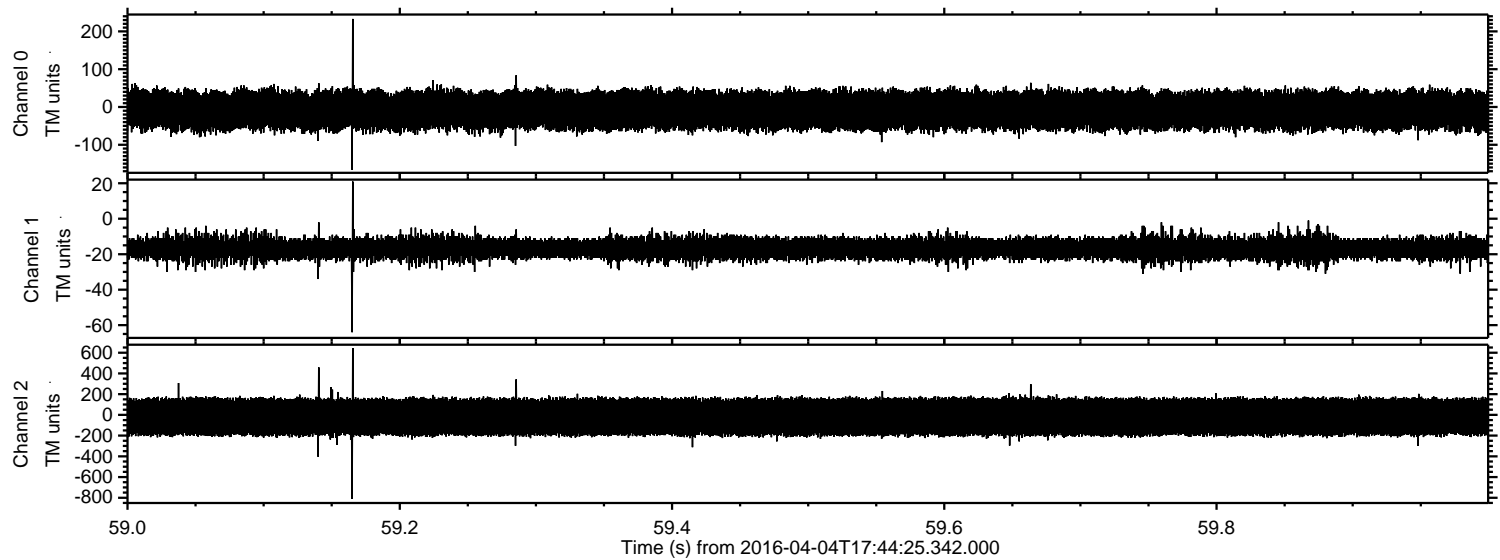
# ELMAVAN 3D WAVEFORMS (Measured data sampled at 50 kHz) 51000 packets of 144 samples from 2016-04-04T17:44:25.342.000.

Processed Fri May 6 03:10:32 2016 by ELM ver.2012-10-06 from 001\_\_elm20160404\_174424\_\_dat00.bin





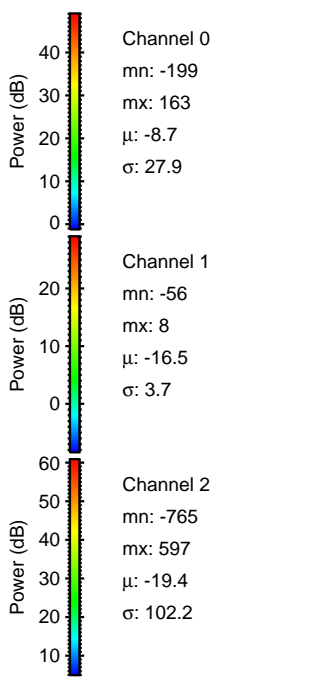
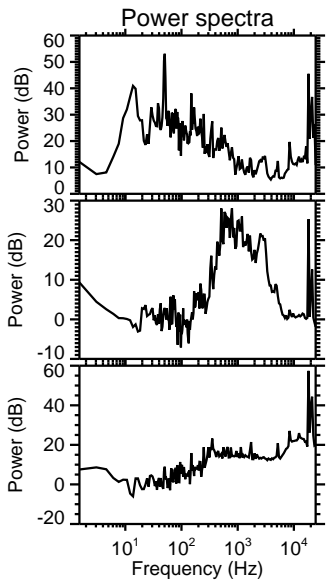
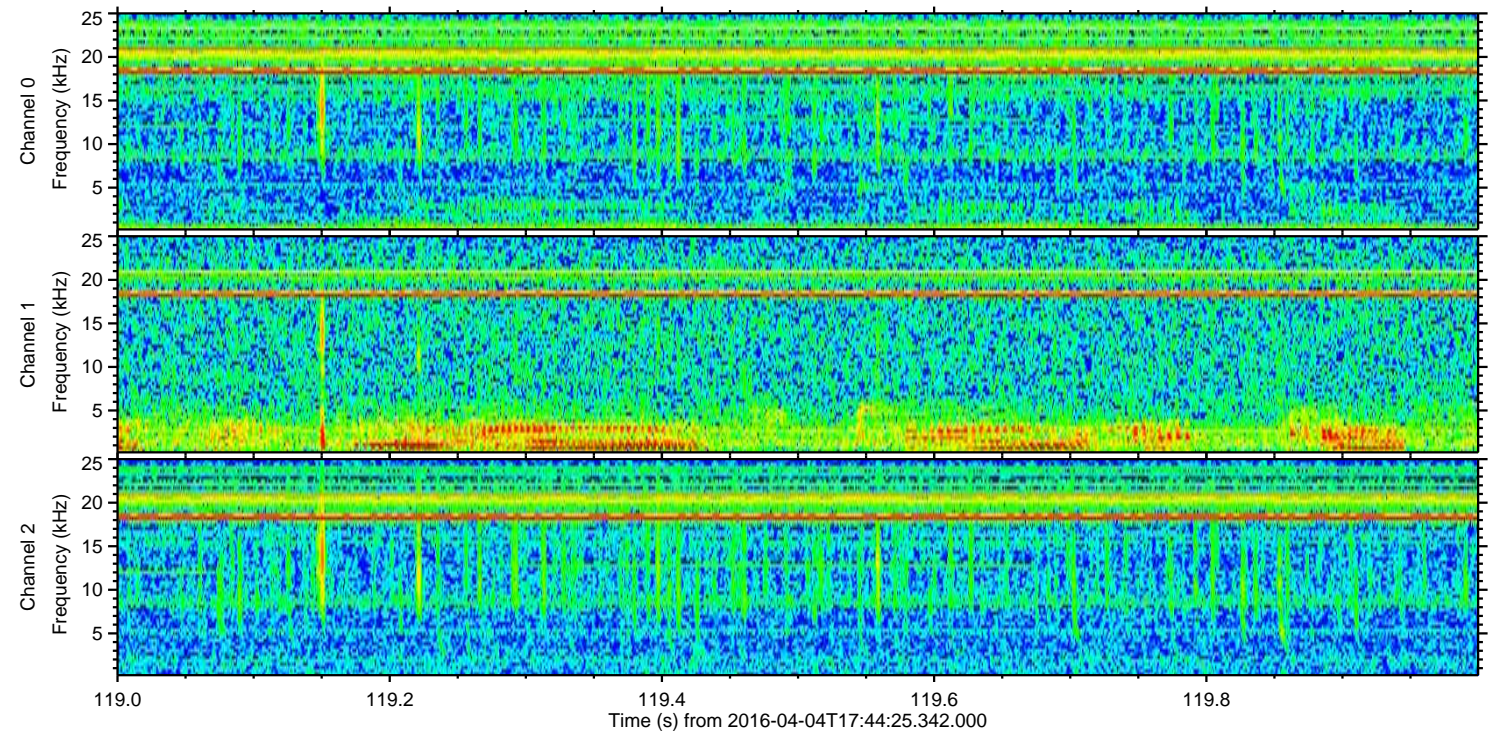
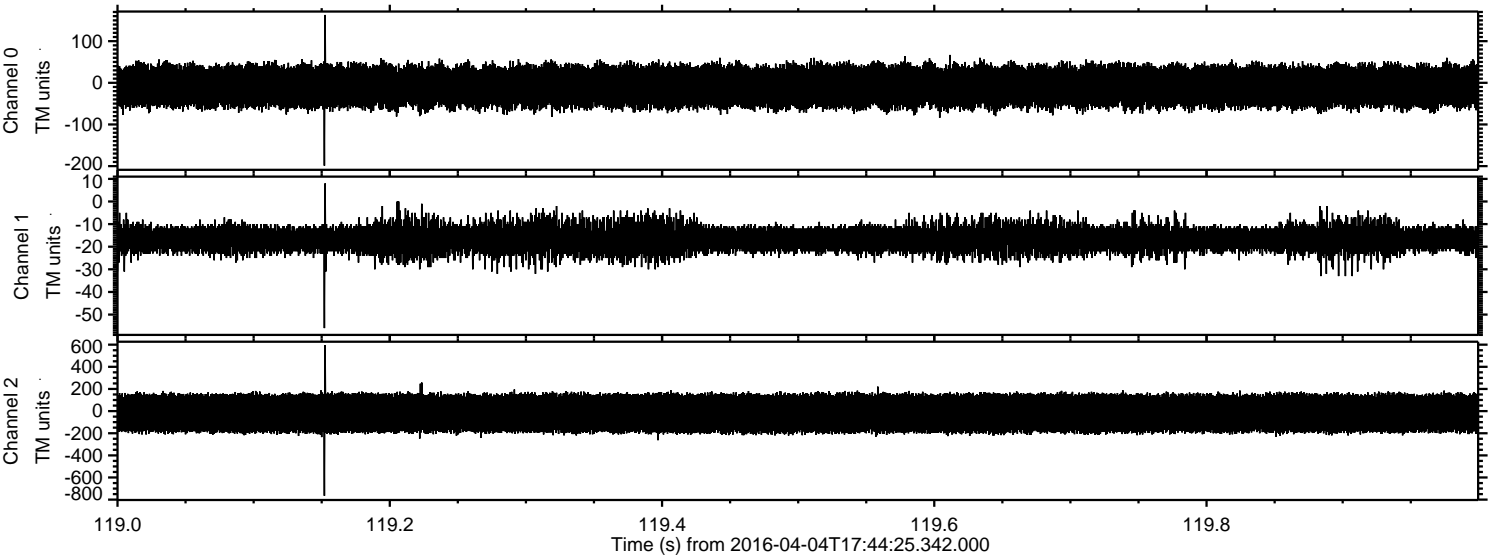
Processed Fri May 6 03:10:47 2016 by ELM ver.2012-10-06 from 001\_\_elm20160404\_174424\_\_dat00.bin





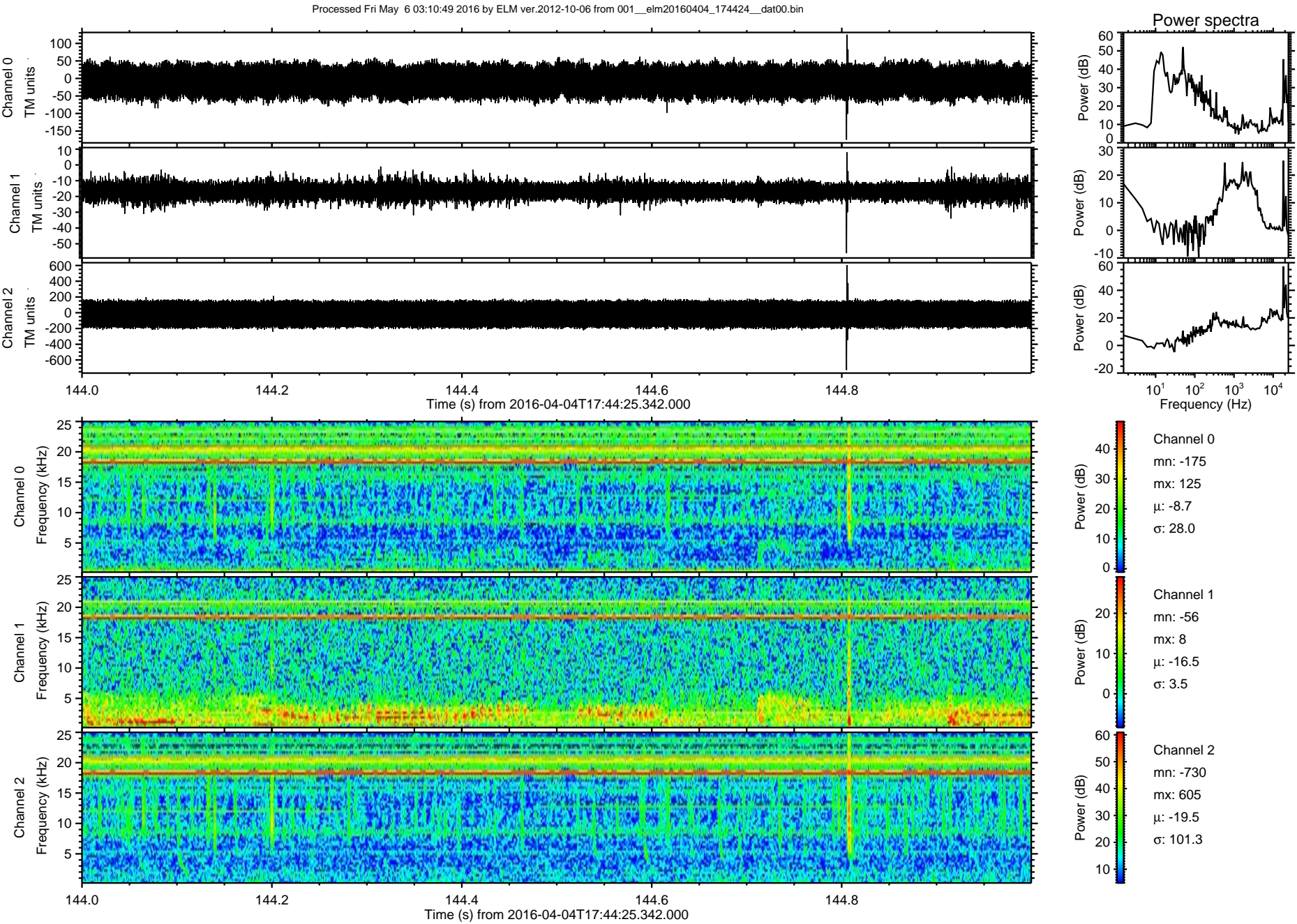
ELMAVAN 3D WAVEFORMS (Measured data sampled at 50 kHz) 51000 packets of 144 samples from 2016-04-04T17:44:25.342.000. Part 120/147

Processed Fri May 6 03:10:48 2016 by ELM ver.2012-10-06 from 001\_\_elm20160404\_174424\_\_dat00.bin



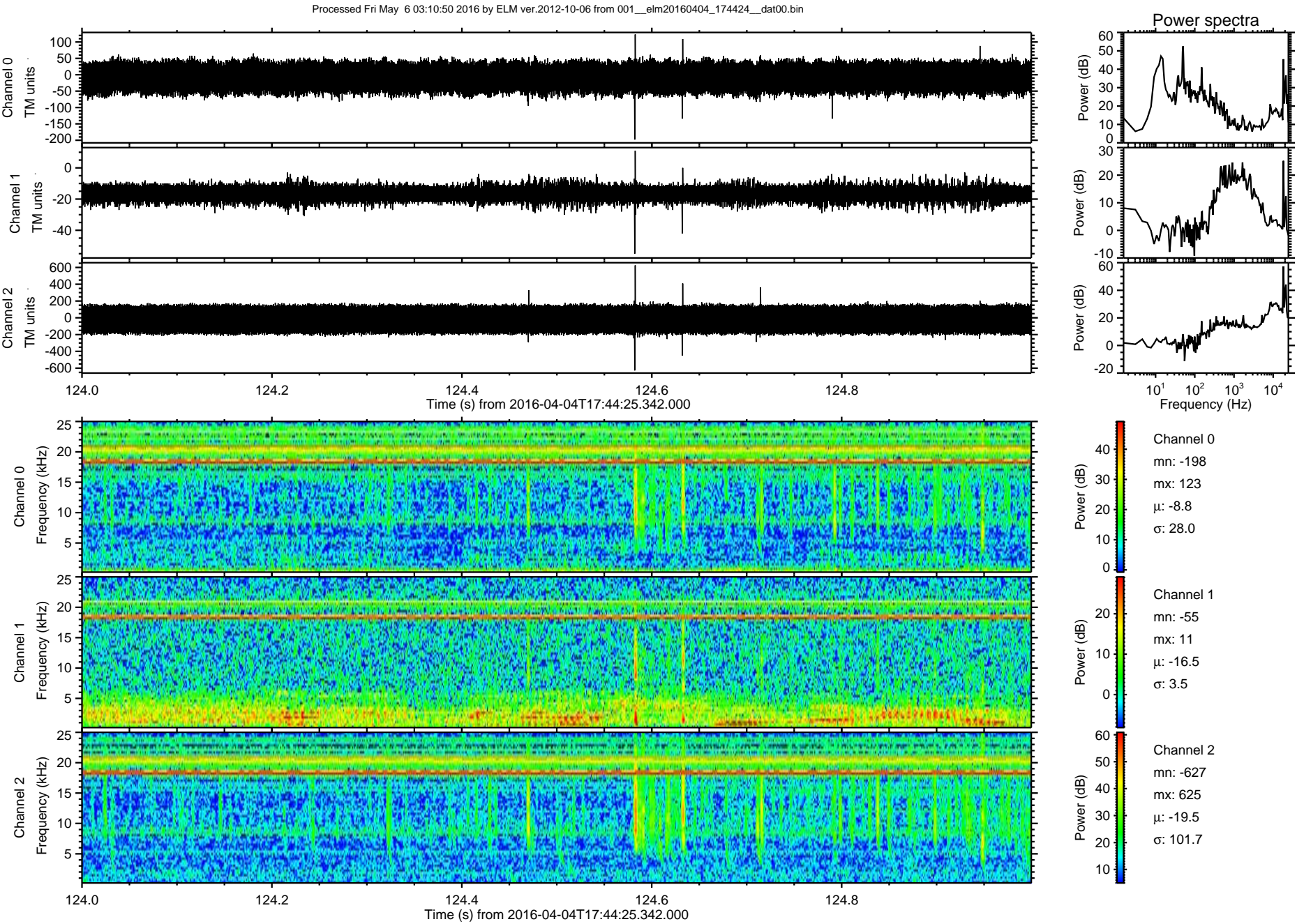


ELMAVAN 3D WAVEFORMS (Measured data sampled at 50 kHz) 51000 packets of 144 samples from 2016-04-04T17:44:25.342.000. Part 145/147



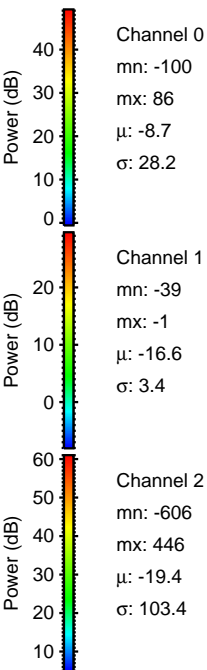
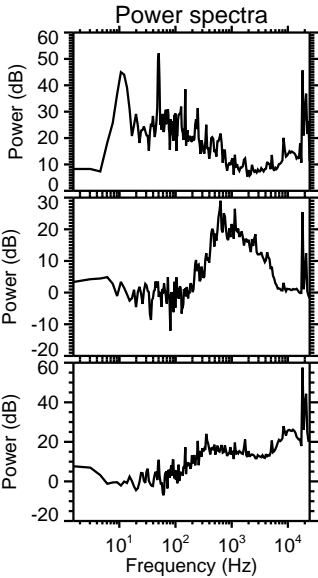
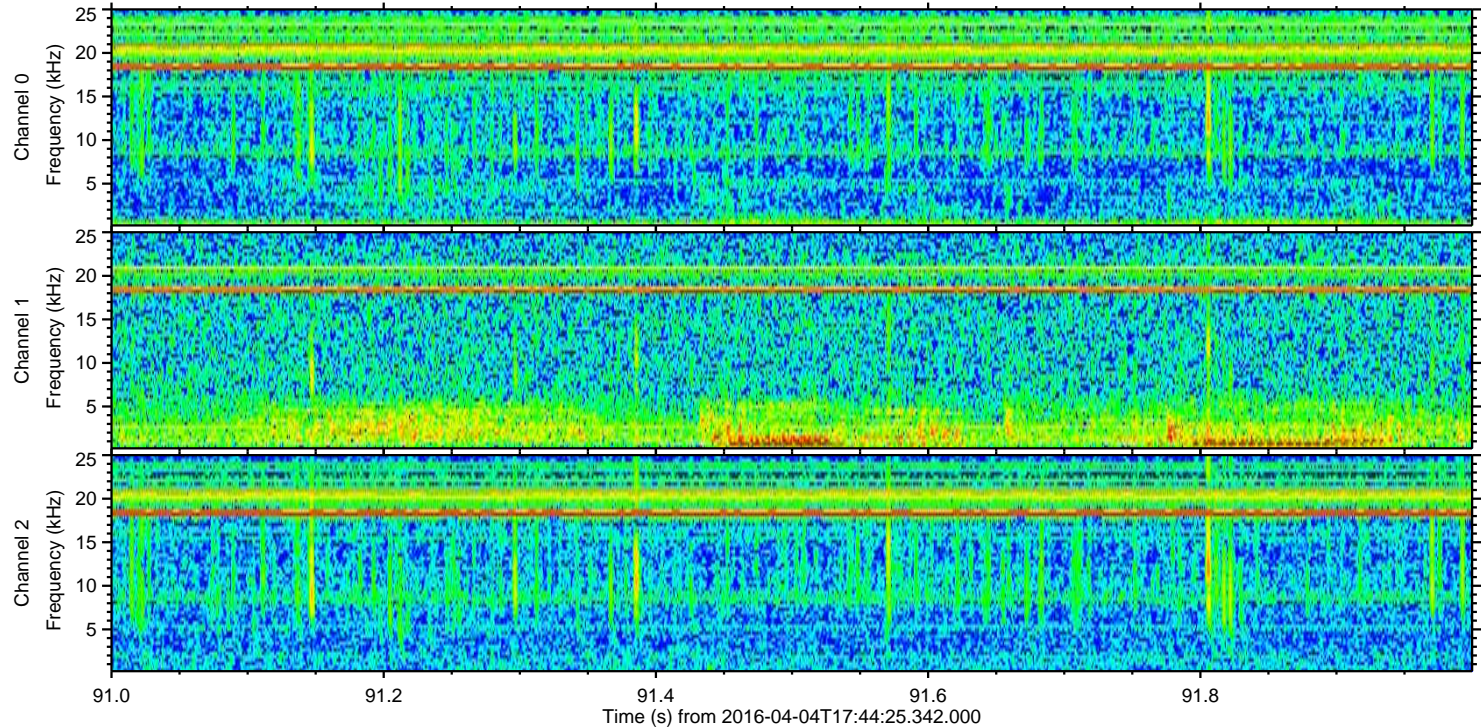
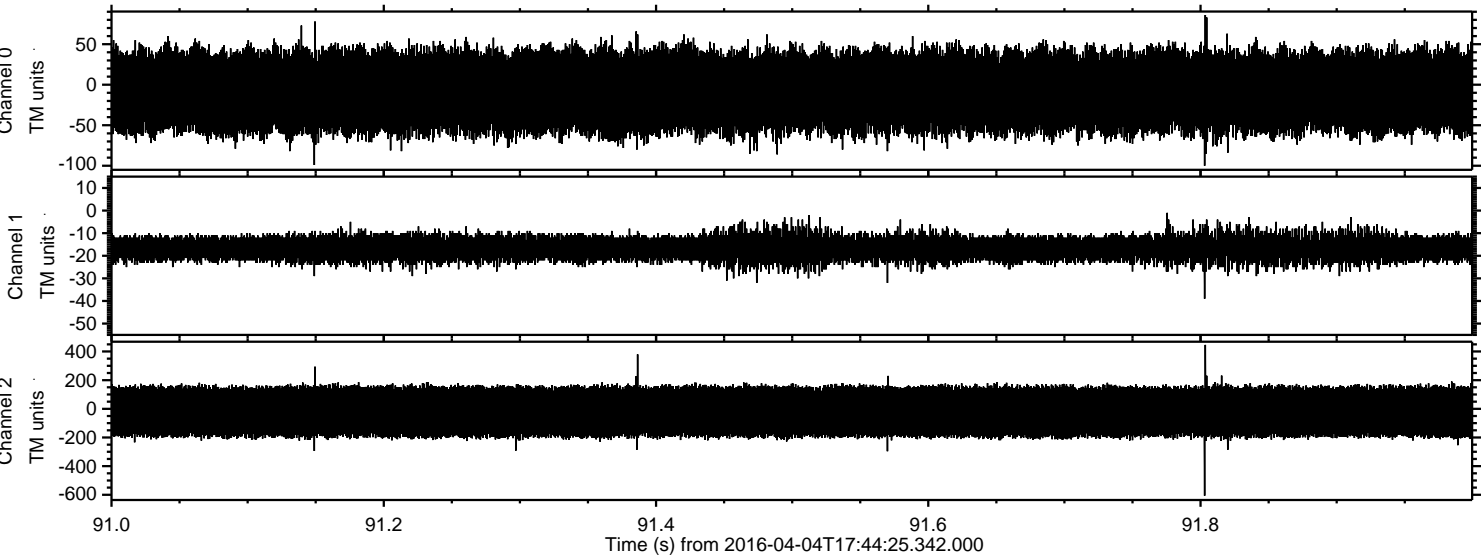


ELMAVAN 3D WAVEFORMS (Measured data sampled at 50 kHz) 51000 packets of 144 samples from 2016-04-04T17:44:25.342.000. Part 125/147



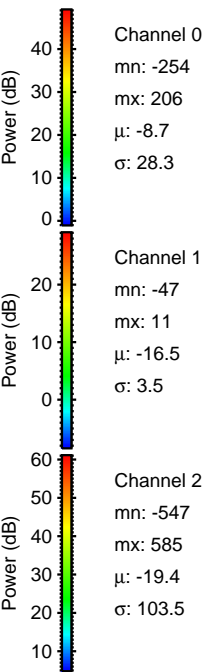
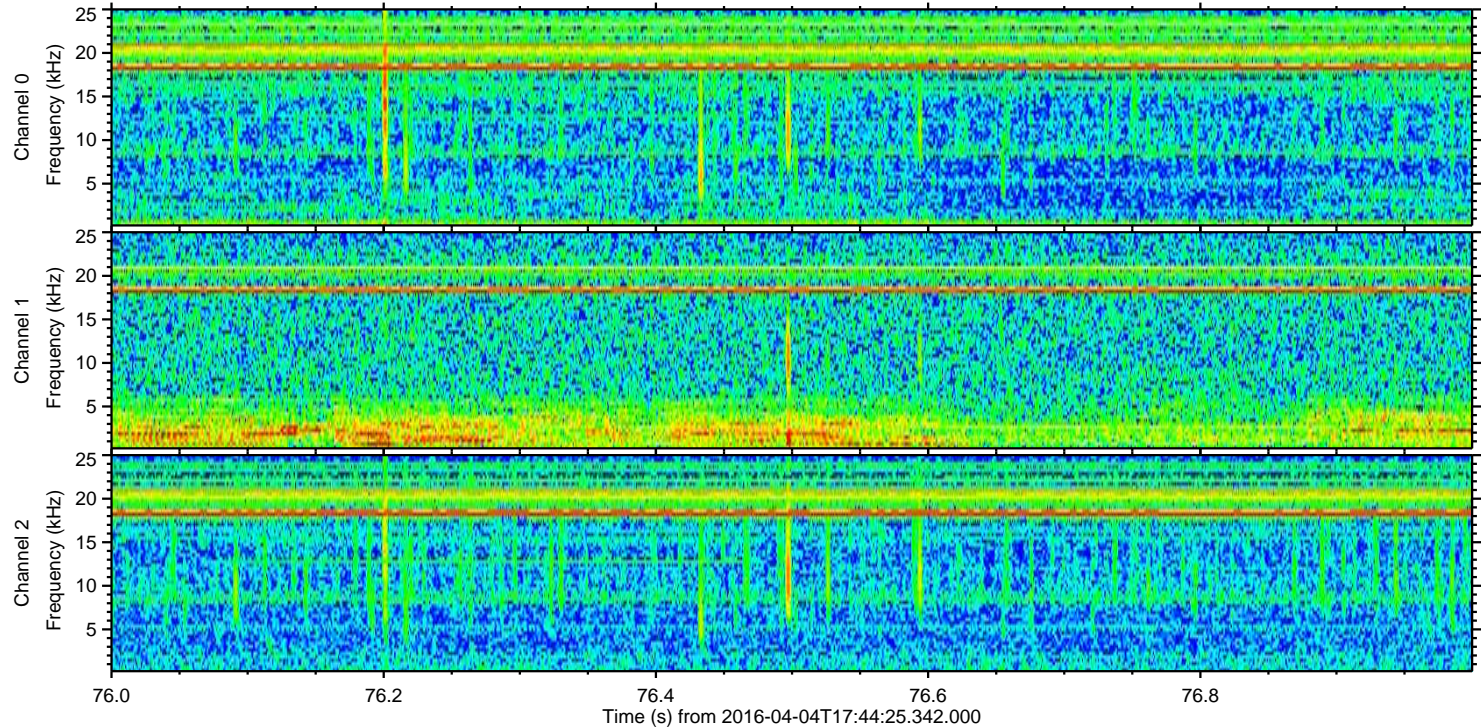
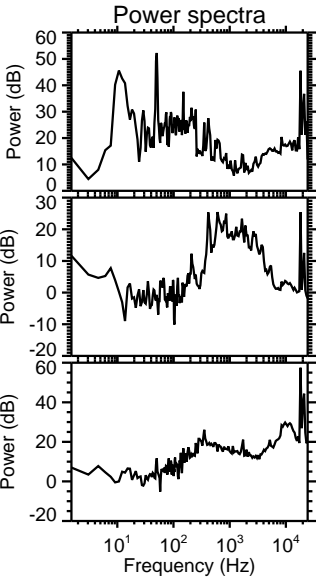
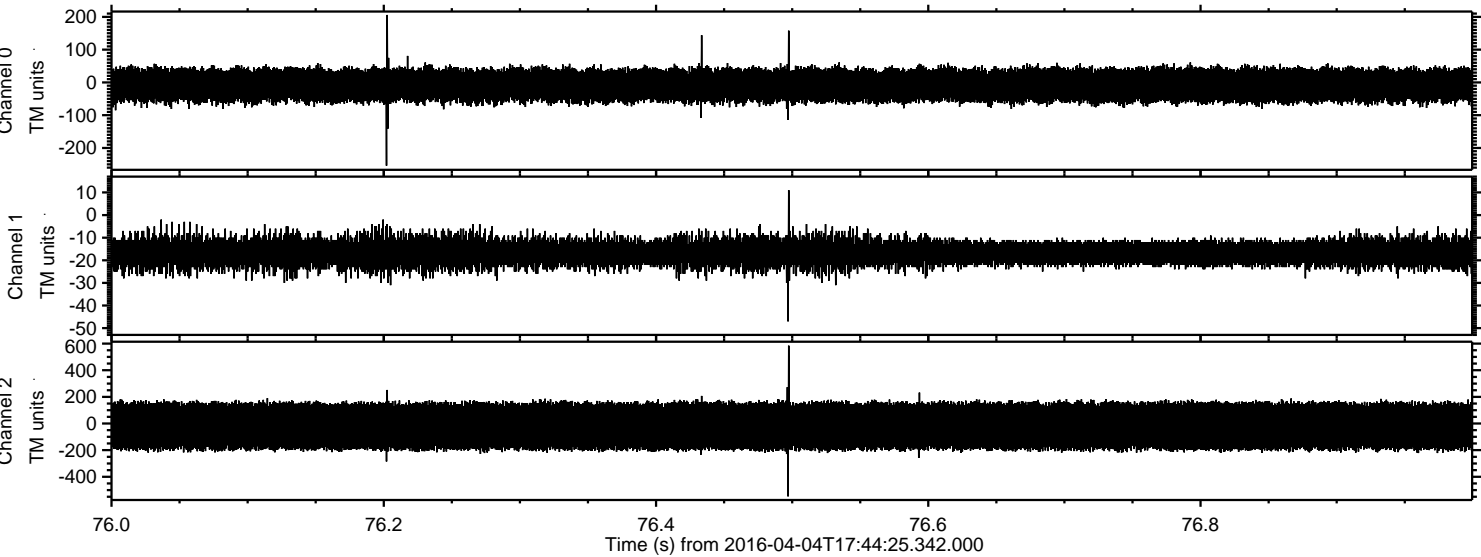


Processed Fri May 6 03:10:51 2016 by ELM ver.2012-10-06 from 001\_\_elm20160404\_174424\_\_dat00.bin



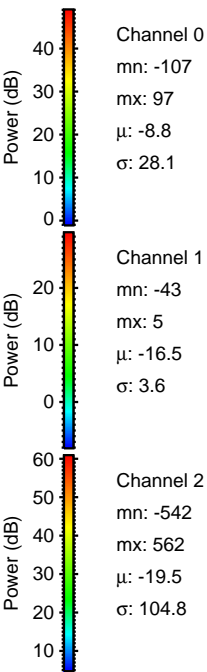
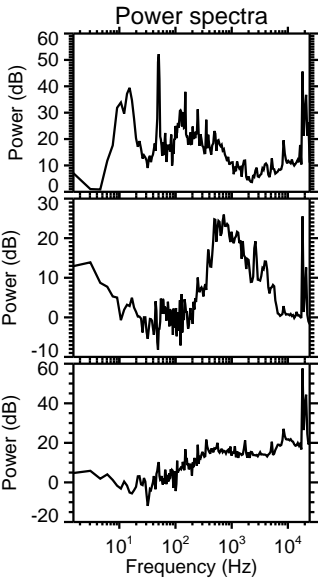
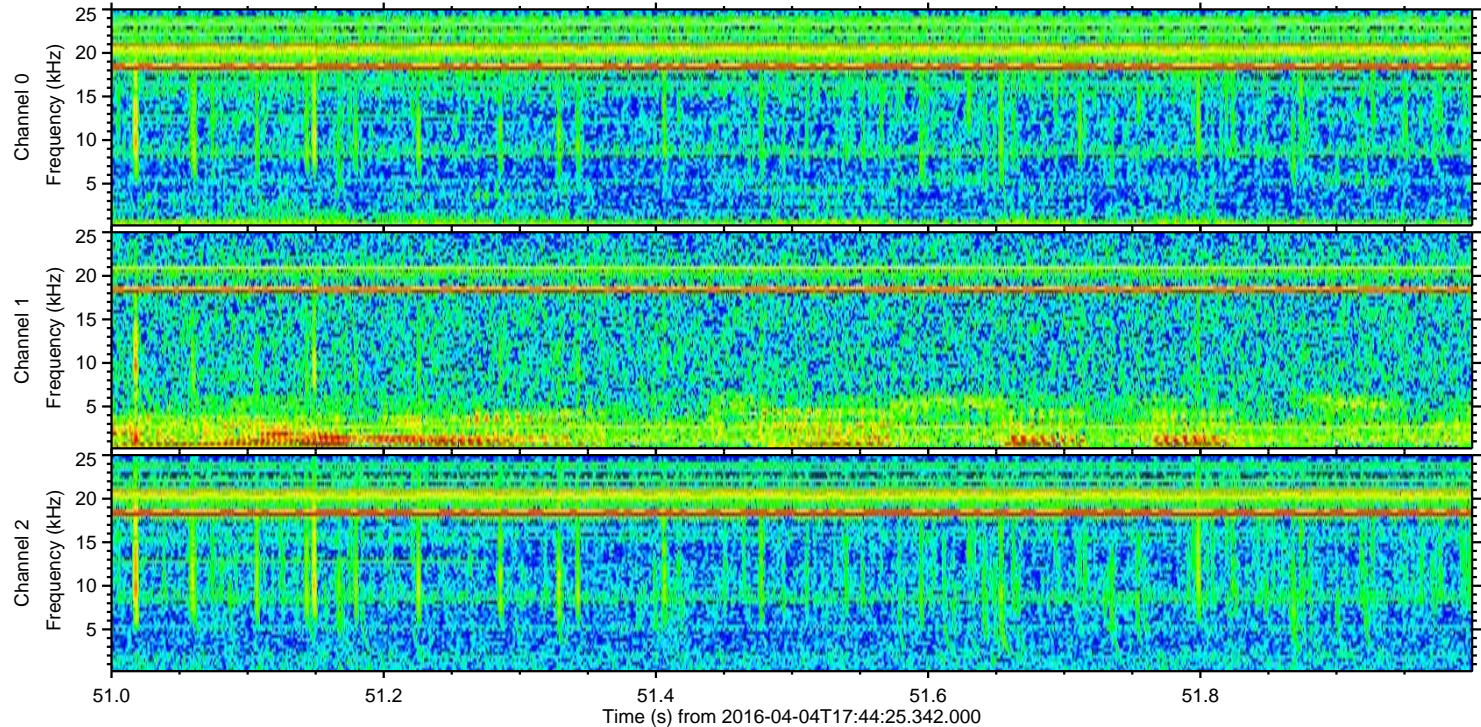
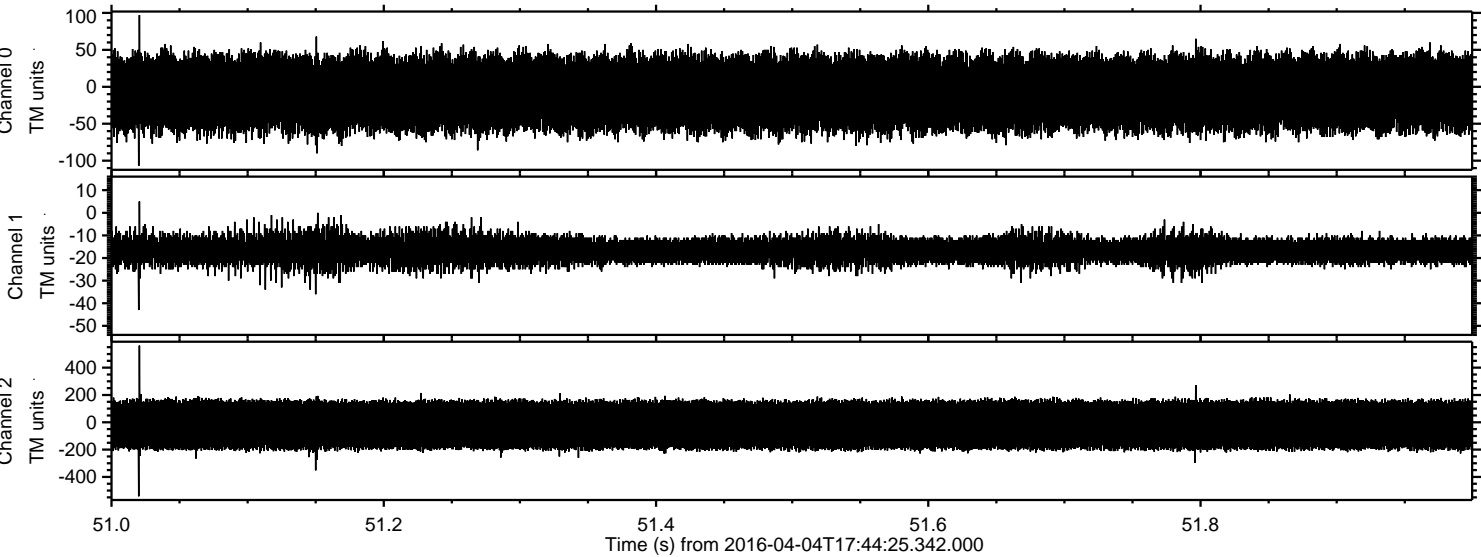


Processed Fri May 6 03:10:52 2016 by ELM ver.2012-10-06 from 001\_\_elm20160404\_174424\_\_dat00.bin



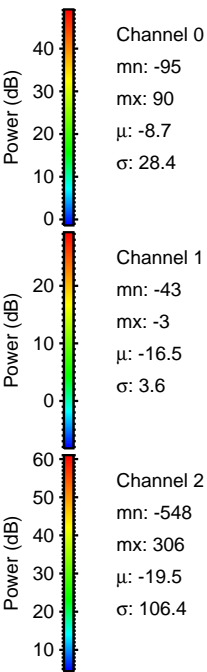
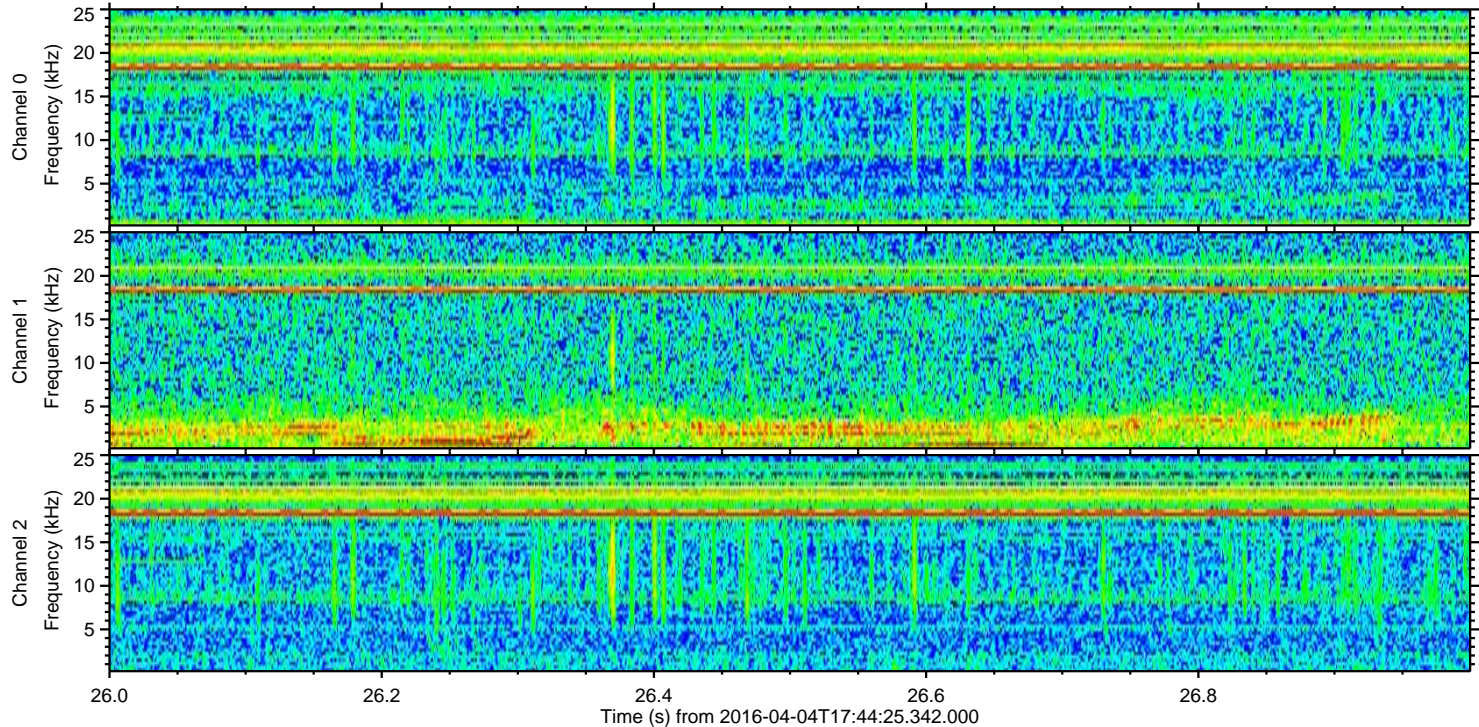
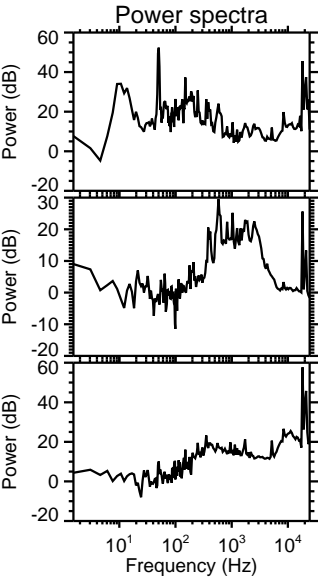
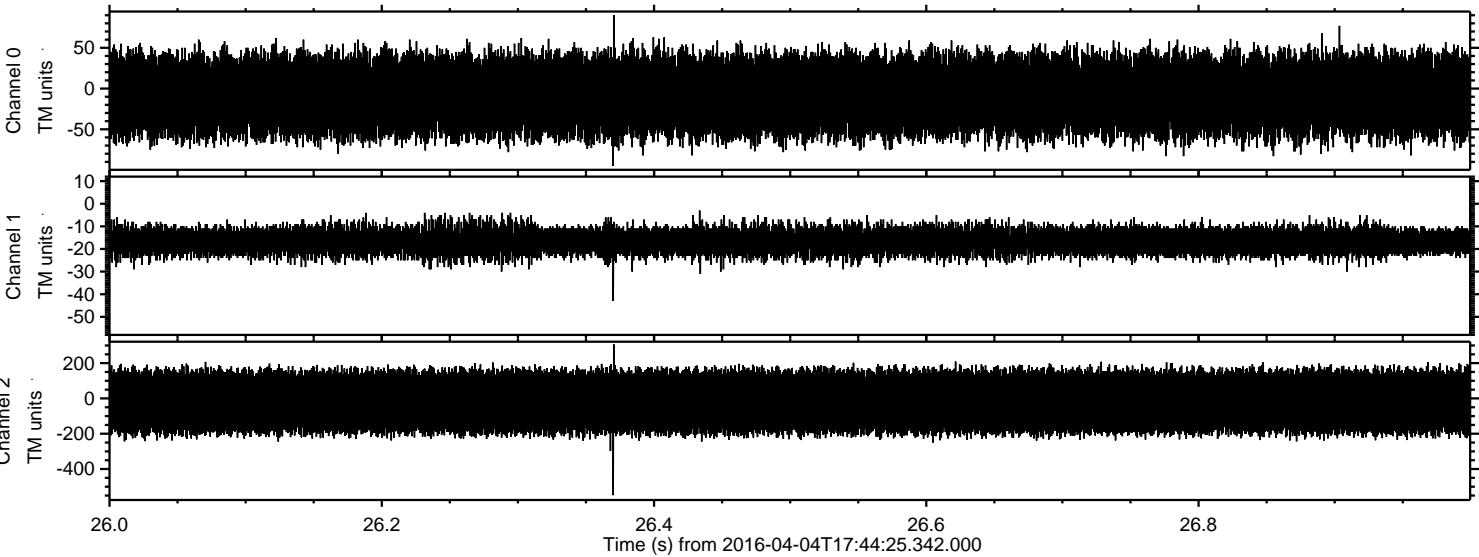


Processed Fri May 6 03:10:54 2016 by ELM ver.2012-10-06 from 001\_\_elm20160404\_174424\_\_dat00.bin



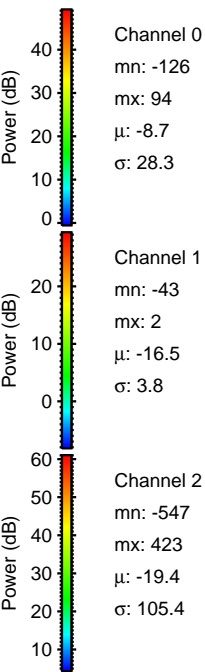
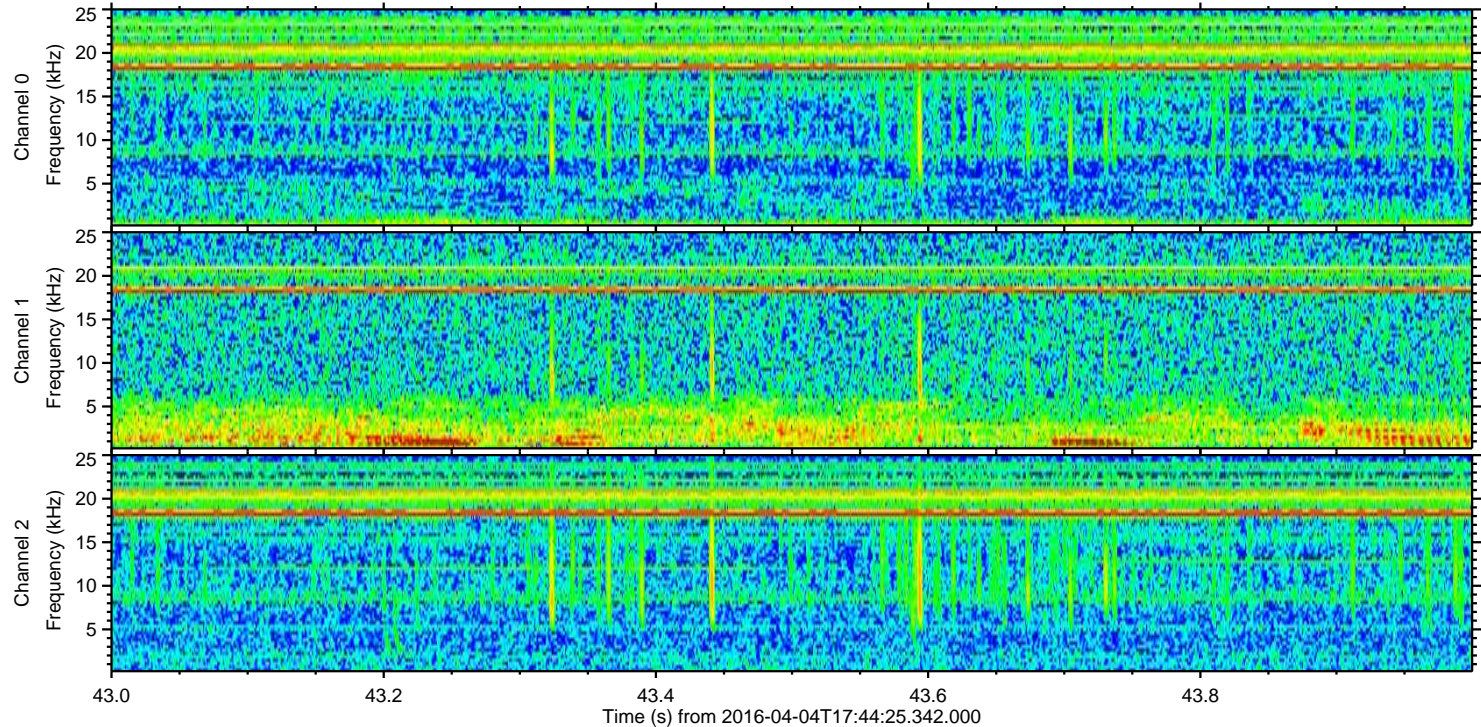
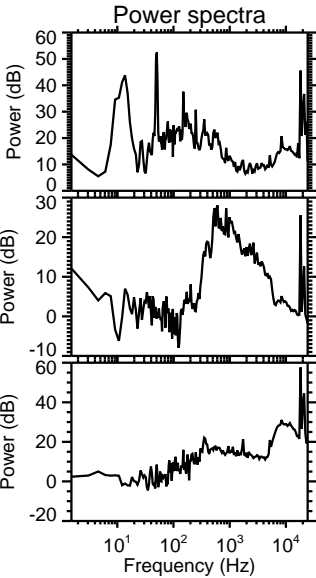
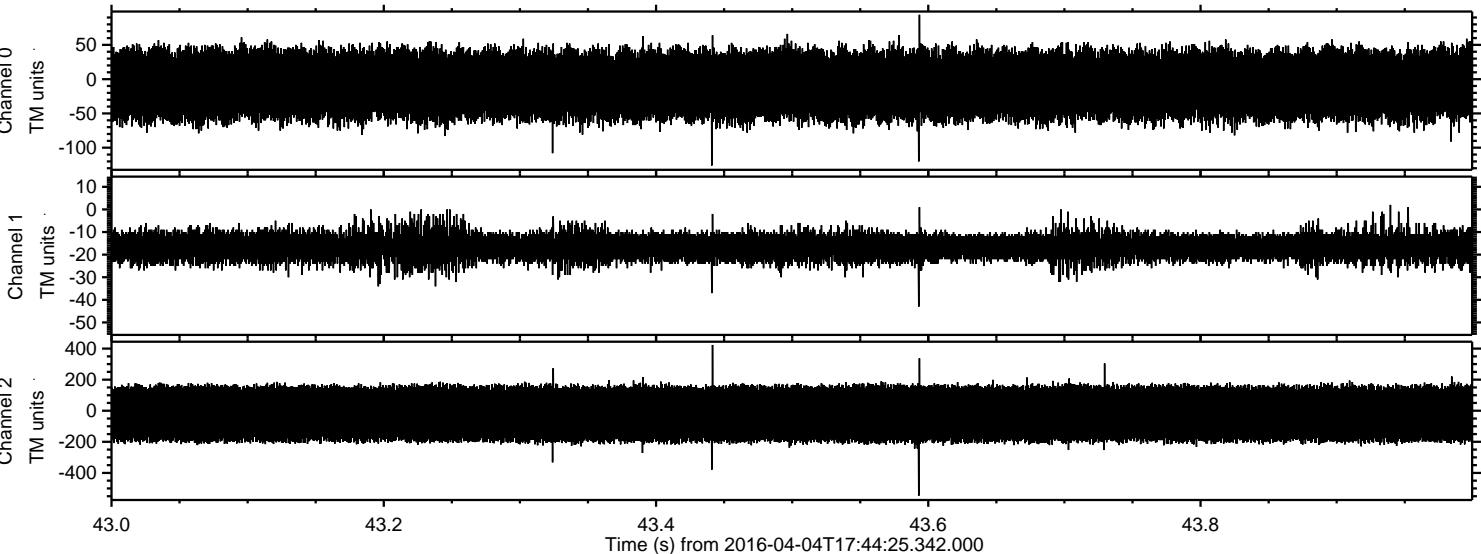


Processed Fri May 6 03:10:55 2016 by ELM ver.2012-10-06 from 001\_\_elm20160404\_174424\_\_dat00.bin





Processed Fri May 6 03:10:56 2016 by ELM ver.2012-10-06 from 001\_\_elm20160404\_174424\_\_dat00.bin





Processed Fri May 6 03:10:57 2016 by ELM ver.2012-10-06 from 001\_\_elm20160404\_174424\_\_dat00.bin

