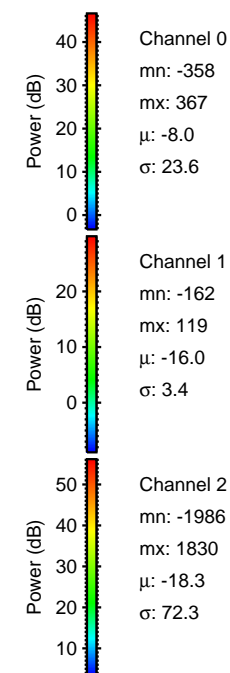
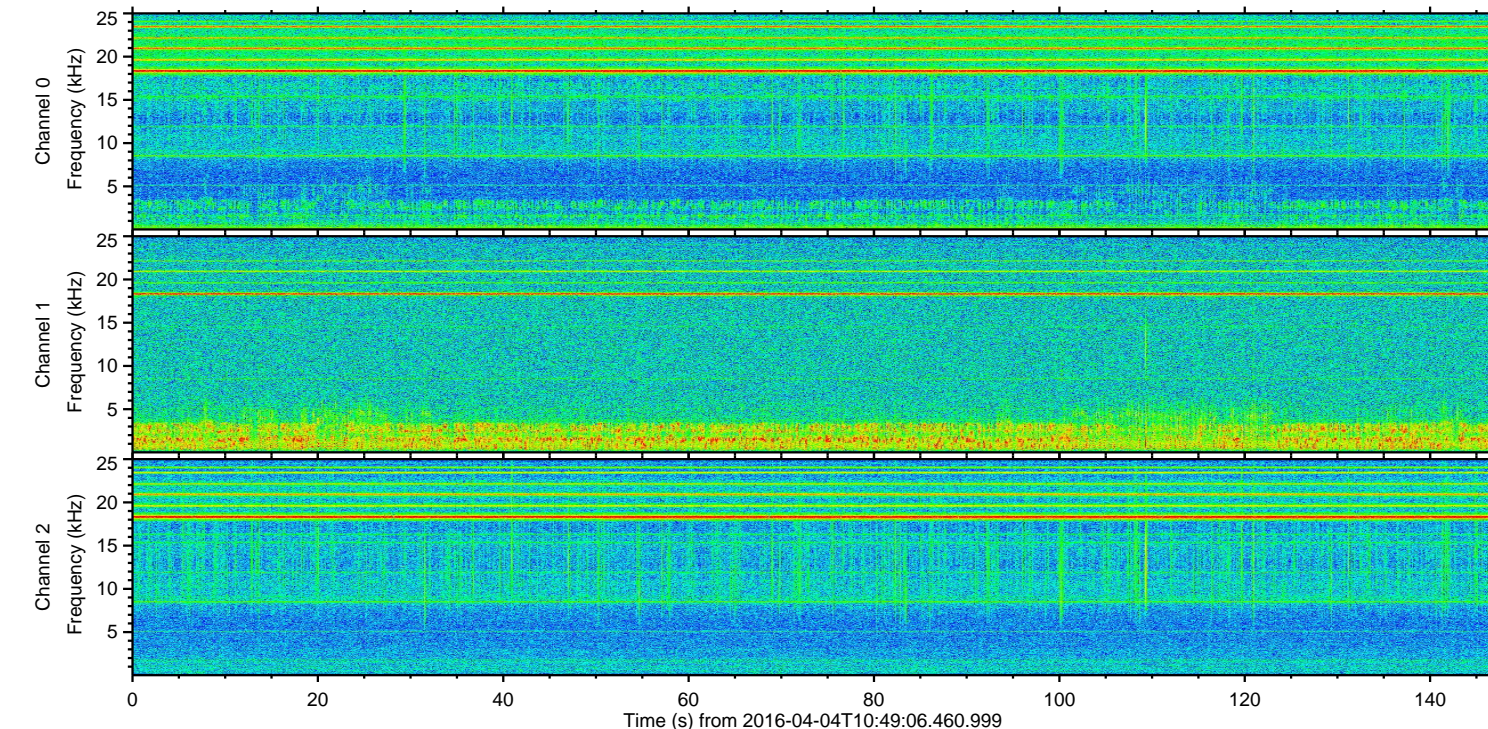
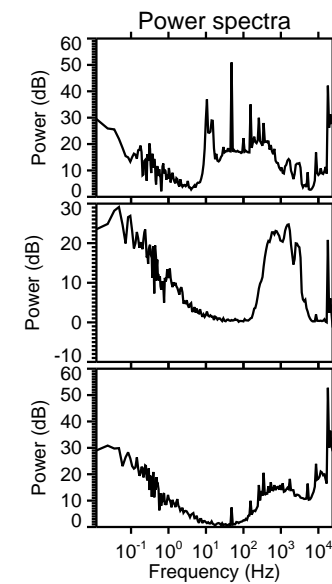
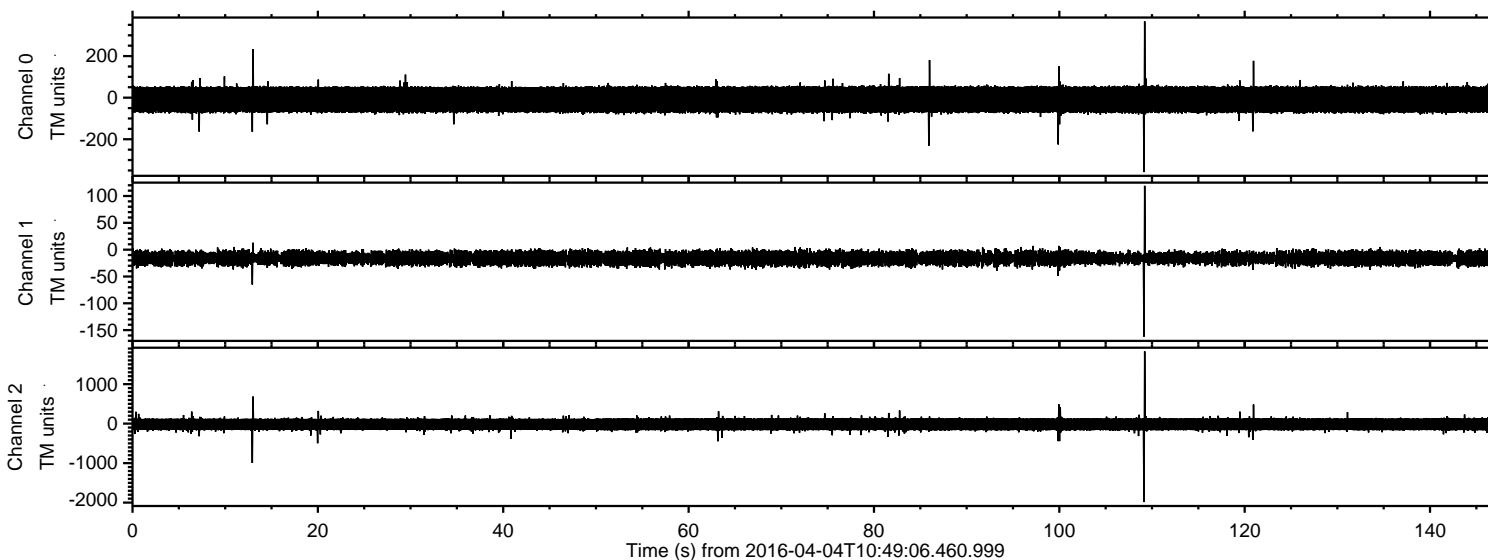


ELMAVAN 3D WAVEFORMS (Measured data sampled at 50 kHz) 51000 packets of 144 samples from 2016-04-04T10:49:06.460.999.

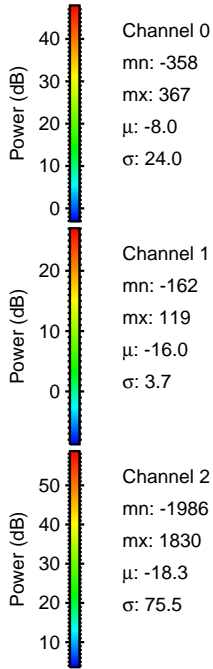
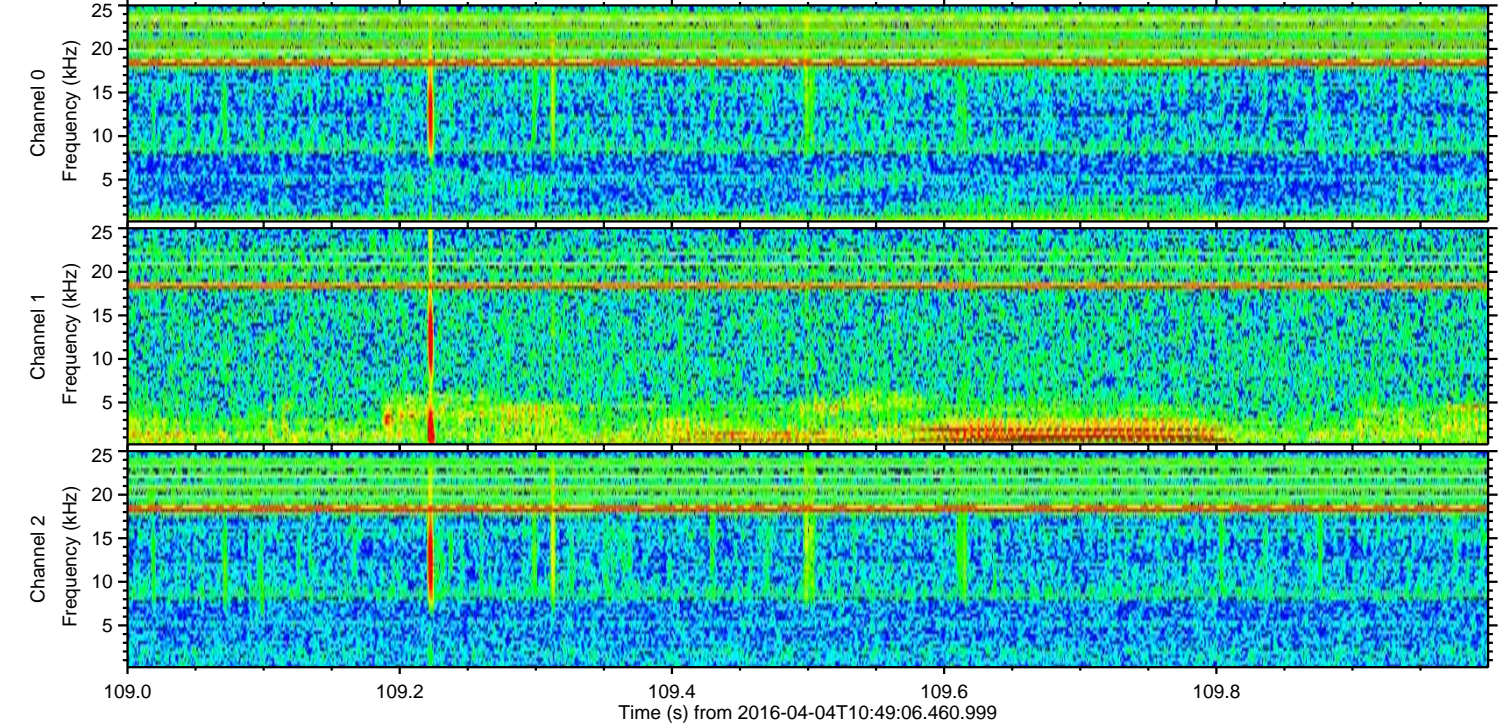
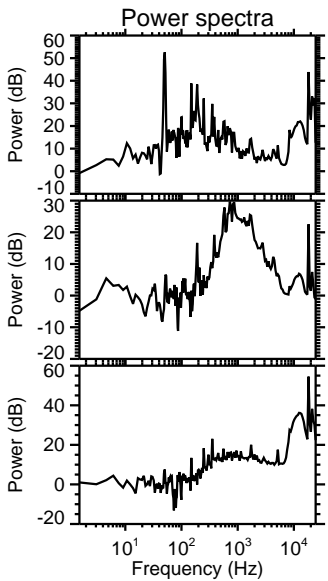
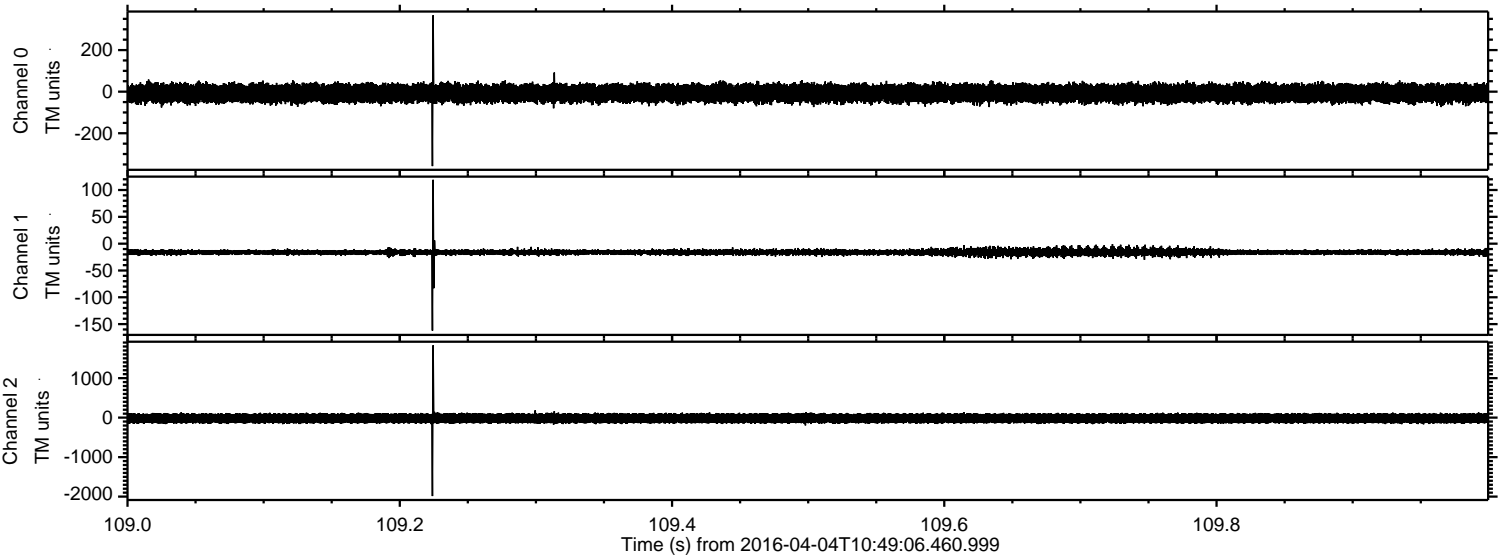
Processed Fri May 6 01:33:47 2016 by ELM ver.2012-10-06 from 001\_\_elm20160404\_104905\_\_dat00.bin





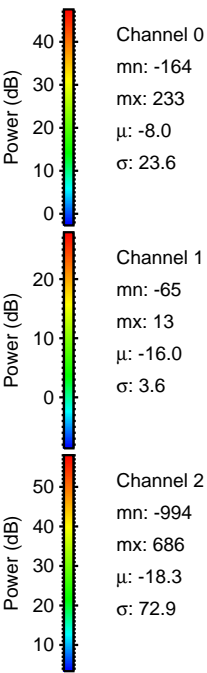
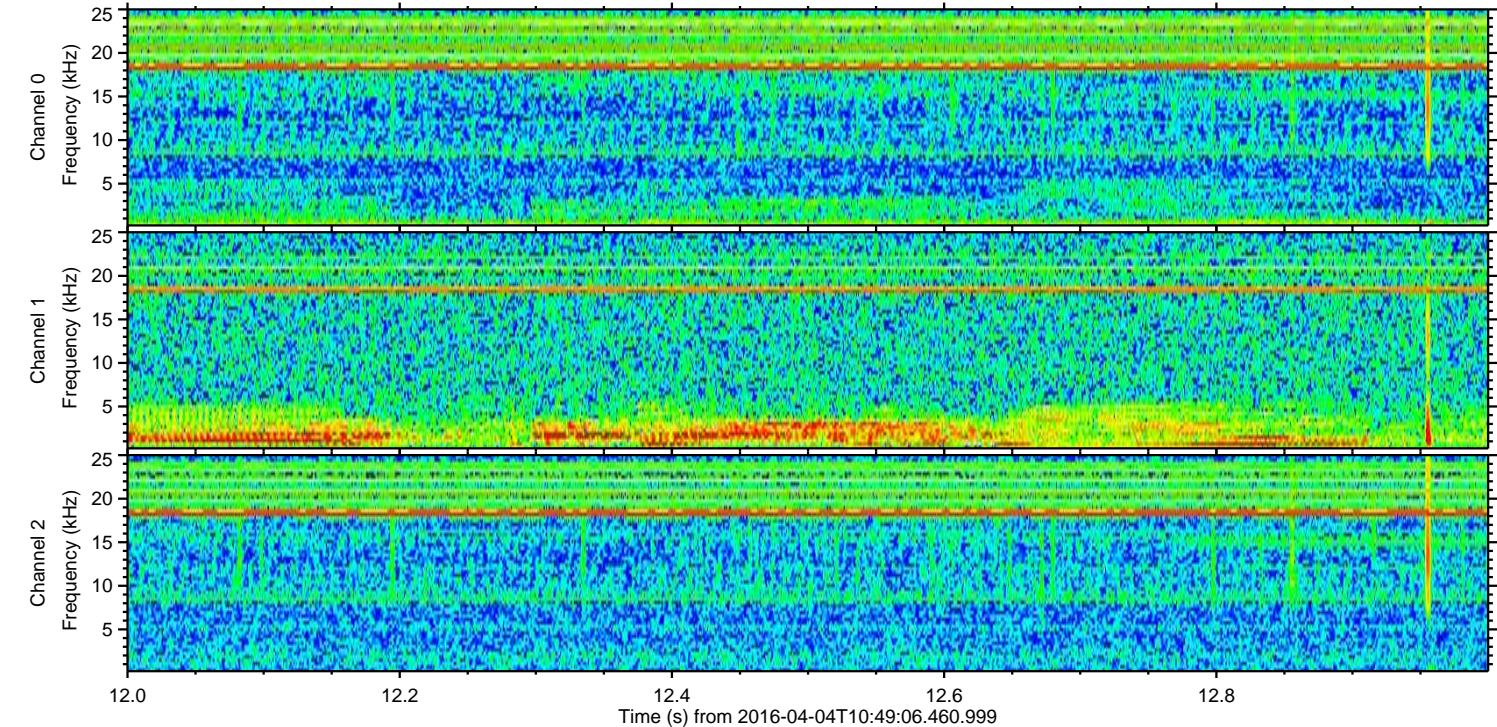
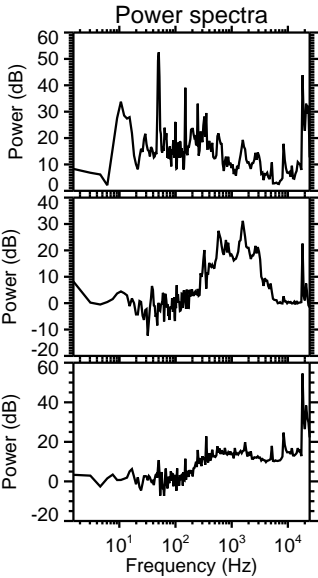
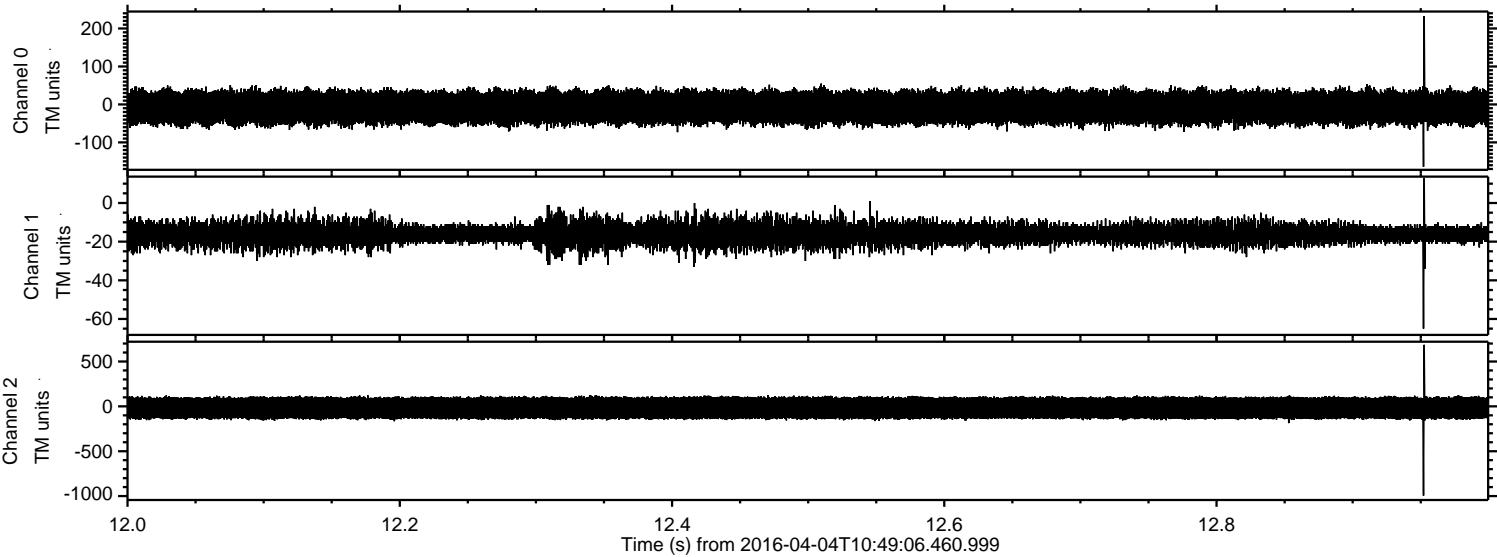
ELMAVAN 3D WAVEFORMS (Measured data sampled at 50 kHz) 51000 packets of 144 samples from 2016-04-04T10:49:06.460.999. Part 110/147

Processed Fri May 6 01:34:02 2016 by ELM ver.2012-10-06 from 001\_\_elm20160404\_104905\_\_dat00.bin



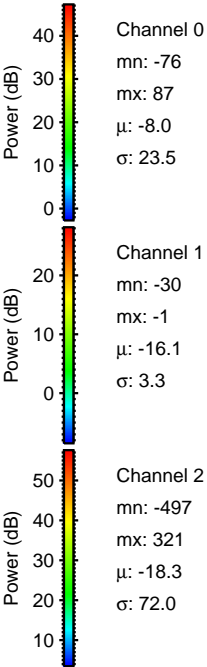
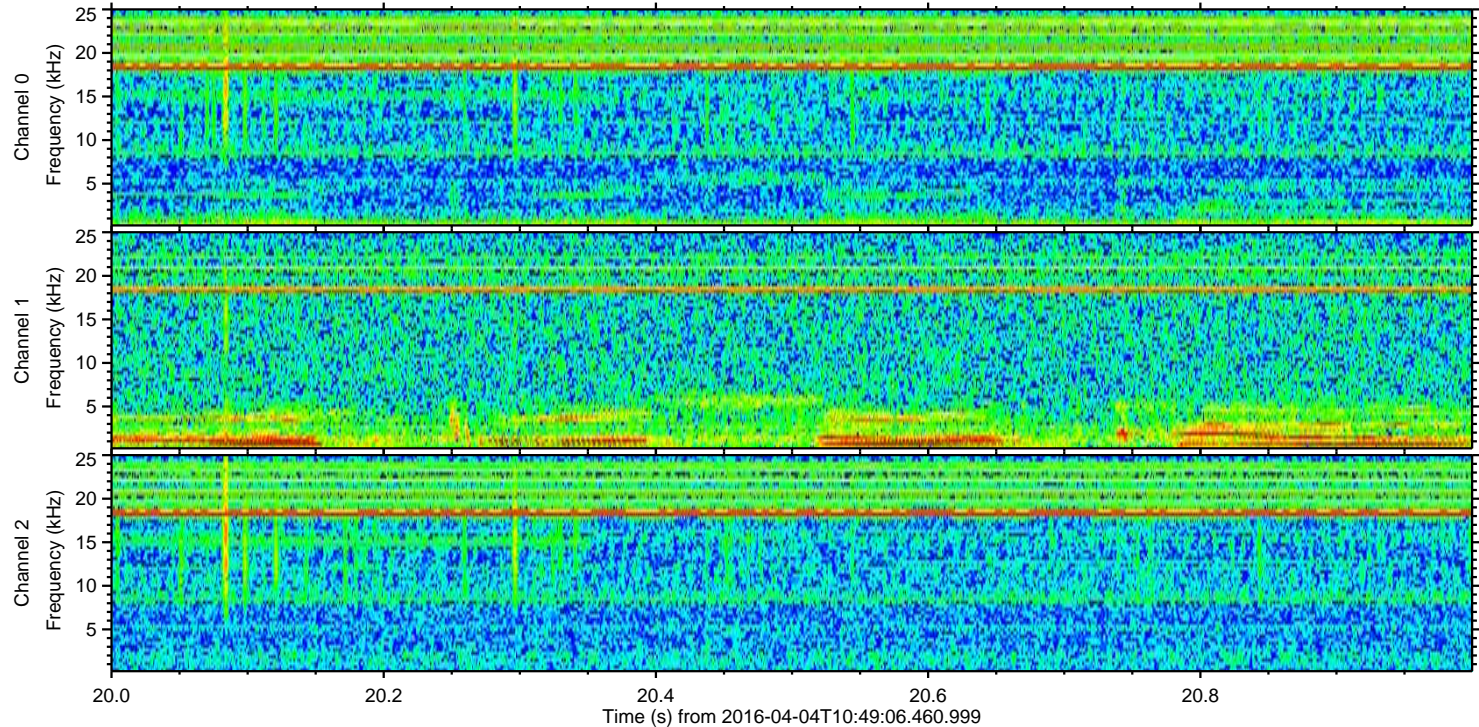
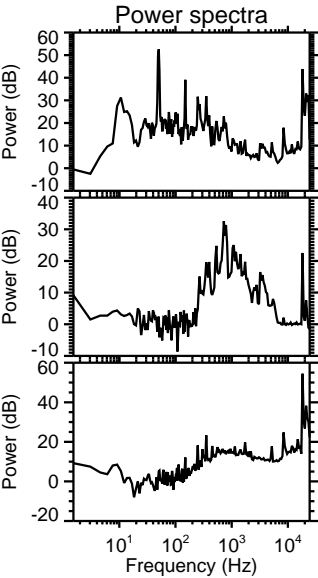
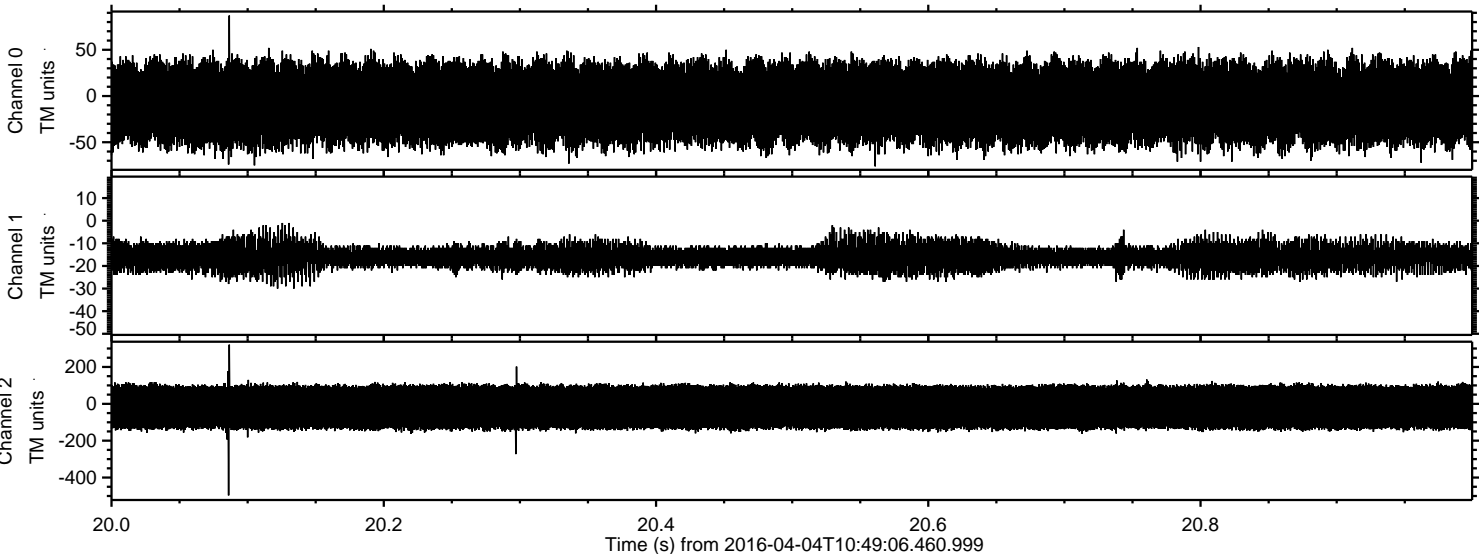


Processed Fri May 6 01:34:03 2016 by ELM ver.2012-10-06 from 001\_\_elm20160404\_104905\_\_dat00.bin



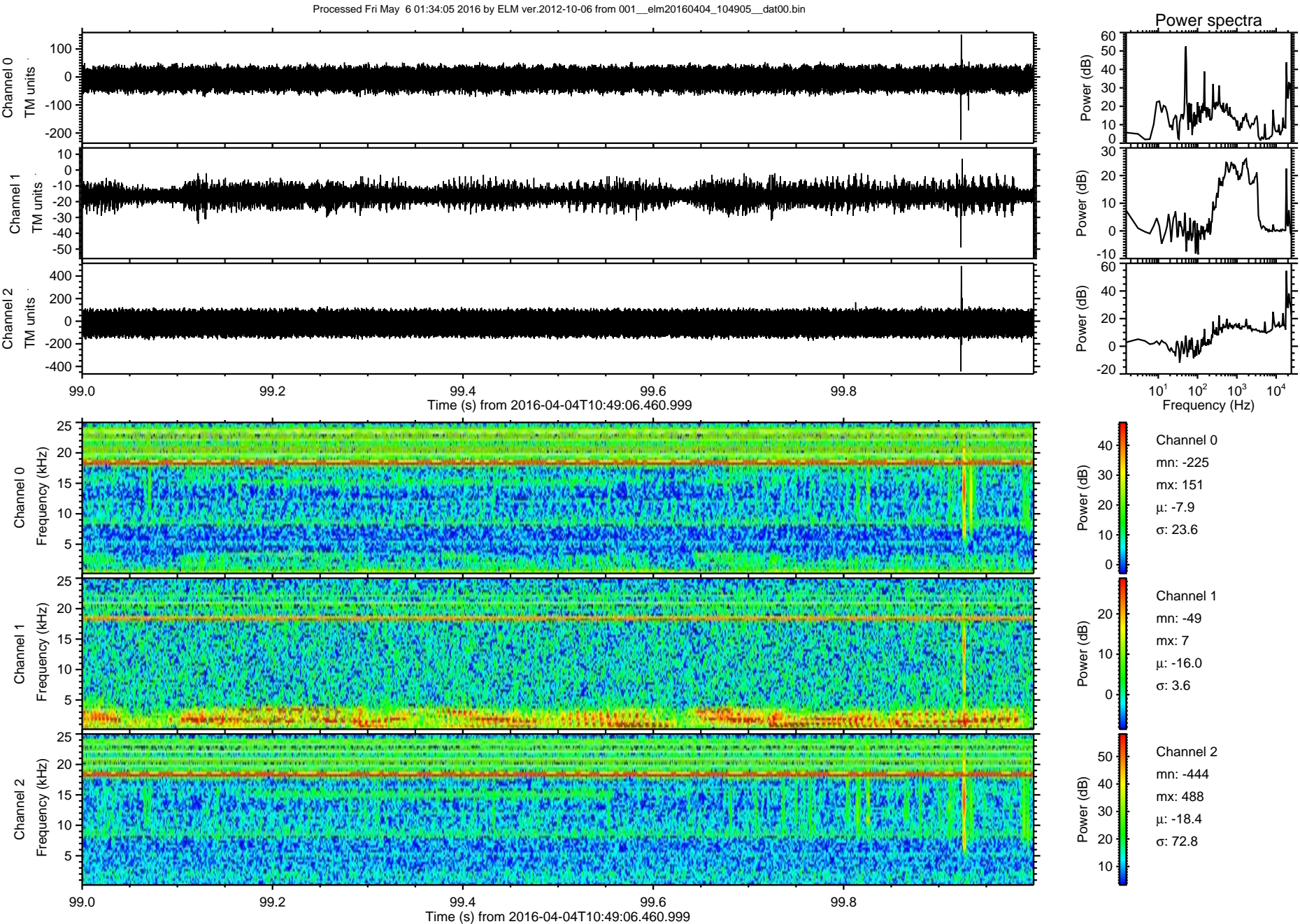


Processed Fri May 6 01:34:04 2016 by ELM ver.2012-10-06 from 001\_\_elm20160404\_104905\_\_dat00.bin





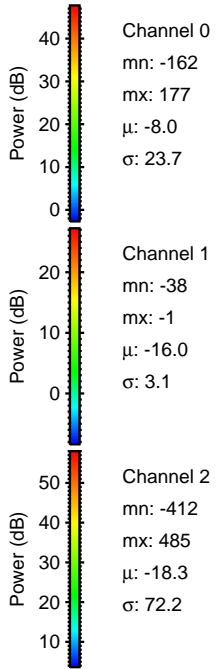
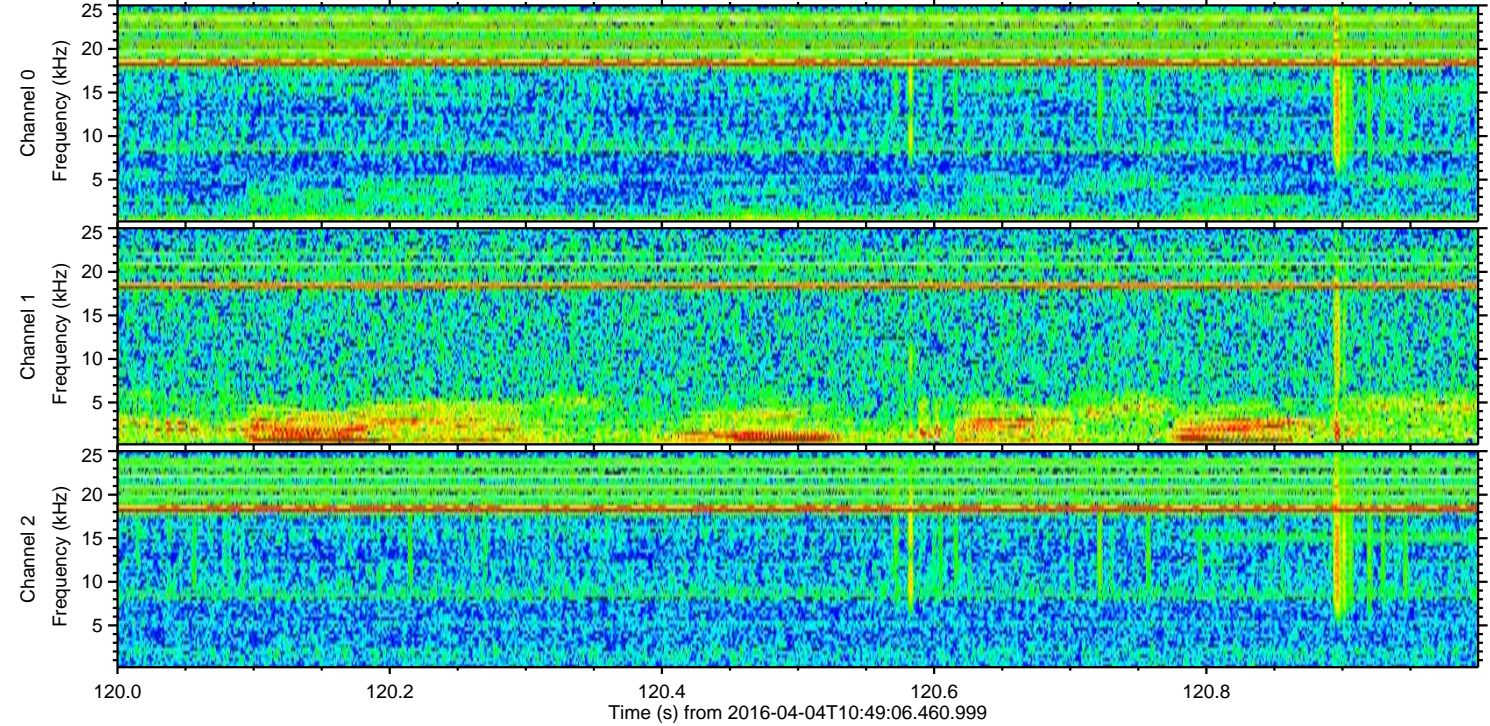
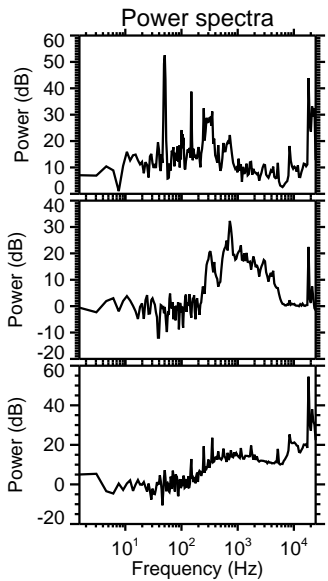
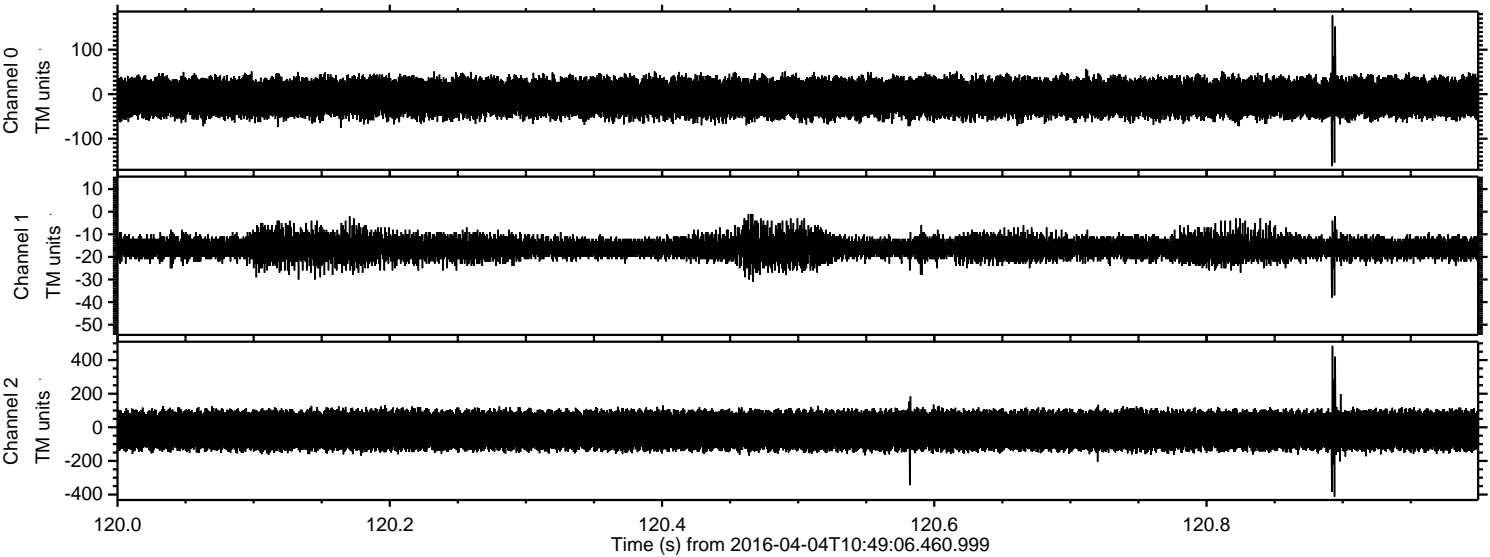
ELMAVAN 3D WAVEFORMS (Measured data sampled at 50 kHz) 51000 packets of 144 samples from 2016-04-04T10:49:06.460.999. Part 100/147





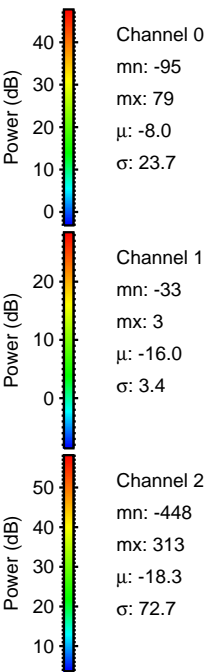
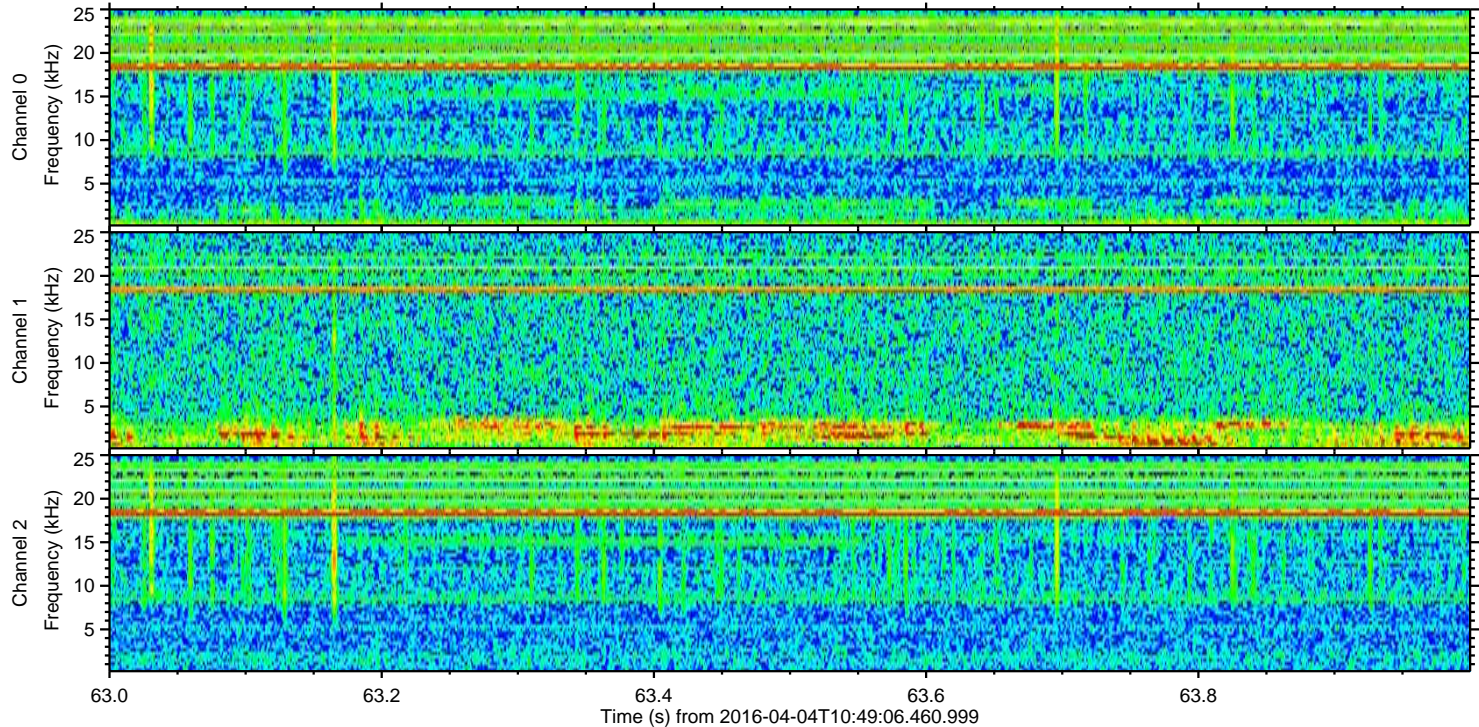
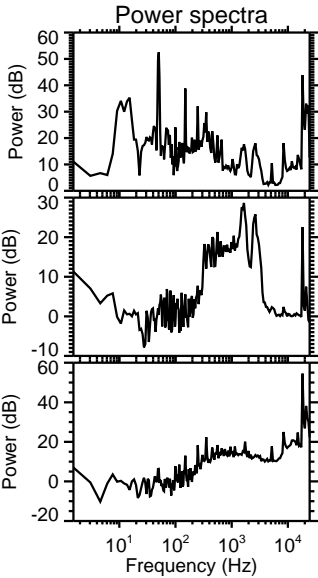
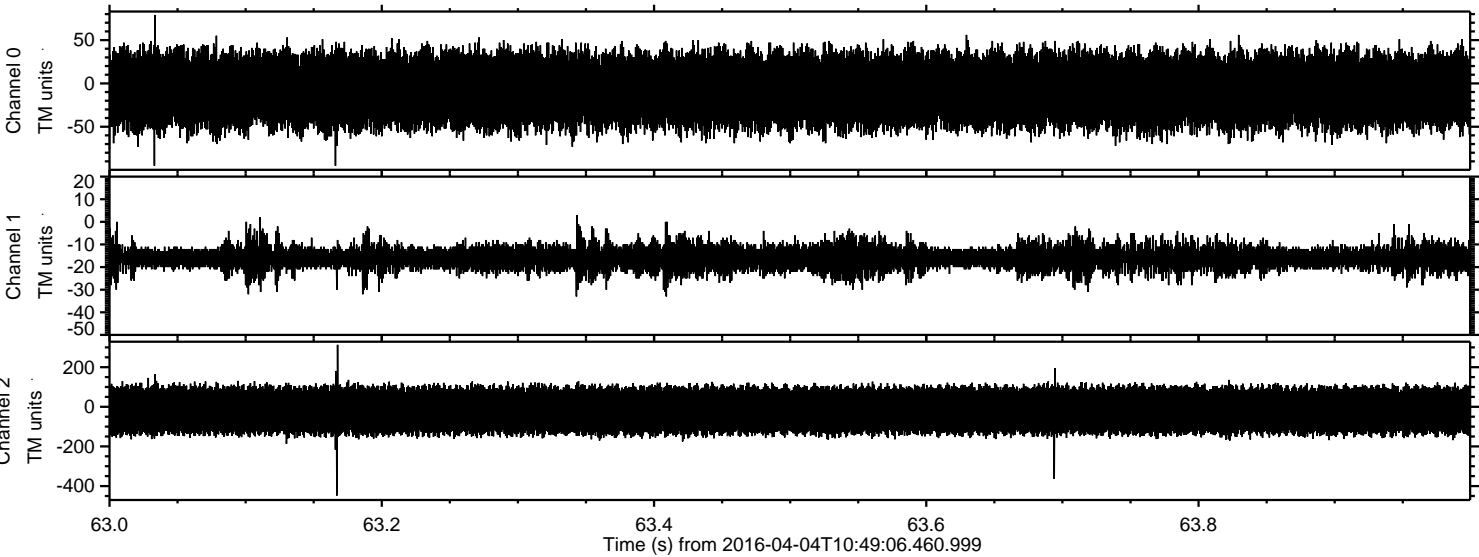
ELMAVAN 3D WAVEFORMS (Measured data sampled at 50 kHz) 51000 packets of 144 samples from 2016-04-04T10:49:06.460.999. Part 121/147

Processed Fri May 6 01:34:07 2016 by ELM ver.2012-10-06 from 001\_\_elm20160404\_104905\_\_dat00.bin



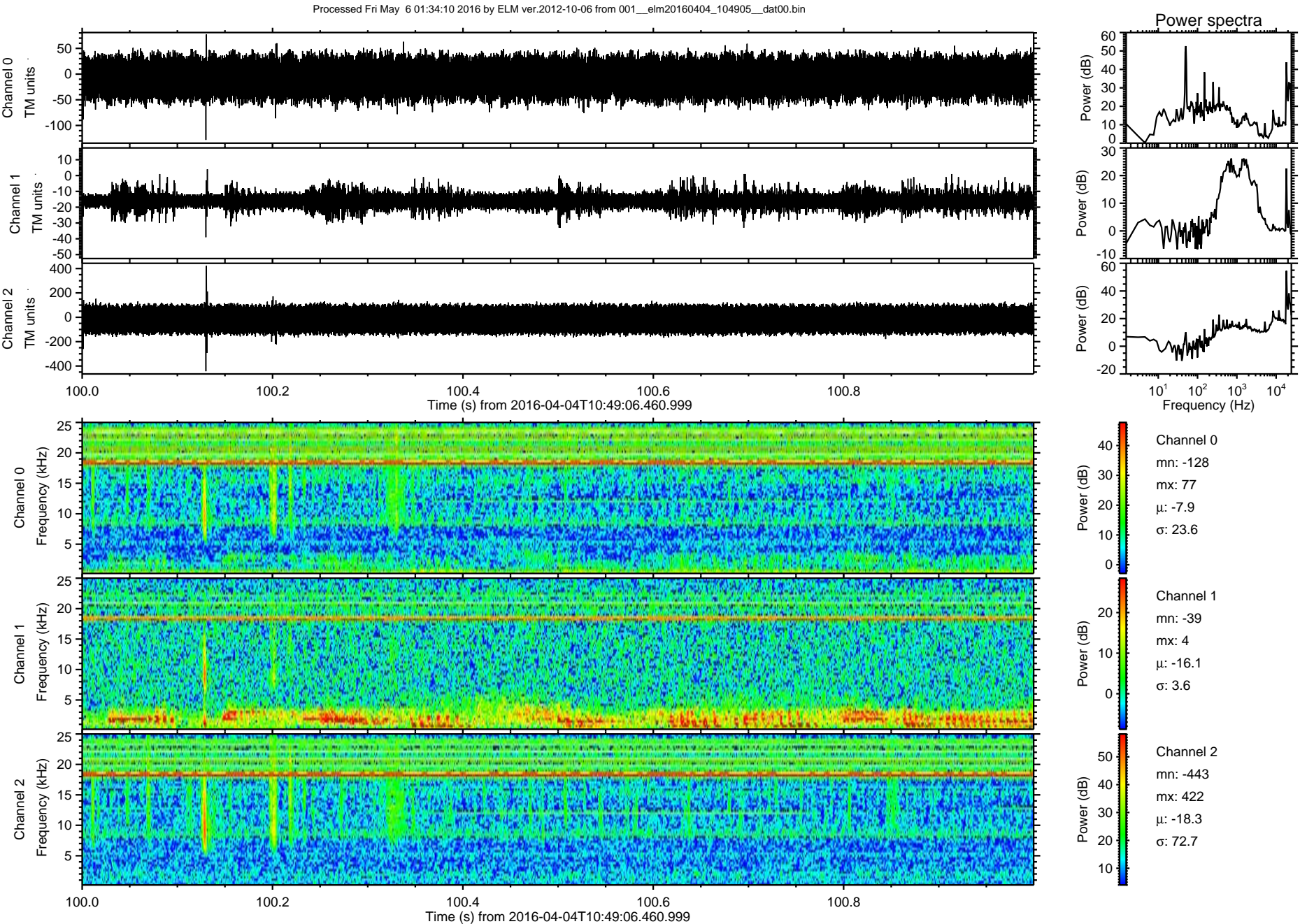


Processed Fri May 6 01:34:08 2016 by ELM ver.2012-10-06 from 001\_\_elm20160404\_104905\_\_dat00.bin



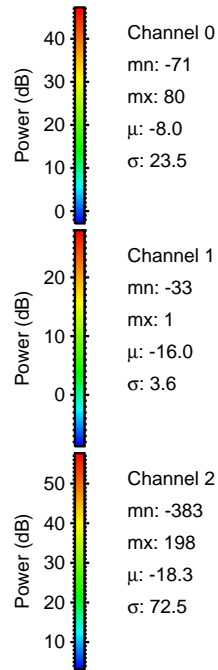
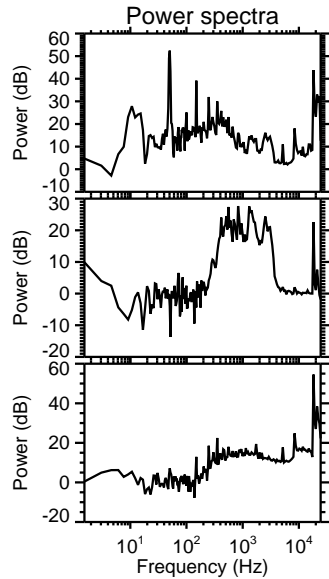
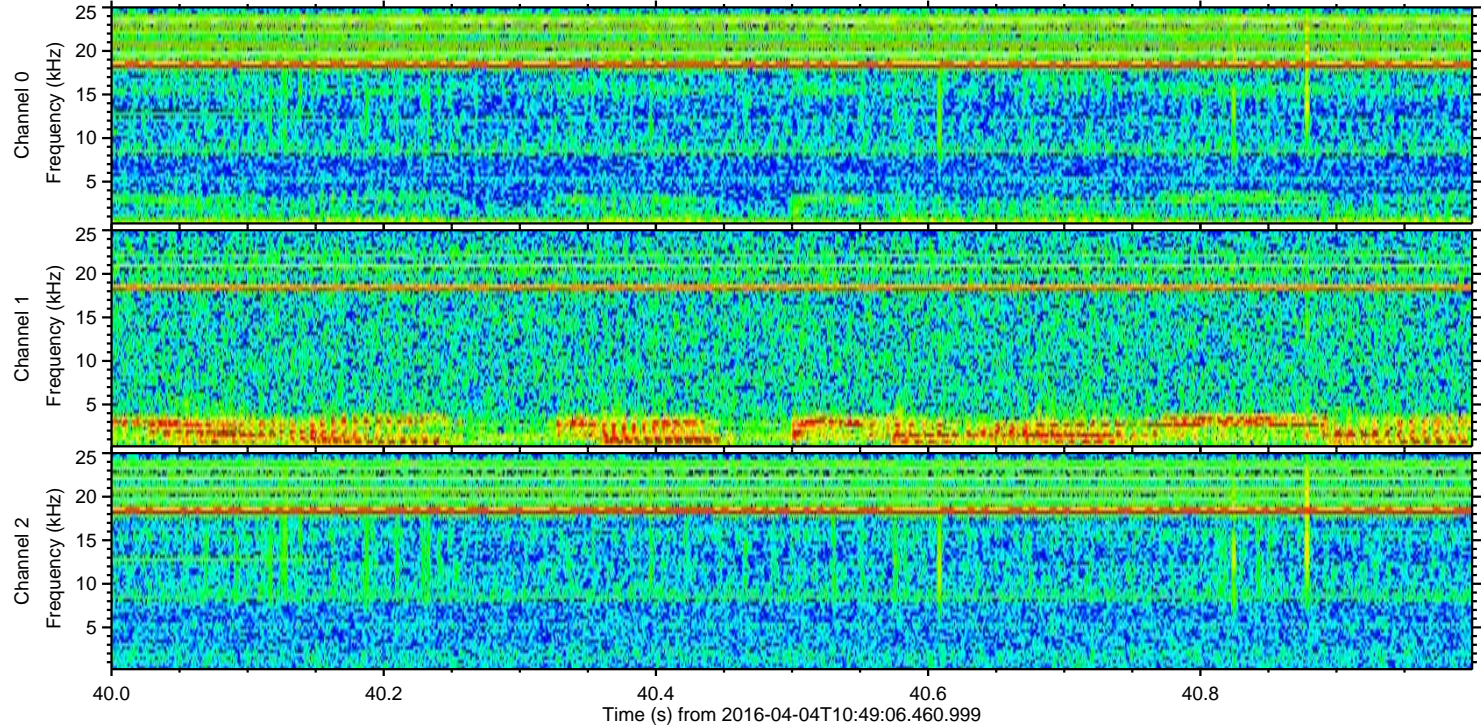
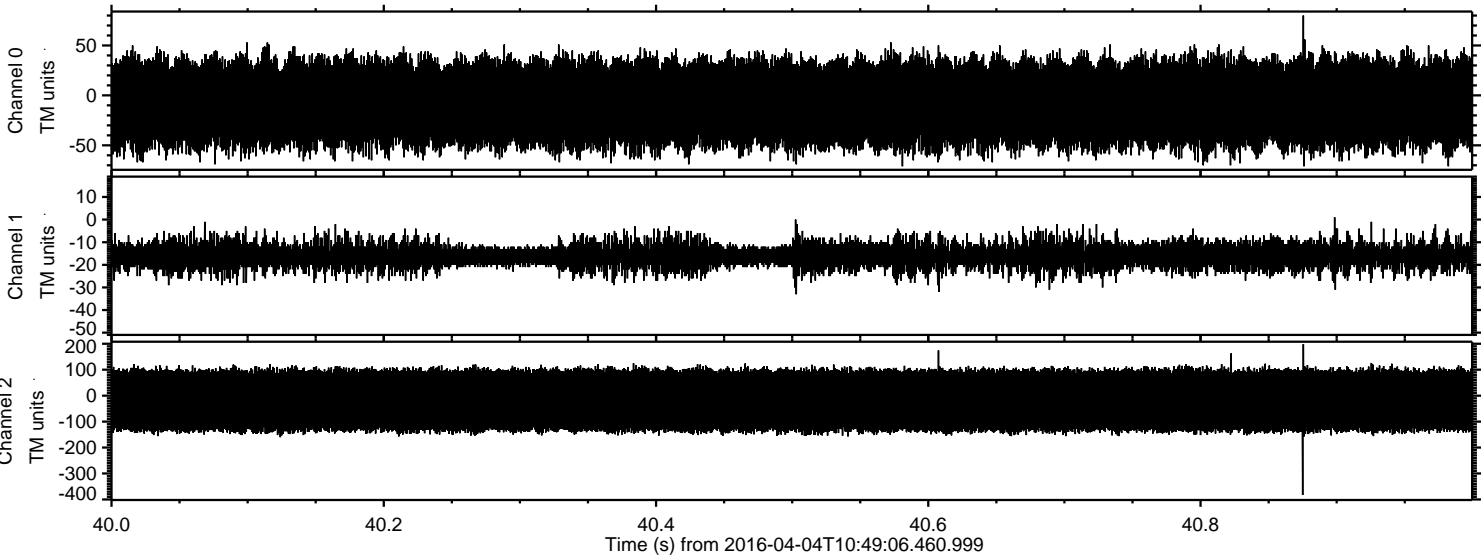


ELMAVAN 3D WAVEFORMS (Measured data sampled at 50 kHz) 51000 packets of 144 samples from 2016-04-04T10:49:06.460.999. Part 101/147





Processed Fri May 6 01:34:11 2016 by ELM ver.2012-10-06 from 001\_\_elm20160404\_104905\_\_dat00.bin



Power spectra

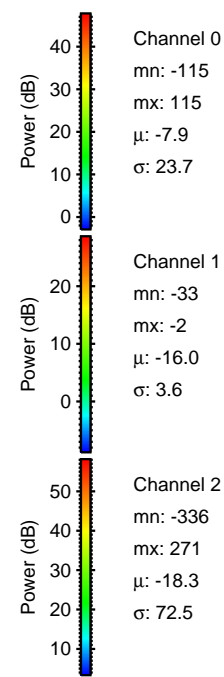
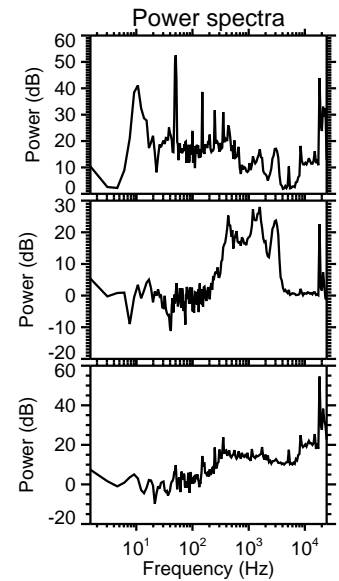
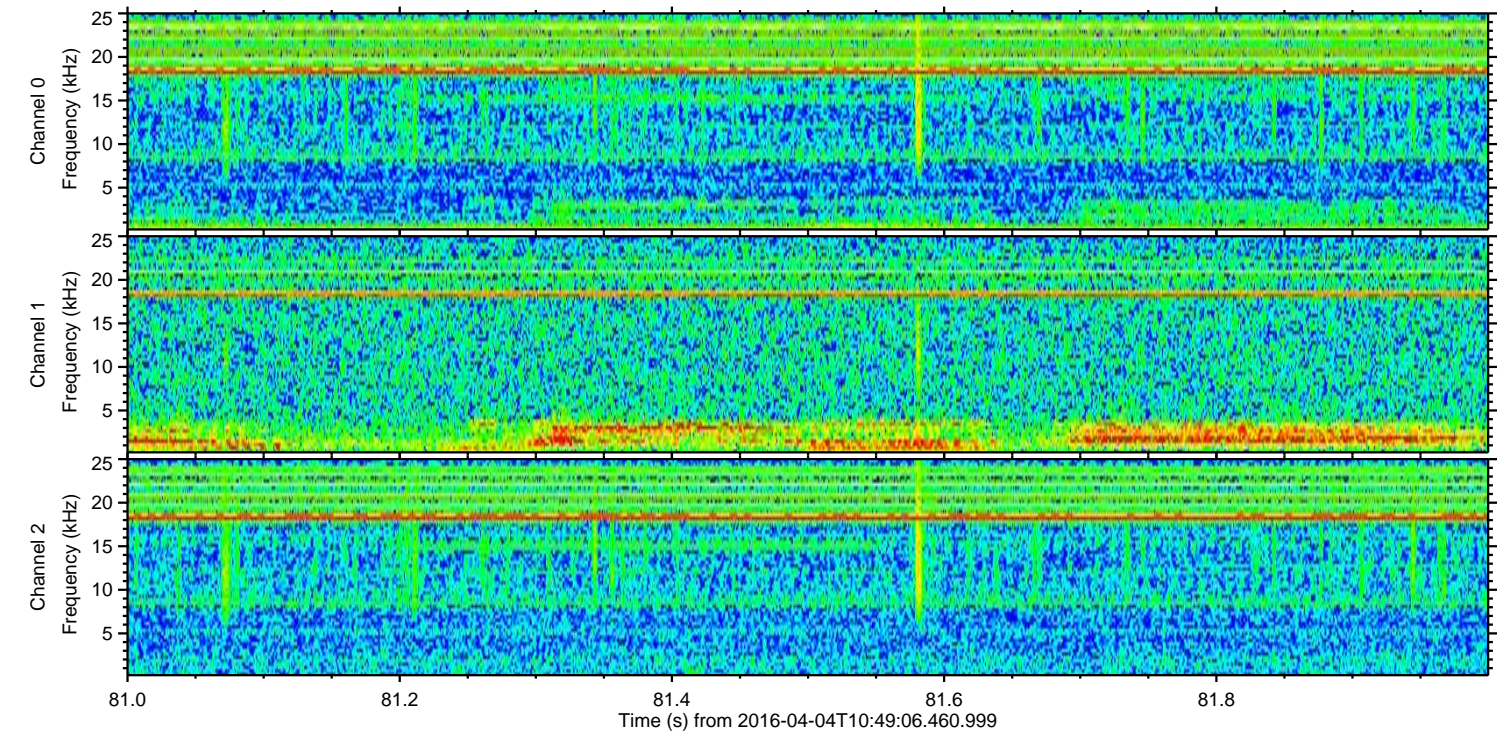
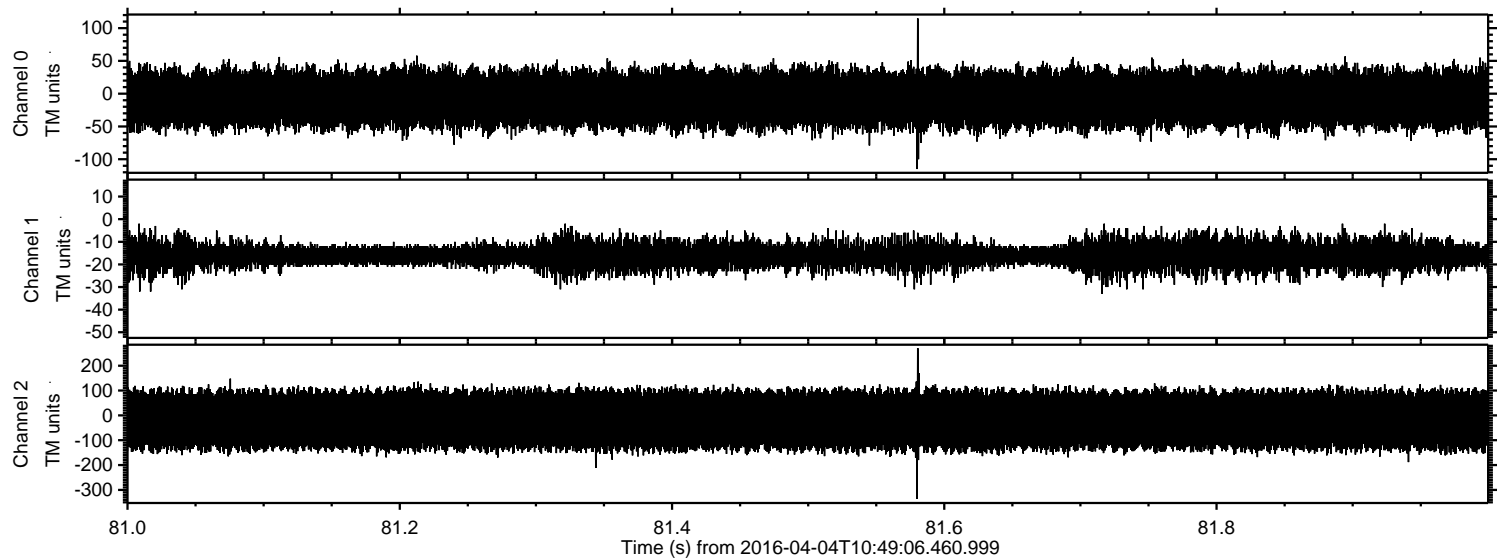
Channel 0  
mn: -71  
mx: 80  
 $\mu$ : -8.0  
 $\sigma$ : 23.5

Channel 1  
mn: -33  
mx: 1  
 $\mu$ : -16.0  
 $\sigma$ : 3.6

Channel 2  
mn: -383  
mx: 198  
 $\mu$ : -18.3  
 $\sigma$ : 72.5



Processed Fri May 6 01:34:13 2016 by ELM ver.2012-10-06 from 001\_\_elm20160404\_104905\_\_dat00.bin





Processed Fri May 6 01:34:16 2016 by ELM ver.2012-10-06 from 001\_\_elm20160404\_104905\_\_dat00.bin

