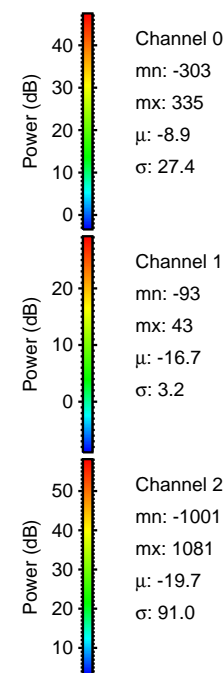
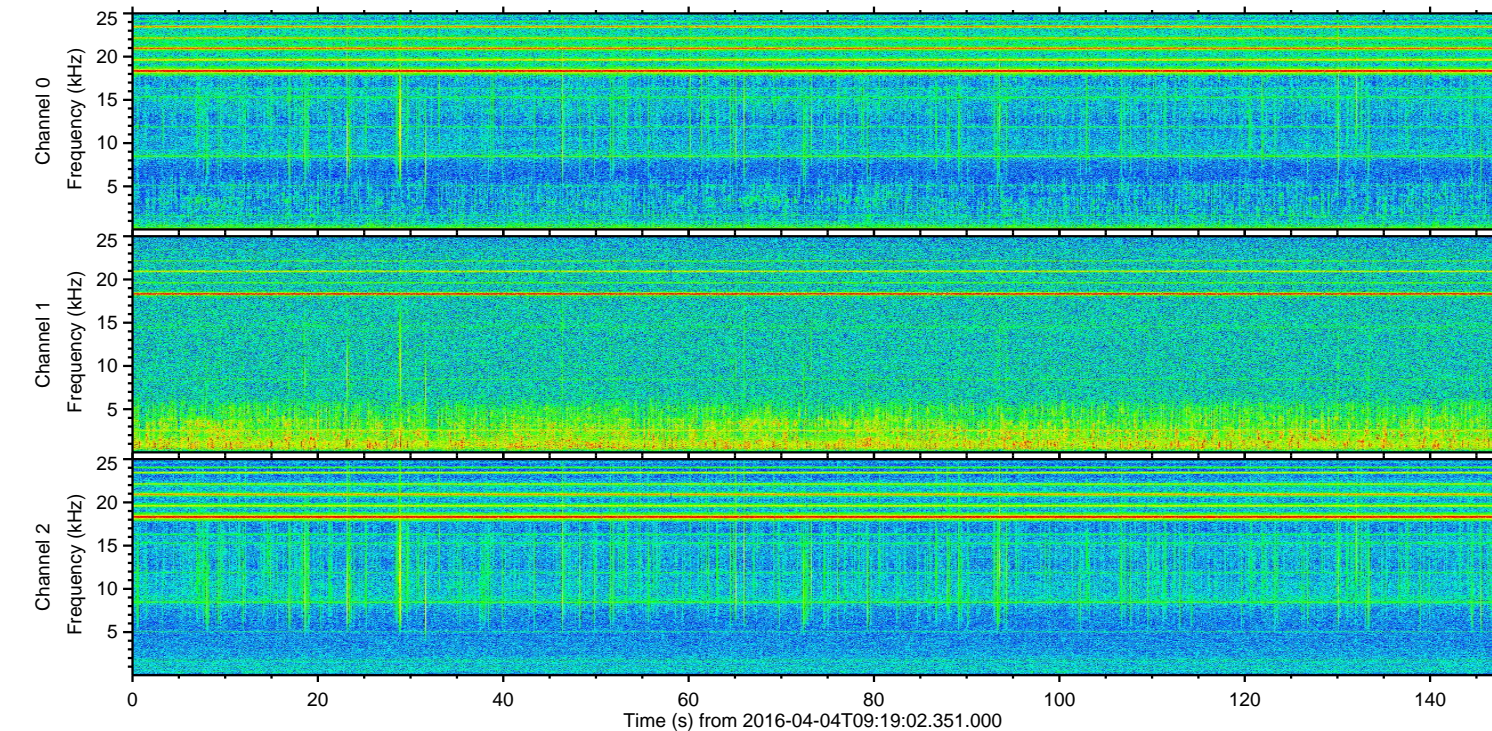
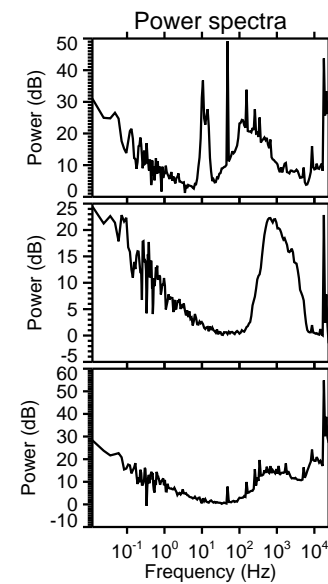
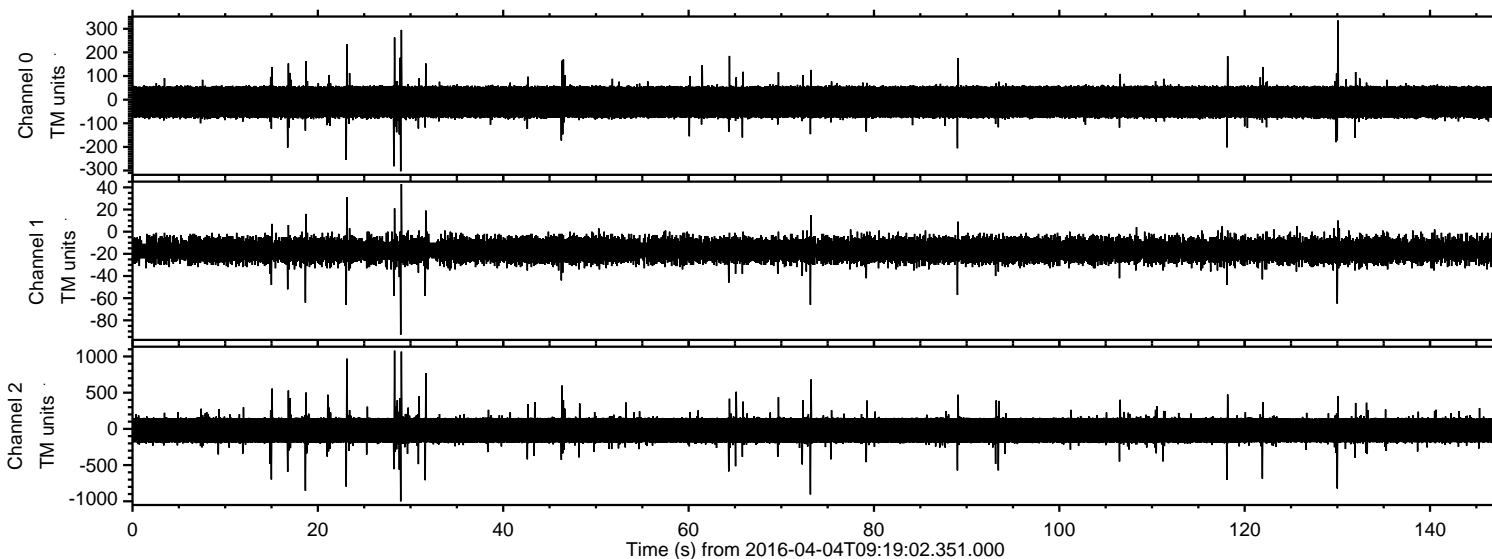


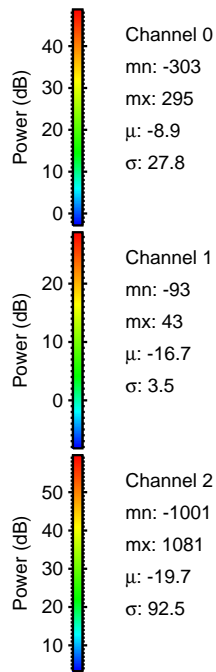
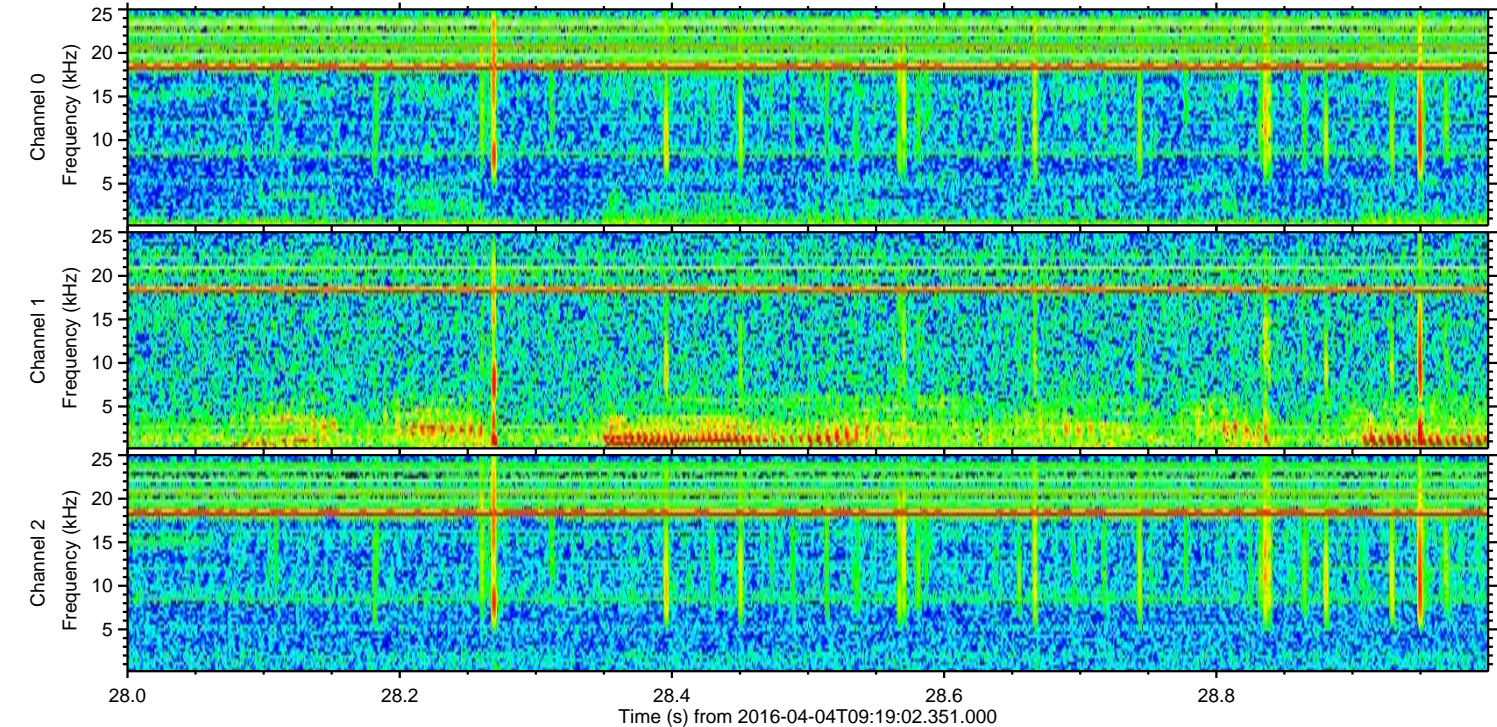
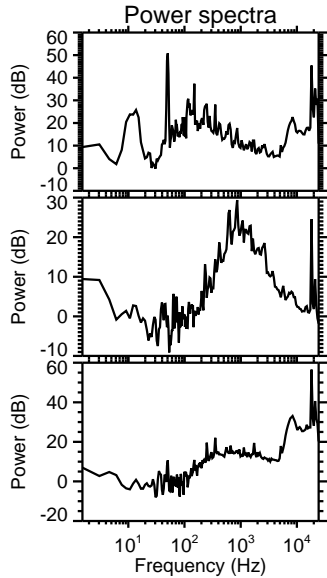
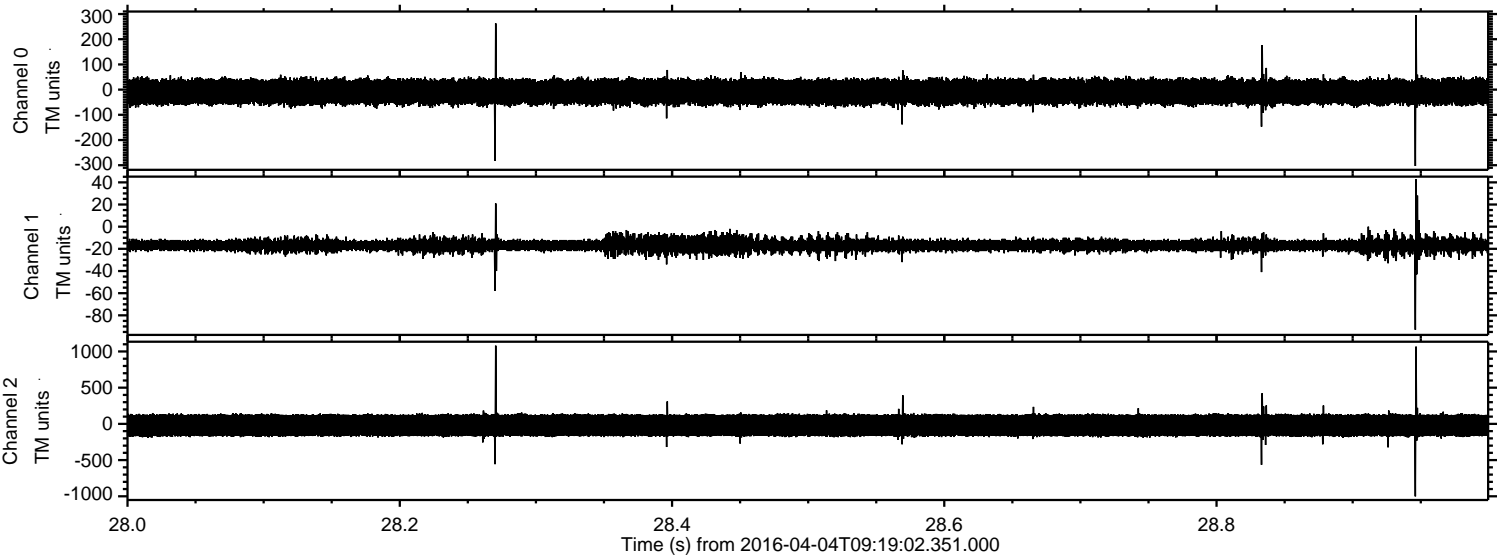
# ELMAVAN 3D WAVEFORMS (Measured data sampled at 50 kHz) 51000 packets of 144 samples from 2016-04-04T09:19:02.351.000.

Processed Fri May 6 01:12:26 2016 by ELM ver.2012-10-06 from 001\_\_elm20160404\_091901\_\_dat00.bin



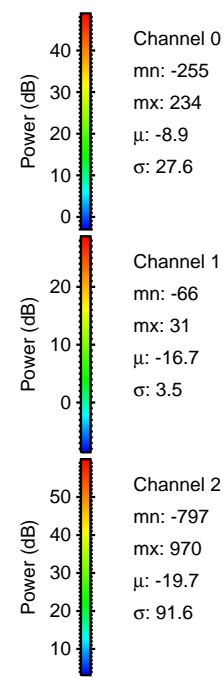
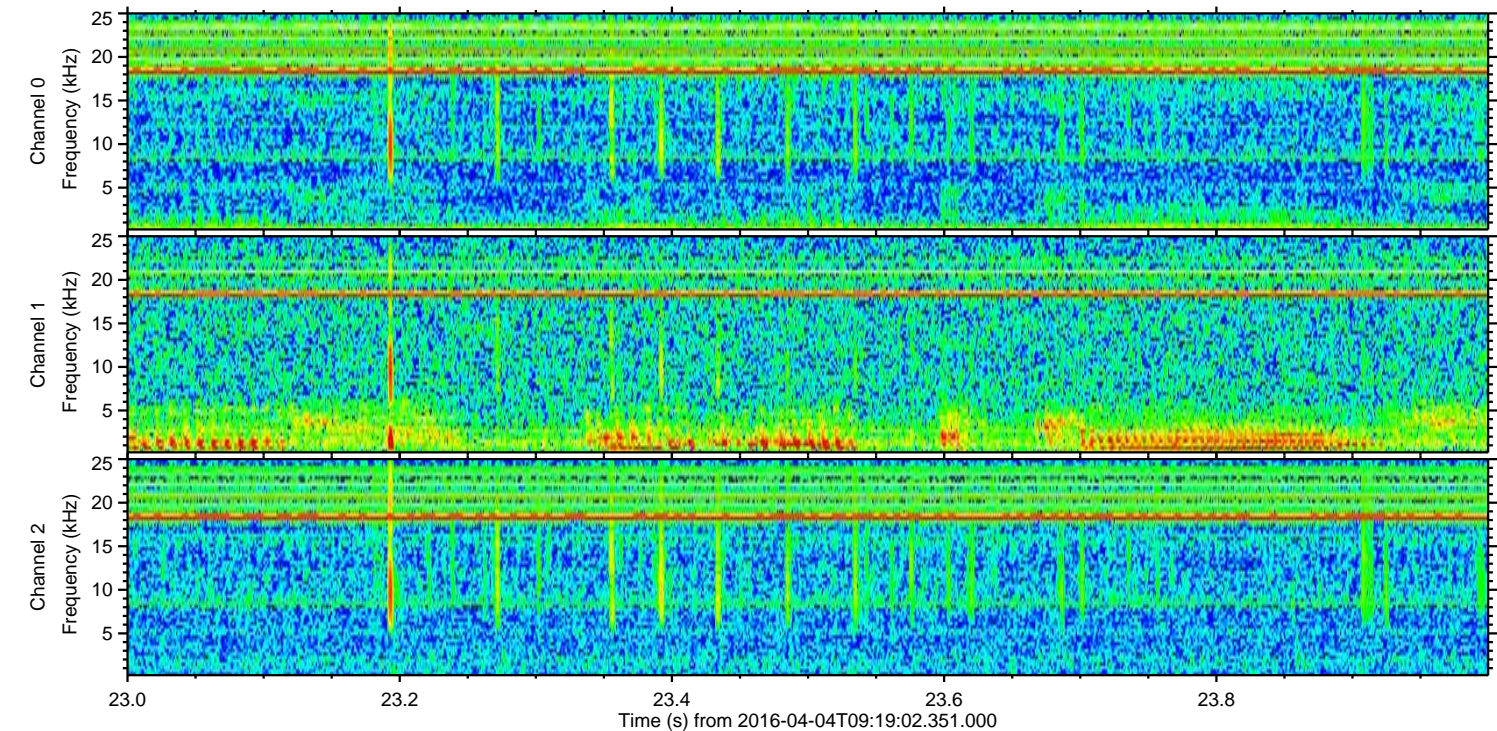
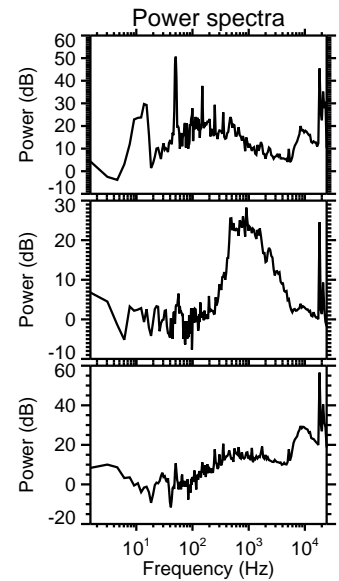
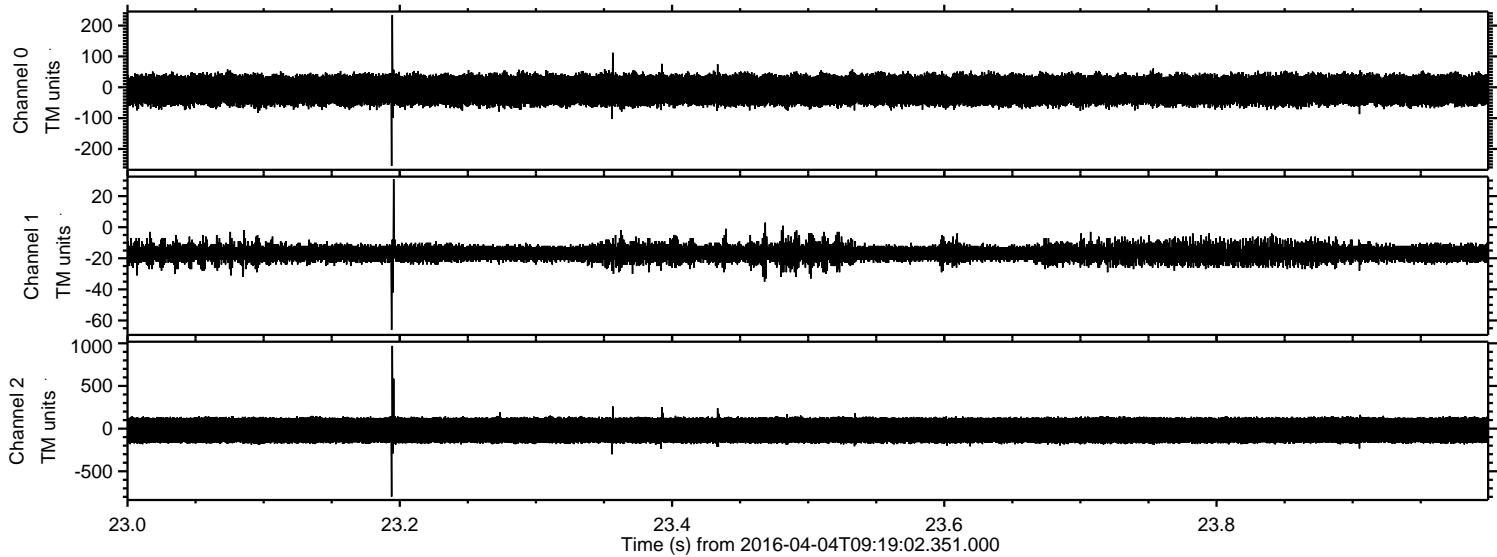


Processed Fri May 6 01:12:41 2016 by ELM ver.2012-10-06 from 001\_\_elm20160404\_091901\_\_dat00.bin



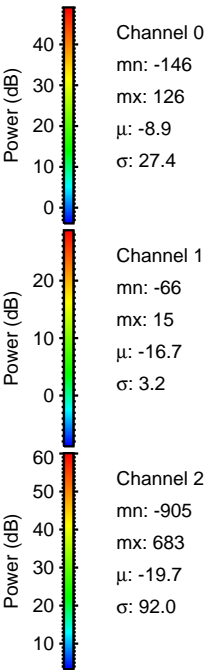
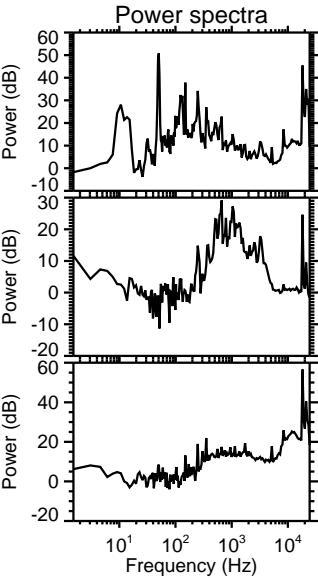
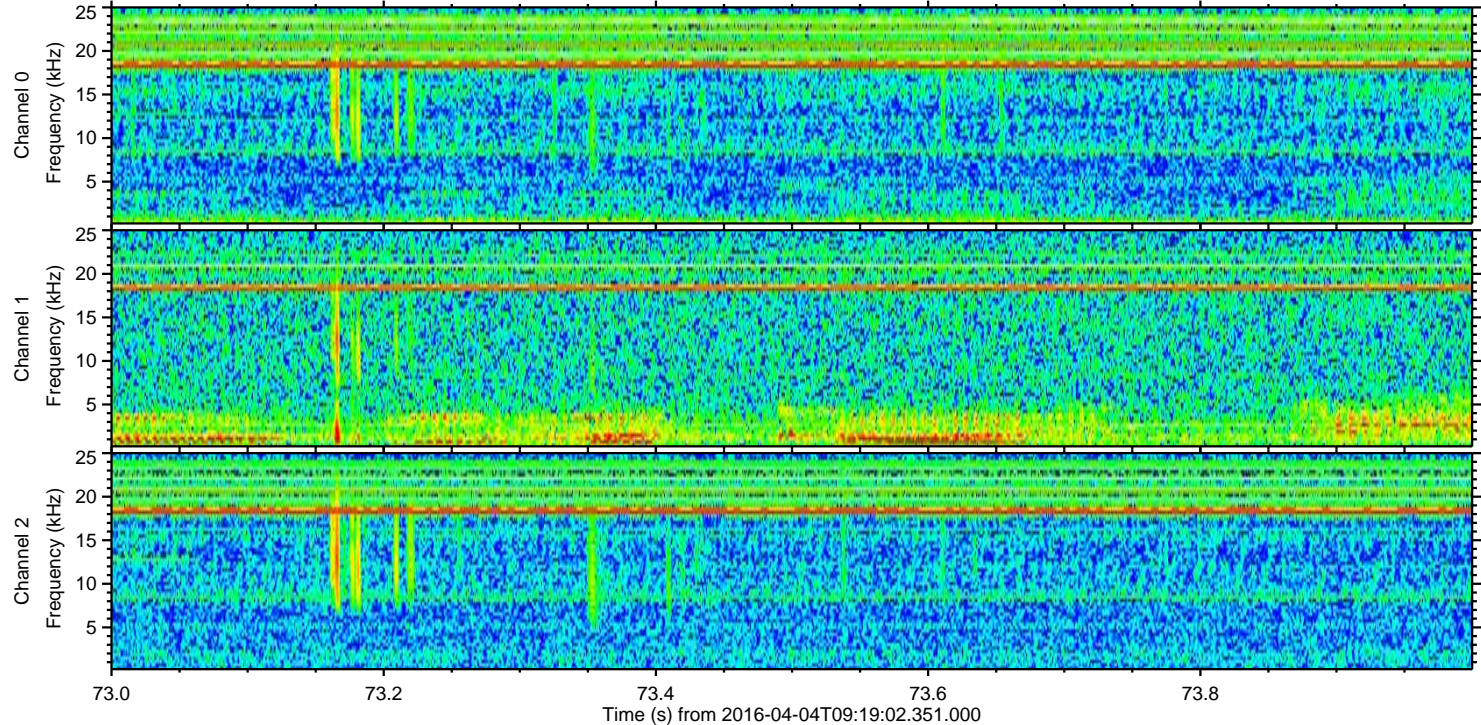
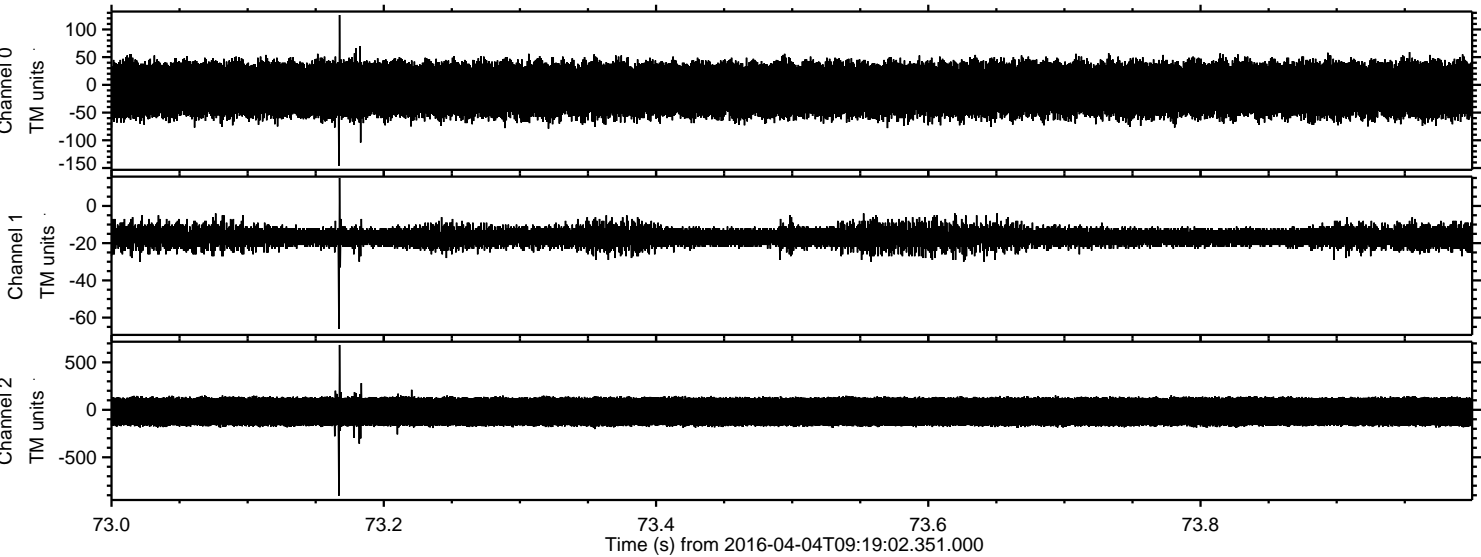


Processed Fri May 6 01:12:42 2016 by ELM ver.2012-10-06 from 001\_\_elm20160404\_091901\_\_dat00.bin



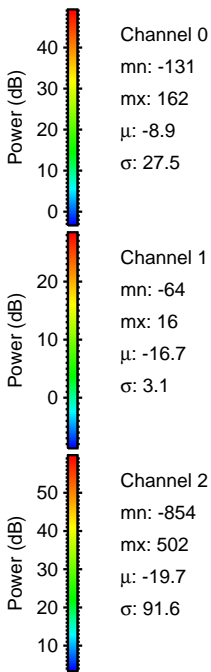
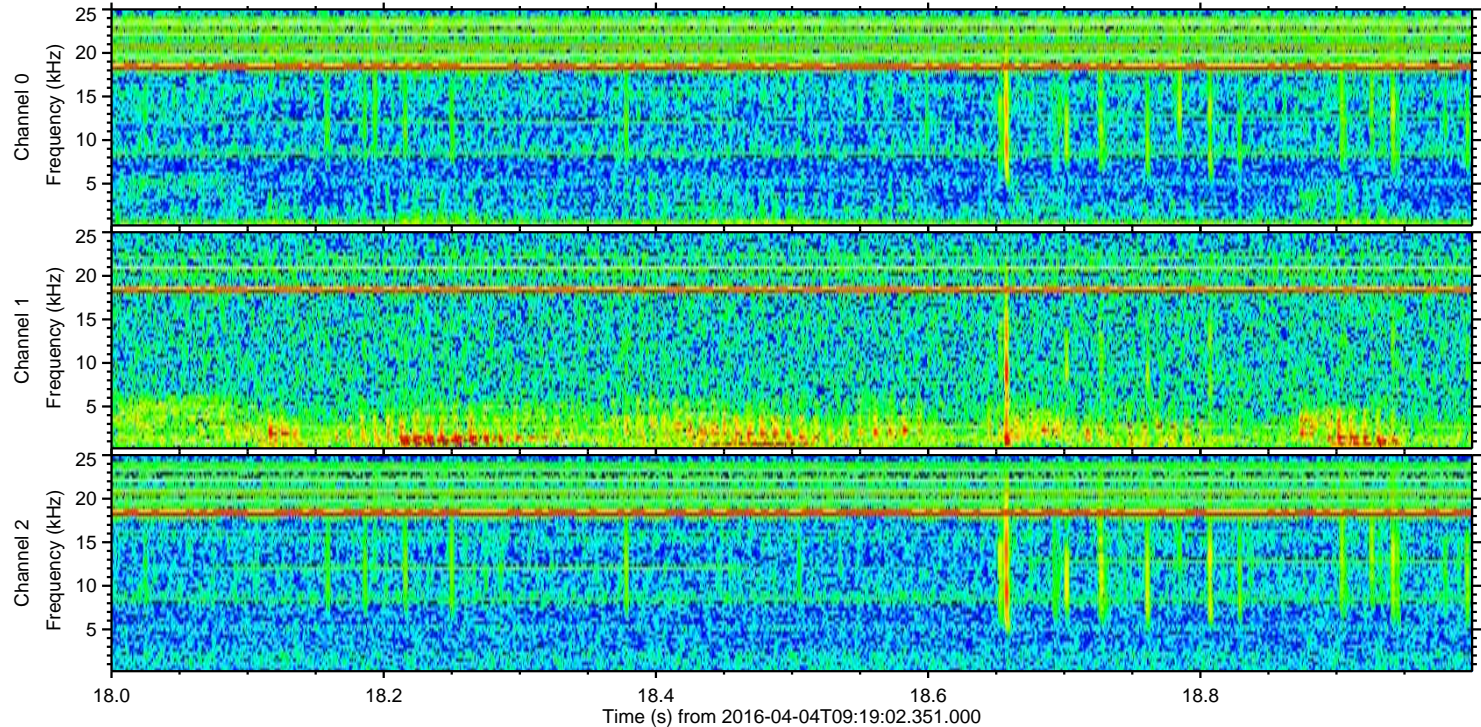
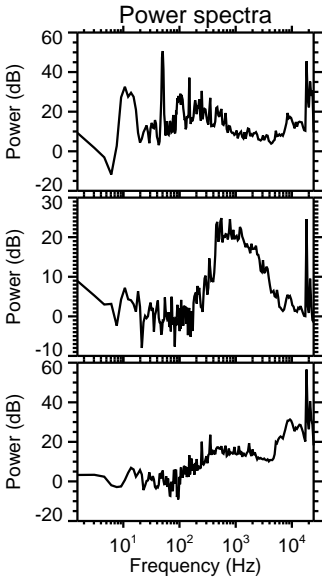
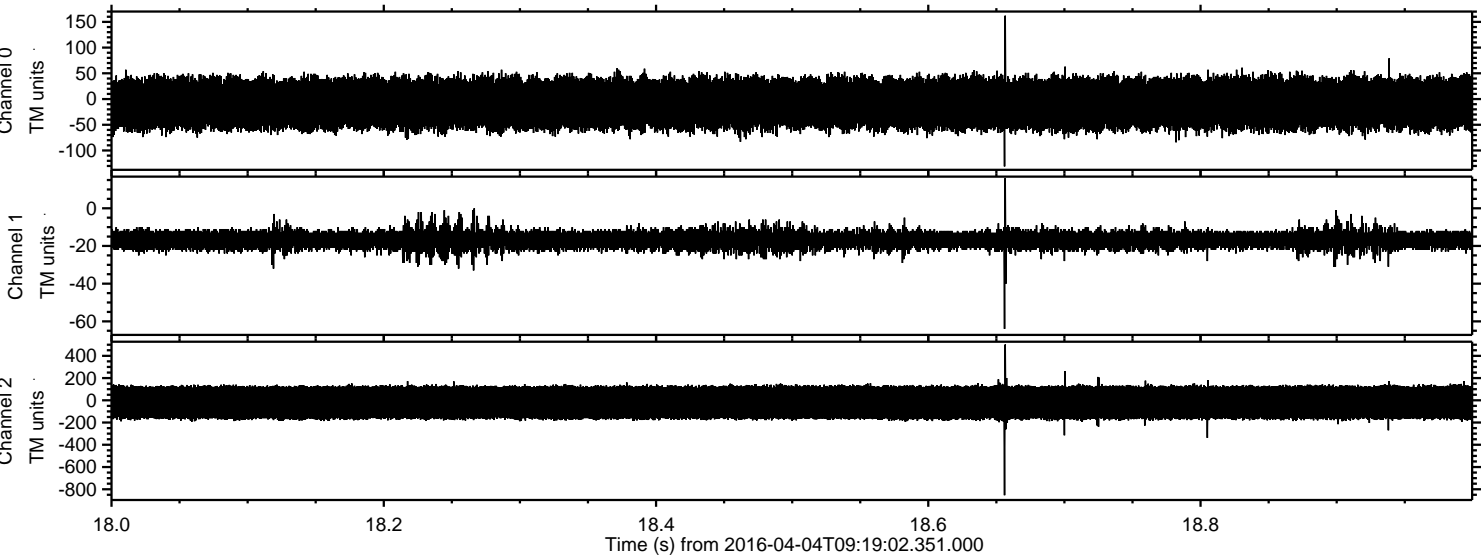


Processed Fri May 6 01:12:43 2016 by ELM ver.2012-10-06 from 001\_\_elm20160404\_091901\_\_dat00.bin





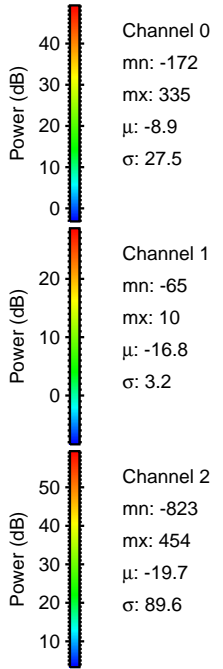
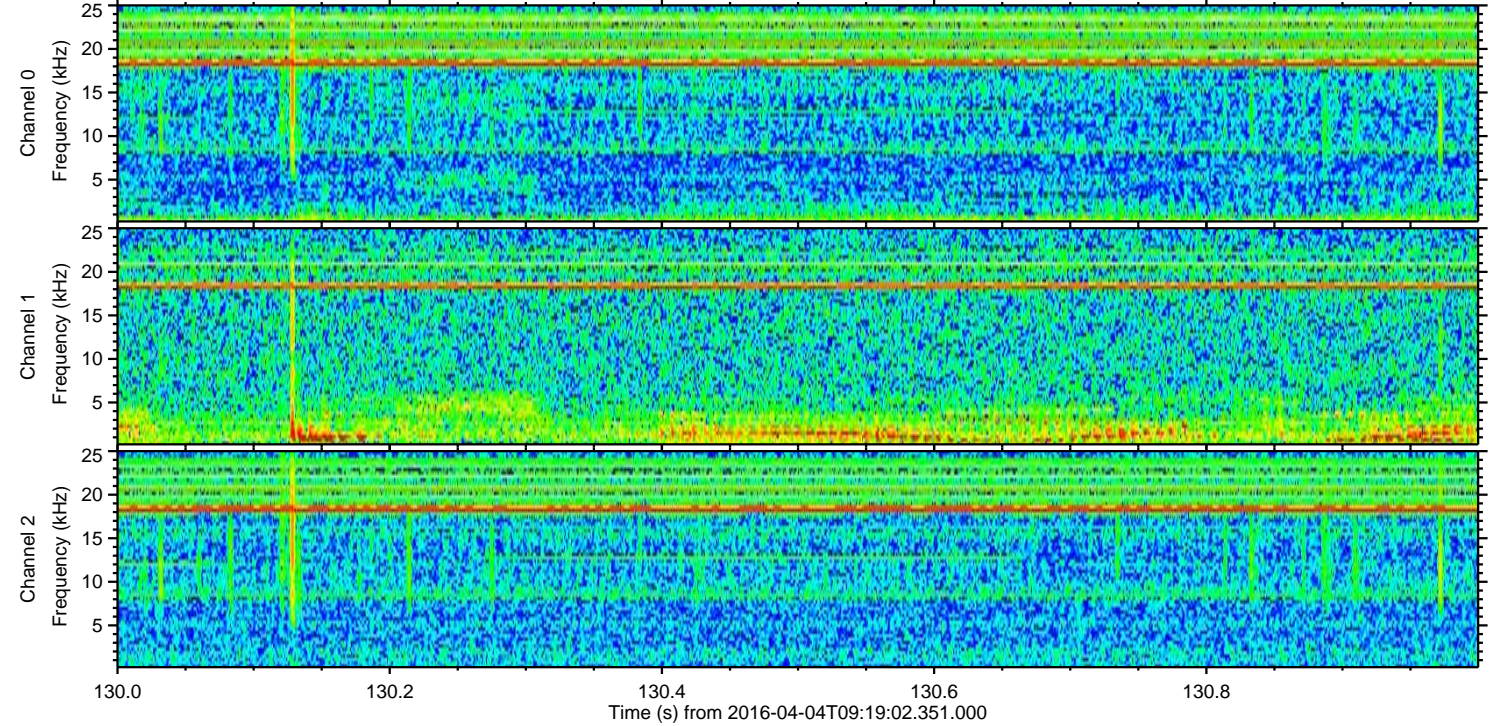
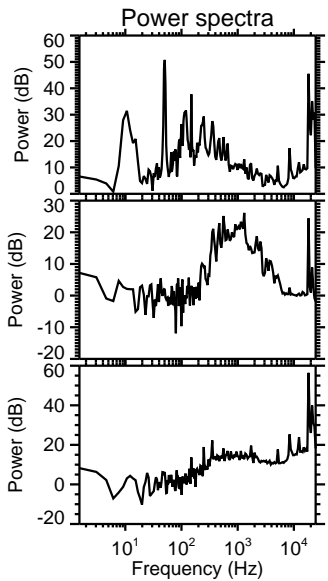
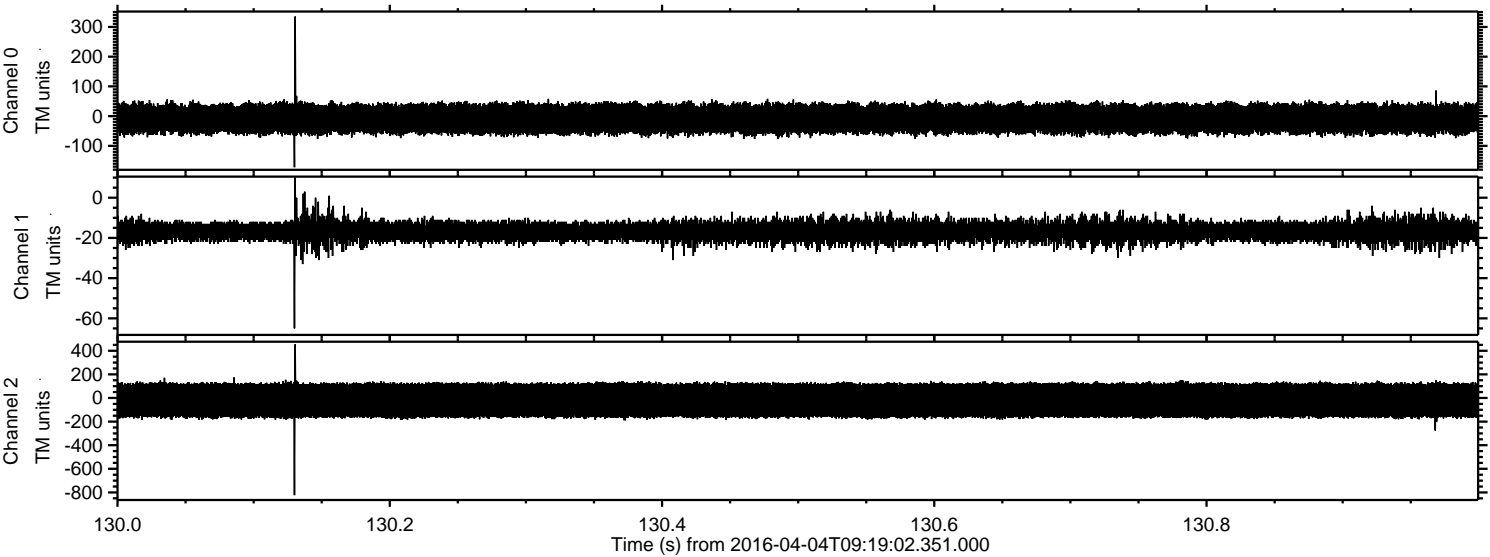
Processed Fri May 6 01:12:44 2016 by ELM ver.2012-10-06 from 001\_\_elm20160404\_091901\_\_dat00.bin





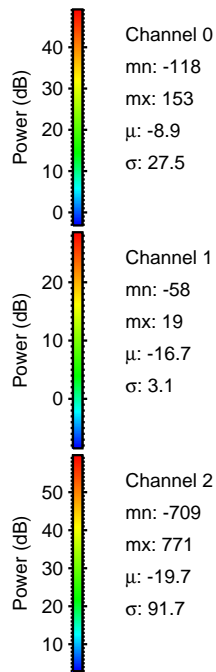
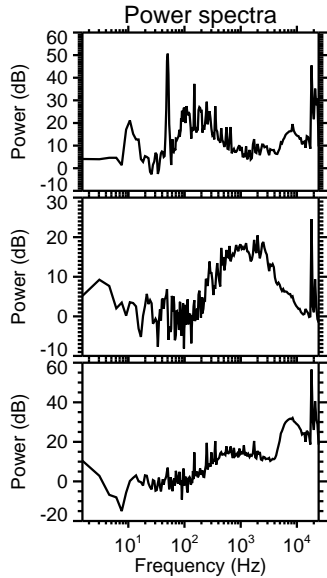
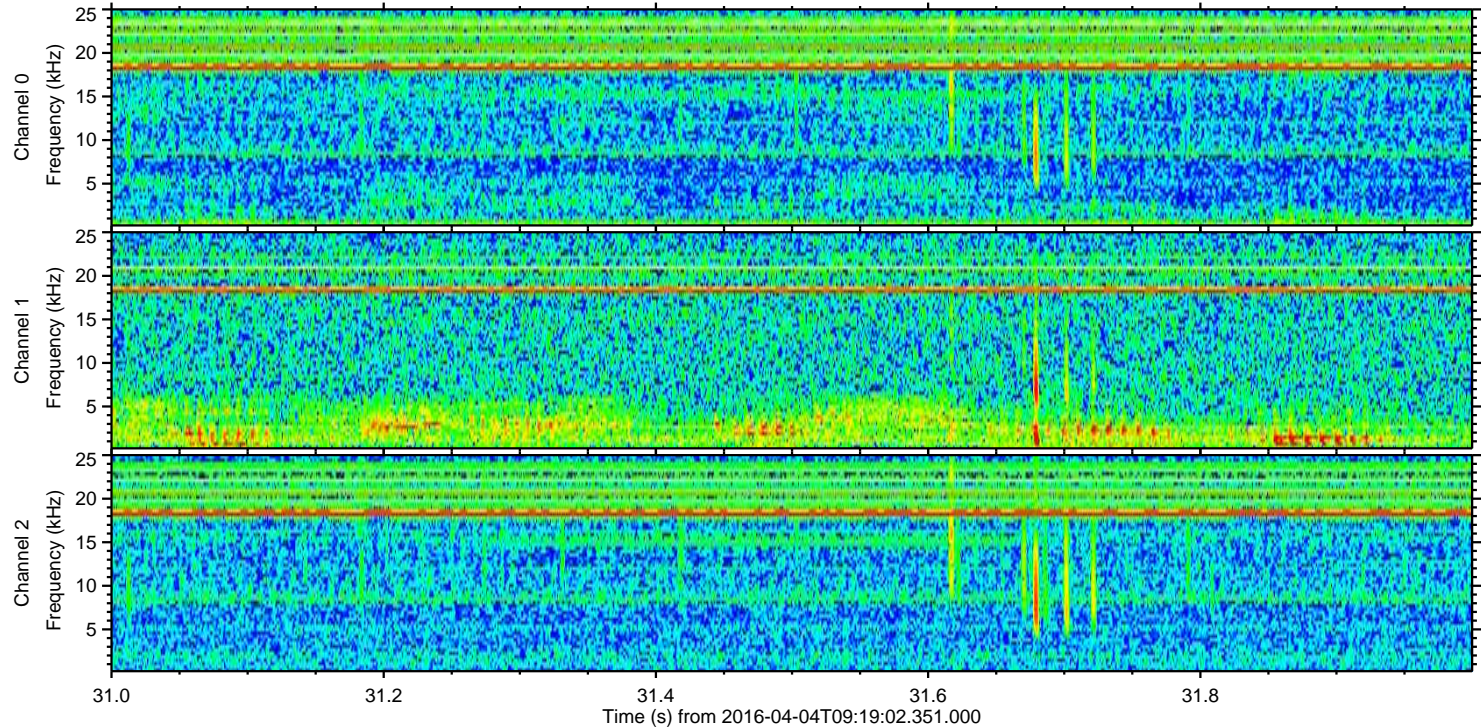
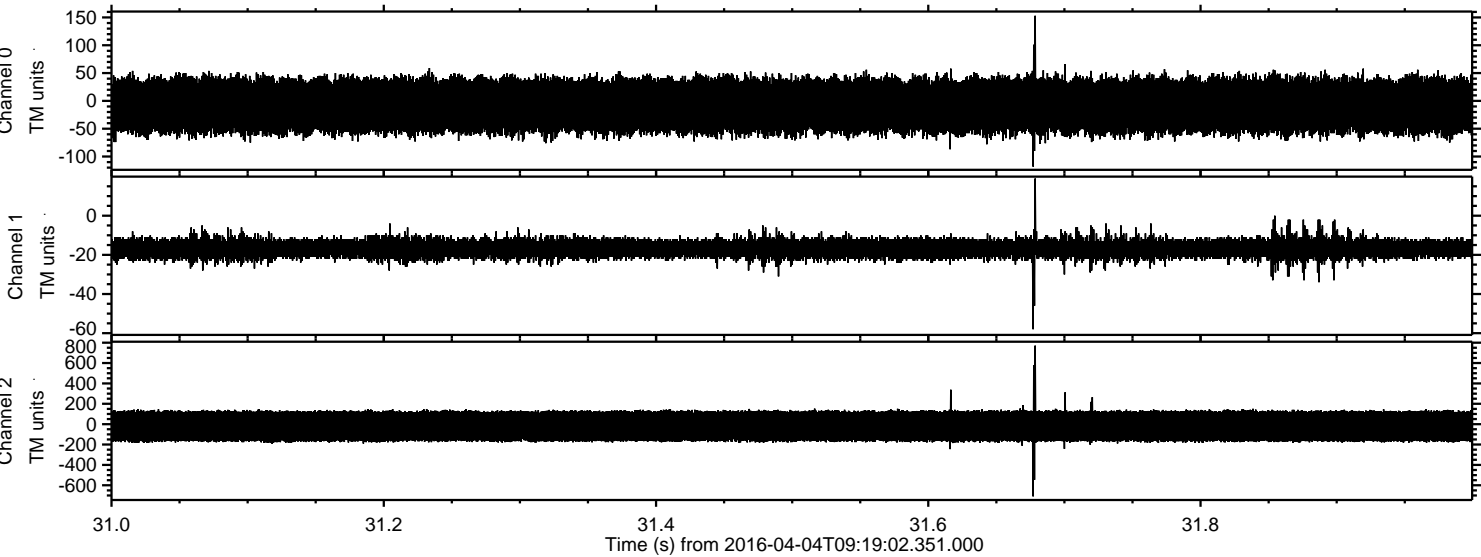
ELMAVAN 3D WAVEFORMS (Measured data sampled at 50 kHz) 51000 packets of 144 samples from 2016-04-04T09:19:02.351.000. Part 131/147

Processed Fri May 6 01:12:45 2016 by ELM ver.2012-10-06 from 001\_\_elm20160404\_091901\_\_dat00.bin



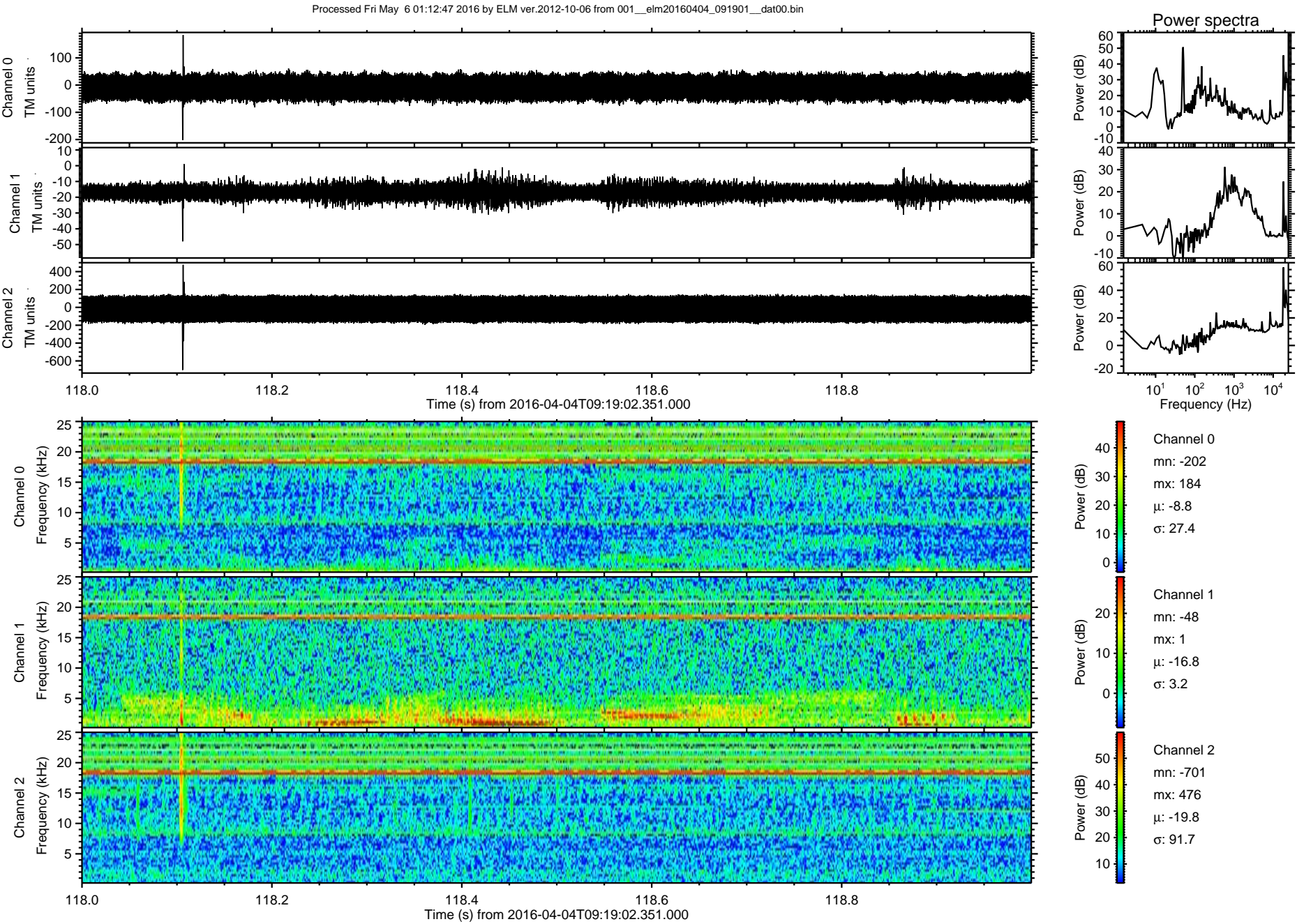


Processed Fri May 6 01:12:46 2016 by ELM ver.2012-10-06 from 001\_\_elm20160404\_091901\_\_dat00.bin



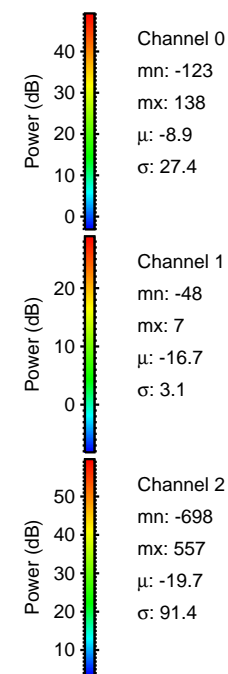
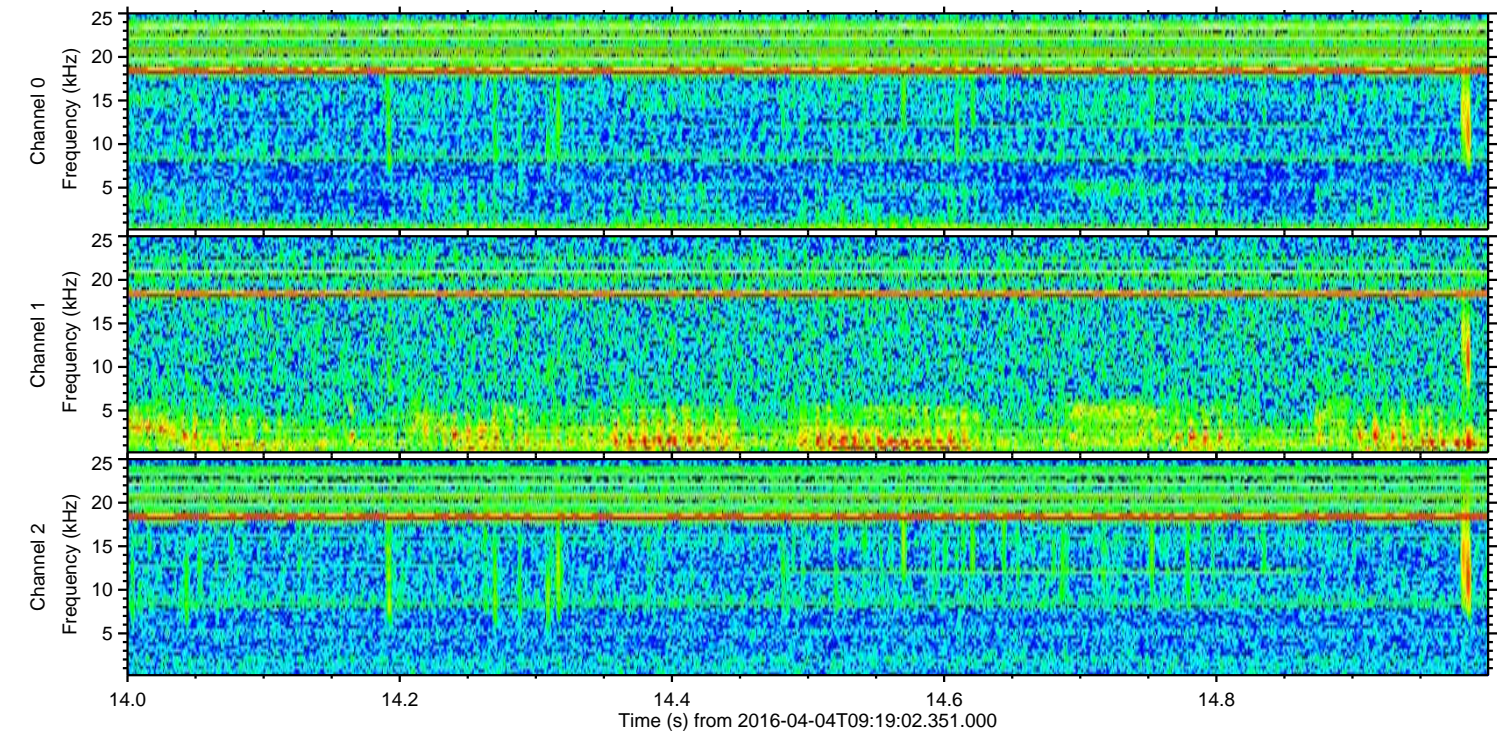
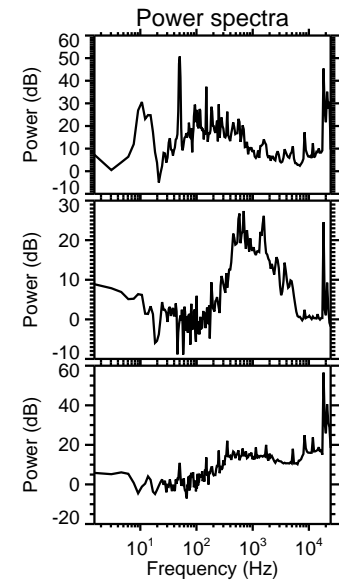
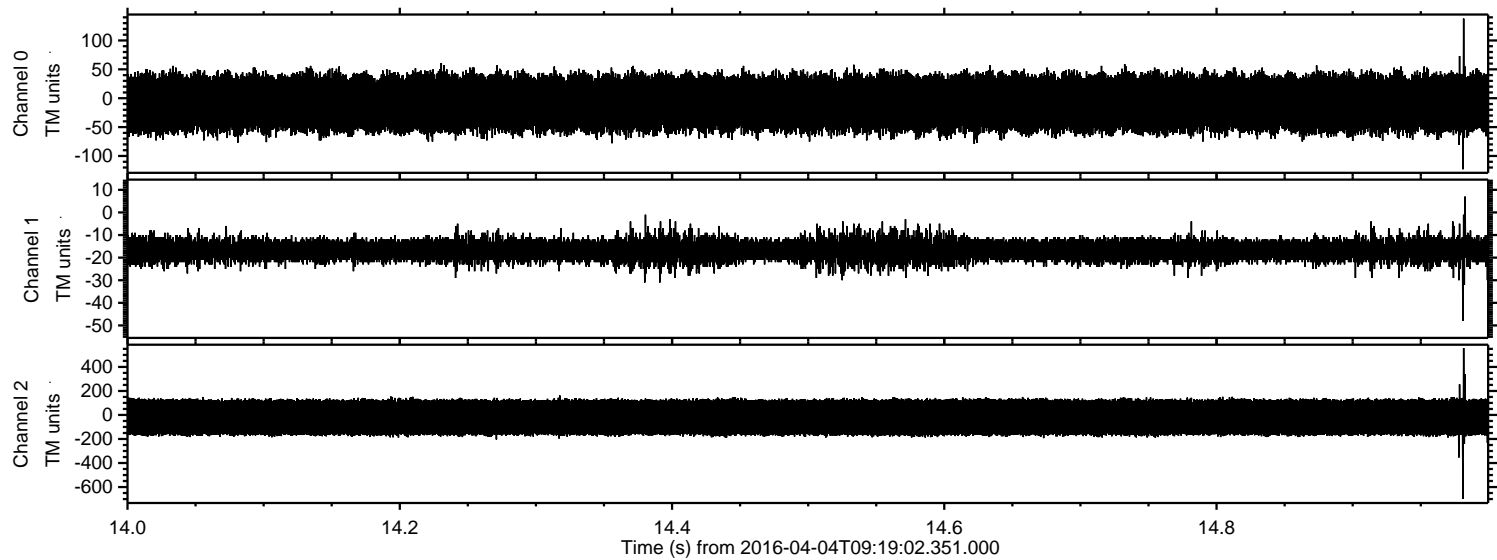


ELMAVAN 3D WAVEFORMS (Measured data sampled at 50 kHz) 51000 packets of 144 samples from 2016-04-04T09:19:02.351.000. Part 119/147





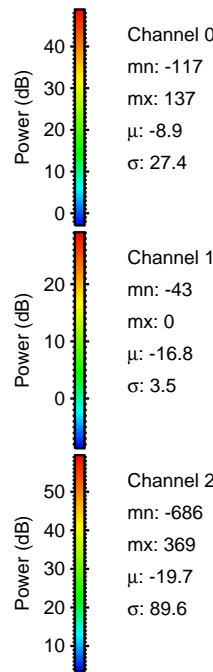
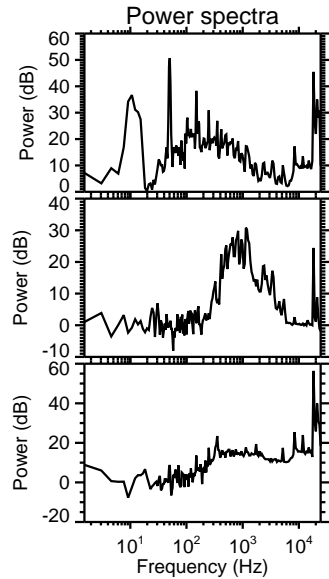
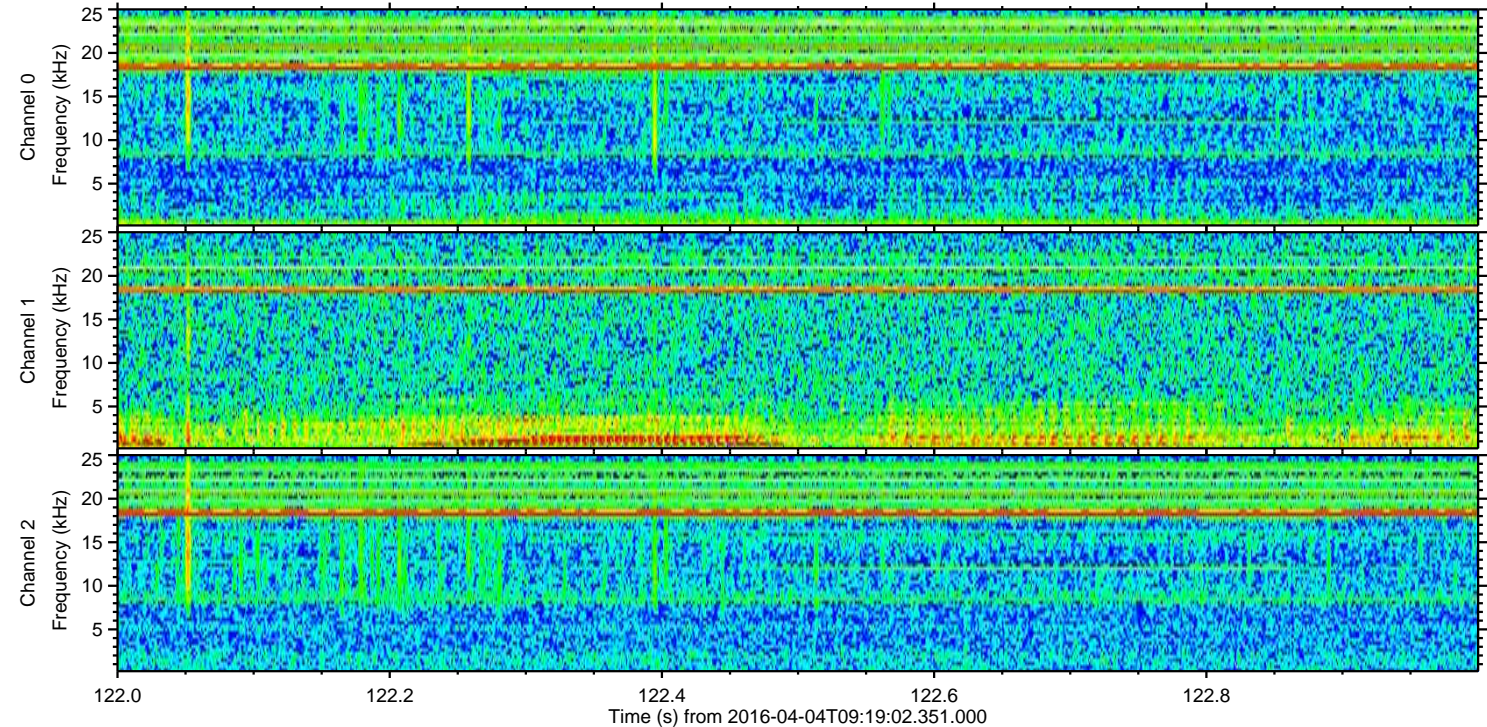
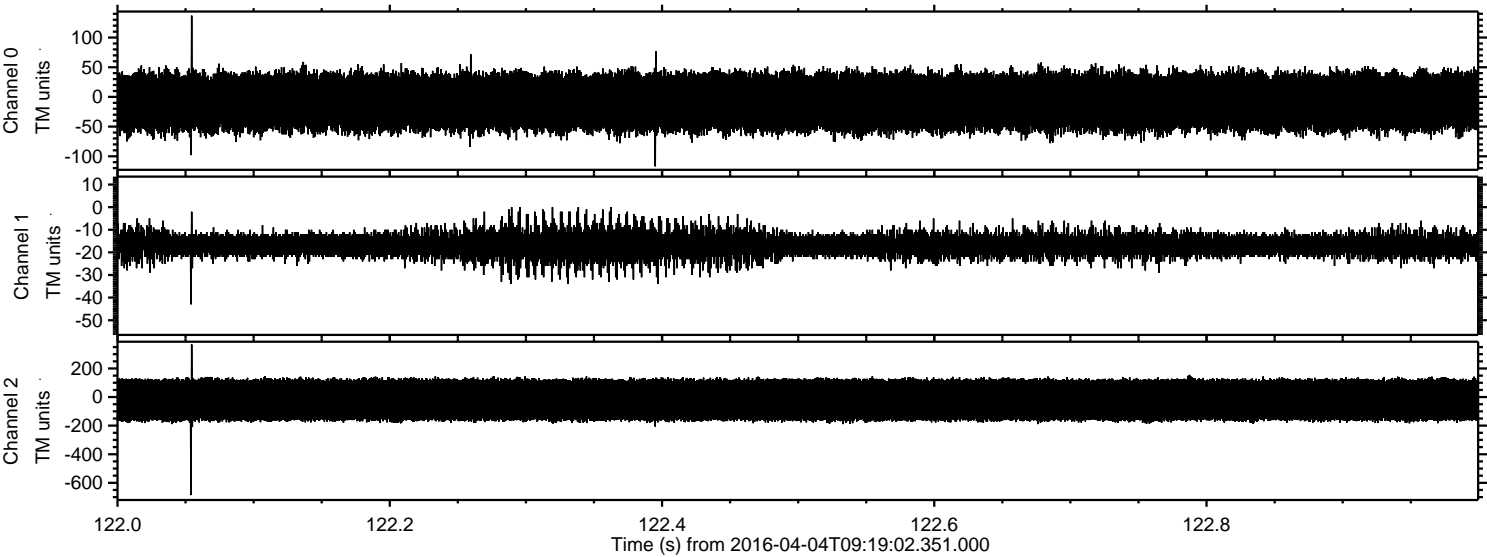
Processed Fri May 6 01:12:48 2016 by ELM ver.2012-10-06 from 001\_\_elm20160404\_091901\_\_dat00.bin





ELMAVAN 3D WAVEFORMS (Measured data sampled at 50 kHz) 51000 packets of 144 samples from 2016-04-04T09:19:02.351.000. Part 123/147

Processed Fri May 6 01:12:49 2016 by ELM ver.2012-10-06 from 001\_\_elm20160404\_091901\_\_dat00.bin



Channel 0  
mn: -117  
mx: 137  
 $\mu$ : -8.9  
 $\sigma$ : 27.4

Channel 1  
mn: -43  
mx: 0  
 $\mu$ : -16.8  
 $\sigma$ : 3.5

Channel 2  
mn: -686  
mx: 369  
 $\mu$ : -19.7  
 $\sigma$ : 89.6



Processed Fri May 6 01:12:50 2016 by ELM ver.2012-10-06 from 001\_\_elm20160404\_091901\_\_dat00.bin

