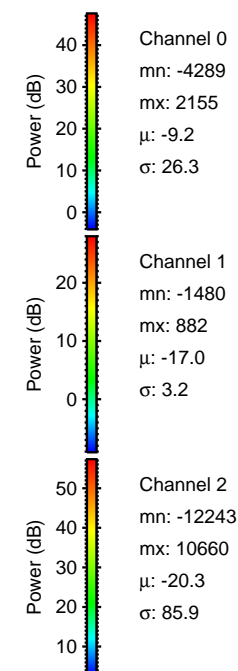
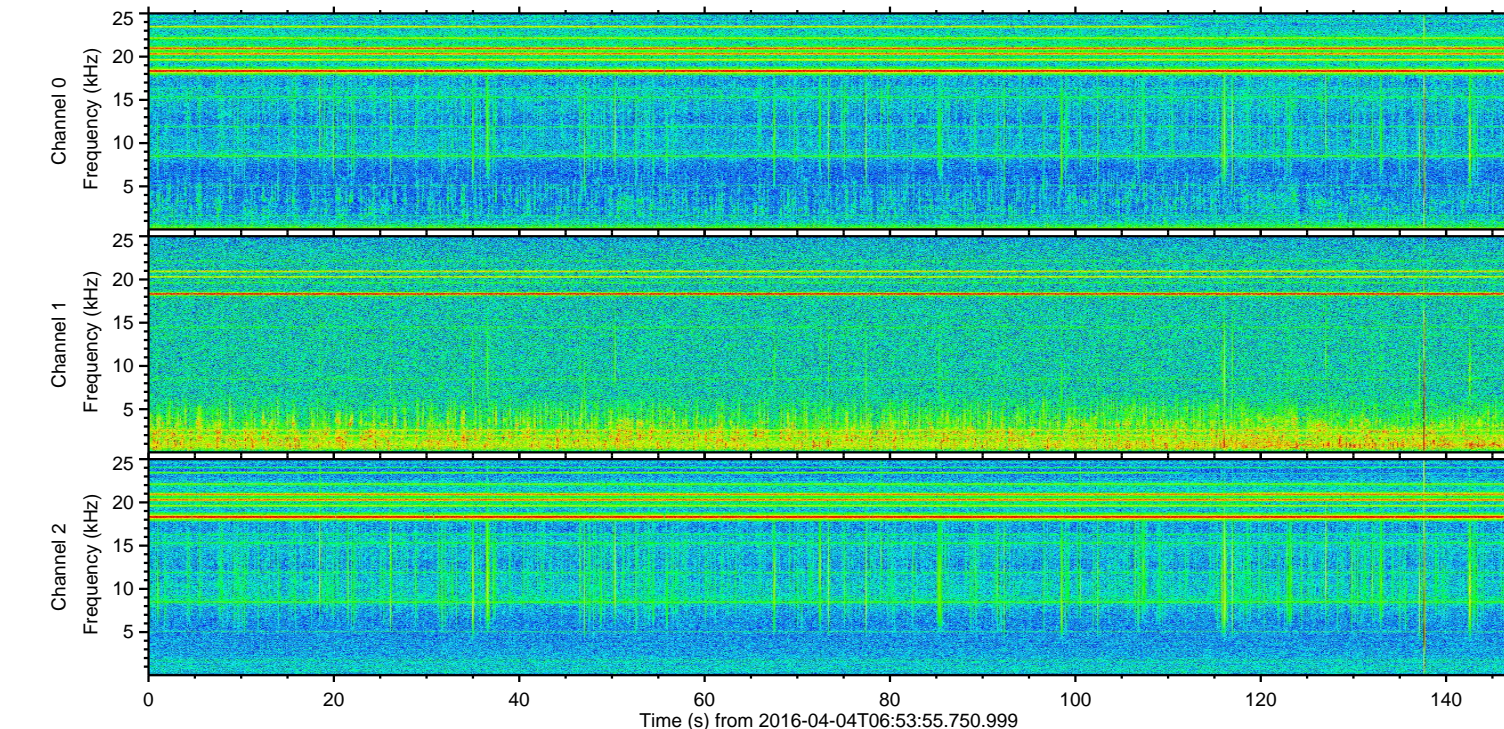
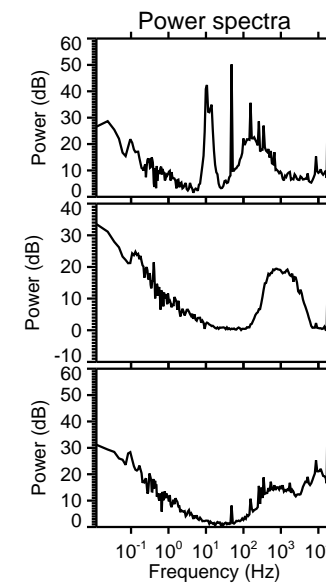
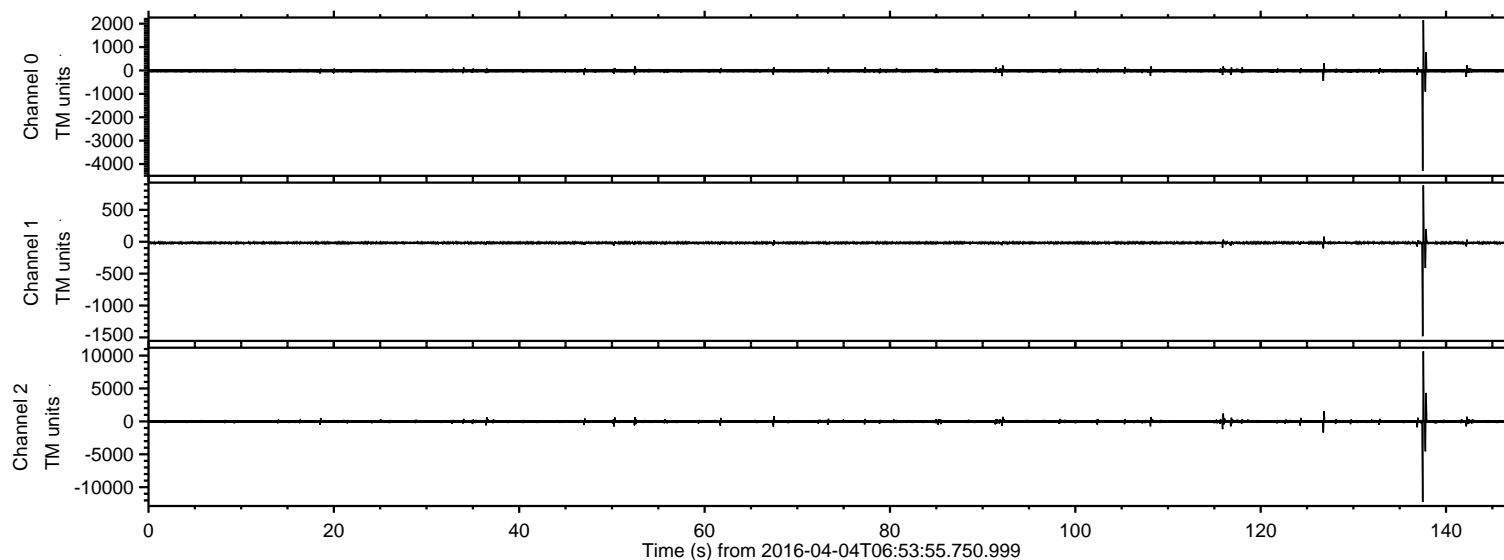


# ELMAVAN 3D WAVEFORMS (Measured data sampled at 50 kHz) 51000 packets of 144 samples from 2016-04-04T06:53:55.750.999.

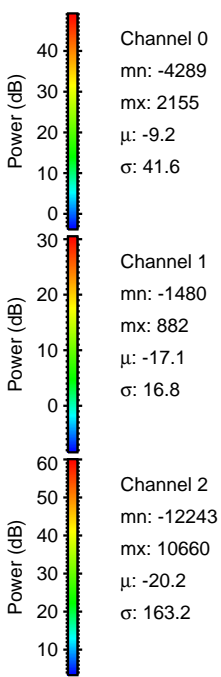
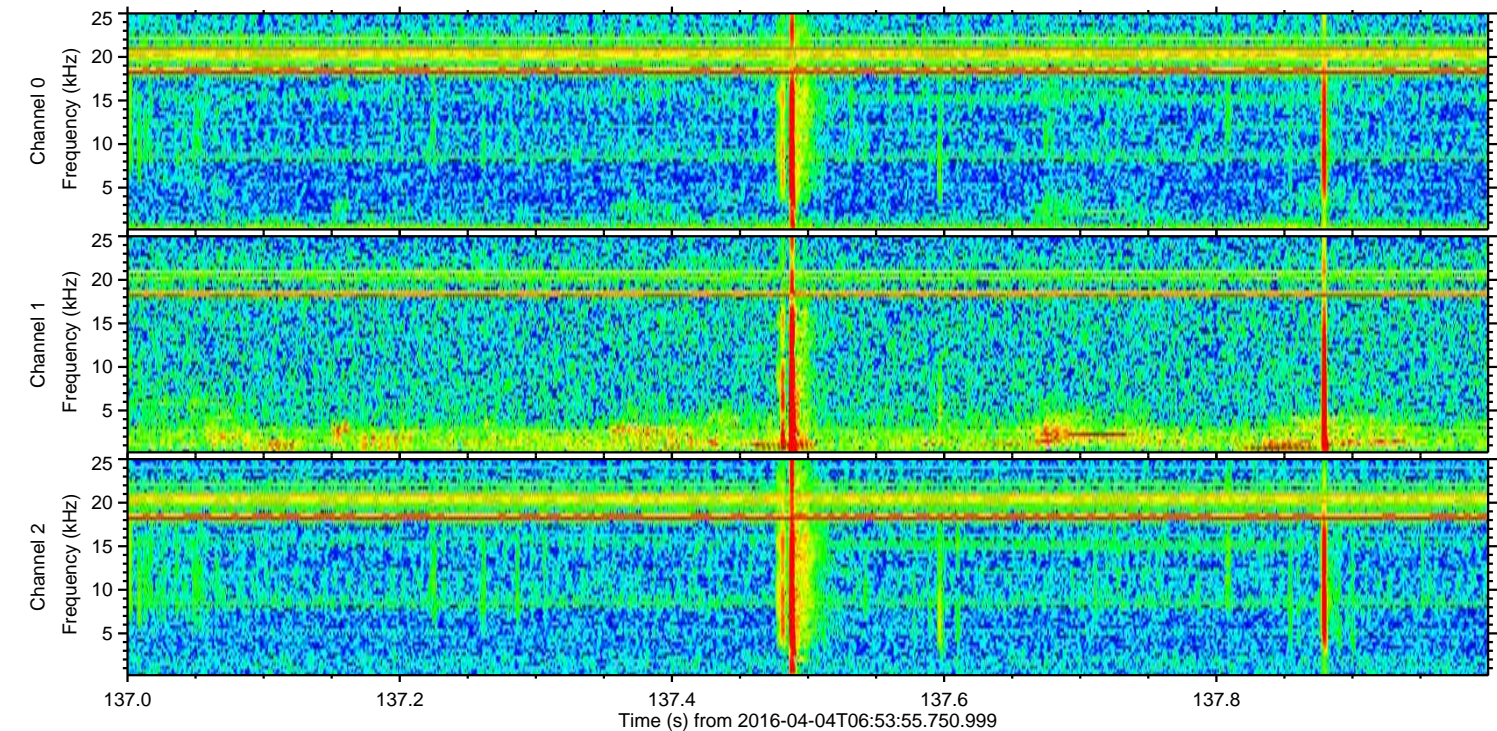
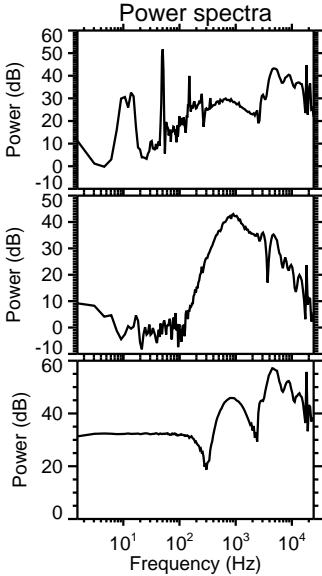
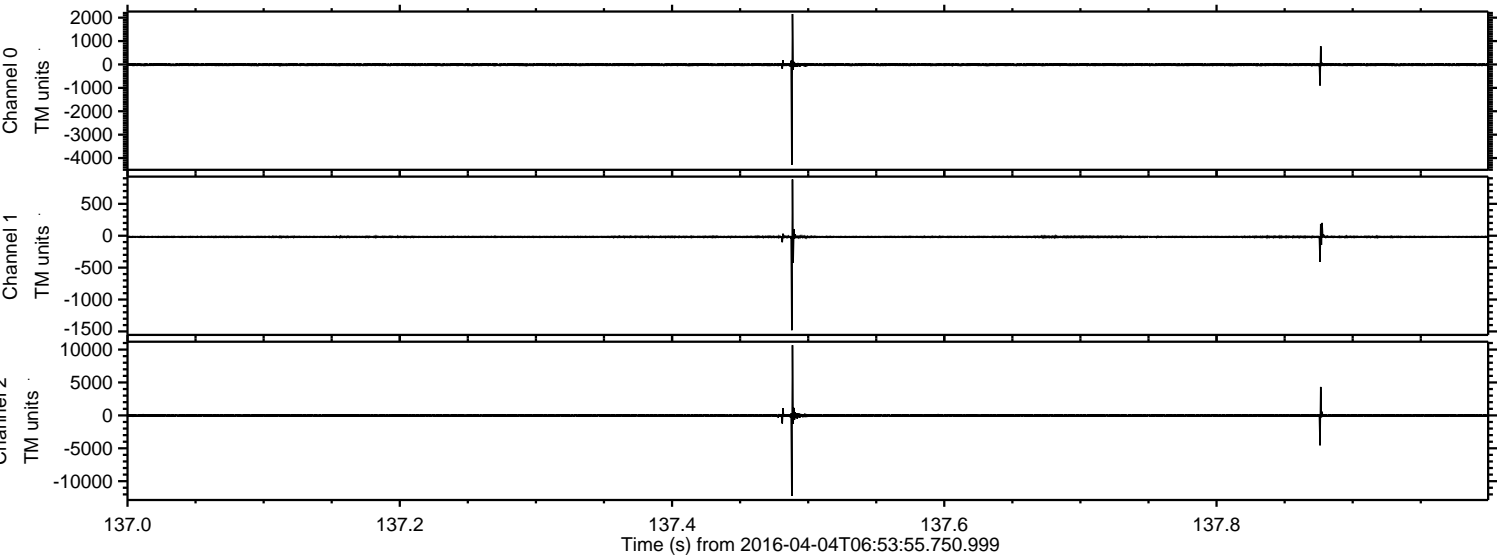
Processed Fri May 6 00:36:30 2016 by ELM ver.2012-10-06 from 001\_\_elm20160404\_065354\_\_dat00.bin





ELMAVAN 3D WAVEFORMS (Measured data sampled at 50 kHz) 51000 packets of 144 samples from 2016-04-04T06:53:55.750.999. Part 138/147

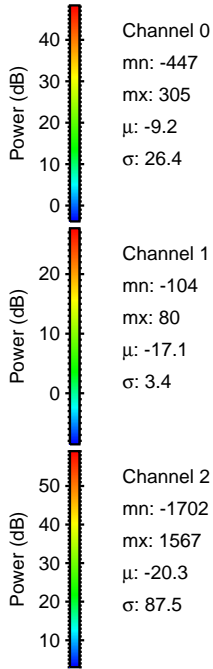
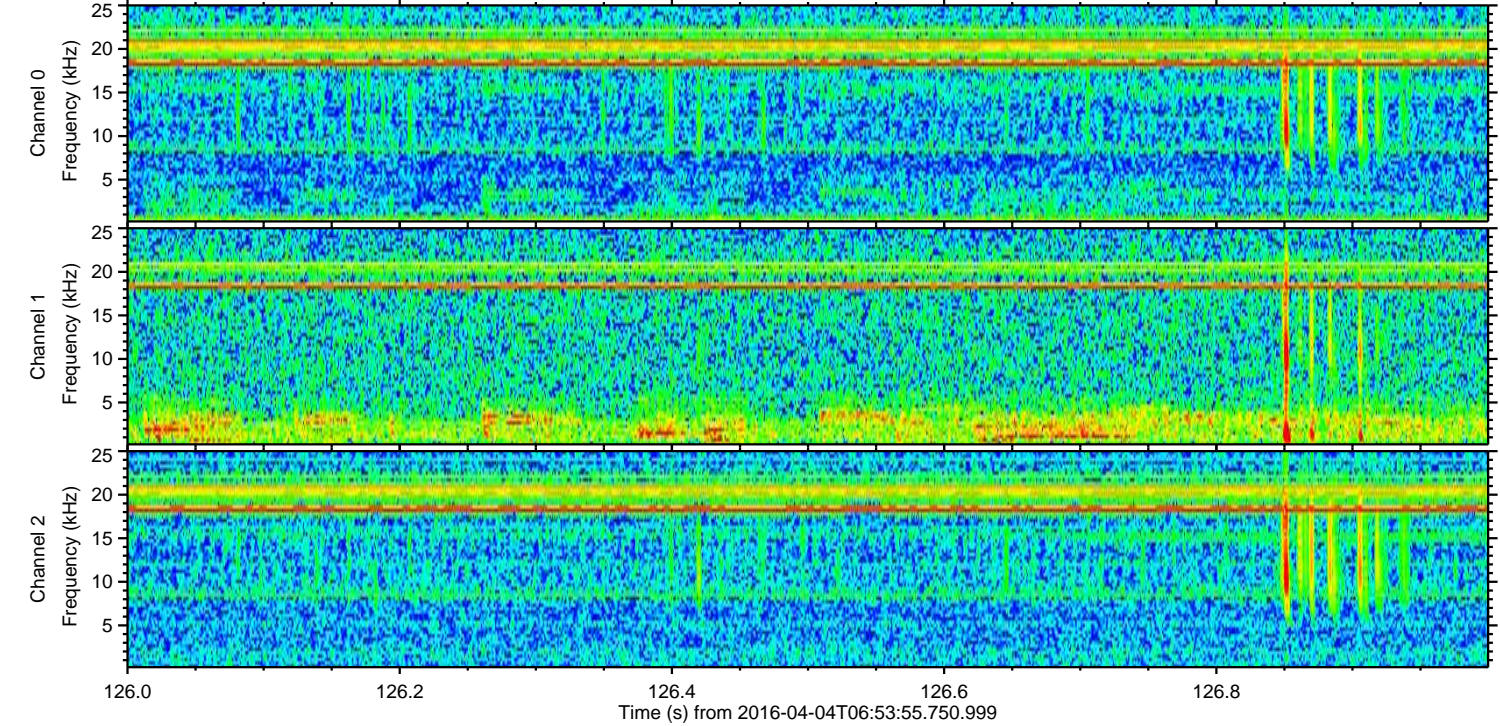
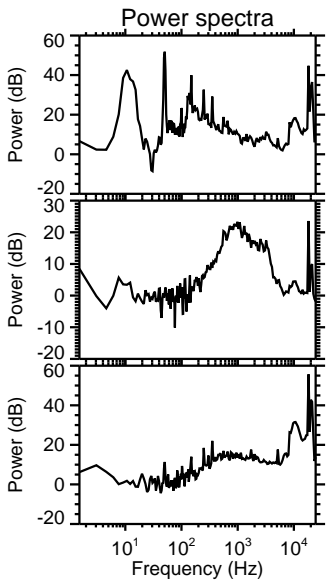
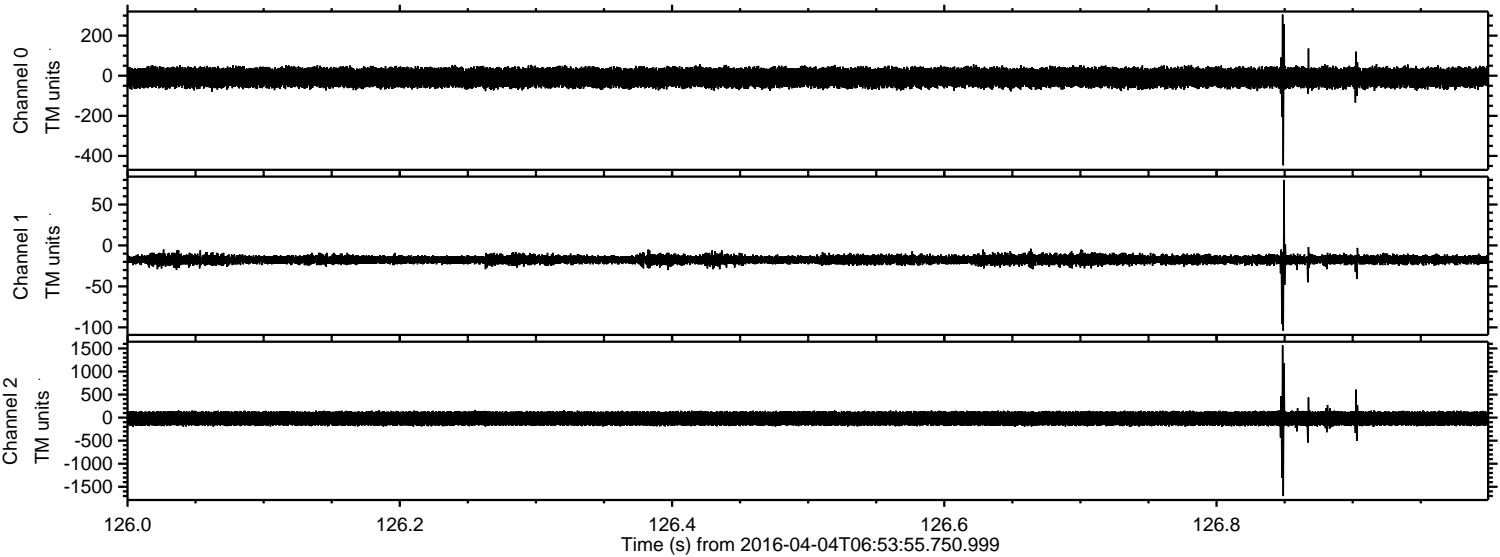
Processed Fri May 6 00:36:42 2016 by ELM ver.2012-10-06 from 001\_\_elm20160404\_065354\_\_dat00.bin





ELMAVAN 3D WAVEFORMS (Measured data sampled at 50 kHz) 51000 packets of 144 samples from 2016-04-04T06:53:55.750.999. Part 127/147

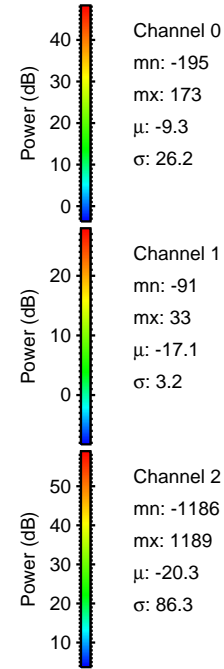
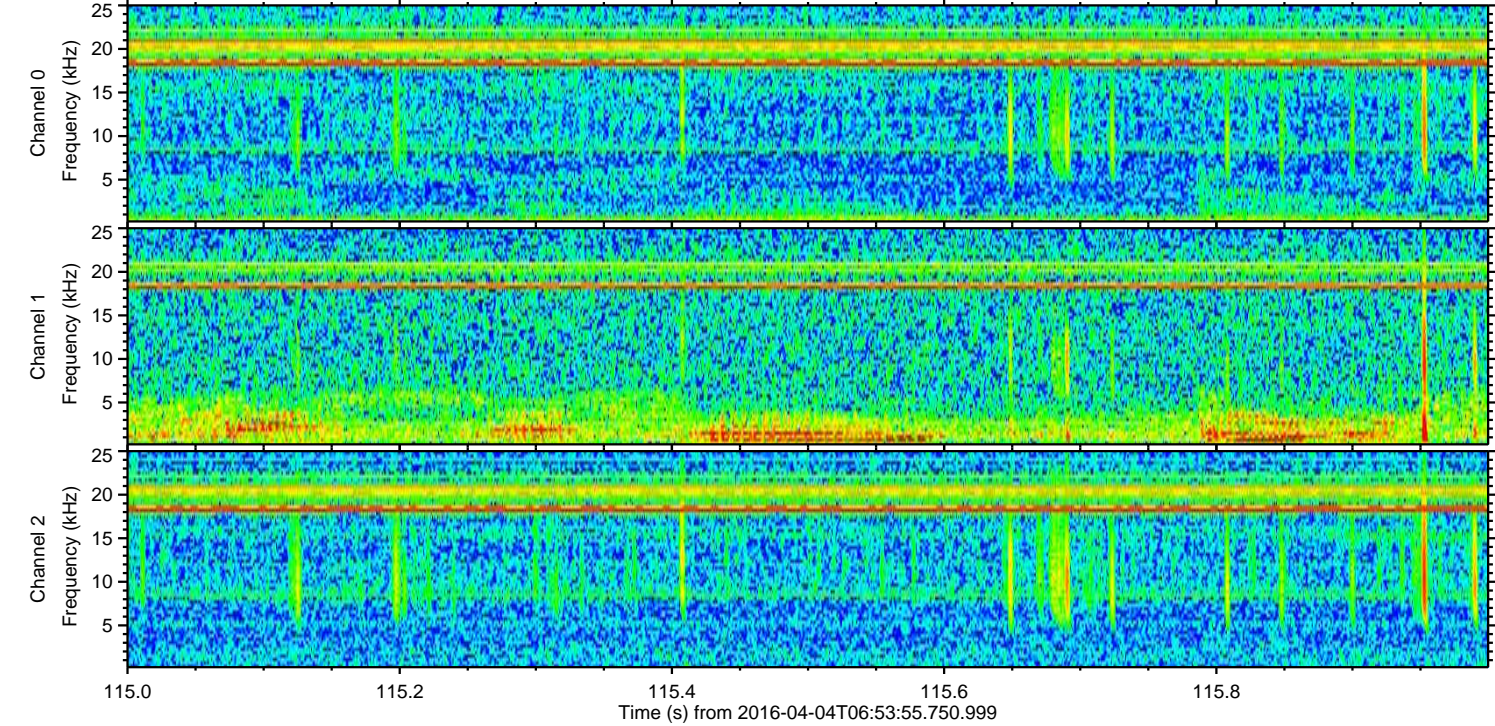
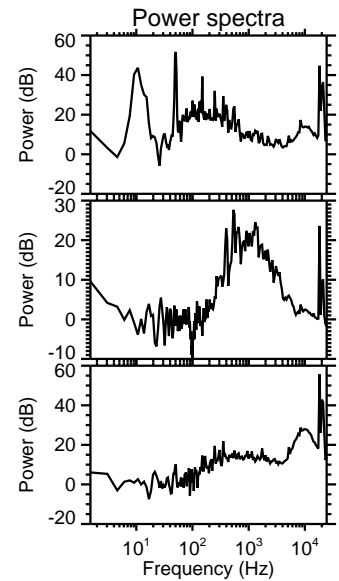
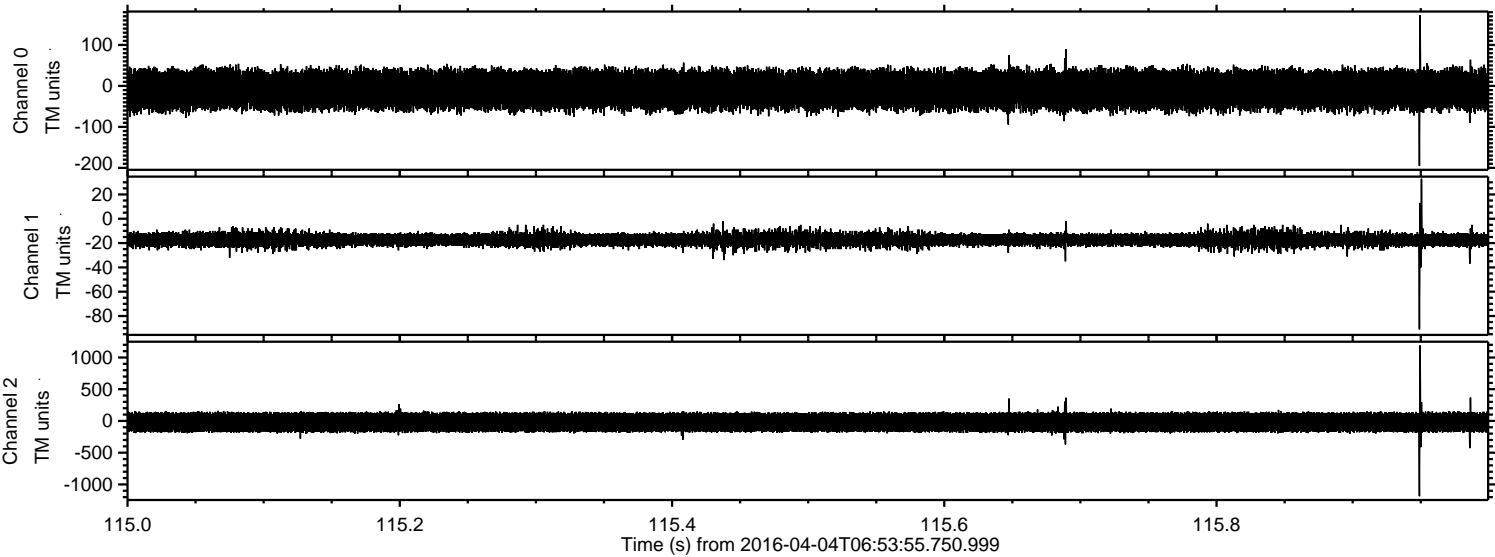
Processed Fri May 6 00:36:43 2016 by ELM ver.2012-10-06 from 001\_\_elm20160404\_065354\_\_dat00.bin



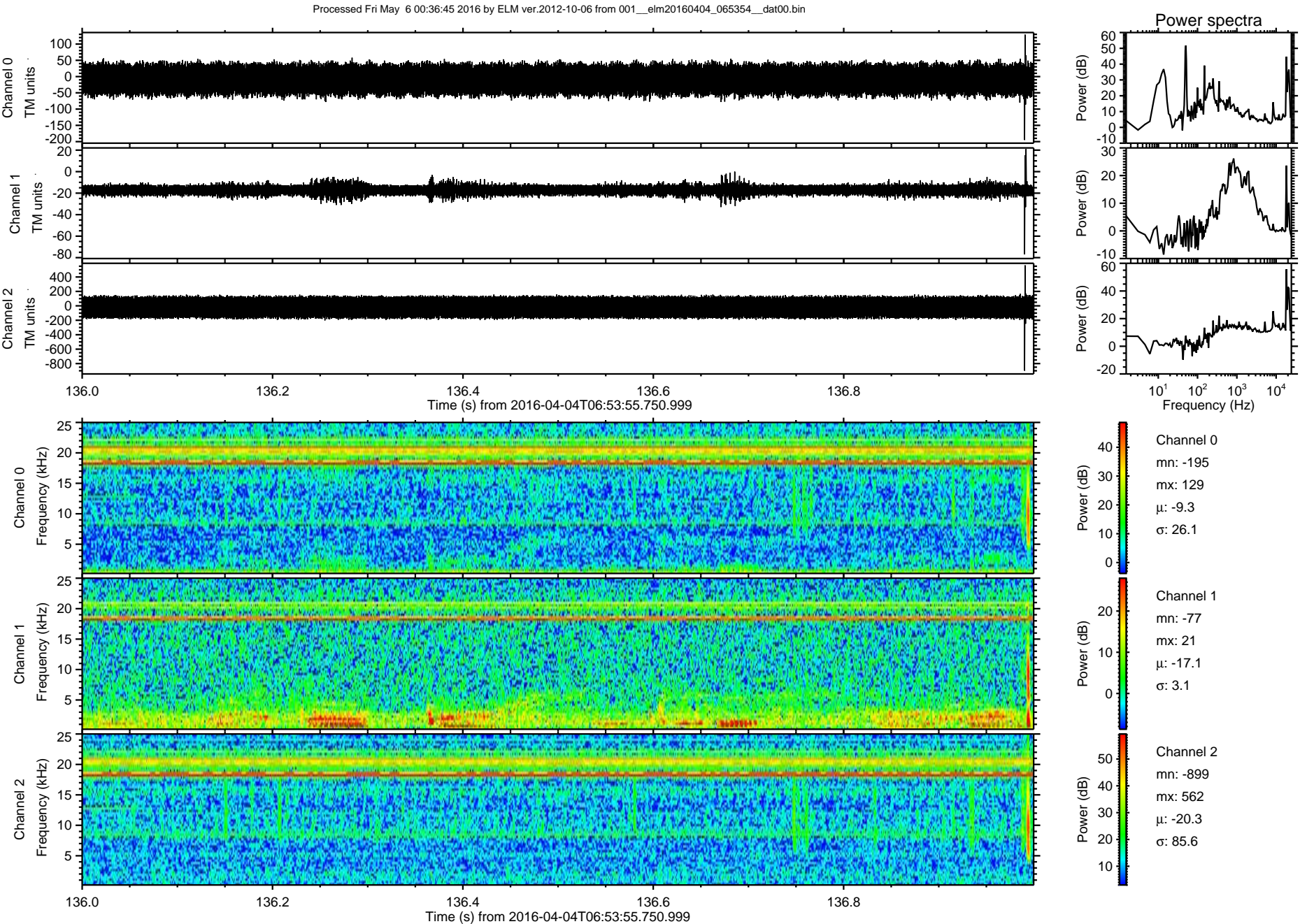


ELMAVAN 3D WAVEFORMS (Measured data sampled at 50 kHz) 51000 packets of 144 samples from 2016-04-04T06:53:55.750.999. Part 116/147

Processed Fri May 6 00:36:44 2016 by ELM ver.2012-10-06 from 001\_\_elm20160404\_065354\_\_dat00.bin

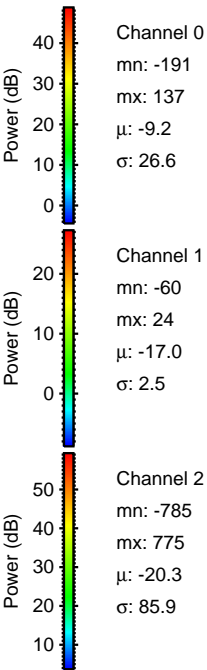
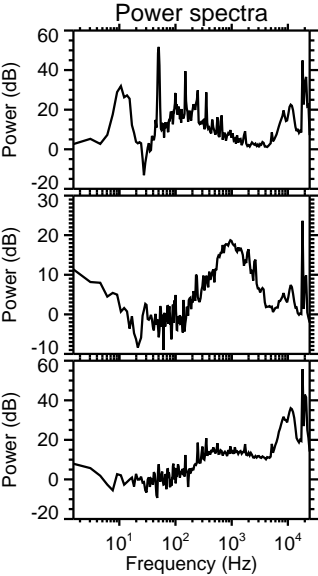
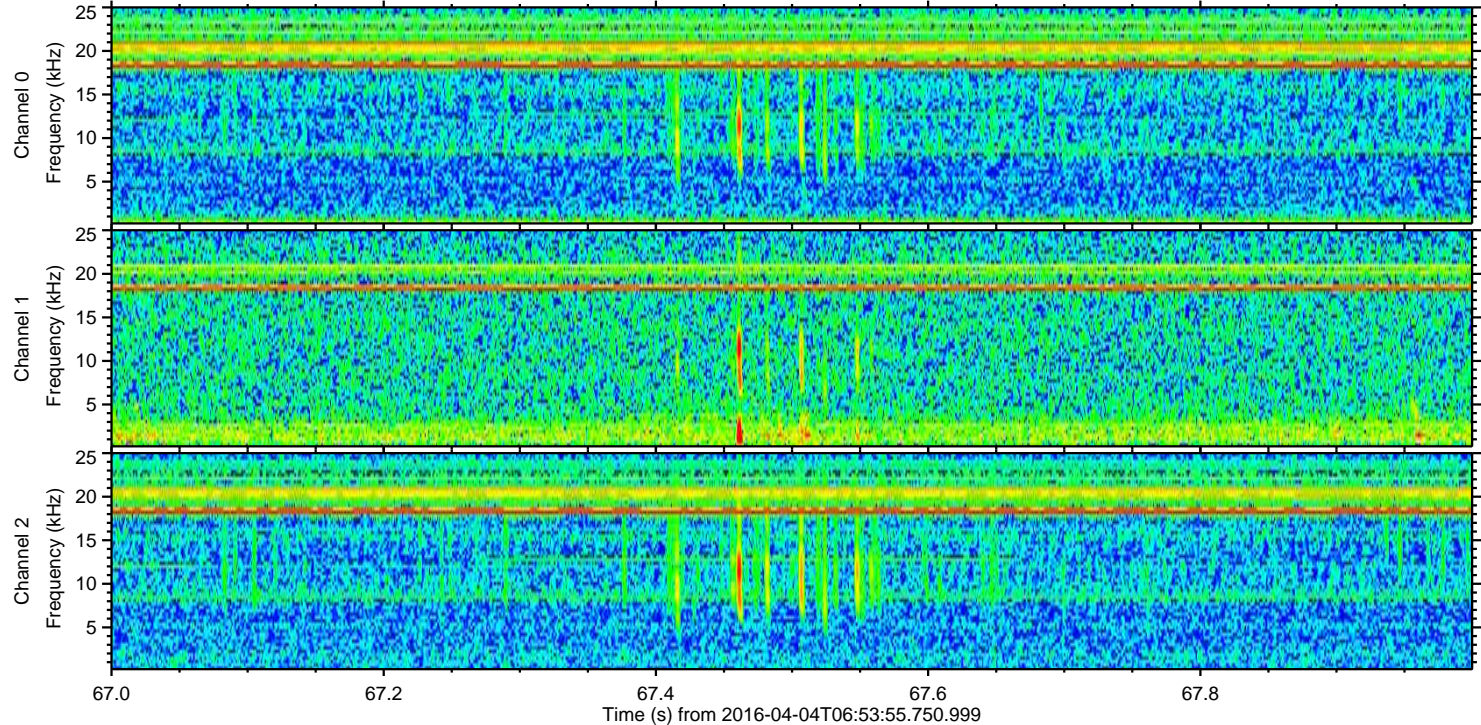
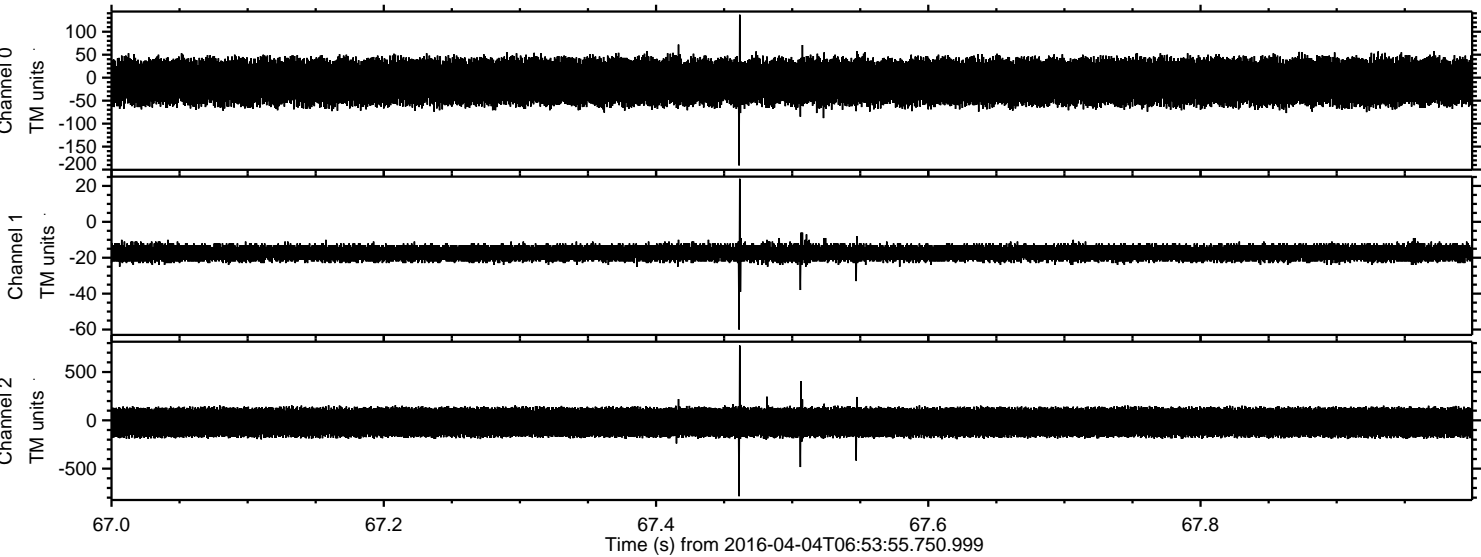






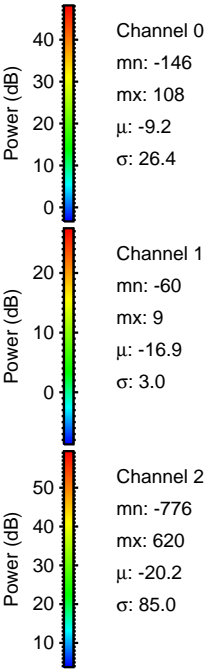
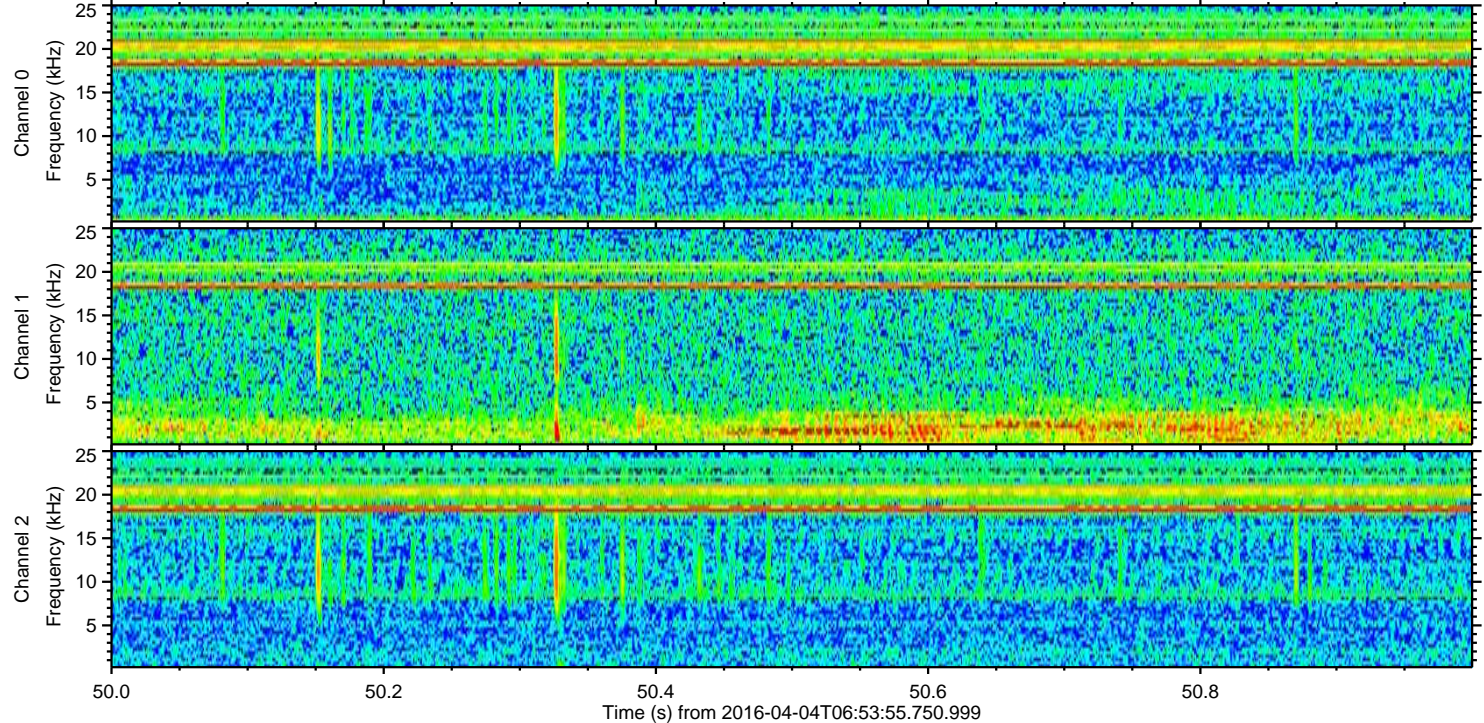
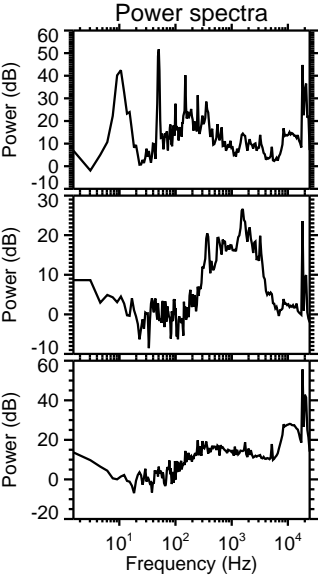
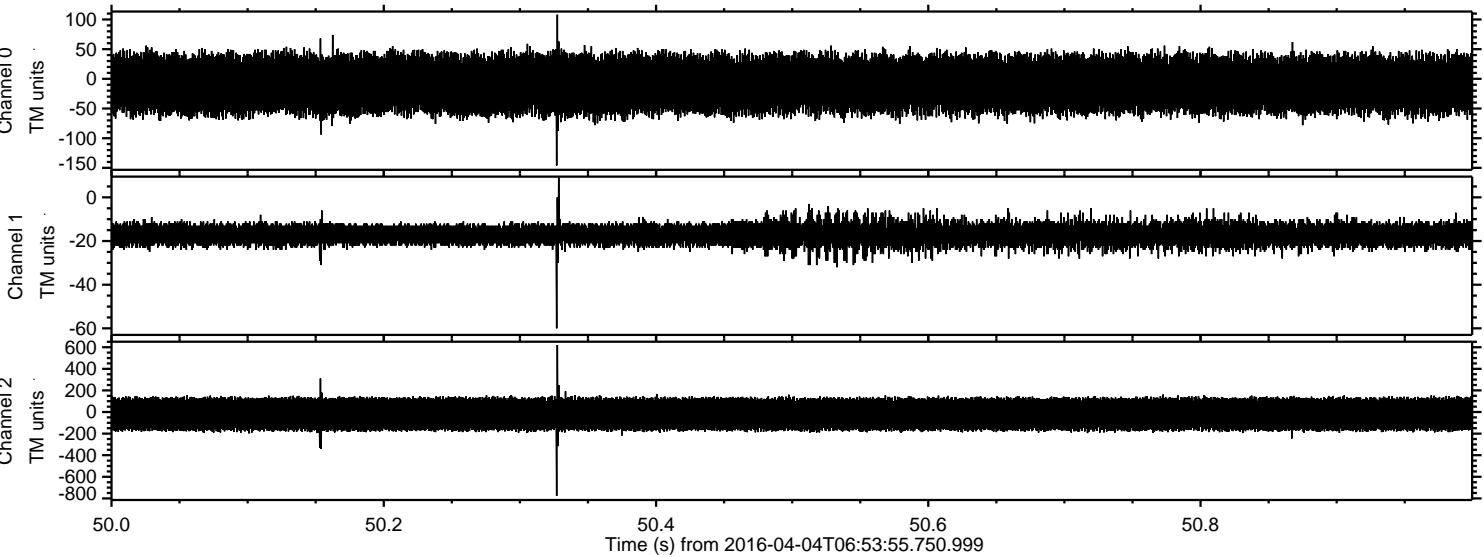


Processed Fri May 6 00:36:46 2016 by ELM ver.2012-10-06 from 001\_\_elm20160404\_065354\_\_dat00.bin

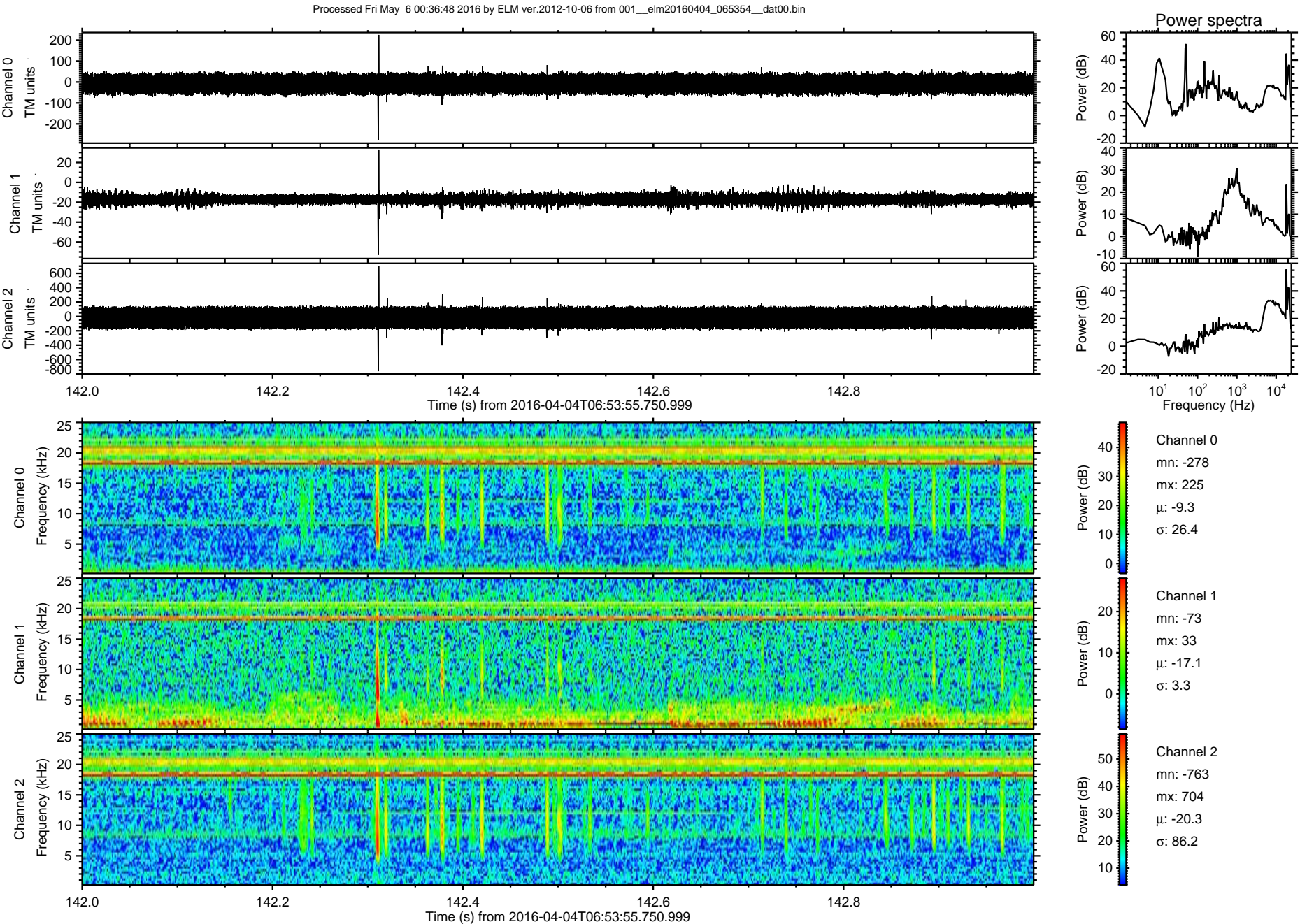




Processed Fri May 6 00:36:47 2016 by ELM ver.2012-10-06 from 001\_\_elm20160404\_065354\_\_dat00.bin

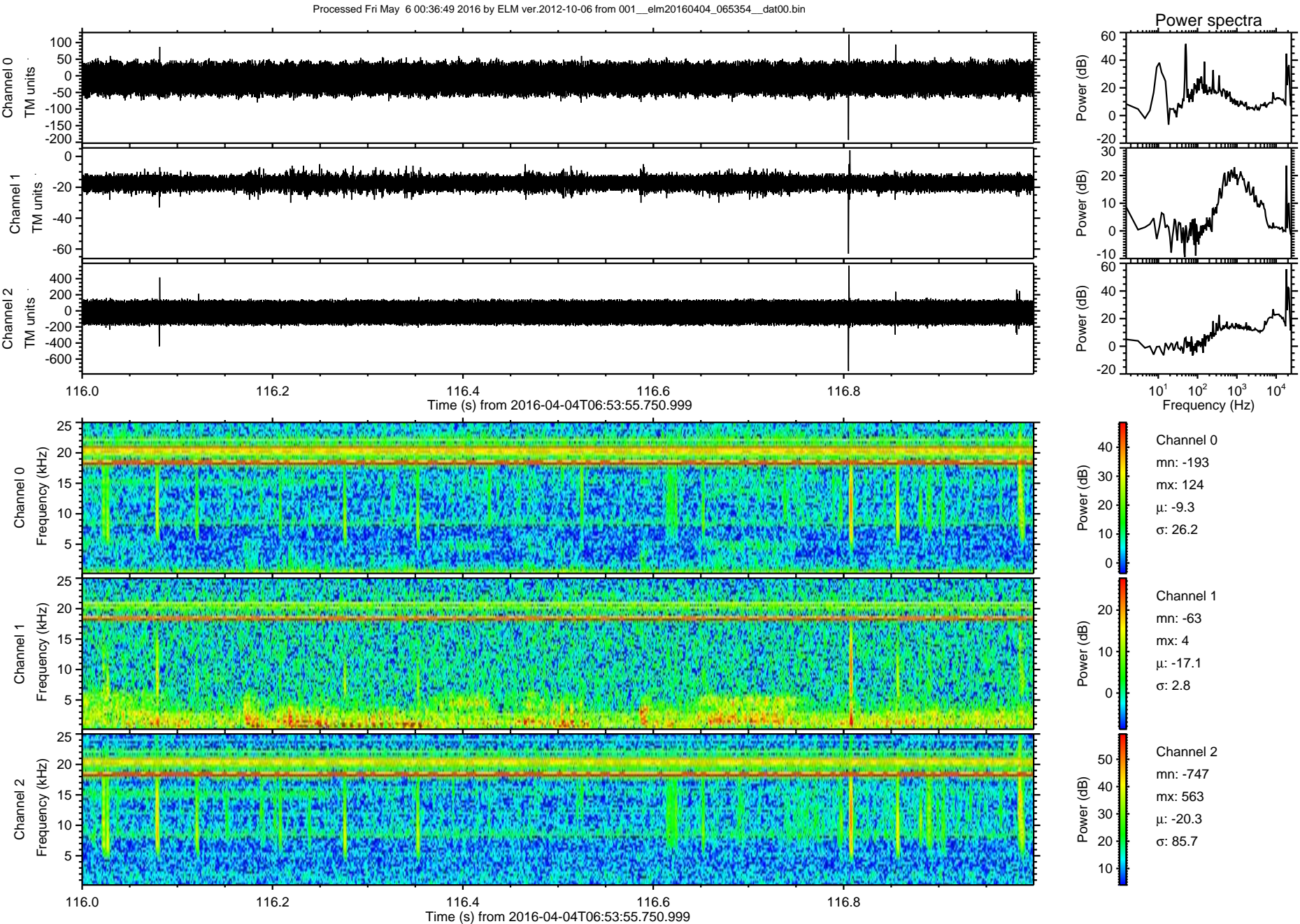






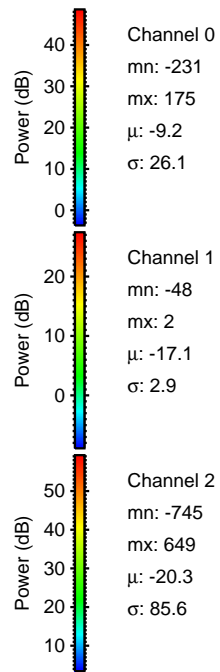
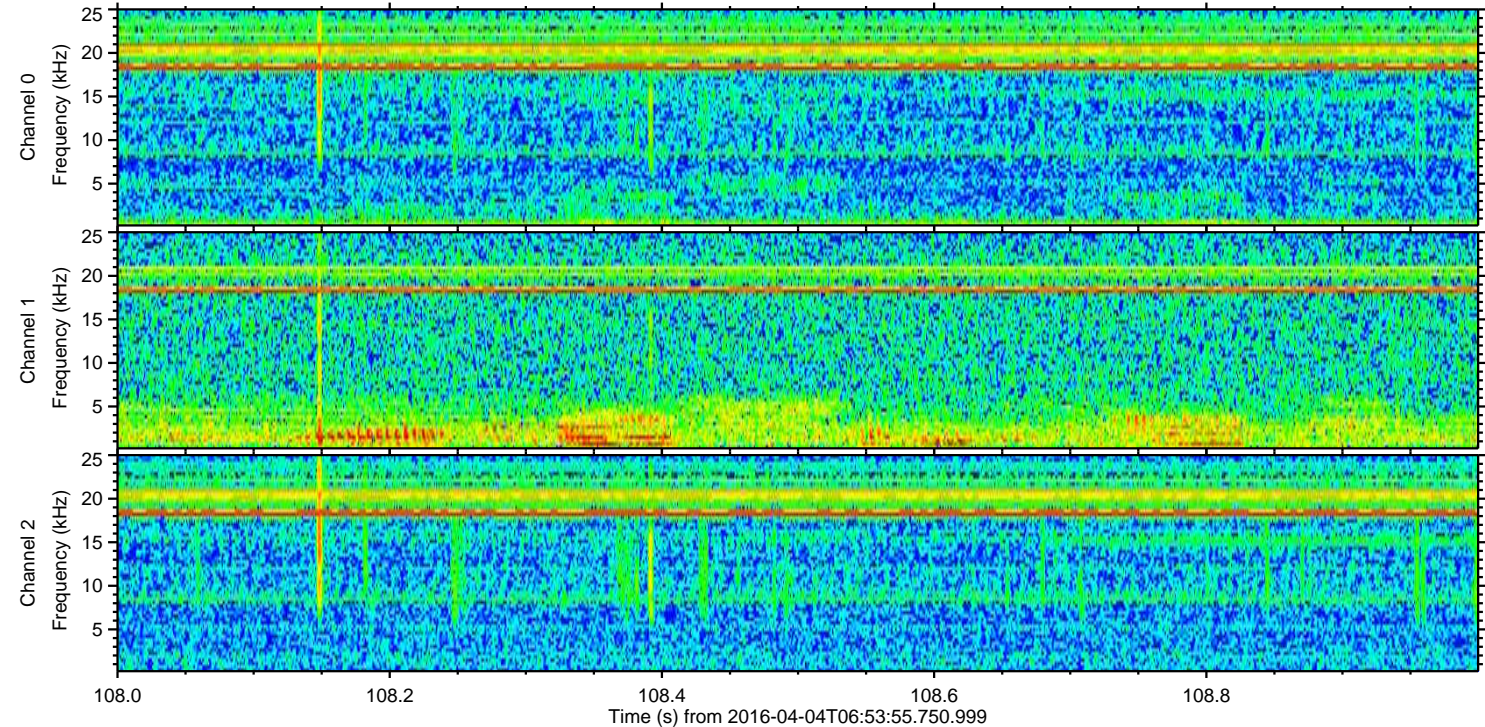
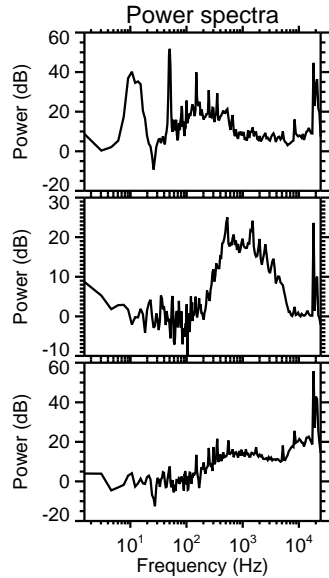
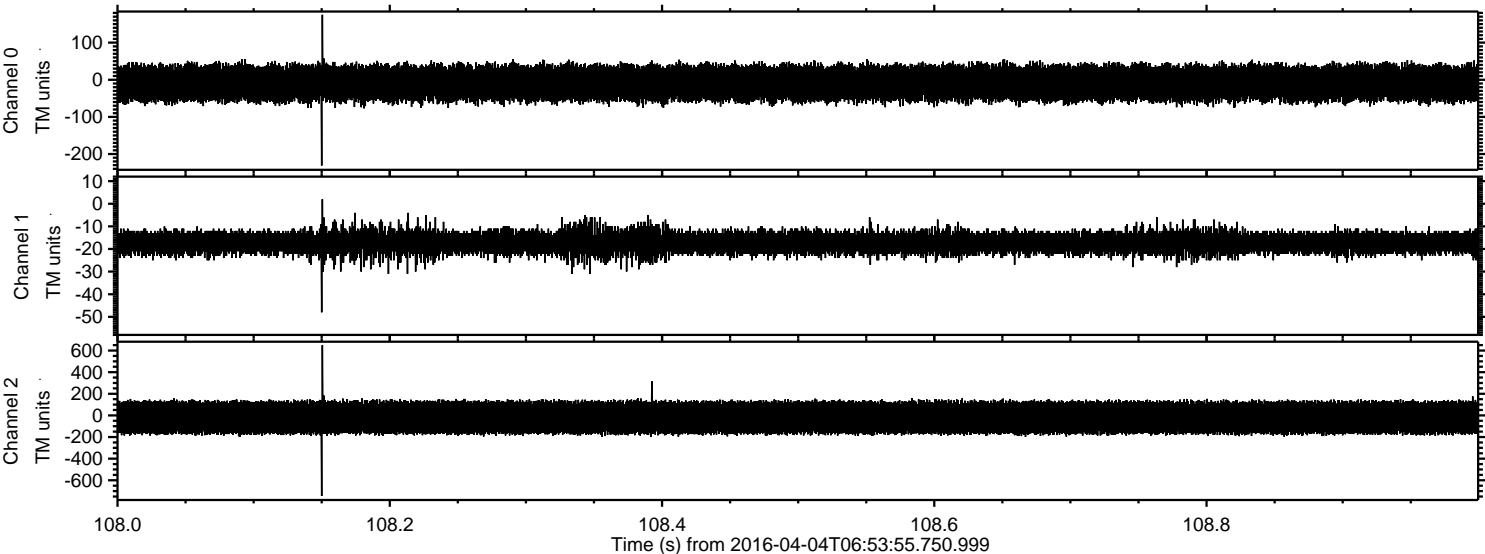


ELMAVAN 3D WAVEFORMS (Measured data sampled at 50 kHz) 51000 packets of 144 samples from 2016-04-04T06:53:55.750.999. Part 117/147





Processed Fri May 6 00:36:49 2016 by ELM ver.2012-10-06 from 001\_\_elm20160404\_065354\_\_dat00.bin





Processed Fri May 6 00:36:50 2016 by ELM ver.2012-10-06 from 001\_\_elm20160404\_065354\_\_dat00.bin

