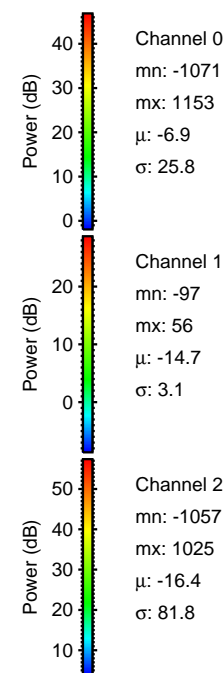
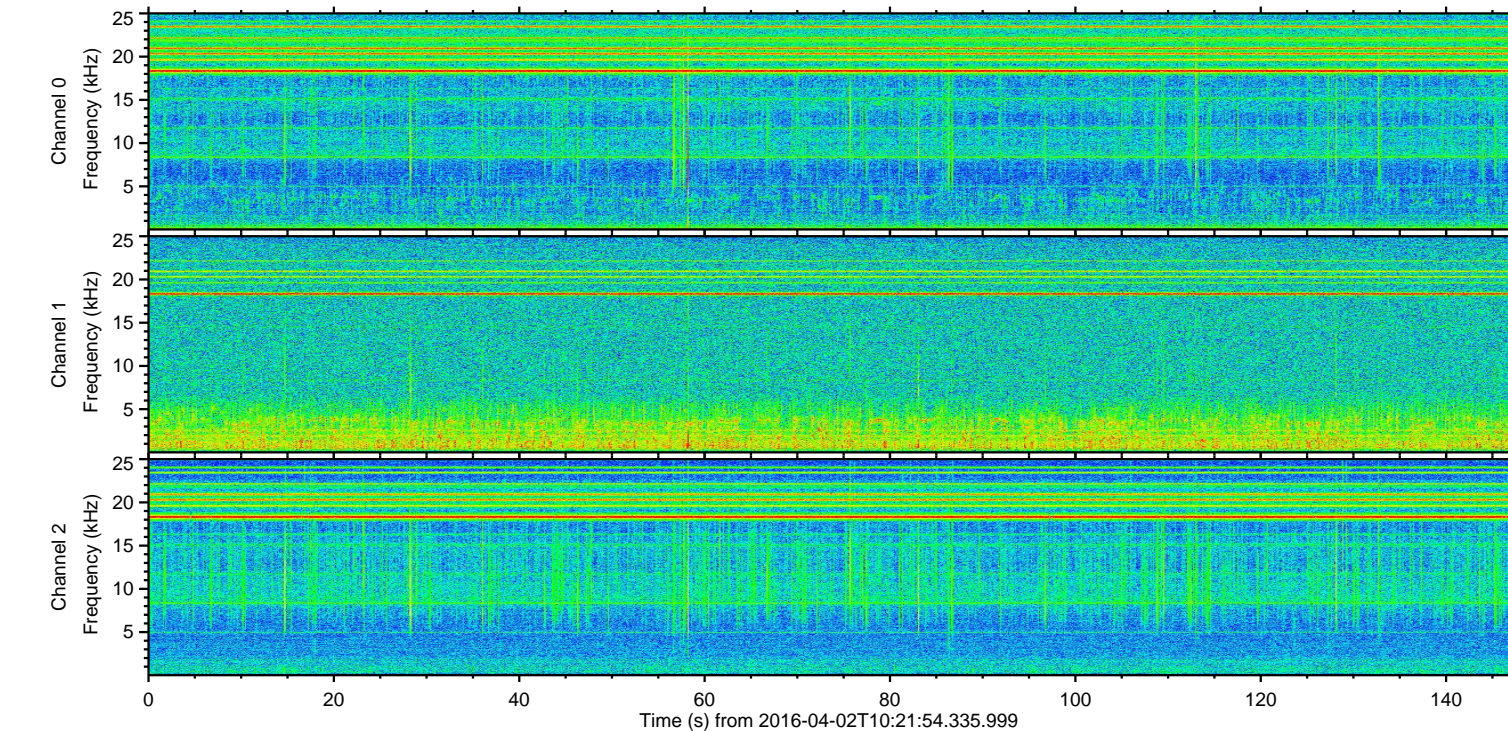
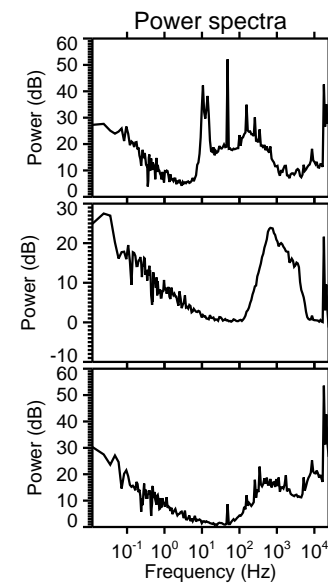
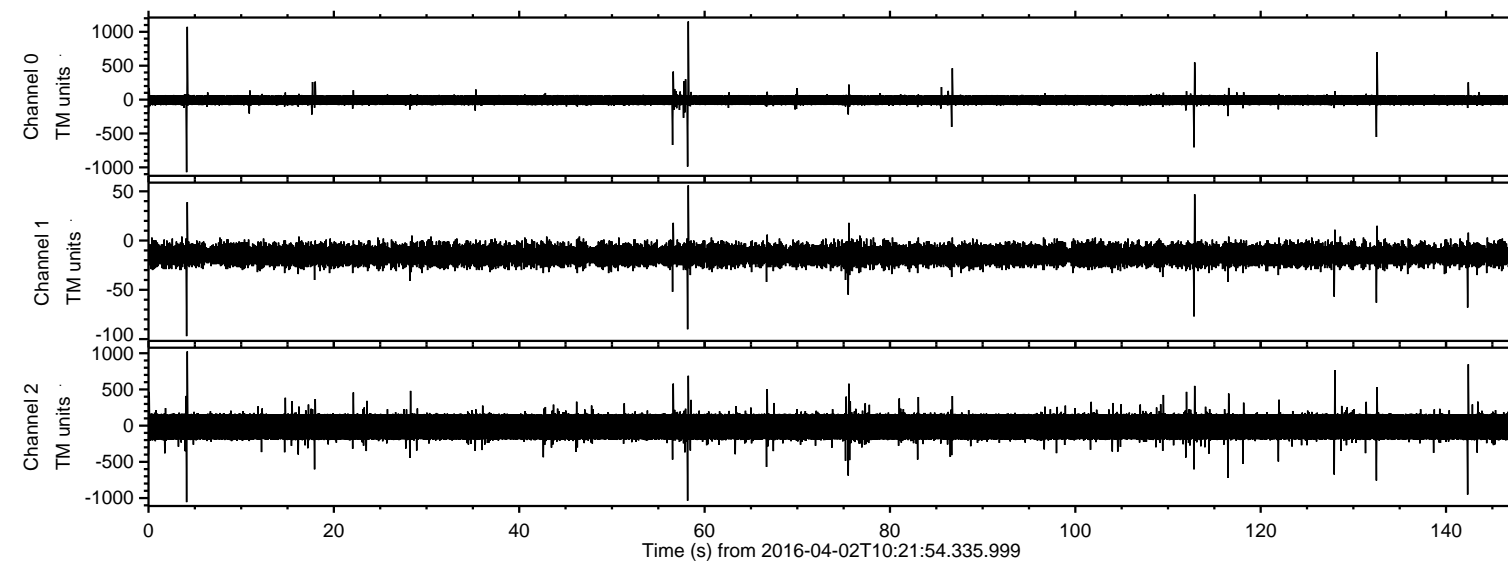
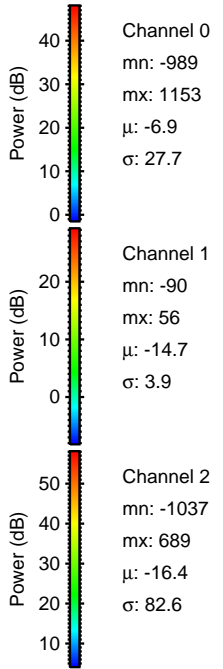
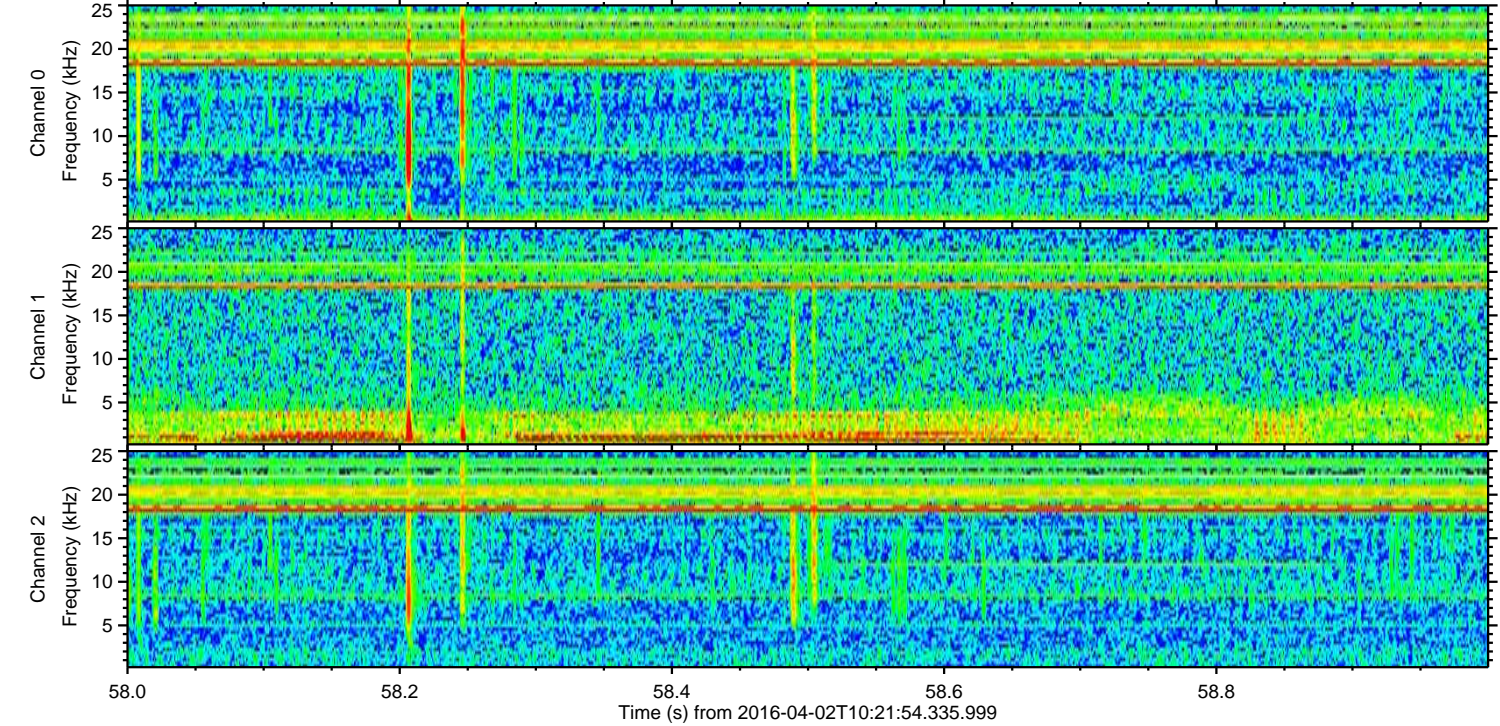
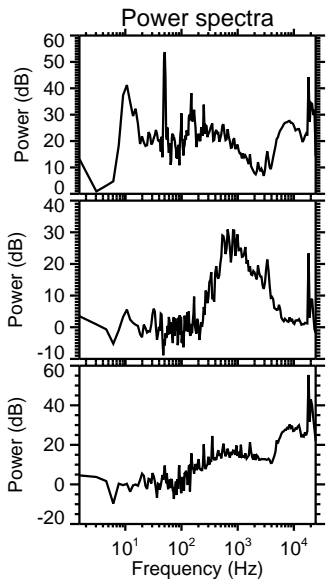
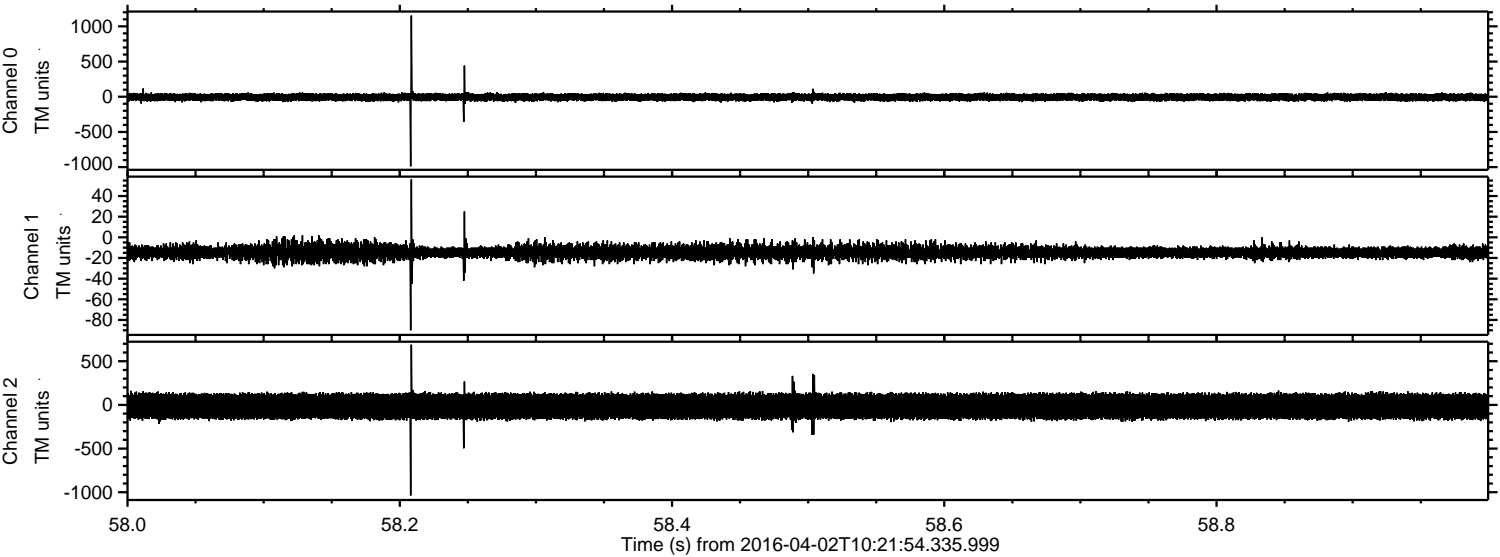


ELMAVAN 3D WAVEFORMS (Measured data sampled at 50 kHz) 51000 packets of 144 samples from 2016-04-02T10:21:54.335.999.

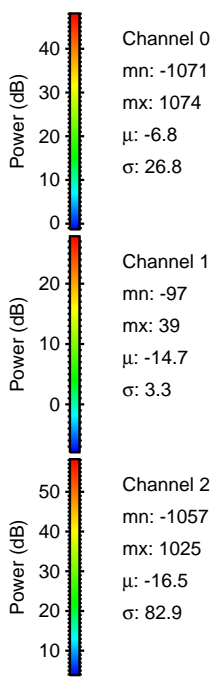
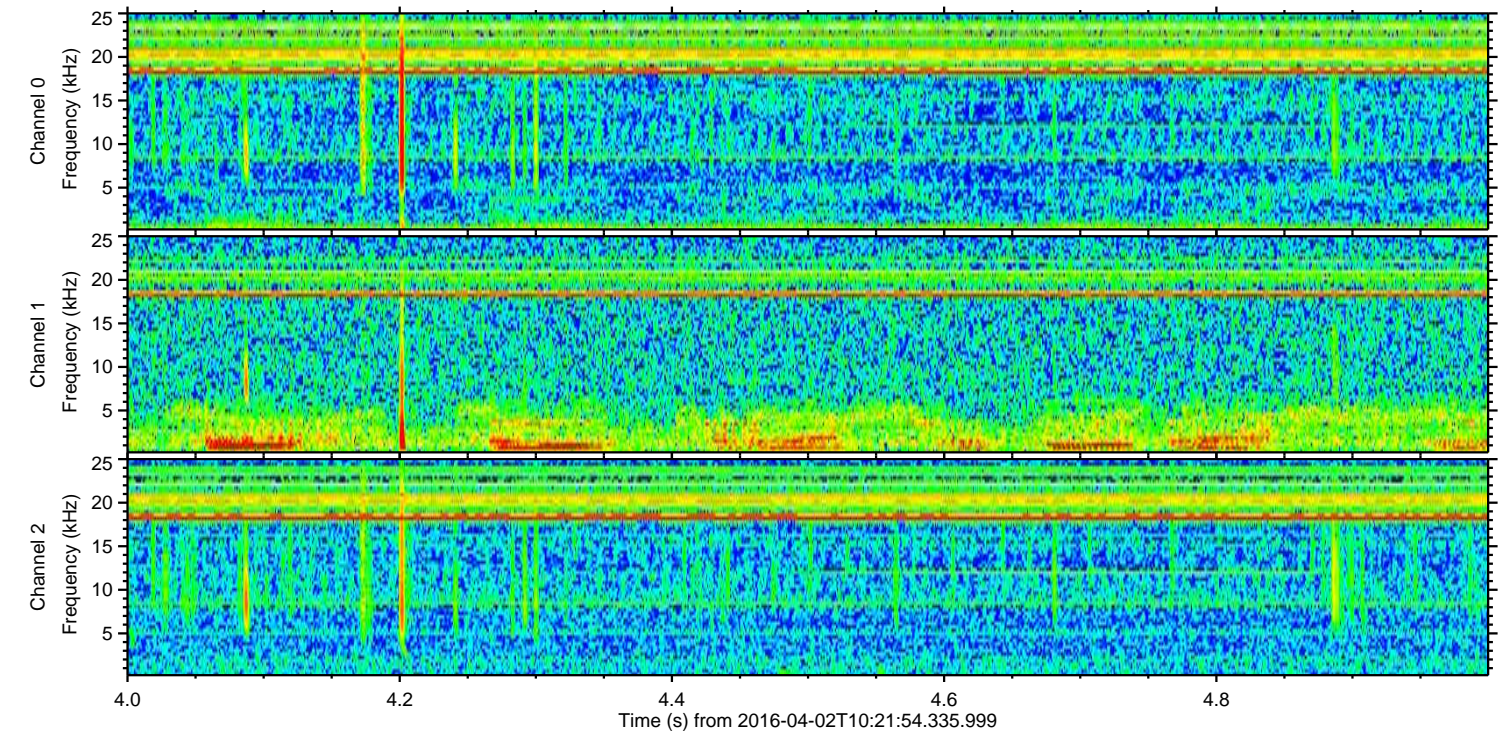
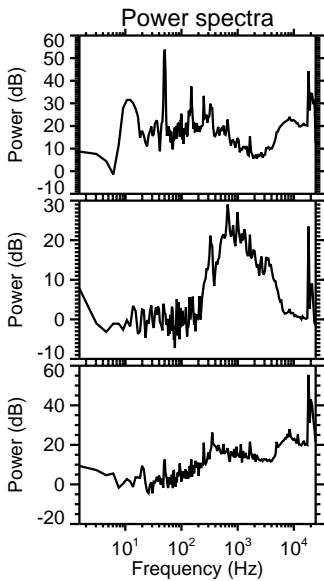
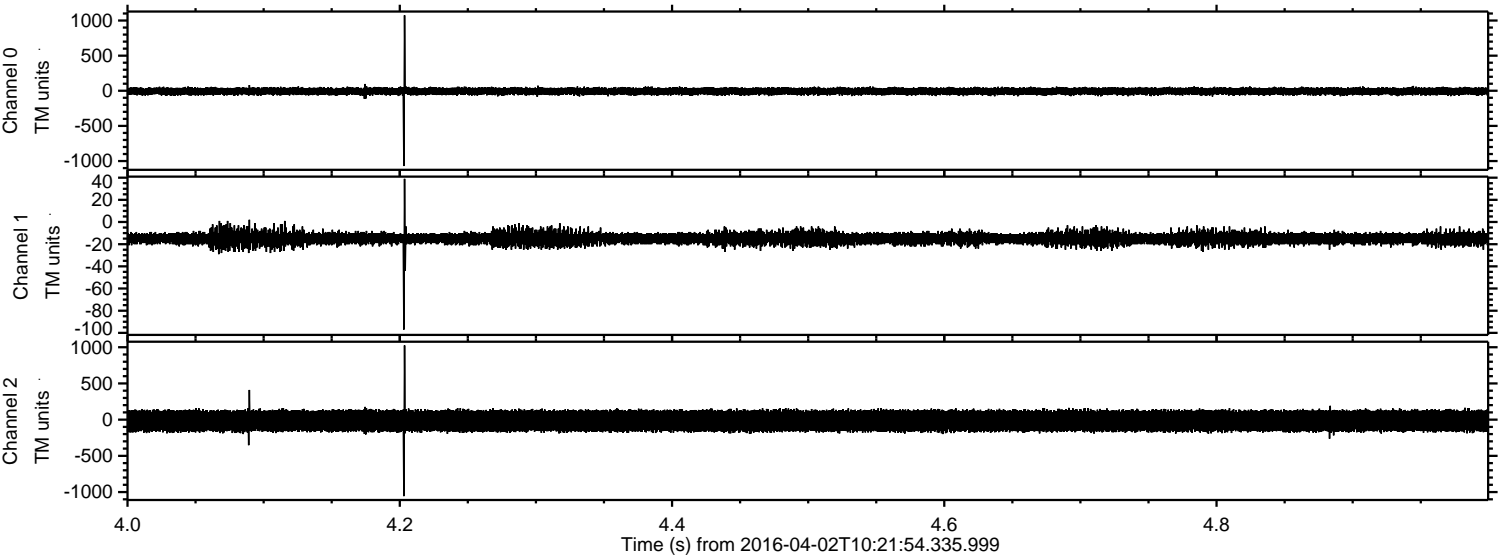
Processed Thu May 5 16:30:57 2016 by ELM ver.2012-10-06 from 001__elm20160402_102153__dat00.bin



Processed Thu May 5 16:31:10 2016 by ELM ver.2012-10-06 from 001__elm20160402_102153__dat00.bin



Processed Thu May 5 16:31:11 2016 by ELM ver.2012-10-06 from 001__elm20160402_102153__dat00.bin

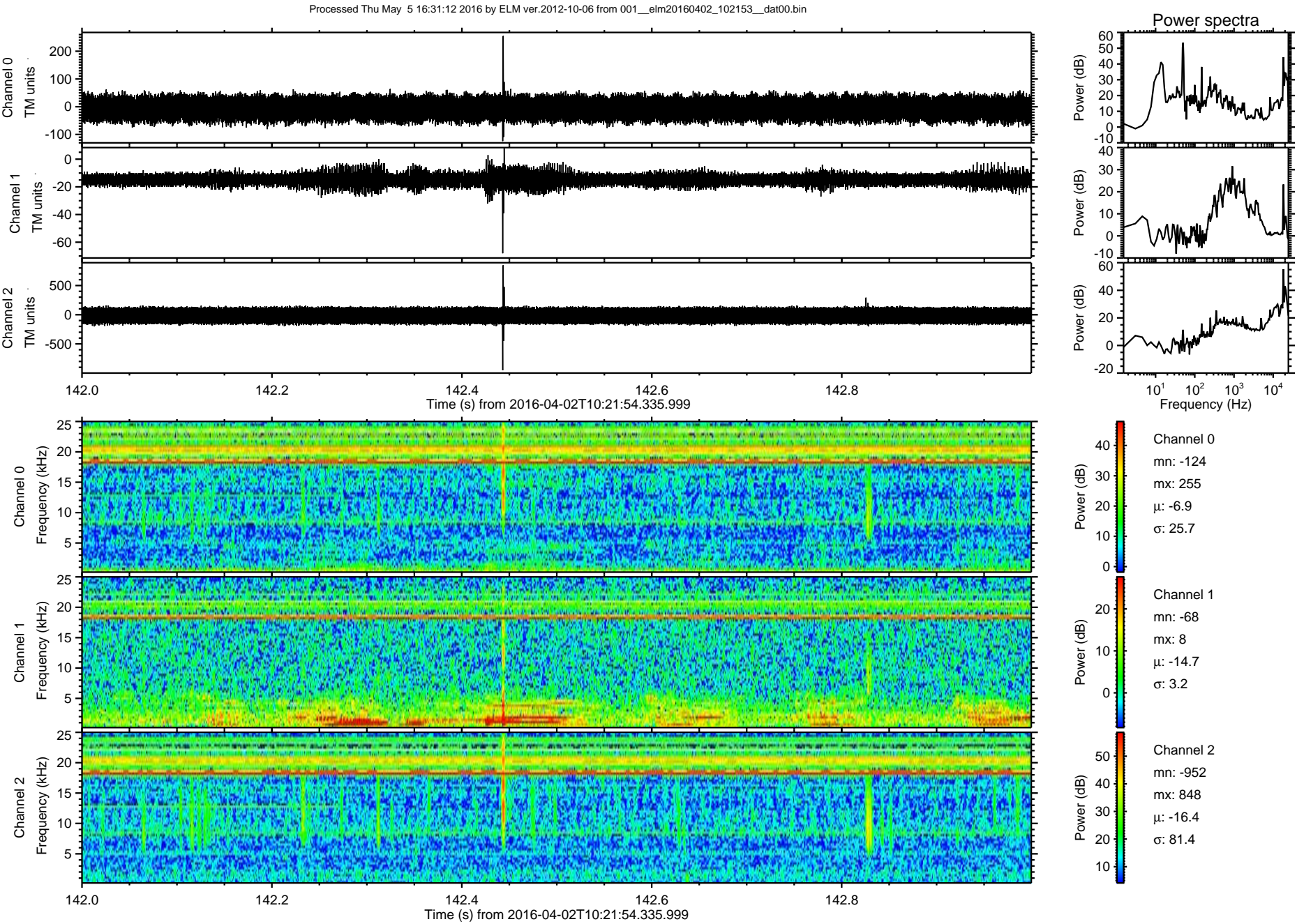


Channel 0
mn: -1071
mx: 1074
 μ : -6.8
 σ : 26.8

Channel 1
mn: -97
mx: 39
 μ : -14.7
 σ : 3.3

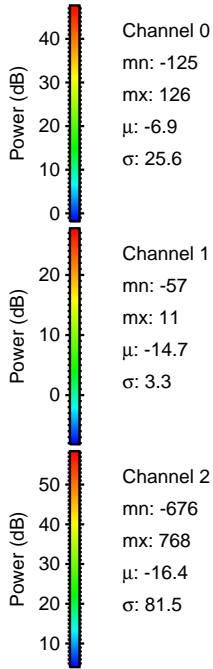
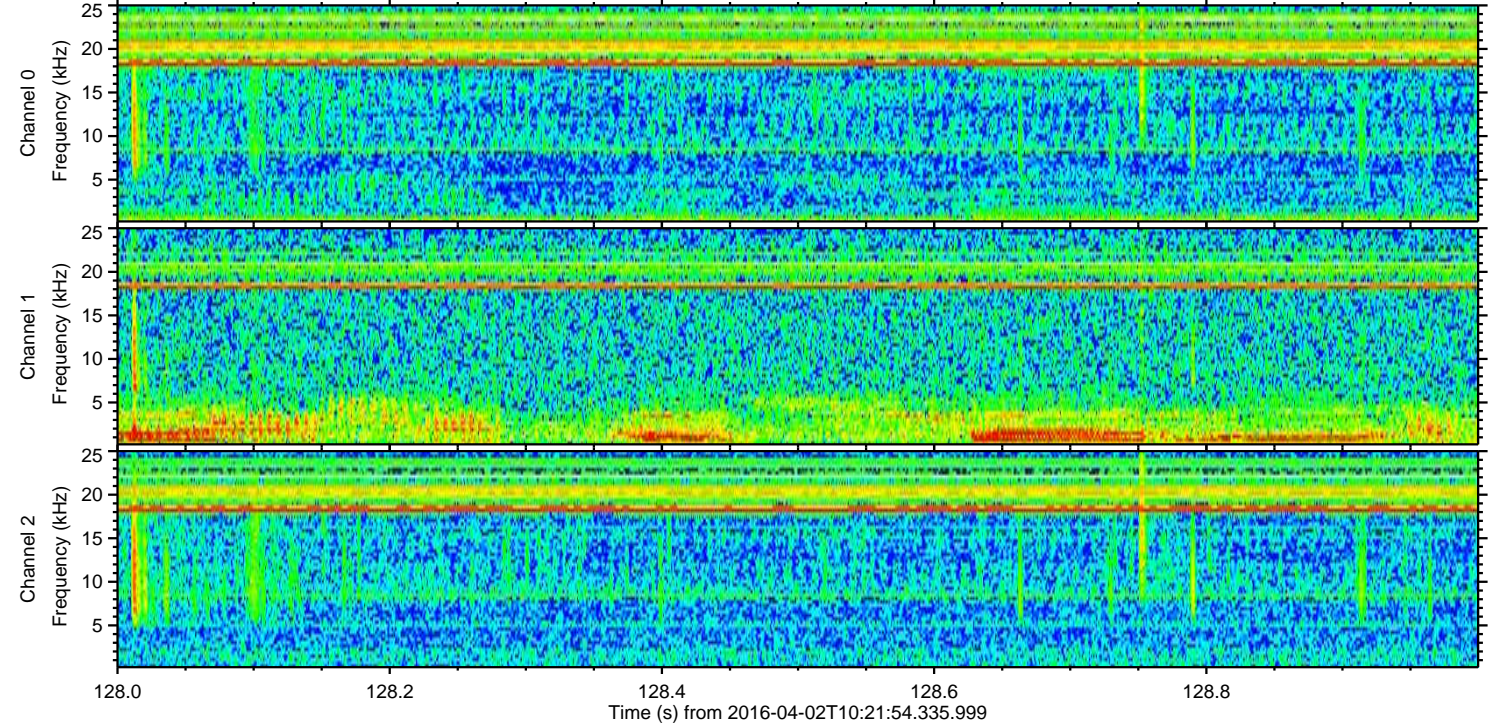
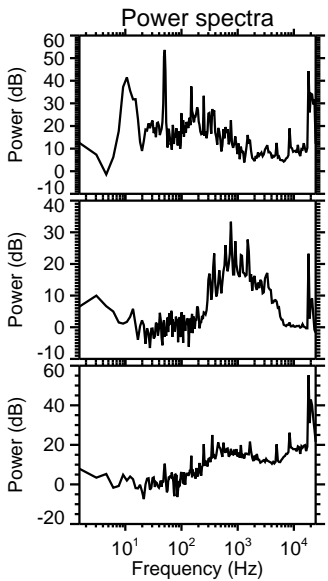
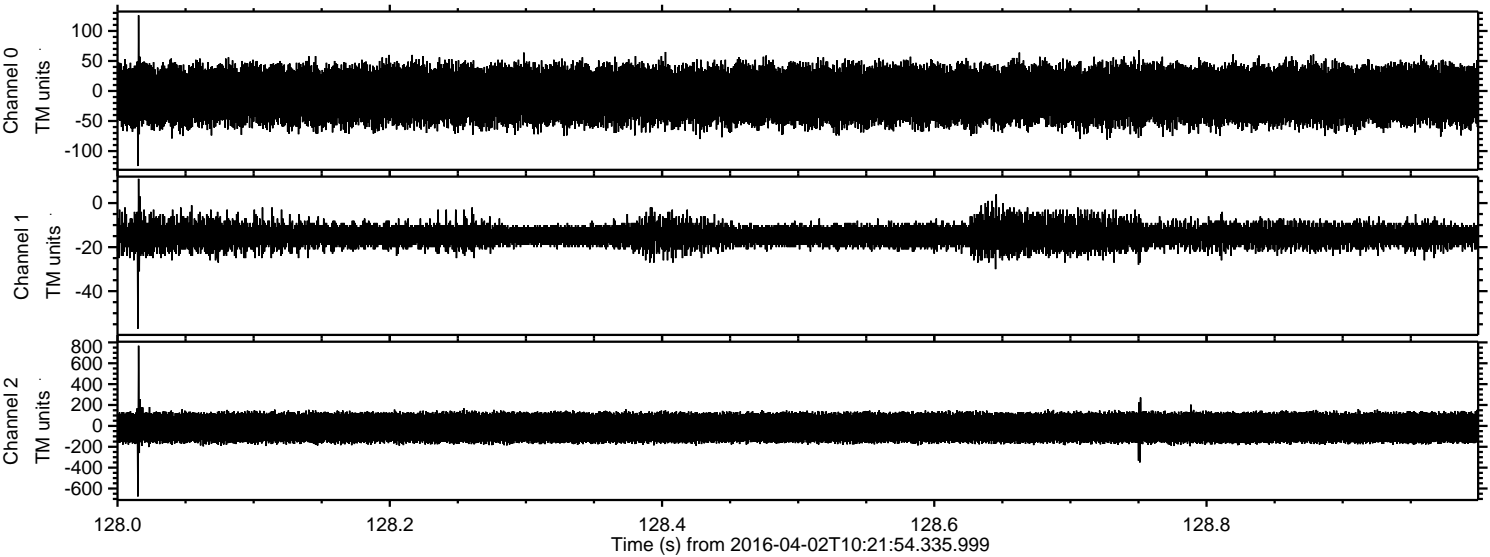
Channel 2
mn: -1057
mx: 1025
 μ : -16.5
 σ : 82.9

ELMAVAN 3D WAVEFORMS (Measured data sampled at 50 kHz) 51000 packets of 144 samples from 2016-04-02T10:21:54.335.999. Part 143/147



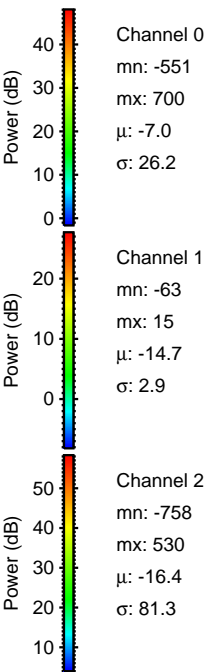
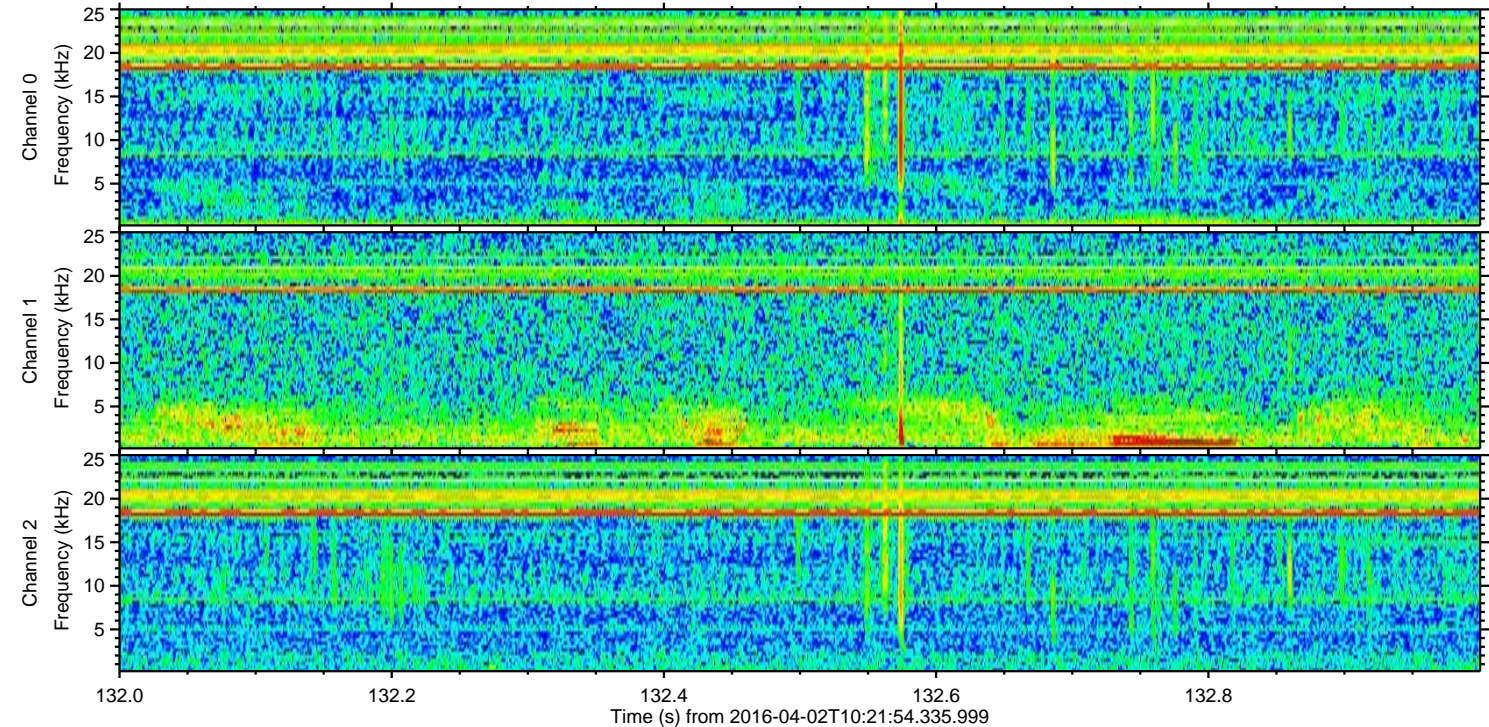
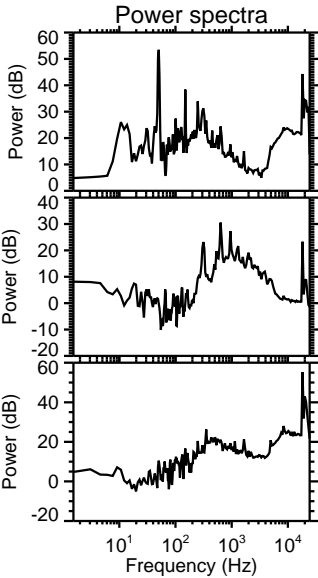
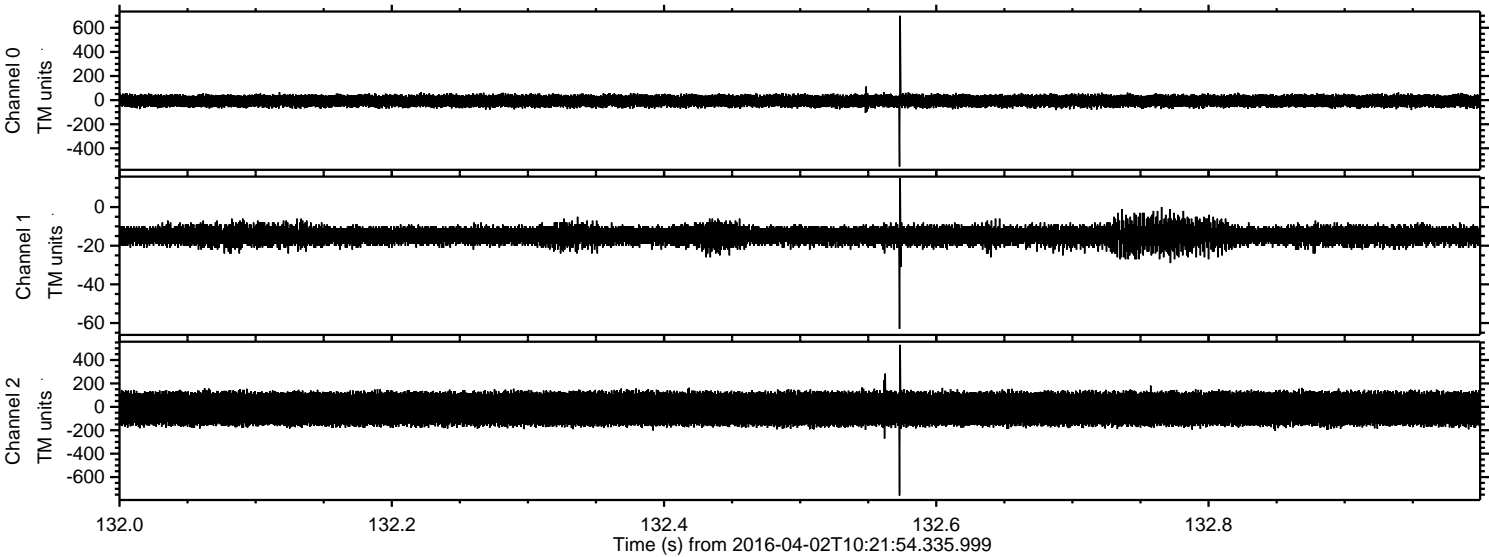
ELMAVAN 3D WAVEFORMS (Measured data sampled at 50 kHz) 51000 packets of 144 samples from 2016-04-02T10:21:54.335.999. Part 129/147

Processed Thu May 5 16:31:13 2016 by ELM ver.2012-10-06 from 001__elm20160402_102153__dat00.bin

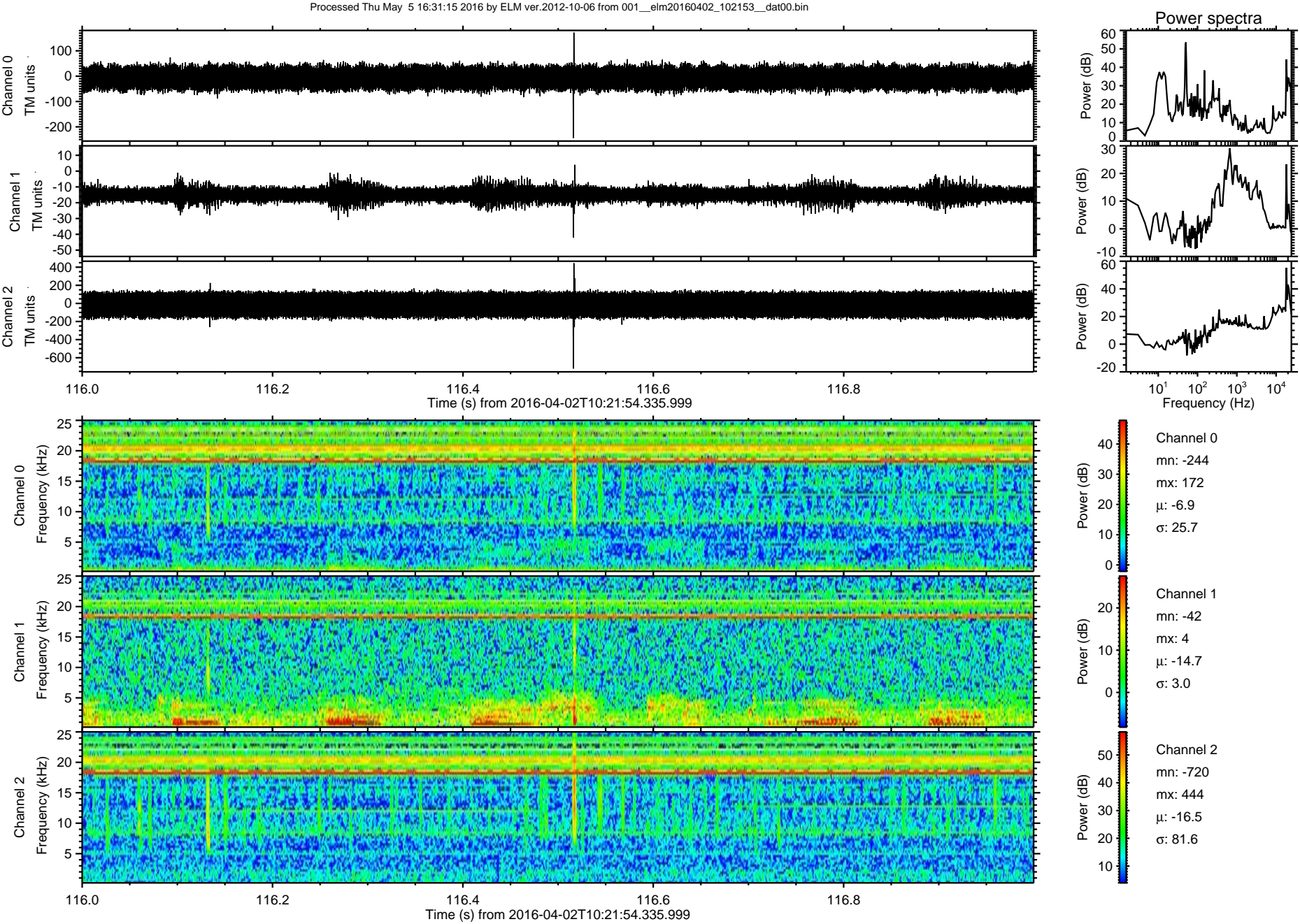


ELMAVAN 3D WAVEFORMS (Measured data sampled at 50 kHz) 51000 packets of 144 samples from 2016-04-02T10:21:54.335.999. Part 133/147

Processed Thu May 5 16:31:14 2016 by ELM ver.2012-10-06 from 001__elm20160402_102153__dat00.bin

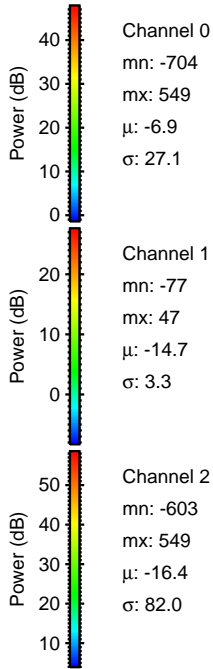
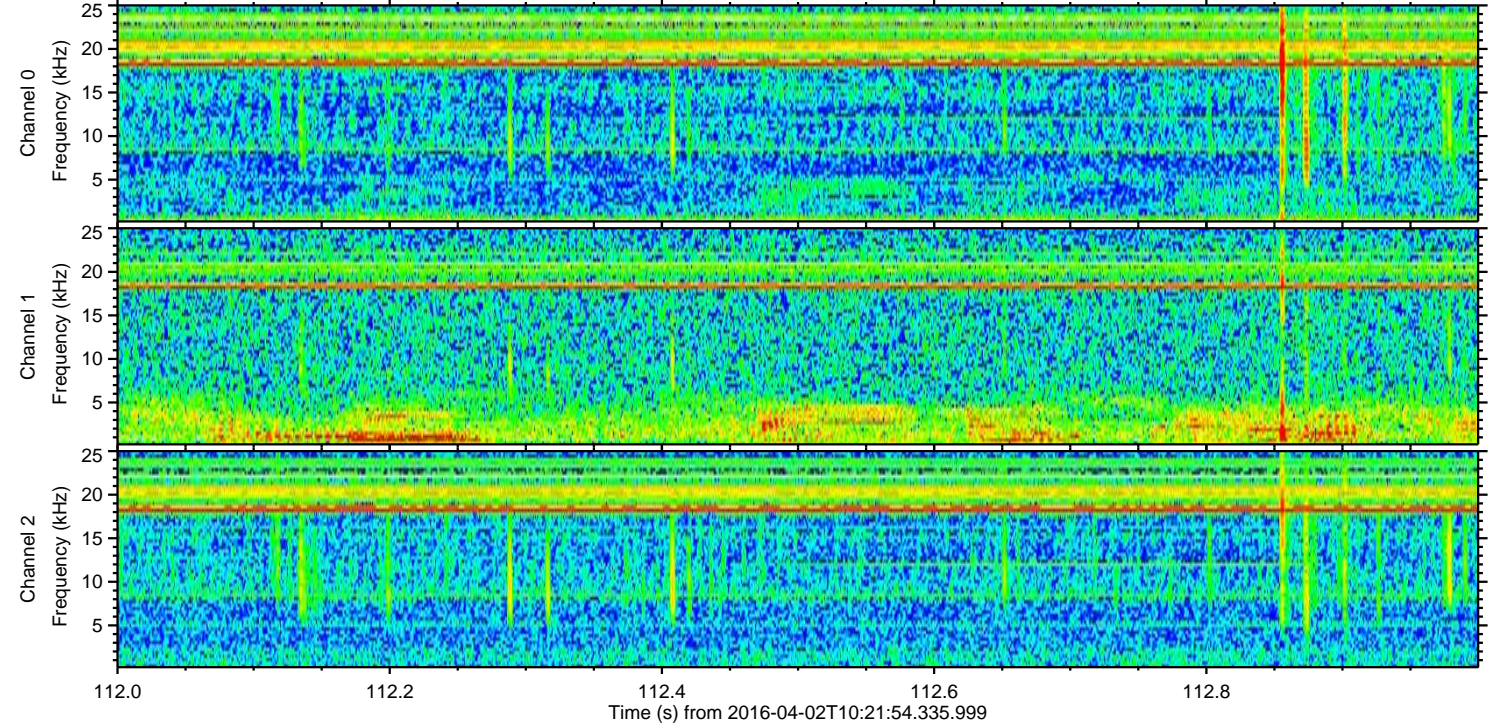
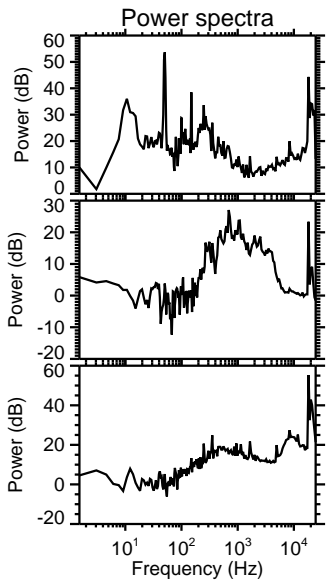
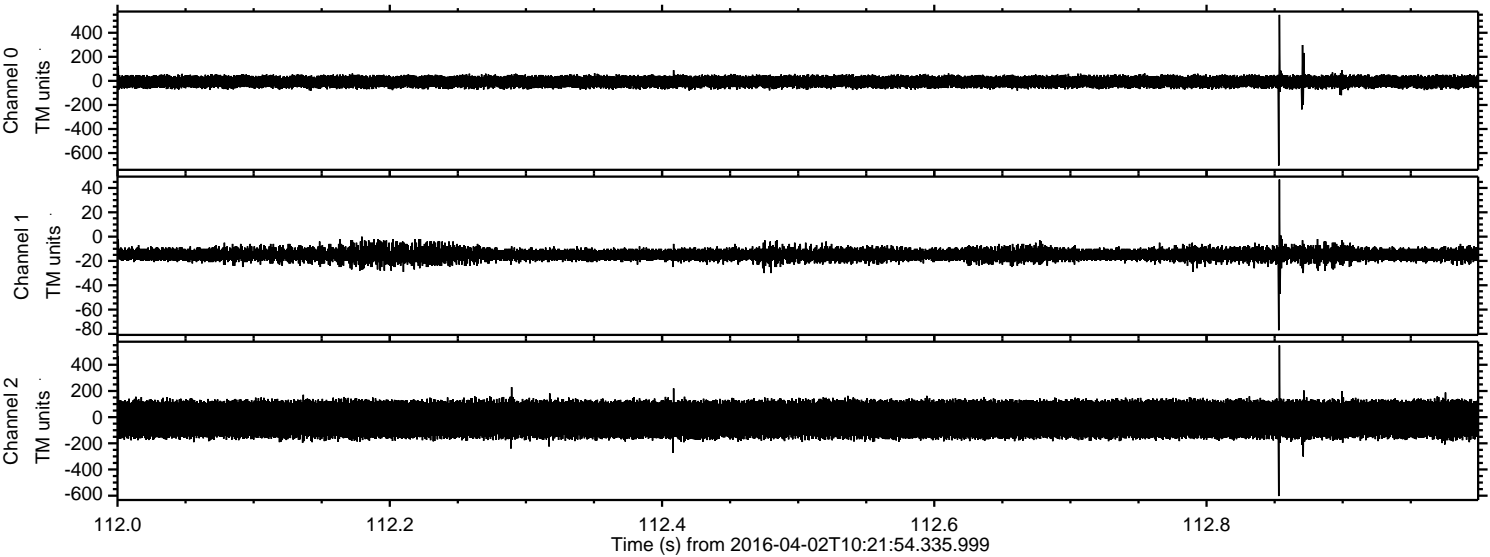


ELMAVAN 3D WAVEFORMS (Measured data sampled at 50 kHz) 51000 packets of 144 samples from 2016-04-02T10:21:54.335.999. Part 117/147

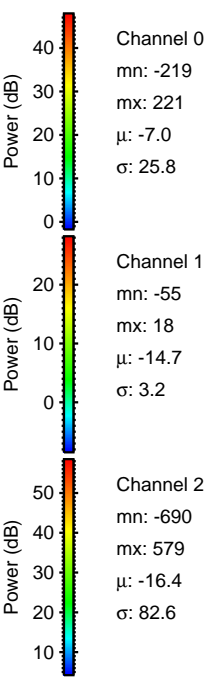
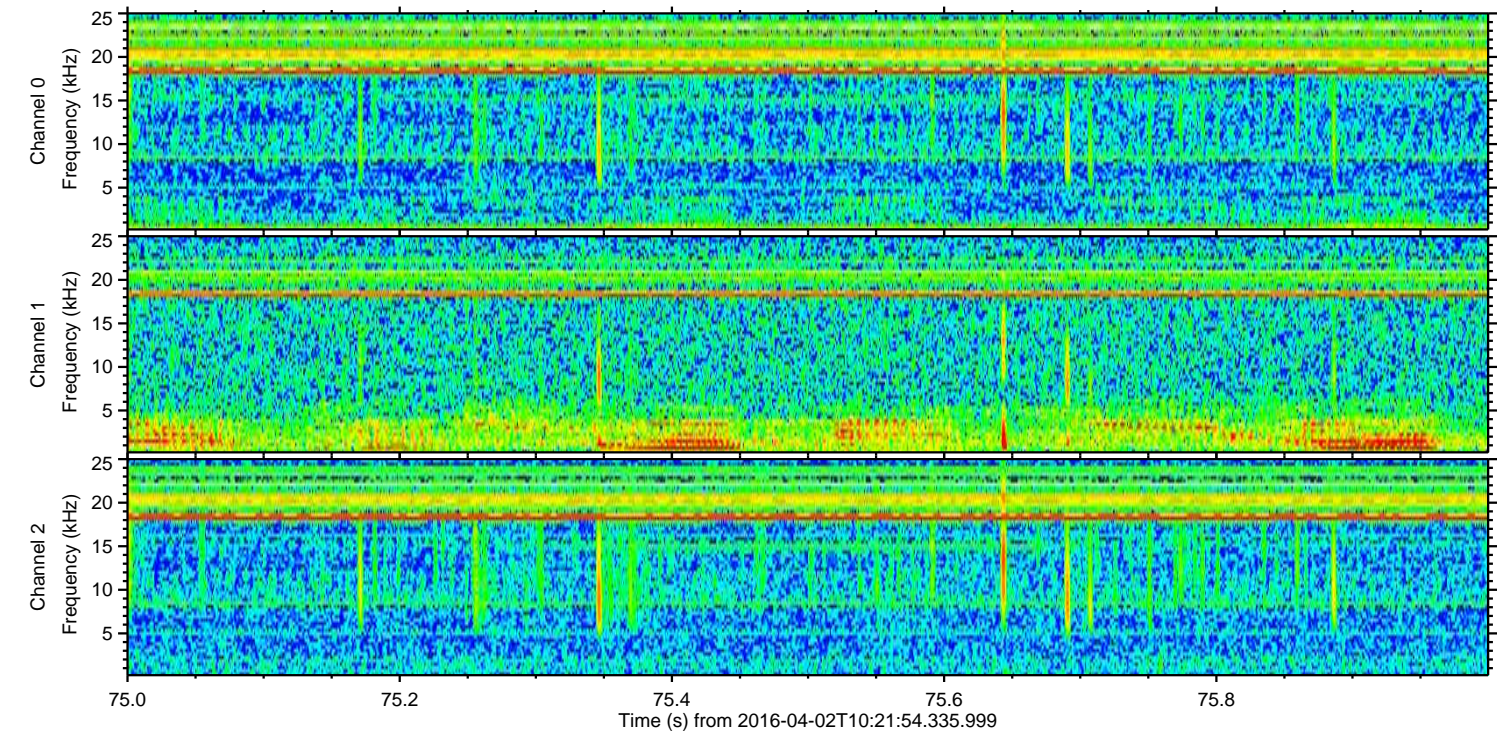
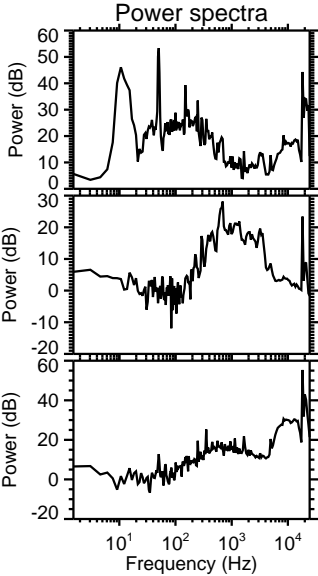
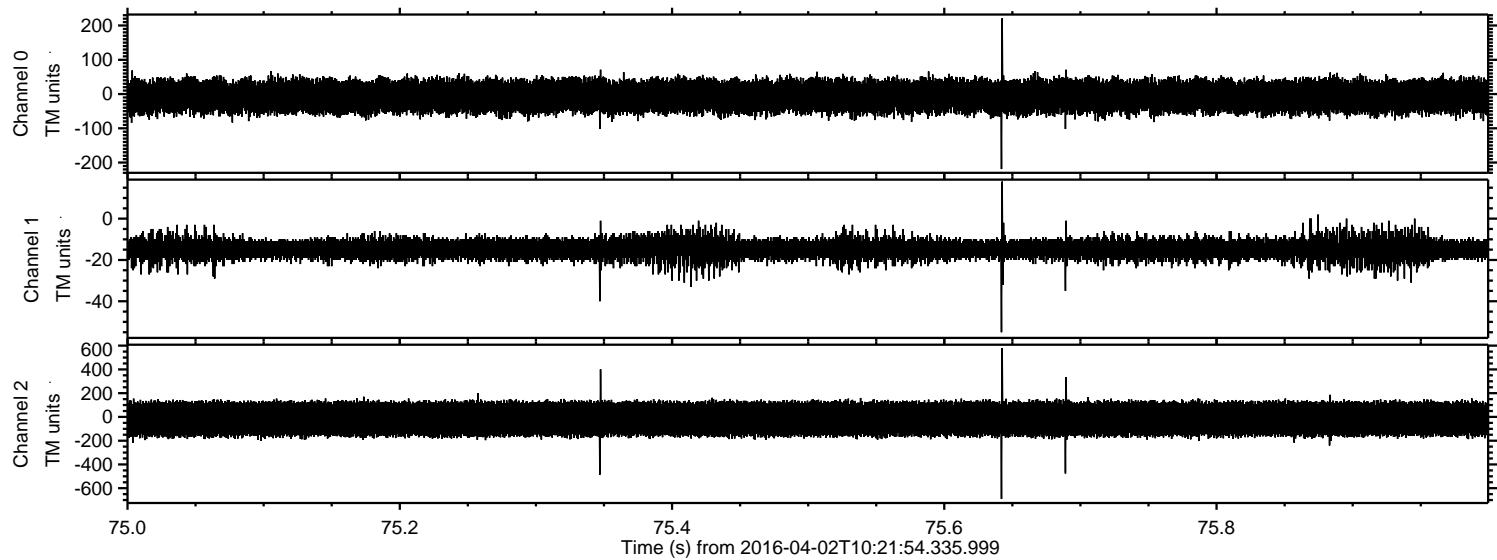


ELMAVAN 3D WAVEFORMS (Measured data sampled at 50 kHz) 51000 packets of 144 samples from 2016-04-02T10:21:54.335.999. Part 113/147

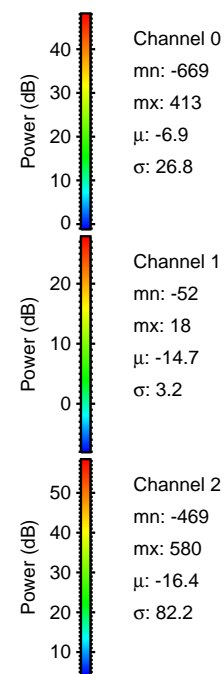
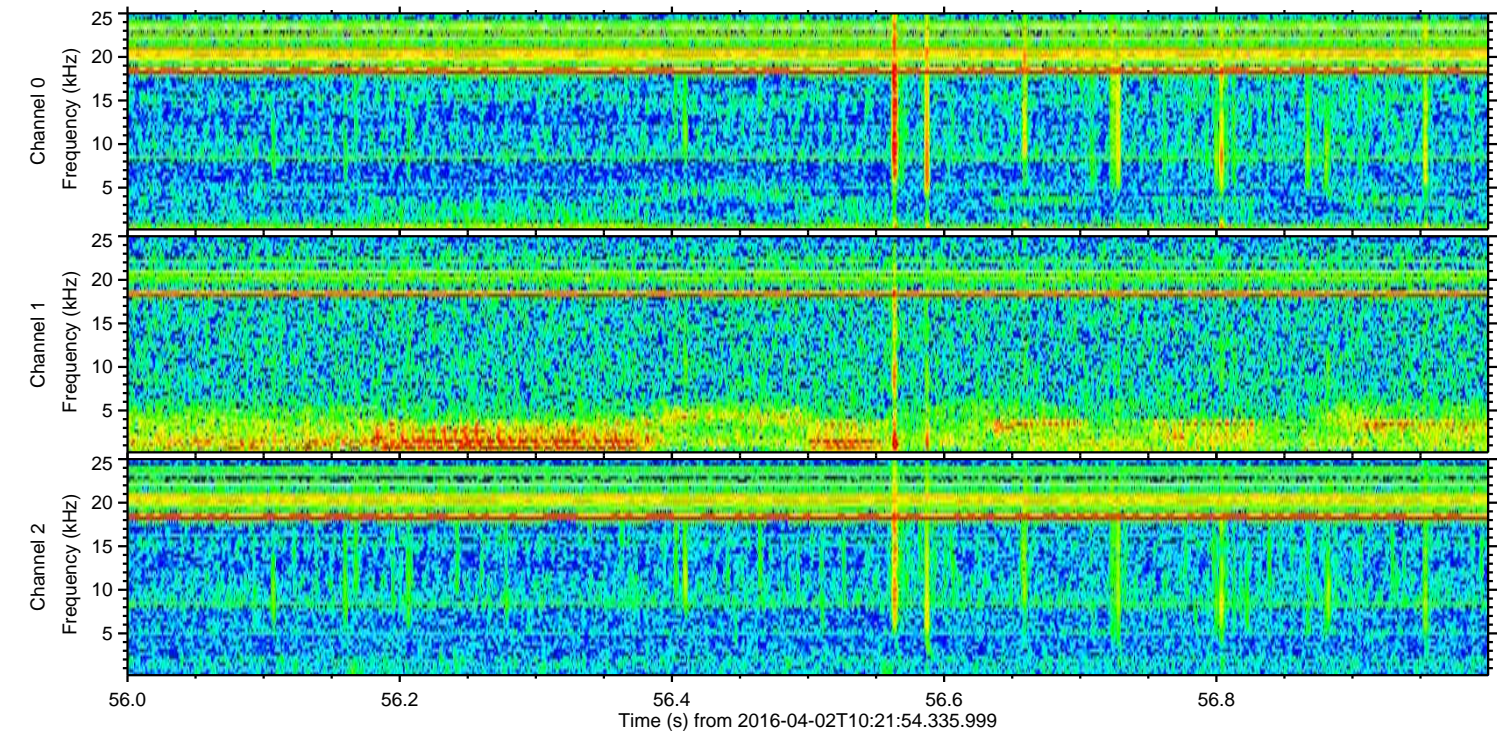
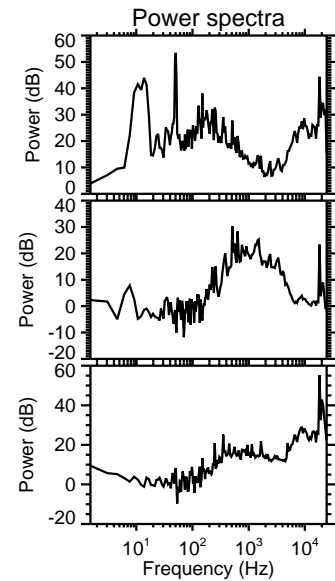
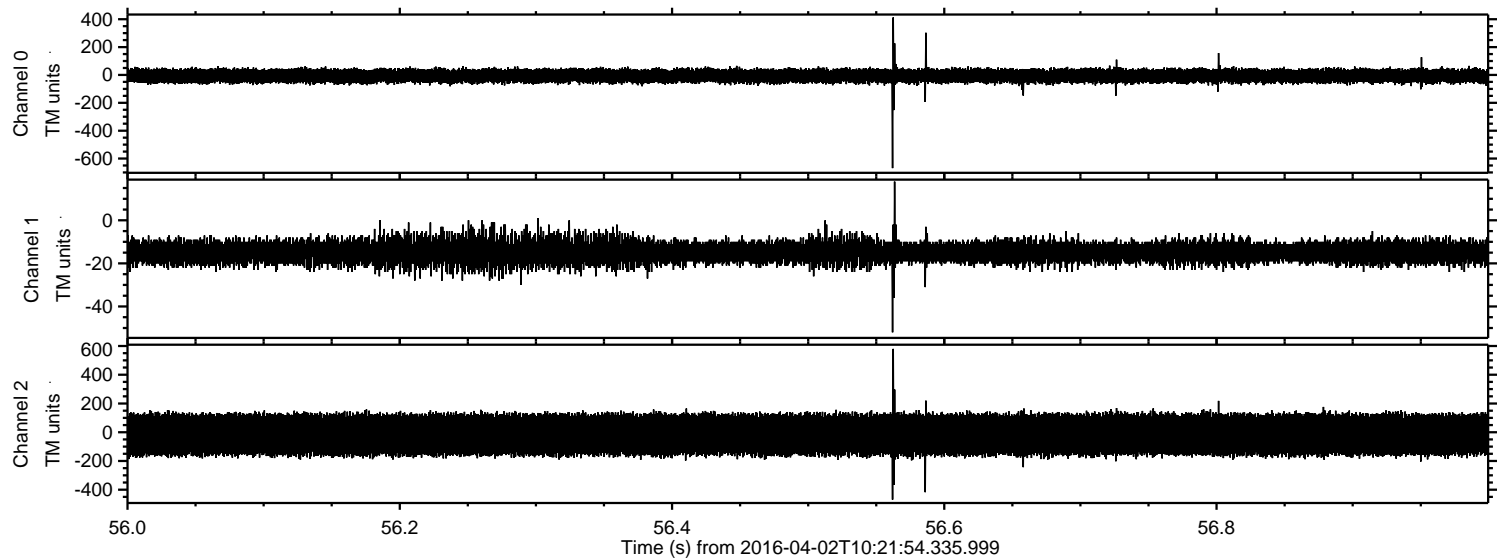
Processed Thu May 5 16:31:16 2016 by ELM ver.2012-10-06 from 001__elm20160402_102153__dat00.bin



Processed Thu May 5 16:31:17 2016 by ELM ver.2012-10-06 from 001__elm20160402_102153__dat00.bin



Processed Thu May 5 16:31:18 2016 by ELM ver.2012-10-06 from 001__elm20160402_102153__dat00.bin



Processed Thu May 5 16:31:19 2016 by ELM ver.2012-10-06 from 001__elm20160402_102153__dat00.bin

