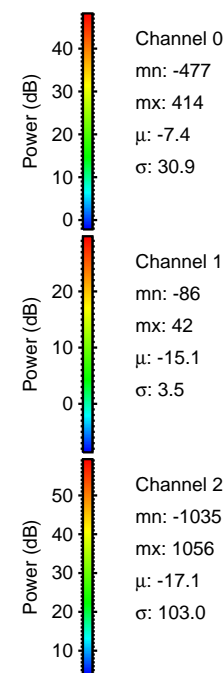
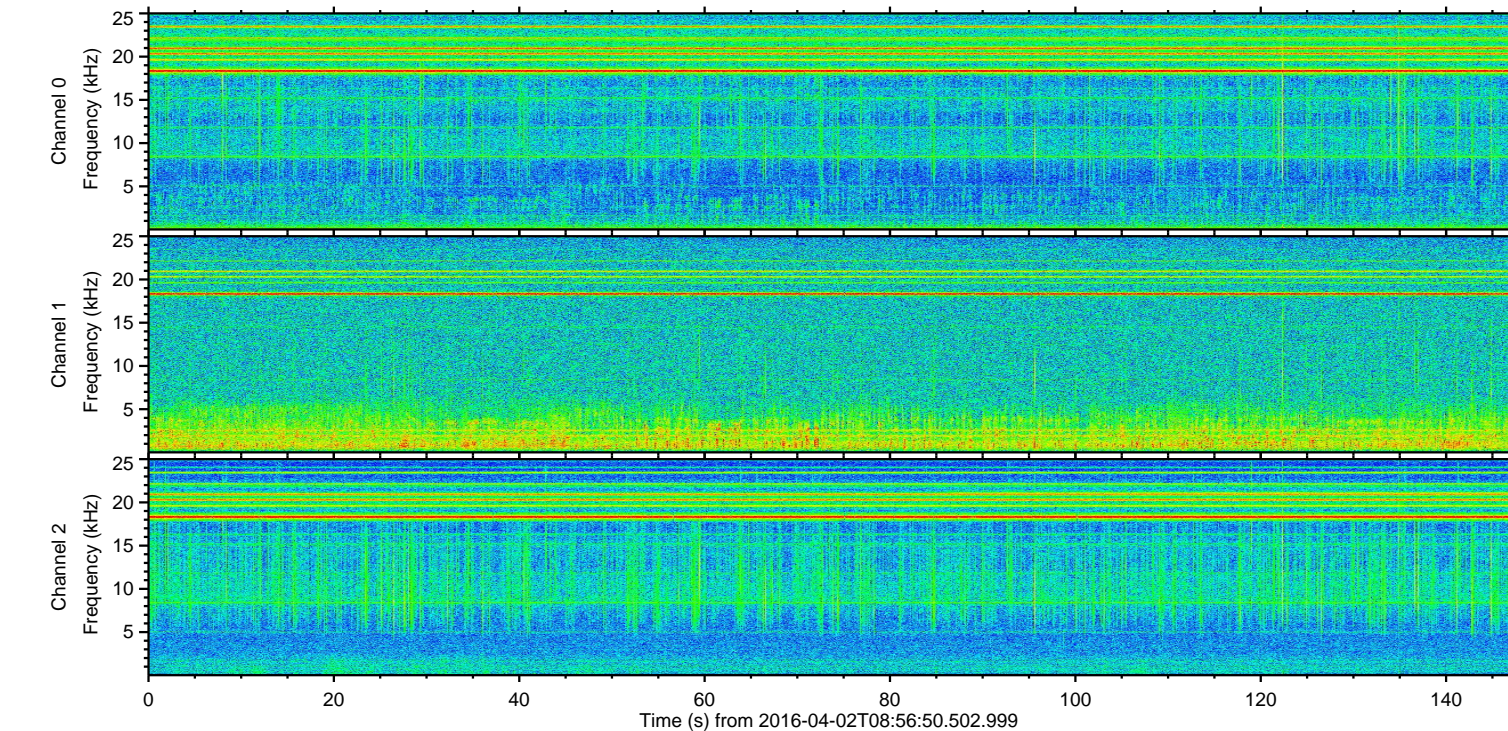
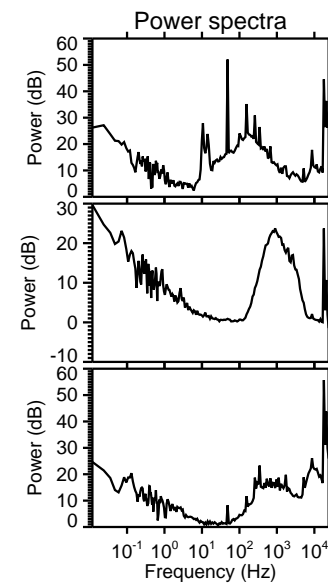
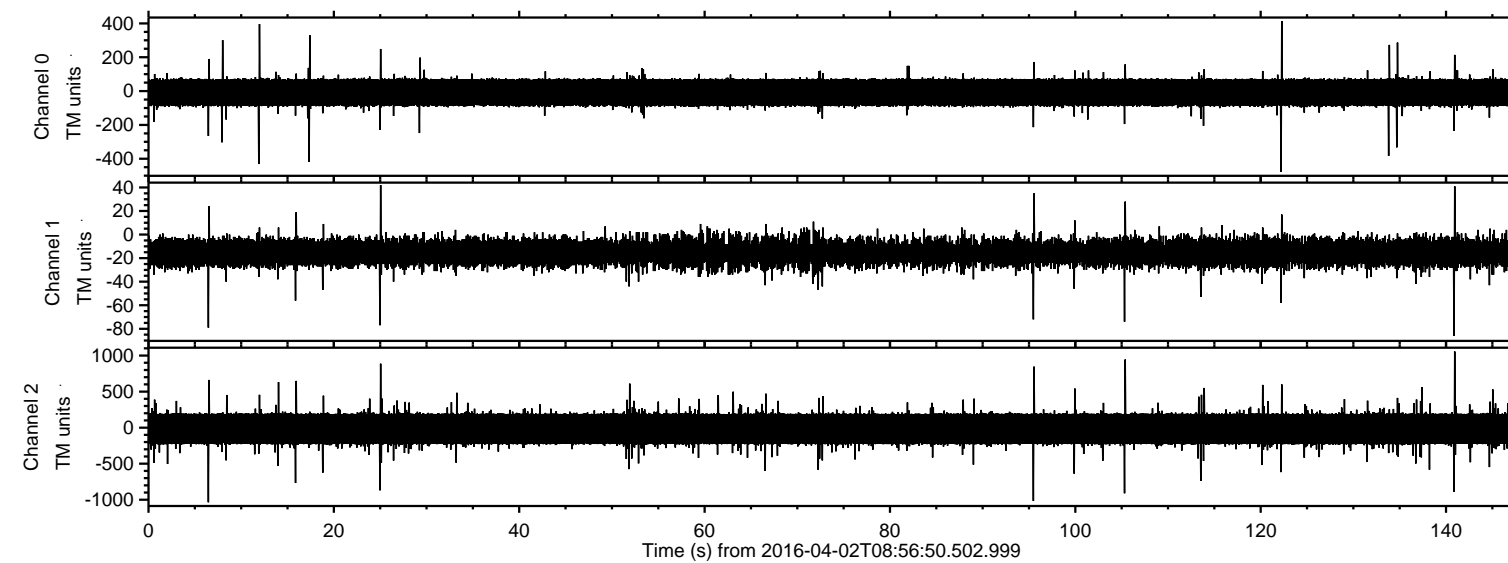


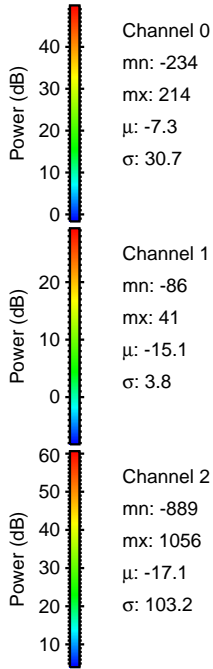
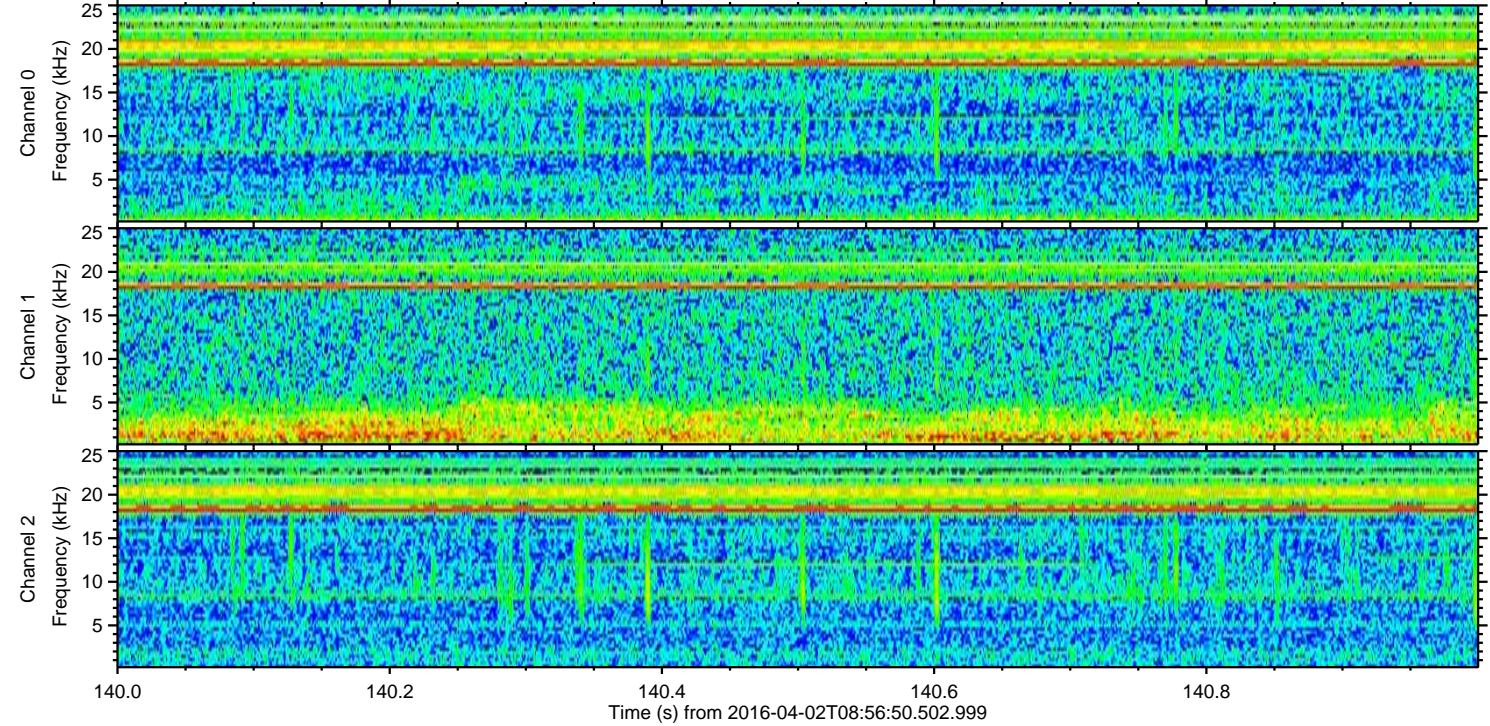
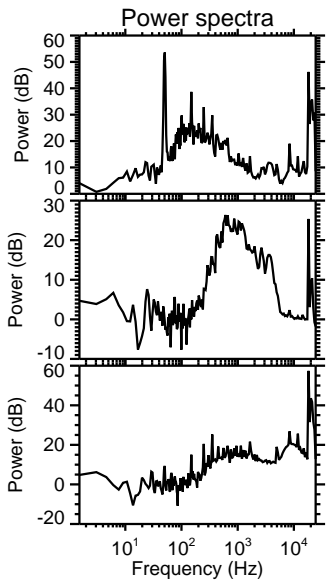
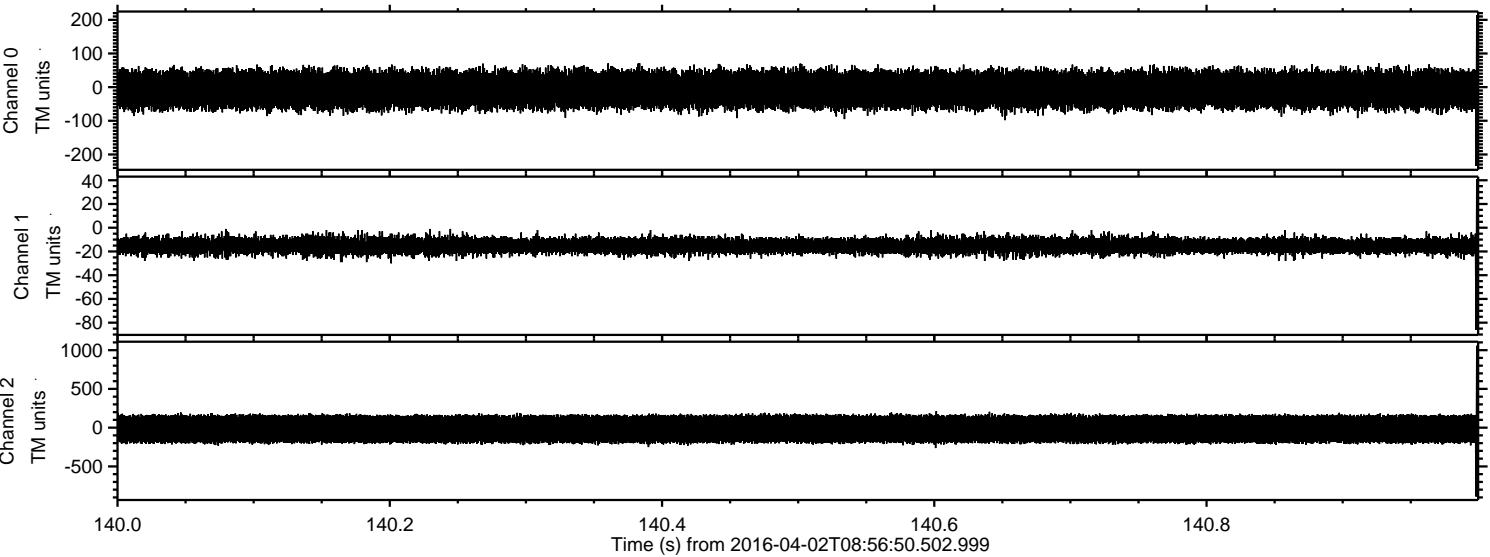
# ELMAVAN 3D WAVEFORMS (Measured data sampled at 50 kHz) 51000 packets of 144 samples from 2016-04-02T08:56:50.502.999.

Processed Thu May 5 16:13:13 2016 by ELM ver.2012-10-06 from 001\_\_elm20160402\_085649\_\_dat00.bin



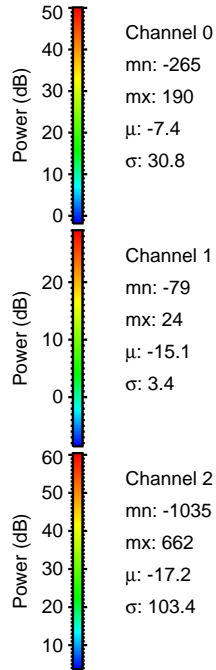
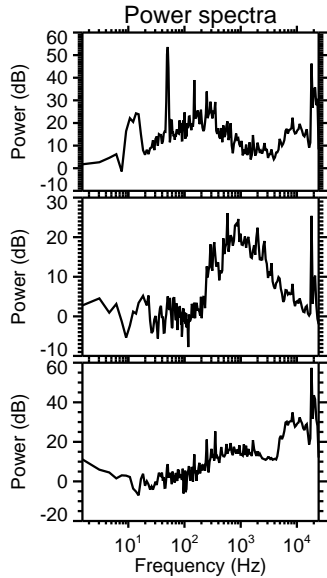
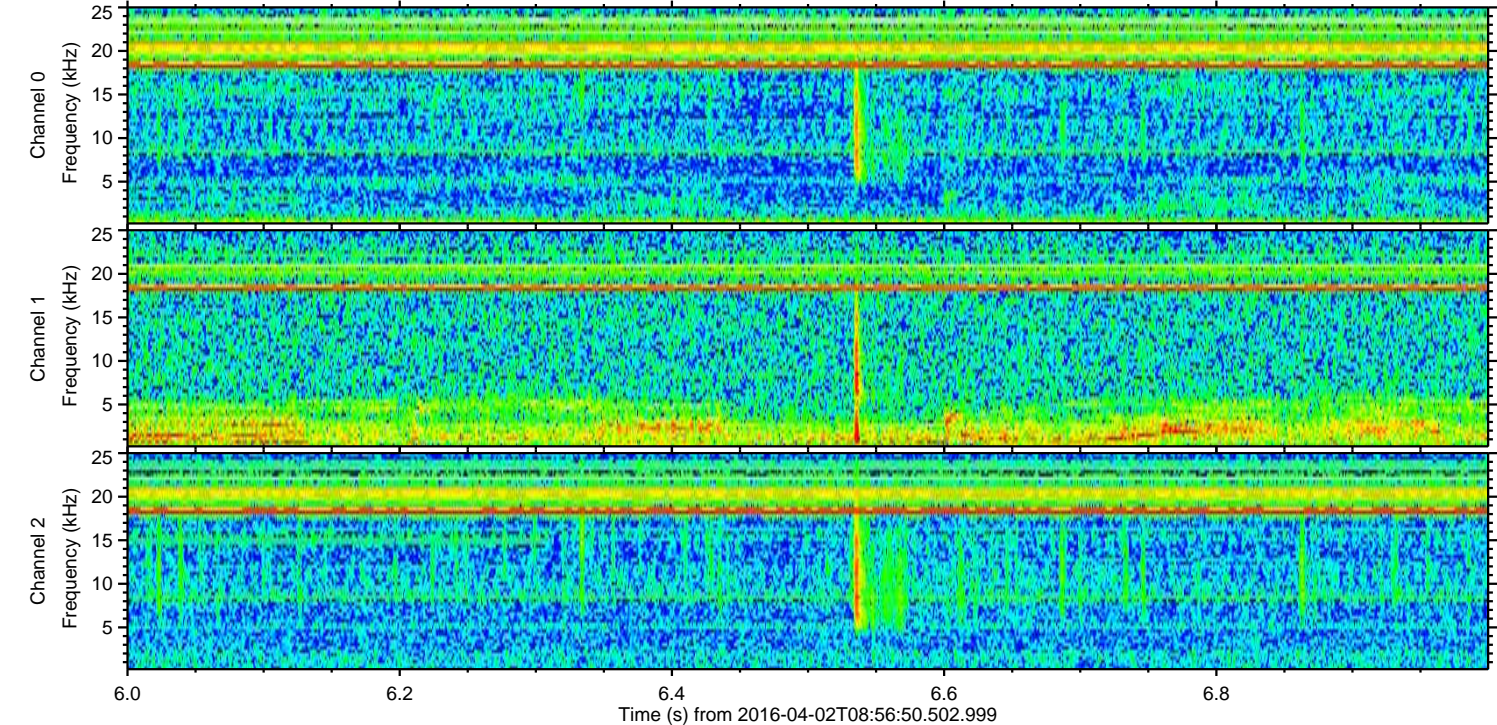
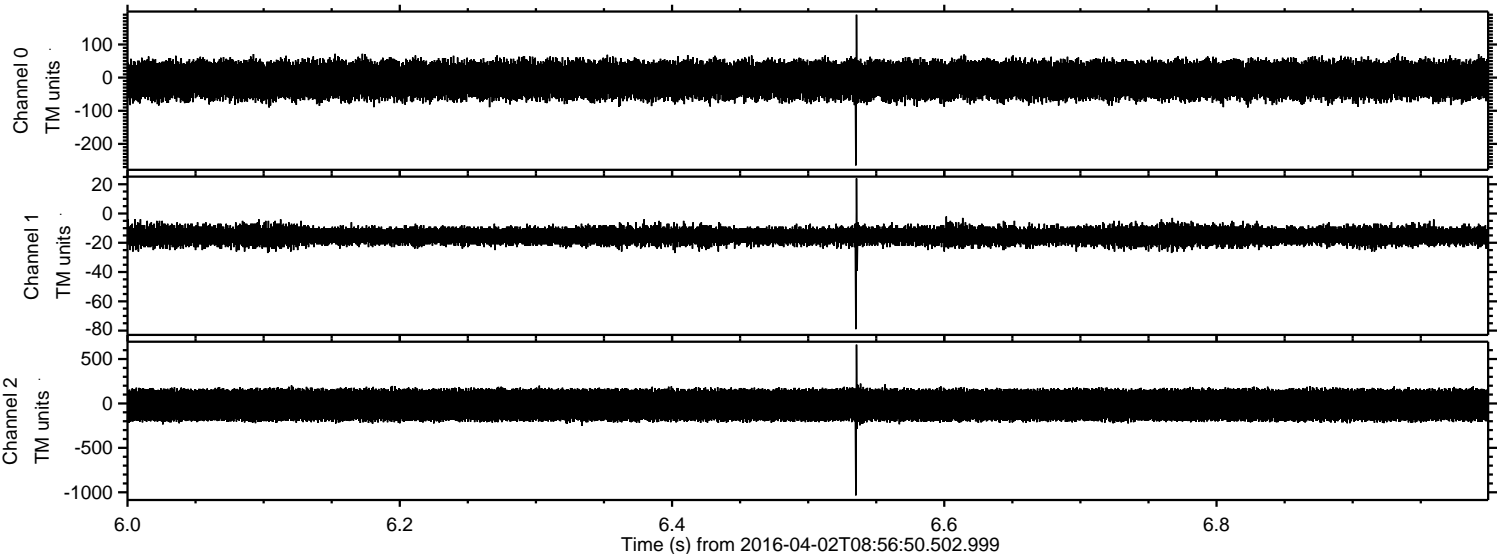


Processed Thu May 5 16:13:26 2016 by ELM ver.2012-10-06 from 001\_\_elm20160402\_085649\_\_dat00.bin



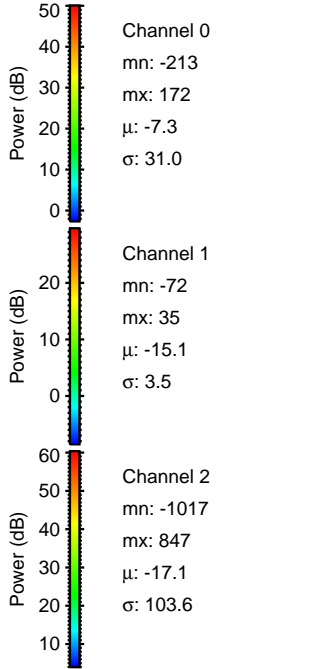
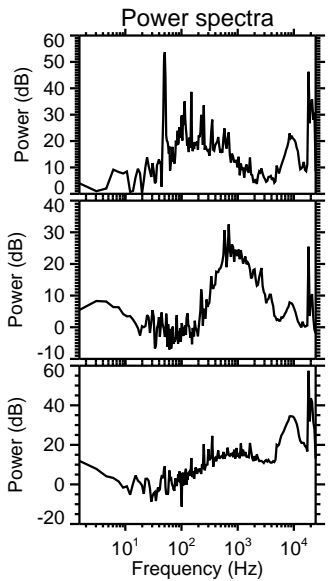
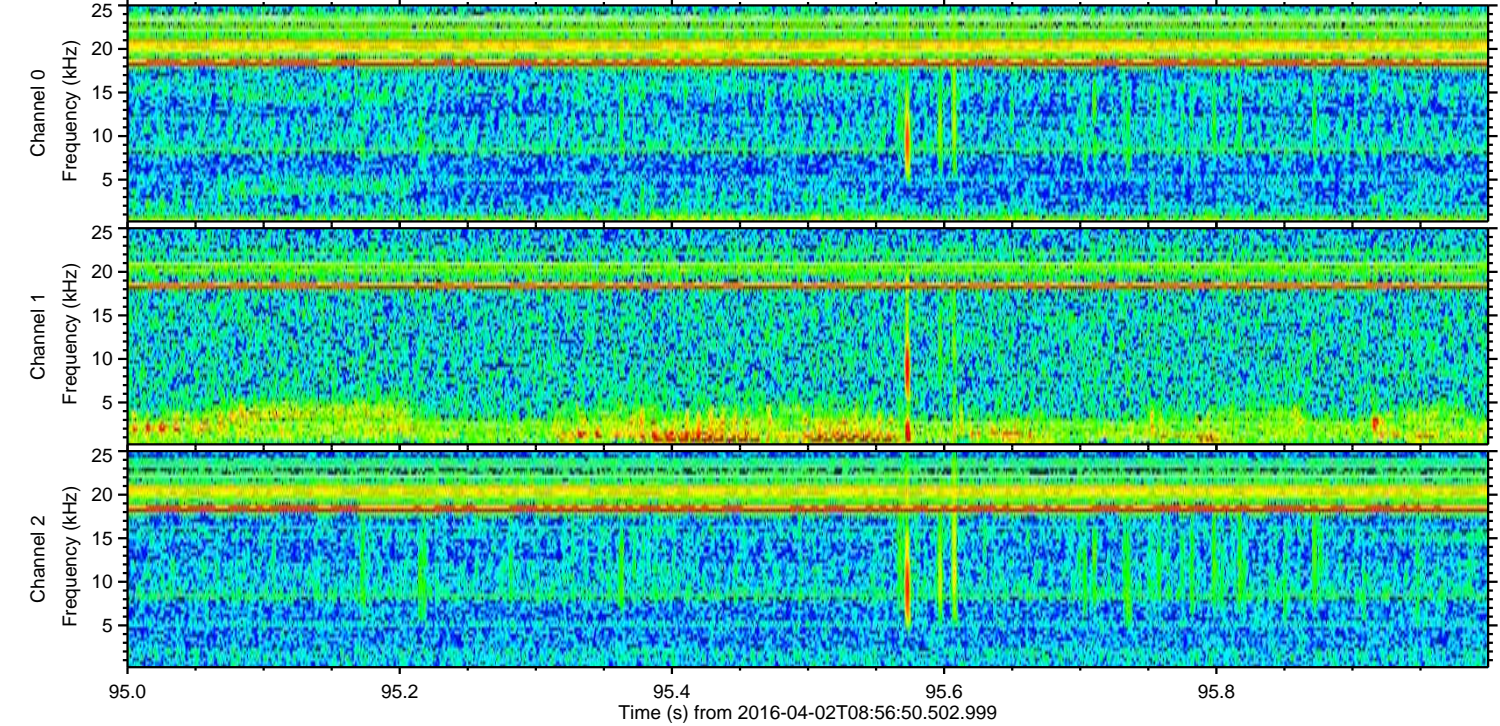
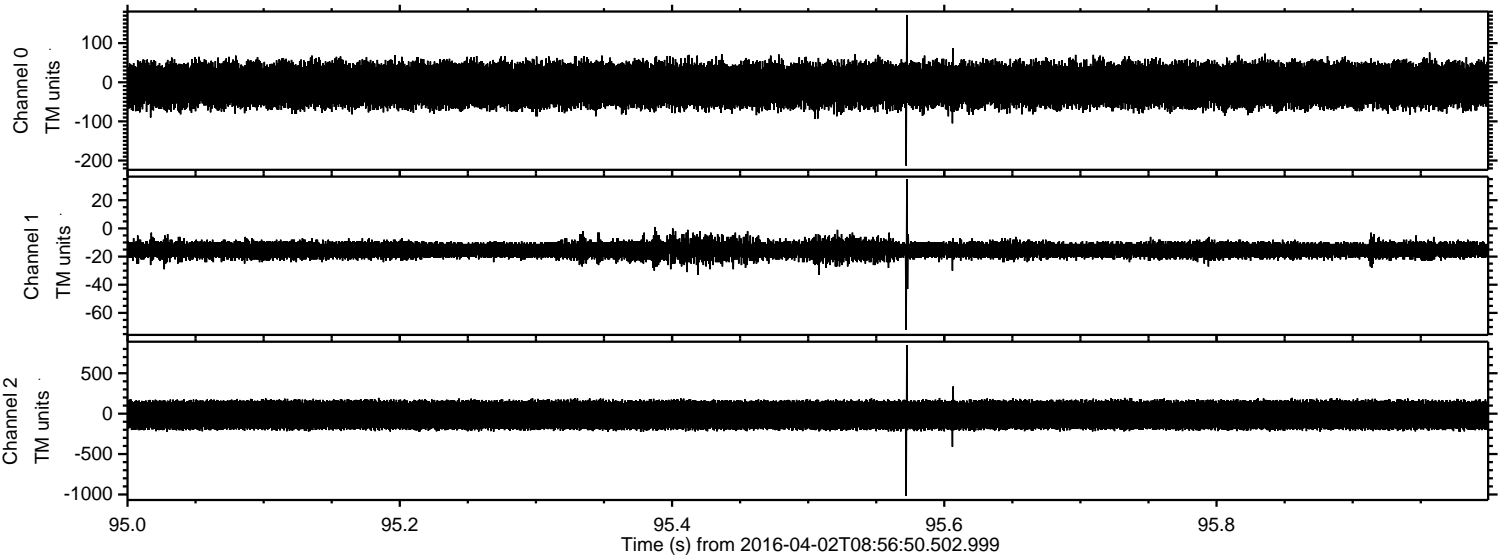


Processed Thu May 5 16:13:27 2016 by ELM ver.2012-10-06 from 001\_\_elm20160402\_085649\_\_dat00.bin



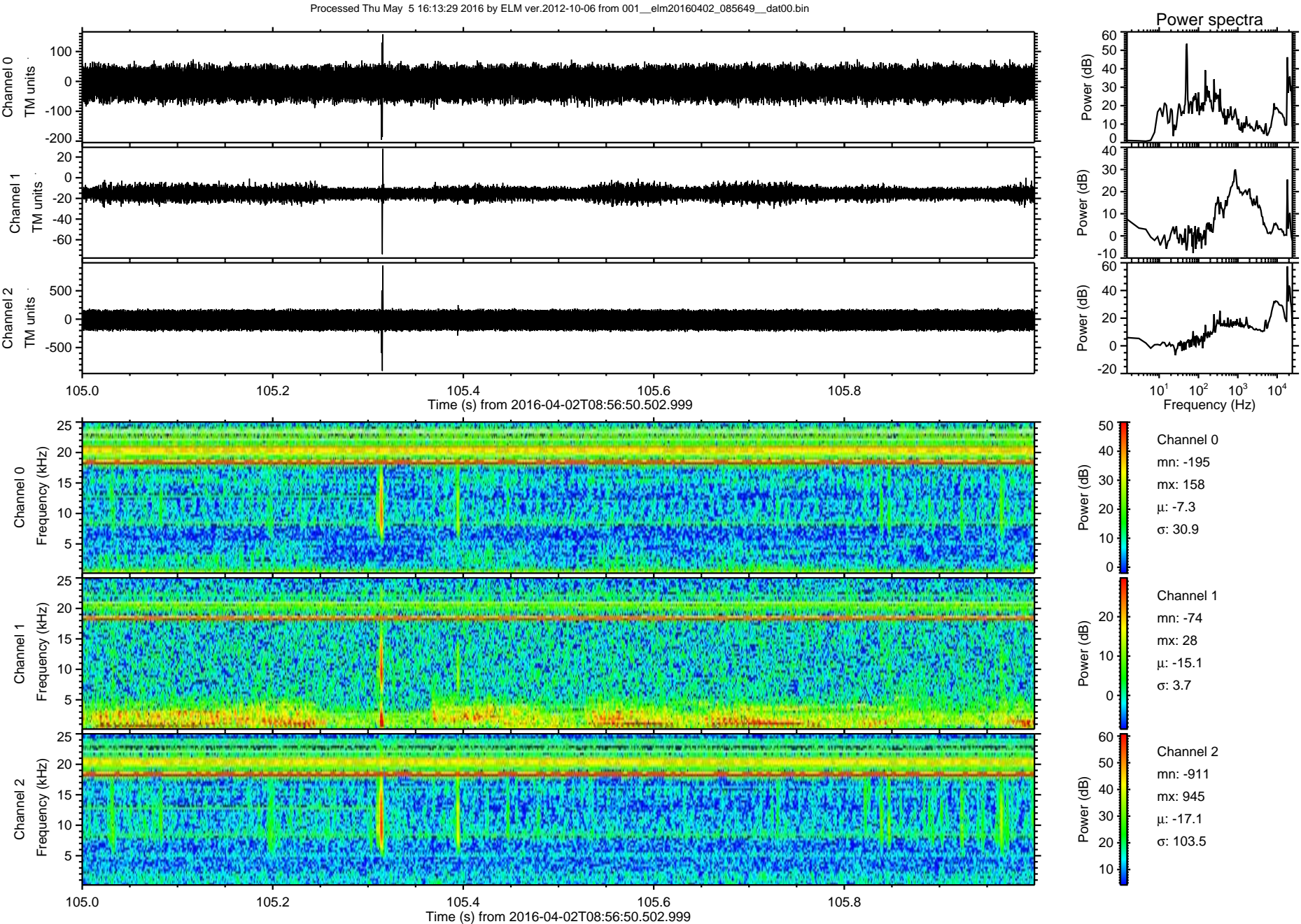


Processed Thu May 5 16:13:28 2016 by ELM ver.2012-10-06 from 001\_\_elm20160402\_085649\_\_dat00.bin



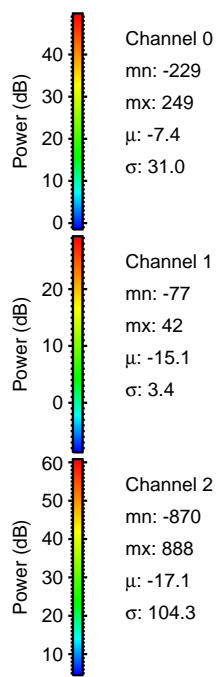
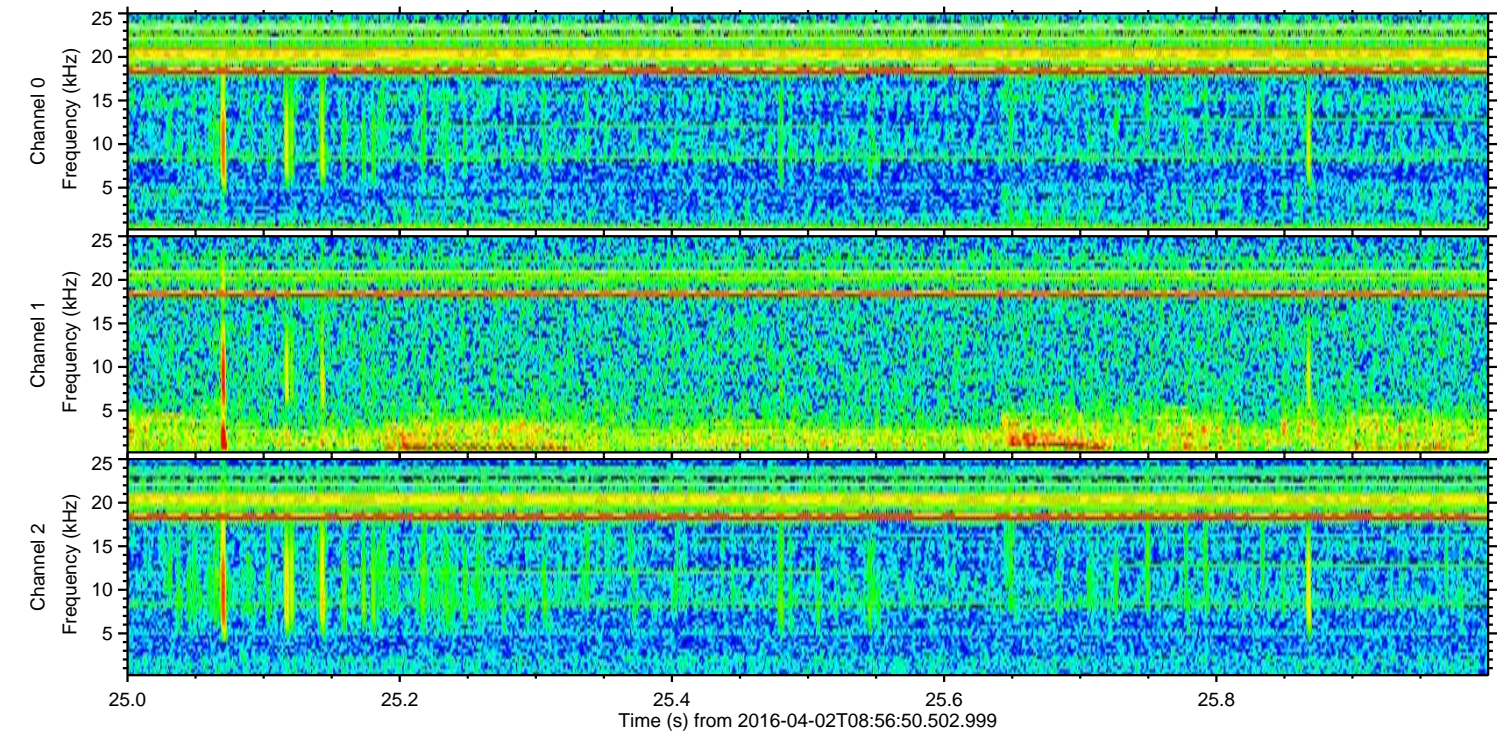
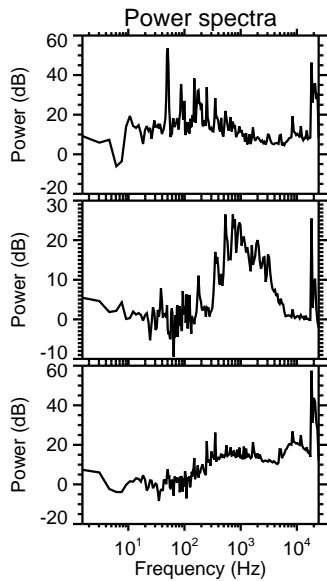
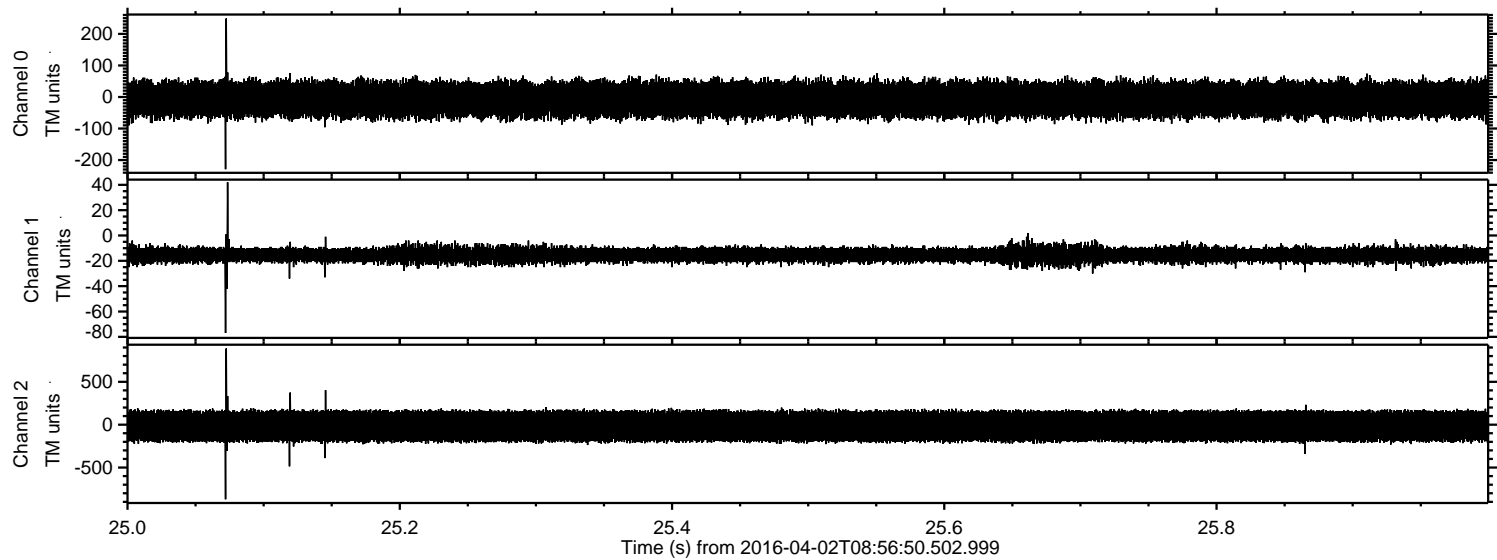


ELMAVAN 3D WAVEFORMS (Measured data sampled at 50 kHz) 51000 packets of 144 samples from 2016-04-02T08:56:50.502.999. Part 106/147



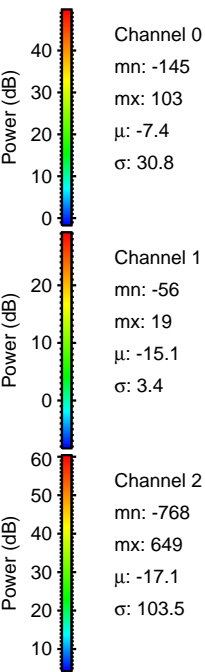
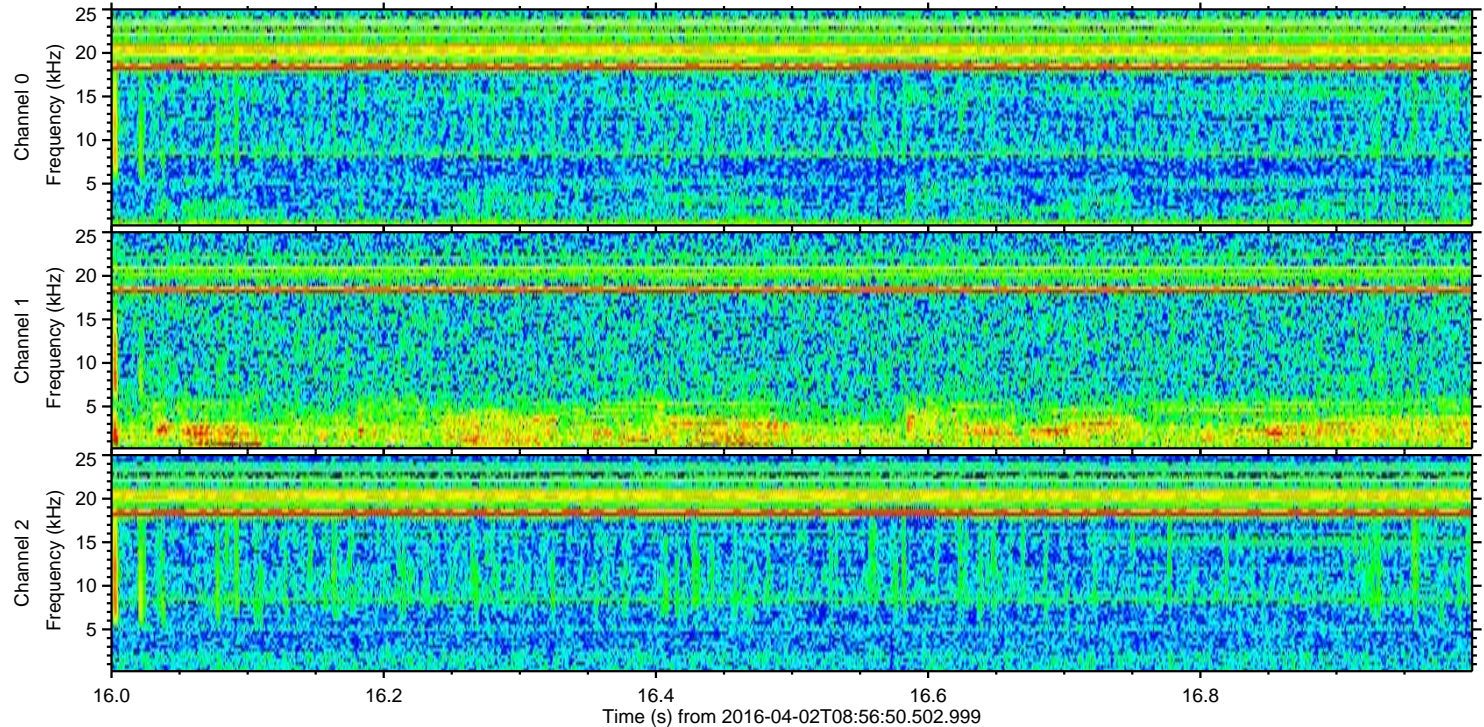
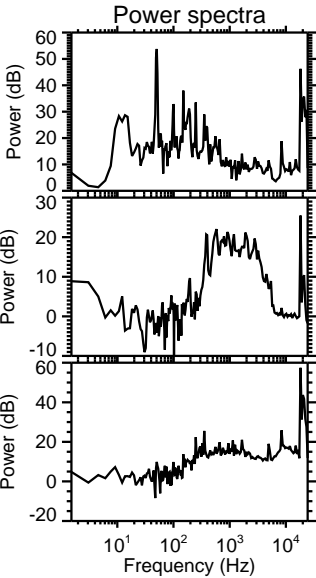
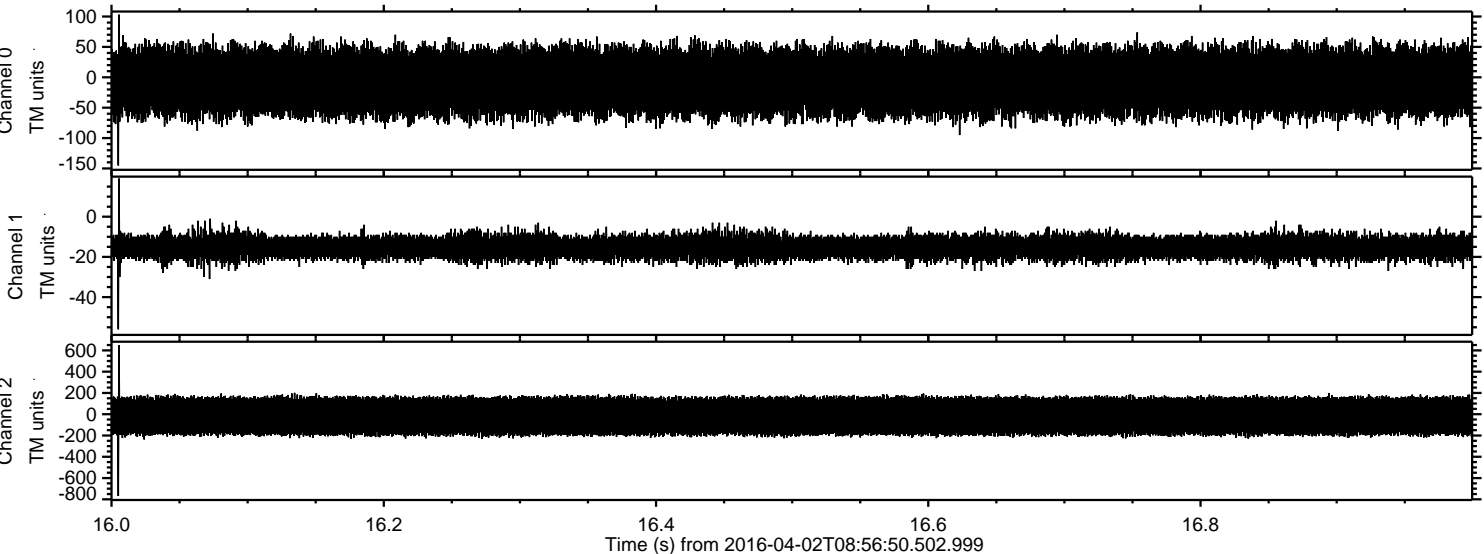


Processed Thu May 5 16:13:30 2016 by ELM ver.2012-10-06 from 001\_\_elm20160402\_085649\_\_dat00.bin





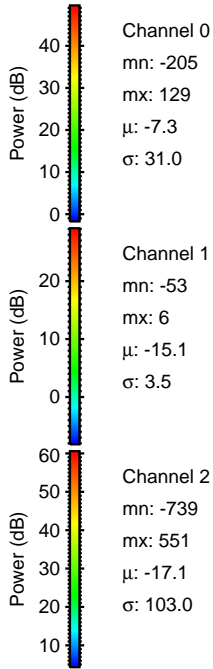
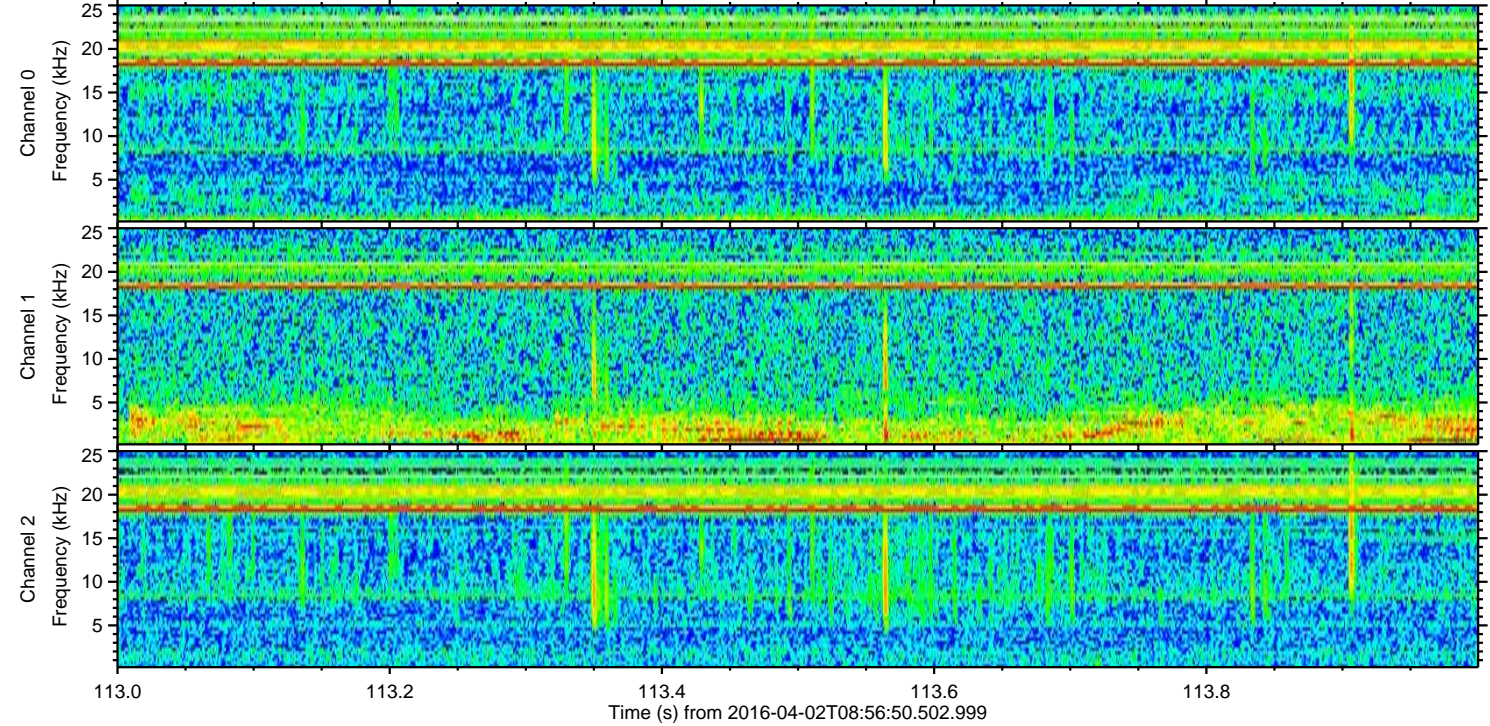
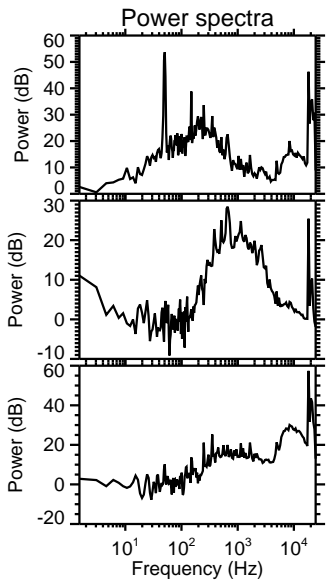
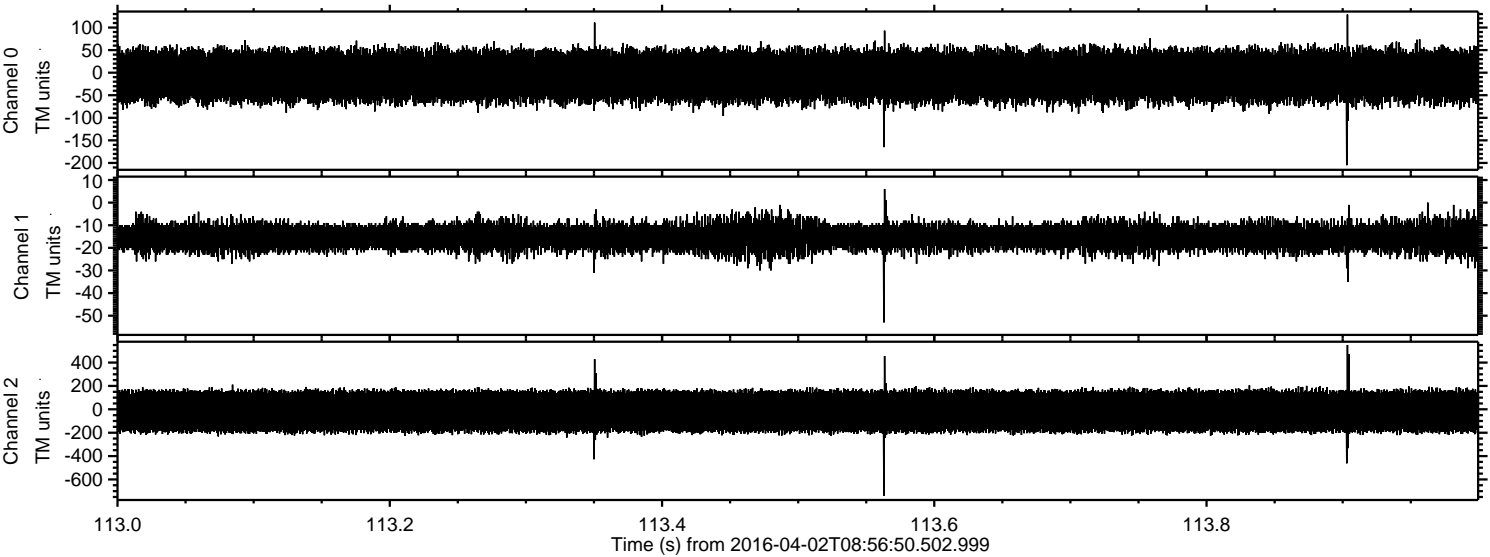
Processed Thu May 5 16:13:31 2016 by ELM ver.2012-10-06 from 001\_\_elm20160402\_085649\_\_dat00.bin





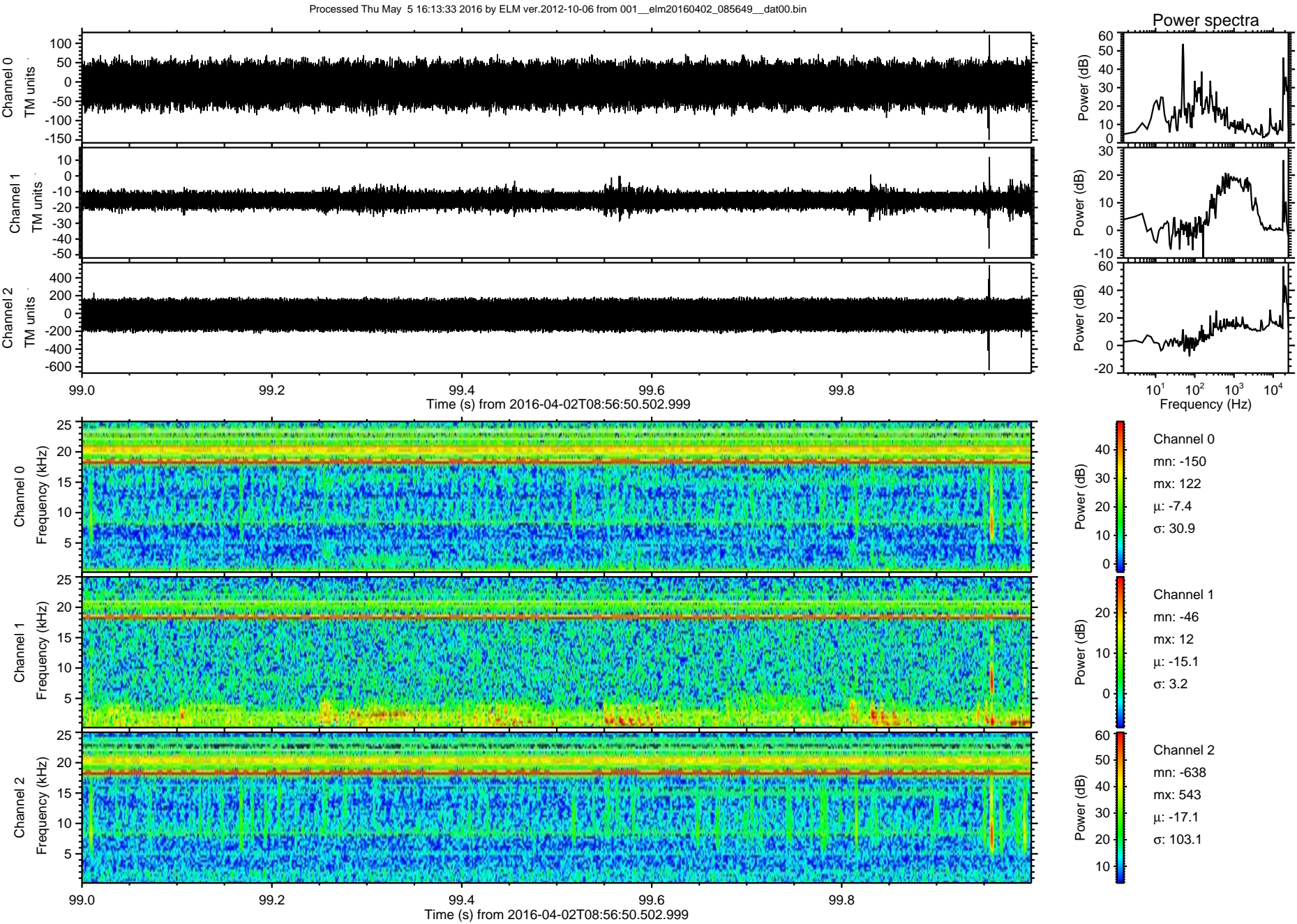
ELMAVAN 3D WAVEFORMS (Measured data sampled at 50 kHz) 51000 packets of 144 samples from 2016-04-02T08:56:50.502.999. Part 114/147

Processed Thu May 5 16:13:32 2016 by ELM ver.2012-10-06 from 001\_\_elm20160402\_085649\_\_dat00.bin



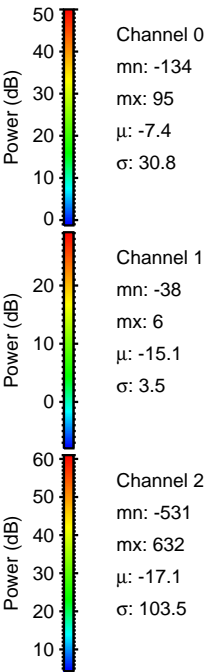
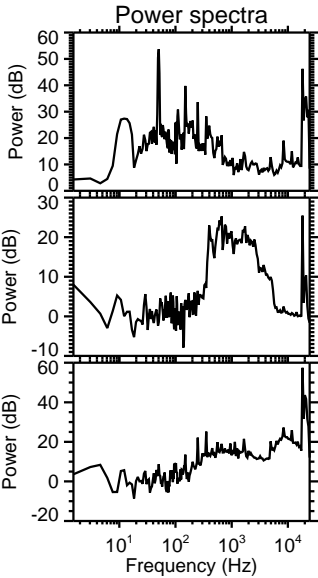
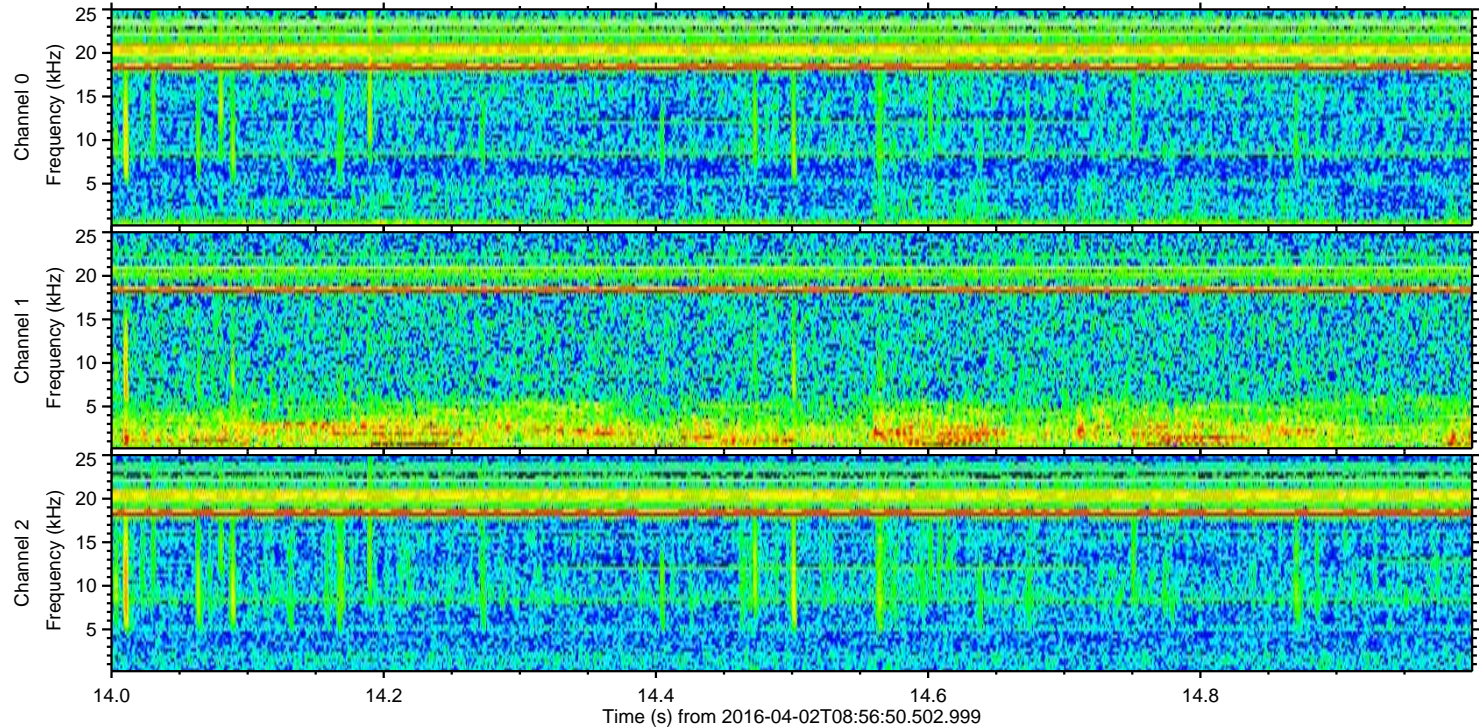
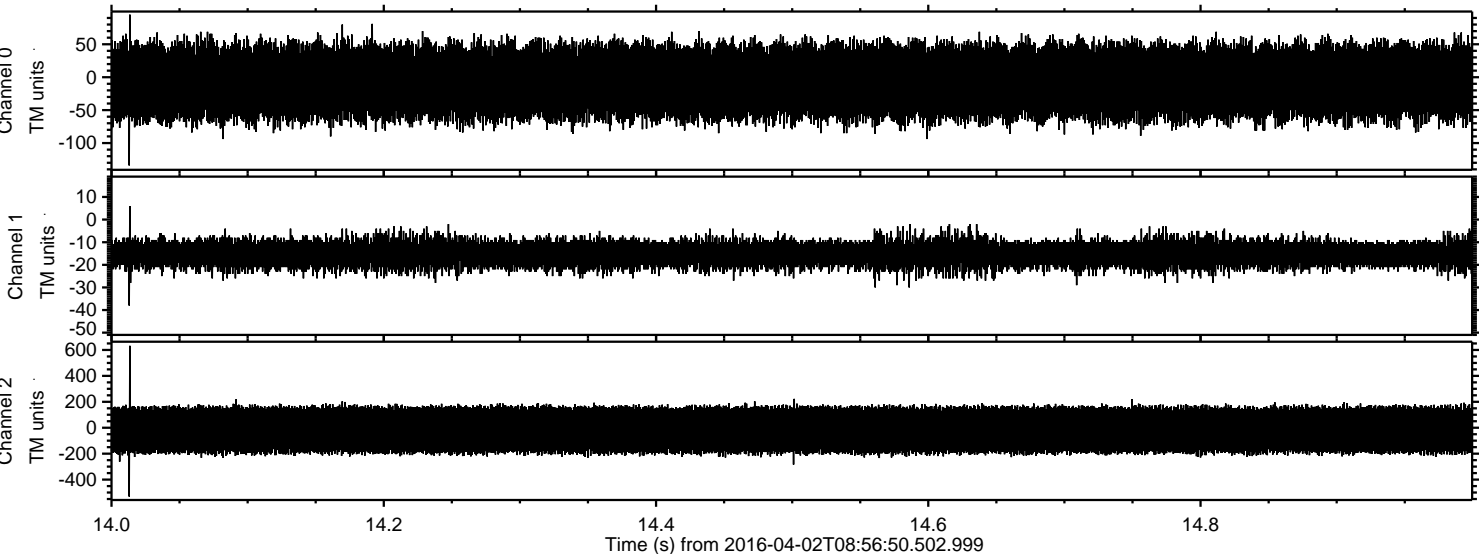


ELMAVAN 3D WAVEFORMS (Measured data sampled at 50 kHz) 51000 packets of 144 samples from 2016-04-02T08:56:50.502.999. Part 100/147





Processed Thu May 5 16:13:34 2016 by ELM ver.2012-10-06 from 001\_\_elm20160402\_085649\_\_dat00.bin





Processed Thu May 5 16:13:34 2016 by ELM ver.2012-10-06 from 001\_\_elm20160402\_085649\_\_dat00.bin

