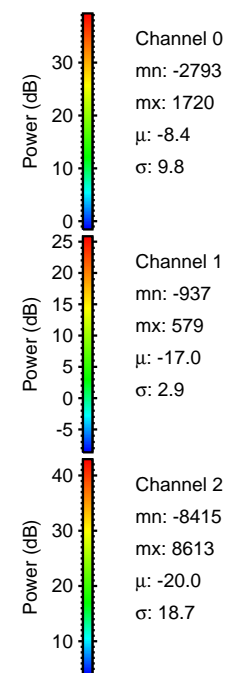
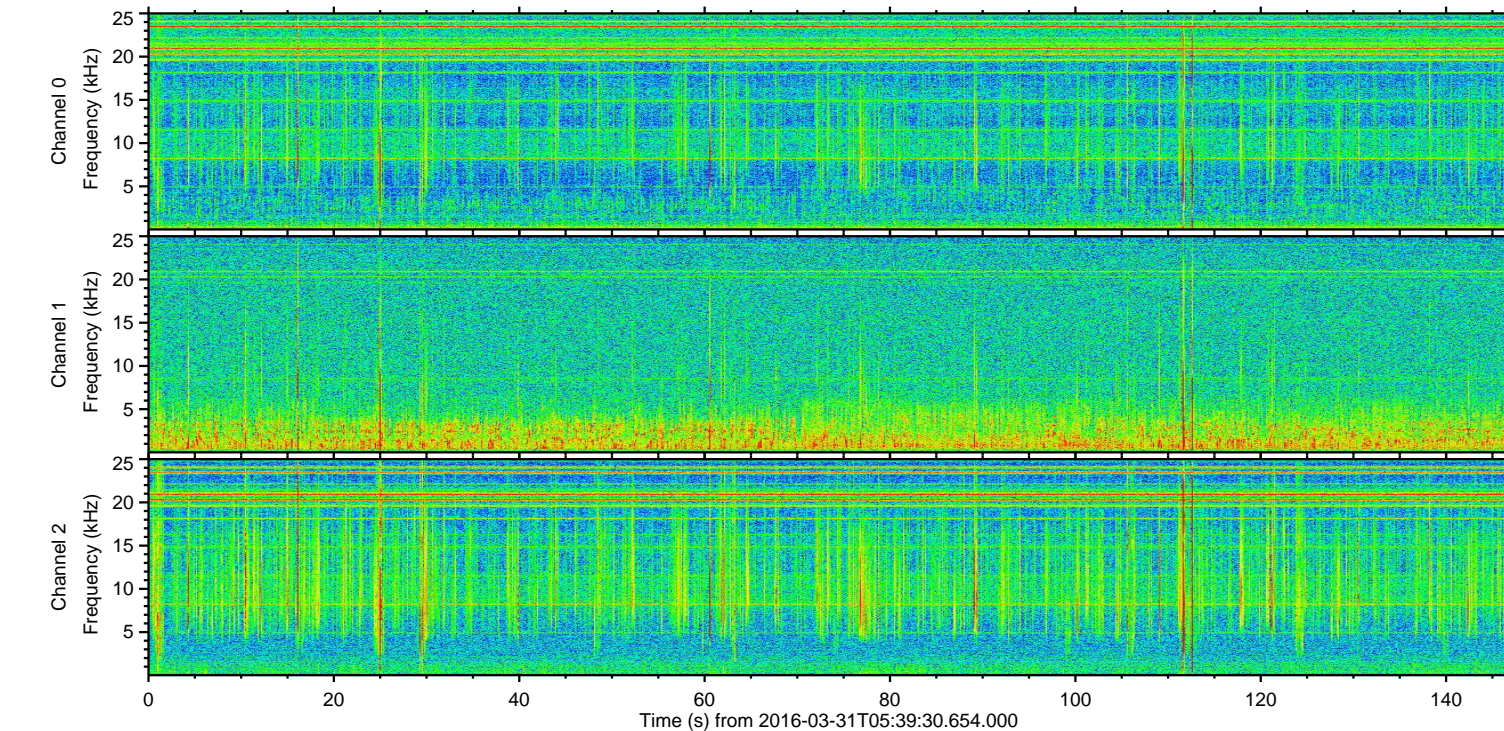
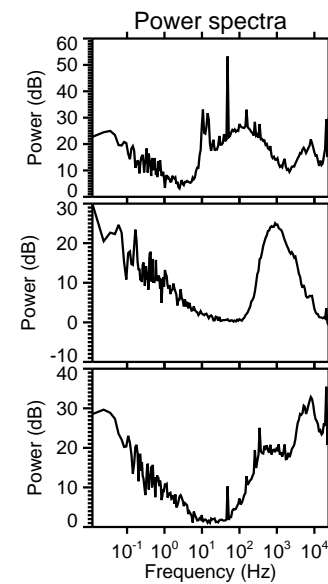
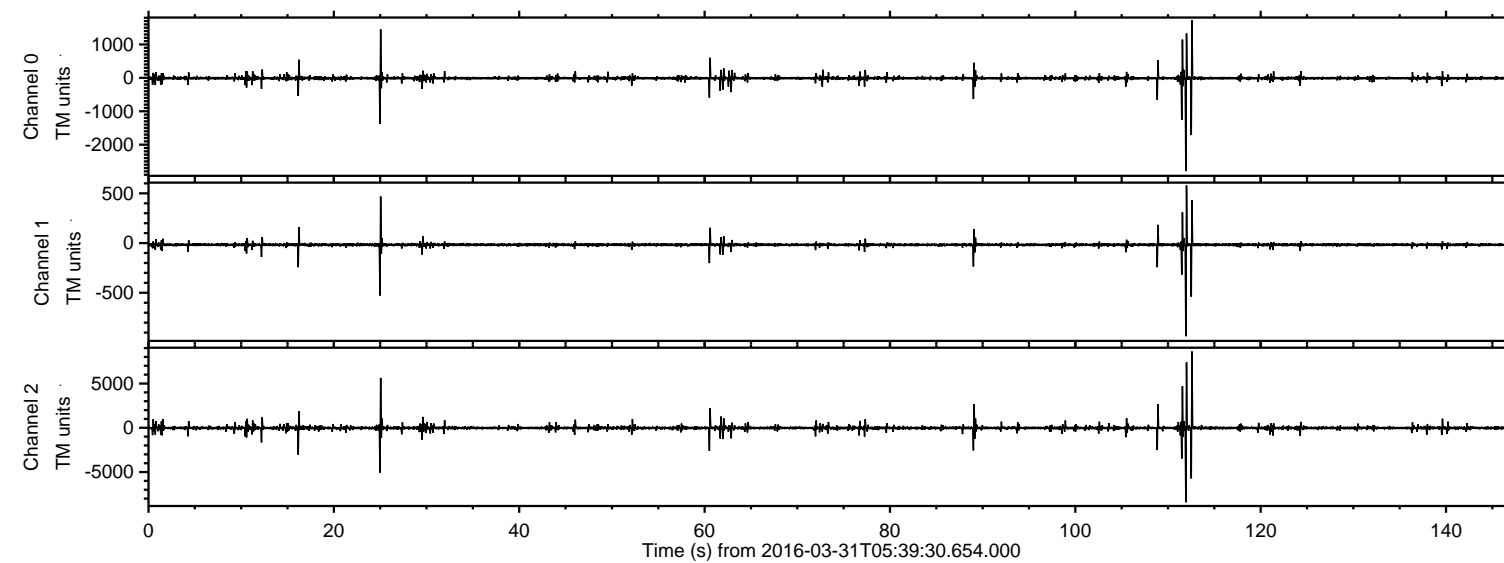


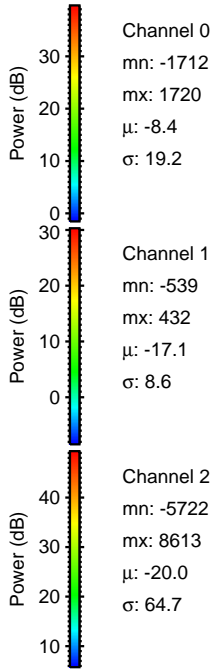
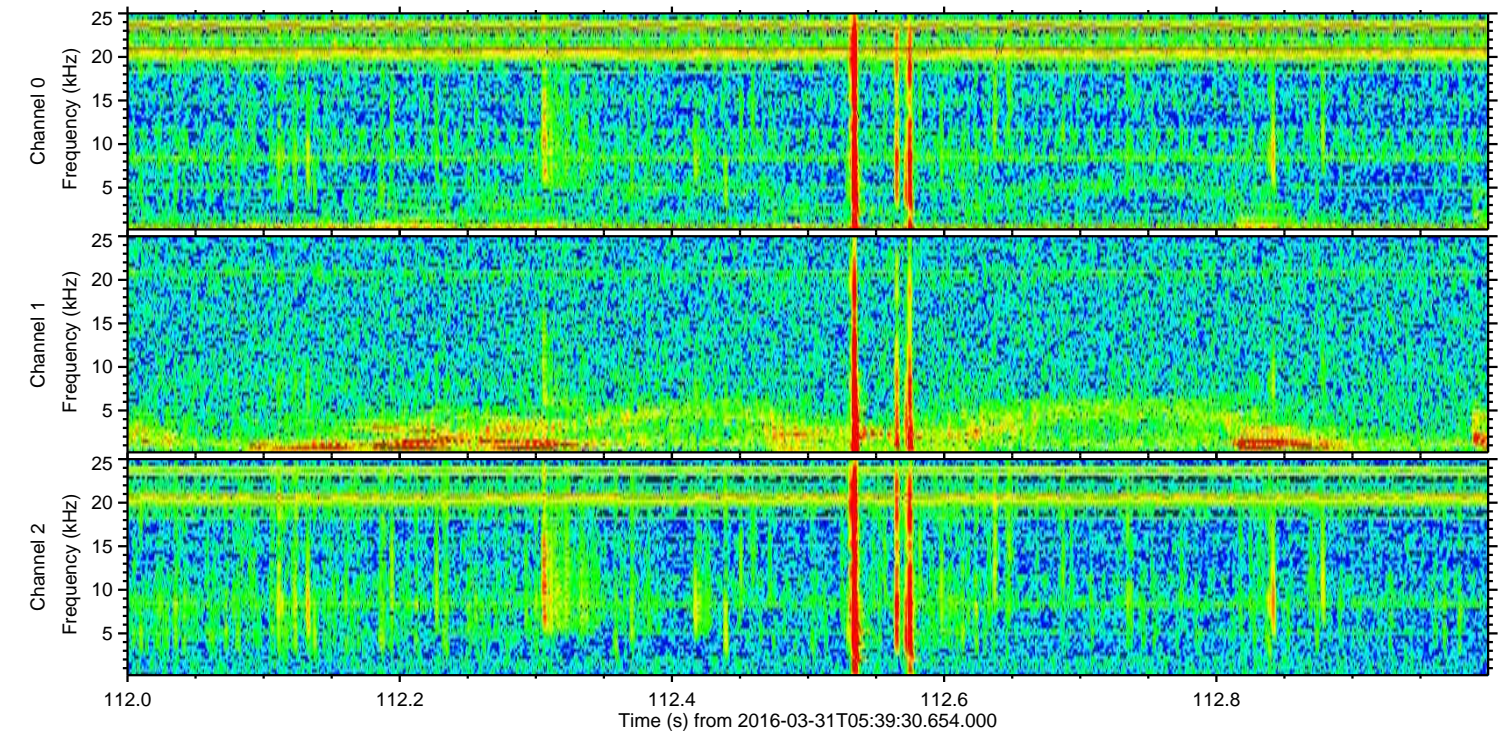
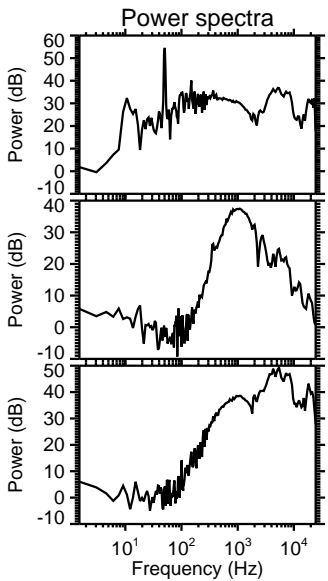
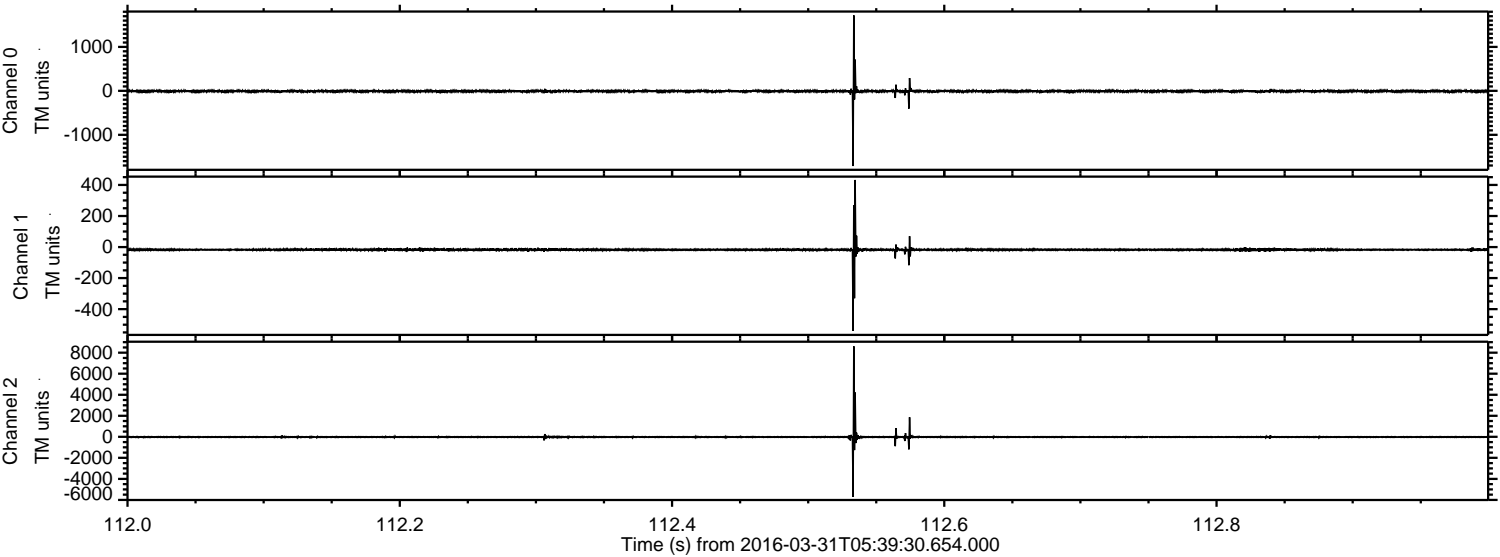
ELMAVAN 3D WAVEFORMS (Measured data sampled at 50 kHz) 51000 packets of 144 samples from 2016-03-31T05:39:30.654.000.

Processed Thu May 5 05:41:23 2016 by ELM ver.2012-10-06 from 001__elm20160331_053929__dat00.bin



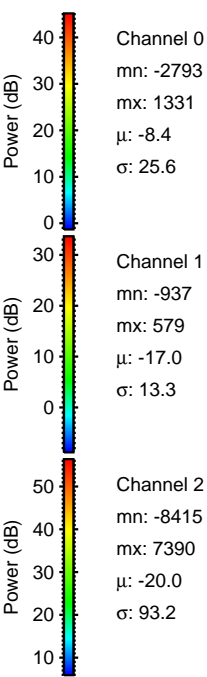
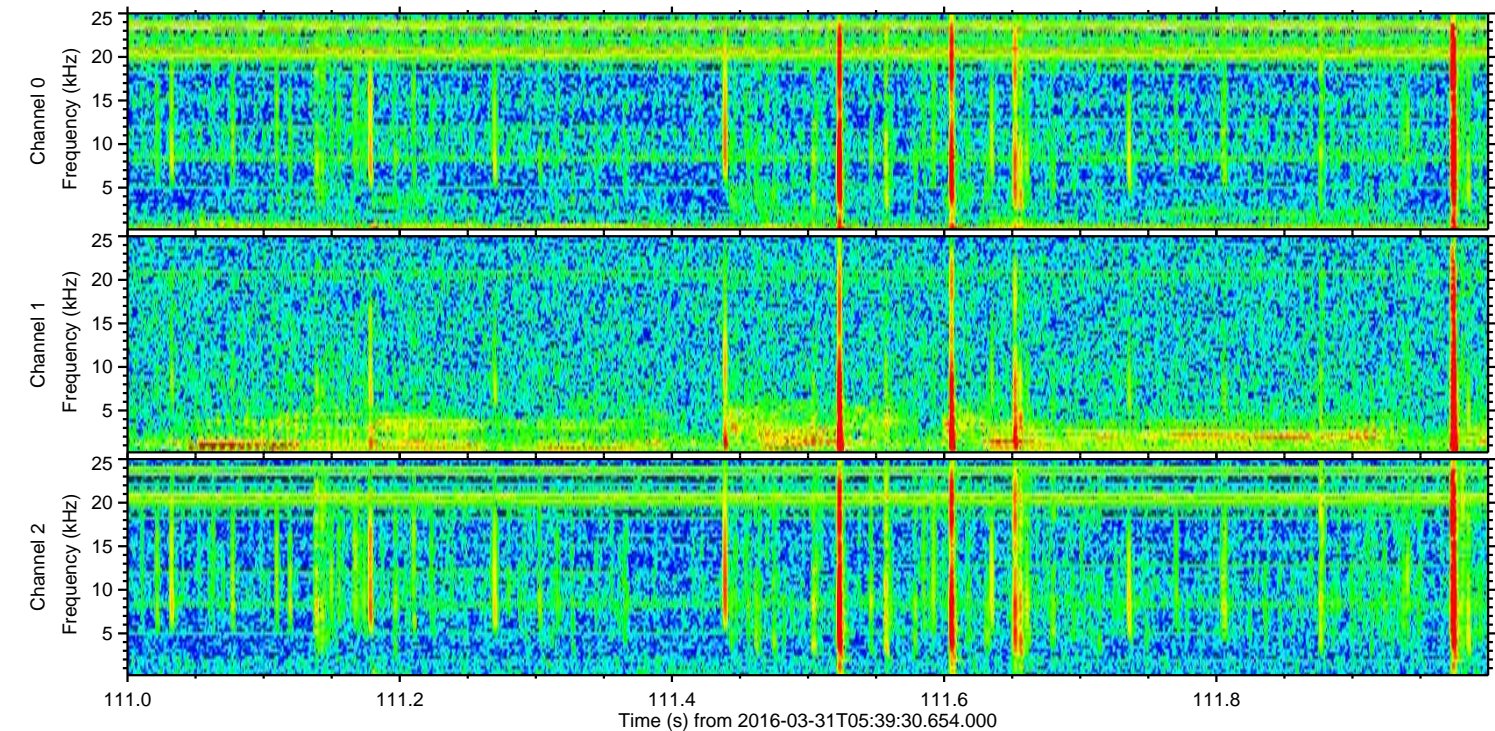
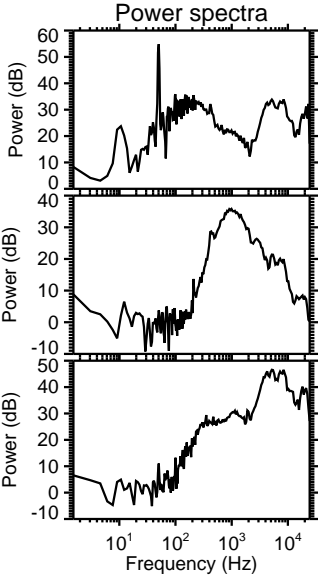
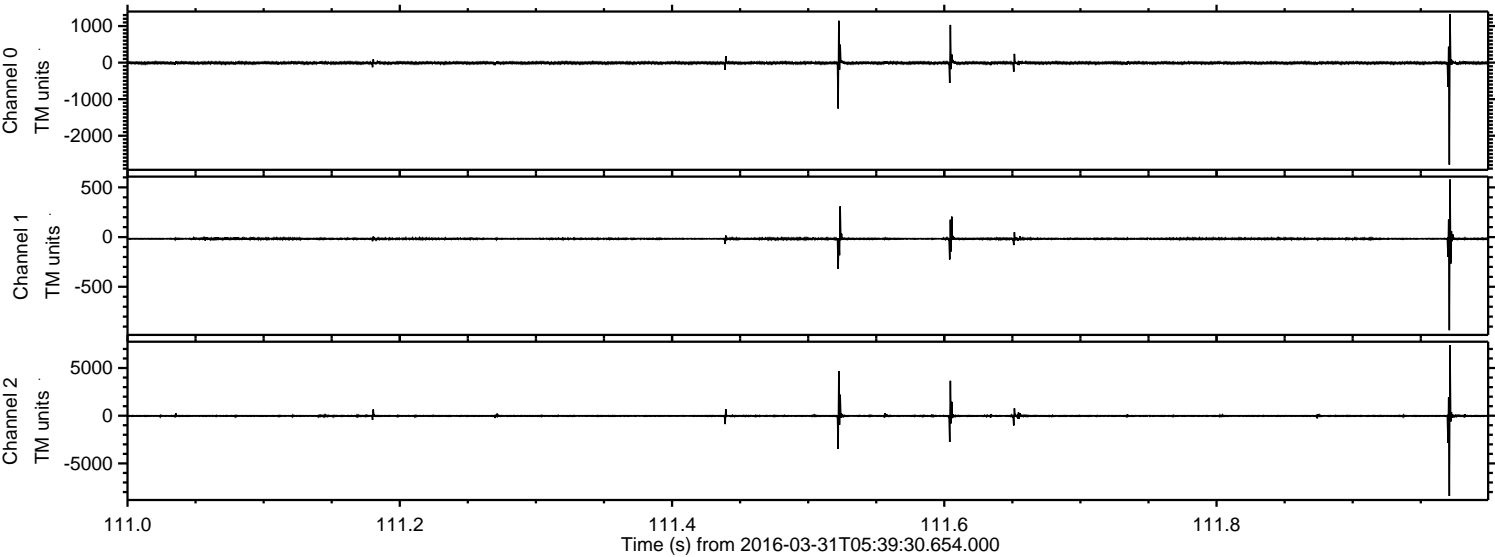
ELMAVAN 3D WAVEFORMS (Measured data sampled at 50 kHz) 51000 packets of 144 samples from 2016-03-31T05:39:30.654.000. Part 113/147

Processed Thu May 5 05:41:35 2016 by ELM ver.2012-10-06 from 001__elm20160331_053929__dat00.bin



ELMAVAN 3D WAVEFORMS (Measured data sampled at 50 kHz) 51000 packets of 144 samples from 2016-03-31T05:39:30.654.000. Part 112/147

Processed Thu May 5 05:41:35 2016 by ELM ver.2012-10-06 from 001__elm20160331_053929__dat00.bin

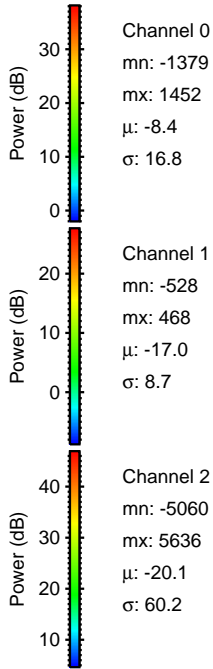
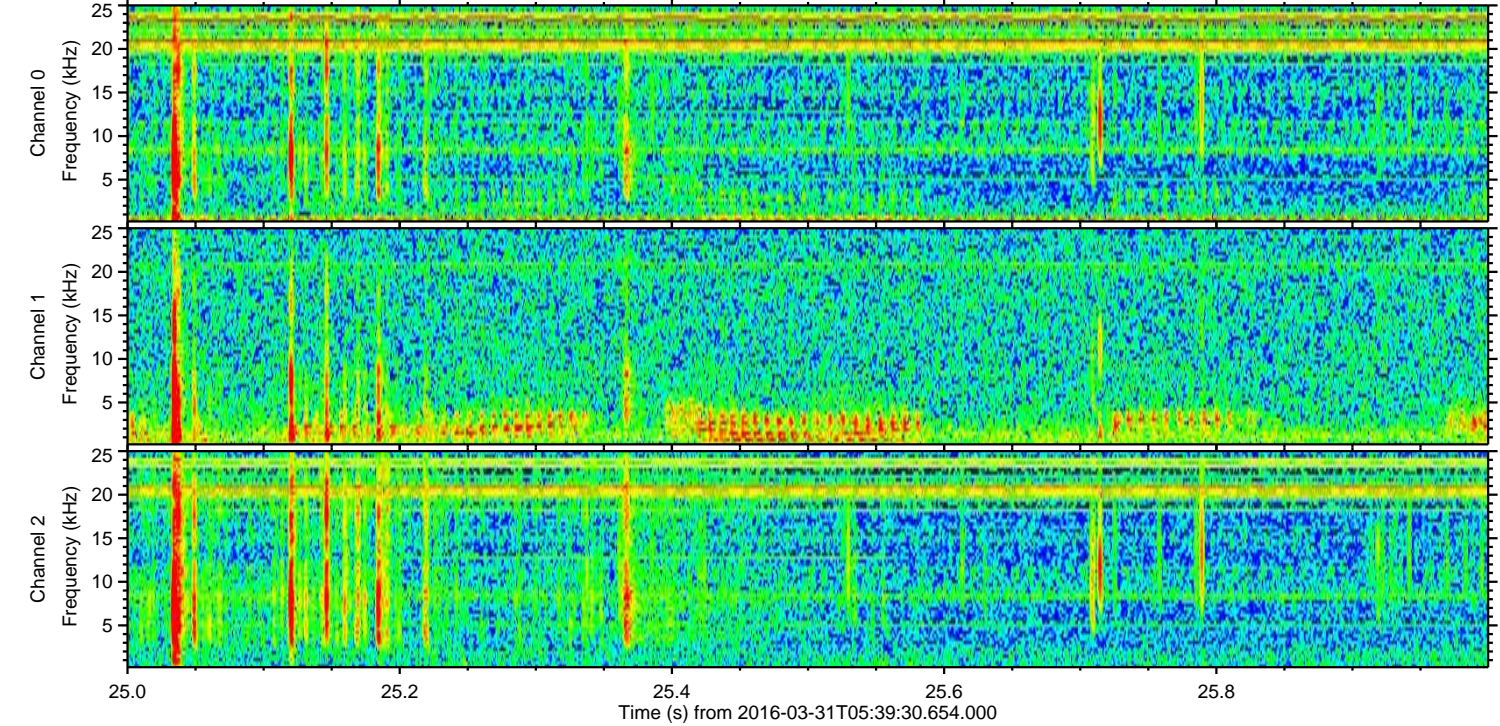
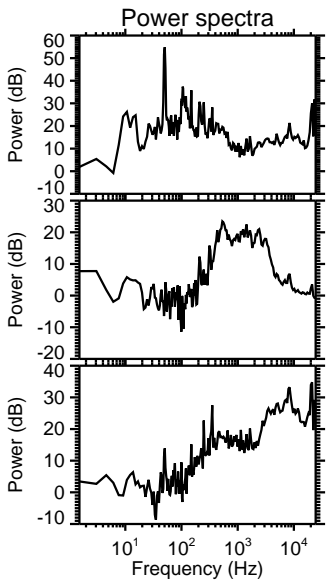
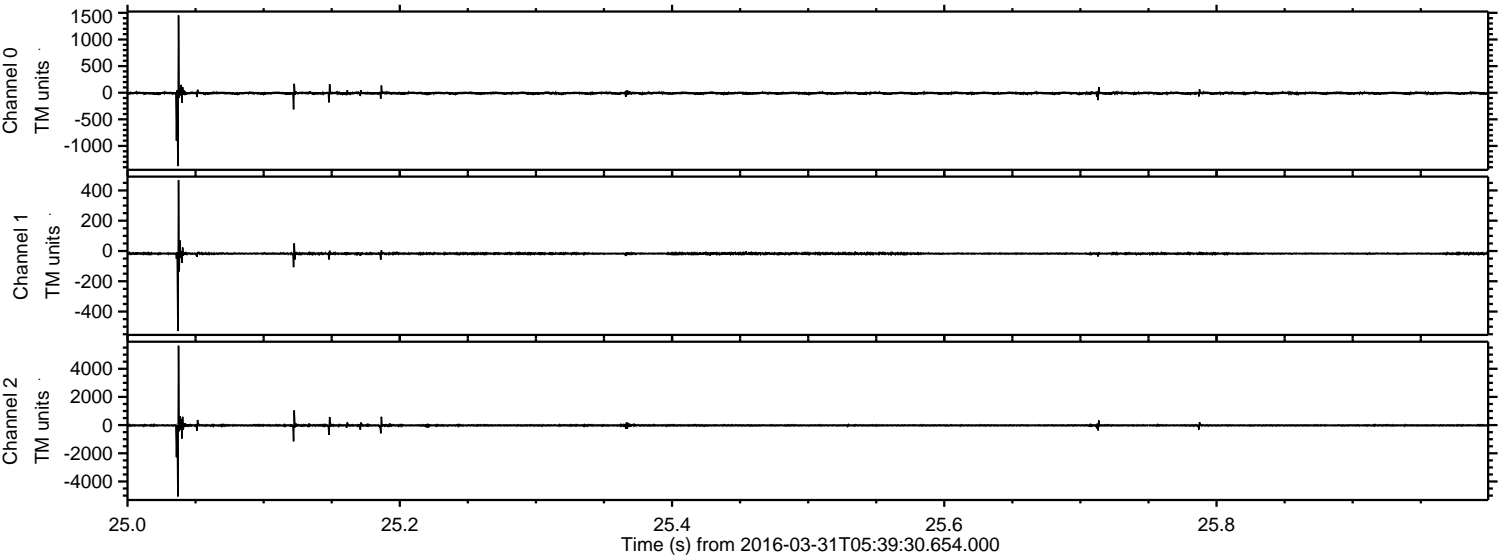


Channel 0
mn: -2793
mx: 1331
 μ : -8.4
 σ : 25.6

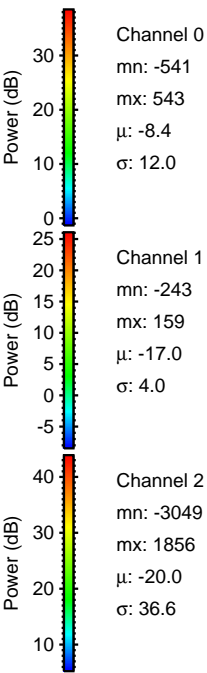
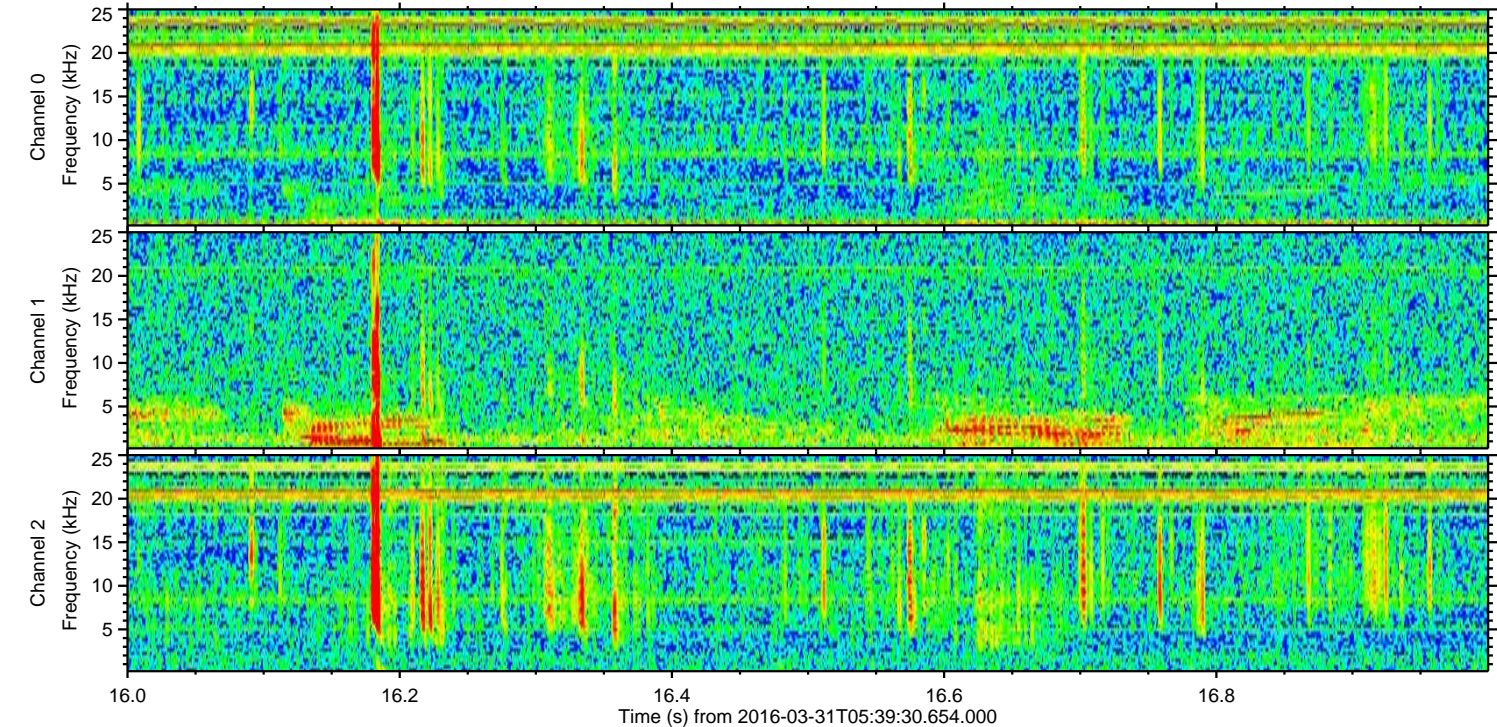
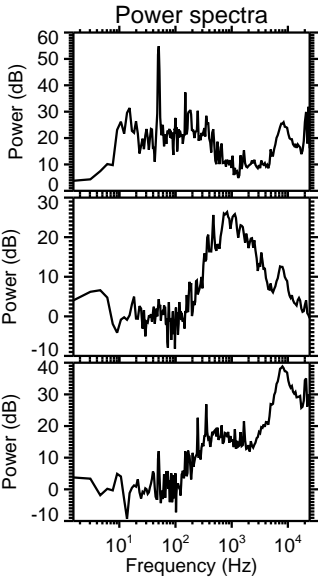
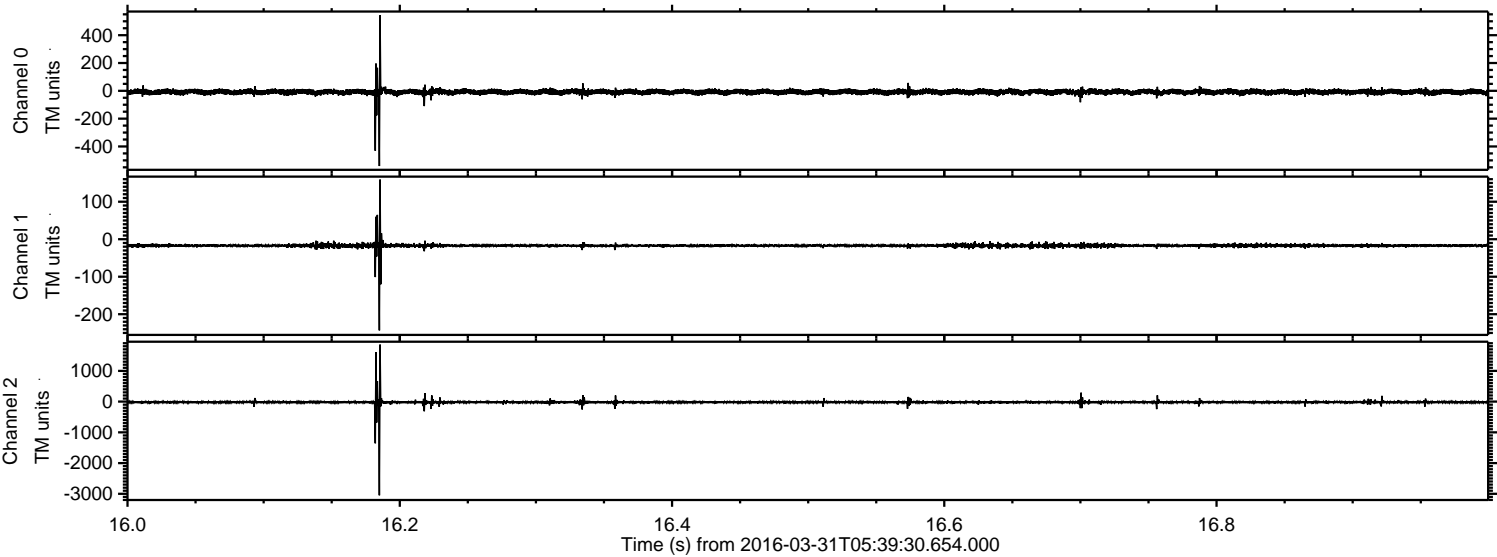
Channel 1
mn: -937
mx: 579
 μ : -17.0
 σ : 13.3

Channel 2
mn: -8415
mx: 7390
 μ : -20.0
 σ : 93.2

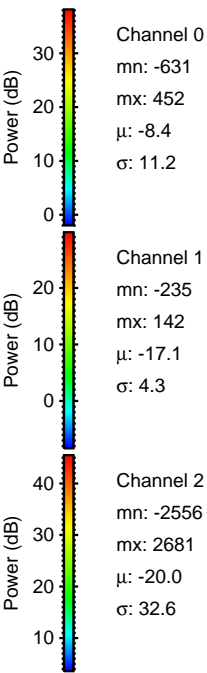
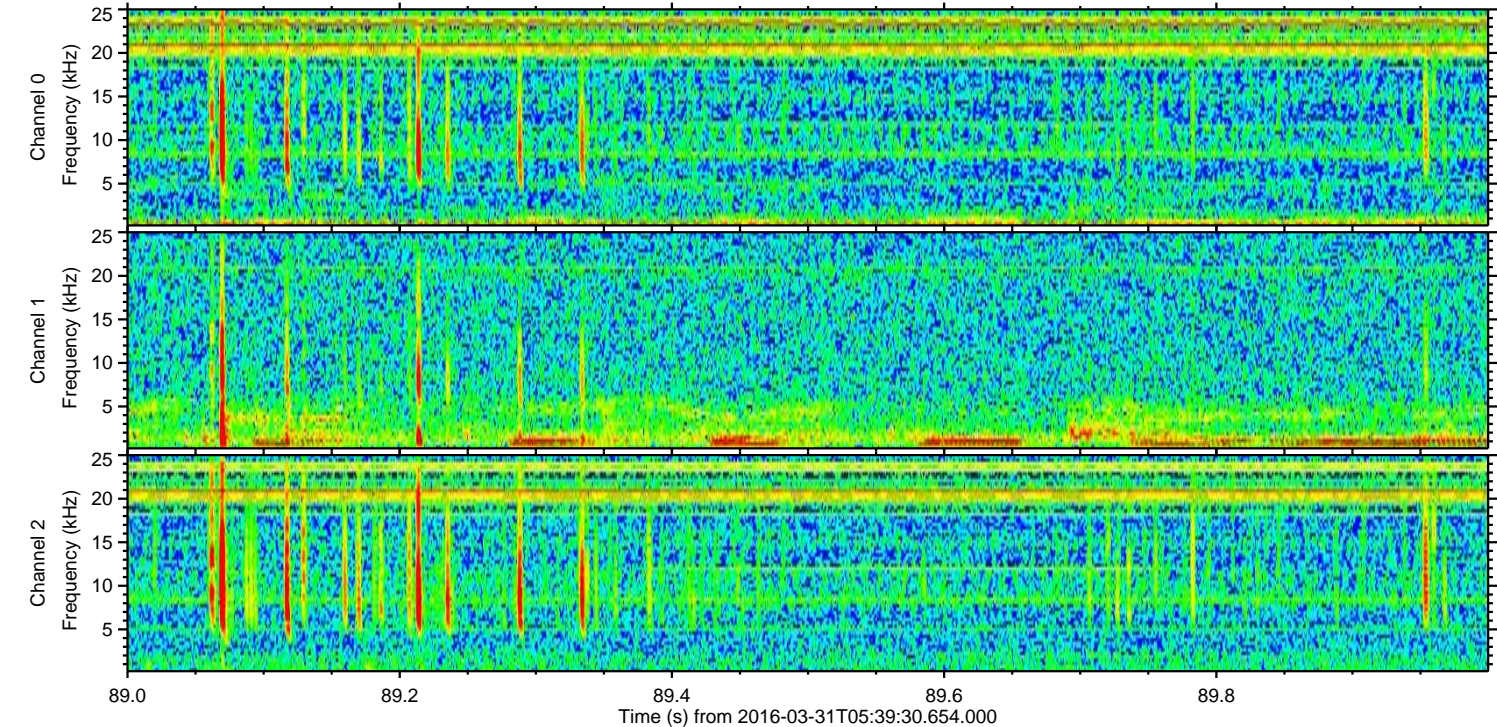
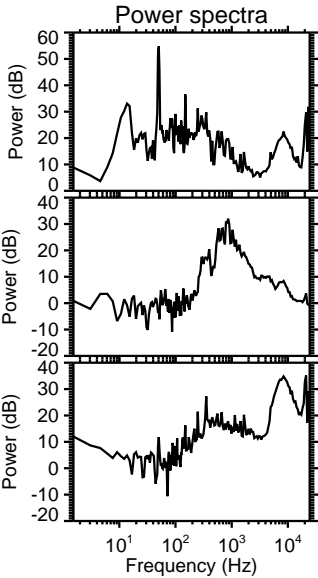
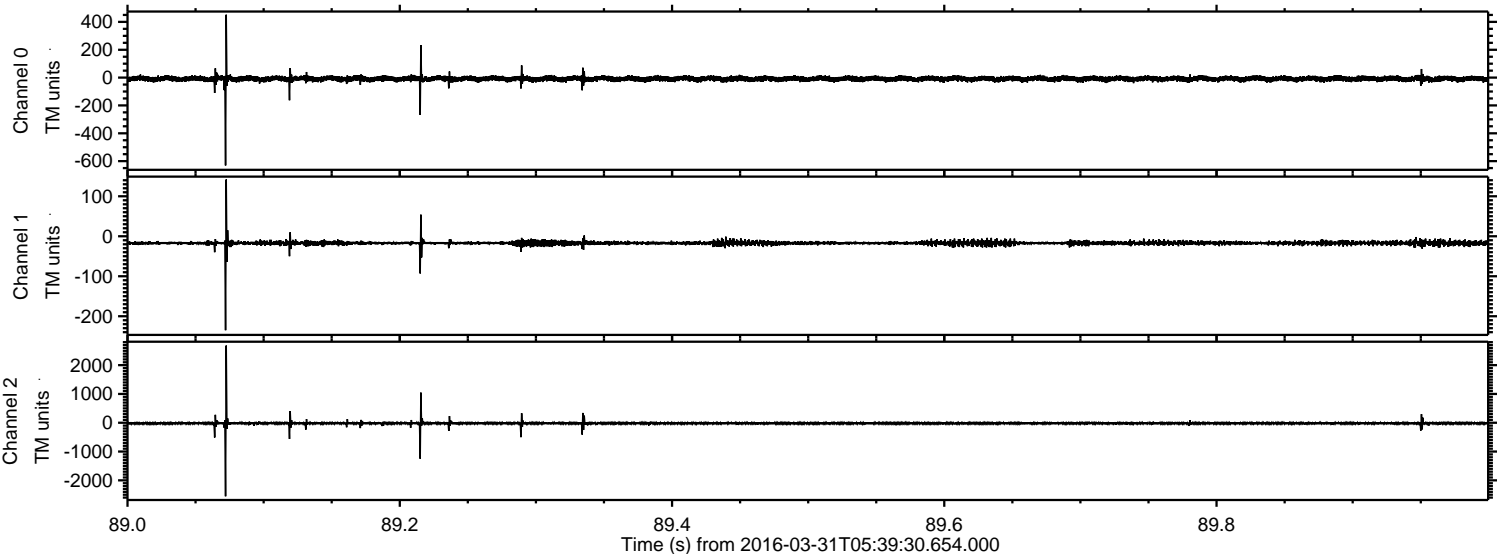
Processed Thu May 5 05:41:36 2016 by ELM ver.2012-10-06 from 001__elm20160331_053929__dat00.bin



Processed Thu May 5 05:41:37 2016 by ELM ver.2012-10-06 from 001__elm20160331_053929__dat00.bin

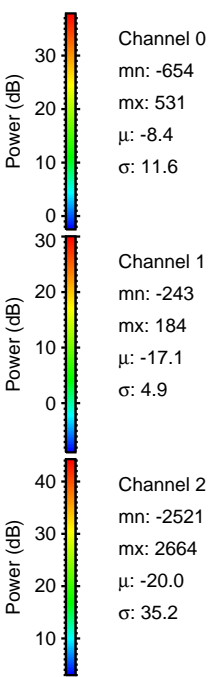
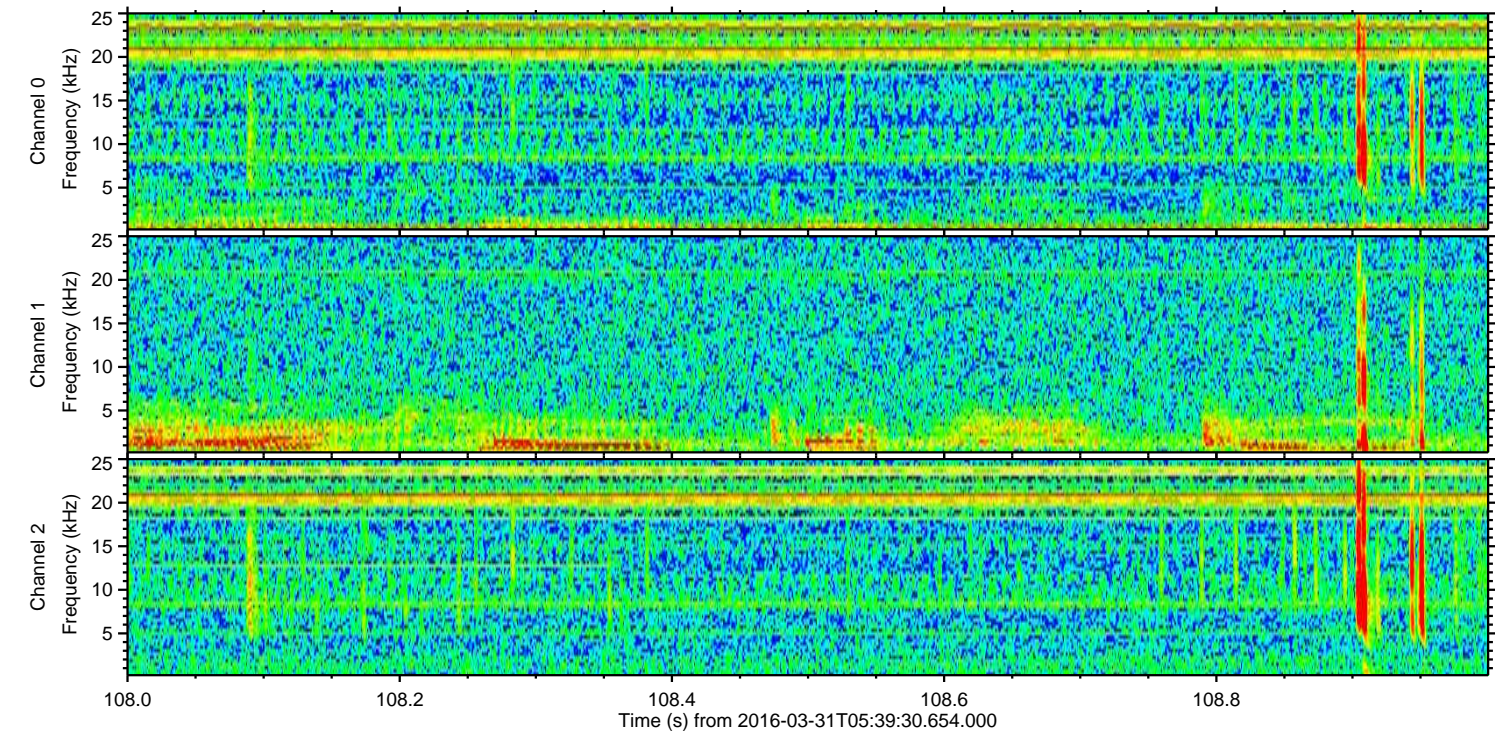
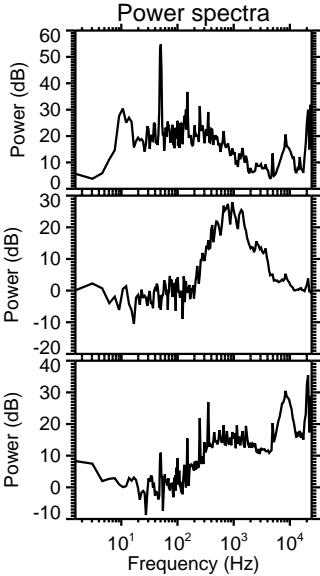
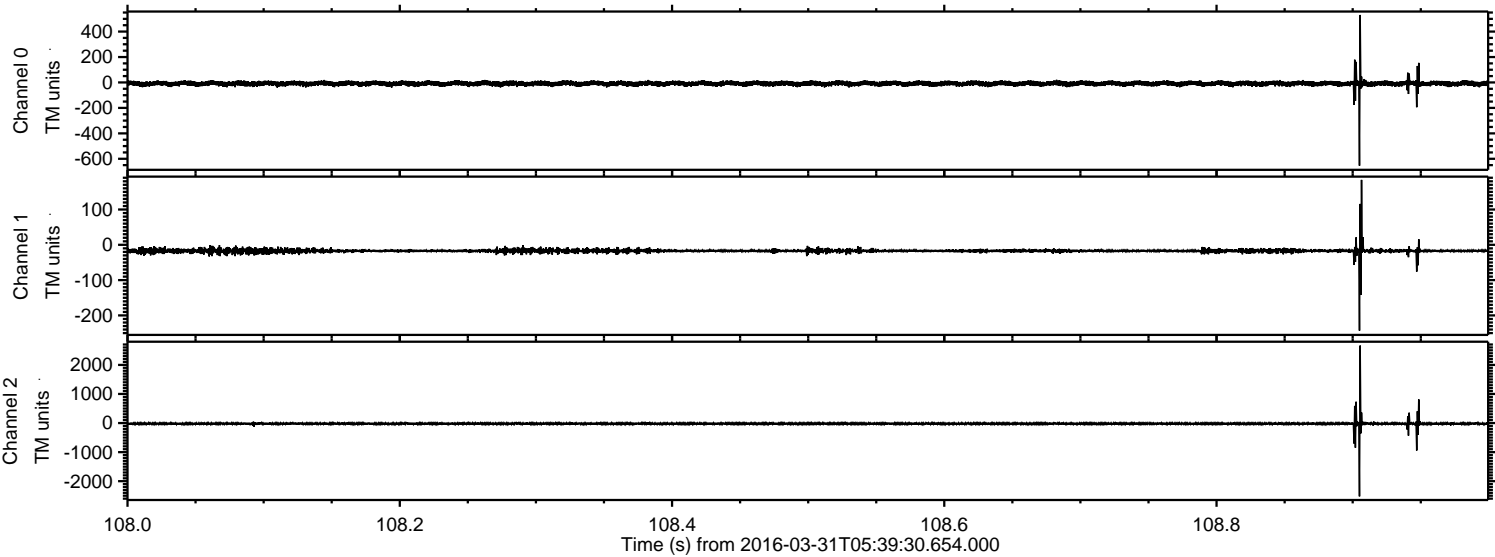


Processed Thu May 5 05:41:38 2016 by ELM ver.2012-10-06 from 001__elm20160331_053929__dat00.bin

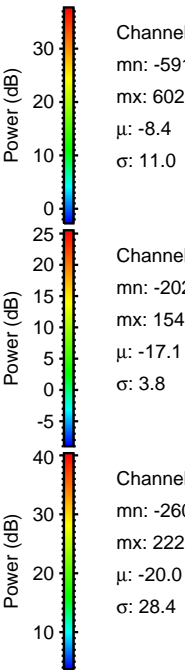
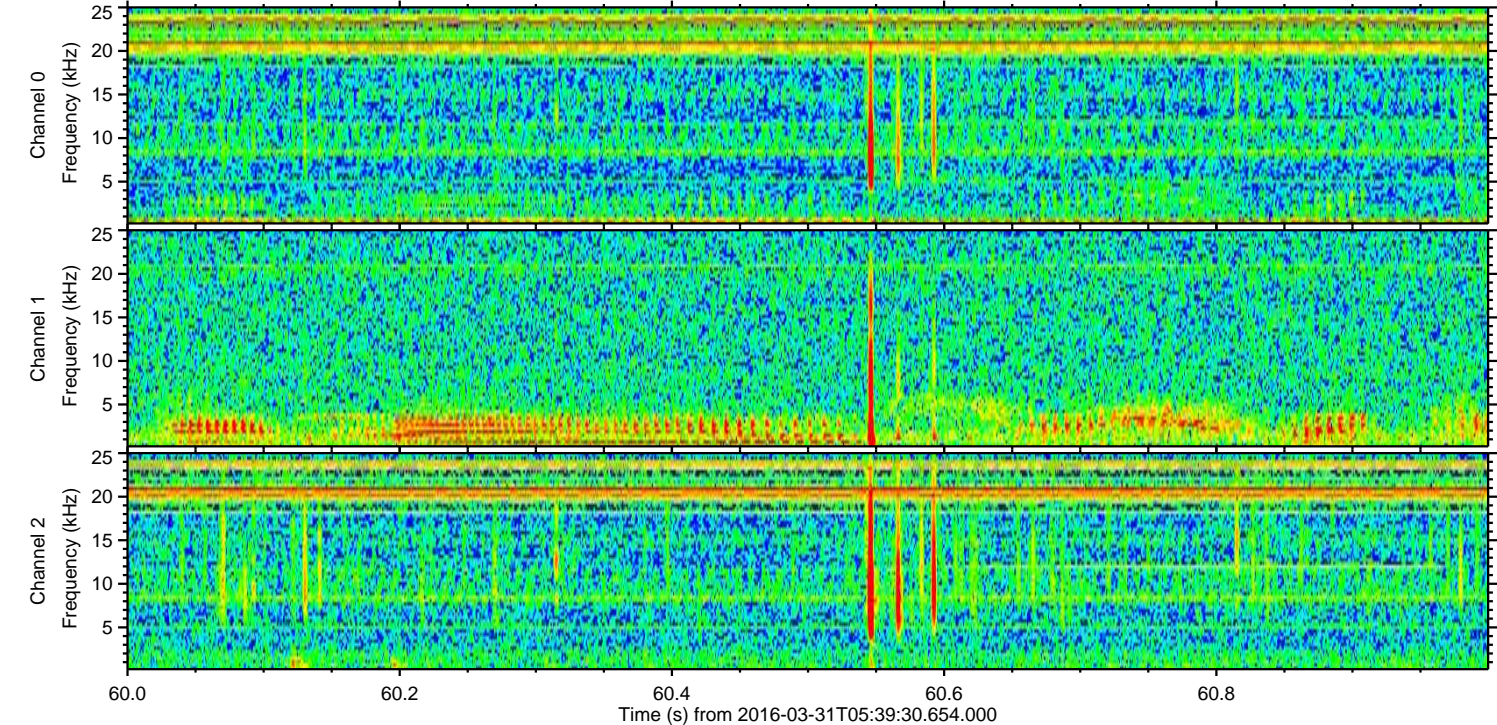
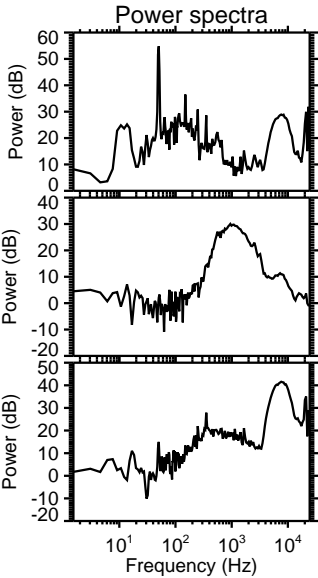
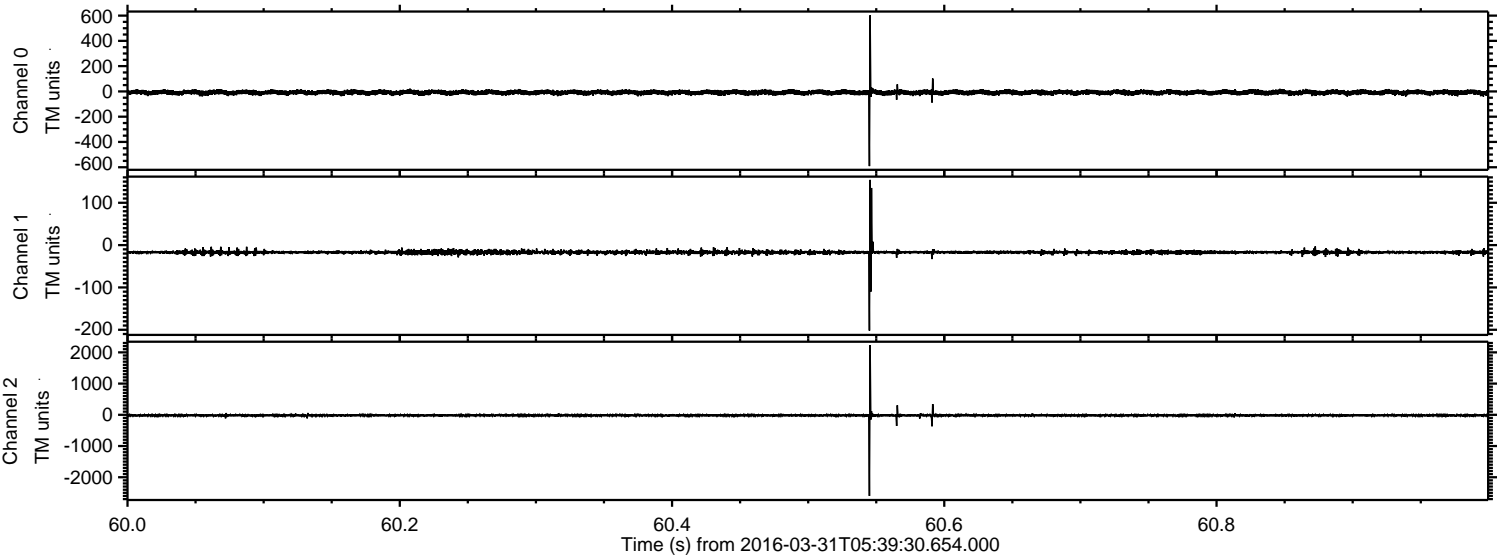


ELMAVAN 3D WAVEFORMS (Measured data sampled at 50 kHz) 51000 packets of 144 samples from 2016-03-31T05:39:30.654.000. Part 109/147

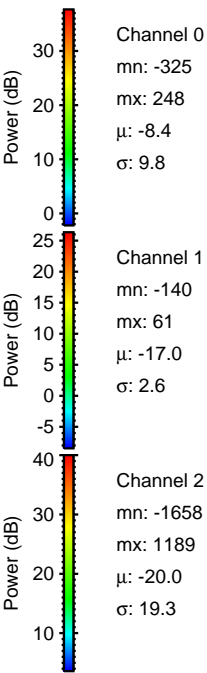
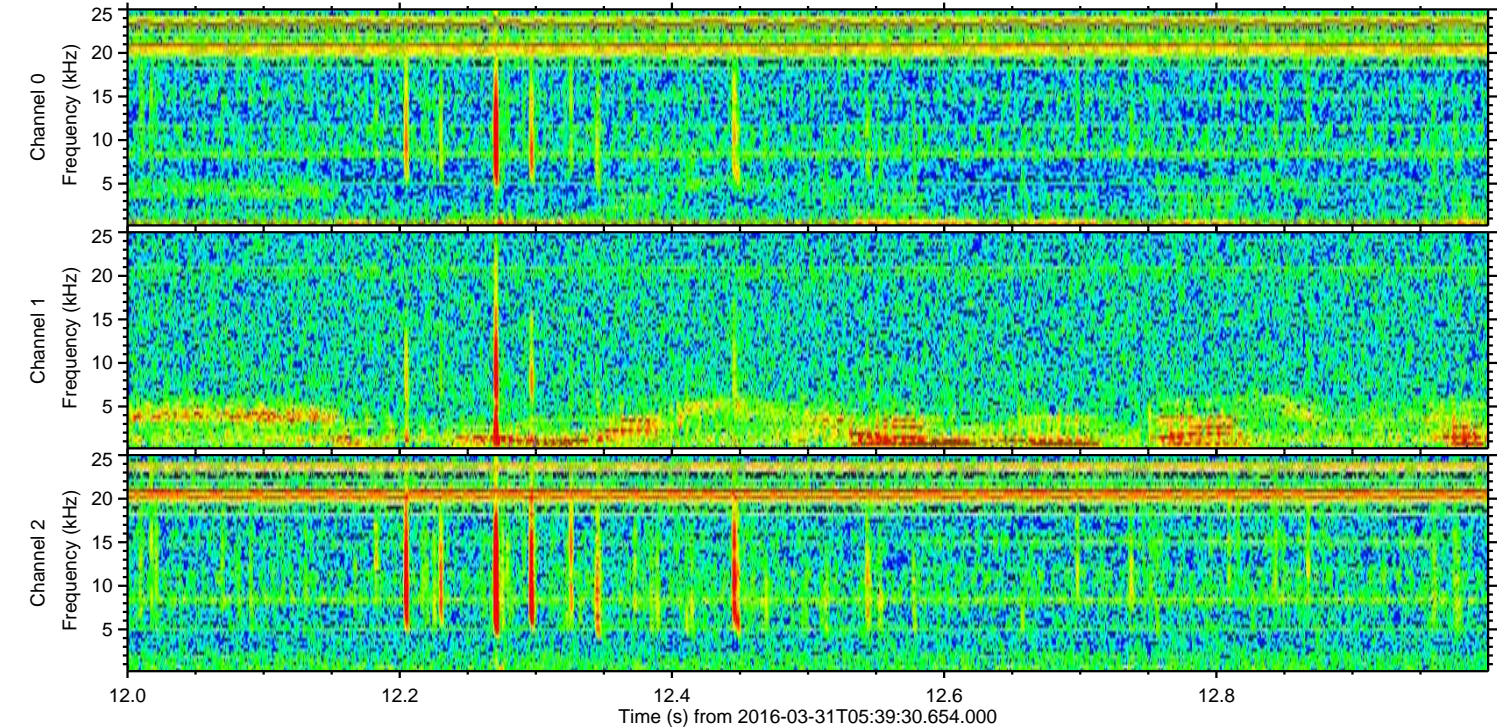
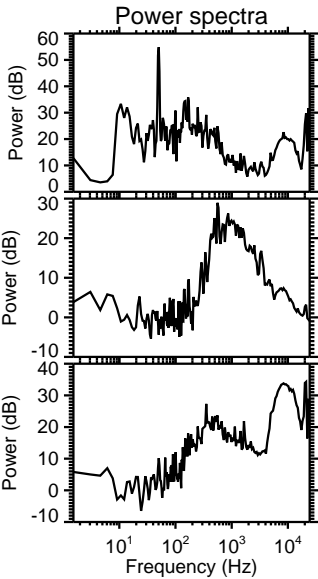
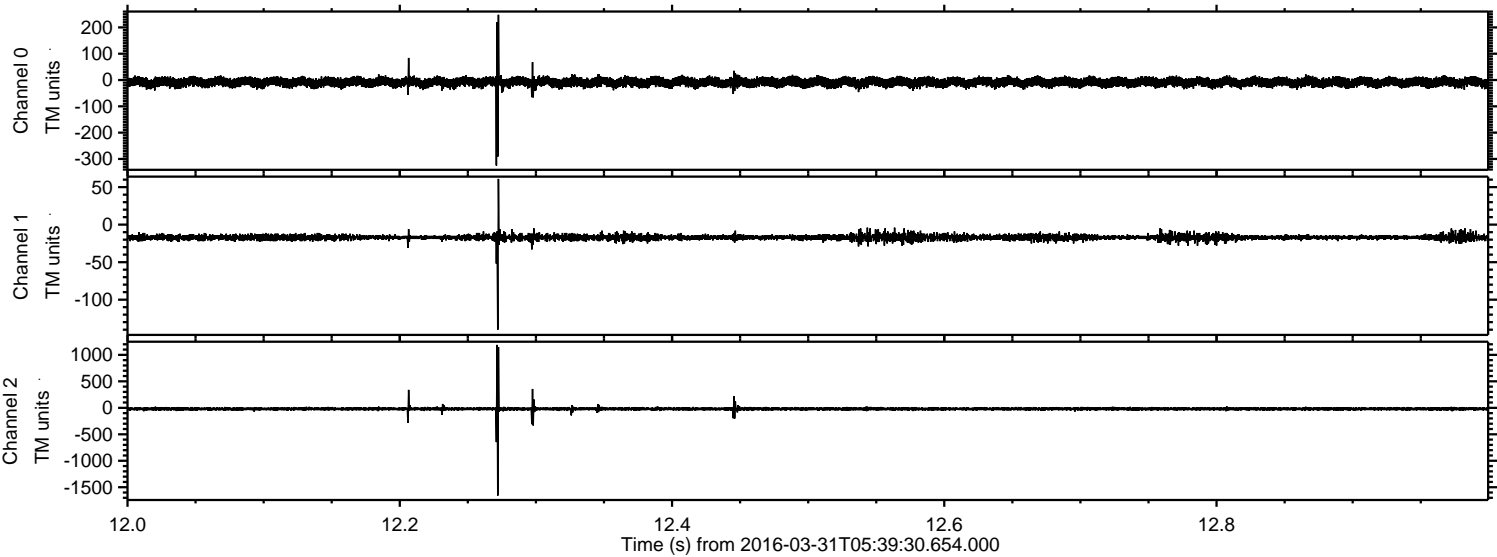
Processed Thu May 5 05:41:39 2016 by ELM ver.2012-10-06 from 001__elm20160331_053929__dat00.bin



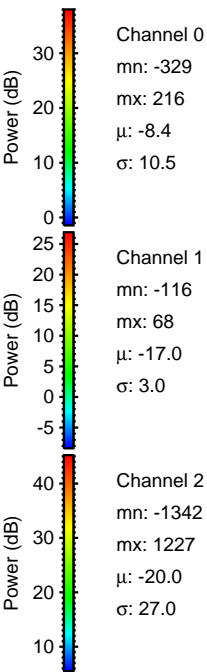
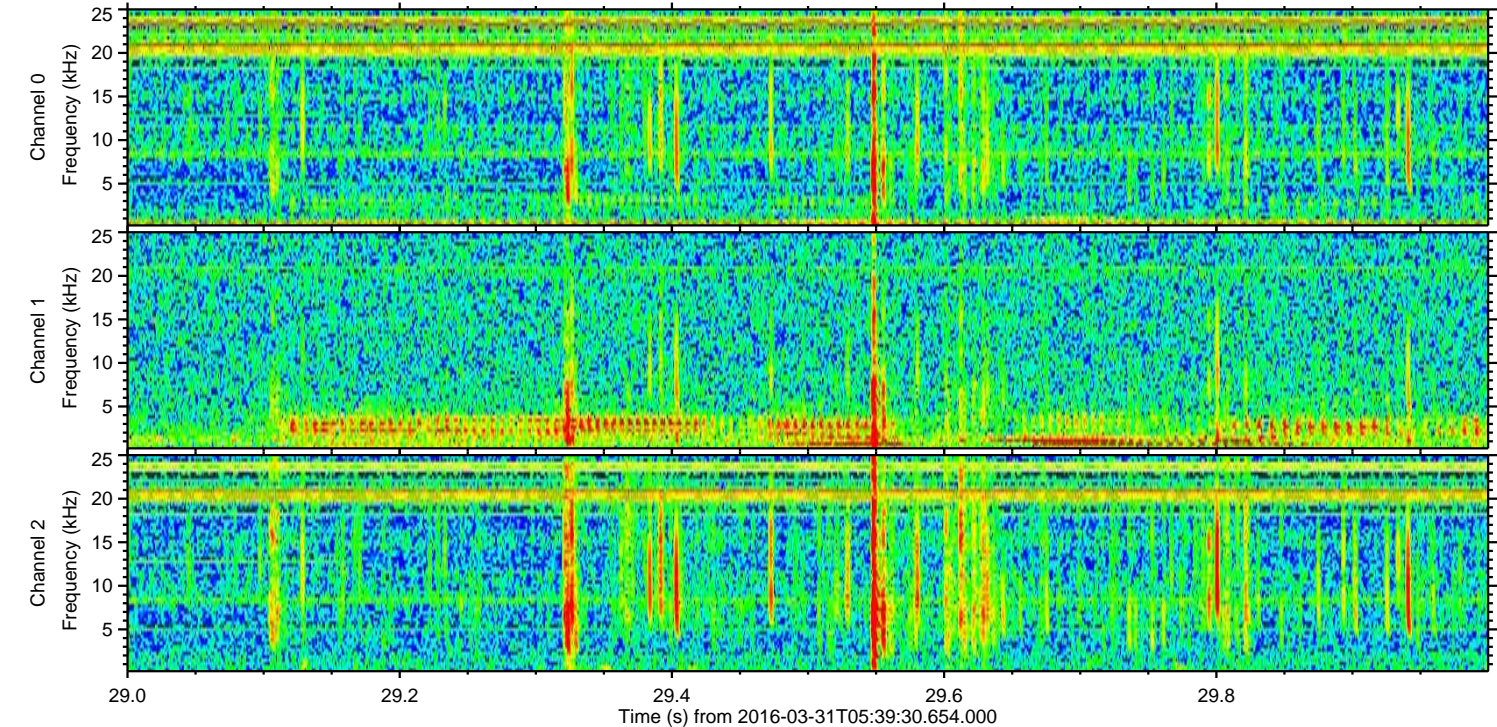
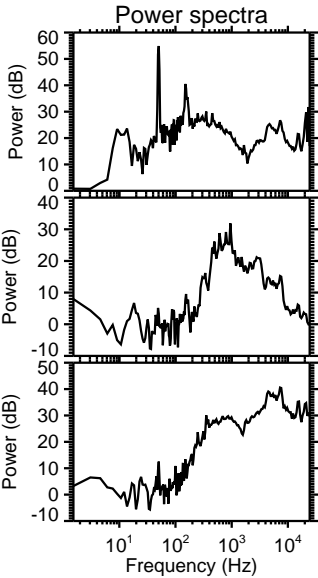
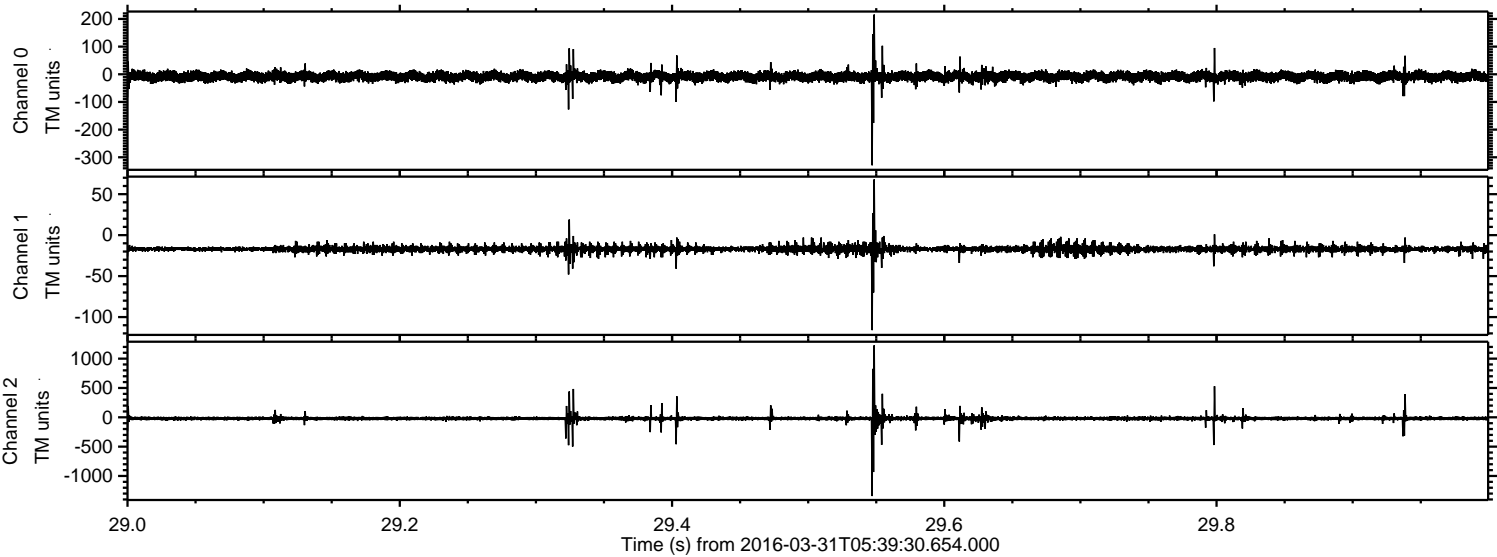
Processed Thu May 5 05:41:40 2016 by ELM ver.2012-10-06 from 001__elm20160331_053929__dat00.bin



Processed Thu May 5 05:41:41 2016 by ELM ver.2012-10-06 from 001__elm20160331_053929__dat00.bin



Processed Thu May 5 05:41:42 2016 by ELM ver.2012-10-06 from 001__elm20160331_053929__dat00.bin



Channel 0
mn: -329
mx: 216
 μ : -8.4
 σ : 10.5

Channel 1
mn: -116
mx: 68
 μ : -17.0
 σ : 3.0

Channel 2
mn: -1342
mx: 1227
 μ : -20.0
 σ : 27.0

