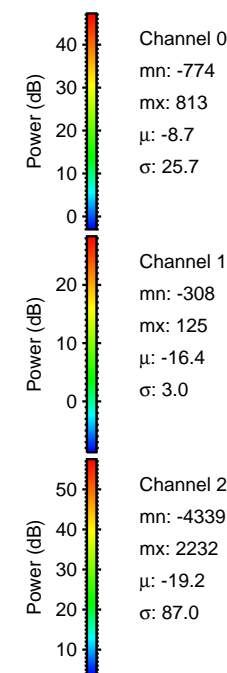
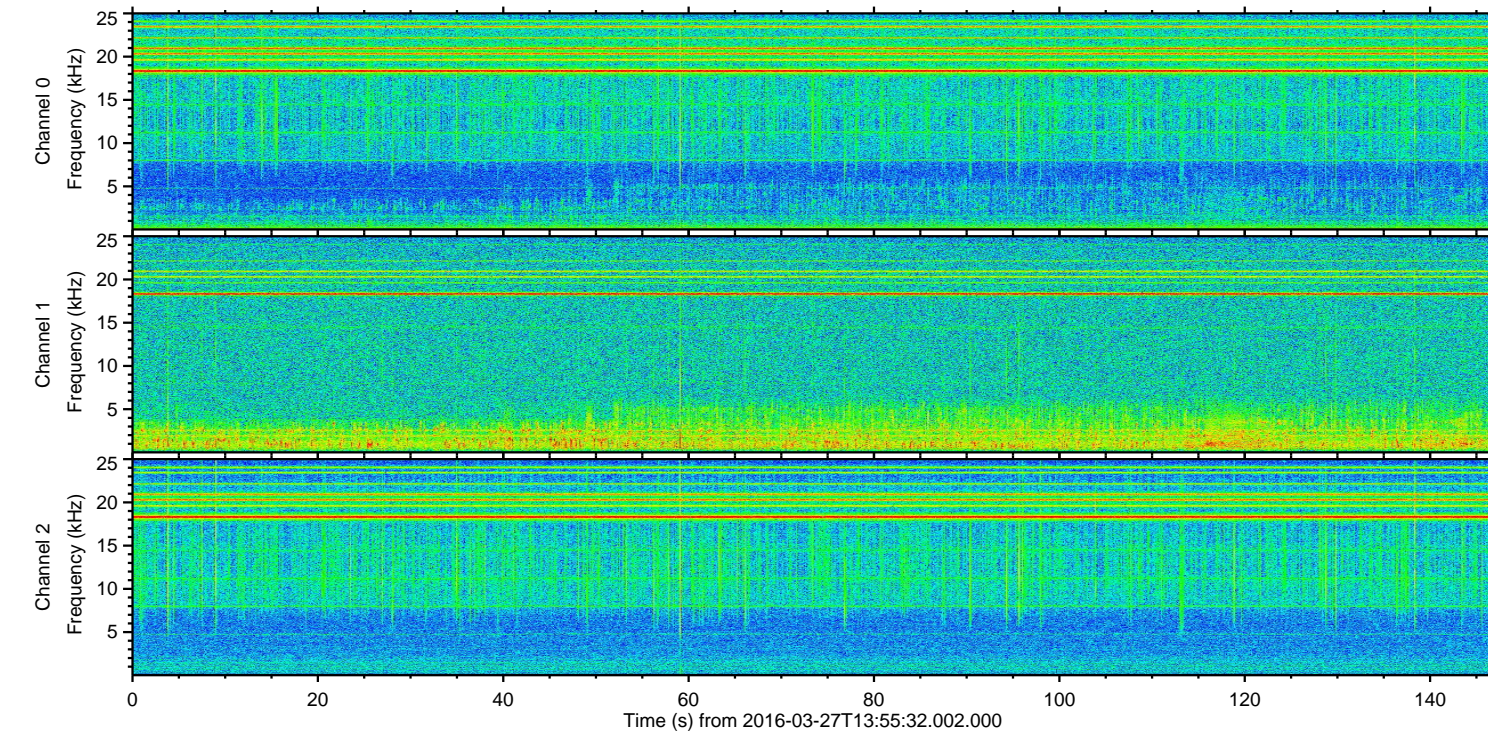
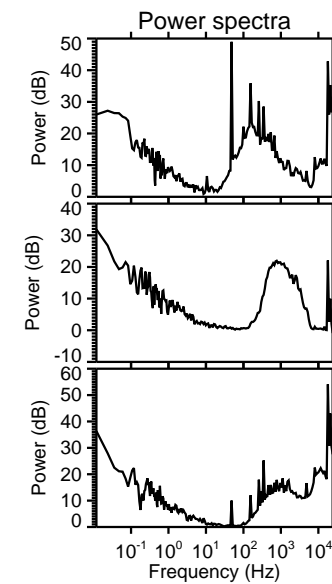
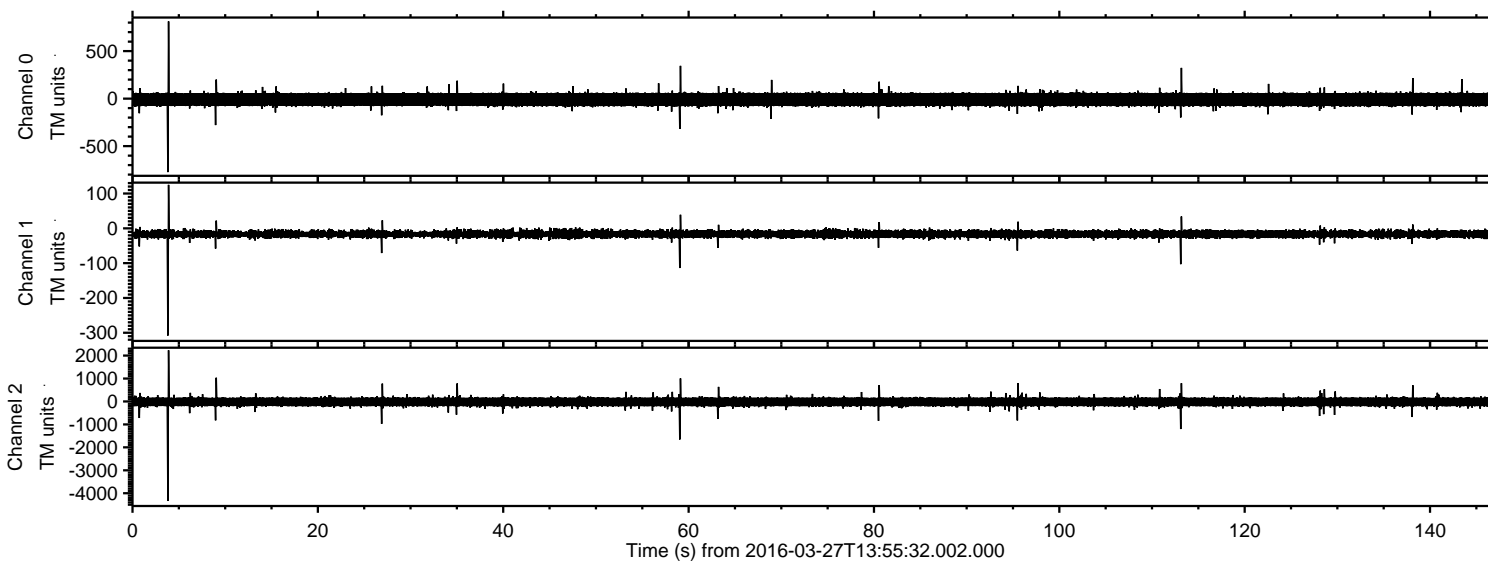


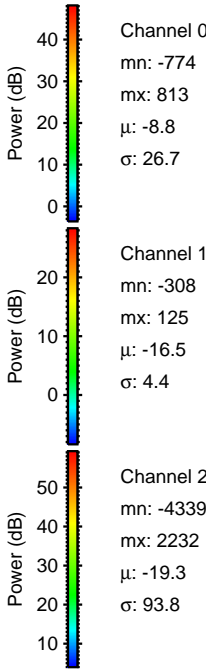
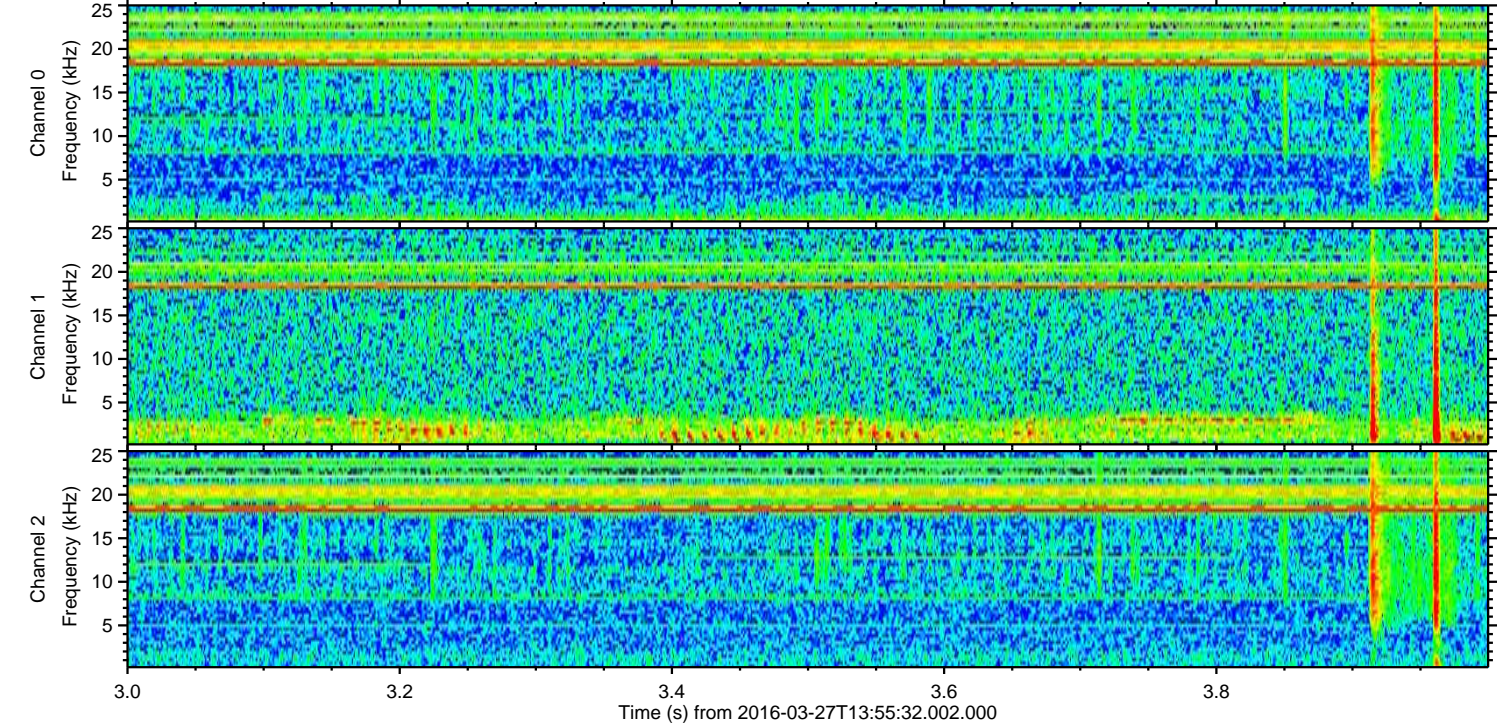
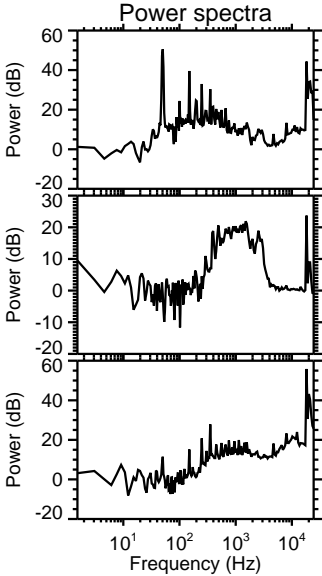
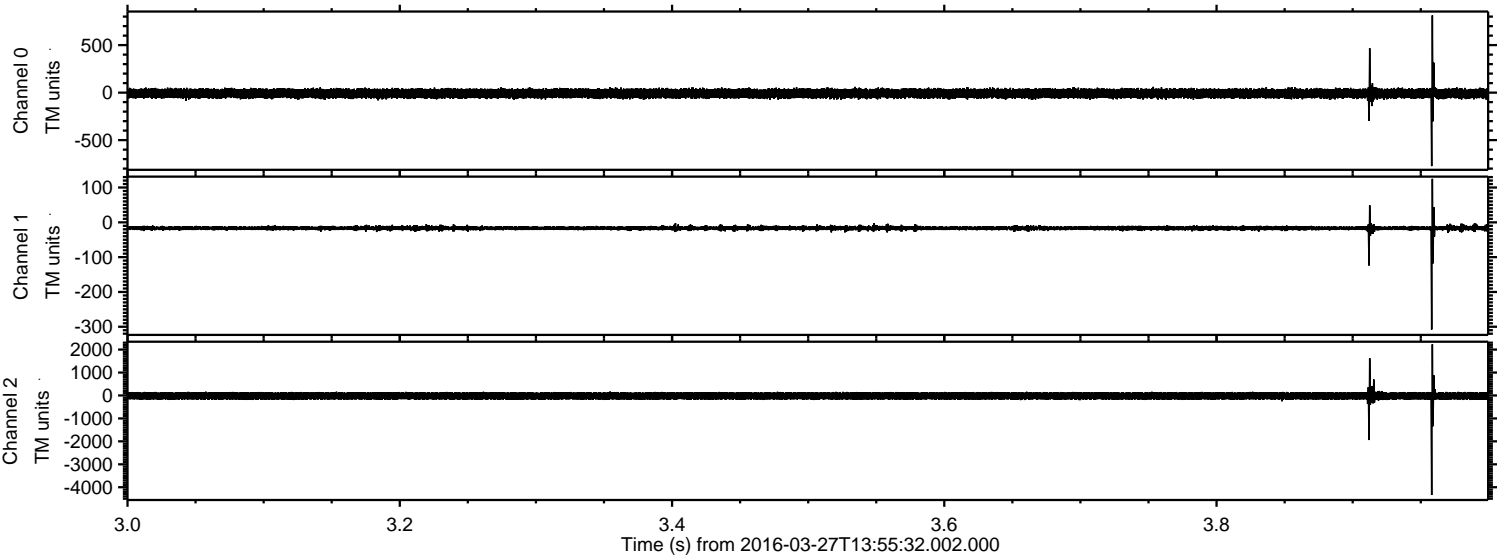
# ELMAVAN 3D WAVEFORMS (Measured data sampled at 50 kHz) 51000 packets of 144 samples from 2016-03-27T13:55:32.002.000.

Processed Sat Apr 23 10:44:31 2016 by ELM ver.2012-10-06 from 001\_\_elm20160327\_135530\_\_dat00.bin



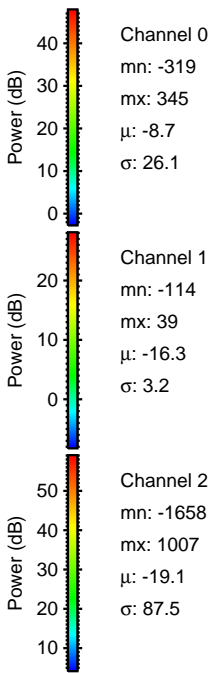
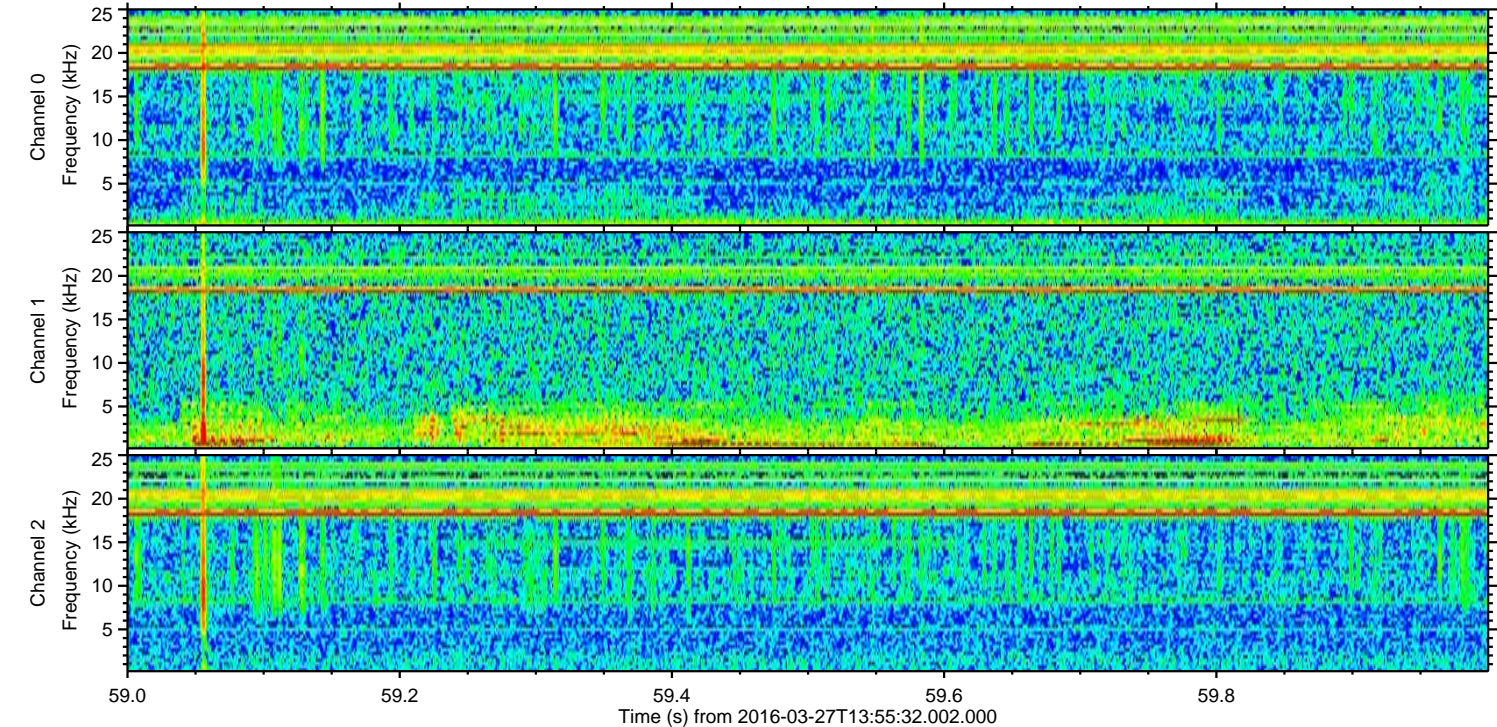
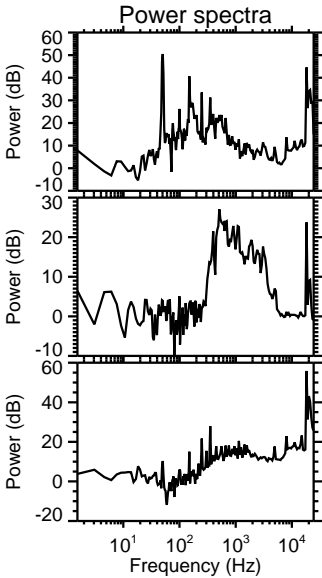
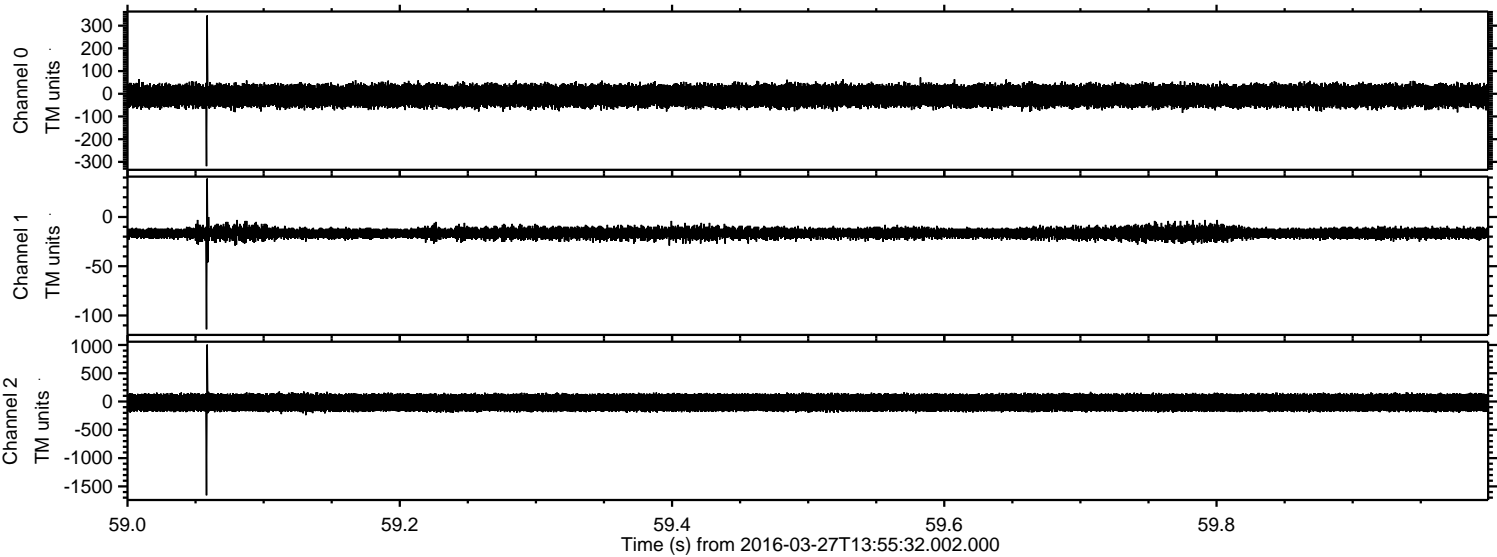


Processed Sat Apr 23 10:44:46 2016 by ELM ver.2012-10-06 from 001\_\_elm20160327\_135530\_\_dat00.bin





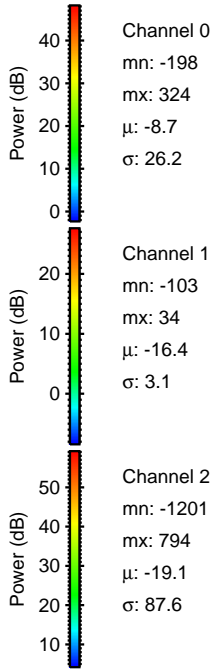
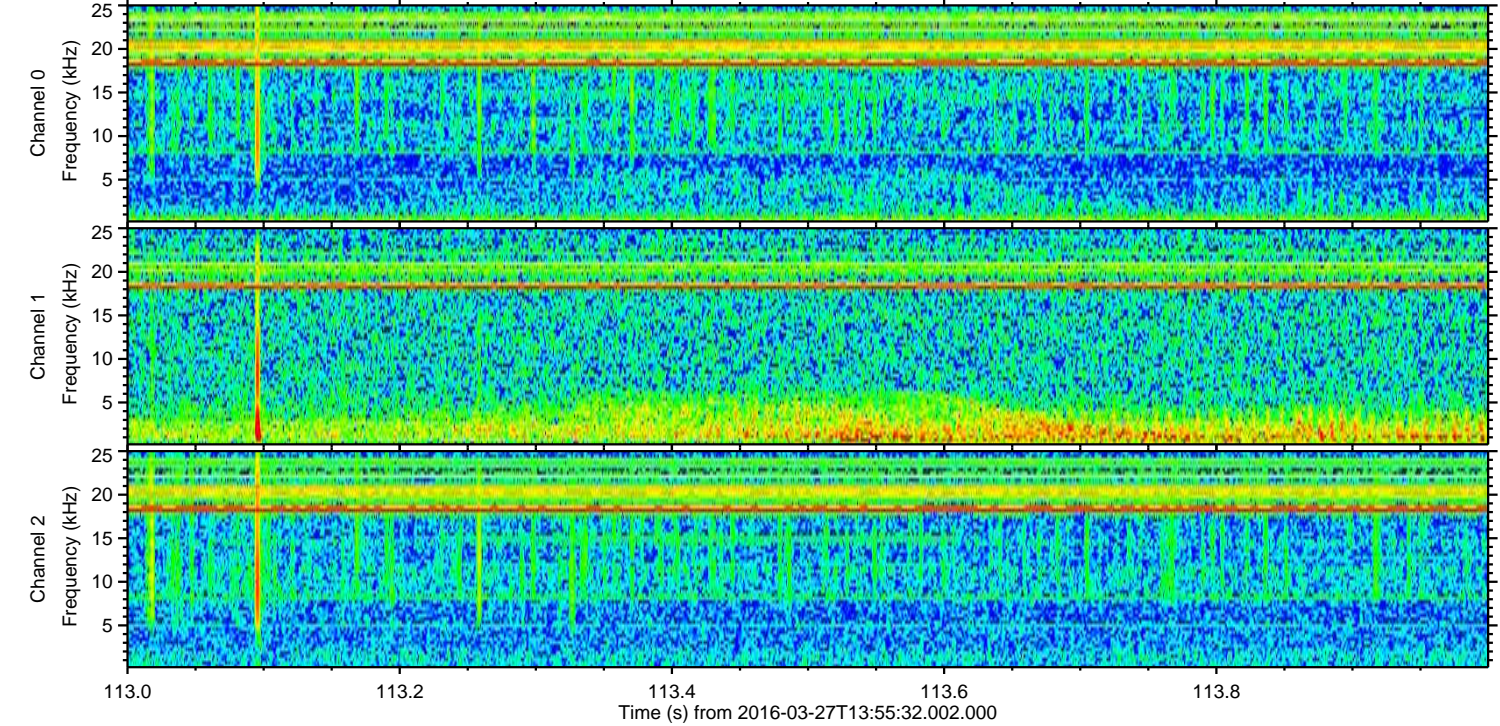
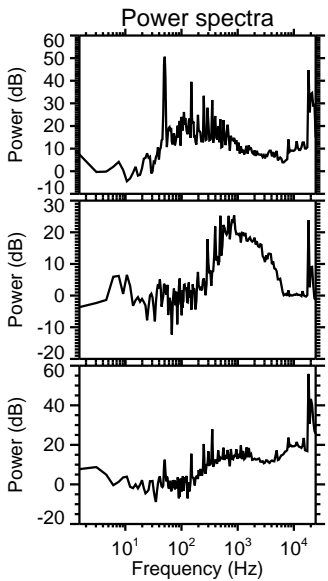
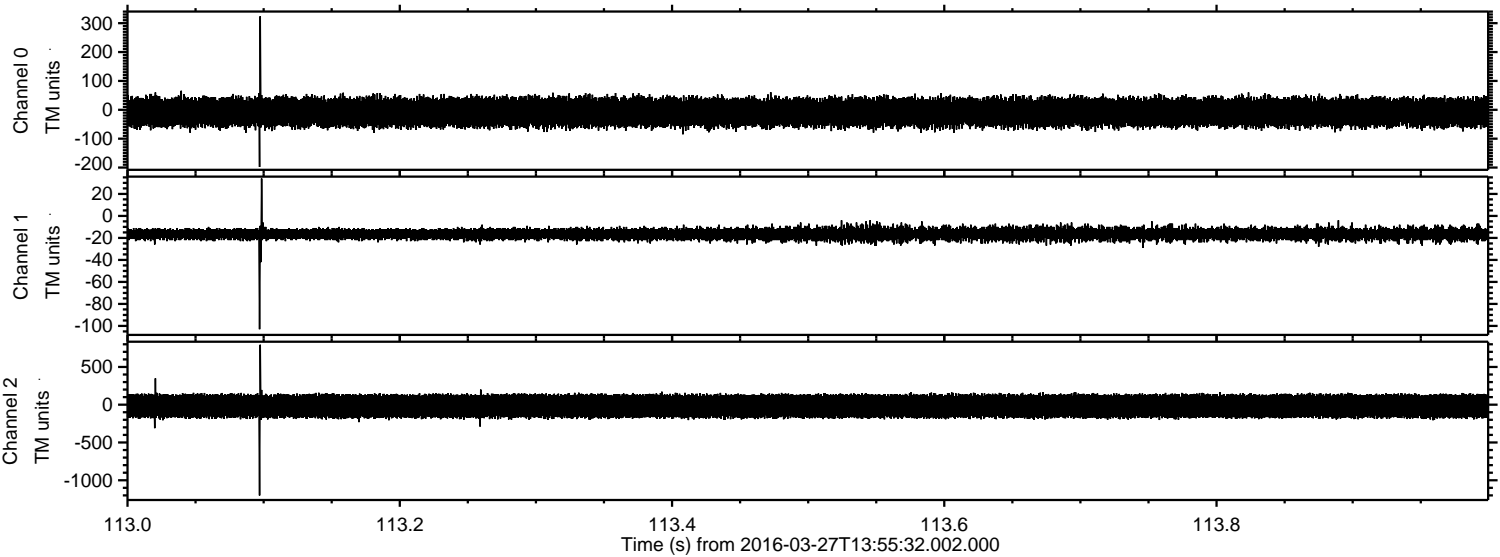
Processed Sat Apr 23 10:44:47 2016 by ELM ver.2012-10-06 from 001\_\_elm20160327\_135530\_\_dat00.bin





ELMAVAN 3D WAVEFORMS (Measured data sampled at 50 kHz) 51000 packets of 144 samples from 2016-03-27T13:55:32.002.000. Part 114/147

Processed Sat Apr 23 10:44:48 2016 by ELM ver.2012-10-06 from 001\_\_elm20160327\_135530\_\_dat00.bin



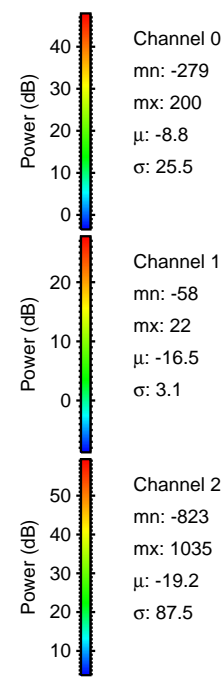
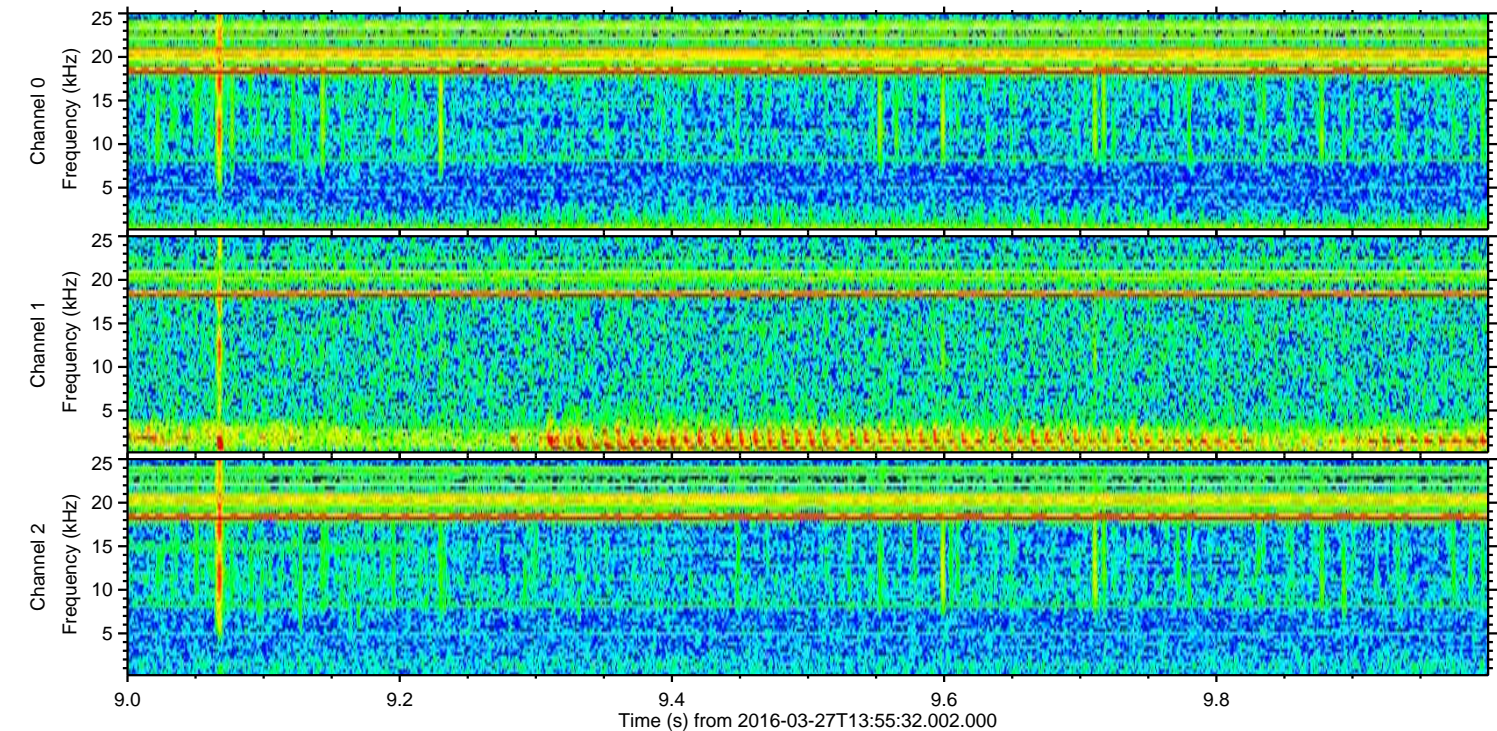
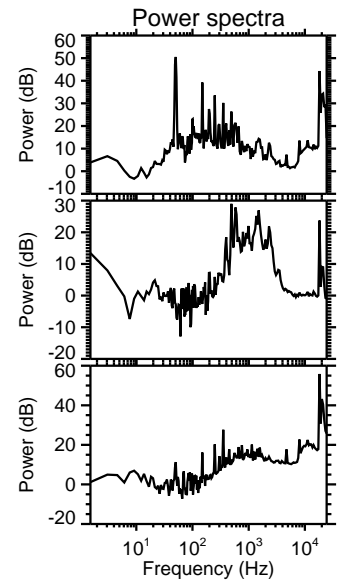
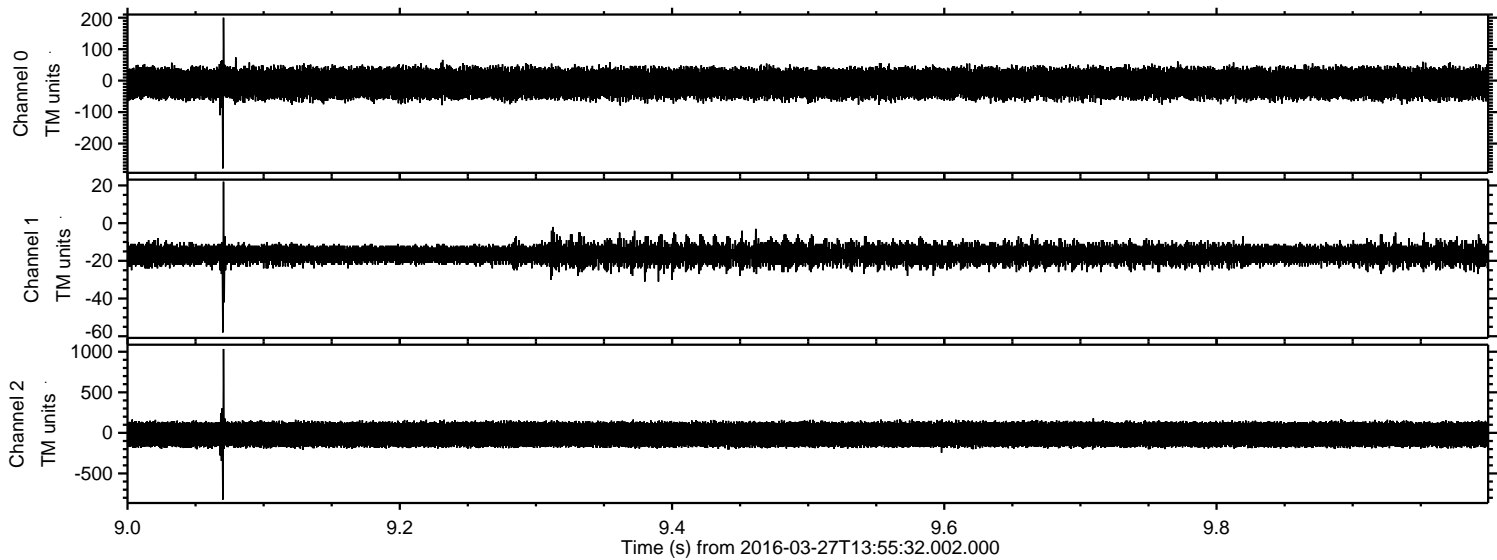
Channel 0  
mn: -198  
mx: 324  
 $\mu$ : -8.7  
 $\sigma$ : 26.2

Channel 1  
mn: -103  
mx: 34  
 $\mu$ : -16.4  
 $\sigma$ : 3.1

Channel 2  
mn: -1201  
mx: 794  
 $\mu$ : -19.1  
 $\sigma$ : 87.6



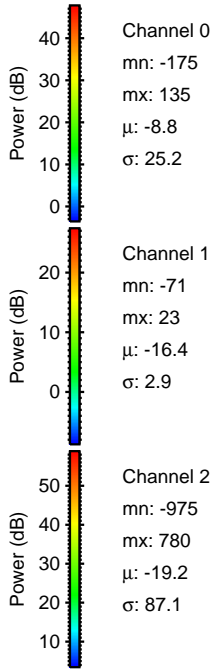
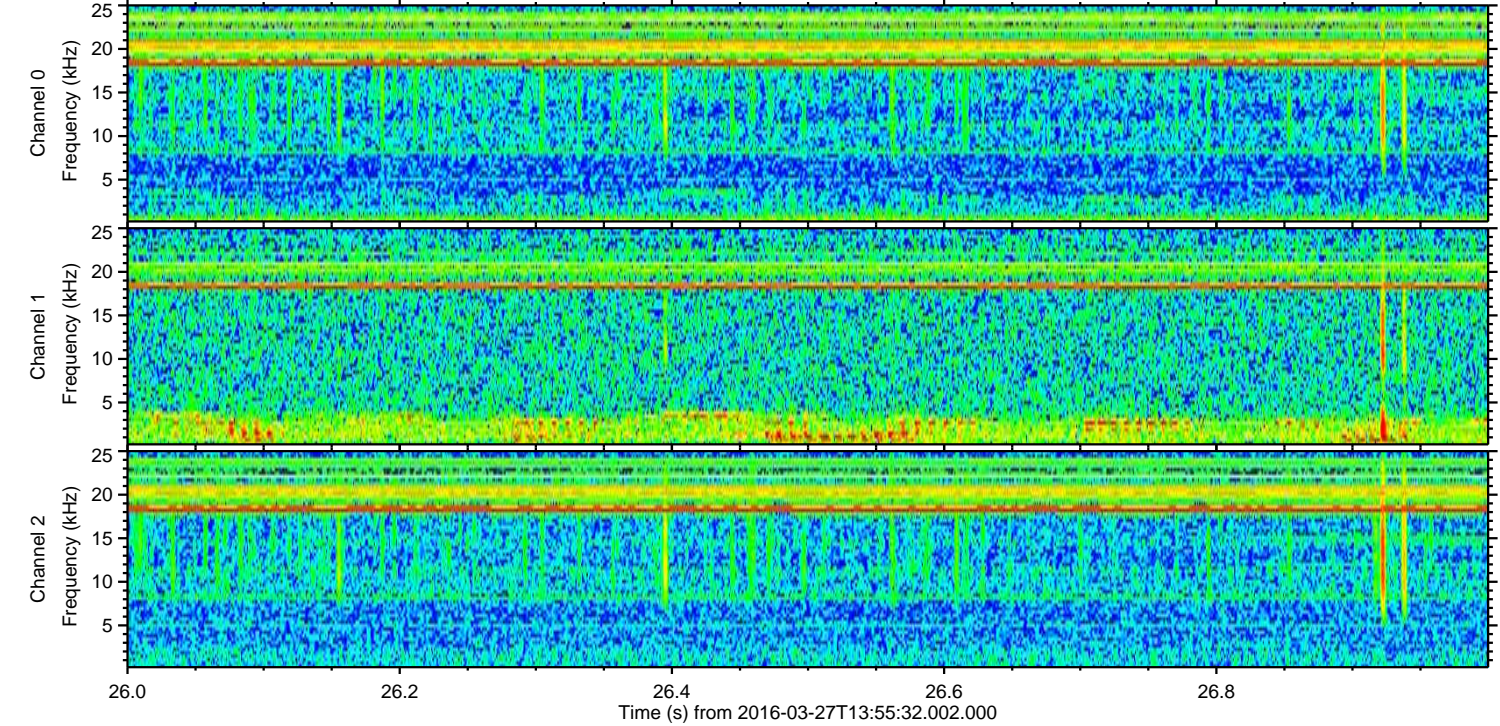
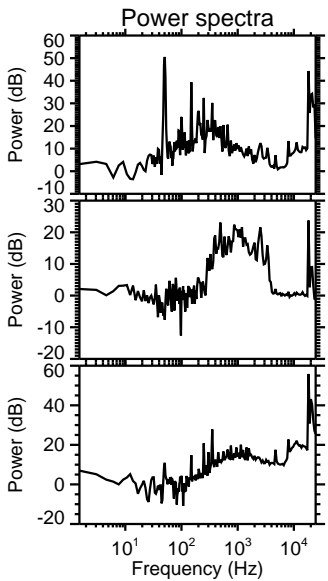
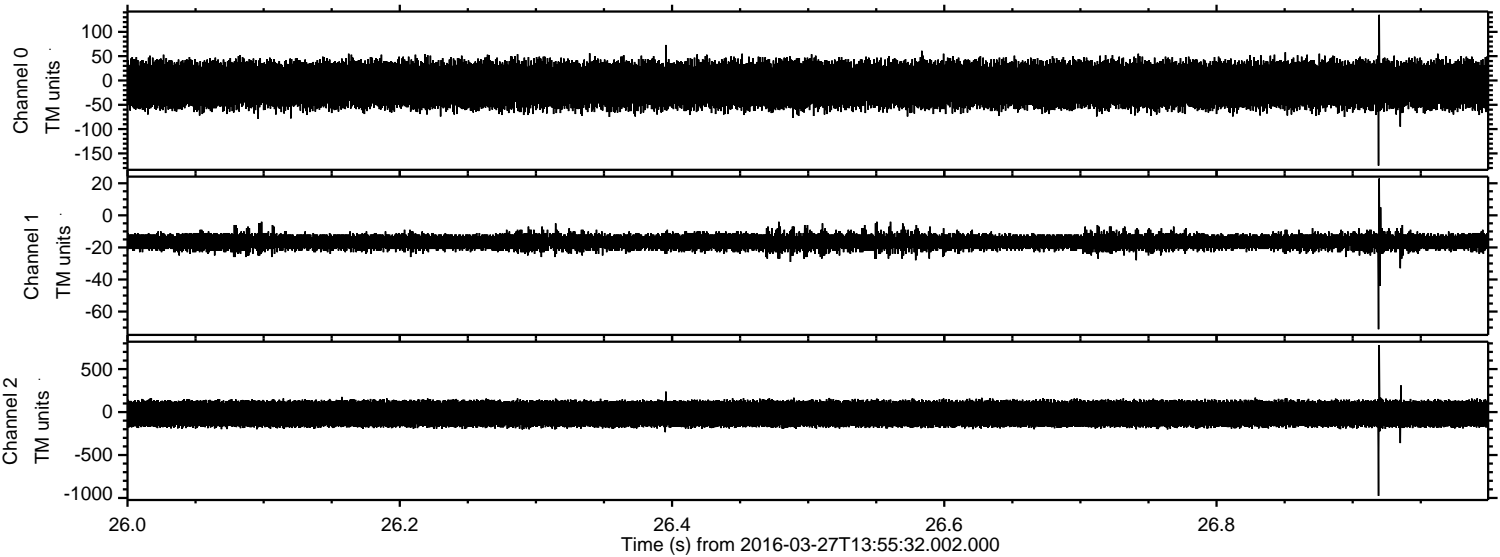
Processed Sat Apr 23 10:44:49 2016 by ELM ver.2012-10-06 from 001\_\_elm20160327\_135530\_\_dat00.bin





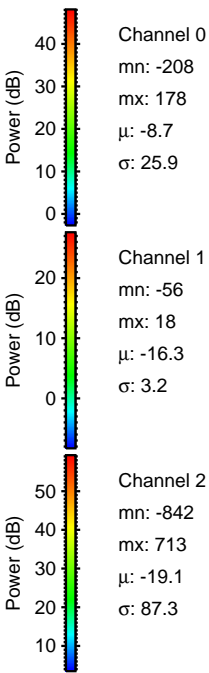
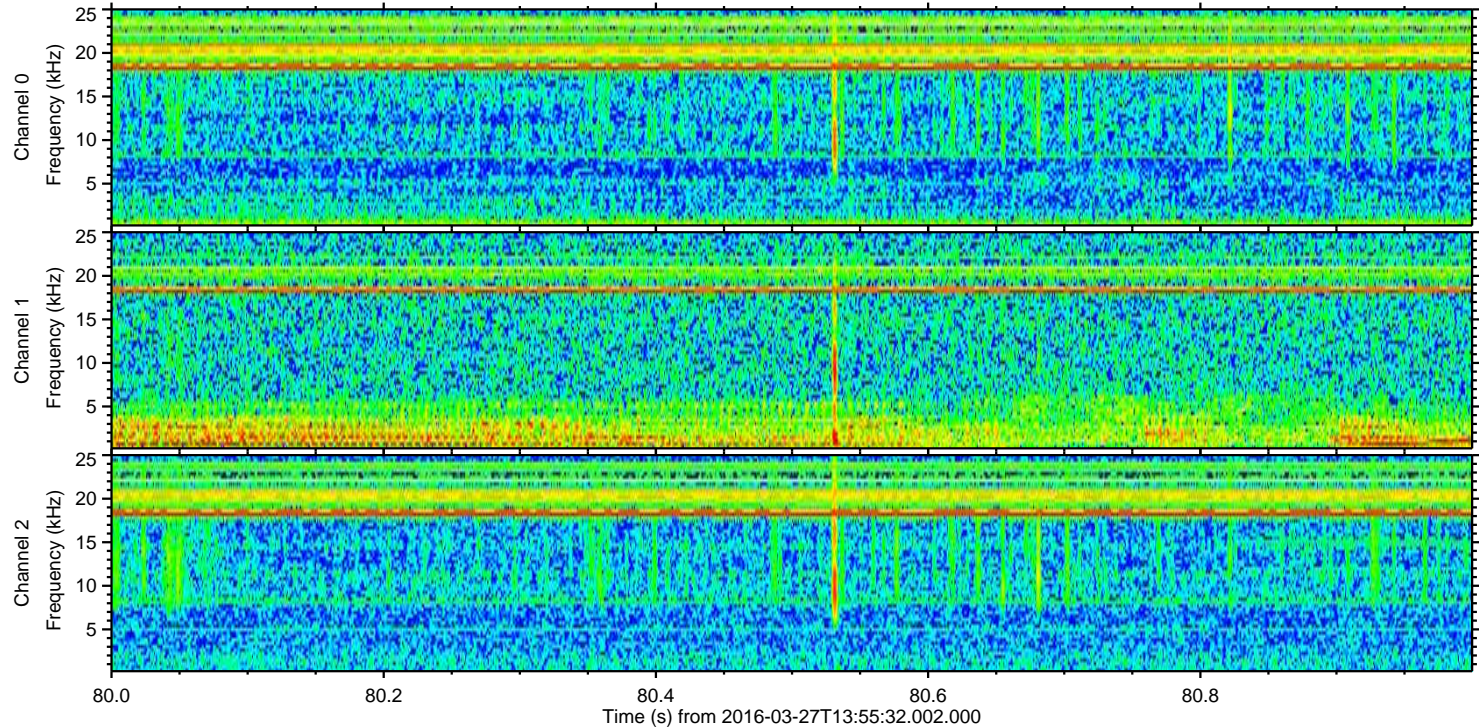
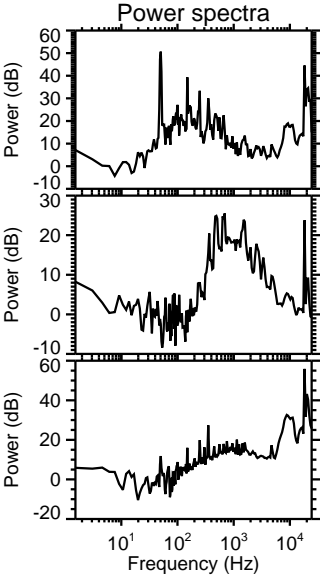
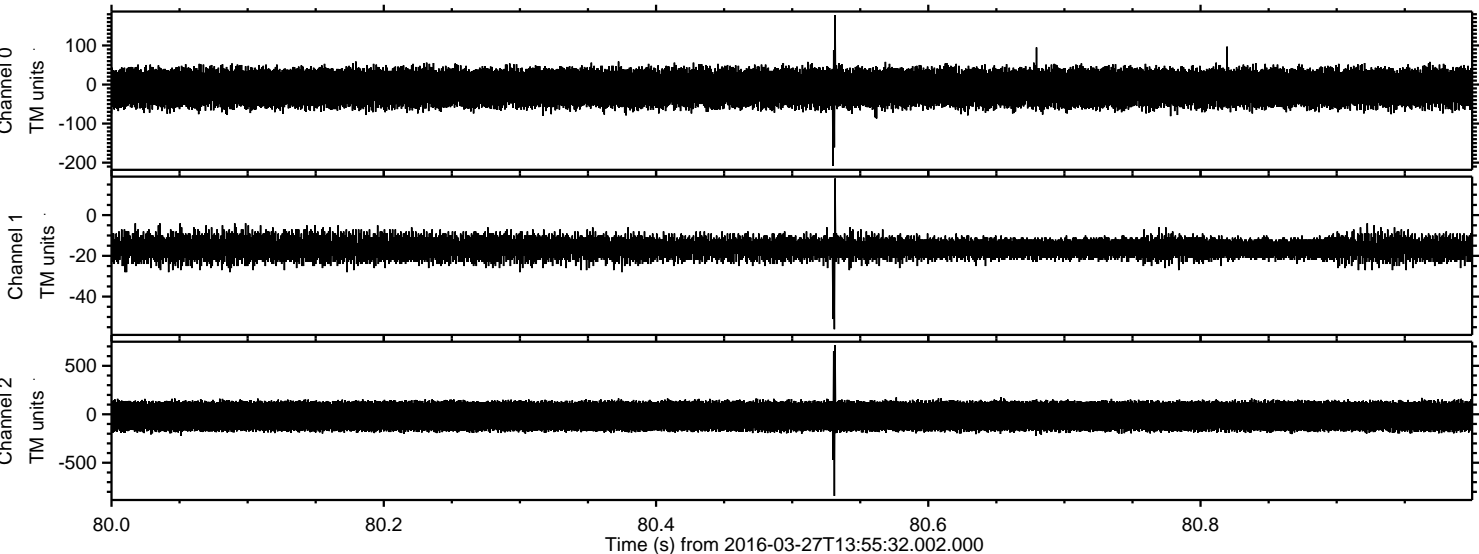
ELMAVAN 3D WAVEFORMS (Measured data sampled at 50 kHz) 51000 packets of 144 samples from 2016-03-27T13:55:32.002.000. Part 27/147

Processed Sat Apr 23 10:44:50 2016 by ELM ver.2012-10-06 from 001\_\_elm20160327\_135530\_\_dat00.bin



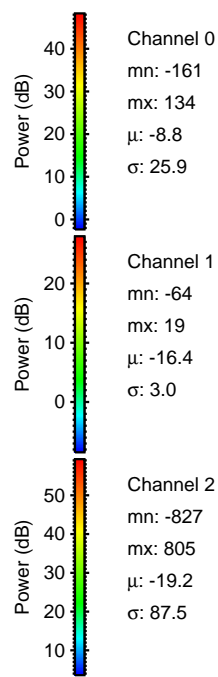
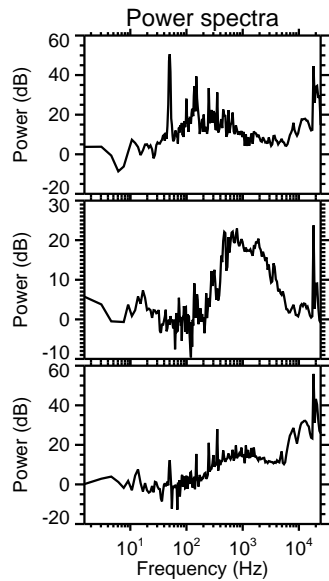
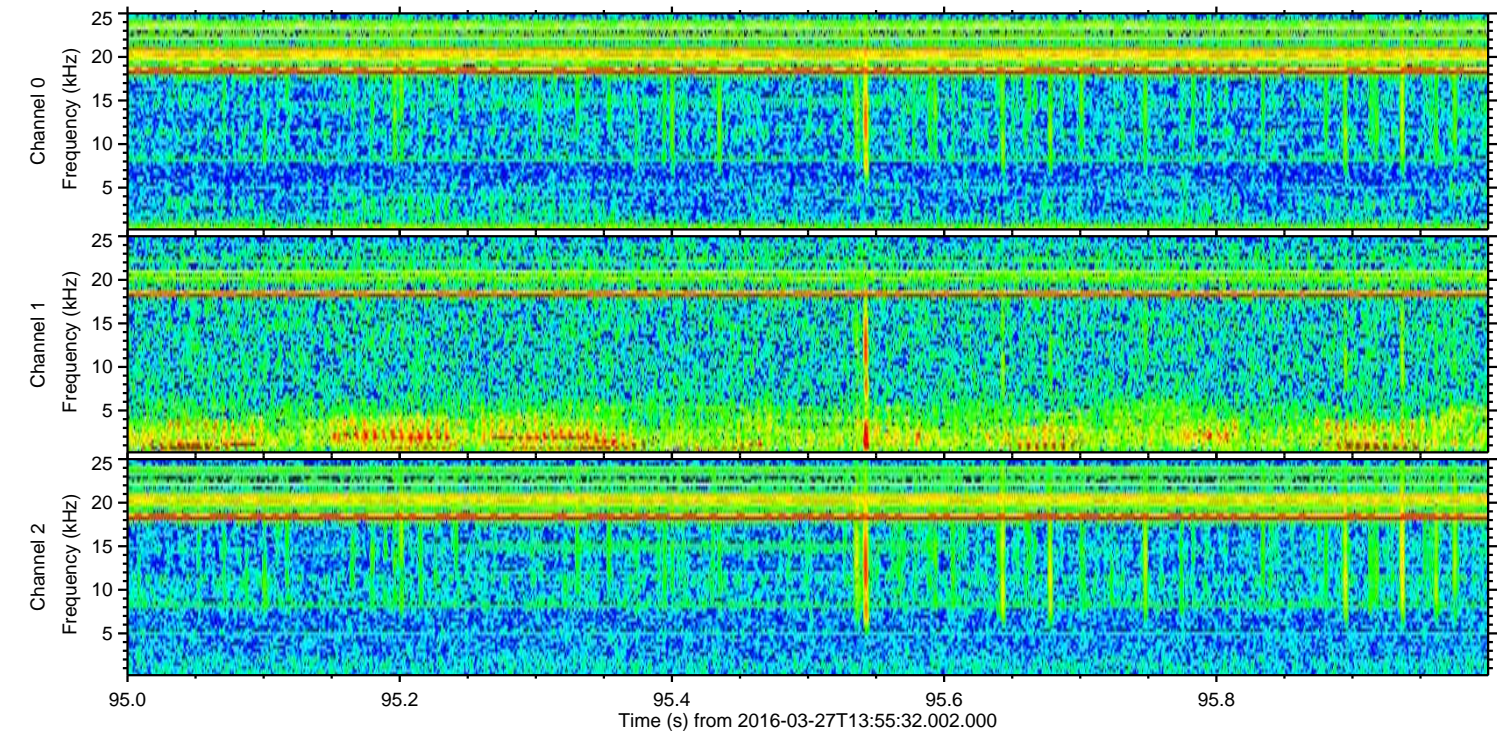
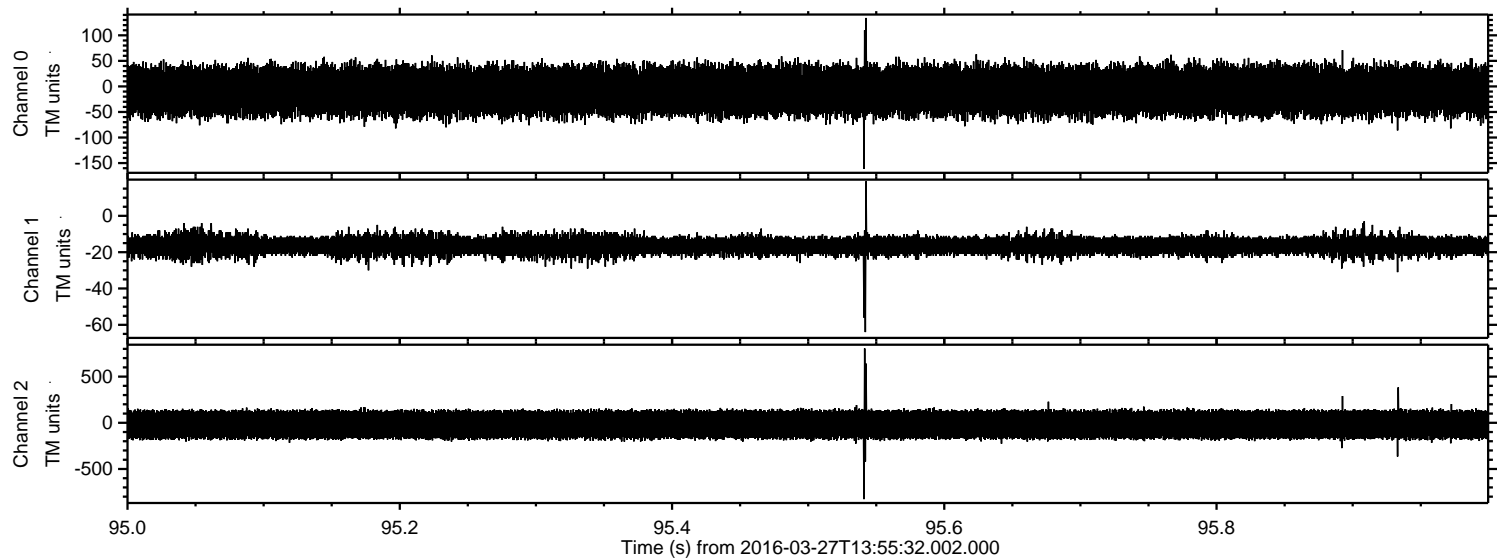


Processed Sat Apr 23 10:44:51 2016 by ELM ver.2012-10-06 from 001\_\_elm20160327\_135530\_\_dat00.bin





Processed Sat Apr 23 10:44:53 2016 by ELM ver.2012-10-06 from 001\_\_elm20160327\_135530\_\_dat00.bin



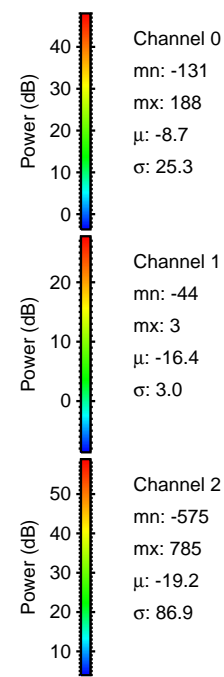
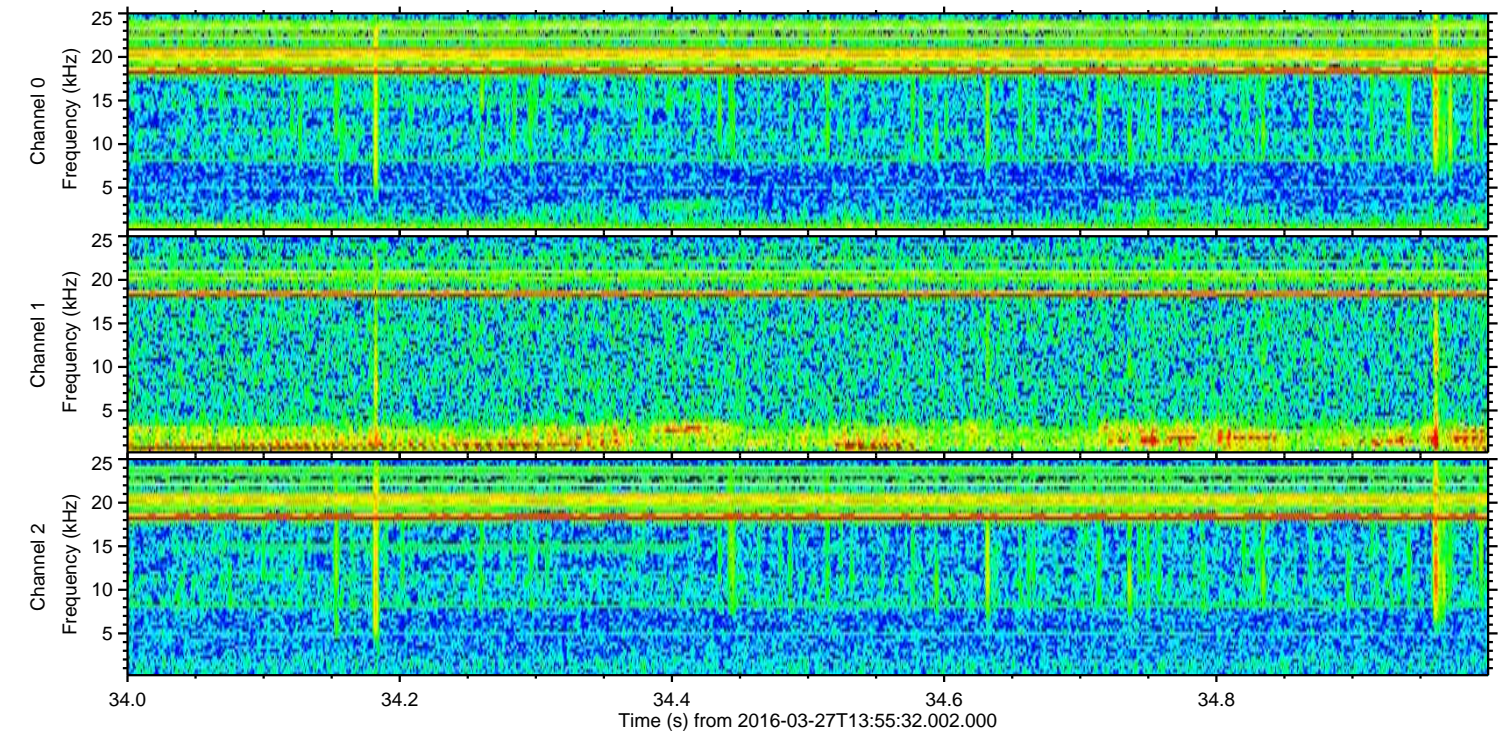
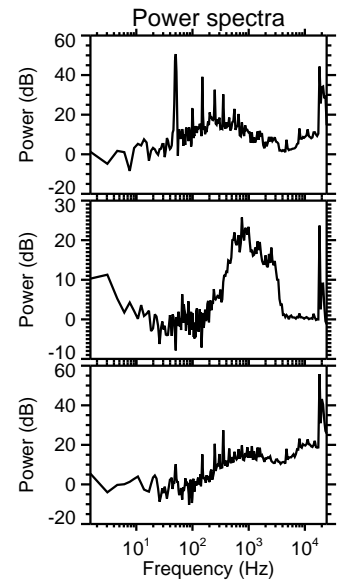
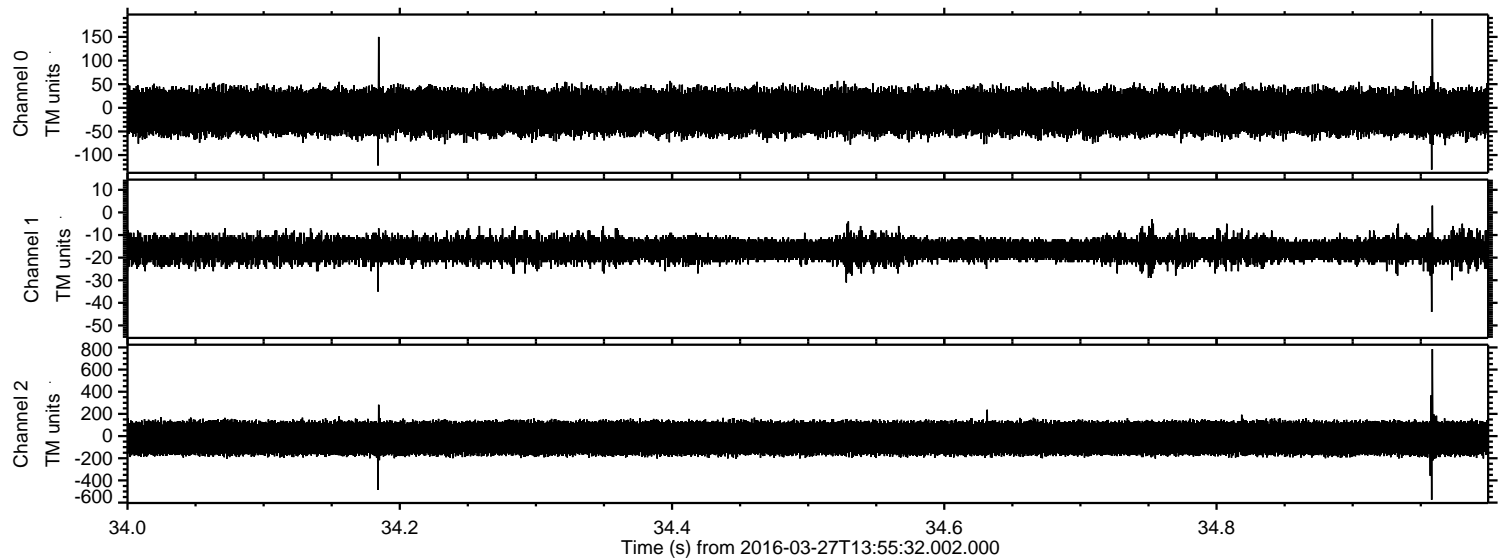
Channel 0  
mn: -161  
mx: 134  
 $\mu$ : -8.8  
 $\sigma$ : 25.9

Channel 1  
mn: -64  
mx: 19  
 $\mu$ : -16.4  
 $\sigma$ : 3.0

Channel 2  
mn: -827  
mx: 805  
 $\mu$ : -19.2  
 $\sigma$ : 87.5

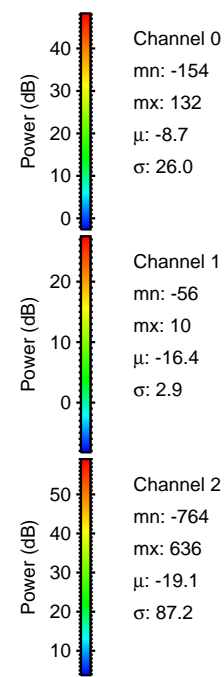
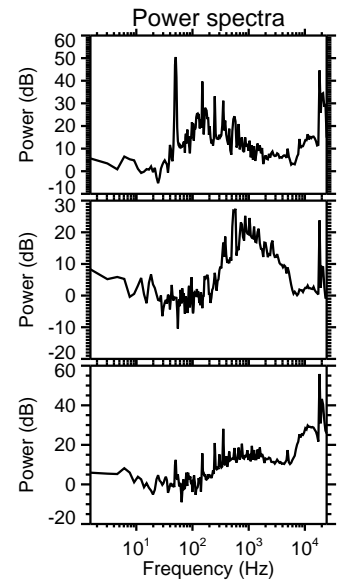
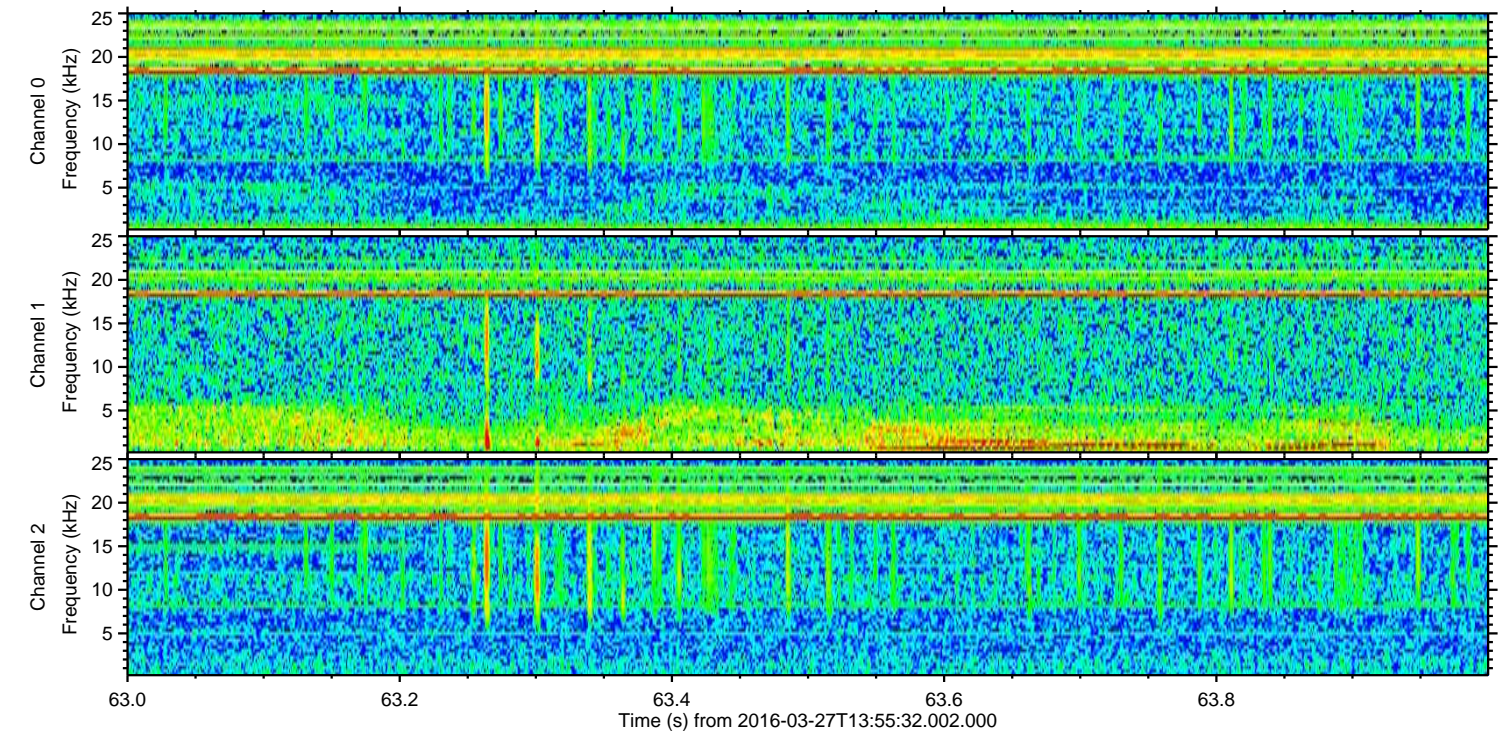
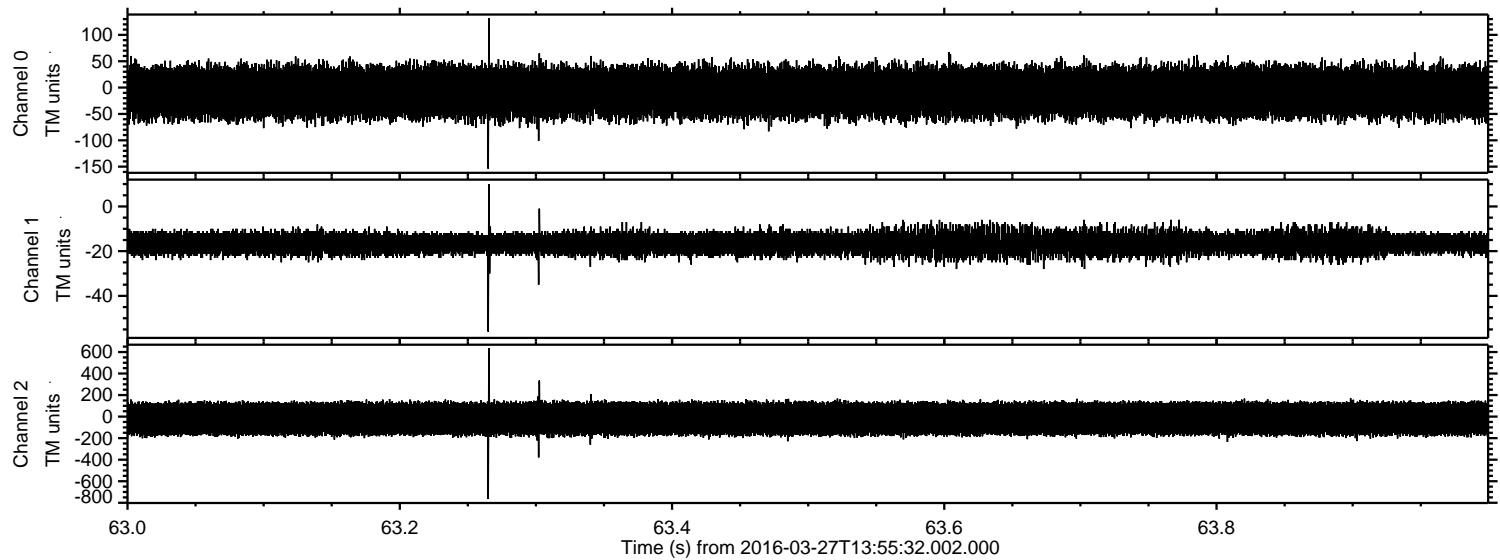


Processed Sat Apr 23 10:44:54 2016 by ELM ver.2012-10-06 from 001\_\_elm20160327\_135530\_\_dat00.bin





Processed Sat Apr 23 10:44:55 2016 by ELM ver.2012-10-06 from 001\_\_elm20160327\_135530\_\_dat00.bin





Processed Sat Apr 23 10:44:56 2016 by ELM ver.2012-10-06 from 001\_\_elm20160327\_135530\_\_dat00.bin

