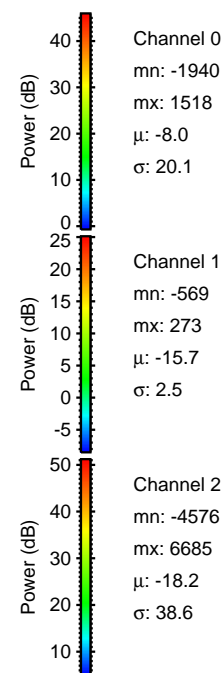
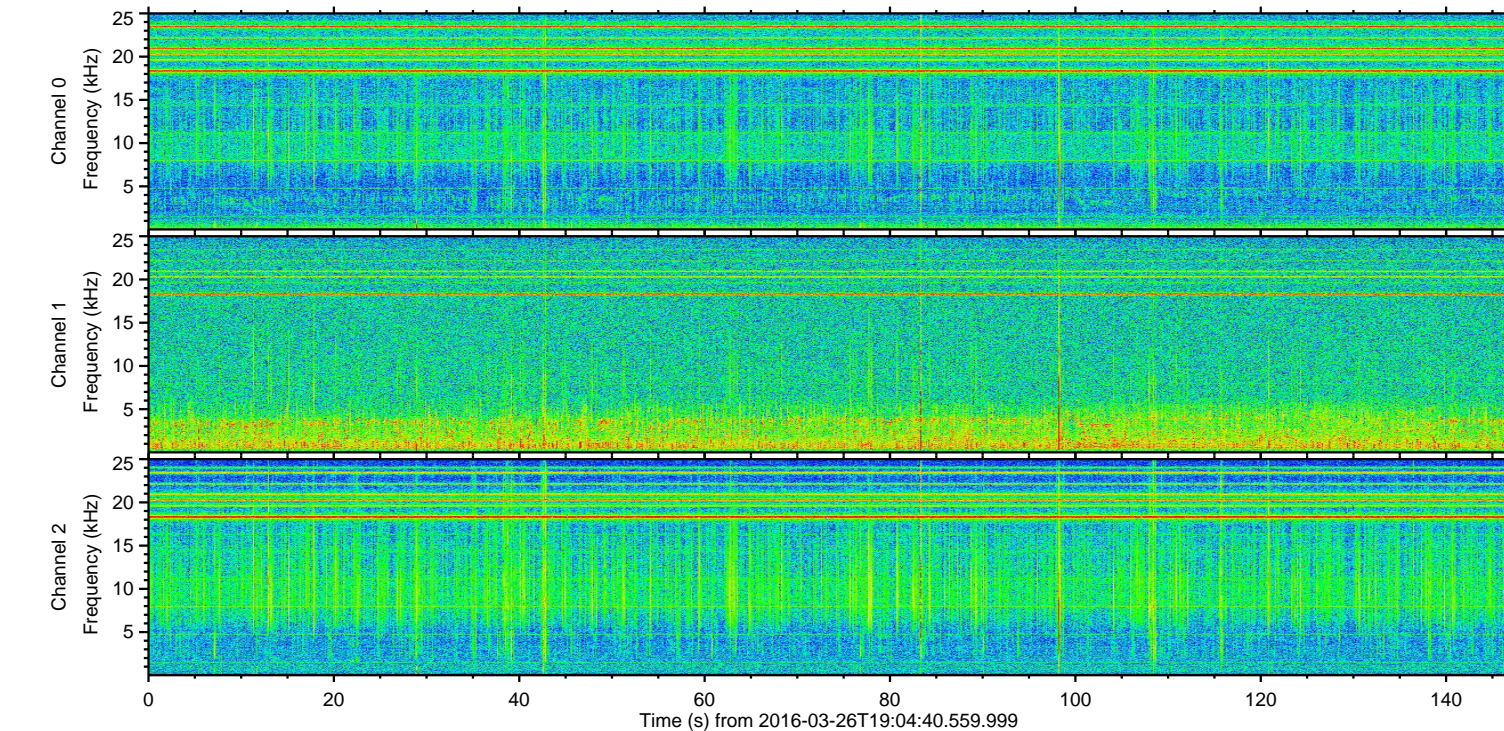
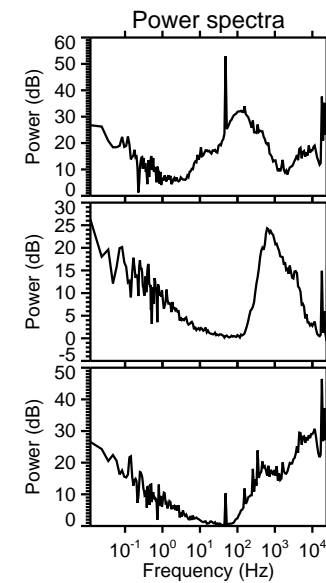
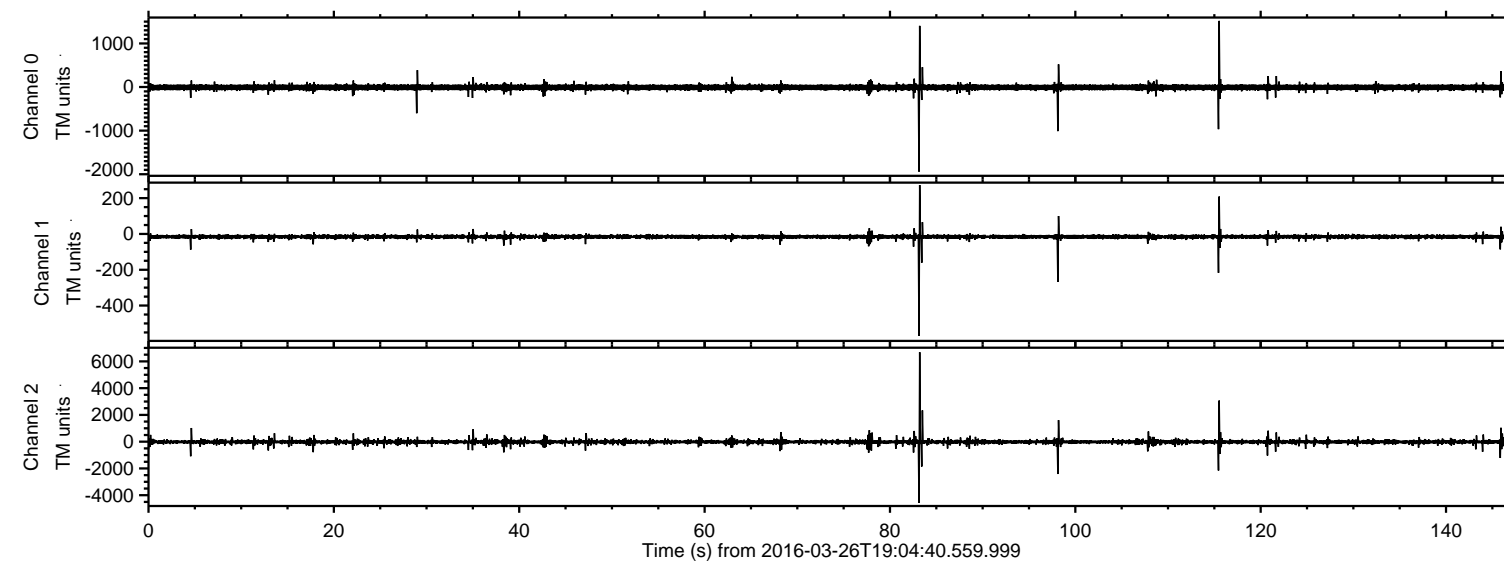


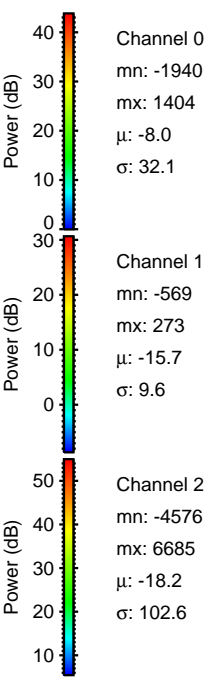
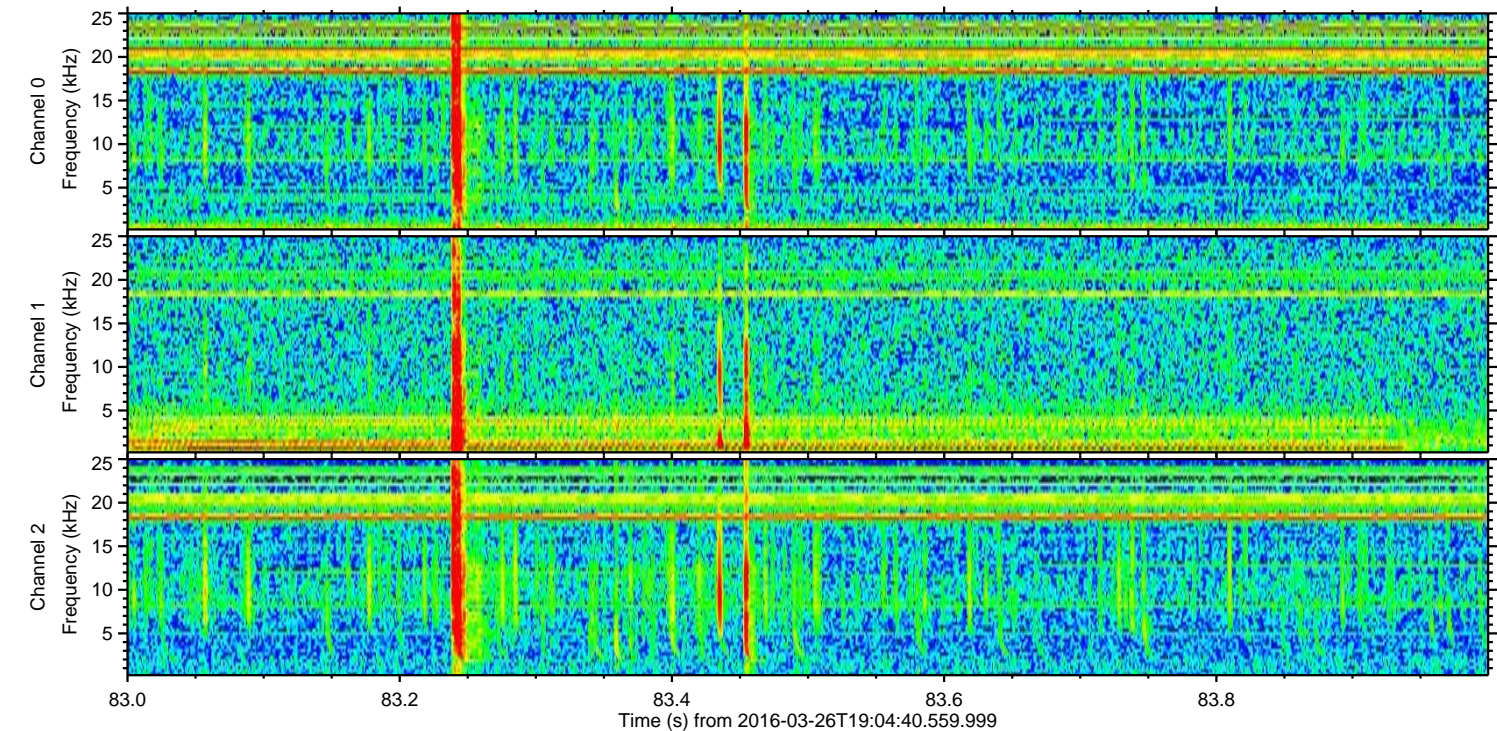
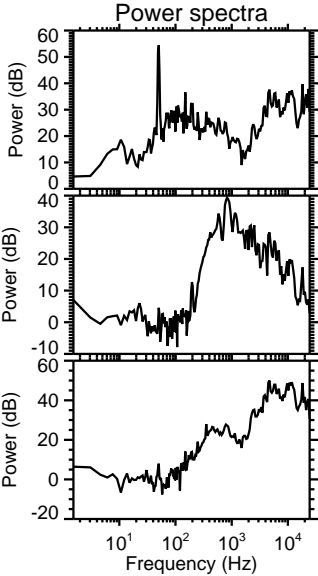
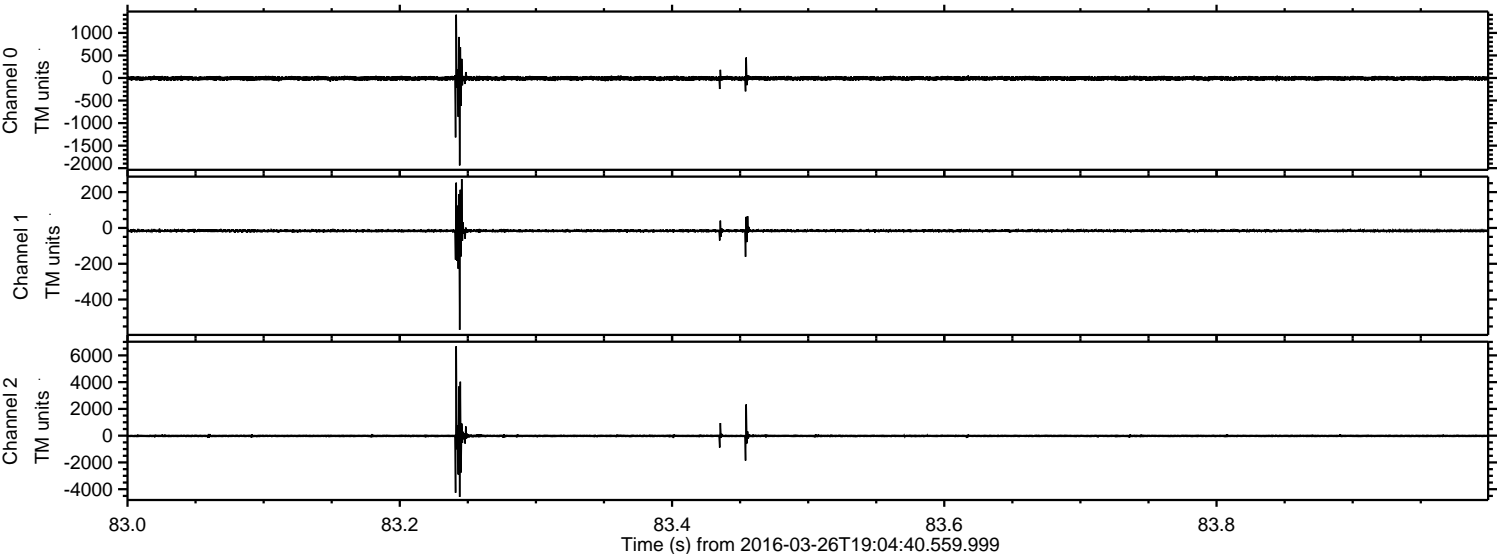
# ELMAVAN 3D WAVEFORMS (Measured data sampled at 50 kHz) 51000 packets of 144 samples from 2016-03-26T19:04:40.559.999.

Processed Sat Apr 23 05:54:17 2016 by ELM ver.2012-10-06 from 001\_\_elm20160326\_190439\_\_dat00.bin





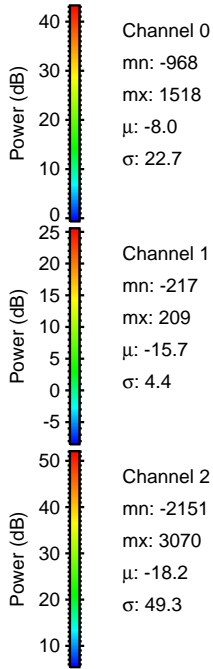
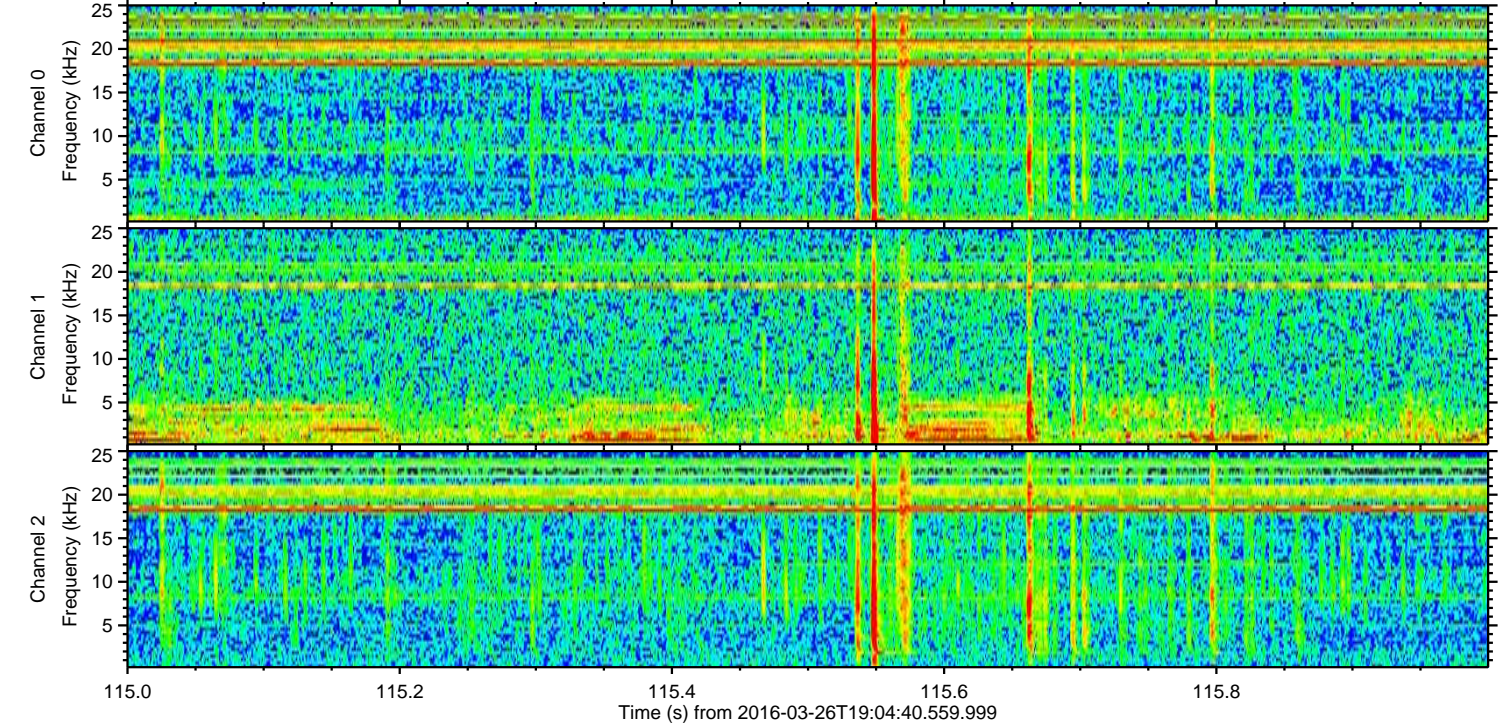
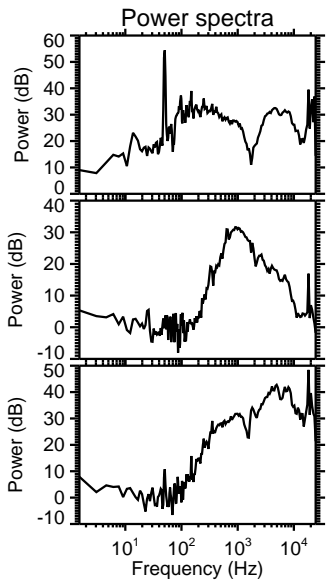
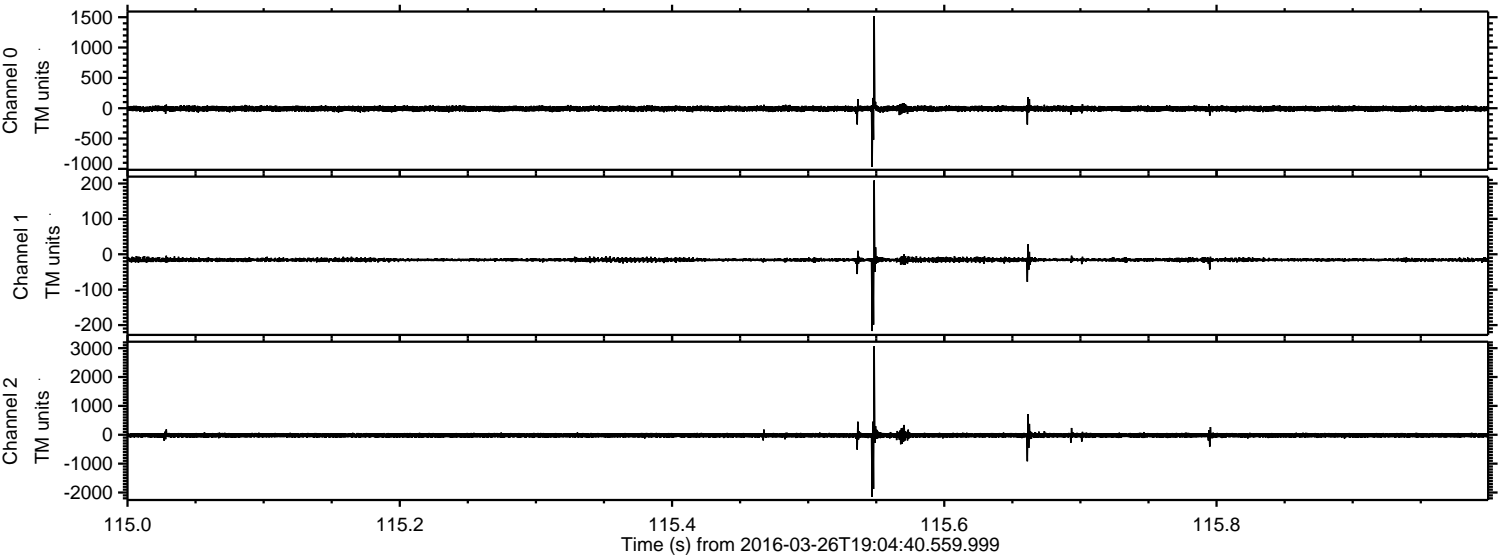
Processed Sat Apr 23 05:54:32 2016 by ELM ver.2012-10-06 from 001\_\_elm20160326\_190439\_\_dat00.bin





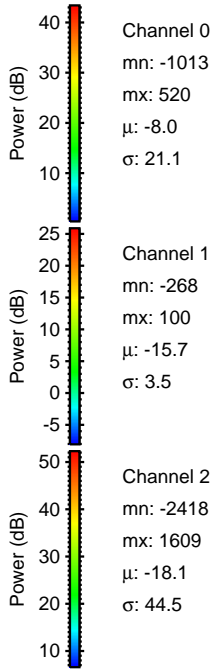
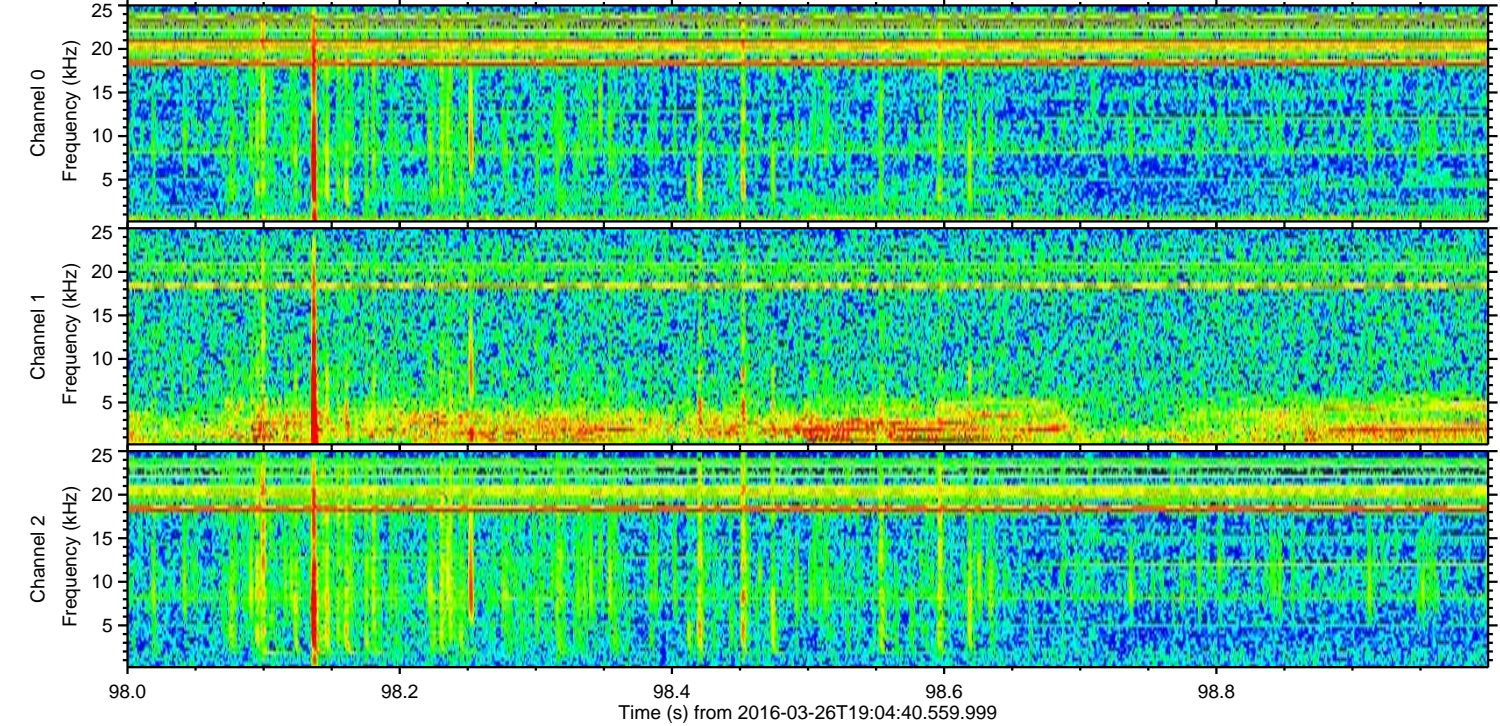
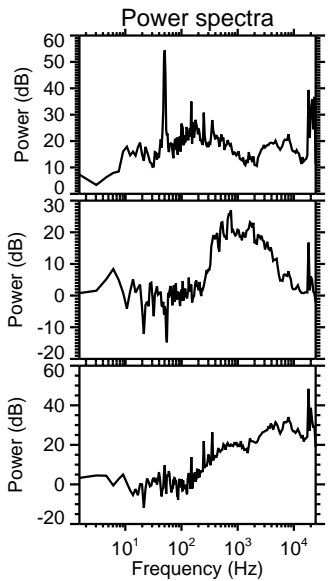
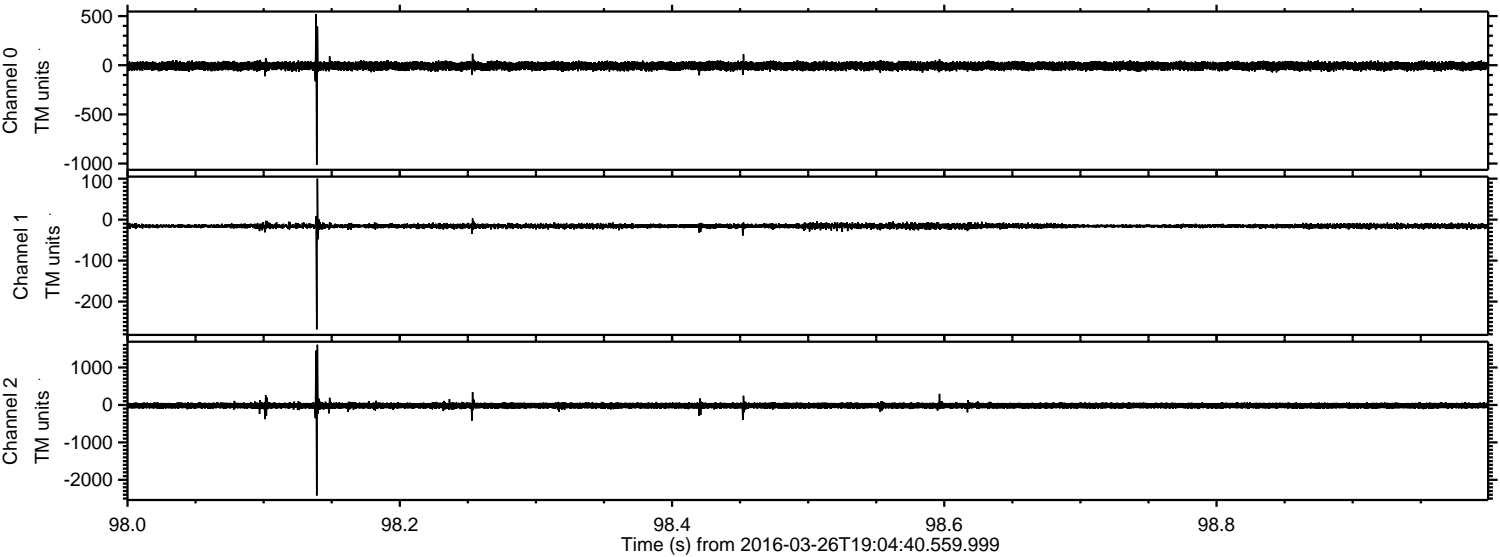
ELMAVAN 3D WAVEFORMS (Measured data sampled at 50 kHz) 51000 packets of 144 samples from 2016-03-26T19:04:40.559.999. Part 116/147

Processed Sat Apr 23 05:54:33 2016 by ELM ver.2012-10-06 from 001\_\_elm20160326\_190439\_\_dat00.bin





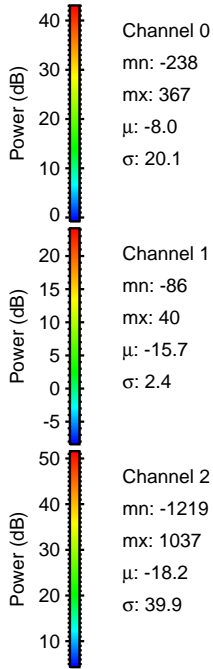
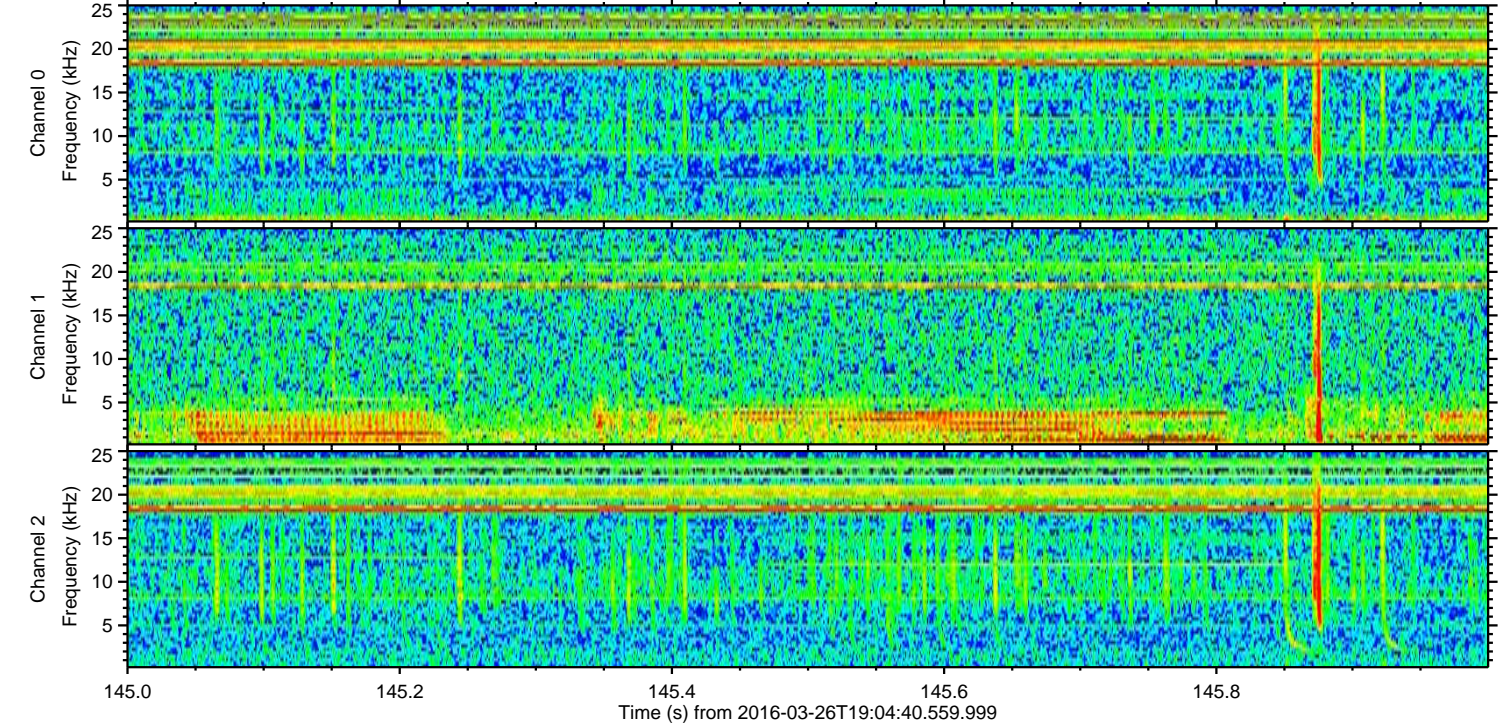
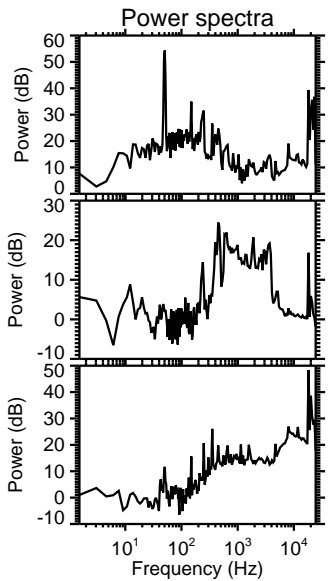
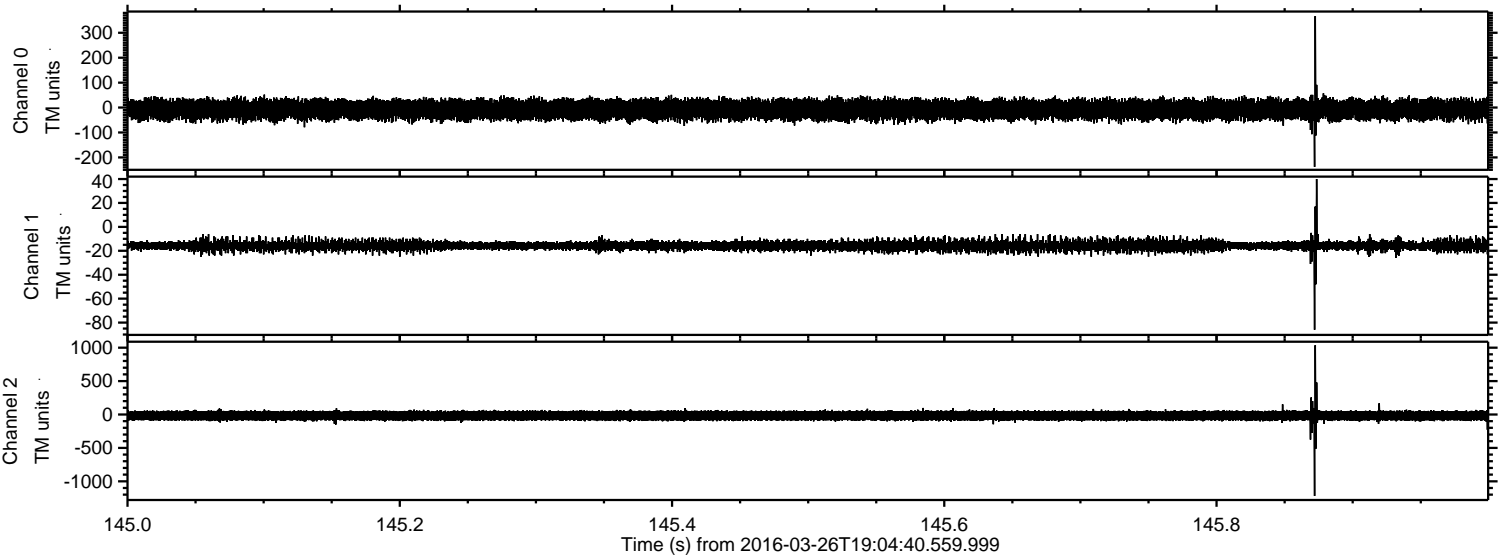
Processed Sat Apr 23 05:54:34 2016 by ELM ver.2012-10-06 from 001\_\_elm20160326\_190439\_\_dat00.bin





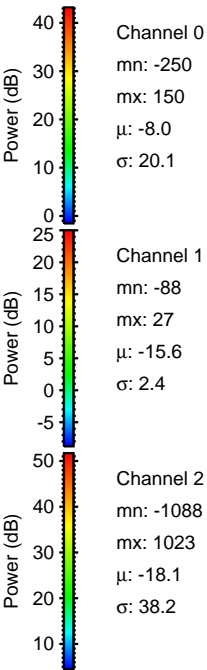
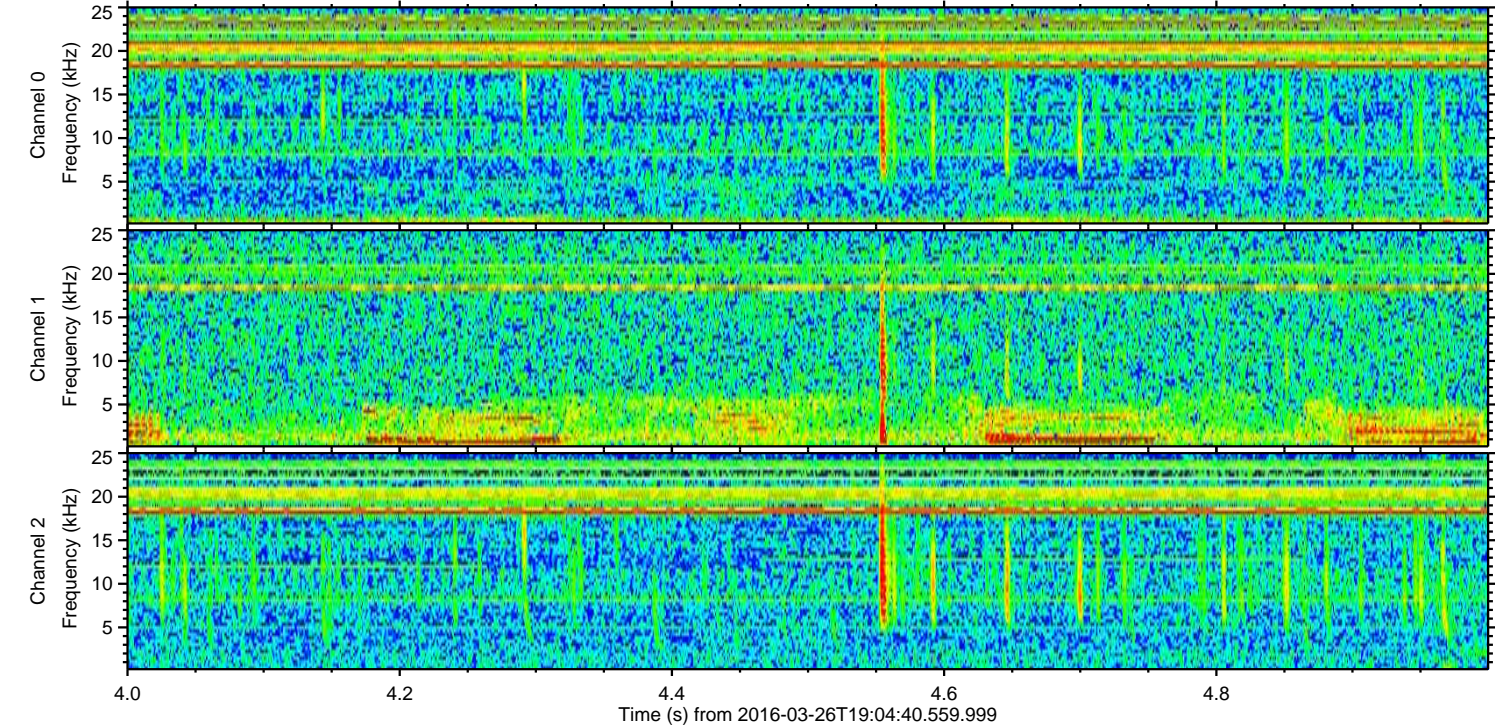
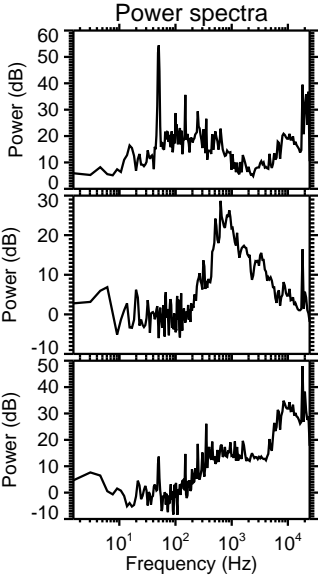
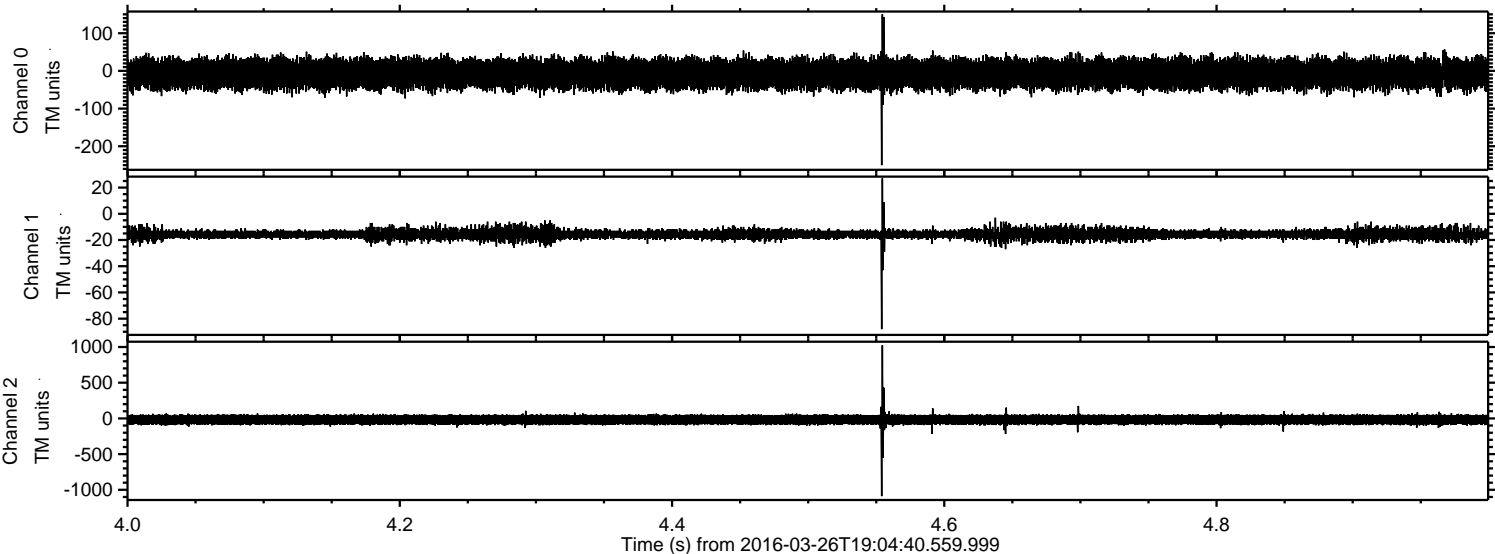
ELMAVAN 3D WAVEFORMS (Measured data sampled at 50 kHz) 51000 packets of 144 samples from 2016-03-26T19:04:40.559.999. Part 146/147

Processed Sat Apr 23 05:54:35 2016 by ELM ver.2012-10-06 from 001\_\_elm20160326\_190439\_\_dat00.bin





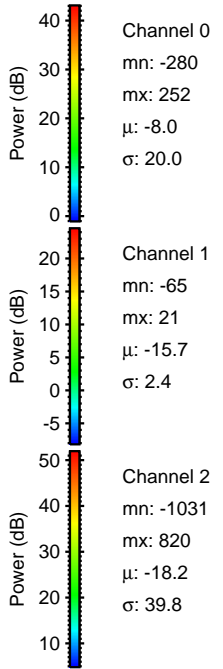
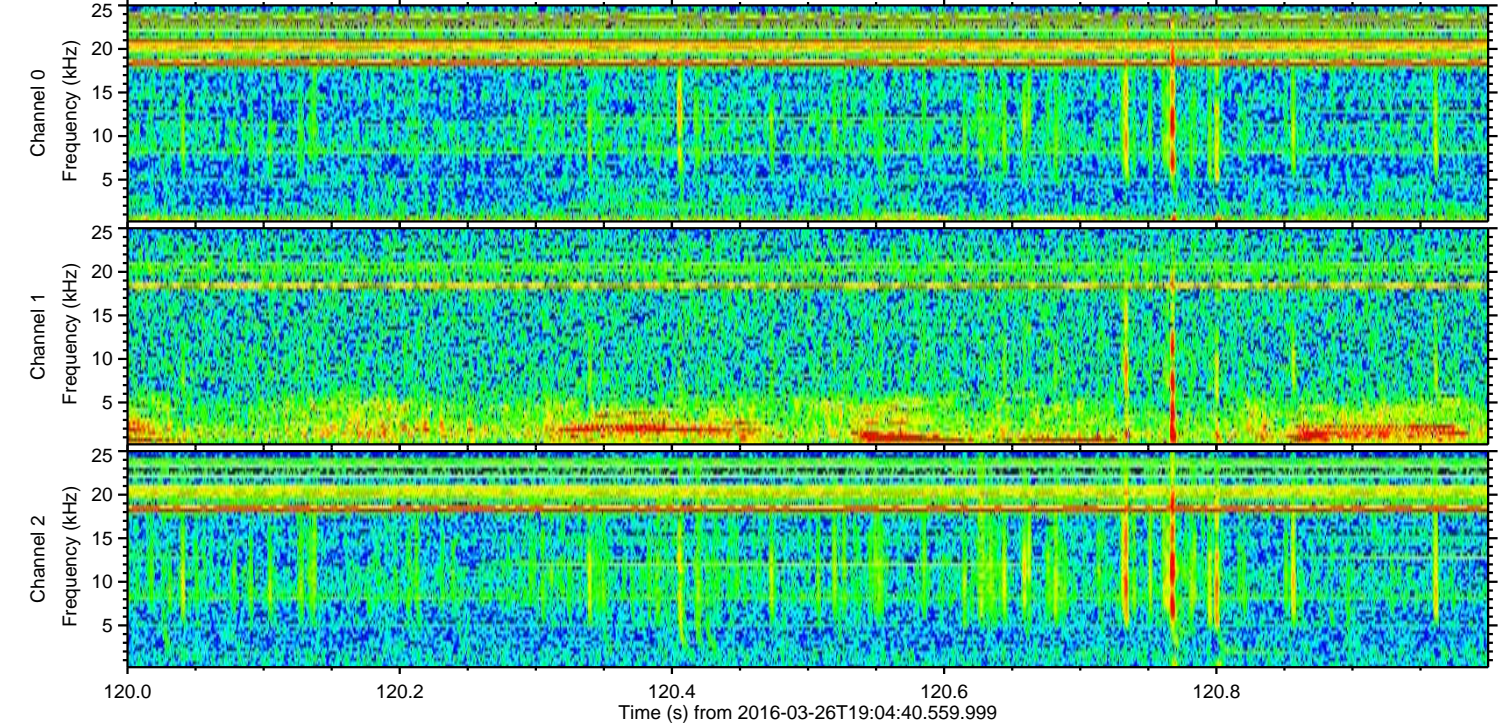
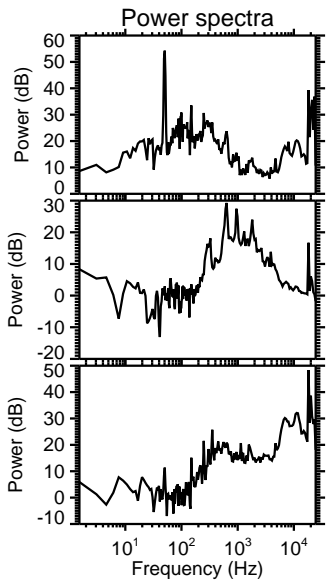
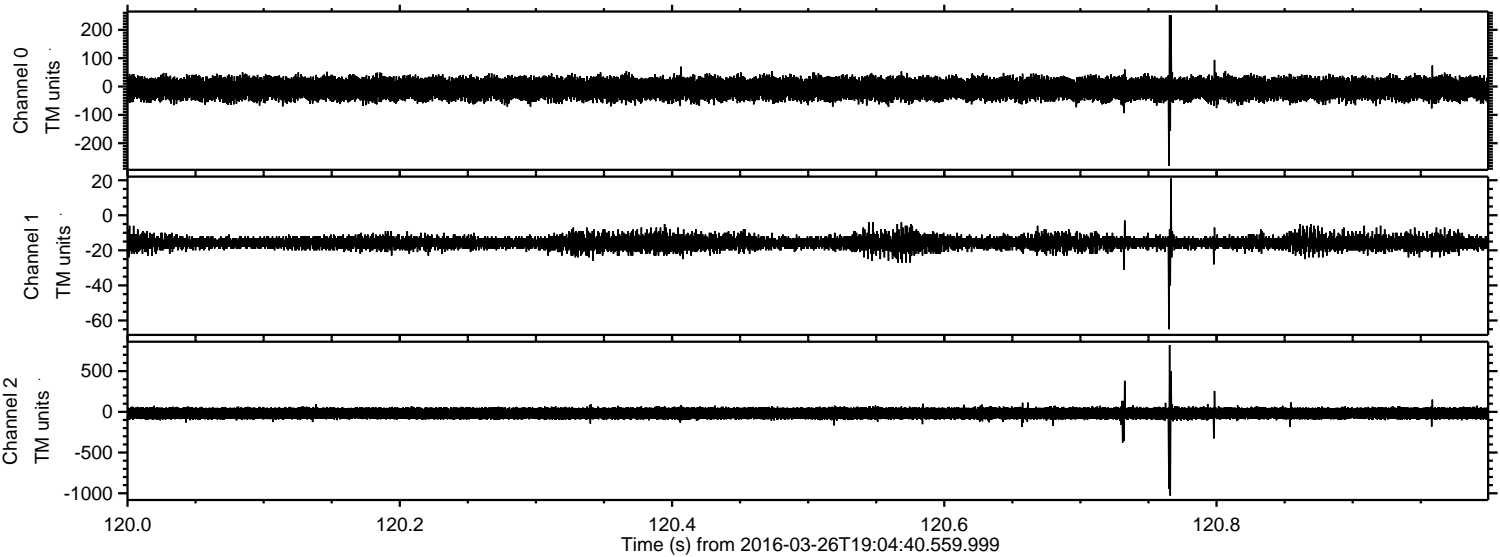
Processed Sat Apr 23 05:54:36 2016 by ELM ver.2012-10-06 from 001\_\_elm20160326\_190439\_\_dat00.bin





ELMAVAN 3D WAVEFORMS (Measured data sampled at 50 kHz) 51000 packets of 144 samples from 2016-03-26T19:04:40.559.999. Part 121/147

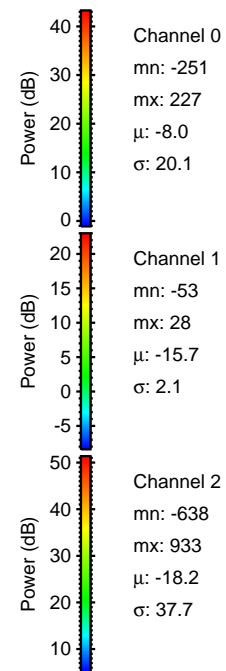
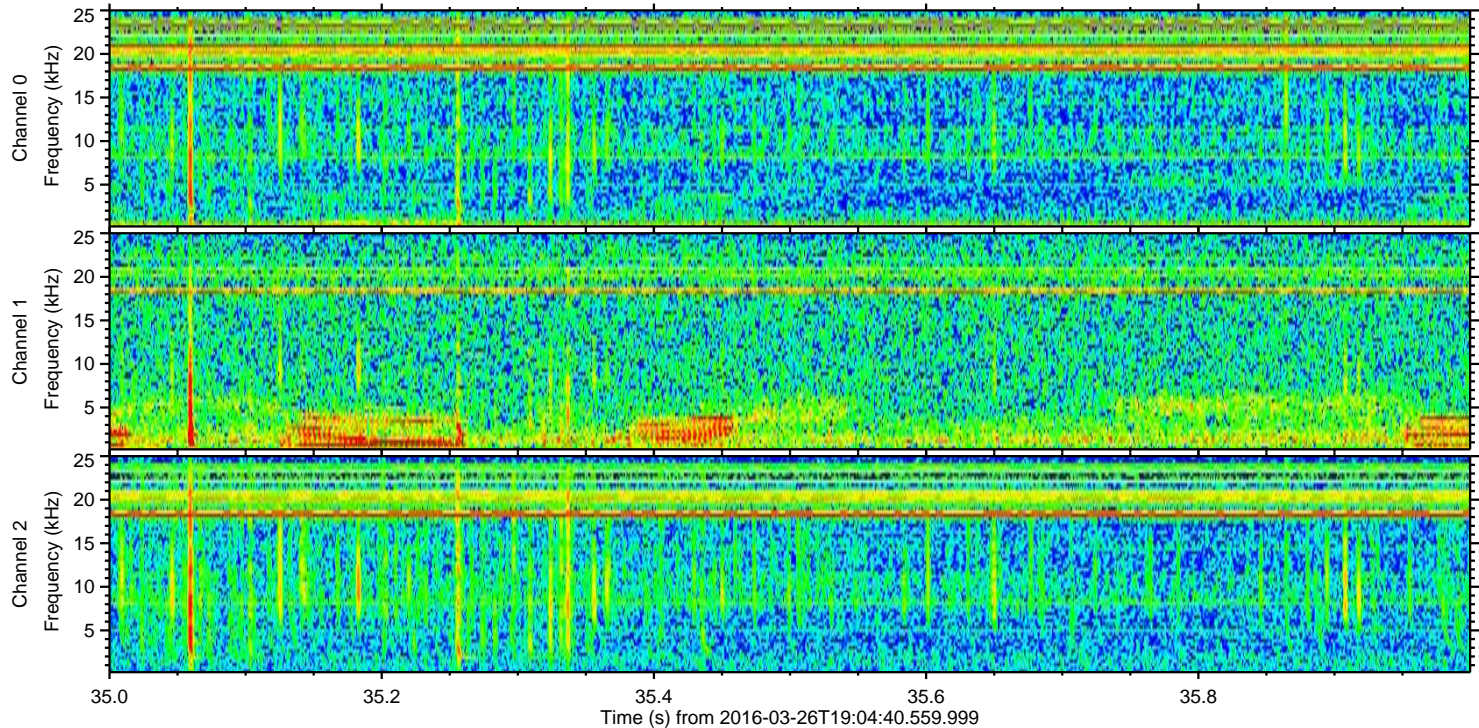
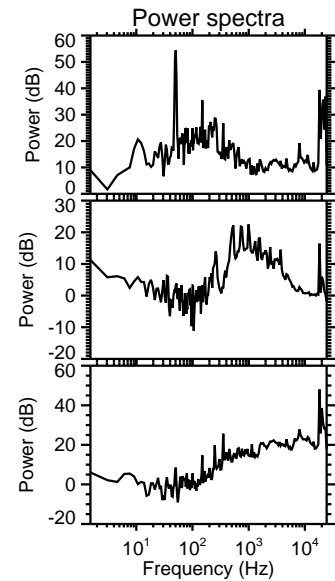
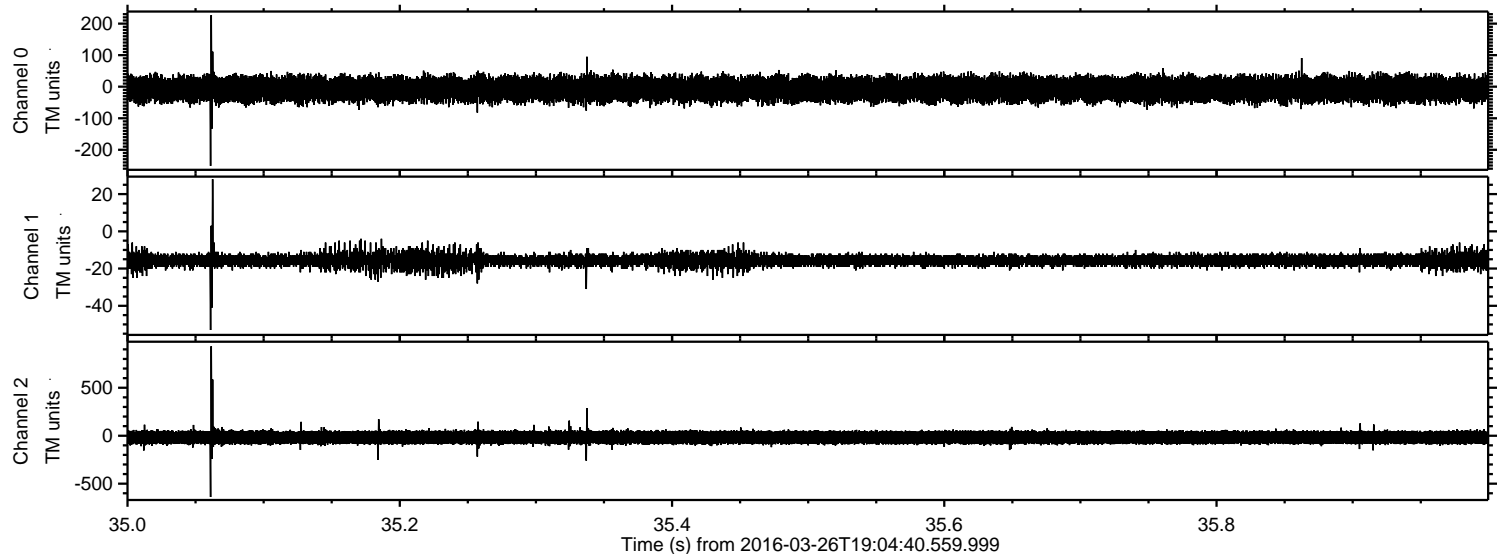
Processed Sat Apr 23 05:54:37 2016 by ELM ver.2012-10-06 from 001\_\_elm20160326\_190439\_\_dat00.bin





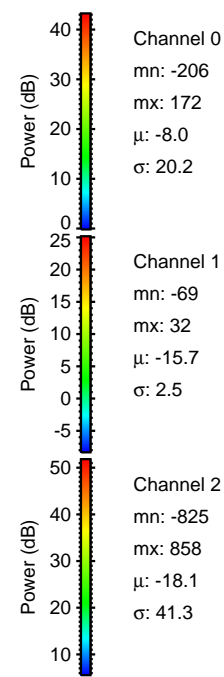
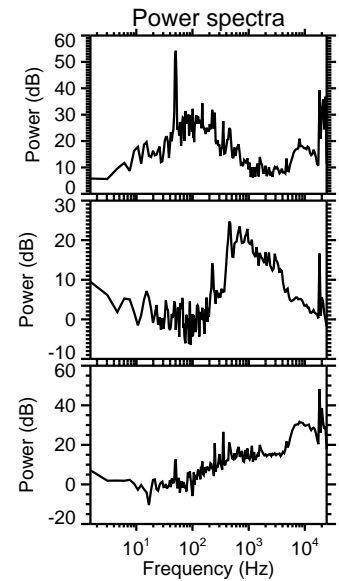
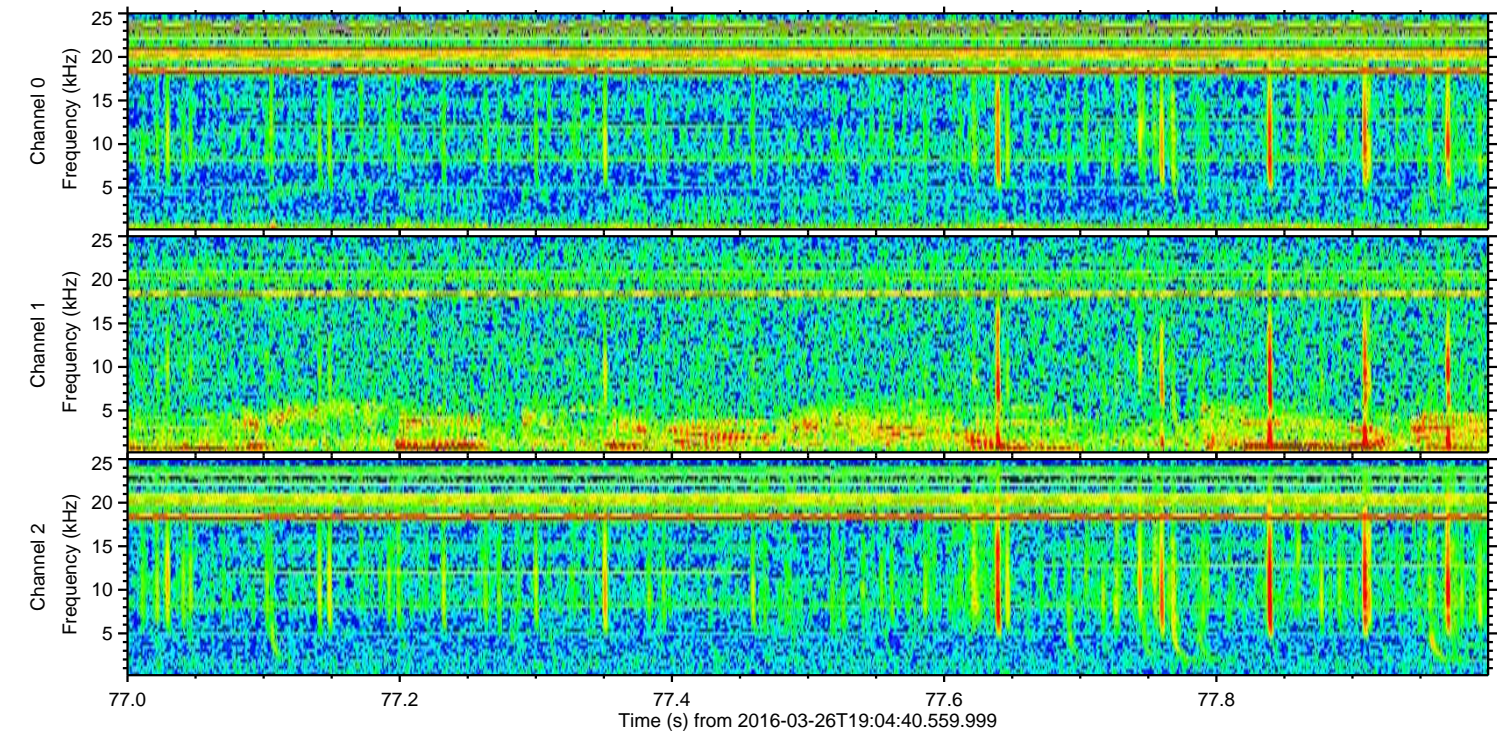
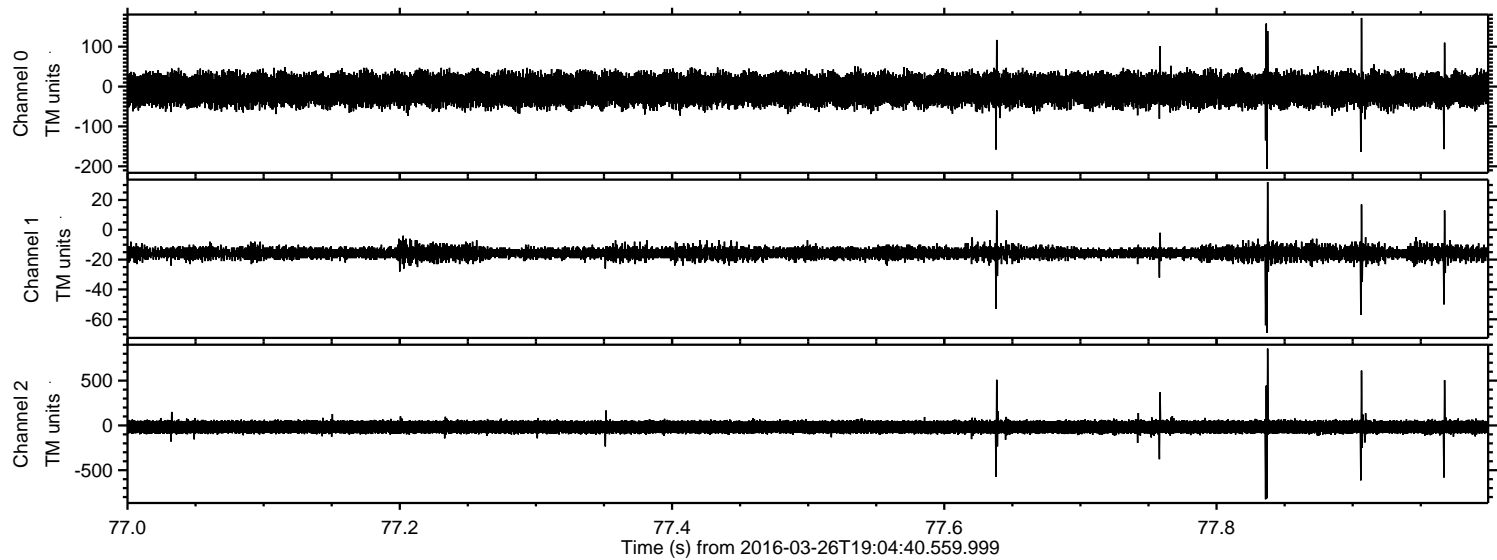
ELMAVAN 3D WAVEFORMS (Measured data sampled at 50 kHz) 51000 packets of 144 samples from 2016-03-26T19:04:40.559.999. Part 36/147

Processed Sat Apr 23 05:54:38 2016 by ELM ver.2012-10-06 from 001\_\_elm20160326\_190439\_\_dat00.bin



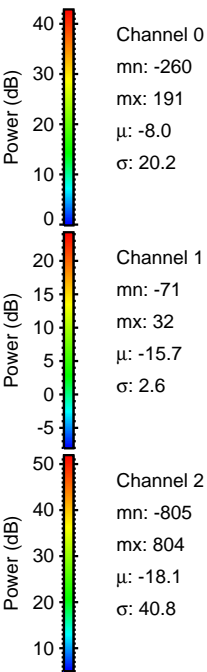
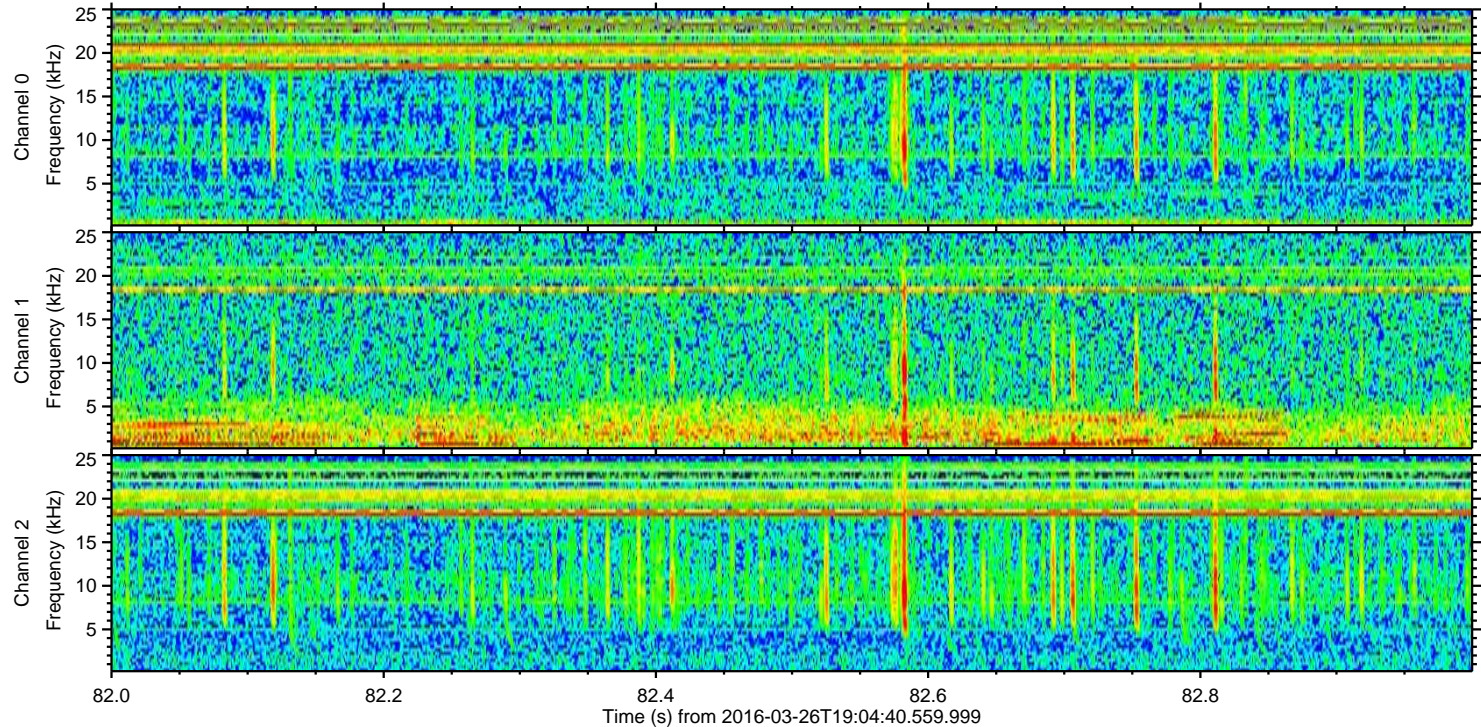
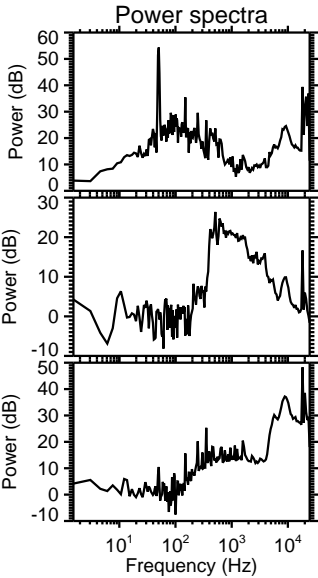
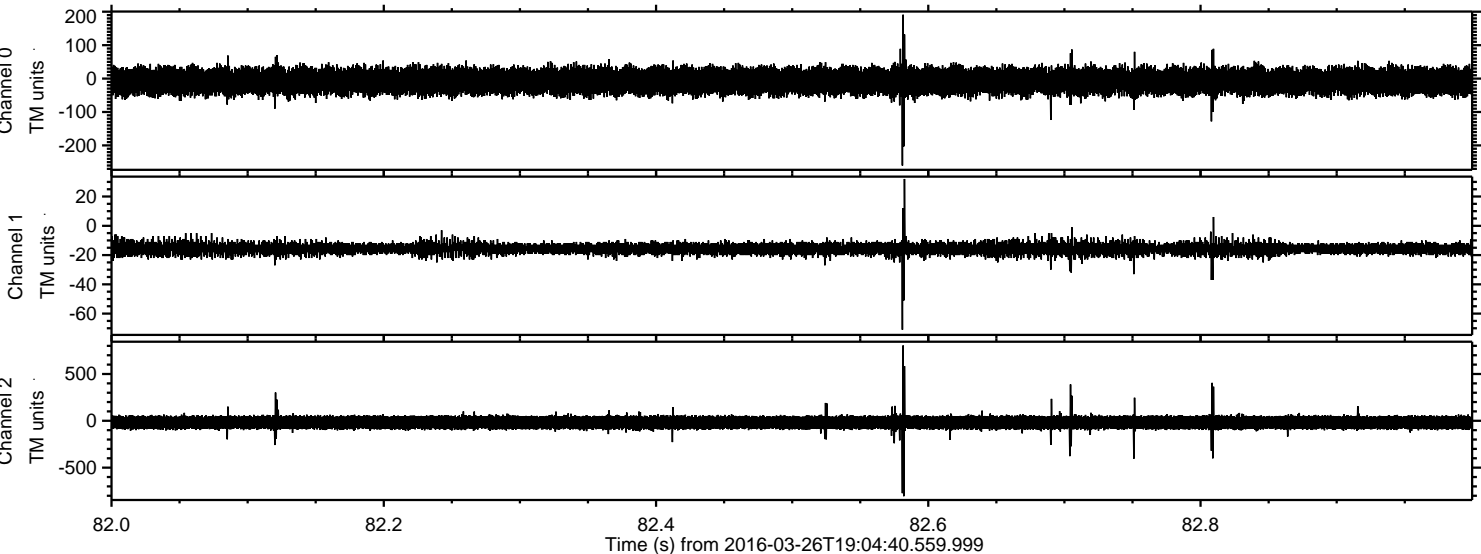


Processed Sat Apr 23 05:54:39 2016 by ELM ver.2012-10-06 from 001\_\_elm20160326\_190439\_\_dat00.bin





Processed Sat Apr 23 05:54:40 2016 by ELM ver.2012-10-06 from 001\_\_elm20160326\_190439\_\_dat00.bin





Processed Sat Apr 23 05:54:41 2016 by ELM ver.2012-10-06 from 001\_\_elm20160326\_190439\_\_dat00.bin

