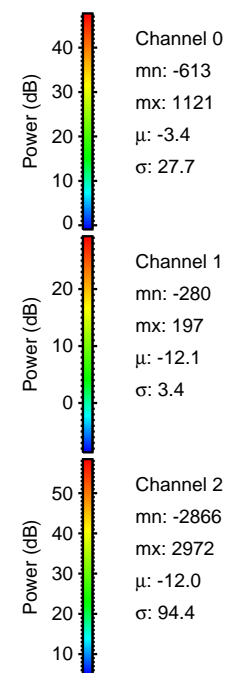
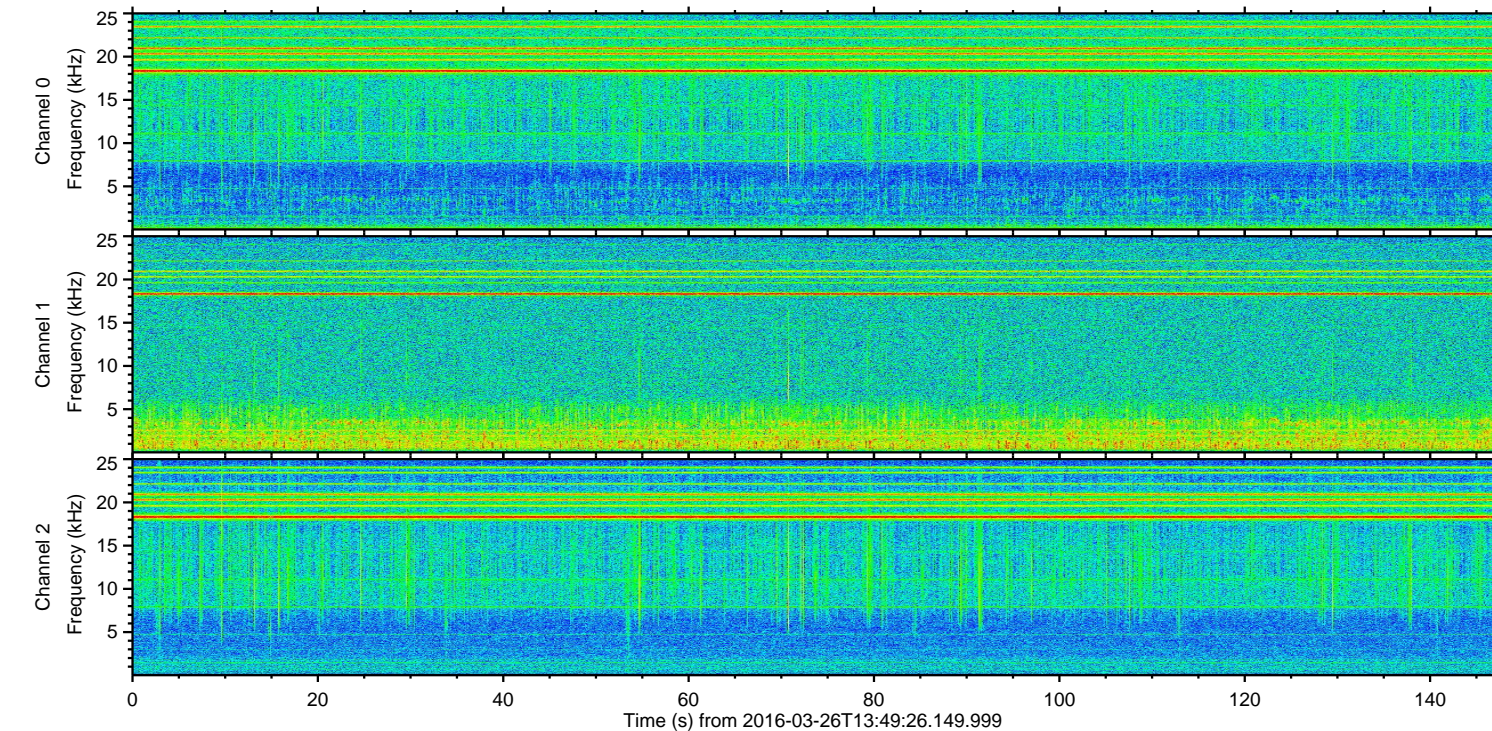
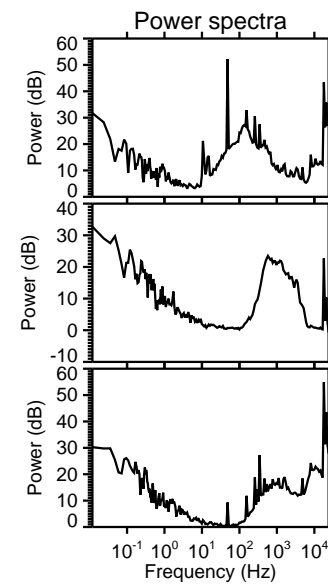
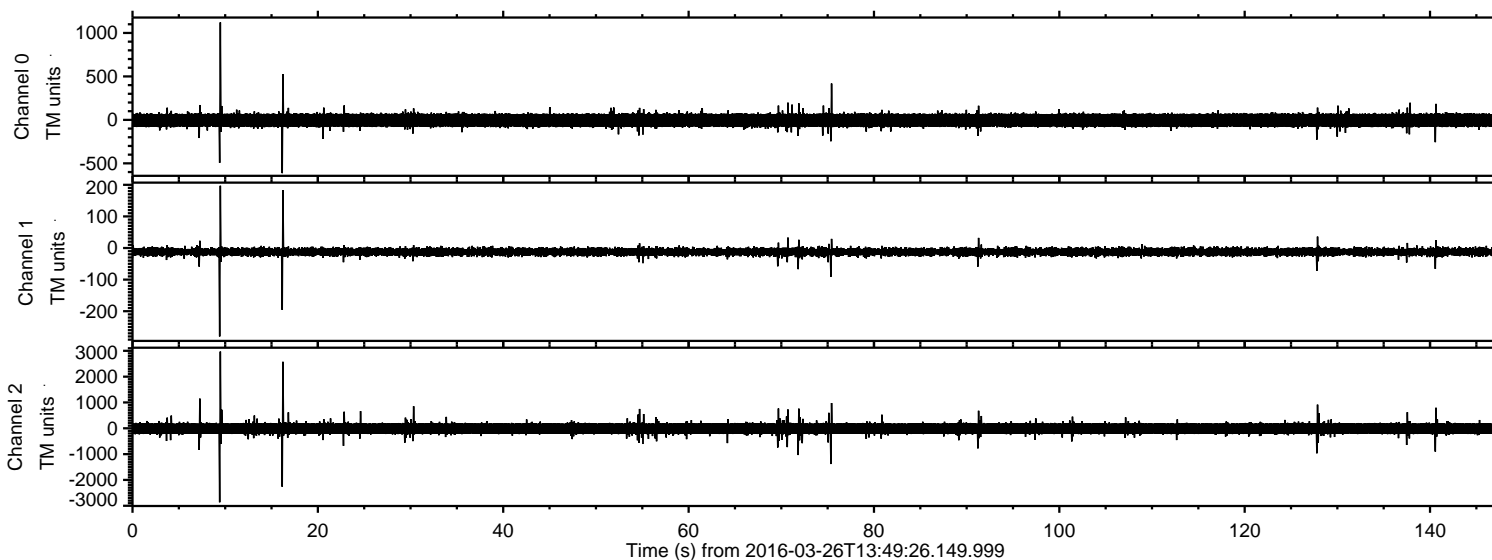
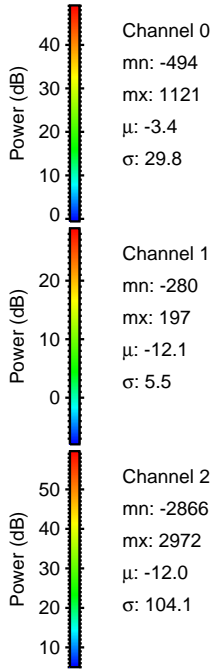
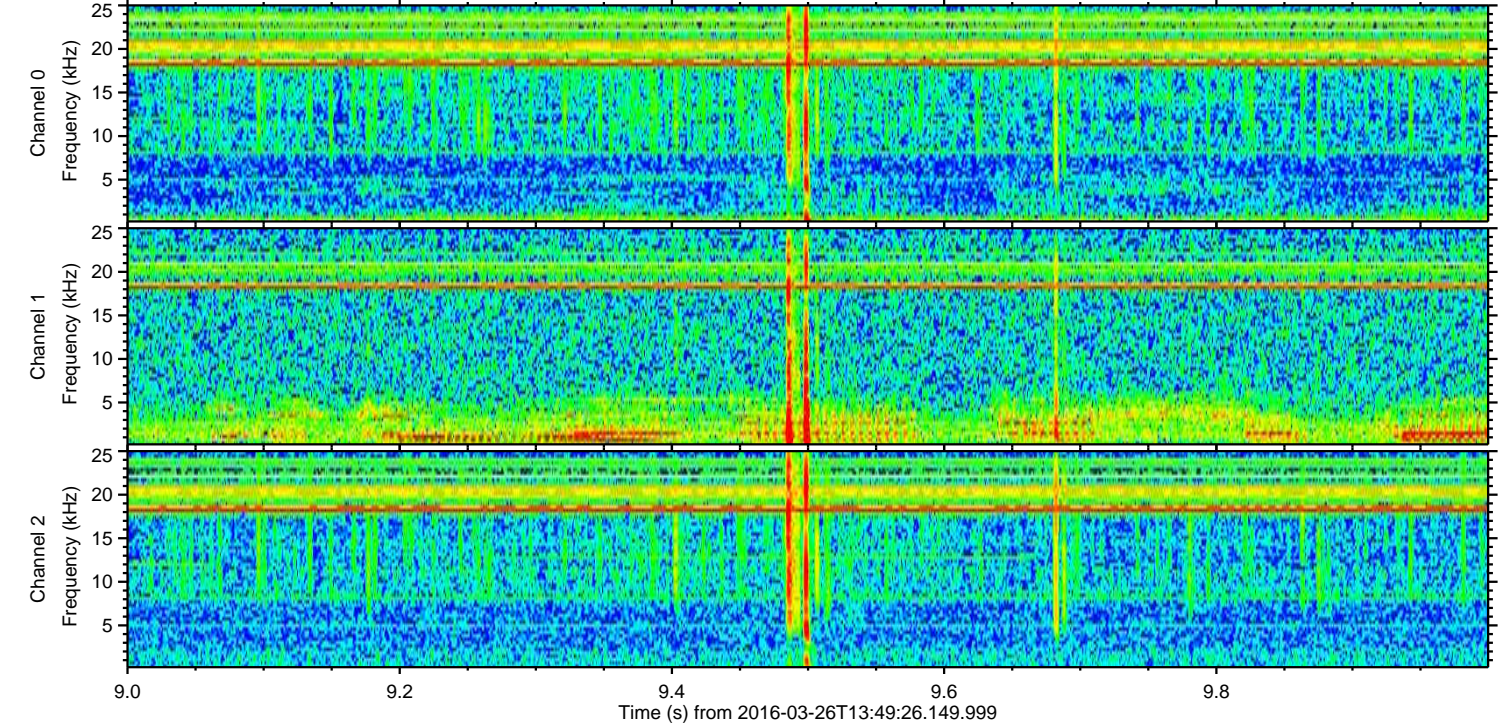
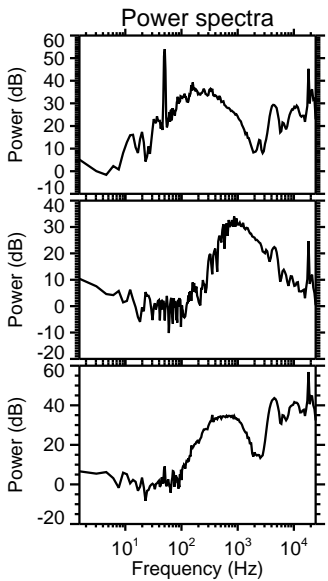
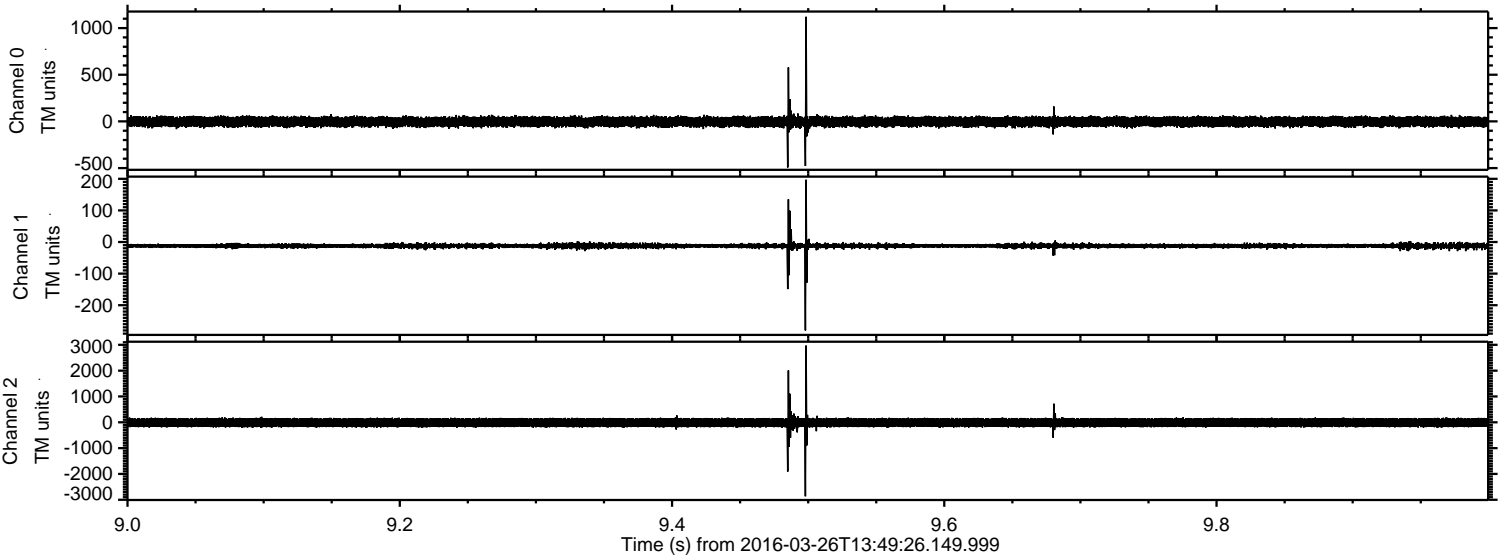


ELMAVAN 3D WAVEFORMS (Measured data sampled at 50 kHz) 51000 packets of 144 samples from 2016-03-26T13:49:26.149.999.

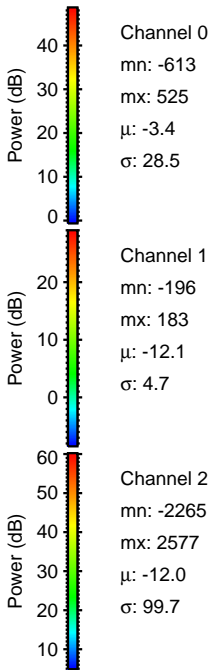
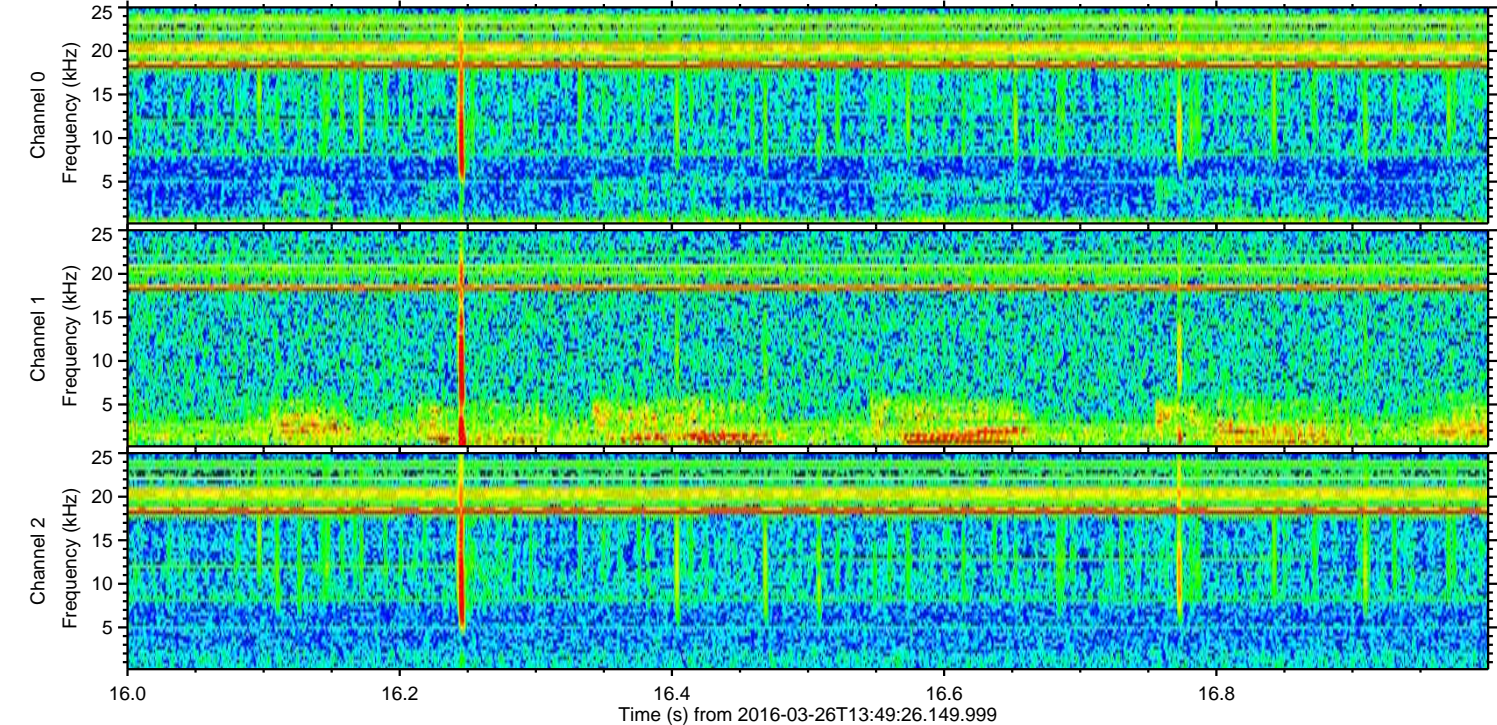
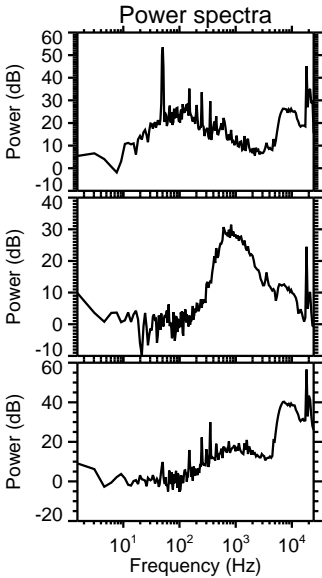
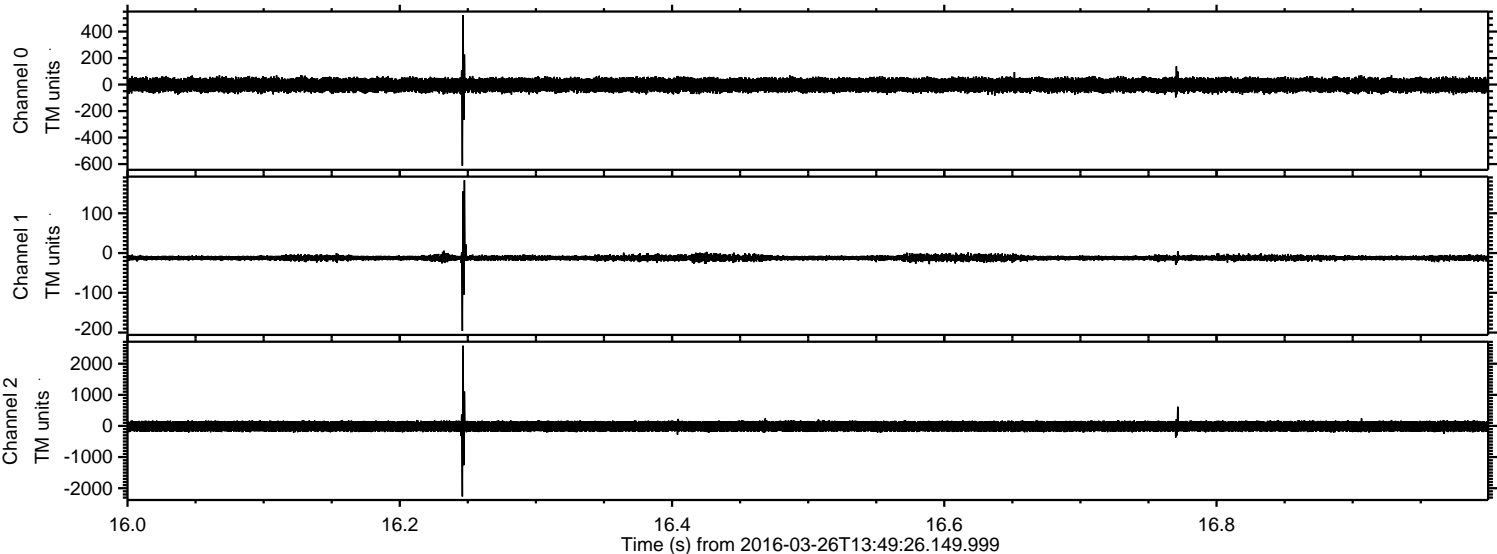
Processed Sat Apr 23 04:33:35 2016 by ELM ver.2012-10-06 from 001__elm20160326_134925__dat00.bin



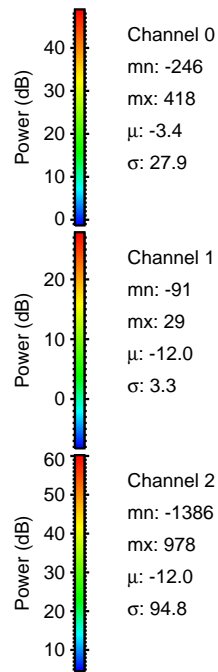
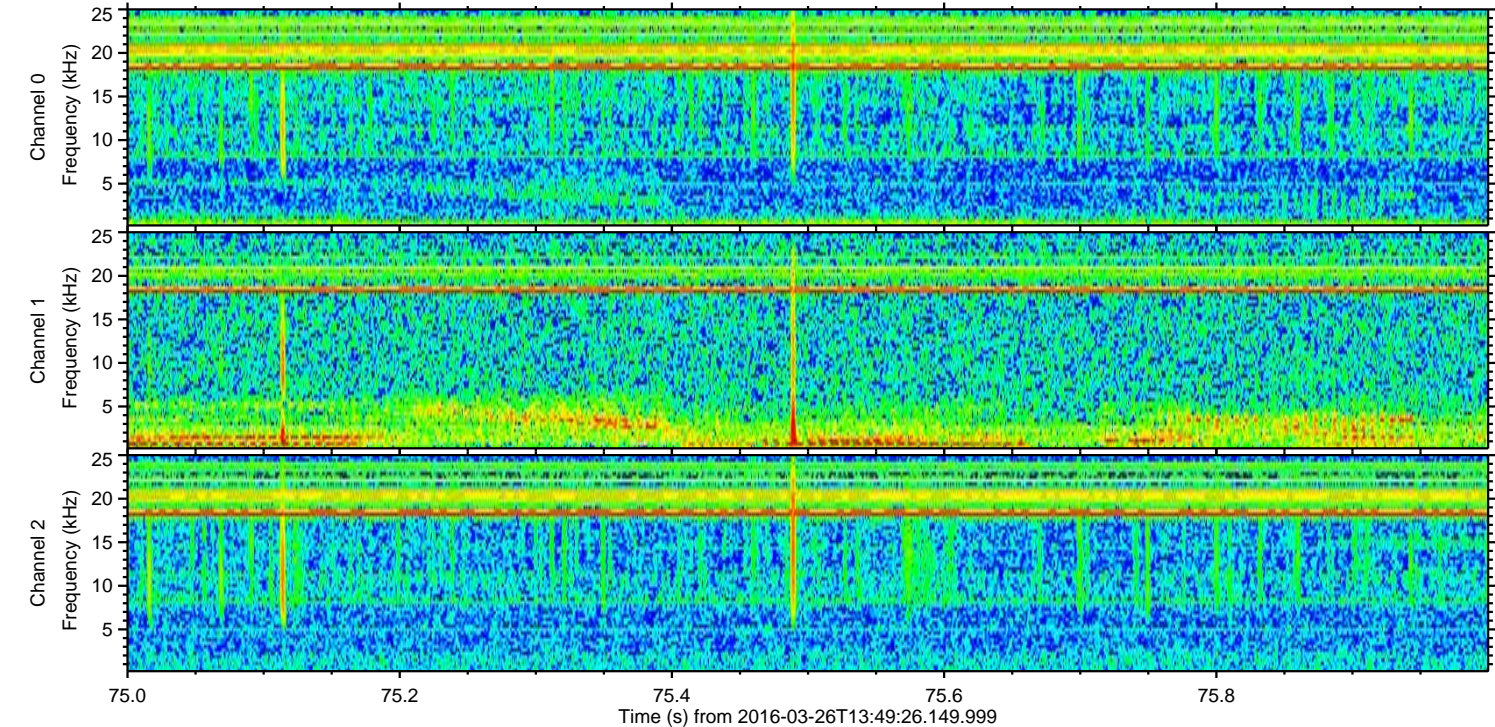
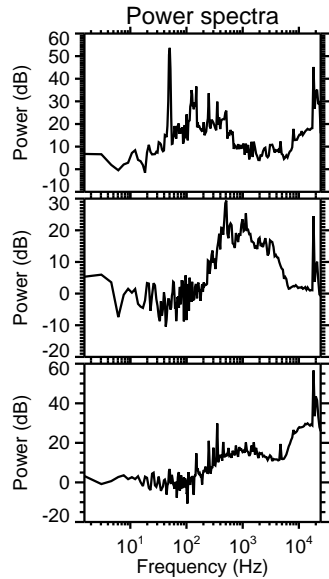
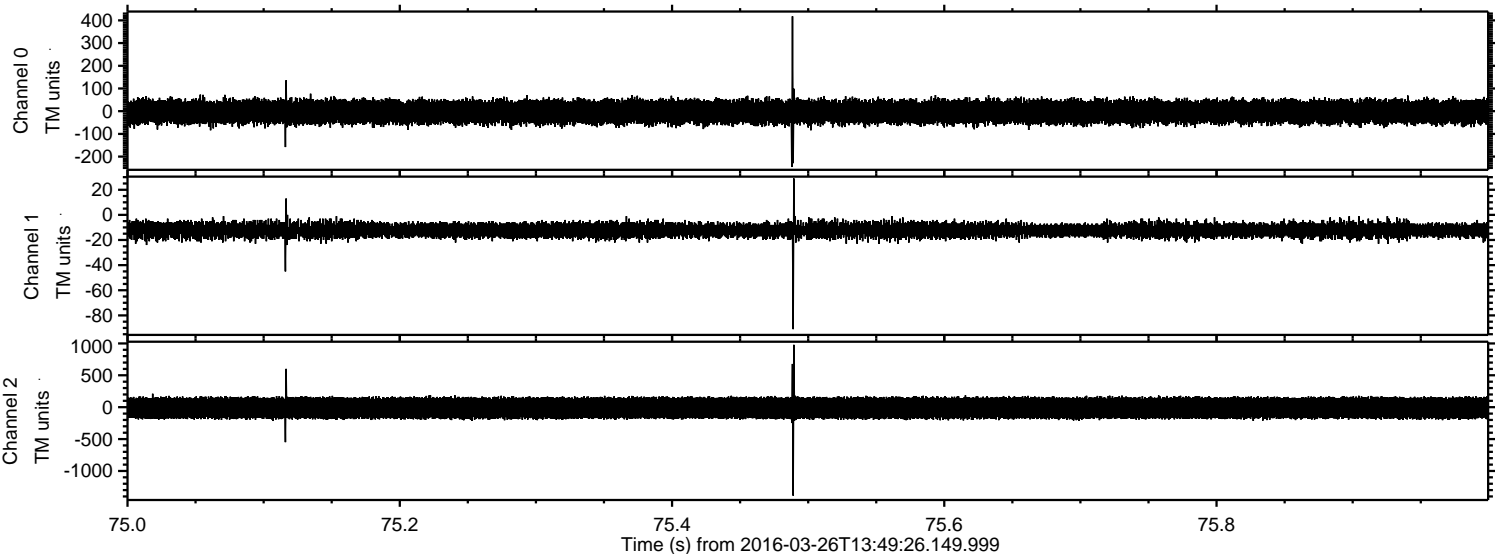
Processed Sat Apr 23 04:33:50 2016 by ELM ver.2012-10-06 from 001__elm20160326_134925__dat00.bin



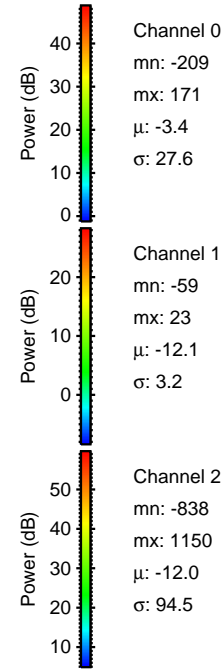
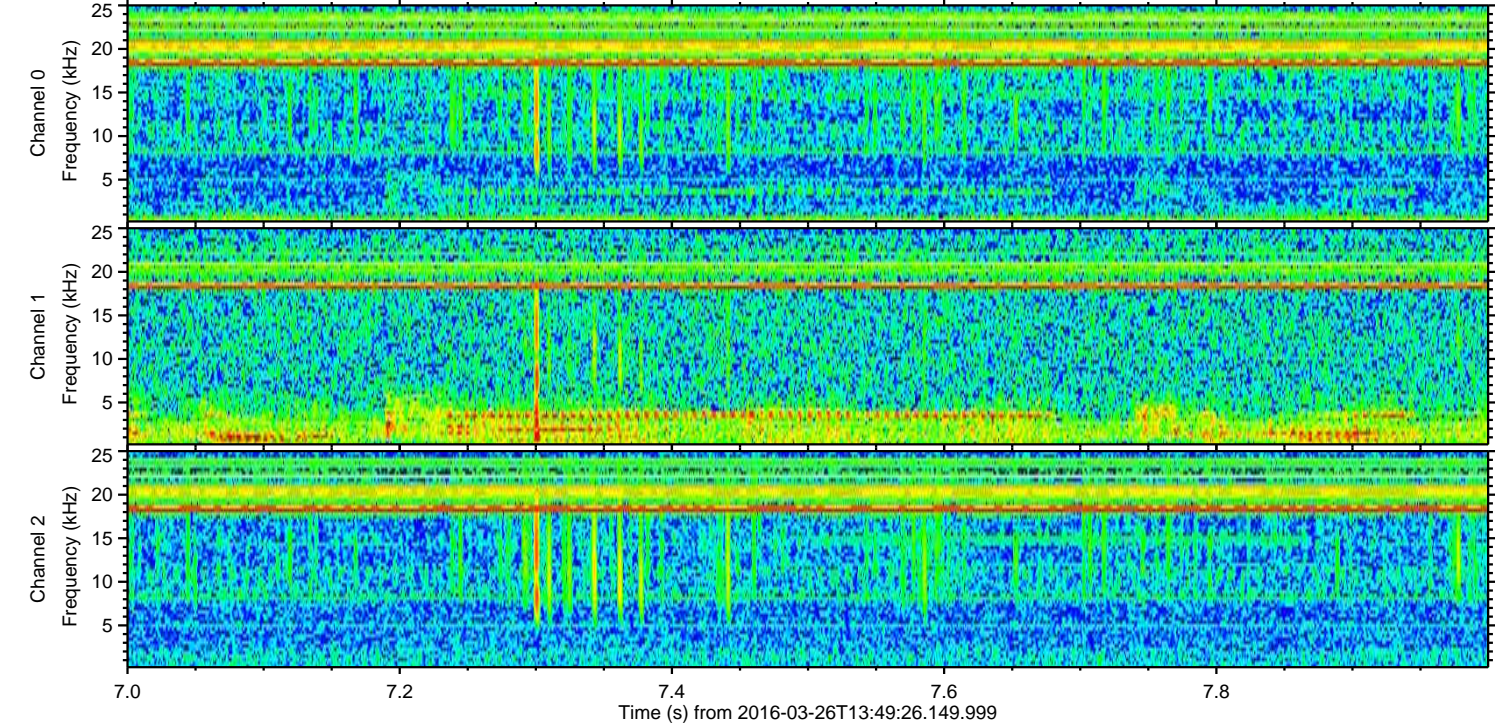
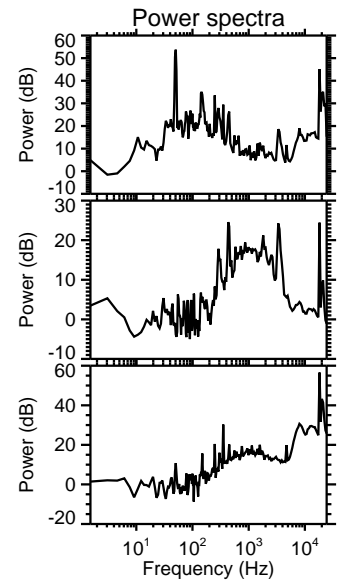
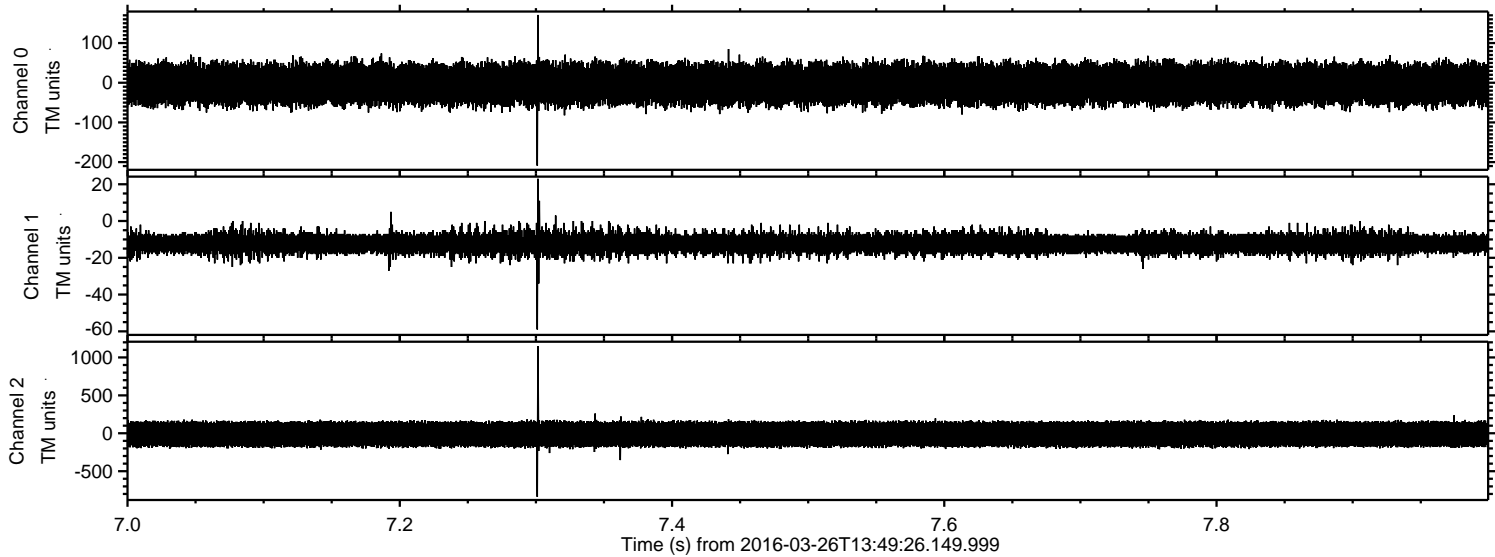
Processed Sat Apr 23 04:33:51 2016 by ELM ver.2012-10-06 from 001__elm20160326_134925__dat00.bin



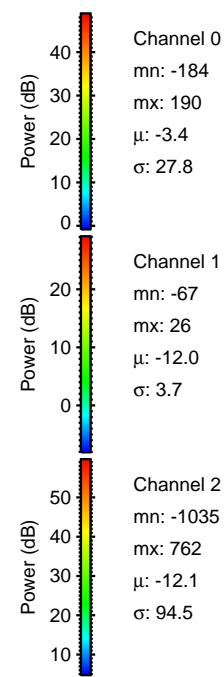
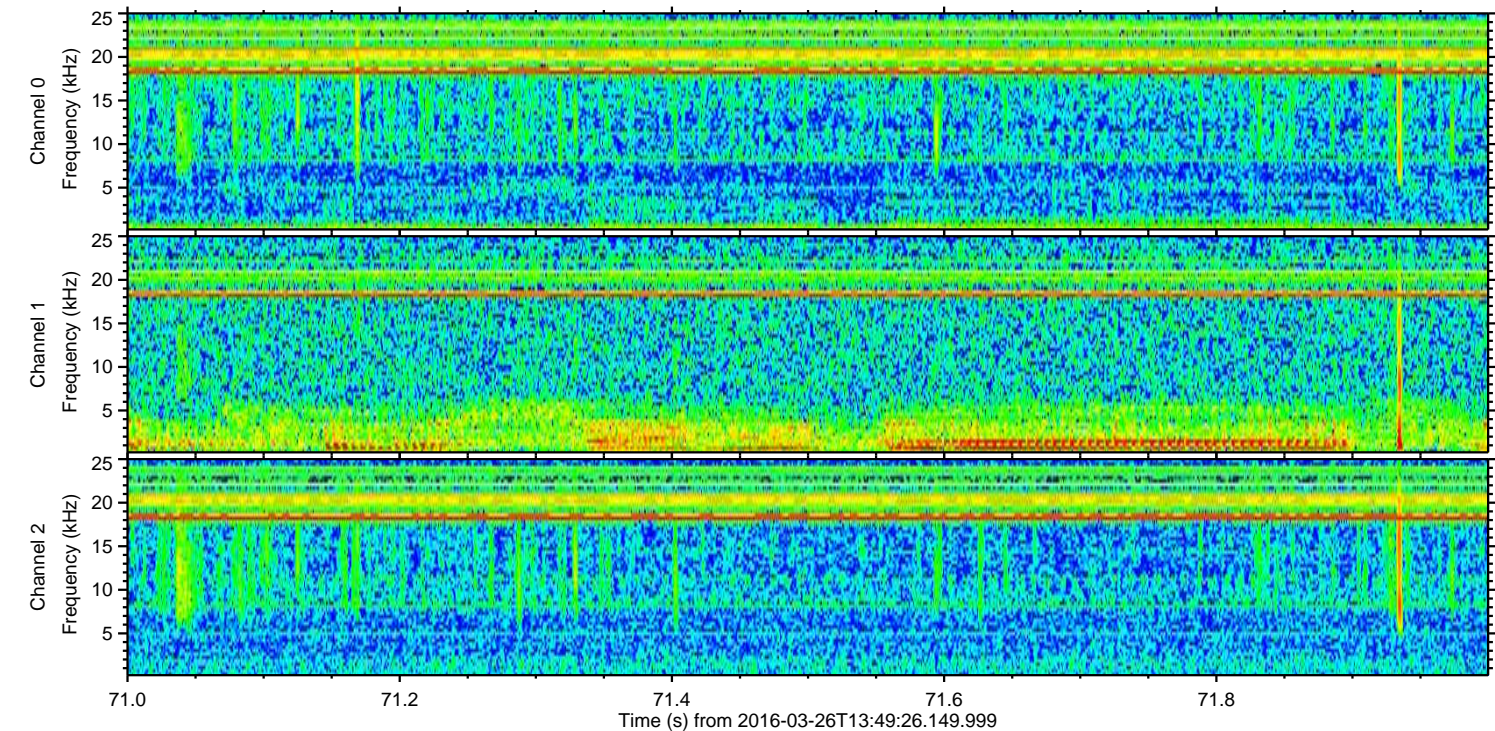
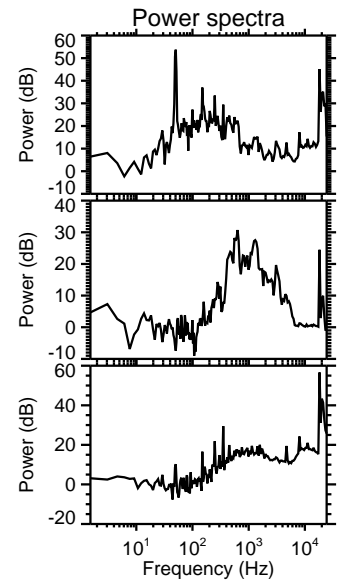
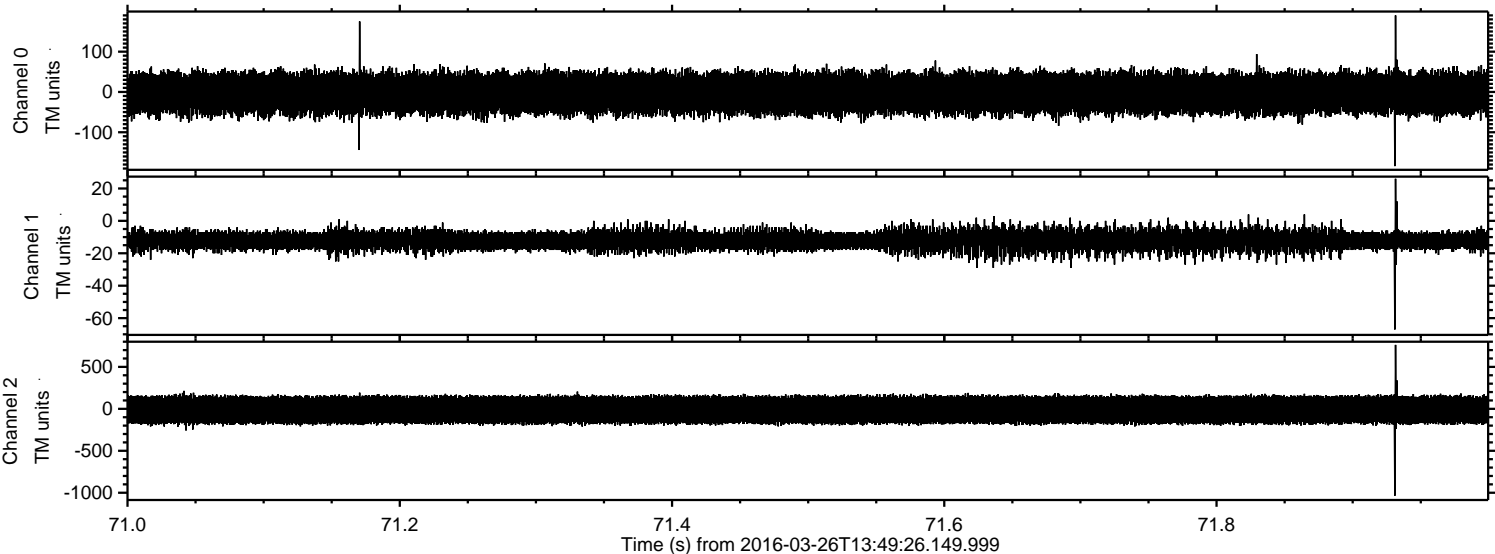
Processed Sat Apr 23 04:33:52 2016 by ELM ver.2012-10-06 from 001__elm20160326_134925__dat00.bin



Processed Sat Apr 23 04:33:53 2016 by ELM ver.2012-10-06 from 001__elm20160326_134925__dat00.bin

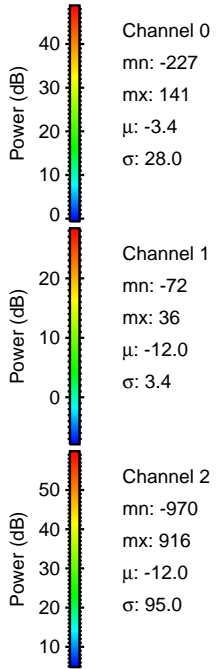
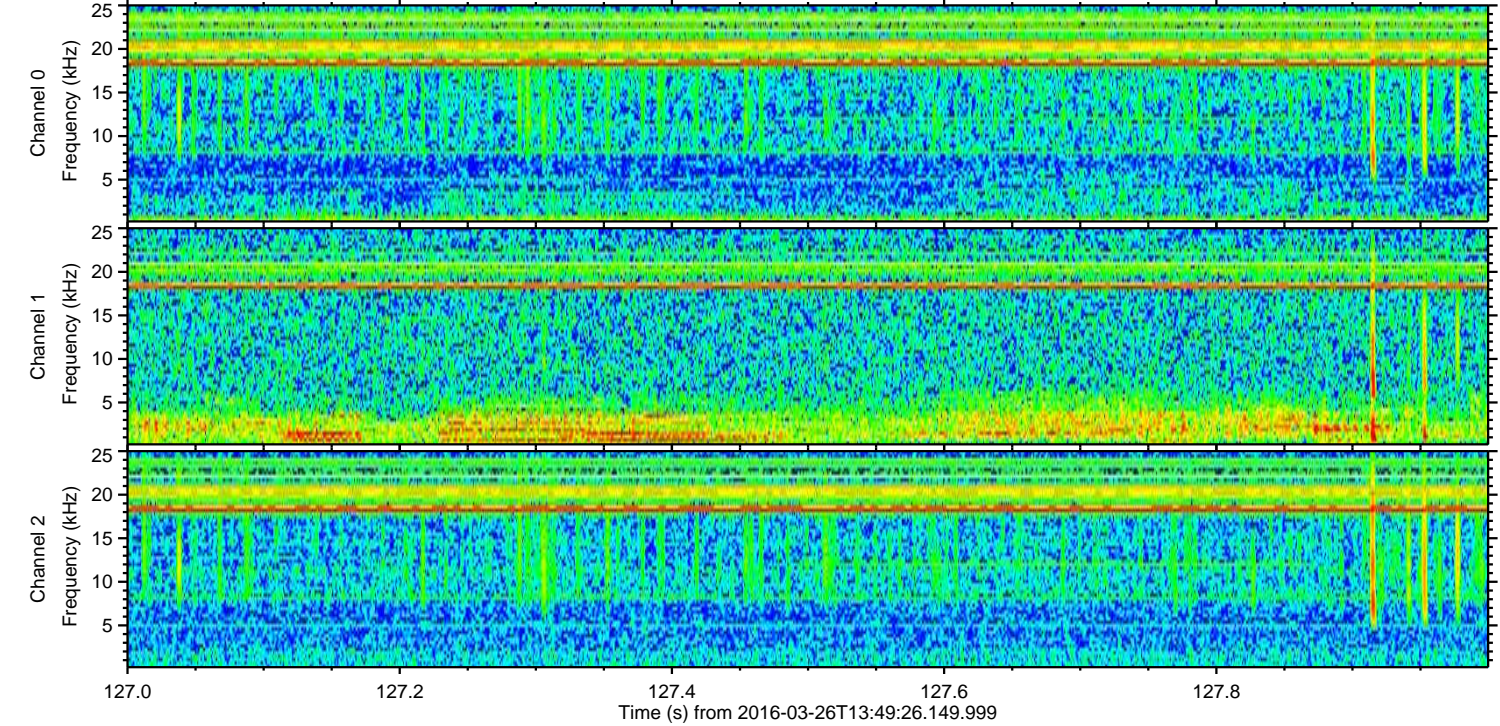
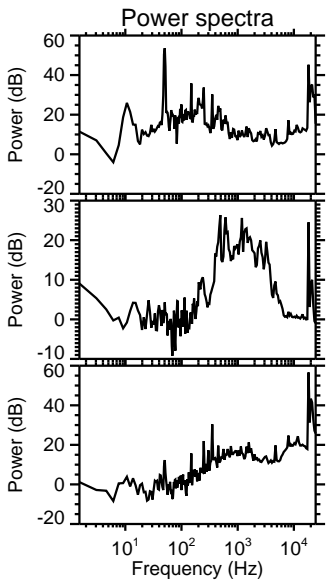
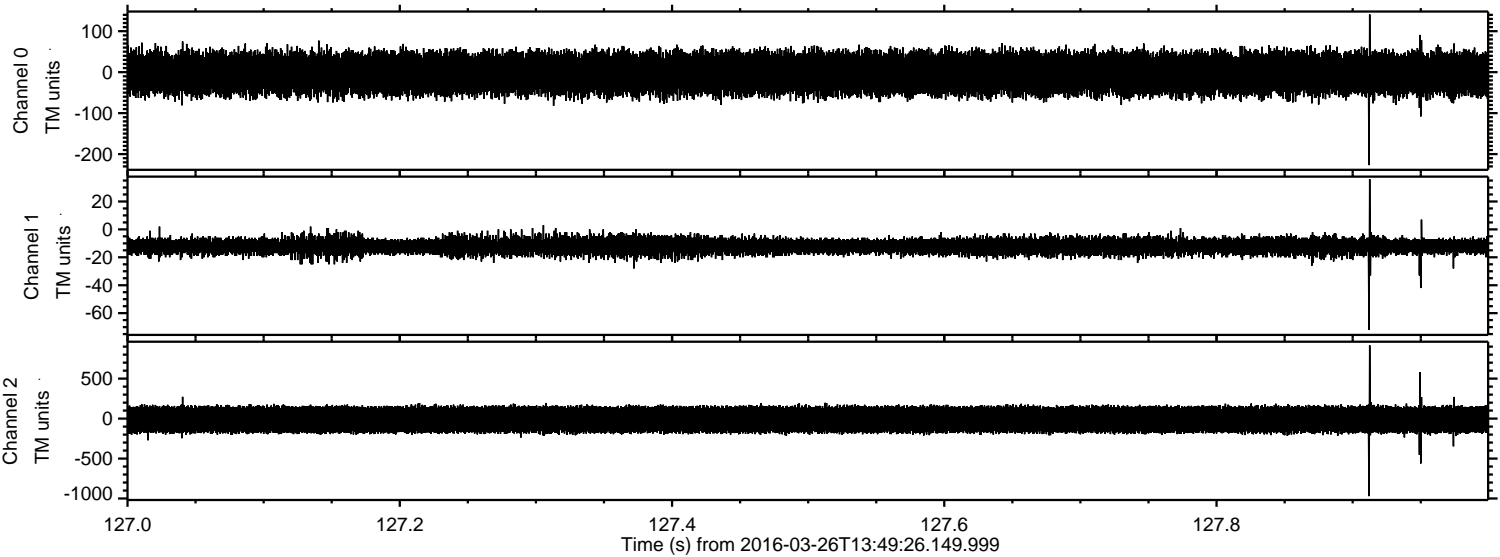


Processed Sat Apr 23 04:33:54 2016 by ELM ver.2012-10-06 from 001__elm20160326_134925__dat00.bin



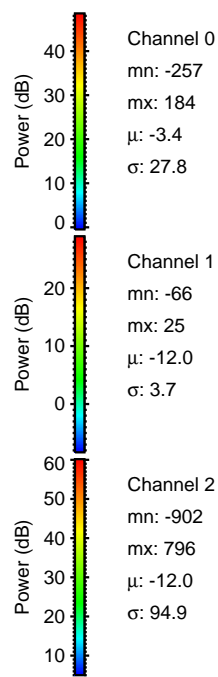
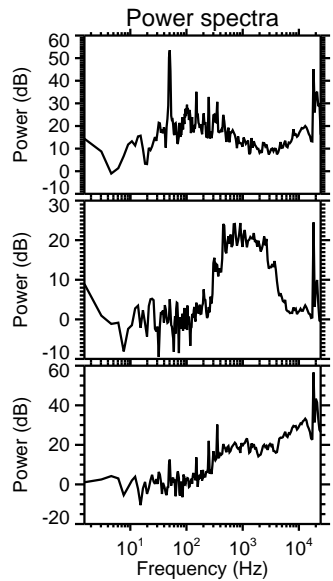
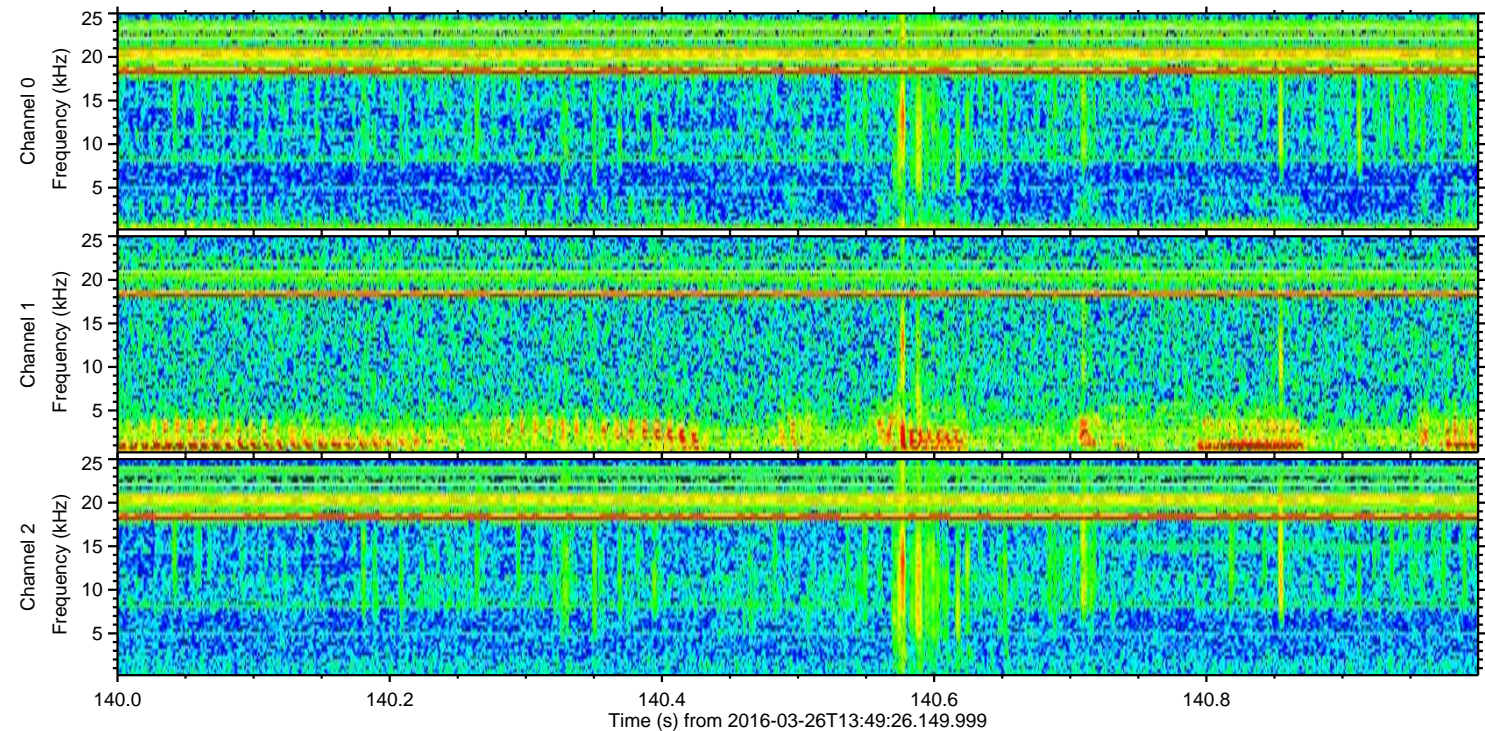
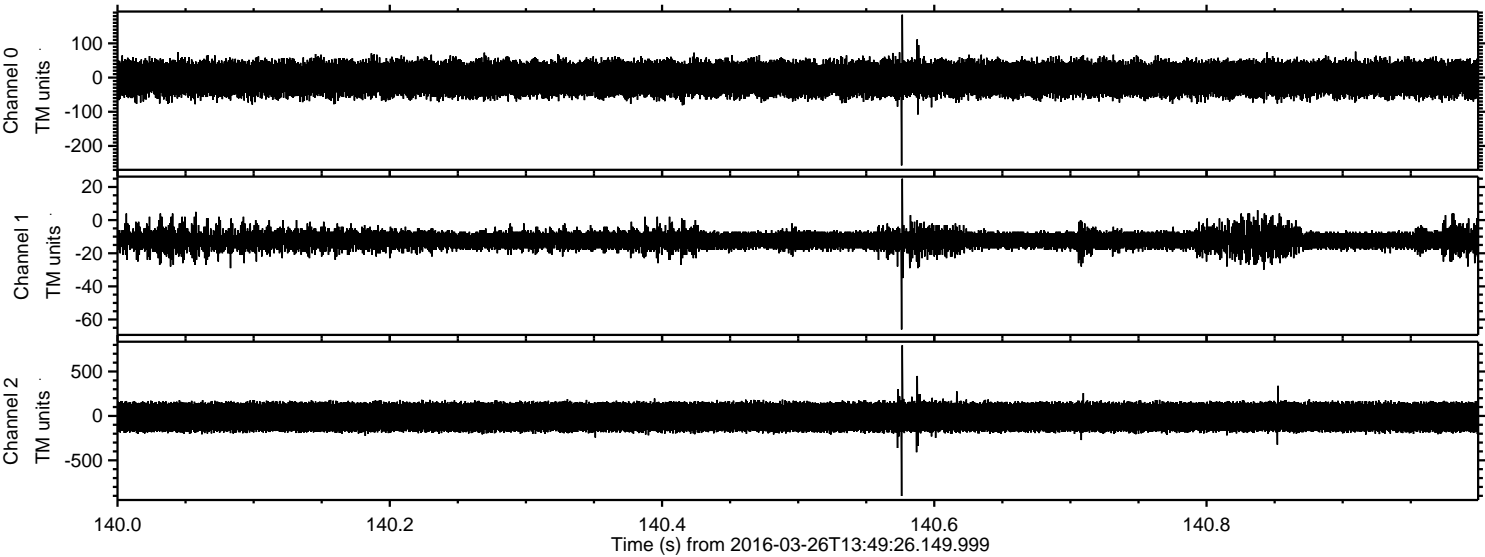
ELMAVAN 3D WAVEFORMS (Measured data sampled at 50 kHz) 51000 packets of 144 samples from 2016-03-26T13:49:26.149.999. Part 128/147

Processed Sat Apr 23 04:33:55 2016 by ELM ver.2012-10-06 from 001__elm20160326_134925__dat00.bin



ELMAVAN 3D WAVEFORMS (Measured data sampled at 50 kHz) 51000 packets of 144 samples from 2016-03-26T13:49:26.149.999. Part 141/147

Processed Sat Apr 23 04:33:56 2016 by ELM ver.2012-10-06 from 001__elm20160326_134925__dat00.bin

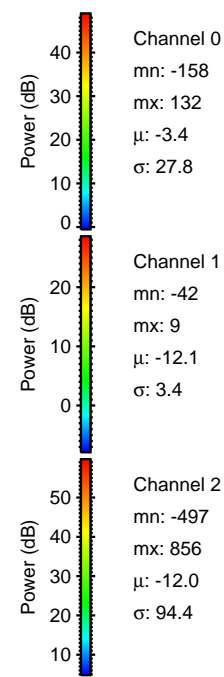
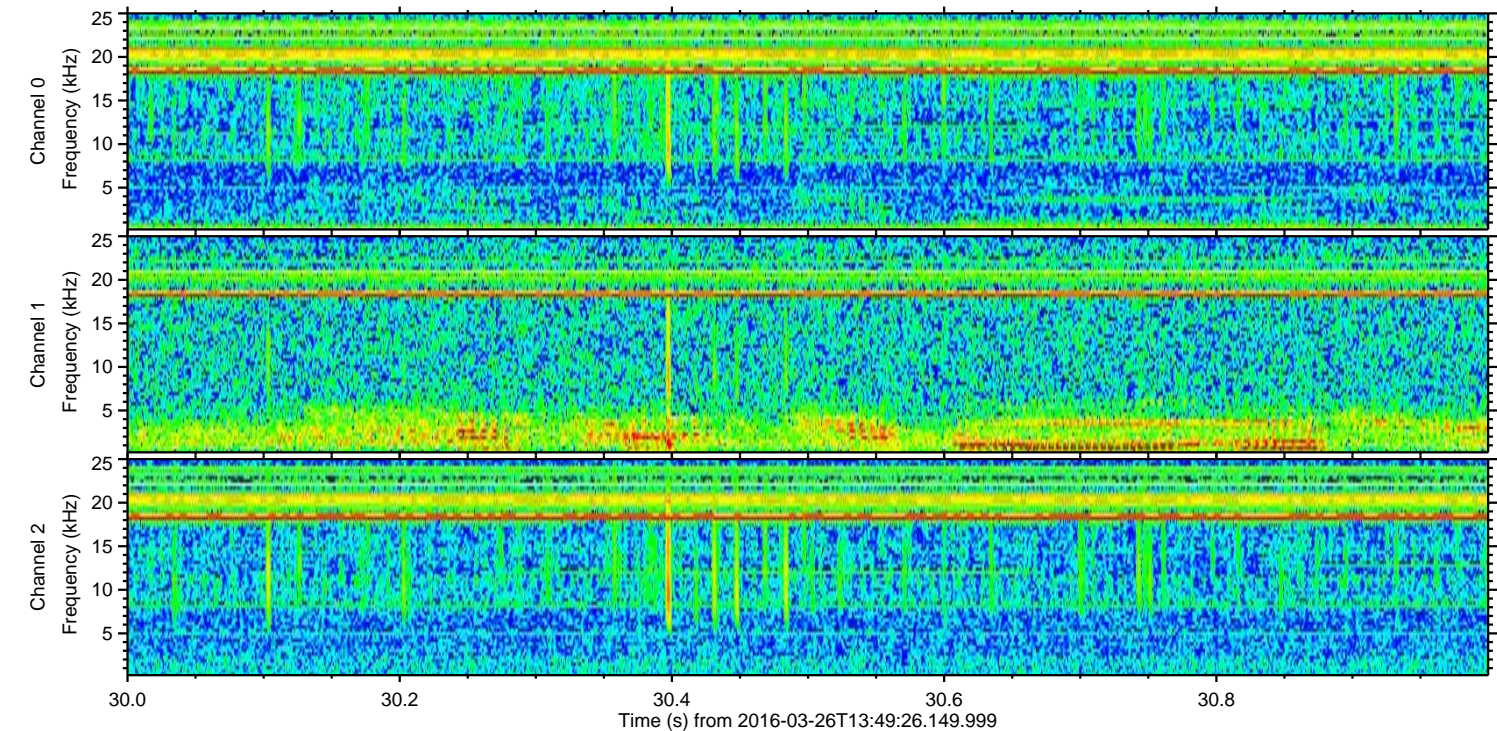
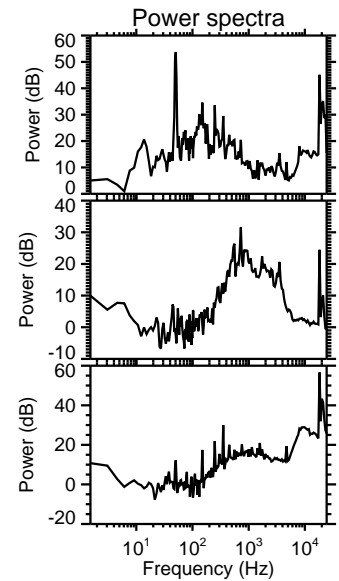
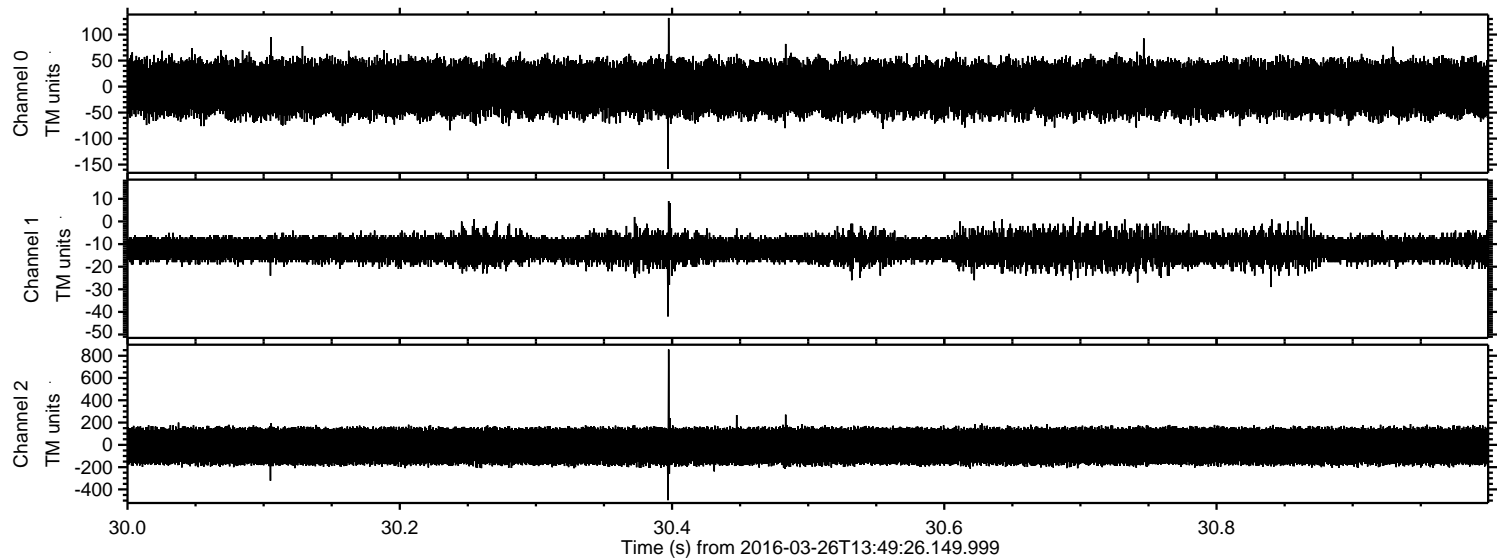


Channel 0
mn: -257
mx: 184
 μ : -3.4
 σ : 27.8

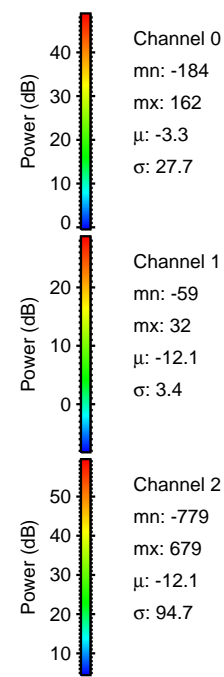
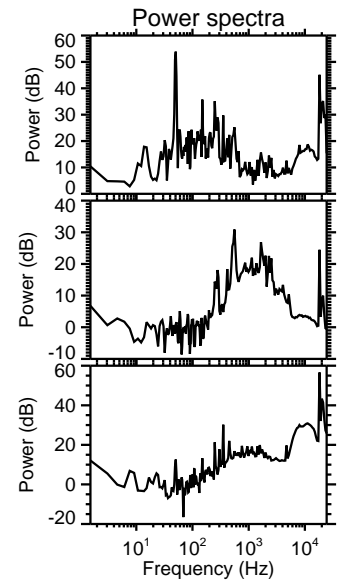
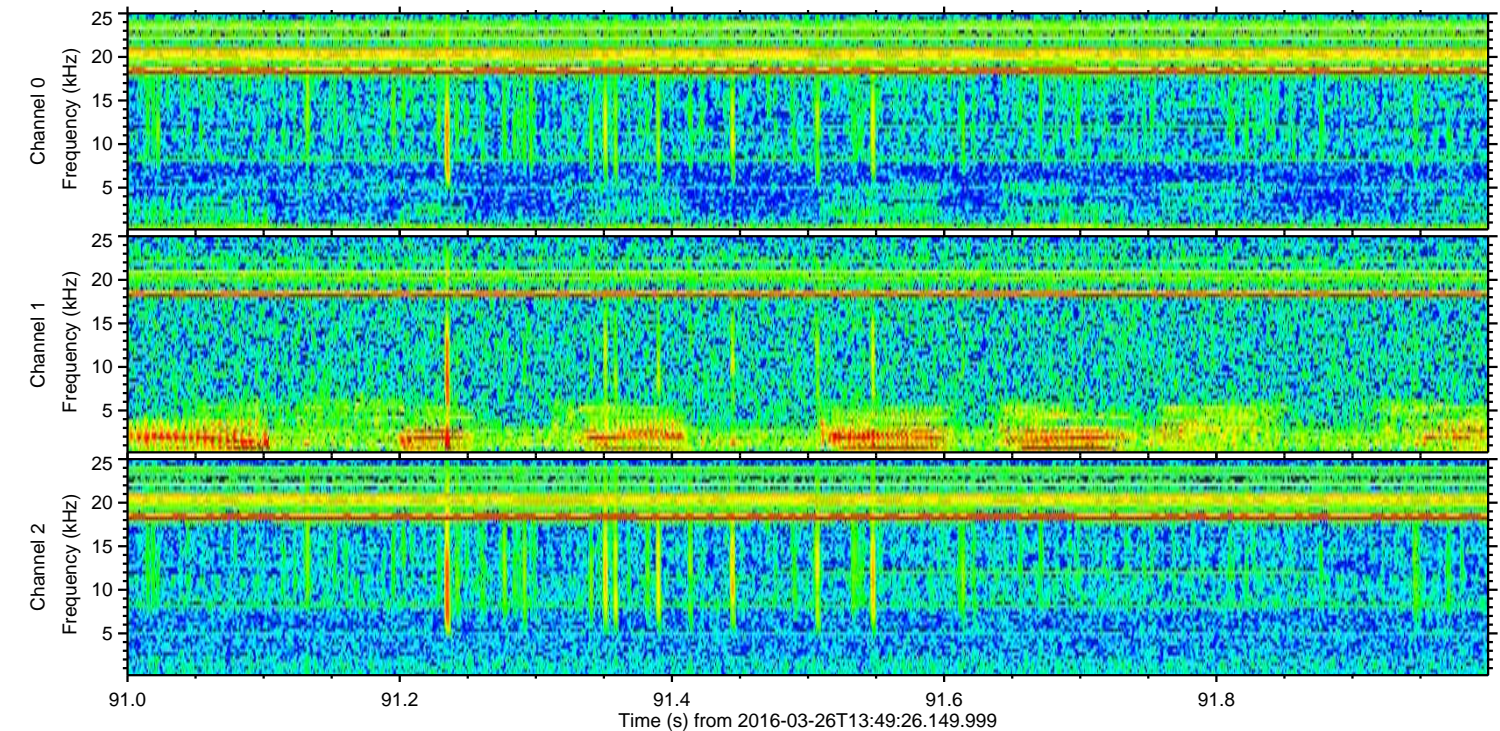
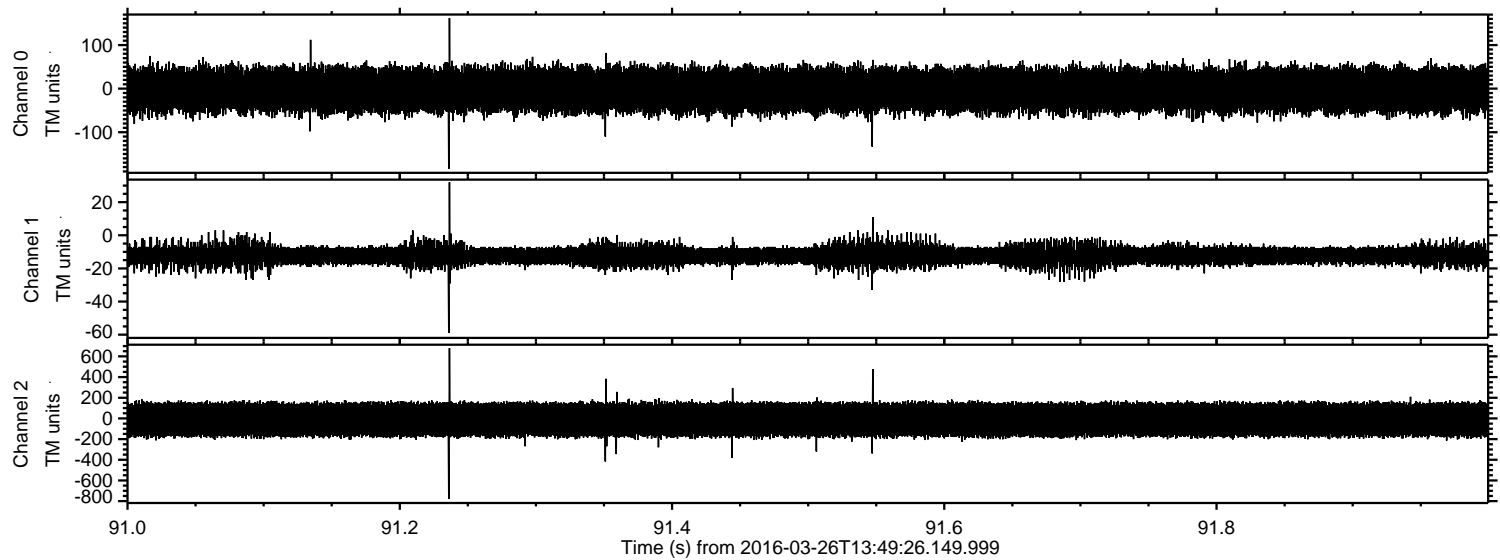
Channel 1
mn: -66
mx: 25
 μ : -12.0
 σ : 3.7

Channel 2
mn: -902
mx: 796
 μ : -12.0
 σ : 94.9

Processed Sat Apr 23 04:33:57 2016 by ELM ver.2012-10-06 from 001__elm20160326_134925__dat00.bin



Processed Sat Apr 23 04:33:58 2016 by ELM ver.2012-10-06 from 001__elm20160326_134925__dat00.bin



Channel 0
mn: -184
mx: 162
 μ : -3.3
 σ : 27.7

Channel 1
mn: -59
mx: 32
 μ : -12.1
 σ : 3.4

Channel 2
mn: -779
mx: 679
 μ : -12.1
 σ : 94.7

Processed Sat Apr 23 04:33:59 2016 by ELM ver.2012-10-06 from 001__elm20160326_134925__dat00.bin

