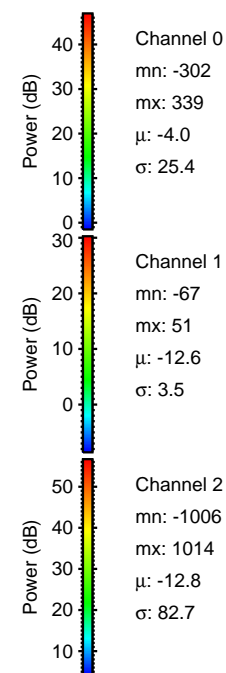
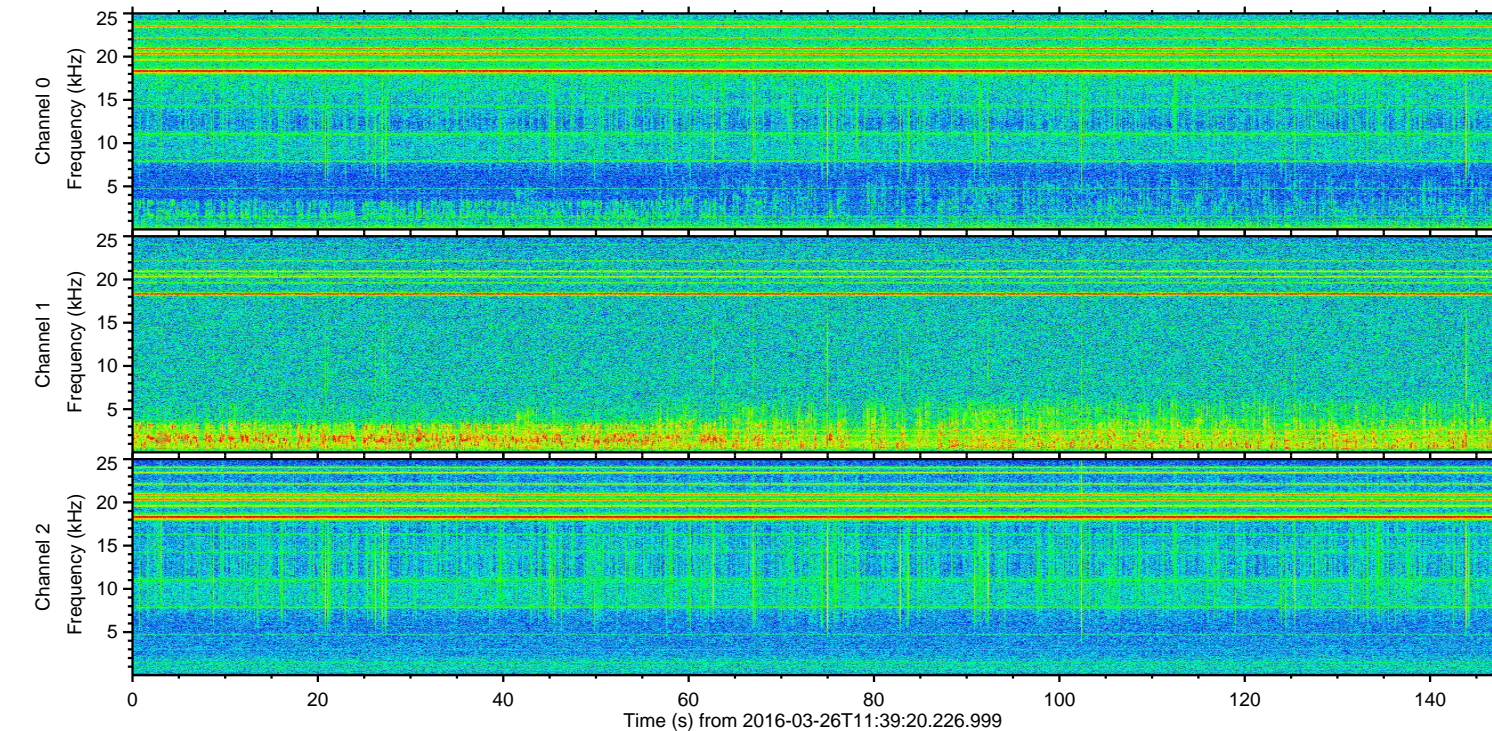
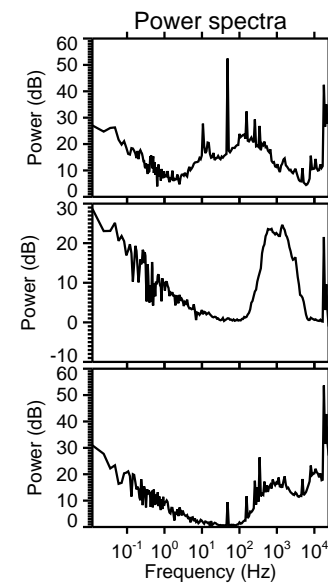
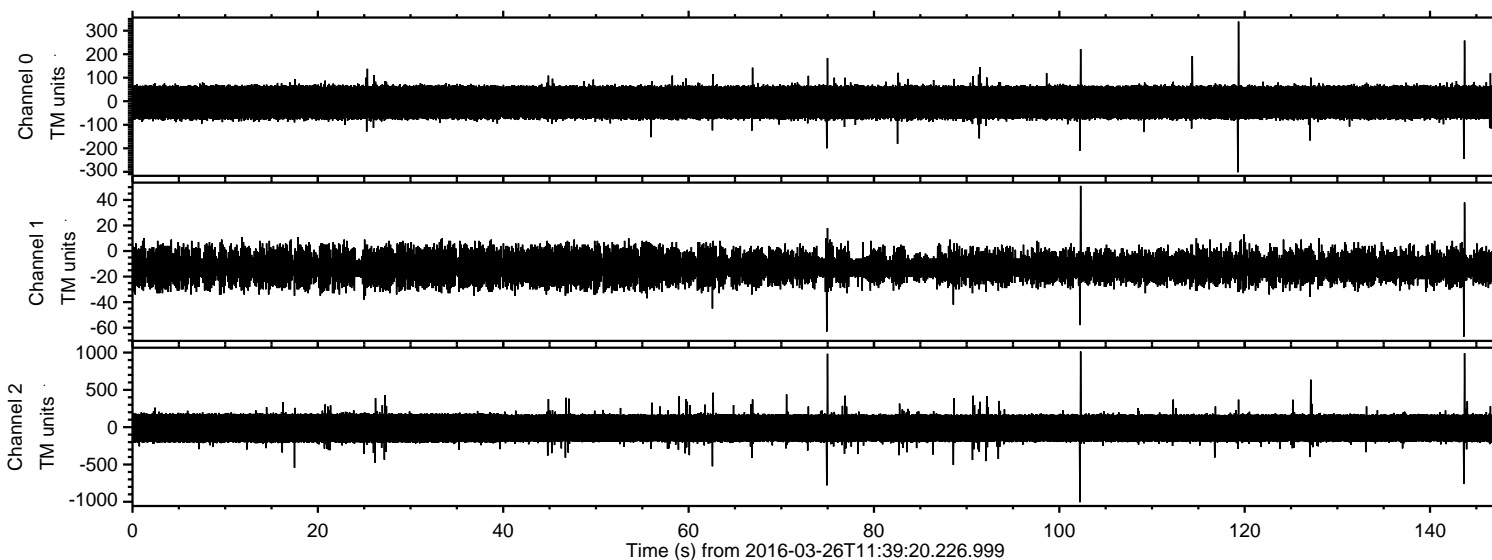


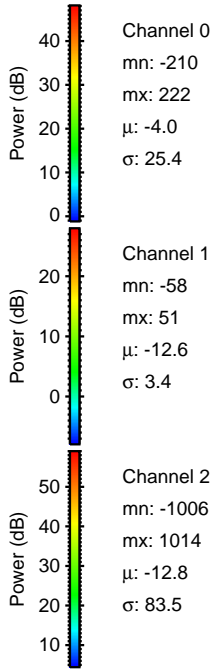
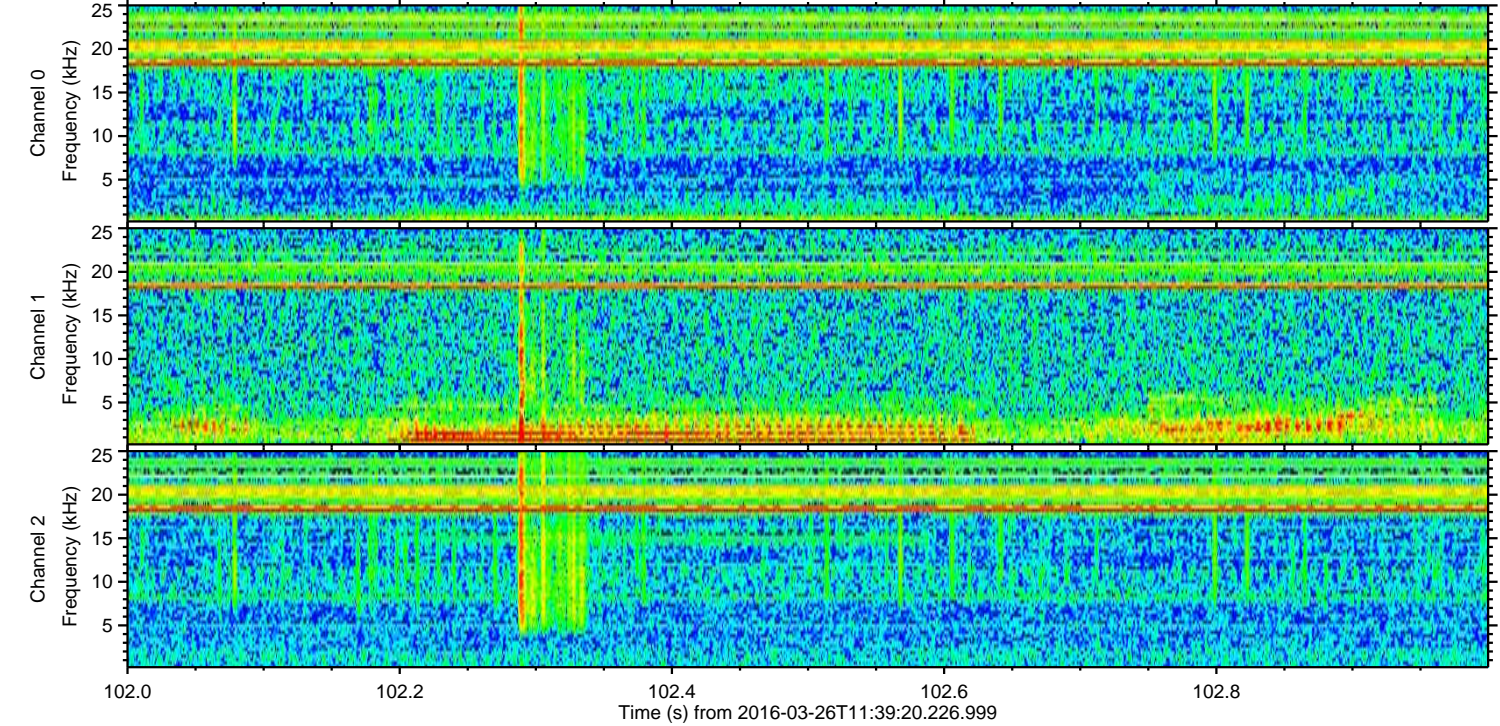
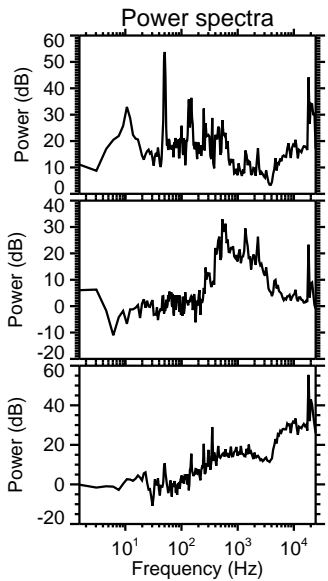
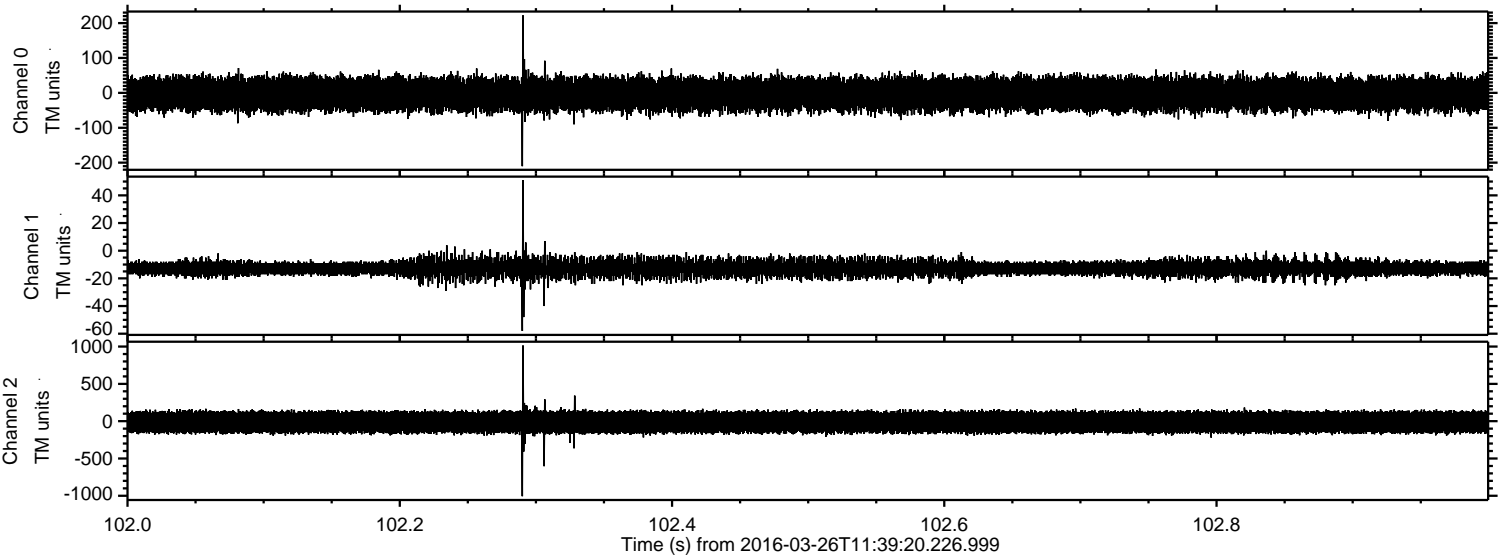
ELMAVAN 3D WAVEFORMS (Measured data sampled at 50 kHz) 51000 packets of 144 samples from 2016-03-26T11:39:20.226.999.

Processed Sat Apr 23 04:00:12 2016 by ELM ver.2012-10-06 from 001__elm20160326_113919__dat00.bin



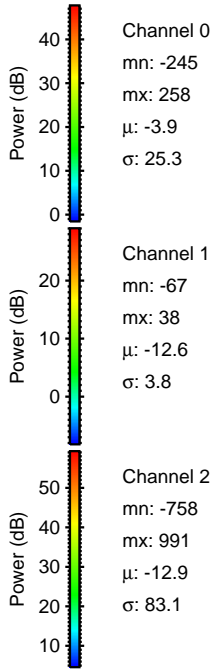
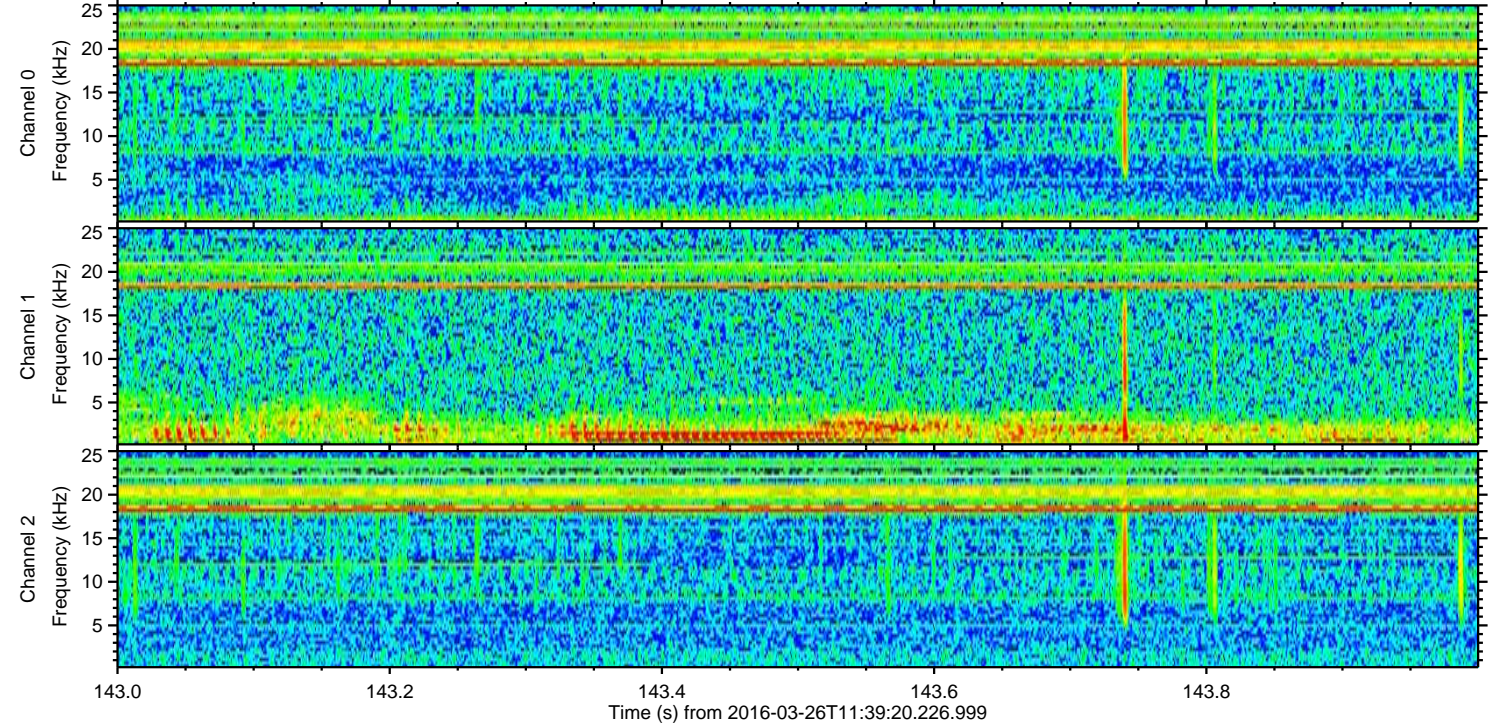
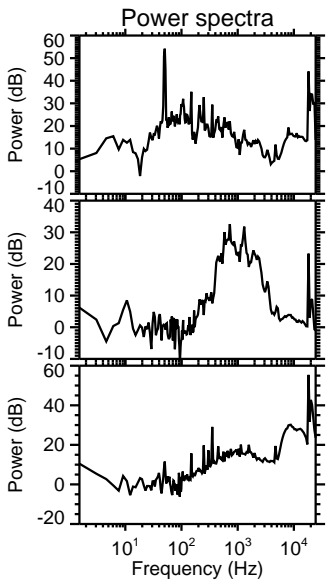
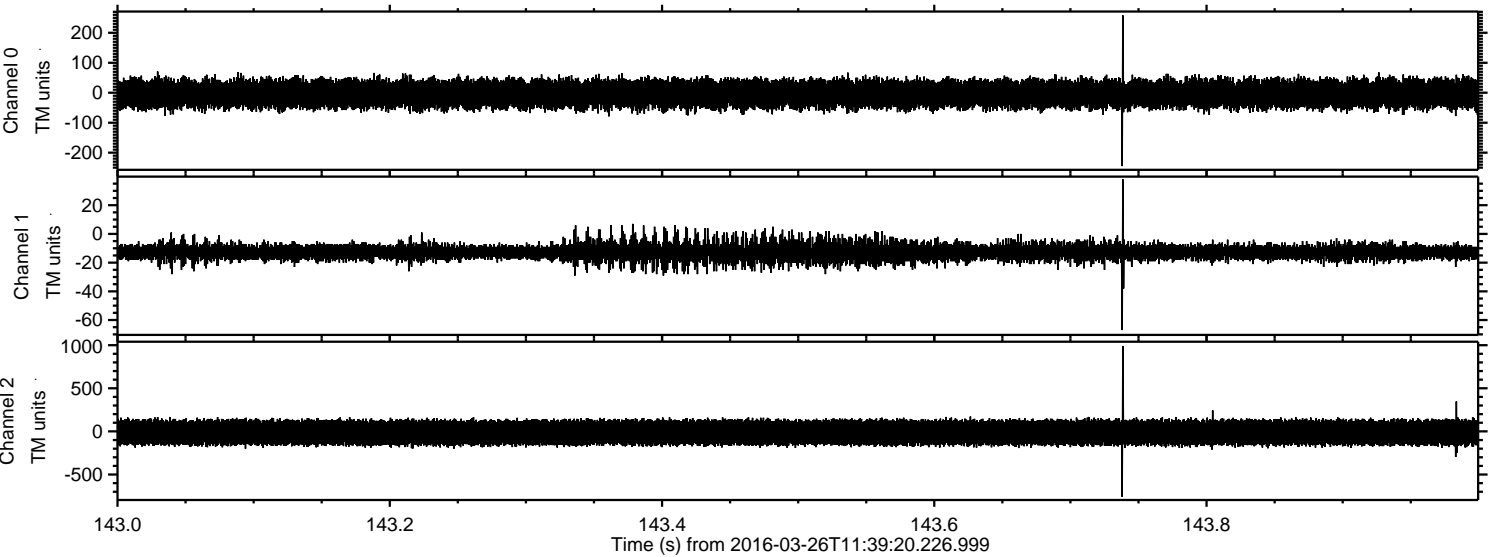
ELMAVAN 3D WAVEFORMS (Measured data sampled at 50 kHz) 51000 packets of 144 samples from 2016-03-26T11:39:20.226.999. Part 103/147

Processed Sat Apr 23 04:00:28 2016 by ELM ver.2012-10-06 from 001__elm20160326_113919__dat00.bin

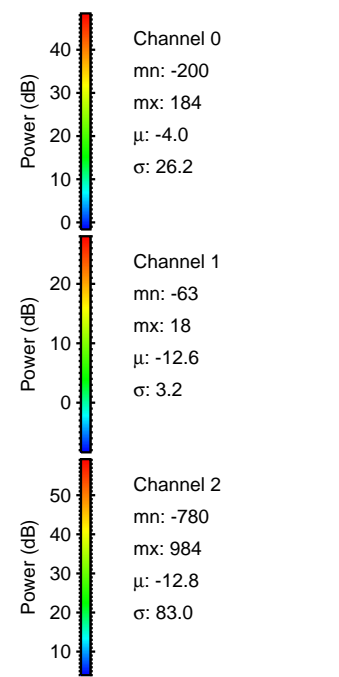
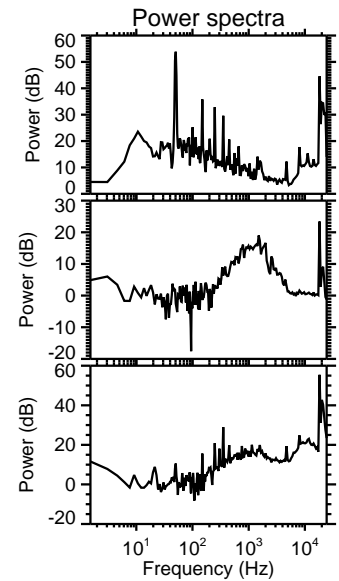
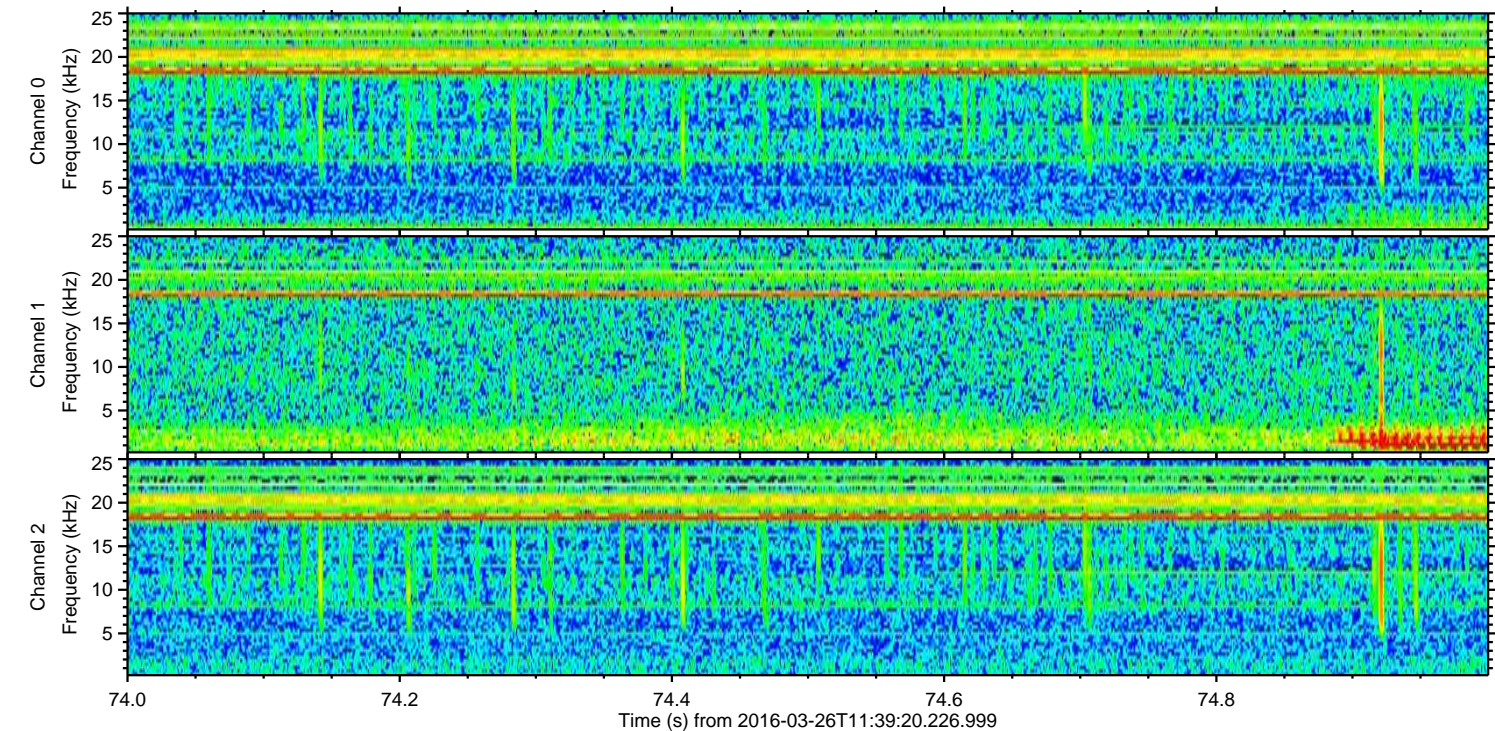
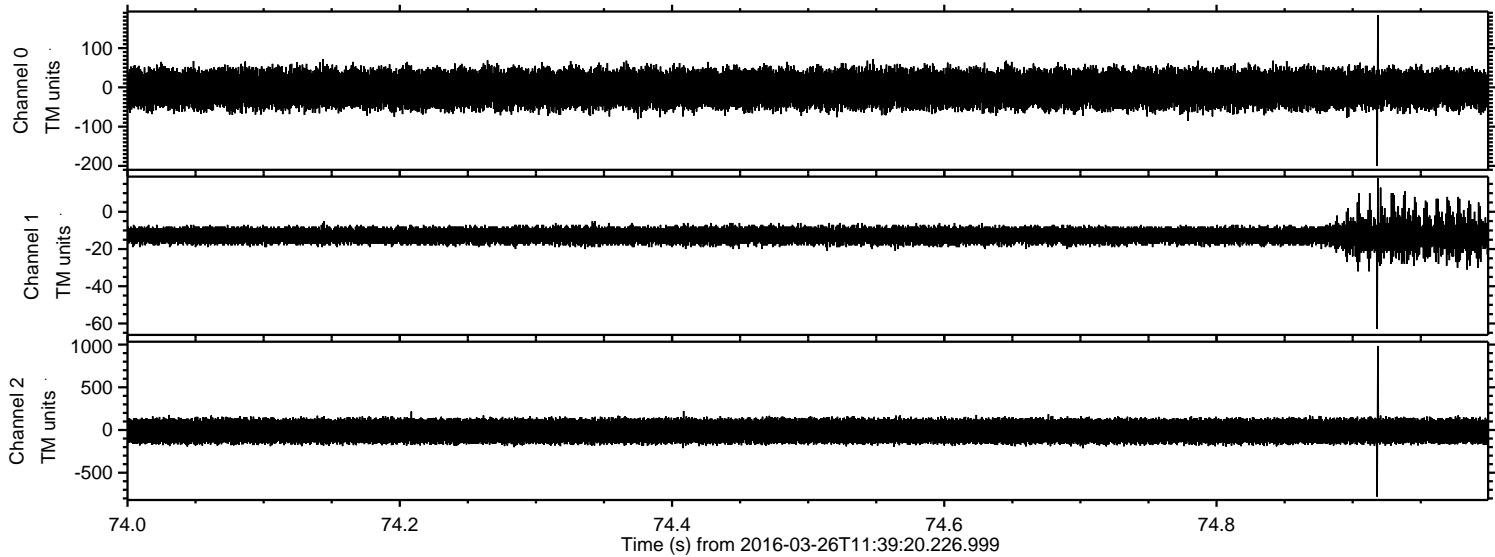


ELMAVAN 3D WAVEFORMS (Measured data sampled at 50 kHz) 51000 packets of 144 samples from 2016-03-26T11:39:20.226.999. Part 144/147

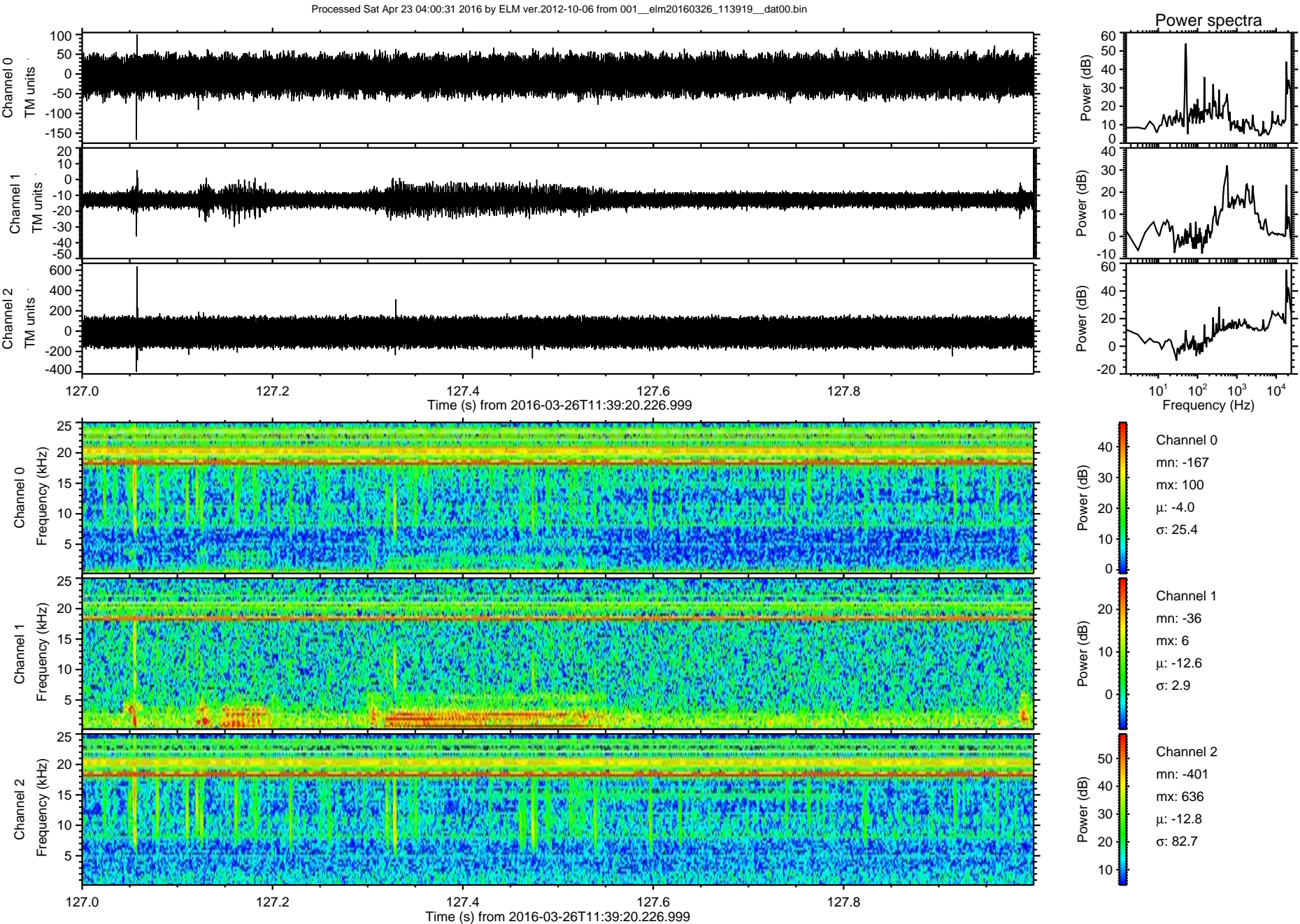
Processed Sat Apr 23 04:00:29 2016 by ELM ver.2012-10-06 from 001__elm20160326_113919__dat00.bin



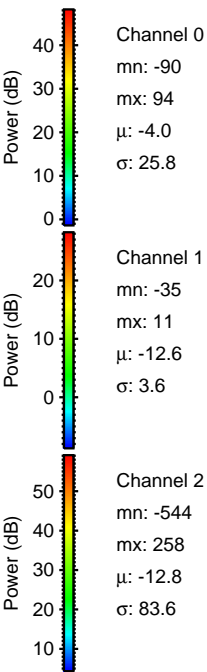
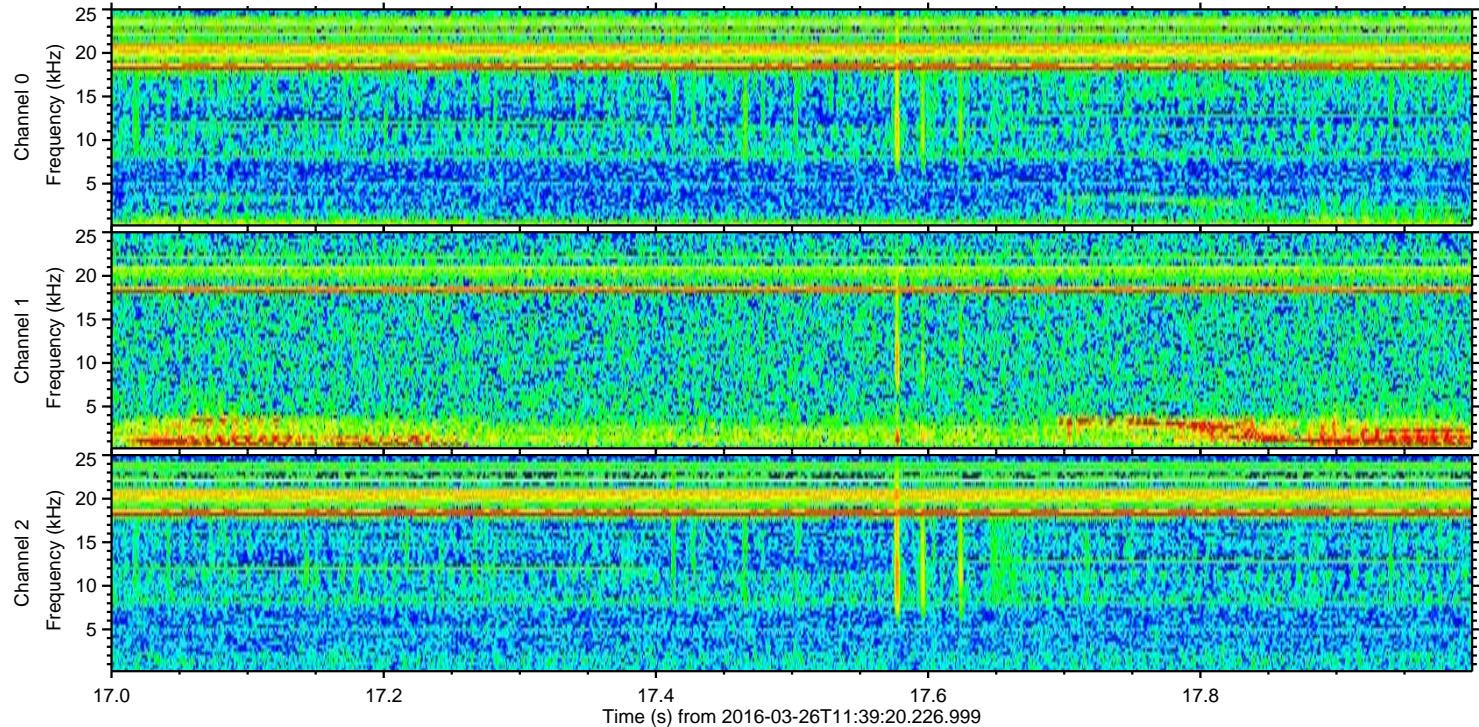
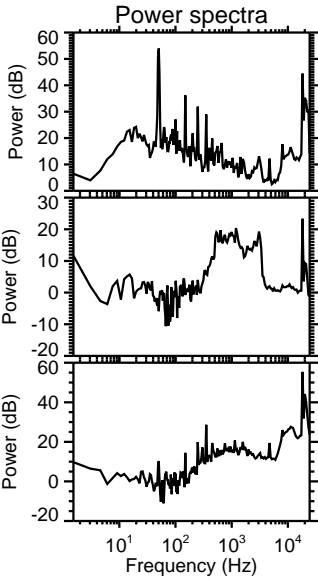
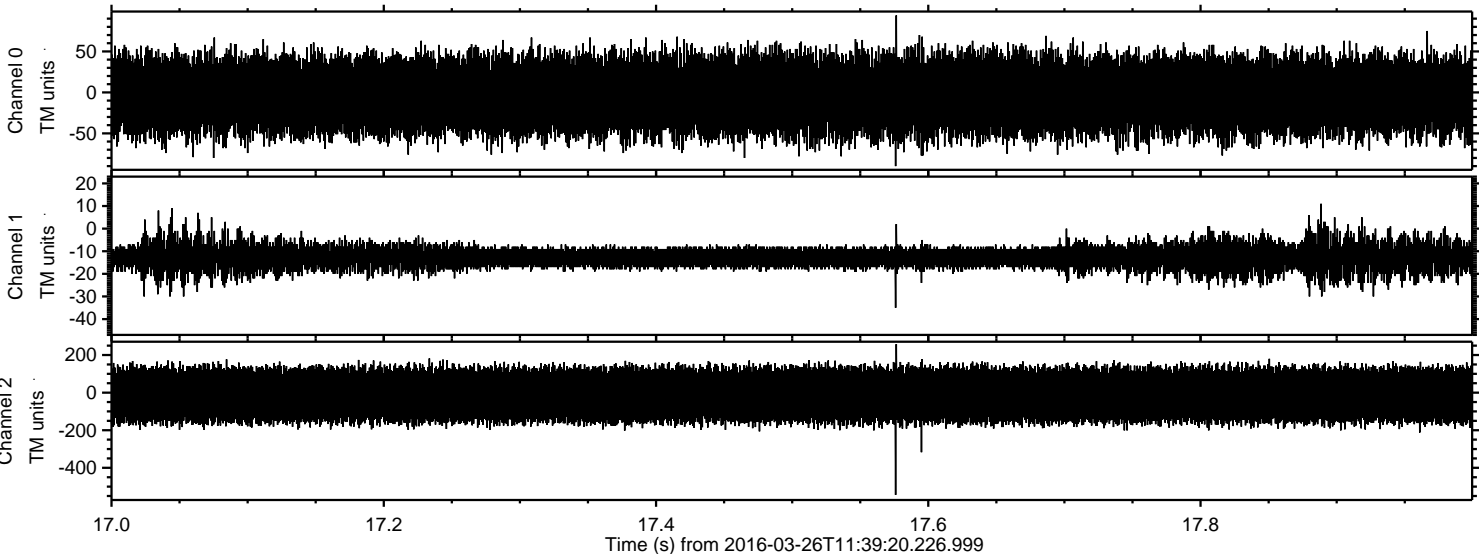
Processed Sat Apr 23 04:00:30 2016 by ELM ver.2012-10-06 from 001__elm20160326_113919__dat00.bin



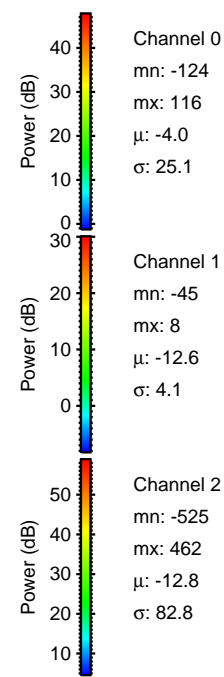
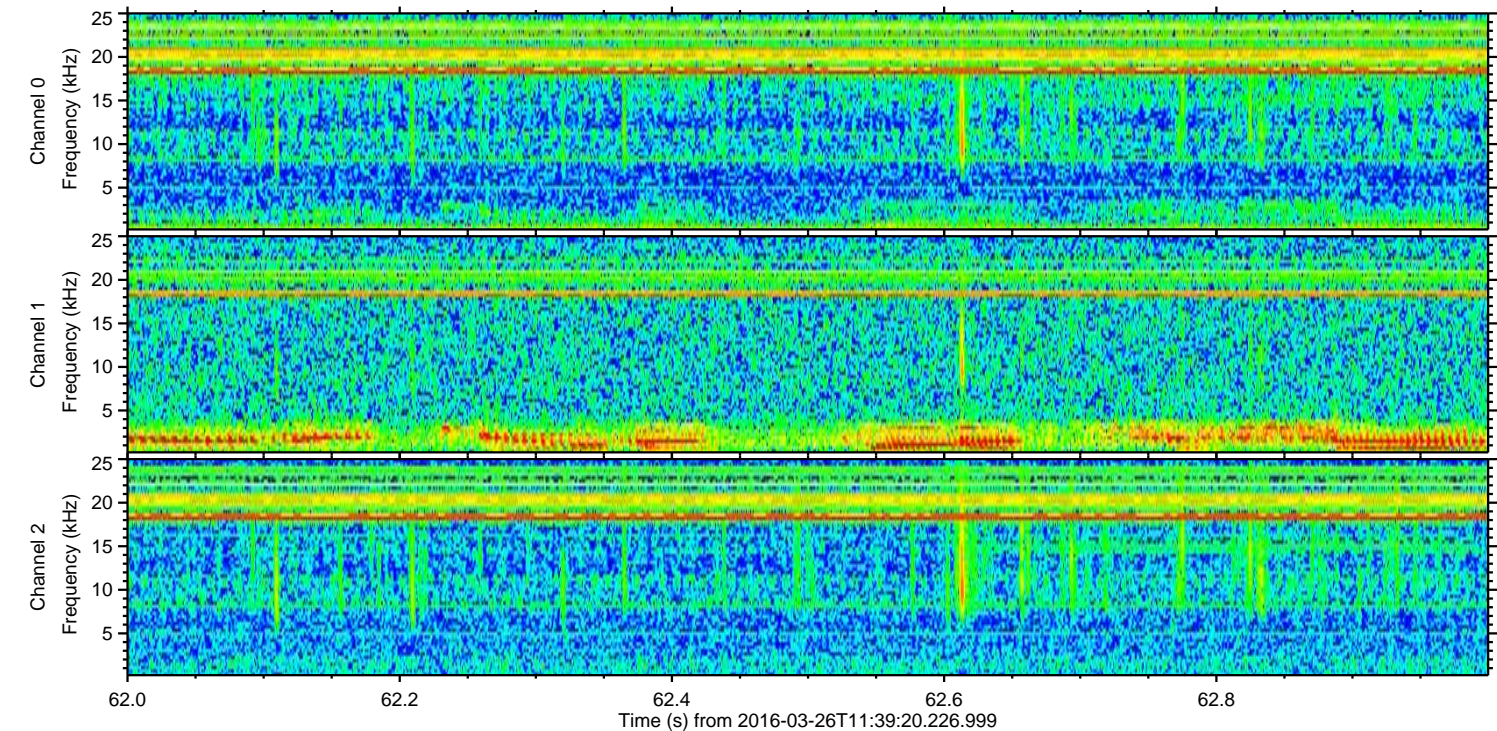
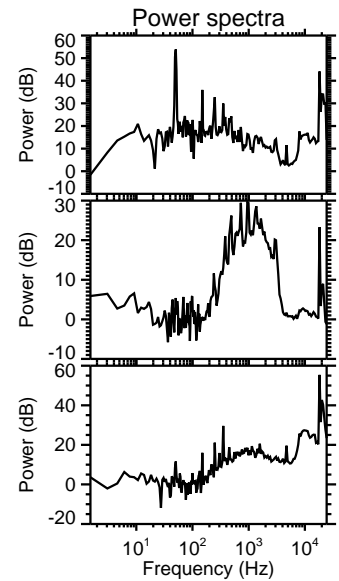
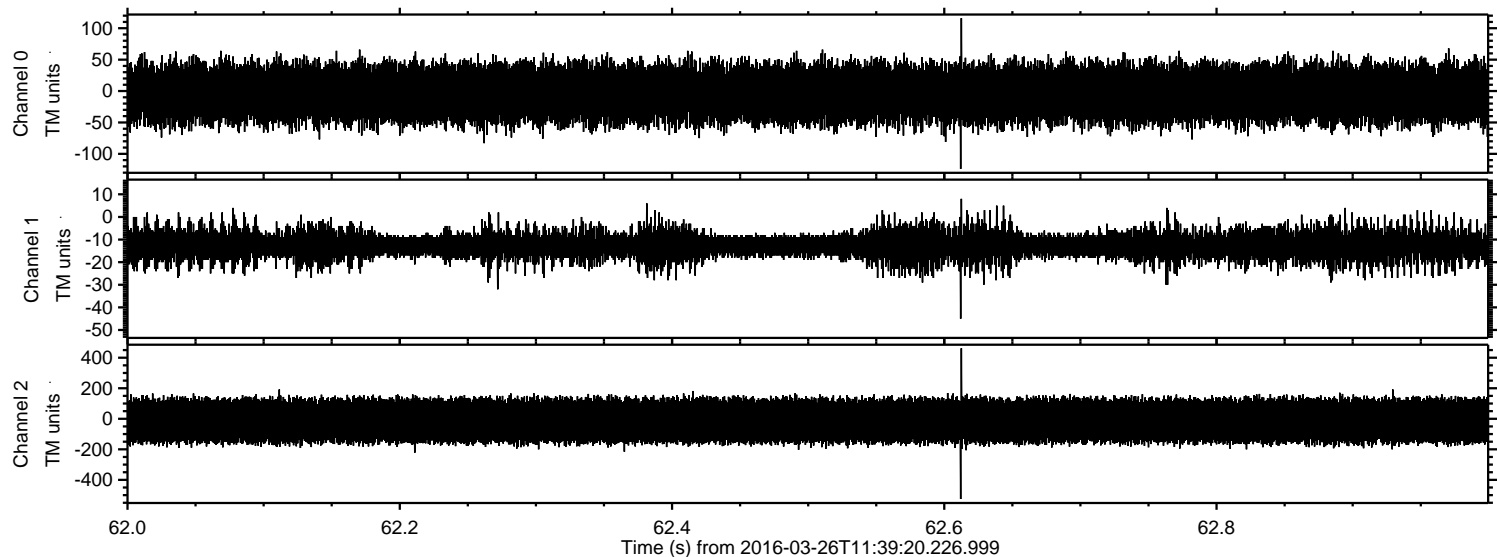
ELMAVAN 3D WAVEFORMS (Measured data sampled at 50 kHz) 51000 packets of 144 samples from 2016-03-26T11:39:20.226.999. Part 128/147



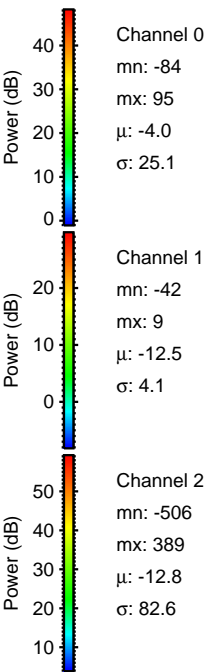
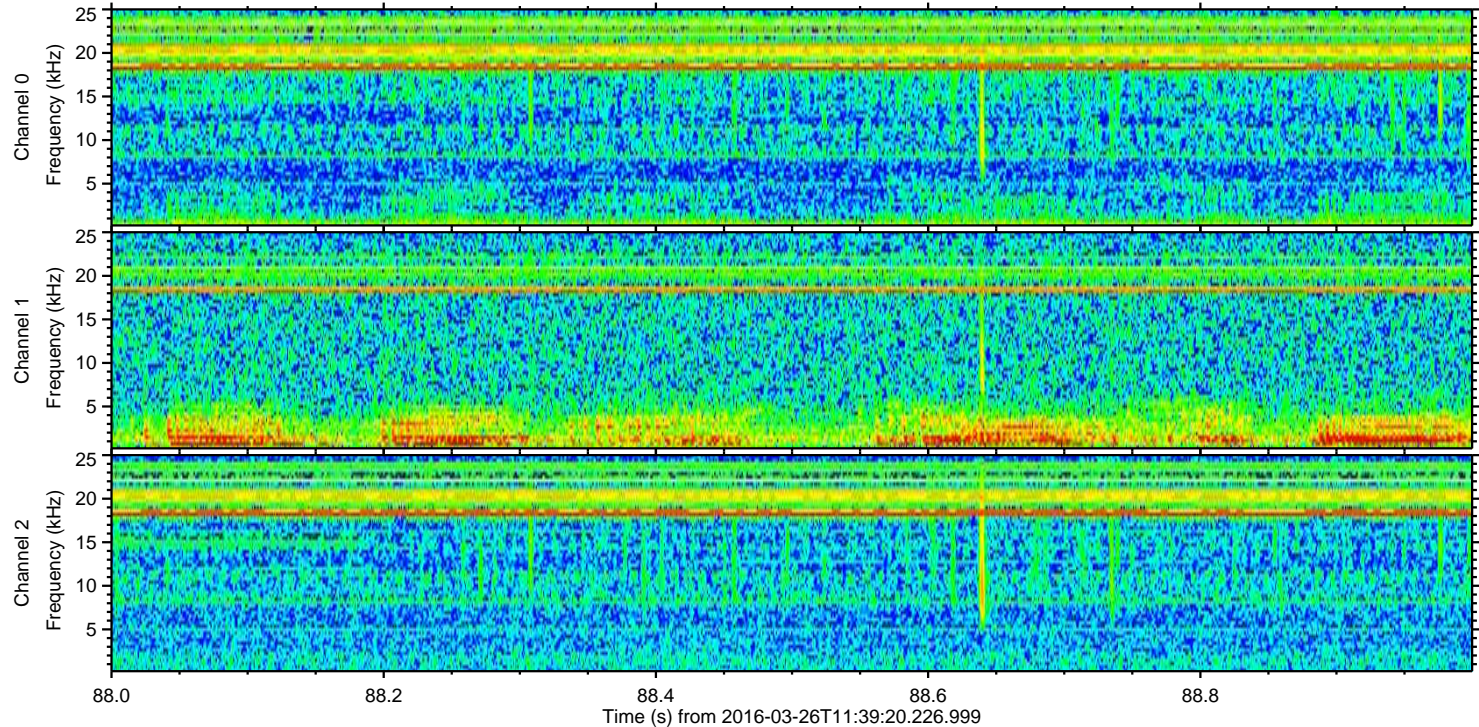
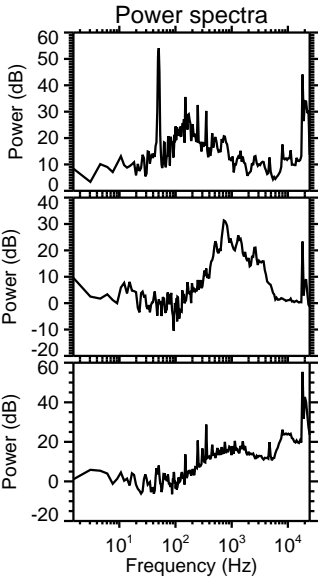
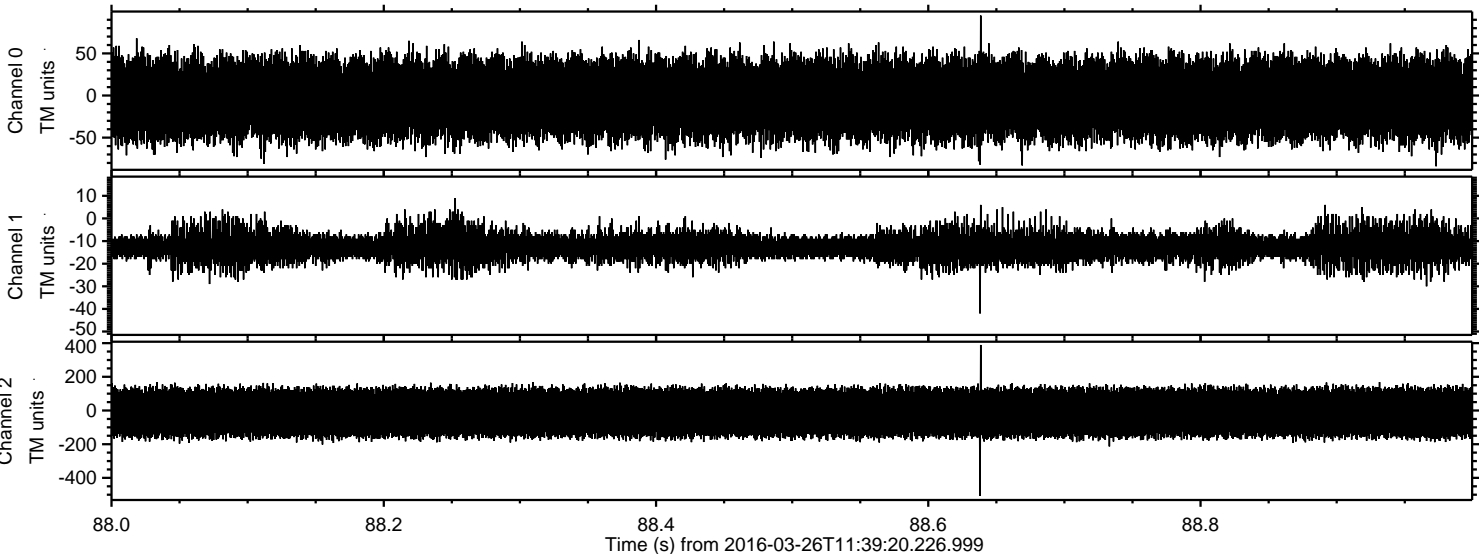
Processed Sat Apr 23 04:00:32 2016 by ELM ver.2012-10-06 from 001___elm20160326_113919___dat00.bin



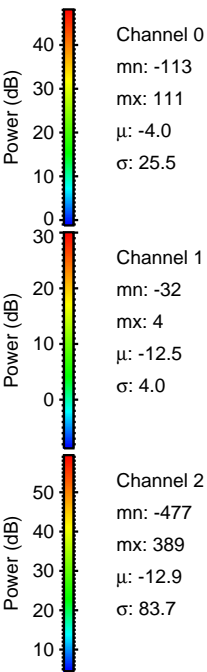
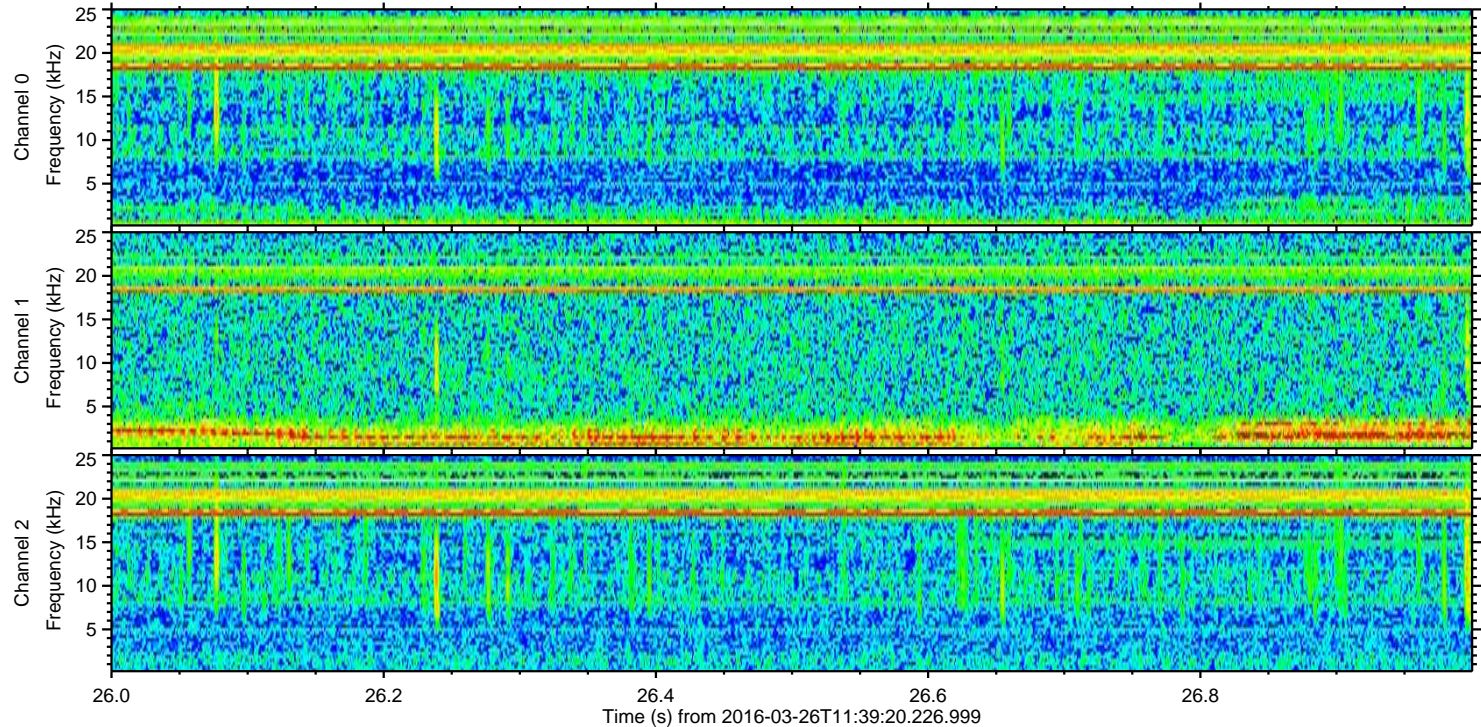
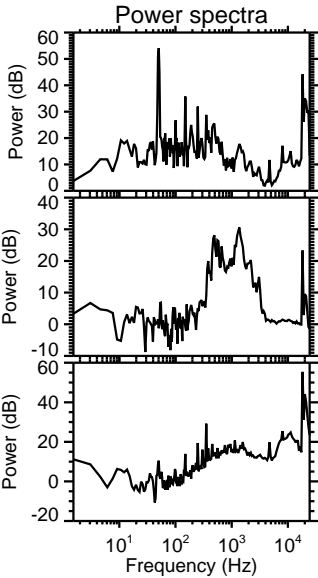
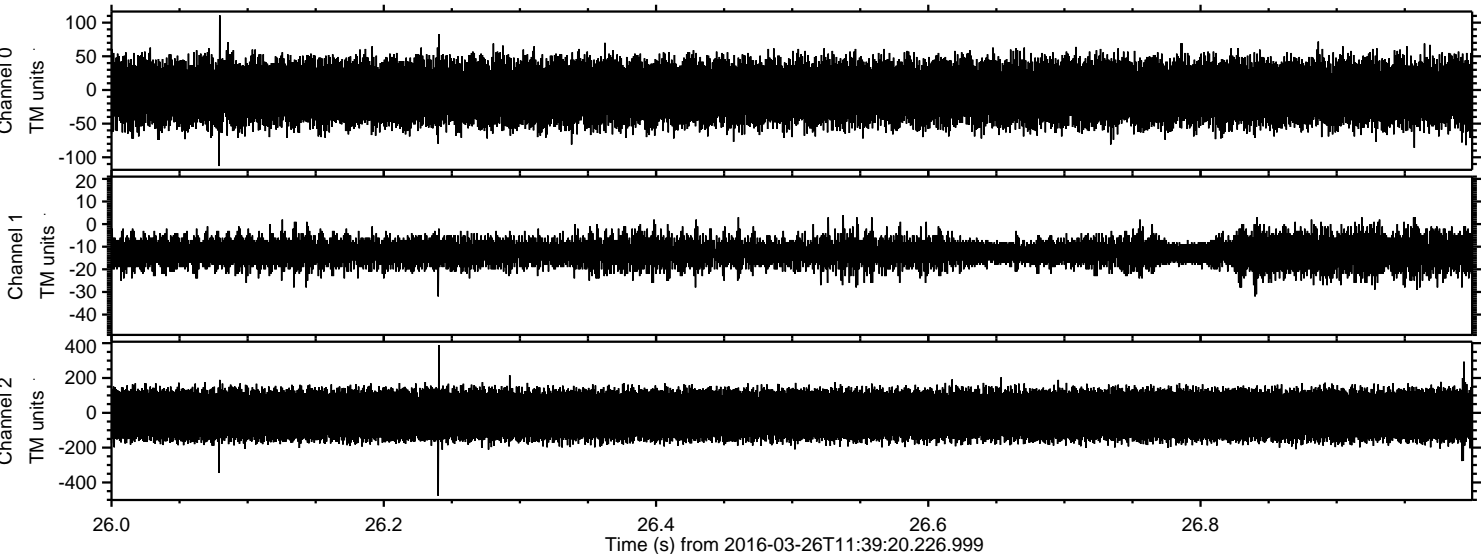
Processed Sat Apr 23 04:00:33 2016 by ELM ver.2012-10-06 from 001__elm20160326_113919__dat00.bin



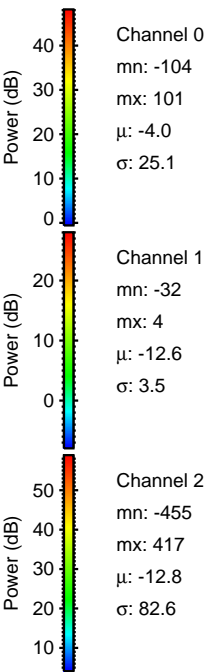
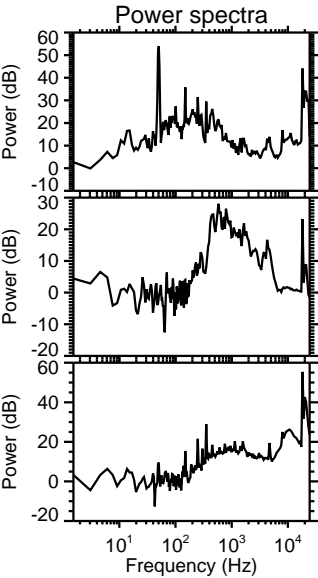
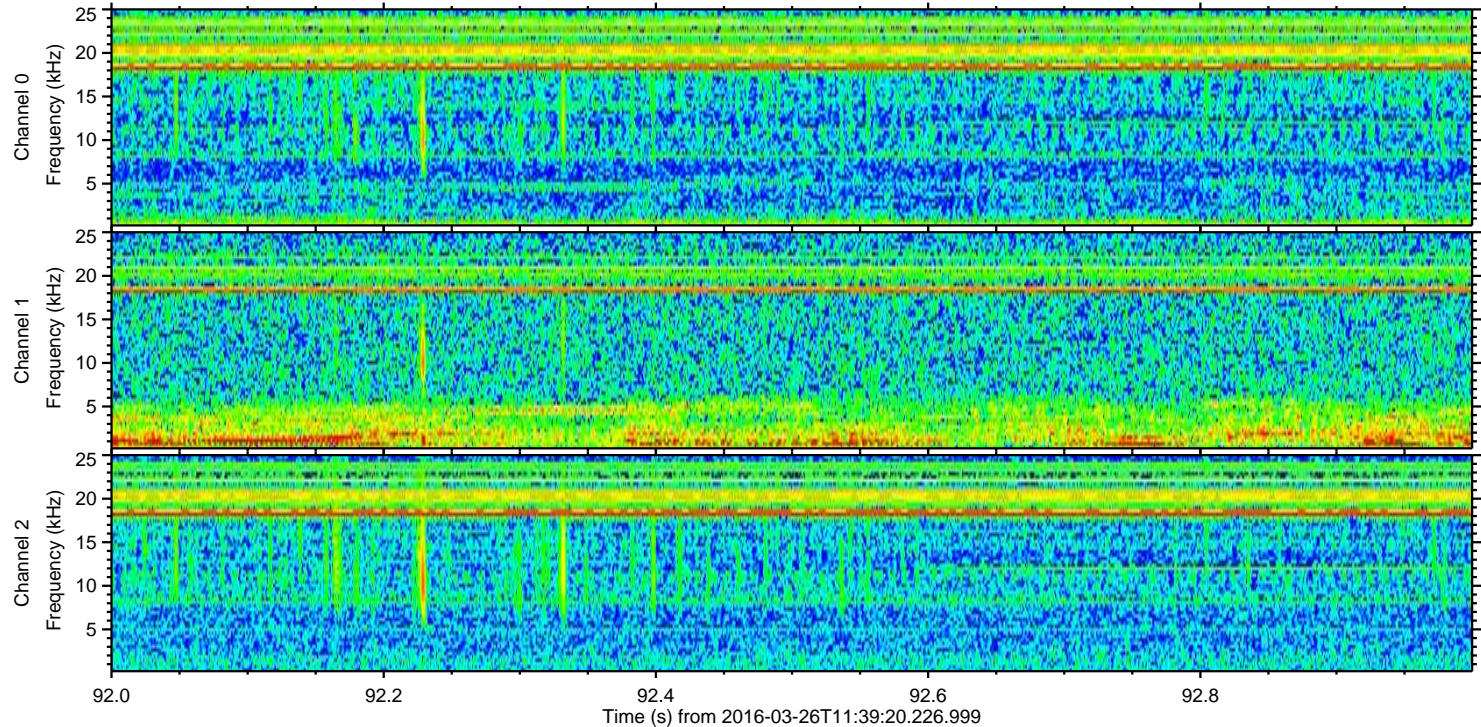
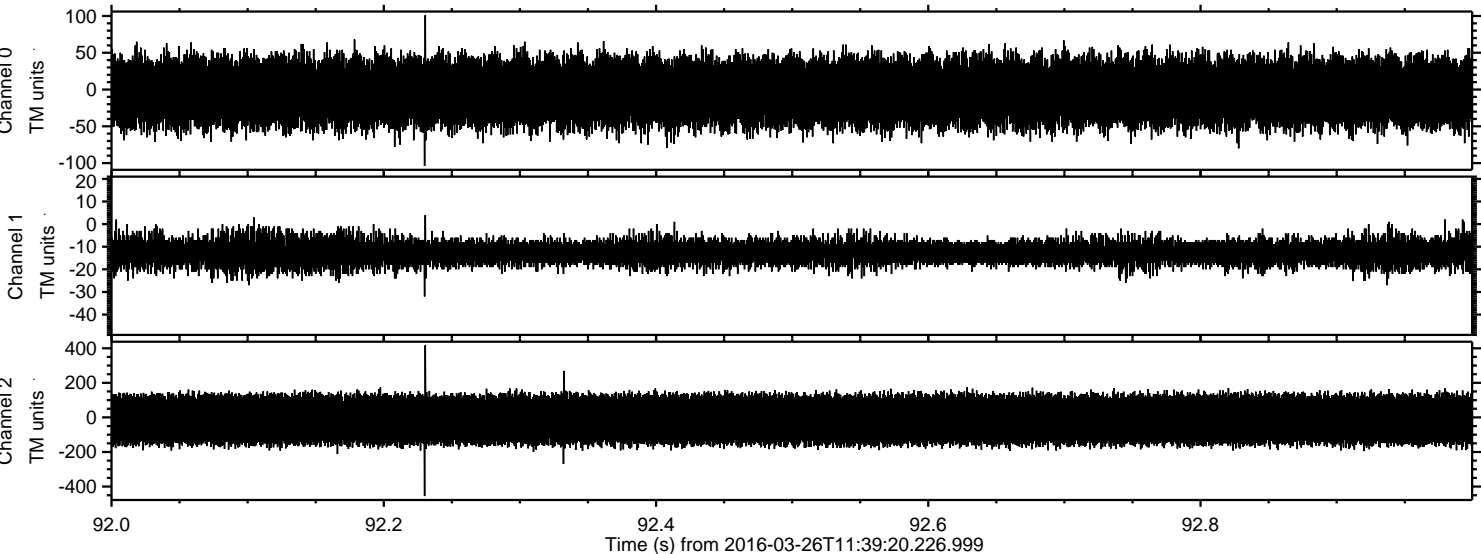
Processed Sat Apr 23 04:00:34 2016 by ELM ver.2012-10-06 from 001__elm20160326_113919__dat00.bin



Processed Sat Apr 23 04:00:35 2016 by ELM ver.2012-10-06 from 001__elm20160326_113919__dat00.bin



Processed Sat Apr 23 04:00:36 2016 by ELM ver.2012-10-06 from 001__elm20160326_113919__dat00.bin



Channel 0
mn: -104
mx: 101
 μ : -4.0
 σ : 25.1

Channel 1
mn: -32
mx: 4
 μ : -12.6
 σ : 3.5

Channel 2
mn: -455
mx: 417
 μ : -12.8
 σ : 82.6

Processed Sat Apr 23 04:00:37 2016 by ELM ver.2012-10-06 from 001__elm20160326_113919__dat00.bin

