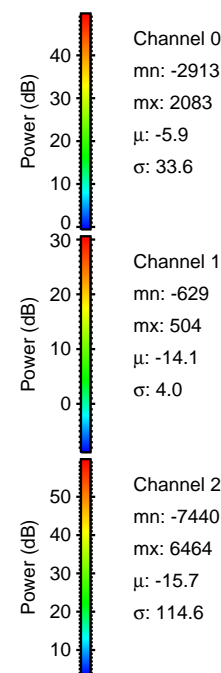
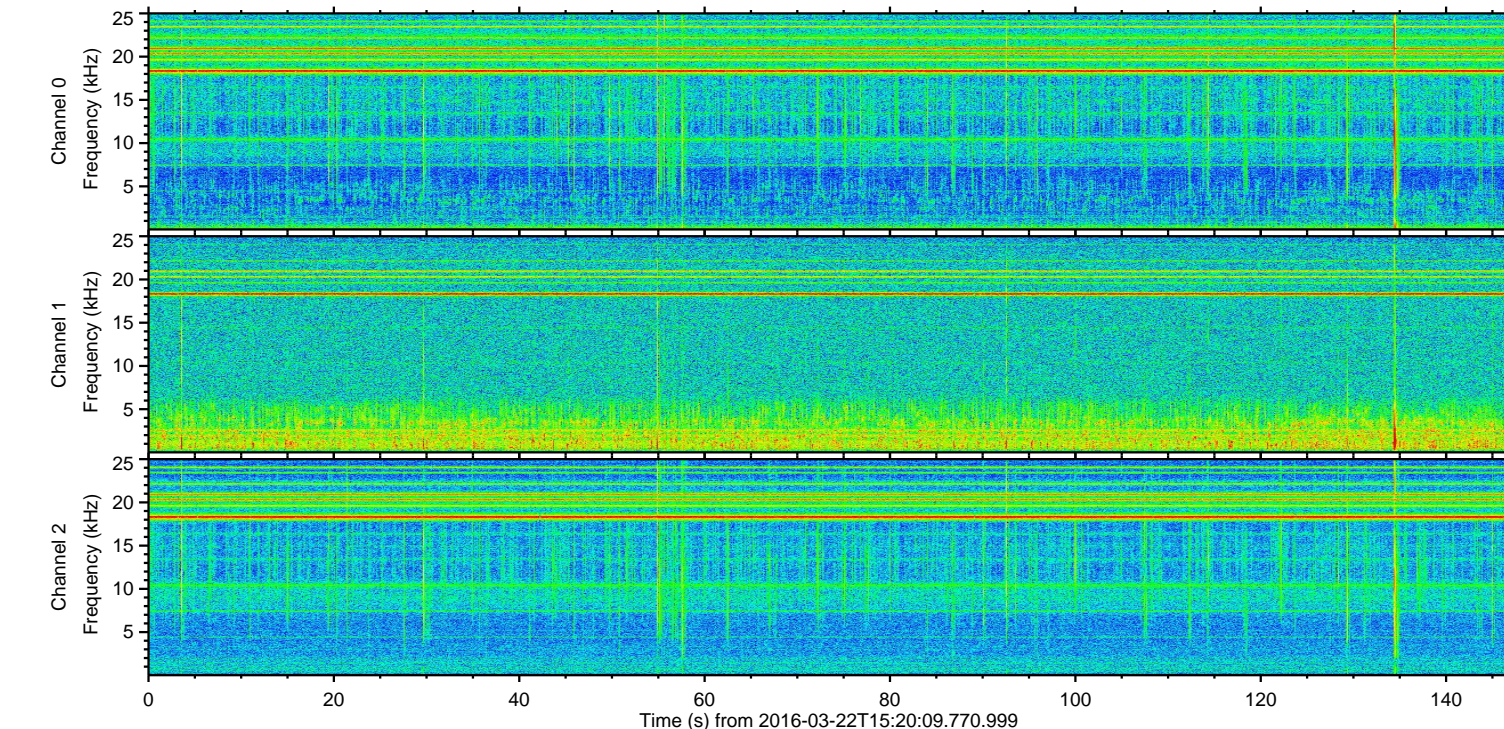
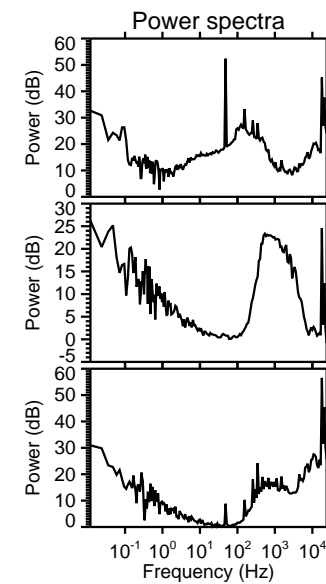
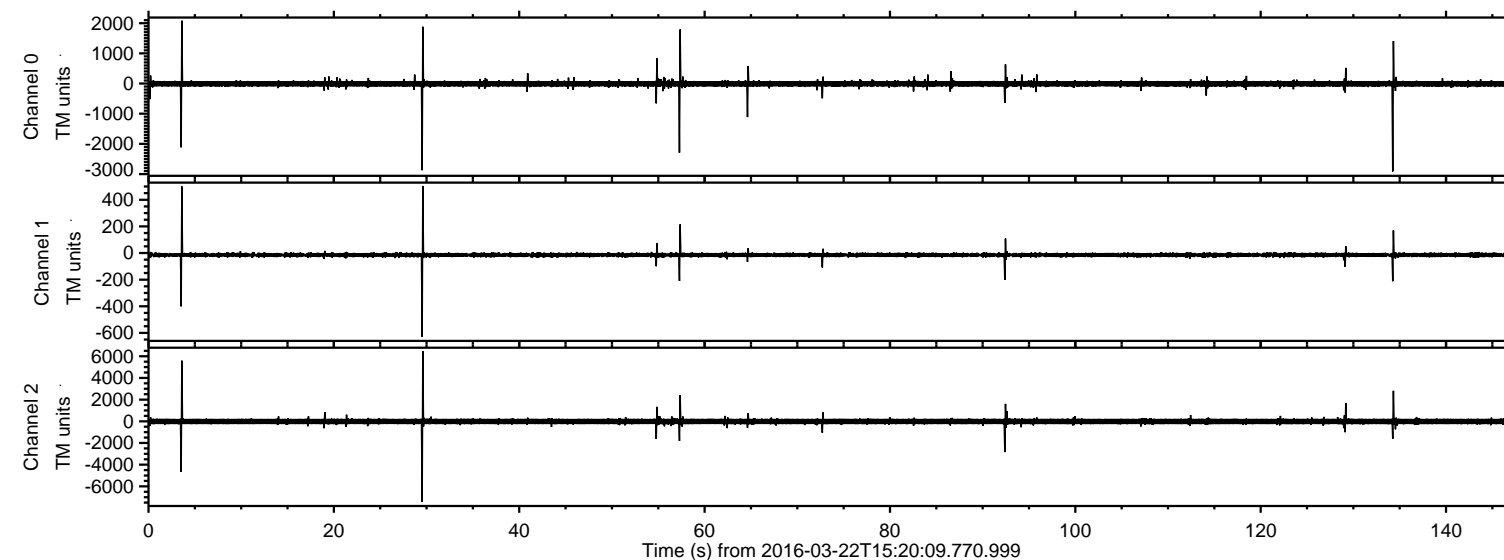
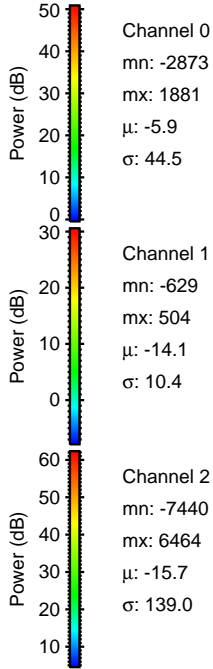
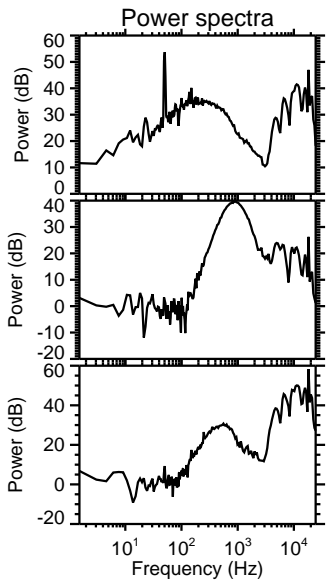
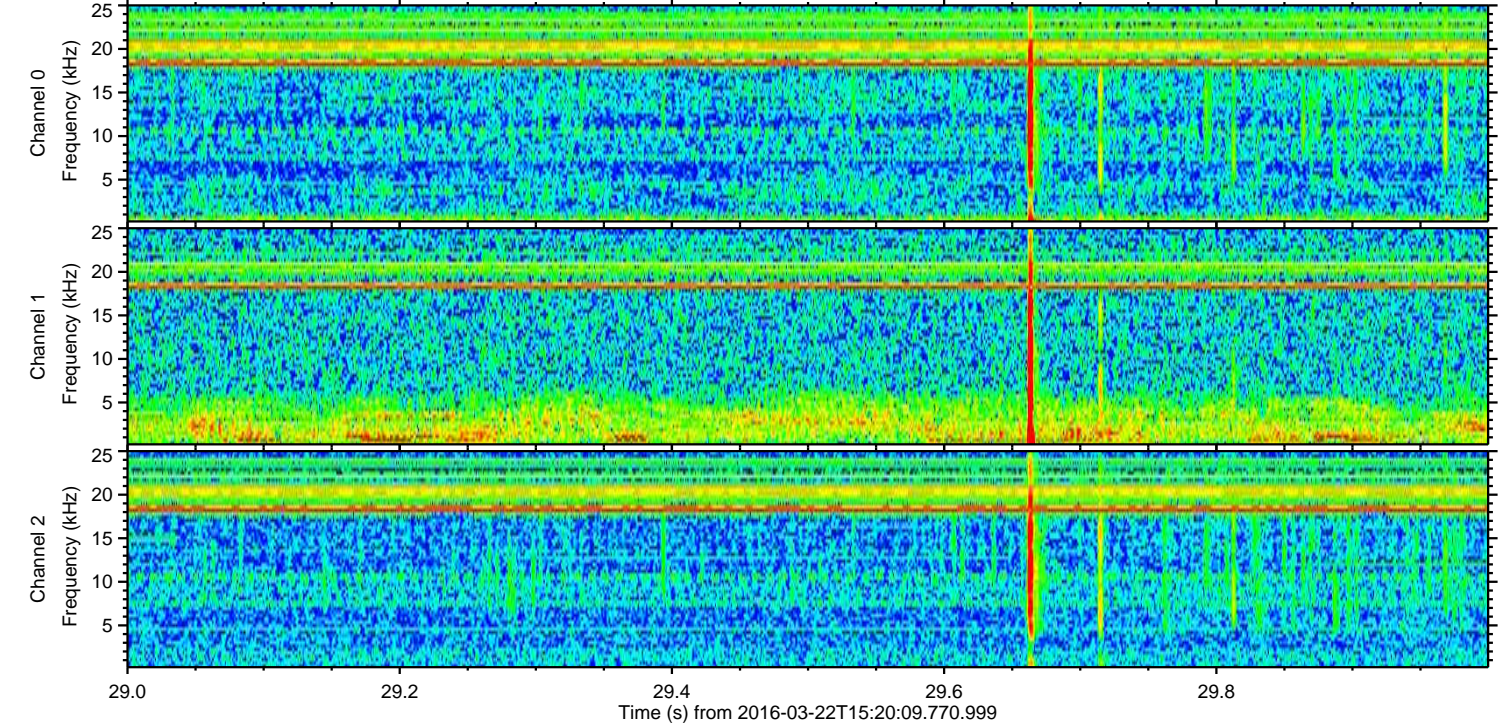
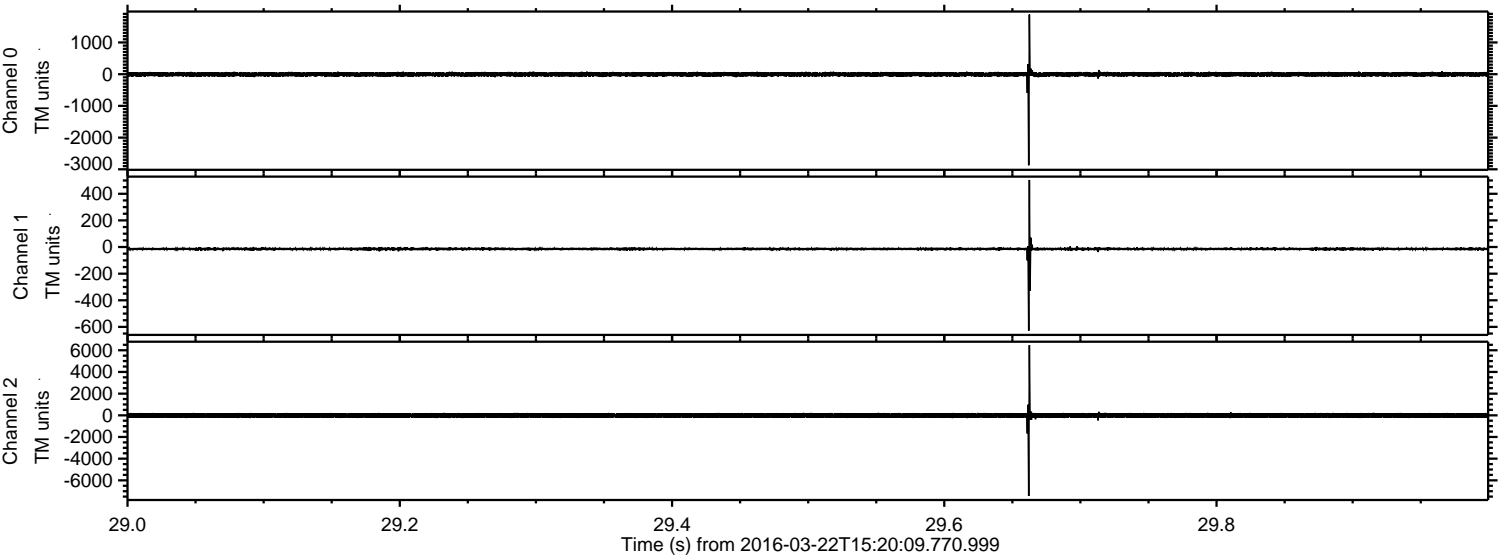


ELMAVAN 3D WAVEFORMS (Measured data sampled at 50 kHz) 51000 packets of 144 samples from 2016-03-22T15:20:09.770.999.

Processed Fri Apr 22 04:16:38 2016 by ELM ver.2012-10-06 from 001__elm20160322_152008__dat00.bin



Processed Fri Apr 22 04:16:52 2016 by ELM ver.2012-10-06 from 001__elm20160322_152008__dat00.bin

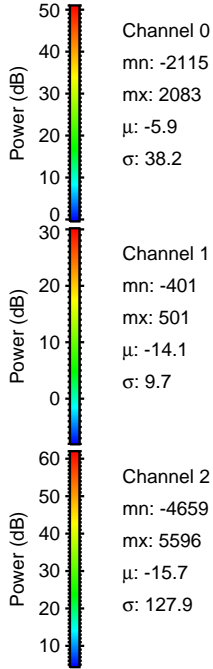
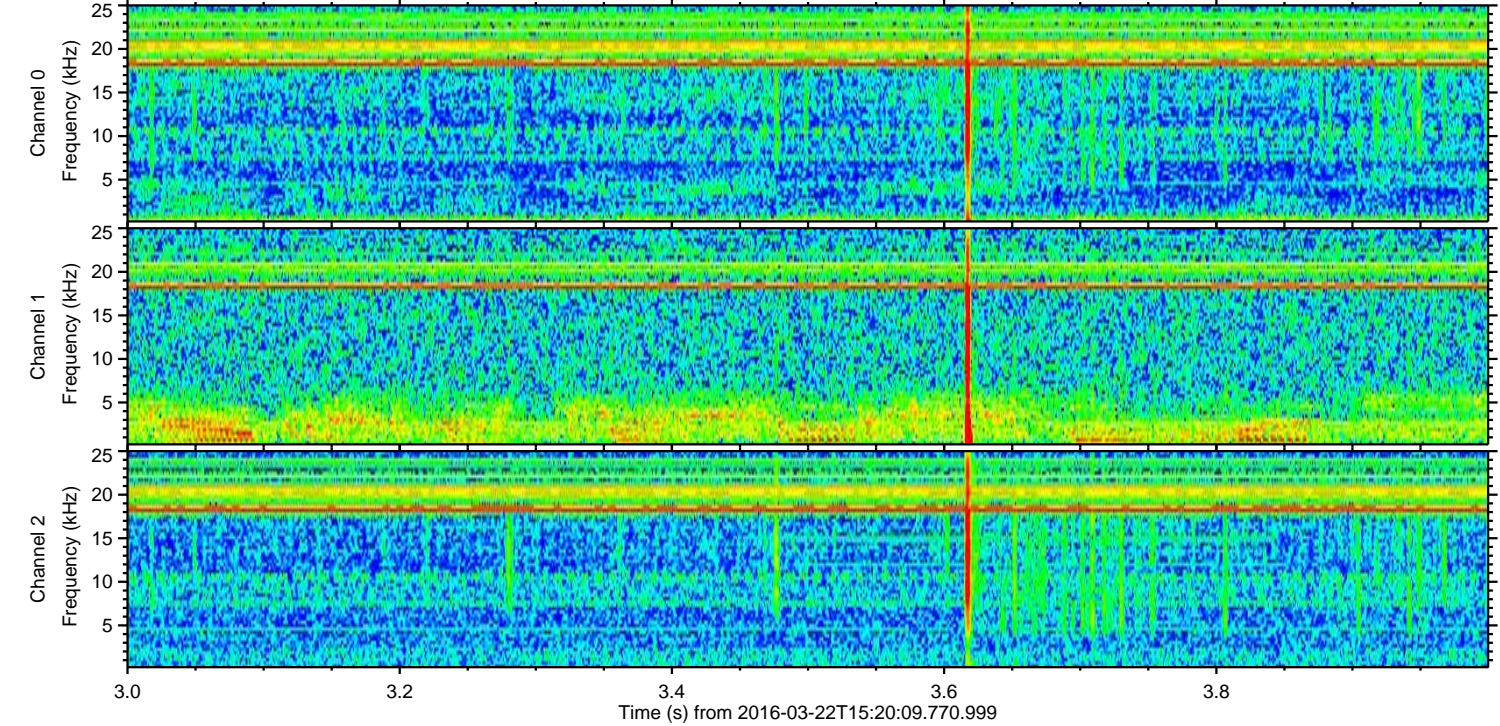
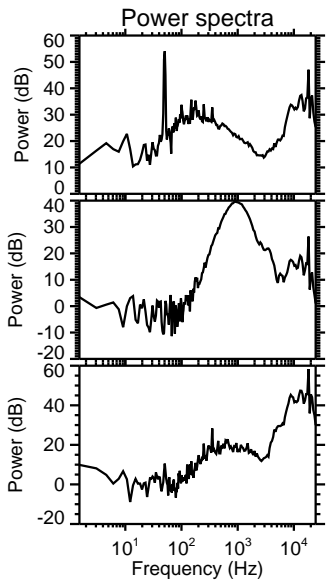
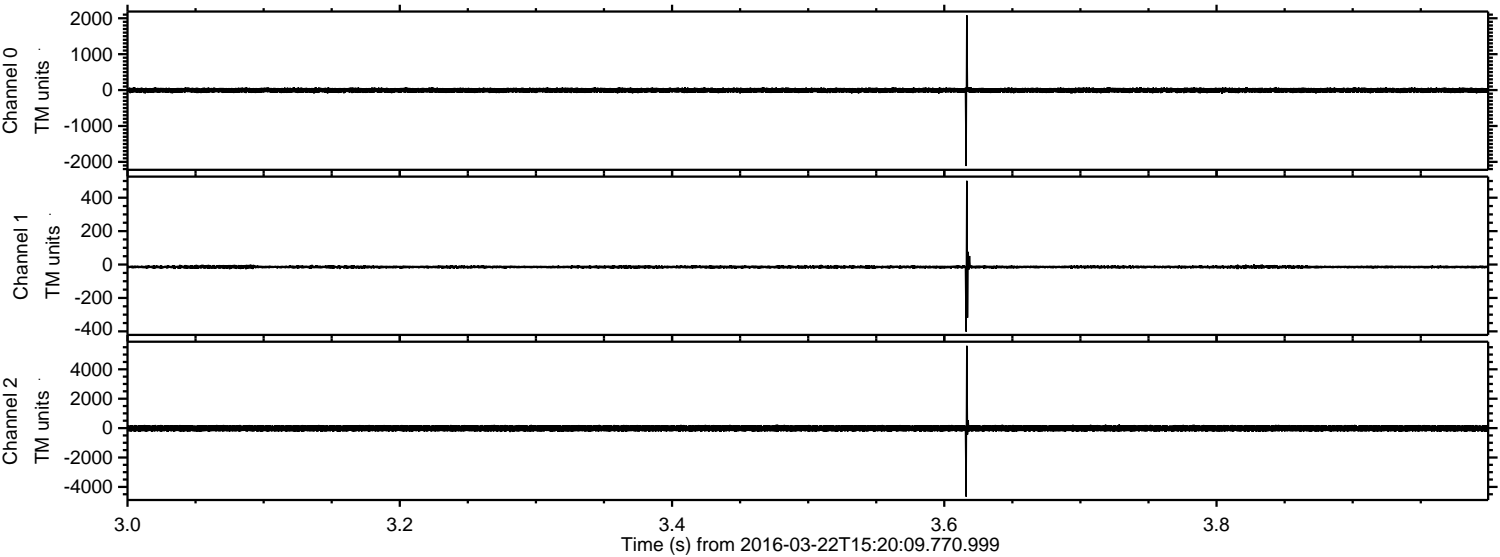


Channel 0
mn: -2873
mx: 1881
 μ : -5.9
 σ : 44.5

Channel 1
mn: -629
mx: 504
 μ : -14.1
 σ : 10.4

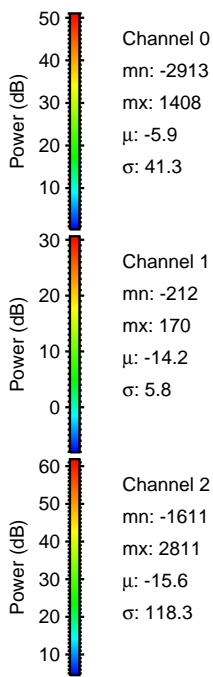
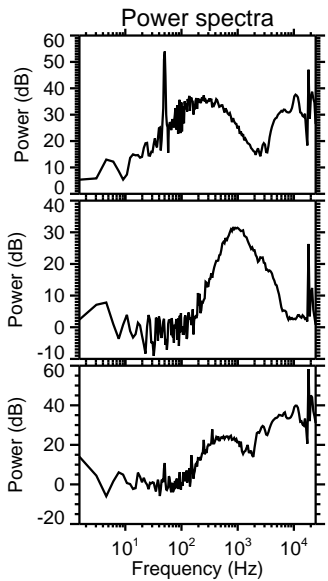
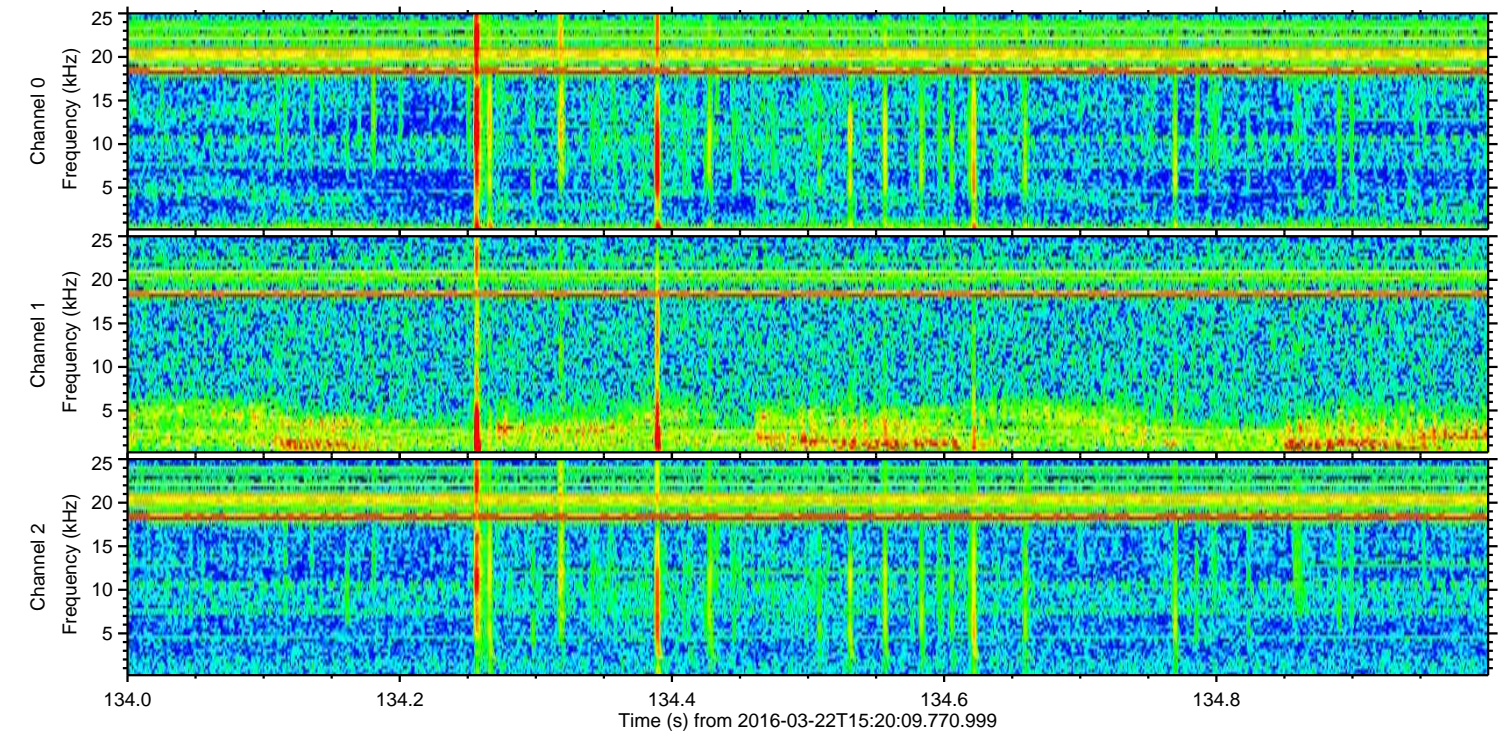
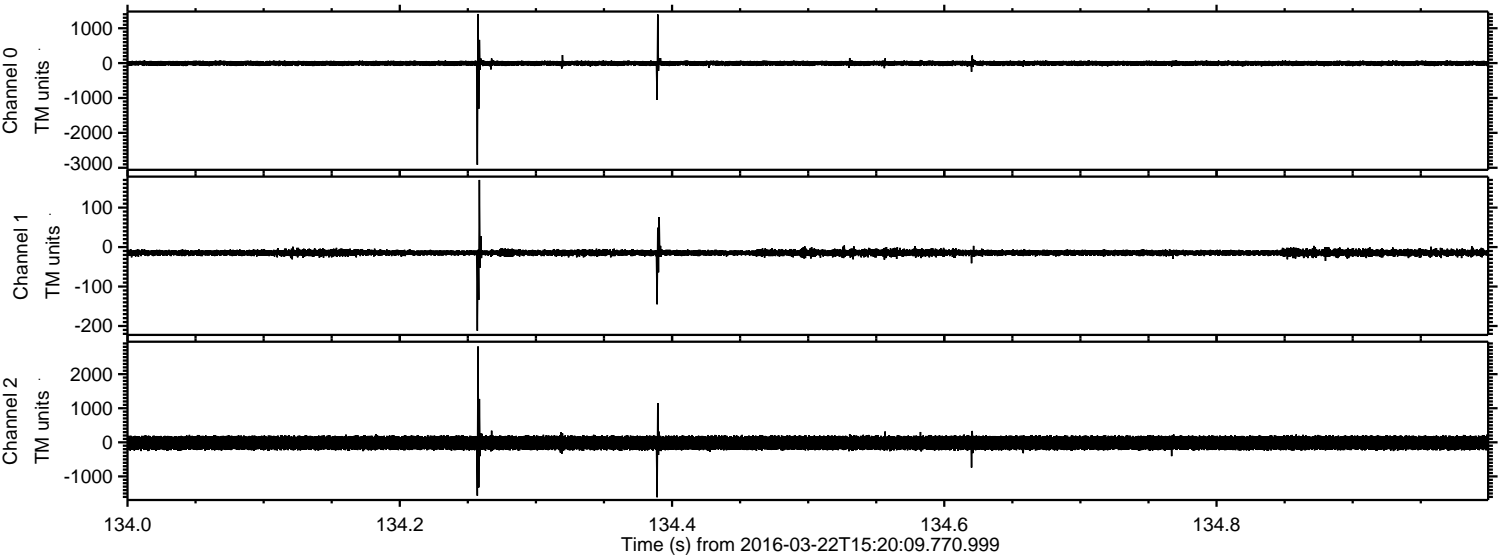
Channel 2
mn: -7440
mx: 6464
 μ : -15.7
 σ : 139.0

Processed Fri Apr 22 04:16:53 2016 by ELM ver.2012-10-06 from 001__elm20160322_152008__dat00.bin

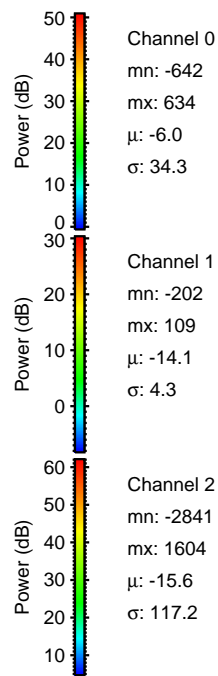
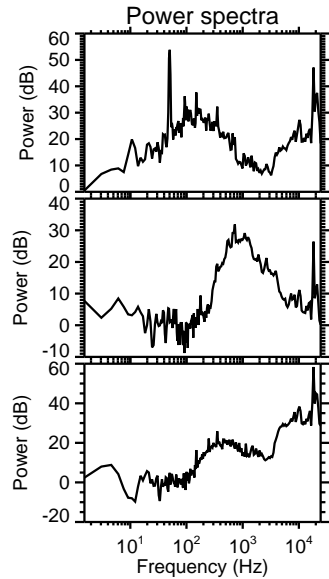
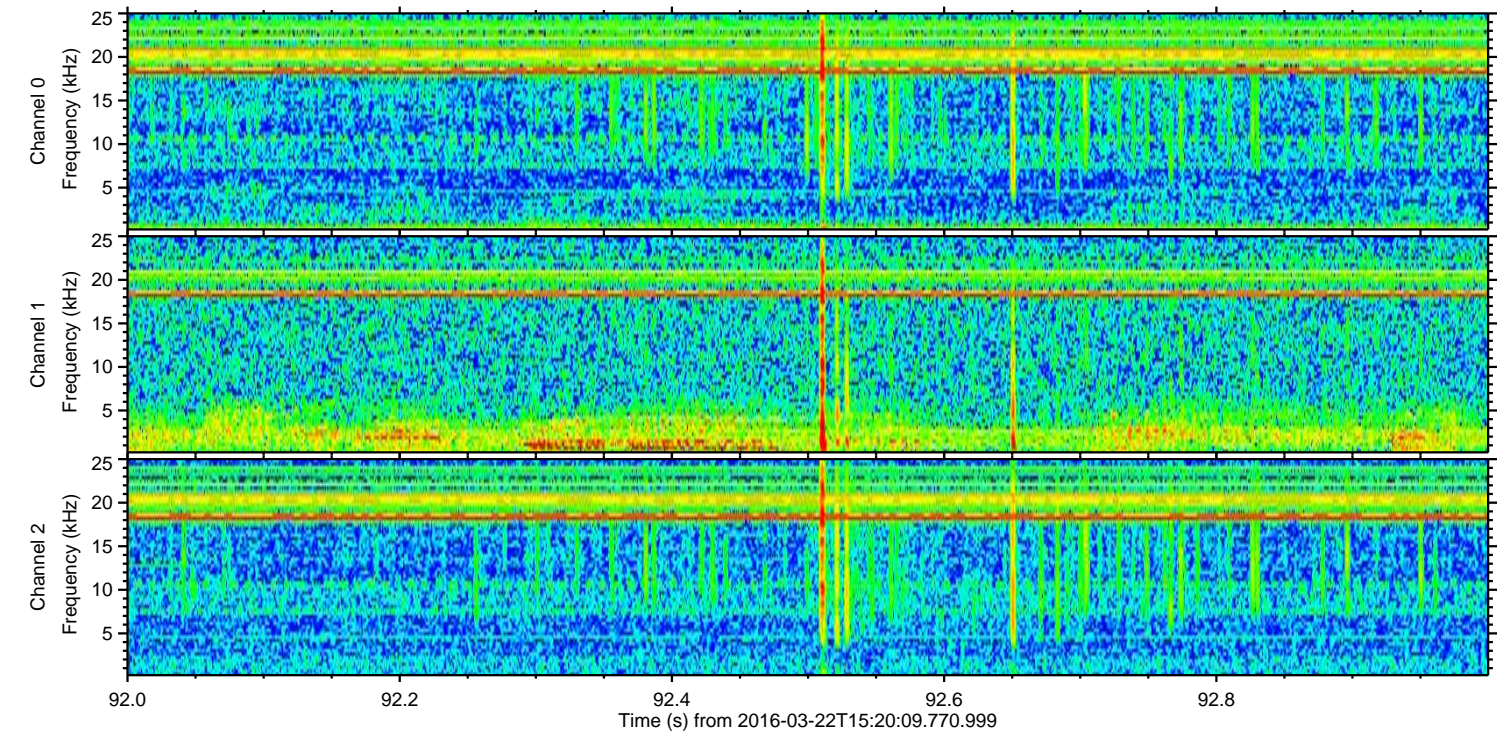
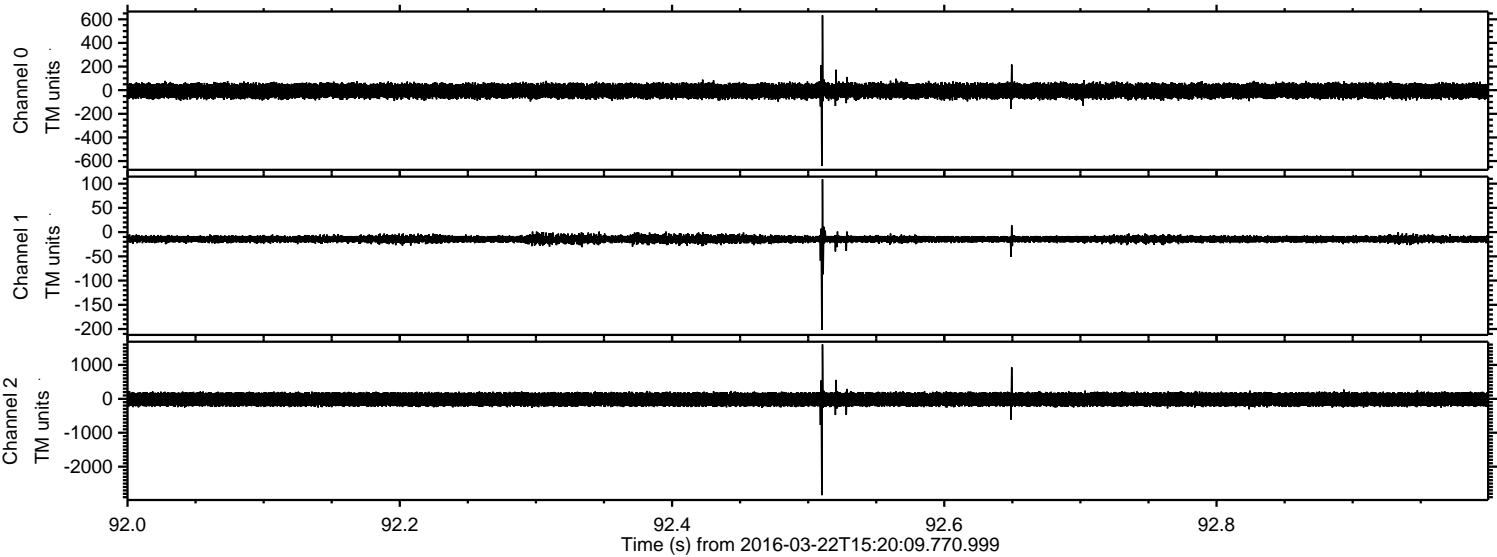


ELMAVAN 3D WAVEFORMS (Measured data sampled at 50 kHz) 51000 packets of 144 samples from 2016-03-22T15:20:09.770.999. Part 135/147

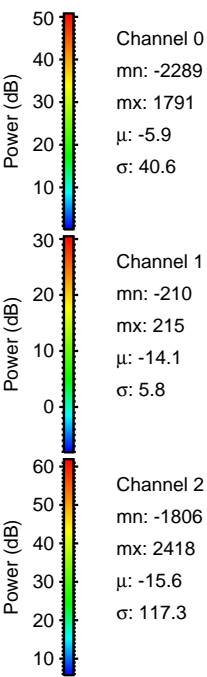
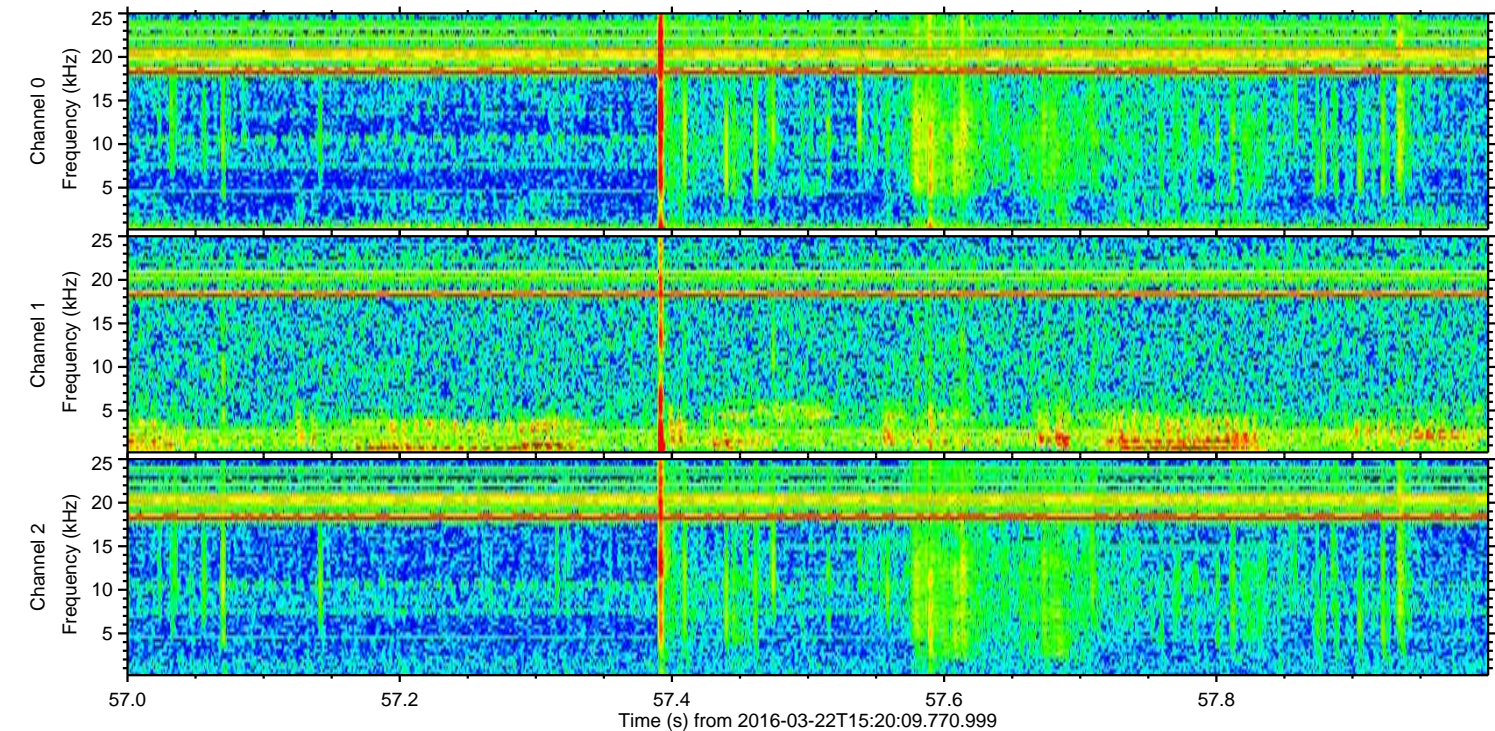
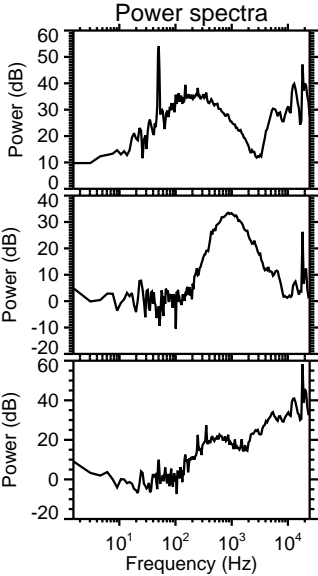
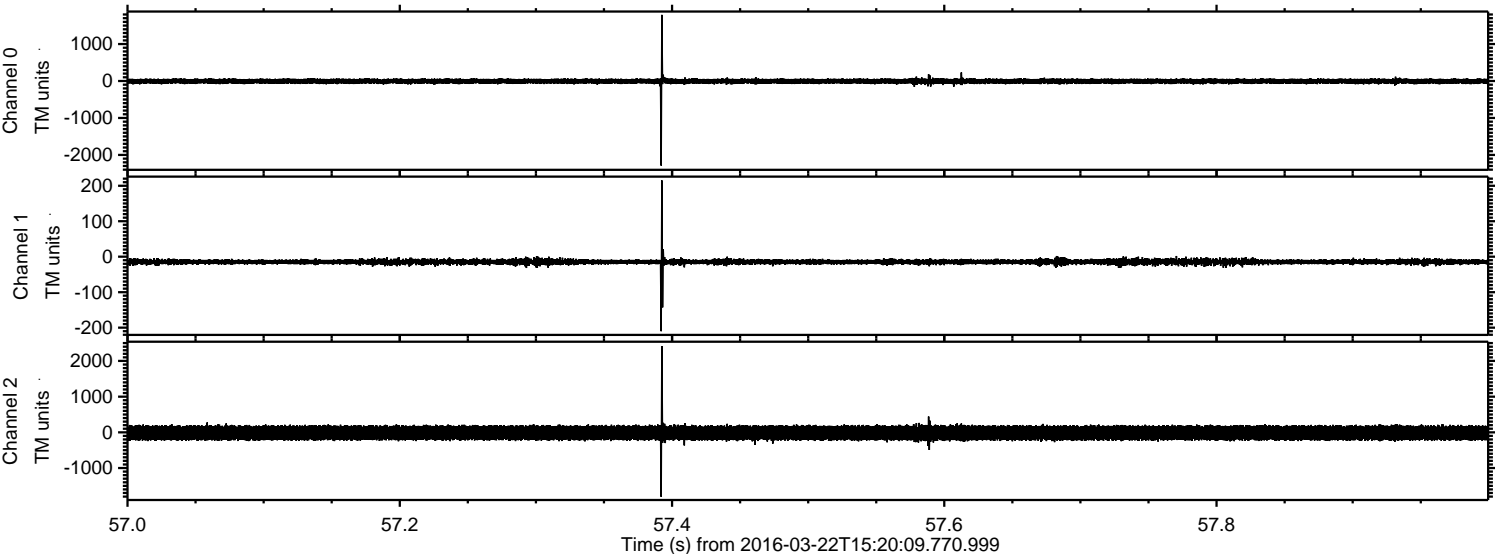
Processed Fri Apr 22 04:16:54 2016 by ELM ver.2012-10-06 from 001__elm20160322_152008__dat00.bin



Processed Fri Apr 22 04:16:55 2016 by ELM ver.2012-10-06 from 001__elm20160322_152008__dat00.bin

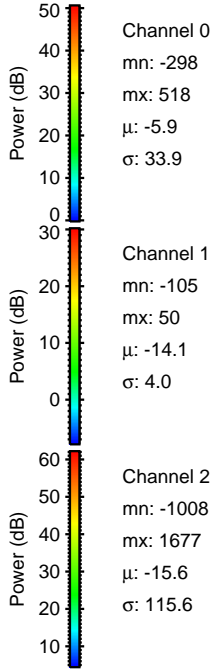
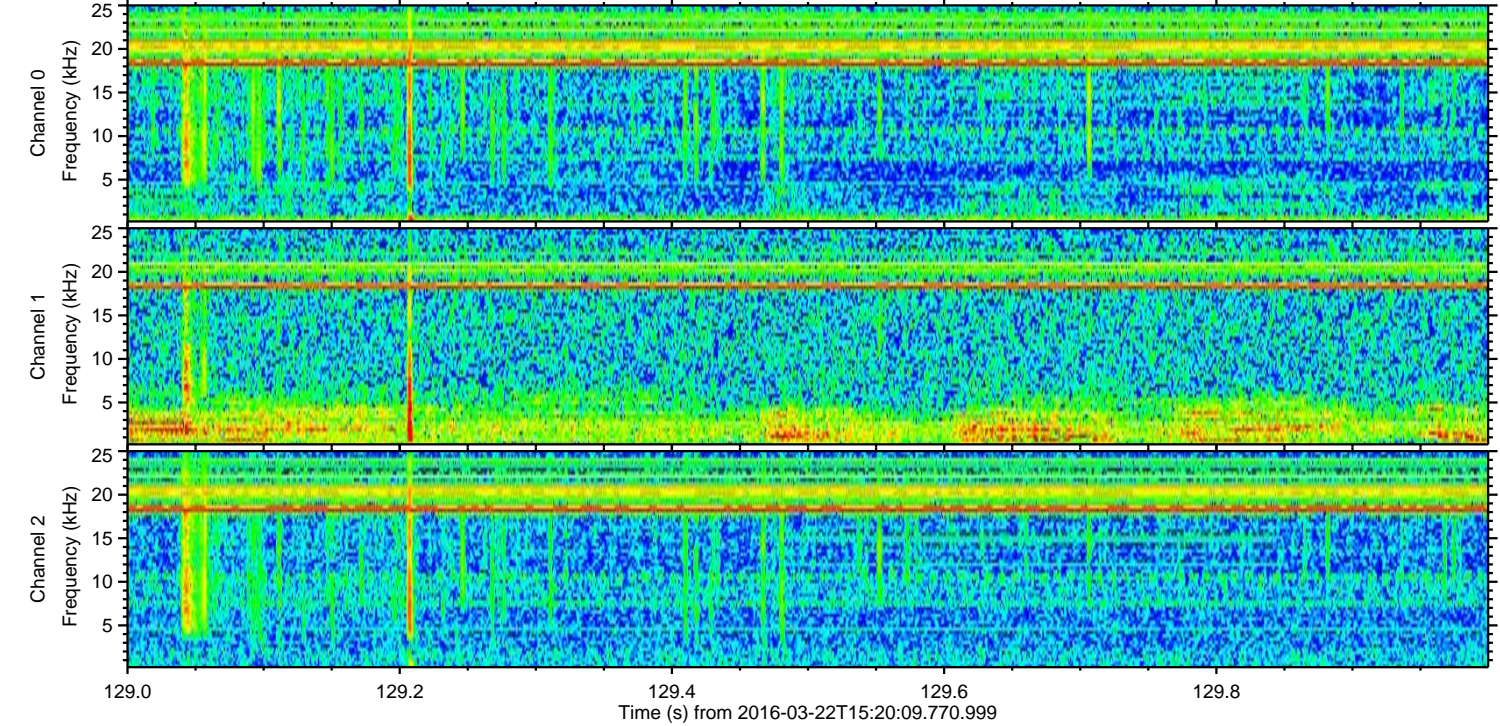
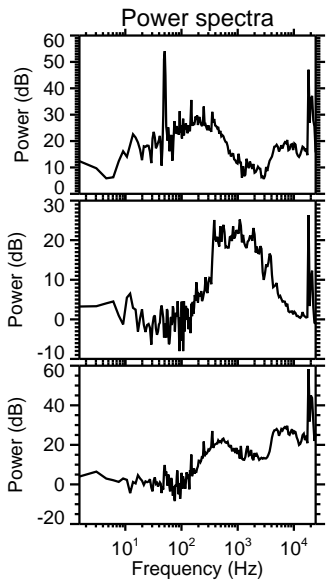
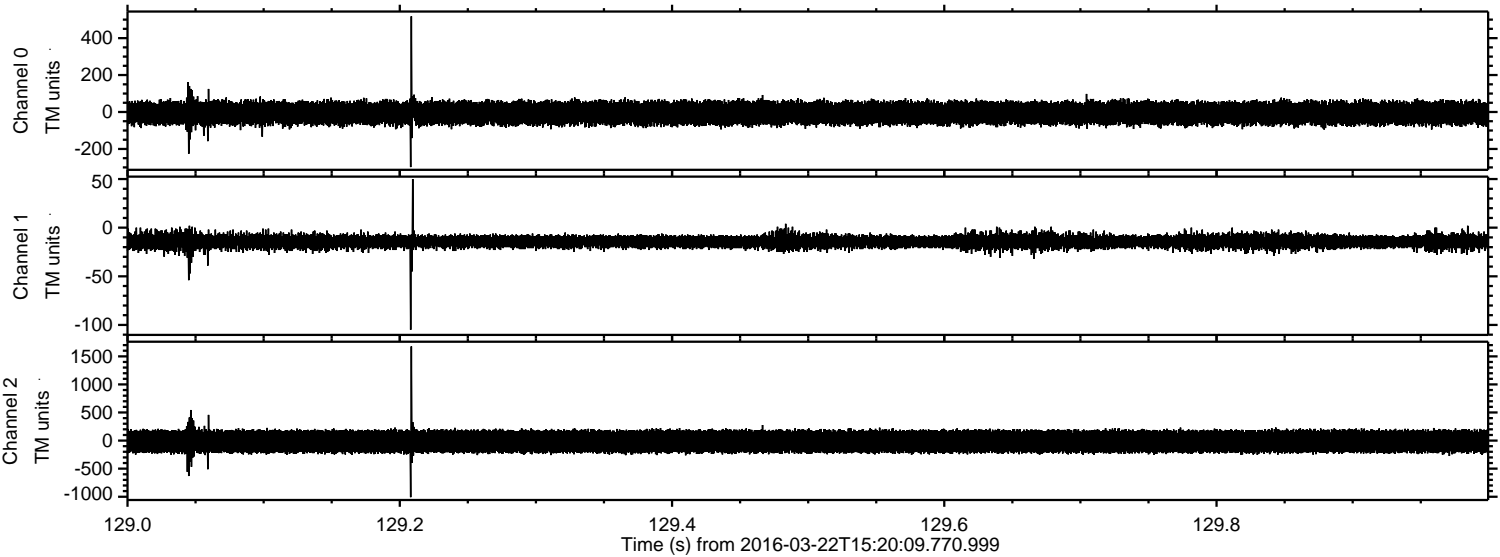


Processed Fri Apr 22 04:16:56 2016 by ELM ver.2012-10-06 from 001__elm20160322_152008__dat00.bin

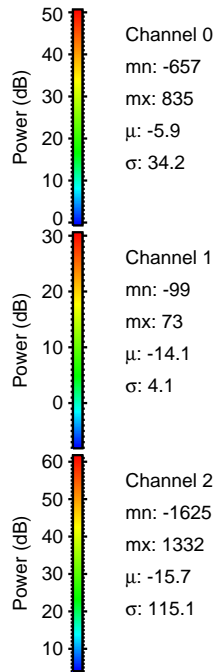
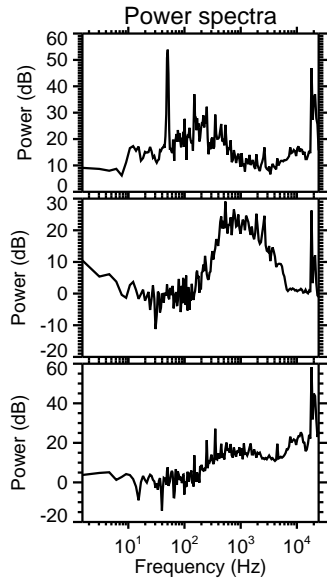
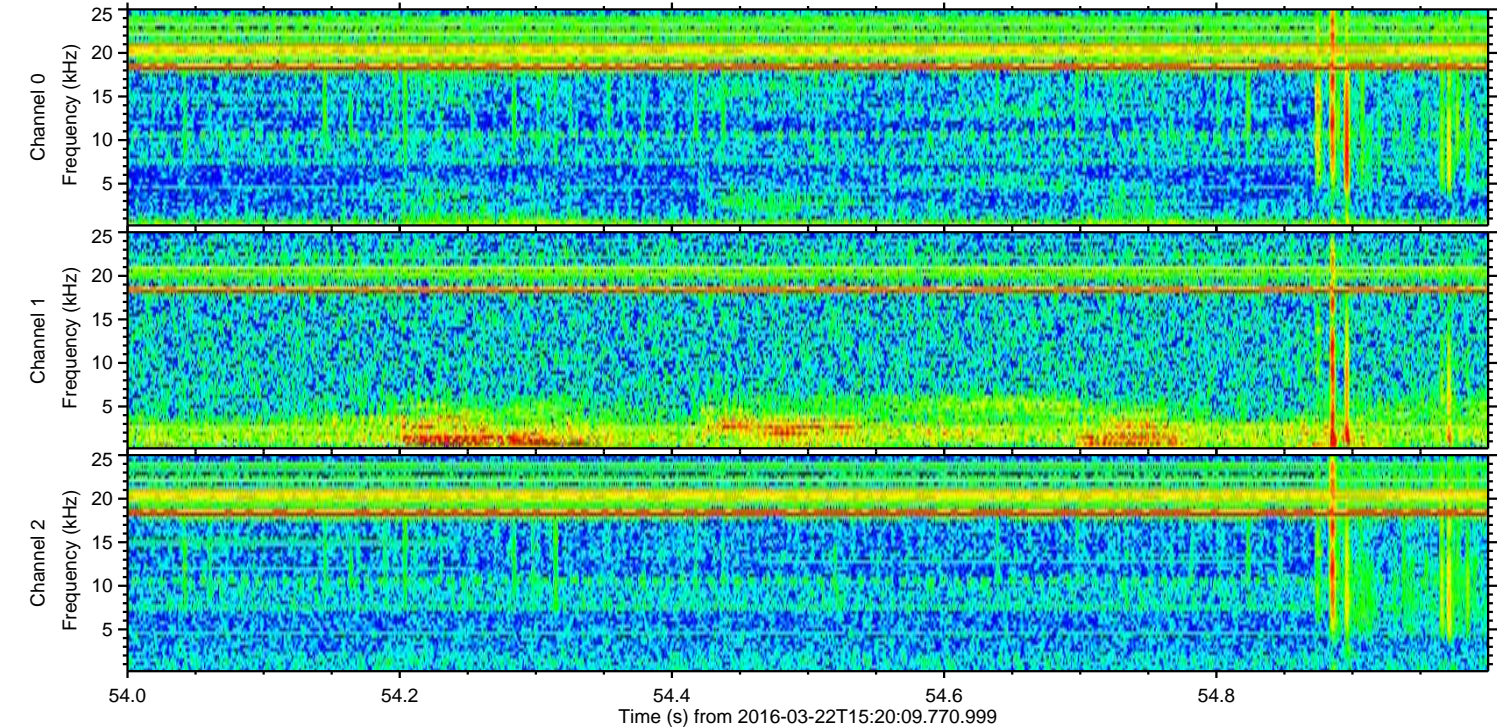
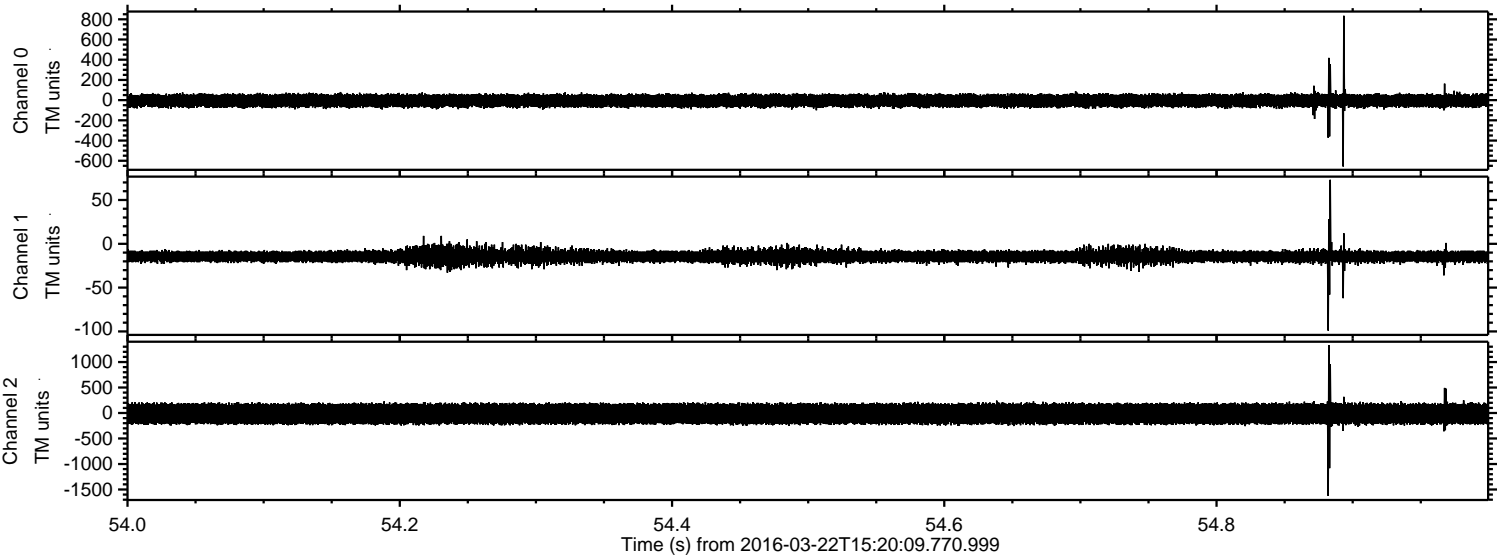


ELMAVAN 3D WAVEFORMS (Measured data sampled at 50 kHz) 51000 packets of 144 samples from 2016-03-22T15:20:09.770.999. Part 130/147

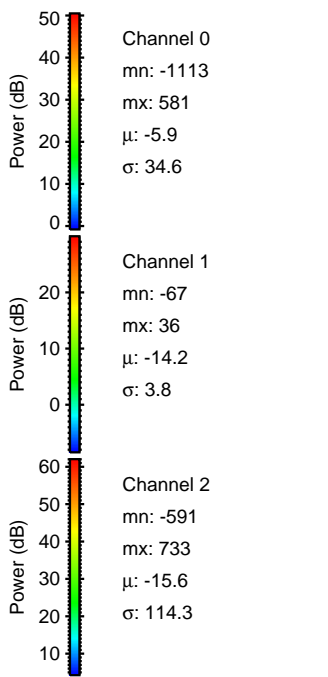
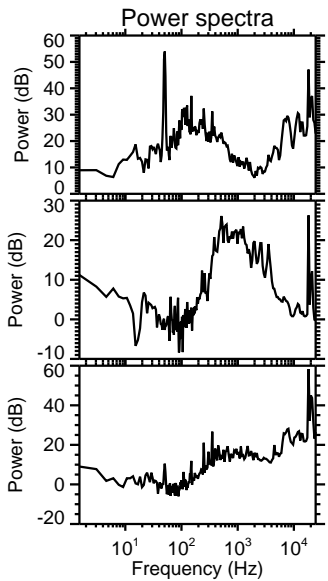
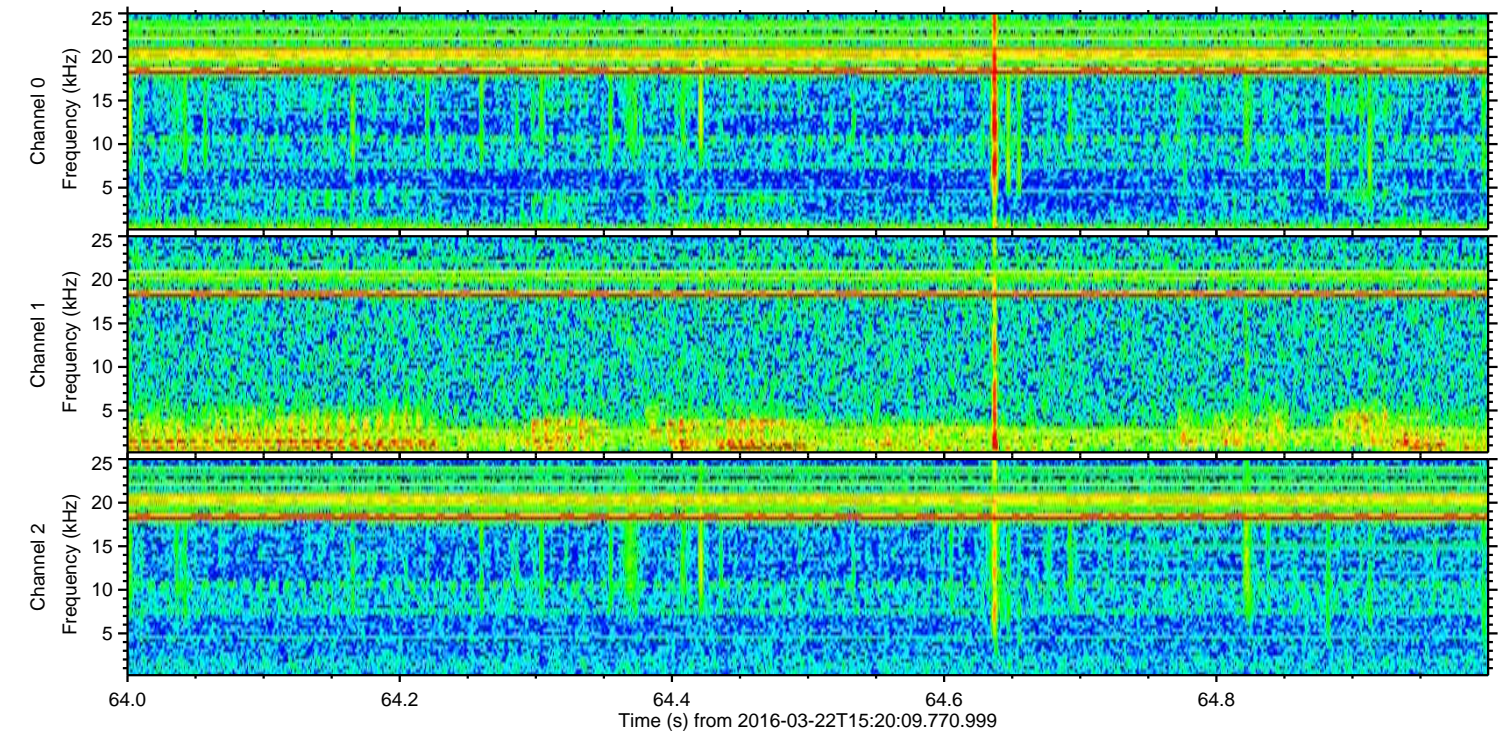
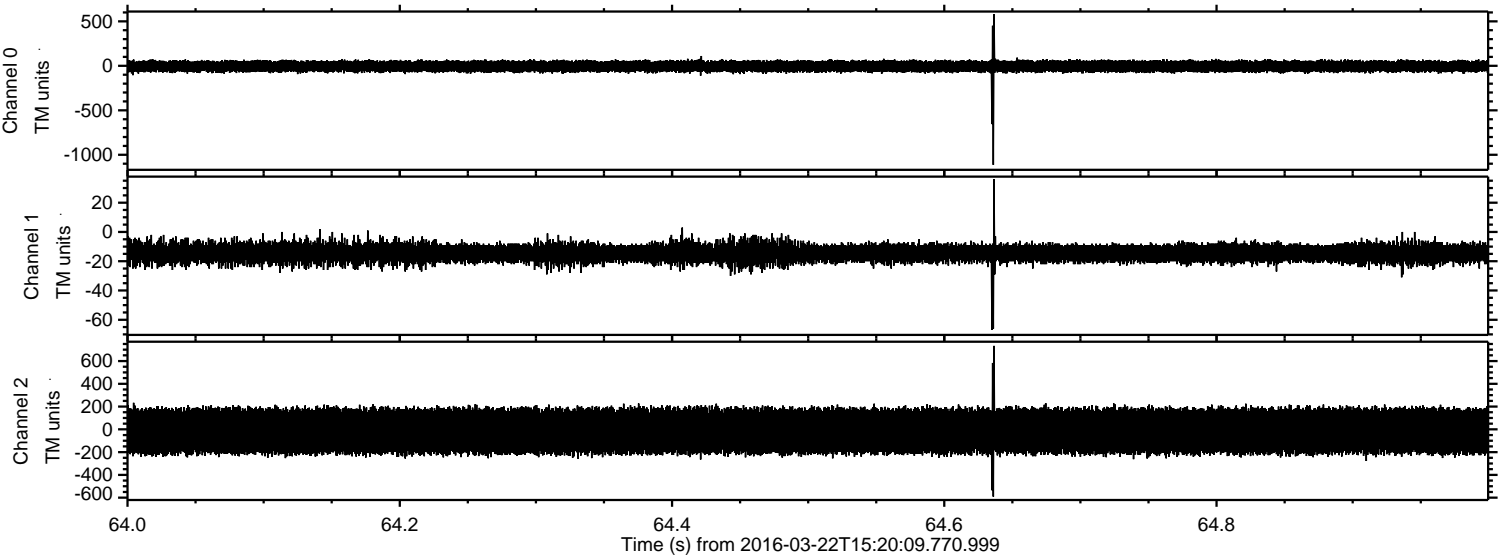
Processed Fri Apr 22 04:16:57 2016 by ELM ver.2012-10-06 from 001__elm20160322_152008__dat00.bin



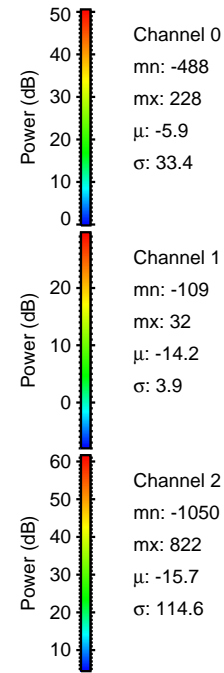
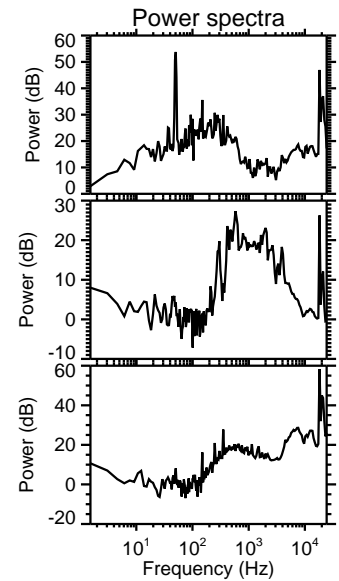
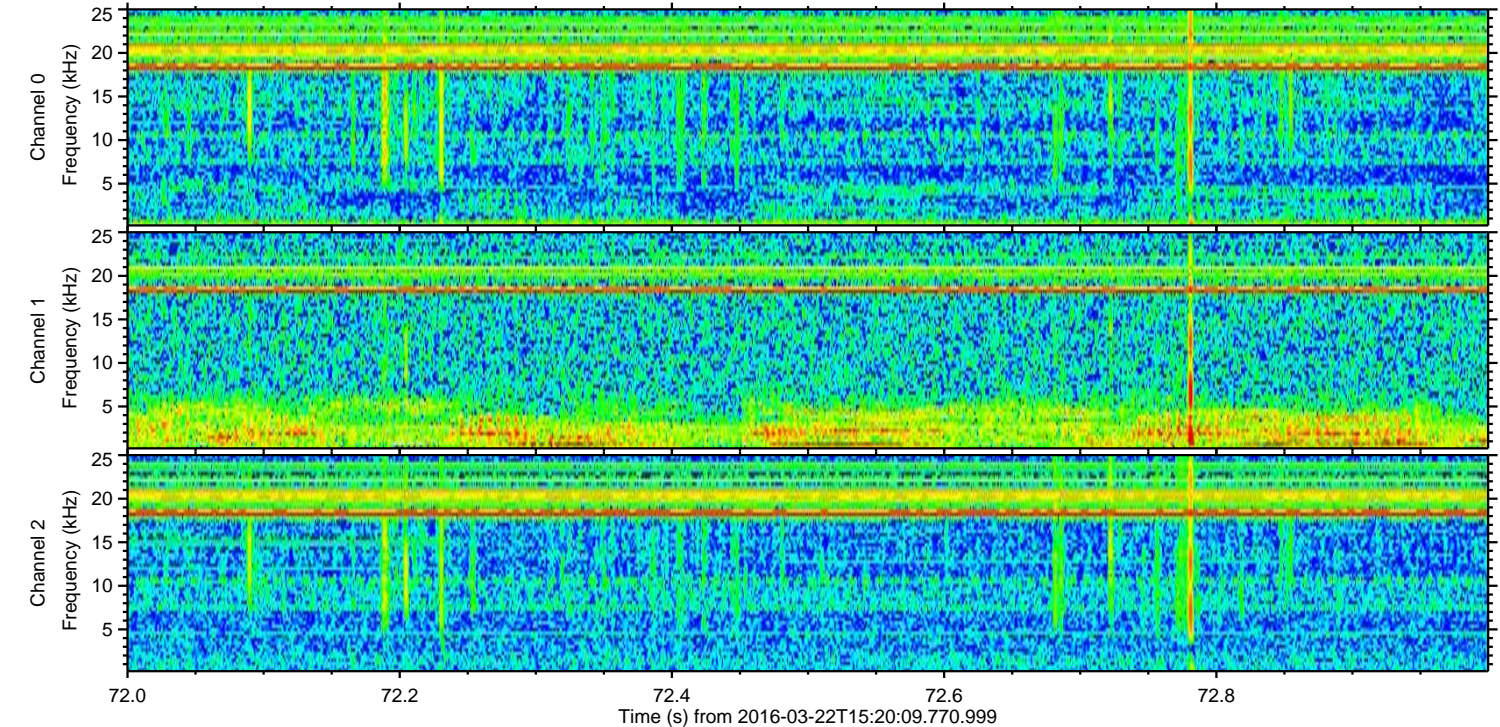
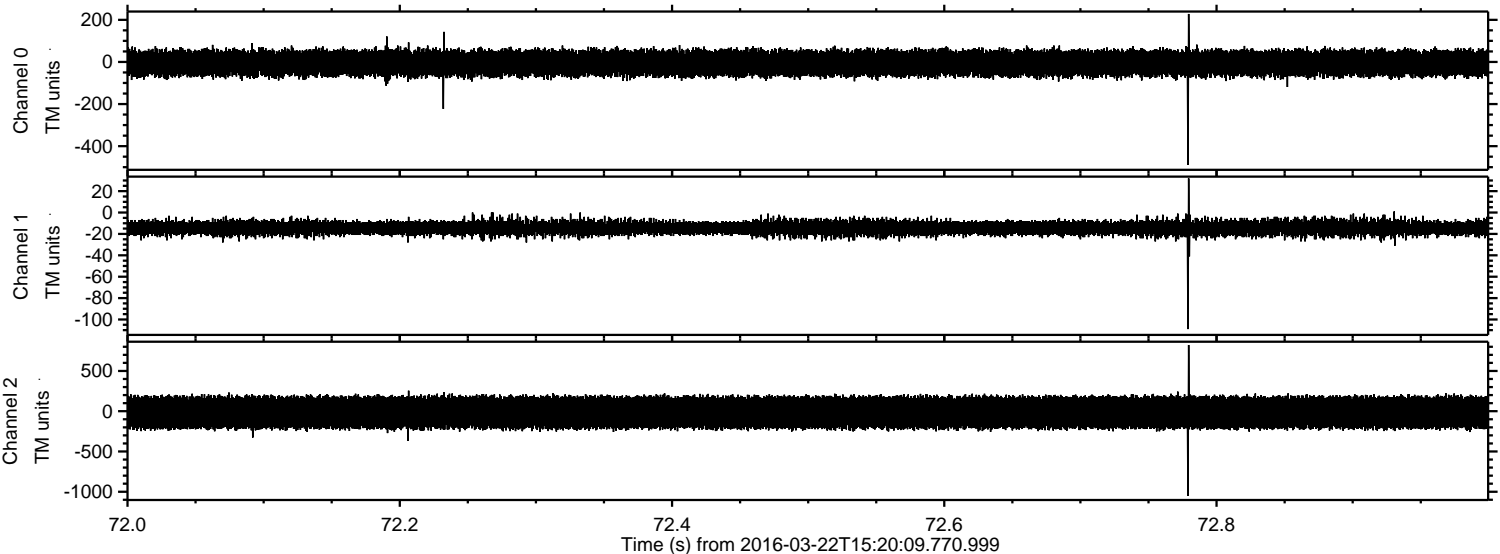
Processed Fri Apr 22 04:16:58 2016 by ELM ver.2012-10-06 from 001__elm20160322_152008__dat00.bin



Processed Fri Apr 22 04:16:59 2016 by ELM ver.2012-10-06 from 001__elm20160322_152008__dat00.bin



Processed Fri Apr 22 04:17:01 2016 by ELM ver.2012-10-06 from 001__elm20160322_152008__dat00.bin



Channel 0
mn: -488
mx: 228
 μ : -5.9
 σ : 33.4

Channel 1
mn: -109
mx: 32
 μ : -14.2
 σ : 3.9

Channel 2
mn: -1050
mx: 822
 μ : -15.7
 σ : 114.6

Processed Fri Apr 22 04:17:02 2016 by ELM ver.2012-10-06 from 001__elm20160322_152008__dat00.bin

