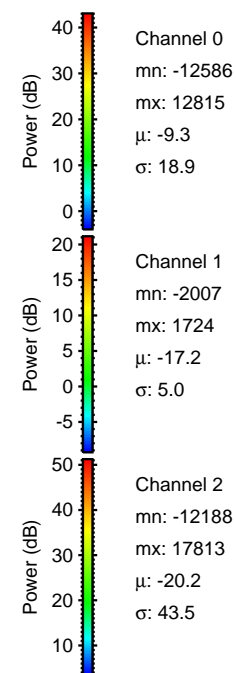
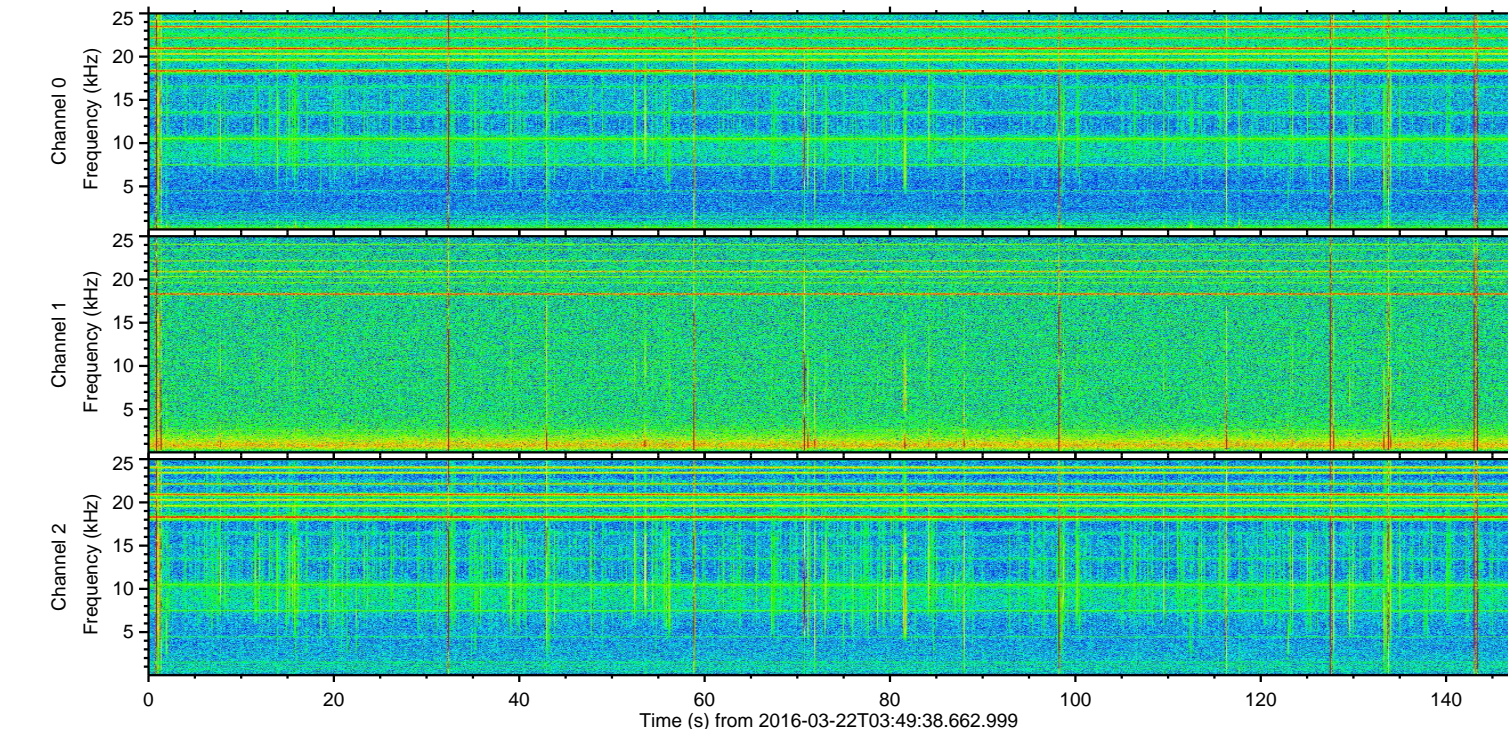
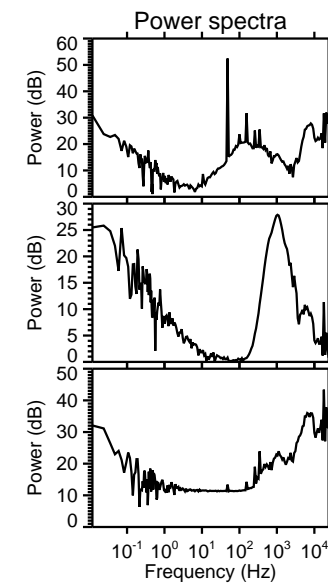
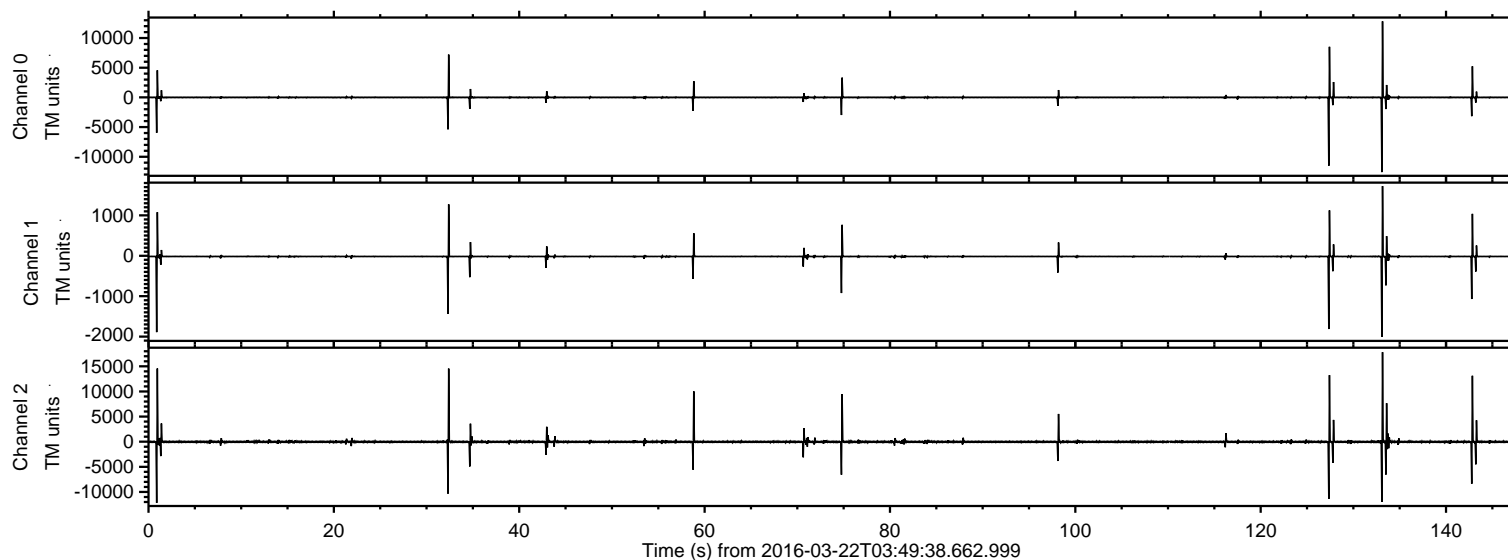


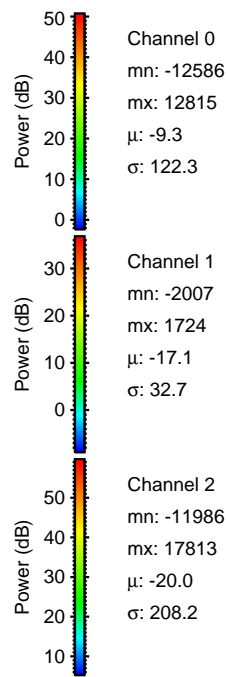
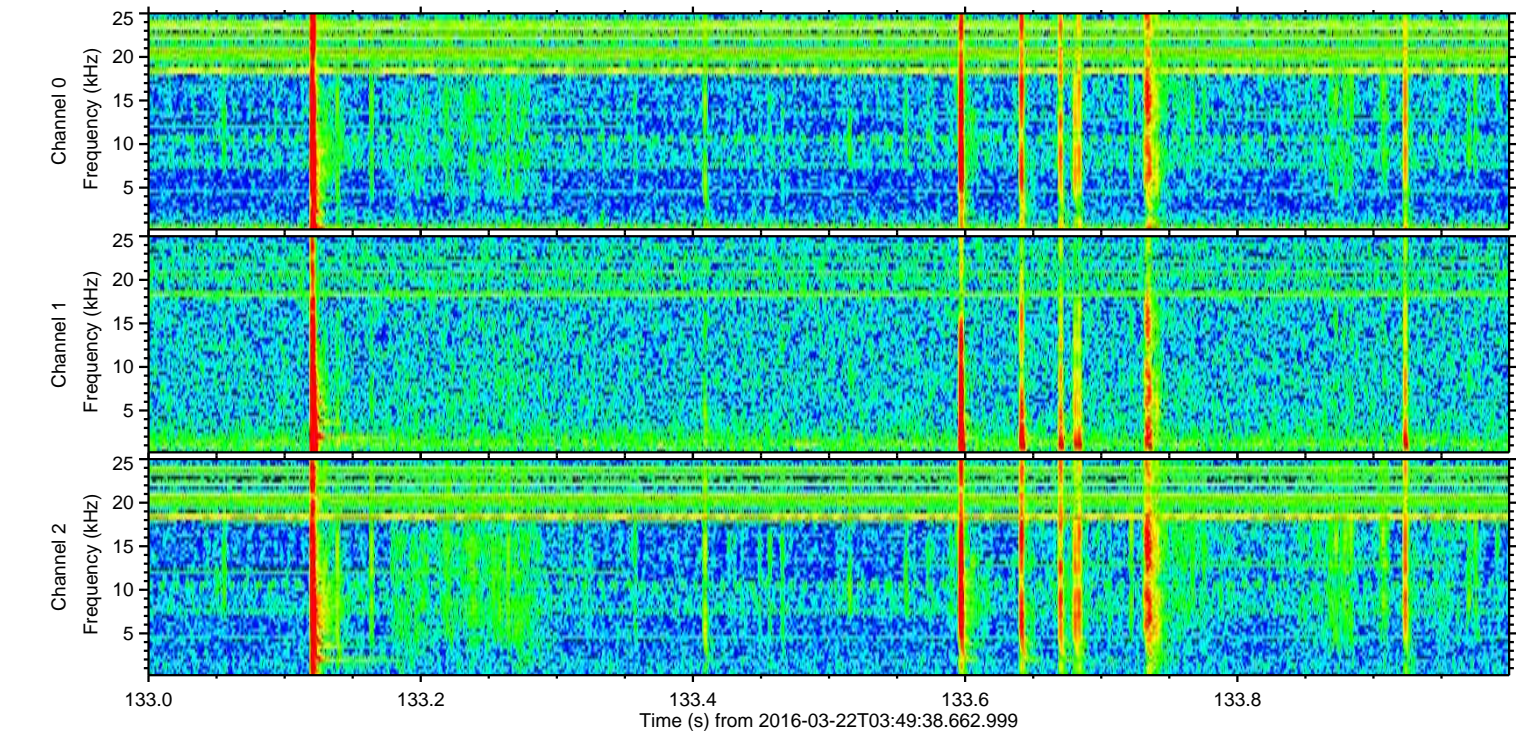
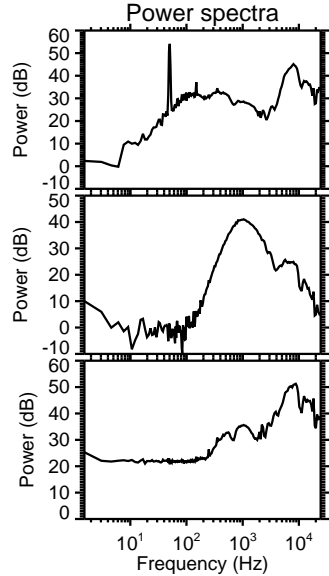
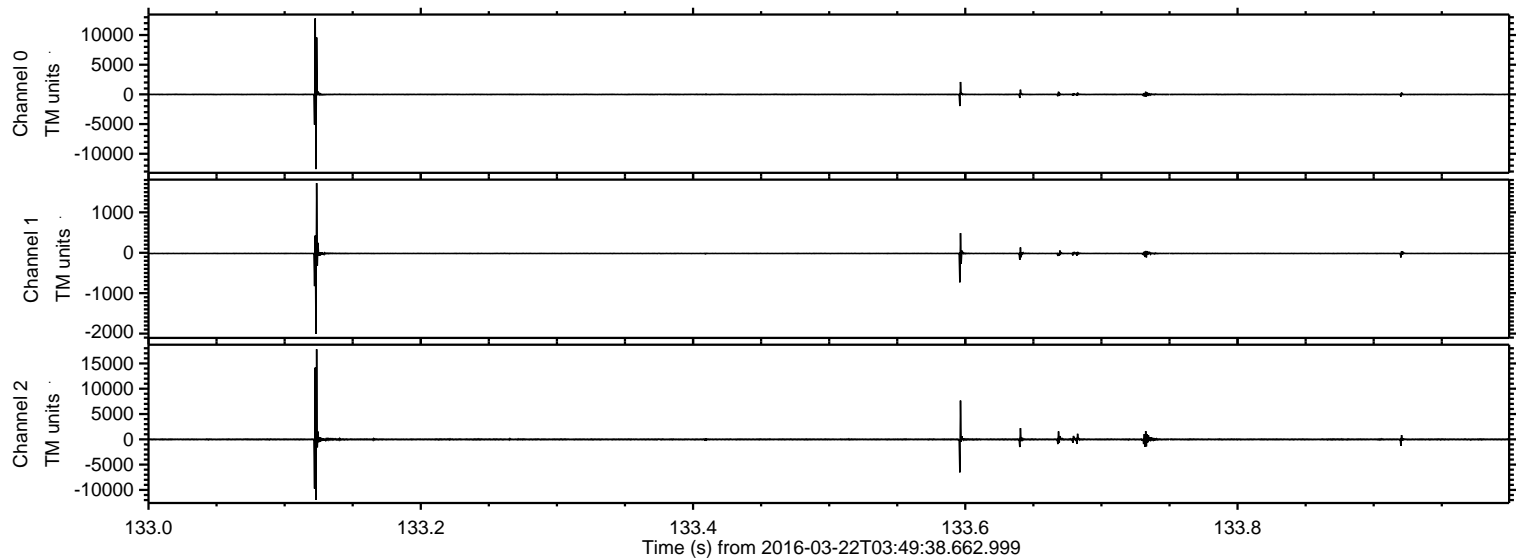
ELMAVAN 3D WAVEFORMS (Measured data sampled at 50 kHz) 51000 packets of 144 samples from 2016-03-22T03:49:38.662.999.

Processed Fri Apr 22 01:20:32 2016 by ELM ver.2012-10-06 from 001__elm20160322_034937__dat00.bin



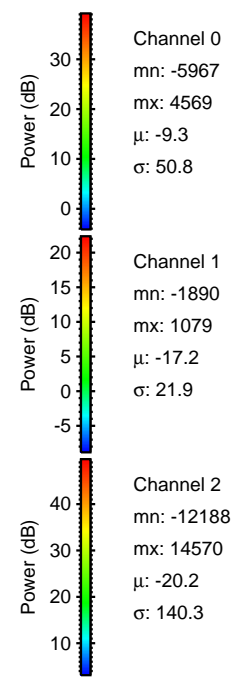
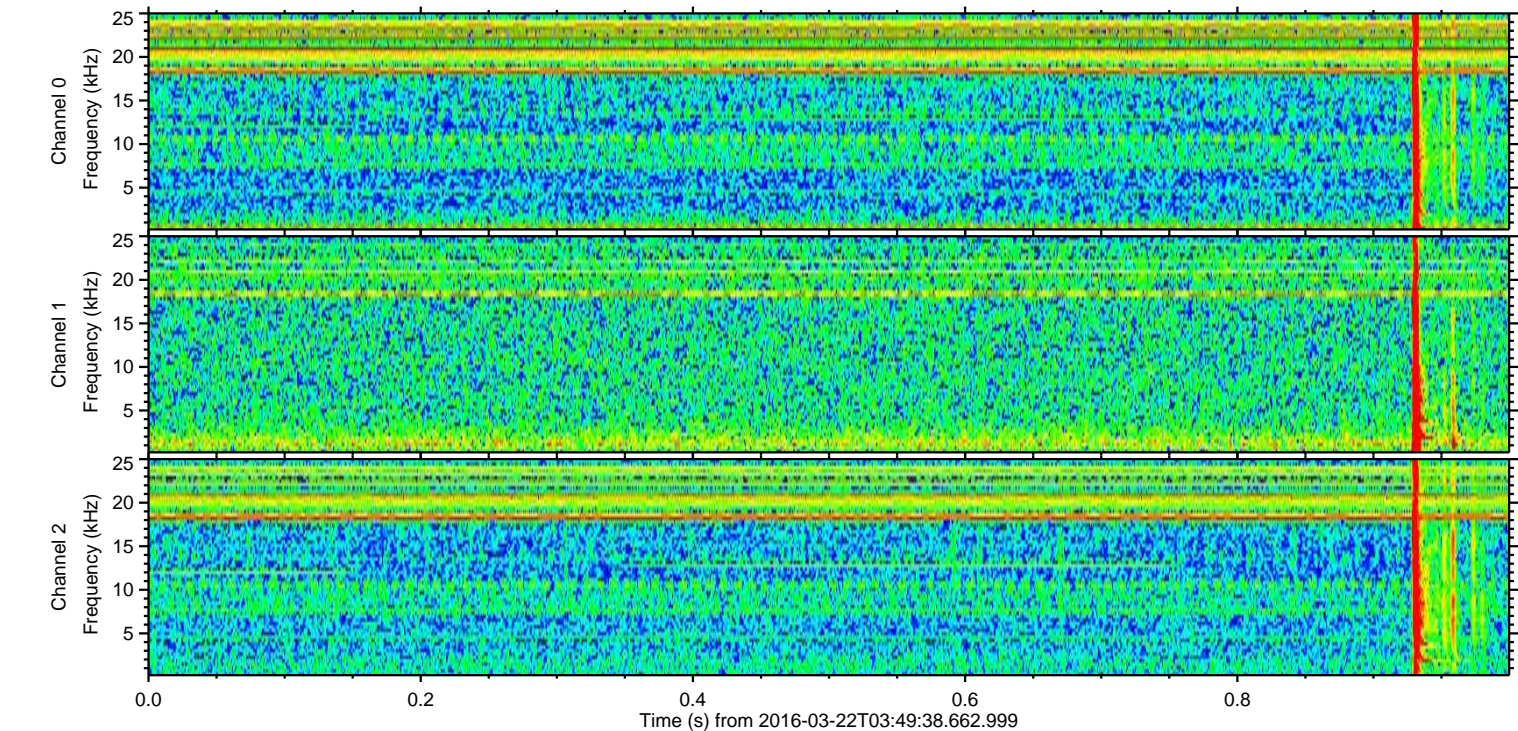
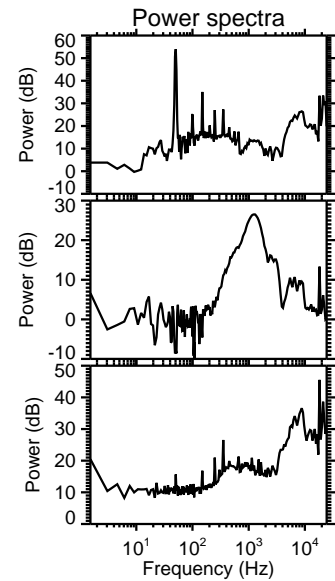
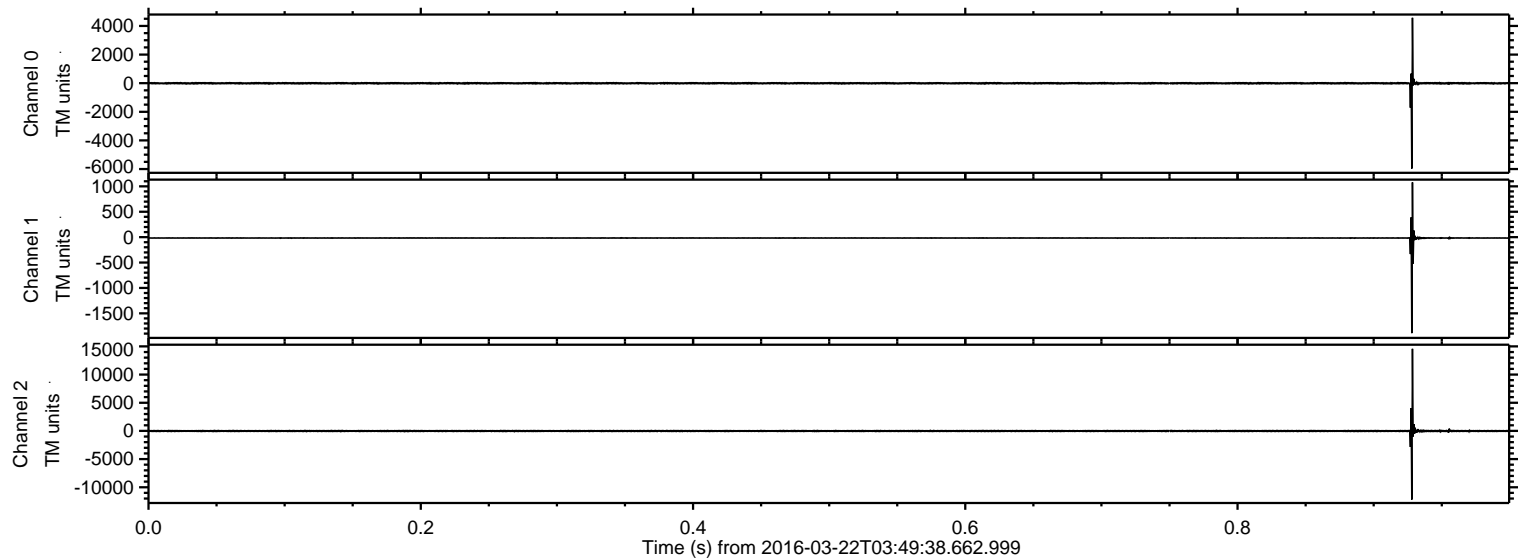
ELMAVAN 3D WAVEFORMS (Measured data sampled at 50 kHz) 51000 packets of 144 samples from 2016-03-22T03:49:38.662.999. Part 134/147

Processed Fri Apr 22 01:20:47 2016 by ELM ver.2012-10-06 from 001__elm20160322_034937__dat00.bin

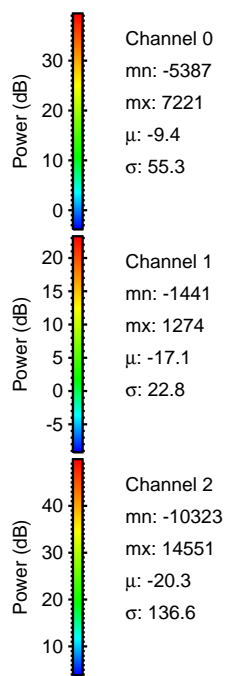
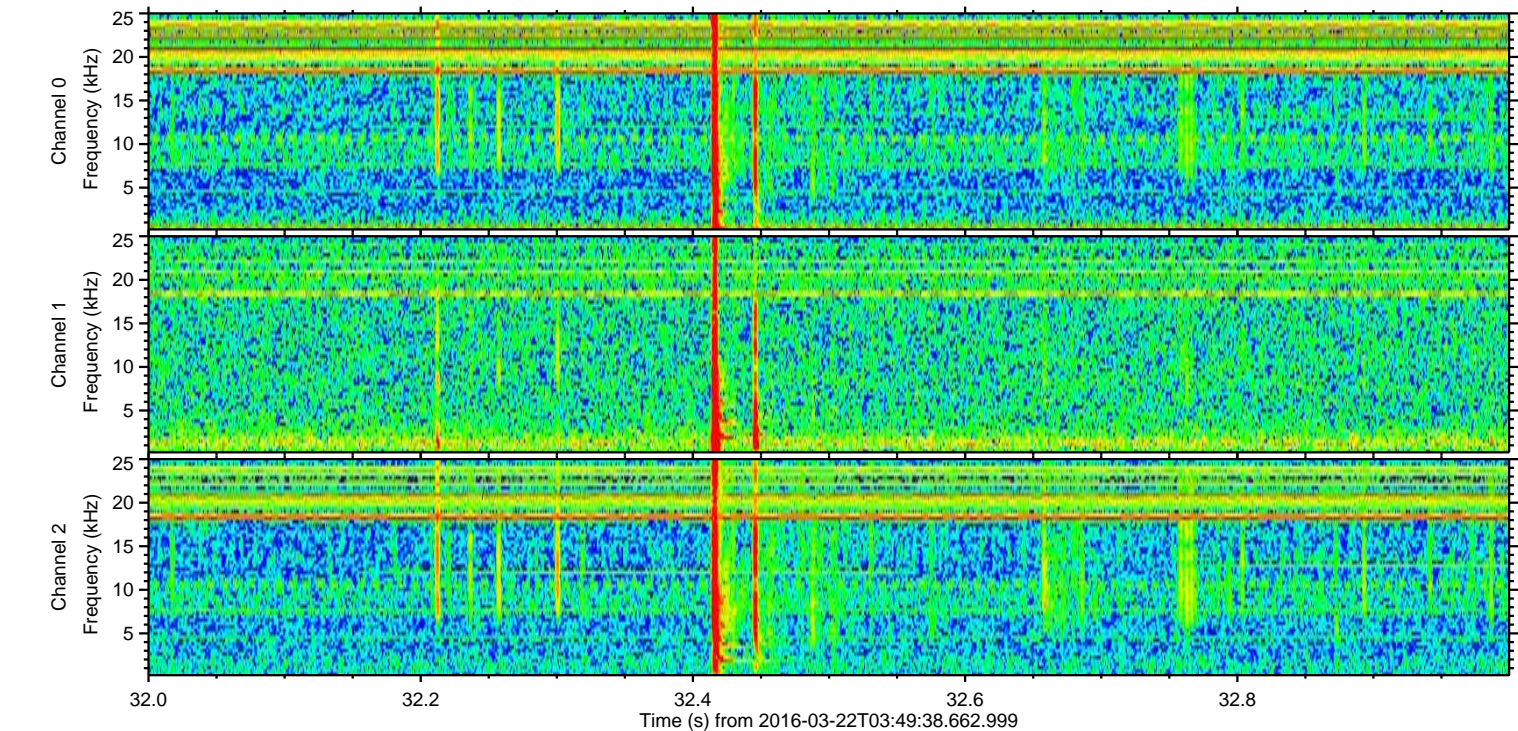
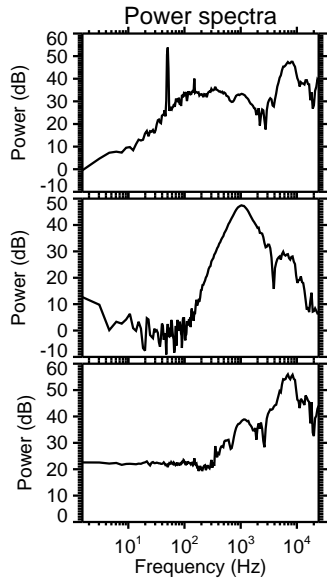
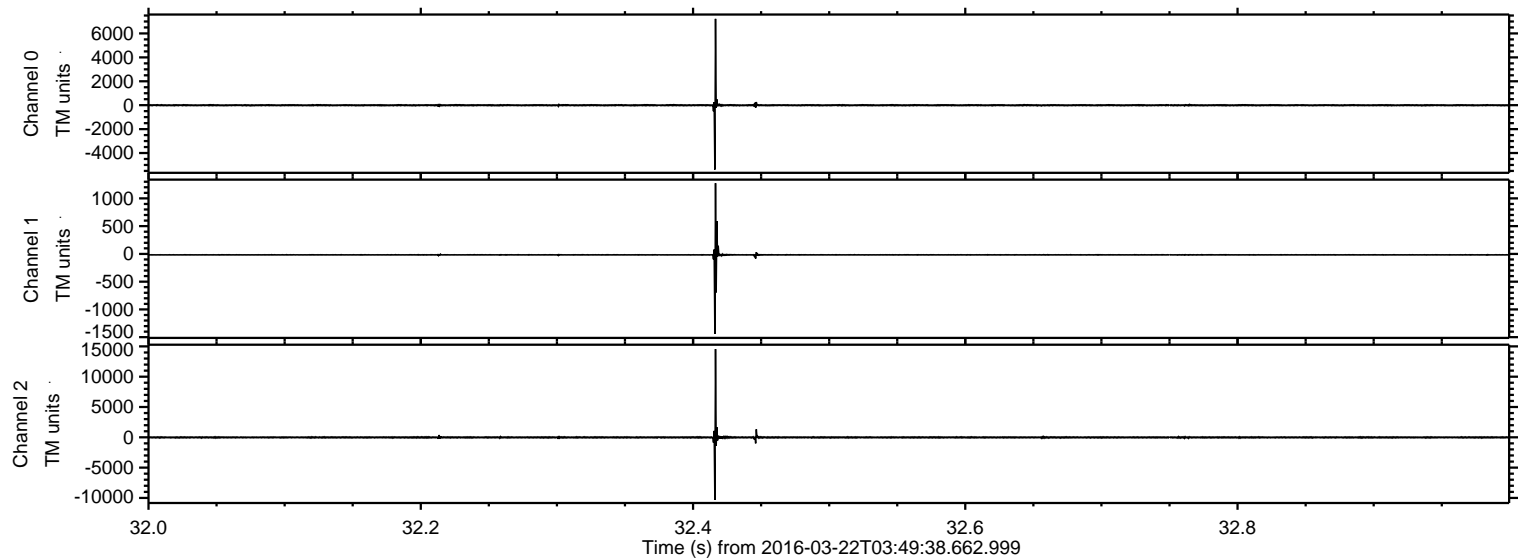


ELMAVAN 3D WAVEFORMS (Measured data sampled at 50 kHz) 51000 packets of 144 samples from 2016-03-22T03:49:38.662.999. Part 1/147

Processed Fri Apr 22 01:20:48 2016 by ELM ver.2012-10-06 from 001__elm20160322_034937__dat00.bin

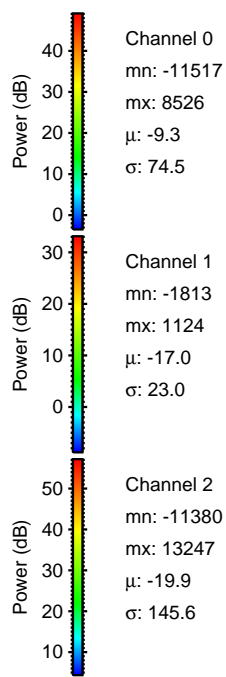
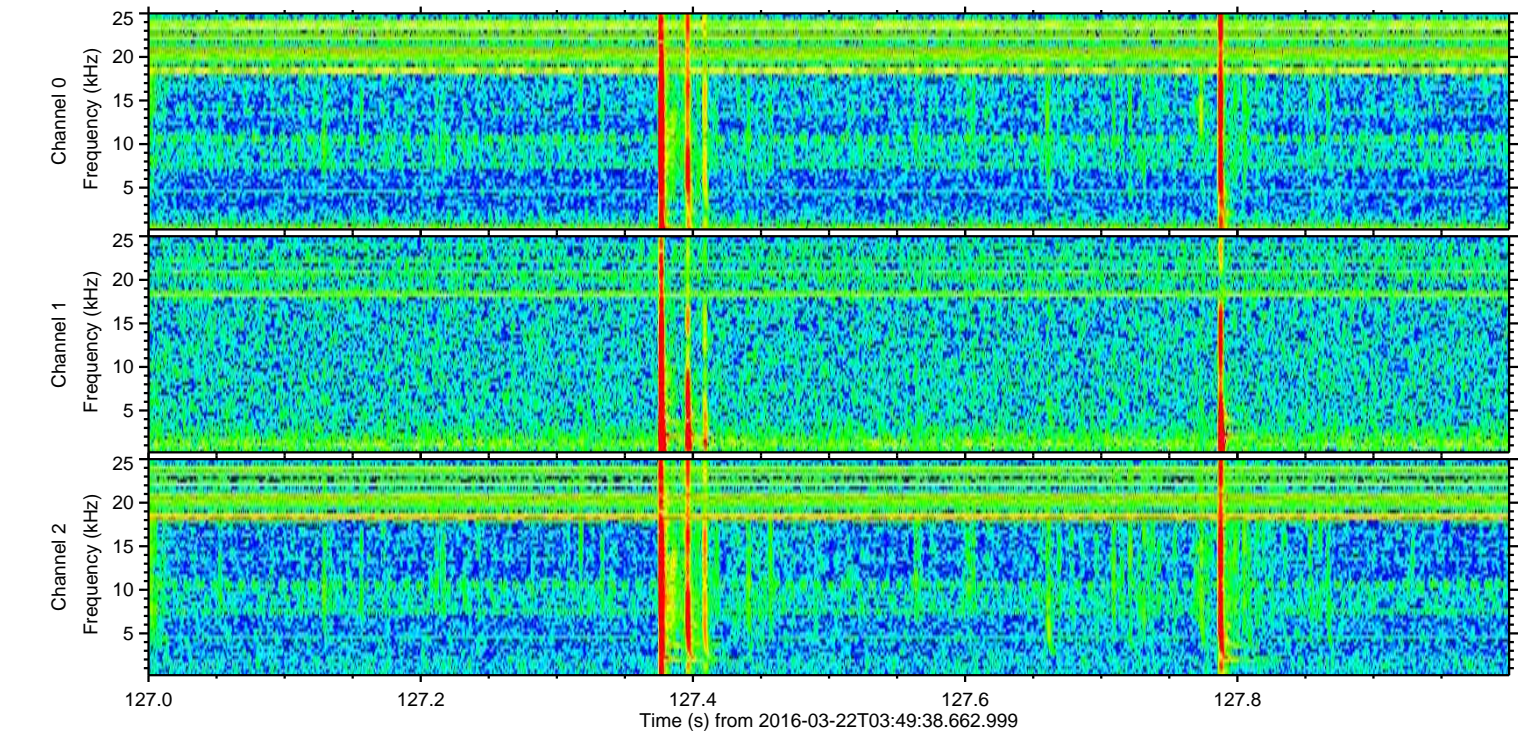
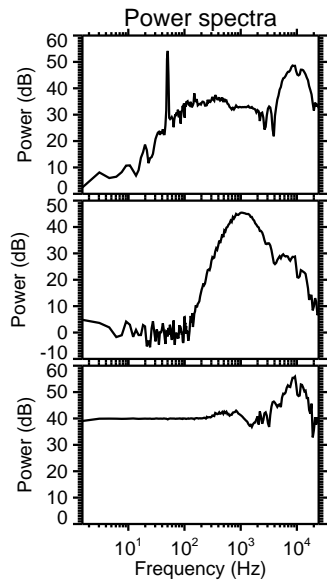
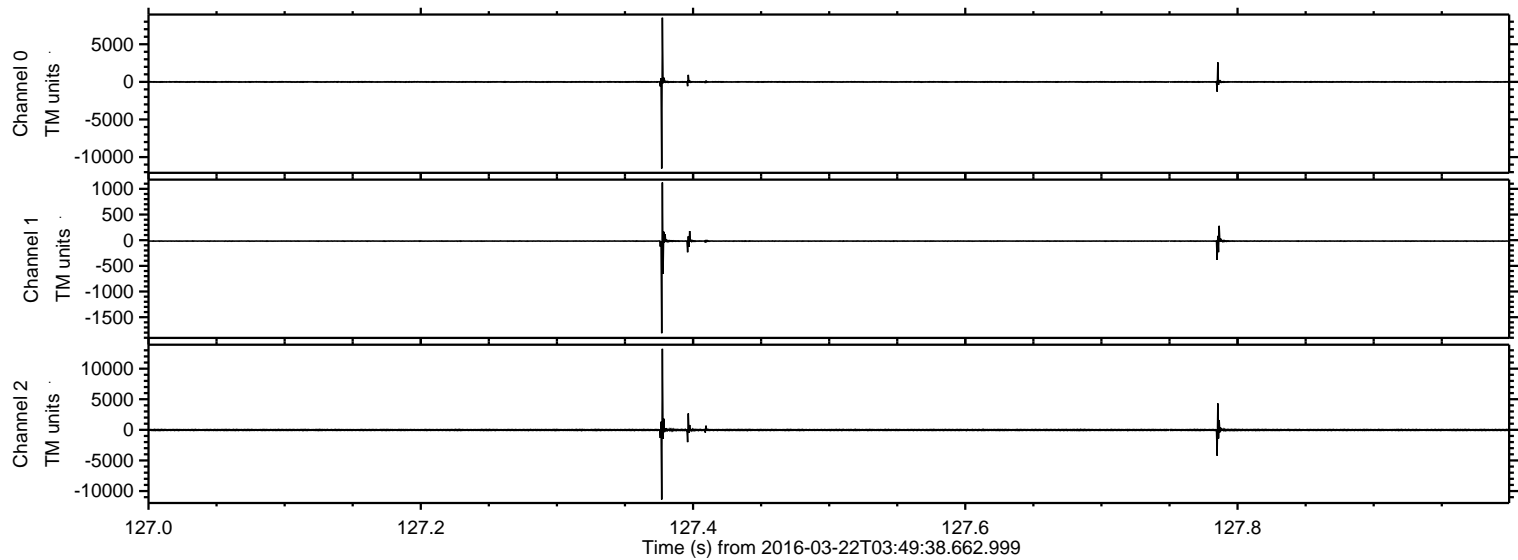


Processed Fri Apr 22 01:20:49 2016 by ELM ver.2012-10-06 from 001__elm20160322_034937__dat00.bin



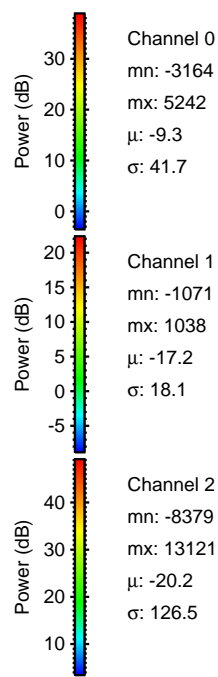
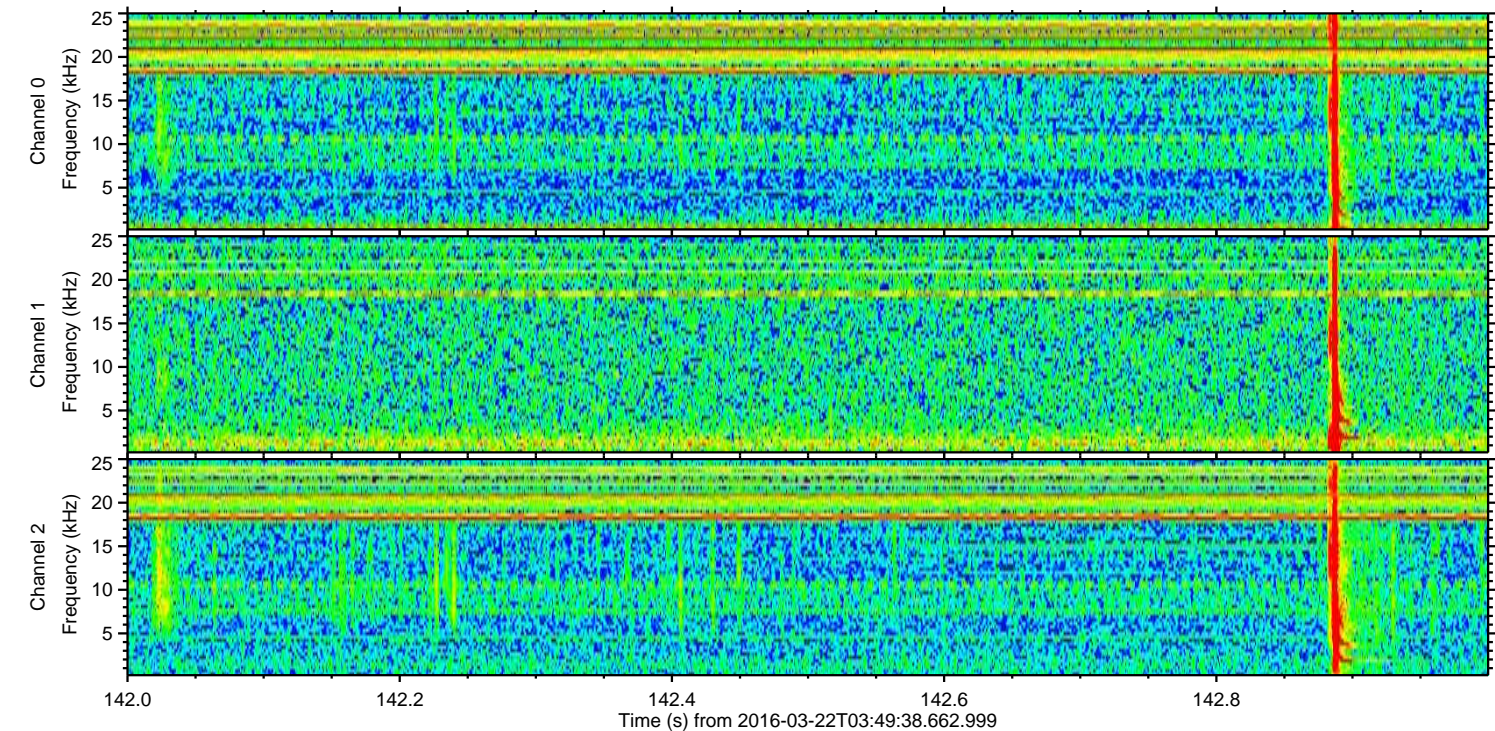
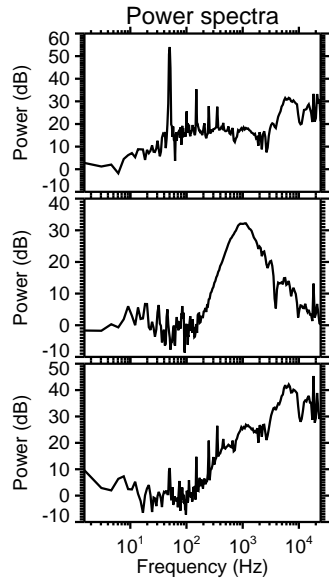
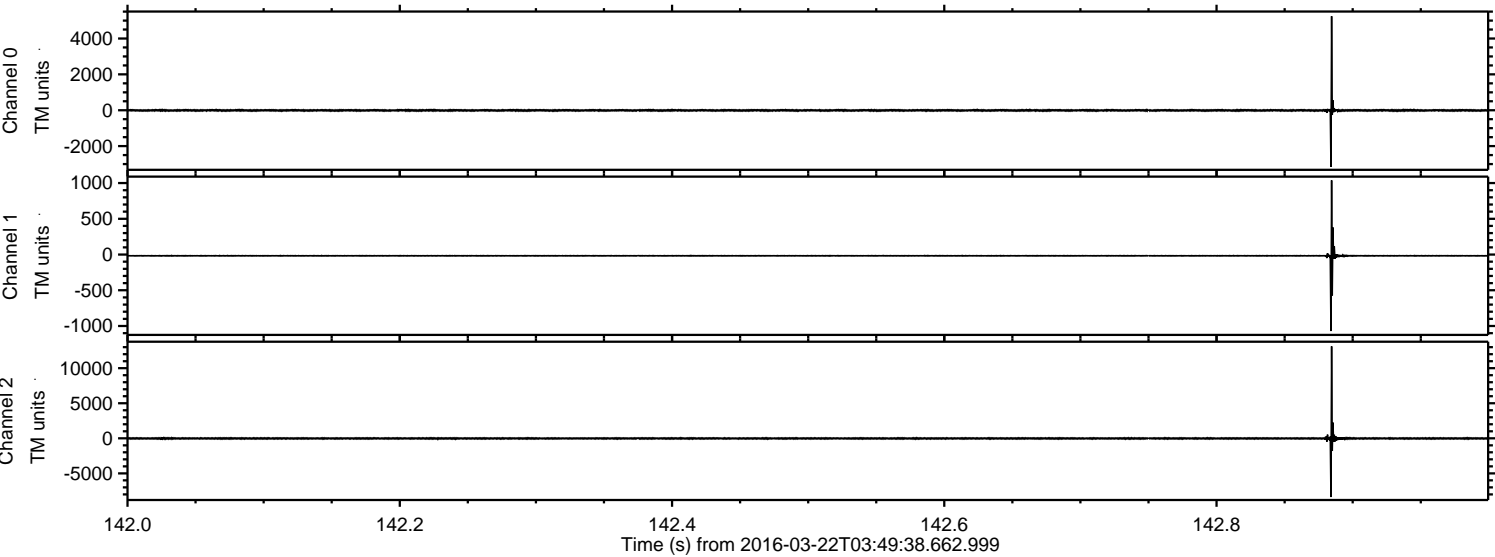
ELMAVAN 3D WAVEFORMS (Measured data sampled at 50 kHz) 51000 packets of 144 samples from 2016-03-22T03:49:38.662.999. Part 128/147

Processed Fri Apr 22 01:20:50 2016 by ELM ver.2012-10-06 from 001__elm20160322_034937__dat00.bin

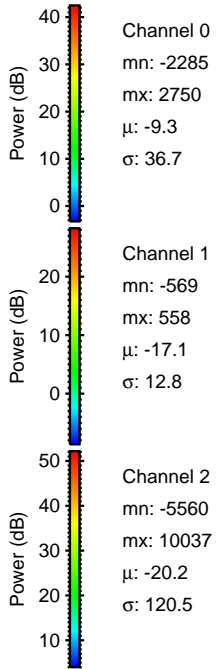
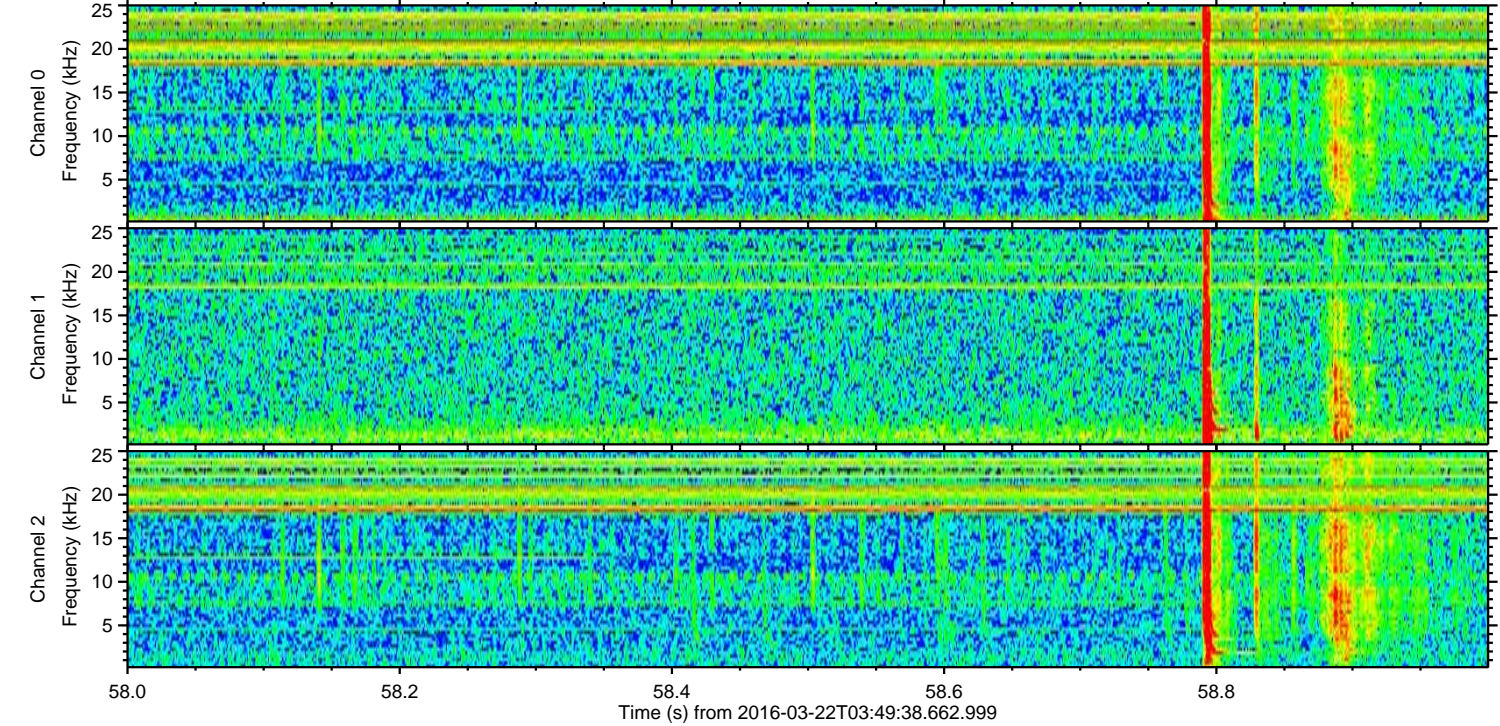
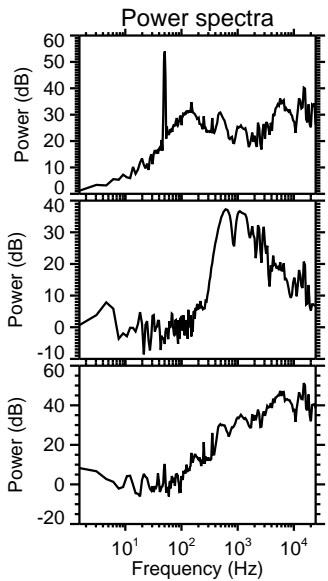
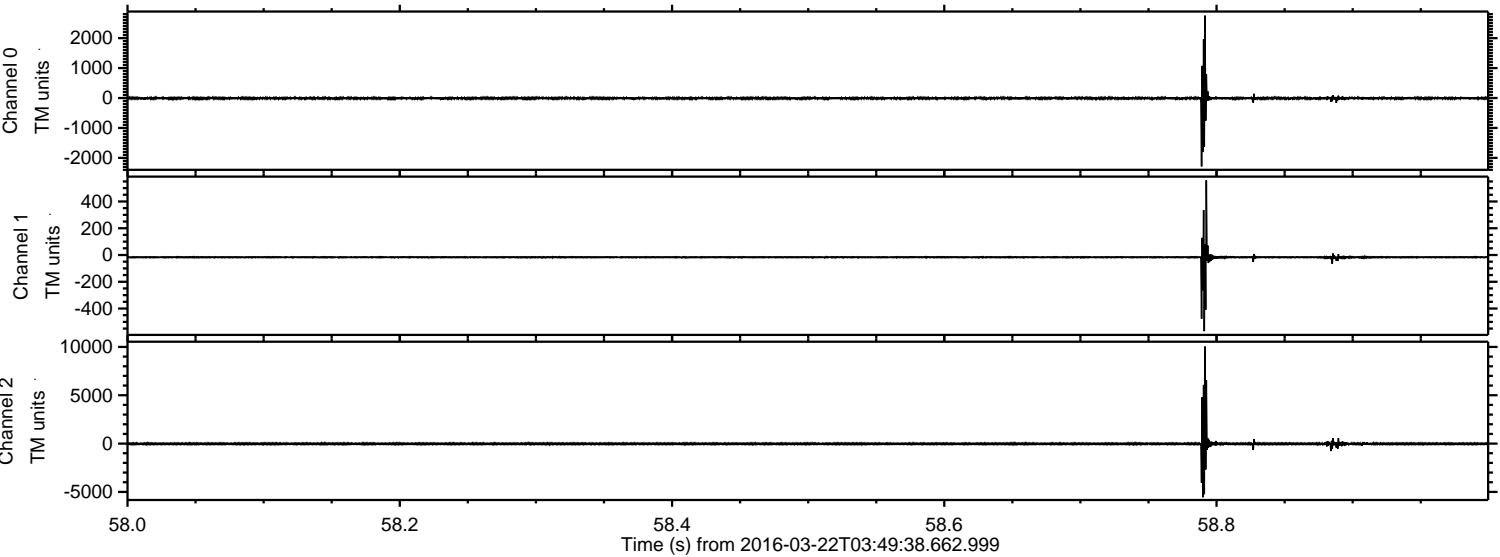


ELMAVAN 3D WAVEFORMS (Measured data sampled at 50 kHz) 51000 packets of 144 samples from 2016-03-22T03:49:38.662.999. Part 143/147

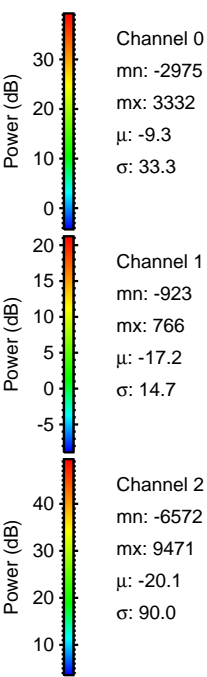
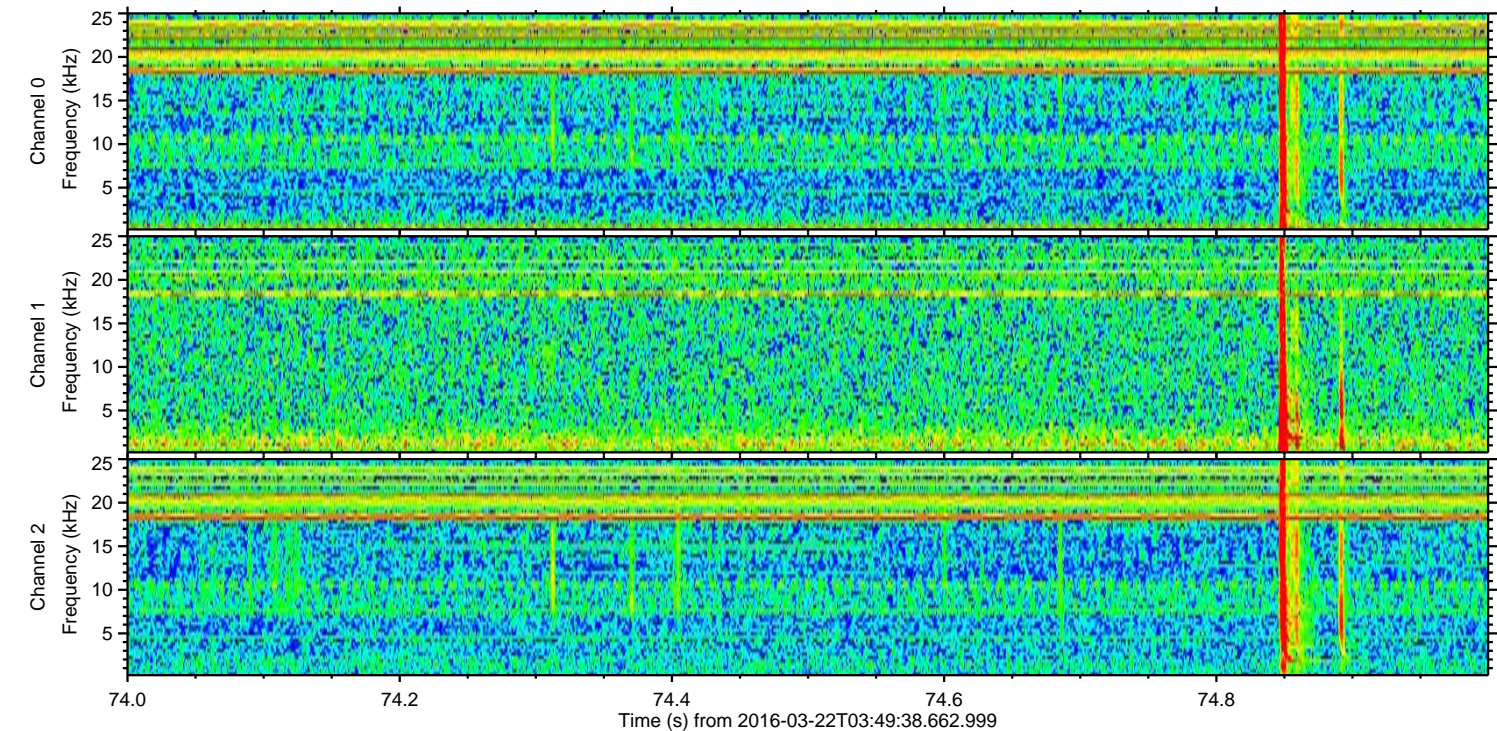
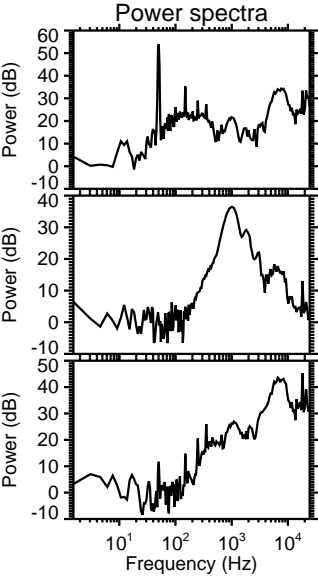
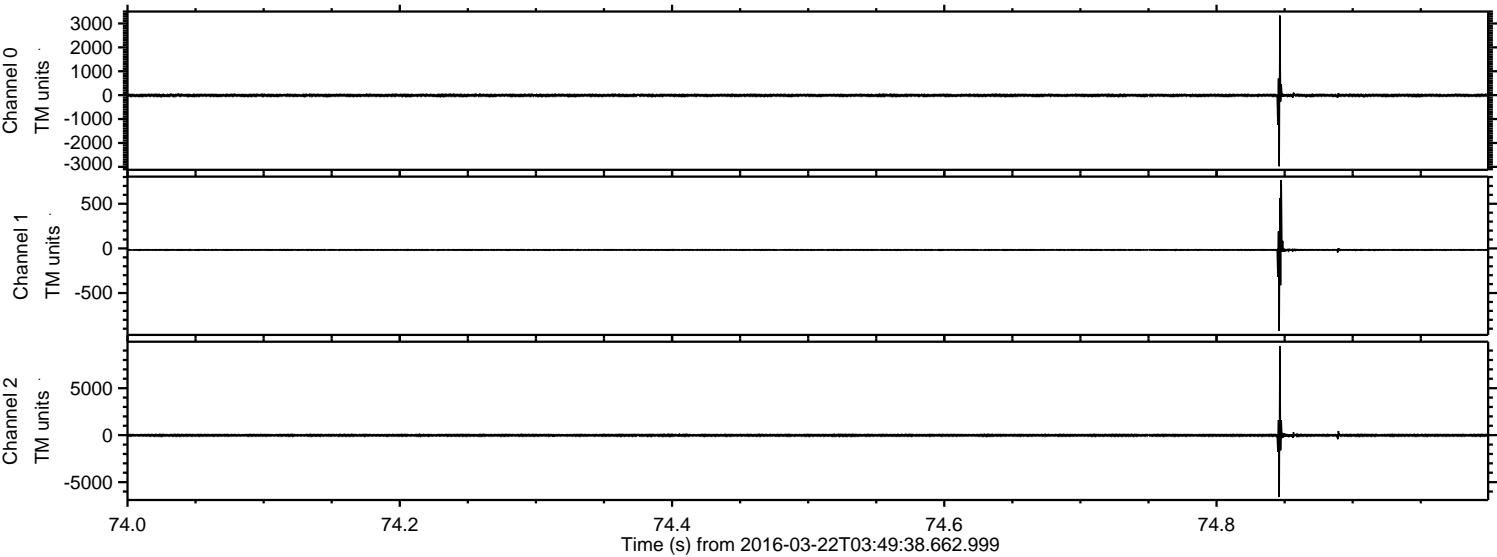
Processed Fri Apr 22 01:20:51 2016 by ELM ver.2012-10-06 from 001__elm20160322_034937__dat00.bin



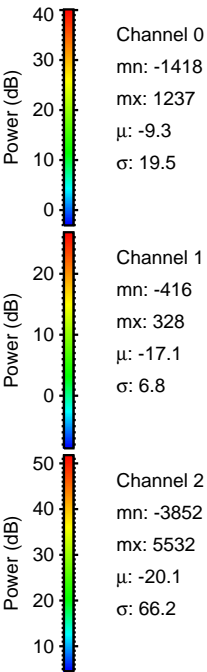
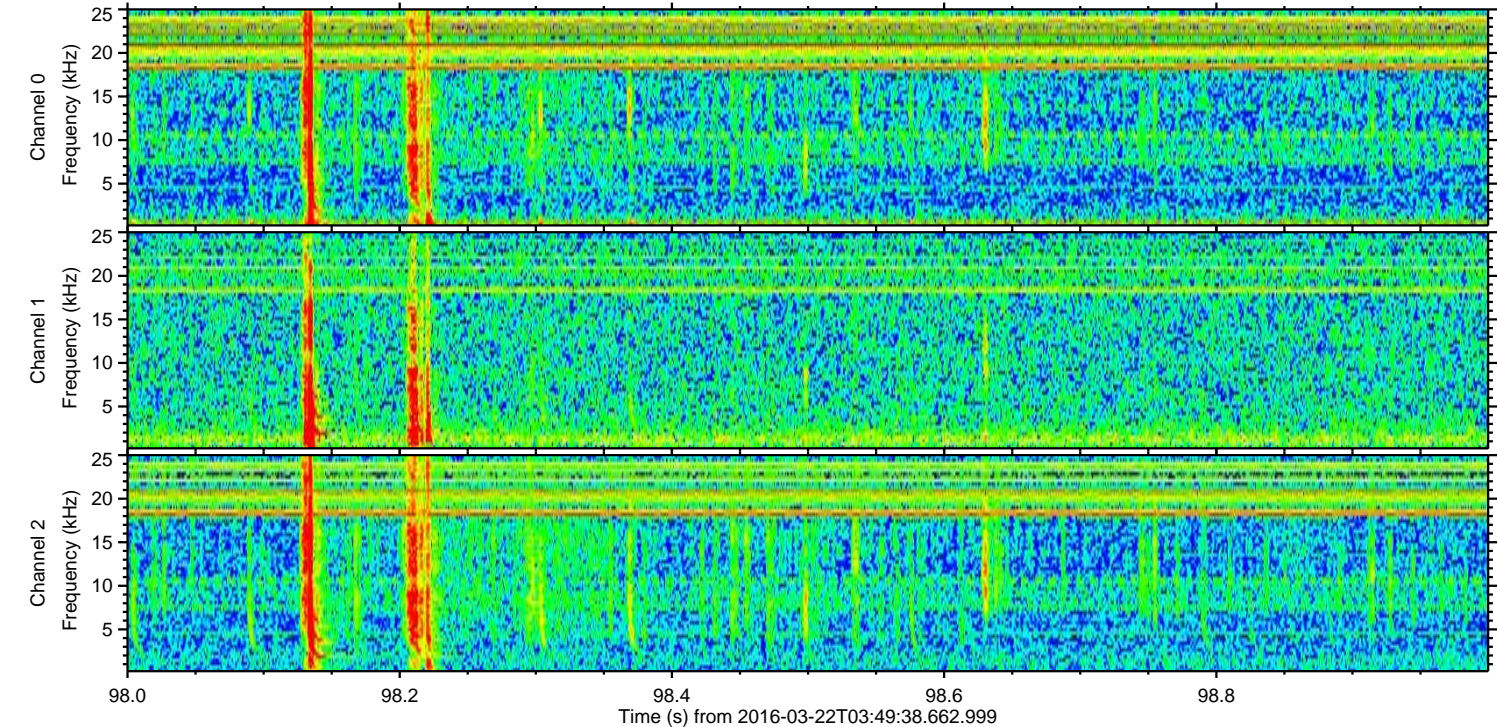
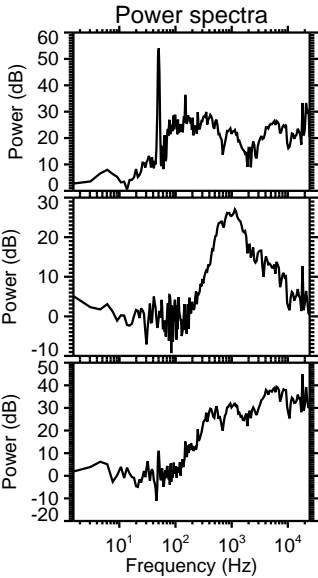
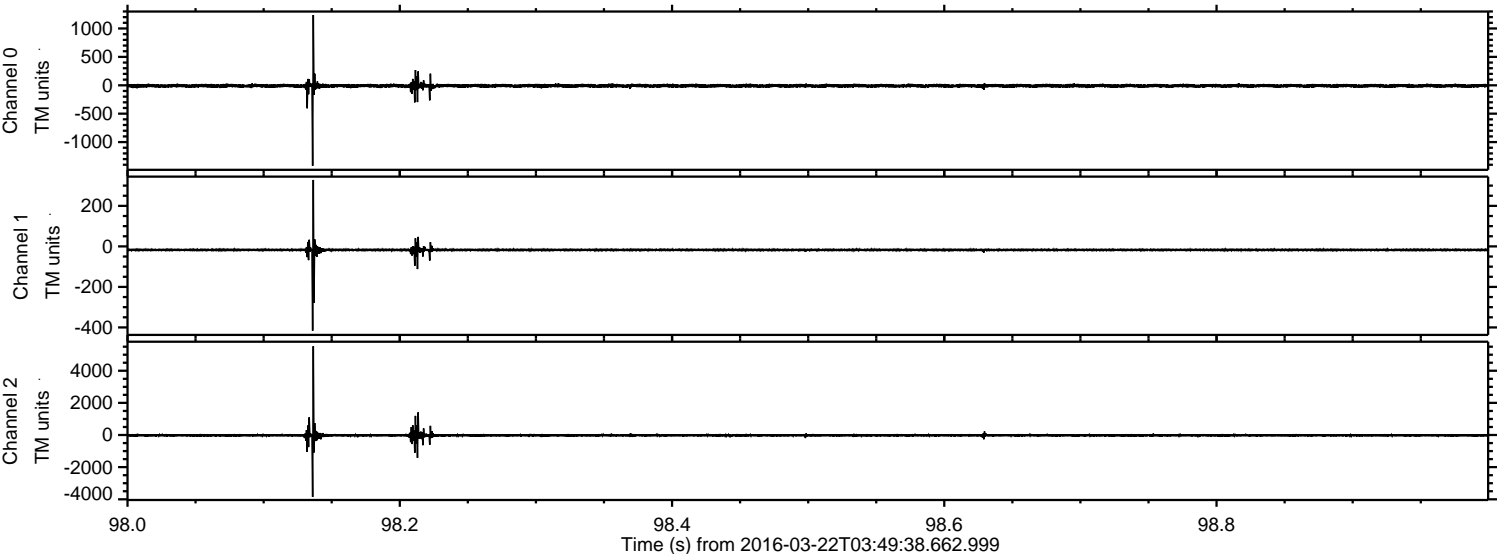
Processed Fri Apr 22 01:20:52 2016 by ELM ver.2012-10-06 from 001__elm20160322_034937__dat00.bin



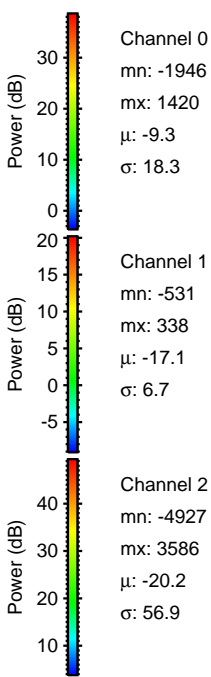
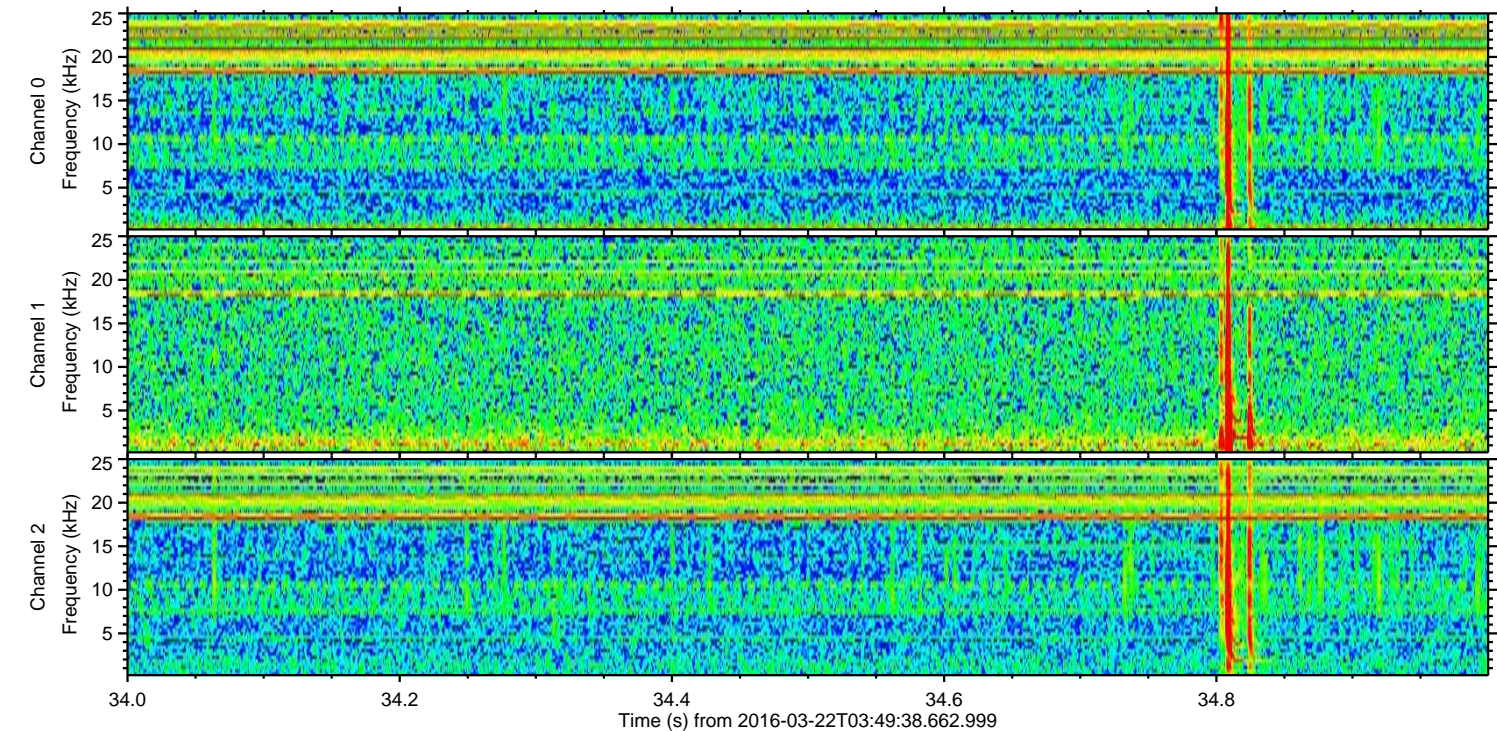
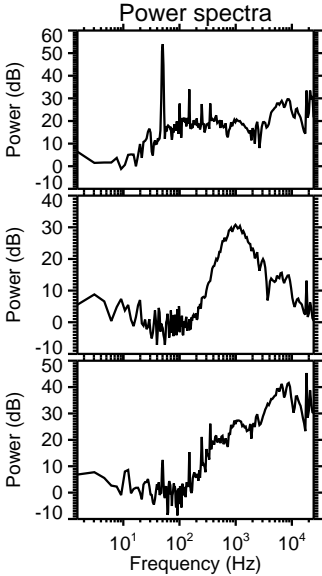
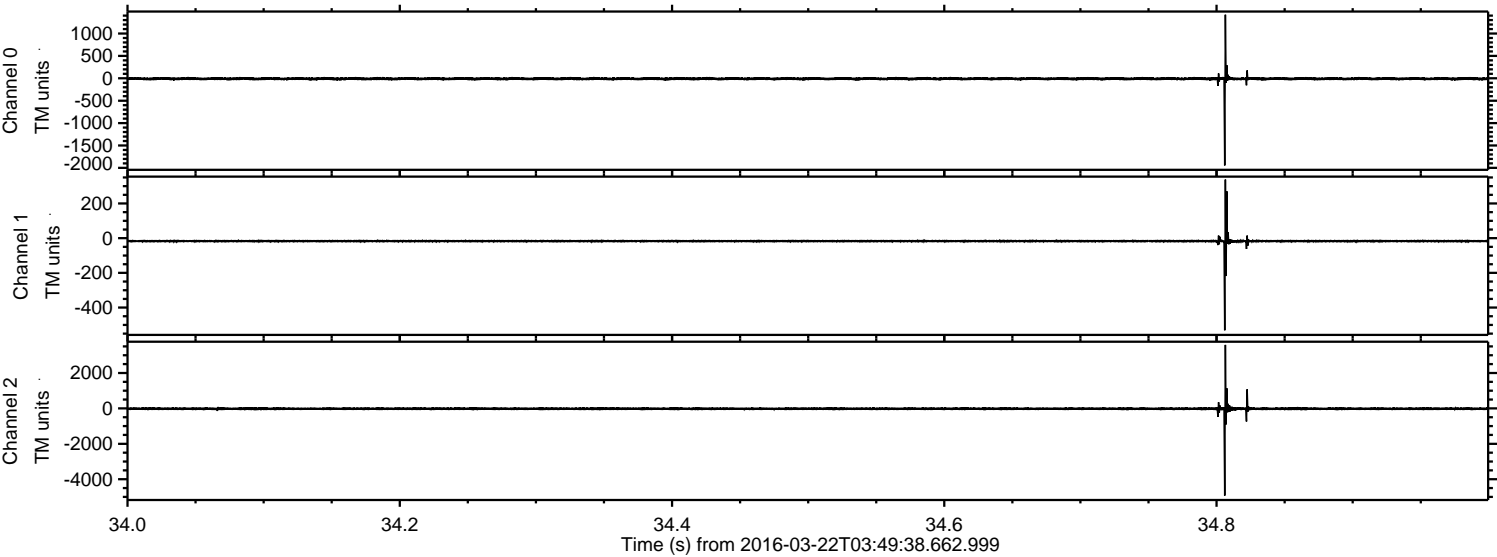
Processed Fri Apr 22 01:20:53 2016 by ELM ver.2012-10-06 from 001__elm20160322_034937__dat00.bin



Processed Fri Apr 22 01:20:54 2016 by ELM ver.2012-10-06 from 001__elm20160322_034937__dat00.bin



Processed Fri Apr 22 01:20:55 2016 by ELM ver.2012-10-06 from 001__elm20160322_034937__dat00.bin



Channel 0
mn: -1946
mx: 1420
 μ : -9.3
 σ : 18.3

Channel 1
mn: -531
mx: 338
 μ : -17.1
 σ : 6.7

Channel 2
mn: -4927
mx: 3586
 μ : -20.2
 σ : 56.9

Processed Fri Apr 22 01:20:56 2016 by ELM ver.2012-10-06 from 001__elm20160322_034937__dat00.bin

