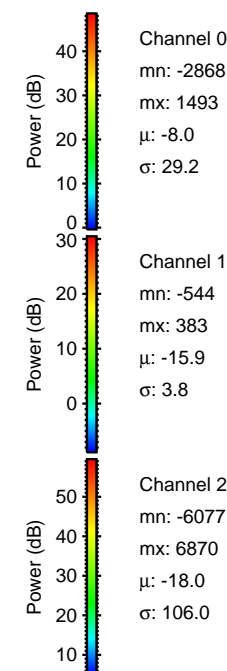
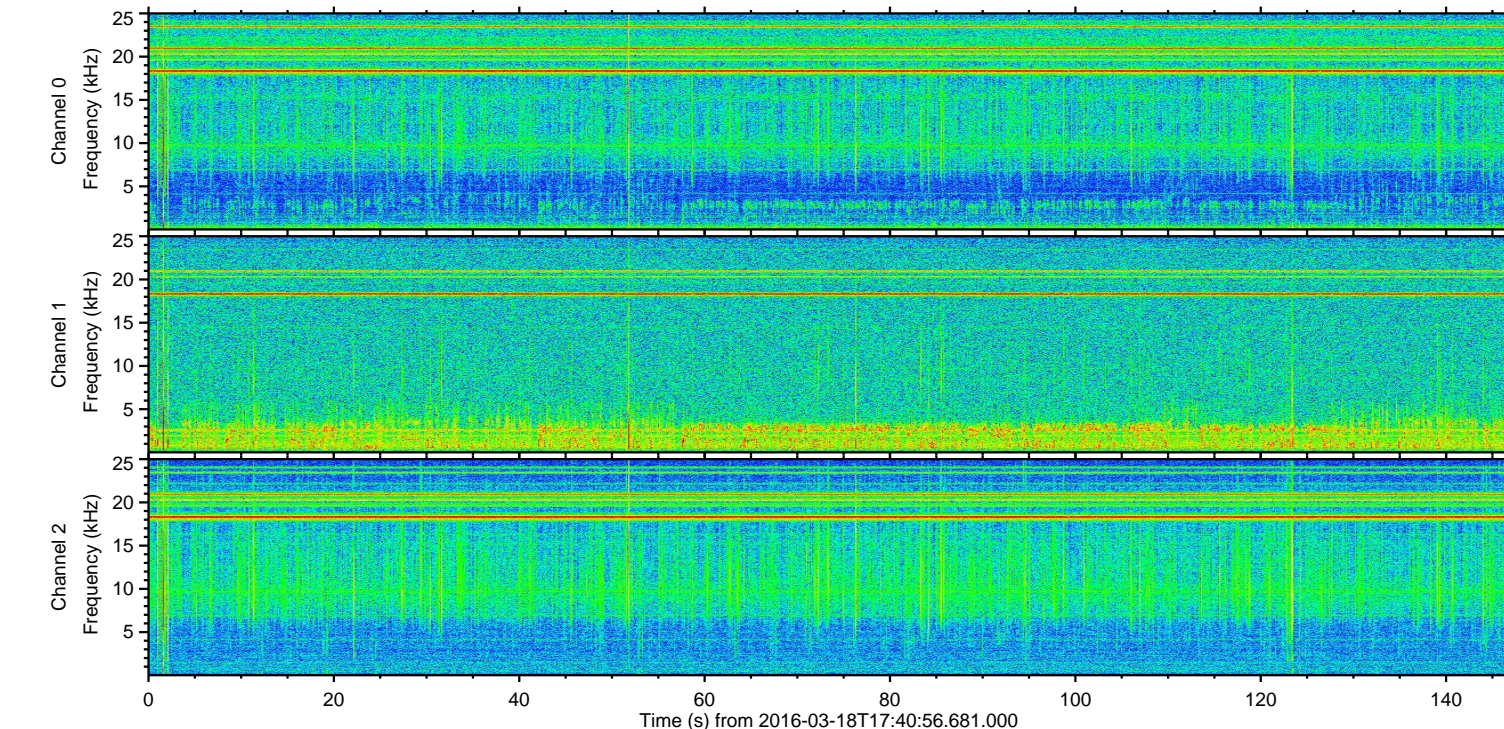
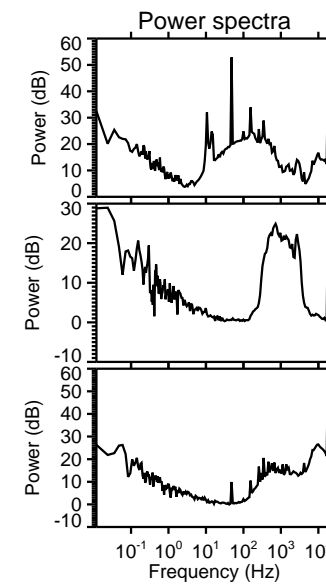
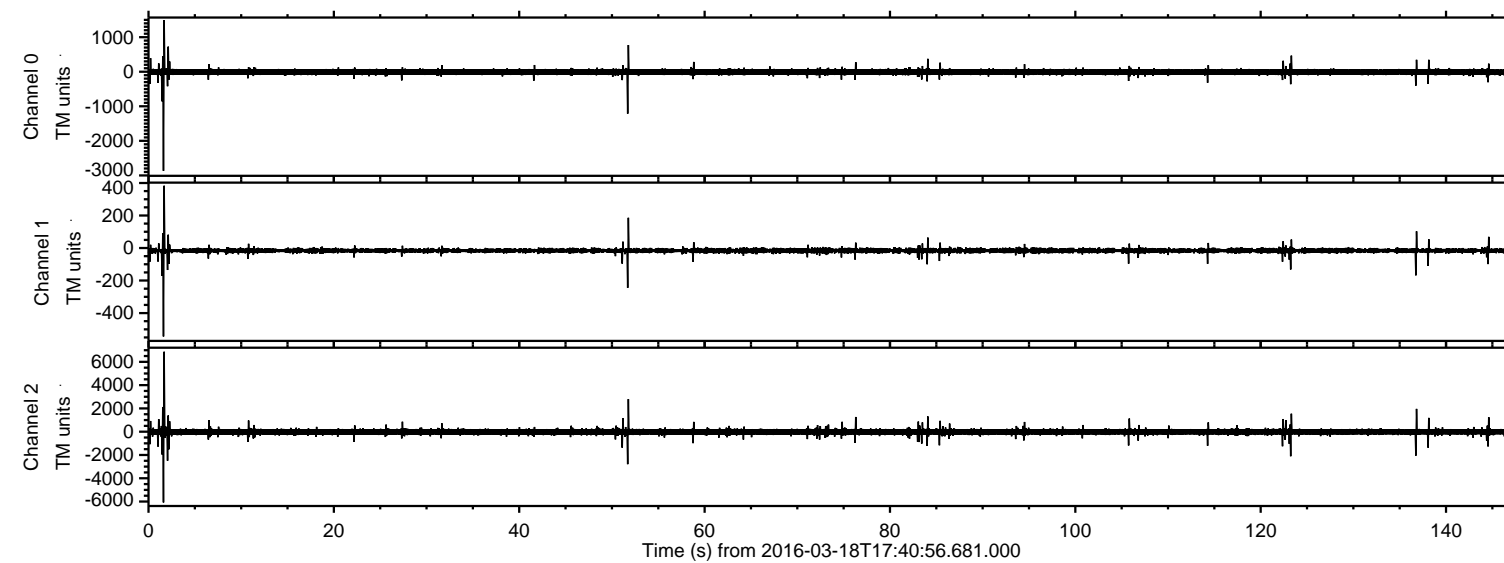


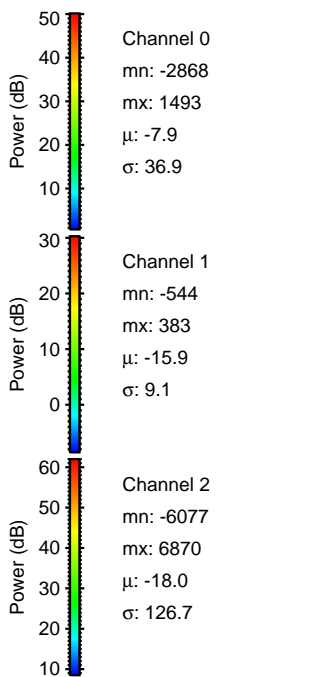
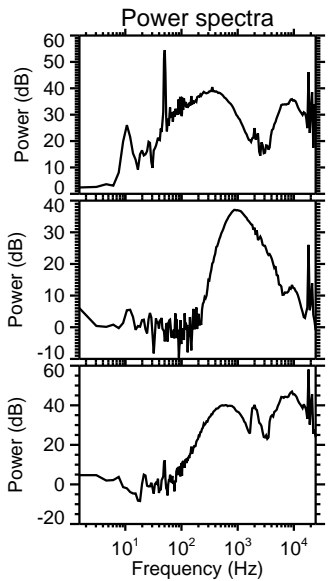
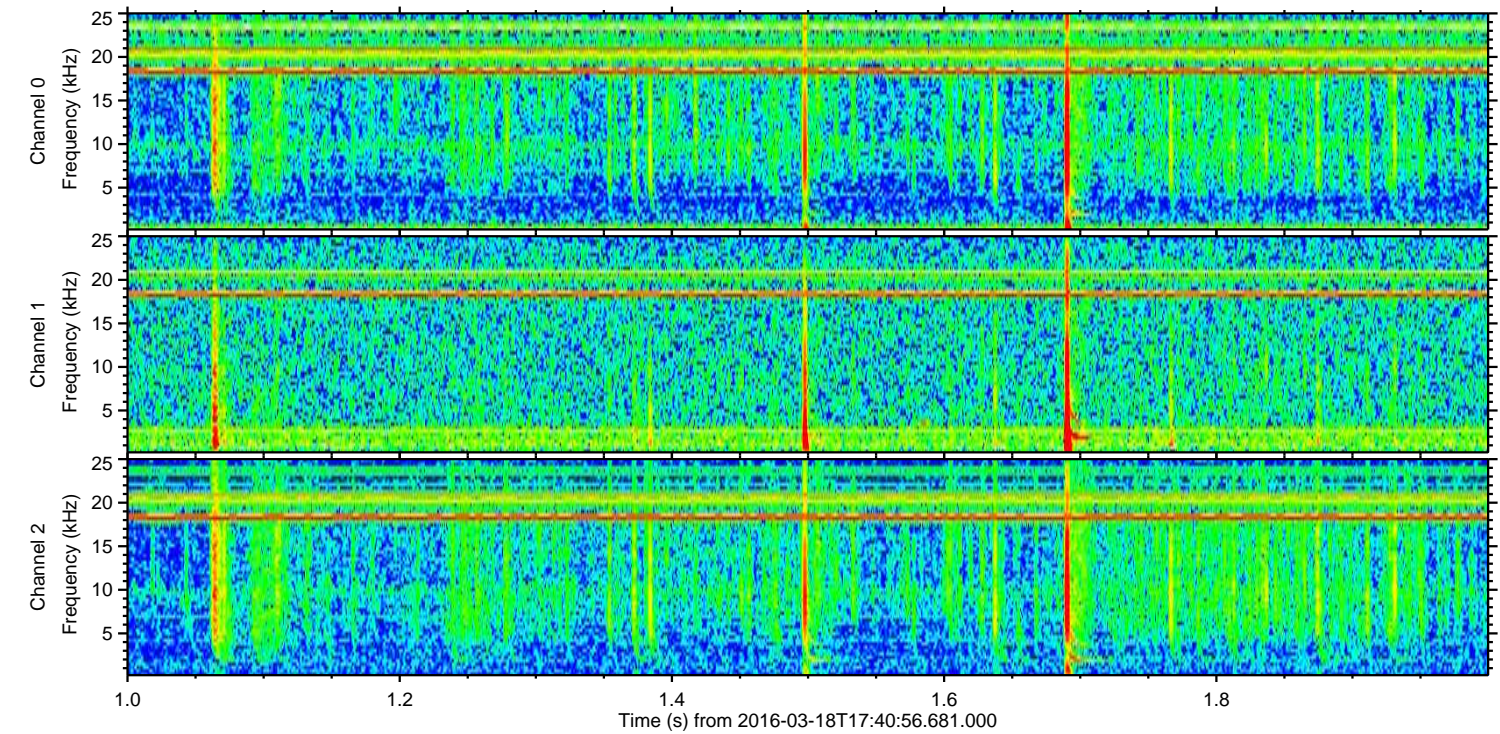
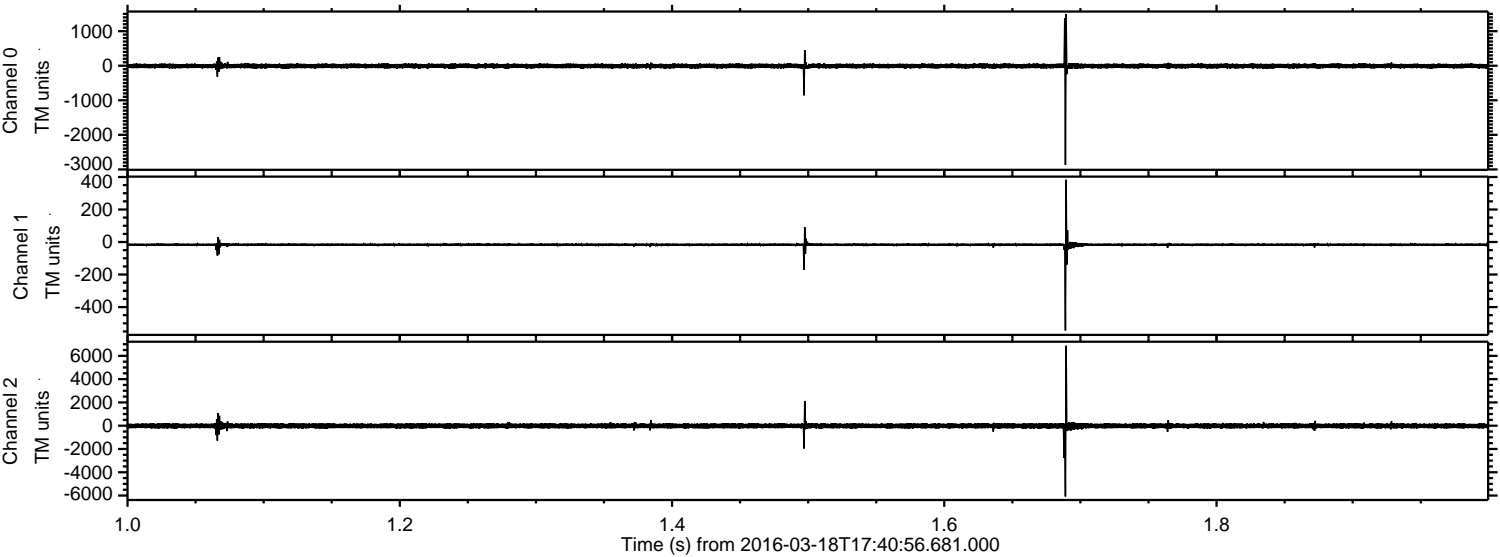
ELMAVAN 3D WAVEFORMS (Measured data sampled at 50 kHz) 51000 packets of 144 samples from 2016-03-18T17:40:56.681.000.

Processed Thu Apr 21 06:18:12 2016 by ELM ver.2012-10-06 from 001__elm20160318_174055__dat00.bin

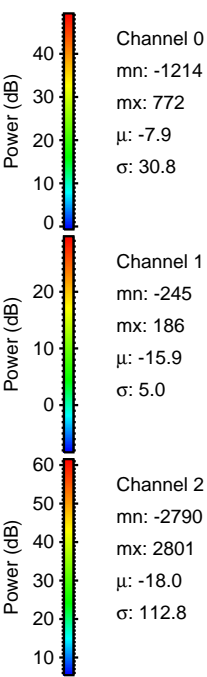
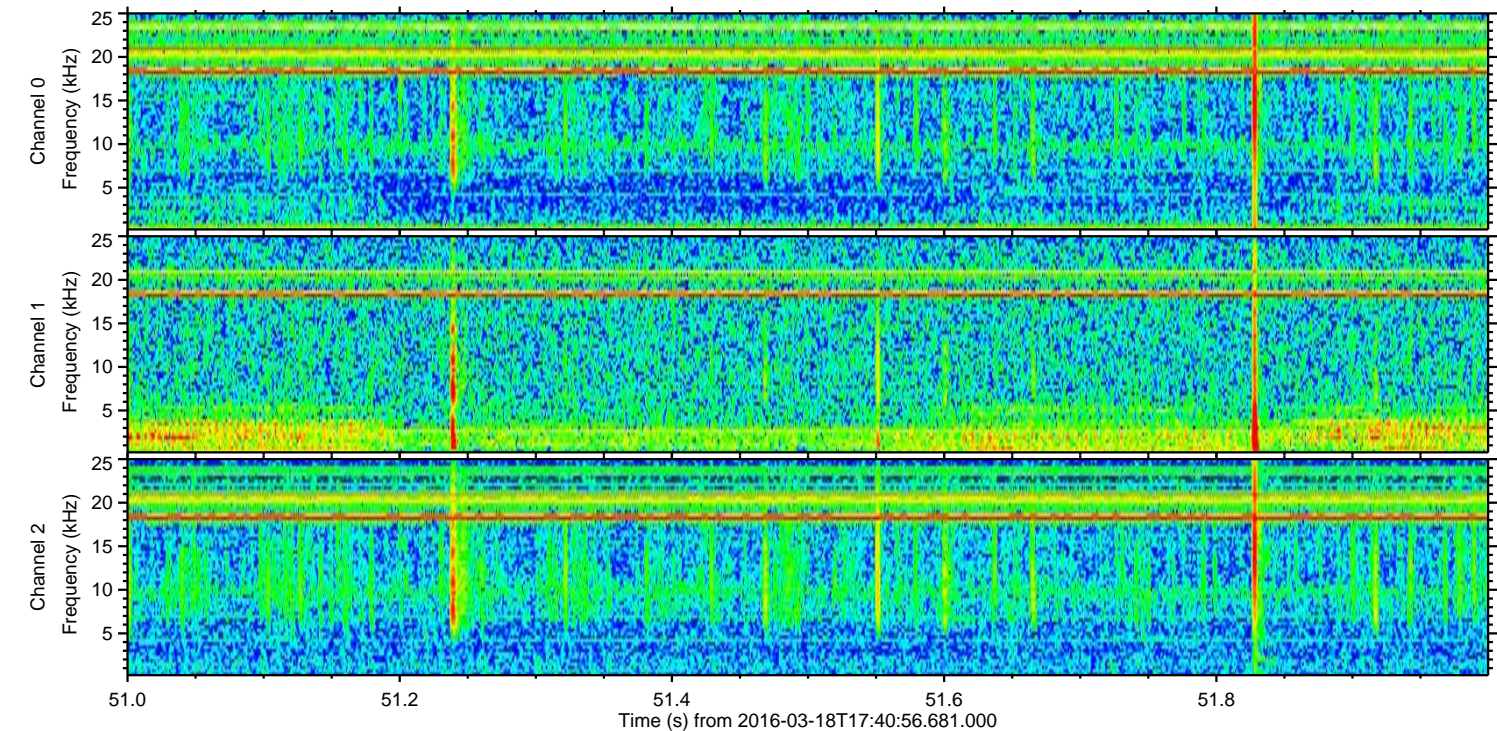
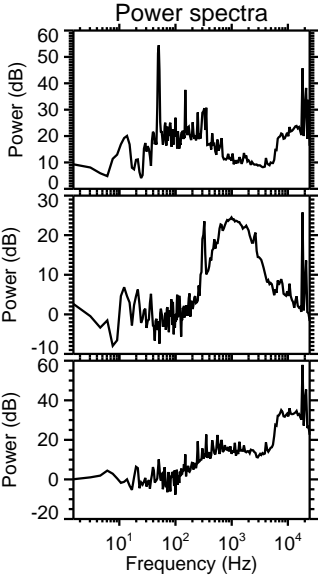
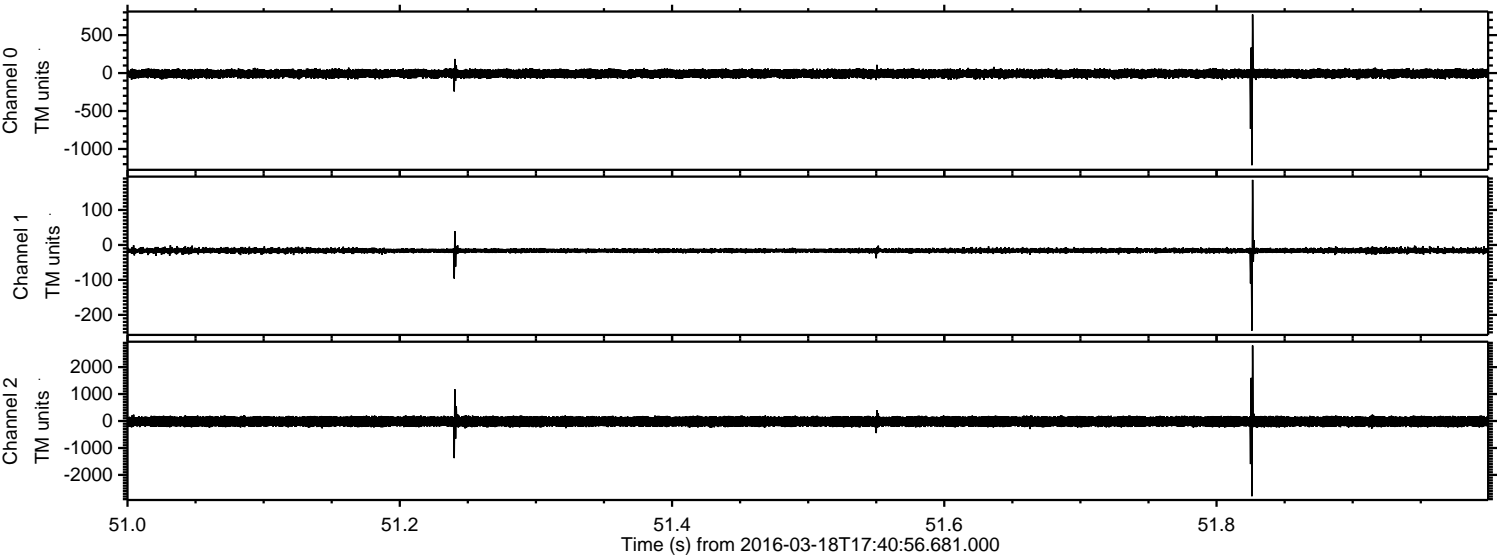


ELMAVAN 3D WAVEFORMS (Measured data sampled at 50 kHz) 51000 packets of 144 samples from 2016-03-18T17:40:56.681.000. Part 2/147

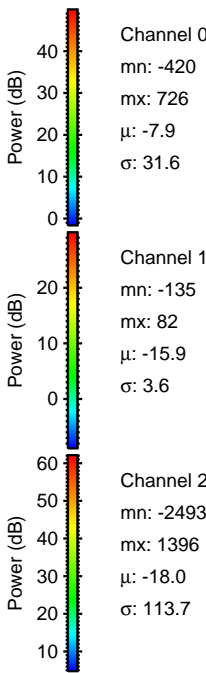
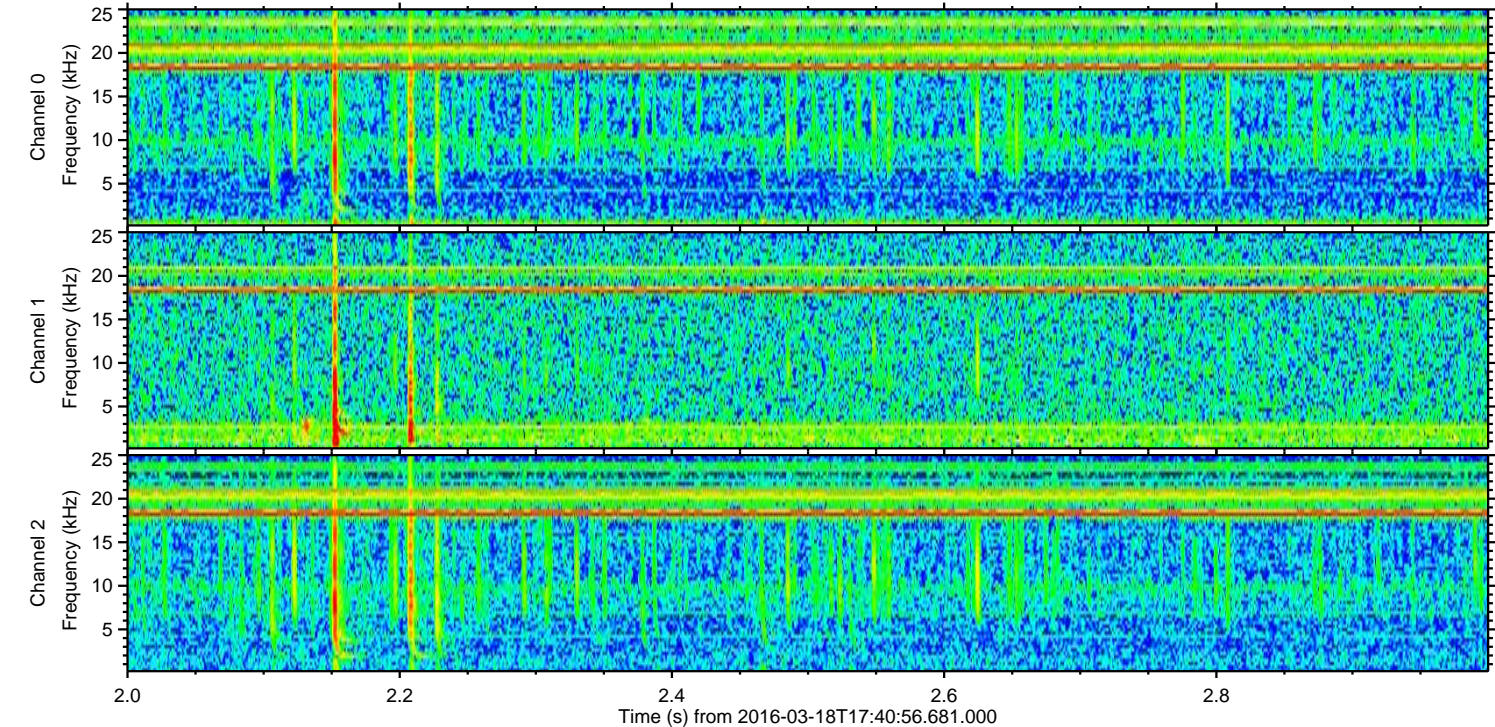
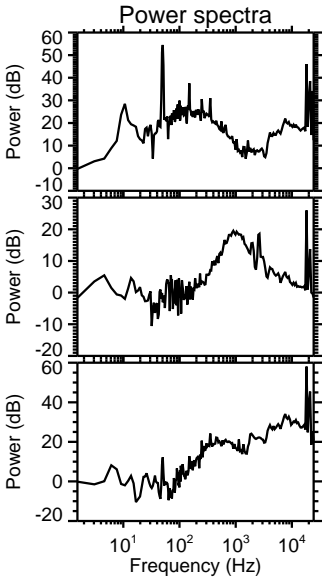
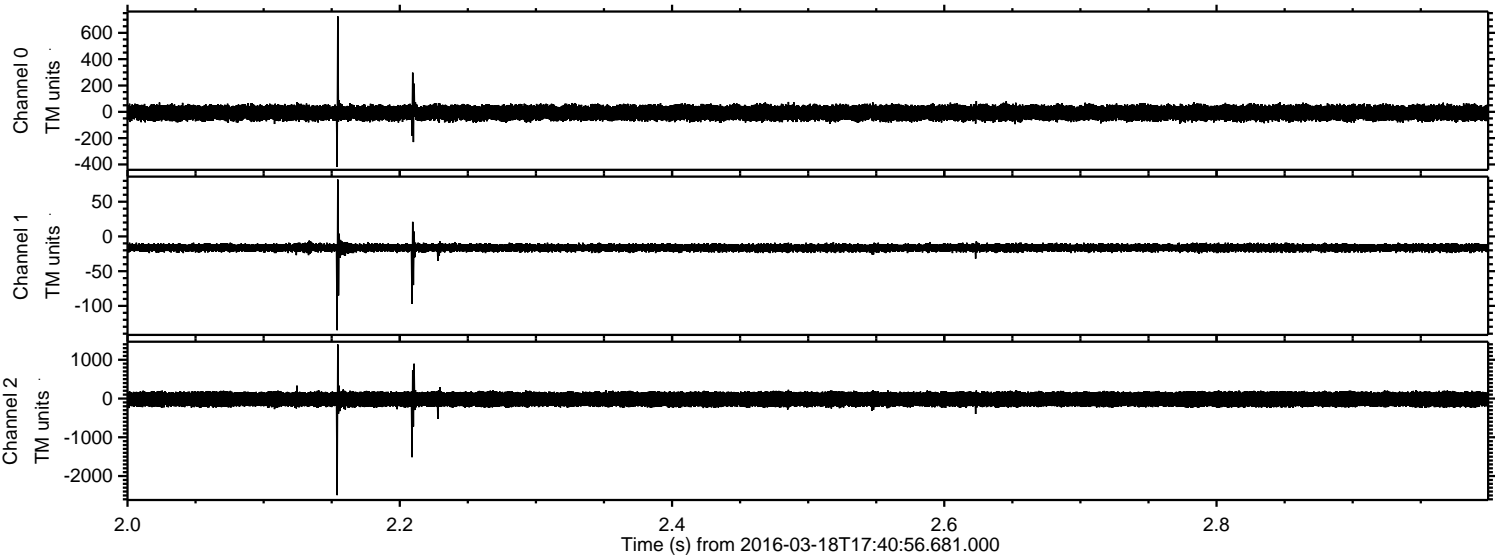
Processed Thu Apr 21 06:18:24 2016 by ELM ver.2012-10-06 from 001__elm20160318_174055__dat00.bin



Processed Thu Apr 21 06:18:25 2016 by ELM ver.2012-10-06 from 001__elm20160318_174055__dat00.bin

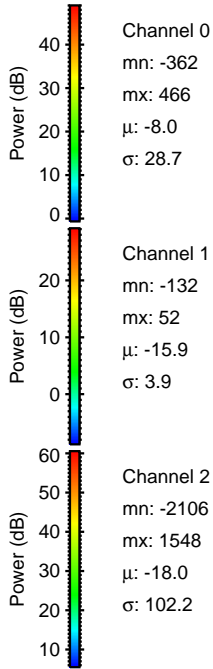
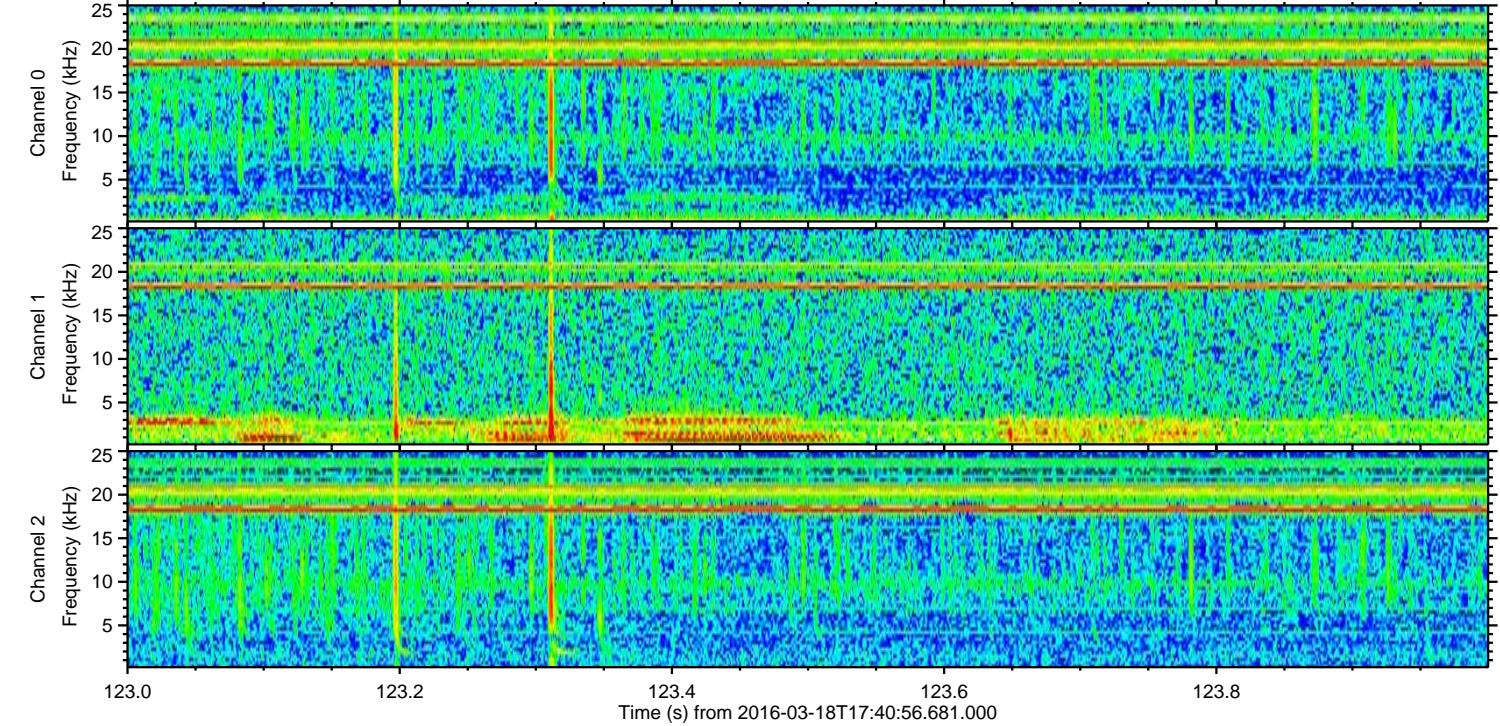
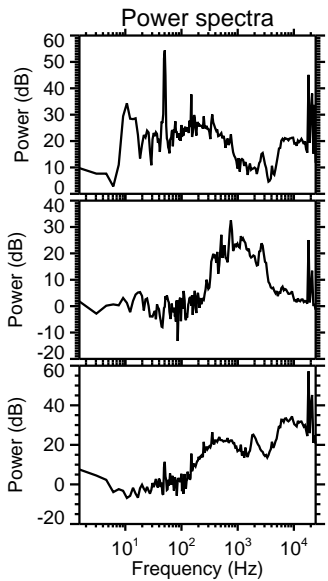
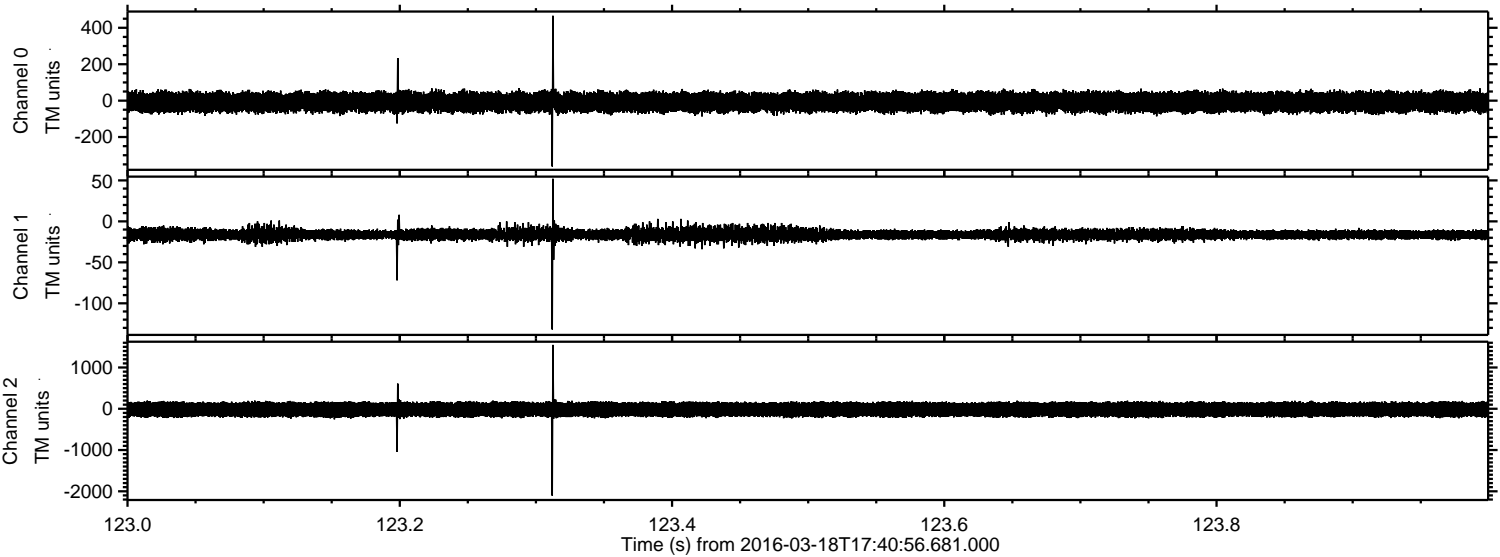


Processed Thu Apr 21 06:18:26 2016 by ELM ver.2012-10-06 from 001__elm20160318_174055__dat00.bin



ELMAVAN 3D WAVEFORMS (Measured data sampled at 50 kHz) 51000 packets of 144 samples from 2016-03-18T17:40:56.681.000. Part 124/147

Processed Thu Apr 21 06:18:27 2016 by ELM ver.2012-10-06 from 001__elm20160318_174055__dat00.bin



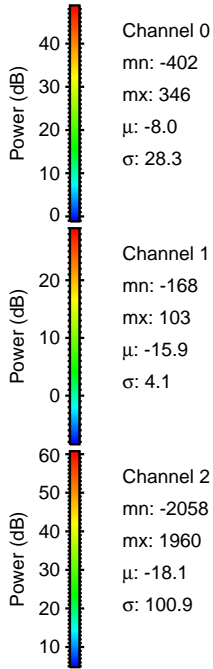
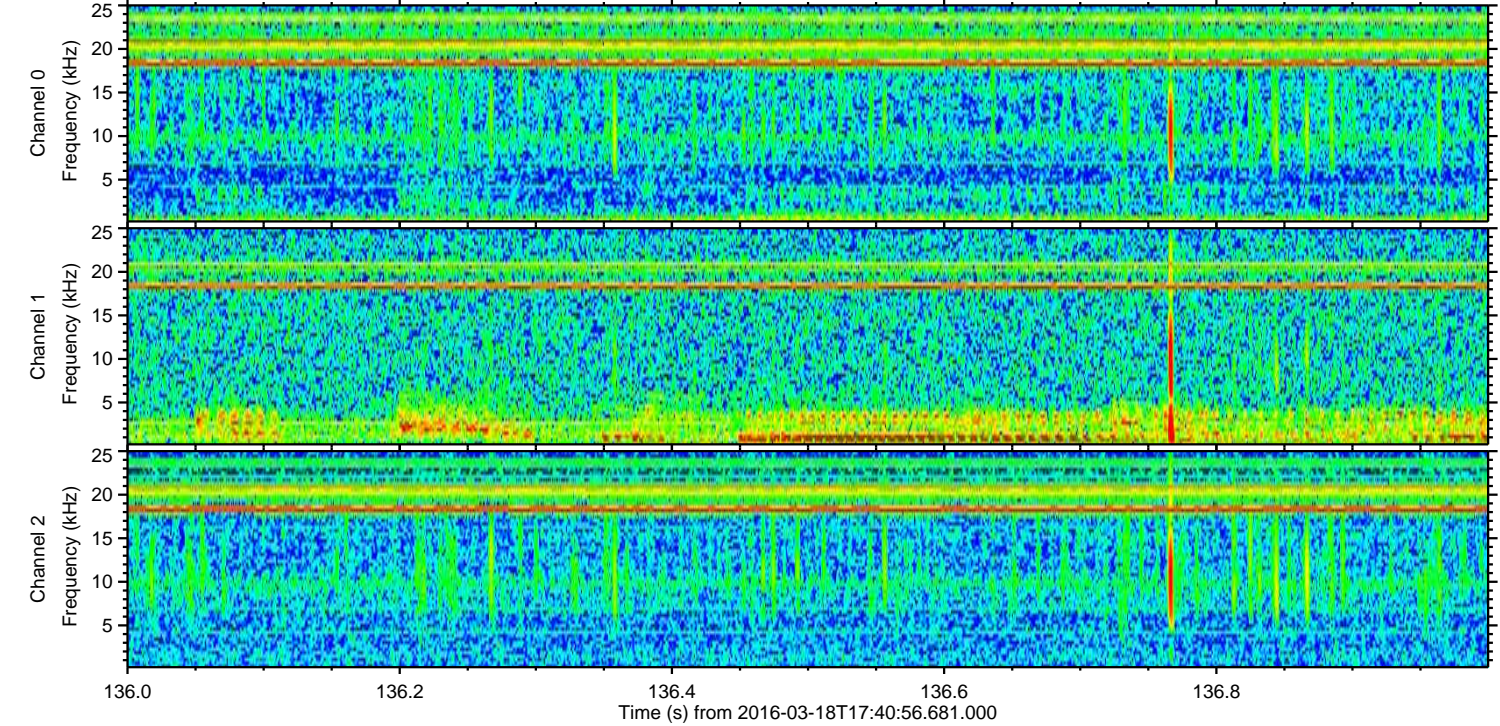
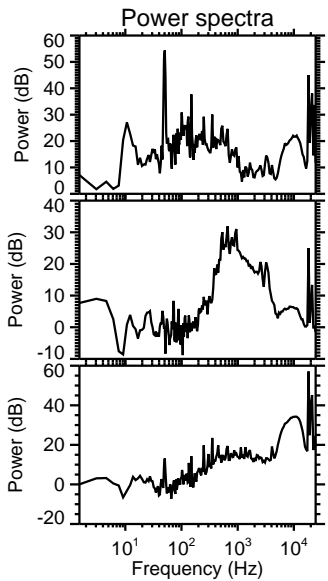
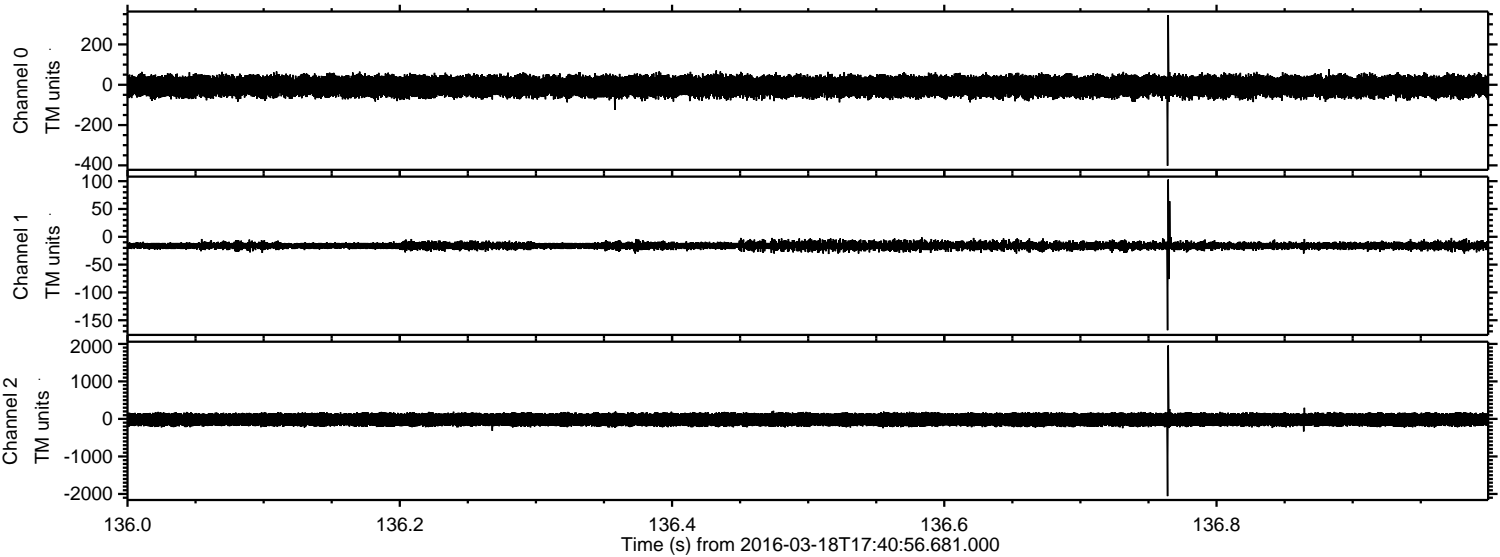
Channel 0
mn: -362
mx: 466
 μ : -8.0
 σ : 28.7

Channel 1
mn: -132
mx: 52
 μ : -15.9
 σ : 3.9

Channel 2
mn: -2106
mx: 1548
 μ : -18.0
 σ : 102.2

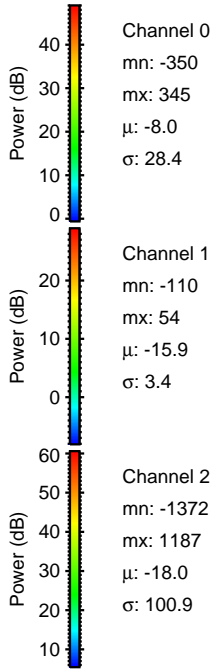
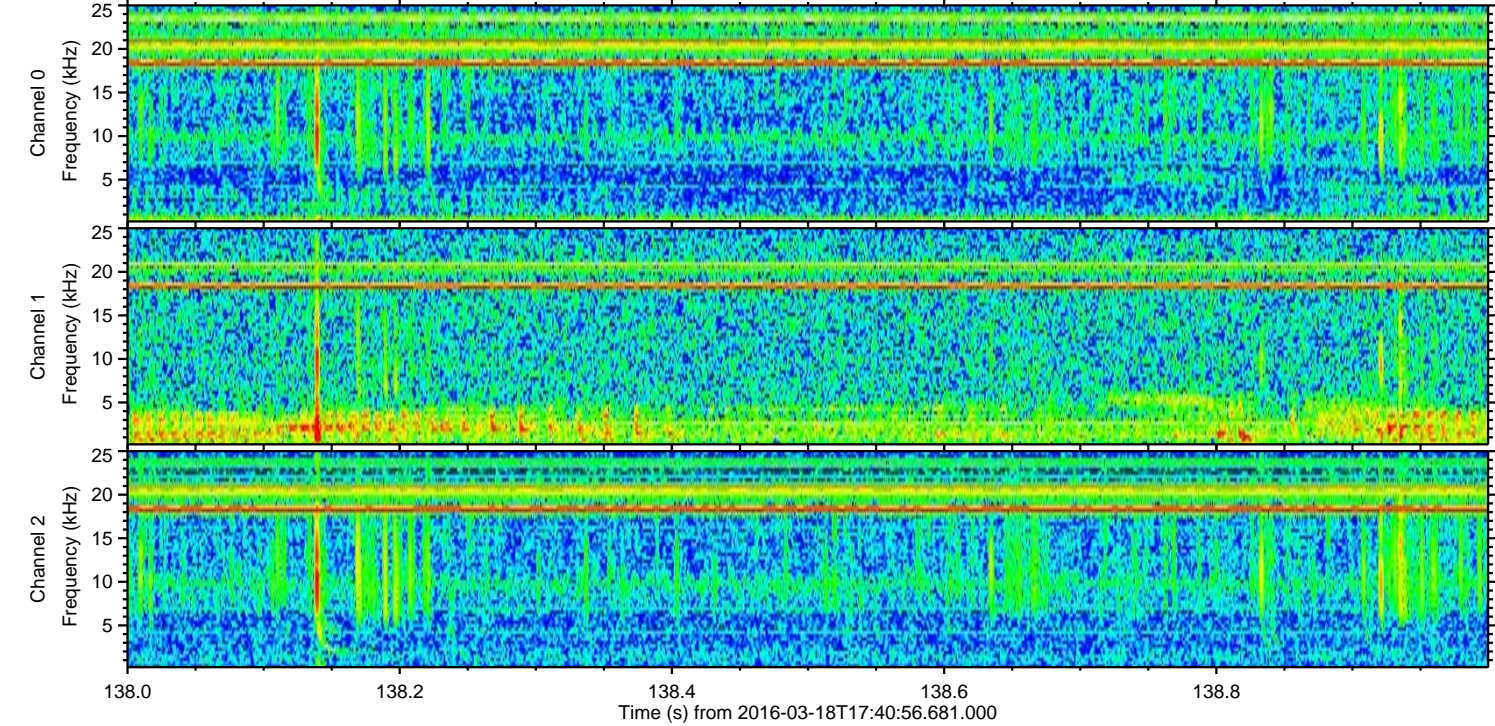
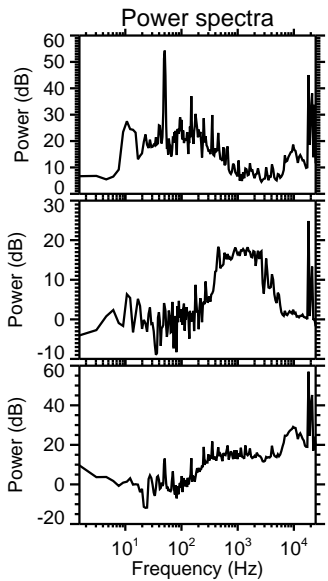
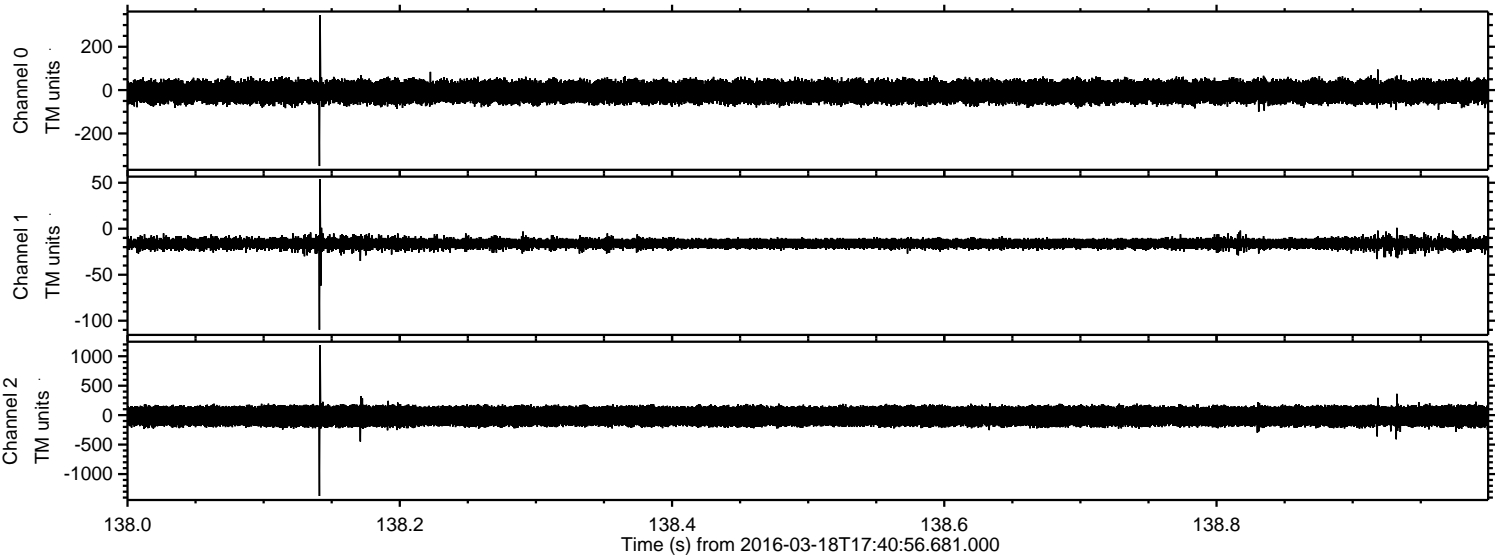
ELMAVAN 3D WAVEFORMS (Measured data sampled at 50 kHz) 51000 packets of 144 samples from 2016-03-18T17:40:56.681.000. Part 137/147

Processed Thu Apr 21 06:18:28 2016 by ELM ver.2012-10-06 from 001__elm20160318_174055__dat00.bin



ELMAVAN 3D WAVEFORMS (Measured data sampled at 50 kHz) 51000 packets of 144 samples from 2016-03-18T17:40:56.681.000. Part 139/147

Processed Thu Apr 21 06:18:29 2016 by ELM ver.2012-10-06 from 001__elm20160318_174055__dat00.bin

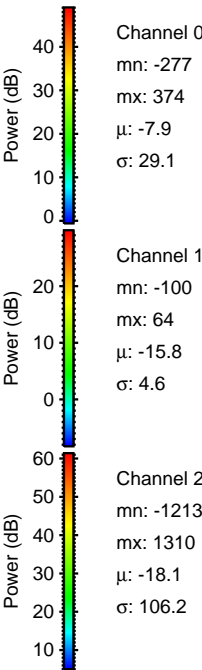
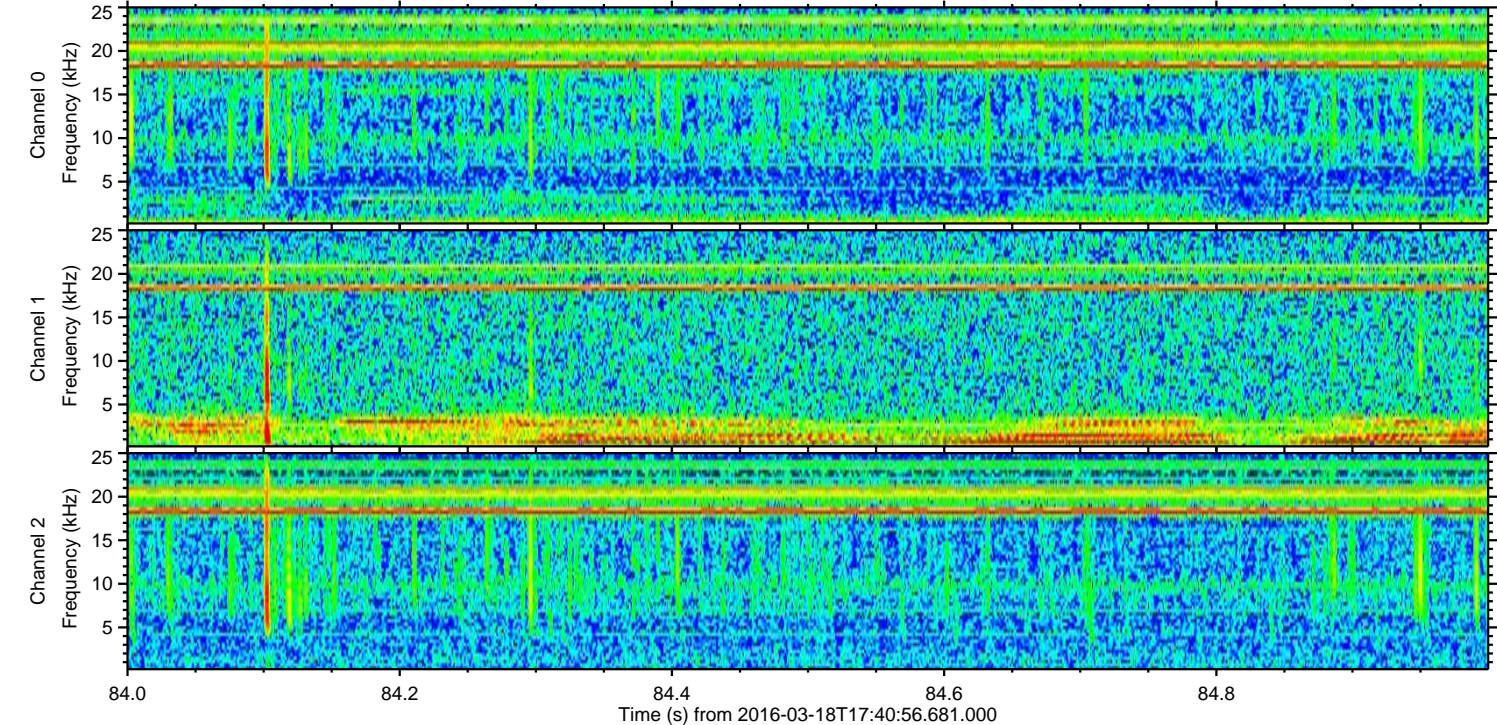
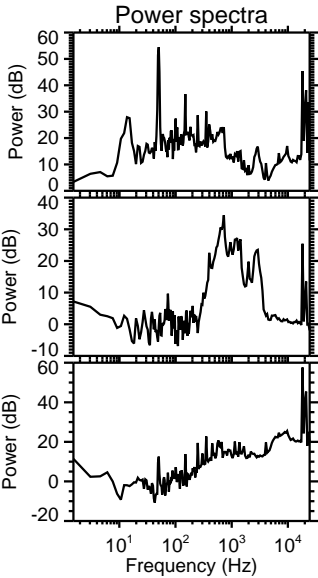
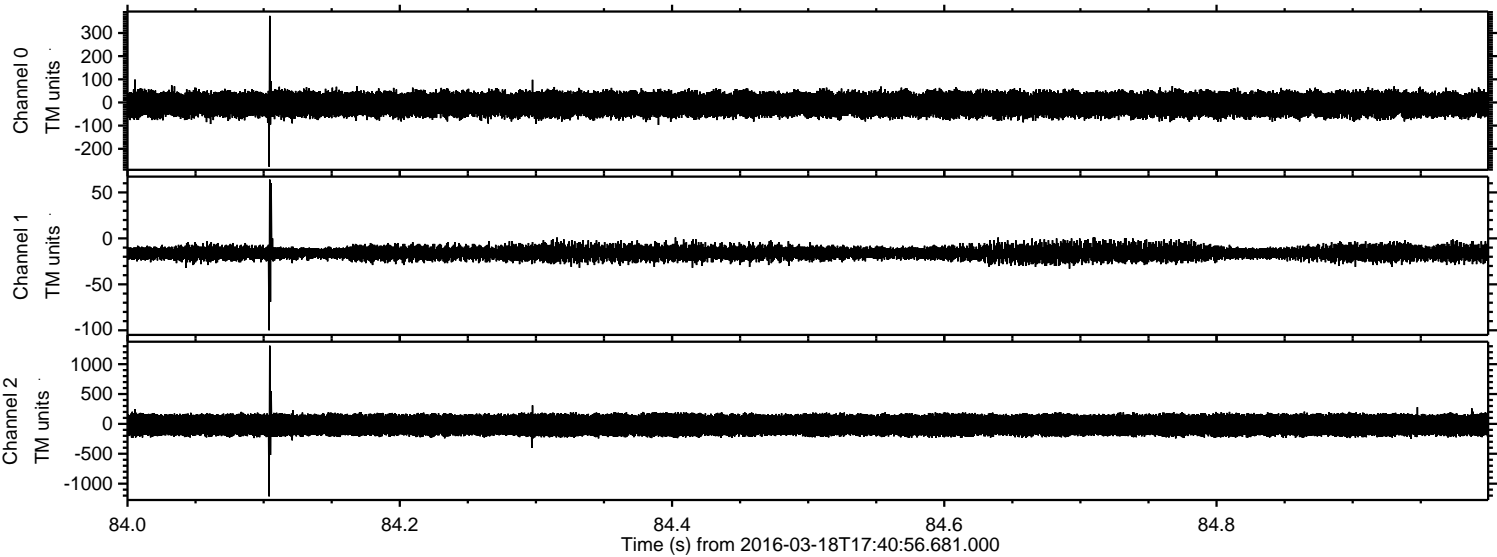


Channel 0
mn: -350
mx: 345
 μ : -8.0
 σ : 28.4

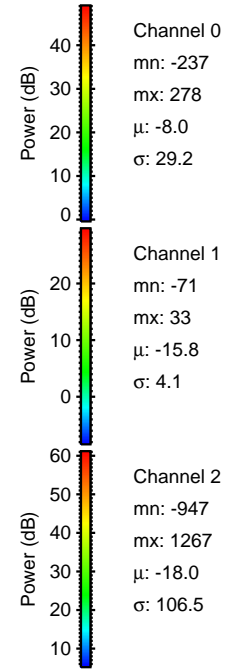
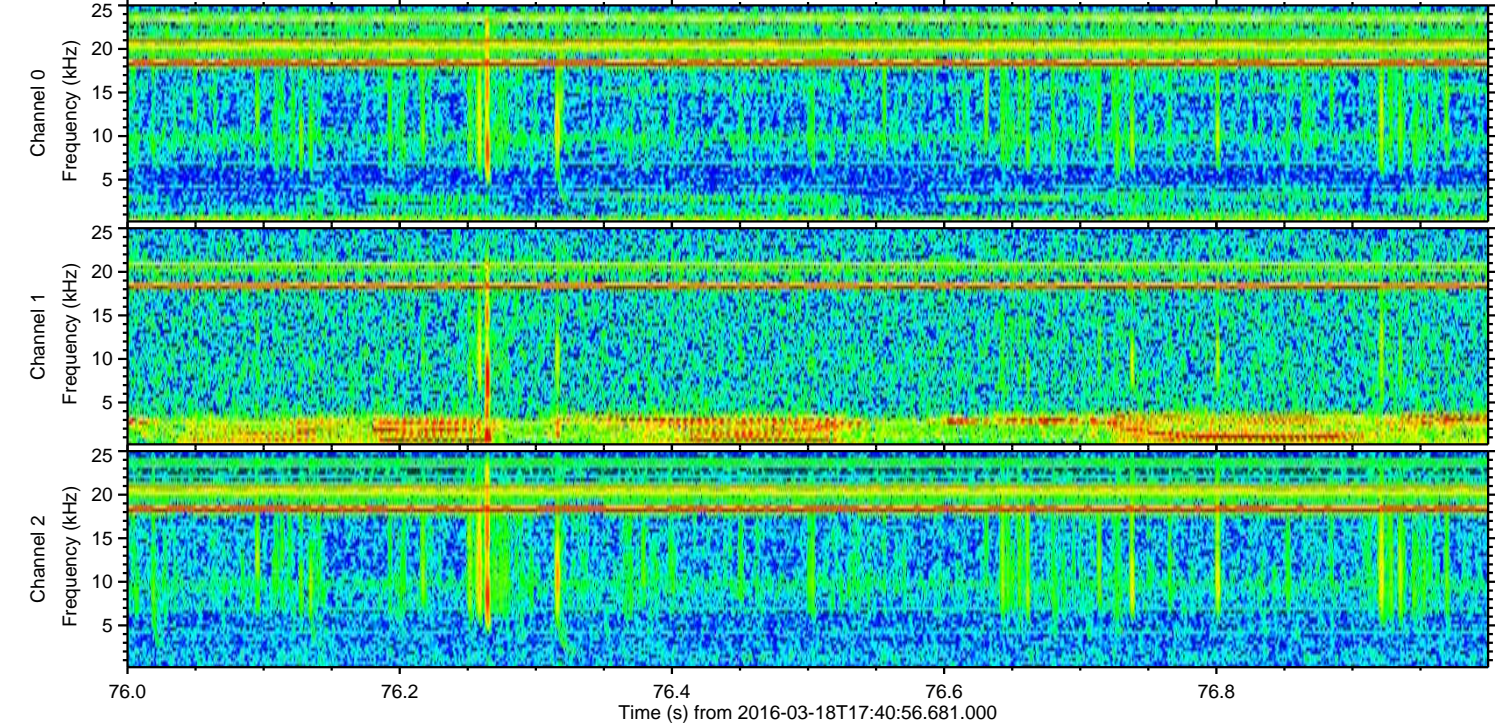
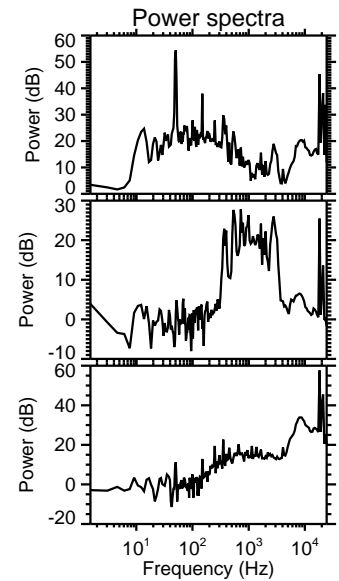
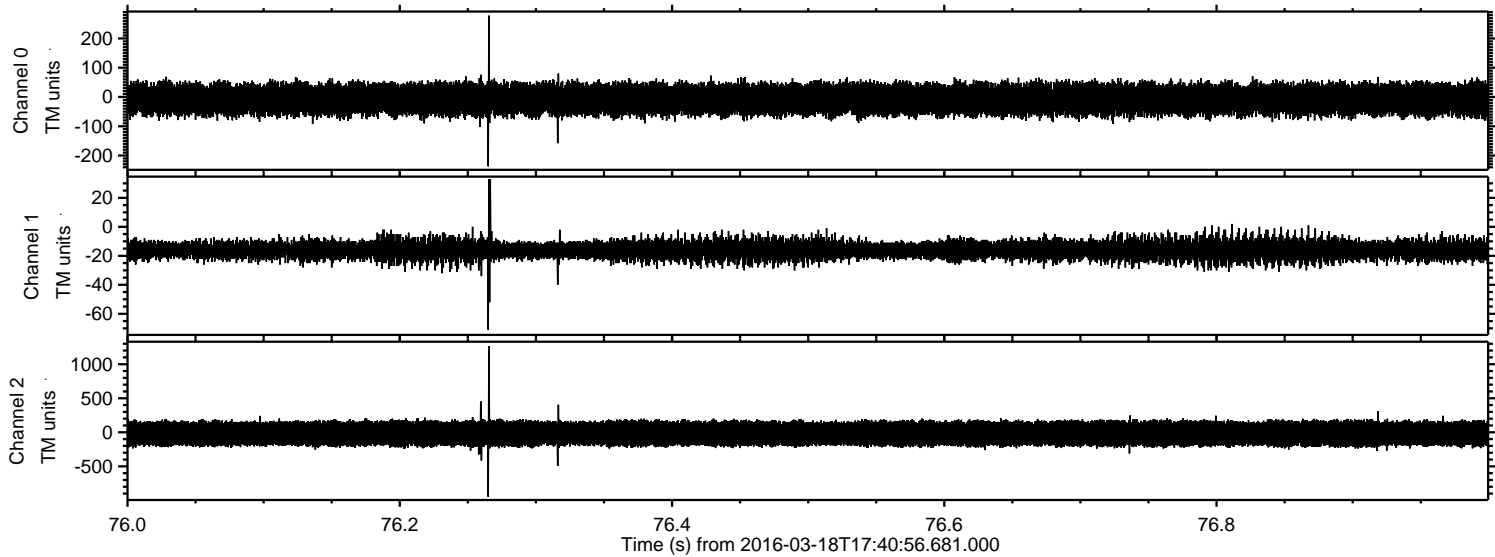
Channel 1
mn: -110
mx: 54
 μ : -15.9
 σ : 3.4

Channel 2
mn: -1372
mx: 1187
 μ : -18.0
 σ : 100.9

Processed Thu Apr 21 06:18:30 2016 by ELM ver.2012-10-06 from 001__elm20160318_174055__dat00.bin

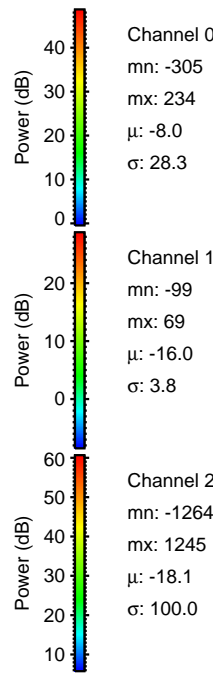
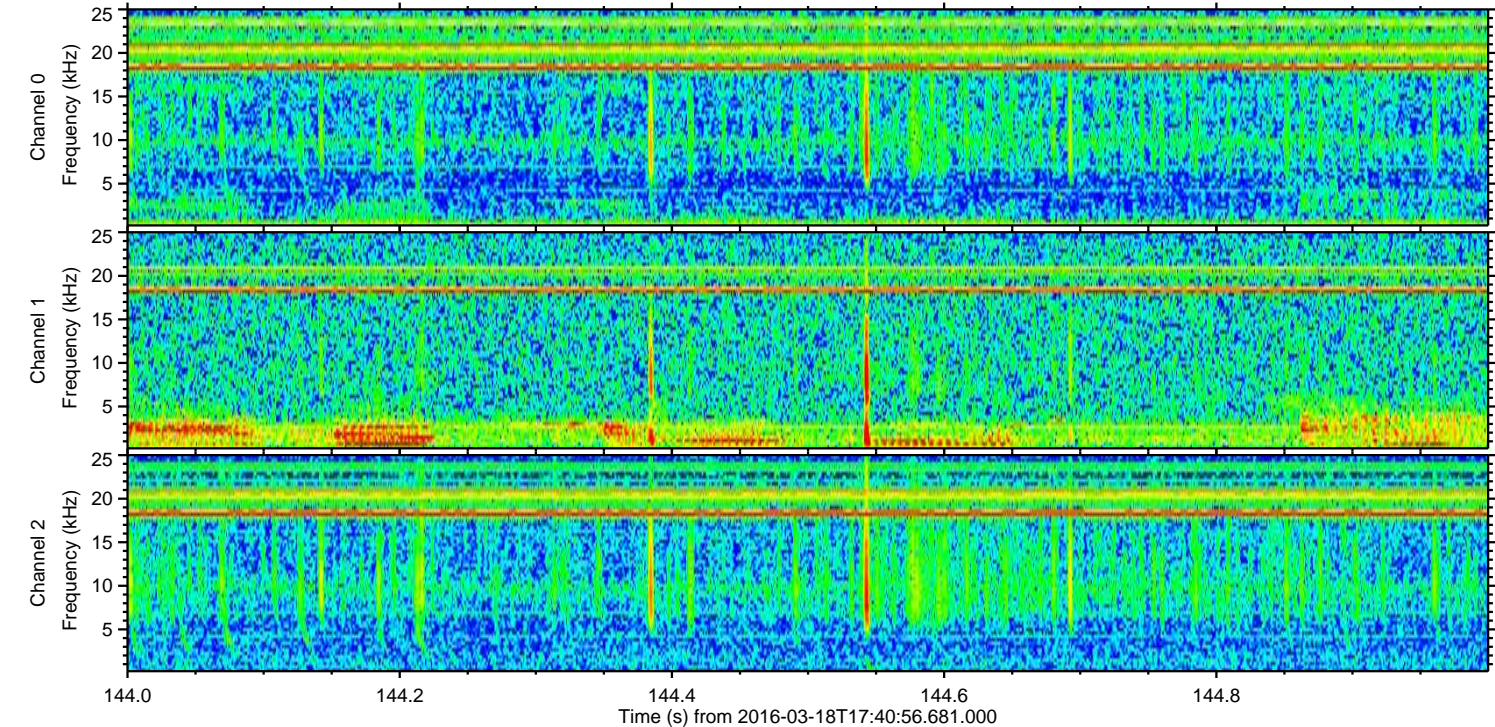
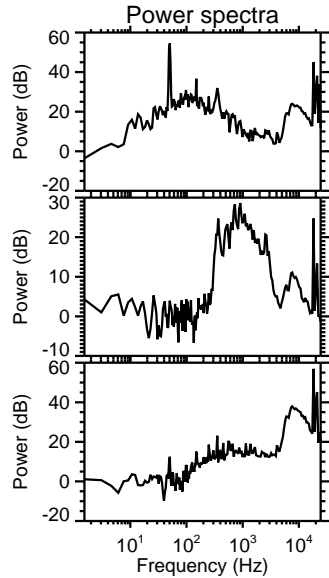
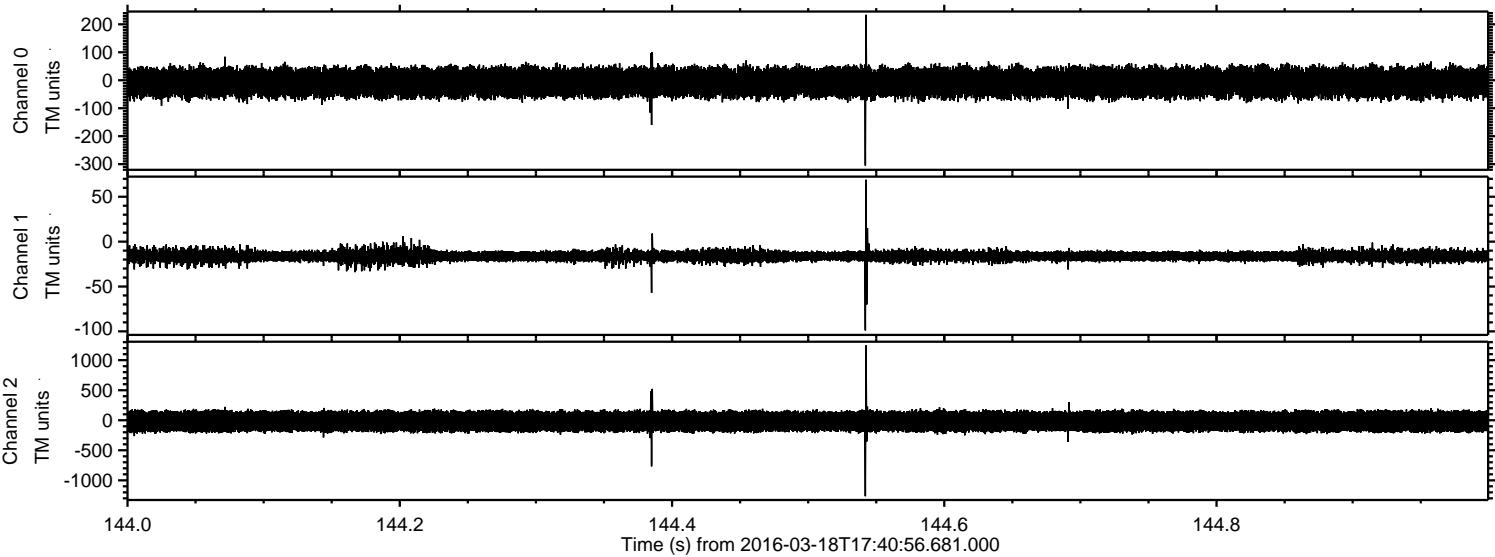


Processed Thu Apr 21 06:18:31 2016 by ELM ver.2012-10-06 from 001__elm20160318_174055__dat00.bin



ELMAVAN 3D WAVEFORMS (Measured data sampled at 50 kHz) 51000 packets of 144 samples from 2016-03-18T17:40:56.681.000. Part 145/147

Processed Thu Apr 21 06:18:32 2016 by ELM ver.2012-10-06 from 001__elm20160318_174055__dat00.bin



Channel 0
mn: -305
mx: 234
 μ : -8.0
 σ : 28.3

Channel 1
mn: -99
mx: 69
 μ : -16.0
 σ : 3.8

Channel 2
mn: -1264
mx: 1245
 μ : -18.1
 σ : 100.0

ELMAVAN 3D WAVEFORMS (Measured data sampled at 50 kHz) 51000 packets of 144 samples from 2016-03-18T17:40:56.681.000. Part 113/147

