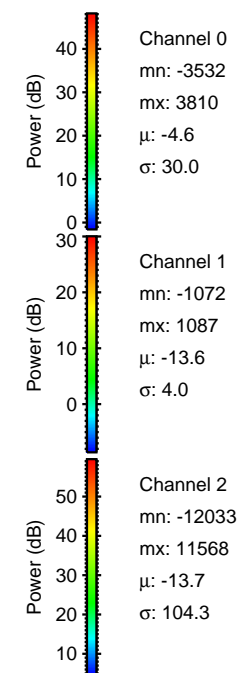
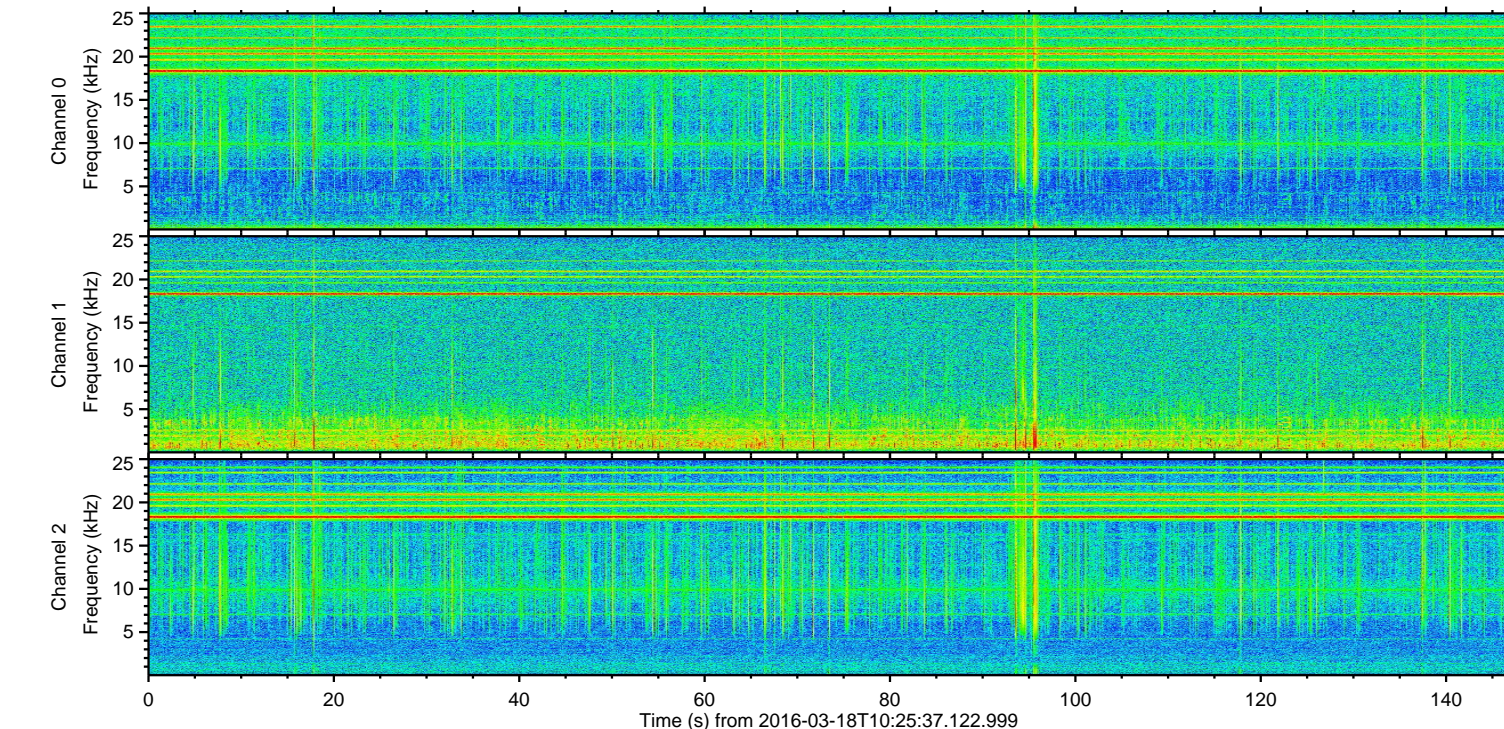
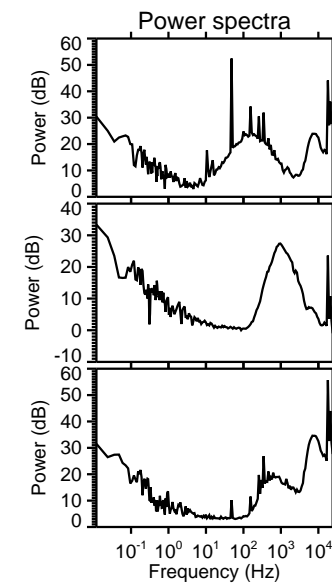
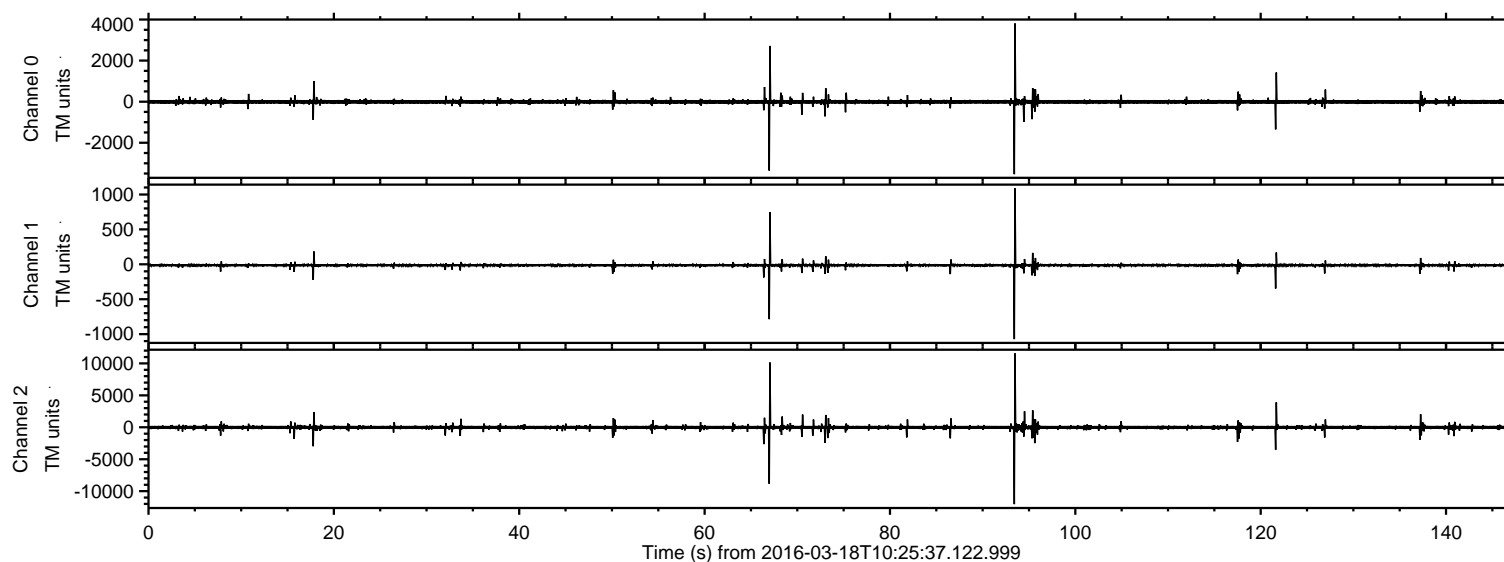
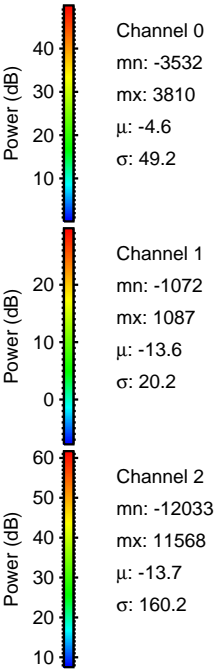
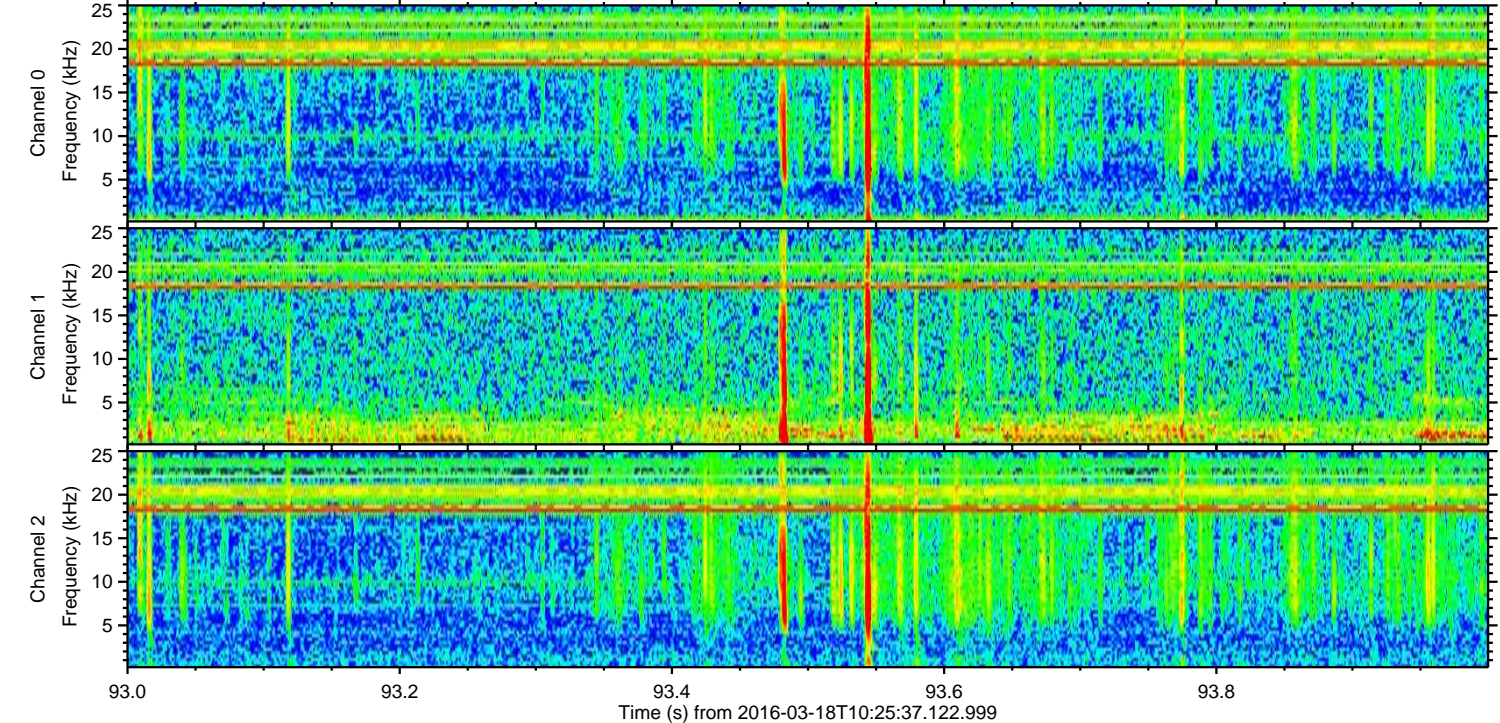
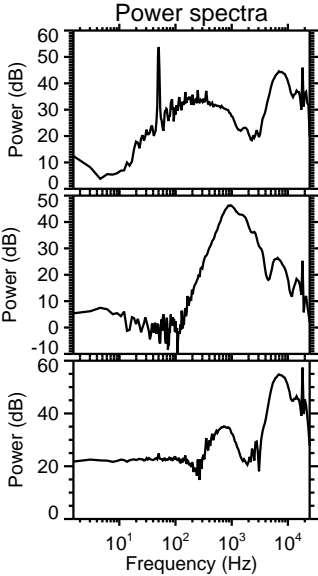
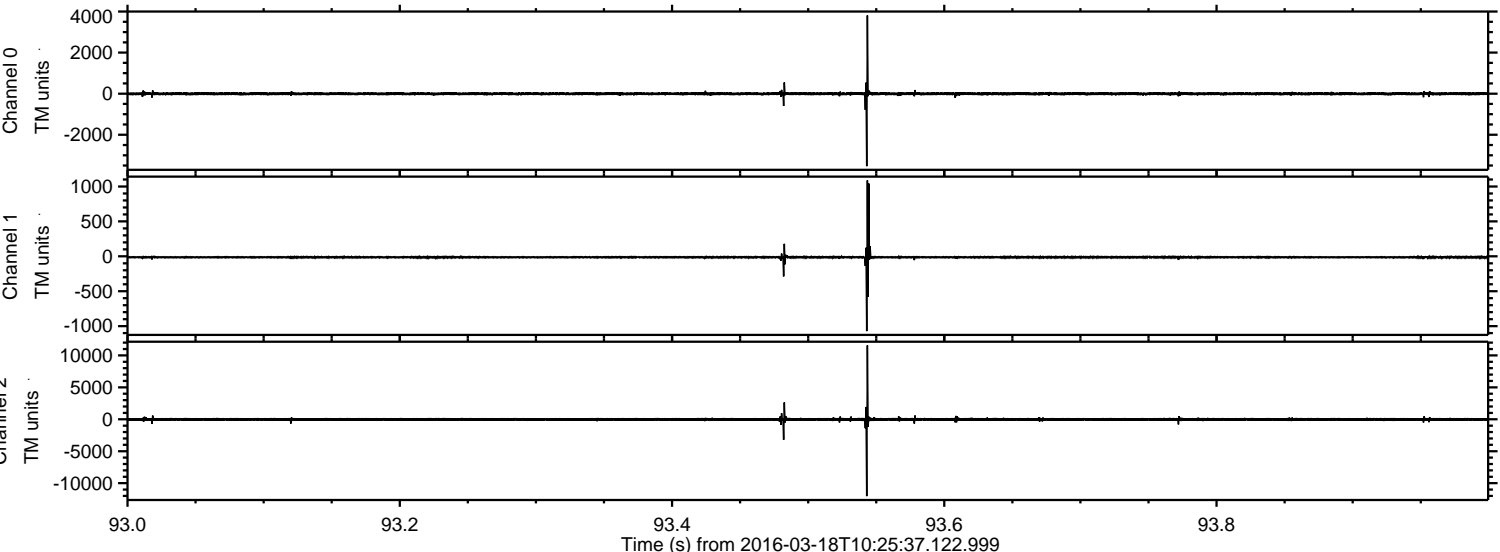


ELMAVAN 3D WAVEFORMS (Measured data sampled at 50 kHz) 51000 packets of 144 samples from 2016-03-18T10:25:37.122.999.

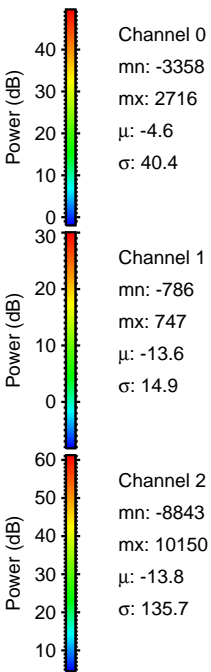
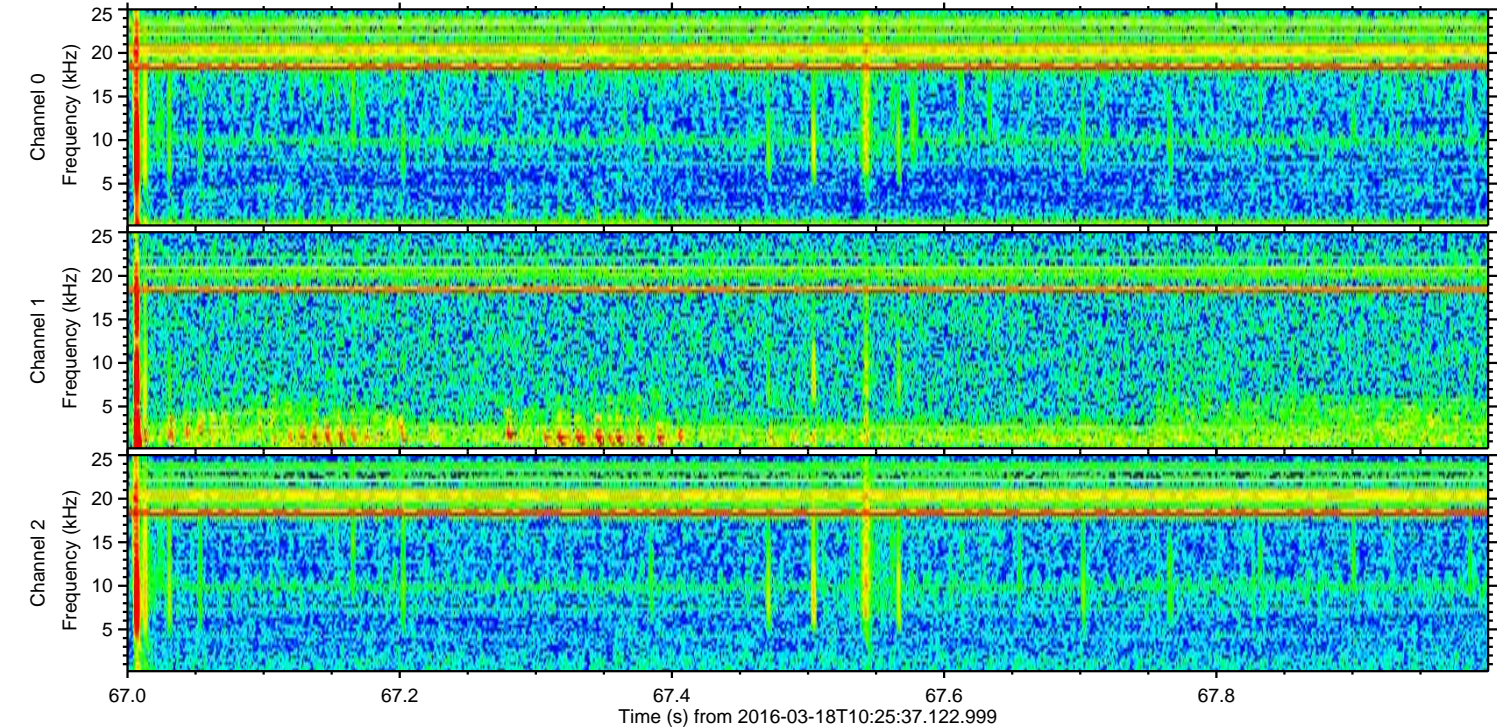
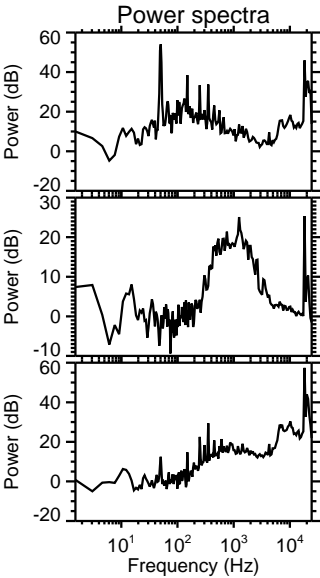
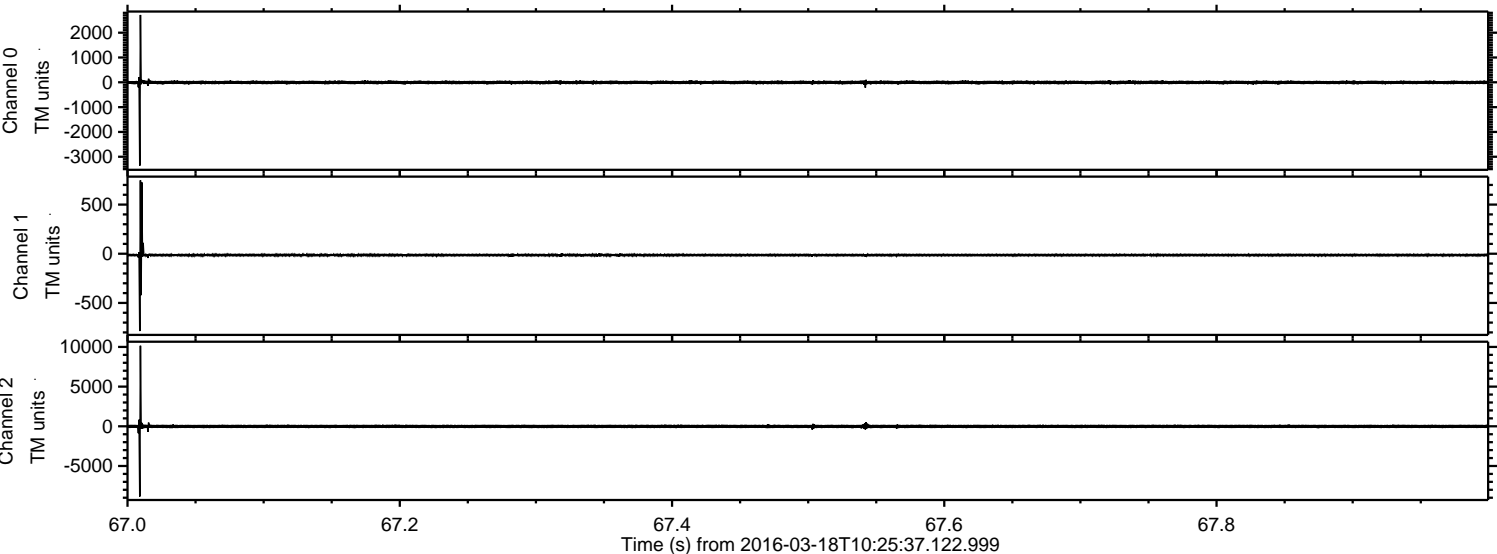
Processed Thu Apr 21 04:49:05 2016 by ELM ver.2012-10-06 from 001__elm20160318_102536__dat00.bin



Processed Thu Apr 21 04:49:16 2016 by ELM ver.2012-10-06 from 001__elm20160318_102536__dat00.bin

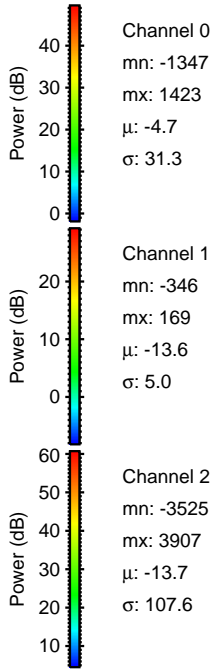
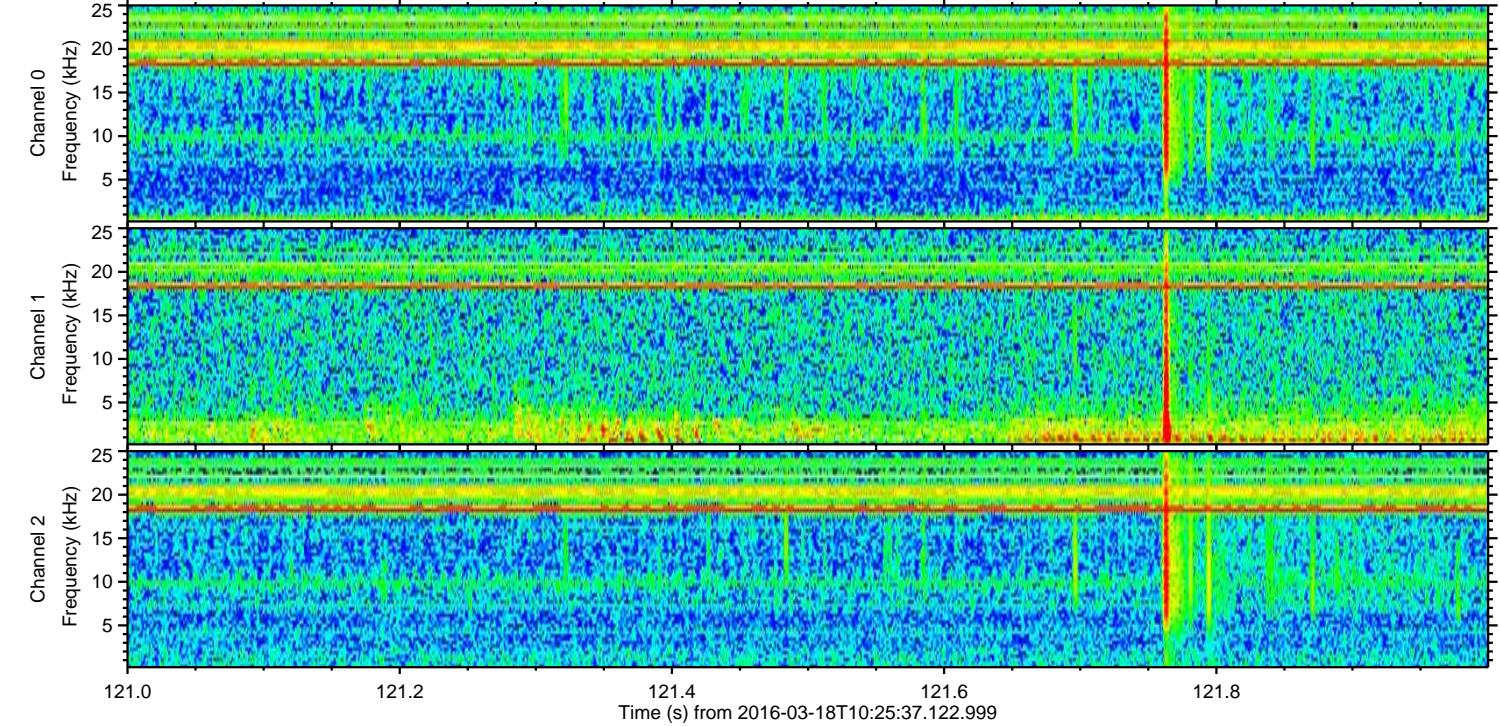
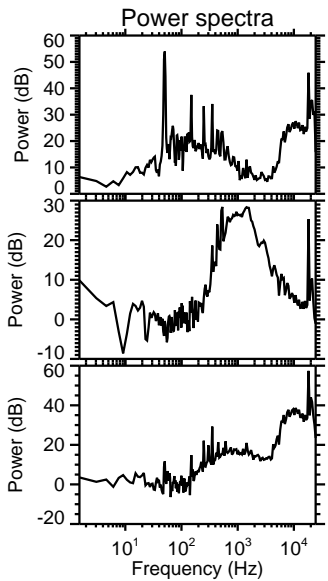
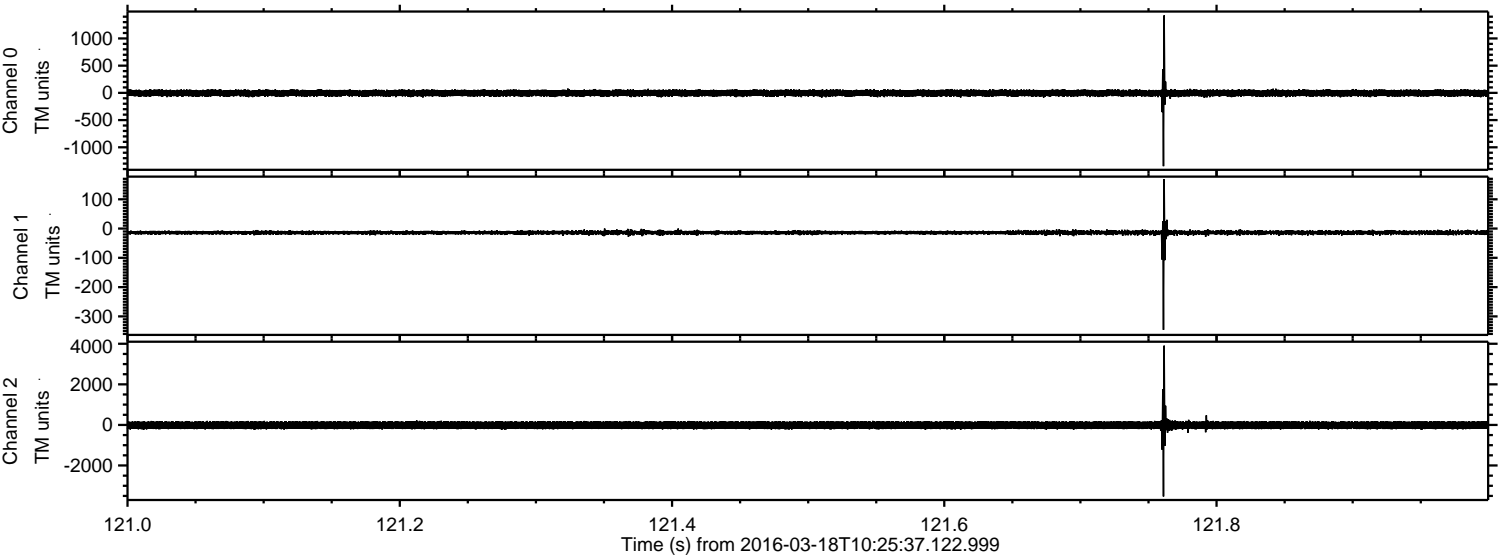


Processed Thu Apr 21 04:49:17 2016 by ELM ver.2012-10-06 from 001__elm20160318_102536__dat00.bin

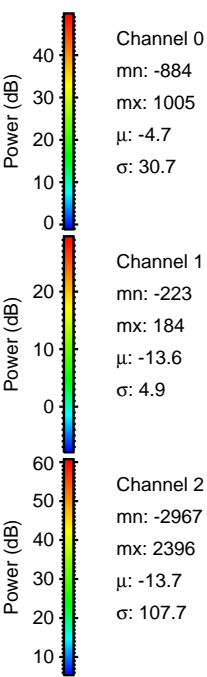
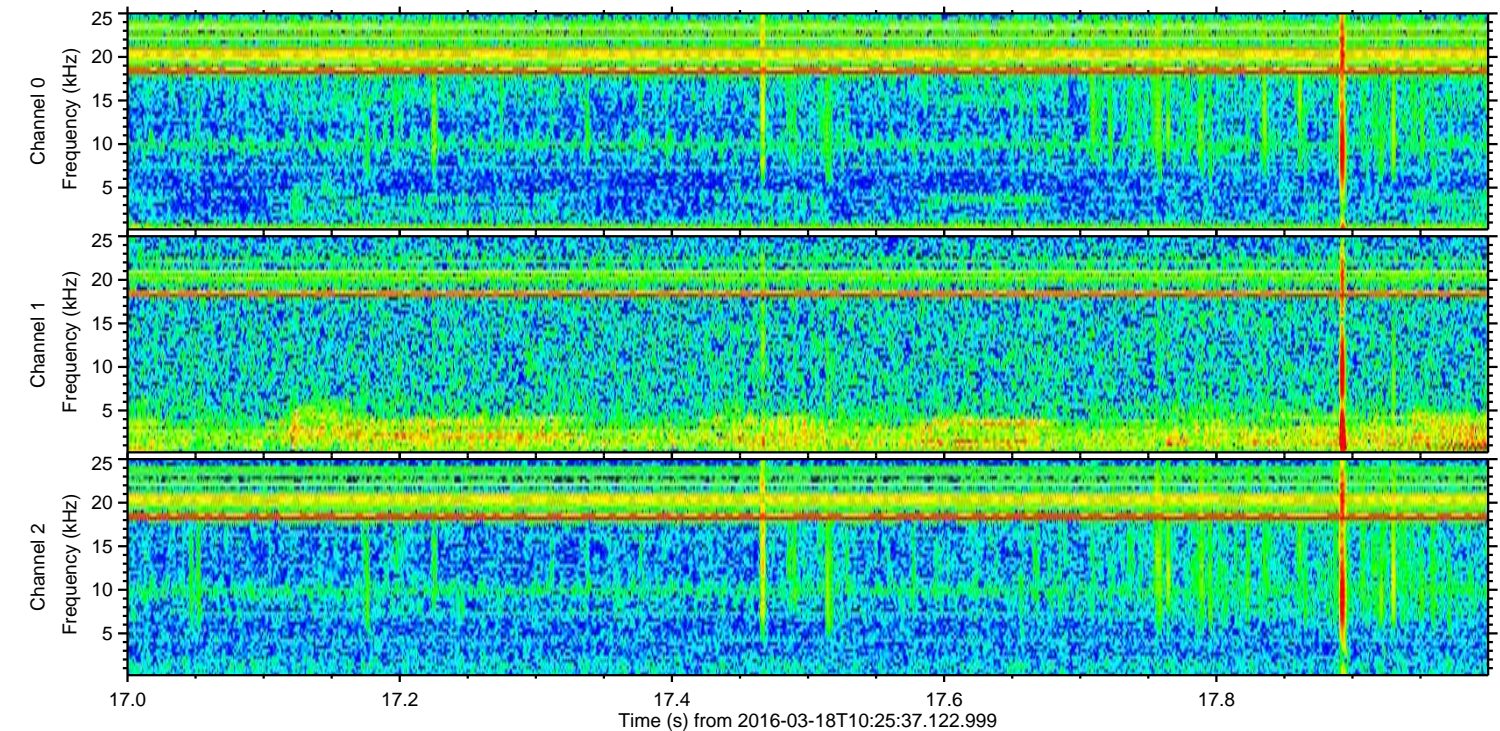
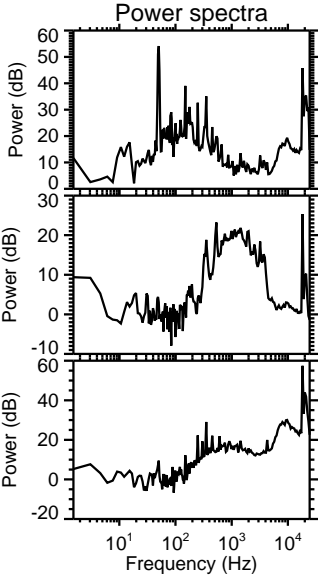
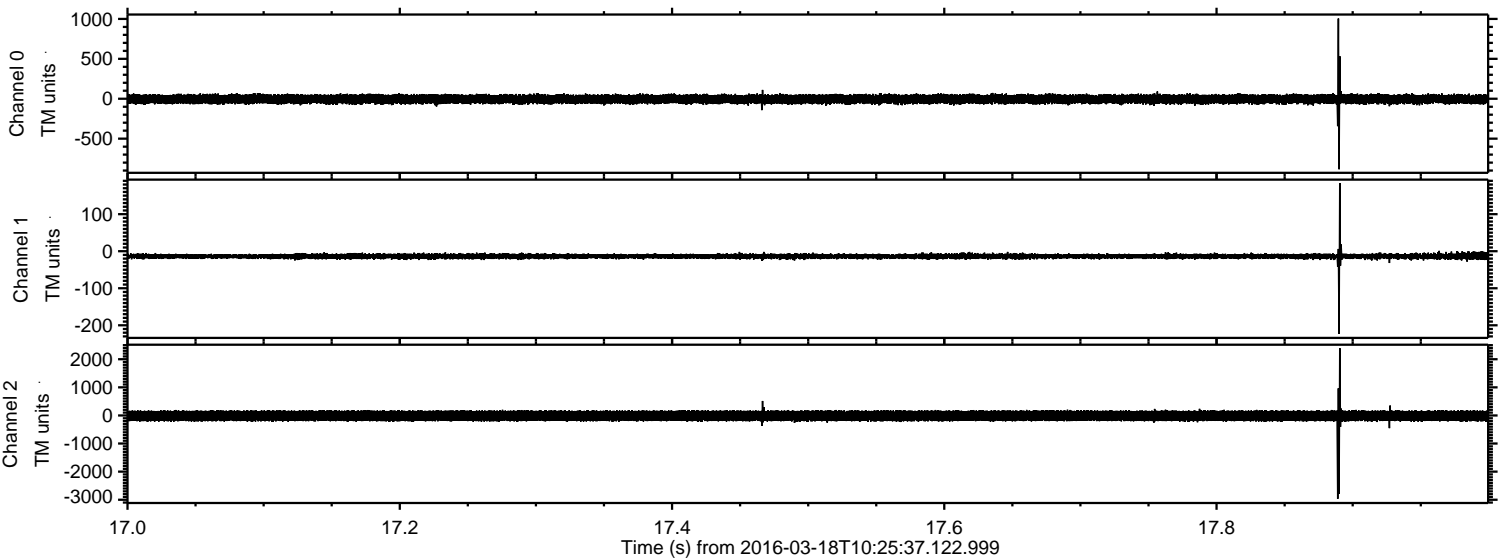


ELMAVAN 3D WAVEFORMS (Measured data sampled at 50 kHz) 51000 packets of 144 samples from 2016-03-18T10:25:37.122.999. Part 122/147

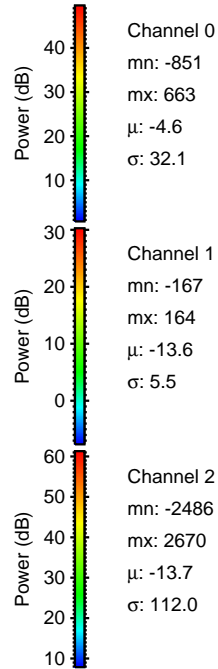
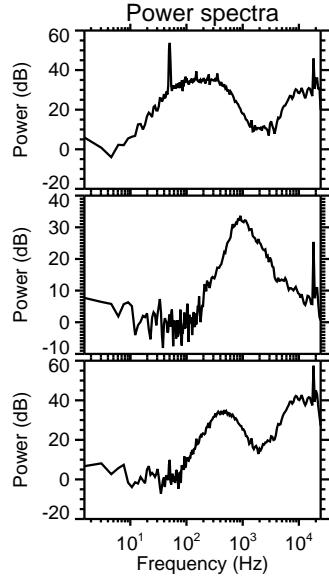
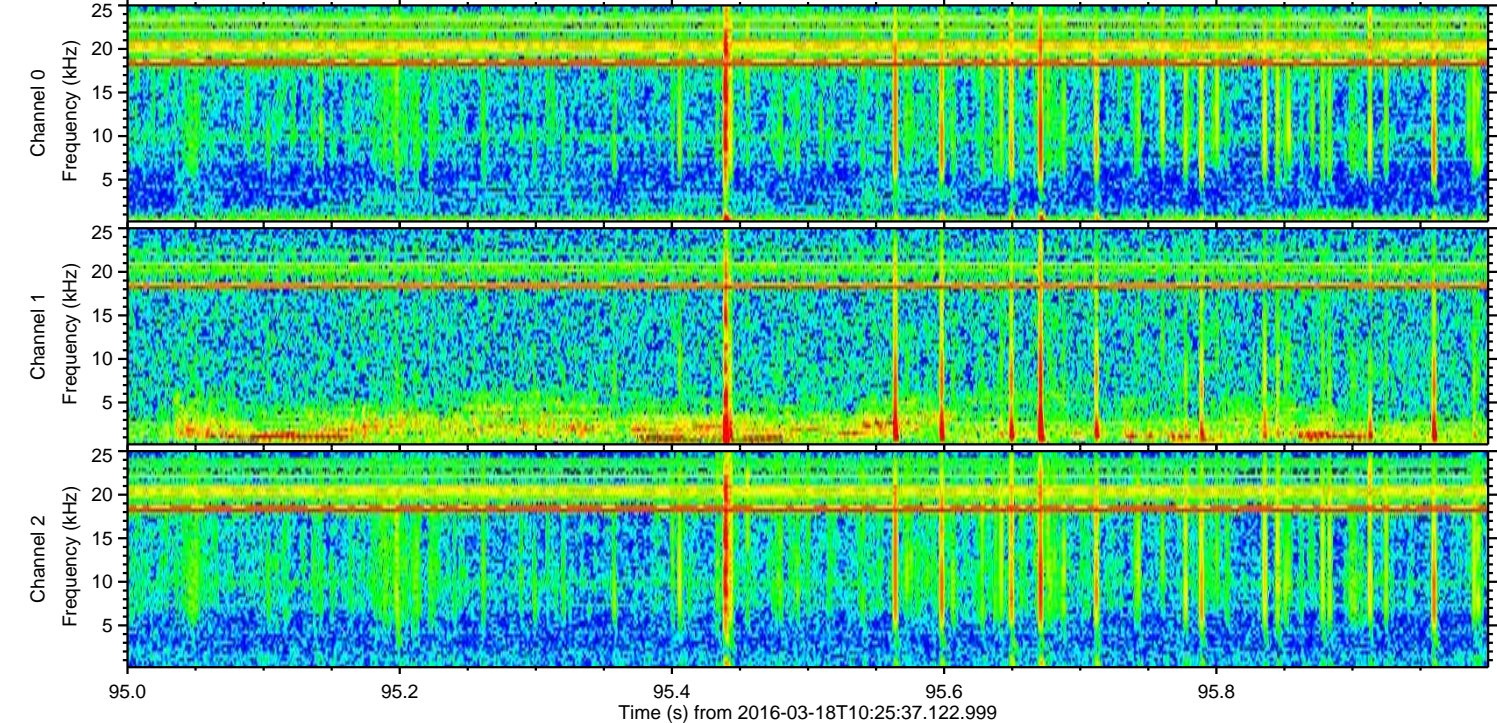
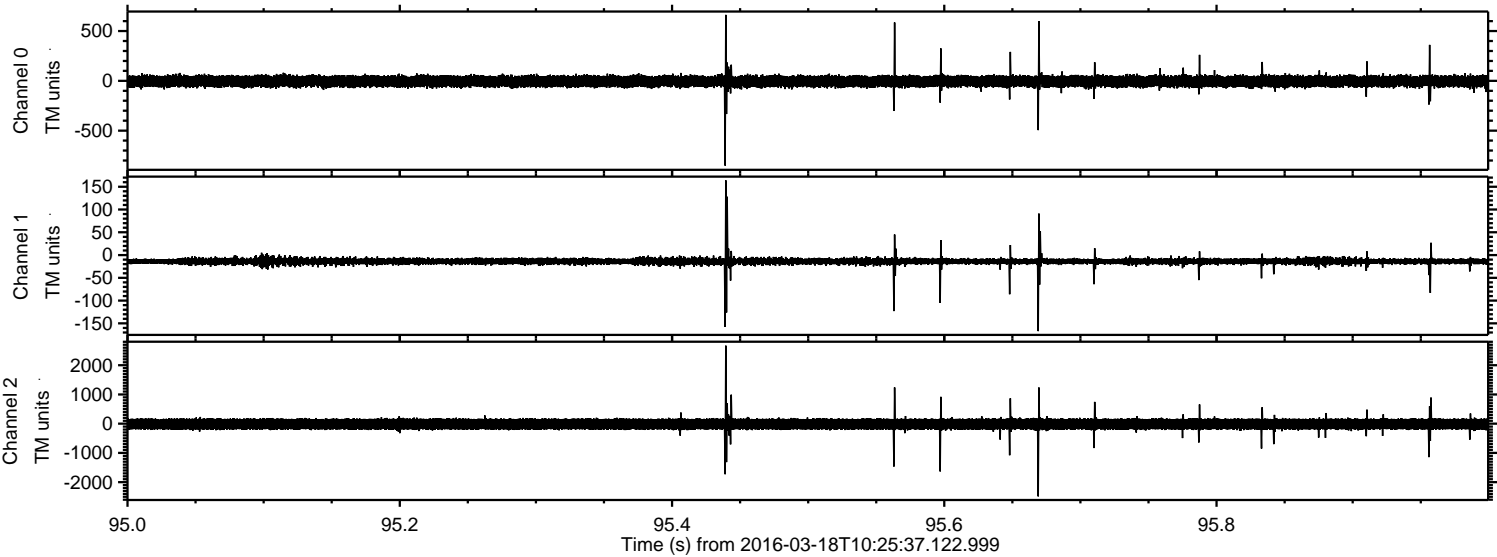
Processed Thu Apr 21 04:49:18 2016 by ELM ver.2012-10-06 from 001__elm20160318_102536__dat00.bin



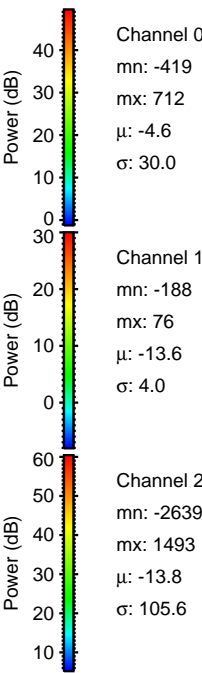
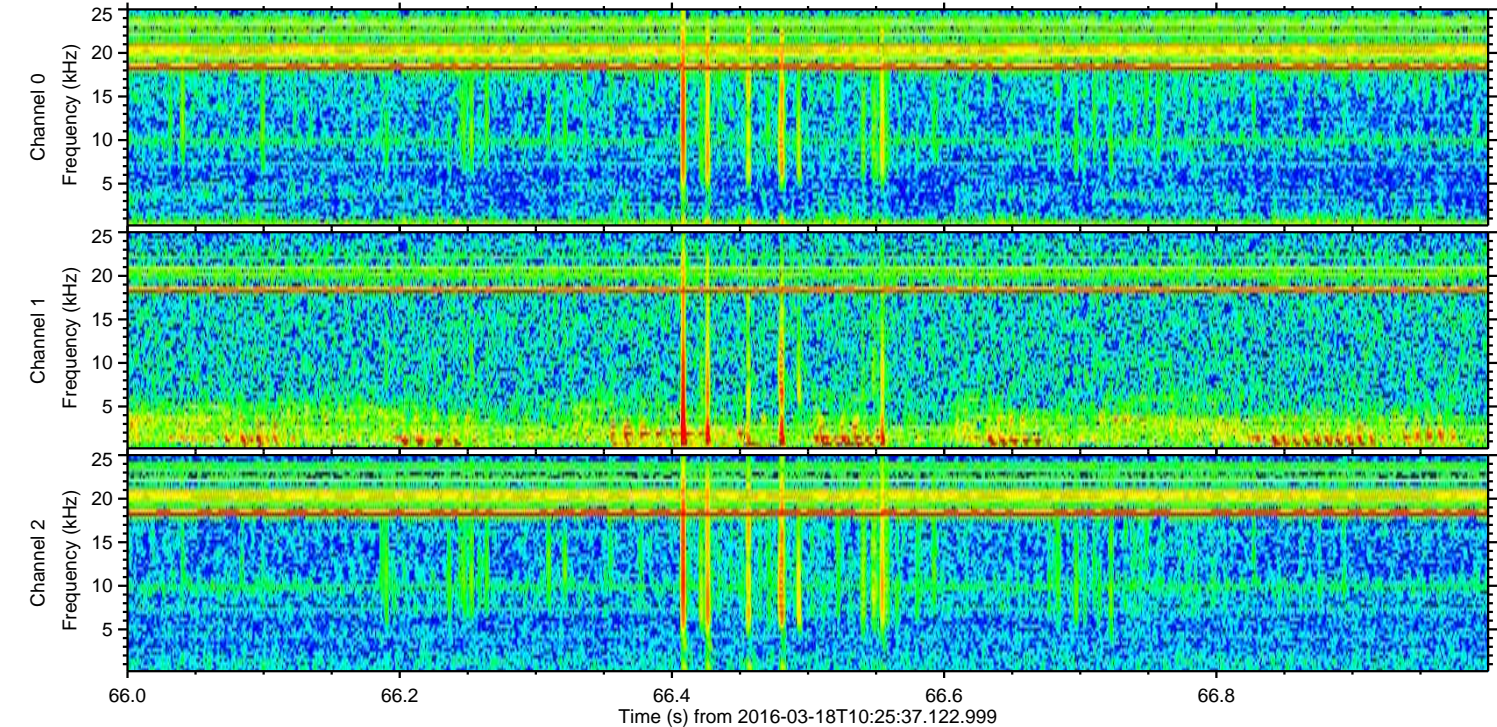
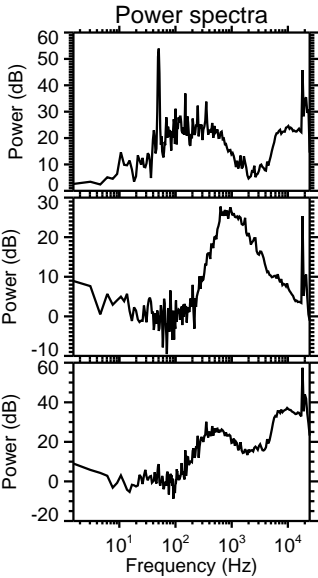
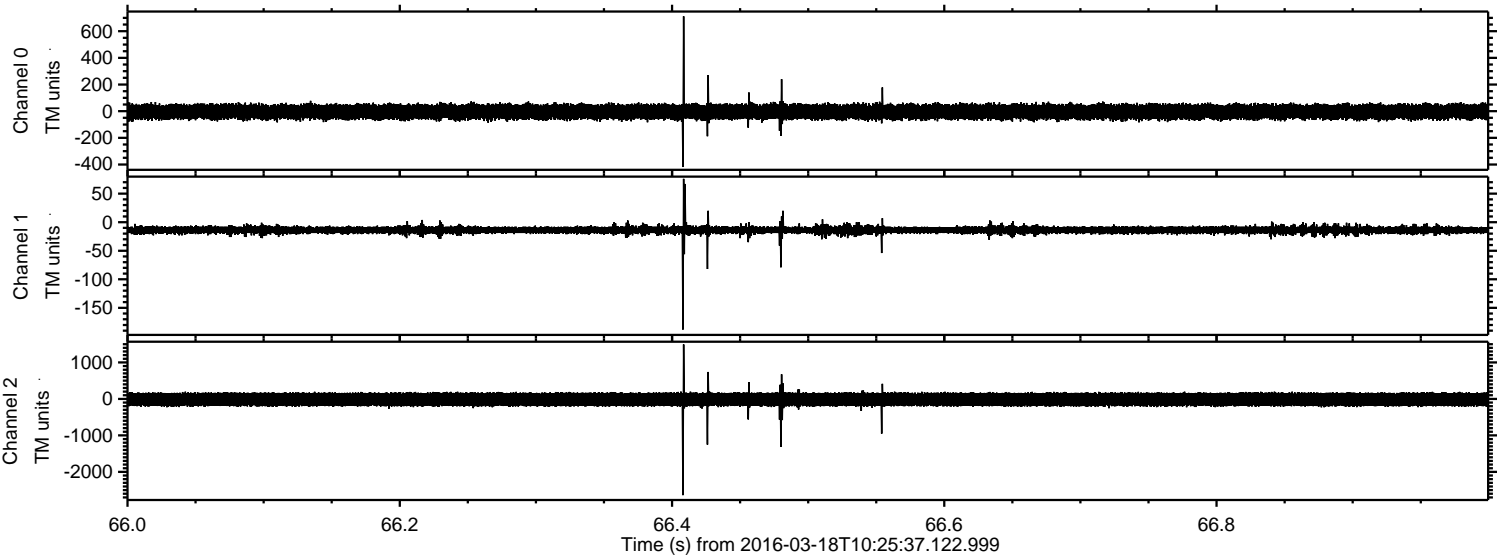
Processed Thu Apr 21 04:49:19 2016 by ELM ver.2012-10-06 from 001__elm20160318_102536__dat00.bin



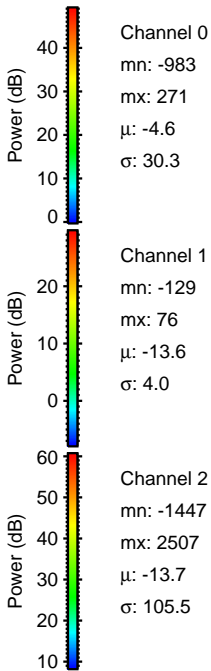
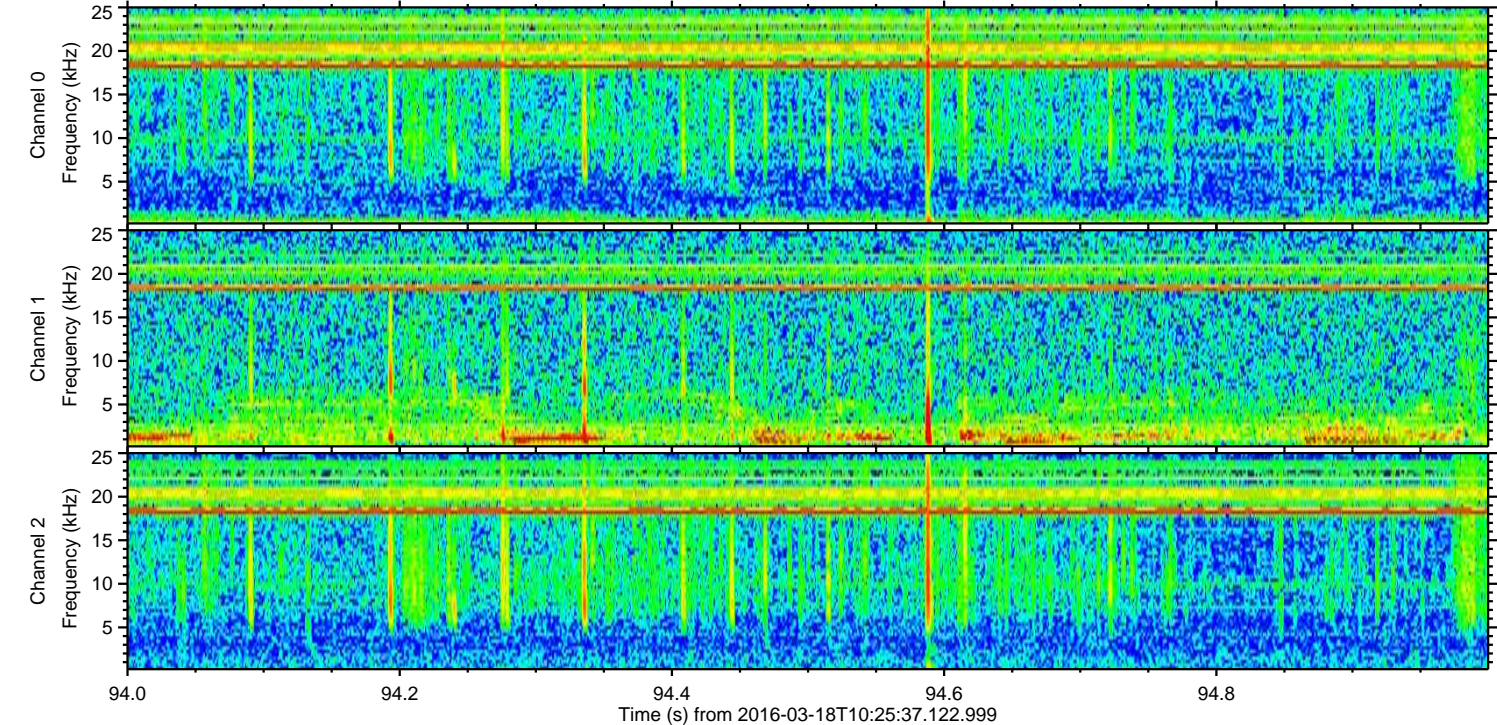
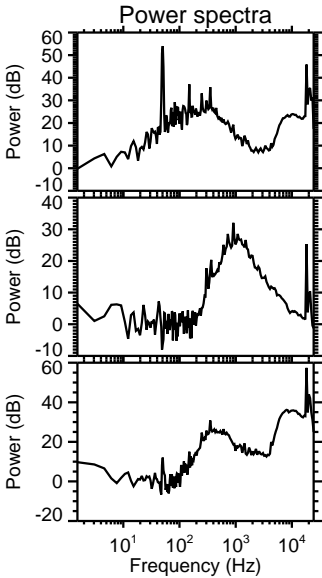
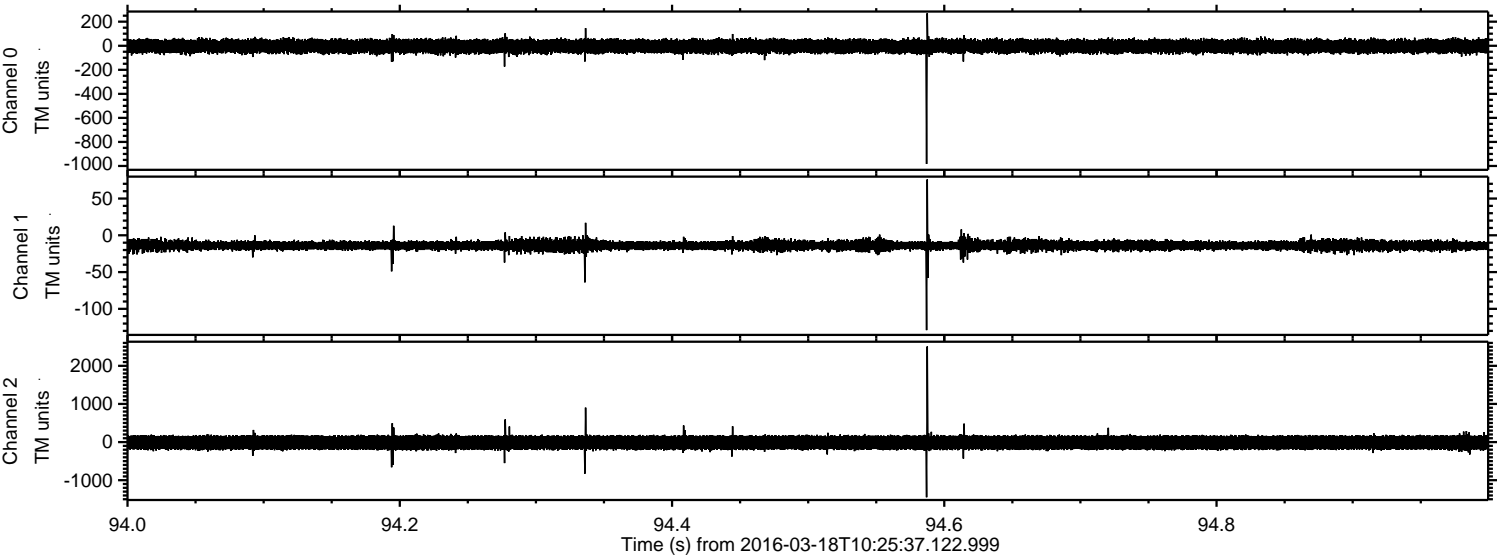
Processed Thu Apr 21 04:49:20 2016 by ELM ver.2012-10-06 from 001__elm20160318_102536__dat00.bin



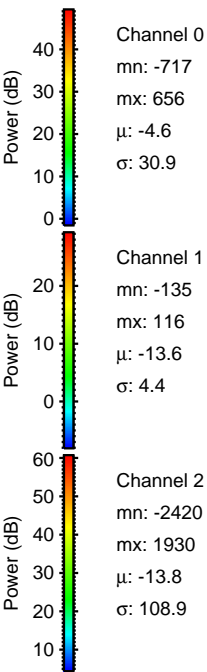
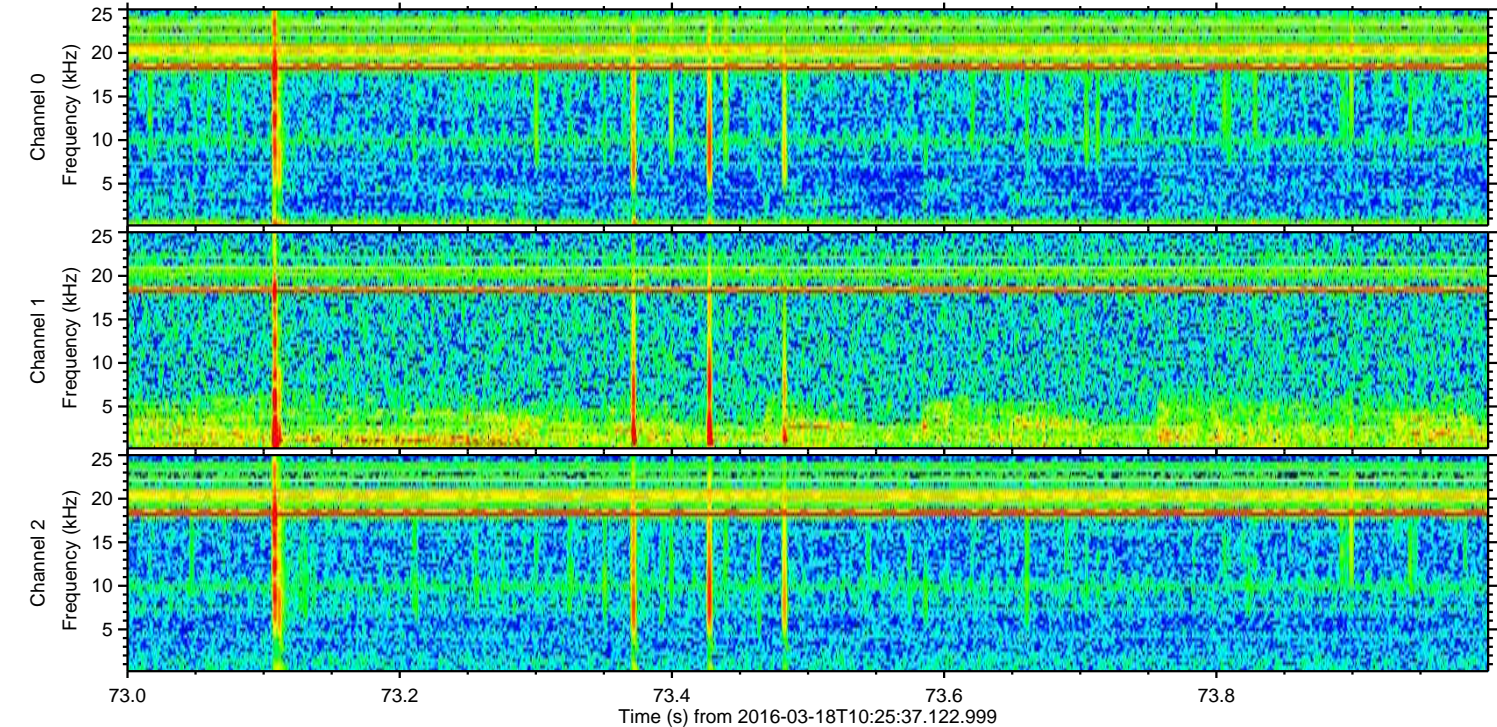
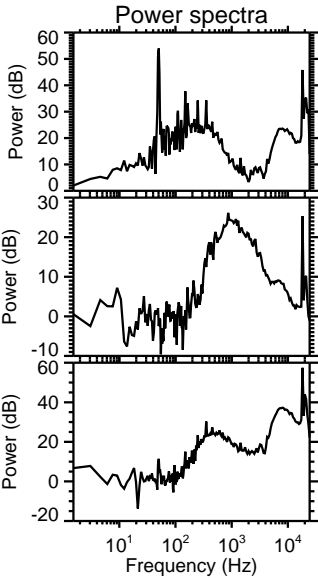
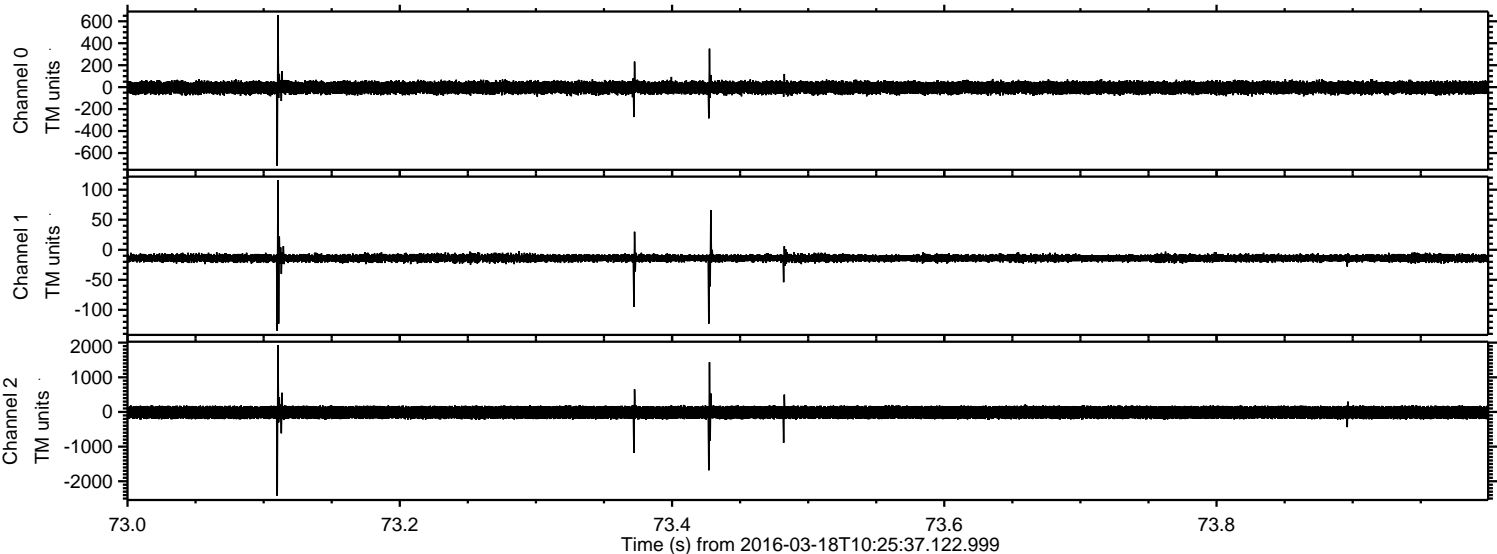
Processed Thu Apr 21 04:49:21 2016 by ELM ver.2012-10-06 from 001__elm20160318_102536__dat00.bin



Processed Thu Apr 21 04:49:22 2016 by ELM ver.2012-10-06 from 001__elm20160318_102536__dat00.bin

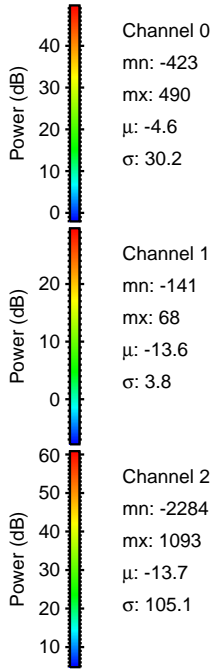
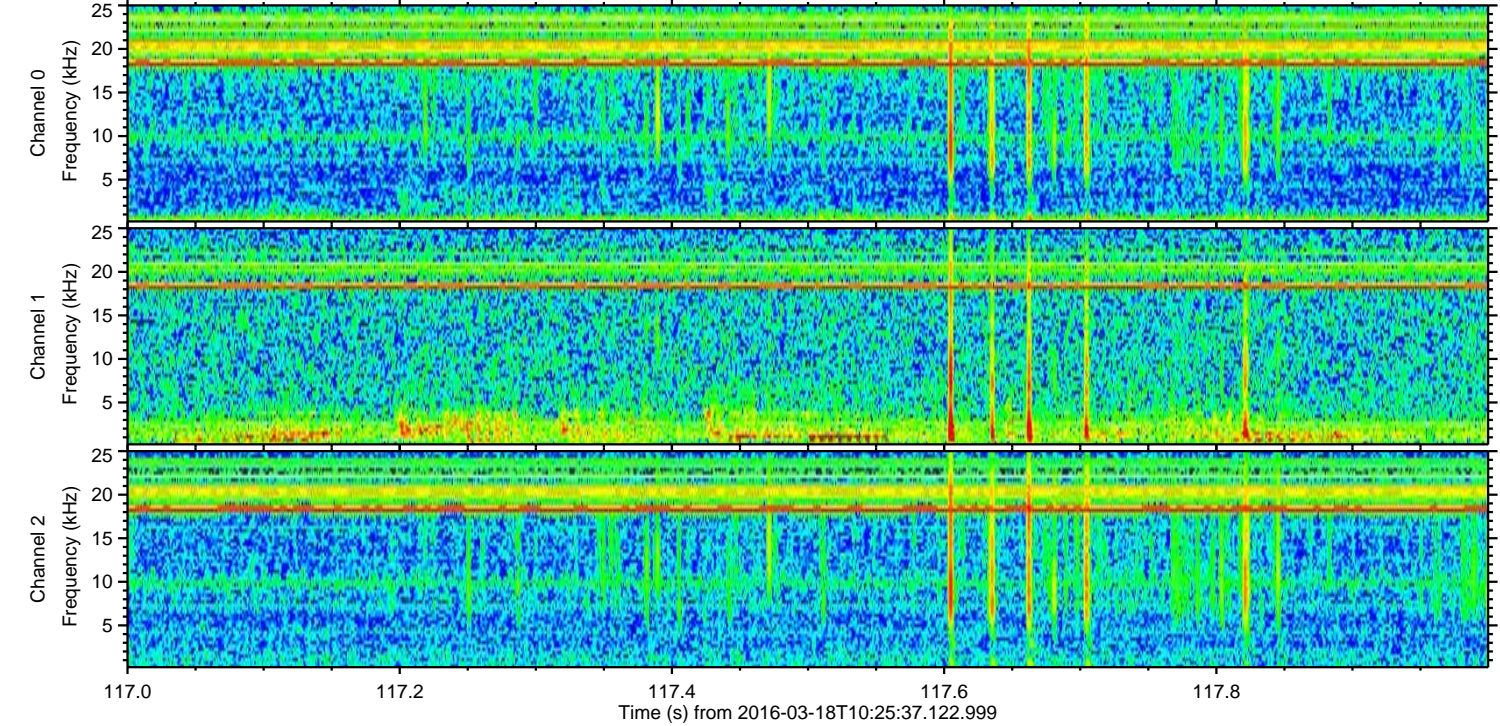
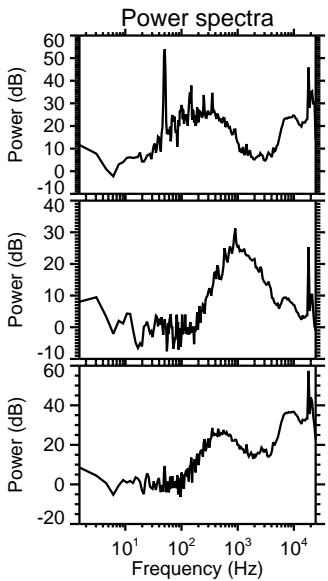
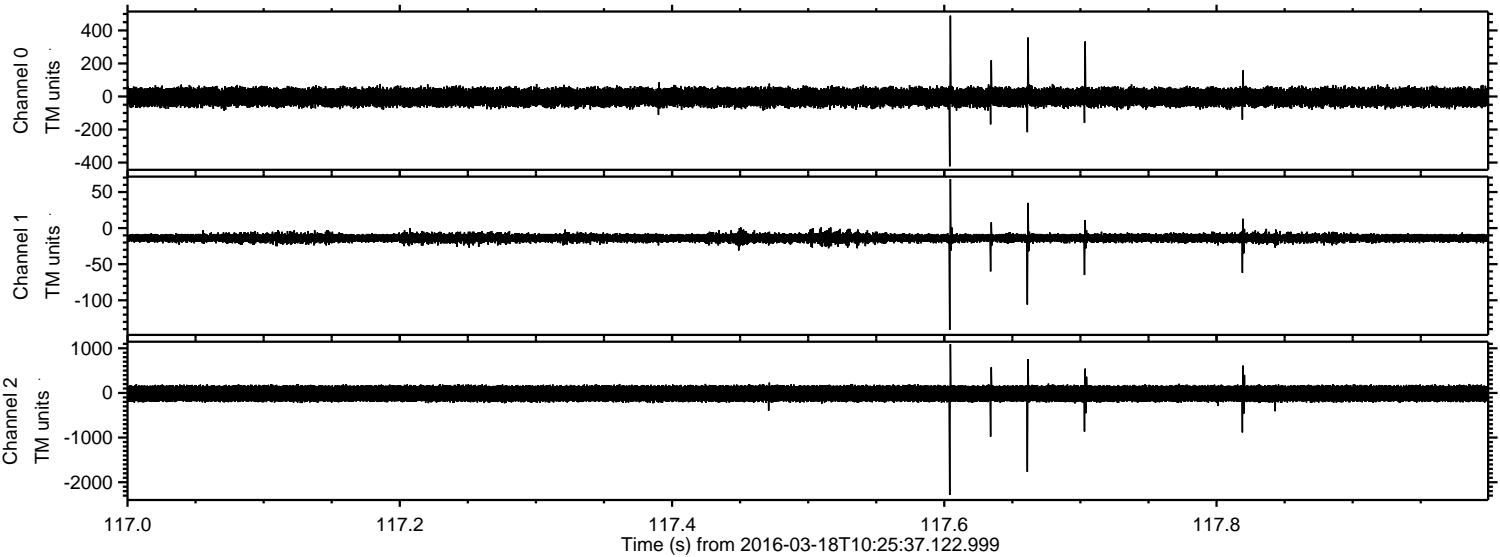


Processed Thu Apr 21 04:49:23 2016 by ELM ver.2012-10-06 from 001__elm20160318_102536__dat00.bin

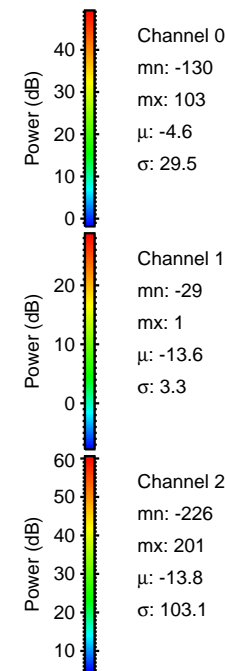
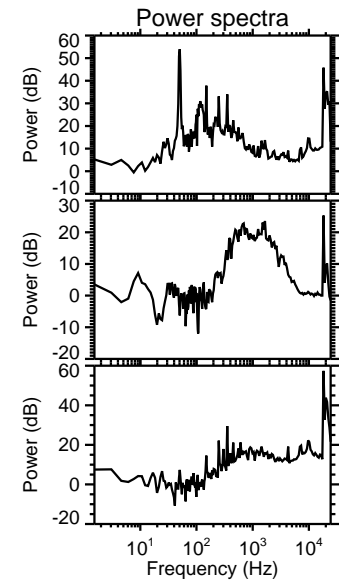
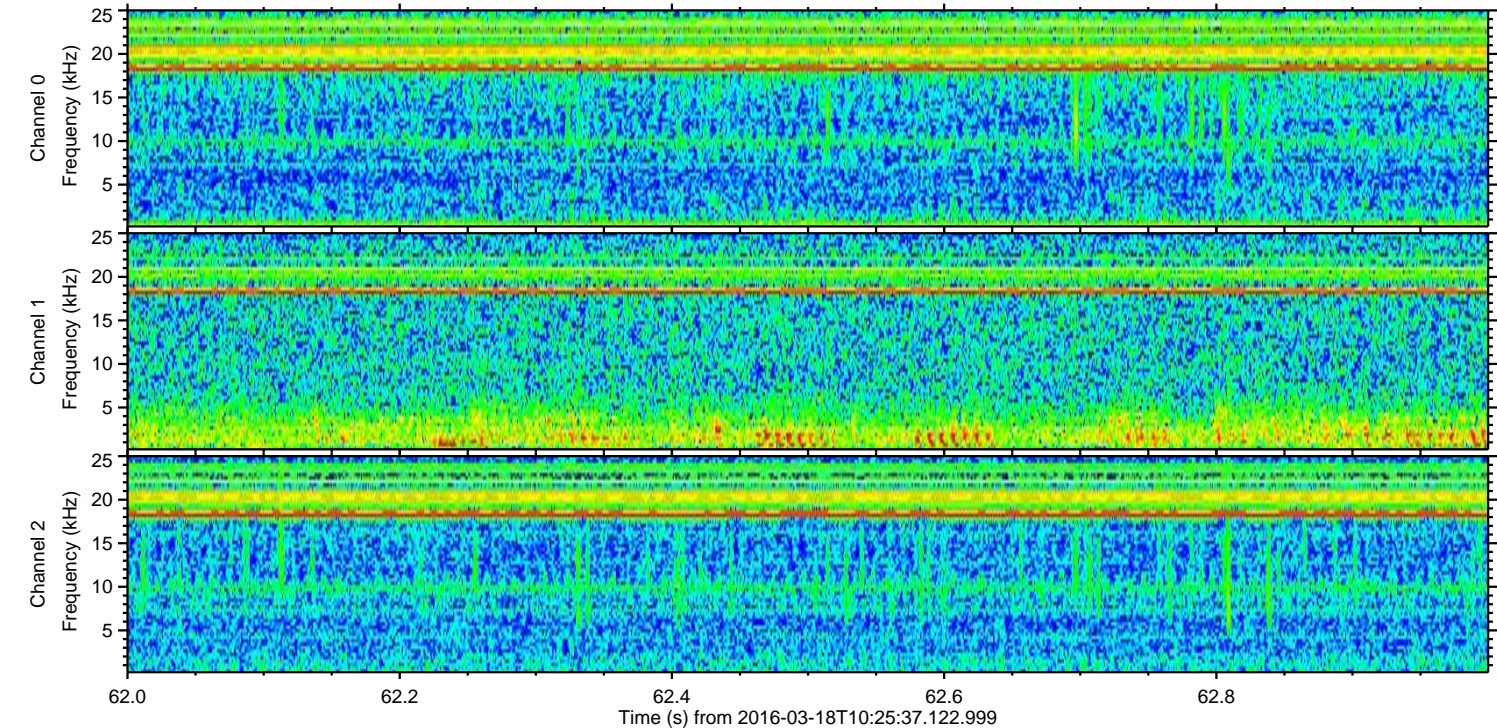
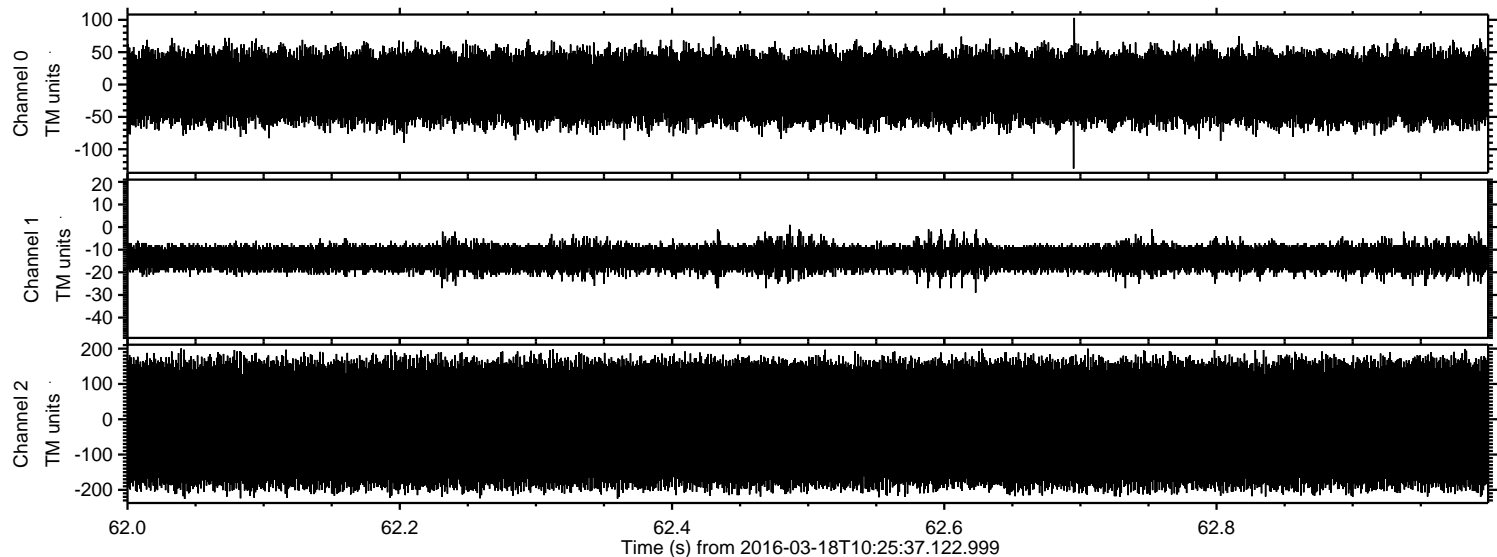


ELMAVAN 3D WAVEFORMS (Measured data sampled at 50 kHz) 51000 packets of 144 samples from 2016-03-18T10:25:37.122.999. Part 118/147

Processed Thu Apr 21 04:49:24 2016 by ELM ver.2012-10-06 from 001__elm20160318_102536__dat00.bin



Processed Thu Apr 21 04:49:25 2016 by ELM ver.2012-10-06 from 001__elm20160318_102536__dat00.bin



Power spectra

Channel 0

mn: -130
mx: 103
 μ : -4.6
 σ : 29.5

Channel 1

mn: -29
mx: 1
 μ : -13.6
 σ : 3.3

Channel 2

mn: -226
mx: 201
 μ : -13.8
 σ : 103.1