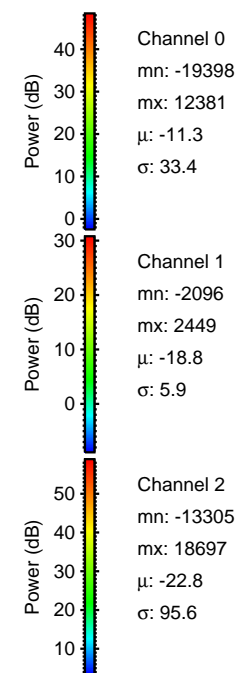
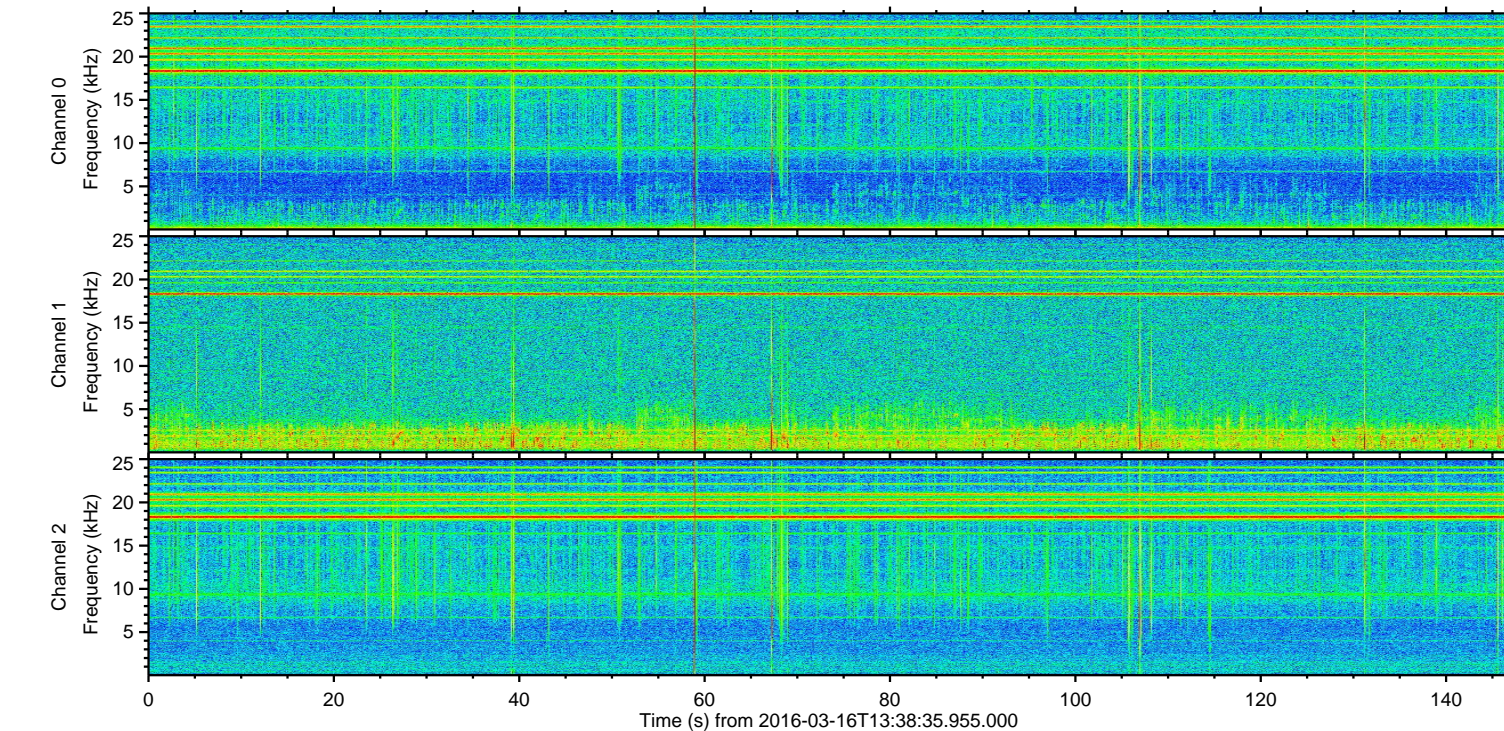
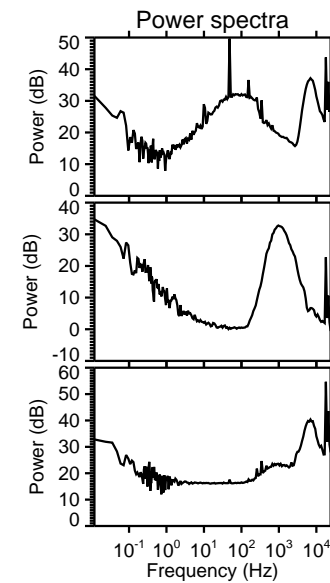
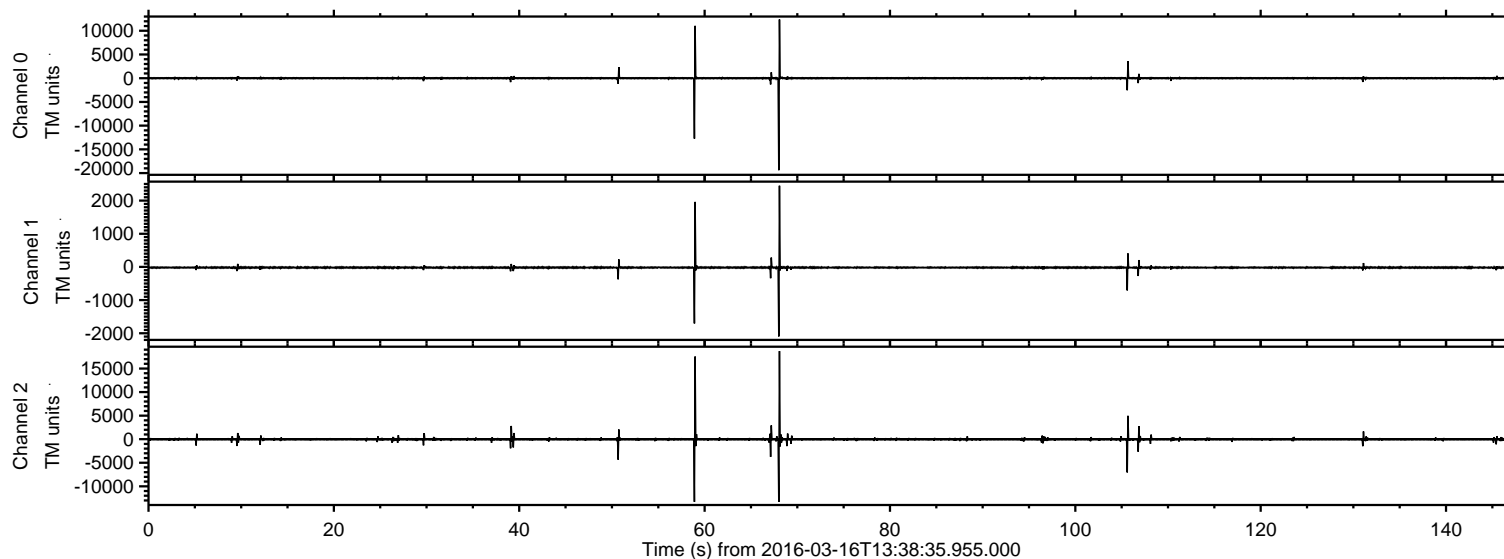
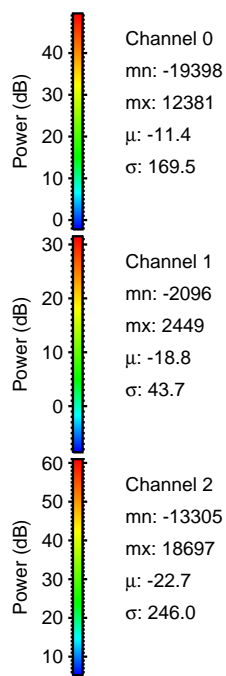
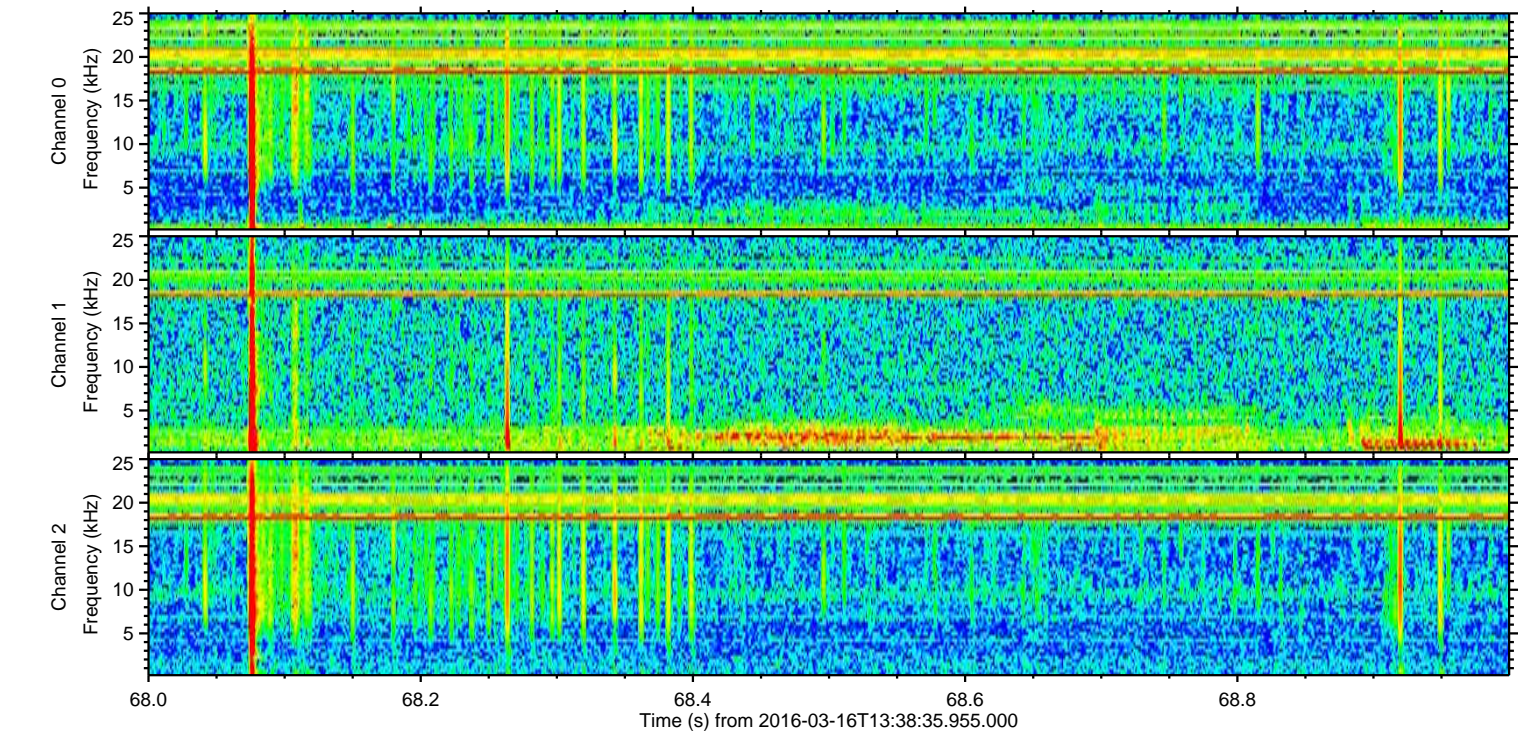
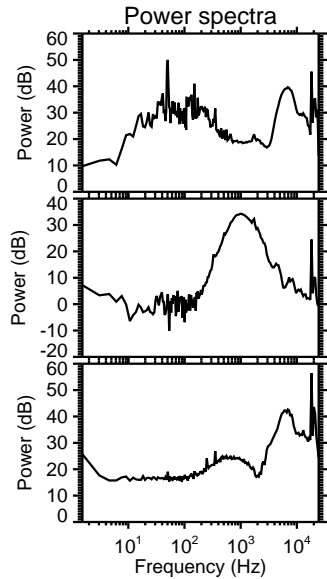
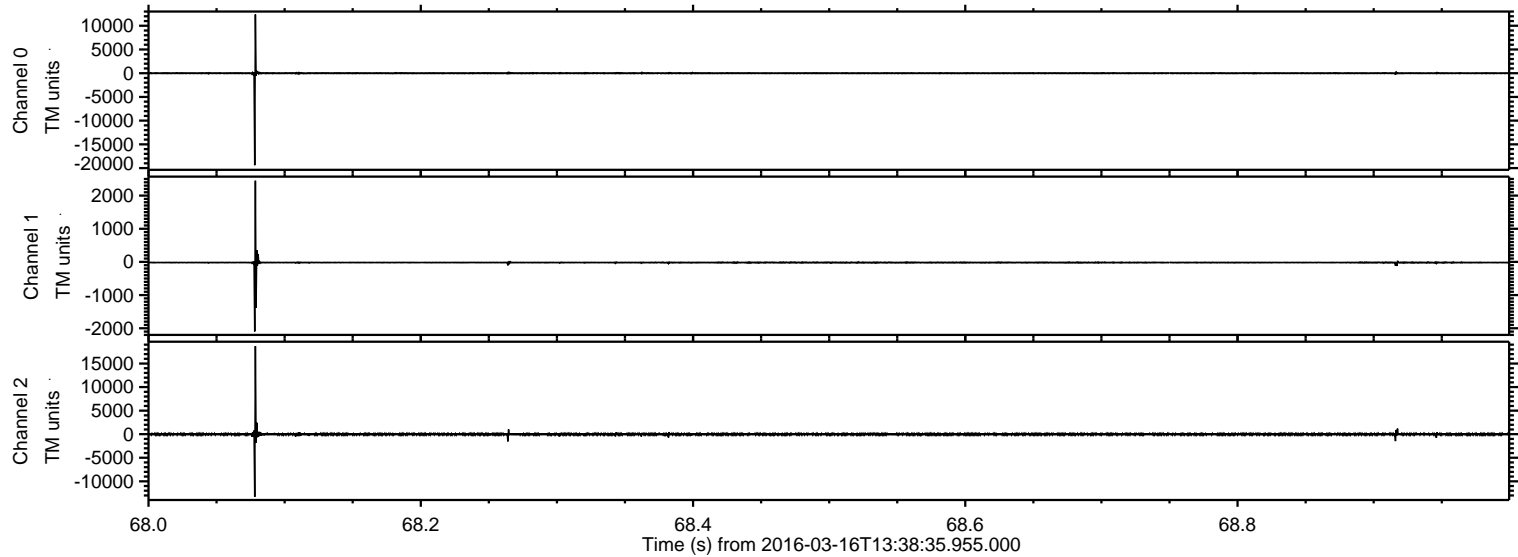


ELMAVAN 3D WAVEFORMS (Measured data sampled at 50 kHz) 51000 packets of 144 samples from 2016-03-16T13:38:35.955.000.

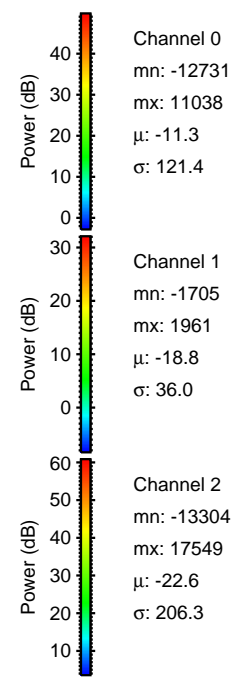
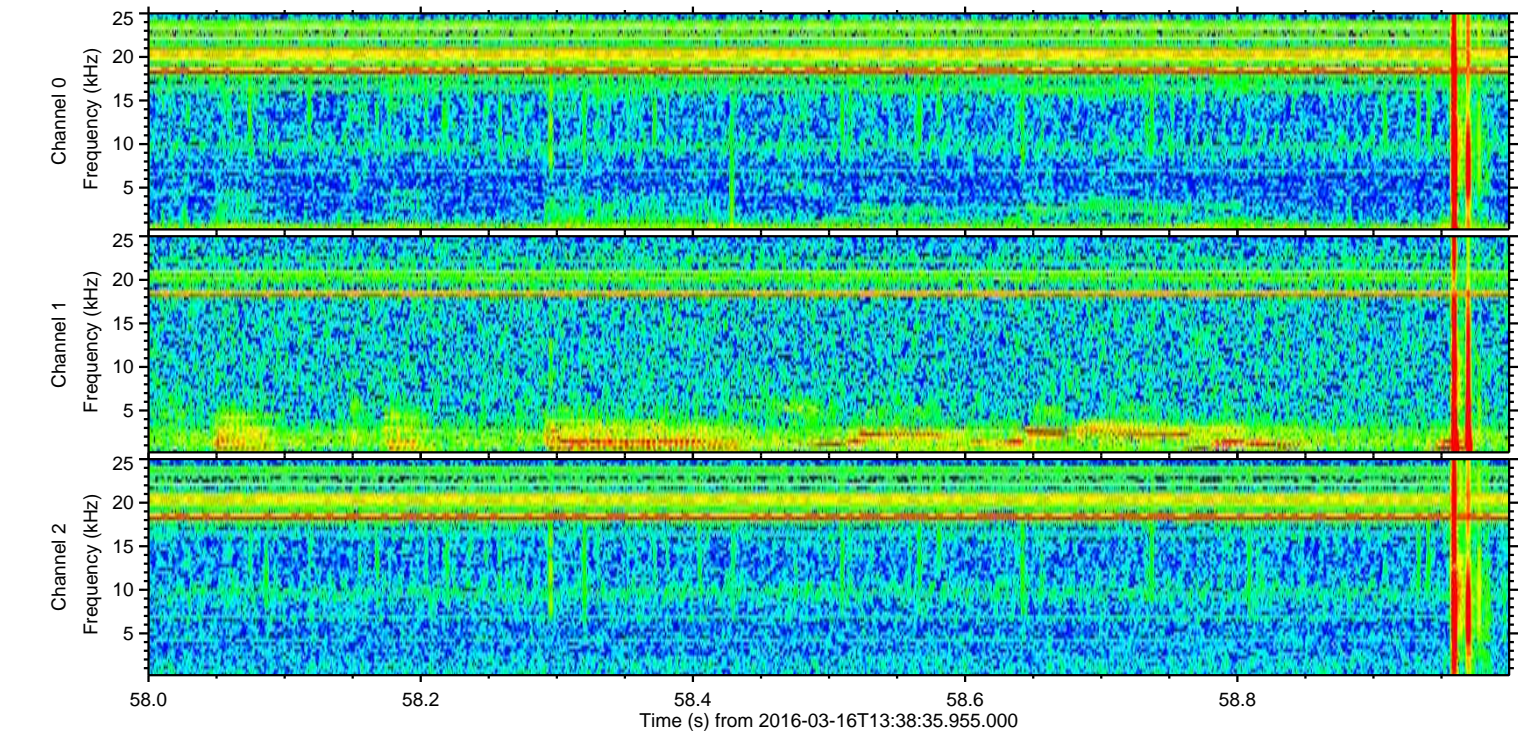
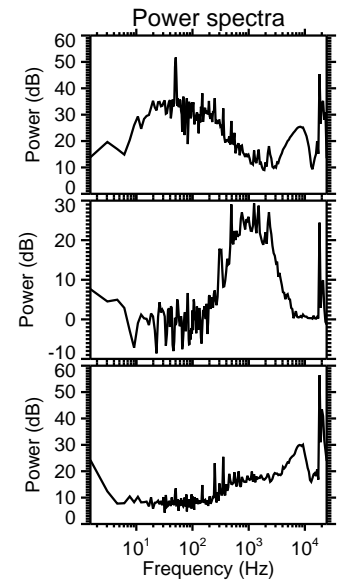
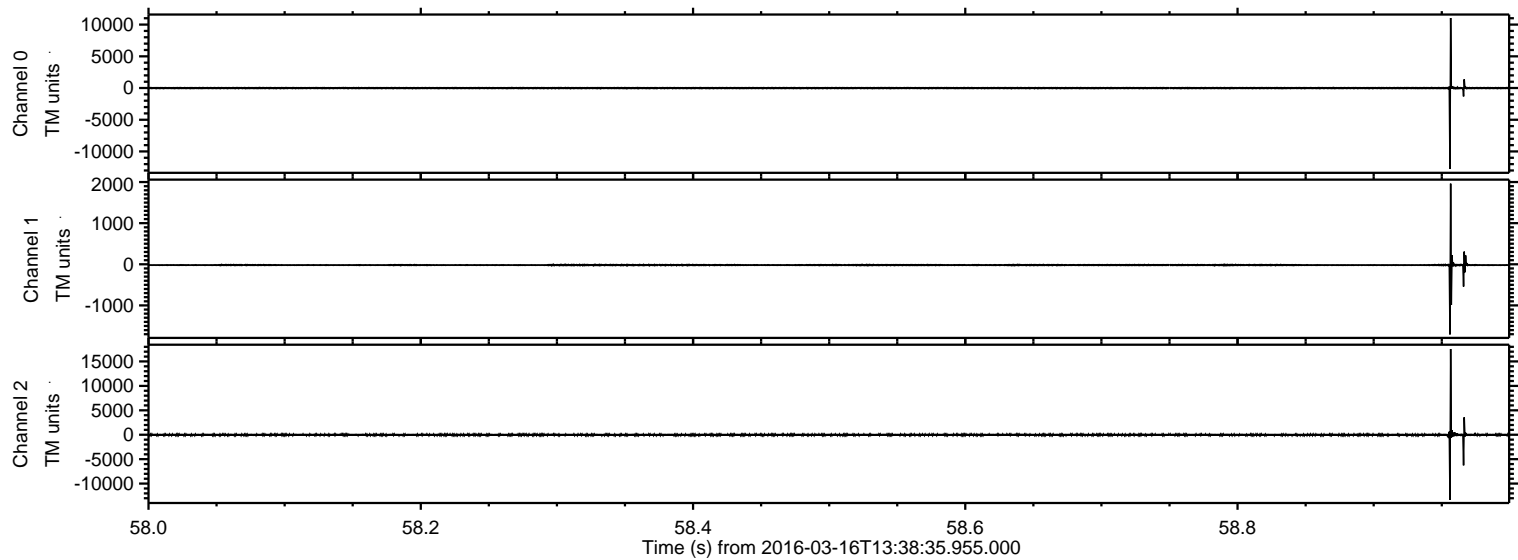
Processed Wed Apr 20 19:35:17 2016 by ELM ver.2012-10-06 from 001__elm20160316_133834__dat00.bin



Processed Wed Apr 20 19:35:29 2016 by ELM ver.2012-10-06 from 001__elm20160316_133834__dat00.bin

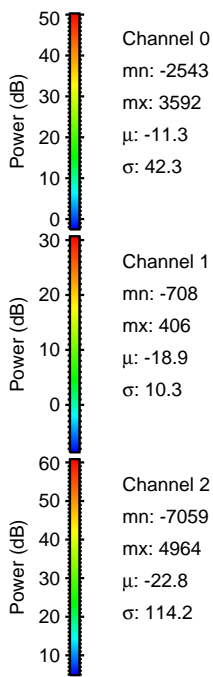
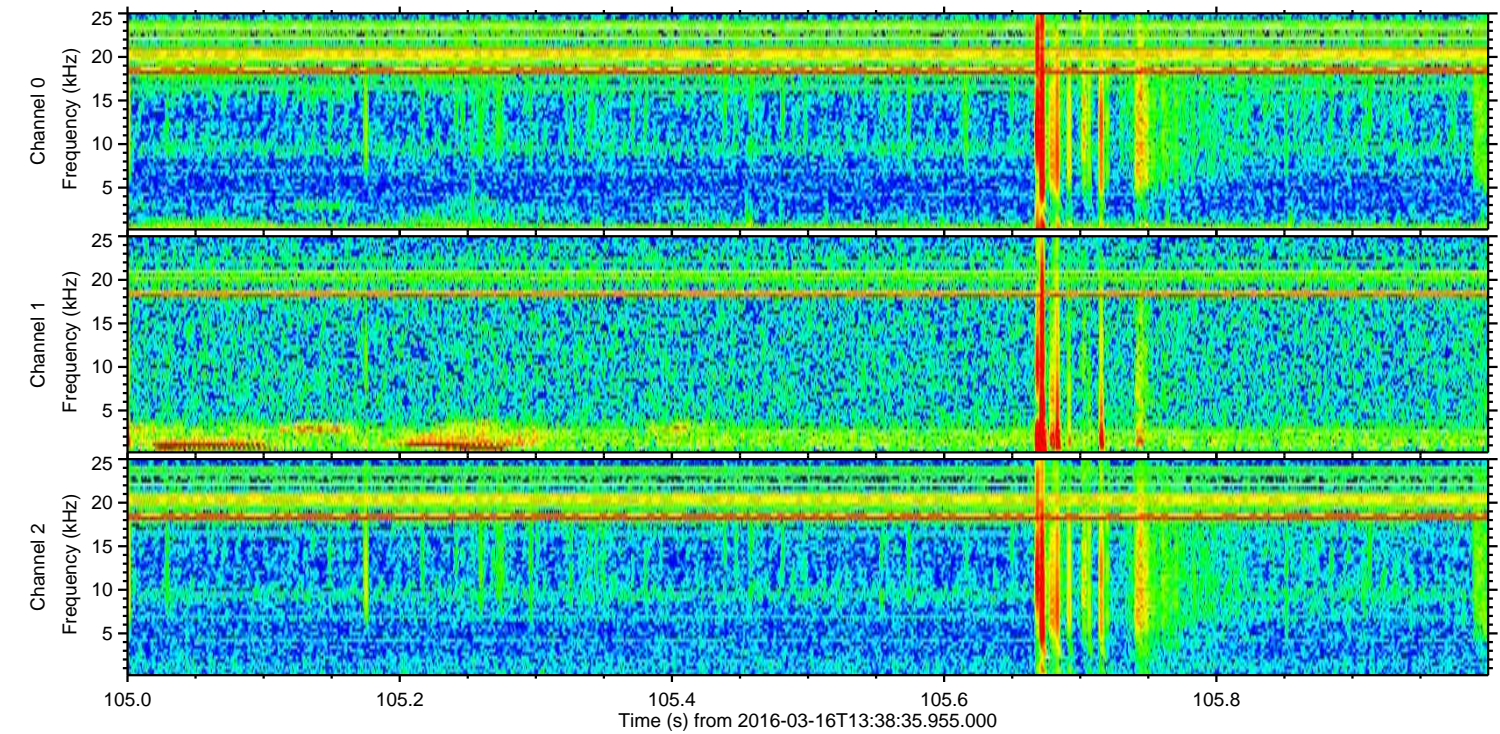
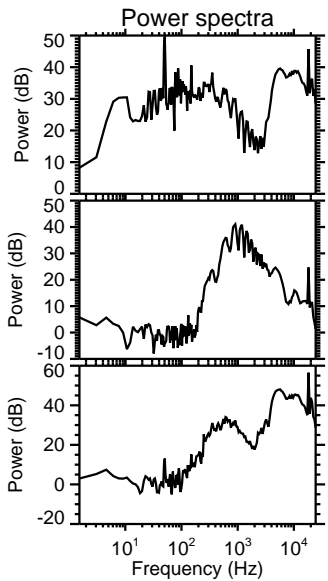
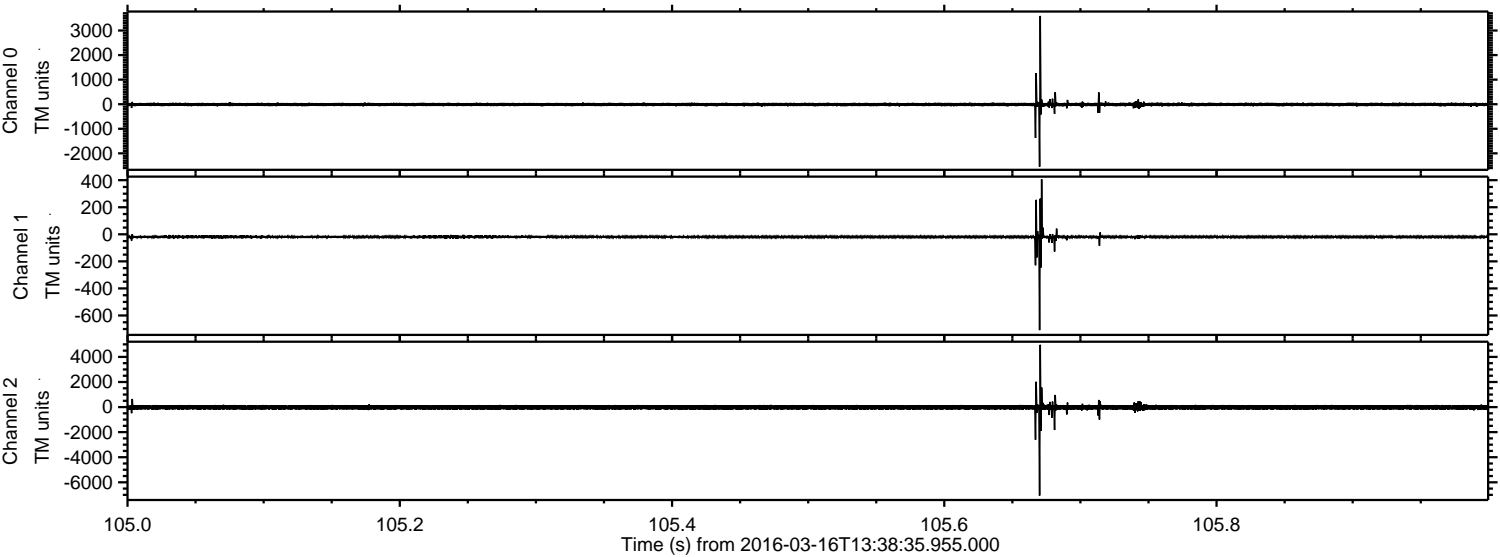


Processed Wed Apr 20 19:35:30 2016 by ELM ver.2012-10-06 from 001__elm20160316_133834__dat00.bin

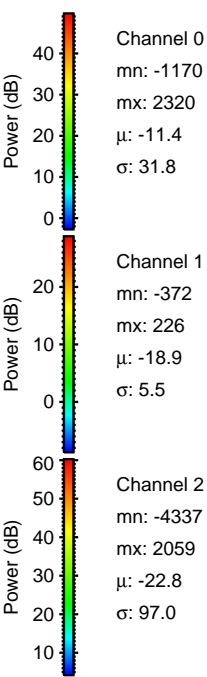
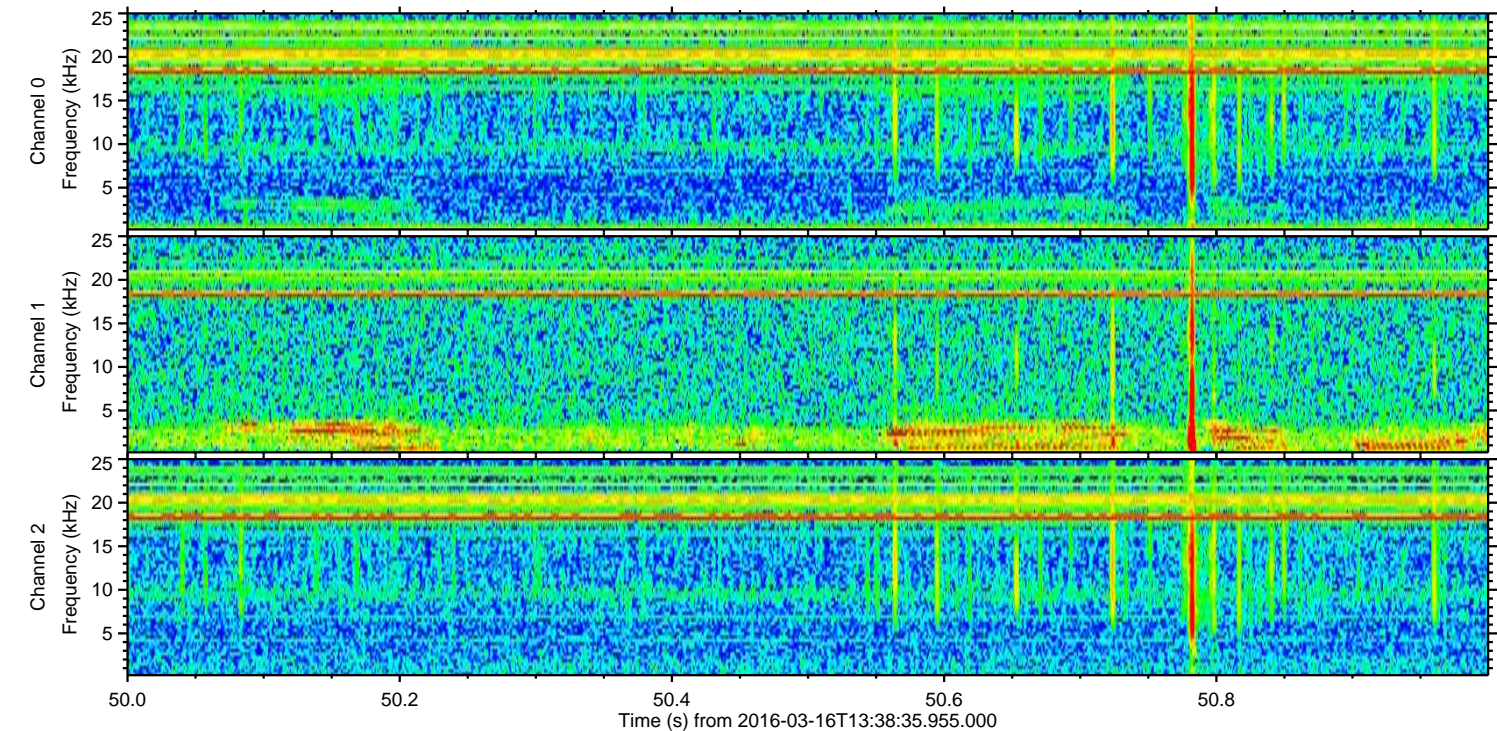
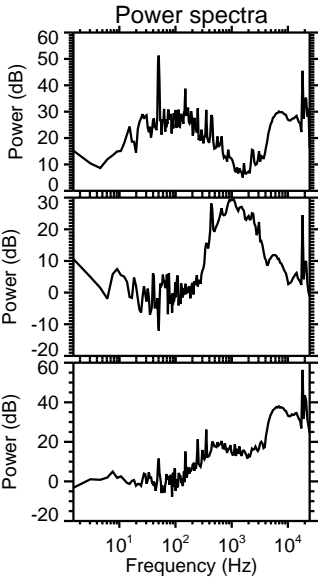
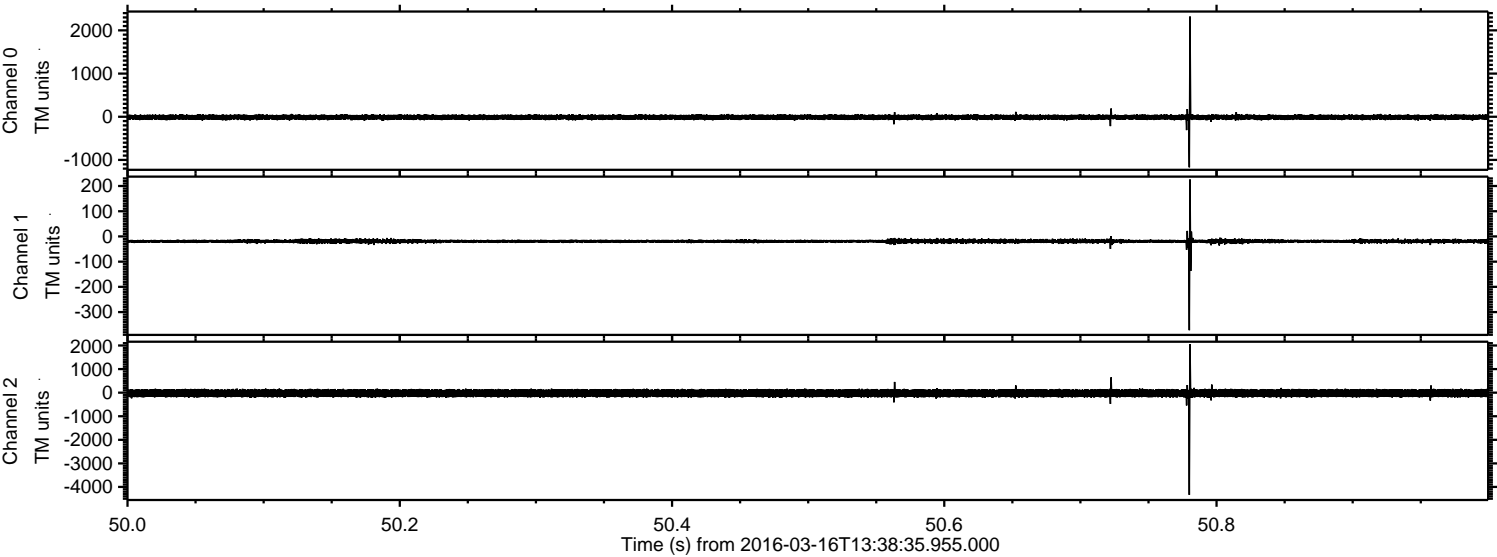


ELMAVAN 3D WAVEFORMS (Measured data sampled at 50 kHz) 51000 packets of 144 samples from 2016-03-16T13:38:35.955.000. Part 106/147

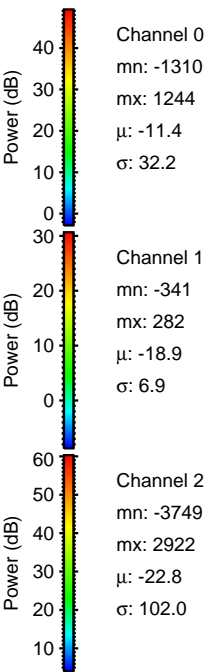
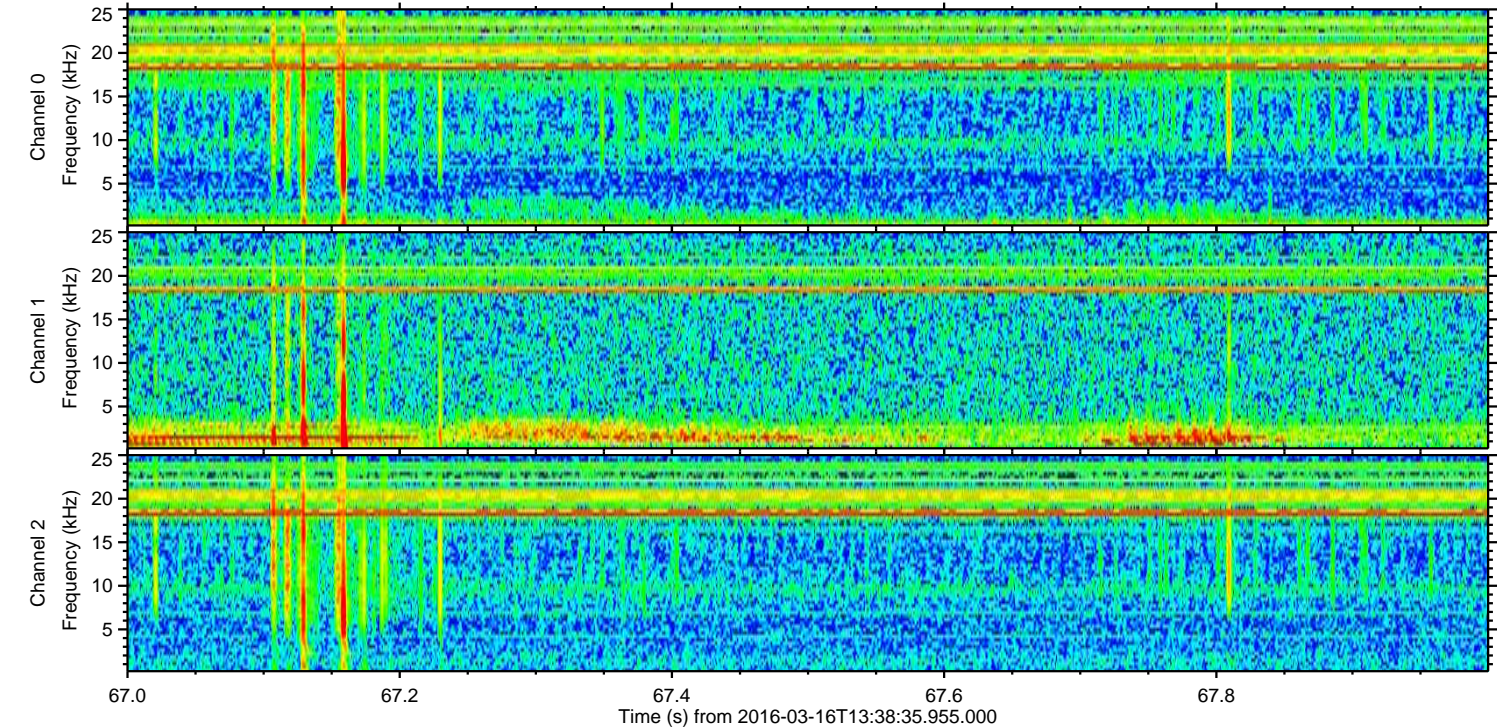
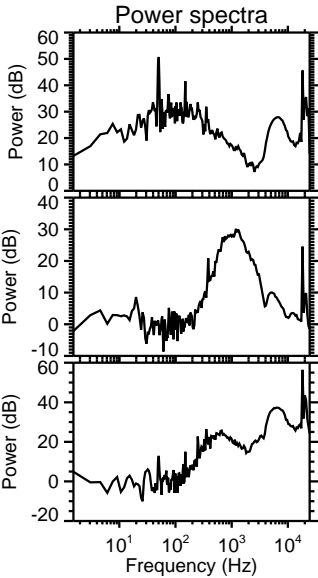
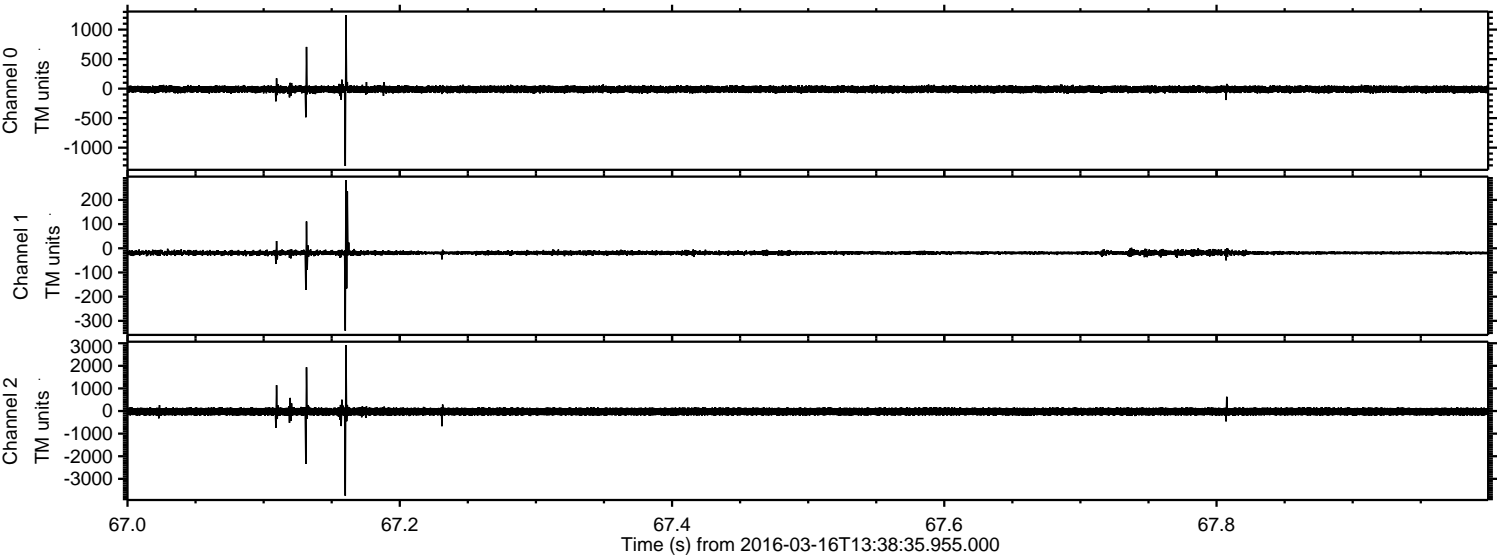
Processed Wed Apr 20 19:35:31 2016 by ELM ver.2012-10-06 from 001__elm20160316_133834__dat00.bin



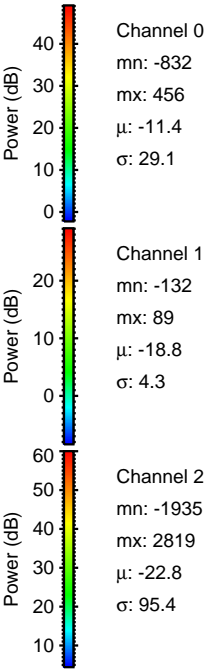
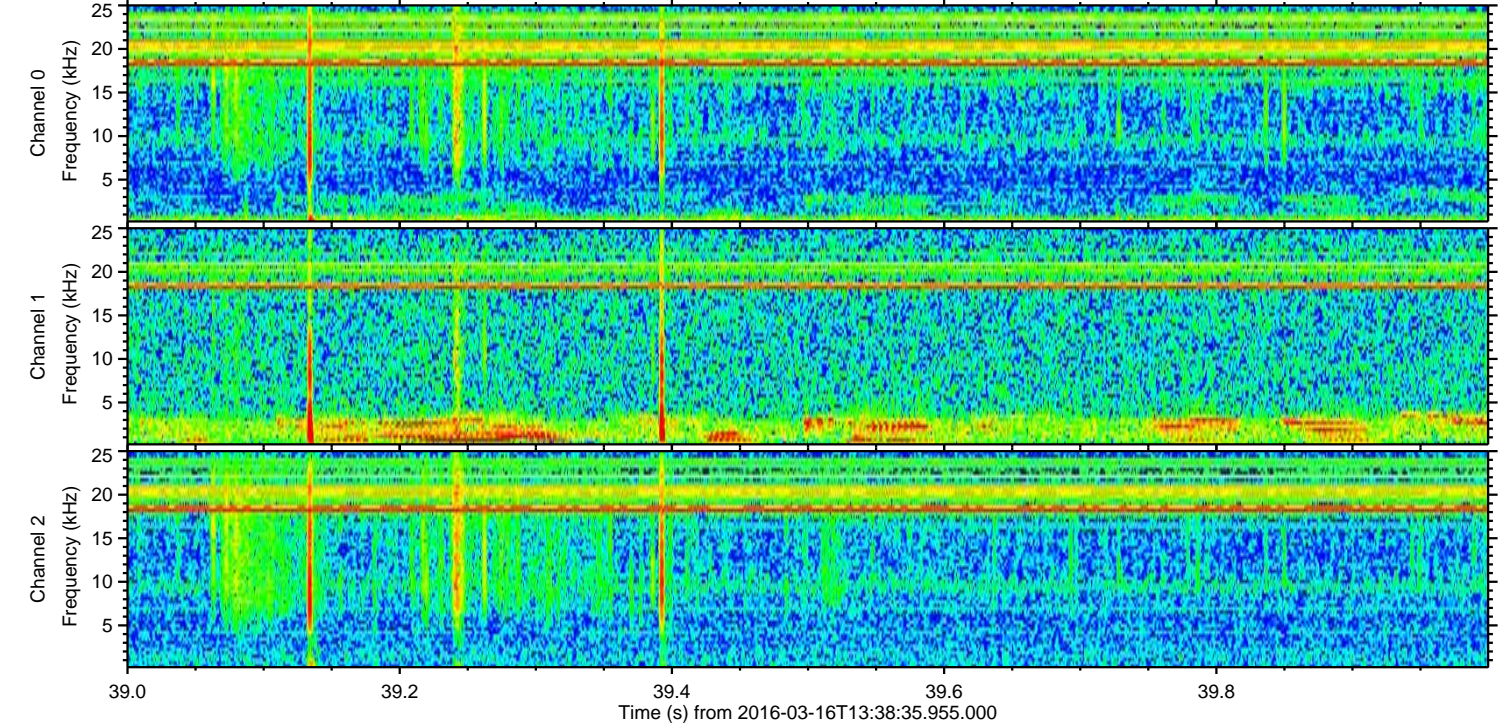
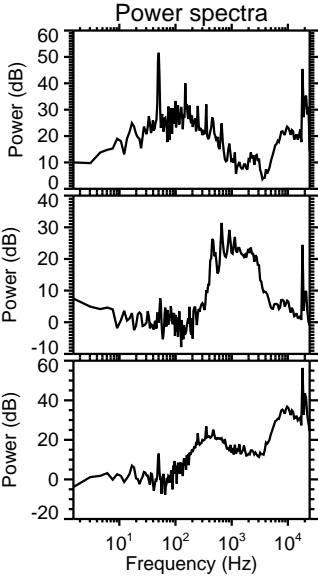
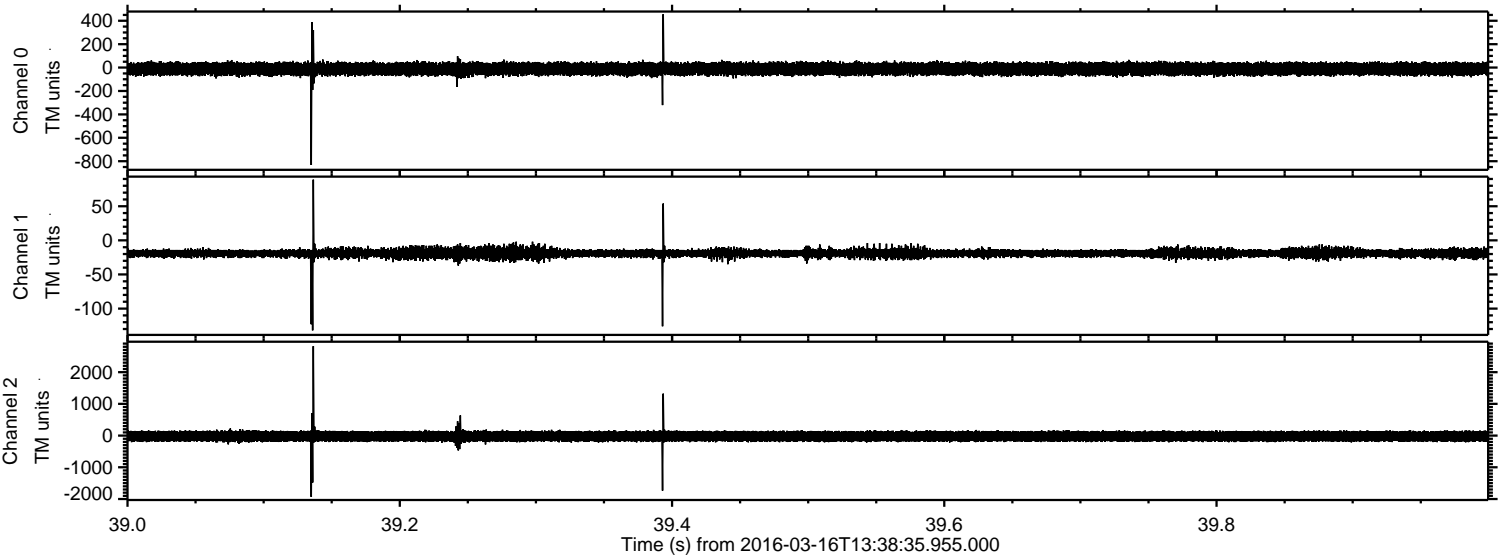
Processed Wed Apr 20 19:35:32 2016 by ELM ver.2012-10-06 from 001__elm20160316_133834__dat00.bin



Processed Wed Apr 20 19:35:32 2016 by ELM ver.2012-10-06 from 001__elm20160316_133834__dat00.bin

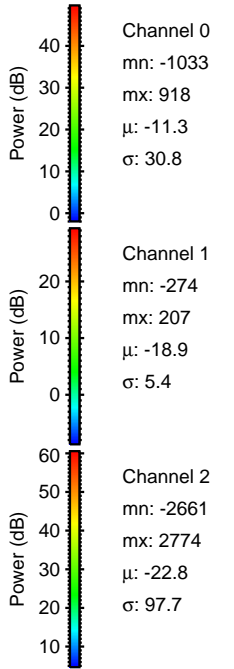
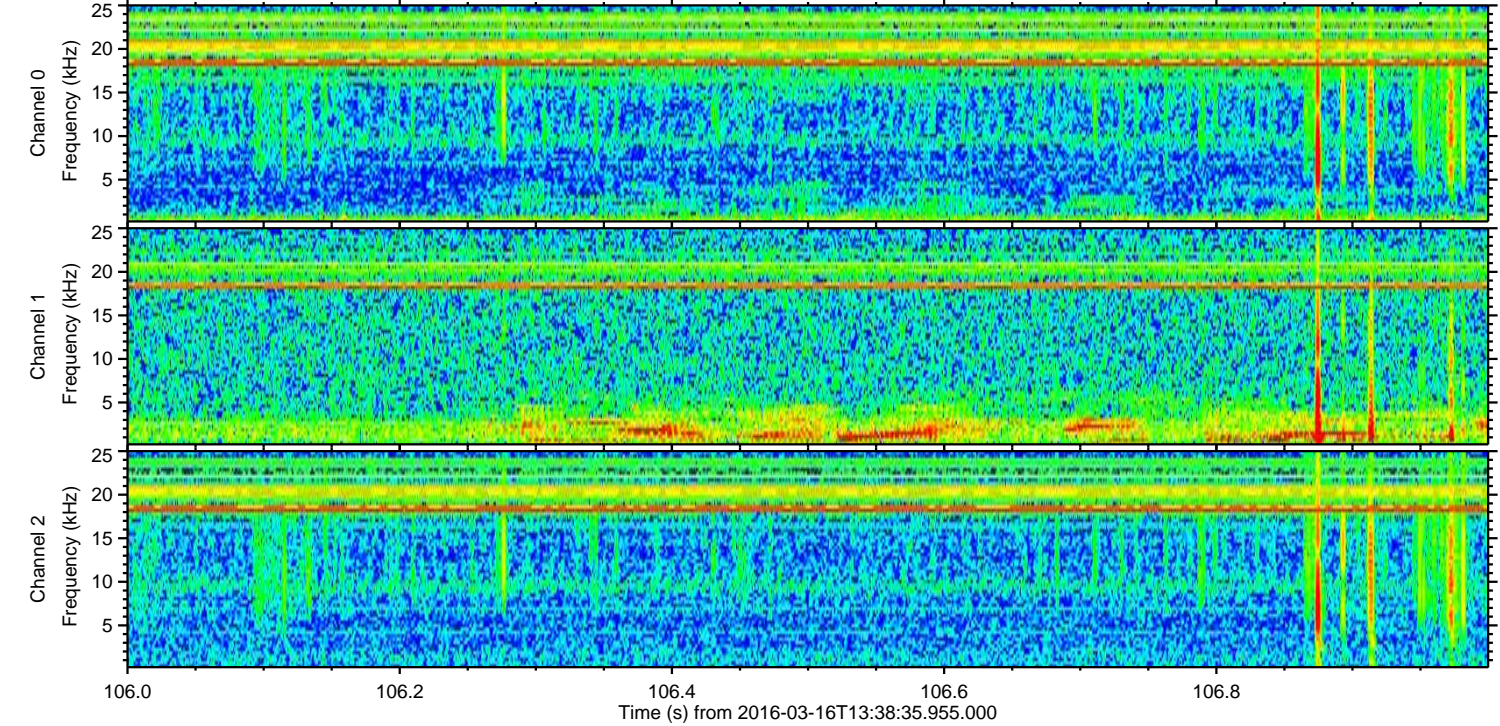
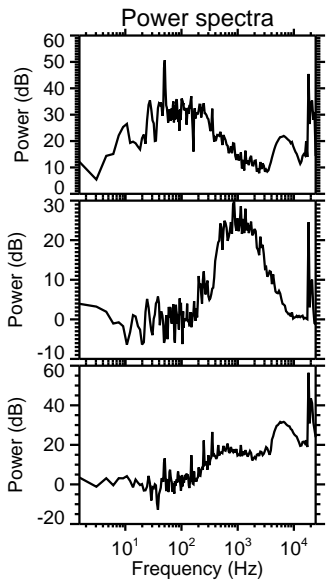
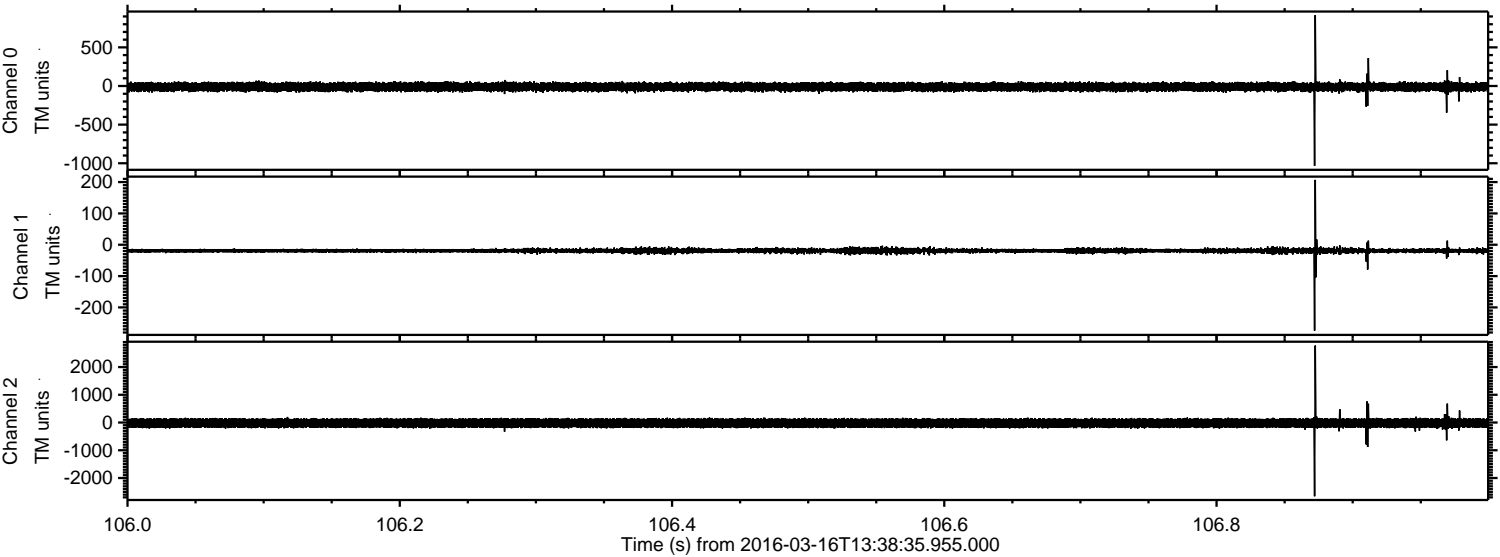


Processed Wed Apr 20 19:35:33 2016 by ELM ver.2012-10-06 from 001__elm20160316_133834__dat00.bin

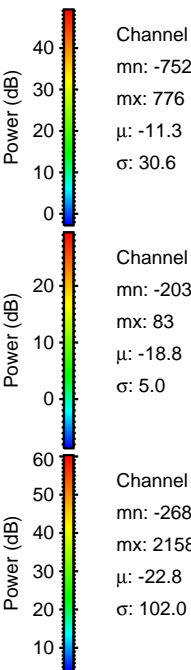
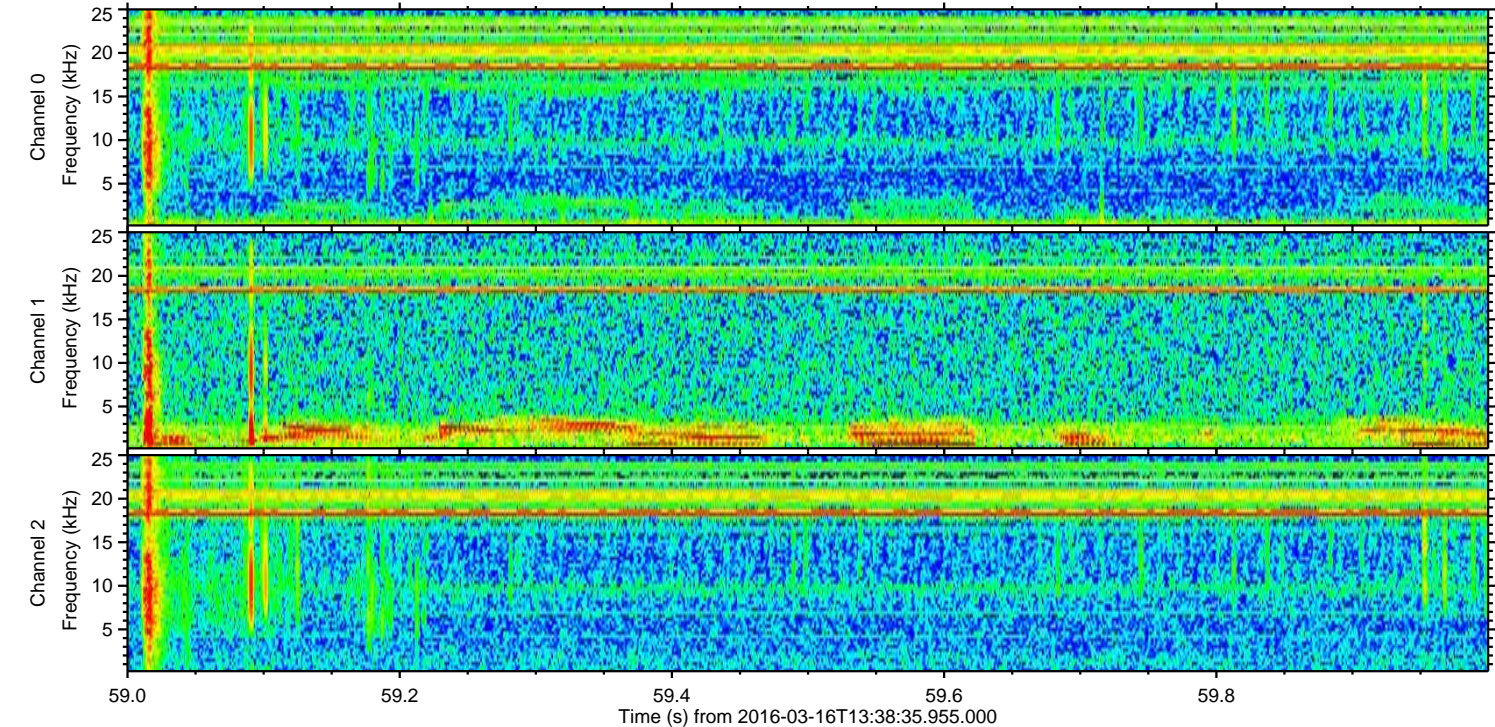
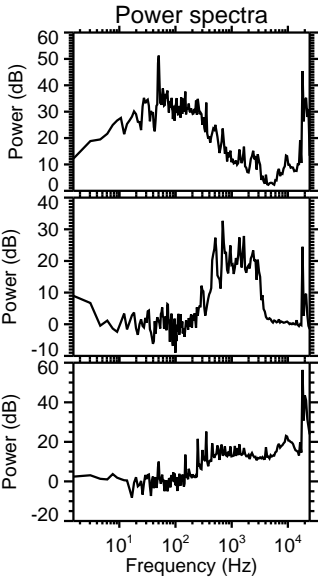
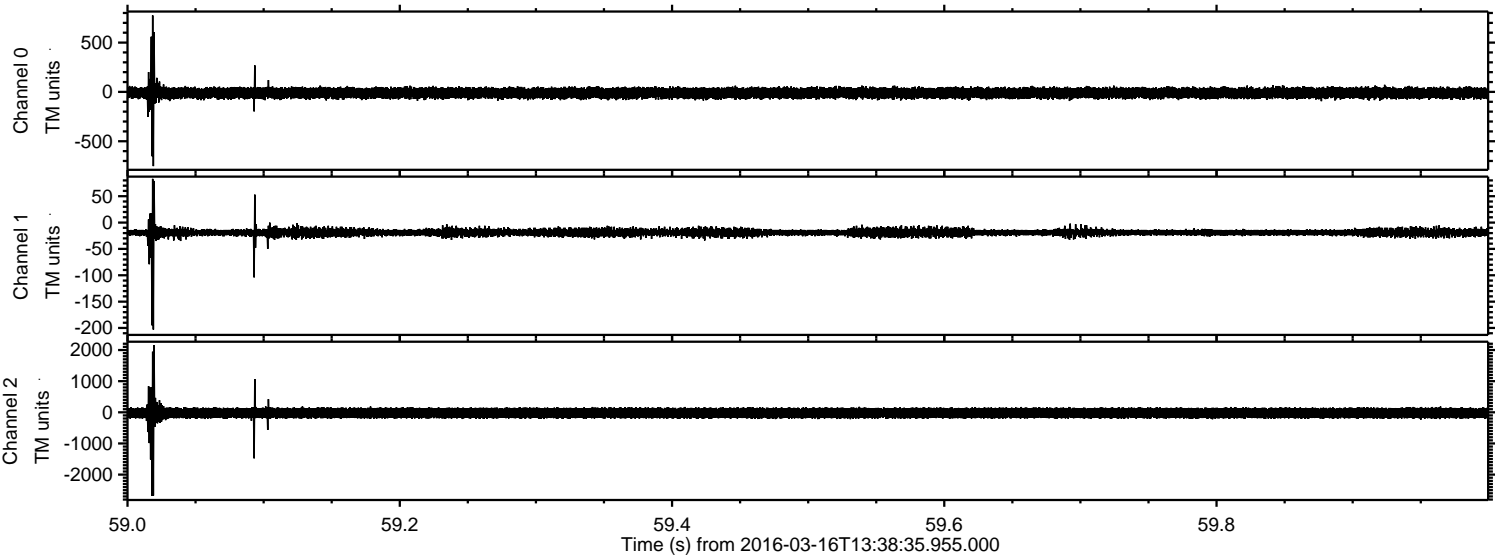


ELMAVAN 3D WAVEFORMS (Measured data sampled at 50 kHz) 51000 packets of 144 samples from 2016-03-16T13:38:35.955.000. Part 107/147

Processed Wed Apr 20 19:35:34 2016 by ELM ver.2012-10-06 from 001__elm20160316_133834__dat00.bin

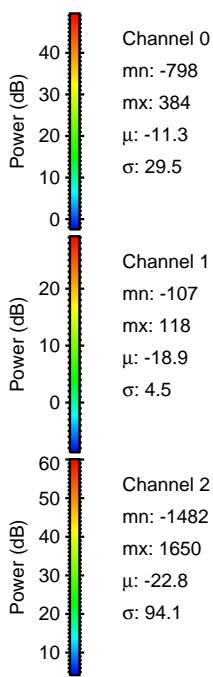
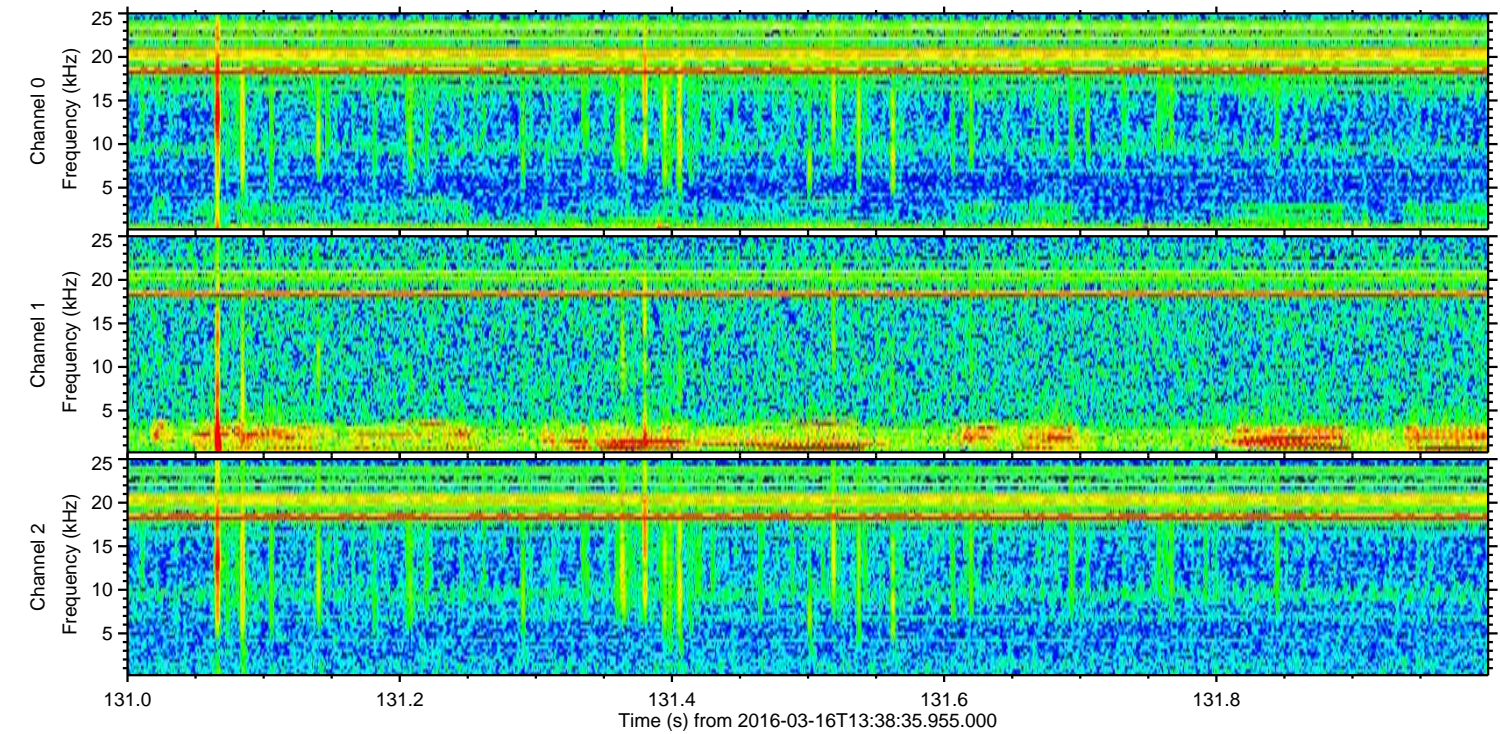
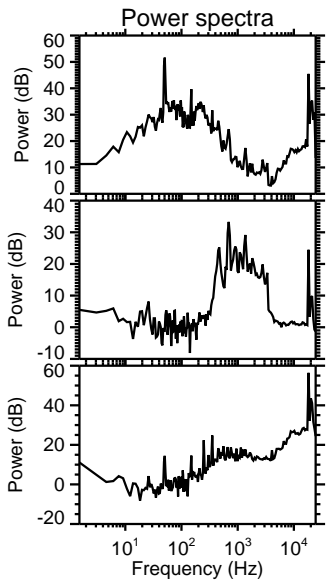
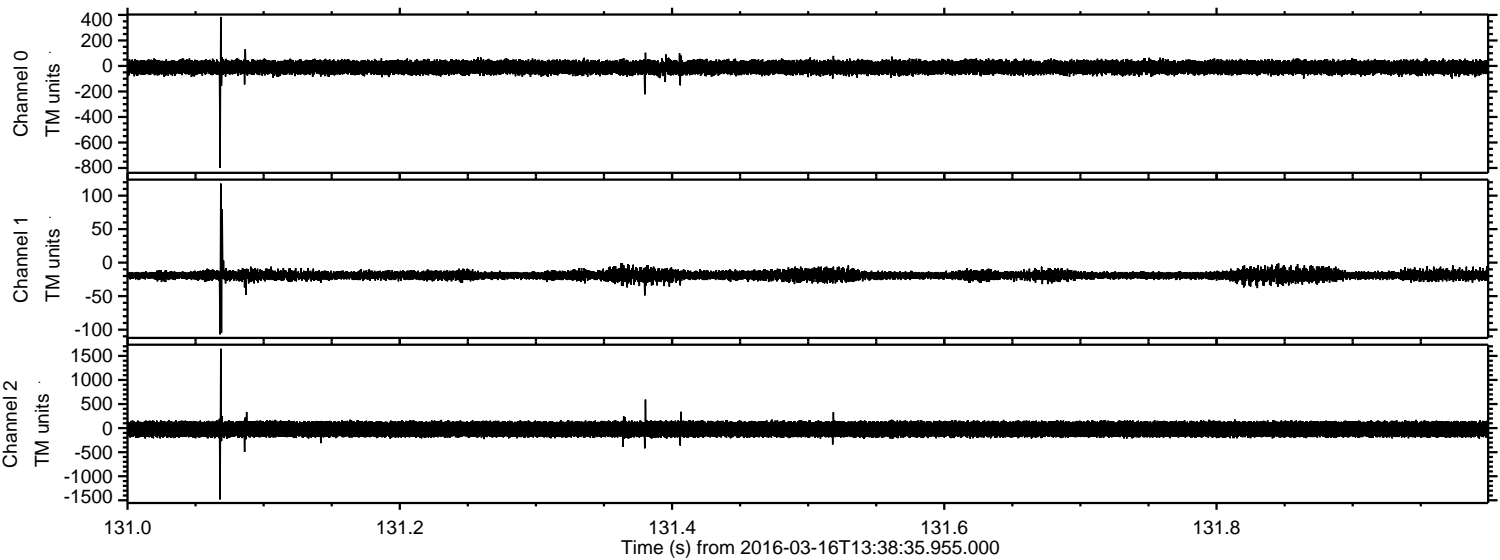


Processed Wed Apr 20 19:35:35 2016 by ELM ver.2012-10-06 from 001__elm20160316_133834__dat00.bin



ELMAVAN 3D WAVEFORMS (Measured data sampled at 50 kHz) 51000 packets of 144 samples from 2016-03-16T13:38:35.955.000. Part 132/147

Processed Wed Apr 20 19:35:36 2016 by ELM ver.2012-10-06 from 001__elm20160316_133834__dat00.bin



Channel 0
mn: -798
mx: 384
 μ : -11.3
 σ : 29.5

Channel 1
mn: -107
mx: 118
 μ : -18.9
 σ : 4.5

Channel 2
mn: -1482
mx: 1650
 μ : -22.8
 σ : 94.1

Processed Wed Apr 20 19:35:37 2016 by ELM ver.2012-10-06 from 001__elm20160316_133834__dat00.bin

