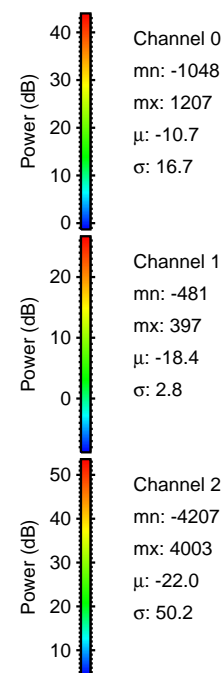
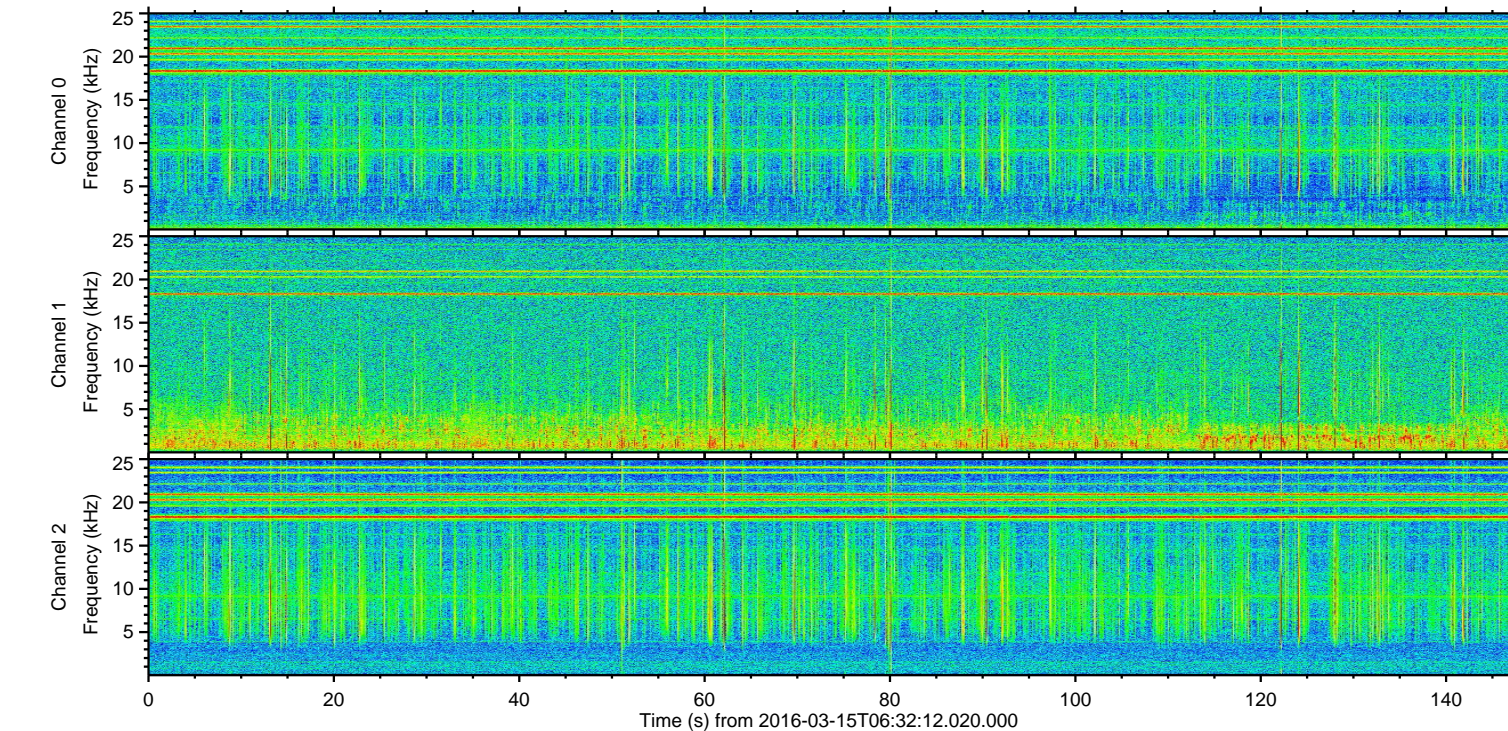
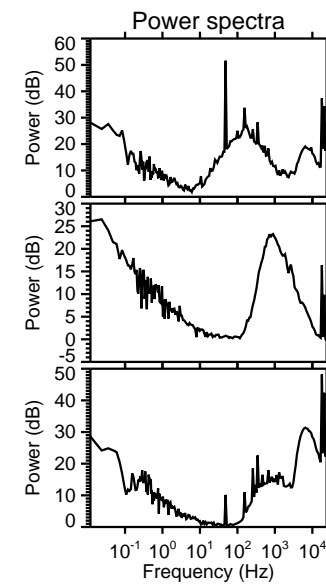
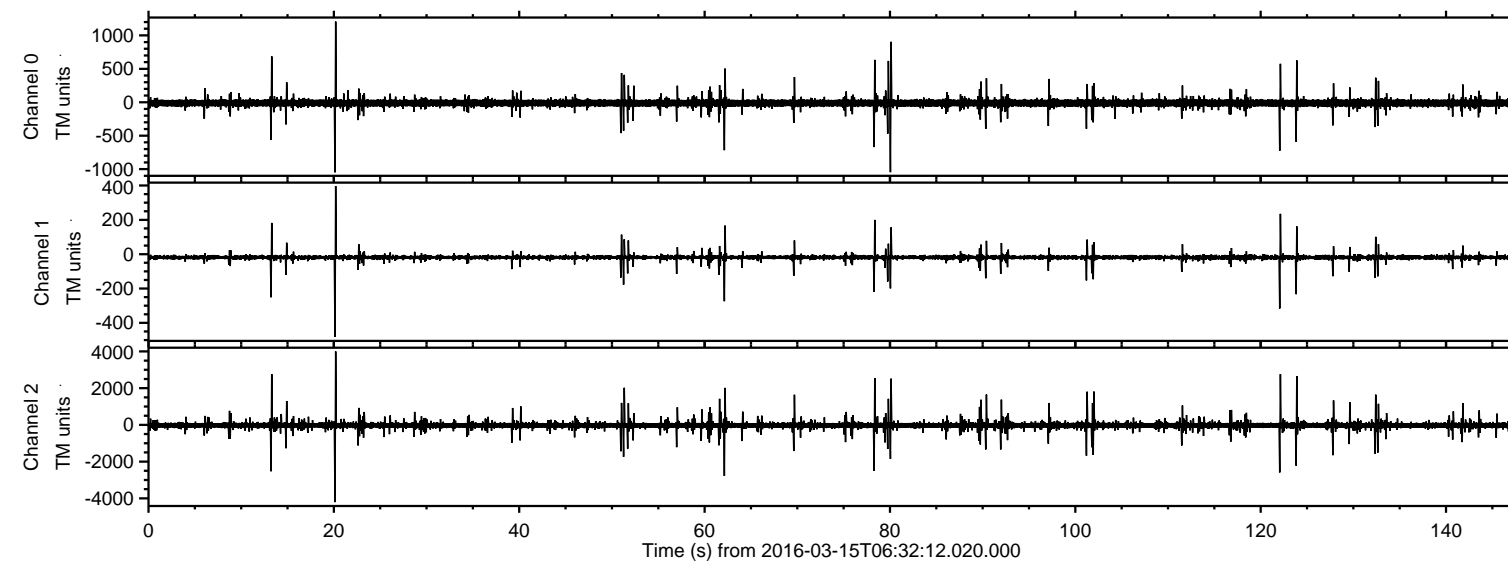


# ELMAVAN 3D WAVEFORMS (Measured data sampled at 50 kHz) 51000 packets of 144 samples from 2016-03-15T06:32:12.020.000.

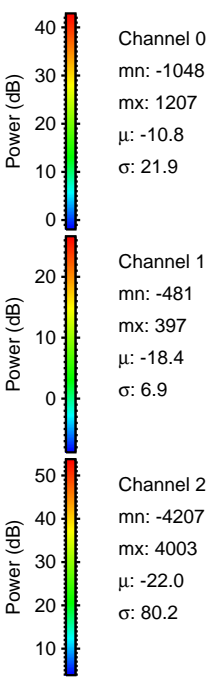
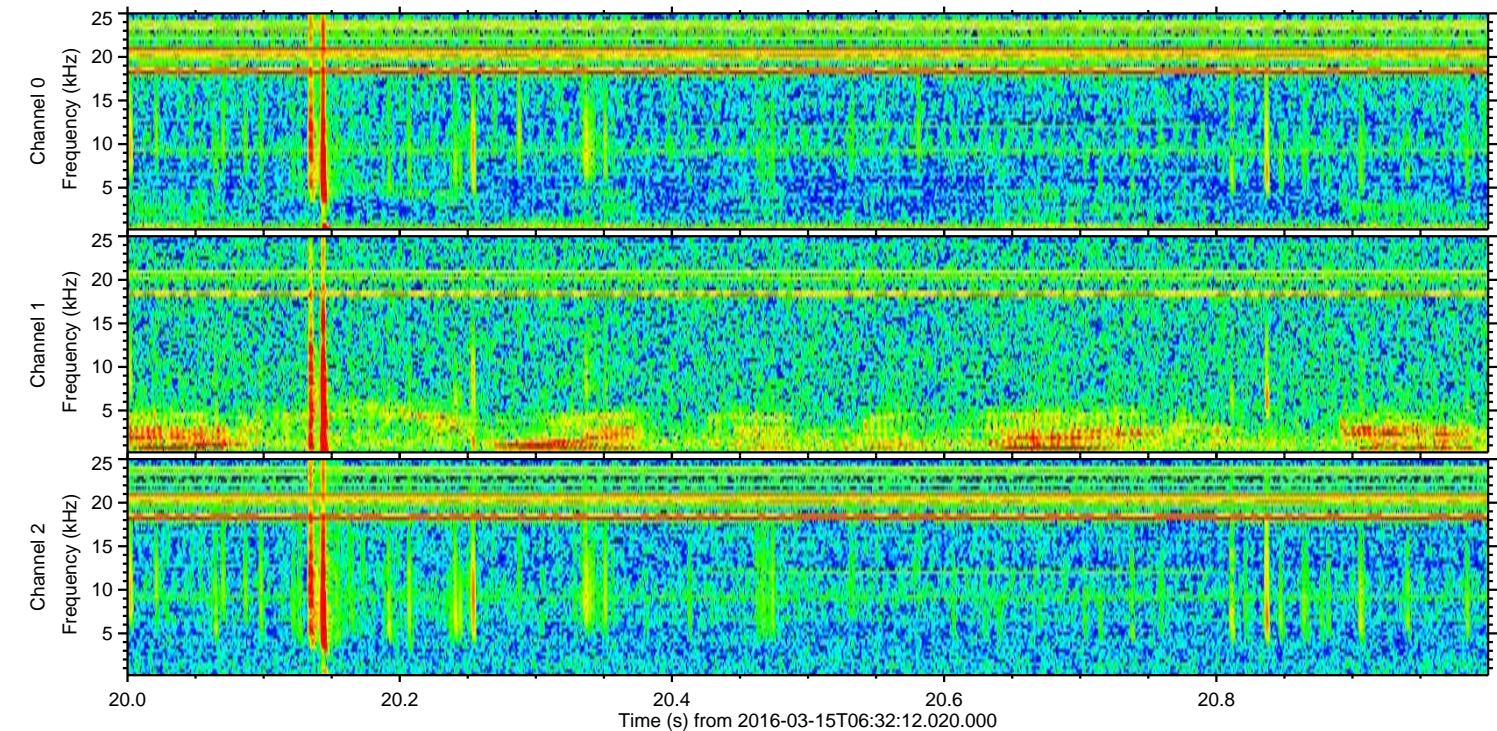
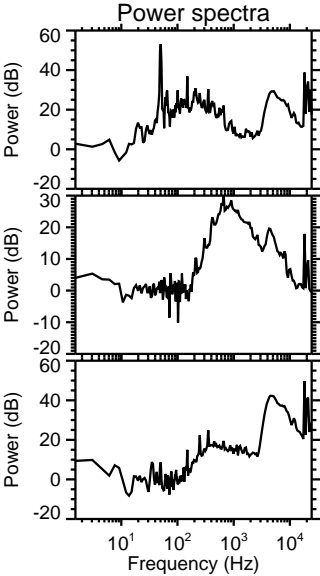
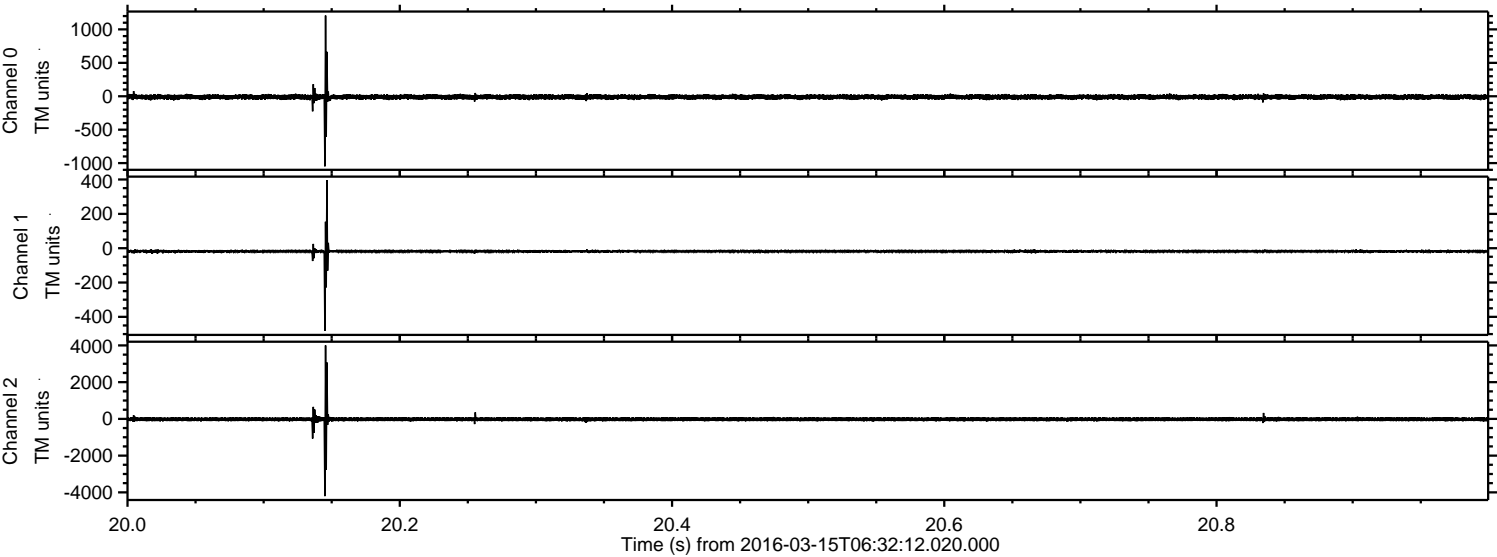
Processed Wed Apr 20 11:58:54 2016 by ELM ver.2012-10-06 from 001\_\_elm20160315\_063211\_\_dat00.bin





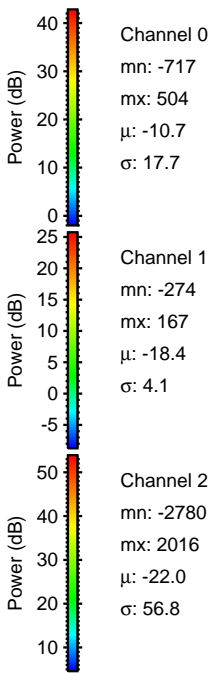
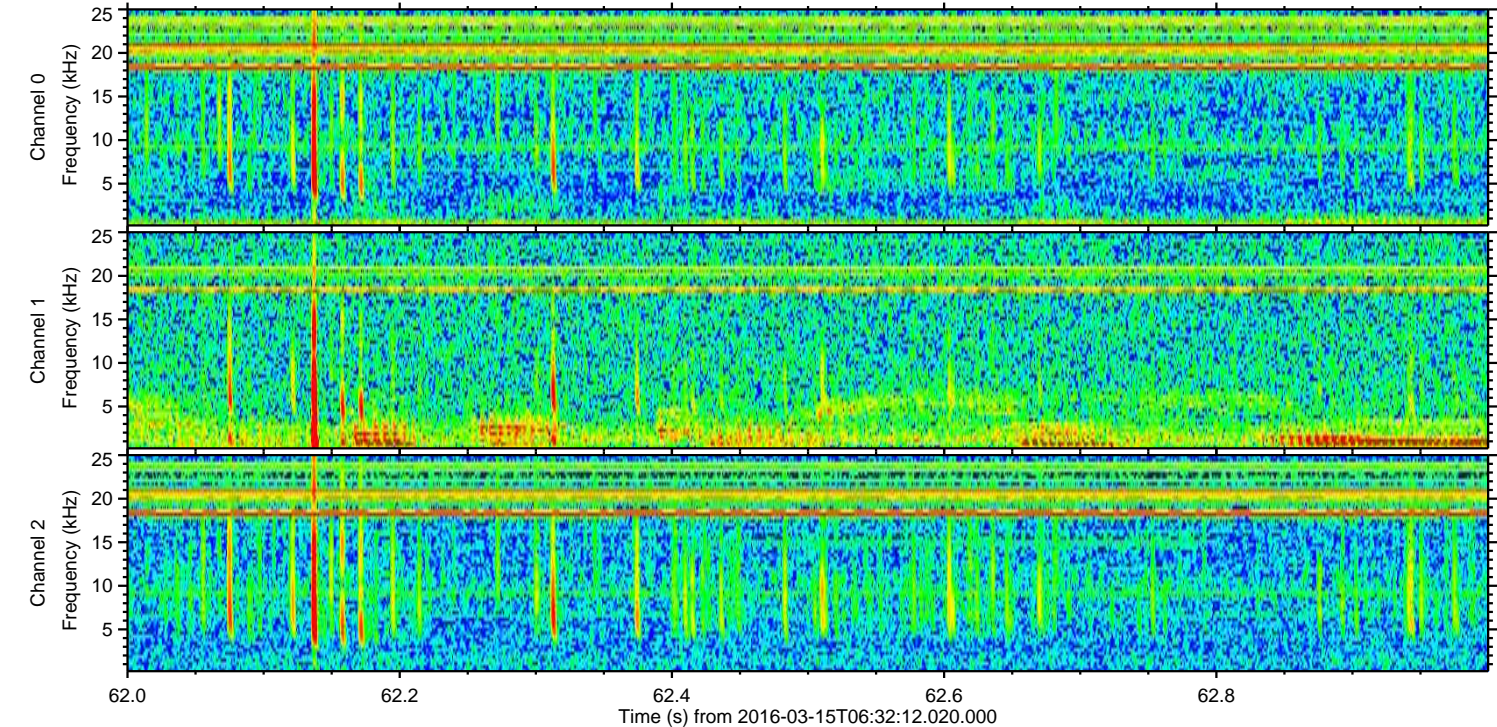
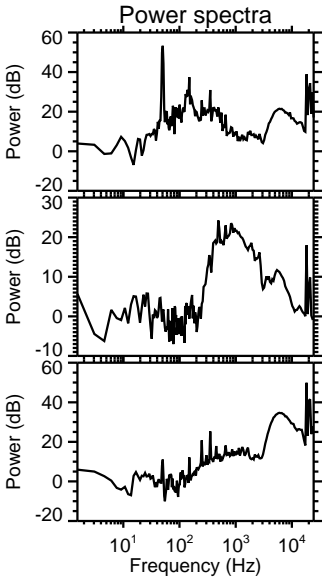
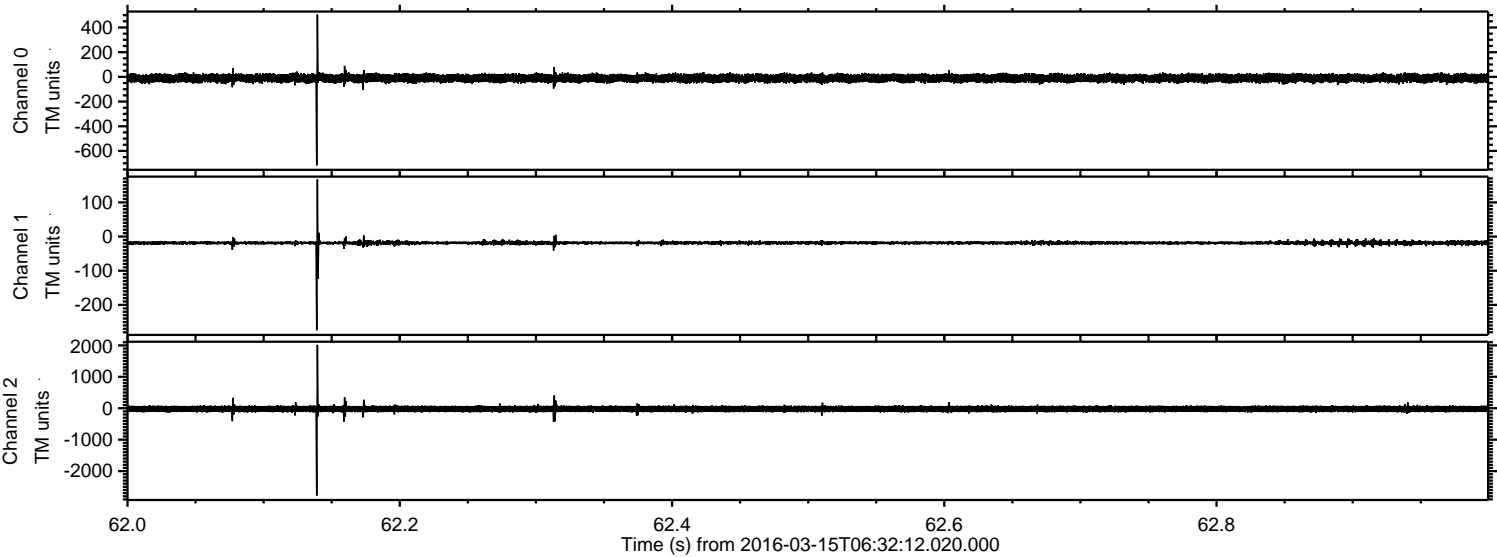
ELMAVAN 3D WAVEFORMS (Measured data sampled at 50 kHz) 51000 packets of 144 samples from 2016-03-15T06:32:12.020.000. Part 21/147

Processed Wed Apr 20 11:59:08 2016 by ELM ver.2012-10-06 from 001\_\_elm20160315\_063211\_\_dat00.bin



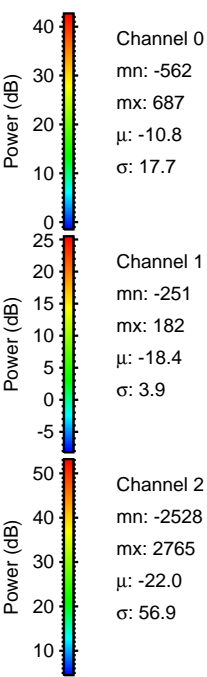
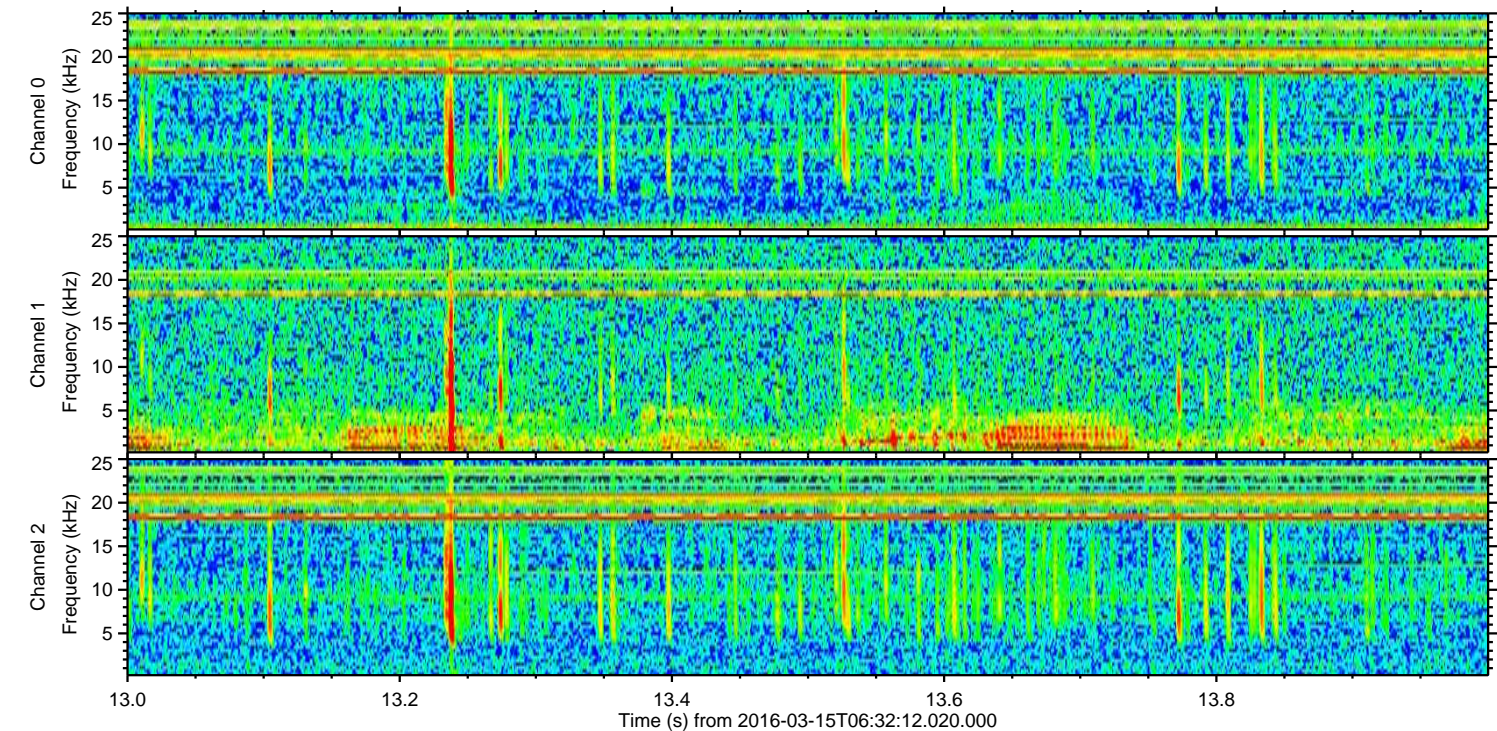
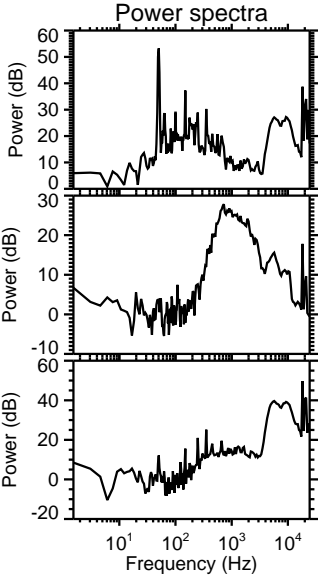
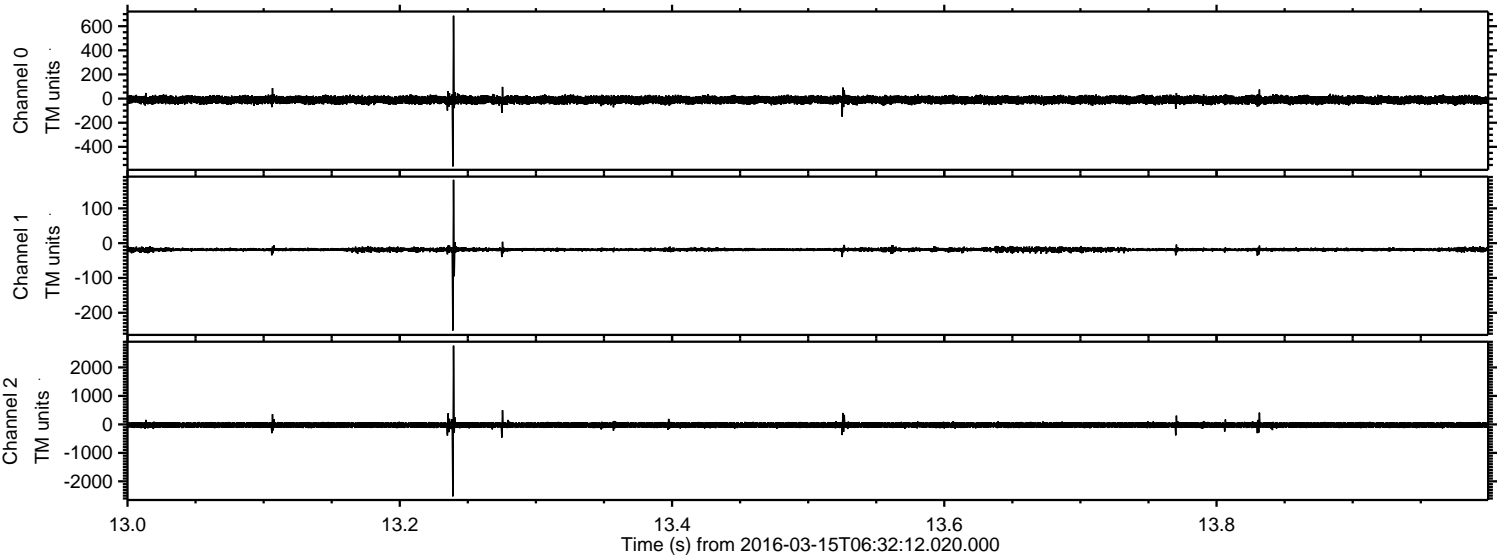


Processed Wed Apr 20 11:59:09 2016 by ELM ver.2012-10-06 from 001\_\_elm20160315\_063211\_\_dat00.bin





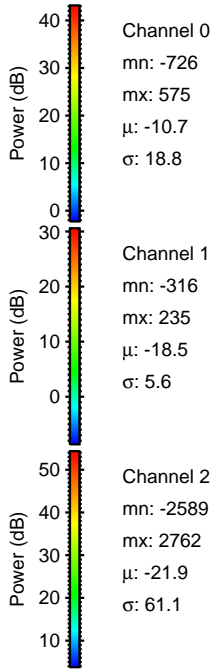
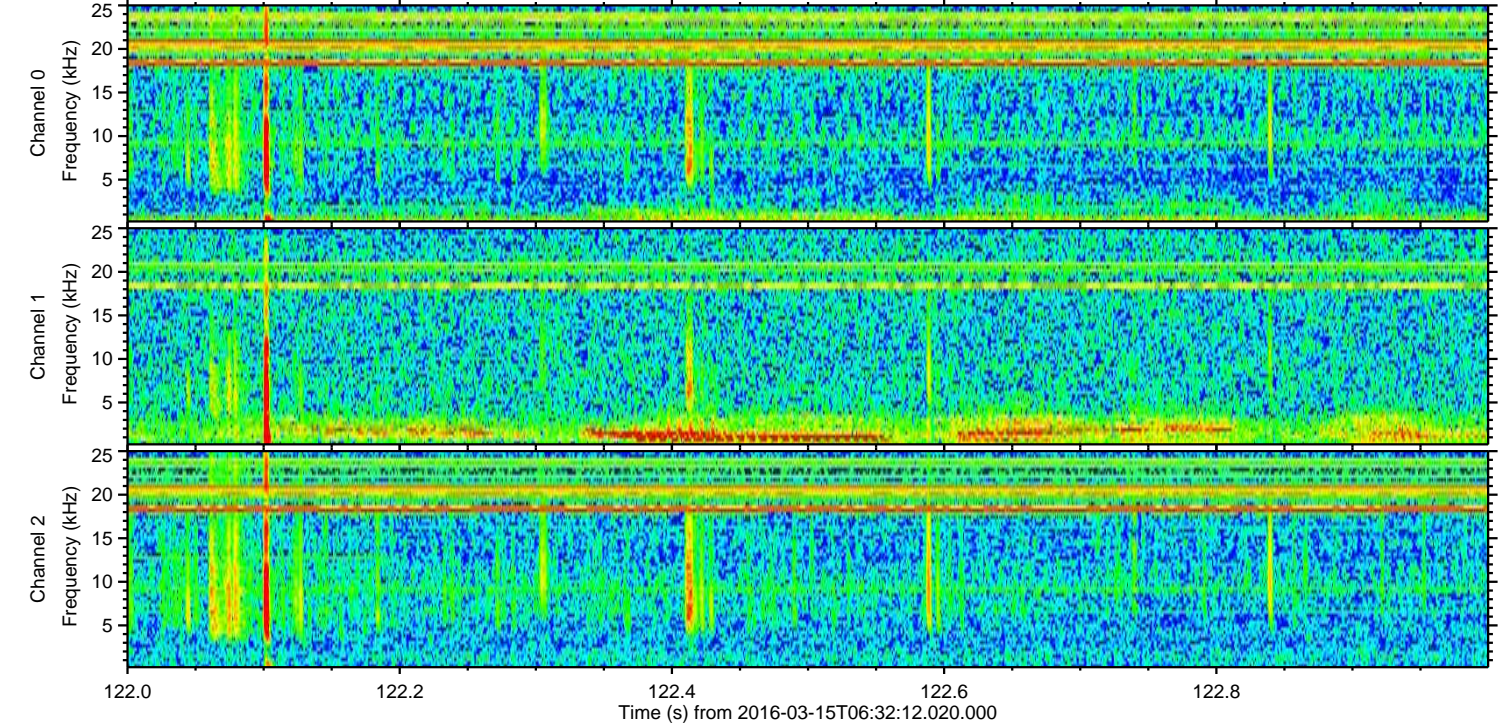
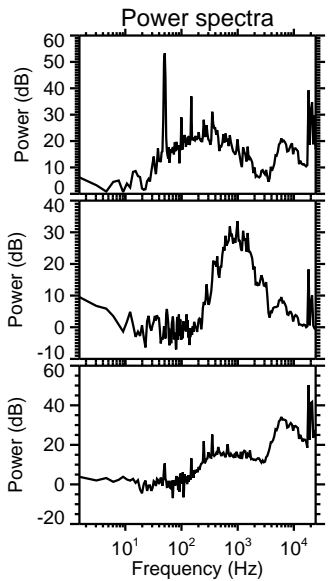
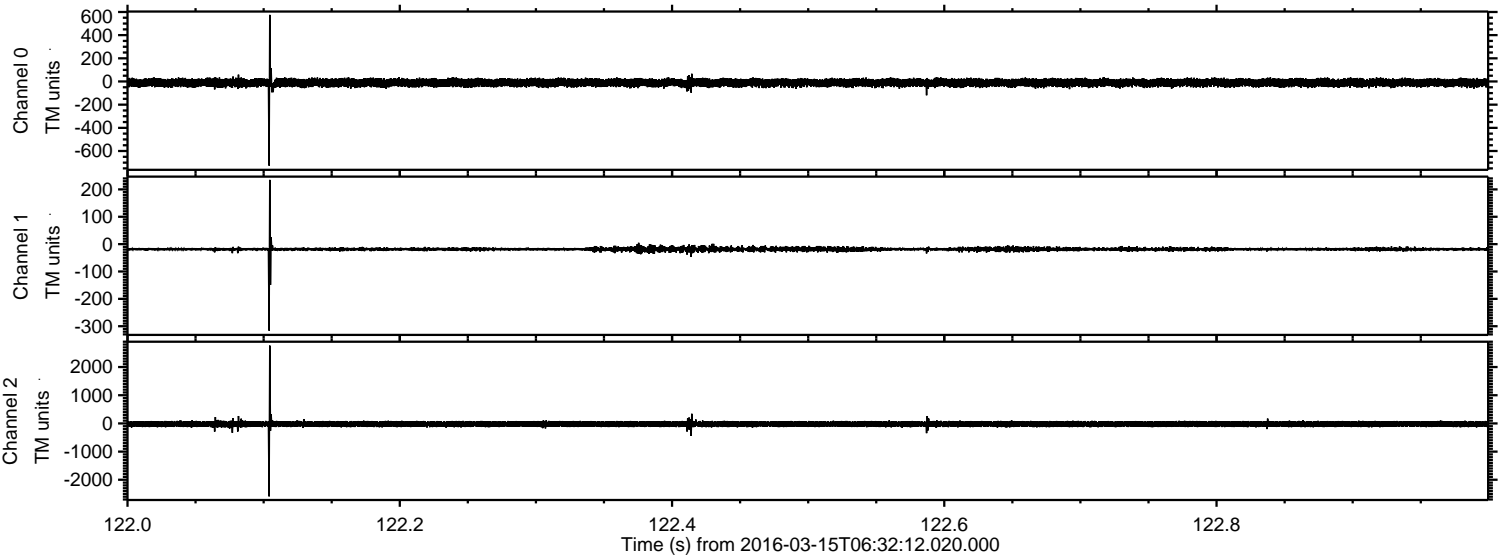
Processed Wed Apr 20 11:59:10 2016 by ELM ver.2012-10-06 from 001\_\_elm20160315\_063211\_\_dat00.bin





ELMAVAN 3D WAVEFORMS (Measured data sampled at 50 kHz) 51000 packets of 144 samples from 2016-03-15T06:32:12.020.000. Part 123/147

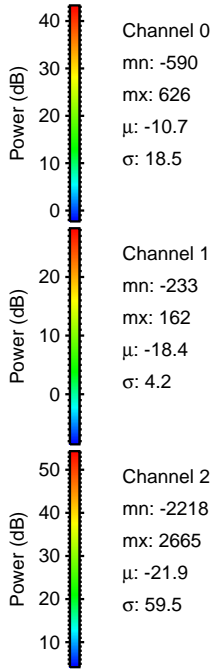
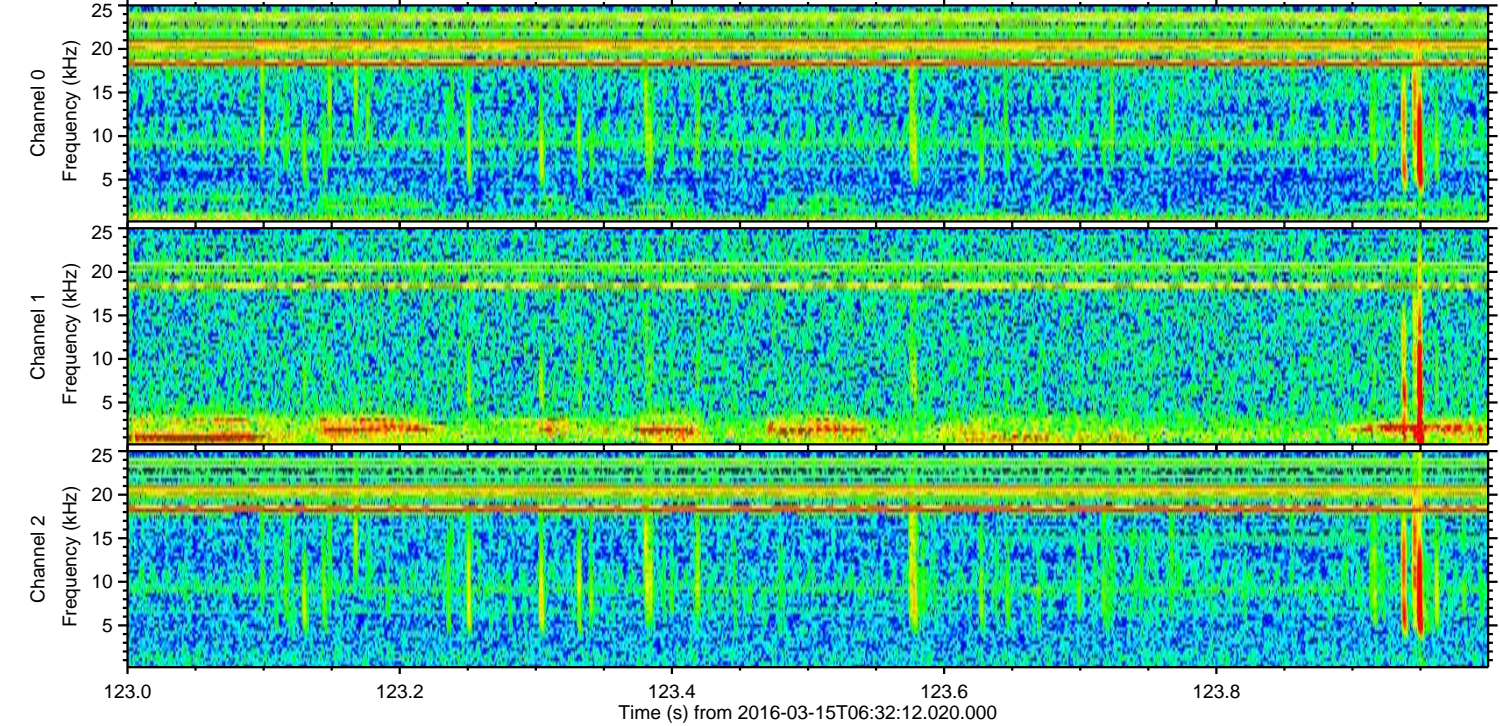
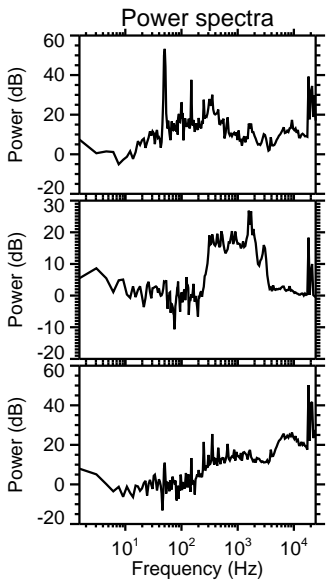
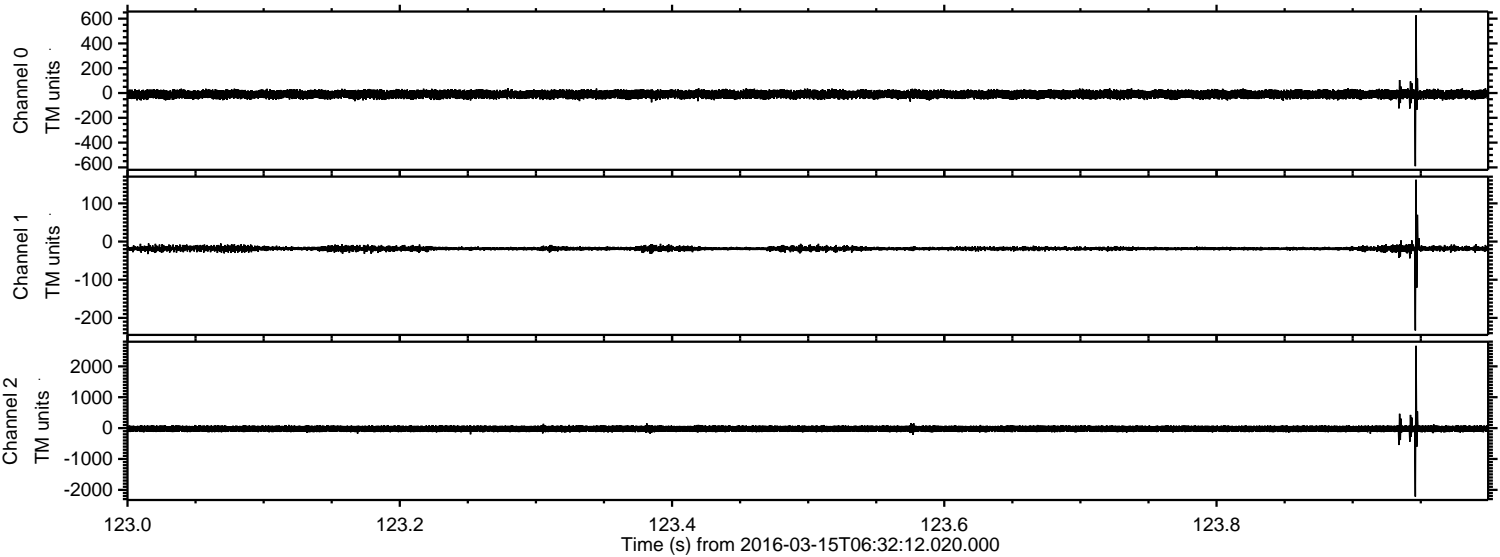
Processed Wed Apr 20 11:59:11 2016 by ELM ver.2012-10-06 from 001\_\_elm20160315\_063211\_\_dat00.bin





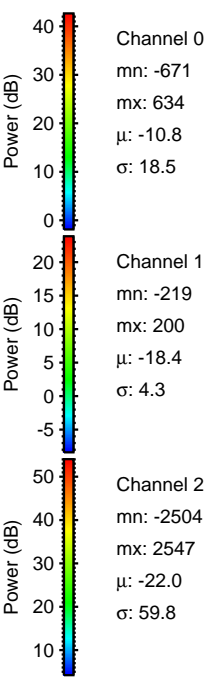
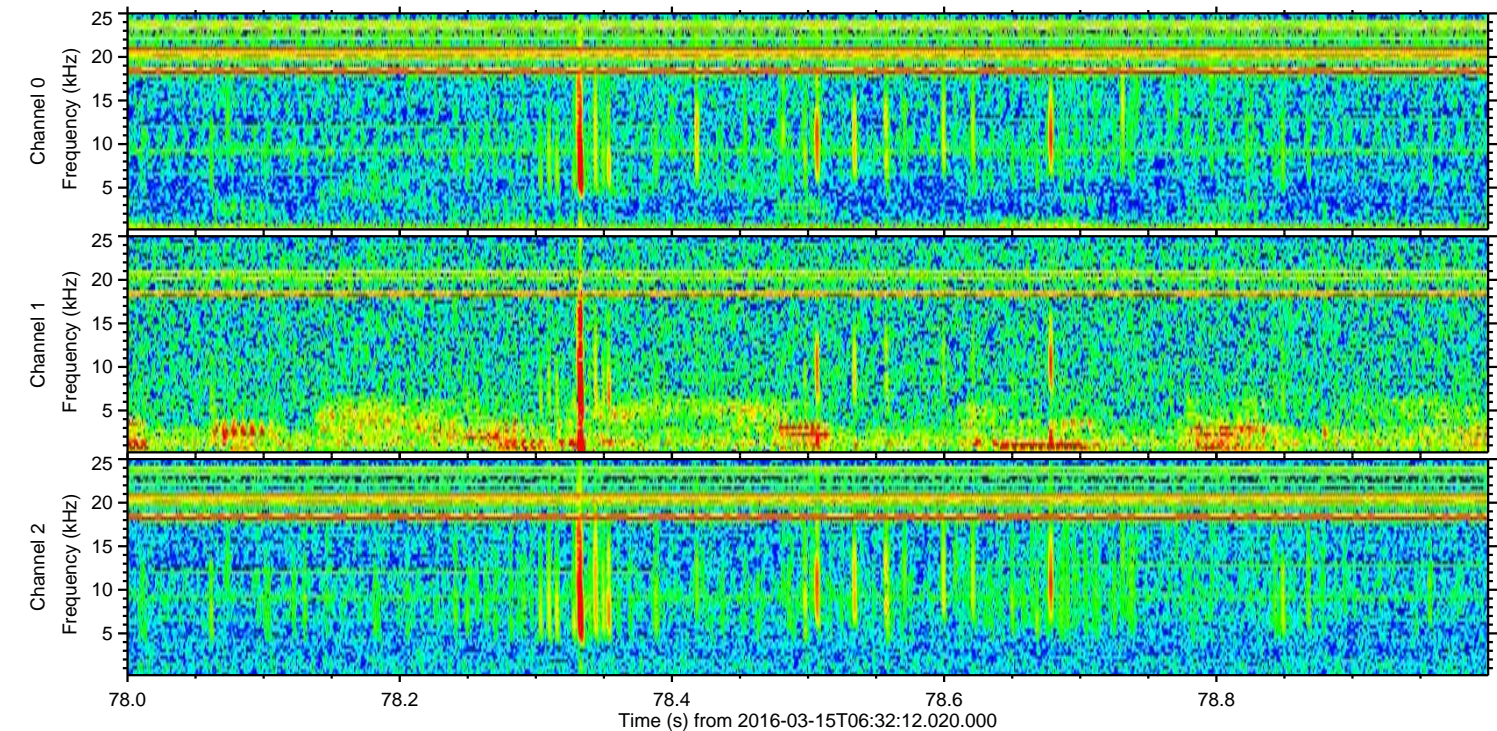
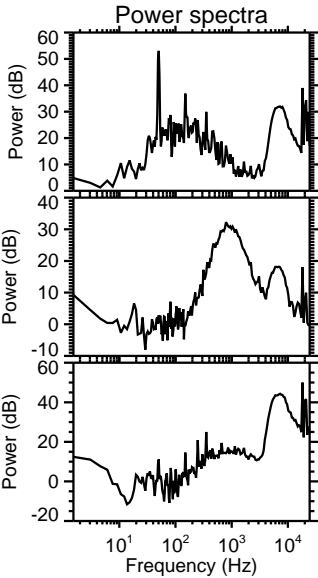
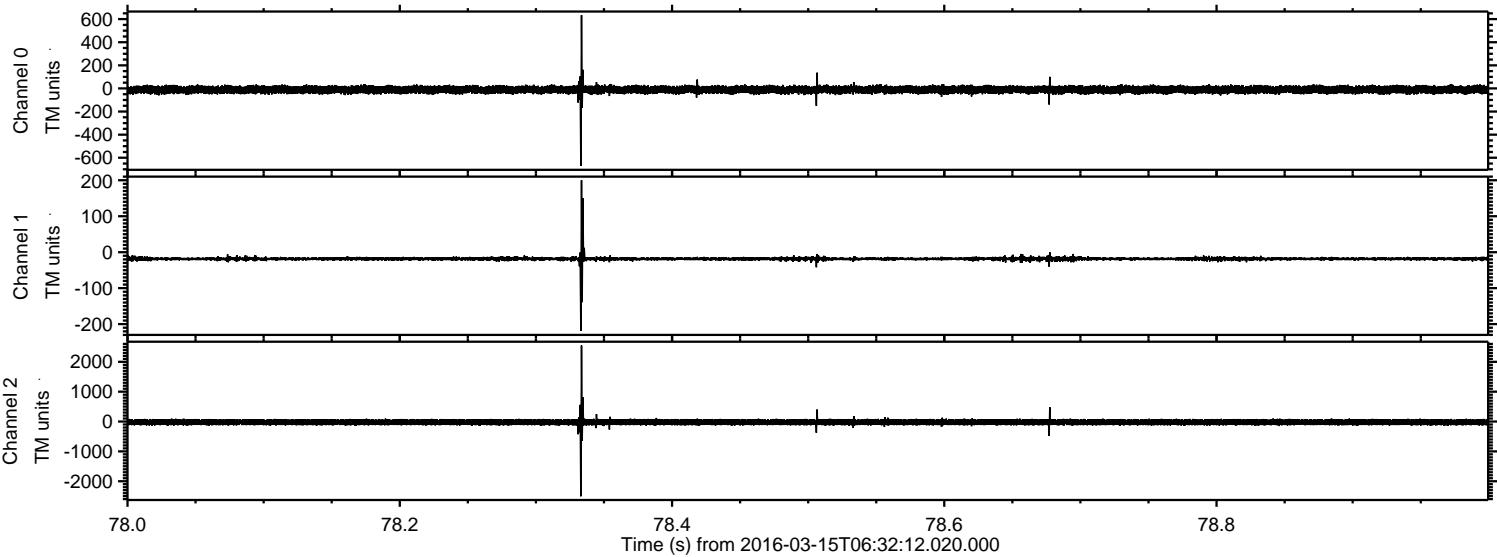
ELMAVAN 3D WAVEFORMS (Measured data sampled at 50 kHz) 51000 packets of 144 samples from 2016-03-15T06:32:12.020.000. Part 124/147

Processed Wed Apr 20 11:59:12 2016 by ELM ver.2012-10-06 from 001\_\_elm20160315\_063211\_\_dat00.bin



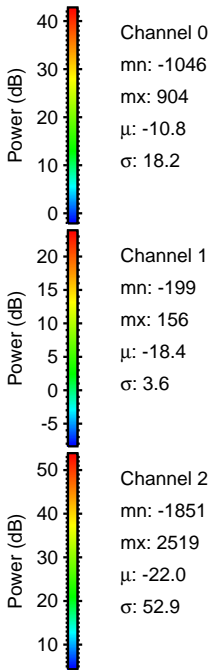
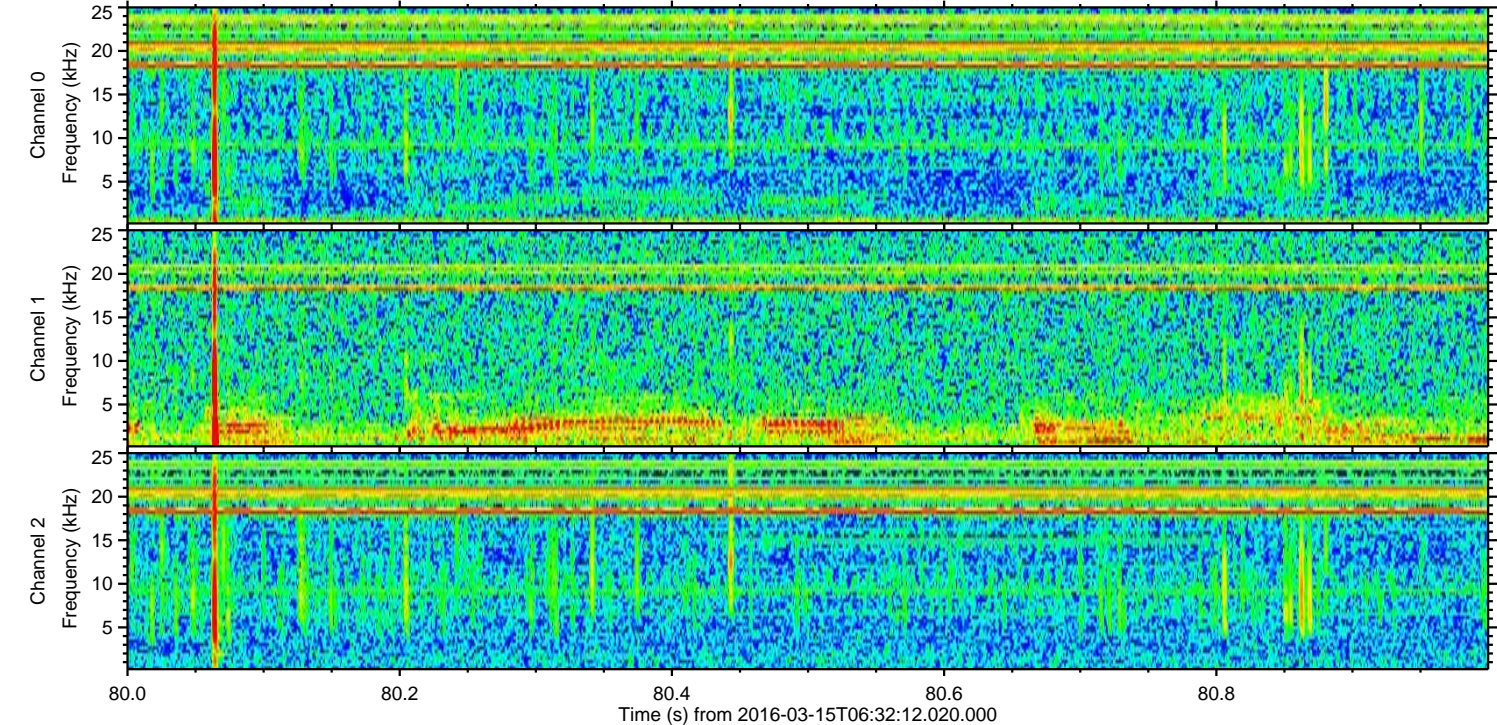
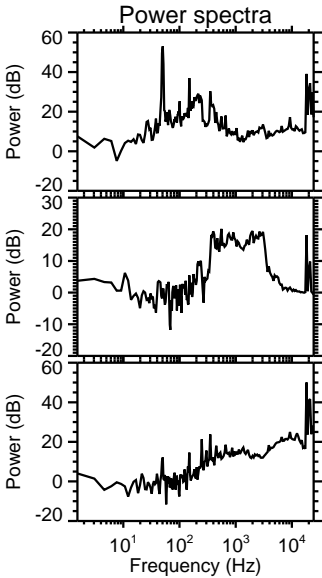
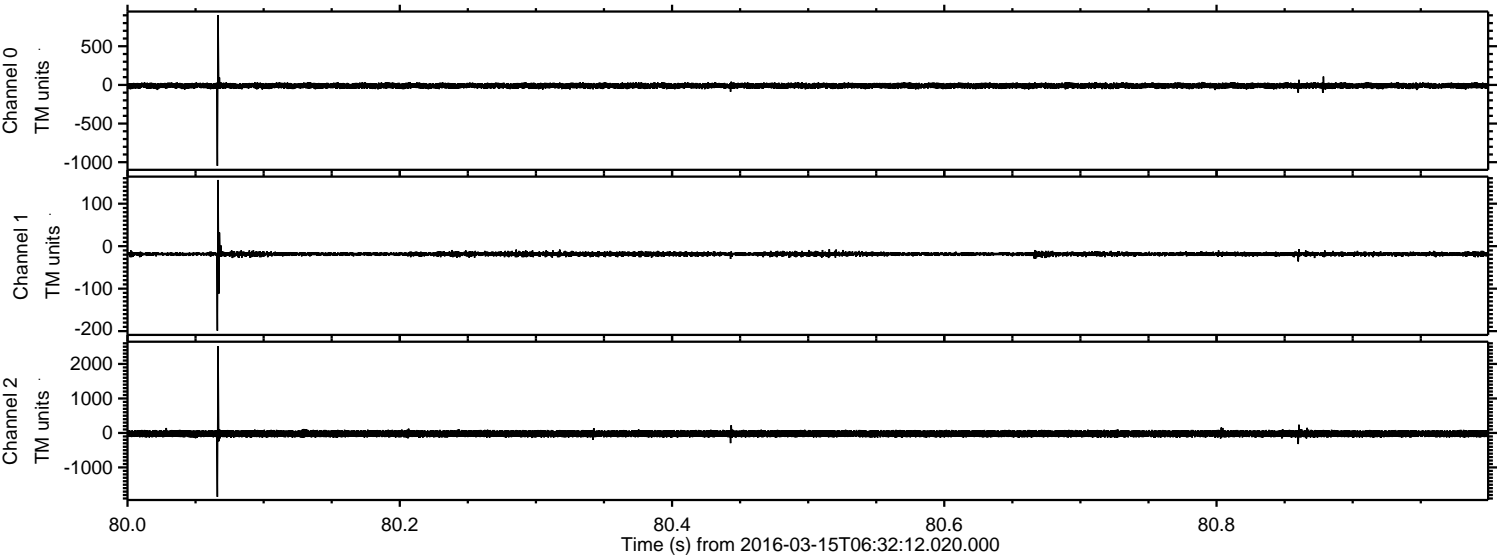


Processed Wed Apr 20 11:59:13 2016 by ELM ver.2012-10-06 from 001\_\_elm20160315\_063211\_\_dat00.bin



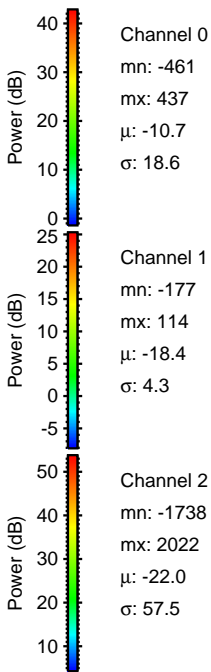
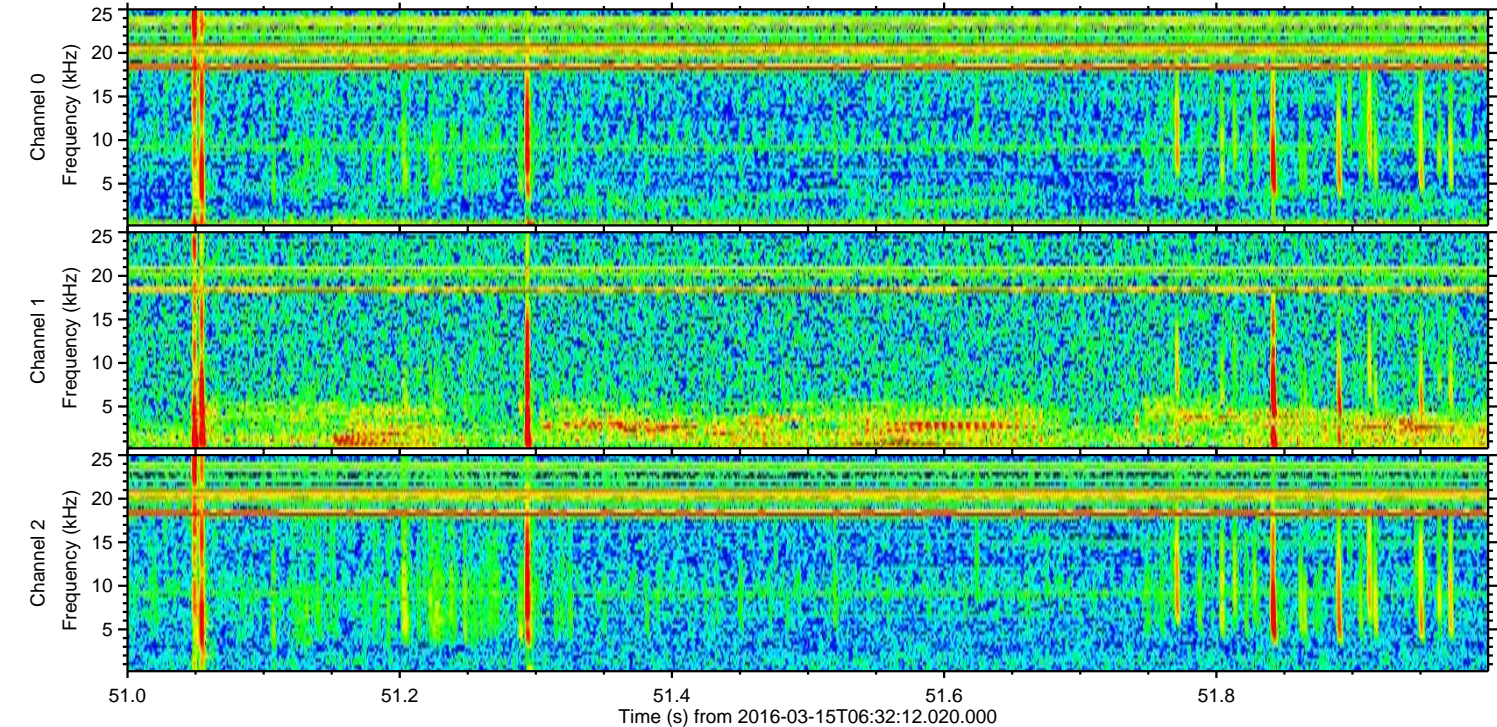
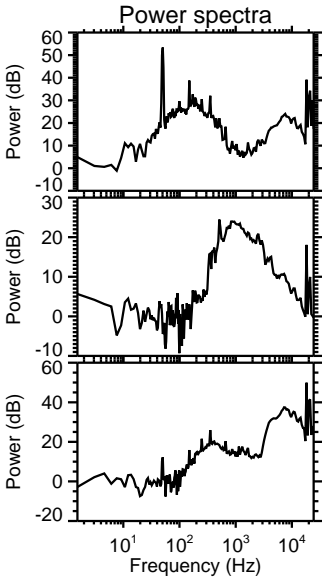
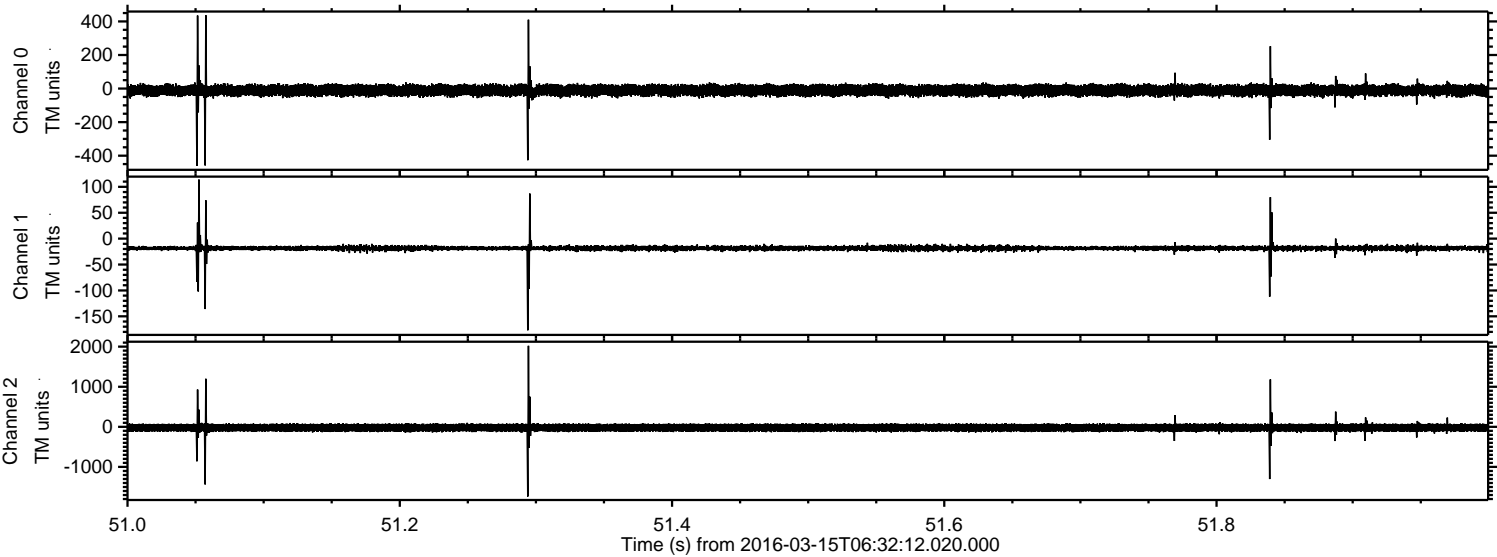


Processed Wed Apr 20 11:59:14 2016 by ELM ver.2012-10-06 from 001\_\_elm20160315\_063211\_\_dat00.bin



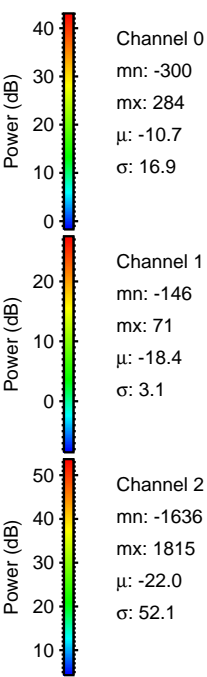
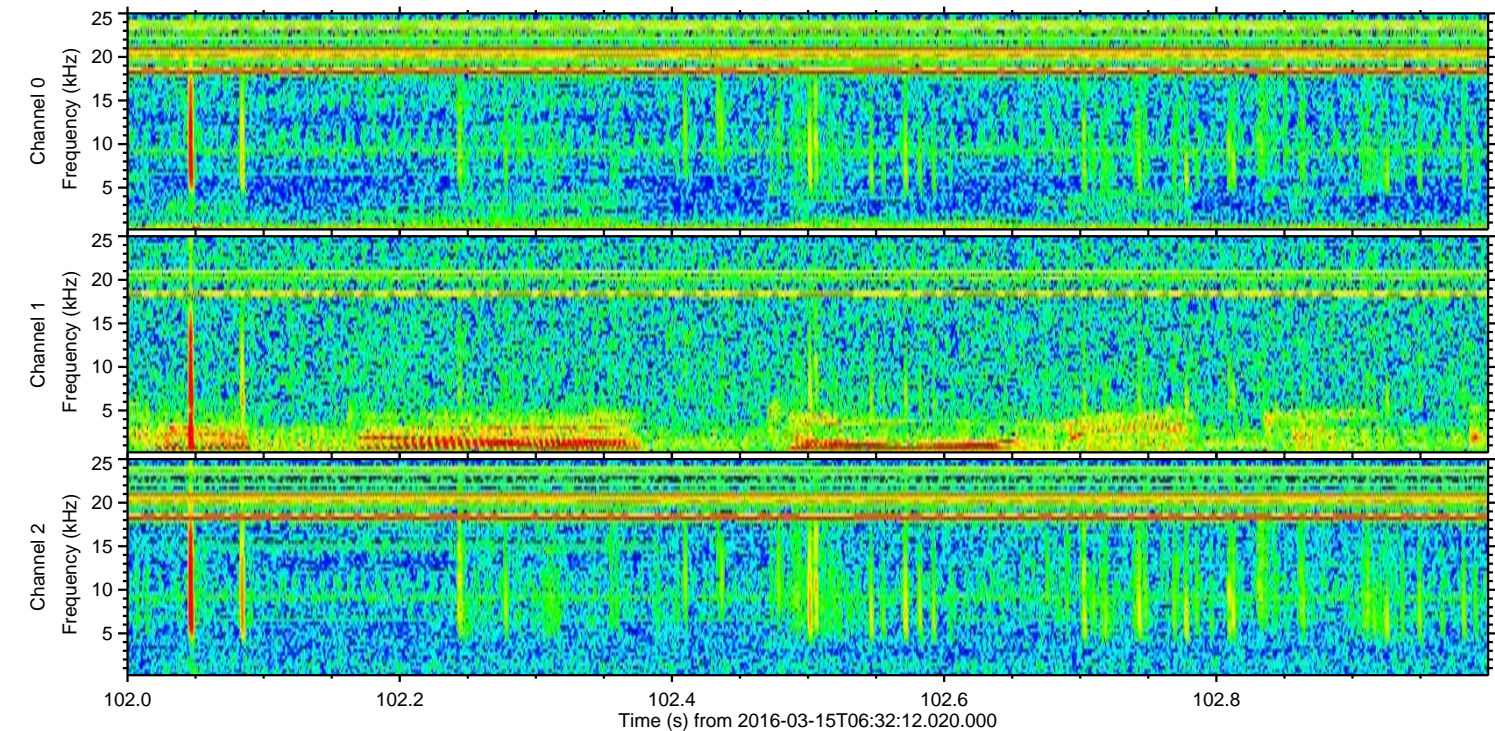
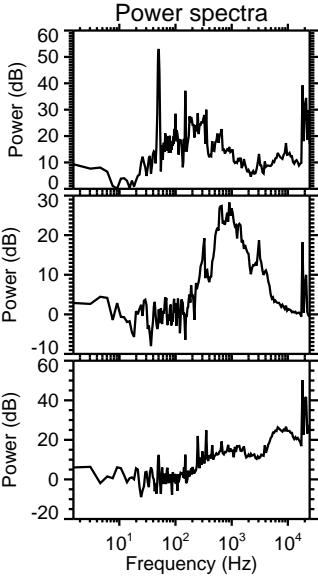
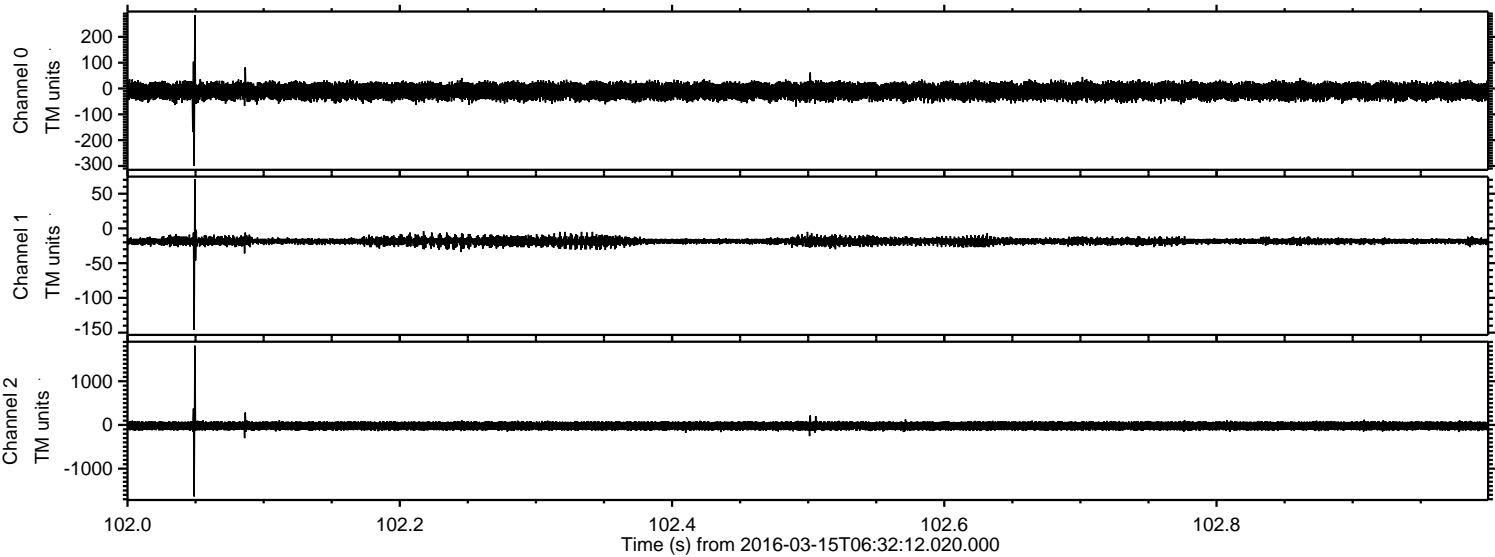


Processed Wed Apr 20 11:59:16 2016 by ELM ver.2012-10-06 from 001\_\_elm20160315\_063211\_\_dat00.bin





Processed Wed Apr 20 11:59:17 2016 by ELM ver.2012-10-06 from 001\_\_elm20160315\_063211\_\_dat00.bin



Channel 0  
mn: -300  
mx: 284  
 $\mu$ : -10.7  
 $\sigma$ : 16.9

Channel 1  
mn: -146  
mx: 71  
 $\mu$ : -18.4  
 $\sigma$ : 3.1

Channel 2  
mn: -1636  
mx: 1815  
 $\mu$ : -22.0  
 $\sigma$ : 52.1



Processed Wed Apr 20 11:59:18 2016 by ELM ver.2012-10-06 from 001\_\_elm20160315\_063211\_\_dat00.bin

