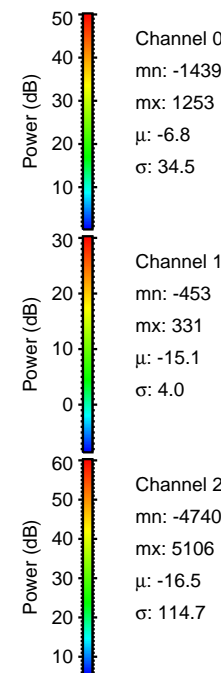
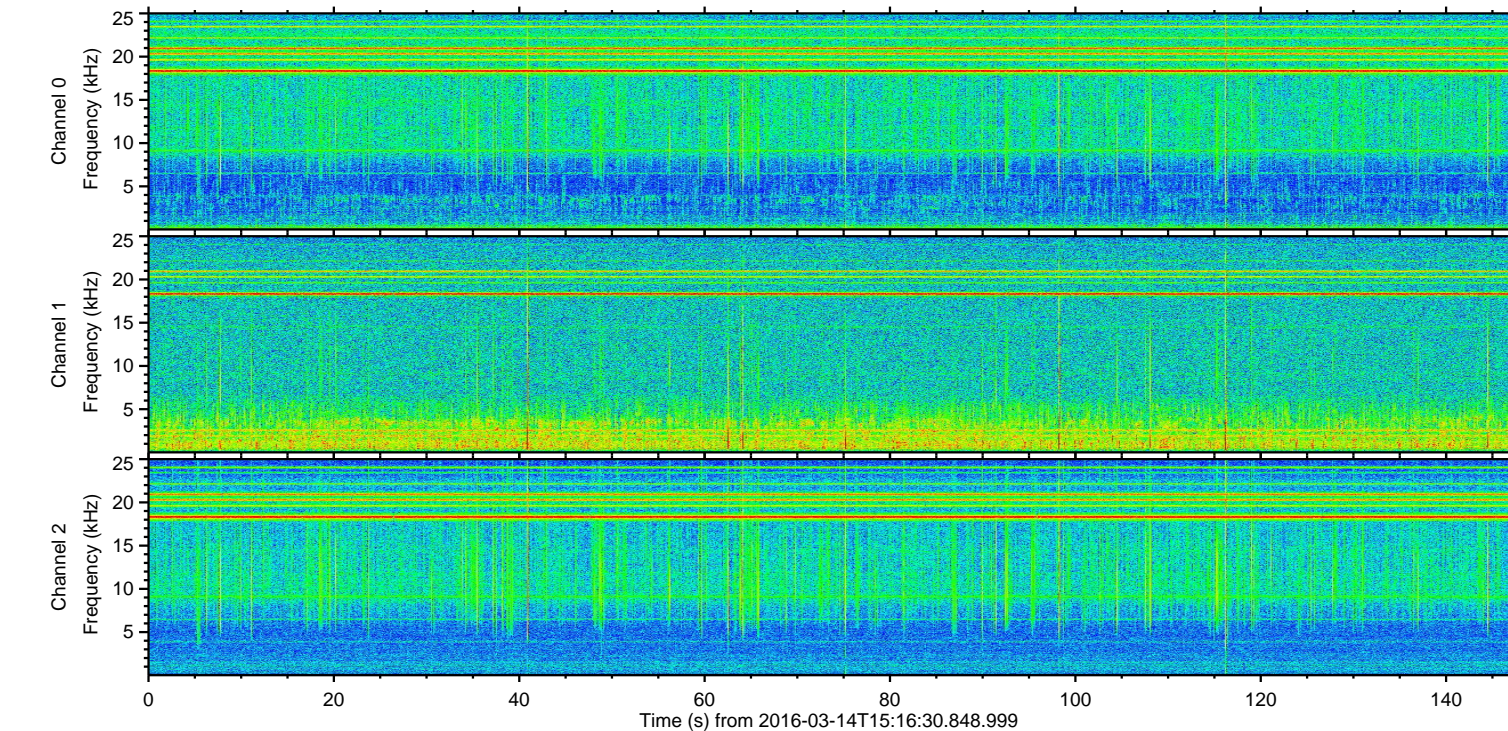
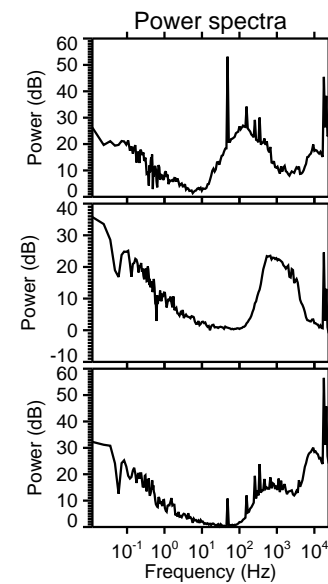
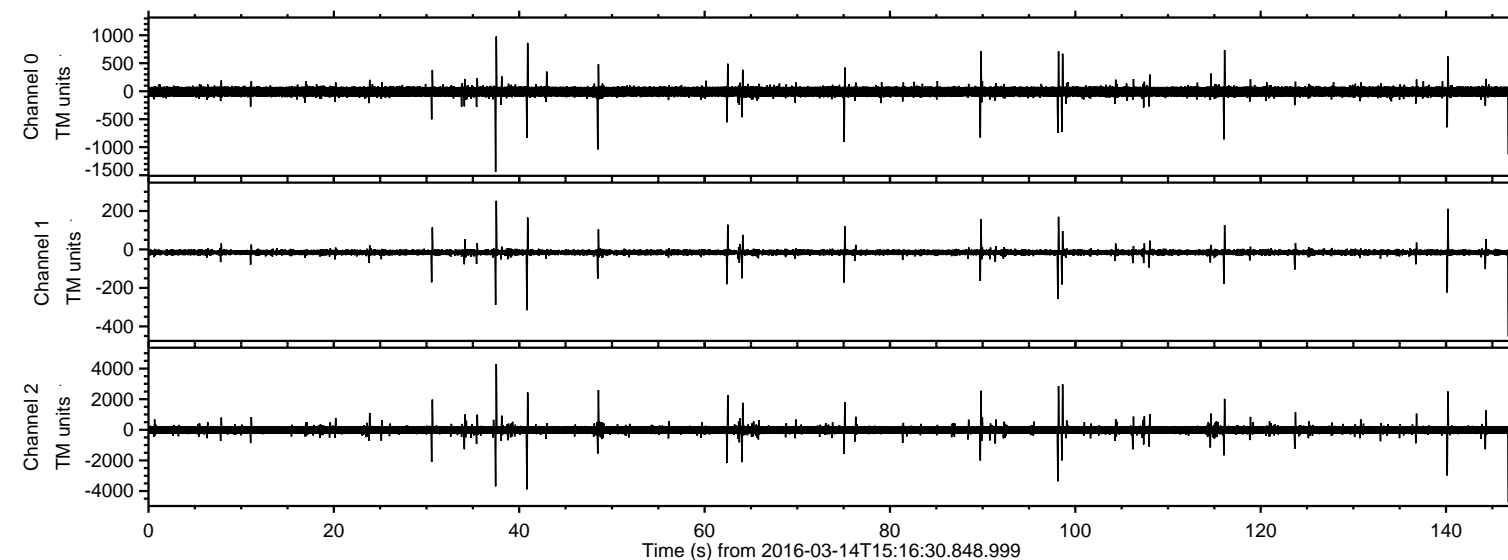
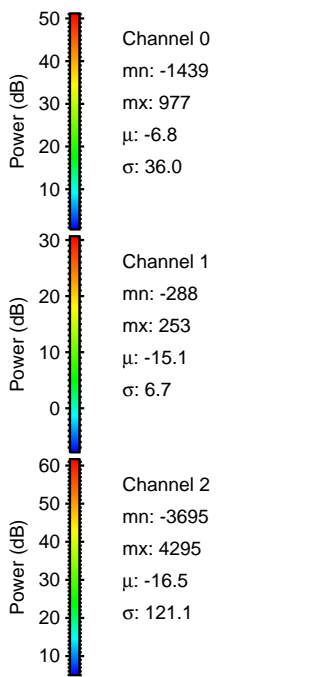
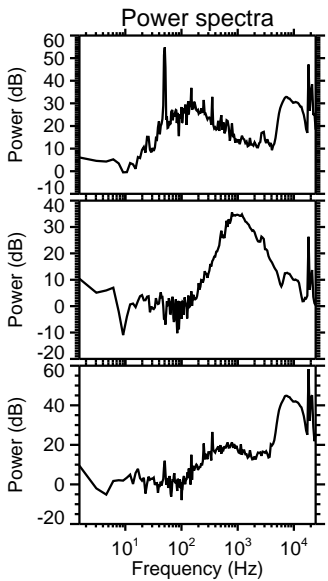
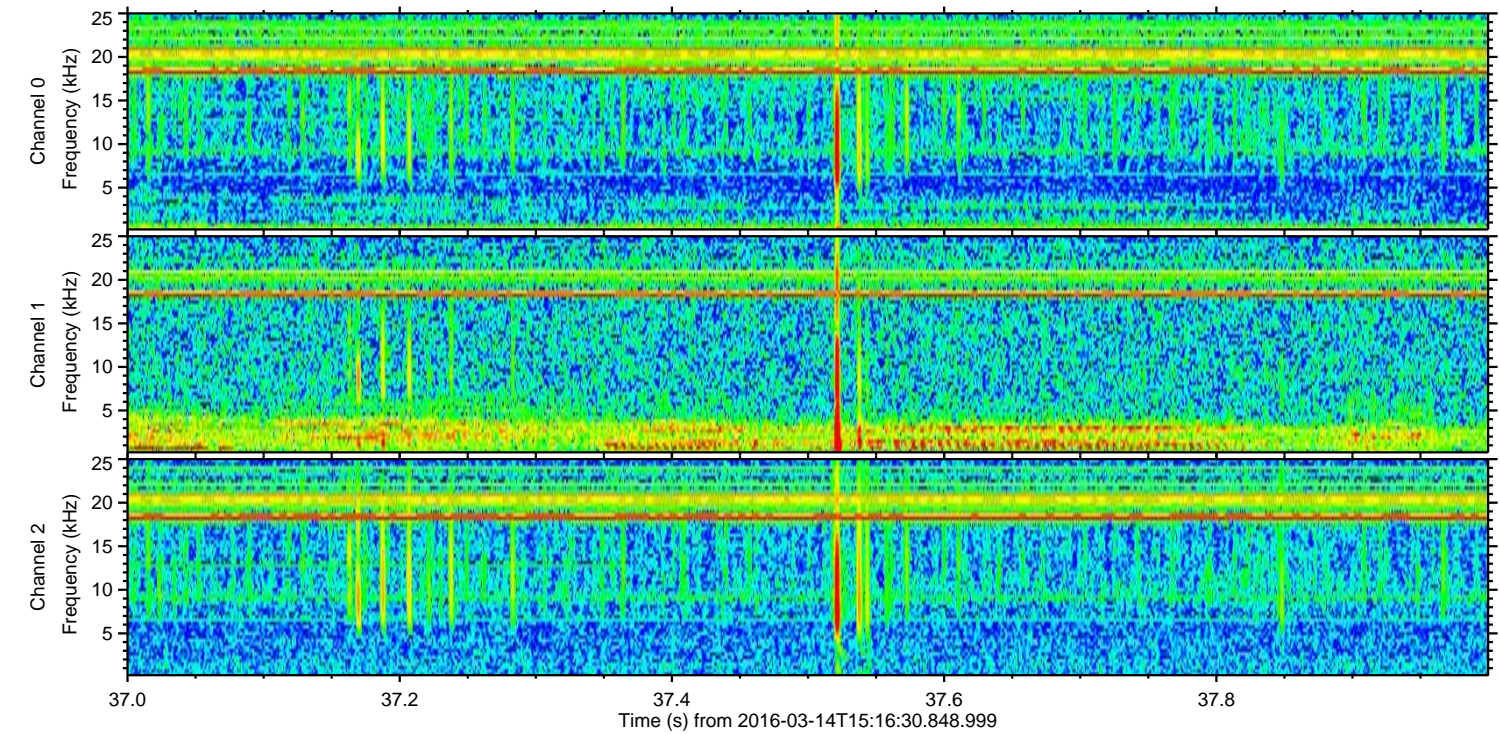
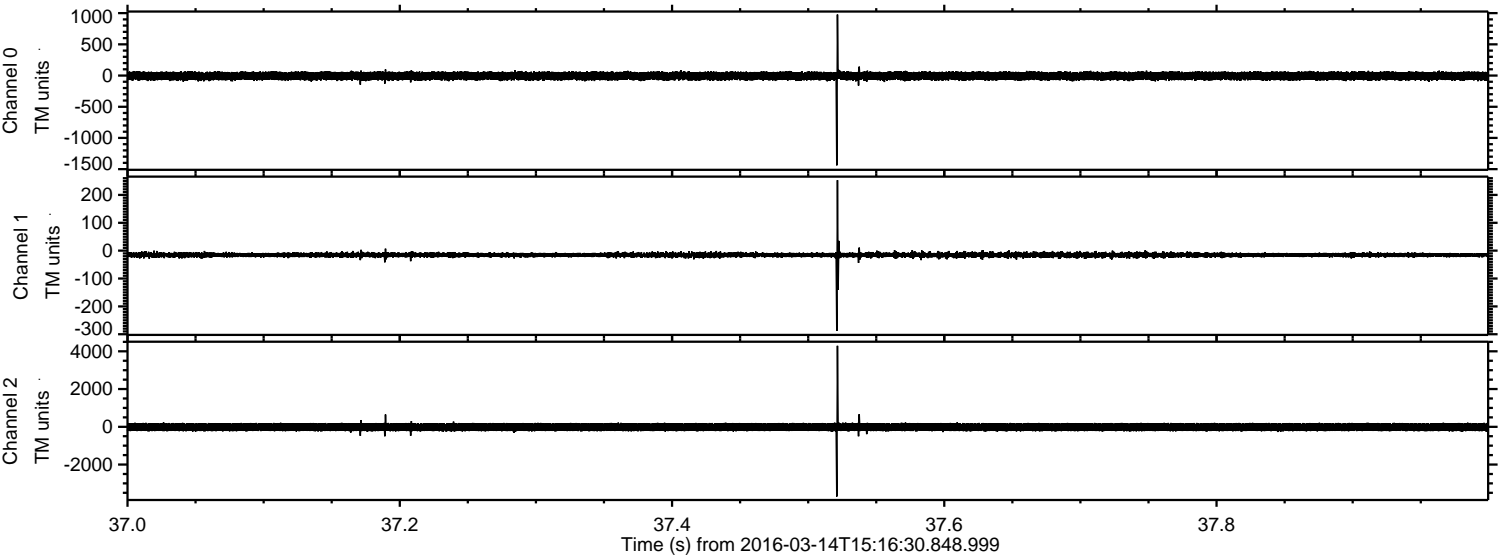


ELMAVAN 3D WAVEFORMS (Measured data sampled at 50 kHz) 51000 packets of 144 samples from 2016-03-14T15:16:30.848.999.

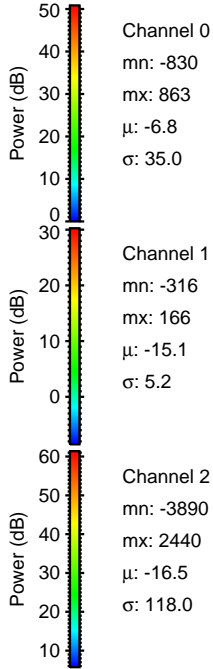
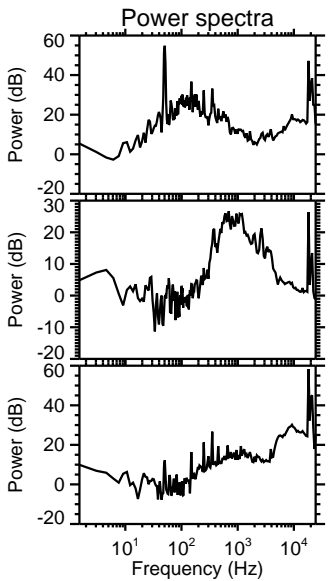
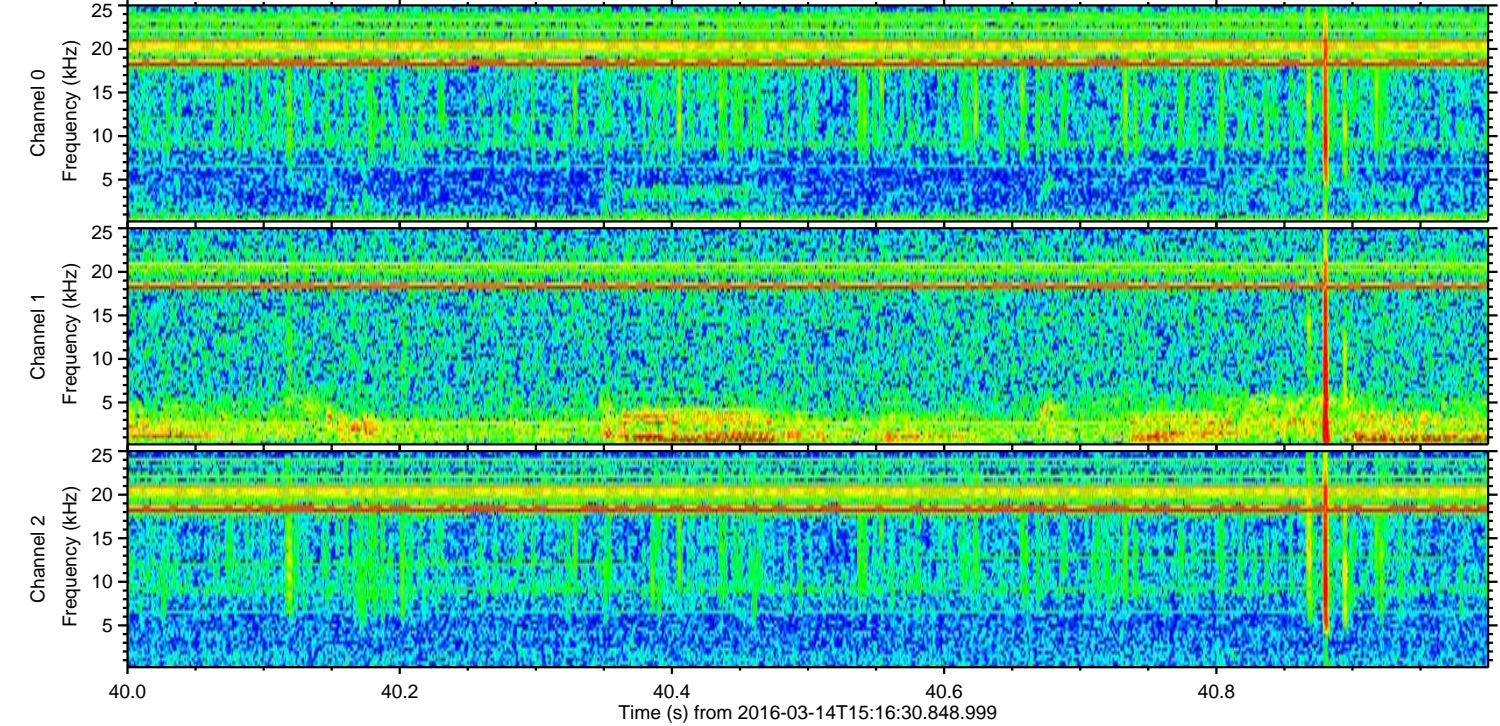
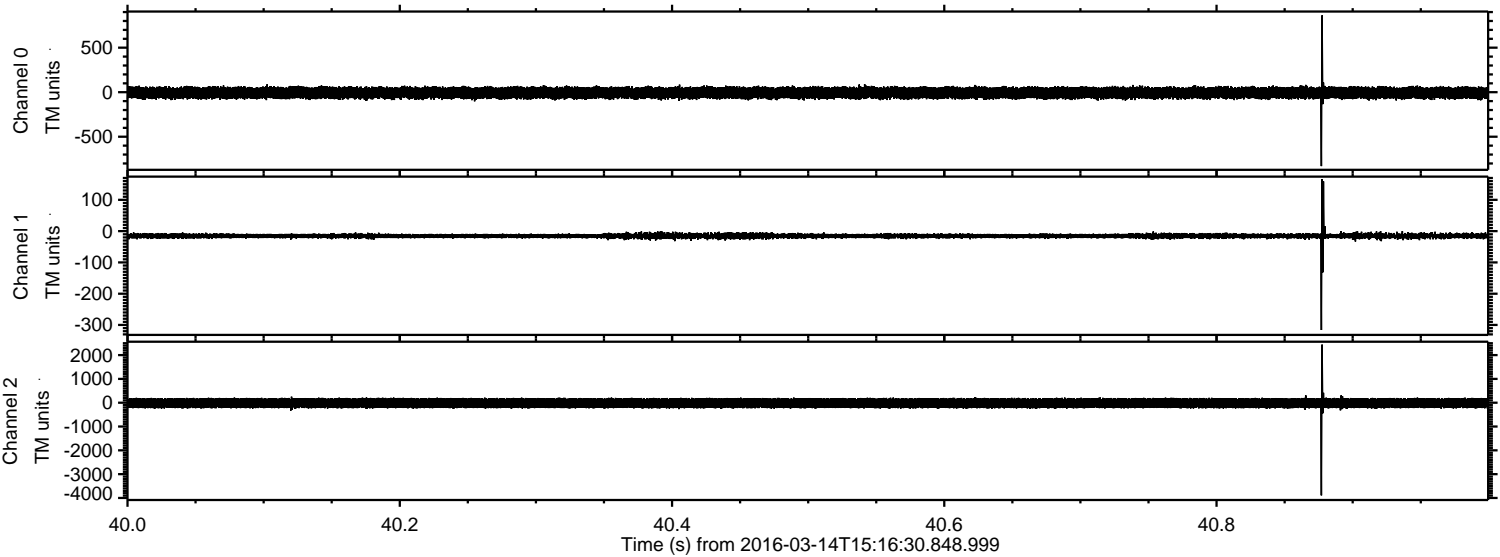
Processed Wed Apr 20 08:42:17 2016 by ELM ver.2012-10-06 from 001__elm20160314_151629__dat00.bin



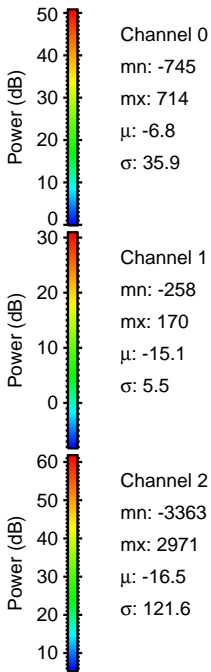
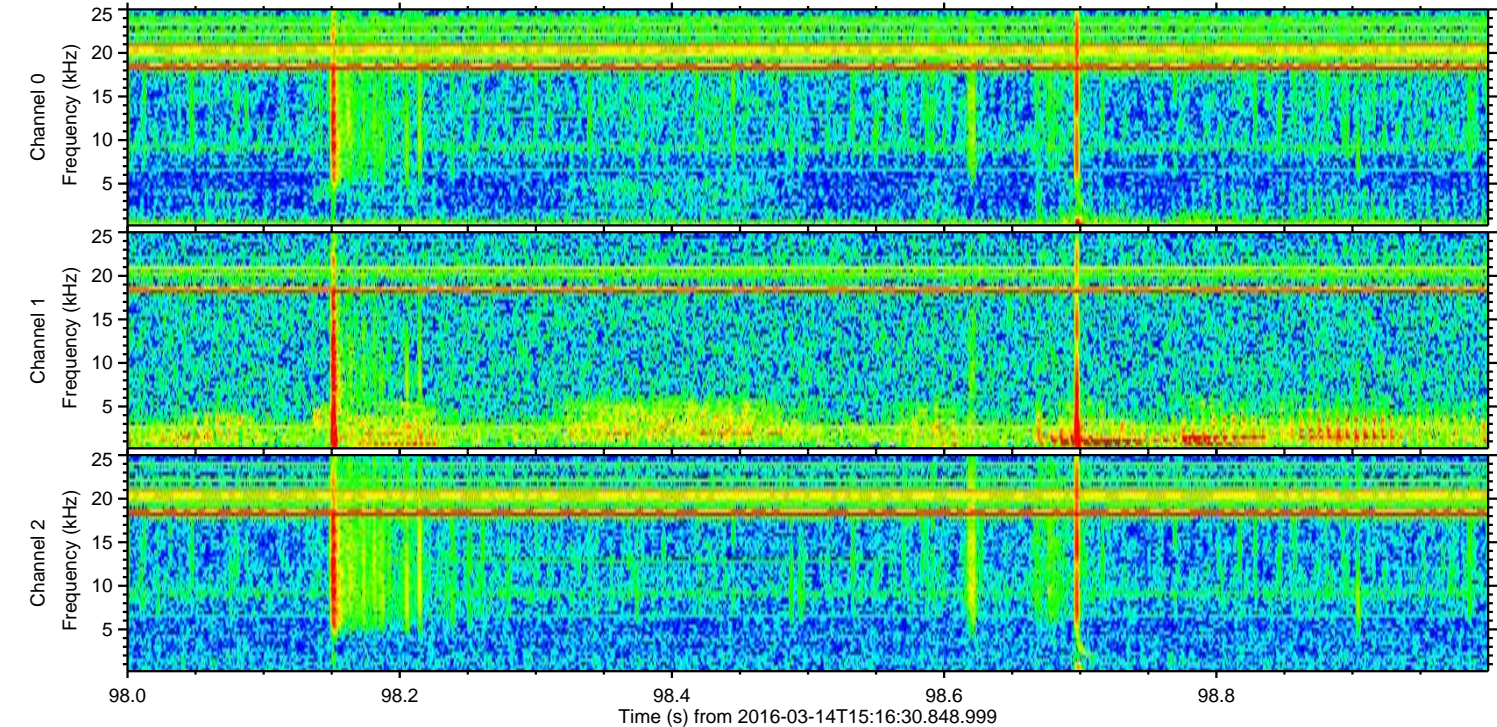
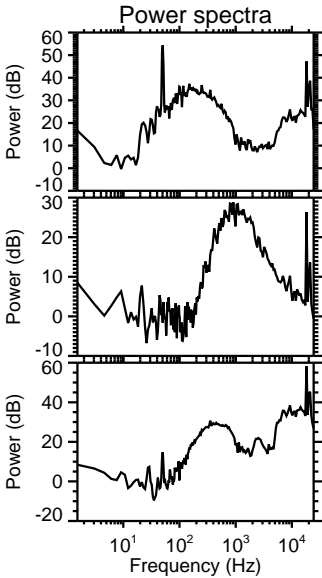
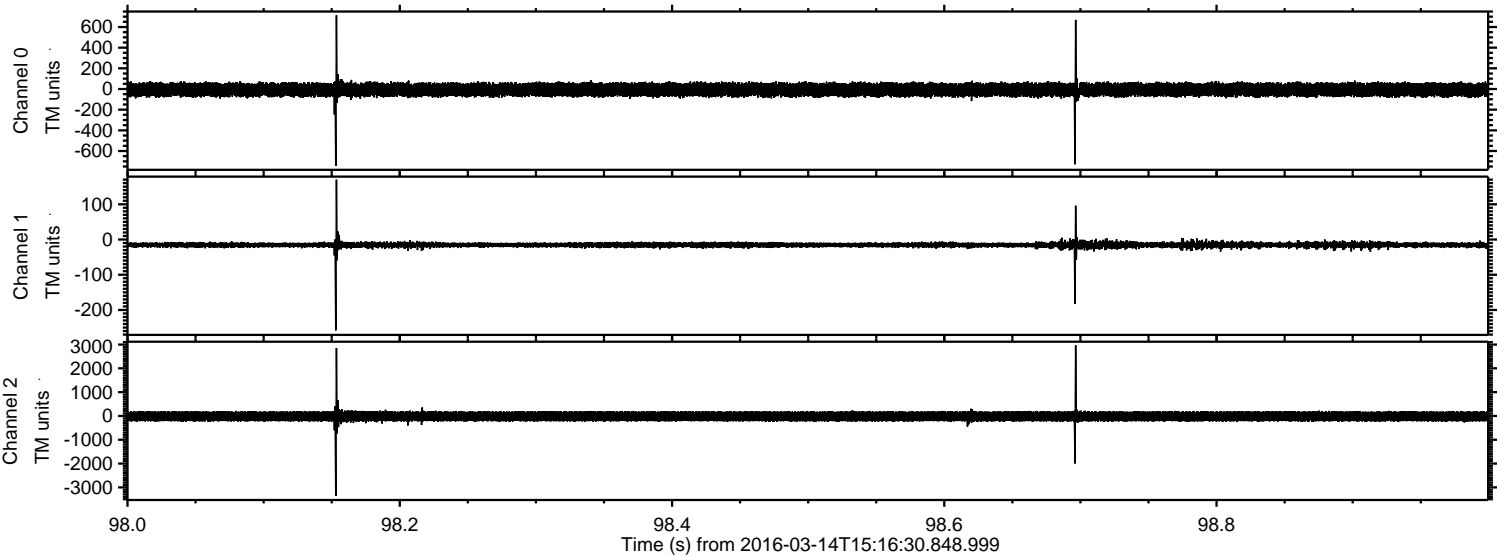
Processed Wed Apr 20 08:42:30 2016 by ELM ver.2012-10-06 from 001__elm20160314_151629__dat00.bin



Processed Wed Apr 20 08:42:30 2016 by ELM ver.2012-10-06 from 001__elm20160314_151629__dat00.bin

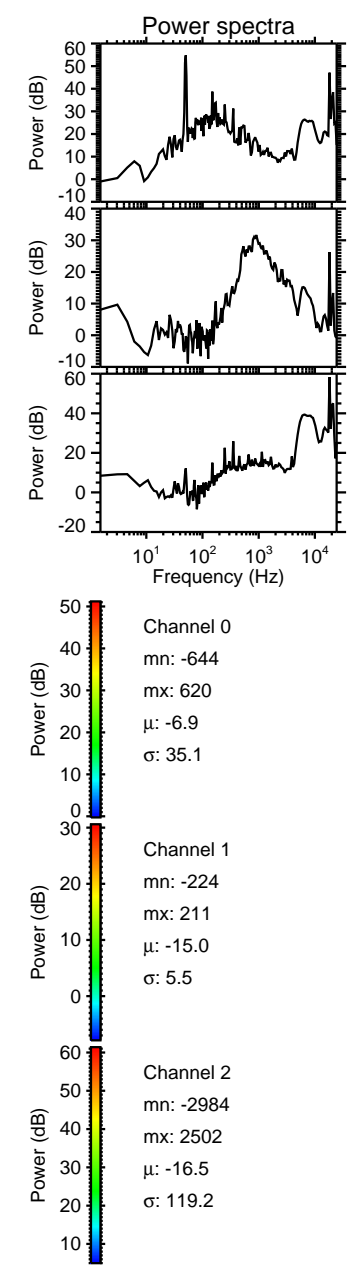
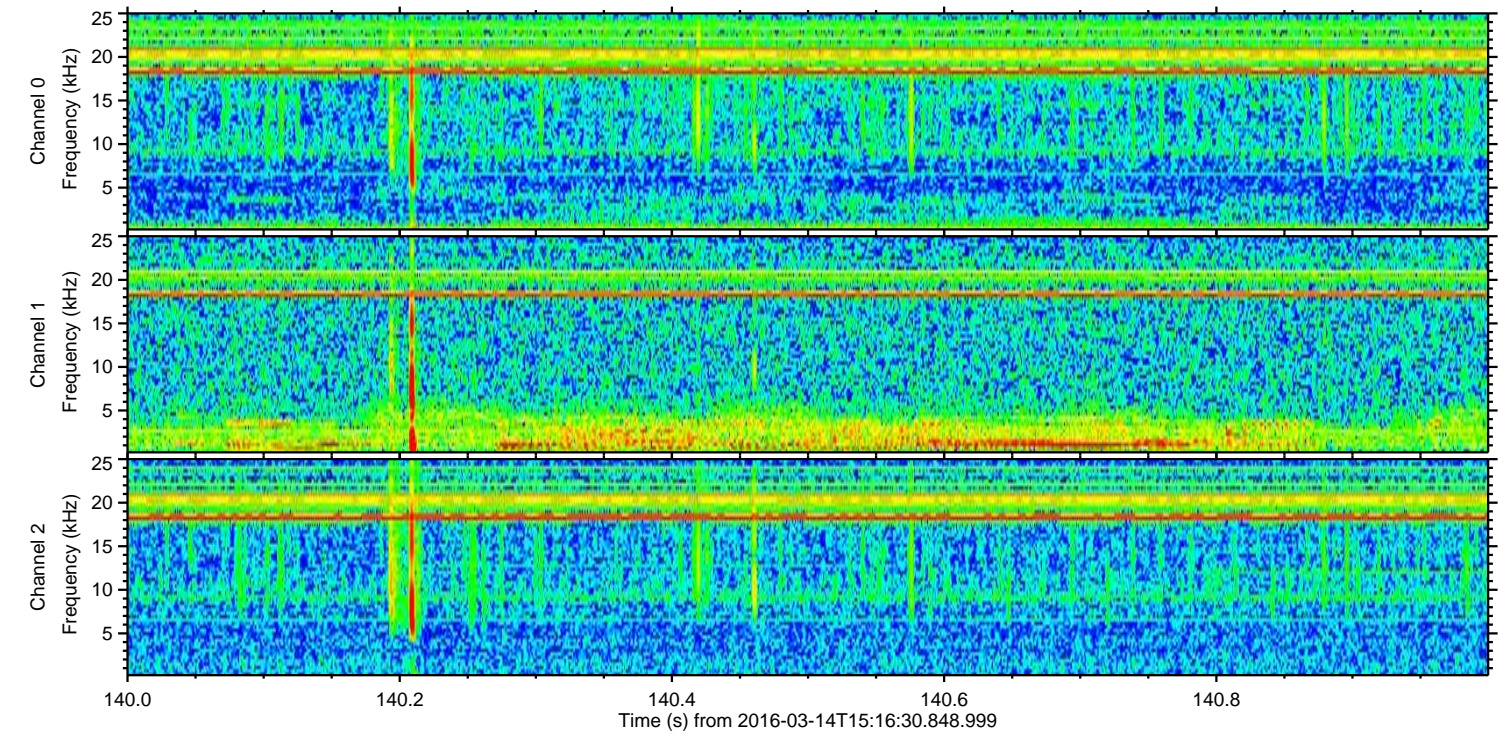
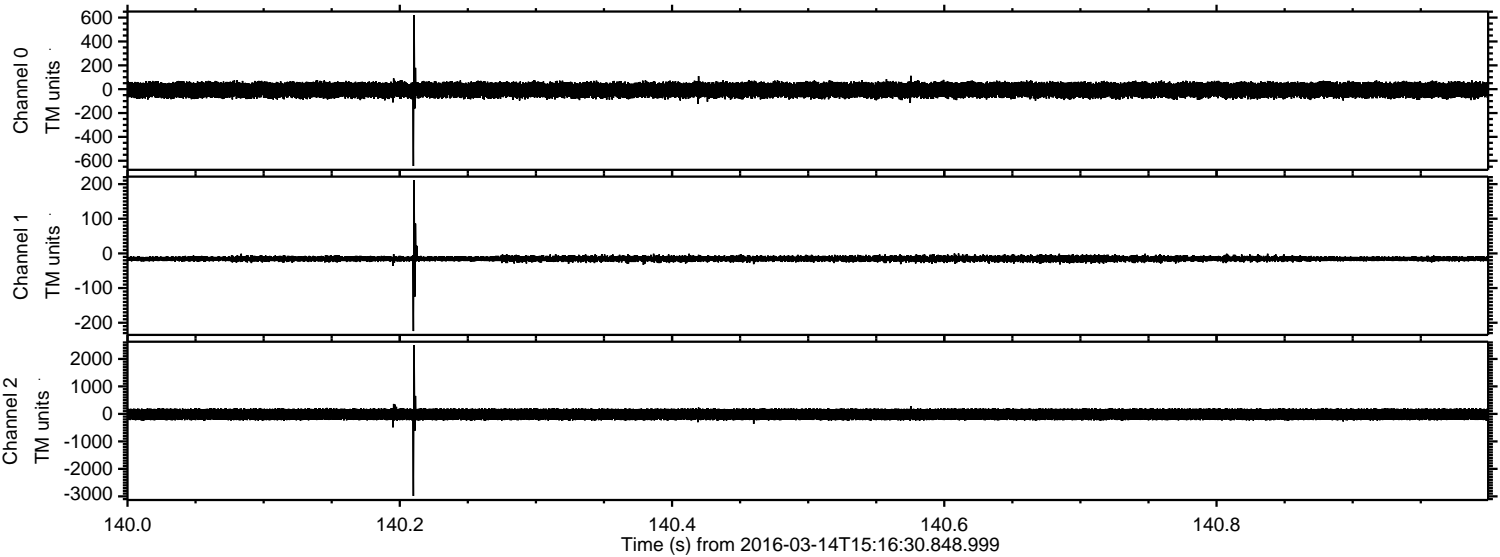


Processed Wed Apr 20 08:42:31 2016 by ELM ver.2012-10-06 from 001__elm20160314_151629__dat00.bin

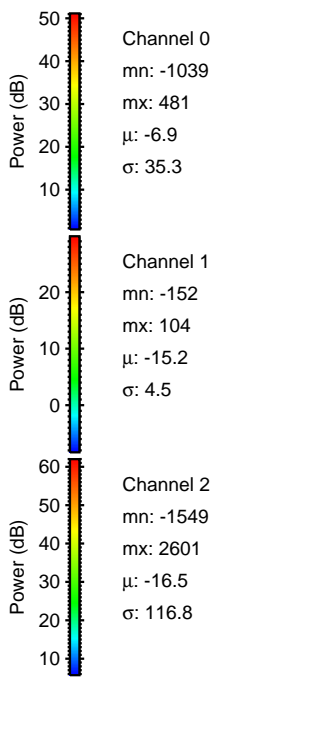
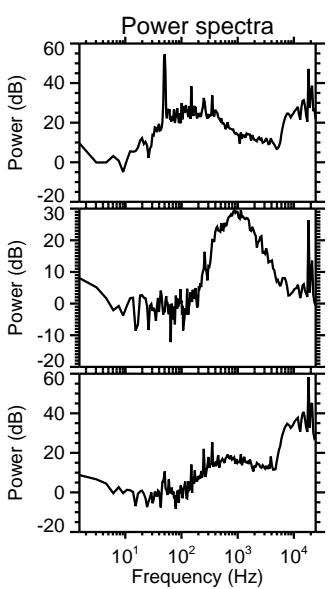
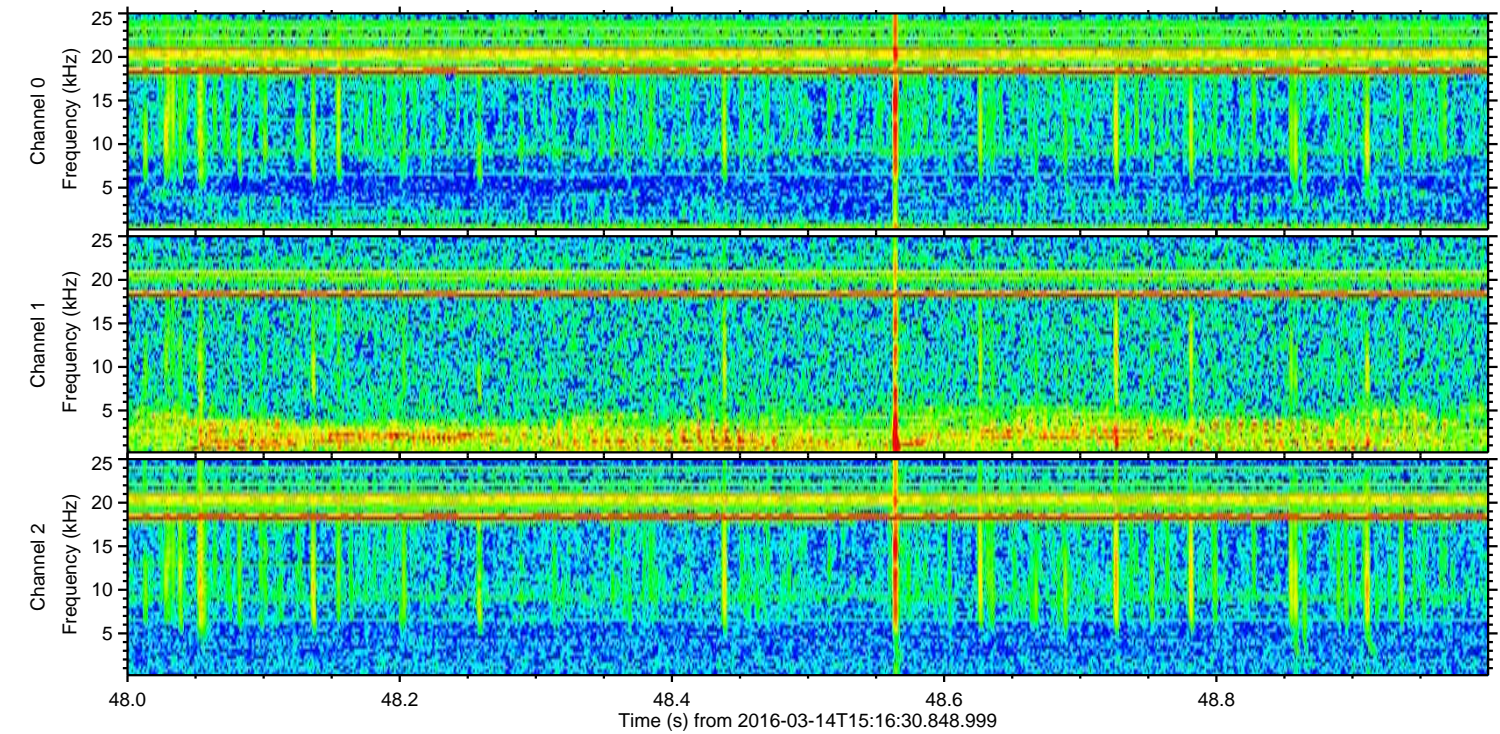
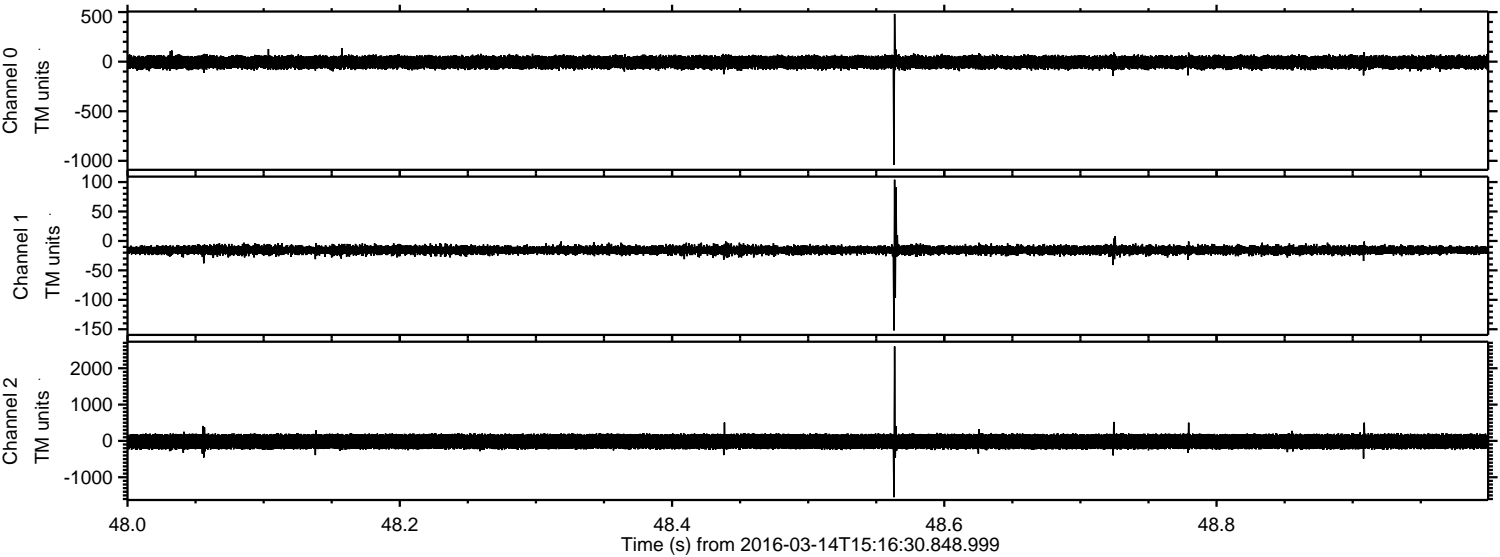


ELMAVAN 3D WAVEFORMS (Measured data sampled at 50 kHz) 51000 packets of 144 samples from 2016-03-14T15:16:30.848.999. Part 141/147

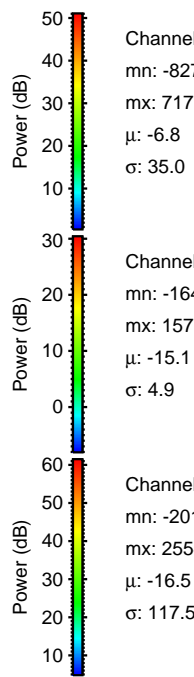
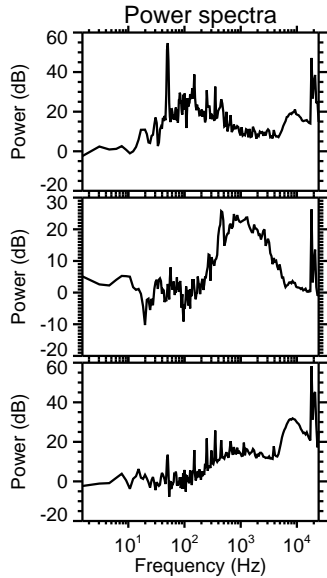
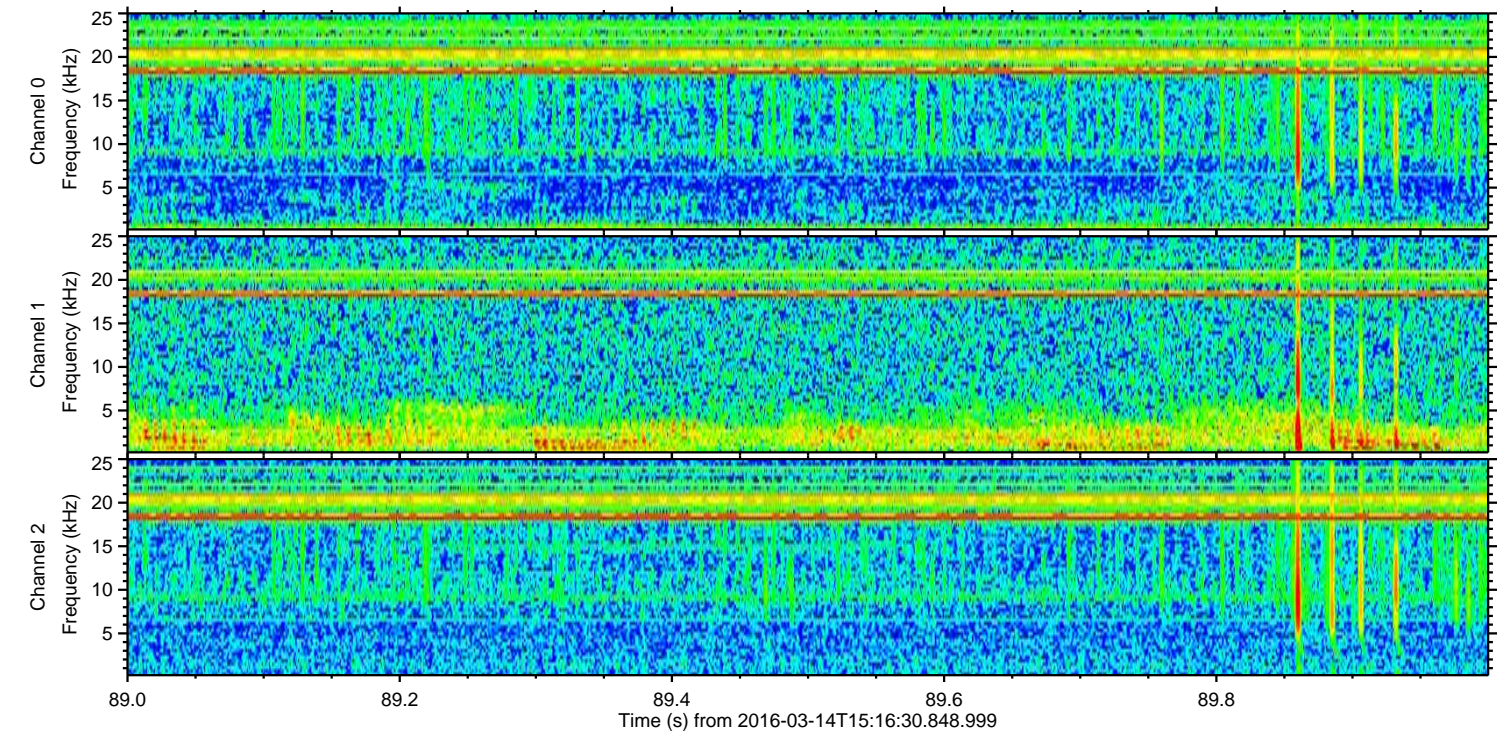
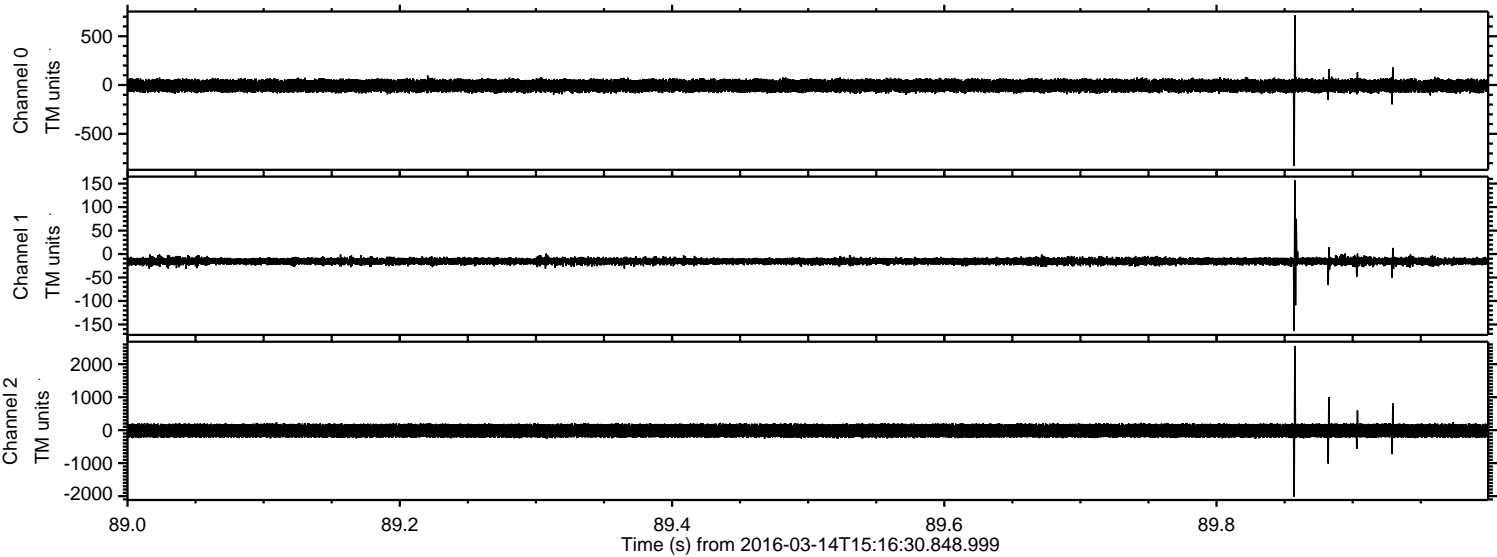
Processed Wed Apr 20 08:42:32 2016 by ELM ver.2012-10-06 from 001__elm20160314_151629__dat00.bin



Processed Wed Apr 20 08:42:33 2016 by ELM ver.2012-10-06 from 001__elm20160314_151629__dat00.bin



Processed Wed Apr 20 08:42:34 2016 by ELM ver.2012-10-06 from 001__elm20160314_151629__dat00.bin

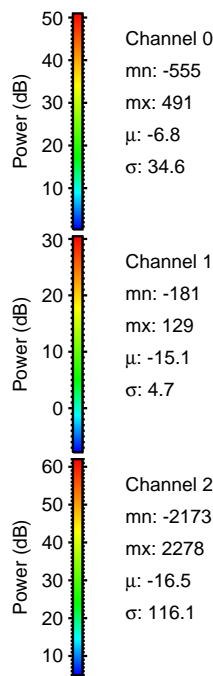
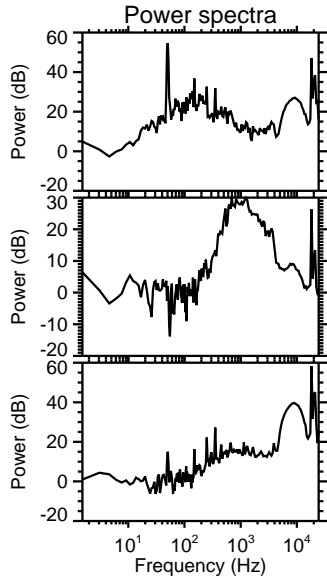
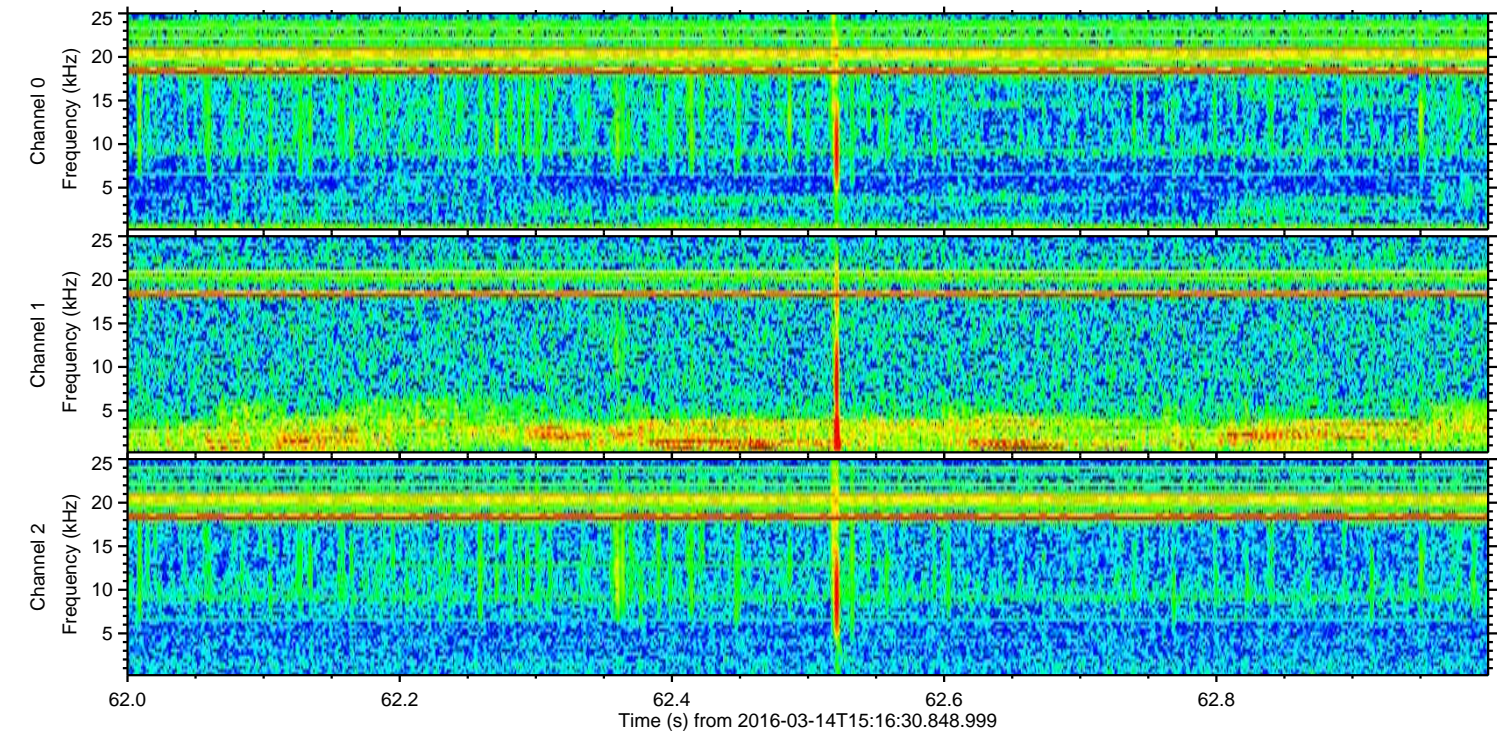
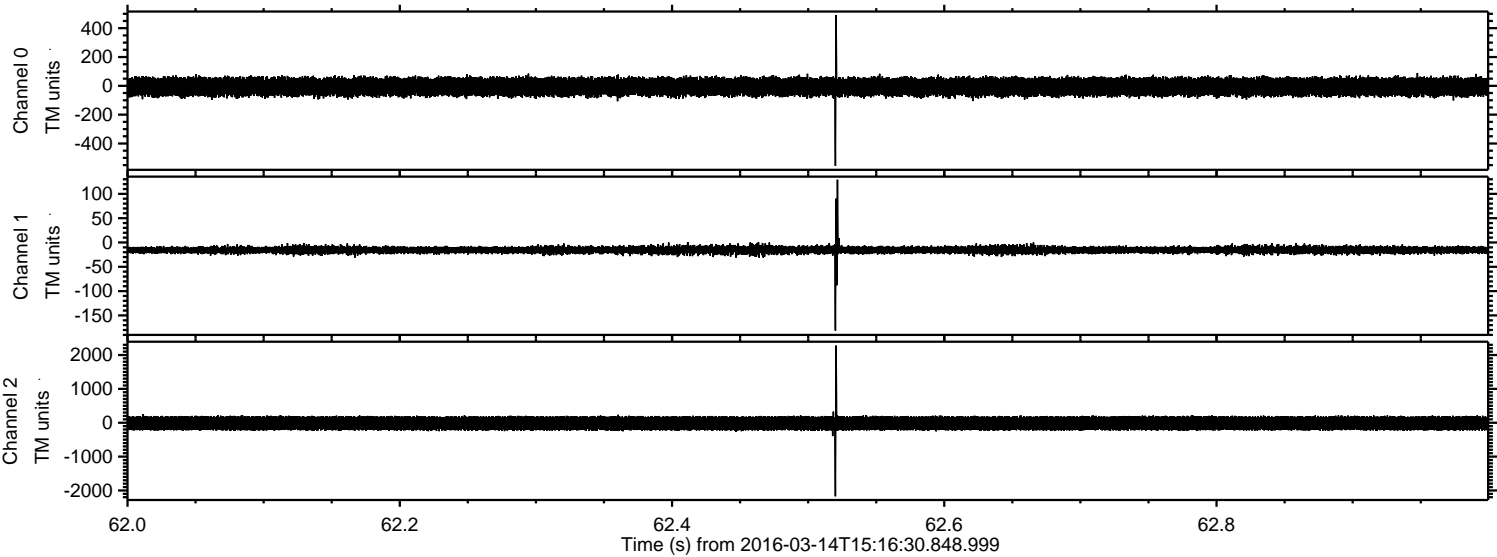


Channel 0
mn: -827
mx: 717
 μ : -6.8
 σ : 35.0

Channel 1
mn: -164
mx: 157
 μ : -15.1
 σ : 4.9

Channel 2
mn: -2017
mx: 2554
 μ : -16.5
 σ : 117.5

Processed Wed Apr 20 08:42:35 2016 by ELM ver.2012-10-06 from 001__elm20160314_151629__dat00.bin

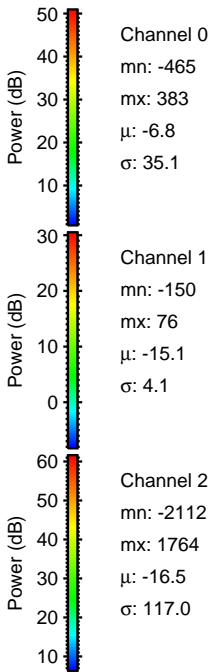
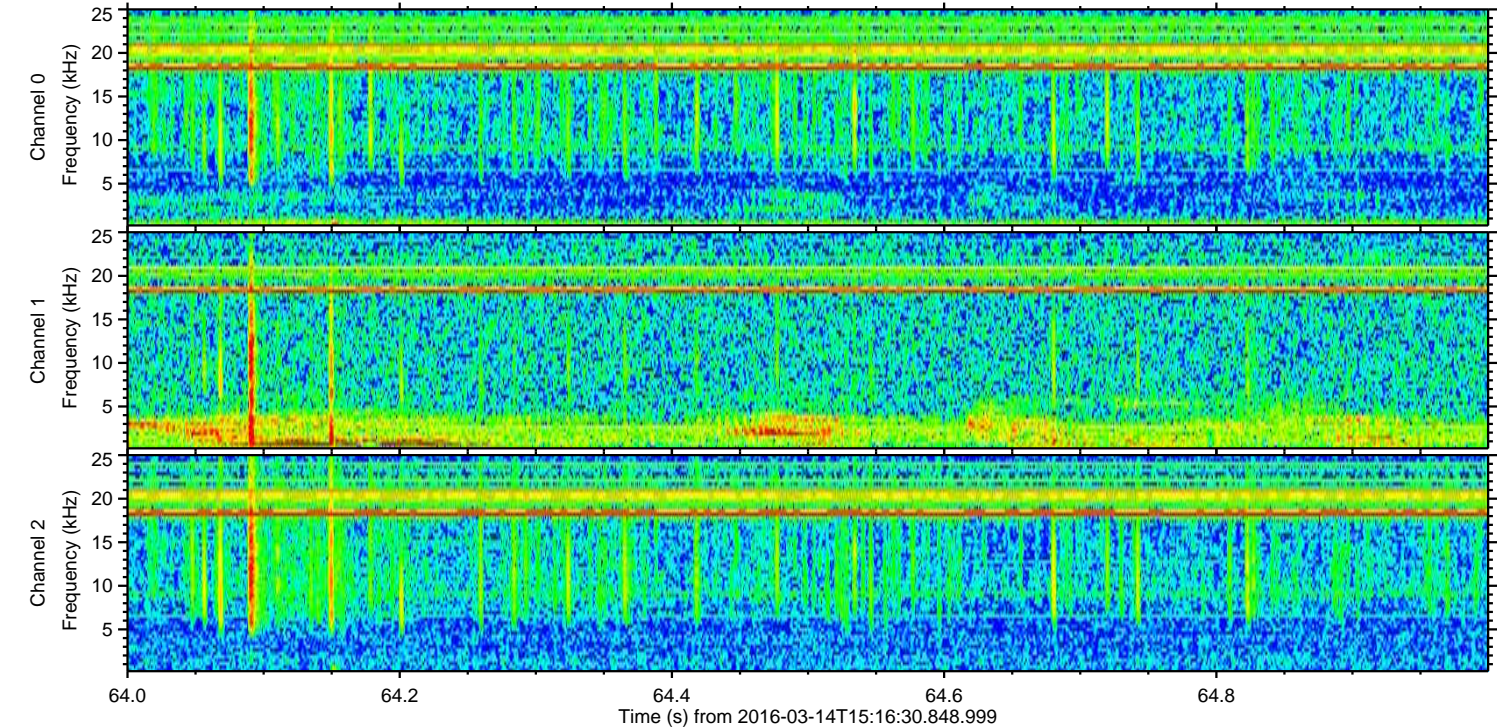
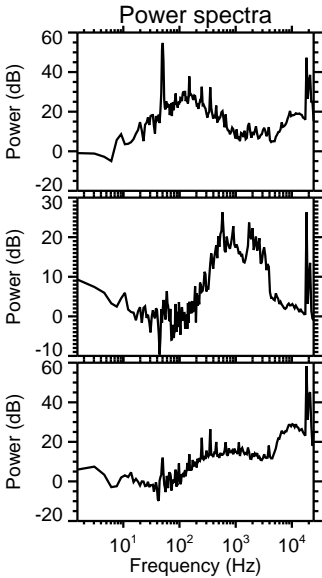
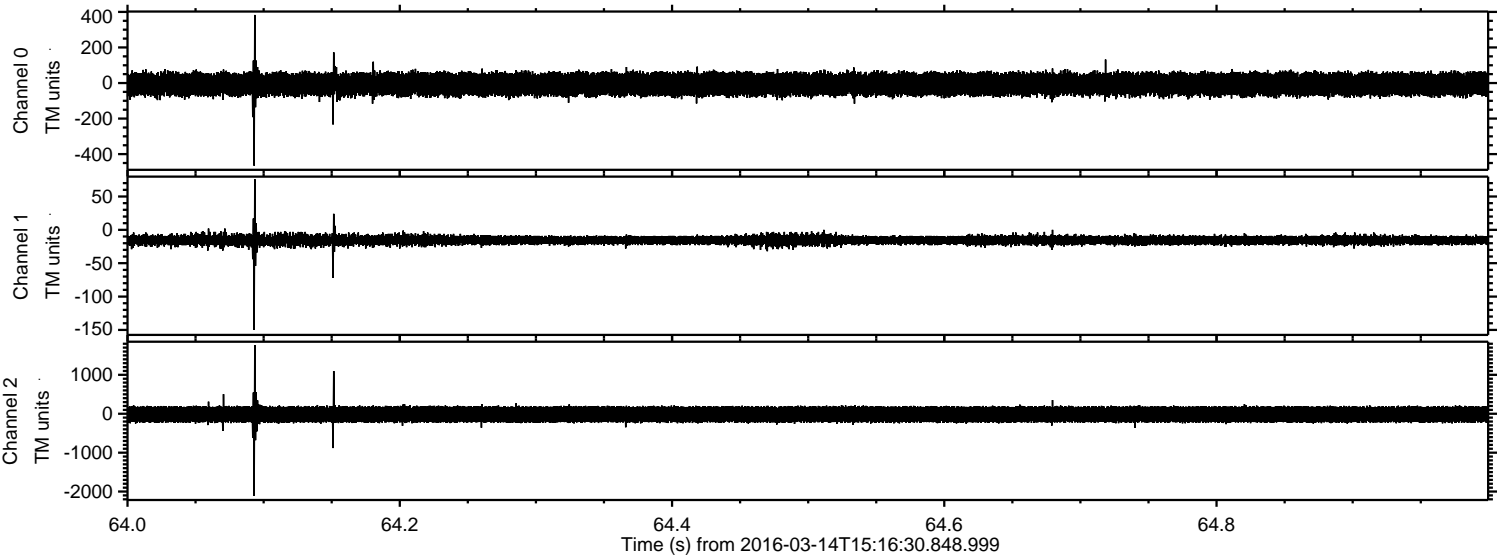


Channel 0
mn: -555
mx: 491
 μ : -6.8
 σ : 34.6

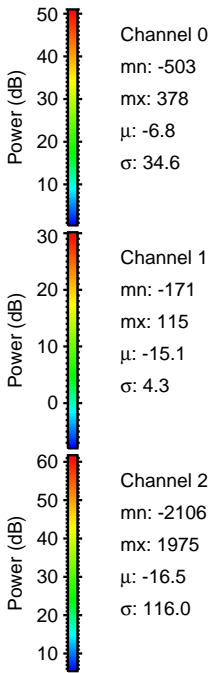
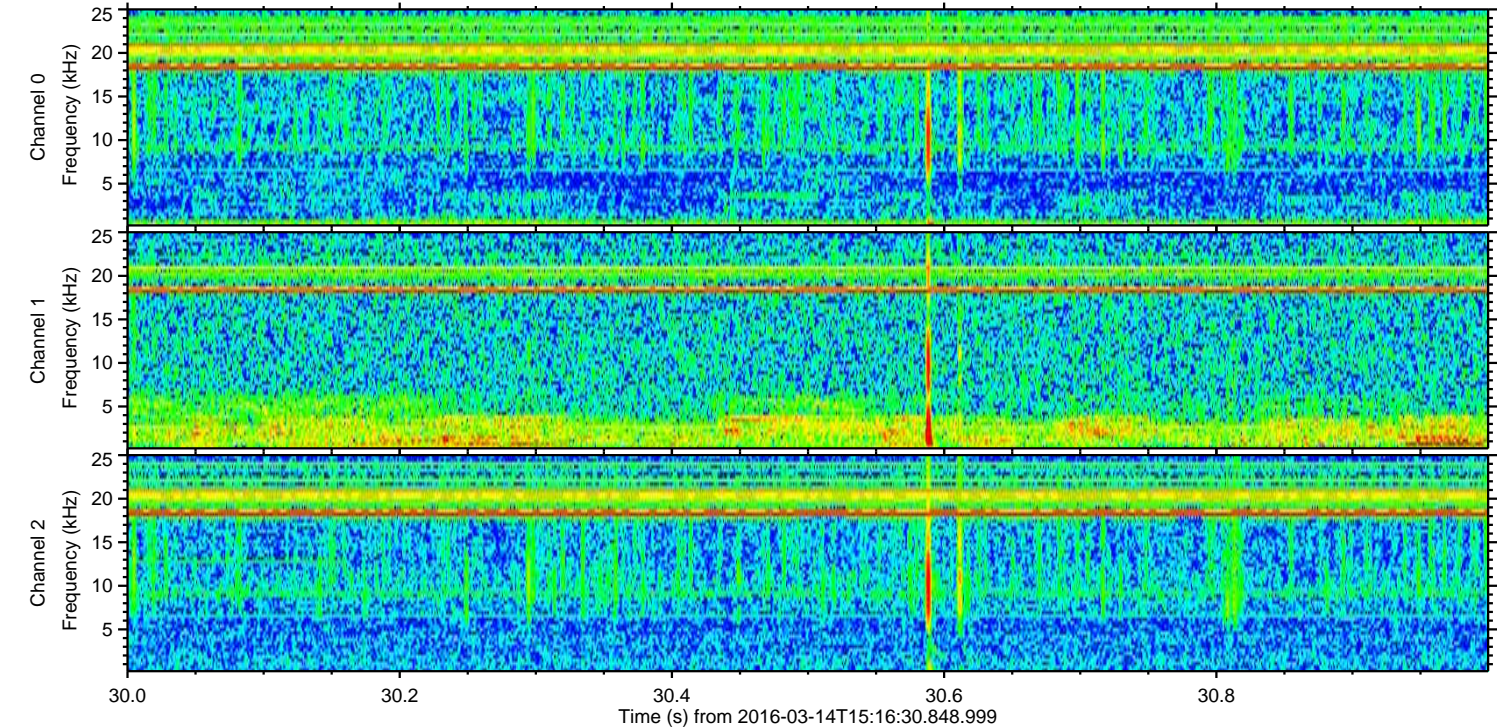
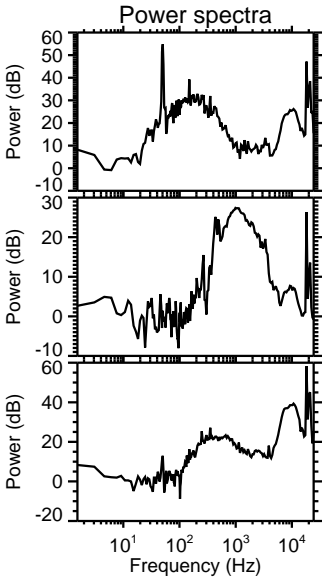
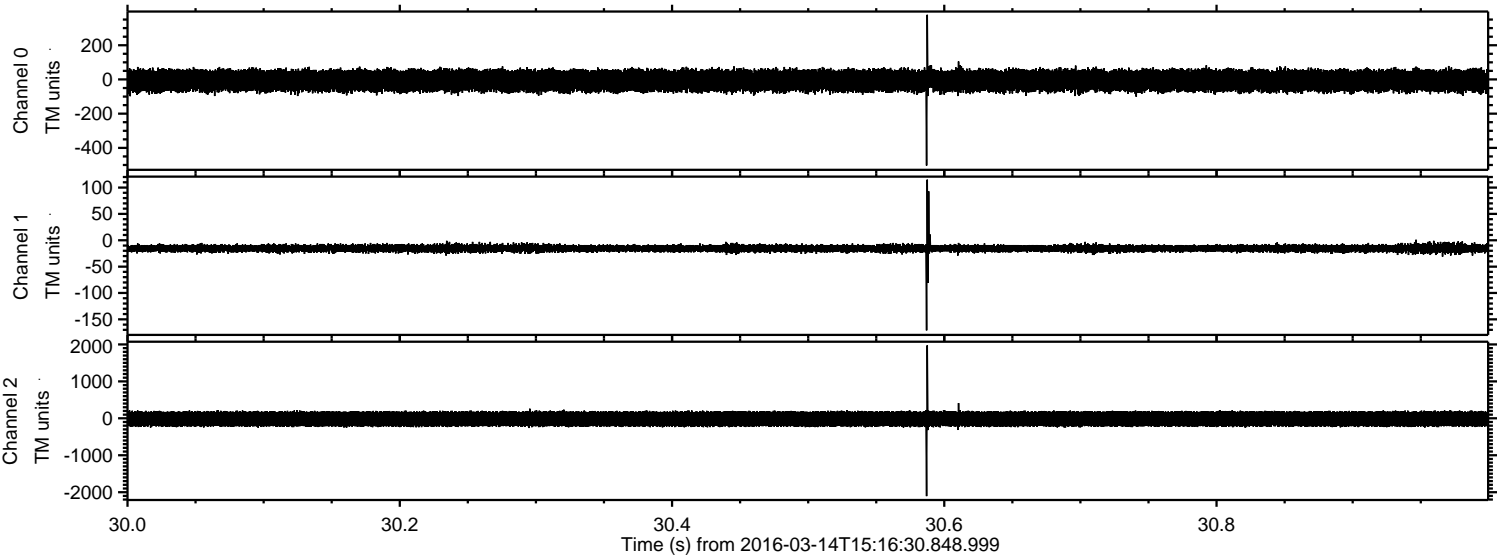
Channel 1
mn: -181
mx: 129
 μ : -15.1
 σ : 4.7

Channel 2
mn: -2173
mx: 2278
 μ : -16.5
 σ : 116.1

Processed Wed Apr 20 08:42:36 2016 by ELM ver.2012-10-06 from 001__elm20160314_151629__dat00.bin



Processed Wed Apr 20 08:42:37 2016 by ELM ver.2012-10-06 from 001__elm20160314_151629__dat00.bin



Processed Wed Apr 20 08:42:38 2016 by ELM ver.2012-10-06 from 001__elm20160314_151629__dat00.bin

