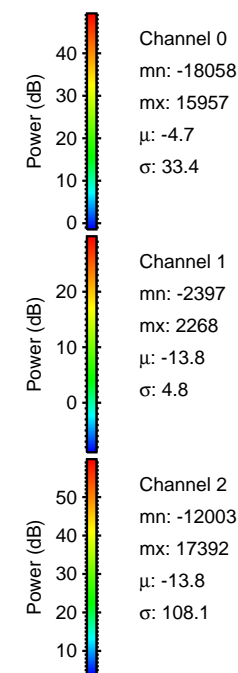
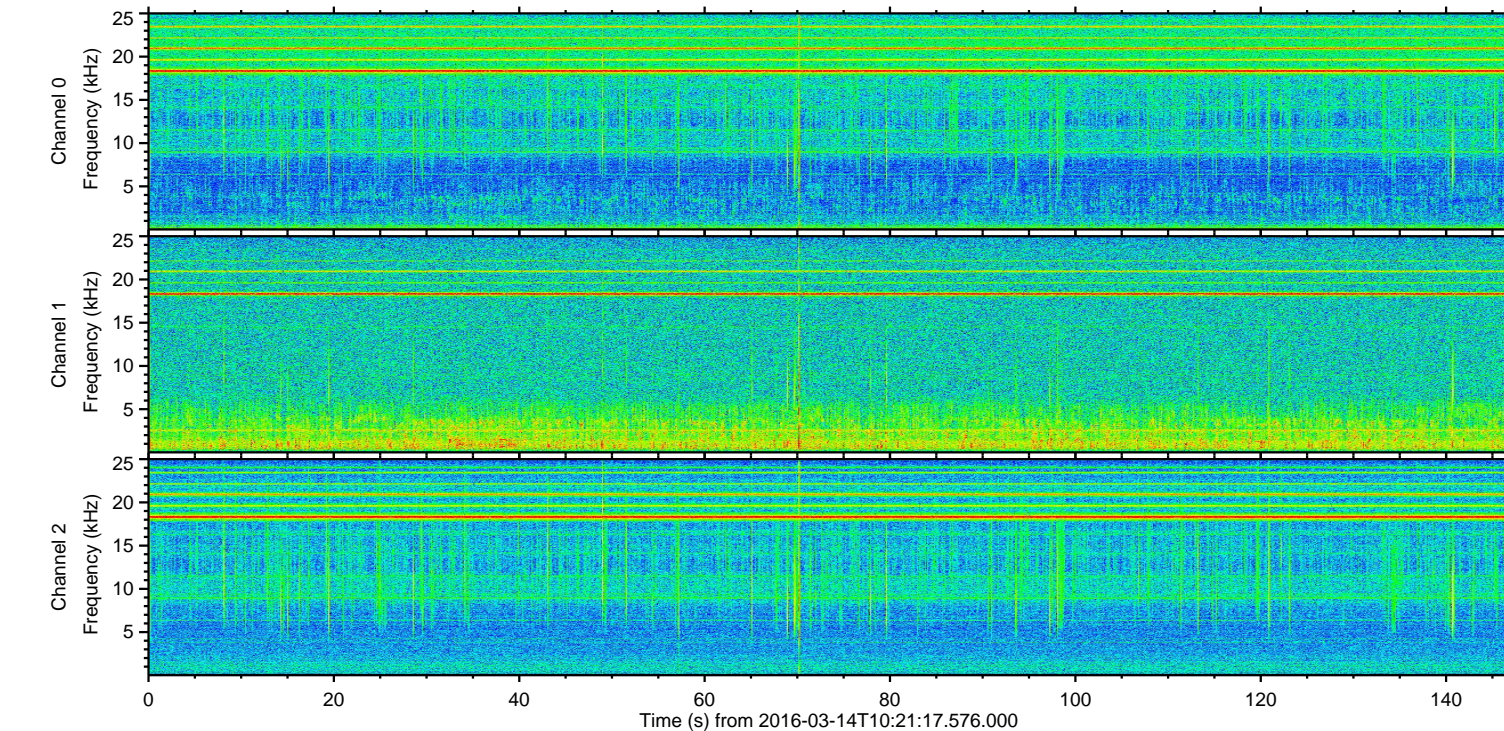
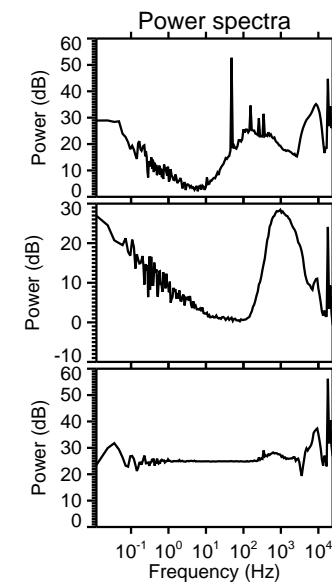
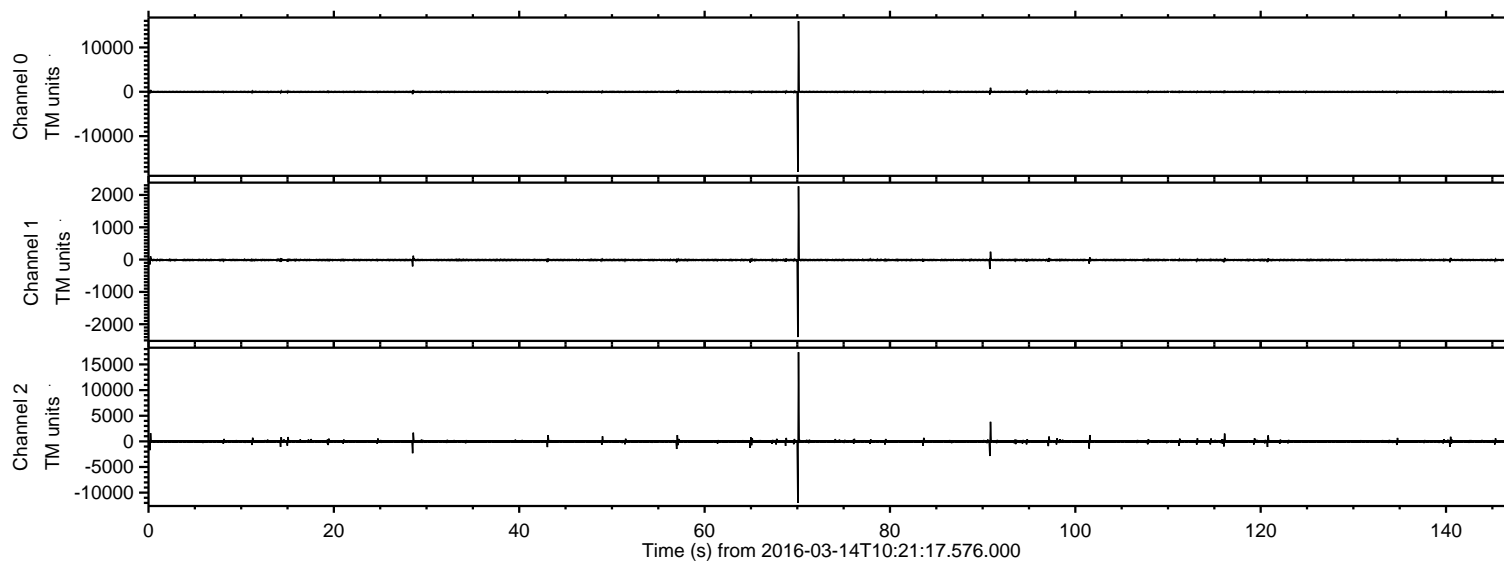


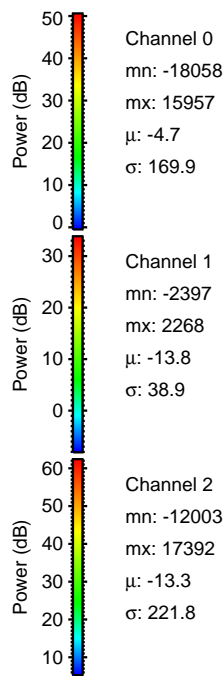
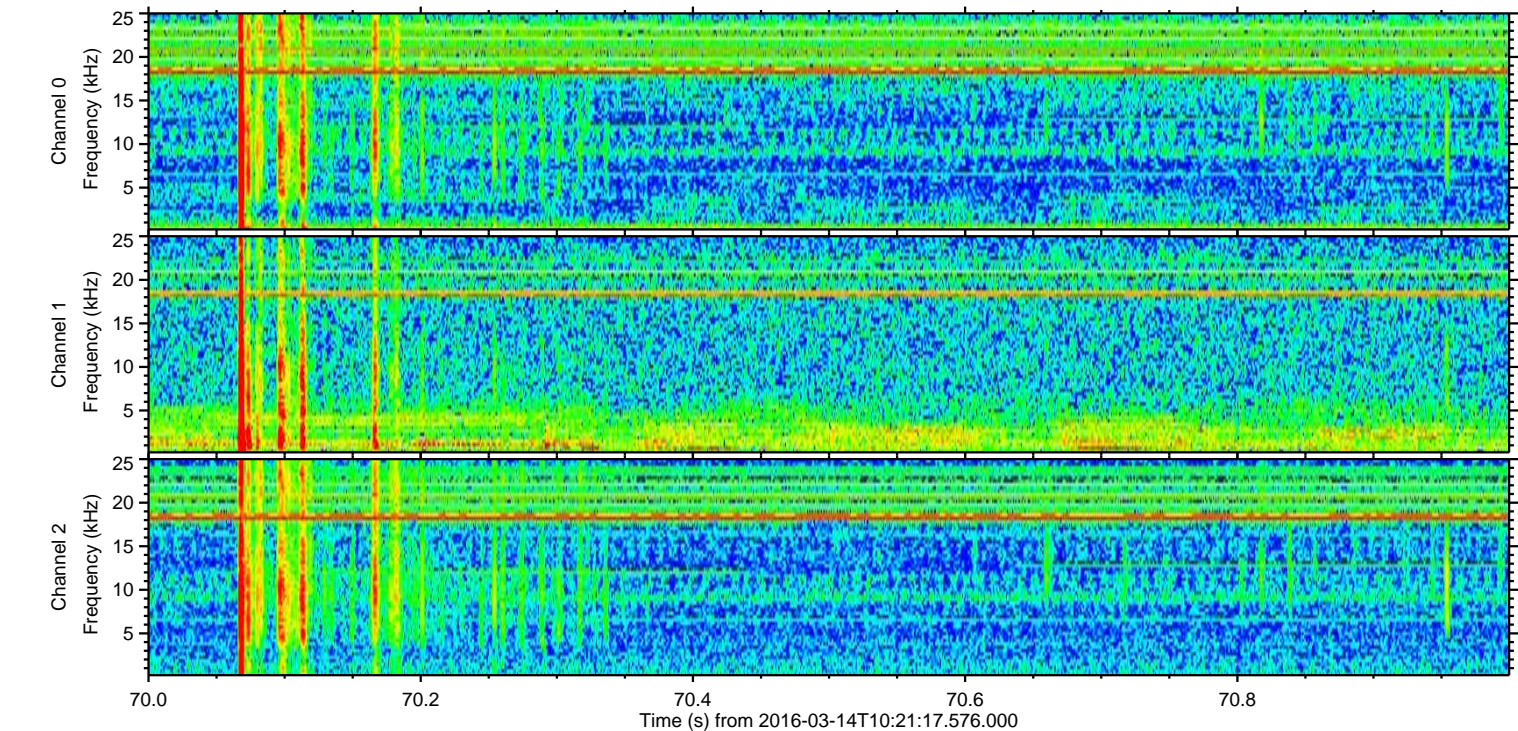
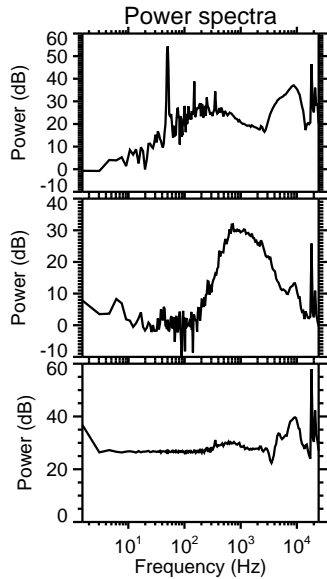
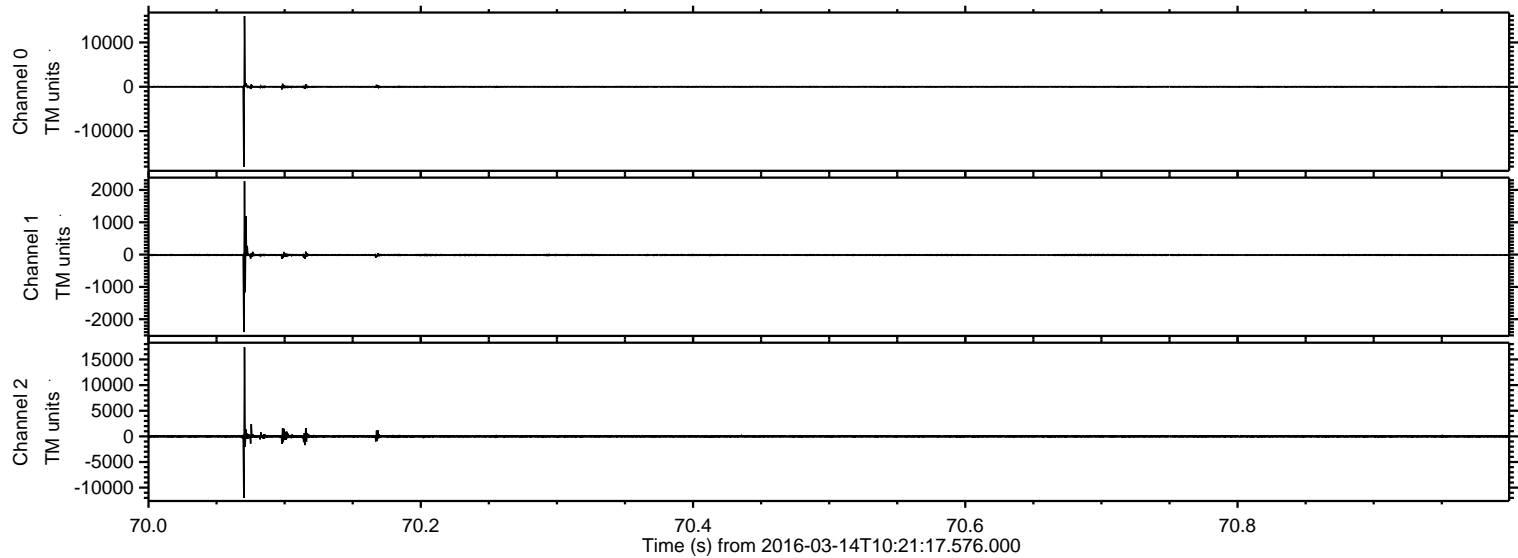
# ELMAVAN 3D WAVEFORMS (Measured data sampled at 50 kHz) 51000 packets of 144 samples from 2016-03-14T10:21:17.576.000.

Processed Wed Apr 20 07:41:33 2016 by ELM ver.2012-10-06 from 001\_\_elm20160314\_102116\_\_dat00.bin



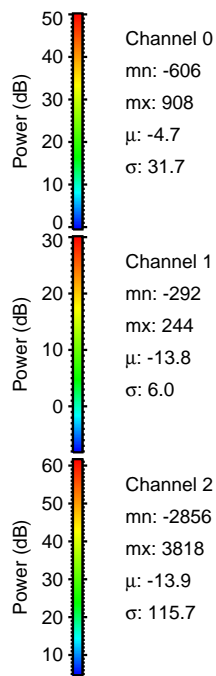
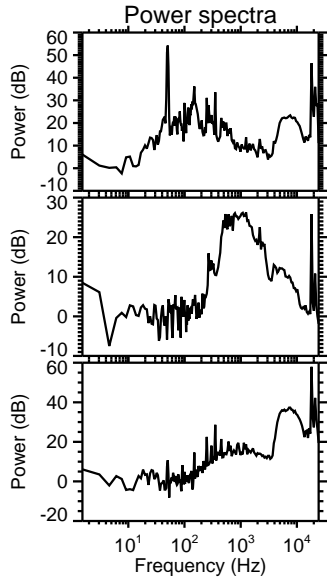
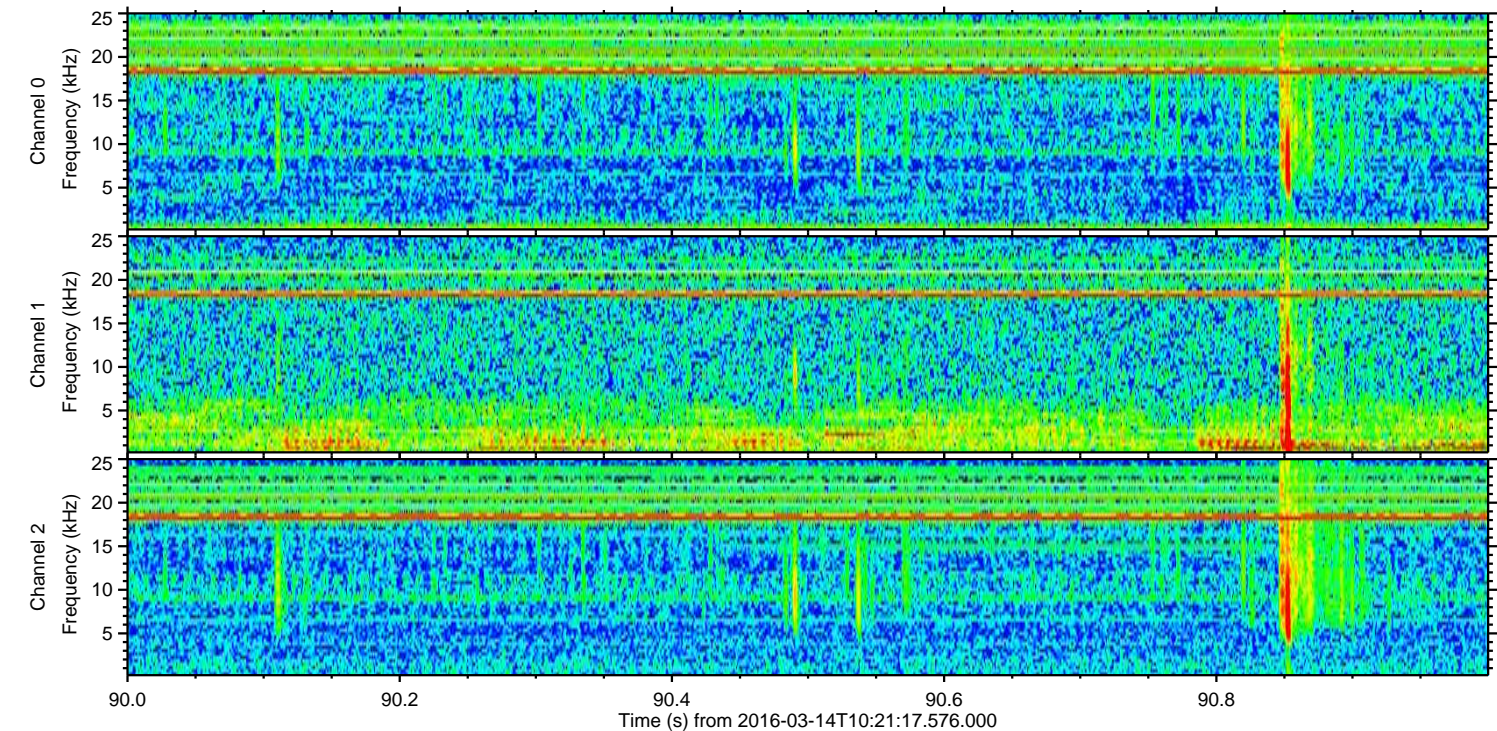
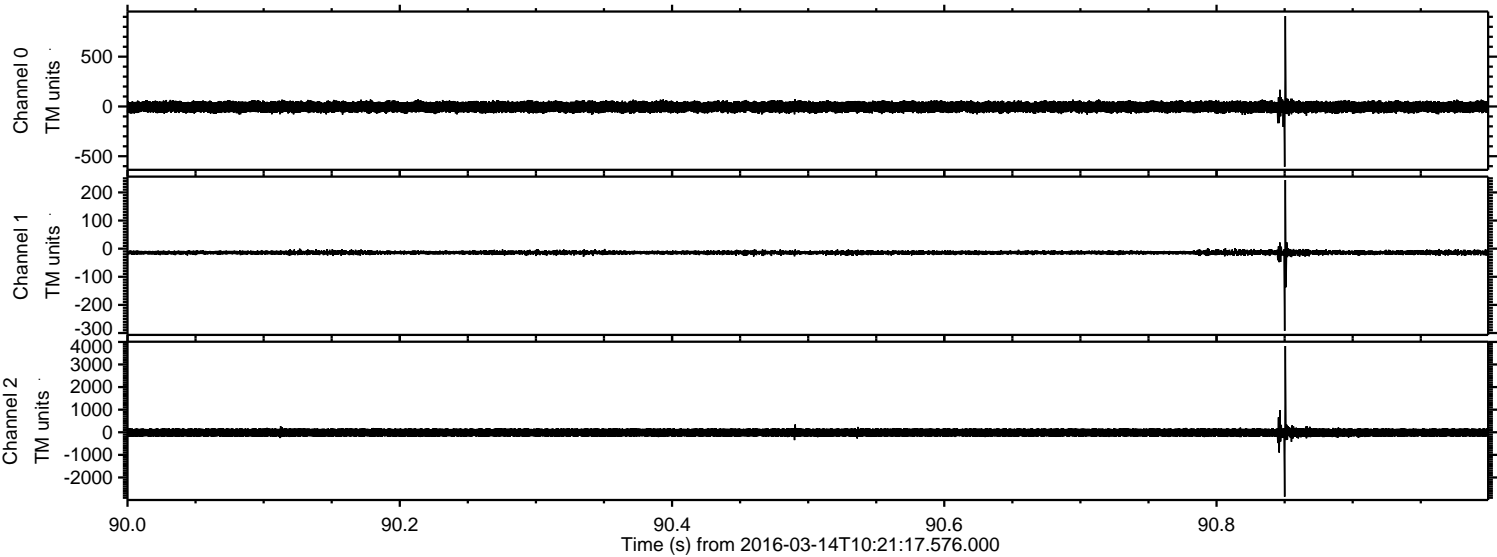


Processed Wed Apr 20 07:41:45 2016 by ELM ver.2012-10-06 from 001\_\_elm20160314\_102116\_\_dat00.bin



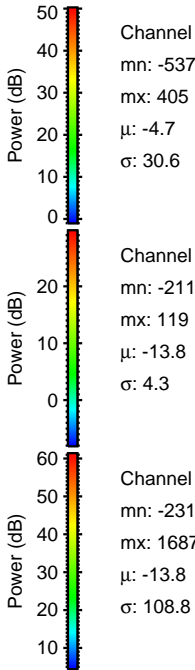
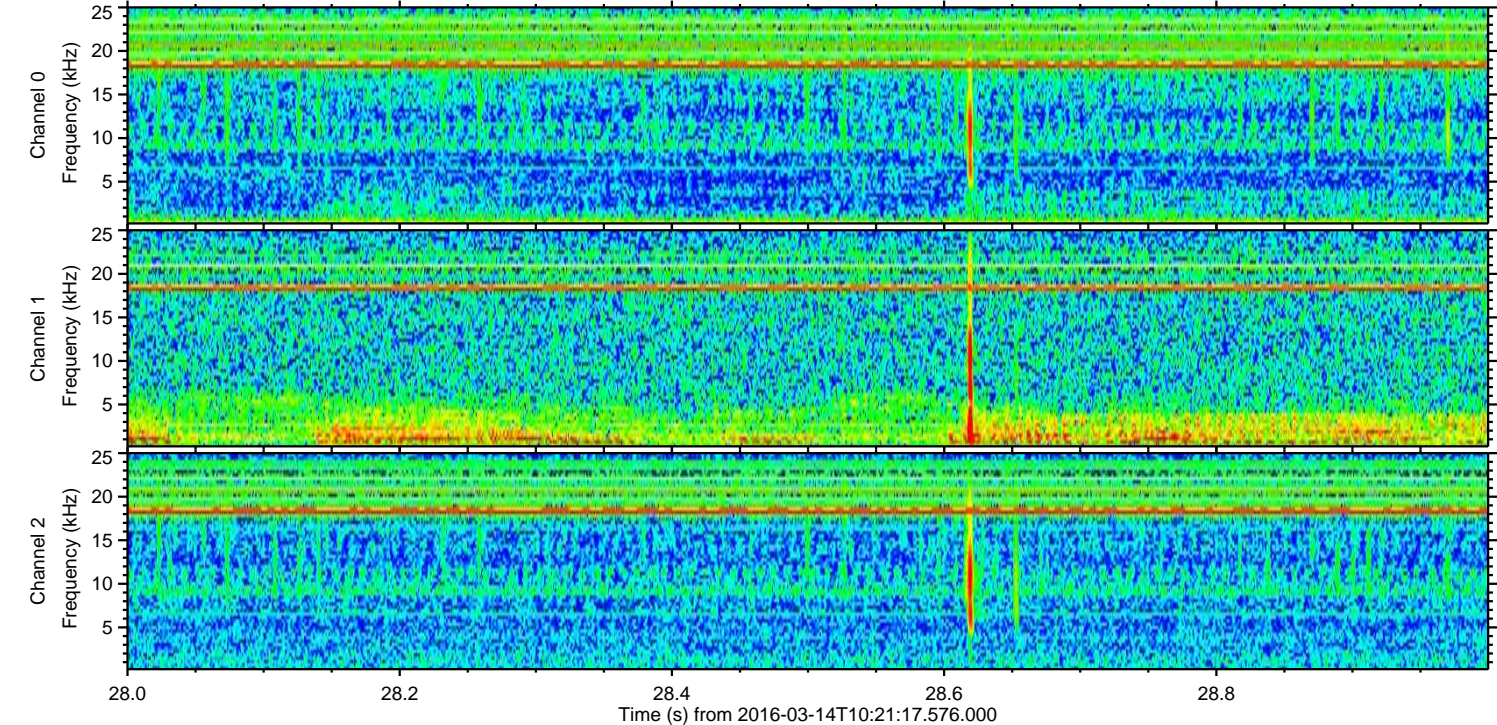
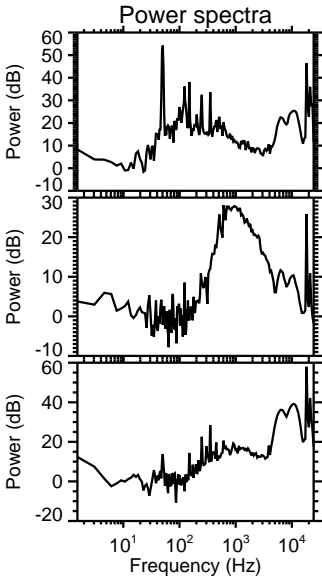
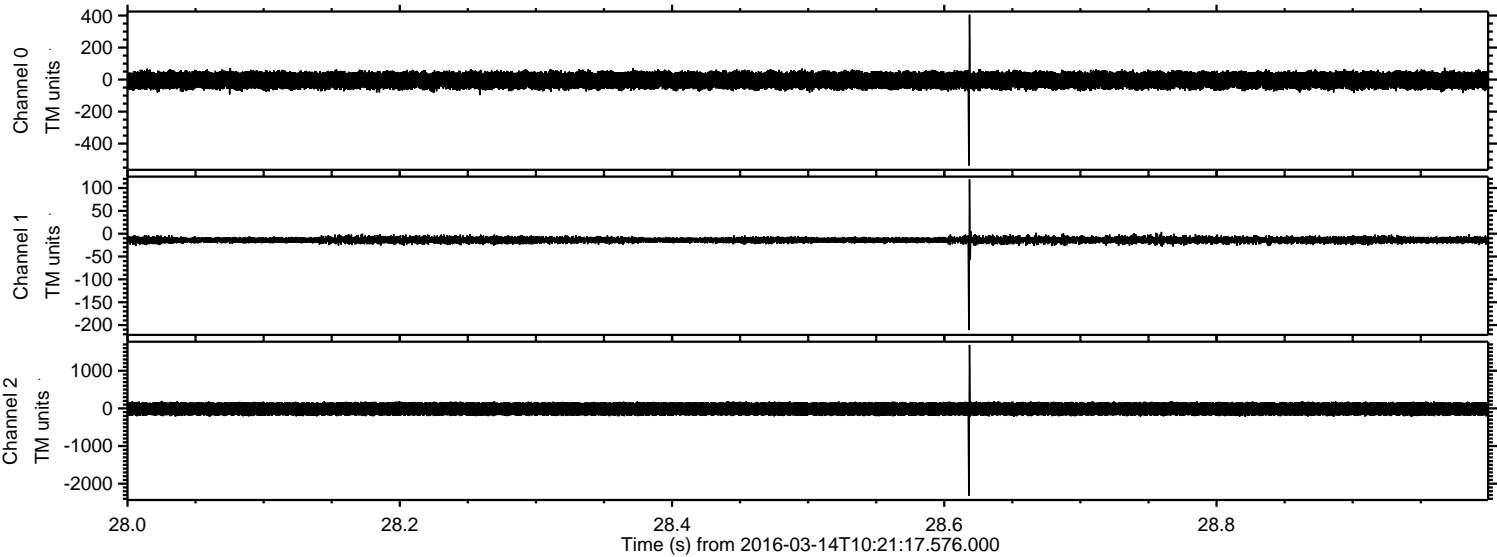


Processed Wed Apr 20 07:41:46 2016 by ELM ver.2012-10-06 from 001\_\_elm20160314\_102116\_\_dat00.bin





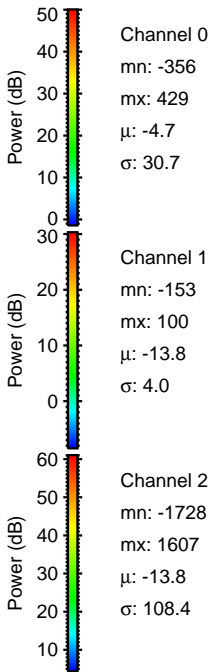
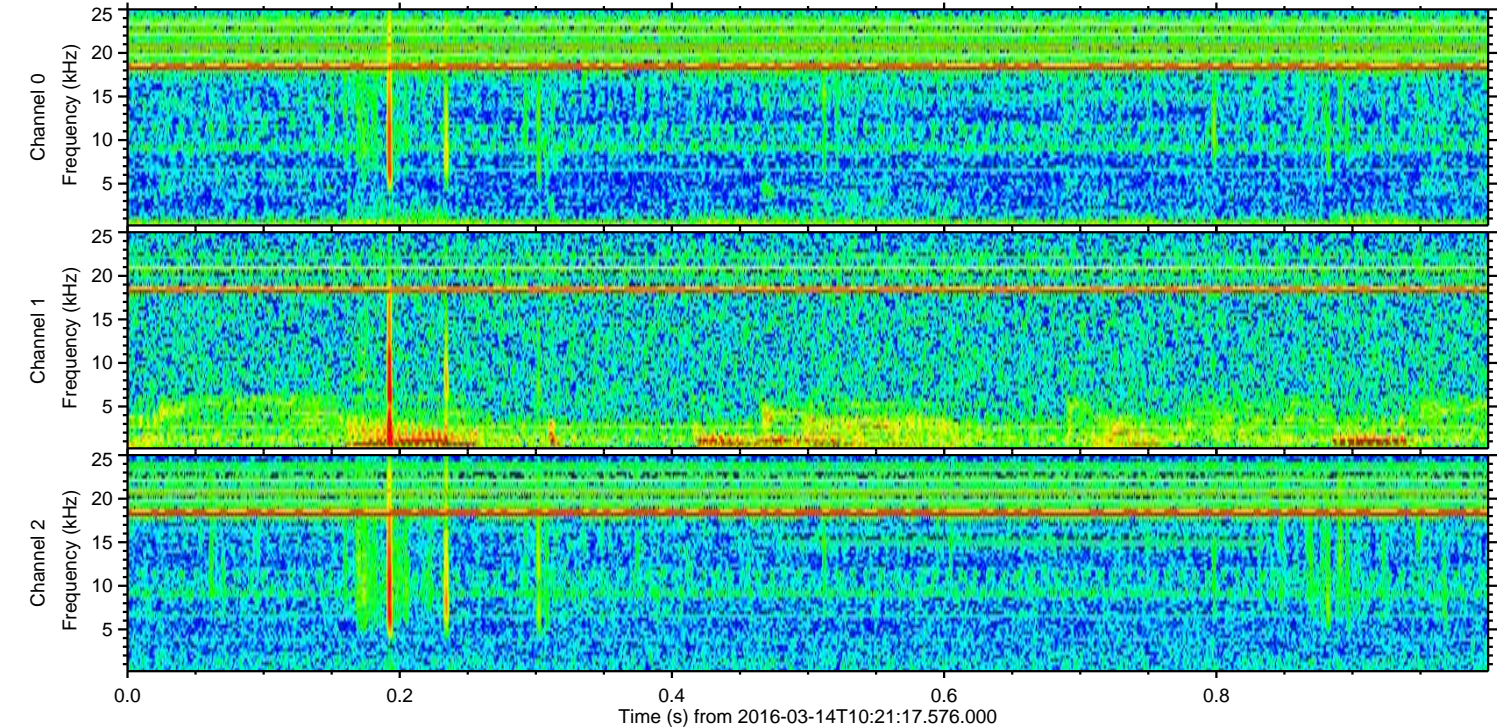
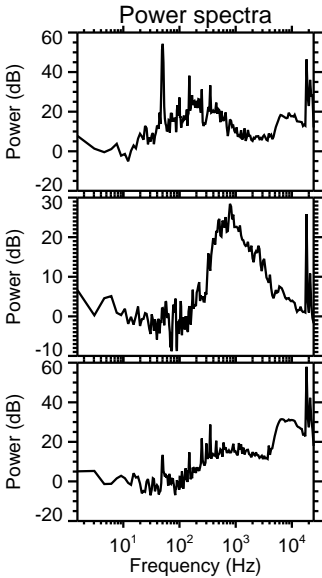
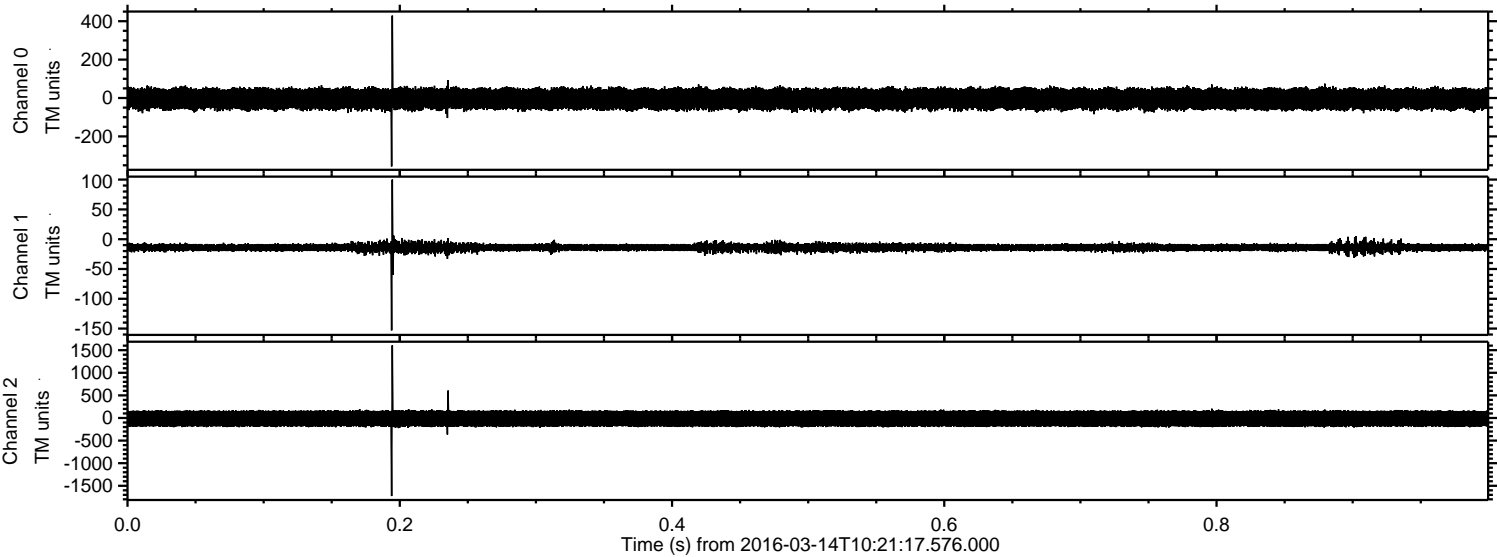
Processed Wed Apr 20 07:41:47 2016 by ELM ver.2012-10-06 from 001\_\_elm20160314\_102116\_\_dat00.bin





ELMAVAN 3D WAVEFORMS (Measured data sampled at 50 kHz) 51000 packets of 144 samples from 2016-03-14T10:21:17.576.000. Part 1/147

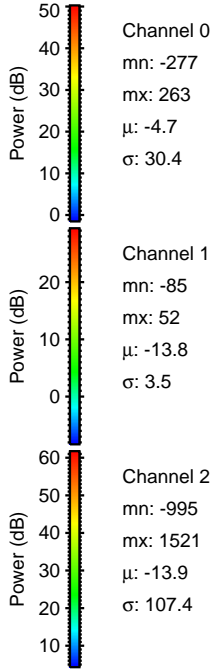
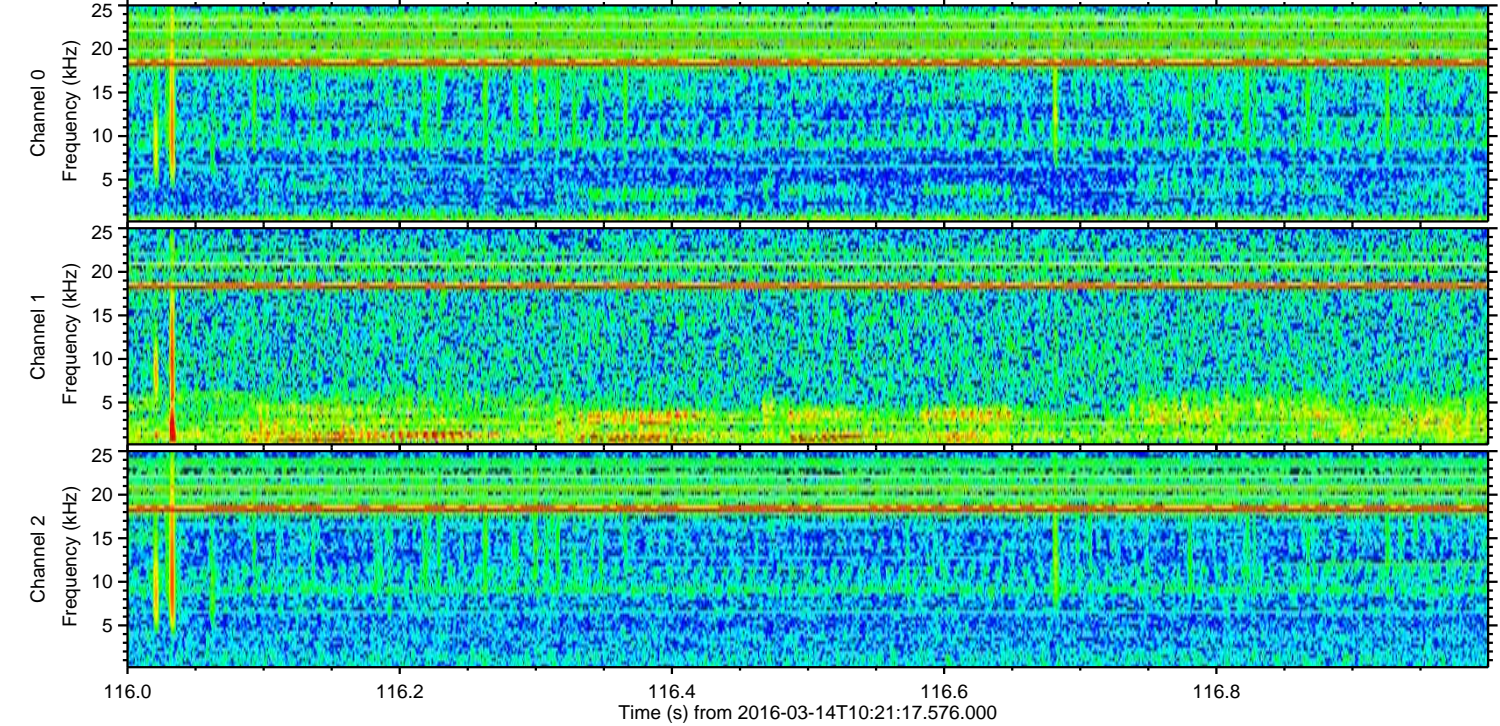
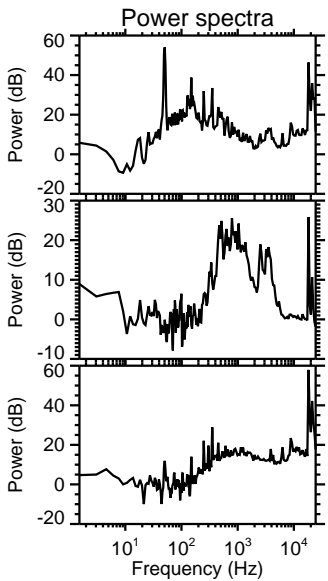
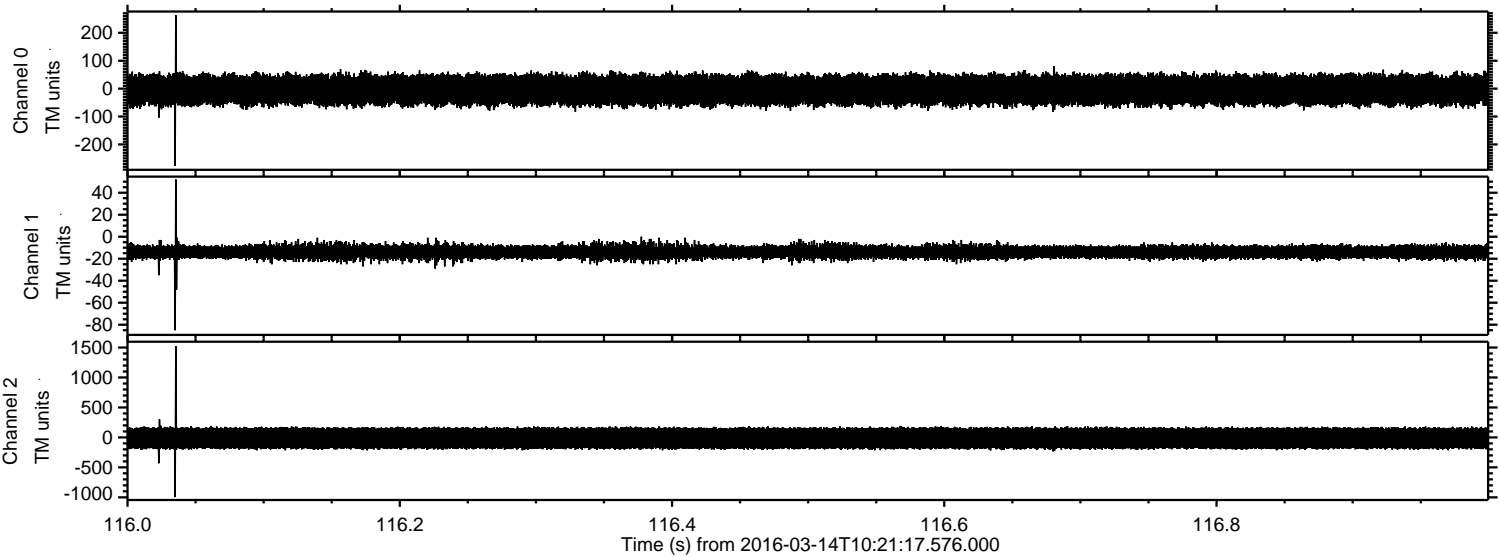
Processed Wed Apr 20 07:41:48 2016 by ELM ver.2012-10-06 from 001\_\_elm20160314\_102116\_\_dat00.bin





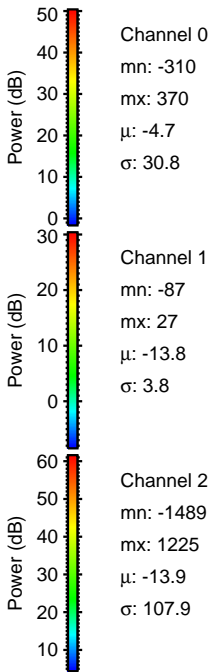
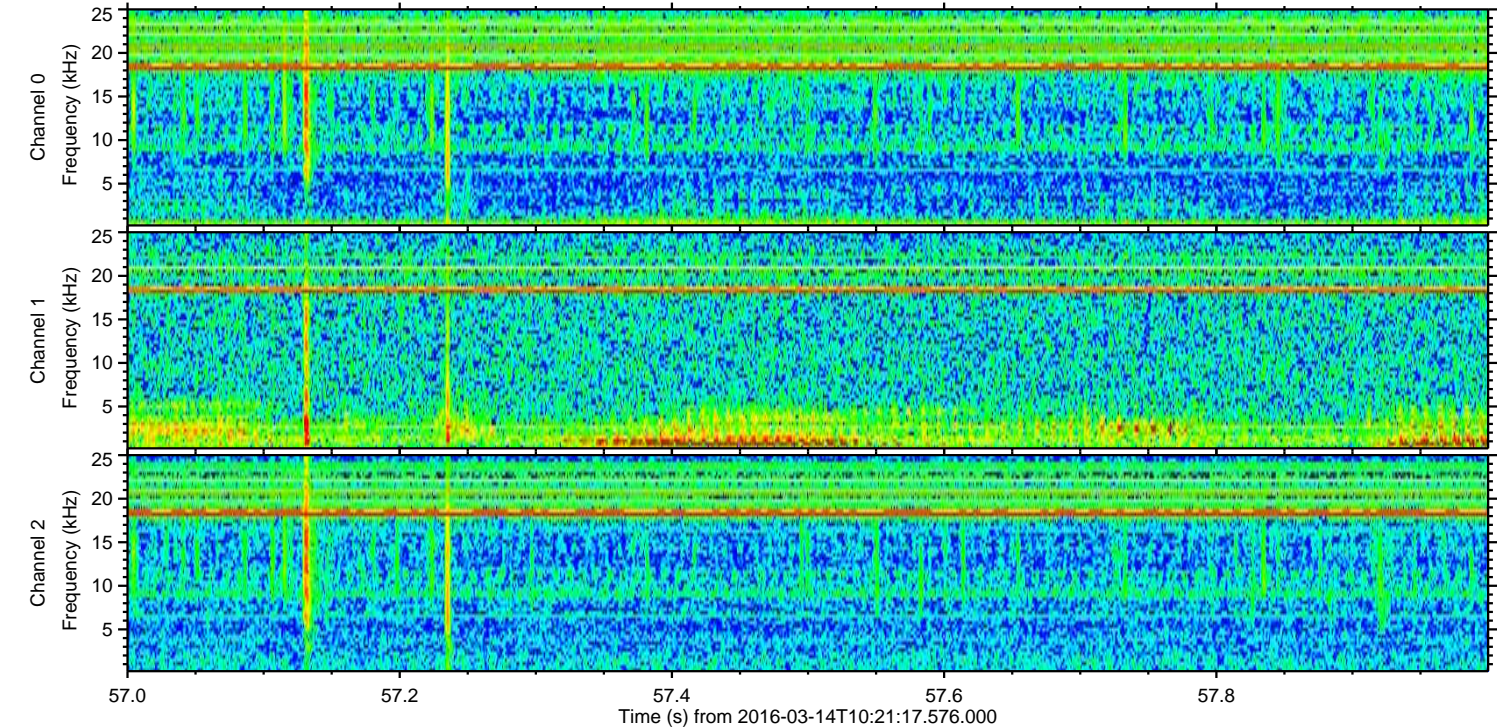
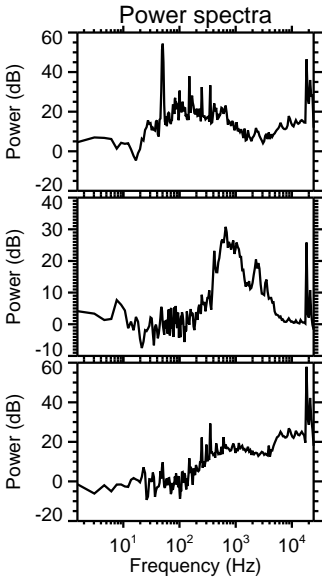
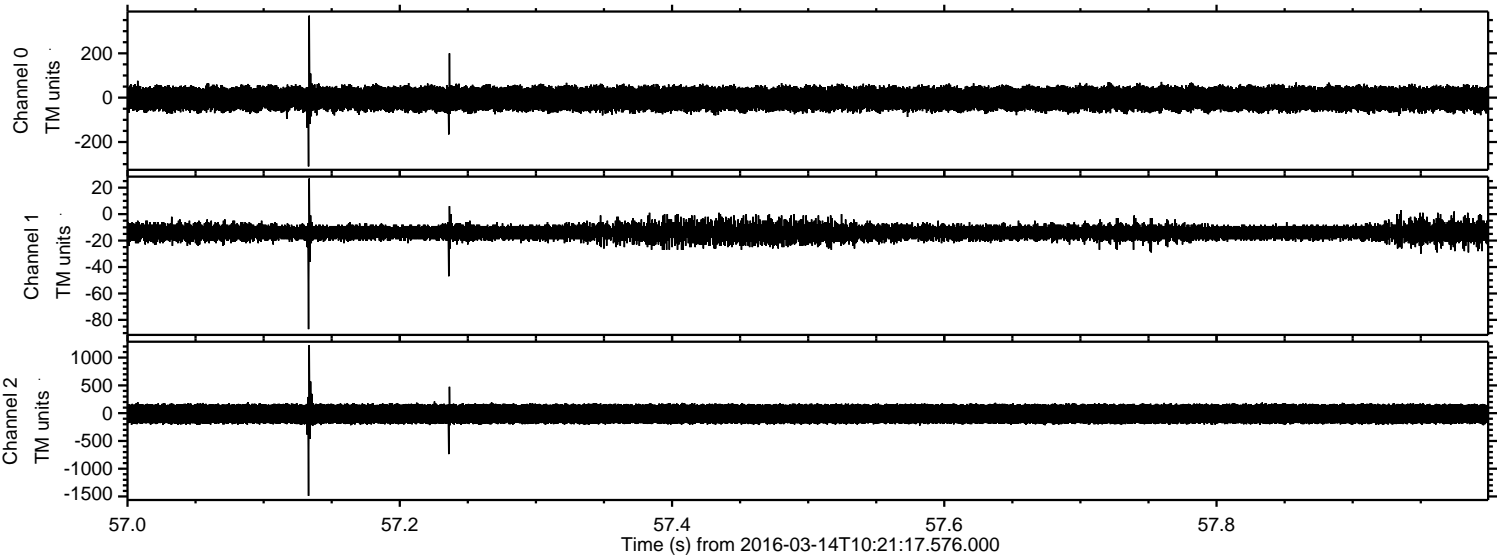
ELMAVAN 3D WAVEFORMS (Measured data sampled at 50 kHz) 51000 packets of 144 samples from 2016-03-14T10:21:17.576.000. Part 117/147

Processed Wed Apr 20 07:41:48 2016 by ELM ver.2012-10-06 from 001\_\_elm20160314\_102116\_\_dat00.bin





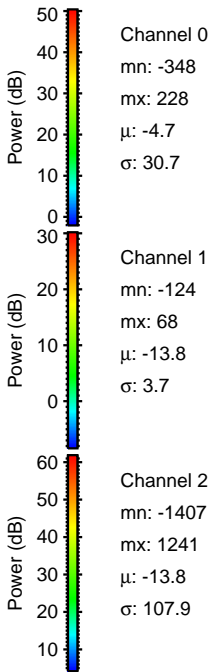
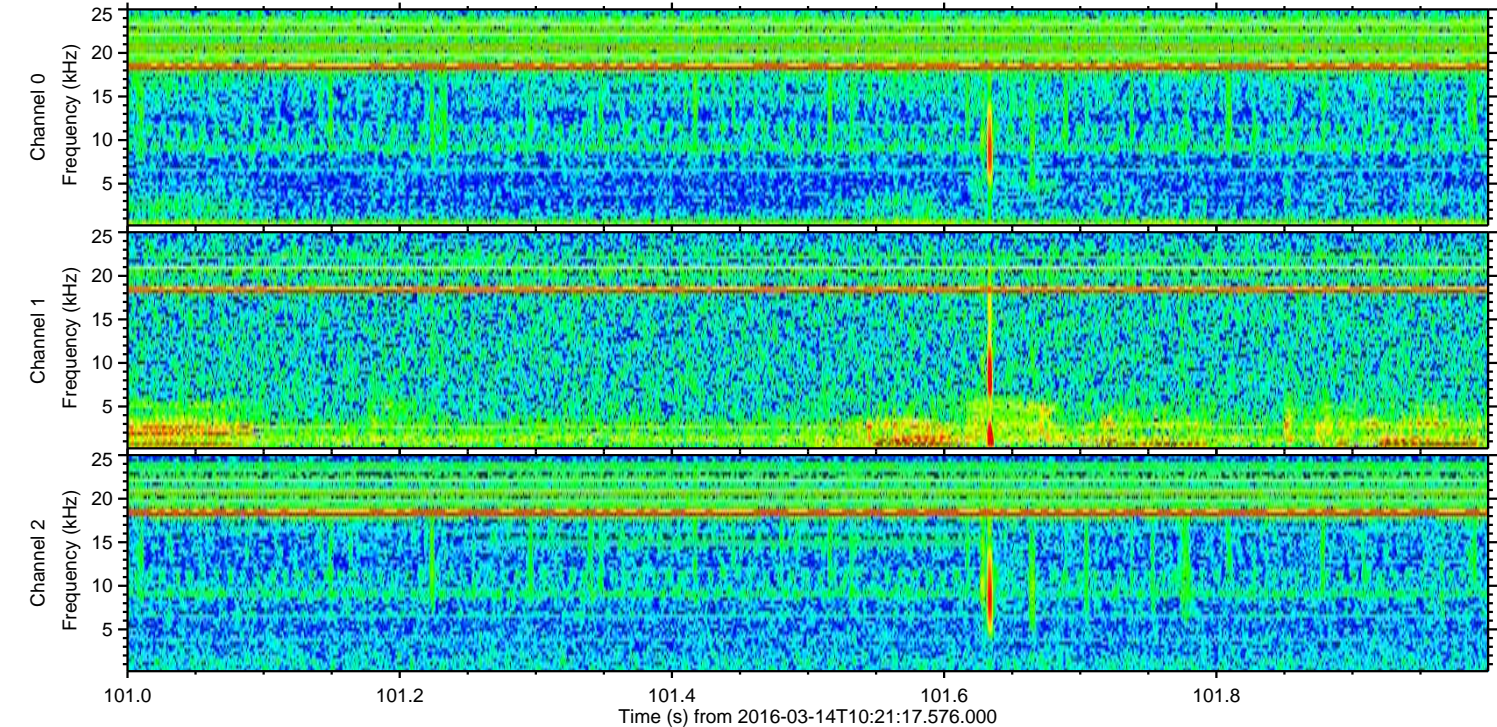
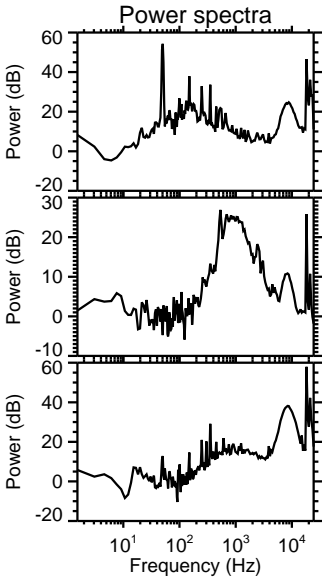
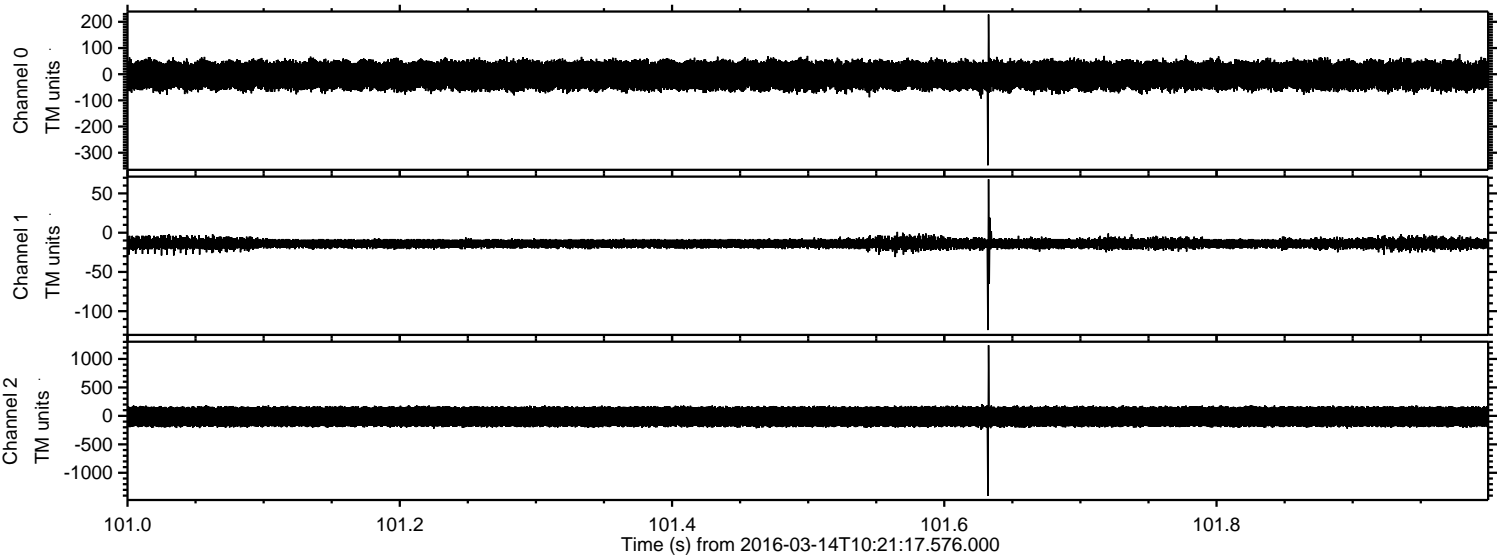
Processed Wed Apr 20 07:41:49 2016 by ELM ver.2012-10-06 from 001\_\_elm20160314\_102116\_\_dat00.bin





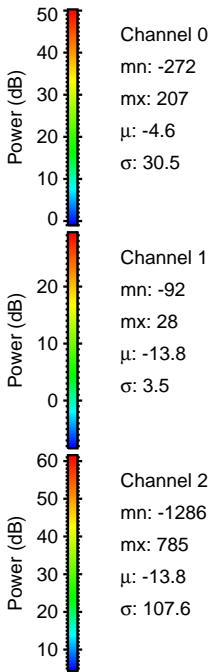
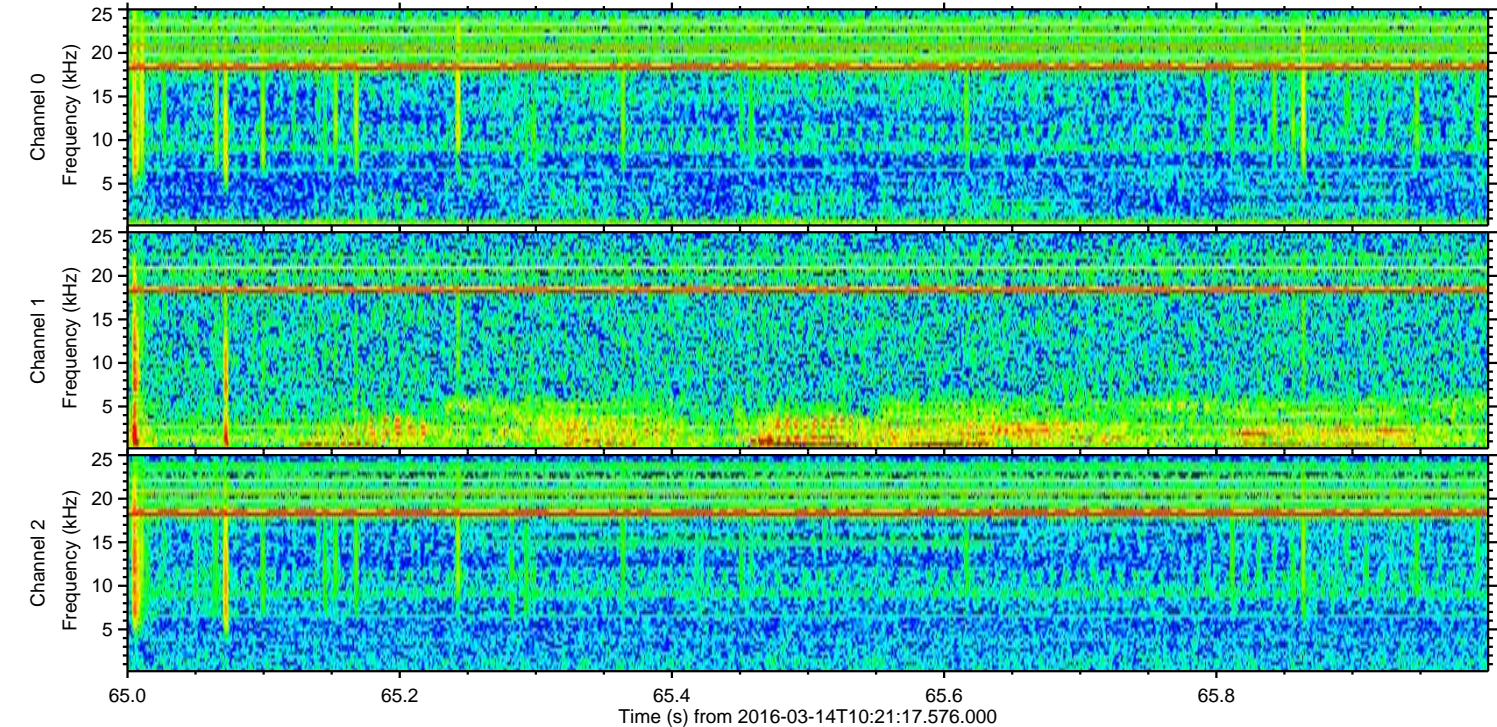
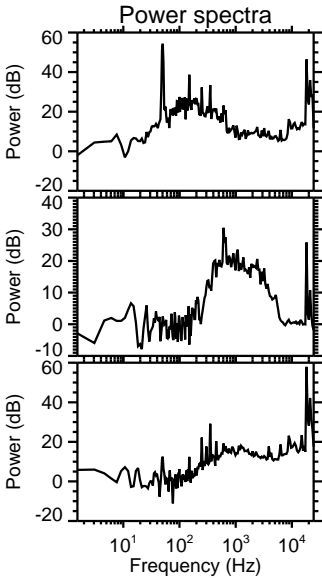
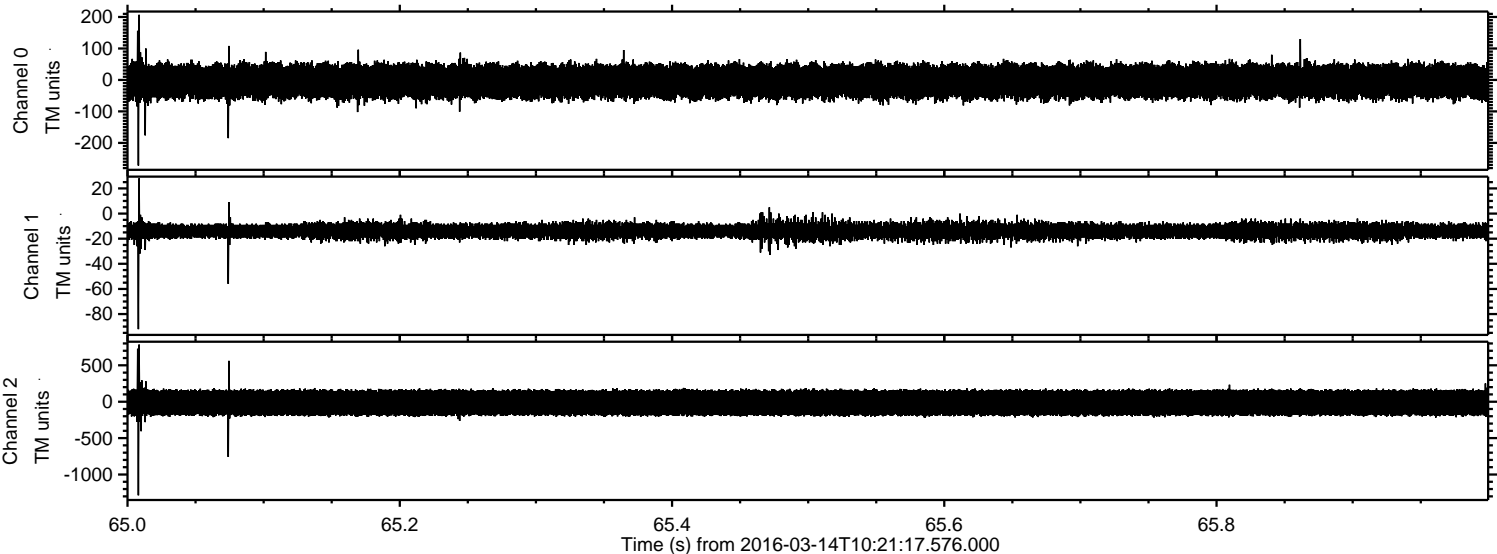
ELMAVAN 3D WAVEFORMS (Measured data sampled at 50 kHz) 51000 packets of 144 samples from 2016-03-14T10:21:17.576.000. Part 102/147

Processed Wed Apr 20 07:41:50 2016 by ELM ver.2012-10-06 from 001\_\_elm20160314\_102116\_\_dat00.bin



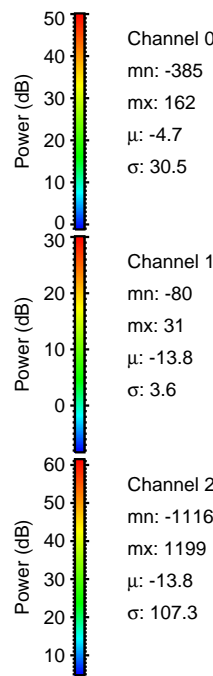
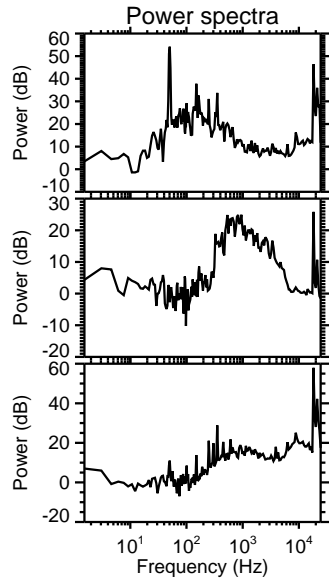
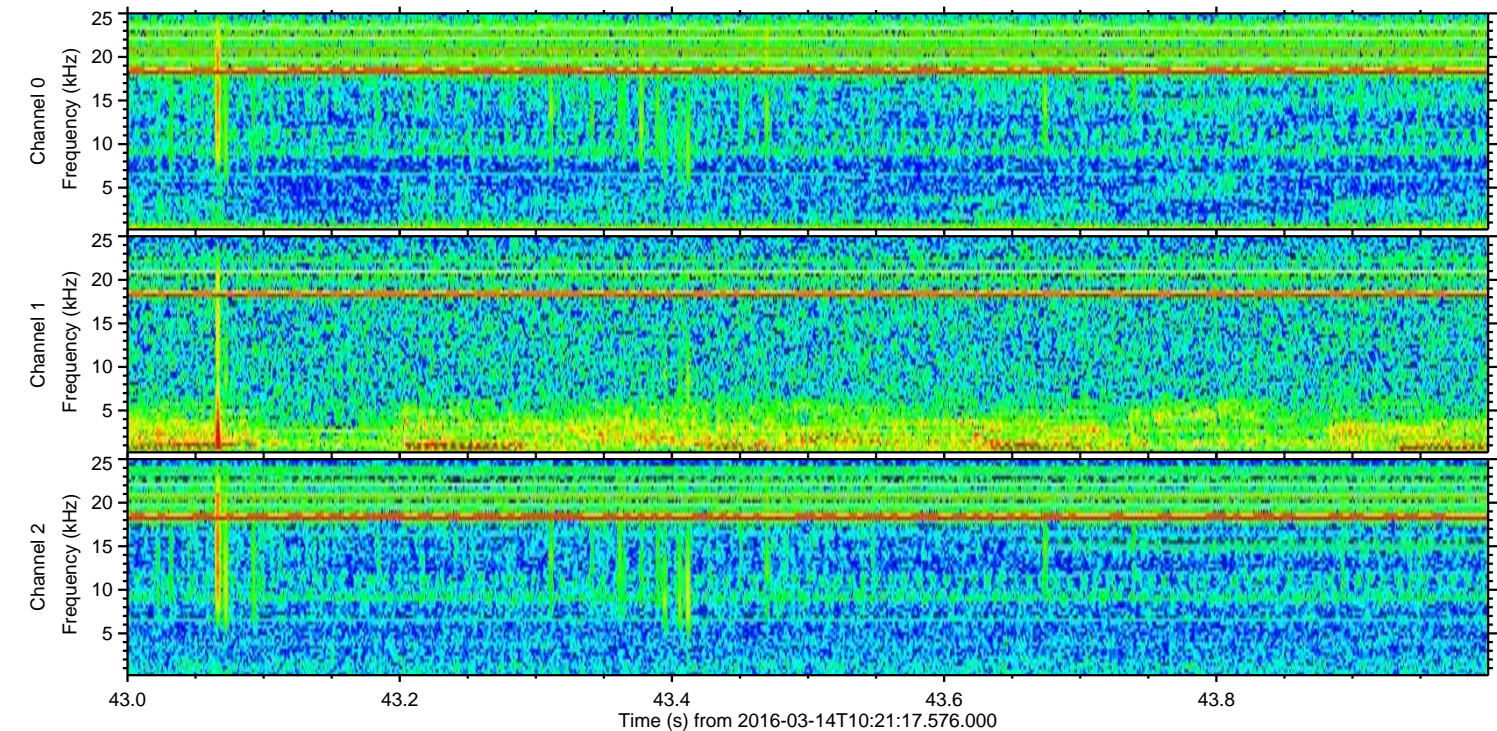
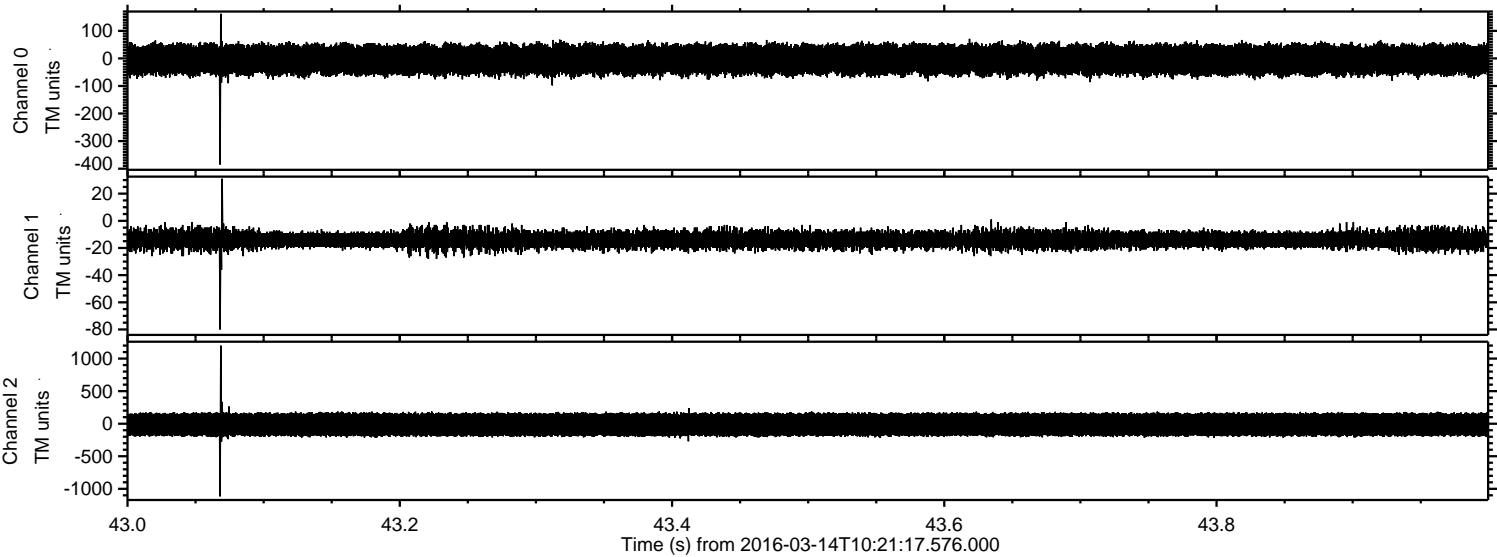


Processed Wed Apr 20 07:41:51 2016 by ELM ver.2012-10-06 from 001\_\_elm20160314\_102116\_\_dat00.bin





Processed Wed Apr 20 07:41:52 2016 by ELM ver.2012-10-06 from 001\_\_elm20160314\_102116\_\_dat00.bin



Channel 0  
mn: -385  
mx: 162  
 $\mu$ : -4.7  
 $\sigma$ : 30.5

Channel 1  
mn: -80  
mx: 31  
 $\mu$ : -13.8  
 $\sigma$ : 3.6

Channel 2  
mn: -1116  
mx: 1199  
 $\mu$ : -13.8  
 $\sigma$ : 107.3



Processed Wed Apr 20 07:41:53 2016 by ELM ver.2012-10-06 from 001\_\_elm20160314\_102116\_\_dat00.bin

