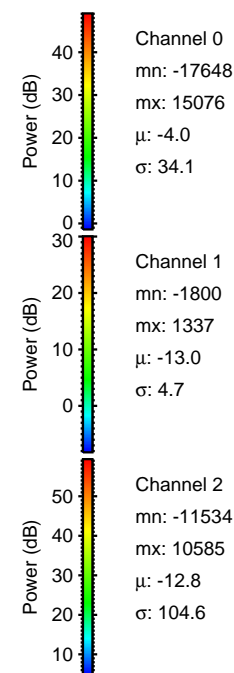
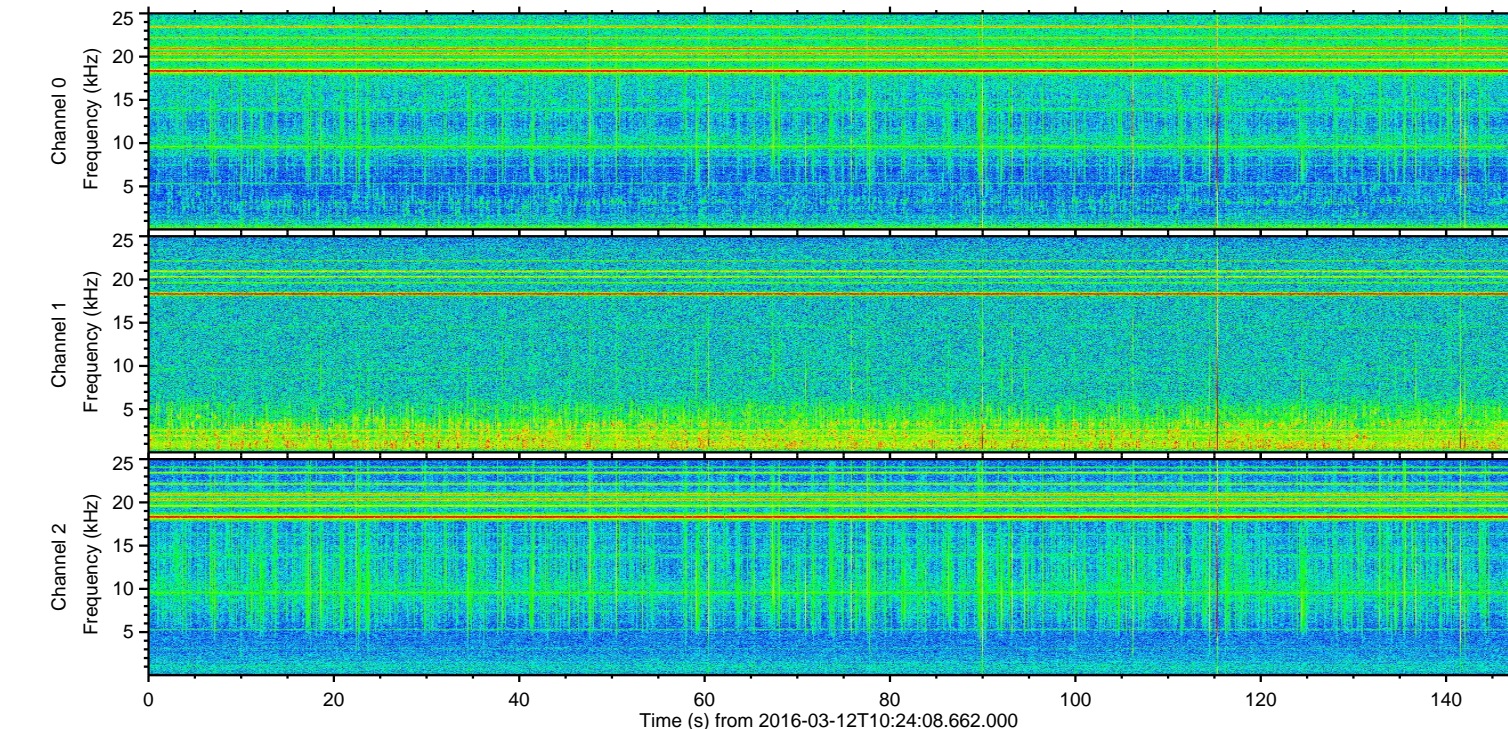
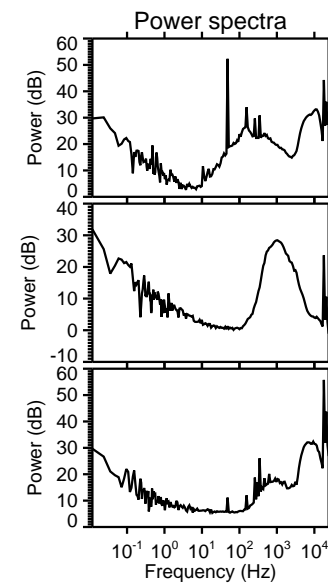
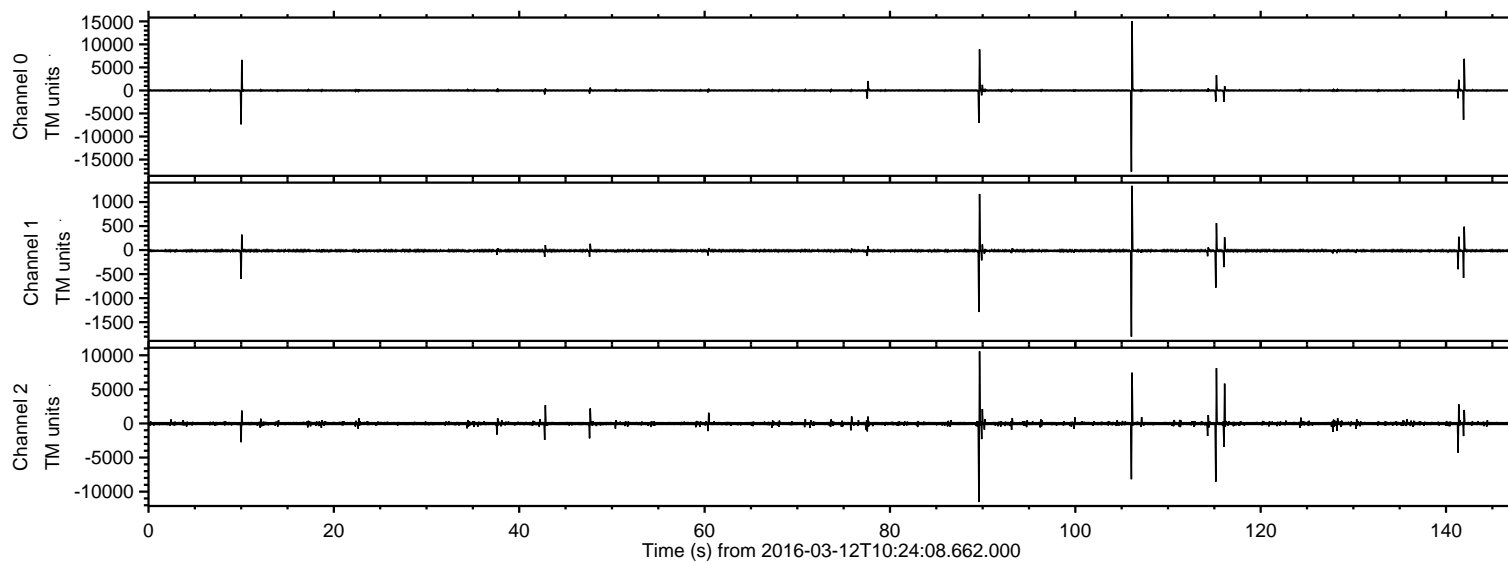


# ELMAVAN 3D WAVEFORMS (Measured data sampled at 50 kHz) 51000 packets of 144 samples from 2016-03-12T10:24:08.662.000.

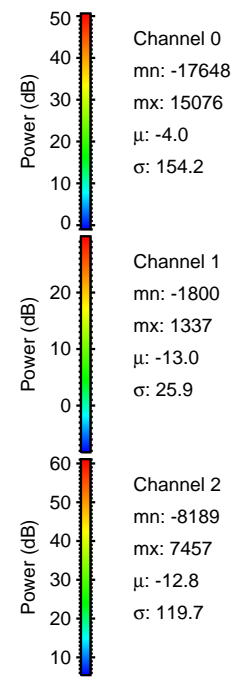
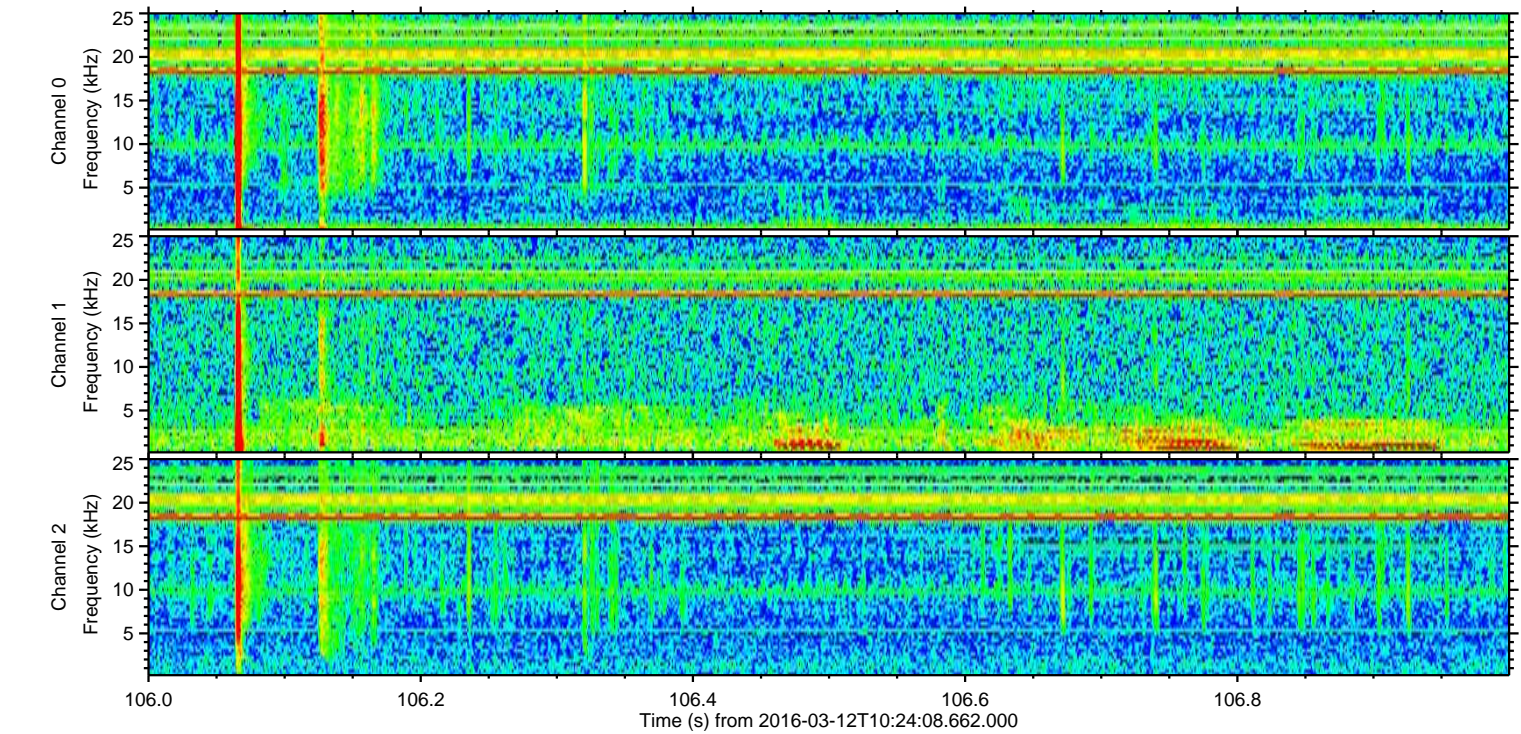
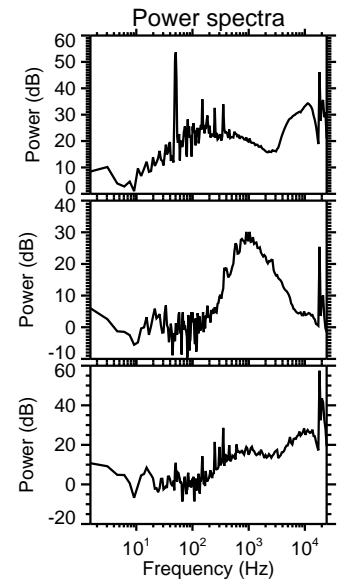
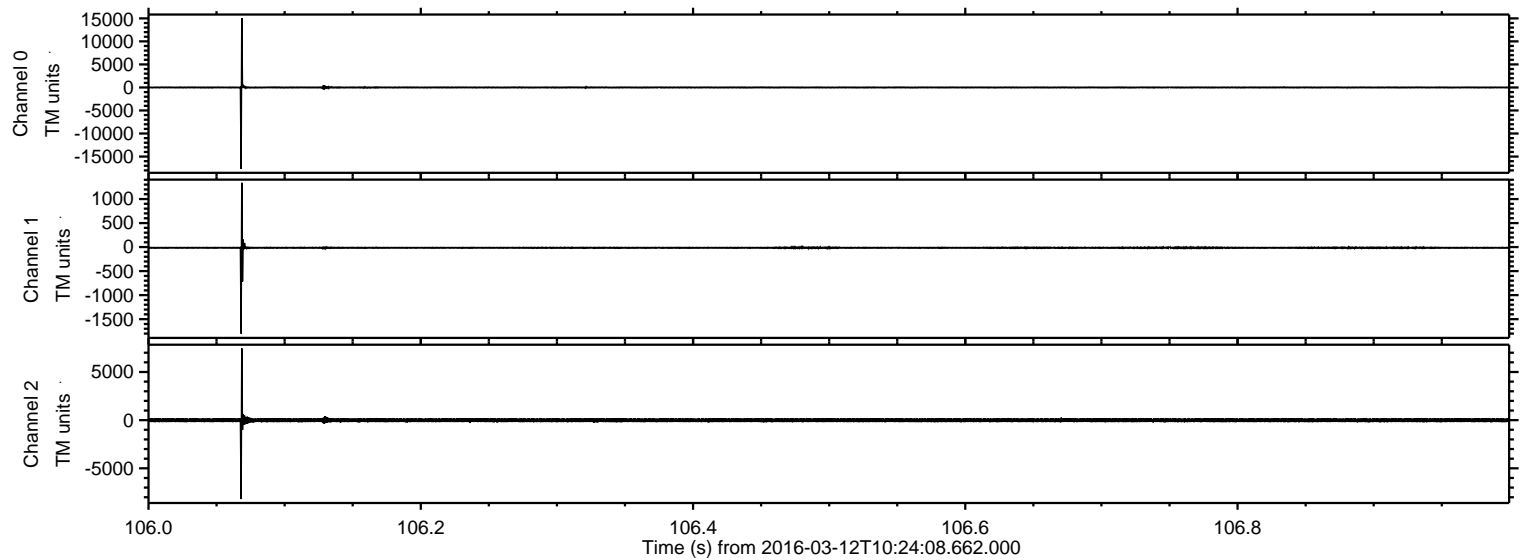
Processed Tue Apr 19 21:53:20 2016 by ELM ver.2012-10-06 from 001\_\_elm20160312\_102407\_\_dat00.bin





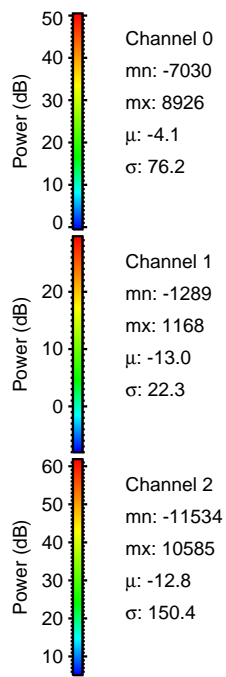
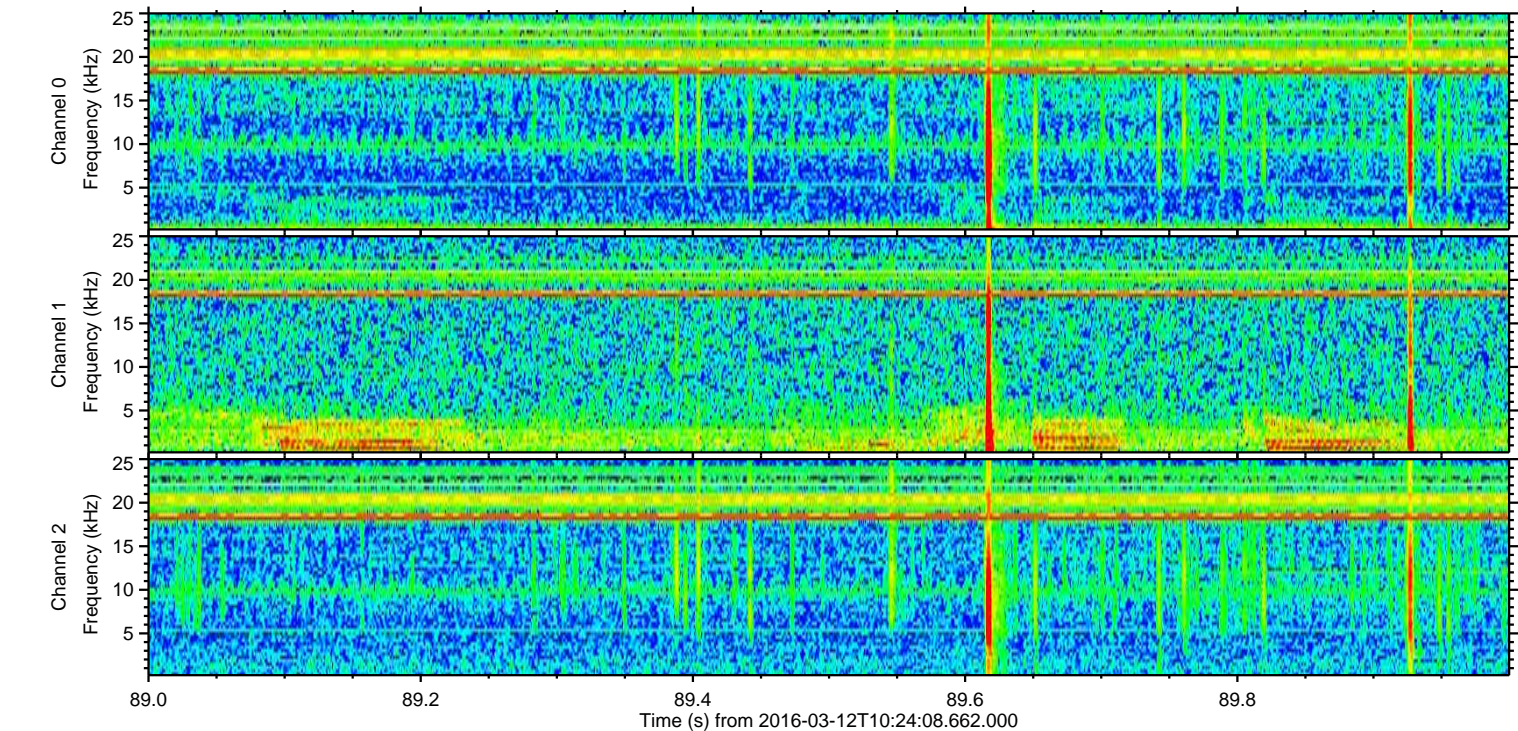
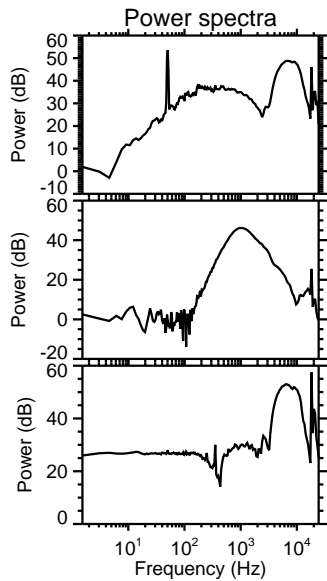
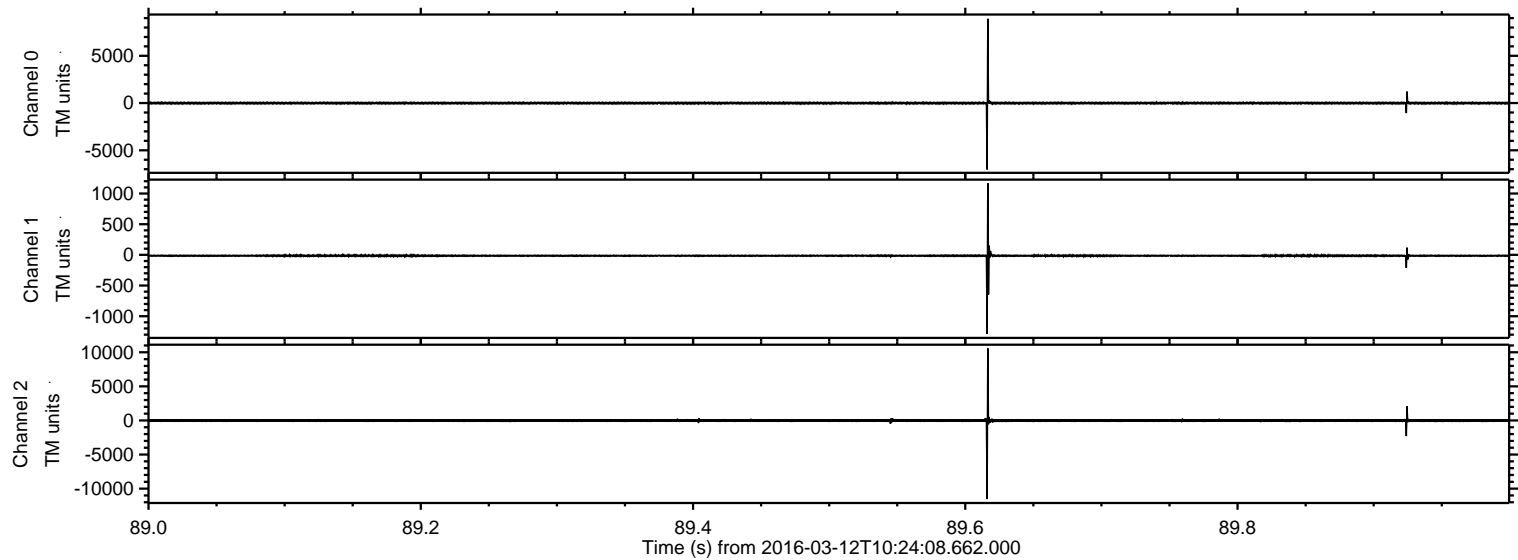
ELMAVAN 3D WAVEFORMS (Measured data sampled at 50 kHz) 51000 packets of 144 samples from 2016-03-12T10:24:08.662.000. Part 107/147

Processed Tue Apr 19 21:53:33 2016 by ELM ver.2012-10-06 from 001\_\_elm20160312\_102407\_\_dat00.bin





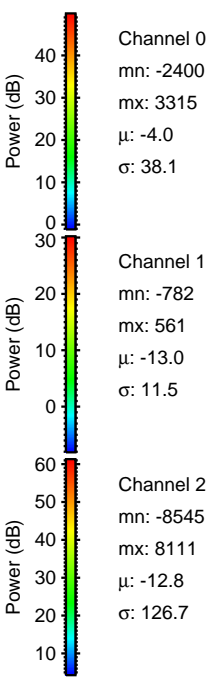
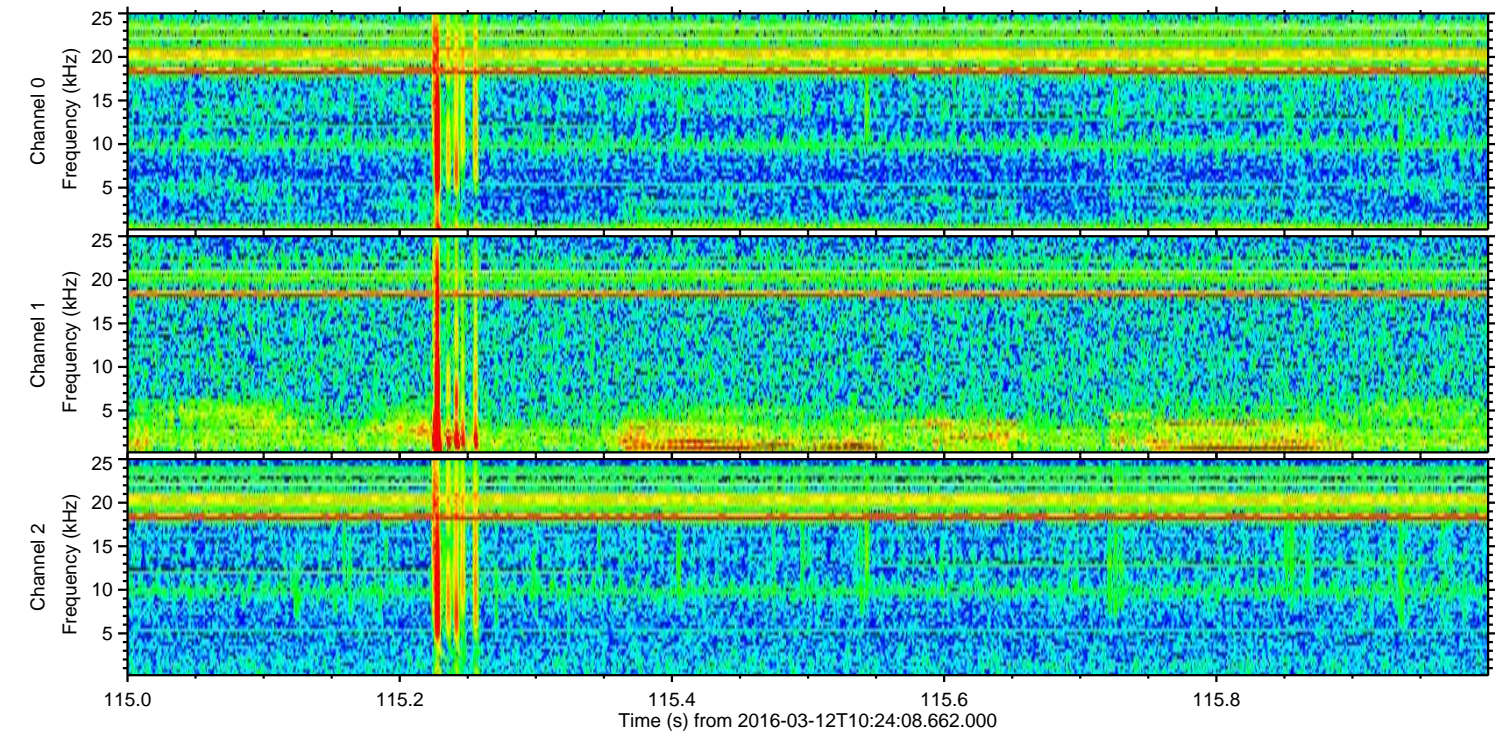
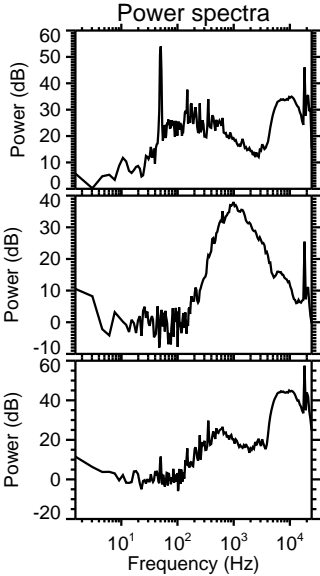
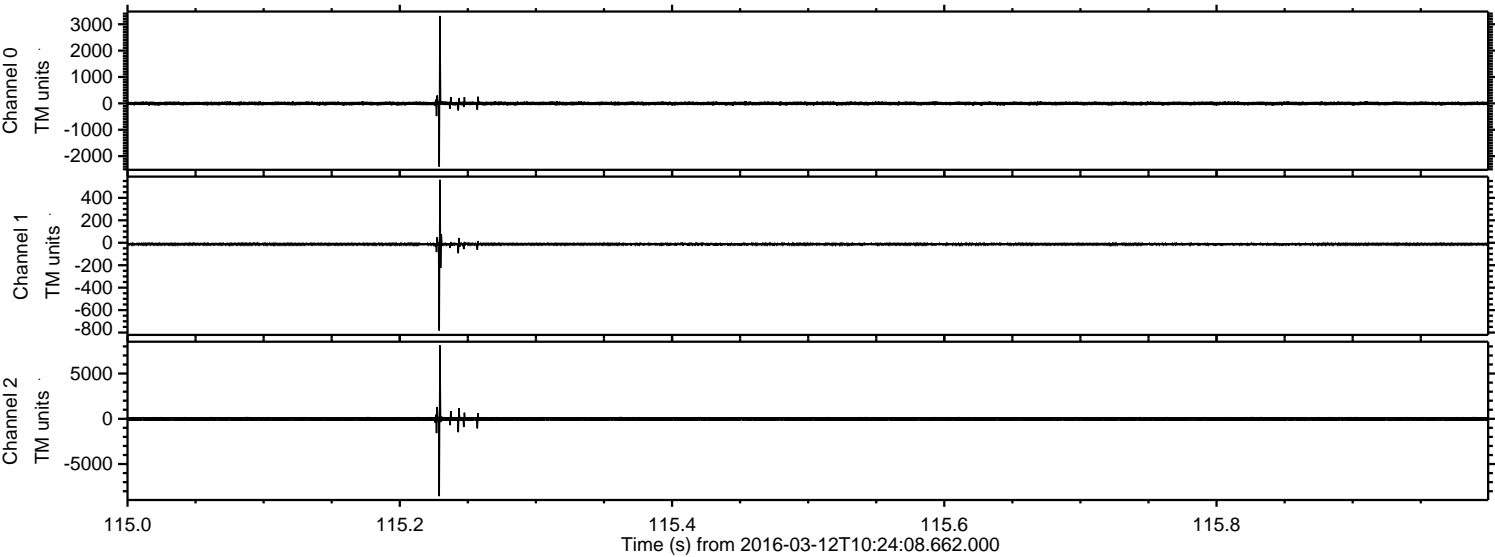
Processed Tue Apr 19 21:53:33 2016 by ELM ver.2012-10-06 from 001\_\_elm20160312\_102407\_\_dat00.bin





ELMAVAN 3D WAVEFORMS (Measured data sampled at 50 kHz) 51000 packets of 144 samples from 2016-03-12T10:24:08.662.000. Part 116/147

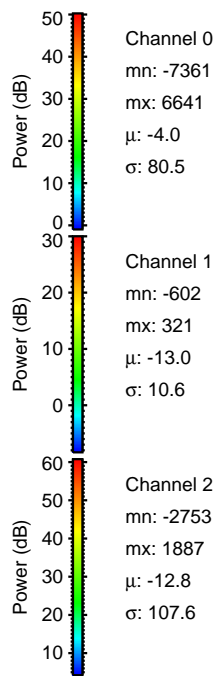
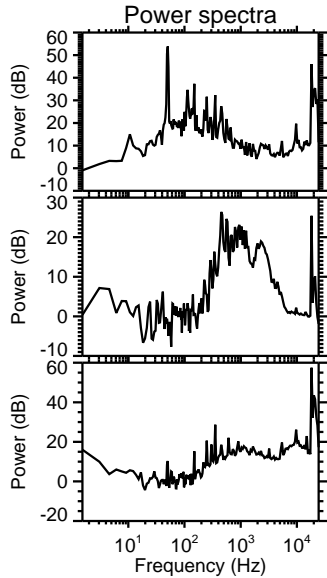
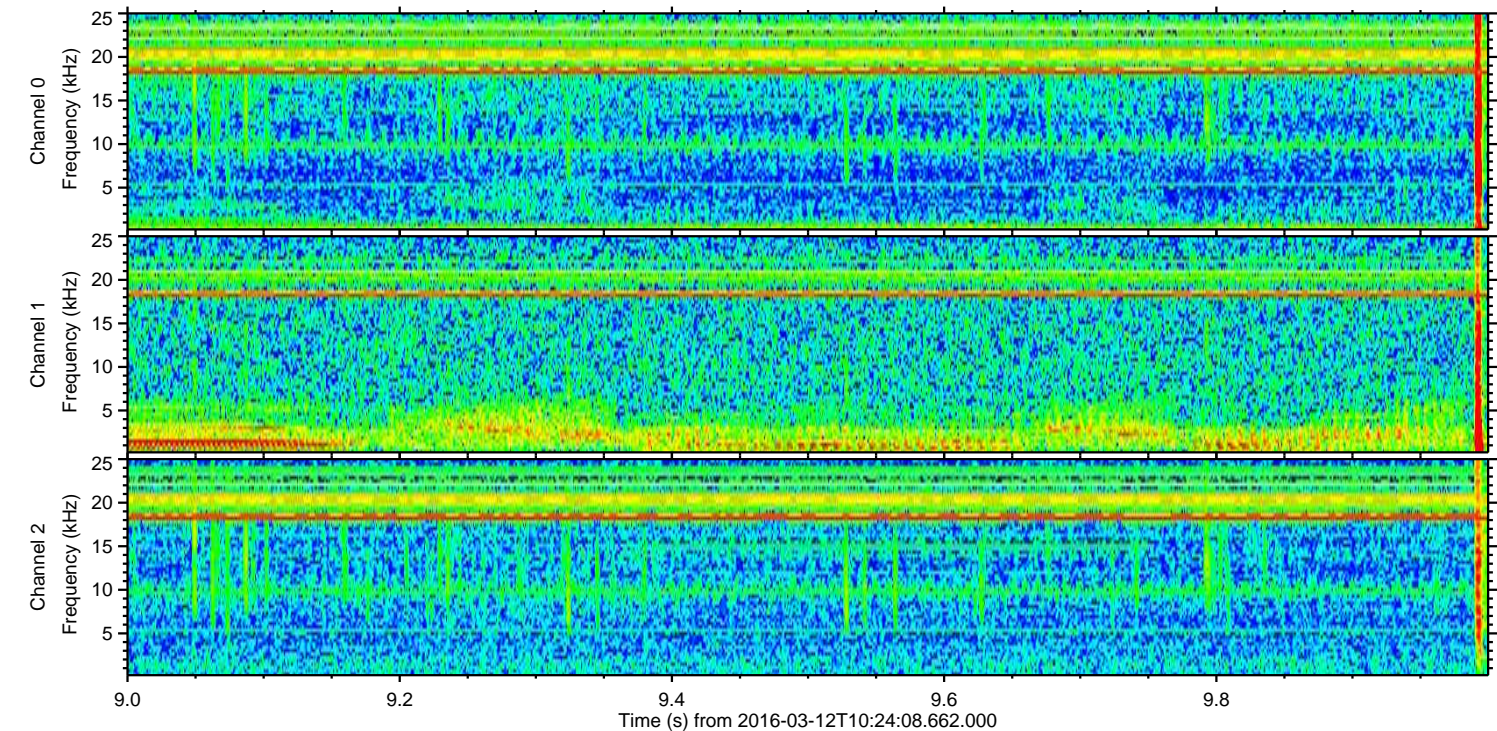
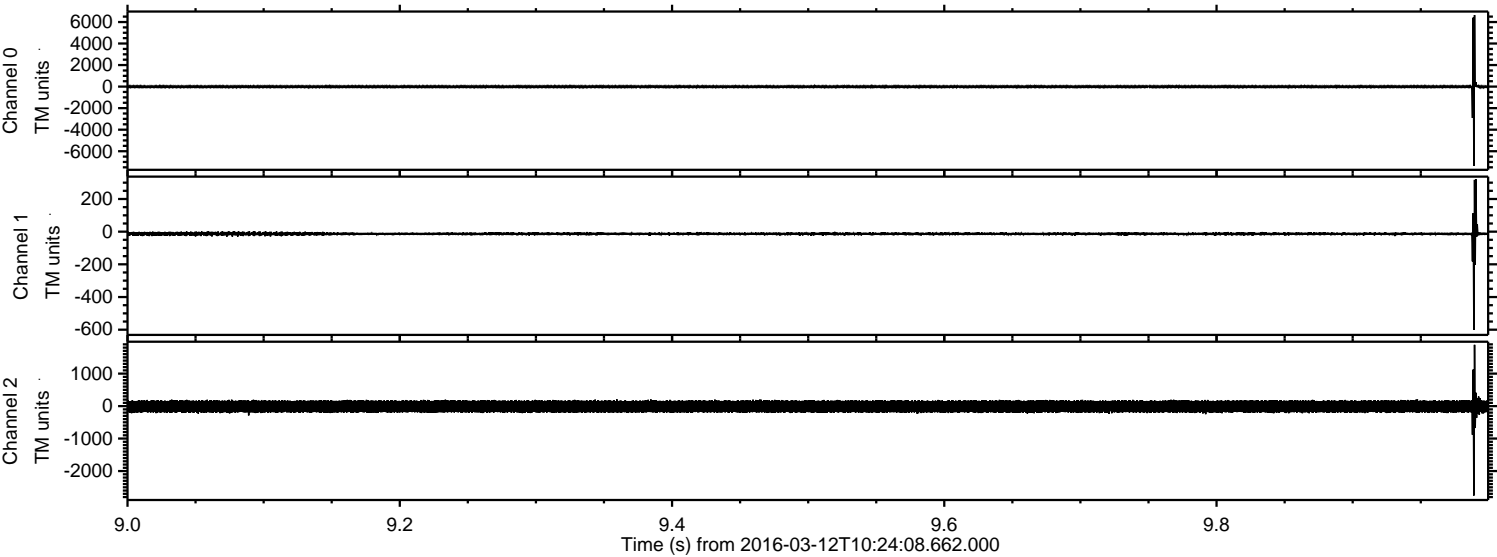
Processed Tue Apr 19 21:53:34 2016 by ELM ver.2012-10-06 from 001\_\_elm20160312\_102407\_\_dat00.bin





ELMAVAN 3D WAVEFORMS (Measured data sampled at 50 kHz) 51000 packets of 144 samples from 2016-03-12T10:24:08.662.000. Part 10/147

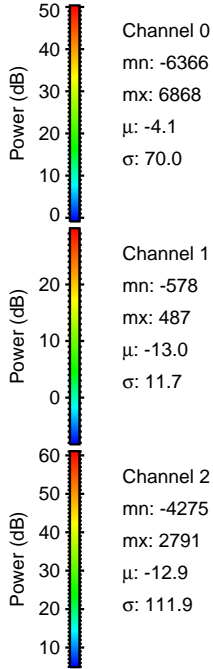
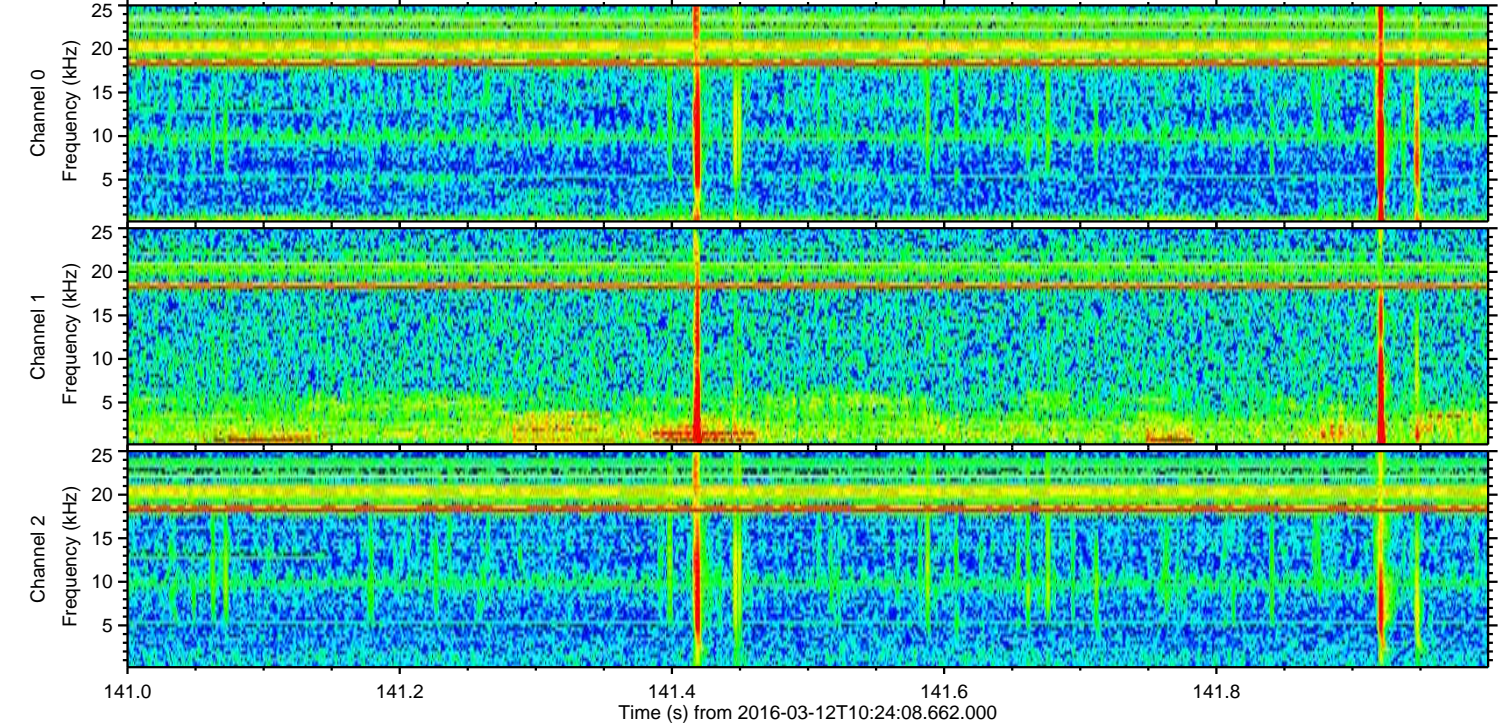
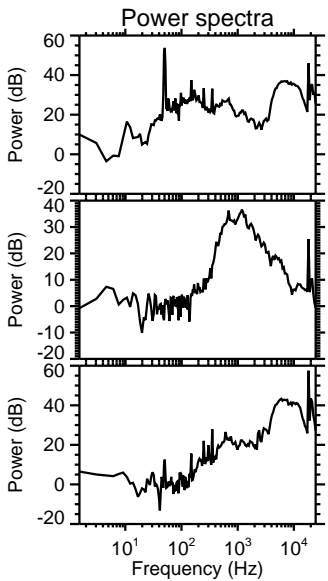
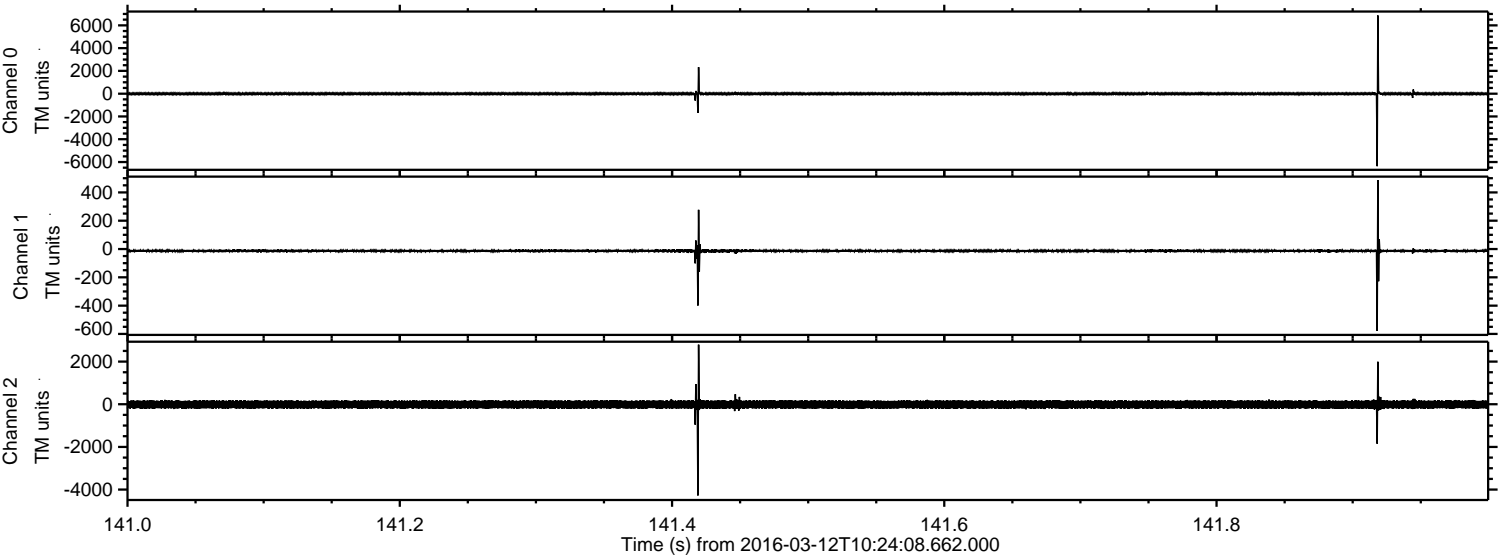
Processed Tue Apr 19 21:53:35 2016 by ELM ver.2012-10-06 from 001\_\_elm20160312\_102407\_\_dat00.bin





ELMAVAN 3D WAVEFORMS (Measured data sampled at 50 kHz) 51000 packets of 144 samples from 2016-03-12T10:24:08.662.000. Part 142/147

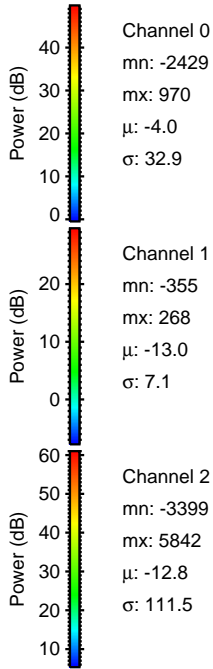
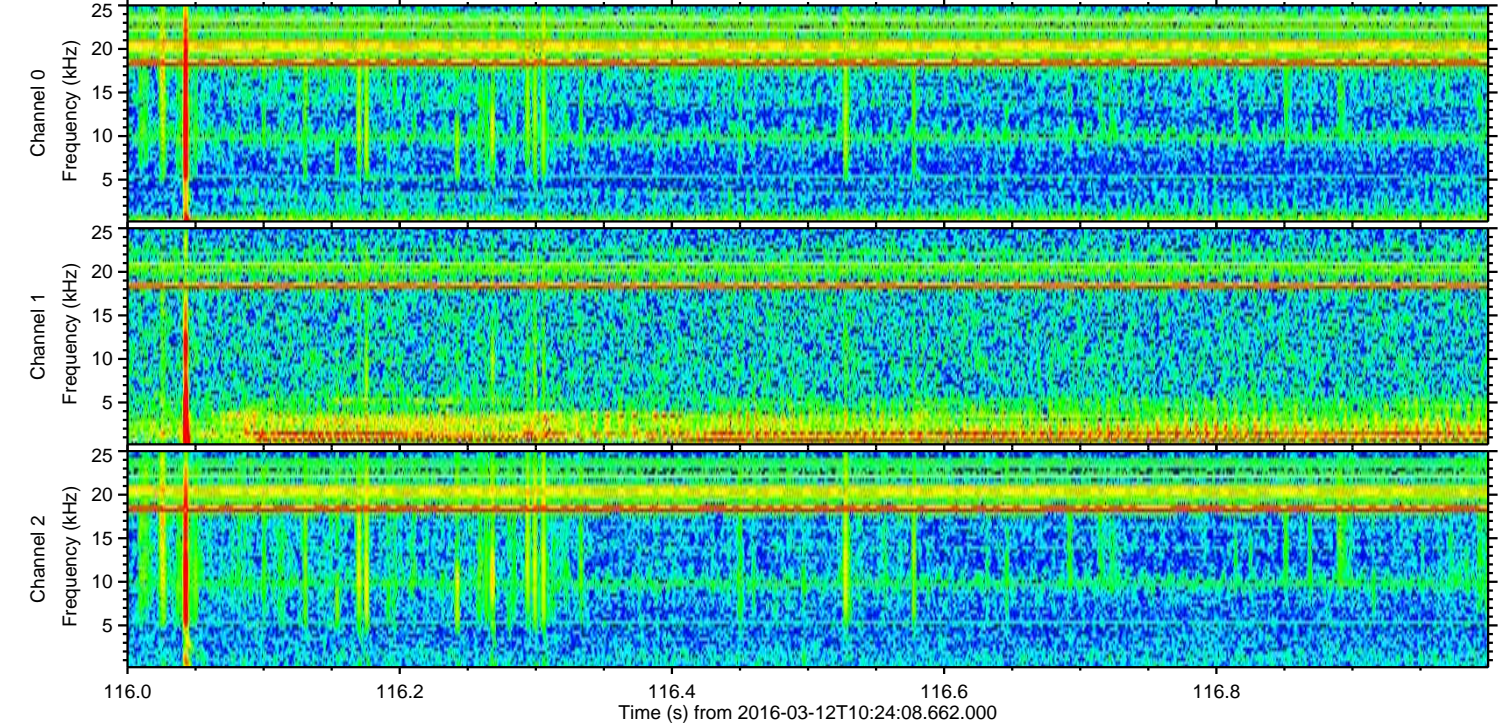
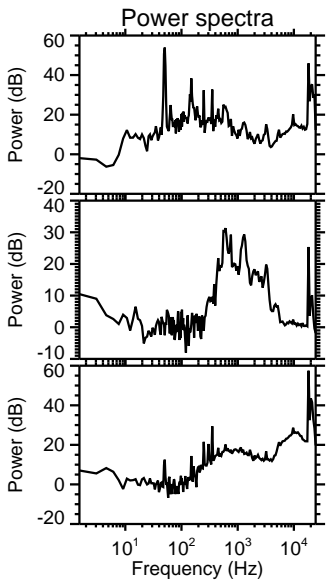
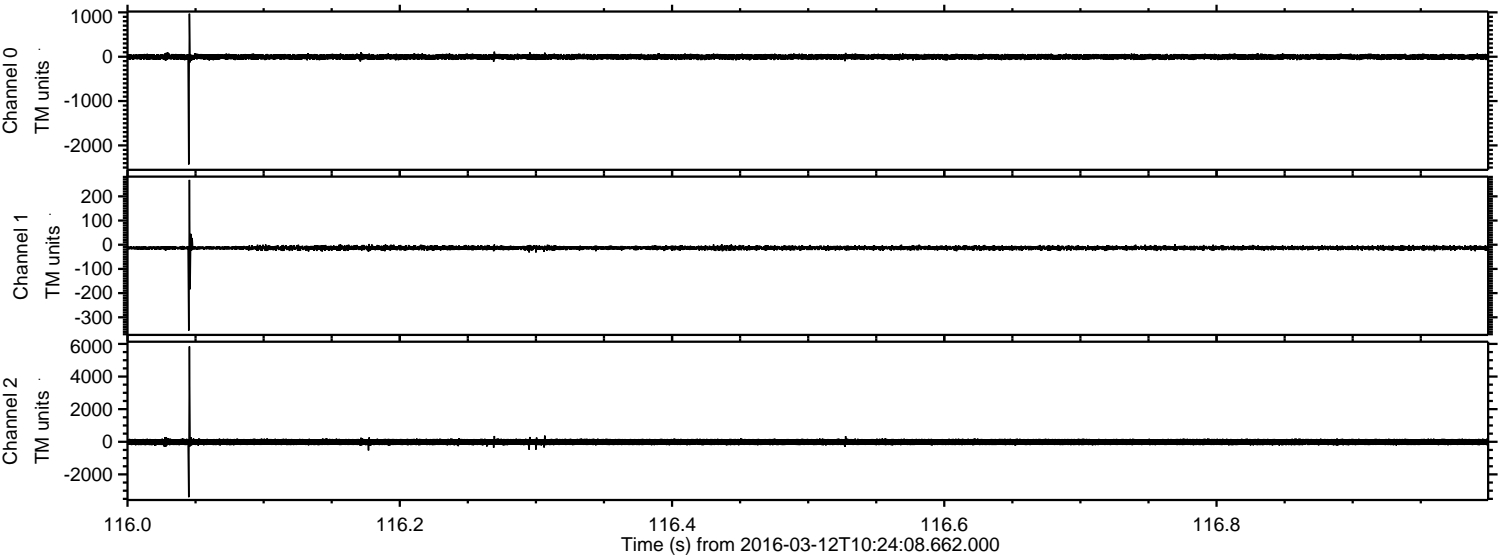
Processed Tue Apr 19 21:53:36 2016 by ELM ver.2012-10-06 from 001\_\_elm20160312\_102407\_\_dat00.bin





ELMAVAN 3D WAVEFORMS (Measured data sampled at 50 kHz) 51000 packets of 144 samples from 2016-03-12T10:24:08.662.000. Part 117/147

Processed Tue Apr 19 21:53:37 2016 by ELM ver.2012-10-06 from 001\_\_elm20160312\_102407\_\_dat00.bin



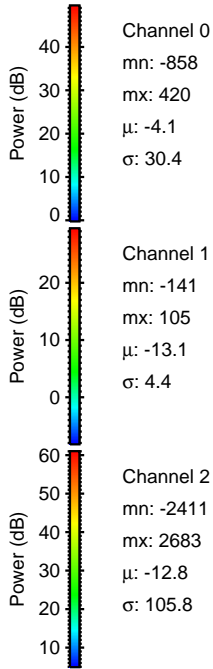
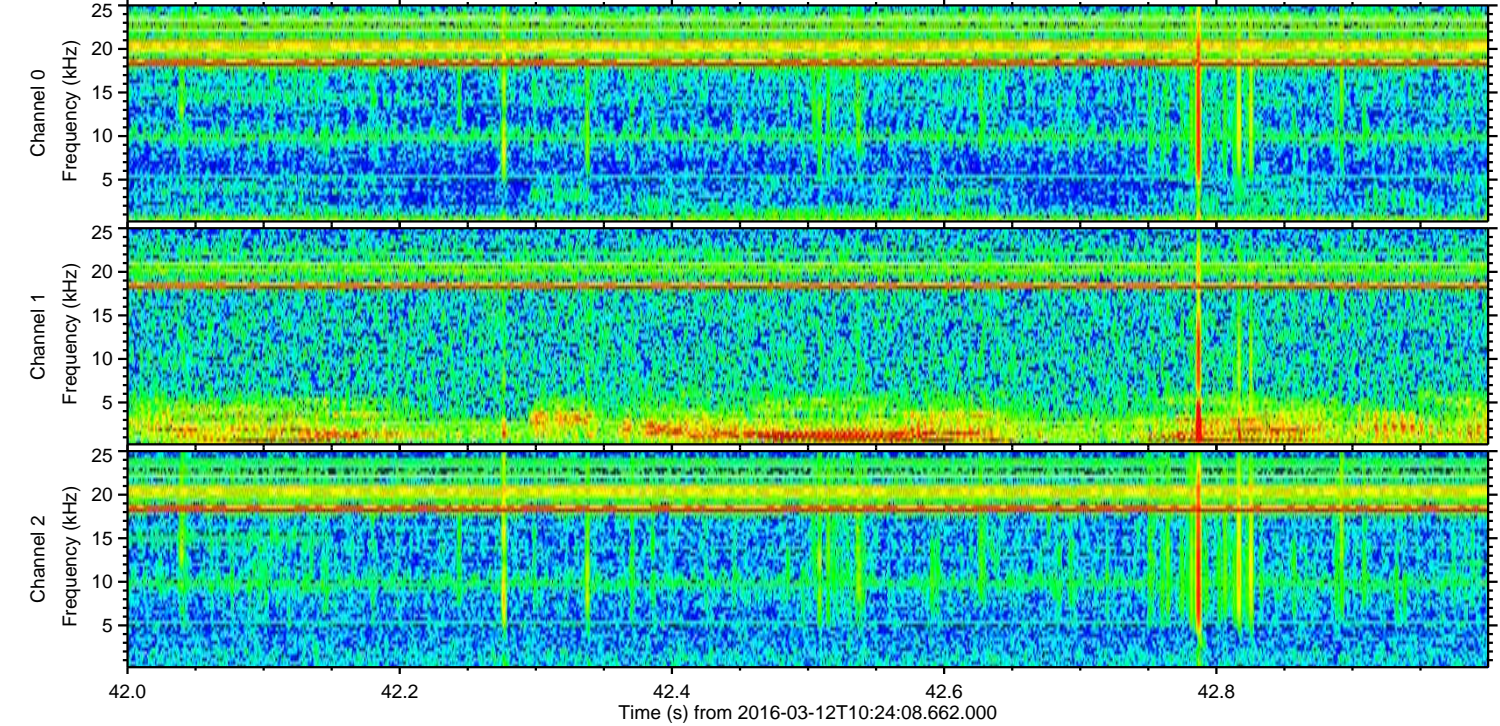
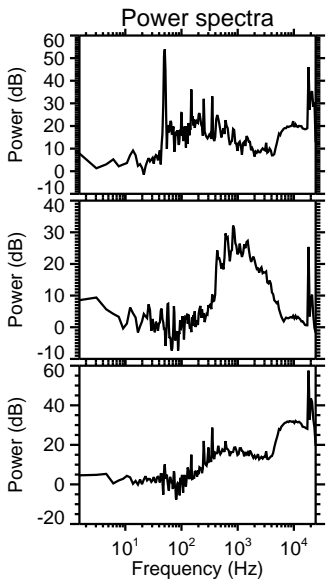
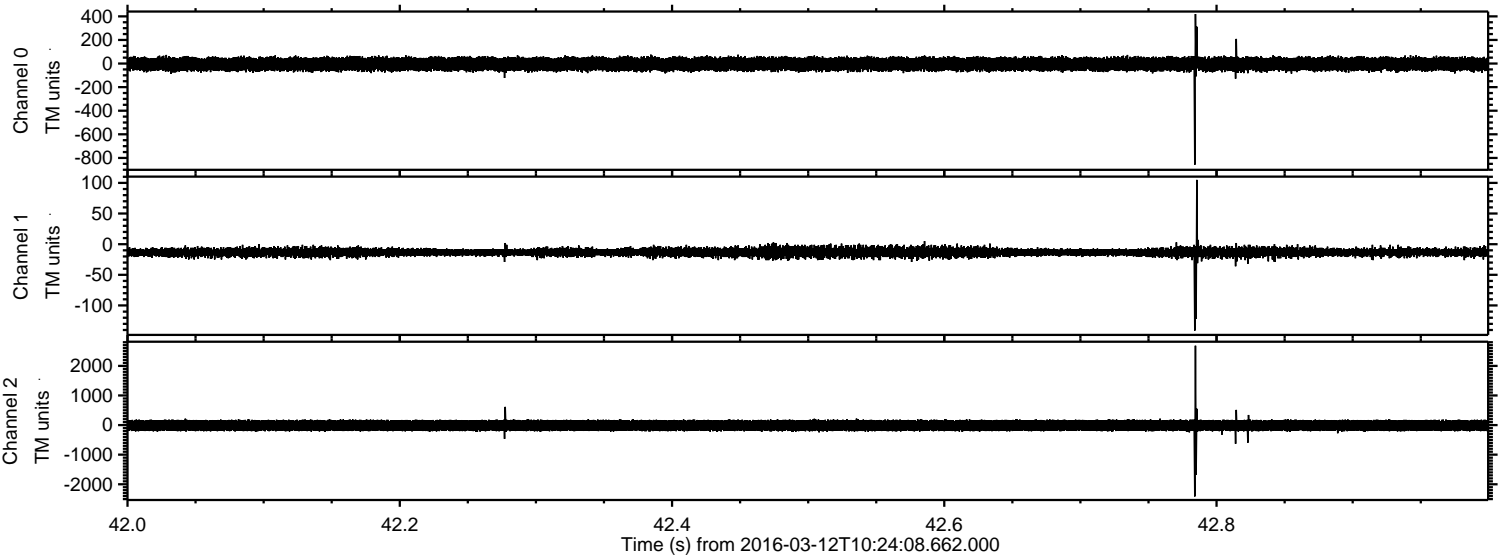
Channel 0  
mn: -2429  
mx: 970  
 $\mu$ : -4.0  
 $\sigma$ : 32.9

Channel 1  
mn: -355  
mx: 268  
 $\mu$ : -13.0  
 $\sigma$ : 7.1

Channel 2  
mn: -3399  
mx: 5842  
 $\mu$ : -12.8  
 $\sigma$ : 111.5

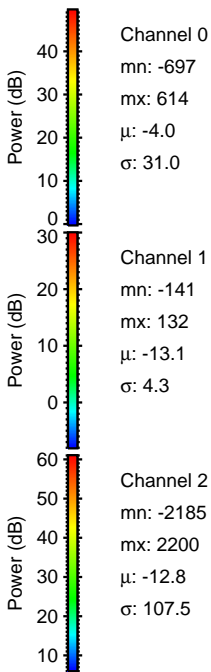
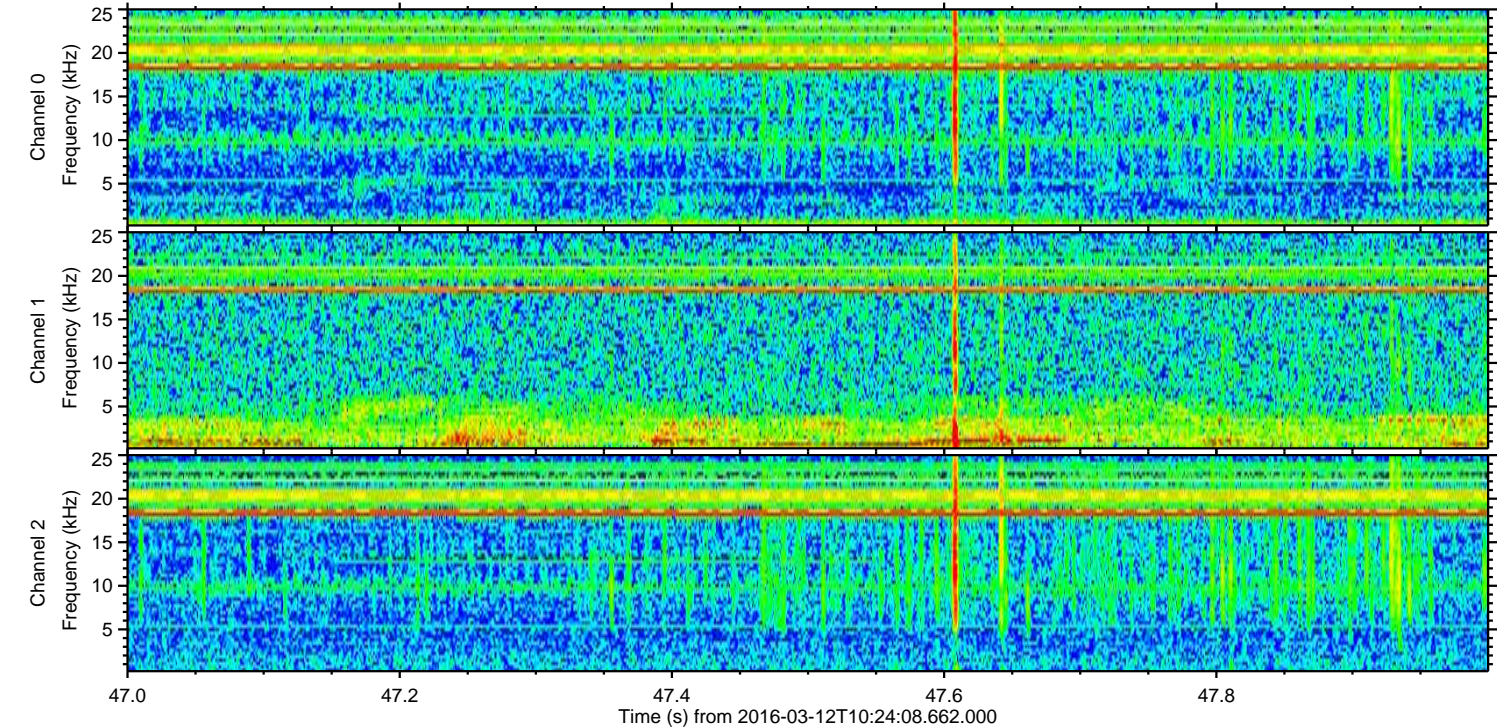
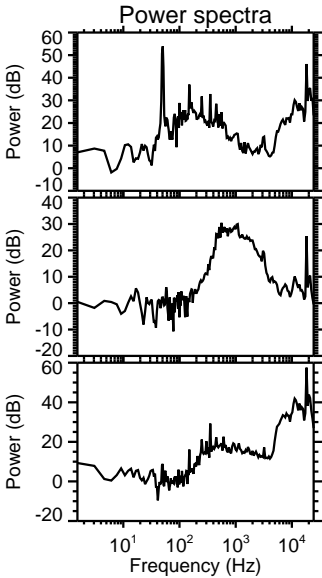
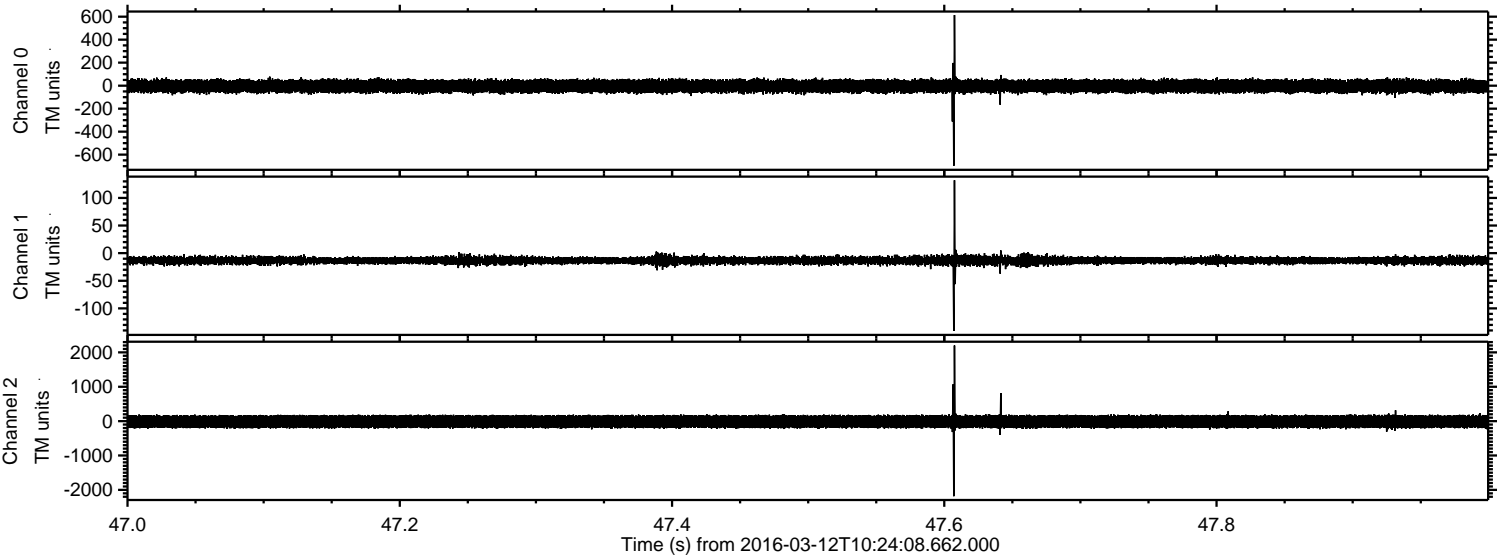


Processed Tue Apr 19 21:53:38 2016 by ELM ver.2012-10-06 from 001\_\_elm20160312\_102407\_\_dat00.bin



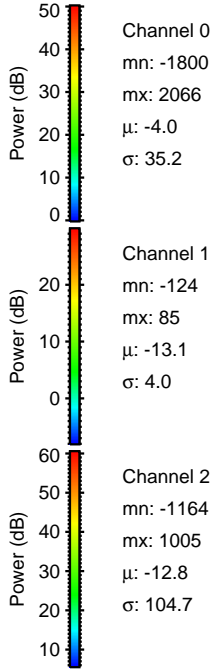
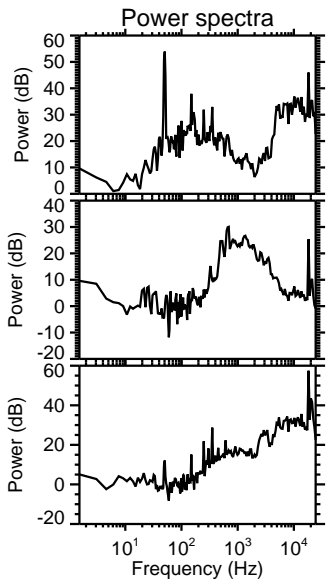
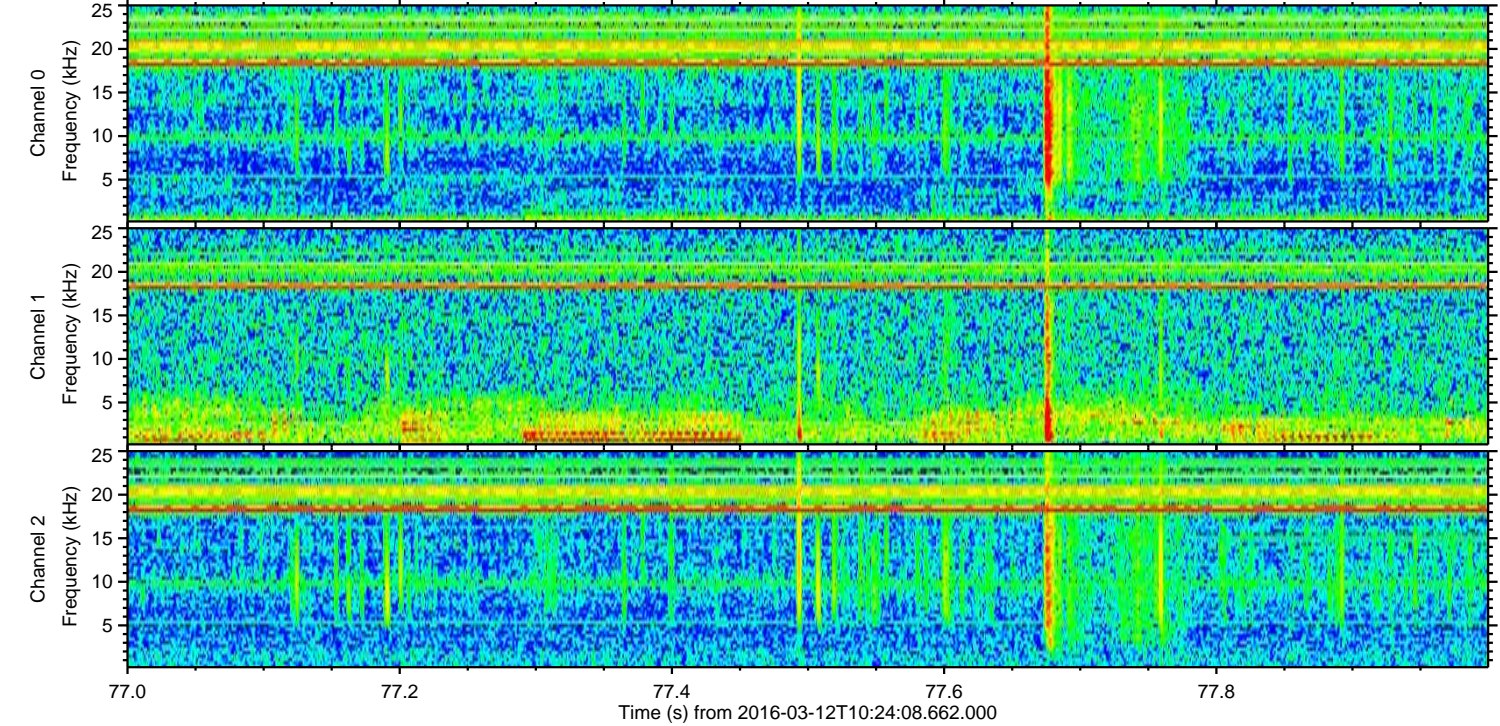
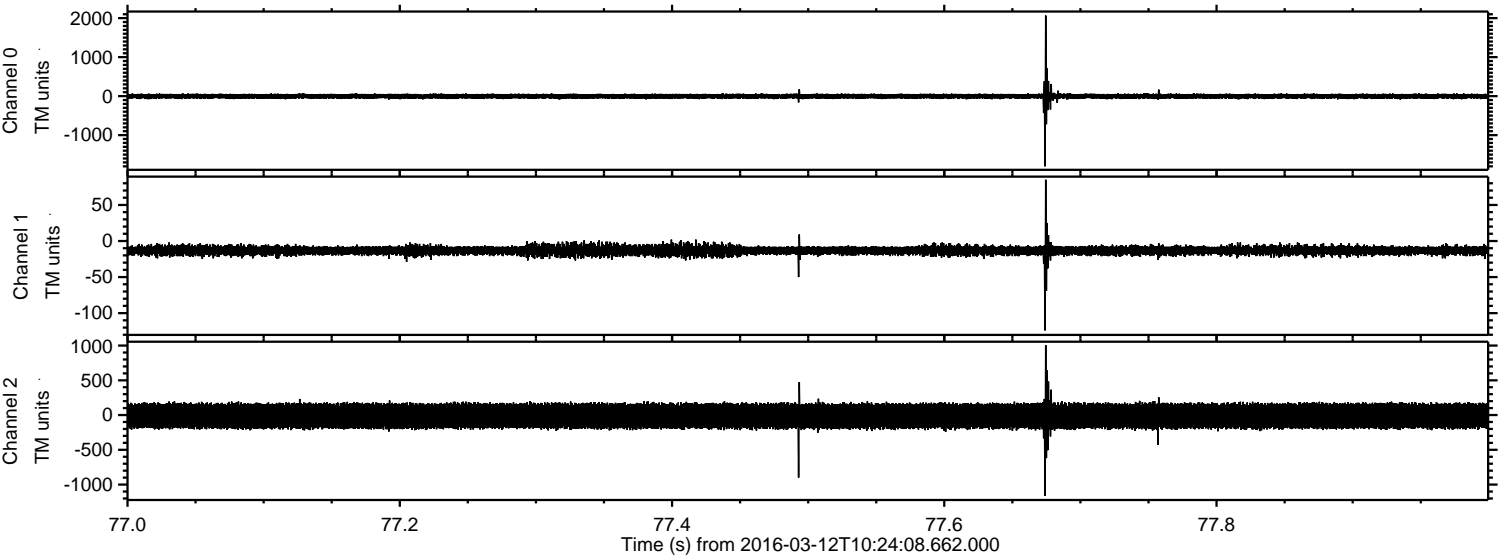


Processed Tue Apr 19 21:53:39 2016 by ELM ver.2012-10-06 from 001\_\_elm20160312\_102407\_\_dat00.bin





Processed Tue Apr 19 21:53:40 2016 by ELM ver.2012-10-06 from 001\_\_elm20160312\_102407\_\_dat00.bin





Processed Tue Apr 19 21:53:41 2016 by ELM ver.2012-10-06 from 001\_\_elm20160312\_102407\_\_dat00.bin

