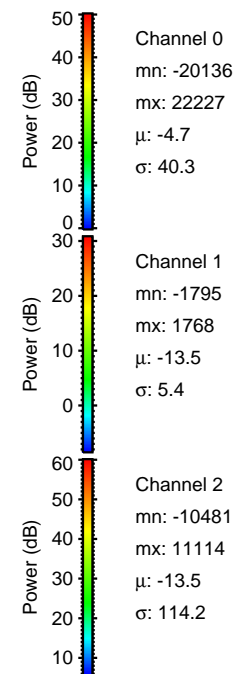
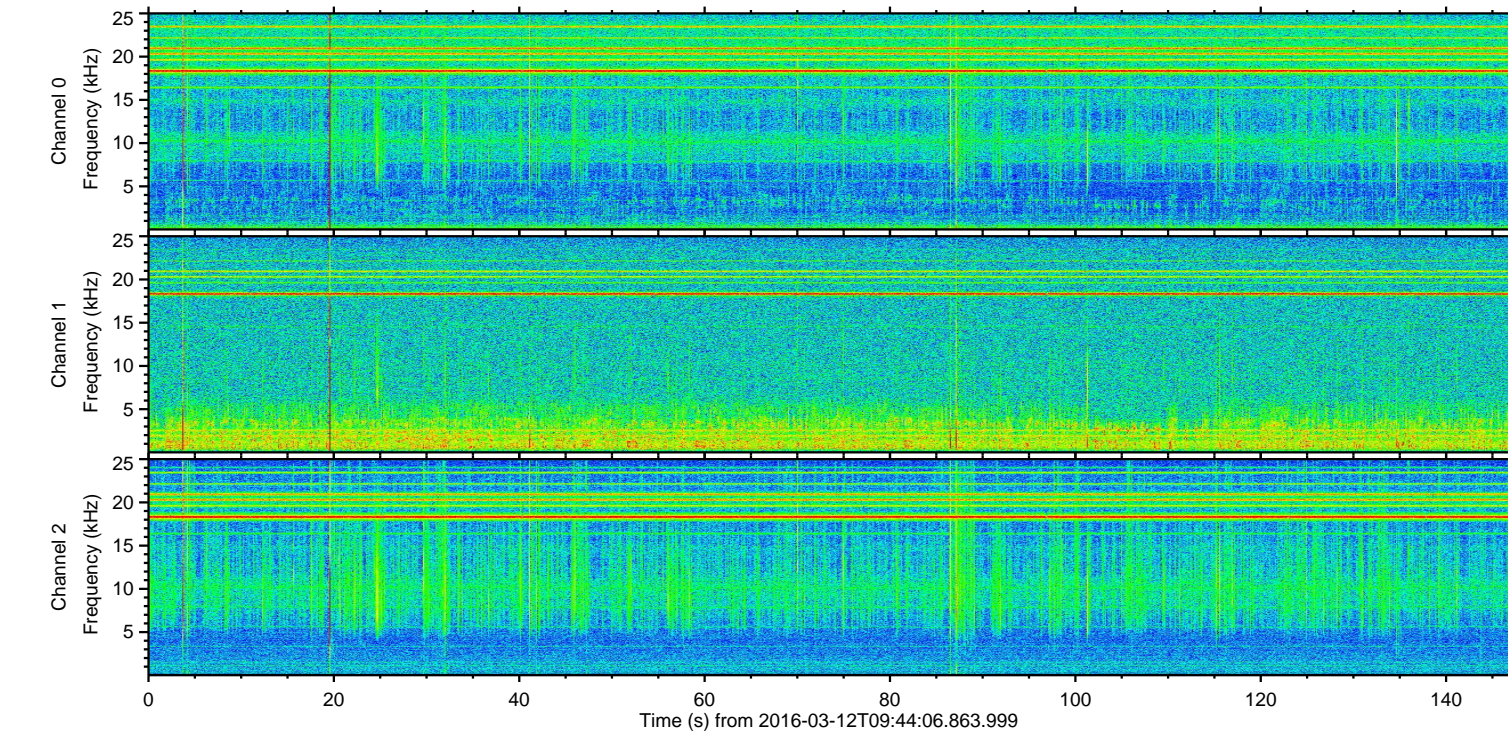
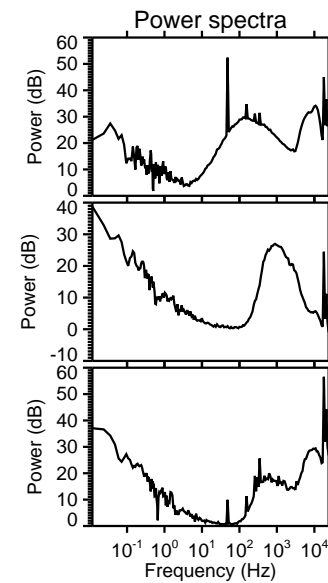
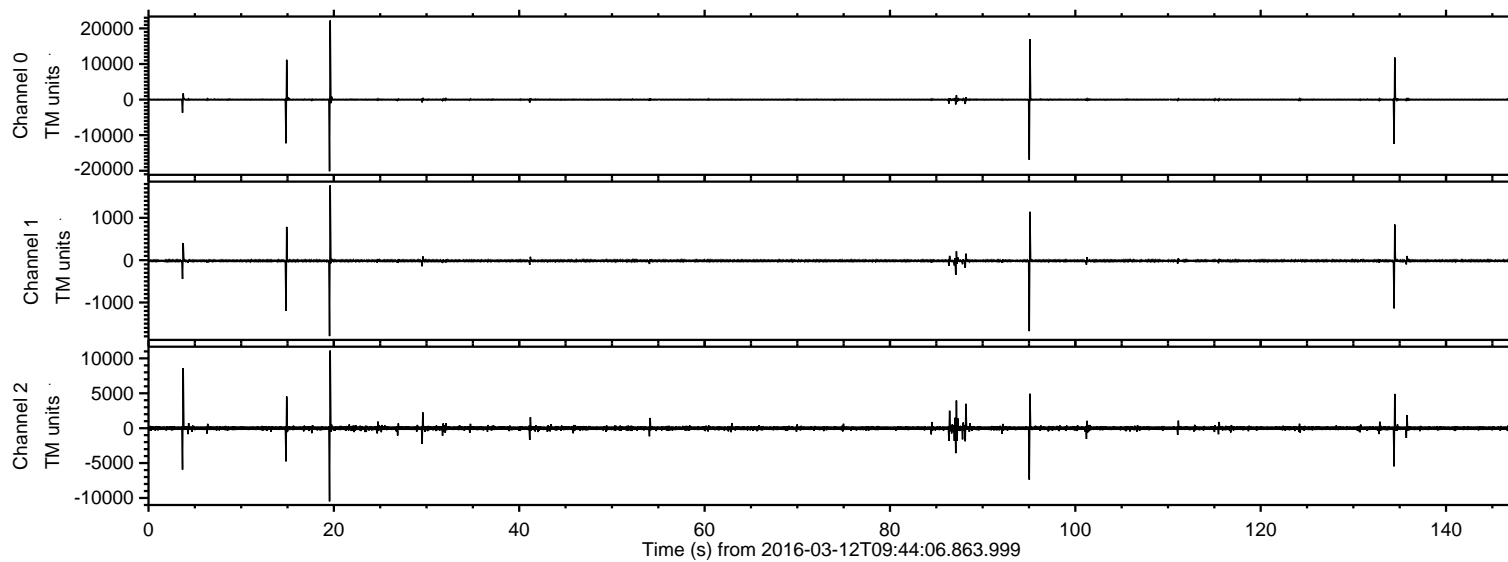
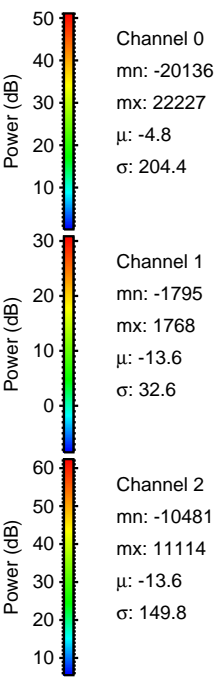
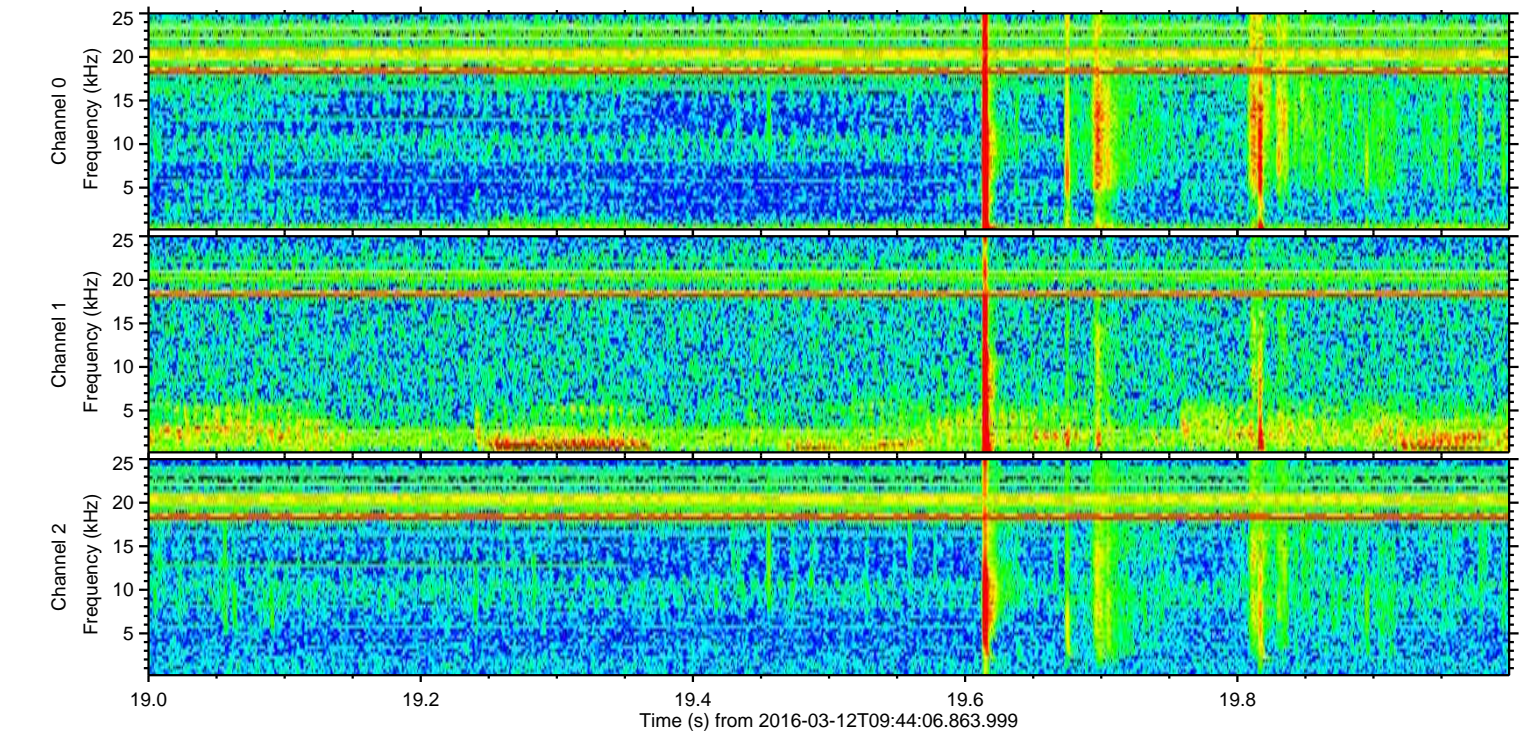
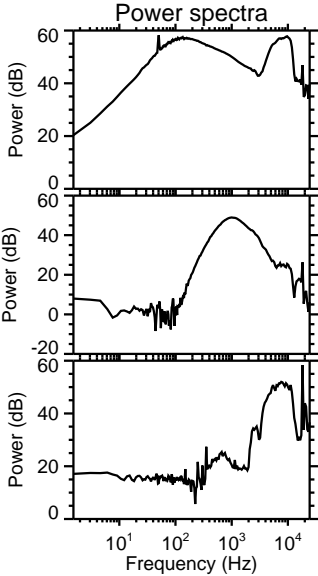
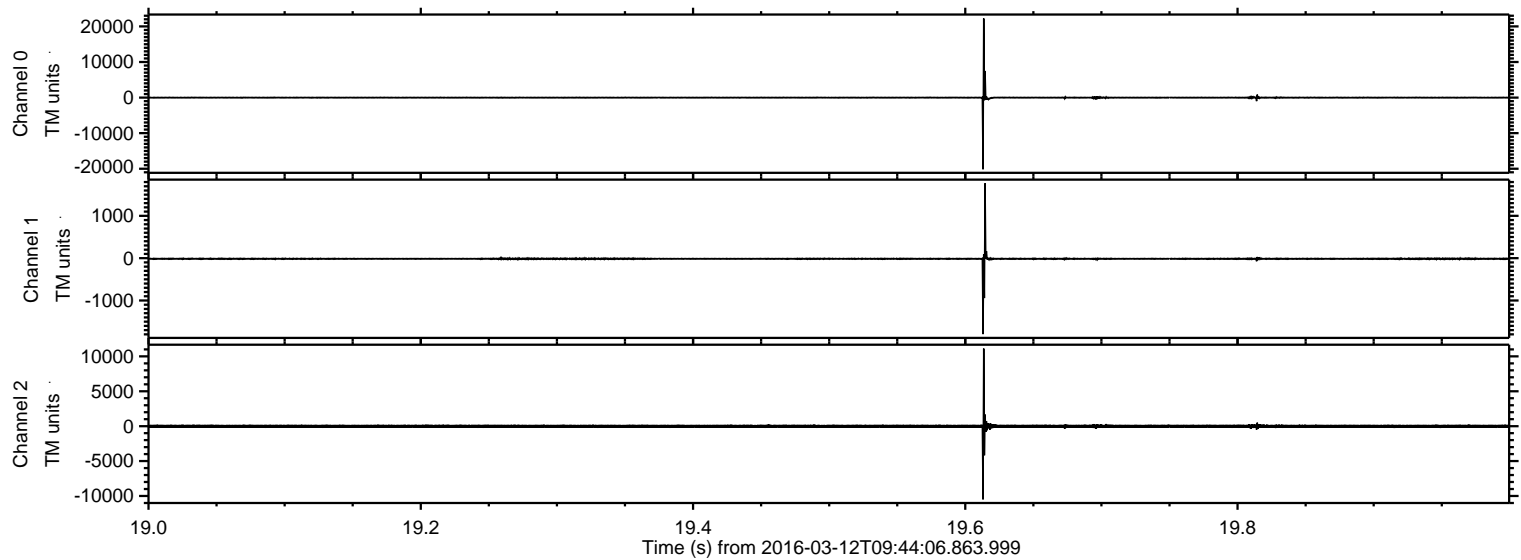


ELMAVAN 3D WAVEFORMS (Measured data sampled at 50 kHz) 51000 packets of 144 samples from 2016-03-12T09:44:06.863.999.

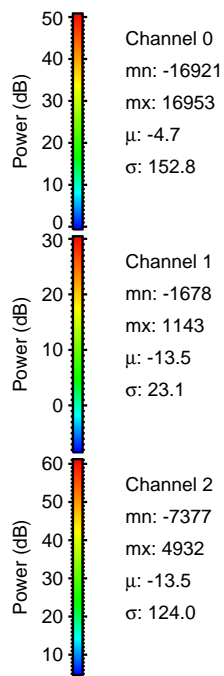
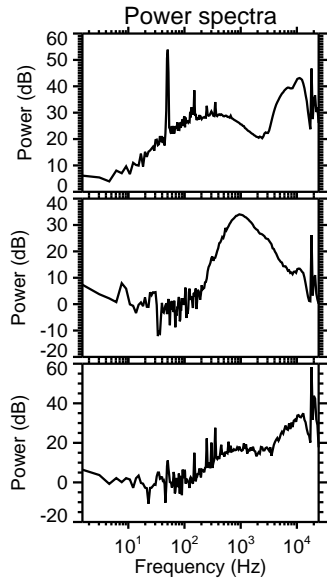
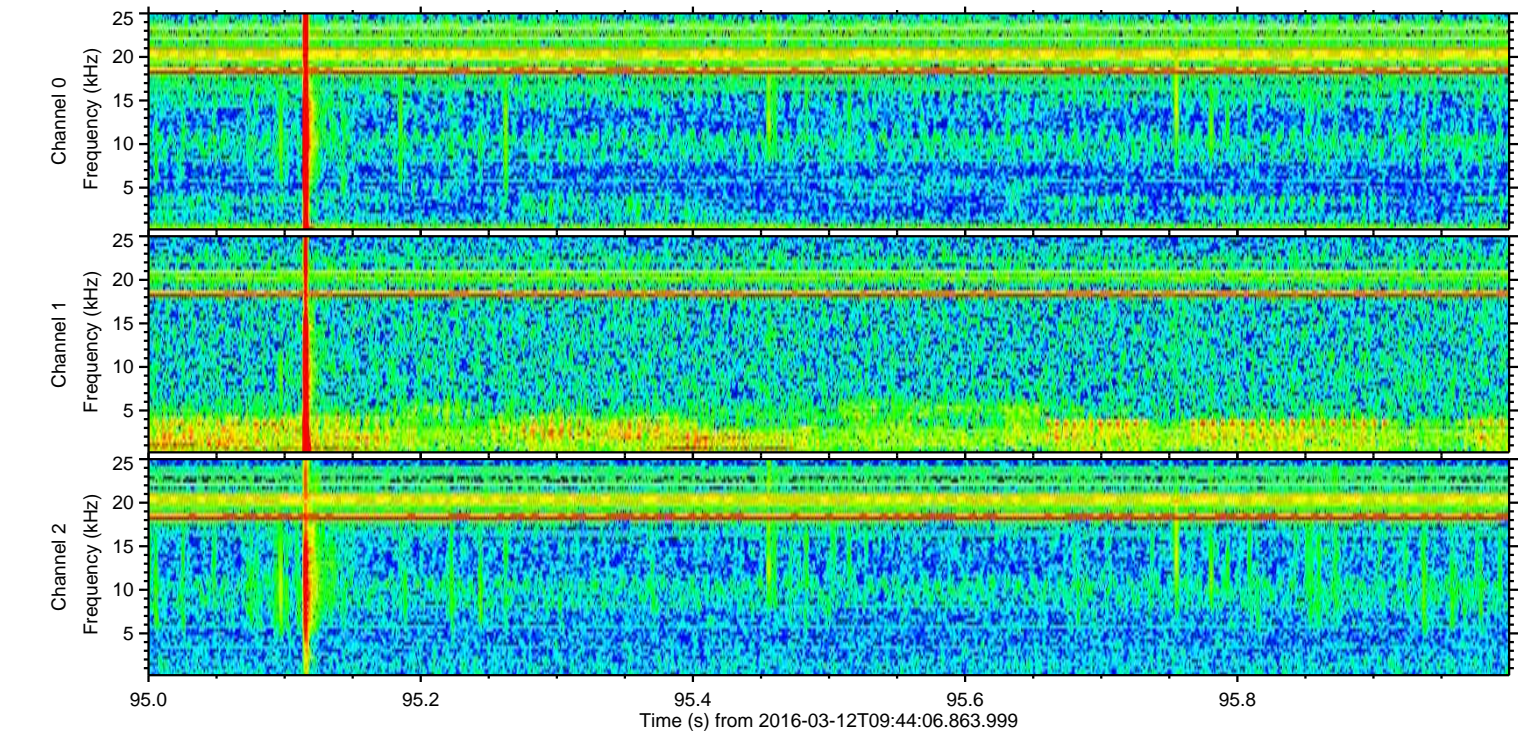
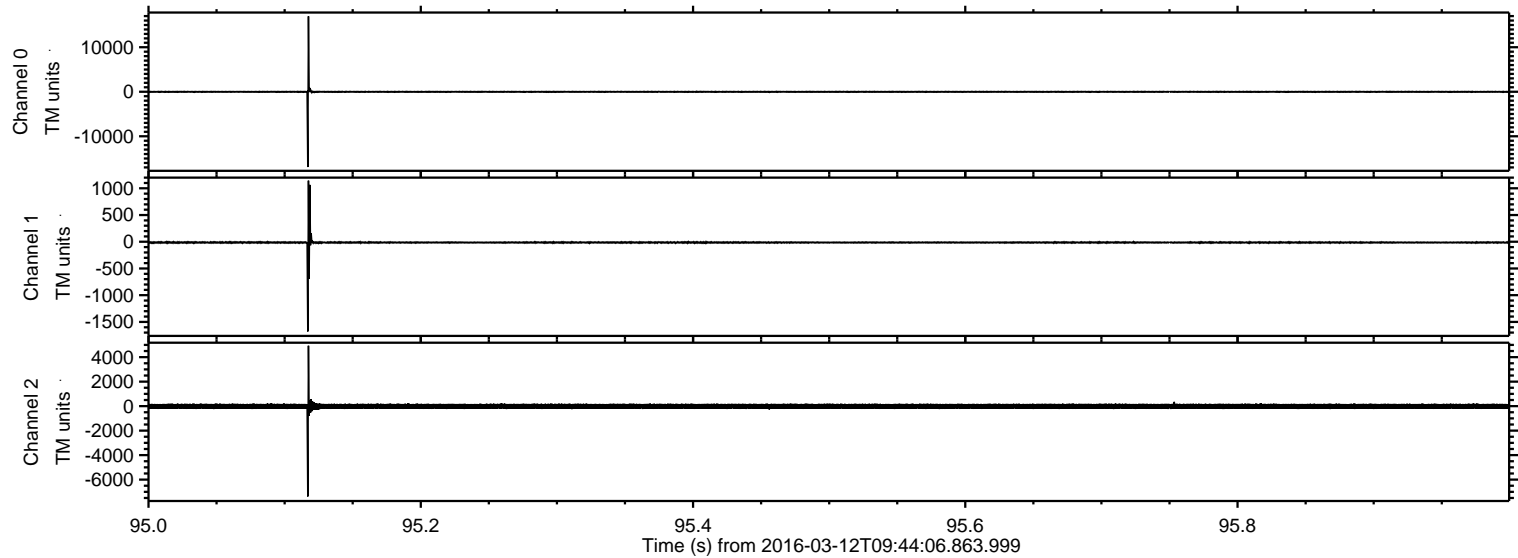
Processed Tue Apr 19 21:45:03 2016 by ELM ver.2012-10-06 from 001__elm20160312_094405__dat00.bin



Processed Tue Apr 19 21:45:15 2016 by ELM ver.2012-10-06 from 001__elm20160312_094405__dat00.bin

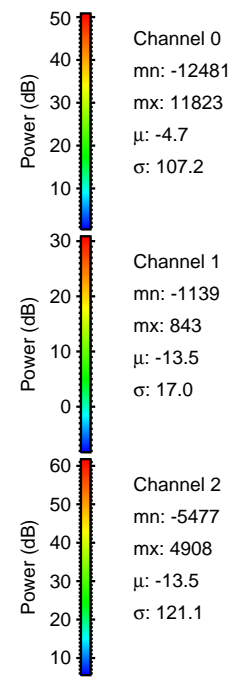
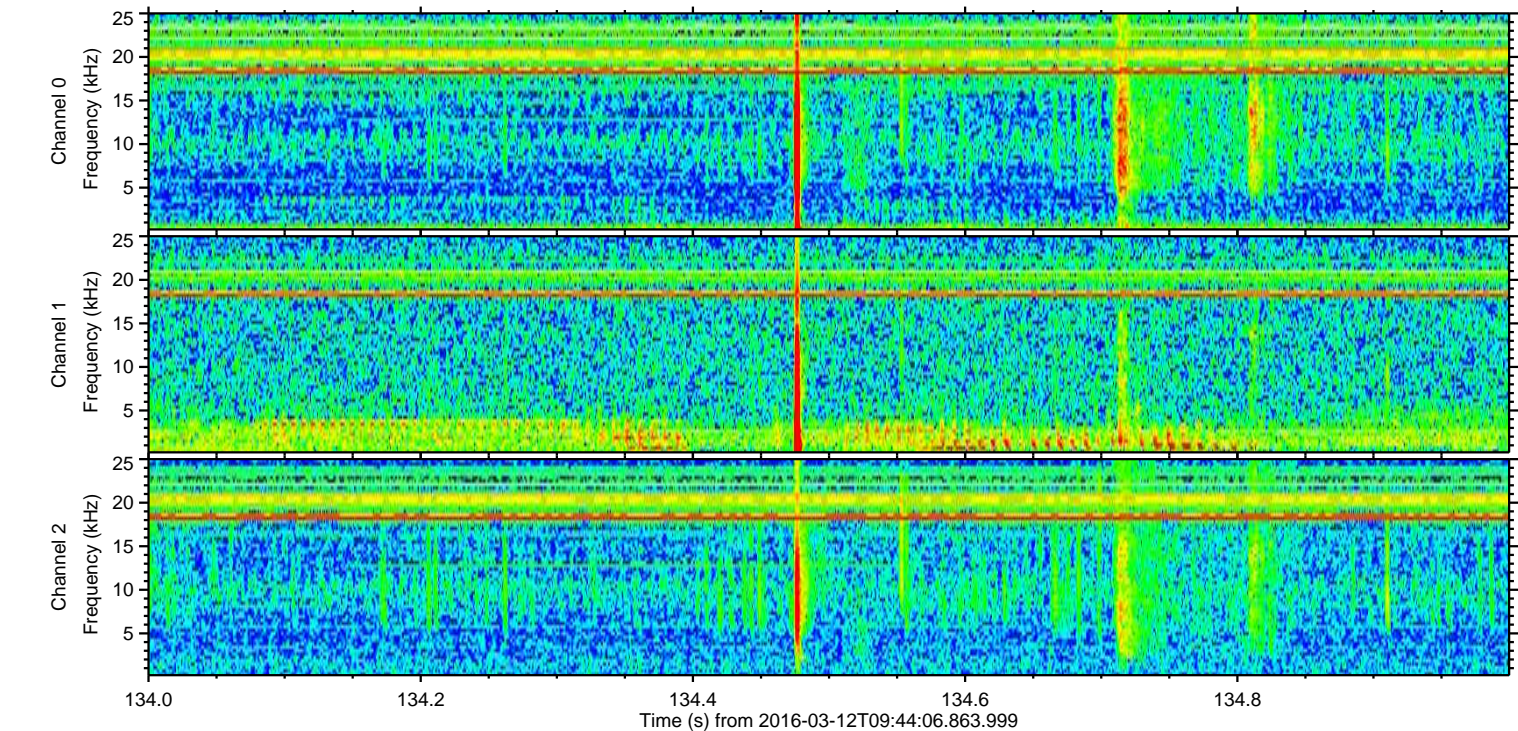
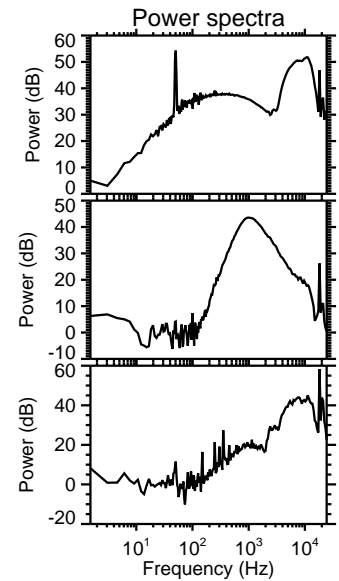
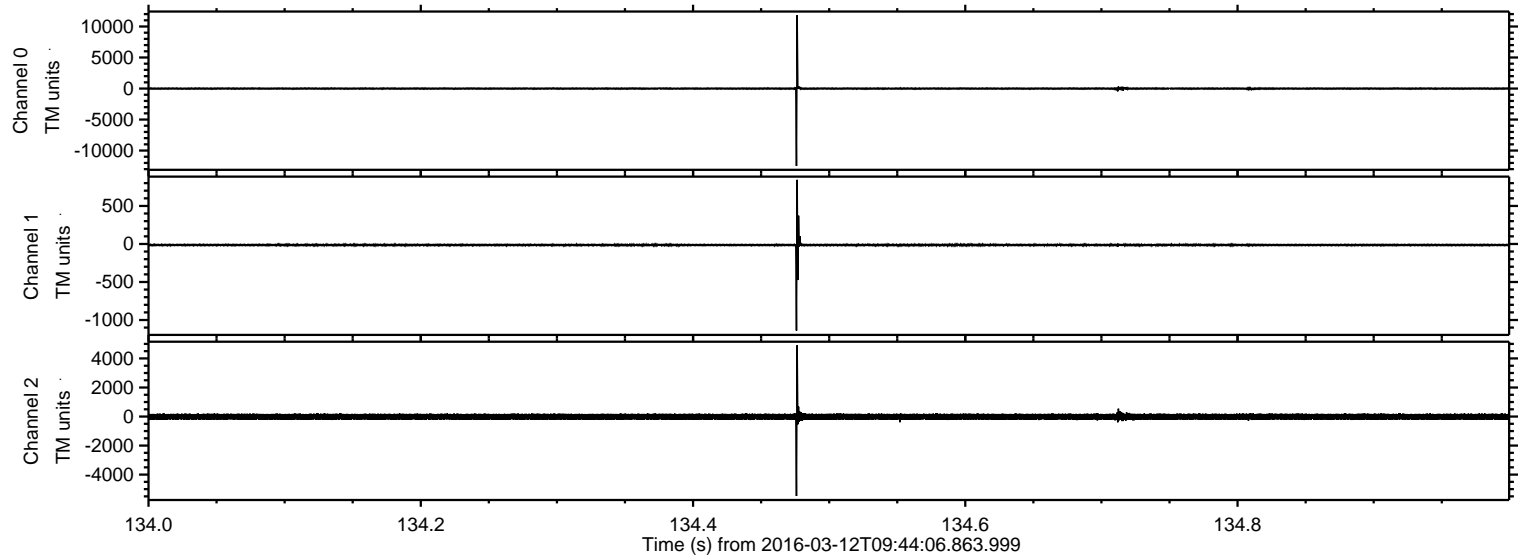


Processed Tue Apr 19 21:45:16 2016 by ELM ver.2012-10-06 from 001__elm20160312_094405__dat00.bin

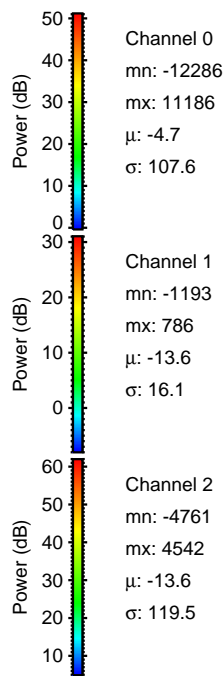
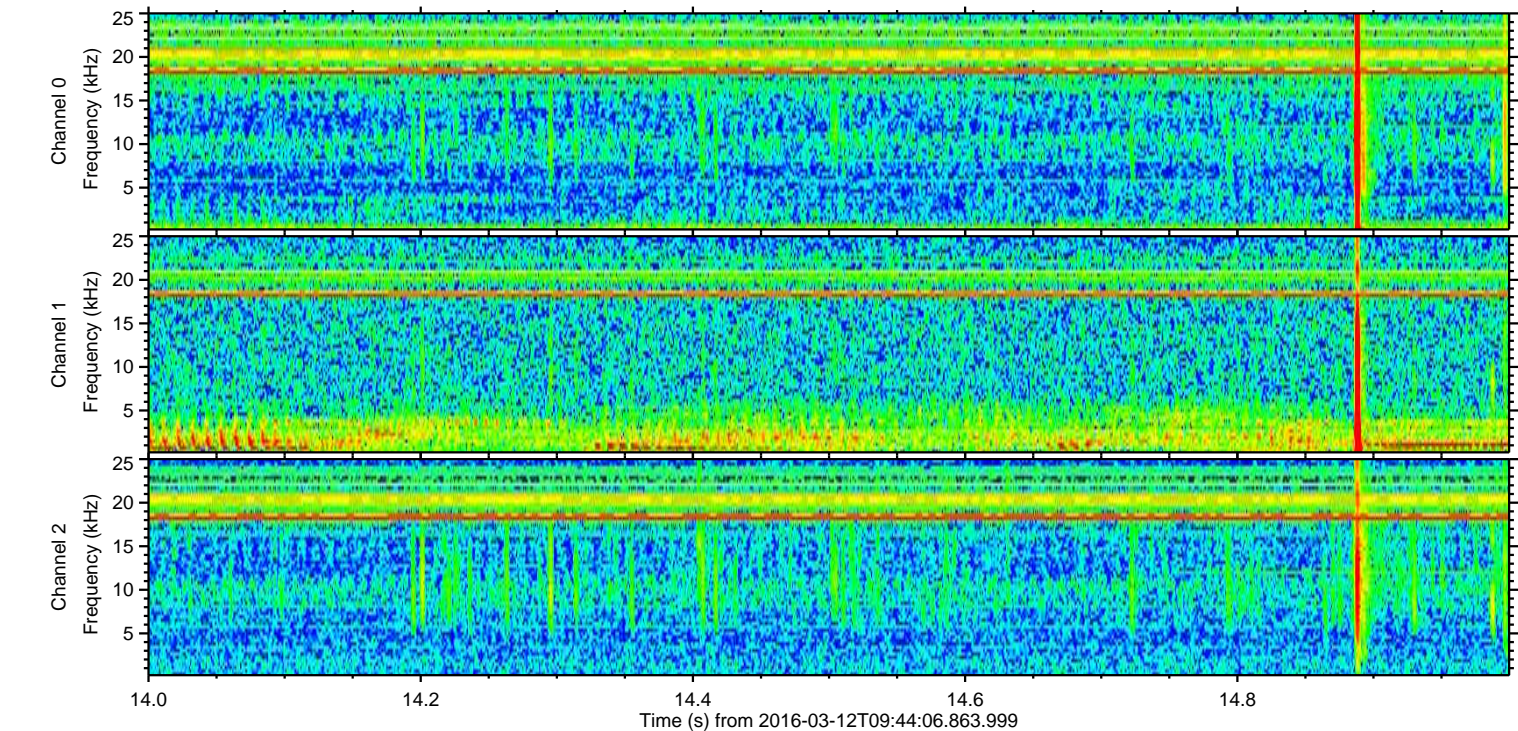
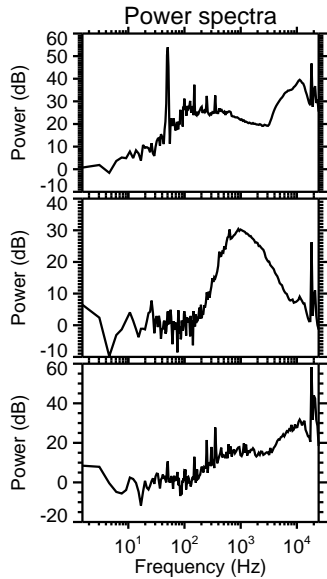
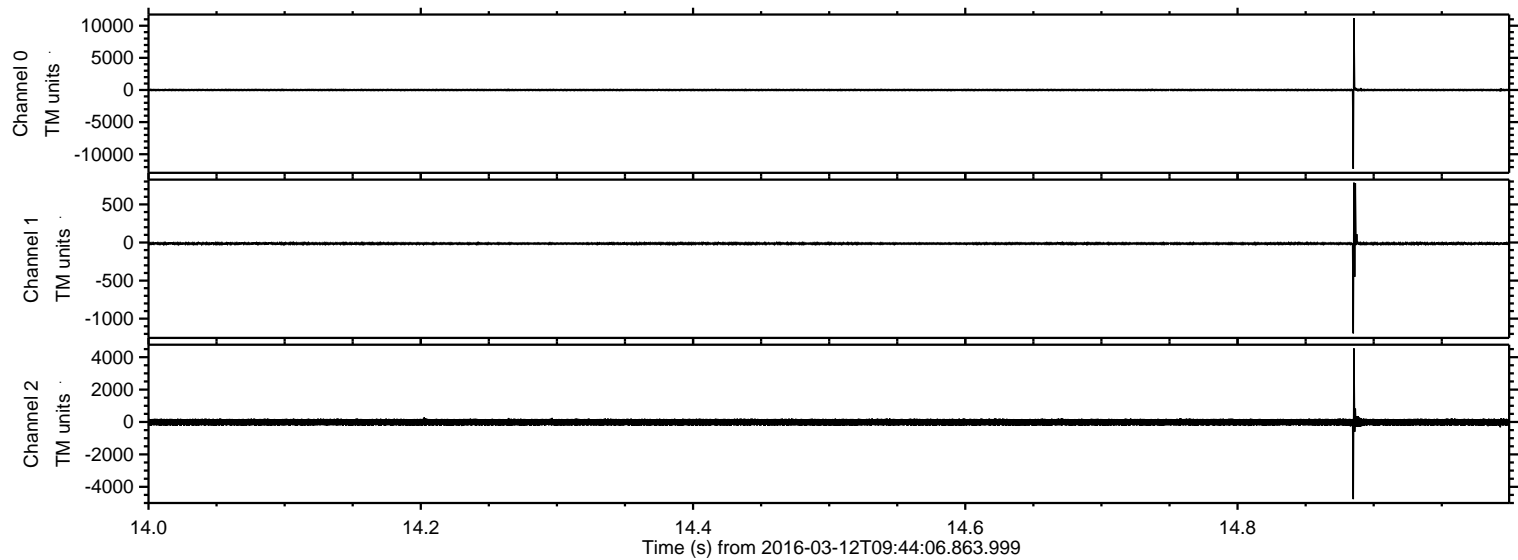


ELMAVAN 3D WAVEFORMS (Measured data sampled at 50 kHz) 51000 packets of 144 samples from 2016-03-12T09:44:06.863.999. Part 135/147

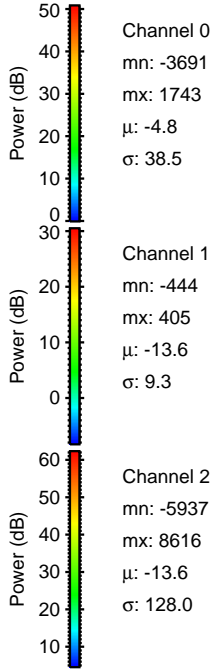
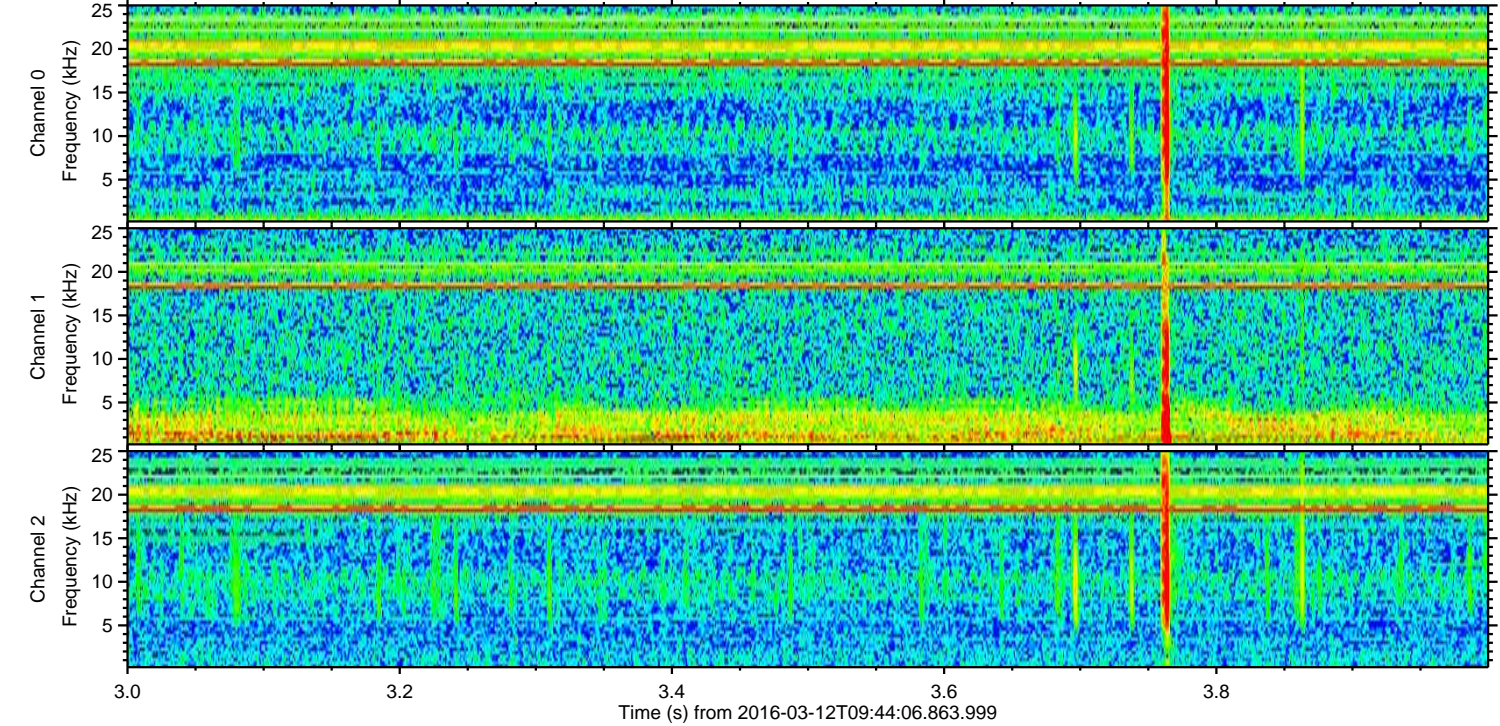
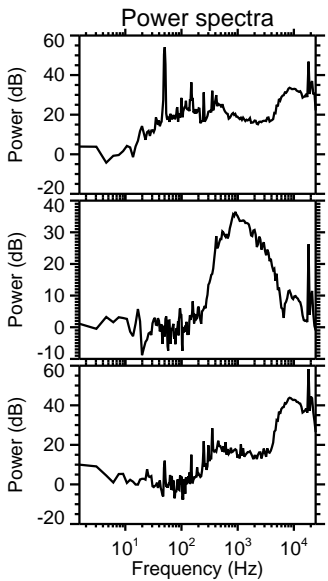
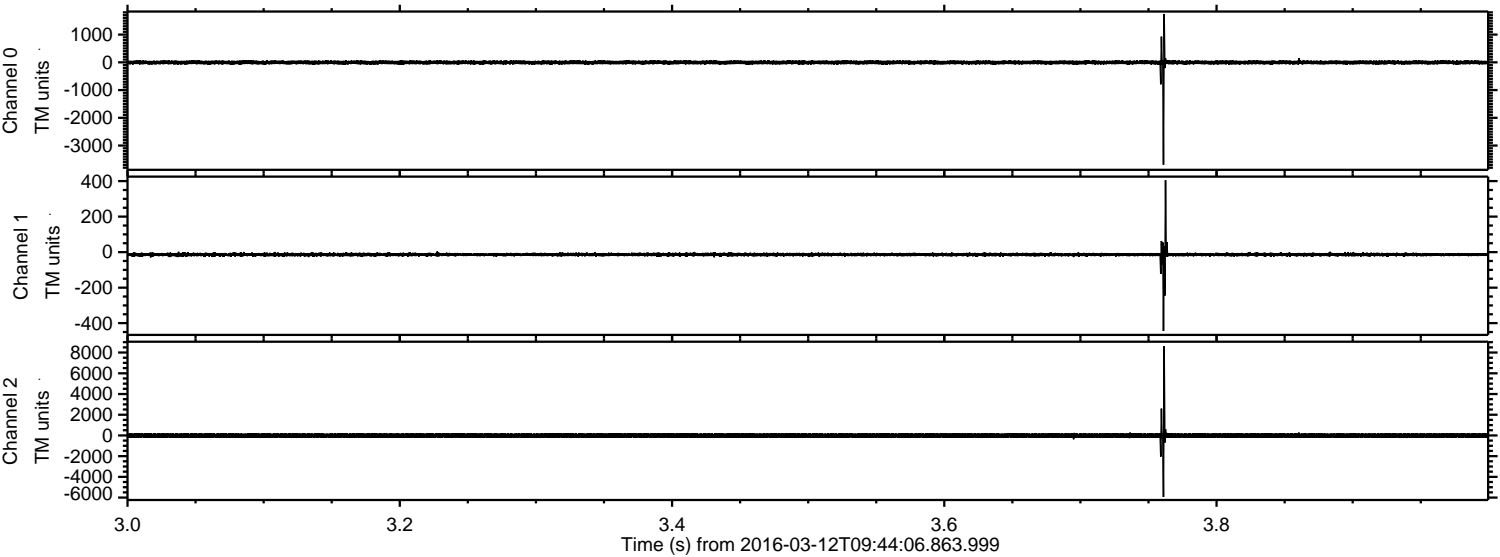
Processed Tue Apr 19 21:45:17 2016 by ELM ver.2012-10-06 from 001__elm20160312_094405__dat00.bin



Processed Tue Apr 19 21:45:18 2016 by ELM ver.2012-10-06 from 001__elm20160312_094405__dat00.bin



Processed Tue Apr 19 21:45:19 2016 by ELM ver.2012-10-06 from 001__elm20160312_094405__dat00.bin

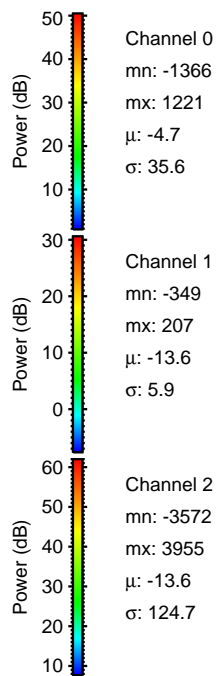
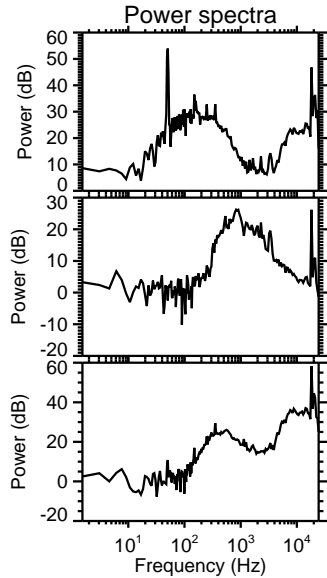
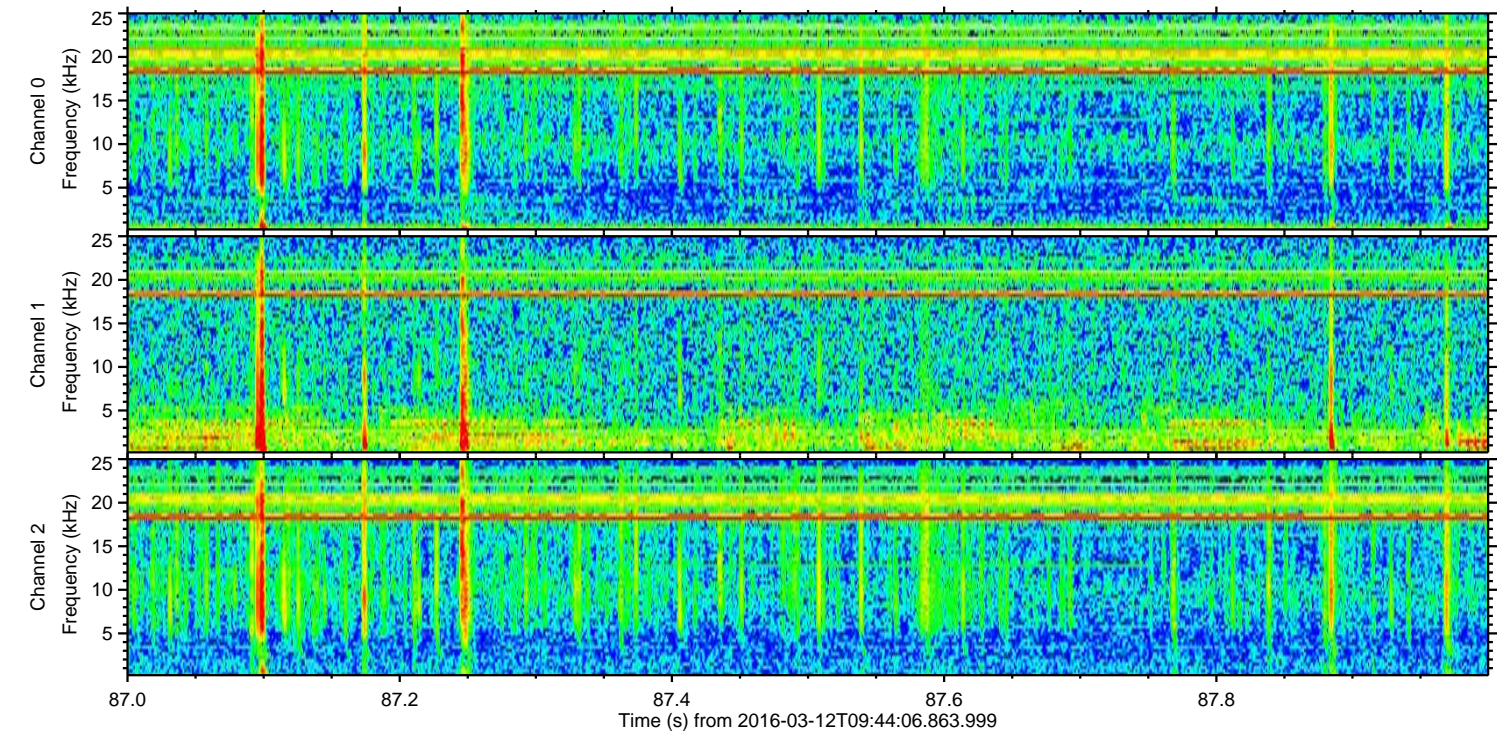
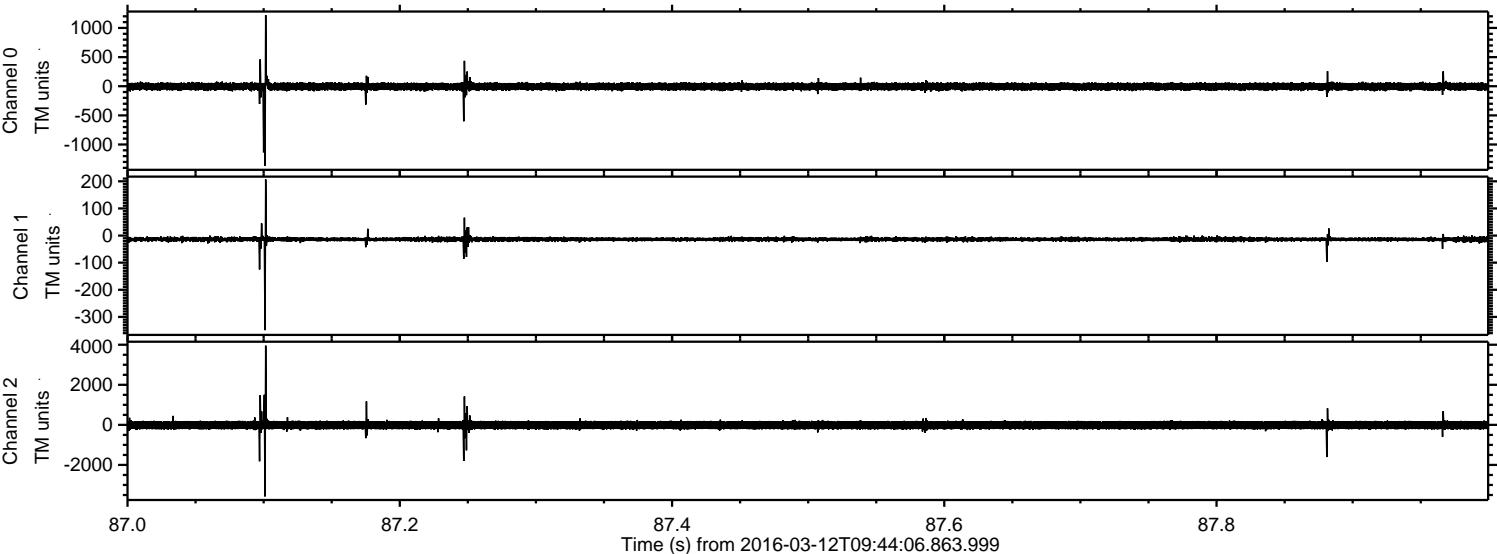


Channel 0
mn: -3691
mx: 1743
 μ : -4.8
 σ : 38.5

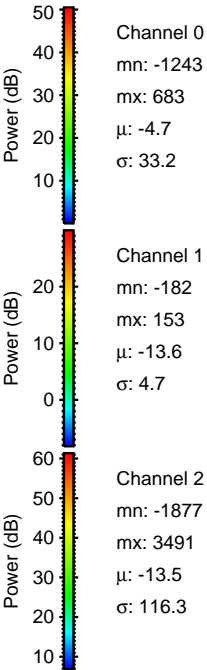
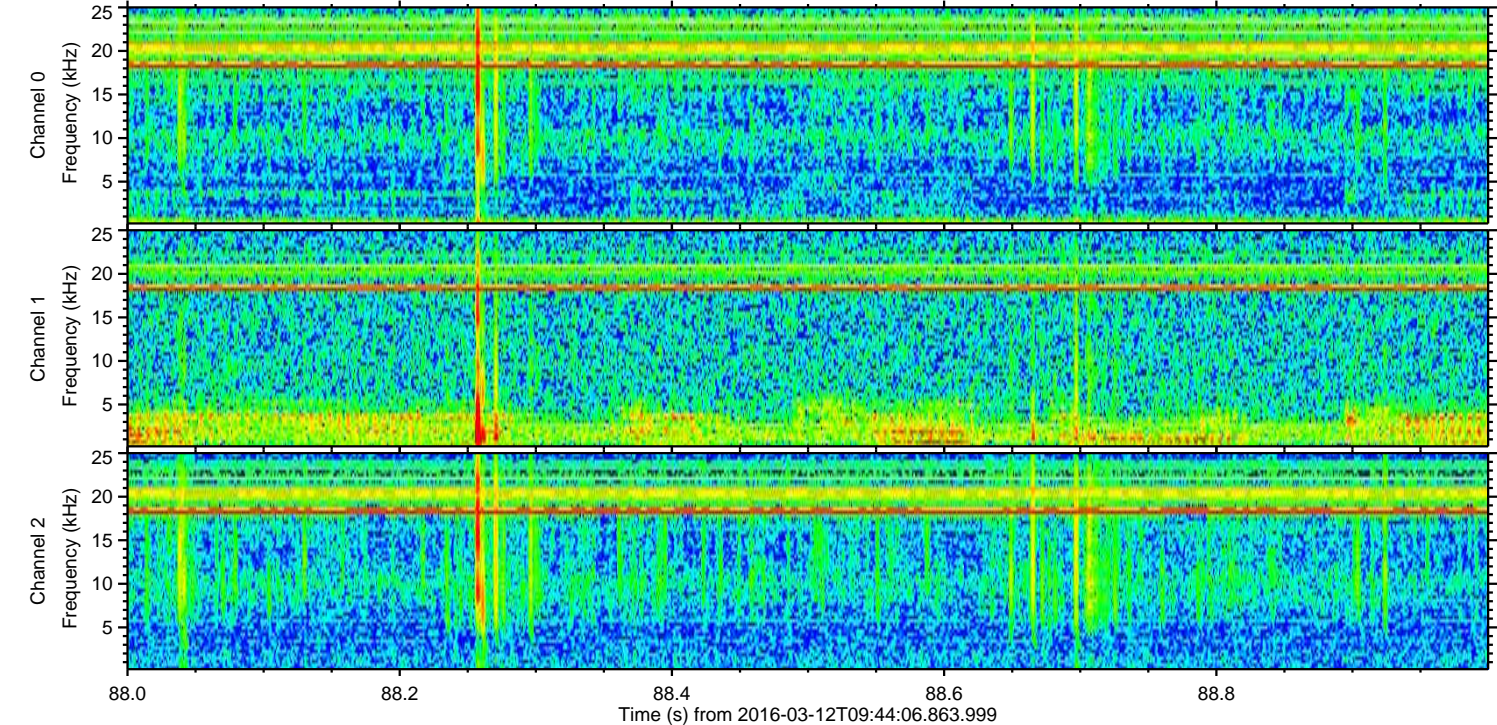
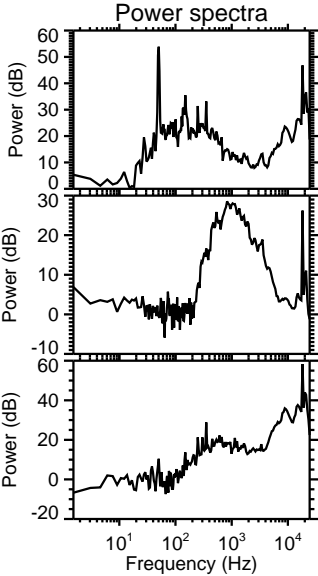
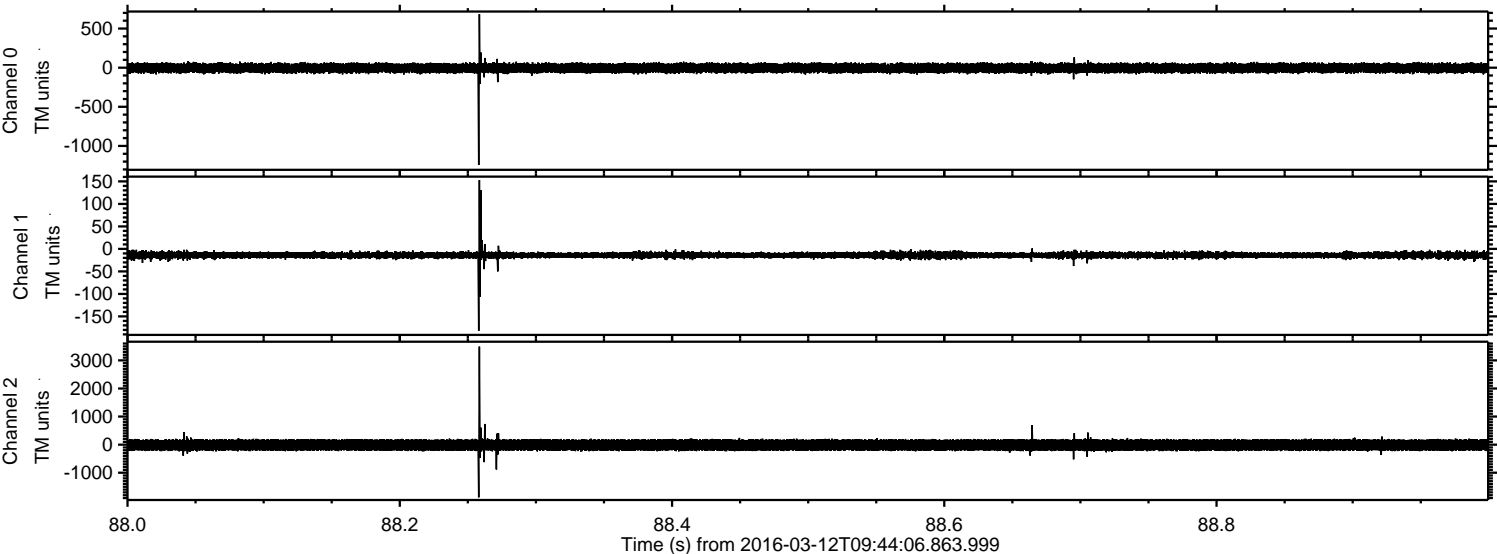
Channel 1
mn: -444
mx: 405
 μ : -13.6
 σ : 9.3

Channel 2
mn: -5937
mx: 8616
 μ : -13.6
 σ : 128.0

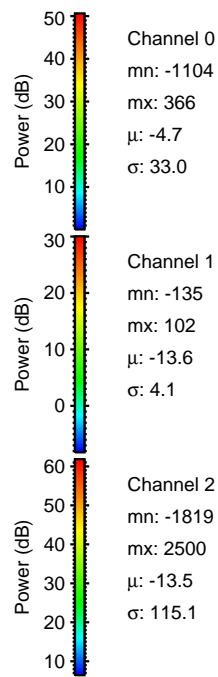
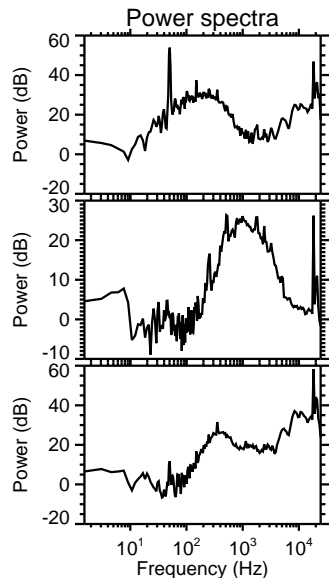
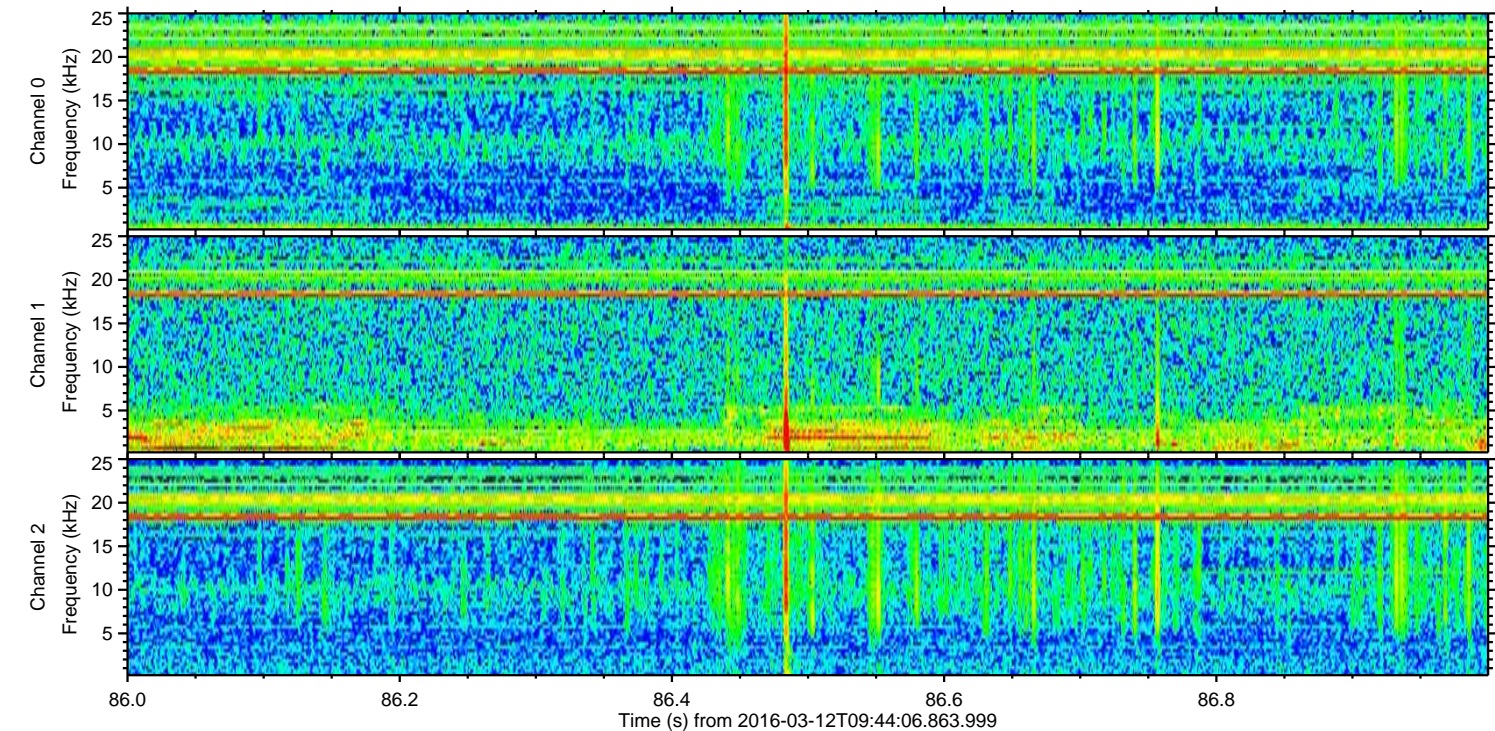
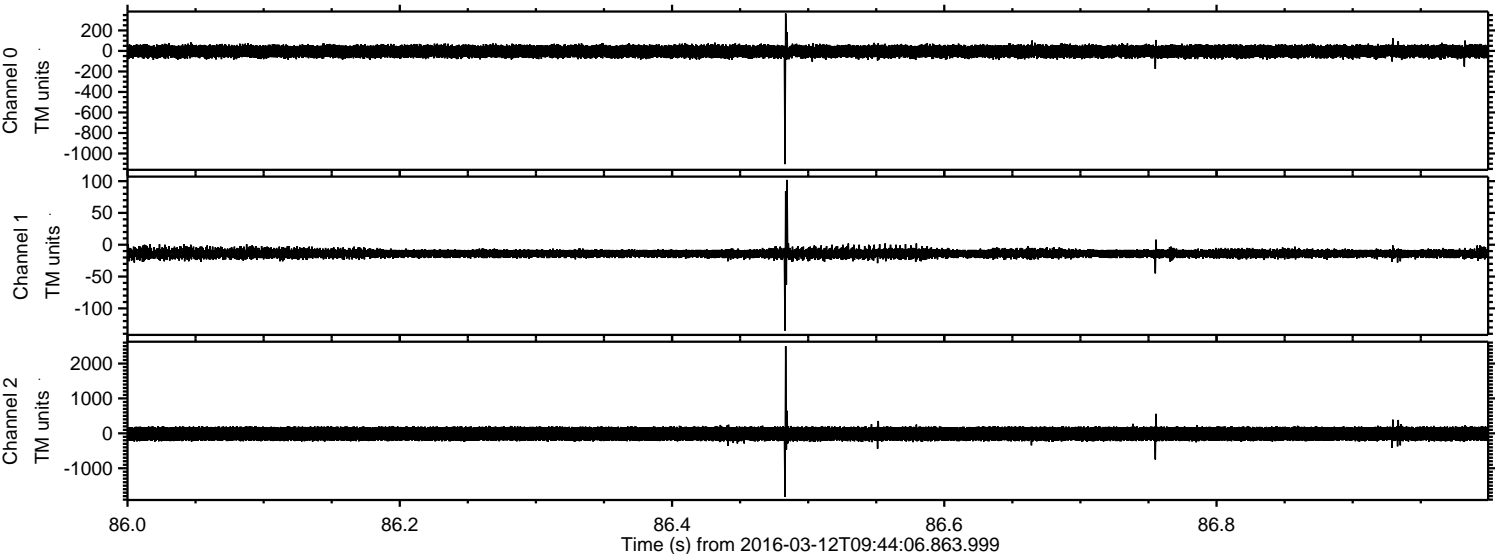
Processed Tue Apr 19 21:45:20 2016 by ELM ver.2012-10-06 from 001__elm20160312_094405__dat00.bin



Processed Tue Apr 19 21:45:21 2016 by ELM ver.2012-10-06 from 001__elm20160312_094405__dat00.bin



Processed Tue Apr 19 21:45:22 2016 by ELM ver.2012-10-06 from 001__elm20160312_094405__dat00.bin

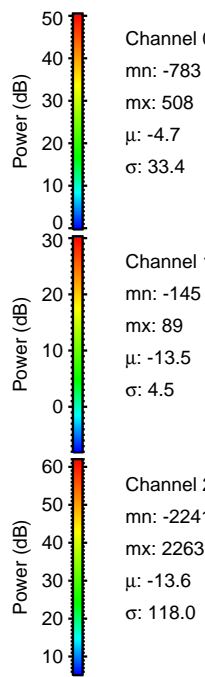
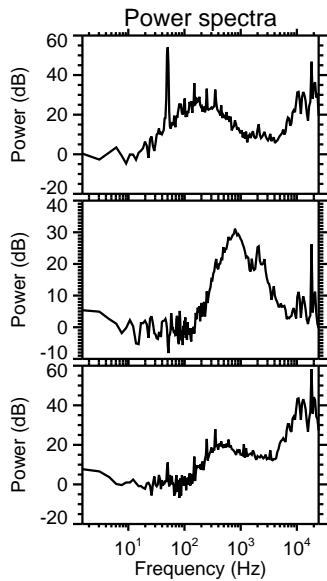
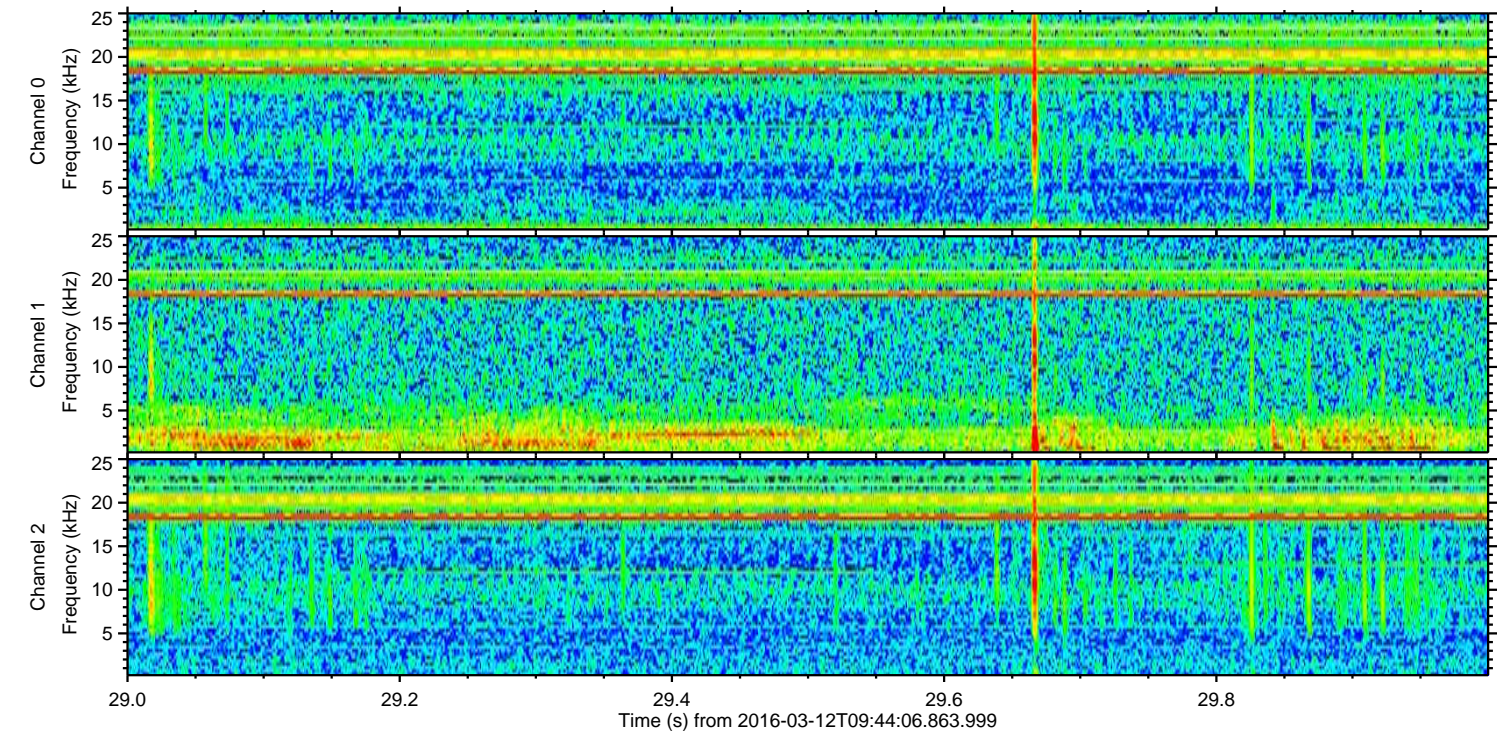
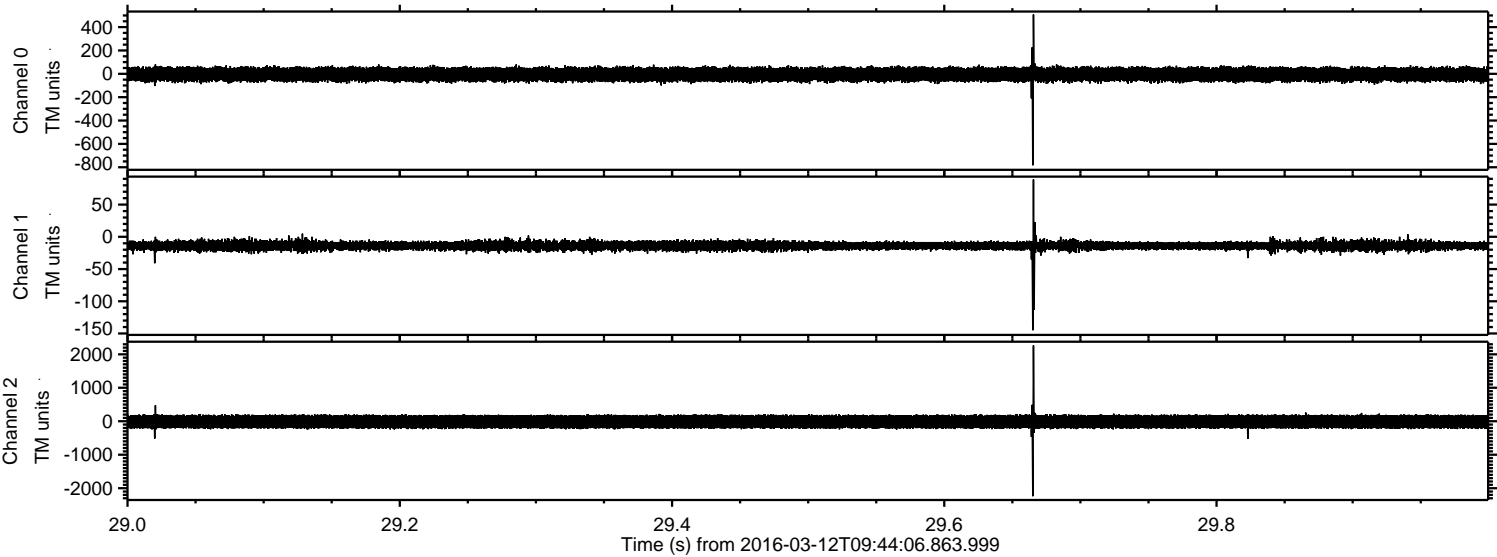


Channel 0
mn: -1104
mx: 366
 μ : -4.7
 σ : 33.0

Channel 1
mn: -135
mx: 102
 μ : -13.6
 σ : 4.1

Channel 2
mn: -1819
mx: 2500
 μ : -13.5
 σ : 115.1

Processed Tue Apr 19 21:45:22 2016 by ELM ver.2012-10-06 from 001__elm20160312_094405__dat00.bin



Channel 0
mn: -783
mx: 508
 μ : -4.7
 σ : 33.4

Channel 1
mn: -145
mx: 89
 μ : -13.5
 σ : 4.5

Channel 2
mn: -2241
mx: 2263
 μ : -13.6
 σ : 118.0

Processed Tue Apr 19 21:45:23 2016 by ELM ver.2012-10-06 from 001__elm20160312_094405__dat00.bin

