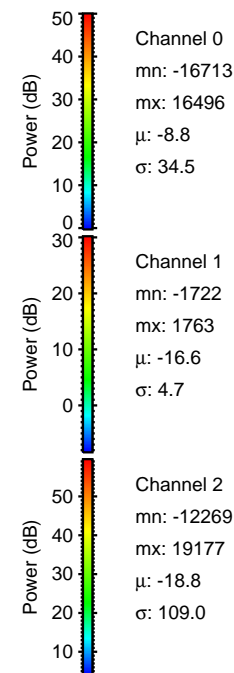
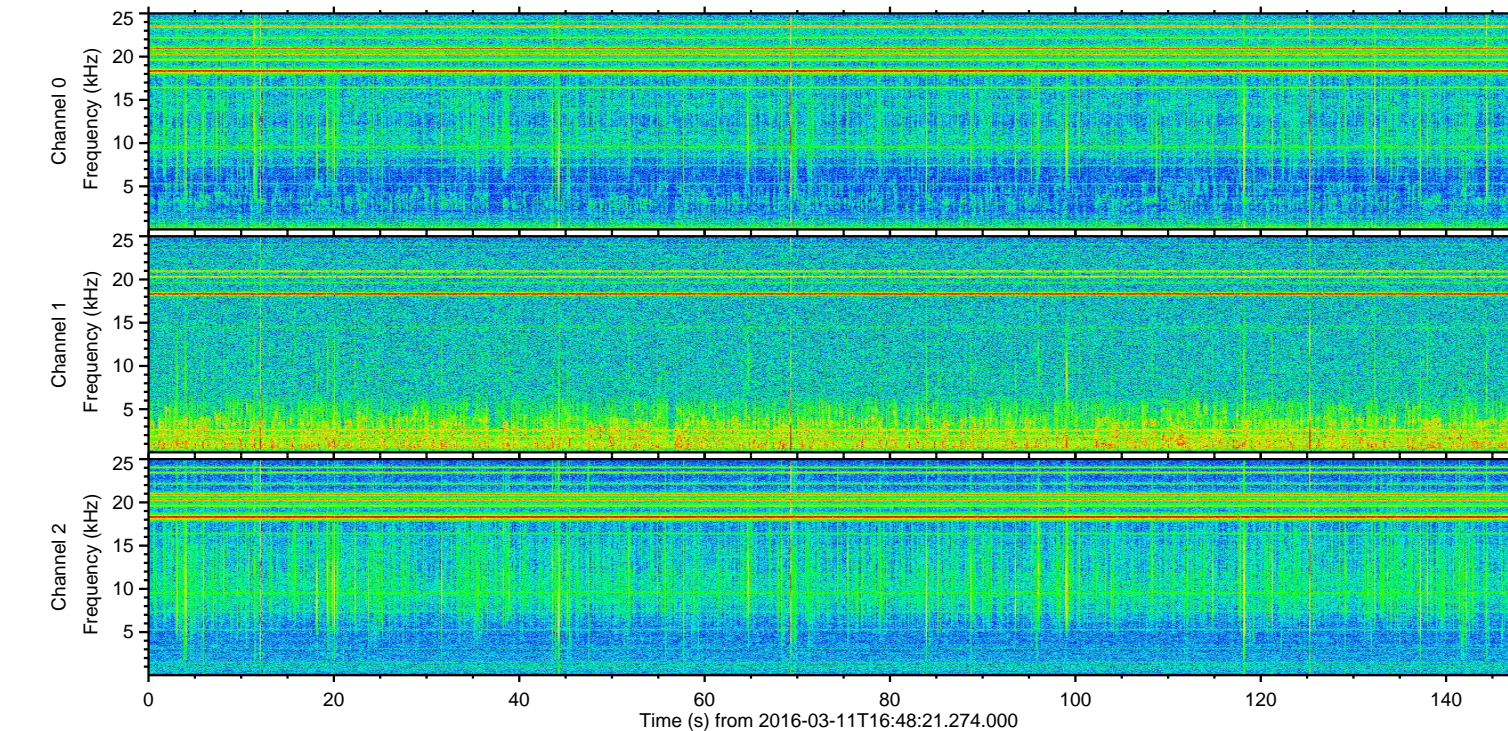
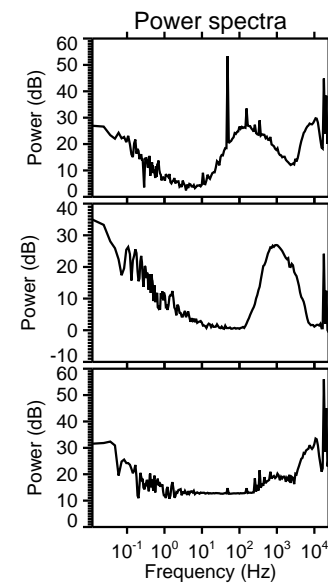
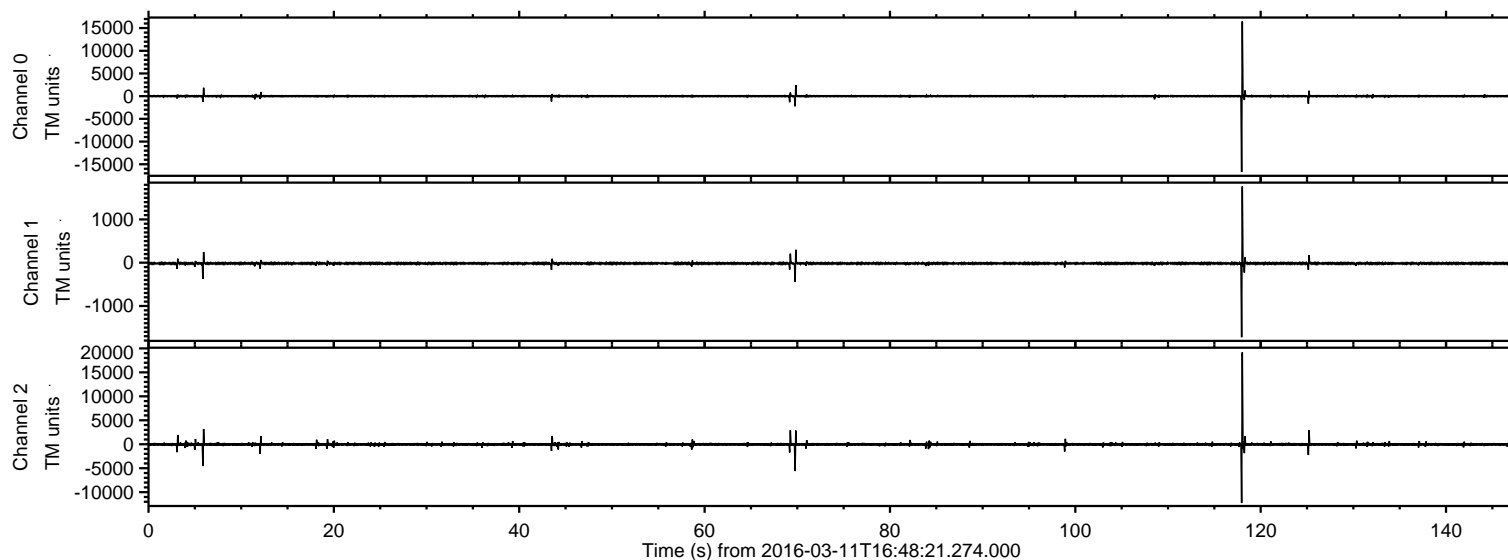


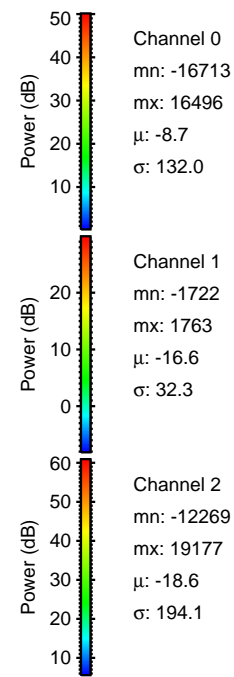
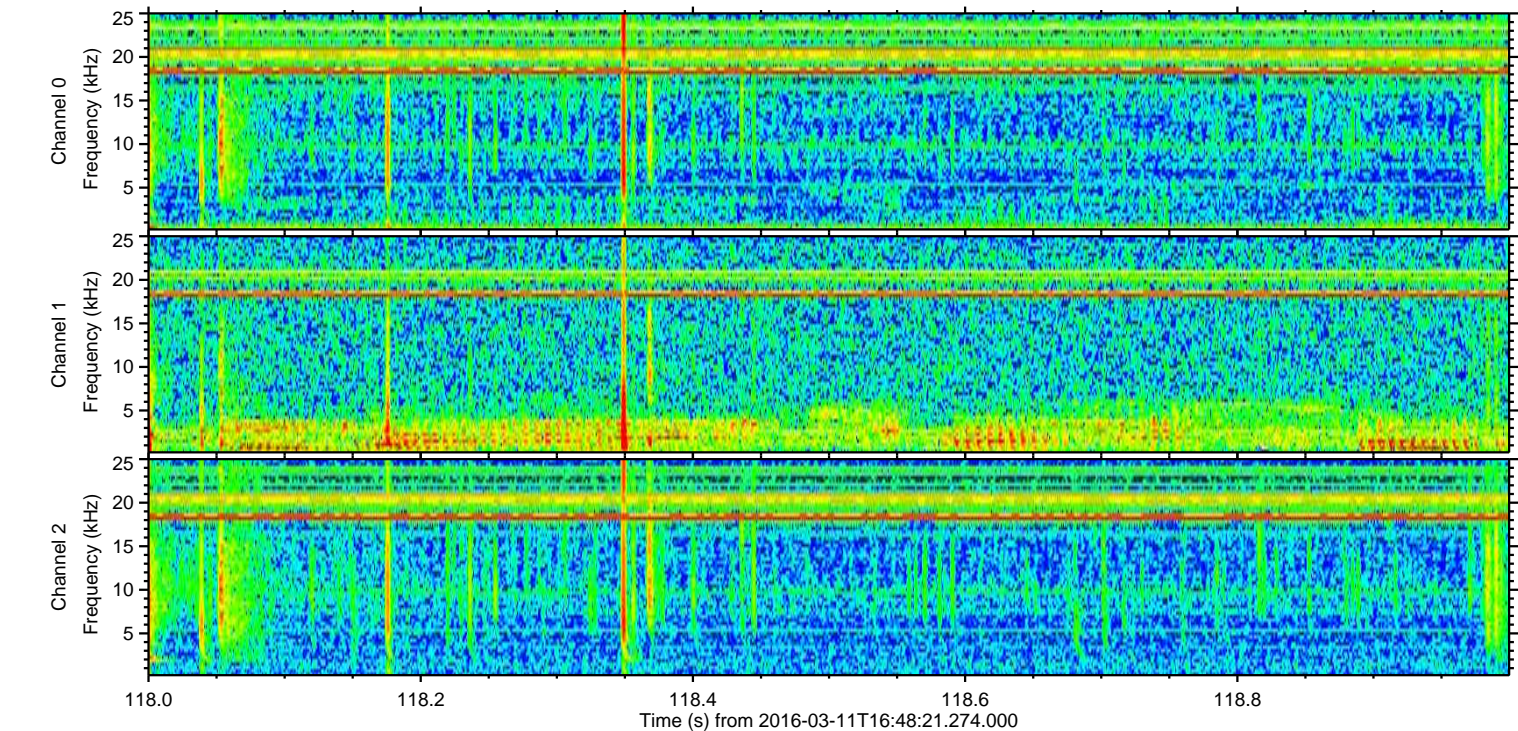
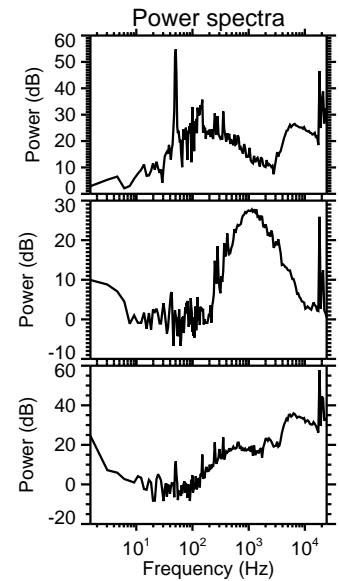
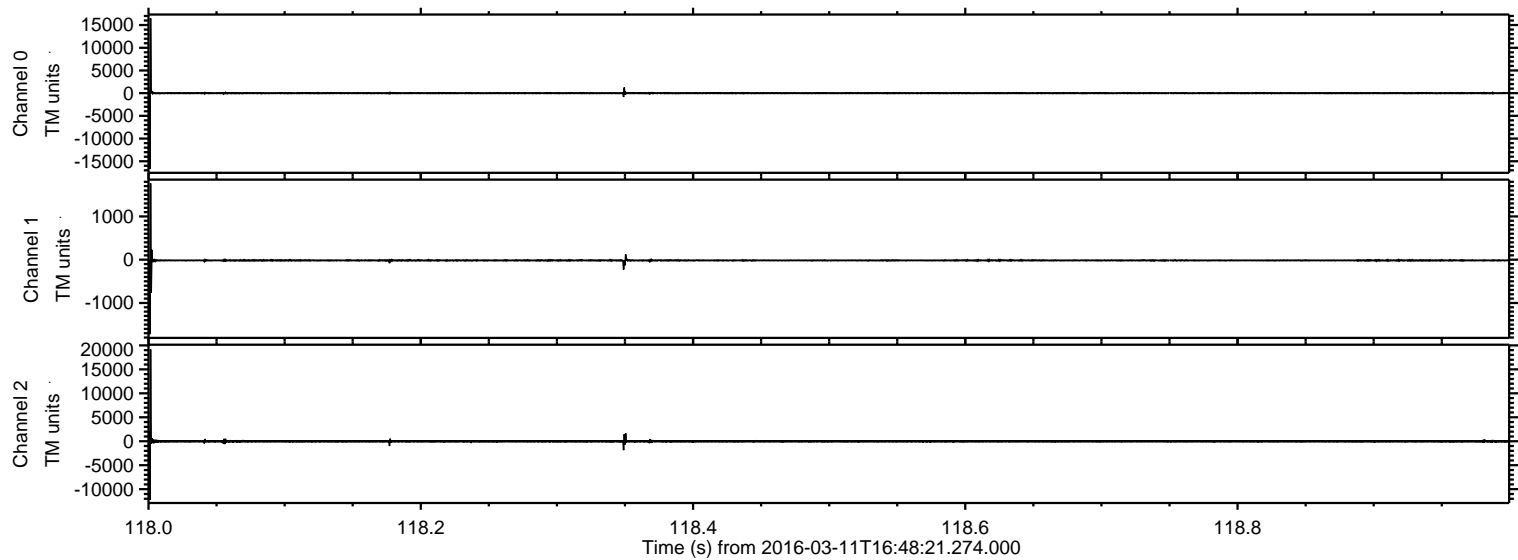
ELMAVAN 3D WAVEFORMS (Measured data sampled at 50 kHz) 51000 packets of 144 samples from 2016-03-11T16:48:21.274.000.

Processed Tue Apr 19 18:15:02 2016 by ELM ver.2012-10-06 from 001__elm20160311_164820__dat00.bin

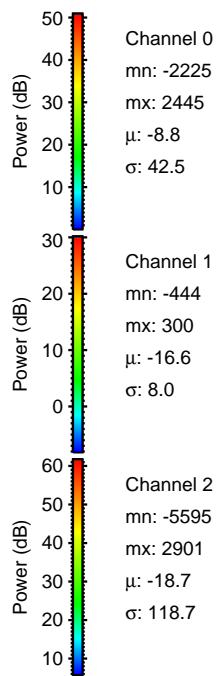
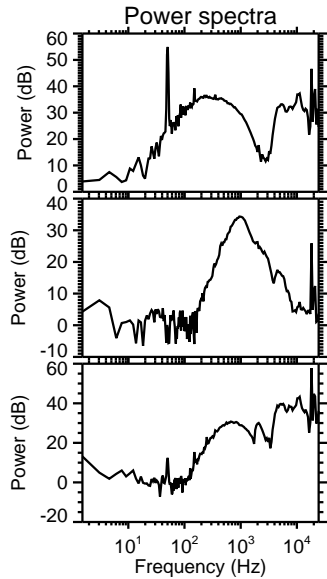
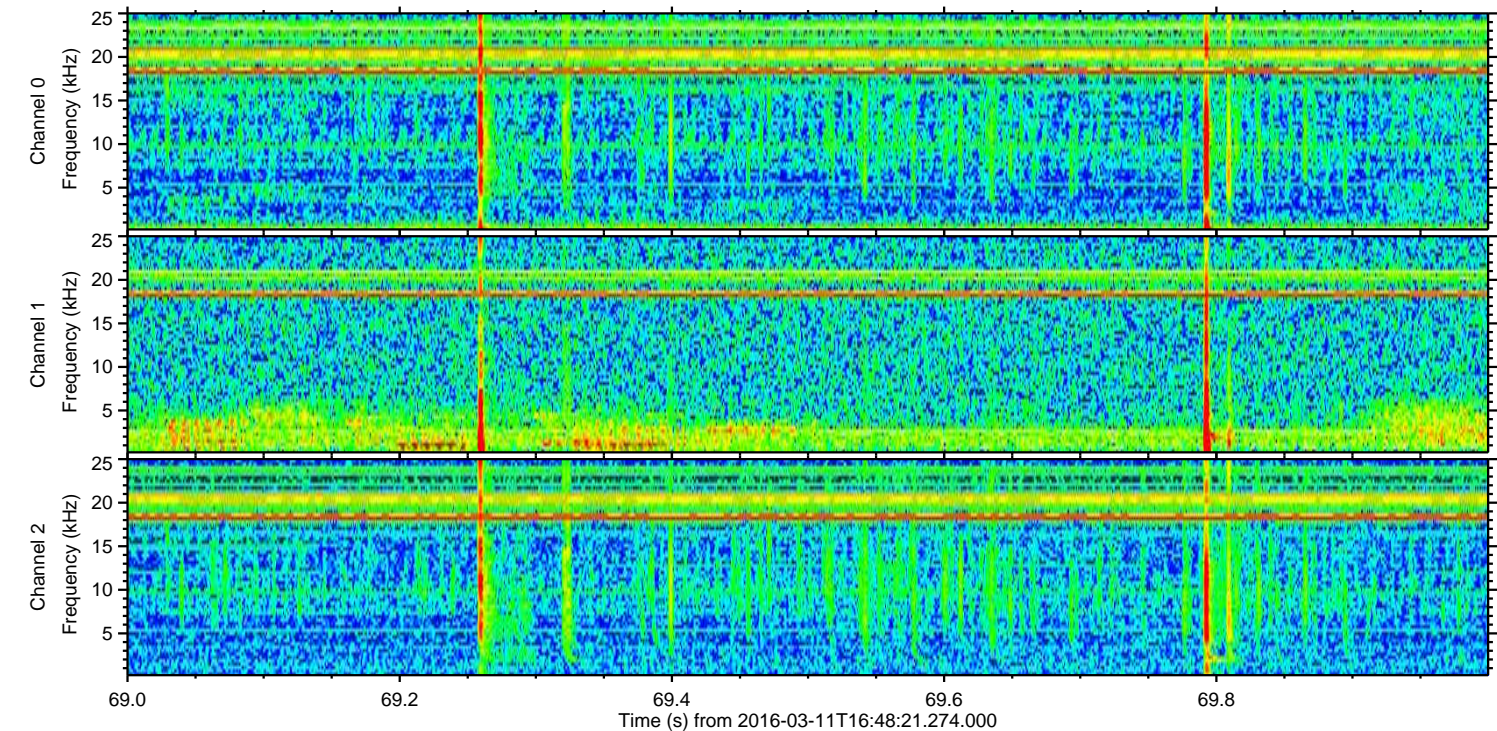
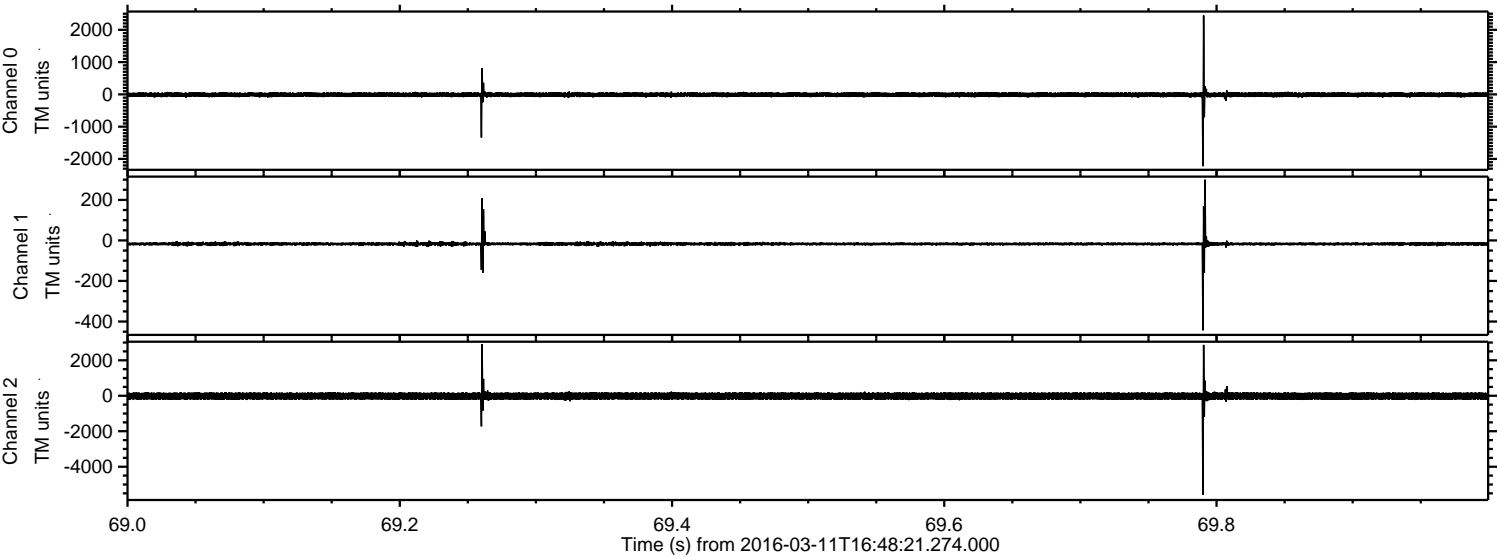


ELMAVAN 3D WAVEFORMS (Measured data sampled at 50 kHz) 51000 packets of 144 samples from 2016-03-11T16:48:21.274.000. Part 119/147

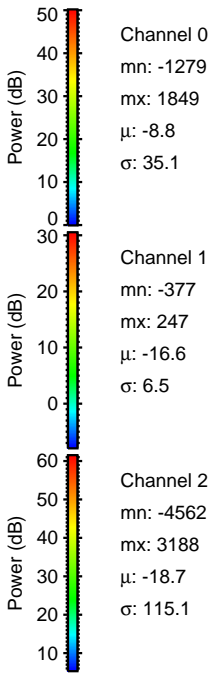
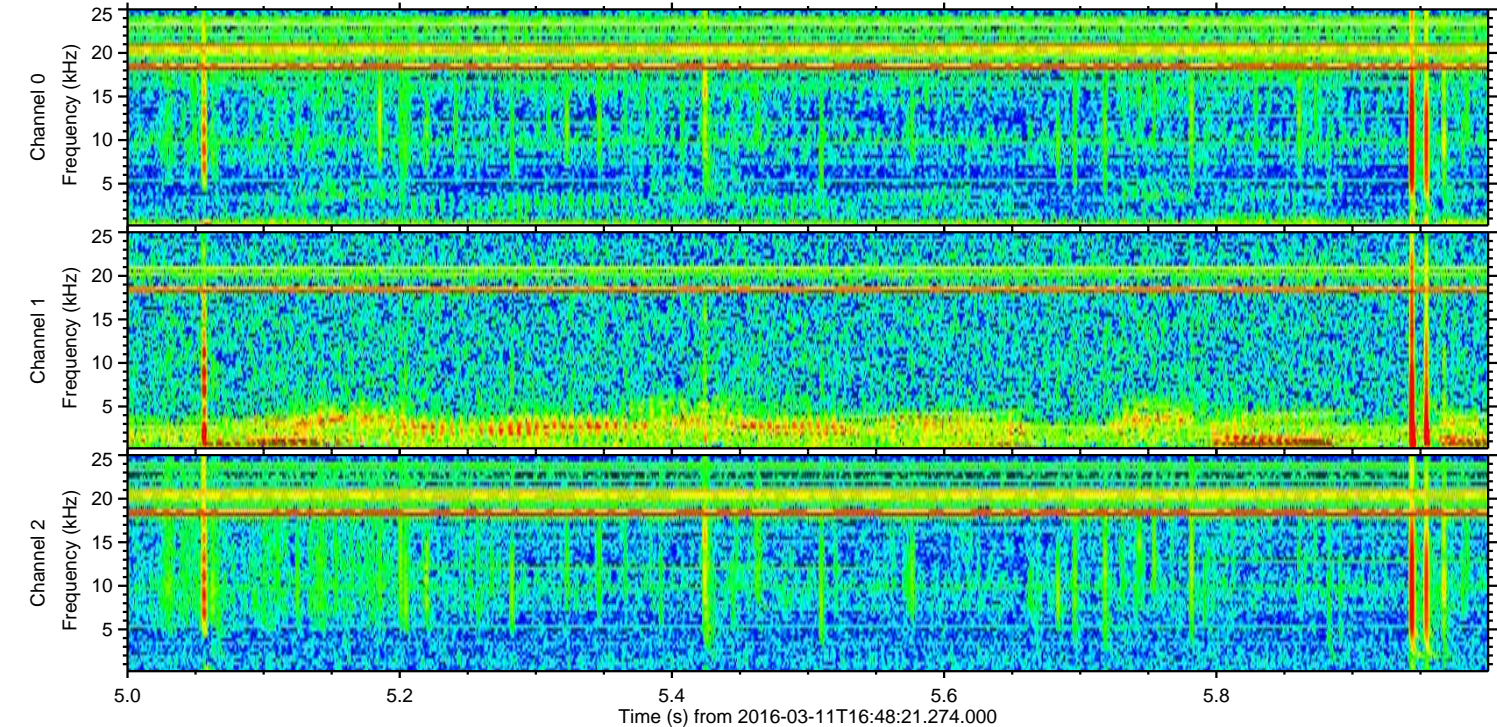
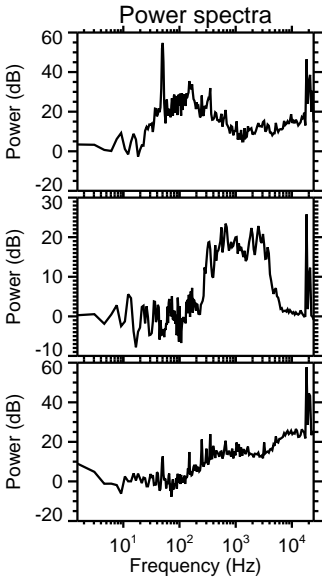
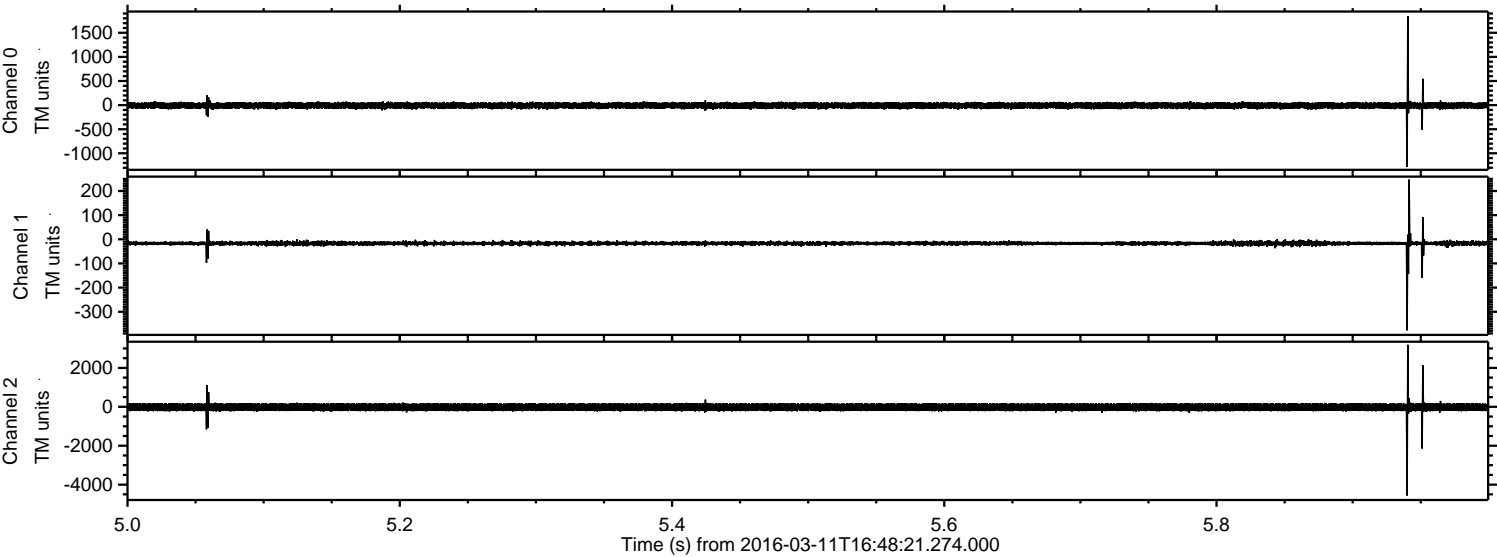
Processed Tue Apr 19 18:15:14 2016 by ELM ver.2012-10-06 from 001__elm20160311_164820__dat00.bin



Processed Tue Apr 19 18:15:15 2016 by ELM ver.2012-10-06 from 001__elm20160311_164820__dat00.bin

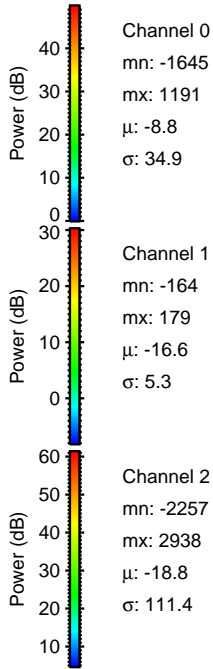
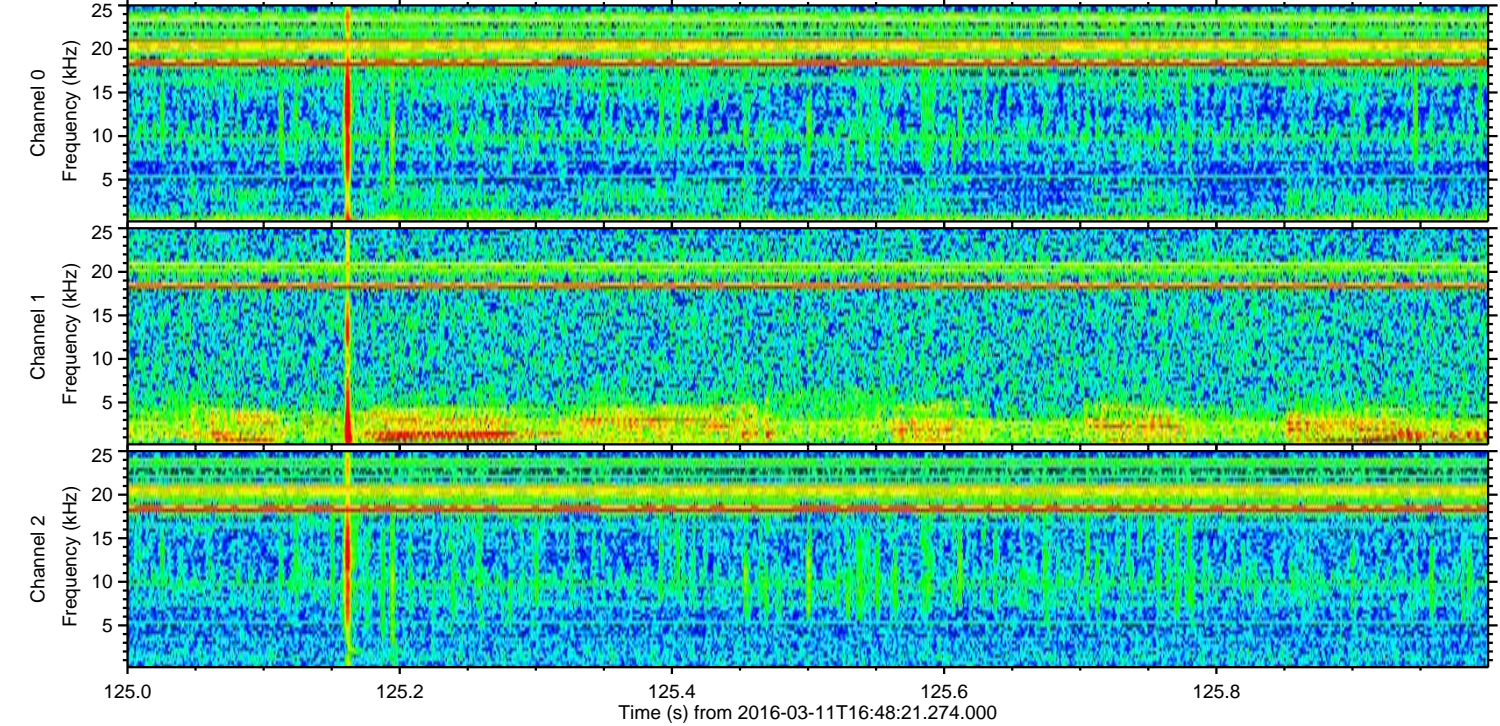
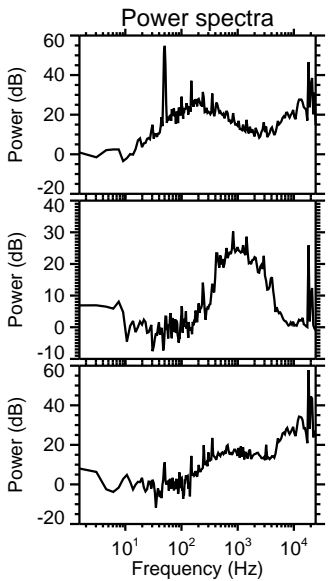
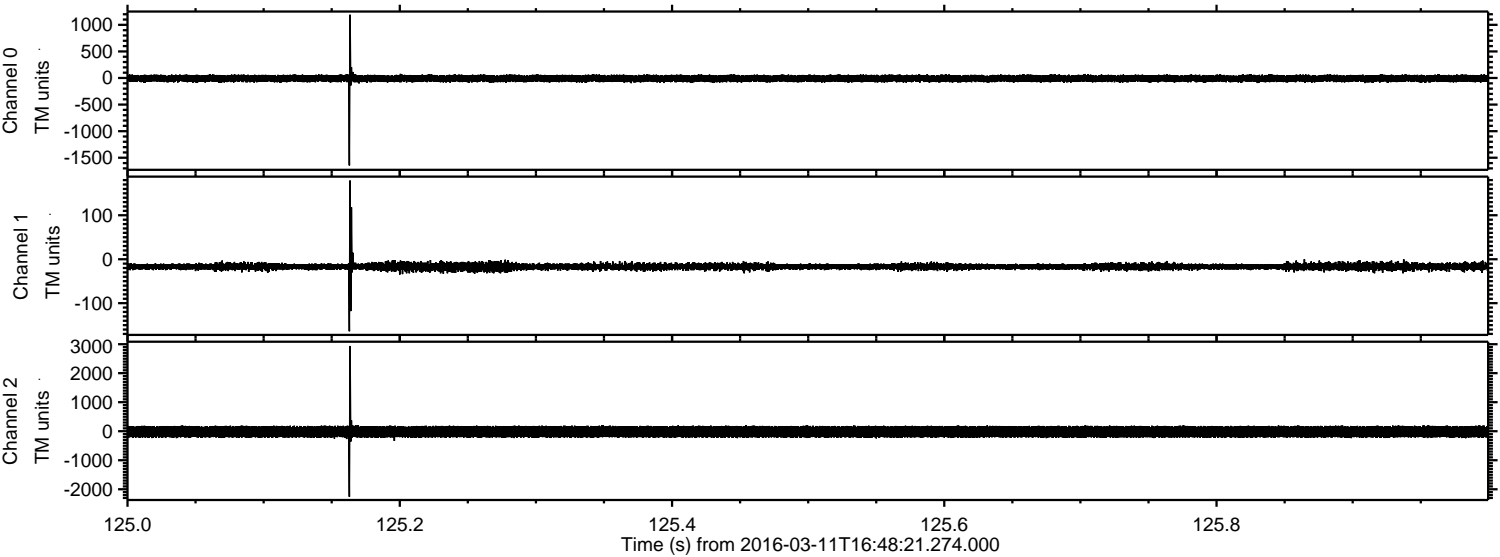


Processed Tue Apr 19 18:15:16 2016 by ELM ver.2012-10-06 from 001__elm20160311_164820__dat00.bin

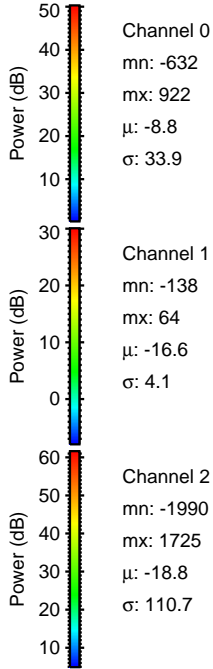
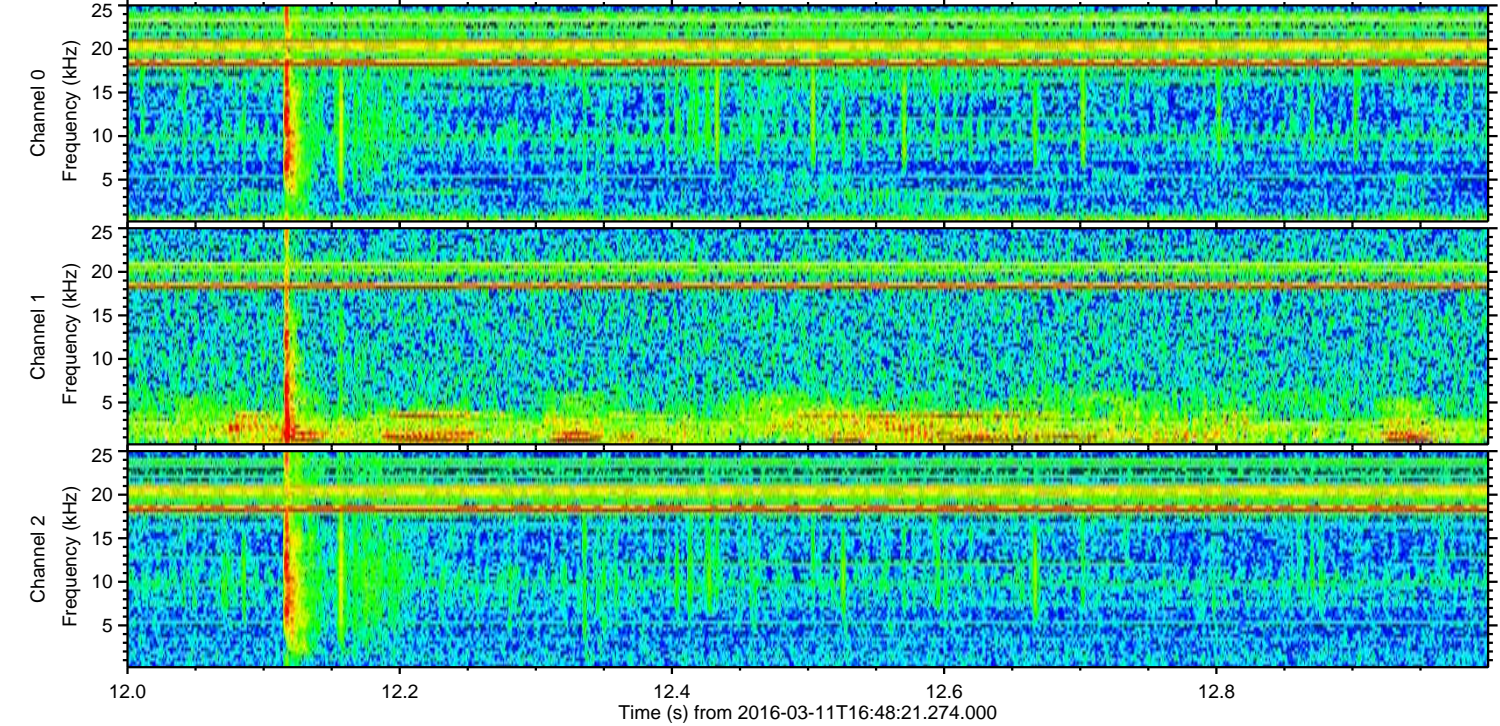
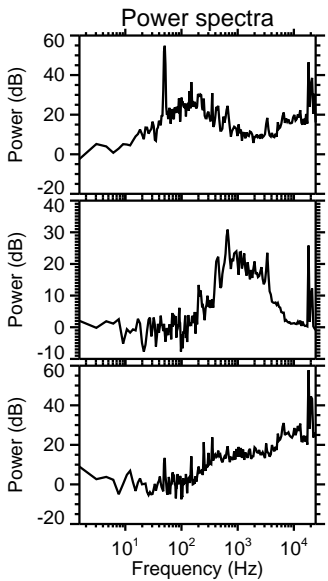
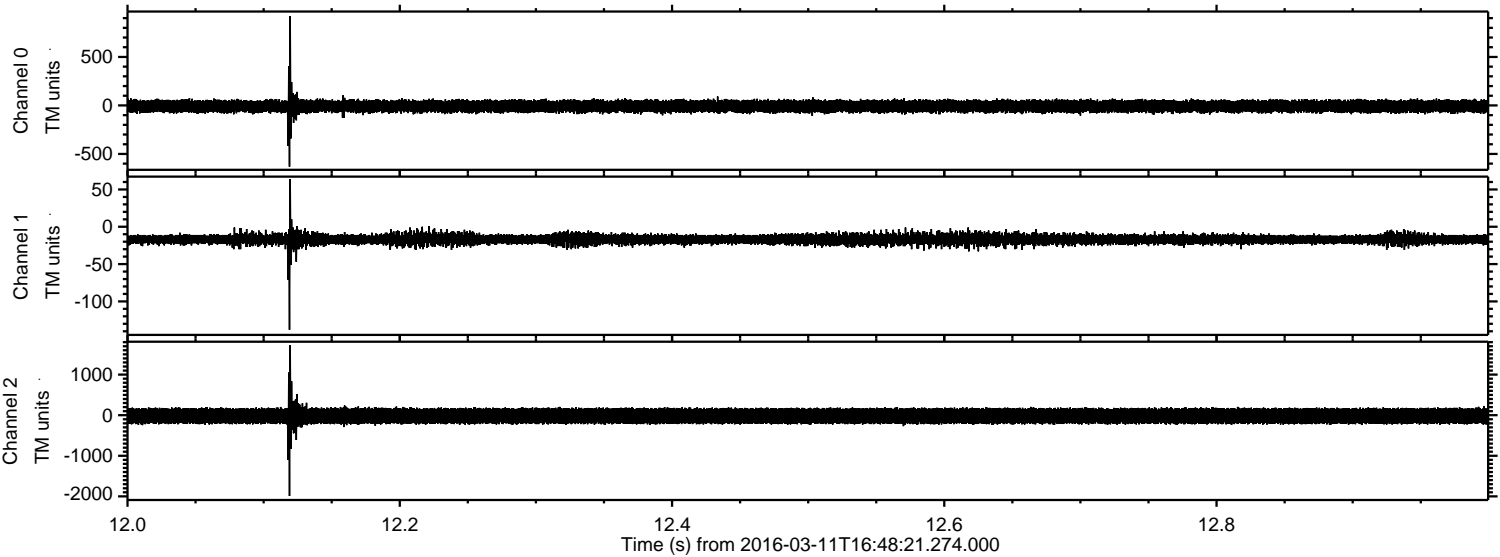


ELMAVAN 3D WAVEFORMS (Measured data sampled at 50 kHz) 51000 packets of 144 samples from 2016-03-11T16:48:21.274.000. Part 126/147

Processed Tue Apr 19 18:15:17 2016 by ELM ver.2012-10-06 from 001__elm20160311_164820__dat00.bin



Processed Tue Apr 19 18:15:18 2016 by ELM ver.2012-10-06 from 001__elm20160311_164820__dat00.bin

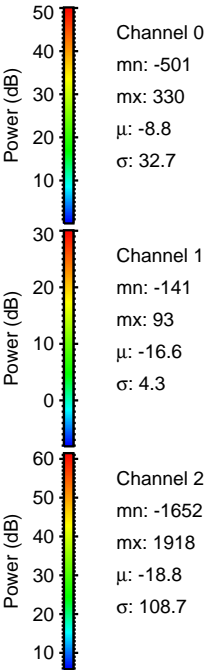
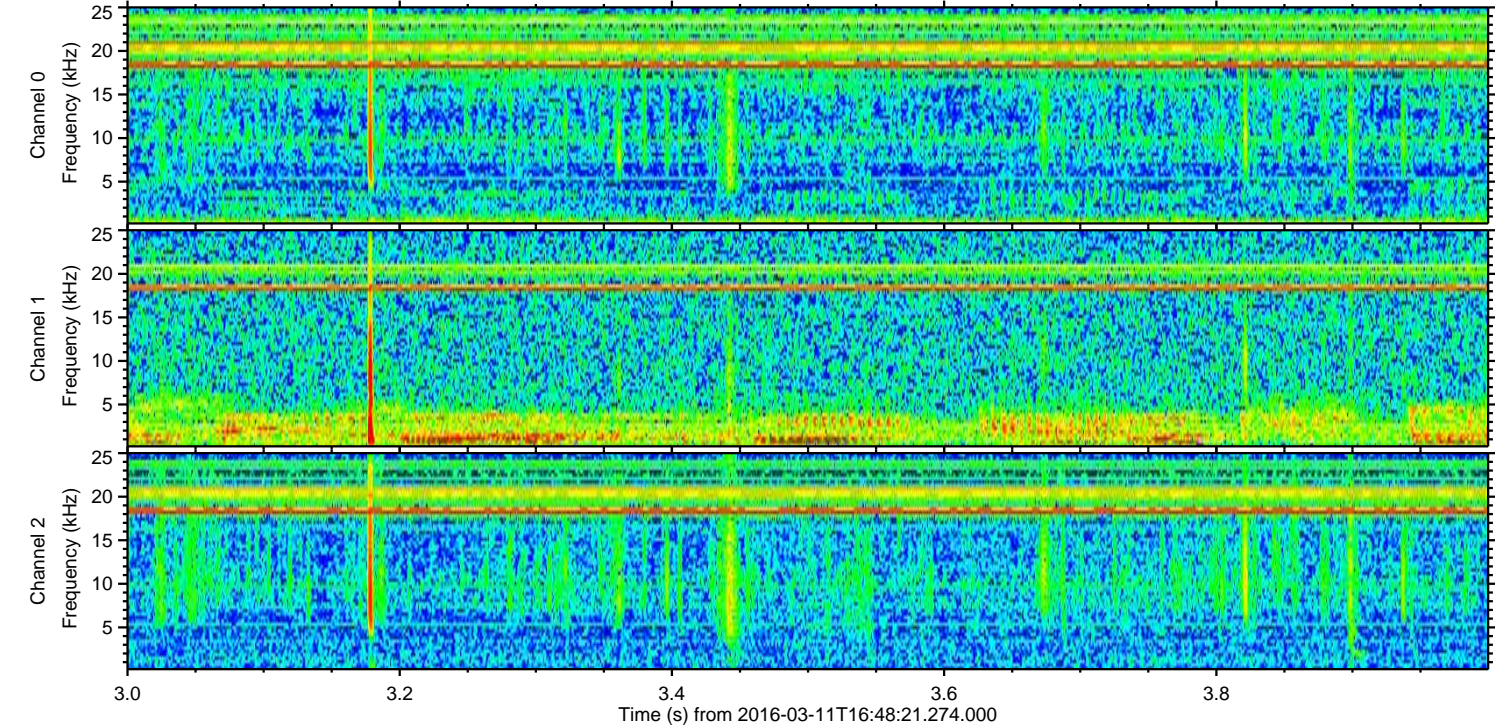
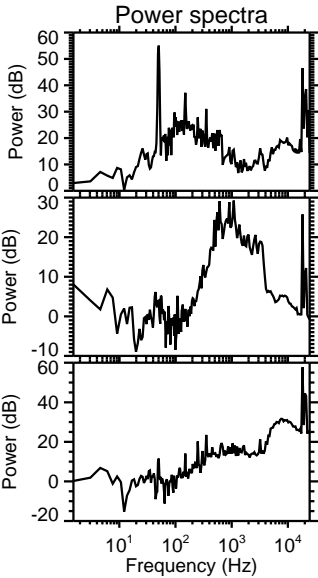
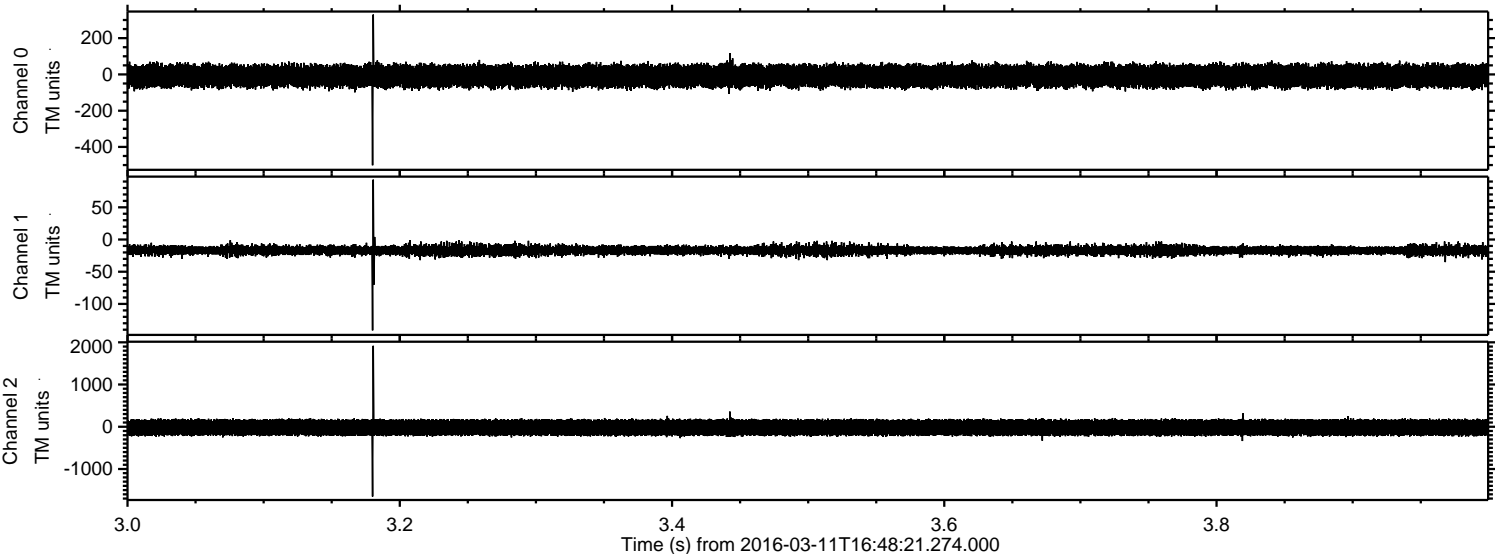


Channel 0
mn: -632
mx: 922
 μ : -8.8
 σ : 33.9

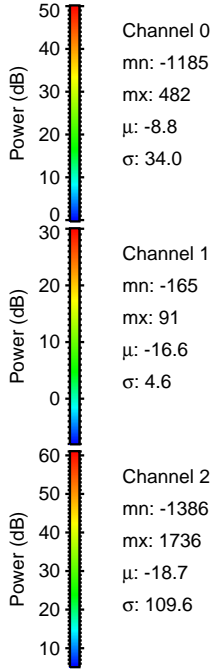
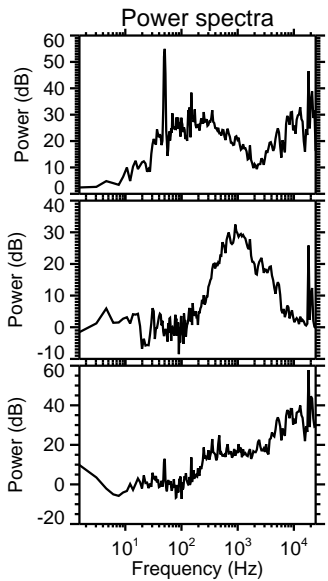
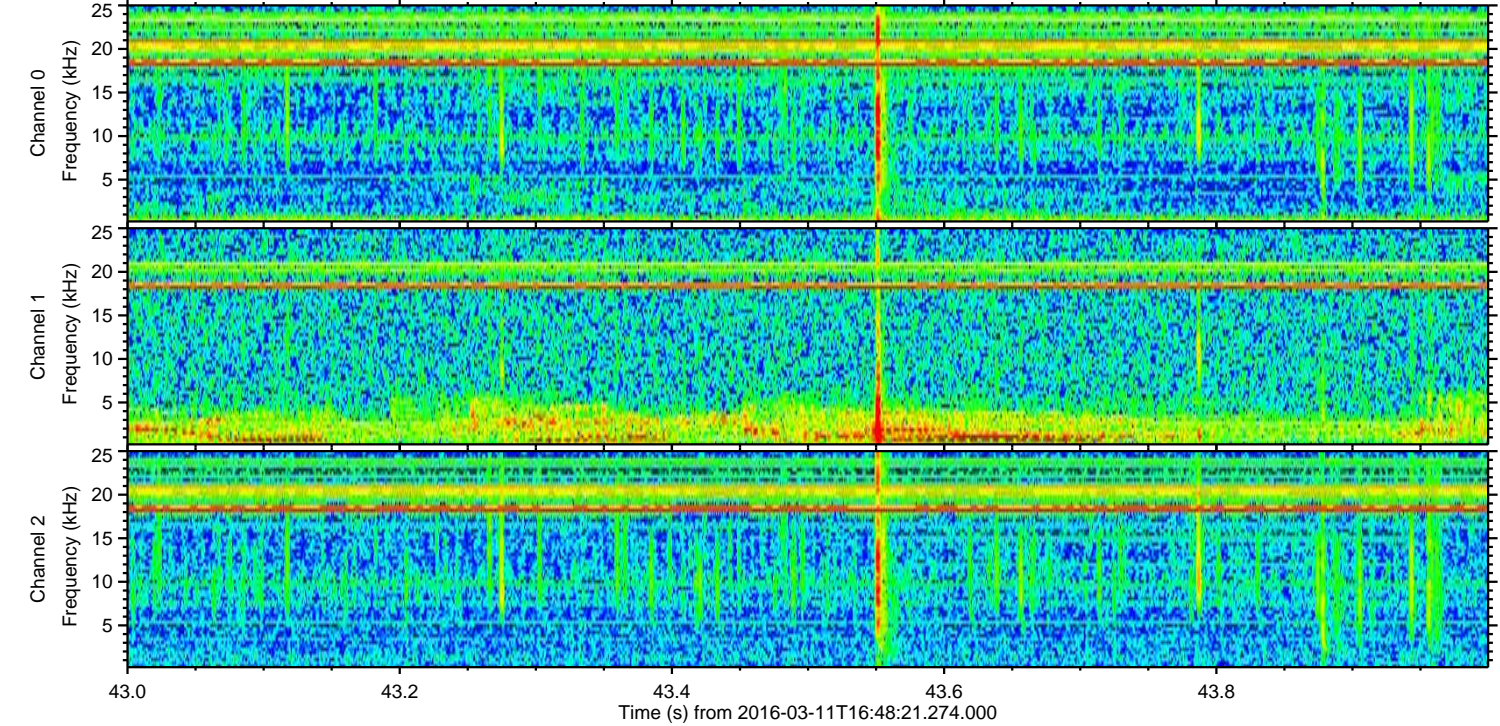
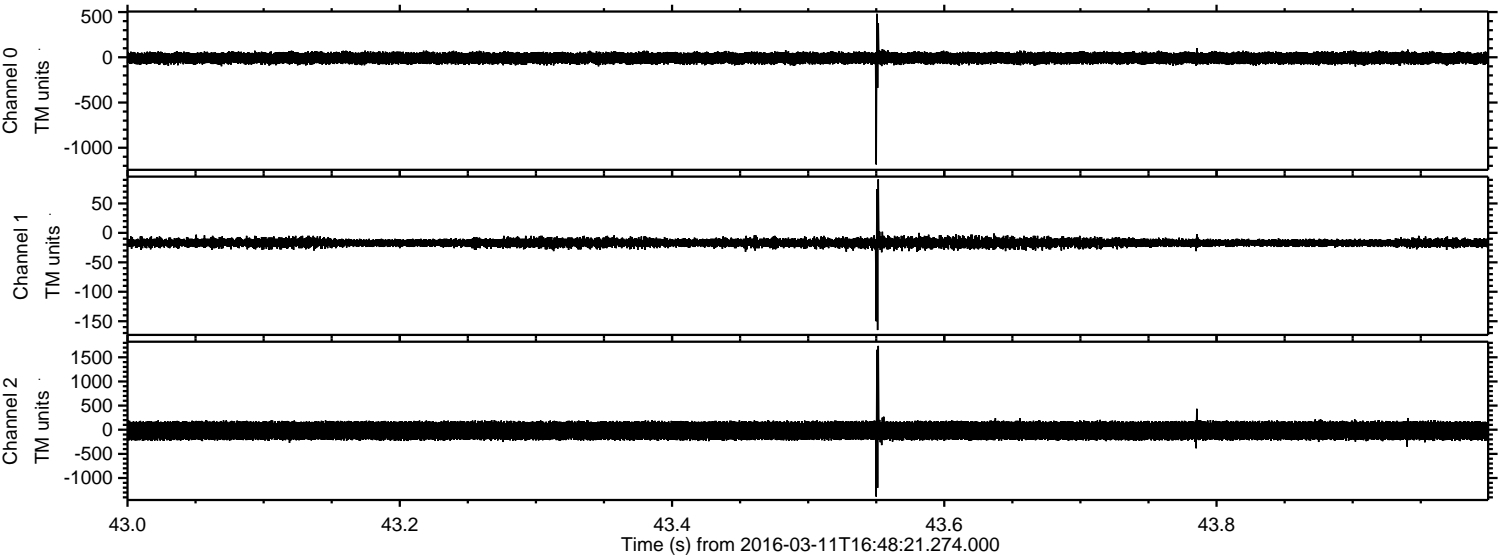
Channel 1
mn: -138
mx: 64
 μ : -16.6
 σ : 4.1

Channel 2
mn: -1990
mx: 1725
 μ : -18.8
 σ : 110.7

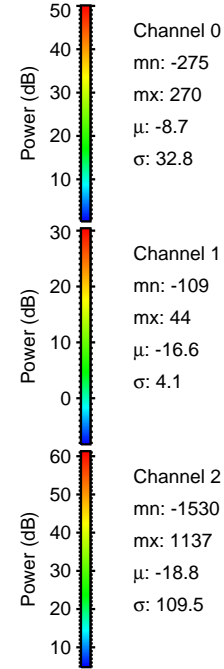
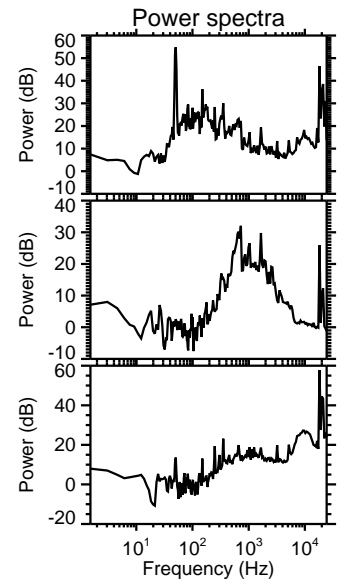
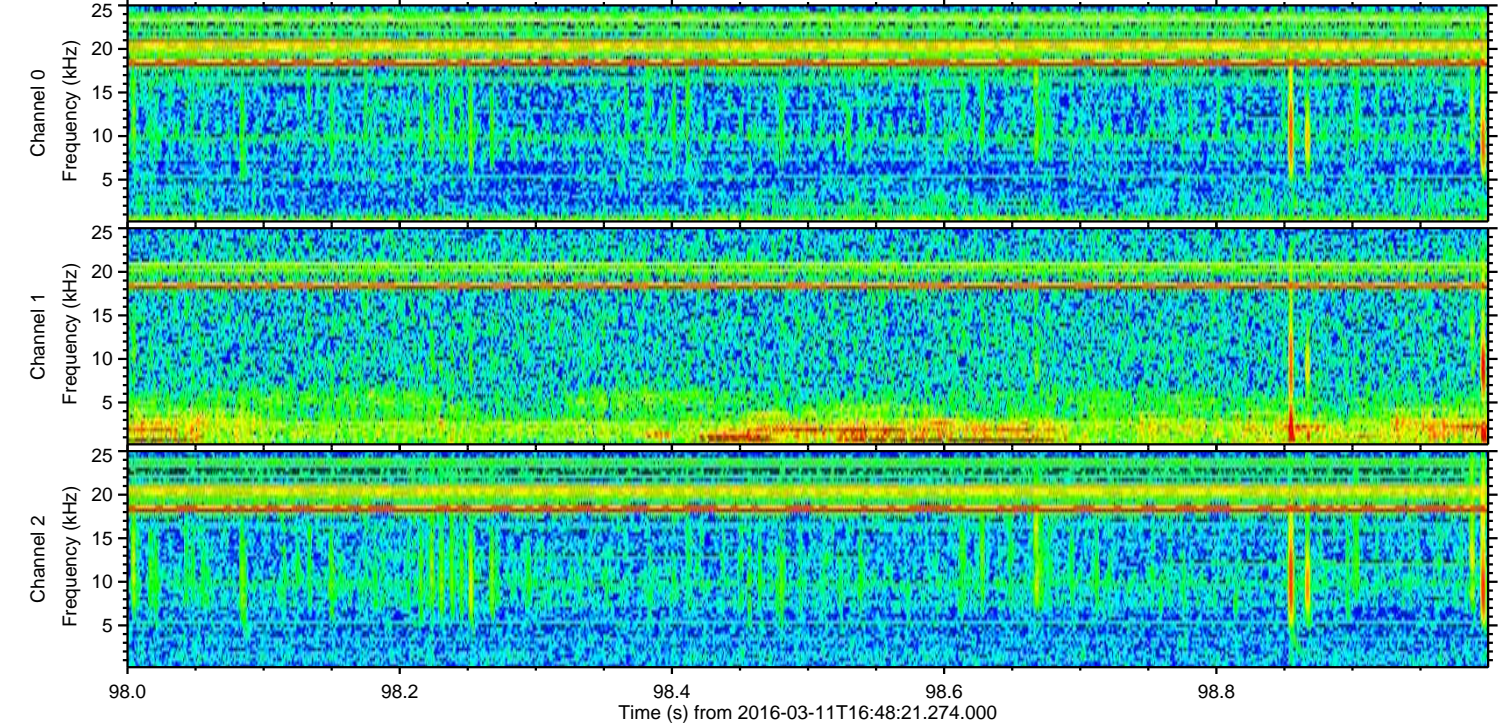
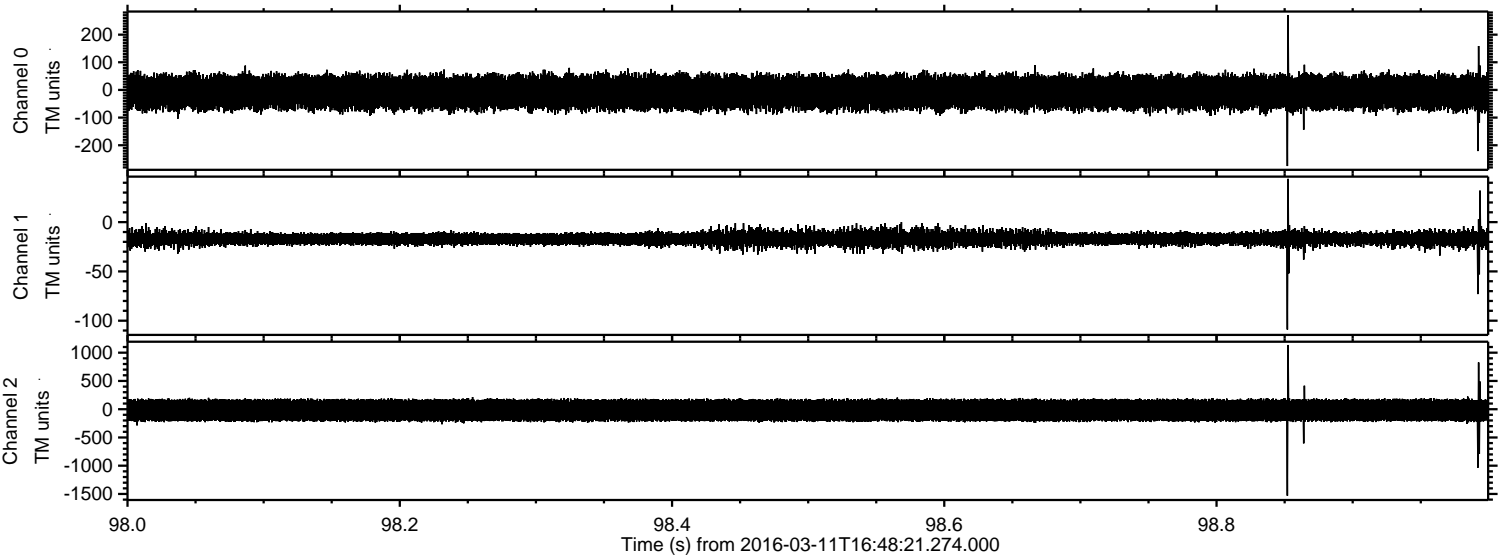
Processed Tue Apr 19 18:15:19 2016 by ELM ver.2012-10-06 from 001__elm20160311_164820__dat00.bin



Processed Tue Apr 19 18:15:20 2016 by ELM ver.2012-10-06 from 001__elm20160311_164820__dat00.bin



Processed Tue Apr 19 18:15:21 2016 by ELM ver.2012-10-06 from 001__elm20160311_164820__dat00.bin

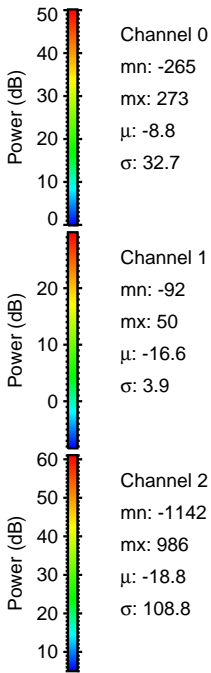
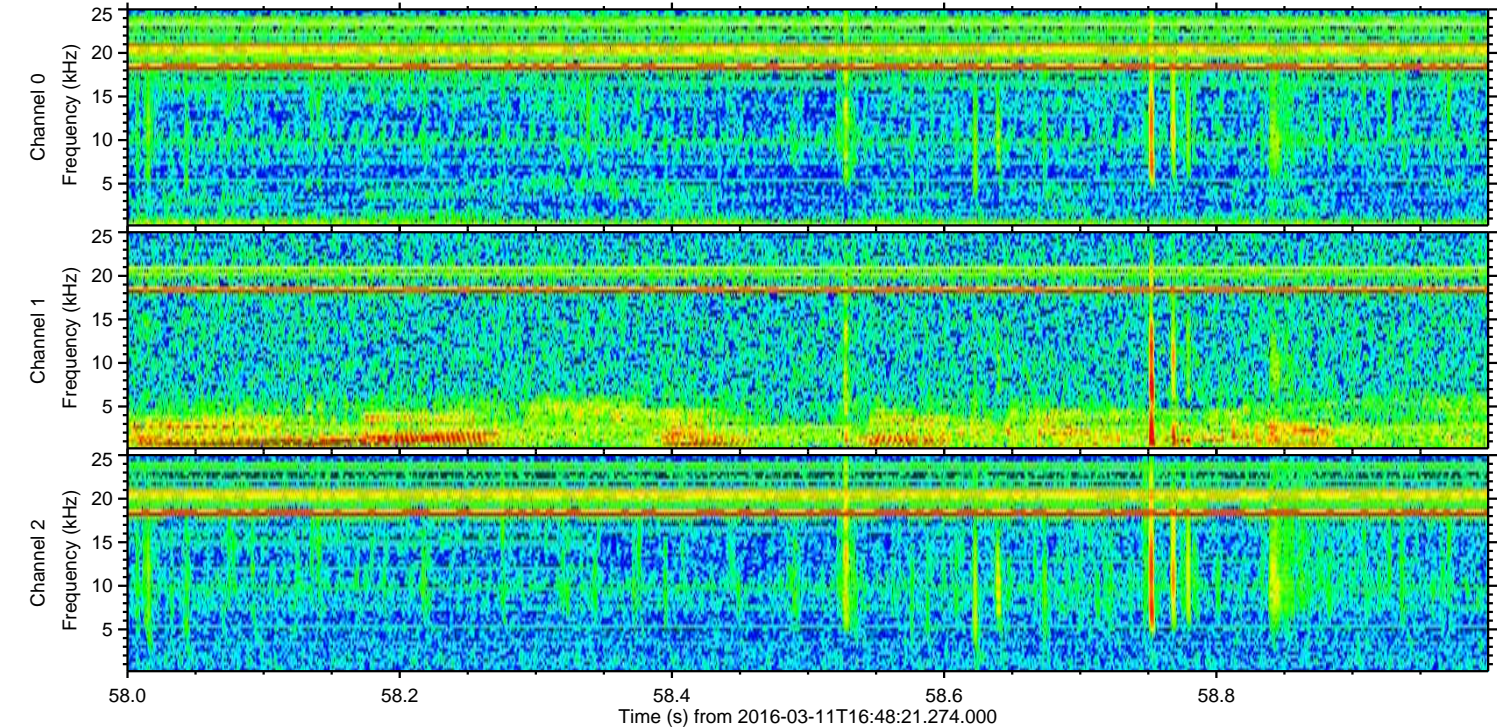
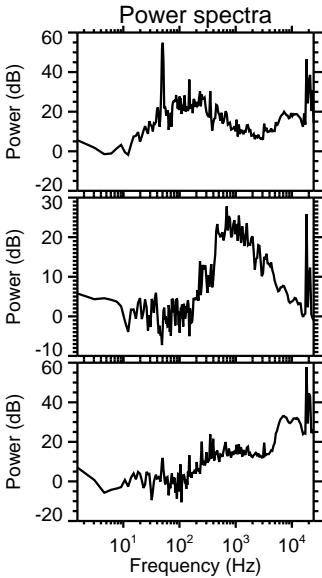
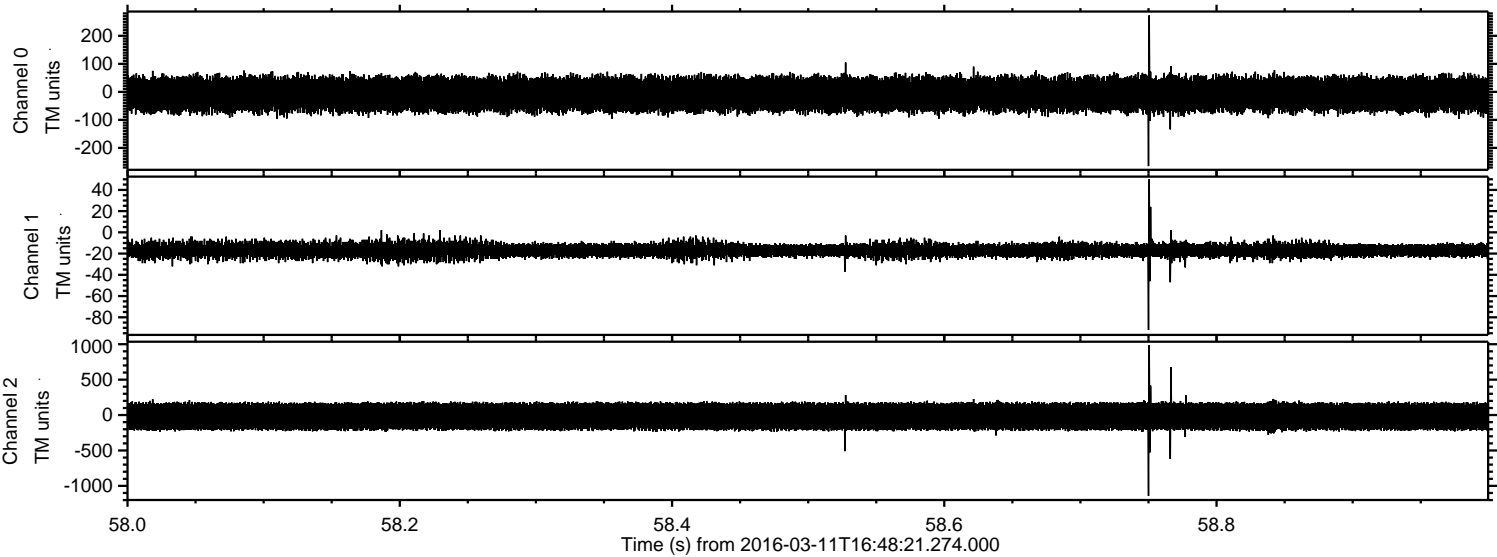


Channel 0
mn: -275
mx: 270
 μ : -8.7
 σ : 32.8

Channel 1
mn: -109
mx: 44
 μ : -16.6
 σ : 4.1

Channel 2
mn: -1530
mx: 1137
 μ : -18.8
 σ : 109.5

Processed Tue Apr 19 18:15:22 2016 by ELM ver.2012-10-06 from 001__elm20160311_164820__dat00.bin



Processed Tue Apr 19 18:15:23 2016 by ELM ver.2012-10-06 from 001__elm20160311_164820__dat00.bin

