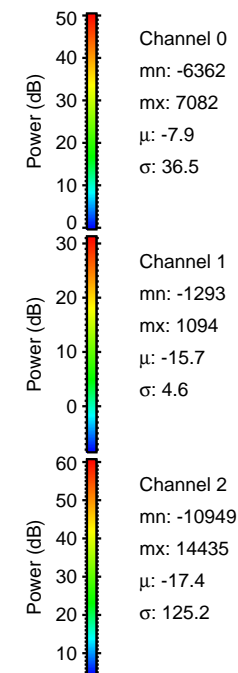
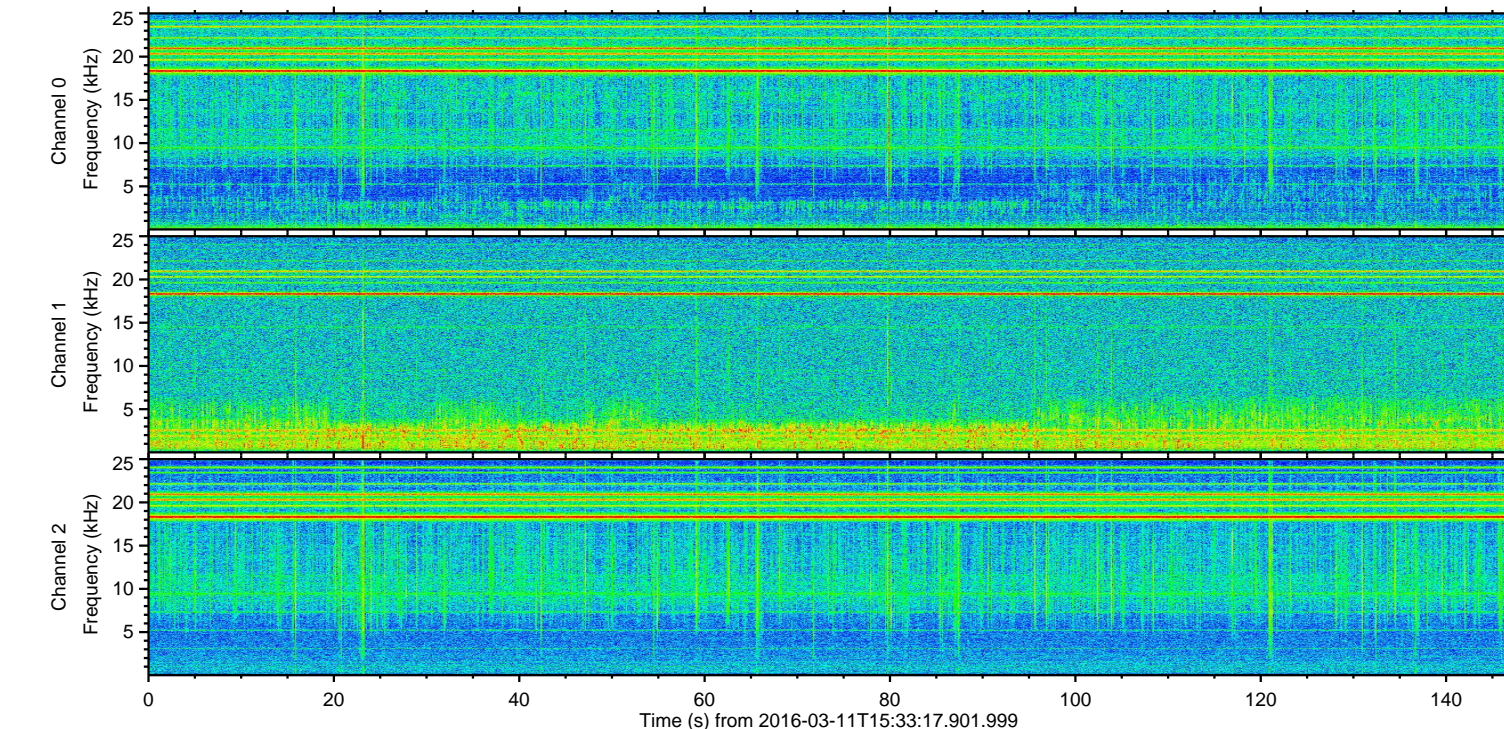
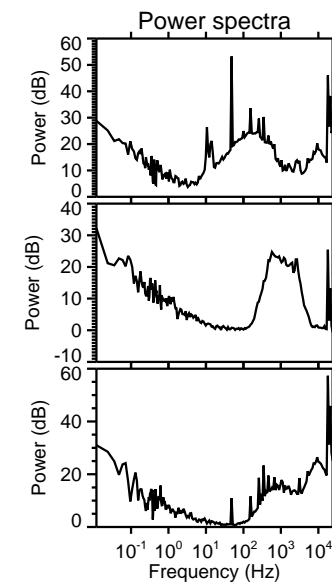
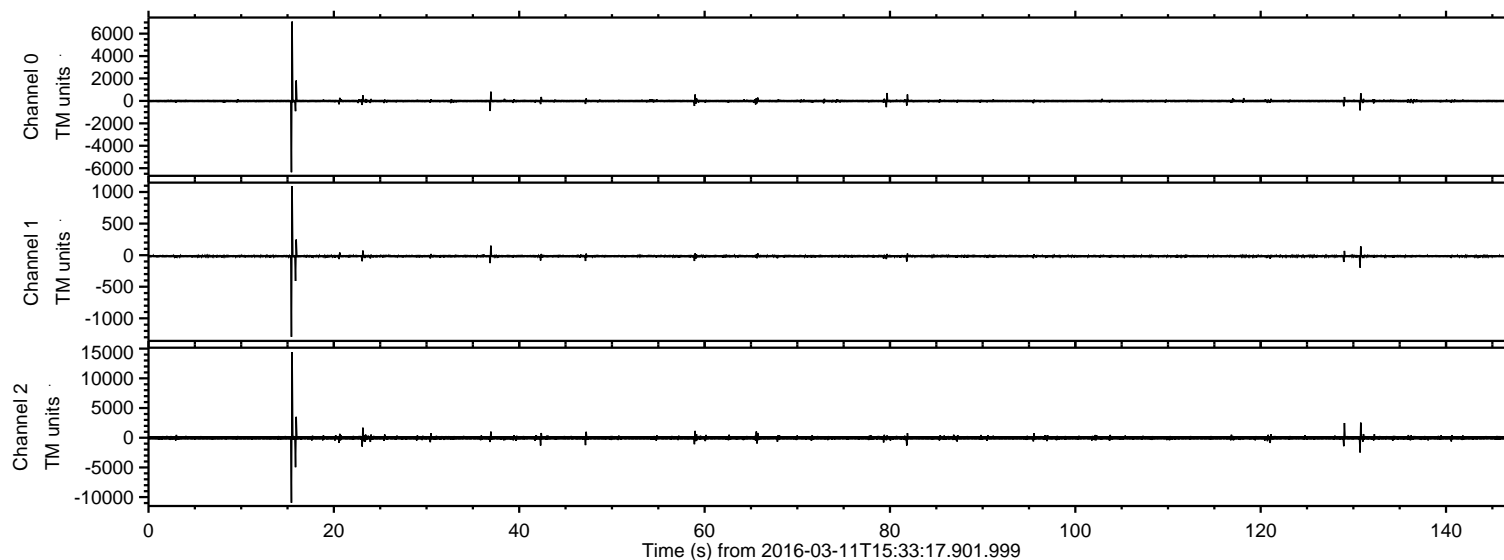


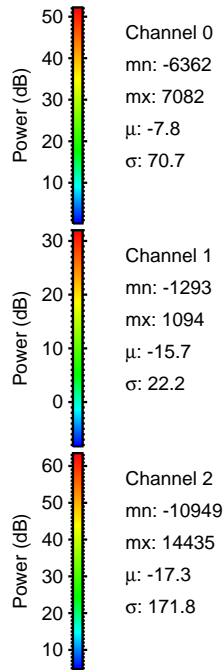
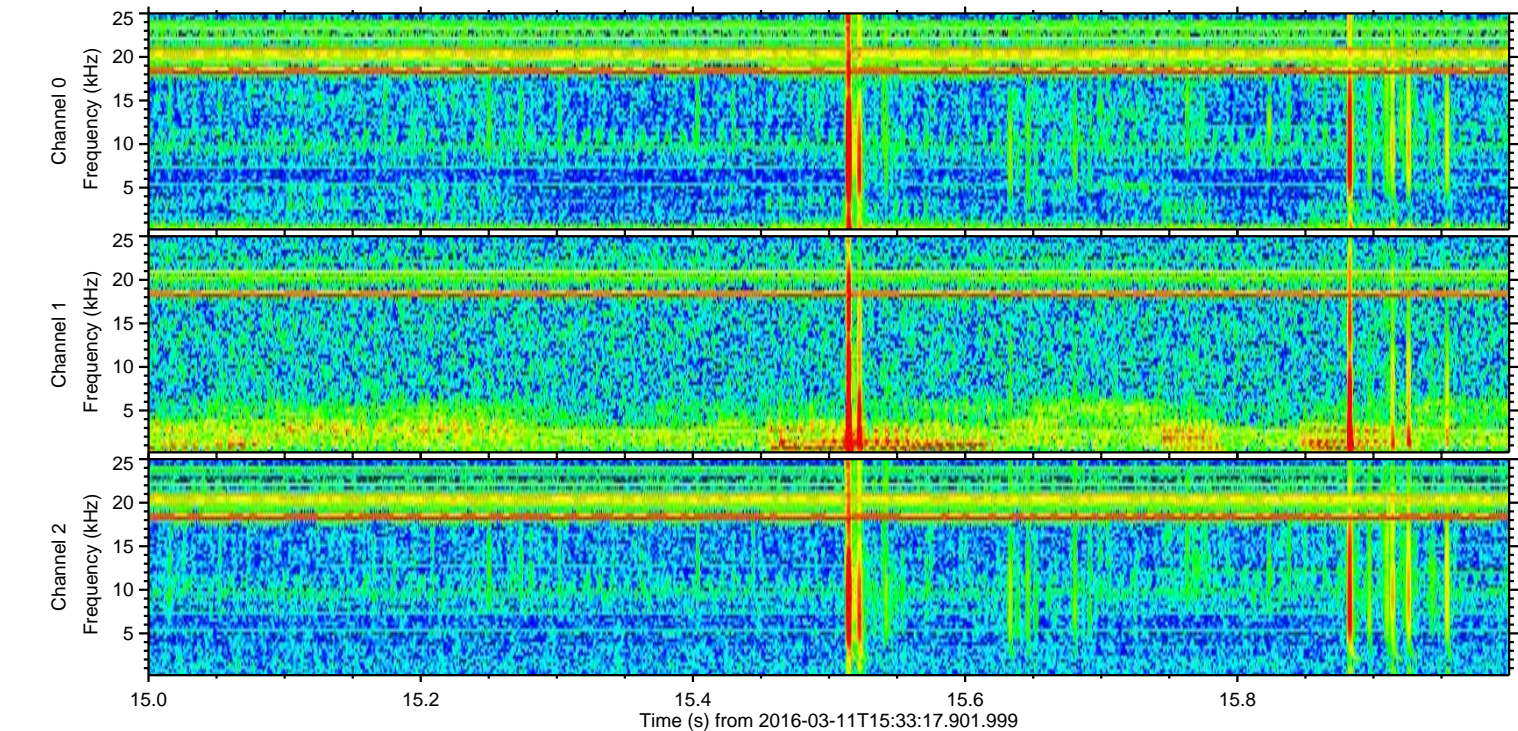
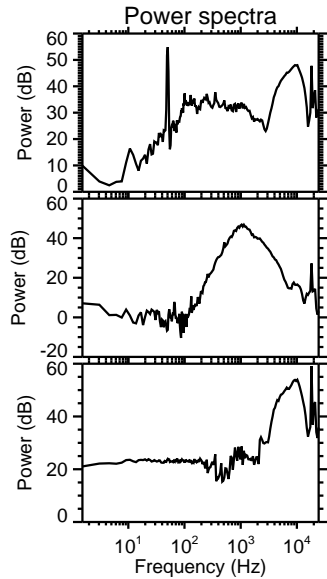
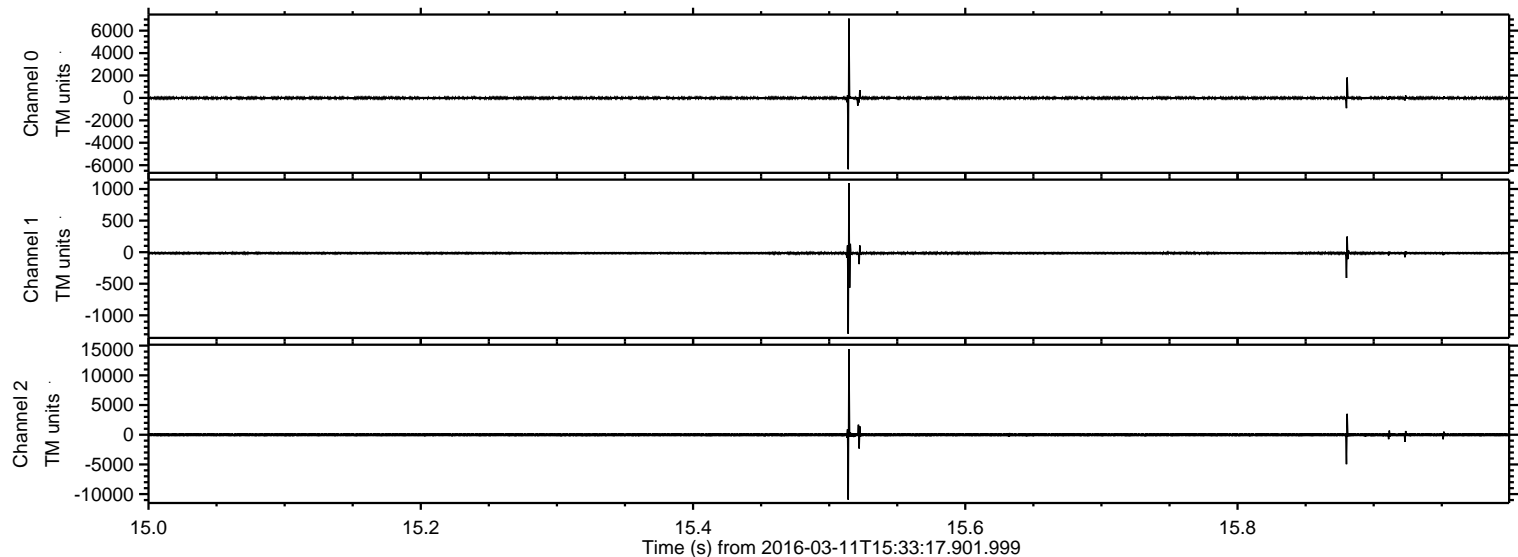
# ELMAVAN 3D WAVEFORMS (Measured data sampled at 50 kHz) 51000 packets of 144 samples from 2016-03-11T15:33:17.901.999.

Processed Tue Apr 19 17:59:30 2016 by ELM ver.2012-10-06 from 001\_\_elm20160311\_153316\_\_dat00.bin





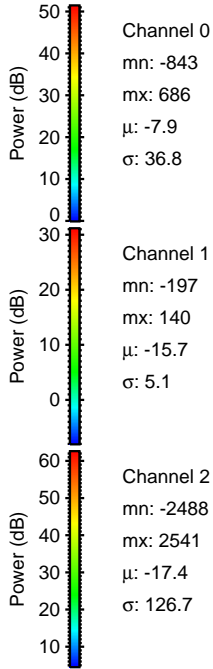
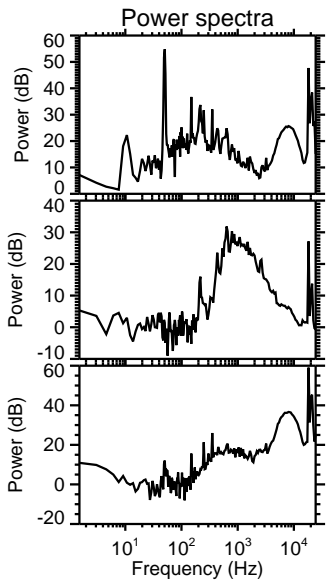
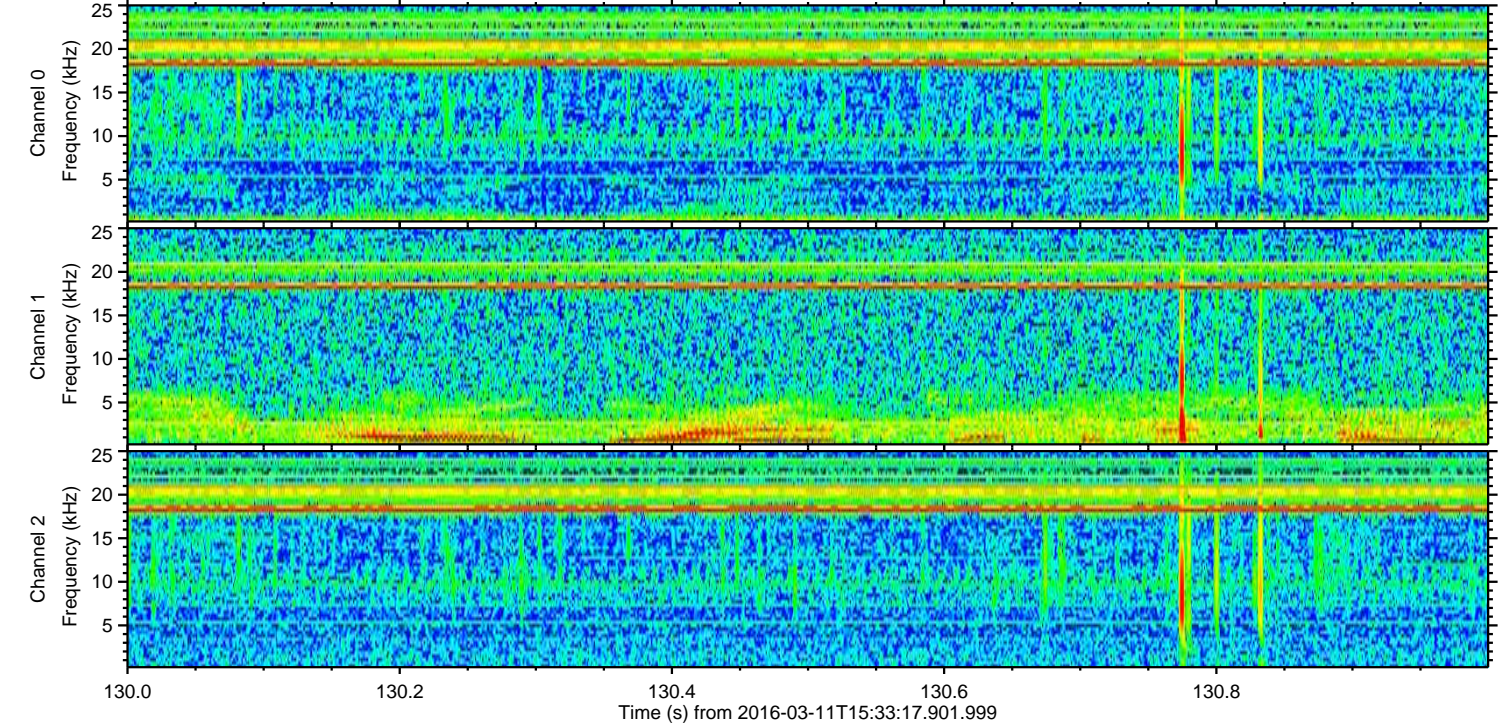
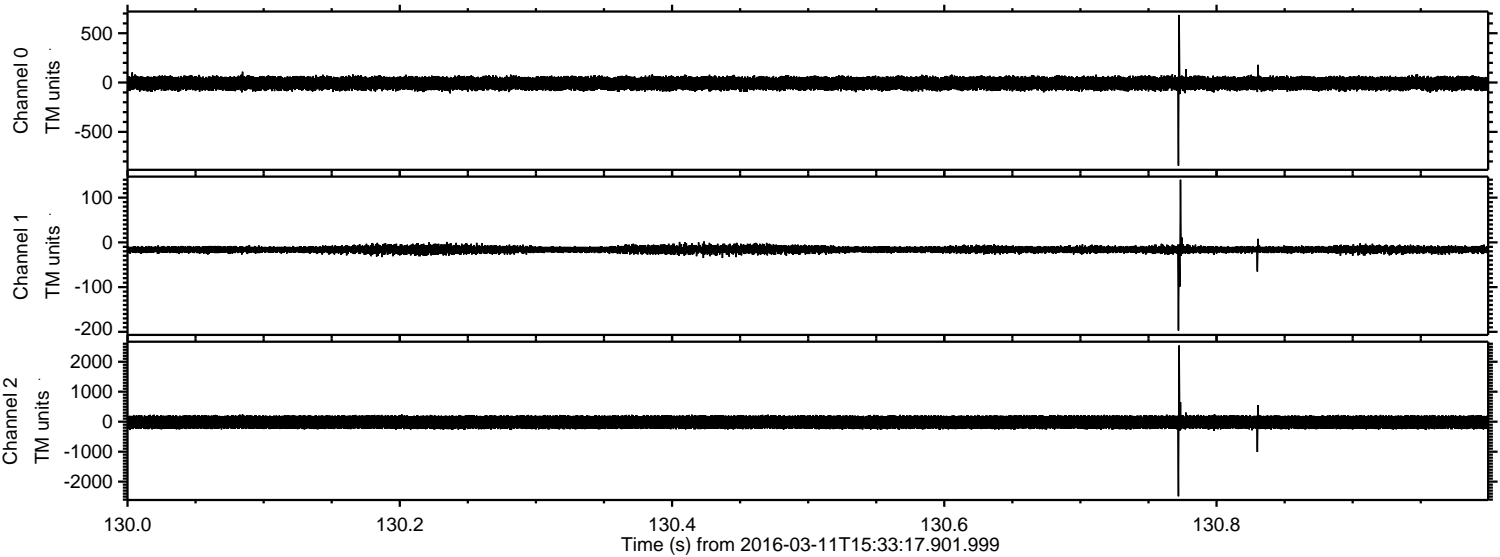
Processed Tue Apr 19 17:59:42 2016 by ELM ver.2012-10-06 from 001\_\_elm20160311\_153316\_\_dat00.bin





ELMAVAN 3D WAVEFORMS (Measured data sampled at 50 kHz) 51000 packets of 144 samples from 2016-03-11T15:33:17.901.999. Part 131/147

Processed Tue Apr 19 17:59:43 2016 by ELM ver.2012-10-06 from 001\_\_elm20160311\_153316\_\_dat00.bin



Channel 0  
mn: -843  
mx: 686  
 $\mu$ : -7.9  
 $\sigma$ : 36.8

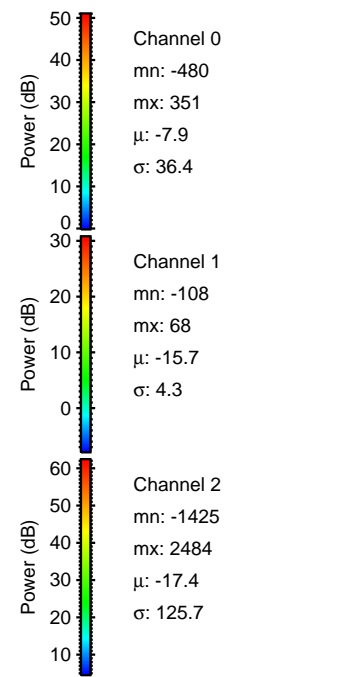
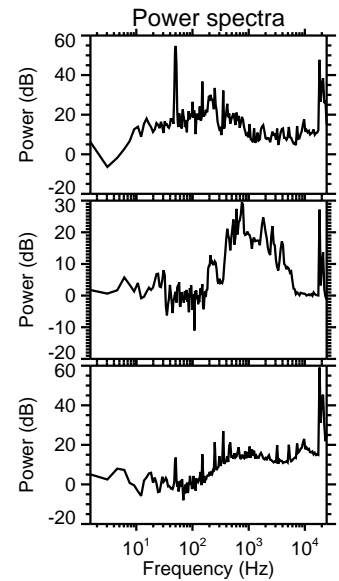
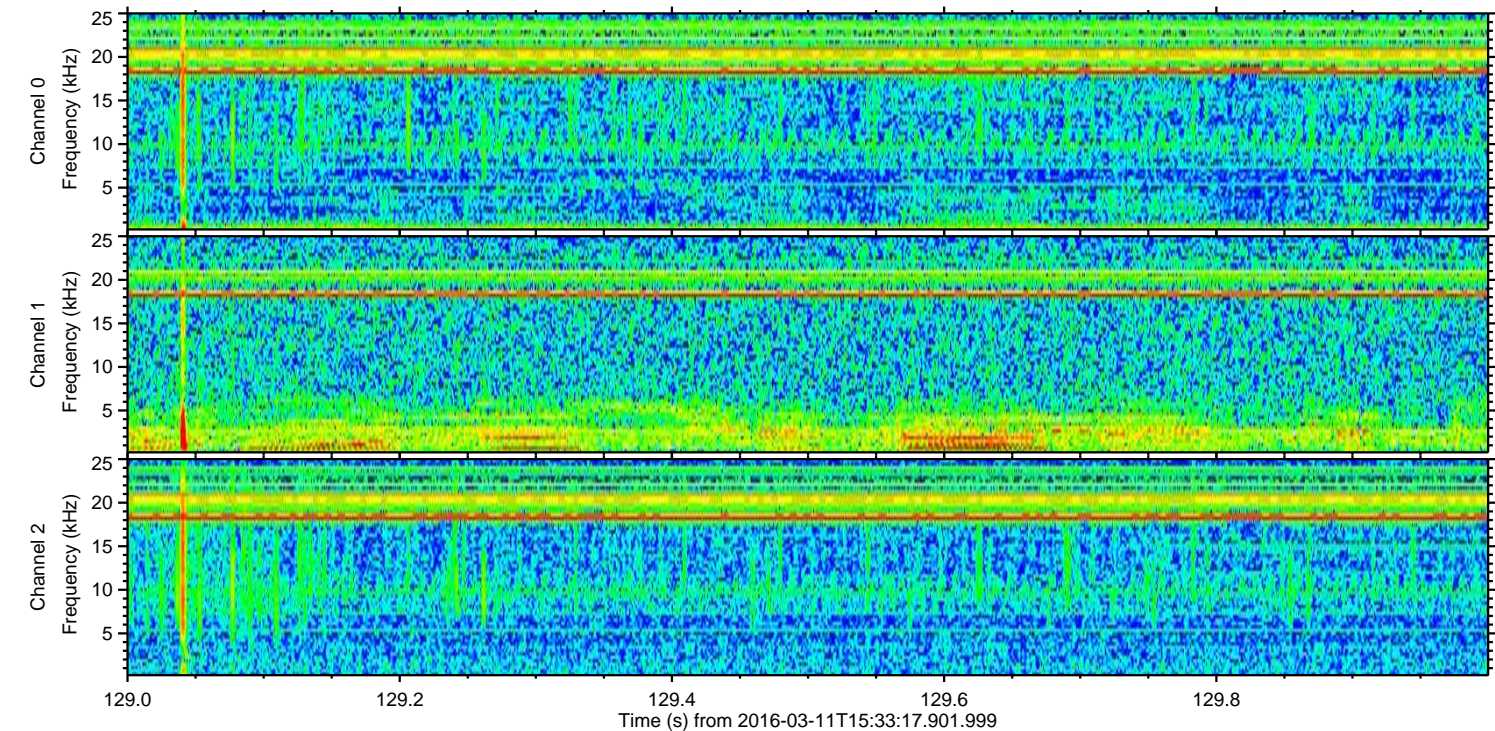
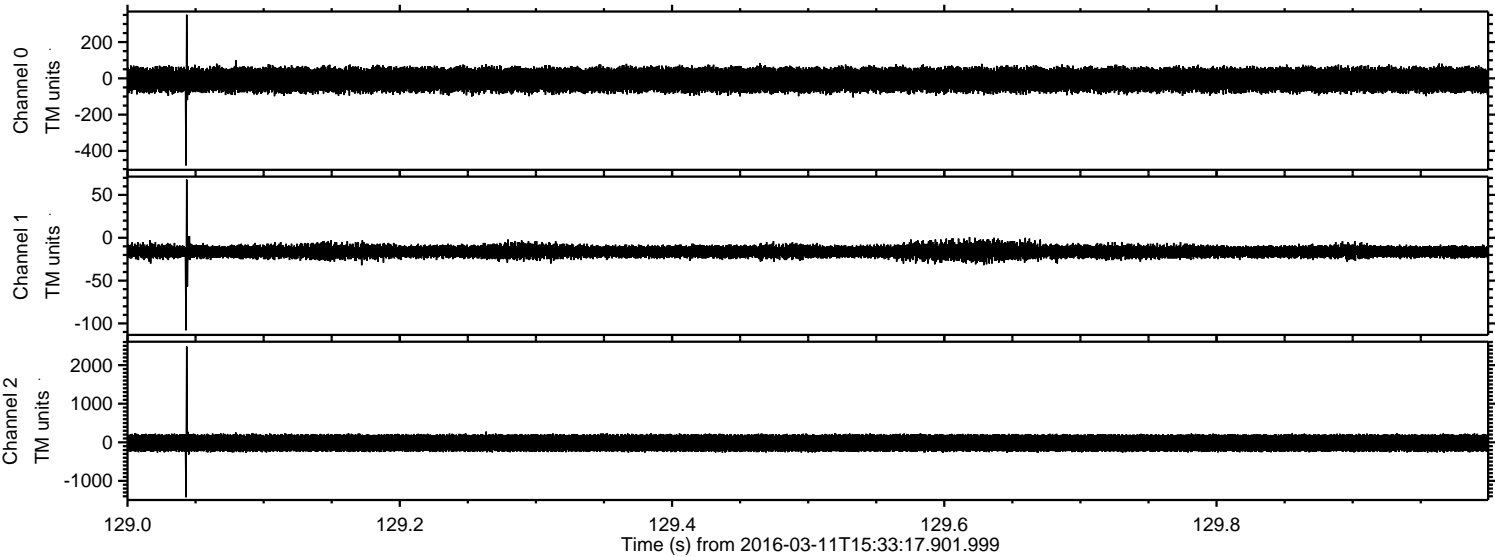
Channel 1  
mn: -197  
mx: 140  
 $\mu$ : -15.7  
 $\sigma$ : 5.1

Channel 2  
mn: -2488  
mx: 2541  
 $\mu$ : -17.4  
 $\sigma$ : 126.7



ELMAVAN 3D WAVEFORMS (Measured data sampled at 50 kHz) 51000 packets of 144 samples from 2016-03-11T15:33:17.901.999. Part 130/147

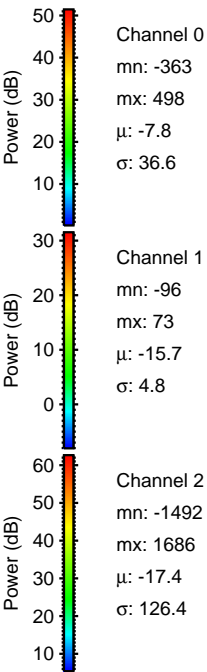
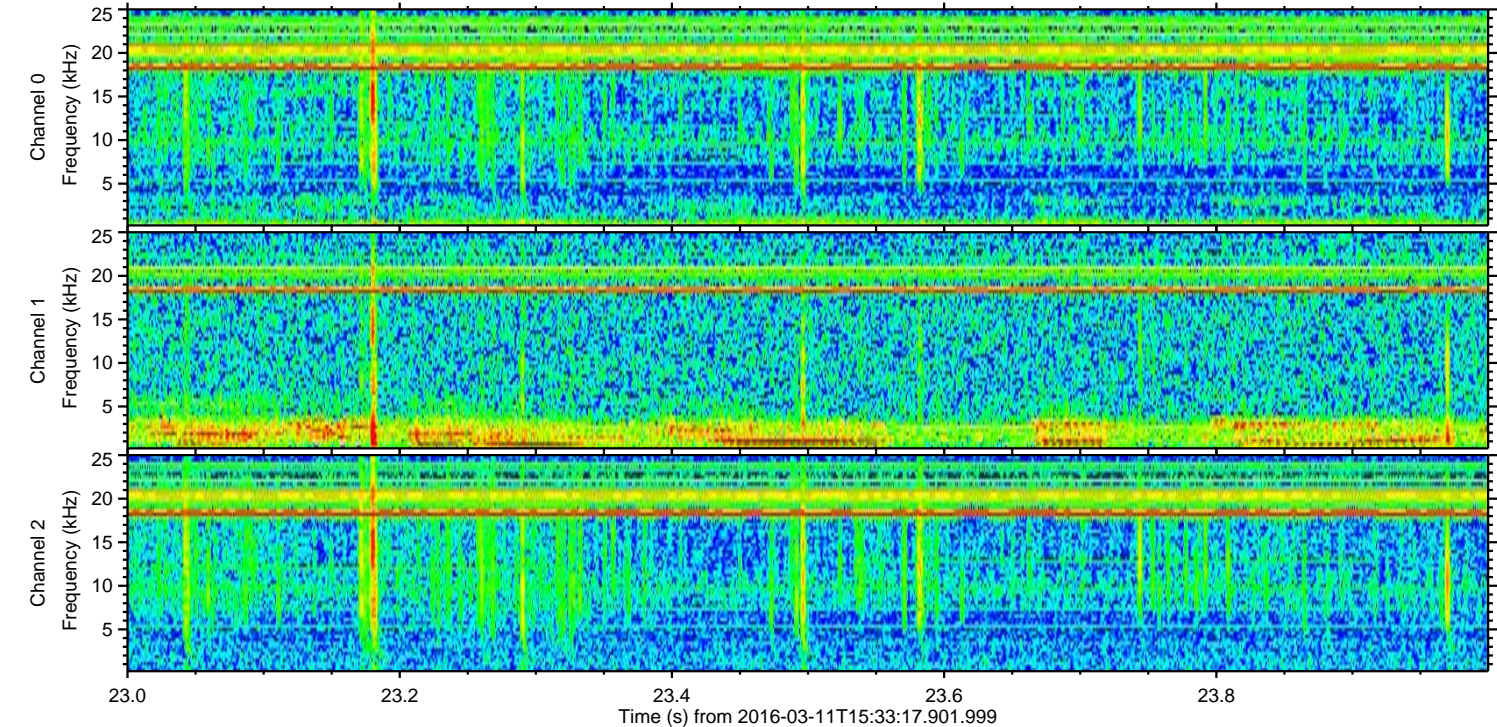
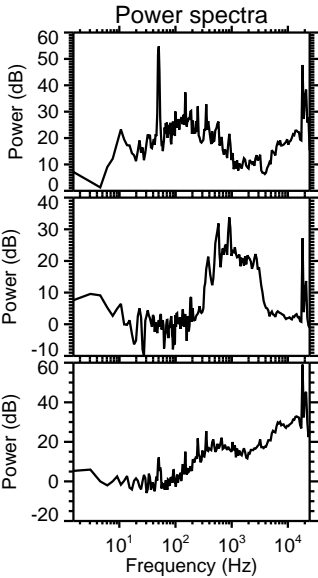
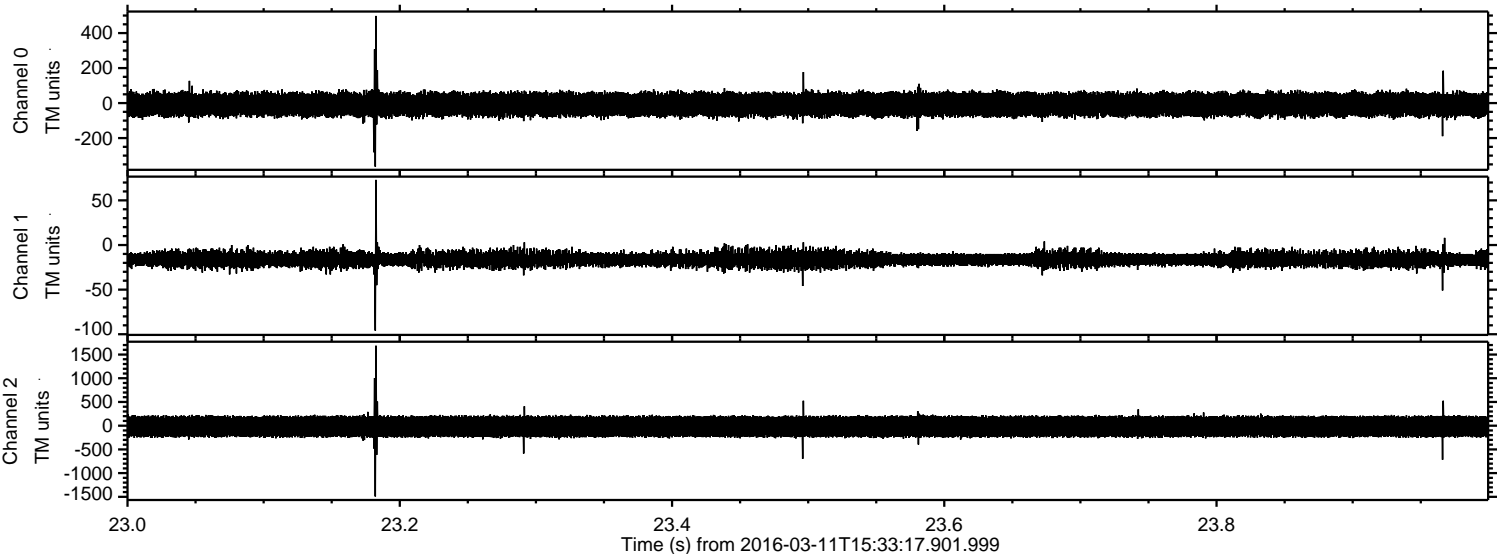
Processed Tue Apr 19 17:59:44 2016 by ELM ver.2012-10-06 from 001\_\_elm20160311\_153316\_\_dat00.bin





ELMAVAN 3D WAVEFORMS (Measured data sampled at 50 kHz) 51000 packets of 144 samples from 2016-03-11T15:33:17.901.999. Part 24/147

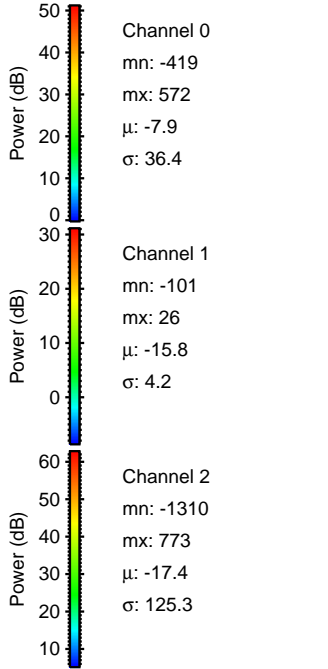
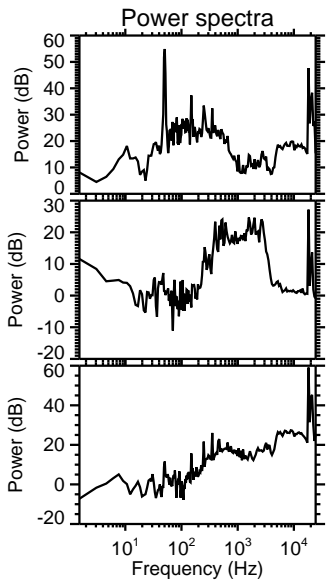
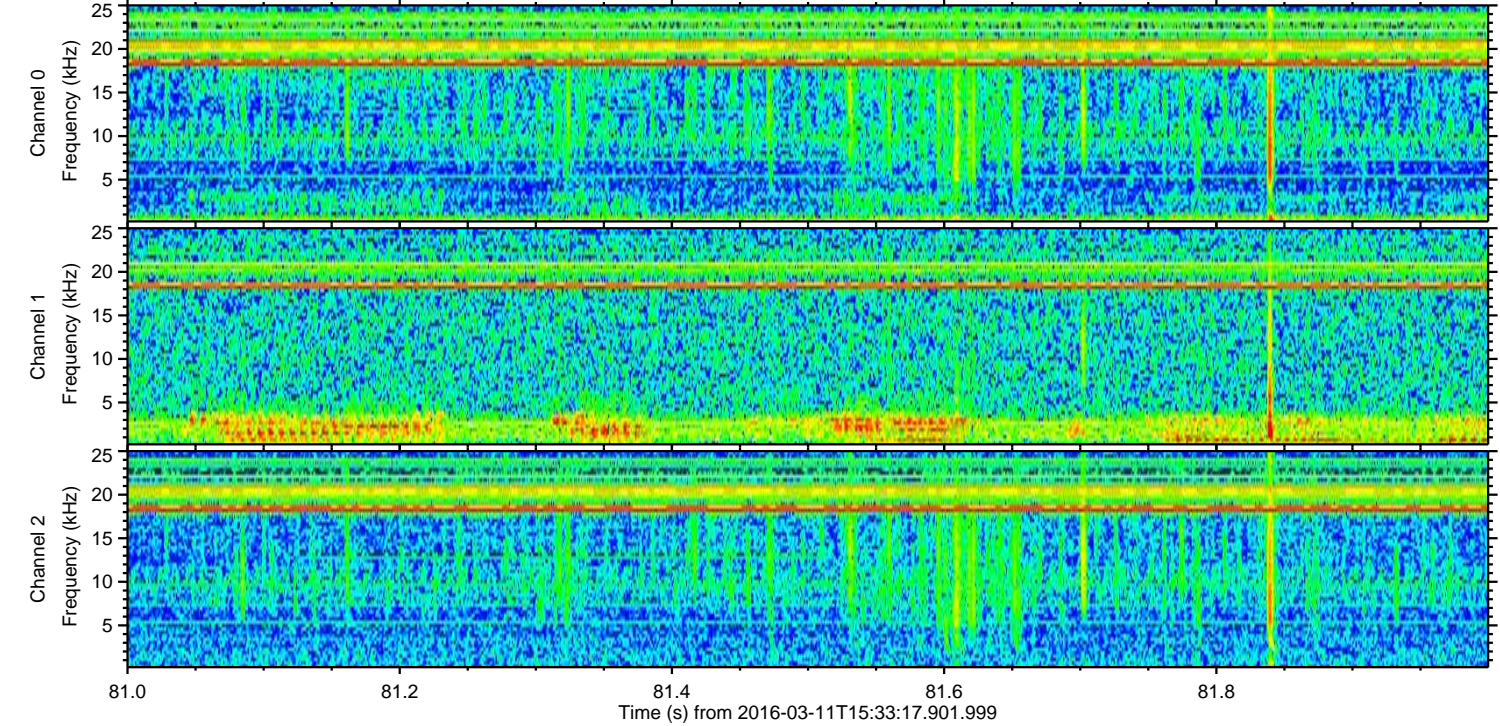
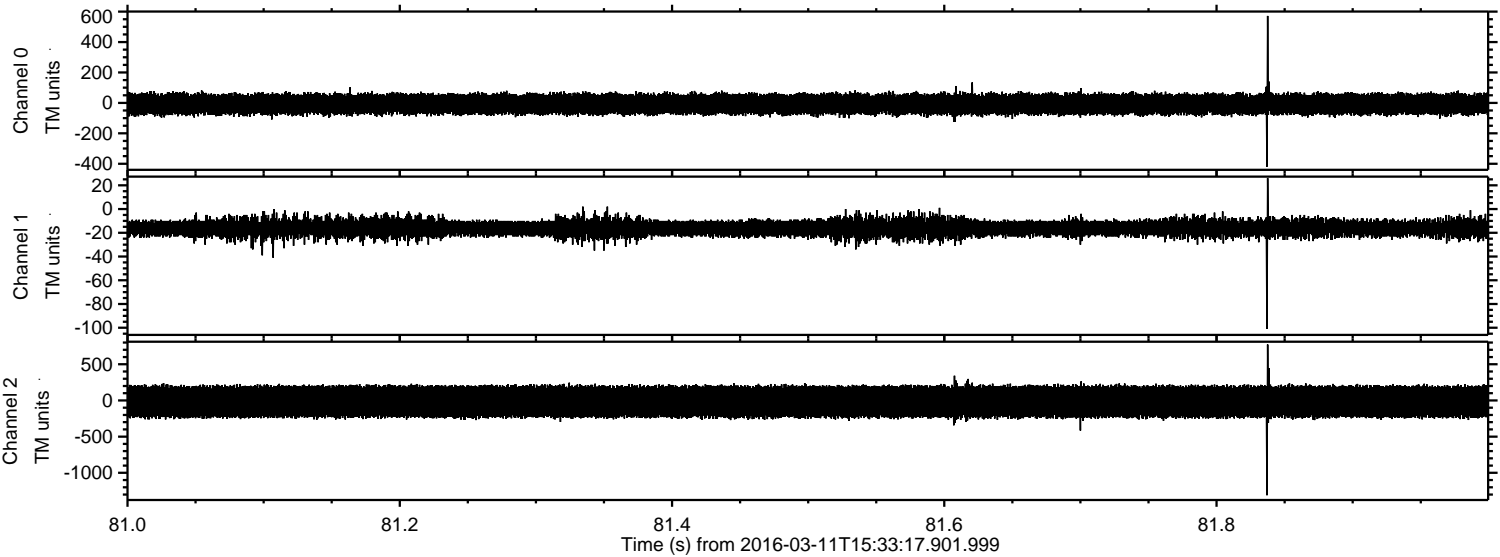
Processed Tue Apr 19 17:59:45 2016 by ELM ver.2012-10-06 from 001\_\_elm20160311\_153316\_\_dat00.bin





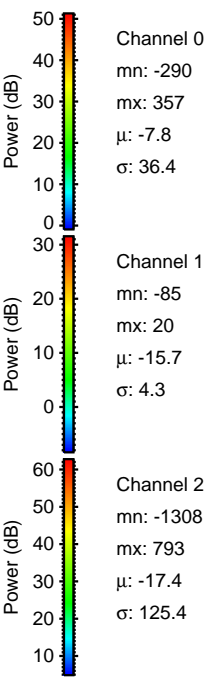
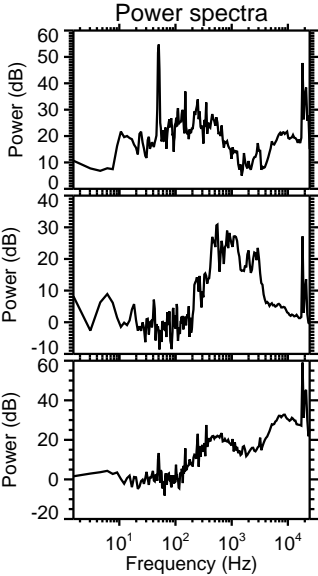
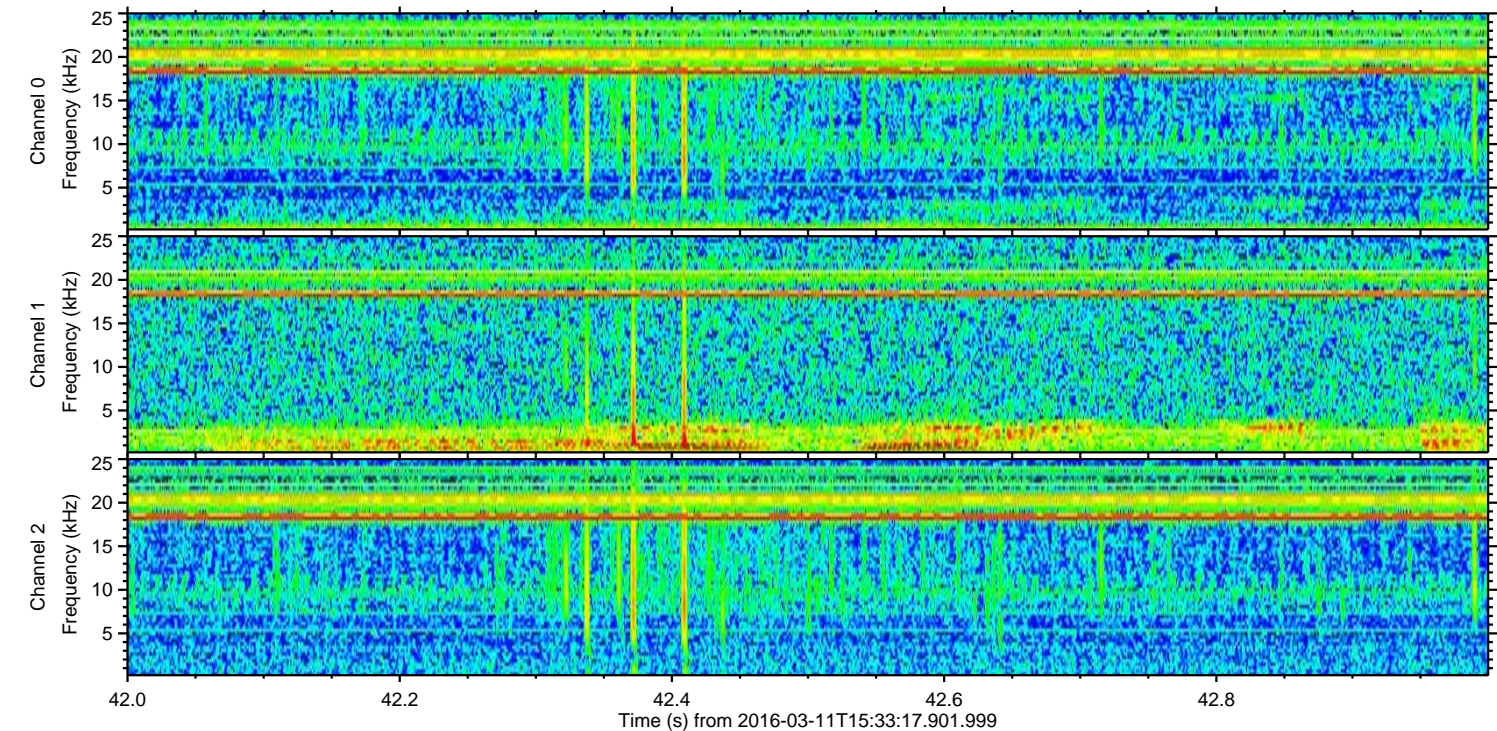
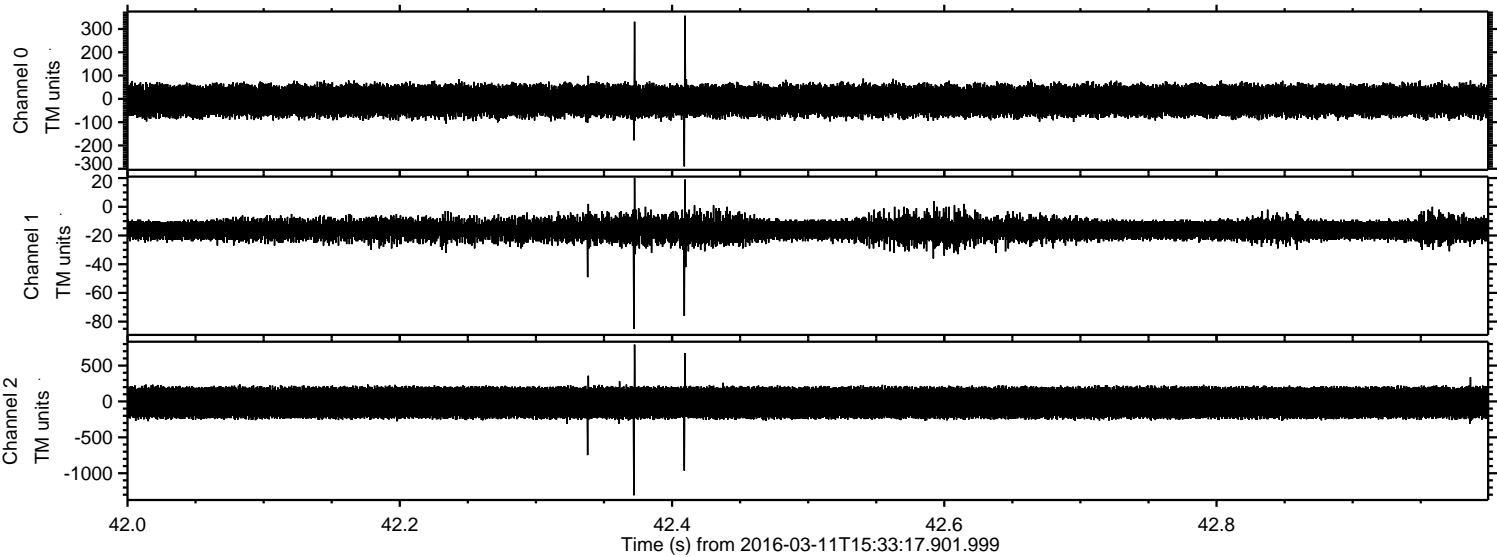
ELMAVAN 3D WAVEFORMS (Measured data sampled at 50 kHz) 51000 packets of 144 samples from 2016-03-11T15:33:17.901.999. Part 82/147

Processed Tue Apr 19 17:59:46 2016 by ELM ver.2012-10-06 from 001\_\_elm20160311\_153316\_\_dat00.bin



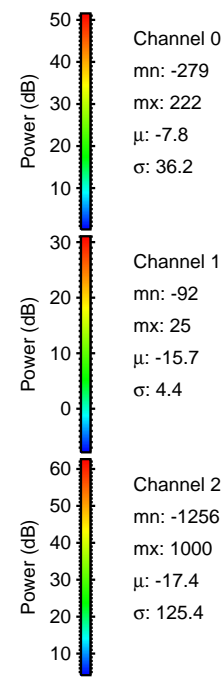
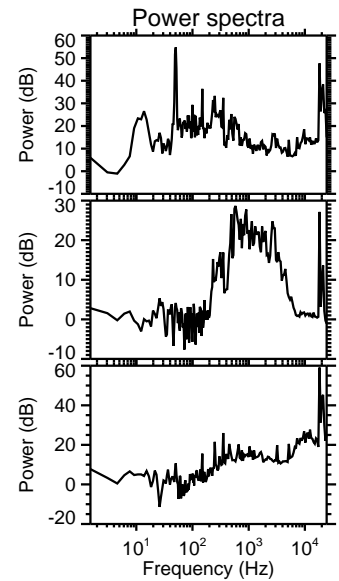
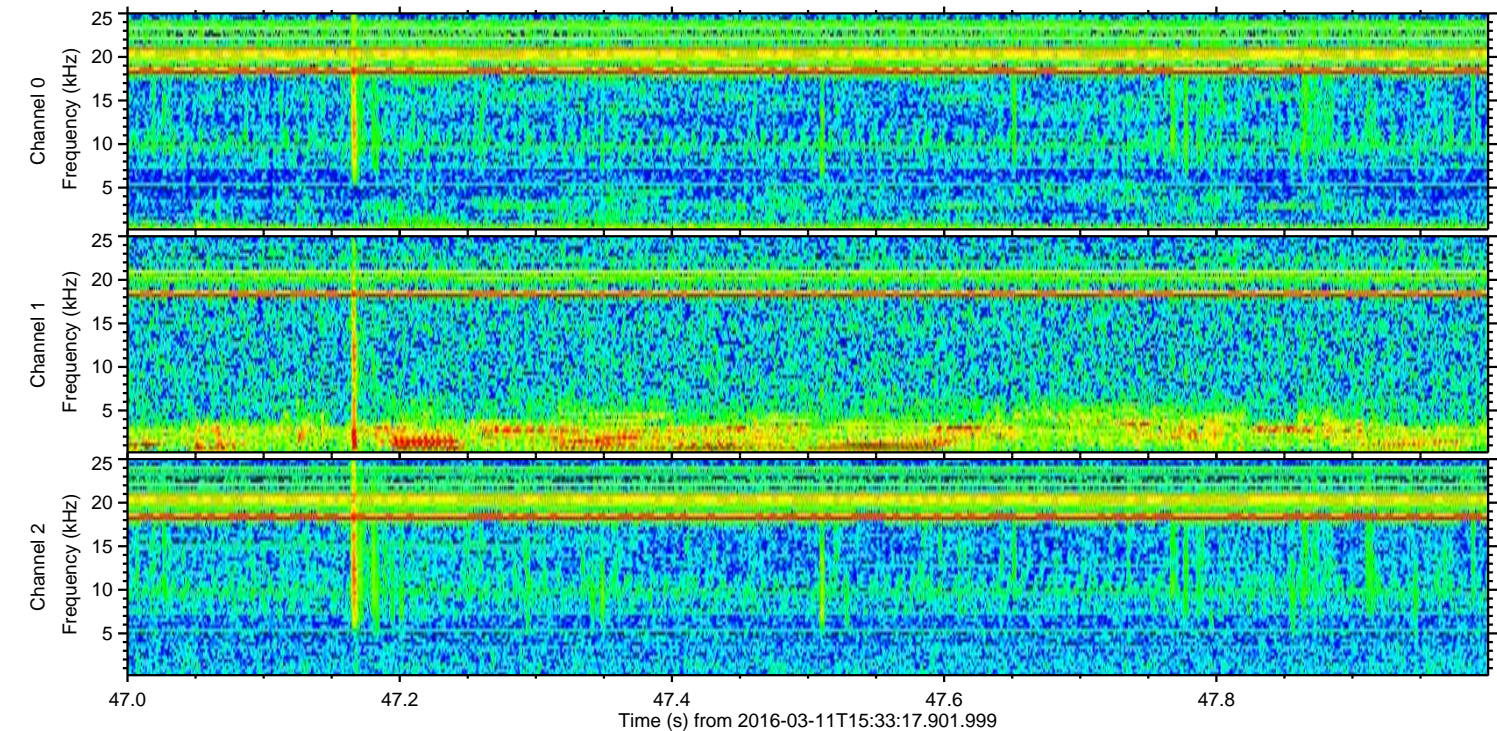
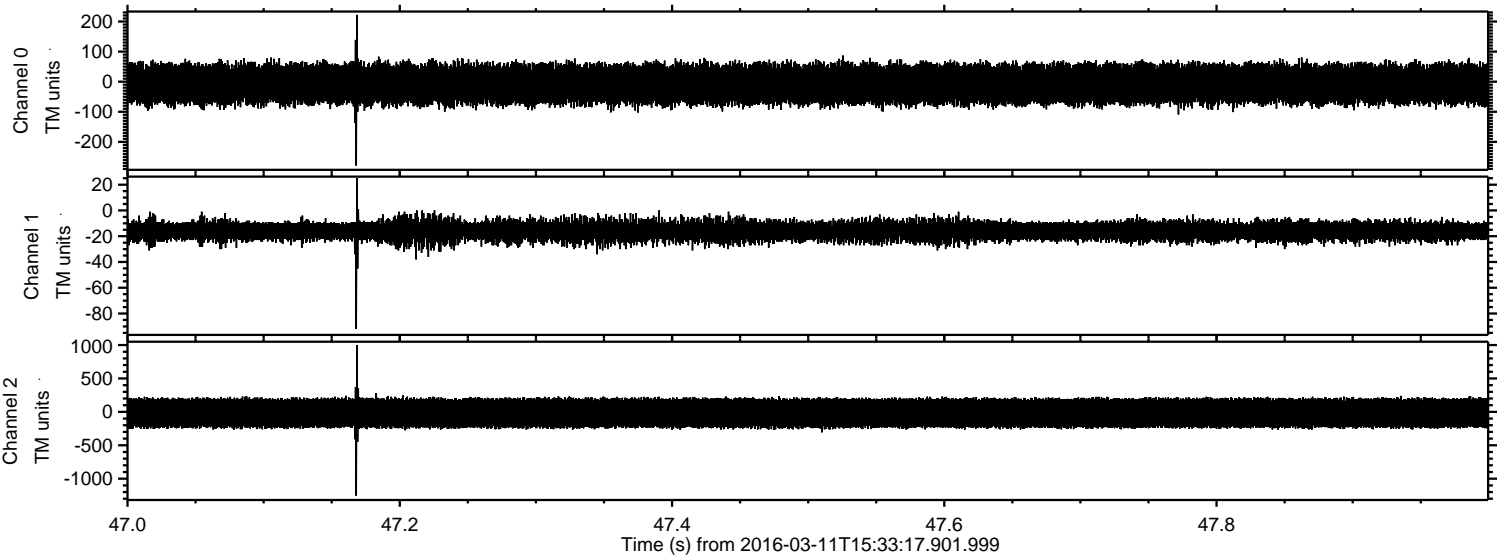


Processed Tue Apr 19 17:59:47 2016 by ELM ver.2012-10-06 from 001\_\_elm20160311\_153316\_\_dat00.bin



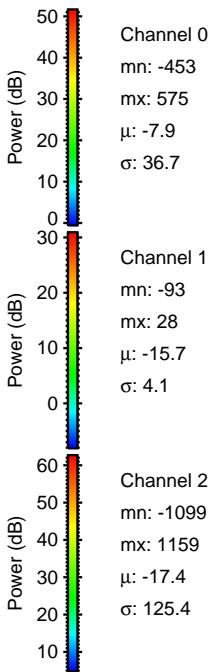
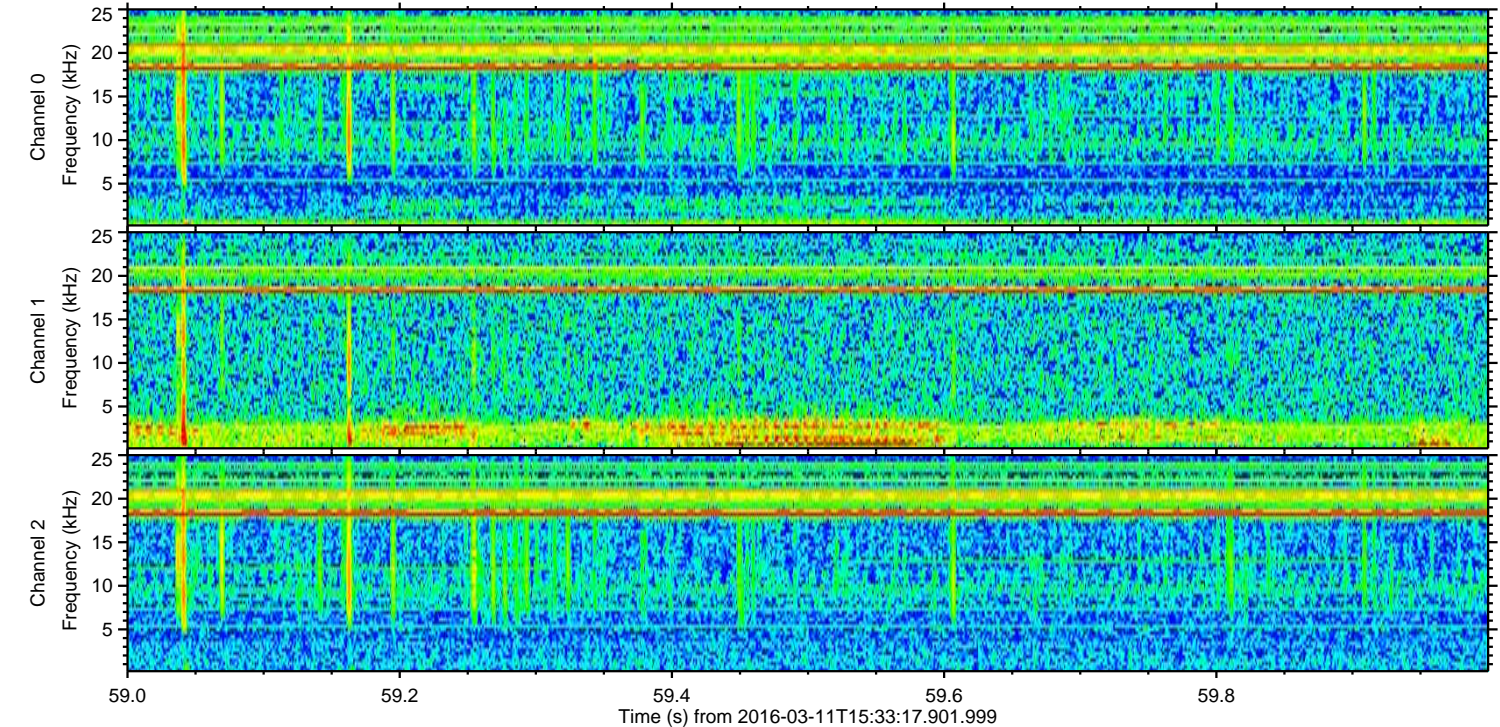
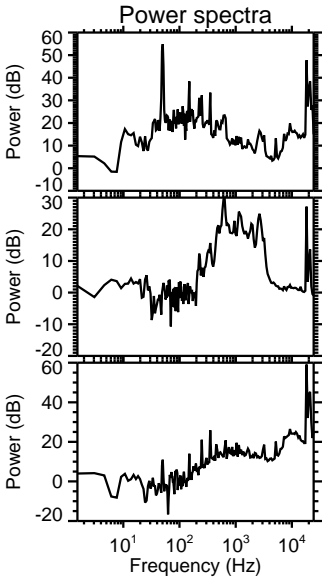
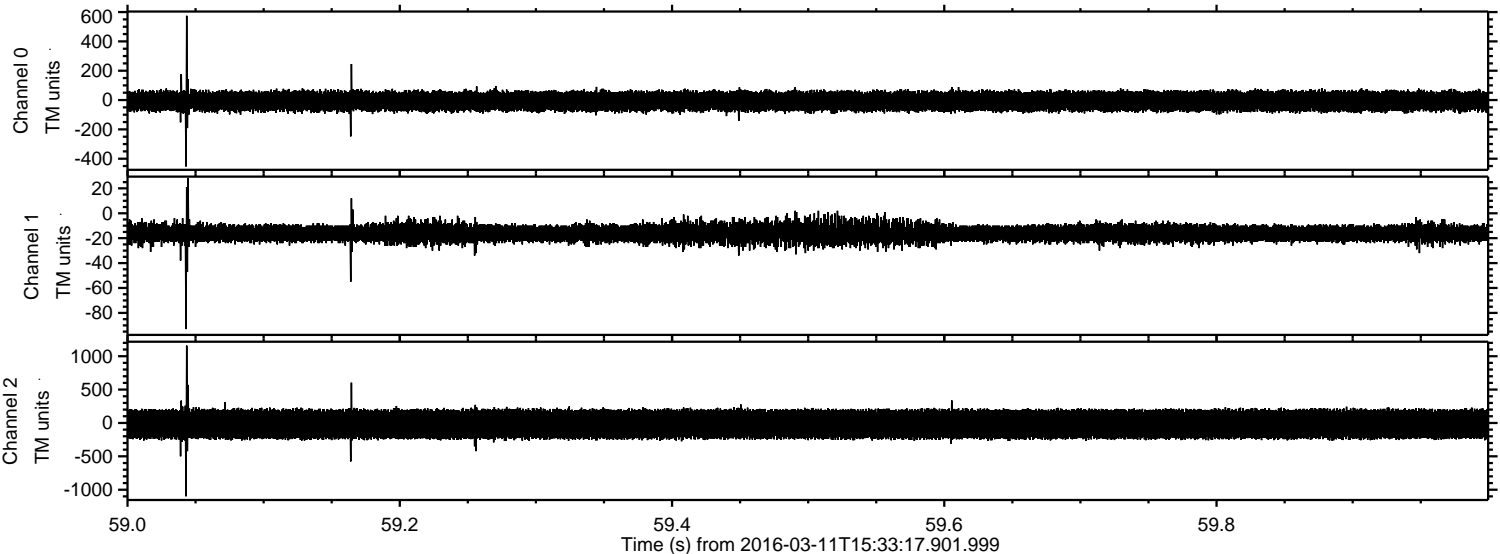


Processed Tue Apr 19 17:59:48 2016 by ELM ver.2012-10-06 from 001\_\_elm20160311\_153316\_\_dat00.bin



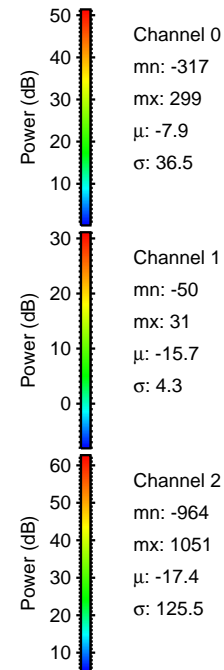
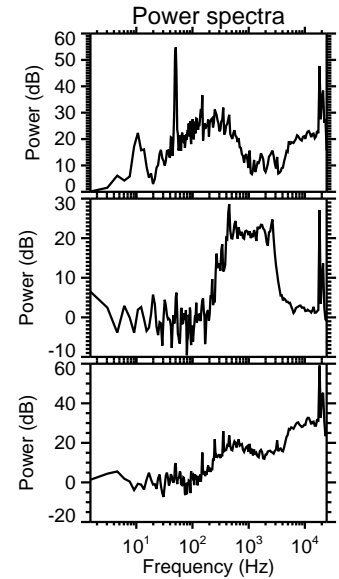
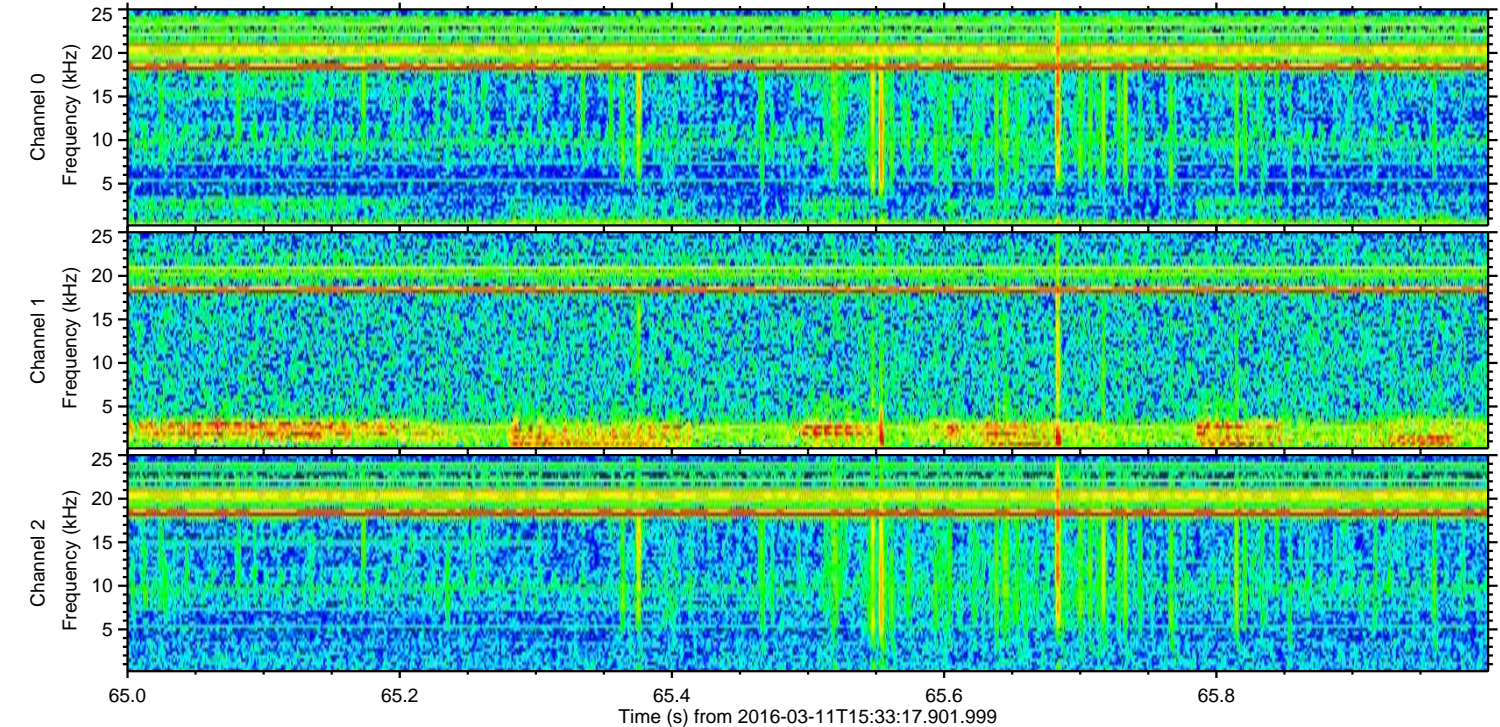
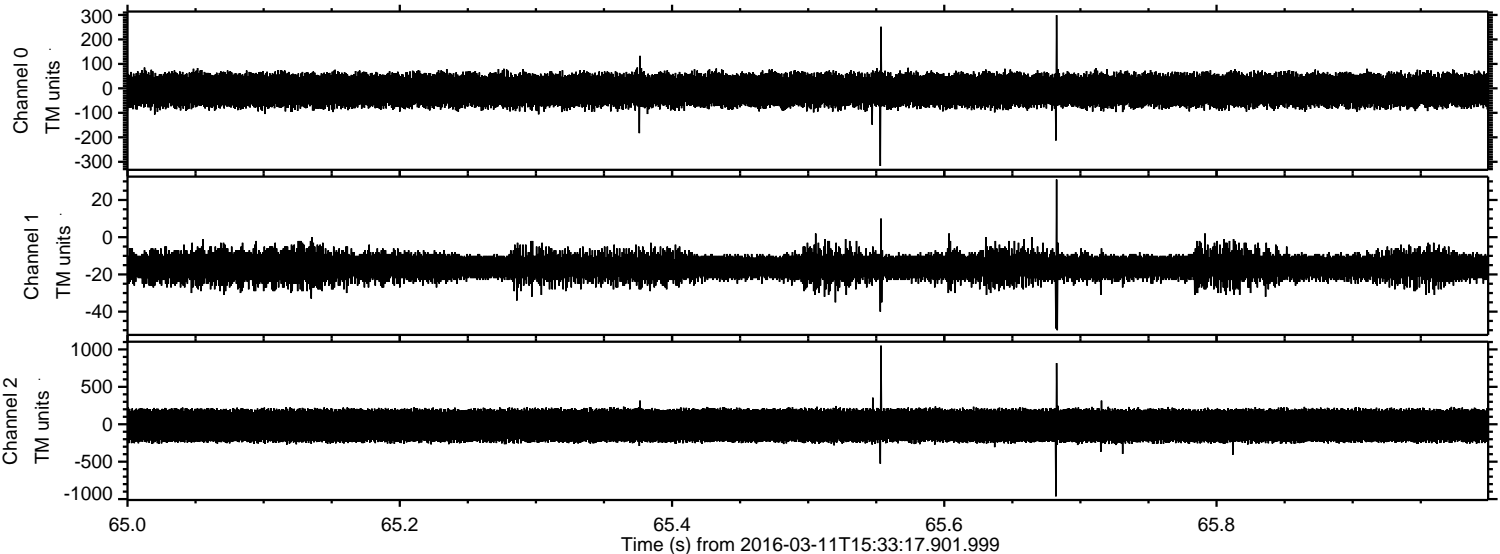


Processed Tue Apr 19 17:59:49 2016 by ELM ver.2012-10-06 from 001\_\_elm20160311\_153316\_\_dat00.bin





Processed Tue Apr 19 17:59:50 2016 by ELM ver.2012-10-06 from 001\_\_elm20160311\_153316\_\_dat00.bin





Processed Tue Apr 19 17:59:51 2016 by ELM ver.2012-10-06 from 001\_\_elm20160311\_153316\_\_dat00.bin

