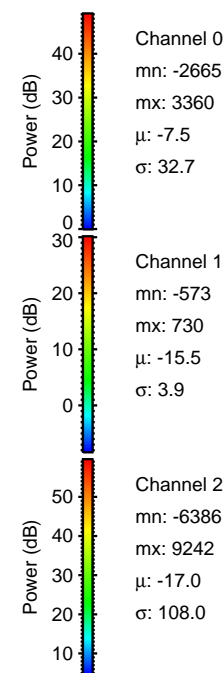
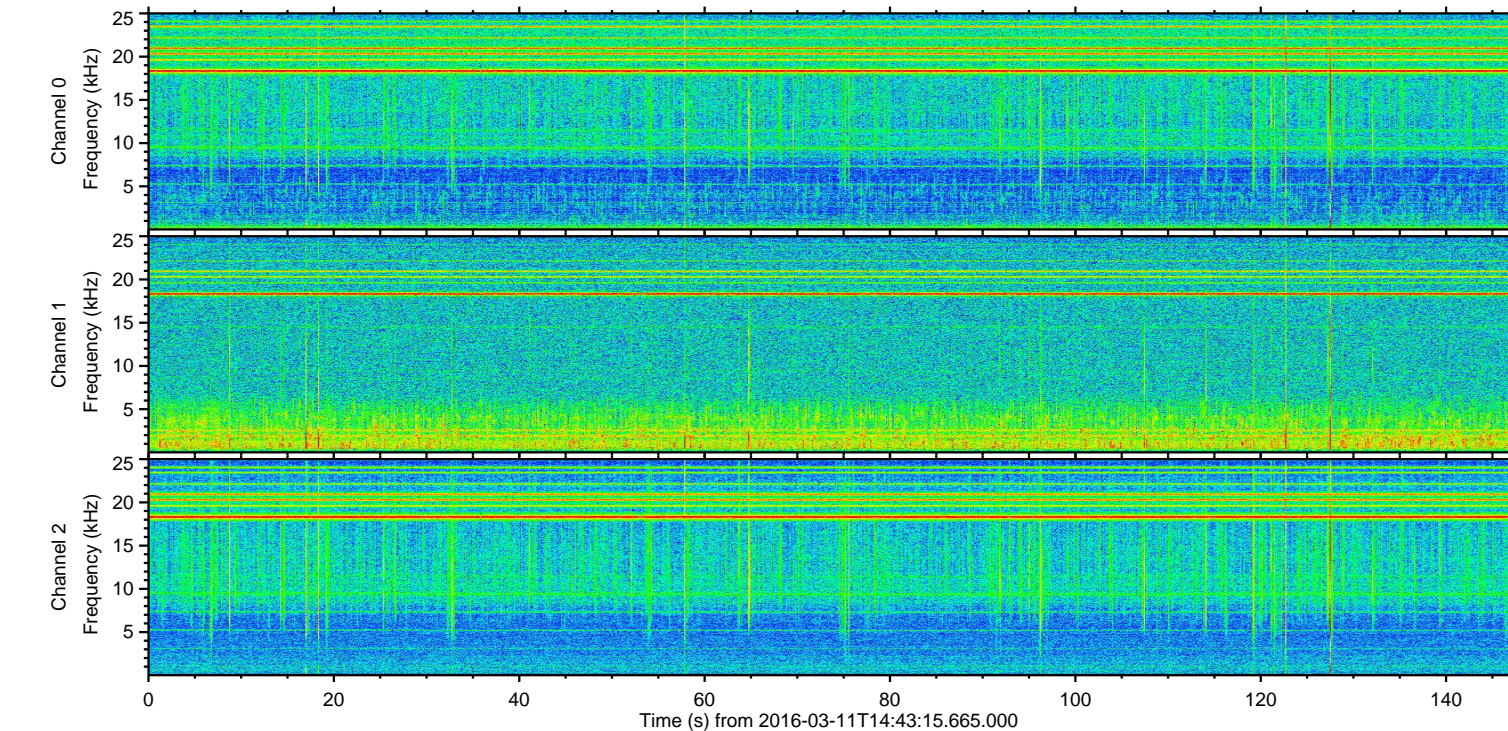
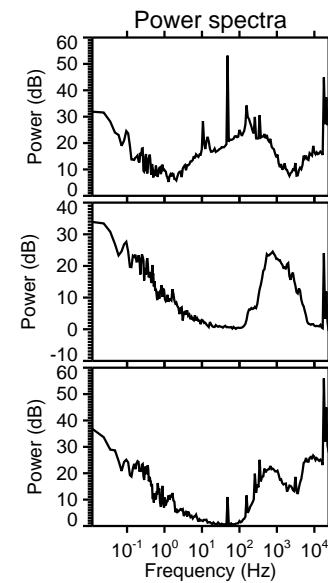
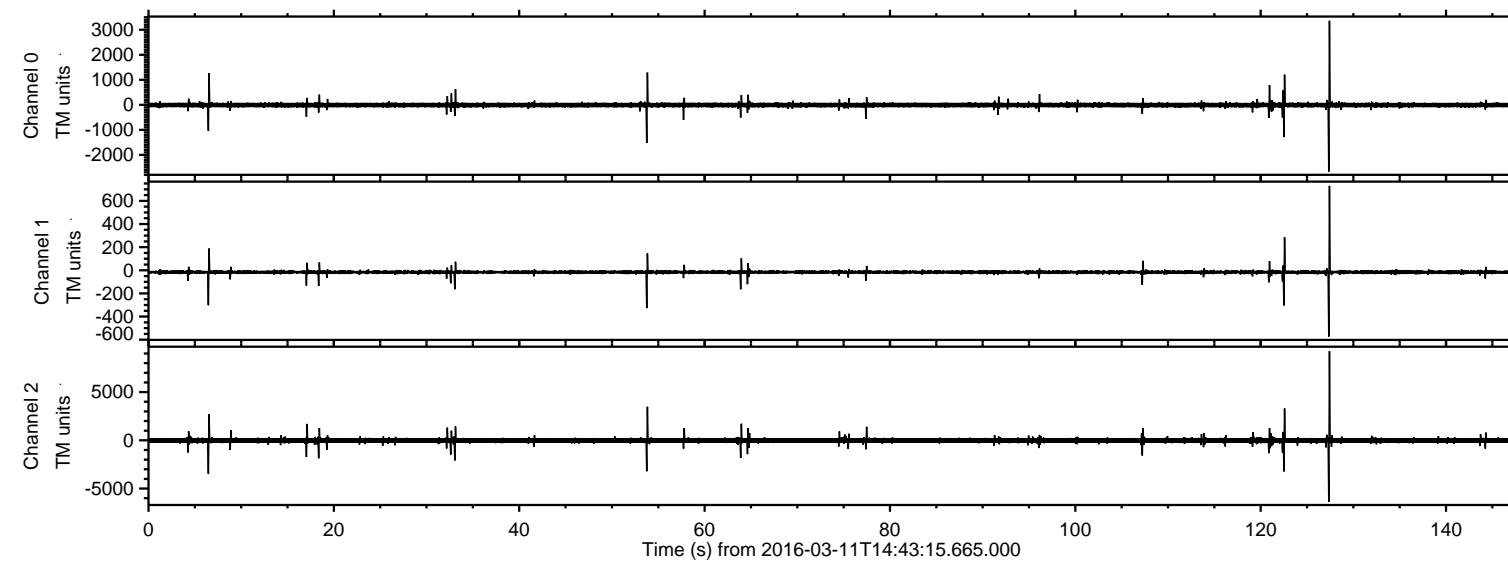


# ELMAVAN 3D WAVEFORMS (Measured data sampled at 50 kHz) 51000 packets of 144 samples from 2016-03-11T14:43:15.665.000.

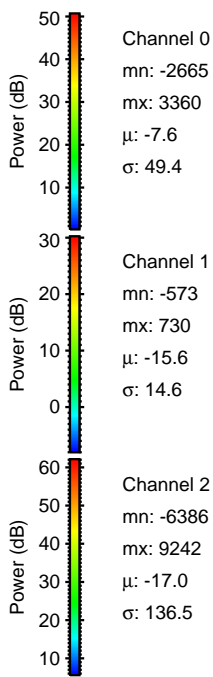
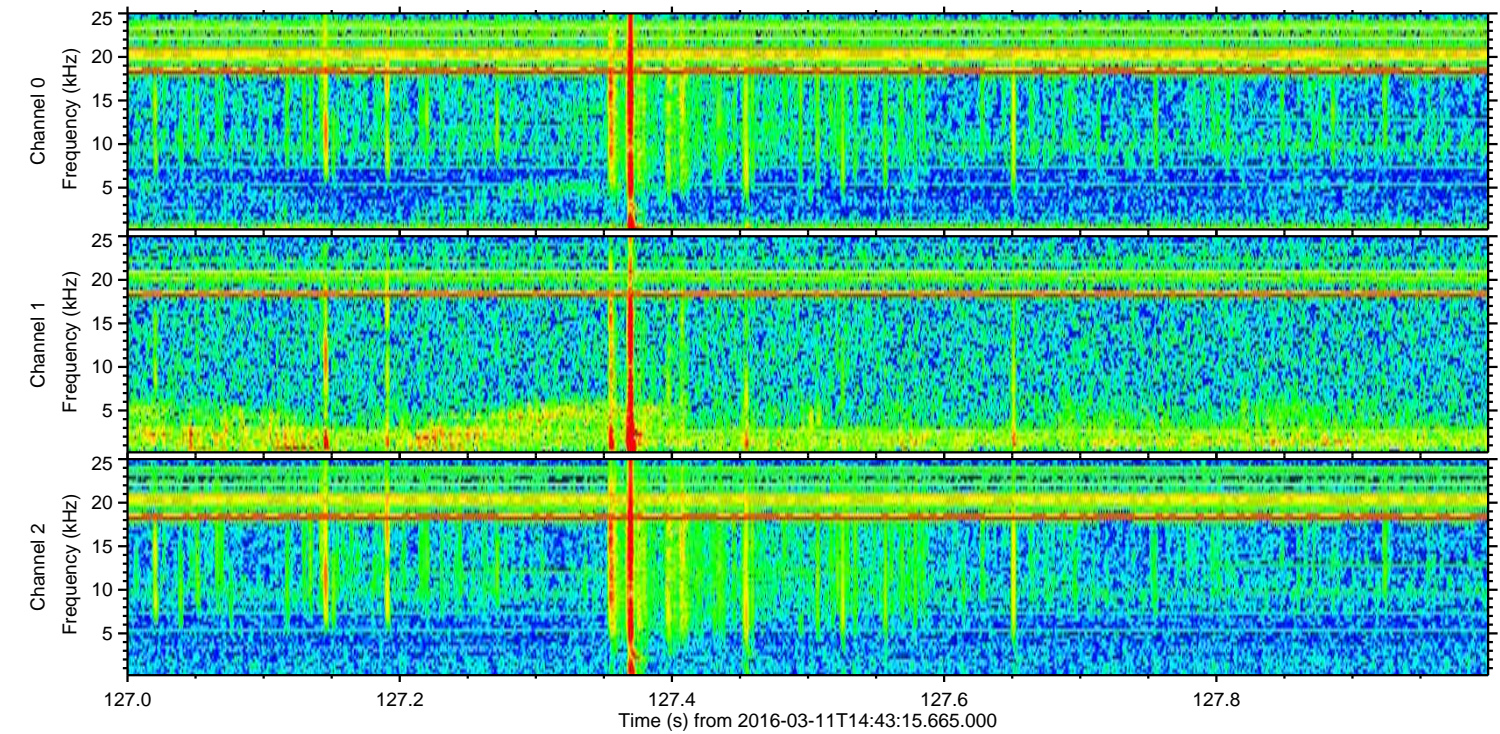
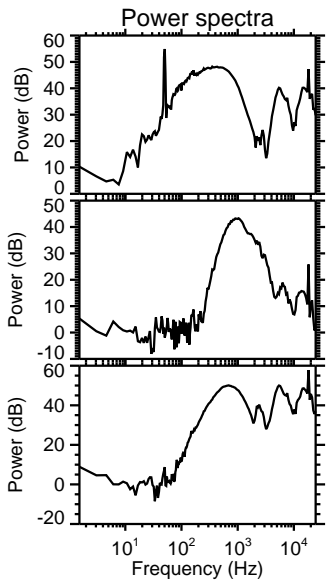
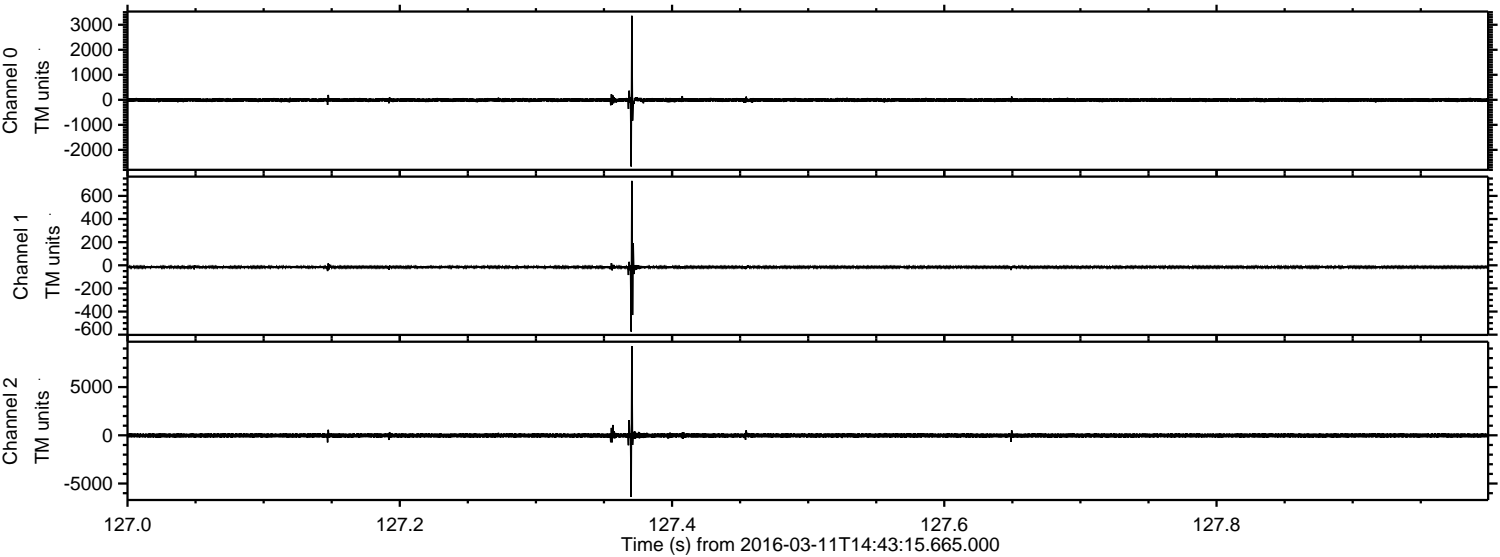
Processed Tue Apr 19 17:49:08 2016 by ELM ver.2012-10-06 from 001\_\_elm20160311\_144314\_\_dat00.bin





ELMAVAN 3D WAVEFORMS (Measured data sampled at 50 kHz) 51000 packets of 144 samples from 2016-03-11T14:43:15.665.000. Part 128/147

Processed Tue Apr 19 17:49:20 2016 by ELM ver.2012-10-06 from 001\_\_elm20160311\_144314\_\_dat00.bin



Channel 0  
mn: -2665  
mx: 3360  
 $\mu$ : -7.6  
 $\sigma$ : 49.4

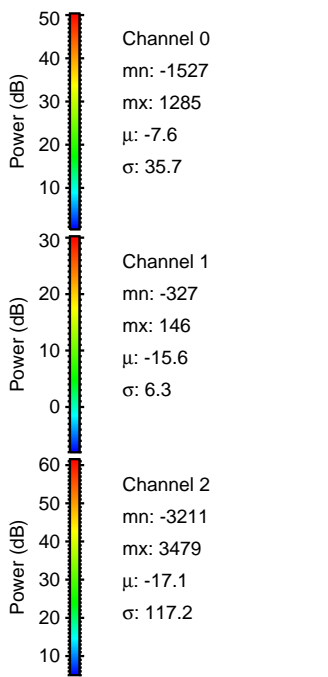
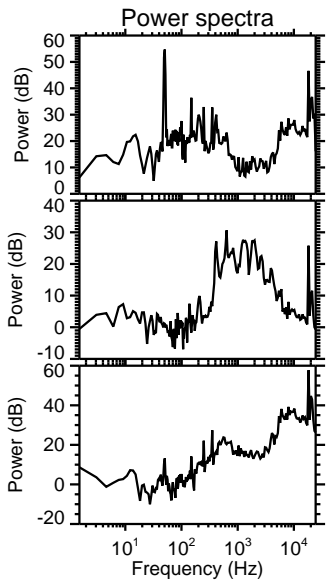
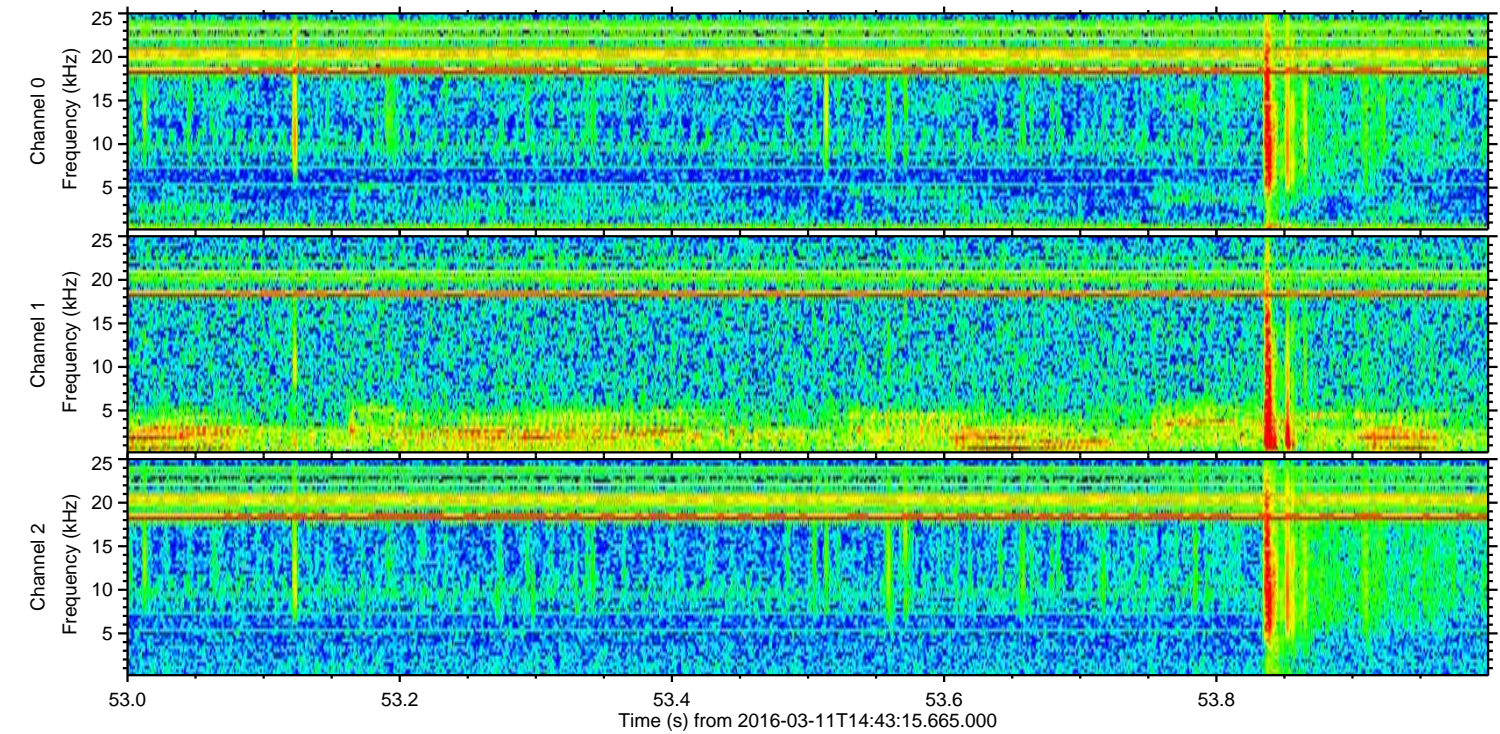
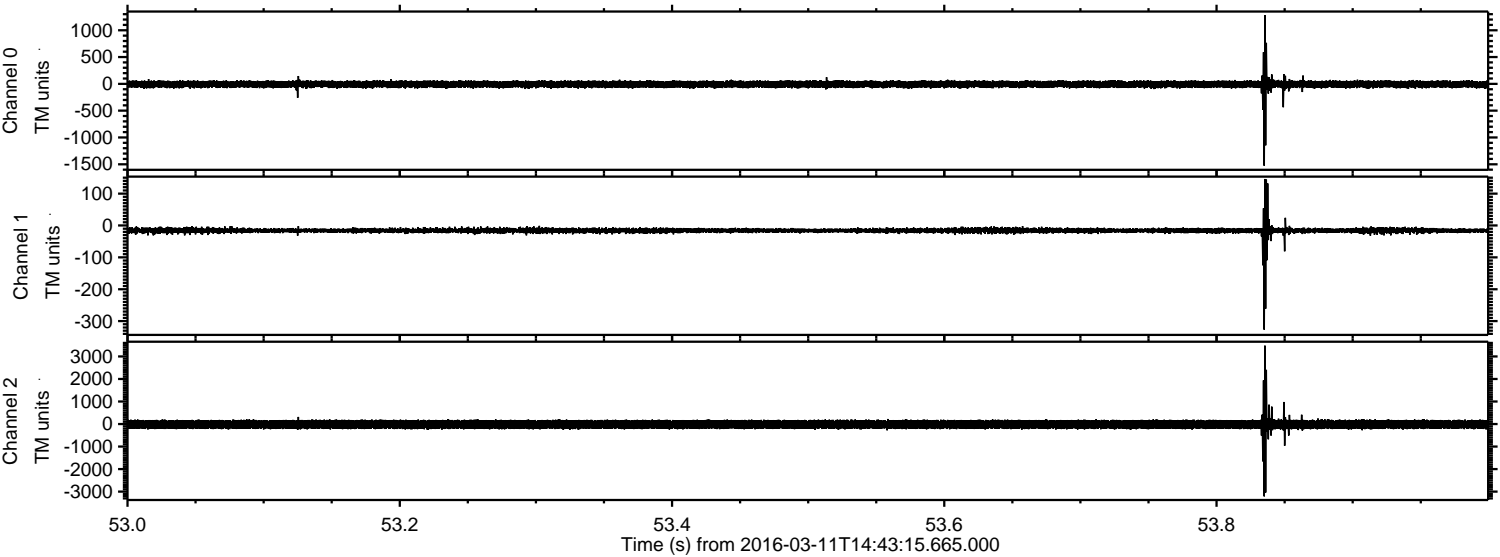
Channel 1  
mn: -573  
mx: 730  
 $\mu$ : -15.6  
 $\sigma$ : 14.6

Channel 2  
mn: -6386  
mx: 9242  
 $\mu$ : -17.0  
 $\sigma$ : 136.5



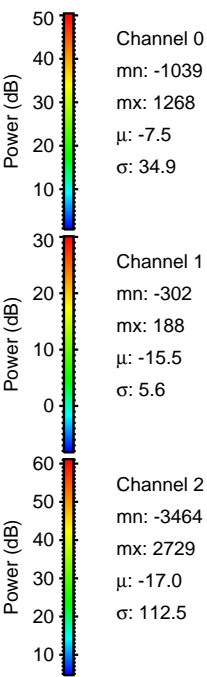
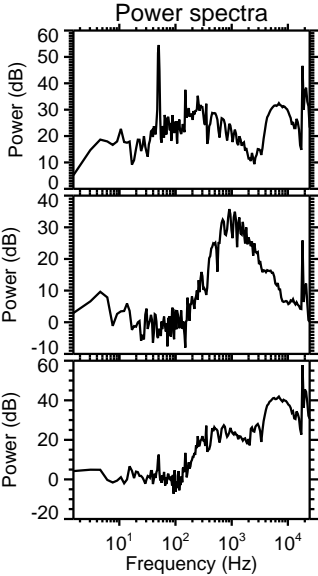
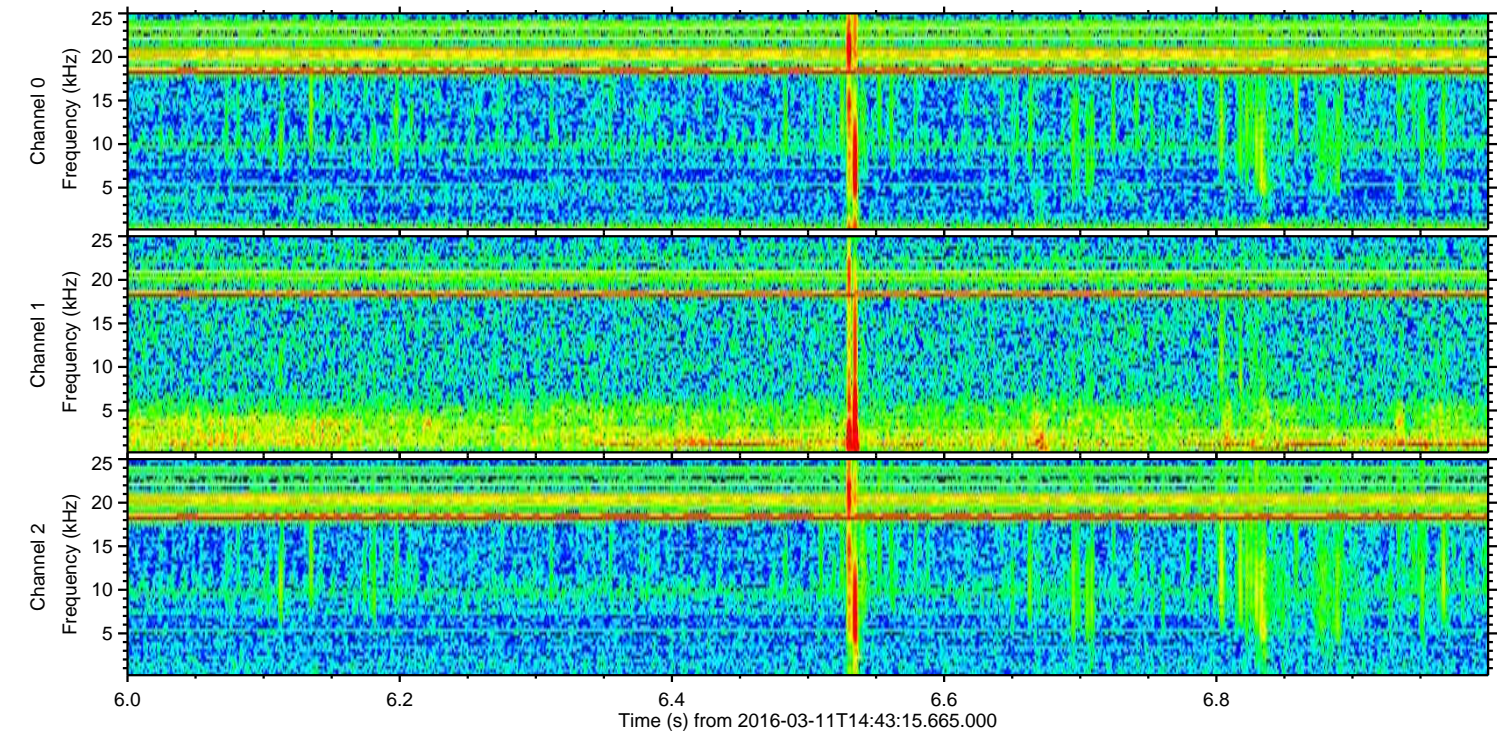
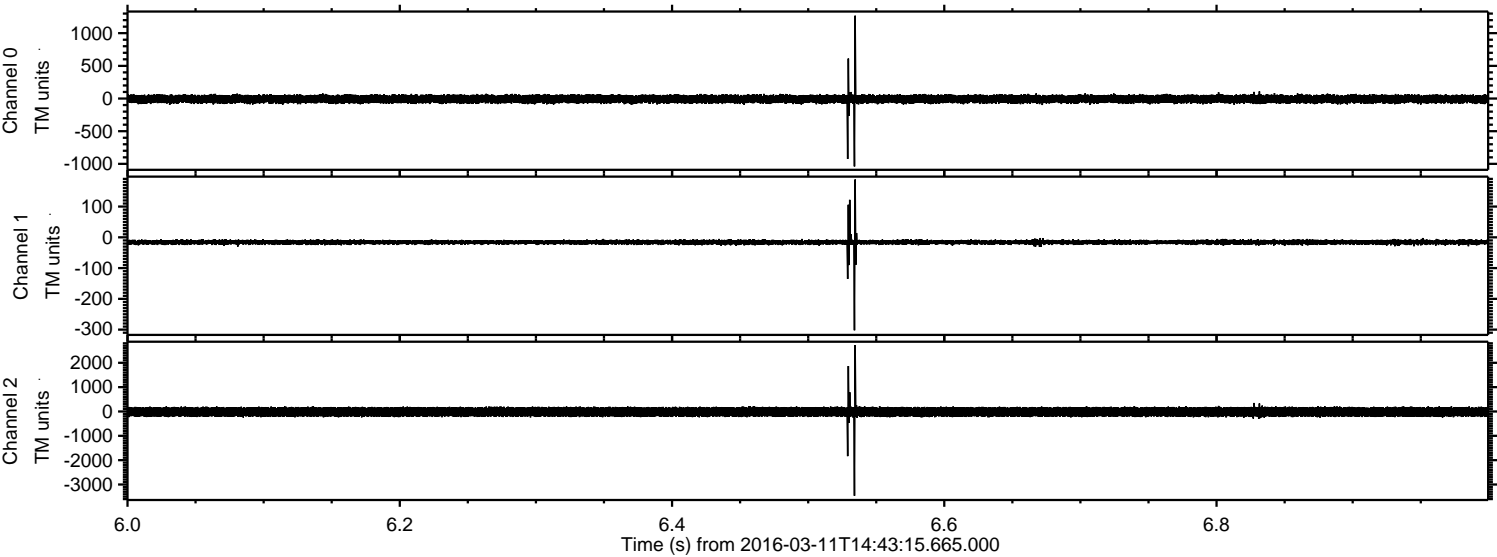
ELMAVAN 3D WAVEFORMS (Measured data sampled at 50 kHz) 51000 packets of 144 samples from 2016-03-11T14:43:15.665.000. Part 54/147

Processed Tue Apr 19 17:49:21 2016 by ELM ver.2012-10-06 from 001\_\_elm20160311\_144314\_\_dat00.bin





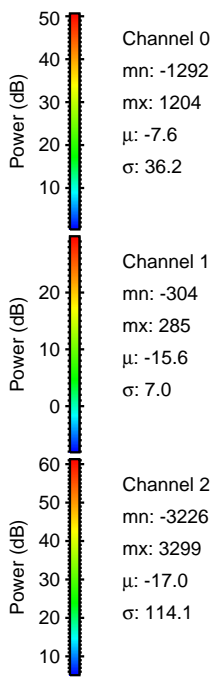
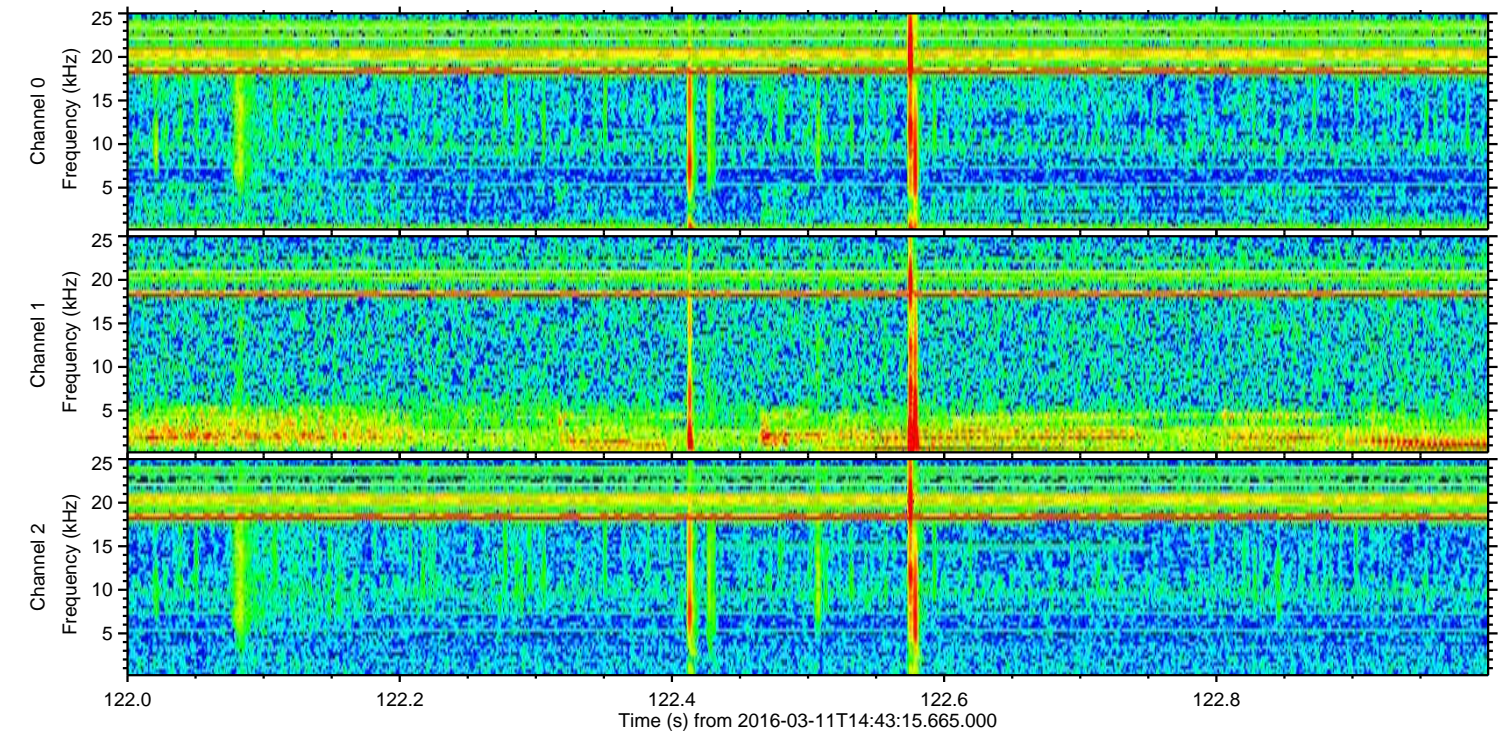
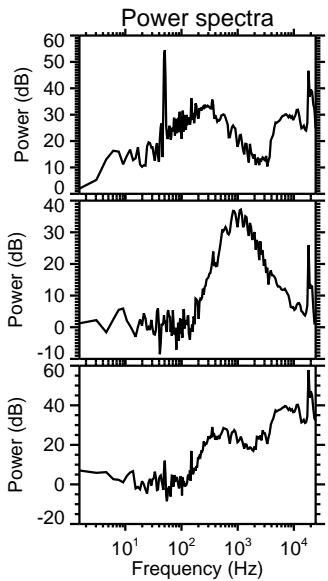
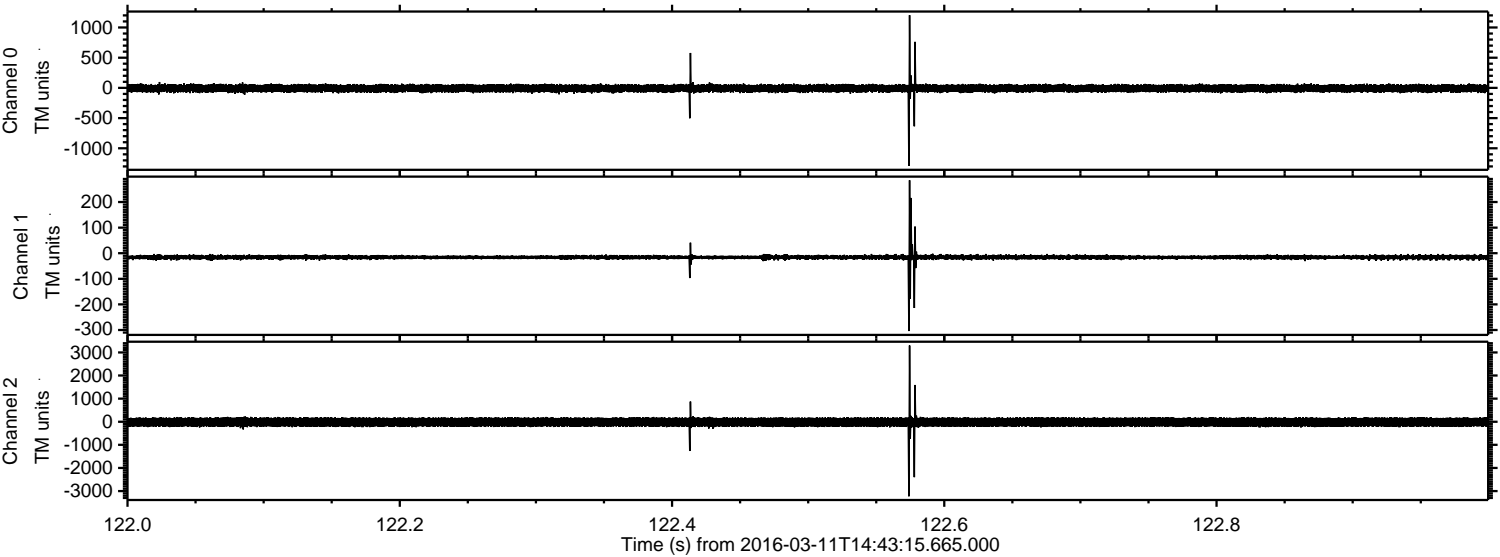
Processed Tue Apr 19 17:49:22 2016 by ELM ver.2012-10-06 from 001\_\_elm20160311\_144314\_\_dat00.bin





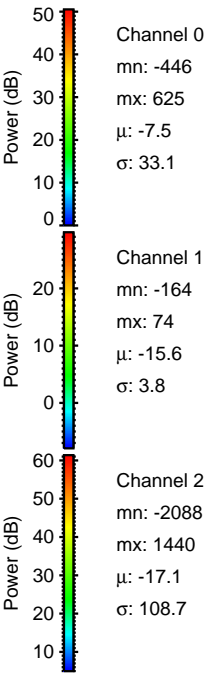
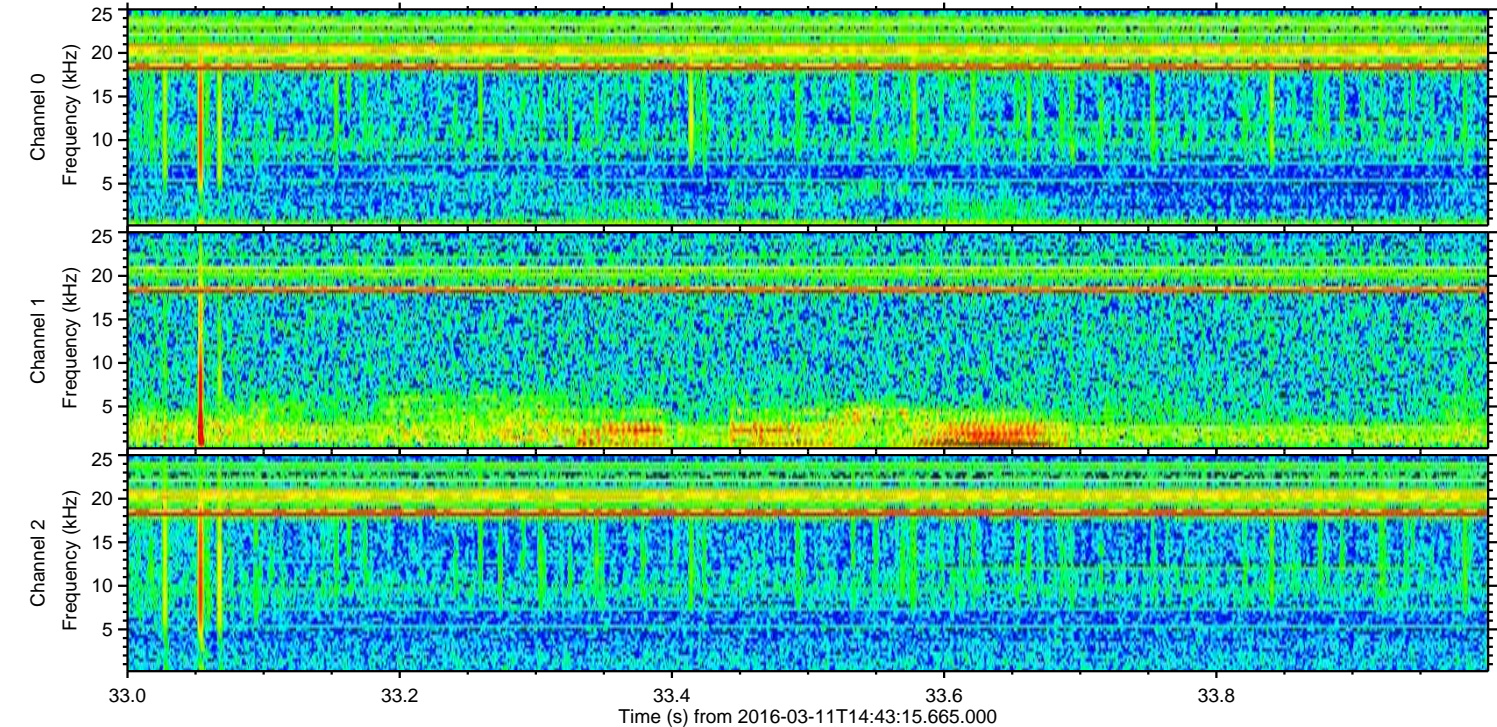
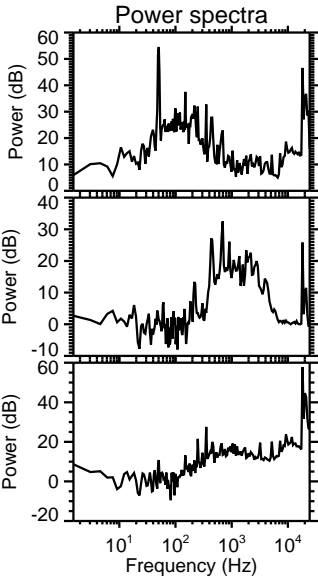
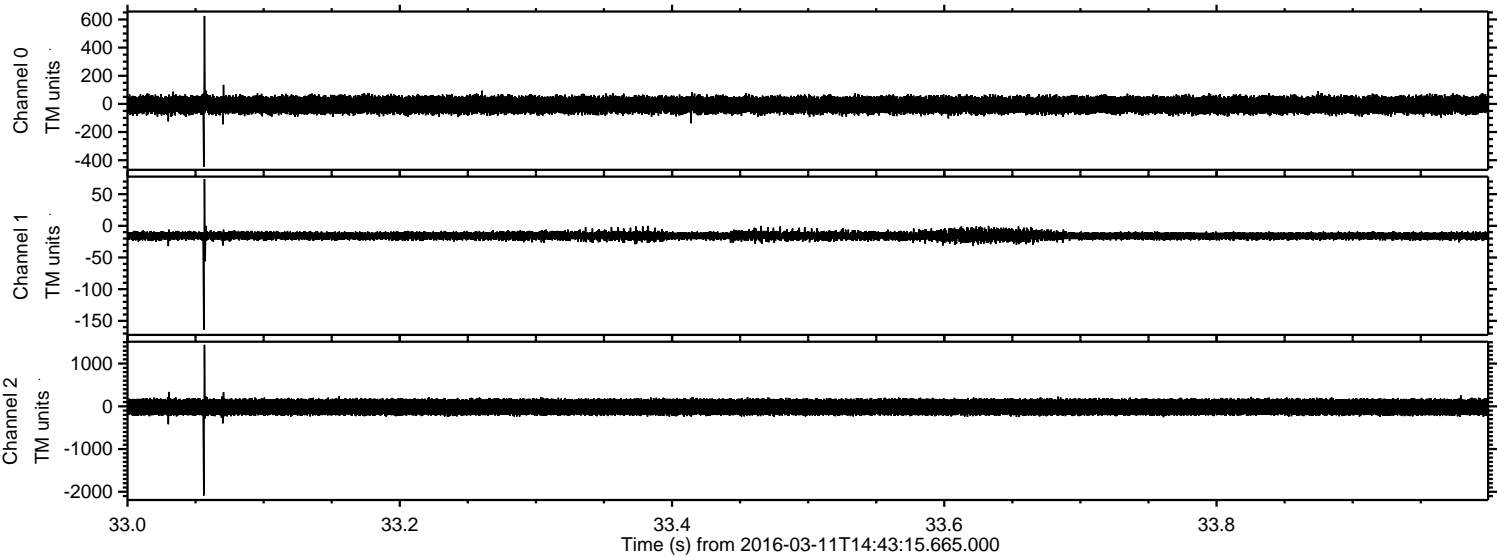
ELMAVAN 3D WAVEFORMS (Measured data sampled at 50 kHz) 51000 packets of 144 samples from 2016-03-11T14:43:15.665.000. Part 123/147

Processed Tue Apr 19 17:49:23 2016 by ELM ver.2012-10-06 from 001\_\_elm20160311\_144314\_\_dat00.bin



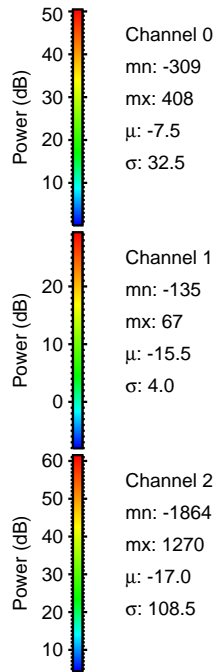
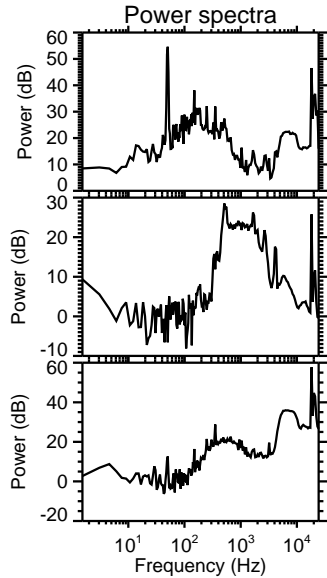
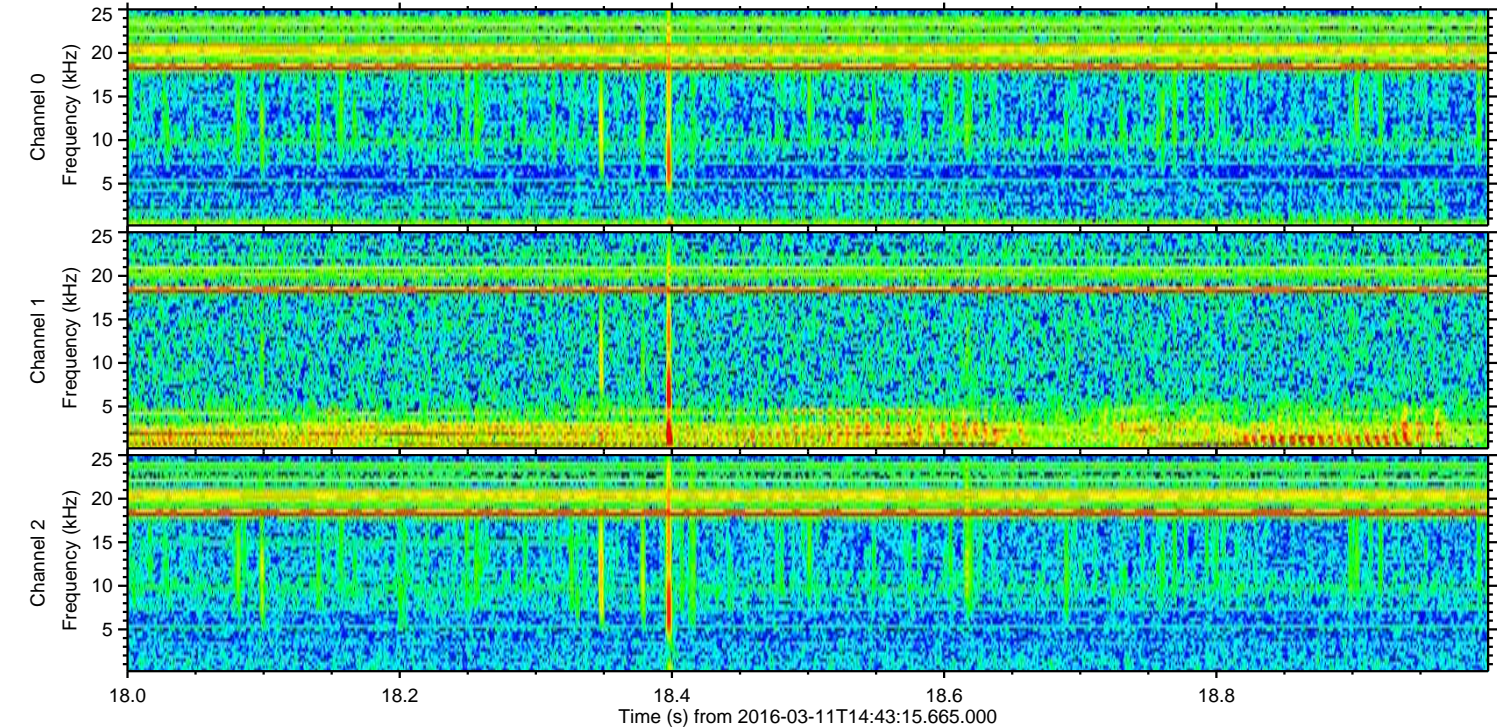
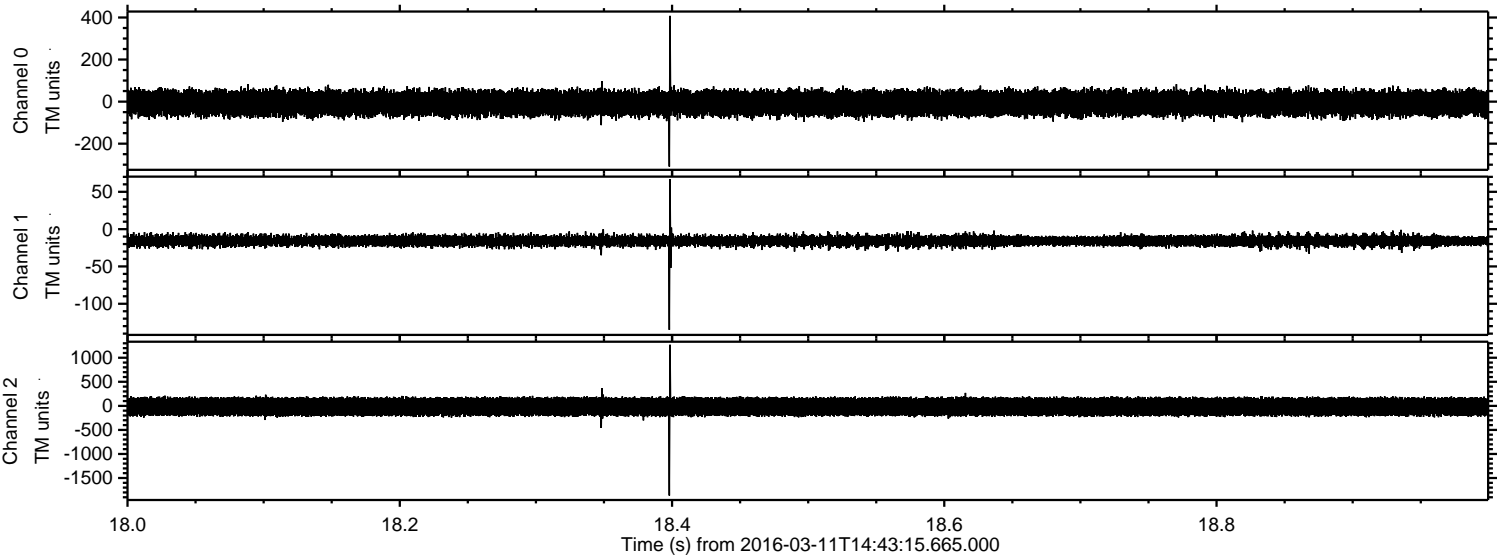


Processed Tue Apr 19 17:49:24 2016 by ELM ver.2012-10-06 from 001\_\_elm20160311\_144314\_\_dat00.bin





Processed Tue Apr 19 17:49:25 2016 by ELM ver.2012-10-06 from 001\_\_elm20160311\_144314\_\_dat00.bin



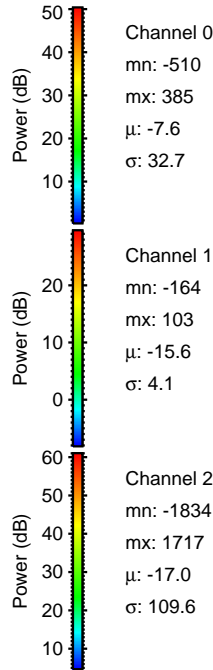
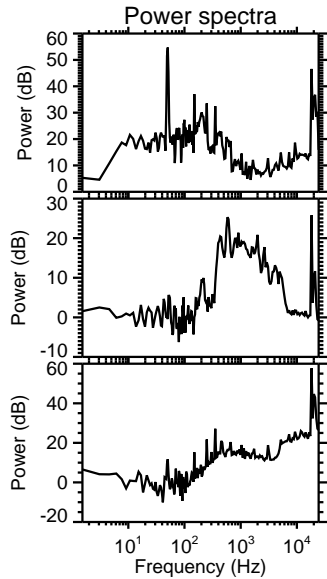
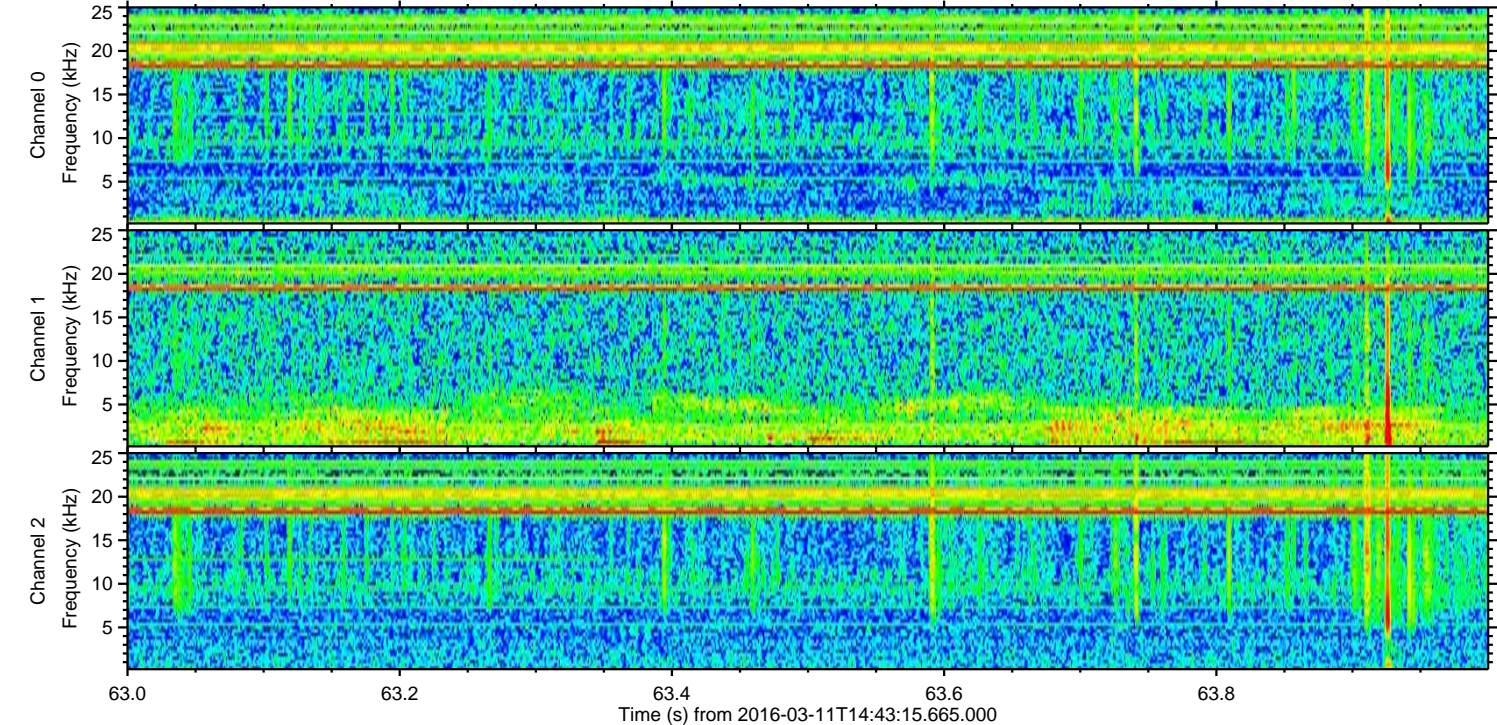
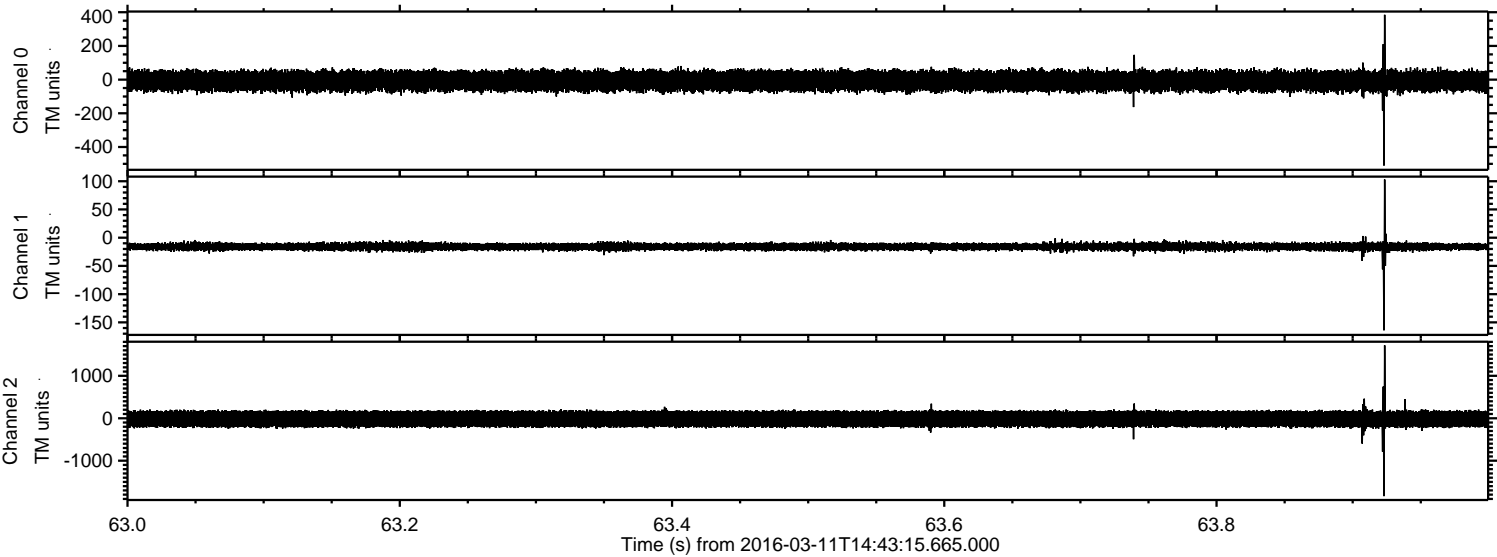
Channel 0  
mn: -309  
mx: 408  
 $\mu$ : -7.5  
 $\sigma$ : 32.5

Channel 1  
mn: -135  
mx: 67  
 $\mu$ : -15.5  
 $\sigma$ : 4.0

Channel 2  
mn: -1864  
mx: 1270  
 $\mu$ : -17.0  
 $\sigma$ : 108.5

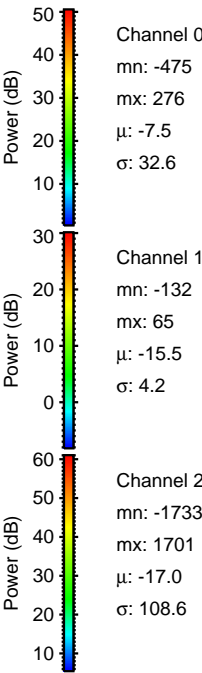
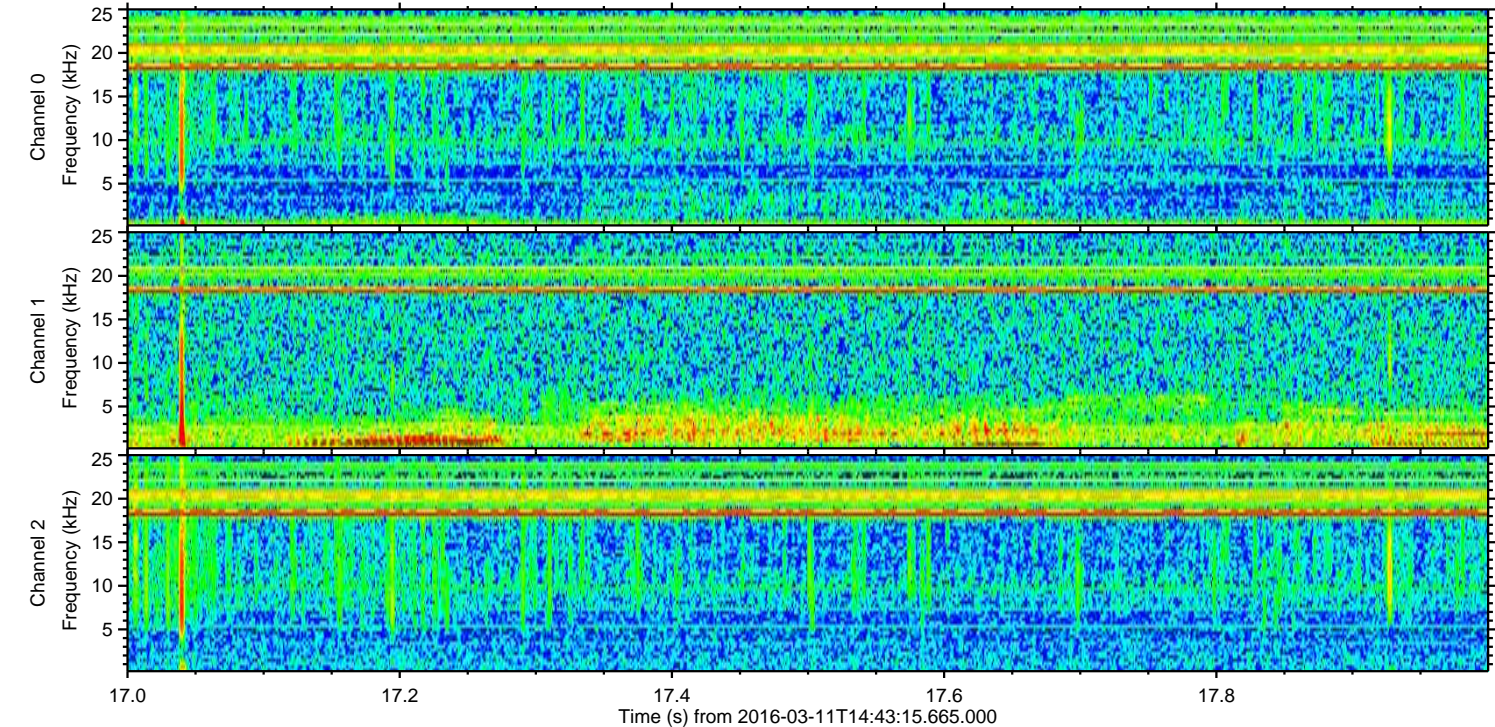
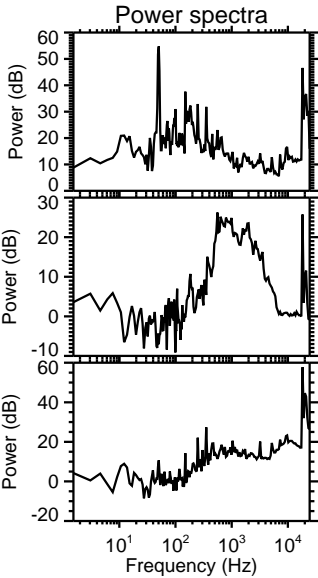
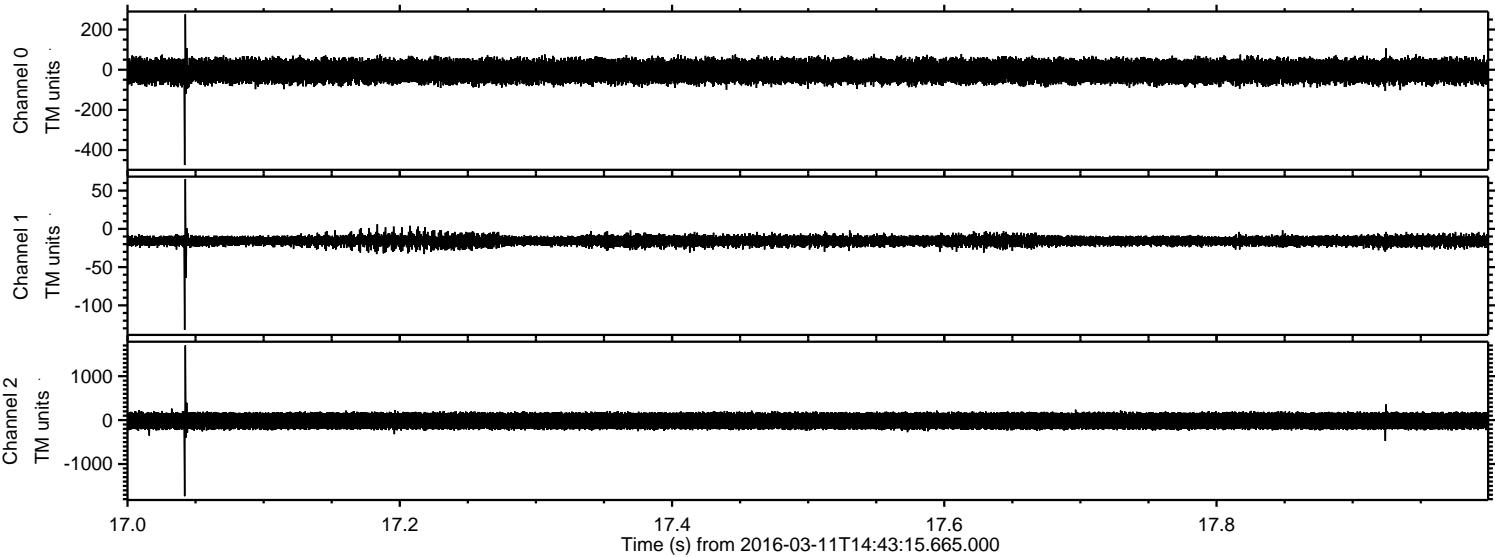


Processed Tue Apr 19 17:49:26 2016 by ELM ver.2012-10-06 from 001\_\_elm20160311\_144314\_\_dat00.bin





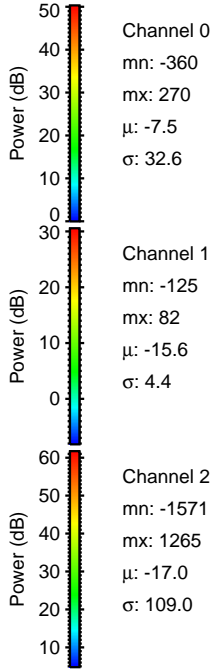
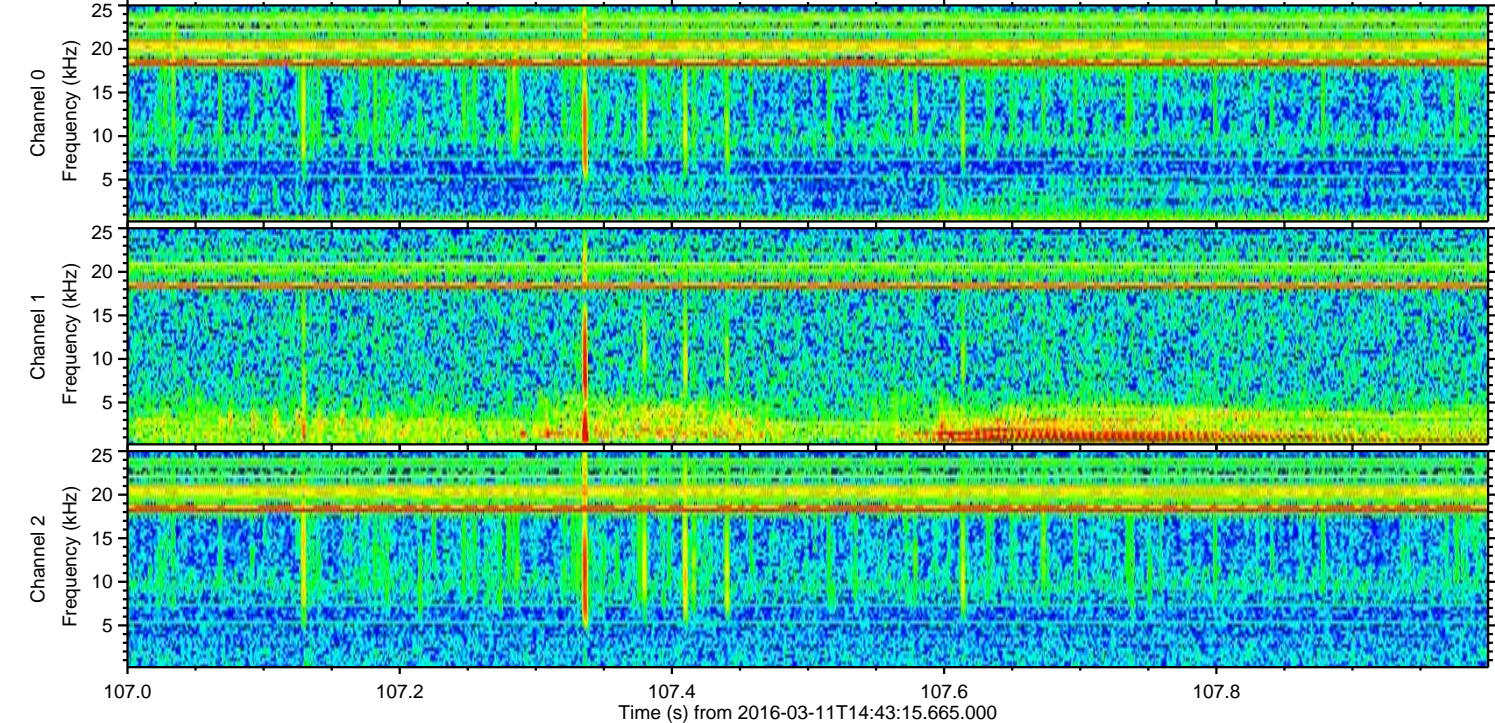
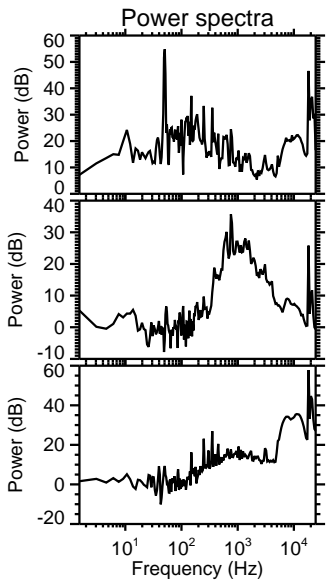
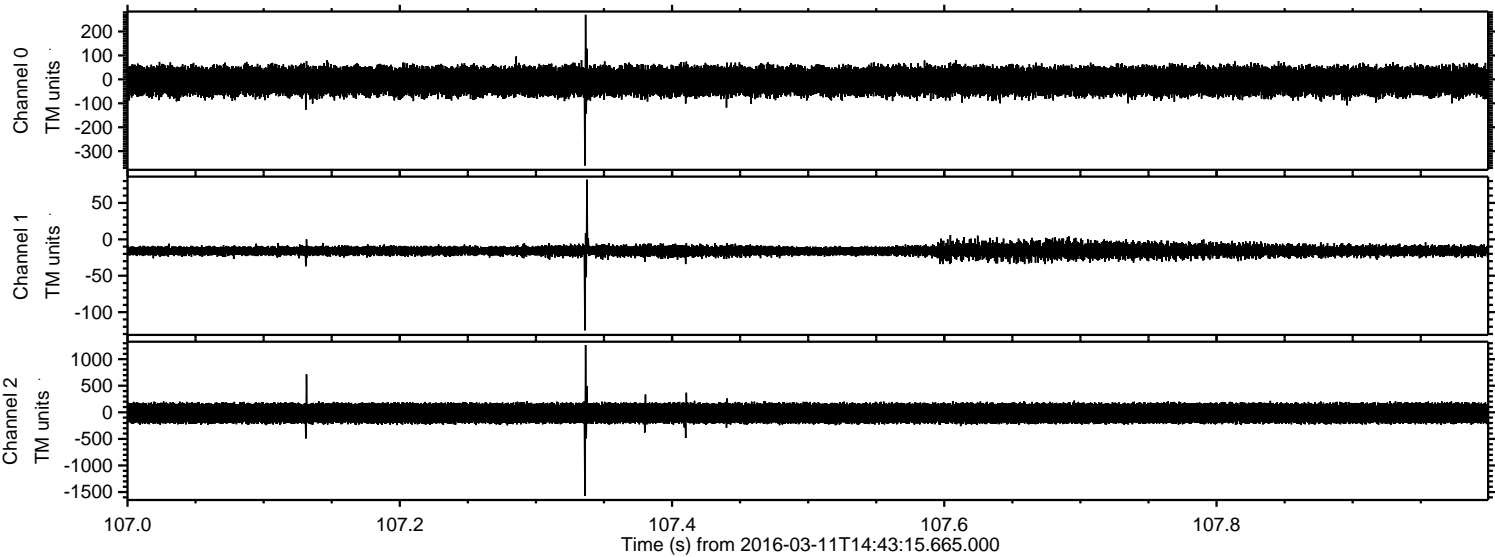
Processed Tue Apr 19 17:49:27 2016 by ELM ver.2012-10-06 from 001\_\_elm20160311\_144314\_\_dat00.bin





ELMAVAN 3D WAVEFORMS (Measured data sampled at 50 kHz) 51000 packets of 144 samples from 2016-03-11T14:43:15.665.000. Part 108/147

Processed Tue Apr 19 17:49:28 2016 by ELM ver.2012-10-06 from 001\_\_elm20160311\_144314\_\_dat00.bin





ELMAVAN 3D WAVEFORMS (Measured data sampled at 50 kHz) 51000 packets of 144 samples from 2016-03-11T14:43:15.665.000. Part 118/147

