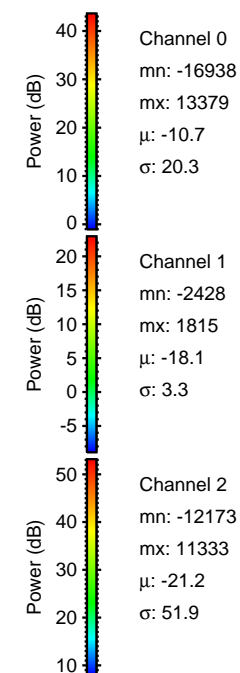
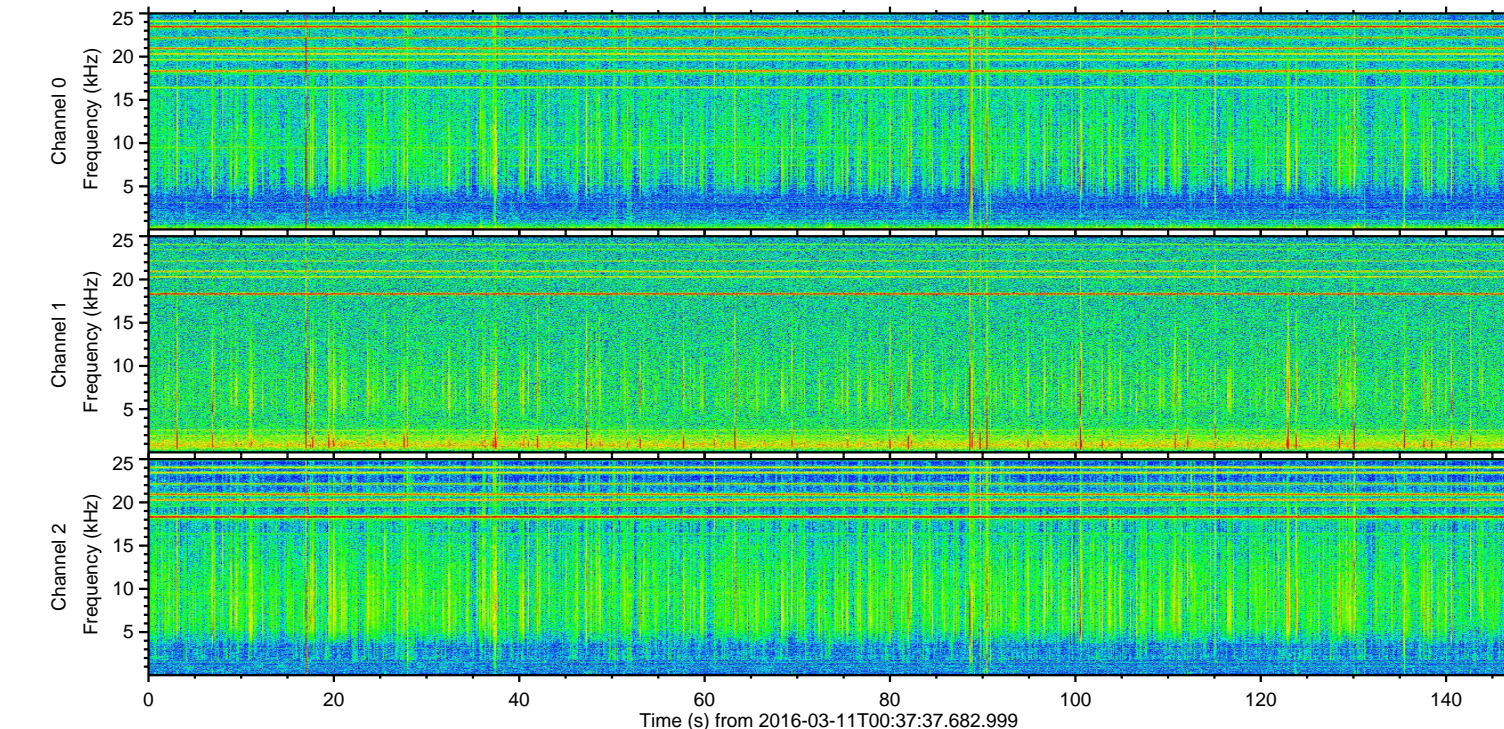
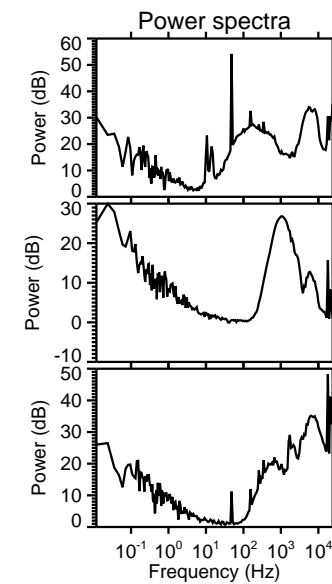
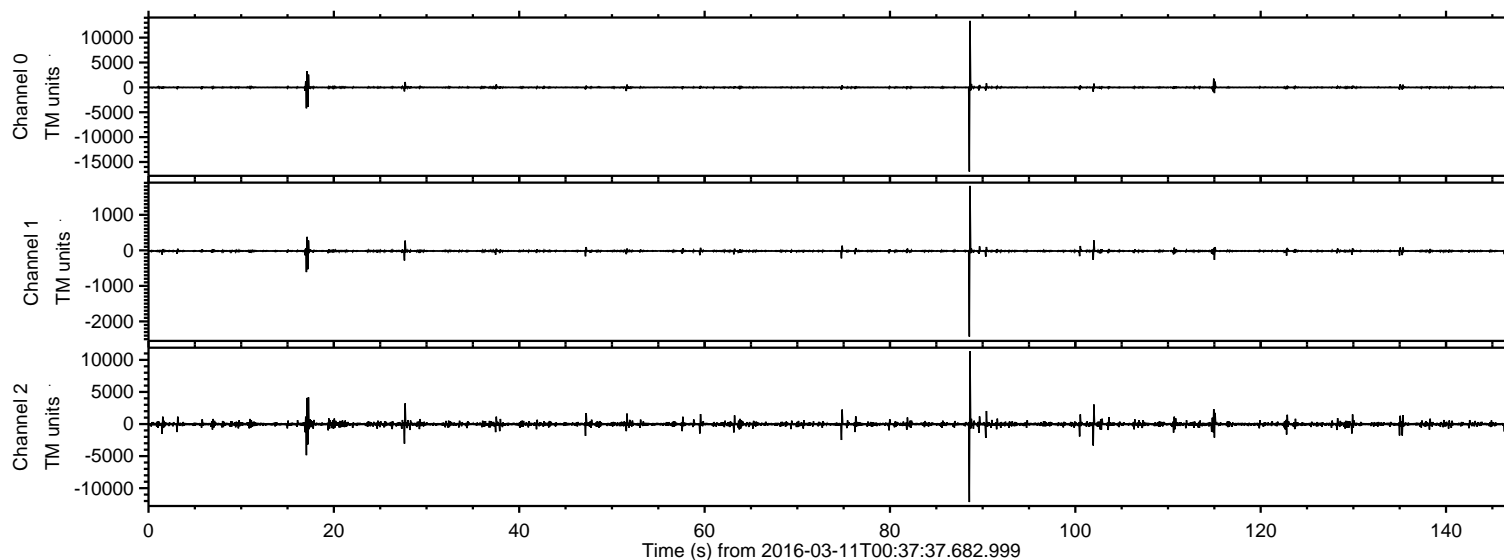


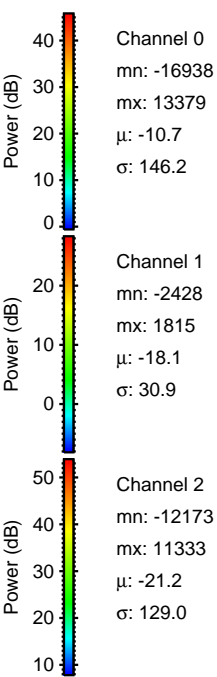
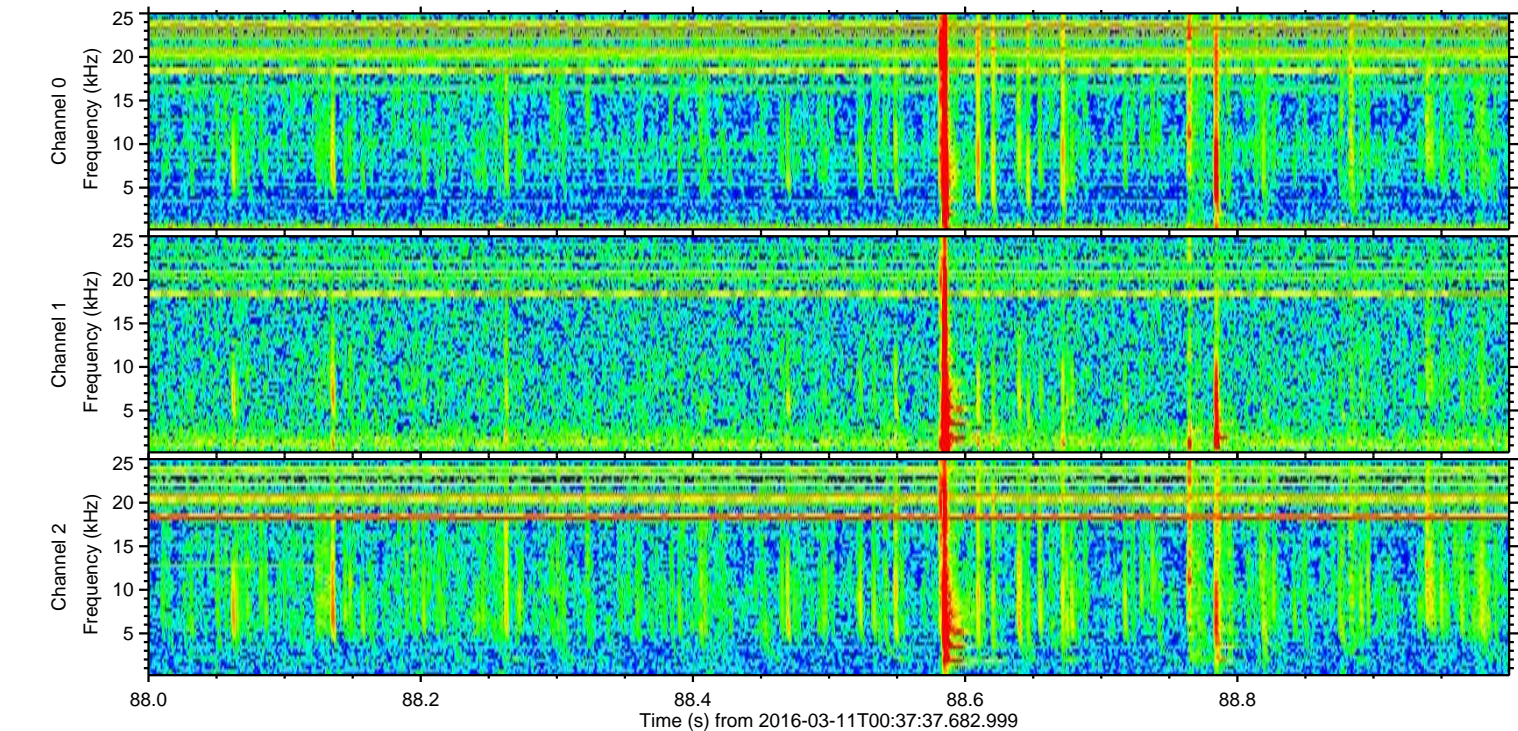
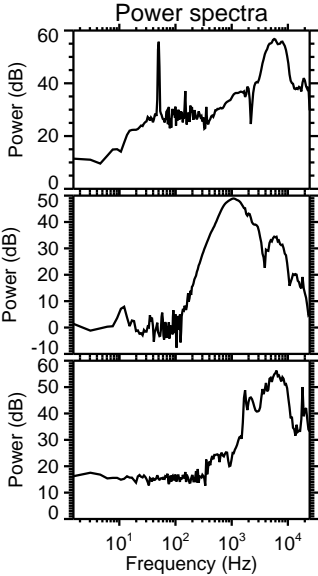
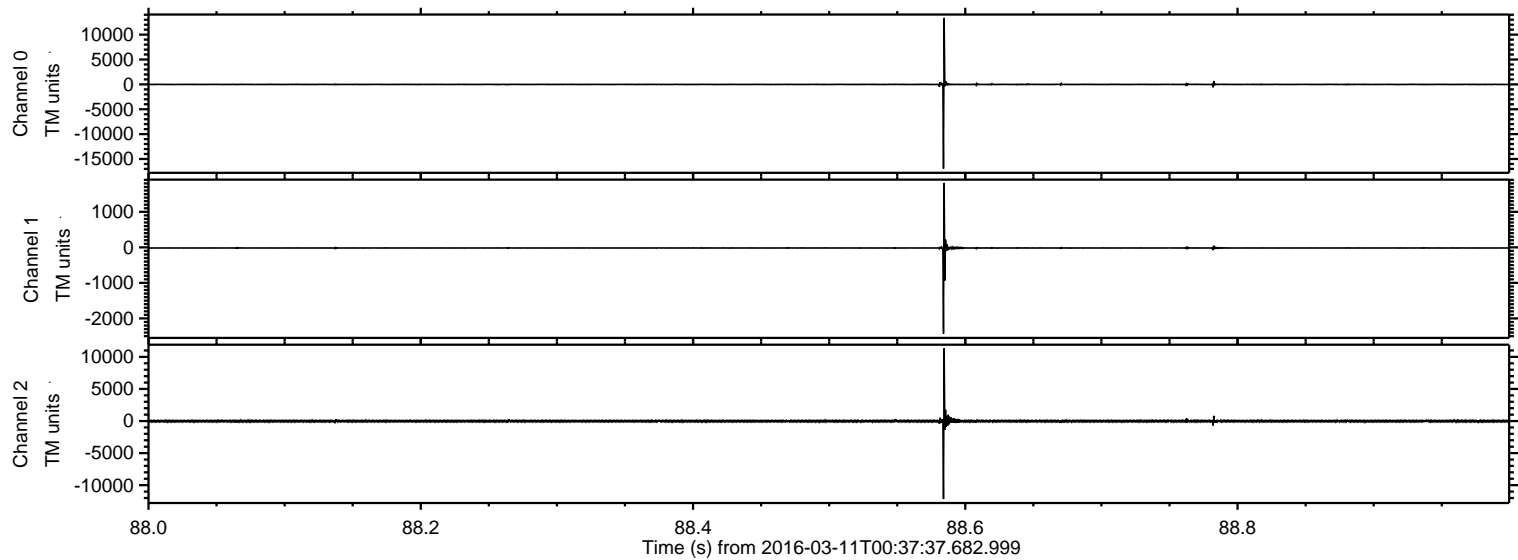
# ELMAVAN 3D WAVEFORMS (Measured data sampled at 50 kHz) 51000 packets of 144 samples from 2016-03-11T00:37:37.682.999.

Processed Tue Apr 19 14:55:43 2016 by ELM ver.2012-10-06 from 001\_\_elm20160311\_003736\_\_dat00.bin



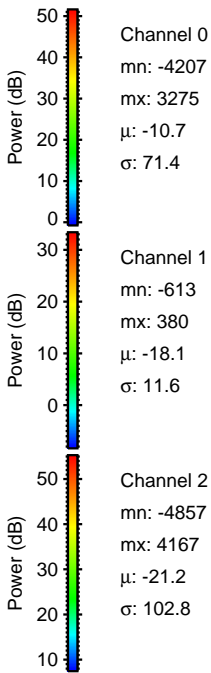
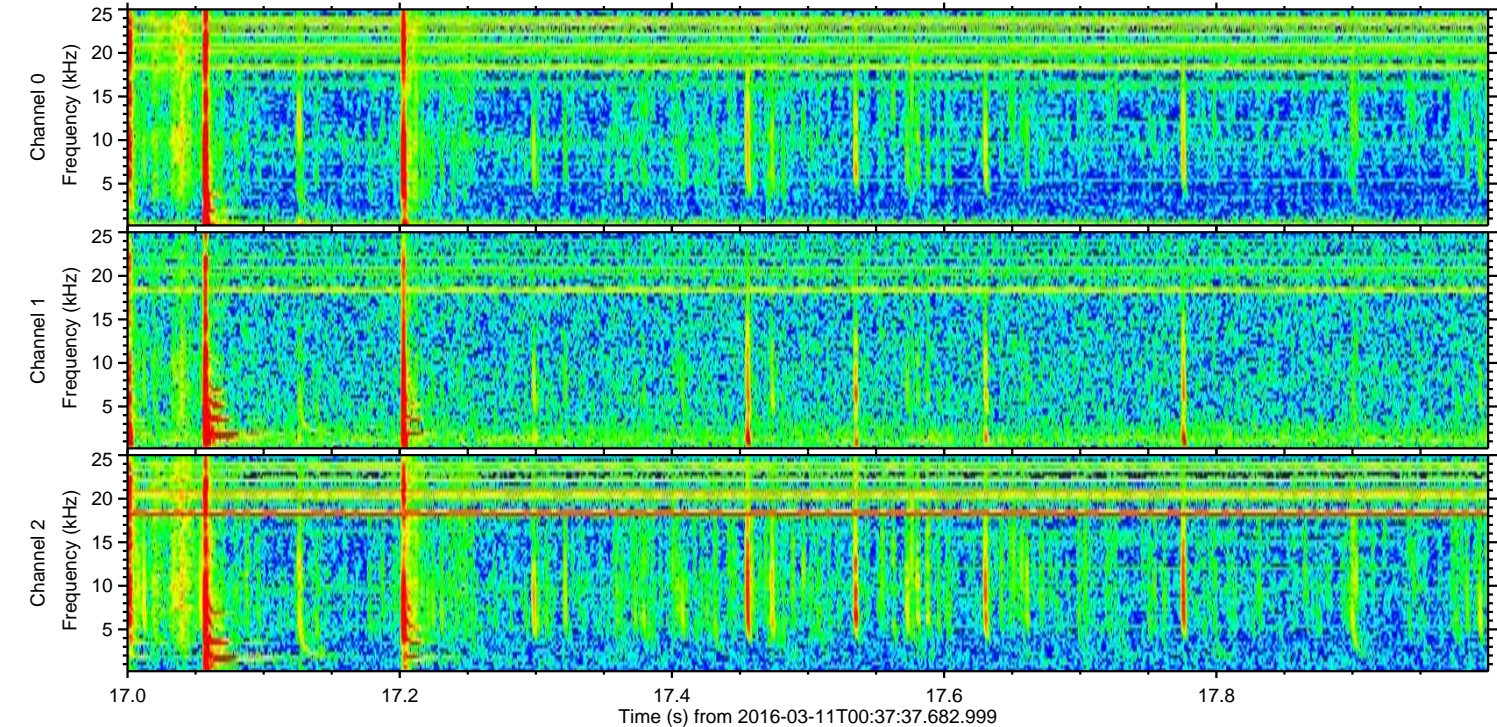
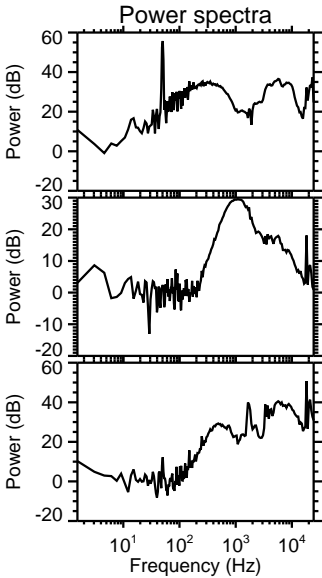
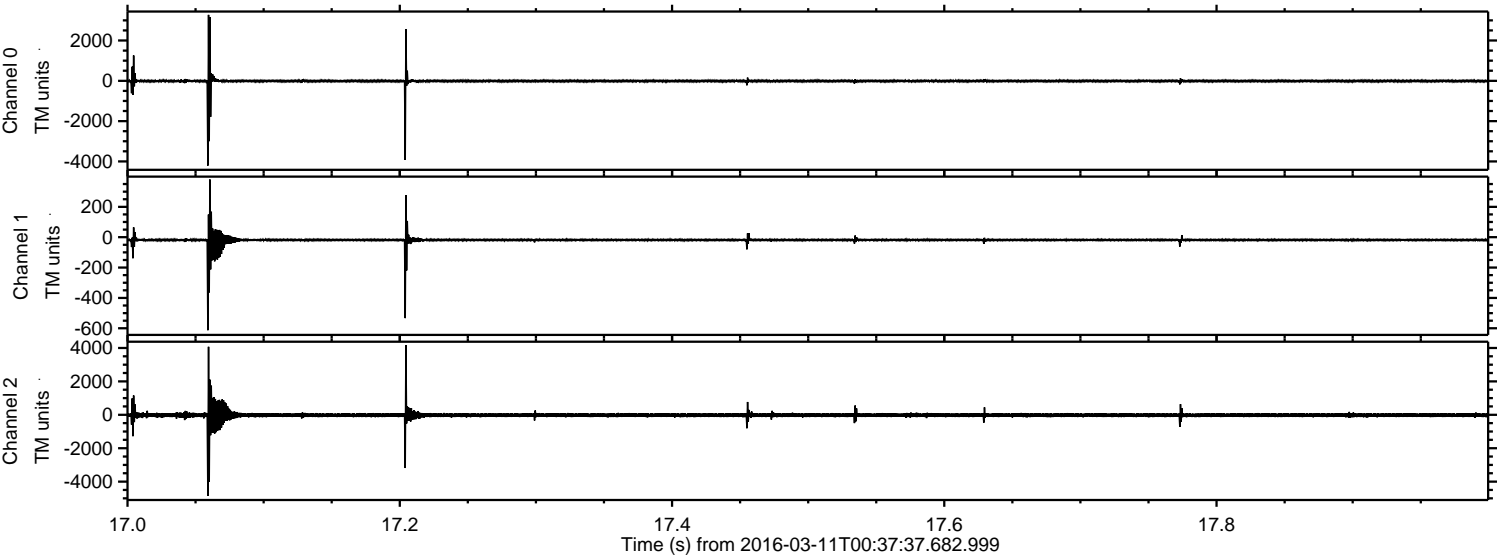


Processed Tue Apr 19 14:55:55 2016 by ELM ver.2012-10-06 from 001\_\_elm20160311\_003736\_\_dat00.bin





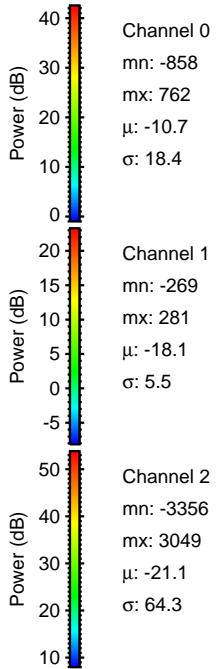
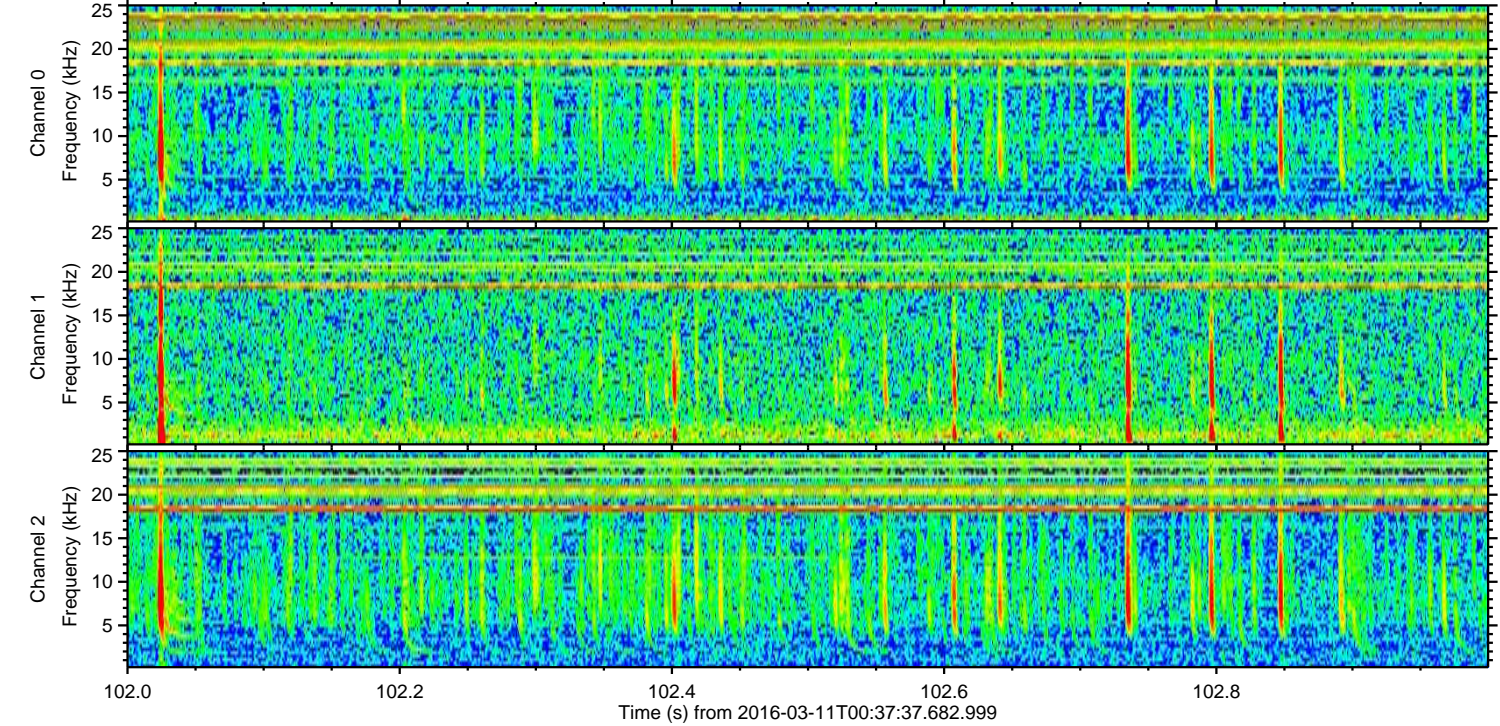
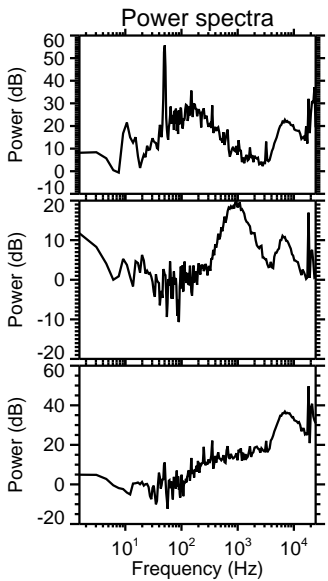
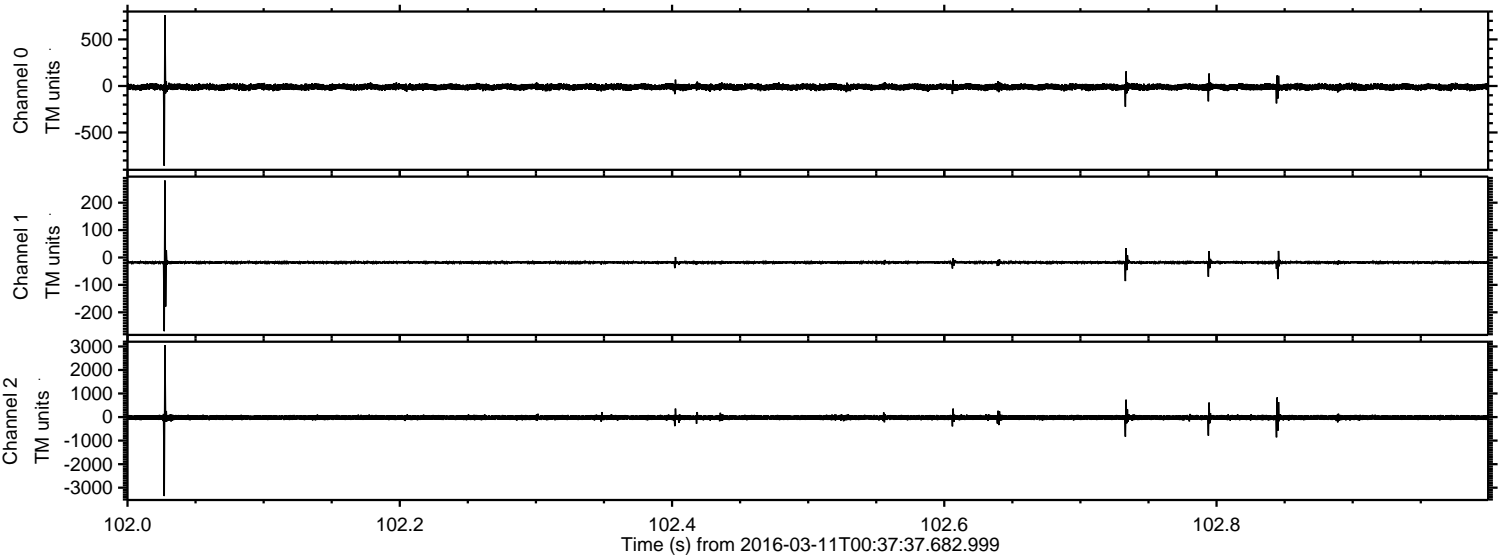
Processed Tue Apr 19 14:55:56 2016 by ELM ver.2012-10-06 from 001\_\_elm20160311\_003736\_\_dat00.bin





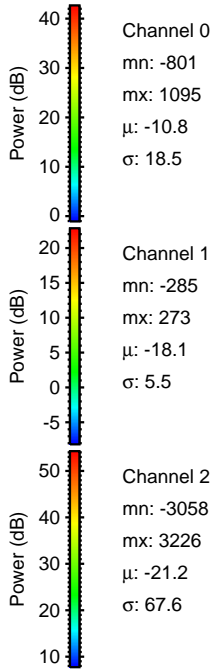
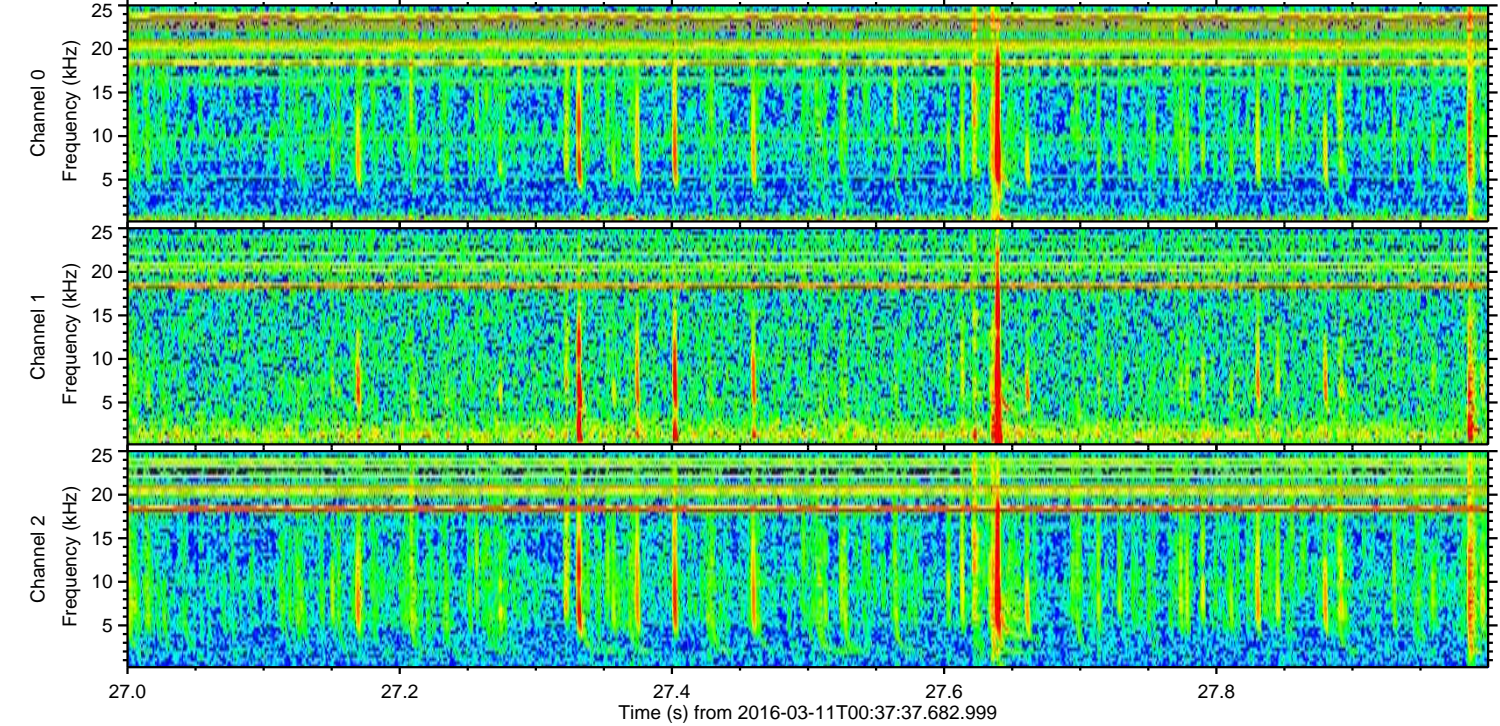
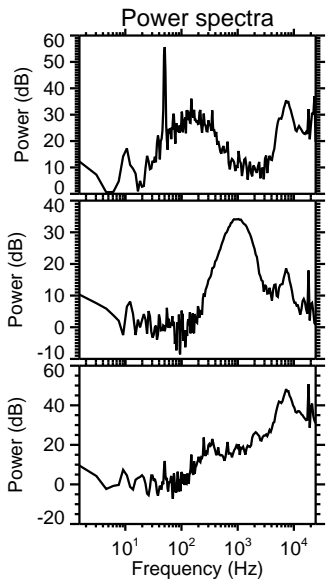
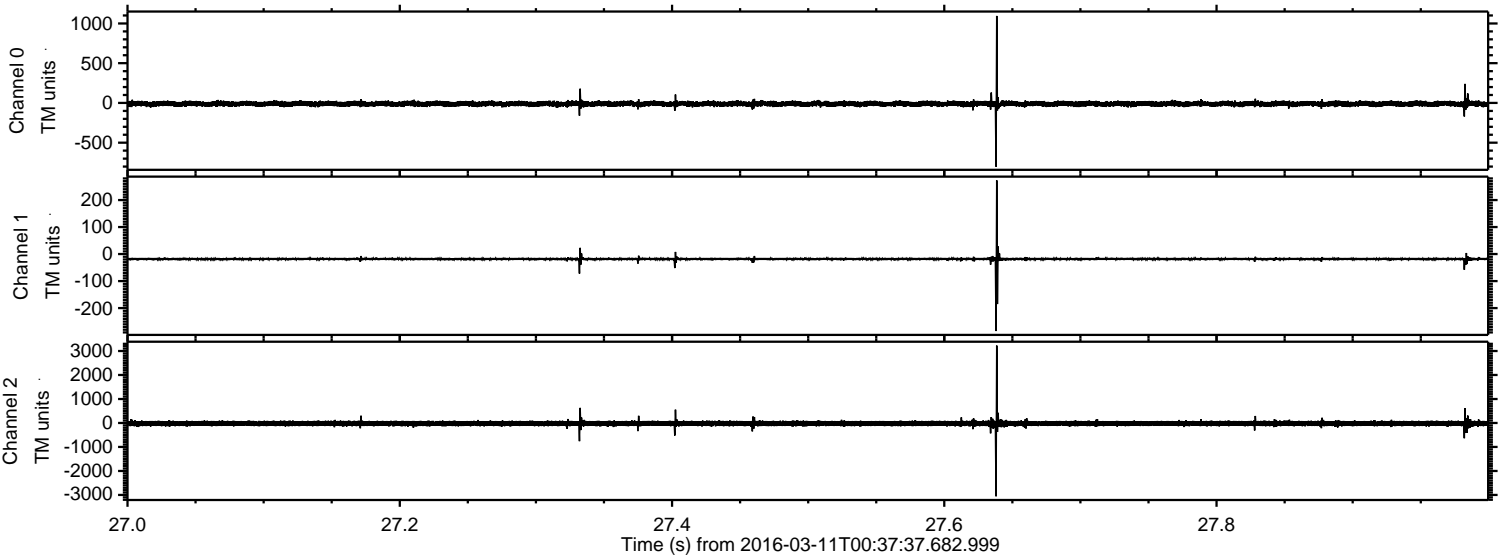
ELMAVAN 3D WAVEFORMS (Measured data sampled at 50 kHz) 51000 packets of 144 samples from 2016-03-11T00:37:37.682.999. Part 103/147

Processed Tue Apr 19 14:55:56 2016 by ELM ver.2012-10-06 from 001\_\_elm20160311\_003736\_\_dat00.bin



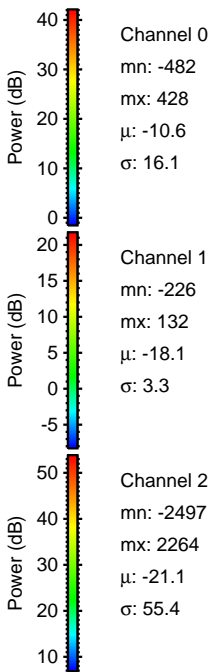
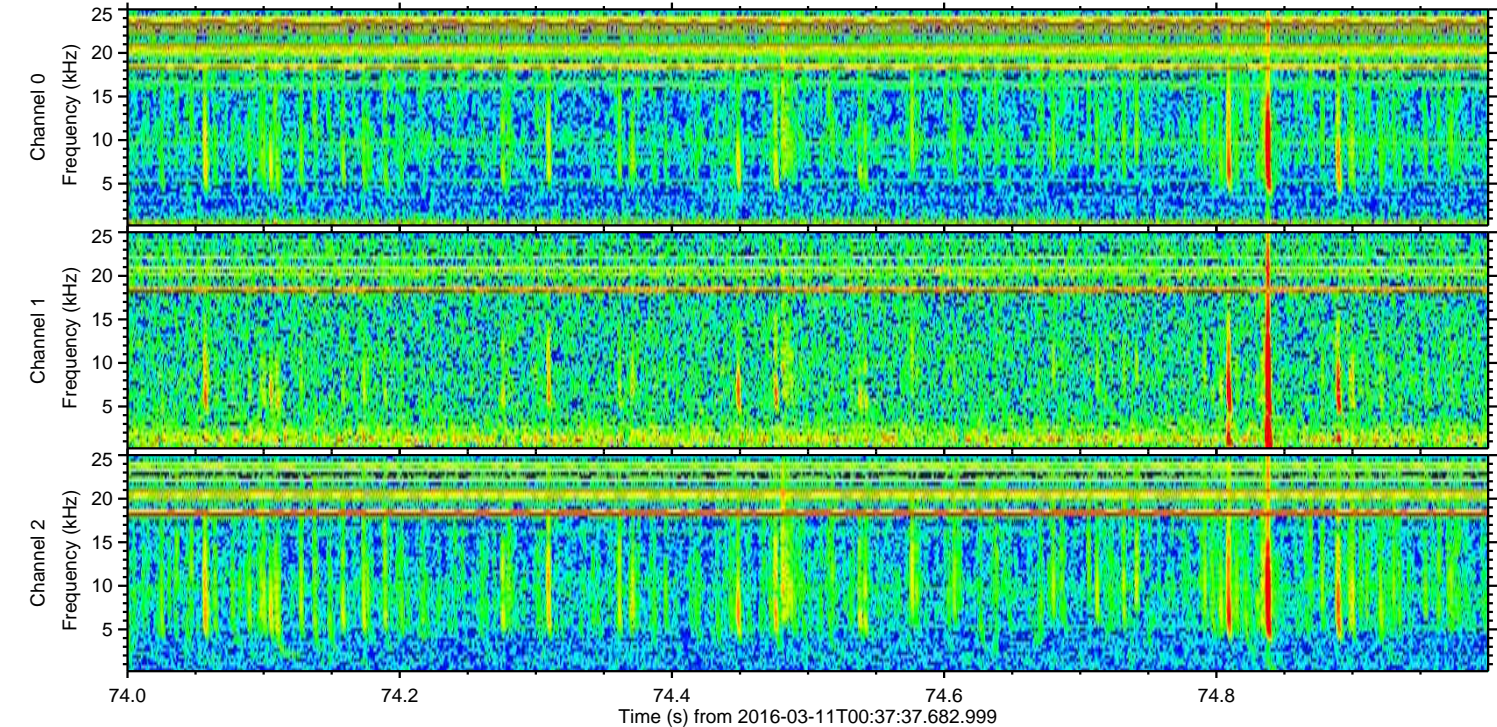
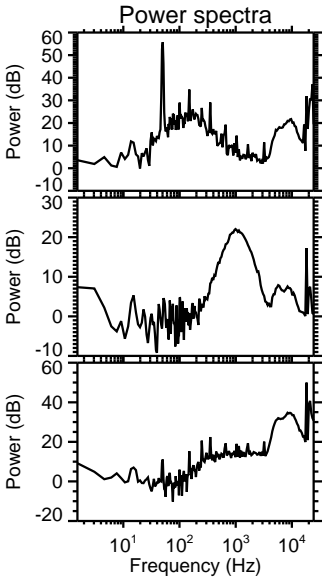
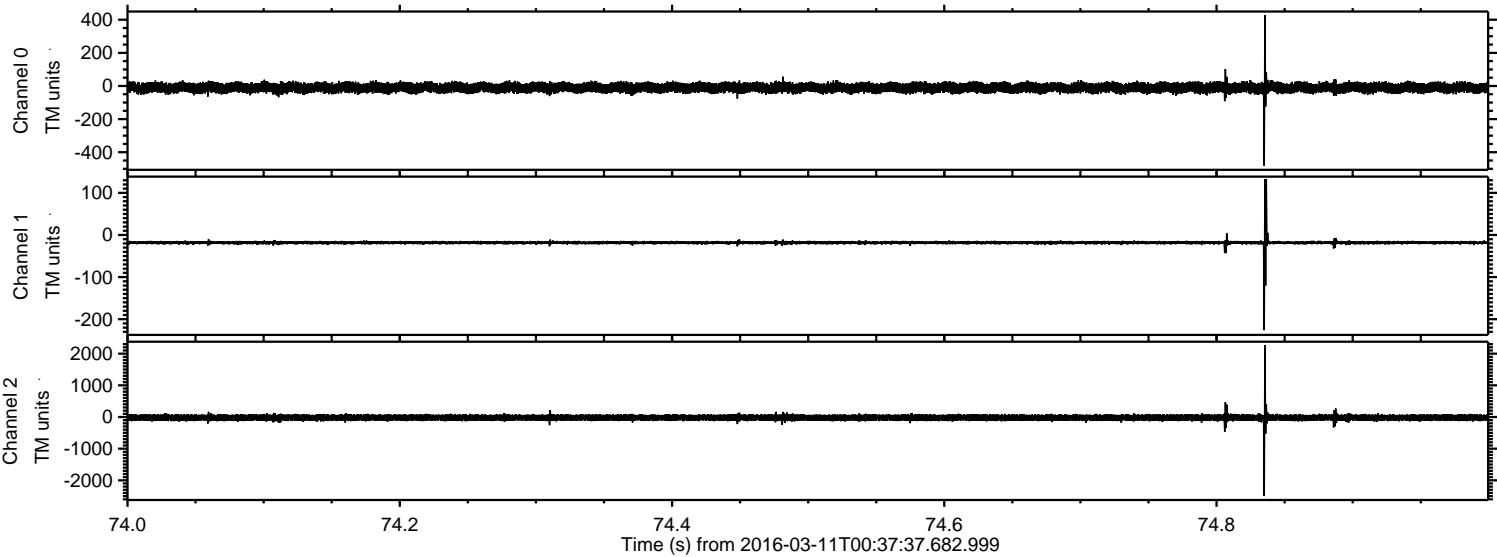


Processed Tue Apr 19 14:55:57 2016 by ELM ver.2012-10-06 from 001\_\_elm20160311\_003736\_\_dat00.bin





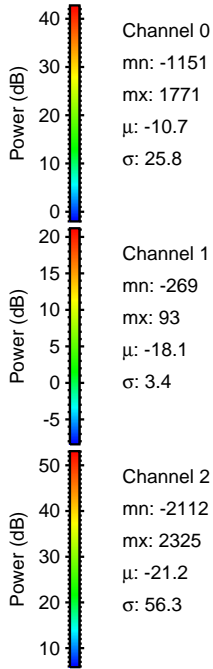
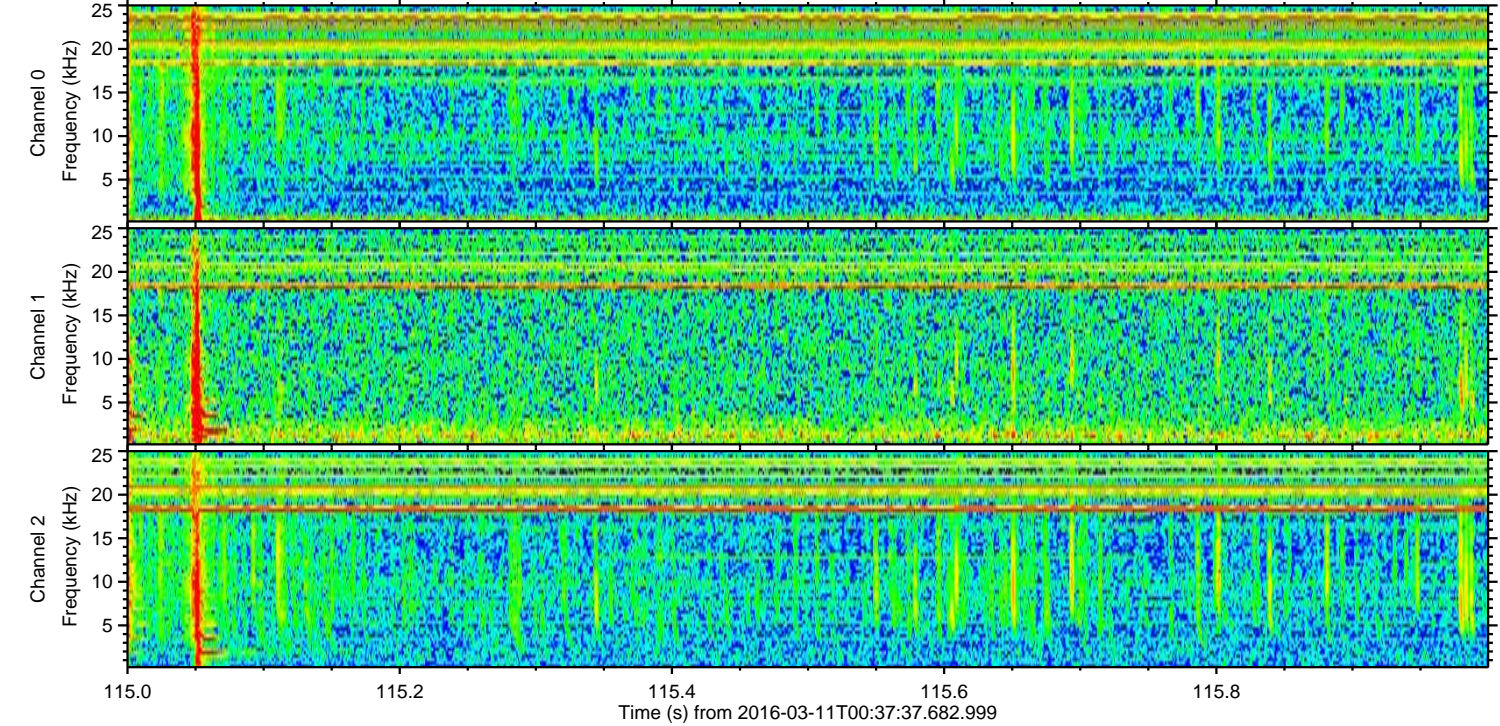
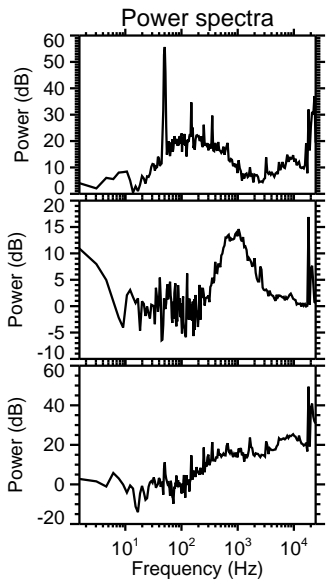
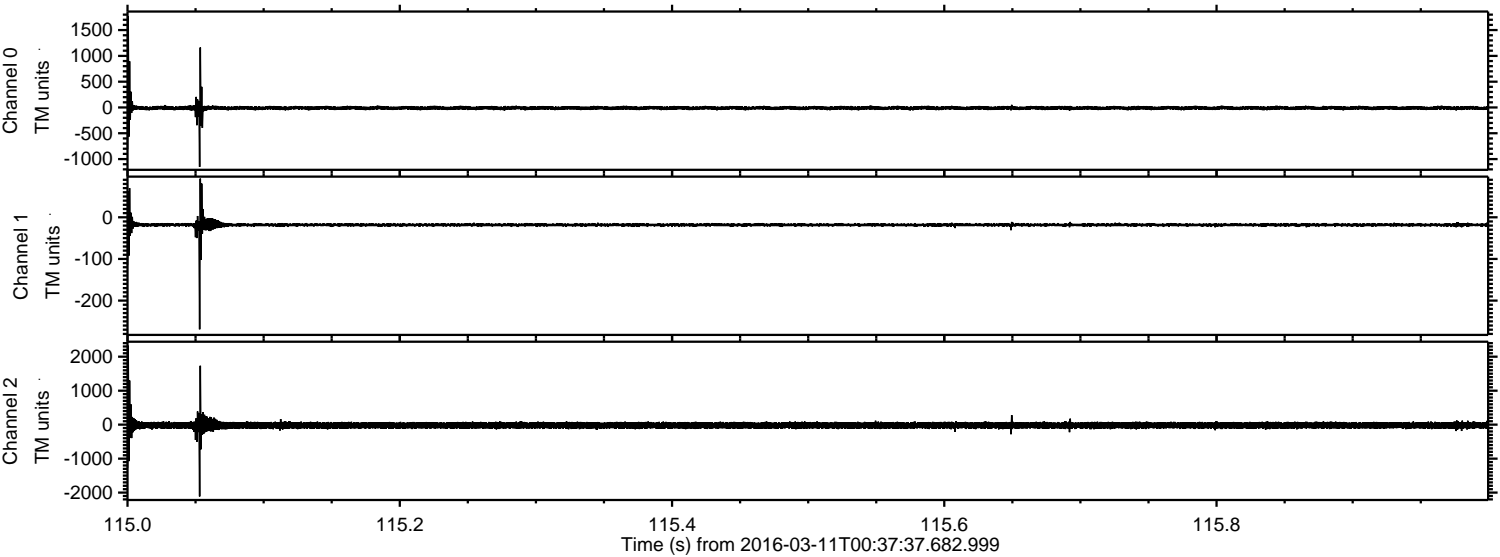
Processed Tue Apr 19 14:55:58 2016 by ELM ver.2012-10-06 from 001\_\_elm20160311\_003736\_\_dat00.bin





ELMAVAN 3D WAVEFORMS (Measured data sampled at 50 kHz) 51000 packets of 144 samples from 2016-03-11T00:37:37.682.999. Part 116/147

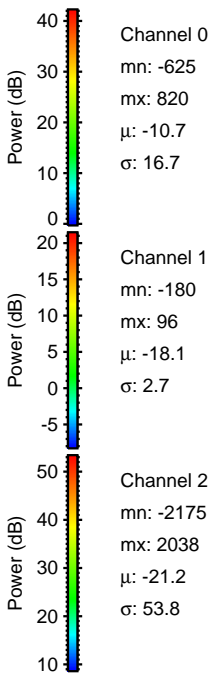
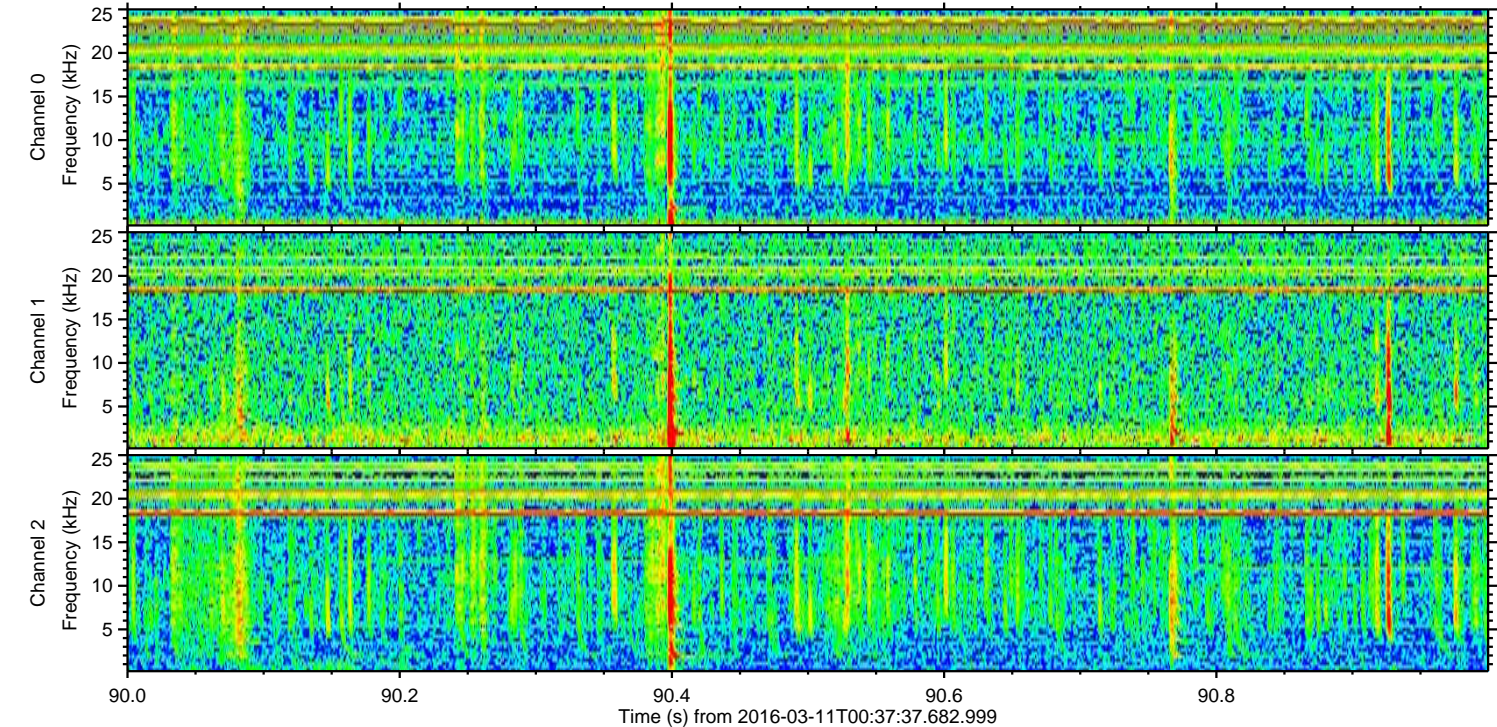
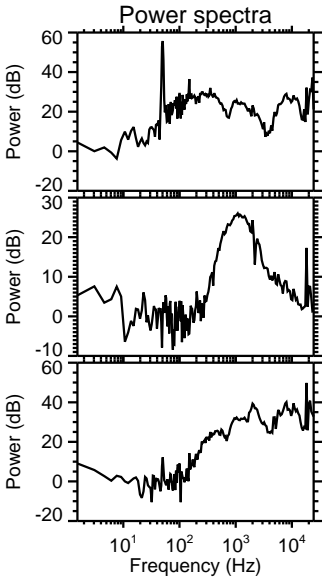
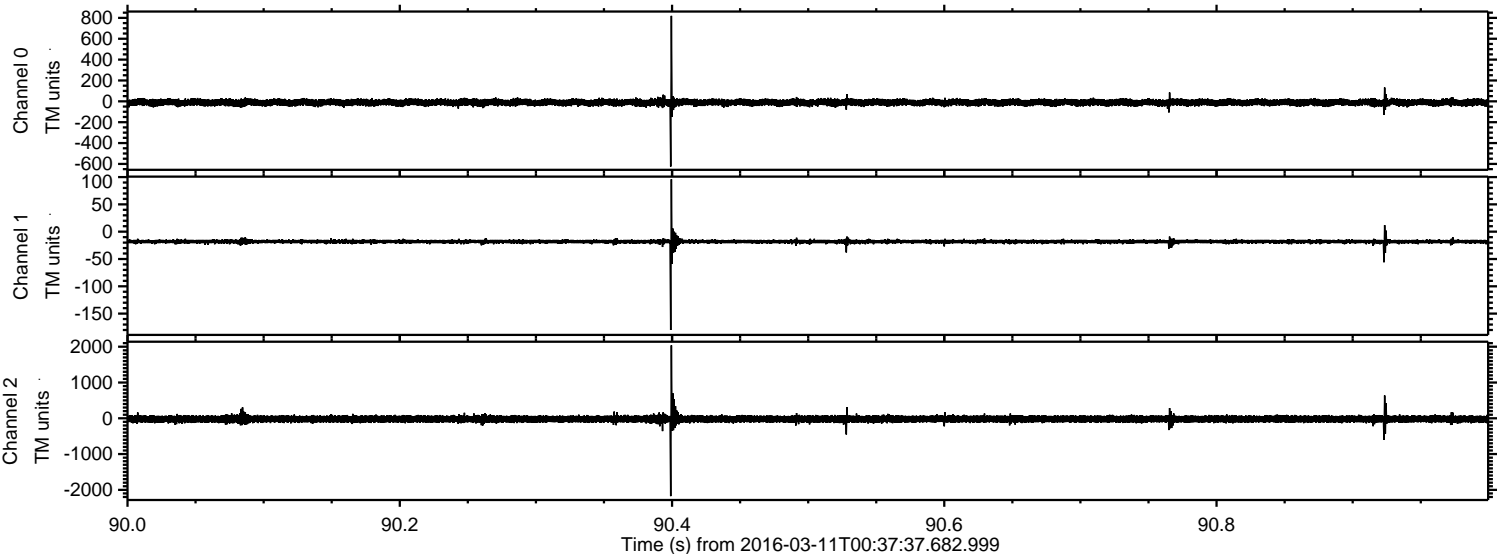
Processed Tue Apr 19 14:55:59 2016 by ELM ver.2012-10-06 from 001\_\_elm20160311\_003736\_\_dat00.bin





ELMAVAN 3D WAVEFORMS (Measured data sampled at 50 kHz) 51000 packets of 144 samples from 2016-03-11T00:37:37.682.999. Part 91/147

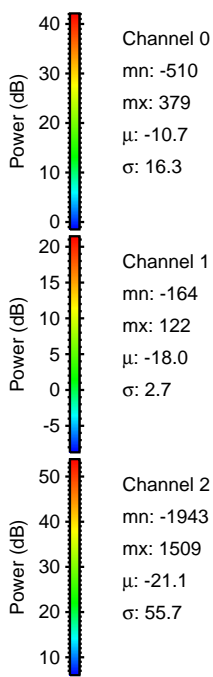
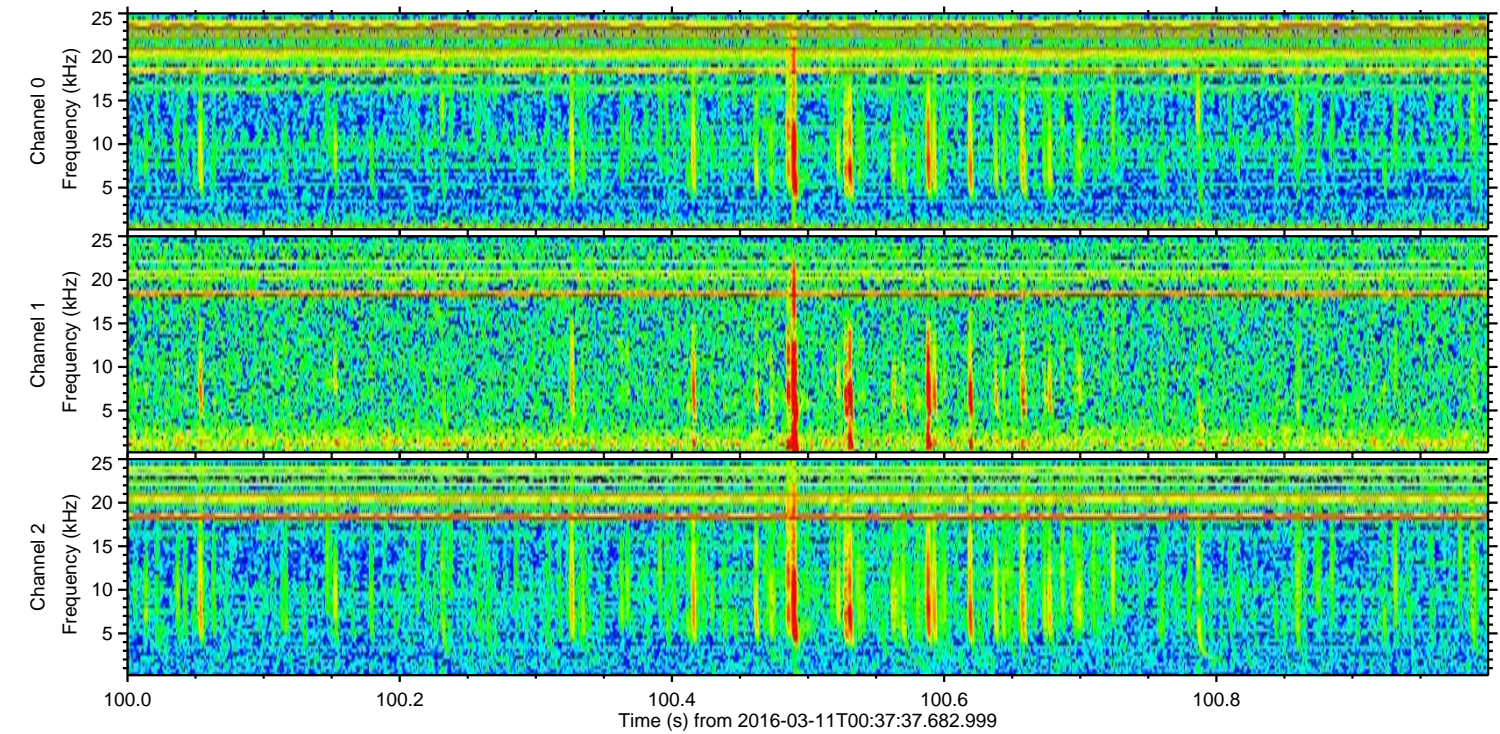
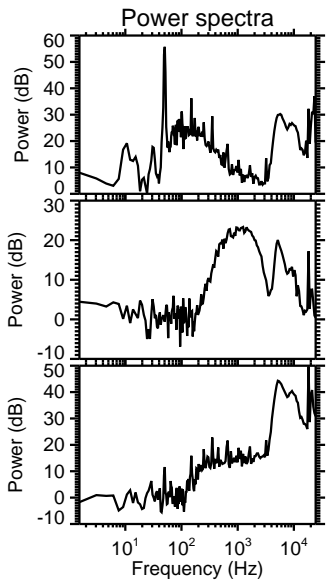
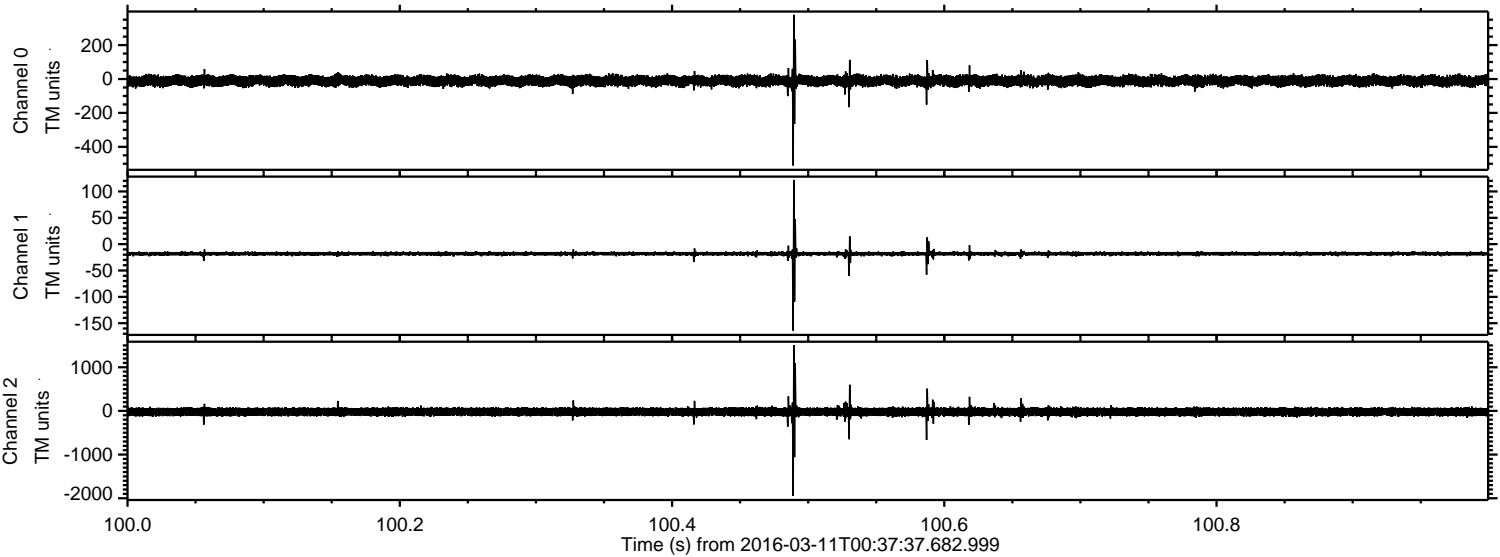
Processed Tue Apr 19 14:56:00 2016 by ELM ver.2012-10-06 from 001\_\_elm20160311\_003736\_\_dat00.bin





ELMAVAN 3D WAVEFORMS (Measured data sampled at 50 kHz) 51000 packets of 144 samples from 2016-03-11T00:37:37.682.999. Part 101/147

Processed Tue Apr 19 14:56:01 2016 by ELM ver.2012-10-06 from 001\_\_elm20160311\_003736\_\_dat00.bin



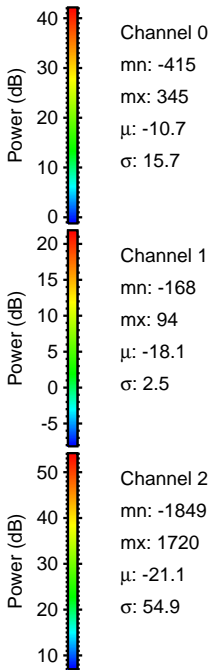
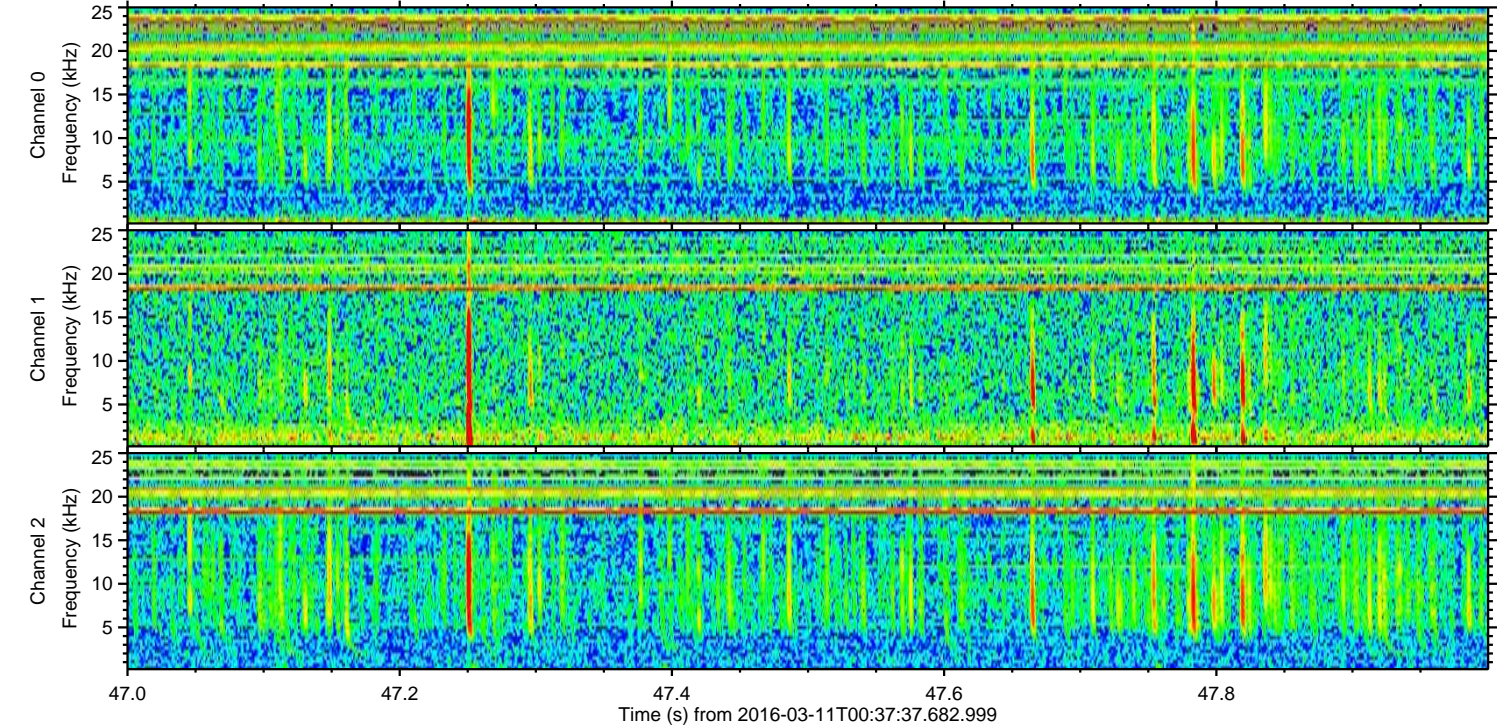
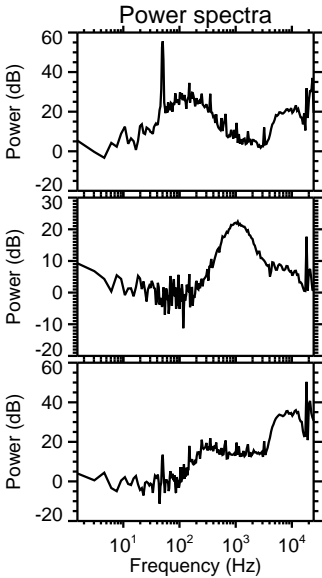
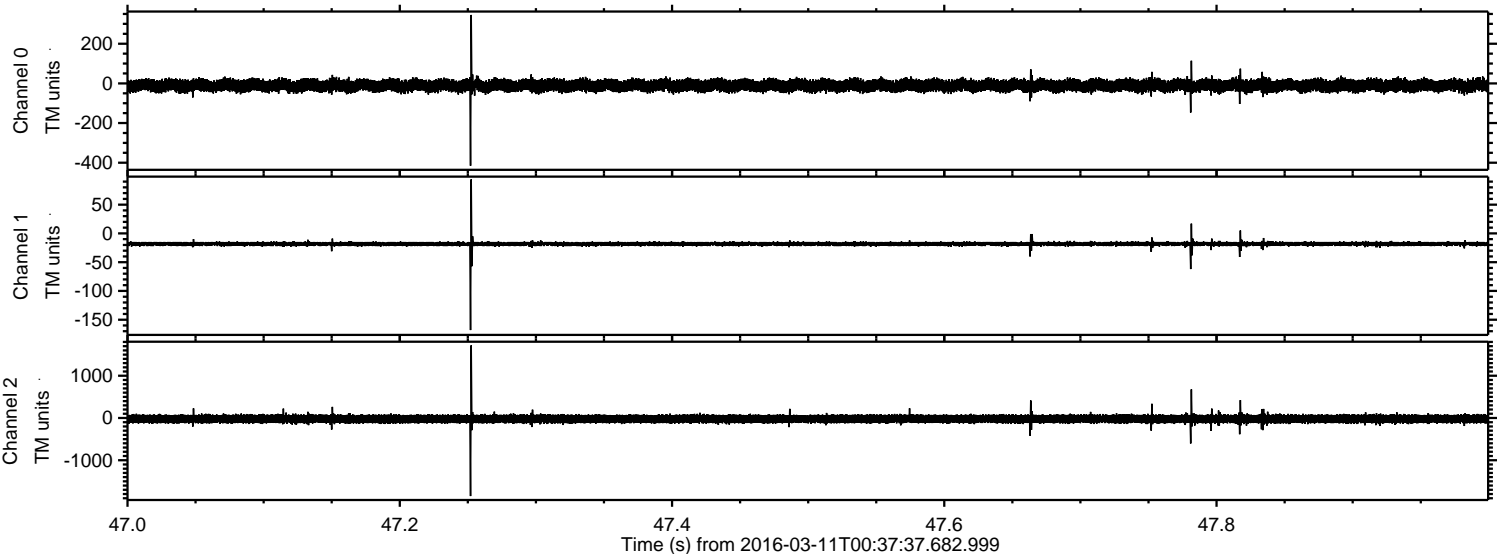
Channel 0  
mn: -510  
mx: 379  
 $\mu$ : -10.7  
 $\sigma$ : 16.3

Channel 1  
mn: -164  
mx: 122  
 $\mu$ : -18.0  
 $\sigma$ : 2.7

Channel 2  
mn: -1943  
mx: 1509  
 $\mu$ : -21.1  
 $\sigma$ : 55.7



Processed Tue Apr 19 14:56:02 2016 by ELM ver.2012-10-06 from 001\_\_elm20160311\_003736\_\_dat00.bin





Processed Tue Apr 19 14:56:03 2016 by ELM ver.2012-10-06 from 001\_\_elm20160311\_003736\_\_dat00.bin

