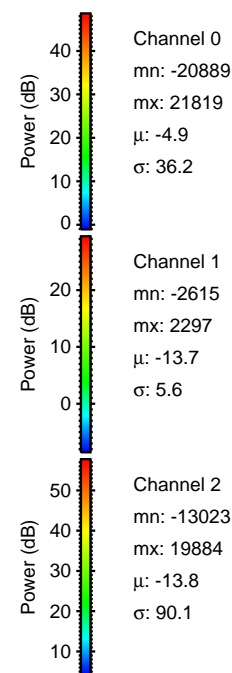
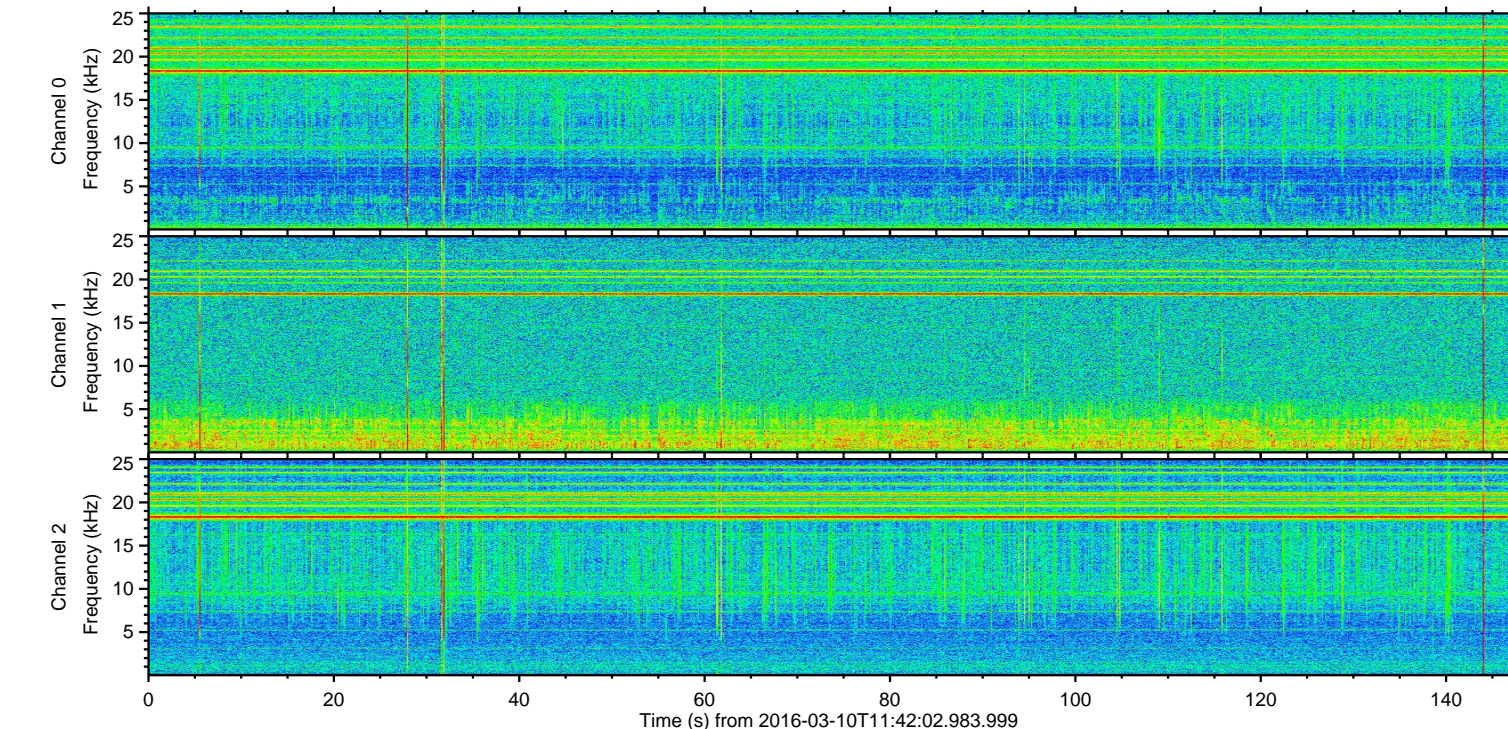
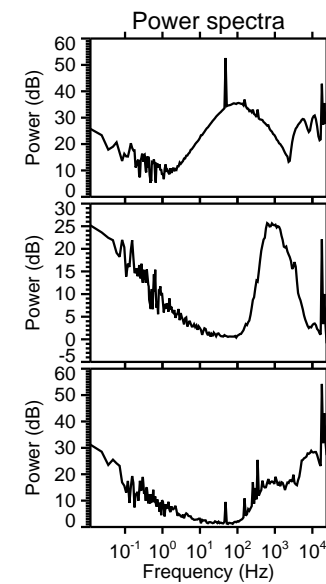
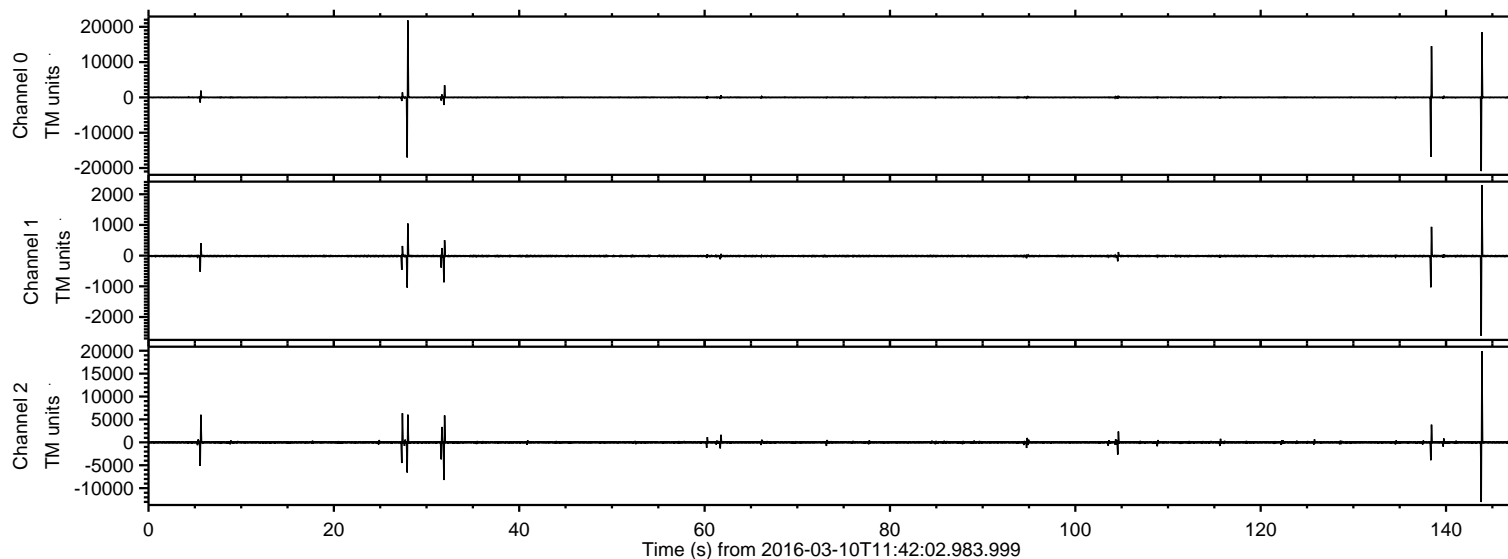


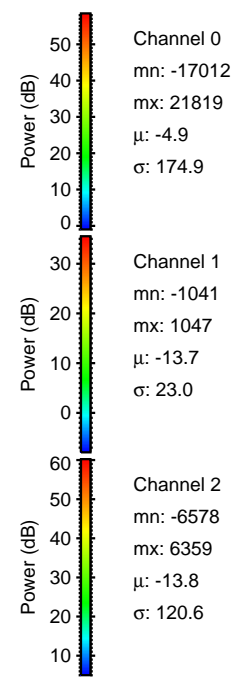
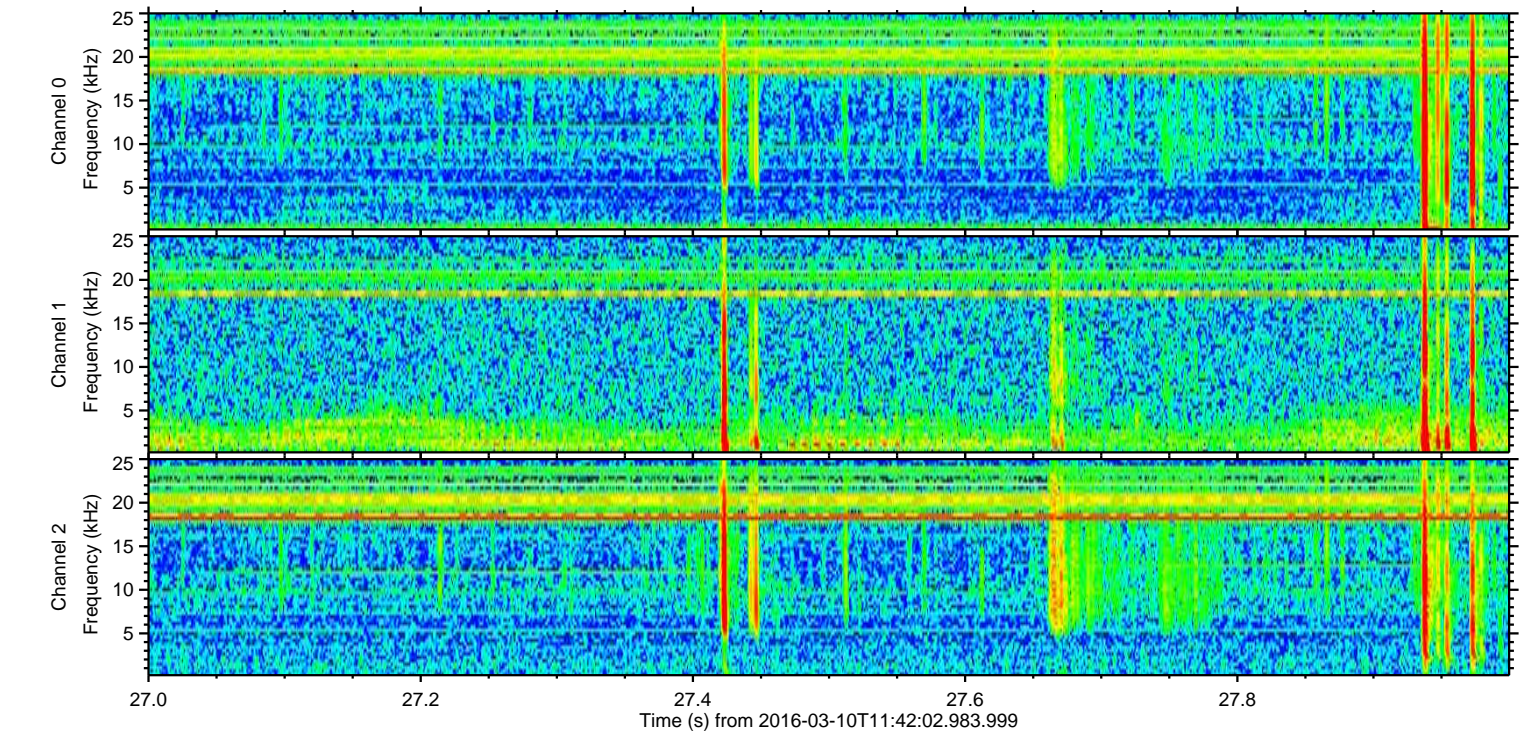
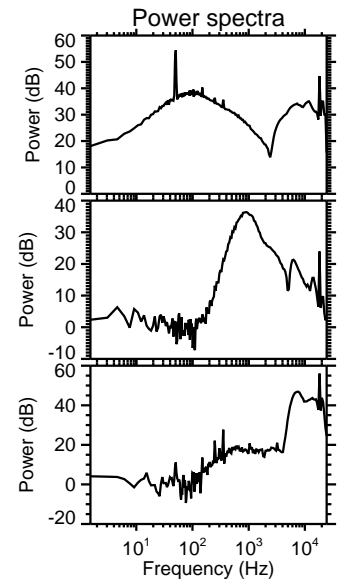
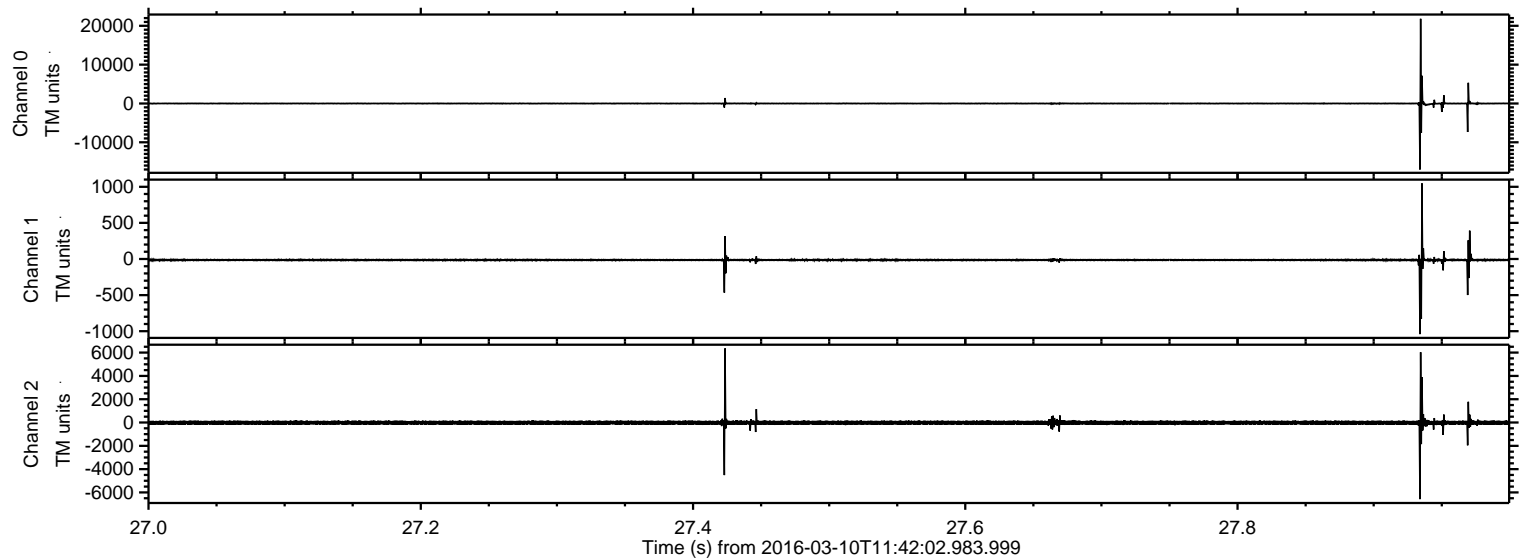
ELMAVAN 3D WAVEFORMS (Measured data sampled at 50 kHz) 51000 packets of 144 samples from 2016-03-10T11:42:02.983.999.

Processed Tue Apr 19 12:17:29 2016 by ELM ver.2012-10-06 from 001__elm20160310_114201__dat00.bin



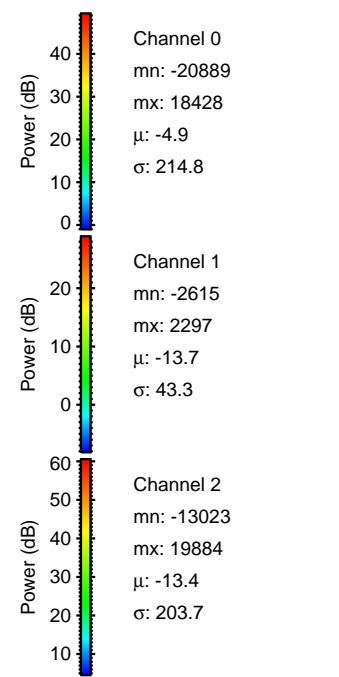
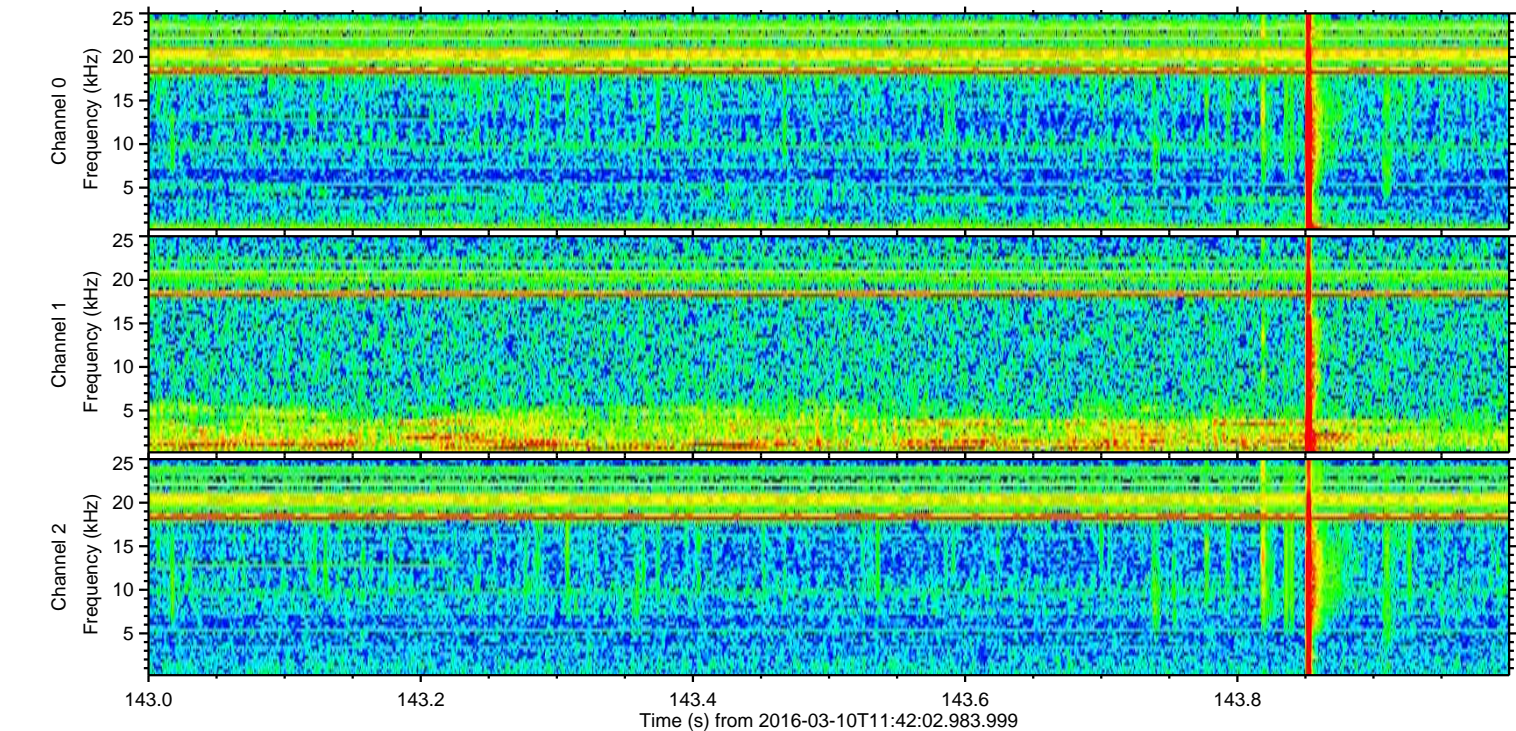
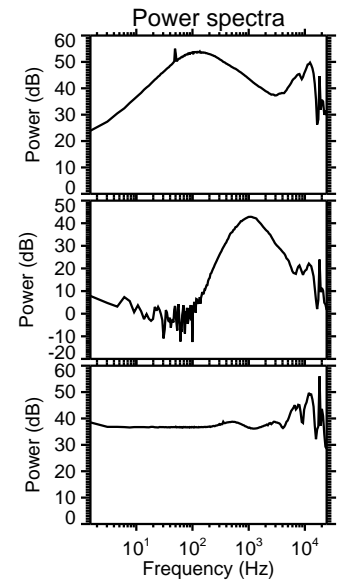
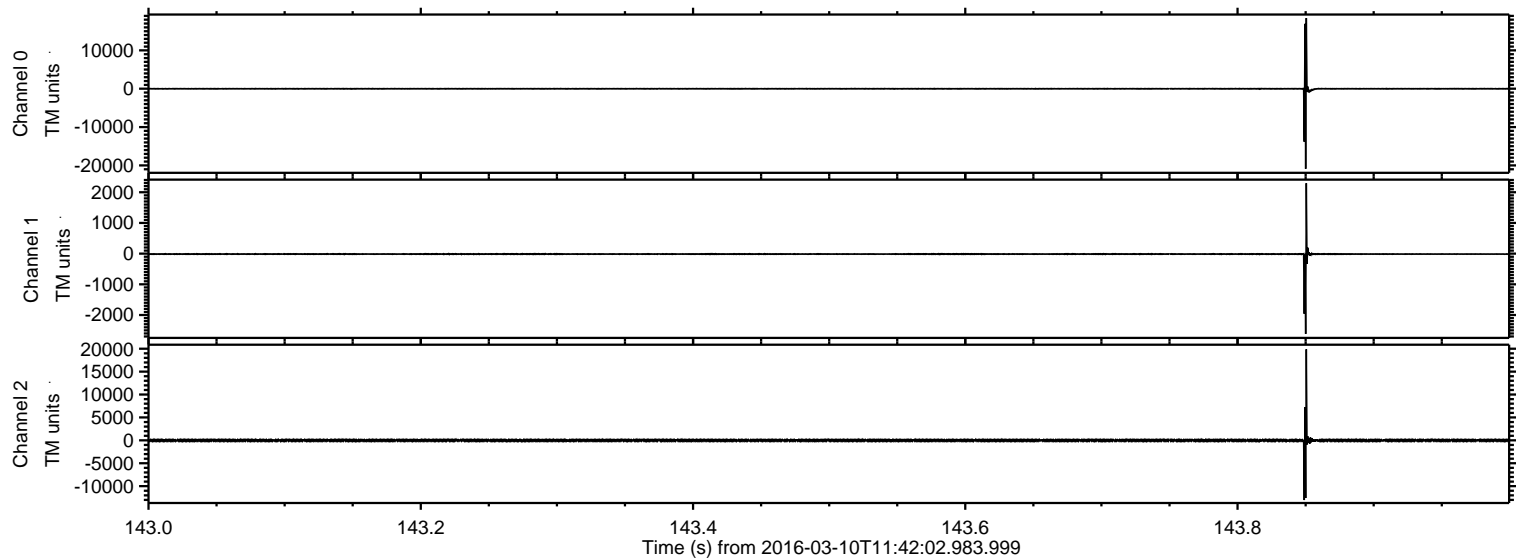
ELMAVAN 3D WAVEFORMS (Measured data sampled at 50 kHz) 51000 packets of 144 samples from 2016-03-10T11:42:02.983.999. Part 28/147

Processed Tue Apr 19 12:17:40 2016 by ELM ver.2012-10-06 from 001__elm20160310_114201__dat00.bin



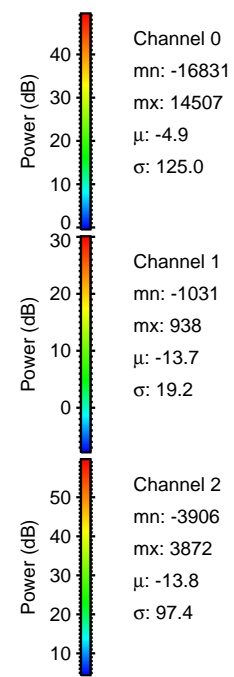
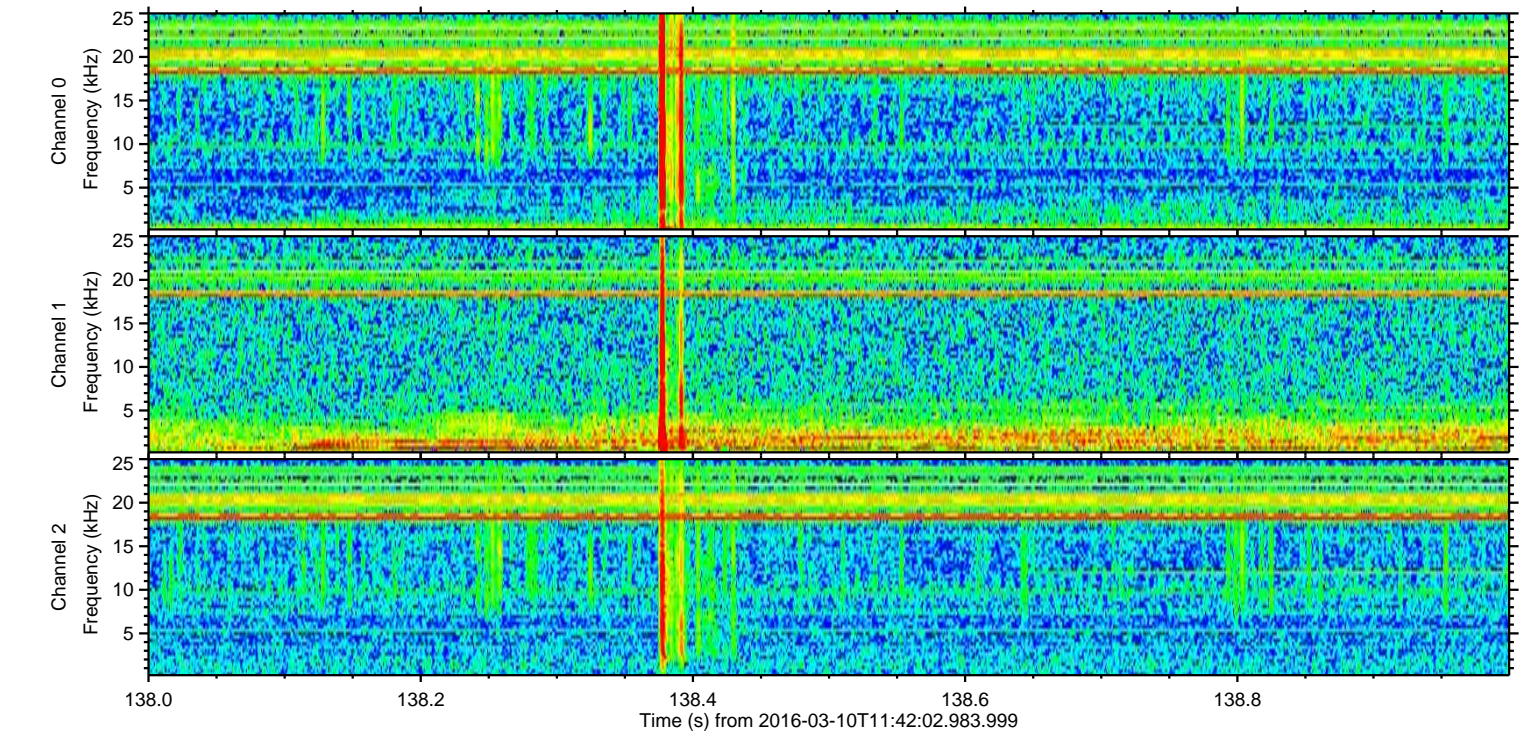
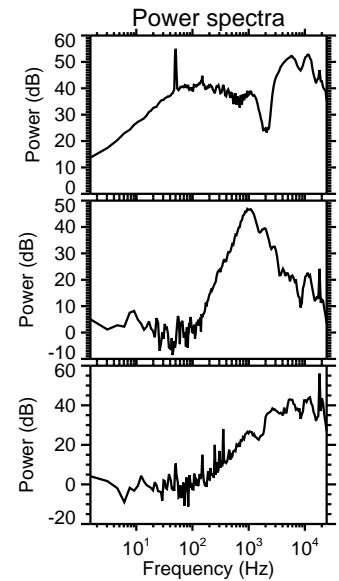
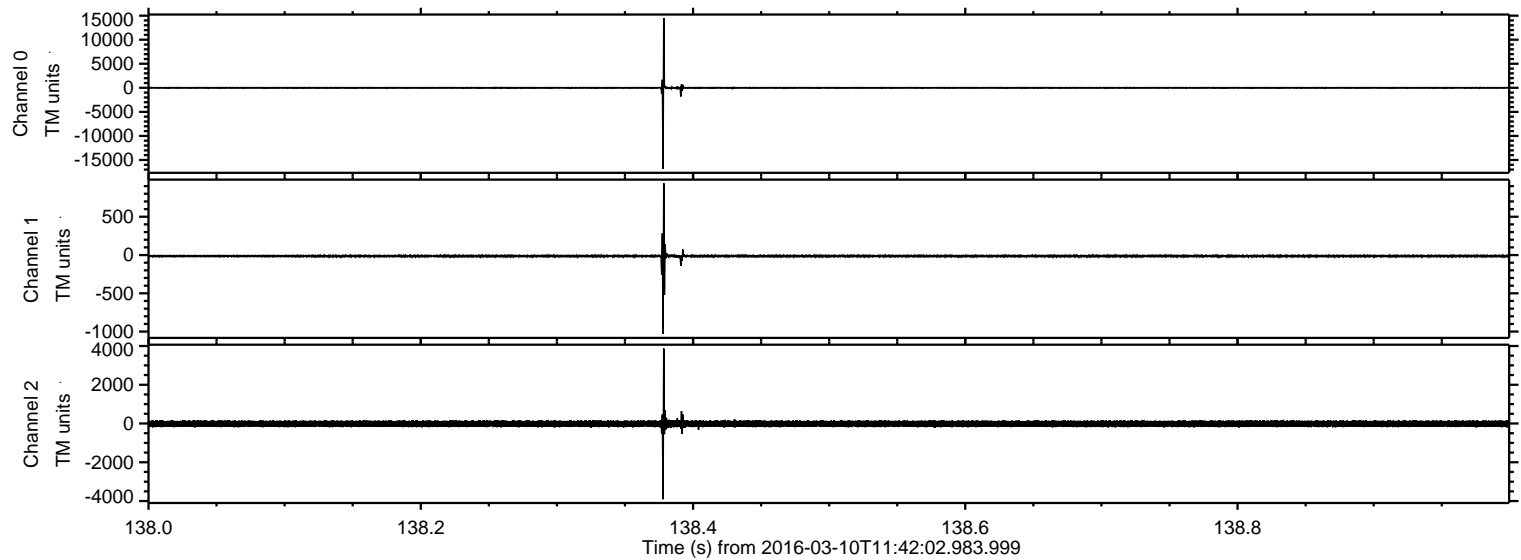
ELMAVAN 3D WAVEFORMS (Measured data sampled at 50 kHz) 51000 packets of 144 samples from 2016-03-10T11:42:02.983.999. Part 144/147

Processed Tue Apr 19 12:17:41 2016 by ELM ver.2012-10-06 from 001__elm20160310_114201__dat00.bin

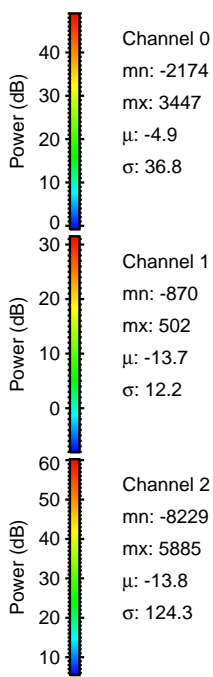
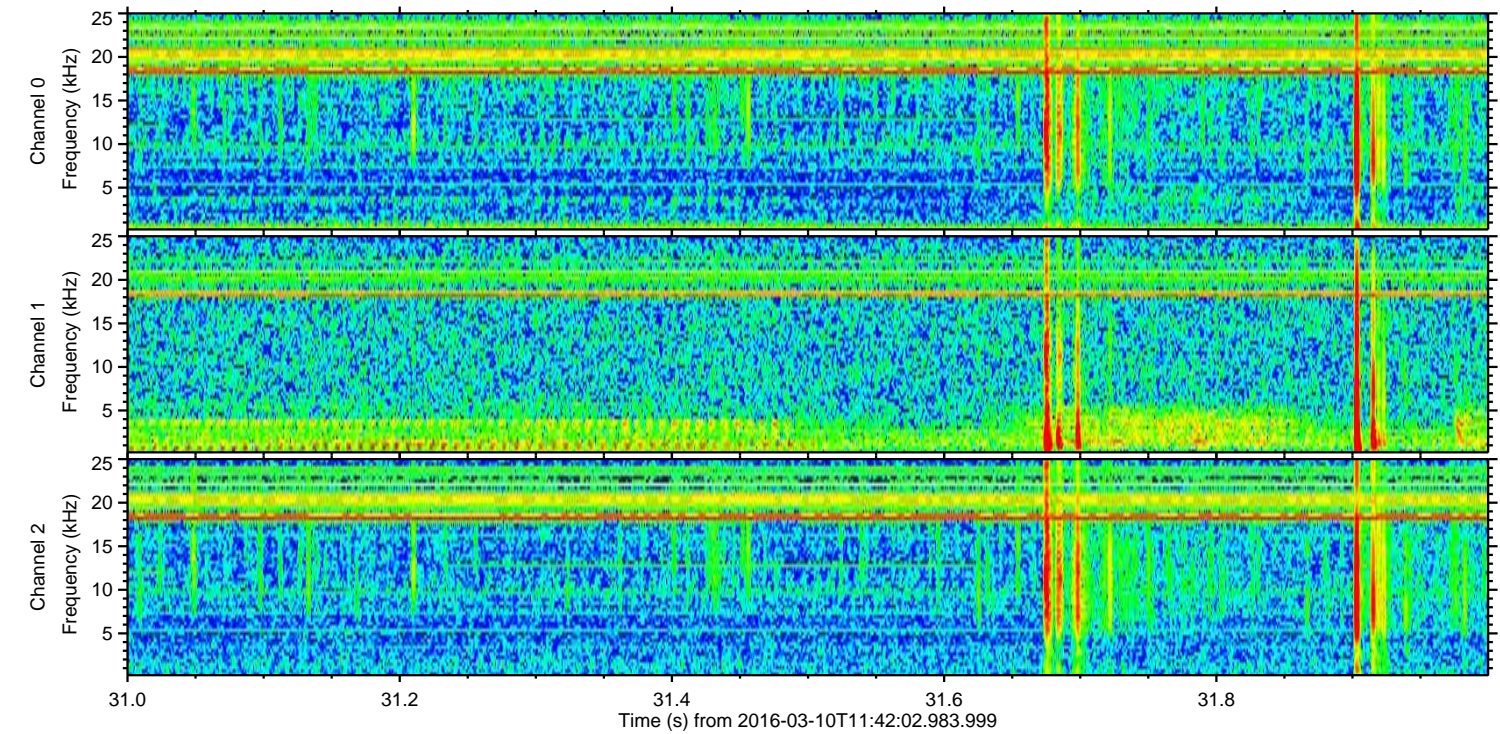
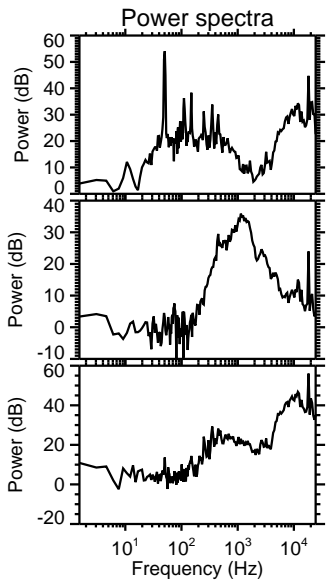
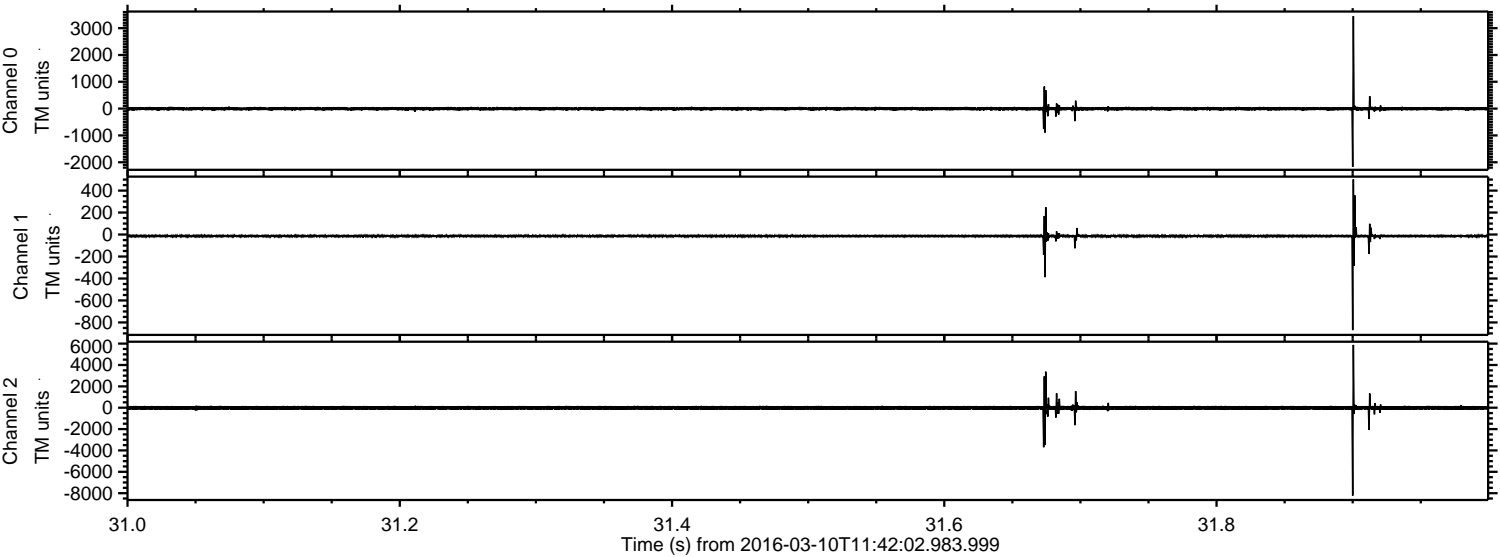


ELMAVAN 3D WAVEFORMS (Measured data sampled at 50 kHz) 51000 packets of 144 samples from 2016-03-10T11:42:02.983.999. Part 139/147

Processed Tue Apr 19 12:17:42 2016 by ELM ver.2012-10-06 from 001__elm20160310_114201__dat00.bin



Processed Tue Apr 19 12:17:43 2016 by ELM ver.2012-10-06 from 001__elm20160310_114201__dat00.bin

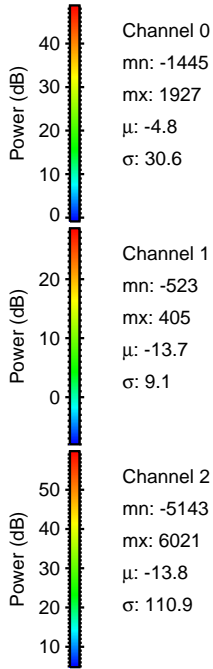
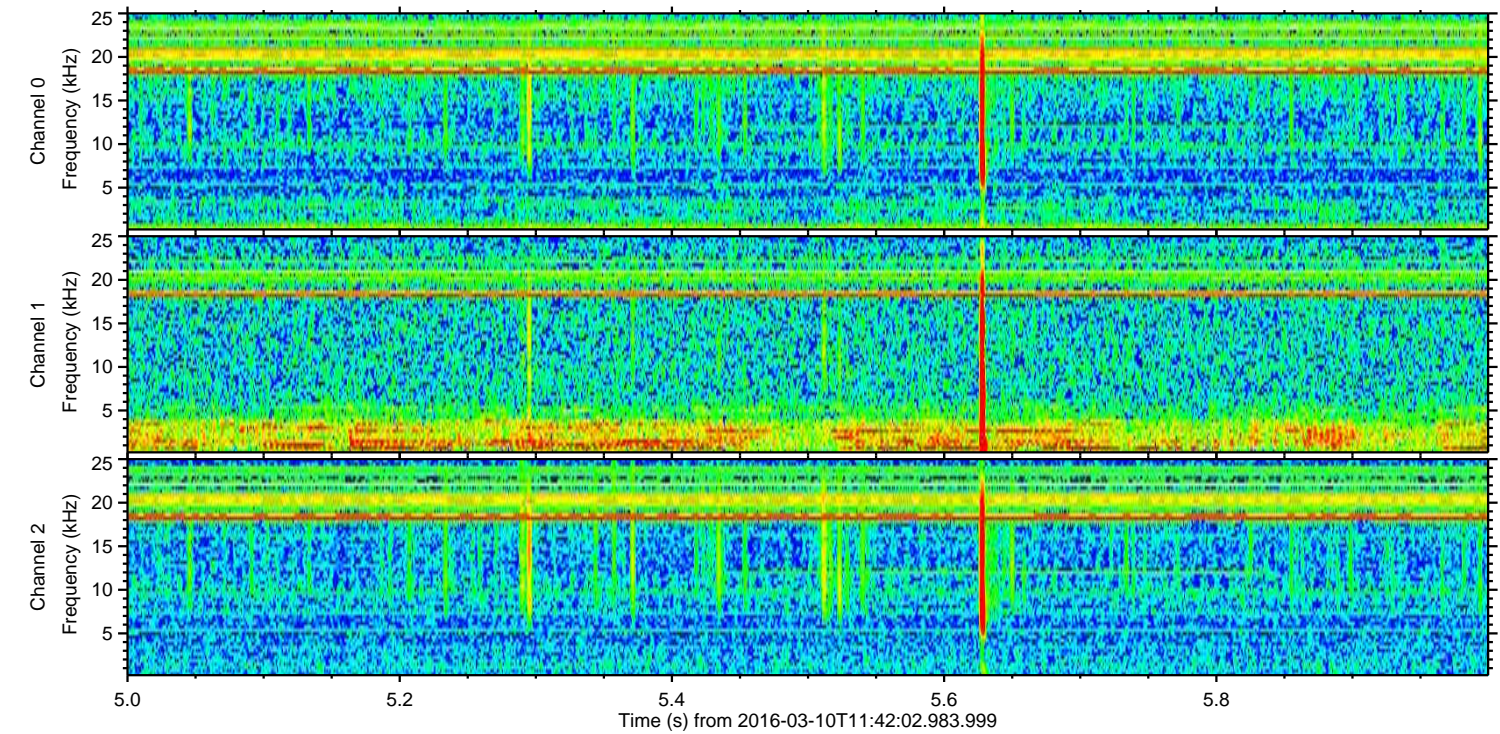
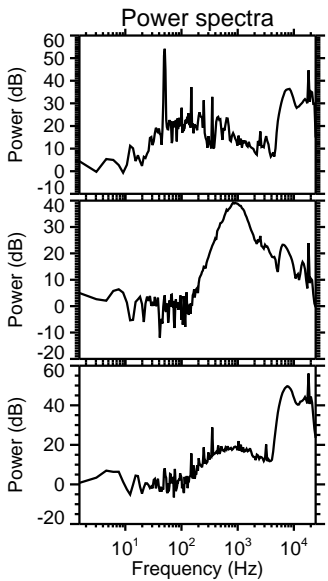
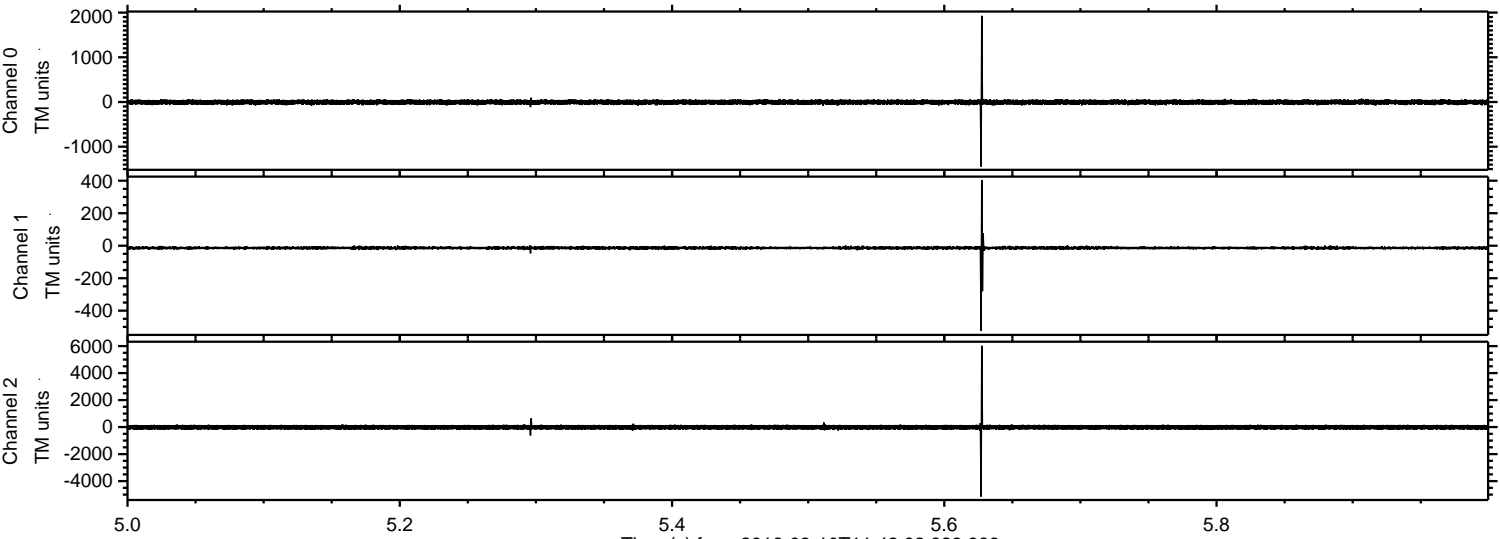


Channel 0
mn: -2174
mx: 3447
 μ : -4.9
 σ : 36.8

Channel 1
mn: -870
mx: 502
 μ : -13.7
 σ : 12.2

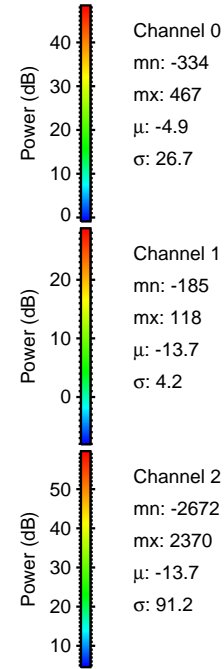
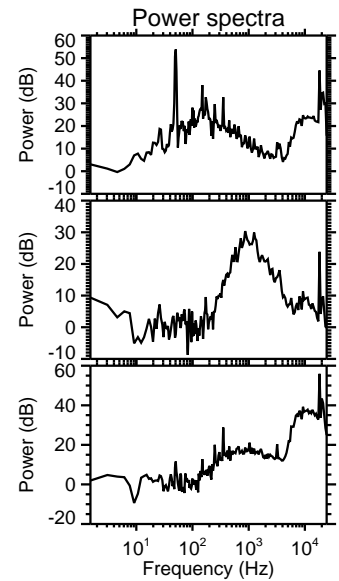
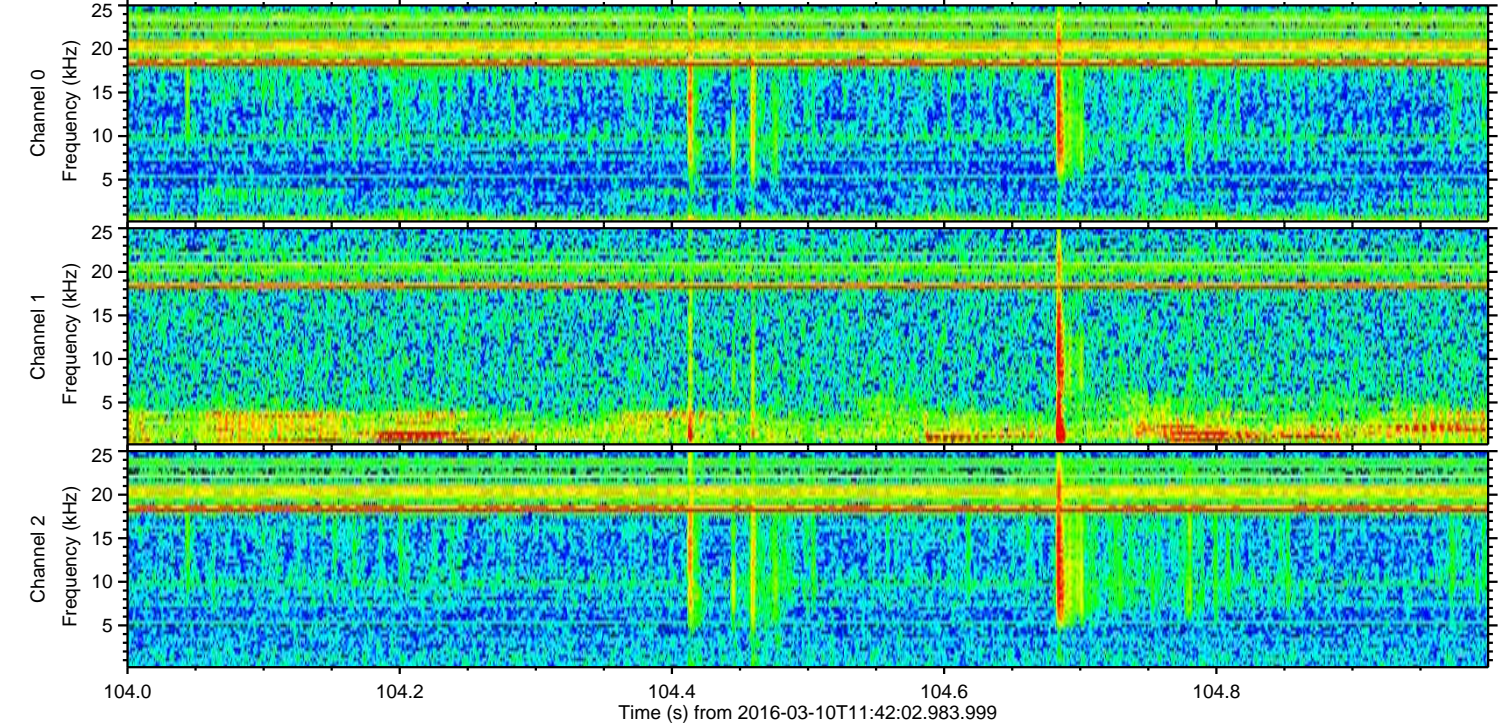
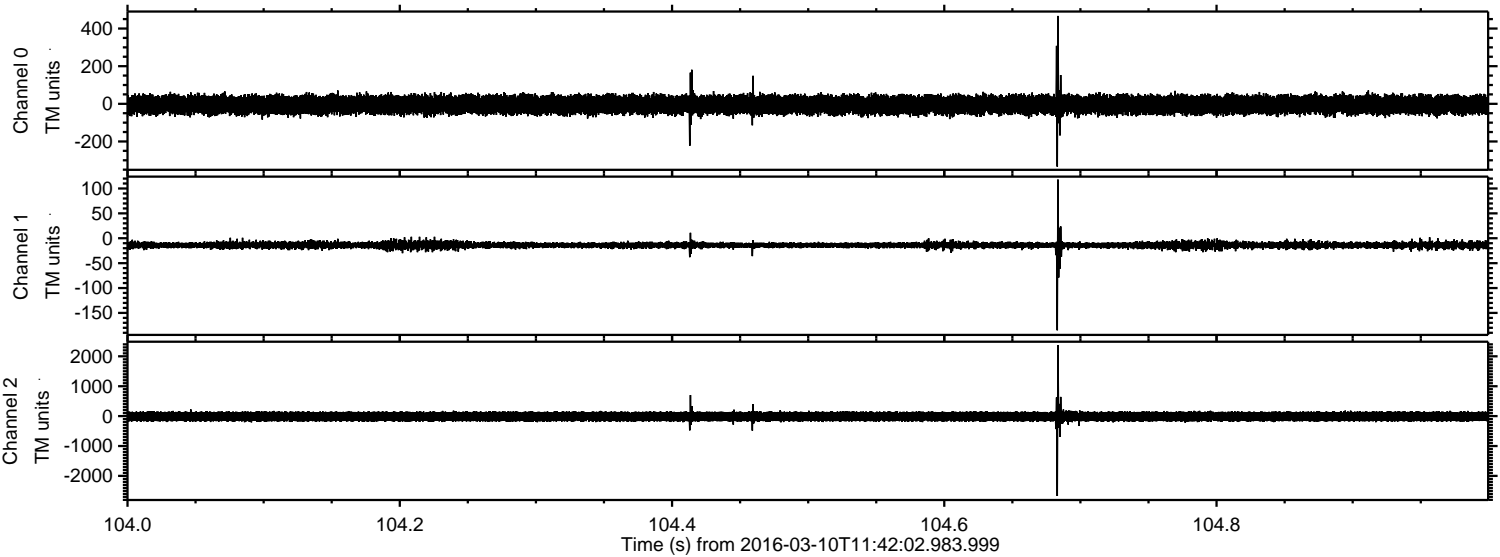
Channel 2
mn: -8229
mx: 5885
 μ : -13.8
 σ : 124.3

Processed Tue Apr 19 12:17:44 2016 by ELM ver.2012-10-06 from 001__elm20160310_114201__dat00.bin

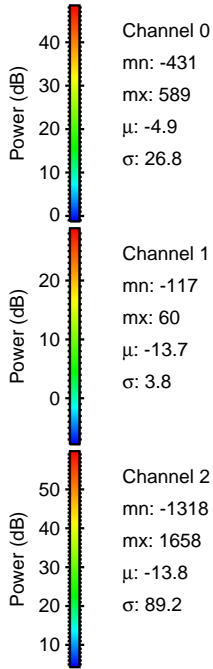
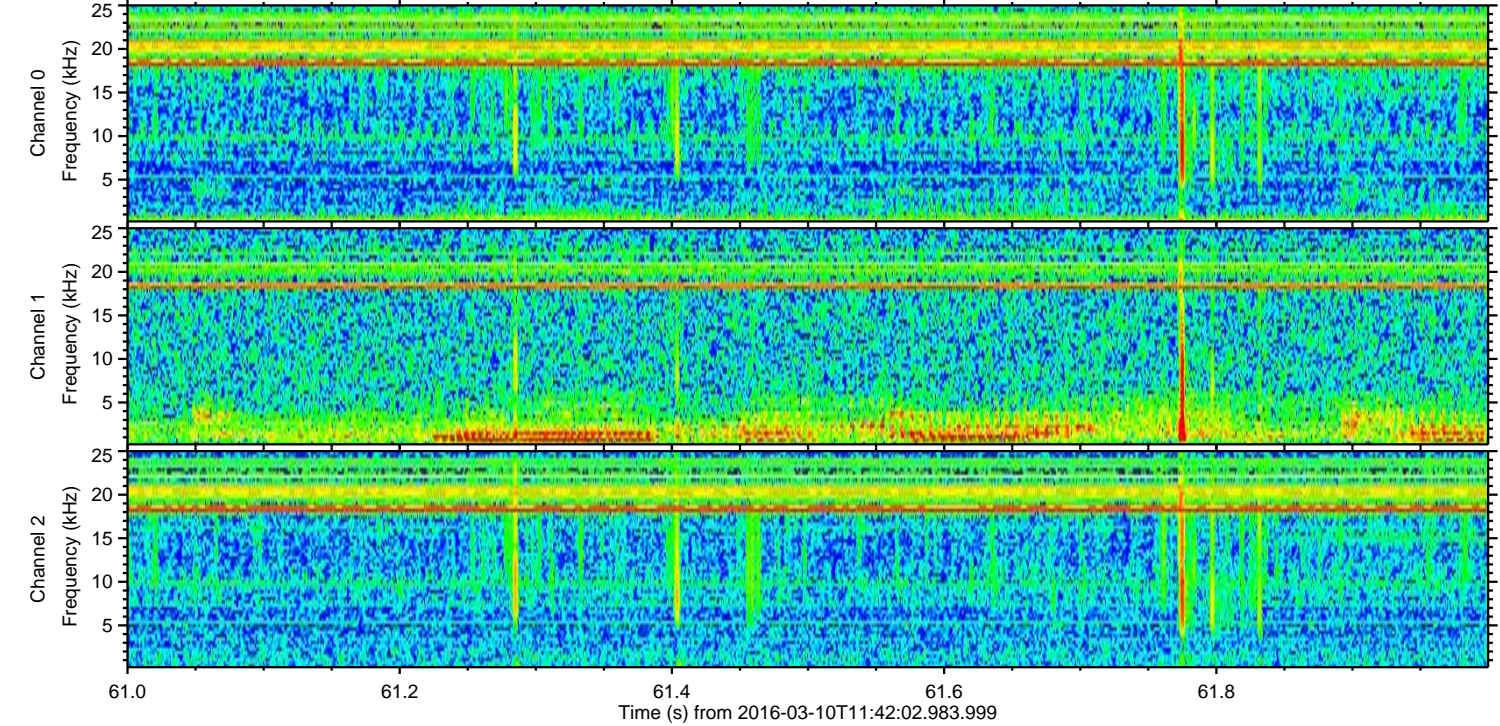
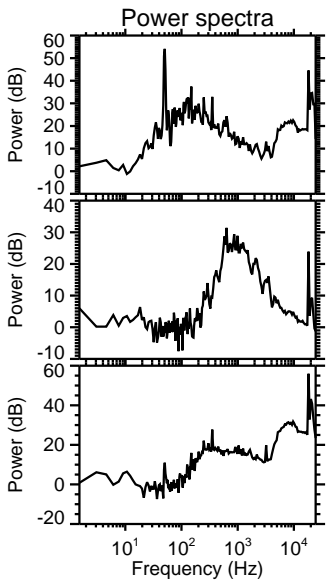
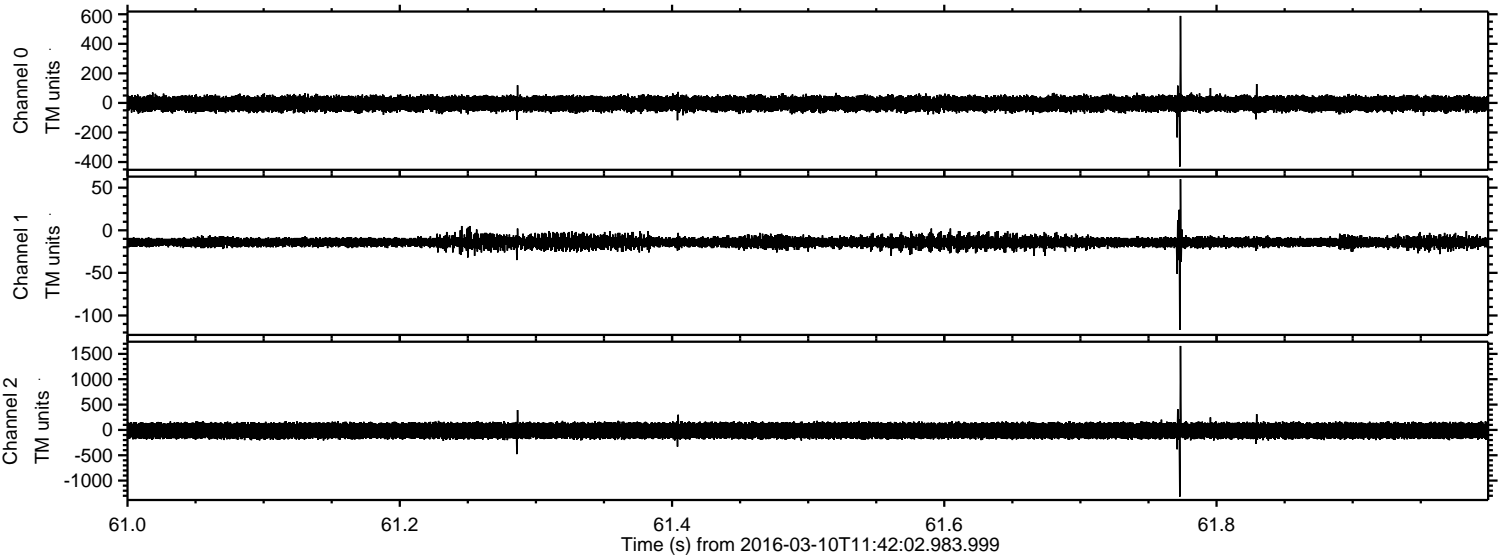


ELMAVAN 3D WAVEFORMS (Measured data sampled at 50 kHz) 51000 packets of 144 samples from 2016-03-10T11:42:02.983.999. Part 105/147

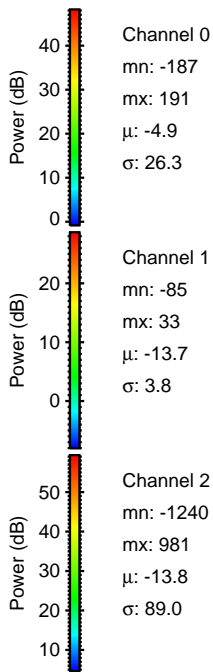
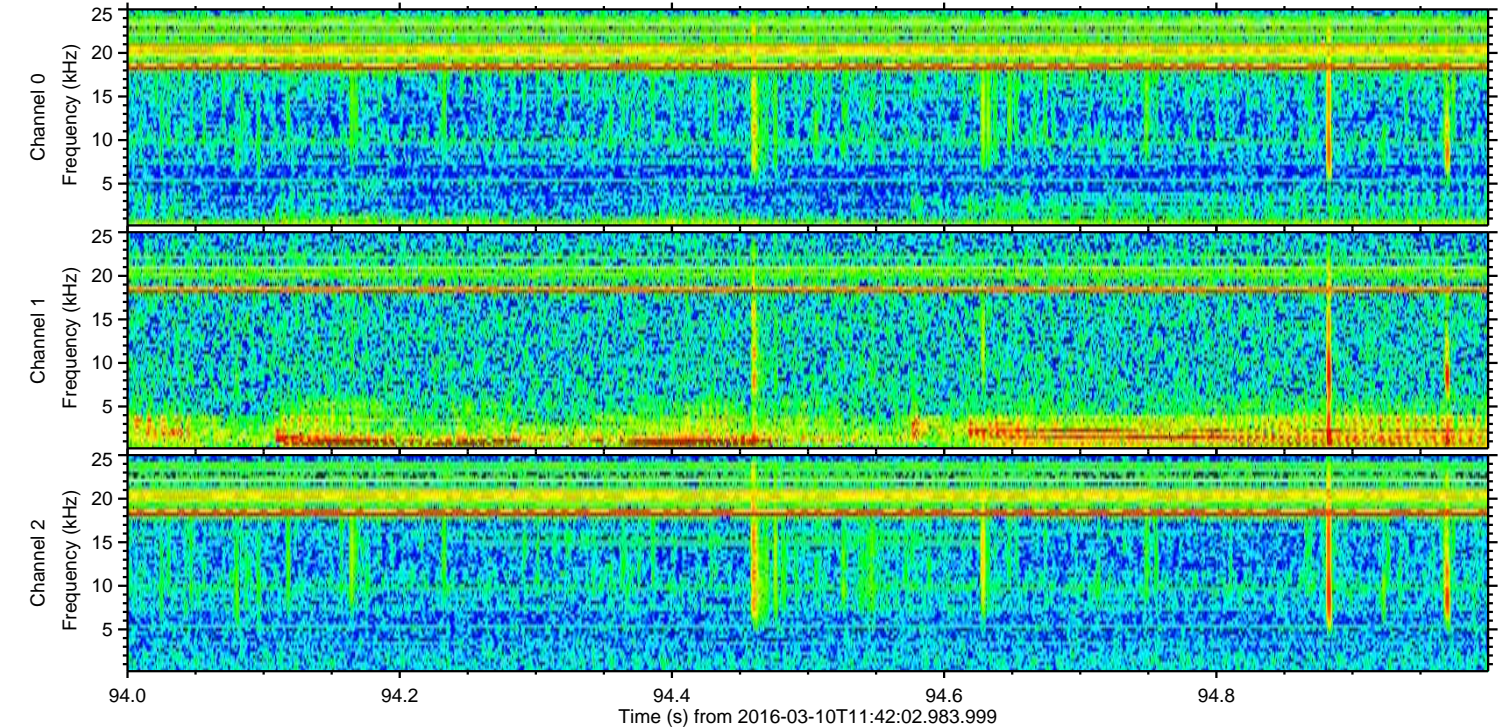
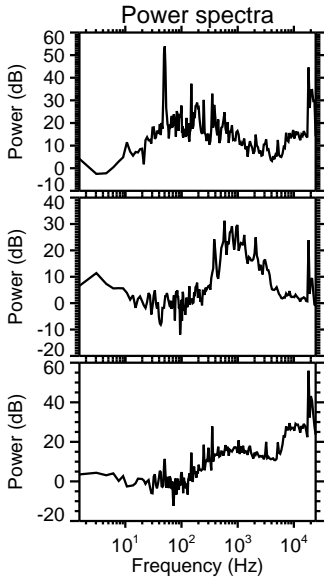
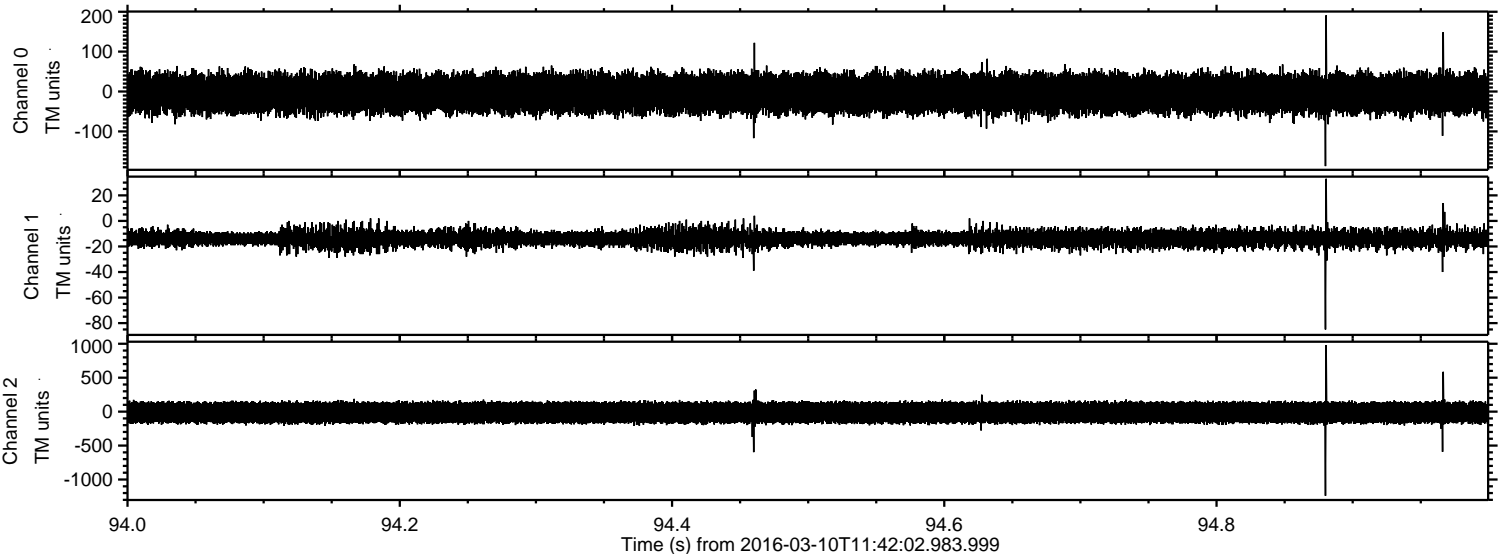
Processed Tue Apr 19 12:17:45 2016 by ELM ver.2012-10-06 from 001__elm20160310_114201__dat00.bin



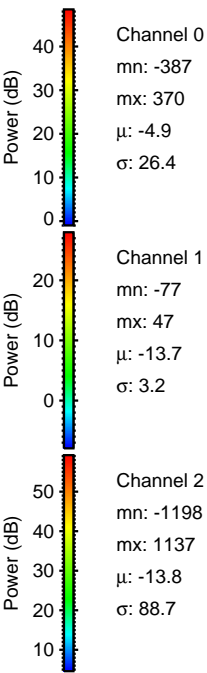
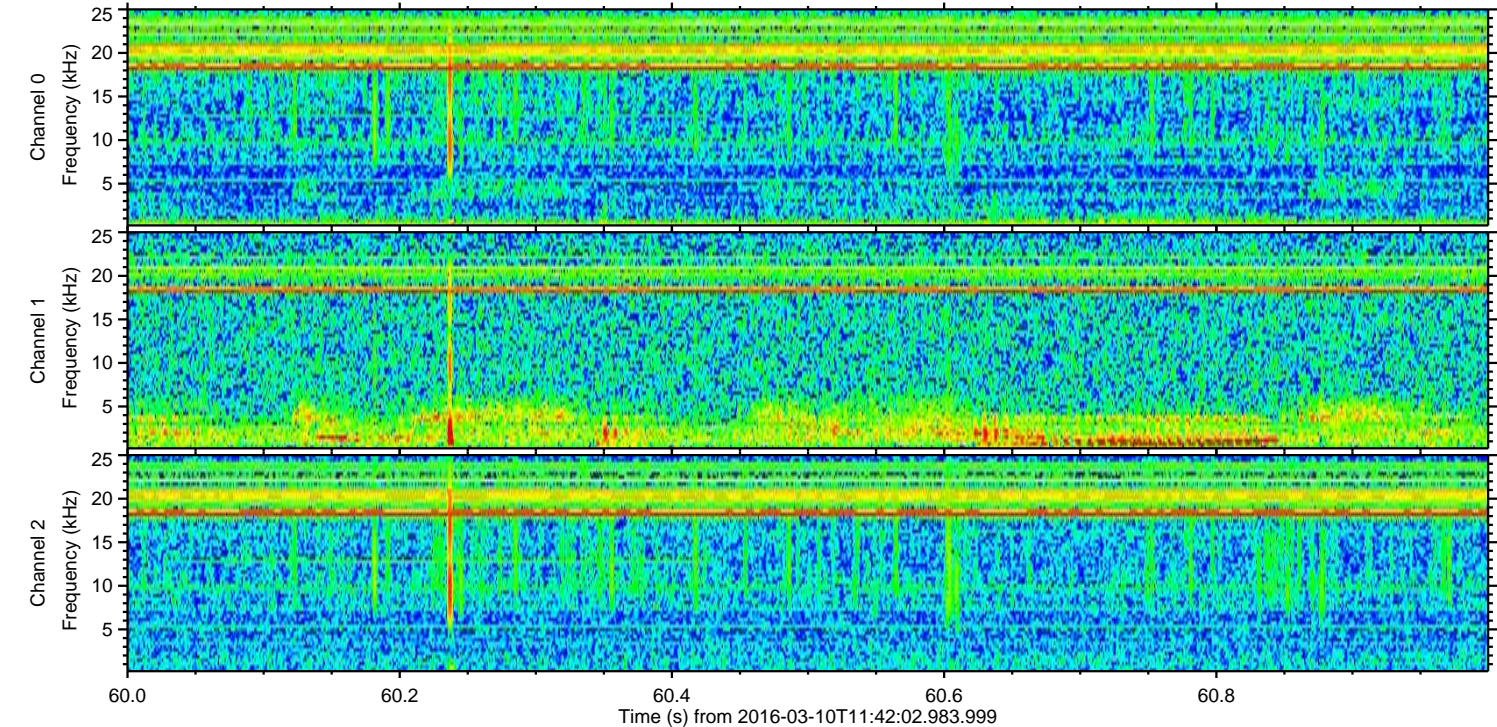
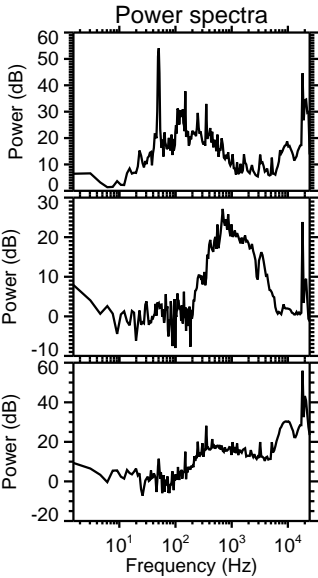
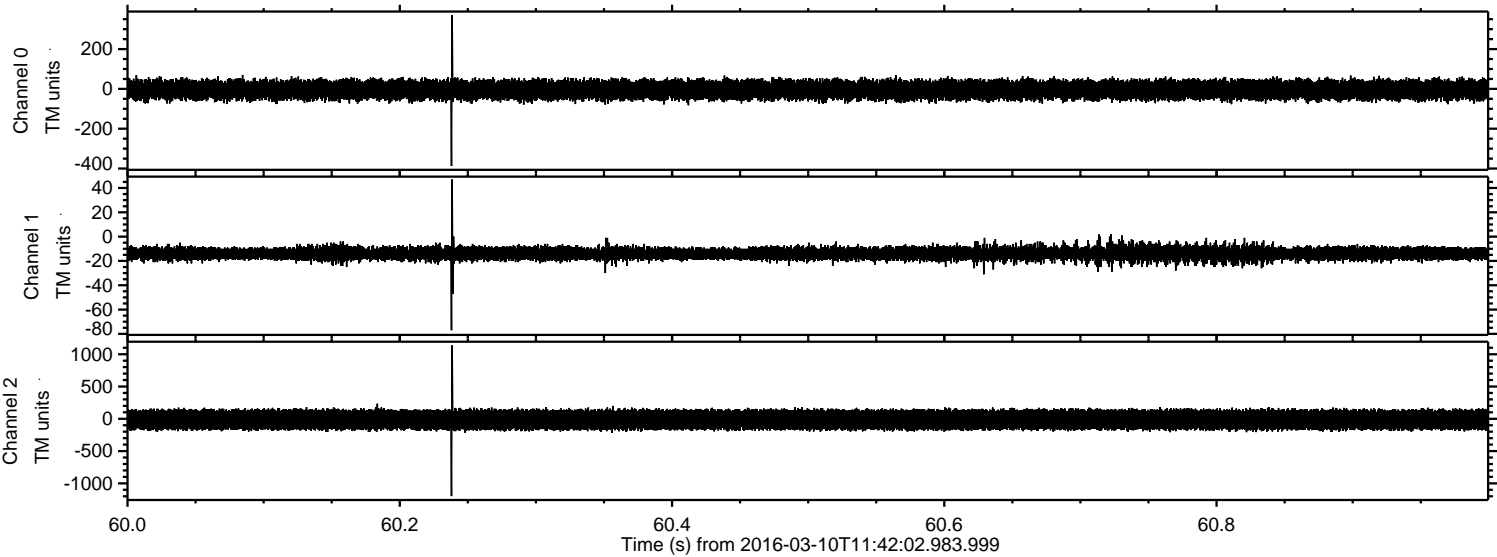
Processed Tue Apr 19 12:17:46 2016 by ELM ver.2012-10-06 from 001__elm20160310_114201__dat00.bin



Processed Tue Apr 19 12:17:47 2016 by ELM ver.2012-10-06 from 001__elm20160310_114201__dat00.bin



Processed Tue Apr 19 12:17:48 2016 by ELM ver.2012-10-06 from 001__elm20160310_114201__dat00.bin



Processed Tue Apr 19 12:17:49 2016 by ELM ver.2012-10-06 from 001__elm20160310_114201__dat00.bin

