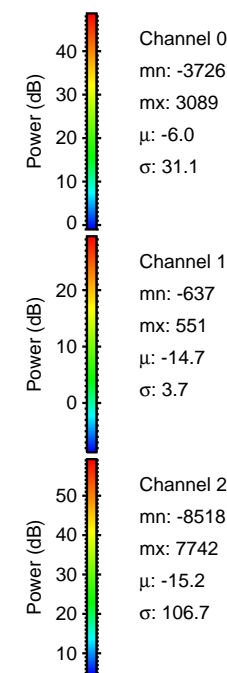
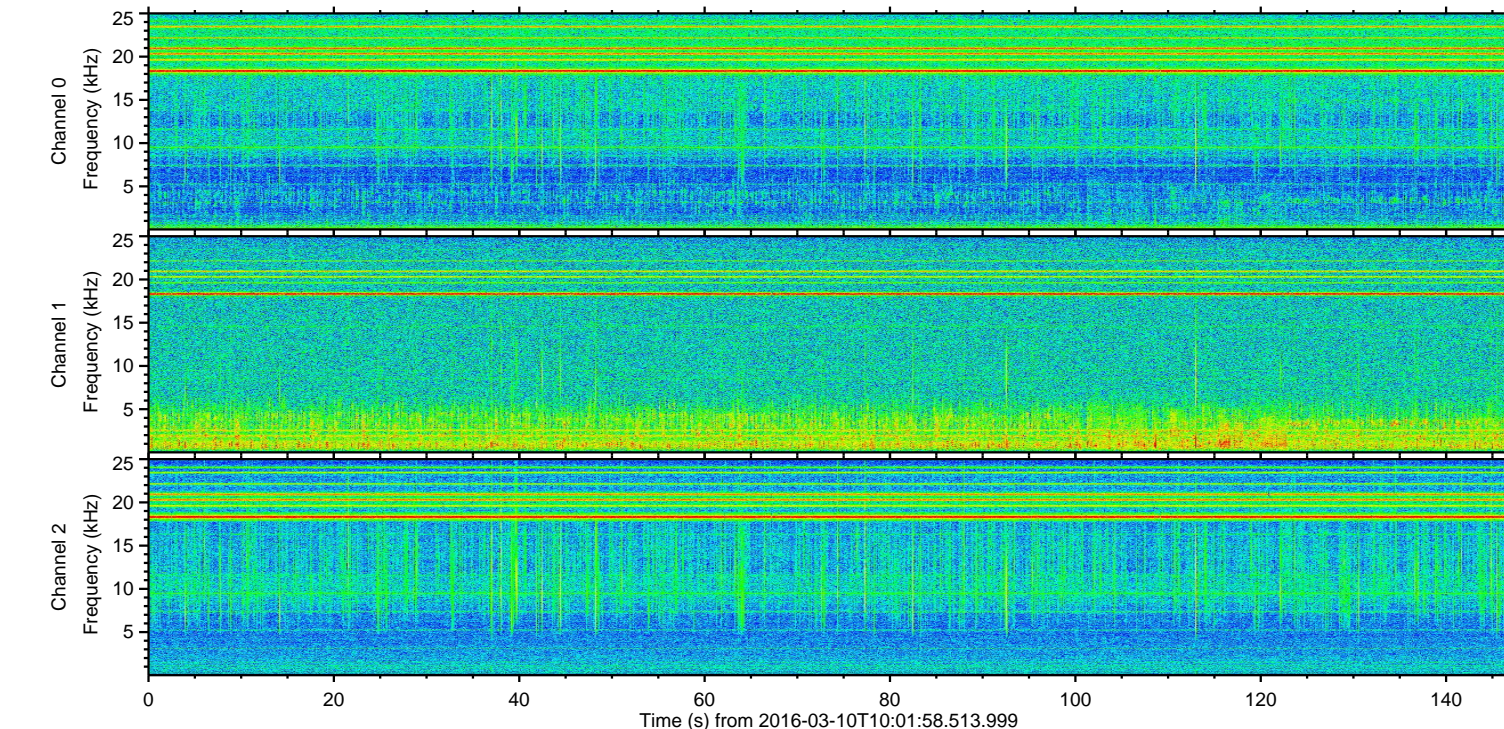
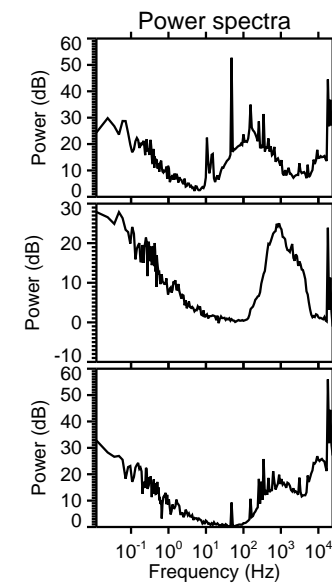
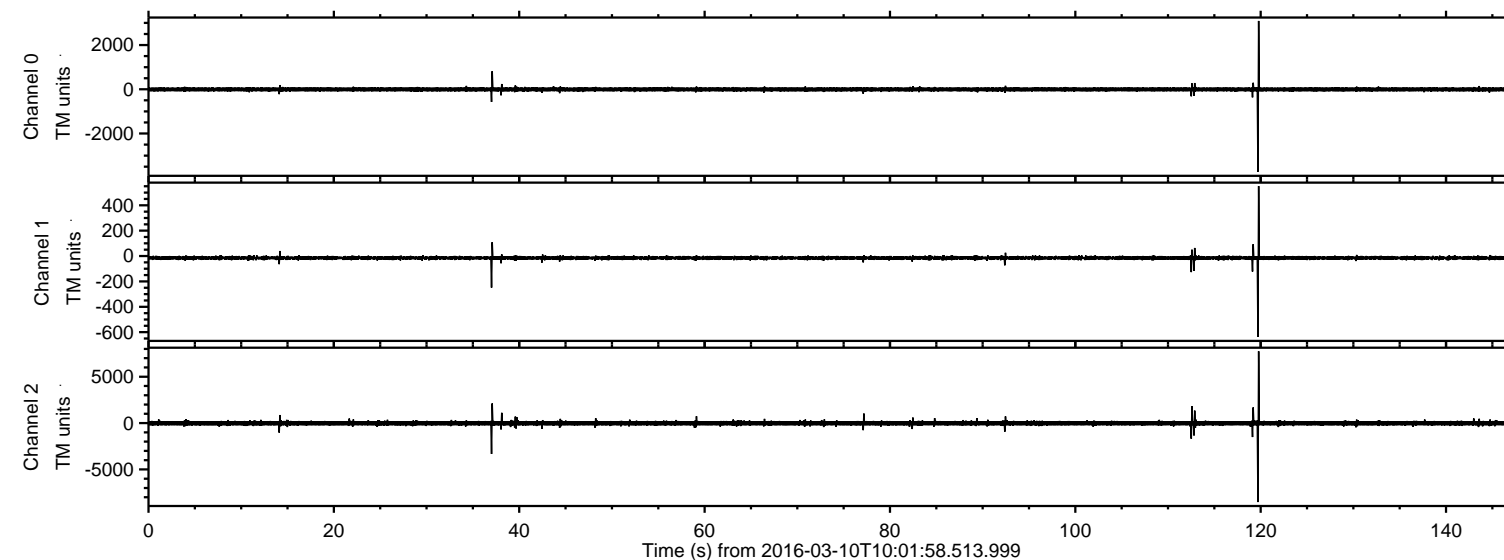


# ELMAVAN 3D WAVEFORMS (Measured data sampled at 50 kHz) 51000 packets of 144 samples from 2016-03-10T10:01:58.513.999.

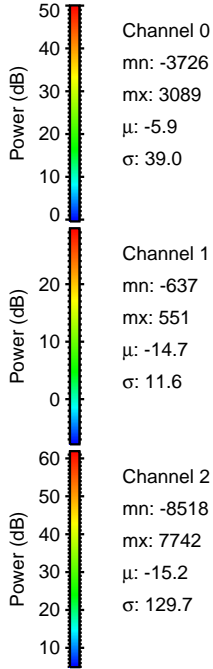
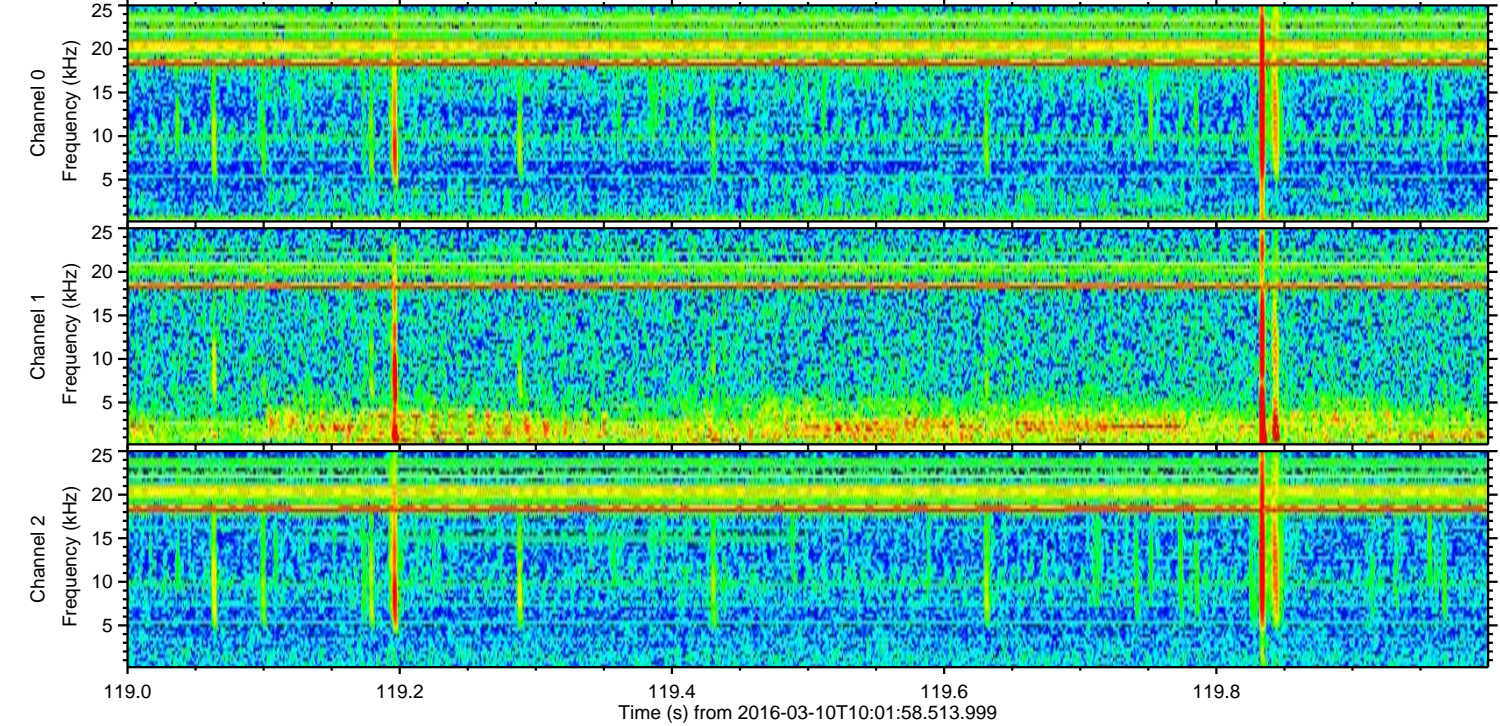
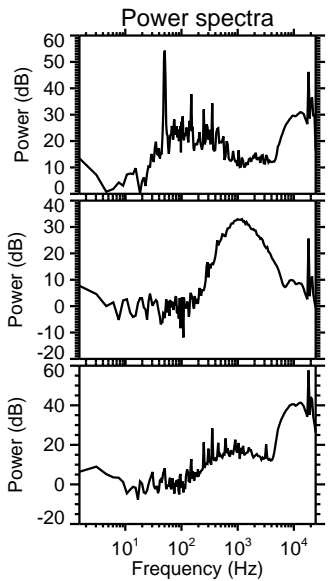
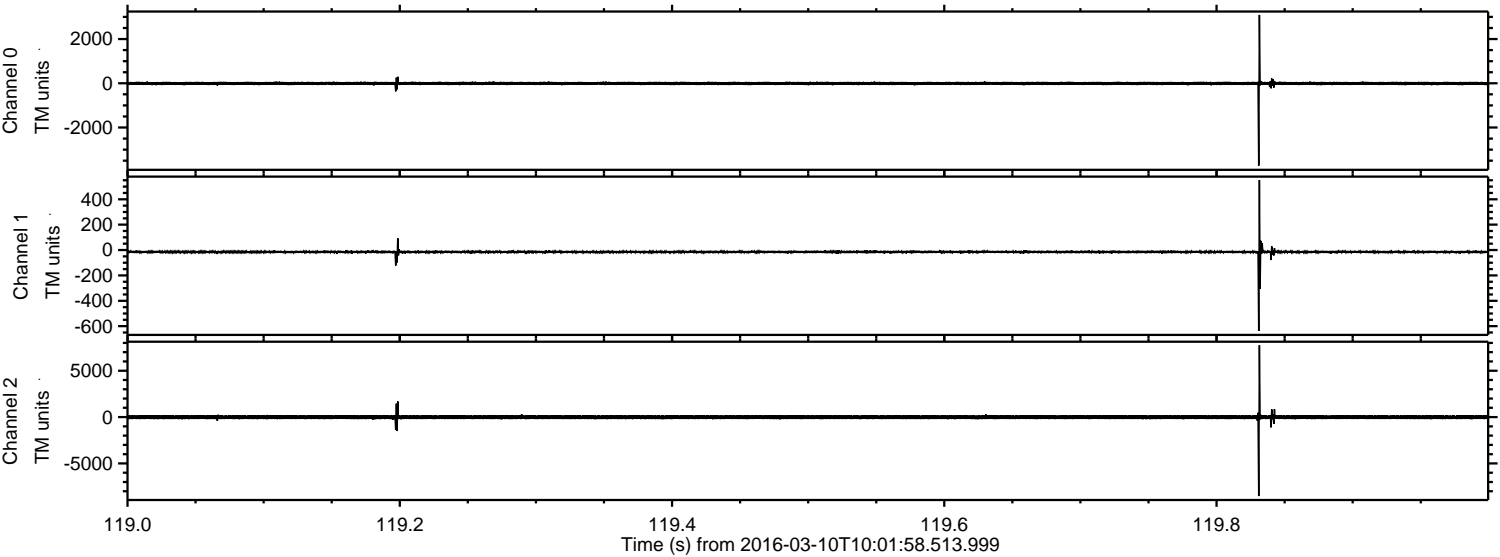
Processed Tue Apr 19 12:00:54 2016 by ELM ver.2012-10-06 from 001\_\_elm20160310\_100157\_\_dat00.bin





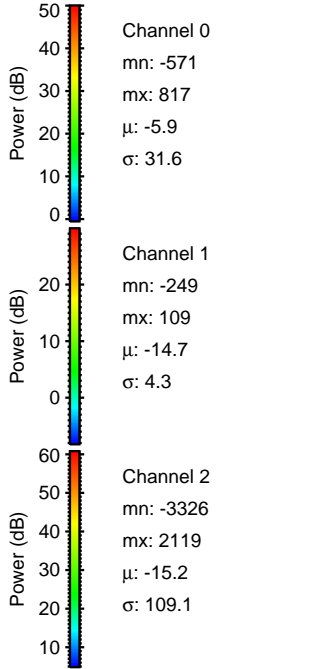
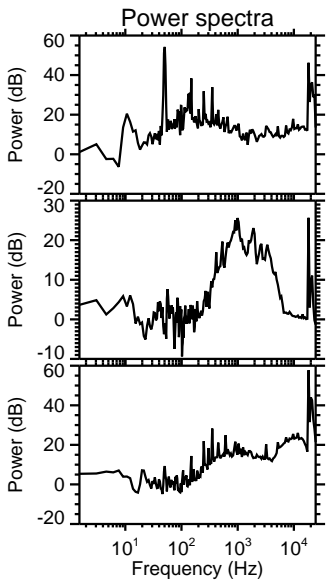
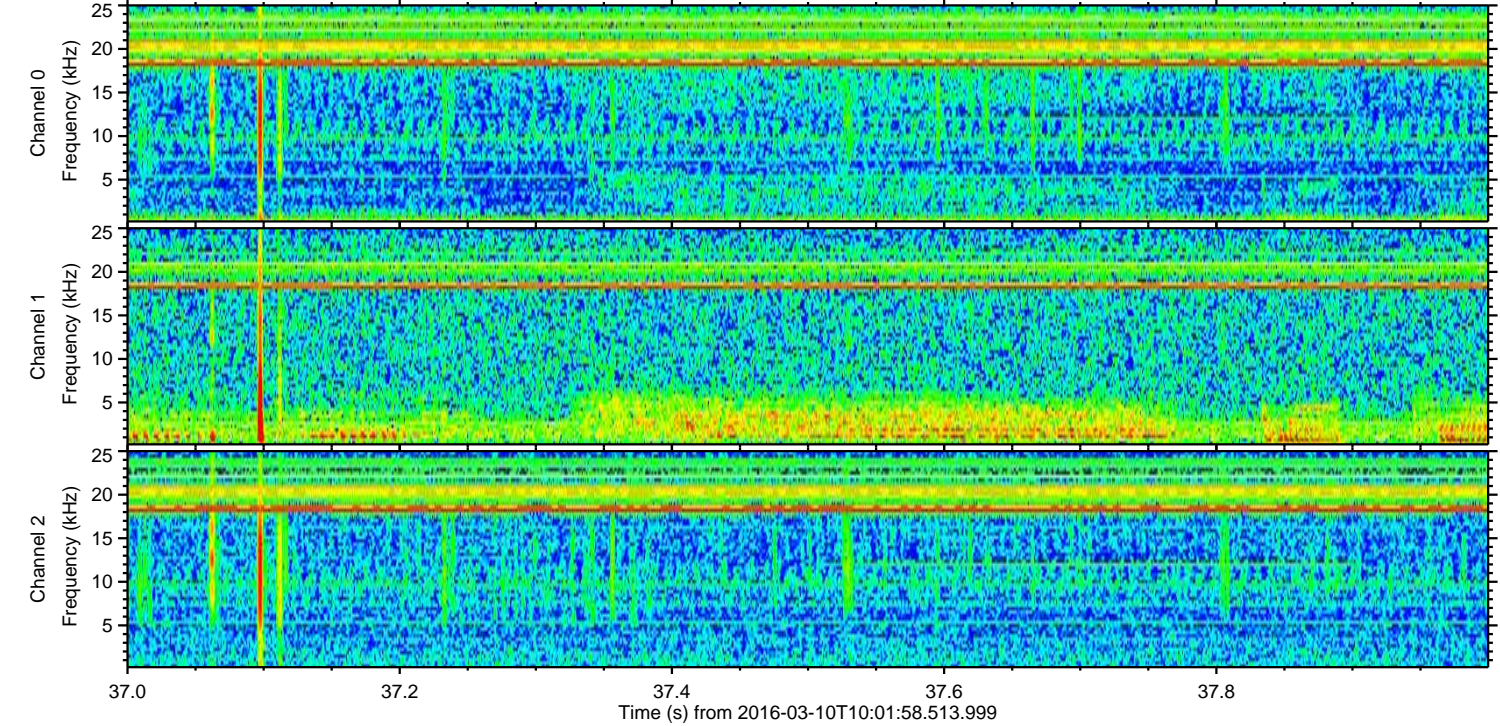
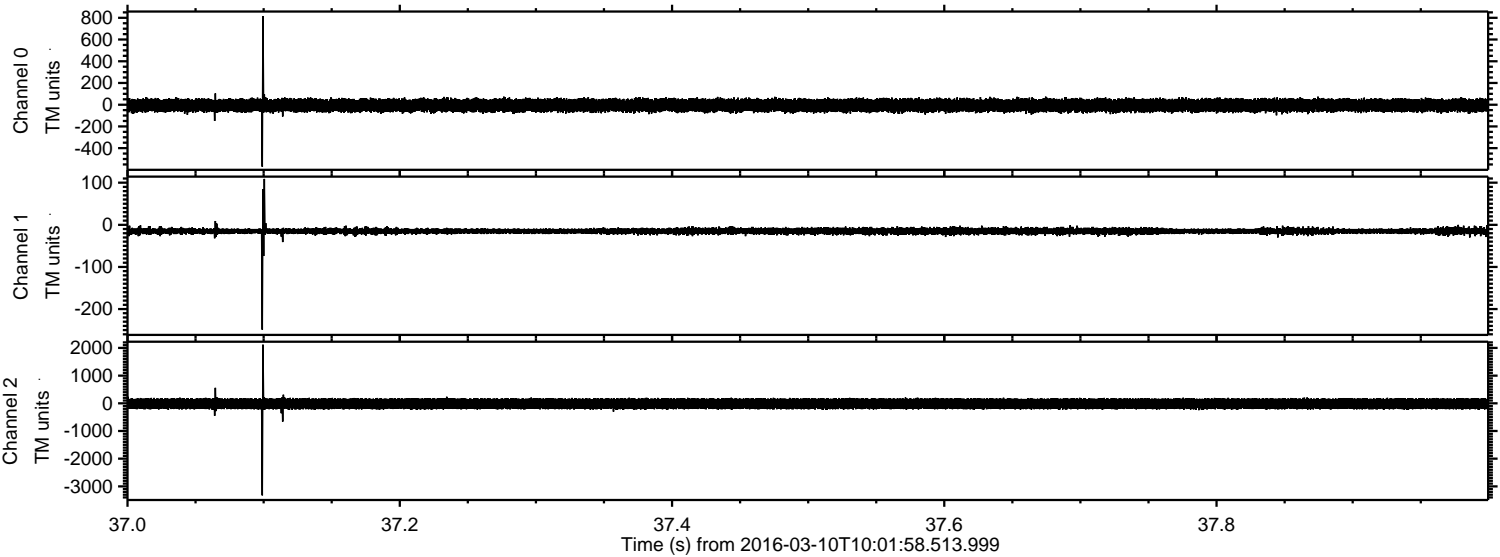
ELMAVAN 3D WAVEFORMS (Measured data sampled at 50 kHz) 51000 packets of 144 samples from 2016-03-10T10:01:58.513.999. Part 120/147

Processed Tue Apr 19 12:01:06 2016 by ELM ver.2012-10-06 from 001\_\_elm20160310\_100157\_\_dat00.bin





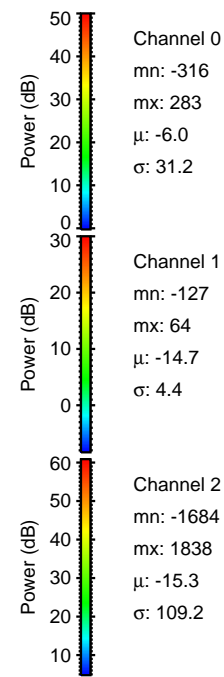
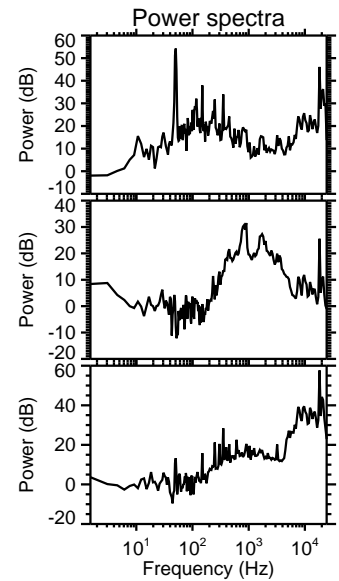
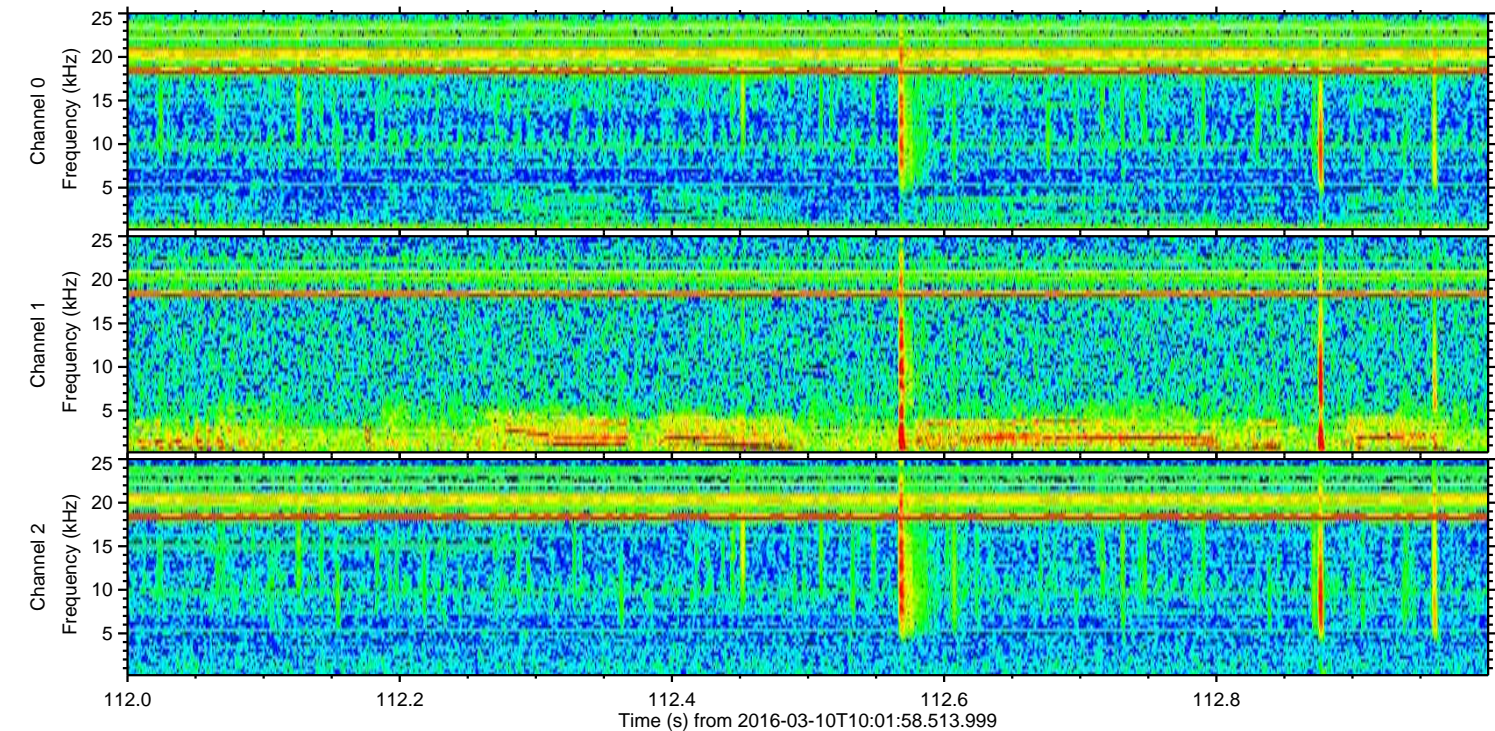
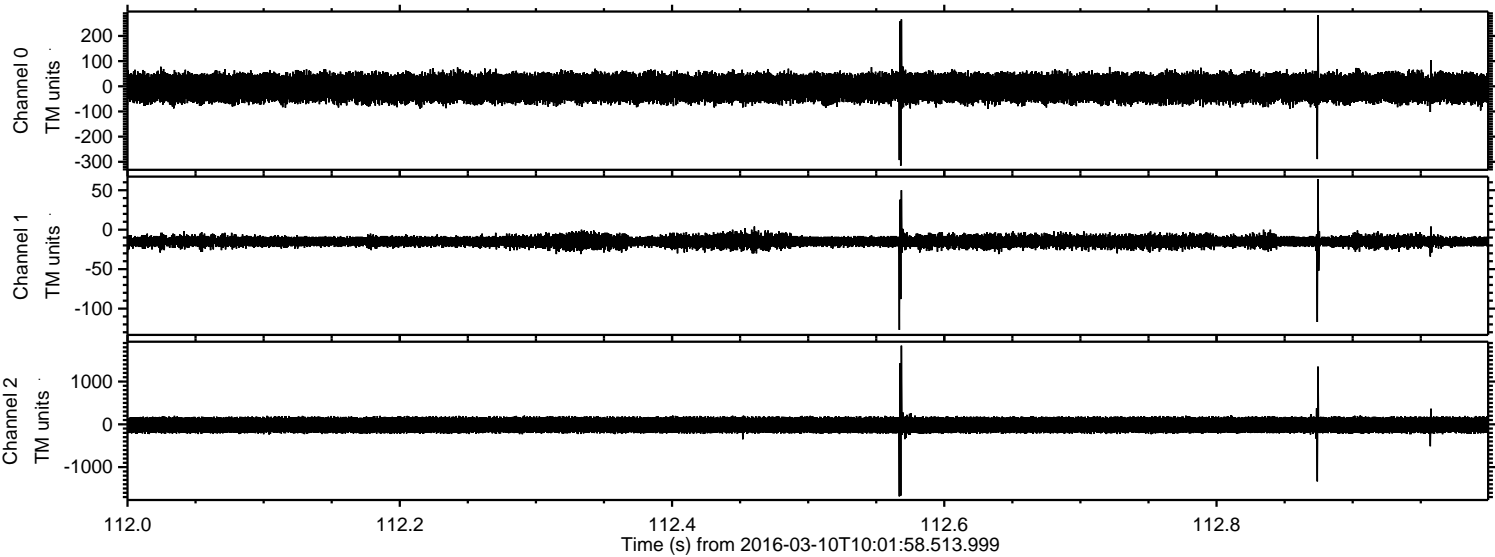
Processed Tue Apr 19 12:01:07 2016 by ELM ver.2012-10-06 from 001\_\_elm20160310\_100157\_\_dat00.bin





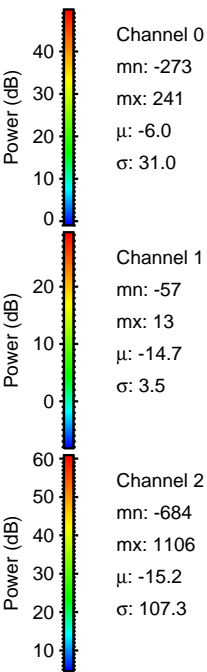
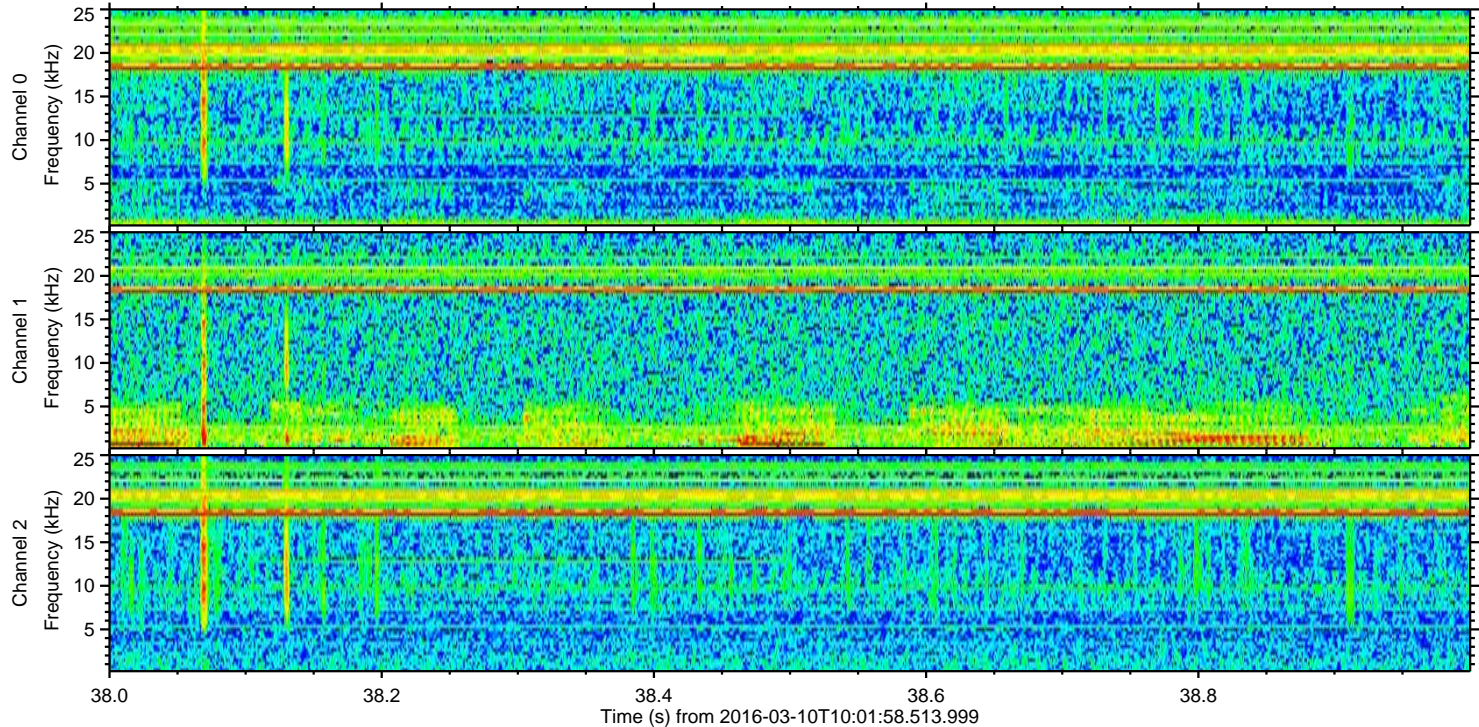
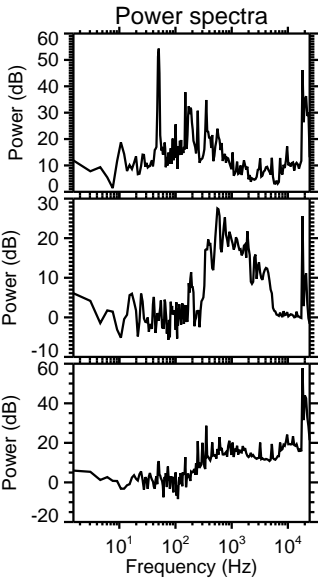
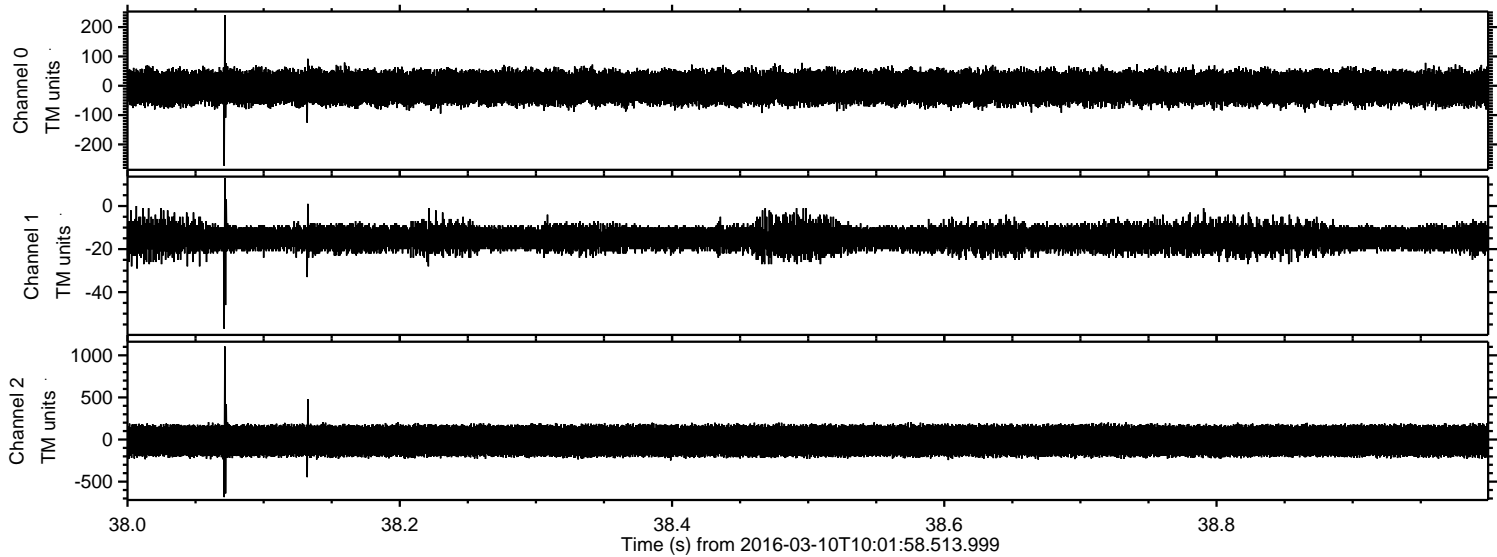
ELMAVAN 3D WAVEFORMS (Measured data sampled at 50 kHz) 51000 packets of 144 samples from 2016-03-10T10:01:58.513.999. Part 113/147

Processed Tue Apr 19 12:01:08 2016 by ELM ver.2012-10-06 from 001\_\_elm20160310\_100157\_\_dat00.bin





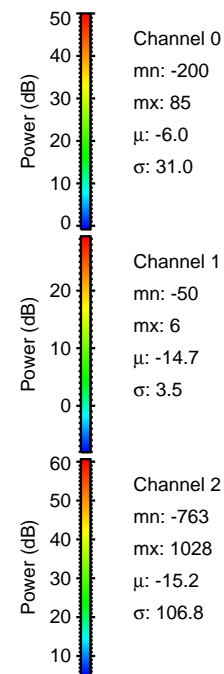
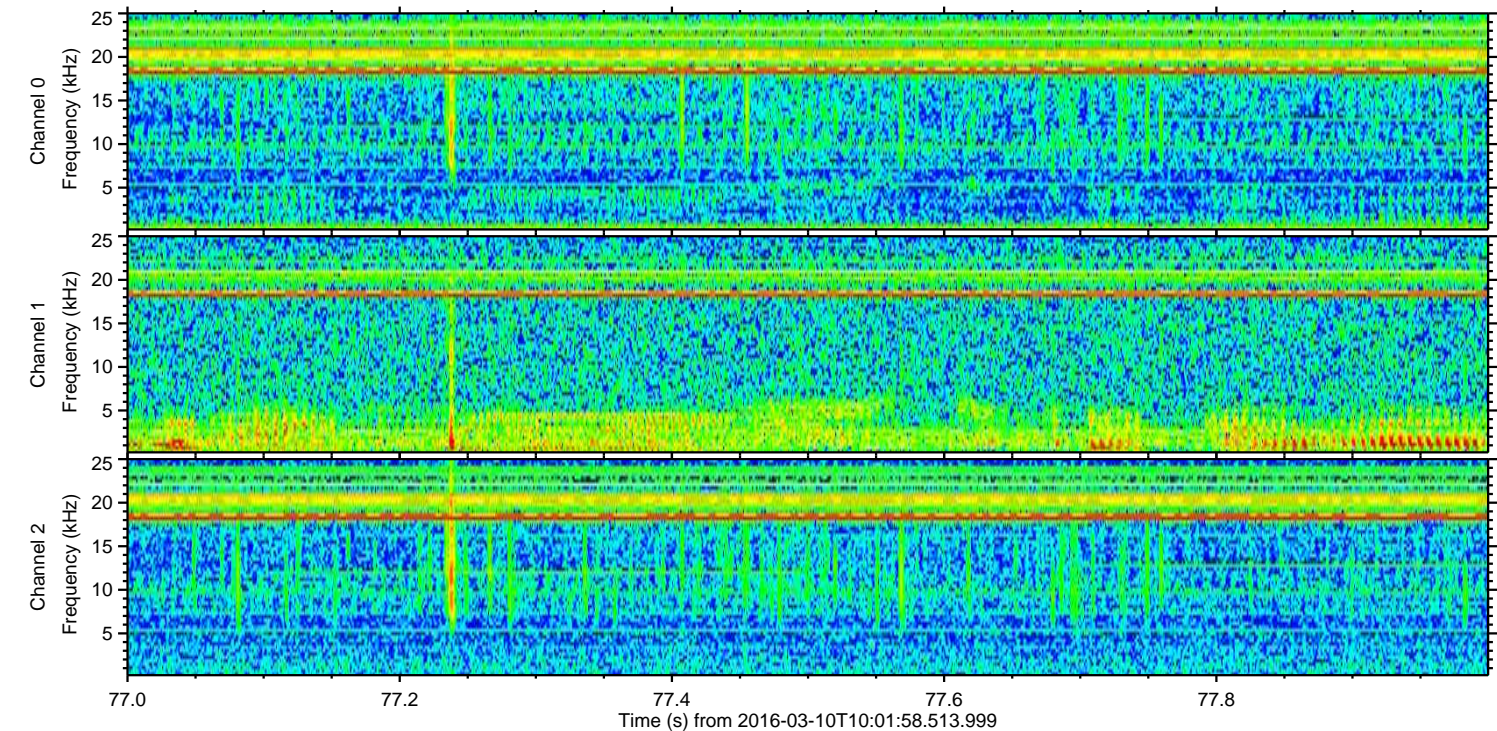
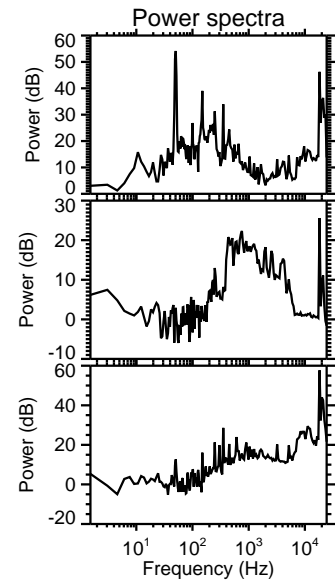
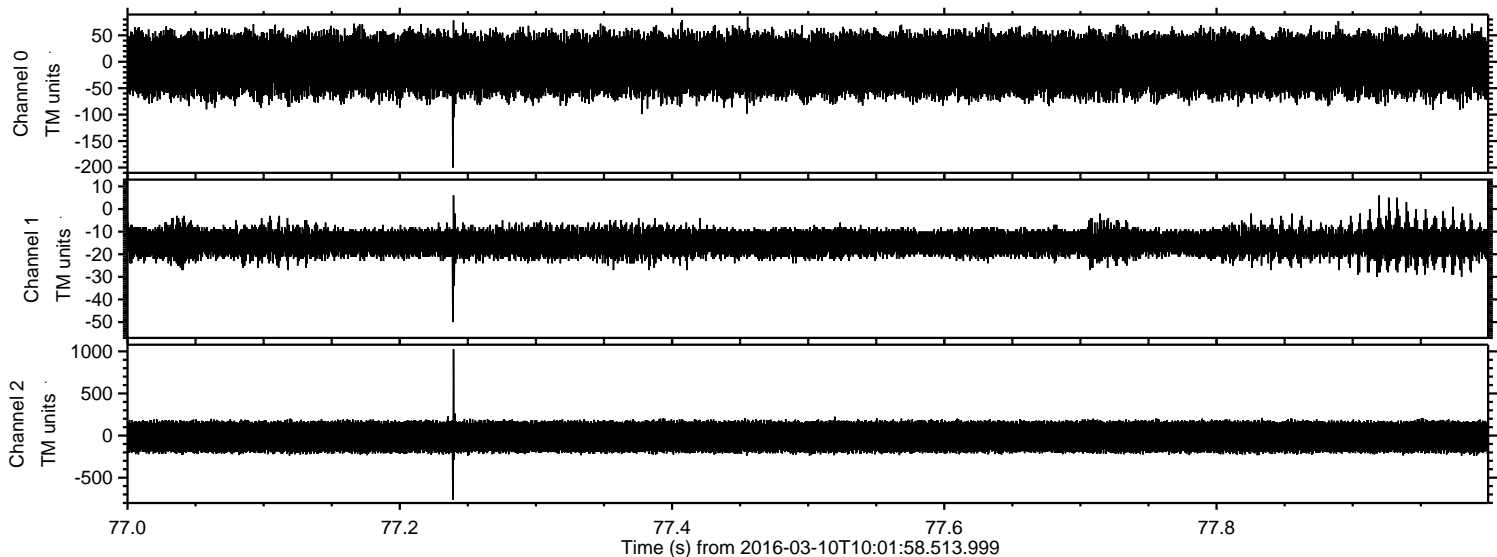
Processed Tue Apr 19 12:01:09 2016 by ELM ver.2012-10-06 from 001\_\_elm20160310\_100157\_\_dat00.bin





ELMAVAN 3D WAVEFORMS (Measured data sampled at 50 kHz) 51000 packets of 144 samples from 2016-03-10T10:01:58.513.999. Part 78/147

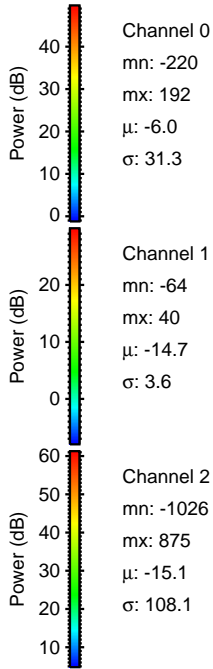
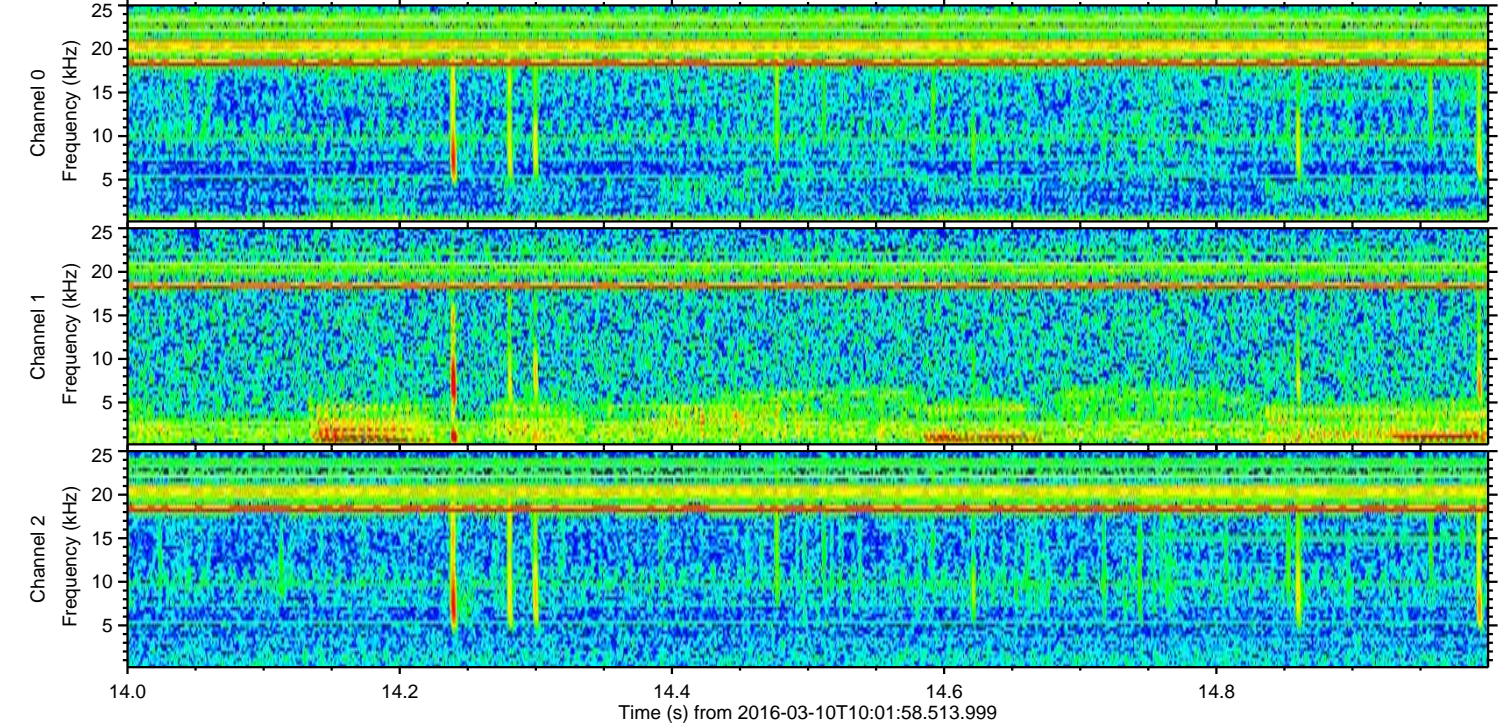
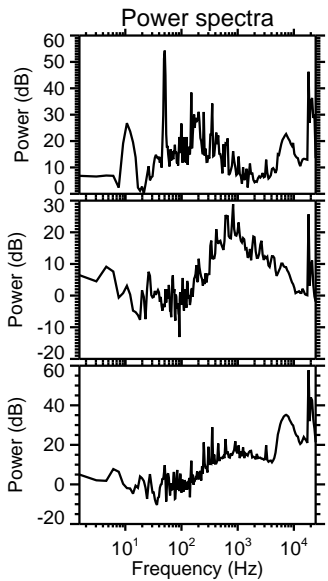
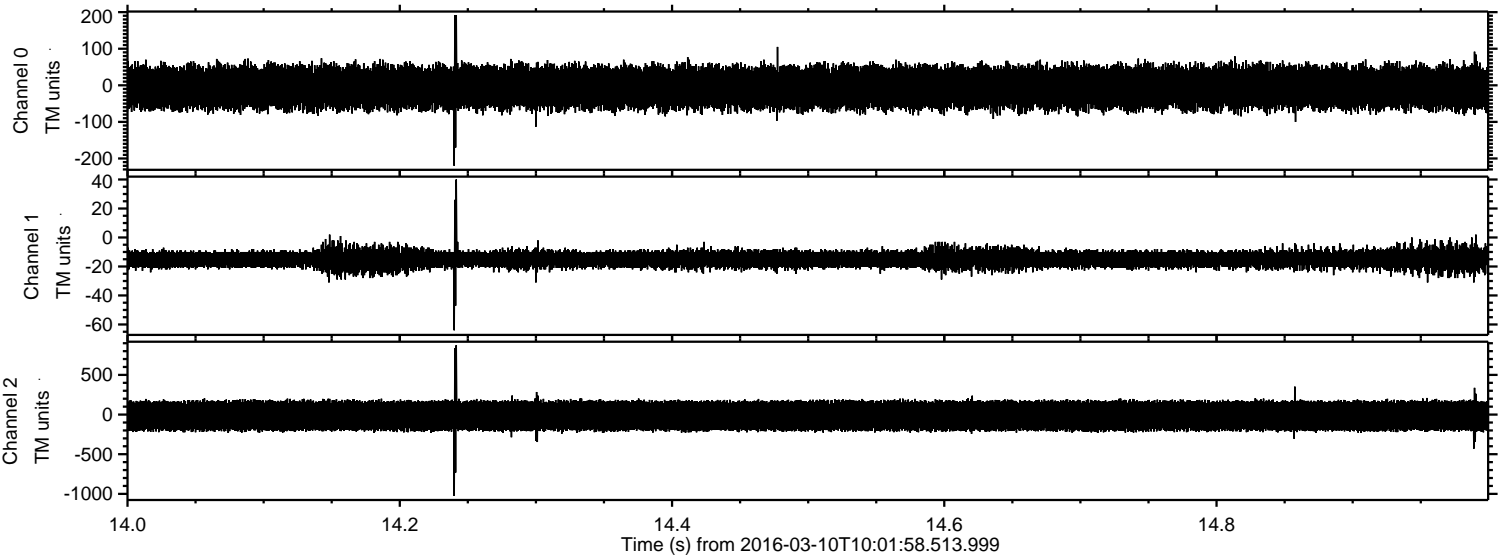
Processed Tue Apr 19 12:01:10 2016 by ELM ver.2012-10-06 from 001\_\_elm20160310\_100157\_\_dat00.bin





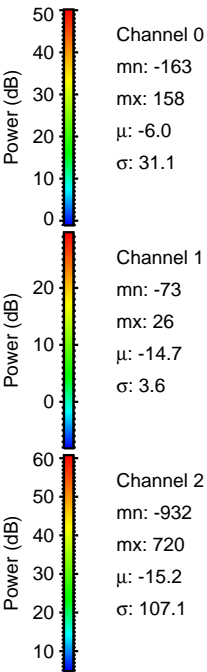
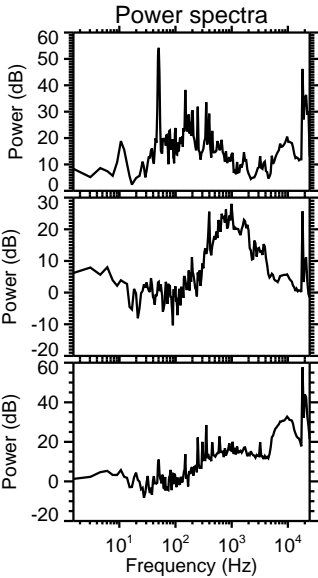
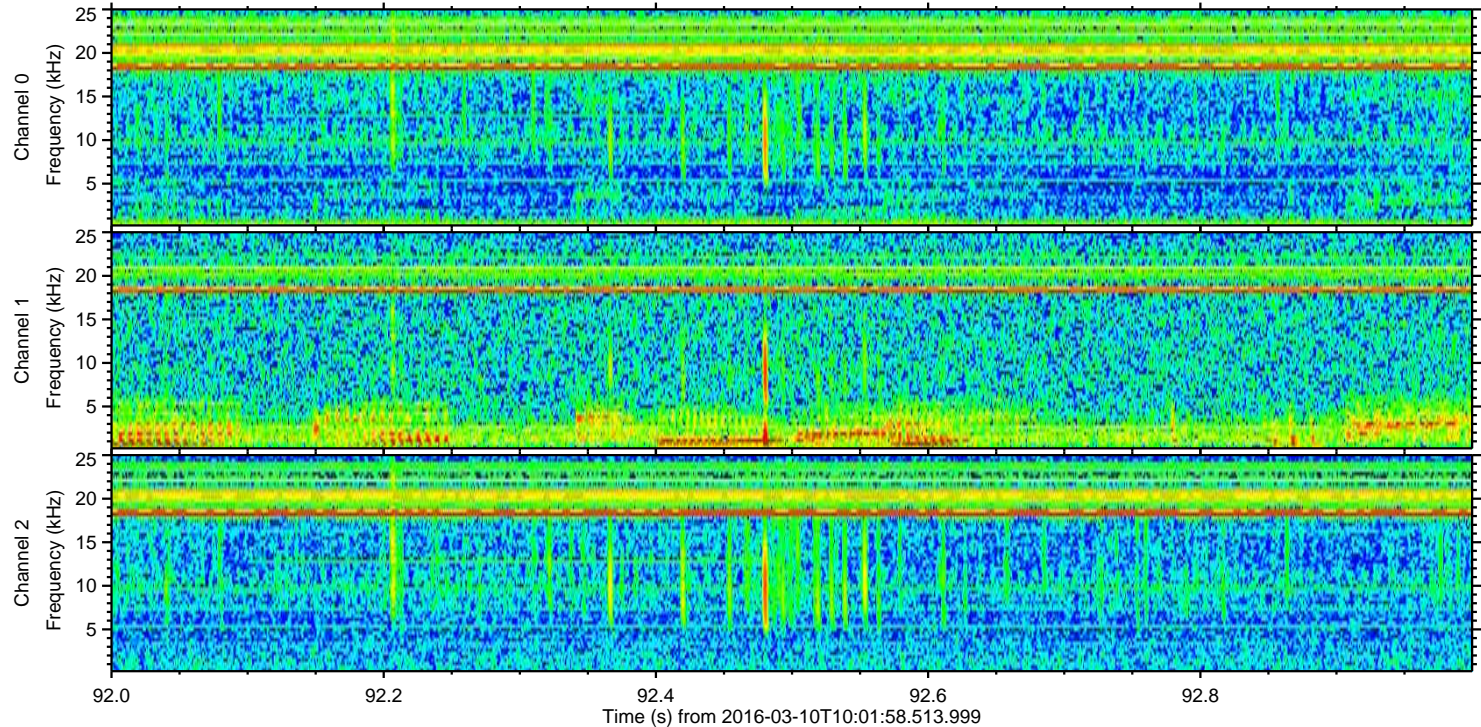
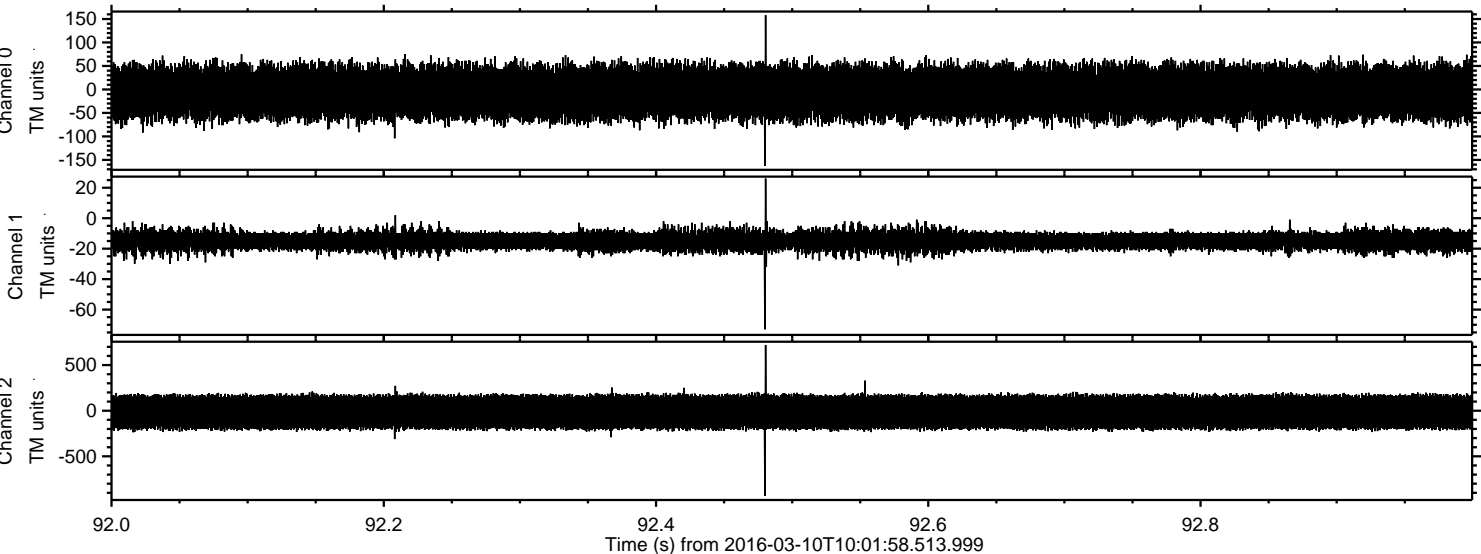
ELMAVAN 3D WAVEFORMS (Measured data sampled at 50 kHz) 51000 packets of 144 samples from 2016-03-10T10:01:58.513.999. Part 15/147

Processed Tue Apr 19 12:01:11 2016 by ELM ver.2012-10-06 from 001\_\_elm20160310\_100157\_\_dat00.bin



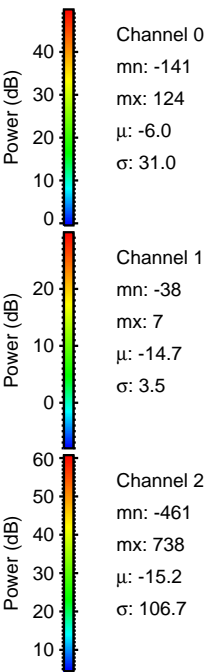
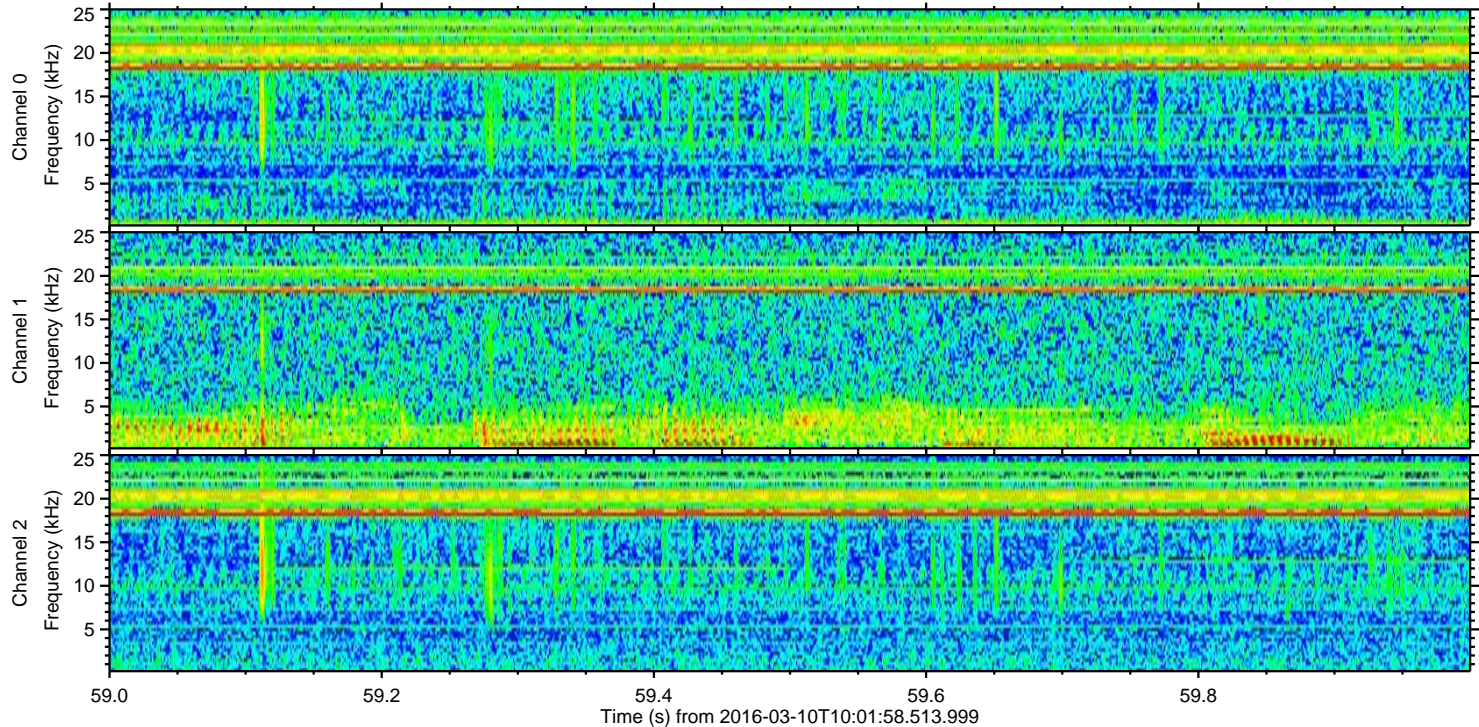
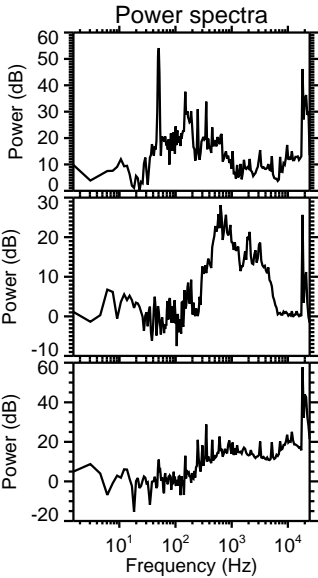
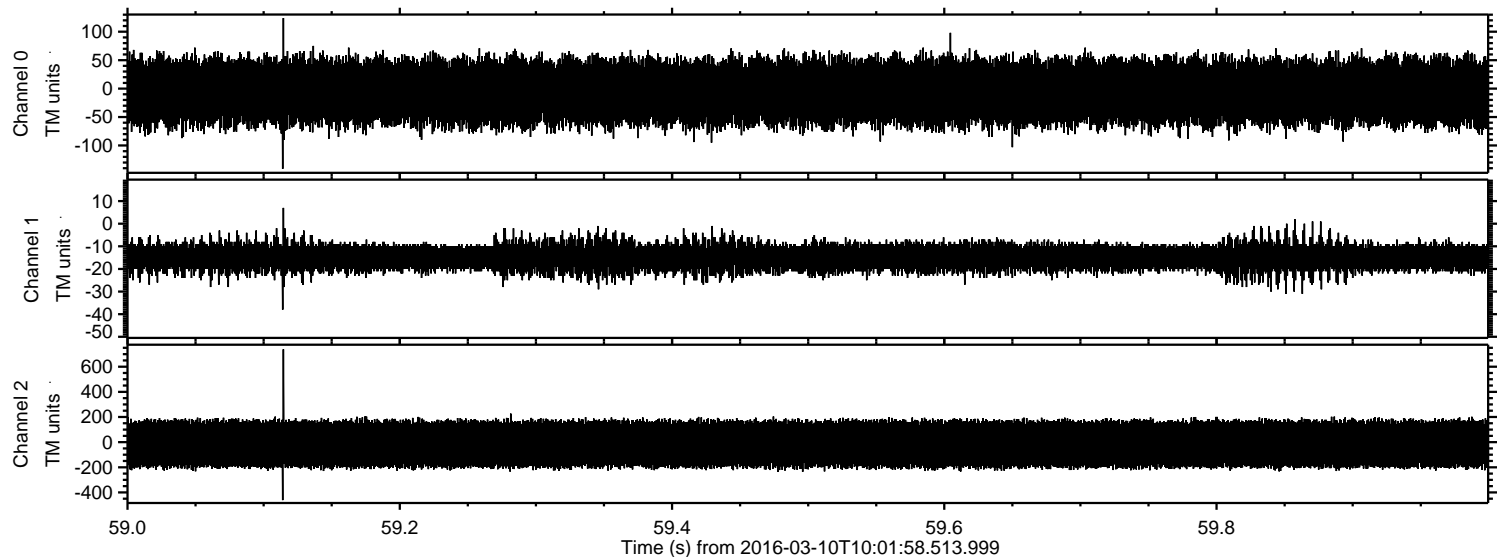


Processed Tue Apr 19 12:01:12 2016 by ELM ver.2012-10-06 from 001\_\_elm20160310\_100157\_\_dat00.bin



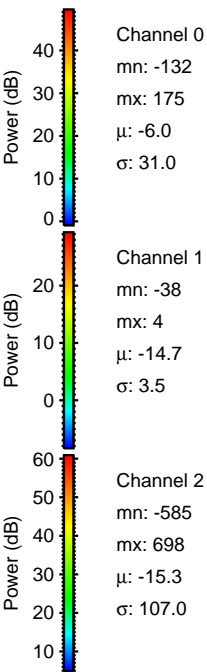
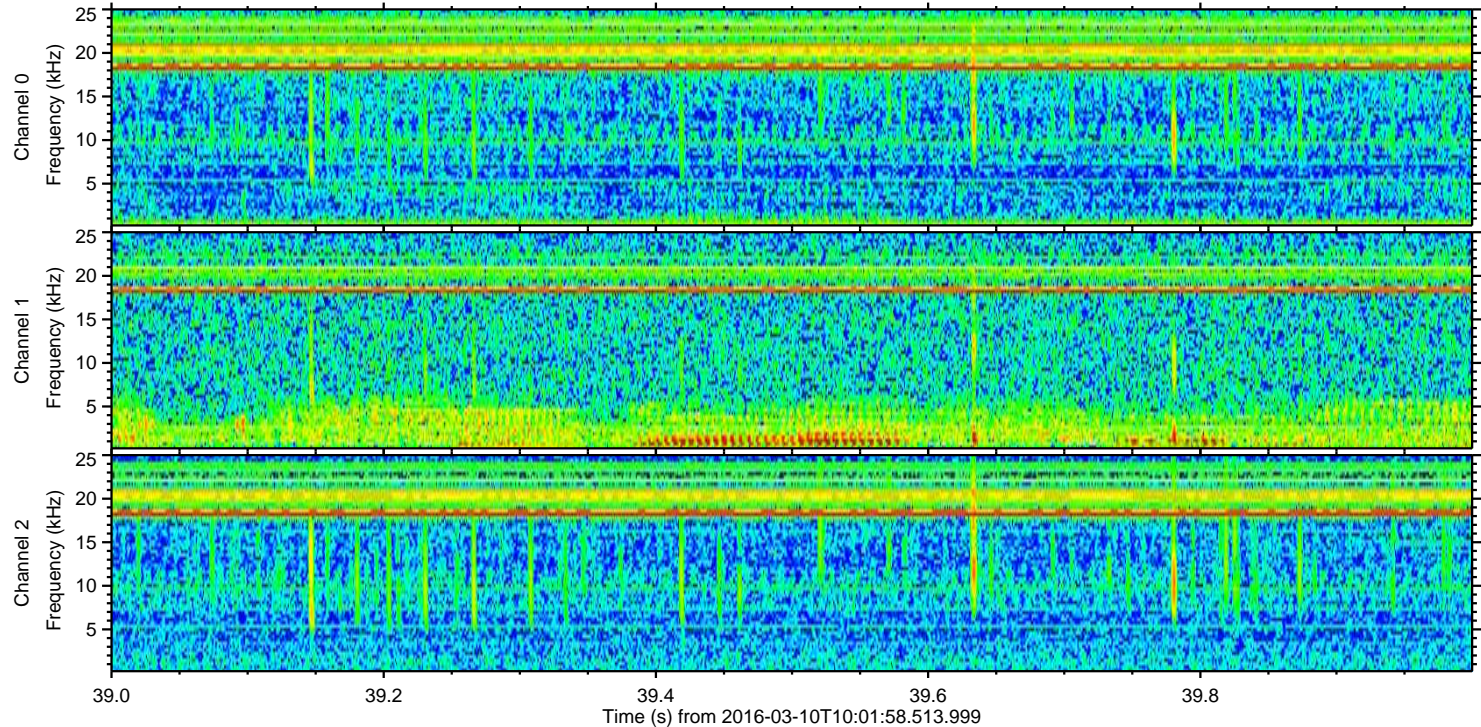
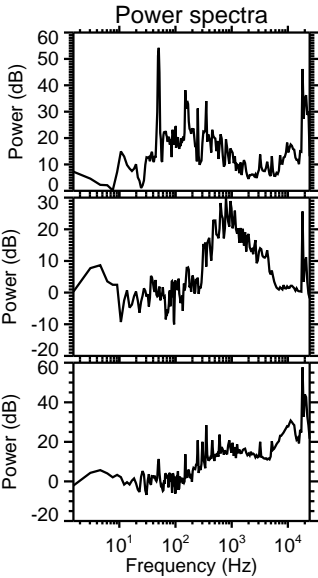
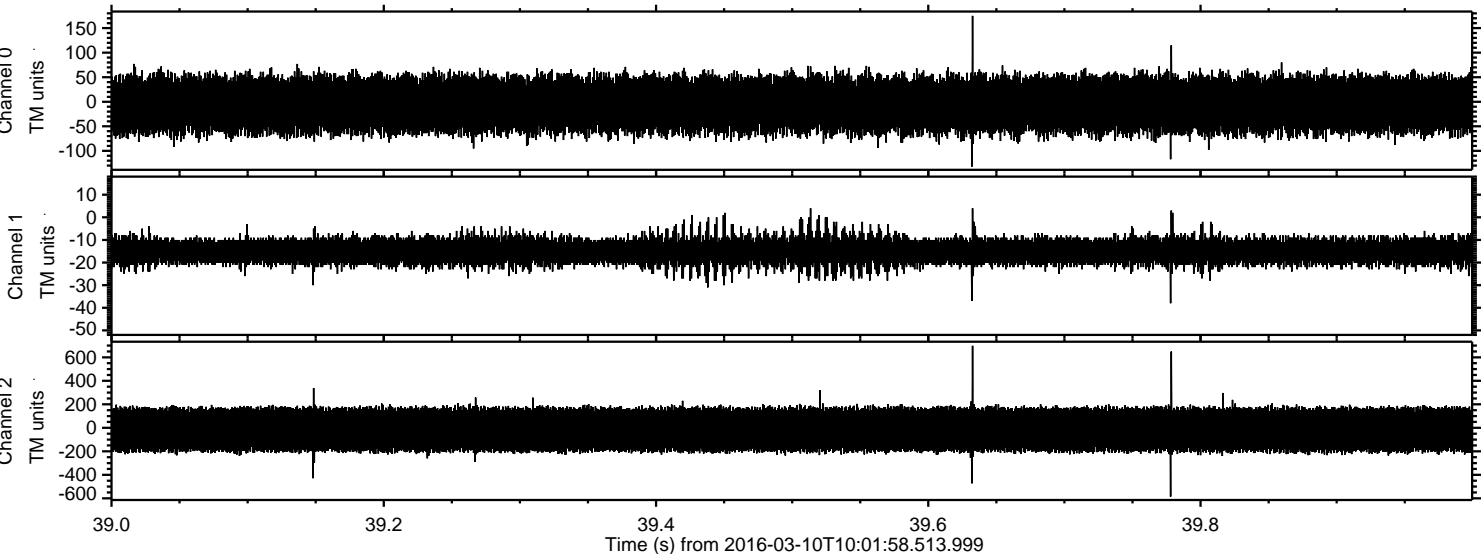


Processed Tue Apr 19 12:01:12 2016 by ELM ver.2012-10-06 from 001\_\_elm20160310\_100157\_\_dat00.bin





Processed Tue Apr 19 12:01:13 2016 by ELM ver.2012-10-06 from 001\_\_elm20160310\_100157\_\_dat00.bin





Processed Tue Apr 19 12:01:14 2016 by ELM ver.2012-10-06 from 001\_\_elm20160310\_100157\_\_dat00.bin

