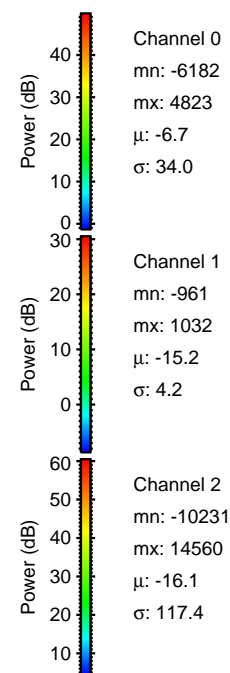
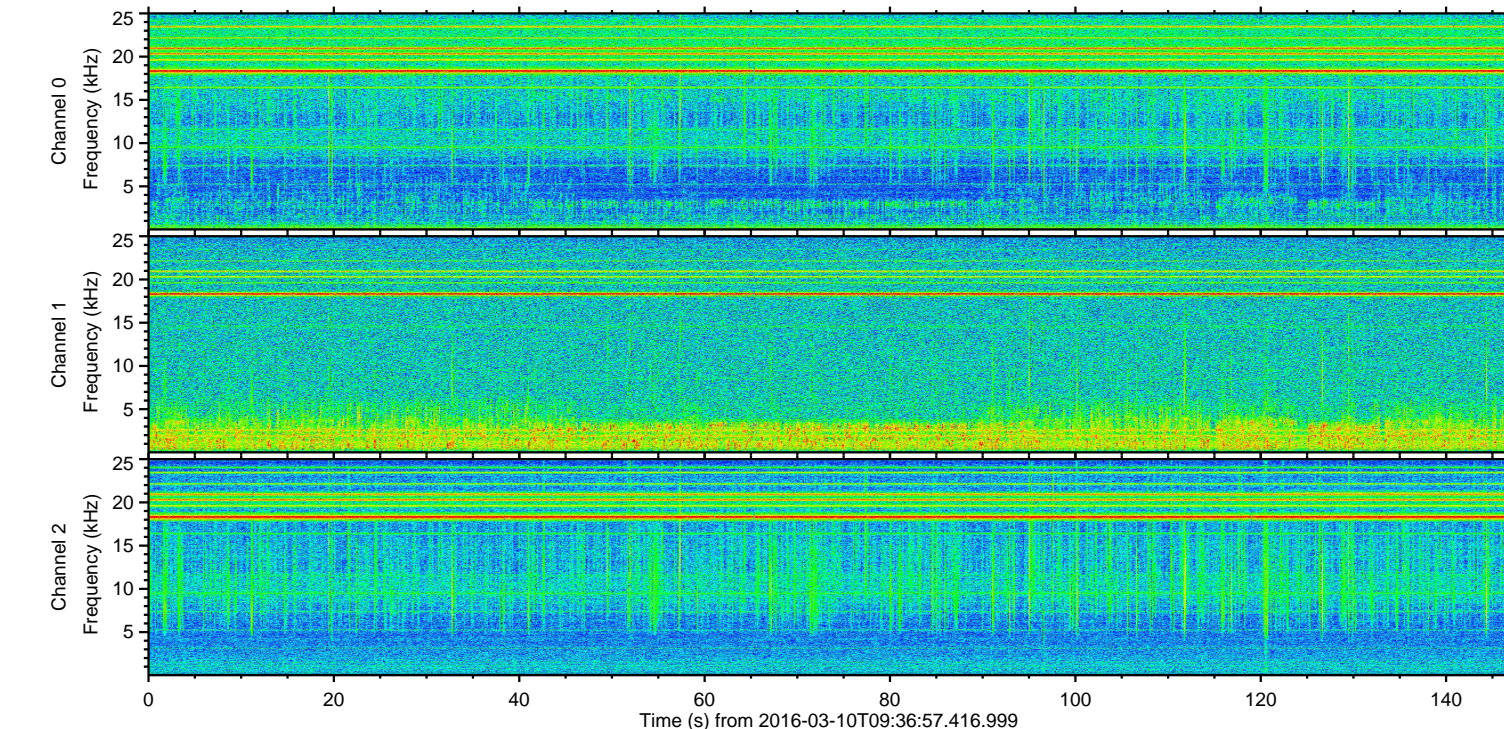
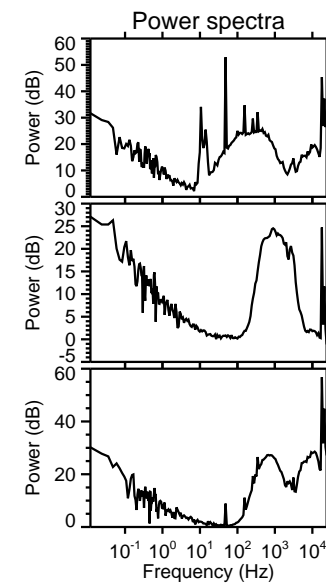
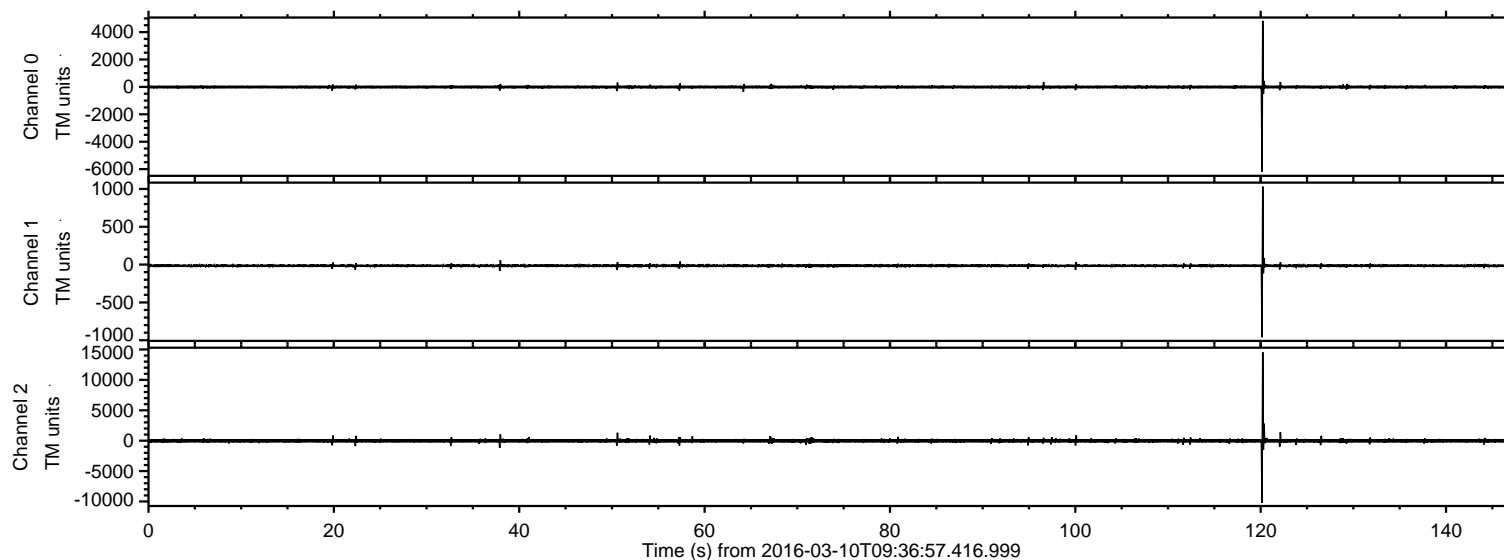


# ELMAVAN 3D WAVEFORMS (Measured data sampled at 50 kHz) 51000 packets of 144 samples from 2016-03-10T09:36:57.416.999.

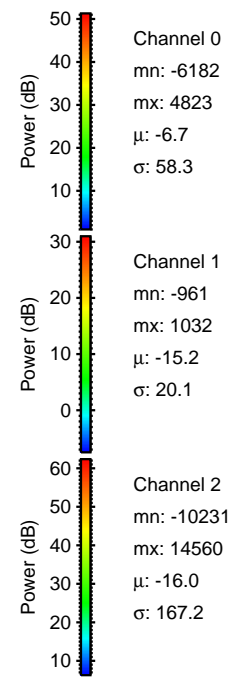
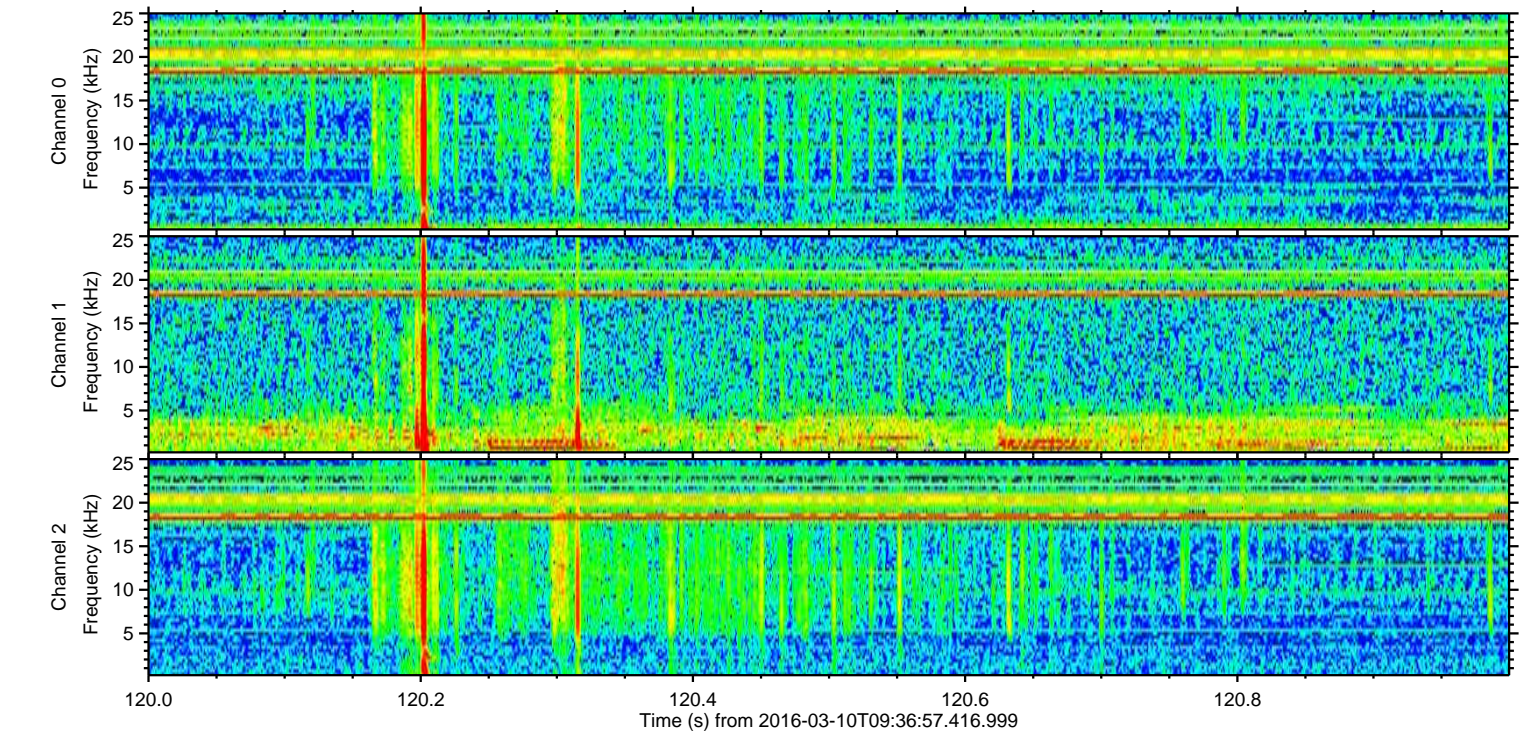
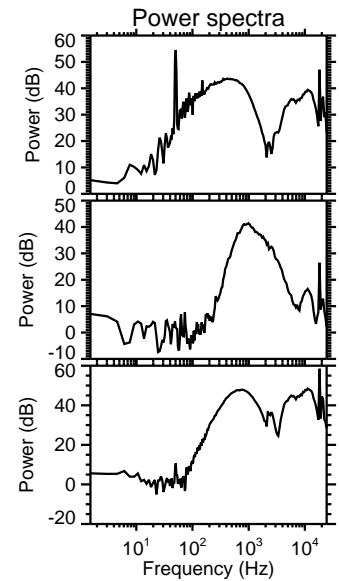
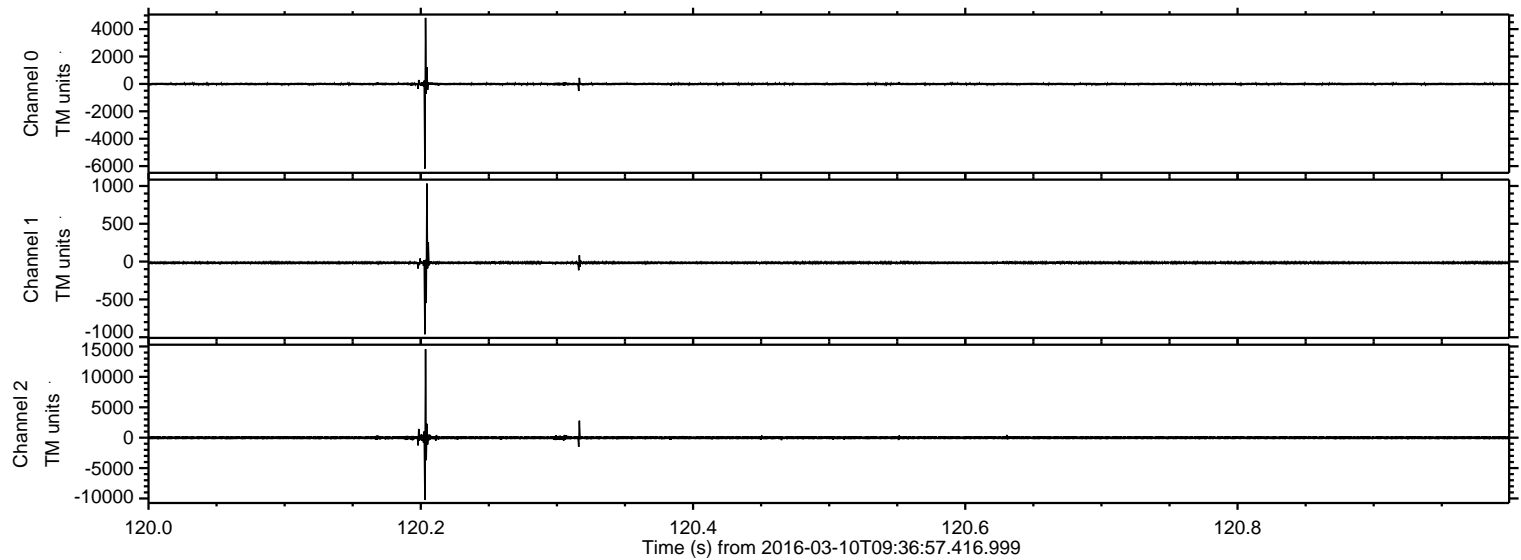
Processed Tue Apr 19 11:55:47 2016 by ELM ver.2012-10-06 from 001\_\_elm20160310\_093656\_\_dat00.bin





ELMAVAN 3D WAVEFORMS (Measured data sampled at 50 kHz) 51000 packets of 144 samples from 2016-03-10T09:36:57.416.999. Part 121/147

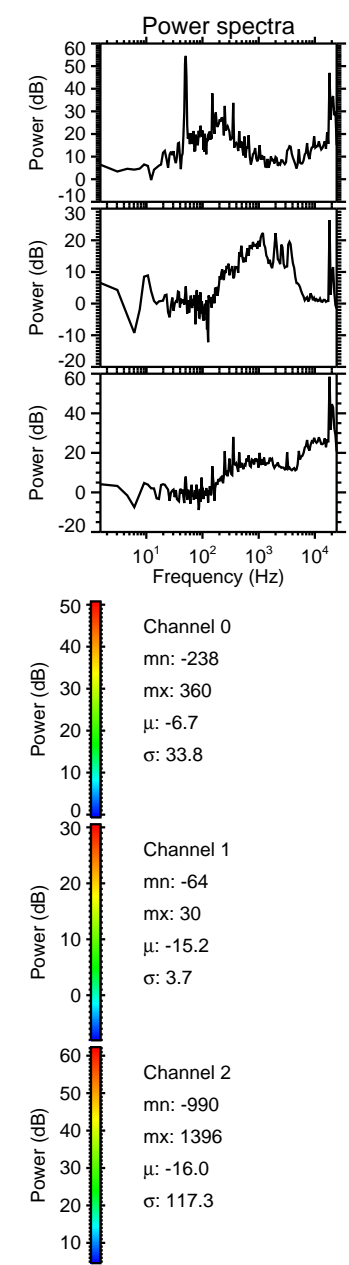
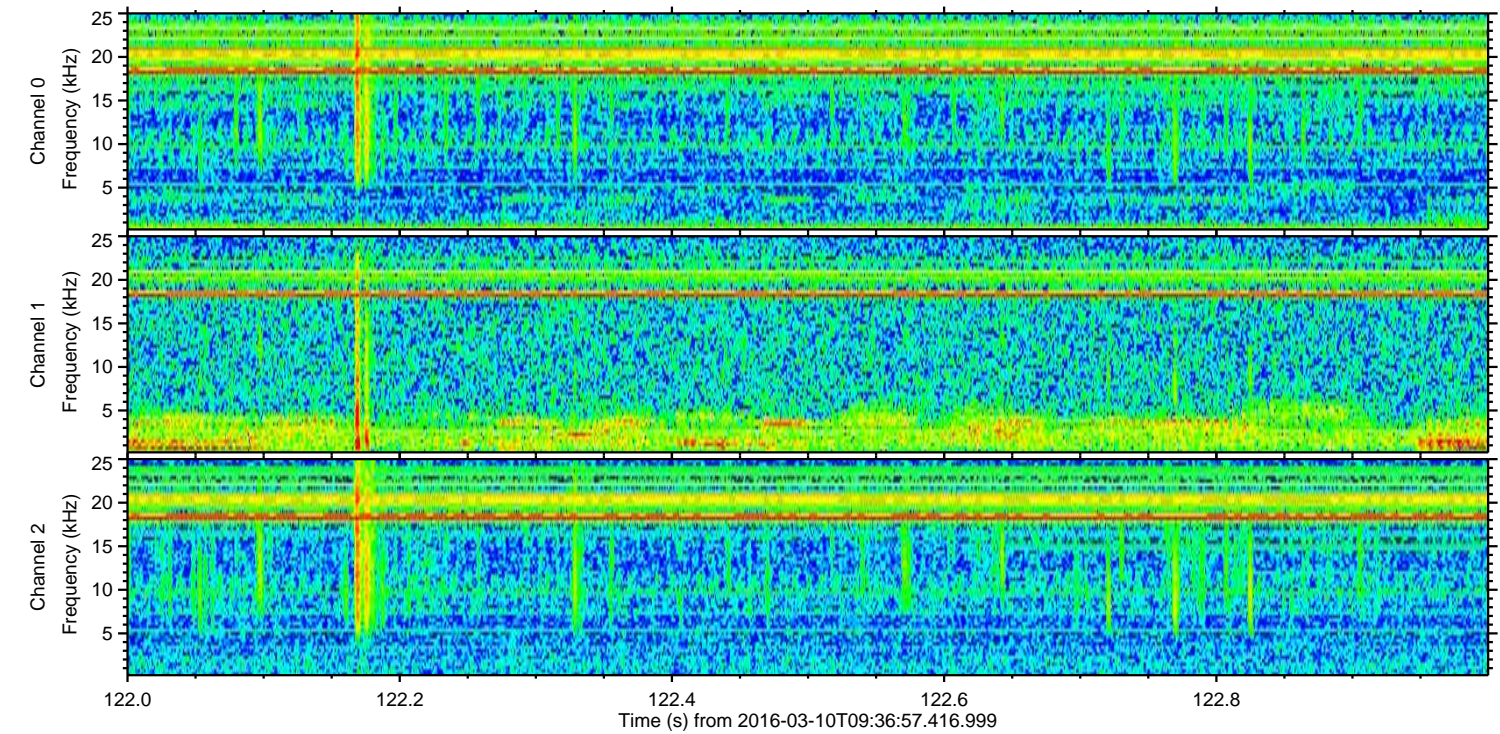
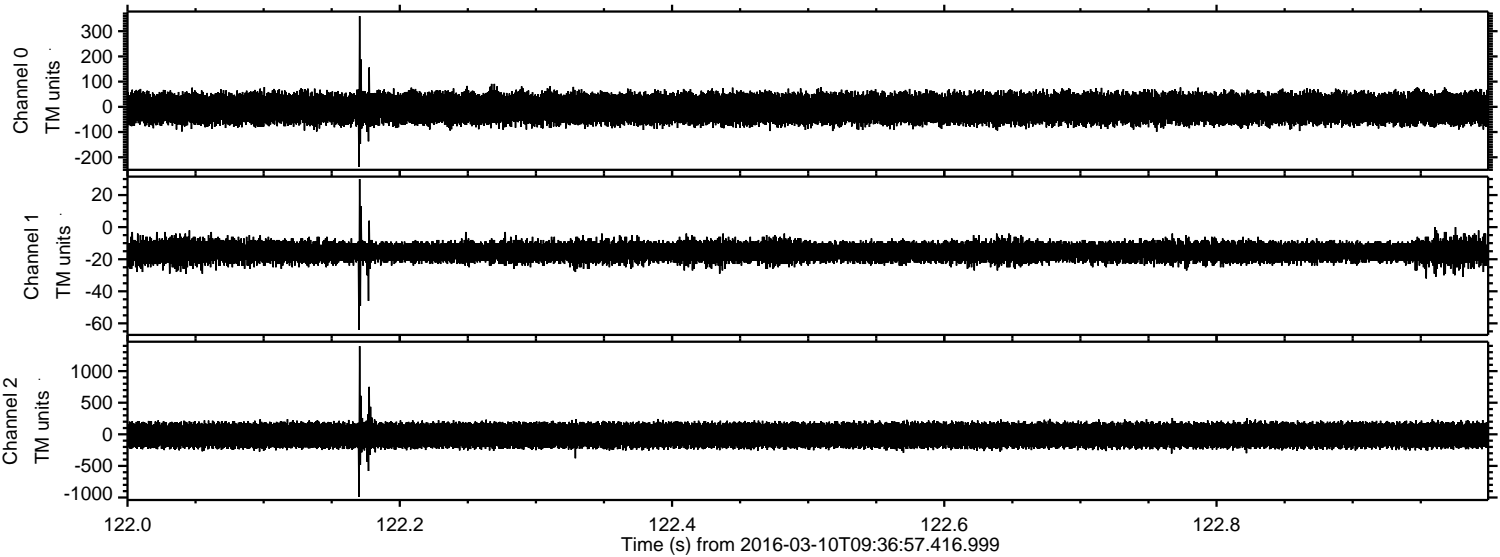
Processed Tue Apr 19 11:55:59 2016 by ELM ver.2012-10-06 from 001\_\_elm20160310\_093656\_\_dat00.bin





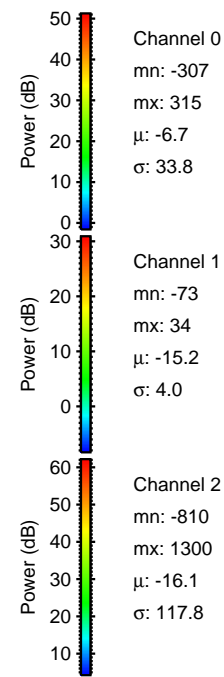
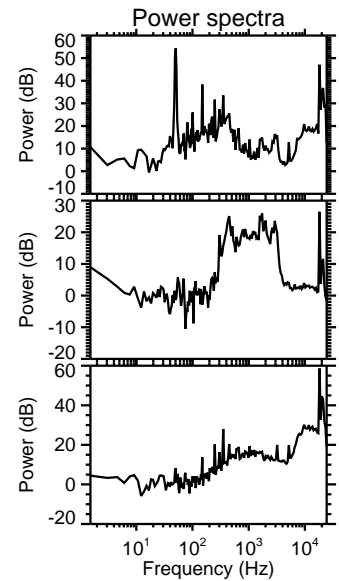
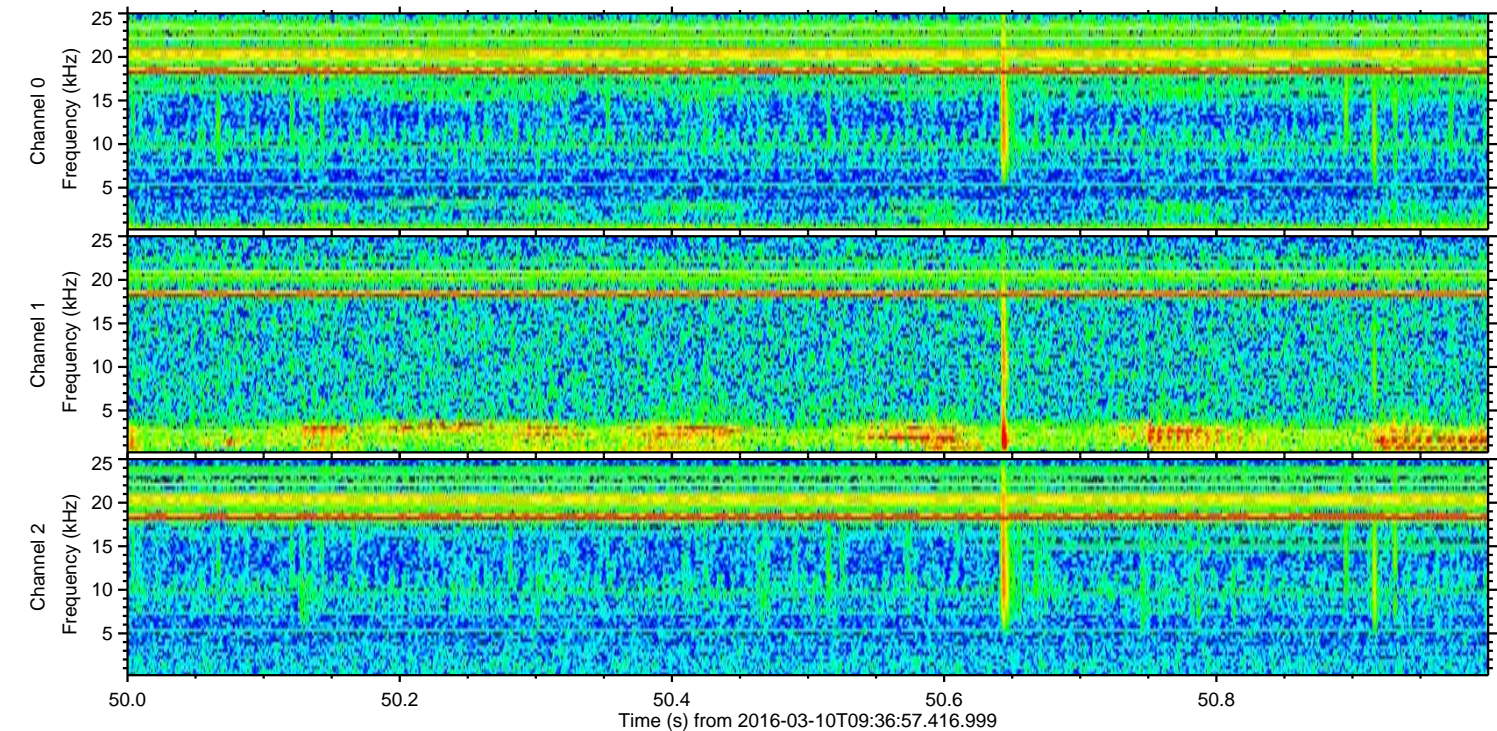
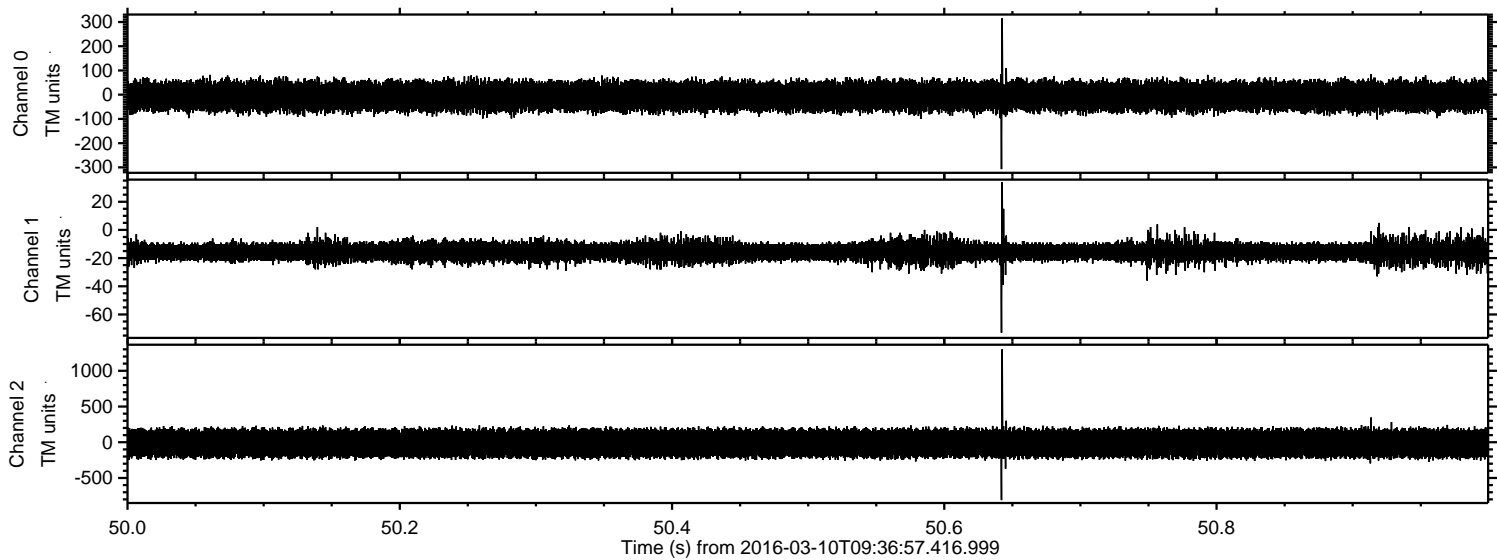
ELMAVAN 3D WAVEFORMS (Measured data sampled at 50 kHz) 51000 packets of 144 samples from 2016-03-10T09:36:57.416.999. Part 123/147

Processed Tue Apr 19 11:56:00 2016 by ELM ver.2012-10-06 from 001\_\_elm20160310\_093656\_\_dat00.bin





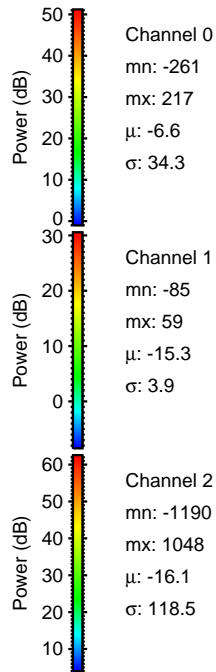
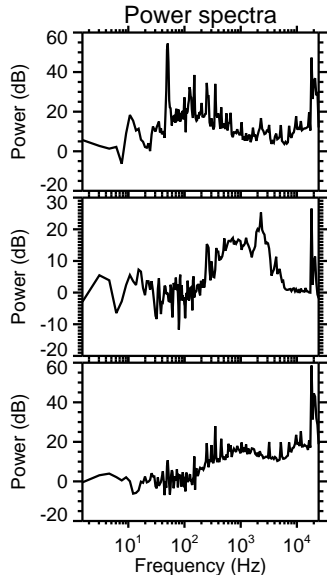
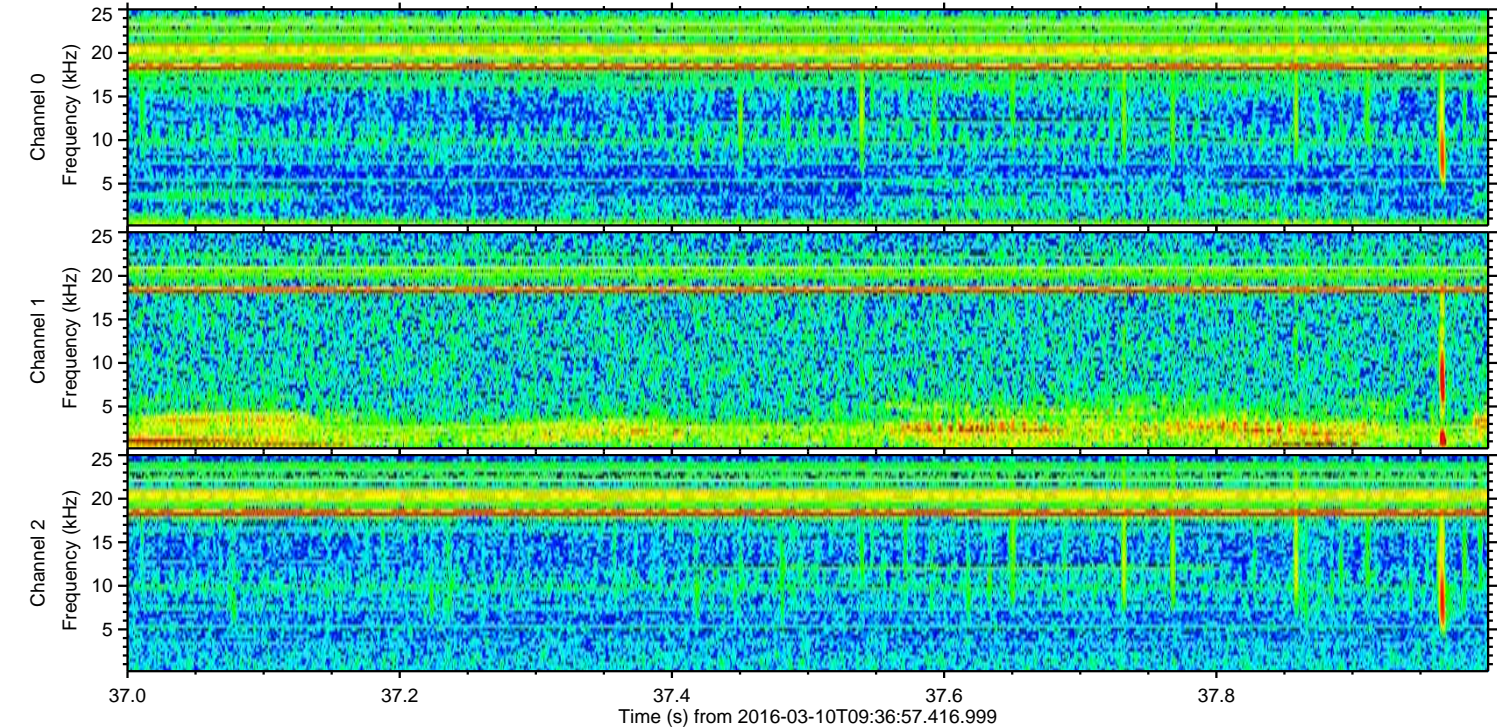
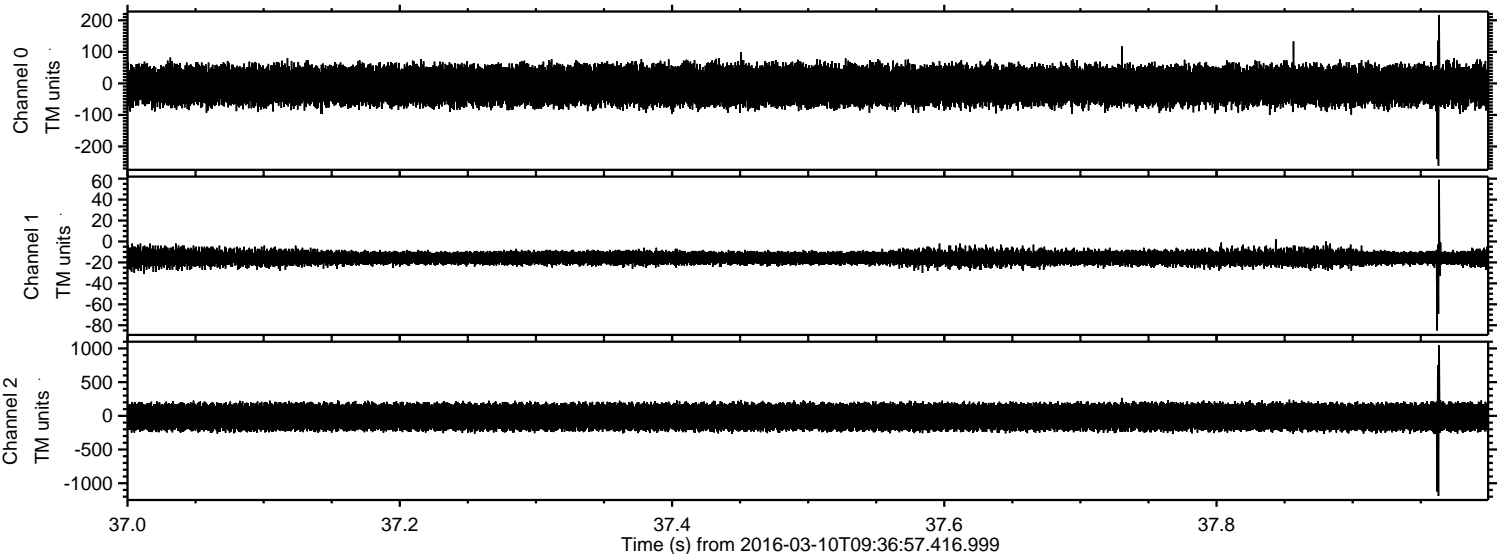
Processed Tue Apr 19 11:56:01 2016 by ELM ver.2012-10-06 from 001\_\_elm20160310\_093656\_\_dat00.bin





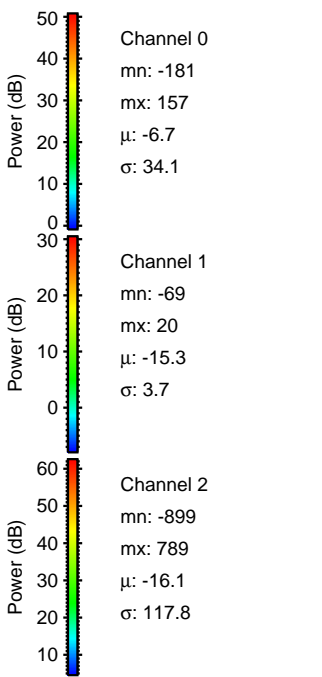
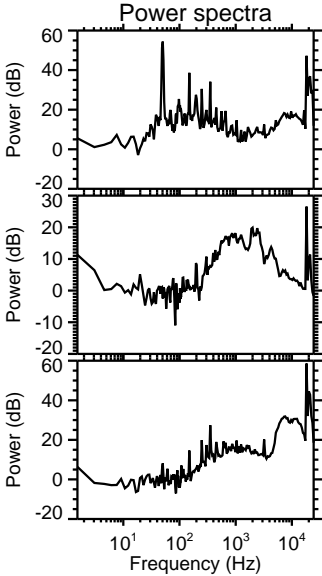
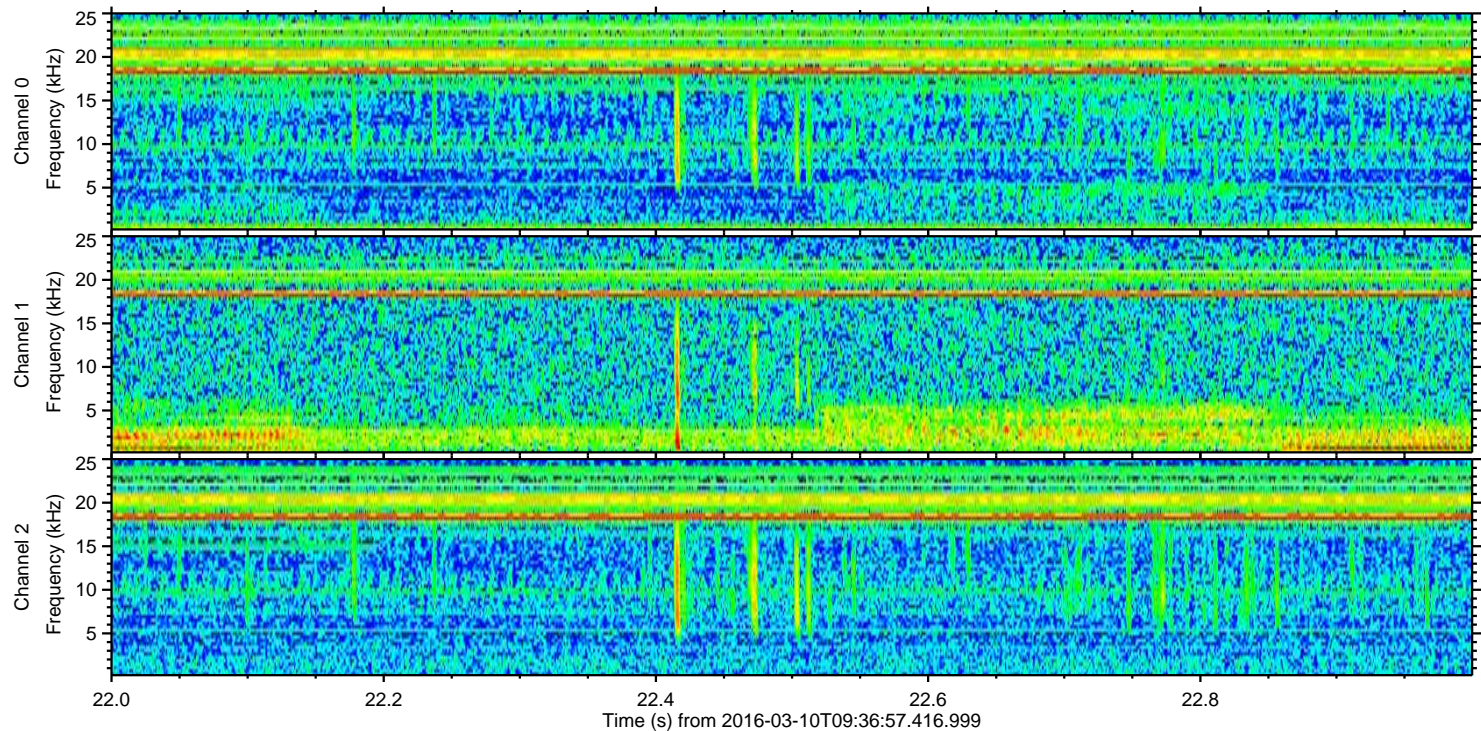
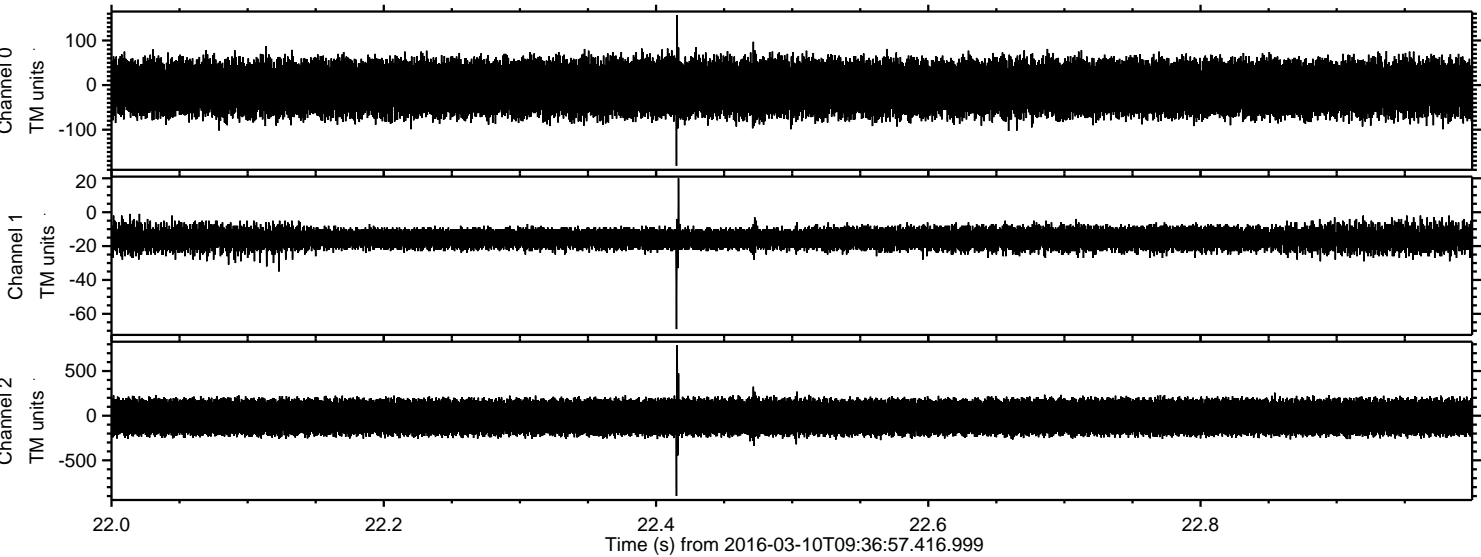
ELMAVAN 3D WAVEFORMS (Measured data sampled at 50 kHz) 51000 packets of 144 samples from 2016-03-10T09:36:57.416.999. Part 38/147

Processed Tue Apr 19 11:56:02 2016 by ELM ver.2012-10-06 from 001\_\_elm20160310\_093656\_\_dat00.bin



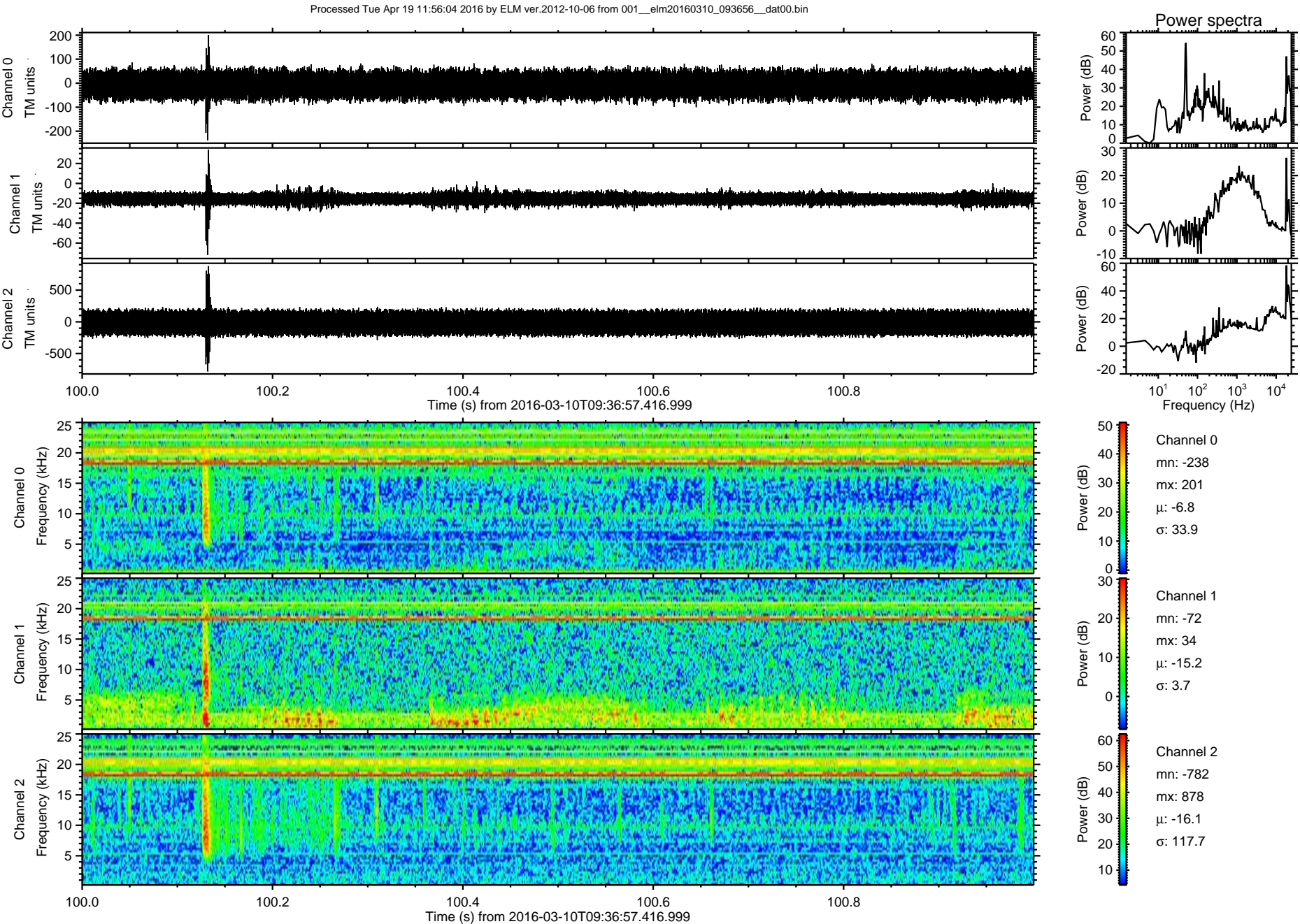


Processed Tue Apr 19 11:56:03 2016 by ELM ver.2012-10-06 from 001\_\_elm20160310\_093656\_\_dat00.bin





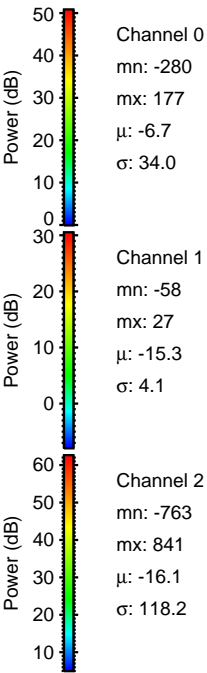
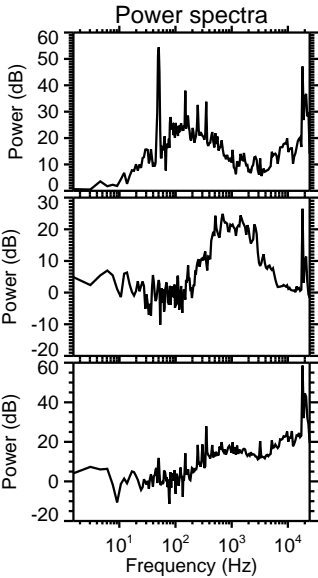
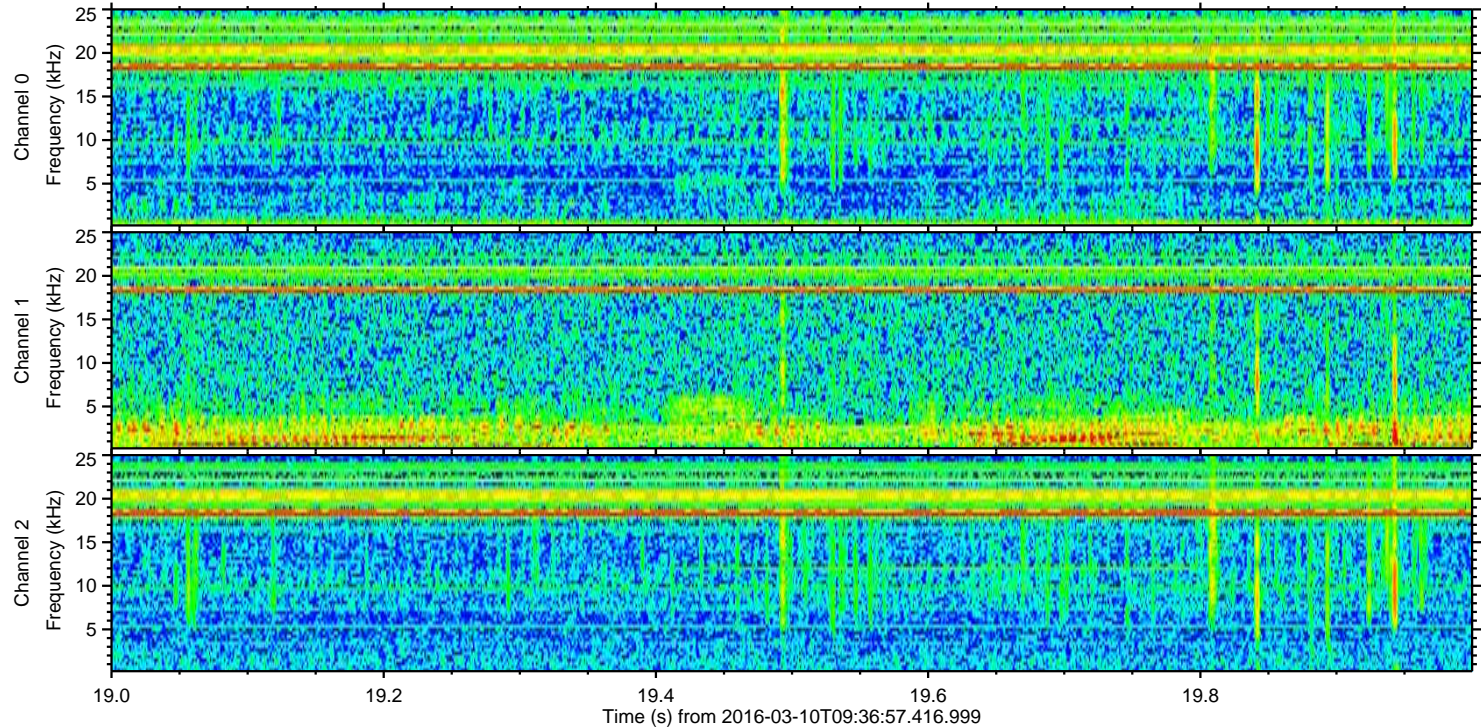
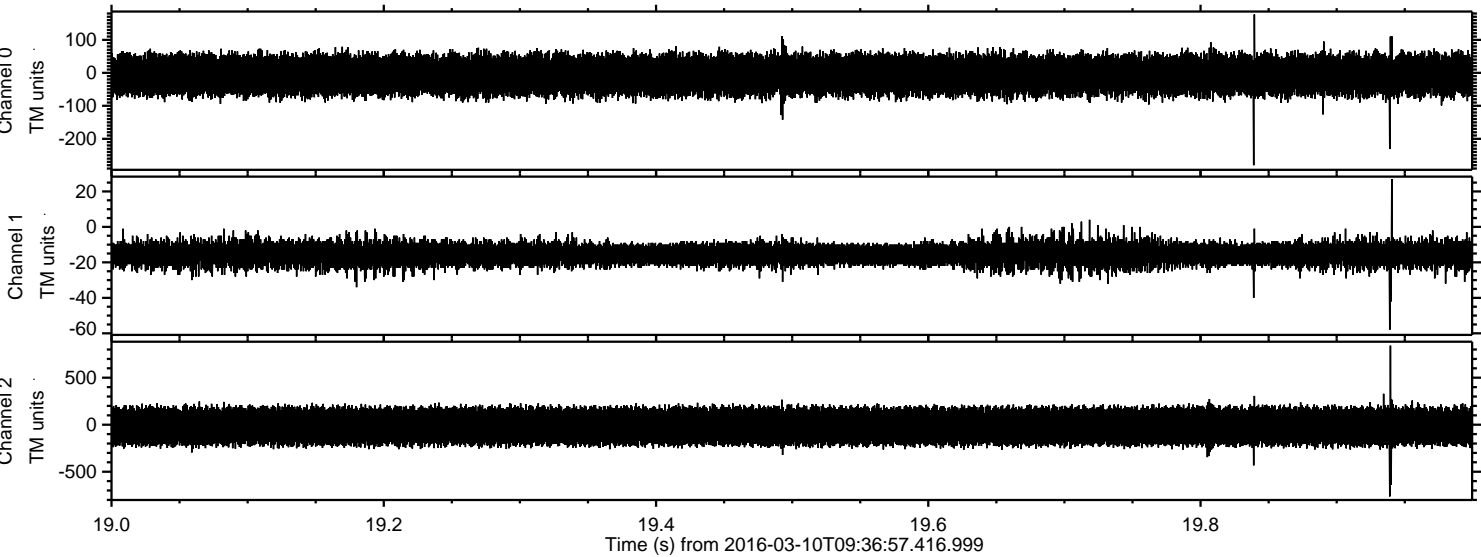
ELMAVAN 3D WAVEFORMS (Measured data sampled at 50 kHz) 51000 packets of 144 samples from 2016-03-10T09:36:57.416.999. Part 101/147





ELMAVAN 3D WAVEFORMS (Measured data sampled at 50 kHz) 51000 packets of 144 samples from 2016-03-10T09:36:57.416.999. Part 20/147

Processed Tue Apr 19 11:56:04 2016 by ELM ver.2012-10-06 from 001\_\_elm20160310\_093656\_\_dat00.bin



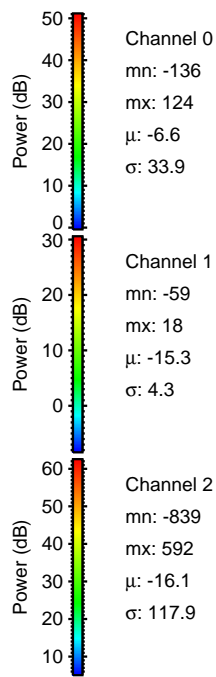
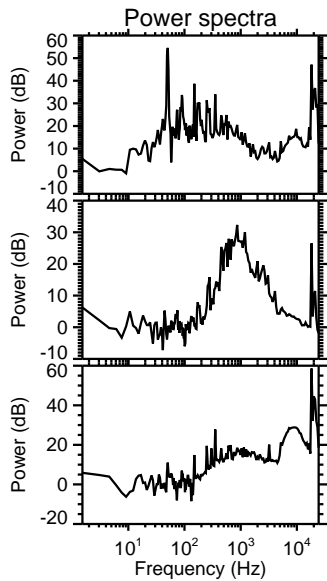
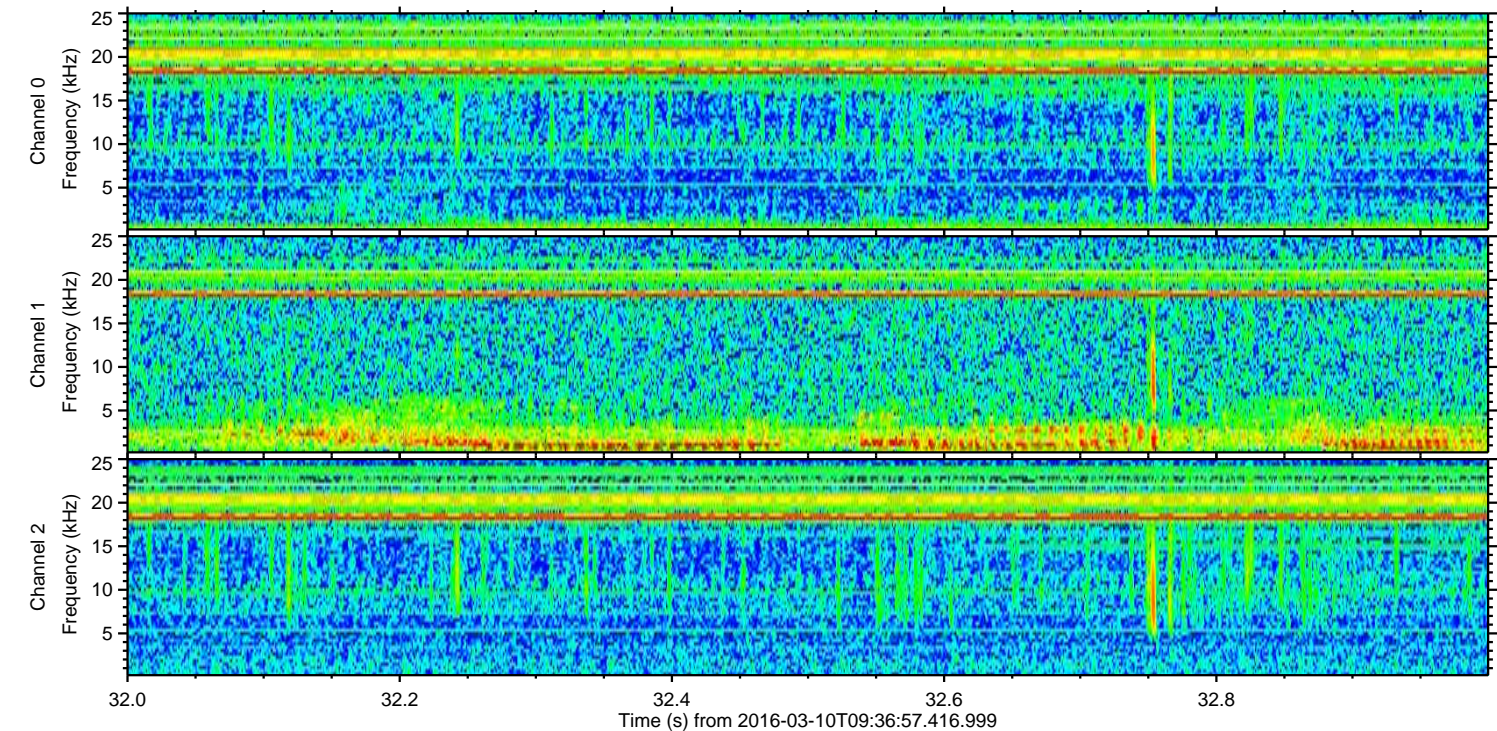
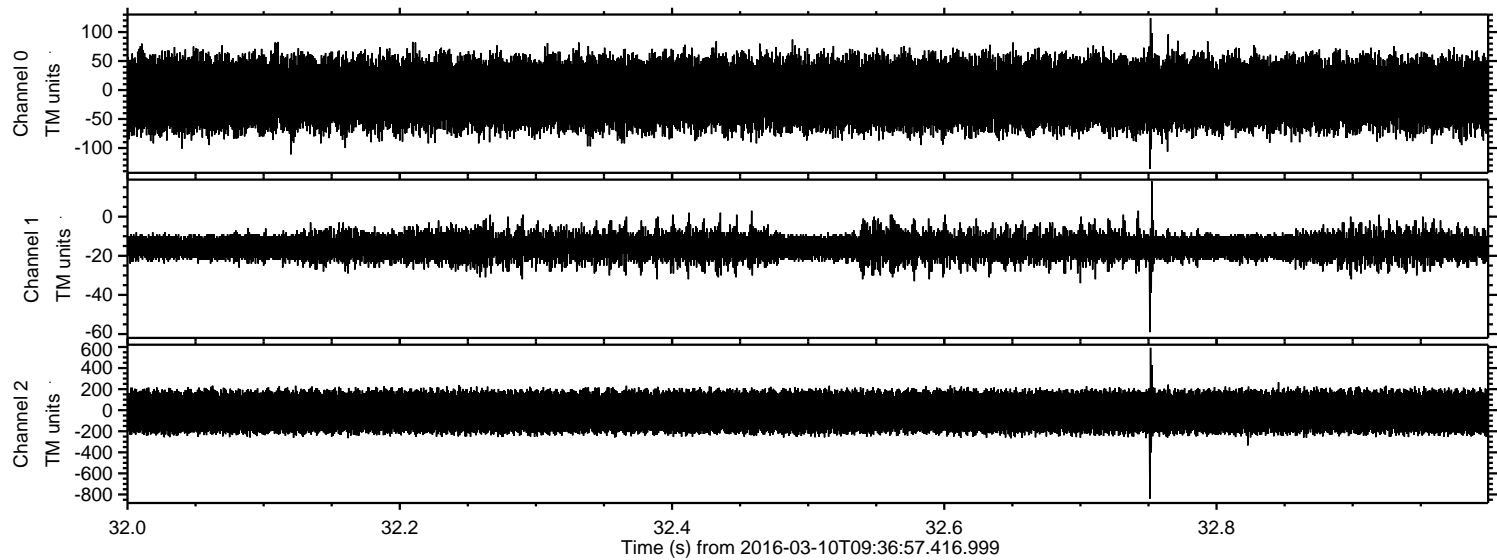
Channel 0  
mn: -280  
mx: 177  
 $\mu$ : -6.7  
 $\sigma$ : 34.0

Channel 1  
mn: -58  
mx: 27  
 $\mu$ : -15.3  
 $\sigma$ : 4.1

Channel 2  
mn: -763  
mx: 841  
 $\mu$ : -16.1  
 $\sigma$ : 118.2

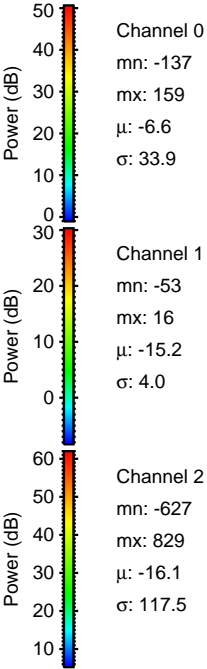
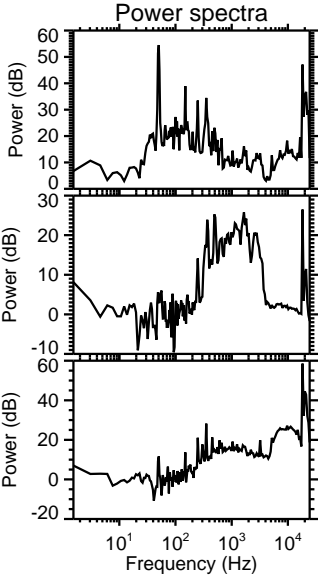
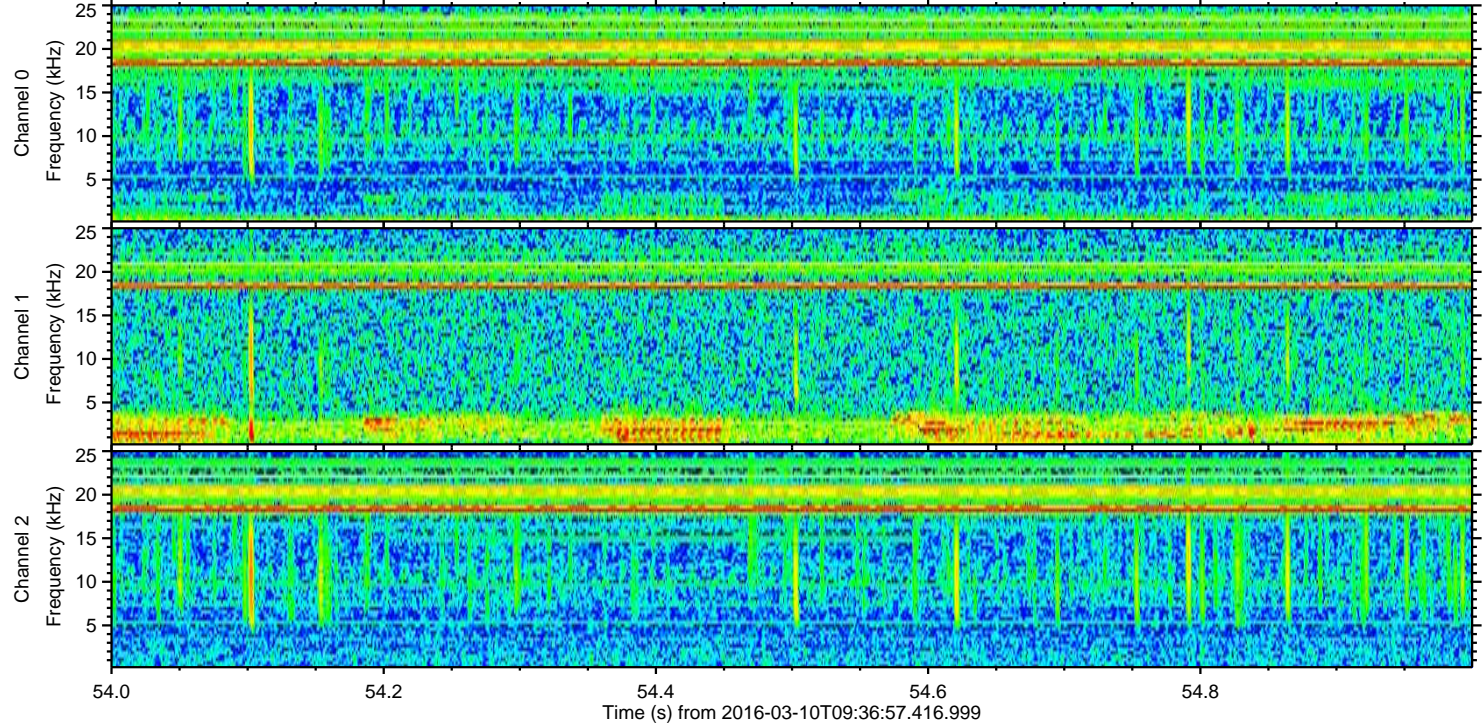
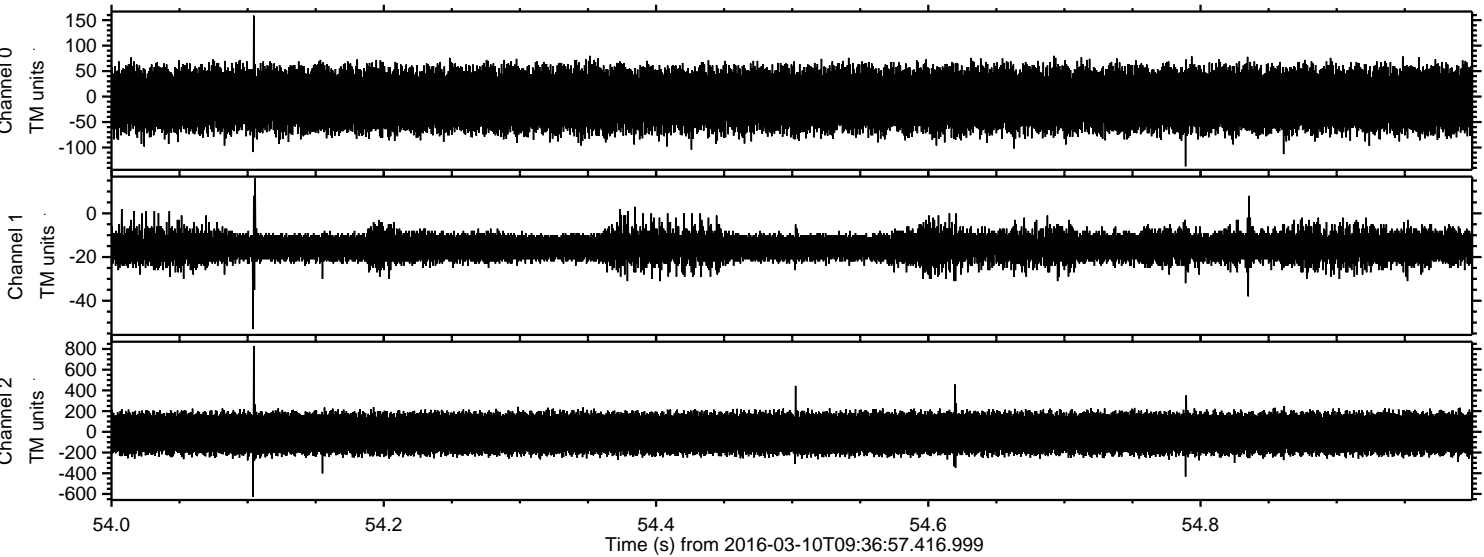


Processed Tue Apr 19 11:56:05 2016 by ELM ver.2012-10-06 from 001\_\_elm20160310\_093656\_\_dat00.bin





Processed Tue Apr 19 11:56:06 2016 by ELM ver.2012-10-06 from 001\_\_elm20160310\_093656\_\_dat00.bin





Processed Tue Apr 19 11:56:07 2016 by ELM ver.2012-10-06 from 001\_\_elm20160310\_093656\_\_dat00.bin

