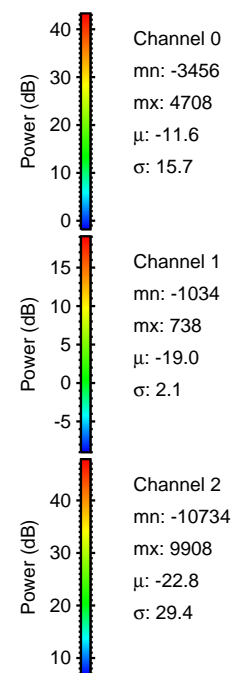
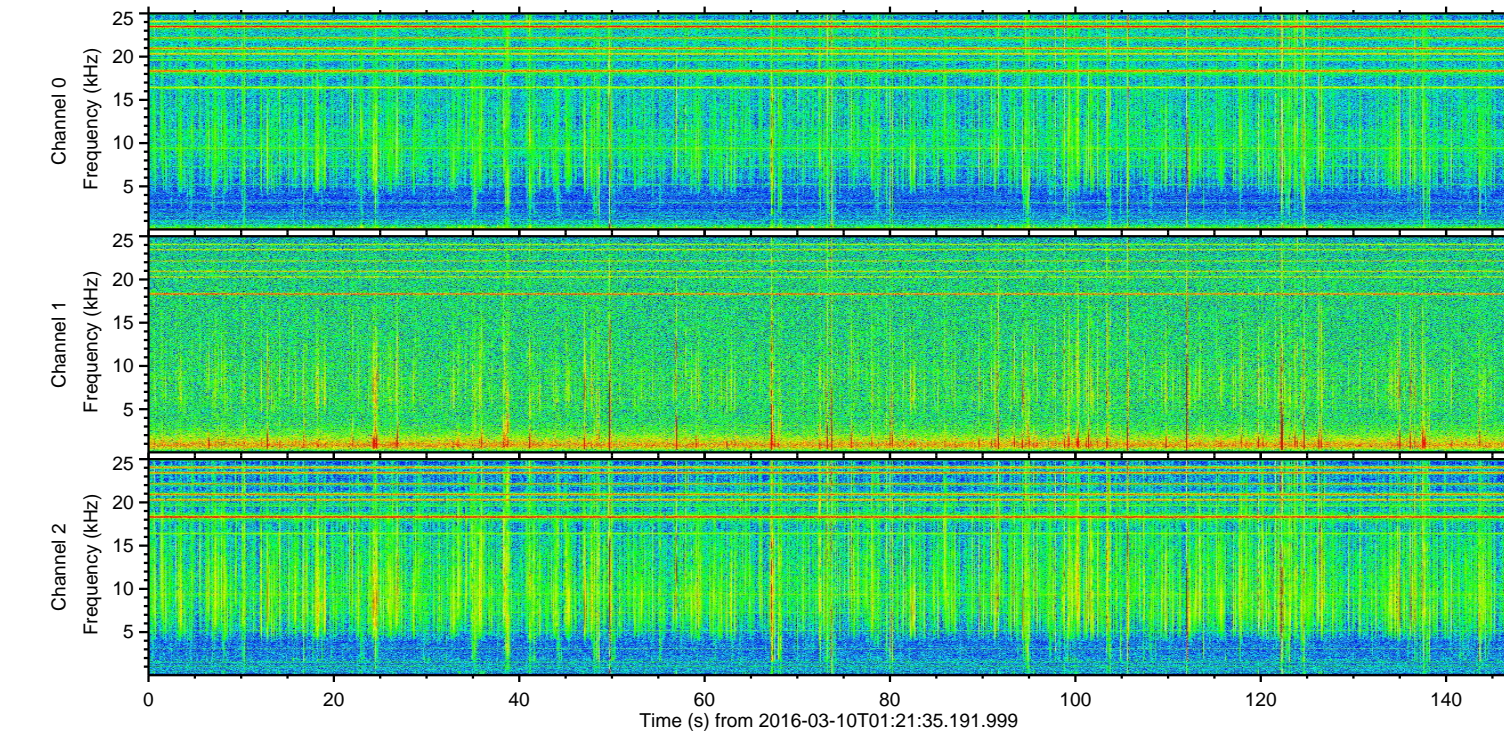
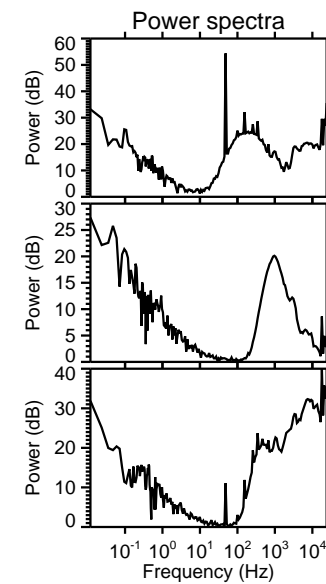
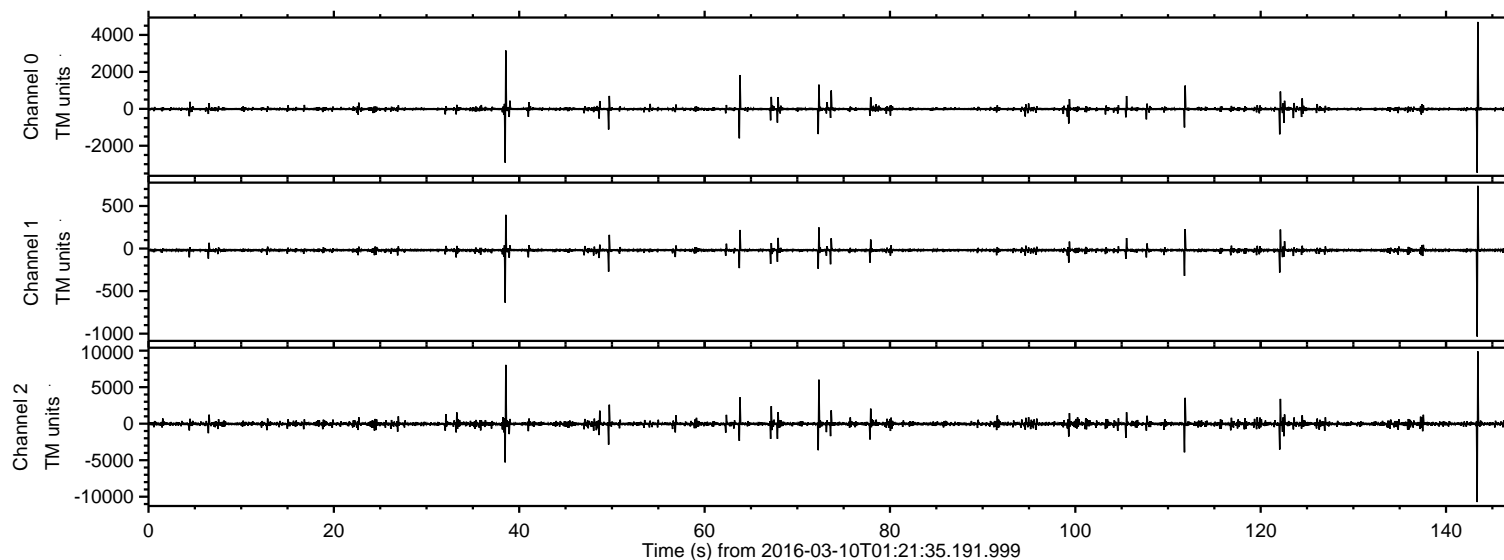


# ELMAVAN 3D WAVEFORMS (Measured data sampled at 50 kHz) 51000 packets of 144 samples from 2016-03-10T01:21:35.191.999.

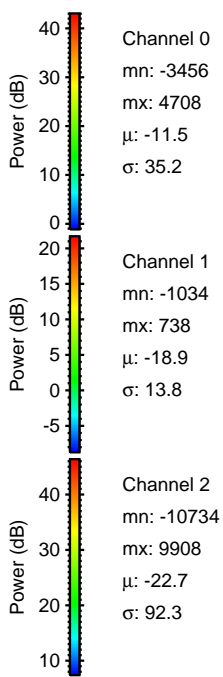
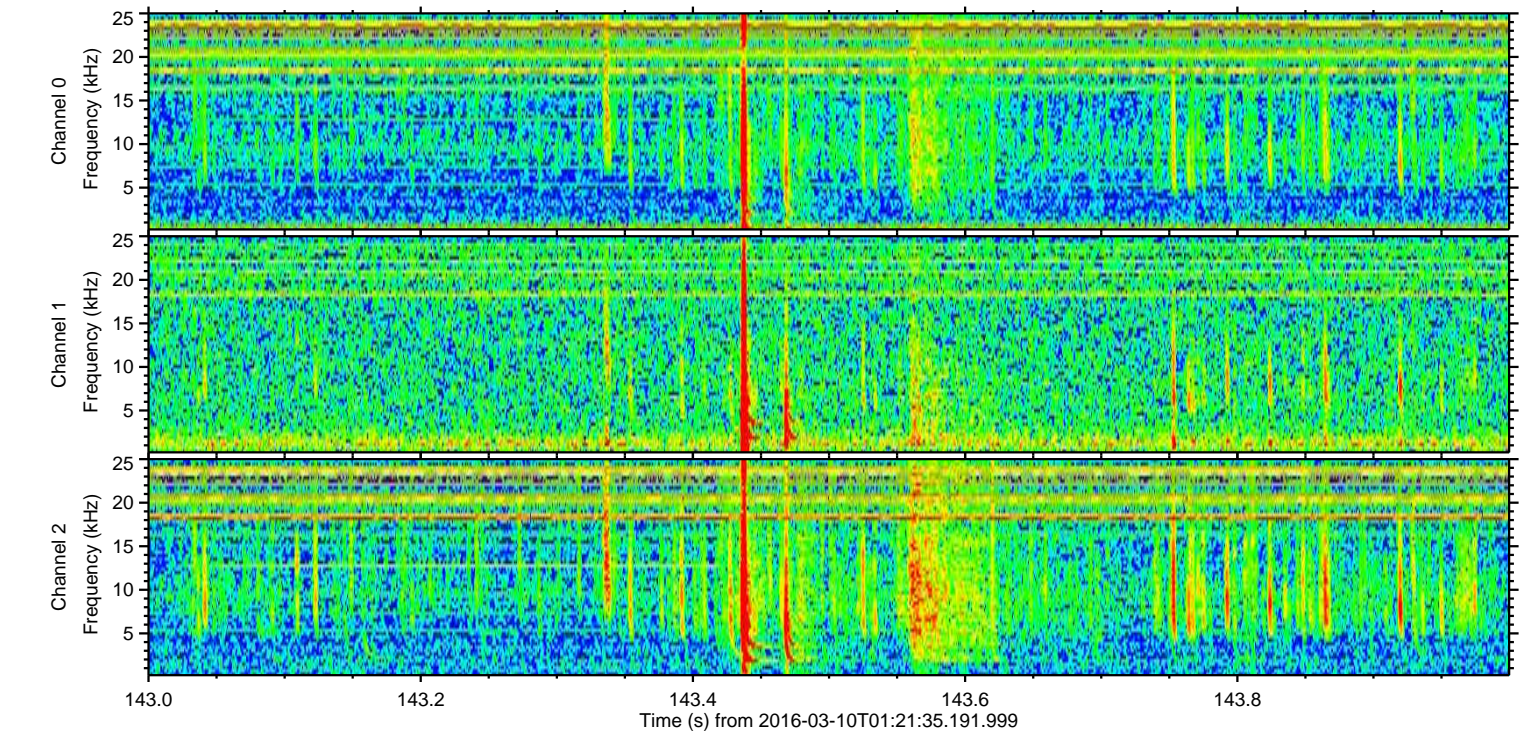
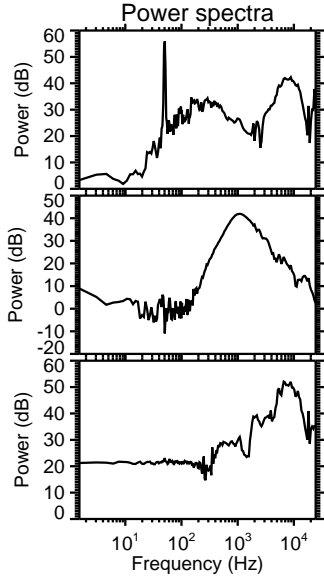
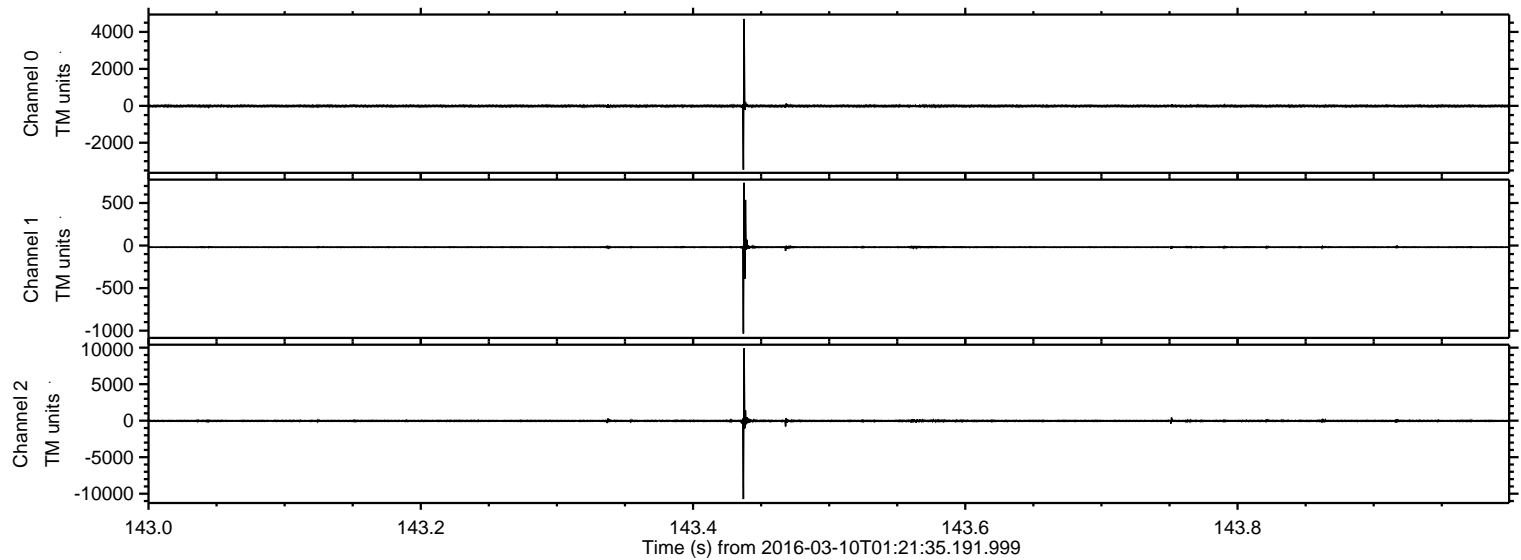
Processed Tue Apr 19 10:15:09 2016 by ELM ver.2012-10-06 from 001\_\_elm20160310\_012134\_\_dat00.bin





ELMAVAN 3D WAVEFORMS (Measured data sampled at 50 kHz) 51000 packets of 144 samples from 2016-03-10T01:21:35.191.999. Part 144/147

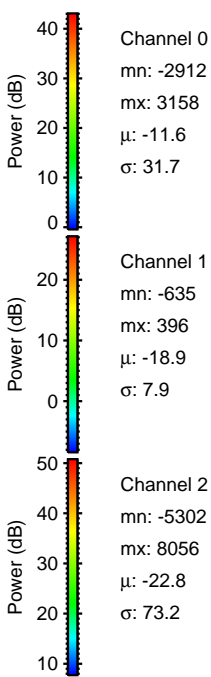
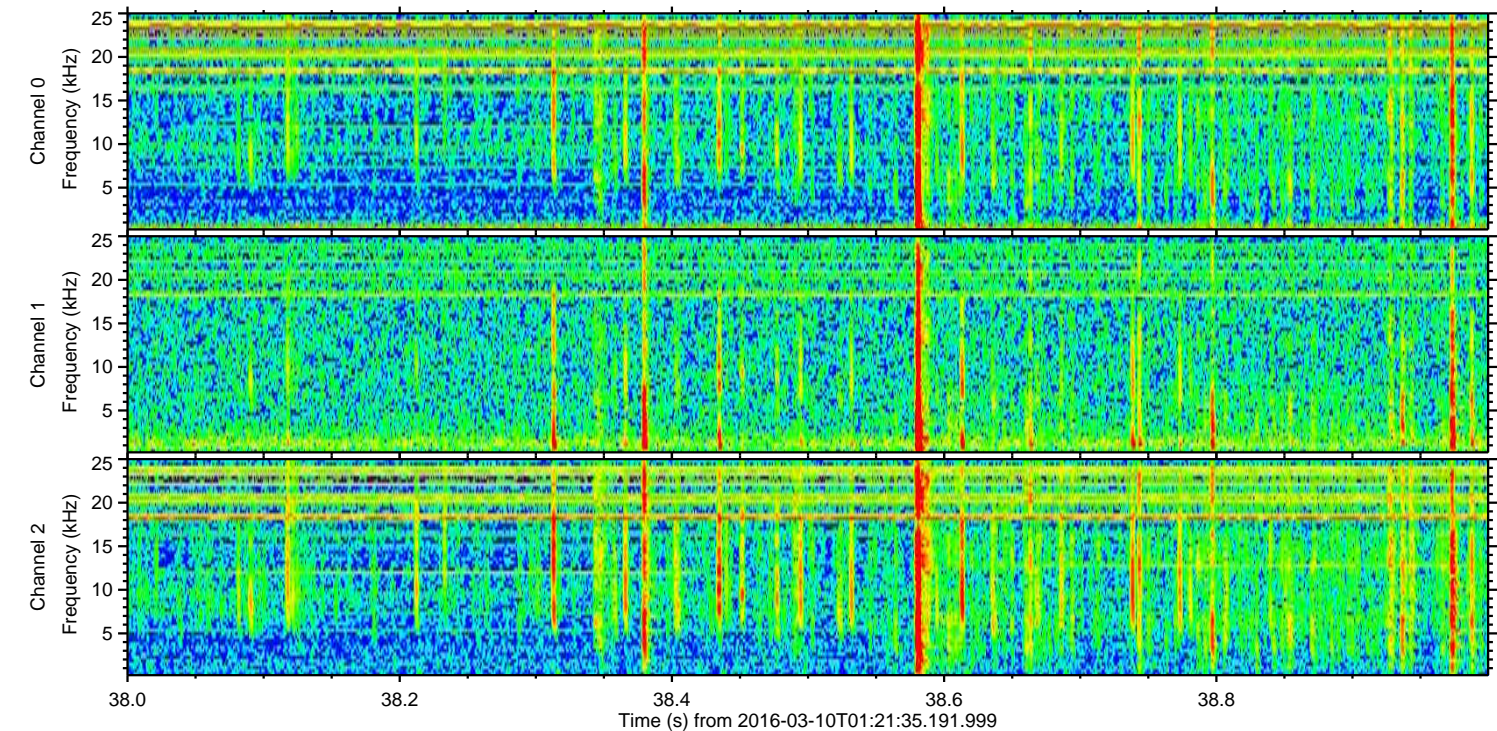
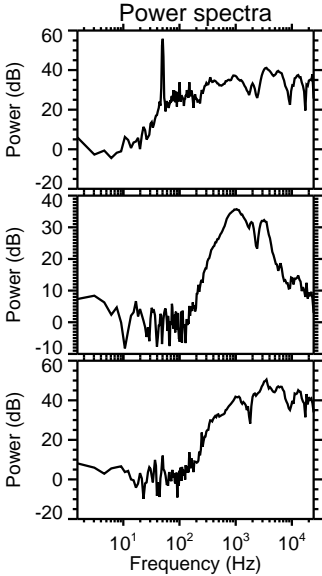
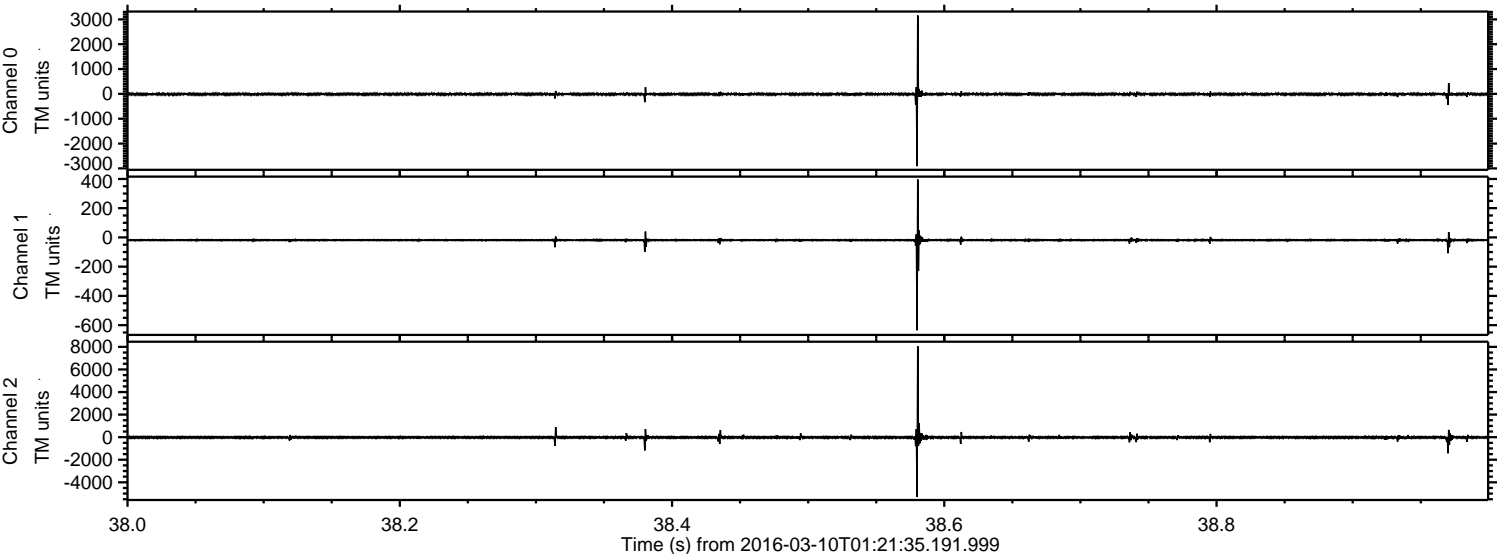
Processed Tue Apr 19 10:15:20 2016 by ELM ver.2012-10-06 from 001\_\_elm20160310\_012134\_\_dat00.bin





ELMAVAN 3D WAVEFORMS (Measured data sampled at 50 kHz) 51000 packets of 144 samples from 2016-03-10T01:21:35.191.999. Part 39/147

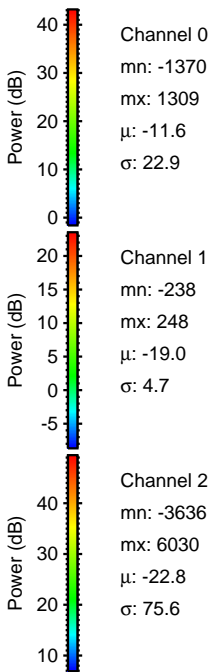
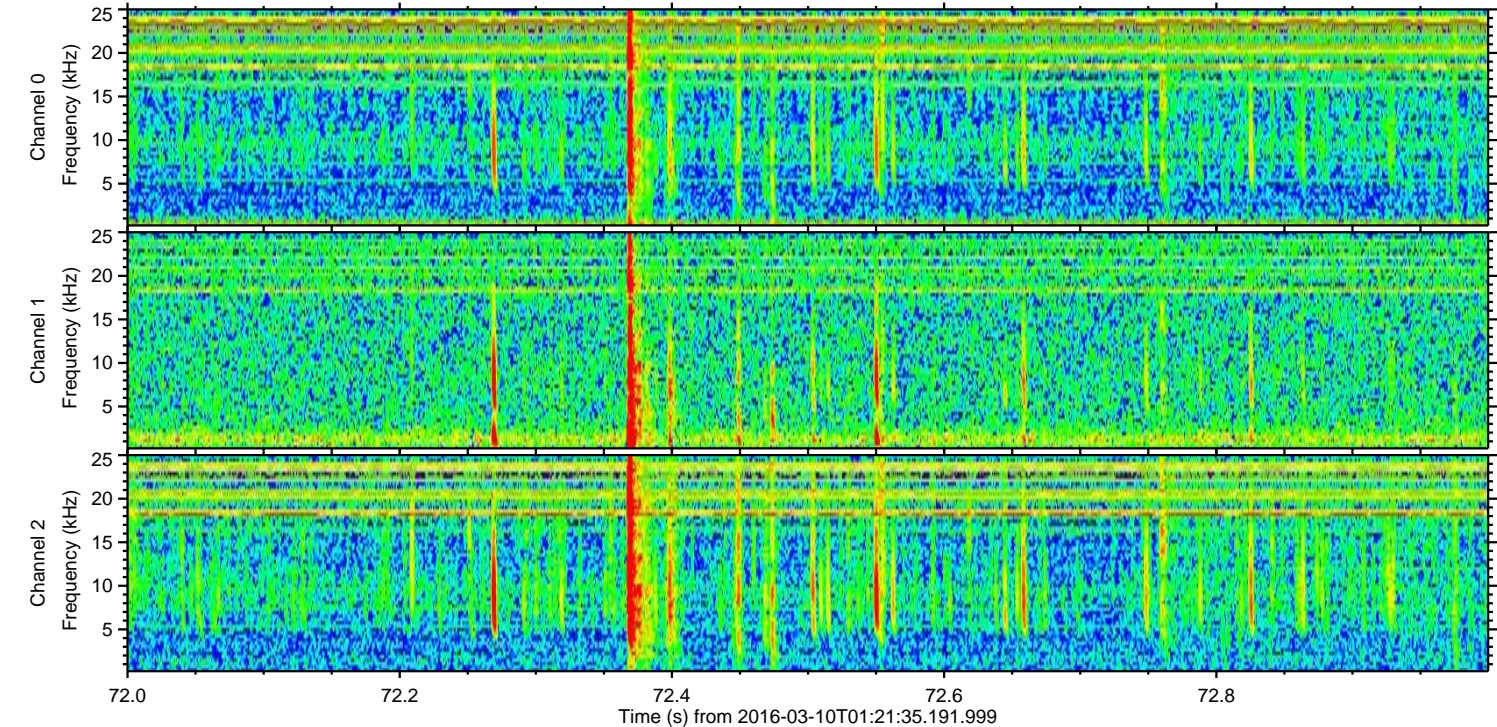
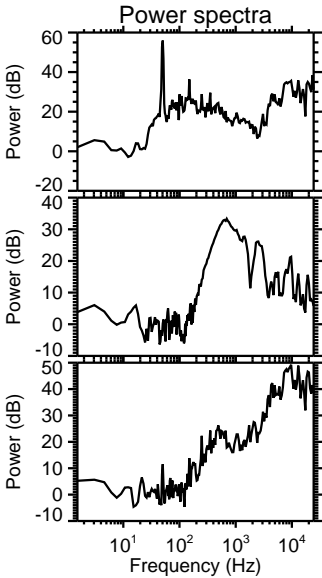
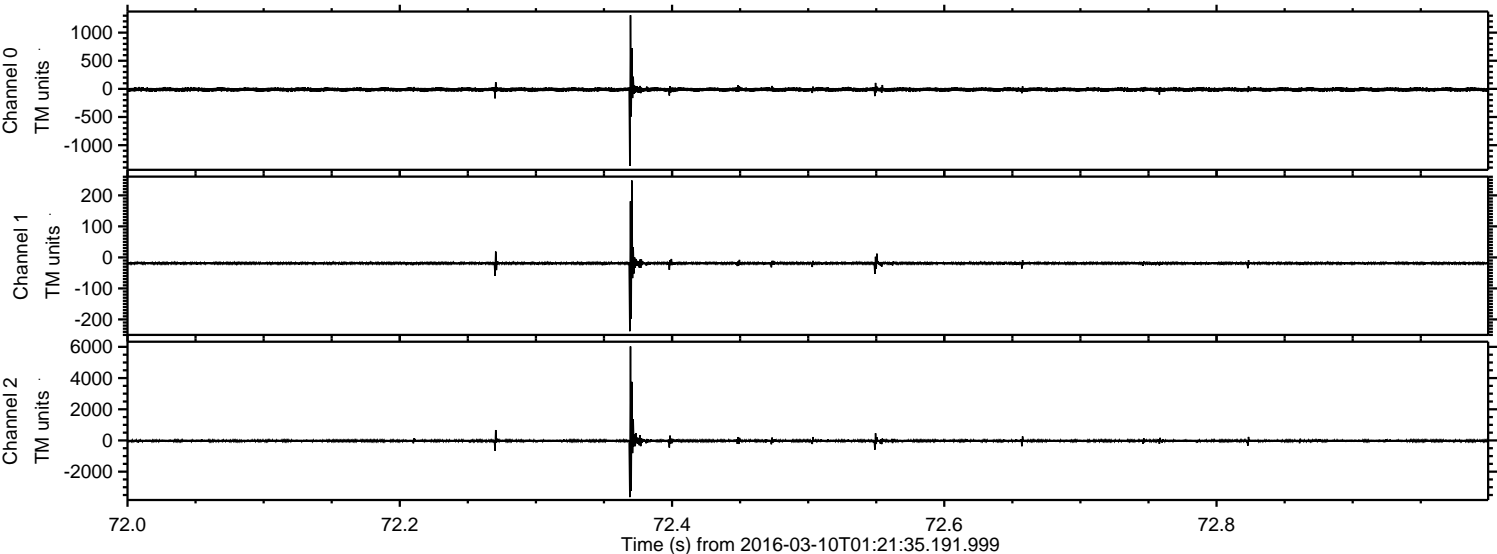
Processed Tue Apr 19 10:15:21 2016 by ELM ver.2012-10-06 from 001\_\_elm20160310\_012134\_\_dat00.bin





ELMAVAN 3D WAVEFORMS (Measured data sampled at 50 kHz) 51000 packets of 144 samples from 2016-03-10T01:21:35.191.999. Part 73/147

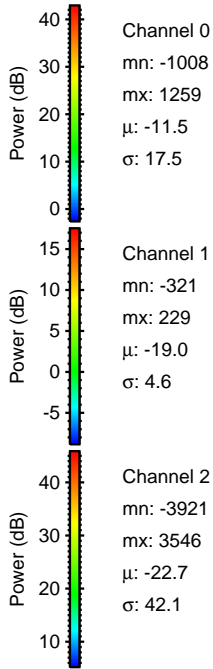
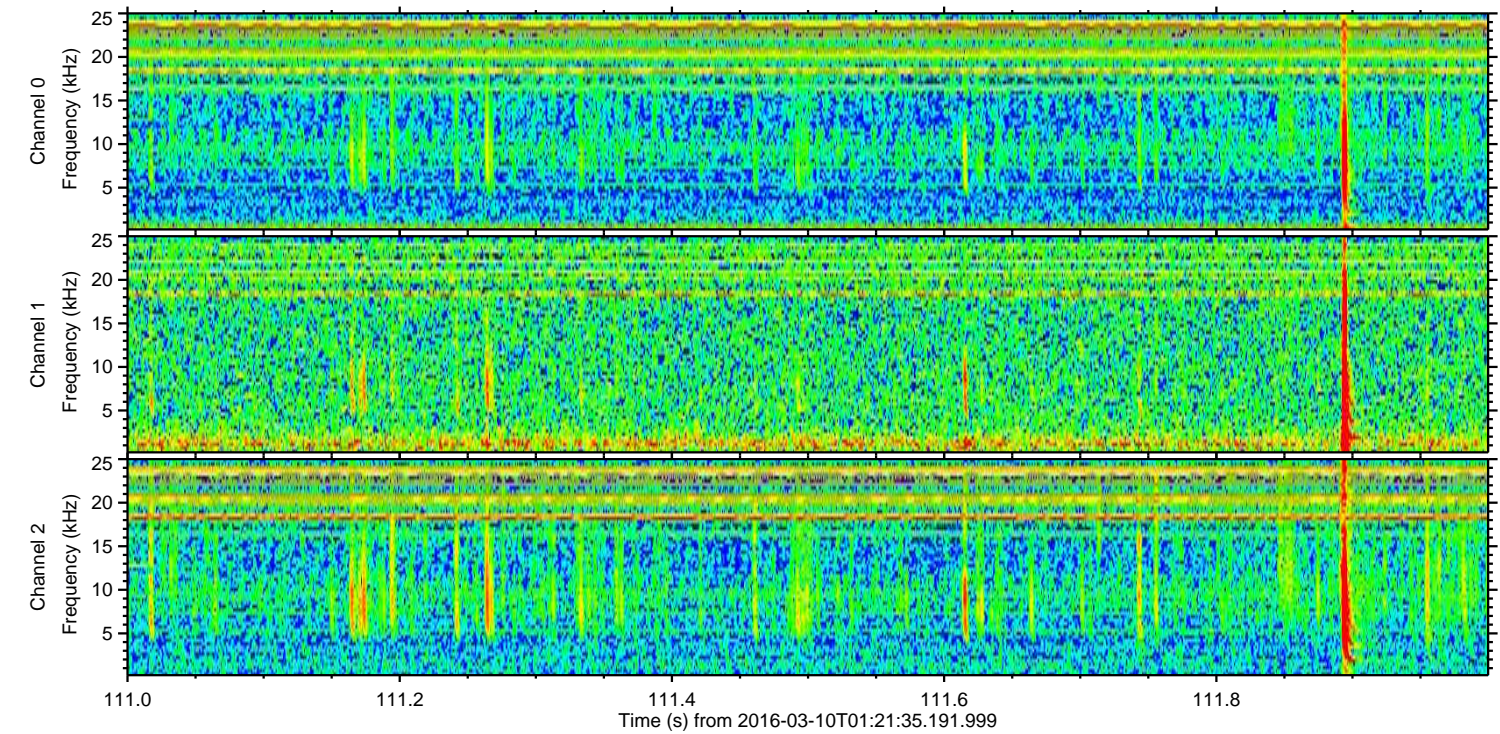
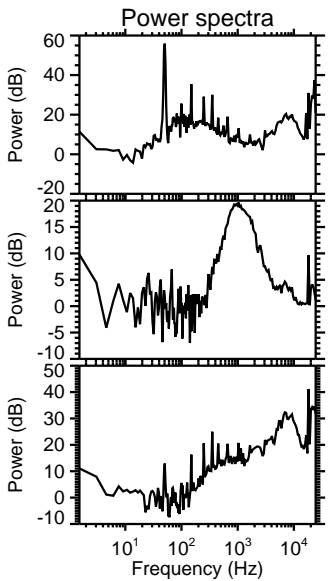
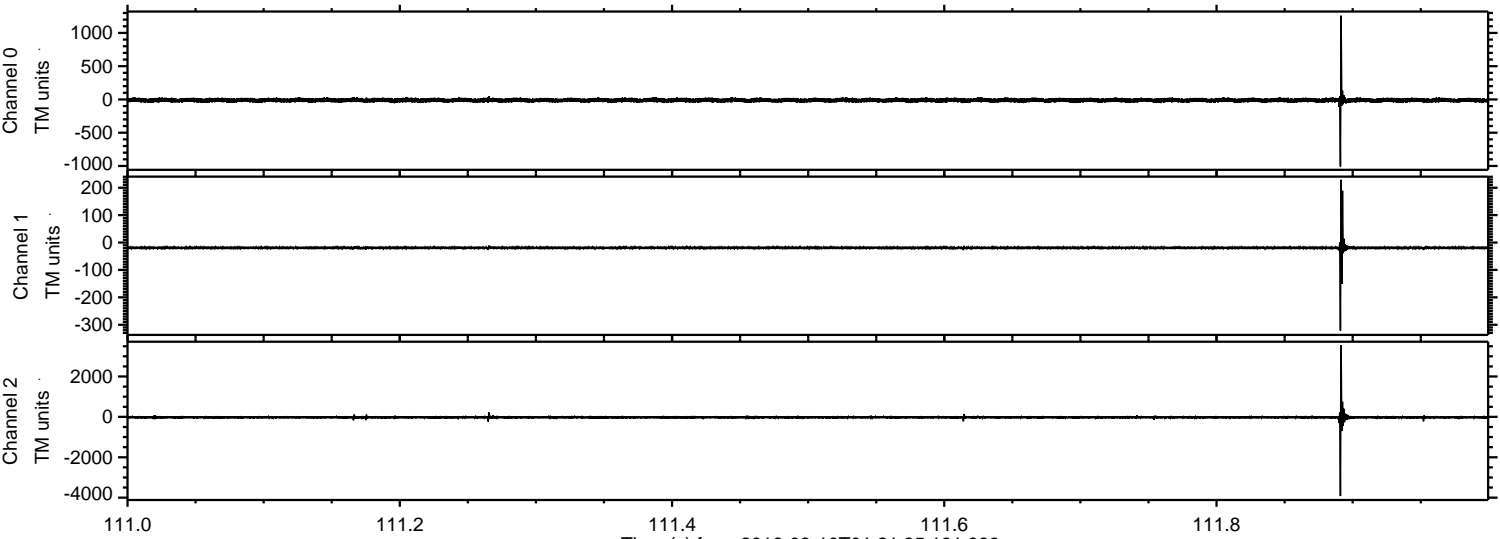
Processed Tue Apr 19 10:15:22 2016 by ELM ver.2012-10-06 from 001\_\_elm20160310\_012134\_\_dat00.bin





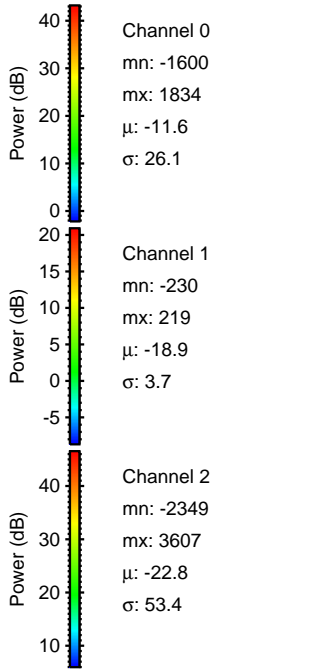
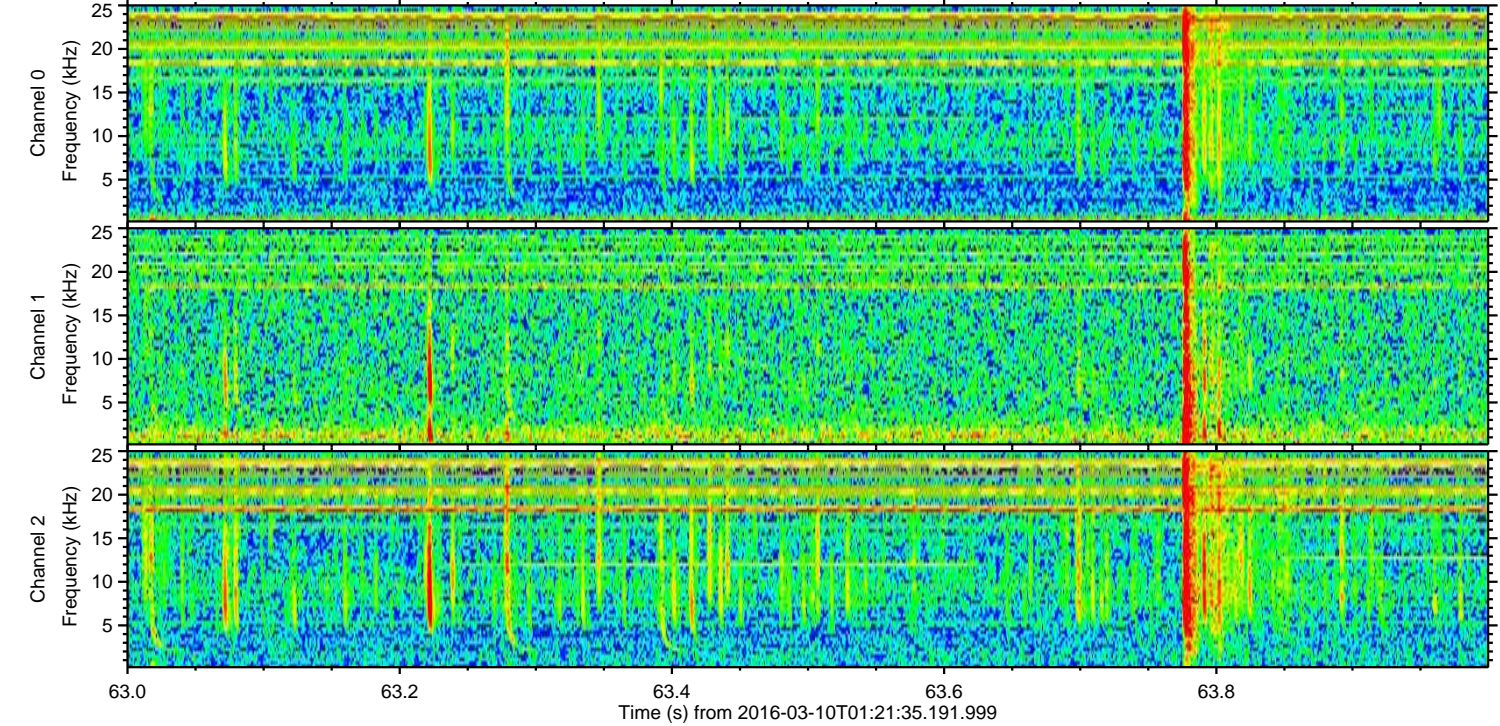
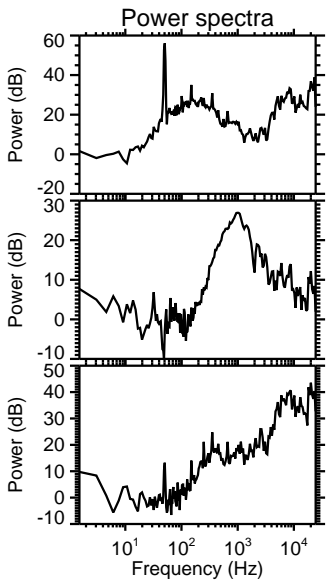
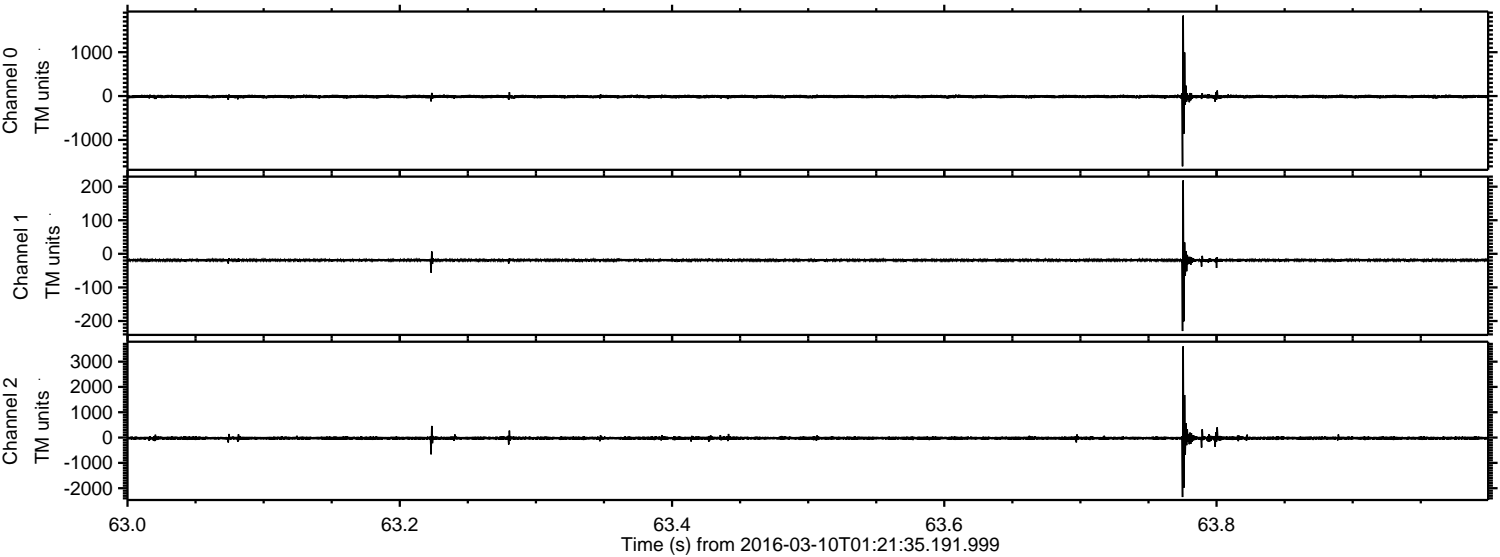
ELMAVAN 3D WAVEFORMS (Measured data sampled at 50 kHz) 51000 packets of 144 samples from 2016-03-10T01:21:35.191.999. Part 112/147

Processed Tue Apr 19 10:15:23 2016 by ELM ver.2012-10-06 from 001\_\_elm20160310\_012134\_\_dat00.bin





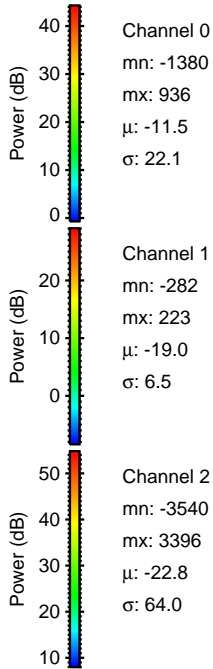
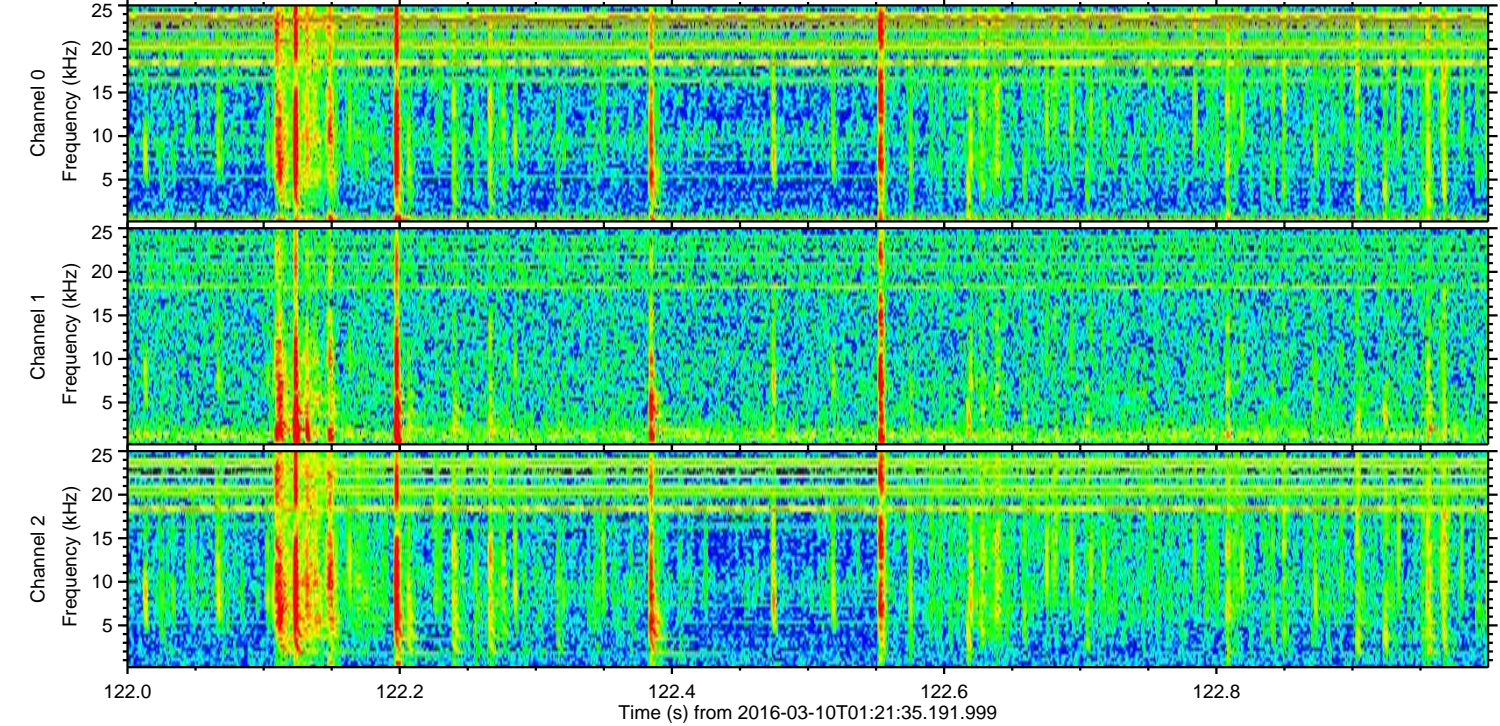
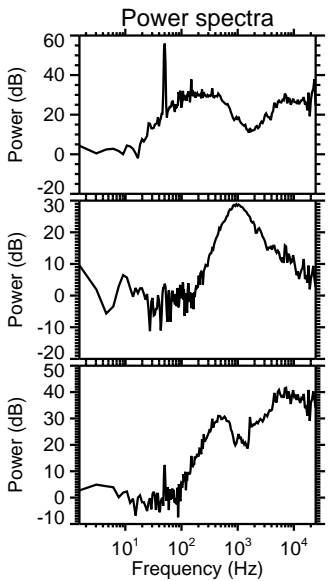
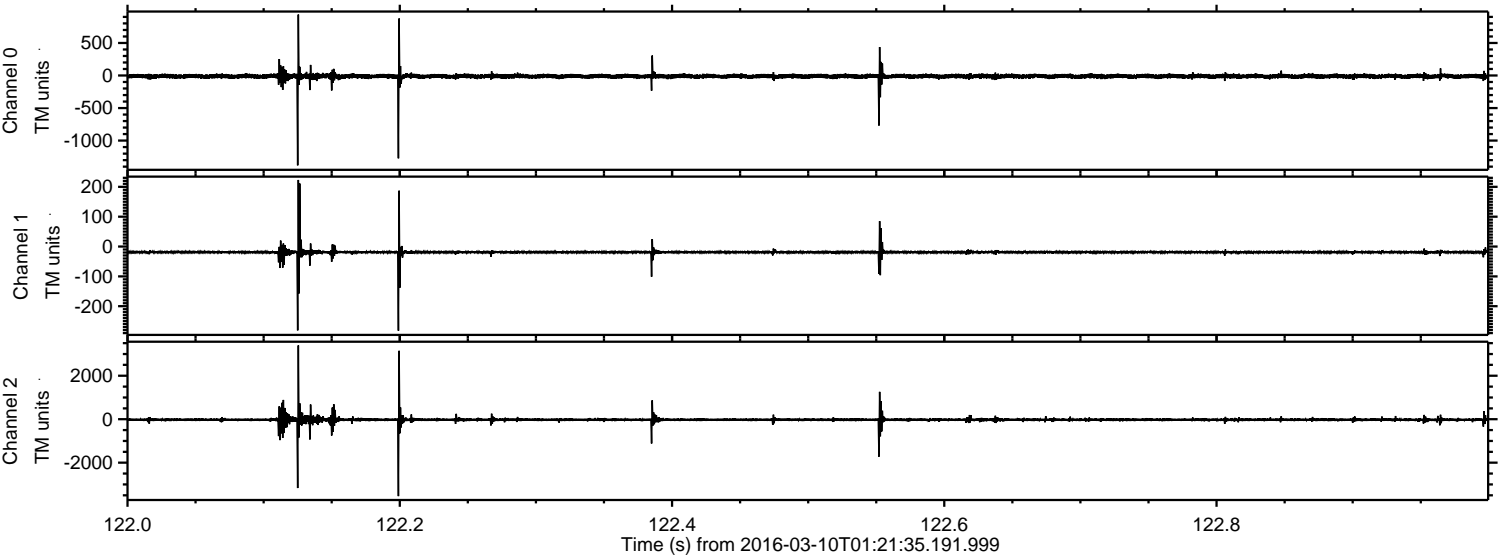
Processed Tue Apr 19 10:15:24 2016 by ELM ver.2012-10-06 from 001\_\_elm20160310\_012134\_\_dat00.bin





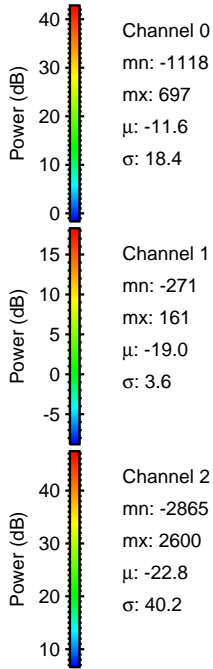
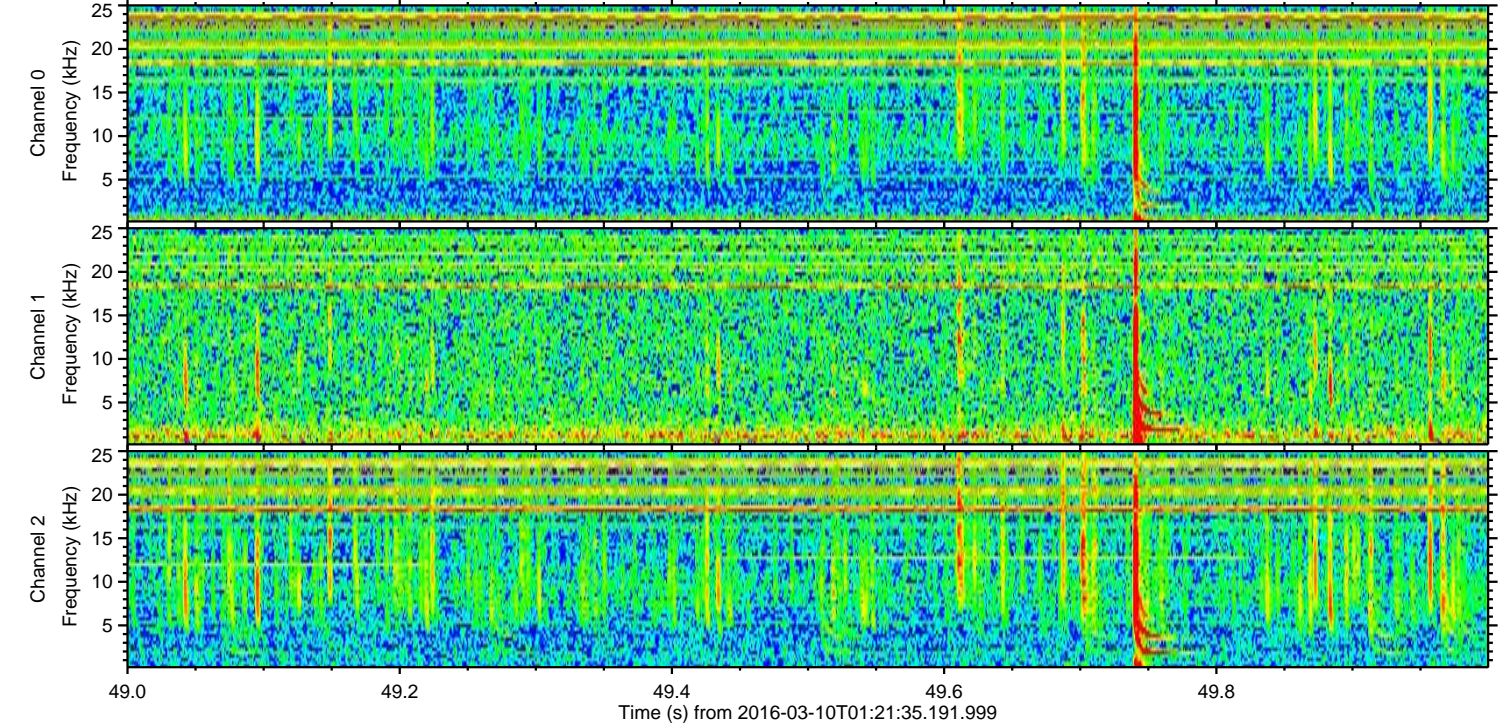
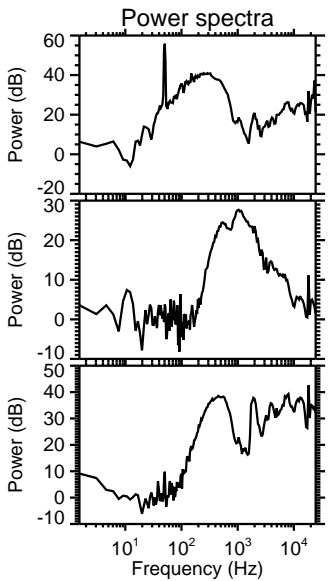
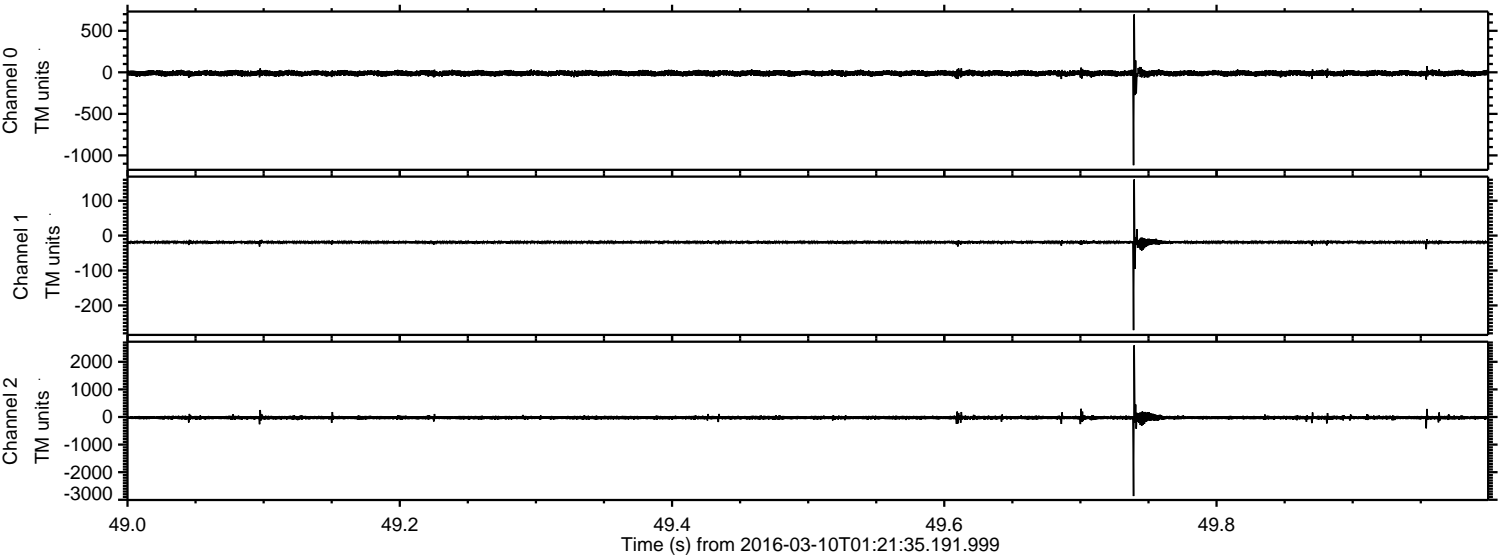
ELMAVAN 3D WAVEFORMS (Measured data sampled at 50 kHz) 51000 packets of 144 samples from 2016-03-10T01:21:35.191.999. Part 123/147

Processed Tue Apr 19 10:15:25 2016 by ELM ver.2012-10-06 from 001\_\_elm20160310\_012134\_\_dat00.bin





Processed Tue Apr 19 10:15:26 2016 by ELM ver.2012-10-06 from 001\_\_elm20160310\_012134\_\_dat00.bin



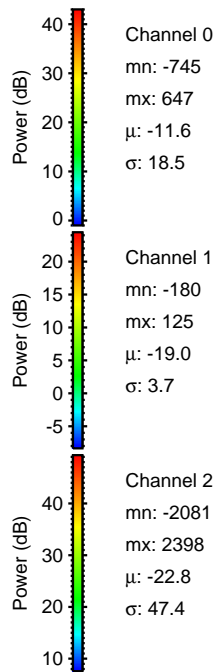
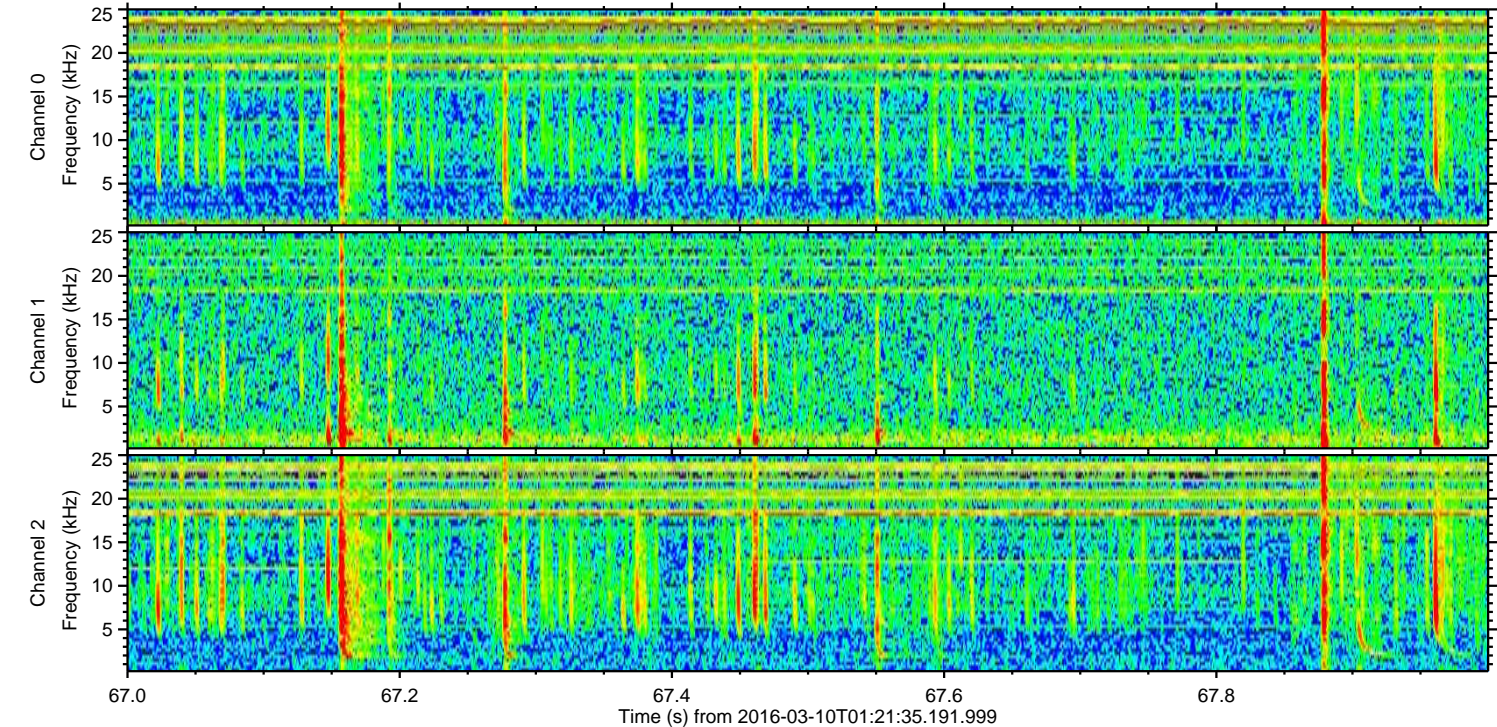
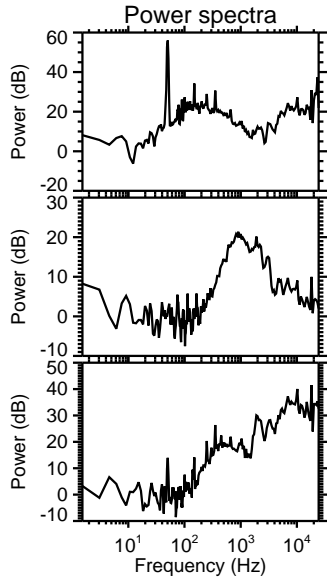
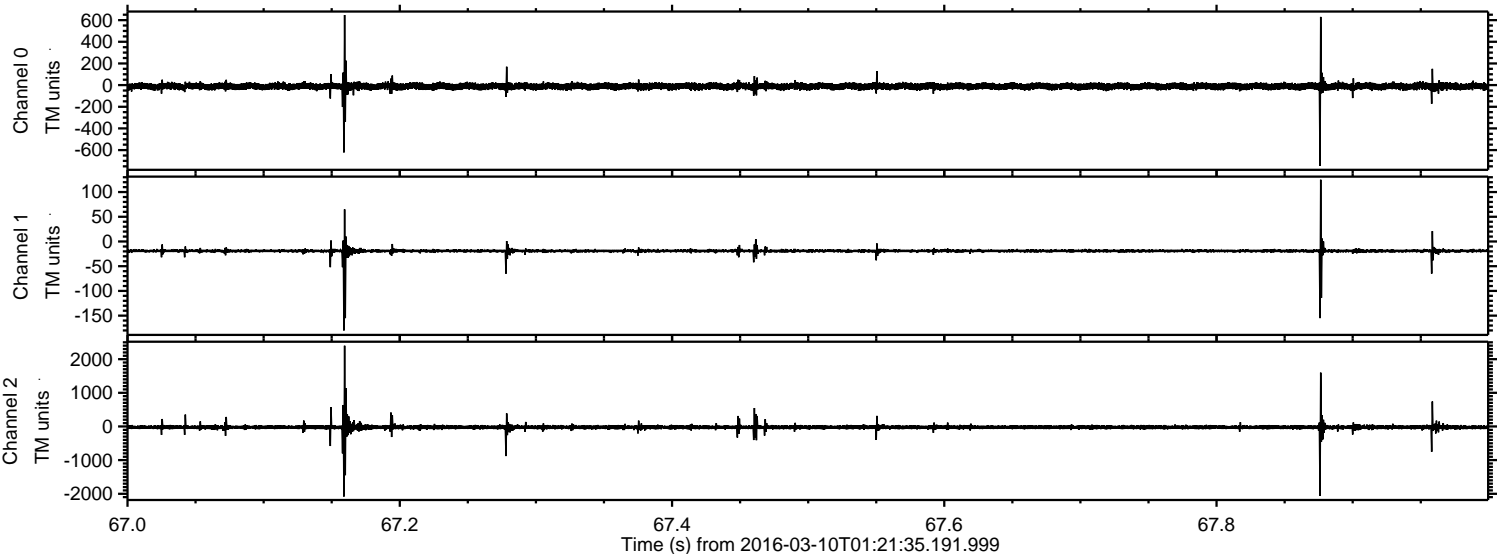
Channel 0  
mn: -1118  
mx: 697  
 $\mu$ : -11.6  
 $\sigma$ : 18.4

Channel 1  
mn: -271  
mx: 161  
 $\mu$ : -19.0  
 $\sigma$ : 3.6

Channel 2  
mn: -2865  
mx: 2600  
 $\mu$ : -22.8  
 $\sigma$ : 40.2

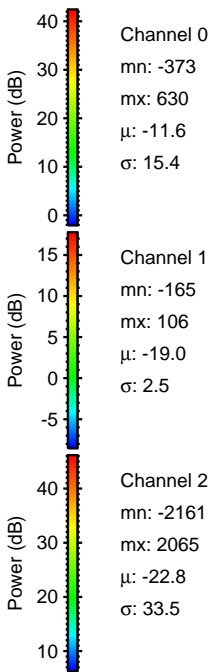
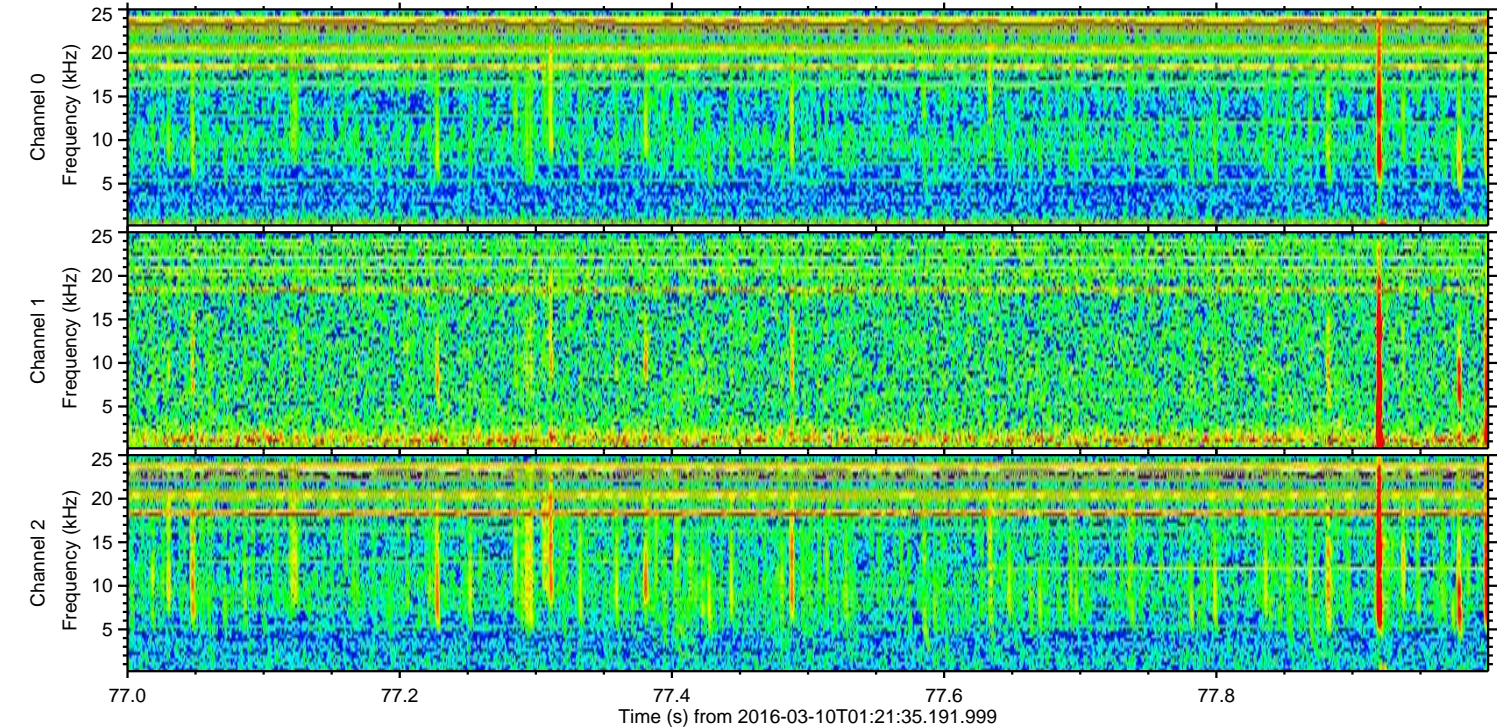
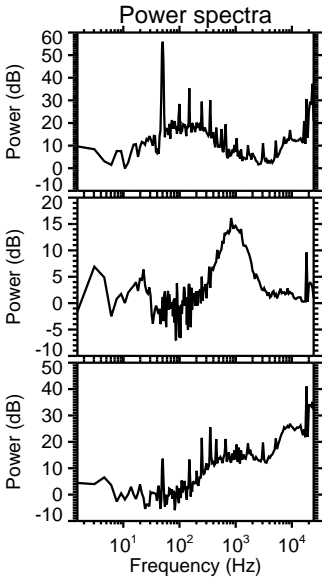
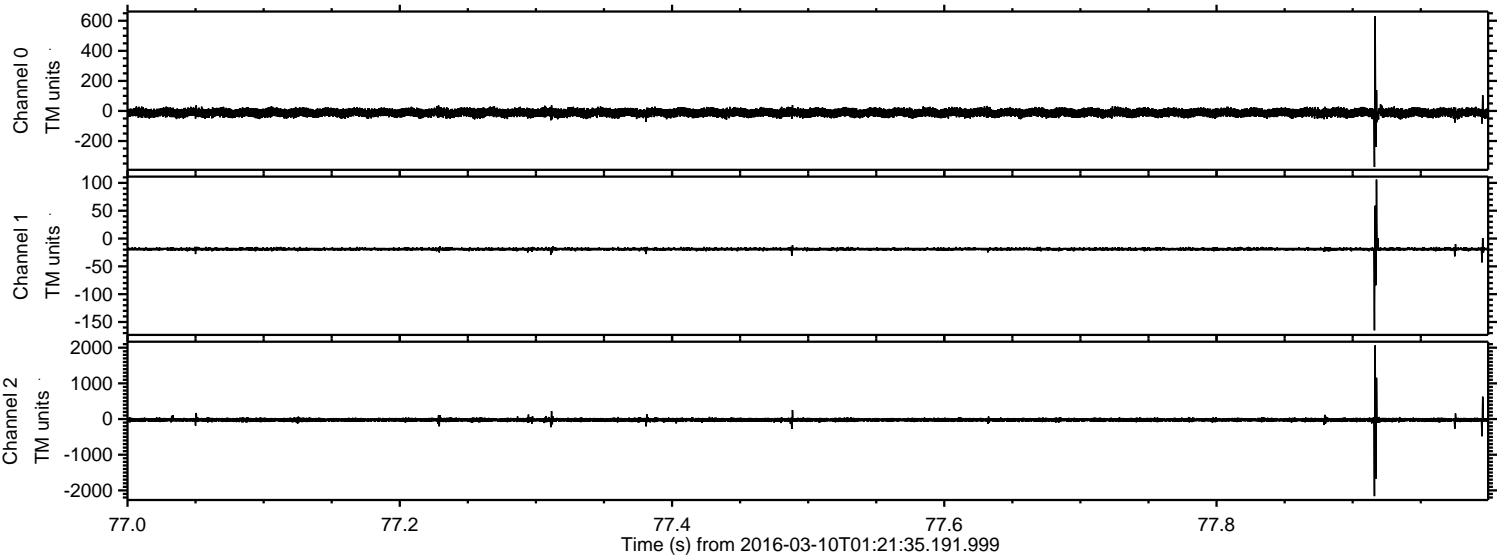


Processed Tue Apr 19 10:15:27 2016 by ELM ver.2012-10-06 from 001\_\_elm20160310\_012134\_\_dat00.bin





Processed Tue Apr 19 10:15:28 2016 by ELM ver.2012-10-06 from 001\_\_elm20160310\_012134\_\_dat00.bin





Processed Tue Apr 19 10:15:29 2016 by ELM ver.2012-10-06 from 001\_\_elm20160310\_012134\_\_dat00.bin

