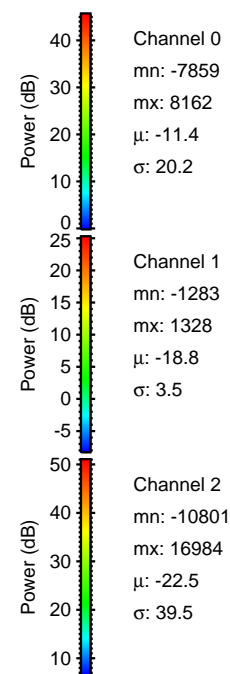
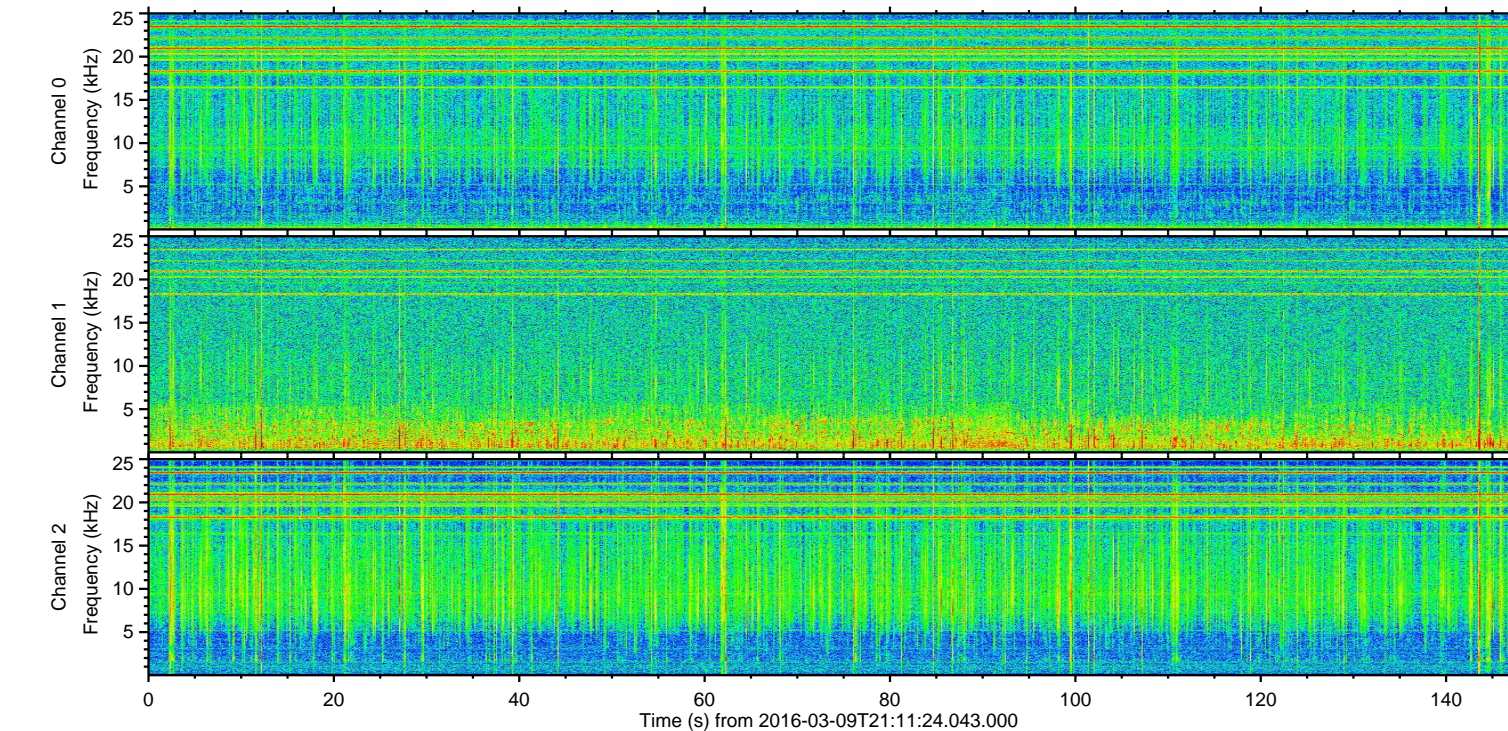
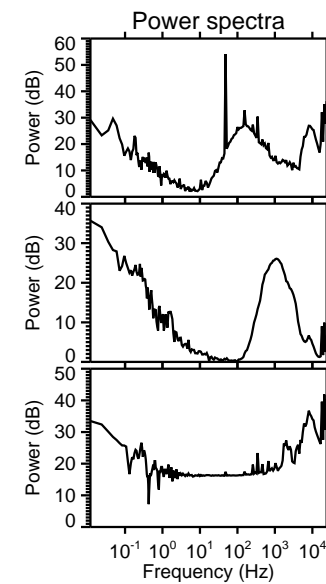
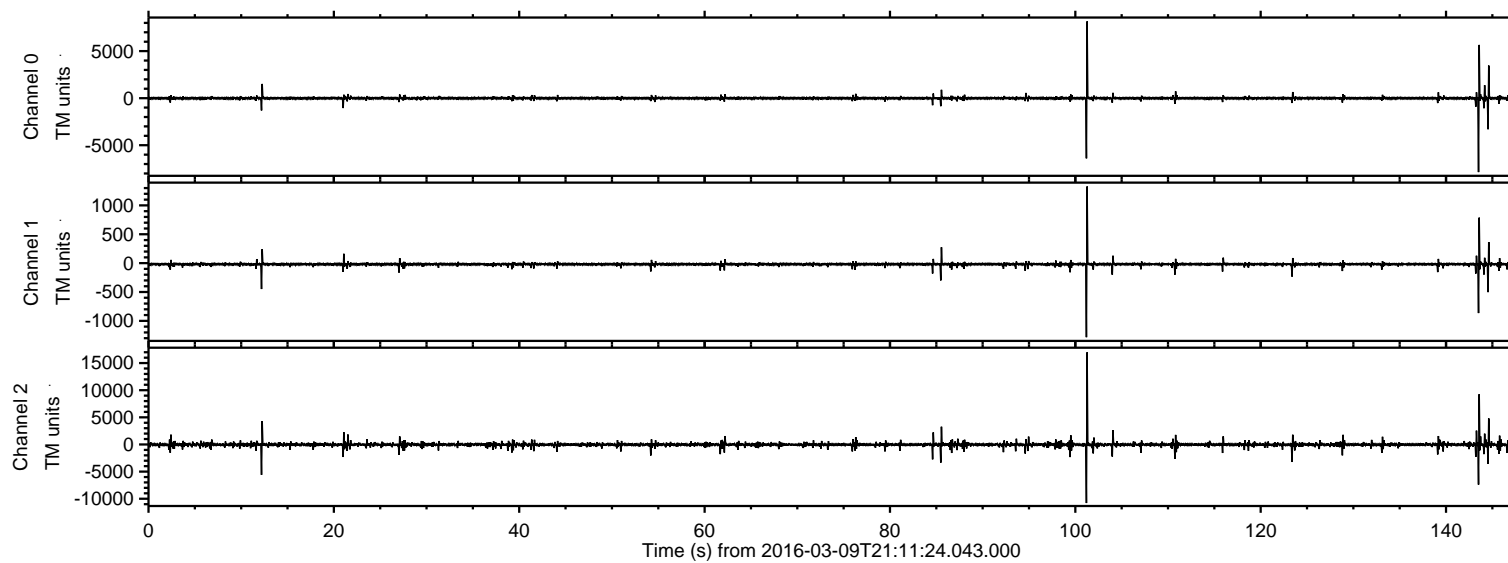


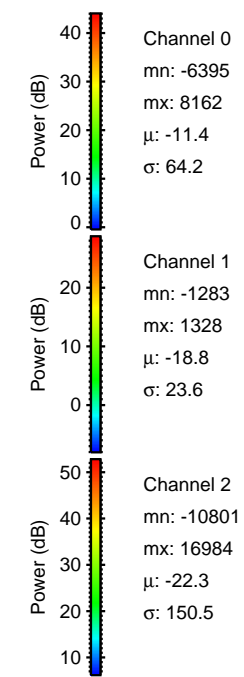
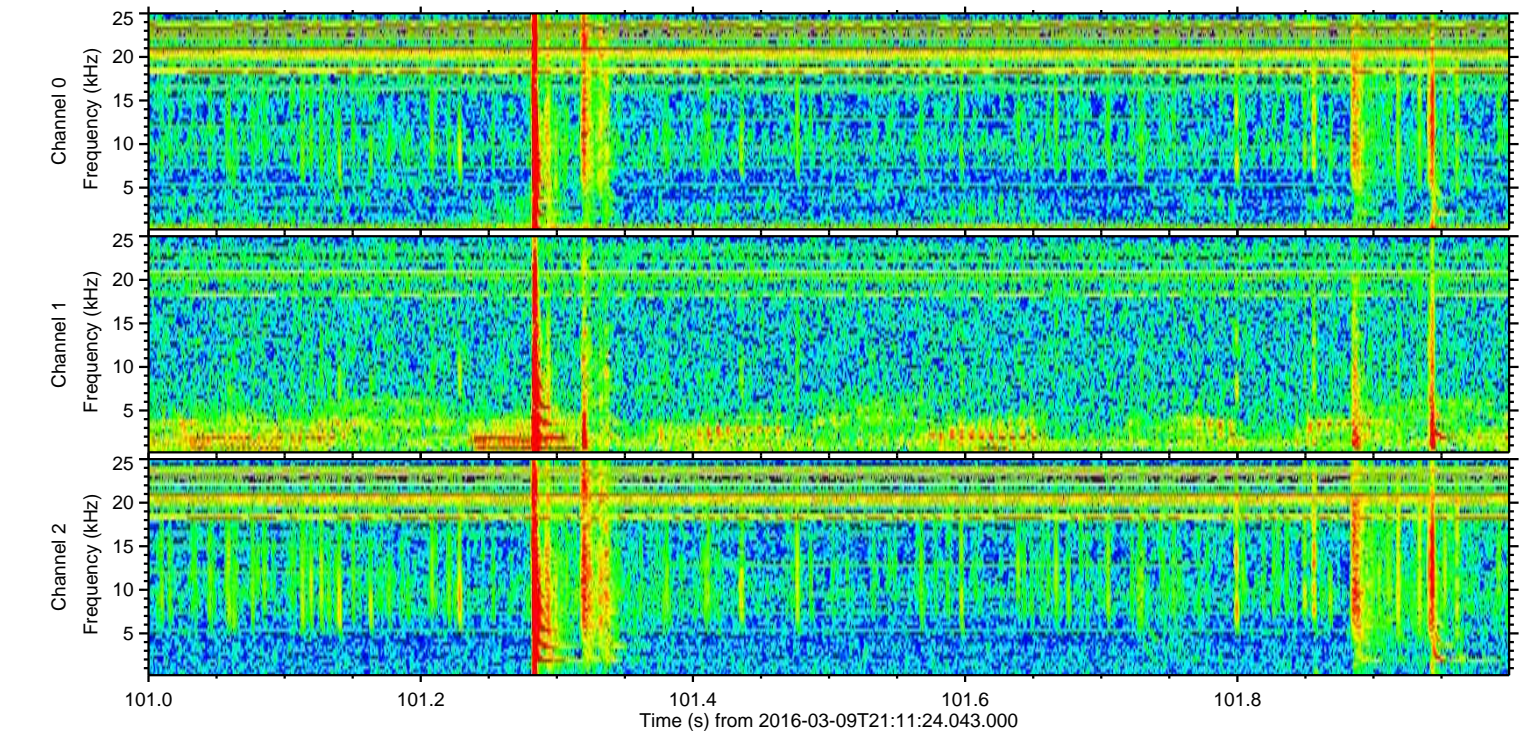
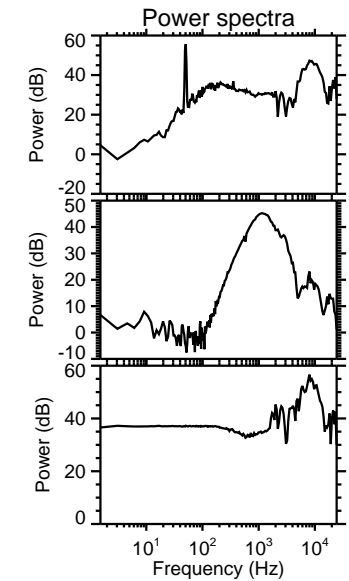
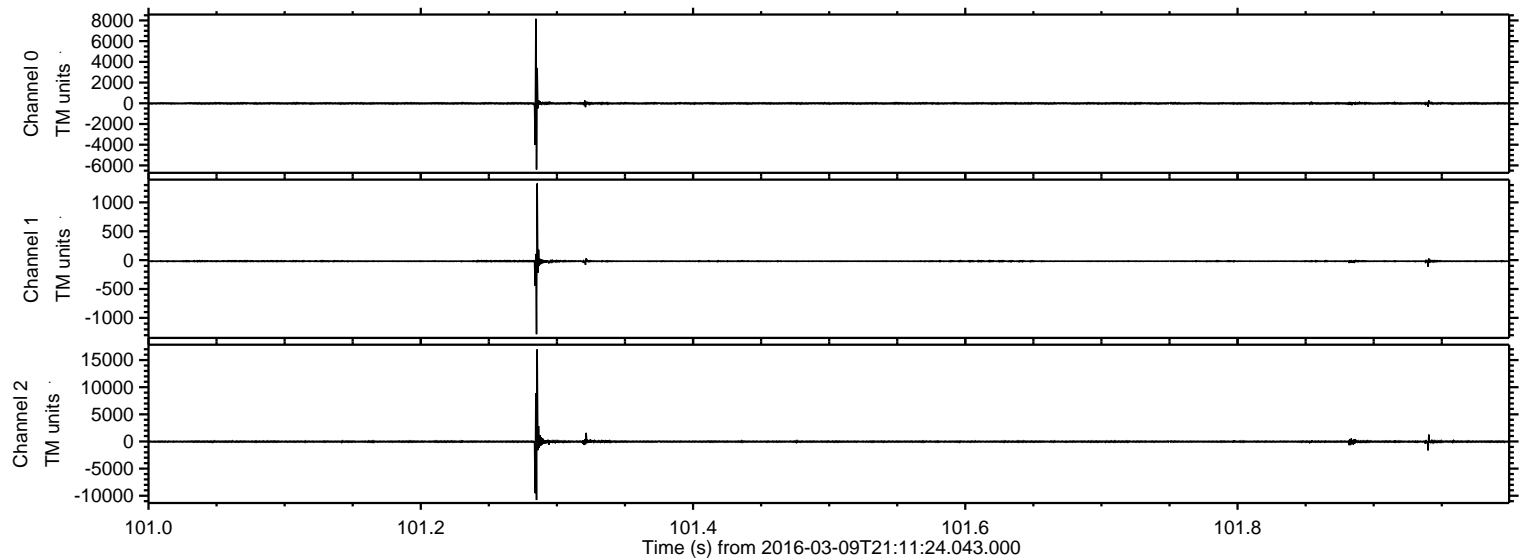
ELMAVAN 3D WAVEFORMS (Measured data sampled at 50 kHz) 51000 packets of 144 samples from 2016-03-09T21:11:24.043.000.

Processed Tue Apr 19 09:24:12 2016 by ELM ver.2012-10-06 from 001__elm20160309_211123__dat00.bin



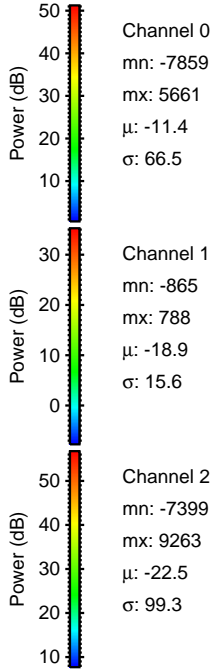
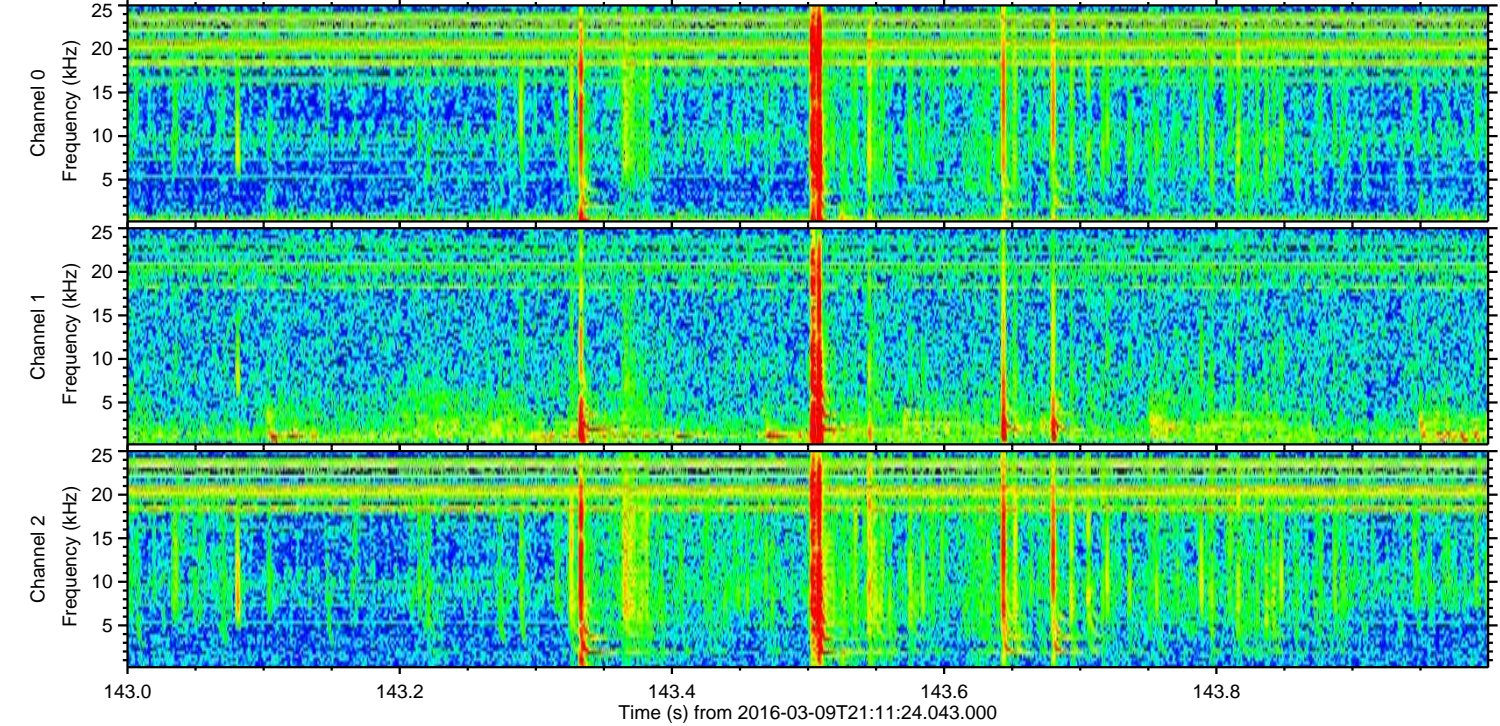
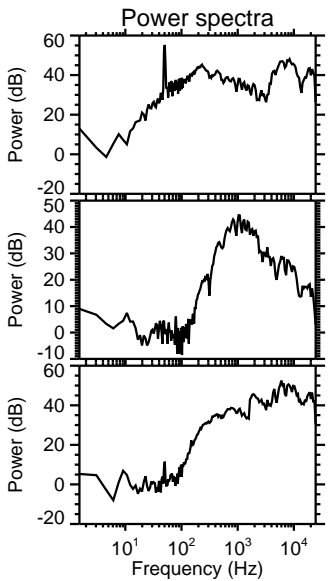
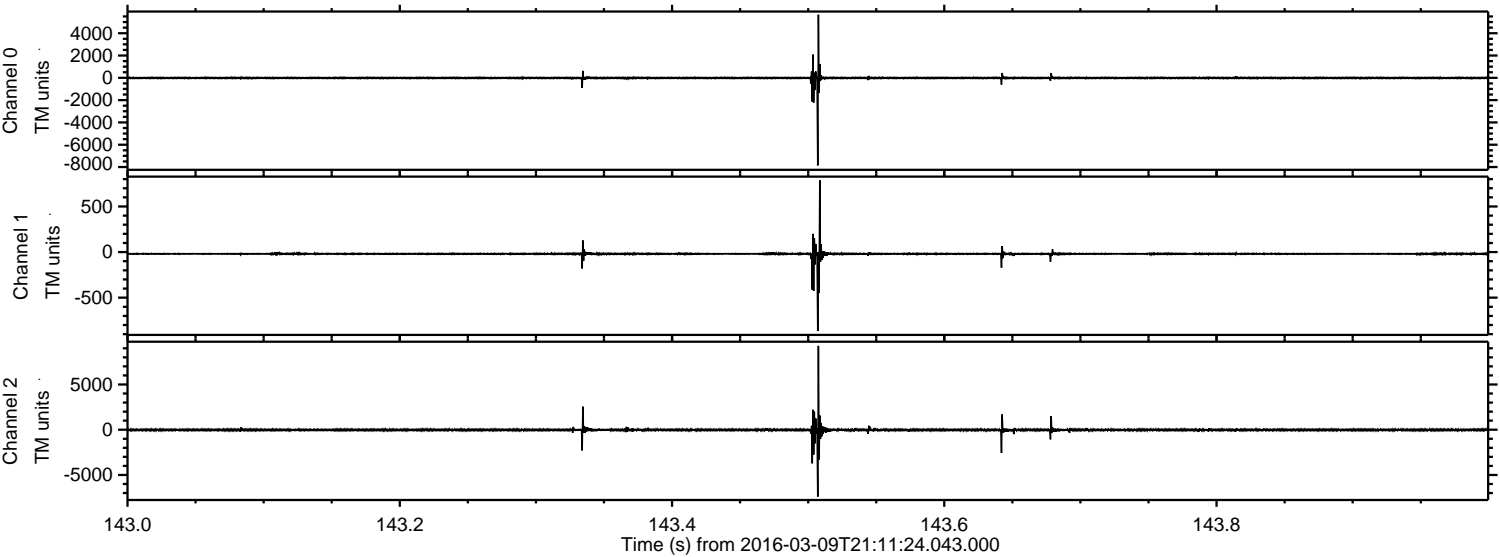
ELMAVAN 3D WAVEFORMS (Measured data sampled at 50 kHz) 51000 packets of 144 samples from 2016-03-09T21:11:24.043.000. Part 102/147

Processed Tue Apr 19 09:24:24 2016 by ELM ver.2012-10-06 from 001__elm20160309_211123__dat00.bin



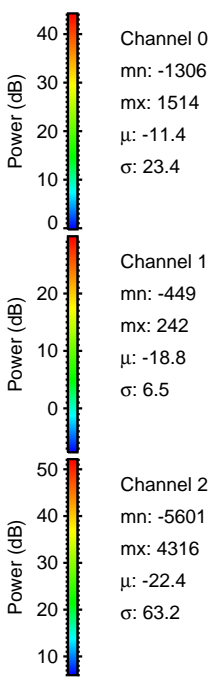
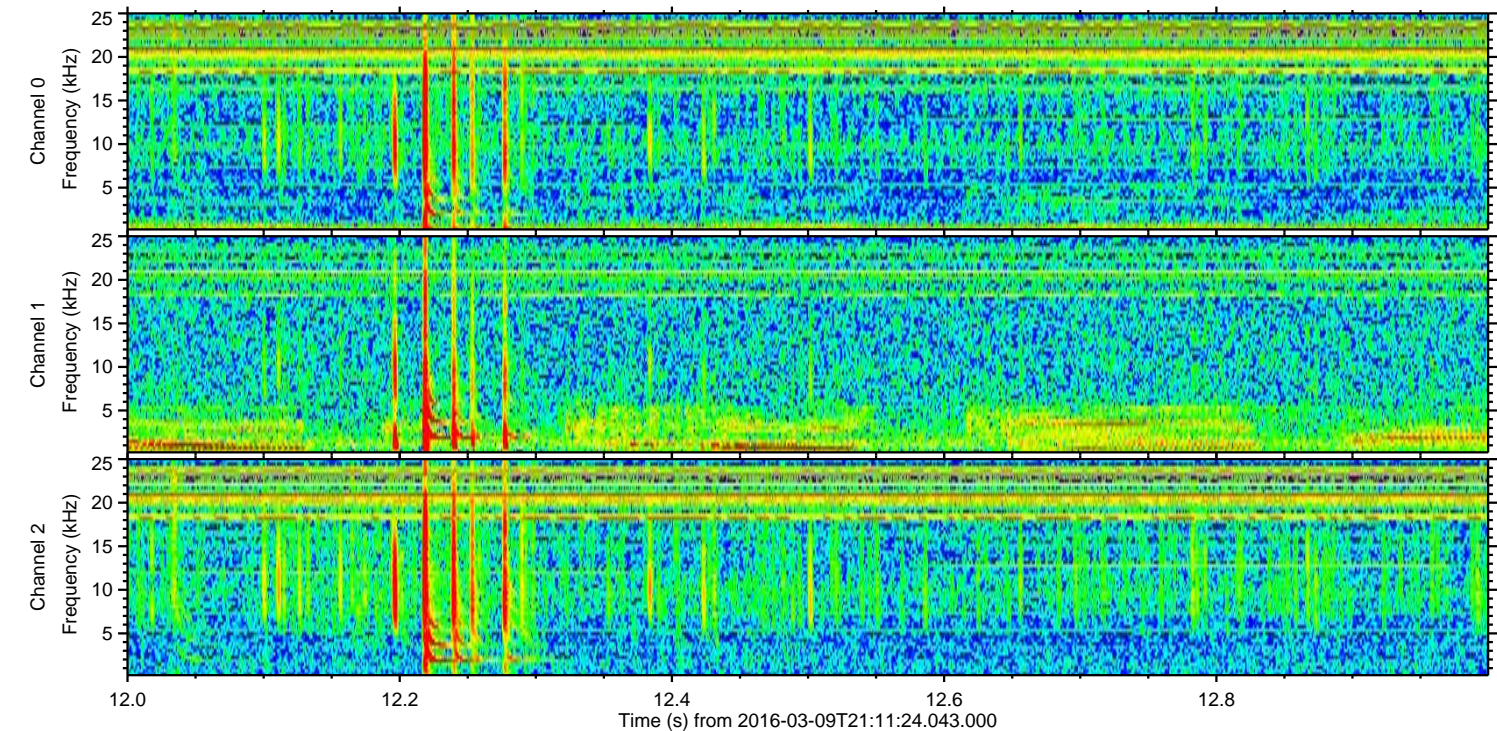
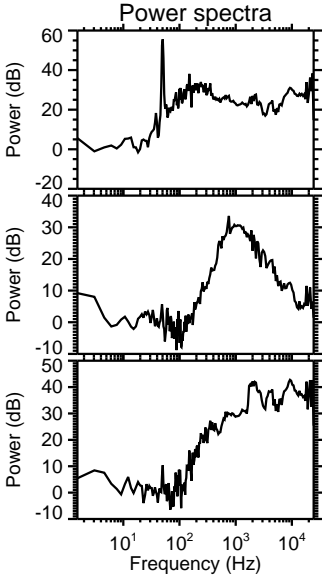
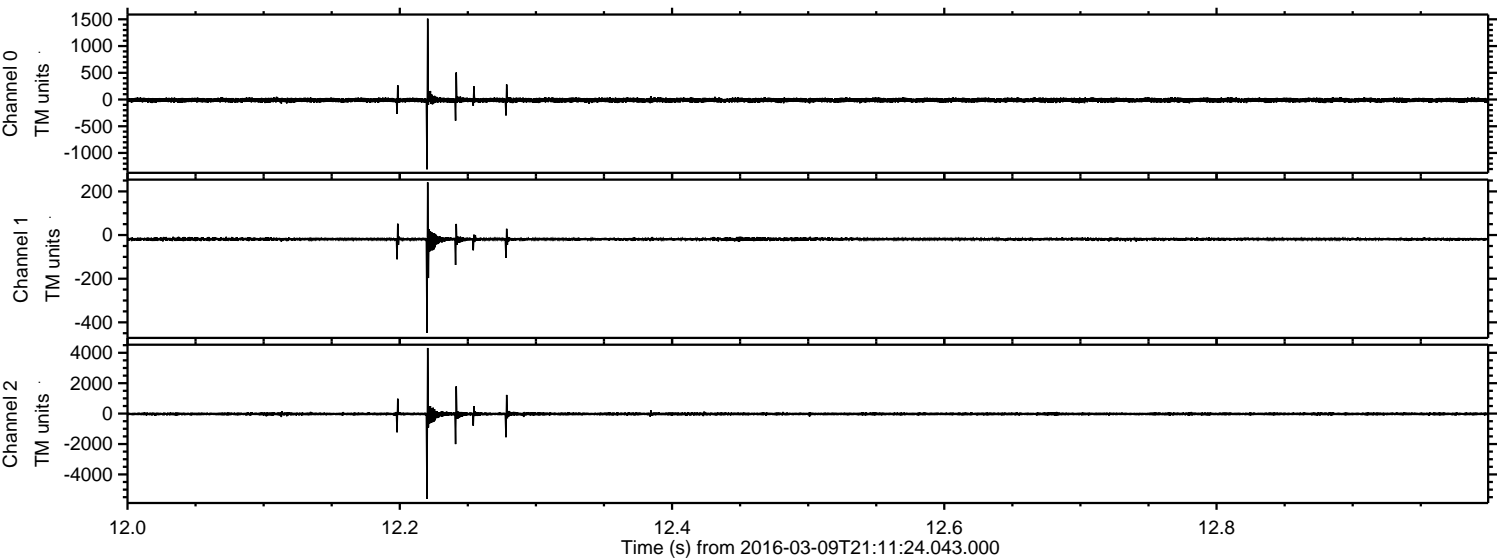
ELMAVAN 3D WAVEFORMS (Measured data sampled at 50 kHz) 51000 packets of 144 samples from 2016-03-09T21:11:24.043.000. Part 144/147

Processed Tue Apr 19 09:24:25 2016 by ELM ver.2012-10-06 from 001__elm20160309_211123__dat00.bin



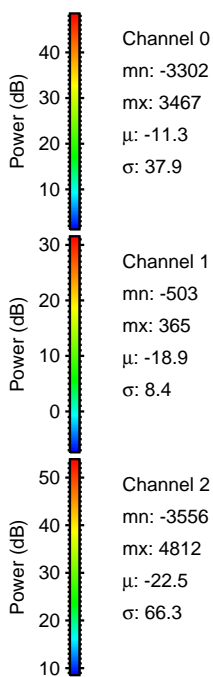
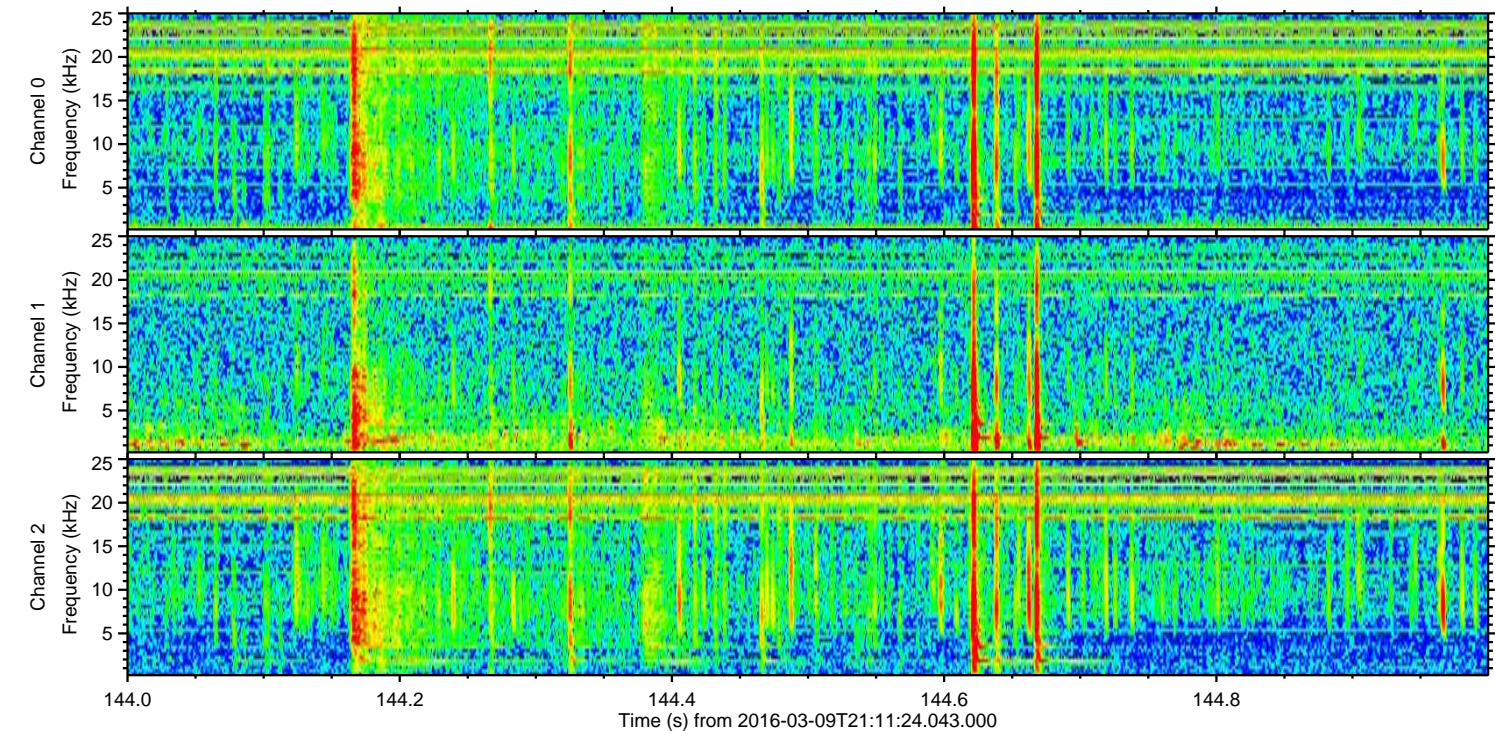
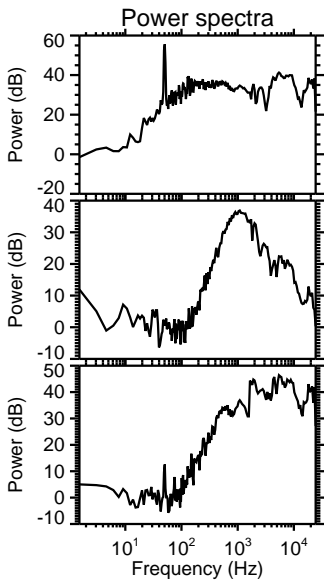
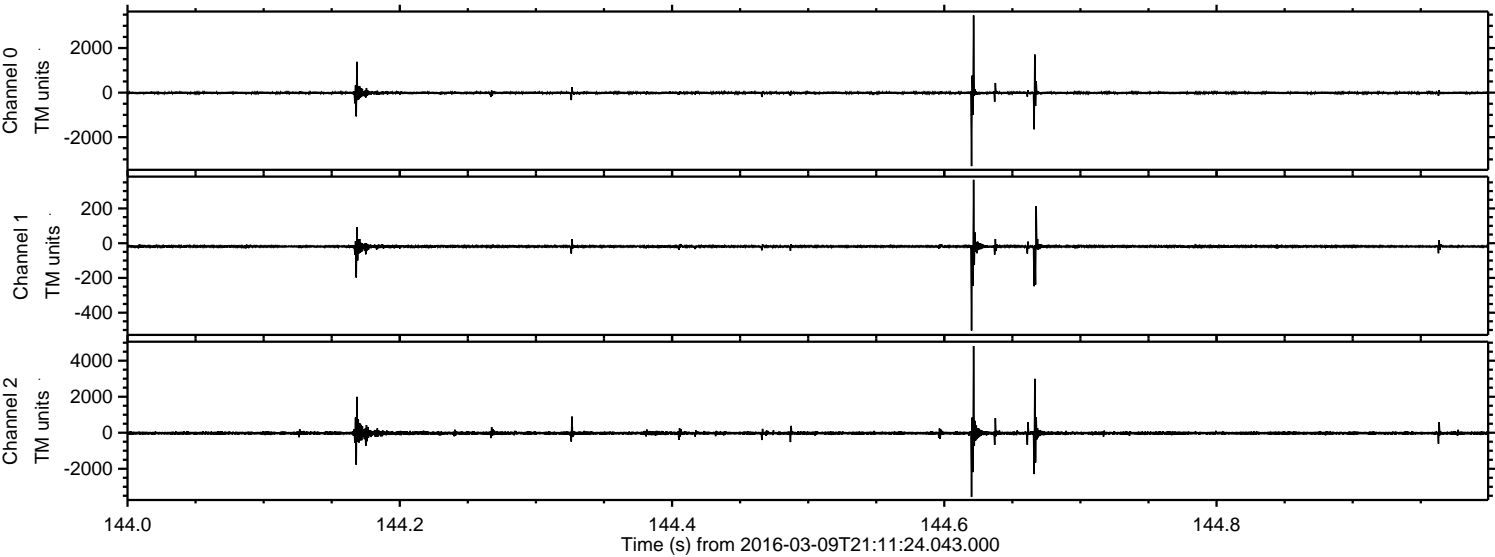
ELMAVAN 3D WAVEFORMS (Measured data sampled at 50 kHz) 51000 packets of 144 samples from 2016-03-09T21:11:24.043.000. Part 13/147

Processed Tue Apr 19 09:24:26 2016 by ELM ver.2012-10-06 from 001__elm20160309_211123__dat00.bin



ELMAVAN 3D WAVEFORMS (Measured data sampled at 50 kHz) 51000 packets of 144 samples from 2016-03-09T21:11:24.043.000. Part 145/147

Processed Tue Apr 19 09:24:27 2016 by ELM ver.2012-10-06 from 001__elm20160309_211123__dat00.bin

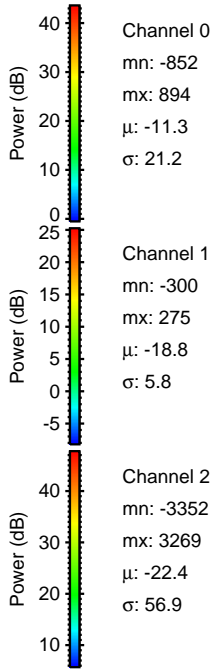
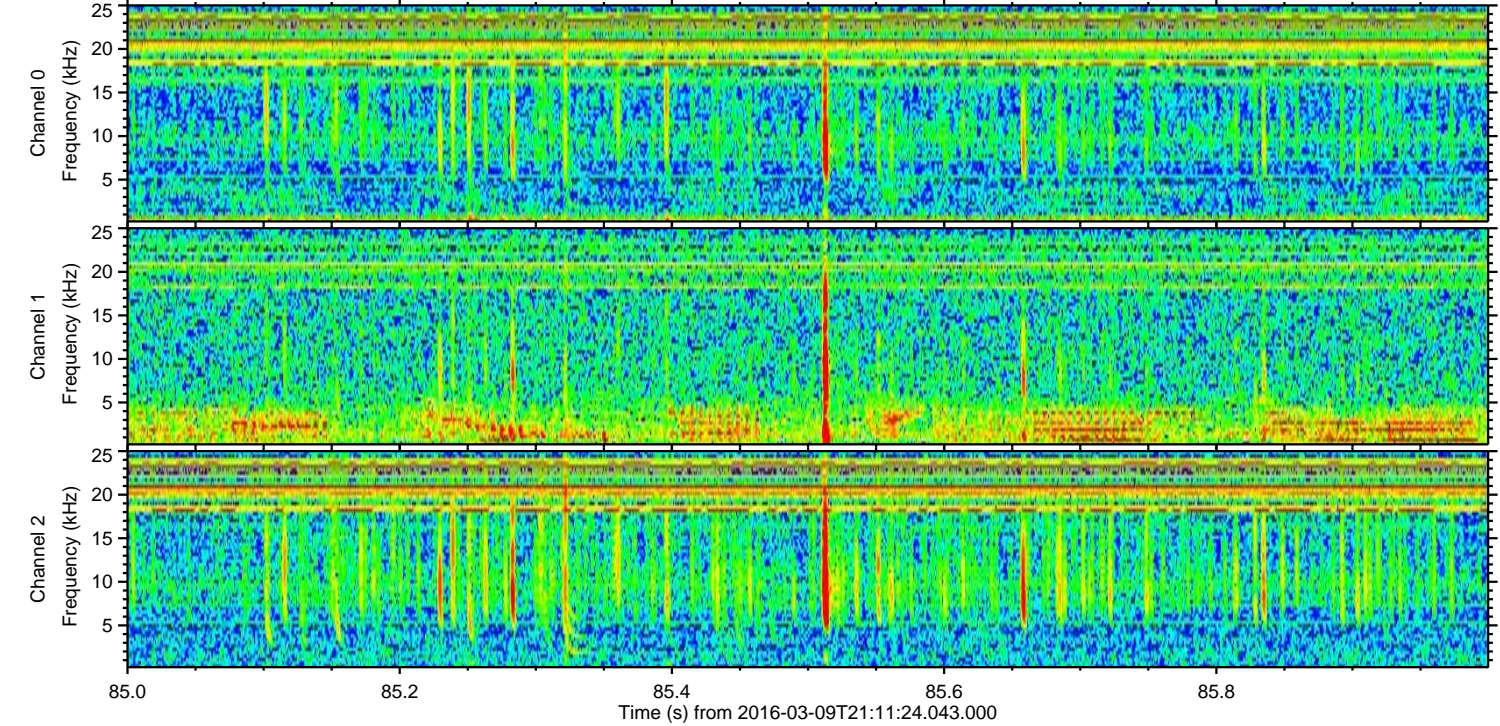
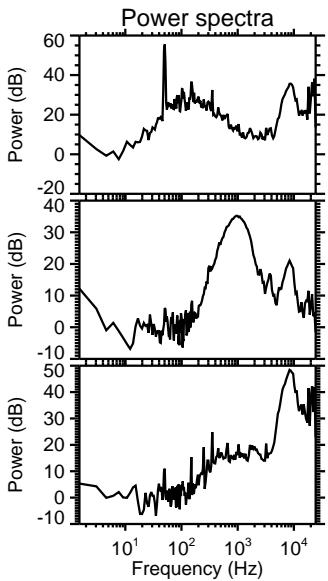
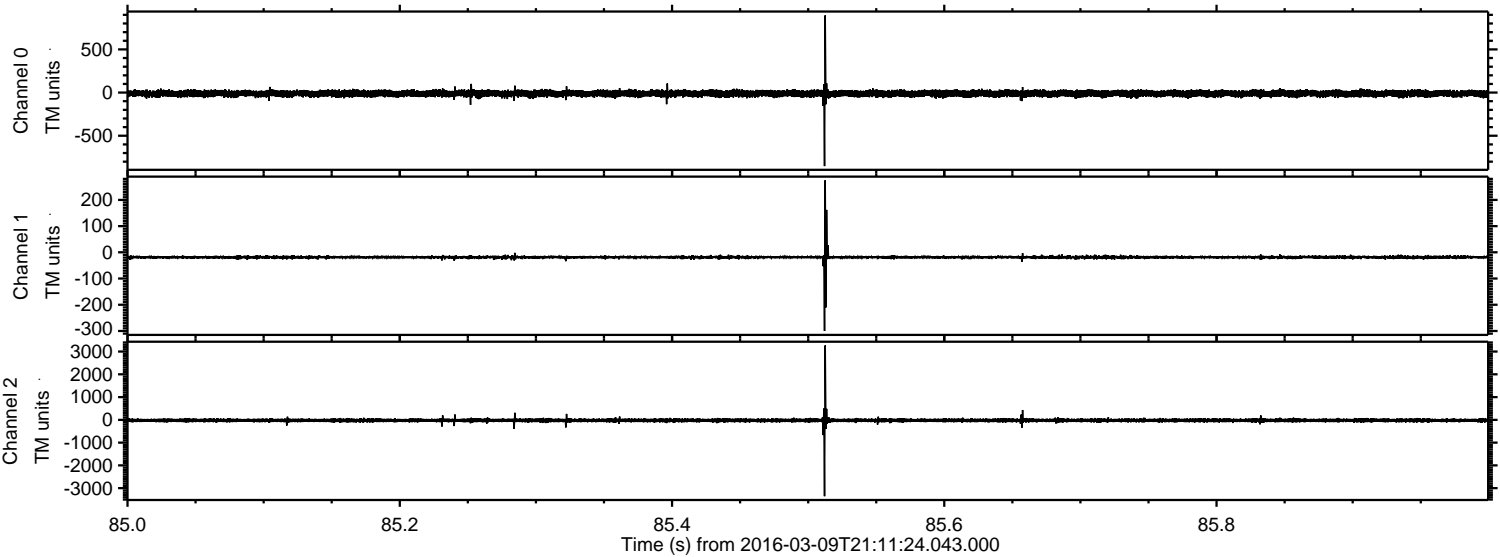


Channel 0
mn: -3302
mx: 3467
 μ : -11.3
 σ : 37.9

Channel 1
mn: -503
mx: 365
 μ : -18.9
 σ : 8.4

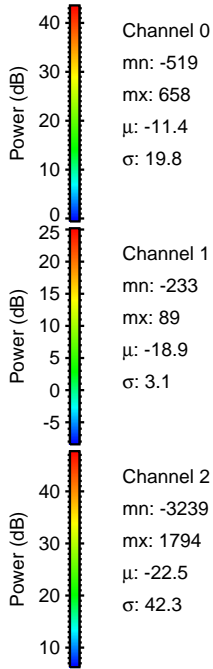
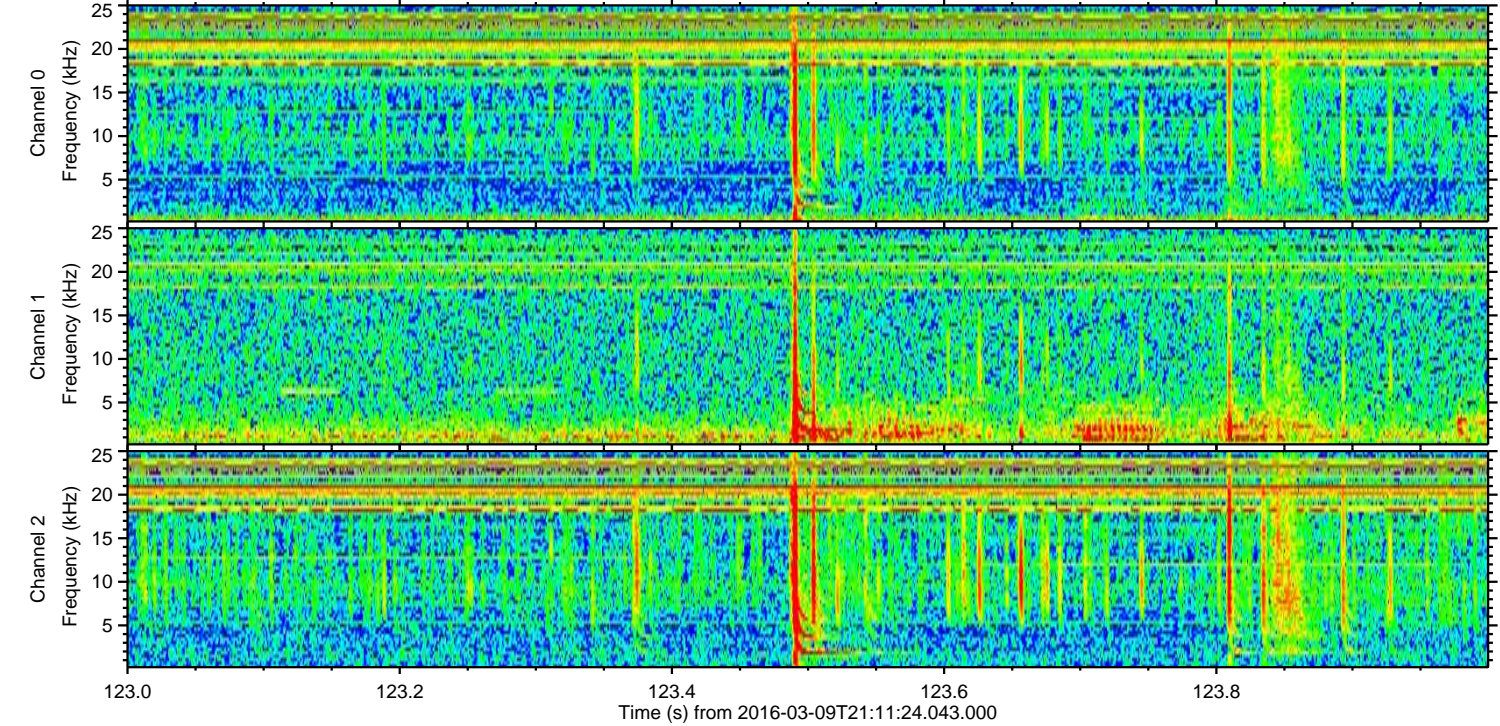
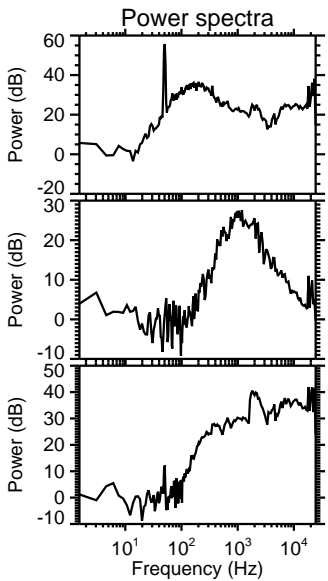
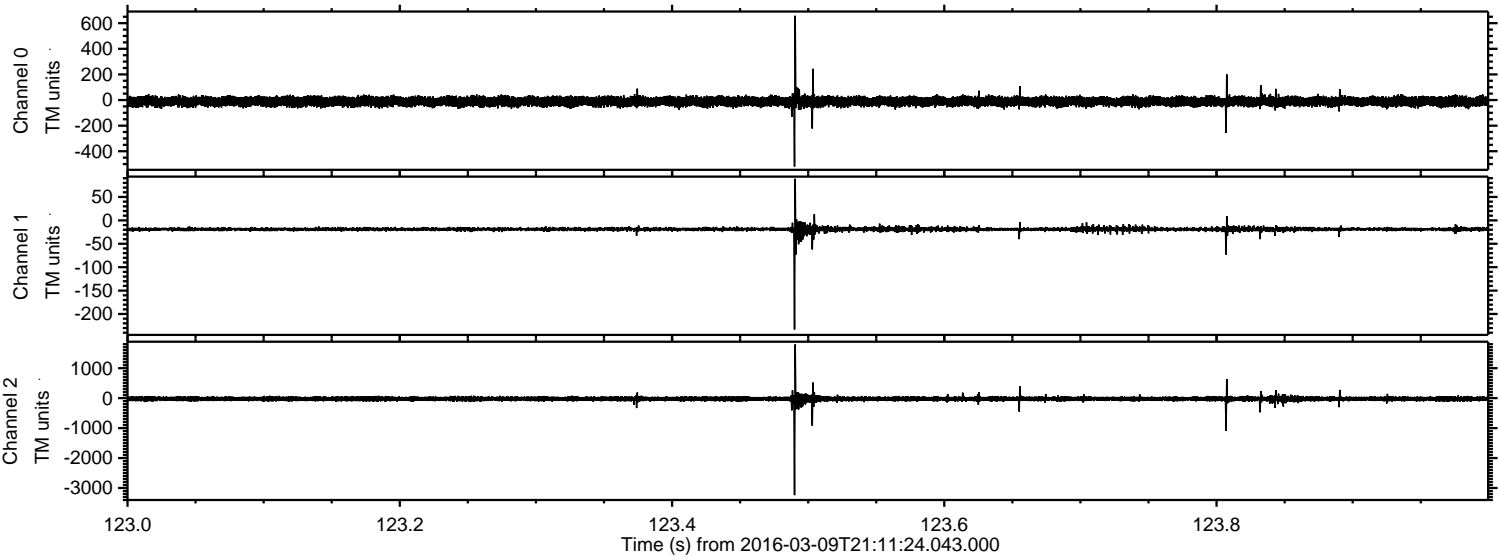
Channel 2
mn: -3556
mx: 4812
 μ : -22.5
 σ : 66.3

Processed Tue Apr 19 09:24:28 2016 by ELM ver.2012-10-06 from 001__elm20160309_211123__dat00.bin



ELMAVAN 3D WAVEFORMS (Measured data sampled at 50 kHz) 51000 packets of 144 samples from 2016-03-09T21:11:24.043.000. Part 124/147

Processed Tue Apr 19 09:24:29 2016 by ELM ver.2012-10-06 from 001__elm20160309_211123__dat00.bin

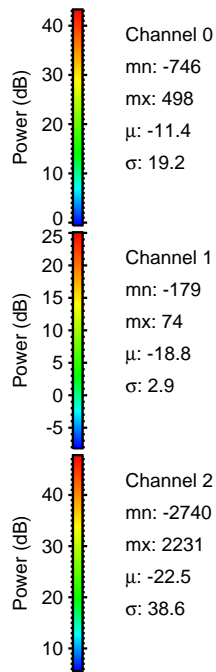
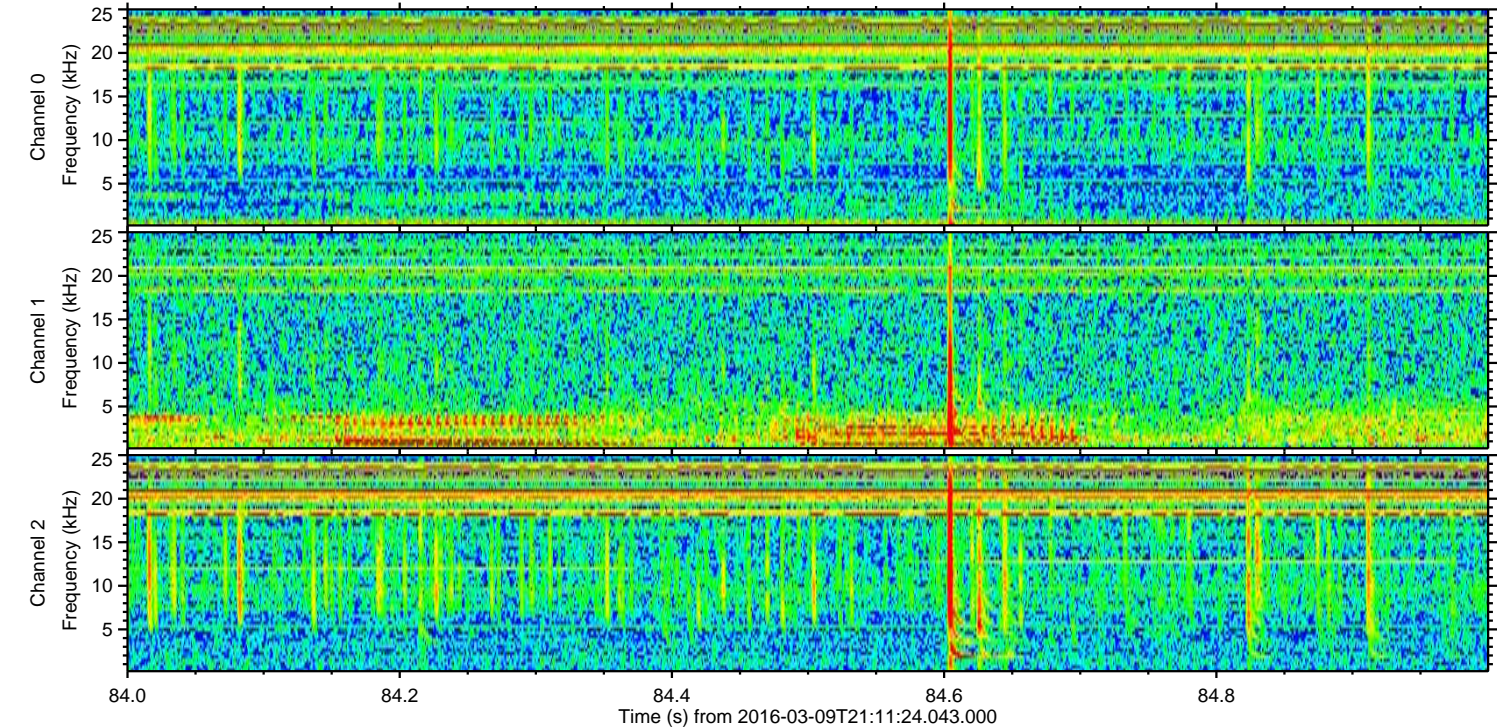
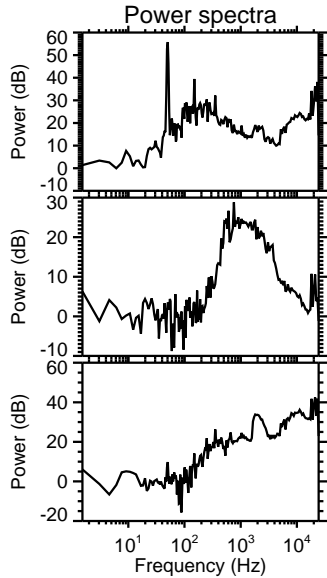
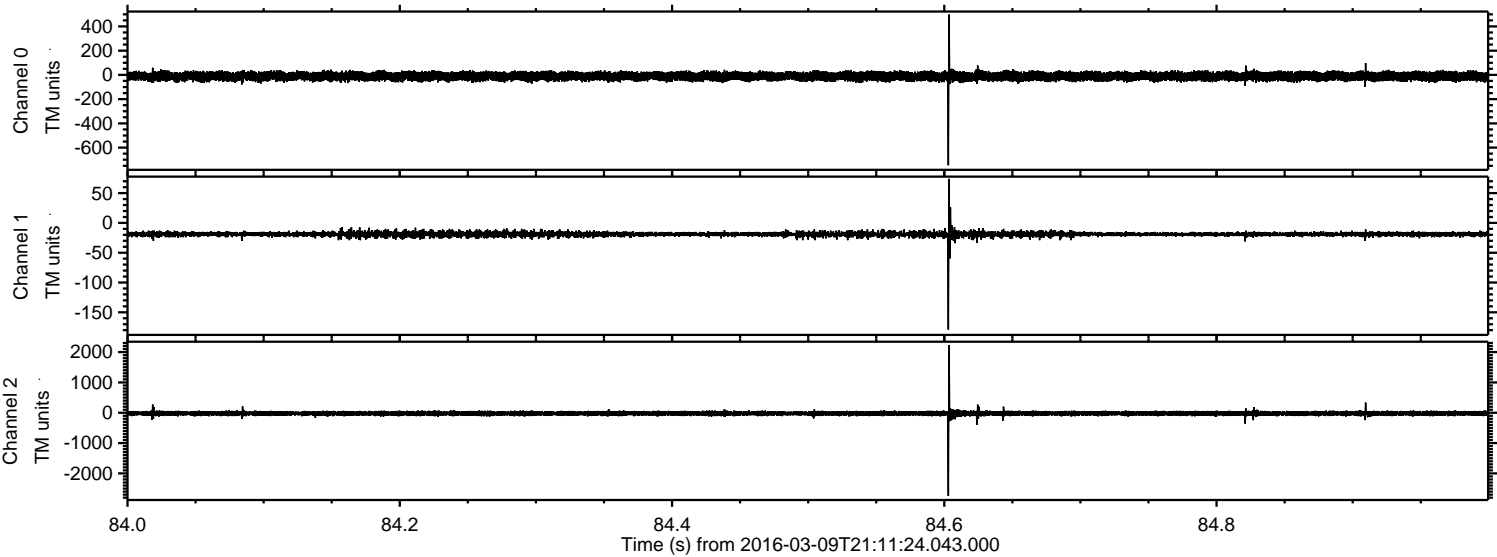


Channel 0
mn: -519
mx: 658
 μ : -11.4
 σ : 19.8

Channel 1
mn: -233
mx: 89
 μ : -18.9
 σ : 3.1

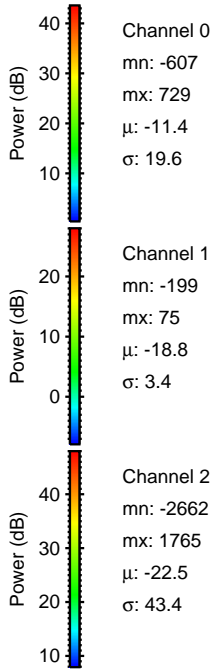
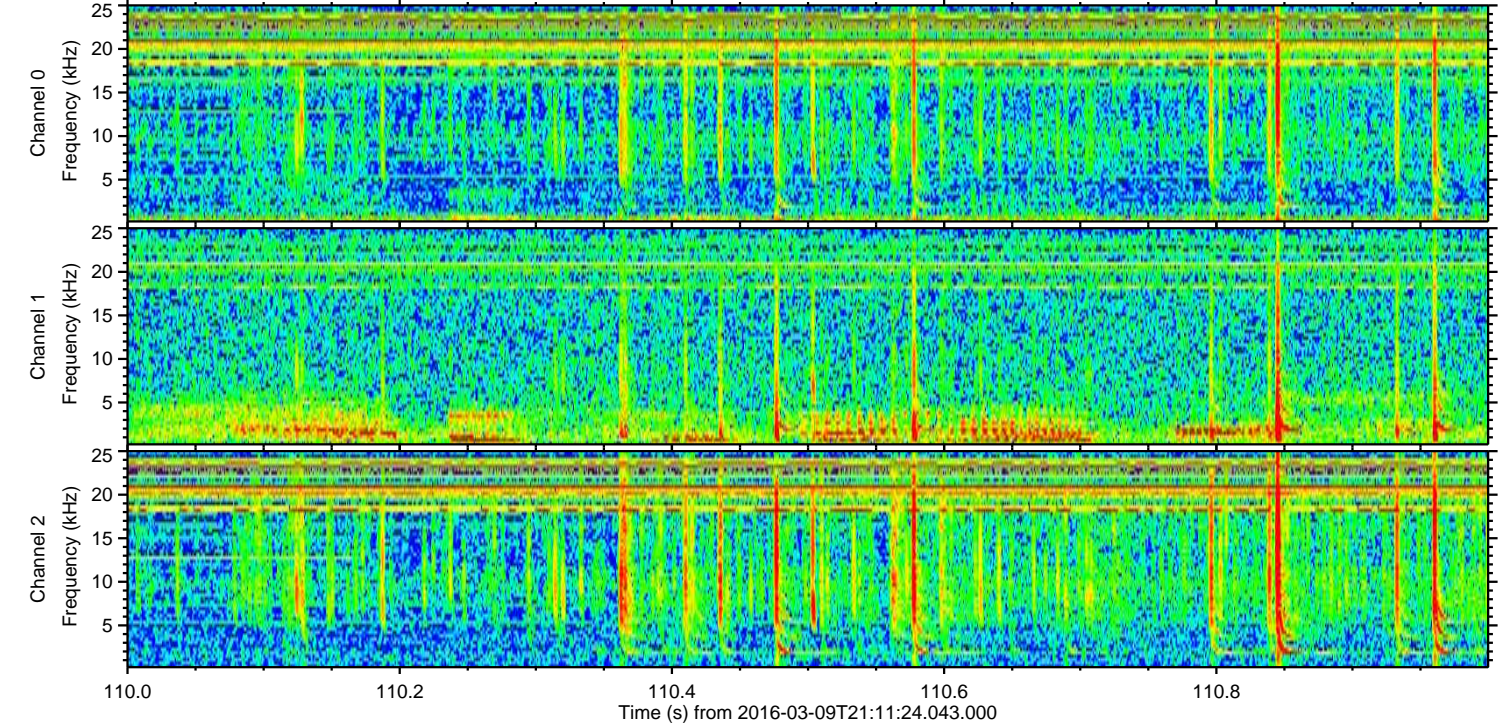
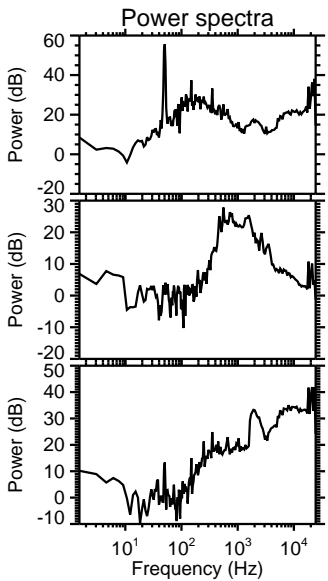
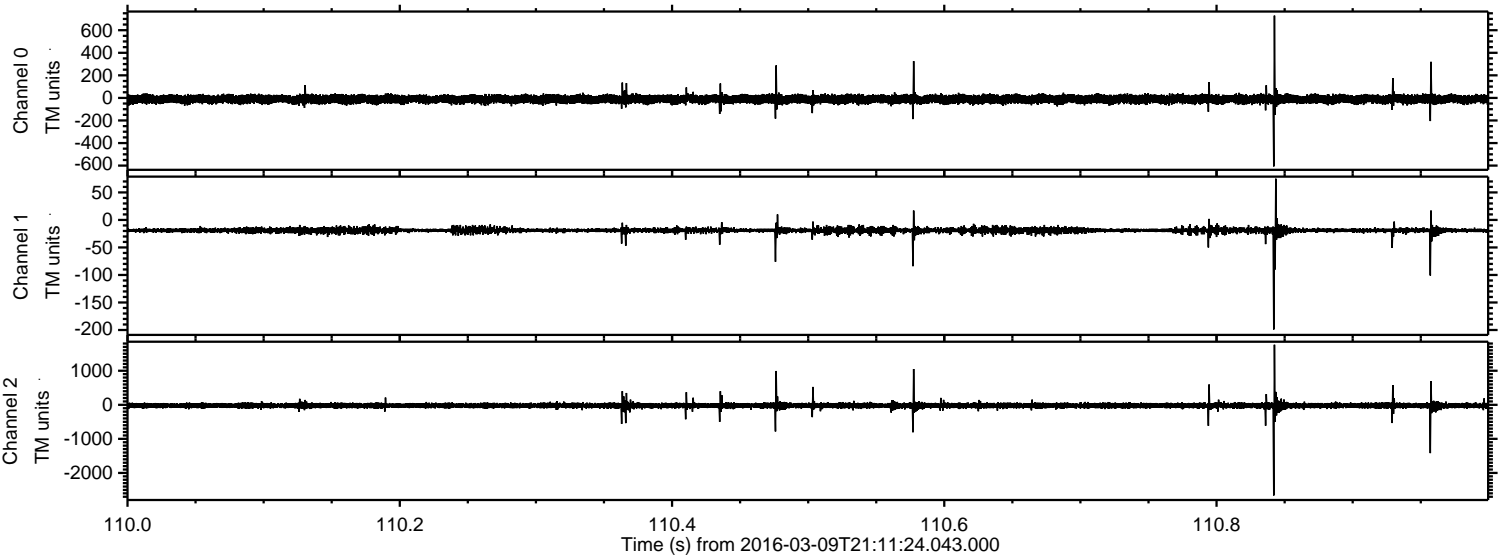
Channel 2
mn: -3239
mx: 1794
 μ : -22.5
 σ : 42.3

Processed Tue Apr 19 09:24:30 2016 by ELM ver.2012-10-06 from 001__elm20160309_211123__dat00.bin



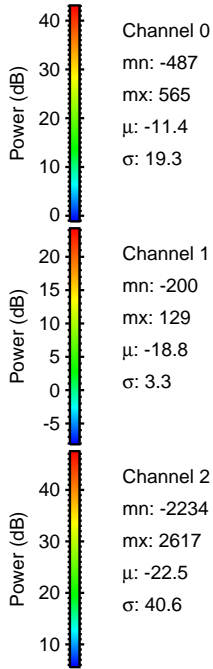
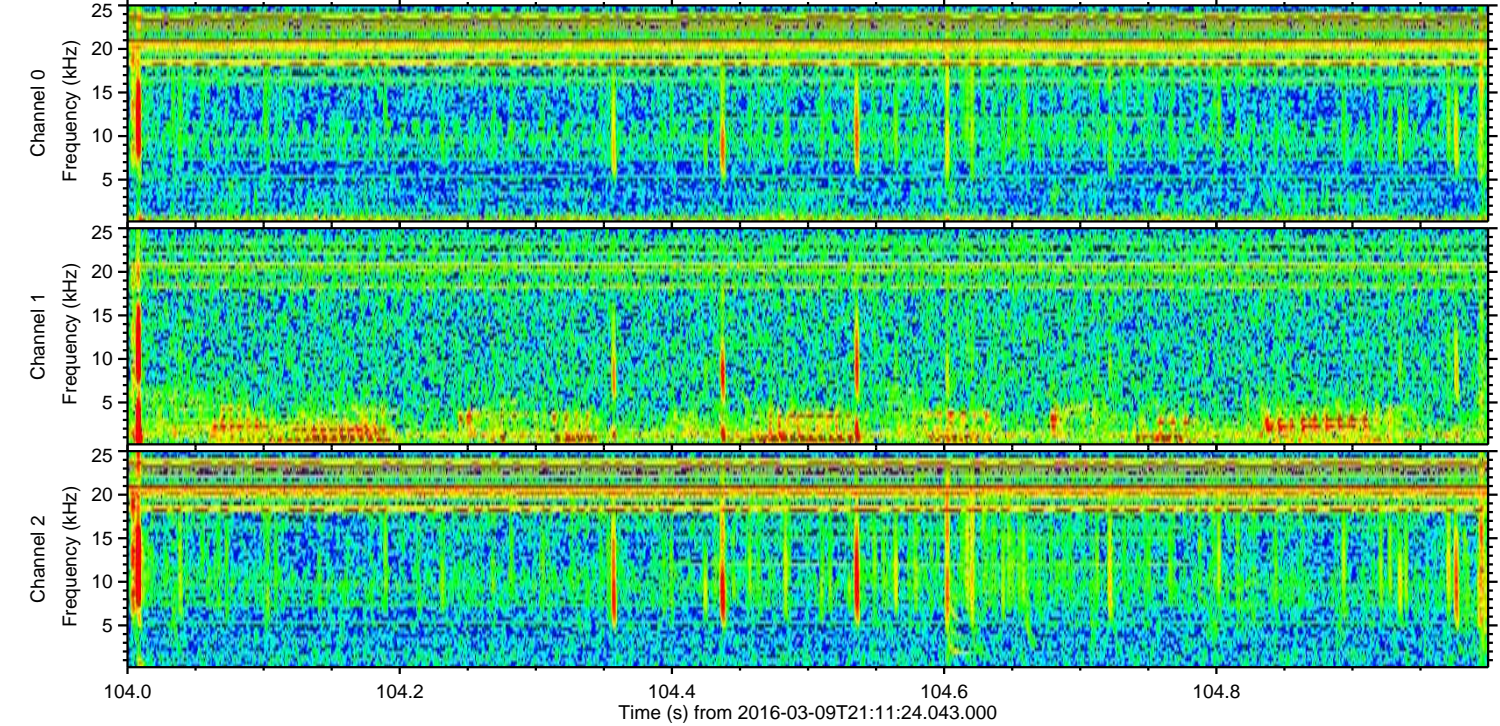
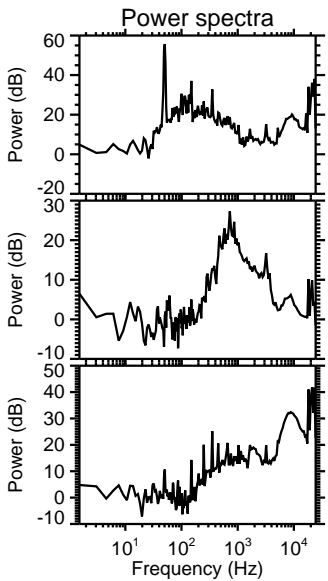
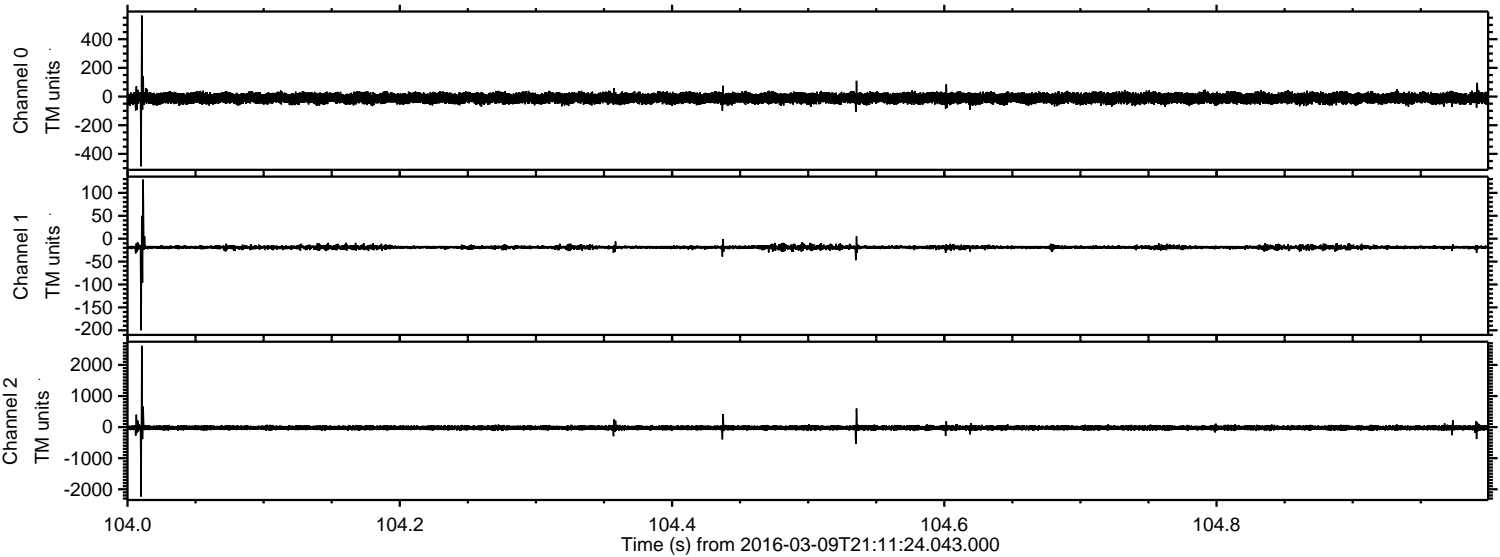
ELMAVAN 3D WAVEFORMS (Measured data sampled at 50 kHz) 51000 packets of 144 samples from 2016-03-09T21:11:24.043.000. Part 111/147

Processed Tue Apr 19 09:24:31 2016 by ELM ver.2012-10-06 from 001__elm20160309_211123__dat00.bin



ELMAVAN 3D WAVEFORMS (Measured data sampled at 50 kHz) 51000 packets of 144 samples from 2016-03-09T21:11:24.043.000. Part 105/147

Processed Tue Apr 19 09:24:31 2016 by ELM ver.2012-10-06 from 001__elm20160309_211123__dat00.bin



Power spectra

ELMAVAN 3D WAVEFORMS (Measured data sampled at 50 kHz) 51000 packets of 144 samples from 2016-03-09T21:11:24.043.000. Part 137/147

Processed Tue Apr 19 09:24:32 2016 by ELM ver.2012-10-06 from 001__elm20160309_211123__dat00.bin

